



CLIMATOLOGICAL DATA

VIRGINIA

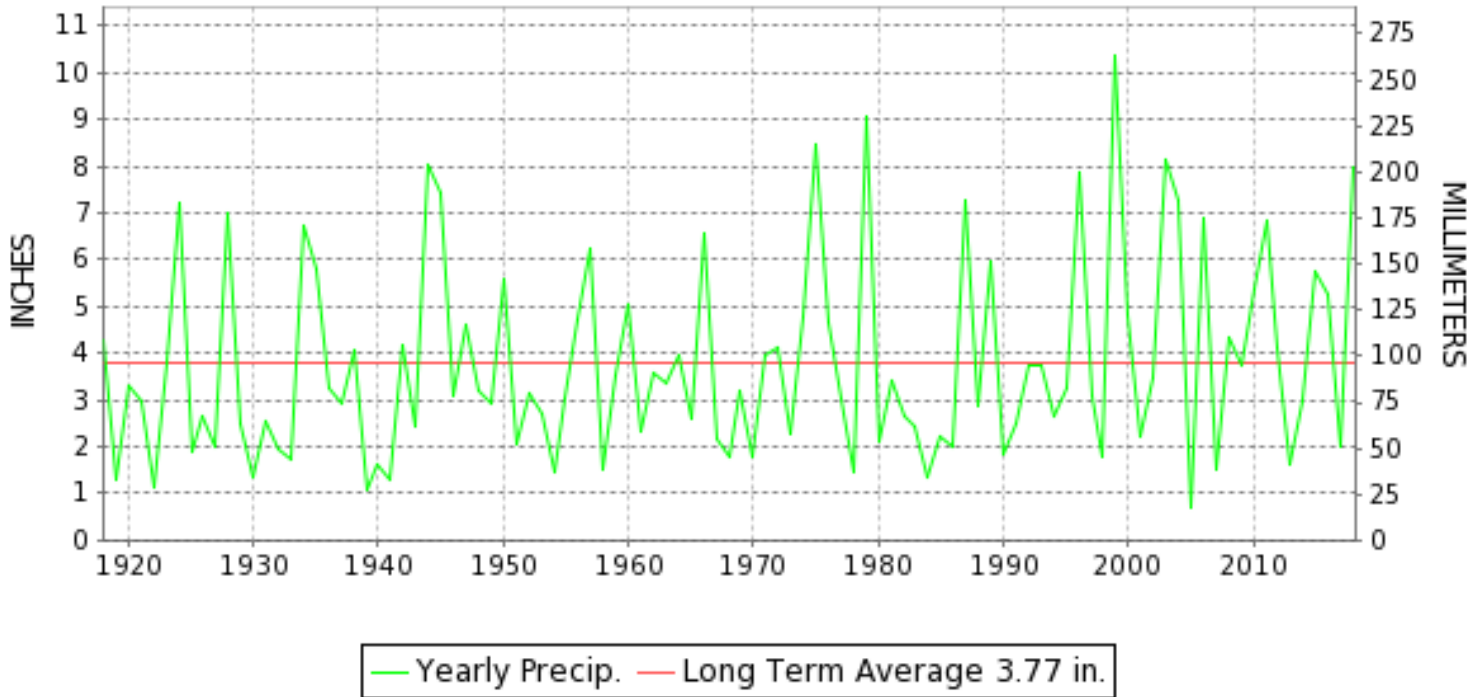
SEPTEMBER 2018

VOLUME 128 NUMBER 09

ISSN 0364-5630

GHCND Ver: 3.25-upd-2019021019

SEPTEMBER PRECIPITATION BY YEAR



TEMPERATURE AND PRECIPITATION EXTREMES

VIRGINIA

HIGHEST TEMPERATURE	99	SEPTEMBER 08	HOLLAND 1 E
LOWEST TEMPERATURE	45	SEPTEMBER 30+	MUSTOE 1 SW
GREATEST TOTAL PRECIPITATION	17.60		WOOLWINE 1 SE
LEAST TOTAL PRECIPITATION	0.70		HOLLAND 1 E
GREATEST 1 DAY PRECIPITATION	7.00	SEPTEMBER 18	CHASE CITY

"I certify that this is an official publication of the National Oceanic and Atmospheric Administration (NOAA) It is compiled using information from weather observing sites supervised by NOAA/National Weather Service and received at the National Centers for Environmental Information(NCEI), Asheville, North Carolina 28801."

Mary S. Wolpengeth

Director
National Centers for Environmental Information

noaa

National
Oceanic and
Atmospheric Administration

National
Environmental Satellite, Data
and Information Service

National
Centers for Environmental Information
Asheville, North Carolina

VIRGINIA
201809

MONTHLY STATION AND DIVISION SUMMARY

STATION	TEMPERATURE (°F)											PRECIPITATION (IN)												
	AVERAGE MAXIMUM	AVERAGE MINIMUM	AVERAGE	DEPARTURE FROM NORMAL	HIGHEST	DATE	LOWEST	DATE	HEATING DEG. DAYS	COOLING DEG. DAYS	NO. OF DAYS				TOTAL	DEPARTURE FROM NORMAL	GREATEST 24 HOURS	DATE	ICE PELLETS, SNOW			NO. OF DAYS		
											MAX		MIN						TOTAL	MAX DEPTH ON GROUND	DATE	.10 OR MORE	.50 OR MORE	1.00 OR MORE
											>=90	<=32	<=32	<=0										
RICHMOND INTL AP	84.0	68.9	76.4	5.8	94	03	57	29	0	350	6	0	0	0	4.53	0.40	1.02	01	0.0	0		17	13	1
WINTERPOCK 4 W															3.60	0.95	18	M				16	8	0
--DIVISIONAL DATA-----> WESTERN PIEDMONT 03			74.7	6.2B										7.37	3.34B									
ALTAVISTA														11.07		2.20	17	0.0	0			13	12	5
APPOMATTOX	79.9	64.1	72.0	4.4	91	07+	56	28+	19	234	4	0	0	0	11.58	7.28	2.92	02	0.0	0		16	11	4
BEDFORD														10.81	6.80	3.95	23	0.0	0			18	12	3
BROOKNEAL	82.0	64.7	73.4	10.0	91	07	55	29	5	263	3	0	0	0	7.59	3.71	2.14	17	0.0	0		15	11	2
CHARLOTTESVILLE 2W	78.8	64.6	71.7	2.9	92	07+	55	28	22	233	4	0	0	0	9.61	4.71	2.38	09	0.0	0		20	14	5
CHARLOTTESVILLE--ALBEMARLE AP	81.6	66.4	74.0	7.2	95	04	56	29	6	284	7	0	0	0	5.37	0.89	1.17	27	M			17	12	1
CHATHAM	80.6	64.5	72.6	6.5	91	05	57	30	6	240	2	0	0	0	10.88	6.43	5.10	23	0.0	0		13	8	3
CONCORD 4 SSW														9.79		1.76	17	0.0	0			17	11	4
DANVILLE 2 SE	83.9	67.0	75.5	5.4	93	07+	59	29	0	324	10	0	0	0	9.50	5.55	2.05	17	0.0	0		13	12	4
DANVILLE RGNL AP	82.3	66.5	74.4	4.5	92	04	58	29	1	290	5	0	0	0	9.64	5.65	2.09	17	0.0	0		12	10	4
FREE UNION	79.7M	66.6M	73.1M		92	07+	58	29+	9E	260E	5	0	0	0	M 10.44		1.82	09	M 0.0	0		20	13	6
BIG IS														14.17		3.94	09	0.0	0			12	12	5
HUDDLESTON 4 SW														10.93		3.06	23	0.0	0			15	11	4
LYNCHBURG INTL AP	80.8	64.1	72.5	5.5	92	06+	54	29	8	239	5	0	0	0	6.77	2.89	1.37	17	0.0	0		16	12	2
MARTINSVILLE FLTR PLT	81.8	64.8	73.3	6.7	91	08	58	30+	1	257	4	0	0	0	13.05	8.49	2.82	17	0.0	0		15	11	5
MEADOWS OF DAN 5 SW	78.7	63.6	71.2		88	07	59	30+	0	192	0	0	0	0	13.56		5.10	17	0.0	0		18	12	5
MONTEBELLO FISH CULTURAL STN	M	M	M		90	03	53	30	19E	180E	1	0	0	0	M 16.81		5.10	18	M 0.0	0		14	12	6
MONTICELLO	M	M	M								0	0	0	0	M				M					
PEDLAR DAM														12.33		3.16	09	0.0	0			15	12	6
ROCKY MT	80.8	63.9	72.4	6.0	90	07+	57	30	8	237	3	0	0	0	14.92	10.33	4.56	23	0.0	0		20	13	4
S BOSTON	84.7	67.4	76.1	7.7	94	07+	58	30+	1	340	8	0	0	0	8.45	4.47	1.85	17	0.0	0		16	10	4
STUART	81.2	64.0	72.6	4.5	90	07+	60	30+	2	238	2	0	0	0	14.58	9.94	4.49	17	0.0	0		19	16	6
WOOLWINE 1 SE														17.60		4.86	17	0.0	0			19	15	6
--DIVISIONAL DATA-----> NORTHERN 04			73.2	5.6B										11.11	6.73B									
FRONT ROYAL	77.2M	63.1M	70.1M	3.5	92	06	50	27	29E	186E	4	0	0	0	M 9.36	4.86	2.45	09	M 0.0	0		16	11	3
PURCELLVILLE	77.5	63.0	70.3	4.7	94	07	52	30	35	200	4	0	0	0	A 9.27		2.10	28	0.0	0		16	8	3
LURAY 5 E	77.5M	61.3M	69.4M	2.9	91	07	53	30+	40E	180E	5	0	0	0	M 8.07	3.54	1.02	17+	M 0.0	0		21	14	3
MANASSAS	77.2M	64.4M	70.8M	2.2	90	06	55	28	14E	196E	1	0	0	0	MA 8.85		1.50	28	M 0.0	0		15	12	2
MT WX 3	73.8	61.3	67.6		88	04	51	29+	52	136	0	0	0	0	11.02		2.30	28	0.0	0		18	14	4
PIEDMONT RSCH STN	79.6	64.5	72.0	4.0	92	07+	55	29+	18	237	4	0	0	0	MA 7.18	3.15	1.17	28	0.0	0		10	10	1
SOMERSET	79.7	64.7	72.2	4.9	93	07+	56	30+	18	242	4	0	0	0	7.93	3.69	1.08	28	0.0	0		22	15	2
SPERRYVILLE	78.1M	64.0M	71.1M	4.4	96	07+	55	30+	24E	213E	4	0	0	0	M 13.86	8.89	4.21	18	M 0.0	0		20	13	5
WFO STERLING	78.8	64.7	71.7	4.9	94	06	55	28+	17	227	4	0	0	0	8.29	4.29	1.78	27	0.0	0		16	12	3

VIRGINIA
201809

MONTHLY STATION AND DIVISION SUMMARY

STATION	TEMPERATURE (°F)											PRECIPITATION (IN)												
	AVERAGE MAXIMUM	AVERAGE MINIMUM	AVERAGE	DEPARTURE FROM NORMAL	HIGHEST	DATE	LOWEST	DATE	HEATING DEG. DAYS	COOLING DEG. DAYS	NO. OF DAYS				TOTAL	DEPARTURE FROM NORMAL	GREATEST 24 HOURS	DATE	ICE PELLETS, SNOW			NO. OF DAYS		
											MAX		MIN						TOTAL	MAX DEPTH ON GROUND	DATE	.10 OR MORE	.50 OR MORE	1.00 OR MORE
											>=90	<=32	<=32	<=0										
VIENNA	77.3	63.5	70.4	4.3	92	06	54	30	19	190	4	0	0	0	4.89	0.71	1.32	28	0.0	0		17	8	1
WASHINGTON DULLES INTL AP	79.4	65.4	72.4	4.5	94	06+	54	30	13	241	4	0	0	0	7.36	3.44	1.40	09	0.0	0		16	13	3
WASHINGTON REAGAN NATL AP	81.8	69.1	75.5	4.5	95	04	59	27	1	324	5	0	0	0	9.73	6.01	2.89	07	0.0	0		16	13	3
WINCHESTER	78.2	62.6	70.4	4.3	94	07+	52	30	37	205	5	0	0	0	10.18	6.44	1.95	28	0.0	0		21	12	4
WINCHESTER 7 SE	78.1	61.6	69.9	4.8	94	07	50	30	39	194	5	0	0	0	8.24	4.33	2.05	10	0.0	0		19	10	2
WOODSTOCK 2 NE	79.0M	63.8M	71.4M	6.6	91	07+	53	09	31E	230E	3	0	0	0	M 6.14	2.26	1.32	10	M 0.0	0		18	14	2
--DIVISIONAL DATA-----> CENTRAL MOUNTAIN 05			71.0	5.0B											8.55	4.48B								
BUENA VISTA														14.99		3.20	09	0.0	0			19	14	5
COVINGTON FLTR PLT	78.8	62.7	70.8	4.5	88	05	55	30+	12	190	0	0	0	0	8.69	5.45	2.79	28	0.0	0		17	10	4
DALE ENTERPRISE	76.6	61.4	69.0	4.4	93	07	52	29+	31	158	3	0	0	0	6.67	3.13	1.80	28	0.0	0		19	12	1
GATHRIGHT DAM	76.3	62.5	69.4	5.4	85	05	53	30	19	158	0	0	0	0	6.37	3.00	1.61	28	0.0	0		19	11	3
GLASGOW 1 SE														11.55		2.92	09	0.0	0			19	13	4
HOT SPRINGS	77.3	60.8	69.1	6.4	89	05	50	30+	29	160	0	0	0	0	9.74	6.09	3.20	17	0.0	0		19	13	3
LEXINGTON	81.2	63.1	72.2	5.5	92	07+	55	30	13	237	5	0	0	0	7.97	4.45	1.67	23	0.0	0		18	8	4
MILL GAP	76.0	59.0	67.5	7.9	87	05	46	30	42	124	0	0	0	0	A 7.77	4.18	1.50	28	M 0.0	0		16	12	1
MTN GROVE														A 8.72		1.80	28	0.0	0			6	6	2
MUSTOE 1 SW	73.7	57.9	65.8	5.8	84	06+	45	30+	56	85	0	0	0	0	8.95	5.29	1.86	17	0.0	0		21	15	3
NEW CASTLE														8.36		2.42	17	0.0	0			19	12	3
ROANOKE 8 N	80.6	64.1	72.4	4.4	91	04	56	30+	10	239	4	0	0	0	9.67	5.53	2.57	23	0.0	0		19	10	4
ROANOKE INTL AP	81.3	65.6	73.5	5.4	94	06	56	30	6	267	6	0	0	0	9.92	6.03	2.07	11	0.0	0		17	11	5
STAUNTON WTP	76.6	61.2	68.9	3.7	89	08+	52	10+	43	164	0	0	0	0	12.75	8.96	2.26	23	0.0	0		19	16	5
WAYNESBORO WTP	79.3	62.9	71.1	6.2	91	07+	53	30	18	209	5	0	0	0	11.50	6.80	1.71	28	0.0	0		20	13	6
WILLIAMSVILLE 2 S														8.80		2.25	28	0.0	0			18	14	2
--DIVISIONAL DATA-----> SOUTHWESTERN MOUNTAIN 06			70.0	4.9B										9.53	5.94B									
ABINGDON 3S	82.9	64.9	73.9	8.3	89	08+	59	30+	0	275	0	0	0	0	7.03	3.68	1.80	28	0.0	0		16	10	3
BIG STONE GAP	82.2	64.5	73.4	6.2	90	07+	56	30	1	258	2	0	0	0	6.46	2.58	1.76	28	0.0	0		15	11	2
BLACKSBURG NWSO	77.5	61.0	69.2	6.1	87	07+	53	30+	21	157	0	0	0	0	7.89	4.79	1.92	23	0.0	0		16	11	3
BURKES GARDEN	76.0	59.3	67.7	8.1	84	08+	49	30	14	102	0	0	0	0	7.11	3.80	1.86	28	0.0	0		20	13	2
CHRISTIANSBURG	76.5	61.2	68.9	4.5	86	08+	52	11	27	151	0	0	0	0	7.37	3.89	1.72	23	0.0	0		16	9	3
CLINTWOOD 1W	77.8	63.5	70.7	7.3	85	05	55	30	7	185	0	0	0	0	7.17	3.89	1.20	28	0.0	0		18	13	2
COPPER HILL	73.2	61.0	67.1		81	07+	55	28	32	100	0	0	0	0	13.58		4.61	17	0.0	0		19	13	5
ELK CREEK 4SSW	74.5	63.1	68.8		81	07	58	29	7	128	0	0	0	0	10.35		3.54	17	0.0	0		20	11	4
GALAX WTP	78.1	62.2	70.1	7.7	86	01	56	20+	3	165	0	0	0	0	15.26		5.50	09	0.0	0		17	11	3
GRUNDY	78.7	64.1	71.4	5.8	86	08+	56	30	6	206	0	0	0	0	7.31	4.17	1.31	28	0.0	0		15	11	3
LEBANON	82.5	63.0	72.8	8.0	90	08	54	30+	1	240	1	0	0	0	6.85	3.76	1.63	11	0.0	0		17	8	3

MONTHLY STATION AND DIVISION SUMMARY

STATION	TEMPERATURE (°F)											PRECIPITATION (IN)												
	AVERAGE MAXIMUM	AVERAGE MINIMUM	AVERAGE	DEPARTURE FROM NORMAL	HIGHEST	DATE	LOWEST	DATE	HEATING DEG. DAYS	COOLING DEG. DAYS	NO. OF DAYS				TOTAL	DEPARTURE FROM NORMAL	GREATEST 24 HOURS	DATE	ICE PELLETS, SNOW			NO. OF DAYS		
											MAX		MIN						TOTAL	MAX DEPTH ON GROUND	DATE	.10 OR MORE	.50 OR MORE	1.00 OR MORE
											>=90	<=32	<=32	<=0										
NORA 4 SSE	77.3	64.1	70.7	5.5	86	03	54	29+	14	191	0	0	0	0	5.90	2.59	1.29	28	0.0	0		17	12	2
PULASKI 2 E	78.8	61.9	70.4	6.3	86	08+	53	29	11	176	0	0	0	0	8.51	5.45	1.89	23	0.0	0		15	9	4
RADFORD 3 N	78.4M	62.3	70.4M	7.1	88	08+	53	30	16E	184E	0	0	0	0	A 8.38	5.37	2.25	28+	0.0	0		16	7	3
RICHLANDS	81.4	62.8	72.1	7.7	90	05	53	30	2	224	1	0	0	0	6.67	3.54	1.66	10	0.0	0		16	8	3
SALTVILLE 1N	83.1	64.0	73.5	8.0	90	08+	56	30	0	264	2	0	0	0	7.68	4.40	1.61	28	0.0	0		15	11	2
STAFFORDSVILLE 3 ENE	77.7	61.9	69.8	6.1	87	07	53	30	16	168	0	0	0	0	8.76	5.67	2.50	09	0.0	0		19	9	4
WISE 1SE	79.0	62.4	70.7	6.5	89	05	53	30+	10	188	0	0	0	0	6.70	3.10	1.58	17	0.0	0		22	11	2
WYTHEVILLE	79.2	61.4	70.3	7.7	87	08+	55	30+	3	169	0	0	0	0	8.24	5.05	1.95	17	0.0	0		18	11	3
--DIVISIONAL DATA----->			70.6	7.0B											8.27	4.80B								

VIRGINIA
201809

DAILY PRECIPITATION (INCHES)

STATION	TOTAL	DAY OF MONTH																																		
		01	02	03	04	05	06	07	08	09	10	11	12	13	14	15	16	17	18	19	20	21	22	23	24	25	26	27	28	29	30	31				
BEDFORD	10.81	0.23	0.30						2.19	0.16	0.01	0.13		0.03	0.13	0.13	2.10	0.06	0.01		0.41		3.95		0.02	0.01	0.12	0.82								
BROOKNEAL	7.59		1.09						0.37	0.43	0.01	0.07	0.01		0.17	0.93	2.14	0.43		0.05	0.18		0.55		T	0.01	0.39	0.77								
CHARLOTTESVILLE 2W	9.61	T	T		0.01				2.38	0.71	0.21	0.01	0.01	0.14	0.15	0.32	1.26	1.22		0.07	0.21	T	1.17	0.10	0.33	0.04	0.14	1.12	0.01							
CHARLOTTESVILLE--ALBEMARLE AP	5.37	T		T				0.06	0.25	0.88	T	0.04	T	0.01	0.20	0.14	0.16	0.85	T		0.20	0.30	0.39	0.39	0.08	0.17	1.17	0.08								
CHATHAM	10.88		0.06						0.55	0.12	0.03	0.05		0.09	0.33	0.53	1.84						5.10		0.04		1.20	0.94								
CONCORD 4 SSW	9.79	0.03	1.61						0.56	0.51	0.03	0.01		0.04	0.51	0.61	1.76	0.61			0.91		1.02	0.02	0.02		0.35	1.19								
DANVILLE 2 SE	9.50	0.67							0.41	0.10				0.30	1.45	1.60	2.05	0.03				0.88	1.18			0.35	0.25	0.23								
DANVILLE RGNL AP	9.64	0.68		T					0.01	0.42	0.10	T	0.02	T	0.13	1.72	1.80	2.09	T		T	1.91			0.23	0.53	T									
FREE UNION	M 10.44							-	-	1.82	1.08	0.16	0.01	0.03	0.08	0.23	1.12	1.56	0.86	0.02	0.06	0.12	1.06	0.15	0.34	0.04	0.38	1.31				-				
BIG IS	14.17	T							3.94	0.48	T	0.59	0.12		0.14	0.21	2.87	T			1.30		2.89		0.12		0.36	1.15								
HUDDLESTON 4 SW	10.93	0.50	0.10		0.26				1.10	0.29	0.05	0.03			0.37	1.12	2.85	0.07				3.06		0.07		0.18	0.88									
LYNCHBURG INTL AP	6.77	0.25							0.75	0.54	0.17	T	T	0.02	0.19	0.35	0.59	1.37	T		0.02	0.05	0.61	0.41		0.22	1.14	0.09								
MARTINSVILLE FLTR PLT	13.05	1.50	0.66	0.01					0.78	0.10	0.01	0.20			0.19	1.42	2.82	0.07				2.35		0.01		0.35	2.58									
MEADOWS OF DAN 5 SW	13.56	0.06	0.06	0.02					1.25	1.08	0.50	0.02	0.50	0.16	0.02	0.80	1.68	5.10	0.41			0.07		0.30		0.12	1.41									
MONTEBELLO FISH CULTURAL STN	M 16.81	-	0.40		-	-			-	2.20	0.32	-	0.09	-	0.37	0.91	1.16		5.10	1.32	-	0.20	-	2.75	0.05	0.28		1.66								
MONTECELLO	M	-	-	-	-	-			-	-	-	-	-	-	-	-	-	-	-	-	-	-	-	-	-	-	-	-	-	-	-	-	-	-		
PEDLAR DAM	12.33		0.56						3.16	0.32	0.03	0.07	1.07		0.10	0.22	2.65	0.39	T	T	1.06		1.42	T	0.05	T	0.19	1.04					T			
ROCKY MT	14.92	0.02	0.98	0.05		T			1.64	0.86	0.02	0.95	0.04	T	0.35	0.82	2.85	0.11	0.03		0.22	4.56	0.02	0.12	T	0.13	1.12	0.03								
S BOSTON	8.45		0.35						0.95	0.04	0.02	0.32		0.02	0.23	1.56	1.85	1.00	0.02			1.20	0.02	0.02		0.51	0.34									
STUART	14.58	1.08	0.32	0.18					0.15	1.69	0.50	0.02	0.48	0.33	0.22	1.65	4.49	0.13				1.22	0.22	0.01	0.01	0.23	1.65									
WOOLWINE 1 SE	17.60	1.98	0.52	0.01					0.21	2.64	0.88	0.01	0.63	0.12	0.35	1.00	4.86	0.14				1.64	0.13	0.18	0.02	0.08	2.20									
NORTHERN 04																																				
FRONT ROYAL	M 9.36	0.07						0.68	0.85	2.45	0.43		0.29	-	0.06	0.08	0.90		-	0.07		0.01	1.03	0.61		0.40	1.29	0.14								
PURCELLVILLE	A 9.27		0.42						0.08	1.39	1.60	0.30	0.02	0.03	0.02	0.05		0.05	0.34			0.04	0.38	*	1.50 _a	0.05	0.90	2.10								
LURAY 5 E	M 8.07		0.23						1.01	1.02	0.92	0.05	-	0.04	0.11	0.27	0.05	1.02	0.62	0.05	0.05	0.10	0.03	0.76	0.22	0.14	0.01	0.53	0.84							
MANASSAS	MA 8.85	0.80	0.30		-	-			1.00	0.65	0.90	0.20	0.05		0.05	*	1.24 _a				0.16	0.50	0.50	0.55	0.05	0.40	1.50									
MT WX 3	11.02	0.01	0.50						0.11	0.95	1.98	0.35	0.07		0.11	0.10		0.02	1.33	0.13		0.35	0.80	1.55	0.05	0.31	2.30									
PIEDMONT RSCH STN	MA 7.18		0.34						*	*	*	2.10 _a	0.12		0.10	0.13	0.41	0.95	0.32		0.15	*	1.00 _a	0.39		-	1.17									
SOMERSET	7.93		1.07						0.56	0.50	0.30	0.04	0.02	0.04	0.30	0.17	0.43	0.39	0.55	0.08	0.32	0.02	0.74	0.16	0.42	0.02	0.69	1.08	0.03							
SPERRYVILLE	M 13.86		0.10	-					0.09	1.45	2.55	0.35		0.27	0.03	0.05	0.05	0.29	4.21	0.03		0.11	0.02	1.38	0.35	0.91	0.06	0.22	1.34							
WFO STERLING	8.29	0.47				T		0.33	0.68	1.62	0.25	0.01	T	0.07	T	T	T	0.63	0.01			0.03	1.04	0.19	0.81	0.12	1.78	0.25								
VIENNA	4.89	0.01	0.34						0.12	0.94	0.05		0.01	0.01	0.01				0.62	0.08		0.04	0.14	0.54	0.59	0.01	0.06	1.32								
WASHINGTON DULLES INTL AP	7.36	0.44				T		0.20	0.34	1.40	0.22	0.12	T	0.02	T		T		1.00	0.06		0.02	0.75	0.16	0.51	0.10	1.37	0.65								
WASHINGTON REAGAN NATL AP	9.73	0.81		T				2.89	0.45	1.59	0.02	T	0.01	T	T	T		1.26	0.22		0.28	0.01	0.71	0.29	0.10	0.19	0.59	0.31								
WINCHESTER	10.18	0.01	1.47					0.19	0.22	1.89	1.35	0.08	0.02	0.03	0.08	0.06		0.03	0.38	0.08		0.04	0.39	0.84	0.67	0.13	0.27	1.95								
WINCHESTER 7 SE	8.24	0.04	0.05					0.05	0.30	0.82	2.05	0.16	0.01		0.05	0.02		0.02	0.57	0.05			0.25	0.97	0.56	0.09	0.29	1.89								
WOODSTOCK 2 NE	M 6.14	0.69	0.44	0.02					0.10	1.10	1.32	0.19			0.20	0.13	0.06	0.22	0.60	0.11	0.18	0.02	0.08	0.38	0.30	-	-	-	-	-	-	-	-	-		
CENTRAL MOUNTAIN 05																																				
BUENA VISTA	14.99		1.23		0.05				3.20	0.54	0.03	0.21	0.39	0.17	0.15	0.10	2.55	0.28	0.02			0.37		2.98	0.03	0.03		0.58	2.08							
COVINGTON FLTR PLT	8.69	0.01	0.05						0.26	1.20	0.12	0.03	0.10		0.06	0.27	1.91	0.14	0.02				1.30		0.06	0.03	0.34	2.79								
DALE ENTERPRISE	6.67			0.30					0.37	0.80	0.15	0.27	0.02		0.03	0.04	0.08	0.53	0.80	0.05		0.13	0.64	0.05	0.22	0.02	0.37	1.80								
GATHRIGHT DAM	6.37	0.02	0.04						0.44	0.26	0.26	T	0.04	0.02	0.27	0.05	0.17	1.04	0.23	0.02			1.30	0.10	0.05	T	0.44	1.61	0.01							

VIRGINIA
201809

DAILY PRECIPITATION (INCHES)

STATION	TOTAL	DAY OF MONTH																																
		01	02	03	04	05	06	07	08	09	10	11	12	13	14	15	16	17	18	19	20	21	22	23	24	25	26	27	28	29	30	31		
GLASGOW 1 SE	11.55		0.12						0.05	2.92	0.42	0.02	0.33	0.06	0.10	0.14	0.21	2.77	0.13			0.70		1.74	0.02	0.14	0.02	0.07	1.59					
HOT SPRINGS	9.74		0.07						0.40	0.40	0.15	0.05	0.13	0.05	0.10	0.15	0.50	3.20	0.50	0.07			1.15	0.12	0.08	0.02	0.85	1.75						
LEXINGTON	7.97		0.51						0.07	1.49	0.33		0.11	0.03		0.06	0.13	1.66	0.09			0.04		1.67	0.02	0.04	0.03	0.09	1.58	0.02				
MILL GAP	A 7.77		0.61	0.41				0.11	0.59	0.18	0.41	0.02	0.52			0.04	0.03		*	*	*	1.78 _a	0.40	0.51	0.42	0.06	0.18	1.50						
MTN GROVE	A 8.72		0.45					1.04	0.75	*	*	0.55 _a	T			T	*	*	1.25 _a			0.13		*	*	2.40 _a		0.35	1.80					
MUSTOE 1 SW	8.95	0.39	0.51			0.09	1.08	0.26	0.24	0.27	0.38	0.01		0.01	0.08	0.25	1.86	0.03				0.12	0.83	0.60	0.19	0.18	1.48	0.09						
NEW CASTLE	8.36	0.75	0.19					0.01	0.30	0.16	0.02	0.42	0.03	T	0.18	0.15	2.42	0.47	0.01		0.07		1.14		0.21	0.03	0.08	1.72						
ROANOKE 8 N	9.67	0.01	0.08	0.03					0.54	0.33	0.03	1.40	0.05	0.03	0.20	0.15	1.82	0.41					2.57	0.07	0.24	0.04	0.03	1.64						
ROANOKE INTL AP	9.92	T	T					0.31	0.37	0.30	2.07	0.10	0.03	0.13	0.09	1.48	1.50				0.02	1.79	0.55	0.05	0.09	T	1.02	0.02						
STAUNTON WTP	12.75	T	0.43	T				1.78	1.27	0.50		0.05	T	0.19	0.32	0.38	1.88	0.52	T	0.10	0.50	T	2.26	0.12	0.13	0.03	0.67	1.59	0.03					
WAYNESBORO WTP	11.50			0.03				0.60	1.53	1.37	0.05	0.03	0.02	0.06	0.21	0.42	1.40	1.61		0.14	0.04		1.22	0.19	0.18	0.02	0.67	1.71						
WILLIAMSVILLE 2 S	8.80		1.40				0.90	0.33	0.21	0.59	0.02	0.11		T	0.05	0.11	0.84	0.37	0.02				0.95	0.22	0.17	0.02	0.24	2.25						
SOUTHWESTERN MOUNTAIN 06																																		
ABINGDON 3S	7.03			0.13			1.50	0.02	0.03	0.24	1.10	0.13	0.02		0.05	0.05	0.50	0.65						0.35	0.02		0.44	1.80						
BIG STONE GAP	6.46	0.03							0.63	0.15	0.40				0.06	0.02	1.12	0.47					0.64	0.32	0.16	0.28	0.40	1.76	0.02					
BLACKSBURG NWSO	7.89	0.02	0.02	0.25				0.09	0.56	0.32	T	0.55	0.12	T	0.27	0.42	1.82	0.05			0.02	1.92	T	T	T	0.16	1.30							
BURKES GARDEN	7.11	0.20	0.19					0.09	0.06	0.12	0.52	0.14			0.10	0.17	1.45	0.82	0.03	0.03		0.31	0.77	0.06	0.02	0.14	1.86	0.03						
CHRISTIANSBURG	7.37	0.05	0.01						0.60	0.20	0.03	0.65	0.01	0.01	0.62	0.72	1.45	0.05				1.72	0.03			0.13	1.09							
CLINTWOOD 1W	7.17	0.26		0.07	0.02			T		0.25	0.76	0.26			0.18	0.76	0.74	0.04	0.01			1.02	0.48	0.60	0.26	0.21	1.20	0.05						
COPPER HILL	13.58	0.15	0.58						1.84	0.37	0.02	0.58	0.10	0.08	0.85	1.00	4.61	0.20				1.53	0.05	0.32	0.05	0.03	1.18	0.04						
ELK CREEK 4SSW	10.35	0.06	0.45	0.03	0.05				1.32	1.08	0.08	1.12	0.02	0.01	0.13	0.97	3.54	0.35				0.13	0.27	0.05	0.01	0.05	0.63							
GALAX WTP	15.26	0.08	0.78	0.73		0.05			5.50	0.53	0.03	0.25			0.13	0.69	4.12	0.67				0.15		0.03	0.01	0.05	1.46							
GRUNDY	7.31	0.61				0.57			0.29	0.02	0.38	0.03			0.10	0.69	1.11					1.27	0.28	0.07	0.03	0.55	1.31	T						
LEBANON	6.85			0.03			0.03	0.31	0.02	1.23	1.63	0.08		0.07		0.02	0.95	0.80	0.03					0.13	0.03	0.04	0.27	1.18						
NORA 4 SSE	5.90	0.19		0.13	0.02			T	0.59	0.18	0.51	0.04			0.24		1.22	0.34			T	0.56	0.05	0.18	0.03	0.31	1.29	0.02						
PULASKI 2 E	8.51	0.05	T						1.26	0.48	0.07	0.53	0.01		0.10	0.79	1.26	0.10				1.89	0.04	0.02		0.04	1.87							
RADFORD 3 N	A 8.38		0.02		0.06			T	*	1.17 _a	0.04	0.65	0.07	0.01	0.02	0.10	1.04	0.38				2.25	T	0.02	0.02	0.25	2.25	0.03						
RICHLANDS	6.67			0.98	0.04		0.04			1.66	1.30	0.08	T		0.07	T	0.46	0.46				0.06	0.03	0.12	0.06	0.20	1.10	0.01						
SALTVILLE 1N	7.68	0.02		0.06					0.47	1.08	0.62	0.82	0.53		0.16	0.07	0.43	0.93						0.56	0.02		0.30	1.61						
STAFFORDSVILLE 3 ENE	8.76	0.03	0.46						2.50	0.38	0.13	0.03	0.02		0.01	0.04	1.36	0.18	0.01			1.62	0.07	0.03	0.02	0.12	1.73	0.02						
WISE 1SE	6.70	0.08		0.02	T		0.15	0.01	0.31	0.03	0.38	0.02	T	T	0.17	0.03	1.58	0.41	0.01	0.01		0.50	0.83	0.09	0.10	0.38	1.57	0.01	0.01					
WYTHEVILLE	8.24	1.02	0.03	T					0.58	0.73	0.23	0.63	0.03	0.03	0.02	0.21	1.95	0.33				0.07	0.50	0.22	0.04		0.05	1.57	T					

VIRGINIA
201809

DAILY TEMPERATURES (°F)

STATION	OB. TIME	MAX/MIN	DAY OF MONTH																															AVERAGE	
			01	02	03	04	05	06	07	08	09	10	11	12	13	14	15	16	17	18	19	20	21	22	23	24	25	26	27	28	29	30	31		
VIRGINIA																																			
TIDEWATER 01																																			
DISPUTANTA	07	MAX	89	92	93	94	94	92	92	94	85	82	88	89	88	81	80	79	76	85	85	84	84	82	83	68	76	88	88	72	67	80		84.3	
		MIN	70	67	70	71	71	71	71	70	69	70	69	70	72	74	74	74	74	75	67	65	64	63	66	65	65	71	71	66	55	55		68.5	
EMPORIA 1 WNW	08	MAX	91	90	91	92	94	91	93	93	91	76	88	91	91	84	82	82	82	86	84	88	89	84	86	71	79	89	88	76	78	82		86.1	
		MIN	70	70	71	72	72	71	71	72	71	68	69	72	74	76	75	73	73	75	67	67	67	66	66	65	65	72	71	70	59	59		69.6	
FREDERICKSBURG SEWAGE	07	MAX	91	86	91	94	94	95	95		77	67	78	79	84	81	76	79	80	77	83	86	84	81	81	64	68	85	88	65	76	78		81.5	
		MIN	73	69	69	74	73	72	72	72	60	62	65	68	69	70	70	66	63	72	66	66	66	67	59	59	59	59	64	57	56	56		65.8	
HOLLAND 1 E	08	MAX	95	95	95	98	98	95	98	99	89	89	85	90	90	85	90	90	85	89	90	85	84	88	90	81	88	80	88	80	81	80		89.0	
		MIN	70	75	75	80	70	80	80	75	70	75	70	80	80	75	80	80	75	75	80	75	78	75	75	75	75	75	75	75	75	75	75		75.9
HOPEWELL	16	MAX	88	91	93	92	93		93	84	77	87	89	89	88	80	81	83	84	82	88	87	82	83	82	71								84.6	
		MIN	70	72	73	75	73		73	72	68	68	72	72	74	76	75	73	75	74	67	67	65	65	63	62									69.3
NORFOLK INTL AP	24	MAX	88	88	90	90	89	90	91	89	85	86	90	88	82	83	82	84	84	89	84	81	85	84	85	83	84	89	78	78	78	78		85.2	
		MIN	73	73	76	75	75	75	76	75	74	73	75	77	78	75	76	76	76	75	74	69	65	70	73	71	73	75	74	69	62	62		73.0	
NORFOLK S	24	MAX	90	87	90	90	89	89	89	87	84	87	90	86	80	83	81	83	82	88	84	80	84	83	85	81	83	87	78	77	77	78		84.4	
		MIN	71	70	73	73	72	73	73	72	72	71	74	74	76	73	75	75	74	73	71	66	62	68	69	69	69	73	71	64	60	60		70.5	
NORTH	07	MAX	84	85	85	87	89	84	88	88	85	78	82	85	85	79	78	79	80	81	82	83	77	78	82	74	77	81	84	77	72	76		81.5	
		MIN	73	74	75	75	73	74	74	74	72	72	72	74	75	76	74	74	76	78	70	68	64	71	70	70	71	74	70	68	59	60		71.7	
PAINTER 2W	16	MAX	86	86	89	90	89	91	91	88	80	83	86	85	83	79	78	81	82	86	83	83	80	81	76	74	83	85	85	78	79	77		83.2	
		MIN	70	72	70	71	70	70	71	71	70	70	72	73	74	73	71	73	76	70	64	60	68	68	68	69	69	69	66	55	56		69.1		
STONY CREEK 2 N	08	MAX	90	90	92	90	91	93	92	84	78	87	86	88	81	81	82	82	85	84	87	84	82	83	73	76	87	88	73	76	81	80		84.2	
		MIN	70	69	70	71	70	70	70	70	68	69	71	73	75	74	73	73	72	67	66	64	64	65	64	65	70	70	62	57	57		68.3		
SUFFOLK LAKE KILBY	24	MAX	91	89	89	90	88	87	88	87	84	85	87	87	81	82	80	82	82	83	84	80	82	83	83	81	80	85	78	76	79	78		83.7	
		MIN	70	69	69	73	67	73	67	71	71	70	70	70	76	73	70	74	72	65	65	66	64	66	68	66	70	74	70	53	55	55		68.1	
WAKEFIELD 1NW	24	MAX	91	91	94	94	93	93	93	89	86	90	91	89	81	80	80	83	86	87	88	84	85	85	75	79	88	90	75	78	82	81		86.0	
		MIN	68	67	71	73	70	71	72	72	71	70	72	72	74	75	74	74	73	70	66	64	62	68	66	65	71	71	69	59	55	56		68.7	
WALKERTON 2 NW	18	MAX	89	91	93	96	92	92	93	84	77	86	88	87	86	83	84	88	82	86	86	84	82	85	73	76	87	90	77	76	79	79		85.0	
		MIN	71	71	72	73	72	72	71	72	71	69	74	68	71	77	76	67	70	78	72	66	68	69	64	69	74	74	65	63	56	57		69.7	
WALLACETON LK DRUMMOND	08	MAX	90	90	94	95	96	96	95	92	91	91	91	91		86	90	85	86	90	89	85	90	92	90	85	85	89	84	82	83		89.6		
		MIN																																	M
WALLOPS IS NASA TEST FACILITY	24	MAX	86	87	88	92	92	92	91	85	75	81	87	86	80		76	82	84	88	87	78	80	85	74	74	84	84	75	78	81	77		83.1	
		MIN	74	75	76	75	75	76	76	72	72	71	74	77	76		74	75	76	73	70	69	64	70	70	68	73	74	71	60	58	62		71.6	
WARSAW 2 NW	18	MAX				96	95	95	94			86	87	85	86	82				79	85	86	85	82	71	86	88	71	74					M	
		MIN				73	71	71				65	71	72	72	72				73	75	66	64	65		62	67	71	65	59				M	
W PT 2 NW	17	MAX	87	90	93	92	91	92	93	90	79	86	88	87	85	80	81	82	82	84	86	84	81	84	80	71	86	88	85	76	78	77		84.6	
		MIN	71	72	73	73	72	72	72	70	69	70	72	72	73	74	72	72	74	70	66	66	64	69	64	64	69	72	65	59	58	58		68.9	
WILLIAMSBURG 2 N	24	MAX	86	90	91	92	91	90	91	88	84	87	84	87	80	79	82	83	84	83	86	81	83	84	77	74	84	87	75	77	80	79		84.0	
		MIN	71	72	74	74	72	73	73	73	71	71	74	74	75	76	75	74	75	73	69	68	65	68	68	67	72	73	72	62	59	60		70.8	
EASTERN PIEDMONT 02																																			
AMELIA COURTHOUSE 1	08	MAX	93	90	89	92	92	91	92	91	82	67	80	88	86	83	83	80	81	77	82	88	88	81	83	83	72	84	87	68	76	79		83.6	
		MIN	68	69	71	73	72	69	69	71	60	60	67	69	70	73	73	70	73	72	65	67	67	68	60	60	63	68	67	58	57	59		66.9	
ASHLAND	18	MAX	85	86	90	91	90	90	89	84	69	82	82	82	81	79	79	78	77	81	84	82	79	80	71	68	80	85	76	72	74	74		80.7	

VIRGINIA
201809

DAILY TEMPERATURES (°F)

STATION	OB. TIME	MAX/MIN	DAY OF MONTH																															AVERAGE
			01	02	03	04	05	06	07	08	09	10	11	12	13	14	15	16	17	18	19	20	21	22	23	24	25	26	27	28	29	30	31	
BREMO BLUFF	07	MIN	71	69	72	73	73	70	71	65	62	65	68	68	71	72	71	67	72	71	65	65	66	68	59	61	66	70	59	56	56	56		66.6
		MAX																																M
CAMP PICKETT	08	MIN																																M
		MAX	87	88	88	91	91	90	91	91	82	81	85	88	84	82	79	80	80	85	82	87	87	80	85	64	71	85	86	70	76	80		83.2
		MIN	68	69	70	71	71	69	68	61	66	62	66	69	71	73	73	72	72	73	65	65	65	67	61	61	63	69	68	61	56	58		66.8
CHASE CITY	07	MAX	87	88	89	91	91	89	90	91	86	67	82	86	84	82	79	80	77	85	85	86	84	81	86	65	70	84	85	70	77	80		82.6
		MIN	70	70	69	70	70	67	68	69	64	62	67	69	71	72	73	71	73	73	64	65	68	65	62	62	63	64	65	62	58	59		66.8
CLARKSVILLE	07	MAX	91	90	89	93	94	90	93	93	90	69	87	89	88	83	81	81	77	86	81	90	85	83	89	67	72	85	88	73	78	82		84.6
		MIN	71	72	71	71	72	71	71	72	67	64	67	70	73	73	73	72	73	72	65	65	69	68	64	63	64	66	66	64	62	63		68.5
CORBIN	09	MAX	85	89	92	92	93	94	90	78	68	78	81	84	82	78	79	79	77	84	86	83	80	81	64	67	83	88	71	75	76	77		81.1
		MIN	70	67	73	72	71	71	69	64	61	65	68	68	71	72	67	65	72	68	65	64	66	61	59	62	67	70	58	57	55	56		65.8
CROZIER	07	MAX	87	88	89	92	91	91	91	89	77	66	74	82	80	80	77	77	77	75	81	85	84	81	80	63	69	83	86	84	82	78		81.3
		MIN	69	68	69	70	71	69	69	70	59	59	66	67	67	71	71	66	67	72	64	66	66	66	58	58	62	67	63	63	62	61		65.9
FARMSVILLE 2 N	07	MAX	92	89	88	91	93	92	91	91	82	81	73	82	87	79	77	80	80	80	78	89	84	84	84	67	67	84	86	85	79	80		83.2
		MIN	67	71	69	71	70	69	69	69	64	64	64	66	67	72	72	67	67	73	65	65	68	67	59	59	61	65	65	58	55	56		65.7
JOHN H KERR DAM	08	MAX	94	93	94	96	96	92	96	97	92	73	90	91	88	84	82	82	77	89	85	93	88	86	89	69	74	89	90	76	79	83		86.9
		MIN	72	72	72	74	73	74	72	73	69	67	69	72	74	75	75	73	73	76	66	70	71	73	66	65	65	68	70	67	59	60		70.2
KEYSVILLE 2 S	07	MAX	89	86	89	92	92	90	91	91	82	65	79	87	81	81	80	79	78	83	81	88	84	83	85	63	69	84	86	69	78	79		82.1
		MIN	67	69	69	70	70	68	67	70	62	58	65	67	68	71	72	68	71	72	63	63	68	68	60	59	61	65	65	58	58	58		65.7
LOUISA	18	MAX	88	90	93	94	93	92	90	82	63	68	79	81	81	80	78	77	78	80	88	85	81	81	70	67	84	87	79	78	79	78		81.5
		MIN	69	69	68	68	68	67	66	63	56	63	66	67	69	71	70	66	72	71	61	64	66	69	57	61	65	66	58	56	53	56		64.7
PALMYRA 3S	06	MAX	84	84	86	89	89	88	89	86	76	64	68	79	77	78	76	76	75	77	78	85	81	80	79	62	69	79	84	61	74	75		78.3
		MIN	70	69	68	69	69	66	69	68	56	56	63	66	67	69	69	66	68	71	61	64	67	67	57	57	60	65	60	56	53	53		64.0
PETERSBURG	07	MAX	92	90	94	93	92	93	73	83	74	88	89	87	82	80	80	83	85	83	87	85	83	68	67	73	88	89	72	77	79	78		82.9
		MIN	70	71	72	72	72	72	73	70	68	70	71	73	74	74	73	75	75	66	66	66	66	64	64	65	72	72	63	57	57	59		68.7
RICHMOND INTL AP	24	MAX	88	91	94	92	92	93	92	84	73	86	89	88	83	80	82	83	83	83	88	84	82	85	67	71	86	89	73	79	80	79		84.0
		MIN	70	70	73	75	73	72	73	69	67	68	72	72	73	74	72	72	74	71	68	66	66	67	62	64	71	73	63	60	57	59		68.9
WESTERN PIEDMONT 03																																		
APPOMATTOX	07	MAX	86	89	88	90	91	90	91	89	81	62	68	84	76	79	74	75	75	82	80	87	83	82	83	63	66	81	84	63	76	78		79.9
		MIN	66	65	67	70	70	69	70	68	57	56	60	65	66	70	70	65	68	68	63	64	67	66	57	57	60	63	63	56	58	58		64.1
BROOKNEAL	07	MAX	87	89	89	87	90	89	91	90	84	65	71	85	83	81	80	77	75	86	80	86	85	85	85	65	68	83	85	85	76	78		82.0
		MIN	69	68	68	68	68	66	67	67	60	59	63	67	68	71	71	68	68	72	61	62	68	65	59	60	62	63	64	59	55	56		64.7
CHARLOTTESVILLE 2W	08	MAX	87	87	89	91	91	92	92	89	77	62	67	77	78	77	76	74	73	79	79	87	82	81	76	61	65	77	84	58	78	79		78.8
		MIN	68	68	68	72	72	72	71	68	56	57	61	66	66	70	69	66	66	71	67	66	67	56	56	60	63	58	55	58	59		64.6	
CHARLOTTESVILLE-ALBEMARLE AP	24	MAX	88	92	94	95	94	94	90	81	65	70	77	81	83	79	78	76	83	84	91	84	84	81	65	68	80	88	72	79	80	72		81.6
		MIN	71	70	71	72	72	71	71	62	59	62	67	69	73	73	72	69	74	67	65	66	69	62	58	63	65	65	58	58	56	61		66.4
CHATHAM	07	MAX	86	89	88	89	91	89	89	90	83	64	69	81	79	79	79	77	74	83	83	85	87	84	86	66	67	79	84	70	73	76		80.6
		MIN	68	68	67	69	67	65	66	68	60	60	62	68	69	71	72	69	68	69	60	62	62	65	60	60	60	61	61	60	61	57		64.5
DANVILLE 2 SE	24	MAX	90	90	93	92	91	93	93	88	75	75	87	84	82	80	79	78	88	85	90	91	88	90	67	71	84	86	72	79	81	76		83.9
		MIN	69	69	69	69	70	68	69	71	63	64	69	70	71	74	72	71	72	68	63	67	70	65	62	64	63	64	63	62	59	61		67.0
DANVILLE RGNL AP	24	MAX	91	89	91	92	89	90	91	87	66	75	87	83	82	78	77	75	83	84	88	88	85	88	66	69	83	85	71	78	81	78		82.3
		MIN	69	69	68	70	70	68	68	64	63	64	69	69	71	74	72	71	72	67	62	66	69	64	62	62	67	63	61	61	58	61		66.5

VIRGINIA
201809

DAILY TEMPERATURES (°F)

STATION	OB. TIME	MAX/MIN	DAY OF MONTH																															AVERAGE	
			01	02	03	04	05	06	07	08	09	10	11	12	13	14	15	16	17	18	19	20	21	22	23	24	25	26	27	28	29	30	31		
FREE UNION	07	MAX	86	84	90	92	92	92	92	89	78	66	69	76	79	80	78	76	74	80	79	88	82	82	77	64	66	75	85	61	78				79.7
		MIN	68	68	69	70	71	70	70	70	62	62	64	68	70	73	73	70	70	73	65	65	67	70	59	59	63	65	61	58	58				66.6
LYNCHBURG INTL AP	24	MAX	89	89	91	92	90	92	91	82	64	69	80	79	81	75	75	74	86	83	89	87	85	85	65	67	80	84	70	78	79	72			80.8
		MIN	67	64	67	67	68	65	69	62	60	61	66	68	72	71	70	66	71	63	60	67	70	61	59	60	63	62	57	57	54	57			64.1
MARTINSVILLE FLTR PLT	07	MAX	88	88	89	89	90	90	90	91	86	66	70	83	81	80	78	76	74	86	85	88	88	87	86	67	67	80	83	72	78	79			81.8
		MIN	68	67	67	67	66	66	66	67	63	62	63	67	70	70	70	69	69	69	59	59	65	66	62	62	62	62	62	58	58				64.8
MEADOWS OF DAN 5 SW	07	MAX	87	86	83	87	85	85	88	87	84	68	69	77	81	81	77	71	70	76	78	81	84	83	80	70	68	74	78	69	77	77			78.7
		MIN	63	63	65	65	66	64	64	65	63	62	63	66	68	66	68	67	66	65	61	61	62	63	63	61	61	62	63	64	59	59			63.6
MONTEBELLO FISH CULTURAL STN	07	MAX			90				89										77	84	82														M
		MIN			64				62										69	74	63														M
MONTECELLO	07	MAX																																	M
		MIN																																	M
ROCKY MT	07	MAX	86	88	88	90	90	88	90	89	83	65	69	79	81	80	77	76	73	84	85	88	87	85	86	66	65	80	83	68	78	77			80.8
		MIN	65	67	66	67	67	65	66	67	62	61	61	67	69	69	71	66	66	69	60	60	64	64	61	60	60	61	61	58	61	57			63.9
S BOSTON	07	MAX	90	92	90	93	94	91	94	93	89	68	80	88	86	84	81	81	79	86	82	89	88	86	89	67	72	87	88	73	79	82			84.7
		MIN	72	69	70	71	71	68	69	70	64	62	67	70	72	74	73	72	72	74	64	65	71	67	62	61	63	65	66	62	58	58			67.4
STUART	07	MAX	87	87	87	89	90	88	90	89	85	67	71	81	82	83	79	75	75	82	84	88	87	85	86	67	66	78	82	70	78	78			81.2
		MIN	65	65	65	66	67	65	65	67	62	62	62	67	68	68	70	68	68	67	62	62	64	63	62	60	61	60	60	60	60	60			64.0
NORTHERN 04																																			
FRONT ROYAL	24	MAX	83	89	91	91	90	92		70	66	66	67	72	79			76	80	82				80	78	60	65	74	84	69	77	76	73		77.2
		MIN	69	66	70	69	71	70	68	59	54	58	63	65	69			69	71	66				66	60	56	59	62	66	50	54	55	55		63.1
PURCELLVILLE	08	MAX	88	84	88	93	92	93	94	85	67	59	66	68	77	78	74	79	79	77	82	84	82	74	70	59	62	74	83	64	75	76			77.5
		MIN	69	69	69	69	70	70	69	66	54	54	57	65	66	70	67	63	63	71	66	60	62	68	56	56	59	61	59	54	55	52			63.0
LURAY 5 E	08	MAX	86	81	89	90	90	90	91	90	60	62	69			79	74	73	71	82	82	84	81	83	70	59	64	74	87	59	76	75			77.5
		MIN	68	63	66	66	68	65	67	58	53	53	61			64	68	64	66	67	61	58	64	67	55	56	59	61	58	53	53	53			61.3
MANASSAS	07	MAX	87	84	86			90		86	73	64	68	71	80	81	77	80	79	77	82	85	80	76	74	63	67	77	85	65	73	75			77.2
		MIN	68	69	70			73		69	57	59	63	67	68	71	69	66	68	72	64	64	65	66	57	57	63	63	63	55	56	56			64.4
MT WX 3	07	MAX	83	81	83	88	86	87	87	79	66	66	68	65	70	73	70	75	73	72	76	79	79	73	67	58	62	70	79	58	70	70			73.8
		MIN	63	66	66	71	71	71	67	65	52	52	57	61	63	67	65	63	64	68	64	63	62	63	53	53	57	62	56	51	51	53			61.3
PIEDMONT RSCH STN	08	MAX	87	85	88	92	92	91	92	87	77	63	67	74	79	80	78	77	75	79	82	86	82	81	77	61	66	86	85	70	77	71			79.6
		MIN	68	69	68	70	71	71	69	69	60	55	60	65	66	71	71	68	66	71	68	66	65	66	59	56	60	56	65	55	55	56			64.5
SOMERSET	08	MAX	88	86	88	92	93	91	93	89	76	63	68	74	80	80	79	77	75	81	83	87	82	81	77	61	67	78	86	61	78	77			79.7
		MIN	69	70	70	71	71	70	68	68	57	57	62	67	67	72	70	67	68	73	64	63	65	67	56	56	61	65	58	56	56				64.7
SPERRYVILLE	06	MAX	90	84			96	94	96	88	73	62	67	73	79	79	76	76	73	76	81	86	83	79	70	61	65	73	86	63	80	78			78.1
		MIN	69	68			71	68	68	67	58	58	61	65	68	71	69	68	68	71	68	61	65	67	55	57	61	64	61	55	56	55			64.0
WFO STERLING	24	MAX	88	89	92	93	93	94	87	72	63	65	70	79	78	76	80	79	78	83	85	83	76	74	62	65	78	86	69	75	76	75			78.8
		MIN	71	70	73	74	73	71	71	57	56	61	61	67	62	71	69	66	70	71	61	65	68	61	57	60	64	68	55	55	57	56			64.7
VIENNA	07	MAX	87	84	89	91	91	92	90	70	62	70	70	70	81	77	78	78	78	75	79	83	79	74	71	60	65	76	84	71	71	74			77.3
		MIN	70	69	69	72	71	71	69	59	58	59	59	60	66	69	66	65	65	71	64	63	63	65	57	57	60	64	61	55	55	54			63.5
WASHINGTON DULLES INTL AP	24	MAX	86	89	94	94	92	94	87	73	64	68	72	81	79	77	81	80	78	84	86	83	76	76	62	65	77	86	70	75	78	75			79.4
		MIN	72	69	72	72	72	72	72	59	57	61	66	68	71	72	69	67	71	68	64	64	68	61	58	61	64	70	55	56	54				65.4
WASHINGTON REAGAN NATL AP	24	MAX	89	89	93	95	93	93	91	77	67	76	77	86	82	78	83	83	80	84	87	83	78	80	66	68	82	87	73	77	80	76			81.8

VIRGINIA
201809

DAILY TEMPERATURES (°F)

STATION	OB. TIME	MAX/MIN	DAY OF MONTH																															AVERAGE
			01	02	03	04	05	06	07	08	09	10	11	12	13	14	15	16	17	18	19	20	21	22	23	24	25	26	27	28	29	30	31	
WINCHESTER	07	MIN	74	74	78	79	78	78	72	63	62	65	71	71	73	72	70	69	72	73	72	69	68	65	61	63	68	72	59	60	63	60	69.1	
		MAX	91	82	89	94	94	94	94	84	69	59	64	68	74	79	73	80	78	78	83	87	83	83	71	59	62	72	83	61	79	78	78.2	
WINCHESTER 7 SE	08	MIN	70	67	69	70	70	71	68	63	54	54	59	62	65	69	68	64	65	70	64	61	62	65	55	55	58	61	59	53	54	52	62.6	
		MAX	90	86	89	93	93	93	94	84	69	59	64	69	74	78	74	77	79	80	84	86	83	81	70	59	62	75	85	61	77	76	78.1	
WOODSTOCK 2 NE	07	MIN	69	67	67	67	68	68	67	66	54	54	59	62	62	68	68	62	63	69	62	59	58	67	55	55	58	60	60	54	51	50	61.6	
		MAX	87	87	89	91	91	89	91	84	69	59	65	69	75	78	76	74	74	82	83	84	83	86	71	59							79.0	
CENTRAL MOUNTAIN 05 COVINGTON FLTR PLT	07	MIN	67	67	67	68	69	68	67	67	53	54	58	63	68	68	68	65	65	67	60	60	62	69	55	55							63.8	
		MAX	83	83	86	87	88	87	86	86	79	63	73	79	80	83	80	77	73	79	80	84	84	85	79	67	65	75	81	65	73	73	78.8	
DALE ENTERPRISE	07	MIN	65	65	65	65	66	64	65	64	59	58	59	65	67	68	66	65	67	67	60	60	63	64	61	60	60	63	63	58	55	55	62.7	
		MAX	84	83	84	91	81	91	93	86	73	58	68	70	73	80	77	70	71	77	78	77	77	84	73	62	62	73	83	68	77	74	76.6	
GATHRIGHT DAM	07	MIN	66	65	65	66	68	65	64	64	53	54	58	64	61	65	66	68	66	67	60	60	66	67	55	55	58	60	59	52	52	54	61.4	
		MAX	81	81	84	84	85	84	84	81	78	62	70	77	77	81	77	76	70	76	77	81	81	82	76	65	63	72	76	65	71	71	76.3	
HOT SPRINGS	07	MIN	65	65	65	65	65	65	65	65	58	58	59	65	67	67	68	67	66	67	59	59	62	65	61	60	60	62	62	57	54	53	62.5	
		MAX	82	86	87	88	89	87	88	85	75	60	71	79	79	82	75	70	68	76	76	85	84	84	78	64	62	74	78	63	73	72	77.3	
LEXINGTON	07	MIN	64	64	64	63	64	64	63	63	56	55	58	66	66	67	66	63	63	66	58	58	60	64	59	58	58	60	55	50	50	50	60.8	
		MAX	89	86	90	92	92	91	92	89	82	61	69	83	80	84	79	78	74	84	83	89	86	86	82	66	66	79	83	67	78	77	81.2	
MILL GAP	06	MIN	67	65	65	67	67	65	66	66	57	56	60	66	66	68	69	67	67	69	58	58	66	65	59	59	60	63	64	57	56	55	63.1	
		MAX	84	80	86	86	87	86	86	84	76	57	67	76	77	81	76	72	72	74	76	82	83	82	77	61	61	70	73	61	73	73	76.0	
MUSTOE 1 SW	24	MIN	61	61	61	60	60	61	60	59	53	53	56	63	63	61	66	65	65	65	55	56	62	62	59	57	57	60	60	55	47	46	59.0	
		MAX	79	83	84	84	83	84	81	73	56	66	72	75	80	74	72	72	72	76	81	79	80	73	61	60	68	73	62	71	71	67	73.7	
ROANOKE 8 N	07	MIN	61	61	58	59	59	59	55	51	55	62	62	62	62	64	64	56	55	56	63	60	57	56	60	61	54	52	45	45	45	57.9		
		MAX	87	87	88	91	90	90	90	89	84	62	69	80	81	83	77	76	73	83	82	87	86	87	84	65	65	78	84	68	77	76	80.6	
ROANOKE INTL AP	24	MIN	66	66	66	68	68	67	67	69	60	59	60	67	68	71	69	68	67	67	61	61	65	65	61	60	60	64	64	58	56	56	64.1	
		MAX	88	90	92	92	90	94	90	84	65	70	80	81	85	78	77	74	85	85	89	86	87	86	66	65	77	85	71	79	78	70	81.3	
STAUNTON WTP	08	MIN	68	67	68	69	70	68	69	63	60	60	68	70	72	72	70	68	72	66	63	66	71	63	62	62	64	64	59	60	58	56	65.6	
		MAX	85	85	87	89	88	88	89	89	72	57	65	70	73	79	76	73	69	79	80	85	81	83	73	58	61	75	81	57	76	76	76.6	
WAYNESBORO WTP	07	MIN	65	63	65	67	67	66	65	64	52	52	57	62	63	65	67	65	65	65	61	64	64	67	55	54	57	61	57	53	53	54	61.2	
		MAX	87	86	90	90	91	91	91	86	75	62	73	78	77	80	76	74	77	83	80	86	82	83	76	60	64	79	84	65	77	77	79.3	
SOUTHWESTERN MOUNTAIN 06 ABINGDON 3S	06	MIN	65	65	65	68	68	67	66	56	55	60	65	65	69	69	65	66	71	60	60	64	67	58	57	59	63	62	58	53	53	62.9		
		MAX	87	87	86	89	89	88	87	89	87	86	82	81	84	86	83	77	73	77	83	85	88	85	85	82	78	82	73	76	75	78	82.9	
BIG STONE GAP	08	MIN	64	64	64	65	64	67	67	66	66	68	67	67	65	65	69	67	68	61	61	63	64	66	66	65	64	65	63	59	59	59	64.9	
		MAX	87	87	89	89	90	87	90	86	87	87	76	77	86	88	86	81	74	74	84	86	86	85	85	78	74	76	73	69	74	76	82.2	
BLACKSBURG NWSO	07	MIN	67	64	65	65	65	67	66	67	67	67	63	63	65	65	66	69	67	67	63	63	64	65	65	65	64	64	65	58	58	56	64.5	
		MAX	83	84	86	87	87	86	87	85	80	63	72	77	79	81	75	70	68	77	80	84	84	83	80	63	62	74	78	64	73	73	77.5	
BURKES GARDEN	07	MIN	63	63	63	63	64	63	63	64	59	58	58	64	66	67	66	64	64	65	57	57	59	62	60	58	58	59	59	57	53	53	61.0	
		MAX	82	81	82	83	84	81	82	84	79	72	75	73	77	78	75	69	68	74	76	80	79	81	78	73	63	71	70	69	71	70	76.0	
CHRISTIANSBURG	07	MIN	57	57	58	58	58	59	59	59	61	61	61	63	63	59	65	64	64	64	55	56	58	60	60	60	60	60	61	57	50	49	59.3	
		MAX	83	84	84	85	86	85	83	86	81	62	70	78	77	79	74	69	68	75	77	82	82	82	81	63	63	72	78	65	70	72	76.5	
		MIN	64	63	62	64	64	64	64	64	57	56	52	64	66	67	65	63	64	66	59	59	65	64	59	58	58	61	62	57	53	53	61.2	

VIRGINIA
201809

DAILY TEMPERATURES (°F)

STATION	OB. TIME	MAX/MIN	DAY OF MONTH																															AVERAGE
			01	02	03	04	05	06	07	08	09	10	11	12	13	14	15	16	17	18	19	20	21	22	23	24	25	26	27	28	29	30	31	
CLINTWOOD 1W	07	MAX	83	81	83	84	85	82	82	84	82	81	74	70	82	83	81	78	70	74	79	82	81	83	78	72	72	72	71	69	66	70	77.8	
		MIN	66	64	64	63	63	66	67	66	66	66	60	60	65	66	64	65	67	67	62	62	63	63	66	66	63	63	63	57	57	55		
COPPER HILL	07	MAX	77	79	78	80	81	79	81	79	79	61	67	74	73	75	69	67	67	74	74	79	78	80	76	60	61	70	76	63	69	69	73.2	
		MIN	61	62	61	65	61	65	65	65	58	57	57	64	65	65	65	63	63	64	59	59	63	63	57	56	56	61	62	55	56	56		
ELK CREEK 4SSW	07	MAX	79	79	80	80	80	79	81	80	77	68	73	74	74	77	74	66	67	71	74	78	79	79	77	72	62	69	76	68	69	72	74.5	
		MIN	65	64	66	66	67	66	67	65	63	60	60	65	65	65	64	64	63	63	62	63	64	64	64	59	59	61	62	59	58	59		
GALAX WTP	07	MAX	86	83	84	84	85	83	85	84	81	68	72	79	79	82	76	70	69	75	80	83	80	82	83	69	65	73	79	73	76	75	78.1	
		MIN	63	62	61	62	63	62	63	64	63	61	62	66	66	67	68	66	66	66	56	56	59	61	61	59	60	60	63	60	59	59		
GRUNDY	07	MAX	83	83	85	86	86	82	85	86	84	83	78	70	81	82	81	76	71	76	79	83	84	85	79	73	71	72	71	68	69	70	78.7	
		MIN	66	66	65	65	66	67	67	65	65	66	60	60	65	66	65	66	66	66	66	56	59	61	61	59	60	60	63	60	59	59		
LEBANON	07	MAX	86	88	88	89	89	87	89	90	88	85	83	76	85	85	81	77	75	79	82	85	88	85	84	81	75	78	74	74	76	74	82.5	
		MIN	63	63	62	62	62	65	66	66	67	67	62	62	65	61	61	67	67	67	60	61	61	63	67	66	64	64	64	58	54	54		
NORA 4 SSE	07	MAX	83	84	86	84	85	82	85	84	81	79	76	67	81	82	78	72	67	71	79	84	82	80	78	76	69	71	69	66	67	70	77.3	
		MIN	65	68	68	69	71	70	67	67	67	66	57	57	66	64	64	64	64	64	66	68	67	67	63	63	62	63	61	54	54	56		
PULASKI 2 E	07	MAX	84	84	85	86	86	86	86	86	84	66	75	80	81	82	82	73	70	77	78	82	84	85	83	64	66	74	78	71	75	72	78.8	
		MIN	63	63	61	62	63	62	62	61	60	58	59	68	68	68	67	65	65	67	62	59	60	65	61	60	60	60	62	58	53	54		
RADFORD 3 N	08	MAX	85	86	86	87	88	87	87	88	85	65	74	81	78	83	79	74	71	79	80	83	84	81	66	65	64	77	66	74	72	78.4		
		MIN	64	65	64	63	65	64	62	63	61	59	60	67	67	68	68	66	66	67	57	61	62	61	61	60	60	61	62	58	54		53	
RICHLANDS	07	MAX	85	86	87	86	90	88	89	88	86	82	82	77	84	86	82	75	74	77	81	84	88	85	83	80	73	76	71	71	75	72	81.4	
		MIN	62	64	62	62	63	65	65	66	66	66	63	62	63	62	62	69	67	67	60	60	62	62	64	65	63	63	64	58	55	53		
SALTVILLE 1N	07	MAX	87	88	89	90	89	89	90	87	83	82	83	85	86	83	77	74	76	83	86	88	86	84	83	76	79	72	74	76	78	83.1		
		MIN	64	64	64	65	64	66	66	66	66	66	65	67	65	64	64	68	67	67	61	61	63	64	64	64	63	64	59	58	56		56	
STAFFORDSVILLE 3 ENE	07	MAX	84	84	86	86	86	85	87	86	82	64	74	76	79	81	78	72	70	74	79	84	83	85	79	65	63	74	77	66	71	72	77.7	
		MIN	64	64	63	64	64	65	64	63	60	59	59	66	67	64	67	66	65	66	58	59	62	62	61	59	59	60	60	58	56	53		
WISE 1SE	09	MAX	84	84	88	87	89	85	86	86	82	82	74	68	86	85	81	75	68	71	81	84	86	82	78	75	69	75	69	66	74	70	79.0	
		MIN	63	63	64	63	67	65	64	64	65	68	58	58	63	63	66	65	64	65	62	61	61	65	64	63	62	65	61	55	53	53		
WYTHEVILLE	07	MAX	84	83	85	87	86	84	87	87	83	71	76	78	79	82	80	72	69	78	80	85	85	85	83	69	66	74	76	72	74	75	79.2	
		MIN	62	62	62	62	63	63	63	61	61	59	59	66	67	66	67	64	64	66	58	58	60	62	61	59	59	60	61	57	55	55		

VIRGINIA
201809

SNOWFALL AND SNOW ON GROUND (INCHES)

STATION		DAY OF MONTH																														
		01	02	03	04	05	06	07	08	09	10	11	12	13	14	15	16	17	18	19	20	21	22	23	24	25	26	27	28	29	30	31
VIRGINIA																																
TIDEWATER 01																																
DISPUTANTA	SNOWFALL																															
EMPORIA 1 WNW	SNOWFALL																															
FREDERICKSBURG SEWAGE	SNOWFALL																															
	SN ON GND																															
HOLLAND 1 E	SNOWFALL																															
HOPEWELL	SNOWFALL	-	-		-		-	-	-	-	-	-	-	-	-	-	-	-	-	-	-					-	-	-	-	-	-	
	SN ON GND	-	-		-		-	-	-	-	-	-	-	-	-	-	-	-	-	-	-					-	-	-	-	-	-	
NORFOLK INTL AP	SNOWFALL																															
	SN ON GND																															
NORFOLK S	SNOWFALL																															
NORTH	SNOWFALL																															
	SN ON GND																															
PAINTER 2W	SNOWFALL																															
STONY CREEK 2 N	SNOWFALL																															
SUFFOLK LAKE KILBY	SNOWFALL																															
	SN ON GND																															
WAKEFIELD 1NW	SNOWFALL																															
	SN ON GND																															
WALKERTON 2 NW	SNOWFALL																															
	SN ON GND																															
WALLACETON LK DRUMMOND	SNOWFALL																															
WALLOPS IS NASA TEST FACILITY	SNOWFALL																															
	SN ON GND																															
WARSAW 2 NW	SNOWFALL																															
W PT 2 NW	SNOWFALL																															
	SN ON GND																															
WILLIAMSBURG 2 N	SNOWFALL																															

Snowfall: Includes snow and ice. Values for NWS stations (J index note) are Mid-Mid (LST).

Snow on ground: Includes snow, sleet, ice, and hail. Values for NWS stations (J index note) are observed at 12 UTC (GMT).

Water Equivalent: Given for NWS stations (J index note) only, when snow depth is 2 inches or more, and is measured at 18 UTC (GMT)

VIRGINIA
201809

PAN EVAPORATION AND WIND

STATION		DAY OF MONTH																															TOTAL OR AVERAGE		
		01	02	03	04	05	06	07	08	09	10	11	12	13	14	15	16	17	18	19	20	21	22	23	24	25	26	27	28	29	30	31			
VIRGINIA EASTERN PIEDMONT 02 JOHN H KERR DAM	WIND	-	-	-	-	-	-	-	-	-	-	-	-	-	-	-	-	-	-	-	-	-	-	-	-	-	-	-	-	-	-	-	-	-	-
	EVAP	-	-	-	-	-	-	-	-	-	-	-	-	-	-	-	-	-	-	-	-	-	-	-	-	-	-	-	-	-	-	-	-	-	-
	MAX	-	-	-	-	-	-	-	-	-	-	-	-	-	-	-	-	-	-	-	-	-	-	-	-	-	-	-	-	-	-	-	-	-	-
	MIN	-	-	-	-	-	-	-	-	-	-	-	-	-	-	-	-	-	-	-	-	-	-	-	-	-	-	-	-	-	-	-	-	-	-

Evaporation: Is measured in hundreths of inches.

Wind: Is measured in miles.

Max and Min: The maximum and minimum temperatures (Fahrenheit) of the water in the evaporation pan.

STATION INDEX

STATION	INDEX NO.	DIVISION	COUNTY	LATITUDE	LONGITUDE	ELEVATION (IN FEET)	OBSERVATION TIME AND TABLES			
							LOCAL STD TIME			
							TEMP	PRECIP	EVAP	SPECIAL SEE (NOTES)
VIRGINIA										
ABINGDON 3S	0021	06	WASHINGTON	36 40	81 58W	1925	06	06		H
ALBERTA 5N	0079	02	BRUNSWICK	36 56	77 54W	376		08		H
ALTAVISTA	0166	03	CAMPBELL	37 7	79 17W	529		07		CH
AMELIA COURTHOUSE 1	0187	02	AMELIA	37 21	77 59W	345	08	08		H
APPOMATTOX	0243	03	APPOMATTOX	37 20	78 50W	850	07	07		H
ASHLAND	0327	02	HANOVER	37 45	77 29W	220	18	18		H
BEDFORD	0551	03	BEDFORD	37 20	79 30W	894		07		H
BIG IS	4039	03	BEDFORD	37 33	79 24W	900		07		H
BIG STONE GAP	0735	06	WISE	36 51	82 48W	1466	08	08		H
BLACKSBURG NWSO	0766	06	MONTGOMERY	37 12	80 25W	2103	07	07		CH
BREMO BLUFF	0993	02	FLUVANNA	37 43	78 17W	225	07	07		CH
BROOKNEAL	1082	03	CAMPBELL	37 4	78 57W	408	07	07		H
BUCKINGHAM	1136	02	BUCKINGHAM	37 30	78 32W	580		07		H
BUENA VISTA	1159	05	ROCKBRIDGE	37 44	79 22W	840		07		H
BURKES GARDEN	1209	06	TAZEWELL	37 5	81 20W	3068	07	07		H
CAMP PICKETT	1322	02	NOTTOWAY	37 2	77 57W	330	08	08		CH
CHARLOTTESVILLE 2W	1593	03	ALBEMARLE	38 2	78 31W	866	08	08		H
CHARLOTTESVILLE-ALBEMARLE AP R	1603	03	ALBEMARLE	38 8	78 27W	640	24	24		H
CHASE CITY	1606	02	MECKLENBURG	36 47	78 29W	510	07	07		H
CHATHAM	1614	03	PITTSYLVANIA	36 49	79 25W	651	07	07		CH
CHRISTIANSBURG	1692	06	MONTGOMERY	37 8	80 24W	2100	07	07		H
CLARKSVILLE	1746	02	MECKLENBURG	36 37	78 33W	330	07	07		H
CLINTWOOD 1W	1825	06	DICKENSON	37 9	82 29W	1566	07	07		H
CONCORD 4 SSW	1955	03	CAMPBELL	37 17	78 58W	815		07		H
COPPER HILL	1999	06	FLOYD	37 5	80 8W	2857	07	07		H
CORBIN	2009	02	CAROLINE	38 12	77 22W	220	09	09		H
COVINGTON FLTR PLT	2044	05	ALLEGHANY	37 49	79 59W	1244	07	07		CH
CROZIER	2142	02	GOOCHLAND	37 40	77 53W	350	07	07		H
DALE ENTERPRISE	2208	05	ROCKINGHAM	38 27	78 56W	1358	07	07		CH
DANVILLE 2 SE	2245	03	PITTSYLVANIA	36 34	79 22W	392	24	24		H
DANVILLE RGNL AP	2250	03	PITTSYLVANIA	36 34	79 20W	571	24	24		CH
DISPUTANTA	2400	01	PRINCE GEORGE	37 7	77 12W	130	07	07		H
ELK CREEK 4SSW	2730	06	GRAYSON	36 40	81 12W	3439	07	07		H
EMPORIA 1 WNW	2790	01	GREENSVILLE	36 42	77 34W	100	08	08		H
FARMVILLE 2 N	2941	02	CUMBERLAND	37 20	78 23W	450	07	07		CH
FREDERICKSBURG SEWAGE	3204	01	FREDERICKSBURG	38 17	77 27W	60	07	07		H
FREE UNION	3213	03	ALBEMARLE	38 5	78 35W	590	07	07		H
FRONT ROYAL	3229	04	WARREN	38 54	78 11W	930	24	24		CH
GALAX WTP	3272	06	CARROLL	36 39	80 55W	2341	07	07		CH
GATHRIGHT DAM	3310	05	ALLEGHANY	37 57	79 57W	1770	07	07		CH
GLASGOW 1 SE	3375	05	ROCKBRIDGE	37 37	79 26W	737		07		H
GRUNDY	3640	06	BUCHANAN	37 17	82 5W	1157	07	07		H
HOLLAND 1 E	4044	01	SUFFOLK	36 41	76 46W	80	08	08		H
HOPEWELL	4101	01	PRINCE GEORGE	37 18	77 17W	40	16	16		H
HOT SPRINGS	4128	05	BATH	37 60	79 50W	2244	07	07		H
HUDDLESTON 4 SW	4148	03	BEDFORD	37 8	79 32W	897		07		H
JOHN H KERR DAM	4414	02	MECKLENBURG	36 36	78 18W	250	08	08	08	CH
KEYSVILLE 2 S	4568	02	CHARLOTTE	37 1	78 29W	625	07	07		H
LEBANON	4777	06	RUSSELL	36 54	82 2W	1912	07	07		H
LEXINGTON	4876	05	ROCKBRIDGE	37 47	79 26W	1097	07	07		H
LOUISA	5050	02	LOUISA	38 3	78 0W	420	18	18		H
LURAY 5 E	5096	04	PAGE	38 40	78 22W	1400	08	08		H
LYNCHBURG INTL AP R	5120	03	CAMPBELL	37 19	79 12W	940	24	24		HJ
MANASSAS	5204	04	MANASSAS	38 44	77 30W	245	07	07		H
MARTINSVILLE FLTR PLT	5300	03	HENRY	36 42	79 52W	760	07	07		H
MEADOWS OF DAN 5 SW	5453	03	PATRICK	36 40	80 27W	2225	07	07		H
MILL GAP	5595	05	HIGHLAND	38 18	79 43W	2421	06	06		CH
MONTEBELLO FISH CULTURAL STN	5690	03	NELSON	37 51	79 8W	2667	07	07		CH
MONTICELLO	5700	03	ALBEMARLE	38 1	78 27W	758	07	07		H
MT WX 3	5853	04	CLARKE	39 4	77 54W	1550	07	07		H
MTN GROVE	5756	05	BATH	38 6	79 53W	1775		07		H
MUSTOE 1 SW	5880	05	HIGHLAND	38 19	79 40W	2367	24	24		CH
NEW CASTLE	6012	05	CRAIG	37 31	80 6W	1258		07		H
NORA 4 SSE	6125	06	DICKENSON	37 1	82 19W	2658	07	07		H
NORFOLK INTL AP R	6139	01	NORFOLK (CITY)	36 54	76 12W	30	24	24		HJ

STATION INDEX

STATION	INDEX NO.	DIVISION	COUNTY	LATITUDE	LONGITUDE	ELEVATION (IN FEET)	OBSERVATION TIME AND TABLES			
							LOCAL STD TIME			
							TEMP	PRECIP	EVAP	SPECIAL SEE (NOTES)
NORFOLK S	6147	01	NORFOLK (CITY)	36 52	76 14W	10	24	24		H
NORTH	6161	01	MATHEWS	37 26	76 26W	10	07	07		H
PAINTER 2W	6475	01	ACCOMACK	37 35	75 49W	30	16	16		CH
PALMYRA 3S	6491	02	FLUVANNA	37 49	78 16W	410	06	06		H
PEDLAR DAM	6593	03	AMHERST	37 40	79 17W	1024		07		CH
PETERSBURG	6656	02	PETERSBURG	37 14	77 24W	19	07	07		H
PIEDMONT RSCH STN	6712	04	ORANGE	38 14	78 7W	520	08	08		CH
PULASKI 2 E	6955	06	PULASKI	37 3	80 47W	1850	07	07		CH
PURCELLVILLE	4909	04	LOUDOUN	39 9	77 43W	510	08	08		H
RADFORD 3 N	6999	06	PULASKI	37 12	80 35W	1800	08	08		H
RICHLANDS	7174	06	TAZEWELL	37 6	81 48W	1910	07	07		H
RICHMOND INTL AP R	7201	02	HENRICO	37 31	77 19W	164	24	24		HJ
ROANOKE 8 N	7278	05	ROANOKE	37 22	79 58W	1157	07	07		H
ROANOKE INTL AP R	7285	05	ROANOKE	37 19	79 58W	1175	24	24		HJ
ROCKY MT	7338	03	FRANKLIN	36 59	79 54W	1315	07	07		CH
S BOSTON	7925	03	HALIFAX	36 42	78 53W	329	07	07		H
SALTVILLE 1N	7506	06	SMYTH	36 53	81 46W	1733	07	07		H
SOMERSET	7904	04	ORANGE	38 15	78 16W	510	08	08		H
SPERRYVILLE	7985	04	RAPPAHANNOCK	38 39	78 14W	750	06	06		H
STAFFORDSVILLE 3 ENE	8022	06	GILES	37 16	80 43W	1906	07	07		CH
STAUNTON WTP	8062	05	AUGUSTA	38 10	79 5W	169	08	08		CH
STONY CREEK 2 N	8129	01	SUSSEX	36 58	77 24W	105	08	08		H
STUART	8170	03	PATRICK	36 38	80 15W	1375	07	07		H
SUFFOLK LAKE KILBY	8192	01	SUFFOLK	36 44	76 36W	22	24	24		H
VIENNA	8737	04	FAIRFAX	38 54	77 17W	418	07	07		H
W PT 2 NW	9025	01	KING WILLIAM	37 34	76 48W	20	17	17		H
WAKEFIELD 1NW	8800	01	SUSSEX	36 59	77 0W	113	24	24		CH
WALKERTON 2 NW	8829	01	KING AND QUEEN	37 45	77 2W	50	18	18		H
WALLACETON LK DRUMMOND	8837	01	CHESAPEAKE	36 36	76 26W	20	08	08		H
WALLOPS IS NASA TEST FACILITY //R	8849	01	ACCOMACK	37 56	75 28W	46	24	24		HJ
WARSAW 2 NW	8894	01	RICHMOND	37 59	76 47W	140	18	18		H
WASHINGTON DULLES INTL AP R	8903	04	LOUDOUN	38 56	77 27W	290	24	24		HJ
WASHINGTON REAGAN NATL AP R	8906	04	ARLINGTON	38 51	77 2W	10	24	24		HJ
WAYNESBORO WTP	8941	05	WAYNESBORO	38 5	78 53W	1270	07	07		H
WFO STERLING	8084	04	LOUDOUN	38 59	77 29W	288	24	24		H
WILLIAMSBURG 2 N	9151	01	YORK	37 18	76 42W	70	24	24		H
WILLIAMSVILLE 2 S	9159	05	BATH	38 11	79 35W	1640		07		CH
WINCHESTER	9181	04	FREDERICK	39 11	78 9W	720	07	07		H
WINCHESTER 7 SE	9186	04	FREDERICK	39 11	78 7W	680	08	08		H
WINTERPOCK 4 W	9213	02	CHESTERFIELD	37 19	77 39W	300		07		H
WISE 1SE	9215	06	WISE	36 58	82 33W	2564	09	09		CH
WOODSTOCK 2 NE	9263	04	SHENANDOAH	38 54	78 28W	675	07	07		H
WOOLWINE 1 SE	9272	03	PATRICK	36 46	80 16W	1263		08		CH
WYTHEVILLE	9301	06	WYTHE	36 58	81 5W	2458	07	07		H

REFERENCE NOTES

STATION NAMES: Name of the city, town or locality. Figures and letters following the station names indicate the distance in miles and direction from the post office or town community center.

DIVISIONS: Areas within a state of similar climatological characteristics. Division averages are calculated using data from stations that record temperature and/or precipitation. Station Precipitation totals flagged with an 'F' or 'M' are excluded from the Divisional Average calculations of precipitation. Stations with monthly Temperature averages flagged with an 'F' or 'M' are included in the Divisional Average if there are no more than 9 flagged or missing daily values in the month, else they are excluded from the divisional average for temperature.

NORMALS: The average value of the meteorological element over a time period. Effective 1 January 2012, the averaging period for station departures is 1981 to 2010. The normals for National Weather Service localities have been adjusted so as to be representative for the current observation site.

The January 2011 through December 2015 publications incorrectly state the computation of divisional departures. Climate Division departures have been, and continue to be, computed from 1971-2000 Normals, not 1981-2010 as stated. Station departures are accurately described as departures from 1981-2010.

MONTHLY DEGREE DAY TOTALS: One heating (cooling) degree day is accumulated for each whole degree that the daily mean temperature is below (above) 65 degrees Fahrenheit.

PRECIPITATION: Values shown in hundredths of inches are water equivalent totals, i.e., total of liquid and melted frozen precipitation. In the "Monthly Summarized Data" table the total snow and sleet values shown in tenths of inches are unmelted amounts. The max depth on ground values of snow and sleet shown in whole inches are cumulative unmelted amounts. The number of days with .10, .50, 1.00 or more refers to water equivalents.

PRECIPITATION QUALITY CONTROL: The NCEI quality control process may flag precipitation data that are spatially inconsistent, exceed climatological limits, or are inconsistent with prevailing weather patterns.

TEMPERATURE: Original temperature values are given in the "Daily Temperature" table. Summary temperature information (averages, departures, extremes, monthly degree day totals) is based on the values labeled MAX/MIN.

WIND: (As shown in the "Evaporation and Wind" table) the total wind movement in miles over the evaporation pan as determined by an anemometer recorder located 6-8 inches above the pan.

SYMBOLS AND LETTERS USED IN THE STATION INDEX TABLE

C Station is equipped with recording rain gage (R) but values in this bulletin are from a non-recording rain gage unless indicated by an R.

G Observations appear in the "Soil Temperatures" table.

H Observations appear in the "Snowfall and Snow on the Ground" table.

J Station also published as a Local Climatological Data publication.

VAR Observation time varies.

SR / SS Observation time near sunrise / Observation time near sunset, respectively.

SYMBOLS AND LETTERS USED IN THE DATA TABLES

(DAILY DATA ARE FOR THE 24 HOURS IMMEDIATELY PRECEDING OBSERVATION TIME.)

BLANK Entries in the "Monthly Summarized Data" table indicate no record.

BLANK Entries in the "Daily Precipitation" and "Snowfall and Snow on the Ground" tables indicate zero.

BLANK Entries in the "Daily Temperature" table indicate a missing record

- No record. Data not recorded or not received in time for publication.

+ Precipitation or temperature extremes occurred on one or more previous dates during the month.

* Rain gage not read. Precipitation is included in the amount following the asterisks.

Time distribution may not be known. A * preceding the monthly total indicates precipitation amount is being carried forward to next month's total, and may include amounts from the previous month(s).

a As a subscript, indicates accumulated total.

A Amount of precipitation is the total of observer's entries for the current month. It may include precipitation that occurred during the previous month. Refer to earlier bulletin to determine date of last

reading. (Hawaii stations)

B Divisional Departure from normals are computed using 1971-2000 normals.

E Normalized HDD/CDD Calculation. E is appended to the HDD/CDD Calculation when 1-9 individual daily TMAX and/or TMIN values are missing and a Normalized HDD/CDD Calculation is provided. M appears alone if 10 or more daily values are missing.

F Monthly calculation flagged value. F is appended to average and/or total values computed which exclude one or more daily data values that have been flagged by the GHCN-Daily Dataset

M Insufficient or partial data. M is appended to average and/or total values computed with 1-9 daily values missing. M appears alone if 10 or more daily values are missing, (8 or more for wind and evaporation).

N Indicates snow fall or Snowdepth totals are computed with one or more missing days.

R Amounts from recording rain gage.

T Trace. An amount too small to measure.

SEASONAL TABLES: Monthly and seasonal snowfall and heating degree days for the 12 months ending with the June data are published in the July issue of this bulletin. Cooling degree days for the calendar year are published in the "Climatological Data Annual Summary."

Information concerning the history of changes in locations, exposure, etc. of substations is kept on file at the National Centers for Environmental Information. Historical information of regular National Weather Service Offices may be obtained from the "Local Climatological Data" annual publication. The contents of this publication may be reprinted or otherwise used freely, with proper credit to the National Centers For Environmental Information. The data are also available digitally.

Effective with the January 2011 Data-Month, COOP Observer Names are no longer included in the Monthly and Annual Climatological Data Publications. This information is not published to ensure the privacy of personal information pursuant to Section 208 of the E-Government Act of 2002 (44 USC 3601).

As of the 2011 Data-Year, Station and Climate Division Maps are no longer being included in the CD Publications. NCEI's Products Branch provides updated Station Maps for various data networks via the Historical Observing Metadata Repository: <http://www.ncdc.noaa.gov/homr>.

The GHCN-Daily Quality Control Flags shown below are displayed as superscripts with the data. For more information on Global Historical Climatology Network - Daily and flags, see: <http://www.ncdc.noaa.gov/oa/climate/ghcn-daily/> and Comprehensive Automated Quality Assurance of Daily Surface Observations. Durre, Imke, Matthew J. Menne, Byron E. Gleason, Tamara G. Houston, Russell S. Vose, 2010: J. Appl. Meteor. Climatol., 49, 16151633. doi: 10.1175/2010JAMC2375.1

Blank = Passed All checks

D = failed duplicate check

G = failed gap check

I = failed internal consistency check

K = failed streak/frequent-value check

L = failed check on length of multiday period

M = failed megaconsistency check

N = failed naught check

O = failed climatological outlier check

R = failed lagged range check

S = failed spatial consistency check

T = failed temporal consistency check

W = temperature too warm for snow

X = failed bounds check

Z = flagged as a result of an official Datzilla investigation

Beginning with the January 2013 CD Publication, monthly mean temperature calculations have changed to the National Data Stewardship Team standard. Monthly maximum and minimum temperatures are not rounded until after the monthly mean temperature is calculated. This is the most accurate outcome, but may be slightly different from the mean derived from rounded monthly maximum and minimum.

The climate division temperature and precipitation values in this publication are based on simple averages from the current set of NWS-Designated Open and Published COOP and First Order Sites within each division. These values differ from those found in NCEI's nClimDiv product. Beginning in February 2014, the nClimDiv product is used by NCEI's Monitoring Branch and in its monthly climate reports. For more details on nClimDiv, please go to <http://www.ncdc.noaa.gov/monitoring-references/maps/us-climate-divisions.php>.

Effective January 2016, Alaska's Climate Divisions are updated to reflect the 13 climate divisional boundaries established by University of Alaska-Fairbanks, NWS, NCEI, Oregon State University, and University of Nebraska-Lincoln. For more details regarding the updated Alaska Climate Divisions, see: <http://journals.ametsoc.org/doi/pdf/10.1175/JAMC-D-11-0168.1> (Bienek et al., 2012).

These and other publications are available from the National Centers for Environmental Information

Hourly Precipitation Data

This publication contains hourly precipitation amounts obtained from recording rain gages located at National Weather Service, Federal Aviation Administration, and cooperative observer stations. Published data are displayed in inches and tenths or inches and hundredths at local standard time. HPD includes maximum precipitation for nine (9) time periods from 15 minutes to 24 hours, for selected stations.

Climatological Data

Monthly editions contain station daily maximum and minimum temperatures and precipitation. Some Stations provide daily snowfall, snow depth, evaporation, and soil temperature data. Each edition also contains monthly summaries for heating and cooling degree days (65 degree F base). The July issue contains a recap of monthly heating degree days and snow data for the preceding July through June.

The Annual issue contains monthly and annual averages of temperature, precipitation, temperature extremes, freeze data, soil temperatures, evaporation, and a recap of monthly cooling degree days.

Storm Data

Monthly issues contain a chronological listing, by states, of occurrences of storms and unusual weather phenomena. Reports contain information on storm paths, deaths, injuries, and property damage. An "Outstanding storms of the month" section highlights severe weather events with photographs, illustrations, and narratives. The December issue includes annual tornado, lightning, flash flood, and tropical cyclone summaries.

Monthly Climatic Data for the World

This publication contains monthly means for temperature, pressure, precipitation, vapor pressure, and sunshine for approximately 2,000 surface data collection stations worldwide and monthly mean upper air temperatures, dew point depressions, and wind velocities for approximately 500 observing sites.

Local Climatological Data

LCD publications summarize temperature, relative humidity, precipitation, cloudiness, wind speed and direction observations for several hundred cities in the U.S. and its territories. Each monthly publication also contains 3 hourly weather observations for that month and a hourly summary of precipitation. Annual LCD publications contain a summary of the past calendar year as well as historical averages and extremes.

For Information Call:

(828) 271-4800 Option 2

(828) 271-4010 (TDD)

(828) 271-4876 (Fax)

NOAA National Centers for Environmental Information
Attn: Customer Engagement Branch
151 Patton Avenue
Asheville, NC 28801-5001

Customer Services Number: (828) 271-4800, option 2
TDD : (828) 271-4010
Fax number: (828) 271-4876

NCEI now offers free online access to the *Climatological Data* publication.
Go to : www.ncdc.noaa.gov and choose Most Popular.