



CLIMATOLOGICAL DATA

VIRGINIA



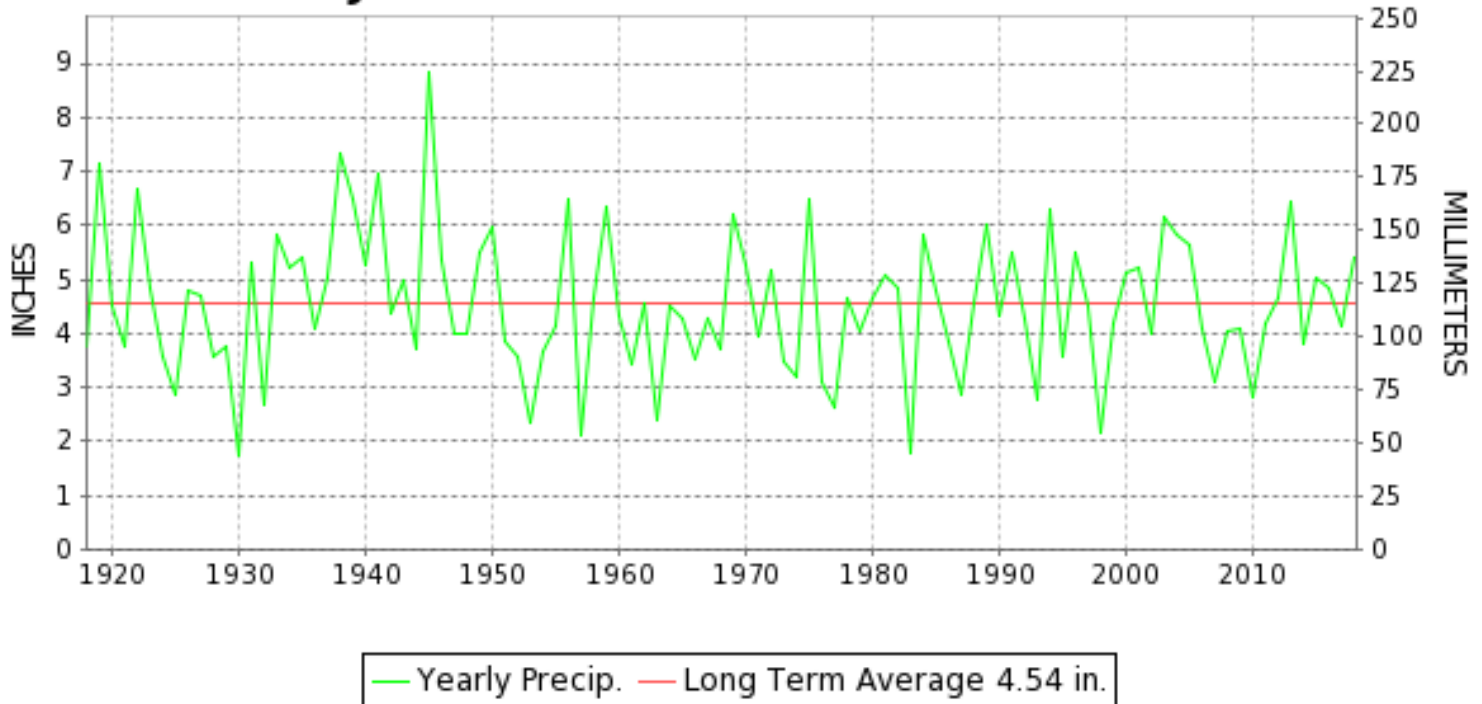
JULY 2018

VOLUME 128 NUMBER 07

ISSN 0364-5630

GHCND Ver: 3.25-upd-2018110519

JULY PRECIPITATION BY YEAR



TEMPERATURE AND PRECIPITATION EXTREMES

VIRGINIA

HIGHEST TEMPERATURE	100	JULY 03	WALLACETON LK DRUMMOND
LOWEST TEMPERATURE	43	JULY 08	MUSTOE 1 SW
GREATEST TOTAL PRECIPITATION	11.21		WASHINGTON DULLES INTL AP
LEAST TOTAL PRECIPITATION	1.50		GATHRIGHT DAM
GREATEST 1 DAY PRECIPITATION	5.02	JULY 21	WASHINGTON DULLES INTL AP

"I certify that this is an official publication of the National Oceanic and Atmospheric Administration (NOAA) It is compiled using information from weather observing sites supervised by NOAA/National Weather Service and received at the National Centers for Environmental Information(NCEI), Asheville, North Carolina 28801."

Mary S. Wolpenbut

Director
National Centers for Environmental Information

noaa

National
Oceanic and
Atmospheric Administration

National
Environmental Satellite, Data
and Information Service

National
Centers for Environmental Information
Asheville, North Carolina

VIRGINIA
201807

MONTHLY STATION AND DIVISION SUMMARY

STATION	TEMPERATURE (°F)											PRECIPITATION (IN)												
	AVERAGE MAXIMUM	AVERAGE MINIMUM	AVERAGE	DEPARTURE FROM NORMAL	HIGHEST	DATE	LOWEST	DATE	HEATING DEG. DAYS	COOLING DEG. DAYS	NO. OF DAYS				TOTAL	DEPARTURE FROM NORMAL	GREATEST 24 HOURS	DATE	ICE PELLETS, SNOW			NO. OF DAYS		
											MAX		MIN						TOTAL	MAX DEPTH ON GROUND	DATE	.10 OR MORE	.50 OR MORE	1.00 OR MORE
											>=90	<=32	<=32	<=0										
RICHMOND INTL AP	87.4	68.8	78.1	-1.2	96	02	57	08	0	412	12	0	0	0	5.68	1.17	1.28	21	0.0	0		12	12	1
WINTERPOCK 4 W															3.30	0.61	30		M			12	9	0
--DIVISIONAL DATA-----> WESTERN PIEDMONT 03			76.7	-0.1B										4.22	-0.14B									
ALTAVISTA														6.63		1.65	12	0.0	0			10	10	3
APPOMATTOX	86.7	65.3	76.0	0.1	93	04	54	09	0	350	11	0	0	0	3.06	-1.76	1.33	07	0.0	0		9	7	1
BEDFORD														3.90	-0.53	0.89	18	0.0	0			8	8	0
BROOKNEAL	87.0	64.5	75.7	3.6	93	02	52	10+	0	342	10	0	0	0	7.34	2.98	2.36	31	0.0	0		10	7	3
CHARLOTTESVILLE 2W	85.9	67.5	76.7	-0.5	93	12+	58	08	0	372	11	0	0	0	3.68	-1.64	0.95	24	0.0	0		11	9	0
CHATHAM	85.7	64.2	75.0	0.3	93	05	51	09	0	315	7	0	0	0	3.17	-1.32	1.43	23	0.0	0		7	7	1
CONCORD 4 SSW														3.59		2.00	31	0.0	0			9	6	1
DANVILLE 2 SE	89.6	66.6	78.1	-0.8	95	11+	53	09	0	414	15	0	0	0	4.94	0.35	1.00	24	0.0	0		10	10	1
DANVILLE RGNL AP	87.7	66.2	77.0	-1.3	94	11	52	09	0	376	11	0	0	0	6.36	1.69	1.19	31+	0.0	0		13	9	4
FREE UNION	85.0	65.9	75.5		92	17+	55	09+	0	332	5	0	0	0	3.99	1.84	1.84	25	0.0	0		10	8	1
BIG IS														4.79		1.93	25	0.0	0			6	6	2
HUDDLESTON 4 SW														4.23		2.28	31	0.0	0			9	8	1
LYNCHBURG INTL AP	87.1	65.9	76.5	1.2	94	03+	53	09	0	364	12	0	0	0	5.78	1.42	1.65	06	0.0	0		9	7	4
MARTINSVILLE FLTR PLT	87.9	63.3	75.6	0.2	95	04+	50	10+	0	336	13	0	0	0	4.59	0.12	1.77	31	0.0	0		9	7	2
MEADOWS OF DAN 5 SW	82.9	62.0	72.4		89	06+	51	10+	1	236	0	0	0	0	5.72		2.27	31	0.0	0		14	10	2
MONTEBELLO FISH CULTURAL STN	83.9M	58.8M	71.3M		92	26	46	10+	7E	212E	3	0	0	0	M 5.77		2.33	25	M 0.0	0		12	7	2
MONTICELLO	M	M	M								0	0	0	0	M				M					
PEDLAR DAM														3.74		1.36	07	0.0	0			8	7	1
ROCKY MT	87.2	64.2	75.7	0.8	93	03	51	09	0	339	9	0	0	0	6.90	2.03	2.45	31	0.0	0		9	7	2
S BOSTON	90.5	66.9	78.7	1.9	97	12	53	09	0	434	18	0	0	0	3.87	-0.46	1.40	18	0.0	0		10	6	1
STUART	85.7	63.9	74.8	-0.5	93	04	52	09	0	311	7	0	0	0	5.98	0.41	1.52	31	0.0	0		12	9	2
WOOLWINE 1 SE														6.80		1.98	07	0.0	0			11	9	2
--DIVISIONAL DATA-----> NORTHERN 04			75.6	-0.3B										4.95	0.32B									
FRONT ROYAL	84.6M	64.0M	74.3M	-0.7	93	03+	54	08	0	294E	7	0	0	0	M 3.92	0.62	1.38	25	M 0.0	0		8	6	1
PURCELLVILLE	86.1	65.1	75.6	0.7	95	04+	52	08	0	337	10	0	0	0	A 9.04		3.05	22	M 0.0	0		9	6	3
LURAY 5 E	84.5	62.5	73.5	-1.0	93	04	52	09+	0	271	7	0	0	0	10.59	6.48	2.51	24	0.0	0		11	10	5
MANASSAS	M	M	M		95	04	56	09	0	444E	9	0	0	0	MA 9.56		4.40	22	M 0.0	0		10	7	4
MT WX 3	80.3	63.6	72.0		90	03	54	09	2	223	1	0	0	0	8.70		2.06	22	0.0	0		10	10	4
PIEDMONT RSCH STN	86.2M	67.0M	76.6M	0.2	94	03	57	09	0	368E	7	0	0	0	M 2.35	-2.35	0.92	17	M 0.0	0		6	4	0
SOMERSET	86.0	65.6	75.8	0.5	94	04	53	09	0	340	7	0	0	0	5.38	-0.32	1.66	24	0.0	0		12	8	2
SPERRYVILLE	88.2M	64.9M	76.5M	1.9	98	03	60	22+	0	362E	10	0	0	0	M 8.53	4.21	3.00	25	M 0.0	0		11	10	4
WFO STERLING	85.8	66.2	76.0	0.1	96	02	55	09+	0	350	7	0	0	0	9.23	5.53	4.42	21	0.0	0		13	8	2
VIENNA	84.6	64.9	74.8	0.2	93	04+	55	09+	0	310	9	0	0	0	8.78	4.59	3.93	22	0.0	0		10	7	3

VIRGINIA
201807

MONTHLY STATION AND DIVISION SUMMARY

STATION	TEMPERATURE (°F)											PRECIPITATION (IN)												
	AVERAGE MAXIMUM	AVERAGE MINIMUM	AVERAGE	DEPARTURE FROM NORMAL	HIGHEST	DATE	LOWEST	DATE	HEATING DEG. DAYS	COOLING DEG. DAYS	NO. OF DAYS				TOTAL	DEPARTURE FROM NORMAL	GREATEST 24 HOURS	DATE	ICE PELLETS, SNOW			NO. OF DAYS		
											MAX		MIN						TOTAL	MAX DEPTH ON GROUND	DATE	.10 OR MORE	.50 OR MORE	1.00 OR MORE
											>=90	<=32	<=32	<=0										
WASHINGTON DULLES INTL AP	86.6	66.5	76.5	-0.2	96	03	54	09+	0	367	9	0	0	0	11.21	7.54	5.02	21	0.0	0		11	8	4
WASHINGTON REAGAN NATL AP	88.5	72.8	80.7	0.9	98	16	64	09+	0	492	12	0	0	0	9.73	6.00	4.00	21	0.0	0		8	6	3
WINCHESTER	86.4	64.5	75.5	0.3	95	04+	53	08	0	331	11	0	0	0	7.74	4.21	1.98	05	0.0	0		11	8	2
WINCHESTER 7 SE	86.9M	62.2M	74.5M	0.4	95	03	51	09	0	303E	7	0	0	0	M 5.49	1.90	0.96	05	M 0.0	0		11	7	0
WOODSTOCK 2 NE	84.2	62.4	73.3	-0.2	93	03	52	08	1	265	6	0	0	0	M 4.59	0.79	1.22	05	0.0	0		8	7	2
--DIVISIONAL DATA-----> CENTRAL MOUNTAIN 05			75.4	0.9B											8.93	5.02B								
BUENA VISTA														4.16		1.68	25	0.0	0		8	5	1	
COVINGTON FLTR PLT	82.7	60.5	71.6	-3.0	90	05+	51	09+	1	214	2	0	0	0	4.04	0.07	1.38	05	0.0	0		12	9	1
DALE ENTERPRISE	84.3	63.3	73.8	0.3	92	02+	55	10+	0	280	5	0	0	0	3.91	-0.09	1.40	25	0.0	0		7	7	1
GATHRIGHT DAM	81.2	61.3	71.2	-0.8	89	11+	52	09+	1	201	0	0	0	0	1.50	-2.40	0.42	26	0.0	0		12	5	0
GLASGOW 1 SE														3.63		1.23	25	0.0	0		8	7	1	
HOT SPRINGS	82.7	60.5	71.6	0.8	93	04	50	09+	3	212	3	0	0	0	2.79	-1.42	0.60	17	0.0	0		9	7	0
LEXINGTON	86.6	63.5	75.0	-0.2	93	04+	52	09	0	320	10	0	0	0	2.26	-1.86	1.28	07	0.0	0		8	3	1
MILL GAP	80.5	55.2	67.9	0.5	89	04	45	20+	18	113	0	0	0	0	2.99	-1.68	0.70	16	0.0	0		11	6	0
MTN GROVE														A 2.89		1.24	16	0.0	0		5	4	1	
MUSTOE 1 SW	79.0	56.4	67.7	-0.1	87	04+	43	08	12	107	0	0	0	0	3.60	-1.01	0.89	15	0.0	0		10	7	0
NEW CASTLE														3.84		0.67	24	0.0	0		13	10	0	
ROANOKE 8 N	85.3	64.1	74.7	-0.6	92	04	53	09	0	306	3	0	0	0	5.50	0.32	1.43	07	0.0	0		11	8	2
ROANOKE INTL AP	86.5	67.2	76.9	0.2	93	03	56	09+	0	374	12	0	0	0	4.47	0.43	1.06	06	0.0	0		9	8	1
STAUNTON WTP	83.8	63.4	73.6	0.0	92	04	52	08	0	273	4	0	0	0	2.79	-1.11	1.13	26	0.0	0		10	7	1
WAYNESBORO WTP	85.2M	63.4M	74.3M	0.8	92	04+	53	09+	0	295E	6	0	0	0	M 5.88	1.65	2.00	25	M 0.0	0		10	7	2
WILLIAMSVILLE 2 S														3.09		0.86	17	0.0	0		9	7	0	
--DIVISIONAL DATA-----> SOUTHWESTERN MOUNTAIN 06			72.6	-0.8B										3.43	-0.54B									
ABINGDON 3S	85.2	63.1	74.1	1.1	93	05+	55	10	0	291	5	0	0	0	3.37	-1.66	0.90	23	0.0	0		8	6	0
BIG STONE GAP	85.3	63.6	74.4	0.0	93	05	58	19	0	300	4	0	0	0	4.63	-0.66	1.39	21	0.0	0		13	9	1
BLACKSBURG NWSO	82.7	59.8	71.3	0.1	90	04	48	09	2	205	1	0	0	0	2.13	-2.13	0.78	22	0.0	0		10	5	0
BURKES GARDEN	M	M	M		82	31	51	29	10E	93E	0	0	0	0	2.18	-2.30	0.53	21	0.0	0		13	8	0
CHRISTIANSBURG	81.4	61.5	71.5	-0.9	89	04	51	10+	2	209	0	0	0	0	5.11	0.76	1.18	07	0.0	0		11	9	1
CLINTWOOD 1 W	82.3	61.5	71.9	0.8	88	06+	56	20+	0	220	0	0	0	0	5.51	0.76	2.01	21	0.0	0		11	7	2
COPPER HILL	77.7	61.3	69.5		83	12+	51	10	5	153	0	0	0	0	5.90		1.85	22	0.0	0		13	11	1
ELK CREEK 4SSW	77.6	62.2	69.9		84	04	52	08	4	160	0	0	0	0	6.21		3.08	16	0.0	0		13	10	2
GALAX WTP	81.9	60.2	71.1	0.7	88	04	46	10+	4	200	0	0	0	0	4.89		1.53	16	0.0	0		16	10	2
GRUNDY	84.6	62.9	73.7	0.9	92	05	55	20+	0	278	4	0	0	0	4.16	-1.04	1.47	21	0.0	0		13	6	2
JOHN FLANNAGAN LAKE	M	M	M								0	0	0	0	M									
LEBANON	85.0	61.9	73.5	1.6	92	05+	53	10+	0	269	3	0	0	0	4.21	-0.36	1.38	21	0.0	0		12	8	1

MONTHLY STATION AND DIVISION SUMMARY

STATION	TEMPERATURE (°F)											PRECIPITATION (IN)												
	AVERAGE MAXIMUM	AVERAGE MINIMUM	AVERAGE	DEPARTURE FROM NORMAL	HIGHEST	DATE	LOWEST	DATE	HEATING DEG. DAYS	COOLING DEG. DAYS	NO. OF DAYS				TOTAL	DEPARTURE FROM NORMAL	GREATEST 24 HOURS	DATE	ICE PELLETS, SNOW			NO. OF DAYS		
											MAX		MIN						TOTAL	MAX DEPTH ON GROUND	DATE	.10 OR MORE	.50 OR MORE	1.00 OR MORE
											>=90	<=32	<=32	<=0										
NORA 4 SSE	80.6	64.4	72.5	0.8	86	05	58	22+	0	241	0	0	0	0	3.74	-1.01	1.40	21	0.0	0		12	7	1
PULASKI 2 E	83.5	60.8	72.2	-0.1	92	04	46	09	4	234	2	0	0	0	3.02	-0.91	0.94	26	0.0	0		12	9	0
RADFORD 3 N	83.9	61.1	72.5	0.1	91	04	47	09	3	246	5	0	0	0	A 3.13	-1.09	0.64	07	0.0	0		8	4	0
RICHLANDS	84.2	61.4	72.8	1.3	93	04	51	09	0	246	5	0	0	0	2.15	-2.17	0.56	21	0.0	0		13	6	0
SALTVILLE 1N	85.5	61.4	73.5	0.6	94	04	50	09	0	269	4	0	0	0	2.08	-2.95	0.81	21	0.0	0		10	6	0
STAFFORDSVILLE 3 ENE	82.4	59.2	70.8	-0.7	88	17+	46	10+	4	195	0	0	0	0	4.68	0.59	0.84	03	0.0	0		12	10	0
WISE 1SE	82.1	62.2	72.1	1.2	88	04	55	19	0	228	0	0	0	0	5.08	-0.22	1.53	07	0.0	0		19	7	2
WYTHEVILLE	83.2	60.5	71.9	1.5	91	04	48	09	4	224	1	0	0	0	3.68	-0.07	1.15	16	0.0	0		9	5	1
--DIVISIONAL DATA----->			72.2	1.0B											3.99	-0.30B								

VIRGINIA
201807

DAILY PRECIPITATION (INCHES)

STATION	TOTAL	DAY OF MONTH																														
		01	02	03	04	05	06	07	08	09	10	11	12	13	14	15	16	17	18	19	20	21	22	23	24	25	26	27	28	29	30	31
BEDFORD	3.90						0.38										0.89					0.52	0.87	0.36	0.16	0.22						0.50
BROOKNEAL	7.34						2.32					0.02					0.74					0.03	0.29	0.10	1.15	0.32		T		0.01	2.36	
CHARLOTTESVILLE 2W	3.68						0.21					0.20				0.08	0.11	0.55					0.52	0.95	0.74	0.14		0.05			0.13	
CHATHAM	3.17						0.30					0.13						0.20						1.43	0.15	0.73	0.23					
CONCORD 4 SSW	3.59						0.54										0.05	0.21					0.26	0.21	0.19	0.09				0.04	2.00	
DANVILLE 2 SE	4.94										0.48					0.10	0.10					0.90	0.24	1.00	0.58	0.54				0.90	0.10	
DANVILLE RGNL AP	6.36			T		0.08					1.00	0.01				0.11	0.06				0.36	0.82	0.15	1.19	0.27	0.07			1.05	1.19		
FREE UNION	3.99						0.11					0.38				0.11	T	0.35					0.31	0.35	1.84	0.40		0.09		0.05		
BIG IS	4.79						0.34																T	1.01	0.63	1.93	0.10					0.78
HUDDLESTON 4 SW	4.23						0.15					0.26					0.09	0.25						0.37	0.19	0.49	0.15					2.28
LYNCHBURG INTL AP	5.78					1.65	0.17									0.03	T					1.00	0.18	1.33	0.04					0.35	1.03	
MARTINSVILLE FLTR PLT	4.59						0.53	0.01											0.39				0.17	0.37	0.05	1.15	0.15					1.77
MEADOWS OF DAN 5 SW	5.72		0.02				0.01	0.93										0.17	0.02			0.13	0.19	0.10	0.28	0.26	1.17	0.15	0.02			2.27
MONTEBELLO FISH CULTURAL STN	M 5.77					0.15					0.02		-	-	0.12	0.01	0.06		0.12		-	0.74	1.27	0.93	2.33			0.01	0.01			-
MONTEBELLO	M	-	-	-	-	-	-	-	-	-	-	-	-	-	-	-	-	-	-	-	-	-	-	-	-	-	-	-	-	-	-	-
PEDLAR DAM	3.74					T	1.36									0.27		0.20					T	0.47	0.67	0.42	0.30					0.05
ROCKY MT	6.90						0.43					0.35						0.09					0.07	0.50	0.25	2.21	0.55	T				2.45
S BOSTON	3.87				0.05		0.01					0.01						1.40					0.25	0.58	0.62		0.05		0.20			0.70
STUART	5.98						1.44	0.25				0.96											0.10	0.10	0.56	0.67	0.30	0.03				1.52
WOOLWINE 1 SE	6.80		0.08				0.04	1.98															0.20	0.39	0.49	0.47	0.96				0.23	1.86
NORTHERN 04																																
FRONT ROYAL	M 3.92	-		0.07											-	-	0.27	0.30					0.73	0.04	0.58	1.38	0.55					-
PURCELLVILLE	A 9.04				0.01	T	0.04									0.05		0.53					3.05	0.94	1.40	1.14	0.73	*	*	*	*	1.15 _a
LURAY 5 E	10.59															1.78	1.20	0.47					0.14	0.11	2.51	1.44	1.80	0.01	0.41			0.72
MANASSAS	MA 9.56			0.05												0.05	0.80	1.00					4.40	*	0.50 _a	0.35	1.10	0.05	0.10		-	1.16
MT WX 3	8.70				0.13											0.26		0.16					2.06	1.15	0.84	0.81	1.32	0.36				1.61
PIEDMONT RSCH STN	M 2.35						0.02									0.08	0.92	0.31						0.50	-	-	-	-	-	-	-	0.52
SOMERSET	5.38											0.05				0.27	T	0.25	0.02					0.46	1.66	0.27	1.37	0.03	0.44	0.02		0.54
SPERRYVILLE	M 8.53			-	-	-	-	-	-							1.80	1.33	0.15					0.10	0.25	0.14	-	3.00	0.38	0.08	0.15		1.15
WFO STERLING	9.23		0.31	0.01	T	0.06									T		0.80					4.42	0.09	0.38	0.58	1.59	0.01	0.05			0.68	0.25
VIENNA	8.78					0.01											0.22	1.16					3.93	0.43	1.77	0.07	0.39		0.04			0.76
WASHINGTON DULLES INTL AP	11.21		0.85			T									T	0.03	1.11					5.02	0.08	0.47	0.77	1.36		0.06			1.29	0.17
WASHINGTON REAGAN NATL AP	9.73		T			T									T	T	2.79					4.00	1.35	0.06	0.32	0.67		T			0.51	0.03
WINCHESTER	7.74		0.02		1.98											1.48		0.62					0.96	0.02	0.40	0.86	0.64		0.03			0.73
WINCHESTER 7 SE	M 5.49			-	0.96		-									0.80	0.01	0.05					0.91	-	0.01	0.80	0.77	0.27		0.04		0.87
WOODSTOCK 2 NE	M 4.59			-	1.22																		0.22	0.05	0.35	1.20	0.36	0.22				0.97
CENTRAL MOUNTAIN 05																																
BUENA VISTA	4.16						0.75									0.03		0.15						0.80	0.68	1.68	0.05					0.02
COVINGTON FLTR PLT	4.04				1.38	0.14	0.30									0.49	0.03						0.02	0.05	0.16	0.83	0.12	0.42				0.10
DALE ENTERPRISE	3.91				0.40											0.14								0.20	0.40	1.40	0.55					0.82
GATHRIGHT DAM	1.50				0.17	0.01	0.04									0.20	0.06	0.08					0.02		0.07	0.28	0.10	0.42				0.05
GLASGOW 1 SE	3.63		0.01				0.61									T	0.14							0.69	0.65	1.23	0.19					0.11

VIRGINIA
201807

DAILY PRECIPITATION (INCHES)

STATION	TOTAL	DAY OF MONTH																														
		01	02	03	04	05	06	07	08	09	10	11	12	13	14	15	16	17	18	19	20	21	22	23	24	25	26	27	28	29	30	31
HOT SPRINGS	2.79				0.55		0.04									0.10	0.60				T		0.02	0.53	0.33	0.30						0.32
LEXINGTON	2.26						1.28									0.03		0.07						0.28	0.08	0.41	0.08	T				0.03
MILL GAP	2.99				0.06	0.08	0.52									0.70	0.01	0.01						0.03	0.63	0.45	0.32					0.18
MTN GROVE	A 2.89				0.12	0.22										1.24	0.14						*	*	*	1.09 _a					0.08	
MUSTOE 1 SW	3.60			0.10	0.01	0.35									0.89	T	0.03						0.81	0.25	0.30				0.79	0.07		
NEW CASTLE	3.84		T	0.20		0.06	0.54					0.24				0.01	0.27						0.57	0.14	0.67	0.15	0.60		0.01		0.38	
ROANOKE 8 N	5.50			0.80		0.05	1.43										0.02						0.14	0.45	1.05	0.50	0.40			0.60	0.06	
ROANOKE INTL AP	4.47		0.02			1.06									T	T					T	0.20	0.50	0.89	0.47	0.91			0.31	0.11		
STAUNTON WTP	2.79					0.02	0.18									0.20		0.13						0.43	0.39	0.27	1.13	0.02	T		0.02	
WAYNESBORO WTP	M 5.88											0.26				0.25		0.02						0.80	1.69	2.00	0.20	0.05	0.01	-	0.60	
WILLIAMSVILLE 2 S	3.09					0.31	0.07									0.21	0.86							0.02	0.82	0.57	0.12				0.11	
SOUTHWESTERN MOUNTAIN 06																																
ABINGDON 3S	3.37						0.78									0.50		0.05					0.72		0.90	0.14	0.25			0.03		
BIG STONE GAP	4.63		0.48		0.18	0.22						0.04				0.79	0.16	0.18				1.39	0.90	0.20	0.03	0.02		0.04				
BLACKSBURG NWSO	2.13			0.09			0.39								T	0.19	0.04						0.78	0.33	0.02	0.02	0.19				0.08	
BURKES GARDEN	2.18	0.03		0.10			0.36					0.02				0.10	0.05	0.26				0.53	0.02	0.32		0.20	0.12				0.07	
CHRISTIANSBURG	5.11			0.72		0.23	1.18									0.15	0.31						0.80	0.88	0.20	0.02	0.05				0.57	
CLINTWOOD 1 W	5.51		0.02	0.04			0.88	T				0.09				0.54	0.09	0.30				2.01	1.14	0.11		0.29						
COPPER HILL	5.90					0.53	0.43					0.67				0.04	0.04	0.35					1.85	0.37	0.14	0.22	0.92			0.12	0.22	
ELK CREEK 4SSW	6.21	0.34	0.01				0.31									3.08	0.28	0.02				0.20	0.30	0.12	0.22	0.11	0.04				1.18	
GALAX WTP	4.89	0.11		0.04			0.27					0.02				1.53	0.02	0.01				0.08	0.21	0.13	0.24	T	0.78	0.19	0.01	0.25	1.00	
GRUNDY	4.16			1.22		0.07	0.03					0.03					0.02	0.02				1.47	0.24	0.03	0.11	T	0.71		0.03	T	0.18	
JOHN FLANNAGAN LAKE	M	-	-	-	-	-	-	-	-	-	-	-	-	-	-	-	-	-	-	-	-	-	-	-	-	-	-	-	-	-	-	
LEBANON	4.21						0.16					0.62				0.02	0.01	0.14				1.38	0.33	0.07	0.11	0.95	0.01		0.41			
NORA 4 SSE	3.74		0.02	0.04			0.12					0.07				0.21	0.02	0.84				1.40	0.67	0.10	0.22	0.03	T		T			
PULASKI 2 E	3.02		T			0.44	0.29					0.04				0.22	0.25	0.26				0.14	T	0.03	0.13	0.01	0.94				0.27	
RADFORD 3 N	A 3.13		0.02	0.01			0.64										0.03					T	*	1.60 _a	0.18	0.07	0.27				0.31	
RICHLANDS	2.15						0.47	T				0.15			T	0.07	0.02	0.05	0.01			0.56	0.30	0.03		0.32	0.05			0.01	0.11	
SALTVILLE 1N	2.08						0.05					0.18					0.07	0.19				0.81	0.17	0.31		0.21	0.04		0.05			
STAFFORDSVILLE 3 ENE	4.68		T	0.84	T	0.04	0.35									T		0.25				0.05	0.63	0.72	0.11	0.10	0.68			0.13	0.78	
WISE 1SE	5.08		0.24	0.02			1.53	0.01	0.01	0.01	0.01	T	T			0.02	0.05	0.42	0.01			1.45	0.78	0.03	0.01	0.17	0.05		0.25	0.01	T	
WYTHEVILLE	3.68						0.92									1.15	0.21	0.49				0.07	T	0.07		0.04	0.07				0.66	

VIRGINIA
201807

DAILY TEMPERATURES (°F)

STATION	OB. TIME	MAX/MIN	DAY OF MONTH																															AVERAGE	
			01	02	03	04	05	06	07	08	09	10	11	12	13	14	15	16	17	18	19	20	21	22	23	24	25	26	27	28	29	30	31		
VIRGINIA																																			
TIDEWATER 01																																			
DISPUTANTA	07	MAX	95	97	98	96	94	92	93	78	80	88	89	92	86	84	85	90	94	91	84	85	84	72	85	81	78	81	91	92	90	85	76	87.3	
		MIN	70	72	74	70	71	72	69	58	54	58	61	69	66	57	60	65	71	72	60	61	65	64	67	71	72	67	68	69	68	70	71	66.5	
EMPORIA 1 WNW	08	MAX	93	95	96	95	93	92	91	81	84	87	92	96	89	87	87	92	91	91	88	89	86	75	85	84	80	85	90	91	89	87	82	88.5	
		MIN	73	73	73	72	73	73	73	61	57	60	66	68	67	61	62	65	71	72	62	63	68	66	68	71	72	69	71	70	70	72	73	68.2	
FREDERICKSBURG SEWAGE	07	MAX	91	92	96	95	90	92	88	77	81	87	93	90	88	87	91	89	96				86	72	83	83	83	84	89	90				74	87.2
		MIN	69	70	74	74	74	75	67	57	56	58	58	69	68	62	64	71	73				68	63	62	63	62	63	71	70				69	66.5
HOLLAND 1 E	08	MAX	93	95	94	89	91	93	88	79	83	90	94	85	84	85	86	89	91	87	85	85	77	88	83	77	83	88	91	85	85	82	85	86.8	
		MIN	71	73	73	73	72	72	68	64	58	55	68	70	64	62	63	70	73	67	63	64	68	67	71	72	72	70	73	72	73	74	74	68.7	
HOPEWELL	16	MAX	94	95	95		92	92	89	81	84	92	93	90					92	89	89	86	86		82	82	83	88	90	89	88	86		88.6	
		MIN	73	75	78		75	75	69	60	60	62	66	72					74	71	65	68	69		70	70	73	68	73	70	71	71		69.9	
NORFOLK INTL AP	24	MAX	92	94	91	89	90	95	80	77	79	89	91	82	81	84	90	91	94	85	86	86	79	89	85	79	83	90	93	87	85	80	87	86.5	
		MIN	76	78	77	78	79	74	70	69	65	60	72	74	72	66	68	76	75	73	68	70	70	69	74	74	74	72	76	74	77	75	75	72.6	
NORFOLK S	24	MAX	92	92	91	87	87	92	78	76	78	88	92	82	81	85	89	89	92	83	86	86	77	88	84	77	82	88	92	85	84	79	85	85.4	
		MIN	74	75	74	75	74	74	68	67	61	57	70	71	68	62	66	74	74	69	65	66	69	67	71	72	72	70	74	72	74	73	73	70.0	
NORTH	07	MAX	88	89	91	88	86	84	88	75	77	80	88	88	82	82	81	86	88	89	84	83	82	77	76	81	77	78	84	86	83	83	76	83.2	
		MIN	73	75	75	73	74	78	68	63	66	60	65	73	67	61	62	74	77	71	64	65	71	67	69	74	74	72	74	71	73	73	70	70.1	
PAINTER 2W	16	MAX	91	93	90	88	87	90	77	76	81	89	89	89	80	84	86	85	91	88	85	84	83	84	84	81	80	86	88	86	86	82	83	85.4	
		MIN	70	72	72	71	72	72	67	58	53	55	69	70	67	58	64	74	74	74	63	60	69	66	68	71	72	71	72	71	71	67	68	67.8	
STONY CREEK 2 N	08	MAX	94	95	93	91	92	93	80	82	86	92	96	87	84	87	92	93	92	86	87	86	73	85	82	78	84	89	89	86	86	79	84	87.2	
		MIN	70	72	73	70	72	74	67	59	54	57	61	67	67	58	60	65	72	68	61	63	69	65	66	70	71	68	70	70	71	71	72	66.9	
SUFFOLK LAKE KILBY	24	MAX	91	92	92	87	89	90	75	78	80	87	90	90	84	84	85	86	88	85	84	84	76	86	82	75	81	84	87	82	84	79	83	84.5	
		MIN	68	74	73	75	73	71	68	65	61	59	68	68	67	64	65	71	72	69	60	60	68	66	69	71	71	69	71	70	73	72	72	68.5	
WAKEFIELD 1NW	24	MAX	95	96	93	91	91	92	80	81	84	92	95	85	85	88	90	92	92	87	86	86	74	87	83	79	84	90	92	87	87	80	86	87.4	
		MIN	71	74	72	70	71	72	65	57	53	55	66	67	62	57	64	73	72	63	59	59	66	64	71	73	72	70	71	70	71	72	72	66.9	
WALKERTON 2 NW	18	MAX	92	96	94	91	92	87	81	82	85	92	91	88	86	90	91	92	91	85	83	85	74	86	83	81	84	89	91	86	85	78	86	87.0	
		MIN	68	73	74	71	72	75	68	54	52	68	67	71	67	57	65	73	74	67	63	63	69	69	75	77	77	73	71	73	69	72	74	69.1	
WALLACETON LK DRUMMOND	08	MAX	97	97	100	94	93	95	96	78	85	88	96	98	88	87	89	92	92	92	90	89	90	82	79	82	79	84	93	95	90	83	85	89.6	
		MIN	56	64	57	57	56	68	55	67	56	53	60	60	60	55	55	58	69	68	59	60	60	60	58	60	56	55	69	68	67	65	59	60.3	
WALLOPS ISLAND NASA TEST FACIL	24	MAX	91	92	89	87	89	94	77	77	82	90	91	82	82	85	88	85	92	91	86	85	78	86	84	85	81	88	89	89	85	78	85	85.9	
		MIN	74	76	77	75	79	75	68	59	56	61	72	73	66	61	71	76	77	73	68	66	71	70	74	76	75	75	74	73	73	71	71	71.2	
WARSAW 2 NW	18	MAX		98	97	96	92	90			87	93	93	91				91	93	87	89	89		87	83	82	89	90				78	86	M	
		MIN		72	73	70	79	70			50	60	68	68				73	74	67	63	60		63	71	72	69	70				71	69	M	
W PT 2 NW	17	MAX	93	96	94	93	91	90	80	82	85	93	92	92	87	88	91	94	93	88	88	86	86	86	84	82	81	89	91	88	88	84	85	88.4	
		MIN	71	73	75	72	72	73	62	56	54	59	68	69	63	60	67	75	72	64	63	64	66	64	73	71	71	69	72	70	69	70	70	67.6	
WILLIAMSBURG 2 N	24	MAX	92	94	92	89	90	91	79	81	85	93	93	85	84	87	89	92	91	88	88	87	77	86	83	77	82	89	90	87	86	76	85	86.7	
		MIN	73	75	75	74	74	76	66	61	58	61	70	71	65	62	67	75	74	68	63	65	67	66	73	73	74	70	74	71	72	71	71	69.5	
EASTERN PIEDMONT 02																																			
AMELIA COURTHOUSE 1	08	MAX	90	93	94	94	91	92	91	79	82	86	91	91	88	86	87	93	93	92	85	87	85		85	85	81	84	88	91		87	80	88.0	
		MIN	69	73	74	70	73	73	69	56	56	63	68	68	68	59	63	73	73	68	61	67	68		64	64	72	67	70	70		68	71	67.5	
ASHLAND	18	MAX	90	93	92	90	89	87	76	79	82	88	88	85	83	85	88	90	90	82	84	82	81	80	80	80	80	84	87	83	82	80	82	84.6	

VIRGINIA
201807

DAILY TEMPERATURES (°F)

STATION	OB. TIME	MAX/MIN	DAY OF MONTH																															AVERAGE
			01	02	03	04	05	06	07	08	09	10	11	12	13	14	15	16	17	18	19	20	21	22	23	24	25	26	27	28	29	30	31	
BREMO BLUFF	07	MIN	68	72	75	72	72	75	65	55	55	60	68	69	66	59	70	73	72	65	62	65	64	62	69	71	71	68	68	70	65	70	70	67.3
		MAX																																M
		MIN																																M
CAMP PICKETT	08	MAX	90	93	93	92	90	92	88	77	80	84	89	92	88	84	86	90	91	89	85	87	87	74	85	84	81	82	89	89	85	84	80	86.5
		MIN	66	70	71	69	69	73	68	57	54	55	62	68	67	58	59	64	72	69	60	61	61	64	64	69	72	67	68	67	67	69	70	65.5
CHASE CITY	07	MAX	89	93	93	93	90	89	88	77	79	83	88	92	86	84	85	91	87	88	83	85	85	79	84	84	83	82	88	88	87	84	84	86.2
		MIN	68	70	70	69	71	71	70	58	53	60	64	69	66	59	62	67	70	69	59	62	67	66	69	71	71	68	69	70	68	70	72	66.7
CLARKSVILLE	07	MAX	93	93	95	95	95	92	80	83	86	93	96	89	88	89	94	91	89	87	88	87	84	86	86	84	83	91	91	90	90	87	89.3	
		MIN	71	73	75	73	73	72	60	58	60	65	70	68	64	65	66	74	70	63	64	70	69	69	72	72	68	68	72	71	71	71	68.7	
CORBIN	09	MAX	93	96	94	90	92	87	77	81	86	91	89	87	85	89	88	95	93	85	87	86	72	83	83	81	83	88	91	85	84	76	83	
		MIN	68	72	74	72	72	75	60	53	53	61	68	65	64	58	66	73	73	64	60	62	65	62	71	73	70	68	71	67	64	66	70	
CROZIER	07	MAX	89	92	94	92	89	90	86	76	80	84	90	90	84	83	88	91	93	91	81	85	84	70	83	82	79	81	87	88	85	83	80	
		MIN	66	67	72	71	69	70	67	52	52	60	66	65	66	58	59	63	72	64	59	62	66	62	63	70	71	67	68	68	64	64	69	
FARMVILLE 2 N	07	MAX	87	93	98	94	85	92	89	79	85	89	89	96	91	86	86	73	73 ^s	83	88	86	82	78	89	86	76	87	93	89	87	86	86.9	
		MIN	65	64	72	70	70	73	69	56	54	62	68	68	59	61	63	63	61	61	61	62	62	71	72	68	68	67	68	69	69	69	64.9	
JOHN H KERR DAM	08	MAX	95	98	99	96	94	96	96	79	83	87	94	97	90	88	91	95	93	94	89	89	88	81	89	87	86	86	93	94	89	88	90.6	
		MIN	72	77	73	71	73	78	72	60	56	62	68	73	68	61	67	72	79	72	61	64	68	69	70	72	73	71	73	72	71	73	73	
KEYSVILLE 2 S	07	MAX	91	93	94	94	90	91	91	77	80	84	89	92	87	89	86	91	89	88	84	86	85	79	83	85	82	83	88	89	87	85	85	
		MIN	71	71	72	68	70	71	68	56	54	56	62	66	66	60	61	67	68	68	60	60	63	63	66	71	71	66	66	69	69	69	70	
LOUISA	18	MAX	93	94	95	93	91	89	83	82	86	90	90	89	85	87	89	93	89	84	85	85	80	83	83	83	81	88	87	86	85	83	84	
		MIN	64	69	72	71	71	74	66	50	49	57	65	61	63	56	65	70	63	58	63	62	61	68	71	72	66	67	68	63	67	68	64.8	
PALMYRA 3S	06	MAX	84	86	79	75	80	80	74	78	84	85	84		70	82	82	82	83	84	89	92	83	86	70	80	87	80	74	80	85	85		
		MIN	64	69	68	57	51	54	58	57	64	64	60		61	65	57	60	64	66	66	68	66	70	66	66	64	65	65	67	65	63	63.1	
PETERSBURG	07	MAX	95	95	95	92	94	92	79	81	85	93	94		86	89	92	94	94	86	87	87	73	85	83	79	85	89	91	88	85	78		
		MIN	73	75	71	71	74	72	60	57	57	61	72		61	60	67	74	71	63	63	69	65	67	70	72	68	68	70	69	69	72	69	
RICHMOND INTL AP	24	MAX	95	96	95	93	93	93	80	82	85	92	92	89	85	86	91	93	92	86	89	86	73	84	82	80	83	88	90	87	86	76		
		MIN	71	74	75	72	73	73	62	57	58	63	72	70	65	61	67	74	73	68	66	67	67	65	71	73	71	68	72	71	69	72	72	
WESTERN PIEDMONT 03																																		
APPOMATTOX	07	MAX	91	91	92	93	90	91	90	79	80	85	89	92	85	84	86	90	89	92	85	86	86	79	82	84	80	84	89	90	87	85		
		MIN	67	69	73	71	71	71	66	56	54	56	64	66	67	61	63	67	71	65	59	61	64	62	66	67	67	67	67	67	67	66	65.3	
BROOKNEAL	07	MAX	89	93	92	92	90	91	92	78	81	85	89	90	87	85	86	91	91	92	85	85	85	81	83	84	82	85	88	89	88	85		
		MIN	65	67	71	69	69	69	66	54	52	52	62	64	68	60	61	65	70	66	57	57	62	65	68	69	68	66	67	68	65	68	64.5	
CHARLOTTESVILLE 2W	08	MAX	91	91	93	92	90	90	86	78	80	86	91	93	84	84	87	92	91	91	82	84	84	77	79	83	79	82	88	88	86	83		
		MIN	72	73	74	75	74	73	63	58	59	62	70	66	66	65	67	71	71	67	63	64	65	63	66	70	70	67	68	67	68	67	67.5	
CHATHAM	07	MAX	89	92	92	89	93	90	91	77	80	85	85	90	86	84	86	91	87	89	83	85	84	82	77	83	82	83	84	89	84	83		
		MIN	64	67	70	69	70	70	68	56	51	54	59	66	64	60	62	64	71	69	58	57	61	66	65	66	64	64	70	64	67	67	64.2	
DANVILLE 2 SE	24	MAX	94	95	95	91	93	90	91	82	89	93	95	88	87	89	94	90	94	87	86	89	87	87	85	87	86	91	93	90	88	86		
		MIN	69	72	72	71	71	69	65	57	53	58	65	67	66	63	62	72	69	69	63	61	66	68	67	71	68	65	68	71	66	70	72	
DANVILLE RGNL AP	24	MAX	93	93	93	90	91	90	79	82	86	92	94	87	85	87	92	88	92	86	87	87	86	85	84	85	84	89	90	88	85	84		
		MIN	69	73	73	71	71	70	62	58	52	58	65	69	65	63	62	72	70	63	59	62	67	67	71	67	66	68	70	66	68	69		
FREE UNION	07	MAX	89	90	92	92	88	88	84	78	80	85	89	89	83	83	85	88	92	90	85	84	84	79	78	83	79	80	86	87	85	82		
		MIN	66	68	72	72	73	72	65	55	55	56	64	64	64	62	63	68	72	66	63	64	66	65	67	72	71	66	66	68	65	65	68	

VIRGINIA
201807

DAILY TEMPERATURES (°F)

STATION	OB. TIME	MAX/MIN	DAY OF MONTH																															AVERAGE	
			01	02	03	04	05	06	07	08	09	10	11	12	13	14	15	16	17	18	19	20	21	22	23	24	25	26	27	28	29	30	31		
LYNCHBURG INTL AP	24	MAX	94	94	94	91	92	90	78	80	87	91	91	87	85	87	93	92	92	85	87	84	82	78	85	84	84	87	90	86	84	84	81	87.1	
		MIN	66	73	72	72	69	71	62	57	53	61	66	69	66	61	63	71	71	62	58	63	66	64	65	70	69	66	69	66	68	67	67	65.9	
MARTINSVILLE FLTR PLT	07	MAX	92	94	95	95	92	92	92	81	83	87	91	93	88	86	88	92	90	93	86	87	84	84	79	82	82	84	88	91	87	84	84	87.9	
		MIN	64	67	69	69	69	69	67	53	50	50	58	66	66	62	60	61	70	66	58	58	64	64	62	64	64	65	65	65	64	64	68	63.3	
MEADOWS OF DAN 5 SW	07	MAX	86	87	89	89	89	89	84	76	78	83	85	85	84	84	83	88	87	84	83	81	80	79	77	77	76	80	82	82	81	80	81	82.9	
		MIN	63	66	67	67	67	67	64	52	51	51	57	57	66	62	62	64	68	65	58	59	62	62	61	62	66	62	62	63	61	62	65	62.0	
MONTEBELLO FISH CULTURAL STN	07	MAX	89	89	90	86			77	79	87	89	90	81			88	89	80	80			74	81	77	80	92	89	87	78	77		83.9		
		MIN	59	64	65	65			46	46	46	46	58	58			66	56	50	60			62	67	69	68	66	64	54	57	61		58.8		
MONTICELLO	07	MAX																																M	
		MIN																																	M
ROCKY MT	07	MAX	89	92	93	92	90	92	88	80	80	86	91	92	86	86	89	92	91	89	86	87	86	83	84	83	78	84	89	87	86	87	84	87.2	
		MIN	66	68	70	71	70	70	68	53	51	56	60	68	66	62	62	63	70	67	58	60	64	64	61	65	69	63	63	67	65	65	66	64.2	
S BOSTON	07	MAX	92	96	96	96	93	93	93	82	85	89	95	97	91	89	91	96	94	92	92	89	89	86	86	87	86	85	91	92	90	88	86	90.5	
		MIN	69	69	73	71	71	71	71	57	53	56	64	69	67	61	63	65	73	69	60	61	64	69	69	71	71	66	68	71	67	72	72	66.9	
STUART	07	MAX	90	91	91	93	91	91	90	79	82	86	88	89	86	84	85	89	88	88	86	84	82	78	79	78	82	82	85	88	84	84	85	85.7	
		MIN	66	69	68	69	69	69	66	53	52	53	60	65	67	63	62	63	70	69	59	60	65	63	62	65	67	63	63	65	64	65	66	63.9	
NORTHERN 04																																			
FRONT ROYAL	24	MAX	91	93	93	90	90	90	85	76	80	86	90	87	83	84				83	81	83	83	77	79	80	78	80	87	86	86	82		84.6	
		MIN	65	70	70	70	70	70	62	54	55	55	63	62	62	62				65	61	61	61	61	61	61	70	69	67	67	67	65	62	64.0	
PURCELLVILLE	08	MAX	91	94	95	95	92	91	85	78	82	87	91	87	86	86	89	85	93	85	84	86	85	74	78	80	81	81	90	91	86	86	75	86.1	
		MIN	67	69	71	72	71	73	62	52	54	61	71	60	61	61	69	66	70	62	61	61	70	60	61	71	70	64	66	64	64	66	67	65.1	
LURAY 5 E	08	MAX	90	90	92	93	92	90	82	77	80	85	90	86	84	82	88	85	86	86	81	82	83	81	77	82	78	83	86	89	84	81	76	84.5	
		MIN	64	67	68	71	69	69	58	52	52	58	64	59	59	60	65	66	67	58	54	55	65	59	64	68	65	63	64	65	60	64	64	62.5	
MANASSAS	07	MAX	90	91	94	95	90	90	86		83	86	92	90	88			87	91															M	
		MIN	69	73	74	76	75	76	65		56	58	65	66	66			70																	M
MT WX 3	07	MAX	86	88	90	88	88	86	78	72	73	81	85	81	79	81	83	81	89	79	79	80	80	71	73	74	73	76	82	84	78	78	74	80.3	
		MIN	69	69	70	70	68	62	58	54	63	66	60	62	65	68	67	67	59	59	62	62	57	60	67	67	66	66	66	64	62	62	63	63.6	
PIEDMONT RSCH STN	08	MAX	89	91	94	90	84	90	88	78	81	86	92	90	87	84	87	88	93	88	82	84	83	73	81									86.2	
		MIN	67	67	75	73	73	73	73	59	57	68	66	70	67	65	61	67	71	71	63	63	66	64	61										67.0
SOMERSET	08	MAX	91	92	93	94	89	91	88	78	80	85	92	89	85	84	87	89	93	89	83	85	84	76	80	83	81	83	87	89	86	83	78	86.0	
		MIN	67	70	73	74	73	73	54	54	53	61	68	68	63	60	66	71	71	64	57	62	64	62	65	68	71	68	67	69	63	67	67	65.6	
SPERRYVILLE	06	MAX	95	96	98							96	91	90	88	90	91	86	92	86	87	88	75	79										88.2	
		MIN	67	69	71								63	65	64	62	62	67	69	66	60	61	64	60	63										64.9
WFO STERLING	24	MAX	93	96	94	91	94	85	78	82	85	90	88	86	86	89	87	95	87	84	86	85	73	81	82	82	82	86	89	84	83	76	82	85.8	
		MIN	68	71	74	74	73	72	58	55	55	61	71	66	65	63	69	67	69	65	61	63	60	59	71	72	70	67	66	67	65	67	68	66.2	
VIENNA	07	MAX	91	91	93	93	91	90	79	79	81	86	90	87	85	85	87	85	92	86	82	86	82	70	78	78	78	81	87	90	83	84	74	84.6	
		MIN	66	71	73	73	74	74	62	55	55	56	62	62	62	63	64	68	68	63	63	62	62	60	60	70	70	68	68	67	63	63	66	64.9	
WASHINGTON DULLES INTL AP	24	MAX	93	95	96	91	90	85	80	83	87	93	91	88	86	89	88	94	89	85	86	87	74	80	82	82	82	89	90	85	85	77	82	86.6	
		MIN	68	70	73	75	74	73	63	54	54	60	70	67	63	63	69	66	70	64	61	62	62	60	73	73	71	68	68	67	65	67	68	66.5	
WASHINGTON REAGAN NATL AP	24	MAX	93	95	97	93	92	89	82	85	88	96	94	92	89	91	88	98	92	88	88	86	75	83	85	83	86	89	91	87	87	84	88.5	88.5	
		MIN	75	78	80	80	80	79	68	64	64	71	78	73	71	70	74	76	74	70	71	71	67	65	75	74	73	75	72	70	72	71	72.8	72.8	
WINCHESTER	07	MAX	90	94	95	95	93	93	80	82	88	92	88	87	86	92	87	92	85	82	86	84	76	77	78	77	82	88	90	85	82	79	86.4		

VIRGINIA
201807

DAILY TEMPERATURES (°F)

STATION	OB. TIME	MAX/MIN	DAY OF MONTH																															AVERAGE	
			01	02	03	04	05	06	07	08	09	10	11	12	13	14	15	16	17	18	19	20	21	22	23	24	25	26	27	28	29	30	31		
WINCHESTER 7 SE	08	MIN	70	68	70	73	69	69	59	53	55	57	68	64	61	63	67	66	68	61	64	63	64	59	60	70	69	66	67	67	61	64	66	64.5	
		MAX	92	94	95			94				82	88	92	88	86	86	90	89	91	86	83	85	84			79	83	86	89	86	83	79	86.9	
WOODSTOCK 2 NE	07	MIN	66	67	67			69			51	52	59	60	58	60	61	64	65	62	59	59	58			69	68	66	65	66	59	59	65	62.2	
		MAX	91	91	93	91	90	90	82	76	80	82	89	85	84	83	88	85	89	89	81	81	82	77	77	78	82	80	86	85	83	82	77	84.2	
CENTRAL MOUNTAIN 05 COVINGTON FLTR PLT	07	MIN	70	67	68	69	68	68	59	52	54	55	60	60	58	60	66	67	68	59	55	56	60	60	61	66	68	65	65	65	61	61	64	62.4	
		MAX	86	89	86	90	90	85	83	76	82	84	87	88	83	83	84	86	87	85	80	80	81	77	77	77	77	77	83	82	81	79	79	82.7	
DALE ENTERPRISE	07	MIN	61	63	67	67	68	67	60	51	51	53	56	59	59	60	60	67	62	54	54	61	62	63	63	65	64	61	58	58	58	64	60.5		
		MAX	92	92	83	90	91	90	78	80	80	87	86	87	88	88	89	89	89	88	81	81	84	82	76	79	78	81	84	82	82	81	76	84.3	
GATHRIGHT DAM	07	MIN	64	66	68	70	66	70	60	60	55	55	60	68	62	60	62	65	65	63	58	58	61	64	64	66	67	64	64	64	66	63	63.3		
		MAX	82	87	84	89	88	84	81	76	77	82	89	86	82	82	84	83	84	82	78	79	79	75	75	77	77	76	81	81	80	79	78	81.2	
HOT SPRINGS	07	MIN	63	63	68	68	68	67	64	52	52	53	59	62	62	61	62	64	67	61	54	55	55	61	62	64	67	63	61	61	58	59	63	61.3	
		MAX	86	90	89	93	91	86	80	75	78	84	87	89	84	84	88	88	72	85	78	81	80	75	75	78	78	79	83	85	82	80	80	82.7	
LEXINGTON	07	MIN	62	64	67	68	67	66	61	50	50	54	59	60	62	60	62	65	65	59	53	53	60	60	62	66	66	61	60	59	57	58	58	60.5	
		MAX	89	93	93	93	91	90	87	80	83	86	91	90	87	85	87	90	90	90	85	85	84	83	76	84	83	82	86	88	86	84	83	86.6	
MILL GAP	06	MIN	64	65	70	70	72	70	65	53	52	53	59	66	64	61	62	65	69	65	57	57	62	62	63	67	69	65	64	64	63	63	67	63.5	
		MAX	85	87	85	89	88	83	79	75	78	82	83	83	82	81	84	83	85	83	76	77	76	76	74	76	78	77	81	80	77	77	76	80.5	
MUSTOE 1 SW	24	MIN	57	57	62	63	62	61	54	45	45	46	52	53	53	53	55	60	63	55	45	45	54	55	58	63	64	60	57	54	51	52	58	55.2	
		MAX	85	84	87	87	82	78	75	77	82	83	82	80	81	82	82	83	80	75	77	76	74	73	75	76	76	80	80	76	76	73	73	79.0	
ROANOKE 8 N	07	MIN	55	61	61	63	61	61	52	43	45	50	59	55	54	53	57	62	62	52	47	51	61	56	62	64	63	58	55	53	53	60	59	56.4	
		MAX	88	91	90	92	89	89	87	78	80	85	89	89	85	85	86	89	89	89	84	84	82	81	78	80	78	81	87	88	85	82	84	85.3	
ROANOKE INTL AP	24	MIN	64	66	70	70	72	69	67	56	53	54	54	67	67	63	64	66	69	65	59	59	65	63	63	64	68	64	65	66	63	66	64.1		
		MAX	92	92	93	91	92	90	79	82	87	91	92	87	86	88	92	90	91	87	86	83	83	79	81	78	81	89	90	86	83	83	79	86.5	
STAUNTON WTP	08	MIN	66	73	70	74	75	70	63	56	56	63	69	70	70	65	66	72	72	67	60	67	67	65	65	71	69	67	68	66	65	69	68	67.2	
		MAX	89	90	91	92	89	87	84	77	81	86	90	89	84	82	87	87	89	88	82	81	80	79	75	79	76	78	84	85	82	79	77	83.8	
WAYNESBORO WTP	07	MIN	67	68	68	68	69	69	60	52	53	58	68	64	61	64	68	68	69	62	56	58	63	59	63	66	67	62	64	65	61	63	63	63.4	
		MAX	90	92	92	92	89	89	85	78	80	87	91	89	83	83	83	88	90	89	81	84	83	79	77	83	80	80	87	89			79	85.2	
SOUTHWESTERN MOUNTAIN 06 ABINGDON 3S	06	MIN	64	66	70	70	71	69	63	53	53	55	62	63	63	63	66	69	62	56	56	67	61	62	68	69	63	63	65			65	63.4		
		MAX	90	92	88	93	93	90	83	80	84	85	87	86	84	87	88	88	88	84	83	83	84	82	77	82	80	81	83	84	80	86	85	85.2	
BIG STONE GAP	08	MIN	68	69	67	67	67	67	66	59	56	55	58	62	64	64	65	68	68	65	59	61	61	61	61	61	62	64	64	61	61	59	61	66	63.1
		MAX	90	88	87	91	93	90	87	82	85	86	88	86	86	89	88	87	84	85	83	83	85	81	75	83	80	83	84	83	81	85	85	85.3	
BLACKSBURG NWSO	07	MIN	69	68	67	69	68	67	67	60	59	63	64	64	65	67	66	67	63	58	59	62	63	64	64	65	63	63	60	60	59	59	63.6		
		MAX	87	88	85	90	88	87	83	77	79	84	87	87	83	83	85	87	87	83	81	79	78	81	74	78	80	78	83	82	80	79	81	82.7	
BURKES GARDEN	07	MIN	61	63	63	64	67	67	62	51	48	50	55	59	60	60	60	61	65	60	54	54	64	60	58	59	65	61	62	59	58	60	64	59.8	
		MAX																																	M
CHRISTIANSBURG	07	MIN																																M	
		MAX	85	87	87	89	87	86	81	75	77	81	85	86	81	81	83	84	86	83	82	78	77	77	71	77	78	79	82	82	80	78	78	81.4	
CLINTWOOD 1 W	07	MIN	65	66	65	65	67	68	61	53	51	51	59	62	62	62	62	64	66	62	57	58	64	60	60	60	60	65	63	63	60	61	63	61.5	
		MAX	86	87	84	86	88	88	84	80	82	82	85	83	83	85	84	85	81	82	80	81	82	80	73	81	78	79	81	80	77	82	81	82.3	
		MIN	62	66	64	64	68	68	65	60	56	56	59	60	60	60	64	65	67	63	56	56	60	61	62	62	64	63	61	59	57	57	63	61.5	

VIRGINIA
201807

DAILY TEMPERATURES (°F)

STATION	OB. TIME	MAX/MIN	DAY OF MONTH																															AVERAGE
			01	02	03	04	05	06	07	08	09	10	11	12	13	14	15	16	17	18	19	20	21	22	23	24	25	26	27	28	29	30	31	
COPPER HILL	07	MAX	80	81	83	83	81	82	81	72	72	81	82	83	78	76	77	82	81	80	79	74	74	73	71	72	71	71	81	80	78	74	75	
		MIN	64	64	64	68	67	66	62	54	52	51	57	62	64	61	61	62	66	63	59	59	61	60	60	63	64	61	60	60	59	63	63	
ELK CREEK 4SSW	07	MAX	81	80	81	84	82	81	80	70	75	79	81	82	79	75	80	82	80	80	76	72	72	77	72	73	73	74	79	78	76	75		
		MIN	67	68	67	68	67	68	62	52	56	61	65	62	64	61	63	62	65	61	60	62	57	59	60	61	61	62	63	60	61	63		
GALAX WTP	07	MAX	86	85	85	88	87	87	85	75	80	85	87	86	83	80	82	86	84	84	81	78	76	79	74	76	77	78	84	83	81			
		MIN	60	67	64	65	66	66	65	50	46	46	56	60	64	60	60	60	64	63	56	56	61	61	61	60	64	60	60	61	60			
GRUNDY	07	MAX	91	88	85	90	92	90	83	80	84	84	86	86	85	87	88	86	87	85	82	83	86	82	74	83	81	82	86	83	78			
		MIN	65	69	67	69	68	70	64	57	56	58	63	61	61	61	62	69	69	64	55	55	61	62	62	63	64	64	64	63	59			
JOHN FLANNAGAN LAKE	07	MAX																																
		MIN																																
LEBANON	07	MAX	91	89	87	92	92	89	82	79	85	85	88	84	87	85	88	88	87	85	82	83	84	83	76	82	82	80	85	84				
		MIN	64	69	65	66	65	66	65	57	53	53	57	61	61	64	65	68	68	63	56	57	60	61	60	61	66	61	61	62	59			
NORA 4 SSE	07	MAX	85	84	83	85	86	84	83	75	81	81	83	84	82	83	84	82	79	81	78	77	79	76	71	78	78	78	83	78				
		MIN	70	69	67	72	71	71	63	60	60	65	69	62	64	68	68	67	67	60	60	64	58	58	61	62	63	64	66	60				
PULASKI 2 E	07	MAX	88	89	87	92	90	89	83	76	80	85	87	86	84	82	86	86	86	84	81	79	78	83	77	81	81	79	83	80				
		MIN	63	68	63	66	66	65	64	50	46	54	63	58	61	59	61	65	67	59	53	59	60	60	62	61	63	62	61	59				
RADFORD 3 N	08	MAX	88	90	89	91	90	90	84	77	79	85	88	88	85	80	83	87	90	87	82	82	79	84	75	79	82	79	84					
		MIN	62	68	65	66	66	67	63	51	47	54	59	57	60	62	62	64	64	62	52	61	67	61	60	62	65	62	61					
RICHLANDS	07	MAX	90	90	87	93	92	92	80	79	83	84	86	83	86	84	88	85	86	83	81	83	82	82	77	84	78	78	84					
		MIN	62	66	67	65	66	66	66	54	51	53	62	59	59	62	62	67	67	62	54	59	60	62	61	62	65	62	62					
SALTVILLE 1N	07	MAX	92	89	89	94	91	90	83	79	84	87	89	84	86	86	89	89	87	82	82	83	82	75	84	84	79	85	84					
		MIN	63	67	68	68	67	66	65	55	50	54	56	58	63	61	62	67	67	61	57	58	60	60	62	62	62	61	61					
STAFFORDSVILLE 3 ENE	07	MAX	86	87	84	88	87	88	81	76	78	83	86	86	87	82	85	85	88	84	81	80	78	82	71	76	78	79	83					
		MIN	60	62	67	66	66	67	64	52	46	46	55	57	57	59	59	62	65	59	51	52	57	61	60	61	65	62	60					
WISE 1SE	09	MAX	85	86	85	88	87	86	82	78	80	81	84	84	84	85	86	85	84	79	77	81	82	80	73	81	78	79	83					
		MIN	67	67	65	67	67	67	62	58	56	59	63	60	60	67	66	66	67	58	55	64	59	62	61	61	61	61	62					
WYTHEVILLE	07	MAX	88	88	88	91	89	88	84	73	78	84	86	85	85	81	85	89	86	82	80	78	76	83	75	80	79	81	84					
		MIN	63	69	64	64	67	66	64	52	48	49	58	60	61	62	62	63	67	60	55	56	60	60	62	62	62	61	61					

TOTAL SNOWFALL AND NUMBER OF DAYS WITH ONE INCH OR MORE ON GROUND

VIRGINIA
201807

STATION	JUL		AUG		SEP		OCT		NOV		DEC		JAN		FEB		MAR		APR		MAY		JUN		TOTAL		TOTAL PRECIPITATION
	SNOWFALL	1 IN ON GD	SNOWFALL	1 IN ON GD	SNOWFALL	1 IN ON GD	SNOWFALL	1 IN ON GD	SNOWFALL	1 IN ON GD	SNOWFALL	1 IN ON GD	SNOWFALL	1 IN ON GD	SNOWFALL	1 IN ON GD	SNOWFALL	1 IN ON GD	SNOWFALL	1 IN ON GD	SNOWFALL	1 IN ON GD	SNOWFALL	1 IN ON GD	SNOWFALL	1 IN ON GD	
VIRGINIA																											
TIDEWATER 01																											
DISPUTANTA	M		M		M		M		M		M		M	9	M		M	1	M		M		M		M 0.0	M 10	48.45
EMPORIA 1 WNW	M		M		M		M		M		M		M	7	M		M	1	M		M		M		M 0.0	M 8	M 41.30
FREDERICKSBURG SEWAGE	M 0.0		M 0.0		M 0.0	0	0.0	0	M 0.0	0	M 1.0	1	M 1.5	1	M 0.0	0	M 0.0	0	0.0	0	M 0.0	0	M 0.0	0	M 2.5	M 2	M 38.78
HOLLAND 1 E	M		M		M		M		M		M		M		M		M		M		M		M		M 0.0	M 0	M 34.83
HOPEWELL	M 0.0		M 0.0		M 0.0	0	0.0	0	M 0.0	0	M 1.0	1	M 4.0	2	M 0.0	0	M 1.0	1	M 0.0	0	M 0.0	0	M 0.0	0	M 4.0	M 4	M 51.89
NORFOLK INTL AP	0.0		0.0		0.0	0	0.0	0	0.0	0	T 0	0	13.1	10	T 0	0	2.0	1	0.0	0	0.0	0	0.0	0	15.1	M 11	49.24
NORFOLK S	M		M		M		M		M		M		M	10	M	0	M	1	M		M		M		M 0.0	M 11	M 52.73
NORTH	0.0		0.0		0.0	0	0.0	0	0.0	0	T 0	0	M 9.0	8	0.0	0	1.0	0	0.0	0	0.0	0	0.0	0	M 10.0	M 8	M 47.61
PAINTER 2W	M		M		M		M		M		M		M	9	M		M		M		M		M		M 0.0	M 9	47.93
STONY CREEK 2 N	M		M		M		M		M		M		M		M		M		0.0	0	M		M		M 0.0	M 0	50.61
SUFFOLK LAKE KILBY	0.0		0.0		0.0	0	0.0	0	0.0	0	0.2	0	12.5	6	0.0	0	3.0	1	0.0	0	0.0	0	0.0	0	15.7	M 7	42.83
WAKEFIELD 1NW	0.0		0.0		M 0.0	0	0.0	0	M 0.0	0	0.7	0	11.8	9	0.0	0	2.8	1	0.1	0	0.0	0	M 0.0	0	M 15.4	M 10	M 52.84
WALKERTON 2 NW	0.0		0.0		0.0	0	0.0	0	M 0.0	0	M 5.9	5	4.1	7	0.0	0	3.0	2	0.1	1	0.0	0	0.0	0	M 13.1	M 15	M 42.91
WALLACETON LK DRUMMOND	M		M		M		M		M		M		M		M		M		M		M		M		M 0.0	M 0	M 44.69
WALLOPS ISLAND NASA TEST FACIL	0.0		0.0		0.0	0	0.0	0	0.0	0	1.3	1	10.5	8	0.0	0	T 0	0	T 0	0	0.0	0	0.0	0	11.8	M 9	51.72
WARSAW 2 NW	M		M		M		M		M		M	4	M	4	M		M		M		M		M		M 0.0	M 4	M 44.59
W PT 2 NW	0.0		0.0		0.0	0	0.0	0	0.0	0	3.0	2	7.7	7	T 0	0	1.7	0	T 0	0	T 0	0	0.0	0	12.4	M 9	49.44
WILLIAMSBURG 2 N	M		M		M		M		M		M	0	M	7	M		M	0	M		M		M		M 0.0	M 7	43.38
EASTERN PIEDMONT 02																											
ALBERTA 5N	0.0		0.0		0.0	0	0.0	0	0.0	0	3.4	3	7.0	9	0.0	0	4.0	2	0.5	0	0.0	0	0.0	0	14.9	M 14	40.78
AMELIA COURTHOUSE 1	0.0		0.0		0.0	0	0.0	0	0.0	0	3.5	2	5.5	1	0.0	0	2.5	2	T 0	0	0.0	0	0.0	0	11.5	M 5	44.37
ASHLAND	0.0		0.0		0.0	0	0.0	0	0.0	0	5.0	4	4.9	6	T 0	0	M 7.0	2	0.1	0	0.0	0	0.0	0	M 17.0	M 12	M 51.33
BREMO BLUFF	M		M		M		M		M		M	0	M 0.4	0	M	0	M	0	M		M		M		M 0.4	M 0	M 4.77
BUCKINGHAM	0.0		0.0		0.0	0	0.0	0	0.0	0	2.5	2	5.5	4	0.0	0	M 3.5	1	0.5	0	0.0	0	0.0	0	M 12.0	M 7	M 49.01
CAMP PICKETT	M		M		M		M		M		M	2	M	2	M	1	M		M		M		M		M 0.0	M 3	M 42.80
CHASE CITY	M		M		M		M		M		M	2	M	2	M		M	2	M	1	M		M		M 0.0	M 5	M 41.53
CLARKSVILLE	0.0		0.0		0.0	0	M 0.0	0	0.0	0	0.4	1	7.9	2	0.0	0	1.8	2	M T	0	0.0	0	0.0	0	M 10.1	M 5	M 44.96
CORBIN	M		M		M		M		M		M	0	M	0	M		M	1	M		M		M		M 0.0	M 1	M 45.50
CROZIER	0.0		0.0		0.0	0	0.0	0	M 0.0	0	4.0	3	4.0	9	0.0	0	4.5	3	M 0.1	0	M 0.0	0	M 0.0	0	M 12.6	M 15	M 46.82
FARMVILLE 2 N	M		M		M		M		M		M	1	M	2	M	0	M	0	M		M		M		M 0.0	M 3	M 37.79
JOHN H KERR DAM	M		M		M		M		M		M		M		M		M		M		M		M		M 0.0	M 0	42.55
KEYSVILLE 2 S	0.0		0.0		0.0	0	0.0	0	0.0	0	4.8	5	7.5	4	T 0	0	2.6	2	0.1	0	0.0	0	0.0	0	15.0	M 11	35.65
LOUISA	M		M		M		M		M		M	1	M	1	M		M	1	M	0	M		M		M 0.0	M 3	41.46
PALMYRA 3S	M		M		M		M		M		M	1	M	2	M		M	1	M	0	M		M		M 0.0	M 4	M 50.16
PETERSBURG	M		M		M		M		M		M	1	M	2	M		M		M		M		M		M 0.0	M 3	M 49.76
RICHMOND INTL AP	0.0		0.0		0.0	0	0.0	0	0.0	0	3.1	3	5.3	6	0.0	0	4.0	2	T 0	0	0.0	0	0.0	0	12.4	M 11	52.13
WINTERPOCK 4 W	M		M		M		M		M		M		M		M		M		M		M		M		M 0.0	M 0	M 45.36
WESTERN PIEDMONT 03																											
ALTAVISTA	0.0		0.0		0.0	0	0.0	0	0.0	0	M 0.0	0	M T	0	M 0.0	0	M T	0	0.0	0	0.0	0	0.0	0	M 0.0	M 0	38.98
APPOMATTOX	0.0		0.0		0.0	0	0.0	0	0.0	0	4.8	4	5.6	4	M T	0	7.9	4	2.1	3	0.0	0	0.0	0	M 20.4	M 15	M 40.07
BEDFORD	0.0		0.0		0.0	0	0.0	0	0.0	0	0.3	0	3.6	3	M 0.0	0	M 6.2	2	T 0	0	0.0	0	0.0	0	M 10.1	M 5	52.93
BROOKNEAL	0.0		0.0		0.0	0	0.0	0	0.0	0	1.6	2	5.0	4	T 0	0	M 3.5	2	T 0	0	0.0	0	0.0	0	M 10.1	M 8	M 36.25
CHARLOTTESVILLE 2W	0.0		0.0		0.0	0	0.0	0	0.0	0	1.5	1	1.0	2	0.6	0	4.7	2	0.4	0	0.0	0	0.0	0	8.2	M 5	42.12
CHATHAM	0.0		0.0		0.0	0	0.0	0	0.0	0	4.5	4	7.8	4	T 0	0	6.6	3	T 0	0	0.0	0	0.0	0	18.9	M 11	M 43.07
CONCORD 4 SSW	0.0		0.0		0.0	0	0.0	0	0.0	0	3.0	2	5.0	4	T 0	0	6.8	3	0.5	0	0.0	0	0.0	0	15.3	M 9	41.42
DANVILLE 2 SE	M		M		M		M		M		M		M		M		M		M		M		M		M 0.0	M 0	M 3.70
DANVILLE RGNL AP	0.0		0.0		0.0	0	0.0	0	0.0	0	4.9	2	8.8	3	T 0	0	7.4	2	T 0	0	0.0	0	0.0	0	21.1	M 7	41.00
FREE UNION	0.0		0.0		0.0	0	0.0	0	0.0	0	0.3	0	0.5	1	0.5	0	7.4	2	T 0	0	0.0	0	0.0	0	M 8.7	M 3	M 51.84
BIG IS	0.0		0.0		0.0	0	0.0	0	0.0	0	0.5	0	0.4	0	1.0	0	6.7	2	1.5	0	T 0	0	0.0	0	10.1	M 2	49.80

TOTAL SNOWFALL AND NUMBER OF DAYS WITH ONE INCH OR MORE ON GROUND

VIRGINIA
201807

STATION	JUL		AUG		SEP		OCT		NOV		DEC		JAN		FEB		MAR		APR		MAY		JUN		TOTAL		TOTAL PRECIPITATION
	SNOWFALL	I IN ON GD	SNOWFALL	I IN ON GD	SNOWFALL	I IN ON GD	SNOWFALL	I IN ON GD	SNOWFALL	I IN ON GD	SNOWFALL	I IN ON GD	SNOWFALL	I IN ON GD	SNOWFALL	I IN ON GD	SNOWFALL	I IN ON GD	SNOWFALL	I IN ON GD	SNOWFALL	I IN ON GD	SNOWFALL	I IN ON GD	SNOWFALL	I IN ON GD	
HUDDLESTON 4 SW	0.0		0.0		0.0	0	0.0	0	0.0	0	3.5	2	5.0	3	M 0.0	0	10.5	4	T	0	0.0	0	0.0	0	M 19.0	M 9	35.50
LYNCHBURG INTL AP	0.0		0.0		0.0	0	0.0	0	0.0	0	1.5	0	4.0	3	0.2	0	7.7	1	0.5	0	0.0	0	0.0	0	M 13.9	M 4	41.45
MARTINSVILLE FLTR PLT	0.0		0.0		0.0	0	0.0	0	0.0	0	5.3	3	6.0	3	M 0.0	0	9.9	4	0.0	0	0.0	0	0.0	0	M 21.2	M 10	40.74
MEADOWS OF DAN 5 SW	0.0		0.0		0.0	0	0.0	0	0.0	0	4.0	3	2.0	3	M 0.0	0	4.6	2	T	0	0.0	0	0.0	0	M 10.6	M 8	57.39
MONTEBELLO FISH CULTURAL STN	M	M 0.0	M	0	M 0.0	0	M 0.0	0	M	0	M	0	M 2.0	0	M 0.0	0	M 4.0	0	M 0.0	0	M 0.0	0	M 0.0	0	M 6.0	M 0	M 57.99
MONTICELLO	M	M	M		M		M		M		M		M		M		M		M		M		M		M 0.0	M 0	M 0.00
PEDLAR DAM	0.0		0.0		0.0	0	0.0	0	0.0	0	1.5	0	0.5	1	1.1	0	5.8	2	0.5	0	T	0	0.0	0	9.4	M 3	39.13
ROCKY MT	0.0		0.0		M 0.0	0	0.0	0	0.0	0	4.0	3	2.8	3	MT	0	10.8	5	T	0	0.0	0	0.0	0	M 17.6	M 11	40.65
S BOSTON	0.0		0.0		0.0	0	0.0	0	0.0	0	1.1	2	7.0	3	T	0	4.3	3	0.0	0	0.0	0	0.0	0	12.4	M 8	41.00
STUART	0.0		0.0		0.0	0	0.0	0	0.0	0	2.0	3	2.0	3	M 0.0	0	7.5	4	0.0	0	0.0	0	0.0	0	M 11.5	M 10	44.69
WOOLWINE 1 SE	0.0		0.0		0.0	0	0.0	0	0.0	0	3.3	2	1.5	2	MT	0	12.0	5	T	0	0.0	0	0.0	0	M 16.8	M 9	48.58
NORTHERN 04																											
FRONT ROYAL	M 0.0		M 0.0		M 0.0	0	M 0.0	0	0.0	0	2.5	1	M 0.0	0	M 3.0	0	M 3.0	2	M 0.0	0	M 0.0	0	0.0	0	M 8.5	M 3	M 44.43
PURCELL VILLE	0.0		0.0		M 0.0	0	0.0	0	M 0.0	0	M 3.0	4	0.1	1	3.5	1	4.7	4	T	0	0.0	0	0.0	0	M 11.3	M 10	M 52.37
LURAY 5 E	0.0		0.0		0.0	0	0.0	0	0.0	0	3.1	3	1.1	2	M 1.2	1	4.2	2	0.0	0	0.0	0	0.0	0	M 9.6	M 8	M 42.45
MANASSAS	M 0.0		0.0		0.0	0	0.0	0	M 0.0	0	M 3.4	2	M 0.5	0	MT	0	M 5.5	3	M 0.0	0	M 0.0	0	M 0.0	0	M 9.4	M 5	M 33.54
MT WX 3	M	M	M		M		M		M 0.0	0	0.5	2	0.2	2	M 1.3	1	M 6.5	2	0.0	0	0.0	0	0.0	0	M 8.5	M 7	M 33.98
PIEDMONT RSCH STN	M 0.0		0.0		M 0.0	0	M 0.0	0	M 0.0	0	M	0	MT	0	M	0	M 6.0	2	M 0.0	0	M 0.0	0	0.0	0	M 6.0	M 2	M 16.08
SOMERSET	0.0		M 0.0		0.0	0	0.0	0	0.0	0	1.6	2	M 0.6	1	M 0.0	0	M	0	M	0	0.0	0	0.0	0	M 2.2	M 3	M 49.16
SPERRYVILLE	M 0.0		0.0		M 0.0	0	M 0.0	0	M 0.0	0	M 3.8	4	MT	1	M 1.7	1	M 3.2	2	MT	0	M 0.0	0	M 0.0	0	M 8.7	M 8	M 49.85
WFO STERLING	0.0		0.0		0.0	0	0.0	0	0.0	0	4.6	1	0.4	0	1.6	1	M 5.3	3	T	0	0.0	0	0.0	0	M 11.9	M 5	M 48.95
VIENNA	0.0		0.0		0.0	0	0.0	0	0.0	0	3.0	3	1.6	6	1.0	0	5.3	2	0.0	0	0.0	0	0.0	0	10.9	M 11	M 31.64
WASHINGTON DULLES INTL AP	T		0.0		0.0	0	0.0	0	0.0	0	4.6	1	0.4	0	1.6	1	5.3	3	T	0	0.0	0	0.0	0	11.9	M 5	45.11
WASHINGTON REAGAN NATL AP	0.0		0.0		0.0	0	0.0	0	0.0	0	1.9	1	1.2	2	0.2	0	4.5	1	T	0	0.0	0	0.0	0	7.8	M 4	44.86
WINCHESTER	0.0		0.0		0.0	0	0.0	0	0.0	0	M 1.3	1	T	0	3.6	2	5.8	3	T	0	0.0	0	0.0	0	M 10.7	M 6	M 50.34
WINCHESTER 7 SE	M 0.0		M 0.0		M 0.0	0	0.0	0	0.0	0	0.0	0	M 0.0	0	M 2.0	1	M 5.0	2	M 0.0	0	M 0.0	0	M 0.0	0	M 7.0	M 3	M 48.34
WOODSTOCK 2 NE	0.0		M 0.0		0.0	0	M 0.0	0	0.0	0	3.0	2	T	0	M 3.5	1	M 4.5	2	0.0	0	0.0	0	0.0	0	M 11.0	M 5	M 38.95
CENTRAL MOUNTAIN 05																											
BUENA VISTA	0.0		0.0		0.0	0	0.0	0	0.0	0	1.0	1	1.0	2	M 0.0	0	2.9	3	T	0	0.0	0	0.0	0	M 4.9	M 6	36.03
COVINGTON FLTR PLT	0.0		0.0		0.0	0	0.0	0	0.0	0	1.5	0	0.4	0	1.0	1	8.2	2	1.2	1	0.0	0	0.0	0	12.3	M 4	38.41
DALE ENTERPRISE	M 0.0		0.0		M 0.0	0	M 0.0	0	0.0	0	2.5	1	M 0.8	1	1.5	1	10.0	2	0.0	0	M 0.0	0	M 0.0	0	M 14.8	M 5	M 47.04
GATHRIGHT DAM	0.0		0.0		0.0	0	0.0	0	0.0	0	1.0	0	0.8	1	3.4	3	M 2.6	4	3.1	1	0.0	0	0.0	0	M 10.9	M 9	M 40.75
GLASGOW 1 SE	0.0		0.0		0.0	0	0.0	0	0.0	0	2.4	1	1.4	2	1.5	1	7.6	3	0.5	0	0.0	0	0.0	0	13.4	M 7	47.81
HOT SPRINGS	0.0		0.0		0.0	0	0.0	0	0.0	0	2.6	3	2.0	3	5.0	3	M 11.0	6	5.1	3	0.0	0	0.0	0	M 25.7	M 18	51.43
LEXINGTON	0.0		0.0		0.0	0	0.0	0	0.0	0	1.4	1	0.3	0	1.4	1	7.4	5	2.7	1	0.0	0	0.0	0	13.2	M 8	37.84
MILL GAP	0.0		0.0		0.0	0	T	0	T	0	7.7	7	3.9	4	11.1	8	24.8	12	1.7	1	0.0	0	0.0	0	49.2	M 32	45.74
MTN GROVE	0.0		0.0		0.0	0	T	0	0.0	0	MT	0	2.7	1	7.2	6	M 18.1	5	M 1.3	0	0.0	0	0.0	0	M 29.3	M 12	M 27.98
MUSTOE 1 SW	0.0		0.0		0.0	0	T	0	T	0	5.2	1	5.4	3	12.0	11	30.7	10	2.8	0	0.0	0	0.0	0	56.1	M 25	47.55
NEW CASTLE	0.0		0.0		0.0	0	0.0	0	T	0	T	0	0.8	2	1.3	1	9.8	3	T	0	0.0	0	0.0	0	11.9	M 6	43.60
ROANOKE 8 N	0.0		0.0		0.0	0	0.0	0	0.0	0	1.5	2	1.5	3	M 0.0	0	8.4	4	T	0	0.0	0	0.0	0	M 11.4	M 9	M 44.14
ROANOKE INTL AP	0.0		0.0		0.0	0	0.0	0	0.0	0	1.5	0	2.1	1	1.5	0	10.6	3	T	0	0.0	0	0.0	0	15.7	M 4	38.66
STAUNTON WTP	0.0		0.0		0.0	0	0.0	0	0.0	0	3.0	2	0.4	0	0.9	1	13.9	8	0.6	1	0.0	0	0.0	0	18.8	M 12	M 39.02
WAYNESBORO WTP	M 0.0		0.0		0.0	0	M 0.0	0	0.0	0	M 1.5	1	M 0.5	0	M 0.0	0	M 11.8	1	T	0	0.0	0	M 0.0	0	M 13.8	M 2	M 45.27
WILLIAMSVILLE 2 S	M		M 0.0		0.0	0	0.0	0	T	0	2.0	1	0.6	0	M 5.8	5	14.7	7	1.5	1	T	0	0.0	0	M 24.6	M 14	M 36.61
SOUTHWESTERN MOUNTAIN 06																											
ABINGDON 3S	0.0		0.0		0.0	0	0.0	0	0.0	0	2.1	3	0.3	1	1.5	2	0.1	0	0.0	0	0.0	0	0.0	0	4.0	M 6	44.44
BIG STONE GAP	0.0		0.0		0.0	0	0.0	0	0.0	0	0.0	0	2.5	4	0.0	0	0.0	0	0.0	0	0.0	0	0.0	0	2.5	M 4	63.53
BLACKSBURG NWSO	0.0		0.0		0.0	0	T	0	T	0	3.8	3	2.2	3	1.4	0	22.7	8	1.2	1	0.0	0	0.0	0	31.3	M 15	39.60
BURKES GARDEN	0.0		0.0		0.0	0	T	0	0.2	0	3.5	3	6.8	7	5.2	4	25.2	10	0.9	1	T	0	0.0	0	41.8	M 25	43.86
CHRISTIANSBURG	0.0		0.0		0.0	0	0.0	0	0.0	0	2.9	3	2.2	3	1.1	0	22.8	9	1.5	1	0.0	0	0.0	0	30.5	M 16	36.17
CLINTWOOD 1 W	0.0		0.0		0.0	0	T	0	T	0	1.7	1	10.1	11	3.0	3	11.9	8	2.5	1	0.0	0	0.0	0	29.2	M 24	57.92

TOTAL SNOWFALL AND NUMBER OF DAYS WITH ONE INCH OR MORE ON GROUND

VIRGINIA
201807

STATION	JUL		AUG		SEP		OCT		NOV		DEC		JAN		FEB		MAR		APR		MAY		JUN		TOTAL		TOTAL PRECIPITATION
	SNOWFALL	1 IN ON GD	SNOWFALL	1 IN ON GD	SNOWFALL	1 IN ON GD	SNOWFALL	1 IN ON GD	SNOWFALL	1 IN ON GD	SNOWFALL	1 IN ON GD	SNOWFALL	1 IN ON GD	SNOWFALL	1 IN ON GD	SNOWFALL	1 IN ON GD	SNOWFALL	1 IN ON GD	SNOWFALL	1 IN ON GD	SNOWFALL	1 IN ON GD	SNOWFALL	1 IN ON GD	
COPPER HILL	0.0		0.0		0.0	0	0.0	0	0.0	0	4.7	6	3.1	4	0.1	0	20.6	10	1.1	1	0.0	0	0.0	0	29.6	M 21	46.12
ELK CREEK 4SSW	0.0		0.0		0.0	0	0.0	0	T	0	5.2	6	2.6	4	2.8	2	19.6	9	0.9	0	0.0	0	0.0	0	31.1	M 21	M 47.60
GALAX WTP	0.0		0.0		0.0	0	0.0	0	0.0	0	3.5	3	2.8	3	0.3	0	13.5	6	M 1.0	1	0.0	0	0.0	0	M 21.1	M 13	45.12
GRUNDY	0.0		0.0		0.0	0	0.0	0	0.0	0	0.2	0	5.7	3	0.5	4	5.9	1	T	0	0.0	0	0.0	0	12.3	M 8	M 50.50
JOHN FLANNAGAN LAKE	0.0		0.0		0.0	0	0.0	0	0.0	0	M	0	M 3.8	6	M	2	M	1	T	0	0.0	0	0.0	0	M 3.8	M 9	M 0.00
LEBANON	0.0		0.0		0.0	0	0.0	0	0.0	0	0.3	0	2.1	1	2.0	1	1.5	1	0.0	0	0.0	0	0.0	0	5.9	M 3	49.77
NORA 4 SSE	0.0		0.0		0.0	0	0.6	0	T	0	2.5	1	10.8	11	7.2	3	17.0	9	1.9	1	0.0	0	0.0	0	40.0	M 25	52.10
PULASKI 2 E	0.0		0.0		0.0	0	0.0	0	0.0	0	1.5	2	0.6	1	MT	0	20.0	9	1.0	1	0.0	0	0.0	0	M 23.1	M 13	38.24
RADFORD 3 N	0.0		0.0		0.0	0	0.0	0	0.0	0	MT	0	0.5	0	MT	0	M 8.0	8	T	0	0.0	0	0.0	0	M 8.5	M 8	M 36.24
RICHLANDS	0.0		0.0		0.0	0	T	0	T	0	T	0	5.1	8	5.2	3	4.0	3	T	0	0.0	0	0.0	0	14.3	M 14	M 45.72
SALTVILLE 1N	0.0		0.0		0.0	0	T	0	0.0	0	T	0	0.9	2	M 1.3	2	3.5	3	T	0	0.0	0	0.0	0	M 5.7	M 7	46.79
STAFFORDSVILLE 3 ENE	0.0		0.0		0.0	0	T	0	0.0	0	1.7	1	0.3	0	MT	0	16.1	6	1.0	1	0.0	0	0.0	0	M 19.1	M 8	42.17
WISE 1SE	0.0		0.0		0.0	0	0.4	0	0.0	0	1.3	0	5.7	8	2.7	2	9.7	7	1.7	0	0.0	0	0.0	0	21.5	M 17	55.34
WYTHEVILLE	0.0		0.0		0.0	0	T	0	0.0	0	4.0	4	1.9	4	1.7	2	19.6	9	0.7	1	0.0	0	0.0	0	27.9	M 20	41.00

MONTHLY AND SEASONAL HEATING DEGREE DAYS

STATION	JUL	AUG	SEP	OCT	NOV	DEC	JAN	FEB	MAR	APR	MAY	JUN	TOTAL	SEASONAL NORM
VIRGINIA														
TIDEWATER 01														
DISPUTANTA	0	0	15	173	540	812	1044	486	700	334	27	0	4131	3854
EMPORIA 1 WNW	0	0	1	115	474	743	941	428E	636	277	17	0	3632E	3717
FREDERICKSBURG SEWAGE	0	0	33E	144E	568E	838E	1134E	607E	792E	389	20E	8E	4533E	4411
HOLLAND 1 E	0	0	2	98E	402	694	874	425	601	373	98	0	3567E	3476
HOPEWELL	0	0	5	95	418E	717E	898	438E	636E	241E	3E	0	3451E	3150
NORFOLK INTL AP	0	0	0	74	352	674	859	395	586	234	15	0	3189	3376
NORFOLK S	0	0	3	106	405	708	883	429E	615	262	18	0	3429E	3282
NORTH	0	0	10	140	474	790	981E	507	715	370	26	0	4013E	3859
PAINTER 2W	0	0	7	109	406	742	902	460	665	317	18	1	3627	3679
STONY CREEK 2 N	0	0	13	156	502	795	959	454	672	281	11	0	3843	3812
SUFFOLK LAKE KILBY	0	0	7	121	426	736	890	426	625	270	17	0	3518	3432
WAKEFIELD 1NW	0	0	11	141	464	771	931	463	665	295	17	0	M 3294	3820
WALKERTON 2 NW	0	0	9	112	352	766	867	449	635	263	12	0	M 3113	3713
WALLACETON LK DRUMMOND	0	0	11	210	464	791	969	493	732	302	31	0	M 2748	3992
WALLOPS ISLAND NASA TEST FACIL	0	0	9	130	464	791	922	511	671	333	20	0	3851	4189
WARSAW 2 NW	0	0	3E	138E	464	651E	841E	457E	644E	314E	11E	0	M 3059E	3725
W PT 2 NW	0	0	8	125	478	804	934	474	659	273	8	0	3763	3677
WILLIAMSBURG 2 N	0	0	1	106	436	761	901	455	642	282	9	0	3593	3711
EASTERN PIEDMONT 02														
AMELIA COURTHOUSE 1	0	0	18E	135	508E	794E	983E	505E	685E	307	16	0	3951E	4073
ASHLAND	0	1	31	148	519	819	929	532	717E	292	9	0	3997E	4096
BREMO BLUFF						1147E	1040E	521E	771E				M 3479E	4059
CAMP PICKETT	3	1	76E	155	519	798	1015	495	681	300	17E	0	4060E	4256
CHASE CITY	0	0	22	149	505	755	901	454	638	305	20	0	3749	3919
CLARKSVILLE	0	0	8	132E	474	744	951	466	633	265	9	0	3682E	3705
CORBIN	0	0	38	169	535	872	972	568	752	370	15	3	4294	4419
CROZIER	0	0	49	188	583E	856	1019	582	755	406E	33E	3E	4474E	4311
FARMVILLE 2 N	0	0	23	158	541	794	1002	543	690E	325E	20	0	4096E	4387
JOHN H KERR DAM	0	0	5	117	451	725	940	455	627	258	11	2	3591	3590
KEYSVILLE 2 S	0	1	33	158	546	812	989E	524	723	350	17	0	4153E	
LOUISA	0	3	49	199	579	853	950	535	742	364	28	1	4303	4241
PALMYRA 3S	0	0	61	227	615	887	1072	601	766E	420	37	5	4691E	4861
PETERSBURG	0	0	11	136	478	796	942	471	661	291	11E	0	3797E	3771
RICHMOND INTL AP	0	0	12	122	478	775	899	478	653	290	4	0	3711	3771
WESTERN PIEDMONT 03														
APPOMATTOX	0	3	43	166E	579	849	1015	557	731	370	17	2	4332E	4396
BROOKNEAL	0	3E	40	169E	567E	832	1053	553	741E	350	23	0	4331E	5487
CHARLOTTESVILLE 2W	0	4	41	150	543	820	968	608	737	376	19	5	4271	4148
CHATHAM	0	2	52	228	591E	861E	1052	577	729	371	34	0	4497E	4691
DANVILLE RGNL AP	0	0	32	167	523	782	893E	482	651	304	8	0	3842E	3815
FREE UNION	1	3	47	202	614	895	1029	642	758	396	30	4	4621	
LYNCHBURG INTL AP	0	2	51	199	563	852	989	572	722	359	10	0	4319	4459
MARTINSVILLE FLTR PLT	0	4	46	222	560E	854	1060E	568	722	369	29	0	4434E	4455
MEADOWS OF DAN 5 SW	0	2	60	207	539	833	1031E	554	722E	399	22	2	4371E	
MONTEBELLO FISH CULTURAL STN	0	52E	219E	339E	663E	1138E	1166E	718E	911E	565E	76E	7E	5854E	
ROCKY MT	0	0	61E	224	570	815E	1056E	543E	697	359E	19	0	4344E	4496
S BOSTON	0	0	8	151	513	767	975	475	733	407	22E	0	4051E	4221
STUART	0	0	44	188	523E	791	994	550	688	385E	17	1	4181E	4133
NORTHERN 04														
FRONT ROYAL	0	8E	59E	203E	666E	892E	953E	674E	784E	436E	50E	12E	4737E	4790
PURCELLVILLE	0	0	75E	198	634	949E	1087	710	804	442	37	14	4950E	5231
LURAY 5 E	4	8	74	211	603	909	1056	631	826	462	39	19	4842	4699
MANASSAS	0	0	42E	184E	542E	878E	1030E	668E	828E	486E	29E	2E	4689E	4639
MT WX 3					665E	993	1151	731	927	553	55	34	M 5109E	
PIEDMONT RSCH STN	0	3	38	164E	578	861	977	614	771	415	29	3	4453E	4503
SOMERSET	0	2	48	199	587	899	1034	664	756E	390	30	4	4613E	4700
SPERRYVILLE	0	3	57E	134E	557E	854E	965E	610E	766E	388E	21E	7E	4362E	4745
WFO STERLING	0	3	48	189	609	930	1076	690	795E	404E	20E	6E	4770E	5001
VIENNA	2	5	61	214E	601	939	1087	713	824	464E	46	14	4970E	4881
WASHINGTON DULLES INTL AP	0	1	40	180	573	923	1003	631	779	410	21	5	4566	4717
WASHINGTON REAGAN NATL AP	0	0	6	87	456	792	900	549	657	312	2	1	3762	4030
WINCHESTER	0	5	41	180	607	907	1057	687	814	461	37	17	4813	5052
WINCHESTER 7 SE	1E	13E	68E	218E	660E	934E	1142E	703E	857E	500E	74E	24E	5194E	5368
WOODSTOCK 2 NE	1	3E	67E	195E	653	938	1086	770E	855E	480	54	11	5113E	5419
CENTRAL MOUNTAIN 05														
COVINGTON FLTR PLT	1	8	81	270	640E	922	1138	645	830	467	50	4	5056E	4728
DALE ENTERPRISE	0	4E	79E	230E	651	925	1017E	641	841	503	46E	2E	4939E	5461
GATHRIGHT DAM	4E	9	90	269	670	951	1158	661	838E	498	48	14	5210E	5331
HOT SPRINGS	6	10E	98	280	694	994	1181	680	885	525	55	13	5421E	5627
LEXINGTON	1	2	59	223	637	884	1078	605	766	431	27	0	4713	4681
MILL GAP	14	65	151	372	796	1082	1257	779	1033	631	118	50	6348	6438
MUSTOE 1 SW	21	62E	169	368	775	1086	1215	761	986	593	90	42	6168E	6271
ROANOKE 8 N	0	0	47	204	599	846	1047	578	742	400	23	1	4487	4354
ROANOKE INTL AP	0	0	37	180	518	799	948	518	668	314	3	0	3985	4143
STAUNTON WTP	3	6	76	205	616	913	1055	635	831	468	42	13	4863	5009

MONTHLY AND SEASONAL HEATING DEGREE DAYS

STATION	JUL	AUG	SEP	OCT	NOV	DEC	JAN	FEB	MAR	APR	MAY	JUN	TOTAL	SEASONAL NORM
WAYNESBORO WTP SOUTHWESTERN MOUNTAIN 06	4E	6	78	226E	658	929	1099	610E	874E	471	42	3E	5000E	5104
ABINGDON 3S	1	0	62	272	584	888	1072E	535	701	457	29	0	4601E	4842
BIG STONE GAP	0	0	52	270	574	877	1120	566	688	452	25	0	4624	4558
BLACKSBURG NWSO	2	14	68E	285	644	955	1149	623	830	514	54	5	5143E	5445
BURKES GARDEN	22	60E	196E	420	763	1060	1239	682	917	619	115	72	6165E	6242
CHRISTIANSBURG	4	12	99	275	624	920	1127	604	831	497	37	4	5034	4987
CLINTWOOD 1 W	1	7	87	325	629	942	1174	598	738	492	36	4	5033	5315
COPPER HILL	3	25E	112	304	668	989	1205	637	890	533	51	15	5432E	
ELK CREEK 4SSW	3	16	95	279	571	925E	1150	550	825	507	41	7	4969E	
GALAX WTP	1	5	98	324	623	912	1114	589	779	480	52E	2	4979E	5503
GRUNDY	0	0	59	263	592E	892	1126	582	731E	437E	34	0	4716E	4932
JOHN FLANNAGAN LAKE	0	0	32E	226E	489E	769E	1092E	618E	642E	438E	23E	0	4329E	
LEBANON	2	4	69	284	597	915	1094	523	736	473	42	2	4741	5081
NORA 4 SSE	3	7	77	249	607	954	1146E	601	813	521	21	2	5001E	5304
PULASKI 2 E	3	8	96	306E	626E	951	1135	578	797	469	40E	3	5012E	5096
RADFORD 3 N	3	12	89	281	631	945	1132	615	795	474	38	4	5019	5486
RICHLANDS	1E	5E	69	248E	626E	926	1156	584	755	501	48	4	4923E	5219
SALTVILLE 1N	1E	3	58	277	612	918	1132E	570	710E	469	50	1	4801E	4942
STAFFORDSVILLE 3 ENE	3	20	103	323	667	957	1161	622	836	518	60	7	5277	5267
WISE 1SE	4	10	81	260	562	923	1136	572	761	493	22	7E	4831E	4848
WYTHEVILLE	2	4	96	298	640	955	1152	596	824	514	46	4	5131	5578

VIRGINIA
201807

SNOWFALL AND SNOW ON GROUND (INCHES)

STATION		DAY OF MONTH																														
		01	02	03	04	05	06	07	08	09	10	11	12	13	14	15	16	17	18	19	20	21	22	23	24	25	26	27	28	29	30	31
VIRGINIA																																
TIDEWATER 01																																
DISPUTANTA	SNOWFALL																															
EMPORIA 1 WNW	SNOWFALL																															
FREDERICKSBURG SEWAGE	SNOWFALL																															
	SN ON GND																															
HOLLAND 1 E	SNOWFALL																															
HOPEWELL	SNOWFALL				-																											
	SN ON GND																															
NORFOLK INTL AP	SNOWFALL																															
	SN ON GND																															
NORFOLK S	SNOWFALL																															
NORTH	SNOWFALL																															
	SN ON GND																															
PAINTER 2W	SNOWFALL																															
STONY CREEK 2 N	SNOWFALL																															
SUFFOLK LAKE KILBY	SNOWFALL																															
	SN ON GND																															
WAKEFIELD 1NW	SNOWFALL																															
	SN ON GND																															
WALKERTON 2 NW	SNOWFALL																															
	SN ON GND																															
WALLACETON LK DRUMMOND	SNOWFALL																															
WALLOPS ISLAND NASA TEST FACIL	SNOWFALL																															
	SN ON GND																															
WARSAW 2 NW	SNOWFALL																															
W PT 2 NW	SNOWFALL																															
	SN ON GND																															
WILLIAMSBURG 2 N	SNOWFALL																															

Snowfall: Includes snow and ice. Values for NWS stations (J index note) are Mid-Mid (LST).

Snow on ground: Includes snow, sleet, ice, and hail. Values for NWS stations (J index note) are observed at 12 UTC (GMT).

Water Equivalent: Given for NWS stations (J index note) only, when snow depth is 2 inches or more, and is measured at 18 UTC (GMT)

VIRGINIA
201807

PAN EVAPORATION AND WIND

STATION		DAY OF MONTH																															TOTAL OR AVERAGE
		01	02	03	04	05	06	07	08	09	10	11	12	13	14	15	16	17	18	19	20	21	22	23	24	25	26	27	28	29	30	31	
VIRGINIA EASTERN PIEDMONT 02 JOHN H KERR DAM	WIND	18	24	18	22	18	49	53	42	22	16	24	31	31	17	22	39	49	29	20	34	28	30	26	23	23	30	19	21	21	16	19	834
	EVAP	-	-	-	-	-	-	-	-	-	-	-	-	-	-	-	-	-	-	-	-	-	-	-	-	-	-	-	-	-	-	-	M
	MAX	-	-	-	-	-	-	-	-	-	-	-	-	-	-	-	-	-	-	-	-	-	-	-	-	-	-	-	-	-	-	-	M
	MIN	-	-	-	-	-	-	-	-	-	-	-	-	-	-	-	-	-	-	-	-	-	-	-	-	-	-	-	-	-	-	-	M

Evaporation: Is measured in hundreths of inches.

Wind: Is measured in miles.

Max and Min: The maximum and minimum temperatures (Fahrenheit) of the water in the evaporation pan.

STATION INDEX

STATION	INDEX NO.	DIVISION	COUNTY	LATITUDE	LONGITUDE	ELEVATION (IN FEET)	OBSERVATION TIME AND TABLES			
							LOCAL STD TIME			
							TEMP	PRECIP	EVAP	SPECIAL SEE (NOTES)
VIRGINIA										
ABINGDON 3S	0021	06	WASHINGTON	36 40	81 58W	1925	06	06		H
ALBERTA 5N	0079	02	BRUNSWICK	36 56	77 54W	376		08		H
ALTAVISTA	0166	03	CAMPBELL	37 7	79 17W	529		07		CH
AMELIA COURTHOUSE 1	0187	02	AMELIA	37 21	77 59W	345	08	08		H
APPOMATTOX	0243	03	APPOMATTOX	37 20	78 50W	850	07	07		H
ASHLAND	0327	02	HANOVER	37 45	77 29W	220	18	18		H
BEDFORD	0551	03	BEDFORD	37 20	79 30W	894		07		H
BIG IS	4039	03	BEDFORD	37 33	79 24W	900		07		H
BIG STONE GAP	0735	06	WISE	36 51	82 48W	1466	08	08		H
BLACKSBURG NWSO	0766	06	MONTGOMERY	37 12	80 25W	2103	07	07		CH
BREMO BLUFF	0993	02	FLUVANNA	37 43	78 17W	225	07	07		CH
BROOKNEAL	1082	03	CAMPBELL	37 4	78 57W	408	07	07		H
BUCKINGHAM	1136	02	BUCKINGHAM	37 30	78 32W	580		07		H
BUENA VISTA	1159	05	ROCKBRIDGE	37 44	79 22W	840		07		H
BURKES GARDEN	1209	06	TAZEWELL	37 5	81 20W	3068	07	07		H
CAMP PICKETT	1322	02	NOTTOWAY	37 2	77 57W	330	08	08		CH
CHARLOTTESVILLE 2W	1593	03	ALBEMARLE	38 2	78 31W	866	08	08		H
CHASE CITY	1606	02	MECKLENBURG	36 47	78 29W	510	07	07		H
CHATHAM	1614	03	PITTSYLVANIA	36 49	79 25W	651	07	07		CH
CHRISTIANSBURG	1692	06	MONTGOMERY	37 8	80 24W	2100	07	07		H
CLARKSVILLE	1746	02	MECKLENBURG	36 37	78 33W	330	07	07		H
CLINTWOOD 1 W	1825	06	DICKENSON	37 9	82 29W	1780	07	07		H
CONCORD 4 SSW	1955	03	CAMPBELL	37 17	78 58W	815		07		H
COPPER HILL	1999	06	FLOYD	37 5	80 8W	2857	07	07		H
CORBIN	2009	02	CAROLINE	38 12	77 22W	220	09	09		H
COVINGTON FLTR PLT	2044	05	ALLEGHANY	37 49	79 59W	1244	07	07		CH
CROZIER	2142	02	GOOCHLAND	37 40	77 53W	350	07	07		H
DALE ENTERPRISE	2208	05	ROCKINGHAM	38 27	78 56W	1358	07	07		CH
DANVILLE 2 SE	2245	03	PITTSYLVANIA	36 34	79 22W	392	24	24		H
DANVILLE RGNL AP	2250	03	PITTSYLVANIA	36 34	79 20W	571	24	24		CH
DISPUTANTA	2400	01	PRINCE GEORGE	37 7	77 12W	130	07	07		H
ELK CREEK 4SSW	2730	06	GRAYSON	36 40	81 12W	3439	07	07		H
EMPORIA 1 WNW	2790	01	GREENSVILLE	36 42	77 34W	100	08	08		H
FARMVILLE 2 N	2941	02	CUMBERLAND	37 20	78 23W	450	07	07		CH
FREDERICKSBURG SEWAGE	3204	01	FREDERICKSBURG	38 17	77 27W	60	07	07		H
FREE UNION	3213	03	ALBEMARLE	38 5	78 35W	590	07	07		H
FRONT ROYAL	3229	04	WARREN	38 54	78 11W	930	24	24		CH
GALAX WTP	3272	06	CARROLL	36 39	80 55W	2341	07	07		CH
GATHRIGHT DAM	3310	05	ALLEGHANY	37 57	79 57W	1770	07	07		CH
GLASGOW 1 SE	3375	05	ROCKBRIDGE	37 37	79 26W	737		07		H
GRUNDY	3640	06	BUCHANAN	37 17	82 5W	1157	07	07		H
HOLCOMB ROCK	4039	03	BEDFORD	37 33	79 24W	900		07		H
HOLLAND 1 E	4044	01	SUFFOLK	36 41	76 46W	80	08	08		H
HOPEWELL	4101	01	PRINCE GEORGE	37 18	77 17W	40	16	16		H
HOT SPRINGS	4128	05	BATH	37 60	79 50W	2244	07	07		H
HUDDLESTON 4 SW	4148	03	BEDFORD	37 8	79 32W	897		07		H
JOHN FLANNAGAN LAKE	4410	06	DICKENSON	37 14	82 21W	1460	07	07		H
JOHN H KERR DAM	4414	02	MECKLENBURG	36 36	78 18W	250	08	08	08	CH
KEYSVILLE 2 S	4568	02	CHARLOTTE	37 1	78 29W	625	07	07		H
LEBANON	4777	06	RUSSELL	36 54	82 2W	1912	07	07		H
LEXINGTON	4876	05	ROCKBRIDGE	37 47	79 26W	1097	07	07		H
LOUISA	5050	02	LOUISA	38 3	78 0W	420	18	18		H
LURAY 5 E	5096	04	PAGE	38 40	78 22W	1400	08	08		H
LYNCHBURG INTL AP R	5120	03	CAMPBELL	37 19	79 12W	940	24	24		HJ
MANASSAS	5204	04	MANASSAS	38 44	77 30W	245	07	07		H
MARTINSVILLE FLTR PLT	5300	03	HENRY	36 42	79 52W	760	07	07		H
MEADOWS OF DAN 5 SW	5453	03	PATRICK	36 40	80 27W	2225	07	07		H
MILL GAP	5595	05	HIGHLAND	38 18	79 43W	2421	06	06		CH
MONTEBELLO FISH CULTURAL STN	5690	03	NELSON	37 51	79 8W	2667	07	07		CH
MONTICELLO	5700	03	ALBEMARLE	38 1	78 27W	758	07	07		H
MT WX 3	5853	04	CLARKE	39 4	77 54W	1550	07	07		H
MTN GROVE	5756	05	BATH	38 6	79 53W	1775		07		H
MUSTOE 1 SW	5880	05	HIGHLAND	38 19	79 40W	2367	24	24		CH
NEW CASTLE	6012	05	CRAIG	37 31	80 6W	1258		07		H
NORA 4 SSE	6125	06	DICKENSON	37 1	82 19W	2650	07	07		H

STATION INDEX

STATION	INDEX NO.	DIVISION	COUNTY	LATITUDE	LONGITUDE	ELEVATION (IN FEET)	OBSERVATION TIME AND TABLES			
							LOCAL STD TIME			
							TEMP	PRECIP	EVAP	SPECIAL SEE (NOTES)
NORFOLK INTL AP R	6139	01	NORFOLK (CITY)	36 54	76 12W	30	24	24		HJ
NORFOLK S	6147	01	NORFOLK (CITY)	36 52	76 14W	10	24	24		H
NORTH	6161	01	MATHEWS	37 26	76 26W	10	07	07		H
PAINTER 2W	6475	01	ACCOMACK	37 35	75 49W	30	16	16		CH
PALMYRA 3S	6491	02	FLUVANNA	37 49	78 16W	410	06	06		H
PEDLAR DAM	6593	03	AMHERST	37 40	79 17W	1024		07		CH
PETERSBURG	6656	02	PETERSBURG	37 14	77 24W	19	07	07		H
PIEDMONT RSCH STN	6712	04	ORANGE	38 14	78 7W	520	08	08		CH
PULASKI 2 E	6955	06	PULASKI	37 3	80 47W	1850	07	07		CH
PURCELLVILLE	4909	04	LOUDOUN	39 9	77 43W	510	08	08		H
RADFORD 3 N	6999	06	PULASKI	37 12	80 35W	1800	08	08		H
RICHLANDS	7174	06	TAZEWELL	37 6	81 48W	1910	07	07		H
RICHMOND INTL AP R	7201	02	HENRICO	37 31	77 19W	164	24	24		HJ
ROANOKE 8 N	7278	05	ROANOKE	37 22	79 58W	1157	07	07		H
ROANOKE INTL AP R	7285	05	ROANOKE	37 19	79 58W	1175	24	24		HJ
ROCKY MT	7338	03	FRANKLIN	36 59	79 54W	1315	07	07		CH
S BOSTON	7925	03	HALIFAX	36 42	78 53W	329	07	07		H
SALTVILLE 1N	7506	06	SMYTH	36 53	81 46W	1733	07	07		H
SOMERSET	7904	04	ORANGE	38 15	78 16W	510	08	08		H
SPERRYVILLE	7985	04	RAPPAHANNOCK	38 39	78 14W	750	06	06		H
STAFFORDSVILLE 3 ENE	8022	06	GILES	37 16	80 43W	1906	07	07		CH
STAUNTON WTP	8062	05	AUGUSTA	38 10	79 5W	169	08	08		CH
STONY CREEK 2 N	8129	01	SUSSEX	36 58	77 24W	105	08	08		H
STUART	8170	03	PATRICK	36 38	80 15W	1375	07	07		H
SUFFOLK LAKE KILBY	8192	01	SUFFOLK	36 44	76 36W	22	24	24		H
VIENNA	8737	04	FAIRFAX	38 54	77 17W	418	07	07		H
W PT 2 NW	9025	01	KING WILLIAM	37 34	76 48W	20	17	17		H
WAKEFIELD 1NW	8800	01	SUSSEX	36 59	77 0W	113	24	24		CH
WALKERTON 2 NW	8829	01	KING AND QUEEN	37 45	77 2W	50	18	18		H
WALLACETON LK DRUMMOND	8837	01	CHESAPEAKE	36 36	76 26W	20	08	08		H
WALLOPS ISLAND NASA TEST FACIL R	8849	01	ACCOMACK	37 56	75 28W	46	24	24		HJ
WARSAW 2 NW	8894	01	RICHMOND	37 59	76 47W	140	18	18		H
WASHINGTON DULLES INTL AP R	8903	04	LOUDOUN	38 56	77 27W	290	24	24		HJ
WASHINGTON REAGAN NATL AP R	8906	04	ARLINGTON	38 51	77 2W	10	24	24		HJ
WAYNESBORO WTP	8941	05	WAYNESBORO	38 5	78 53W	1270	07	07		H
WFO STERLING	8084	04	LOUDOUN	38 59	77 29W	288	24	24		H
WILLIAMSBURG 2 N	9151	01	YORK	37 18	76 42W	70	24	24		H
WILLIAMSVILLE 2 S	9159	05	BATH	38 11	79 35W	1640		07		CH
WINCHESTER	9181	04	FREDERICK	39 11	78 9W	720	07	07		H
WINCHESTER 7 SE	9186	04	FREDERICK	39 11	78 7W	680	08	08		H
WINTERPOCK 4 W	9213	02	CHESTERFIELD	37 19	77 39W	300		07		H
WISE 1SE	9215	06	WISE	36 58	82 33W	2564	09	09		CH
WOODSTOCK 2 NE	9263	04	SHENANDOAH	38 54	78 28W	675	07	07		H
WOOLWINE 1 SE	9272	03	PATRICK	36 46	80 16W	1263		08		CH
WYTHEVILLE	9301	06	WYTHE	36 58	81 5W	2458	07	07		H

REFERENCE NOTES

STATION NAMES: Name of the city, town or locality. Figures and letters following the station names indicate the distance in miles and direction from the post office or town community center.

DIVISIONS: Areas within a state of similar climatological characteristics. Division averages are calculated using data from stations that record temperature and/or precipitation. Station Precipitation totals flagged with an 'F' or 'M' are excluded from the Divisional Average calculations of precipitation. Stations with monthly Temperature averages flagged with an 'F' or 'M' are included in the Divisional Average if there are no more than 9 flagged or missing daily values in the month, else they are excluded from the divisional average for temperature.

NORMALS: The average value of the meteorological element over a time period. Effective 1 January 2012, the averaging period for station departures is 1981 to 2010. The normals for National Weather Service localities have been adjusted so as to be representative for the current observation site.

The January 2011 through December 2015 publications incorrectly state the computation of divisional departures. Climate Division departures have been, and continue to be, computed from 1971-2000 Normals, not 1981-2010 as stated. Station departures are accurately described as departures from 1981-2010.

MONTHLY DEGREE DAY TOTALS: One heating (cooling) degree day is accumulated for each whole degree that the daily mean temperature is below (above) 65 degrees Fahrenheit.

PRECIPITATION: Values shown in hundredths of inches are water equivalent totals, i.e., total of liquid and melted frozen precipitation. In the "Monthly Summarized Data" table the total snow and sleet values shown in tenths of inches are unmelted amounts. The max depth on ground values of snow and sleet shown in whole inches are cumulative unmelted amounts. The number of days with .10, .50, 1.00 or more refers to water equivalents.

PRECIPITATION QUALITY CONTROL: The NCEI quality control process may flag precipitation data that are spatially inconsistent, exceed climatological limits, or are inconsistent with prevailing weather patterns.

TEMPERATURE: Original temperature values are given in the "Daily Temperature" table. Summary temperature information (averages, departures, extremes, monthly degree day totals) is based on the values labeled MAX/MIN.

WIND: (As shown in the "Evaporation and Wind" table) the total wind movement in miles over the evaporation pan as determined by an anemometer recorder located 6-8 inches above the pan.

SYMBOLS AND LETTERS USED IN THE STATION INDEX TABLE

C Station is equipped with recording rain gage (R) but values in this bulletin are from a non-recording rain gage unless indicated by an R.
G Observations appear in the "Soil Temperatures" table.
H Observations appear in the "Snowfall and Snow on the Ground" table.
J Station also published as a Local Climatological Data publication.
VAR Observation time varies.
SR / SS Observation time near sunrise / Observation time near sunset, respectively.

SYMBOLS AND LETTERS USED IN THE DATA TABLES

(DAILY DATA ARE FOR THE 24 HOURS IMMEDIATELY PRECEDING OBSERVATION TIME.)

BLANK Entries in the "Monthly Summarized Data" table indicate no record.

BLANK Entries in the "Daily Precipitation" and "Snowfall and Snow on the Ground" tables indicate zero.

BLANK Entries in the "Daily Temperature" table indicate a missing record

- No record. Data not recorded or not received in time for publication.

+ Precipitation or temperature extremes occurred on one or more previous dates during the month.

* Rain gage not read. Precipitation is included in the amount following the asterisks.

Time distribution may not be known. A * preceding the monthly total indicates precipitation amount is being carried forward to next month's total, and may include amounts from the previous month(s).

a As a subscript, indicates accumulated total.

A Amount of precipitation is the total of observer's entries for the current month. It may include precipitation that occurred during the previous month. Refer to earlier bulletin to determine date of last

reading. (Hawaii stations)

B Divisional Departure from normals are computed using 1971-2000 normals.

E Normalized HDD/CDD Calculation. E is appended to the HDD/CDD Calculation when 1-9 individual daily TMAX and/or TMIN values are missing and a Normalized HDD/CDD Calculation is provided. M appears alone if 10 or more daily values are missing.

F Monthly calculation flagged value. F is appended to average and/or total values computed which exclude one or more daily data values that have been flagged by the GHCN-Daily Dataset

M Insufficient or partial data. M is appended to average and/or total values computed with 1-9 daily values missing. M appears alone if 10 or more daily values are missing, (8 or more for wind and evaporation).

N Indicates snow fall or Snowdepth totals are computed with one or more missing days.

R Amounts from recording rain gage.

T Trace. An amount too small to measure.

SEASONAL TABLES: Monthly and seasonal snowfall and heating degree days for the 12 months ending with the June data are published in the July issue of this bulletin. Cooling degree days for the calendar year are published in the "Climatological Data Annual Summary."

Information concerning the history of changes in locations, exposure, etc. of substations is kept on file at the National Centers for Environmental Information. Historical information of regular National Weather Service Offices may be obtained from the "Local Climatological Data" annual publication. The contents of this publication may be reprinted or otherwise used freely, with proper credit to the National Centers For Environmental Information. The data are also available digitally.

Effective with the January 2011 Data-Month, COOP Observer Names are no longer included in the Monthly and Annual Climatological Data Publications. This information is not published to ensure the privacy of personal information pursuant to Section 208 of the E-Government Act of 2002 (44 USC 3601).

As of the 2011 Data-Year, Station and Climate Division Maps are no longer being included in the CD Publications. NCEI's Products Branch provides updated Station Maps for various data networks via the Historical Observing Metadata Repository: <http://www.ncdc.noaa.gov/homr>.

The GHCN-Daily Quality Control Flags shown below are displayed as superscripts with the data. For more information on Global Historical Climatology Network - Daily and flags, see: <http://www.ncdc.noaa.gov/oa/climate/ghcn-daily/> and Comprehensive Automated Quality Assurance of Daily Surface Observations. Durre, Imke, Matthew J. Menne, Byron E. Gleason, Tamara G. Houston, Russell S. Vose, 2010: J. Appl. Meteor. Climatol., 49, 16151633. doi: 10.1175/2010JAMC2375.1

Blank = Passed All checks	N = failed naught check
D = failed duplicate check	O = failed climatological outlier check
G = failed gap check	R = failed lagged range check
I = failed internal consistency check	S = failed spatial consistency check
K = failed streak/frequent-value check	T = failed temporal consistency check
L = failed check on length of multiday period	W = temperature too warm for snow
M = failed megaconsistency check	X = failed bounds check
	Z = flagged as a result of an official Datzilla investigation

Beginning with the January 2013 CD Publication, monthly mean temperature calculations have changed to the National Data Stewardship Team standard. Monthly maximum and minimum temperatures are not rounded until after the monthly mean temperature is calculated. This is the most accurate outcome, but may be slightly different from the mean derived from rounded monthly maximum and minimum.

The climate division temperature and precipitation values in this publication are based on simple averages from the current set of NWS-Designated Open and Published COOP and First Order Sites within each division. These values differ from those found in NCEI's nClimDiv product. Beginning in February 2014, the nClimDiv product is used by NCEI's Monitoring Branch and in its monthly climate reports. For more details on nClimDiv, please go to <http://www.ncdc.noaa.gov/monitoring-references/maps/us-climate-divisions.php>.

Effective January 2016, Alaska's Climate Divisions are updated to reflect the 13 climate divisional boundaries established by University of Alaska-Fairbanks, NWS, NCEI, Oregon State University, and University of Nebraska-Lincoln. For more details regarding the updated Alaska Climate Divisions, see: <http://journals.ametsoc.org/doi/pdf/10.1175/JAMC-D-11-0168.1> (Bienek et al., 2012).

NOAA National Centers for Environmental Information
Attn: Customer Engagement Branch
151 Patton Avenue
Asheville, NC 28801-5001

Customer Services Number: (828) 271-4800, option 2
TDD : (828) 271-4010
Fax number: (828) 271-4876

NCEI now offers free online access to the *Climatological Data* publication.
Go to : www.ncdc.noaa.gov and choose Most Popular.