



# CLIMATOLOGICAL DATA

## VIRGINIA



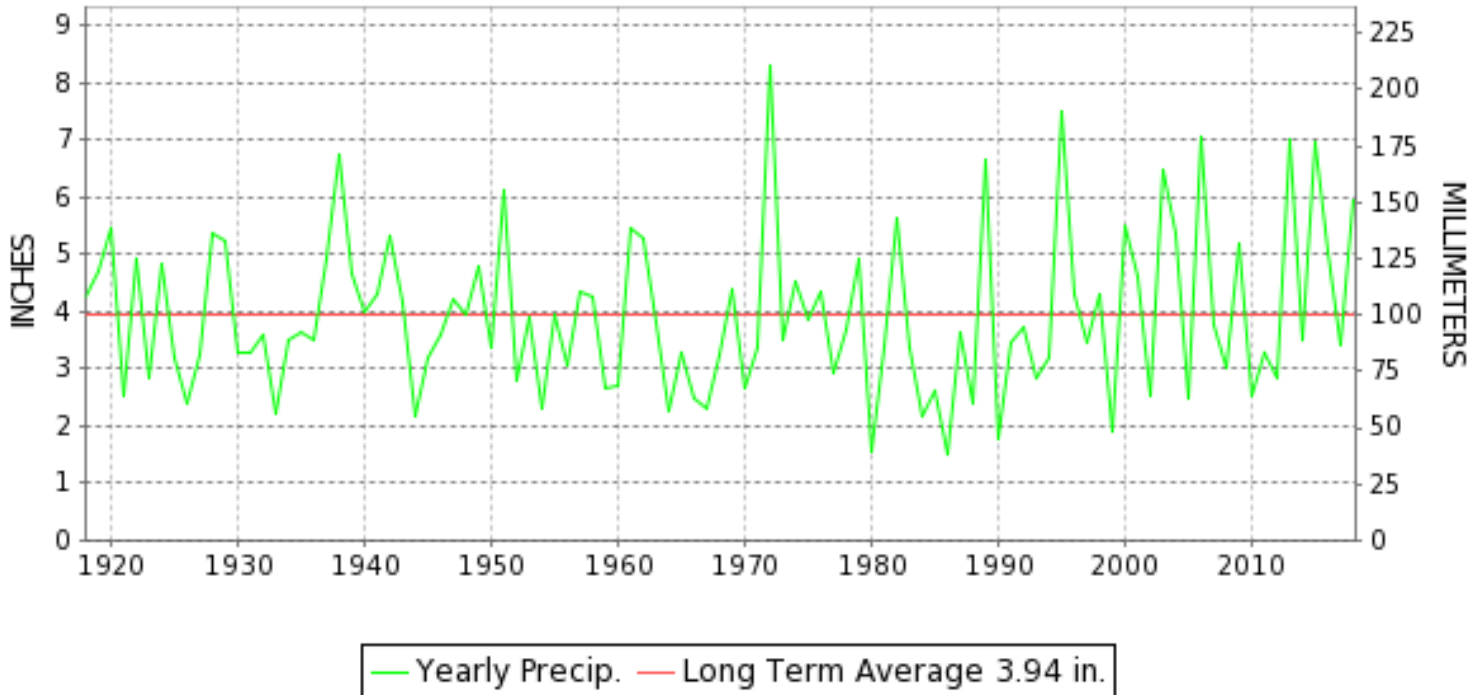
**JUNE 2018**

VOLUME 128 NUMBER 06

ISSN 0364-5630

GHCND Ver: 3.25-upd-2018102018

### JUNE PRECIPITATION BY YEAR



#### TEMPERATURE AND PRECIPITATION EXTREMES

**VIRGINIA**

HIGHEST TEMPERATURE	101	JUNE 19	NORFOLK INTL AP
LOWEST TEMPERATURE	41	JUNE 08++	2 STATIONS
GREATEST TOTAL PRECIPITATION	13.32		RICHMOND INTL AP
LEAST TOTAL PRECIPITATION	1.16		MARTINSVILLE FLTR PLT
GREATEST 1 DAY PRECIPITATION	7.61	JUNE 22	RICHMOND INTL AP

"I certify that this is an official publication of the National Oceanic and Atmospheric Administration (NOAA) It is compiled using information from weather observing sites supervised by NOAA/National Weather Service and received at the National Centers for Environmental Information(NCEI), Asheville, North Carolina 28801."

*Mary S. Wolpenbut*

Director  
National Centers for Environmental Information

**noaa**

National  
Oceanic and  
Atmospheric Administration

National  
Environmental Satellite, Data  
and Information Service

National  
Centers for Environmental Information  
Asheville, North Carolina



VIRGINIA  
201806

# MONTHLY STATION AND DIVISION SUMMARY

STATION	TEMPERATURE (°F)											PRECIPITATION (IN)												
	AVERAGE MAXIMUM	AVERAGE MINIMUM	AVERAGE	DEPARTURE FROM NORMAL	HIGHEST	DATE	LOWEST	DATE	HEATING DEG. DAYS	COOLING DEG. DAYS	NO. OF DAYS				TOTAL	DEPARTURE FROM NORMAL	GREATEST 24 HOURS	DATE	ICE PELLETS, SNOW			NO. OF DAYS		
											MAX		MIN						TOTAL	MAX DEPTH ON GROUND	DATE	.10 OR MORE	.50 OR MORE	1.00 OR MORE
											>=90	<=32	<=32	<=0										
RICHMOND INTL AP	86.4	66.9	76.7	1.4	98	19	58	04	0	356	8	0	0	0	13.32	9.39	7.61	22	0.0	0		11	10	4
WINTERPOCK 4 W															6.61	2.77		03	M			13	8	3
--DIVISIONAL DATA-----> WESTERN PIEDMONT 03			75.0	2.6B										6.54	2.96B									
ALTAVISTA														2.06		0.73	23	0.0	0			11	6	0
APPOMATTOX	84.2	64.2	74.2	2.0	95	20	56	07	2	284	5	0	0	0	3.62	-0.33	1.35	22	0.0	0		9	7	1
BEDFORD														6.44	2.06	2.25	28	0.0	0			13	10	3
BROOKNEAL	85.0	63.2	74.1	4.9	95	20	53	05	0	280	6	0	0	0	3.29	0.32	1.21	23	0.0	0		12	5	1
CHARLOTTESVILLE 2W	82.6	65.0	73.8	0.2	94	20	56	04	5	276	2	0	0	0	5.44	1.28	1.98	22	0.0	0		16	11	1
CHATHAM	84.0	62.8	73.4	2.5	95	20	53	07+	0	260	3	0	0	0	3.56	-0.18	2.00	22	0.0	0		12	6	1
CONCORD 4 SSW														3.45		0.90	22	0.0	0			13	7	0
DANVILLE 2 SE	88.0M	65.2M	76.6M	1.6	97	19	55	05	0	355E	14	0	0	0	3.70	0.13	1.20	10	0.0	0		7	5	2
DANVILLE RGNL AP	86.4	65.3	75.8	1.0	94	19+	54	05	0	334	6	0	0	0	3.86	0.02	1.50	26	0.0	0		8	5	2
FREE UNION	80.7	63.3	72.0		91	20+	55	05	4	219	2	0	0	0	8.49		1.52	01	0.0	0		17	11	4
HOLCOMB ROCK														6.30		1.36	22	0.0	0			12	11	3
HUDDLESTON 4 SW														1.51		0.47	23	0.0	0			10	6	0
LYNCHBURG INTL AP	84.9	63.8	74.4	2.8	95	19+	55	05	0	288	7	0	0	0	4.87	1.25	1.50	21	0.0	0		9	5	2
MARTINSVILLE FLTR PLT	86.6	62.3	74.5	2.8	96	20	54	05	0	289	8	0	0	0	1.16	-2.59	0.63	22	0.0	0		9	3	0
MEADOWS OF DAN 5 SW	81.6	60.7	71.1		90	19	54	05	2	194	1	0	0	0	4.24		1.73	23	0.0	0		16	7	1
MONTEBELLO FISH CULTURAL STN	82.5M	58.1M	70.3M		93	19	47	14+	7E	176E	1	0	0	0	M 6.05		1.13	20	M 0.0	0		13	12	1
MONTICELLO	M	M	M								0	0	0	0	M				M					
PEDLAR DAM														5.38		1.06	21	0.0	0			13	12	1
ROCKY MT	85.6	63.2	74.4	3.3	95	20	53	06	0	288	4	0	0	0	3.26	-1.26	0.89	22	0.0	0		10	7	0
S BOSTON	87.5	66.4	77.0	4.2	99	20	55	05	0	368	13	0	0	0	4.06	-0.23	1.35	27	0.0	0		10	7	1
STUART	84.3	62.2	73.3	1.3	92	20	55	06+	1	253	3	0	0	0	2.25	-2.74	0.58	22	0.0	0		14	5	0
WOOLWINE 1 SE														4.32		1.26	02	0.0	0			14	8	1
--DIVISIONAL DATA-----> NORTHERN 04			73.9	2.3B										4.06	0.11B									
FRONT ROYAL	80.2M	61.2	70.7M	-0.5	93	19	51	07	12E	187E	2	0	0	0	13.18	9.15	2.80	03	0.0	0		14	12	5
PURCELLVILLE	80.6	62.0	71.3	1.2	93	19	52	05	14	212	1	0	0	0	8.00		1.92	01	0.0	0		16	13	3
LURAY 5 E	80.0	60.0	70.0	-0.9	92	19	50	07+	19	177	2	0	0	0	10.84	6.89	4.23	03	0.0	0		13	11	4
MANASSAS	82.5M	64.1M	73.3M	-0.5	93	20+	54	12	2E	260E	2	0	0	0	A 8.44		2.35	04	M 0.0	0		13	11	3
MT WX 3	75.8	60.3	68.1		87	20+	51	07+	34	135	0	0	0	0	9.45		2.00	03	0.0	0		13	12	3
PIEDMONT RSCH STN	82.3	63.0	72.7	0.1	95	20	54	06	3	239	2	0	0	0	M 11.00	6.83	5.04	22	0.0	0		11	10	3
SOMERSET	82.3	63.6	73.0	1.2	95	20	54	05	4	252	2	0	0	0	9.39	5.32	1.88	22	0.0	0		17	11	3
SPERRYVILLE	83.1M	61.6M	72.4M	1.4	97	19	52	05	7E	236E	3	0	0	0	M 10.27	5.93	3.72	23	M 0.0	0		12	10	3
WFO STERLING	81.5M	62.6M	72.1M	0.6	92	30+	53	12+	6E	224E	3	0	0	0	5.33	1.41	1.28	22	0.0	0		13	8	2
VIENNA	79.7	61.3	70.5	0.0	91	30+	52	13+	14	187	3	0	0	0	4.39	0.31	1.69	01	0.0	0		12	8	1

VIRGINIA  
201806

## MONTHLY STATION AND DIVISION SUMMARY

STATION	TEMPERATURE (°F)											PRECIPITATION (IN)												
	AVERAGE MAXIMUM	AVERAGE MINIMUM	AVERAGE	DEPARTURE FROM NORMAL	HIGHEST	DATE	LOWEST	DATE	HEATING DEG. DAYS	COOLING DEG. DAYS	NO. OF DAYS				TOTAL	DEPARTURE FROM NORMAL	GREATEST 24 HOURS	DATE	ICE PELLETS, SNOW			NO. OF DAYS		
											MAX		MIN						TOTAL	MAX DEPTH ON GROUND	DATE	.10 OR MORE	.50 OR MORE	1.00 OR MORE
											>=90	<=32	<=32	<=0										
WASHINGTON DULLES INTL AP	82.5	62.8	72.6	0.2	94	18	52	12+	5	241	4	0	0	0	4.17	0.19	1.18	02	0.0	0		13	7	1
WASHINGTON REAGAN NATL AP	84.5	67.8	76.2	1.0	95	19	56	04	1	344	6	0	0	0	5.21	1.43	1.65	03	0.0	0		11	8	2
WINCHESTER	80.6	61.2	70.9	-0.1	94	19	50	07	17	200	2	0	0	0	10.20	6.59	1.98	23	0.0	0		16	13	2
WINCHESTER 7 SE	80.6M	M	M		95	19	49	07	24E	173E	3	0	0	0	M 12.59	8.93	2.60	10	M 0.0	0		11	11	5
WOODSTOCK 2 NE	80.7	59.9	70.3	0.9	92	19	49	07	11	179	1	0	0	0	10.41	6.61	1.94	03	0.0	0		14	13	5
--DIVISIONAL DATA-----> CENTRAL MOUNTAIN 05			71.7	1.6B											8.25	4.31B								
BUENA VISTA														3.92		1.16	23	0.0	0			13	9	1
COVINGTON FLTR PLT	81.3	59.1	70.2	-0.8	91	20+	48	07	4	169	2	0	0	0	3.91	0.61	1.21	23	0.0	0		17	9	1
DALE ENTERPRISE	81.5M	61.1M	71.3M	1.6	92	20	53	07	2E	198E	2	0	0	0	M 12.83	9.42	2.53	22	M 0.0	0		16	11	6
GATHRIGHT DAM	78.4	59.4	68.9	0.4	88	19	47	07	14	137	0	0	0	0	5.43	1.79	1.85	23	0.0	0		17	11	1
GLASGOW 1 SE														6.80		1.50	23	0.0	0			15	12	3
HOT SPRINGS	79.6	58.5	69.1	1.7	89	20	47	07	13	144	0	0	0	0	5.49	1.83	1.70	23	0.0	0		18	13	1
LEXINGTON	83.9	61.8	72.9	1.5	94	20+	53	15+	0	243	3	0	0	0	4.55	0.30	0.95	22	0.0	0		14	9	0
MILLGAP	77.4	53.4	65.4	2.0	86	19	41	08+	50	69	0	0	0	0	5.36	1.30	1.16	23	0.0	0		17	10	1
MTN GROVE														A 2.54		0.06	28	0.0	0			1	0	0
MUSTOE 1 SW	76.3	55.0	65.6	1.2	86	18	41	07	42	68	0	0	0	0	5.37	1.56	1.05	22	0.0	0		18	10	1
NEW CASTLE														3.23		0.45	10	0.0	0			16	11	0
ROANOKE 8 N	83.6	62.8	73.2	1.5	93	20+	56	16+	1	253	4	0	0	0	6.48	2.02	2.22	23	0.0	0		13	9	3
ROANOKE INTL AP	85.7	65.5	75.6	2.7	96	18	57	15	0	325	6	0	0	0	3.63	-0.20	1.52	22	0.0	0		12	5	1
STAUNTON WTP	79.6	61.3	70.4	0.4	91	20	50	07	13	186	1	0	0	0	6.84	3.23	2.73	22	0.0	0		14	10	1
WAYNESBORO WTP	81.8M	60.8M	71.3M	1.4	94	20	52	05	3E	198E	1	0	0	0	M 7.42	3.55	1.74	03	M 0.0	0		15	11	1
WILLIAMSVILLE 2 S														A 4.56		1.46	23	0.0	0			13	9	1
--DIVISIONAL DATA-----> SOUTHWESTERN MOUNTAIN 06			70.4	1.1B										4.87	1.17B									
ABINGDON 3S	82.5	62.0	72.3	2.3	90	18	53	08+	0	223	1	0	0	0	3.39	-0.67	0.72	02	0.0	0		11	10	0
BIG STONE GAP	82.6	62.2	72.4	1.4	91	19+	53	07+	0	232	2	0	0	0	5.74	1.89	0.87	25	0.0	0		19	16	0
BLACKSBURG NWSO	80.2	59.2	69.7	2.0	89	19	50	08+	5	157	0	0	0	0	1.68	-2.32	0.78	26	0.0	0		9	3	0
BURKES GARDEN	MF	MF	MF		80	11+	42	08	72	17	0	0	0	0	2.91	-1.31	0.96	26	0.0	0		17	8	0
CHRISTIANSBURG	79.7	60.4	70.0	1.4	89	20+	52	08+	4	163	0	0	0	0	2.01	-1.91	0.90	26	0.0	0		10	4	0
CLINTWOOD 1 W	80.3	59.4	69.9	2.3	88	18	50	07+	4	158	0	0	0	0	8.40	3.61	2.20	26	0.0	0		17	13	2
COPPER HILL	77.3	59.5	68.4		86	22+	52	08	15	123	0	0	0	0	5.48		1.76	11	0.0	0		14	9	1
ELK CREEK 4SSW	77.4	61.5	69.5		84	19+	53	07	7	148	0	0	0	0	A 2.41		0.60	11	0.0	0		12	6	0
GALAX WTP	81.6	59.4	70.5	3.6	89	19	52	07	2	173	0	0	0	0	2.32		0.95	14	0.0	0		12	4	0
GRUNDY	83.3	61.2	72.3	3.1	92	20+	50	05	0	224	4	0	0	0	6.77	2.27	1.61	23	0.0	0		16	12	1
JOHN FLANNAGAN LAKE	M	M	M		94	20+	52	05	0	264E	4	0	0	0	M				0.0	0				
LEBANON	83.1	59.4	71.2	2.7	90	18	48	07	2	196	1	0	0	0	4.52	-0.06	1.28	26	0.0	0		11	9	1

## MONTHLY STATION AND DIVISION SUMMARY

STATION	TEMPERATURE (°F)											PRECIPITATION (IN)												
	AVERAGE MAXIMUM	AVERAGE MINIMUM	AVERAGE	DEPARTURE FROM NORMAL	HIGHEST	DATE	LOWEST	DATE	HEATING DEG. DAYS	COOLING DEG. DAYS	NO. OF DAYS				TOTAL	DEPARTURE FROM NORMAL	GREATEST 24 HOURS	DATE	ICE PELLETS, SNOW			NO. OF DAYS		
											MAX		MIN						TOTAL	MAX DEPTH ON GROUND	DATE	.10 OR MORE	.50 OR MORE	1.00 OR MORE
											>=90	<=32	<=32	<=0										
NORA 4 SSE	79.0	62.8	70.9	1.9	87	17	52	08+	2	187	0	0	0	0	6.43	0.71	1.89	12	0.0	0		16	9	2
PULASKI 2 E	81.2	60.8	71.0	2.2	89	20+	48	07	3	191	0	0	0	0	1.93	-1.58	0.39	23	0.0	0		13	6	0
RADFORD 3 N	81.5	60.4	71.0	2.8	91	19	48	07	4	190	2	0	0	0	A 1.38	-1.69	0.40	26	0.0	0		5	2	0
RICHLANDS	82.0	59.3	70.6	2.5	89	18+	49	07	4	179	0	0	0	0	A 4.11	0.16	0.96	26	0.0	0		13	7	0
SALTVILLE 1N	83.4	60.2	71.8	2.3	90	18+	50	07	1	215	2	0	0	0	2.61	-1.54	0.65	26	0.0	0		15	10	0
STAFFORDSVILLE 3 ENE	80.4	58.5	69.5	1.7	90	19	48	07	7	150	1	0	0	0	2.12	-1.59	0.70	23	0.0	0		12	7	0
WISE 1SE	79.5M	59.8M	69.7M	1.8	87	18	48	08+	7E	154E	0	0	0	0	6.51	2.05	1.95	02	0.0	0		19	13	1
WYTHEVILLE	81.3	59.4	70.4	3.8	90	20+	49	07	4	171	2	0	0	0	2.03	-1.54	0.61	26	0.0	0		13	6	0
--DIVISIONAL DATA----->			70.6	3.4B											3.83	-0.28B								

VIRGINIA  
201806

## DAILY PRECIPITATION (INCHES)

STATION	TOTAL	DAY OF MONTH																																	
		01	02	03	04	05	06	07	08	09	10	11	12	13	14	15	16	17	18	19	20	21	22	23	24	25	26	27	28	29	30	31			
<b>VIRGINIA</b>																																			
<b>TIDEWATER 01</b>																																			
DISPUTANTA	8.04			3.63							0.39	0.11	0.08							0.46	0.32	0.67	1.19	0.09	0.87						0.23				
EMPORIA 1 WNW	5.03			0.07							0.56	0.04								0.64	0.41	2.02	1.14		0.15										
FREDERICKSBURG SEWAGE	M 7.63	0.30	0.03	0.59	2.82				-	-	-	0.19	0.03	T						0.30	0.22	0.70	1.50		0.90		0.05								
HOLLAND 1 E	M	-	-	-	-	-	-	-	-	-	-	-	-	-	-	-	-	-	-	0.01	0.24	-	-	-	-	-	-	-	-	-	-	-	-	-	
HOPEWELL	M 8.83		0.57	2.61							0.05	0.82	0.39	0.15						1.16	0.35	0.54	2.01		0.18										
NORFOLK INTL AP	4.96		0.49	0.30							0.66	0.15	0.12						T	0.10	0.14	2.28	0.09	0.63		T	T								
NORFOLK S	4.39		0.82	0.27							0.17	0.35	0.13						T	0.15	0.15	0.65	1.25	0.44			T	T	0.01						
NORTH	5.71			1.56	1.62							1.31	0.08	0.22						0.21	0.03		0.68												
PAINTER 2W	4.52			0.17	0.50						0.26	1.01		0.25						0.40	0.03	0.14	0.12	0.32	1.32										
STONY CREEK 2 N	7.26		0.42	0.42							0.36	0.70								0.71	0.36	2.35	0.50	0.50	0.50	0.07			0.37						
SUFFOLK LAKE KILBY	4.52		0.19	0.59							0.03	0.52	0.17						T	0.38	0.15	2.23	0.09	0.15	T			T							
WAKEFIELD 1NW	6.03	0.05	0.08	0.47							0.29	0.05	0.05							0.25	0.52	0.69	2.16	0.33	0.80	0.01	T	0.28							
WALKERTON 2 NW	9.46		0.20	3.90							1.82	0.19	0.01							0.20	0.65		1.82	0.10	0.52			0.05							
WALLACETON LK DRUMMOND	7.06			0.68	0.49							1.30	0.13	0.17					1.20			0.20	0.37	2.00	0.27	0.20	0.05								
WALLOPS ISLAND NASA TEST FACIL	5.18		0.14	0.67	0.05					1.34	0.73	0.15	0.02	0.07				T		0.49	0.03		0.47	0.52	0.50										
WARSAW 2 NW	8.44		0.32	3.09							2.25	0.10								1.31	0.61	0.14	0.16		0.45			0.01							
W PT 2 NW	6.94			4.60	0.05						0.21	0.50	0.05	0.02						0.24	0.10	0.65	0.51		0.01			T							
WILLIAMSBURG 2 N	3.56		0.59	0.07							0.90	0.06	0.06					0.01		0.65	0.01	0.12	0.73	0.02	0.29	0.01		0.04							
<b>EASTERN PIEDMONT 02</b>																																			
ALBERTA 5N	3.09		T	0.41	0.35							0.35	0.11	T							0.56	0.11	0.88	0.19	T	0.13	T	T							
AMELIA COURTHOUSE 1	7.54	0.65	0.25	0.02	0.77						0.10	0.76	0.33	0.01							0.33	0.72	2.70	0.51		0.38							0.01		
ASHLAND	7.41	0.10	0.47	1.80			T				1.11	0.80								0.40	0.63	0.59	1.38	0.13	T			T							
BREMO BLUFF	M	-	-	-	-	-	-	-	-	-	-	-	-	-	-	-	-	-	-	-	-	-	-	-	-	-	-	-	-	-	-	-	-	-	-
BUCKINGHAM	A 6.48	0.18	0.01	1.72	0.22						0.03	T	0.10					*	*	*	0.90 <sub>a</sub>	2.00	0.69	0.01	0.52	T	0.09	0.01							
CAMP PICKETT	3.50	0.02		0.10	0.37						0.13	0.30	T	T			T			0.25	0.25	0.83	0.39	0.37	0.29			0.20							
CHASE CITY	7.03		0.90	1.13	0.04							1.52	0.07								0.90	2.25	0.09						0.13						
CLARKSVILLE	5.47	T		0.40	T							1.14	0.10	T						0.69	T	1.06	1.72	T		T		0.36							
CORBIN	M 7.88	0.29	-	-	3.31						-	-	-	0.94							1.13		1.30	-	-	0.86			0.05						
CROZIER	M 5.36	0.19	-	0.03							0.20	1.06	0.37							0.02	1.65	0.37	0.97	0.20		0.30									
FARMVILLE 2 N	4.20	0.12		0.54	0.12						0.02	0.86	0.08							0.31	0.34	1.36	0.45	T	T			T							
JOHN H KERR DAM	5.82	0.01				0.37	0.42										1.45	0.12	0.20	0.09	0.04	2.92	0.04	0.01	0.15										
KEYSVILLE 2 S	3.34		0.15	0.80	0.02							0.48	0.08								0.57	0.07	1.09	0.05		0.15	T	0.03							
LOUISA	9.66	1.03	0.43	1.33							0.88	0.38							0.16	0.32	0.20	0.60	3.61	0.15	0.56	0.01									
PALMYRA 3S	8.33	0.46		1.06	0.40						0.15	1.45	0.51							0.30	0.97	1.75	0.29	0.42	0.57										
PETERSBURG	6.28		2.20	0.05							0.61	0.22								0.50	0.35	0.44	1.78	0.02	0.11										
RICHMOND INTL AP	13.32	T	1.49	1.25			0.05			0.11	0.44	0.22	T	T						1.25	0.45	0.21	7.61		0.24	T		T							
WINTERPOCK 4 W	6.61	0.07		2.77	0.03		0.02				0.04	1.14	0.14	0.01							0.30	0.28	0.55	1.06		0.20		T	T						
<b>WESTERN PIEDMONT 03</b>																																			
ALTAVISTA	2.06	0.27	0.20	0.30	0.05							0.02	0.02										0.22	0.73		0.01			0.19						
APPOMATTOX	3.62	0.40	0.34	0.25	0.17						T	T	0.11	T							0.04	T	1.35	0.94			0.02	T	T						

VIRGINIA  
201806

## DAILY PRECIPITATION (INCHES)

STATION	TOTAL	DAY OF MONTH																															
		01	02	03	04	05	06	07	08	09	10	11	12	13	14	15	16	17	18	19	20	21	22	23	24	25	26	27	28	29	30	31	
BEDFORD	6.44	0.23		0.18	0.10					0.10		0.04	0.12	0.02	0.03								1.17	1.83			0.13	0.24	2.25				
BROOKNEAL	3.29	0.01	0.04	0.57	0.04							0.06									0.47	0.62	1.21	0.10	0.02	0.08	0.07						
CHARLOTTESVILLE 2W	5.44	0.19		0.39	0.36					0.19	0.03	0.29	0.45						T	0.24	0.31	0.76	1.98	0.16	0.01	0.01	0.05	0.02					
CHATHAM	3.56			0.04								0.05	0.05		0.15	0.04							2.00	0.03	0.25	0.48	0.34	0.03					
CONCORD 4 SSW	3.45	0.73	0.42	0.68	0.16						0.03	0.02	0.12	0.02									0.90	0.27	0.04	T	0.04	0.02					
DANVILLE 2 SE	3.70	0.40									1.20	0.03							0.68			0.35			T	1.02	0.02						
DANVILLE RGNL AP	3.86	0.32	T								1.21	0.01		T			0.44	0.01			0.04	0.33	T		T	1.50	T						
FREE UNION	8.49	1.52	0.01	0.61	0.18					0.05	0.07	1.04	0.51						T	0.63	0.36	1.44	1.39	0.18	0.06	0.34	0.09	0.01					
HOLCOMB ROCK	6.30	0.30	0.06	1.33	0.26					0.26	T	0.45	0.35		T								1.36	1.05	0.23	T	0.44	0.21	T				
HUDDLESTON 4 SW	1.51	0.03	0.19	0.02								0.12	0.11			0.05							0.29	0.47	0.09	T	T	0.14					
LYNCHBURG INTL AP	4.87		0.92	0.83						0.40	0.01	0.09	T	T								1.50	1.05	T		T	0.04	0.03					
MARTINSVILLE FLTR PLT	1.16		0.12	0.04							T		0.03		0.04								0.63	T	0.02	T	0.05	0.02	0.21				
MEADOWS OF DAN 5 SW	4.24	0.46	0.02	0.02	0.03						0.05	0.52	0.05	0.03	0.18							0.02	0.02	0.51	1.73		0.42	0.03	0.15				
MONTEBELLO FISH CULTURAL STN	M 6.05	0.18	-	-	0.80	0.32				0.08	0.73	0.90	0.26								0.39	1.13	0.48	-	0.50	0.18	0.10						
MONTECELLO	M	-	-	-	-	-				-	-	-	-	-	-	-	-	-	-	-	-	-	-	-	-	-	-	-	-	-	-	-	-
PEDLAR DAM	5.38	0.48	0.19	0.57	0.36		T			0.19	0.35	0.13	0.26	T								1.06	0.64	0.89	T		0.18	0.08	T				
ROCKY MT	3.26		0.01	0.04								0.10	0.10			0.48	T						0.89	0.67	0.05		0.36	0.56					
S BOSTON	4.06		0.25	0.75								0.35	0.03									0.60	0.10	0.55			0.06	1.35	0.02				
STUART	2.25	0.06	0.07		0.01						0.33	0.39	0.17		0.07							T	0.58	0.04	0.03	0.08	0.28	0.08	0.06				
WOOLWINE 1 SE	4.32	0.01	1.26								0.28	0.19	0.19	0.03	0.02	0.03							0.76	0.74	0.07		0.54	0.17	0.03				
<b>NORTHERN 04</b>																																	
FRONT ROYAL	13.18	2.11	0.20	2.80	1.55		0.02				0.50	0.40	0.11									0.55	1.93	0.92	1.14	0.91				0.04			
PURCELLVILLE	8.00	1.92	0.44	1.18	0.38	0.02	0.03				0.17	0.63	0.05									0.11	0.46	0.50	1.38	0.13	0.50			0.10			
LURAY 5 E	10.84	0.21	0.08	4.23	1.01						0.51	0.13	0.40									1.01	0.78	1.76	0.36		0.31			0.05			
MANASSAS	A 8.44	0.60	0.20	0.35	2.35					0.05	1.20	*	0.20 <sub>a</sub>									0.87	0.60	0.25	0.60	1.02	0.10			0.05			
MT WX 3	9.45	1.39	0.98	2.00	0.75						0.12	0.60	0.11									0.15	0.70	0.26	1.97	0.02				0.40			
PIEDMONT RSCH STN	M 11.00	0.44	-	-	1.19			0.02		-	-	1.01	0.48								0.92	0.12	0.79	5.04	-	-	0.87		0.12				
SOMERSET	9.39	0.37	0.55	1.74	0.78					0.02	T	0.41	0.64								0.01	0.69	1.14	1.88	0.58	0.02	0.48	0.02	0.05	0.01			
SPERRYVILLE	M 10.27	0.20	0.33	2.43	0.88						0.40	0.16	0.34	-							0.04	-	1.50	-	3.72	0.21		0.06	-		-		
WFO STERLING	5.33	0.19	1.20	0.84		T				0.19	0.03	0.36							T	T	0.40	0.69	0.02	1.28	0.05	0.02		0.06					
VIENNA	4.39	1.69	0.02	0.24	0.91						0.06	0.35										0.39	0.27	0.05	0.25	0.14	0.02						
WASHINGTON DULLES INTL AP	4.17	0.07	1.18	0.82		T				0.16	T	0.74		0.01						T	T	0.10	0.46	0.01	0.55	0.03	0.03		0.01	T			
WASHINGTON REAGAN NATL AP	5.21		0.05	1.65					0.96	0.10	T	0.42		T	T						1.12	0.13	T	0.57	0.06	0.11		0.04			0.21		
WINCHESTER	10.20	0.51	0.97	1.41	0.89						0.74	0.74	0.11	0.01	0.03							0.29	0.94	0.66	1.98	0.67	0.04				0.21		
WINCHESTER 7 SE	M 12.59	1.08	1.03	2.20	0.97						2.60	0.74	0.13	-	-								0.90	0.65	1.48	0.81		-	-				
WOODSTOCK 2 NE	10.41	0.10	0.03	1.94	1.41		0.10				0.19	0.42	0.11									0.15	1.60	1.75	1.79	0.72	T		0.10				
<b>CENTRAL MOUNTAIN 05</b>																																	
BUENA VISTA	3.92	0.48	0.03	0.34	0.16						0.37		0.05	0.29									0.20	0.61	1.16	0.06		0.07	0.10				
COVINGTON FLTR PLT	3.91	0.10	0.03	0.32	0.11						0.07		0.17	0.38	0.02	0.02							0.05	0.18	1.21	0.22	0.02	0.90	0.09	0.02			
DALE ENTERPRISE	M 12.83	1.68	1.90	2.50	0.10						0.10	0.10	0.75	1.13	-	-						0.02	1.72	2.53	0.03	0.03	-		0.20	0.01			
GATHRIGHT DAM	5.43	0.13	0.06	0.20	0.02						0.06	0.99	0.22	0.53	0.01	T				0.03			0.03	0.11	1.85	0.17	0.11	0.75	0.05	0.14			
GLASGOW 1 SE	6.80	0.14	0.19	1.22	0.23						1.00	T	0.10	0.36		0.06						0.49	0.81	1.50	0.09		0.47	0.10	0.04				

VIRGINIA  
201806

## DAILY PRECIPITATION (INCHES)

STATION	TOTAL	DAY OF MONTH																																
		01	02	03	04	05	06	07	08	09	10	11	12	13	14	15	16	17	18	19	20	21	22	23	24	25	26	27	28	29	30	31		
HOT SPRINGS	5.49	0.29	0.35	0.54		0.04			0.37	0.28	0.24	0.53	0.04						0.02		0.23	0.22	1.70	0.10	0.10	0.38	0.02	0.04						
LEXINGTON	4.55	0.02	0.24	0.87	0.17	T			0.71	0.08	0.41										0.01	0.95	0.46	0.13	0.35	0.08	0.07							
MILLGAP	5.36	0.07	0.04	0.82	0.08	0.02			0.17	0.14	0.70	0.45	T					0.03			0.06	0.72	1.16	0.14	0.61	0.01	0.14							
MTN GROVE	A 2.54	*	*	*	0.58 <sub>a</sub>				*	*	*	0.35 <sub>a</sub>							T		*	0.72 <sub>a</sub>	*	*	0.83 <sub>a</sub>	T	T	0.06						
MUSTOE 1 SW	5.37	0.01	0.60	0.06	0.03	0.03		0.21	0.15	0.83	0.60	0.03	0.02				0.02			T	0.90	1.05	0.18	0.42		0.05	0.18							
NEW CASTLE	3.23	0.09	0.27	0.10	0.02					0.45	0.31	0.10	0.03	0.02				0.39			T	0.44	0.18	0.03		0.32	0.15	0.33						
ROANOKE 8 N	6.48	0.48	0.01	0.18	0.07						1.00	0.20		0.05								1.42	2.22		0.03	0.24	0.41	0.17						
ROANOKE INTL AP	3.63		0.18	0.06						0.06	0.03	0.03	0.02				0.18				0.93	1.52	T	T	0.03	0.58	0.01							
STAUNTON WTP	6.84	0.05		0.86	0.05				0.40	0.40	0.28	0.44	T					0.03	0.27	T	0.54	2.73	0.50	0.04	0.25		T	T		T				
WAYNESBORO WTP	M 7.42	0.80	0.03	1.74	0.12				0.30	0.07	0.27	0.68						-	0.14	0.88	0.71	0.90	0.72	0.03		0.03								
WILLIAMSVILLE 2 S	A 4.56	0.30	0.10	0.54	0.04	0.01			0.10	*	0.75 <sub>a</sub>	0.21	0.02									0.12	0.44	1.46	0.40	0.07	T							
<b>SOUTHWESTERN MOUNTAIN 06</b>																																		
ABINGDON 3S	3.39	0.15	0.72	0.02	0.37						0.30		0.30	0.10							0.18	0.20			0.60	0.45								
BIG STONE GAP	5.74	0.50	0.70	0.16	0.15						0.50	0.11		0.35				0.07	0.22	0.22	0.07	0.28	0.12	0.29	0.87	0.55	0.41	0.16		0.01				
BLACKSBURG NWSO	1.68	0.18	0.07	0.01					T		0.05	0.01	T	0.48							T	0.03	0.07		T	0.78	T	T						
BURKES GARDEN	2.91	0.07	0.25	0.02	0.04						0.10	0.20		0.24	0.02						0.02	0.07	0.45	0.18	0.04	0.05	0.96	0.16	0.04					
CHRISTIANSBURG	2.01	0.01	0.08	0.02								0.01	T	0.05								0.30	0.19		0.43	0.90	0.02							
CLINTWOOD 1 W	8.40	0.15	0.25	0.91	T					T	0.15	2.01	0.06	0.20						0.04	0.34	0.02	0.10	0.50	0.20	0.01	2.20	0.60	0.66					
COPPER HILL	5.48	0.70	0.03	0.05							1.76	0.10	0.05	0.10							0.04	0.91	0.63	0.03	0.15	0.49	0.44							
ELK CREEK 4SSW	A 2.41	0.02	0.04	T					0.45	0.60	*	*	0.39 <sub>a</sub>									0.08	0.02	0.17	0.04	0.22	0.11	0.24	0.03					
GALAX WTP	2.32	0.09							0.05	0.82	0.03	0.01	0.95									0.04	0.06		0.10	0.11	0.05	0.01						
GRUNDY	6.77	0.11	0.23	T	0.34				0.03	0.46	0.40	0.02	0.89								0.06	0.32	0.69	1.61	0.02	0.51	0.50	0.58						
JOHN FLANNAGAN LAKE	M	0.04	*	*	1.05 <sub>a</sub>				-	-	0.30	0.95	0.37	0.63		*	*	0.00 <sub>a</sub>			0.24	0.11	0.50	-	-	-	-	-	-	-	-	-		
LEBANON	4.52	0.22	0.52	0.23							0.34	0.89										0.34	0.05		0.21	1.28	0.39	0.05						
NORA 4 SSE	6.43	0.05	0.21	0.98	T					0.49	1.89	0.02	0.07								0.24	0.09	T	0.12	0.20	0.01	0.05	0.91	1.08	0.02				
PULASKI 2 E	1.93	0.20	T	0.21	0.02				0.05	0.03	0.13	0.09	T	0.29									0.39	0.06	0.05	0.35	0.06							
RADFORD 3 N	A 1.38	0.02									0.03	0.03		0.30									0.04	*	*	0.59 <sub>a</sub>	0.40							
RICHLANDS	A 4.11	0.34	0.74	0.01	0.12						0.64	0.01	0.05	0.01								*	0.60 <sub>a</sub>	0.12	0.04	T	0.96	0.42	0.05					
SALTVILLE 1N	2.61	0.04	0.25	0.03				0.12	0.12		0.04	0.24	0.04										0.02	0.25	0.10	0.16	0.65	0.30	0.25					
STAFFORDSVILLE 3 ENE	2.12	0.42	0.02	0.11					0.21			0.16	0.03										0.02	0.15	0.70	0.01	T	0.27	0.02					
WISE 1SE	6.51	0.41	1.95	0.15	0.29		0.02				0.14	0.83	0.18	0.02							0.40		0.02	0.06	0.56	0.17	0.14	0.41	0.72	0.02	0.02			
WYTHEVILLE	2.03	0.04	0.08							0.12	0.01	0.03	0.02									0.18	0.04	0.28		0.36	0.61	0.18	0.08					



VIRGINIA  
201806

## DAILY TEMPERATURES (°F)

STATION	OB. TIME	MAX/MIN	DAY OF MONTH																															AVERAGE		
			01	02	03	04	05	06	07	08	09	10	11	12	13	14	15	16	17	18	19	20	21	22	23	24	25	26	27	28	29	30	31			
<b>VIRGINIA</b>																																				
<b>TIDEWATER 01</b>																																				
DISPUTANTA	07	MAX	88	93	88	81	81	82	78	81	86	88	70	73	84	88	83	86	89	95	98	91	92	91	87	90	85	83	86	90	92	86	92	86.2		
		MIN	70	68	69	59	60	62	59	58	61	66	67	60	61	65	66	59	61	68	70	71	71	70	68	71	69	70	65	68	71	68	67	65.7		
EMPORIA 1 WNW	08	MAX	83	93	85	82	84	83	84	84	87	89	90	76	73	86	90	88	89	93	95	97	92	92	91	90	92	85	80	88	89	92	87.4			
		MIN	72	69	70	60	60	63	61	62	64	68	68	63	63	67	71	63	65	74	74	72	71	73	71	73	71	70	67	69	72	69	67.8			
FREDERICKSBURG SEWAGE	07	MAX	86	89	90	70	81	82	77					63	76	86	86	84	87	89	93	95	87	85	68	85	91	81	78	84	88	89	83.5			
		MIN	68	69	69	57	56	56	61					55	55	69	58	60	61	69	70	72	68	68	64	66	68	63	64	66	67	67	64.1			
HOLLAND 1 E	08	MAX																																	M	
		MIN																																	M	
HOPEWELL	16	MAX	91	91	79	84	83	82	81	88	87	88	86	73	85	87	86	87	89	93	98	96	89	89	89	91	90	90	86	90		92	87.6			
		MIN	72	70	68	58	62	64	62	61	70	68	64	60	60	72	66	63	70	72	78	72	71	72	69	74	70	70	68	73	70	70	67.9			
NORFOLK INTL AP	24	MAX	91	89	83	79	83	77	77	87	89	87	75	73	86	86	83	87	90	87	101	90	91	85	93	93	83	80	85	92	89	91	86.1			
		MIN	75	73	64	62	70	66	64	65	72	70	66	66	70	71	70	67	72	74	78	74	74	72	72	74	73	71	74	76	76	73	70.8			
NORFOLK S	24	MAX	91	88	81	80	82	76	78	85	87	86	73	72	85	84	83	86	90	87	97	89	89	85	91	92	82	78	85	90	90	91	85.1			
		MIN	73	71	63	60	64	63	61	60	70	70	64	64	68	70	67	63	70	72	75	72	71	71	70	71	71	67	72	74	74	71	68.4			
NORTH	07	MAX	81	86	85	78	71	79	75	75	80	85	81	69	71	82	83	81	81	85	85	93	85	85	78	85	87	82	77	80	86	87	81.3			
		MIN	73	72	71	59	61	63	60	61	71	68	69	61	61	64	62	60	67	73	75	75	72	72	71	74	72	66	70	75	71	71	68.0			
PAINTER 2W	16	MAX	86	88	86	76	80	80	73	81	86	81	80	72	82	83	84	85	86	87	95	95	87	87	89	90	90	82	82	89	89	91	84.7			
		MIN	71	71	70	60	59	64	56	61	70	67	60	56	66	73	61	60	66	70	73	72	71	68	69	72	69	64	70	73	70	69	66.7			
STONY CREEK 2 N	08	MAX	93	86	80	84	82	80	83	88	89	86	72	74	86	88	86	88	91	93	97	90	90	89	88	92	85	77	86	89	90	92	86.5			
		MIN	72	69	61	59	62	64	60	60	68	68	64	61	66	72	66	60	69	71	74	72	71	72	70	73	70	68	67	69	71	67	67.2			
SUFFOLK LAKE KILBY	24	MAX	89	87	76	79	78	78	79	84	85	85	75	72	81	85	82	85	88	88	94	87	89	86	88	89	83	77	83	86	88	90	83.9			
		MIN	67	70	62	59	64	63	62	60	60	69	63	64	68	71	66	63	68	70	74	71	71	70	70	70	69	69	70	74	72	67.3				
WAKEFIELD 1NW	24	MAX	93	86	82	84	84	79	81	88	89	89	71	73	86	87	84	88	92	92	98	90	91	90	89	91	82	75	87	90	91	93	86.5			
		MIN	71	67	60	51	58	59	57	58	66	63	61	67	66	63	61	70	68	72	70	68	70	68	70	68	68	67	73	70	67	65.5				
WALKERTON 2 NW	18	MAX	90	86	74	81	84	78	81	87	88	87	71	77	86	85	85	89	89	87	97	89	90	79	89	91	83	79	85	90	91	92	85.3			
		MIN	70	72	65	62	58	60	61	60	69	69	68	63	68	71	59	62	65	66	71	74	72	74	76	71	71	65	66	73	68	67	67.2			
WALLACETON LK DRUMMOND	08	MAX	90	93	83	85	86	85	84	85	90	90	92	80	75	87	90	90	91	96	95	100	98	95	94	93	95	88	84	90	96	95	89.8			
		MIN	57	57	57	48	47	47	55	57	65	56	61	55	54	55	50	67	69	68	69	72	60	60	64	66	60	58	55	58	68	54	59.0			
WALLOPS ISLAND NASA TEST FACIL	24	MAX	86	85	75	77	81	72	73	79	85	79	72	72	84	84	83	83	85	85	94	83	89	74	86	91	85	79	81	89	87	93	82.4			
		MIN	72	72	63	58	62	62	63	62	68	68	62	61	68	69	64	63	70	72	77	76	73	69	71	73	71	68	72	76	72	73	68.3			
WARSAW 2 NW	18	MAX	88			77	82	83	83	87				67	78	86	85			92	93	96	90	89	86		85	85	84	90		M				
		MIN	70			56	55	58	59	59				62	56	66	72			59	70	75	68	67		73	63	66	70		M					
W PT 2 NW	17	MAX	91	90	81	81	82	82	79	87	88	88	87	74	85	86	86	88	91	92	97	97	89	87	88	91	88	80	85	90	91	93	87.1			
		MIN	72	70	58	57	60	62	61	59	67	66	62	59	67	64	61	63	67	72	73	72	69	70	69	71	68	66	68	73	68	68	66.1			
WILLIAMSBURG 2 N	24	MAX	91	89	82	82	81	78	79	85	87	88	71	74	85	87	85	88	91	91	96	87	90	78	89	91	84	78	85	91	90	93	85.5			
		MIN	73	71	61	58	63	64	63	60	70	67	63	62	69	67	63	64	69	74	74	74	71	74	71	72	70	67	69	74	71	71	68.0			
<b>EASTERN PIEDMONT 02</b>																																				
AMELIA COURTHOUSE 1	08	MAX	86	90	90	78	83		82	81	87	87	86	68	74	86	86	85	88	89	93	96	89	89	89	86	90	84	78	85	89	89	85.6			
		MIN	69	68	68	58	58		59	61	68	65	67	61	65	65	65	62	69	71	74	72	70	72	69	71	68	68	65	68	70	67	66.7			
ASHLAND	18	MAX	87	84	70	79	80	76	79	84	86	84	76	74	84	83	82	85	87	90	93	85	84	80	83	88	81	77	83	87	86	89	82.9			

VIRGINIA  
201806

## DAILY TEMPERATURES (°F)

STATION	OB. TIME	MAX/MIN	DAY OF MONTH																															AVERAGE
			01	02	03	04	05	06	07	08	09	10	11	12	13	14	15	16	17	18	19	20	21	22	23	24	25	26	27	28	29	30	31	
BREMO BLUFF	07	MIN MAX MIN	69	70	61	56	57	60	60	60	69	65	63	58	67	70	60	61	67	70	73	70	68	70	69	70	67	65	66	71	68	68	65.6 M M	
CAMP PICKETT	08	MAX MIN	86	90	90	79	83	80	82	82	86	87	85	85	72	85	87	87	87	89	92	95	89	89	87	87	90	83	78	85	87	88	85.7	
CHASE CITY	07	MAX MIN	70	67	67	58	58	61	59	60	66	65	66	61	61	68	67	62	62	68	72	71	70	71	70	70	67	67	65	68	71	67	65.8	
CLARKSVILLE	07	MAX MIN	84	89	79	82	82	79	81	81	85	86	87	72	71	83	87	84	85	91	91	93	88	88	86	86	89	89	75	82	86	88	84.3	
CORBIN	09	MAX MIN	69	66	68	60	56	60	59	61	62	66	68	62	62	68	70	62	62	67	70	71	68	70	69	70	68	68	64	66	69	65	65.5	
CROZIER	07	MAX MIN	87	91	81	84	86	82	85	83	88	88	90	76	76	86	90	86	87	95	95	97	91	93	88	88	92	84	73	85	90	90	86.9	
FARMVILLE 2 N	07	MAX MIN	70	67	69	61	59	62	61	64	68	70	68	63	63	67	72	65	69	72	74	72	70	71	71	72	66	67	72	70	70	68.0		
JOHN H KERR DAM	08	MAX MIN	89	80	71	80	81	75	81	87	88	84	67	77	86	85	83	87	87	93	94	88	86	73	85	90	82	79	84	89	89	92	83.7	
KEYSVILLE 2 S	07	MAX MIN	68	69	56	56	54	56	58	58	67	64	59	55	64	62	57	58	64	68	72	70	67	65	67	69	67	62	64	70	66	65	63.2	
LOUISA	18	MAX MIN	84	86	80	72	82	81	75	80	86	87	85	66	72	84	84	83	86	86	91	94	86	84	78	83	88	80	77	83	87	88	82.5	
PALMYRA 3S	06	MAX MIN	70	65	57	57	51	56	57	60	63	65	58	60	68	60	59	61	67	69	69	67	71	67	68	66	64	63	66	67	65	63.3		
PETERSBURG	07	MAX MIN	86	91	82	78	85	82	82	86	86	90	70	74	86	87	87	91	95	94	91	91	84	84	91	84	71	84	90	87	85	85.3		
RICHMOND INTL AP	24	MAX MIN	68	68	67	58	55	59	61	61	63	64	65	61	61	67	66	61	61	67	72	70	69	72	68	70	68	68	65	66	70	65	65.2	
WESTERN PIEDMONT 03	07	MAX MIN	88	87	87	89	93	78	86	77	72	84	89	94	91	94	92	91	89	87	93	93	83	87	90	91	92	88	86	84	82	90	87.6	
APPOMATTOX	07	MAX MIN	65	62	58	60	68	66	62	54	54	60	68	72	74	72	69	70	71	74	76	67	69	71	75	77	71	59	62	57	62	72	66.6	
BROOKNEAL	07	MAX MIN	85	89	80	78	82	79	80	81	85	88	88	69	72	85	87	84	86	92	93	96	87	88	88	86	91	82	76	83	87	89	84.5	
CHARLOTTESVILLE 2W	08	MAX MIN	68	66	66	58	55	59	57	57	66	64	66	60	60	66	67	60	60	69	71	70	70	68	67	69	68	68	63	65	70	71	64.8	
CHATHAM	07	MAX MIN	88	87	71	83	81	76	81	87	88	85	68	74	85	87	87	88	94	95	86	85	77	84	89	83	81	82	90	90	92	84.4		
DANVILLE 2 SE	24	MAX MIN	64	67	62	57	52	56	54	57	65	64	59	57	65	68	54	57	64	66	69	68	77	64	66	66	64	62	64	69	64	63	62.8	
DANVILLE RGNL AP	24	MAX MIN	84	86	79	75	80	80	74	78	84	85	84	62	70	82	82	82	83	84	89	92	83	86	70	80	87	80	74	80	85	85	80.8	
FREE UNION	07	MAX MIN	64	69	68	57	51	54	58	57	64	64	60	58	61	65	57	60	64	66	66	68	66	70	66	66	64	65	65	67	65	63	62.9	
	07	MAX MIN	91	86	81	83	83	78	84	87	87	87	71	74	85	87	85	87	86	93	96	88	89	88	87	91	85	79	86	90	91	92	85.9	
	24	MAX MIN	70	70	60	60	60	63	61	67	68	68	62	62	67	66	62	68	71	74	72	71	71	70	71	70	68	67	69	73	70	70	67.4	
	07	MAX MIN	93	87	79	83	83	80	82	87	89	87	70	74	86	86	86	89	91	94	98	89	89	86	88	91	86	79	86	91	91	93	86.4	
	07	MAX MIN	71	70	59	58	60	62	61	60	69	66	63	60	66	68	63	62	70	72	74	71	70	72	70	72	70	67	66	73	72	69	66.9	
	07	MAX MIN	85	88	79	80	83	81	80	80	85	87	87	67	70	85	88	85	87	91	94	95	91	90	81	84	89	82	75	81	88	89	84.2	
	07	MAX MIN	65	66	66	58	58	61	56	58	64	63	66	59	60	65	62	62	63	69	70	69	68	70	65	67	68	67	62	66	66	66	64.2	
	07	MAX MIN	86	89	81	81	84	82	81	82	85	86	89	71	72	85	87	85	86	92	93	95	93	90	86	86	90	82	73	82	88	88	85.0	
	08	MAX MIN	64	65	67	59	53	57	55	57	60	65	65	61	61	65	67	59	61	64	64	69	66	67	67	68	66	62	65	67	64	63.2		
	07	MAX MIN	85	89	76	74	82	81	77	79	86	86	85	62	71	84	87	85	86	87	93	94	86	87	70	83	87	82	75	81	88	89	82.6	
	07	MAX MIN	68	70	68	56	59	61	58	60	65	66	59	58	59	67	67	62	65	72	71	71	68	69	63	66	69	66	65	66	68	68	65.0	
	07	MAX MIN	84	86	83	85	82	78	80	78	85	87	88	79	71	84	87	84	85	91	92	95	88	88	86	84	87	83	71	80	84	86	84.0	
	24	MAX MIN	65	64	64	63	53	53	53	56	58	63	63	62	61	64	59	59	59	64	67	69	67	68	68	68	66	68	65	66	65	64	62.8	
	24	MAX MIN	88	85	90	87	83	86	85	89	90	91	81	71	88	92	87	90	94	95	97	91	91	89	94	86	73	86	90	90	92	88.0		
	24	MAX MIN	66	66	68	61	55	57	56	61	64	65	64	62	63	68	64	70	62	68	69	72	69	69	69	70	68	66	66	69	67	67	65.2	
	07	MAX MIN	88	85	88	85	80	85	83	87	88	89	80	73	85	90	85	87	93	94	94	89	88	88	87	92	85	73	84	88	88	91	86.4	
	07	MAX MIN	66	66	65	63	54	58	57	62	64	63	62	66	68	65	62	67	67	71	70	70	68	69	68	69	68	66	66	69	67	66	65.3	
	07	MAX MIN	81	87	76	72	81	81	76	78	85	86	82	62	69	84	84	84	84	84	91	91	82	84	70	82	85	79	72	78	84	87	80.7	
	07	MAX MIN	66	67	68	58	55	57	58	58	60	65	62	60	64	56	58	60	67	70	70	68	68	65	66	65	66	65	66	64	66	63.3		

VIRGINIA  
201806

## DAILY TEMPERATURES (°F)

STATION	OB. TIME	MAX/MIN	DAY OF MONTH																															AVERAGE
			01	02	03	04	05	06	07	08	09	10	11	12	13	14	15	16	17	18	19	20	21	22	23	24	25	26	27	28	29	30	31	
LYNCHBURG INTL AP	24	MAX	88	83	80	82	82	81	80	86	88	87	69	71	85	89	85	87	92	95	95	92	90	84	83	90	82	73	81	89	88	91	84.9	
		MIN	65	67	60	60	55	59	58	60	66	66	61	60	65	65	58	60	63	68	71	68	68	67	67	66	63	64	67	65	66	63.8		
MARTINSVILLE FLTR PLT	07	MAX	86	90	85	89	85	82	84	82	86	88	89	81	69	86	90	87	89	92	95	96	93	89	90	87	93	82	71	85	89	89	86.6	
		MIN	63	63	65	62	54	56	56	56	56	58	62	61	61	62	57	57	61	64	66	67	67	67	68	67	66	68	67	67	62	62	62.3	
MEADOWS OF DAN 5 SW	07	MAX	80	85	83	84	80	79	80	79	84	84	82	81	66	78	84	81	84	87	90	89	86	82	83	83	85	80	67	75	81	85	81.6	
		MIN	61	62	61	55	54	55	55	57	59	59	60	60	61	57	57	61	64	66	65	66	63	64	63	63	63	63	63	62	62	60.7		
MONTEBELLO FISH CULTURAL STN	07	MAX	85				80	77	78	80	78	83	83	69	70	87	85	82	87	89	93	86	88			89	81	67	82	88	87	89	82.5	
		MIN	66				55	56	47	47	50	61	61	58	59	47	49	59	60	62	64	66	66			62	64	60	64	56	56	58	58.1	
MONTICELLO	07	MAX																															M	
		MIN																																M
ROCKY MT	07	MAX	86	89	82	87	87	87	83	82	86	87	89	77	69	85	88	87	88	92	94	95	92	87	88	85	89	79	69	83	88	88	85.6	
		MIN	64	66	67	58	55	53	59	58	58	64	64	59	60	64	56	56	60	64	72	69	71	69	66	68	69	68	65	65	65	63	63.2	
S BOSTON	07	MAX	87	90	82	86	86	82	85	84	88	89	91	75	73	87	92	87	90	95	96	99	92	91	90	90	95	86	73	86	89	90	87.5	
		MIN	69	67	69	61	55	57	58	61	66	67	68	62	63	68	69	62	68	72	72	72	69	71	70	71	70	70	64	66	69	66	66.4	
STUART	07	MAX	84	87	85	87	83	80	83	81	86	87	86	82	68	82	87	84	86	91	91	92	89	85	86	84	86	83	71	81	85	88	84.3	
		MIN	62	65	63	56	55	57	57	59	60	62	60	60	60	62	59	60	61	65	68	67	67	65	66	65	66	65	65	65	63	64	62.2	
<b>NORTHERN 04</b>																																		
FRONT ROYAL	06	MAX	82	88	80	67	78	77	70	78	83	86	76	63	74	85	84	83	85	85	93	91		79	68	78	84	80	77	80	85	87	80.2	
		MIN	65	65	66	56	54	54	51	53	59	62	58	58	59	64	59	55	56	67	66	70	68	67	60	62	64	62	62	66	63	64	61.2	
PURCELLVILLE	08	MAX	84	88	79	65	78	79	72	79	83	85	75	63	77	83	84	82	86	89	93	89	80	79	66	79	84	81	82	81	85	89	80.6	
		MIN	67	68	65	55	52	55	54	58	64	64	56	54	59	66	61	53	65	66	73	69	68	63	61	63	65	56	64	68	65	64	62.0	
LURAY 5 E	08	MAX	83	87	77	66	76	75	67	79	83	86	80	63	73	85	82	82	84	84	92	91	79	83	70	83	83	79	76	80	85	87	80.0	
		MIN	62	67	65	56	50	54	50	56	61	60	58	53	60	63	52	52	63	63	67	69	65	60	63	62	60	61	63	66	60	60	60.0	
MANASSAS	07	MAX	83	87	82	70	79	79																										
		MIN	69	69	70	56	55	56																										
MT WX 3	07	MAX	77	83	74	65	71	73	66	74	78	80	73	59	72	80	80	76	80	81	87	87	79	74	64	75	78	78	76	74	79	82	75.8	
		MIN	64	65	63	52	53	51	51	54	61	63	54	54	54	60	59	59	63	69	70	67	66	63	58	60	63	61	60	62	64	65	60.3	
PIEDMONT RSCH STN	08	MAX	85	88	82	71	79	81	74	79	86	88	81	68	72	82	86	83	86	85	92	95	85	85	71	83	88	81	76	81	88	88	82.3	
		MIN	68	65	69	57	57	54	57	57	60	64	59	58	57	65	64	59	60	65	69	71	68	67	61	64	67	65	65	64	68	66	63.0	
SOMERSET	08	MAX	85	89	79	79	81	82	74	79	86	87	82	62	72	83	86	84	85	85	91	95	86	86	67	84	88	82	73	80	89	89	82.3	
		MIN	68	69	69	57	54	57	57	59	64	66	59	59	59	68	55	57	64	68	72	72	68	67	62	66	65	66	65	66	64	65	63.6	
SPERRYVILLE	06	MAX	86	94	80	70	80	80	71	82	88	89	76	67																			M	
		MIN	64	65	68	57	52	56	55	62	63	62	59	59																			M	
WFO STERLING	24	MAX	87	81	70	77	79	72	79	84																								
		MIN	68	69	56	55	53	58	57	57																								
VIENNA	07	MAX	81	85	77	69	75	77	71	77	81	85	77	62	75	80	82	80	85	86	91	91	81	79	67	77	84	80	80	83	83	91	79.7	
		MIN	67	68	68	53	54	54	57	57	60	64	56	52	52	64	60	57	56	68	68	67	67	64	63	63	65	58	58	67	66	66	61.3	
WASHINGTON DULLES INTL AP	24	MAX	88	82	71	79	80	74	80	85	88	79	65	76	83	84	83	86	88	94	93	84	82	72	78	87	83	82	80	87	90	92	82.5	
		MIN	69	69	56	56	52	59	57	58	67	63	58	52	65	63	59	54	68	68	71	69	68	64	64	65	60	66	70	65	64	62.8		
WASHINGTON REAGAN NATL AP	24	MAX	90	86	75	80	84	78	79	84	86	81	67	79	85	87	85	89	89	92	95	86	86	77	81	85	84	82	89	93	91	84.5		
		MIN	71	73	58	56	61	63	62	65	70	65	61	58	68	73	67	64	73	74	77	73	72	67	67	71	70	65	71	75	73	72	67.8	
WINCHESTER	07	MAX	82	89	79	66	77	79	69	80	84	76	87	64	77	83	84	81	87	86	94	90	81	79	66	76	85	83	81	78	85	89	80.6	

VIRGINIA  
201806

## DAILY TEMPERATURES (°F)

STATION	OB. TIME	MAX/MIN	DAY OF MONTH																															AVERAGE
			01	02	03	04	05	06	07	08	09	10	11	12	13	14	15	16	17	18	19	20	21	22	23	24	25	26	27	28	29	30	31	
			WINCHESTER 7 SE	08	MIN	65	65	65	55	54	53	50	55	62	60	57	52	57	64	58	55	62	67	72	68	68	66	61	62	65	59	62	67	
		MAX	81	88	80	67	77	78	70	79	83	86	86	63							95	91	91	78	66	79	84	81			89	89	M	
		MIN	62	65	65	55	50	52	49	53	57	61	58	57								71	66	64	61	61	63	58			62	62	M	
WOODSTOCK 2 NE	07	MAX	85	80	77	77	78	76	76	80	84	85	78	63	74	84	82	84	85	85	92	85	83	81	66	80	84	84	82	80	84	87	80.7	
		MIN	65	65	65	56	57	52	49	53	63	63	57	55	57	57	55	53	60	60	69	71	58	60	60	62	62	62	63	63	62	62	59.9	
<b>CENTRAL MOUNTAIN 05</b>																																		
COVINGTON FLTR PLT	07	MAX	83	84	71	84	76	78	77	79	84	85	87	76	67	80	84	82	82	85	91	91	85	84	81	80	85	79	69	81	84	84	81.3	
		MIN	60	60	63	54	51	51	48	54	54	62	63	60	60	60	51	51	54	59	62	66	66	66	63	63	60	62	64	65	61	61	59.1	
DALE ENTERPRISE	07	MAX	83	86	71	81	77	77	77	78	78	83	83	68							91	92	86	82	70	83							81.5	
		MIN	67	67	65	57	57	57	53	54	59	64	60	59							58	54	54	65	67	68	66	65	57	60			61.1	
GATHRIGHT DAM	07	MAX	80	81	70	81	75	75	73	76	82	81	82	72	64	79	82	80	81	82	88	87	82	81	76	77	79	76	66	79	81	83	78.4	
		MIN	61	61	64	54	51	51	47	50	56	62	62	58	59	62	52	53	55	61	64	66	67	67	62	63	62	62	63	64	60	62	59.4	
HOT SPRINGS	07	MAX	82	84	71	81	75	76	73	78	83	85	74	74	66	81	82	79	81	84	88	89	83	82	79	79	81	81	68	80	83	85	79.6	
		MIN	59	61	63	54	50	52	47	48	58	60	60	57	57	62	50	52	54	60	64	64	66	65	62	63	60	62	63	64	58	61	58.5	
LEXINGTON	07	MAX	86	89	78	82	81	79	81	86	88	87	70	71	85	88	84	86	90	94	94	88	86	80	83	86	83	71	82	89	89	83.9		
		MIN	66	66	66	61	53	54	53	54	58	64	65	60	61	65	53	54	58	62	67	67	69	69	65	65	63	64	65	65	61	62	61.8	
MILLGAP	06	MAX	79	82	69	80	71	70	70	78	77	82	81	66	63	78	79	79	82	82	86	84	82	82	74	75	77	77	77	78	79	84	77.4	
		MIN	57	57	60	48	44	44	41	41	47	56	56	56	56	58	43	45	46	54	58	60	61	63	58	58	55	56	56	60	53	55	53.4	
MUSTOE 1 SW	24	MAX	81	69	77	71	71	70	75	77	81	78	64	62	77	79	80	80	82	86	84	81	81	73	74	75	77	65	76	78	82	83	76.3	
		MIN	59	61	60	50	44	48	41	48	59	59	56	55	58	52	45	47	54	56	61	61	61	59	58	58	53	60	60	58	52	56	55.0	
ROANOKE 8 N	07	MAX	84	87	79	86	81	81	78	80	86	87	85	77	68	84	87	87	85	90	93	93	90	86	84	84	88	77	68	80	87	86	83.6	
		MIN	63	64	65	57	57	57	58	61	64	65	59	60	64	56	56	62	64	67	69	70	68	66	66	66	66	66	64	65	64	64	62.8	
ROANOKE INTL AP	24	MAX	89	81	88	82	83	81	81	87	89	88	78	68	85	90	87	89	94	96	95	93	88	84	86	90	77	73	82	89	89	89	85.7	
		MIN	67	68	65	59	59	61	59	61	68	65	61	61	65	64	57	60	67	68	77	73	72	69	67	69	69	66	65	71	65	66	65.5	
STAUNTON WTP	08	MAX	83	84	73	72	80	77	75	78	83	85	83	60	65	81	84	82	83	85	89	91	84	82	67	81	82	80	69	78	85	86	79.6	
		MIN	64	67	64	56	55	59	50	55	63	62	60	57	57	64	54	56	62	65	65	68	67	66	62	64	61	65	63	65	60	63	61.3	
WAYNESBORO WTP	07	MAX	84	88	88	72	81	79	76	79	84	86	84	66	71	84	85	83	86															81.8
		MIN	63	67	66	60	52	55	53	54	60	63	65	58	58	61	53	53	57															60.8
<b>SOUTHWESTERN MOUNTAIN 06</b>																																		
ABINGDON 3S	06	MAX	83	78	77	82	79	79	78	83	86	87	84	82	83	79	84	85	88	90	88	85	85	78	83	82	86	81	76	74	81	88	82.5	
		MIN	63	62	64	54	53	55	54	53	57	61	62	62	61	63	61	58	63	65	65	67	66	67	65	66	66	67	63	65	67	66	62.0	
BIG STONE GAP	08	MAX	82	82	82	83	78	79	79	85	86	86	84	80	82	79	85	86	88	91	91	87	84	79	81	83	86	77	71	74	80	89	82.6	
		MIN	63	63	65	54	53	54	53	54	56	62	61	65	65	67	60	60	60	62	62	67	65	68	68	67	67	63	64	66	65	65	62.2	
BLACKSBURG NWSO	07	MAX	80	82	78	81	76	77	76	79	83	84	83	74	66	81	83	81	84	88	89	88	85	79	80	80	84	72	67	78	83	85	80.2	
		MIN	59	61	61	57	54	57	50	50	58	59	60	57	57	61	52	53	56	61	64	65	66	62	64	63	63	63	62	63	59	60	59.2	
BURKES GARDEN	07	MAX	77	75	75	77	70	72	71	78	80	80	80	75	67	78	78	79	82 <sup>Z</sup>	75 <sup>Z</sup>	79 <sup>Z</sup>	74 <sup>Z</sup>	71 <sup>Z</sup>	64 <sup>Z</sup>	67 <sup>Z</sup>	66 <sup>Z</sup>	69 <sup>Z</sup>	66 <sup>Z</sup>	63 <sup>Z</sup>	66 <sup>Z</sup>	69 <sup>Z</sup>	72 <sup>Z</sup>	M	
		MIN	60	61	54	52	51	53	43	42	45	52	61	55	54	58	50	47	47 <sup>Z</sup>	50 <sup>Z</sup>	50 <sup>Z</sup>	56 <sup>Z</sup>	58 <sup>Z</sup>	54 <sup>Z</sup>	54 <sup>Z</sup>	56 <sup>Z</sup>	52 <sup>Z</sup>	55 <sup>Z</sup>	52 <sup>Z</sup>	56 <sup>Z</sup>	51 <sup>Z</sup>	50 <sup>Z</sup>	M	
CHRISTIANSBURG	07	MAX	81	82	77	81	76	75	75	77	82	84	82	75	66	81	82	80	84	87	89	89	86	80	79	78	82	72	66	78	81	83	79.7	
		MIN	61	63	61	58	57	58	52	52	53	60	62	57	58	61	55	55	58	64	66	66	66	63	64	64	64	64	63	63	61	62	60.4	
CLINTWOOD 1 W	07	MAX	82	76	76	82	77	78	76	81	85	82	80	81	80	77	81	81	86	88	86	87	81	76	78	78	81	79	72	77	82	84	80.3	
		MIN	60	61	63	52	50	50	50	51	52	60	61	63	63	64	59	55	55	55	59	63	65	65	63	60	60	64	64	61	62	66	62	59.4

VIRGINIA  
201806

## DAILY TEMPERATURES (°F)

STATION	OB. TIME	MAX/MIN	DAY OF MONTH																															AVERAGE
			01	02	03	04	05	06	07	08	09	10	11	12	13	14	15	16	17	18	19	20	21	22	23	24	25	26	27	28	29	30	31	
COPPER HILL	07	MAX	77	81	74	79	74	75	74	72	77	80	81	71	65	79	79	78	77	82	86	85	82	86	76	78	81	70	63	78	80	78	77.3	
		MIN	60	60	61	57	54	55	53	52	59	62	61	55	55	58	55	56	58	64	67	64	66	63	62	63	63	62	60	61	60	60	59.5	
ELK CREEK 4SSW	07	MAX	79	79	76	78	72	73	73	77	79	78	80	76	66	77	79	79	80	84	84	83	80	75	75	76	81	77	73	75	78	81	77.4	
		MIN	60	61	61	55	55	57	53	58	63	61	62	56	56	62	60	64	66	67	68	67	65	63	63	63	65	61	61	63	63	66	61.5	
GALAX WTP	07	MAX	78	85	82	83	78	78	78	79	81	83	82	82	67	83	84	84	84	87	89	88	85	81	80	81	86	80	74	77	83	85	81.6	
		MIN	60	61	60	53	55	55	52	55	55	56	59	59	58	59	56	56	57	61	63	65	66	62	62	63	64	63	64	62	61	60	59.4	
GRUNDY	07	MAX	86	81	81	83	80	82	80	84	88	87	83	80	85	81	87	84	90	92	92	92	85	76	77	81	85	76	73	80	82	87	83.3	
		MIN	61	64	67	55	50	52	51	52	55	62	63	62	63	66	59	56	56	65	67	67	67	65	63	65	63	64	63	65	66	63	61.2	
JOHN FLANNAGAN LAKE	07	MAX	86			87	83	85	82	88			92	82	83	85	89		94	94	94	88	80									M		
		MIN	61			53	52	54	53	55			55	64	63	65	61			59	66	68	67	65									M	
LEBANON	07	MAX	83	79	80	83	78	79	77	83	87	87	87	82	81	79	85	85	89	90	89	89	83	81	83	84	85	81	77	75	83	88	83.1	
		MIN	60	62	63	51	51	53	48	50	53	53	53	61	62	63	55	55	55	63	65	65	65	63	64	65	65	64	62	63	66	64	59.4	
NORA 4 SSE	07	MAX	78	75	76	82	74	75	74	79	84	84	79	77	76	76	81	81	87	86	84	86	86	73	77	78	82	75	69	72	79	84	79.0	
		MIN	61	61	65	58	55	56	52	52	66	65	64	60	60	65	62	65	69	72	69	67	66	65	63	63	64	63	62	63	64	68	62.8	
PULASKI 2 E	07	MAX	83	82	81	82	76	78	76	80	85	83	84	79	70	84	83	82	86	88	89	89	84	80	81	79	82	77	67	78	83	86	81.2	
		MIN	62	65	59	58	54	58	48	54	61	58	61	58	59	63	53	53	61	66	67	68	66	61	66	63	64	64	64	65	60	64	60.8	
RADFORD 3 N	08	MAX	83	84	79	83	77	77	76	80	85	85	84	75	68	82	84	82	85	89	91	90	87	81	79	81	85	75	68	82	83	86	81.5	
		MIN	59	66	61	59	59	55	48	53	61	60	60	59	60	61	53	53	59	62	65	64	66	62	66	64	63	64	64	65	60	61	60.4	
RICHLANDS	07	MAX	82	79	80	82	76	78	75	83	86	84	82	81	80	80	83	84	89	89	88	88	82	79	83	80	83	80	76	76	83	88	82.0	
		MIN	61	61	64	52	51	53	49	50	50	59	60	60	60	60	56	55	55	59	63	66	66	63	63	66	64	64	62	62	64	61	59.3	
SALTVILLE 1N	07	MAX	84	80	82	84	79	79	78	84	87	87	85	83	79	80	86	86	90	90	89	88	84	79	84	82	84	81	82	76	82	89	83.4	
		MIN	63	63	64	52	52	53	50	51	53	60	61	60	60	60	57	55	56	59	64	65	66	67	65	65	67	66	63	63	65	61	60.2	
STAFFORDSVILLE 3 ENE	07	MAX	82	83	78	82	77	77	75	79	83	83	84	75	66	80	83	80	84	87	90	89	86	77	79	81	85	74	66	80	83	85	80.4	
		MIN	59	60	58	62	55	55	48	49	52	58	59	58	57	58	53	52	55	58	62	63	65	64	64	62	63	63	64	63	59	58	58.5	
WISE 1SE	09	MAX	80	75	76	82	75	78	74	80	84	82	79	77	78	77	82	83	86	87			86	81	78	78	79	84	76	72	72	81	84	79.5
		MIN	59	62	58	52	51	51	48	48	59	60	63	61	64	63	56	57	61	62			65	65	64	63	64	64	63	61	64	64	63	59.8
WYTHEVILLE	07	MAX	82	80	80	83	76	77	76	81	84	83	85	80	68	83	85	84	85	89	90	90	84	79	81	80	81	80	68	77	82	86	81.3	
		MIN	62	62	62	56	56	57	49	51	55	57	58	57	57	57	55	55	55	61	65	67	66	63	63	62	65	63	61	61	63	62	59.4	

VIRGINIA  
201806

## SNOWFALL AND SNOW ON GROUND (INCHES)

STATION		DAY OF MONTH																															
		01	02	03	04	05	06	07	08	09	10	11	12	13	14	15	16	17	18	19	20	21	22	23	24	25	26	27	28	29	30	31	
<b>VIRGINIA</b>																																	
<b>TIDEWATER 01</b>																																	
DISPUTANTA	SNOWFALL																																
EMPORIA 1 WNW	SNOWFALL																																
FREDERICKSBURG SEWAGE	SNOWFALL								-	-	-																						
	SN ON GND								-	-	-																						
HOLLAND 1 E	SNOWFALL																																
HOPEWELL	SNOWFALL								-	-	-																						
	SN ON GND								-	-	-					-	-	-	-	-	-	-					-	-	-	-	-		
NORFOLK INTL AP	SNOWFALL																																
	SN ON GND																																
NORFOLK S	SNOWFALL																																
NORTH	SNOWFALL																																
	SN ON GND																																
PAINTER 2W	SNOWFALL																																
STONY CREEK 2 N	SNOWFALL																																
SUFFOLK LAKE KILBY	SNOWFALL																																
	SN ON GND																																
WAKEFIELD 1NW	SNOWFALL																																
	SN ON GND																																
WALKERTON 2 NW	SNOWFALL																																
	SN ON GND																																
WALLACETON LK DRUMMOND	SNOWFALL																																
WALLOPS ISLAND NASA TEST FACIL	SNOWFALL																																
	SN ON GND																																
WARSAW 2 NW	SNOWFALL																																
W PT 2 NW	SNOWFALL																																
	SN ON GND																																
WILLIAMSBURG 2 N	SNOWFALL																																
	SNOWFALL																																

Snowfall: Includes snow and ice. Values for NWS stations (J index note) are Mid-Mid (LST).

Snow on ground: Includes snow, sleet, ice, and hail. Values for NWS stations (J index note) are observed at 12 UTC (GMT).

Water Equivalent: Given for NWS stations (J index note) only, when snow depth is 2 inches or more, and is measured at 18 UTC (GMT)

VIRGINIA  
201806

## PAN EVAPORATION AND WIND

STATION		DAY OF MONTH																														TOTAL OR AVERAGE
		01	02	03	04	05	06	07	08	09	10	11	12	13	14	15	16	17	18	19	20	21	22	23	24	25	26	27	28	29	30	
VIRGINIA EASTERN PIEDMONT 02 JOHN H KERR DAM	WIND	25	15	15	22	46	11	49	34	21	16	46	40	51	30	12	24	26	51	62	35	63	56	92	63	21	14	15	19	41	58	1073 M M M
	EVAP	-	-	-	-	-	-	-	-	-	-	-	-	-	-	-	-	-	-	-	-	-	-	-	-	-	-	-	-	-	-	
	MAX	-	-	-	-	-	-	-	-	-	-	-	-	-	-	-	-	-	-	-	-	-	-	-	-	-	-	-	-	-	-	
	MIN	-	-	-	-	-	-	-	-	-	-	-	-	-	-	-	-	-	-	-	-	-	-	-	-	-	-	-	-	-	-	

Evaporation: Is measured in hundreths of inches.

Wind: Is measured in miles.

Max and Min: The maximum and minimum temperatures (Fahrenheit) of the water in the evaporation pan.

# STATION INDEX

STATION	INDEX NO.	DIVISION	COUNTY	LATITUDE	LONGITUDE	ELEVATION (IN FEET)	OBSERVATION TIME AND TABLES			
							LOCAL STD TIME			
							TEMP	PRECIP	EVAP	SPECIAL SEE (NOTES)
VIRGINIA										
ABINGDON 3S	0021	06	WASHINGTON	36 40	81 58W	1925	06	06		H
ALBERTA 5N	0079	02	BRUNSWICK	36 56	77 54W	376		08		H
ALTAVISTA	0166	03	CAMPBELL	37 7	79 17W	529		07		CH
AMELIA COURTHOUSE 1	0187	02	AMELIA	37 21	77 59W	345	08	08		H
APPOMATTOX	0243	03	APPOMATTOX	37 20	78 50W	850	07	07		H
ASHLAND	0327	02	HANOVER	37 45	77 29W	220	18	18		H
BEDFORD	0551	03	BEDFORD	37 20	79 30W	894		07		H
BIG STONE GAP	0735	06	WISE	36 51	82 48W	1466	08	08		H
BLACKSBURG NWSO	0766	06	MONTGOMERY	37 12	80 25W	2103	07	07		CH
BREMO BLUFF	0993	02	FLUVANNA	37 43	78 17W	225	07	07		CH
BROOKNEAL	1082	03	CAMPBELL	37 4	78 57W	408	07	07		H
BUCKINGHAM	1136	02	BUCKINGHAM	37 30	78 32W	580		07		H
BUENA VISTA	1159	05	ROCKBRIDGE	37 44	79 22W	840		07		H
BURKES GARDEN	1209	06	TAZEWELL	37 5	81 20W	3068	07	07		H
CAMP PICKETT	1322	02	NOTTOWAY	37 2	77 57W	330	08	08		CH
CHARLOTTESVILLE 2W	1593	03	ALBEMARLE	38 2	78 31W	866	08	08		H
CHASE CITY	1606	02	MECKLENBURG	36 47	78 29W	510	07	07		H
CHATHAM	1614	03	PITTSYLVANIA	36 49	79 25W	651	07	07		CH
CHRISTIANSBURG	1692	06	MONTGOMERY	37 8	80 24W	2100	07	07		H
CLARKSVILLE	1746	02	MECKLENBURG	36 37	78 33W	330	07	07		H
CLINTWOOD 1 W	1825	06	DICKENSON	37 9	82 29W	1780	07	07		H
CONCORD 4 SSW	1955	03	CAMPBELL	37 17	78 58W	815		07		H
COPPER HILL	1999	06	FLOYD	37 5	80 8W	2857	07	07		H
CORBIN	2009	02	CAROLINE	38 12	77 22W	220	09	09		H
COVINGTON FLTR PLT	2044	05	ALLEGHANY	37 49	79 59W	1244	07	07		CH
CROZIER	2142	02	GOOCHLAND	37 40	77 53W	350	07	07		H
DALE ENTERPRISE	2208	05	ROCKINGHAM	38 27	78 56W	1358	07	07		CH
DANVILLE 2 SE	2245	03	PITTSYLVANIA	36 34	79 22W	392	24	24		H
DANVILLE RGNL AP	2250	03	PITTSYLVANIA	36 34	79 20W	571	24	24		CH
DISPUTANTA	2400	01	PRINCE GEORGE	37 7	77 12W	130	07	07		H
ELK CREEK 4SSW	2730	06	GRAYSON	36 40	81 12W	3439	07	07		H
EMPORIA 1 WNW	2790	01	GREENSVILLE	36 42	77 34W	100	08	08		H
FARMVILLE 2 N	2941	02	CUMBERLAND	37 20	78 23W	450	07	07		CH
FREDERICKSBURG SEWAGE	3204	01	FREDERICKSBURG	38 17	77 27W	60	07	07		H
FREE UNION	3213	03	ALBEMARLE	38 5	78 35W	590	07	07		H
FRONT ROYAL	3229	04	WARREN	38 54	78 11W	930	06	06		CH
GALAX WTP	3272	06	CARROLL	36 39	80 55W	2341	07	07		CH
GATHRIGHT DAM	3310	05	ALLEGHANY	37 57	79 57W	1770	07	07		CH
GLASGOW 1 SE	3375	05	ROCKBRIDGE	37 37	79 26W	737		07		H
GRUNDY	3640	06	BUCHANAN	37 17	82 5W	1157	07	07		H
HOLCOMB ROCK	4039	03	BEDFORD	37 33	79 24W	900		07		H
HOLLAND 1 E	4044	01	SUFFOLK	36 41	76 46W	80	08	08		H
HOPEWELL	4101	01	PRINCE GEORGE	37 18	77 17W	40	16	16		H
HOT SPRINGS	4128	05	BATH	37 60	79 50W	2244	07	07		H
HUDDLESTON 4 SW	4148	03	BEDFORD	37 8	79 32W	897		07		H
JOHN FLANNAGAN LAKE	4410	06	DICKENSON	37 14	82 21W	1460	07	07		H
JOHN H KERR DAM	4414	02	MECKLENBURG	36 36	78 18W	250	08	08	08	CH
KEYSVILLE 2 S	4568	02	CHARLOTTE	37 1	78 29W	625	07	07		H
LEBANON	4777	06	RUSSELL	36 54	82 2W	1912	07	07		H
LEXINGTON	4876	05	ROCKBRIDGE	37 47	79 26W	1097	07	07		H
LOUISA	5050	02	LOUISA	38 3	78 0W	420	18	18		H
LURAY 5 E	5096	04	PAGE	38 40	78 22W	1400	08	08		H
LYNCHBURG INTL AP R	5120	03	CAMPBELL	37 19	79 12W	940	24	24		HJ
MANASSAS	5204	04	MANASSAS	38 44	77 30W	245	07	07		H
MARTINSVILLE FLTR PLT	5300	03	HENRY	36 42	79 52W	760	07	07		H
MEADOWS OF DAN 5 SW	5453	03	PATRICK	36 40	80 27W	2225	07	07		H
MILLGAP	5595	05	HIGHLAND	38 18	79 43W	2421	06	06		CH
MONTEBELLO FISH CULTURAL STN	5690	03	NELSON	37 51	79 8W	2667	07	07		CH
MONTICELLO	5700	03	ALBEMARLE	38 1	78 27W	758	07	07		H
MT WX 3	5853	04	CLARKE	39 4	77 54W	1550	07	07		H
MTN GROVE	5756	05	BATH	38 6	79 53W	1775		07		H
MUSTOE 1 SW	5880	05	HIGHLAND	38 19	79 40W	2367	24	24		CH
NEW CASTLE	6012	05	CRAIG	37 31	80 6W	1258		07		H
NORA 4 SSE	6125	06	DICKENSON	37 1	82 19W	2650	07	07		H
NORFOLK INTL AP R	6139	01	NORFOLK (CITY)	36 54	76 12W	30	24	24		HJ



# STATION INDEX

STATION	INDEX NO.	DIVISION	COUNTY	LATITUDE	LONGITUDE	ELEVATION (IN FEET)	OBSERVATION TIME AND TABLES			
							LOCAL STD TIME			
							TEMP	PRECIP	EVAP	SPECIAL SEE (NOTES)
NORFOLK S	6147	01	NORFOLK (CITY)	36 52	76 14W	10	24	24		H
NORTH	6161	01	MATHEWS	37 26	76 26W	10	07	07		H
PAINTER 2W	6475	01	ACCOMACK	37 35	75 49W	30	16	16		CH
PALMYRA 3S	6491	02	FLUVANNA	37 49	78 16W	410	06	06		H
PEDLAR DAM	6593	03	AMHERST	37 40	79 17W	1024		07		CH
PETERSBURG	6656	02	PETERSBURG	37 14	77 24W	19	07	07		H
PIEDMONT RSCH STN	6712	04	ORANGE	38 14	78 7W	520	08	08		CH
PULASKI 2 E	6955	06	PULASKI	37 3	80 47W	1850	07	07		CH
PURCELLVILLE	4909	04	LOUDOUN	39 9	77 43W	510	08	08		H
RADFORD 3 N	6999	06	PULASKI	37 12	80 35W	1800	08	08		H
RICHLANDS	7174	06	TAZEWELL	37 6	81 48W	1910	07	07		H
RICHMOND INTL AP R	7201	02	HENRICO	37 31	77 19W	164	24	24		HJ
ROANOKE 8 N	7278	05	ROANOKE	37 22	79 58W	1157	07	07		H
ROANOKE INTL AP R	7285	05	ROANOKE	37 19	79 58W	1175	24	24		HJ
ROCKY MT	7338	03	FRANKLIN	36 59	79 54W	1315	07	07		CH
S BOSTON	7925	03	HALIFAX	36 42	78 53W	329	07	07		H
SALTVILLE 1N	7506	06	SMYTH	36 53	81 46W	1733	07	07		H
SOMERSET	7904	04	ORANGE	38 15	78 16W	510	08	08		H
SPERRYVILLE	7985	04	RAPPAHANNOCK	38 39	78 14W	750	06	06		H
STAFFORDSVILLE 3 ENE	8022	06	GILES	37 16	80 43W	1906	07	07		CH
STAUNTON WTP	8062	05	AUGUSTA	38 10	79 5W	169	08	08		CH
STONY CREEK 2 N	8129	01	SUSSEX	36 58	77 24W	105	08	08		H
STUART	8170	03	PATRICK	36 38	80 15W	1375	07	07		H
SUFFOLK LAKE KILBY	8192	01	SUFFOLK	36 44	76 36W	22	24	24		H
VIENNA	8737	04	FAIRFAX	38 54	77 17W	418	07	07		H
W PT 2 NW	9025	01	KING WILLIAM	37 34	76 48W	20	17	17		H
WAKEFIELD 1NW	8800	01	SUSSEX	36 59	77 0W	113	24	24		CH
WALKERTON 2 NW	8829	01	KING AND QUEEN	37 45	77 2W	50	18	18		H
WALLACETON LK DRUMMOND	8837	01	CHESAPEAKE	36 36	76 26W	20	08	08		H
WALLOPS ISLAND NASA TEST FACIL R	8849	01	ACCOMACK	37 56	75 28W	46	24	24		HJ
WARSAW 2 NW	8894	01	RICHMOND	37 59	76 47W	140	18	18		H
WASHINGTON DULLES INTL AP R	8903	04	LOUDOUN	38 56	77 27W	290	24	24		HJ
WASHINGTON REAGAN NATL AP R	8906	04	ARLINGTON	38 51	77 2W	10	24	24		HJ
WAYNESBORO WTP	8941	05	WAYNESBORO	38 5	78 53W	1270	07	07		H
WFO STERLING	8084	04	LOUDOUN	38 59	77 29W	288	24	24		H
WILLIAMSBURG 2 N	9151	01	YORK	37 18	76 42W	70	24	24		H
WILLIAMSVILLE 2 S	9159	05	BATH	38 11	79 35W	1640		07		CH
WINCHESTER	9181	04	FREDERICK	39 11	78 9W	720	07	07		H
WINCHESTER 7 SE	9186	04	FREDERICK	39 11	78 7W	680	08	08		H
WINTERPOCK 4 W	9213	02	CHESTERFIELD	37 19	77 39W	300		07		H
WISE 1SE	9215	06	WISE	36 58	82 33W	2564	09	09		CH
WOODSTOCK 2 NE	9263	04	SHENANDOAH	38 54	78 28W	675	07	07		H
WOOLWINE 1 SE	9272	03	PATRICK	36 46	80 16W	1263		08		CH
WYTHEVILLE	9301	06	WYTHE	36 58	81 5W	2458	07	07		H

# REFERENCE NOTES

**STATION NAMES:** Name of the city, town or locality. Figures and letters following the station names indicate the distance in miles and direction from the post office or town community center.

**DIVISIONS:** Areas within a state of similar climatological characteristics. Division averages are calculated using data from stations that record temperature and/or precipitation. Station Precipitation totals flagged with an 'F' or 'M' are excluded from the Divisional Average calculations of precipitation. Stations with monthly Temperature averages flagged with an 'F' or 'M' are included in the Divisional Average if there are no more than 9 flagged or missing daily values in the month, else they are excluded from the divisional average for temperature.

**NORMALS:** The average value of the meteorological element over a time period. Effective 1 January 2012, the averaging period for station departures is 1981 to 2010. The normals for National Weather Service localities have been adjusted so as to be representative for the current observation site.

The January 2011 through December 2015 publications incorrectly state the computation of divisional departures. Climate Division departures have been, and continue to be, computed from 1971-2000 Normals, not 1981-2010 as stated. Station departures are accurately described as departures from 1981-2010.

**MONTHLY DEGREE DAY TOTALS:** One heating (cooling) degree day is accumulated for each whole degree that the daily mean temperature is below (above) 65 degrees Fahrenheit.

**PRECIPITATION:** Values shown in hundredths of inches are water equivalent totals, i.e., total of liquid and melted frozen precipitation. In the "Monthly Summarized Data" table the total snow and sleet values shown in tenths of inches are unmelted amounts. The max depth on ground values of snow and sleet shown in whole inches are cumulative unmelted amounts. The number of days with .10, .50, 1.00 or more refers to water equivalents.

**PRECIPITATION QUALITY CONTROL:** The NCEI quality control process may flag precipitation data that are spatially inconsistent, exceed climatological limits, or are inconsistent with prevailing weather patterns.

**TEMPERATURE:** Original temperature values are given in the "Daily Temperature" table. Summary temperature information (averages, departures, extremes, monthly degree day totals) is based on the values labeled MAX/MIN.

**WIND:** (As shown in the "Evaporation and Wind" table) the total wind movement in miles over the evaporation pan as determined by an anemometer recorder located 6-8 inches above the pan.

## SYMBOLS AND LETTERS USED IN THE STATION INDEX TABLE

C Station is equipped with recording rain gage (R) but values in this bulletin are from a non-recording rain gage unless indicated by an R.  
G Observations appear in the "Soil Temperatures" table.  
H Observations appear in the "Snowfall and Snow on the Ground" table.  
J Station also published as a Local Climatological Data publication.  
VAR Observation time varies.  
SR / SS Observation time near sunrise / Observation time near sunset, respectively.

## SYMBOLS AND LETTERS USED IN THE DATA TABLES

(DAILY DATA ARE FOR THE 24 HOURS IMMEDIATELY PRECEDING OBSERVATION TIME.)

BLANK Entries in the "Monthly Summarized Data" table indicate no record.

BLANK Entries in the "Daily Precipitation" and "Snowfall and Snow on the Ground" tables indicate zero.

BLANK Entries in the "Daily Temperature" table indicate a missing record

- No record. Data not recorded or not received in time for publication.

+ Precipitation or temperature extremes occurred on one or more previous dates during the month.

\* Rain gage not read. Precipitation is included in the amount following the asterisks.

Time distribution may not be known. A \* preceding the monthly total indicates precipitation amount is being carried forward to next month's total, and may include amounts from the previous month(s).

a As a subscript, indicates accumulated total.

A Amount of precipitation is the total of observer's entries for the current month. It may include precipitation that occurred during the previous month. Refer to earlier bulletin to determine date of last

reading. (Hawaii stations)

B Divisional Departure from normals are computed using 1971-2000 normals.

E Normalized HDD/CDD Calculation. E is appended to the HDD/CDD Calculation when 1-9 individual daily TMAX and/or TMIN values are missing and a Normalized HDD/CDD Calculation is provided. M appears alone if 10 or more daily values are missing.

F Monthly calculation flagged value. F is appended to average and/or total values computed which exclude one or more daily data values that have been flagged by the GHCN-Daily Dataset

M Insufficient or partial data. M is appended to average and/or total values computed with 1-9 daily values missing. M appears alone if 10 or more daily values are missing, (8 or more for wind and evaporation).

N Indicates snow fall or Snowdepth totals are computed with one or more missing days.

R Amounts from recording rain gage.

T Trace. An amount too small to measure.

**SEASONAL TABLES:** Monthly and seasonal snowfall and heating degree days for the 12 months ending with the June data are published in the July issue of this bulletin. Cooling degree days for the calendar year are published in the "Climatological Data Annual Summary."

Information concerning the history of changes in locations, exposure, etc. of substations is kept on file at the National Centers for Environmental Information. Historical information of regular National Weather Service Offices may be obtained from the "Local Climatological Data" annual publication. The contents of this publication may be reprinted or otherwise used freely, with proper credit to the National Centers For Environmental Information. The data are also available digitally.

Effective with the January 2011 Data-Month, COOP Observer Names are no longer included in the Monthly and Annual Climatological Data Publications. This information is not published to ensure the privacy of personal information pursuant to Section 208 of the E-Government Act of 2002 (44 USC 3601).

As of the 2011 Data-Year, Station and Climate Division Maps are no longer being included in the CD Publications. NCEI's Products Branch provides updated Station Maps for various data networks via the Historical Observing Metadata Repository: <http://www.ncdc.noaa.gov/homr>.

The GHCN-Daily Quality Control Flags shown below are displayed as superscripts with the data. For more information on Global Historical Climatology Network - Daily and flags, see: <http://www.ncdc.noaa.gov/oa/climate/ghcn-daily/> and Comprehensive Automated Quality Assurance of Daily Surface Observations. Durre, Imke, Matthew J. Menne, Byron E. Gleason, Tamara G. Houston, Russell S. Vose, 2010: J. Appl. Meteor. Climatol., 49, 16151633. doi: 10.1175/2010JAMC2375.1

Blank = Passed All checks	N = failed naught check
D = failed duplicate check	O = failed climatological outlier check
G = failed gap check	R = failed lagged range check
I = failed internal consistency check	S = failed spatial consistency check
K = failed streak/frequent-value check	T = failed temporal consistency check
L = failed check on length of multiday period	W = temperature too warm for snow
M = failed megaconsistency check	X = failed bounds check
	Z = flagged as a result of an official Datzilla investigation

Beginning with the January 2013 CD Publication, monthly mean temperature calculations have changed to the National Data Stewardship Team standard. Monthly maximum and minimum temperatures are not rounded until after the monthly mean temperature is calculated. This is the most accurate outcome, but may be slightly different from the mean derived from rounded monthly maximum and minimum.

The climate division temperature and precipitation values in this publication are based on simple averages from the current set of NWS-Designated Open and Published COOP and First Order Sites within each division. These values differ from those found in NCEI's nClimDiv product. Beginning in February 2014, the nClimDiv product is used by NCEI's Monitoring Branch and in its monthly climate reports. For more details on nClimDiv, please go to <http://www.ncdc.noaa.gov/monitoring-references/maps/us-climate-divisions.php>.

Effective January 2016, Alaska's Climate Divisions are updated to reflect the 13 climate divisional boundaries established by University of Alaska-Fairbanks, NWS, NCEI, Oregon State University, and University of Nebraska-Lincoln. For more details regarding the updated Alaska Climate Divisions, see: <http://journals.ametsoc.org/doi/pdf/10.1175/JAMC-D-11-0168.1> (Bienek et al., 2012).

**These and other publications are available from the National Centers for Environmental Information**

### **Hourly Precipitation Data**

This publication contains hourly precipitation amounts obtained from recording rain gages located at National Weather Service, Federal Aviation Administration, and cooperative observer stations. Published data are displayed in inches and tenths or inches and hundredths at local standard time. HPD includes maximum precipitation for nine (9) time periods from 15 minutes to 24 hours, for selected stations.

### **Climatological Data**

Monthly editions contain station daily maximum and minimum temperatures and precipitation. Some Stations provide daily snowfall, snow depth, evaporation, and soil temperature data. Each edition also contains monthly summaries for heating and cooling degree days (65 degree F base). The July issue contains a recap of monthly heating degree days and snow data for the preceding July through June.

The Annual issue contains monthly and annual averages of temperature, precipitation, temperature extremes, freeze data, soil temperatures, evaporation, and a recap of monthly cooling degree days.

### **Storm Data**

Monthly issues contain a chronological listing, by states, of occurrences of storms and unusual weather phenomena. Reports contain information on storm paths, deaths, injuries, and property damage. An "Outstanding storms of the month" section highlights severe weather events with photographs, illustrations, and narratives. The December issue includes annual tornado, lightning, flash flood, and tropical cyclone summaries.

### **Monthly Climatic Data for the World**

This publication contains monthly means for temperature, pressure, precipitation, vapor pressure, and sunshine for approximately 2,000 surface data collection stations worldwide and monthly mean upper air temperatures, dew point depressions, and wind velocities for approximately 500 observing sites.

### **Local Climatological Data**

LCD publications summarize temperature, relative humidity, precipitation, cloudiness, wind speed and direction observations for several hundred cities in the U.S. and its territories. Each monthly publication also contains 3 hourly weather observations for that month and a hourly summary of precipitation. Annual LCD publications contain a summary of the past calendar year as well as historical averages and extremes.

For Information Call:

(828) 271-4800 Option 2

(828) 271-4010 (TDD)

(828) 271-4876 (Fax)

NOAA National Centers for Environmental Information  
Attn: Customer Engagement Branch  
151 Patton Avenue  
Asheville, NC 28801-5001

Customer Services Number: (828) 271-4800, option 2  
TDD : (828) 271-4010  
Fax number: (828) 271-4876

NCEI now offers free online access to the *Climatological Data* publication.  
Go to : [www.ncdc.noaa.gov](http://www.ncdc.noaa.gov) and choose Most Popular.