



CLIMATOLOGICAL DATA

VIRGINIA

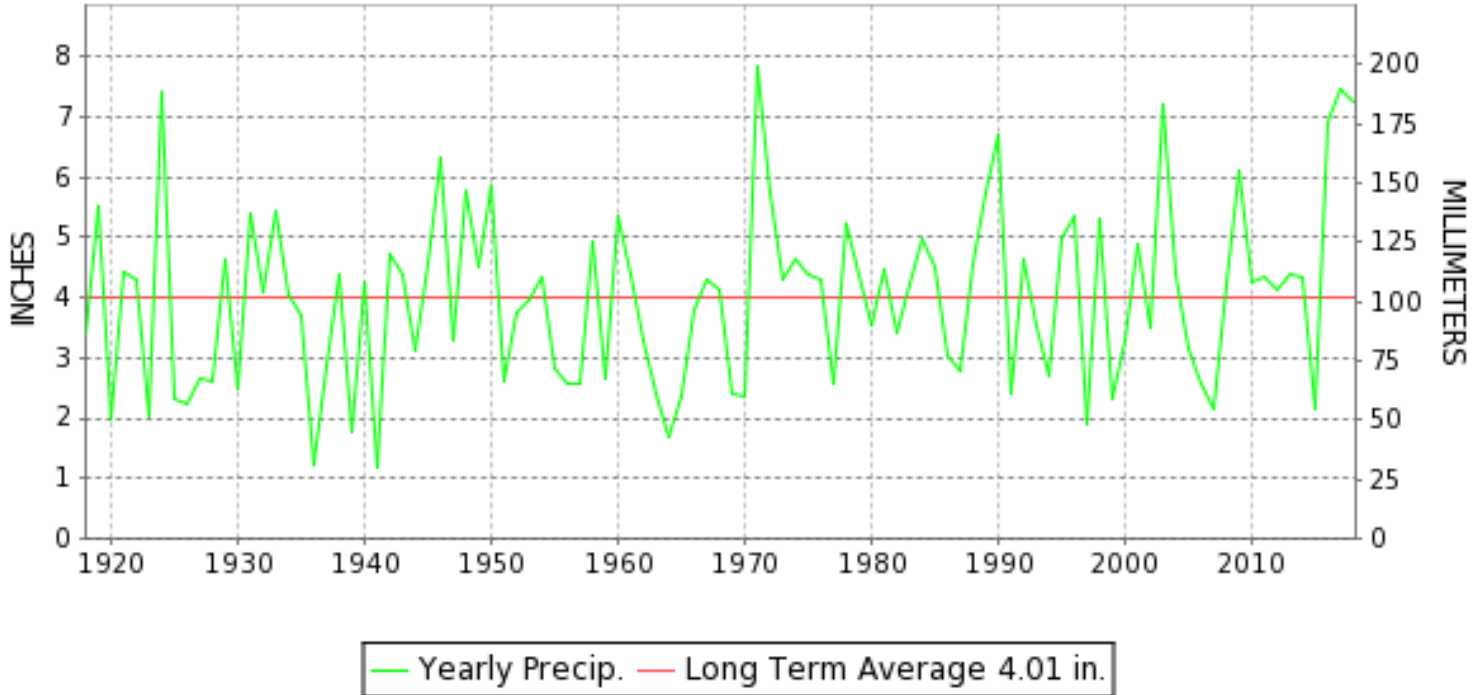
MAY 2018

VOLUME 128 NUMBER 05

ISSN 0364-5630

GHCND Ver: 3.25-upd-2018091918

MAY PRECIPITATION BY YEAR



TEMPERATURE AND PRECIPITATION EXTREMES

VIRGINIA

HIGHEST TEMPERATURE	95	MAY 13+	SPERRYVILLE
LOWEST TEMPERATURE	23	MAY 02+	MILLGAP
GREATEST TOTAL PRECIPITATION	14.76		ASHLAND
LEAST TOTAL PRECIPITATION	3.55		EMPORIA 1 WNW
GREATEST 1 DAY PRECIPITATION	7.12	MAY 31	FREE UNION
GREATEST TOTAL SNOWFALL	T		5 STATIONS

"I certify that this is an official publication of the National Oceanic and Atmospheric Administration (NOAA) It is compiled using information from weather observing sites supervised by NOAA/National Weather Service and received at the National Centers for Environmental Information(NCEI), Asheville, North Carolina 28801."

Mary S. Wolpenbut

Director
National Centers for Environmental Information

noaa

National
Oceanic and
Atmospheric Administration

National
Environmental Satellite, Data
and Information Service

National
Centers for Environmental Information
Asheville, North Carolina

MONTHLY STATION AND DIVISION SUMMARY

STATION	TEMPERATURE (°F)										PRECIPITATION (IN)													
	AVERAGE MAXIMUM	AVERAGE MINIMUM	AVERAGE	DEPARTURE FROM NORMAL	HIGHEST	DATE	LOWEST	DATE	HEATING DEG. DAYS	COOLING DEG. DAYS	NO. OF DAYS				TOTAL	DEPARTURE FROM NORMAL	GREATEST 24 HOURS	DATE	ICE PELLETS, SNOW			NO. OF DAYS		
											MAX		MIN						TOTAL	MAX DEPTH ON GROUND	DATE	.10 OR MORE	.50 OR MORE	1.00 OR MORE
											>=90	<=32	<=32	<=0										
RICHMOND INTL AP	84.3	62.5	73.4	7.0	93	12	42	01	4	273	5	0	0	0	10.35	6.57	3.86	18	0.0	0		11	7	4
WINTERPOCK 4 W															8.89		3.23	18	M			12	9	3
--DIVISIONAL DATA-----> WESTERN Piedmont 03			71.8	7.7B										8.42	4.29B									
ALTAVISTA														8.00		2.18	22	0.0	0			12	10	3
APPOMATTOX	81.6	59.7	70.6	7.3	91	15+	42	01	17	200	2	0	0	0	7.17	2.41	2.02	18	0.0	0		14	9	2
BEDFORD														11.02	6.82	3.26	19	0.0	0			15	13	4
BROOKNEAL	82.8	57.7	70.2	10.6	92	15+	31	01	23	194	3	0	1	0	6.92	2.23	3.12	19	0.0	0		12	9	2
CHARLOTTESVILLE 2W	81.5	61.1	71.3	6.3	92	13	46	01	19	220	5	0	0	0	8.97	4.34	3.06	31	0.0	0		16	9	2
CHATHAM	81.4	57.7	69.5	7.3	90	15+	33	01	34	181	2	0	0	0	6.61	2.57	2.49	19	0.0	0		12	9	2
CONCORD 4 SSW														8.58		2.91	18	0.0	0			14	10	2
DANVILLE 2 SE	M	M	M								0	0	0	0	M				M					
DANVILLE RGNL AP	82.9	60.8	71.9	5.5	91	14	37	01	8	230	3	0	0	0	6.60	2.72	3.96	18	0.0	0		13	7	1
FREE UNION	81.1	57.6	69.4		93	05	36	01	30	175	5	0	0	0	M 13.49		7.12	31	0.0	0		12	9	4
HOLCOMB ROCK														9.24		2.09	20	T	0			12	11	3
HUDDLESTON 4 SW														6.52		2.07	19	0.0	0			14	11	2
LYNCHBURG INTL AP	81.9	59.5	70.7	7.6	91	12	38	01	10	195	2	0	0	0	8.32	4.59	1.88	27	0.0	0		15	11	3
MARTINSVILLE FLTR PLT	82.5	57.1	69.8	6.5	91	15+	31	01	29	184	3	0	1	0	7.52	3.49	3.85	19	0.0	0		13	11	2
MEADOWS OF DAN 5 SW	78.4	57.2	67.8		89	15	40	02+	22	115	0	0	0	0	8.87		2.58	19	0.0	0		17	12	3
MONTEBELLO FISH CULTURAL STN	77.0M	53.2M	65.1M		90	15	34	01	76E	86E	1	0	0	0	M 11.15		2.85	22	M 0.0	0		16	11	4
MONTICELLO	M	M	M								0	0	0	0	M				M					
PEDLAR DAM														6.08		1.70	20	T	0			12	10	2
ROCKY MT	82.0	58.8	70.4	7.8	92	15+	35	01	19	193	3	0	0	0	6.50	2.43	1.92	20	0.0	0		16	12	2
S BOSTON	84.4	60.4M	72.4M	8.6	94	15	33	01	22E	266E	5	0	0	0	7.93	4.01	3.47	19	0.0	0		12	8	3
STUART	81.4	58.2	69.8	5.7	90	14+	39	01	17	174	2	0	0	0	6.09	1.49	1.95	20	0.0	0		17	11	1
WOOLWINE 1 SE														4.32		1.13	19	0.0	0			17	10	1
--DIVISIONAL DATA-----> NORTHERN 04			69.9	6.4B										7.51	3.12B									
FRONT ROYAL	79.7M	54.7M	67.2M	4.8	92	13	45	01	50E	127E	2	0	0	0	M 6.79	2.59	1.65	15	M 0.0	0		15	11	3
PURCELLVILLE	79.4	58.1	68.8	7.9	91	05+	45	01	37	160	5	0	0	0	9.40		2.70	15	0.0	0		16	11	4
LURAY 5 E	80.1	56.6	68.4	5.6	90	13+	37	01	39	152	3	0	0	0	9.23	5.23	2.90	15	0.0	0		17	13	2
MANASSAS	78.8M	58.5M	68.6M	4.6	90	13	37	01	29E	153E	1	0	0	0	M 6.32		1.85	18	M 0.0	0		15	12	2
MT WX 3	75.5	57.6	66.5		87	05+	38	01	55	111	0	0	0	0	9.13		2.35	15	0.0	0		16	13	3
PIEDMONT RSCH STN	80.7	58.6	69.6	5.9	91	13	36	01	29	181	3	0	0	0	MA 7.05	2.91	0.85	15	M 0.0	0		9	6	0
SOMERSET	80.6	59.1	69.9	6.5	91	13	40	01	30	190	1	0	0	0	8.61	4.39	3.14	19	0.0	0		17	11	3
SPERRYVILLE	81.9M	59.0M	70.4M	8.4	95	13+	50	10+	21E	197E	7	0	0	0	M 11.05	6.70	2.60	19	M 0.0	0		18	11	5
WFO STERLING	80.0M	57.6M	68.8M	6.5	90	12+	40	01	20E	145E	3	0	0	0	8.11	3.39	2.01	14	0.0	0		13	10	3
VIENNA	77.7	57.2	67.4	5.9	90	04	38	01	46	129	1	0	0	0	6.12	1.59	1.61	15	0.0	0		14	10	3

VIRGINIA
201805

MONTHLY STATION AND DIVISION SUMMARY

STATION	TEMPERATURE (°F)											PRECIPITATION (IN)												
	AVERAGE MAXIMUM	AVERAGE MINIMUM	AVERAGE	DEPARTURE FROM NORMAL	HIGHEST	DATE	LOWEST	DATE	HEATING DEG. DAYS	COOLING DEG. DAYS	NO. OF DAYS				TOTAL	DEPARTURE FROM NORMAL	GREATEST 24 HOURS	DATE	ICE PELLETS, SNOW			NO. OF DAYS		
											MAX		MIN						TOTAL	MAX DEPTH ON GROUND	DATE	.10 OR MORE	.50 OR MORE	1.00 OR MORE
											>=90	<=32	<=32	<=0										
WASHINGTON DULLES INTL AP	80.2	59.0	69.6	6.4	90	12+	39	01	21	172	3	0	0	0	8.92	4.37	2.35	31	0.0	0		15	10	2
WASHINGTON REAGAN NATL AP	81.5	63.4	72.4	6.4	91	02	49	01	2	239	4	0	0	0	8.73	4.74	1.49	14	0.0	0		12	10	4
WINCHESTER	80.3	58.0	69.1	7.1	93	13	43	01	37	175	3	0	0	0	8.98	5.11	2.24	15	0.0	0		16	11	3
WINCHESTER 7 SE	79.3M	54.5M	66.9M	6.3	92	13+	35	02+	74E	143E	4	0	0	0	M 8.59	4.77	2.30	17	M 0.0	0		17	11	3
WOODSTOCK 2 NE	79.5	55.8	67.7	7.3	90	13	37	02	54	144	1	0	0	0	7.25	3.24	2.20	17	0.0	0		18	13	1
--DIVISIONAL DATA-----> CENTRAL MOUNTAIN 05			68.8	7.0B											8.45	4.22B								
BUENA VISTA														4.63		1.10	22	0.0	0			15	13	1
COVINGTON FLTR PLT	79.4	53.9	66.6	3.8	89	15+	31	01	50	108	0	0	2	0	5.97	1.89	1.52	06	0.0	0		17	10	1
DALE ENTERPRISE	79.5MF	55.3M	67.4MF	7.1	89	13	34	01	46E	124E	0	0	0	0	M 6.55	2.84	1.35	28	M 0.0	0		13	9	2
GATHRIGHT DAM	78.6	54.9	66.7	6.4	90	04	33	01	48	110	1	0	0	0	6.82	2.71	1.94	06	0.0	0		18	14	1
GLASGOW 1 SE														6.10		1.31	19	0.0	0			17	10	2
HOT SPRINGS	78.1	54.4	66.2	6.8	88	15	34	01	55	101	0	0	0	0	7.98	3.79	1.50	06	0.0	0		15	13	3
LEXINGTON	82.2	56.4	69.3	6.5	91	15+	34	01	27	169	4	0	0	0	3.69	-0.33	0.66	20	0.0	0		13	9	0
MILLGAP	76.2	48.1	62.2	5.8	86	16+	23	02+	118	37	0	0	3	0	6.62	1.85	1.33	06	0.0	0		19	15	1
MTN GROVE														* 5.44		2.27	06	0.0	0			16	12	1
MUSTOE 1 SW	75.5	51.1	63.3	6.7	84	15+	28	01	90	43	0	0	1	0	6.06	1.36	1.02	05	0.0	0		19	17	1
NEW CASTLE														6.57		1.24	19	0.0	0			18	11	2
ROANOKE 8 N	81.3	58.1	69.7	6.4	91	15+	38	01	23	178	3	0	0	0	7.95	3.52	1.75	18	0.0	0		15	11	3
ROANOKE INTL AP	82.6	62.3	72.5	7.9	93	13+	42	01	3	242	5	0	0	0	9.50	5.44	2.71	17	0.0	0		14	12	4
STAUNTON WTP	78.5	58.3	68.4	6.9	89	13	43	01	42	153	0	0	0	0	5.89	2.15	1.22	15	0.0	0		18	12	1
WAYNESBORO WTP	80.3	56.6	68.5	7.6	90	15+	34	02+	42	157	2	0	0	0	10.29	6.36	3.24	31	0.0	0		14	12	4
WILLIAMSVILLE 2 S														A 6.66		0.79	29	T	0			14	11	0
--DIVISIONAL DATA-----> SOUTHWESTERN MOUNTAIN 06			67.3	5.9B										6.68	2.56B									
ABINGDON 3S	79.4	56.4	67.9	5.9	86	15	33	01	29	128	0	0	0	0	4.10	-0.51	0.86	06	0.0	0		15	13	0
BIG STONE GAP	80.3	56.7	68.5	5.5	87	15	35	01	25	143	0	0	0	0	8.76	3.88	1.90	31	0.0	0		17	14	3
BLACKSBURG NWSO	77.1	54.8	66.0	6.7	85	15+	32	01	54	92	0	0	1	0	5.79	1.46	1.49	27	0.0	0		16	10	2
BURKES GARDEN	73.1	50.8	61.9	5.7	81	15	24	01	115	27	0	0	2	0	6.52	1.76	1.11	17	T	0		18	13	1
CHRISTIANSBURG	76.6	57.2	66.9	5.9	86	15	38	01	37	105	0	0	0	0	4.11	-0.79	1.42	19	0.0	0		15	10	1
CLINTWOOD 1 W	79.7	54.5	67.1	7.3	87	13+	29	01	36	109	0	0	2	0	7.56	2.97	1.60	22	0.0	0		18	13	2
COPPER HILL	74.3	56.9	65.6		85	14	36	01	51	76	0	0	0	0	7.39		1.71	19	0.0	0		16	13	2
ELK CREEK 4SSW	73.2	59.0	66.1		83	15	43	01	41	82	0	0	0	0	6.83		1.62	17	0.0	0		17	13	2
GALAX WTP	77.7M	54.5	66.1M	7.2	88	15+	33	02+	52E	91E	0	0	0	0	5.79		2.10	19	0.0	0		13	9	1
GRUNDY	81.1	56.3	68.7	7.6	89	16	31	01	34	156	0	0	1	0	4.07	-0.82	1.69	06	0.0	0		17	10	1
JOHN FLANNAGAN LAKE	85.0M	54.6M	69.8M		93	14	31	01	23E	178E	2	0	1	0	MA 5.11		0.90	16	0.0	0		9	4	0
LEBANON	80.4	54.8	67.6	6.9	87	16	30	02+	42	129	0	0	2	0	5.99	1.57	1.42	16	0.0	0		16	11	2

MONTHLY STATION AND DIVISION SUMMARY

STATION	TEMPERATURE (°F)											PRECIPITATION (IN)												
	AVERAGE MAXIMUM	AVERAGE MINIMUM	AVERAGE	DEPARTURE FROM NORMAL	HIGHEST	DATE	LOWEST	DATE	HEATING DEG. DAYS	COOLING DEG. DAYS	NO. OF DAYS				TOTAL	DEPARTURE FROM NORMAL	GREATEST 24 HOURS	DATE	ICE PELLETS, SNOW			NO. OF DAYS		
											MAX		MIN						TOTAL	MAX DEPTH ON GROUND	DATE	.10 OR MORE	.50 OR MORE	1.00 OR MORE
											>=90	<=32	<=32	<=0										
NORA 4 SSE	76.1	60.2	68.2	7.5	84	15	42	01	21	127	0	0	0	0	3.57	-1.93	0.82	06	0.0	0		13	10	0
PULASKI 2 E	78.3M	56.0	67.2M	6.6	86	15+	34	01	40E	111E	0	0	0	0	3.67	-0.10	1.07	17	0.0	0		15	9	1
RADFORD 3 N	78.4	56.1	67.2	7.6	87	15+	31	01	38	116	0	0	1	0	A 4.66	0.74	0.71	16	0.0	0		6	5	0
RICHLANDS	78.9	55.0	67.0	6.8	86	15	31	01	48	118	0	0	1	0	5.69	0.94	0.85	16	0.0	0		20	11	0
SALTVILLE 1N	79.1	54.6	66.8	5.2	86	15	30	01	50	117	0	0	2	0	4.66	0.31	1.10	20	0.0	0		17	10	1
STAFFORDSVILLE 3 ENE	77.5	53.4	65.5	5.9	86	14	30	01	60	82	0	0	2	0	7.45	3.21	1.72	06	0.0	0		15	11	1
WILLIS															A 4.72		1.76	19	0.0	0		14	7	1
WISE 1SE	77.8	58.3	68.0	7.2	85	15	42	01	22	124	0	0	0	0	5.39	0.77	1.12	16	0.0	0		19	11	1
WYTHEVILLE	77.0	55.7	66.3	7.6	86	15	36	01	46	95	0	0	0	0	5.65	1.54	2.01	19	0.0	0		15	9	2
--DIVISIONAL DATA----->			66.9	7.3B											5.62	1.02B								

VIRGINIA
201805

DAILY PRECIPITATION (INCHES)

STATION	TOTAL	DAY OF MONTH																															
		01	02	03	04	05	06	07	08	09	10	11	12	13	14	15	16	17	18	19	20	21	22	23	24	25	26	27	28	29	30	31	
VIRGINIA																																	
TIDEWATER 01																																	
DISPUTANTA	5.98										0.54				0.45		0.37	1.42	0.25	0.46				0.13				0.04	0.45	0.35	0.24	1.27	
EMPORIA 1 WNW	3.55										0.16				0.12		1.02	0.15	0.40	0.31			0.08	0.02				0.05		0.71	0.05	0.12	
FREDERICKSBURG SEWAGE	M 4.62										-	T	0.06	0.02	0.44	0.01	0.01	1.37	2.18	-	0.07	T	0.10			-	0.13	0.19	0.02	T	0.02		
HOLLAND 1 E	6.52	0.02	1.48	0.42	0.03	0.77	0.45	0.04			0.10	0.70	0.12	0.06			0.02	0.01				0.33	0.51			0.04	0.23		0.72	0.30	0.12	0.05	
HOPEWELL	M 4.34								0.07		0.20	T			0.32	0.20	1.22	0.80	-	0.63				0.29				0.27	0.13	-	0.14	0.07	
NORFOLK INTL AP	7.68						2.57	0.06			0.38				0.22	T	0.95	0.01	1.20	T	T	T	T			T	T	1.88	0.35	0.06	T	0.03	
NORFOLK S	8.40						2.44	0.04	0.01	0.01	0.34			0.06		0.03	0.88	0.14	1.27	0.03								2.93	0.19			0.03	
NORTH	7.28										0.35				0.67		0.84	1.25	1.35	0.55				1.86				0.38				0.03	
PAINTER 2W	5.01						0.69	0.04			0.28				0.29	0.64	0.10	0.31	0.87	0.27				0.39				0.73		0.40			
STONY CREEK 2 N	8.03						0.13				0.50	0.40		1.00	0.03	0.60	1.14	0.23	0.30				0.12			0.72	0.72		0.72	0.55	0.86	0.01	
SUFFOLK LAKE KILBY	4.39						2.20	0.05	T	T	0.20			0.06		T	0.40	0.21	0.27			T						T	0.58	0.22	0.20	T	
WAKEFIELD 1NW	10.60						0.89	0.01			0.37			0.99		0.74	1.67	1.34	0.37	T			0.01				T	0.30	1.62	1.04	1.25	T	
WALKERTON 2 NW	8.92						0.07				0.55				0.63	1.13	0.65	3.31	2.00				0.27					0.02	0.21		0.02	0.06	
WALLACETON LK DRUMMOND	6.55						1.10	0.08	0.15	0.05	0.73					0.28	0.10	0.58	1.20			0.10	0.05	0.10					1.95	0.03	0.05		
WALLOPS ISLAND NASA TEST FACIL	5.89						0.68	0.03			0.03	0.25	0.03	0.04	0.02	0.69	0.14	2.61	0.15	T	0.02	0.32	T			T		0.70	0.09	0.09	T	T	
WARSAW 2 NW	8.87					0.05					0.06			0.69	0.15	0.37	2.00	0.96	2.18				1.08					0.75				0.58	
WEST POINT 2 NW	8.74									0.80	0.01				0.49	0.14	0.75	3.22	1.85	0.01				1.01				0.03	0.11	0.01	T	0.02	
WILLIAMSBURG 2 N	6.44						1.29	0.05			0.45			0.26	0.01	0.95	0.24	1.75	0.45				0.02	0.14				0.55	0.08	0.10	0.10	T	
EASTERN PIEDMONT 02																																	
ALBERTA 5N	7.39										0.10					T	2.67	2.25	0.70	0.26				0.18				0.46		0.55	0.15	0.05	
AMELIA COURTHOUSE 1	7.11										0.10	0.24				0.12	1.88	2.23	1.64	0.32	0.02			0.30			0.07		0.10	0.02	0.07		
ASHLAND	14.76						T				0.29				0.27	0.61	0.26	4.12	3.13					0.50					5.51			0.07	
BREMO BLUFF	M	-	-	-	-	-	-	-	-	-	-	-	-	-	-	-	-	-	-	-	-	-	-	-	-	-	-	-	-	-	-	-	-
BUCKINGHAM	A 9.93						T	0.11			0.31				0.08	0.07	*	*	*	6.85 _a	0.22	T	0.68	0.03				1.46	0.04	0.08			
CAMP PICKETT	M 8.81										0.35				0.30	0.31	1.84	3.50	0.50	0.07				0.15	-			0.75		0.85	T	0.19	
CHASE CITY	9.81							0.06			0.31						6.85	0.53	1.35									0.33		0.26	0.12		
CLARKSVILLE	8.14							0.68			0.40					T	0.80	1.94	0.97	1.10	T	0.10	T	0.25			0.64		0.23	T	1.03		
CORBIN	M 5.56														0.59	0.02	-	2.56	1.46	0.05				0.25				-	-	0.60		0.03	
CROZIER	M 7.42										0.28				0.92	0.07	0.75	2.02	1.80	0.10	0.16		0.39				0.08	0.59	0.08		0.18		
FARMVILLE 2 N	6.53							0.05			0.23					T	1.04	0.58	2.80	0.30	0.52		0.50				0.12	0.32	0.07	T	T		
JOHN H KERR DAM	8.03							0.43			0.41						0.88	4.01	0.48	0.24				0.08	0.04		0.82	0.26	0.26	0.10	0.02		
KEYSVILLE 2 S	5.37							0.06			0.02					0.02	1.92	1.24	0.65	0.52			0.01	0.34			0.35		0.20	0.04			
LOUISA	5.01						0.01				0.31	0.10	0.20		0.39	0.21	0.28	0.38	1.50	0.01			0.22			0.01	0.42	0.17		0.07	0.73		
PALMYRA 3S	8.09						0.06				0.09				0.55	0.73	3.01	2.23	0.01	0.11			0.13					0.23	0.39			0.55	
PETERSBURG	M 8.46						0.13				0.59		0.16	0.30	0.02	2.26	1.10	1.63	0.22	0.10			0.32	-		0.31	0.17		1.15				
RICHMOND INTL AP	10.35					T					0.36	T		0.23	T	1.04	2.67	3.86	0.68				1.38	0.03		0.02	T	0.01	T	0.07	T		
WINTERPOCK 4 W	8.89										0.63	0.29			0.26		2.07	3.23	1.53	0.14			0.23				0.05		0.09	0.01	0.36		
WESTERN PIEDMONT 03																																	
ALTAVISTA	8.00															0.60	0.37	1.37	1.75	0.15			2.18	0.65				0.53	0.01	0.05	0.20	0.14	
APPOMATTOX	7.17						T	0.07			0.09					0.04	0.65	2.02	2.00	0.27			0.05	0.80				0.13	0.67	0.12	0.03	0.23	

VIRGINIA
201805

DAILY PRECIPITATION (INCHES)

STATION	TOTAL	DAY OF MONTH																														
		01	02	03	04	05	06	07	08	09	10	11	12	13	14	15	16	17	18	19	20	21	22	23	24	25	26	27	28	29	30	31
BEDFORD	11.02						0.40	0.32			0.04					0.20	1.07	1.00	3.26	2.63		0.90	0.23					0.15	0.25	0.05	0.20	0.32
BROOKNEAL	6.92						0.17									0.27	1.57	0.42	3.12	0.15		0.02	0.42					0.45	0.21	0.07	0.05	
CHARLOTTESVILLE 2W	8.97				0.01	T	0.08				0.52				0.47	0.01	0.44	0.84	2.24	0.35	T	0.02	0.44				0.32	0.05	0.08	0.04	3.06	
CHATHAM	6.61						0.15									0.35	2.40	0.10	2.49	0.39		0.18	0.03				0.14		0.33	0.04	0.01	
CONCORD 4 SSW	8.58						0.15				0.06					0.11	0.56	2.91	2.51	0.58		0.13	0.97				0.02	0.42	0.11	0.03	0.02	
DANVILLE 2 SE	M	-	-	-	-	-	-	-	-	-	-	-	-	-	-	-	-	-	-	-	-	-	-	-	-	-	-	-	-	-	-	
DANVILLE RGNL AP	6.60						0.20			0.03					T	0.72	0.03	3.96	0.40	0.07	0.18	T	T			0.64	0.08	0.05	0.23	0.01	T	
FREE UNION	M 13.49				T	T	0.10				0.09				1.26	-	-	1.85	1.74	0.19	T	0.04	0.42				0.24	0.38	0.06	T	7.12	
HOLCOMB ROCK	9.24						T	0.36			0.48					T	1.73	0.67	1.60	2.09		0.72	0.45				0.19	0.09	T	0.25	0.61	
HUDDLESTON 4 SW	6.52						0.28	0.04			0.33					0.83	1.02	0.72	2.07	0.22		0.28	0.42				0.10		0.07	0.11	0.03	
LYNCHBURG INTL AP	8.32					0.33			0.10	0.09					0.47	0.76	1.44	1.30	0.35	T	0.94	0.19	T		0.06	1.88	0.02	T	0.04	0.35		
MARTINSVILLE FLTR PLT	7.52						0.15			0.16	0.42					0.22	1.21	0.16	3.85	0.75		0.06					0.20		0.20	0.13	0.01	
MEADOWS OF DAN 5 SW	8.87						0.08	1.25			0.12					0.32	0.80	0.23	2.58	0.65	0.04	1.74	0.06			0.07	0.44	0.03	0.15	0.11	0.20	
MONTEBELLO FISH CULTURAL STN	M 11.15			-	0.06	0.02	0.12	0.05						-	0.65		1.00	0.79	1.10	0.72	0.05	2.85	0.78				0.89	0.08		0.28	1.71	
MONTECELLO	M	-	-	-	-	-	-	-	-	-	-	-	-	-	-	-	-	-	-	-	-	-	-	-	-	-	-	-	-	-	-	
PEDLAR DAM	6.08				T	T	0.31	0.29			0.51					T	0.45	0.22	0.72	1.70		1.03	0.30				T	0.03	0.03	T	0.49	
ROCKY MT	6.50					0.01	0.12	0.11			T					0.34	0.34	0.55	1.45	1.92	0.02	0.04	0.90			0.02	0.20		0.16	0.12	0.20	
S BOSTON	7.93						0.42			0.08						0.04	1.04	1.74	3.47	0.10		0.03	0.04				0.66		0.19	0.12		
STUART	6.09					T	0.05	0.26		0.03	0.36					0.44	0.86	0.22	0.94	1.95	0.03	0.31	0.06			0.01	0.20		0.17	0.06	0.14	
WOOLWINE 1 SE	4.32						0.02	0.54		0.09	0.03					0.42	0.45	0.33	1.13	0.41	0.01	0.19	0.06				0.13	0.03	0.15	0.07	0.26	
NORTHERN 04																																
FRONT ROYAL	M 6.79			-			0.22	0.37			0.10	0.01	0.41	0.32	1.65	0.40	1.13	-	1.38	0.08		0.02	0.28				0.04		-		0.38	
PURCELLVILLE	9.40				T		0.26	0.12			0.20		0.56	0.05	2.70	1.34	1.85	0.46	1.32	0.08		T	0.29			0.01	0.02	0.04			0.10	
LURAY 5 E	9.23						0.22	0.08			0.43	0.10	0.56	0.39	2.90	0.06	0.67	0.36	0.82	0.02		0.10	0.32						0.11	0.01	2.08	
MANASSAS	M 6.32			-	0.05								0.61	0.25	0.65	0.15	0.25	1.85	1.60	0.10		0.05	0.30				0.10	0.21	0.05		0.10	
MT WX 3	9.13					0.21	0.19			0.20		0.50	0.20	2.35	0.57	1.90	0.46	1.86	0.06			T	0.19		0.01		0.02	0.10		0.31		
PIEDMONT RSCH STN	MA 7.05				-	-	0.19			0.01	*		0.56 _a	0.85	0.24	0.06	0.38	*	*	2.79 _a			0.14			*	*	*	1.18 _a	0.01	0.64	
SOMERSET	8.61				0.02	0.02	0.07			0.10	0.06				0.71	0.16	0.21	0.42	3.14	0.10		0.01	0.34				0.13	1.38		0.03	1.71	
SPERRYVILLE	M 11.05	-					0.10	0.03			0.42	0.06	0.45	0.64	1.39	-	1.18	0.83	2.60	0.05	0.01	0.05	0.13				0.07	1.09	0.06	-	1.89	
WFO STERLING	8.11				T	0.10	0.13			T			0.02	2.01	0.94	0.15	0.74	1.26	0.75	T		0.61					T	0.04	T	0.03	1.33	
VIENNA	6.12					0.01							0.31	0.33	1.61	0.16	0.25	1.06	1.24	0.21		0.01	0.79				0.01	0.01			0.12	
WASHINGTON DULLES INTL AP	8.92			0.01	0.03	0.20				T		T	0.52	1.87	0.27	0.29	0.92	0.85	0.71			0.83				T	0.02	0.03		0.02	2.35	
WASHINGTON REAGAN NATL AP	8.73				T	T				T		0.15	0.52	1.49	0.41	0.82	0.97	1.01	0.77			1.23				0.03	T	0.01		T	1.32	
WINCHESTER	8.98						0.27	0.64			0.06		0.46	0.18	2.24	0.71	1.77	0.72	1.23	0.08		0.02	0.16				T	0.07			0.08	
WINCHESTER 7 SE	M 8.59						0.43	0.37		-	0.03		0.62	0.07	0.93	1.42	2.30	0.64	1.00	0.10		0.04	0.15				0.36	0.02	0.03	-	0.08	
WOODSTOCK 2 NE	7.25						0.35	0.35			0.40		0.90	0.04	0.82	0.20	2.20	0.62	0.42	0.02	0.01	0.25				0.21	0.02	0.02	0.10		0.32	
CENTRAL MOUNTAIN 05																																
BUENA VISTA	4.63						0.10	0.17	0.25	0.15		0.32			0.03		0.41	0.20	0.78	0.26		1.10	0.31					0.03	0.23		0.29	
COVINGTON FLTR PLT	5.97				0.05	1.52	0.42	0.07			0.05					0.62	0.78	0.43	0.40	0.53		0.25	0.05				0.05	0.38	0.07	0.05	0.25	
DALE ENTERPRISE	M 6.55					0.60	0.24							0.05	0.70	0.04	0.87	0.03	0.57			1.22	0.06					1.35	0.42		0.40	
GATHRIGHT DAM	6.82					1.94	0.41	0.10	0.01		0.22	T				0.12	0.54	0.50	0.40	0.30	0.07	0.55	0.18		T		0.18	0.93	0.25	0.03	0.09	
GLASGOW 1 SE	6.10					0.01	0.02	0.10			0.64				0.02	0.01	0.45	0.68	1.31	0.68		1.10	0.40				0.07	0.06	0.03	0.11	0.41	

DAILY PRECIPITATION (INCHES)

STATION	TOTAL	DAY OF MONTH																														
		01	02	03	04	05	06	07	08	09	10	11	12	13	14	15	16	17	18	19	20	21	22	23	24	25	26	27	28	29	30	31
HOT SPRINGS	7.98					1.50	0.32	0.08				0.18				0.15	1.10	0.87	0.70	0.47		1.40	0.15						0.17	0.76	0.02	0.11
LEXINGTON	3.69					T 0.40	0.37					0.04					0.17	0.39	0.64	0.66		0.41	0.37					0.05	0.05	0.02	0.12	
MILLGAP	6.62					0.06	1.33	0.51	0.13	0.13					0.01	0.10	0.58	0.51	0.47	0.30	0.02	0.68	0.24					0.97	0.11	0.04	0.21	
MTN GROVE	* 5.44					T 2.27	0.31	0.03	0.31	0.12	0.22					0.10	0.32	0.56	0.31	0.32		0.09	0.25					0.05	0.03	0.15	-	-
MUSTOE 1 SW	6.06				T	1.02	0.73	0.13	0.04		0.22			T	0.28	0.35	0.70	0.27	0.25	0.12	0.22	0.24	0.10			0.46	0.05	0.15		0.62	0.11	
NEW CASTLE	6.57					0.06	0.58	0.05	0.03			0.35			0.14	0.06	0.45	1.22	1.24	0.45	T	0.82	0.47					0.18	0.34	0.04	0.02	0.07
ROANOKE 8 N	7.95						0.02	0.04	0.05							1.64	0.57	1.75	1.50	0.30		0.38	0.41					0.18	0.67	0.08	0.10	0.26
ROANOKE INTL AP	9.50					T			T		0.12				1.60	1.23	2.71	1.26	0.97		0.20	0.70			0.12		0.47	0.01	0.07	0.40	0.24	
STAUNTON WTP	5.89					0.04	0.35	0.04	T		0.02	0.20	T		1.22	0.08	0.10	0.90	0.98	0.30	0.01	0.51	0.33				0.04	0.51	0.12		0.14	
WAYNESBORO WTP	10.29					T	0.11	0.01				0.20			1.32		0.83	1.79	1.05	0.19	0.06	0.30	0.18					0.77	0.24		3.24	
WILLIAMSVILLE 2 S	A 6.66					*	*	1.51 _a	0.15	0.04		0.13			0.22	0.26	0.67	0.50	*	*	0.80 _a	0.77	0.11				0.04	0.23	0.79	0.04	0.40	
SOUTHWESTERN MOUNTAIN 06																																
ABINGDON 3S	4.10						0.86	0.13	0.02			0.42	0.10			0.10		0.28	0.25	0.22		0.10	0.07					0.70	0.35	0.25	0.25	
BIG STONE GAP	8.76					0.46	0.34	0.03	0.16				0.05			0.32	0.18	1.46	0.01	0.35	0.58	0.64			0.11		0.90	1.07	0.20		1.90	
BLACKSBURG NWSO	5.79					T	0.36	0.02			0.01	0.02			0.44	0.65	0.54	1.00	0.04			0.10	0.81				1.49	0.12	0.16	0.01	0.02	
BURKES GARDEN	6.52					0.12	0.86	0.17	0.35			0.10	0.04			0.13	1.11	0.53	0.77	0.96		0.05	0.07				0.72	0.02	0.09	0.13	0.30	
CHRISTIANSBURG	4.11						0.08	0.03					0.26		0.41	0.34	0.17	1.42	0.06			0.40	0.05				0.31	0.20	0.26	0.02	0.10	
CLINTWOOD 1 W	7.56					0.09	1.01	0.29	0.65		0.25	T			0.10	0.22	0.51	0.35	0.97			1.60	0.09		T	0.21	0.60	0.05	0.07	0.03	0.47	
COPPER HILL	7.39						0.06	0.06	0.08						0.10	0.49	0.18	0.86	1.71	0.40		1.11	0.87				0.80	0.14	0.15	0.23	0.15	
ELK CREEK 4SSW	6.83						0.29	0.01	0.15						0.40	1.62	0.83	1.58	0.03	T	0.35	0.43	0.01		0.01	0.02	0.32	0.13	0.14	0.20	0.32	
GALAX WTP	5.79						0.06		0.13			T			0.38	0.50	0.68	2.10	0.05			0.12	0.09				0.76	0.07	0.46	0.39		
GRUNDY	4.07					0.04	1.69	0.21	0.54		0.17				0.45	0.13	0.05	0.04	0.15			0.03	0.04				0.10	0.10	0.03	0.02	0.28	
JOHN FLANNAGAN LAKE	MA 5.11					*	*	1.78 _a			0.05	-	-		0.90	0.12	0.04	-	-	0.78	0.55	0.05				-	*	*	0.72 _a	0.04	0.08	
LEBANON	5.99					0.11	0.80	0.29	0.03		0.38	0.16			1.42		0.30	0.03	0.65			0.25	0.10				1.40		0.02	0.03	0.02	
NORA 4 SSE	3.57					0.22	0.82	0.29	T	T		0.25	T		0.43	0.17	T	0.11	0.57	T	0.06	T			0.01	0.28		0.04	T	0.32		
PULASKI 2 E	3.67						0.19		0.06			0.02			0.28	1.07	0.21	0.58	0.50	T	0.25	0.09				0.01	0.11	0.05	0.18	0.06	0.02	
RADFORD 3 N	A 4.66					*	*	0.28 _a	0.23						0.71	0.63	0.17	*	*	1.00 _a	0.10	0.01				*	*	*	1.53 _a			
RICHLANDS	5.69					0.33	0.77	0.05	0.05	0.02		0.04	0.05		0.85	0.30	0.06	0.14	0.75		0.05	0.40			0.69	0.20	0.23	0.03	0.02	0.66		
SALTVILLE 1N	4.66					0.02	0.97	0.16	0.01		0.38	0.13			0.20	0.30	0.42	0.30	1.10	0.01	0.02						0.54		0.02	0.06	0.02	
STAFFORDSVILLE 3 ENE	7.45					0.07	1.72	0.12							0.27	0.79	0.96	0.76	0.93			0.53	0.15				0.31	0.76	0.02	0.01	0.05	
WILLIS	A 4.72						0.07	0.04	0.11			0.41	0.01		0.21	0.32	0.16	1.76	*	*	*	1.08 _a					0.02	0.05	0.08	0.08	0.32	
WISE 1SE	5.39					0.35	0.56	0.04	0.03		0.02	0.10			1.12	0.16	0.69	0.25		0.01	0.07	0.01	0.02	0.02		0.02	0.52	0.70	0.12	T	0.60	
WYTHEVILLE	5.65						0.14					0.08	0.29		0.07	0.82	0.09	2.01	0.26			1.21	0.04				0.25	0.03	0.09	0.12	0.15	

VIRGINIA
201805

DAILY TEMPERATURES (°F)

STATION	OB. TIME	MAX/MIN	DAY OF MONTH																															AVERAGE
			01	02	03	04	05	06	07	08	09	10	11	12	13	14	15	16	17	18	19	20	21	22	23	24	25	26	27	28	29	30	31	
VIRGINIA																																		
TIDEWATER 01																																		
DISPUTANTA	07	MAX	71	83	91	89	87	79	77	66	70	78	86	85	92	87	91	86	84	76	82	77	84	79	83	86	89	87	88	87	82	77	84	
		MIN	34	39	48	59	61	59	58	49	52	54	57	60	65	60	62	66	68	69	69	69	68	65	66	60	61	64	68	67	68	68		
EMPORIA 1 WNW	08	MAX	72	83	88	87	87	83	79	68	71	80	86	88	92	91	93	88	81	82	82	77	84	85	85	89	87	86	87	88	83	80		
		MIN	40	44	49	61	63	61	58	52	54	56	58	62	65	66	64	68	69	69	71	70	69	65	65	65	60	61	70	68	68			
FREDERICKSBURG SEWAGE	07	MAX	73	84	91	92	90			75	76	78			93	88	85	89	74	73	73			81	84	83	83			88	69			
		MIN	35	47	56	62	66	55	54	51	49	51			58	63	62	62	67	63	57			63	63	57	57			67	65			
HOLLAND 1 E	08	MAX	74	65	74	67	65	60	67	81	79	72	78	70	74	80	65	69	70	65	63	72	68	65	62	67	89	87	80	84	79			
		MIN	55	62	60	54	50	49	50	60	48	52	62	61	61	52	47	39	45	54	51	48	55	58	54	46	50	65	71	68	68			
HOPEWELL	16	MAX	83	91	90	88	88	77	77	74	78	88	88	94	90	91	92	88	79	78	78	86	85	85	89	85	85	89	91	87	87			
		MIN	42	56	62	64	65	57	58	54	55	56	59	67	68	63	65	71	68	70	67	70	70	64	69	63	62	70	70	69	68			
NORFOLK INTL AP	24	MAX	82	89	89	89	77	74	64	61	66	84	84	93	79	82	89	84	79	83	81	86	79	85	86	80	86	89	89	84	78			
		MIN	48	56	63	66	63	62	57	56	54	52	64	69	62	66	67	72	72	70	70	72	66	67	71	66	62	71	74	67	71			
NORFOLK S	24	MAX	82	88	87	87	76	73	63	60	66	82	85	91	78	86	86	84	77	81	78	85	77	84	85	80	85	87	88	83	77			
		MIN	46	55	62	64	61	62	56	55	53	52	62	67	62	63	64	70	70	69	69	70	65	65	69	63	60	70	72	64	68			
NORTH	07	MAX	69	79	86	85	85	75	75	66	66	69	81	79	89	75	81	84	74	75	78	75	82	74	81	81	81	81	85	84	76			
		MIN	40	49	63	66	68	60	59	50	55	52	63	66	65	63	65	68	68	70	64	71	69	63	64	62	58	65	72	70	70			
PAINTER 2W	16	MAX	78	86	87	86	85	68	69	68	70	82	82	89	90	78	82	84	77	80	76	83	83	80	82	81	82	87	87	86	78			
		MIN	43	51	64	65	66	57	57	50	52	48	61	66	61	58	63	64	68	64	58	69	66	61	66	59	57	70	69	62	64			
STONY CREEK 2 N	08	MAX	84	90	89	89	81	79	67	73	80	88	87	93	90	93	87	82	78	81	77	85	82	85	88	85	86	87	87	81	77			
		MIN	37	41	58	60	63	59	54	51	51	54	57	62	66	62	63	67	69	70	71	70	67	65	67	62	59	66	70	68	68			
SUFFOLK LAKE KILBY	24	MAX	79	84	83	84	79	73	64	62	71	80	84	88	89	89	87	79	80	77	77	81	78	82	85	85	82	84	88	84	78			
		MIN	45	54	60	61	62	62	56	54	54	53	61	64	64	64	65	69	69	70	68	68	65	65	67	64	59	60	71	65	67			
WAKEFIELD 1NW	24	MAX	84	89	88	88	80	79	65	70	77	86	87	93	87	91	87	81	78	83	76	86	77	86	88	86	87	88	88	83	77			
		MIN	39	53	60	63	61	60	49	47	55	55	58	67	63	60	64	69	69	70	70	70	64	64	65	59	57	69	70	67	67			
WALKERTON 2 NW	18	MAX	73	91	90	89	81	77	74	79	78	89	86	93	85	89	89	81	78	75	79	88	81	85	85	84	87	88	88	83	83			
		MIN	34	38	61	63	64	56	59	49	53	55	62	66	66	64	65	67	71	69	67	76	69	65	69	59	59	67	72	72	71			
WALLACETON LK DRUMMOND	08	MAX	74	85	90	90	90	84	76	65	65	76	84	89	94	92	92	90	87	84	80	84	87	84	89	90	85	89	90	87	85			
		MIN	45	49	46	54	47	44	46	45	42	53	56	50	50	50	50	56	55	58	55	60	55	62	55	57	49	55	50	54	50			
WALLOPS ISLAND NASA TEST FACIL	24	MAX	79	87	82	84	77	69	68	63	67	74	85	89	67	73	88	76	79	68	76	85	77	77	86	81	83	89	86	71				
		MIN	49	54	63	61	59	59	57	55	51	62	62	60	59	65	66	64	60	61	68	64	63	68	62	59	71	68	65	67	67			
WARSAW 2 NW	18	MAX	82	91	91	91		73	77	78	87	86	94		89	89	89	89	78					82	83	83	84	86		84	83			
		MIN	41	56	64	66	55		58	48	46	55	61		64	64	66	67	65					69	64	66	58	60		69	69			
WEST POINT 2 NW	17	MAX	83	91	89	88	88	76	75	72	75	86	86	92	92	90	89	86	78	77	75	86	86	83	85	84	86	88	88	87	80			
		MIN	40	50	63	64	59	57	53	50	55	54	58	67	62	63	64	67	68	62	63	70	64	64	64	59	61	69	71	67	67			
WILLIAMSBURG 2 N	24	MAX	83	90	88	88	78	77	67	71	75	85	86	92	78	89	87	79	77	81	76	84	76	84	85	85	86	87	87	83	79			
		MIN	43	53	65	65	62	61	55	52	56	53	61	68	62	62	65	70	70	66	66	72	64	65	67	62	61	71	71	67	67			
EASTERN PIEDMONT 02																																		
AMELIA COURTHOUSE 1	08	MAX	73	84	90	89	88	75	72	74	77	80	88	89	93	89	91	91	79	79	79	87	87	82	85	88	84	85	86	87	83			
		MIN	41	41	41	62	66	56	54	52	49	57	56	56	66	63	62	62	68	66	62	62	65	64	67	61	61	68	71	68	67			
ASHLAND	18	MAX	83	90	90	88	85	72	73	76	78	85	84	90	85	89	88	85	79	75	76	85	85	85	83	82	84	86	87	83	89			

DAILY TEMPERATURES (°F)

STATION	OB. TIME	MAX/MIN	DAY OF MONTH																															AVERAGE	
			01	02	03	04	05	06	07	08	09	10	11	12	13	14	15	16	17	18	19	20	21	22	23	24	25	26	27	28	29	30	31		
			BREMO BLUFF	07	MIN MAX MIN	40	51	61	64	64	55	54	50	48	56	56	56	66	62	63	67	67	65	60	69	66	69	67	58	59	69	72	66		66
CAMP PICKETT	08	MAX MIN	72	83	88	86	86	79	76	71	78	80	85	87	91	89	91	88	88	79	77	74	85	80	85		84	84	83	84	81	77	85	82.5 61.0	
CHASE CITY	07	MAX MIN	71	81	85	84	84	84	77	72	77	78	85	86	89	88	90	85	80	76	79	74	84	82	82	86	83	83	81	83	80	77	82	81.5 61.3	
CLARKSVILLE	07	MAX MIN	73	84	87	86	86	78	79	74	79	80	87	88	91	91	92	87	82	78	80	76	87	84	83	89	89	85	83	85	80	79	83	83.4 63.2	
CORBIN	09	MAX MIN	83	90	91	90	76	71	74	75	76	85	85	91	86	87	88	76	73	68	73	88	80	84	83	83	85	88	88	71	83	79	86	81.8 60.0	
CROZIER	07	MAX MIN	72	82	88	88	87	71		72	76	79	85	87	90	88	90	86	77	78	71	71	85	81	83	84	82	82	84	85	81	78	81	81.5 57.6	
FARMVILLE 2 N	07	MAX MIN	73	84	90	88	88	73	74	75	79	81	87	89	92	91	93	89	81	82	76	74	87	86	86	88	85	85	85	87	85	78	87	83.8 60.3	
JOHN H KERR DAM	08	MAX MIN	71	83	87	88	88	82	76	73	77	79	88	89	93	92	94	90	87	82	80	75	88	86	81	91	85	89	87	88	82	81	87	84.5 65.1	
KEYSVILLE 2 S	07	MAX MIN	72	83	87	86	85	76	76	74	77	79	86	88	91	90	91	88	77	79	74	74	85	82	85	86	83	83	83	85	80	77	83	82.1 60.3	
LOUISA	18	MAX MIN	82	88	89	87	86	71	75	75	77	82	85	90	89	88	86	82	70	67	69	87	83	82	83	83	84	83	76	81	80	84	81.5 58.0		
PALMYRA 3S	06	MAX MIN	73	83	89	90	88	72	71	74	76	78	84	86	91	87	89	86	75	77	69	70	84	80	82	84	81	83	84	87	79	77	81	81.0 57.9	
PETERSBURG	07	MAX MIN	83	90	89	88	79	78	69	74	79	87	87	92	92	92	89	82	79	81	78	86	79	85		84	85	86	87	83	78	84	87	83.7 63.2	
RICHMOND INTL AP	24	MAX MIN	84	91	90	89	76	79	73	77	80	87	88	93	87	91	90	81	78	81	77	88	81	85	86	85	85	88	87	84	82	83	87	84.3 62.5	
WESTERN PIEDMONT 03																																			
APPOMATTOX	07	MAX MIN	72	82	86	87	86	71	74	76	77	79	86	88	91	89	91	87	75	79	70	71	86	83	84	86	82	84	84	86	79	76	83	81.6 59.7	
BROOKNEAL	07	MAX MIN	74	84	89	88	87	74	78	77	78	81	87	89	92	92	92	89	77	78	70	75	86	85	85	87	84	84	83	85	80	76	81	82.8 57.7	
CHARLOTTESVILLE 2W	08	MAX MIN	74	85	90	90	91	71	70	75	77	79	84	86	92	88	90	86	74	70	67	69	87	82	83	85	82	85	85	80	82	81	81.5	61.1	
CHATHAM	07	MAX MIN	72	82	87	86	85	76	75	75	75	78	86	87	90	88	90	87	74	79	72	76	84	83	83	84	82	83	83	85	79	76	82	81.4 57.7	
DANVILLE 2 SE	24	MAX MIN																																	M M
DANVILLE RGNL AP	24	MAX MIN	82	85	84	86	79	78	76	77	80	87	88	90	90	91	87	80	78	75	79	85	84	85	88	83	83	81	84	79	78	82	86	82.9 60.8	
FREE UNION	07	MAX MIN	74	87	91	92	93	71	69	76	77	81	83	88	92	86	90	86	74	69	67	65	86	81	82	84	82	85	85	82	77	81	79	81.1 57.6	

VIRGINIA
201805

DAILY TEMPERATURES (°F)

STATION	OB. TIME	MAX/MIN	DAY OF MONTH																													AVERAGE						
			01	02	03	04	05	06	07	08	09	10	11	12	13	14	15	16	17	18	19	20	21	22	23	24	25	26	27	28	29		30	31				
			LYNCHBURG INTL AP	24	MAX MIN	83 38	87 45	87 55	88 57	73 62	74 54	74 48	75 52	79 50	86 58	86 54	91 59	89 62	90 61	88 64	74 66	79 66	69 61	74 57	85 66	83 66	83 66	86 65	81 59	83 57	82 65		86 68	79 67	78 67	81 70	85 69	81.9 59.5
MARTINSVILLE FLTR PLT	07	MAX MIN	75 31	84 34	86 43	86 52	87 55	87 56	77 46	77 46	77 47	81 47	85 52	88 52	90 56	91 58	91 59	87 64	76 66	81 66	70 66	80 62	86 63	83 63	85 65	87 62	82 62	84 65	81 59	86 62	84 67	81 67	79 67	82 67	82.5 57.1			
MEADOWS OF DAN 5 SW	07	MAX MIN	73 40	82 40	83 48	83 52	84 54	77 59	76 50	73 51	75 49	81 49	87 54	87 55	87 57	89 59	83 62	72 63	74 63	68 64	77 63	81 61	82 62	80 60	82 59	77 59	75 63	75 63	68 63	71 64	75 65	77 66	77 66	78.4 57.2				
MONTEBELLO FISH CULTURAL STN	07	MAX MIN	69 34	82 38	85 51			66 50	72 42	72 42	68 44	72 44	79 50	75 50		90 52	84 58	67 58	74 61	66 56	71 56	84 57	80 57	82 57	84 54	79 50	78 52	79 62	81 64	78 64	81 66	81 68	82 68	77.0 53.2				
MONTICELLO	07	MAX MIN																																				M M
ROCKY MT	07	MAX MIN	75 35	85 47	87 46	88 59	89 61	75 58	75 47	76 50	75 49	84 51	89 54	92 60	92 62	92 62	88 64	75 65	81 64	70 60	77 63	87 63	83 64	83 64	85 63	81 59	83 59	83 66	77 66	85 67	85 67	77 66	77 66	81 66	82.0 58.8			
S BOSTON	07	MAX MIN	70 33	86 36	89 44	89 55	89 55	78 53	80 48	74 49	78 49	81 57	88 63	90 66	92 65	92 65	94 69	90 67	84 67	84 67	81 68	77 65	87 68	83 68	85 65	89 60	85 64	86 64	84 70	86 67	86 67	80 67	81 68	85 69	84.4 60.4			
STUART	07	MAX MIN	76 39	83 42	84 51	85 52	86 58	78 59	77 48	78 49	74 48	80 48	83 52	88 53	90 61	89 58	85 63	76 64	69 65	72 65	80 62	84 61	82 61	81 62	84 61	82 65	81 65	84 66	78 66	84 66	75 66	78 67	80 69	81.4 58.2				
NORTHERN 04 FRONT ROYAL	06	MAX MIN	71 45	84 46	89 56			68 51	59 51	74 50	76 48	77 46	81 50	81 54	92 57	81 62	82 61	91 62	75 63			69 52	87 61	79 62	82 47	81 46	81 50	86 69	86 69	83 69					78 54.7			
PURCELLVILLE	08	MAX MIN	71 45	84 48	90 59	91 65	91 61	68 52	63 48	75 49	76 48	79 56	80 54	90 56	73 59	82 61	90 61	74 63	67 63	65 51	71 52	87 61	81 65	78 63	79 58	84 52	79 68	87 69	89 62	85 63	85 67	85 67	71 63	84 67	77 67	79.4 58.1		
LURAY 5 E	08	MAX MIN	69 37	81 47	87 54	90 59	90 59	69 50	71 46	73 47	75 47	78 53	81 51	83 56	90 62	85 61	89 58	89 63	72 63	68 62	67 53	73 54	86 58	80 63	81 60	81 51	81 52	86 63	84 65	85 66	84 64	85 66	78 64	84 65	77 67	80.1 56.6		
MANASSAS	07	MAX MIN	71 37		89			70 53	70 53	76 53	76 50	82 55	83 56	90 63	77 61	79 62	88 64	73 65	69 65	67 55	71 56	86 65	80 65	82 64	81 56	83 56	85 64	87 64	84 70	87 68	84 82	78 78	82 78	78 68	78.8 58.5			
MT WX 3	07	MAX MIN	67 38	78 51	85 67	87 68	87 58	64 48	54 49	69 49	72 53	75 57	76 58	76 57	86 57	75 57	78 57	85 61	71 60	71 49	71 49	65 62	80 61	76 60	76 59	73 59	78 66	78 66	83 61	84 60	81 67	69 65	78 65	70 65	75.5 57.6			
PIEDMONT RSCH STN	08	MAX MIN	72 36	82 44	88 50	90 59	90 62	74 53	70 52	75 51	75 51	82 50	86 55	91 58	86 61	87 63	87 61	74 65	69 56	70 54	67 68	81 64	83 64	84 64	83 61	85 59	86 56	86 67	85 69	86 69	86 70	86 67	72 68	83 69	80 69	80.7 58.6		
SOMERSET	08	MAX MIN	73 40	83 45	88 58	88 60	89 64	71 52	70 46	74 49	77 46	78 51	82 56	86 61	86 64	88 61	86 64	74 66	69 64	67 55	71 56	87 64	82 66	82 66	84 55	82 53	84 62	84 62	84 65	86 69	86 70	85 67	73 68	83 71	81 59.1			
SPERRYVILLE	06	MAX MIN			91	92	95	70	70	74	80	81	84	83	95	85	80	91	75	69	66	66	89	82	84	83	84	90	90	89	72					81.9		
WFO STERLING	24	MAX MIN	81 40	89 49	90 59	90 62	73 54	66 53	74 52	76 52	78 50	82 55	81 55	90 60	74		88 63	75 65	68 64	75 54	66 53	80 64	81 53	79 64	83 52	86 56	88 64	85 52	82 56	85 70	88 68	85 62	72 65	84 68	77 68	84 57.6		
VIENNA	07	MAX MIN	69 38	88 45	88 53	90 64	69 52	68 52	66 50	74 50	75 48	81 48	80 56	88 56	69 61	79 59	87 63	71 63	66 63	65 53	69 53	86 63	80 63	78 64	77 56	84 59	86 70	87 61	85 61	70 66	80 67	80 67	77 67	77.7 57.2				
WASHINGTON DULLES INTL AP	24	MAX MIN	82 39	88 46	90 63	90 64	73 54	68 53	77 50	76 46	78 46	82 56	82 53	90 61	73 60	81 60	89 63	74 65	69 54	68 55	67 67	87 67	82 65	80 58	80 56	84 56	86 59	88 70	86 63	86 67	73 67	83 67	83 68	78 68	83 68	80.2 59.0		
WASHINGTON REAGAN NATL AP	24	MAX MIN	83 49	91 56	90 64	90 69	76 62	73 59	77 58	78 58	80 57	83 61	85 61	90 67	73	81	89	75	69	72	89	82	80	83	83	86	87	87	85	72	83	81	86	81	86	81.5		
WINCHESTER	07	MAX	71	85	89	92	89	74	60	76	78	81	83	82	93	79	88	91	72	67	66	67	81	78	81	84	89	87	84	76	84	76	84	76	80.3			

VIRGINIA
201805

DAILY TEMPERATURES (°F)

STATION	OB. TIME	MAX/MIN	DAY OF MONTH																															AVERAGE
			01	02	03	04	05	06	07	08	09	10	11	12	13	14	15	16	17	18	19	20	21	22	23	24	25	26	27	28	29	30	31	
COPPER HILL	07	MAX	66	77	80	82	83	68	70	67	65	69	78	81	84	85	83	79	69	72	63	70	80	74	76	77	72	74	72	75	70	70	72	74.3
		MIN	36	47	54	57	59	52	46	47	52	51	55	56	60	61	61	59	60	60	60	60	61	61	61	58	58	59	62	62	62	63	64	56.9
ELK CREEK 4SSW	07	MAX	67	76	78	81	80	67	66	66	67	71	74	80	81	82	83	76	68	70	66	71	78	74	75	76	71	74	68	76	67	68	71	73.2
		MIN	43	57	61	61	60	52	50	50	51	52	59	63	64	64	64	60	61	62	60	60	63	59	61	58	60	62	63	62	61	63	63	59.0
GALAX WTP	07	MAX	70	78	82	81	84	72	73	72	72	73	79	85	86	88	88	80		73		75	83	76	79	81	76	76	73	78	71	74	75	77.7
		MIN	33	33	41	48	51	56	46	47	44	44	52	52	53	53	53	61	61	64	62	59	58	59	59	57	60	65	63	63	64	65	65	54.5
GRUNDY	07	MAX	73	83	85	87	84	69	66	75	74	83	81	86	88	88	88	89	69	80	79	82	85	83	78	82	85	84	78	84	79	84	84	81.1
		MIN	31	35	43	51	54	56	50	51	50	51	56	57	56	57	57	61	61	63	61	61	61	62	62	58	59	61	65	65	62	63	66	56.3
JOHN FLANNAGAN LAKE	07	MAX	79	83	86	88		84	79	78	85	85				93	92	88	75	85			87	86	82	86	89			87	87	85	85.0	
		MIN	31	35	48	51		49	50	51	51	44			57	58	61	61	62				61	62	62	58	57			62	64	66	54.6	
LEBANON	07	MAX	77	78	81	81	81	73	73	74	74	80	78	80	84	85	86	87	82	80	84	83	84	80	81	81	82	83	78	82	78	79	82	80.4
		MIN	30	30	41	49	59	54	47	46	46	55	55	54	54	55	56	56	58	60	61	59	58	59	59	56	57	60	63	63	63	69	67	54.8
NORA 4 SSE	07	MAX	69	73	82	78	79	71	64	72	71	75	76	78	83	83	84	81	68	77	72	75	81	79	76	77	79	78	73	77	76	77	76	76.1
		MIN	42	56	59	62	61	55	53	53	56	57	59	58	66	67	68	61	60	60	61	61	64	63	63	57	59	64	64	64	65	65	60.2	
PULASKI 2 E	07	MAX	70	79	81	84	82	72	69	72	72	77	78	83	85	86	86	83	72	78		78	83	81	80	80	78	80	72	81	74	76	77	78.3
		MIN	34	44	51	53	59	57	44	47	43	47	56	57	57	58	62	60	60	62	61	61	59	59	60	54	57	58	62	61	64	65	65	56.0
RADFORD 3 N	08	MAX	69	81	81	83	84	71	72	71	72	78	79	84	87	87	87	84	71	78	67	77	83	81	81	79	79	81	72	82	76	74	80	78.4
		MIN	31	45	60	50	57	56	46	49	45	48	49	54	54	56	57	60	62	63	63	60	58	62	60	55	60	60	62	64	67	63	66	56.1
RICHLANDS	07	MAX	71	78	80	82	80	72	67	72	73	79	76	80	84	84	86	84	72	78	75	80	82	81	79	80	82	83	83	82	78	82	82	78.9
		MIN	31	35	40	48	51	55	45	45	46	52	57	55	54	56	55	59	61	62	61	61	61	61	60	57	58	58	59	63	66	67	66	55.0
SALTVILLE 1N	07	MAX	72	78	80	83	81	71	68	72	76	79	76	82	84	84	86	82	72	82	73	80	83	80	81	82	85	78	82	76	80	82	79.1	
		MIN	30	32	39	46	49	56	47	46	46	46	51	55	55	54	55	60	61	63	62	61	61	59	59	58	57	58	62	65	65	67	67	54.6
STAFFORDSVILLE 3 ENE	07	MAX	70	80	82	84	85	70	71	72	72	75	78	84	85	86	85	83	69	77	66	76	82	80	80	78	77	79	72	77	77	73	77	77.5
		MIN	30	31	35	48	52	56	44	44	44	44	49	51	54	55	56	58	60	60	62	60	58	59	60	55	57	59	60	63	63	64	65	53.4
WISE 1SE	09	MAX	75	78	80	82	77	72	69	71	73	79	78	81	83	83	85	82	70	79	74	76	81	80	77	78	83	82	75	80	73	77	79	77.8
		MIN	42	50	61	63	59	55	49	48	53	62	56	62	57	57	61	59	57	61	60	58	60	59	60	55	61	62	63	62	62	67	66	58.3
WYTHEVILLE	07	MAX	69	78	79	83	81	70	67	68	71	78	77	81	83	84	86	84	70	75	67	76	83	79	79	79	78	80	72	83	72	77	77	77.0
		MIN	36	41	51	54	55	54	46	46	46	46	52	55	58	58	60	60	61	62	61	61	60	60	59	55	57	60	61	62	63	64	64	55.7

VIRGINIA
201805

SNOWFALL AND SNOW ON GROUND (INCHES)

STATION		DAY OF MONTH																															
		01	02	03	04	05	06	07	08	09	10	11	12	13	14	15	16	17	18	19	20	21	22	23	24	25	26	27	28	29	30	31	
VIRGINIA																																	
TIDEWATER 01																																	
DISPUTANTA	SNOWFALL																																
EMPORIA 1 WNW	SNOWFALL																																
FREDERICKSBURG SEWAGE	SNOWFALL																																
	SN ON GND																																
HOLLAND 1 E	SNOWFALL																																
HOPEWELL	SNOWFALL																																
	SN ON GND																																
NORFOLK INTL AP	SNOWFALL																																
	SN ON GND																																
NORFOLK S	SNOWFALL																																
NORTH	SNOWFALL																																
	SN ON GND																																
PAINTER 2W	SNOWFALL																																
STONY CREEK 2 N	SNOWFALL																																
SUFFOLK LAKE KILBY	SNOWFALL																																
	SN ON GND																																
WAKEFIELD 1NW	SNOWFALL																																
	SN ON GND																																
WALKERTON 2 NW	SNOWFALL																																
	SN ON GND																																
WALLACETON LK DRUMMOND	SNOWFALL																																
WALLOPS ISLAND NASA TEST FACIL	SNOWFALL																																
	SN ON GND																																
WARSAW 2 NW	SNOWFALL																																
WEST POINT 2 NW	SNOWFALL																																
	SN ON GND																																
WILLIAMSBURG 2 N	SNOWFALL																																
WESTERN PIEDMONT 03																																	
HOLCOMB ROCK	SNOWFALL																																
	SN ON GND																																
HUDDLESTON 4 SW	SNOWFALL																																
	SN ON GND																																
LYNCHBURG INTL AP	SNOWFALL																																
	SN ON GND																																
MARTINSVILLE FLTR PLT	SNOWFALL																																
	SN ON GND																																
MEADOWS OF DAN 5 SW	SNOWFALL																																
	SN ON GND																																
MONTEBELLO FISH CULTURAL STN	SNOWFALL																																
	SN ON GND																																

Snowfall: Includes snow and ice. Values for NWS stations (J index note) are Mid-Mid (LST).

Snow on ground: Includes snow, sleet, ice, and hail. Values for NWS stations (J index note) are observed at 12 UTC (GMT).

Water Equivalent: Given for NWS stations (J index note) only, when snow depth is 2 inches or more, and is measured at 18 UTC (GMT)

VIRGINIA
201805

SNOWFALL AND SNOW ON GROUND (INCHES)

STATION		DAY OF MONTH																														
		01	02	03	04	05	06	07	08	09	10	11	12	13	14	15	16	17	18	19	20	21	22	23	24	25	26	27	28	29	30	31
MONTICELLO PEDLAR DAM	SNOWFALL SNOWFALL SN ON GND											T																				
ROCKY MT	SNOWFALL SN ON GND																															
S BOSTON	SNOWFALL SN ON GND																															
STUART	SNOWFALL SN ON GND																															
WOOLWINE 1 SE	SNOWFALL SN ON GND																															
CENTRAL MOUNTAIN 05 WILLIAMSVILLE 2 S	SNOWFALL SN ON GND																															
SOUTHWESTERN MOUNTAIN 06 BURKES GARDEN	SNOWFALL SN ON GND									T																						
CHRISTIANSBURG	SNOWFALL SN ON GND																															
CLINTWOOD 1 W	SNOWFALL SN ON GND																															
COPPER HILL	SNOWFALL SN ON GND																															
ELK CREEK 4SSW	SNOWFALL SN ON GND																															
GALAX WTP	SNOWFALL SN ON GND																															
GRUNDY	SNOWFALL SN ON GND																															
JOHN FLANNAGAN LAKE	SNOWFALL SN ON GND																															
LEBANON	SNOWFALL SN ON GND																															
NORA 4 SSE	SNOWFALL SN ON GND																															
PULASKI 2 E	SNOWFALL SN ON GND																															
RADFORD 3 N	SNOWFALL SN ON GND																															
RICHLANDS	SNOWFALL SN ON GND																															

Snowfall: Includes snow and ice. Values for NWS stations (J index note) are Mid-Mid (LST).

Snow on ground: Includes snow, sleet, ice, and hail. Values for NWS stations (J index note) are observed at 12 UTC (GMT).

Water Equivalent: Given for NWS stations (J index note) only, when snow depth is 2 inches or more, and is measured at 18 UTC (GMT)

VIRGINIA
201805

SNOWFALL AND SNOW ON GROUND (INCHES)

STATION		DAY OF MONTH																															
		01	02	03	04	05	06	07	08	09	10	11	12	13	14	15	16	17	18	19	20	21	22	23	24	25	26	27	28	29	30	31	
SALTVILLE 1N	SNOWFALL																																
	SN ON GND																																
STAFFORDSVILLE 3 ENE	SNOWFALL																																
	SN ON GND																																
WILLIS	SNOWFALL																																
	SN ON GND																																
WISE 1SE	SNOWFALL																																
	SN ON GND																																
WYTHEVILLE	SNOWFALL																																
	SN ON GND																																

Snowfall: Includes snow and ice. Values for NWS stations (J index note) are Mid-Mid (LST).

Snow on ground: Includes snow, sleet, ice, and hail. Values for NWS stations (J index note) are observed at 12 UTC (GMT).

Water Equivalent: Given for NWS stations (J index note) only, when snow depth is 2 inches or more, and is measured at 18 UTC (GMT)

VIRGINIA
201805

PAN EVAPORATION AND WIND

STATION		DAY OF MONTH																															TOTAL OR AVERAGE	
		01	02	03	04	05	06	07	08	09	10	11	12	13	14	15	16	17	18	19	20	21	22	23	24	25	26	27	28	29	30	31		
VIRGINIA EASTERN PIEDMONT 02 JOHN H KERR DAM	WIND	-	31	63	70	35	17	33	39	23	35	28	27	27	43	51	27	31	35	40	49	27	22	57	30	31	54	58	14	14	22	47	1116E	
	EVAP	-	-	-	-	-	0.16	0.12	0.19	0.13	0.00	0.00	0.29	0.29	0.00	0.20	0.08	0.09	0.75	0.24	-	-	-	-	-	-	-	-	-	-	-	-	-	M
	MAX	-	-	-	-	-	-	-	-	-	-	-	-	-	-	-	-	-	-	-	-	-	-	-	-	-	-	-	-	-	-	-	-	M
	MIN	-	-	-	-	-	-	-	-	-	-	-	-	-	-	-	-	-	-	-	-	-	-	-	-	-	-	-	-	-	-	-	-	M

Evaporation: Is measured in hundreths of inches.

Wind: Is measured in miles.

Max and Min: The maximum and minimum tempertures (Fahrenheit) of the water in the evaporation pan.

STATION INDEX

STATION	INDEX NO.	DIVISION	COUNTY	LATITUDE	LONGITUDE	ELEVATION (IN FEET)	OBSERVATION TIME AND TABLES			
							LOCAL STD TIME			
							TEMP	PRECIP	EVAP	SPECIAL SEE (NOTES)
VIRGINIA										
ABINGDON 3S	0021	06	WASHINGTON	36 40	81 58W	1925	06	06		H
ALBERTA 5N	0079	02	BRUNSWICK	36 56	77 54W	376		08		H
ALTAVISTA	0166	03	CAMPBELL	37 7	79 17W	529		07		CH
AMELIA COURTHOUSE 1	0187	02	AMELIA	37 21	77 59W	345	08	08		H
APPOMATTOX	0243	03	APPOMATTOX	37 20	78 50W	850	07	07		H
ASHLAND	0327	02	HANOVER	37 45	77 29W	220	18	18		H
BEDFORD	0551	03	BEDFORD	37 20	79 30W	894		07		H
BIG STONE GAP	0735	06	WISE	36 51	82 48W	1466	08	08		H
BLACKSBURG NWSO	0766	06	MONTGOMERY	37 12	80 25W	2103	07	07		CH
BREMO BLUFF	0993	02	FLUVANNA	37 43	78 17W	225	07	07		CH
BROOKNEAL	1082	03	CAMPBELL	37 4	78 57W	408	07	07		H
BUCKINGHAM	1136	02	BUCKINGHAM	37 30	78 32W	580		07		H
BUENA VISTA	1159	05	ROCKBRIDGE	37 44	79 22W	840		07		H
BURKES GARDEN	1209	06	TAZEWELL	37 5	81 20W	3068	07	07		H
CAMP PICKETT	1322	02	NOTTOWAY	37 2	77 57W	330	08	08		CH
CHARLOTTESVILLE 2W	1593	03	ALBEMARLE	38 2	78 31W	866	08	08		H
CHASE CITY	1606	02	MECKLENBURG	36 47	78 29W	510	07	07		H
CHATHAM	1614	03	PITTSYLVANIA	36 49	79 25W	651	07	07		CH
CHRISTIANSBURG	1692	06	MONTGOMERY	37 8	80 24W	2100	07	07		H
CLARKSVILLE	1746	02	MECKLENBURG	36 37	78 33W	330	07	07		H
CLINTWOOD 1 W	1825	06	DICKENSON	37 9	82 29W	1780	07	07		H
CONCORD 4 SSW	1955	03	CAMPBELL	37 17	78 58W	815		07		H
COPPER HILL	1999	06	FLOYD	37 5	80 8W	2857	07	07		H
CORBIN	2009	02	CAROLINE	38 12	77 22W	220	09	09		H
COVINGTON FLTR PLT	2044	05	ALLEGHANY	37 49	79 59W	1244	07	07		CH
CROZIER	2142	02	GOOCHLAND	37 40	77 53W	350	07	07		H
DALE ENTERPRISE	2208	05	ROCKINGHAM	38 27	78 56W	1358	07	07		CH
DANVILLE 2 SE	2245	03	PITTSYLVANIA	36 34	79 22W	392	24	24		H
DANVILLE RGNL AP	2250	03	PITTSYLVANIA	36 34	79 20W	571	24	24		CH
DISPUTANTA	2400	01	PRINCE GEORGE	37 7	77 12W	130	07	07		H
ELK CREEK 4SSW	2730	06	GRAYSON	36 40	81 12W	3439	07	07		H
EMPORIA 1 WNW	2790	01	GREENSVILLE	36 42	77 34W	100	08	08		H
FARMVILLE 2 N	2941	02	CUMBERLAND	37 20	78 23W	450	07	07		CH
FREDERICKSBURG SEWAGE	3204	01	FREDERICKSBURG	38 17	77 27W	60	07	07		H
FREE UNION	3213	03	ALBEMARLE	38 5	78 35W	590	07	07		H
FRONT ROYAL	3229	04	WARREN	38 54	78 11W	930	06	06		CH
GALAX WTP	3272	06	CARROLL	36 39	80 55W	2341	07	07		CH
GATHRIGHT DAM	3310	05	ALLEGHANY	37 57	79 57W	1770	07	07		CH
GLASGOW 1 SE	3375	05	ROCKBRIDGE	37 37	79 26W	737		07		H
GRUNDY	3640	06	BUCHANAN	37 17	82 5W	1157	07	07		H
HOLCOMB ROCK	4039	03	BEDFORD	37 33	79 24W	900		07		H
HOLLAND 1 E	4044	01	SUFFOLK	36 41	76 46W	80	08	08		H
HOPEWELL	4101	01	PRINCE GEORGE	37 18	77 17W	40	16	16		H
HOT SPRINGS	4128	05	BATH	37 60	79 50W	2244	07	07		H
HUDDLESTON 4 SW	4148	03	BEDFORD	37 8	79 32W	897		07		H
JOHN FLANNAGAN LAKE	4410	06	DICKENSON	37 14	82 21W	1460	07	07		H
JOHN H KERR DAM	4414	02	MECKLENBURG	36 36	78 18W	250	08	08	08	CH
KEYSVILLE 2 S	4568	02	CHARLOTTE	37 1	78 29W	625	07	07		H
LEBANON	4777	06	RUSSELL	36 54	82 2W	1912	07	07		H
LEXINGTON	4876	05	ROCKBRIDGE	37 47	79 26W	1097	07	07		H
LOUISA	5050	02	LOUISA	38 3	78 0W	420	18	18		H
LURAY 5 E	5096	04	PAGE	38 40	78 22W	1400	08	08		H
LYNCHBURG INTL AP R	5120	03	CAMPBELL	37 19	79 12W	940	24	24		HJ
MANASSAS	5204	04	MANASSAS	38 44	77 30W	245	07	07		H
MARTINSVILLE FLTR PLT	5300	03	HENRY	36 42	79 52W	760	07	07		H
MEADOWS OF DAN 5 SW	5453	03	PATRICK	36 40	80 27W	2225	07	07		H
MILLGAP	5595	05	HIGHLAND	38 18	79 43W	2421	06	06		CH
MONTEBELLO FISH CULTURAL STN	5690	03	NELSON	37 51	79 8W	2667	07	07		CH
MONTICELLO	5700	03	ALBEMARLE	38 1	78 27W	758	07	07		H
MT WX 3	5853	04	CLARKE	39 4	77 54W	1550	07	07		H
MTN GROVE	5756	05	BATH	38 6	79 53W	1775		07		H
MUSTOE 1 SW	5880	05	HIGHLAND	38 19	79 40W	2367	24	24		CH
NEW CASTLE	6012	05	CRAIG	37 31	80 6W	1258		07		H
NORA 4 SSE	6125	06	DICKENSON	37 1	82 19W	2650	07	07		H
NORFOLK INTL AP R	6139	01	NORFOLK (CITY)	36 54	76 12W	30	24	24		HJ

STATION INDEX

STATION	INDEX NO.	DIVISION	COUNTY	LATITUDE	LONGITUDE	ELEVATION (IN FEET)	OBSERVATION TIME AND TABLES			
							LOCAL STD TIME			
							TEMP	PRECIP	EVAP	SPECIAL SEE (NOTES)
NORFOLK S	6147	01	NORFOLK (CITY)	36 52	76 14W	10	24	24		H
NORTH	6161	01	MATHEWS	37 26	76 26W	10	07	07		H
PAINTER 2W	6475	01	ACCOMACK	37 35	75 49W	30	16	16		CH
PALMYRA 3S	6491	02	FLUVANNA	37 49	78 16W	410	06	06		H
PEDLAR DAM	6593	03	AMHERST	37 40	79 17W	1024		07		CH
PETERSBURG	6656	02	PETERSBURG	37 14	77 24W	19	07	07		H
PIEDMONT RSCH STN	6712	04	ORANGE	38 14	78 7W	520	08	08		CH
PULASKI 2 E	6955	06	PULASKI	37 3	80 47W	1850	07	07		CH
PURCELLVILLE	4909	04	LOUDOUN	39 9	77 43W	510	08	08		H
RADFORD 3 N	6999	06	PULASKI	37 12	80 35W	1800	08	08		H
RICHLANDS	7174	06	TAZEWELL	37 6	81 48W	1910	07	07		H
RICHMOND INTL AP R	7201	02	HENRICO	37 31	77 19W	164	24	24		HJ
ROANOKE 8 N	7278	05	ROANOKE	37 22	79 58W	1157	07	07		H
ROANOKE INTL AP R	7285	05	ROANOKE	37 19	79 58W	1175	24	24		HJ
ROCKY MT	7338	03	FRANKLIN	36 59	79 54W	1315	07	07		CH
S BOSTON	7925	03	HALIFAX	36 42	78 53W	329	07	07		H
SALTVILLE 1N	7506	06	SMYTH	36 53	81 46W	1733	07	07		H
SOMERSET	7904	04	ORANGE	38 15	78 16W	510	08	08		H
SPERRYVILLE	7985	04	RAPPAHANNOCK	38 39	78 14W	750	06	06		H
STAFFORDSVILLE 3 ENE	8022	06	GILES	37 16	80 43W	1906	07	07		CH
STAUNTON WTP	8062	05	AUGUSTA	38 10	79 5W	169	08	08		CH
STONY CREEK 2 N	8129	01	SUSSEX	36 58	77 24W	105	08	08		H
STUART	8170	03	PATRICK	36 38	80 15W	1375	07	07		H
SUFFOLK LAKE KILBY	8192	01	SUFFOLK	36 44	76 36W	22	24	24		H
VIENNA	8737	04	FAIRFAX	38 54	77 17W	418	07	07		H
WAKEFIELD 1NW	8800	01	SUSSEX	36 59	77 0W	113	24	24		CH
WALKERTON 2 NW	8829	01	KING AND QUEEN	37 45	77 2W	50	18	18		H
WALLACETON LK DRUMMOND	8837	01	CHESAPEAKE	36 36	76 26W	20	08	08		H
WALLOPS ISLAND NASA TEST FACIL R	8849	01	ACCOMACK	37 56	75 28W	46	24	24		HJ
WARSAW 2 NW	8894	01	RICHMOND	37 59	76 47W	140	18	18		H
WASHINGTON DULLES INTL AP R	8903	04	LOUDOUN	38 56	77 27W	290	24	24		HJ
WASHINGTON REAGAN NATL AP R	8906	04	ARLINGTON	38 51	77 2W	10	24	24		HJ
WAYNESBORO WTP	8941	05	WAYNESBORO	38 5	78 53W	1270	07	07		H
WEST POINT 2 NW	9025	01	KING WILLIAM	37 34	76 48W	20	17	17		H
WFO STERLING	8084	04	LOUDOUN	38 59	77 29W	288	24	24		H
WILLIAMSBURG 2 N	9151	01	YORK	37 18	76 42W	70	24	24		H
WILLIAMSVILLE 2 S	9159	05	BATH	38 11	79 35W	1640		07		CH
WILLIS	9169	06	FLOYD	36 55	80 30W	2810		07		CH
WINCHESTER	9181	04	FREDERICK	39 11	78 9W	720	07	07		H
WINCHESTER 7 SE	9186	04	FREDERICK	39 11	78 7W	680	08	08		H
WINTERPOCK 4 W	9213	02	CHESTERFIELD	37 19	77 39W	300		07		H
WISE 1SE	9215	06	WISE	36 58	82 33W	2564	09	09		CH
WOODSTOCK 2 NE	9263	04	SHENANDOAH	38 54	78 28W	675	07	07		H
WOOLWINE 1 SE	9272	03	PATRICK	36 46	80 16W	1263		08		CH
WYTHEVILLE	9301	06	WYTHE	36 58	81 5W	2458	07	07		H

REFERENCE NOTES

STATION NAMES: Name of the city, town or locality. Figures and letters following the station names indicate the distance in miles and direction from the post office or town community center.

DIVISIONS: Areas within a state of similar climatological characteristics. Division averages are calculated using data from stations that record temperature and/or precipitation. Station Precipitation totals flagged with an 'F' or 'M' are excluded from the Divisional Average calculations of precipitation. Stations with monthly Temperature averages flagged with an 'F' or 'M' are included in the Divisional Average if there are no more than 9 flagged or missing daily values in the month, else they are excluded from the divisional average for temperature.

NORMALS: The average value of the meteorological element over a time period. Effective 1 January 2012, the averaging period for station departures is 1981 to 2010. The normals for National Weather Service localities have been adjusted so as to be representative for the current observation site.

The January 2011 through December 2015 publications incorrectly state the computation of divisional departures. Climate Division departures have been, and continue to be, computed from 1971-2000 Normals, not 1981-2010 as stated. Station departures are accurately described as departures from 1981-2010.

MONTHLY DEGREE DAY TOTALS: One heating (cooling) degree day is accumulated for each whole degree that the daily mean temperature is below (above) 65 degrees Fahrenheit.

PRECIPITATION: Values shown in hundredths of inches are water equivalent totals, i.e., total of liquid and melted frozen precipitation. In the "Monthly Summarized Data" table the total snow and sleet values shown in tenths of inches are unmelted amounts. The max depth on ground values of snow and sleet shown in whole inches are cumulative unmelted amounts. The number of days with .10, .50, 1.00 or more refers to water equivalents.

PRECIPITATION QUALITY CONTROL: The NCEI quality control process may flag precipitation data that are spatially inconsistent, exceed climatological limits, or are inconsistent with prevailing weather patterns.

TEMPERATURE: Original temperature values are given in the "Daily Temperature" table. Summary temperature information (averages, departures, extremes, monthly degree day totals) is based on the values labeled MAX/MIN.

WIND: (As shown in the "Evaporation and Wind" table) the total wind movement in miles over the evaporation pan as determined by an anemometer recorder located 6-8 inches above the pan.

SYMBOLS AND LETTERS USED IN THE STATION INDEX TABLE

C Station is equipped with recording rain gage (R) but values in this bulletin are from a non-recording rain gage unless indicated by an R.
G Observations appear in the "Soil Temperatures" table.
H Observations appear in the "Snowfall and Snow on the Ground" table.
J Station also published as a Local Climatological Data publication.
VAR Observation time varies.
SR / SS Observation time near sunrise / Observation time near sunset, respectively.

SYMBOLS AND LETTERS USED IN THE DATA TABLES

(DAILY DATA ARE FOR THE 24 HOURS IMMEDIATELY PRECEDING OBSERVATION TIME.)

BLANK Entries in the "Monthly Summarized Data" table indicate no record.

BLANK Entries in the "Daily Precipitation" and "Snowfall and Snow on the Ground" tables indicate zero.

BLANK Entries in the "Daily Temperature" table indicate a missing record

- No record. Data not recorded or not received in time for publication.

+ Precipitation or temperature extremes occurred on one or more previous dates during the month.

* Rain gage not read. Precipitation is included in the amount following the asterisks.

Time distribution may not be known. A * preceding the monthly total indicates precipitation amount is being carried forward to next month's total, and may include amounts from the previous month(s).

a As a subscript, indicates accumulated total.

A Amount of precipitation is the total of observer's entries for the current month. It may include precipitation that occurred during the previous month. Refer to earlier bulletin to determine date of last

reading. (Hawaii stations)

B Divisional Departure from normals are computed using 1971-2000 normals.

E Normalized HDD/CDD Calculation. E is appended to the HDD/CDD Calculation when 1-9 individual daily TMAX and/or TMIN values are missing and a Normalized HDD/CDD Calculation is provided. M appears alone if 10 or more daily values are missing.

F Monthly calculation flagged value. F is appended to average and/or total values computed which exclude one or more daily data values that have been flagged by the GHCN-Daily Dataset

M Insufficient or partial data. M is appended to average and/or total values computed with 1-9 daily values missing. M appears alone if 10 or more daily values are missing, (8 or more for wind and evaporation).

N Indicates snow fall or Snowdepth totals are computed with one or more missing days.

R Amounts from recording rain gage.

T Trace. An amount too small to measure.

SEASONAL TABLES: Monthly and seasonal snowfall and heating degree days for the 12 months ending with the June data are published in the July issue of this bulletin. Cooling degree days for the calendar year are published in the "Climatological Data Annual Summary."

Information concerning the history of changes in locations, exposure, etc. of substations is kept on file at the National Centers for Environmental Information. Historical information of regular National Weather Service Offices may be obtained from the "Local Climatological Data" annual publication. The contents of this publication may be reprinted or otherwise used freely, with proper credit to the National Centers For Environmental Information. The data are also available digitally.

Effective with the January 2011 Data-Month, COOP Observer Names are no longer included in the Monthly and Annual Climatological Data Publications. This information is not published to ensure the privacy of personal information pursuant to Section 208 of the E-Government Act of 2002 (44 USC 3601).

As of the 2011 Data-Year, Station and Climate Division Maps are no longer being included in the CD Publications. NCEI's Products Branch provides updated Station Maps for various data networks via the Historical Observing Metadata Repository: <http://www.ncdc.noaa.gov/homr>.

The GHCN-Daily Quality Control Flags shown below are displayed as superscripts with the data. For more information on Global Historical Climatology Network - Daily and flags, see: <http://www.ncdc.noaa.gov/oa/climate/ghcn-daily/> and Comprehensive Automated Quality Assurance of Daily Surface Observations. Durre, Imke, Matthew J. Menne, Byron E. Gleason, Tamara G. Houston, Russell S. Vose, 2010: J. Appl. Meteor. Climatol., 49, 16151633. doi: 10.1175/2010JAMC2375.1

Blank = Passed All checks

D = failed duplicate check

G = failed gap check

I = failed internal consistency check

K = failed streak/frequent-value check

L = failed check on length of multiday period

M = failed megaconsistency check

N = failed naught check

O = failed climatological outlier check

R = failed lagged range check

S = failed spatial consistency check

T = failed temporal consistency check

W = temperature too warm for snow

X = failed bounds check

Z = flagged as a result of an official Datzilla investigation

Beginning with the January 2013 CD Publication, monthly mean temperature calculations have changed to the National Data Stewardship Team standard. Monthly maximum and minimum temperatures are not rounded until after the monthly mean temperature is calculated. This is the most accurate outcome, but may be slightly different from the mean derived from rounded monthly maximum and minimum.

The climate division temperature and precipitation values in this publication are based on simple averages from the current set of NWS-Designated Open and Published COOP and First Order Sites within each division. These values differ from those found in NCEI's nClimDiv product. Beginning in February 2014, the nClimDiv product is used by NCEI's Monitoring Branch and in its monthly climate reports. For more details on nClimDiv, please go to <http://www.ncdc.noaa.gov/monitoring-references/maps/us-climate-divisions.php>.

Effective January 2016, Alaska's Climate Divisions are updated to reflect the 13 climate divisional boundaries established by University of Alaska-Fairbanks, NWS, NCEI, Oregon State University, and University of Nebraska-Lincoln. For more details regarding the updated Alaska Climate Divisions, see: <http://journals.ametsoc.org/doi/pdf/10.1175/JAMC-D-11-0168.1> (Bienek et al., 2012).

These and other publications are available from the National Centers for Environmental Information

Hourly Precipitation Data

This publication contains hourly precipitation amounts obtained from recording rain gages located at National Weather Service, Federal Aviation Administration, and cooperative observer stations. Published data are displayed in inches and tenths or inches and hundredths at local standard time. HPD includes maximum precipitation for nine (9) time periods from 15 minutes to 24 hours, for selected stations.

Climatological Data

Monthly editions contain station daily maximum and minimum temperatures and precipitation. Some Stations provide daily snowfall, snow depth, evaporation, and soil temperature data. Each edition also contains monthly summaries for heating and cooling degree days (65 degree F base). The July issue contains a recap of monthly heating degree days and snow data for the preceding July through June.

The Annual issue contains monthly and annual averages of temperature, precipitation, temperature extremes, freeze data, soil temperatures, evaporation, and a recap of monthly cooling degree days.

Storm Data

Monthly issues contain a chronological listing, by states, of occurrences of storms and unusual weather phenomena. Reports contain information on storm paths, deaths, injuries, and property damage. An "Outstanding storms of the month" section highlights severe weather events with photographs, illustrations, and narratives. The December issue includes annual tornado, lightning, flash flood, and tropical cyclone summaries.

Monthly Climatic Data for the World

This publication contains monthly means for temperature, pressure, precipitation, vapor pressure, and sunshine for approximately 2,000 surface data collection stations worldwide and monthly mean upper air temperatures, dew point depressions, and wind velocities for approximately 500 observing sites.

Local Climatological Data

LCD publications summarize temperature, relative humidity, precipitation, cloudiness, wind speed and direction observations for several hundred cities in the U.S. and its territories. Each monthly publication also contains 3 hourly weather observations for that month and a hourly summary of precipitation. Annual LCD publications contain a summary of the past calendar year as well as historical averages and extremes.

For Information Call:

(828) 271-4800 Option 2

(828) 271-4010 (TDD)

(828) 271-4876 (Fax)

NOAA National Centers for Environmental Information
Attn: Customer Engagement Branch
151 Patton Avenue
Asheville, NC 28801-5001

Customer Services Number: (828) 271-4800, option 2
TDD : (828) 271-4010
Fax number: (828) 271-4876

NCEI now offers free online access to the *Climatological Data* publication.
Go to : www.ncdc.noaa.gov and choose Most Popular.