



CLIMATOLOGICAL DATA

VIRGINIA

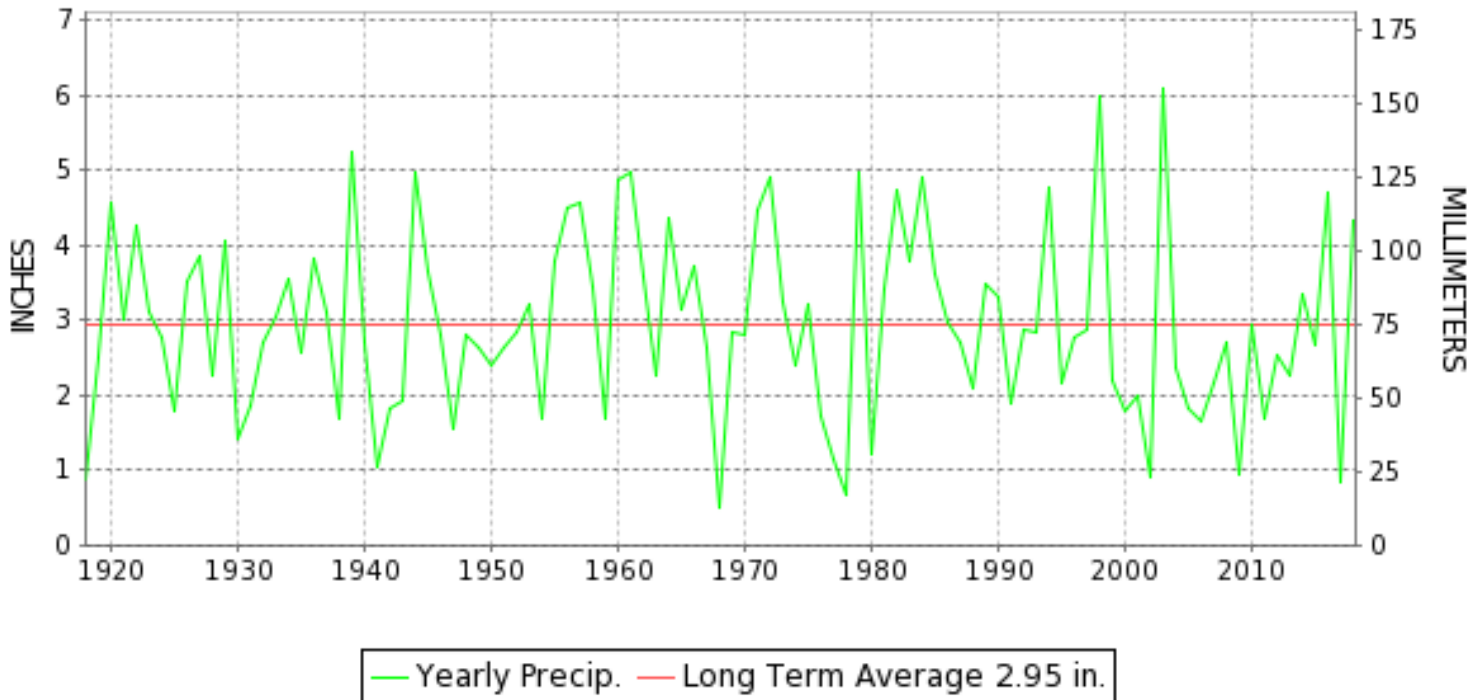
FEBRUARY 2018

VOLUME 128 NUMBER 02

ISSN 0364-5630

GHCND Ver: 3.25-upd-2018062418

FEBRUARY PRECIPITATION BY YEAR



TEMPERATURE AND PRECIPITATION EXTREMES

VIRGINIA

HIGHEST TEMPERATURE	84	FEBRUARY 22	ROANOKE INTL AP
LOWEST TEMPERATURE	-2	FEBRUARY 04	MILLGAP
GREATEST TOTAL PRECIPITATION	12.84		BIG STONE GAP
LEAST TOTAL PRECIPITATION	1.48		HOLLAND 1 E
GREATEST 1 DAY PRECIPITATION	4.11	FEBRUARY 11	BIG STONE GAP
GREATEST TOTAL SNOWFALL	12.0		MUSTOE 1 SW
GREATEST DEPTH OF SNOW OR ICE	6		2 STATIONS

"I certify that this is an official publication of the National Oceanic and Atmospheric Administration (NOAA) It is compiled using information from weather observing sites supervised by NOAA/National Weather Service and received at the National Centers for Environmental Information(NCEI), Asheville, North Carolina 28801."

Mary S. Wolpenbut

Director
National Centers for Environmental Information

noaa

National
Oceanic and
Atmospheric Administration

National
Environmental Satellite, Data
and Information Service

National
Centers for Environmental Information
Asheville, North Carolina

VIRGINIA
201802

MONTHLY STATION AND DIVISION SUMMARY

STATION	TEMPERATURE (°F)											PRECIPITATION (IN)												
	AVERAGE MAXIMUM	AVERAGE MINIMUM	AVERAGE	DEPARTURE FROM NORMAL	HIGHEST	DATE	LOWEST	DATE	HEATING DEG. DAYS	COOLING DEG. DAYS	NO. OF DAYS				TOTAL	DEPARTURE FROM NORMAL	GREATEST 24 HOURS	DATE	ICE PELLETS, SNOW			NO. OF DAYS		
											MAX		MIN						TOTAL	MAX DEPTH ON GROUND	DATE	.10 OR MORE	.50 OR MORE	1.00 OR MORE
											>=90	<=32	<=32	<=0										
RICHMOND INTL AP	58.6	37.1	47.8	6.9	80	21	14	03	478	6	0	0	8	0	2.04	-0.72	0.52	04	0.0	0		11	8	0
WINTERPOCK 4 W														2.31		0.54	05	M				12	8	0
--DIVISIONAL DATA-----> WESTERN PIEDMONT 03			46.3	7.2B										3.42	0.23B									
ALTAVISTA														5.15		2.62	11	M 0.0	0			10	6	2
APPOMATTOX	54.9	35.0	44.9	6.3	75	24+	12	03	557	2	0	0	13	0	5.08	2.00	2.73	11	M T	M T	04	14	8	1
BEDFORD														6.16	3.22	3.10	11	M 0.0	0			15	8	2
BROOKNEAL	55.7	34.3	45.0	11.2	79	22	12	03	553	0	0	0	12	0	3.25	0.11	1.36	11	T	0		18	5	1
CHARLOTTESVILLE 2W	51.9	34.3	43.1	4.0	80	22	14	03	608	4	0	1	16	0	5.46	2.39	2.03	11	0.6	T	06	11	7	2
CHATHAM	55.3	33.0	44.1	6.6	78	22	12	04	577	1	0	0	16	0	3.65	0.64	1.52	11	T	T	05	13	7	1
CONCORD 4 SSW														5.16		2.60	11	T	T	05	18	7	1	
DANVILLE RGNL AP	58.1	36.9	47.5	6.6	79	21	13	03	482	0	0	0	10	0	2.39	-0.62	0.80	04	T	0		16	5	0
FREE UNION	53.1	30.7	41.9		82	22	7	04+	642	1	0	0	19	0	5.16		1.78	11	0.5	T	05	16	7	2
HOLCOMB ROCK														5.97		1.78	11	1.0	T	05	10	7	3	
HUDDLESTON 4 SW														5.24		2.32	11	M 0.0	0			16	7	1
LYNCHBURG INTL AP	54.7	33.9	44.3	6.1	77	22	10	03	572	0	0	0	13	0	5.72	2.79	2.04	11	0.2	T	04	12	6	2
MARTINSVILLE FLTR PLT	56.0	33.0	44.5	6.1	78	23	12	04	568	2	0	0	16	0	4.85	1.71	1.63	11	M 0.0	0		16	10	3
MEADOWS OF DAN 5 SW	53.8	36.2	45.0		73	23	17	04+	554	0	0	2	13	0	7.47		3.02	11	M 0.0	0		16	13	3
MONTEBELLO FISH CULTURAL STN	50.5M	27.8M	39.2M		70	23	8	03	718E	0	0	1	12	0	A 6.85		2.20	11	M 0.0	0		8	6	2
MONTICELLO	M	M	M											M					M					
PEDLAR DAM														5.23		1.57	11	1.1	T	05	11	7	2	
ROCKY MT	56.4M	34.3M	45.4M	7.1	79	23	13	03	543E	0	0	0	14	0	5.54	2.46	2.72	11	M T	M T	04	14	7	1
S BOSTON	60.0	36.1	48.1	8.7	81	22	13	03	475	7	0	0	11	0	2.44	-0.68	0.69	05	T	0		16	7	0
STUART	55.7	34.5	45.1	5.3	77	23	13	04+	550	0	0	0	13	0	5.28	2.03	2.77	11	M 0.0	0		15	7	2
WOOLWINE 1 SE														6.19		2.79	11	M T	M T	04	14	7	3	
--DIVISIONAL DATA-----> NORTHERN 04			44.5	5.6B										5.11	1.82B									
FRONT ROYAL	51.5M	31.2M	41.3M	5.1	81	22	9	04+	674E	4E	0	1	15	0	M 4.05	1.40	1.00	18	M 3.0	0		14	9	1
PURCELLVILLE	47.7	31.1	39.4	5.8	81	22	12	03	710	0	0	1	17	0	A 3.70		0.87	05	3.5	2	18	12	7	0
LURAY 5 E	52.2	32.3	42.2	5.7	79	22+	5	03	631	2	0	1	15	0	3.92	1.26	0.77	05	M 1.2	1	18	14	9	0
MANASSAS	50.0M	32.2M	41.1M	5.1	81	22	10	03	668E	4E	0	1	15	0	MA 4.83		1.60	11	M T	M T	18	11	6	2
MT WX 3	48.4	29.0	38.7		77	22	10	03	731	1	0	5	16	0	3.13		0.77	05	M 1.3	1	18	12	8	0
PIEDMONT RSCH STN	52.2	33.8	43.0	5.7	79	22	8	03	614	3	0	1	16	0	MA 5.88	3.13	1.25	05	M	0		7	5	1
SOMERSET	50.4	31.9	41.2	4.7	80	22	9	03	664	2	0	1	18	0	5.61	2.84	2.08	11	M 0.0	0		19	7	2
SPERRYVILLE	54.0M	32.4M	43.2M	7.0	83	22	10	03	610E	4E	0	0	13	0	M 4.35	1.51	0.95	05	M 1.7	M 1	18	16	10	0
STERLING (RCS)	49.6	30.7	40.1	5.5	80	22	9	04+	690	0	0	1	18	0	4.76	1.99	1.11	05	1.6	1	18	16	11	1
VIENNA	48.4	30.4	39.4	3.7	79	22	11	04+	713	1	0	1	18	0	2.69	-0.12	1.04	11	1.0	0		16	8	1
WASHINGTON DULLES INTL AP	51.9	32.9	42.4	6.2	80	21	9	03	631	5	0	0	15	0	4.60	1.86	1.13	04	1.6	1	18	17	10	1

VIRGINIA
201802

MONTHLY STATION AND DIVISION SUMMARY

STATION	TEMPERATURE (°F)											PRECIPITATION (IN)												
	AVERAGE MAXIMUM	AVERAGE MINIMUM	AVERAGE	DEPARTURE FROM NORMAL	HIGHEST	DATE	LOWEST	DATE	HEATING DEG. DAYS	COOLING DEG. DAYS	NO. OF DAYS				TOTAL	DEPARTURE FROM NORMAL	GREATEST 24 HOURS	DATE	ICE PELLETS, SNOW			NO. OF DAYS		
											MAX		MIN						TOTAL	MAX DEPTH ON GROUND	DATE	.10 OR MORE	.50 OR MORE	1.00 OR MORE
											>=90	<=32	<=32	<=0										
WASHINGTON REAGAN NATL AP	53.6	37.0	45.3	6.3	82	21	17	03	549	4	0	0	6	0	4.79	2.17	1.12	04	0.2	T	18	15	7	3
WINCHESTER	50.6	30.2	40.4	5.5	83	22	10	03	687	6	0	1	18	0	3.16	0.84	0.68	05	3.6	1	18	16	9	0
WINCHESTER 7 SE	50.5M	28.4M	39.4M	5.9	81	22	6	03	703E	0	0	1	15	0	M 2.72	0.25	0.67	05	M 2.0	2	18	15	7	0
WOODSTOCK 2 NE	MMF	25.3M	MMF		78	16	7	03	770E	0	0	1	15	0	M 2.25	-0.34	0.72	05	M 3.5	M 3	18	8	5	0
--DIVISIONAL DATA-----> CENTRAL MOUNTAIN 05			41.2	6.1B											4.04	1.39B								
BUENA VISTA															4.68	1.96	11	M 0.0	0		12	7	2	
COVINGTON FLTR PLT	52.2	31.3	41.8	5.3	79	23	8	04+	645	0	0	1	16	0	5.32	2.95	1.93	11	1.0	1	05	15	10	1
DALE ENTERPRISE	53.2	30.4	41.8	8.9	76	15	8	04+	641	0	0	0	18	0	3.96	1.74	1.00	05	1.5	1	05	17	8	1
GATHRIGHT DAM	51.6	30.7	41.1	7.0	80	23	6	04+	661	1	0	1	17	0	5.23	2.63	1.52	11	3.4	3	05	16	10	1
GLASGOW 1 SE															4.76	1.73	11	1.5	1	05	13	7	2	
HOT SPRINGS	50.1	30.8	40.4	7.4	77	23	7	04+	680	0	0	1	16	0	5.64	2.61	1.35	11	5.0	3	05	17	12	1
LEXINGTON	54.4	32.0	43.2	6.4	80	23	10	04+	605	0	0	1	16	0	4.94	2.29	1.88	11	1.4	1	05	12	8	2
MILLGAP	49.2	24.5	36.9	6.8	73	23+	-2	04	779	0	0	1	19	2	5.00	2.02	0.93	08	11.1	M 5	05	16	12	0
MTN GROVE															MA 4.84	0.93	08	7.2	M 6	06	5	4	0	
MUSTOE 1 SW	48.4	26.6	37.5	6.3	71	22	0	03	761	0	0	3	20	1	5.18	1.93	1.02	07	12.0	6	05	15	10	1
NEW CASTLE															4.30	1.42	11	1.3	1	05	18	9	1	
ROANOKE 8 N	54.9	33.4	44.1	5.4	82	23	13	04+	578	0	0	1	14	0	4.38	1.74	1.46	11	M 0.0	0		15	8	1
ROANOKE INTL AP	56.7	36.1	46.4	6.8	84	22	15	03	518	4	0	0	11	0	3.98	1.09	0.93	07	1.5	T	04	13	5	0
STAUNTON WTP	51.3	33.1	42.2	6.6	77	22	11	03	635	1	0	1	15	0	3.61	1.06	0.86	11	0.9	1	05	12	8	0
WAYNESBORO WTP	53.6M	32.3M	42.9M	8.0	79	22	9	04+	610E	1E	0	1	16	0	M 3.99	1.07	1.26	11	M 0.0	0		14	8	1
WILLIAMSVILLE 2 S															A 4.95	0.94	08	M 5.8	4	05	10	8	0	
--DIVISIONAL DATA-----> SOUTHWESTERN MOUNTAIN 06			41.7	6.1B											4.71	1.97B								
ABINGDON 3S	56.0	35.1	45.6	8.8	78	22	8	03	535	0	0	1	12	0	6.64	2.90	1.05	11	1.5	2	02	18	16	1
BIG STONE GAP	54.5	34.6	44.6	6.8	76	24+	13	03	566	0	0	1	11	0	12.84	8.44	4.11	11	0.0	0		21	15	3
BLACKSBURG NWSO	53.0	32.0	42.5	8.3	80	23	10	03	623	0	0	1	17	0	4.54	1.73	1.36	11	1.4	T	05	15	10	1
BURKES GARDEN	50.7	30.0	40.3	8.7	72	23+	0	03	682	0	0	1	17	1	5.35	1.89	1.31	11	5.2	4	03	18	12	1
CHRISTIANSBURG	52.4	33.9	43.1	7.3	76	23	10	04+	604	0	0	1	15	0	4.40	1.57	1.14	11	1.1	T	05	18	12	1
CLINTWOOD 1 W	54.5	32.4	43.4	8.8	78	24	9	04+	598	0	0	2	13	0	8.76	5.11	3.50	11	3.0	2	04	22	15	1
COPPER HILL	51.1	33.0	42.1		73	23	6	03	637	0	0	1	15	0	4.28		1.81	11	0.1	T	13	16	10	1
ELK CREEK 4SSW	55.3F	36.1	45.7F		77	23	6	03	550	2	0	0	11	0	4.43		1.22	11	2.8	2	04	19	12	1
GALAX WTP	53.7	33.9	43.8	9.5	74	23	12	04	589	0	0	1	13	0	3.91		1.75	11	0.3	T	04	17	7	1
GRUNDY	54.6	33.4	44.0	7.7	79	24	10	03	582	0	0	1	14	0	7.82	4.73	2.90	11	0.5	1	04	16	12	2
JOHN FLANNAGAN LAKE	M	M	M		78	21	10	05	618E	0	0	0	12	0	MA 6.27	0.73	05	M	1	02	6	4	0	
LEBANON	57.4	35.0F	46.2F	10.3	79	22	5	03	523	7	0	1	11	0	8.48	5.05	2.00	11	2.0	2	02	17	14	1
NORA 4 SSE	51.3	35.3	43.3	9.8	73	22	10	03	601	1	0	1	13	0	9.10	5.48	2.95	11	7.2	4	03	17	15	2

VIRGINIA
201802

MONTHLY STATION AND DIVISION SUMMARY

STATION	TEMPERATURE (°F)											PRECIPITATION (IN)												
	AVERAGE MAXIMUM	AVERAGE MINIMUM	AVERAGE	DEPARTURE FROM NORMAL	HIGHEST	DATE	LOWEST	DATE	HEATING DEG. DAYS	COOLING DEG. DAYS	NO. OF DAYS				TOTAL	DEPARTURE FROM NORMAL	GREATEST 24 HOURS	DATE	ICE PELLETS, SNOW			NO. OF DAYS		
											MAX		MIN						TOTAL	MAX DEPTH ON GROUND	DATE	.10 OR MORE	.50 OR MORE	1.00 OR MORE
											>=90	<=32	<=32	<=0										
PULASKI 2 E	54.1	34.0	44.1	8.4	79	23	8	03	578	1	0	0	14	0	4.57	1.88	1.05	11	M T	M T	02	15	11	1
RADFORD 3 N	53.8	31.8	42.8	8.7	80	23	12	03	615	0	0	1	15	0	A 4.05	1.31	0.62	07	M T	M T	02	3	3	0
RICHLANDS	55.1	32.5	43.8	8.6	77	21	4	04+	584	0	0	1	12	0	7.63	4.72	2.05	11	5.2	2	03	20	14	1
SALTVILLE 1N	55.1	33.8	44.4	8.3	79	22	9	04+	570	0	0	1	12	0	6.70	3.23	1.66	11	M 1.3	1	04	17	12	1
STAFFORDSVILLE 3 ENE	53.6	31.6	42.6	7.6	80	24+	7	04+	622	1	0	1	15	0	4.37	1.64	1.10	11	M T	M T	04	16	12	1
WILLIS															4.67		1.83	11	M 0.0	0		14	8	1
WISE 1SE	53.2	35.6	44.4	7.6	75	21	7	03	572	2	0	1	13	0	10.31	6.33	3.74	11	2.7	3	02	19	15	2
WYTHEVILLE	53.2	33.9	43.5	9.6	78	23	10	03	596	3	0	1	14	0	4.02	1.22	0.73	11	1.7	1	05	16	12	0
--DIVISIONAL DATA----->			43.7	8.5B											6.34	2.96B								

VIRGINIA
201802

DAILY PRECIPITATION (INCHES)

STATION	TOTAL	DAY OF MONTH																															
		01	02	03	04	05	06	07	08	09	10	11	12	13	14	15	16	17	18	19	20	21	22	23	24	25	26	27	28	29	30	31	
VIRGINIA																																	
TIDEWATER 01																																	
DISPUTANTA	1.56		0.18		0.39			0.08			0.12	0.06	0.36	0.02						0.11	0.16	0.01											0.07
EMPORIA 1 WNW	M 1.53		0.19		0.38			0.12			T	0.05	0.14	0.04	T		0.12	-	0.05	0.25	T	0.02					T					0.17	
FREDERICKSBURG SEWAGE	A 7.10		0.15	T	1.11	*	0.09 _a	0.38			3.08	1.03	0.06		0.05	0.03	0.07	0.49	0.08			*	0.14 _a		0.23	0.11							
HOLLAND 1 E	1.48		0.15		0.20	0.01	0.18					0.27	0.09	0.01		0.15	0.15	0.01	0.23	0.01						0.02						0.02	
HOPEWELL	3.60		0.91		0.22	0.50	T	0.18	0.07		0.47	0.05	0.35	0.06		0.11	0.09	0.21	0.25	0.02				0.02								0.09	
NORFOLK INTL AP	1.73		0.22		0.23			0.37	T			T	0.31	0.09		0.15	0.17		0.17				T									0.02	
NORFOLK S	M 1.93		0.26		0.24			0.30				T	0.35	0.11	0.01		0.22	0.23	T	0.14	0.02			0.02		T				0.03		-	
NORTH	1.99		0.28		0.21			0.20				0.10	0.41	0.13			0.12	0.31	0.10				0.02								0.11		
PAINTER 2W	2.01		0.39		0.09	0.13		0.14				0.38		0.17		0.09	0.07	0.39	0.10	0.03						0.03							
STONY CREEK 2 N	1.56		0.17		0.41			0.05				0.13	0.16		0.03	0.18	0.21		0.15											0.05	0.02		
SUFFOLK LAKE KILBY	1.99		0.23		0.23			0.29				0.38	0.10	0.02		0.21	0.18	T	0.29												0.06		
WAKEFIELD 1NW	1.65		0.15		0.30			0.12			0.02	T	0.32	0.04	0.01	T	0.22	0.17		0.24						T				0.06			
WALKERTON 2 NW	2.42				0.72	0.08		0.09	0.08		0.44	0.15	0.18		0.02	0.08	0.16	0.20	0.19				0.01								T		
WALLACETON LK DRUMMOND	2.49		0.30		0.40			0.30			0.03	0.05	0.10	0.19	0.22		0.25	0.30		0.25										0.05	0.05		
WALLOPS ISLAND NASA TEST FACIL	1.85		0.23		0.38			0.11	T		0.01	0.50	0.02	0.01	T	0.05	0.53		T			T		T		0.01	T			T			
WARSAW 2 NW	2.14		0.23		0.38			0.09	0.06			0.81	0.08			0.05		0.39				0.01	0.01			0.03				0.03			
WEST POINT 2 NW	2.39		0.23		0.07	0.30		0.04	0.25		0.31	0.05	0.37	0.01	0.01	0.03	0.11	0.26	0.13	0.17			T		0.01	0.01	0.02	0.02			0.02		
WILLIAMSBURG 2 N	2.43		0.30		0.40			0.08			0.09		0.69	0.08	0.03	0.02	0.18	0.29		0.22	0.02	0.01								0.02			
EASTERN PIEDMONT 02																																	
ALBERTA 5N	2.82		0.23		0.69			0.11			T	0.50	0.30	0.34	0.04	0.01		0.09	0.18	0.06	0.12				T		T		0.15				
AMELIA COURTHOUSE 1	2.49		0.10		0.10	0.68		0.18			0.14	0.53	0.04	0.07	0.01	0.02		0.07	0.22	0.20	0.02								0.05	0.06			
ASHLAND	3.59		0.08		0.74	0.01		0.21	0.01		0.74	0.79	0.21	T		0.05	0.05	0.25	0.15	0.18			0.02		T		0.10						
BREMO BLUFF	M 4.09		-	-	-	1.00	-	0.02	0.06			1.55	0.43	-	-	-	0.05		0.17	0.11	0.15			0.02	0.03					0.50			
BUCKINGHAM	5.02		0.03		0.87			T	0.43			2.71	0.32	0.02		0.02	T	0.02	0.36	0.15	0.03			T		0.01	0.02	0.03					
CAMP PICKETT	3.02		0.28		0.77						0.07	0.70	0.06	0.24			0.05	0.20	0.23	0.16	0.10									0.16			
CHASE CITY	2.85		0.14		0.76			0.20				0.70	0.28	0.32	0.03				0.07	0.12										0.23			
CLARKSVILLE	2.79		0.12		0.77			0.25			0.05	0.44	T	0.12	0.10	T		0.10	0.10	0.12	0.26	T							0.10	0.26			
CORBIN	M 5.91		0.10		-	0.99		0.05	0.30		-	3.10	0.40	0.04		0.01	0.02		-	-	0.54			0.13		0.16	0.06	0.01					
CROZIER	4.01				0.87			0.18				1.94	0.35					0.43	0.18					0.03			0.03			0.03			
FARMVILLE 2 N	M 2.83		T		-			T	1.03			1.17	0.07			T		T	0.34	0.07	0.13			T		0.02	T	T					
JOHN H KERR DAM	M 1.25		0.09		-			0.09				0.28	0.02	0.09	0.03			0.04	0.09	0.14	0.19								-	0.19			
KEYSVILLE 2 S	2.07		0.26		0.61			0.23				0.38	0.28	0.17	T	0.03			0.01	0.07									T	0.03			
LOUISA	5.52		0.05		0.89			0.38			0.73	2.69	0.05				0.04	0.39	0.02	0.07				0.04	0.01	0.15	0.01						
PALMYRA 3S	6.70				1.00			0.51				3.99	0.30	0.20			0.05	0.02	0.25	0.16						0.04	0.15	0.03					
PETERSBURG	2.64	0.21			0.52			0.19			0.57	0.10	0.19	0.05	0.01		0.15	0.22	0.03	0.23	0.01				0.07	0.09							
RICHMOND INTL AP	2.04	T	0.11		0.52			0.10	T		0.31	0.15	0.26	T		0.02	0.07	0.27		0.20	T		T	T	T	T	0.03						
WINTERPOCK 4 W	2.31		0.10		0.54			0.05	0.13			0.39	0.42		0.25	0.02		0.08		0.08	0.15						T	0.10					
WESTERN PIEDMONT 03																																	
ALTAVISTA	5.15				1.00			0.01	0.61			2.62	0.55	0.03					0.13		0.11						0.07	0.02					
APPOMATTOX	5.08		0.18		0.01	0.86		0.02	0.42			2.73	0.22		0.06	T		0.05	0.22	0.17	0.02	T		0.02		T	T	0.10					

VIRGINIA
201802

DAILY PRECIPITATION (INCHES)

STATION	TOTAL	DAY OF MONTH																															
		01	02	03	04	05	06	07	08	09	10	11	12	13	14	15	16	17	18	19	20	21	22	23	24	25	26	27	28	29	30	31	
LEXINGTON	4.94				1.12		0.18	0.91			1.88	0.08			0.09	0.04		0.13	0.17	0.13			T	T	0.18	0.03	T						
MILLGAP	5.00		0.22		0.82		0.16	0.93			0.85	0.28		T	0.17	0.04	0.02	0.55	0.16	0.02		0.19	0.02	T	T	0.27	0.30						
MTN GROVE	MA 4.84		0.20		0.90		0.16	0.93			*	1.27 _a			-	0.07	*	*	0.83 _a	T		*	*	*	*	*	*	*	0.48 _a				
MUSTOE 1 SW	5.18	0.24	0.06		0.92		1.02			0.45	0.65	0.03		0.03	T	0.08	0.62		0.22		0.17	T	0.05	0.17	0.47								
NEW CASTLE	4.30		0.10		0.01	0.85	0.25	0.77		0.17	1.42	0.04	0.01	0.07	0.04	T	0.03	0.15	0.17	0.01					0.17	0.01	0.03						
ROANOKE 8 N	4.38				0.92		0.30	0.78		T	1.46	0.20	0.05	0.07	0.06		0.05	0.12	0.20	0.02			0.02		0.10		0.03						
ROANOKE INTL AP	3.98	T	T		0.91	T	0.08	0.93		0.91	0.63		0.08	0.04		0.02	0.09		0.21				T	0.01	0.06	T		0.01					
STAUNTON WTP	3.61		0.01		0.01	0.75		0.10	0.72		0.86	0.11		T	T			0.35	0.03			0.05	0.10	0.10	0.52	T							
WAYNESBORO WTP	M 3.99		0.04		0.96		-	0.67			1.26	0.15		0.03	0.03	0.04		0.20	0.19				0.04	0.03	0.25	0.10							
WILLIAMSVILLE 2 S	A 4.95		0.22		* 0.88 _a		0.10	0.94			0.84	0.27	T	T	0.04	T	T	0.50	0.11	T		0.08	0.13	*	*	0.84 _a	T						
SOUTHWESTERN MOUNTAIN 06																																	
ABINGDON 3S	6.64		0.35		0.65		0.45	0.90	0.05	0.05	1.05	0.50	0.20	0.14	0.47	0.10	0.38	0.65	0.12						0.15	0.28	0.15						
BIG STONE GAP	12.84		0.60		0.50	0.48	0.70	0.63		0.78	4.11	0.66	0.05	0.45	0.33	0.05	0.52	1.32	0.04		0.04	0.10		0.05	1.14	0.22	0.07						
BLACKSBURG NWSO	4.54		T	T	T	0.86	0.28	0.82		0.08	1.36	0.15	0.14	0.05	0.01	T	0.16	0.18	0.17	T				0.08	0.19	0.01							
BURKES GARDEN	5.35		0.47	T	0.03	0.55	0.29	0.61		0.10	1.31	0.19	0.14	0.03	0.11	0.02	0.34	0.61	0.03					T	0.43	0.02	0.07						
CHRISTIANSBURG	4.40		0.11		0.01	0.80	0.30	0.73		0.18	1.14	0.16	0.15	0.06	0.02	0.02	0.22	0.15	0.13					0.15	0.03	0.04							
CLINTWOOD 1 W	8.76		0.47	0.06	0.20	0.40	T	0.30	0.27	0.25	3.50	0.31	T	0.40	0.31	0.01	0.50	0.67	0.03		0.01	0.02		0.32	0.60	0.10	0.01	0.02					
COPPER HILL	4.28		0.10		0.01	0.67	0.15	0.61		0.16	1.81	0.23	0.02	0.01			0.13	0.10	0.08	0.02					0.10	0.08							
ELK CREEK 4SSW	4.43		0.05	T	0.14	0.53	0.33	0.64		0.09	1.22	0.29	0.17	0.05	0.10	0.03	0.09	0.20	0.13						0.21	0.04	0.10	0.02					
GALAX WTP	3.91		0.07		0.02	0.60	0.02	0.68		0.05	1.75	0.06	0.17	0.01	0.15		0.02	0.10	0.06	T	0.01	T	T		0.13	0.01							
GRUNDY	7.82		0.47		0.30	0.39	0.18	0.35		0.28	2.90	0.34	T	T	0.06		0.50	1.13	0.05				0.06		0.10	0.69	0.02						
JOHN FLANNAGAN LAKE	MA 6.27		0.50	-	-	0.73	0.11	0.42		*	*	3.63 _a	0.03	T	-	-	-	-	-	-				*	*	0.81 _a	0.04						
LEBANON	8.48		0.50		0.89		0.23	0.85	0.05	0.10	2.00	0.92	0.02	0.12	0.30	0.01	0.72	0.95			T				0.47	0.20	0.15						
NORA 4 SSE	9.10		0.55	0.11	0.15	0.41	T	0.27	0.55	0.45	2.95	0.64	0.04	0.26	0.15	T	0.43	1.22	T		T				0.67	0.19	0.06						
PULASKI 2 E	4.57		0.12		0.01	0.71		0.50	0.76	0.30	1.05	0.19	0.15	T	T		0.15	0.25	0.08						0.25	0.02	0.03						
RADFORD 3 N	A 4.05		T	*	* 0.86 _a		0.62	0.57		*	*	1.25 _a	0.13	T			*	*	*	0.43 _a				*	*	0.19 _a							
RICHLANDS	7.63		0.63	0.02	0.07	0.43	0.23	0.46		0.22	2.05	0.54	0.02	0.11	0.20	0.20	0.49	0.87	0.01				0.03		0.81	0.17	0.07						
SALTVILLE 1N	6.70		0.45		0.01	0.57	0.40	0.73		0.05	1.66	0.76	0.13	0.17	0.35	0.04	0.23	0.76	0.05					T	0.25	0.09							
STAFFORDSVILLE 3 ENE	4.37		0.19		T	0.68	0.28	0.77		0.05	1.10	0.06	0.25	0.02	0.11		0.10	0.28	0.12						0.22	0.12	0.02						
WILLIS	4.67		0.08			0.71	0.16	0.87		0.10	1.83	0.31	0.08	0.05	0.02		0.12	T	0.17						T	0.09	0.08						
WISE 1SE	10.31		0.47		0.43	0.30	0.73	0.18		0.64	3.74	0.31	T	0.49	0.15	0.02	0.58	1.24	0.02					0.25	0.45	0.21	0.08	0.02					
WYTHEVILLE	4.02		0.19		T	0.49	0.44	0.57		0.10	0.73	0.11	0.17	0.05	0.03		0.15	0.34	0.07						0.34	0.17	0.07						

VIRGINIA
201802

DAILY TEMPERATURES (°F)

STATION	OB. TIME	MAX/MIN	DAY OF MONTH																															AVERAGE			
			01	02	03	04	05	06	07	08	09	10	11	12	13	14	15	16	17	18	19	20	21	22	23	24	25	26	27	28	29	30	31				
ELK CREEK 4SSW	07	MAX	50	51	21 ^G	41	44	41	45	52	41	50	56	59	49	53	62	66	62	45	51	64	68	69	77	71	68	60	46	53							55.3
		MIN	30	14	6	14	19	18	37	19	20	36	46	48	26	29	52	57	34	32	34	46	55	59	56	54	53	46	35	37							36.1
GALAX WTP	07	MAX	43	51	25	36	41	40	47	50	43	52	58	61	52	41	62	71	66	47	54	58	65	68	74	65	68	63	49	54							53.7
		MIN	16	25	13	12	24	26	32	26	23	23	40	49	33	30	34	47	38	35	36	41	41	57	54	46	47	49	25	26							33.9
GRUNDY	07	MAX	49	48	23	40	39	34	38	45	41	58	46	64	37	57	60	70	65	43	53	71	78	75	76	79	70	57	52	62							54.6
		MIN	16	20	10	12	25	23	28	28	23	24	38	36	32	37	43	51	36	32	33	38	44	49	50	51	52	43	30	31							33.4
JOHN FLANNAGAN LAKE	07	MAX	52	47			41	35	37	44	44			63	35	58						78	76	76					57	64							M
		MIN	16	19			10	21	27	27	23			24	31	32		51					49	49	49				43	31	30						M
LEBANON	07	MAX	45	46	22	40	44	35	51	53	55	59	61	62	43	55	59	66	64	47	55	73	77	79	77	76	76	76	48	62							57.4
		MIN	42 ^S	14	5	7	24	22	32	26	23	21	40	38	34	39	51	58	37	37	36	36	61	57	46	52	52	44	27	27							35.0
NORA 4 SSE	07	MAX	42	41	16	34	39	35	47	50	40	51	55	58	36	49	54	63	63	43	51	66	72	73	70	72	64	53	45	55							51.3
		MIN	20	13	10	15	19	19	30	22	22	38	44	32	29	35	45	53	33	32	32	50	55	58	59	58	53	38	37	38							35.3
PULASKI 2 E	07	MAX	49	46	36	41	38	38	41	44	42	53	59	61	46	42	60	66	63	46	54	64	72	72	79	72	66	60	49	57							54.1
		MIN	18	22	8	10	26	21	32	26	21	30	36	42	32	29	38	57	35	34	34	39	49	59	50	49	55	45	24	31							34.0
RADFORD 3 N	08	MAX	51	47	25	41	39	36	42	45	41	54	54	62	43	40	62	69	65	45	53	60	72	75	80	69	71	61	48	57							53.8
		MIN	17	22	12	14	23	19	26	27	20	23	34	41	32	28	31	55	33	33	33	39	40	50	48	47	49	46	23	25							31.8
RICHLANDS	07	MAX	49	44	21	44	41	34	50	51	42	59	58	62	42	53	57	66	55	44	58	71	77	76	75	76	69	59	49	62							55.1
		MIN	12	17	4	4	22	22	30	26	21	21	37	38	33	33	49	55	36	34	36	44	47	47	46	47	50	44	28	27							32.5
SALTVILLE 1N	07	MAX	50	41	24	43	40	37	42	49	43	60	51	60	45	47	54	64	63	45	60	70	78	79	78	78	71	59	50	63							55.1
		MIN	15	21	9	9	26	21	27	28	22	22	38	44	35	37	44	54	36	36	36	42	42	49	45	48	54	47	29	29							33.8
STAFFORDSVILLE 3 ENE	07	MAX	52	48	24	41	38	33	40	44	41	53	49	62	43	39	61	70	64	45	52	60	72	75	80	80	70	60	48	57							53.6
		MIN	13	24	7	7	24	20	25	26	19	19	36	41	32	27	29	56	34	33	34	40	43	52	52	49	49	45	24	25							31.6
WISE 1SE	09	MAX	47	41	22	40	40	36	48	49	42	55	56	59	40	51	55	63	59	44	54	66	75	72	72	74	66	54	50	59							53.2
		MIN	24	12	7	17	19	19	32	23	24	34	43	31	29	40	49	55	33	32	34	54	59	57	54	55	51	38	29	42							35.6
WYTHEVILLE	07	MAX	50	44	20	40	38	36	39	46	40	55	53	61	46	47	56	63	62	44	52	63	73	75	78	77	71	58	46	56							53.2
		MIN	15	20	10	11	23	22	28	25	23	22	38	42	31	31	46	54	34	34	35	40	49	57	55	52	52	46	26	27							33.9

VIRGINIA
201802

SNOWFALL AND SNOW ON GROUND (INCHES)

STATION		DAY OF MONTH																																		
		01	02	03	04	05	06	07	08	09	10	11	12	13	14	15	16	17	18	19	20	21	22	23	24	25	26	27	28	29	30	31				
VIRGINIA																																				
TIDEWATER 01																																				
DISPUTANTA	SNOWFALL																																			
EMPORIA 1 WNW	SNOWFALL																																			
FREDERICKSBURG SEWAGE	SNOWFALL				-		-												-	-			-													
	SN ON GND				-		-												-	-		-														
HOLLAND 1 E	SNOWFALL																																			
HOPEWELL	SNOWFALL	-			-								-			-		-	-					-		-										
	SN ON GND	-			-								-			-		-	-					-		-										
NORFOLK INTL AP	SNOWFALL																																			
	SN ON GND																																			
NORFOLK S	SNOWFALL	-			-	-	-	-	-	-	-	-	-	-	-	-	-	-	-	-	-	-	-	-	-	-	-	-	-	-	-	-	-	-		
	SN ON GND	-			-	-	-	-	-	-	-	-	-	-	-	-	-	-	-	-	-	-	-	-	-	-	-	-	-	-	-	-	-	-		
NORTH	SNOWFALL																																			
	SN ON GND																																			
PAINTER 2W	SNOWFALL																																			
STONY CREEK 2 N	SNOWFALL																																			
SUFFOLK LAKE KILBY	SNOWFALL																																			
	SN ON GND																																			
WAKEFIELD 1NW	SNOWFALL																																			
	SN ON GND																																			
WALKERTON 2 NW	SNOWFALL																																			
	SN ON GND																																			
WALLACETON LK DRUMMOND	SNOWFALL																																			
WALLOPS ISLAND NASA TEST FACIL	SNOWFALL																																			
	SN ON GND																																			
WARSAW 2 NW	SNOWFALL																																			
WEST POINT 2 NW	SNOWFALL																																			
	SN ON GND																																			
WILLIAMSBURG 2 N	SNOWFALL																																			
EASTERN PIEDMONT 02																																				
ASHLAND	SNOWFALL																																			
	SN ON GND				T	T																														
BREMO BLUFF	SNOWFALL																																			
	SN ON GND																																			
BUCKINGHAM	SNOWFALL																																			
	SN ON GND																																			
CAMP PICKETT	SNOWFALL																																			
CHASE CITY	SNOWFALL																																			
CLARKSVILLE	SNOWFALL																																			
	SN ON GND																																			
CORBIN	SNOWFALL																																			

Snowfall: Includes snow and ice. Values for NWS stations (J index note) are Mid-Mid (LST).

Snow on ground: Includes snow, sleet, ice, and hail. Values for NWS stations (J index note) are observed at 12 UTC (GMT).

Water Equivalent: Given for NWS stations (J index note) only, when snow depth is 2 inches or more, and is measured at 18 UTC (GMT)

VIRGINIA
201802

SNOWFALL AND SNOW ON GROUND (INCHES)

STATION		DAY OF MONTH																															
		01	02	03	04	05	06	07	08	09	10	11	12	13	14	15	16	17	18	19	20	21	22	23	24	25	26	27	28	29	30	31	
CROZIER	SNOWFALL																																
	SN ON GND																																
FARMVILLE 2 N	SNOWFALL	-	-	-	-	-	-	-	-	-	-	-	-	-	-	-	-	-	-	-	-	-	-	-	-	-	-	-	-	-	-	-	
	SN ON GND	-	-	-	-	-	-	-	-	-	-	-	-	-	-	-	-	-	-	-	-	-	-	-	-	-	-	-	-	-	-	-	
JOHN H KERR DAM	SNOWFALL																																
KEYSVILLE 2 S	SNOWFALL					T																											
	SN ON GND																																
LOUISA	SNOWFALL																																
PALMYRA 3S	SNOWFALL																																
PETERSBURG	SNOWFALL																																
RICHMOND INTL AP	SNOWFALL																																
	SN ON GND																																
WINTERPOCK 4 W	SNOWFALL	-	-	-	-	-	-	-	-	-	-	-	-	-	-	-	-	-	-	-	-	-	-	-	-	-	-	-	-	-	-	-	
WESTERN PIEDMONT 03	SNOWFALL																																
APPOMATTOX	SNOWFALL				T	-																											
	SN ON GND				T	-																											
BEDFORD	SNOWFALL																																
	SN ON GND																																
BROOKNEAL	SNOWFALL					T																											
	SN ON GND																																
CHARLOTTESVILLE 2W	SNOWFALL				0.1	0.5																											
	SN ON GND				T	T	T																										
CHATHAM	SNOWFALL																																
	SN ON GND																																
CONCORD 4 SSW	SNOWFALL																																
	SN ON GND																																
DANVILLE RGNL AP	SNOWFALL				T																												
	SN ON GND																																
FREE UNION	SNOWFALL				T	0.5																											
	SN ON GND				T	T																											
HOLCOMB ROCK	SNOWFALL																																
	SN ON GND																																
HUDDLESTON 4 SW	SNOWFALL																																
	SN ON GND																																
LYNCHBURG INTL AP	SNOWFALL																																
	SN ON GND				0.2																												
MARTINSVILLE FLTR PLT	SNOWFALL																																
	SN ON GND																																
MEADOWS OF DAN 5 SW	SNOWFALL																																
	SN ON GND																																
MONTEBELLO FISH CULTURAL STN	SNOWFALL																																
	SN ON GND																																

Snowfall: Includes snow and ice. Values for NWS stations (J index note) are Mid-Mid (LST).

Snow on ground: Includes snow, sleet, ice, and hail. Values for NWS stations (J index note) are observed at 12 UTC (GMT).

Water Equivalent: Given for NWS stations (J index note) only, when snow depth is 2 inches or more, and is measured at 18 UTC (GMT)

VIRGINIA
201802

SNOWFALL AND SNOW ON GROUND (INCHES)

STATION		DAY OF MONTH																																					
		01	02	03	04	05	06	07	08	09	10	11	12	13	14	15	16	17	18	19	20	21	22	23	24	25	26	27	28	29	30	31							
MONTICELLO	SNOWFALL				T	1.1																																	
PEDLAR DAM	SNOWFALL				T	T																																	
	SN ON GND				T	T																																	
ROCKY MT	SNOWFALL				T	-																																	
	SN ON GND				T	-																																	
S BOSTON	SNOWFALL					T																																	
	SN ON GND					T																																	
STUART	SNOWFALL				-																																		
	SN ON GND				-																																		
WOOLWINE 1 SE	SNOWFALL				T	-																																	
	SN ON GND				T	-																																	
NORTHERN 04																																							
FRONT ROYAL	SNOWFALL					-									-																								
	SN ON GND					-									-																								
PURCELLVILLE	SNOWFALL		T		T	1.0																																	
	SN ON GND		T		T	1.0																																	
LURAY 5 E	SNOWFALL					-																																	
	SN ON GND					-																																	
MANASSAS	SNOWFALL					-																																	
	SN ON GND					-																																	
MT WX 3	SNOWFALL		-			0.3																																	
	SN ON GND		-			0.3																																	
PIEDMONT RSCH STN	SNOWFALL			-	-	-						-	-																										
	SN ON GND			-	-	-						-	-																										
SOMERSET	SNOWFALL					-																																	
	SN ON GND					-																																	
SPERRYVILLE	SNOWFALL				-	0.5									-																								
	SN ON GND				-	T	T	T						-																									
STERLING (RCS)	SNOWFALL					0.1																																	
	SN ON GND					0.1																																	
	WTR EQUIV																																						
VIENNA	SNOWFALL																																						
	SN ON GND																																						
WASHINGTON DULLES INTL AP	SNOWFALL				0.1										T																								
	SN ON GND				0.1										T																								
WASHINGTON REAGAN NATL AP	SNOWFALL				T																																		
	SN ON GND				T																																		
WINCHESTER	SNOWFALL					1.3																																	
	SN ON GND					1																																	
WINCHESTER 7 SE	SNOWFALL														-																								
	SN ON GND														-																								
WOODSTOCK 2 NE	SNOWFALL					T																																	
	SN ON GND					T																																	

Snowfall: Includes snow and ice. Values for NWS stations (J index note) are Mid-Mid (LST).

Snow on ground: Includes snow, sleet, ice, and hail. Values for NWS stations (J index note) are observed at 12 UTC (GMT).

Water Equivalent: Given for NWS stations (J index note) only, when snow depth is 2 inches or more, and is measured at 18 UTC (GMT)

VIRGINIA
201802

SNOWFALL AND SNOW ON GROUND (INCHES)

STATION		DAY OF MONTH																														
		01	02	03	04	05	06	07	08	09	10	11	12	13	14	15	16	17	18	19	20	21	22	23	24	25	26	27	28	29	30	31
CENTRAL MOUNTAIN 05	SN ON GND					-		T											3	-	-	-	-	-	-	-						
	COVINGTON FLTR PLT		T			1.0																										
DALE ENTERPRISE	SNOWFALL		T			1	T												0.5													
	SN ON GND		T			1																										
GATHRIGHT DAM	SNOWFALL		T			3.4																										
	SN ON GND		T			3	2	1	T	T	T																					
GLASGOW 1 SE	SNOWFALL					1.5									T																	
	SN ON GND					1																										
HOT SPRINGS	SNOWFALL		1.0			3.0													1.0													
	SN ON GND		1			3	2																									
LEXINGTON	SNOWFALL					1.4													T													
	SN ON GND					1	T																									
MILLGAP	SNOWFALL		0.8			6.8													3.5													
	SN ON GND	T	1	T	T	5	-	4	3	3	3	1	T						2	T												
MTN GROVE	SNOWFALL		0.2			7.0																										
	SN ON GND		T	T		6	6	5	5	4	2	-	T																			
MUSTOE 1 SW	SNOWFALL	0.8	0.6		7.4													3.2														
	SN ON GND	1	1	T	6	6	5	4	4	3	3	T	T					3	1	T												
NEW CASTLE	SNOWFALL		T		0.3	1.0																										
	SN ON GND		T		T	1	T																									
ROANOKE 8 N	SNOWFALL					-																										
	SN ON GND					-																										
ROANOKE INTL AP	SNOWFALL		T		1.5																											
	SN ON GND				T																											
STAUNTON WTP	SNOWFALL				T	0.9																										
	SN ON GND				T	1																										
WAYNESBORO WTP	SNOWFALL					-		-																								
	SN ON GND					-		-																								
WILLIAMSVILLE 2 S	SNOWFALL				-	5.5													0.3													
	SN ON GND				-	4	3	3	2	1	T	T																				
SOUTHWESTERN																																
MOUNTAIN 06																																
ABINGDON 3S	SNOWFALL		1.5																													
BIG STONE GAP	SN ON GND		2	1																												
	SNOWFALL																															
BLACKSBURG NWSO	SNOWFALL		0.1	T	0.1	1.2																										
	SN ON GND		T		T	T																										
BURKES GARDEN	SNOWFALL		4.0	T	1.0	0.2																										
	SN ON GND		4	4	3	2	T																									

Snowfall: Includes snow and ice. Values for NWS stations (J index note) are Mid-Mid (LST).

Snow on ground: Includes snow, sleet, ice, and hail. Values for NWS stations (J index note) are observed at 12 UTC (GMT).

Water Equivalent: Given for NWS stations (J index note) only, when snow depth is 2 inches or more, and is measured at 18 UTC (GMT)

VIRGINIA
201802

SNOWFALL AND SNOW ON GROUND (INCHES)

STATION		DAY OF MONTH																													
		01	02	03	04	05	06	07	08	09	10	11	12	13	14	15	16	17	18	19	20	21	22	23	24	25	26	27	28	29	30
CHRISTIANSBURG	SNOWFALL		T		0.1	1.0																									
	SN ON GND		T		T	T																									
CLINTWOOD 1 W	SNOWFALL		1.3	1.0	0.5	0.2	T		T																						
	SN ON GND		1	2	2	T	T																								
COPPER HILL	SNOWFALL		T		0.1																										
	SN ON GND		T		T									T																	
ELK CREEK 4SSW	SNOWFALL		0.6	0.1	1.9	0.2																									
	SN ON GND		1	T	2	T								T																	
GALAX WTP	SNOWFALL				0.3	T																									
	SN ON GND				T																										
GRUNDY	SNOWFALL		0.3		0.2	T																									
	SN ON GND	1	1	1	1	T																									
JOHN FLANNAGAN LAKE	SNOWFALL	-	-	-	-	-		-	-	-	-	-	-																		
	SN ON GND	1	1	T	T	T		-	-	-	-	-	-																		
LEBANON	SNOWFALL		2.0																												
	SN ON GND		2																												
NORA 4 SSE	SNOWFALL		3.8	1.8	0.9	0.3	T		0.4																						
	SN ON GND		4	4	2	T	T		T																						
PULASKI 2 E	SNOWFALL		T		-	-																									
	SN ON GND		T		-	-																									
RADFORD 3 N	SNOWFALL		T		-	-																									
	SN ON GND		T		-	-																									
RICHLANDS	SNOWFALL		1.2	2.8	1.2																										
	SN ON GND		1	2	1																										
SALTVILLE 1N	SNOWFALL		0.8		0.5	-																									
	SN ON GND		1		1	-																									
STAFFORDSVILLE 3 ENE	SNOWFALL		T		T	-																									
	SN ON GND		T		T	-																									
WILLIS	SNOWFALL				-	-																									
	SN ON GND				-	-																									
WISE 1SE	SNOWFALL		2.1		0.5	0.1			T																						
	SN ON GND		3	2	T	T			T																						
WYTHEVILLE	SNOWFALL		1.0		T	0.7								T																	
	SN ON GND		1		T	1																									

Snowfall: Includes snow and ice. Values for NWS stations (J index note) are Mid-Mid (LST).

Snow on ground: Includes snow, sleet, ice, and hail. Values for NWS stations (J index note) are observed at 12 UTC (GMT).

Water Equivalent: Given for NWS stations (J index note) only, when snow depth is 2 inches or more, and is measured at 18 UTC (GMT)

VIRGINIA
201802

PAN EVAPORATION AND WIND

STATION		DAY OF MONTH																															TOTAL OR AVERAGE			
		01	02	03	04	05	06	07	08	09	10	11	12	13	14	15	16	17	18	19	20	21	22	23	24	25	26	27	28	29	30	31				
VIRGINIA EASTERN PIEDMONT 02 JOHN H KERR DAM	WIND	-	-	-	-	-	-	-	-	-	-	-	-	-	-	-	-	-	-	-	-	-	-	-	-	-	-	-	-	-	-	-	-	-		
	EVAP	-	-	-	-	-	-	-	-	-	-	-	-	-	-	-	-	-	-	-	-	-	-	-	-	-	-	-	-	-	-	-	-	-		
	MAX	-	-	-	-	-	-	-	-	-	-	-	-	-	-	-	-	-	-	-	-	-	-	-	-	-	-	-	-	-	-	-	-	-		
	MIN	-	-	-	-	-	-	-	-	-	-	-	-	-	-	-	-	-	-	-	-	-	-	-	-	-	-	-	-	-	-	-	-	-		

Evaporation: Is measured in hundreths of inches.
 Wind: Is measured in miles.
 Max and Min: The maximum and minimum temperatures (Fahrenheit) of the water in the evaporation pan.

STATION INDEX

STATION	INDEX NO.	DIVISION	COUNTY	LATITUDE	LONGITUDE	ELEVATION (IN FEET)	OBSERVATION TIME AND TABLES			
							LOCAL STD TIME			
							TEMP	PRECIP	EVAP	SPECIAL SEE (NOTES)
VIRGINIA										
ABINGDON 3S	0021	06	WASHINGTON	36 40	81 58W	1925	06	06		H
ALBERTA 5N	0079	02	BRUNSWICK	36 56	77 54W	376		08		H
ALTAVISTA	0166	03	CAMPBELL	37 7	79 17W	529		07		CH
AMELIA COURTHOUSE 1	0187	02	AMELIA	37 21	77 59W	345	08	08		H
APPOMATTOX	0243	03	APPOMATTOX	37 20	78 50W	850	07	07		H
ASHLAND	0327	02	HANOVER	37 45	77 29W	220	18	18		H
BEDFORD	0551	03	BEDFORD	37 20	79 30W	894		07		H
BIG STONE GAP	0735	06	WISE	36 51	82 48W	1466	08	08		H
BLACKSBURG NWSO	0766	06	MONTGOMERY	37 12	80 25W	2103	07	07		CH
BREMO BLUFF	0993	02	FLUVANNA	37 43	78 17W	225	07	07		CH
BROOKNEAL	1082	03	CAMPBELL	37 4	78 57W	408	07	07		H
BUCKINGHAM	1136	02	BUCKINGHAM	37 30	78 32W	580		07		H
BUENA VISTA	1159	05	ROCKBRIDGE	37 44	79 22W	840		07		H
BURKES GARDEN	1209	06	TAZEWELL	37 5	81 20W	3068	07	07		H
CAMP PICKETT	1322	02	NOTTOWAY	37 2	77 57W	330	08	08		CH
CHARLOTTESVILLE 2W	1593	03	ALBEMARLE	38 2	78 31W	866	08	08		H
CHASE CITY	1606	02	MECKLENBURG	36 47	78 29W	510	07	07		H
CHATHAM	1614	03	PITTSYLVANIA	36 49	79 25W	651	07	07		CH
CHRISTIANSBURG	1692	06	MONTGOMERY	37 8	80 24W	2100	07	07		H
CLARKSVILLE	1746	02	MECKLENBURG	36 37	78 33W	330	07	07		H
CLINTWOOD 1 W	1825	06	DICKENSON	37 9	82 29W	1780	07	07		H
CONCORD 4 SSW	1955	03	CAMPBELL	37 17	78 58W	815		07		H
COPPER HILL	1999	06	FLOYD	37 5	80 8W	2857	07	07		H
CORBIN	2009	02	CAROLINE	38 12	77 22W	220	09	09		H
COVINGTON FLTR PLT	2044	05	ALLEGHANY	37 49	79 59W	1244	07	07		CH
CROZIER	2142	02	GOOCHLAND	37 40	77 53W	350	07	07		H
DALE ENTERPRISE	2208	05	ROCKINGHAM	38 27	78 56W	1358	07	07		CH
DANVILLE RGNL AP	2250	03	PITTSYLVANIA	36 34	79 20W	571	24	24		CH
DISPUTANTA	2400	01	PRINCE GEORGE	37 7	77 12W	130	07	07		H
ELK CREEK 4SSW	2730	06	GRAYSON	36 40	81 12W	3439	07	07		H
EMPORIA 1 WNW	2790	01	GREENSVILLE	36 42	77 34W	100	08	08		H
FARMVILLE 2 N	2941	02	CUMBERLAND	37 20	78 23W	450	07	07		CH
FREDERICKSBURG SEWAGE	3204	01	FREDERICKSBURG	38 17	77 27W	60	07	07		H
FREE UNION	3213	03	ALBEMARLE	38 5	78 35W	590	07	07		H
FRONT ROYAL	3229	04	WARREN	38 54	78 11W	930	06	06		CH
GALAX WTP	3272	06	CARROLL	36 39	80 55W	2341	07	07		CH
GATHRIGHT DAM	3310	05	ALLEGHANY	37 57	79 57W	1770	07	07		CH
GLASGOW 1 SE	3375	05	ROCKBRIDGE	37 37	79 26W	737		07		H
GRUNDY	3640	06	BUCHANAN	37 17	82 5W	1170	07	07		H
HOLCOMB ROCK	4039	03	BEDFORD	37 33	79 24W	900		07		H
HOLLAND 1 E	4044	01	SUFFOLK	36 41	76 46W	80	08	08		H
HOPEWELL	4101	01	PRINCE GEORGE	37 18	77 17W	40	16	16		H
HOT SPRINGS	4128	05	BATH	37 60	79 50W	2244	07	07		H
HUDDLESTON 4 SW	4148	03	BEDFORD	37 8	79 32W	897		07		H
JOHN FLANNAGAN LAKE	4410	06	DICKENSON	37 14	82 21W	1460	07	07		H
JOHN H KERR DAM	4414	02	MECKLENBURG	36 36	78 18W	250	08	08	08	CH
KEYSVILLE 2 S	4568	02	CHARLOTTE	37 1	78 29W	625	07	07		H
LEBANON	4777	06	RUSSELL	36 54	82 2W	1912	07	07		H
LEXINGTON	4876	05	ROCKBRIDGE	37 47	79 26W	1097	07	07		H
LOUISA	5050	02	LOUISA	38 3	78 0W	420	18	18		H
LURAY 5 E	5096	04	PAGE	38 40	78 22W	1400	08	08		H
LYNCHBURG INTL AP R	5120	03	CAMPBELL	37 19	79 12W	940	24	24		HJ
MANASSAS	5204	04	MANASSAS	38 44	77 30W	245	07	07		H
MARTINSVILLE FLTR PLT	5300	03	HENRY	36 42	79 52W	760	07	07		H
MEADOWS OF DAN 5 SW	5453	03	PATRICK	36 40	80 27W	2225	07	07		H
MILLGAP	5595	05	HIGHLAND	38 18	79 43W	2421	06	06		CH
MONTEBELLO FISH CULTURAL STN	5690	03	NELSON	37 51	79 8W	2667	07	07		CH
MONTICELLO	5700	03	ALBEMARLE	38 1	78 27W	758	07	07		H
MT WX 3	5853	04	CLARKE	39 4	77 54W	1550	07	07		H
MTN GROVE	5756	05	BATH	38 6	79 53W	1775		07		H
MUSTOE 1 SW	5880	05	HIGHLAND	38 19	79 40W	2367	24	24		CH
NEW CASTLE	6012	05	CRAIG	37 31	80 6W	1258		07		H
NORA 4 SSE	6125	06	DICKENSON	37 1	82 19W	2650	07	07		H
NORFOLK INTL AP R	6139	01	NORFOLK (CITY)	36 54	76 12W	30	24	24		HJ
NORFOLK S	6147	01	NORFOLK (CITY)	36 52	76 14W	10	24	24		H

STATION INDEX

STATION	INDEX NO.	DIVISION	COUNTY	LATITUDE	LONGITUDE	ELEVATION (IN FEET)	OBSERVATION TIME AND TABLES			
							LOCAL STD TIME			
							TEMP	PRECIP	EVAP	SPECIAL SEE (NOTES)
NORTH	6161	01	MATHEWS	37 26	76 26W	10	07	07		H
PAINTER 2W	6475	01	ACCOMACK	37 35	75 49W	30	16	16		CH
PALMYRA 3S	6491	02	FLUVANNA	37 49	78 16W	410	06	06		H
PEDLAR DAM	6593	03	AMHERST	37 40	79 17W	1024		07		CH
PETERSBURG	6656	02	PETERSBURG	37 14	77 24W	19	07	07		H
PIEDMONT RSCH STN	6712	04	ORANGE	38 14	78 7W	520	08	08		CH
PULASKI 2 E	6955	06	PULASKI	37 3	80 47W	1850	07	07		CH
PURCELLVILLE	4909	04	LOUDOUN	39 9	77 43W	510	08	08		H
RADFORD 3 N	6999	06	PULASKI	37 12	80 35W	1800	08	08		H
RICHLANDS	7174	06	TAZEWELL	37 6	81 48W	1910	07	07		H
RICHMOND INTL AP R	7201	02	HENRICO	37 31	77 19W	164	24	24		HJ
ROANOKE 8 N	7278	05	ROANOKE	37 22	79 58W	1157	07	07		H
ROANOKE INTL AP R	7285	05	ROANOKE	37 19	79 58W	1175	24	24		HJ
ROCKY MT	7338	03	FRANKLIN	36 59	79 54W	1315	07	07		CH
S BOSTON	7925	03	HALIFAX	36 42	78 53W	329	07	07		H
SALTVILLE 1N	7506	06	SMYTH	36 53	81 46W	1733	07	07		H
SOMERSET	7904	04	ORANGE	38 15	78 16W	510	08	08		H
SPERRYVILLE	7985	04	RAPPAHANNOCK	38 39	78 14W	750	06	06		H
STAFFORDSVILLE 3 ENE	8022	06	GILES	37 16	80 43W	1906	07	07		CH
STAUNTON WTP	8062	05	AUGUSTA	38 10	79 5W	169	08	08		CH
STERLING (RCS)	8084	04	LOUDOUN	38 59	77 29W	288	07	07		H
STONY CREEK 2 N	8129	01	SUSSEX	36 58	77 24W	105	08	08		H
STUART	8170	03	PATRICK	36 38	80 15W	1375	07	07		H
SUFFOLK LAKE KILBY	8192	01	SUFFOLK	36 44	76 36W	22	24	24		H
VIENNA	8737	04	FAIRFAX	38 54	77 17W	418	07	07		H
WAKEFIELD 1NW	8800	01	SUSSEX	36 59	77 0W	113	24	24		CH
WALKERTON 2 NW	8829	01	KING AND QUEEN	37 45	77 2W	50	18	18		H
WALLACETON LK DRUMMOND	8837	01	CHESAPEAKE	36 36	76 26W	20	08	08		H
WALLOPS ISLAND NASA TEST FACIL R	8849	01	ACCOMACK	37 56	75 28W	46	24	24		HJ
WARSAW 2 NW	8894	01	RICHMOND	37 59	76 47W	140	18	18		H
WASHINGTON DULLES INTL AP R	8903	04	LOUDOUN	38 56	77 27W	290	24	24		HJ
WASHINGTON REAGAN NATL AP R	8906	04	ARLINGTON	38 51	77 2W	10	24	24		HJ
WAYNESBORO WTP	8941	05	WAYNESBORO	38 5	78 53W	1270	07	07		H
WEST POINT 2 NW	9025	01	KING WILLIAM	37 34	76 48W	20	17	17		H
WILLIAMSBURG 2 N	9151	01	YORK	37 18	76 42W	70	24	24		H
WILLIAMSVILLE 2 S	9159	05	BATH	38 11	79 35W	1640		07		CH
WILLIS	9169	06	FLOYD	36 55	80 30W	2810		07		CH
WINCHESTER	9181	04	FREDERICK	39 11	78 9W	720	07	07		H
WINCHESTER 7 SE	9186	04	FREDERICK	39 11	78 7W	680	08	08		H
WINTERPOCK 4 W	9213	02	CHESTERFIELD	37 19	77 39W	300		07		H
WISE 1SE	9215	06	WISE	36 58	82 33W	2564	09	09		CH
WOODSTOCK 2 NE	9263	04	SHENANDOAH	38 54	78 28W	675	07	07		H
WOOLWINE 1 SE	9272	03	PATRICK	36 46	80 16W	1263		08		CH
WYTHEVILLE	9301	06	WYTHE	36 58	81 5W	2458	07	07		H

REFERENCE NOTES

STATION NAMES: Name of the city, town or locality. Figures and letters following the station names indicate the distance in miles and direction from the post office or town community center.

DIVISIONS: Areas within a state of similar climatological characteristics. Division averages are calculated using data from stations that record temperature and/or precipitation. Station Precipitation totals flagged with an 'F' or 'M' are excluded from the Divisional Average calculations of precipitation. Stations with monthly Temperature averages flagged with an 'F' or 'M' are included in the Divisional Average if there are no more than 9 flagged or missing daily values in the month, else they are excluded from the divisional average for temperature.

NORMALS: The average value of the meteorological element over a time period. Effective 1 January 2012, the averaging period for station departures is 1981 to 2010. The normals for National Weather Service localities have been adjusted so as to be representative for the current observation site.

The January 2011 through December 2015 publications incorrectly state the computation of divisional departures. Climate Division departures have been, and continue to be, computed from 1971-2000 Normals, not 1981-2010 as stated. Station departures are accurately described as departures from 1981-2010.

MONTHLY DEGREE DAY TOTALS: One heating (cooling) degree day is accumulated for each whole degree that the daily mean temperature is below (above) 65 degrees Fahrenheit.

PRECIPITATION: Values shown in hundredths of inches are water equivalent totals, i.e., total of liquid and melted frozen precipitation. In the "Monthly Summarized Data" table the total snow and sleet values shown in tenths of inches are unmelted amounts. The max depth on ground values of snow and sleet shown in whole inches are cumulative unmelted amounts. The number of days with .10, .50, 1.00 or more refers to water equivalents.

PRECIPITATION QUALITY CONTROL: The NCEI quality control process may flag precipitation data that are spatially inconsistent, exceed climatological limits, or are inconsistent with prevailing weather patterns.

TEMPERATURE: Original temperature values are given in the "Daily Temperature" table. Summary temperature information (averages, departures, extremes, monthly degree day totals) is based on the values labeled MAX/MIN.

WIND: (As shown in the "Evaporation and Wind" table) the total wind movement in miles over the evaporation pan as determined by an anemometer recorder located 6-8 inches above the pan.

SYMBOLS AND LETTERS USED IN THE STATION INDEX TABLE

C Station is equipped with recording rain gage (R) but values in this bulletin are from a non-recording rain gage unless indicated by an R.

G Observations appear in the "Soil Temperatures" table.

H Observations appear in the "Snowfall and Snow on the Ground" table.

J Station also published as a Local Climatological Data publication.

VAR Observation time varies.

SR / SS Observation time near sunrise / Observation time near sunset, respectively.

SYMBOLS AND LETTERS USED IN THE DATA TABLES

(DAILY DATA ARE FOR THE 24 HOURS IMMEDIATELY PRECEDING OBSERVATION TIME.)

BLANK Entries in the "Monthly Summarized Data" table indicate no record.

BLANK Entries in the "Daily Precipitation" and "Snowfall and Snow on the Ground" tables indicate zero.

BLANK Entries in the "Daily Temperature" table indicate a missing record

- No record. Data not recorded or not received in time for publication.

+ Precipitation or temperature extremes occurred on one or more previous dates during the month.

* Rain gage not read. Precipitation is included in the amount following the asterisks.

Time distribution may not be known. A * preceding the monthly total indicates precipitation amount is being carried forward to next month's total, and may include amounts from the previous month(s).

a As a subscript, indicates accumulated total.

A Amount of precipitation is the total of observer's entries for the current month. It may include precipitation that occurred during the previous month. Refer to earlier bulletin to determine date of last

reading. (Hawaii stations)

B Divisional Departure from normals are computed using 1971-2000 normals.

E Normalized HDD/CDD Calculation. E is appended to the HDD/CDD Calculation when 1-9 individual daily TMAX and/or TMIN values are missing and a Normalized HDD/CDD Calculation is provided. M appears alone if 10 or more daily values are missing.

F Monthly calculation flagged value. F is appended to average and/or total values computed which exclude one or more daily data values that have been flagged by the GHCN-Daily Dataset

M Insufficient or partial data. M is appended to average and/or total values computed with 1-9 daily values missing. M appears alone if 10 or more daily values are missing, (8 or more for wind and evaporation).

N Indicates snow fall or Snowdepth totals are computed with one or more missing days.

R Amounts from recording rain gage.

T Trace. An amount too small to measure.

SEASONAL TABLES: Monthly and seasonal snowfall and heating degree days for the 12 months ending with the June data are published in the July issue of this bulletin. Cooling degree days for the calendar year are published in the "Climatological Data Annual Summary."

Information concerning the history of changes in locations, exposure, etc. of substations is kept on file at the National Centers for Environmental Information. Historical information of regular National Weather Service Offices may be obtained from the "Local Climatological Data" annual publication. The contents of this publication may be reprinted or otherwise used freely, with proper credit to the National Centers For Environmental Information. The data are also available digitally.

Effective with the January 2011 Data-Month, COOP Observer Names are no longer included in the Monthly and Annual Climatological Data Publications. This information is not published to ensure the privacy of personal information pursuant to Section 208 of the E-Government Act of 2002 (44 USC 3601).

As of the 2011 Data-Year, Station and Climate Division Maps are no longer being included in the CD Publications. NCEI's Products Branch provides updated Station Maps for various data networks via the Historical Observing Metadata Repository: <http://www.ncdc.noaa.gov/homr>.

The GHCN-Daily Quality Control Flags shown below are displayed as superscripts with the data. For more information on Global Historical Climatology Network - Daily and flags, see: <http://www.ncdc.noaa.gov/oa/climate/ghcn-daily/> and Comprehensive Automated Quality Assurance of Daily Surface Observations. Durre, Imke, Matthew J. Menne, Byron E. Gleason, Tamara G. Houston, Russell S. Vose, 2010: J. Appl. Meteor. Climatol., 49, 16151633. doi: 10.1175/2010JAMC2375.1

Blank = Passed All checks

D = failed duplicate check

G = failed gap check

I = failed internal consistency check

K = failed streak/frequent-value check

L = failed check on length of multiday period

M = failed megaconsistency check

N = failed naught check

O = failed climatological outlier check

R = failed lagged range check

S = failed spatial consistency check

T = failed temporal consistency check

W = temperature too warm for snow

X = failed bounds check

Z = flagged as a result of an official Datzilla investigation

Beginning with the January 2013 CD Publication, monthly mean temperature calculations have changed to the National Data Stewardship Team standard. Monthly maximum and minimum temperatures are not rounded until after the monthly mean temperature is calculated. This is the most accurate outcome, but may be slightly different from the mean derived from rounded monthly maximum and minimum.

The climate division temperature and precipitation values in this publication are based on simple averages from the current set of NWS-Designated Open and Published COOP and First Order Sites within each division. These values differ from those found in NCEI's nClimDiv product. Beginning in February 2014, the nClimDiv product is used by NCEI's Monitoring Branch and in its monthly climate reports. For more details on nClimDiv, please go to <http://www.ncdc.noaa.gov/monitoring-references/maps/us-climate-divisions.php>.

Effective January 2016, Alaska's Climate Divisions are updated to reflect the 13 climate divisional boundaries established by University of Alaska-Fairbanks, NWS, NCEI, Oregon State University, and University of Nebraska-Lincoln. For more details regarding the updated Alaska Climate Divisions, see: <http://journals.ametsoc.org/doi/pdf/10.1175/JAMC-D-11-0168.1> (Bienek et al., 2012).

These and other publications are available from the National Centers for Environmental Information

Hourly Precipitation Data

This publication contains hourly precipitation amounts obtained from recording rain gages located at National Weather Service, Federal Aviation Administration, and cooperative observer stations. Published data are displayed in inches and tenths or inches and hundredths at local standard time. HPD includes maximum precipitation for nine (9) time periods from 15 minutes to 24 hours, for selected stations.

Climatological Data

Monthly editions contain station daily maximum and minimum temperatures and precipitation. Some Stations provide daily snowfall, snow depth, evaporation, and soil temperature data. Each edition also contains monthly summaries for heating and cooling degree days (65 degree F base). The July issue contains a recap of monthly heating degree days and snow data for the preceding July through June.

The Annual issue contains monthly and annual averages of temperature, precipitation, temperature extremes, freeze data, soil temperatures, evaporation, and a recap of monthly cooling degree days.

Storm Data

Monthly issues contain a chronological listing, by states, of occurrences of storms and unusual weather phenomena. Reports contain information on storm paths, deaths, injuries, and property damage. An "Outstanding storms of the month" section highlights severe weather events with photographs, illustrations, and narratives. The December issue includes annual tornado, lightning, flash flood, and tropical cyclone summaries.

Monthly Climatic Data for the World

This publication contains monthly means for temperature, pressure, precipitation, vapor pressure, and sunshine for approximately 2,000 surface data collection stations worldwide and monthly mean upper air temperatures, dew point depressions, and wind velocities for approximately 500 observing sites.

Local Climatological Data

LCD publications summarize temperature, relative humidity, precipitation, cloudiness, wind speed and direction observations for several hundred cities in the U.S. and its territories. Each monthly publication also contains 3 hourly weather observations for that month and a hourly summary of precipitation. Annual LCD publications contain a summary of the past calendar year as well as historical averages and extremes.

For Information Call:

(828) 271-4800 Option 2

(828) 271-4010 (TDD)

(828) 271-4876 (Fax)

NOAA National Centers for Environmental Information
Attn: Customer Engagement Branch
151 Patton Avenue
Asheville, NC 28801-5001

Customer Services Number: (828) 271-4800, option 2
TDD : (828) 271-4010
Fax number: (828) 271-4876

NCEI now offers free online access to the *Climatological Data* publication.
Go to : www.ncdc.noaa.gov and choose Most Popular.