



# CLIMATOLOGICAL DATA

## VIRGINIA

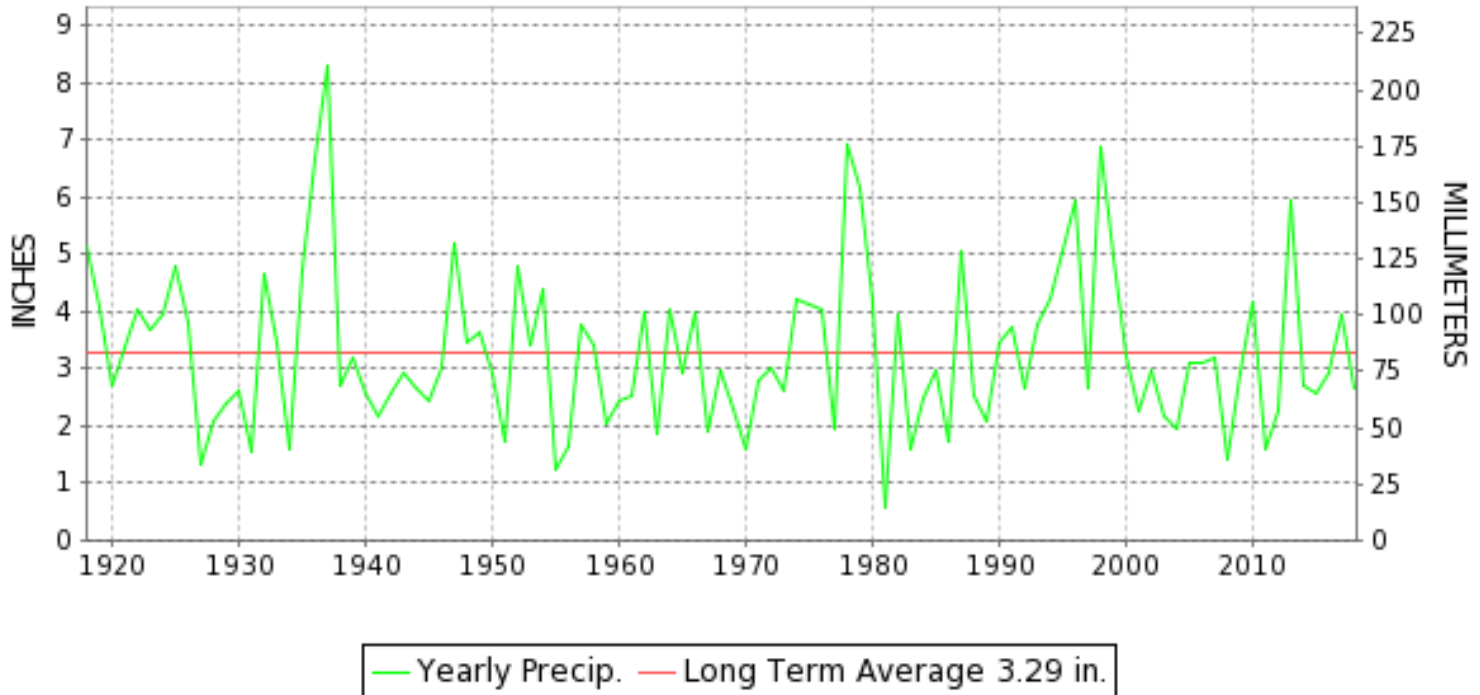
**JANUARY 2018**

VOLUME 128 NUMBER 01

ISSN 0364-5630

GHCND Ver: 3.25-upd-2018051318

### JANUARY PRECIPITATION BY YEAR



#### TEMPERATURE AND PRECIPITATION EXTREMES

**VIRGINIA**

|                               |      |             |                              |
|-------------------------------|------|-------------|------------------------------|
| HIGHEST TEMPERATURE           | 75   | JANUARY 24+ | 2 STATIONS                   |
| LOWEST TEMPERATURE            | -14  | JANUARY 07  | WAKEFIELD 1NW                |
| GREATEST TOTAL PRECIPITATION  | 6.33 |             | DISPUTANTA                   |
| LEAST TOTAL PRECIPITATION     | 0.94 |             | WASHINGTON REAGAN NATL AP    |
| GREATEST 1 DAY PRECIPITATION  | 2.53 | JANUARY 12  | MONTEBELLO FISH CULTURAL STN |
| GREATEST TOTAL SNOWFALL       | 13.1 |             | NORFOLK INTL AP              |
| GREATEST DEPTH OF SNOW OR ICE | 12   |             | DISPUTANTA                   |

"I certify that this is an official publication of the National Oceanic and Atmospheric Administration (NOAA) It is compiled using information from weather observing sites supervised by NOAA/National Weather Service and received at the National Centers for Environmental Information(NCEI), Asheville, North Carolina 28801."

*Mary S. Wolpengeti*

Director  
National Centers for Environmental Information

**noaa**

National  
Oceanic and  
Atmospheric Administration

National  
Environmental Satellite, Data  
and Information Service

National  
Centers for Environmental Information  
Asheville, North Carolina



VIRGINIA  
201801

# MONTHLY STATION AND DIVISION SUMMARY

| STATION  | TEMPERATURE (°F)   |                    |         |                          |         |      |        |      |                      |                      |             | PRECIPITATION (IN) |      |      |         |                          |                      |      |                   |                        |      |             |             |              |
|--|--------------------|--------------------|---------|--------------------------|---------|------|--------|------|----------------------|----------------------|-------------|--------------------|------|------|---------|--------------------------|----------------------|------|-------------------|------------------------|------|-------------|-------------|--------------|
|  | AVERAGE<br>MAXIMUM | AVERAGE<br>MINIMUM | AVERAGE | DEPARTURE<br>FROM NORMAL | HIGHEST | DATE | LOWEST | DATE | HEATING<br>DEG. DAYS | COOLING<br>DEG. DAYS | NO. OF DAYS |                    |      |      | TOTAL   | DEPARTURE<br>FROM NORMAL | GREATEST<br>24 HOURS | DATE | ICE PELLETS, SNOW |                        |      | NO. OF DAYS |             |              |
|  |                    |                    |         |                          |         |      |        |      |                      |                      | MAX         |                    | MIN  |      |         |                          |                      |      | TOTAL             | MAX DEPTH<br>ON GROUND | DATE | .10 OR MORE | .50 OR MORE | 1.00 OR MORE |
|  |                    |                    |         |                          |         |      |        |      |                      |                      | >=90        | <=32               | <=32 | <=0  |         |                          |                      |      |                   |                        |      |             |             |              |
| RICHMOND INTL AP                               | 47.0               | 24.5               | 35.7    | -2.2                     | 73      | 23   | -3     | 07   | 899                  | 0                    | 0           | 7                  | 24   | 1    | 3.41    | 0.37                     | 1.00                 | 12   | 5.3               | 3                      | 04   | 11          | 6           | 1            |
| WINTERPOCK 4 W                                 |                    |                    |         |                          |         |      |        |      |                      |                      |             |                    |      |      | 2.69    | 0.91                     | 29                   | M    |                   |                        |      | 9           | 8           | 0            |
| --DIVISIONAL DATA-----><br>WESTERN PIEDMONT 03 |                    |                    | 33.3    | -2.6B                    |         |      |        |      |                      |                      |             |                    |      | 3.03 | -0.81B  |                          |                      |      |                   |                        |      |             |             |              |
| ALTAVISTA                                      |                    |                    |         |                          |         |      |        |      |                      |                      |             |                    |      | 2.57 |         | 0.54                     | 13                   | M T  | M T               | 09                     | 8    | 8           | 8           | 0            |
| APPOMATTOX                                     | 42.1               | 22.0               | 32.0    | -3.1                     | 69      | 13   | 1      | 07   | 1015                 | 0                    | 0           | 11                 | 22   | 0    | 2.35    | -0.79                    | 0.54                 | 29   | 5.6               | 6                      | 18   | 9           | 7           | 0            |
| BEDFORD  |                    |                    |         |                          |         |      |        |      |                      |                      |             |                    |      | 3.09 | -0.27   | 0.73                     | 23                   | 3.6  | 4                 | 18                     | 9    | 8           | 0           |              |
| BROOKNEAL                                      | 44.7               | 16.6               | 30.7    | -0.6                     | 73      | 13   | -4     | 07   | 1053                 | 0                    | 0           | 10                 | 28   | 3    | 2.41    | -1.26                    | 0.63                 | 13   | 5.0               | 5                      | 18   | 9           | 7           | 0            |
| CHARLOTTESVILLE 2W                             | 42.7               | 24.5               | 33.6    | -2.3                     | 68      | 22   | 6      | 08+  | 968                  | 0                    | 0           | 9                  | 20   | 0    | 1.85    | -1.25                    | 0.58                 | 13   | 1.0               | 1                      | 18   | 8           | 4           | 0            |
| CHATHAM  | 44.0               | 17.6               | 30.8    | -3.8                     | 71      | 24+  | -2     | 08+  | 1052                 | 0                    | 0           | 10                 | 27   | 2    | 2.58    | -1.20                    | 1.07                 | 13   | 7.8               | 8                      | 19   | 9           | 6           | 1            |
| CONCORD 4 SSW                                  |                    |                    |         |                          |         |      |        |      |                      |                      |             |                    |      | 2.58 |         | 0.60                     | 13                   | 5.0  | 5                 | 18                     | 9    | 8           | 0           |              |
| DANVILLE RGNL AP                               | 48.5M              | 24.1M              | 36.3M   | -1.4                     | 73      | 12   | 2      | 02   | 893E                 | 0                    | 0           | 4                  | 18   | 0    | 2.83    | -0.59                    | 0.95                 | 28   | 8.8               | 9                      | 17   | 7           | 6           | 0            |
| FREE UNION                                     | 44.2               | 18.9               | 31.5    |                          | 66      | 24+  | -3     | 07   | 1029                 | 0                    | 0           | 10                 | 26   | 2    | 2.26    |                          | 1.00                 | 12   | 0.5               | 1                      | 17   | 7           | 4           | 1            |
| HOLCOMB ROCK                                   |                    |                    |         |                          |         |      |        |      |                      |                      |             |                    |      | 3.67 |         | 1.05                     | 13                   | 0.4  | T                 | 19                     | 7    | 6           | 1           |              |
| HUDDLESTON 4 SW                                |                    |                    |         |                          |         |      |        |      |                      |                      |             |                    |      | 2.48 |         | 0.49                     | 13                   | 5.0  | 5                 | 18                     | 8    | 8           | 0           |              |
| LYNCHBURG INTL AP                              | 44.2               | 20.5F              | 32.3F   | -2.8                     | 70      | 12   | -2     | 07   | 989                  | 0                    | 0           | 8                  | 26   | 1    | 2.94    | -0.20                    | 1.10                 | 12   | 4.0               | 4                      | 17   | 8           | 7           | 1            |
| MARTINSVILLE FLTR PLT                          | 43.9M              | 17.5M              | 30.7M   | -4.8                     | 68      | 13   | -1     | 07   | 1060E                | 0                    | 0           | 9                  | 23   | 1    | 2.11    | -1.38                    | 0.51                 | 13   | 6.0               | 6                      | 18   | 9           | 7           | 0            |
| MEADOWS OF DAN 5 SW                            | 41.4M              | 21.7               | 31.5M   |                          | 64      | 22   | 5      | 07   | 1031E                | 0                    | 0           | 10                 | 25   | 0    | 2.37    |                          | 0.75                 | 13   | 2.0               | 2                      | 18   | 9           | 5           | 0            |
| MONTEBELLO FISH CULTURAL STN                   | M                  | M                  | M       |                          | 58      | 23   | -1     | 01   | 1166E                | 0                    | 0           | 9                  | 16   | 1    | M 8.96  |                          | 2.53                 | 12   | M 2.0             | 0                      |      | 6           | 6           | 4            |
| MONTICELLO                                     | M                  | M                  | M       |                          |         |      |        |      |                      |                      |             |                    |      | 0    | M       |                          |                      |      |                   |                        |      |             |             |              |
| PEDLAR DAM                                     |                    |                    |         |                          |         |      |        |      |                      |                      |             |                    |      | 3.60 |         | 1.30                     | 13                   | 0.5  | 1                 | 18                     | 8    | 6           | 1           |              |
| ROCKY MT                                       | 42.5               | 19.8M              | 31.1M   | -4.5                     | 65      | 13   | -1     | 08   | 1056E                | 0                    | 0           | 12                 | 22   | 2    | 2.43    | -0.94                    | 0.59                 | 13   | 2.8               | 3                      | 18   | 8           | 5           | 0            |
| S BOSTON                                       | 47.8               | 18.9               | 33.3    | -3.1                     | 75      | 13   | -1     | 07   | 975                  | 0                    | 0           | 7                  | 29   | 3    | 2.96    | -0.65                    | 0.80                 | 13   | 7.0               | 6                      | 18   | 11          | 7           | 0            |
| STUART   | 44.5               | 20.7               | 32.6    | -4.2                     | 70      | 23   | 1      | 07   | 994                  | 0                    | 0           | 9                  | 25   | 0    | 1.47    | -2.40                    | 0.42                 | 13   | 2.0               | 2                      | 18   | 7           | 4           | 0            |
| WOOLWINE 1 SE                                  |                    |                    |         |                          |         |      |        |      |                      |                      |             |                    |      | 2.71 |         | 0.98                     | 12                   | 1.5  | 2                 | 18                     | 8    | 5           | 0           |              |
| --DIVISIONAL DATA-----><br>NORTHERN 04         |                    |                    | 32.2    | -3.6B                    |         |      |        |      |                      |                      |             |                    |      | 2.59 | -1.25B  |                          |                      |      |                   |                        |      |             |             |              |
| FRONT ROYAL                                    | 44.9M              | 21.4M              | 33.2M   | 0.3                      | 70      | 13   | 3      | 06   | 953E                 | 0                    | 0           | 8                  | 22   | 0    | M 2.34  | -0.10                    | 1.29                 | 13   | M 0.0             | 0                      |      | 8           | 4           | 1            |
| PURCELLVILLE                                   | 39.4               | 20.0               | 29.7    | -1.6                     | 69      | 13   | 2      | 07   | 1087                 | 0                    | 0           | 13                 | 26   | 0    | A 1.85  |                          | 1.04                 | 13   | 0.1               | 1                      | 01   | 6           | 3           | 1            |
| LURAY 5 E                                      | 41.6               | 19.6               | 30.6    | -2.3                     | 71      | 13   | -4     | 07   | 1056                 | 0                    | 0           | 13                 | 25   | 5    | M 1.88  | -0.80                    | 1.03                 | 13   | 1.1               | 1                      | 17   | 7           | 4           | 1            |
| MANASSAS                                       | 42.3M              | 21.1M              | 31.7M   | -1.8                     | 71      | 13   | 5      | 08+  | 1030E                | 0                    | 0           | 10                 | 23   | 0    | M 1.37  |                          | 0.85                 | 13   | M 0.5             | M T                    | 18   | 6           | 3           | 0            |
| MT WX 3  | 35.6               | 19.7               | 27.7    |                          | 62      | 13   | 0      | 08+  | 1151                 | 0                    | 0           | 14                 | 24   | 2    | 2.96    |                          | 1.63                 | 13   | 0.2               | 1                      | 02   | 7           | 4           | 1            |
| PIEDMONT RSCH STN                              | 43.1               | 22.0F              | 32.5F   | -1.8                     | 68      | 13   | 3      | 03   | 977                  | 0                    | 0           | 10                 | 23   | 0    | MA 2.41 | -0.35                    | 1.79                 | 13   | M T               | 0                      |      | 4           | 3           | 1            |
| SOMERSET                                       | 42.9               | 19.9               | 31.4    | -2.1                     | 69      | 13   | -4     | 07   | 1034                 | 0                    | 0           | 11                 | 23   | 4    | 1.64    | -1.25                    | 0.57                 | 13   | M 0.6             | 1                      | 17   | 8           | 4           | 0            |
| SPERRYVILLE                                    | 44.0M              | 23.3M              | 33.7M   | 0.6                      | 66      | 23+  | 4      | 06   | 965E                 | 0                    | 0           | 9                  | 22   | 0    | M 3.40  | 0.33                     | 1.32                 | 12   | M T               | 1                      | 01   | 8           | 4           | 2            |
| STERLING (RCS)                                 | 40.5               | 19.5               | 30.0    | -2.0                     | 71      | 13   | -1     | 08+  | 1076                 | 0                    | 0           | 13                 | 27   | 2    | 1.98    | -0.87                    | 1.40                 | 13   | 0.4               | T                      | 18   | 9           | 4           | 1            |
| VIENNA   | 39.1               | 20.3               | 29.7    | -2.9                     | 66      | 13   | 2      | 08+  | 1087                 | 0                    | 0           | 12                 | 26   | 0    | 1.03    | -2.10                    | 0.65                 | 13   | 1.6               | 1                      | 17   | 9           | 2           | 0            |
| WASHINGTON DULLES INTL AP                      | 43.3               | 21.4               | 32.4    | -0.8                     | 70      | 12   | -1     | 07   | 1003                 | 0                    | 0           | 10                 | 25   | 1    | 1.79    | -0.89                    | 0.91                 | 12   | 0.4               | T                      | 18   | 7           | 4           | 0            |

VIRGINIA  
201801

# MONTHLY STATION AND DIVISION SUMMARY

| STATION  | TEMPERATURE (°F)   |                    |         |                          |         |      |        |      |                      |                      |             | PRECIPITATION (IN) |      |     |         |                          |                      |      |                   |                        |      |             |             |              |
|--|--------------------|--------------------|---------|--------------------------|---------|------|--------|------|----------------------|----------------------|-------------|--------------------|------|-----|---------|--------------------------|----------------------|------|-------------------|------------------------|------|-------------|-------------|--------------|
|  | AVERAGE<br>MAXIMUM | AVERAGE<br>MINIMUM | AVERAGE | DEPARTURE<br>FROM NORMAL | HIGHEST | DATE | LOWEST | DATE | HEATING<br>DEG. DAYS | COOLING<br>DEG. DAYS | NO. OF DAYS |                    |      |     | TOTAL   | DEPARTURE<br>FROM NORMAL | GREATEST<br>24 HOURS | DATE | ICE PELLETS, SNOW |                        |      | NO. OF DAYS |             |              |
|  |                    |                    |         |                          |         |      |        |      |                      |                      | MAX         |                    | MIN  |     |         |                          |                      |      | TOTAL             | MAX DEPTH<br>ON GROUND | DATE | .10 OR MORE | .50 OR MORE | 1.00 OR MORE |
|  |                    |                    |         |                          |         |      |        |      |                      |                      | >=90        | <=32               | <=32 | <=0 |         |                          |                      |      |                   |                        |      |             |             |              |
| WASHINGTON REAGAN NATL AP                      | 44.7               | 26.7               | 35.7    | -0.3                     | 68      | 23   | 8      | 07   | 900                  | 0                    | 0           | 8                  | 23   | 0   | 0.94    | -1.87                    | 0.37                 | 12   | 1.2               | 1                      | 05   | 7           | 5           | 0            |
| WINCHESTER                                     | 41.3               | 20.0               | 30.7    | -1.1                     | 68      | 23+  | 1      | 08+  | 1057                 | 0                    | 0           | 13                 | 25   | 0   | 2.00    | -0.56                    | 1.07                 | 13   | T                 | 0                      |      | 7           | 2           | 1            |
| WINCHESTER 7 SE                                | 41.1M              | 15.3M              | 28.2M   | -2.7                     | 68      | 13   | -4     | 08   | 1142E                | 0                    | 0           | 12                 | 25   | 4   | M 2.07  | -0.12                    | 1.48                 | 13   | M 0.0             | 0                      |      | 7           | 2           | 1            |
| WOODSTOCK 2 NE                                 | 41.9               | 17.6               | 29.7    | -0.8                     | 69      | 13   | -2     | 08+  | 1086                 | 0                    | 0           | 12                 | 26   | 4   | 1.32    | -1.35                    | 0.60                 | 13   | T                 | T                      | 17   | 6           | 3           | 0            |
| --DIVISIONAL DATA-----><br>CENTRAL MOUNTAIN 05 |                    |                    | 31.1    | -0.7B                    |         |      |        |      |                      |                      |             |                    |      |     | 1.72    | -1.45B                   |                      |      |                   |                        |      |             |             |              |
| BUENA VISTA                                    |                    |                    |         |                          |         |      |        |      |                      |                      |             |                    |      |     | 2.53    |                          | 0.89                 | 13   | 1.0               | 1                      | 18   | 8           | 4           | 0            |
| COVINGTON FLTR PLT                             | 39.0               | 17.0               | 28.0    | -5.5                     | 65      | 13   | -2     | 08+  | 1138                 | 0                    | 0           | 12                 | 25   | 2   | 1.11    | -1.39                    | 0.50                 | 13   | 0.4               | T                      | 19   | 7           | 4           | 0            |
| DALE ENTERPRISE                                | 42.0M              | 19.7M              | 30.9M   | 0.5                      | 65      | 13   | -4     | 07   | 1017E                | 0                    | 0           | 9                  | 23   | 2   | M 1.80  | -0.49                    | 0.68                 | 23   | M 0.8             | 1                      | 17   | 6           | 4           | 0            |
| GATHRIGHT DAM                                  | 38.0               | 16.8               | 27.4    | -4.0                     | 64      | 13   | -4     | 07   | 1158                 | 0                    | 0           | 13                 | 25   | 5   | 1.66    | -1.12                    | 0.54                 | 13   | 0.8               | 1                      | 17   | 9           | 7           | 0            |
| GLASGOW 1 SE                                   |                    |                    |         |                          |         |      |        |      |                      |                      |             |                    |      |     | 3.86    |                          | 1.57                 | 12   | 1.4               | 1                      | 18   | 9           | 5           | 2            |
| HOT SPRINGS                                    | 36.5               | 16.8               | 26.6    | -3.4                     | 63      | 13   | -1     | 08+  | 1181                 | 0                    | 0           | 13                 | 25   | 4   | 2.81    | -0.65                    | 0.88                 | 13   | 2.0               | 1                      | 30   | 9           | 7           | 0            |
| LEXINGTON                                      | 41.4               | 18.6               | 30.0    | -4.0                     | 67      | 13   | -2     | 08   | 1078                 | 0                    | 0           | 12                 | 27   | 2   | 2.12    | -0.67                    | 0.66                 | 13   | 0.3               | T                      | 19   | 9           | 4           | 0            |
| MILLGAP  | 36.1               | 12.4               | 24.2    | -3.5                     | 62      | 13   | -9     | 08+  | 1257                 | 0                    | 0           | 14                 | 26   | 6   | 1.97    | -1.28                    | 0.93                 | 13   | 3.9               | 1                      | 30   | 10          | 5           | 0            |
| MTN GROVE                                      |                    |                    |         |                          |         |      |        |      |                      |                      |             |                    |      |     | A 1.70  |                          | 0.77                 | 13   | 2.7               | 2                      | 29   | 5           | 4           | 0            |
| MUSTOE 1 SW                                    | 37.1               | 13.8               | 25.5    | -2.6                     | 60      | 12   | -9     | 07   | 1215                 | 0                    | 0           | 11                 | 27   | 5   | 2.75    | -0.63                    | 1.25                 | 12   | 5.4               | 1                      | 30   | 13          | 7           | 1            |
| NEW CASTLE                                     |                    |                    |         |                          |         |      |        |      |                      |                      |             |                    |      |     | 2.47    |                          | 0.85                 | 13   | 0.8               | 1                      | 18   | 10          | 7           | 0            |
| ROANOKE 8 N                                    | 41.9               | 20.1               | 31.0    | -4.3                     | 67      | 13   | 3      | 08+  | 1047                 | 0                    | 0           | 12                 | 25   | 0   | 2.32    | -0.70                    | 0.57                 | 29+  | 1.5               | 2                      | 18   | 9           | 6           | 0            |
| ROANOKE INTL AP                                | 44.2               | 24.1               | 34.1    | -2.5                     | 67      | 12   | 4      | 07   | 948                  | 0                    | 0           | 8                  | 22   | 0   | 2.14    | -0.78                    | 0.54                 | 12   | 2.1               | 2                      | 17   | 9           | 6           | 0            |
| STAUNTON WTP                                   | 40.2               | 21.2               | 30.7    | -1.9                     | 66      | 13   | -2     | 07   | 1055                 | 0                    | 0           | 11                 | 23   | 1   | M 1.01  | -1.66                    | 0.39                 | 23   | 0.4               | T                      | 30   | 6           | 3           | 0            |
| WAYNESBORO WTP                                 | 40.5               | 18.0               | 29.2    | -3.6                     | 65      | 13   | -2     | 08+  | 1099                 | 0                    | 0           | 11                 | 27   | 3   | M 2.26  | -0.53                    | 1.13                 | 12   | M 0.5             | T                      | 30   | 8           | 4           | 1            |
| WILLIAMSVILLE 2 S                              |                    |                    |         |                          |         |      |        |      |                      |                      |             |                    |      |     | A 2.23  |                          | 0.90                 | 13   | 0.6               | T                      | 30   | 6           | 5           | 0            |
| --DIVISIONAL DATA-----><br>SOUTHWESTERN        |                    |                    | 28.9    | -3.4B                    |         |      |        |      |                      |                      |             |                    |      |     | 2.28    | -0.88B                   |                      |      |                   |                        |      |             |             |              |
| MOUNTAIN 06                                    |                    |                    |         |                          |         |      |        |      |                      |                      |             |                    |      |     |         |                          |                      |      |                   |                        |      |             |             |              |
| ABINGDON 3S                                    | 42.1M              | 18.4M              | 30.3M   | -2.8                     | 66      | 22   | -3     | 03   | 1072E                | 0                    | 0           | 9                  | 23   | 3   | 2.02    | -1.65                    | 1.10                 | 13   | 0.3               | 1                      | 17   | 8           | 5           | 1            |
| BIG STONE GAP                                  | 39.7               | 17.6               | 28.6    | -5.4                     | 67      | 12   | -1     | 07+  | 1120                 | 0                    | 0           | 11                 | 24   | 2   | 3.83    | -0.36                    | 1.65                 | 12   | 2.5               | 2                      | 18   | 13          | 8           | 1            |
| BLACKSBURG NWSO                                | 38.3               | 17.0               | 27.6    | -3.9                     | 64      | 13   | -1     | 08+  | 1149                 | 0                    | 0           | 13                 | 27   | 2   | 1.64    | -1.44                    | 0.49                 | 29   | 2.2               | 2                      | 18   | 9           | 5           | 0            |
| BURKES GARDEN                                  | 33.9               | 15.7               | 24.8    | -4.1                     | 59      | 13   | -7     | 07   | 1239                 | 0                    | 0           | 14                 | 25   | 6   | 2.29    | -1.66                    | 1.03                 | 13   | 6.8               | 3                      | 30   | 10          | 5           | 1            |
| CHRISTIANSBURG                                 | 37.5               | 19.4               | 28.4    | -4.4                     | 64      | 13   | 1      | 08+  | 1127                 | 0                    | 0           | 13                 | 22   | 0   | 1.45    | -1.31                    | 0.47                 | 29   | 2.2               | 2                      | 18   | 9           | 5           | 0            |
| CLINTWOOD 1 W                                  | 38.4               | 15.4               | 26.9    | -4.2                     | 68      | 12   | -5     | 07+  | 1174                 | 0                    | 0           | 13                 | 30   | 5   | 2.14    | -1.47                    | 0.55                 | 13   | 10.1              | 3                      | 30   | 14          | 7           | 0            |
| COPPER HILL                                    | 35.1               | 16.6               | 25.9    |                          | 60      | 13   | -5     | 03   | 1205                 | 0                    | 0           | 14                 | 24   | 8   | 2.02    |                          | 0.46                 | 12   | 3.1               | 3                      | 19   | 9           | 6           | 0            |
| ELK CREEK 4SSW                                 | 37.0               | 18.3               | 27.6    |                          | 57      | 23+  | -5     | 07+  | 1150                 | 0                    | 0           | 11                 | 21   | 7   | 2.28    |                          | 0.67                 | 13   | 2.6               | 2                      | 18   | 9           | 7           | 0            |
| GALAX WTP                                      | 39.3               | 18.2               | 28.7    | -2.3                     | 60      | 22+  | -1     | 08+  | 1114                 | 0                    | 0           | 12                 | 26   | 2   | 3.40    |                          | 1.90                 | 12   | 2.8               | 2                      | 18   | 10          | 4           | 1            |
| GRUNDY   | 39.2               | 17.8               | 28.5    | -4.4                     | 68      | 12   | -2     | 06   | 1126                 | 0                    | 0           | 10                 | 25   | 3   | 1.88    | -1.31                    | 0.50                 | 13   | 5.7               | 2                      | 30   | 12          | 6           | 0            |
| JOHN FLANNAGAN LAKE                            | M                  | M                  | M       |                          | 69      | 12   | -3     | 08   | 1092E                | 0                    | 0           | 4                  | 15   | 2   | MA 2.01 |                          | 0.63                 | 12   | M 3.8             | 2                      | 17   | 9           | 3           | 0            |
| LEBANON  | 41.2               | 17.8               | 29.5    | -3.5                     | 66      | 23   | -4     | 06   | 1094                 | 0                    | 0           | 10                 | 25   | 5   | 2.10    | -0.94                    | 0.84                 | 13   | 2.1               | 2                      | 17   | 9           | 5           | 0            |
| NORA 4 SSE                                     | 35.9M              | 19.7M              | 27.8M   | -2.3                     | 62      | 12   | -2     | 03+  | 1146E                | 0                    | 0           | 14                 | 22   | 4   | 2.81    | -0.80                    | 0.98                 | 12   | 10.8              | 3                      | 18   | 15          | 7           | 0            |

VIRGINIA  
201801

## MONTHLY STATION AND DIVISION SUMMARY

| STATION                 | TEMPERATURE (°F)   |                    |         |                          |         |      |        |      |                      |                      | PRECIPITATION (IN) |      |      |     |        |                          |                      |      |                   |                        |      |             |             |              |
|-------------------------|--------------------|--------------------|---------|--------------------------|---------|------|--------|------|----------------------|----------------------|--------------------|------|------|-----|--------|--------------------------|----------------------|------|-------------------|------------------------|------|-------------|-------------|--------------|
|                         | AVERAGE<br>MAXIMUM | AVERAGE<br>MINIMUM | AVERAGE | DEPARTURE<br>FROM NORMAL | HIGHEST | DATE | LOWEST | DATE | HEATING<br>DEG. DAYS | COOLING<br>DEG. DAYS | NO. OF DAYS        |      |      |     | TOTAL  | DEPARTURE<br>FROM NORMAL | GREATEST<br>24 HOURS | DATE | ICE PELLETS, SNOW |                        |      | NO. OF DAYS |             |              |
|                         |                    |                    |         |                          |         |      |        |      |                      |                      | MAX                |      | MIN  |     |        |                          |                      |      | TOTAL             | MAX DEPTH<br>ON GROUND | DATE | .10 OR MORE | .50 OR MORE | 1.00 OR MORE |
|                         |                    |                    |         |                          |         |      |        |      |                      |                      | >=90               | <=32 | <=32 | <=0 |        |                          |                      |      |                   |                        |      |             |             |              |
| PULASKI 2 E             | 38.7               | 17.5               | 28.1    | -4.9                     | 62      | 13   | -5     | 07   | 1135                 | 0                    | 0                  | 12   | 23   | 3   | 1.71   | -1.14                    | 0.50                 | 13   | 0.6               | 1                      | 18   | 8           | 6           | 0            |
| RADFORD 3 N             | 38.5               | 17.9               | 28.2    | -2.1                     | 63      | 13   | -2     | 06   | 1132                 | 0                    | 0                  | 12   | 26   | 2   | A 1.42 | -1.51                    | 0.59                 | 13   | 0.5               | T                      | 19   | 5           | 3           | 0            |
| RICHLANDS               | 38.6               | 16.3               | 27.5    | -4.5                     | 65      | 23   | -9     | 07+  | 1156                 | 0                    | 0                  | 13   | 28   | 5   | 1.97   | -1.08                    | 0.85                 | 13   | 5.1               | 3                      | 30   | 11          | 7           | 0            |
| SALTVILLE 1N            | 39.0M              | 17.5M              | 28.3M   | -4.6                     | 66      | 23   | -1     | 07+  | 1132E                | 0                    | 0                  | 12   | 25   | 3   | 1.73   | -1.87                    | 0.70                 | 13   | 0.9               | 1                      | 18   | 10          | 5           | 0            |
| STAFFORDSVILLE 3 ENE    | 37.9               | 16.8               | 27.3    | -4.3                     | 62      | 13   | -4     | 08+  | 1161                 | 0                    | 0                  | 12   | 24   | 3   | 1.64   | -1.26                    | 0.84                 | 13   | 0.3               | T                      | 30   | 8           | 5           | 0            |
| WILLIS                  |                    |                    |         |                          |         |      |        |      |                      |                      |                    |      |      |     | 2.33   |                          | 0.58                 | 12   | 3.8               | 4                      | 18   | 10          | 6           | 0            |
| WISE 1SE                | 36.6               | 19.5               | 28.0    | -5.1                     | 63      | 12   | -5     | 06   | 1136                 | 0                    | 0                  | 13   | 23   | 4   | 2.81   | -1.07                    | 1.11                 | 12   | 5.7               | 2                      | 17   | 13          | 7           | 1            |
| WYTHEVILLE              | 37.5               | 17.6               | 27.5    | -3.2                     | 62      | 13   | -3     | 07   | 1152                 | 0                    | 0                  | 13   | 23   | 2   | 1.79   | -1.11                    | 0.68                 | 13   | 1.9               | 1                      | 30   | 10          | 5           | 0            |
| --DIVISIONAL DATA-----> |                    |                    | 27.9    | -4.1B                    |         |      |        |      |                      |                      |                    |      |      |     | 2.16   | -1.38B                   |                      |      |                   |                        |      |             |             |              |

VIRGINIA  
201801

## DAILY PRECIPITATION (INCHES)

| STATION                        | TOTAL  | DAY OF MONTH |      |                |      |    |    |      |      |      |      |      |      |    |      |      |      |      |      |      |      |      |      |    |    |      |      |      |      |      |      |    |  |  |
|--------------------------------|--------|--------------|------|----------------|------|----|----|------|------|------|------|------|------|----|------|------|------|------|------|------|------|------|------|----|----|------|------|------|------|------|------|----|--|--|
|                                |        | 01           | 02   | 03             | 04   | 05 | 06 | 07   | 08   | 09   | 10   | 11   | 12   | 13 | 14   | 15   | 16   | 17   | 18   | 19   | 20   | 21   | 22   | 23 | 24 | 25   | 26   | 27   | 28   | 29   | 30   | 31 |  |  |
| <b>VIRGINIA</b>                |        |              |      |                |      |    |    |      |      |      |      |      |      |    |      |      |      |      |      |      |      |      |      |    |    |      |      |      |      |      |      |    |  |  |
| <b>TIDEWATER 01</b>            |        |              |      |                |      |    |    |      |      |      |      |      |      |    |      |      |      |      |      |      |      |      |      |    |    |      |      |      |      |      |      |    |  |  |
| DISPUTANTA                     | 6.33   |              |      | 0.67           |      |    |    |      | 0.05 |      | 0.84 | 1.59 |      |    |      |      |      | 0.18 |      |      |      | 0.26 | 0.72 |    |    |      |      | 0.08 | 1.27 | 0.56 | 0.11 |    |  |  |
| EMPORIA 1 WNW                  | 5.64   |              |      | 0.37           |      |    |    |      | T    |      |      | 0.28 | 1.28 |    |      |      |      | 0.21 |      |      |      | 0.29 | 0.89 |    |    |      |      | 0.92 | 1.07 | 0.33 |      |    |  |  |
| FREDERICKSBURG SEWAGE          | M 1.09 |              |      | -              |      |    |    |      | 0.16 |      |      | 0.11 | 0.20 | -  |      |      | T    |      |      |      |      | -    |      |    |    |      | -    | 0.14 | 0.30 | 0.18 |      |    |  |  |
| HOLLAND 1 E                    | 1.91   |              | 0.19 | 0.19           |      |    |    |      | 0.01 |      |      | 0.34 | 0.01 |    |      |      |      |      |      |      |      | 0.05 |      |    |    |      |      | 0.63 | 0.49 |      |      |    |  |  |
| HOPEWELL                       | 5.50   |              |      | 0.20           |      |    |    |      | 0.09 |      | T    | 2.10 | 0.40 |    |      |      | 0.20 |      |      |      | 0.30 | 0.26 |      |    |    |      | 0.80 | 0.94 | 0.21 |      | T    |    |  |  |
| NORFOLK INTL AP                | 3.51   |              | 0.42 | 0.64           |      |    |    | 0.01 | 0.03 |      |      | 0.49 | 0.05 |    |      | 0.18 | T    |      |      |      |      | 0.04 |      |    | T  |      |      | 0.66 | 0.92 | 0.07 |      |    |  |  |
| NORFOLK S                      | 3.79   |              | 0.42 | 0.64           |      |    |    | T    | 0.04 |      |      | 0.59 | 0.08 |    | T    | 0.18 | T    |      |      |      |      | 0.06 |      |    |    |      |      | 0.71 | 1.00 | 0.07 |      |    |  |  |
| NORTH                          | M 4.76 |              | -    | 0.40           | 0.25 |    |    |      |      |      |      | 0.17 | 0.87 |    |      |      |      | 0.20 |      |      |      | 0.25 | 1.17 |    |    |      | 0.04 | 0.90 | 0.51 |      |      |    |  |  |
| PAINTER 2W                     | 4.29   |              |      | 1.46           |      |    |    |      |      | 0.06 |      | 0.01 | 0.68 |    |      |      |      | 0.06 |      |      |      | 0.32 |      |    |    |      | 0.24 | 1.04 | 0.42 |      |      |    |  |  |
| STONY CREEK 2 N                | 3.61   |              |      |                |      |    |    | 0.03 |      |      | 0.61 |      |      |    |      |      | 0.06 |      |      |      | 1.03 |      |      |    |    |      | 1.46 | 0.38 | 0.04 |      |      |    |  |  |
| SUFFOLK LAKE KILBY             | 3.10   |              | 0.09 | 0.52           |      |    |    |      |      |      |      | 1.17 | 0.02 |    |      |      | 0.11 | T    |      |      |      | 0.12 | T    |    |    |      | 0.72 | 0.31 | 0.04 |      |      |    |  |  |
| WAKEFIELD 1NW                  | 5.98   |              | 0.23 | 0.40           |      |    |    | 0.02 |      |      | 0.02 | 1.38 | 0.03 |    | T    |      | 0.21 |      |      |      |      | 1.74 | 0.01 |    |    |      | 1.11 | 0.73 | 0.10 |      |      |    |  |  |
| WALKERTON 2 NW                 | F 3.39 |              |      | T <sup>1</sup> |      |    |    | T    | 0.20 |      |      | 1.01 | 0.43 |    |      | T    |      |      |      |      |      | 0.55 |      | T  |    |      | 0.42 | 0.78 | T    |      |      |    |  |  |
| WALLACETON LK DRUMMOND         | 3.44   |              |      | 0.60           |      |    |    |      | 0.05 |      |      |      | 0.90 |    |      |      |      | 0.18 |      |      |      | 0.04 | 0.07 |    |    |      | 0.10 | 1.15 | 0.35 |      |      |    |  |  |
| WALLOPS ISLAND NASA TEST FACIL | 3.67   |              | 0.22 | 0.58           |      |    |    | 0.12 | T    |      |      | 0.17 | 0.23 |    | T    |      | 0.09 |      |      |      |      | 0.95 |      |    |    |      | 0.80 | 0.48 | 0.03 |      |      |    |  |  |
| WARSAW 2 NW                    | 3.61   |              |      | 0.32           |      |    |    | 0.09 |      |      |      | 1.89 |      |    |      |      | 0.01 |      |      |      |      | 0.36 |      |    |    |      |      | 0.91 | 0.03 |      |      |    |  |  |
| WEST POINT 2 NW                | 3.40   |              |      | 0.56           |      |    |    | T    | 0.07 |      |      | 0.63 | 0.41 |    |      |      | 0.07 | 0.01 |      |      |      | 0.31 |      |    |    |      | 0.51 | 0.53 | 0.30 |      |      |    |  |  |
| WILLIAMSBURG 2 N               | 4.55   |              | 0.06 | 0.09           |      |    |    | 0.06 | 0.02 |      |      | 0.78 | 0.08 |    |      |      | 0.07 |      |      |      |      | 1.82 |      |    |    |      | 0.79 | 0.75 | 0.03 |      |      |    |  |  |
| <b>EASTERN PIEDMONT 02</b>     |        |              |      |                |      |    |    |      |      |      |      |      |      |    |      |      |      |      |      |      |      |      |      |    |    |      |      |      |      |      |      |    |  |  |
| ALBERTA 5N                     | 3.52   |              |      | 0.11           |      |    |    |      | T    |      |      | 0.33 | 0.54 |    |      |      | 0.08 | 0.31 |      |      |      | 0.46 | T    |    |    |      | 0.26 | 1.01 | 0.42 |      |      |    |  |  |
| AMELIA COURTHOUSE 1            | 3.04   |              |      | 0.16           |      |    |    |      | 0.14 |      |      | 0.16 | 0.51 |    |      |      |      | 0.29 |      |      |      | 0.25 |      |    |    |      | 0.38 | 0.85 | 0.30 |      |      |    |  |  |
| ASHLAND                        | 2.88   |              |      | 0.18           |      |    |    | 0.08 | 0.10 |      |      | 0.67 | 0.19 |    |      |      | 0.12 |      |      |      |      | 0.12 |      |    |    |      | 0.48 | 0.89 | 0.05 |      |      |    |  |  |
| BREMO BLUFF                    | M 0.68 |              |      | 0.04           | -    |    |    |      | 0.13 |      |      | -    | -    | -  | -    |      |      |      |      |      |      | -    | 0.12 |    |    |      | 0.10 | 0.16 | 0.13 |      |      |    |  |  |
| BUCKINGHAM                     | 3.13   |              |      | 0.05           |      |    |    |      | 0.10 |      |      | 0.28 | 1.14 |    |      |      | T    | 0.36 |      |      |      | 0.08 |      |    |    |      | 0.19 | 0.74 | 0.19 |      |      |    |  |  |
| CAMP PICKETT                   | 3.88   |              |      |                |      |    |    |      |      |      |      | 0.33 | 0.41 |    |      |      | 0.18 | 0.37 |      |      |      | 1.04 | 0.12 |    |    |      |      | 1.10 | 0.33 |      |      |    |  |  |
| CHASE CITY                     | 4.12   |              |      | 0.40           |      |    |    |      |      |      |      | 0.33 | 0.79 |    |      |      | 0.50 | 0.75 |      |      |      | 0.30 |      |    |    |      |      | 1.05 |      |      |      |    |  |  |
| CLARKSVILLE                    | 3.81   |              |      | T              |      |    |    |      | 0.10 | T    |      | 0.17 | 0.90 |    |      |      | T    | 0.86 |      |      |      | 0.35 | T    |    |    |      | 0.18 | 0.96 | 0.29 |      |      |    |  |  |
| CORBIN                         | M 2.10 |              |      | 0.11           |      |    |    |      | 0.15 | 0.01 |      | 0.25 | -    | -  | 0.25 |      | 0.01 |      |      |      |      | 0.16 | 0.04 |    |    |      | 0.31 | 0.64 | 0.17 |      |      |    |  |  |
| CROZIER                        | 2.34   |              |      | 0.05           |      |    |    |      |      |      |      | 0.20 | 0.37 |    |      |      | 0.20 |      |      |      |      | 0.17 |      |    |    |      | 0.32 | 0.70 | 0.33 |      |      |    |  |  |
| FARMVILLE 2 N                  | 2.67   |              |      | T              |      |    |    |      | T    |      |      | T    |      |    |      |      | T    | 0.70 |      |      |      | 0.82 |      |    |    |      | 0.11 | 0.64 | 0.40 |      |      |    |  |  |
| JOHN H KERR DAM                | 3.07   |              |      |                |      |    |    |      | 0.02 |      |      | 0.15 | 0.34 |    |      |      |      | 0.11 | 0.20 | 0.19 |      | 0.49 | 0.02 |    |    |      | 0.18 | 1.01 | 0.36 |      |      |    |  |  |
| KEYSVILLE 2 S                  | 2.68   |              |      | 0.06           |      |    |    |      | 0.03 |      |      | 0.26 | 0.65 |    |      |      | T    | 0.31 |      |      |      | 0.23 | 0.02 |    |    |      | 0.23 | 0.77 | 0.12 |      |      |    |  |  |
| LOUISA                         | 1.25   |              |      | 0.04           |      |    |    | 0.04 | 0.07 |      |      | 0.12 | 0.44 |    |      |      | 0.04 |      |      |      |      | 0.07 |      |    |    |      | 0.22 | 0.20 | 0.01 |      |      |    |  |  |
| PALMYRA 3S                     | 2.32   |              |      | T              |      |    |    |      | 0.13 |      |      | 0.23 | 0.63 |    |      |      | 0.06 | 0.13 |      |      |      | 0.07 | 0.04 |    |    |      | 0.16 | 0.70 | 0.17 |      |      |    |  |  |
| PETERSBURG                     | 3.69   |              | 0.12 |                |      |    |    | 0.09 |      |      | 0.13 | 1.04 |      |    |      |      | 0.20 |      |      |      | 0.29 | 0.02 |      |    |    | 0.39 | 0.91 | 0.50 |      |      |      |    |  |  |
| RICHMOND INTL AP               | 3.41   |              | 0.04 | 0.16           |      |    |    | 0.09 |      |      | 0.04 | 1.00 | 0.01 |    |      | T    | 0.10 |      |      |      |      | 0.48 | T    |    |    | T    | 0.81 | 0.60 | 0.08 |      |      |    |  |  |
| WINTERPOCK 4 W                 | 2.69   |              |      | 0.11           |      |    |    |      | 0.14 |      |      |      |      |    |      |      | 0.03 | 0.17 |      |      |      | 0.37 | 0.47 |    |    |      | 0.19 | 0.91 |      |      | 0.30 |    |  |  |
| <b>WESTERN PIEDMONT 03</b>     |        |              |      |                |      |    |    |      |      |      |      |      |      |    |      |      |      |      |      |      |      |      |      |    |    |      |      |      |      |      |      |    |  |  |
| ALTAVISTA                      | 2.57   |              |      |                |      |    |    |      |      |      |      | 0.42 | 0.54 |    |      |      |      |      | 0.39 |      |      |      | 0.11 |    |    |      | 0.20 | 0.43 | 0.24 |      |      |    |  |  |
| APPOMATTOX                     | 2.35   |              |      |                |      |    |    |      |      |      |      | 0.21 | 0.46 |    |      |      |      | 0.07 | 0.35 |      |      | 0.07 |      |    |    |      | 0.27 | 0.54 | 0.11 |      |      |    |  |  |

VIRGINIA  
201801

## DAILY PRECIPITATION (INCHES)

| STATION                      | TOTAL   | DAY OF MONTH |    |    |      |      |    |      |      |    |      |      |      |    |    |      |      |      |    |    |    |      |      |      |      |    |    |      |      |                   |      |    |
|------------------------------|---------|--------------|----|----|------|------|----|------|------|----|------|------|------|----|----|------|------|------|----|----|----|------|------|------|------|----|----|------|------|-------------------|------|----|
|                              |         | 01           | 02 | 03 | 04   | 05   | 06 | 07   | 08   | 09 | 10   | 11   | 12   | 13 | 14 | 15   | 16   | 17   | 18 | 19 | 20 | 21   | 22   | 23   | 24   | 25 | 26 | 27   | 28   | 29                | 30   | 31 |
| BEDFORD                      | 3.09    |              |    |    |      |      |    |      | 0.14 |    |      | 0.42 | 0.58 |    |    |      | 0.06 | 0.10 |    |    |    |      | 0.73 |      |      |    |    |      | 0.32 | 0.60              | 0.14 |    |
| BROOKNEAL                    | 2.41    |              |    |    |      |      |    |      | 0.15 |    |      | 0.16 | 0.63 |    |    |      | 0.07 | 0.29 |    |    |    |      | 0.07 |      |      |    |    |      | 0.22 | 0.60              | 0.22 |    |
| CHARLOTTESVILLE 2W           | 1.85    |              |    |    |      |      |    |      | 0.04 |    |      | 0.49 | 0.58 |    |    |      | 0.03 | T    |    |    |    |      | 0.42 |      |      |    |    |      | 0.03 | 0.22              | 0.04 |    |
| CHATHAM                      | 2.58    |              |    |    |      |      |    |      | 0.07 |    |      | 0.30 | 1.07 |    |    |      | 0.01 | 0.30 |    |    |    |      | 0.10 |      |      |    |    |      | 0.08 | 0.50              | 0.15 |    |
| CONCORD 4 SSW                | 2.58    |              |    |    |      |      |    |      | 0.21 |    |      | 0.32 | 0.60 |    |    |      | 0.05 | 0.27 |    |    |    |      | 0.13 |      |      |    |    |      | 0.26 | 0.59              | 0.15 |    |
| DANVILLE RGNL AP             | 2.83    |              |    |    |      |      |    |      |      |    | 0.11 | 0.75 | T    |    |    |      | 0.35 | T    |    |    |    |      | 0.40 |      |      |    | T  | 0.95 | 0.26 | 0.01              |      |    |
| FREE UNION                   | 2.26    |              |    |    |      |      |    |      | 0.04 |    |      | 1.00 | 0.45 |    |    |      | 0.04 |      |    |    |    |      | 0.46 |      |      |    |    |      | 0.01 | 0.26              | T    |    |
| HOLCOMB ROCK                 | 3.67    |              |    |    |      |      |    |      | 0.23 |    |      | 0.71 | 1.05 |    |    |      | T    | 0.06 |    |    |    |      | 0.72 |      |      |    |    |      | 0.34 | 0.56              | T    |    |
| HUDDLESTON 4 SW              | 2.48    |              |    |    |      |      |    |      | 0.27 |    |      | 0.36 | 0.49 |    |    |      | T    | 0.24 |    |    |    |      | 0.29 |      |      |    |    |      | 0.16 | 0.46              | 0.21 |    |
| LYNCHBURG INTL AP            | 2.94    |              |    | T  |      |      |    | 0.24 |      |    | 0.14 | 1.10 | T    |    |    |      | 0.32 |      |    |    |    | 0.22 |      |      |      |    | T  | 0.79 | 0.12 | 0.01              |      |    |
| MARTINSVILLE FLTR PLT        | 2.11    |              |    |    |      |      |    |      | 0.05 |    |      | 0.20 | 0.51 |    |    |      | 0.10 | 0.34 |    |    |    |      | 0.28 |      |      |    |    |      | 0.11 | 0.45              | 0.07 |    |
| MEADOWS OF DAN 5 SW          | 2.37    |              |    |    | T    |      |    |      | 0.16 |    | 0.01 | 0.62 | 0.75 |    |    |      | 0.03 | 0.09 |    |    |    |      |      |      |      |    |    | 0.42 | 0.28 | 0.01              |      |    |
| MONTEBELLO FISH CULTURAL STN | M 8.96  |              |    |    |      | -    | -  | -    |      |    |      | 2.53 | 1.59 |    |    |      |      | 1.90 | -  | -  | -  |      | 0.78 |      |      | -  | -  | -    | 0.66 | 1.50              |      |    |
| MONTICELLO                   | M       | -            | -  | -  | -    | -    | -  | -    |      |    |      |      |      |    |    |      |      |      |    |    |    |      |      |      |      |    |    |      |      |                   |      |    |
| PEDLAR DAM                   | 3.60    |              |    |    |      |      |    |      | 0.27 |    |      | 0.84 | 1.30 |    |    |      | 0.03 | T    |    |    |    |      | 0.70 |      |      |    |    |      | 0.12 | 0.29              | 0.05 |    |
| ROCKY MT                     | 2.43    |              |    |    |      |      |    |      | 0.08 |    |      | 0.40 | 0.59 |    |    |      | 0.05 | 0.12 |    |    |    |      | 0.58 |      |      |    |    |      | 0.07 | 0.54              |      |    |
| S BOSTON                     | 2.96    |              |    |    | 0.08 |      |    |      | 0.02 |    |      | 0.14 | 0.80 |    |    |      | 0.02 | 0.37 |    |    |    |      | 0.22 | 0.04 |      |    |    |      | 0.28 | 0.75              | 0.24 |    |
| STUART                       | 1.47    |              |    |    |      |      |    |      | T    |    |      | 0.40 | 0.42 |    |    |      | 0.07 | 0.04 |    |    |    |      | 0.15 |      |      |    |    |      | 0.03 | 0.36              |      |    |
| WOOLWINE 1 SE                | 2.71    |              |    |    | T    |      |    |      | 0.12 |    | T    | 0.98 | 0.50 |    |    |      | 0.03 | 0.09 |    |    |    |      | 0.46 |      |      |    |    |      | 0.09 | 0.44              | T    |    |
| <b>NORTHERN 04</b>           |         |              |    |    |      |      |    |      |      |    |      |      |      |    |    |      |      |      |    |    |    |      |      |      |      |    |    |      |      |                   |      |    |
| FRONT ROYAL                  | M 2.34  |              |    |    |      |      |    | -    |      |    |      | 0.21 | 1.29 |    |    |      | 0.01 |      |    |    |    |      | 0.42 | 0.03 | 0.01 |    |    |      | 0.02 | -                 | 0.35 |    |
| PURCELLVILLE                 | A 1.85  |              |    |    | T    |      |    |      | 0.01 |    |      | 0.11 | 1.04 |    |    |      | 0.01 |      |    |    |    |      | 0.46 | 0.05 | T    |    |    |      | *    | 0.17 <sub>a</sub> | T    |    |
| LURAY 5 E                    | M 1.88  |              |    |    |      |      |    |      | 0.01 |    |      | 0.14 | 1.03 |    |    |      | -    |      |    |    |    |      | 0.46 |      |      |    |    |      | 0.03 | 0.20              | 0.01 |    |
| MANASSAS                     | M 1.37  |              |    |    | -    | -    |    |      | 0.05 |    |      | 0.15 | 0.85 |    |    |      | 0.05 |      |    |    |    |      | 0.07 |      |      |    |    |      | -    | 0.20              | T    |    |
| MT WX 3                      | 2.96    | T            |    |    |      |      |    |      | T    |    |      | 0.58 | 1.63 |    |    |      | T    |      |    |    |    |      | 0.51 | 0.06 |      |    |    | 0.07 | 0.10 | 0.01              |      |    |
| PIEDMONT RSCH STN            | MA 2.41 | -            | -  |    | T    |      |    |      | 0.08 |    |      |      | 1.79 |    |    |      | T    |      |    |    |    |      | 0.12 |      |      |    | -  |      | *    | 0.23 <sub>a</sub> | 0.19 |    |
| SOMERSET                     | 1.64    |              |    |    |      |      |    |      | 0.03 |    |      | 0.42 | 0.57 |    |    |      | 0.04 | T    |    |    |    |      | 0.30 |      |      |    |    |      | 0.04 | 0.20              | 0.04 |    |
| SPERRYVILLE                  | M 3.40  | T            |    |    |      |      |    | -    | 0.06 |    |      | 1.32 | 1.08 |    |    |      | T    |      |    |    |    |      | 0.61 | 0.07 |      |    |    | 0.05 | 0.16 | 0.05              |      |    |
| STERLING (RCS)               | 1.98    | T            |    |    | 0.01 | T    |    |      | 0.02 |    |      | 0.13 | 1.40 | T  |    | T    | 0.02 | T    |    |    |    | 0.01 | 0.27 |      | T    |    |    | 0.01 | 0.11 | T                 |      |    |
| VIENNA                       | 1.03    |              |    |    | 0.06 |      |    |      | 0.05 |    |      | 0.01 | 0.65 |    |    | 0.01 | 0.05 |      |    |    |    |      | 0.07 |      |      |    | T  |      | 0.02 | 0.11              |      |    |
| WASHINGTON DULLES INTL AP    | 1.79    |              |    |    | 0.02 |      |    | 0.05 |      |    |      | 0.91 | 0.55 |    |    | T    | 0.02 |      |    |    | T  | T    | 0.13 | T    |      |    |    |      | 0.11 |                   | T    |    |
| WASHINGTON REAGAN NATL AP    | 0.94    |              |    |    | T    | 0.10 |    | 0.06 |      |    | T    | 0.37 | 0.11 |    |    |      | 0.03 |      |    |    |    | T    | 0.11 |      |      |    | T  | 0.16 | T    | T                 |      |    |
| WINCHESTER                   | 2.00    |              |    |    |      | T    |    |      | T    |    |      | 0.08 | 1.07 |    |    |      | T    |      |    |    |    |      | 0.62 | 0.04 |      |    |    | 0.07 | 0.09 | 0.03              |      |    |
| WINCHESTER 7 SE              | M 2.07  |              |    |    |      |      |    |      | 0.01 |    |      | -    | 1.48 |    |    |      | 0.01 |      |    |    |    |      | 0.45 | 0.06 |      |    |    | 0.05 | -    | 0.01              |      |    |
| WOODSTOCK 2 NE               | 1.32    |              |    |    |      |      |    |      |      |    |      | 0.07 | 0.60 |    |    |      | 0.01 |      |    |    |    |      | 0.45 |      |      |    |    |      | 0.07 | 0.12              |      |    |
| <b>CENTRAL MOUNTAIN 05</b>   |         |              |    |    |      |      |    |      |      |    |      |      |      |    |    |      |      |      |    |    |    |      |      |      |      |    |    |      |      |                   |      |    |
| BUENA VISTA                  | 2.53    |              |    |    |      |      |    |      |      |    |      | 0.81 | 0.89 |    |    |      | 0.03 | 0.03 |    |    |    |      | 0.50 |      |      |    |    |      | 0.02 | 0.21              | 0.04 |    |
| COVINGTON FLTR PLT           | 1.11    |              |    |    |      |      |    |      | 0.16 |    |      | 0.20 | 0.50 |    |    |      | 0.04 | T    |    |    |    | T    | 0.07 |      |      |    |    | 0.02 | 0.12 |                   |      |    |
| DALE ENTERPRISE              | M 1.80  |              |    |    |      |      |    |      |      |    |      | 0.30 | 0.63 |    |    |      | -    |      |    |    |    |      | 0.68 |      |      |    |    | 0.02 | 0.14 | 0.03              |      |    |
| GATHRIGHT DAM                | 1.66    |              |    |    |      |      |    |      | 0.26 |    |      | 0.18 | 0.54 |    |    | 0.11 | 0.05 |      |    |    |    |      | 0.13 |      |      |    |    | 0.05 | 0.24 | 0.10              |      |    |
| GLASGOW 1 SE                 | 3.86    |              |    |    |      |      |    |      | 0.11 |    |      | 1.57 | 1.01 |    |    |      | 0.03 | 0.08 |    |    |    |      | 0.51 |      |      |    |    | 0.07 | 0.45 | 0.03              |      |    |
| HOT SPRINGS                  | 2.81    |              |    |    |      |      |    |      | 0.22 |    |      | 0.83 | 0.88 |    |    |      | 0.08 |      |    |    |    | 0.01 | 0.25 |      |      |    |    | 0.10 | 0.25 | 0.19              |      |    |

VIRGINIA  
201801

## DAILY PRECIPITATION (INCHES)

| STATION                         | TOTAL   | DAY OF MONTH |      |    |      |      |    |    |    |      |      |      |      |      |      |    |                   |      |      |    |    |      |      |      |      |    |      |      |                   |                   |      |    |
|---------------------------------|---------|--------------|------|----|------|------|----|----|----|------|------|------|------|------|------|----|-------------------|------|------|----|----|------|------|------|------|----|------|------|-------------------|-------------------|------|----|
|                                 |         | 01           | 02   | 03 | 04   | 05   | 06 | 07 | 08 | 09   | 10   | 11   | 12   | 13   | 14   | 15 | 16                | 17   | 18   | 19 | 20 | 21   | 22   | 23   | 24   | 25 | 26   | 27   | 28                | 29                | 30   | 31 |
| LEXINGTON                       | 2.12    |              |      |    |      |      |    |    |    | 0.09 |      |      | 0.34 | 0.66 |      |    | 0.03              | 0.01 |      |    |    |      | 0.45 |      |      |    |      |      | 0.03              | 0.42              | 0.09 |    |
| MILLGAP                         | 1.97    |              |      |    |      | T    |    |    |    | 0.12 |      | T    | 0.22 | 0.93 |      |    | 0.09              |      |      |    |    |      | 0.25 | 0.09 | 0.02 |    |      | 0.08 | 0.05              | 0.12              |      |    |
| MTN GROVE                       | A 1.70  |              |      |    | T    | T    |    |    |    | 0.19 |      | T    | 0.29 | 0.77 |      |    | 0.01              |      |      |    |    | T    | 0.21 |      |      |    |      |      | *                 | 0.23 <sub>a</sub> |      |    |
| MUSTOE 1 SW                     | 2.75    |              |      |    | 0.02 | 0.01 |    |    |    | 0.17 |      | T    | 0.22 | 1.25 | T    |    | T                 | 0.11 | 0.05 |    |    | 0.02 | 0.29 | 0.02 |      |    |      |      | 0.32              | 0.24              | 0.03 |    |
| NEW CASTLE                      | 2.47    |              |      |    | T    |      |    |    |    | 0.16 |      |      | 0.30 | 0.85 | T    |    |                   | 0.04 | 0.04 |    |    |      | 0.38 | 0.01 |      |    |      | 0.14 | 0.40              | 0.15              | T    |    |
| ROANOKE 8 N                     | 2.32    |              |      |    |      |      |    |    |    | 0.06 |      |      | 0.57 | 0.51 |      |    |                   | 0.04 | 0.03 |    |    |      | 0.27 |      |      |    |      | 0.10 | 0.57              | 0.17              |      |    |
| ROANOKE INTL AP                 | 2.14    |              |      |    | T    |      |    |    |    | 0.06 |      | 0.41 | 0.54 | 0.03 |      |    |                   | 0.15 |      |    |    | T    | 0.22 |      |      | T  |      | 0.44 | 0.28              | 0.01              |      |    |
| STAUNTON WTP                    | M 1.01  |              |      |    |      |      |    |    |    |      |      |      | 0.05 | 0.24 |      |    |                   | 0.09 |      |    |    |      | 0.39 |      |      |    |      | 0.05 | 0.19              | -                 |      |    |
| WAYNESBORO WTP                  | M 2.26  |              |      |    |      |      |    |    |    | 0.06 |      |      | 1.13 | 0.34 |      |    |                   | 0.07 | -    |    |    |      | 0.36 |      |      |    |      | 0.01 | 0.26              | 0.03              |      |    |
| WILLIAMSVILLE 2 S               | A 2.23  |              |      |    |      |      |    |    |    | 0.15 |      | T    | 0.39 | 0.90 | T    |    |                   | 0.02 |      |    |    |      | 0.32 |      |      |    |      | *    | 0.31 <sub>a</sub> | 0.14              |      |    |
| <b>SOUTHWESTERN MOUNTAIN 06</b> |         |              |      |    |      |      |    |    |    |      |      |      |      |      |      |    |                   |      |      |    |    |      |      |      |      |    |      |      |                   |                   |      |    |
| ABINGDON 3S                     | 2.02    |              |      |    |      |      |    |    |    | 0.15 | 0.05 |      | 0.18 | 1.10 | 0.01 |    |                   | 0.10 |      |    |    |      |      |      |      |    |      |      | 0.38              | 0.05              |      |    |
| BIG STONE GAP                   | 3.83    |              |      |    |      |      |    |    |    | 0.27 | 0.05 | 0.02 | 1.65 | 0.54 |      |    |                   | 0.20 |      |    |    |      | 0.10 | 0.02 |      |    |      | 0.50 | 0.11              | 0.05              | 0.30 |    |
| BLACKSBURG NWSO                 | 1.64    |              |      |    | T    |      |    |    |    | 0.17 |      |      | 0.10 | 0.31 | T    |    |                   | 0.05 | 0.07 |    |    | 0.02 | 0.10 | 0.02 |      |    | 0.09 | 0.49 | 0.08              | T                 |      |    |
| BURKES GARDEN                   | 2.29    |              |      |    | T    | 0.02 |    |    |    | T    |      |      | 0.30 | 1.03 | 0.02 |    |                   | 0.04 | T    |    |    |      | 0.09 | T    |      |    |      | 0.14 | 0.18              | 0.07              |      |    |
| CHRISTIANSBURG                  | 1.45    |              |      |    |      |      |    |    |    | 0.23 |      |      | 0.05 | 0.17 |      |    |                   | 0.05 | 0.09 |    |    |      | 0.18 |      |      |    |      | 0.07 | 0.47              | 0.14              |      |    |
| CLINTWOOD 1 W                   | 2.14    | 0.01         | T    |    | 0.02 | 0.01 | T  |    |    | 0.10 | 0.02 |      | 0.52 | 0.55 | 0.06 | T  |                   | 0.14 | T    |    |    | 0.01 | 0.01 | T    |      |    | 0.25 | 0.28 | 0.16              | T                 |      |    |
| COPPER HILL                     | 2.02    |              |      |    |      |      |    |    |    | 0.19 |      |      | 0.46 | 0.35 |      |    |                   | 0.06 | 0.20 |    |    |      | 0.26 |      |      |    |      | 0.06 | 0.43              | 0.01              |      |    |
| ELK CREEK 4SSW                  | 2.28    |              |      |    | T    | T    |    |    |    | 0.14 |      | 0.08 | 0.65 | 0.67 |      |    |                   | 0.10 | T    |    |    | 0.15 |      |      |      |    | 0.11 | 0.35 | 0.03              |                   |      |    |
| GALAX WTP                       | 3.40    |              |      |    |      |      |    |    |    | 0.05 | T    | 0.08 | 1.90 | 0.68 |      |    |                   | 0.06 | 0.05 |    |    |      | 0.26 | T    |      |    | 0.05 | 0.22 | 0.05              |                   |      |    |
| GRUNDY                          | 1.88    | T            |      |    | T    | T    |    |    |    | 0.20 | 0.01 |      | 0.30 | 0.50 | 0.05 |    |                   | 0.07 |      |    |    | 0.04 | 0.02 |      |      |    | 0.35 | 0.13 | 0.20              | 0.01              |      |    |
| JOHN FLANNAGAN LAKE             | MA 2.01 | -            | 0.01 |    | 0.04 | 0.02 | -  | -  |    | -    | -    |      | 0.63 | *    | *    | *  | 0.49 <sub>a</sub> | 0.15 |      |    | -  | -    | -    | 0.04 | 0.01 |    | *    | *    | 0.45 <sub>a</sub> | 0.15              | 0.02 |    |
| LEBANON                         | 2.10    |              |      |    |      |      |    |    |    | 0.25 |      | 0.01 | 0.34 | 0.84 |      |    |                   | 0.06 |      |    |    |      | 0.02 |      |      |    |      | 0.11 | 0.45              | 0.02              |      |    |
| NORA 4 SSE                      | 2.81    | 0.01         | 0.01 |    | 0.03 | 0.02 | T  |    |    | 0.11 | 0.03 | T    | 0.98 | 0.65 | 0.07 | T  |                   | 0.18 | 0.02 |    |    | 0.02 | T    | T    |      |    | 0.21 | 0.34 | 0.13              |                   |      |    |
| PULASKI 2 E                     | 1.71    |              |      |    | T    |      |    |    |    | 0.18 |      | T    | 0.37 | 0.50 |      |    |                   | 0.04 | 0.02 |    |    |      | 0.12 |      |      |    |      | 0.12 | 0.36              | T                 |      |    |
| RADFORD 3 N                     | A 1.42  |              |      |    | T    |      |    |    |    | 0.22 |      |      |      | 0.59 |      |    |                   | 0.04 |      |    |    |      | 0.13 |      |      |    |      | *    | 0.42 <sub>a</sub> | 0.02              |      |    |
| RICHLANDS                       | 1.97    | T            | T    |    | 0.04 | 0.07 |    |    |    | 0.26 | T    |      | 0.15 | 0.85 | 0.01 |    |                   | 0.04 |      |    |    | 0.10 | T    | T    |      |    | 0.20 | 0.15 | 0.10              |                   |      |    |
| SALTVILLE 1N                    | 1.73    |              |      |    | T    | 0.01 |    |    |    | 0.21 | 0.01 |      | 0.23 | 0.70 |      |    |                   | 0.04 | T    |    |    | 0.10 |      |      |      |    | 0.08 | 0.28 | 0.07              |                   |      |    |
| STAFFORDSVILLE 3 ENE            | 1.64    |              |      |    |      | T    |    |    |    | 0.15 |      |      | 0.26 | 0.84 |      |    |                   | 0.02 | T    |    |    | 0.11 |      | T    |      |    | 0.02 | 0.23 | 0.01              |                   |      |    |
| WILLIS                          | 2.33    |              |      |    | T    |      |    |    |    | 0.16 |      | 0.02 | 0.58 | 0.45 | T    |    |                   | 0.07 | 0.11 |    |    | 0.33 |      |      |      |    | 0.07 | 0.47 | 0.07              |                   |      |    |
| WISE 1SE                        | 2.81    | 0.01         |      |    | 0.02 | T    |    |    |    | 0.16 | 0.02 |      | 1.11 | 0.56 | 0.02 |    |                   | 0.16 | T    |    |    | 0.12 | 0.04 |      |      |    | 0.31 | 0.24 | 0.04              |                   |      |    |
| WYTHEVILLE                      | 1.79    |              |      |    | T    |      |    |    |    | 0.12 |      | 0.02 | 0.30 | 0.68 |      |    |                   | 0.11 | 0.02 |    |    | 0.06 |      | T    |      |    | 0.04 | 0.38 | 0.06              | T                 |      |    |



VIRGINIA  
201801

## DAILY TEMPERATURES (°F)

| STATION                        | OB. TIME | MAX/MIN | DAY OF MONTH |    |    |    |    |    |     |     |    |    |    |    |    |    |    |    |    |    |    |    |    |    |    |    |    |    |    |    |      |    |    | AVERAGE |  |
|--------------------------------|----------|---------|--------------|----|----|----|----|----|-----|-----|----|----|----|----|----|----|----|----|----|----|----|----|----|----|----|----|----|----|----|----|------|----|----|---------|--|
|                                |          |         | 01           | 02 | 03 | 04 | 05 | 06 | 07  | 08  | 09 | 10 | 11 | 12 | 13 | 14 | 15 | 16 | 17 | 18 | 19 | 20 | 21 | 22 | 23 | 24 | 25 | 26 | 27 | 28 | 29   | 30 | 31 |         |  |
| <b>VIRGINIA</b>                |          |         |              |    |    |    |    |    |     |     |    |    |    |    |    |    |    |    |    |    |    |    |    |    |    |    |    |    |    |    |      |    |    |         |  |
| <b>TIDEWATER 01</b>            |          |         |              |    |    |    |    |    |     |     |    |    |    |    |    |    |    |    |    |    |    |    |    |    |    |    |    |    |    |    |      |    |    |         |  |
| DISPUTANTA                     | 07       | MAX     | 27           | 26 | 27 | 33 | 28 | 26 | 23  | 24  | 45 | 57 | 50 | 69 | 52 | 37 | 28 | 36 | 45 | 33 | 40 | 55 | 61 | 68 | 66 | 73 | 54 | 44 | 54 | 66 | 58   | 48 | 39 | 44.9    |  |
|                                |          | MIN     | 12           | 3  | 3  | 5  | -3 | -9 | -13 | -13 | 10 | 26 | 26 | 32 | 18 | 18 | 16 | 21 | 18 | 11 | 11 | 20 | 27 | 27 | 41 | 30 | 26 | 22 | 23 | 28 | 46   | 32 | 19 | 17.2    |  |
| EMPORIA 1 WNW                  | 08       | MAX     | 30           | 28 | 31 | 34 | 34 | 28 | 26  | 27  | 47 | 49 | 53 | 68 | 68 | 50 | 32 | 41 | 46 | 33 | 37 | 55 | 61 | 68 | 66 | 70 | 55 | 49 | 56 | 68 | 59   | 47 | 41 | 47.0    |  |
|                                |          | MIN     | 13           | 8  | 7  | 7  | 6  | 2  | -3  | -3  | 13 | 31 | 32 | 36 | 50 | 19 | 19 | 21 | 23 | 16 | 15 | 23 | 28 | 33 | 38 | 33 | 29 | 25 | 25 | 30 | 47   | 32 | 22 | 21.8    |  |
| FREDERICKSBURG SEWAGE          | 07       | MAX     | 22           | 25 | 27 | 34 | 27 | 23 | 20  | 25  | 39 | 51 | 41 | 64 | 69 |    | 34 | 41 | 25 | 45 | 57 | 62 | 67 |    | 49 | 44 |    | 53 | 43 | 35 | 40.9 |    |    |         |  |
|                                |          | MIN     | 6            | 5  | 5  | 5  | 9  | 0  | 0   | -4  | 20 | 23 | 28 | 28 |    |    | 14 | 25 | 12 | 12 | 17 | 20 | 26 |    | 31 | 21 |    | 43 | 30 | 19 | 16.5 |    |    |         |  |
| HOLLAND 1 E                    | 08       | MAX     | 31           | 29 | 37 | 30 | 26 | 23 | 24  | 44  | 54 | 58 | 68 | 70 | 65 | 46 | 38 | 45 | 43 | 36 | 54 | 60 | 65 | 65 | 73 | 53 | 51 | 52 | 68 | 59 | 52   | 45 | 39 | 48.5    |  |
|                                |          | MIN     | 10           | 9  | 7  | 19 | 9  | 0  | -5  | 20  | 27 | 29 | 33 | 35 | 29 | 21 | 25 | 29 | 23 | 19 | 22 | 34 | 30 | 40 | 47 | 34 | 27 | 22 | 30 | 48 | 37   | 28 | 22 | 24.5    |  |
| HOPEWELL                       | 16       | MAX     | 27           | 30 | 32 | 31 | 26 | 22 | 22  | 45  | 54 | 52 | 67 | 69 | 69 | 39 | 34 | 41 | 40 | 40 | 54 | 60 | 66 | 65 | 73 | 73 | 51 | 54 | 65 | 63 | 53   | 38 | 40 | 48.2    |  |
|                                |          | MIN     | 8            | 10 | 8  | 21 | 9  | 3  | -4  | 13  | 34 | 25 | 25 | 25 | 25 | 19 | 18 | 24 | 21 | 13 | 23 | 31 | 29 | 46 | 54 | 35 | 27 | 24 | 24 | 52 | 33   | 30 | 20 | 23.4    |  |
| NORFOLK INTL AP                | 24       | MAX     | 27           | 29 | 37 | 32 | 27 | 23 | 23  | 42  | 47 | 43 | 67 | 73 | 65 | 30 | 36 | 37 | 36 | 38 | 55 | 62 | 64 | 68 | 74 | 55 | 43 | 52 | 67 | 60 | 45   | 40 | 40 | 46.4    |  |
|                                |          | MIN     | 21           | 15 | 13 | 21 | 15 | 15 | 10  | 10  | 28 | 28 | 34 | 59 | 30 | 23 | 27 | 31 | 25 | 22 | 24 | 30 | 32 | 44 | 43 | 39 | 30 | 26 | 34 | 44 | 37   | 27 | 25 | 27.8    |  |
| NORFOLK S                      | 24       | MAX     | 25           | 26 | 35 | 31 | 25 | 22 | 21  | 43  | 49 | 48 | 66 | 74 | 64 | 28 | 35 | 38 | 35 | 37 | 53 | 61 | 63 | 66 | 72 | 52 | 42 | 51 | 66 | 59 | 46   | 38 | 40 | 45.5    |  |
|                                |          | MIN     | 15           | 15 | 12 | 20 | 13 | 11 | 10  | 12  | 29 | 28 | 35 | 58 | 28 | 21 | 26 | 30 | 24 | 21 | 24 | 33 | 33 | 43 | 43 | 37 | 28 | 25 | 32 | 46 | 37   | 26 | 23 | 27.0    |  |
| NORTH                          | 07       | MAX     | 26           |    | 27 | 33 | 25 | 24 | 22  | 22  | 42 | 50 | 45 | 58 | 67 | 43 | 28 | 34 | 42 | 32 | 37 | 51 | 57 | 60 | 62 | 68 | 52 | 43 | 43 | 63 | 58   | 44 | 44 | 43.4    |  |
|                                |          | MIN     | 13           |    | 8  | 10 | 13 | 0  | 2   | 4   | 20 | 25 | 27 | 33 | 43 | 18 | 18 | 26 | 27 | 18 | 18 | 22 | 30 | 30 | 42 | 32 | 29 | 23 | 24 | 31 | 44   | 35 | 21 | 22.9    |  |
| PAINTER 2W                     | 16       | MAX     | 25           | 27 | 38 | 33 | 25 | 24 | 21  | 42  | 48 | 52 | 64 | 62 | 63 | 37 | 36 | 39 | 35 | 38 | 49 | 57 | 61 | 65 | 70 | 69 | 46 | 44 | 63 | 59 | 58   | 43 | 37 | 46.1    |  |
|                                |          | MIN     | 13           | 12 | 8  | 24 | 16 | 9  | 7   | 9   | 28 | 23 | 34 | 53 | 32 | 17 | 16 | 21 | 22 | 19 | 18 | 25 | 28 | 48 | 45 | 31 | 31 | 20 | 33 | 49 | 40   | 29 | 21 | 25.2    |  |
| STONY CREEK 2 N                | 08       | MAX     | 27           | 30 | 32 | 29 | 26 | 24 | 26  | 47  | 59 | 52 | 68 | 68 | 65 | 51 | 37 | 45 | 34 | 39 | 55 | 61 | 67 | 67 | 73 | 60 | 46 | 55 | 67 | 59 | 52   | 47 | 42 | 48.7    |  |
|                                |          | MIN     | 9            | 5  | 5  | 6  | 10 | -3 | -9  | -8  | 12 | 25 | 31 | 35 | 28 | 18 | 17 | 21 | 21 | 11 | 11 | 22 | 27 | 28 | 40 | 35 | 27 | 22 | 22 | 28 | 37   | 27 | 20 | 18.7    |  |
| SUFFOLK LAKE KILBY             | 24       | MAX     | 28           | 29 | 35 | 28 | 28 | 24 | 25  | 44  | 53 | 55 | 67 | 70 | 62 | 30 | 39 | 43 | 36 | 37 | 53 | 59 | 64 | 65 | 71 | 53 | 46 | 53 | 65 | 58 | 51   | 38 | 40 | 46.7    |  |
|                                |          | MIN     | 10           | 12 | 10 | 17 | 11 | 7  | 2   | 10  | 29 | 27 | 26 | 59 | 28 | 20 | 23 | 29 | 21 | 19 | 24 | 31 | 30 | 40 | 44 | 38 | 28 | 26 | 28 | 51 | 37   | 26 | 22 | 25.3    |  |
| WAKEFIELD 1NW                  | 24       | MAX     | 29           | 30 | 35 | 30 | 27 | 25 | 25  | 45  | 57 | 51 | 69 | 72 | 58 | 32 | 37 | 46 | 33 | 39 | 56 | 61 | 66 | 65 | 73 | 56 | 48 | 55 | 66 | 59 | 51   | 40 | 41 | 47.6    |  |
|                                |          | MIN     | 5            | 3  | 4  | 10 | -2 | -7 | -14 | 10  | 28 | 26 | 28 | 55 | 26 | 16 | 17 | 27 | 19 | 12 | 23 | 32 | 29 | 43 | 41 | 33 | 25 | 23 | 30 | 51 | 37   | 25 | 19 | 21.7    |  |
| WALKERTON 2 NW                 | 18       | MAX     | 27           | 33 | 36 | 31 | 26 | 23 | 24  | 47  | 52 | 44 | 67 | 73 | 68 | 33 | 36 | 45 | 35 | 43 | 57 | 63 | 67 | 66 | 74 | 61 | 46 | 65 | 60 | 60 | 56   | 44 | 42 | 48.5    |  |
|                                |          | MIN     | 6            | 12 | 5  | 24 | 12 | -5 | -8  | 13  | 28 | 27 | 35 | 60 | 33 | 18 | 19 | 29 | 24 | 15 | 20 | 24 | 28 | 43 | 50 | 33 | 29 | 22 | 30 | 53 | 44   | 33 | 21 | 25.1    |  |
| WALLACETON LK DRUMMOND         | 08       | MAX     | 35           | 25 | 35 | 30 | 26 | 28 | 23  | 32  | 44 | 52 | 54 | 69 | 73 | 68 | 46 | 36 | 44 | 37 | 34 | 55 | 65 | 70 | 69 | 75 | 56 | 49 | 53 | 65 | 60   | 48 | 40 | 48.3    |  |
|                                |          | MIN     | 10           | 5  | 15 | 17 | 15 | 12 | 8   | 5   | 15 | 10 | 10 | 44 | 56 | 10 | 13 | 10 | 10 | 8  | 10 | 15 | 35 | 20 | 40 | 30 | 28 | 17 | 20 | 32 | 30   | 20 | 12 | 18.8    |  |
| WALLOPS ISLAND NASA TEST FACIL | 24       | MAX     | 25           | 27 | 35 | 32 | 23 | 19 | 21  | 40  | 50 | 47 | 61 | 59 | 59 | 30 | 40 | 49 | 36 | 37 | 50 | 57 | 59 | 64 | 63 | 52 | 43 | 43 | 60 | 57 | 48   | 38 | 37 | 43.9    |  |
|                                |          | MIN     | 14           | 12 | 10 | 17 | 13 | 10 | 2   | 14  | 27 | 26 | 45 | 50 | 28 | 20 | 21 | 29 | 25 | 21 | 25 | 29 | 30 | 43 | 45 | 35 | 25 | 23 | 36 | 47 | 38   | 26 | 23 | 26.1    |  |
| WARSAW 2 NW                    | 18       | MAX     |              |    | 37 |    |    |    |     | 44  | 53 | 50 | 66 | 69 |    |    | 44 | 42 | 42 | 57 |    |    | 65 | 72 | 68 | 45 | 52 |    | 65 | 43 | 40   | 38 |    | M       |  |
|                                |          | MIN     |              |    | 6  |    |    |    |     | -3  | 26 | 24 | 34 |    |    |    | 16 | 25 | 17 | 21 |    |    | 30 | 52 | 33 | 32 | 21 |    |    | 35 | 30   | 21 |    | M       |  |
| WEST POINT 2 NW                | 17       | MAX     | 26           | 26 | 33 | 31 | 23 | 20 | 21  | 43  | 51 | 46 | 67 | 69 | 65 | 35 | 33 | 43 | 41 | 41 | 54 | 60 | 62 | 64 | 73 | 68 | 49 | 50 | 65 | 60 | 55   | 38 | 38 | 46.8    |  |
|                                |          | MIN     | 9            | 7  | 5  | 12 | 4  | -4 | -3  | 16  | 25 | 24 | 32 | 56 | 24 | 15 | 15 | 28 | 21 | 15 | 22 | 26 | 27 | 43 | 44 | 29 | 25 | 22 | 30 | 48 | 36   | 23 | 20 | 22.5    |  |
| WILLIAMSBURG 2 N               | 24       | MAX     | 26           | 29 | 34 | 29 | 27 | 24 | 24  | 46  | 53 | 49 | 67 | 69 | 58 | 30 | 36 | 45 | 33 | 40 | 55 | 61 | 63 | 66 | 73 | 54 | 45 | 50 | 66 | 58 | 50   | 38 | 38 | 46.3    |  |
|                                |          | MIN     | 11           | 12 | 9  | 17 | 8  | 1  | 0   | 15  | 28 | 26 | 35 | 58 | 26 | 19 | 20 | 29 | 21 | 17 | 24 | 29 | 31 | 45 | 45 | 34 | 27 | 24 | 32 | 50 | 37   | 25 | 22 | 25.1    |  |
| <b>EASTERN PIEDMONT 02</b>     |          |         |              |    |    |    |    |    |     |     |    |    |    |    |    |    |    |    |    |    |    |    |    |    |    |    |    |    |    |    |      |    |    |         |  |
| AMELIA COURTHOUSE 1            | 08       | MAX     | 25           | 24 | 27 | 34 | 29 | 23 | 20  | 22  | 47 | 56 | 45 | 65 | 70 | 45 | 27 | 34 | 44 | 33 | 38 | 52 | 62 | 67 | 66 | 71 | 53 | 47 | 56 | 65 | 57   | 57 | 39 | 45.2    |  |
|                                |          | MIN     | 0            | 2  | 0  |    | 4  | -3 | -11 | 11  | 22 | 26 | 33 | 39 | 45 | 12 | 9  | 12 | 17 | 3  | 11 | 30 | 36 | 41 | 45 | 35 | 24 | 19 | 24 | 42 | 45   | 31 | 15 | 20.6    |  |
| ASHLAND                        | 18       | MAX     | 25           | 26 | 34 | 29 | 25 | 22 | 24  | 45  | 52 | 41 | 66 | 70 | 66 | 29 | 36 | 43 | 32 | 41 | 54 | 60 | 67 | 66 | 70 | 56 | 46 | 55 | 64 | 59 | 50   | 38 | 40 | 46.2    |  |



VIRGINIA  
201801

## DAILY TEMPERATURES (°F)

| STATION                      | OB. TIME | MAX/MIN | DAY OF MONTH |    |    |    |    |    |    |    |    |    |    |    |                 |    |    |    |    |    |    |    |    |    |    |    |    |    |    |    |    |    |      | AVERAGE |   |   |
|------------------------------|----------|---------|--------------|----|----|----|----|----|----|----|----|----|----|----|-----------------|----|----|----|----|----|----|----|----|----|----|----|----|----|----|----|----|----|------|---------|---|---|
|                              |          |         | 01           | 02 | 03 | 04 | 05 | 06 | 07 | 08 | 09 | 10 | 11 | 12 | 13              | 14 | 15 | 16 | 17 | 18 | 19 | 20 | 21 | 22 | 23 | 24 | 25 | 26 | 27 | 28 | 29 | 30 | 31   |         |   |   |
| MARTINSVILLE FLTR PLT        | 07       | MAX     | 25           | 25 | 31 | 32 | 27 | 26 | 23 |    |    |    | 49 | 61 | 68              | 38 | 28 | 34 | 44 | 27 | 40 | 53 | 62 | 67 | 63 | 66 | 50 | 48 | 54 | 54 | 54 | 45 | 35   | 43.9    |   |   |
|                              |          | MIN     | 5            | 4  | 4  | 9  | 14 | 6  | -1 |    |    |    |    | 41 | 34              | 14 | 8  | 8  | 14 | 2  | 3  | 10 | 18 | 25 | 30 | 40 | 25 | 19 | 18 | 32 | 45 | 29 | 16   | 17.5    |   |   |
| MEADOWS OF DAN 5 SW          | 07       | MAX     | 22           | 22 | 33 | 32 | 19 | 24 | 22 | 27 | 38 | 54 | 48 | 62 | 63              | 29 | 31 | 35 | 41 | 23 | 37 | 47 | 56 | 64 | 61 | 58 | 44 | 47 | 52 | 48 | 52 | 50 |      | 41.4    |   |   |
|                              |          | MIN     | 11           | 10 | 9  | 15 | 10 | 6  | 5  | 7  | 18 | 30 | 36 | 40 | 29              | 14 | 13 | 13 | 21 | 12 | 15 | 24 | 27 | 30 | 33 | 33 | 26 | 27 | 27 | 40 | 44 | 27 | 20   | 21.7    |   |   |
| MONTEBELLO FISH CULTURAL STN | 07       | MAX     | 14           | 17 | 25 | 25 |    |    |    |    |    |    |    | 38 | 44              | 50 |    |    |    |    |    |    | 51 | 57 | 58 | 56 | 39 |    |    |    | 50 | 36 | 25   | M       |   |   |
|                              |          | MIN     | -1           | 1  | 2  | 5  |    |    |    |    |    |    |    | 28 | 25              | 33 |    | 5  | 4  | 5  | 15 | 7  |    | 33 | 38 | 43 | 30 | 24 |    |    | 20 | 21 | 11   | M       |   |   |
| MONTICELLO                   | 07       | MAX     |              |    |    |    |    |    |    |    |    |    |    |    |                 |    |    |    |    |    |    |    |    |    |    |    |    |    |    |    |    |    |      |         | M |   |
|                              |          | MIN     |              |    |    |    |    |    |    |    |    |    |    |    |                 |    |    |    |    |    |    |    |    |    |    |    |    |    |    |    |    |    |      |         |   | M |
| ROCKY MT                     | 07       | MAX     | 23           | 24 | 32 | 32 | 24 | 22 | 22 | 15 | 45 | 58 | 47 | 62 | 65              | 32 | 25 | 34 | 44 | 25 | 40 | 53 | 62 | 64 | 61 | 63 | 63 | 48 | 55 | 50 | 54 | 42 | 32   | 42.5    |   |   |
|                              |          | MIN     | 10           | 3  | 2  | 9  | 13 | 6  | 0  | -1 | 14 |    | 39 | 41 | 30              | 15 | 8  | 8  | 16 | 10 | 13 |    | 36 | 35 | 37 | 39 | 31 | 21 | 21 | 29 | 42 | 28 | 18   | 19.8    |   |   |
| S BOSTON                     | 07       | MAX     | 29           | 30 | 34 | 32 | 32 | 30 | 28 | 32 | 47 | 62 | 49 | 65 | 75              | 46 | 34 | 39 | 48 | 34 | 42 | 55 | 63 | 68 | 66 | 72 | 55 | 51 | 59 | 65 | 55 | 46 | 39   | 47.8    |   |   |
|                              |          | MIN     | 8            | 6  | 6  | 9  | 4  | 0  | -1 | 0  | 18 | 28 | 30 | 31 | 41              | 19 | 14 | 13 | 15 | 8  | 12 | 18 | 22 | 29 | 32 | 31 | 25 | 21 | 21 | 31 | 46 | 30 | 18   | 18.9    |   |   |
| STUART                       | 07       | MAX     | 24           | 26 | 32 | 36 | 22 | 24 | 26 | 29 | 40 | 63 | 49 | 63 | 66              | 38 | 28 | 35 | 42 | 24 | 40 | 60 | 64 | 69 | 70 | 64 | 50 | 50 | 54 | 51 | 53 | 53 | 36   | 44.5    |   |   |
|                              |          | MIN     | 9            | 4  | 3  | 13 | 11 | 3  | 1  | 2  | 23 | 25 | 38 | 44 | 31              | 15 | 9  | 9  | 20 | 12 | 18 | 21 | 31 | 31 | 34 | 34 | 27 | 22 | 22 | 44 | 43 | 28 | 16   | 20.7    |   |   |
| <b>NORTHERN 04</b>           |          |         |              |    |    |    |    |    |    |    |    |    |    |    |                 |    |    |    |    |    |    |    |    |    |    |    |    |    |    |    |    |    |      |         |   |   |
| FRONT ROYAL                  | 06       | MAX     | 18           | 21 | 26 |    |    |    |    | 24 | 45 | 52 | 59 | 64 | 70              | 32 | 23 | 35 | 37 | 24 | 48 | 54 | 63 | 64 | 65 | 59 | 44 | 41 | 50 | 64 | 51 | 47 | 31   | 44.9    |   |   |
|                              |          | MIN     | 5            | 5  | 5  | 5  | 5  | 3  |    | 4  | 19 |    | 28 | 39 | 32              | 14 | 6  | 7  | 21 | 15 | 14 | 29 | 39 | 41 | 50 | 42 | 29 | 20 | 20 | 39 | 41 | 31 | 14   | 21.4    |   |   |
| PURCELLVILLE                 | 08       | MAX     | 18           | 21 | 24 | 29 | 24 | 16 | 16 | 23 | 38 | 47 | 45 | 60 | 69              | 30 | 23 | 29 | 34 | 23 | 42 | 51 | 60 | 61 | 64 | 62 | 42 | 38 | 48 | 60 | 50 | 45 | 30   | 39.4    |   |   |
|                              |          | MIN     | 11           | 9  | 4  | 7  | 9  | 6  | 2  | 5  | 15 | 21 | 29 | 37 | 28              | 12 | 8  | 12 | 19 | 15 | 15 | 25 | 31 | 36 | 40 | 39 | 28 | 19 | 22 | 32 | 40 | 27 | 17   | 20.0    |   |   |
| LURAY 5 E                    | 08       | MAX     | 24           | 24 | 27 | 31 | 23 | 17 | 15 | 28 | 43 | 48 | 47 | 63 | 71              | 32 | 29 | 29 | 40 | 24 | 43 | 54 | 63 | 64 | 68 | 62 | 42 | 41 | 53 | 61 | 51 | 44 | 28   | 41.6    |   |   |
|                              |          | MIN     | 0            | -3 | 4  | 6  | 8  | -2 | -4 | -3 | 22 | 25 | 31 | 42 | 26              | 7  | 4  | 21 | 21 | 7  | 19 | 24 | 32 | 37 | 44 | 39 | 30 | 20 | 30 | 49 | 37 | 26 | 10   | 19.6    |   |   |
| MANASSAS                     | 07       | MAX     | 21           | 23 |    | 33 | 26 | 20 | 19 | 24 | 38 | 49 | 43 | 63 | 71              | 44 | 25 | 32 | 40 | 23 | 46 | 55 | 62 | 65 | 67 | 68 | 46 | 41 |    | 62 |    |    |      | 42.3    |   |   |
|                              |          | MIN     | 9            | 11 |    |    | 11 | 7  | 5  | 5  | 18 | 25 | 26 | 40 | 31              | 14 | 11 | 16 | 23 | 15 | 15 | 19 | 29 | 32 | 50 | 39 | 31 | 20 |    |    | 30 | 17 | 21.1 |         |   |   |
| MT WX 3                      | 07       | MAX     | 13           | 16 | 19 | 25 | 19 | 12 | 12 | 23 | 39 | 42 | 48 | 59 | 62              | 26 | 19 | 25 | 31 | 19 | 39 | 49 | 56 | 59 | 60 | 53 | 35 | 34 | 41 | 56 | 48 | 41 | 25   | 35.6    |   |   |
|                              |          | MIN     | 5            | 3  | 3  | 13 | 4  | 2  | 0  | 0  | 17 | 29 | 29 | 46 | 25              | 8  | 7  | 7  | 16 | 11 | 13 | 27 | 36 | 50 | 46 | 33 | 25 | 24 | 26 | 38 | 34 | 23 | 12   | 19.7    |   |   |
| PIEDMONT RSCH STN            | 08       | MAX     | 22           | 24 | 28 | 33 | 27 | 21 | 19 | 24 | 32 | 51 | 44 | 59 | 68              | 59 | 25 | 32 | 41 | 33 | 43 | 55 | 62 | 66 | 63 | 67 | 48 | 45 | 51 | 61 | 53 | 44 | 36   | 43.1    |   |   |
|                              |          | MIN     | 10           | 6  | 3  | 6  | 10 | 10 | 5  | 17 | 19 | 30 | 35 | 38 | 59 <sup>s</sup> | 20 | 12 | 19 | 22 | 8  | 11 | 23 | 30 | 33 | 49 | 38 | 32 | 22 | 24 | 44 | 40 | 30 | 14   | 22.0    |   |   |
| SOMERSET                     | 08       | MAX     | 23           | 25 | 29 | 32 | 27 | 22 | 19 | 26 | 38 | 50 | 45 | 64 | 69              | 39 | 26 | 31 | 42 | 27 | 44 | 56 | 64 | 66 | 64 | 67 | 49 | 45 | 51 | 60 | 52 | 43 | 34   | 42.9    |   |   |
|                              |          | MIN     | 4            | -1 | 0  | 2  | 9  | 6  | -4 | -3 | 21 | 25 | 31 | 40 | 34              | 11 | 7  | 8  | 20 | 10 | 16 | 27 | 31 | 37 | 45 | 40 | 33 | 19 | 21 | 42 | 41 | 29 | 16   | 19.9    |   |   |
| SPERRYVILLE                  | 06       | MAX     | 21           | 23 | 29 | 31 | 31 | 20 |    |    | 34 | 51 | 46 | 61 | 66              | 32 | 26 | 31 | 40 | 33 | 47 | 54 | 66 | 66 | 66 | 65 | 44 | 43 | 51 | 60 | 56 | 47 | 37   | 44.0    |   |   |
|                              |          | MIN     | 10           | 7  | 6  | 7  | 6  | 4  |    |    | 18 | 26 | 32 | 35 | 31              | 15 | 8  | 10 | 22 | 21 | 21 | 24 | 32 | 42 | 48 | 43 | 34 | 23 | 23 | 37 | 44 | 32 | 16   | 23.3    |   |   |
| STERLING (RCS)               | 07       | MAX     | 19           | 20 | 24 | 31 | 25 | 17 | 17 | 24 | 36 | 49 | 44 | 61 | 71              | 32 | 24 | 29 | 38 | 22 | 45 | 54 | 62 | 64 | 66 | 63 | 43 | 40 | 48 | 61 | 51 | 45 | 32   | 40.5    |   |   |
|                              |          | MIN     | 10           | 9  | 3  | 4  | 9  | 7  | -1 | -1 | 16 | 20 | 26 | 39 | 30              | 13 | 10 | 10 | 21 | 15 | 18 | 18 | 22 | 32 | 47 | 39 | 30 | 19 | 20 | 32 | 40 | 28 | 18   | 19.5    |   |   |
| VIENNA                       | 07       | MAX     | 18           | 20 | 23 | 30 | 23 | 16 | 16 | 21 | 36 | 46 | 41 | 61 | 66              | 30 | 24 | 30 | 38 | 22 | 43 | 52 | 59 | 59 | 64 | 61 | 42 | 38 | 45 | 60 | 51 | 44 | 33   | 39.1    |   |   |
|                              |          | MIN     | 8            | 8  | 6  | 6  | 9  | 7  | 2  | 2  | 17 | 25 | 25 | 38 | 30              | 12 | 10 | 11 | 20 | 15 | 16 | 21 | 27 | 32 | 47 | 39 | 29 | 21 | 21 | 38 | 41 | 29 | 17   | 20.3    |   |   |
| WASHINGTON DULLES INTL AP    | 24       | MAX     | 23           | 25 | 32 | 28 | 19 | 19 | 24 | 35 | 50 | 43 | 62 | 70 | 61              | 26 | 31 | 39 | 32 | 46 | 54 | 61 | 63 | 66 | 64 | 44 | 41 | 48 | 61 | 55 | 46 | 35 | 39   | 43.3    |   |   |
|                              |          | MIN     | 6            | 7  | 1  | 13 | 10 | 8  | -1 | 17 | 22 | 20 | 37 | 58 | 19              | 14 | 11 | 25 | 17 | 16 | 17 | 20 | 28 | 48 | 40 | 31 | 22 | 19 | 26 | 45 | 33 | 20 | 15   | 21.4    |   |   |
| WASHINGTON REAGAN NATL AP    | 24       | MAX     | 26           | 26 | 35 | 27 | 21 | 21 | 23 | 39 | 51 | 43 | 62 | 64 | 62              | 28 | 32 | 43 | 37 | 47 | 51 | 63 | 61 | 65 | 68 | 48 | 42 | 50 | 63 | 57 | 48 | 41 | 41   | 44.7    |   |   |
|                              |          | MIN     | 13           | 13 | 13 | 16 | 13 | 11 | 8  | 19 | 30 | 27 | 38 | 57 | 21              | 17 | 18 | 30 | 20 | 19 | 25 | 28 | 32 | 47 | 47 | 35 | 31 | 28 | 38 | 47 | 41 | 24 | 21   | 26.7    |   |   |
| WINCHESTER                   | 07       | MAX     | 17           | 20 | 28 | 32 | 24 | 17 | 17 | 28 | 40 | 49 | 51 | 66 | 68              | 31 | 28 | 31 | 33 | 25 | 46 | 58 | 64 | 60 | 68 | 59 | 39 | 41 | 52 | 60 | 50 | 29 | 41.3 |         |   |   |
|                              |          | MIN     | 7            | 7  | 4  | 3  | 7  | 5  | 1  | 1  | 23 | 24 | 28 | 32 | 27              | 10 | 8  | 8  | 17 | 13 | 20 | 30 | 33 | 40 | 48 | 39 | 28 | 20 | 20 | 40 | 38 | 26 | 14   | 20.0    |   |   |
| WINCHESTER 7 SE              | 08       | MAX     | 31           | 21 | 26 | 30 | 24 | 25 | 24 | 25 | 41 | 50 | 49 |    | 68              | 32 | 26 | 29 | 28 | 33 | 48 | 55 | 62 | 61 | 65 | 58 | 40 | 40 | 49 | 60 |    |    | 50   | 41.1    |   |   |

VIRGINIA  
201801

## DAILY TEMPERATURES (°F)

| STATION                         | OB. TIME | MAX/MIN | DAY OF MONTH |    |    |    |    |    |    |    |    |    |    |    |    |    |    |    |    |    |    |    |    |    |    |    |    |    |    |    |    |    |      | AVERAGE |      |  |  |
|---------------------------------|----------|---------|--------------|----|----|----|----|----|----|----|----|----|----|----|----|----|----|----|----|----|----|----|----|----|----|----|----|----|----|----|----|----|------|---------|------|--|--|
|                                 |          |         | 01           | 02 | 03 | 04 | 05 | 06 | 07 | 08 | 09 | 10 | 11 | 12 | 13 | 14 | 15 | 16 | 17 | 18 | 19 | 20 | 21 | 22 | 23 | 24 | 25 | 26 | 27 | 28 | 29 | 30 | 31   |         |      |  |  |
|                                 |          |         |              |    |    |    |    |    |    |    |    |    |    |    |    |    |    |    |    |    |    |    |    |    |    |    |    |    |    |    |    |    |      |         |      |  |  |
| WOODSTOCK 2 NE                  | 07       | MIN     | 2            | 2  | -2 | -2 | 9  | 6  | -2 | -4 | 20 | 17 | 21 |    | 27 | 11 | 5  | 5  | 16 | 14 | 16 | 22 | 28 | 32 | 47 | 38 | 28 | 15 | 16 |    |    |    |      | 27      | 15.3 |  |  |
|                                 |          | MAX     | 19           | 22 | 28 | 30 | 24 | 17 | 15 | 30 | 42 | 52 | 52 | 62 | 69 | 32 | 25 | 29 | 33 | 33 | 48 | 56 | 64 | 62 | 67 | 60 | 41 | 41 | 51 | 63 | 51 | 51 | 29   | 41.9    |      |  |  |
|                                 |          | MIN     | 2            | -2 | -1 | 3  | 8  | 7  | -2 | -2 | 21 | 21 | 28 | 39 | 26 | 8  | 5  | 5  | 21 | 14 | 14 | 20 | 25 | 35 | 46 | 39 | 30 | 17 | 17 | 25 | 38 | 25 | 13   | 17.6    |      |  |  |
| <b>CENTRAL MOUNTAIN 05</b>      |          |         |              |    |    |    |    |    |    |    |    |    |    |    |    |    |    |    |    |    |    |    |    |    |    |    |    |    |    |    |    |    |      |         |      |  |  |
| COVINGTON FLTR PLT              | 07       | MAX     | 21           | 19 | 26 | 27 | 19 | 17 | 15 | 28 | 35 | 47 | 50 | 63 | 65 | 29 | 26 | 33 | 39 | 27 | 35 | 47 | 54 | 55 | 62 | 58 | 37 | 40 | 55 | 58 | 54 | 41 | 28   | 39.0    |      |  |  |
|                                 |          | MIN     | 3            | 1  | 1  | 2  | 10 | 7  | -2 | -2 | 14 | 25 | 30 | 36 | 26 | 10 | 8  | 8  | 18 | 6  | 6  | 15 | 33 | 33 | 35 | 37 | 28 | 19 | 19 | 23 | 38 | 25 | 14   | 17.0    |      |  |  |
|                                 |          | MAX     |              |    |    |    | 19 | 18 | 25 | 25 | 42 | 45 | 45 | 57 | 65 | 29 | 25 | 30 | 40 | 23 | 45 | 50 | 62 | 63 | 60 | 48 | 48 | 43 | 56 | 48 | 47 | 47 | 30   | 42.0    |      |  |  |
| DALE ENTERPRISE                 | 07       | MIN     | 2            |    | 1  | 2  | 2  | 5  | -4 | -2 | 23 | 23 | 32 | 42 | 29 | 10 | 10 | 20 | 8  | 8  | 28 | 35 | 38 | 47 | 38 | 31 | 19 | 20 | 34 | 38 | 25 | 18 | 19.7 |         |      |  |  |
|                                 |          | MAX     | 20           | 18 | 25 | 26 | 18 | 14 | 13 | 27 | 36 | 45 | 48 | 60 | 64 | 27 | 27 | 31 | 38 | 26 | 37 | 46 | 54 | 56 | 61 | 57 | 36 | 40 | 54 | 57 | 52 | 41 | 25   | 38.0    |      |  |  |
|                                 |          | MIN     | -1           | -1 | -1 | 1  | 9  | 6  | -4 | -3 | 15 | 27 | 31 | 36 | 25 | 7  | 7  | 7  | 18 | 2  | 4  | 21 | 39 | 38 | 39 | 35 | 28 | 20 | 19 | 25 | 37 | 23 | 12   | 16.8    |      |  |  |
| HOT SPRINGS                     | 07       | MAX     | 19           | 17 | 21 | 28 | 16 | 12 | 10 | 25 | 37 | 43 | 47 | 60 | 63 | 25 | 24 | 31 | 39 | 24 | 34 | 42 | 52 | 55 | 59 | 55 | 35 | 37 | 51 | 55 | 52 | 39 | 23   | 36.5    |      |  |  |
|                                 |          | MIN     | 2            | 0  | 0  | 3  | 6  | 4  | -1 | -1 | 17 | 26 | 32 | 38 | 22 | 8  | 8  | 8  | 16 | 4  | 6  | 21 | 36 | 35 | 38 | 33 | 26 | 21 | 21 | 25 | 33 | 22 | 12   | 16.8    |      |  |  |
|                                 |          | MAX     | 23           | 24 | 28 | 30 | 24 | 20 | 19 | 27 | 32 | 48 | 46 | 61 | 67 | 34 | 27 | 33 | 44 | 27 | 40 | 52 | 60 | 61 | 65 | 61 | 44 | 45 | 55 | 57 | 55 | 43 | 30   | 41.4    |      |  |  |
| LEXINGTON                       | 07       | MIN     | 3            | 3  | 3  | 4  | 11 | 7  | -1 | -2 | 14 | 24 | 31 | 39 | 31 | 14 | 8  | 8  | 17 | 13 | 13 | 18 | 30 | 30 | 39 | 40 | 32 | 19 | 19 | 26 | 39 | 29 | 17   | 18.6    |      |  |  |
|                                 |          | MAX     | 15           | 14 | 24 | 27 | 14 | 7  | 8  | 30 | 38 | 46 | 43 | 58 | 62 | 24 | 26 | 33 | 32 | 24 | 37 | 49 | 53 | 54 | 60 | 53 | 32 | 37 | 53 | 56 | 50 | 38 | 22   | 36.1    |      |  |  |
|                                 |          | MIN     | -4           | -4 | -7 | -7 | 3  | 2  | -9 | -9 | 14 | 18 | 26 | 35 | 24 | 6  | 1  | 1  | 15 | 1  | 7  | 10 | 35 | 34 | 33 | 31 | 24 | 12 | 12 | 15 | 34 | 22 | 8    | 12.4    |      |  |  |
| MUSTOE 1 SW                     | 24       | MAX     | 14           | 25 | 25 | 26 | 9  | 7  | 26 | 33 | 45 | 41 | 52 | 60 | 44 | 24 | 30 | 33 | 24 | 38 | 48 | 52 | 53 | 57 | 54 | 34 | 37 | 49 | 53 | 48 | 39 | 30 | 41   | 37.1    |      |  |  |
|                                 |          | MIN     | -2           | -8 | -6 | 3  | 3  | -3 | -9 | 10 | 22 | 22 | 28 | 44 | 11 | 4  | 1  | 16 | 5  | 3  | 11 | 18 | 31 | 34 | 33 | 26 | 18 | 14 | 18 | 39 | 28 | 8  | 7    | 13.8    |      |  |  |
|                                 |          | MAX     | 21           | 23 | 31 | 32 | 22 | 20 | 18 | 27 | 43 | 56 | 47 | 61 | 67 | 32 | 28 | 33 | 42 | 25 | 42 | 54 | 61 | 61 | 62 | 62 | 47 | 47 | 54 | 55 | 52 | 42 | 31   | 41.9    |      |  |  |
| ROANOKE 8 N                     | 07       | MIN     | 7            | 7  | 6  | 9  | 12 | 10 | 3  | 3  | 14 | 33 | 36 | 40 | 29 | 15 | 10 | 10 | 18 | 12 | 14 | 20 | 29 | 31 | 36 | 36 | 30 | 21 | 21 | 28 | 39 | 26 | 19   | 20.1    |      |  |  |
|                                 |          | MAX     | 24           | 32 | 30 | 27 | 21 | 20 | 28 | 36 | 59 | 47 | 53 | 67 | 53 | 29 | 33 | 44 | 35 | 39 | 53 | 62 | 64 | 60 | 46 | 48 | 55 | 56 | 53 | 50 | 37 | 47 | 44.2 |         |      |  |  |
|                                 |          | MIN     | 9            | 8  | 7  | 14 | 14 | 8  | 4  | 16 | 31 | 38 | 42 | 52 | 18 | 15 | 10 | 16 | 13 | 12 | 29 | 35 | 42 | 39 | 43 | 34 | 29 | 23 | 27 | 47 | 32 | 20 | 20   | 24.1    |      |  |  |
| STAUNTON WTP                    | 08       | MAX     | 34           | 21 | 27 | 31 | 22 | 15 | 15 | 26 | 39 | 46 | 46 | 61 | 66 | 33 | 23 | 31 | 43 | 25 | 43 | 50 | 57 | 57 | 62 | 59 | 43 | 44 | 53 | 55 | 53 | 39 | 27   | 40.2    |      |  |  |
|                                 |          | MIN     | 2            | 4  | 4  | 13 | 6  | 4  | -2 | 1  | 23 | 29 | 34 | 46 | 26 | 8  | 4  | 6  | 20 | 11 | 16 | 32 | 43 | 46 | 49 | 36 | 27 | 26 | 30 | 39 | 37 | 23 | 14   | 21.2    |      |  |  |
|                                 |          | MAX     | 19           | 22 | 27 | 33 | 24 | 18 | 16 | 25 | 43 | 47 | 44 | 61 | 65 | 34 | 23 | 31 | 44 | 25 | 40 | 51 | 58 | 60 | 64 | 61 | 43 | 43 | 51 | 59 | 54 | 41 | 29   | 40.5    |      |  |  |
| WAYNESBORO WTP                  | 07       | MIN     | 1            | 1  | 1  | 4  | 8  | -1 | -2 | -2 | 17 | 17 | 31 | 39 | 32 | 13 | 7  | 7  | 19 | 10 | 9  | 25 | 31 | 31 | 41 | 38 | 31 | 22 | 21 | 26 | 39 | 28 | 14   | 18.0    |      |  |  |
|                                 |          |         |              |    |    |    |    |    |    |    |    |    |    |    |    |    |    |    |    |    |    |    |    |    |    |    |    |    |    |    |    |    |      |         |      |  |  |
|                                 |          |         |              |    |    |    |    |    |    |    |    |    |    |    |    |    |    |    |    |    |    |    |    |    |    |    |    |    |    |    |    |    |      |         |      |  |  |
| <b>SOUTHWESTERN MOUNTAIN 06</b> |          |         |              |    |    |    |    |    |    |    |    |    |    |    |    |    |    |    |    |    |    |    |    |    |    |    |    |    |    |    |    |    |      |         |      |  |  |
| ABINGDON 3S                     | 06       | MAX     | 23           | 17 | 27 | 29 | 29 | 16 | 20 | 39 | 35 | 49 | 62 | 65 | 64 | 64 | 25 | 38 | 39 | 39 | 42 | 47 | 55 | 66 | 52 | 34 | 44 | 58 | 59 | 49 | 48 | 30 | 42.1 |         |      |  |  |
|                                 |          | MIN     | 6            | 0  | -3 | 11 | 10 | 1  | 0  | 2  | 23 | 23 | 38 | 45 | 21 | 10 | 7  | 18 | 16 | 2  | 8  | 27 | 33 | 34 | 33 | 25 | 22 | 22 | 36 | 41 | 24 | 16 | 18.4 |         |      |  |  |
|                                 |          | MAX     | 21           | 19 | 29 | 31 | 18 | 19 | 23 | 35 | 34 | 49 | 64 | 67 | 62 | 23 | 27 | 37 | 35 | 20 | 29 | 42 | 48 | 55 | 63 | 49 | 33 | 46 | 58 | 56 | 51 | 50 | 38   | 39.7    |      |  |  |
| BIG STONE GAP                   | 08       | MIN     | 10           | 1  | 1  | 10 | 9  | -1 | -1 | 2  | 27 | 33 | 36 | 43 | 20 | 13 | 12 | 18 | 7  | 2  | 3  | 28 | 33 | 33 | 33 | 20 | 20 | 23 | 33 | 32 | 26 | 17 | 17.6 |         |      |  |  |
|                                 |          | MAX     | 17           | 19 | 26 | 27 | 19 | 17 | 15 | 31 | 37 | 52 | 48 | 59 | 64 | 25 | 27 | 36 | 43 | 17 | 32 | 48 | 55 | 55 | 58 | 53 | 37 | 44 | 52 | 50 | 46 | 27 | 38.3 |         |      |  |  |
|                                 |          | MIN     | 2            | 2  | 1  | 7  | 8  | 5  | -1 | -1 | 14 | 35 | 35 | 38 | 22 | 6  | 6  | 7  | 15 | 5  | 9  | 24 | 28 | 30 | 32 | 32 | 26 | 18 | 19 | 25 | 39 | 22 | 16   | 17.0    |      |  |  |
| BURKES GARDEN                   | 07       | MAX     | 13           | 10 | 21 | 26 | 11 | 10 | 8  | 37 | 39 | 49 | 48 | 58 | 59 | 16 | 20 | 31 | 36 | 11 | 32 | 40 | 46 | 51 | 58 | 47 | 28 | 38 | 49 | 51 | 47 | 41 | 20   | 33.9    |      |  |  |
|                                 |          | MIN     | 1            | -1 | -3 | 3  | 3  | -2 | -7 | 1  | 32 | 31 | 40 | 46 | 16 | -4 | -5 | 8  | 9  | 3  | 6  | 25 | 32 | 35 | 43 | 28 | 22 | 15 | 15 | 38 | 34 | 17 | 6    | 15.7    |      |  |  |
|                                 |          | MAX     | 16           | 18 | 26 | 26 | 18 | 17 | 15 | 32 | 38 | 50 | 48 | 59 | 64 | 23 | 27 | 34 | 43 | 15 | 32 | 44 | 54 | 55 | 58 | 52 | 36 | 43 | 52 | 49 | 49 | 43 | 26   | 37.5    |      |  |  |
| CHRISTIANSBURG                  | 07       | MIN     | 4            | 2  | 2  | 8  | 7  | 4  | 1  | 1  | 18 | 37 | 38 | 39 | 22 | 9  | 8  | 9  | 14 | 6  | 10 | 21 | 34 | 38 | 43 | 33 | 26 | 25 | 22 | 42 | 39 | 22 | 16   | 19.4    |      |  |  |
|                                 |          | MAX     | 18           | 16 | 23 | 31 | 16 | 16 | 18 | 38 | 42 | 48 | 62 | 68 | 58 | 20 | 22 | 36 | 33 | 14 | 32 | 43 | 49 | 57 | 64 | 48 | 32 | 44 | 57 | 58 | 50 | 48 | 29   | 38.4    |      |  |  |
|                                 |          | MIN     | 5            | -2 | -3 | 6  | 10 | -5 | -5 | -2 | 26 | 33 | 30 | 31 | 20 | 12 | 8  | 14 | 7  | 2  | 1  | 6  | 26 | 32 | 32 | 31 | 26 | 19 | 19 | 31 | 29 | 24 | 14   | 15.4    |      |  |  |
| CLINTWOOD 1 W                   | 07       | MAX     | 14           | 14 | 22 | 28 | 13 | 11 | 9  | 26 | 41 | 48 | 45 | 57 | 60 | 23 | 23 | 30 | 42 | 14 | 29 | 42 | 51 | 54 | 57 | 52 | 37 | 39 | 49 | 48 | 48 | 40 | 22   | 35.1    |      |  |  |
|                                 |          | MIN     | -4           | -4 | -5 | 12 | 1  | -3 | -4 | -3 | 21 | 37 | 36 | 45 | 19 | 3  | 2  | 4  | 12 | -1 | 0  | 20 | 31 | 36 | 45 | 31 | 22 | 21 | 32 | 39 | 39 | 21 | 11   | 16.6    |      |  |  |
|                                 |          |         |              |    |    |    |    |    |    |    |    |    |    |    |    |    |    |    |    |    |    |    |    |    |    |    |    |    |    |    |    |    |      |         |      |  |  |

VIRGINIA  
201801

## DAILY TEMPERATURES (°F)

| STATION              | OB. TIME | MAX/MIN | DAY OF MONTH |    |    |    |    |    |    |    |    |    |    |    |    |    |    |    |    |    |    |    |    |    |    |    |    |    |    |    |    |    |      | AVERAGE |
|----------------------|----------|---------|--------------|----|----|----|----|----|----|----|----|----|----|----|----|----|----|----|----|----|----|----|----|----|----|----|----|----|----|----|----|----|------|---------|
|                      |          |         | 01           | 02 | 03 | 04 | 05 | 06 | 07 | 08 | 09 | 10 | 11 | 12 | 13 | 14 | 15 | 16 | 17 | 18 | 19 | 20 | 21 | 22 | 23 | 24 | 25 | 26 | 27 | 28 | 29 | 30 | 31   |         |
| ELK CREEK 4SSW       | 07       | MAX     | 12           | 11 | 25 | 27 | 11 | 13 | 13 | 42 | 45 | 51 | 46 | 57 | 57 | 18 | 22 | 38 | 44 | 14 | 35 | 48 | 53 | 57 | 57 | 48 | 38 | 43 | 50 | 47 | 48 | 45 | 32   | 37.0    |
|                      |          | MIN     | -3           | -3 | -1 | 7  | -1 | -5 | 7  | 35 | 42 | 40 | 40 | 16 | 1  | 1  | 9  | 10 | -2 | 8  | 32 | 36 | 44 | 46 | 26 | 19 | 20 | 37 | 43 | 40 | 15 | 13 | 18.3 |         |
| GALAX WTP            | 07       | MAX     | 19           | 18 | 30 | 30 | 18 | 20 | 19 | 26 | 42 | 54 | 49 | 60 | 60 | 26 | 28 | 35 | 40 | 18 | 36 | 52 | 55 | 60 | 58 | 54 | 40 | 46 | 49 | 49 | 50 | 48 | 28   | 39.3    |
|                      |          | MIN     | 7            | 5  | 3  | 9  | 9  | 5  | -1 | -1 | 20 | 29 | 38 | 41 | 25 | 10 | 9  | 9  | 18 | 7  | 10 | 11 | 18 | 27 | 32 | 33 | 28 | 20 | 20 | 42 | 43 | 23 | 16   | 18.2    |
| GRUNDY               | 07       | MAX     | 19           | 18 | 23 | 33 | 18 | 18 | 18 | 38 | 36 | 47 | 63 | 68 | 60 | 21 | 25 | 39 | 34 | 20 | 33 | 51 | 39 | 55 | 65 | 52 | 33 | 45 | 57 | 59 | 50 | 49 | 30   | 39.2    |
|                      |          | MIN     | 7            | 0  | 1  | 7  | 11 | -2 | -1 | 5  | 25 | 33 | 33 | 34 | 20 | 13 | 11 | 15 | 8  | 8  | 9  | 12 | 28 | 32 | 34 | 33 | 29 | 21 | 21 | 31 | 33 | 24 | 16   | 17.8    |
| JOHN FLANNAGAN LAKE  | 07       | MAX     |              | 35 | 30 | 36 | 26 |    |    | 38 |    |    | 65 | 69 |    |    | 39 | 31 | 19 |    |    |    | 58 | 64 | 50 | 35 | 49 |    |    |    | 53 | 33 | M    |         |
|                      |          | MIN     |              | 1  | 0  | 7  | 5  |    |    | -3 |    |    | 36 | 38 |    |    | 11 | 6  | 5  |    |    |    | 10 | 35 | 31 | 28 | 21 |    |    | 21 | 24 | 16 | M    |         |
| LEBANON              | 07       | MAX     | 31           | 14 | 25 | 30 | 16 | 16 | 18 | 37 | 42 | 47 | 62 | 64 | 65 | 64 | 23 | 38 | 40 | 14 | 27 | 42 | 54 | 55 | 66 | 48 | 33 | 45 | 58 | 57 | 50 | 47 | 48   | 41.2    |
|                      |          | MIN     | 7            | 0  | -1 | 9  | 9  | -4 | -3 | -1 | 26 | 31 | 35 | 53 | 16 | 10 | 10 | 17 | 8  | 4  | 3  | 7  | 30 | 34 | 35 | 32 | 23 | 18 | 18 | 46 | 38 | 22 | 20   | 17.8    |
| NORA 4 SSE           | 07       | MAX     | 15           | 12 | 23 | 26 | 14 | 13 | 17 | 31 | 38 | 49 | 58 | 62 | 61 | 15 | 19 |    | 32 | 11 | 22 | 35 | 49 | 51 | 59 | 59 | 27 | 45 | 52 | 52 | 48 | 46 |      | 35.9    |
|                      |          | MIN     | 5            | -2 | -2 | 9  | 5  | -1 | 0  | 13 | 28 | 38 | 48 | 52 | 15 | 6  | 6  |    | 3  | 3  | 3  | 20 | 31 | 47 | 47 | 27 | 22 | 22 | 36 | 42 | 30 | 19 |      | 19.7    |
| PULASKI 2 E          | 07       | MAX     | 18           | 17 | 29 | 31 | 17 | 18 | 15 | 32 | 38 | 53 | 50 | 60 | 62 | 23 | 22 | 36 | 43 | 19 | 34 | 49 | 55 | 55 | 59 | 52 | 37 | 45 | 52 | 53 | 50 | 48 | 27   | 38.7    |
|                      |          | MIN     | 2            | 3  | 0  | 6  | 8  | 5  | -5 | -4 | 21 | 34 | 37 | 38 | 22 | 6  | 5  | 9  | 15 | 8  | 11 | 11 | 29 | 34 | 35 | 33 | 26 | 18 | 19 | 40 | 40 | 22 | 14   | 17.5    |
| RADFORD 3 N          | 08       | MAX     | 19           | 20 | 25 | 28 | 19 | 15 | 29 | 22 | 34 | 49 | 48 | 59 | 63 | 24 | 26 | 34 | 44 | 18 | 33 | 50 | 56 | 57 | 58 | 54 | 38 | 44 | 52 | 50 | 51 | 48 | 27   | 38.5    |
|                      |          | MIN     | 7            | 4  | 1  | 4  | 10 | -2 | -1 | 17 | 17 | 33 | 41 | 41 | 22 | 11 | 6  | 9  | 14 | 9  | 14 | 16 | 29 | 31 | 32 | 33 | 27 | 17 | 19 | 16 | 40 | 23 | 15   | 17.9    |
| RICHLANDS            | 07       | MAX     | 20           | 16 | 27 | 31 | 14 | 15 | 17 | 38 | 35 | 50 | 61 | 64 | 63 | 20 | 26 | 38 | 39 | 15 | 29 | 43 | 49 | 55 | 65 | 50 | 31 | 46 | 58 | 57 | 50 | 48 | 28   | 38.6    |
|                      |          | MIN     | 5            | -2 | -3 | 7  | 8  | -9 | -9 | -1 | 24 | 32 | 34 | 43 | 20 | 10 | 10 | 15 | 9  | 8  | 8  | 9  | 27 | 31 | 31 | 31 | 28 | 19 | 19 | 30 | 38 | 22 | 12   | 16.3    |
| SALTVILLE 1N         | 07       | MAX     | 23           | 19 | 29 | 31 | 18 | 18 | 20 | 37 | 37 | 46 | 61 | 62 |    | 26 | 28 | 38 | 41 | 20 | 29 | 43 | 48 | 55 | 66 | 50 | 35 | 46 | 58 | 56 | 50 | 49 | 30   | 39.0    |
|                      |          | MIN     | 6            | 1  | 0  | 9  | 10 | -1 | -1 | 1  | 26 | 35 | 35 | 43 |    | 9  | 8  | 17 | 18 | 7  | 8  | 8  | 22 | 29 | 30 | 34 | 24 | 18 | 18 | 32 | 40 | 25 | 15   | 17.5    |
| STAFFORDSVILLE 3 ENE | 07       | MAX     | 18           | 17 | 24 | 27 | 16 | 17 | 14 | 29 | 38 | 48 | 52 | 61 | 62 | 22 | 24 | 33 | 40 | 18 | 34 | 49 | 56 | 55 | 58 | 54 | 37 | 44 | 52 | 53 | 50 | 46 | 26   | 37.9    |
|                      |          | MIN     | 6            | 2  | -1 | 3  | 9  | 5  | -4 | -4 | 15 | 32 | 36 | 40 | 22 | 10 | 7  | 7  | 13 | 8  | 7  | 15 | 33 | 33 | 33 | 33 | 26 | 16 | 16 | 27 | 40 | 22 | 13   | 16.8    |
| WISE 1SE             | 09       | MAX     | 15           | 11 | 26 | 29 | 14 | 13 | 18 | 34 | 38 | 49 | 62 | 63 | 62 | 16 | 21 | 35 | 33 | 14 | 29 | 40 | 47 | 53 | 62 | 46 | 29 | 44 | 56 | 52 | 48 | 46 | 29   | 36.6    |
|                      |          | MIN     | 5            | -4 | 4  | 10 | 5  | -5 | -1 | 9  | 32 | 35 | 46 | 52 | 15 | 7  | 8  | 21 | 2  | -1 | 7  | 21 | 36 | 45 | 41 | 27 | 21 | 26 | 33 | 45 | 29 | 20 | 14   | 19.5    |
| WYTHEVILLE           | 07       | MAX     | 16           | 14 | 28 | 29 | 15 | 17 | 15 | 31 | 37 | 52 | 54 | 60 | 62 | 22 | 24 | 37 | 42 | 17 | 28 | 41 | 51 | 55 | 61 | 49 | 34 | 44 | 53 | 54 | 48 | 46 | 25   | 37.5    |
|                      |          | MIN     | 3            | 1  | 1  | 8  | 7  | 3  | -3 | -2 | 18 | 36 | 38 | 44 | 21 | 7  | 7  | 12 | 12 | 4  | 5  | 18 | 33 | 36 | 35 | 31 | 23 | 20 | 20 | 34 | 39 | 21 | 15   | 17.6    |

VIRGINIA  
201801

## SNOWFALL AND SNOW ON GROUND (INCHES)

| STATION                        |                     | DAY OF MONTH |    |     |                |     |    |    |    |    |    |    |    |    |    |    |     |     |    |    |    |    |    |    |    |    |    |    |    |     |     |    |
|--------------------------------|---------------------|--------------|----|-----|----------------|-----|----|----|----|----|----|----|----|----|----|----|-----|-----|----|----|----|----|----|----|----|----|----|----|----|-----|-----|----|
|                                |                     | 01           | 02 | 03  | 04             | 05  | 06 | 07 | 08 | 09 | 10 | 11 | 12 | 13 | 14 | 15 | 16  | 17  | 18 | 19 | 20 | 21 | 22 | 23 | 24 | 25 | 26 | 27 | 28 | 29  | 30  | 31 |
| <b>VIRGINIA</b>                |                     |              |    |     |                |     |    |    |    |    |    |    |    |    |    |    |     |     |    |    |    |    |    |    |    |    |    |    |    |     |     |    |
|                                | <b>TIDEWATER 01</b> |              |    |     |                |     |    |    |    |    |    |    |    |    |    |    |     |     |    |    |    |    |    |    |    |    |    |    |    |     |     |    |
| DISPUTANTA                     | SNOWFALL            | -            | -  | -   | 11.5           | -   | -  | -  | -  | -  | -  | -  | -  | -  | -  | -  | -   | 2.5 | -  | -  | -  | -  | -  | -  | -  | -  | -  | -  | -  | -   | -   |    |
|                                | SN ON GND           | -            | -  | -   | 12             | 11  | 9  | 8  | 7  | 5  | 3  | 2  | -  | -  | -  | -  | -   | 3   | T  | T  | T  | -  | -  | -  | -  | -  | -  | -  | -  | -   | -   |    |
| EMPORIA 1 WNW                  | SNOWFALL            | -            | -  | -   | 2.5            | -   | -  | -  | -  | -  | -  | -  | -  | -  | -  | -  | -   | 2.0 | -  | -  | -  | -  | -  | -  | -  | -  | -  | -  | -  | -   | -   |    |
|                                | SN ON GND           | -            | -  | -   | 3              | 3   | 2  | 2  | 1  | 1  | -  | -  | -  | -  | -  | -  | -   | 2   | T  | -  | -  | -  | -  | -  | -  | -  | -  | -  | -  | -   | -   |    |
| FREDERICKSBURG SEWAGE          | SNOWFALL            |              |    |     | 1.5            |     |    |    |    |    |    |    |    |    |    |    |     |     |    |    |    |    |    |    |    |    |    |    |    |     |     |    |
|                                | SN ON GND           |              |    |     | 2              | -   | -  | -  | -  | -  | -  | -  | -  | -  | -  | -  | T   |     |    |    |    |    |    |    |    |    |    |    |    |     |     |    |
|                                | WTR EQUIV           |              |    |     | -              | -   | -  | -  | -  | -  |    |    |    |    |    |    |     |     |    |    |    |    |    |    |    |    |    |    |    |     |     |    |
| HOLLAND 1 E                    | SNOWFALL            |              |    |     |                |     |    |    |    |    |    |    |    |    |    |    |     |     |    |    |    |    |    |    |    |    |    |    |    |     |     |    |
| HOPEWELL                       | SNOWFALL            | -            | -  | -   | 2.0            | -   | -  | -  | -  | -  | -  | -  | -  | -  | -  | -  | 2.0 |     |    |    |    |    |    |    |    |    |    |    |    |     |     |    |
|                                | SN ON GND           | -            | -  | -   | 2              | -   | -  | -  | -  | -  | -  | -  | -  | -  | -  | -  | 2   |     |    |    |    |    |    |    |    |    |    |    |    |     |     |    |
| NORFOLK INTL AP                | SNOWFALL            |              |    |     | 5.2            | 5.1 |    |    |    |    |    |    |    |    |    |    | 2.5 | T   |    |    |    |    |    |    |    |    |    |    | T  | 0.3 |     |    |
|                                | SN ON GND           |              |    |     | 9              | 10  | 8  | 8  | 7  | 6  | 5  | 4  |    |    |    |    |     | 2   | 1  |    |    |    |    |    |    |    |    |    |    |     |     |    |
| NORFOLK S                      | SNOWFALL            | -            | -  | 3.8 | 6.5            | -   | -  | -  | -  | -  | -  | -  | -  | -  | -  | T  | -   | 2.5 | T  | -  | -  | -  | -  | -  | -  | -  | -  | -  | -  | -   | 0.3 |    |
|                                | SN ON GND           | -            | -  | 4   | 10             | 9   | 8  | 7  | 6  | 5  | 4  | T  |    |    |    |    | 3   | 1   | T  | -  | -  | -  | -  | -  | -  | -  | -  | -  | -  | -   |     |    |
| NORTH                          | SNOWFALL            | -            | -  |     | 6.0            | 1.0 |    |    |    |    |    |    |    |    |    |    |     | 2.0 |    |    |    |    |    |    |    |    |    |    |    |     |     |    |
|                                | SN ON GND           | -            | -  |     | 6              | 6   | 3  | 3  | 3  | 2  | 1  | T  | T  |    |    |    |     | 2   | T  |    |    |    |    |    |    |    |    |    |    |     |     |    |
| PAINTER 2W                     | SNOWFALL            | -            | -  | -   | 9.0            | -   | -  | -  | -  | -  | -  | -  | -  | -  | -  | -  | -   | 2.0 | -  | -  | -  | -  | -  | -  | -  | -  | -  | -  | -  | -   | -   |    |
|                                | SN ON GND           | -            | -  | -   | 9              | 9   | 9  | 9  | 8  | 6  | 5  | 3  |    |    |    |    |     | 1   |    |    |    |    |    |    |    |    |    |    |    |     |     |    |
| STONY CREEK 2 N                | SNOWFALL            |              |    |     |                |     |    |    |    |    |    |    |    |    |    |    |     |     |    |    |    |    |    |    |    |    |    |    |    |     |     |    |
| SUFFOLK LAKE KILBY             | SNOWFALL            |              |    | T   | 9.0            |     |    |    |    |    |    |    |    |    |    |    | 3.0 | T   |    |    |    |    |    |    |    |    |    |    |    |     | 0.5 |    |
|                                | SN ON GND           |              |    | T   | 9              | 7   | 5  | 3  | 1  | T  |    |    |    |    |    |    | 3   | T   |    |    |    |    |    |    |    |    |    |    |    |     |     |    |
| WAKEFIELD 1NW                  | SNOWFALL            |              |    |     | 3.0            | 5.5 |    |    |    |    |    |    |    |    |    | T  |     | 2.6 |    |    |    |    |    |    |    |    |    |    |    |     | 0.7 |    |
|                                | SN ON GND           |              |    |     | 3              | 8   | 7  | 7  | 6  | 3  | 1  | T  |    |    |    |    | 3   | 1   | T  |    |    |    |    |    |    |    |    |    |    |     |     |    |
| WALKERTON 2 NW                 | SNOWFALL            |              |    |     | 3.7            |     |    |    |    |    |    |    |    |    |    |    | 0.3 |     |    |    |    |    |    |    |    |    |    |    |    |     | 0.1 |    |
|                                | SN ON GND           |              |    | 1   | 4 <sup>1</sup> | 4   | 4  | 4  | 2  | 1  | 1  |    |    |    |    |    | 1   |     |    |    |    |    |    |    |    |    |    |    |    |     |     |    |
| WALLACETON LK DRUMMOND         | SNOWFALL            |              |    |     |                |     |    |    |    |    |    |    |    |    |    |    |     |     |    |    |    |    |    |    |    |    |    |    |    |     |     |    |
| WALLOPS ISLAND NASA TEST FACIL | SNOWFALL            |              |    |     | 1.0            | 8.5 |    |    |    |    |    |    |    |    |    |    | 1.0 |     |    |    |    |    |    |    |    |    |    |    |    |     |     |    |
|                                | SN ON GND           |              |    |     | 6              | 9   | 8  | 8  | 7  | 3  | 1  |    |    |    |    |    |     | 1   |    |    |    |    |    |    |    |    |    |    |    |     |     |    |
| WARSAW 2 NW                    | SNOWFALL            | -            | -  | -   | 4.0            | -   | -  | -  | -  | -  | -  | -  | -  | -  | -  | -  | -   | -   | -  | -  | -  | -  | -  | -  | -  | -  | -  | -  | -  | -   | -   |    |
| WEST POINT 2 NW                | SNOWFALL            |              |    |     | 7.0            |     |    |    |    |    |    |    |    | T  |    |    | 0.6 | 0.1 |    |    |    |    |    |    |    |    |    |    |    |     | T   |    |
|                                | SN ON GND           |              |    |     | 7              | 6   | 6  | 5  | 3  | 2  | 1  | T  |    |    |    |    | T   | T   |    |    |    |    |    |    |    |    |    |    |    |     |     |    |
| WILLIAMSBURG 2 N               | SNOWFALL            | -            | -  | 2.0 | 3.5            | -   | -  | -  | -  | -  | -  | -  | -  | -  | -  | -  | -   | 3.0 | -  | -  | -  | -  | -  | -  | -  | -  | -  | -  | -  | -   | T   |    |
|                                | SN ON GND           | -            | -  | 2   | 5              | 4   | 3  | 3  | 3  | T  | T  | T  |    |    |    |    | 3   | T   | T  | T  |    |    |    |    |    |    |    |    |    |     |     |    |
| <b>EASTERN PIEDMONT 02</b>     |                     |              |    |     |                |     |    |    |    |    |    |    |    |    |    |    |     |     |    |    |    |    |    |    |    |    |    |    |    |     |     |    |
| ALBERTA 5N                     | SNOWFALL            |              |    |     | 1.9            |     |    |    |    |    |    |    |    |    |    |    | 0.8 | 4.3 |    |    |    |    |    |    |    |    |    |    |    |     | T   |    |
|                                | SN ON GND           |              |    |     | 2              | 1   | 1  | 1  | 1  | T  |    |    |    |    |    |    | 1   | 5   | 4  | 2  | T  |    |    |    |    |    |    |    |    |     | T   |    |
| AMELIA COURTHOUSE 1            | SNOWFALL            |              |    |     | 1.0            |     |    |    |    |    |    |    |    |    |    |    | 4.5 |     |    |    |    |    |    |    |    |    |    |    |    |     |     |    |
|                                | SN ON GND           |              |    |     | 1              |     |    |    |    |    |    |    |    |    |    |    |     |     |    |    |    |    |    |    |    |    |    |    |    |     |     |    |
| ASHLAND                        | SNOWFALL            |              |    |     | 2.7            |     |    |    |    |    |    |    |    |    |    |    | 2.0 |     |    |    |    |    |    |    |    |    |    |    |    |     | T   |    |
|                                | SN ON GND           |              |    |     | 3              | 2   | 2  | 2  | T  | T  | T  |    |    |    |    |    | 2   | 1   | T  | T  |    |    |    |    |    |    |    |    |    |     | 0.2 |    |

Snowfall: Includes snow and ice. Values for NWS stations (J index note) are Mid-Mid (LST).

Snow on ground: Includes snow, sleet, ice, and hail. Values for NWS stations (J index note) are observed at 12 UTC (GMT).

Water Equivalent: Given for NWS stations (J index note) only, when snow depth is 2 inches or more, and is measured at 18 UTC (GMT)

VIRGINIA  
201801

## SNOWFALL AND SNOW ON GROUND (INCHES)

| STATION                    |           | DAY OF MONTH |    |     |     |    |    |    |    |    |    |    |    |    |    |    |    |     |     |    |    |    |    |    |    |    |    |    |    |    |    |    |   |   |     |     |
|----------------------------|-----------|--------------|----|-----|-----|----|----|----|----|----|----|----|----|----|----|----|----|-----|-----|----|----|----|----|----|----|----|----|----|----|----|----|----|---|---|-----|-----|
|                            |           | 01           | 02 | 03  | 04  | 05 | 06 | 07 | 08 | 09 | 10 | 11 | 12 | 13 | 14 | 15 | 16 | 17  | 18  | 19 | 20 | 21 | 22 | 23 | 24 | 25 | 26 | 27 | 28 | 29 | 30 | 31 |   |   |     |     |
| BREMO BLUFF                | SNOWFALL  |              |    |     | 0.4 | -  |    |    |    |    |    |    | -  | -  | -  |    |    |     |     |    |    |    |    | -  |    |    |    |    |    |    |    |    |   |   |     |     |
|                            | SN ON GND |              |    |     |     | -  |    |    |    |    |    |    | -  | -  | -  |    |    |     |     |    |    |    |    |    | -  |    |    |    |    |    |    |    |   |   |     |     |
| BUCKINGHAM                 | SNOWFALL  |              |    |     | 0.5 |    |    |    |    | T  |    |    |    |    |    |    |    | T   | 5.0 |    |    |    |    |    |    |    |    |    |    |    |    |    |   |   |     |     |
|                            | SN ON GND |              |    |     | 1   | T  |    |    |    |    |    |    |    |    |    |    |    | T   | 5   | 3  | 1  | T  |    |    |    |    |    |    |    |    |    |    |   |   |     |     |
| CAMP PICKETT               | SNOWFALL  | -            | -  | -   | -   | -  | -  | -  | -  | -  | -  | -  | -  | -  | -  | -  | -  | 2.0 | 3.5 | -  | -  | -  | -  | -  | -  | -  | -  | -  | -  | -  | -  | -  | - | - | -   |     |
|                            | SN ON GND | -            | -  | -   | -   | -  | -  | -  | -  | -  | -  | -  | -  | -  | -  | -  | -  | -   | 4   | -  | -  | -  | -  | -  | -  | -  | -  | -  | -  | -  | -  | -  | - | - | -   |     |
| CHASE CITY                 | SNOWFALL  | -            | -  | -   | 0.4 | -  | -  | -  | -  | -  | -  | -  | -  | -  | -  | -  | -  | 0.5 | 6.5 | -  | -  | -  | -  | -  | -  | -  | -  | -  | -  | -  | -  | -  | - | - | -   |     |
| CLARKSVILLE                | SNOWFALL  |              |    |     | 0.2 |    |    |    |    |    |    |    |    |    |    |    |    | 0.3 | 7.4 |    |    |    |    |    |    |    |    |    |    |    |    |    |   |   | T   |     |
|                            | SN ON GND |              |    |     | T   |    |    |    |    |    |    |    |    |    |    |    |    | 1   | 7   |    |    |    |    |    |    |    |    |    |    |    |    |    |   |   | T   |     |
| CORBIN                     | SNOWFALL  | -            | -  | -   | T   | T  | -  | -  | -  | -  | -  | -  | -  | -  | -  | -  | -  | 0.2 | -   | -  | -  | -  | -  | -  | -  | -  | -  | -  | -  | -  | -  | -  | - | - | 0.1 | -   |
|                            | SN ON GND | -            | -  | -   | T   | T  | -  | -  | -  | -  | -  | -  | -  | -  | -  | -  | -  | -   | -   | -  | -  | -  | -  | -  | -  | -  | -  | -  | -  | -  | -  | -  | - | - | -   | -   |
| CROZIER                    | SNOWFALL  |              |    |     | 1.0 |    |    |    |    |    |    |    |    |    |    |    |    | 3.0 |     |    |    |    |    |    |    |    |    |    |    |    |    |    |   |   |     |     |
|                            | SN ON GND |              |    |     | 1   | 1  | 1  | 1  | 1  | 1  |    |    |    |    |    |    |    | 3   | 3   | 3  |    |    |    |    |    |    |    |    |    |    |    |    |   |   |     |     |
| FARMVILLE 2 N              | SNOWFALL  | -            | -  | -   | T   | -  | -  | -  | -  | -  | -  | -  | -  | -  | -  | -  | -  | T   | 5.0 | -  | -  | -  | -  | -  | -  | -  | -  | -  | -  | -  | -  | -  | - | - | -   | -   |
|                            | SN ON GND | -            | -  | -   | -   | -  | -  | -  | -  | -  | -  | -  | -  | -  | -  | -  | -  | T   | 5   | 2  | -  | -  | -  | -  | -  | -  | -  | -  | -  | -  | -  | -  | - | - | -   | -   |
| JOHN H KERR DAM            | SNOWFALL  | -            | -  | -   | -   | -  | -  | -  | -  | -  | -  | -  | -  | -  | -  | -  | -  | -   | 6.5 | -  | -  | -  | -  | -  | -  | -  | -  | -  | -  | -  | -  | -  | - | - | -   | -   |
| KEYSVILLE 2 S              | SNOWFALL  |              |    |     | 0.4 |    |    |    |    |    |    |    |    |    |    |    |    | T   | 7.1 |    |    |    |    |    |    |    |    |    |    |    |    |    |   |   |     | T   |
|                            | SN ON GND |              |    |     | T   |    |    |    |    |    |    |    |    |    |    |    |    | T   | 7   | 5  | 3  | 1  |    |    |    |    |    |    |    |    |    |    |   |   |     |     |
| LOUISA                     | SNOWFALL  | -            | -  | -   | 0.8 | -  | -  | -  | -  | -  | -  | -  | -  | -  | -  | -  | -  | 1.5 | -   | -  | -  | -  | -  | -  | -  | -  | -  | -  | -  | -  | -  | -  | - | - | -   | -   |
|                            | SN ON GND | -            | -  | -   | -   | -  | -  | -  | -  | -  | -  | -  | -  | -  | -  | -  | -  | 1   | -   | -  | -  | -  | -  | -  | -  | -  | -  | -  | -  | -  | -  | -  | - | - | -   | -   |
| PALMYRA 3S                 | SNOWFALL  | -            | -  | -   | T   | -  | -  | -  | -  | -  | -  | -  | -  | -  | -  | -  | -  | 0.9 | 2.0 | -  | -  | -  | -  | -  | -  | -  | -  | -  | -  | -  | -  | -  | - | - | -   | -   |
|                            | SN ON GND | -            | -  | -   | -   | -  | -  | -  | -  | -  | -  | -  | -  | -  | -  | -  | -  | 1   | 3   | -  | -  | -  | -  | -  | -  | -  | -  | -  | -  | -  | -  | -  | - | - | -   | -   |
| PETERSBURG                 | SNOWFALL  | -            | -  | 3.0 | -   | -  | -  | -  | -  | -  | -  | -  | -  | -  | -  | -  | -  | 1.0 | -   | -  | -  | -  | -  | -  | -  | -  | -  | -  | -  | -  | -  | -  | - | - | -   | -   |
|                            | SN ON GND | -            | -  | 3   | -   | -  | -  | -  | -  | -  | -  | -  | -  | -  | -  | -  | -  | 1   | -   | -  | -  | -  | -  | -  | -  | -  | -  | -  | -  | -  | -  | -  | - | - | -   | -   |
| RICHMOND INTL AP           | SNOWFALL  |              |    | 0.6 | 2.4 |    |    |    |    |    |    |    |    |    |    |    | T  | 2.0 |     |    |    |    |    |    |    |    |    |    |    |    |    |    |   |   |     | 0.3 |
|                            | SN ON GND |              |    | 3   | 2   | 2  | 2  | 1  | T  |    |    |    |    |    |    |    |    | T   | 1   |    |    |    |    |    |    |    |    |    |    |    |    |    |   |   |     |     |
| WINTERPOCK 4 W             | SNOWFALL  | -            | -  | -   | 1.8 | -  | -  | -  | -  | -  | -  | -  | -  | -  | -  | -  | -  | 0.3 | 3.8 | -  | -  | -  | -  | -  | -  | -  | -  | -  | -  | -  | -  | -  | - | - | -   | T   |
| <b>WESTERN PIEDMONT 03</b> |           |              |    |     |     |    |    |    |    |    |    |    |    |    |    |    |    |     |     |    |    |    |    |    |    |    |    |    |    |    |    |    |   |   |     |     |
| ALTAVISTA                  | SNOWFALL  |              |    |     |     |    |    |    |    | T  |    |    |    |    |    |    |    | -   | -   |    |    |    |    |    |    |    |    |    |    |    |    |    |   |   |     |     |
|                            | SN ON GND |              |    |     |     |    |    |    |    | T  |    |    |    |    |    |    |    | -   | -   | -  | -  | -  | -  | -  | -  | -  | -  | -  | -  | -  | -  | -  | - | - | -   | -   |
| APPOMATTOX                 | SNOWFALL  |              |    |     |     |    |    |    |    |    |    |    |    |    |    |    |    | 1.2 | 4.4 |    |    |    |    |    |    |    |    |    |    |    |    |    |   |   |     |     |
|                            | SN ON GND |              |    |     |     |    |    |    |    |    |    |    |    |    |    |    |    | 1   | 6   | 4  | 1  | T  |    |    |    |    |    |    |    |    |    |    |   |   |     |     |
| BEDFORD                    | SNOWFALL  |              |    |     |     |    |    |    |    |    |    |    |    |    |    |    |    | 1.1 | 2.5 |    |    |    |    |    |    |    |    |    |    |    |    |    |   |   |     | T   |
|                            | SN ON GND |              |    |     |     |    |    |    |    |    |    |    |    |    |    |    |    | 1   | 4   | 2  | T  |    |    |    |    |    |    |    |    |    |    |    |   |   |     |     |
| BROOKNEAL                  | SNOWFALL  |              |    |     |     |    |    |    |    | T  |    |    |    |    |    |    |    | 1.0 | 4.0 |    |    |    |    |    |    |    |    |    |    |    |    |    |   |   |     | T   |
|                            | SN ON GND |              |    |     |     |    |    |    |    |    |    |    |    |    |    |    |    | 1   | 5   | 3  | 1  |    |    |    |    |    |    |    |    |    |    |    |   |   |     | T   |
| CHARLOTTESVILLE 2W         | SNOWFALL  |              |    |     |     |    |    |    |    | T  |    |    |    |    |    |    |    | 1.0 | T   |    |    |    |    |    |    |    |    |    |    |    |    |    |   |   |     |     |
|                            | SN ON GND |              |    |     |     |    |    |    |    | T  |    |    |    |    |    |    |    | 1   | 1   | T  |    |    |    |    |    |    |    |    |    |    |    |    |   |   |     |     |
|                            | WTR EQUIV |              |    |     |     |    |    |    |    | -  |    |    |    |    |    |    |    | -   | -   | -  |    |    |    |    |    |    |    |    |    |    |    |    |   |   |     |     |
| CHATHAM                    | SNOWFALL  |              |    |     |     |    |    |    |    | T  |    |    |    |    |    |    |    | 0.2 | 7.6 |    |    |    |    |    |    |    |    |    |    |    |    |    |   |   |     |     |
|                            | SN ON GND |              |    |     |     |    |    |    |    | T  |    |    |    |    |    |    |    | T   | 8   | 8  | 4  | 2  | T  |    |    |    |    |    |    |    |    |    |   |   |     |     |
| CONCORD 4 SSW              | SNOWFALL  |              |    |     |     |    |    |    |    | T  |    |    |    |    |    |    |    | 1.0 | 4.0 |    |    |    |    |    |    |    |    |    |    |    |    |    |   |   |     |     |

Snowfall: Includes snow and ice. Values for NWS stations (J index note) are Mid-Mid (LST).

Snow on ground: Includes snow, sleet, ice, and hail. Values for NWS stations (J index note) are observed at 12 UTC (GMT).

Water Equivalent: Given for NWS stations (J index note) only, when snow depth is 2 inches or more, and is measured at 18 UTC (GMT)

VIRGINIA  
201801

## SNOWFALL AND SNOW ON GROUND (INCHES)

| STATION                      |           | DAY OF MONTH |    |    |    |    |    |    |    |    |    |    |    |    |    |    |     |     |    |    |    |    |    |    |    |    |    |    |    |    |     |    |
|------------------------------|-----------|--------------|----|----|----|----|----|----|----|----|----|----|----|----|----|----|-----|-----|----|----|----|----|----|----|----|----|----|----|----|----|-----|----|
|                              |           | 01           | 02 | 03 | 04 | 05 | 06 | 07 | 08 | 09 | 10 | 11 | 12 | 13 | 14 | 15 | 16  | 17  | 18 | 19 | 20 | 21 | 22 | 23 | 24 | 25 | 26 | 27 | 28 | 29 | 30  | 31 |
| DANVILLE RGNL AP             | SN ON GND |              |    |    |    |    |    |    | T  |    |    |    |    |    |    |    | 1   | 5   | 2  | 1  |    |    |    |    |    |    |    |    |    |    |     |    |
|                              | SNOWFALL  |              |    |    |    |    |    |    |    |    |    |    |    |    |    | T  | 8.8 | T   |    |    |    |    |    |    |    |    |    |    |    |    |     |    |
| FREE UNION                   | SN ON GND |              |    |    |    |    |    |    |    |    |    |    |    |    |    |    | 9   | 6   | 3  |    |    |    |    |    |    |    |    |    |    |    |     |    |
|                              | SNOWFALL  |              |    |    |    |    |    |    |    | T  |    |    |    |    |    |    | 0.5 |     |    |    |    |    |    |    |    |    |    |    |    |    |     |    |
| HOLCOMB ROCK                 | SN ON GND | T            |    |    |    |    |    |    | T  |    |    |    |    |    |    |    | 1   | T   |    |    |    |    |    |    |    |    |    |    |    |    |     |    |
|                              | WTR EQUIV | -            |    |    |    |    |    |    | -  |    |    |    |    |    |    |    | -   | -   | -  | -  | -  | -  | -  | -  | -  | -  | -  | -  | -  | -  | -   |    |
| HUDDLESTON 4 SW              | SNOWFALL  |              |    |    |    |    |    |    |    |    |    |    |    |    |    |    | T   | 0.4 |    |    |    |    |    |    |    |    |    |    |    |    |     |    |
|                              | SN ON GND |              |    |    |    |    |    |    |    |    |    |    |    |    |    |    | T   | T   |    | T  |    |    |    |    |    |    |    |    |    |    |     |    |
| LYNCHBURG INTL AP            | SNOWFALL  |              |    |    |    |    |    |    |    |    |    |    |    |    |    |    | T   | -   |    |    |    |    |    |    |    |    |    |    |    |    |     |    |
|                              | SN ON GND |              |    |    |    |    |    |    |    | T  |    |    |    |    |    |    | T   | 5.0 |    |    |    |    |    |    |    |    |    |    |    |    | T   |    |
| MARTINSVILLE FLTR PLT        | SNOWFALL  |              |    |    |    |    |    |    |    |    |    |    |    |    |    |    | T   | 5   | 4  | 1  | T  |    |    |    |    |    |    |    |    |    |     |    |
|                              | SN ON GND |              |    |    |    |    |    |    |    |    |    |    |    |    |    |    | T   | 4   | 3  | 1  |    |    |    |    |    |    |    |    |    |    |     |    |
| MEADOWS OF DAN 5 SW          | SNOWFALL  |              |    |    |    |    |    |    |    |    |    |    |    |    |    |    | 1   | 6   | 5  |    |    |    |    |    |    |    |    |    |    |    |     |    |
|                              | SN ON GND |              |    |    |    |    |    |    |    |    |    |    |    |    |    |    | 0.5 | 1.5 |    |    |    |    |    |    |    |    |    |    |    |    | T   |    |
| MONTEBELLO FISH CULTURAL STN | SNOWFALL  |              |    |    |    |    |    |    |    |    |    |    |    |    |    |    | 1   | 2   | 1  |    |    |    |    |    |    |    |    |    |    |    | T   |    |
|                              | SN ON GND |              |    |    |    |    |    |    |    |    |    |    |    |    |    |    | 1   | 2   | 1  |    |    |    |    |    |    |    |    |    |    |    | T   |    |
| MONTICELLO PEDLAR DAM        | SNOWFALL  |              |    |    |    |    |    |    |    |    |    |    |    |    |    |    |     |     |    |    |    |    |    |    |    |    |    |    |    |    | 2.0 |    |
|                              | SN ON GND |              |    |    |    |    |    |    |    |    |    |    |    |    |    |    |     |     |    |    |    |    |    |    |    |    |    |    |    |    | -   |    |
| ROCKY MT                     | SNOWFALL  |              |    |    |    |    |    |    |    |    |    |    |    |    |    |    |     |     |    |    |    |    |    |    |    |    |    |    |    |    |     |    |
|                              | SN ON GND |              |    |    |    |    |    |    |    |    |    |    |    |    |    |    |     |     |    |    |    |    |    |    |    |    |    |    |    |    |     |    |
| S BOSTON                     | SNOWFALL  |              |    |    |    |    |    |    |    |    |    |    |    |    |    |    |     |     |    |    |    |    |    |    |    |    |    |    |    |    |     |    |
|                              | SN ON GND |              |    |    |    |    |    |    |    |    |    |    |    |    |    |    |     |     |    |    |    |    |    |    |    |    |    |    |    |    |     |    |
| STUART                       | SNOWFALL  |              |    |    |    |    |    |    |    |    |    |    |    |    |    |    |     |     |    |    |    |    |    |    |    |    |    |    |    |    |     |    |
|                              | SN ON GND |              |    |    |    |    |    |    |    |    |    |    |    |    |    |    |     |     |    |    |    |    |    |    |    |    |    |    |    |    |     |    |
| WOOLWINE 1 SE                | SNOWFALL  |              |    |    |    |    |    |    |    |    |    |    |    |    |    |    |     |     |    |    |    |    |    |    |    |    |    |    |    |    |     |    |
|                              | SN ON GND |              |    |    |    |    |    |    |    |    |    |    |    |    |    |    |     |     |    |    |    |    |    |    |    |    |    |    |    |    |     |    |
| NORTHERN 04 PURCELLVILLE     | SNOWFALL  |              |    |    |    |    |    |    |    |    |    |    |    |    |    |    |     |     |    |    |    |    |    |    |    |    |    |    |    |    |     |    |
|                              | SN ON GND | 1            |    |    |    |    |    |    |    |    |    |    |    |    |    |    |     |     |    |    |    |    |    |    |    |    |    |    |    |    |     |    |
| LURAY 5 E                    | SNOWFALL  |              |    |    |    |    |    |    |    |    |    |    |    |    |    |    |     |     |    |    |    |    |    |    |    |    |    |    |    |    |     |    |
|                              | SN ON GND | 1            |    |    |    |    |    |    |    |    |    |    |    |    |    |    |     |     |    |    |    |    |    |    |    |    |    |    |    |    |     |    |
| MANASSAS                     | SNOWFALL  |              |    |    |    |    |    |    |    |    |    |    |    |    |    |    |     |     |    |    |    |    |    |    |    |    |    |    |    |    |     |    |
|                              | SN ON GND |              |    |    |    |    |    |    |    |    |    |    |    |    |    |    |     |     |    |    |    |    |    |    |    |    |    |    |    |    |     |    |

Snowfall: Includes snow and ice. Values for NWS stations (J index note) are Mid-Mid (LST).

Snow on ground: Includes snow, sleet, ice, and hail. Values for NWS stations (J index note) are observed at 12 UTC (GMT).

Water Equivalent: Given for NWS stations (J index note) only, when snow depth is 2 inches or more, and is measured at 18 UTC (GMT)



VIRGINIA  
201801

## SNOWFALL AND SNOW ON GROUND (INCHES)

| STATION                            |           | DAY OF MONTH |    |    |     |    |    |    |    |    |    |    |    |    |    |     |     |     |    |    |    |    |    |    |    |    |    |    |    |    |    |
|------------------------------------|-----------|--------------|----|----|-----|----|----|----|----|----|----|----|----|----|----|-----|-----|-----|----|----|----|----|----|----|----|----|----|----|----|----|----|
|                                    |           | 01           | 02 | 03 | 04  | 05 | 06 | 07 | 08 | 09 | 10 | 11 | 12 | 13 | 14 | 15  | 16  | 17  | 18 | 19 | 20 | 21 | 22 | 23 | 24 | 25 | 26 | 27 | 28 | 29 | 30 |
| MT WX 3                            | SNOWFALL  | 0.2          |    |    |     |    |    |    |    |    |    |    |    |    |    |     |     | T   |    |    |    |    |    |    |    |    |    |    |    |    | T  |
|                                    | SN ON GND | 1            | 1  |    |     |    |    |    |    |    |    |    |    |    |    |     |     | T   |    |    |    |    |    |    |    |    |    |    |    |    | T  |
|                                    | WTR EQUIV | -            | -  |    |     |    |    |    |    |    |    |    |    |    |    |     |     | -   |    |    |    |    |    |    |    | -  | -  | -  | -  | -  | -  |
| PIEDMONT RSCH STN                  | SNOWFALL  |              |    |    | T   |    |    |    |    |    |    |    |    |    |    |     |     | -   |    |    |    |    |    |    |    |    |    |    |    |    | -  |
|                                    | SN ON GND |              |    |    | -   |    |    |    |    |    |    |    |    |    |    |     |     | -   |    |    |    |    |    |    |    |    |    |    |    |    | -  |
|                                    | WTR EQUIV |              |    |    | -   |    |    |    |    |    |    |    |    |    |    |     |     | -   |    |    |    |    |    |    |    | -  | -  | -  | -  | -  | -  |
| SOMERSET                           | SNOWFALL  |              |    |    |     |    |    |    |    |    |    |    |    |    |    |     | 0.6 | T   |    |    |    |    |    |    |    |    |    |    |    |    | -  |
|                                    | SN ON GND |              |    |    |     |    |    |    |    |    |    |    |    |    |    |     | 1   | T   | T  |    |    |    |    |    |    |    |    |    |    |    | -  |
|                                    | WTR EQUIV |              |    |    |     |    |    |    |    |    |    |    |    |    |    |     | -   | -   | -  |    |    |    |    |    |    |    |    |    |    |    | -  |
| SPERRYVILLE                        | SNOWFALL  | T            |    |    |     |    |    | -  |    | T  |    |    |    |    |    |     | T   |     |    |    |    |    |    |    |    |    |    |    |    |    | -  |
|                                    | SN ON GND | 1            | T  | T  | T   | T  | T  | -  | T  | T  |    |    |    |    |    |     | T   |     |    |    |    |    |    |    |    |    |    |    |    |    | -  |
|                                    | WTR EQUIV | -            | -  | -  | -   | -  | -  | -  | -  | -  | -  |    |    |    |    |     | -   |     |    |    |    |    |    |    |    | -  | -  | -  | -  | -  | -  |
| STERLING (RCS)                     | SNOWFALL  | T            |    |    | 0.1 | T  |    |    |    | T  |    |    |    | T  |    |     | 0.3 | T   |    |    |    |    |    |    |    |    | T  |    |    |    | T  |
|                                    | SN ON GND | T            | T  | T  | T   |    |    |    |    | T  |    |    |    |    |    |     | T   | T   |    |    |    |    |    |    |    |    |    |    |    |    | -  |
|                                    | WTR EQUIV | -            | -  | -  | -   | -  | -  | -  | -  | -  |    |    |    |    |    |     | -   | -   |    |    |    |    |    |    |    | -  | -  | -  | -  | -  | -  |
| VIENNA                             | SNOWFALL  |              |    |    | 1.0 |    |    |    |    |    |    |    |    |    |    | 0.1 | 0.5 |     |    |    |    |    |    |    |    |    |    |    |    |    | -  |
|                                    | SN ON GND |              |    |    | 1   | 1  | 1  | 1  | 1  |    |    |    |    |    |    | T   | 1   |     |    |    |    |    |    |    |    |    |    |    |    |    | -  |
|                                    | WTR EQUIV |              |    |    | -   | -  | -  | -  | -  | -  |    |    |    |    |    | -   | -   |     |    |    |    |    |    |    |    | -  | -  | -  | -  | -  | -  |
| WASHINGTON DULLES INTL AP          | SNOWFALL  |              |    |    | 0.1 |    |    |    |    | T  |    |    |    | T  |    |     | 0.3 |     |    |    |    |    |    |    | T  |    |    |    |    |    | T  |
|                                    | SN ON GND | T            | T  | T  | T   |    |    |    |    | T  |    |    |    |    |    |     | T   | T   |    |    |    |    |    |    |    |    |    |    |    |    | -  |
| WASHINGTON REAGAN NATL AP          | SNOWFALL  |              |    |    | 0.8 |    |    |    |    | T  |    |    |    |    |    |     | 0.4 |     |    |    |    |    |    |    |    |    |    |    |    |    | T  |
|                                    | SN ON GND |              |    |    | 1   | 1  | T  |    |    |    |    |    |    |    |    |     | T   | T   |    |    |    |    |    |    |    |    |    |    |    |    | -  |
| WINCHESTER                         | SNOWFALL  |              |    |    |     | T  |    |    |    | T  |    |    |    | T  |    |     | T   |     |    |    |    |    |    |    |    |    |    |    |    |    | T  |
|                                    | SN ON GND |              |    |    |     |    |    |    |    |    |    |    |    |    |    |     |     |     |    |    |    |    |    |    |    |    |    |    |    |    | -  |
|                                    | WTR EQUIV |              |    |    |     |    |    |    |    |    |    |    |    |    |    |     |     |     |    |    |    |    |    |    |    |    |    |    |    |    | -  |
| WINCHESTER 7 SE                    | SNOWFALL  |              |    |    |     |    |    |    |    |    |    |    | -  |    |    |     |     |     |    |    |    |    |    |    |    |    |    |    |    |    | -  |
|                                    | SN ON GND |              |    |    |     |    |    |    |    |    |    |    | -  |    |    |     |     |     |    |    |    |    |    |    |    |    |    |    |    |    | -  |
|                                    | WTR EQUIV |              |    |    |     |    |    |    |    |    |    |    |    |    |    |     |     |     |    |    |    |    |    |    |    |    |    |    |    |    | -  |
| WOODSTOCK 2 NE                     | SNOWFALL  |              |    |    |     |    |    |    |    |    |    |    |    |    |    |     |     | T   |    |    |    |    |    |    |    |    |    |    |    |    | -  |
|                                    | SN ON GND | T            | T  | T  | T   | T  |    |    |    |    |    |    |    |    |    |     | T   | T   |    |    |    |    |    |    |    |    |    |    |    |    | -  |
|                                    | WTR EQUIV | -            | -  | -  | -   | -  |    |    |    |    |    |    |    |    |    |     | -   |     |    |    |    |    |    |    |    |    |    |    |    |    | -  |
| CENTRAL MOUNTAIN 05<br>BUENA VISTA | SNOWFALL  |              |    |    |     |    |    |    |    |    |    |    |    |    |    |     | 0.5 | 0.5 |    |    |    |    |    |    |    |    |    |    |    |    | T  |
|                                    | SN ON GND |              |    |    |     |    |    |    |    |    |    |    |    |    |    |     | 1   | 1   | T  |    |    |    |    |    |    |    |    |    |    |    | T  |
|                                    | WTR EQUIV |              |    |    |     |    |    |    |    |    |    |    |    |    |    |     | -   |     |    |    |    |    |    |    |    |    |    |    |    |    | -  |
| COVINGTON FLTR PLT                 | SNOWFALL  |              |    |    |     |    |    |    |    |    |    |    |    |    |    |     | 0.4 | T   |    |    |    |    |    |    |    |    |    |    |    |    | -  |
|                                    | SN ON GND |              |    |    |     |    |    |    |    |    |    |    |    |    |    |     | T   | T   | T  |    |    |    |    |    |    |    |    |    |    |    | -  |
|                                    | WTR EQUIV |              |    |    |     |    |    |    |    |    |    |    |    |    |    |     | -   |     |    |    |    |    |    |    |    |    |    |    |    |    | -  |
| DALE ENTERPRISE                    | SNOWFALL  |              |    |    |     |    |    |    |    |    |    |    |    |    |    |     | 0.8 |     |    |    |    |    |    |    |    |    |    |    |    |    | -  |
|                                    | SN ON GND |              |    |    |     |    |    |    |    |    |    |    |    |    |    |     | 1   |     |    |    |    |    |    |    |    |    |    |    |    |    | -  |
|                                    | WTR EQUIV |              |    |    |     |    |    |    |    |    |    |    |    |    |    |     | -   |     |    |    |    |    |    |    |    |    |    |    |    |    | -  |
| GATHRIGHT DAM                      | SNOWFALL  |              |    |    |     |    |    |    |    |    |    |    |    |    |    |     | 0.6 |     |    |    |    |    |    |    |    |    |    |    |    |    | T  |
|                                    | SN ON GND |              |    |    |     |    |    |    |    |    |    |    |    |    |    |     | 1   | T   | T  |    |    |    |    |    |    |    |    |    |    |    | -  |
| GLASGOW 1 SE                       | SNOWFALL  |              |    |    |     |    |    |    |    |    |    |    |    |    |    |     | 0.5 | 0.9 |    |    |    |    |    |    |    |    |    |    |    |    | -  |

Snowfall: Includes snow and ice. Values for NWS stations (J index note) are Mid-Mid (LST).

Snow on ground: Includes snow, sleet, ice, and hail. Values for NWS stations (J index note) are observed at 12 UTC (GMT).

Water Equivalent: Given for NWS stations (J index note) only, when snow depth is 2 inches or more, and is measured at 18 UTC (GMT)

VIRGINIA  
201801

## SNOWFALL AND SNOW ON GROUND (INCHES)

| STATION                  |           | DAY OF MONTH |    |    |     |     |    |    |    |     |    |    |     |     |    |    |     |     |     |    |    |    |    |    |     |     |    |    |    |    |     |     |     |     |     |     |
|--------------------------|-----------|--------------|----|----|-----|-----|----|----|----|-----|----|----|-----|-----|----|----|-----|-----|-----|----|----|----|----|----|-----|-----|----|----|----|----|-----|-----|-----|-----|-----|-----|
|                          |           | 01           | 02 | 03 | 04  | 05  | 06 | 07 | 08 | 09  | 10 | 11 | 12  | 13  | 14 | 15 | 16  | 17  | 18  | 19 | 20 | 21 | 22 | 23 | 24  | 25  | 26 | 27 | 28 | 29 | 30  | 31  |     |     |     |     |
| HOT SPRINGS              | SN ON GND |              |    |    |     |     |    |    |    | T   |    |    |     |     |    |    |     | 1   | 1   | T  |    |    |    |    |     |     |    |    |    |    |     |     |     |     |     |     |
|                          | SNOWFALL  |              |    |    |     |     |    |    |    | T   |    |    |     |     |    |    |     | 1.0 |     |    |    |    |    |    |     |     |    |    |    |    |     | 1.0 |     |     |     |     |
| LEXINGTON                | SN ON GND |              |    |    |     |     |    |    |    | T   |    |    |     |     |    |    |     | 1   | 1   | T  |    |    |    |    |     |     |    |    |    |    |     | 1   |     |     |     |     |
|                          | SNOWFALL  |              |    |    |     |     |    |    |    | T   |    |    |     |     |    |    |     | 0.2 | 0.1 |    |    |    |    |    |     |     |    |    |    |    |     |     |     |     |     |     |
| MILLGAP                  | SN ON GND |              |    |    |     |     |    |    |    | T   |    |    |     |     |    |    |     | T   | T   | T  |    |    |    |    |     |     |    |    |    |    |     |     |     |     |     |     |
|                          | SNOWFALL  |              |    |    |     | 0.1 | T  |    |    | 0.6 |    |    |     |     |    |    |     | 1.0 |     |    |    |    |    |    | 0.1 | 0.6 |    |    |    |    |     |     | 1.5 |     |     |     |
| MTN GROVE                | SN ON GND | T            | T  | T  | T   | T   | T  | T  | T  | T   | T  |    |     |     |    |    |     | 1   | 1   | T  | T  |    |    |    | T   | 1   | T  |    |    |    |     | 1   | T   |     |     |     |
|                          | WTR EQUIV | -            | -  | -  | -   | -   | -  | -  | -  | -   | -  |    |     |     |    |    |     | -   | -   | -  | -  |    |    |    | -   | -   | -  | -  | -  | -  | -   | -   | -   | -   |     |     |
| MUSTOE 1 SW              | SNOWFALL  |              |    |    | T   | 0.1 |    |    |    | 0.5 |    |    | T   |     |    |    |     | 0.2 |     |    |    |    |    |    |     | 0.1 |    |    |    |    | 1.5 | 0.3 |     |     |     |     |
|                          | SN ON GND |              |    |    | T   | T   |    |    |    | T   | T  |    |     |     |    |    |     | T   | T   | T  |    |    |    |    |     | T   |    |    |    |    | 2   | T   | T   |     |     |     |
| NEW CASTLE               | SNOWFALL  |              |    |    | 0.2 | 0.1 |    |    |    | 1.5 |    |    | T   |     |    | T  | 0.5 | 0.4 |     |    |    |    |    |    | 0.2 |     |    |    |    |    | 2.2 | 0.3 |     |     |     |     |
|                          | SN ON GND | T            | T  | T  | T   | T   | T  | T  | 1  | T   | T  |    |     |     |    | T  | T   | T   | T   | T  |    |    |    |    | T   | T   |    |    |    | 1  | 1   | T   | T   |     |     |     |
| ROANOKE 8 N              | SNOWFALL  |              |    |    | T   |     |    |    |    | T   |    |    |     |     | T  |    |     | 0.5 | 0.3 |    |    |    |    |    |     |     |    |    |    |    |     |     |     |     |     |     |
|                          | SN ON GND |              |    |    |     |     |    |    |    | T   | T  |    |     |     |    |    |     | 1   | 1   | T  |    |    |    |    |     |     |    |    |    |    |     |     |     |     |     |     |
| ROANOKE INTL AP          | SNOWFALL  |              |    |    |     |     |    |    |    | T   |    |    |     |     |    |    |     | 1   | 2   | 1  |    |    |    |    |     |     |    |    |    |    |     |     |     |     |     |     |
|                          | SN ON GND |              |    |    | T   |     |    |    |    | T   |    |    |     |     |    |    |     | 2.1 | 2   |    |    |    |    |    | T   |     |    |    |    |    |     |     |     |     |     |     |
| STAUNTON WTP             | SNOWFALL  |              |    |    |     |     |    |    |    |     |    |    |     |     |    |    |     | T   |     |    |    |    |    |    |     |     |    |    |    |    |     |     |     |     |     |     |
|                          | SN ON GND |              |    |    |     |     |    |    |    |     |    |    |     |     |    |    |     | T   | T   |    |    |    |    |    |     |     |    |    |    |    |     |     |     |     | 0.4 |     |
| WAYNESBORO WTP           | WTR EQUIV |              |    |    |     |     |    |    |    |     |    |    |     |     |    |    |     | T   |     |    |    |    |    |    |     |     |    |    |    |    |     |     |     |     |     |     |
|                          | SNOWFALL  |              |    |    |     |     |    |    |    |     |    |    |     |     |    |    |     | -   | 0.5 |    |    |    |    |    |     |     |    |    |    |    |     |     |     |     | -   |     |
| WILLIAMSVILLE 2 S        | SN ON GND |              |    |    |     |     |    |    |    |     |    |    |     |     |    |    |     | T   | T   |    |    |    |    |    |     |     |    |    |    |    |     |     |     |     |     |     |
|                          | SNOWFALL  |              |    |    |     |     |    |    |    |     |    |    |     |     |    |    |     | 0.3 |     |    |    |    |    |    |     |     |    |    |    |    |     |     |     |     | 0.3 |     |
| SOUTHWESTERN MOUNTAIN 06 | SN ON GND |              |    |    |     |     |    |    |    |     |    |    |     |     |    |    |     | T   | T   | T  |    |    |    |    |     |     |    |    |    |    |     |     |     |     |     |     |
|                          | SNOWFALL  |              |    |    |     |     |    |    |    |     |    |    |     |     |    |    |     |     |     |    |    |    |    |    |     |     |    |    |    |    |     |     |     |     |     |     |
| ABINGDON 3S              | SNOWFALL  |              |    |    |     |     |    |    |    |     |    |    |     | 0.1 | T  |    |     | 0.1 |     |    |    |    |    |    |     |     |    |    |    |    |     |     |     | 0.1 |     |     |
|                          | SN ON GND |              |    |    |     |     |    |    |    |     |    |    |     |     | T  |    |     | 1   |     |    |    |    |    |    |     |     |    |    |    |    |     |     |     | T   |     |     |
| BIG STONE GAP            | SNOWFALL  |              |    |    |     |     |    |    |    |     |    |    |     |     |    |    |     | 2.0 |     |    |    |    |    |    |     |     |    |    |    |    |     |     |     |     |     | 0.5 |
|                          | SN ON GND |              |    |    |     |     |    |    |    |     |    |    |     |     |    |    |     | 2   | 2   | 1  |    |    |    |    |     |     |    |    |    |    |     |     |     |     | 1   | T   |
| BLACKSBURG NWSO          | SNOWFALL  |              | T  |    | T   | T   | T  |    |    | T   |    |    | T   | T   |    |    | 0.6 | 1.5 |     |    |    |    |    |    | T   | T   |    |    |    |    |     |     |     | 0.1 | T   |     |
|                          | SN ON GND |              |    |    | T   | T   |    |    |    | T   |    |    |     |     |    |    | 1   | 2   | 1   | T  |    |    |    |    |     |     |    |    |    |    |     |     |     |     | T   | T   |
| BURKES GARDEN            | SNOWFALL  |              |    |    | T   | 2.0 |    |    |    | T   |    |    | T   | 1.0 |    |    | 0.6 | 0.2 |     |    |    |    |    |    | T   |     |    |    |    |    |     |     |     |     | 3.0 |     |
|                          | SN ON GND |              |    |    | T   | 2   | 1  | T  | T  |     |    |    | T   | 1   | T  | T  | 1   | 1   | T   |    |    |    |    |    | T   |     |    |    |    |    |     |     |     |     | 3   | 1   |
| CHRISTIANSBURG           | SNOWFALL  |              |    |    |     |     |    |    |    |     |    |    |     |     |    |    |     | 0.7 | 1.3 |    |    |    |    |    |     |     |    |    |    |    |     |     |     |     |     | T   |
|                          | SN ON GND |              |    |    |     |     |    |    |    |     |    |    |     |     |    |    |     | 1   | 2   | 1  |    |    |    |    |     |     |    |    |    |    |     |     |     |     |     | T   |
| CLINTWOOD 1 W            | SNOWFALL  | 0.2          | T  |    | 0.5 | 0.3 | T  |    |    |     |    |    | 1.2 | 2.0 | T  |    | 2.6 | 0.1 |     |    |    |    |    |    |     |     |    |    |    |    |     |     |     |     | 3.1 |     |
|                          | SN ON GND | T            | T  | T  | 1   | 1   | T  | T  | T  |     |    |    | 1   | 2   | 2  | 1  | 3   | 2   | 1   | T  |    |    |    |    | 0.1 | T   |    |    |    |    |     |     |     |     | 3   | 2   |
| COPPER HILL              | SNOWFALL  |              |    |    |     |     |    |    |    |     |    |    |     |     |    |    |     | 0.5 | 2.5 |    |    |    |    |    |     |     |    |    |    |    |     |     |     |     |     | 0.1 |
|                          | SN ON GND |              |    |    |     |     |    |    |    |     |    |    |     |     |    |    |     | 1   | 3   | 3  | 2  |    |    |    |     |     |    |    |    |    |     |     |     |     |     |     |

Snowfall: Includes snow and ice. Values for NWS stations (J index note) are Mid-Mid (LST).

Snow on ground: Includes snow, sleet, ice, and hail. Values for NWS stations (J index note) are observed at 12 UTC (GMT).

Water Equivalent: Given for NWS stations (J index note) only, when snow depth is 2 inches or more, and is measured at 18 UTC (GMT)

VIRGINIA  
201801

## SNOWFALL AND SNOW ON GROUND (INCHES)

| STATION              |           | DAY OF MONTH |     |    |     |     |    |    |    |    |    |    |     |     |     |    |     |     |     |    |    |    |    |    |     |    |    |    |    |     |     |
|----------------------|-----------|--------------|-----|----|-----|-----|----|----|----|----|----|----|-----|-----|-----|----|-----|-----|-----|----|----|----|----|----|-----|----|----|----|----|-----|-----|
|                      |           | 01           | 02  | 03 | 04  | 05  | 06 | 07 | 08 | 09 | 10 | 11 | 12  | 13  | 14  | 15 | 16  | 17  | 18  | 19 | 20 | 21 | 22 | 23 | 24  | 25 | 26 | 27 | 28 | 29  | 30  |
| ELK CREEK 4SSW       | SNOWFALL  |              |     |    | T   | T   |    |    |    |    |    |    |     | T   |     |    |     | 1.6 | T   |    |    |    |    |    |     |    |    |    |    |     | 1.0 |
|                      | SN ON GND |              |     |    | T   | T   |    |    |    |    |    |    |     | T   |     |    |     |     | 2   | 2  | 1  | T  |    |    |     |    |    |    |    |     | 1   |
| GALAX WTP            | SNOWFALL  |              |     |    |     |     |    |    |    |    |    |    |     |     |     |    |     | 1.0 | 1.5 |    |    |    |    |    | T   |    |    |    |    |     | 0.3 |
|                      | SN ON GND |              |     |    |     |     |    |    |    |    |    |    |     |     |     |    |     | 1   | 2   | 1  |    |    |    |    |     |    |    |    |    |     | T   |
| GRUNDY               | SNOWFALL  | T            |     |    | T   | 0.2 |    |    |    |    |    |    | 0.5 | 1.0 |     |    |     | 1.5 |     |    |    |    |    |    |     |    |    |    |    | 2.1 | 0.4 |
|                      | SN ON GND |              |     |    | T   | T   |    |    |    |    |    |    | T   | T   | T   | T  |     | 2   | T   | T  |    |    |    |    |     |    |    |    |    | 2   | 1   |
| JOHN FLANNAGAN LAKE  | SNOWFALL  |              |     |    | 0.8 |     |    |    |    |    |    |    |     | -   | -   | -  | -   | 2.0 |     |    |    |    |    |    |     |    |    |    |    | 1.0 |     |
|                      | SN ON GND |              |     |    | 1   | 1   | T  |    |    |    |    |    |     | -   | -   | -  | -   | 2   | 1   | T  |    |    |    |    |     |    |    |    |    | 1   | 1   |
| LEBANON              | SNOWFALL  |              |     |    |     |     |    |    |    |    |    |    |     |     |     |    |     | 1.6 |     |    |    |    |    |    |     |    |    |    |    | 0.5 |     |
|                      | SN ON GND |              |     |    |     |     |    |    |    |    |    |    |     | T   |     |    |     | 2   |     |    |    |    |    |    |     |    |    |    |    |     |     |
| NORA 4 SSE           | SNOWFALL  | 0.3          | 0.2 |    | 0.6 | 0.7 | T  |    |    |    |    |    | 0.5 | 2.6 | T   |    | 3.2 | 0.3 |     |    |    |    |    |    | T   | T  |    |    |    | 2.4 |     |
|                      | SN ON GND | T            | T   | T  | 1   | 1   | T  | T  |    |    |    |    | 1   | 3   | 1   | 1  | 3   | 3   | 2   | T  |    |    |    |    | T   |    |    |    | 2  | 2   |     |
| PULASKI 2 E          | SNOWFALL  |              |     |    | T   |     |    |    |    |    |    |    |     | T   |     |    |     | 0.4 | 0.2 |    |    |    |    |    |     |    |    |    |    | T   |     |
|                      | SN ON GND |              |     |    |     |     |    |    |    |    |    |    |     |     |     |    |     | T   | 1   | T  |    |    |    |    |     |    |    |    |    | T   |     |
| RADFORD 3 N          | SNOWFALL  |              |     |    | T   |     |    |    |    |    |    |    |     |     |     |    |     | 0.4 |     |    |    |    |    |    |     |    |    |    |    | 0.1 |     |
|                      | SN ON GND |              |     |    |     |     |    |    |    |    |    |    |     |     |     |    |     | T   | T   | T  |    |    |    |    |     |    |    |    |    |     |     |
| RICHLANDS            | SNOWFALL  | T            | T   |    | 0.3 | 1.6 |    |    |    |    |    |    |     | T   | 0.2 |    | 0.5 |     |     |    |    |    |    |    | T   | T  |    |    |    | 2.5 |     |
|                      | SN ON GND | T            | T   |    | T   | 2   | 1  | 1  | 1  | T  |    |    |     | T   | T   | T  | 1   | 1   | T   |    |    |    |    |    | T   |    |    |    | 3  | 1   |     |
| SALTVILLE 1N         | SNOWFALL  |              |     |    | T   | T   |    |    |    |    |    |    |     | T   |     |    | 0.5 | T   |     |    |    |    |    |    |     |    |    |    |    | 0.4 |     |
|                      | SN ON GND |              |     |    |     | T   |    |    |    |    |    |    |     | T   |     |    | 1   | 1   | T   |    |    |    |    |    |     |    |    |    |    | T   |     |
| STAFFORDSVILLE 3 ENE | SNOWFALL  |              |     |    |     | T   |    |    |    |    |    |    |     | T   |     |    | 0.2 | T   | T   |    |    |    |    |    |     | T  |    |    |    | 0.1 |     |
|                      | SN ON GND |              |     |    |     | T   |    |    |    |    |    |    |     | T   |     |    | T   | T   | T   |    |    |    |    |    |     |    |    |    |    | T   |     |
| WILLIS               | SNOWFALL  |              |     |    | T   |     |    |    |    |    |    |    |     |     | T   |    | 0.7 | 3.0 |     |    |    |    |    |    |     |    |    |    |    | 0.1 |     |
|                      | SN ON GND |              |     |    | T   |     |    |    |    |    |    |    |     |     |     |    | 1   | 4   | 2   | T  |    |    |    |    |     |    |    |    |    | T   |     |
| WISE 1SE             | SNOWFALL  | 0.2          | T   |    | 1.2 | 0.1 |    |    |    |    |    |    | 0.8 | 0.6 |     |    | 1.7 | T   |     |    |    |    |    |    | 0.3 |    |    |    |    | 0.8 |     |
|                      | SN ON GND | T            | T   |    | 1   | 1   | 1  | T  | T  |    |    |    | 1   | 1   | T   |    | 2   | 1   |     |    |    |    |    |    | T   | T  |    |    | 1  | T   |     |
| WYTHEVILLE           | SNOWFALL  |              |     |    | T   |     |    |    |    |    |    |    |     | T   |     |    | 1.2 | 0.2 |     |    |    |    |    |    |     |    |    |    |    | 0.5 | T   |
|                      | SN ON GND |              |     |    | T   |     |    |    |    |    |    |    |     |     |     |    | 1   | 1   | 1   |    |    |    |    |    |     |    |    |    |    | 1   |     |

Snowfall: Includes snow and ice. Values for NWS stations (J index note) are Mid-Mid (LST).

Snow on ground: Includes snow, sleet, ice, and hail. Values for NWS stations (J index note) are observed at 12 UTC (GMT).

Water Equivalent: Given for NWS stations (J index note) only, when snow depth is 2 inches or more, and is measured at 18 UTC (GMT)

VIRGINIA  
201801

## PAN EVAPORATION AND WIND

| STATION  |      | DAY OF MONTH |    |    |    |    |    |    |    |    |    |    |    |    |    |    |    |    |    |    |    |    |    |    |    |    |    |    |    |    |    |    | TOTAL OR<br>AVERAGE |
|--|------|--------------|----|----|----|----|----|----|----|----|----|----|----|----|----|----|----|----|----|----|----|----|----|----|----|----|----|----|----|----|----|----|---------------------|
|  |      | 01           | 02 | 03 | 04 | 05 | 06 | 07 | 08 | 09 | 10 | 11 | 12 | 13 | 14 | 15 | 16 | 17 | 18 | 19 | 20 | 21 | 22 | 23 | 24 | 25 | 26 | 27 | 28 | 29 | 30 | 31 |                     |
| VIRGINIA<br>EASTERN PIEDMONT 02<br>JOHN H KERR DAM | WIND | 22           | 12 | 14 | 51 | 42 | 21 | 60 | 22 | 22 | 19 | 19 | 35 | 49 | 42 | 9  | 6  | 16 | 34 | 34 | 51 | 12 | 11 | 79 | 36 | 0  | 10 | 22 | 14 | 38 | 32 | 29 | 863                 |
|  | EVAP | -            | -  | -  | -  | -  | -  | -  | -  | -  | -  | -  | -  | -  | -  | -  | -  | -  | -  | -  | -  | -  | -  | -  | -  | -  | -  | -  | -  | -  | -  | -  | M                   |
|  | MAX  | -            | -  | -  | -  | -  | -  | -  | -  | -  | -  | -  | -  | -  | -  | -  | -  | -  | -  | -  | -  | -  | -  | -  | -  | -  | -  | -  | -  | -  | -  | -  | M                   |
|  | MIN  | -            | -  | -  | -  | -  | -  | -  | -  | -  | -  | -  | -  | -  | -  | -  | -  | -  | -  | -  | -  | -  | -  | -  | -  | -  | -  | -  | -  | -  | -  | -  | M                   |

Evaporation: Is measured in hundreths of inches.

Wind: Is measured in miles.

Max and Min: The maximum and minimum temperatures (Fahrenheit) of the water in the evaporation pan.

# STATION INDEX

| STATION                      | INDEX NO. | DIVISION | COUNTY         | LATITUDE | LONGITUDE | ELEVATION<br>(IN FEET) | OBSERVATION<br>TIME AND<br>TABLES |        |      |                        |
|------------------------------|-----------|----------|----------------|----------|-----------|------------------------|-----------------------------------|--------|------|------------------------|
|                              |           |          |                |          |           |                        | LOCAL STD TIME                    |        |      |                        |
|                              |           |          |                |          |           |                        | TEMP                              | PRECIP | EVAP | SPECIAL<br>SEE (NOTES) |
| VIRGINIA                     |           |          |                |          |           |                        |                                   |        |      |                        |
| ABINGDON 3S                  | 0021      | 06       | WASHINGTON     | 36 40    | 81 58W    | 1925                   | 06                                | 06     |      | H                      |
| ALBERTA 5N                   | 0079      | 02       | BRUNSWICK      | 36 56    | 77 54W    | 376                    |                                   | 08     |      | H                      |
| ALTAVISTA                    | 0166      | 03       | CAMPBELL       | 37 7     | 79 17W    | 529                    |                                   | 07     |      | CH                     |
| AMELIA COURTHOUSE 1          | 0187      | 02       | AMELIA         | 37 21    | 77 59W    | 345                    | 08                                | 08     |      | H                      |
| APPOMATTOX                   | 0243      | 03       | APPOMATTOX     | 37 20    | 78 50W    | 850                    | 07                                | 07     |      | H                      |
| ASHLAND                      | 0327      | 02       | HANOVER        | 37 45    | 77 29W    | 220                    | 18                                | 18     |      | H                      |
| BEDFORD                      | 0551      | 03       | BEDFORD        | 37 20    | 79 30W    | 894                    |                                   | 07     |      | H                      |
| BIG STONE GAP                | 0735      | 06       | WISE           | 36 51    | 82 48W    | 1466                   | 08                                | 08     |      | H                      |
| BLACKSBURG NWSO              | 0766      | 06       | MONTGOMERY     | 37 12    | 80 25W    | 2103                   | 07                                | 07     |      | CH                     |
| BREMO BLUFF                  | 0993      | 02       | FLUVANNA       | 37 43    | 78 17W    | 225                    | 07                                | 07     |      | CH                     |
| BROOKNEAL                    | 1082      | 03       | CAMPBELL       | 37 4     | 78 57W    | 408                    | 07                                | 07     |      | H                      |
| BUCKINGHAM                   | 1136      | 02       | BUCKINGHAM     | 37 30    | 78 32W    | 580                    |                                   | 07     |      | H                      |
| BUENA VISTA                  | 1159      | 05       | ROCKBRIDGE     | 37 44    | 79 22W    | 840                    |                                   | 07     |      | H                      |
| BURKES GARDEN                | 1209      | 06       | TAZEWELL       | 37 5     | 81 20W    | 3068                   | 07                                | 07     |      | H                      |
| CAMP PICKETT                 | 1322      | 02       | NOTTOWAY       | 37 2     | 77 57W    | 330                    | 08                                | 08     |      | CH                     |
| CHARLOTTESVILLE 2W           | 1593      | 03       | ALBEMARLE      | 38 2     | 78 31W    | 866                    | 08                                | 08     |      | H                      |
| CHASE CITY                   | 1606      | 02       | MECKLENBURG    | 36 47    | 78 29W    | 510                    | 07                                | 07     |      | H                      |
| CHATHAM                      | 1614      | 03       | PITTSYLVANIA   | 36 49    | 79 25W    | 651                    | 07                                | 07     |      | CH                     |
| CHRISTIANSBURG               | 1692      | 06       | MONTGOMERY     | 37 8     | 80 24W    | 2100                   | 07                                | 07     |      | H                      |
| CLARKSVILLE                  | 1746      | 02       | MECKLENBURG    | 36 37    | 78 33W    | 330                    | 07                                | 07     |      | H                      |
| CLINTWOOD 1 W                | 1825      | 06       | DICKENSON      | 37 9     | 82 29W    | 1780                   | 07                                | 07     |      | H                      |
| CONCORD 4 SSW                | 1955      | 03       | CAMPBELL       | 37 17    | 78 58W    | 815                    |                                   | 07     |      | H                      |
| COPPER HILL                  | 1999      | 06       | FLOYD          | 37 5     | 80 8W     | 2857                   | 07                                | 07     |      | H                      |
| CORBIN                       | 2009      | 02       | CAROLINE       | 38 12    | 77 22W    | 220                    | 09                                | 09     |      | H                      |
| COVINGTON FLTR PLT           | 2044      | 05       | ALLEGHANY      | 37 49    | 79 59W    | 1244                   | 07                                | 07     |      | CH                     |
| CROZIER                      | 2142      | 02       | GOOCHLAND      | 37 40    | 77 53W    | 350                    | 07                                | 07     |      | H                      |
| DALE ENTERPRISE              | 2208      | 05       | ROCKINGHAM     | 38 27    | 78 56W    | 1358                   | 07                                | 07     |      | CH                     |
| DANVILLE RGNL AP             | 2250      | 03       | PITTSYLVANIA   | 36 34    | 79 20W    | 571                    | 24                                | 24     |      | CH                     |
| DISPUTANTA                   | 2400      | 01       | PRINCE GEORGE  | 37 7     | 77 12W    | 130                    | 07                                | 07     |      | H                      |
| ELK CREEK 4SSW               | 2730      | 06       | GRAYSON        | 36 40    | 81 12W    | 3439                   | 07                                | 07     |      | H                      |
| EMPORIA 1 WNW                | 2790      | 01       | GREENSVILLE    | 36 42    | 77 34W    | 100                    | 08                                | 08     |      | H                      |
| FARMVILLE 2 N                | 2941      | 02       | CUMBERLAND     | 37 20    | 78 23W    | 450                    | 07                                | 07     |      | CH                     |
| FREDERICKSBURG SEWAGE        | 3204      | 01       | FREDERICKSBURG | 38 17    | 77 27W    | 60                     | 07                                | 07     |      | H                      |
| FREE UNION                   | 3213      | 03       | ALBEMARLE      | 38 5     | 78 35W    | 590                    | 07                                | 07     |      | H                      |
| FRONT ROYAL                  | 3229      | 04       | WARREN         | 38 54    | 78 11W    | 930                    | 06                                | 06     |      | CH                     |
| GALAX WTP                    | 3272      | 06       | CARROLL        | 36 39    | 80 55W    | 2341                   | 07                                | 07     |      | CH                     |
| GATHRIGHT DAM                | 3310      | 05       | ALLEGHANY      | 37 57    | 79 57W    | 1770                   | 07                                | 07     |      | CH                     |
| GLASGOW 1 SE                 | 3375      | 05       | ROCKBRIDGE     | 37 37    | 79 26W    | 737                    |                                   | 07     |      | H                      |
| GRUNDY                       | 3640      | 06       | BUCHANAN       | 37 17    | 82 5W     | 1170                   | 07                                | 07     |      | H                      |
| HOLCOMB ROCK                 | 4039      | 03       | BEDFORD        | 37 33    | 79 24W    | 900                    |                                   | 07     |      | H                      |
| HOLLAND 1 E                  | 4044      | 01       | SUFFOLK        | 36 41    | 76 46W    | 80                     | 08                                | 08     |      | H                      |
| HOPEWELL                     | 4101      | 01       | PRINCE GEORGE  | 37 18    | 77 17W    | 40                     | 16                                | 16     |      | H                      |
| HOT SPRINGS                  | 4128      | 05       | BATH           | 37 60    | 79 50W    | 2244                   | 07                                | 07     |      | H                      |
| HUDDLESTON 4 SW              | 4148      | 03       | BEDFORD        | 37 8     | 79 32W    | 897                    |                                   | 07     |      | H                      |
| JOHN FLANNAGAN LAKE          | 4410      | 06       | DICKENSON      | 37 14    | 82 21W    | 1460                   | 07                                | 07     |      | H                      |
| JOHN H KERR DAM              | 4414      | 02       | MECKLENBURG    | 36 36    | 78 18W    | 250                    | 08                                | 08     | 08   | CH                     |
| KEYSVILLE 2 S                | 4568      | 02       | CHARLOTTE      | 37 1     | 78 29W    | 625                    | 07                                | 07     |      | H                      |
| LEBANON                      | 4777      | 06       | RUSSELL        | 36 54    | 82 2W     | 1912                   | 07                                | 07     |      | H                      |
| LEXINGTON                    | 4876      | 05       | ROCKBRIDGE     | 37 47    | 79 26W    | 1097                   | 07                                | 07     |      | H                      |
| LOUISA                       | 5050      | 02       | LOUISA         | 38 3     | 78 0W     | 420                    | 18                                | 18     |      | H                      |
| LURAY 5 E                    | 5096      | 04       | PAGE           | 38 40    | 78 22W    | 1400                   | 08                                | 08     |      | H                      |
| LYNCHBURG INTL AP R          | 5120      | 03       | CAMPBELL       | 37 19    | 79 12W    | 940                    | 24                                | 24     |      | HJ                     |
| MANASSAS                     | 5204      | 04       | MANASSAS       | 38 44    | 77 30W    | 245                    | 07                                | 07     |      | H                      |
| MARTINSVILLE FLTR PLT        | 5300      | 03       | HENRY          | 36 42    | 79 52W    | 760                    | 07                                | 07     |      | H                      |
| MEADOWS OF DAN 5 SW          | 5453      | 03       | PATRICK        | 36 40    | 80 27W    | 2225                   | 07                                | 07     |      | H                      |
| MILLGAP                      | 5595      | 05       | HIGHLAND       | 38 18    | 79 43W    | 2421                   | 06                                | 06     |      | CH                     |
| MONTEBELLO FISH CULTURAL STN | 5690      | 03       | NELSON         | 37 51    | 79 8W     | 2667                   | 07                                | 07     |      | CH                     |
| MONTICELLO                   | 5700      | 03       | ALBEMARLE      | 38 1     | 78 27W    | 758                    | 07                                | 07     |      | H                      |
| MT WX 3                      | 5853      | 04       | CLARKE         | 39 4     | 77 54W    | 1550                   | 07                                | 07     |      | H                      |
| MTN GROVE                    | 5756      | 05       | BATH           | 38 6     | 79 53W    | 1775                   |                                   | 07     |      | H                      |
| MUSTOE 1 SW                  | 5880      | 05       | HIGHLAND       | 38 19    | 79 40W    | 2367                   | 24                                | 24     |      | CH                     |
| NEW CASTLE                   | 6012      | 05       | CRAIG          | 37 31    | 80 6W     | 1258                   |                                   | 07     |      | H                      |
| NORA 4 SSE                   | 6125      | 06       | DICKENSON      | 37 1     | 82 19W    | 2650                   | 07                                | 07     |      | H                      |
| NORFOLK INTL AP R            | 6139      | 01       | NORFOLK (CITY) | 36 54    | 76 12W    | 30                     | 24                                | 24     |      | HJ                     |
| NORFOLK S                    | 6147      | 01       | NORFOLK (CITY) | 36 52    | 76 14W    | 10                     | 24                                | 24     |      | H                      |

# STATION INDEX

| STATION                          | INDEX NO. | DIVISION | COUNTY         | LATITUDE | LONGITUDE | ELEVATION<br>(IN FEET) | OBSERVATION<br>TIME AND<br>TABLES |        |      |                        |
|----------------------------------|-----------|----------|----------------|----------|-----------|------------------------|-----------------------------------|--------|------|------------------------|
|                                  |           |          |                |          |           |                        | LOCAL STD TIME                    |        |      |                        |
|                                  |           |          |                |          |           |                        | TEMP                              | PRECIP | EVAP | SPECIAL<br>SEE (NOTES) |
| NORTH                            | 6161      | 01       | MATHEWS        | 37 26    | 76 26W    | 10                     | 07                                | 07     |      | H                      |
| PAINTER 2W                       | 6475      | 01       | ACCOMACK       | 37 35    | 75 49W    | 30                     | 16                                | 16     |      | CH                     |
| PALMYRA 3S                       | 6491      | 02       | FLUVANNA       | 37 49    | 78 16W    | 410                    | 06                                | 06     |      | H                      |
| PEDLAR DAM                       | 6593      | 03       | AMHERST        | 37 40    | 79 17W    | 1024                   |                                   | 07     |      | CH                     |
| PETERSBURG                       | 6656      | 02       | PETERSBURG     | 37 14    | 77 24W    | 19                     | 07                                | 07     |      | H                      |
| PIEDMONT RSCH STN                | 6712      | 04       | ORANGE         | 38 14    | 78 7W     | 520                    | 08                                | 08     |      | CH                     |
| PULASKI 2 E                      | 6955      | 06       | PULASKI        | 37 3     | 80 47W    | 1850                   | 07                                | 07     |      | CH                     |
| PURCELLVILLE                     | 4909      | 04       | LOUDOUN        | 39 9     | 77 43W    | 510                    | 08                                | 08     |      | H                      |
| RADFORD 3 N                      | 6999      | 06       | PULASKI        | 37 12    | 80 35W    | 1800                   | 08                                | 08     |      | H                      |
| RICHLANDS                        | 7174      | 06       | TAZEWELL       | 37 6     | 81 48W    | 1910                   | 07                                | 07     |      | H                      |
| RICHMOND INTL AP R               | 7201      | 02       | HENRICO        | 37 31    | 77 19W    | 164                    | 24                                | 24     |      | HJ                     |
| ROANOKE 8 N                      | 7278      | 05       | ROANOKE        | 37 22    | 79 58W    | 1157                   | 07                                | 07     |      | H                      |
| ROANOKE INTL AP R                | 7285      | 05       | ROANOKE        | 37 19    | 79 58W    | 1175                   | 24                                | 24     |      | HJ                     |
| ROCKY MT                         | 7338      | 03       | FRANKLIN       | 36 59    | 79 54W    | 1315                   | 07                                | 07     |      | CH                     |
| S BOSTON                         | 7925      | 03       | HALIFAX        | 36 42    | 78 53W    | 329                    | 07                                | 07     |      | H                      |
| SALTVILLE 1N                     | 7506      | 06       | SMYTH          | 36 53    | 81 46W    | 1733                   | 07                                | 07     |      | H                      |
| SOMERSET                         | 7904      | 04       | ORANGE         | 38 15    | 78 16W    | 510                    | 08                                | 08     |      | H                      |
| SPERRYVILLE                      | 7985      | 04       | RAPPAHANNOCK   | 38 39    | 78 14W    | 750                    | 06                                | 06     |      | H                      |
| STAFFORDSVILLE 3 ENE             | 8022      | 06       | GILES          | 37 16    | 80 43W    | 1906                   | 07                                | 07     |      | CH                     |
| STAUNTON WTP                     | 8062      | 05       | AUGUSTA        | 38 10    | 79 5W     | 169                    | 08                                | 08     |      | CH                     |
| STERLING (RCS)                   | 8084      | 04       | LOUDOUN        | 38 59    | 77 29W    | 288                    | 07                                | 07     |      | H                      |
| STONY CREEK 2 N                  | 8129      | 01       | SUSSEX         | 36 58    | 77 24W    | 105                    | 08                                | 08     |      | H                      |
| STUART                           | 8170      | 03       | PATRICK        | 36 38    | 80 15W    | 1375                   | 07                                | 07     |      | H                      |
| SUFFOLK LAKE KILBY               | 8192      | 01       | SUFFOLK        | 36 44    | 76 36W    | 22                     | 24                                | 24     |      | H                      |
| VIENNA                           | 8737      | 04       | FAIRFAX        | 38 54    | 77 17W    | 418                    | 07                                | 07     |      | H                      |
| WAKEFIELD 1NW                    | 8800      | 01       | SUSSEX         | 36 59    | 77 0W     | 113                    | 24                                | 24     |      | CH                     |
| WALKERTON 2 NW                   | 8829      | 01       | KING AND QUEEN | 37 45    | 77 2W     | 50                     | 18                                | 18     |      | H                      |
| WALLACETON LK DRUMMOND           | 8837      | 01       | CHESAPEAKE     | 36 36    | 76 26W    | 20                     | 08                                | 08     |      | H                      |
| WALLOPS ISLAND NASA TEST FACIL R | 8849      | 01       | ACCOMACK       | 37 56    | 75 28W    | 46                     | 24                                | 24     |      | HJ                     |
| WARSAW 2 NW                      | 8894      | 01       | RICHMOND       | 37 59    | 76 47W    | 140                    | 18                                | 18     |      | H                      |
| WASHINGTON DULLES INTL AP R      | 8903      | 04       | LOUDOUN        | 38 56    | 77 27W    | 290                    | 24                                | 24     |      | HJ                     |
| WASHINGTON REAGAN NATL AP R      | 8906      | 04       | ARLINGTON      | 38 51    | 77 2W     | 10                     | 24                                | 24     |      | HJ                     |
| WAYNESBORO WTP                   | 8941      | 05       | WAYNESBORO     | 38 5     | 78 53W    | 1270                   | 07                                | 07     |      | H                      |
| WEST POINT 2 NW                  | 9025      | 01       | KING WILLIAM   | 37 34    | 76 48W    | 20                     | 17                                | 17     |      | H                      |
| WILLIAMSBURG 2 N                 | 9151      | 01       | YORK           | 37 18    | 76 42W    | 70                     | 24                                | 24     |      | CH                     |
| WILLIAMSVILLE 2 S                | 9159      | 05       | BATH           | 38 11    | 79 35W    | 1640                   |                                   | 07     |      | CH                     |
| WILLIS                           | 9169      | 06       | FLOYD          | 36 55    | 80 30W    | 2810                   |                                   | 07     |      | CH                     |
| WINCHESTER                       | 9181      | 04       | FREDERICK      | 39 11    | 78 9W     | 720                    | 07                                | 07     |      | H                      |
| WINCHESTER 7 SE                  | 9186      | 04       | FREDERICK      | 39 11    | 78 7W     | 680                    | 08                                | 08     |      | H                      |
| WINTERPOCK 4 W                   | 9213      | 02       | CHESTERFIELD   | 37 19    | 77 39W    | 300                    |                                   | 07     |      | H                      |
| WISE 1SE                         | 9215      | 06       | WISE           | 36 58    | 82 33W    | 2564                   | 09                                | 09     |      | CH                     |
| WOODSTOCK 2 NE                   | 9263      | 04       | SHENANDOAH     | 38 54    | 78 28W    | 675                    | 07                                | 07     |      | H                      |
| WOOLWINE                         | 9272      | 03       | PATRICK        | 36 47    | 80 17W    | 1500                   |                                   | 08     |      | CH                     |
| WYTHEVILLE                       | 9301      | 06       | WYTHE          | 36 58    | 81 5W     | 2458                   | 07                                | 07     |      | H                      |

# REFERENCE NOTES

**STATION NAMES:** Name of the city, town or locality. Figures and letters following the station names indicate the distance in miles and direction from the post office or town community center.

**DIVISIONS:** Areas within a state of similar climatological characteristics. Division averages are calculated using data from stations that record temperature and/or precipitation. Station Precipitation totals flagged with an 'F' or 'M' are excluded from the Divisional Average calculations of precipitation. Stations with monthly Temperature averages flagged with an 'F' or 'M' are included in the Divisional Average if there are no more than 9 flagged or missing daily values in the month, else they are excluded from the divisional average for temperature.

**NORMALS:** The average value of the meteorological element over a time period. Effective 1 January 2012, the averaging period for station departures is 1981 to 2010. The normals for National Weather Service localities have been adjusted so as to be representative for the current observation site.

The January 2011 through December 2015 publications incorrectly state the computation of divisional departures. Climate Division departures have been, and continue to be, computed from 1971-2000 Normals, not 1981-2010 as stated. Station departures are accurately described as departures from 1981-2010.

**MONTHLY DEGREE DAY TOTALS:** One heating (cooling) degree day is accumulated for each whole degree that the daily mean temperature is below (above) 65 degrees Fahrenheit.

**PRECIPITATION:** Values shown in hundredths of inches are water equivalent totals, i.e., total of liquid and melted frozen precipitation. In the "Monthly Summarized Data" table the total snow and sleet values shown in tenths of inches are unmelted amounts. The max depth on ground values of snow and sleet shown in whole inches are cumulative unmelted amounts. The number of days with .10, .50, 1.00 or more refers to water equivalents.

**PRECIPITATION QUALITY CONTROL:** The NCEI quality control process may flag precipitation data that are spatially inconsistent, exceed climatological limits, or are inconsistent with prevailing weather patterns.

**TEMPERATURE:** Original temperature values are given in the "Daily Temperature" table. Summary temperature information (averages, departures, extremes, monthly degree day totals) is based on the values labeled MAX/MIN.

**WIND:** (As shown in the "Evaporation and Wind" table) the total wind movement in miles over the evaporation pan as determined by an anemometer recorder located 6-8 inches above the pan.

## SYMBOLS AND LETTERS USED IN THE STATION INDEX TABLE

C Station is equipped with recording rain gage (R) but values in this bulletin are from a non-recording rain gage unless indicated by an R.  
G Observations appear in the "Soil Temperatures" table.  
H Observations appear in the "Snowfall and Snow on the Ground" table.  
J Station also published as a Local Climatological Data publication.  
VAR Observation time varies.  
SR / SS Observation time near sunrise / Observation time near sunset, respectively.

## SYMBOLS AND LETTERS USED IN THE DATA TABLES

(DAILY DATA ARE FOR THE 24 HOURS IMMEDIATELY PRECEDING OBSERVATION TIME.)

BLANK Entries in the "Monthly Summarized Data" table indicate no record.

BLANK Entries in the "Daily Precipitation" and "Snowfall and Snow on the Ground" tables indicate zero.

BLANK Entries in the "Daily Temperature" table indicate a missing record

- No record. Data not recorded or not received in time for publication.

+ Precipitation or temperature extremes occurred on one or more previous dates during the month.

\* Rain gage not read. Precipitation is included in the amount following the asterisks.

Time distribution may not be known. A \* preceding the monthly total indicates precipitation amount is being carried forward to next month's total, and may include amounts from the previous month(s).

a As a subscript, indicates accumulated total.

A Amount of precipitation is the total of observer's entries for the current month. It may include precipitation that occurred during the previous month. Refer to earlier bulletin to determine date of last

reading. (Hawaii stations)

B Divisional Departure from normals are computed using 1971-2000 normals.

E Normalized HDD/CDD Calculation. E is appended to the HDD/CDD Calculation when 1-9 individual daily TMAX and/or TMIN values are missing and a Normalized HDD/CDD Calculation is provided. M appears alone if 10 or more daily values are missing.

F Monthly calculation flagged value. F is appended to average and/or total values computed which exclude one or more daily data values that have been flagged by the GHCN-Daily Dataset

M Insufficient or partial data. M is appended to average and/or total values computed with 1-9 daily values missing. M appears alone if 10 or more daily values are missing, (8 or more for wind and evaporation).

N Indicates snow fall or Snowdepth totals are computed with one or more missing days.

R Amounts from recording rain gage.

T Trace. An amount too small to measure.

**SEASONAL TABLES:** Monthly and seasonal snowfall and heating degree days for the 12 months ending with the June data are published in the July issue of this bulletin. Cooling degree days for the calendar year are published in the "Climatological Data Annual Summary."

Information concerning the history of changes in locations, exposure, etc. of substations is kept on file at the National Centers for Environmental Information. Historical information of regular National Weather Service Offices may be obtained from the "Local Climatological Data" annual publication. The contents of this publication may be reprinted or otherwise used freely, with proper credit to the National Centers For Environmental Information. The data are also available digitally.

Effective with the January 2011 Data-Month, COOP Observer Names are no longer included in the Monthly and Annual Climatological Data Publications. This information is not published to ensure the privacy of personal information pursuant to Section 208 of the E-Government Act of 2002 (44 USC 3601).

As of the 2011 Data-Year, Station and Climate Division Maps are no longer being included in the CD Publications. NCEI's Products Branch provides updated Station Maps for various data networks via the Historical Observing Metadata Repository: <http://www.ncdc.noaa.gov/homr>.

The GHCN-Daily Quality Control Flags shown below are displayed as superscripts with the data. For more information on Global Historical Climatology Network - Daily and flags, see: <http://www.ncdc.noaa.gov/oa/climate/ghcn-daily/> and Comprehensive Automated Quality Assurance of Daily Surface Observations. Durre, Imke, Matthew J. Menne, Byron E. Gleason, Tamara G. Houston, Russell S. Vose, 2010: J. Appl. Meteor. Climatol., 49, 16151633. doi: 10.1175/2010JAMC2375.1

|   |   |
|---|---|
| Blank = Passed All checks                     | N = failed naught check                                       |
| D = failed duplicate check                    | O = failed climatological outlier check                       |
| G = failed gap check                          | R = failed lagged range check                                 |
| I = failed internal consistency check         | S = failed spatial consistency check                          |
| K = failed streak/frequent-value check        | T = failed temporal consistency check                         |
| L = failed check on length of multiday period | W = temperature too warm for snow                             |
| M = failed megaconsistency check              | X = failed bounds check                                       |
|   | Z = flagged as a result of an official Datzilla investigation |

Beginning with the January 2013 CD Publication, monthly mean temperature calculations have changed to the National Data Stewardship Team standard. Monthly maximum and minimum temperatures are not rounded until after the monthly mean temperature is calculated. This is the most accurate outcome, but may be slightly different from the mean derived from rounded monthly maximum and minimum.

The climate division temperature and precipitation values in this publication are based on simple averages from the current set of NWS-Designated Open and Published COOP and First Order Sites within each division. These values differ from those found in NCEI's nClimDiv product. Beginning in February 2014, the nClimDiv product is used by NCEI's Monitoring Branch and in its monthly climate reports. For more details on nClimDiv, please go to <http://www.ncdc.noaa.gov/monitoring-references/maps/us-climate-divisions.php>.

Effective January 2016, Alaska's Climate Divisions are updated to reflect the 13 climate divisional boundaries established by University of Alaska-Fairbanks, NWS, NCEI, Oregon State University, and University of Nebraska-Lincoln. For more details regarding the updated Alaska Climate Divisions, see: <http://journals.ametsoc.org/doi/pdf/10.1175/JAMC-D-11-0168.1> (Bienek et al., 2012).

NOAA National Centers for Environmental Information  
Attn: Customer Engagement Branch  
151 Patton Avenue  
Asheville, NC 28801-5001

Customer Services Number: (828) 271-4800, option 2  
TDD : (828) 271-4010  
Fax number: (828) 271-4876

NCEI now offers free online access to the *Climatological Data* publication.  
Go to : [www.ncdc.noaa.gov](http://www.ncdc.noaa.gov) and choose Most Popular.