



# CLIMATOLOGICAL DATA

## VIRGINIA

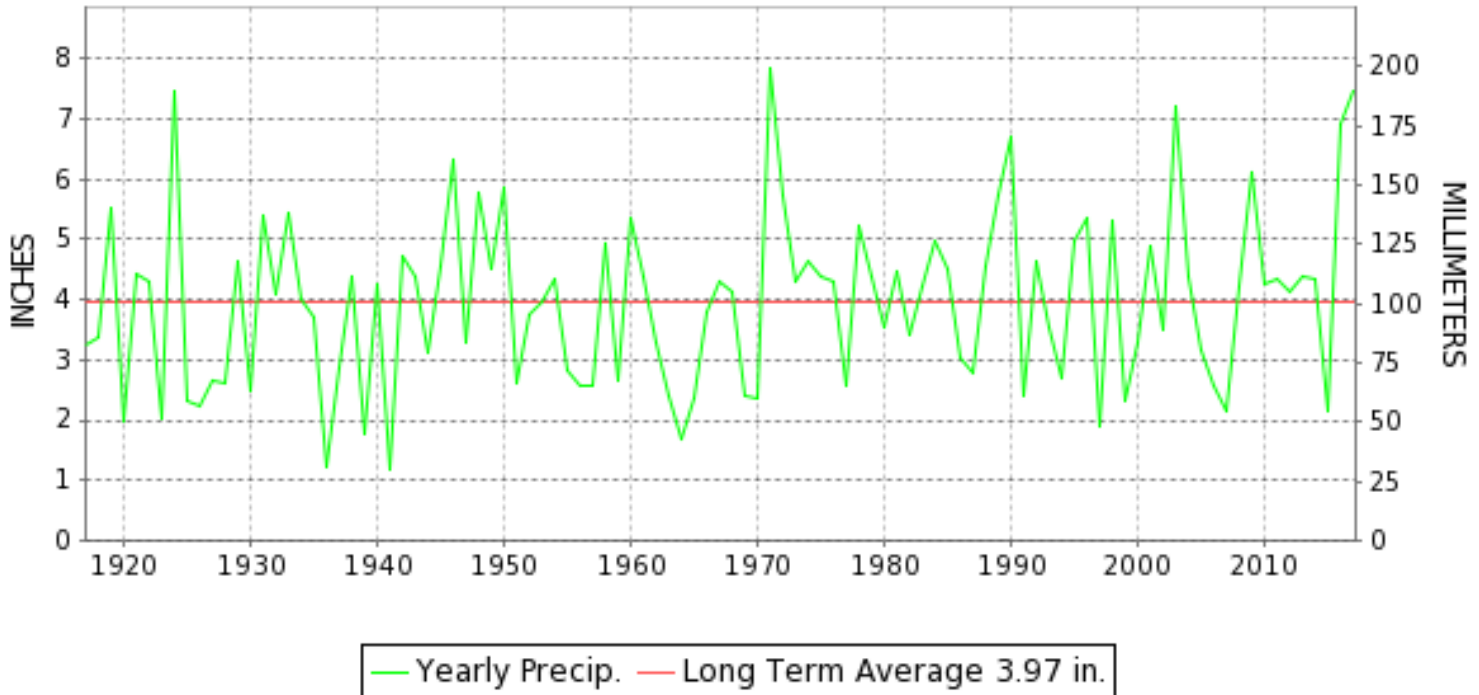
MAY 2017

VOLUME 127 NUMBER 05

ISSN 0364-5630

GHCND Ver: 3.22-upd-2017091004

### MAY PRECIPITATION BY YEAR



#### TEMPERATURE AND PRECIPITATION EXTREMES

##### VIRGINIA

HIGHEST TEMPERATURE	95	MAY 17+	3 STATIONS
LOWEST TEMPERATURE	23	MAY 09	CROZIER
GREATEST TOTAL PRECIPITATION	13.78		GLASGOW 1 SE
LEAST TOTAL PRECIPITATION	4.72		VIENNA
GREATEST 1 DAY PRECIPITATION	4.92	MAY 05	MONTEBELLO FISH CULTURAL STN
GREATEST TOTAL SNOWFALL	T		4 STATIONS

"I certify that this is an official publication of the National Oceanic and Atmospheric Administration (NOAA) It is compiled using information from weather observing sites supervised by NOAA/National Weather Service and received at the National Centers for Environmental Information(NCEI), Asheville, North Carolina 28801."

*Mary S. Wolpenbut*

Director  
National Centers for Environmental Information

noaa

National  
Oceanic and  
Atmospheric Administration

National  
Environmental Satellite, Data  
and Information Service

National  
Centers for Environmental Information  
Asheville, North Carolina



# MONTHLY STATION AND DIVISION SUMMARY

STATION	TEMPERATURE (°F)											PRECIPITATION (IN)												
	AVERAGE MAXIMUM	AVERAGE MINIMUM	AVERAGE	DEPARTURE FROM NORMAL	HIGHEST	DATE	LOWEST	DATE	HEATING DEG. DAYS	COOLING DEG. DAYS	NO. OF DAYS				TOTAL	DEPARTURE FROM NORMAL	GREATEST 24 HOURS	DATE	ICE PELLETS, SNOW			NO. OF DAYS		
											MAX		MIN						TOTAL	MAX DEPTH ON GROUND	DATE	.10 OR MORE	.50 OR MORE	1.00 OR MORE
											>=90	<=32	<=32	<=0										
RICHMOND INTL AP	76.0	55.8	65.9	-0.5	93	17	42	09	83	118	2	0	0	0	7.57	3.79	1.66	05	T	0		15	11	3
WINTERPOCK 4 W															6.43		1.05	13	M			12	12	1
--DIVISIONAL DATA-----> WESTERN PIEDMONT 03			64.8	0.7B										6.46	2.33B									
ALTAVISTA														7.83		2.11	05	0.0	0			12	12	2
APPOMATTOX	75.6M	54.1M	64.9M	1.6	90	20+	40	09	95E	99E	2	0	0	0	8.04	3.28	2.12	05	0.0	0		15	10	4
BEDFORD														A 10.05	5.85	2.36	25	0.0	0			10	9	4
BROOKNEAL	78.1M	M	M		90	18	43	07	47E	128E	1	0	0	0	7.54	2.85	1.98	05	0.0	0		14	8	2
CHARLOTTESVILLE 2W	73.2	54.8	64.0	-1.0	92	20	41	06	122	97	2	0	0	0	9.28	4.65	3.08	05	0.0	0		13	10	4
CHATHAM	74.8	52.0	63.4	1.2	88	20+	35	09	113	70	0	0	0	0	8.67	4.63	1.33	25	0.0	0		14	11	5
CONCORD 4 SSW														8.54		2.03	05	0.0	0			12	10	4
DANVILLE RGNL AP	77.1	55.1	66.1	-0.3	88	20+	38	09	72	113	0	0	0	0	6.04	2.16	1.52	23	0.0	0		16	13	1
FREE UNION	72.7	51.5	62.1		91	18	34	09	143	64	2	0	0	0	10.13		3.52	05	0.0	0		11	11	3
HOLCOMB ROCK														11.56		3.27	25	0.0	0			10	10	5
HUDDLESTON 4 SW														8.79		1.89	05	0.0	0			15	11	4
LYNCHBURG INTL AP	75.1	53.7	64.4	1.3	89	17	36	09	94	83	0	0	0	0	7.88	4.15	1.32	05	0.0	0		14	12	3
MARTINSVILLE FLTR PLT	77.3M	52.0	64.7M	1.4	89	18	37	10+	97E	92E	0	0	0	0	10.90	6.87	3.17	22	0.0	0		16	13	2
MEADOWS OF DAN 5 SW	74.4	51.3	62.8		88	18	38	09+	120	61	0	0	0	0	12.20		2.30	05	0.0	0		17	14	5
MONTEBELLO FISH CULTURAL STN	68.3M	45.5M	56.9M		84	17	30	09+	244E	4E	0	0	2	0	MA 12.58		4.92	05	M 0.0	0		13	9	3
MONTICELLO	M	M	M								0	0	0	0	M				M					
PEDLAR DAM														9.38		2.35	25	0.0	0			12	10	3
ROCKY MT	75.3	53.2	64.2	1.6	89	18	38	09+	106	88	0	0	0	0	8.97	4.90	2.11	05	0.0	0		14	11	4
SOUTH BOSTON	78.9M	57.3	68.1M	4.3	93	18	41	09	58E	160E	3	0	0	0	7.20	3.28	1.40	23	0.0	0		14	11	4
STUART	76.5	53.7	65.1	1.0	87	21+	41	09+	84	95	0	0	0	0	12.10	7.50	2.53	05	0.0	0		19	14	3
WOOLWINE														10.92		2.95	05	0.0	0			17	12	4
--DIVISIONAL DATA-----> NORTHERN 04			63.9	0.4B										9.26	4.87B									
FRONT ROYAL	70.8	50.2M	60.5M	-1.9	93	18	31	17	216E	57E	3	0	1	0	7.78	3.58	2.00	05	0.0	0		18	9	3
LURAY 5 E	71.8	50.7	61.3	-1.5	92	18	32	09	170	63	1	0	1	0	6.39	2.39	2.09	05	0.0	0		14	13	1
MANASSAS	74.2M	53.6	63.9M	-0.1	94	18	37	11+	120E	100E	3	0	0	0	7.42		1.70	12	T	0		15	13	1
MT WEATHER	66.4	51.3	58.8	-2.1	87	19+	38	10+	233	47	0	0	0	0	9.61	5.13	2.59	12	0.0	0		20	12	3
PIEDMONT RSCH STN	73.0	53.7	63.4	-0.3	91	20+	38	09	126	79	2	0	0	0	A 6.91	2.77	1.92	05	T	0		11	10	2
SOMERSET	73.2	53.0	63.1	-0.3	91	20+	33	09	139	87	2	0	0	0	7.55	3.33	2.45	05	0.0	0		17	12	2
SPERRYVILLE	72.7M	51.9M	62.3M	0.3	94	20	34	10+	150E	65E	1	0	0	0	M 12.61	8.26	2.97	05	M 0.0	0		16	13	5
STERLING (RCS)	72.0	52.5	62.3	0.0	93	18	36	09	148	71	3	0	0	0	8.05	3.33	1.48	12	0.0	0		17	13	2
VIENNA	69.4	51.5	60.4	-1.1	91	18	37	10+	189	56	1	0	0	0	4.72	0.19	0.92	12	0.0	0		17	13	0
WASHINGTON DULLES INTL AP	72.5	52.3	62.4	-0.8	92	17	36	09	140	68	3	0	0	0	8.49	3.94	1.73	11	0.0	0		17	15	3
WASHINGTON REAGAN NATL AP	73.9	57.1	65.5	-0.5	93	19	46	09+	74	98	2	0	0	0	5.55	1.56	1.75	05	0.0	0		15	9	2

# MONTHLY STATION AND DIVISION SUMMARY

STATION	TEMPERATURE (°F)										PRECIPITATION (IN)													
	AVERAGE MAXIMUM	AVERAGE MINIMUM	AVERAGE	DEPARTURE FROM NORMAL	HIGHEST	DATE	LOWEST	DATE	HEATING DEG. DAYS	COOLING DEG. DAYS	NO. OF DAYS				TOTAL	DEPARTURE FROM NORMAL	GREATEST 24 HOURS	DATE	ICE PELLETS, SNOW			NO. OF DAYS		
											MAX		MIN						TOTAL	MAX DEPTH ON GROUND	DATE	.10 OR MORE	.50 OR MORE	1.00 OR MORE
											>=90	<=32	<=32	<=0										
WINCHESTER	70.6	52.3	61.5	-0.5	92	18	37	09	167	65	2	0	0	0	8.03	4.16	2.16	05	0.0	0		17	13	3
WINCHESTER 7 SE	70.8M	49.9M	60.3M	-0.3	90	20+	32	09	184E	45E	2	0	1	0	MA 7.11	3.29	1.70	05	M 0.0	0		13	9	2
WOODSTOCK 2 NE	72.3	50.1	61.2	0.8	91	18	33	09	168	57	1	0	0	0	A 5.91	1.90	0.90	12	0.0	0		11	8	0
--DIVISIONAL DATA-----> CENTRAL MOUNTAIN 05			61.9	0.1B											7.20	2.97B								
BUENA VISTA														6.95		1.67	25	0.0	0			13	10	3
COVINGTON FLTR PLT	72.4	49.3	60.9	-1.9	88	18	32	10+	162	43	0	0	2	0	6.80	2.72	1.56	05	0.0	0		14	9	3
DALE ENTERPRISE	70.2M	49.0	59.6M	-0.7	88	20	31	09	199E	34E	0	0	1	0	7.05	3.34	1.91	05	0.0	0		15	12	2
GATHRIGHT DAM	71.0	50.0	60.5	0.2	87	18+	32	09+	175	42	0	0	2	0	6.91	2.80	1.42	12	0.0	0		15	9	4
GLASGOW 1 SE														13.78		3.60	05	0.0	0			11	10	4
HOT SPRINGS	71.4M	48.8	60.1M	0.7	87	18	32	09	184E	42E	0	0	1	0	8.74	4.55	2.53	05	0.0	0		15	10	4
LEXINGTON	74.9	50.8	62.9	0.1	91	18	33	10+	128	70	1	0	0	0	7.88	3.86	2.27	05	0.0	0		14	8	2
MILLGAP	68.4	43.2	55.8	-0.6	85	18+	24	10	288	7	0	0	5	0	6.55	1.78	1.63	05	0.0	0		13	11	2
MTN GROVE														7.14		1.60	05	0.0	0			11	10	4
MUSTOE 1 SW	67.4	45.5	56.5	-0.1	84	17	26	09	265	8	0	0	2	0	6.31	1.61	1.17	05	0.0	0		18	13	1
NEW CASTLE														8.14		2.73	05	0.0	0			16	11	3
ROANOKE 8 N	74.5	53.8	64.2	0.9	90	18	39	09	103	87	1	0	0	0	8.32	3.89	2.27	05	0.0	0		13	10	4
ROANOKE INTL AP	75.2	55.8	65.5	0.9	91	17	39	09+	88	114	1	0	0	0	8.14	4.08	1.61	05	T	0		16	12	3
STAUNTON WTP	71.7	51.0	61.3	-0.2	88	18	34	09	157	52	0	0	0	0	8.31	4.57	2.31	05	0.0	0		16	11	3
WAYNESBORO WTP	72.8	50.2	61.5	0.6	91	19+	32	09	158	58	2	0	1	0	8.70	4.77	2.91	05	0.0	0		11	9	4
--DIVISIONAL DATA-----> SOUTHWESTERN MOUNTAIN 06			60.8	-0.6B											7.98	3.86B								
ABINGDON 3S	72.9	52.2	62.5	0.5	87	18	37	08	118	51	0	0	0	0	8.87	4.26	2.40	13	0.0	0		16	14	2
BIG STONE GAP	73.6	51.9	62.7	-0.3	86	21	37	09+	116	53	0	0	0	0	8.44	3.56	2.71	28	0.0	0		18	13	2
BLACKSBURG NWSO	70.6	50.3	60.5	1.2	85	18	38	08+	169	37	0	0	0	0	6.22	1.89	1.23	25	0.0	0		13	9	2
BURKES GARDEN	66.6M	48.0M	57.3M	1.1	81	20	37	16+	245E	12E	0	0	0	0	M 8.14	3.38	1.40	05	M 0.0	0		18	13	2
CHRISTIANSBURG	69.9	51.2	60.6	-0.4	85	21+	39	08+	173	43	0	0	0	0	7.01	2.11	1.46	13	0.0	0		15	11	3
CLINTWOOD 1 W	73.0	50.7	61.9	2.1	87	18+	34	09+	135	45	0	0	0	0	8.49	3.90	1.56	20	0.0	0		15	12	3
COPPER HILL	68.1M	50.1M	59.1M		82	18	37	07	208E	30E	0	0	0	0	8.88		3.41	05	0.0	0		14	10	1
ELK CREEK 4SSW	68.5	52.9	60.7		80	21+	40	08+	169	44	0	0	0	0	8.11		1.53	25	0.0	0		20	11	3
GALAX WTP	72.2	50.7	61.5	2.6	83	19+	40	14+	143	40	0	0	0	0	9.01		2.19	05	0.0	0		19	12	4
GRUNDY	74.2	52.5	63.4	2.3	89	17	39	09+	113	68	0	0	0	0	9.30	4.41	1.60	13	0.0	0		16	14	3
JOHN FLANNAGAN LAKE	M	M	M		89	01	36	09+	104E	77E	0	0	0	0	MA 9.17		1.66	25	0.0	0		9	8	1
LEBANON	73.5	50.8	62.1	1.4	86	18	35	08	133	55	0	0	0	0	7.92	3.50	1.83	13	0.0	0		15	13	2
NORA 4 SSE	69.4	52.7	61.1	0.4	81	18	37	07	170	55	0	0	0	0	6.60	1.10	1.39	13	0.0	0		17	12	1
PULASKI 2 E	71.5	51.7	61.6	1.0	86	18	38	09	147	49	0	0	0	0	9.48	5.71	2.36	25	0.0	0		16	13	4
RADFORD 3 N	71.2	50.7	60.9	1.3	86	19+	37	09	162	43	0	0	0	0	6.59	2.67	1.87	25	0.0	0		15	10	2

VIRGINIA  
201705

## MONTHLY STATION AND DIVISION SUMMARY

STATION	TEMPERATURE (°F)											PRECIPITATION (IN)												
	AVERAGE MAXIMUM	AVERAGE MINIMUM	AVERAGE	DEPARTURE FROM NORMAL	HIGHEST	DATE	LOWEST	DATE	HEATING DEG. DAYS	COOLING DEG. DAYS	NO. OF DAYS				TOTAL	DEPARTURE FROM NORMAL	GREATEST 24 HOURS	DATE	ICE PELLETS, SNOW			NO. OF DAYS		
											MAX		MIN						TOTAL	MAX DEPTH ON GROUND	DATE	.10 OR MORE	.50 OR MORE	1.00 OR MORE
											>=90	<=32	<=32	<=0										
RICHLANDS	73.4M	48.7M	61.0M	0.8	86	21	36	09+	160E	42E	0	0	0	0	M 7.62	2.87	2.00	13	M 0.0	0		14	12	2
SALTVILLE 1N	73.0	51.3	62.1	0.5	86	18+	37	08	124	42	0	0	0	0	6.64	2.29	1.03	13	0.0	0		18	12	2
STAFFORDSVILLE 3 ENE	70.8M	49.7	60.3M	0.7	87	20	36	09	174E	34E	0	0	0	0	7.78	3.54	1.68	25	0.0	0		19	12	2
WILLIS														8.12		1.35	25	0.0	0			16	15	2
WISE 1SE	70.5	53.1	61.8	1.0	83	21+	36	08	148	57	0	0	0	0	7.77	3.15	1.36	13	0.0	0		14	13	1
WYTHEVILLE	71.4	51.6	61.5	2.8	87	18	39	07	153	50	0	0	0	0	8.11	4.00	2.19	13	0.0	0		16	14	3
--DIVISIONAL DATA----->			61.2	1.6B											7.96	3.36B								



VIRGINIA  
201705

# DAILY PRECIPITATION (INCHES)

STATION	TOTAL	DAY OF MONTH																															
		01	02	03	04	05	06	07	08	09	10	11	12	13	14	15	16	17	18	19	20	21	22	23	24	25	26	27	28	29	30	31	
BEDFORD	A 10.05		0.52			*	2.34 <sub>a</sub>				*	0.01 <sub>a</sub>	0.32	1.02							0.15	1.18	0.96	0.10	1.08	2.36	0.01						
BROOKNEAL	7.54		0.52			1.98				0.03	0.02	0.09	1.85							0.03	0.04	0.51	0.46	0.89	0.86	0.22			0.04	T			
CHARLOTTESVILLE 2W	9.28		0.38			3.08	0.05	0.29			T	0.30	1.39	0.01								0.39	0.03	1.01	1.86	0.22			0.27				
CHATHAM	8.67		1.20			1.23	0.02				0.40	0.25	0.75	T							0.10		0.50	1.20	1.12	1.33	0.52	0.02	0.03				
CONCORD 4 SSW	8.54		0.40			2.03						0.67	0.34	1.44							0.03	0.05	0.55	0.34	1.00	1.54			0.15				
DANVILLE RGNL AP	6.04	0.44			0.59	0.61	T		0.36	0.22	0.29	0.27	0.08							0.02	0.06	0.11	0.33	1.52	0.41	0.62			T	T	0.11		
FREE UNION	10.13		0.72			3.52	0.12	0.18				T	0.42	1.26									0.42	T	0.89	1.93	0.32		0.35				
HOLCOMB ROCK	11.56		0.50			2.28	0.68	T				0.35	1.00									1.07	0.74	1.32	3.27	T		0.35					
HUDDLESTON 4 SW	8.79		0.54			1.89	0.09				0.22	0.03	0.33	0.98								1.11	0.26	0.72	1.19	1.05	0.03		0.32			0.03	
LYNCHBURG INTL AP	7.88	0.40			0.61	1.32	T		0.01	T	0.16	1.02	0.11							T	1.13	0.09	0.78	0.87	0.61	0.41		T	0.36	T	T		
MARTINSVILLE FLTR PLT	10.90		0.58			2.53	0.02				0.18		0.90	0.50							0.23	0.37	3.17	0.42	0.83	0.82	0.14		0.11	0.02	0.08		
MEADOWS OF DAN 5 SW	12.20		0.70			2.30	0.13	0.02	0.08	0.35			0.53							1.14	1.15	1.19	1.64	0.74	0.82	0.83	0.08		0.10	0.40			
MONTEBELLO FISH CULTURAL STN	MA 12.58	0.03	0.98			4.92	0.51	0.14		0.01	*	*	1.15 <sub>a</sub>							-	-	-	0.03	0.45	1.08	2.90	0.14		0.02	0.22	-	-	
MONTICELLO	M	-	-	-	-	-	-	-	-	-	-	-	-	-	-	-	-	-	-	-	-	-	-	-	-	-	-	-	-	-	-	-	-
PEDLAR DAM	9.38	T	0.54			2.31	0.42	T			0.06	0.14	0.72									1.05	0.47	0.05	0.95	2.35	T		0.32				
ROCKY MT	8.97	T	0.52			2.11	0.14	0.05			0.43	T	0.14	0.74							0.05	0.45	1.04	0.20	1.12	1.96	0.02						
SOUTH BOSTON	7.20		0.11			1.20	0.05				0.22	0.01	0.34	0.32							0.85		0.19	1.40	1.05	1.21	0.04			0.21			
STUART	12.10	0.04	0.45			2.53	0.08		0.06	0.20		0.73	0.53							0.67	0.55	0.99	1.49	0.53	0.95	1.24	0.15		0.03	0.08	0.80		
WOOLWINE	10.92	0.03	0.50			2.95			0.12	0.24		0.42	0.62							0.35	0.08	0.63	1.79	0.28	1.29	1.54	0.05		0.02	0.01			
<b>NORTHERN 04</b>																																	
FRONT ROYAL	7.78					2.00	1.20	0.15	0.04			0.03	1.47	0.90	0.03					0.01		0.03	0.10	0.01	0.53	0.58	0.61	0.02		0.01		0.06	
LURAY 5 E	6.39		0.03			2.09	0.19	0.19				0.74	0.12	0.11									0.20		0.54	0.69	0.77		0.10	0.12	0.50		
MANASSAS	7.42		0.15			0.45	0.80	0.10					1.70	0.90						0.35	0.05		0.50	0.15	0.30	0.70	0.42		0.05	0.80			
MT WEATHER	9.61	0.04	0.08			1.46	0.58	0.13					2.59	0.73	0.02					0.68	0.03		0.23	0.02	0.38	1.33	0.76	0.04	0.03	0.11	0.04	0.33	
PIEDMONT RSCH STN	A 6.91		0.12			1.92	0.18					0.02	0.39	0.86									0.47	0.40	0.85	1.17	0.42	*	*	*	0.11 <sub>a</sub>		
SOMERSET	7.55		0.15			2.45	0.23	0.20	0.02			0.22	0.12	0.96							0.03		0.38	0.02	0.82	1.38	0.32		0.11	0.08	T	0.06	
SPERRYVILLE	M 12.61	0.02	0.22			2.97	2.00	0.27			0.07	1.45	0.88	T						0.14	0.03	-	0.25	0.72	1.52	1.18		0.18	0.34	0.71			
STERLING (RCS)	8.05	T	0.03			0.77	0.76	0.06	T			1.48	0.82	T						0.51	0.52		0.28	0.10	0.34	1.05	0.16		0.03	0.34	0.03	0.77	
VIENNA	4.72		0.02			0.58	0.86	0.10				0.03	0.92	0.58	0.01						0.15		0.18	0.10	0.18	0.33	0.11		0.14	0.01	0.42		
WASHINGTON DULLES INTL AP	8.49	0.24			0.21	1.09	0.13	T				1.73	0.38	0.41					0.61	0.05		T	0.51	0.12	0.34	0.79		0.01	0.17	T	1.10	0.60	
WASHINGTON REAGAN NATL AP	5.55	T			0.13	1.75	0.07	T				1.04	0.31	0.51	T				0.03			T	0.34	0.06	0.26	0.75		0.03	0.08	T	0.17	0.02	
WINCHESTER	8.03		0.03			2.16	0.45	0.07	0.02			0.23	1.39	0.54	0.02								0.10		0.46	1.20	0.63		0.10	0.13		0.28	
WINCHESTER 7 SE	MA 7.11	0.02	0.02			1.70	0.83	0.06				1.48	-										0.14	0.03	0.42	0.95	0.61		0.07	0.15			
WOODSTOCK 2 NE	A 5.91	0.02			*	1.65 <sub>a</sub>			0.25			0.26	0.90	0.80				*	*	0.00 <sub>a</sub>	0.65			0.04	0.62	0.49	0.53		0.32		0.03		
<b>CENTRAL MOUNTAIN 05</b>																																	
BUENA VISTA	6.95		0.41			1.20	0.22	0.07			0.06		0.27	0.79									0.10	0.49		1.02	1.67	0.02		0.63			
COVINGTON FLTR PLT	6.80	0.03	0.10			1.56	0.18	0.08			0.04		0.39	0.76									0.58	0.35		1.40	1.22	0.08		0.03			
DALE ENTERPRISE	7.05		0.08			1.91	0.11	0.16				0.13	0.34	0.83	0.01							0.35	0.16	0.17	0.02	0.70	1.78		0.30				
GATHRIGHT DAM	6.91		0.11			1.33	0.20	0.03	0.01		T	0.03	1.42	0.93	0.01								0.03	0.38	0.01	1.16	1.16	0.10					
GLASGOW 1 SE	13.78		0.59			3.60	0.16	0.03				T	0.17	0.82							T		2.50	0.56		1.51	3.13		0.71				
HOT SPRINGS	8.74		0.13			2.53	0.21	0.02	0.01		0.13	0.01	0.86	1.13									0.08	0.48	0.03	1.15	1.87	0.10					
LEXINGTON	7.88		0.12			2.27	0.07	0.09	0.03		0.05		0.48	0.78									0.07	0.61	T	0.98	2.07	0.02		0.24			

VIRGINIA  
201705

## DAILY PRECIPITATION (INCHES)

STATION	TOTAL	DAY OF MONTH																																
		01	02	03	04	05	06	07	08	09	10	11	12	13	14	15	16	17	18	19	20	21	22	23	24	25	26	27	28	29	30	31		
MILLGAP	6.55		0.06			1.63	0.27	0.08				0.30	0.92								0.16	0.15	0.18		0.81	1.32	0.11				0.56			
MTN GROVE	7.14		0.09			1.60	0.17	T			0.10	T	0.25	1.35								0.45	0.53	T	1.08	1.35	0.17							
MUSTOE 1 SW	6.31	0.08			0.60	1.17	0.22	0.08		T		0.20	0.95	0.13						0.12	0.14	0.06	0.16	0.87	0.83	0.41	0.05		0.22				0.02	
NEW CASTLE	8.14		0.19			2.73	0.19	0.12		T	0.36	0.01	0.32	0.85							0.02	0.17	0.70	0.05	1.05	1.26	0.03			0.09				
ROANOKE 8 N	8.32		0.08			2.27					0.28	0.15	0.14	0.88							0.20	1.07	0.70	0.03	1.13	1.38		0.01						
ROANOKE INTL AP	8.14	0.12			0.64	1.61	0.01			0.36	0.05	0.15	0.77	0.06							0.97	0.18	0.43	1.14	1.51	0.11	T		T				0.03	
STAUNTON WTP	8.31		0.12			2.31	0.12	0.02				0.11	0.41	0.99	0.01						0.02	0.19	0.40	T	1.17	1.88	0.02				0.52		0.02	
WAYNESBORO WTP	8.70		0.26			2.91	0.33						0.15	1.36									0.34	0.06	1.08	1.42	0.05				0.74			
SOUTHWESTERN MOUNTAIN 06																																		
ABINGDON 3S	8.87		0.08			0.50	0.30	0.10		0.10	0.35		0.20	2.40								0.15	0.18	0.95	0.01	0.80	0.97	0.50		1.28				
BIG STONE GAP	8.44		0.61			0.25	0.11	0.10		0.49			0.30	1.38	0.02						0.06	0.01	0.26	0.20	0.03	0.28	0.95	0.64		2.71				0.04
BLACKSBURG NWSO	6.22	T	0.23			0.87	0.20	0.01		0.02	0.41	T	0.07	1.00							T	0.01	0.99	T	0.98	1.23	0.20		T	T				
BURKES GARDEN	M 8.14		0.27	-		1.40	0.19	0.18		0.22	0.99	-	-	-	-	1.10				-	-	0.43	0.02	0.72	0.03	0.80	0.74	0.56	0.02	0.37	0.02		0.08	
CHRISTIANSBURG	7.01		0.28			0.87	0.21	0.04		0.05	0.56		0.10	1.46							0.09	1.00	0.14	0.99	1.05	0.15		0.02						
CLINTWOOD 1 W	8.49		0.28			0.52	0.18	0.08		0.24	0.44		0.02	1.30	0.06						1.56	T	0.34		1.35	0.81	0.43		0.88	T				
COPPER HILL	8.88		0.17			3.41	0.10	0.05			0.87		0.08	0.96							0.08	0.35	0.48	0.42	0.95	0.88	0.08							
ELK CREEK 4SSW	8.11	0.02	0.76			1.33	0.06	0.02		0.16	0.33		0.05	0.84	0.01						0.33	0.10	0.93	0.06	1.00	1.53	0.05		0.45		0.01	0.07		
GALAX WTP	9.01	0.14	0.31			2.19	0.04			0.05	0.66		0.02	0.73						0.28	0.51	0.03	1.12	0.46	1.00	1.12	0.04		0.29		0.01	0.01		
GRUNDY	9.30		0.39			1.02	0.44	0.19		0.34	0.61		0.62	1.60							1.44	0.68	0.09		0.86	0.51	0.39		0.10	0.02				
JOHN FLANNAGAN LAKE	MA 9.17		0.46		-	0.43	-	-	0.52	0.17	0.68		0.24	*	*	1.21 <sub>a</sub>	-	-			*	*	2.05 <sub>a</sub>	*	1.26 <sub>a</sub>	1.66	0.42	-	-	-	0.07	-		
LEBANON	7.92		0.83			1.05	0.25	0.08		0.14	0.97			1.83							0.28	0.12	0.22		0.95	0.48	0.31		0.33				0.08	
NORA 4 SSE	6.60		0.24			0.61	0.29	0.08		0.23	0.44		0.06	1.39	0.03						0.47	0.05	0.24	0.02	0.75	0.95	0.28		0.47					
PULASKI 2 E	9.48		0.39			0.61	0.25	0.02		0.10	0.37		0.92	1.62							0.15	T	1.07	0.05	1.20	2.36	0.10		0.08				0.19	
RADFORD 3 N	6.59		0.16			0.70	0.28	0.05		0.05	0.36		0.07	0.81									0.25	0.79	0.06	1.02	1.87	0.10	0.02					
RICHLANDS	M 7.62		0.32			0.65	0.27	0.08		0.26	0.75		0.15	2.00							0.29	0.09	-	0.22	-	1.20	0.52	-	0.82	-				
SALTVILLE 1N	6.64		0.20			0.48	0.17	0.08		0.17	0.46		0.02	1.03							0.33	0.05	0.51	0.02	0.81	1.02	0.59		0.60			0.03	0.07	
STAFFORDSVILLE 3 ENE	7.78		0.17			0.97	0.34	0.18	T	0.05	0.28	0.01	0.19	1.04	T						0.04	0.80	0.82	0.03	0.98	1.68	0.10	0.01	0.02	0.07				
WILLIS	8.12	0.11			0.30	1.31		0.21		0.15	0.27		0.60	0.60							0.86	0.42	0.80	0.17	0.74	1.35	0.16		0.07					
WISE 1SE	7.77		0.83			0.56		0.42		0.63			0.14	1.36							0.73	0.10	0.12	0.03	0.67	0.90	0.50		0.78					
WYTHEVILLE	8.11		0.19			1.12	0.04	0.09		0.10	0.44		0.28	2.19							0.26		1.12	0.10	0.75	0.79	0.21		0.12				0.31	











VIRGINIA  
201705

## DAILY TEMPERATURES (°F)

STATION	OB. TIME	MAX/MIN	DAY OF MONTH																															AVERAGE
			01	02	03	04	05	06	07	08	09	10	11	12	13	14	15	16	17	18	19	20	21	22	23	24	25	26	27	28	29	30	31	
GALAX WTP	07	MAX	78	78	69	73	61	64	54	61	64	65	81	81	54	69	76	79	80	83	83	82	82	65	75	63	62	64	74	79	78	80	80	72.2
		MIN	63	51	42	42	51	43	42	43	40	45	55	53	47	40	41	50	50	55	55	57	58	57	58	56	53	53	52	53	56	58	54	50.7
GRUNDY	07	MAX	87	79	72	73	70	65	65	63	66	66	81	80	66	67	79	81	89	88	86	76	87	67	72	65	69	57	76	80	73	74	74.2	
		MIN	62	49	43	43	50	43	41	39	39	46	56	58	53	47	49	54	55	57	57	60	61	59	55	56	53	53	55	57	61	60	56	52.5
JOHN FLANNAGAN LAKE	07	MAX	89	78	74		70			64	71	70	83	80			83			88	87			80		74	71	58			83	M		
		MIN	53	53	44		51			36	36	46	57	58			46			58	59			60		54	52	52			56	M		
LEBANON	07	MAX	84	77	71	73	68	68	53	60	64	73	81	79	69	67	77	80	85	86	85	81	83	69	72	67	71	56	75	79	73	75	77	73.5
		MIN	71	50	42	44	48	42	38	35	36	36	58	58	54	42	42	49	52	56	58	57	57	56	55	56	51	52	52	60	57	56	54	50.8
NORA 4 SSE	07	MAX	79	72	68	68	65	57	52	57	60	66	80	78	64	62	75	78	80	81	78	75	80	62	67	62	67	55	72	75	68	73	76	69.4
		MIN	67	47	43	44	48	38	37	38	38	48	62	57	50	49	49	61	64	65	64	58	60	59	53	53	47	47	55	58	58	59	58	52.7
PULASKI 2 E	07	MAX	79	72	68	72	66	67	54	60	62	64	81	79	52	67	76	78	85	86	84	78	84	66	73	59	62	62	74	78	76	76	78	71.5
		MIN	66	51	50	48	50	41	41	42	38	44	44	52	46	44	53	48	55	54	62	59	59	56	54	54	52	52	56	58	59	58	57	51.7
RADFORD 3 N	07	MAX	80	72	68	70	61	68	54	60	62	55	80	77	53	66	76	78	84	86	86	84	79	65	73	57	61	64	74	79	77	78	79	71.2
		MIN	65	52	49	48	49	44	42	40	37	40	52	50	47	41	42	49	52	52	52	60	58	56	54	54	53	53	52	56	62	56	55	50.7
RICHLANDS	07	MAX	84	76	70	72	67	64	53	59	62	65		80	70	75	76	78	85	84	83	79	86		74		70	70		74		74	73.4	
		MIN	54	52	42	42	49	41	41	36	36	45		56	52	41	42	42	50	54	55	58	61		54		51	51		55		57	48.7	
SALTVILLE 1N	07	MAX	83	75	71	73	67	67	56	61	66	69	81	79	61	68	77	81	86	86	84	79	79	70	75	65	69	57	74	78	72	76	77	73.0
		MIN	60	51	44	49	48	43	42	37	38	49	56	58	51	43	43	49	49	53	54	58	59	59	57	57	51	52	53	53	59	59	55	51.3
STAFFORDSVILLE 3 ENE	07	MAX	78		68	70	70	69	56	60	62	54	80	76	51	65	76	77	81	84	84	87	82	64	73	59	59	64	72	79	75	76	74	70.8
		MIN	65	52	46	47	47	42	40	41	36	40	52	51	46	39	40	46	49	53	54	57	58	56	52	54	54	53	50	52	60	55	54	49.7
WISE 1SE	09	MAX	81	73	70	66	56	51	59	55	64	71	78	76	63	66	76	79	83	83	82	79	83	66	69	64	65	58	74	78	70	71	78	70.5
		MIN	67	47	45	56	40	39	37	36	47	52	60	56	50	44	53	53	64	63	62	57	62	57	54	57	48	49	58	59	60	59	55	53.1
WYTHEVILLE	07	MAX	81	72	67	71	61	67	52	58	62	64	79	77	52	66	76	78	86	87	85	80	84	70	75	60	61	59	73	79	75	77	78	71.4
		MIN	63	50	49	47	47	40	39	41	41	48	58	52	46	44	48	50	54	55	59	58	58	57	55	54	50	50	56	58	58	59	55	51.6

VIRGINIA  
201705

## SNOWFALL AND SNOW ON GROUND (INCHES)

STATION		DAY OF MONTH																															
		01	02	03	04	05	06	07	08	09	10	11	12	13	14	15	16	17	18	19	20	21	22	23	24	25	26	27	28	29	30	31	
<b>VIRGINIA</b>																																	
<b>TIDEWATER 01</b>																																	
DISPUTANTA	SNOWFALL																																
EMPORIA 1 WNW	SNOWFALL																																
FREDERICKSBURG SEWAGE	SNOWFALL					-					-						-																
	SN ON GND					-					-						-																
HOLLAND 1 E	SNOWFALL																																
HOPEWELL	SNOWFALL																																
	SN ON GND																																
NORFOLK INTL AP	SNOWFALL																																
	SN ON GND																																
NORFOLK S	SNOWFALL																																
NORTH	SNOWFALL																																
	SN ON GND																																
PAINTER 2W	SNOWFALL																																
STONY CREEK 2 N	SNOWFALL																																
SUFFOLK LAKE KILBY	SNOWFALL																																
	SN ON GND																																
WAKEFIELD 1NW	SNOWFALL																																
	SN ON GND																																
WALKERTON 2 NW	SNOWFALL																																
	SN ON GND																																
WALLACETON LK DRUMMOND	SNOWFALL																																
WALLOPS ISLAND NASA TEST FACIL	SNOWFALL																																
	SN ON GND																																
WARSAW 2 NW	SNOWFALL																																
WEST POINT 2 NW	SNOWFALL																																
	SN ON GND																																
WILLIAMSBURG 2 N	SNOWFALL																																
<b>EASTERN PIEDMONT 02</b>																																	
RICHMOND INTL AP	SNOWFALL																																
	SN ON GND																																
WINTERPOCK 4 W	SNOWFALL																																
<b>NORTHERN 04</b>																																	
MANASSAS	SNOWFALL																																
	SN ON GND																																
MT WEATHER	SNOWFALL																																
	SN ON GND																																
	WTR EQUIV																																
PIEDMONT RSCH STN	SNOWFALL																																
	SN ON GND																																
	WTR EQUIV																																

Snowfall: Includes snow and ice. Values for NWS stations (J index note) are Mid-Mid (LST).

Snow on ground: Includes snow, sleet, ice, and hail. Values for NWS stations (J index note) are observed at 12 UTC (GMT).

Water Equivalent: Given for NWS stations (J index note) only, when snow depth is 2 inches or more, and is measured at 18 UTC (GMT)

VIRGINIA  
201705

## SNOWFALL AND SNOW ON GROUND (INCHES)

STATION		DAY OF MONTH																														
		01	02	03	04	05	06	07	08	09	10	11	12	13	14	15	16	17	18	19	20	21	22	23	24	25	26	27	28	29	30	31
SOMERSET	SNOWFALL																															
	SN ON GND																															
SPERRYVILLE	SNOWFALL																															
	SN ON GND																															
STERLING (RCS)	SNOWFALL																															
	SN ON GND																															
	WTR EQUIV																															
VIENNA	SNOWFALL																															
	SN ON GND																															
WASHINGTON DULLES INTL AP	SNOWFALL																															
	SN ON GND																															
WASHINGTON REAGAN NATL AP	SNOWFALL																															
	SN ON GND																															
WINCHESTER	SNOWFALL																															
	SN ON GND																															
WINCHESTER 7 SE	SNOWFALL																															
	SN ON GND																															
	WTR EQUIV																															
WOODSTOCK 2 NE	SNOWFALL																															
	SN ON GND																															
<b>CENTRAL MOUNTAIN 05</b>																																
ROANOKE INTL AP	SNOWFALL																															
	SN ON GND																															
STAUNTON WTP	SNOWFALL																															
	SN ON GND																															
WAYNESBORO WTP	SNOWFALL																															
	SN ON GND																															
	WTR EQUIV																															

Snowfall: Includes snow and ice. Values for NWS stations (J index note) are Mid-Mid (LST).

Snow on ground: Includes snow, sleet, ice, and hail. Values for NWS stations (J index note) are observed at 12 UTC (GMT).

Water Equivalent: Given for NWS stations (J index note) only, when snow depth is 2 inches or more, and is measured at 18 UTC (GMT)

VIRGINIA  
201705

## PAN EVAPORATION AND WIND

STATION		DAY OF MONTH																															TOTAL OR AVERAGE
		01	02	03	04	05	06	07	08	09	10	11	12	13	14	15	16	17	18	19	20	21	22	23	24	25	26	27	28	29	30	31	
VIRGINIA EASTERN PIEDMONT 02 JOHN H KERR DAM	WIND	64	94	27	54	83	88	39	21	24	18	29	54	17	47	23	3	31	63	62	36	29	18	30	38	58	69	20	17	34	22	25	1237
	EVAP	0.06	0.21	-	-	-	-	-	-	-	-	-	-	-	-	-	-	-	-	-	-	-	-	-	-	-	-	-	-	-	-	-	M
	MAX	-	-	-	-	-	-	-	-	-	-	-	-	-	-	-	-	-	-	-	-	-	-	-	-	-	-	-	-	-	-	-	M
	MIN	-	-	-	-	-	-	-	-	-	-	-	-	-	-	-	-	-	-	-	-	-	-	-	-	-	-	-	-	-	-	-	M

Evaporation: Is measured in hundredths of inches.

Wind: Is measured in miles.

Max and Min: The maximum and minimum temperatures (Fahrenheit) of the water in the evaporation pan.



# STATION INDEX

STATION	INDEX NO.	DIVISION	COUNTY	LATITUDE	LONGITUDE	ELEVATION (IN FEET)	OBSERVATION TIME AND TABLES			
							LOCAL STD TIME			
							TEMP	PRECIP	EVAP	SPECIAL SEE (NOTES)
VIRGINIA										
ABINGDON 3S	0021	06	WASHINGTON	36 40	81 58W	1925	22	22		H
ALBERTA 5N	0079	02	BRUNSWICK	36 56	77 54W	376		08		H
ALTAVISTA	0166	03	CAMPBELL	37 7	79 17W	529		07		CH
AMELIA COURTHOUSE 1	0187	02	AMELIA	37 21	77 59W	345	08	08		H
APPOMATTOX	0243	03	APPOMATTOX	37 20	78 50W	850	07	07		H
ASHLAND	0327	02	HANOVER	37 45	77 29W	220	18	18		H
BEDFORD	0551	03	BEDFORD	37 20	79 30W	894		07		H
BIG STONE GAP	0735	06	WISE	36 52	82 46W	1464	08	08		H
BLACKSBURG NWSO	0766	06	MONTGOMERY	37 12	80 25W	2103	07	07		CH
BREMO BLUFF	0993	02	FLUVANNA	37 43	78 17W	225	07	07		CH
BROOKNEAL	1082	03	CAMPBELL	37 4	78 57W	408	07	07		H
BUCKINGHAM	1136	02	BUCKINGHAM	37 30	78 32W	580		07		H
BUENA VISTA	1159	05	ROCKBRIDGE	37 44	79 22W	840		07		H
BURKES GARDEN	1209	06	TAZEWELL	37 6	81 20W	3068	07	07		H
CAMP PICKETT	1322	02	NOTTOWAY	37 2	77 57W	330	08	08		CH
CHARLOTTESVILLE 2W	1593	03	ALBEMARLE	38 2	78 31W	866	08	08		H
CHASE CITY	1606	02	MECKLENBURG	36 47	78 29W	510	17	17		H
CHATHAM	1614	03	PITTSYLVANIA	36 49	79 25W	651	07	07		CH
CHRISTIANSBURG	1692	06	MONTGOMERY	37 8	80 24W	2100	07	07		H
CLARKSVILLE	1746	02	MECKLENBURG	36 37	78 33W	330	07	07		H
CLINTWOOD 1 W	1825	06	DICKENSON	37 9	82 29W	1780	07	07		H
CONCORD 4 SSW	1955	03	CAMPBELL	37 17	78 58W	815		07		H
COPPER HILL	1999	06	FLOYD	37 5	80 8W	2857	07	07		H
CORBIN	2009	02	CAROLINE	38 12	77 22W	220	09	09		H
COVINGTON FLTR PLT	2044	05	ALLEGHANY	37 49	79 59W	1244	07	07		CH
CROZIER	2142	02	GOOCHLAND	37 40	77 53W	350	07	07		H
DALE ENTERPRISE	2208	05	ROCKINGHAM	38 27	78 56W	1358	07	07		CH
DANVILLE RGNL AP	2250	03	PITTSYLVANIA	36 34	79 20W	571	24	24		CH
DISPUTANTA	2400	01	PRINCE GEORGE	37 7	77 12W	130	07	07		H
ELK CREEK 4SSW	2730	06	GRAYSON	36 40	81 12W	3439	07	07		H
EMPORIA 1 WNW	2790	01	GREENSVILLE	36 42	77 34W	100	08	08		H
FARMVILLE 2 N	2941	02	CUMBERLAND	37 20	78 23W	450	07	07		CH
FREDERICKSBURG SEWAGE	3204	01	FREDERICKSBURG	38 17	77 27W	15	07	07		H
FREE UNION	3213	03	ALBEMARLE	38 5	78 35W	590	08	07		H
FRONT ROYAL	3229	04	WARREN	38 54	78 11W	930	06	06		CH
GALAX WTP	3272	06	CARROLL	36 39	80 55W	2341	07	07		CH
GATHRIGHT DAM	3310	05	ALLEGHANY	37 57	79 57W	1770	07	07		CH
GLASGOW 1 SE	3375	05	ROCKBRIDGE	37 37	79 26W	737		07		H
GRUNDY	3640	06	BUCHANAN	37 17	82 5W	1170	07	07		H
HOLCOMB ROCK	4039	03	BEDFORD	37 33	79 24W	900		07		H
HOLLAND 1 E	4044	01	SUFFOLK	36 41	76 46W	80	08	08		H
HOPEWELL	4101	01	PRINCE GEORGE	37 18	77 17W	40	16	16		H
HOT SPRINGS	4128	05	BATH	37 60	79 50W	2236	07	07		H
HUDDLESTON 4 SW	4148	03	BEDFORD	37 8	79 32W	897		07		H
JOHN FLANNAGAN LAKE	4410	06	DICKENSON	37 14	82 21W	1460	07	07		H
JOHN H KERR DAM	4414	02	MECKLENBURG	36 36	78 18W	250	08	08	08	CH
KEYSVILLE 2 S	4568	02	CHARLOTTE	37 1	78 29W	625	07	07		H
LEBANON	4777	06	RUSSELL	36 54	82 2W	1912	07	07		H
LEXINGTON	4876	05	ROCKBRIDGE	37 47	79 26W	1097	07	07		H
LOUISA	5050	02	LOUISA	38 3	78 0W	420	18	18		H
LURAY 5 E	5096	04	PAGE	38 40	78 22W	1400	08	08		H
LYNCHBURG INTL AP R	5120	03	CAMPBELL	37 19	79 12W	940	24	24		HJ
MANASSAS	5204	04	MANASSAS	38 44	77 30W	245	07	07		H
MARTINSVILLE FLTR PLT	5300	03	HENRY	36 42	79 52W	760	07	07		H
MEADOWS OF DAN 5 SW	5453	03	PATRICK	36 40	80 27W	2225	07	07		H
MILLGAP	5595	05	HIGHLAND	38 18	79 43W	2421	06	06		CH
MONTEBELLO FISH CULTURAL STN	5690	03	NELSON	37 51	79 8W	2667	07	07		H
MONTICELLO	5700	03	ALBEMARLE	38 1	78 27W	758	07	07		H
MT WEATHER	5851	04	LOUDOUN	39 4	77 53W	1659	07	07		H
MTN GROVE	5756	05	BATH	38 6	79 53W	1775		07		H
MUSTOE 1 SW	5880	05	HIGHLAND	38 19	79 40W	2367	24	24		CH
NEW CASTLE	6012	05	CRAIG	37 31	80 6W	1258		07		H
NORA 4 SSE	6125	06	DICKENSON	37 1	82 19W	2650	07	07		H
NORFOLK INTL AP R	6139	01	NORFOLK (CITY)	36 54	76 12W	30	24	24		HJ
NORFOLK S	6147	01	NORFOLK (CITY)	36 52	76 14W	10	24	24		H

# STATION INDEX

STATION	INDEX NO.	DIVISION	COUNTY	LATITUDE	LONGITUDE	ELEVATION (IN FEET)	OBSERVATION TIME AND TABLES			
							LOCAL STD TIME			
							TEMP	PRECIP	EVAP	SPECIAL SEE (NOTES)
NORTH	6161	01	MATHEWS	37 26	76 26W	10	07	07		H
PAINTER 2W	6475	01	ACCOMACK	37 35	75 49W	30	16	16		CH
PALMYRA 3S	6491	02	FLUVANNA	37 49	78 16W	410	06	06		H
PEDLAR DAM	6593	03	AMHERST	37 40	79 17W	1024		07		CH
PETERSBURG	6656	02	PETERSBURG	37 14	77 24W	19	07	07		H
PIEDMONT RSCH STN	6712	04	ORANGE	38 14	78 7W	520	08	08		CH
PULASKI 2 E	6955	06	PULASKI	37 3	80 47W	1850	07	07		CH
RADFORD 3 N	6999	06	PULASKI	37 12	80 35W	1800	07	07		H
RICHLANDS	7174	06	TAZEWELL	37 6	81 48W	1910	07	07		H
RICHMOND INTL AP R	7201	02	HENRICO	37 30	77 19W	164	24	24		HJ
ROANOKE 8 N	7278	05	ROANOKE	37 22	79 58W	1190	07	07		H
ROANOKE INTL AP R	7285	05	ROANOKE	37 19	79 58W	1175	24	24		HJ
ROCKY MT	7338	03	FRANKLIN	36 59	79 54W	1315	07	07		CH
SALTVILLE 1N	7506	06	SMYTH	36 53	81 46W	1733	07	07		H
SOMERSET	7904	04	ORANGE	38 15	78 16W	510	08	08		H
SOUTH BOSTON	7925	03	HALIFAX	36 42	78 53W	329	07	07		H
SPERRYVILLE	7985	04	RAPPAHANNOCK	38 39	78 14W	750	06	06		H
STAFFORDSVILLE 3 ENE	8022	06	GILES	37 16	80 43W	1950	07	07		CH
STAUNTON WTP	8062	05	AUGUSTA	38 10	79 5W	169	08	08		CH
STERLING (RCS)	8084	04	LOUDOUN	38 59	77 29W	288	07	07		H
STONY CREEK 2 N	8129	01	SUSSEX	36 58	77 24W	105	08	08		H
STUART	8170	03	PATRICK	36 38	80 15W	1375	07	07		H
SUFFOLK LAKE KILBY	8192	01	SUFFOLK	36 44	76 36W	22	24	24		H
VIENNA	8737	04	FAIRFAX	38 54	77 17W	418	07	07		H
WAKEFIELD 1NW	8800	01	SUSSEX	36 59	77 0W	113	24	24		CH
WALKERTON 2 NW	8829	01	KING AND QUEEN	37 45	77 2W	50	18	18		H
WALLACETON LK DRUMMOND	8837	01	CHESAPEAKE	36 36	76 26W	20	08	08		H
WALLOPS ISLAND NASA TEST FACIL R	8849	01	ACCOMACK	37 56	75 28W	46	24	24		HJ
WARSAW 2 NW	8894	01	RICHMOND	37 59	76 47W	140	18	18		H
WASHINGTON DULLES INTL AP R	8903	04	LOUDOUN	38 56	77 27W	290	24	24		HJ
WASHINGTON REAGAN NATL AP R	8906	04	ARLINGTON	38 51	77 2W	10	24	24		HJ
WAYNESBORO WTP	8941	05	WAYNESBORO	38 5	78 53W	1270	07	07		H
WEST POINT 2 NW	9025	01	KING WILLIAM	37 34	76 48W	20	17	17		H
WILLIAMSBURG 2 N	9151	01	YORK	37 18	76 42W	70	24	24		CH
WILLIS	9169	06	FLOYD	36 55	80 30W	2810		07		CH
WINCHESTER	9181	04	FREDERICK	39 11	78 9W	720	07	07		H
WINCHESTER 7 SE	9186	04	FREDERICK	39 11	78 7W	680	08	08		H
WINTERPOCK 4 W	9213	02	CHESTERFIELD	37 19	77 39W	300		07		H
WISE 1SE	9215	06	WISE	36 58	82 33W	2564	09	09		CH
WOODSTOCK 2 NE	9263	04	SHENANDOAH	38 54	78 28W	675	07	07		H
WOOLWINE	9272	03	PATRICK	36 47	80 17W	1500		07		H
WYTHEVILLE	9301	06	WYTHE	36 58	81 5W	2458	07	07		H

# REFERENCE NOTES

**STATION NAMES:** Name of the city, town or locality. Figures and letters following the station names indicate the distance in miles and direction from the post office or town community center.

**DIVISIONS:** Areas within a state of similar climatological characteristics. Division averages are calculated using data from stations that record temperature and/or precipitation. Station Precipitation totals flagged with an 'F' or 'M' are excluded from the Divisional Average calculations of precipitation. Stations with monthly Temperature averages flagged with an 'F' or 'M' are included in the Divisional Average if there are no more than 9 flagged or missing daily values in the month, else they are excluded from the divisional average for temperature.

**NORMALS:** The average value of the meteorological element over a time period. Effective 1 January 2012, the averaging period for station departures is 1981 to 2010. The normals for National Weather Service localities have been adjusted so as to be representative for the current observation site.

The January 2011 through December 2015 publications incorrectly state the computation of divisional departures. Climate Division departures have been, and continue to be, computed from 1971-2000 Normals, not 1981-2010 as stated. Station departures are accurately described as departures from 1981-2010.

**MONTHLY DEGREE DAY TOTALS:** One heating (cooling) degree day is accumulated for each whole degree that the daily mean temperature is below (above) 65 degrees Fahrenheit.

**PRECIPITATION:** Values shown in hundredths of inches are water equivalent totals, i.e., total of liquid and melted frozen precipitation. In the "Monthly Summarized Data" table the total snow and sleet values shown in tenths of inches are unmelted amounts. The max depth on ground values of snow and sleet shown in whole inches are cumulative unmelted amounts. The number of days with .10, .50, 1.00 or more refers to water equivalents.

**PRECIPITATION QUALITY CONTROL:** The NCEI quality control process may flag precipitation data that are spatially inconsistent, exceed climatological limits, or are inconsistent with prevailing weather patterns.

**TEMPERATURE:** Original temperature values are given in the "Daily Temperature" table. Summary temperature information (averages, departures, extremes, monthly degree day totals) is based on the values labeled MAX/MIN.

**WIND:** (As shown in the "Evaporation and Wind" table) the total wind movement in miles over the evaporation pan as determined by an anemometer recorder located 6-8 inches above the pan.

## SYMBOLS AND LETTERS USED IN THE STATION INDEX TABLE

C Station is equipped with recording rain gage (R) but values in this bulletin are from a non-recording rain gage unless indicated by an R.

G Observations appear in the "Soil Temperatures" table.

H Observations appear in the "Snowfall and Snow on the Ground" table.

J Station also published as a Local Climatological Data publication.

VAR Observation time varies.

SR / SS Observation time near sunrise / Observation time near sunset, respectively.

## SYMBOLS AND LETTERS USED IN THE DATA TABLES

(DAILY DATA ARE FOR THE 24 HOURS IMMEDIATELY PRECEDING OBSERVATION TIME.)

BLANK Entries in the "Monthly Summarized Data" table indicate no record.

BLANK Entries in the "Daily Precipitation" and "Snowfall and Snow on the Ground" tables indicate zero.

BLANK Entries in the "Daily Temperature" table indicate a missing record

- No record. Data not recorded or not received in time for publication.

+ Precipitation or temperature extremes occurred on one or more previous dates during the month.

\* Rain gage not read. Precipitation is included in the amount following the asterisks.

Time distribution may not be known. A \* preceding the monthly total indicates precipitation amount is being carried forward to next month's total, and may include amounts from the previous month(s).

a As a subscript, indicates accumulated total.

A Amount of precipitation is the total of observer's entries for the current month. It may include precipitation that occurred during the previous month. Refer to earlier bulletin to determine date of last

reading. (Hawaii stations)

B Divisional Departure from normals are computed using 1971-2000 normals.

E Normalized HDD/CDD Calculation. E is appended to the HDD/CDD Calculation when 1-9 individual daily TMAX and/or TMIN values are missing and a Normalized HDD/CDD Calculation is provided. M appears alone if 10 or more daily values are missing.

F Monthly calculation flagged value. F is appended to average and/or total values computed which exclude one or more daily data values that have been flagged by the GHCN-Daily Dataset

M Insufficient or partial data. M is appended to average and/or total values computed with 1-9 daily values missing. M appears alone if 10 or more daily values are missing, (8 or more for wind and evaporation).

N Indicates snow fall or Snowdepth totals are computed with one or more missing days.

R Amounts from recording rain gage.

T Trace. An amount too small to measure.

**SEASONAL TABLES:** Monthly and seasonal snowfall and heating degree days for the 12 months ending with the June data are published in the July issue of this bulletin. Cooling degree days for the calendar year are published in the "Climatological Data Annual Summary."

Information concerning the history of changes in locations, exposure, etc. of substations is kept on file at the National Centers for Environmental Information. Historical information of regular National Weather Service Offices may be obtained from the "Local Climatological Data" annual publication. The contents of this publication may be reprinted or otherwise used freely, with proper credit to the National Centers For Environmental Information. The data are also available digitally.

Effective with the January 2011 Data-Month, COOP Observer Names are no longer included in the Monthly and Annual Climatological Data Publications. This information is not published to ensure the privacy of personal information pursuant to Section 208 of the E-Government Act of 2002 (44 USC 3601).

As of the 2011 Data-Year, Station and Climate Division Maps are no longer being included in the CD Publications. NCEI's Products Branch provides updated Station Maps for various data networks via the Historical Observing Metadata Repository: <http://www.ncdc.noaa.gov/homr>.

The GHCN-Daily Quality Control Flags shown below are displayed as superscripts with the data. For more information on Global Historical Climatology Network - Daily and flags, see: <http://www.ncdc.noaa.gov/oa/climate/ghcn-daily/> and Comprehensive Automated Quality Assurance of Daily Surface Observations. Durre, Imke, Matthew J. Menne, Byron E. Gleason, Tamara G. Houston, Russell S. Vose, 2010: J. Appl. Meteor. Climatol., 49, 16151633. doi: 10.1175/2010JAMC2375.1

Blank = Passed All checks

D = failed duplicate check

G = failed gap check

I = failed internal consistency check

K = failed streak/frequent-value check

L = failed check on length of multiday period

M = failed megaconsistency check

N = failed naught check

O = failed climatological outlier check

R = failed lagged range check

S = failed spatial consistency check

T = failed temporal consistency check

W = temperature too warm for snow

X = failed bounds check

Z = flagged as a result of an official Datzilla investigation

Beginning with the January 2013 CD Publication, monthly mean temperature calculations have changed to the National Data Stewardship Team standard. Monthly maximum and minimum temperatures are not rounded until after the monthly mean temperature is calculated. This is the most accurate outcome, but may be slightly different from the mean derived from rounded monthly maximum and minimum.

The climate division temperature and precipitation values in this publication are based on simple averages from the current set of NWS-Designated Open and Published COOP and First Order Sites within each division. These values differ from those found in NCEI's nClimDiv product. Beginning in February 2014, the nClimDiv product is used by NCEI's Monitoring Branch and in its monthly climate reports. For more details on nClimDiv, please go to <http://www.ncdc.noaa.gov/monitoring-references/maps/us-climate-divisions.php>.

Effective January 2016, Alaska's Climate Divisions are updated to reflect the 13 climate divisional boundaries established by University of Alaska-Fairbanks, NWS, NCEI, Oregon State University, and University of Nebraska-Lincoln. For more details regarding the updated Alaska Climate Divisions, see: <http://journals.ametsoc.org/doi/pdf/10.1175/JAMC-D-11-0168.1> (Bienek et al., 2012).

NOAA National Centers for Environmental Information  
Attn: Customer Engagement Branch  
151 Patton Avenue  
Asheville, NC 28801-5001

Customer Services Number: (828) 271-4800, option 2  
TDD : (828) 271-4010  
Fax number: (828) 271-4876

NCEI now offers free online access to the *Climatological Data* publication.  
Go to : [www.ncdc.noaa.gov](http://www.ncdc.noaa.gov) and choose Most Popular.