



# CLIMATOLOGICAL DATA

## VIRGINIA

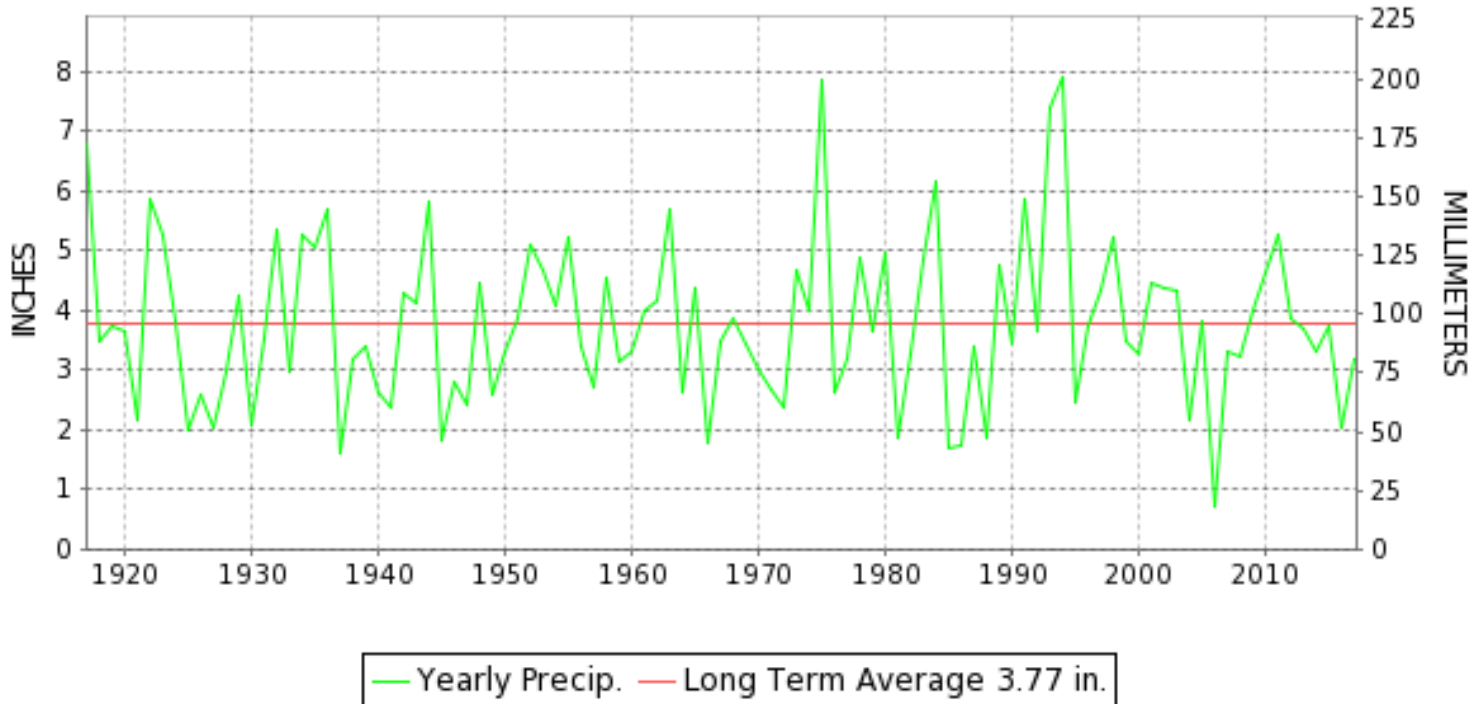
MARCH 2017

VOLUME 127 NUMBER 03

ISSN 0364-5630

GHCND Ver: 3.22-upd-2017072005

### MARCH PRECIPITATION BY YEAR



#### TEMPERATURE AND PRECIPITATION EXTREMES

##### VIRGINIA

HIGHEST TEMPERATURE	83	MARCH 01	NORFOLK INTL AP
LOWEST TEMPERATURE	5	MARCH 16	BURKES GARDEN
GREATEST TOTAL PRECIPITATION	5.62		WAKEFIELD 1NW
LEAST TOTAL PRECIPITATION	1.65		STAUNTON WTP
GREATEST 1 DAY PRECIPITATION	2.81	MARCH 31	SUFFOLK LAKE KILBY
GREATEST TOTAL SNOWFALL	8.3		MUSTOE 1 SW
GREATEST DEPTH OF SNOW OR ICE	6		2 STATIONS

"I certify that this is an official publication of the National Oceanic and Atmospheric Administration (NOAA) It is compiled using information from weather observing sites supervised by NOAA/National Weather Service and received at the National Centers for Environmental Information(NCEI), Asheville, North Carolina 28801."

Director  
National Centers for Environmental Information

noaa

National  
Oceanic and  
Atmospheric Administration

National  
Environmental Satellite, Data  
and Information Service

National  
Centers for Environmental Information  
Asheville, North Carolina



VIRGINIA  
201703

# MONTHLY STATION AND DIVISION SUMMARY

STATION	TEMPERATURE (°F)											PRECIPITATION (IN)												
	AVERAGE MAXIMUM	AVERAGE MINIMUM	AVERAGE	DEPARTURE FROM NORMAL	HIGHEST	DATE	LOWEST	DATE	HEATING DEG. DAYS	COOLING DEG. DAYS	NO. OF DAYS				TOTAL	DEPARTURE FROM NORMAL	GREATEST 24 HOURS	DATE	ICE PELLETS, SNOW			NO. OF DAYS		
											MAX		MIN						TOTAL	MAX DEPTH ON GROUND	DATE	.10 OR MORE	.50 OR MORE	1.00 OR MORE
											>=90	<=32	<=32	<=0										
RICHMOND INTL AP	60.1	37.9	49.0	0.4	81	01	22	16+	493	8	0	0	13	0	3.68	-0.36	1.45	31	T	0		11	6	2
WINTERPOCK 4 W															2.09		1.30	14	M			8	3	1
--DIVISIONAL DATA-----> WESTERN Piedmont 03			47.7	0.8B										2.67	-1.49B									
ALTAVISTA														2.09		0.97	14	0.0	0			11	6	0
APPOMATTOX	59.3	34.9	47.1	1.4	76	28+	17	15	547	0	0	0	15	0	2.68	-1.29	0.88	14	T	0		12	8	0
BEDFORD 4 NW														2.58		0.69	31	T	0			10	8	0
BROOKNEAL	61.3	31.7	46.5	4.9	79	28	18	16	569	1	0	0	18	0	2.62	-1.32	0.68	31	T	0		10	7	0
CHARLOTTESVILLE 2W	57.2	34.9	46.1	-0.7	80	26	17	15	582	1	0	0	14	0	2.31	-1.54	0.77	14	0.7	1	14	12	8	0
CHATHAM	61.6	30.6	46.1	1.4	78	02	16	18	580	0	0	0	19	0	3.23	-0.82	0.65	14	T	0		11	7	0
CONCORD 4 SSW														2.30		0.90	14	T	0			12	7	0
DANVILLE RGNL AP	62.5	36.5	49.5	0.8	78	01	19	17+	478	3	0	0	14	0	2.65	-1.46	0.87	31	T	0		10	7	0
FREE UNION	58.3	31.0	44.7		80	26	18	15+	623	0	0	0	17	0	2.24		0.80	14	0.9	1	14	12	6	0
HOLCOMB ROCK														3.09		0.65	31	T	T	14	10	9	0	
HUDDLESTON 4 SW														2.62		0.59	14	T	0			11	8	0
LYNCHBURG INTL AP	59.3	35.5	47.4	1.5	76	27	18	15	539	0	0	0	15	0	2.66	-0.92	0.81	31	T	0		12	8	0
MARTINSVILLE FLTR PLT	61.1	30.5	45.8	-0.2	76	28	16	18+	590	0	0	0	20	0	3.02	-1.13	0.92	31	0.0	0		12	6	0
MEADOWS OF DAN 5 SW	58.5	33.5	46.0		75	30	15	16	581	0	0	0	16	0	4.12		1.12	28	0.0	0		10	7	1
MONTEBELLO FISH CULTURAL STN	M	M	M		68	02	16	05	765E	0	0	0	6	0	M				M	0				
MONTICELLO	M	M	M												M				M					
PEDLAR DAM														2.86		0.68	14	T	T	14	9	9	0	
ROCKY MT	59.7	33.8	46.8	1.4	77	28	16	16	562	2	0	0	17	0	3.08	-1.18	0.74	31	T	0		13	10	0
SOUTH BOSTON	64.4M	36.6	50.5M	3.9	79	02	23	18+	443E	4E	0	0	17	0	2.30	-1.85	0.58	02	T	0		12	6	0
STUART	60.7	33.5	47.1	0.2	78	22	18	17+	543	0	0	0	16	0	3.23	-0.85	1.21	31	0.0	0		9	6	1
WOOLWINE														3.60		1.44	31	T	0			11	7	1
--DIVISIONAL DATA-----> NORTHERN 04			47.0	0.5B										2.80	-1.43B									
FRONT ROYAL	52.1M	32.2M	42.2M	-1.0	78	26	11	03	700E	0	0	0	15	0	MA 1.82	-1.94	0.45	19	M	4	15	12	6	0
LINCOLN	M	M	M		78	25	37	30	238E	0	0	0	0	0	MA 3.15				M	0		0	0	0
LURAY 5 E	53.7	31.9	42.8	-1.5	77	28+	14	05	679	0	0	2	16	0	2.22	-1.66	0.53	14	4.0	4	14	14	7	0
MANASSAS	55.4M	33.0M	44.2M	0.2	81	26	20	15+	631E	1E	0	1	15	0	M 3.00		1.00	18	M	M 1	17	11	8	1
MT WEATHER	48.7	29.1	38.9	-1.8	73	26	13	15	803	0	0	3	19	0	2.35	-1.21	0.78	14	M	M 6	15	13	6	0
PIEDMONT RSCH STN	55.4	33.8	44.6	-0.4	79	25	18	15	623	0	0	0	17	0	A 2.79	-0.72	0.85	14	MT	MT	14	10	7	0
SOMERSET	56.4	32.7	44.6	0.1	79	26	19	15+	623	0	0	0	17	0	3.71	-0.02	1.03	31	M	1	14	13	8	1
SPERRYVILLE	57.4M	34.9M	46.2M	2.6	82	26	19	15	576E	1E	0	0	13	0	A 1.87	-2.15	0.27	01	M	2	14	8	5	0
STERLING (RCS)	53.2	31.9	42.5	-0.2	79	26	16	04	689	0	0	1	15	0	3.90	0.30	1.09	14	5.7	3	14	15	8	1
VIENNA	52.3	31.1	41.7	-1.1	77	25	18	16+	716	0	0	1	19	0	2.56	-1.26	1.12	14	3.6	4	14	15	7	1
WASHINGTON DULLES INTL AP	54.8	33.7	44.2	0.0	78	25	17	13	640	2	0	1	15	0	4.12	0.74	1.55	31	5.7	3	14	15	7	1

VIRGINIA  
201703

## MONTHLY STATION AND DIVISION SUMMARY

STATION	TEMPERATURE (°F)											PRECIPITATION (IN)												
	AVERAGE MAXIMUM	AVERAGE MINIMUM	AVERAGE	DEPARTURE FROM NORMAL	HIGHEST	DATE	LOWEST	DATE	HEATING DEG. DAYS	COOLING DEG. DAYS	NO. OF DAYS				TOTAL	DEPARTURE FROM NORMAL	GREATEST 24 HOURS	DATE	ICE PELLETS, SNOW			NO. OF DAYS		
											MAX		MIN						TOTAL	MAX DEPTH ON GROUND	DATE	.10 OR MORE	.50 OR MORE	1.00 OR MORE
											>=90	<=32	<=32	<=0										
WASHINGTON REAGAN NATL AP	56.5	37.9	47.2	0.4	80	01	22	15	548	5	0	0	12	0	3.19	-0.29	0.96	31	2.0	2	14	14	6	0
WINCHESTER	52.6	30.9	41.8	-0.5	78	26	17	15+	712	0	0	1	15	0	2.78	-0.67	0.77	14	7.3	6	14	16	8	0
WINCHESTER 7 SE	52.3M	28.3M	40.3M	-0.7	76	26	12	05	758E	0	0	1	19	0	M 1.82	-1.60	0.57	13	M 5.0	5	13	9	6	0
WOODSTOCK 2 NE	53.6M	30.8M	42.2M	1.1	76	26	16	15	694E	0	0	0	15	0	A 2.59	-0.67	0.89	14	M 5.6	5	14	12	8	0
--DIVISIONAL DATA-----> CENTRAL MOUNTAIN 05			43.1	0.0B											2.92	-0.65B								
BUENA VISTA															1.96		0.55	14	1.0	1	14	9	8	0
COVINGTON FLTR PLT	54.9	30.0	42.5	-1.6	76	28	14	16+	691	0	0	1	22	0	2.15	-1.13	0.48	02	1.5	2	14	11	5	0
DALE ENTERPRISE	53.9	30.2	42.1	1.1	76	28	14	16+	703	0	0	1	16	0	1.94	-0.98	0.40	27	2.5	3	14	12	7	0
GATHRIGHT DAM	54.0	30.6	42.3	0.4	76	26	13	16+	693	0	0	1	19	0	2.63	-0.65	0.55	18	2.8	3	14	11	8	0
GLASGOW 1 SE															2.55		0.65	14	0.4	T	14	10	9	0
HOT SPRINGS	52.8	29.5	41.1	0.2	74	26	10	16+	731	0	0	1	19	0	2.85	-1.24	0.50	18	3.0	3	15	11	10	0
LEXINGTON	57.7	31.7	44.7	0.0	77	28	16	16+	622	0	0	0	17	0	2.51	-0.64	0.54	14	0.7	1	14	11	9	0
MILLGAP	49.7	24.2	36.9	-1.2	72	25	7	18	862	0	0	3	21	0	2.56	-1.31	0.50	27	6.3	4	15	14	8	0
MTN GROVE															M 3.43		0.96	31	M T	M T	18	9	8	0
MUSTOE 1 SW	49.2	28.2	38.7	0.4	70	27	9	15	807	0	0	4	20	0	3.71	-0.45	1.15	31	8.3	4	15	12	11	1
NEW CASTLE															1.86		0.46	31	0.5	T	14	12	6	0
ROANOKE 8 N	58.9	34.8	46.9	1.1	79	29+	16	16+	559	2	0	0	16	0	1.78	-1.95	0.33	14	T	0		10	7	0
ROANOKE INTL AP	59.2	37.9	48.6	1.3	80	27	16	15	504	2	0	0	13	0	2.32	-1.14	0.97	31	0.1	0		9	8	0
STAUNTON WTP	54.1	31.6	42.9	-0.3	76	28	13	15	677	0	0	1	16	0	1.65	-1.60	0.51	31	1.2	1	14	10	5	0
WAYNESBORO WTP	55.2	30.5	42.9	0.6	77	26	15	16	677	0	0	1	19	0	2.10	-1.63	0.50	18	0.6	1	14	10	6	0
--DIVISIONAL DATA-----> SOUTHWESTERN MOUNTAIN 06			42.7	-1.0B											2.33	-1.25B								
ABINGDON 3S	57.3	32.5	44.9	0.4	76	26	13	17+	617	0	0	1	17	0	4.52	0.48	1.46	02	T	0		13	9	1
BIG STONE GAP	57.2	31.1	44.2	-1.5	75	31+	13	17	638	0	0	1	21	0	4.82	0.13	0.86	02	T	0		14	11	0
BLACKSBURG NWSO	53.8	31.2	42.5	0.9	74	28	11	16+	690	0	0	1	18	0	3.10	-0.54	0.66	31	1.0	1	15	13	7	0
BURKES GARDEN	50.4	28.3	39.3	0.2	69	28	5	16	791	0	0	3	20	0	5.22	1.20	1.20	02	6.1	4	15	14	10	2
CHRISTIANSBURG	53.3	32.5	42.9	-0.4	73	28	10	16+	677	0	0	2	16	0	2.89	-0.39	0.75	31	1.0	1	15	12	7	0
CLINTWOOD 1 W	57.2	28.9	43.0	0.6	77	28+	11	17	674	0	0	1	21	0	3.13	-0.74	0.88	02	3.0	1	15	14	9	0
COPPER HILL	51.3	30.7	41.0		71	29+	6	16	737	0	0	2	18	0	2.32		0.41	18	1.1	1	15	12	6	0
GALAX WTP	54.8	31.6	43.2	2.4	70	30+	13	16+	670	0	0	1	18	0	2.98		1.20	31	T	0		11	10	1
GRUNDY	57.5	31.2	44.3	0.6	77	28	14	17+	635	0	0	1	18	0	3.09	-0.34	0.71	02	0.4	T	15	16	9	0
JOHN FLANNAGAN LAKE	M	M	M		77	27	15	16+	556E	0	0	1	12	0	MA 3.10		0.76	02	1.1	1	15	11	7	0
LEBANON	56.6	31.2	43.9	0.7	76	26	12	17+	650	2	0	1	19	0	4.42	0.58	1.13	02	1.0	1	15	16	10	1
NORA 4 SSE	53.6	34.1	43.9	2.5	70	28+	10	16+	647	0	0	2	16	0	3.58	-0.32	1.07	02	3.5	2	15	14	11	1
PULASKI 2 E	54.5	31.9	43.2	0.3	74	28	11	16+	670	0	0	1	18	0	3.35	0.16	1.12	31	0.9	1	15	11	7	1
RADFORD 3 N	53.9	31.7	42.8	1.9	73	28	12	16+	681	0	0	1	17	0	3.51	0.53	1.05	31	1.0	1	15	12	8	1

VIRGINIA  
201703

## MONTHLY STATION AND DIVISION SUMMARY

STATION	TEMPERATURE (°F)											PRECIPITATION (IN)												
	AVERAGE MAXIMUM	AVERAGE MINIMUM	AVERAGE	DEPARTURE FROM NORMAL	HIGHEST	DATE	LOWEST	DATE	HEATING DEG. DAYS	COOLING DEG. DAYS	NO. OF DAYS				TOTAL	DEPARTURE FROM NORMAL	GREATEST 24 HOURS	DATE	ICE PELLETS, SNOW			NO. OF DAYS		
											MAX		MIN						TOTAL	MAX DEPTH ON GROUND	DATE	.10 OR MORE	.50 OR MORE	1.00 OR MORE
											>=90	<=32	<=32	<=0										
RICHLANDS	57.0	29.8	43.4	1.3	75	26	11	17+	661	0	0	1	20	0	3.85	-0.09	0.98	02	T	T	16	15	8	0
SALTVILLE 1N	58.2	30.9	44.5	0.7	75	30+	15	17+	626	0	0	1	18	0	4.92	1.06	1.19	02	0.2	1	15	12	9	1
STAFFORDSVILLE 3 ENE	54.4	31.2	42.8	0.1	76	28	11	16	679	0	0	1	18	0	4.07	0.64	1.07	31	1.6	2	14	12	8	1
WILLIS														MA 2.63		0.93	31	M 0.0	0			7	6	0
WISE 1SE	55.0	34.0	44.5	-0.2	72	28+	11	16+	629	0	0	2	18	0	4.40	0.28	0.87	02	4.7	3	15	15	10	0
WYTHEVILLE	53.9	31.7	42.8	1.7	73	30+	10	16+	679	0	0	1	17	0	3.90	0.66	0.87	02	1.4	1	14	12	7	0
--DIVISIONAL DATA----->			43.2	-0.1B											3.78	-0.28B								

VIRGINIA  
201703

## DAILY PRECIPITATION (INCHES)

STATION	TOTAL	DAY OF MONTH																																
		01	02	03	04	05	06	07	08	09	10	11	12	13	14	15	16	17	18	19	20	21	22	23	24	25	26	27	28	29	30	31		
<b>VIRGINIA</b>																																		
<b>TIDEWATER 01</b>																																		
DISPUTANTA	2.80	0.32	0.33						0.04					1.36						0.57	0.09	0.01										0.08		
EMPORIA 1 WNW	A 2.73	T	0.43					0.03	*	*	*	*	*	1.65 <sub>a</sub>					0.15	0.25		T	0.02								0.20		T	
FREDERICKSBURG SEWAGE	A 2.27	0.23	0.14					0.08		T			*	0.35 <sub>a</sub>	0.17			*	1.13 <sub>a</sub>					*	*	*	0.01 <sub>a</sub>	0.02	0.08		0.06			
HOLLAND 1 E	4.12		0.04	0.55									0.46	0.12	0.73	0.05	0.05		0.09	0.22		0.04									0.01	1.76		
HOPEWELL	4.20	0.03	0.22					0.06					1.80					0.06	0.90					0.03					0.15	0.07		0.88		
NORFOLK INTL AP	4.61	0.28	0.01	T			T	0.02		T			0.69	1.29		T	0.09	0.42			T	T							0.17			1.64		
NORFOLK S	5.19	0.32	0.02	T				0.04		T			0.50	1.43		T	0.11	0.42			T	T							0.27			2.08		
NORTH	3.06	0.08	0.11						0.14					2.30						0.43														
PAINTER 2W	3.90	0.06	0.09	0.03					0.15	0.04				2.02				0.01	0.28											0.04		1.18		
STONY CREEK 2 N	4.13	0.40					0.04			0.01			1.61			0.01	0.42			0.04									0.01	0.07		1.52		
SUFFOLK LAKE KILBY	5.44	0.45	0.07					T	0.02				0.46	1.36		T	0.08	0.03			0.02	0.02							0.12		2.81			
WAKEFIELD 1NW	5.62	0.33		T				0.01	0.05		T		0.91	1.50		0.40	0.05	0.15			0.01								0.11		2.10			
WALKERTON 2 NW	4.72	0.25	0.11			0.09				0.02				1.96				0.62			0.02								0.52		1.13			
WALLACETON LK DRUMMOND	M	-	-	-	-	-	-	-	-	-	-	-	-	-	-	-	-	-	-	-	-	-	-	-	-	-	-	-	-	-	-	-		
WALLOPS ISLAND NASA TEST FACIL	3.38	0.07		T				T	0.04	0.04			0.32	1.16		0.01	0.03	0.12				T							T		1.59			
WARSAW 2 NW	3.01	0.18						0.06		0.04			0.93					0.88											0.01		0.91			
WEST POINT 2 NW	4.23	0.02	0.14	T				0.06					0.01	2.17				0.02	0.69	0.01							T	T	0.12	0.06	0.93			
WILLIAMSBURG 2 N	5.15	0.25						0.01	0.09				0.42	2.06				0.19	0.40									0.05			1.68			
<b>EASTERN PIEDMONT 02</b>																																		
ALBERTA 5N	2.27	0.03	0.37					0.02			T			1.26	0.02			0.11	0.21			0.06	T					T	0.02	0.06	0.11			
AMELIA COURTHOUSE 1	3.33	0.16	0.24	T				0.05			0.03		T	0.97				1.10	0.09			0.01							0.22	0.12	0.34			
ASHLAND	2.97	0.10	0.13	T			T	T		0.03			0.03	1.10				0.08	0.43					T			T	0.06			1.01			
BREMO BLUFF	1.80	0.05	0.19					0.05					1.08	0.21		*	*	0.05	0.01									0.03		0.10	0.03			
BUCKINGHAM	A 2.19	0.05	0.17					0.03			T		*	*	*	*	*	1.42 <sub>a</sub>				0.02						0.33	T	0.17				
CAMP PICKETT	2.37		0.46					0.05					1.05					0.35				0.05							0.09	0.08	0.24			
CHASE CITY	2.96	0.02	0.52					0.02					0.54					0.24				0.06						0.04	0.18	1.21	0.13			
CLARKSVILLE	M 2.41		0.55					0.05					0.47	-	-		-	0.26	0.60									0.10	0.08	0.10	0.20			
CORBIN	M 2.25	0.25	0.08	T							0.07		0.55	T			-	-	0.98									0.02		0.15	0.15			
CROZIER	1.87	0.12	0.30								0.10		0.75					0.04										0.22	0.12		0.22			
FARMVILLE 2 N	1.96	T	0.40					T			0.05		0.45				0.50	0.24			T	T					0.11	T	0.18		T			
JOHN H KERR DAM	2.03		0.54					0.01					0.66	0.01			0.20	0.22				0.03	0.01					0.02	0.06	0.01	0.26			
KEYSVILLE 2 S	2.06	0.06	0.35					0.02					0.17				0.18	0.16										0.02	0.12	0.96	0.02			
LOUISA	3.39	0.37	0.02				0.07	0.07		0.01			0.02	0.93				0.06	0.56			0.01						0.05	0.24	0.02	0.96			
PALMYRA 3S	2.87	0.14	0.15					0.07					T	1.16				0.03	0.35									0.06	0.12	0.04	0.75			
PETERSBURG	4.88	0.26							0.03				1.82					0.12	0.55	0.03									0.90		1.17			
RICHMOND INTL AP	3.68	0.11		T			T	0.06		0.01			0.58	1.06		0.02		0.08	0.19			T					T	0.11		0.01	1.45			
WINTERPOCK 4 W	2.09	0.07	0.29						0.03					1.30	0.09			0.06	0.21										T	0.04		T		
<b>WESTERN PIEDMONT 03</b>																																		
ALTAVISTA	2.09	0.12	0.26					0.07						0.97					0.23	0.02			0.02						0.15	0.05	0.15	0.05		
APPOMATTOX	2.68	0.28	0.25					0.07		0.01	T			0.88					0.15	0.07			0.07					0.22	0.16	0.21	0.31			

VIRGINIA  
201703

## DAILY PRECIPITATION (INCHES)

STATION	TOTAL	DAY OF MONTH																														
		01	02	03	04	05	06	07	08	09	10	11	12	13	14	15	16	17	18	19	20	21	22	23	24	25	26	27	28	29	30	31
BEDFORD 4 NW	2.58	0.17	0.19					0.21		T				0.50				0.27	T		0.02						0.17	0.32	0.04		0.69	
BROOKNEAL	2.62	0.08	0.32					0.04						0.66				0.20	0.25								0.17	0.21	0.01		0.68	
CHARLOTTESVILLE 2W	2.31	0.19	0.13						T		0.03			0.77				0.05	0.18		0.01						0.12	0.28	0.11		0.36	
CHATHAM	3.23	0.04	0.40					0.01						0.65				0.42	0.08		0.05						0.21	0.50	0.47		0.40	
CONCORD 4 SSW	2.30	0.11	0.24					0.06						0.90	0.02			0.16	0.01		0.04						0.20	0.18	0.03		0.35	
DANVILLE RGNL AP	2.65	0.51							T				0.28	0.24			0.27	0.06		T	T	T				0.15	0.22			T	0.87	
FREE UNION	2.24	0.19	0.12					0.11			0.02			0.80	T			0.07	0.07		0.02					T	T				0.39	
HOLCOMB ROCK	3.09	0.15	0.22					0.27						0.55	0.18			0.20	T		T						0.40	0.41	0.06		0.65	
HUDDLESTON 4 SW	2.62	0.12	0.27					0.07						0.59				0.32	0.02		0.07						0.24	0.28	0.30		0.34	
LYNCHBURG INTL AP	2.66	0.27					0.09	T			T			0.43	0.32			0.21	0.12		0.04	0.01				0.10	0.03	0.23		T	0.81	
MARTINSVILLE FLTR PLT	3.02	0.03	0.38					0.05		0.01				0.63	0.02			0.35									0.21	0.33	0.08	0.01	0.92	
MEADOWS OF DAN 5 SW	4.12	0.09	0.33					0.14		0.09				0.25				0.20									0.99	1.12		0.03	0.88	
MONTEBELLO FISH CULTURAL STN	M	0.24	0.46							0.31		0.05		-	-	-	-	-	-	-	-	-	-	-	-	-	-	-	-	-	-	
MONTICELLO	M	-	-	-	-	-	-	-	-	-	-	-	-	-	-	-	-	-	-	-	-	-	-	-	-	-	-	-	-	-	-	
PEDLAR DAM	2.86	0.18	0.15		T			0.19			T			0.68	T			0.18	T		T						0.33	0.50	0.19		0.46	
ROCKY MT	3.08	0.13	0.25	T				0.09			T			0.43	0.02			0.25	0.20		0.06						0.19	0.45	0.16	0.11	0.74	
SOUTH BOSTON	2.30	0.02	0.58					0.03						0.52	0.01			0.31	0.22		0.04						0.08	0.17	0.25		0.07	
STUART	3.23	0.04	0.47					0.06			T			0.27				0.28									0.60	0.25		0.05	1.21	
WOOLWINE	3.60	0.07	0.19					0.07			0.15			0.28	T			0.28									0.43	0.64	0.03	0.02	1.44	
<b>NORTHERN 04</b>																																
FRONT ROYAL	MA 1.82	0.15		0.25				0.03	0.26		0.09			-	-			0.07	0.45	0.02		*	0.00 <sub>a</sub>			0.18	0.08	0.02	0.22			
LINCOLN	MA 3.15	*	*	*	*	*	*	*	*	*	*	*	*	*	*	*	*	*	*	*	*	*	*	*	*	*	1.65 <sub>a</sub>	*	*	1.50 <sub>a</sub>		-
LURAY 5 E	2.22	0.33	0.02					0.01	0.22		0.03			0.53				0.14	0.28						0.06	0.03	0.02	0.10	0.05	0.40		
MANASSAS	M 3.00	0.40	0.10	T	-			0.15			0.10			0.10				1.00	0.75		0.05					0.05	0.05	0.25		-		
MT WEATHER	2.35	0.21	0.04	T				0.03	0.20					0.78	0.02			0.02	0.60		0.03					0.09	0.11	0.02	0.20		T	
PIEDMONT RSCH STN	A 2.79	0.23	0.24					0.08			0.02			0.85				0.37			0.01					*	0.08 <sub>a</sub>	0.22	0.28		0.41	
SOMERSET	3.71	0.20	0.30					0.12			T	0.02		0.83				0.01	0.37		0.03					0.03	0.09	0.40	0.28		1.03	
SPERRYVILLE	A 1.87	0.27	0.02		T			T	0.20				*	0.73 <sub>a</sub>	T			0.17	0.25		T						0.05	0.01	0.17			
STERLING (RCS)	3.90	0.36	0.01	T	T			T	0.22		0.14			1.09	0.02	T		0.04	0.57		0.03	0.04				0.16	0.04	0.04	0.93		0.21	
VIENNA	2.56	0.29	0.09	0.01				0.01	0.11		0.01			1.12				0.03	0.39		0.01					0.13	0.04	0.01	0.20		0.11	
WASHINGTON DULLES INTL AP	4.12	0.01	T	T			T	0.18	0.01		0.08			0.27	0.84		0.03	0.34	0.09		0.01				0.14	0.02	0.04	0.51	T		1.55	
WASHINGTON REAGAN NATL AP	3.19	0.02	0.01	T			T	0.07	0.01		0.09			0.34	0.89		0.01	0.37	0.26		T			0.13	T	0.01	0.02	T		0.96		
WINCHESTER	2.78	0.23	0.08	0.01				0.08	0.13		0.07	0.08		0.77	0.06			0.06	0.52		T					0.19	0.20	0.12	0.14		0.04	
WINCHESTER 7 SE	M 1.82	-					0.06	0.14			0.10			0.57			0.03	0.52			-						0.20	0.01	0.19			
WOODSTOCK 2 NE	A 2.59	0.20	0.01					0.02	0.16		0.07			0.89				0.25	0.21						*	0.05 <sub>a</sub>	0.20	0.18	0.05		0.30	
<b>CENTRAL MOUNTAIN 05</b>																																
BUENA VISTA	1.96	0.15	0.18						0.15					0.55				0.17			T						0.08	0.40	0.10		0.18	
COVINGTON FLTR PLT	2.15	0.22	0.48						0.04		0.01			0.41				0.37	0.09		0.06					0.04	0.02				0.41	
DALE ENTERPRISE	1.94	0.33	0.15					0.03	0.17					0.38				0.17	0.04		0.02					0.40	0.06	0.15		0.04		
GATHRIGHT DAM	2.63	0.25	0.31	T				0.01	0.14					0.45	0.01			0.55			0.10					0.23	0.08			0.50		
GLASGOW 1 SE	2.55	0.17	0.15		T				0.19			T		0.65	T			0.23	T		0.07					0.12	0.35	0.11		0.51		
HOT SPRINGS	2.85	0.26	0.33						0.20					0.46				0.50	0.04		0.13					0.20	0.12	0.16		0.45		

VIRGINIA  
201703

## DAILY PRECIPITATION (INCHES)

STATION	TOTAL	DAY OF MONTH																														
		01	02	03	04	05	06	07	08	09	10	11	12	13	14	15	16	17	18	19	20	21	22	23	24	25	26	27	28	29	30	31
LEXINGTON	2.51	0.23	0.31					0.20						0.54				0.28	0.07		0.03							0.17	0.31	0.10		0.27
MILLGAP	2.56	0.34	0.14	0.02	0.01			T 0.24						0.46	0.02	T		0.34	0.20		0.01							0.50	0.04	0.04		0.20
MTN GROVE	M 3.43	0.28	-					T 0.38		T				0.50	T			0.70			0.13							0.25	0.15	0.08		0.96
MUSTOE 1 SW	3.71	0.17		0.14			T	0.26		T			0.18	0.39		T	0.42	0.20	T	0.04						0.28	0.36	0.12		T	1.15	
NEW CASTLE	1.86	0.20	0.11						0.09	T				0.40				0.37	0.02		0.04							0.11	0.02	0.02	0.02	0.46
ROANOKE 8 N	1.78	0.15	0.23					T 0.19						0.33	T			0.26			0.04							0.05	0.26	0.05		0.22
ROANOKE INTL AP	2.32	0.18		T			T	0.16	T				0.15	0.13	T		0.25	0.10			T					0.07	T	0.31		T	0.97	
STAUNTON WTP	1.65	0.18	0.11	T				T 0.09						0.44	T			0.09	0.02		0.02							0.11	0.08			0.51
WAYNESBORO WTP	2.10	0.35						0.30						0.13				0.50	0.05		0.05							0.07	0.37	0.08		0.20
<b>SOUTHWESTERN MOUNTAIN 06</b>																																
ABINGDON 3S	4.52	0.50	1.46						0.37	0.43	0.08			0.25	0.02			0.30			0.08							0.18	0.10	0.03		0.72
BIG STONE GAP	4.82	0.67	0.86	T				0.60	0.70	0.10	0.01			0.49	0.03			0.32			0.11					0.08	0.10	0.35			0.40	
BLACKSBURG NWSO	3.10	0.39	0.59	T	0.01			T 0.18		T				0.35	0.01			0.45	0.18		0.07						0.08	0.05	0.08	T	0.66	
BURKES GARDEN	5.22	0.83	1.20	T	T			0.29	0.24	0.04				0.23	0.08			0.73	0.14		0.04				0.17	0.06	0.14	T		1.03		
CHRISTIANSBURG	2.89	0.45	0.43					0.15	0.02	0.02				0.25	T			0.48	T		0.12						0.05	0.09	0.08		0.75	
CLINTWOOD 1 W	3.13	0.11	0.88	0.03	T			0.02	0.41	0.20	0.08			0.40	0.07	T		0.35	T		T						0.13	0.10	0.03		0.32	
COPPER HILL	2.32	0.28	0.34					0.08	0.01					0.29	0.06			0.41			0.08						0.06	0.39	0.07		0.25	
GALAX WTP	2.98	0.14	0.55					0.12	0.16					0.20	0.11			0.10			0.04						0.18	0.18			1.20	
GRUNDY	3.09	0.49	0.71	0.01	0.01			0.03	0.43	0.07	T			0.19	T			0.29	0.07		0.01						0.25	0.17	0.14	0.01	0.21	
JOHN FLANNAGAN LAKE	MA 3.10	0.53	0.76	0.01	*		* 0.00 <sub>a</sub>	0.03	0.41	0.09	*		* 0.00 <sub>a</sub>	0.31	0.15		*	*	*	0.30 <sub>a</sub>	0.03				*	*	0.10 <sub>a</sub>	-	0.11		0.27	
LEBANON	4.42	0.48	1.13	0.01				0.01	0.31	0.47	0.08			0.22	0.10			0.20	T	0.05	0.05						0.22	0.50	0.02		0.57	
NORA 4 SSE	3.58	0.37	1.07	0.03	T			0.01	0.37	0.30	0.10			0.34	0.11	T		0.16	T		T						0.34	0.19	0.01		0.18	
PULASKI 2 E	3.35	0.56	0.54					T 0.25	0.02	0.02				0.27	T			0.38	T		0.04						0.10	0.03	0.04		1.12	
RADFORD 3 N	3.51	0.42	0.50					0.09	T 0.10					0.41	T			0.51	0.20		0.02						0.05	0.11	0.05		1.05	
RICHLANDS	3.85	0.38	0.98	T				0.36	0.19	0.08				0.18	0.03	T		0.38	0.06	0.03	0.02						0.50	0.60	0.04		0.02	
SALTVILLE 1N	4.92	0.59	1.19		T			0.27	0.50					0.22	0.02			0.72	0.07		0.02						0.21	0.16			0.95	
STAFFORDSVILLE 3 ENE	4.07	0.41	0.80		T			0.28			0.04			0.32	T			0.60	0.26		0.12						0.04	0.07	0.06		1.07	
WILLIS	MA 2.63	0.22	0.31					0.09	0.14	T				*	0.44 <sub>a</sub>			-			T							0.24	0.26	T		0.93
WISE 1SE	4.40	0.33	0.87	0.03			0.04	0.48	0.42	0.06				0.44	0.06	T		0.20			0.18					0.02	0.14	0.47			0.66	
WYTHEVILLE	3.90	0.79	0.87		0.02			0.01	0.27	0.20				0.23	0.05			0.56	T		0.05							0.07				0.78





VIRGINIA  
201703

## DAILY TEMPERATURES (°F)

STATION	OB. TIME	MAX/MIN	DAY OF MONTH																															AVERAGE
			01	02	03	04	05	06	07	08	09	10	11	12	13	14	15	16	17	18	19	20	21	22	23	24	25	26	27	28	29	30	31	
BREMO BLUFF	07	MIN	53	43	27	20	23	26	48	49	39	39	24	25	23	30	19	18	21	41	34	27	45	43	28	31	55	50	48	59	55	42	46	36.5
		MAX	70	79	57	49	51	52	62	70	70	74	59	51	51	50	49	41	50	54	70	55	62	72	55	56	71	80	72	80	75	75	60	62.0
CAMP PICKETT	08	MIN	34	45	22	16	16	19	22	52	40	34	20	20	22	20	18	18	17	16	36	25	24	44	21	19	28	48	44	46	49	45	45	29.8
		MAX	73	78	50	49	48	47	65	71	68	72	63	48	46	44	49	37	46	54	66	51	60	70	55	52	70	74	74	77	74	71	60	60.1
CHASE CITY	17	MIN	42	35	22	23	23	26	26	51	40	42	26	27	25	25	21	20	20	20	41	21	27	46	26	29	33	52	54	58	53	49	48	33.9
		MAX	72	78	56	51	51	49	65	69	68	72	66	51	49	45	52	41	48	54	65	54	61	73	58	53	68	73	73	76	73	72	64	61.3
CLARKSVILLE	07	MIN	45	45	31	27	29	30	30	53	36	38	33	33	30	30	26	25	24	24	37	31	31	45	29	29	34	50	51	57	51	52	52	36.7
		MAX	74	79	58	51	53	50	67	71	69	74	68	51	51	35			48	56	66	56		76		61	70	74	75	78	77	76	66	64.1
CORBIN	09	MIN	46	45	30	26	26	29	29	52	43	50	34	31	29	30			22	22	42	29		31		31	36	52	52	59	52	52	53	38.3
		MAX	79	60	44	45	42	59	68	67	72	55	43	43	46	44	34	44	53	61	50	57	63	53	50	66	80	64	79	73	66	56	55	57.1
CROZIER	07	MIN	56	32	27	19	23	28	50	47	48	31	25	26	22	25	20	22	22	38	35	30	45	36	24	32	58	47	48	60	52	42	46	36.0
		MAX	69	78	54	48	47	44	63	68	67	71	51	46	45	45	48	37	46	53	64	52	55	65	50	51	68	78	67	77	75	68	56	58.3
FARMVILLE 2 N	07	MIN	50	43	25	10	19	23	27	51	45	46	10	24	25	24	19	20	21	21	38	15	28	47	24	30	32	52	49	49	55	47	47	32.8
		MAX	72	81	54	48	51	50	54	70	70	73	52	49	43	42	46	42	46	56	68	54	56	72	56	55	71	77	77	79	72	71	64	60.4
JOHN H KERR DAM	08	MIN	40	45	30	23	24	26	28	54	46	47	31	28	26	27	21	20	20	24	37	28	29	47	27	27	34	55	52	52	53	51	50	35.5
		MAX	74	74	59	52	52	50	66	72	71	75	69	51	48	43	53	39	49	55	65	53	63	76	60	55	68	75	74	77	77	74	66	62.4
KEYSVILLE 2 S	07	MIN	51	46	31	25	28	29	38	54	42	47	30	31	25	27	22	22	23	26	38	29	30	49	26	30	40	51	51	60	51	51	51	37.2
		MAX	72	78	54	47	49	48	67	71	67	73	56	47	48	45	50	36	45	53	69	54	61	72	55	53	69	75	75	78	75	72	62	60.5
LOUISA	18	MIN	42	45	29	23	23	26	27	51	44	43	26	27	26	26	21	19	18	22	40	29	29	44	28	28	32	51	52	57	54	52	50	35.0
		MAX	77	57	45	48	44	57	67	66	72	66	46	45	45	40	46	51	63	58	56	65	64	50	67	78	75	77	75	68	68	59	59.4	
PALMYRA 3S	06	MIN	52	42	27	15	17	22	41	48	36	40	18	21	18	31	19	20	17	37	37	24	42	43	19	28	56	44	48	58	47	43	44	34.0
		MAX	69	79	54	47	48	45	58	68	67	73	52	47	46	46	47	37	45	52	64	52	56	65	52	50	67	78	66	77	73	69	55	58.2
PETERSBURG	08	MIN	36	36	24	14	17	21	30	50	36	42	21	21	23	23	19	18	16	18	38	24	25	44	20	21	30	46	48	49	47	48	46	30.7
		MAX	80	57	50	48	45	66	71	67	67	55	49	45	45	51	38	47	56	65	52	57	67	55	51	70	77	75	78	73	68	59	69	59.8
RICHMOND INTL AP	24	MIN	47	29	25	26	29	30	51	41	41	28	28	25	30	22	23	22	22	40	30	29	47	28	32	32	55	52	57	55	44	44	51	36.0
		MAX	81	62	50	48	45	63	71	68	73	55	48	46	47	50	39	47	56	64	53	58	67	55	51	70	79	70	78	75	69	58	67	60.1
WESTERN PIEDMONT 03 APPOMATTOX	07	MIN	56	41	28	22	26	28	50	51	49	34	26	27	26	29	23	22	24	43	37	33	48	36	28	31	55	52	51	59	48	45	48	37.9
		MAX	70	76	52	46	49	45	61	66	66	71	59	47	48	43	48	35	45	54	66	56	61	74	55	52	67	73	73	76	73	72	59	59.3
BROOKNEAL	07	MIN	44	41	30	24	24	28	32	49	43	45	27	25	23	25	17	19	19	33	35	31	33	47	26	26	35	52	49	52	51	51	46	34.9
		MAX	73	78	53	47	51	48	66	70	68	73	64	44	48	46	49	37	45	54	68	57	62	75	58	54	69	76	76	79	74	75	62	61.3
CHARLOTTESVILLE 2W	08	MIN	37	43	27	21	21	36	52	33	35	26	26	24	27	21	18	19	20	32	27	27	42	23	24	29	41	41	52	44	44	50	31.7	
		MAX	68	75	51	43	47	45	53	65	66	72	47	46	46	49	43	36	44	53	66	51	57	68	49	51	69	80	59	77	74	70	54	57.2
CHATHAM	07	MIN	44	41	32	25	23	24	34	47	47	43	27	25	24	24	17	18	24	31	36	35	36	43	27	27	35	51	47	49	55	47	44	34.9
		MAX	72	78	57	52	52	48	65	69	67	74	68	49	48	44	51	38	46	55	67	58	63	76	59	52	68	76	74	77	73	72	61	61.6
DANVILLE RGNL AP	24	MIN	34	40	25	19	19	24	24	51	34	32	23	23	22	24	20	19	17	16	37	26	25	40	23	22	28	45	45	46	46	46	53	30.6
		MAX	78	60	50	52	51	66	71	69	73	67	51	49	45	49	38	48	55	70	59	64	75	60	55	69	75	77	76	74	74	63	73	62.5
FREE UNION	08	MIN	54	40	27	20	27	27	50	43	34	40	31	27	23	27	20	19	19	40	38	28	42	34	26	31	51	49	55	57	49	53	51	36.5
		MAX	67	75	53	45	49	45	53	66	67	72	51	47	49	47	46	37	45	50	66	56	58	69	53	51	69	80	60	78	77	72	54	58.3
LYNCHBURG INTL AP	24	MIN	33	42	29	19	18	19	28	42	40	39	23	24	22	23	18	19	20	35	26	26	42	21	20	33	46	48	49	46	47	45	31.0	
		MAX	75	58	44	49	46	61	66	66	71	62	47	49	44	47	34	42	52	68	56	60	72	57	51	68	75	72	76	75	72	59	65	59.3
		MIN	52	39	27	21	24	26	46	48	41	36	27	27	26	24	18	22	22	37	36	27	42	32	25	30	50	50	53	48	50	46	35.5	

VIRGINIA  
201703

## DAILY TEMPERATURES (°F)

STATION	OB. TIME	MAX/MIN	DAY OF MONTH																															AVERAGE	
			01	02	03	04	05	06	07	08	09	10	11	12	13	14	15	16	17	18	19	20	21	22	23	24	25	26	27	28	29	30	31		
MARTINSVILLE FLTR PLT	07	MAX	70	74	54	47	53	50	64	69	68	73	63	63	48	45	45	36	46	51	71	57	64	74	59	55	69	75	70	76	74	73	59	61.1	
		MIN	32	42	24	19	19	24	26	50	29	29	28	28	21	21	19	19	16	16	33	24	24	38	22	22	35	45	50	52	43	43	51	30.5	
MEADOWS OF DAN 5 SW	07	MAX	67	70	52	53	53	48	58	61	64	72	55	47	51	45	41	41	43	48	69	51	65	73	55	55	67	73	61	73	71	75	57	58.5	
		MIN	34	36	29	26	26	29	34	43	35	34	28	29	28	29	16	15	18	18	37	28	29	43	28	28	41	45	54	54	48	47	49	33.5	
MONTEBELLO FISH CULTURAL STN	07	MAX	62	68	45	36	43	43	55	58	59	65	49	40																				M	
		MIN	33	35	27	18	16	22	37	38	37	38	19	19																				M	
MONTICELLO	07	MAX																																M	
		MIN																																M	
ROCKY MT	07	MAX	69	70	52	43	52	50	63	66	66	73	59	47	59	44	42	33	43	50	69	54	68	71	58	56	70	76	68	77	73	75	56	59.7	
		MIN	33	42	31	23	22	24	27	48	42	44	29	29	24	24	17	16	22	22	39	26	26	44	24	24	41	53	52	57	47	48	48	33.8	
SOUTH BOSTON	07	MAX	75	79	60	54	54	51	68	72	71	76	70	53	51	47	55	43	50	59	69	59	65	78		54	70	77	77	78	76	74	66	64.4	
		MIN	41	45	31	27	27	29	29	53	39	41	31	33	27	26	25	25	23	23	43	32	32	45	29	29	32	51	51	60	50	50	55	36.6	
STUART	07	MAX	68	73	56	48	55	50	62	65	68	73	61	51	53	46	45	37	47	50	70	56	67	78	60	60	69	73	63	75	76	71	57	60.7	
		MIN	37	38	30	21	24	25	33	45	33	35	28	32	23	23	19	18	18	19	39	28	29	45	27	26	43	52	52	54	47	47	50	33.5	
<b>NORTHERN 04</b>																																			
FRONT ROYAL	06	MAX	63	75	47	38	40	42	48	63	63	69	42	37	42	38	37	37	37	46	50	47	52			48	60	78	58	72	65	65	52	52.1	
		MIN	40	42	11	22	19	19	29	44	44	41	24	22	21	22	23	21	21	22	34	32	36			25	35	49	47	46	53	46	44	32.2	
LINCOLN	07	MAX																									78	72	73	72	64	61		M	
		MIN																								46	43	43	43	54	37			M	
LURAY 5 E	08	MAX	66	74	46	32	41	44	55	63	63	68	42	37	42	46	39	30	38	48	60	46	54	63	47	51	69	77	61	77	68	66	52	53.7	
		MIN	48	39	29	19	14	20	38	44	41	37	22	21	18	25	15	18	19	30	37	27	27	36	19	23	36	48	49	49	52	45	45	31.9	
MANASSAS	07	MAX	70	77	50		40	40	53	70	68	74	45	39	42	44	38	32	40	50	59	50	55			49	64	81	49	79	74	66	54	55.4	
		MIN	44	44	31		20	22	30	46	43	36	24	24	21	21	20	22	24	24	34	33	30			24	24	34	46	46	46	57	44	44	33.0
MT WEATHER	07	MAX	61	68	44	35	38	37	46	58	60	66	38	32	38	42	30	26	35	44	51	44	49	57	43	45	62	73	44	67	67	60	49	48.7	
		MIN	41	38	26	20	16	15	27	41	42	38	20	19	17	18	13	14	21	27	31	31	32	34	21	21	31	43	42	42	43	39	39	29.1	
PIEDMONT RSCH STN	08	MAX	67	74	50	44	45	43	53	65	65	70	47	42	43	47	43	35	43	50	63	51	55	63	43	49	79	66	53	77	73	67	53	55.4	
		MIN	47	44	30	20	22	24	31	50	43	42	22	23	23	24	18	19	24	29	36	29	32	43	30	30	34	47	48	48	51	43	43	33.8	
SOMERSET	08	MAX	68	75	50	50	46	42	54	66	66	72	47	43	45	46	44	35	44	52	62	51	56	63	50	68	79	53	77	75	67	53	56.4		
		MIN	41	44	28	19	23	25	31	36	46	41	22	24	22	23	19	20	22	25	36	27	28	42	22	28	39	49	48	49	48	44	44	32.7	
SPERRYVILLE	06	MAX	66	77	61	40	44	46	46	65	66	71	53	39			41	34	41	53	58	50	59	66	57	53	68	82	61	77	70	68	54	57.4	
		MIN	37	46	35	25	20	26	30	40	49	46	26	24			19	22	27	25	35	39	37	45	24	24	29	49	48	47	54	42	42	34.9	
STERLING (RCS)	07	MAX	67	75	48	40	41	38	53	68	66	71	43	36	40	44	37	30	39	48	56	50	53	61	46	48	62	79	48	75	70	63	53	53.2	
		MIN	39	43	29	16	19	19	28	43	48	42	24	22	19	19	20	21	22	34	33	34	39	24	23	35	46	45	45	54	43	42	31.9		
VIENNA	07	MAX	64	74	46	38	38	37	50	65	64	69	42	34	37	40	35	29	37	47	55	47	51	55	47	62	77	65	73	73	68	51	51	52.3	
		MIN	40	42	30	20	18	18	30	46	46	42	22	22	20	20	18	18	22	22	31	31	31	30	21	22	36	44	43	44	51	43	41	31.1	
WASHINGTON DULLES INTL AP	24	MAX	75	60	41	42	39	53	68	66	71	56	38	41	46	37	31	39	50	57	51	54	62	59	48	62	78	62	75	71	65	53	48	54.8	
		MIN	53	30	27	18	19	24	43	48	43	28	24	23	17	22	19	23	20	36	34	31	44	33	21	33	55	46	45	53	48	41	43	33.7	
WASHINGTON REAGAN NATL AP	24	MAX	80	63	44	44	40	54	71	68	74	60	40	43	46	39	33	42	52	59	54	54	63	59	48	62	78	56	76	74	67	55	54	56.5	
		MIN	56	40	31	26	23	33	47	50	47	31	26	27	28	26	22	24	29	40	36	37	46	37	30	36	54	47	46	57	52	46	45	37.9	
WINCHESTER	07	MAX	64	73	46	37	41	43	50	59	64	69	41	35	42	46	37	30	38	46	57	50	54	60	47	51	66	78	48	71	69	68	52	52.6	
		MIN	37	39	28	21	17	19	31	41	45	35	22	22	18	18	17	18	21	22	34	34	33	33	22	22	35	47	45	46	52	41	42	30.9	
WINCHESTER 7 SE	08	MAX	74	48	39	43	41	50	61	64	69	44	36	43	45	36	30	42	46	54	54	54	54	48	50	64	76	49	71	67	64	52	52.3		

VIRGINIA  
201703

## DAILY TEMPERATURES (°F)

STATION	OB. TIME	MAX/MIN	DAY OF MONTH																															AVERAGE
			01	02	03	04	05	06	07	08	09	10	11	12	13	14	15	16	17	18	19	20	21	22	23	24	25	26	27	28	29	30	31	
WOODSTOCK 2 NE	07	MIN	40	29	17	13	12	26	41	42	40	22	21	14	13	17	18	17	20	34	27	26		27	16	16	29	47	49	46	52	35	43	28.3
		MAX	60	74	46	39	42	47	51	62	63	69	43	37	44	47	36	37	37	45	58	50	55	62				76	55	75	71	67	53	53.6
		MIN	33	40	28	20	17	17	30	43	46	36	23	21	18	19	16	19	20	20	33	28	34	36	22			47	46	46	51	40	43	30.8
CENTRAL MOUNTAIN 05 COVINGTON FLTR PLT	07	MAX	59	72	46	37	44	52	53	64	61	66	52	40	45	46	35	30	39	38	62	50	60	62	50	52	73	75	66	76	69	74	55	54.9
		MIN	29	29	29	20	20	22	29	38	32	32	25	25	23	28	14	14	19	18	29	29	29	39	23	23	35	44	44	51	44	44	49	30.0
DALE ENTERPRISE	07	MAX	59	69	56	38	43	43	52	61	63	68	50	39	44	45	38	31	38	45	60	50	53	63	49	48	67	75	63	76	71	63	52	53.9
		MIN	33	38	26	17	16	17	34	45	44	29	21	21	18	18	14	14	18	18	33	32	42	38	16	17	35	45	47	50	48	46	46	30.2
GATHRIGHT DAM	07	MAX	57	70	44	35	42	52	51	61	59	66	52	39	43	46	34	28	37	37	60	48	60	63	48	51	74	76	68	75	70	73	54	54.0
		MIN	31	37	31	19	19	22	30	39	38	37	23	23	23	25	13	13	18	18	31	29	28	40	23	22	35	45	45	53	46	46	48	30.6
HOT SPRINGS	07	MAX	59	70	42	33	42	52	51	60	58	65	51	39	43	45	33	27	35	38	59	46	59	62	46	49	72	74	66	73	66	70	52	52.8
		MIN	31	35	28	19	20	21	30	36	35	38	20	20	20	23	10	10	17	17	31	28	28	38	21	21	37	45	46	52	45	44	47	29.5
LEXINGTON	07	MAX	64	74	49	40	49	49	55	64	64	70	57	45	49	47	42	33	43	46	64	55	60	69	54	52	69	76	68	77	75	74	55	57.7
		MIN	31	41	33	22	22	25	28	45	42	38	24	24	20	25	16	16	18	18	37	25	25	45	22	22	33	46	47	53	46	46	48	31.7
MILLGAP	06	MAX	58	63	37	28	37	51	51	55	55	61	47	33	37	44	33	23	32	34	54	41	58	59	42	50	72	70	63	71	64	68	49	49.7
		MIN	22	33	25	20	12	12	26	38	36	27	18	16	13	14	8	8	9	7	32	24	21	39	10	10	26	34	34	46	44	41	45	24.2
MUSTOE 1 SW	24	MAX	63	44	28	36	48	49	53	55	61	48	32	38	42	33	23	30	33	53	41	57	59	44	47	69	69	64	70	63	68	49	57	49.2
		MIN	43	28	18	17	15	24	36	32	33	25	18	16	14	12	9	17	11	30	31	24	35	23	23	26	43	45	48	48	43	43	45	28.2
ROANOKE 8 N	07	MAX	66	79	51	42	50	49	60	63	64	70	56	46	50	45	41	34	41	50	65	55	66	68	55	53	71	75	75	79	79	74	54	58.9
		MIN	34	41	36	26	26	27	30	44	43	43	29	29	29	27	16	16	23	24	39	29	29	45	27	27	39	49	49	55	50	50	48	34.8
ROANOKE INTL AP	24	MAX	75	54	42	50	49	60	65	65	71	59	46	50	47	41	33	42	50	67	55	66	70	58	53	71	75	67	80	72	74	61	68	59.2
		MIN	49	38	30	27	26	30	49	46	48	35	27	30	27	21	16	24	25	38	37	32	47	37	30	37	54	52	54	58	53	49	49	37.9
STAUNTON WTP	08	MAX	62	71	46	38	44	44	52	61	60	68	41	42	42	44	38	31	39	44	63	51	57	69	50	49	66	75	65	76	71	67	51	54.1
		MIN	35	37	28	21	19	19	40	42	44	40	22	22	20	21	13	14	20	25	34	28	31	38	21	23	40	48	48	48	49	46	44	31.6
WAYNESBORO WTP	07	MAX	64	73	47	38	44	44	57	63	64	68	47	42	47	44	38	32	40	47	64	50	59	68	46	50	69	77	63	74	72	67	54	55.2
		MIN	35	40	27	19	18	19	30	45	27	27	23	22	25	23	16	15	19	19	37	27	26	44	21	20	40	47	48	51	45	45	45	30.5
SOUTHWESTERN MOUNTAIN 06 ABINGDON 3S	22	MAX	65	65	48	41	51	62	60	65	59	65	46	40	48	54	36	29	41	45	61	45	58	72	53	63	72	76	72	74	63	74	72	57.3
		MIN	35	35	30	20	20	27	40	36	30	38	27	26	27	30	15	13	13	22	35	21	25	40	31	31	42	50	49	51	45	47	55	32.5
BIG STONE GAP	08	MAX	61	64	49	42	54	63	59	61	61	66	48	42	48	54	36	30	42	44	62	50	58	55	54	64	72	75	71	74	64	75	75	57.2
		MIN	34	34	30	22	24	28	28	30	31	28	26	23	23	18	14	13	26	36	27	27	27	27	28	43	47	50	50	49	47	47	47	31.1
BLACKSBURG NWSO	07	MAX	62	68	46	38	43	53	55	59	60	65	48	42	45	43	33	28	38	42	59	48	63	64	50	54	69	70	60	74	66	72	51	53.8
		MIN	30	35	31	22	22	25	31	39	34	39	23	23	23	24	11	11	17	18	34	25	28	41	23	26	41	44	51	51	50	50	45	31.2
BURKES GARDEN	07	MAX	64	61	41	33	41	56	54	61	53	59	44	34	40	42	31	20	31	45	53	40	57	60	45	53	65	67	61	69	58	67	58	50.4
		MIN	27	29	26	17	17	26	34	35	32	34	18	18	17	26	6	5	13	13	29	22	25	36	19	27	43	46	49	47	48	43	49	28.3
CHRISTIANSBURG	07	MAX	64	67	45	37	43	53	55	57	59	64	48	41	44	44	32	27	37	44	60	46	64	63	50	53	66	69	60	73	64	71	52	53.3
		MIN	35	35	30	22	22	31	35	38	38	41	24	23	23	24	10	10	18	22	33	28	29	41	26	26	42	49	54	53	51	50	46	32.5
CLINTWOOD 1 W	07	MAX	67	66	47	40	51	65	58	63	60	68	48	39	44	57	34	29	38	46	62	45	61	65	50	64	72	77	71	77	64	68	76	57.2
		MIN	32	32	28	19	21	23	39	32	28	28	23	23	20	20	16	12	11	22	36	24	24	38	22	22	38	44	43	50	41	41	28.9	
COPPER HILL	07	MAX	62	67	43	33	41	44	57	56	57	64	48	37	41	38	31	24	34	46	59	44	58	64	49	46	65	69	56	71	71	66	48	51.3
		MIN	42	32	29	20	20	20	38	38	37	40	20	20	21	20	8	6	15	23	32	27	27	40	26	25	37	49	49	53	49	47	42	30.7

VIRGINIA  
201703

## DAILY TEMPERATURES (°F)

STATION	OB. TIME	MAX/MIN	DAY OF MONTH																															AVERAGE
			01	02	03	04	05	06	07	08	09	10	11	12	13	14	15	16	17	18	19	20	21	22	23	24	25	26	27	28	29	30	31	
GALAX WTP	07	MAX	61	70	48	48	50	50	55	58	59	67	51	42	47	42	37	28	40	44	61	46	67	70	52	51	66	68	58	70	66	70	56	54.8
		MIN	31	36	33	21	23	23	35	40	31	31	27	27	25	27	13	13	17	18	35	26	25	44	24	24	40	44	53	51	47	48	48	31.6
GRUNDY	07	MAX	67	64	48	41	49	65	59	66	62	68	68	40	45	55	34	30	40	46	62	44	57	64	50	64	65	76	65	77	64	70	76	57.5
		MIN	35	39	30	21	21	25	39	35	29	30	25	24	23	23	16	14	14	25	35	26	26	38	25	25	42	45	45	49	52	45	45	31.2
JOHN FLANNAGAN LAKE	07	MAX	67	67	50			68	58	63	63	69				57	34	29			63	61	68	54	68			77		63	74	74	M	
		MIN	34	35	31			21	41	35	30	29			23	23	15	15			27	26	41	25	25			47		52	45	45	M	
LEBANON	07	MAX	63	69	48	39	51	62	60	67	61	65	47	39	45	53	36	24	40	48	61	43	60	69	50	63	72	76	74	75	63	73	58	56.6
		MIN	35	22	31	18	19	23	42	34	29	29	25	25	23	27	13	12	12	21	33	24	23	40	24	29	44	47	59	48	52	47	56	31.2
NORA 4 SSE	07	MAX	59	60	45	39	50	60	53	61	58	63	45	37	43	49	31	25	36	46	60	40	59	67	47	59	67	70	65	70	61	67	69	53.6
		MIN	48	30	27	22	24	40	44	38	37	44	21	22	20	31	10	10	14	30	30	30	33	36	29	32	46	54	52	51	50	49	54	34.1
PULASKI 2 E	07	MAX	64	68	46	38	47	56	57	61	60	65	47	39	47	46	34	28	39	45	54	46	63	65	50	54	69	71	62	74	67	72	55	54.5
		MIN	30	29	31	22	21	27	35	39	36	40	24	25	21	30	11	11	17	19	34	26	27	40	20	21	45	52	54	53	50	50	48	31.9
RADFORD 3 N	07	MAX	62	68	47	38	44	54	55	60	60	66	50	40	44	45	33	28	38	42	59	45	64	63	49	55	70	71	61	73	65	71	52	53.9
		MIN	32	38	33	21	22	28	31	39	36	37	25	24	20	23	12	12	18	19	37	27	29	39	21	24	40	44	48	53	53	52	47	31.7
RICHLANDS	07	MAX	69	64	46	40	51	63	61	65	60	65	47	40	46	53	53	31	36	46	61	41	58	66	49	63	71	75	69	73	61	72	72	57.0
		MIN	31	33	28	18	18	24	39	34	28	28	24	25	23	23	13	11	11	16	31	23	23	41	24	24	41	46	49	48	52	52	43	29.8
SALTVILLE 1N	07	MAX	65	61	50	41	52	63	61	64	62	66	66	41	49	53	37	31	42	44	61	45	61	72	53	64	72	75	68	75	66	75	70	58.2
		MIN	33	36	31	21	21	31	37	35	28	28	27	25	22	22	16	15	15	21	33	24	24	42	26	26	39	44	46	49	52	44	44	30.9
STAFFORDSVILLE 3 ENE	07	MAX	62	69	47	40	44	56	55	63	60	67	50	42	45	44	34	28	38	40	59	46	63	59	48	54	71	71	62	76	69	71	54	54.4
		MIN	28	36	32	21	20	20	30	40	37	37	24	24	22	28	12	11	17	16	35	25	24	41	21	21	44	45	53	53	53	50	48	31.2
WISE 1SE	09	MAX	63	62	46	38	54	61	54	60	59	63	55	37	44	52	27	25	38	45	45	59	59	70	49	62	70	72	66	72	58	70	71	55.0
		MIN	41	30	27	19	30	45	46	32	35	39	27	22	24	27	11	11	18	30	28	26	30	32	25	42	50	53	49	52	50	49	54	34.0
WYTHEVILLE	07	MAX	64	68	45	36	48	57	55	61	58	63	47	38	44	45	34	26	37	43	58	44	62	67	50	53	70	70	64	73	64	73	55	53.9
		MIN	36	33	31	23	23	24	36	36	36	36	23	23	23	26	10	10	17	22	32	25	26	40	26	27	40	45	51	53	50	52	48	31.7

VIRGINIA  
201703

## SNOWFALL AND SNOW ON GROUND (INCHES)

STATION		DAY OF MONTH																																		
		01	02	03	04	05	06	07	08	09	10	11	12	13	14	15	16	17	18	19	20	21	22	23	24	25	26	27	28	29	30	31				
<b>VIRGINIA</b>																																				
<b>TIDEWATER 01</b>																																				
DISPUTANTA	SNOWFALL																																			
EMPORIA 1 WNW	SNOWFALL																																			
FREDERICKSBURG SEWAGE	SNOWFALL																																			
HOLLAND 1 E	SNOWFALL																																			
HOPEWELL	SNOWFALL																																			
	SN ON GND				-																															
NORFOLK INTL AP	SNOWFALL			T										T							0.1															
	SN ON GND																																			
NORFOLK S	SNOWFALL	-	-	T	-	-	-	-	-	-	-	-	-	-	-	-	-	-	-	-	0.1	-	-	-	-	-	-	-	-	-	-	-	-			
	SN ON GND	-	-	-	-	-	-	-	-	-	-	-	-	-	-	-	-	-	-	-	-	-	-	-	-	-	-	-	-	-	-	-	-			
<b>NORTH</b>																																				
Painter 2W	SNOWFALL																																			
STONY CREEK 2 N	SNOWFALL																																			
SUFFOLK LAKE KILBY	SNOWFALL																																			
	SN ON GND																																			
WAKEFIELD 1NW	SNOWFALL			T										T																						
	SN ON GND																																			
WALKERTON 2 NW	SNOWFALL																																			
	SN ON GND																																			
WALLACETON LK DRUMMOND	SNOWFALL																																			
WALLOPS ISLAND NASA TEST FACIL	SNOWFALL			T																																
	SN ON GND																																			
WARSAW 2 NW	SNOWFALL																																			
WEST POINT 2 NW	SNOWFALL			T										T	T					T	T															
	SN ON GND																																			
WILLIAMSBURG 2 N	SNOWFALL																																			
<b>EASTERN PIEDMONT 02</b>																																				
ALBERTA 5N	SNOWFALL														T																					
	SN ON GND																																			
AMELIA COURTHOUSE 1	SNOWFALL	-	-	T	-	-	-	-	-	-	-	-	-	T	-	-	-	-	-	-	-	-	-	-	-	-	-	-	-	-	-	-	-	-		
ASHLAND	SNOWFALL			T										T	0.1					T																
	SN ON GND																																			
BREMO BLUFF	SNOWFALL																																			
	SN ON GND																																			
BUCKINGHAM	SNOWFALL														1.0	-	-	-	-																	
	SN ON GND														1	-	-	-	-																	
CAMP PICKETT	SNOWFALL																																			
CHASE CITY	SNOWFALL																																			
CLARKSVILLE	SNOWFALL																																			
	SNOWFALL																																			

Snowfall: Includes snow and ice. Values for NWS stations (J index note) are Mid-Mid (LST).

Snow on ground: Includes snow, sleet, ice, and hail. Values for NWS stations (J index note) are observed at 12 UTC (GMT).

Water Equivalent: Given for NWS stations (J index note) only, when snow depth is 2 inches or more, and is measured at 18 UTC (GMT)

VIRGINIA  
201703

## SNOWFALL AND SNOW ON GROUND (INCHES)

STATION		DAY OF MONTH																														
		01	02	03	04	05	06	07	08	09	10	11	12	13	14	15	16	17	18	19	20	21	22	23	24	25	26	27	28	29	30	31
CORBIN	SN ON GND				T										0.5	-	-															
	SNOWFALL	-	-	-		-	-	-	-	-	-	-	-	-	-	T	-	-	-	-	-	-	-	-	-	-	-	-	-	-	-	-
CROZIER	SN ON GND																															
	SNOWFALL	-	-	-		-	-	-	-	-	-	-	-	-	-	-	-	-	-	-	-	-	-	-	-	-	-	-	-	-	-	
FARMVILLE 2 N	SN ON GND																															
	SNOWFALL																															
JOHN H KERR DAM	SN ON GND																															
	SNOWFALL																															
KEYSVILLE 2 S	SN ON GND																															
	SNOWFALL																															
LOUISA	SN ON GND																															
	SNOWFALL																															
PALMYRA 3S	SN ON GND																															
	SNOWFALL	-	-	-	-	-	-	-	-	-	-	-	-	T	-	-	-	-	-	-	-	-	-	-	-	-	-	-	-	-	-	
PETERSBURG	SN ON GND																															
	SNOWFALL																															
RICHMOND INTL AP	SN ON GND																															
	SNOWFALL				T									T	T							T										
WINTERPOCK 4 W	SN ON GND																															
	SNOWFALL																															
WESTERN PIEDMONT 03	SN ON GND																															
	SNOWFALL																															
APPOMATTOX	SN ON GND																															
	SNOWFALL															T																
BEDFORD 4 NW	SN ON GND																															
	SNOWFALL															T																
BROOKNEAL	SN ON GND																															
	SNOWFALL															T																
CHARLOTTESVILLE 2W	SN ON GND																															
	SNOWFALL															0.7																
CHATHAM	SN ON GND																															
	SNOWFALL															1																
CONCORD 4 SSW	SN ON GND																															
	SNOWFALL															T																
DANVILLE RGNL AP	SN ON GND																															
	SNOWFALL				T										T																	
FREE UNION	SN ON GND																															
	SNOWFALL															0.9	T															
HOLCOMB ROCK	SN ON GND																															
	SNOWFALL															1	T															
HUDDLESTON 4 SW	SN ON GND																															
	SNOWFALL	-	-	-	-	-	-	-	-	-	-	-	-	-	T	-	-	-	-	-	-	-	-	-	-	-	-	-	-	-		
LYNCHBURG INTL AP	SN ON GND																															
	SNOWFALL																															
MARTINSVILLE FLTR PLT	SN ON GND																															
	SNOWFALL																															
MEADOWS OF DAN 5 SW	SN ON GND																															
	SNOWFALL																															

Snowfall: Includes snow and ice. Values for NWS stations (J index note) are Mid-Mid (LST).

Snow on ground: Includes snow, sleet, ice, and hail. Values for NWS stations (J index note) are observed at 12 UTC (GMT).

Water Equivalent: Given for NWS stations (J index note) only, when snow depth is 2 inches or more, and is measured at 18 UTC (GMT)

VIRGINIA  
201703

## SNOWFALL AND SNOW ON GROUND (INCHES)

STATION		DAY OF MONTH																														
		01	02	03	04	05	06	07	08	09	10	11	12	13	14	15	16	17	18	19	20	21	22	23	24	25	26	27	28	29	30	31
MONTEBELLO FISH CULTURAL STN	SN ON GND																															
	SNOWFALL																															
MONTICELLO PEDLAR DAM	SN ON GND																															
	SNOWFALL																															
ROCKY MT	SN ON GND																															
	SNOWFALL																															
SOUTH BOSTON	SN ON GND																															
	SNOWFALL																															
STUART	SN ON GND																															
	SNOWFALL																															
WOOLWINE	SN ON GND																															
	SNOWFALL																															
<b>NORTHERN 04</b> FRONT ROYAL	SN ON GND																															
	SNOWFALL	-	-	-	-	-	-	-	-	-	-	-	-	-	5.0	-	-	-	-	-	-	-	-	-	-	-	-	-	-	-	-	-
LINCOLN	SN ON GND																															
	SNOWFALL	-	-	-	-	-	-	-	-	-	-	-	-	-	-	-	-	-	-	-	-	-	-	-	-	-	-	-	-	-	-	-
LURAY 5 E	SN ON GND																															
	SNOWFALL																															
MANASSAS	WTR EQUIV	-	-	-	-	-	-	-	-	-	-	-	-	-	-	-	-	-	-	-	-	-	-	-	-	-	-	-	-	-	-	-
	SNOWFALL																															
MT WEATHER	SN ON GND																															
	SNOWFALL																															
PIEDMONT RSCH STN	WTR EQUIV	-	-	-	-	-	-	-	-	-	-	-	-	-	-	-	-	-	-	-	-	-	-	-	-	-	-	-	-	-	-	-
	SNOWFALL																															
SOMERSET	SN ON GND																															
	SNOWFALL																															
SPERRYVILLE	SN ON GND																															
	SNOWFALL																															
STERLING (RCS)	SN ON GND																															
	SNOWFALL																															
VIENNA	WTR EQUIV	-	-	-	-	-	-	-	-	-	-	-	-	-	-	-	-	-	-	-	-	-	-	-	-	-	-	-	-	-	-	-
	SNOWFALL																															
WASHINGTON DULLES INTL AP	SN ON GND																															
	SNOWFALL																															

Snowfall: Includes snow and ice. Values for NWS stations (J index note) are Mid-Mid (LST).

Snow on ground: Includes snow, sleet, ice, and hail. Values for NWS stations (J index note) are observed at 12 UTC (GMT).

Water Equivalent: Given for NWS stations (J index note) only, when snow depth is 2 inches or more, and is measured at 18 UTC (GMT)



VIRGINIA  
201703

## SNOWFALL AND SNOW ON GROUND (INCHES)

STATION		DAY OF MONTH																															
		01	02	03	04	05	06	07	08	09	10	11	12	13	14	15	16	17	18	19	20	21	22	23	24	25	26	27	28	29	30	31	
WASHINGTON REAGAN NATL AP	SNOWFALL			T						T			1.1	0.9					T														
	SN ON GND													2	1	1	T																
WINCHESTER	SNOWFALL			0.2							T			6.2	0.9																		
	SN ON GND			T										6	4	4	2																
WINCHESTER 7 SE	SNOWFALL												5.0																				
	SN ON GND												5	3	2																		
	WTR EQUIV									-																							
WOODSTOCK 2 NE	SNOWFALL													5.6																			
	SN ON GND	-	-	-	-	-	-	-	-	-	-	-	-	5	3	2	1	T	-	-	-	-	-	-	-	-	-	-	-	-	-	-	
<b>CENTRAL MOUNTAIN 05</b>																																	
BUENA VISTA	SNOWFALL													1.0																			
	SN ON GND													1																			
COVINGTON FLTR PLT	SNOWFALL													1.5																			
	SN ON GND													2																			
DALE ENTERPRISE	SNOWFALL													2.5																			
	SN ON GND													3																			
	WTR EQUIV													3.0	0.5																		
GATHRIGHT DAM	SNOWFALL													2.8																			
	SN ON GND													3	T	T																	
GLASGOW 1 SE	SNOWFALL				T									0.4	T																		
	SN ON GND													T																			
HOT SPRINGS	SNOWFALL													3.0																			
	SN ON GND													3	3	1																	
LEXINGTON	SNOWFALL													0.7						T													
	SN ON GND													1																			
MILLGAP	SNOWFALL			1.0	0.5									4.0	0.2	0.1			0.5														
	SN ON GND			1	T	T								4	4	2	2	1	T	T	T												
	WTR EQUIV	-	-	-		-	-	-	-	-	-	-	-																				
MTN GROVE	SNOWFALL																			T													
	SN ON GND																			T													
MUSTOE 1 SW	SNOWFALL			1.8							T		1.0	4.2		0.2	1.1	T	T														
	SN ON GND			1	T	T							1	4	4	2	2	1	T	T	T	T											
NEW CASTLE	SNOWFALL													0.5																			
	SN ON GND													T																			
ROANOKE 8 N	SNOWFALL													T	T																		
	SN ON GND																																
ROANOKE INTL AP	SNOWFALL			T									T	0.1	T				T														
	SN ON GND																																
STAUNTON WTP	SNOWFALL													1.2																			
	SN ON GND													1																			
	WTR EQUIV	-	-	-	-	-	-	-	-	-	-	-	-	1.2																			
WAYNESBORO WTP	SNOWFALL													0.6																			

Snowfall: Includes snow and ice. Values for NWS stations (J index note) are Mid-Mid (LST).

Snow on ground: Includes snow, sleet, ice, and hail. Values for NWS stations (J index note) are observed at 12 UTC (GMT).

Water Equivalent: Given for NWS stations (J index note) only, when snow depth is 2 inches or more, and is measured at 18 UTC (GMT)

VIRGINIA  
201703

## SNOWFALL AND SNOW ON GROUND (INCHES)

STATION		DAY OF MONTH																														
		01	02	03	04	05	06	07	08	09	10	11	12	13	14	15	16	17	18	19	20	21	22	23	24	25	26	27	28	29	30	31
SOUTHWESTERN MOUNTAIN 06 ABINGDON 3S	SN ON GND														1																	
	WTR EQUIV													-	0.6		-															-
BIG STONE GAP	SNOWFALL														T																	
	SN ON GND															T																
BLACKSBURG NWSO	SNOWFALL			T	T						T				0.9	0.1					T											
	SN ON GND														1	1																
BURKES GARDEN	SNOWFALL			T											1.4	4.0					0.7											
	SN ON GND			T											1	4	3	T		1												
CHRISTIANSBURG	SNOWFALL														1.0	T																
	SN ON GND														1	1	T															
CLINTWOOD 1 W	SNOWFALL			1.0	T										T	2.0	T			T	T											
	SN ON GND			1												1	T															
COPPER HILL	SNOWFALL														T	1.1																
	SN ON GND														T	1																
GALAX WTP	SNOWFALL														T																	
	SN ON GND															1	T															
GRUNDY	SNOWFALL															0.3																
	SN ON GND															T																
JOHN FLANNAGAN LAKE	SNOWFALL															1.1																
	SN ON GND															1	T															
LEBANON	SNOWFALL															1.0																
	SN ON GND															1	T															
NORA 4 SSE	SNOWFALL														0.3	2.8	T		T		T	T										
	SN ON GND			0.4	T							T			T	2	T					T	T									
PULASKI 2 E	SNOWFALL														0.9	T																
	SN ON GND														1	1	T															
RADFORD 3 N	SNOWFALL														1.0	T																
	SN ON GND														1	1	T															
RICHLANDS	SNOWFALL														T	T	T															
	SN ON GND			T											T	T	T															
SALTVILLE 1N	SNOWFALL														T	0.2						T										
	SN ON GND															1																
STAFFORDSVILLE 3 ENE	SNOWFALL														1.6	T					T											
	SN ON GND														2	1	T	T														
WILLIS	SNOWFALL														-						-											
	SN ON GND														-						-											
WISE 1SE	SNOWFALL														0.5	3.5																
	SN ON GND														1	3	1															

Snowfall: Includes snow and ice. Values for NWS stations (J index note) are Mid-Mid (LST).

Snow on ground: Includes snow, sleet, ice, and hail. Values for NWS stations (J index note) are observed at 12 UTC (GMT).

Water Equivalent: Given for NWS stations (J index note) only, when snow depth is 2 inches or more, and is measured at 18 UTC (GMT)

VIRGINIA  
201703

## SNOWFALL AND SNOW ON GROUND (INCHES)

STATION		DAY OF MONTH																																
		01	02	03	04	05	06	07	08	09	10	11	12	13	14	15	16	17	18	19	20	21	22	23	24	25	26	27	28	29	30	31		
WYTHEVILLE	SNOWFALL SN ON GND				0.2										1.0 1	0.2 T					T													

Snowfall: Includes snow and ice. Values for NWS stations (J index note) are Mid-Mid (LST).

Snow on ground: Includes snow, sleet, ice, and hail. Values for NWS stations (J index note) are observed at 12 UTC (GMT).

Water Equivalent: Given for NWS stations (J index note) only, when snow depth is 2 inches or more, and is measured at 18 UTC (GMT)

VIRGINIA  
201703

## PAN EVAPORATION AND WIND

STATION		DAY OF MONTH																															TOTAL OR AVERAGE
		01	02	03	04	05	06	07	08	09	10	11	12	13	14	15	16	17	18	19	20	21	22	23	24	25	26	27	28	29	30	31	
VIRGINIA EASTERN PIEDMONT 02 JOHN H KERR DAM	WIND	75	38	27	15	29	18	65	52	34	62	21	37	37	48	52	30	16	35	26	12	17	42	18	48	53	15	23	31	19	34	22	1051
	EVAP	-	-	-	-	-	-	-	-	-	-	-	-	-	-	-	-	-	-	-	-	-	-	-	-	-	-	-	-	-	-	-	M
	MAX	-	-	-	-	-	-	-	-	-	-	-	-	-	-	-	-	-	-	-	-	-	-	-	-	-	-	-	-	-	-	-	M
	MIN	-	-	-	-	-	-	-	-	-	-	-	-	-	-	-	-	-	-	-	-	-	-	-	-	-	-	-	-	-	-	-	M

Evaporation: Is measured in hundreths of inches.

Wind: Is measured in miles.

Max and Min: The maximum and minimum temperatures (Fahrenheit) of the water in the evaporation pan.

# STATION INDEX

STATION	INDEX NO.	DIVISION	COUNTY	LATITUDE	LONGITUDE	ELEVATION (IN FEET)	OBSERVATION TIME AND TABLES			
							LOCAL STD TIME			
							TEMP	PRECIP	EVAP	SPECIAL SEE (NOTES)
VIRGINIA										
ABINGDON 3S	0021	06	WASHINGTON	36 40	81 58W	1925	22	22		H
ALBERTA 5N	0079	02	BRUNSWICK	36 56	77 54W	376		08		H
ALTAVISTA	0166	03	CAMPBELL	37 7	79 17W	529		07		CH
AMELIA COURTHOUSE 1	0187	02	AMELIA	37 21	77 59W	345	08	08		H
APPOMATTOX	0243	03	APPOMATTOX	37 20	78 50W	850	07	07		H
ASHLAND	0327	02	HANOVER	37 45	77 29W	220	18	18		H
BEDFORD 4 NW	0561	03	BEDFORD	37 23	79 34W	1228		07		CH
BIG STONE GAP	0735	06	WISE	36 52	82 46W	1464	08	08		H
BLACKSBURG NWSO	0766	06	MONTGOMERY	37 12	80 25W	2103	07	07		CH
BREMO BLUFF	0993	02	FLUVANNA	37 43	78 17W	225	07	07		CH
BROOKNEAL	1082	03	CAMPBELL	37 4	78 57W	408	07	07		H
BUCKINGHAM	1136	02	BUCKINGHAM	37 30	78 32W	580		07		H
BUENA VISTA	1159	05	ROCKBRIDGE	37 44	79 22W	840		07		H
BURKES GARDEN	1209	06	TAZEWELL	37 6	81 20W	3068	07	07		H
CAMP PICKETT	1322	02	NOTTOWAY	37 2	77 57W	330	08	08		CH
CHARLOTTESVILLE 2W	1593	03	ALBEMARLE	38 2	78 31W	866	08	08		H
CHASE CITY	1606	02	MECKLENBURG	36 47	78 29W	510	17	17		H
CHATHAM	1614	03	PITTSYLVANIA	36 49	79 25W	651	07	07		CH
CHRISTIANSBURG	1692	06	MONTGOMERY	37 8	80 24W	2100	07	07		H
CLARKSVILLE	1746	02	MECKLENBURG	36 37	78 33W	330	07	07		H
CLINTWOOD 1 W	1825	06	DICKENSON	37 9	82 29W	1780	07	07		H
CONCORD 4 SSW	1955	03	CAMPBELL	37 17	78 58W	815		07		H
COPPER HILL	1999	06	FLOYD	37 5	80 9W	2690	07	07		H
CORBIN	2009	02	CAROLINE	38 12	77 22W	220	09	09		H
COVINGTON FLTR PLT	2044	05	ALLEGHANY	37 49	79 59W	1244	07	07		CH
CROZIER	2142	02	GOOCHLAND	37 40	77 53W	350	07	07		H
DALE ENTERPRISE	2208	05	ROCKINGHAM	38 27	78 56W	1358	07	07		CH
DANVILLE RGNL AP	2250	03	PITTSYLVANIA	36 34	79 20W	571	24	24		CH
DISPUTANTA	2400	01	PRINCE GEORGE	37 7	77 12W	15	07	07		H
ELK CREEK 4SSW	2730	06	GRAYSON	36 40	81 12W	3439		07		H
EMPORIA 1 NNW	2790	01	GREENSVILLE	36 42	77 34W	100	08	08		H
FARMVILLE 2 N	2941	02	CUMBERLAND	37 20	78 23W	450	07	07		CH
FREDERICKSBURG SEWAGE	3204	01	FREDERICKSBURG	38 17	77 27W	15	07	07		H
FREE UNION	3213	03	ALBEMARLE	38 5	78 35W	590	08	07		H
FRONT ROYAL	3229	04	WARREN	38 54	78 11W	930	06	06		CH
GALAX WTP	3272	06	CARROLL	36 39	80 55W	2341	07	07		CH
GATHRIGHT DAM	3310	05	ALLEGHANY	37 57	79 57W	1770	07	07		CH
GLASGOW 1 SE	3375	05	ROCKBRIDGE	37 37	79 26W	737		07		H
GRUNDY	3640	06	BUCHANAN	37 17	82 5W	1170	07	07		H
HOLCOMB ROCK	4039	03	BEDFORD	37 33	79 24W	900		07		H
HOLLAND 1 E	4044	01	SUFFOLK	36 41	76 46W	80	08	08		H
HOPEWELL	4101	01	PRINCE GEORGE	37 18	77 17W	40	16	16		H
HOT SPRINGS	4128	05	BATH	37 60	79 50W	2236	07	07		H
HUDDLESTON 4 SW	4148	03	BEDFORD	37 8	79 32W	898		07		H
JOHN FLANNAGAN LAKE	4410	06	DICKENSON	37 14	82 21W	1460	07	07		H
JOHN H KERR DAM	4414	02	MECKLENBURG	36 36	78 18W	250	08	08	08	CH
KEYSVILLE 2 S	4568	02	CHARLOTTE	37 1	78 29W	625	07	07		H
LEBANON	4777	06	RUSSELL	36 54	82 2W	1912	07	07		H
LEXINGTON	4876	05	ROCKBRIDGE	37 47	79 26W	1097	07	07		H
LINCOLN	4909	04	LOUDOUN	39 5	77 42W	500	07	07		H
LOUISA	5050	02	LOUISA	38 3	78 0W	420	18	18		H
LURAY 5 E	5096	04	PAGE	38 40	78 22W	1400	08	08		H
LYNCHBURG INTL AP R	5120	03	CAMPBELL	37 19	79 12W	940	24	24		HJ
MANASSAS	5204	04	MANASSAS	38 44	77 30W	245	07	07		H
MARTINSVILLE FLTR PLT	5300	03	HENRY	36 42	79 52W	760	07	07		H
MEADOWS OF DAN 5 SW	5453	03	PATRICK	36 40	80 27W	2225	07	07		H
MILLGAP	5595	05	HIGHLAND	38 18	79 43W	2421	06	06		CH
MONTEBELLO FISH CULTURAL STN	5690	03	NELSON	37 51	79 8W	2667	07	07		H
MONTICELLO	5700	03	ALBEMARLE	38 1	78 27W	758	07	07		H
MT WEATHER	5851	04	LOUDOUN	39 4	77 53W	1659	07	07		H
MTN GROVE	5756	05	BATH	38 6	79 53W	1775		07		H
MUSTOE 1 SW	5880	05	HIGHLAND	38 20	79 40W	2380	24	24		H
NEW CASTLE	6012	05	CRAIG	37 31	80 6W	1258		07		H
NORA 4 SSE	6125	06	DICKENSON	37 1	82 19W	2650	07	07		H
NORFOLK INTL AP R	6139	01	NORFOLK (CITY)	36 54	76 12W	30	24	24		HJ

# STATION INDEX

STATION	INDEX NO.	DIVISION	COUNTY	LATITUDE	LONGITUDE	ELEVATION (IN FEET)	OBSERVATION TIME AND TABLES			
							LOCAL STD TIME			
							TEMP	PRECIP	EVAP	SPECIAL SEE (NOTES)
NORFOLK S	6147	01	NORFOLK (CITY)	36 52	76 14W	100	24	24		H
NORTH	6161	01	MATHEWS	37 26	76 26W	10	07	07		H
PAINTER 2W	6475	01	ACCOMACK	37 35	75 49W	30	16	16		CH
PALMYRA 3S	6491	02	FLUVANNA	37 49	78 16W	410	06	06		H
PEDLAR DAM	6593	03	AMHERST	37 40	79 17W	1024		07		CH
PETERSBURG	6656	02	PETERSBURG	37 14	77 24W	15	08	08		H
PIEDMONT RSCH STN	6712	04	ORANGE	38 14	78 7W	520	08	08		CH
PULASKI 2 E	6955	06	PULASKI	37 3	80 47W	1850	07	07		CH
RADFORD 3 N	6999	06	PULASKI	37 12	80 35W	1800	07	07		H
RICHLANDS	7174	06	TAZEWELL	37 6	81 48W	1910	07	07		H
RICHMOND INTL AP R	7201	02	HENRICO	37 30	77 19W	164	24	24		HJ
ROANOKE 8 N	7278	05	ROANOKE	37 22	79 58W	1190	07	07		H
ROANOKE INTL AP R	7285	05	ROANOKE	37 19	79 58W	1175	24	24		HJ
ROCKY MT	7338	03	FRANKLIN	36 59	79 54W	1315	07	07		CH
SALTVILLE 1N	7506	06	SMYTH	36 53	81 46W	1733	07	07		H
SOMERSET	7904	04	ORANGE	38 15	78 16W	510	08	08		H
SOUTH BOSTON	7925	03	HALIFAX	36 42	78 53W	329	07	07		H
SPERRYVILLE	7985	04	RAPPAHANNOCK	38 39	78 14W	750	06	06		H
STAFFORDSVILLE 3 ENE	8022	06	GILES	37 16	80 43W	1950	07	07		CH
STAUNTON WTP	8062	05	AUGUSTA	38 10	79 5W	169	08	08		CH
STERLING (RCS)	8084	04	LOUDOUN	38 59	77 29W	288	07	07		H
STONY CREEK 2 N	8129	01	SUSSEX	36 58	77 24W	105	08	08		H
STUART	8170	03	PATRICK	36 38	80 15W	1375	07	07		H
SUFFOLK LAKE KILBY	8192	01	SUFFOLK	36 44	76 36W	22	24	24		H
VIENNA	8737	04	FAIRFAX	38 54	77 17W	418	07	07		H
WAKEFIELD 1NW	8800	01	SUSSEX	36 59	77 0W	113	24	24		CH
WALKERTON 2 NW	8829	01	KING AND QUEEN	37 45	77 2W	50	18	18		H
WALLACETON LK DRUMMOND	8837	01	CHESAPEAKE	36 36	76 26W	20	08	08		H
WALLOPS ISLAND NASA TEST FACIL R	8849	01	ACCOMACK	37 56	75 28W	46	24	24		HJ
WARSAW 2 NW	8894	01	RICHMOND	37 59	76 47W	140	18	18		H
WASHINGTON DULLES INTL AP R	8903	04	LOUDOUN	38 56	77 27W	290	24	24		HJ
WASHINGTON REAGAN NATL AP R	8906	04	ARLINGTON	38 51	77 2W	10	24	24		HJ
WAYNESBORO WTP	8941	05	WAYNESBORO	38 5	78 53W	1270	07	07		H
WEST POINT 2 NW	9025	01	KING WILLIAM	37 34	76 48W	20	17	17		H
WILLIAMSBURG 2 N	9151	01	YORK	37 18	76 42W	70	24	24		CH
WILLIS	9169	06	FLOYD	36 55	80 30W	2810		07		CH
WINCHESTER	9181	04	FREDERICK	39 11	78 9W	720	07	07		H
WINCHESTER 7 SE	9186	04	FREDERICK	39 11	78 7W	680	08	08		H
WINTERPOCK 4 W	9213	02	CHESTERFIELD	37 19	77 39W	300		07		H
WISE 1SE	9215	06	WISE	36 58	82 33W	2564	09	09		CH
WOODSTOCK 2 NE	9263	04	SHENANDOAH	38 54	78 28W	675	07	07		H
WOOLWINE	9272	03	PATRICK	36 47	80 17W	1500		07		H
WYTHEVILLE	9301	06	WYTHE	36 58	81 5W	2458	07	07		H

# REFERENCE NOTES

**STATION NAMES:** Name of the city, town or locality. Figures and letters following the station names indicate the distance in miles and direction from the post office or town community center.

**DIVISIONS:** Areas within a state of similar climatological characteristics. Division averages are calculated using data from stations that record temperature and/or precipitation. Station Precipitation totals flagged with an 'F' or 'M' are excluded from the Divisional Average calculations of precipitation. Stations with monthly Temperature averages flagged with an 'F' or 'M' are included in the Divisional Average if there are no more than 9 flagged or missing daily values in the month, else they are excluded from the divisional average for temperature.

**NORMALS:** The average value of the meteorological element over a time period. Effective 1 January 2012, the averaging period for station departures is 1981 to 2010. The normals for National Weather Service localities have been adjusted so as to be representative for the current observation site.

The January 2011 through December 2015 publications incorrectly state the computation of divisional departures. Climate Division departures have been, and continue to be, computed from 1971-2000 Normals, not 1981-2010 as stated. Station departures are accurately described as departures from 1981-2010.

**MONTHLY DEGREE DAY TOTALS:** One heating (cooling) degree day is accumulated for each whole degree that the daily mean temperature is below (above) 65 degrees Fahrenheit.

**PRECIPITATION:** Values shown in hundredths of inches are water equivalent totals, i.e., total of liquid and melted frozen precipitation. In the "Monthly Summarized Data" table the total snow and sleet values shown in tenths of inches are unmelted amounts. The max depth on ground values of snow and sleet shown in whole inches are cumulative unmelted amounts. The number of days with .10, .50, 1.00 or more refers to water equivalents.

**PRECIPITATION QUALITY CONTROL:** The NCEI quality control process may flag precipitation data that are spatially inconsistent, exceed climatological limits, or are inconsistent with prevailing weather patterns.

**TEMPERATURE:** Original temperature values are given in the "Daily Temperature" table. Summary temperature information (averages, departures, extremes, monthly degree day totals) is based on the values labeled MAX/MIN.

**WIND:** (As shown in the "Evaporation and Wind" table) the total wind movement in miles over the evaporation pan as determined by an anemometer recorder located 6-8 inches above the pan.

## SYMBOLS AND LETTERS USED IN THE STATION INDEX TABLE

C Station is equipped with recording rain gage (R) but values in this bulletin are from a non-recording rain gage unless indicated by an R.  
G Observations appear in the "Soil Temperatures" table.  
H Observations appear in the "Snowfall and Snow on the Ground" table.  
J Station also published as a Local Climatological Data publication.  
VAR Observation time varies.  
SR / SS Observation time near sunrise / Observation time near sunset, respectively.

## SYMBOLS AND LETTERS USED IN THE DATA TABLES

(DAILY DATA ARE FOR THE 24 HOURS IMMEDIATELY PRECEDING OBSERVATION TIME.)

BLANK Entries in the "Monthly Summarized Data" table indicate no record.

BLANK Entries in the "Daily Precipitation" and "Snowfall and Snow on the Ground" tables indicate zero.

BLANK Entries in the "Daily Temperature" table indicate a missing record

- No record. Data not recorded or not received in time for publication.

+ Precipitation or temperature extremes occurred on one or more previous dates during the month.

\* Rain gage not read. Precipitation is included in the amount following the asterisks.

Time distribution may not be known. A \* preceding the monthly total indicates precipitation amount is being carried forward to next month's total, and may include amounts from the previous month(s).

a As a subscript, indicates accumulated total.

A Amount of precipitation is the total of observer's entries for the current month. It may include precipitation that occurred during the previous month. Refer to earlier bulletin to determine date of last

reading. (Hawaii stations)

B Divisional Departure from normals are computed using 1971-2000 normals.

E Normalized HDD/CDD Calculation. E is appended to the HDD/CDD Calculation when 1-9 individual daily TMAX and/or TMIN values are missing and a Normalized HDD/CDD Calculation is provided. M appears alone if 10 or more daily values are missing.

F Monthly calculation flagged value. F is appended to average and/or total values computed which exclude one or more daily data values that have been flagged by the GHCN-Daily Dataset

M Insufficient or partial data. M is appended to average and/or total values computed with 1-9 daily values missing. M appears alone if 10 or more daily values are missing, (8 or more for wind and evaporation).

N Indicates snow fall or Snowdepth totals are computed with one or more missing days.

R Amounts from recording rain gage.

T Trace. An amount too small to measure.

**SEASONAL TABLES:** Monthly and seasonal snowfall and heating degree days for the 12 months ending with the June data are published in the July issue of this bulletin. Cooling degree days for the calendar year are published in the "Climatological Data Annual Summary."

Information concerning the history of changes in locations, exposure, etc. of substations is kept on file at the National Centers for Environmental Information. Historical information of regular National Weather Service Offices may be obtained from the "Local Climatological Data" annual publication. The contents of this publication may be reprinted or otherwise used freely, with proper credit to the National Centers For Environmental Information. The data are also available digitally.

Effective with the January 2011 Data-Month, COOP Observer Names are no longer included in the Monthly and Annual Climatological Data Publications. This information is not published to ensure the privacy of personal information pursuant to Section 208 of the E-Government Act of 2002 (44 USC 3601).

As of the 2011 Data-Year, Station and Climate Division Maps are no longer being included in the CD Publications. NCEI's Products Branch provides updated Station Maps for various data networks via the Historical Observing Metadata Repository: <http://www.ncdc.noaa.gov/homr>.

The GHCN-Daily Quality Control Flags shown below are displayed as superscripts with the data. For more information on Global Historical Climatology Network - Daily and flags, see: <http://www.ncdc.noaa.gov/oa/climate/ghcn-daily/> and Comprehensive Automated Quality Assurance of Daily Surface Observations. Durre, Imke, Matthew J. Menne, Byron E. Gleason, Tamara G. Houston, Russell S. Vose, 2010: J. Appl. Meteor. Climatol., 49, 16151633. doi: 10.1175/2010JAMC2375.1

Blank = Passed All checks

D = failed duplicate check

G = failed gap check

I = failed internal consistency check

K = failed streak/frequent-value check

L = failed check on length of multiday period

M = failed megaconsistency check

N = failed naught check

O = failed climatological outlier check

R = failed lagged range check

S = failed spatial consistency check

T = failed temporal consistency check

W = temperature too warm for snow

X = failed bounds check

Z = flagged as a result of an official Datzilla investigation

Beginning with the January 2013 CD Publication, monthly mean temperature calculations have changed to the National Data Stewardship Team standard. Monthly maximum and minimum temperatures are not rounded until after the monthly mean temperature is calculated. This is the most accurate outcome, but may be slightly different from the mean derived from rounded monthly maximum and minimum.

The climate division temperature and precipitation values in this publication are based on simple averages from the current set of NWS-Designated Open and Published COOP and First Order Sites within each division. These values differ from those found in NCEI's nClimDiv product. Beginning in February 2014, the nClimDiv product is used by NCEI's Monitoring Branch and in its monthly climate reports. For more details on nClimDiv, please go to <http://www.ncdc.noaa.gov/monitoring-references/maps/us-climate-divisions.php>.

Effective January 2016, Alaska's Climate Divisions are updated to reflect the 13 climate divisional boundaries established by University of Alaska-Fairbanks, NWS, NCEI, Oregon State University, and University of Nebraska-Lincoln. For more details regarding the updated Alaska Climate Divisions, see: <http://journals.ametsoc.org/doi/pdf/10.1175/JAMC-D-11-0168.1> (Bienek et al., 2012).

NOAA National Centers for Environmental Information  
Attn: Customer Engagement Branch  
151 Patton Avenue  
Asheville, NC 28801-5001

Customer Services Number: (828) 271-4800, option 2  
TDD : (828) 271-4010  
Fax number: (828) 271-4876

NCEI now offers free online access to the *Climatological Data* publication.  
Go to : [www.ncdc.noaa.gov](http://www.ncdc.noaa.gov) and choose Most Popular.