



# CLIMATOLOGICAL DATA

## VIRGINIA

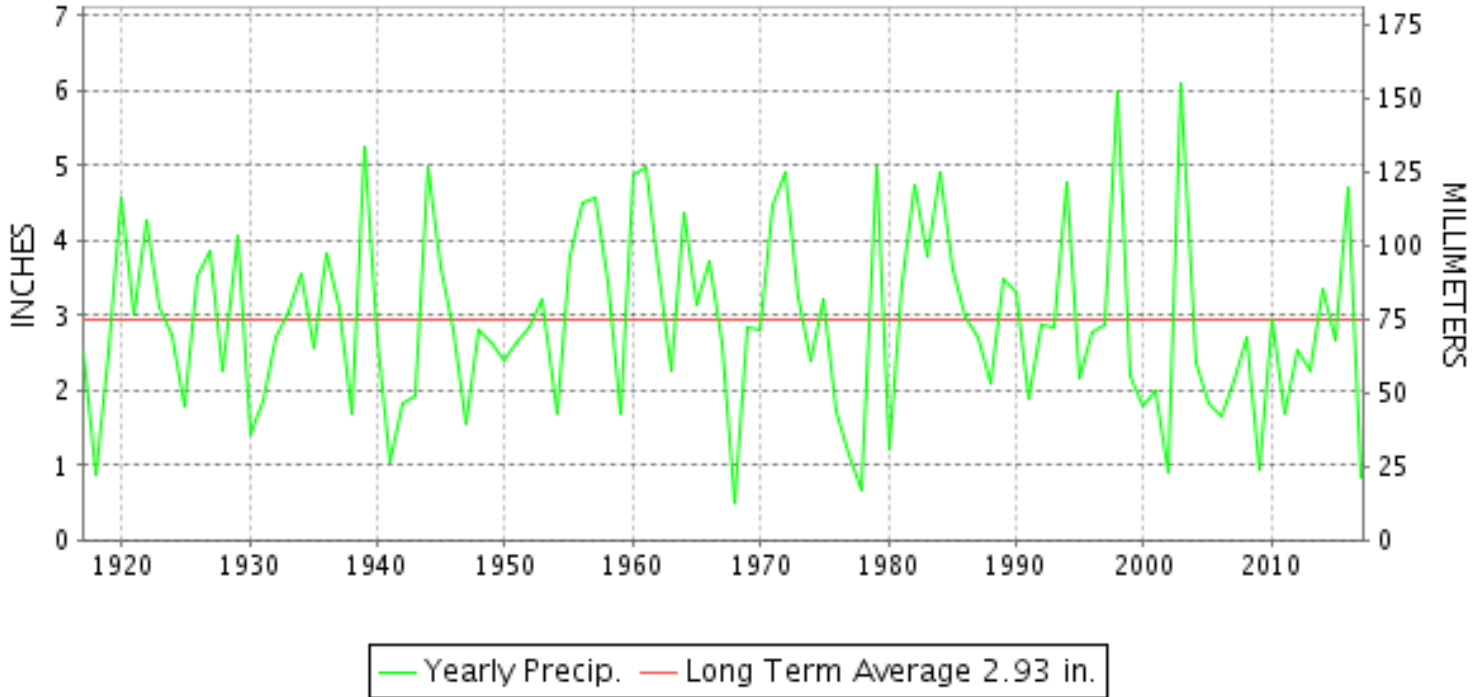
**FEBRUARY 2017**

VOLUME 127 NUMBER 02

ISSN 0364-5630

GHCND Ver: 3.22-upd-2017061805

### FEBRUARY PRECIPITATION BY YEAR



#### TEMPERATURE AND PRECIPITATION EXTREMES

**VIRGINIA**

HIGHEST TEMPERATURE	83	FEBRUARY 13+	4 STATIONS
LOWEST TEMPERATURE	0	FEBRUARY 11	MILLGAP
GREATEST TOTAL PRECIPITATION	2.15		BIG STONE GAP
LEAST TOTAL PRECIPITATION	0.15		CORBIN
GREATEST 1 DAY PRECIPITATION	0.83	FEBRUARY 09	BURKES GARDEN
GREATEST TOTAL SNOWFALL	3.4		BURKES GARDEN
GREATEST DEPTH OF SNOW OR ICE	2		3 STATIONS

"I certify that this is an official publication of the National Oceanic and Atmospheric Administration (NOAA) It is compiled using information from weather observing sites supervised by NOAA/National Weather Service and received at the National Centers for Environmental Information(NCEI), Asheville, North Carolina 28801."

Director  
National Centers for Environmental Information

**noaa**

National  
Oceanic and  
Atmospheric Administration

National  
Environmental Satellite, Data  
and Information Service

National  
Centers for Environmental Information  
Asheville, North Carolina



VIRGINIA  
201702

# MONTHLY STATION AND DIVISION SUMMARY

STATION	TEMPERATURE (°F)											PRECIPITATION (IN)													
	AVERAGE MAXIMUM	AVERAGE MINIMUM	AVERAGE	DEPARTURE FROM NORMAL	HIGHEST	DATE	LOWEST	DATE	HEATING DEG. DAYS	COOLING DEG. DAYS	NO. OF DAYS				TOTAL	DEPARTURE FROM NORMAL	GREATEST 24 HOURS	DATE	ICE PELLETS, SNOW			NO. OF DAYS			
											MAX		MIN						TOTAL	MAX DEPTH ON GROUND	DATE	.10 OR MORE	.50 OR MORE	1.00 OR MORE	
											>=90	<=32	<=32	<=0											
RICHMOND INTL AP	61.6	36.5	49.0	8.1	82	12	18	10	440	0	0	0	10	0	0.71	-2.05	0.39	15	0.0	0		1	0	0	
WINTERPOCK 4 W														1.33		0.67	26	M				3	1	0	
--DIVISIONAL DATA-----> WESTERN Piedmont 03			47.6	8.5B										0.69	-2.50B										
ALTAVISTA														0.52		0.22	16	0.0	0			3	0	0	
APPOMATTOX	58.9	34.9	46.9	8.3	79	13	18	04	500	0	0	0	14	0	0.53	-2.55	0.16	15	T	0		3	0	0	
BEDFORD 4 NW														0.57		0.21	15	0.0	0			3	0	0	
BROOKNEAL	60.7	31.6	46.2	12.4	82	13	19	04	521	0	0	0	17	0	0.59	-2.55	0.30	15	0.0	0		3	0	0	
CHARLOTTESVILLE 2W	59.6	35.9	47.7	8.6	77	25+	20	10+	476	0	0	0	12	0	0.78	-2.29	0.58	26	T	0		2	1	0	
CHATHAM	60.6	30.2	45.4	7.9	82	13	16	05	542	0	0	0	19	0	1.05	-1.96	0.50	16	0.0	0		3	1	0	
CONCORD 4 SSW														0.51		0.17	16	0.0	0			3	0	0	
DANVILLE RGNL AP	62.8	35.3	49.0	8.1	83	12	18	04	446	5	0	0	12	0	0.89	-2.12	0.34	15	T	0		3	0	0	
FREE UNION	59.9	29.9	44.9		79	13	17	04	556	0	0	0	17	0	0.61		0.29	26	0.0	0		2	0	0	
HOLCOMB ROCK														0.43		0.15	15+	0.0	0			3	0	0	
HUDDLESTON 4 SW														0.54		0.21	16	0.0	0			2	0	0	
LYNCHBURG INTL AP	59.9	32.9M	46.4M	8.2	80	12	17	04	520E	1E	0	0	14	0	0.60	-2.33	0.25	15	0.0	0		3	0	0	
MARTINSVILLE FLTR PLT	61.0	30.2	45.6	7.2	82	13	16	05	536	0	0	0	20	0	1.04	-2.10	0.34	16	0.0	0		4	0	0	
MEADOWS OF DAN 5 SW	59.6	32.5	46.1		79	13	20	06+	523	0	0	0	14	0	0.96		0.45	23	0.0	0		3	0	0	
MONTEBELLO FISH CULTURAL STN	55.1M	27.7M	41.4M		73	13	12	06	651E	0	0	1	15	0	M 0.72		0.43	09	M 0.0	0		2	0	0	
MONTICELLO	M	M	M											M				M							
PEDLAR DAM														0.30		0.10	09	T	0			1	0	0	
ROCKY MT	59.5	32.9M	46.2M	7.9	78	13	20	05+	523E	0	0	0	13	0	1.03	-2.05	0.32	23	0.0	0		4	0	0	
SOUTH BOSTON	64.3M	34.7M	49.5M	10.1	83	13	24	05	422E	0	0	0	12	0	1.01	-2.11	0.46	09	0.0	0		2	0	0	
STUART	61.6	32.4	47.0	7.2	81	13	17	04	495	0	0	0	15	0	1.03	-2.22	0.49	09	0.0	0		4	0	0	
WOOLWINE														1.05		0.33	23	0.0	0			3	0	0	
--DIVISIONAL DATA-----> NORTHERN 04			46.3	7.4B										0.74	-2.55B										
FRONT ROYAL	55.6M	32.0M	43.8M	7.6	77	24	11	09	587E	0	0	0	15	0	M 0.51	-2.14	0.46	09	0.0	0		1	0	0	
LINCOLN	52.3M	32.0M	42.1M	8.5	73	19	16	05+	620E	0	0	0	14	0	MA 0.20				M 0.0	0			0	0	0
LURAY 5 E	56.9	32.2	44.5	8.0	76	25+	13	10+	567	0	0	0	16	0	0.52	-2.14	0.45	09	0.0	0		1	0	0	
MANASSAS	58.0M	35.1M	46.5M	10.5	79	24	20	17	504E	4E	0	0	12	0	M 0.55		0.30	26	T	T	10	2	0	0	
MT WEATHER	52.3M	31.0M	41.7M	8.4	73	25+	15	10	647E	0	0	2	15	0	M 1.00	-1.96	0.37	26	M 0.1	0		3	0	0	
PIEDMONT RSCH STN	58.3	33.4	45.8	8.5	76	24	16	10	530	0	0	0	13	0	0.68	-2.07	0.43	26	T	0		2	0	0	
SOMERSET	58.9	31.5	45.2	8.7	76	25+	18	10	549	0	0	0	18	0	0.62	-2.15	0.38	26	0.0	0		2	0	0	
SPERRYVILLE	57.4	32.3	44.9	8.7	78	24	16	05+	556	0	0	0	18	0	0.66	-2.18	0.30	26+	T	0		2	0	0	
STERLING (RCS)	55.4	29.9	42.7	8.1	78	24	13	05	619	0	0	0	19	0	0.32	-2.45	0.21	09	0.6	T	10	1	0	0	
VIENNA	52.7	31.0	41.9	6.2	74	24	18	05+	643	0	0	0	18	0	0.24	-2.57	0.12	09	0.2	0		2	0	0	
WASHINGTON DULLES INTL AP	56.8	32.9	44.8	8.6	77	25+	14	04	557	0	0	0	16	0	0.71	-2.03	0.38	28	0.6	T	10	2	0	0	

VIRGINIA  
201702

# MONTHLY STATION AND DIVISION SUMMARY

STATION	TEMPERATURE (°F)											PRECIPITATION (IN)												
	AVERAGE MAXIMUM	AVERAGE MINIMUM	AVERAGE	DEPARTURE FROM NORMAL	HIGHEST	DATE	LOWEST	DATE	HEATING DEG. DAYS	COOLING DEG. DAYS	NO. OF DAYS				TOTAL	DEPARTURE FROM NORMAL	GREATEST 24 HOURS	DATE	ICE PELLETS, SNOW			NO. OF DAYS		
											MAX		MIN						TOTAL	MAX DEPTH ON GROUND	DATE	.10 OR MORE	.50 OR MORE	1.00 OR MORE
											>=90	<=32	<=32	<=0										
WASHINGTON REAGAN NATL AP	57.6	37.8	47.7	8.7	77	24	23	10	478	1	0	0	8	0	0.68	-1.94	0.34	28	T	0		3	0	0
WINCHESTER	55.6	32.9	44.2	9.3	78	24	18	10	576	0	0	1	13	0	0.79	-1.53	0.44	09	T	0		2	0	0
WINCHESTER 7 SE	56.5	29.6	43.0	9.5	76	24+	15	09	606	0	0	0	19	0	1.15	-1.32	0.42	08	0.0	0		4	0	0
WOODSTOCK 2 NE	55.6	29.1	42.3	9.2	77	24	15	10+	629	0	0	0	20	0	0.81	-1.78	0.40	09	0.0	0		3	0	0
--DIVISIONAL DATA-----> CENTRAL MOUNTAIN 05			44.1	9.0B										0.65	-2.00B									
BUENA VISTA														0.25		0.14	09	0.0	0			1	0	0
COVINGTON FLTR PLT	55.1	28.5	41.8	5.3	74	13	13	05	643	0	0	0	22	0	0.55	-1.82	0.25	09	0.0	0		2	0	0
DALE ENTERPRISE	56.5	30.0	43.3	10.4	74	25+	13	04	601	0	0	0	17	0	0.19	-2.03	0.15	09	0.0	0		1	0	0
GATHRIGHT DAM	54.2	27.9	41.1	7.0	73	25	12	05+	661	0	0	0	21	0	0.45	-2.15	0.16	09	0.0	0		3	0	0
GLASGOW 1 SE														0.36		0.11	23	0.0	0			2	0	0
HOT SPRINGS	53.0M	28.7M	40.9M	7.9	72	25	12	05	668E	0	0	1	20	0	0.49	-2.54	0.34	26	M 0.0	0		2	0	0
LEXINGTON	58.0	29.5	43.7	6.9	78	13	18	10+	588	0	0	0	21	0	0.34	-2.31	0.19	09	T	0		1	0	0
MILLGAP	52.0	22.9	37.4	7.3	71	25+	0	11	764	0	0	2	23	1	0.48	-2.50	0.22	09	0.3	T	16	2	0	0
MTN GROVE														0.69		0.22	13	T	T	16	4	0	0	
MUSTOE 1 SW	51.4	25.3	38.4	7.2	69	24+	8	04	740	0	0	2	22	0	1.22	-2.03	0.42	28	0.8	T	10	5	0	0
NEW CASTLE														0.53		0.23	09	M				2	0	0
ROANOKE 8 N	59.1M	32.9	46.0M	7.3	78	13	18	05+	524E	0	0	0	14	0	0.67	-1.97	0.22	09	0.0	0		3	0	0
ROANOKE INTL AP	60.4	36.3	48.3	8.7	78	12	19	04	460	0	0	0	11	0	0.54	-2.35	0.18	22	T	0		3	0	0
STAUNTON WTP	56.8	33.6	45.2	9.6	73	25	15	10+	548	0	0	0	14	0	0.26	-2.29	0.16	09	0.0	0		1	0	0
WAYNESBORO WTP	56.8	30.4	43.6	8.7	75	13	18	10+	592	0	0	0	21	0	0.27	-2.65	0.16	09	0.0	0		1	0	0
--DIVISIONAL DATA-----> SOUTHWESTERN MOUNTAIN 06			42.7	7.1B										0.49	-2.25B									
ABINGDON 3S	54.9	29.0	42.0	5.2	76	25	12	05+	636	0	0	1	20	0	1.70	-2.04	0.70	09	T	0		4	1	0
BIG STONE GAP	56.7	29.4	43.0	5.2	75	25	14	05+	610	0	0	0	19	0	2.15	-2.25	0.46	25	0.0	0		7	0	0
BLACKSBURG NWSO	55.0	29.8	42.4	8.2	71	25+	13	04	624	0	0	1	21	0	0.89	-1.92	0.39	09	T	0		3	0	0
BURKES GARDEN	50.5M	26.4M	38.4M	6.8	69	25	6	04	734E	0	0	2	20	0	M 1.98	-1.48	0.83	09	M 3.4	M 2	10	4	2	0
CHRISTIANSBURG	53.6	30.8	42.2	6.4	70	25	13	04	628	0	0	1	19	0	1.00	-1.83	0.45	09	0.0	0		4	0	0
CLINTWOOD 1 W	55.0	27.5	41.3	6.7	76	25	11	05+	659	0	0	2	22	0	1.97	-1.68	0.50	25	0.4	T	10	6	1	0
COPPER HILL	52.4	31.2	41.8		70	13	12	05+	643	0	0	1	16	0	0.68		0.26	09	T	T	05	3	0	0
GALAX WTP	55.9	29.9	42.9	8.6	72	13	15	05+	613	0	0	0	21	0	1.06		0.51	23	0.0	0		3	1	0
GRUNDY	56.0	30.9	43.4	7.1	77	25	14	05+	600	0	0	2	18	0	1.30	-1.79	0.37	15	0.1	T	10	4	0	0
JOHN FLANNAGAN LAKE	M	M	M		78	24	13	06	593E	0	0	1	12	0	MA 1.69		0.40	09	0.0	0		3	0	0
LEBANON	55.1	28.0	41.6	5.7	76	25	11	06+	650	0	0	2	22	0	1.80	-1.63	0.53	09	0.5	1	15	6	1	0
NORA 4 SSE	52.1	32.5	42.3	8.8	70	25+	12	04	629	0	0	2	15	0	1.57	-2.05	0.57	09	2.8	2	15	4	1	0
PULASKI 2 E	55.9	31.1	43.5	7.8	70	25+	13	04	597	0	0	0	17	0	1.29	-1.40	0.39	13+	0.0	0		4	0	0
RADFORD 3 N	54.5	29.6	42.1	8.0	72	25+	15	04	636	0	0	2	20	0	0.81	-1.93	0.40	09	0.0	0		4	0	0

## MONTHLY STATION AND DIVISION SUMMARY

STATION	TEMPERATURE (°F)											PRECIPITATION (IN)												
	AVERAGE MAXIMUM	AVERAGE MINIMUM	AVERAGE	DEPARTURE FROM NORMAL	HIGHEST	DATE	LOWEST	DATE	HEATING DEG. DAYS	COOLING DEG. DAYS	NO. OF DAYS				TOTAL	DEPARTURE FROM NORMAL	GREATEST 24 HOURS	DATE	ICE PELLETS, SNOW			NO. OF DAYS		
											MAX		MIN						TOTAL	MAX DEPTH ON GROUND	DATE	.10 OR MORE	.50 OR MORE	1.00 OR MORE
											>=90	<=32	<=32	<=0										
RICHLANDS	55.9M	28.6M	42.3M	7.1	76	25	10	05	631E	0	0	1	21	0	M 1.47	-1.44	0.45	09	1.0	1	15	5	0	0
SALTVILLE 1N	56.3	29.1	42.7	6.6	77	25	12	04	619	0	0	1	22	0	1.73	-1.74	0.56	09	M 0.8	1	15	4	2	0
STAFFORDSVILLE 3 ENE	55.3	30.0	42.7	7.7	74	13	14	05	616	0	0	2	22	0	M 0.38	-2.35	0.18	23	T	T	01	3	0	0
WILLIS															1.26		0.58	09	T	0		3	1	0
WISE 1SE	52.9	32.1	42.5	5.7	72	25	10	04	621	0	0	2	16	0	1.88	-2.10	0.53	25	2.2	2	15	5	1	0
WYTHEVILLE	54.0	30.9	42.5	8.6	72	25	11	05	623	0	0	1	18	0	1.64	-1.16	0.59	09	M 0.3	T	05	4	1	0
--DIVISIONAL DATA----->			42.2	7.0B											1.42	-1.96B								

VIRGINIA  
201702

## DAILY PRECIPITATION (INCHES)

STATION	TOTAL	DAY OF MONTH																																				
		01	02	03	04	05	06	07	08	09	10	11	12	13	14	15	16	17	18	19	20	21	22	23	24	25	26	27	28	29	30	31						
<b>VIRGINIA</b>																																						
<b>TIDEWATER 01</b>																																						
DISPUTANTA	1.24								0.34							0.38								0.03				0.49										
EMPORIA 1 WNW	0.54			T				T	0.22						0.28								0.04															
FREDERICKSBURG SEWAGE	0.26								0.14	T			0.02		0.02										0.01		0.08	T	T									
HOLLAND 1 E	1.04								0.21						0.53							0.03	0.07	0.19	0.01													
HOPEWELL	0.53								0.21														0.10			0.19			0.03									
NORFOLK INTL AP	0.66							T	0.18			0.16			0.31						T					0.01		T										
NORFOLK S	0.81			T				T	0.20			0.23			0.35								T			0.03												
NORTH	1.55								0.39				0.39		0.02	0.52									0.08			0.15										
PAINTER 2W	1.61								0.54				0.33		0.44										0.08			0.22										
STONY CREEK 2 N	1.13						0.02	0.42							0.34								0.02				0.31			0.02								
SUFFOLK LAKE KILBY	0.58							T	0.20		T				0.35										0.03													
WAKEFIELD 1NW	0.69			T		T		T	0.17						0.37						T					0.11					0.01							
WALKERTON 2 NW	1.16								0.20			0.34			0.40										T			0.22										
WALLACETON LK DRUMMOND	0.65								0.15						0.39											0.11												
WALLOPS ISLAND NASA TEST FACIL	1.41		T			T		T	0.56			0.08			0.55								0.02	T		0.20			T									
WARSAW 2 NW	0.36								0.15						0.13												0.08											
WEST POINT 2 NW	1.42			T					0.21				0.31		0.47									0.04	0.01		0.36	0.02										
WILLIAMSBURG 2 N	1.36								0.30			0.08			0.42									0.03	0.03		0.36							0.14				
<b>EASTERN PIEDMONT 02</b>																																						
ALBERTA 5N	0.87			T	T				0.26	0.03					T	0.38										0.02		0.18		T								
AMELIA COURTHOUSE 1	M 0.77								0.02				-	0.04	0.41											0.15		T		0.15								
ASHLAND	0.70								0.22			0.13			0.22										T			0.13										
BREMO BLUFF	M 0.23			-	-				0.05						0.07	0.10										0.01												
BUCKINGHAM	0.42								0.03				0.07		0.03	0.18										0.11												
CAMP PICKETT	0.78					T										0.60																			0.18			
CHASE CITY	0.48							0.02	0.28																										0.18			
CLARKSVILLE	1.00								0.35				0.23			0.22										0.10									0.10			
CORBIN	0.15								0.11						0.03																				0.20			
CROZIER	M 0.63								0.20							0.22												-						0.20				
FARMVILLE 2 N	0.63								T						T	0.43						0.01				0.12								0.07				
JOHN H KERR DAM	1.27							0.02	0.23				0.25			0.20																		0.57				
KEYSVILLE 2 S	0.50								0.02						T	0.36																		0.11				
LOUISA	0.25								0.08			0.02			0.01										0.03			0.03							0.08			
PALMYRA 3S	0.33								0.08				0.10		0.13											0.02												
PETERSBURG	0.92							0.26				0.04			0.45									0.15										0.02				
RICHMOND INTL AP	0.71	T	T						0.08			0.05			0.39						T			0.01	0.01		0.09							0.08				
WINTERPOCK 4 W	1.33		0.01						0.07			0.01			0.05	0.39										0.13								0.67				
<b>WESTERN PIEDMONT 03</b>																																						
ALTAVISTA	0.52								0.12						0.03	0.22										0.14								0.01				
APPOMATTOX	0.53							T	0.06		T	0.02			0.16	0.13										0.14												

VIRGINIA  
201702

## DAILY PRECIPITATION (INCHES)

STATION	TOTAL	DAY OF MONTH																																		
		01	02	03	04	05	06	07	08	09	10	11	12	13	14	15	16	17	18	19	20	21	22	23	24	25	26	27	28	29	30	31				
BEDFORD 4 NW	0.57								0.10						0.21								0.06	0.12			0.08									
BROOKNEAL	0.59								0.10						0.30	0.01							0.01	0.17												
CHARLOTTESVILLE 2W	0.78								0.12	T					T								0.06	0.02			0.58									
CHATHAM	1.05								0.30				T			0.50								0.25												
CONCORD 4 SSW	0.51							T	0.06						0.14	0.17								0.14												
DANVILLE RGNL AP	0.89								0.03	0.32				T	0.34								0.12		0.08			T								
FREE UNION	0.61								0.22				0.02							T			0.05	0.03			0.29									
HOLCOMB ROCK	0.43								0.15						0.15								0.05	0.13			T									
HUDDLESTON 4 SW	0.54								0.19						0.06	0.21							0.08													
LYNCHBURG INTL AP	0.60							T	0.03	0.05		T			0.25				T				0.14		T				0.13							
MARTINSVILLE FLTR PLT	1.04								0.27						0.12	0.34	0.01							0.23			0.07									
MEADOWS OF DAN 5 SW	0.96								0.35						0.15									0.45			0.01									
MONTEBELLO FISH CULTURAL STN	M 0.72					-			0.43		-			0.10	0.03							0.03	0.05		-	-	-	0.08								
MONTICELLO	M	-	-	-	-	-	-	-	-	-	-	-	-	-	-	-	-	-	-	-	-	-	-	-	-	-	-	-	-	-	-	-	-			
PEDLAR DAM	0.30								0.10	T		T	T		0.05								0.07	0.08			T									
ROCKY MT	1.03								0.26			0.02	0.05		0.25	0.02					T		0.11	0.32												
SOUTH BOSTON	1.01								0.02	0.46			0.05			0.40								0.08												
STUART	1.03								0.49						0.10	0.19								0.25												
WOOLWINE	1.05								0.32						0.30	0.08					T		T	0.33			0.02									
<b>NORTHERN 04</b>																																				
FRONT ROYAL	M 0.51								0.46													0.05														
LINCOLN	MA 0.20				-				* 0.20 <sub>a</sub>																											
LURAY 5 E	0.52							T	0.45			T	0.02										0.05				T									
MANASSAS	M 0.55								0.15	-			0.05		0.05												0.30									
MT WEATHER	M 1.00								T	0.30			0.01	0.25								0.06	0.01			0.37										
PIEDMONT RSCH STN	0.68								0.23						T								T	0.02		0.43										
SOMERSET	0.62								0.17														0.05	0.02		0.38										
SPERRYVILLE	0.66								0.30	T			0.03		T							0.03		T		0.30										
STERLING (RCS)	0.32				T			T	0.21	0.02		T	0.04		T			T				T			0.05											
VIENNA	0.24							0.01	0.12	0.01																0.10										
WASHINGTON DULLES INTL AP	0.71								T	0.20		0.05				T						T			0.08		T	0.38								
WASHINGTON REAGAN NATL AP	0.68								T	T	0.12	0.03	0.29	T		T						0.01		T	0.18								0.34			
WINCHESTER	0.79								0.44	0.02		0.02	0.23									0.02														
WINCHESTER 7 SE	1.15								0.42	0.25		0.23										0.05												0.20		
WOODSTOCK 2 NE	0.81								0.40			0.19	0.19										0.03													
<b>CENTRAL MOUNTAIN 05</b>																																				
BUENA VISTA	0.25								0.14						0.02								0.03	0.06												
COVINGTON FLTR PLT	0.55								0.25														0.09	0.07		0.14										
DALE ENTERPRISE	0.19								0.15														0.04													
GATHRIGHT DAM	0.45								0.16	T			T		0.02								0.13	0.03		0.11										
GLASGOW 1 SE	0.36								0.10				0.03		0.05								0.06	0.11		0.01										
HOT SPRINGS	0.49								0.01			T											0.12	0.02		0.34										

VIRGINIA  
201702

## DAILY PRECIPITATION (INCHES)

STATION	TOTAL	DAY OF MONTH																																
		01	02	03	04	05	06	07	08	09	10	11	12	13	14	15	16	17	18	19	20	21	22	23	24	25	26	27	28	29	30	31		
LEXINGTON	0.34								0.19	T			0.01		T								0.07	0.07										
MILLGAP	0.48						0.02	0.01	0.22	T		0.03	0.06			T							0.02	0.01			0.11							
MTN GROVE	0.69								0.19	T			0.22		T	T				T			0.10	T		0.07	0.11							
MUSTOE 1 SW	1.22					T	0.07	0.14	0.15			0.20			T	T							0.08		0.16			0.42						
NEW CASTLE	0.53								0.23	T					0.06							0.03	0.21											
ROANOKE 8 N	0.67								0.22						0.14	0.02						0.02	0.21				0.06							
ROANOKE INTL AP	0.54							0.08	0.10			T			0.04				T			0.18		0.01				0.13						
STAUNTON WTP	0.26								0.16				T									0.07	0.03											
WAYNESBORO WTP	0.27								0.16											T		0.06	0.05											
<b>SOUTHWESTERN MOUNTAIN 06</b>																																		
ABINGDON 3S	1.70	0.01					0.05		0.70			0.05			0.25				0.03				0.32		0.24	0.05								
BIG STONE GAP	2.15				0.03		0.03	0.21	0.45		0.12	0.05			0.38				0.08			0.19	0.14	0.46	0.01									
BLACKSBURG NWSO	0.89			T			T		0.39	T		T	T		0.21	0.01						T	0.19		0.09									
BURKES GARDEN	M 1.98			0.01					0.83	0.07		-	0.02		0.55	-				T		0.02	0.28		0.20									
CHRISTIANSBURG	1.00								0.45						0.21					T		0.01	0.20			0.13								
CLINTWOOD 1 W	1.97				0.01		0.01	0.10	0.42	0.02		0.01	0.09		0.40	T				T		0.20	0.15		0.50	0.06								
COPPER HILL	0.68				0.01				0.26						0.06	0.12							0.21			0.02								
GALAX WTP	1.06								0.37				T		0.14							0.04	0.51											
GRUNDY	1.30							T	0.36	0.02		T			0.37				0.01			0.14	0.07		0.33									
JOHN FLANNAGAN LAKE	MA 1.69			-	-	0.01	-	0.04	0.40	0.04	-	-	0.05		0.31			-		-	-	0.08	0.20		*	*	0.56 <sub>a</sub>							
LEBANON	1.80	0.01			T			0.06	0.53	0.02		0.03			0.34	0.20				T		0.02	0.28	0.02	0.16	0.13								
NORA 4 SSE	1.57				T		T	0.09	0.57	0.02		T	T		0.37	T				T		0.09	0.11		0.25	0.07								
PULASKI 2 E	1.29								0.39					0.39	0.13							0.08	0.25			0.05								
RADFORD 3 N	0.81								0.40						0.11							0.03	0.17			0.10								
RICHLANDS	M 1.47				T		0.01		0.45	0.02		0.01	0.02		0.42							0.05	0.18		0.20	0.11								
SALTVILLE 1N	1.73		T				0.03		0.56	0.02		0.04	T		0.50							0.03	0.35		0.20									
STAFFORDSVILLE 3 ENE	M 0.38								-	T					0.10							T	0.18			0.10								
WILLIS	1.26				T				0.58				0.03		0.19	T				T			0.46			T								
WISE 1SE	1.88				0.02		0.02	0.17	0.41	T		0.02			0.37					T			0.31	0.02		0.53		0.01						
WYTHEVILLE	1.64				T		0.02		0.59	0.02		0.03	0.05		0.24								0.42			0.27								



VIRGINIA  
201702

## DAILY TEMPERATURES (°F)

STATION	OB. TIME	MAX/MIN	DAY OF MONTH																															AVERAGE			
			01	02	03	04	05	06	07	08	09	10	11	12	13	14	15	16	17	18	19	20	21	22	23	24	25	26	27	28	29	30	31				
<b>VIRGINIA</b>																																					
<b>TIDEWATER 01</b>																																					
DISPUTANTA	07	MAX	64	57	58	39	41	55	66	73	73	55	44	67	81	54	50	53	47	62	74	73	69	60	56	75	76	79	54	63					61.4		
		MIN	27	36	34	19	19	28	29	51	53	19	20	44	40	23	25	24	21	23	32	41	34	36	41	46	49	31	27	30					32.2		
EMPORIA 1 WNW	08	MAX																																		M	
		MIN																																		M	
FREDERICKSBURG SEWAGE	07	MAX	59	58	53	53	41	61	66	74	72	39	43	65	66	50	49	54	43	56	72	73	68	60	64	77	77	78	51	57					60.0		
		MIN	30	36	32	21	22	28	28	55	38	18	18	41	38	26	32	30	21	21	32	37	37	37	37	43	48	48	34	29	31					32.5	
HOLLAND 1 E	08	MAX	62	60	51	41	56	64	72	72	59	47	36	32	32 <sup>s</sup>	31 <sup>s</sup>	50	59	55	47	49	67	72	61	52	70	61	53	50	65					56.3		
		MIN	41	38	32	26	26	31	45	46	30	26	21	18	18	14	21	33	33	27	21	35	40	34	42	45	43	33	24	31					31.2		
HOPEWELL	16	MAX	62	56	54	41	55	65	73	73	73	41	64	82	80	53	53	49	62	74	73	70	67	67	75	75	78	78	61	73					65.3		
		MIN	25	40	35	26	24	31	50	57	39	21	40	47	41	25	41	30	23	34	46	47	41	40	54	51	45	45	29	48					38.4		
NORFOLK INTL AP	24	MAX	61	52	43	38	56	65	73	72	61	45	70	82	53	54	51	46	55	76	67	60	56	70	76	77	81	54	65	78					62.0		
		MIN	42	40	37	26	28	34	48	57	32	28	43	47	41	30	41	32	26	39	49	46	43	47	55	52	52	41	37	52					40.9		
NORFOLK S	24	MAX	60	56	43	38	55	63	71	70	60	44	68	81	51	53	49	44	56	74	69	61	57	67	75	76	79	53	64	78					61.3		
		MIN	43	39	35	28	27	33	48	56	30	24	42	47	40	30	39	31	26	39	48	43	39	44	53	49	50	39	36	49					39.5		
NORTH	07	MAX	54	52	51	38	39	52	59	71	72	46	47	62	77	51	45	50	43	49	68	70	65	53	58	70	70	71	51	55					56.8		
		MIN	32	35	30	26	27	30	32	54	46	23	23	42	40	27	31	30	23	28	39	46	34	34	40	45	45	29	25	36					34.0		
PAINTER 2W	16	MAX	51	53	50	37	50	59	68	71	67	38	56	76	75	50	47	47	50	70	65	65	60	64	71	72	71	68	58	70					60.0		
		MIN	34	30	30	27	27	29	45	55	36	24	36	41	39	26	40	34	27	33	52	45	37	41	52	49	51	39	31	48					37.8		
STONY CREEK 2 N	08	MAX	58	58	41	43	57	67	74	74	61	45	69	82	65	51	55	46	64	76	73	70	62	58	75	77	80	56	64	75					63.4		
		MIN	29	34	28	19	20	28	38	51	31	21	23	47	33	25	27	27	23	30	33	37	36	37	43	44	45	33	28	33					32.3		
SUFFOLK LAKE KILBY	24	MAX	60	59	42	42	55	64	70	72	60	43	68	79	59	52	51	46	59	71	72	66	59	65	74	77	78	54	61	77					62.0		
		MIN	40	40	32	27	27	32	46	53	30	24	41	52	36	29	33	29	27	38	46	42	40	44	53	49	50	37	33	46					38.4		
WAKEFIELD 1NW	24	MAX	60	60	40	42	57	67	73	76	62	45	69	82	56	51	54	47	62	74	75	70	62	60	77	78	79	55	65	76					63.4		
		MIN	38	36	26	18	22	29	47	57	28	18	41	48	30	24	29	24	21	33	44	41	34	42	52	45	51	30	28	47					35.1		
WALKERTON 2 NW	18	MAX	54	56	50	42	55	66	74	73	59	41	74	82	64	50	56	45	73	73	73	68	61	60	76	78	78	63	61	72					63.5		
		MIN	32	35	27	25	27	29	53	55	28	19	37	42	40	27	34	28	31	46	46	39	35	39	53	47	53	36	28	42					36.9		
WALLACETON LK DRUMMOND	08	MAX	60	64	63	41	45	59	67	73	74	47	52	72	82	58	56	52	49	60	76	70	60	63	71	77	79	79	57	68					63.4		
		MIN	34	20	35	11	10	19	29	35	29	15	19	39	35	14	24	16	13	20	34	28	23	30	41	34	35	32	23	34					26.1		
WALLOPS ISLAND NASA TEST FACIL	24	MAX	52	51	37	38	49	55	58	72	54	40	54	63	46	43	48	42	47	67	68	64	52	58	69	70	65	49	55	67					54.8		
		MIN	29	34	30	25	28	28	41	49	27	22	40	40	30	24	36	29	28	35	49	39	37	39	50	47	47	32	31	46					35.4		
WARSAW 2 NW	18	MAX	57	54	54		54	65	75	75	72	42		77		50	52	48	56		72	67	67	62	76	77									63.3		
		MIN	36	34	26	22		29	50	55	21	19			25	33	35	20	29			44	36	39	54	52									M		
WEST POINT 2 NW	17	MAX	56	56	53	41	55	63	74	74	70	42	63	81	70	49	54	48	57	73	72	69	65	60	75	74	77	60	60	71					62.9		
		MIN	31	32	28	23	29	29	50	54	25	19	40	41	29	25	32	26	23	31	44	39	35	40	51	46	51	34	32	45					35.1		
WILLIAMSBURG 2 N	24	MAX	56	57	41	43	55	64	74	73	58	42	66	81	54	50	52	45	58	72	73	68	57	60	75	76	79	54	62	74					61.4		
		MIN	36	39	31	27	28	32	48	57	29	22	42	46	33	27	36	29	25	36	45	43	38	41	54	49	53	35	34	49					38.0		
<b>EASTERN PIEDMONT 02</b>																																					
AMELIA COURTHOUSE 1	08	MAX	64	54	55	33	45	56	66	74	72	43	47		81	53	48	55	55	64	73	74	69	60	54	75	75	78	52	60					60.6		
		MIN	31	36	30	21	24	34	34	54	43	18	26		39	25	36	27	24	32	44	38	38	40	41	46	56	32	28	28					34.3		
ASHLAND	18	MAX	55	54	41	41	55	65	74	74	61	40	61	81	63	49	55	45	61	72	74	69	60	60	77	76	71	78	60	71					62.3		

VIRGINIA  
201702

## DAILY TEMPERATURES (°F)

STATION	OB. TIME	MAX/MIN	DAY OF MONTH																															AVERAGE		
			01	02	03	04	05	06	07	08	09	10	11	12	13	14	15	16	17	18	19	20	21	22	23	24	25	26	27	28	29	30	31			
BREMO BLUFF	07	MIN	34	33	25	20	23	29	44	54	30	18	35	44	38	25	35	26	22	29	42	35	35	39	55	48	31	48	26	40						34.4
		MAX	65	59			57	59	70	78	75	48	46	68	83	59	50	58	47	66	74	76	74	64	61	77	79	79	56	60						64.9
CAMP PICKETT	08	MIN	23	30			20	25	27	56	47	16	18	42	39	23	26	27	20	24	26	31	30	35	38	41	43	31	25	22						30.2
		MAX	64	54	55	39	42	56	66	69	74	45	48	67	81	55	48	54	46	65	73	73	70	60	56	74	73	75	53	61						60.6
CHASE CITY	17	MIN	25	37	36	20	20	30	29	28	27	20	23	47	28	25	27	26	23	31	36	37	30	28	41	32	46	20	28	32						29.7
		MAX	64	56	57	42	43	57	66	72	72	48	48	68	80	56	54	56	49	65	71	71	69	62	57	73	74	78	54	61						61.5
CLARKSVILLE	07	MIN	32	35	35	25	25	33	33	49	47	26	29	48	38	30	32	31	29	35	44	38	38	39	47	45	49	35	32	36						36.3
		MAX	65	60	61	41	43	58	68	74	75	47	47	72	81	58	58	56	49	68	75	74	71	61	56	75	75	80	54	64						63.1
CORBIN	09	MIN	31	37	38	25	24	29	39	51	45	25	27	46	42	28	31	28	28	35	36	38	39	40	48	46	46	34	31	37						35.9
		MAX	57	53	37	40	53	65	74	72	56	38	62	67	54	50	55	42	55	72	72	67	59	64	76	75	76	50	57	70						59.6
CROZIER	07	MIN	40	35	28	19	29	30	53	55	24	16	34	44	29	26	32	25	21	29	49	40	38	41	54	53	46	32	27	41						35.4
		MAX	61	54	53	36	40	55	65	73	72	42	47	61	81	54	46	53	44	63	73	73	70	60	56		75	75	51	58						58.9
FARMVILLE 2 N	07	MIN	29	33	26	5	19	15	32	56	39	11	24	43	25	25	32	28	23	29	32	33	34	41	43		51	31	26	30						30.2
		MAX	64	53	54	42	43	57	67	74	73	59	46	70	82	55	52	48	47	68	75	74	72	63	58	74	78	72	58	58						62.0
JOHN H KERR DAM	08	MIN	24	36	30	22	22	32	37	55	48	21	23	45	40	26	27	27	27	29	32	37	37	39	43	49	49	28	29						34.4	
		MAX	64	61	61	41	42	59	69	71	76	50	49	73	83	58	55	55	50	64	74	74	70	64	59	77	78	78	54	64						63.3
KEYSVILLE 2 S	07	MIN	36	37	37	21	24	32	38	52	48	23	28	48	40	28	33	33	28	37	41	39	38	39	47	45	46	35	29	39						36.5
		MAX	64	52	54	40	44	57	67	73	73	50	46	65	81	55	55	54	46	66	74	71	71	62	57	75	76	78	52	60						61.4
LOUISA	18	MIN	24	39	35	21	20	29	37	53	50	19	20	45	40	26	26	27	26	32	41	40	38	38	45	49	46	31	29	31						34.2
		MAX	58	54	45	41	55	65	73	72	61	34	62	79	62	46	55	44	63	72	73	70	59	60	75	74	73	58	56	68						61.0
PALMYRA 3S	06	MIN	41	36	29	15	25	28	51	50	31	17	34	43	36	24	36	30	23	27	42	29	32	41	49	43	57	26	22	35						34.0
		MAX	64	58	54	38	41	56	66	73	73	42	44	67	82	54	47	54	45	64	72	74	70	60	58	74	76	75	55	58						60.5
PETERSBURG	08	MIN	19	35	24	15	14	26	26	51	42	16	18	43	38	22	29	26	21	27	27	31	32	35	42	41	41	27	23	26						29.2
		MAX	55	57	39	42	56	67	74	75	46	43	66	82	55	50	55	46	63	75	72	68	61	55	75	76	78	53	62	74						61.4
RICHMOND INTL AP	24	MIN	28	36	22	22	30	31	51	43	23	24	39	42	26	28	28	24	29	33	38	37	37	40	48	47	37	30	32	46						34.0
		MAX	55	56	37	41	56	65	74	75	62	43	64	82	55	49	55	46	61	74	74	70	59	57	75	76	78	52	60	73						61.6
WESTERN PIEDMONT 03 APPOMATTOX	07	MIN	35	36	28	21	27	34	49	55	28	18	43	46	31	26	33	24	22	33	49	46	39	38	50	51	49	34	30	46						36.5
		MAX	64	54	51	37	39	55	63	72	70	43	42	65	79	53	50	52	44	63	71	71	68	60	57	71	73	73	52	58						58.9
BROOKNEAL	07	MIN	27	39	29	18	25	31	37	50	41	20	22	42	37	31	30	29	30	34	44	43	40	41	45	48	53	28	31	32						34.9
		MAX	65	52	53	41	42	57	66	74	72	45	42	64	82	55	54	54	46	66	73	70	70	62	56	73	75	76	53	62						60.7
CHARLOTTESVILLE 2W	08	MIN	24	32	29	19	20	30	35	45	44	20	25	41	34	26	27	28	26	30	32	32	35	37	44	41	41	28	27	33						31.6
		MAX	60	58	53	37	43	54	65	72	70	38	39	67	77	53	47	54	42	64	74	72	72	60	61	76	77	75	52	56						59.6
CHATHAM	07	MIN	24	41	30	20	21	31	42	50	38	20	22	39	34	35	38	30	31	32	46	49	43	43	46	51	53	29	31	36						35.9
		MAX	64	54	54	41	40	55	66	74	74	49	42	68	82	56	54	54	49	57	74	69	70	61	57	73	76	73	52	60						60.6
DANVILLE RGNL AP	24	MIN	19	31	29	18	16	28	29	47	44	21	22	40	37	26	26	27	25	30	29	34	32	35	42	41	40	25	24	28						30.2
		MAX	54	58	43	43	56	67	74	73	55	45	72	83	57	56	54	50	67	74	70	70	63	57	73	76	78	54	63	73						62.8
FREE UNION	08	MIN	33	36	29	18	25	31	46	47	28	22	36	56	37	27	38	27	32	32	41	35	41	43	46	44	44	29	27	37						35.3
		MAX	60	56	53	38	42	54	66	72	71	40	34	69	79	55	49	55	44	65	71	74	72	60	63	77	76	73	53	56						59.9
LYNCHBURG INTL AP	24	MIN	21	35	29	17	19	28	29	43	40	18	20	29	35	26	33	29	21	27	28	36	35	36	44	41	41	26	25	26						29.9
		MAX	55	53	38	40	56	65	72	70	52	37	68	80	54	52	52	45	65	71	70	71	60	55	73	74	71	52	58	69						59.9
		MIN	38	32	23	17	23	31	48	46	24	18	30	51	31	29	37	26	28	34	39	35	36	40		44	39	25	27	37						32.9

VIRGINIA  
201702

## DAILY TEMPERATURES (°F)

STATION	OB. TIME	MAX/MIN	DAY OF MONTH																															AVERAGE					
			01	02	03	04	05	06	07	08	09	10	11	12	13	14	15	16	17	18	19	20	21	22	23	24	25	26	27	28	29	30	31						
MARTINSVILLE FLTR PLT	07	MAX	66	51	56	42	42	57	68	72	71	44	45	67	82	55	54	53	49	68	72	69	72	62	55	74	76	71	54	61							61.0		
		MIN	21	30	29	19	16	27	28	41	40	21	25	41	40	24	26	31	27	27	27	30	31	38	44	40	40	29	24	30								30.2	
MEADOWS OF DAN 5 SW	07	MAX	66	53	57	43	43	58	68	66	64	40	42	63	79	55	58	50	48	68	72	64	73	63	56	71	72	63	55	60								59.6	
		MIN	30	35	35	20	20	20	34	42	36	23	23	31	36	30	30	27	27	29	36	39	38	42	43	44	48	29	29	34								32.5	
MONTEBELLO FISH CULTURAL STN	07	MAX	54	53	51	52		47	63	64	61	30		60	73	48	46	48	38	58	66	66	68	54	57			61	49								55.1		
		MIN	33	34	26	27		12	34	34	30	13		15	26	22	33	20	20	32	38	31	31	34	44			21	28									27.7	
MONTICELLO	07	MAX																																				M	
		MIN																																				M	
ROCKY MT	07	MAX	65	52	54	39	43	55	68	69	67	39	42	68	78	55	53	50	46	67	73	67	71	64	55	73	76	68	52	57							59.5		
		MIN	24	34	34	20	20	32	37	47	39	24	25		35	29	33	33	29	30	30	37	37	40	44	44	44	31	26	30							32.9		
SOUTH BOSTON	07	MAX	66	57	59	44	46	59	68	76	77	50	47	70	83	57	59	58	52	68	76	73	73		57	76	78	80	64								64.3		
		MIN	25	33	36	25	24	31	36	52	49	25	26	47	40	28	28	30	29	29	34	38	38		47	45	45	33	30	34								34.7	
STUART	07	MAX	66	53	58	58	42	58	68	69	70	45	45	68	81	48	55	54	51	69	71	72	73	62	57	73	75	68	55	61							61.6		
		MIN	30	30	34	17	22	23	23	41	40	25	26	37	37	29	34	31	30	30	30	36	37	42	44	44	46	28	28	34								32.4	
<b>NORTHERN 04</b>																																							
FRONT ROYAL	06	MAX	54	50	46	37	39	52	63	73	61	34	35	69	54		46	48	37	54	69	68	66	56	65	77	76	70	47								55.6		
		MIN	29	33	28	21	21	28	33	56	11	19	19	34	35		31	29	21	26	32	44	42	41	46	53	53	17	29								32.0		
LINCOLN	07	MAX	52	46	40	37	35	49	57	69	58	34		52	50	41	51	40	40	49	73	67	61	54	65	72	72	59	45	44							52.3		
		MIN	29	35	29	16	16	32	40	47	34	20	21	42	35	22	28	28	20	20	34	48	33	37	42	42	55	32	27								32.0		
LURAY 5 E	08	MAX	55	50	50	39	39	53	64	74	65	34	41	68	60	47	48	48	39	61	70	67	69	62	64	76	76	71	49	54							56.9		
		MIN	29	29	25	13	21	29	35	46	31	13	22	41	32	24	33	28	21	32	46	35	40	44	48	46	52	27	26	33							32.2		
MANASSAS	07	MAX	54	49	49	40	40		64	74	72		37	52	55	47	46	52	39	54	73	72	68	58	65	79	78	77									58.0		
		MIN	31	32	31	22	27			55	36			37	37	25	30	31	20	24	34	42	39	39	46	53	56	32		28							35.1		
MT WEATHER	07	MAX	52	49	43	32	35	48	60	66	62	29	43	57	50	41	44	45	34	51	69	64	63	53	60	73	73	67		49							52.3		
		MIN	23	33	25	18	17	29	33	33	29	15	16	38	30	29	32	25	22	28	45	47	36	35	35	51	51	26		37							31.0		
PIEDMONT RSCH STN	08	MAX	59	58	52	37	39	54	65	72	71	38	40	61	67	52	46	54	42	61	72	72	69	58	61	76	75	74	50	56							58.3		
		MIN	23	37	29	18	21	30	38	52	38	16	19	40	35	27	34	29	23	28	36	38	39	40	45	50	55	31	29	35								33.4	
SOMERSET	08	MAX	60	58	53	38	41	55	65	73	72	39	34	64	74	52	48	54	42	61	71	72	69	58	62	76	76	74	51	56								58.9	
		MIN	22	36	29	20	23	26	31	53	37	18	21	31	36	27	32	31	23	26	31	35	35	37	45	46	48	28	25	29								31.5	
SPERRYVILLE	06	MAX	56	53	50	41	41	54	64	72	69	38	33	58	65	49	45	49	41	57	73	71	70	58	68	78	77	75	50	53								57.4	
		MIN	32	31	28	16	16	28	30	45	37	21	21	26	38	31	31	31	26	26	38	49	35	35	43	49	50	31	31	30								32.3	
STERLING (RCS)	07	MAX	56	51	48	36	38	52	62	72	69	35	35	52	52	44	46	51	38	53	73	69	65	57	65	78	77	76	47	54								55.4	
		MIN	26	27	30	14	13	24	25	51	34	20	21	30	34	20	27	30	20	23	24	44	35	37	44	49	52	32	24	28									29.9
VIENNA	07	MAX	52	41	45	34	36	50	59	70	67	33	36	50	50	42	49	49	35	50	69	66	63	52	63	74	72	72	45	51								52.7	
		MIN	28	32	29	18	18	29	29	49	33	19	20	36	34	24	31	29	21	21	28	42	38	38	44	52	40	31	28	28									31.0
WASHINGTON DULLES INTL AP	24	MAX	51	49	37	39	53	63	72	71	52	35	52	53	46	46	53	39	52	72	69	65	57	65	77	77	77	48	54	67								56.8	
		MIN	27	33	28	14	30	25	50	52	22	20	31	41	25	22	30	24	19	25	50	40	35	44	52	53	41	26	24	37								32.9	
WASHINGTON REAGAN NATL AP	24	MAX	51	50	40	41	54	61	73	74	53	39	53	55	47	46	55	42	51	68	71	68	58	63	75	77	75	50	55	68								57.6	
		MIN	34	36	30	24	32	33	48	51	25	23	34	45	35	30	37	32	28	33	49	43	41	46	53	54	44	35	36	47								37.8	
WINCHESTER	07	MAX	54	49	49	35	39	51	64	73	64	32	37	69	54	45	49	46	36	57	70	66	70	58	67	78	77	68	48	52								55.6	
		MIN	28	35	28	19	19	34	34	51	32	18	20	37	34	28	33	29	22	26	36	45	37	37	44	50	50	30	28	36								32.9	
WINCHESTER 7 SE	08	MAX	49	46	38	40	52	72	72	66	33	33	70	53	46	49	47	37	67	69	68	68	57	66	76	76	66	49	52	64								56.5	

VIRGINIA  
201702

## DAILY TEMPERATURES (°F)

STATION	OB. TIME	MAX/MIN	DAY OF MONTH																															AVERAGE	
			01	02	03	04	05	06	07	08	09	10	11	12	13	14	15	16	17	18	19	20	21	22	23	24	25	26	27	28	29	30	31		
WOODSTOCK 2 NE	07	MIN	33	23	17	19	25	25	49	32	15	18	29	34	23	27	29	18	18	47	42	31	36	42	43	43	30	22	29	29				29.6	
		MAX	54	52	46	38	40	52	64	73	65	33	34	68	54	57	51	49	39	58	69	67	70	60	66	77	67	54	54	45				55.6	
		MIN	24	31	23	15	20	26	26	48	33	15	17	28	25	25	29	29	21	27	41	36	36	36	47	46	28	26	28	28				29.1	
<b>CENTRAL MOUNTAIN 05</b>																																			
COVINGTON FLTR PLT	07	MAX	55	53	46	36	40	50	66	71	62	35	35	62	74	48	50	45	39	64	65	61	69	59	55	71	73	62	46	50				55.1	
		MIN	19	28	23	14	13	27	27	45	35	18	18	26	32	24	26	28	26	26	29	30	30	45	45	41	40	28	26	29				28.5	
DALE ENTERPRISE	07	MAX	54	51	48	38	37	52	63	69	65	40	35	68	74	49	52	38	61	61	65	68	66	57	61	74	74	63	50	50				56.5	
		MIN	26	35	24	13	20	27	32	43	34	34	34	34	31	22	29	24	19	23	32	30	33	37	45	43	45	25	22	25				30.0	
GATHRIGHT DAM	07	MAX	53	51	45	34	38	48	63	71	61	33	33	60	72	47	50	44	44	63	65	65	68	60	55	70	73	58	45	48				54.2	
		MIN	18	27	24	12	12	27	30	44	33	16	16	30	29	24	27	26	26	26	26	26	33	39	44	43	43	26	26	29				27.9	
HOT SPRINGS	07	MAX	50		47	33	37	46	60	68	58	30	41	59	70	43	49	43	36	61	63	60	68	59	57	70	72	59	44	49				53.0	
		MIN	20		24	13	12	29	29	48	30	14	14	40	28	23	28	24	24	27	34	31	32	42	44	43	44	24	23	31				28.7	
LEXINGTON	07	MAX	60	56	50	36	41	54	66	72	65	38	34	66	78	53	53	50	44	66	69	69	70	60	55	74	75	66	50	53				58.0	
		MIN	20	29	28	18	18	27	51	38	18	20	26	34	25	30	29	25	26	30	32	31	38	44	42	42	26	25	27						29.5
MILLGAP	06	MAX	47	45	40	36	39	44	62	67	59	29	53	60	63	43	49	39	31	61	63	58	71	59	57	68	71	54	41	47				52.0	
		MIN	19	28	19	8	5	25	23	40	29	9	0	40	27	15	20	22	16	23	31	22	22	30	40	35	36	23	15	19				22.9	
MUSTOE 1 SW	24	MAX	44	40	35	36	43	59	67	58	46	27	59	63	43	47	42	31	60	60	59	69	66	55	66	69	53	41	45	57				51.4	
		MIN	30	20	17	8	15	24	37	42	14	10	25	38	21	18	25	18	19	31	31	25	30	40	42	36	27	20	20	25				25.3	
ROANOKE 8 N	07	MAX	62	58	51	37	47	56	67	73	65	38	42	69	78	52	54	48	44	67	70	64	73	60	54	72	75	64		56				59.1	
		MIN	22	36	30	18	18	30	35	45	37	21	23	40	35	28	33	31	30	31	38	36	37	43	46	44	45	29	28	32				32.9	
ROANOKE INTL AP	24	MAX	60	53	39	42	57	68	73	68	53	40	69	78	54	55	52	46	67	71	66	72	61	55	74	76	64	52	58	67				60.4	
		MIN	40	36	25	19	26	40	46	52	25	23	29	45	33	30	37	32	32	47	46	36	45	47	47	46	37	31	30	35				36.3	
STAUNTON WTP	08	MAX	55	53	48	35	38	50	62	68	64	34	49	64	71	71	52	48	39	62	64	69	67	59	58	72	73	66	49	49				56.8	
		MIN	32	34	29	15	17	31	40	52	31	15	19	48	29	29	35	25	27	34	46	37	38	42	45	50	54	24	28	35				33.6	
WAYNESBORO WTP	07	MAX	57	53	49	36	39	51	64	70	66	38	33	66	75	51	51	49	39	62	67	68	68	58	62	73	74	67	49	54				56.8	
		MIN	28	29	27	19	18	28	29	45	38	18	21	29	31	26	31	28	22	29	35	32	32	44	46	44	44	26	26	27				30.4	
<b>SOUTHWESTERN MOUNTAIN 06</b>																																			
ABINGDON 3S	22	MAX	57	55	50	35	46	45	63	70	58	32	49	54	69	49	50	45	42	60	58	57	71	67	54	69	76	54	46	57				54.9	
		MIN	28	29	31	12	12	24	24	39	31	17	20	43	30	25	25	26	27	30	34	31	31	43	39	40	43	24	22	33				29.0	
BIG STONE GAP	08	MAX	59	53	48	35	44	50	57	66	61	34	50	57	73	73	48	48	48	62	56	62	71	70	60	69	75	54	48	56				56.7	
		MIN	23	31	31	14	14	26	26	49	31	19	22	41	30	27	30	25	25	26	34	34	34	38	38	42	42	22	24	24				29.4	
BLACKSBURG NWSO	07	MAX	57	53	47	32	42	51	66	67	60	34	51	63	71	48	49	45	42	62	63	59	69	62	51	68	71	59	46	53				55.0	
		MIN	30	31	29	13	14	30	29	39	31	18	17	50	30	25	29	26	27	27	33	32	31	42	40	41	42	25	25	29				29.8	
BURKES GARDEN	07	MAX	49	47	41	27	37	43	59	64	56	27	48		66	41	47		41	54	57	50	66	61	54	65	69	51	40	52				50.5	
		MIN	28	29	22	6	16	24	22	46	27	13	15		26	21	24		22	32	40	26	25	43	35	36	40	21	21	27				26.4	
CHRISTIANSBURG	07	MAX	57	51	47	31	40	49	64	58	58	33	50	61	68	46	49	43	41	59	64	57	68	62	51	68	70	59	45	52				53.6	
		MIN	29	30	28	13	17	30	30	31	31	18	19	49	30	29	30	26	26	34	43	36	37	42	42	43	42	23	24	31				30.8	
CLINTWOOD 1 W	07	MAX	59	49	45	32	39	52	65	68	62	31	49	58	72	46	47	45	40	64	61	61	70	72	61	68	76	51	46	52				55.0	
		MIN	26	28	25	11	11	23	24	44	30	17	20	38	27	25	29	27	26	26	30	29	30	34	41	38	38	22	22	29				27.5	
COPPER HILL	07	MAX	55	48	44	29	35	46	62	64	59	33	48	61	70	45	47	41	37	59	64	57	65	55	54	65	67	63	43	51				52.4	
		MIN	33	34	27	12	12	29	31	47	33	15	15	48	30	27	31	24	23	31	31	40	39	39	44	47	50	22	22	37				31.2	

VIRGINIA  
201702

## DAILY TEMPERATURES (°F)

STATION	OB. TIME	MAX/MIN	DAY OF MONTH																															AVERAGE
			01	02	03	04	05	06	07	08	09	10	11	12	13	14	15	16	17	18	19	20	21	22	23	24	25	26	27	28	29	30	31	
GALAX WTP	07	MAX	59	59	51	39	39	50	63	64	58	35	57	65	72	50	52	43	43	64	65	57	69	58	56	67	69	62	47	53				55.9
		MIN	23	28	31	15	15	28	27	38	34	20	21	52	32	25	25	29	28	28	31	31	31	40	42	41	40	27	26	30				29.9
GRUNDY	07	MAX	59	50	47	32	42	54	65	70	62	31	49	67	72	48	47	45	40	64	61	61	69	72	59	67	77	54	47	57				56.0
		MIN	27	29	26	14	14	26	26	46	30	19	21	39	30	27	31	28	28	28	44	35	37	38	46	43	43	25	31	33				30.9
JOHN FLANNAGAN LAKE	07	MAX	59	59	50			54		69	62	31			73	53	45	48	39			73	74	60	78			52	57				M	
		MIN		24	27			13		47	29	18			20	26	30	31	28				27	38	44	44			23	33				M
LEBANON	07	MAX	57	49	47	31	45	47	64	69	61	30	51	60	73	48	48	45	40	60	61	57	70	72	56	67	76	56	45	57				55.1
		MIN	28	29	26	11	11	11	24	44	29	15	17	51	31	25	24	27	26	30	32	30	30	35	41	41	41	22	22	32				28.0
NORA 4 SSE	07	MAX	54	46	44	28	38	45	58	63	58	27	50	56	70	46	44	42	40	58	58	60	69	66	53	64	70	54	45	52				52.1
		MIN	37	30	25	12	13	30	34	47	25	15	17	46	27	26	31	25	26	35	43	43	45	48	47	51	50	22	22	38				32.5
PULASKI 2 E	07	MAX	58	53	48	37	48	48	65	68	58	42	54	65	69	48	50	44	42	60	63	57	70	61	53	68	70	65	47	53				55.9
		MIN	28	28	28	13	15	32	34	41	30	19	19	53	31	25	33	28	28	36	35	31	35	38	43	41	50	25	23	28				31.1
RADFORD 3 N	07	MAX	58	54	46	32	38	51	65	67	58	32	41	62	72	48	50	44	44	63	64	57	69	64	51	68	72	57	46	54				54.5
		MIN	23	30	28	15	20	27	30	44	30	18	19	30	30	24	34	28	26	28	31	33	35	43	44	38	43	27	25	27				29.6
RICHLANDS	07	MAX	56	48	46	36	47		64	68	61	29	50	59	71	47	45	44	56	60	62	61	73	69	56	68	76	54	47	57				55.9
		MIN	28	29	25	11	10		24	43	29	15	18	50	31	24	27	26	26	26	31	31	31	40	43	40	40	22	22	30				28.6
SALTVILLE 1N	07	MAX	58	53	50	36	46	48	65	71	62	32	48	52	74	51	50	44	41	61	60	60	74	67	54	71	77	56	56	58				56.3
		MIN	28	29	29	12	13	26	26	43	32	18	20	37	32	24	26	27	28	28	32	32	32	36	45	41	41	23	23	31				29.1
STAFFORDSVILLE 3 ENE	07	MAX	58	53	47	32	47	52	66	68	60	32	50	62	74	47	50	43	42	65	62	56	68	63	51	68	72	60	47	54				55.3
		MIN	21	29	28	15	14	28	27	45	31	18	19	49	31	24	28	28	28	29	32	31	31	43	45	43	43	27	24	29				30.0
WISE 1SE	09	MAX	54	47	45	28	41	47	59	65	58	28	48	59	69	47	44	44	41	58	56	62	69	68	56	66	72	51	46	54				52.9
		MIN	31	30	26	10	20	28	35	48	23	14	14	47	27	26	32	26	29	38	43	35	46	47	43	51	42	22	26	41				32.1
WYTHEVILLE	07	MAX	56	52	48	34	41	45	66	69	58	32	47	59	70	46	51	41	41	58	61	58	70	63	50	66	72	60	45	54				54.0
		MIN	31	30	27	12	11	28	30	43	32	17	19	44	32	27	31	26	26	35	42	36	36	46	40	41	48	23	24	29				30.9

VIRGINIA  
201702

## SNOWFALL AND SNOW ON GROUND (INCHES)

STATION		DAY OF MONTH																																			
		01	02	03	04	05	06	07	08	09	10	11	12	13	14	15	16	17	18	19	20	21	22	23	24	25	26	27	28	29	30	31					
<b>VIRGINIA</b>																																					
<b>TIDEWATER 01</b>																																					
DISPUTANTA	SNOWFALL																																				
EMPORIA 1 WNW	SNOWFALL																																				
FREDERICKSBURG SEWAGE	SNOWFALL																																				
	SN ON GND																																				
HOLLAND 1 E	SNOWFALL																																				
HOPEWELL	SNOWFALL																																				
	SN ON GND																																				
NORFOLK INTL AP	SNOWFALL																																				
	SN ON GND																																				
NORFOLK S	SNOWFALL	-	-	T	-	-	-	-	-	-	-	-	-	-	-	-	-	-	-	-	-	-	-	-	-	-	-	-	-	-	-	-	-	-			
	SN ON GND	-	-		-	-	-	-	-	-	-	-	-	-	-	-	-	-	-	-	-	-	-	-	-	-	-	-	-	-	-	-	-	-			
NORTH	SNOWFALL																																				
	SN ON GND																																				
PAINTER 2W	SNOWFALL																																				
STONY CREEK 2 N	SNOWFALL																																				
SUFFOLK LAKE KILBY	SNOWFALL																																				
	SN ON GND																																				
WAKEFIELD 1NW	SNOWFALL			T		T																															
	SN ON GND																																				
WALKERTON 2 NW	SNOWFALL																																				
	SN ON GND																																				
WALLACETON LK DRUMMOND	SNOWFALL																																				
WALLOPS ISLAND NASA TEST FACIL	SNOWFALL									T																											
	SN ON GND																																				
WARSAW 2 NW	SNOWFALL																																				
WEST POINT 2 NW	SNOWFALL			T						T																		T									
	SN ON GND																																				
WILLIAMSBURG 2 N	SNOWFALL																																				
<b>EASTERN PIEDMONT 02</b>																																					
ALBERTA 5N	SNOWFALL					T																															
	SN ON GND					T																															
AMELIA COURTHOUSE 1	SNOWFALL	-	-	-	-	-	-	-	-	-	-	-	-	-	-	-	-	-	-	-	-	-	-	-	-	-	-	T	-	-	-	-	-	-	-		
ASHLAND	SNOWFALL									T																											
	SN ON GND																																				
BREMO BLUFF	SNOWFALL			-	-																																
	SN ON GND			-	-																																
BUCKINGHAM	SNOWFALL																																				
	SN ON GND																																				
CAMP PICKETT	SNOWFALL	-	-	-	-	T	-	-	-	-	-	-	-	-	-	-	-	-	-	-	-	-	-	-	-	-	-	-	-	-	-	-	-	-	-	-	
CHASE CITY	SNOWFALL																																				

Snowfall: Includes snow and ice. Values for NWS stations (J index note) are Mid-Mid (LST).

Snow on ground: Includes snow, sleet, ice, and hail. Values for NWS stations (J index note) are observed at 12 UTC (GMT).

Water Equivalent: Given for NWS stations (J index note) only, when snow depth is 2 inches or more, and is measured at 18 UTC (GMT)

VIRGINIA  
201702

## SNOWFALL AND SNOW ON GROUND (INCHES)

STATION		DAY OF MONTH																																	
		01	02	03	04	05	06	07	08	09	10	11	12	13	14	15	16	17	18	19	20	21	22	23	24	25	26	27	28	29	30	31			
CLARKSVILLE	SNOWFALL																																		
	SN ON GND																																		
CORBIN	SNOWFALL																																		
CROZIER	SNOWFALL																																		
	SN ON GND																																		
FARMVILLE 2 N	SNOWFALL																																		
JOHN H KERR DAM	SNOWFALL																																		
KEYSVILLE 2 S	SNOWFALL																																		
	SN ON GND																																		
LOUISA	SNOWFALL																																		
PALMYRA 3S	SNOWFALL																																		
PETERSBURG	SNOWFALL																																		
RICHMOND INTL AP	SNOWFALL																																		
	SN ON GND																																		
WINTERPOCK 4 W	SNOWFALL																																		
WESTERN PIEDMONT 03																																			
APPOMATTOX	SNOWFALL																																		
	SN ON GND																																		
BEDFORD 4 NW	SNOWFALL																																		
	SN ON GND																																		
BROOKNEAL	SNOWFALL																																		
	SN ON GND																																		
CHARLOTTESVILLE 2W	SNOWFALL																																		
	SN ON GND																																		
CHATHAM	SNOWFALL																																		
	SN ON GND																																		
CONCORD 4 SSW	SNOWFALL																																		
	SN ON GND																																		
DANVILLE RGNL AP	SNOWFALL																																		
	SN ON GND																																		
FREE UNION	SNOWFALL																																		
	SN ON GND																																		
HOLCOMB ROCK	SNOWFALL																																		
	SN ON GND																																		
HUDDLESTON 4 SW	SNOWFALL																																		
	SN ON GND																																		
LYNCHBURG INTL AP	SNOWFALL																																		
	SN ON GND																																		
MARTINSVILLE FLTR PLT	SNOWFALL																																		
	SN ON GND																																		
MEADOWS OF DAN 5 SW	SNOWFALL																																		
	SN ON GND																																		

Snowfall: Includes snow and ice. Values for NWS stations (J index note) are Mid-Mid (LST).

Snow on ground: Includes snow, sleet, ice, and hail. Values for NWS stations (J index note) are observed at 12 UTC (GMT).

Water Equivalent: Given for NWS stations (J index note) only, when snow depth is 2 inches or more, and is measured at 18 UTC (GMT)





VIRGINIA  
201702

## SNOWFALL AND SNOW ON GROUND (INCHES)

STATION		DAY OF MONTH																													
		01	02	03	04	05	06	07	08	09	10	11	12	13	14	15	16	17	18	19	20	21	22	23	24	25	26	27	28	29	30
MILLGAP	SN ON GND										0.3						T														
	SNOWFALL									T							T														
MTN GROVE	SN ON GND																T														
	WTR EQUIV	-	-	-	-	-	-	-	-	-	-	-	-	-	-	-	-	-	-	-	-	-	-	-	-	-	-	-	-	-	
MUSTOE 1 SW	SNOWFALL									T	T						T														
	SN ON GND									T	T						T														
NEW CASTLE ROANOKE 8 N	SNOWFALL									0.8																					
	SN ON GND									T	T																				
ROANOKE INTL AP	SNOWFALL																														
	SN ON GND									T																					
STAUNTON WTP	SNOWFALL																														
	SN ON GND																														
WAYNESBORO WTP	WTR EQUIV	-	-	-		-	-	-	-		-	-	-	-	-	-	-	-	-	-	-	-	-	-	-	-	-	-	-		
	SNOWFALL																														
SOUTHWESTERN MOUNTAIN 06 ABINGDON 3S	SNOWFALL																T														
	SN ON GND																														
BIG STONE GAP	SNOWFALL																														
	SN ON GND																														
BLACKSBURG NWSO	SNOWFALL				T					T	T						T														
	SN ON GND																														
BURKES GARDEN	SNOWFALL					T				T	2.0	-				1.4	-														
	SN ON GND	T				T				T	2	-				1	-														
CHRISTIANSBURG	SNOWFALL																														
	SN ON GND																														
CLINTWOOD 1 W	SNOWFALL									0.2	0.2					T	T														
	SN ON GND									T	T																				
COPPER HILL	SNOWFALL					T																									
	SN ON GND					T																									
GALAX WTP	SNOWFALL																														
	SN ON GND																														
GRUNDY	SNOWFALL									T	0.1																				
	SN ON GND										T																				
JOHN FLANNAGAN LAKE	SNOWFALL																														
	SN ON GND																														
LEBANON	SNOWFALL									0.5																					
	SNOWFALL																														

Snowfall: Includes snow and ice. Values for NWS stations (J index note) are Mid-Mid (LST).

Snow on ground: Includes snow, sleet, ice, and hail. Values for NWS stations (J index note) are observed at 12 UTC (GMT).

Water Equivalent: Given for NWS stations (J index note) only, when snow depth is 2 inches or more, and is measured at 18 UTC (GMT)

VIRGINIA  
201702

## SNOWFALL AND SNOW ON GROUND (INCHES)

STATION		DAY OF MONTH																															
		01	02	03	04	05	06	07	08	09	10	11	12	13	14	15	16	17	18	19	20	21	22	23	24	25	26	27	28	29	30	31	
NORA 4 SSE	SN ON GND									1						1																	
	SNOWFALL					T				0.6	0.3					1.9	T																
PULASKI 2 E	SN ON GND					T				T	T					2	T																
	SNOWFALL																																
RADFORD 3 N	SN ON GND																																
	SNOWFALL																																
RICHLANDS	SN ON GND																																
	SNOWFALL					T				T						1.0																	
SALTVILLE 1N	SN ON GND					T				T						1																	
	SNOWFALL																																
STAFFORDSVILLE 3 ENE	SN ON GND																																
	SNOWFALL									T	T																						
WILLIS	SN ON GND	T																															
	SNOWFALL					T																											
WISE 1SE	SN ON GND																																
	SNOWFALL									0.3	T					1.9																	
WYTHEVILLE	SN ON GND									T	T					2																	
	SNOWFALL					T					-					0.3																	
	SN ON GND					T																											

Snowfall: Includes snow and ice. Values for NWS stations (J index note) are Mid-Mid (LST).

Snow on ground: Includes snow, sleet, ice, and hail. Values for NWS stations (J index note) are observed at 12 UTC (GMT).

Water Equivalent: Given for NWS stations (J index note) only, when snow depth is 2 inches or more, and is measured at 18 UTC (GMT)



# STATION INDEX

STATION	INDEX NO.	DIVISION	COUNTY	LATITUDE	LONGITUDE	ELEVATION (IN FEET)	OBSERVATION TIME AND TABLES					
							LOCAL STD TIME					
							TEMP	PRECIP	EVAP	SPECIAL SEE (NOTES)		
VIRGINIA												
ABINGDON 3S	0021	06	WASHINGTON	36 40	81 58W	1925	22	22				H
ALBERTA 5N	0079	02	BRUNSWICK	36 56	77 54W	376		08				H
ALTAVISTA	0166	03	CAMPBELL	37 7	79 17W	529		07				CH
AMELIA COURTHOUSE 1	0187	02	AMELIA	37 21	77 59W	345	08	08				H
APPOMATTOX	0243	03	APPOMATTOX	37 20	78 50W	850	07	07				H
ASHLAND	0327	02	HANOVER	37 45	77 29W	220	18	18				H
BEDFORD 4 NW	0561	03	BEDFORD	37 23	79 34W	1228		07				CH
BIG STONE GAP	0735	06	WISE	36 52	82 46W	1464	08	08				H
BLACKSBURG NWSO	0766	06	MONTGOMERY	37 12	80 25W	2103	07	07				CH
BREMO BLUFF	0993	02	FLUVANNA	37 43	78 17W	225	07	07				CH
BROOKNEAL	1082	03	CAMPBELL	37 4	78 57W	408	07	07				H
BUCKINGHAM	1136	02	BUCKINGHAM	37 30	78 32W	580		07				H
BUENA VISTA	1159	05	ROCKBRIDGE	37 44	79 22W	840		07				H
BURKES GARDEN	1209	06	TAZEWELL	37 6	81 20W	3068	07	07				H
CAMP PICKETT	1322	02	NOTTOWAY	37 2	77 57W	330	08	08				CH
CHARLOTTESVILLE 2W	1593	03	ALBEMARLE	38 2	78 31W	866	08	08				H
CHASE CITY	1606	02	MECKLENBURG	36 47	78 29W	510	17	17				H
CHATHAM	1614	03	PITTSYLVANIA	36 49	79 25W	651	07	07				CH
CHRISTIANSBURG	1692	06	MONTGOMERY	37 8	80 24W	2100	07	07				H
CLARKSVILLE	1746	02	MECKLENBURG	36 37	78 33W	330	07	07				H
CLINTWOOD 1 W	1825	06	DICKENSON	37 9	82 29W	1780	07	07				H
CONCORD 4 SSW	1955	03	CAMPBELL	37 17	78 58W	815		07				H
COPPER HILL	1999	06	FLOYD	37 5	80 9W	2690	07	07				H
CORBIN	2009	02	CAROLINE	38 12	77 22W	220	09	09				H
COVINGTON FLTR PLT	2044	05	ALLEGHANY	37 49	79 59W	1244	07	07				CH
CROZIER	2142	02	GOOCHLAND	37 40	77 53W	350	07	07				H
DALE ENTERPRISE	2208	05	ROCKINGHAM	38 27	78 56W	1358	07	07				CH
DANVILLE RGNL AP	2250	03	PITTSYLVANIA	36 34	79 20W	571	24	24				CH
DISPUTANTA	2400	01	PRINCE GEORGE	37 7	77 12W	15	07	07				H
EMPORIA 1 WNW	2790	01	GREENSVILLE	36 42	77 34W	100	08	08				H
FARMVILLE 2 N	2941	02	CUMBERLAND	37 20	78 23W	450	07	07				CH
FREDERICKSBURG SEWAGE	3204	01	FREDERICKSBURG	38 17	77 27W	15	07	07				H
FREE UNION	3213	03	ALBEMARLE	38 5	78 35W	590	08	07				H
FRONT ROYAL	3229	04	WARREN	38 54	78 11W	930	06	06				CH
GALAX WTP	3272	06	CARROLL	36 39	80 55W	2360	07	07				CH
GATHRIGHT DAM	3310	05	ALLEGHANY	37 57	79 57W	1770	07	07				CH
GLASGOW 1 SE	3375	05	ROCKBRIDGE	37 37	79 26W	737		07				H
GRUNDY	3640	06	BUCHANAN	37 17	82 5W	1170	07	07				H
HOLCOMB ROCK	4039	03	BEDFORD	37 33	79 24W	900		07				H
HOLLAND 1 E	4044	01	SUFFOLK	36 41	76 46W	80	08	08				H
HOPEWELL	4101	01	PRINCE GEORGE	37 18	77 17W	40	16	16				H
HOT SPRINGS	4128	05	BATH	37 60	79 50W	2236	07	07				H
HUDDLESTON 4 SW	4148	03	BEDFORD	37 8	79 32W	898		07				H
JOHN FLANNAGAN LAKE	4410	06	DICKENSON	37 14	82 21W	1460	07	07				H
JOHN H KERR DAM	4414	02	MECKLENBURG	36 36	78 18W	250	08	08	08			CH
KEYSVILLE 2 S	4568	02	CHARLOTTE	37 1	78 29W	625	07	07				H
LEBANON	4777	06	RUSSELL	36 54	82 2W	1912	07	07				H
LEXINGTON	4876	05	ROCKBRIDGE	37 47	79 26W	1097	07	07				H
LINCOLN	4909	04	LOUDOUN	39 5	77 42W	500	07	07				H
LOUISA	5050	02	LOUISA	38 3	78 0W	420	18	18				H
LURAY 5 E	5096	04	PAGE	38 40	78 22W	1400	08	08				H
LYNCHBURG INTL AP R	5120	03	CAMPBELL	37 19	79 12W	940	24	24				HJ
MANASSAS	5204	04	MANASSAS	38 44	77 30W	245	07	07				H
MARTINSVILLE FLTR PLT	5300	03	HENRY	36 42	79 52W	760	07	07				H
MEADOWS OF DAN 5 SW	5453	03	PATRICK	36 40	80 27W	2225	07	07				H
MILLGAP	5595	05	HIGHLAND	38 18	79 43W	2421	06	06				CH
MONTEBELLO FISH CULTURAL STN	5690	03	NELSON	37 51	79 8W	2667	07	07				H
MONTICELLO	5700	03	ALBEMARLE	38 1	78 27W	758	07	07				H
MT WEATHER	5851	04	LOUDOUN	39 4	77 53W	1659	07	07				H
MTN GROVE	5756	05	BATH	38 6	79 53W	1775		07				H
MUSTOE 1 SW	5880	05	HIGHLAND	38 20	79 40W	2380	24	24				H
NEW CASTLE	6012	05	CRAIG	37 31	80 6W	1258		07				H
NORA 4 SSE	6125	06	DICKENSON	37 1	82 19W	2650	07	07				H
NORFOLK INTL AP R	6139	01	NORFOLK (CITY)	36 54	76 12W	30	24	24				HJ
NORFOLK S	6147	01	NORFOLK (CITY)	36 52	76 14W	100	24	24				H

# STATION INDEX

STATION	INDEX NO.	DIVISION	COUNTY	LATITUDE	LONGITUDE	ELEVATION (IN FEET)	OBSERVATION TIME AND TABLES			
							LOCAL STD TIME			
							TEMP	PRECIP	EVAP	SPECIAL SEE (NOTES)
NORTH	6161	01	MATHEWS	37 26	76 26W	10	07	07		H
PAINTER 2W	6475	01	ACCOMACK	37 35	75 49W	30	16	16		CH
PALMYRA 3S	6491	02	FLUVANNA	37 49	78 16W	410	06	06		H
PEDLAR DAM	6593	03	AMHERST	37 40	79 17W	1024		07		CH
PETERSBURG	6656	02	PETERSBURG	37 14	77 24W	15	08	08		H
PIEDMONT RSCH STN	6712	04	ORANGE	38 14	78 7W	520	08	08		CH
PULASKI 2 E	6955	06	PULASKI	37 3	80 47W	1850	07	07		CH
RADFORD 3 N	6999	06	PULASKI	37 12	80 35W	1800	07	07		H
RICHLANDS	7174	06	TAZEWELL	37 6	81 48W	1910	07	07		H
RICHMOND INTL AP R	7201	02	HENRICO	37 30	77 19W	164	24	24		HJ
ROANOKE 8 N	7278	05	ROANOKE	37 22	79 58W	1190	07	07		H
ROANOKE INTL AP R	7285	05	ROANOKE	37 19	79 58W	1175	24	24		HJ
ROCKY MT	7338	03	FRANKLIN	36 59	79 54W	1315	07	07		CH
SALTVILLE 1N	7506	06	SMYTH	36 53	81 46W	1733	07	07		H
SOMERSET	7904	04	ORANGE	38 15	78 16W	510	08	08		H
SOUTH BOSTON	7925	03	HALIFAX	36 42	78 53W	329	07	07		H
SPERRYVILLE	7985	04	RAPPAHANNOCK	38 39	78 14W	750	06	06		H
STAFFORDSVILLE 3 ENE	8022	06	GILES	37 16	80 43W	1950	07	07		CH
STAUNTON WTP	8062	05	AUGUSTA	38 10	79 5W	169	08	08		CH
STERLING (RCS)	8084	04	LOUDOUN	38 59	77 29W	288	07	07		H
STONY CREEK 2 N	8129	01	SUSSEX	36 58	77 24W	105	08	08		H
STUART	8170	03	PATRICK	36 38	80 15W	1375	07	07		H
SUFFOLK LAKE KILBY	8192	01	SUFFOLK	36 44	76 36W	22	24	24		H
VIENNA	8737	04	FAIRFAX	38 54	77 17W	418	07	07		H
WAKEFIELD 1NW	8800	01	SUSSEX	36 59	77 0W	113	24	24		CH
WALKERTON 2 NW	8829	01	KING AND QUEEN	37 45	77 2W	50	18	18		H
WALLACETON LK DRUMMOND	8837	01	CHESAPEAKE	36 36	76 26W	20	08	08		H
WALLOPS ISLAND NASA TEST FACIL R	8849	01	ACCOMACK	37 56	75 28W	46	24	24		HJ
WARSAW 2 NW	8894	01	RICHMOND	37 59	76 47W	140	18	18		H
WASHINGTON DULLES INTL AP R	8903	04	LOUDOUN	38 56	77 27W	290	24	24		HJ
WASHINGTON REAGAN NATL AP R	8906	04	ARLINGTON	38 51	77 2W	10	24	24		HJ
WAYNESBORO WTP	8941	05	WAYNESBORO	38 5	78 53W	1270	07	07		H
WEST POINT 2 NW	9025	01	KING WILLIAM	37 34	76 48W	20	17	17		H
WILLIAMSBURG 2 N	9151	01	YORK	37 18	76 42W	70	24	24		CH
WILLIS	9169	06	FLOYD	36 55	80 30W	2810		07		CH
WINCHESTER	9181	04	FREDERICK	39 11	78 9W	720	07	07		H
WINCHESTER 7 SE	9186	04	FREDERICK	39 11	78 7W	680	08	08		H
WINTERPOCK 4 W	9213	02	CHESTERFIELD	37 19	77 39W	300		07		H
WISE 1SE	9215	06	WISE	36 58	82 33W	2564	09	09		CH
WOODSTOCK 2 NE	9263	04	SHENANDOAH	38 54	78 28W	675	07	07		H
WOOLWINE	9272	03	PATRICK	36 47	80 17W	1500		07		H
WYTHEVILLE	9301	06	WYTHE	36 58	81 5W	2458	07	07		H

# REFERENCE NOTES

**STATION NAMES:** Name of the city, town or locality. Figures and letters following the station names indicate the distance in miles and direction from the post office or town community center.

**DIVISIONS:** Areas within a state of similar climatological characteristics. Division averages are calculated using data from stations that record temperature and/or precipitation. Station Precipitation totals flagged with an 'F' or 'M' are excluded from the Divisional Average calculations of precipitation. Stations with monthly Temperature averages flagged with an 'F' or 'M' are included in the Divisional Average if there are no more than 9 flagged or missing daily values in the month, else they are excluded from the divisional average for temperature.

**NORMALS:** The average value of the meteorological element over a time period. Effective 1 January 2012, the averaging period for station departures is 1981 to 2010. The normals for National Weather Service localities have been adjusted so as to be representative for the current observation site.

The January 2011 through December 2015 publications incorrectly state the computation of divisional departures. Climate Division departures have been, and continue to be, computed from 1971-2000 Normals, not 1981-2010 as stated. Station departures are accurately described as departures from 1981-2010.

**MONTHLY DEGREE DAY TOTALS:** One heating (cooling) degree day is accumulated for each whole degree that the daily mean temperature is below (above) 65 degrees Fahrenheit.

**PRECIPITATION:** Values shown in hundredths of inches are water equivalent totals, i.e., total of liquid and melted frozen precipitation. In the "Monthly Summarized Data" table the total snow and sleet values shown in tenths of inches are unmelted amounts. The max depth on ground values of snow and sleet shown in whole inches are cumulative unmelted amounts. The number of days with .10, .50, 1.00 or more refers to water equivalents.

**PRECIPITATION QUALITY CONTROL:** The NCEI quality control process may flag precipitation data that are spatially inconsistent, exceed climatological limits, or are inconsistent with prevailing weather patterns.

**TEMPERATURE:** Original temperature values are given in the "Daily Temperature" table. Summary temperature information (averages, departures, extremes, monthly degree day totals) is based on the values labeled MAX/MIN.

**WIND:** (As shown in the "Evaporation and Wind" table) the total wind movement in miles over the evaporation pan as determined by an anemometer recorder located 6-8 inches above the pan.

## SYMBOLS AND LETTERS USED IN THE STATION INDEX TABLE

C Station is equipped with recording rain gage (R) but values in this bulletin are from a non-recording rain gage unless indicated by an R.

G Observations appear in the "Soil Temperatures" table.

H Observations appear in the "Snowfall and Snow on the Ground" table.

J Station also published as a Local Climatological Data publication.

VAR Observation time varies.

SR / SS Observation time near sunrise / Observation time near sunset, respectively.

## SYMBOLS AND LETTERS USED IN THE DATA TABLES

(DAILY DATA ARE FOR THE 24 HOURS IMMEDIATELY PRECEDING OBSERVATION TIME.)

BLANK Entries in the "Monthly Summarized Data" table indicate no record.

BLANK Entries in the "Daily Precipitation" and "Snowfall and Snow on the Ground" tables indicate zero.

BLANK Entries in the "Daily Temperature" table indicate a missing record

- No record. Data not recorded or not received in time for publication.

+ Precipitation or temperature extremes occurred on one or more previous dates during the month.

\* Rain gage not read. Precipitation is included in the amount following the asterisks.

Time distribution may not be known. A \* preceding the monthly total indicates precipitation amount is being carried forward to next month's total, and may include amounts from the previous month(s).

a As a subscript, indicates accumulated total.

A Amount of precipitation is the total of observer's entries for the current month. It may include precipitation that occurred during the previous month. Refer to earlier bulletin to determine date of last

reading. (Hawaii stations)

B Divisional Departure from normals are computed using 1971-2000 normals.

E Normalized HDD/CDD Calculation. E is appended to the HDD/CDD Calculation when 1-9 individual daily TMAX and/or TMIN values are missing and a Normalized HDD/CDD Calculation is provided. M appears alone if 10 or more daily values are missing.

F Monthly calculation flagged value. F is appended to average and/or total values computed which exclude one or more daily data values that have been flagged by the GHCN-Daily Dataset

M Insufficient or partial data. M is appended to average and/or total values computed with 1-9 daily values missing. M appears alone if 10 or more daily values are missing, (8 or more for wind and evaporation).

N Indicates snow fall or Snowdepth totals are computed with one or more missing days.

R Amounts from recording rain gage.

T Trace. An amount too small to measure.

**SEASONAL TABLES:** Monthly and seasonal snowfall and heating degree days for the 12 months ending with the June data are published in the July issue of this bulletin. Cooling degree days for the calendar year are published in the "Climatological Data Annual Summary."

Information concerning the history of changes in locations, exposure, etc. of substations is kept on file at the National Centers for Environmental Information. Historical information of regular National Weather Service Offices may be obtained from the "Local Climatological Data" annual publication. The contents of this publication may be reprinted or otherwise used freely, with proper credit to the National Centers For Environmental Information. The data are also available digitally.

Effective with the January 2011 Data-Month, COOP Observer Names are no longer included in the Monthly and Annual Climatological Data Publications. This information is not published to ensure the privacy of personal information pursuant to Section 208 of the E-Government Act of 2002 (44 USC 3601).

As of the 2011 Data-Year, Station and Climate Division Maps are no longer being included in the CD Publications. NCEI's Products Branch provides updated Station Maps for various data networks via the Historical Observing Metadata Repository: <http://www.ncdc.noaa.gov/homr>.

The GHCN-Daily Quality Control Flags shown below are displayed as superscripts with the data. For more information on Global Historical Climatology Network - Daily and flags, see: <http://www.ncdc.noaa.gov/oa/climate/ghcn-daily/> and Comprehensive Automated Quality Assurance of Daily Surface Observations. Durre, Imke, Matthew J. Menne, Byron E. Gleason, Tamara G. Houston, Russell S. Vose, 2010: J. Appl. Meteor. Climatol., 49, 16151633. doi: 10.1175/2010JAMC2375.1

Blank = Passed All checks

D = failed duplicate check

G = failed gap check

I = failed internal consistency check

K = failed streak/frequent-value check

L = failed check on length of multiday period

M = failed megaconsistency check

N = failed naught check

O = failed climatological outlier check

R = failed lagged range check

S = failed spatial consistency check

T = failed temporal consistency check

W = temperature too warm for snow

X = failed bounds check

Z = flagged as a result of an official Datzilla investigation

Beginning with the January 2013 CD Publication, monthly mean temperature calculations have changed to the National Data Stewardship Team standard. Monthly maximum and minimum temperatures are not rounded until after the monthly mean temperature is calculated. This is the most accurate outcome, but may be slightly different from the mean derived from rounded monthly maximum and minimum.

The climate division temperature and precipitation values in this publication are based on simple averages from the current set of NWS-Designated Open and Published COOP and First Order Sites within each division. These values differ from those found in NCEI's nClimDiv product. Beginning in February 2014, the nClimDiv product is used by NCEI's Monitoring Branch and in its monthly climate reports. For more details on nClimDiv, please go to <http://www.ncdc.noaa.gov/monitoring-references/maps/us-climate-divisions.php>.

Effective January 2016, Alaska's Climate Divisions are updated to reflect the 13 climate divisional boundaries established by University of Alaska-Fairbanks, NWS, NCEI, Oregon State University, and University of Nebraska-Lincoln. For more details regarding the updated Alaska Climate Divisions, see: <http://journals.ametsoc.org/doi/pdf/10.1175/JAMC-D-11-0168.1> (Bienek et al., 2012).

**These and other publications are available from the National Centers for Environmental Information**

### **Hourly Precipitation Data**

This publication contains hourly precipitation amounts obtained from recording rain gages located at National Weather Service, Federal Aviation Administration, and cooperative observer stations. Published data are displayed in inches and tenths or inches and hundredths at local standard time. HPD includes maximum precipitation for nine (9) time periods from 15 minutes to 24 hours, for selected stations.

### **Climatological Data**

Monthly editions contain station daily maximum and minimum temperatures and precipitation. Some Stations provide daily snowfall, snow depth, evaporation, and soil temperature data. Each edition also contains monthly summaries for heating and cooling degree days (65 degree F base). The July issue contains a recap of monthly heating degree days and snow data for the preceding July through June.

The Annual issue contains monthly and annual averages of temperature, precipitation, temperature extremes, freeze data, soil temperatures, evaporation, and a recap of monthly cooling degree days.

### **Storm Data**

Monthly issues contain a chronological listing, by states, of occurrences of storms and unusual weather phenomena. Reports contain information on storm paths, deaths, injuries, and property damage. An "Outstanding storms of the month" section highlights severe weather events with photographs, illustrations, and narratives. The December issue includes annual tornado, lightning, flash flood, and tropical cyclone summaries.

### **Monthly Climatic Data for the World**

This publication contains monthly means for temperature, pressure, precipitation, vapor pressure, and sunshine for approximately 2,000 surface data collection stations worldwide and monthly mean upper air temperatures, dew point depressions, and wind velocities for approximately 500 observing sites.

### **Local Climatological Data**

LCD publications summarize temperature, relative humidity, precipitation, cloudiness, wind speed and direction observations for several hundred cities in the U.S. and its territories. Each monthly publication also contains 3 hourly weather observations for that month and a hourly summary of precipitation. Annual LCD publications contain a summary of the past calendar year as well as historical averages and extremes.

For Information Call:

(828) 271-4800 Option 2

(828) 271-4010 (TDD)

(828) 271-4876 (Fax)

NOAA National Centers for Environmental Information  
Attn: Customer Engagement Branch  
151 Patton Avenue  
Asheville, NC 28801-5001

Customer Services Number: (828) 271-4800, option 2  
TDD : (828) 271-4010  
Fax number: (828) 271-4876

NCEI now offers free online access to the *Climatological Data* publication.  
Go to : [www.ncdc.noaa.gov](http://www.ncdc.noaa.gov) and choose Most Popular.