



CLIMATOLOGICAL DATA

VIRGINIA

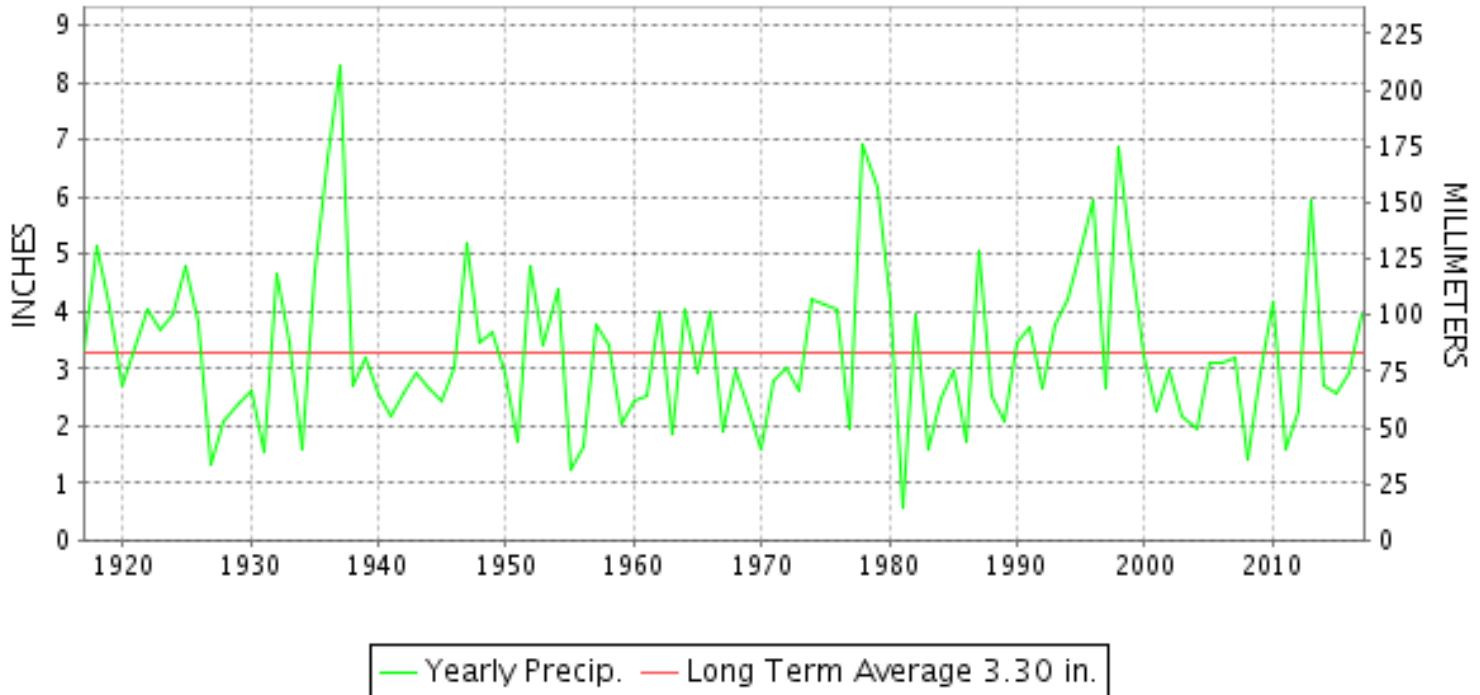
JANUARY 2017

VOLUME 127 NUMBER 01

ISSN 0364-5630

GHCND Ver: 3.22-upd-2017061405

JANUARY PRECIPITATION BY YEAR



TEMPERATURE AND PRECIPITATION EXTREMES

VIRGINIA

HIGHEST TEMPERATURE	73	JANUARY 12+	2 STATIONS
LOWEST TEMPERATURE	-8	JANUARY 09	MILLGAP
GREATEST TOTAL PRECIPITATION	5.71		WOOLWINE
LEAST TOTAL PRECIPITATION	2.30		LOUISA
GREATEST 1 DAY PRECIPITATION	2.49	JANUARY 23	WOOLWINE
GREATEST TOTAL SNOWFALL	13.0		NORTH
GREATEST DEPTH OF SNOW OR ICE	12		NORTH

"I certify that this is an official publication of the National Oceanic and Atmospheric Administration (NOAA) It is compiled using information from weather observing sites supervised by NOAA/National Weather Service and received at the National Centers for Environmental Information(NCEI), Asheville, North Carolina 28801."

Director
National Centers for Environmental Information

noaa

National
Oceanic and
Atmospheric Administration

National
Environmental Satellite, Data
and Information Service

National
Centers for Environmental Information
Asheville, North Carolina

MONTHLY STATION AND DIVISION SUMMARY

STATION	TEMPERATURE (°F)											PRECIPITATION (IN)												
	AVERAGE MAXIMUM	AVERAGE MINIMUM	AVERAGE	DEPARTURE FROM NORMAL	HIGHEST	DATE	LOWEST	DATE	HEATING DEG. DAYS	COOLING DEG. DAYS	NO. OF DAYS				TOTAL	DEPARTURE FROM NORMAL	GREATEST 24 HOURS	DATE	ICE PELLETS, SNOW			NO. OF DAYS		
											MAX		MIN						TOTAL	MAX DEPTH ON GROUND	DATE	.10 OR MORE	.50 OR MORE	1.00 OR MORE
											>=90	<=32	<=32	<=0										
RICHMOND INTL AP	49.9	33.3	41.6	3.7	70	12	0	09	718	0	0	3	10	1	4.29	1.25	0.88	23	7.1	6	08	8	4	0
WINTERPOCK 4 W															5.33	1.65	24	M				10	4	1
--DIVISIONAL DATA-----> WESTERN PIEDMONT 03			40.7	4.8B										4.16	0.32B									
ALTAVISTA														3.50	0.84	23	0.0	0				8	3	0
APPOMATTOX	47.6M	32.9M	40.3M	5.2	66	26	5	08	758E	0	0	2	11	0	4.29	1.15	0.91	07	9.3	9	08	9	3	0
BEDFORD 4 NW														3.37	0.86	23	6.0	5	08	9	2	0		
BROOKNEAL	49.7M	29.7	39.7M	8.4	69	26	0	09	783E	0	0	3	18	1	4.49	0.82	1.11	23	6.4	6	09	10	3	1
CHARLOTTESVILLE 2W	46.6	31.9	39.2	3.3	69	26	9	09+	790	0	0	3	13	0	3.82	0.72	1.12	24	2.9	3	07	7	3	1
CHATHAM	49.7	28.9	39.3	4.7	69	26	-3	10	788	0	0	3	18	2	3.99	0.21	0.75	24	7.0	7	10	8	4	0
CONCORD 4 SSW														3.58	0.75	23	M 5.5	6	07	10	3	0		
DANVILLE RGNL AP	51.7	32.3	42.0	4.3	71	25+	-1	09	706	0	0	3	12	1	3.88	0.46	1.00	23	8.8	9	07	8	3	1
FREE UNION	47.2	29.5	38.3		70	26	4	09	819	0	0	3	16	0	3.77	1.10	24	2.3	2	10	8	3	1	
HOLCOMB ROCK														3.97	1.11	24	4.8	4	08	10	3	1		
HUDDLESTON 4 SW														3.59	0.87	24	9.0	9	08	11	1	0		
LYNCHBURG INTL AP	48.4	31.5	40.0	4.9	68	25	0	09	769	0	0	3	14	1	3.78	0.64	1.47	23	5.9	5	08	8	2	1
MARTINSVILLE FLTR PLT	49.9	29.5	39.7	4.2	71	26	-3	09	777	0	0	3	18	2	4.16	0.67	1.00	23	M 7.4	8	08	8	4	1
MEADOWS OF DAN 5 SW	48.8M	32.1	40.5M		72	26	8	09+	751E	0	0	4	13	0	3.55	1.17	23	5.0	5	08	9	2	1	
MONTEBELLO FISH CULTURAL STN	45.9M	27.0M	36.5M		67	26	-1	10+	878E	0	0	5	16	3	M 4.56	1.45	24	M			10	2	2	
MONTICELLO	M	M	M									0	0	0	M				M					
PEDLAR DAM														2.93	0.94	24	3.3	3	07	9	1	0		
ROCKY MT	49.7	31.8	40.7	5.1	71	26	1	10	745	0	0	3	14	0	4.16	0.79	1.35	23	7.0	6	08	10	3	1
SOUTH BOSTON	53.6	33.1	43.4	7.0	72	27+	0	10	660	0	0	3	12	1	4.08	0.47	1.07	03	M 6.5	7	07	8	3	1
STUART	50.5	32.8	41.7	4.9	73	26	4	09	715	0	0	3	15	0	4.82	0.95	2.13	23	4.4	4	08	9	2	1
WOOLWINE														5.71	2.49	23	6.9	7	08	9	3	1		
--DIVISIONAL DATA-----> NORTHERN 04			40.1	4.3B										3.97	0.13B									
FRONT ROYAL	45.6	30.1	37.9	5.0	71	13	8	10	835	0	0	4	16	0	M 4.19	1.75	1.73	24	M 1.0	1	06	9	3	1
LINCOLN	M	M	M		61	26	21	31	733E	0	0	1	4	0	M				M	0				
LURAY 5 E	47.6	29.0	38.3	5.4	70	13+	3	09	819	0	0	4	21	0	M 3.74	1.06	1.25	24	2.5	1	30	5	3	1
MANASSAS	46.1M	31.9M	39.0M	5.5	65	26	9	09	799E	0	0	2	10	0	MA 3.57	0.75	04	M 2.0	1	30	7	1	0	
MT WEATHER	40.4M	28.4M	34.4M	3.7	62	13	6	09	941E	0	0	7	18	0	M 3.99	1.11	1.47	24	M 3.0	1	08	9	2	1
PIEDMONT RSCH STN	46.3	30.2	38.2	3.9	69	13	5	09	822	0	0	4	14	0	A 3.41	0.65	1.30	24	1.6	1	30	5	2	1
SOMERSET	46.7	30.4	38.5	5.0	69	26+	4	09	812	0	0	3	15	0	3.20	0.31	0.91	24	1.3	1	30	8	2	0
SPERRYVILLE	45.4M	30.1M	37.8M	4.7	70	13	8	10	834E	0	0	4	17	0	M 3.81	0.74	1.53	24	M 2.1	2	30	8	2	1
STERLING (RCS)	44.8M	31.0M	37.9M	5.9	70	13	9	09	833E	0	0	5	13	0	3.02	0.17	1.08	24	1.0	T	30	7	2	1
VIENNA	43.5	30.8	37.2	4.6	69	13	10	09	851	0	0	5	14	0	2.39	-0.74	0.67	24	1.5	1	30	6	2	0
WASHINGTON DULLES INTL AP	46.7	32.1	39.4	6.2	70	12	7	09	786	0	0	4	14	0	2.73	0.05	0.92	03	1.0	T	30	5	2	0

VIRGINIA
201701

MONTHLY STATION AND DIVISION SUMMARY

STATION	TEMPERATURE (°F)											PRECIPITATION (IN)												
	AVERAGE MAXIMUM	AVERAGE MINIMUM	AVERAGE	DEPARTURE FROM NORMAL	HIGHEST	DATE	LOWEST	DATE	HEATING DEG. DAYS	COOLING DEG. DAYS	NO. OF DAYS				TOTAL	DEPARTURE FROM NORMAL	GREATEST 24 HOURS	DATE	ICE PELLETS, SNOW			NO. OF DAYS		
											MAX		MIN						TOTAL	MAX DEPTH ON GROUND	DATE	.10 OR MORE	.50 OR MORE	1.00 OR MORE
											>=90	<=32	<=32	<=0										
WASHINGTON REAGAN NATL AP	48.5	35.7	42.1	6.1	72	12	15	08	701	0	0	3	8	0	2.75	-0.06	0.86	03	1.4	1	30	6	2	0
WINCHESTER	44.1	30.5	37.3	5.5	70	13	10	09	851	0	0	4	13	0	4.19	1.63	1.38	24	2.2	1	06	9	2	1
WINCHESTER 7 SE	44.8M	28.9M	36.9M	6.0	70	12	7	08	866E	0	0	4	19	0	M 3.63	1.44	1.52	23	M 0.5	0		8	2	1
WOODSTOCK 2 NE	46.5	28.7	37.6	7.1	71	13	6	09	842	0	0	4	21	0	3.37	0.70	1.08	24	3.3	1	08	10	1	1
--DIVISIONAL DATA-----> CENTRAL MOUNTAIN 05			38.0	6.2B											3.13	-0.04B								
BUENA VISTA															2.52	0.80	24	2.6	2	08	8	1	0	
COVINGTON FLTR PLT	45.8M	31.1	38.4M	4.9	68	13	5	09	810E	0	0	5	15	0	3.80	1.30	1.25	24	2.3	2	07	9	2	1
DALE ENTERPRISE	45.5	28.7	37.1	6.7	67	13	3	09+	856	0	0	4	19	0	3.05	0.76	0.75	24	0.9	0		11	1	0
GATHRIGHT DAM	44.4	30.5	37.5	6.1	66	13	2	09	846	0	0	7	16	0	3.56	0.78	0.83	24	2.6	2	08	10	2	0
GLASGOW 1 SE															3.71	1.17	24	4.6	4	09	9	2	1	
HOT SPRINGS	43.7	28.6	36.2	6.2	64	13	-3	09	888	0	0	7	17	2	4.02	0.56	0.86	23	5.0	3	09	12	3	0
LEXINGTON	47.1	30.4	38.7	4.7	69	13	4	10	806	0	0	4	17	0	2.94	0.15	0.74	24	3.0	2	10	9	2	0
MILLGAP	41.8	25.8	33.8	6.1	63	13	-8	09	957	0	0	8	18	2	3.28	0.03	0.57	24	4.2	2	08	9	1	0
MTN GROVE															M				M	0				
MUSTOE 1 SW	41.9	25.5	33.7	5.6	61	12	-5	09	961	0	0	8	21	2	4.25	0.87	1.09	23	5.6	2	09	11	2	1
NEW CASTLE															3.62	0.87	24	M				9	2	0
ROANOKE 8 N	47.8MF	31.1	39.4MF	4.1	71	25	7	10	794E	0	0	4	15	0	5.00	1.98	1.50	23	3.5	3	07	14	3	1
ROANOKE INTL AP	49.5	33.7	41.6	5.0	71	25	9	09	717	0	0	3	13	0	4.10	1.18	1.87	23	4.5	4	07	8	2	1
STAUNTON WTP	45.3	30.3	37.8	5.2	67	13	4	09	835	0	0	5	16	0	3.45	0.78	0.97	23	1.6	2	07	6	3	0
WAYNESBORO WTP	46.5	29.3	37.9	5.1	69	13	2	09	832	0	0	4	18	0	3.64	0.85	1.48	24	3.3	3	08	8	1	1
--DIVISIONAL DATA-----> SOUTHWESTERN MOUNTAIN 06			37.5	5.2B											3.64	0.48B								
ABINGDON 3S	48.9F	33.0	40.9F	7.8	65	17	4	09	724	0	0	4	15	0	4.25	0.58	0.75	23	4.5	4	09	16	2	0
BIG STONE GAP	49.2	33.1	41.1	7.1	64	21+	6	09+	731	0	0	3	15	0	5.22	1.03	1.25	18	3.0	3	08	15	2	1
BLACKSBURG NWSO	44.7	28.9	36.8	5.3	64	26	5	10+	865	0	0	5	18	0	4.50	1.42	0.82	23	5.9	5	08	11	2	0
BURKES GARDEN	43.0M	29.0M	36.0M	7.1	59	17	-6	09	892E	0	0	7	16	1	M 5.21	1.26	0.94	24	M 10.8	6	30	10	4	0
CHRISTIANSBURG	44.5	29.3	36.9	4.1	63	26	4	08	862	0	0	5	16	0	4.21	1.45	1.37	23	7.0	5	07	12	1	1
CLINTWOOD 1 W	47.8	31.8	39.8	8.7	66	03	2	09	775	0	0	4	16	0	4.37	0.76	1.05	23	7.8	4	07	14	2	1
COPPER HILL	43.6	28.6	36.1		62	26	1	08	886	0	0	6	17	0	4.98		1.53	23	7.1	6	09	8	3	2
GALAX WTP	48.5	31.8	40.2	9.2	68	26	9	09+	765	0	0	4	17	0	3.64		1.51	23	6.5	5	08	9	1	1
GRUNDY	47.9	32.9	40.4	7.5	65	21+	6	09	756	0	0	4	14	0	4.28	1.09	0.90	24	6.2	3	07	14	3	0
JOHN FLANNAGAN LAKE	M	M	M		67	17	6	09	698E	0	0	1	10	0	MA 4.78		1.04	24	2.8	1	30	7	1	1
LEBANON	49.0	31.8	40.4	7.4	65	17	1	09	755	0	0	4	17	0	4.17	1.13	0.92	24	4.5	4	07	15	2	0
NORA 4 SSE	45.3	32.1	38.7	8.6	63	17	3	09+	809	0	0	6	13	0	4.10	0.49	0.91	23	9.1	5	07	13	2	0
PULASKI 2 E	46.2M	30.0	38.1M	5.1	63	26+	3	09	828E	0	0	4	16	0	4.30	1.45	1.42	23	4.5	4	09	10	2	1
RADFORD 3 N	45.1	29.6	37.4	7.1	66	26	6	08	850	0	0	5	17	0	3.59	0.66	1.25	23	4.8	3	07	9	2	1

VIRGINIA
201701

MONTHLY STATION AND DIVISION SUMMARY

STATION	TEMPERATURE (°F)											PRECIPITATION (IN)												
	AVERAGE MAXIMUM	AVERAGE MINIMUM	AVERAGE	DEPARTURE FROM NORMAL	HIGHEST	DATE	LOWEST	DATE	HEATING DEG. DAYS	COOLING DEG. DAYS	NO. OF DAYS				TOTAL	DEPARTURE FROM NORMAL	GREATEST 24 HOURS	DATE	ICE PELLETS, SNOW			NO. OF DAYS		
											MAX		MIN						TOTAL	MAX DEPTH ON GROUND	DATE	.10 OR MORE	.50 OR MORE	1.00 OR MORE
											>=90	<=32	<=32	<=0										
RICHLANDS	48.9M	30.1M	39.5M	7.5	65	03	0	09	774E	0	0	3	17	1	M 3.62	0.57	0.69	24	M 6.7	4	07	14	2	0
SALTVILLE 1N	48.5	32.8	40.6	7.7	65	17	5	09	749	0	0	3	14	0	M 4.11	0.51	0.80	23	M 3.1	2	09	15	1	0
STAFFORDSVILLE 3 ENE	45.3	29.1	37.2	5.6	65	13	4	09	854	0	0	4	17	0	4.12	1.22	0.77	24	M 4.3	3	30	12	2	0
WILLIS															4.43		1.47	23	7.5	7	08	8	3	1
WISE 1SE	46.3	32.7	39.5	6.4	62	17	4	09+	783	0	0	5	13	0	4.28	0.40	1.02	23	6.6	5	07	16	2	1
WYTHEVILLE	45.7	30.2	38.0	7.3	62	20+	3	09+	831	0	0	5	13	0	4.61	1.71	1.44	23	6.1	4	09	10	3	1
--DIVISIONAL DATA----->			38.8	6.8B											4.32	0.78B								

VIRGINIA
201701

DAILY PRECIPITATION (INCHES)

STATION	TOTAL	DAY OF MONTH																															
		01	02	03	04	05	06	07	08	09	10	11	12	13	14	15	16	17	18	19	20	21	22	23	24	25	26	27	28	29	30	31	
VIRGINIA																																	
TIDEWATER 01																																	
DISPUTANTA	4.41		0.73	0.69	0.16			0.78						0.01		0.12		0.02				0.14	0.84	0.11	0.63		0.09	0.09					
EMPORIA 1 WNW	3.45		1.34	0.30	0.06			0.40	0.30					0.03	T	T		0.07				0.21	0.36	0.21	0.07		0.10						
FREDERICKSBURG SEWAGE	M 3.06	-	0.20	0.43			0.45	0.08	0.08		0.07	-	0.01	0.11	0.18	0.02		0.10				0.07	0.02	0.20	0.89						0.15		
HOLLAND 1 E	2.85	0.01	1.30	0.05		0.14	0.01	0.01		0.04	0.46	0.06		0.01		0.02	0.07	0.01			0.15	0.33	0.01	0.11	0.01		0.05						
HOPEWELL	M 4.45		1.13	0.38				0.79						-	-	-	-				0.21	0.03	0.86	0.90	0.04	-		0.03			0.08		
NORFOLK INTL AP	4.41	0.02	1.73	0.24		T	0.03	1.04			T	0.05		T		0.02	0.01	0.09			0.20	0.44	0.03	0.46	T		0.05			T			
NORFOLK S	4.47	0.02	1.77	0.25	T		0.04	1.04				0.05		T	T	0.03	T	0.04			0.22	0.48	0.04	0.43	0.01		0.04			T			
NORTH	5.19		0.68	0.73	0.52			0.55	0.50							0.18		0.07	0.05		0.05	0.08	1.13	0.17	0.38		0.10					0.05	
PAINTER 2W	4.96		0.81	0.18			0.03	0.90	0.02			0.12		0.01	0.07			0.15			0.04		1.56	0.72	0.05		0.20					0.10	
STONY CREEK 2 N	3.82		1.25	0.38			0.15	0.22							0.14		0.01				0.22	0.78	0.37	0.08		0.22							
SUFFOLK LAKE KILBY	3.26	T	1.49	0.03		T	0.04	1.17			T			0.01		0.05	T	T			0.18	0.04	0.04	0.10	0.03		0.05				0.03		
WAKEFIELD 1NW	4.29	T	1.41	0.33		T	0.04	0.91				0.06		0.04	0.02	0.07	0.01	0.01			0.14	0.61	0.12	0.34	0.02		0.14			T		0.02	
WALKERTON 2 NW	3.77		0.74	1.22				0.50				0.05							0.04			0.06	0.03	0.05	1.03	0.05				T			
WALLACETON LK DRUMMOND	4.25		1.40	0.40	0.05			1.10	0.10			0.05		0.05	0.05	0.06		0.05				0.15	0.36	0.23	0.05			0.15					
WALLOPS ISLAND NASA TEST FACIL	4.79		0.80	0.20		T	0.01	0.77				0.16		T	0.22	T		0.01	0.21		0.10	0.14	1.40	0.60	0.01		0.11					0.05	
WARSAW 2 NW	2.71		0.64	0.22				0.57				0.03			0.13			0.02	0.04				0.20	0.54	0.10				0.20				
WEST POINT 2 NW	4.36		0.71	0.28				0.81				0.07			0.12	0.05		0.05			0.07	0.01	0.85	1.10	0.06							0.18	
WILLIAMSBURG 2 N	4.39	0.01	1.24	0.41			0.02	0.52				0.05		0.08		0.03		0.03			0.12	0.45	0.34	0.83	0.03		0.23						
EASTERN PIEDMONT 02																																	
ALBERTA 5N	3.74	T	0.47	0.67	0.05		T	0.50	0.42			0.05		0.06	T	0.12	T	0.02				0.28	0.46	0.22	0.32		0.10					T	
AMELIA COURTHOUSE 1	M 4.90		0.48	1.08	0.02			-	0.65			0.03		0.01	-	0.17	0.01	0.03				0.19	0.90	0.45	0.84		0.01			-		0.03	
ASHLAND	4.42		0.71	1.02			T	0.41				0.11		0.07	0.05	0.10	0.06	0.01			0.08	0.01	0.50	1.08	0.03							0.18	
BREMO BLUFF	3.40		0.12	0.31	0.27			0.25	0.15					0.07		0.14	0.03	0.04				0.12	0.49	0.20	1.16							0.05	
BUCKINGHAM	3.99		0.29	0.33	0.38			0.35	0.14		0.01	0.01	T	0.02	T	0.17	T	0.03				0.19	0.44	0.13	1.49			0.01				T	
CAMP PICKETT	5.48		0.61	0.79				0.47	T							0.90						0.33	1.03	0.26	0.34		0.05						
CHASE CITY	4.41	0.03	0.66	0.78	0.02			0.45	0.32						0.24				0.10			0.46	0.78	0.50			0.07						
CLARKSVILLE	4.63		0.94	0.64	0.10		0.10	0.50	0.20						0.17				0.15			0.45	0.63	0.55	0.10		0.10						
CORBIN	M 3.24	-	-	1.06	0.10			-	0.10						-	-	-	0.28	0.07				-	-	0.43	1.00							0.20
CROZIER	4.07		0.20	1.15	0.05			0.37	0.01							0.40		0.04	0.05			0.21	0.60	0.24	0.75								
FARMVILLE 2 N	4.82		0.35	0.77	0.36			0.60	0.02			T		0.03		0.20		T			0.05	0.23	0.70	0.46	1.10						T		
JOHN H KERR DAM	3.90		1.06	0.59	0.02			0.08				0.34			0.01		0.10		0.10			0.36	0.68	0.51	0.06	0.01	0.08						
KEYSVILLE 2 S	3.75		0.08	0.67				0.72	0.15			0.02			0.05		0.10		0.04			0.40	1.10	0.37	0.03		0.01					0.01	
LOUISA	2.30		0.27	0.48				0.19				0.01			0.13		0.04	0.03				0.06		0.08	0.93							0.08	
PALMYRA 3S	3.89		0.19	0.71	0.08		0.02	0.07	0.30			0.03			0.12		0.22	0.03	0.06			0.20	0.24	0.75	0.87								
PETERSBURG	M 3.31	0.37	0.33	0.16			0.05	0.02			0.20				0.10			0.05			0.22	0.82	0.01	0.90		0.02				0.06		-	
RICHMOND INTL AP	4.29	T	0.73	0.84		T	0.01	0.56				0.05		0.10	T	0.11	T	0.01			0.07	0.38	0.49	0.88	T		T				0.05		
WINTERPOCK 4 W	5.33		0.50	0.76	0.41			0.40	0.15			0.04		0.02	0.03	0.10	0.02	0.03				0.17	0.87	0.11	1.65							0.07	
WESTERN PIEDMONT 03																																	
ALTAVISTA	3.50		0.33	0.64				0.56	0.07			0.02			0.03		0.08		0.15			0.35	0.28	0.84	0.12							0.03	
APPOMATTOX	4.29		0.44	0.65	0.02		T	0.91	0.07			0.02	0.03		0.03	0.01	0.25		0.12			0.26	0.26	0.81	0.39		T	T				0.02	

DAILY PRECIPITATION (INCHES)

STATION	TOTAL	DAY OF MONTH																															
		01	02	03	04	05	06	07	08	09	10	11	12	13	14	15	16	17	18	19	20	21	22	23	24	25	26	27	28	29	30	31	
BEDFORD 4 NW	3.37		0.15	0.59	T			0.46	0.06					0.06	0.02	0.19	0.06	0.12		0.32	0.05	0.29	0.86	0.10							0.04		
BROOKNEAL	4.49		0.45	0.63	0.01			0.65	0.03			0.02		0.10	0.10	0.09	0.01	0.11		0.01	0.35	0.48	1.11	0.29							0.05		
CHARLOTTESVILLE 2W	3.82		0.17	0.71	0.06			0.27	T		T	0.03		0.11	0.05	0.12	0.03	0.07			0.09	0.09	0.90	1.12		T					T		
CHATHAM	3.99	0.04	0.24	0.72	0.08			0.43	0.06					0.01				0.15			0.51	0.30	0.70	0.75									
CONCORD 4 SSW	3.58		0.33	0.65	0.12			0.31	0.07		0.03	0.01		0.03		0.11	0.01	0.10			0.29	0.23	0.75	0.51							0.03		
DANVILLE RGNL AP	3.88	0.08	0.84	0.55		0.12	0.33				T			0.04		0.09	T		0.44	0.21	0.18	1.00			T			T					
FREE UNION	3.77		0.20	0.65	0.07			0.20	0.02		0.01	0.05		0.12	0.11	0.08	0.03	0.10			0.07	0.05	0.87	1.10							0.04		
HOLCOMB ROCK	3.97		0.12	0.54	0.28			0.36	0.08					T		0.33		0.12			0.26	0.17	0.60	1.11							T		
HUDDLESTON 4 SW	3.59		0.23	0.42	0.19			0.40	0.12		0.01			0.04		0.11	0.02	0.23			0.37	0.23	0.33	0.87		0.01					0.01		
LYNCHBURG INTL AP	3.78	0.05	0.26	0.44		T	0.12	0.52		T	0.01		T	T	0.06	0.07	0.10	0.05		0.29	0.09	0.18	1.47		0.06			0.01			T		
MARTINSVILLE FLTR PLT	4.16		0.32	0.58	0.04			0.74	0.06				0.01	0.03				0.13			0.59	0.23	1.00	0.43									
MEADOWS OF DAN 5 SW	3.55		0.26	0.55	0.02			0.30	0.04					0.11		0.03		0.07		0.34	0.22	0.16	1.17	0.28									
MONTEBELLO FISH CULTURAL STN	M 4.56		0.01	0.49	0.12			-	-		0.30	0.30	-	0.11	-	-	0.21	-		-	0.39	0.10	1.03	1.45		0.05					-		
MONTICELLO	M	-	-	-	-	-	-	-	-	-	-	-	-	-	-	-	-	-	-	-	-	-	-	-	-	-	-	-	-	-	-	-	
PEDLAR DAM	2.93		0.06	0.49	0.17	T	T	0.30	0.03		0.04	T		T	T	0.22	T	0.17			0.17	0.13	0.21	0.94		T					T		
ROCKY MT	4.16	0.02	0.26	0.61	T			0.30	0.02		T				0.12	0.03	T	0.28		0.14	0.13	0.19	1.35	0.70	T	T		0.01			T		
SOUTH BOSTON	4.08	0.01	0.60	1.07	0.01			0.43	0.08									0.12			0.46	0.44	0.60	0.24		0.02							
STUART	4.82		0.37	0.70				0.47	0.05					0.03				0.11		0.30	0.25	0.23	2.13	0.18									
WOOLWINE	5.71	T	0.29	0.80	0.03			0.66	0.03		0.01			0.14		0.06	0.01	0.20		0.44	0.06	0.18	2.49	0.31								T	
NORTHERN 04																																	
FRONT ROYAL	M 4.19		0.11	0.21	0.75		-					0.12		0.10	0.15		0.02	0.20				0.05	0.73	1.73	0.02							-	
LINCOLN	M	-	-	-	-	-	-	-	-	-	-	-	-	-	-	-	-	-	-	-	-	-	-	1.35								T	
LURAY 5 E	M 3.74		-	0.06	0.71		0.02	0.01		T		0.08		0.30	0.06		0.02	0.13		0.01	0.05	T	0.98	1.25	T							0.06	
MANASSAS	MA 3.57		0.20	0.30	0.75		-	-	0.10		-	0.05	0.10	-	* 0.25 _a		-	0.17			0.05	-	* 1.50 _a									0.10	
MT WEATHER	M 3.99		0.23	0.23	0.92		0.02				T	0.12	0.05	-	0.18		0.11	0.19		T	0.05	0.03	0.33	1.47								0.06	
PIEDMONT RSCH STN	A 3.41		* 0.85 _a	0.10					0.06			0.03		0.03	0.20		0.02	0.08			0.01	0.04	0.55	1.30								0.14	
SOMERSET	3.20		0.19	0.59	0.06			0.15	T			0.02		0.23	0.03	0.04	0.03	0.13			0.08	0.03	0.46	0.91	0.01							0.24	
SPERRYVILLE	M 3.81		0.14	0.27	0.03	0.02		0.04	T		T	0.07		0.37	0.10	-	0.04	0.12			0.07	0.03	0.85	1.53					T			0.13	
STERLING (RCS)	3.02	T	0.13	0.15	0.79	0.07	0.01	T	0.04		0.01	0.06		0.01	0.22		T	0.24		T	0.05	T	0.14	1.08					T			0.02	
VIENNA	2.39		0.06	0.16	0.64		0.01	0.01	0.02			0.07		0.01	0.24		0.05	0.20			0.02		0.16	0.67								0.07	
WASHINGTON DULLES INTL AP	2.73		0.27	0.92	0.02	T	0.01	0.04		T	0.09	0.02	T	0.23		T	0.20			0.03		0.07	0.74	0.07		T	T				0.02		
WASHINGTON REAGAN NATL AP	2.75		0.35	0.86	T	T	T	0.01			0.07	0.02	T	0.29		0.01	0.21			0.01	T	0.15	0.67	0.03		T					0.07		
WINCHESTER	4.19		0.21	0.42	0.75		0.11				0.04	0.17	0.05	0.02	0.22			0.24			0.06	0.02	0.48	1.38							0.02		
WINCHESTER 7 SE	M 3.63	-	0.40	0.70		0.15					0.14	0.02		0.20						0.02		0.28	1.52									0.02	
WOODSTOCK 2 NE	3.37		0.07	0.40	0.42		0.11	0.14			0.01	0.19		0.13	0.12		0.02	0.17	0.02	0.02		0.02	0.38	1.08							0.07	T	
CENTRAL MOUNTAIN 05																																	
BUENA VISTA	2.52		T	0.45	0.23			0.17	0.04		0.05					0.17		0.08			0.18	0.11	0.20	0.80		0.01						0.03	
COVINGTON FLTR PLT	3.80		0.03	0.73	0.09			0.14	0.01		0.02	0.06		0.01	0.08	0.47		0.16		0.08	0.15	0.12	0.30	1.25		0.10						T	
DALE ENTERPRISE	3.05		0.12	0.45	0.38			0.03				0.13	0.01	0.26	0.15	0.05	0.02	0.12			0.13	0.03	0.15	0.75	0.02							0.25	
GATHRINT DAM	3.56		0.07	0.51	0.09		T	0.15			0.05	0.10		0.18	0.08	0.49	0.03	0.19		0.20	0.05	0.10	0.38	0.83								0.06	
GLASGOW 1 SE	3.71		0.07	0.54	0.20		T	0.30	0.09		0.03	0.01		T	T	0.27	T	0.16		T	0.20	0.22	0.43	1.17		T			T			0.02	
HOT SPRINGS	4.02		0.05	0.55	0.17		0.04	0.18	0.04		0.07	0.10		0.15	0.11	0.35	0.05	0.23		T	0.24	0.08	0.86	0.60		T		0.02				0.13	

VIRGINIA
201701

DAILY PRECIPITATION (INCHES)

STATION	TOTAL	DAY OF MONTH																														
		01	02	03	04	05	06	07	08	09	10	11	12	13	14	15	16	17	18	19	20	21	22	23	24	25	26	27	28	29	30	31
LEXINGTON	2.94		0.04	0.53	0.11			0.18	0.08			0.04	0.02		0.04	0.02	0.34	0.04	0.11		T	0.17	0.18	0.26	0.74		0.01				0.03	
MILLGAP	3.28	T	0.05	0.32	0.42		0.06	0.12	T			0.02	0.25		0.38	0.08	0.08	0.02	0.32		T	0.12	T	0.37	0.57		T	0.02	0.01	0.01	0.06	T
MTN GROVE	M	-	-	-	-	-	-	-	-	-	-	-	-	-	-	-	-	-	-	-	T	-	-	-	1.10	-	0.06	-	-	-	-	T
MUSTOE 1 SW	4.25	0.05	0.05	0.75		0.07		0.16				0.29		0.13	0.47	0.09	0.10	0.36			0.22	0.02	0.12	1.09		0.06	0.05	T	0.10	0.07		
NEW CASTLE	3.62		0.05	0.46	0.07	0.03	0.02	0.18	0.02				0.02		0.15	0.09	0.22	0.01	0.17		0.15	0.06	0.21	0.78	0.87		0.03				0.03	
ROANOKE 8 N	5.00		0.11	0.55	0.07	0.03		0.40	0.08					0.20		0.05	0.15	0.11	0.17	0.02	0.13		0.18	0.10	0.36	1.50	0.66			0.10	0.03	
ROANOKE INTL AP	4.10	0.03	0.09	0.51	T		0.02	0.30		T		0.06		0.01	0.13	0.05	0.02	0.15	T		0.28	0.31	0.19	1.87	T		0.01	T		0.07	T	0.03
STAUNTON WTP	3.45		0.12	0.73	0.14			0.07	0.02				0.07		0.20	0.01	0.08	0.03	0.02		0.07	0.02	0.07	0.97	0.83	T	T			T		
WAYNESBORO WTP	3.64		0.05	0.43	0.28			0.25	0.15				0.06		0.07	0.08	0.11		0.07			0.10	0.05	0.46	1.48					T		
SOUTHWESTERN MOUNTAIN 06																																
ABINGDON 3S	4.25	0.08	0.06	0.27	0.14		0.20	0.30				0.10	0.15	0.06	0.16	0.16			0.22		0.30	0.15		0.75	0.50	0.10	0.40				0.15	
BIG STONE GAP	5.22	0.30	0.05	0.28	0.17		0.06	0.20	0.02			0.23	0.45	0.22	0.12	0.16		0.13	1.25		0.25	0.02	0.13	0.45	0.59	0.01	0.04		0.01		0.08	
BLACKSBURG NWSO	4.50	T	0.17	0.47	0.03		T	0.33	0.04			0.04	0.01	T	0.32	0.10	0.28	0.01	0.49		0.20	0.08	0.24	0.82	0.67	T	0.06	0.07	T	T	0.07	T
BURKES GARDEN	M 5.21	0.08	0.02	0.57	0.26	T	0.06	0.28	T			0.06	0.04	0.04	-	0.43	0.01	0.50		0.36	0.03	T	0.89	0.94	0.03	0.17	T	T	T	T	0.43	
CHRISTIANSBURG	4.21	0.01	0.15	0.40	0.02	0.02		0.37	0.03			0.04	0.01		0.18	0.03	0.12	0.17	0.29		0.22	0.01	0.38	1.37	0.20		0.08		0.01	0.10		
CLINTWOOD 1 W	4.37	0.07	0.05	0.31	0.16		0.10	0.22	T	T		0.15	0.28	0.25	0.15	0.21	0.02	0.05	0.18		0.12		0.01	1.05	0.77	0.05		T	0.01	T	0.16	T
COPPER HILL	4.98		0.06	0.31	0.10			0.61	T			0.05	0.02	0.01	0.04	0.02	0.10	0.02	0.42			0.41	0.06	1.53	1.07		0.04		0.01	0.09	0.01	
GALAX WTP	3.64		0.13	0.39	0.25			0.40	0.05			0.01			0.15	0.02	0.04	T	0.15		0.16	0.03	0.02	1.51	0.33		T					
GRUNDY	4.28	0.08	0.05	0.10	0.57		0.14	0.12	T			0.10	0.15	0.19	0.10	0.18	0.02	0.18	0.38		0.04		T	0.81	0.90	0.03	0.01	T	T		0.13	
JOHN FLANNAGAN LAKE	MA 4.78	*	*	0.33 _a	0.34	0.02	0.20	*	*	0.15 _a		0.17	0.23	0.20	*	*	*	0.38 _a	0.48		0.08	*	*	0.92 _a	1.04	0.03	-		*	*	0.21 _a	
LEBANON	4.17	0.11	0.02	0.21	0.26	0.01	0.08	0.23	0.01			0.17	0.10	0.13	0.18	0.15		0.01	0.36	0.01	0.18	0.02	0.01	0.72	0.92	0.05	0.10	0.01	0.02	T	0.10	
NORA 4 SSE	4.10	0.04	0.03	0.17	0.09	T	0.21	0.38	0.02			0.16	0.16	0.17	0.14	0.24	0.03	0.04	0.17		0.14		T	0.91	0.76	0.02		T	0.03	0.01	0.18	T
PULASKI 2 E	4.30	0.02	0.10	0.52	0.04			0.34	T			0.08			0.35	0.08	0.21	0.08	0.16		0.25	T	0.18	1.42	0.37		0.05				0.05	
RADFORD 3 N	3.59		0.04	0.51	0.01			0.23	0.02			0.05	0.01		0.18	0.04	0.13	0.18	0.08		0.25	0.02	0.17	1.25	0.28		0.06			0.01	0.07	
RICHLANDS	M 3.62	0.18	0.01	0.24	0.15		0.12	0.31	0.01			0.06	0.08	0.18	0.10	0.13		0.05	-	0.10	0.31		0.10	0.52	0.69	0.02	0.05		0.01	0.01	0.19	
SALTVILLE 1N	M 4.11	0.09	0.04	0.39	0.17		0.01	0.26	-			0.10	0.13	0.20	0.19	0.13	0.02		0.47		0.28	0.10		0.80	0.37	0.01	0.23		0.01	T	0.11	
STAFFORDSVILLE 3 ENE	4.12	0.01	0.04	0.49	0.08	0.03	T	0.15	0.02			T	0.06	0.02	0.33	0.15	0.18	0.02	0.20		0.18	0.10	0.25	0.76	0.77	0.02	0.08		0.02	T	0.16	
WILLIS	4.43	0.02	0.08	0.37				0.47	0.07			0.06			0.25	0.03	0.14		0.50		0.23	0.08	0.07	1.47	0.56		0.03					
WISE 1SE	4.28	0.11	0.03	0.12	0.27		0.13	0.23	T			0.25	0.18	0.23	0.11	0.23	0.03	0.21	0.15		0.21		0.04	1.02	0.58		0.02		0.02	T	0.11	T
WYTHEVILLE	4.61	0.07	0.06	0.52	0.06			0.36	0.07			0.05		0.05	0.34	0.09	0.05	T	0.18		0.15	0.13	0.05	1.44	0.59		0.14		T	T	0.21	

VIRGINIA
201701

DAILY TEMPERATURES (°F)

STATION	OB. TIME	MAX/MIN	DAY OF MONTH																															AVERAGE
			01	02	03	04	05	06	07	08	09	10	11	12	13	14	15	16	17	18	19	20	21	22	23	24	25	26	27	28	29	30	31	
GALAX WTP	07	MAX	40	53	49	58	50	36	28	21	21	24	45	51	65	64	55	62	51	62	56	60	62	57	55	51	47	68	52	34	42	42	44	48.5
		MIN	21	36	44	44	27	27	20	9	9	12	22	36	43	40	39	44	43	48	30	30	38	37	48	43	30	32	28	28	24	23	31.8	
GRUNDY	07	MAX	45	54	63	58	42	32	24	19	20	36	51	58	65	50	61	47	64	59	48	56	65	52	62	49	44	63	46	33	44	38	37	47.9
		MIN	23	40	45	42	26	23	13	10	6	12	30	30	50	43	43	43	45	48	35	37	42	43	44	42	33	33	30	29	30	24	25	32.9
JOHN FLANNAGAN LAKE	07	MAX				57	42	30				35	49	60	63				67	61	52	56			66	52	51		48		45	38	M	
		MIN			21	42	26	20			6	13	31	40	49				41	49	33	33			40	41	31		31		23	24	M	
LEBANON	07	MAX	43	53	63	58	43	36	24	18	20	33	51	61	62	55	62	57	65	61	54	62	62	60	64	48	43	62	49	31	41	37	41	49.0
		MIN	25	39	39	43	22	21	11	4	1	10	30	43	52	47	48	48	47	48	32	32	38	38	41	41	28	27	30	27	27	23	24	31.8
NORA 4 SSE	07	MAX	39	52	59	55	39	29	19	15	17	29	43	54	57	52	61	51	63	58	51	57	60	57	60	47	40	56	43	28	40	34	39	45.3
		MIN	28	37	49	37	21	17	7	3	3	15	28	42	49	41	42	41	50	44	36	41	49	49	46	37	35	35	26	23	23	20	20	32.1
PULASKI 2 E	07	MAX	41	51	45	55	45	33	25	17	17	28	43	53	63	61	51	53	45	58	52	61	60	51	49	49	46	63	50	40	39	41	46.2	
		MIN	27	35	40	40	25	24	13	6	3	8	21	36	50	35	35	41	41	43	28	28	36	37	45	39	30	33	30	27	29	23	23	30.0
RADFORD 3 N	07	MAX	41	49	46	56	47	31	25	19	16	28	41	48	63	60	52	51	45	58	51	58	56	51	51	45	46	66	52	33	42	38	33	45.1
		MIN	18	35	40	41	27	24	14	6	7	9	22	34	39	36	37	40	41	42	29	30	40	41	45	38	28	30	30	29	27	22	18	29.6
RICHLANDS	07	MAX	42	52	65	56	42	34		18	19	34	51	57	62	62	63	54	64		54	61	62	58	61	48	43	61	49	31	40	36	38	48.9
		MIN	17	34	45	40	23	20	11	5	0	8	26	40	40	40	47	46	46		31	31	40	42	41	41	30	30	30	28	28	21	22	30.1
SALTVILLE 1N	07	MAX	42	51	57	55	45	36	28	22	23	36	46	48	63	60	57	57	65	60	57	62	62	55	61	50	44	61	49	33	42	37	38	48.5
		MIN	19	36	46	43	23	25	14	9	5	12	26	37	41	50	50	51	44	47	33	33	41	42	47	42	31	31	33	29	30	25	22	32.8
STAFFORDSVILLE 3 ENE	07	MAX	41	49	46	57	49	34	24	18	16	28	46	48	65	54	48	50	46	61	50	57	56	49	56	47	47	64	49	33	42	40	33	45.3
		MIN	16	34	41	41	25	24	13	6	4	7	15	33	39	36	36	42	41	44	29	29	40	40	46	38	28	28	31	27	31	21	18	29.1
WISE 1SE	09	MAX	41	52	60	55	40	31	22	17	20	36	46	56	58	55	61	52	62	58	55	57	59	57	60	47	42	57	39	29	39	33	39	46.3
		MIN	30	41	48	34	22	17	7	4	4	18	36	44	47	42	44	44	49	50	33	50	47	40	40	37	30	38	27	23	26	20	23	32.7
WYTHEVILLE	07	MAX	41	50	46	54	47	34	23	17	16	28	41	53	62	61	55	55	48	57	52	62	59	59	53	46	42	61	50	30	39	36	39	45.7
		MIN	22	34	39	39	23	22	14	3	3	8	20	36	47	41	37	44	42	43	35	34	39	39	44	40	35	36	28	24	26	20	20	30.2

VIRGINIA
201701

SNOWFALL AND SNOW ON GROUND (INCHES)

STATION		DAY OF MONTH																														
		01	02	03	04	05	06	07	08	09	10	11	12	13	14	15	16	17	18	19	20	21	22	23	24	25	26	27	28	29	30	31
VIRGINIA																																
	TIDEWATER 01																															
DISPUTANTA	SNOWFALL	-	-	-	-	-		8.2	-	-	-	-	-	-	-	-	-	-	-	-	-	-	-	-	-	-	-	-	-	-	-	-
	SN ON GND	-	-	-	-	-		8	2	-	-	-	-	-	-	-	-	-	-	-	-	-	-	-	-	-	-	-	-	-	-	-
EMPORIA 1 WNW	SNOWFALL	-	-	-	-	-		4.0	3.0	-	-	-	-	-	-	-	-	-	-	-	-	-	-	-	-	-	-	-	-	-	-	
FREDERICKSBURG SEWAGE	SNOWFALL							0.8	0.8																						0.3	
	SN ON GND							1	2	-																					T	T
HOLLAND 1 E	SNOWFALL																															
HOPEWELL	SNOWFALL			-				8.0					-			-	-									-						
	SN ON GND			-				8	9				-			-	-									-						
NORFOLK INTL AP	SNOWFALL						T	5.3																								T
	SN ON GND						T	2	5	5	5	4																				T
NORFOLK S	SNOWFALL	-	-	-	-	-	T	5.3	-	-	-	-	-	-	-	-	-	-	-	-	-	-	-	-	-	-	-	-	-	-	-	T
	SN ON GND	-	-	-	-	-	T	5	5	5	4	1																				-
NORTH	SNOWFALL							8.0	5.0																							T
	SN ON GND							8	12	8	7	T																				
PAINTER 2W	SNOWFALL	-	-	-	-	-		10.5	0.5	-	-	-	-	-	-	-	-	-	-	-	-	-	-	-	-	-	-	-	-	-	-	-
	SN ON GND	-	-	-	-	-		10	11	11	6																					-
STONY CREEK 2 N	SNOWFALL	-	-	-	-	-	0.2	0.2	-	-	-	-	-	-	-	-	-	-	-	-	-	-	-	-	-	-	-	-	-	-	-	-
SUFFOLK LAKE KILBY	SNOWFALL						T	6.0																								
	SN ON GND						T	6	5	4	3																					
WAKEFIELD 1NW	SNOWFALL						0.2	9.7																								T
	SN ON GND						T	9	8	6	4																					
WALKERTON 2 NW	SNOWFALL							7.0																								
	SN ON GND							7	7	7	5	2																				
WALLACETON LK DRUMMOND	SNOWFALL																															
WALLOPS ISLAND NASA TEST FACIL	SNOWFALL				T	0.1	10.0																									T
	SN ON GND						4	10	7	5																						
WARSAW 2 NW	SNOWFALL	-	-	-	-	-		8.0	-	-	-	-	-	-	-	-	-	-	-	-	-	-	-	-	-	-	-	-	-	-	-	-
	SN ON GND	-	-	-	-	-		8	8	6	3																					-
WEST POINT 2 NW	SNOWFALL							10.2																								T
	SN ON GND							10	9	8	7	1																				
WILLIAMSBURG 2 N	SNOWFALL	-	-	-	-	-		9.0																								-
	SN ON GND	-	-	-	-	-		9	9	6	5	T																				-
EASTERN PIEDMONT 02																																
ALBERTA 5N	SNOWFALL						T	5.5	4.5																							
	SN ON GND							6	10	8	7	1	T																			
AMELIA COURTHOUSE 1	SNOWFALL	-	-	-	-	-		-	4.3	-	-	-	-	-	-	-	-	-	-	-	-	-	-	-	-	-	-	-	-	-	-	
	SN ON GND	-	-	-	-	-		-	4	-	-	-	-	-	-	-	-	-	-	-	-	-	-	-	-	-	-	-	-	-	-	
ASHLAND	SNOWFALL						T	7.0							T																	T
	SN ON GND							7	5	4	3	T																				
BREMO BLUFF	SNOWFALL			-	-			2.0	1.5																							

Snowfall: Includes snow and ice. Values for NWS stations (J index note) are Mid-Mid (LST).

Snow on ground: Includes snow, sleet, ice, and hail. Values for NWS stations (J index note) are observed at 12 UTC (GMT).

Water Equivalent: Given for NWS stations (J index note) only, when snow depth is 2 inches or more, and is measured at 18 UTC (GMT)

VIRGINIA
201701

SNOWFALL AND SNOW ON GROUND (INCHES)

STATION		DAY OF MONTH																														
		01	02	03	04	05	06	07	08	09	10	11	12	13	14	15	16	17	18	19	20	21	22	23	24	25	26	27	28	29	30	31
BUCKINGHAM	SN ON GND			-	-			2	2																							
	SNOWFALL							6.0	-																							
CAMP PICKETT	SN ON GND							6	6	5	4	3	1																			
	SNOWFALL	-	-	-	-	-	-	6.0	T	-	-	-	-	-	-	-	-	-	-	-	-	-	-	-	-	-	-	-	-	-	-	-
CHASE CITY	SN ON GND	-	-	-	-	-	-	6	-	-	-	-	-	-	-	-	-	-	-	-	-	-	-	-	-	-	-	-	-	-	-	
	SNOWFALL	-	-	-	-	-	-	5.0	4.0	-	-	-	-	-	-	-	-	-	-	-	-	-	-	-	-	-	-	-	-	-	-	-
CLARKSVILLE	SNOWFALL							6.0	0.2																							
	SN ON GND							6	2																							
CORBIN	SNOWFALL	-	-	-	-	-	-	-	3.0				-	-	-	-	-	-	-	-	-	-	-	-	-	-	-	-	-	-	-	
	SN ON GND	-	-	-	-	-	-	-	3	3	3		-	-	-	-	-	-	-	-	-	-	-	-	-	-	-	-	-	-	-	1.6
CROZIER	SNOWFALL							4.0	0.5																							
	SN ON GND							4	5	4	4																					
FARMVILLE 2 N	SNOWFALL	-	-	-	-	-	-	6.0	-	-	-	-	-	-	-	-	-	-	-	-	-	-	-	-	-	-	-	-	-	-	-	
	SN ON GND	-	-	-	-	-	-	6	6	4	3	2	T	-	-	-	-	-	-	-	-	-	-	-	-	-	-	-	-	-	-	-
JOHN H KERR DAM	SNOWFALL	-	-	-	-	-	-	7.5	-	-	-	-	-	-	-	-	-	-	-	-	-	-	-	-	-	-	-	-	-	-	-	
	SN ON GND	-	-	-	-	-	-	8	2	-	-	-	-	-	-	-	-	-	-	-	-	-	-	-	-	-	-	-	-	-	-	-
KEYSVILLE 2 S	SNOWFALL							6.5	1.0																							
	SN ON GND							7	7	5	4	2																				
LOUISA	SNOWFALL	-	-	-	-	-	-	3.4					-	-	-	-	-	-	-	-	-	-	-	-	-	-	-	-	-	-	-	
	SN ON GND	-	-	-	-	-	-	3	3	2	1		-	-	-	-	-	-	-	-	-	-	-	-	-	-	-	-	-	-	-	T
PALMYRA 3S	SNOWFALL	-	-	-	-	-	T	T	3.7 ^T																							
	SN ON GND	-	-	-	-	-	-	I	8 ^T	3	2	2		-	-	-	-	-	-	-	-	-	-	-	-	-	-	-	-	-	-	
PETERSBURG	SNOWFALL	-	-	-	-	-	-	-	-	-	-	-	-	-	-	-	-	-	-	-	-	-	-	-	-	-	-	-	-	-	-	
	SN ON GND	-	-	-	-	-	3	3	4	-	-	-	-	-	-	-	-	-	-	-	-	-	-	-	-	-	-	-	-	-	-	-
RICHMOND INTL AP	SNOWFALL					T	0.1	7.0																								
	SN ON GND							3	6	5	4	1																				
WINTERPOCK 4 W WESTERN PIEDMONT 03	SNOWFALL																															
	SN ON GND						T	8.3	1.0																							T
BEDFORD 4 NW	SNOWFALL							5.0	1.0																							
	SN ON GND							5	5	4	3	2	T																			T
BROOKNEAL	SNOWFALL							5.6	0.8																							
	SN ON GND							6	6	6	5	3	T																			T
CHARLOTTESVILLE 2W	SNOWFALL							2.6	0.1																							
	SN ON GND							3	2	2	2	1																				0.2
CHATHAM	WTR EQUIV	-	-	-	-	-	-	0.3	-	-	-	-	-	-	-	-	-	-	-	-	-	-	-	-	-	-	-	-	-	-	-	
	SNOWFALL							6.0	1.0																							
CONCORD 4 SSW	SN ON GND							6	7	7	7	3																				
	SNOWFALL							5.5	-																							
DANVILLE RGNL AP	SN ON GND							6	5	4	3	2																				
	SNOWFALL						1.0	7.8																								T

Snowfall: Includes snow and ice. Values for NWS stations (J index note) are Mid-Mid (LST).

Snow on ground: Includes snow, sleet, ice, and hail. Values for NWS stations (J index note) are observed at 12 UTC (GMT).

Water Equivalent: Given for NWS stations (J index note) only, when snow depth is 2 inches or more, and is measured at 18 UTC (GMT)

VIRGINIA
201701

SNOWFALL AND SNOW ON GROUND (INCHES)

STATION	DAY OF MONTH																														
	01	02	03	04	05	06	07	08	09	10	11	12	13	14	15	16	17	18	19	20	21	22	23	24	25	26	27	28	29	30	31
FREE UNION	SN ON GND					1	9	8	5	3	1																				
	SNOWFALL						1.9	0.2																							0.2
HOLCOMB ROCK	SN ON GND						2	2	2	2	1																				
	SNOWFALL						3.5	1.3																							
HUDDLESTON 4 SW	SN ON GND						3	4	3	2	T																				
	WTR EQUIV	-	-	-	-	-	0.4	-	-	-	-	-	-	-	-	-	-	-	-	-	-	-	-	-	-	-	-	-	-	-	-
LYNCHBURG INTL AP	SNOWFALL						7.0	2.0																							
	SN ON GND						7	9	8	5	2	T																			
MARTINSVILLE FLTR PLT	SNOWFALL				T	1.0	4.9																								
	SN ON GND					1	5	5	4	3	1																				
MEADOWS OF DAN 5 SW	SNOWFALL						7.4	-																							
	SN ON GND						7	8	7	6	3	T																			
MONTEBELLO FISH CULTURAL STN	SNOWFALL						4.0	1.0																							
	SN ON GND						4	5	4	4																					
MONTICELLO	SNOWFALL																														
	SN ON GND					T	2.9	0.4																							
PEDLAR DAM	SNOWFALL						3	2	2	1	1																				
	SN ON GND						6.0	1.0																							
ROCKY MT	SNOWFALL						6	6	5	5	2																				
	SN ON GND						6.5	-																							
SOUTH BOSTON	SNOWFALL						7	6	5	5	3																				
	SN ON GND						7	6	5	5	3																				
STUART	SNOWFALL						3.9	0.5																							
	SN ON GND						4	4	2	1	T	T																			
WOOLWINE	SNOWFALL						6.6	0.3																							
	SN ON GND						7	7	5	4	1																				
WTR EQUIV	WTR EQUIV	-	-	-	-	-	0.7	0.7	-	-	-	-	-	-	-	-	-	-	-	-	-	-	-	-	-	-	-	-	-	-	
	SNOWFALL																														
FRONT ROYAL	SNOWFALL					1.0																									
	SN ON GND					1																									
LINCOLN	WTR EQUIV	-	-	-	-	-	-	-	-	-	-	-	-	-	-	-	-	-	-	-	-	-	-	-	-	-	-	-	-	-	
	SNOWFALL	-	-	-	-	-	-	-	-	-	-	-	-	-	-	-	-	-	-	-	-	-	-	-	-	-	-	-	-	-	
LURAY 5 E	SN ON GND	-	-	-	-	-	-	-	-	-	-	-	-	-	-	-	-	-	-	-	-	-	-	-	-	-	-	-	-	-	
	SNOWFALL					0.3	0.7																								
MANASSAS	SN ON GND					1	1	1																							
	WTR EQUIV	-	-	-	-	0.3	-	-	-	-	-	-	-	-	-	-	-	-	-	-	-	-	-	-	-	-	-	-	-	-	
MT WEATHER	SNOWFALL					T	1.0																								
	SN ON GND						1	1	1	1																					
PIEDMONT RSCH STN	SNOWFALL						1.4																								
	SN ON GND					1	1	1	T						-																
	SNOWFALL							1.0																							
	SN ON GND							1	T																						

Snowfall: Includes snow and ice. Values for NWS stations (J index note) are Mid-Mid (LST).

Snow on ground: Includes snow, sleet, ice, and hail. Values for NWS stations (J index note) are observed at 12 UTC (GMT).

Water Equivalent: Given for NWS stations (J index note) only, when snow depth is 2 inches or more, and is measured at 18 UTC (GMT)

VIRGINIA
201701

SNOWFALL AND SNOW ON GROUND (INCHES)

STATION		DAY OF MONTH																														
		01	02	03	04	05	06	07	08	09	10	11	12	13	14	15	16	17	18	19	20	21	22	23	24	25	26	27	28	29	30	31
SOMERSET	SNOWFALL						0.5	T																							0.8	
	SN ON GND						1	1	T	T	T																			1	T	
SPERRYVILLE	SNOWFALL						0.5	T			T				0.1	-								T						1.5		
	SN ON GND						1	T	T	T	T				T	-								T						2	T	
STERLING (RCS)	SNOWFALL					0.1	T	0.6			T				T									T					0.3	T		
	SN ON GND					T	T	T	T	T					T									T						T		
VIENNA	SNOWFALL							1.0																						0.5		
	SN ON GND							1	1																					1		
	WTR EQUIV	-	-	-	-	-	-	-	-	-	-	-	-	-	-	-	-	-	-	-	-	-	-	-	-	-	-	-	-	0.5	-	
WASHINGTON DULLES INTL AP	SNOWFALL					T	0.1	0.6			T			T	T								T						0.3			
	SN ON GND					T	T	T	T	T					T															T		
WASHINGTON REAGAN NATL AP	SNOWFALL					T	T	0.4							T															1.0	T	
	SN ON GND								T																					1		
WINCHESTER	SNOWFALL						1.7								0.2										T				0.3	T		
	SN ON GND					1	T	T																								
WINCHESTER 7 SE	SNOWFALL																													0.5		
	SN ON GND																															
	WTR EQUIV			-		-	-	-	-	-	-	-	-	-	-	-	-	-	-	-	-	-	-	-	-	-	-	-	-	-	-	
WOODSTOCK 2 NE	SNOWFALL						1.0	0.7																						1.6		
	SN ON GND					1	1	1	T	T																				-	T	
CENTRAL MOUNTAIN 05																																
BUENA VISTA	SNOWFALL							2.0	0.5																					0.1		
	SN ON GND							2	2	1	T																					
COVINGTON FLTR PLT	SNOWFALL							2.2	0.1																						T	
	SN ON GND							2	1	1																					T	
DALE ENTERPRISE	SNOWFALL							0.7																						0.2		
	SN ON GND																															
	WTR EQUIV							-	-	-	-																			-		
GATHRIGHT DAM	SNOWFALL					T	2.0																							0.6		
	SN ON GND						2	2	1	1	T																			1	T	
GLASGOW 1 SE	SNOWFALL					T	2.9	1.7																							T	
	SN ON GND						3	4	4	3	1																					
HOT SPRINGS	SNOWFALL					T	2.0	1.0																						2.0		
	SN ON GND					T	2	3	3	2	1																			2	2	
LEXINGTON	SNOWFALL						2.0	1.0																								
	SN ON GND						2	2	2	2	1																					
MILLGAP	SNOWFALL					0.9	1.9	0.2			T														T					0.7	0.2	
	SN ON GND					1	2	2	1	1	T	T												T					1	T		
MTN GROVE	SNOWFALL	-	-	-	-	-	-	-	-	-	-	-	-	-	-	-	-	-	-	-	-	-	-	-	-	-	-	-	-	-	T	
	SN ON GND	-	-	-	-	-	-	-	-	-	-	-	-	-	-	-	-	-	-	-	-	-	-	-	-	-	-	-	-	-		
MUSTOE 1 SW	SNOWFALL						1.0	1.6			T													0.2						0.8		
	SN ON GND					1	1	2	2	2	1	T											T				T		1	1	T	

Snowfall: Includes snow and ice. Values for NWS stations (J index note) are Mid-Mid (LST).

Snow on ground: Includes snow, sleet, ice, and hail. Values for NWS stations (J index note) are observed at 12 UTC (GMT).

Water Equivalent: Given for NWS stations (J index note) only, when snow depth is 2 inches or more, and is measured at 18 UTC (GMT)

VIRGINIA
201701

SNOWFALL AND SNOW ON GROUND (INCHES)

STATION		DAY OF MONTH																															
		01	02	03	04	05	06	07	08	09	10	11	12	13	14	15	16	17	18	19	20	21	22	23	24	25	26	27	28	29	30	31	
SALTVILLE 1N	SN ON GND						1	4	3	1	1																					1	T
	SNOWFALL						T	2.5	-																							0.6	
STAFFORDSVILLE 3 ENE	SN ON GND						T	2	2	2	1																					1	T
	SNOWFALL						T	1.5	-																					T	T	2.8	
WILLIS	SN ON GND						T	2	2	2	2	T																			T	3	1
	SNOWFALL							4.5	3.0																								
WISE 1SE	SN ON GND							5	7	4	2	1																					
	SNOWFALL						1.2	3.5	T																								
WYTHEVILLE	SN ON GND						1	5	4	3	1																			0.3	0.2	1.4	
	SNOWFALL							3.0	0.8																						T	2.3	
	SN ON GND							3	4	4	3	1																				2	T

Snowfall: Includes snow and ice. Values for NWS stations (J index note) are Mid-Mid (LST).

Snow on ground: Includes snow, sleet, ice, and hail. Values for NWS stations (J index note) are observed at 12 UTC (GMT).

Water Equivalent: Given for NWS stations (J index note) only, when snow depth is 2 inches or more, and is measured at 18 UTC (GMT)

VIRGINIA
201701

PAN EVAPORATION AND WIND

STATION		DAY OF MONTH																															TOTAL OR AVERAGE
		01	02	03	04	05	06	07	08	09	10	11	12	13	14	15	16	17	18	19	20	21	22	23	24	25	26	27	28	29	30	31	
VIRGINIA EASTERN PIEDMONT 02 JOHN H KERR DAM	WIND	39	21	25	36	12	29	5	10	11	13	14	61	40	25	21	15	36	27	4	4	5	65	65	32	26	87	29	80	46	32	65	980
	EVAP	-	-	-	-	-	-	-	-	-	-	-	-	-	-	-	-	-	-	-	-	-	-	-	-	-	-	-	-	-	-	-	M
	MAX	-	-	-	-	-	-	-	-	-	-	-	-	-	-	-	-	-	-	-	-	-	-	-	-	-	-	-	-	-	-	-	M
	MIN	-	-	-	-	-	-	-	-	-	-	-	-	-	-	-	-	-	-	-	-	-	-	-	-	-	-	-	-	-	-	-	M

Evaporation: Is measured in hundreths of inches.

Wind: Is measured in miles.

Max and Min: The maximum and minimum temperatures (Fahrenheit) of the water in the evaporation pan.

STATION INDEX

STATION	INDEX NO.	DIVISION	COUNTY	LATITUDE	LONGITUDE	ELEVATION (IN FEET)	OBSERVATION TIME AND TABLES			
							LOCAL STD TIME			
							TEMP	PRECIP	EVAP	SPECIAL SEE (NOTES)
VIRGINIA										
ABINGDON 3S	0021	06	WASHINGTON	36 40	81 58W	1925	22	22		H
ALBERTA 5N	0079	02	BRUNSWICK	36 56	77 54W	376		08		H
ALTAVISTA	0166	03	CAMPBELL	37 7	79 17W	529		07		CH
AMELIA COURTHOUSE 1	0187	02	AMELIA	37 21	77 59W	345	08	08		H
APPOMATTOX	0243	03	APPOMATTOX	37 20	78 50W	850	07	07		H
ASHLAND	0327	02	HANOVER	37 45	77 29W	220	18	18		H
BEDFORD 4 NW	0561	03	BEDFORD	37 23	79 34W	1228		07		CH
BIG STONE GAP	0735	06	WISE	36 52	82 46W	1464	08	08		H
BLACKSBURG NWSO	0766	06	MONTGOMERY	37 12	80 25W	2103	07	07		CH
BREMO BLUFF	0993	02	FLUVANNA	37 43	78 17W	225	07	07		CH
BROOKNEAL	1082	03	CAMPBELL	37 4	78 57W	408	07	07		H
BUCKINGHAM	1136	02	BUCKINGHAM	37 30	78 32W	580		07		H
BUENA VISTA	1159	05	ROCKBRIDGE	37 44	79 22W	840		07		H
BURKES GARDEN	1209	06	TAZEWELL	37 6	81 20W	3068	07	07		H
CAMP PICKETT	1322	02	NOTTOWAY	37 2	77 57W	330	08	08		CH
CHARLOTTESVILLE 2W	1593	03	ALBEMARLE	38 2	78 31W	866	08	08		H
CHASE CITY	1606	02	MECKLENBURG	36 47	78 29W	510	17	17		H
CHATHAM	1614	03	PITTSYLVANIA	36 49	79 25W	651	07	07		CH
CHRISTIANSBURG	1692	06	MONTGOMERY	37 8	80 24W	2100	07	07		H
CLARKSVILLE	1746	02	MECKLENBURG	36 37	78 33W	330	07	07		H
CLINTWOOD 1 W	1825	06	DICKENSON	37 9	82 29W	1780	07	07		H
CONCORD 4 SSW	1955	03	CAMPBELL	37 17	78 58W	815		07		H
COPPER HILL	1999	06	FLOYD	37 5	80 9W	2690	07	07		H
CORBIN	2009	02	CAROLINE	38 12	77 22W	220	09	09		H
COVINGTON FLTR PLT	2044	05	ALLEGHANY	37 49	79 59W	1244	07	07		CH
CROZIER	2142	02	GOOCHLAND	37 40	77 53W	350	07	07		H
DALE ENTERPRISE	2208	05	ROCKINGHAM	38 27	78 56W	1358	07	07		CH
DANVILLE RGNL AP	2250	03	PITTSYLVANIA	36 34	79 20W	571	24	24		CH
DISPUTANTA	2400	01	PRINCE GEORGE	37 7	77 12W	15	07	07		H
EMPORIA 1 WNW	2790	01	GREENSVILLE	36 42	77 34W	100	08	08		H
FARMVILLE 2 N	2941	02	CUMBERLAND	37 20	78 23W	450	07	07		CH
FREDERICKSBURG SEWAGE	3204	01	FREDERICKSBURG	38 17	77 27W	15	07	07		H
FREE UNION	3213	03	ALBEMARLE	38 5	78 35W	590	08	07		H
FRONT ROYAL	3229	04	WARREN	38 54	78 11W	930	06	06		CH
GALAX WTP	3272	06	CARROLL	36 39	80 55W	2360	07	07		CH
GATHRIGHT DAM	3310	05	ALLEGHANY	37 57	79 57W	1770	07	07		CH
GLASGOW 1 SE	3375	05	ROCKBRIDGE	37 37	79 26W	737		07		H
GRUNDY	3640	06	BUCHANAN	37 17	82 5W	1170	07	07		H
HOLCOMB ROCK	4039	03	BEDFORD	37 33	79 24W	900		07		H
HOLLAND 1 E	4044	01	SUFFOLK	36 41	76 46W	80	08	08		H
HOPEWELL	4101	01	PRINCE GEORGE	37 18	77 17W	40	16	16		H
HOT SPRINGS	4128	05	BATH	37 60	79 50W	2236	07	07		H
HUDDLESTON 4 SW	4148	03	BEDFORD	37 8	79 32W	898		07		H
JOHN FLANNAGAN LAKE	4410	06	DICKENSON	37 14	82 21W	1460	07	07		H
JOHN H KERR DAM	4414	02	MECKLENBURG	36 36	78 18W	250	08	08	08	CH
KEYSVILLE 2 S	4568	02	CHARLOTTE	37 1	78 29W	625	07	07		H
LEBANON	4777	06	RUSSELL	36 54	82 2W	1912	07	07		H
LEXINGTON	4876	05	ROCKBRIDGE	37 47	79 26W	1097	07	07		H
LINCOLN	4909	04	LOUDOUN	39 5	77 42W	500	07	07		H
LOUISA	5050	02	LOUISA	38 3	78 0W	420	18	18		H
LURAY 5 E	5096	04	PAGE	38 40	78 22W	1400	08	08		H
LYNCHBURG INTL AP R	5120	03	CAMPBELL	37 19	79 12W	940	24	24		HJ
MANASSAS	5204	04	MANASSAS	38 44	77 30W	245	07	07		H
MARTINSVILLE FLTR PLT	5300	03	HENRY	36 42	79 52W	760	07	07		H
MEADOWS OF DAN 5 SW	5453	03	PATRICK	36 40	80 27W	2225	07	07		H
MILLGAP	5595	05	HIGHLAND	38 18	79 43W	2421	06	06		CH
MONTEBELLO FISH CULTURAL STN	5690	03	NELSON	37 51	79 8W	2667	07	07		H
MONTICELLO	5700	03	ALBEMARLE	38 1	78 27W	758	07	07		H
MT WEATHER	5851	04	LOUDOUN	39 4	77 53W	1659	07	07		H
MTN GROVE	5756	05	BATH	38 6	79 53W	1775		07		H
MUSTOE 1 SW	5880	05	HIGHLAND	38 20	79 40W	2380	24	24		H
NEW CASTLE	6012	05	CRAIG	37 31	80 6W	1258		07		H
NORA 4 SSE	6125	06	DICKENSON	37 1	82 19W	2650	07	07		H
NORFOLK INTL AP R	6139	01	NORFOLK (CITY)	36 54	76 12W	30	24	24		HJ
NORFOLK S	6147	01	NORFOLK (CITY)	36 52	76 14W	100	24	24		H

STATION INDEX

STATION	INDEX NO.	DIVISION	COUNTY	LATITUDE	LONGITUDE	ELEVATION (IN FEET)	OBSERVATION TIME AND TABLES			
							LOCAL STD TIME			
							TEMP	PRECIP	EVAP	SPECIAL SEE (NOTES)
NORTH	6161	01	MATHEWS	37 26	76 26W	10	07	07		H
PAINTER 2W	6475	01	ACCOMACK	37 35	75 49W	30	16	16		CH
PALMYRA 3S	6491	02	FLUVANNA	37 49	78 16W	410	06	06		H
PEDLAR DAM	6593	03	AMHERST	37 40	79 17W	1024		07		CH
PETERSBURG	6656	02	PETERSBURG	37 14	77 24W	15	08	08		H
PIEDMONT RSCH STN	6712	04	ORANGE	38 14	78 7W	520	08	08		CH
PULASKI 2 E	6955	06	PULASKI	37 3	80 47W	1850	07	07		CH
RADFORD 3 N	6999	06	PULASKI	37 12	80 35W	1800	07	07		H
RICHLANDS	7174	06	TAZEWELL	37 6	81 48W	1910	07	07		H
RICHMOND INTL AP R	7201	02	HENRICO	37 30	77 19W	164	24	24		HJ
ROANOKE 8 N	7278	05	ROANOKE	37 22	79 58W	1190	07	07		H
ROANOKE INTL AP R	7285	05	ROANOKE	37 19	79 58W	1175	24	24		HJ
ROCKY MT	7338	03	FRANKLIN	36 59	79 54W	1315	07	07		CH
SALTVILLE 1N	7506	06	SMYTH	36 53	81 46W	1733	07	07		H
SOMERSET	7904	04	ORANGE	38 15	78 16W	510	08	08		H
SOUTH BOSTON	7925	03	HALIFAX	36 42	78 53W	329	07	07		H
SPERRYVILLE	7985	04	RAPPAHANNOCK	38 39	78 14W	750	06	06		H
STAFFORDSVILLE 3 ENE	8022	06	GILES	37 16	80 43W	1950	07	07		CH
STAUNTON WTP	8062	05	AUGUSTA	38 10	79 5W	169	08	08		CH
STERLING (RCS)	8084	04	LOUDOUN	38 59	77 29W	288	07	07		H
STONY CREEK 2 N	8129	01	SUSSEX	36 58	77 24W	105	08	08		H
STUART	8170	03	PATRICK	36 38	80 15W	1375	07	07		H
SUFFOLK LAKE KILBY	8192	01	SUFFOLK	36 44	76 36W	22	24	24		H
VIENNA	8737	04	FAIRFAX	38 54	77 17W	418	07	07		H
WAKEFIELD 1NW	8800	01	SUSSEX	36 59	77 0W	113	24	24		CH
WALKERTON 2 NW	8829	01	KING AND QUEEN	37 45	77 2W	50	18	18		H
WALLACETON LK DRUMMOND	8837	01	CHESAPEAKE	36 36	76 26W	20	08	08		H
WALLOPS ISLAND NASA TEST FACIL R	8849	01	ACCOMACK	37 56	75 28W	46	24	24		HJ
WARSAW 2 NW	8894	01	RICHMOND	37 59	76 47W	140	18	18		H
WASHINGTON DULLES INTL AP R	8903	04	LOUDOUN	38 56	77 27W	290	24	24		HJ
WASHINGTON REAGAN NATL AP R	8906	04	ARLINGTON	38 51	77 2W	10	24	24		HJ
WAYNESBORO WTP	8941	05	WAYNESBORO	38 5	78 53W	1270	07	07		H
WEST POINT 2 NW	9025	01	KING WILLIAM	37 34	76 48W	20	17	17		H
WILLIAMSBURG 2 N	9151	01	YORK	37 18	76 42W	70	24	24		CH
WILLIS	9169	06	FLOYD	36 55	80 30W	2810		07		CH
WINCHESTER	9181	04	FREDERICK	39 11	78 9W	720	07	07		H
WINCHESTER 7 SE	9186	04	FREDERICK	39 11	78 7W	680	08	08		H
WINTERPOCK 4 W	9213	02	CHESTERFIELD	37 19	77 39W	300		07		H
WISE 1SE	9215	06	WISE	36 58	82 33W	2564	09	09		CH
WOODSTOCK 2 NE	9263	04	SHENANDOAH	38 54	78 28W	675	07	07		H
WOOLWINE	9272	03	PATRICK	36 47	80 17W	1500		07		H
WYTHEVILLE	9301	06	WYTHE	36 58	81 5W	2458	07	07		H

REFERENCE NOTES

STATION NAMES: Name of the city, town or locality. Figures and letters following the station names indicate the distance in miles and direction from the post office or town community center.

DIVISIONS: Areas within a state of similar climatological characteristics. Division averages are calculated using data from stations that record temperature and/or precipitation. Station Precipitation totals flagged with an 'F' or 'M' are excluded from the Divisional Average calculations of precipitation. Stations with monthly Temperature averages flagged with an 'F' or 'M' are included in the Divisional Average if there are no more than 9 flagged or missing daily values in the month, else they are excluded from the divisional average for temperature.

NORMALS: The average value of the meteorological element over a time period. Effective 1 January 2012, the averaging period for station departures is 1981 to 2010. The normals for National Weather Service localities have been adjusted so as to be representative for the current observation site.

The January 2011 through December 2015 publications incorrectly state the computation of divisional departures. Climate Division departures have been, and continue to be, computed from 1971-2000 Normals, not 1981-2010 as stated. Station departures are accurately described as departures from 1981-2010.

MONTHLY DEGREE DAY TOTALS: One heating (cooling) degree day is accumulated for each whole degree that the daily mean temperature is below (above) 65 degrees Fahrenheit.

PRECIPITATION: Values shown in hundredths of inches are water equivalent totals, i.e., total of liquid and melted frozen precipitation. In the "Monthly Summarized Data" table the total snow and sleet values shown in tenths of inches are unmelted amounts. The max depth on ground values of snow and sleet shown in whole inches are cumulative unmelted amounts. The number of days with .10, .50, 1.00 or more refers to water equivalents.

PRECIPITATION QUALITY CONTROL: The NCEI quality control process may flag precipitation data that are spatially inconsistent, exceed climatological limits, or are inconsistent with prevailing weather patterns.

TEMPERATURE: Original temperature values are given in the "Daily Temperature" table. Summary temperature information (averages, departures, extremes, monthly degree day totals) is based on the values labeled MAX/MIN.

WIND: (As shown in the "Evaporation and Wind" table) the total wind movement in miles over the evaporation pan as determined by an anemometer recorder located 6-8 inches above the pan.

SYMBOLS AND LETTERS USED IN THE STATION INDEX TABLE

C Station is equipped with recording rain gage (R) but values in this bulletin are from a non-recording rain gage unless indicated by an R.
G Observations appear in the "Soil Temperatures" table.
H Observations appear in the "Snowfall and Snow on the Ground" table.
J Station also published as a Local Climatological Data publication.
VAR Observation time varies.
SR / SS Observation time near sunrise / Observation time near sunset, respectively.

SYMBOLS AND LETTERS USED IN THE DATA TABLES

(DAILY DATA ARE FOR THE 24 HOURS IMMEDIATELY PRECEDING OBSERVATION TIME.)

BLANK Entries in the "Monthly Summarized Data" table indicate no record.

BLANK Entries in the "Daily Precipitation" and "Snowfall and Snow on the Ground" tables indicate zero.

BLANK Entries in the "Daily Temperature" table indicate a missing record

- No record. Data not recorded or not received in time for publication.

+ Precipitation or temperature extremes occurred on one or more previous dates during the month.

* Rain gage not read. Precipitation is included in the amount following the asterisks.

Time distribution may not be known. A * preceding the monthly total indicates precipitation amount is being carried forward to next month's total, and may include amounts from the previous month(s).

a As a subscript, indicates accumulated total.

A Amount of precipitation is the total of observer's entries for the current month. It may include precipitation that occurred during the previous month. Refer to earlier bulletin to determine date of last

reading. (Hawaii stations)

B Divisional Departure from normals are computed using 1971-2000 normals.

E Normalized HDD/CDD Calculation. E is appended to the HDD/CDD Calculation when 1-9 individual daily TMAX and/or TMIN values are missing and a Normalized HDD/CDD Calculation is provided. M appears alone if 10 or more daily values are missing.

F Monthly calculation flagged value. F is appended to average and/or total values computed which exclude one or more daily data values that have been flagged by the GHCN-Daily Dataset

M Insufficient or partial data. M is appended to average and/or total values computed with 1-9 daily values missing. M appears alone if 10 or more daily values are missing, (8 or more for wind and evaporation).

N Indicates snow fall or Snowdepth totals are computed with one or more missing days.

R Amounts from recording rain gage.

T Trace. An amount too small to measure.

SEASONAL TABLES: Monthly and seasonal snowfall and heating degree days for the 12 months ending with the June data are published in the July issue of this bulletin. Cooling degree days for the calendar year are published in the "Climatological Data Annual Summary."

Information concerning the history of changes in locations, exposure, etc. of substations is kept on file at the National Centers for Environmental Information. Historical information of regular National Weather Service Offices may be obtained from the "Local Climatological Data" annual publication. The contents of this publication may be reprinted or otherwise used freely, with proper credit to the National Centers For Environmental Information. The data are also available digitally.

Effective with the January 2011 Data-Month, COOP Observer Names are no longer included in the Monthly and Annual Climatological Data Publications. This information is not published to ensure the privacy of personal information pursuant to Section 208 of the E-Government Act of 2002 (44 USC 3601).

As of the 2011 Data-Year, Station and Climate Division Maps are no longer being included in the CD Publications. NCEI's Products Branch provides updated Station Maps for various data networks via the Historical Observing Metadata Repository: <http://www.ncdc.noaa.gov/homr>.

The GHCN-Daily Quality Control Flags shown below are displayed as superscripts with the data. For more information on Global Historical Climatology Network - Daily and flags, see: <http://www.ncdc.noaa.gov/oa/climate/ghcn-daily/> and Comprehensive Automated Quality Assurance of Daily Surface Observations. Durre, Imke, Matthew J. Menne, Byron E. Gleason, Tamara G. Houston, Russell S. Vose, 2010: J. Appl. Meteor. Climatol., 49, 16151633. doi: 10.1175/2010JAMC2375.1

Blank = Passed All checks	N = failed naught check
D = failed duplicate check	O = failed climatological outlier check
G = failed gap check	R = failed lagged range check
I = failed internal consistency check	S = failed spatial consistency check
K = failed streak/frequent-value check	T = failed temporal consistency check
L = failed check on length of multiday period	W = temperature too warm for snow
M = failed megaconsistency check	X = failed bounds check
	Z = flagged as a result of an official Datzilla investigation

Beginning with the January 2013 CD Publication, monthly mean temperature calculations have changed to the National Data Stewardship Team standard. Monthly maximum and minimum temperatures are not rounded until after the monthly mean temperature is calculated. This is the most accurate outcome, but may be slightly different from the mean derived from rounded monthly maximum and minimum.

The climate division temperature and precipitation values in this publication are based on simple averages from the current set of NWS-Designated Open and Published COOP and First Order Sites within each division. These values differ from those found in NCEI's nClimDiv product. Beginning in February 2014, the nClimDiv product is used by NCEI's Monitoring Branch and in its monthly climate reports. For more details on nClimDiv, please go to <http://www.ncdc.noaa.gov/monitoring-references/maps/us-climate-divisions.php>.

Effective January 2016, Alaska's Climate Divisions are updated to reflect the 13 climate divisional boundaries established by University of Alaska-Fairbanks, NWS, NCEI, Oregon State University, and University of Nebraska-Lincoln. For more details regarding the updated Alaska Climate Divisions, see: <http://journals.ametsoc.org/doi/pdf/10.1175/JAMC-D-11-0168.1> (Bienek et al., 2012).

NOAA National Centers for Environmental Information
Attn: Customer Engagement Branch
151 Patton Avenue
Asheville, NC 28801-5001

Customer Services Number: (828) 271-4800, option 2
TDD : (828) 271-4010
Fax number: (828) 271-4876

NCEI now offers free online access to the *Climatological Data* publication.
Go to : www.ncdc.noaa.gov and choose Most Popular.