



CLIMATOLOGICAL DATA

VIRGINIA

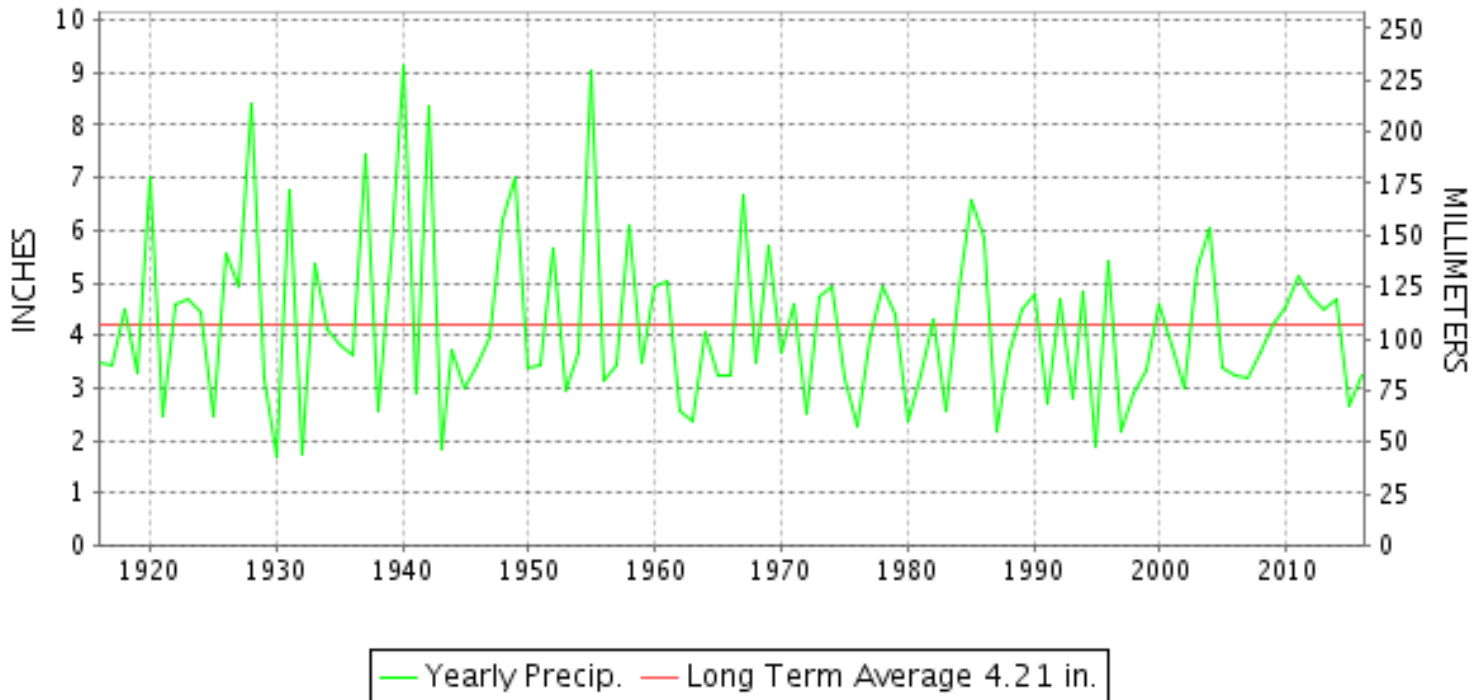
AUGUST 2016

VOLUME 126 NUMBER 08

ISSN 0364-5630

GHCND Ver: 3.22-upd-2016120606

AUGUST PRECIPITATION BY YEAR



TEMPERATURE AND PRECIPITATION EXTREMES

VIRGINIA

HIGHEST TEMPERATURE	102	AUGUST 16+	2 STATIONS
LOWEST TEMPERATURE	48	AUGUST 24+	3 STATIONS
GREATEST TOTAL PRECIPITATION	9.20		WOOLWINE
LEAST TOTAL PRECIPITATION	0.53		RICHMOND INTL AP
GREATEST 1 DAY PRECIPITATION	5.50	AUGUST 04	MEADOWS OF DAN 5 SW

"I certify that this is an official publication of the National Oceanic and Atmospheric Administration (NOAA) It is compiled using information from weather observing sites supervised by NOAA/National Weather Service and received at the National Centers for Environmental Information(NCEI), Asheville, North Carolina 28801."

Director
National Centers for Environmental Information

noaa

National
Oceanic and
Atmospheric Administration

National
Environmental Satellite, Data
and Information Service

National
Centers for Environmental Information
Asheville, North Carolina

VIRGINIA
201608

MONTHLY STATION AND DIVISION SUMMARY

STATION	TEMPERATURE (°F)											PRECIPITATION (IN)												
	AVERAGE MAXIMUM	AVERAGE MINIMUM	AVERAGE	DEPARTURE FROM NORMAL	HIGHEST	DATE	LOWEST	DATE	HEATING DEG. DAYS	COOLING DEG. DAYS	NO. OF DAYS				TOTAL	DEPARTURE FROM NORMAL	GREATEST 24 HOURS	DATE	ICE PELLETS, SNOW			NO. OF DAYS		
											MAX		MIN						TOTAL	MAX DEPTH ON GROUND	DATE	.10 OR MORE	.50 OR MORE	1.00 OR MORE
											>=90	<=32	<=32	<=0										
PALMYRA 3S	86.4M	66.4M	76.4M	3.7	92	15+	58	22	0	359E	5	0	0	0	4.09	0.26	1.88	16	M			6	3	1
PETERSBURG	91.1F	70.5	80.8F	3.3	100	15	61	23	0	489	19	0	0	0	0.64	-4.13	0.42	02	M			1	0	0
RICHMOND INTL AP	90.4	70.3	80.3	2.8	99	26+	61	24	0	482	19	0	0	0	0.53	-4.13	0.22	09	0.0	0		2	0	0
SANDSTON	M	M	M								0	0	0	0	M				M					
WINTERPOCK 4 W															2.10		0.99	03	M			4	1	0
--DIVISIONAL DATA-----> WESTERN PIEDMONT 03			79.0	3.9B										2.08	-1.85B									
ALTAVISTA														3.92		2.18	07	0.0	0			6	2	1
APPOMATTOX	88.2	68.2	78.2	3.5	95	27	62	24+	0	417	16	0	0	0	1.77	-2.21	0.95	07	0.0	0		4	1	0
BEDFORD 4 NW														1.93		0.48	18	0.0	0			9	0	0
BROOKNEAL	88.4	68.9	78.6	7.4	95	15	60	23	0	430	14	0	0	0	4.06	0.10	1.22	07	0.0	0		8	4	1
CHARLOTTESVILLE 2W	87.2	69.0	78.1	2.4	94	27+	64	25+	0	416	13	0	0	0	3.61	-0.46	0.75	16	0.0	0		9	3	0
CHATHAM	84.9	67.0	76.0	2.7	91	27+	58	24+	0	346	5	0	0	0	6.01	2.19	2.20	07	0.0	0		8	4	2
CONCORD 4 SSW														2.35		1.10	07	0.0	0			4	2	1
DANVILLE RGNL AP	88.3	69.5	78.9	1.9	94	26	59	23	0	438	14	0	0	0	4.94	1.03	1.85	06	0.0	0		6	5	1
FREE UNION	85.2	66.4	75.8		93	15+	59	22	0	344	7	0	0	0	A 7.67	0.69	16	0.0	0		5	2	0	
HOLCOMB ROCK														5.09	1.85	06	0.0	0				11	3	1
HUDDLESTON 4 SW														2.42	0.53	06	0.0	0				7	2	0
LYNCHBURG INTL AP	86.5	67.9	77.2	3.1	94	26	58	22	0	385	12	0	0	0	1.19	-2.07	0.62	06	0.0	0		2	1	0
MARTINSVILLE FLTR PLT	87.2	66.6	76.9	3.0	95	16	57	23+	0	374	11	0	0	0	2.62	-1.29	0.71	07	0.0	0		8	2	0
MEADOWS OF DAN 5 SW	83.7	65.5	74.6		91	16	57	23	0	304	3	0	0	0	9.07		5.50	04	0.0	0		8	4	1
MONTEBELLO FISH CULTURAL STN	M	M	M		92	15+	55	25+	0	310E	5	0	0	0	M				0.0	0				
MONTICELLO	M	M	M								0	0	0	0	M				0.0	0				
PEDLAR DAM														3.14		1.46	06	0.0	0			6	2	1
ROCKY MT	86.3	67.1	76.7	3.2	93	17+	58	24+	0	371	11	0	0	0	5.21	0.92	1.08	07	0.0	0		10	4	1
SOUTH BOSTON	90.1	69.5	79.8	4.4	96	28+	61	24+	0	466	20	0	0	0	2.55	-1.22	0.78	07	0.0	0		5	2	0
STUART	86.1	67.0	76.6	2.1	93	16	59	24+	0	366	10	0	0	0	7.38	2.39	2.89	04	0.0	0		13	4	1
TYE RVR 1 SE	M	M	M								0	0	0	0	M				0.0	0				
WOOLWINE														9.20		3.40	04	0.0	0			11	6	2
--DIVISIONAL DATA-----> NORTHERN 04			77.3	3.0B										4.43	0.62B									
EDINBURG	M	M	M								0	0	0	0	M				M					
FRONT ROYAL	86.4M	65.2M	75.8M	1.9	96	14	51	27	0	339E	7	0	0	0	M 3.16	0.10	2.20	18	0.0	0		4	1	1
LINCOLN	92.6M	68.2M	80.4M	7.3	102	14	63	25+	0	482E	16	0	0	0	M				0.0	0				
LURAY 5 E	86.1	64.7	75.4	2.3	94	14	57	23+	0	329	8	0	0	0	4.91	1.59	2.09	18	0.0	0		7	4	1
MADISON	M	M	M								0	0	0	0	M				0.0	0				
MANASSAS	90.1M	69.9M	80.0M	3.1	98	15+	63	23+	0	472E	18	0	0	0	M 2.42		0.70	18	0.0	0		4	4	0
MT WEATHER	83.8	67.0	75.4	2.7	91	15+	62	24+	0	330	5	0	0	0	3.27	-0.18	0.84	22	0.0	0		5	4	0

MONTHLY STATION AND DIVISION SUMMARY

STATION	TEMPERATURE (°F)										PRECIPITATION (IN)													
	AVERAGE MAXIMUM	AVERAGE MINIMUM	AVERAGE	DEPARTURE FROM NORMAL	HIGHEST	DATE	LOWEST	DATE	HEATING DEG. DAYS	COOLING DEG. DAYS	NO. OF DAYS				TOTAL	DEPARTURE FROM NORMAL	GREATEST 24 HOURS	DATE	ICE PELLETS, SNOW			NO. OF DAYS		
											MAX		MIN						TOTAL	MAX DEPTH ON GROUND	DATE	.10 OR MORE	.50 OR MORE	1.00 OR MORE
											>=90	<=32	<=32	<=0										
PIEDMONT RSCH STN	87.2	68.7	77.9	3.0	95	27+	62	24	0	407	12	0	0	0	A 2.68	-0.54	0.68	07	0.0	0		5	1	0
SOMERSET	88.3	67.9	78.1	3.4	98	15	60	25	0	415	15	0	0	0	M				0.0	0				
SPERRYVILLE	90.4M	66.0M	78.2M	4.7	99	14	58	23	0	413E	20	0	0	0	M 5.27	1.36	1.63	03	0.0	0		6	4	2
STERLING (RCS)	90.6M	68.4M	79.5M	5.1	99	14	61	24+	0	458E	19	0	0	0	1.08	-2.41	0.68	18	0.0	0		3	1	0
VIENNA	88.5	67.7	78.1	5.0	97	14	59	23	0	413	12	0	0	0	2.44	-1.25	1.08	16	0.0	0		3	3	1
WARRENTON 3 SE	M	M	M								0	0	0	0	M				0.0	0				
WASHGTON DULLES INTL AP	90.3	68.6	79.4	4.0	99	13	61	23+	0	453	20	0	0	0	0.96	-2.57	0.66	17	0.0	0		2	1	0
WASHINGTON REAGAN NATL AP	91.7	73.7	82.7	4.6	101	13	67	24+	0	556	23	0	0	0	2.79	-0.14	1.16	15	0.0	0		3	3	1
WINCHESTER	87.0	68.0	77.5	3.9	97	14	59	23	0	394	8	0	0	0	2.25	-0.77	0.78	18	0.0	0		5	2	0
WINCHESTER 7 SE	88.0M	64.7M	76.3M	3.8	96	26	56	22	0	361E	11	0	0	0	M 2.15	-1.08	0.80	06	0.0	0		4	2	0
WOODSTOCK 2 NE	87.6	64.6	76.1	3.8	97	28	57	24+	0	351	9	0	0	0	3.84	0.68	1.04	18	0.0	0		5	4	1
--DIVISIONAL DATA----->			78.1	5.3B											2.69	-0.97B								
CENTRAL MOUNTAIN 05																								
BUENA VISTA														1.68		0.45	07	0.0	0		5	0	0	
COVINGTON FLTR PLT	87.6	66.2	76.9	3.4	96	14	56	24+	0	376	16	0	0	0	2.40	-0.82	0.53	06	0.0	0		7	1	0
DALE ENTERPRISE	86.5	64.9	75.7	3.6	94	27	56	22	0	339	11	0	0	0	3.07	-0.37	1.00	16	0.0	0		6	3	1
GATHRIGHT DAM	82.2	64.8	73.5	2.5	88	27+	54	24	0	269	0	0	0	0	3.11	-0.08	0.48	21	0.0	0		9	0	0
GLASGOW 1 SE														1.75		0.46	09	0.0	0		4	0	0	
HOT SPRINGS	82.2	63.6	72.9	3.1	89	28+	52	24+	2	255	0	0	0	0	2.91	-0.52	0.73	09	0.0	0		11	1	0
LEXINGTON	87.5	65.8	76.7	2.5	95	27	55	24+	0	369	15	0	0	0	2.29	-0.88	0.66	01	0.0	0		9	1	0
MILLGAP	81.4	58.9	70.1	3.5	88	27+	48	24+	11	179	0	0	0	0	2.63	-0.88	0.46	18	0.0	0		10	0	0
MTN GROVE														4.00		1.07	09	0.0	0		8	3	1	
MUSTOE 1 SW	80.4	59.9M	70.1M	3.6	87	26	49	23	10E	176E	0	0	0	0	M				0.0	0				
NEW CASTLE														5.44		1.04	19	0.0	0		10	4	1	
ROANOKE 8 N	86.6M	66.6M	76.6M	2.0	93	27+	58	23	0	369E	13	0	0	0	M 3.19	-0.40	0.83	01	0.0	0		11	1	0
ROANOKE INTL AP	86.3	69.0	77.6	2.2	94	26+	59	23	0	399	13	0	0	0	4.46	0.90	1.09	15	0.0	0		10	2	1
STAUNTON WATER TRMTMT PLT	85.3	65.9	75.6	3.3	91	27	58	23	0	337	6	0	0	0	2.86	-0.77	1.15	04	0.0	0		7	1	1
WAYNESBORO WTP	86.0	65.9	76.0	3.7	94	14	58	23+	0	347	9	0	0	0	6.24	2.20	3.48	04	0.0	0		7	3	1
--DIVISIONAL DATA----->			74.7	2.8B										3.30	-0.12B									
SOUTHWESTERN MOUNTAIN 06																								
ABINGDON 3S	85.9	64.6	75.2	3.0	91	12	57	24+	0	326	6	0	0	0	4.30	0.70	1.60	22	0.0	0		8	1	1
BIG STONE GAP	85.2	65.7	75.5	1.5	90	30+	55	24+	0	333	4	0	0	0	4.64	0.36	0.93	19	0.0	0		10	3	0
BLACKSBURG NWSO	82.8	63.8	73.3	3.3	90	27	54	23	0	265	1	0	0	0	4.16	0.57	1.09	04	0.0	0		8	3	2
BURKES GARDEN	77.9M	59.3M	68.6M	2.4	83	28+	48	23	13E	131E	0	0	0	0	M 4.84	0.68	0.91	21	M 0.0	0		11	3	0
CHRISTIANSBURG	81.0	63.7	72.3	0.9	88	28	55	24+	1	236	0	0	0	0	4.84	1.54	1.79	06	0.0	0		9	2	2
CLINTWOOD 1 W	83.0	64.5	73.8	3.3	89	28	54	23	0	282	0	0	0	0	3.57	-0.08	0.78	19	0.0	0		8	1	0
COPPER HILL	79.7	64.4	72.0		88	17	56	23	1	229	0	0	0	0	7.80		2.11	06	0.0	0		12	5	3

VIRGINIA
201608

DAILY PRECIPITATION (INCHES)

STATION	TOTAL	DAY OF MONTH																															
		01	02	03	04	05	06	07	08	09	10	11	12	13	14	15	16	17	18	19	20	21	22	23	24	25	26	27	28	29	30	31	
VIRGINIA																																	
TIDEWATER 01																																	
DISPUTANTA	1.24	0.05		0.10				0.10		0.10	0.07					0.20																	
EASTVILLE	M	-	-	-	-	-	-	-	-	-	-	-	-	-	-	-	-	-	-	-	-	-	-	-	-	-	-	-	-	-	-	-	-
EMPORIA 1 WNW	0.72	0.07		T				0.08	T	0.05								0.17	0.31														
FREDERICKSBURG SEWAGE	M 3.62	0.03	0.02				0.37	0.60		0.02					0.08	2.30		0.07															-
HOLLAND 1 E	0.76		0.25						0.04	0.45							0.01																0.01
HOPEWELL	0.72		0.21			T	T	0.12	0.03	0.08	0.06					0.22																	
NORFOLK INTL AP	4.75		0.98		T	0.30			0.02	1.76				0.06	0.06	0.01			1.02			0.54											
NORFOLK SOUTH	5.65		3.59		T	0.15			0.05	0.59					0.39		0.03		0.55		0.30												
NORTH	0.55							0.08		0.47																							
PAINTER 2W	1.73		0.16					0.01	0.38	0.32						0.15																	0.71
STONY CREEK 2 N	1.74			0.09			0.20		0.10					1.25			0.02				0.08												
SUFFOLK LAKE KILBY	1.45		0.09	T	T	0.01	T		0.04	1.12				0.18					T			0.01											
WAKEFIELD 1NW	0.96	T	0.09				0.07		T	0.14					0.15		0.48		T			0.03											
WALKERTON 2 NW	3.42						0.22		0.80	1.16					0.10		1.14				T												
WALLACETON LK DRUMMOND	1.17	0.47	0.04	0.10					0.25	0.10		0.03			0.08					0.10													
WALLOPS ISLAND NASA TEST FACIL	1.85		T				0.02		0.06	0.01						0.08	0.22	T				1.46											T
WARSAW 2 NW	1.89			0.07		0.08	0.15		0.16	0.26						0.43			0.12														
WEST POINT 2 NW	2.13	0.42	0.12					0.28	0.08	0.56						T		0.14			0.17	0.14	0.22										
WILLIAMSBURG 2 N	1.96	0.02	1.25				0.02		0.22	0.42										0.03													
EASTERN PIEDMONT 02																																	
ALBERTA 5N	1.64	0.11		0.37	T		T	0.13		0.01	T								T			0.55											0.47
AMELIA COURTHOUSE 1	4.33	2.09		0.10			0.03	0.66	0.01	0.10						0.67		0.03															0.64
ASHLAND	1.75	0.10					0.01	0.24	0.70	0.22						0.45		0.03															
BREMO BLUFF	2.53	0.29				0.01	0.10	1.09	0.48	0.05						0.47		0.04															
BUCKINGHAM	1.53	0.13						0.15		0.57						0.55	0.08	0.04															0.01
CAMP PICKETT	1.45	0.30		0.01	0.01	0.02	0.09	0.49								0.07						0.08	0.38										
CHASE CITY	2.95	0.05		0.03		0.10	0.17	0.69												0.07	1.57	0.27											
CLARKSVILLE	M	-	-	-	-	-	-	-	-	-	-	-	-	-	-	-	-	-	-	-	-	-	-	-	-	-	-	-	-	-	-	-	-
CORBIN	0.72	0.02		0.02	0.01		0.07		0.55	0.03	0.02																						
CROZIER	1.77	0.08						0.20		0.55						0.94																	
FARMVILLE 2 N	1.55	0.10	T			T	0.03	0.08	0.03	0.09	0.04					0.96		T				0.09	0.13										
GREENBAY 3 NE	M	-	-	-	-	-	-	-	-	-	-	-	-	-	-	-	-	-	-	-	-	-	-	-	-	-	-	-	-	-	-	-	-
JOHN H KERR DAM	1.85	0.34		0.39			0.12	0.20	0.10	0.02	0.09								0.24		0.02		0.33										
KEYSVILLE 2 S	3.54	2.43			T	0.08	0.10	0.09			0.63																						
LOUISA	2.47	0.02					1.08		0.40	0.13					0.13	0.66						0.05											
PALMYRA 3S	4.09	0.18				0.04	0.51		0.93	0.02						1.88		0.10															0.40
PETERSBURG	0.64	0.01	0.42				0.07		0.07	0.02					0.05																		
RICHMOND INTL AP	0.53		T		T	T	0.09		0.02	0.22					0.20			T				T											T
SANDSTON	M	-	-	-	-	-	-	-	-	-	-	-	-	-	-	-	-	-	-	-	-	-	-	-	-	-	-	-	-	-	-	-	-
WINTERPOCK 4 W	2.10	0.35	0.01	0.99				0.29		0.06	0.01					0.31	T	0.03					0.05										

VIRGINIA
201608

DAILY PRECIPITATION (INCHES)

STATION	TOTAL	DAY OF MONTH																															
		01	02	03	04	05	06	07	08	09	10	11	12	13	14	15	16	17	18	19	20	21	22	23	24	25	26	27	28	29	30	31	
WESTERN PIEDMONT 03																																	
ALTAVISTA	3.92	0.15	0.02	0.82	0.03		0.27	2.18	0.03	0.06	0.02						0.04	0.12				0.18											
APPOMATTOX	1.77	0.06		0.02		0.12	0.95	0.05	0.16	0.04					0.02	0.04	0.04	0.06	T	0.21	T	T											
BEDFORD 4 NW	1.93	0.02	0.02	0.01	0.19	0.11	0.29	T	0.11	0.14	0.08					0.12	0.12	0.48	0.02	0.03	0.17	0.01				0.01							
BROOKNEAL	4.06	0.20		0.30	0.10	0.64	1.22		0.60									0.71				0.29											
CHARLOTTESVILLE 2W	3.61	0.20		0.02	0.02	0.26	0.33	0.72		0.66	0.03				0.10	0.75		T	0.19		0.01	0.30										0.02	
CHATHAM	6.01		0.15	0.85	0.03		1.33	2.20		0.55	0.02					0.26	0.01	0.15	0.05		0.03	0.38											
CONCORD 4 SSW	2.35	0.05			0.03	0.02	1.10	0.03	0.20	0.03								0.72		0.12						0.05							
DANVILLE RGNL AP	4.94	0.05	0.57	0.01		0.71	1.85	0.04	0.67	T	T						0.63		0.01	T	0.01						0.39						
FREE UNION	A 7.67	*	*	*	*	*	*	5.57 _a		0.37	0.02					T	0.69		0.53		0.04	0.16						0.26				0.03	
HOLCOMB ROCK	5.09	0.05			0.15	0.30	1.85	0.11	T	0.37	0.24			T	0.58	0.35		0.72	T		0.12	0.25											
HUDDLESTON 4 SW	2.42	0.06	0.28		0.08	0.03	0.53	0.52	0.03	0.25	0.09							0.26	0.15		0.11	0.03											
LYNCHBURG INTL AP	1.19	T		T	0.02	0.05	0.62		0.31	0.04					T	0.03	0.05		0.06	0.01												T	
MARTINSVILLE FLTR PLT	2.62	0.06	0.18	0.15	0.08	0.10	0.71		0.31	0.54						0.02		0.35	0.01	0.10									0.01				
MEADOWS OF DAN 5 SW	9.07	0.36	0.11	0.05	5.50	0.08	0.48		0.04	0.06	0.76						0.01	0.08	0.01	0.75	0.04	0.61							0.01	0.13			
MONTEBELLO FISH CULTURAL STN	M	0.02	-	-	0.60	0.14	-	0.85	-	0.86	0.03	0.01			0.20		-	-	-	-	0.22	0.02	0.10	-	-			0.29	-	-	-	-	
MONTICELLO	M	-	-	-	-	-	-	-	-	-	-	-	-	-	-	-	-	-	-	-	-	-	-	-	-	-	-	-	-	-	-	-	-
PEDLAR DAM	3.14	0.15		0.03	T	0.33	1.46	0.23		0.61	T				0.05	T		0.03	T	0.03	T	0.22											
ROCKY MT	5.21	0.31	0.35	0.06	0.16	0.04	0.45	1.08	0.02	0.09	0.81	T				0.60	0.28	0.07	0.03	0.02	0.04	0.60			0.18			0.02					
SOUTH BOSTON	2.55		0.01	0.40		0.04	0.68	0.78		0.28									0.01		0.05	0.17	0.05						0.08				
STUART	7.38	0.40	0.80	0.11	2.89	0.04	0.20	0.22	0.25	0.35	0.61							0.03		0.65	0.15	0.38							0.30				
TYE RVR 1 SE	M	-	-	-	-	-	-	-	-	-	-	-	-	-	-	-	-	-	-	-	-	-	-	-	-	-	-	-	-	-	-	-	-
WOOLWINE	9.20		1.65	0.80	3.40	0.15	0.07	0.01	0.05	0.90	0.72				0.05	0.01	0.25	0.52	0.04	0.29	0.01	0.16											
NORTHERN 04																																	
EDINBURG	M	-	-	-	-	-	-	-	-	-	-	-	-	-	-	-	-	-	-	-	-	-	-	-	-	-	-	-	-	-	-	-	-
FRONT ROYAL	M 3.16	0.02					0.02									-	0.32	0.30	2.20			0.30											
LINCOLN	M	-	0.40	-	-	-	-	-	-	-	-	-	-	-	-	-	-	0.40	0.88	-	-	-	0.36										
LURAY 5 E	4.91	0.29		0.22				0.69								0.59	0.26		2.09			0.77											
MADISON	M	-	-	-	-	-	-	-	-	-	-	-	-	-	-	-	-	-	-	-	-	-	-	-	-	-	-	-	-	-	-	-	-
MANASSAS	M 2.42	-						0.57								0.50		0.70				0.65											
MT WEATHER	3.27	0.51	0.01			0.03	0.34							0.02		0.08	0.02	0.62	0.80			0.84											
PIEDMONT RSCH STN	A 2.68	0.94 ₁			0.09	T	0.68		0.11	0.02						0.21	0.49					0.14											
SOMERSET	M	0.04	0.06	0.31	0.02	0.10	0.28	0.08	0.02	0.06																							
SPERRYVILLE	M 5.27	0.37		1.63	-	0.05	1.11								0.03	0.05	0.86		0.73	0.02		0.42											
STERLING (RCS)	1.08	0.01					0.02									T	0.10		0.68			0.27											
VIENNA	2.44															1.08		0.51				0.85											
WARRENTON 3 SE	M	-	-	-	-	-	-	-	-	-	-	-	-	-	-	-	-	-	-	-	-	-	-	-	-	-	-	-	-	-	-	-	-
WASHGTN DULLES INTL AP	0.96						0.02			T					0.05	0.14		0.66	T		0.07											0.02	
WASHINGTON REAGAN NATL AP	2.79				T	0.06				T					T	1.16		0.88	T		0.69												
WINCHESTER	2.25		0.17			0.30	0.13									0.77	0.03	0.78				0.07											
WINCHESTER 7 SE	M 2.15	-			0.37	0.80						0.05		0.01	0.57	0.02	0.31				0.02												-
WOODSTOCK 2 NE	3.84	0.02				0.06	0.85						0.29			0.90	0.65	1.04				0.03											

VIRGINIA
201608

DAILY TEMPERATURES (°F)

STATION	OB. TIME	MAX/MIN	DAY OF MONTH																															AVERAGE	
			01	02	03	04	05	06	07	08	09	10	11	12	13	14	15	16	17	18	19	20	21	22	23	24	25	26	27	28	29	30	31		
VIRGINIA																																			
TIDEWATER 01																																			
DISPUTANTA	07	MAX	92	89	86	83	84	84	93	88	78	87	91	93	97	98	98	96	95	95	90	84	92	92	85	83	85	89	97	92	89	89	92	89.9	
		MIN	70	71	71	67	67	70	70	71	68	70	72	73	74	76	73	73	71	72	70	68	68	65	60	54	60	62	70	69	64	65	65	68.4	
EASTVILLE	07	MAX																																M	
		MIN																																M	
EMPORIA 1 WNW	08	MAX																																M	
		MIN																																M	
FREDERICKSBURG SEWAGE	07	MAX	92	90	84	80	82	82	93	87	87	81	91	93	95	97	97	97	94	92	92	91	82	84	84	85	90	95	91	91		90	89.4		
		MIN	71	73	70	68	68	70	70	64	64	67	73	74	74	77	72	71	71	72	71	70	71	67	64	63	64	68	72	68	67		69	69.4	
HOLLAND 1 E	08	MAX	87	82	82	88	87	90	86	85	86	89	90	91	93	93	93	93	93	90	86	89	85	85	85	84	87	93	91	88	89	89	88	88.3	
		MIN	68	68	68	69	68	73	76	67	70	68	68	66	66	67	68	68	68	68	68	67	66	65	61	58	61	65	65	65	67	67	67	67	67.0
HOPEWELL	16	MAX	89	85	82	83	82	91	90	85	86	99	91	92	96	97	97	95	96	92	88	90	92	93	85	84	90	95	95	92	92	91	91	90.5	
		MIN	71	73	73	71	63	75	71	69	68	57	56 ^s	76	76	78	77	71	77	75	73	71	69	65	63	67	73	73	71	70	63	69	70.6		
NORFOLK INTL AP	24	MAX	91	86	82	84	87	91	85	79	87	91	90	94	96	96	91	94	96	89	86	93	83	81	81	88	92	86	84	85	85	86	88.0		
		MIN	73	72	75	75	74	76	77	73	74	76	77	77	79	80	79	78	77	76	72	72	73	72	69	66	69	74	77	77	76	76	75	74.7	
NORFOLK SOUTH	24	MAX	89	86	82	83	87	90	84	79	87	91	91	93	95	96	92	94	95	89	88	88	92	83	81	81	88	92	87	84	84	87	86	87.9	
		MIN	72	71	73	71	70	75	75	73	73	74	76	75	78	79	75	76	76	76	71	70	72	69	66	62	67	73	76	75	72	70	71	72.6	
NORTH	07	MAX	88	87	82	80	81	80	88	84	79	82	87	89	90	92	93	90	92	93	87	87	85	88	83	82	83	85	93	89	85	87	97	86.7	
		MIN	74	74	72	68	68	73	73	67	69	71	77	78	79	81	76	77	80	76	72	70	73	69	63	61	67	72	75	70	66	68	68	71.8	
PAINTER 2W	16	MAX	90	88	82	82	81	89	89	87	82	89	90	91	94	96	96	94	94	91	87	87	85	83	81	85	94	92	88	88	88	88	88	88.5	
		MIN	74	72	69	67	65	75	76	64	65	76	76	78	80	81	76	74	80	74	70	70	69	73	68	58	62	73	72	70	65	67	67	71.2	
STONY CREEK 2 N	08	MAX	89	85	83	84	92	86	76	90	91	92	94	97	98	96	96	95	95	95	91	85	91	87	85	86	92	95	94	91	92	92	92	90.5	
		MIN	71	73	71	68	75	72	70	70	71	73	75	76	76	75	73	75	76	76	74	72	70	66	60	59	62	64	71	66	65	65	66	70.2	
SUFFOLK LAKE KILBY	24	MAX	89	82	83	84	86	88	87	81	87	88	90	90	92	93	93	92	91	89	83	89	89	86	85	83	86	92	92	87	87	89	89	87.8	
		MIN	73	72	72	71	71	74	73	70	70	73	77	75	76	77	77	75	72	74	71	70	70	66	65	63	63	71	74	73	70	69	70	71.5	
WAKEFIELD 1NW	24	MAX	92	83	84	85	88	92	87	79	89	92	94	95	95	97	97	96	96	91	85	92	93	87	86	86	91	96	95	91	92	93	92	90.7	
		MIN	72	71	68	66	67	74	71	69	69	73	75	75	77	77	75	73	73	72	70	67	71	63	59	57	61	72	68	68	65	64	66	69.3	
WALKERTON 2 NW	18	MAX	91	86	82	83	84	93	88	90	86	91	92	93	87	98	95	95	95	88	90	90	85	93	84	86	91	96	91	89	90	90	91	89.8	
		MIN	71	73	70	67	66	73	73	76	68	71	73	75	77	77	76	77	76	74	71	69	66	65	62	61	64	72	77	66	65	67	67	70.5	
WALLACETON LK DRUMMOND	08	MAX	93	91	88	86	88	90	94	93	83	90	94	94	94	97	98	97	96	98	95	88	93	95	90	88	88	89	81	94	94	90	93	91.7	
		MIN	62	64	62	57	58	64	68	58	60	61	64	63	63	68	66	65	64	65	60	59	60	59	52	48	50	58	61	64	59	55	59	60.5	
WALLOPS ISLAND NASA TEST FACIL	24	MAX	88	85	82	83	82	90	88	88	83	89	91	94	94	98	93	91	95	91	92	89	88	87	80	82	86	94	87	85	88	86	87	88.3	
		MIN	75	73	71	67	64	78	70	68	71	78	76	78	80	79	78	75	75	74	73	71	71	68	65	60	64	73	75	73	66	71	70	71.9	
WARSAW 2 NW	18	MAX	92	92	89	84	85		93	83	85	92	94	94	97		97	98	95	95	90	91		84	85	88	90	96	96		91	93	92	91.1	
		MIN	70	71	67	64	64	63		66	64	73	74	75		70	72	76	72	68			64	61	59	67	72			62	66	65	67.7		
WEST POINT 2 NW	17	MAX	90	89	84	82	82	91	90	86	86	91	92	92	95	97	95	95	96	96	90	90	92	88	84	85	90	97	96	91	91	92	90	90.5	
		MIN	71	72	69	68	68	74	70	66	66	74	75	75	78	78	73	74	74	73	70	69	72	66	64	61	66	73	70	68	65	67	68	70.2	
WILLIAMSBURG 2 N	24	MAX	90	82	82	84	84	92	88	80	87	90	93	93	95	96	93	95	96	91	89	90	93	86	85	86	90	98	93	90	91	91	90	89.8	
		MIN	72	73	70	70	70	75	72	69	70	75	76	77	79	80	78	75	79	75	73	70	74	68	66	63	66	73	73	72	68	70	70	72.3	
EASTERN PIEDMONT 02																																			
AMELIA COURTHOUSE 1	08	MAX	87	88	87	87	83	82	91	85	76	85	90	90	92	95	95	96	94	94	88	88	90	91	84	83	86	90	96	94	90	91	92	89.0	

VIRGINIA
201608

DAILY TEMPERATURES (°F)

STATION	OB. TIME	MAX/MIN	DAY OF MONTH																															AVERAGE	
			01	02	03	04	05	06	07	08	09	10	11	12	13	14	15	16	17	18	19	20	21	22	23	24	25	26	27	28	29	30	31		
ASHLAND	18	MIN	70	72	71	68	70	72	71	70	66	66	73	74	76	76	72	71	75	72	71	71	72	62	61	61	63	70	74	65	65	68	68	69.5	
		MAX	88	87	83	80	83	90	86	78	81	88	90	91	93	93	93	91	91	88	86	87	91	83	82	84	90	93	90	87	87	88	90	87.5	
BREM BLUFF	07	MIN	70	72	70	68	68	72	68	65	65	71	72	74	76	76	72	70	75	71	69	69	72	63	62	60	68	71	75	73	63	67	69	69.5	
		MAX	95	93	91	85	85	87	96	90	74	77	92	93	96	98	100	98	94	98	91	90	94	93	88	89	90	95	101	97	94	95	96	92.1	
CAMP PICKETT	08	MIN	68	66	66	65	64	67	69	61	63	63	68	68	70	73	68	67	68	69	66	65	67	58	61	60	60	63	68	61	60	60	64	65.0	
		MAX	88	87	87	84	84	84	91	84	76	87	89	89	91	93	95	94	93	94	88	84	89	91	92	83	83	88	94	94	89	89	92	88.6	
CHASE CITY	17	MIN	70	72	72	68	68	71	71	71	68	68	73	73	75	75	73	71	73	71	71	69	69	62	60	60	63	64	64	66	67	65	66	68.7	
		MAX	91	89	87	84	85	84	89	84	78	87	90	90	91	93	94	94	94	94	90	85	88	89	84	85	84	90	95	94	90	89	91	88.8	
CLARKSVILLE	07	MIN	71	73	72	69	69	72	72	71	70	70	72	74	75	74	74	73	75	71	72	72	73	62	62	62								69.8	
		MAX																																	
CORBIN	09	MIN																																	M
		MAX	89	88	80	81	84	93	87	81	81	90	92	93	95	95	95	102																	
CROZIER	07	MIN	71	72	68	66	67	72	68	62	63	72	73	75	77	76	70																		M
		MAX	88	88	86	79	79	84	91	83	72	81	89	90	93	94	95	95	93	93	87	87	89	91	83	83	86	90	90	90	87	94	89	87.7	
FARMVILLE 2 N	07	MIN	69	71	69	61	68	71	68	66	65	68	70	71	74	75	72	69	72	71	69	69	72	61	61	61	62	70	64	64	68	63	70	67.9	
		MAX	86	88	86	84	80	82	90	82	73	82	89	90	91	94	95	97	92	93	90	89	91	89	85	85	86	92	96	93	88	91	91	88.4	
GREENBAY 3 NE	09	MIN	71	71	71	69	69	71	71	69	66	67	71	72	74	75	70	68	68	70	71	73	73	64	63	61	61	66	75	68	68	68	68	69.1	
		MAX																																	
JOHN H KERR DAM	08	MIN																																	M
		MAX	95	93	91	86	88	91	95	87	80	91	95	95	97	98	98	101	100	97	95	88	93	95	89	90	87	93	101	96	93	92	95	93.1	
KEYSVILLE 2 S	07	MIN	75	77	73	70	72	74	75	73	72	73	77	79	81	81	78	78	80	77	76	75	76	67	62	64	65	70	75	68	70	67	70	73.2	
		MAX	91	90	88	84	85	86	90	84	78	86	90	90	91	93	94	93	93	94	88	85	79	90	84	85	84	91	95	94	89	90	92	88.6	
LOUISA	18	MIN	70	70	71	68	68	71	72	70	67	68	72	73	74	75	71	71	71	70	70	70	62	61	60	60	66	71	64	65	66	66	68.5		
		MAX	89	88	85	81	80	90	86	85	76	88	89	92	93	94	93	91	92	90	88	88	87	83	83	85	89	95	90	88	89	89	90	87.9	
PALMYRA 3S	06	MIN	70	67	69	65	65	71	66	59	65	70	71	72	74	74	67	69	73	70	65	66	70	58	61	58	64	70	70	60	60	65	69	66.9	
		MAX																																	
PETERSBURG	08	MIN	69	70	70	68	68	71	72	70	67	68	72	73	74	75	71	71	71	70	70	70	62	61	60	60	66	71	64	65	66	66	68.5		
		MAX	90	89	84	84	84	93	87	78	88	92	75 ^s	95	97	98	100	97	97	93	89	93	95	88	87	87	92	97	94	90	90	93	92	91.1	
RICHMOND INTL AP	24	MIN	71	73	69	70	70	73	72	68	69	74	75	75	77	75	73	73	75	72	71	73	67	67	61	62	67	73	69	67	68	69	70.5		
		MAX	88	87	81	83	83	92	88	78	87	91	93	94	96	99	96	95	97	90	89	91	94	87	85	86	92	99	94	90	91	94	92	90.4	
SANDSTON	07	MIN	70	73	70	69	69	73	71	68	67	73	74	74	78	77	73	72	76	72	70	69	72	66	63	61	66	72	71	68	64	69	68	70.3	
		MAX																																	
WESTERN PIEDMONT 03																																			M
APPOMATTOX	07	MIN	91	91	88	80	78	83	93	84	70	82	88	89	91	93	94	94	92	94	88	86	89	90	85	84	86	91	95	93	90	91	91	88.2	
		MAX	70	70	70	67	68	71	71	67	65	66	71	71	72	73	71	69	71	70	71	69	69	62	62	62	63	67	72	65	65	67	67	68.2	
BROOKNEAL	07	MIN	91	89	88	81	84	81	92	82	76	85	89	89	91	93	95	94	94	93	87	85	88	89	85	83	85	91	94	94	90	90	91	88.4	
		MAX	70	70	72	70	70	72	72	70	68	69	69	70	71	72	70	72	73	71	72	72	71	61	60	61	62	69	72	65	65	67	67	68.9	
CHARLOTTESVILLE 2W	08	MIN	88	89	86	78	80	80	92	85	69	74	88	90	93	94	94	92	91	92	88	88	89	90	82	84	86	91	94	90	89	90	88	87.2	
		MAX	70	70	71	69	69	69	69	66	65	65	71	73	74	75	71	70	70	73	69	71	71	64	64	64	64	69	72	67	67	68	70	69.0	
CHATHAM	07	MIN	89	87	85	79	79	79	86	79	73	79	86	86	89	90	90	91	89	89	83	80	86	86	83	82	82	87	91	90	86	85	86	84.9	
		MAX	70	69	71	69	69	69	70	70	66	67	68	68	70	72	69	69	71	68	69	70	69	59	58	58	60	64	67	65	65	64	64	67.0	

VIRGINIA
201608

DAILY TEMPERATURES (°F)

STATION	OB. TIME	MAX/MIN	DAY OF MONTH																															AVERAGE	
			01	02	03	04	05	06	07	08	09	10	11	12	13	14	15	16	17	18	19	20	21	22	23	24	25	26	27	28	29	30	31		
DANVILLE RGNL AP	24	MAX	92	89	82	84	83	90	84	77	87	88	89	90	92	93	93	92	93	88	86	88	90	83	85	84	91	94	93	89	88	91	90	88.3	
		MIN	70	72	72	70	72	71	71	69	69	69	71	73	74	74	73	73	72	71	73	71	70	61	59	62	65	71	71	67	66	65	67	69.5	
FREE UNION	08	MAX	86	86	84	74	76	78	89	84	68	73	87	89	91	93	93	91	90	90	86	85	87	84	81	80	84	89	92	88	87	88	85.2		
		MIN	68	68	69	68	68	68	66	63	65	66	68	69	70	71	68	68	69	71	66	66	69	59	60	60	61	66	69	65	64	64	67	66.4	
LYNCHBURG INTL AP	24	MAX	89	85	81	76	81	89	80	71	77	87	88	90	92	92	92	90	92	86	84	87	86	83	84	84	91	94	92	88	90	91	86.5		
		MIN	69	71	71	68	70	71	68	66	65	70	69	71	73	70	69	70	70	70	70	68	66	58	60	61	66	68	72	65	66	67	67.9		
MARTINSVILLE FLTR PLT	07	MAX	90	89	87	78	79	82	91	83	74	81	88	89	91	92	94	95	92	92	88	82	87	88	83	85	84	90	92	92	88	88	87.2		
		MIN	68	69	70	69	69	68	69	70	67	67	68	68	70	70	70	70	70	68	69	70	69	57	57	59	59	64	66	66	64	62	63	66.6	
MEADOWS OF DAN 5 SW	07	MAX	85	85	82	72	73	81	86	81	72	82	85	86	88	89	90	91	87	90	85	79	82	81	81	82	81	86	87	88	85	86	83.7		
		MIN	67	67	69	66	65	65	65	67	67	67	69	68	68	69	69	69	69	68	68	67	67	58	57	58	59	64	66	65	63	63	63	65.5	
MONTEBELLO FISH CULTURAL STN	07	MAX	86			85	73		88		83	80	87	88	90	92	92	88		90	86	86	85	81		83	89	91	85			M			
		MIN	66			63	63		63		58	65	67	67	68	69	65	66		69	61	61	63	55		55	65	65	59			M			
MONTICELLO	07	MAX																															M		
		MIN																																M	
ROCKY MT	07	MAX	88	89	85	77	75	79	91	81	81	77	87	89	91	92	91	93	93	90	86	83	85	85	83	83	84	90	90	91	91	87	86.3		
		MIN	69	70	71	68	68	68	70	69	66	67	69	70	70	71	69	70	70	70	70	69	69	59	58	58	60	60	69	68	64	65	65	67.1	
SOUTH BOSTON	07	MAX	96	92	91	83	85	83	92	85	78	86	90	91	92	95	96	95	94	95	91	85	88	91	87	85	86	94	96	96	92	90	90.1		
		MIN	71	72	72	69	69	71	72	72	69	69	69	71	74	74	73	73	74	72	73	73	72	63	61	61	63	66	71	67	67	66	69.5		
STUART	07	MAX	88	87	84	73	80	80	89	90	74	79	86	88	90	91	92	93	92	91	86	84	83	86	83	83	83	87	90	91	91	89	86.1		
		MIN	68	69	71	67	67	68	67	67	67	67	69	68	71	70	70	70	70	70	69	68	69	59	59	59	61	67	67	67	65	66	67.0		
TYE RVR 1 SE	07	MAX																															M		
		MIN																																M	
NORTHERN 04																																			
EDINBURG	07	MAX																																M	
		MIN																																	M
FRONT ROYAL	06	MAX	86	88	85	82	79	81	86	85	82	77	91	91	92	96		89	92	90	86	87	86	84	80	80	84	89	93	89	87	88	86.4		
		MIN	69	67	67	68	67	67	66	61	61	61	71	61	76	73		68	69	68	67	67	66	66	59	64	67	51	69	55	66	59	65.2		
LINCOLN	07	MAX	94	95	86											100	102	93	100	98	92	96	94	90	88	86	84	88	96	92	94	88	92.6		
		MIN	70	68	70											74	74	72	72	70	72	66	66	70	66	63	63	63	66	70	70	66	68.2		
LURAY 5 E	08	MAX	85	86	85	85	81	83	88	83	76	79	89	91	92	94	91	90	91	90	86	85	85	84	80	80	84	87	93	86	86	89	86.1		
		MIN	66	64	67	65	64	65	60	58	60	66	68	71	71	70	67	66	68	68	64	64	68	57	57	59	65	67	65	64	63	65	64.7		
MADISON	08	MAX																																M	
		MIN																																	M
MANASSAS	07	MAX	91	91	89	83		83		90	88	78		94	96	98	98	96	95	93	91	90	90	87	84	83	86	90	96	92	89	91	90.1		
		MIN	74	73	71	69		71		64	63	64			79	79	73	72	72	73	72	69	72	64	63	64	69	70	73	69	68	69	69.9		
MT WEATHER	07	MAX	83	83	81	78	79	73	84	84	80	71	86	89	90	91	91	90	89	87	84	83	85	78	78	78	82	86	90	87	85	87	83.8		
		MIN	66	70	65	64	64	66	62	62	63	63	69	76	76	74	71	67	69	68	68	68	68	62	62	62	65	68	72	67	67	66	67.0		
PIEDMONT RSCH STN	08	MAX	87	89	86	79	79	80	91	85	74	75	86	90	93	95	95	93	92	91	88	86	88	88	83	81	86	91	95	90	88	90	87.2		
		MIN	69	71	70	68	67	70	67	64	65	67	72	73	75	73	71	69	71	72	69	69	70	63	64	62	66	69	73	66	65	70	68.7		
SOMERSET	08	MAX	89	90	87	79	80	81	92	86	73	74	91	93	95	97	98	94	93	93	88	87	89	90	84	82	87	91	96	90	91	89	88.3		
		MIN	70	68	69	69	68	70	67	61	65	67	73	72	73	74	73	69	70	72	72	67	68	65	61	62	60	65	71	64	63	69	67.9		
SPERRYVILLE	06	MAX	93	93	89		84	81	90	88	80	75	93	96	98	99	97	96	96	96	90	90	91	87	82	84	88	92	95	93	92	90	90.4		

VIRGINIA
201608

DAILY TEMPERATURES (°F)

STATION	OB. TIME	MAX/MIN	DAY OF MONTH																															AVERAGE
			01	02	03	04	05	06	07	08	09	10	11	12	13	14	15	16	17	18	19	20	21	22	23	24	25	26	27	28	29	30	31	
STERLING (RCS)	07	MIN	68	67	67		66	68	63	61	61	65	69	71	70	72	69	68	68	70	67	66	67	60	58	60	63	66	67	67	64	65	66	66.0
		MAX	90	89	88	82	85	82	90		87	87	93	95	97	99	97	95	97	94	90	90	92	89	83	84	88	92	95	93	91	93	90	90.6
VIENNA	07	MIN	71	70	69	66	68	71	62		62	62	75	76	77	76	72	71	72	71	68	66	68	66	61	61	64	69	72	65	66	69	65	68.4
		MAX	89	89	87	79	84	78	89	88	86	78	90	94	95	97	96	93	93	92	89	87	87	88	83	85	89	93	92	91	84	90	89	88.5
WARRENTON 3 SE	08	MIN	71	69	69	64	64	70	63	63	62	62	75	75	77	77	71	70	70	70	67	66	66	68	59	60	63	69	71	67	67	67	66	67.7
		MAX																																
WASHGTN DULLES INTL AP	24	MIN																																M
		MAX	90	88	82	84	80	91	89	88	78	93	95	96	99	97	96	96	94	90	89	90	90	85	85	87	91	95	92	91	94	91	92	90.3
WASHINGTON REAGAN NATL AP	24	MIN	72	70	69	64	68	74	64	62	61	75	75	77	78	76	70	72	70	72	67	65	69	63	61	62	67	73	69	65	66	67	64	68.6
		MAX	93	91	83	86	85	94	92	92	81	95	97	99	101	100	100	97	95	92	92	91	91	85	84	86	89	95	92	90	94	91	91	91.7
WINCHESTER	07	MIN	76	75	72	70	73	75	71	70	68	77	78	81	81	80	73	75	72	74	74	75	74	69	67	67	71	77	77	74	72	75	73	73.7
		MAX	85	88	85	80	80	82	88	86	82	76	89	91	93	97	94	93	91	92	88	86	87	82	80	81	85	88	93	89	89	89	88	87.0
WINCHESTER 7 SE	08	MIN	69	67	68	68	67	70	66	63	63	66	70	76	77	76	70	70	71	69	69	68	68	66	59	61	63	72	69	67	67	66	66	68.0
		MAX	88		86	82	82	89	86	81	79	91	91	94	95	94	92	91	90	89	86	88	84	83	82	86	89	96	90	89		90		88.0
WOODSTOCK 2 NE	07	MIN	65		66	65	65	60	60	60	62	67	75	75	74	68	69	70	70	65	64	64	61	56	59	59	60	66	63	63		61		64.7
		MAX	88	87	86	82	81	84	88	84	81	82	89	92	93	93	93	92	89	89	87	86	85	83	82	82	89	90	90	97	93	89	89	87.6
CENTRAL MOUNTAIN 05 COVINGTON FLTR PLT	07	MIN	68	65	65	66	63	68	61	59	60	63	68	68	68	71	68	68	64	68	67	66	66	57	57	57	65	62	65	65	65	65	65	64.6
		MAX	90	88	87	80	74	85	91	86	69	80	90	90	93	96	94	90	94	93	86	87	86	81	84	84	85	92	94	93	91	92	90	87.6
DALE ENTERPRISE	07	MIN	67	70	69	67	67	69	66	66	67	67	69	69	71	68	68	69	67	67	67	69	58	56	56	60	66	66	66	64	65	68	66.2	
		MAX	86	86	85	78	79	84	89	84	72	80	88	90	93	92	93	91	91	86	88	86	84	79	80	88	90	94	91	90	86	88	86	86.5
GATHRIGHT DAM	07	MIN	66	65	66	67	66	68	60	58	60	67	68	70	71	69	69	68	68	68	63	66	69	56	58	58	62	64	66	65	63	63	66	64.9
		MAX	84	84	82	76	72	79	86	81	66	77	83	85	86	87	88	85	87	86	81	82	81	76	76	78	81	86	88	87	86	87	84	82.2
HOT SPRINGS	07	MIN	66	68	68	66	66	66	65	63	63	65	67	67	68	70	67	67	67	67	64	64	67	57	57	54	60	65	66	67	64	64	64	64.8
		MAX	84	80	81	76	74	79	85	81	67	75	83	86	86	88	87	86	86	85	81	82	81	76	74	77	80	86	89	89	88	88	88	82.2
LEXINGTON	07	MIN	65	66	67	65	65	65	65	63	62	66	67	67	67	69	65	66	66	66	62	62	65	55	52	52	59	64	65	65	62	63	65	63.6
		MAX	91	88	86	76	74	84	91	85	69	80	89	91	92	94	93	93	92	92	87	86	88	84	84	84	87	92	95	92	90	93	90	87.5
MILLGAP	06	MIN	68	70	70	67	66	67	69	66	66	67	68	69	69	70	67	67	68	68	67	67	67	56	55	55	59	66	68	67	63	63	66	65.8
		MAX	81	82	80	72	73	80	82	82	66	75	82	86	86	88	85	86	85	85	81	81	81	73	75	77	81	84	88	87	86	87	85	81.4
MUSTOE 1 SW	24	MIN	60	59	58	63	62	63	57	54	57	63	63	63	63	64	63	63	61	62	58	58	60	51	48	48	53	60	60	59	60	57	57	58.9
		MAX	82	81	71	72	78	83	80	66	74	82	84	85	86	85	85	85	84	80	80	79	73	74	75	78	85	87	84	84	86	82	81	80.4
ROANOKE 8 N	07	MIN	60	60	64	63	63	63	54	55	63	65	62	63	66	65	63	63	65	61	57	58	56	52	49	50	60	60	60	58		58	59.9	
		MAX	89	89		75	75	82	91	82	82	78	88	88	92	93	93	91	90	92	85	83	87	81	82	82	84	92	93	90	90	90	90	86.6
ROANOKE INTL AP	24	MIN	68	70		66	66	68	68	65	66	66	66	66	69	71	68	69	69	70	70	69	69	60	58	61	63	67	70	68	63	64	65	66.6
		MAX	90	86	76	74	80	91	81	73	78	88	88	91	93	94	91	89	92	86	83	85	82	82	82	83	92	94	91	90	90	89	91	86.3
STAUNTON WATER TRMTMT PLT	08	MIN	71	72	72	67	69	70	71	68	67	70	70	71	73	72	70	71	71	74	70	69	67	61	59	63	68	72	71	68	65	68	69	69.0
		MAX	87	85	85	85	85	85	88	82	68	78	85	88	90	90	90	89	89	90	85	84	83	80	80	80	84	90	91	87	87	88	86	85.3
WAYNESBORO WTP	07	MIN	68	66	68	65	65	65	63	61	62	65	70	70	74	73	67	67	71	69	63	64	68	60	58	59	65	70	68	65	64	65	65	65.9
		MAX	86	86	85	74	79	81	90	83	70	79	89	89	91	94	93	91	91	91	86	87	87	87	81	81	84	90	91	88	87	89	87	86.0
SOUTHWESTERN MOUNTAIN 06	07	MIN	68	68	68	68	67	67	66	62	63	65	69	69	69	71	68	68	69	69	65	65	67	58	58	60	62	67	68	66	64	64	65	65.9
		MAX																																

VIRGINIA
201608

DAILY TEMPERATURES (°F)

STATION	OB. TIME	MAX/MIN	DAY OF MONTH																															AVERAGE	
			01	02	03	04	05	06	07	08	09	10	11	12	13	14	15	16	17	18	19	20	21	22	23	24	25	26	27	28	29	30	31		
ABINGDON 3S	22	MAX	85	87	84	85	82	85	88	86	87	87	90	91	90	89	89	90	90	87	80	78	82	75	76	86	82	86	89	90	88	89	89	85.9	
		MIN	64	66	68	67	66	65	65	68	68	68	67	66	67	66	65	66	65	66	67	66	66	57	57	60	64	64	64	63	62	63	64.6		
BIG STONE GAP	08	MAX	84	86	85	86	87	85	84	84	85	88	86	88	89	87	88	90	87	87	79	77	78	76	79	82	83	86	90	90	89	90	87	85.2	
		MIN	65	65	69	66	66	68	68	68	67	67	68	69	66	66	67	67	69	68	66	66	60	55	55	62	67	67	66	68	65	65	65.7		
BLACKSBURG NWSO	07	MAX	87	86	83	71	70	80	87	77	70	82	85	87	87	87	88	88	87	87	81	78	83	76	76	80	80	87	90	89	87	87	85	82.8	
		MIN	65	66	68	64	64	65	66	66	64	65	66	66	67	67	67	67	65	65	67	64	65	56	54	55	58	63	65	64	60	60	63	63.8	
BURKES GARDEN	07	MAX	81	80	78	72	66	77	81	74	68	77	79	82		83	82	83	82	81	74		78	70	72	76	75	80	83	83	81		82	77.9	
		MIN	59	58	64	65	63	60	64	64	63	63	65	62		60	57	56	61	61	62		59	54	48	50	51	56	57	60	62		56	59.3	
CHRISTIANSBURG	07	MAX	85	85	82	69	66	79	84	73	68	80	82	84	85	87	86	87	85	78	77	79	76	76	79	78	85	87	88	87	86	80	81.0		
		MIN	64	65	66	63	61	65	66	65	63	63	66	67	66	67	67	66	66	66	65	66	57	55	55	58	65	66	66	60	60	63	63.7		
CLINTWOOD 1 W	07	MAX	81	84	79	85	82	81	84	82	80	86	86	84	88	88	86	83	85	85	76	78	80	73	76	81	81	86	86	89	87	87	85	83.0	
		MIN	65	65	68	65	65	66	67	66	66	66	65	66	67	65	65	65	65	68	67	67	67	58	54	55	59	65	64	64	68	64	64	64.5	
COPPER HILL	07	MAX	84	85	80	69	68	77	85	75	66	75	80	81	83	85	85	82	88	84	79	76	78	78	77	74	76	86	87	84	80	82	81	79.7	
		MIN	66	66	66	62	61	66	67	64	62	62	67	67	68	67	68	68	67	65	66	65	59	56	57	60	65	68	66	63	62	65	64.4		
GALAX RADIO WBRF	17	MAX																																M	
		MIN																																M	
GALAX WTP	07	MAX	86	87	80	73	71	79	87	76	74	80	80	82	84	85	86	86	83	85	82	78	80	80	78	78	77	85	87	86	85	85	85	81.6	
		MIN	65	66	68	66	66	68	68	66	67	68	66	67	68	65	64	64	66	66	68	67	67	62	56	56	56	62	61	62	59	59	59	64.1	
GRUNDY	07	MAX	84	85	83	84	85	85	84	82	84	88	87	88	90	91	87	89	89	87	78	79	81	74	79	83	82	86	87	91	87	87	85	84.9	
		MIN	67	67	69	65	65	66	70	67	66	66	67	67	69	69	69	67	67	69	68	68	68	61	56	56	61	66	68	68	68	66	66	66.2	
JOHN FLANNAGAN LAKE	07	MAX	88	90	91	90	87		81	84	91	92	94			92	94	92	89	84		83	84	87	87								89.3		
		MIN	66	66	66	66	66		67	67	67	67	68			69	68	68	69	68			61	57	57	62							63	63	65.4
LEBANON	07	MAX	86	86	82	85	82	84	86	82	85	87	88	91	91	91	90	91	90	88	88	81	81	76	78	84	83	87	89	92	89	89	88	86.1	
		MIN	61	62	67	69	68	66	67	70	69	70	66	67	67	66	63	64	64	66	66	65	65	56	54	53	58	63	62	62	61	61	62	63.9	
NORA 4 SSE	07	MAX	81	82	77	84	80	82	85	80	82	82	82	84	85	84	85	86		85	75	77	75	70	72	79	77	83	85	86	84	84	83	81.2	
		MIN	67	67	66	66	67	68	68	68	68	69	70	71	70	71	68		67	65	66	66	56	56	62	66	68	70	70	68	66	69	66.9		
N FK LAKE	08	MAX	85	87	82	86	84		86	83	87		88			91	86	89	87	79			82	77	84								89	M	
		MIN	65	64	67	66	66		67	67	67		67			66	65	65	67	68			58	55	54								65	64	M
PULASKI 2 E	07	MAX	88	88	83	73	83	82	86	86	69	82	84	86	87	88	88	89	86	87	80	78	82	76	77	81	81	85	88	88	86	86	85	83.5	
		MIN	63	63	68	64	63	65	67	66	64	64	66	66	68	67	64	66	65	67	66	64	66	56	53	55	59	64	63	64	58	60	63	63.5	
RADFORD 3 N	07	MAX	87	86	83	70	70	84	88	71	72	83	85	87	88	89	89	89	88	84	81	78	83	77	77	83	82	88	88	86	84	87	83	82.9	
		MIN	66	63	66	65	64	66	67	66	65	66	65	65	67	67	61	61	65	66	67	65	67	60	55	57	60	67	66	65	59	55	64	63.8	
RICHLANDS	07	MAX	84	86	86	79	81	82	85	80		86	87	89	90		88	90	89	87	79					83	83	83	85	89	92	90	88	88	85.7
		MIN	64	63	63	63	64	65	66	69		67	65	65	67		64	64	66	68	67					53	57	57	63	63	64	62	62	62	63.6
SALTVILLE 1N	07	MAX	87	87	83		79	85	87	85	84	86	87	90	92	90	91	91	91	89	80	81	82	77	80	85	82	88	91	92	89	90	90	86.4	
		MIN	64	64	67	66	66	66	69	69	67	67	66	66	66	67	66	66	67	68	67	67	67	57	56	57	60	64	64	65	61	61	64	64.8	
STAFFORDSVILLE 3 ENE	07	MAX	87	86	83	70	69	79	88	74	69	81	84	85	88	88	88	85	87	85	80	76	82	76	77	81	79	87	89	87	85	87	85	82.2	
		MIN	65	65	67	65	64	66	66	67	65	66	68	66	66	67	67	66	66	67	67	65	66	58	55	55	56	64	66	66	60	60	63	64.2	
WISE 1SE	09	MAX	80	83	79	83	83	82	82	78	81	84	84	85	88	87	88	86	85	84	78	76	76	74	75	80	82	87	87	89	86	86	86	82.7	
		MIN	61	63	67	66	69	64	66	68	67	69	68	68	70	66	66	65	66	66	65	64	67	55	52	59	65	64	68	65	63	64	64.8		
WYTHEVILLE	07	MAX	89	89	85	73		84	88	76	70	83	84	87	89	89	87	91	87	86	80	75	81	77	77	82	81	86	89	90	86	87	85	83.8	
		MIN	63	62	67	65	63	64	64	66	65	65	68	68	67	65	64	63	65	65	66	63	63	58	55	55	57	62	64	63	59	59	62	63.1	

VIRGINIA
201608

SNOWFALL AND SNOW ON GROUND (INCHES)

STATION	DAY OF MONTH																																
	01	02	03	04	05	06	07	08	09	10	11	12	13	14	15	16	17	18	19	20	21	22	23	24	25	26	27	28	29	30	31		
VIRGINIA																																	
TIDEWATER 01																																	
DISPUTANTA																																	
EASTVILLE																																	
EMPORIA 1 WNW																																	
FREDERICKSBURG SEWAGE																																	
	SNOWFALL																																
HOLLAND 1 E																																	
HOPEWELL																																	
	SNOWFALL																																
	SN ON GND																																
NORFOLK INTL AP																																	
	SNOWFALL																																
	SN ON GND																																
NORFOLK SOUTH																																	
NORTH																																	
	SNOWFALL																																
	SN ON GND																																
PAINTER 2W																																	
STONY CREEK 2 N																																	
	SNOWFALL																																
	SN ON GND																																
SUFFOLK LAKE KILBY																																	
	SNOWFALL																																
	SN ON GND																																
WAKEFIELD 1NW																																	
	SNOWFALL																																
	SN ON GND																																
WALKERTON 2 NW																																	
	SNOWFALL																																
	SN ON GND																																
WALLACETON LK DRUMMOND																																	
WALLOPS ISLAND NASA TEST FACIL																																	
	SNOWFALL																																
	SN ON GND																																
WARSAW 2 NW																																	
WEST POINT 2 NW																																	
	SNOWFALL																																
	SN ON GND																																
WILLIAMSBURG 2 N																																	
	SNOWFALL																																

Snowfall: Includes snow and ice. Values for NWS stations (J index note) are Mid-Mid (LST).

Snow on ground: Includes snow, sleet, ice, and hail. Values for NWS stations (J index note) are observed at 12 UTC (GMT).

Water Equivalent: Given for NWS stations (J index note) only, when snow depth is 2 inches or more, and is measured at 18 UTC (GMT)

VIRGINIA
201608

PAN EVAPORATION AND WIND

STATION		DAY OF MONTH																															TOTAL OR AVERAGE	
		01	02	03	04	05	06	07	08	09	10	11	12	13	14	15	16	17	18	19	20	21	22	23	24	25	26	27	28	29	30	31		
VIRGINIA EASTERN PIEDMONT 02 JOHN H KERR DAM	WIND	29	24	39	26	11	40	19	28	20	15	31	41	61	52	20	36	48	21	15	14	35	13	14	15	19	30	25	24	19	19	22	825	
	EVAP	0.18	0.14	0.16	0.18	0.11	0.21	0.14	0.04	0.12	0.21	0.22	0.25	0.25	0.24	0.23	0.26	0.25	0.21	0.08	0.18	0.12	0.19	0.17	0.15	0.19	0.21	0.21	0.21	0.18	0.18	0.20	5.67	
	MAX	-	-	-	-	-	-	-	-	-	-	-	-	-	-	-	-	-	-	-	-	-	-	-	-	-	-	-	-	-	-	-	-	M
	MIN	-	-	-	-	-	-	-	-	-	-	-	-	-	-	-	-	-	-	-	-	-	-	-	-	-	-	-	-	-	-	-	-	M

Evaporation: Is measured in hundreths of inches.

Wind: Is measured in miles.

Max and Min: The maximum and minimum tempertures (Fahrenheit) of the water in the evaporation pan.

STATION INDEX

STATION	INDEX NO.	DIVISION	COUNTY	LATITUDE	LONGITUDE	ELEVATION (IN FEET)	OBSERVATION TIME AND TABLES			
							LOCAL STD TIME			
							TEMP	PRECIP	EVAP	SPECIAL SEE (NOTES)
VIRGINIA										
ABINGDON 3S	0021	06	WASHINGTON	36 40	81 58W	1925	22	22		H
ALBERTA 5N	0079	02	BRUNSWICK	36 56	77 54W	376		08		H
ALTAVISTA	0166	03	CAMPBELL	37 7	79 17W	529		07		CH
AMELIA COURTHOUSE 1	0187	02	AMELIA	37 21	77 59W	345	08	08		H
APPOMATTOX	0243	03	APPOMATTOX	37 20	78 50W	850	07	07		H
ASHLAND	0327	02	HANOVER	37 45	77 29W	220	18	18		H
BEDFORD 4 NW	0561	03	BEDFORD	37 23	79 34W	1228		07		CH
BIG STONE GAP	0735	06	WISE	36 52	82 46W	1464	08	08		H
BLACKSBURG NWSO	0766	06	MONTGOMERY	37 12	80 25W	2103	07	07		H
BREMO BLUFF	0993	02	FLUVANNA	37 43	78 17W	225	07	07		CH
BROOKNEAL	1082	03	CAMPBELL	37 4	78 57W	408	07	07		H
BUCKINGHAM	1136	02	BUCKINGHAM	37 30	78 32W	580		07		H
BUENA VISTA	1159	05	ROCKBRIDGE	37 44	79 22W	840		07		H
BURKES GARDEN	1209	06	TAZEWELL	37 6	81 20W	3068	07	07		H
CAMP PICKETT	1322	02	NOTTOWAY	37 2	77 57W	330	08	08		CH
CHARLOTTESVILLE 2W	1593	03	ALBEMARLE	38 2	78 31W	866	08	08		H
CHASE CITY	1606	02	MECKLENBURG	36 47	78 29W	510	17	17		H
CHATHAM	1614	03	PITTSYLVANIA	36 49	79 25W	651	07	07		CH
CHRISTIANSBURG	1692	06	MONTGOMERY	37 8	80 24W	2100	07	07		H
CLARKSVILLE	1746	02	MECKLENBURG	36 37	78 33W	330	07	07		H
CLINTWOOD 1 W	1825	06	DICKENSON	37 9	82 29W	1780	07	07		H
CONCORD 4 SSW	1955	03	CAMPBELL	37 17	78 58W	815		07		H
COPPER HILL	1999	06	FLOYD	37 5	80 9W	2690	07	07		H
CORBIN	2009	02	CAROLINE	38 12	77 22W	220	09	09		H
COVINGTON FLTR PLT	2044	05	ALLEGHANY	37 49	79 59W	1230	07	07		CH
CROZIER	2142	02	GOOCHLAND	37 40	77 53W	350	07	07		H
DALE ENTERPRISE	2208	05	ROCKINGHAM	38 27	78 56W	1358	07	07		H
DANVILLE RGNL AP	2250	03	PITTSYLVANIA	36 34	79 20W	571	24	24		H
DISPUTANTA	2400	01	PRINCE GEORGE	37 7	77 12W	15	07	07		H
EASTVILLE	2635	01	NORTHAMPTON	37 23	75 58W	10	07	07		H
EDINBURG	2663	04	SHENANDOAH	38 48	78 35W	928	07	07		H
EMPORIA 1 WNW	2790	01	GREENSVILLE	36 42	77 34W	100	08	08		H
FARMVILLE 2 N	2941	02	CUMBERLAND	37 20	78 23W	450	07	07		H
FREDERICKSBURG SEWAGE	3204	01	FREDERICKSBURG	38 17	77 27W	15	07	07		H
FREE UNION	3213	03	ALBEMARLE	38 5	78 35W	590	08	07		H
FRONT ROYAL	3229	04	WARREN	38 54	78 11W	930	06	06		CH
GALAX RADIO WBRF	3267	06	CARROLL	36 40	80 55W	2385	17	17		H
GALAX WTP	3272	06	CARROLL	36 39	80 55W	2360	07	07		CH
GATHRIGHT DAM	3310	05	ALLEGHANY	37 57	79 57W	1770	07	07		CH
GLASGOW 1 SE	3375	05	ROCKBRIDGE	37 37	79 26W	737		07		H
GREENBAY 3 NE	3565	02	PRINCE EDWARD	37 11	78 17W	500	09	09		H
GRUNDY	3640	06	BUCHANAN	37 17	82 5W	1170	07	07		H
HOLCOMB ROCK	4039	03	BEDFORD	37 33	79 24W	900		07		H
HOLLAND 1 E	4044	01	SUFFOLK	36 41	76 46W	80	08	08		H
HOPEWELL	4101	01	PRINCE GEORGE	37 18	77 17W	40	16	16		H
HOT SPRINGS	4128	05	BATH	37 60	79 50W	2236	07	07		H
HUDDLESTON 4 SW	4148	03	BEDFORD	37 8	79 32W	898		07		H
JOHN FLANNAGAN LAKE	4410	06	DICKENSON	37 14	82 21W	1460	07	07		H
JOHN H KERR DAM	4414	02	MECKLENBURG	36 36	78 18W	250	08	08	08	CH
KEYSVILLE 2 S	4568	02	CHARLOTTE	37 1	78 29W	625	07	07		H
LAFAYETTE 1 NE	4676	06	MONTGOMERY	37 14	80 12W	1320		07		H
LEBANON	4777	06	RUSSELL	36 54	82 2W	1912	07	07		H
LEXINGTON	4876	05	ROCKBRIDGE	37 47	79 26W	1097	07	07		H
LINCOLN	4909	04	LOUDOUN	39 5	77 42W	500	07	07		H
LOUISA	5050	02	LOUISA	38 3	78 0W	420	18	18		H
LURAY 5 E	5096	04	PAGE	38 40	78 22W	1400	08	08		H
LYNCHBURG INTL AP R	5120	03	CAMPBELL	37 19	79 12W	940	24	24		HJ
MADISON	5150	04	MADISON	38 22	78 15W	577	08	08		H
MANASSAS	5204	04	MANASSAS	38 44	77 30W	245	07	07		H
MARTINSVILLE FLTR PLT	5300	03	HENRY	36 42	79 52W	760	07	07		H
MEADOWS OF DAN 5 SW	5453	03	PATRICK	36 40	80 27W	2225	07	07		H
MILLGAP	5595	05	HIGHLAND	38 18	79 43W	2421	06	06		CH
MONTEBELLO FISH CULTURAL STN	5690	03	NELSON	37 51	79 8W	2667	07	07		H
MONTICELLO	5700	03	ALBEMARLE	38 1	78 27W	758	07	07		H
MT WEATHER	5851	04	LOUDOUN	39 4	77 53W	1659	07	07		H

STATION INDEX

STATION	INDEX NO.	DIVISION	COUNTY	LATITUDE	LONGITUDE	ELEVATION (IN FEET)	OBSERVATION TIME AND TABLES			
							LOCAL STD TIME			
							TEMP	PRECIP	EVAP	SPECIAL SEE (NOTES)
MTN GROVE	5756	05	BATH	38 6	79 53W	1775		07		H
MUSTOE 1 SW	5880	05	HIGHLAND	38 20	79 40W	2380	24	24		H
N FK LAKE	6173	06	WISE	37 7	82 38W	1675	08	08		H
NEW CASTLE	6012	05	CRAIG	37 31	80 6W	1258		07		H
NORA 4 SSE	6125	06	DICKENSON	37 1	82 19W	2650	07	07		H
NORFOLK INTL AP R	6139	01	NORFOLK (CITY)	36 54	76 12W	30	24	24		HJ
NORFOLK SOUTH	6147	01	NORFOLK (CITY)	36 52	76 14W	100	24	24		H
NORTH	6161	01	MATHEWS	37 26	76 26W	10	07	07		H
PAINTER 2W	6475	01	ACCOMACK	37 35	75 49W	30	16	16		CH
PALMYRA 3S	6491	02	FLUVANNA	37 49	78 16W	410	06	06		H
PEDLAR DAM	6593	03	AMHERST	37 40	79 17W	1024		07		CH
PETERSBURG	6656	02	PETERSBURG	37 14	77 24W	15	08	08		H
PIEDMONT RSCH STN	6712	04	ORANGE	38 14	78 7W	520	08	08		CH
PULASKI 2 E	6955	06	PULASKI	37 3	80 47W	1850	07	07		CH
RADFORD 3 N	6999	06	PULASKI	37 12	80 35W	1800	07	07		H
RICHLANDS	7174	06	TAZEWELL	37 6	81 48W	1910	07	07		H
RICHMOND INTL AP R	7201	02	HENRICO	37 30	77 19W	164	24	24		HJ
ROANOKE 8 N	7278	05	ROANOKE	37 22	79 58W	1190	07	07		H
ROANOKE INTL AP R	7285	05	ROANOKE	37 19	79 58W	1175	24	24		HJ
ROCKY MT	7338	03	FRANKLIN	36 59	79 54W	1315	07	07		CH
SALTVILLE 1N	7506	06	SMYTH	36 53	81 46W	1733	07	07		H
SANDSTON	7541	02	HENRICO	37 33	77 17W	165	07	07		H
SOMERSET	7904	04	ORANGE	38 15	78 16W	510	08	08		H
SOUTH BOSTON	7925	03	HALIFAX	36 42	78 53W	329	07	07		H
SPERRYVILLE	7985	04	RAPPAHANNOCK	38 39	78 14W	750	06	06		H
STAFFORDSVILLE 3 ENE	8022	06	GILES	37 16	80 43W	1950	07	07		CH
STAUNTON WATER TRMTMT PLT	8062	05	AUGUSTA	38 10	79 5W	169	08	08		H
STERLING (RCS)	8084	04	LOUDOUN	38 59	77 29W	288	07	07		H
STONY CREEK 2 N	8129	01	SUSSEX	36 58	77 24W	105	08	08		H
STUART	8170	03	PATRICK	36 38	80 15W	1375	07	07		H
SUFFOLK LAKE KILBY	8192	01	SUFFOLK	36 44	76 36W	22	24	24		H
TYE RVR 1 SE	8600	03	NELSON	37 38	78 56W	720	07	07		H
VIENNA	8737	04	FAIRFAX	38 54	77 16W	418	07	07		H
WAKEFIELD 1NW	8800	01	SUSSEX	36 59	77 0W	113	24	24		CH
WALKERTON 2 NW	8829	01	KING AND QUEEN	37 45	77 2W	50	18	18		H
WALLACETON LK DRUMMOND	8837	01	CHESAPEAKE	36 36	76 26W	20	08	08		H
WALLOPS ISLAND NASA TEST FACIL R	8849	01	ACCOMACK	37 56	75 28W	46	24	24		HJ
WARRENTON 3 SE	8888	04	FAUQUIER	38 41	77 46W	500	08	08		H
WARSAW 2 NW	8894	01	RICHMOND	37 59	76 47W	140	18	18		H
WASHGTN DULLES INTL AP R	8903	04	LOUDOUN	38 56	77 28W	290	24	24		HJ
WASHINGTON REAGAN NATL AP R	8906	04	ARLINGTON	38 51	77 2W	10	24	24		HJ
WAYNESBORO WTP	8941	05	WAYNESBORO	38 5	78 53W	1270	07	07		H
WEST POINT 2 NW	9025	01	KING WILLIAM	37 34	76 48W	20	17	17		H
WILLIAMSBURG 2 N	9151	01	YORK	37 18	76 42W	70	24	24		CH
WILLIS	9169	06	FLOYD	36 55	80 30W	2810		07		CH
WINCHESTER	9181	04	FREDERICK	39 11	78 9W	720	07	07		H
WINCHESTER 7 SE	9186	04	FREDERICK	39 11	78 7W	680	08	08		H
WINTERPOCK 4 W	9213	02	CHESTERFIELD	37 19	77 39W	300		07		H
WISE 1SE	9215	06	WISE	36 58	82 33W	2564	09	09		CH
WOODSTOCK 2 NE	9263	04	SHENANDOAH	38 54	78 28W	675	07	07		H
WOOLWINE	9272	03	PATRICK	36 47	80 17W	1500		07		H
WYTHEVILLE	9301	06	WYTHE	36 58	81 5W	2458	07	07		H

REFERENCE NOTES

STATION NAMES: Name of the city, town or locality. Figures and letters following the station names indicate the distance in miles and direction from the post office or town community center.

DIVISIONS: Areas within a state of similar climatological characteristics. Division averages are calculated using data from stations that record temperature and/or precipitation. Station Precipitation totals flagged with an 'F' or 'M' are excluded from the Divisional Average calculations of precipitation. Stations with monthly Temperature averages flagged with an 'F' or 'M' are included in the Divisional Average if there are no more than 9 flagged or missing daily values in the month, else they are excluded from the divisional average for temperature.

NORMALS: The average value of the meteorological element over a time period. Effective 1 January 2012, the averaging period for station departures is 1981 to 2010. The normals for National Weather Service localities have been adjusted so as to be representative for the current observation site.

The January 2011 through December 2015 publications incorrectly state the computation of divisional departures. Climate Division departures have been, and continue to be, computed from 1971-2000 Normals, not 1981-2010 as stated. Station departures are accurately described as departures from 1981-2010.

MONTHLY DEGREE DAY TOTALS: One heating (cooling) degree day is accumulated for each whole degree that the daily mean temperature is below (above) 65 degrees Fahrenheit.

PRECIPITATION: Values shown in hundredths of inches are water equivalent totals, i.e., total of liquid and melted frozen precipitation. In the "Monthly Summarized Data" table the total snow and sleet values shown in tenths of inches are unmelted amounts. The max depth on ground values of snow and sleet shown in whole inches are cumulative unmelted amounts. The number of days with .10, .50, 1.00 or more refers to water equivalents.

PRECIPITATION QUALITY CONTROL: The NCEI quality control process may flag precipitation data that are spatially inconsistent, exceed climatological limits, or are inconsistent with prevailing weather patterns.

TEMPERATURE: Original temperature values are given in the "Daily Temperature" table. Summary temperature information (averages, departures, extremes, monthly degree day totals) is based on the values labeled MAX/MIN.

WIND: (As shown in the "Evaporation and Wind" table) the total wind movement in miles over the evaporation pan as determined by an anemometer recorder located 6-8 inches above the pan.

SYMBOLS AND LETTERS USED IN THE STATION INDEX TABLE

C Station is equipped with recording rain gage (R) but values in this bulletin are from a non-recording rain gage unless indicated by an R.
G Observations appear in the "Soil Temperatures" table.
H Observations appear in the "Snowfall and Snow on the Ground" table.
J Station also published as a Local Climatological Data publication.
VAR Observation time varies.
SR / SS Observation time near sunrise / Observation time near sunset, respectively.

SYMBOLS AND LETTERS USED IN THE DATA TABLES

(DAILY DATA ARE FOR THE 24 HOURS IMMEDIATELY PRECEDING OBSERVATION TIME.)

BLANK Entries in the "Monthly Summarized Data" table indicate no record.

BLANK Entries in the "Daily Precipitation" and "Snowfall and Snow on the Ground" tables indicate zero.

BLANK Entries in the "Daily Temperature" table indicate a missing record

- No record. Data not recorded or not received in time for publication.

+ Precipitation or temperature extremes occurred on one or more previous dates during the month.

* Rain gage not read. Precipitation is included in the amount following the asterisks.

Time distribution may not be known. A * preceding the monthly total indicates precipitation amount is being carried forward to next month's total, and may include amounts from the previous month(s).

a As a subscript, indicates accumulated total.

A Amount of precipitation is the total of observer's entries for the current month. It may include precipitation that occurred during the previous month. Refer to earlier bulletin to determine date of last

reading. (Hawaii stations)

B Divisional Departure from normals are computed using 1971-2000 normals.

E Normalized HDD/CDD Calculation. E is appended to the HDD/CDD Calculation when 1-9 individual daily TMAX and/or TMIN values are missing and a Normalized HDD/CDD Calculation is provided. M appears alone if 10 or more daily values are missing.

F Monthly calculation flagged value. F is appended to average and/or total values computed which exclude one or more daily data values that have been flagged by the GHCN-Daily Dataset

M Insufficient or partial data. M is appended to average and/or total values computed with 1-9 daily values missing. M appears alone if 10 or more daily values are missing, (8 or more for wind and evaporation).

N Indicates snow fall or Snowdepth totals are computed with one or more missing days.

R Amounts from recording rain gage.

T Trace. An amount too small to measure.

SEASONAL TABLES: Monthly and seasonal snowfall and heating degree days for the 12 months ending with the June data are published in the July issue of this bulletin. Cooling degree days for the calendar year are published in the "Climatological Data Annual Summary."

Information concerning the history of changes in locations, exposure, etc. of substations is kept on file at the National Centers for Environmental Information. Historical information of regular National Weather Service Offices may be obtained from the "Local Climatological Data" annual publication. The contents of this publication may be reprinted or otherwise used freely, with proper credit to the National Centers For Environmental Information. The data are also available digitally.

Effective with the January 2011 Data-Month, COOP Observer Names are no longer included in the Monthly and Annual Climatological Data Publications. This information is not published to ensure the privacy of personal information pursuant to Section 208 of the E-Government Act of 2002 (44 USC 3601).

As of the 2011 Data-Year, Station and Climate Division Maps are no longer being included in the CD Publications. NCEI's Products Branch provides updated Station Maps for various data networks via the Historical Observing Metadata Repository: <http://www.ncdc.noaa.gov/homr>.

The GHCN-Daily Quality Control Flags shown below are displayed as superscripts with the data. For more information on Global Historical Climatology Network - Daily and flags, see: <http://www.ncdc.noaa.gov/oa/climate/ghcn-daily/> and Comprehensive Automated Quality Assurance of Daily Surface Observations. Durre, Imke, Matthew J. Menne, Byron E. Gleason, Tamara G. Houston, Russell S. Vose, 2010: J. Appl. Meteor. Climatol., 49, 16151633. doi: 10.1175/2010JAMC2375.1

Blank = Passed All checks	N = failed naught check
D = failed duplicate check	O = failed climatological outlier check
G = failed gap check	R = failed lagged range check
I = failed internal consistency check	S = failed spatial consistency check
K = failed streak/frequent-value check	T = failed temporal consistency check
L = failed check on length of multiday period	W = temperature too warm for snow
M = failed megaconsistency check	X = failed bounds check
	Z = flagged as a result of an official Datzilla investigation

Beginning with the January 2013 CD Publication, monthly mean temperature calculations have changed to the National Data Stewardship Team standard. Monthly maximum and minimum temperatures are not rounded until after the monthly mean temperature is calculated. This is the most accurate outcome, but may be slightly different from the mean derived from rounded monthly maximum and minimum.

The climate division temperature and precipitation values in this publication are based on simple averages from the current set of NWS-Designated Open and Published COOP and First Order Sites within each division. These values differ from those found in NCEI's nClimDiv product. Beginning in February 2014, the nClimDiv product is used by NCEI's Monitoring Branch and in its monthly climate reports. For more details on nClimDiv, please go to <http://www.ncdc.noaa.gov/monitoring-references/maps/us-climate-divisions.php>.

Effective January 2016, Alaska's Climate Divisions are updated to reflect the 13 climate divisional boundaries established by University of Alaska-Fairbanks, NWS, NCEI, Oregon State University, and University of Nebraska-Lincoln. For more details regarding the updated Alaska Climate Divisions, see: <http://journals.ametsoc.org/doi/pdf/10.1175/JAMC-D-11-0168.1> (Bienek et al., 2012).

These and other publications are available from the National Centers for Environmental Information

Hourly Precipitation Data

This publication contains hourly precipitation amounts obtained from recording rain gages located at National Weather Service, Federal Aviation Administration, and cooperative observer stations. Published data are displayed in inches and tenths or inches and hundredths at local standard time. HPD includes maximum precipitation for nine (9) time periods from 15 minutes to 24 hours, for selected stations.

Climatological Data

Monthly editions contain station daily maximum and minimum temperatures and precipitation. Some Stations provide daily snowfall, snow depth, evaporation, and soil temperature data. Each edition also contains monthly summaries for heating and cooling degree days (65 degree F base). The July issue contains a recap of monthly heating degree days and snow data for the preceding July through June.

The Annual issue contains monthly and annual averages of temperature, precipitation, temperature extremes, freeze data, soil temperatures, evaporation, and a recap of monthly cooling degree days.

Storm Data

Monthly issues contain a chronological listing, by states, of occurrences of storms and unusual weather phenomena. Reports contain information on storm paths, deaths, injuries, and property damage. An "Outstanding storms of the month" section highlights severe weather events with photographs, illustrations, and narratives. The December issue includes annual tornado, lightning, flash flood, and tropical cyclone summaries.

Monthly Climatic Data for the World

This publication contains monthly means for temperature, pressure, precipitation, vapor pressure, and sunshine for approximately 2,000 surface data collection stations worldwide and monthly mean upper air temperatures, dew point depressions, and wind velocities for approximately 500 observing sites.

Local Climatological Data

LCD publications summarize temperature, relative humidity, precipitation, cloudiness, wind speed and direction observations for several hundred cities in the U.S. and its territories. Each monthly publication also contains 3 hourly weather observations for that month and a hourly summary of precipitation. Annual LCD publications contain a summary of the past calendar year as well as historical averages and extremes.

For Information Call:

(828) 271-4800 Option 2

(828) 271-4010 (TDD)

(828) 271-4876 (Fax)

NOAA National Centers for Environmental Information
Attn: Customer Engagement Branch
151 Patton Avenue
Asheville, NC 28801-5001

Customer Services Number: (828) 271-4800, option 2
TDD : (828) 271-4010
Fax number: (828) 271-4876

NCEI now offers free online access to the *Climatological Data* publication.
Go to : www.ncdc.noaa.gov and choose Most Popular.