



CLIMATOLOGICAL DATA

VIRGINIA

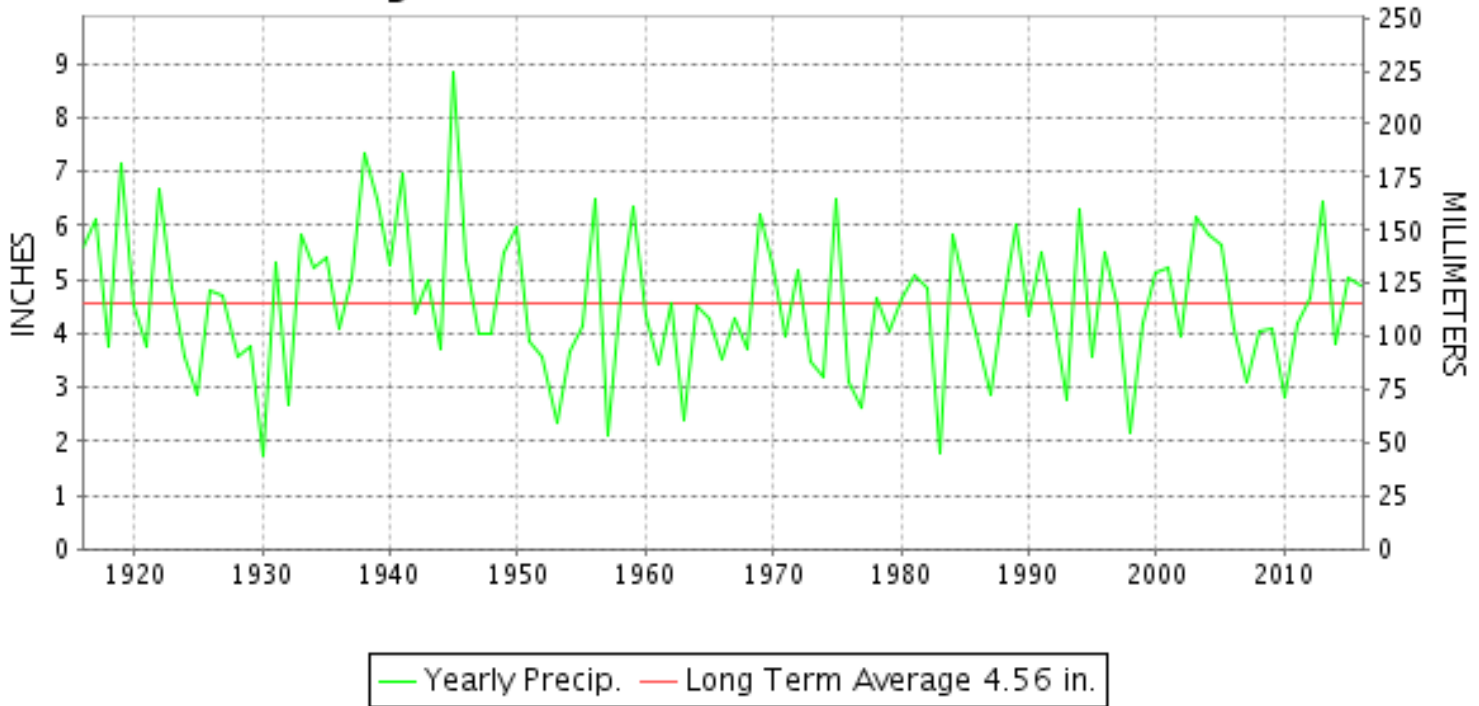
JULY 2016

VOLUME 126 NUMBER 07

ISSN 0364-5630

GHCND Ver: 3.22-upd-2016102505

JULY PRECIPITATION BY YEAR



TEMPERATURE AND PRECIPITATION EXTREMES

VIRGINIA

HIGHEST TEMPERATURE	104	JULY 26	LINCOLN
LOWEST TEMPERATURE	48	JULY 01	MILLGAP
GREATEST TOTAL PRECIPITATION	11.09		SUFFOLK LAKE KILBY
LEAST TOTAL PRECIPITATION	1.75		KEYSVILLE 2 S
GREATEST 1 DAY PRECIPITATION	6.98	JULY 31	NORFOLK INTL AP

"I certify that this is an official publication of the National Oceanic and Atmospheric Administration (NOAA) It is compiled using information from weather observing sites supervised by NOAA/National Weather Service and received at the National Centers for Environmental Information(NCEI), Asheville, North Carolina 28801."

Director
National Centers for Environmental Information

noaa

National
Oceanic and
Atmospheric Administration

National
Environmental Satellite, Data
and Information Service

National
Centers for Environmental Information
Asheville, North Carolina

VIRGINIA
201607

MONTHLY STATION AND DIVISION SUMMARY

STATION	TEMPERATURE (°F)													PRECIPITATION (IN)										
	AVERAGE MAXIMUM	AVERAGE MINIMUM	AVERAGE	DEPARTURE FROM NORMAL	HIGHEST	DATE	LOWEST	DATE	HEATING DEG. DAYS	COOLING DEG. DAYS	NO. OF DAYS				TOTAL	DEPARTURE FROM NORMAL	GREATEST 24 HOURS	DATE	ICE PELLETS, SNOW			NO. OF DAYS		
											MAX		MIN						TOTAL	MAX DEPTH ON GROUND	DATE	.10 OR MORE	.50 OR MORE	1.00 OR MORE
											>=90	<=32	<=32	<=0										
PALMYRA 3S	M	M	M		91	09+	61	02	0	333E	4	0	0	0	7.08	2.72	2.07	31	M			7	4	4
PETERSBURG	89.1M	70.8M	79.9M	0.7	97	25	65	03+	0	471E	18	0	0	0	M 4.22	-0.24	1.30	16	M			8	3	1
RICHMOND INTL AP	89.1	70.6	79.8	0.5	96	25+	63	03	0	468	16	0	0	0	4.47	-0.04	0.91	19	0.0	0		10	3	0
SANDSTON	M	M	M								0	0	0	0	M				M					
WINTERPOCK 4 W															3.30		0.87	17	M			6	2	0
--DIVISIONAL DATA-----> WESTERN PIEDMONT 03			79.3	2.5B											4.62	0.26B								
ALTAVISTA															4.42		1.62	05	0.0	0		8	3	1
APPOMATTOX	88.9	67.8	78.4	2.5	98	27	61	03	1	423	15	0	0	0	2.95	-1.87	0.80	29	0.0	0		9	1	0
BEDFORD 4 NW															4.13		1.52	29	0.0	0		8	3	1
BROOKNEAL	89.8	68.5	79.1	7.0	96	27+	63	01	0	446	17	0	0	0	6.26	1.90	2.26	27	0.0	0		10	6	1
CHARLOTTESVILLE 2W	89.8	69.6	79.7	2.5	99	27+	62	04+	0	464	19	0	0	0	3.22	-2.10	1.98	31	0.0	0		5	1	1
CHATHAM	85.0	66.2	75.6	0.9	92	25	62	11+	0	337	6	0	0	0	5.59	1.10	1.00	09	0.0	0		10	5	1
CONCORD 4 SSW															4.61		1.08	03	0.0	0		8	3	2
DANVILLE RGNL AP	89.7	69.0	79.4	1.1	97	26	64	10	0	452	18	0	0	0	4.07	-0.60	0.94	03	0.0	0		8	3	0
FREE UNION	86.5	66.0	76.3		94	27+	60	01	0	356	10	0	0	0	* 2.18		0.64	28	0.0	0		5	1	0
HOLCOMB ROCK															3.40		0.64	05	0.0	0		9	3	0
HUDDLESTON 4 SW															3.11		0.82	03	0.0	0		7	2	0
LYNCHBURG INTL AP	87.7	67.4	77.5	2.2	95	26+	62	11+	0	393	11	0	0	0	6.00	1.64	3.22	26	0.0	0		7	3	2
MARTINSVILLE FLTR PLT	89.2	65.9	77.5	2.1	98	26	61	10	0	397	13	0	0	0	3.28	-1.19	0.85	05	0.0	0		8	3	0
MEADOWS OF DAN 5 SW	85.7M	64.6	75.2M		91	26	60	11+	0	323E	4	0	0	0	5.53		1.46	15	0.0	0		11	3	1
MONTEBELLO FISH CULTURAL STN	M	M	M		94	27	52	03	8E	304E	5	0	0	0	M				M					
MONTICELLO	86.8	68.6	77.7	2.4	95	26+	60	04	1	403	10	0	0	0	3.47	-2.02	2.00	31	0.0	0		7	1	1
PEDLAR DAM															2.93		0.65	05	0.0	0		11	2	0
ROCKY MT	89.0M	67.4M	78.2M	3.3	96	27+	63	21+	0	416E	14	0	0	0	4.99	0.12	1.32	28	0.0	0		9	3	2
SOUTH BOSTON	90.6	69.7	80.2	3.4	98	27+	65	10	0	478	21	0	0	0	4.08	-0.25	0.92	05	0.0	0		8	4	0
STUART	87.5	66.8	77.1	1.8	95	26+	63	17+	0	388	11	0	0	0	6.47	0.90	2.03	03	0.0	0		13	5	1
TYE RVR 1 SE	M	M	M								0	0	0	0	M				0.0	0				
WOOLWINE															4.92		0.77	15	0.0	0		10	5	0
--DIVISIONAL DATA-----> NORTHERN 04			77.8	1.9B											4.28	-0.35B								
EDINBURG	M	M	M								0	0	0	0	M				M					
FRONT ROYAL	87.1M	65.5M	76.3M	1.3	98	26	55	02	0	358E	9	0	0	0	M 6.48	3.18	1.90	28	0.0	0		5	4	4
LINCOLN	94.8M	68.4M	81.6M	6.7	104	26	60	22+	0	518E	24	0	0	0	M				0.0	0				
LURAY 5 E	86.3	63.9	75.1	0.6	95	26	57	11+	0	320	9	0	0	0	4.60	0.49	1.25	31	0.0	0		9	2	2
MADISON	M	M	M								0	0	0	0	M				0.0	0				
MANASSAS	90.7	71.2	81.0	2.8	100	26	61	01	0	502	23	0	0	0	4.74		1.50	31	0.0	0		6	4	2
MT WEATHER	83.9	67.4	75.7	1.7	94	26	59	01	0	341	4	0	0	0	5.49	1.68	1.97	29	0.0	0		7	4	2

VIRGINIA
201607

MONTHLY STATION AND DIVISION SUMMARY

STATION	TEMPERATURE (°F)													PRECIPITATION (IN)										
	AVERAGE MAXIMUM	AVERAGE MINIMUM	AVERAGE	DEPARTURE FROM NORMAL	HIGHEST	DATE	LOWEST	DATE	HEATING DEG. DAYS	COOLING DEG. DAYS	NO. OF DAYS				TOTAL	DEPARTURE FROM NORMAL	GREATEST 24 HOURS	DATE	ICE PELLETS, SNOW			NO. OF DAYS		
											MAX		MIN						TOTAL	MAX DEPTH ON GROUND	DATE	.10 OR MORE	.50 OR MORE	1.00 OR MORE
											>=90	<=32	<=32	<=0										
PIEDMONT RSCH STN	87.5	68.0	77.8	1.4	96	26	61	04+	1	404	11	0	0	0	* 5.60		2.16	05	M			8	3	2
SOMERSET	88.5	67.7	78.1	2.8	97	26	61	11	0	413	16	0	0	0	2.92	-2.78	0.73	05	0.0	0		6	2	0
SPERRYVILLE	88.2M	65.8M	77.0M	2.4	101	26	60	21+	0	383E	12	0	0	0	M 6.00	1.68	2.02	31	0.0	0		7	3	2
STERLING (RCS)	89.1M	69.1M	79.1M	3.2	102	26	62	21	0	440E	14	0	0	0	4.71	1.01	2.03	29	0.0	0		6	4	1
VIENNA	87.8	68.1	78.0	3.4	97	26	58	01	0	408	12	0	0	0	1.92	-2.27	1.03	29	0.0	0		3	2	1
WARRENTON 3 SE	M	M	M								0	0	0	0	M				0.0	0				
WASHGTON DULLES INTL AP	89.7	69.2	79.5	2.8	100	25	60	21	0	459	21	0	0	0	3.02	-0.65	0.99	28	0.0	0		7	2	0
WASHINGTON REAGAN NATL AP	91.2	74.3	82.7	2.9	100	25	64	03	0	557	23	0	0	0	3.13	-0.60	0.46	19	0.0	0		10	0	0
WINCHESTER	88.0	67.0	77.5	2.3	99	24	55	04+	2	399	13	0	0	0	6.77	3.24	2.58	29	0.0	0		7	4	3
WINCHESTER 7 SE	89.0	64.9	77.0	2.9	97	25+	55	10	0	379	17	0	0	0	5.99	2.40	1.88	28	0.0	0		8	3	2
WOODSTOCK 2 NE	87.2	65.0	76.1	2.6	96	26	49	02	0	351	9	0	0	0	3.64	-0.16	1.37	05	0.0	0		8	2	1
--DIVISIONAL DATA-----> CENTRAL MOUNTAIN 05			78.2	3.7B											4.38	0.47B								
BUENA VISTA															2.45		0.54	05	0.0	0		8	1	0
COVINGTON FLTR PLT	87.8	63.6	75.7	1.1	95	27+	56	10	0	340	12	0	0	0	3.15	-0.82	1.43	05	0.0	0		6	2	1
DALE ENTERPRISE	86.3	64.1	75.2	1.7	94	24	59	03+	0	324	9	0	0	0	4.86	0.86	0.85	13	0.0	0		9	5	0
GATHRIGHT DAM	82.4	63.5	72.9	0.9	90	25	57	01	0	252	1	0	0	0	3.89	-0.01	1.37	05	0.0	0		9	2	1
GLASGOW 1 SE															4.16		1.48	20	0.0	0		9	3	1
HOT SPRINGS	81.7	62.3	72.0	1.2	90	25	55	01	0	228	1	0	0	0	4.46	0.25	1.10	05	0.0	0		10	3	1
LEXINGTON	88.2	65.3	76.7	1.5	96	25	59	11	0	372	11	0	0	0	1.87	-2.25	0.61	05	0.0	0		5	1	0
MILLGAP	81.2M	57.1M	69.2M	1.8	90	24	48	01	4E	143E	1	0	0	0	A 5.34	0.67	1.90	05	M			7	2	1
MTN GROVE															4.27		1.31	05	0.0	0		7	4	2
MUSTOE 1 SW	81.7	60.5	71.1	3.3	89	23	52	11	1	198	0	0	0	0	M				0.0	0				
NEW CASTLE															4.63		0.94	05	0.0	0		8	4	0
ROANOKE 8 N	87.7	67.0	77.4	2.1	97	25	62	01	0	390	10	0	0	0	5.56	0.38	1.40	29	0.0	0		9	4	1
ROANOKE INTL AP	89.1	69.1	79.1	2.4	98	26	63	11	0	445	17	0	0	0	5.55	1.51	1.21	28	0.0	0		9	5	1
STAUNTON WATER TRMTMT PLT	85.2	65.3	75.3	1.7	93	25+	56	01	3	329	5	0	0	0	5.73	1.83	1.25	28	0.0	0		10	6	2
WAYNESBORO WTP	87.1	65.0	76.1	2.6	97	27	59	01	0	351	12	0	0	0	2.73	-1.50	0.76	31	0.0	0		8	1	0
--DIVISIONAL DATA-----> SOUTHWESTERN			74.6	1.2B											4.19	0.22B								
MOUNTAIN 06																								
ABINGDON 3S	86.1	63.4	74.7	1.7	93	25+	58	01	0	311	5	0	0	0	6.39	1.36	1.65	07	0.0	0		13	5	3
BIG STONE GAP	85.7	65.6	75.6	1.2	92	28+	58	01	0	338	6	0	0	0	6.02	0.73	1.21	05	0.0	0		11	6	1
BLACKSBURG NWSO	84.4	63.5	74.0	2.8	93	25	59	22	0	284	3	0	0	0	4.86	0.60	1.53	05	0.0	0		9	3	1
BURKES GARDEN	79.7M	58.2M	69.0M	1.6	87	25+	50	23	2E	134E	0	0	0	0	M 5.40	0.92	1.33	28	M 0.0	0		11	3	2
CHRISTIANSBURG	82.9	63.7	73.3	0.9	93	25	58	01	0	266	2	0	0	0	3.16	-1.19	1.25	05	0.0	0		8	2	1
CLINTWOOD 1 W	83.7	62.8	73.3	2.2	91	24	54	01	0	266	1	0	0	0	5.61	0.86	0.98	29	0.0	0		12	4	0
COPPER HILL	81.3M	63.2M	72.2M		90	27	59	06+	4E	234E	1	0	0	0	M 3.27		0.65	05	M 0.0	0		9	2	0

VIRGINIA
201607

DAILY PRECIPITATION (INCHES)

STATION	TOTAL	DAY OF MONTH																														
		01	02	03	04	05	06	07	08	09	10	11	12	13	14	15	16	17	18	19	20	21	22	23	24	25	26	27	28	29	30	31
CENTRAL MOUNTAIN 05																																
BUENA VISTA	2.45			0.17	0.22	0.54	0.02	0.03					0.17	0.37							0.03							0.40	0.25	0.17	0.03	0.05
COVINGTON FLTR PLT	3.15				0.03	1.43			0.13	0.03			0.18	0.31									0.61					0.03	0.02	0.38		T
DALE ENTERPRISE	4.86			0.05	0.02	0.75	0.10		0.40				0.85	0.03	0.04		0.46								0.70	0.50		0.28			0.68	
GATHRIGHT DAM	3.89			0.27	0.18	1.37	0.13	T	0.25				0.77	0.30	0.19		0.06											0.09	0.08	0.20		
GLASGOW 1 SE	4.16			0.01	0.22	0.74	0.03		T				0.15	0.24	0.05						1.48					0.11	0.21	0.64	0.07	0.21	T	
HOT SPRINGS	4.46			0.11	0.05	1.10	0.30	0.05	0.36	0.02			0.60	0.18	0.26		0.16			T						0.03	0.78	0.02	0.44			
LEXINGTON	1.87			T	0.34	0.61	T						0.39	0.05			0.02				0.05						T	0.07	0.15	0.01	0.16	
MILLGAP	A 5.34				0.18	1.90	0.10			0.02				0.32	0.27		0.83										*	1.34 _a	0.26	0.01	0.09	
MTN GROVE	4.27					1.31			0.27				1.12	0.11	0.74													0.57	0.15			
MUSTOE 1 SW	M	-	-	0.21	2.22	0.07	-	0.02	-	-	-	-	0.05	0.21	0.01	0.30	-	-	-	-	-	-	-	-	-	-	1.20	-	0.15	0.08	0.04	0.06
NEW CASTLE	4.63			0.20	0.39	0.94	0.08	T		0.69			0.46	0.05												0.29	0.07	0.53	0.87	0.06		
ROANOKE 8 N	5.56			0.35	0.44	0.52	0.02			0.43			0.32	0.04												0.67	0.04	0.44	1.40	0.85	0.04	
ROANOKE INTL AP	5.55	T	0.92	0.17	0.70	0.08	T	0.06	0.10			0.21	T	T		T								0.09	0.01	0.66	1.21	0.05	0.38	0.91		
STAUNTON WATER TRMTMT PLT	5.73			0.52	0.80	0.60	T		0.18				0.11	0.53	0.06		0.06	T								1.02	1.25	0.25	0.01	0.34		
WAYNESBORO WTP	2.73				0.24	0.42			0.06				0.15	0.30													0.12	0.42	0.26		0.76	
SOUTHWESTERN MOUNTAIN 06																																
ABINGDON 3S	6.39				0.11	0.61	0.18	1.65	0.10	1.00			0.30		0.35		0.10									0.20		1.10	0.50	0.11	0.08	
BIG STONE GAP	6.02				0.14	1.21	0.87	0.05	0.58	0.84			0.20		0.23	0.20				0.03						0.02		0.63	0.62	0.34	0.06	
BLACKSBURG NWSO	4.86			0.01	0.18	1.53	0.07	0.06	0.19	0.04	0.05		0.03	0.63	0.86		0.25								0.05	0.03		0.34	0.42	0.10	0.02	
BURKES GARDEN	M 5.40				0.10	1.08	0.08	0.14	0.31	0.62	0.03		0.16	0.05	0.25	0.02	0.04									0.04	0.30	1.33	0.42	0.43		
CHRISTIANSBURG	3.16				0.07	1.25	0.10	0.09	0.16	0.37			0.22	0.24	0.12													0.54				
CLINTWOOD 1 W	5.61				0.18	0.89	0.09	0.19	0.35	0.58		0.02	0.22	0.05	0.13		0.20		0.39					0.03	T	0.04		0.96	0.98	0.26	0.05	
COPPER HILL	M 3.27			0.34	0.15	0.65	0.09		0.08	0.56	0.02		0.31	0.19													0.03	0.24	0.26	0.03		
GALAX RADIO WBRF	M	-	-	-	-	-	-	-	-	-	-	-	-	-	-	-	-	-	-	-	-	-	-	-	-	-	-	-	-	-	-	-
GALAX WTP	5.67			0.41	0.13	0.27	T	1.08	0.25	0.25			0.23	0.03	0.03		0.78	0.01								0.03	T	1.87	0.28		0.02	
GRUNDY	7.99					1.26	0.62	0.14	0.45	0.89			0.25	0.65	0.15											T	1.00	0.90	1.66	0.02		
JOHN FLANNAGAN LAKE	MA 5.70		*	*	*	1.36 _a	1.06	-	0.52	*	*	0.65 _a	*	*	0.27 _a	0.39	*	*	0.33 _a	T							T	-	0.41	0.71	-	-
LAFAYETTE 1 NE	6.71				0.21	1.19	0.07	0.03	0.11	0.17	T		2.10	0.02	0.12		0.02									0.27	0.07	0.43	1.55	0.06	0.29	
LEBANON	5.25				0.23	0.76	0.19	0.03	0.48	0.88			0.52	0.02	0.16													0.80	0.67	0.37	0.14	
NORA 4 SSE	7.20			0.18	T	0.86	0.05	0.06	0.65	0.79			0.82	0.04	0.17	0.40		0.04	T	0.03						0.04		1.97	0.69	0.17	0.24	
N FK LAKE	A* 6.64	*	*	*	*	1.37 _a	0.18	0.18	0.77	*	*	0.93 _a	0.47	0.31	0.07		*	*	0.00 _a	0.13	*	0.00 _a	*	*	*	*	1.24 _a	0.07	*	0.92 _a	-	-
PULASKI 2 E	2.84			0.02	0.15	0.31	0.08	0.05	0.02	0.19			0.56	0.05			0.36									0.23	0.37	0.10	0.35			
RADFORD 3 N	4.28				0.16	1.51	0.16	0.12	0.09	0.16			0.65	0.11	0.03				0.03									0.46	0.77			
RICHLANDS	5.10				0.04	1.14	0.05	0.06	0.23	0.34			0.23	0.03	0.16													1.78	0.73	0.09	0.22	
SALTVILLE 1N	4.61			0.01	0.23	0.70	0.03	0.62	0.71	0.75			0.23		0.22	0.02										0.16		0.19	0.41	0.33		
STAFFORDSVILLE 3 ENE	5.27				0.22	1.15	0.14	0.31	0.23	0.17	0.02		0.19	1.03	0.02	0.13		0.57	0.01								0.36	0.44	0.04			
WILLIS	5.65			1.77	0.17	1.64	0.13	0.17	0.13	0.23	0.02			0.13														0.32	0.02	0.28	0.18	
WISE 1SE	A 7.37	0.01		*	0.07 _a	1.10	0.02	0.14	0.52	1.07			0.08		1.10		0.04										0.20	0.10	1.65	0.60	0.66	0.01
WYTHEVILLE	2.15				0.23	0.21	0.19	0.18	0.12	0.42			0.24														0.16	0.15	0.12	0.01		

VIRGINIA
201607

DAILY TEMPERATURES (°F)

STATION	OB. TIME	MAX/MIN	DAY OF MONTH																															AVERAGE		
			01	02	03	04	05	06	07	08	09	10	11	12	13	14	15	16	17	18	19	20	21	22	23	24	25	26	27	28	29	30	31			
VIRGINIA																																				
TIDEWATER 01																																				
DISPUTANTA	07	MAX	84	77	84	70	76	90	93	92	93	89	83	99	90	92	95	93	85	88	92	87	90	91	94	94	97	94	95	94	93	87	84	89.2		
		MIN	66	69	65	65	66	67	73	72	71	66	66	69	70	71	71	70	69	70	65	66	67	70	72	72	74	74	74	74	73	74	71	70	69.6	
EASTVILLE	07	MAX																																	M	
		MIN																																	M	
EMPORIA 1 WNW	08	MAX	92	96	91	88	94																											M		
		MIN	79	79	77	79	85																												M	
FREDERICKSBURG SEWAGE	07	MAX	83	88	82	69	75	91	92	92	92	91	86	86	89	90	95	91	92	92	94	88	88		95	99	98	100		94	95	89	88	89.8		
		MIN	65	65	63	63	66	72	73	72	74	67	65	66	72	71	72	72	67	71	69	68	64		65	74	77			74	73	72	70	69.4		
HOLLAND 1 E	08	MAX	87	83	71	79	91	91	91	90	88	87	87	87	89	94	93	85	88	97	89	88	88	90	93	95	95	83	93	96	88	89	89	88.8		
		MIN	65	66	65	64	67	67	66	66	68	68	67	68	68	69	69	69	68	68	68	72	66	69	69	69	68	58	62	77	75	68	68	67.6		
HOPEWELL	16	MAX	83	83	82	74	87	90	92	93	92	90	86	87	90	95	93	88	92	92	86	87	91	97	96	95	96	93	93	93	93	86	87	89.8		
		MIN	66	65	62	67	74	75	76	74	72	70	71	71	73	73	75	73	70	74	68	72	71	75	76	77	79	75	73	75	74	73	72.4			
NORFOLK INTL AP	24	MAX	90	82	76	79	92	94	92	90	86	85	87	92	97	96	88	91	95	90	87	88	91	95	96	93	96	93	96	98	90	92	90.5			
		MIN	71	72	65	70	77	75	75	74	74	73	76	78	76	74	73	73	74	70	70	73	74	77	79	79	80	79	81	78	75	71	74.5			
NORFOLK SOUTH	24	MAX	89	82	73	77	92	93	93	92	89	88	84	87	91	96	94	87	90	93	89	87	87	91	95	95	96	93	93	96	88	88	89	89.6		
		MIN	69	70	64	67	74	74	74	73	73	69	74	75	74	72	71	71	73	67	68	70	72	75	77	77	78	76	79	77	73	71	72.6			
NORTH	07	MAX	81	83	81	69	77	87	87	90	89	88	84	83	82	86	92	91	82	86	90	86	85	85	89	91	93	92	92	90	89	84	84	86.1		
		MIN	69	70	61	65	68	76	74	75	74	70	69	68	72	72	75	72	72	72	71	69	69	72	76	78	79	81	77	75	74	72	73	72.3		
PAINTER 2W	16	MAX	87	82	79	74	89	91	92	92	90	89	85	85	86	94	94	89	87	91	91	87	87	90	92	92	94	94	92	90	89	86	90	88.7		
		MIN	70	69	62	63	73	75	74	76	76	76	68	66	74	72	78	75	71	77	70	70	68	71	78	79	79	82	76	76	72	72	72	72.9		
STONY CREEK 2 N	08	MAX	86	86	85	73	92	93	94	93	91	90	89	87	92	96	95	88	90	94	90	88	88	93	95	97	97	95	94	95	89	83	91	90.6		
		MIN	68	68	70	66	67	73	73	73	71	67	67	70	72	71	73	71	70	70	68	67	68	70	73	74	75	77	73	74	74	72	72	70.9		
SUFFOLK LAKE KILBY	24	MAX	85	86	73	78	90	99	90	88	88	86	86	86	87	93	93	85	87	89	90	88	89	88	92	94	93	95	93	93	86	89	89	88.6		
		MIN	70	71	65	66	66	72	73	73	72	71	72	72	73	70	70	70	72	70	67	70	72	74	75	76	77	73	73	76	72	72	71.5			
WAKEFIELD 1NW	24	MAX	88	85	70	78	93	93	94	93	91	89	88	89	92	97	95	89	90	93	91	89	89	92	96	98	96	96	95	96	89	88	92	90.8		
		MIN	67	69	65	65	73	73	72	72	70	66	65	69	72	71	72	70	69	71	65	65	66	70	73	75	75	73	73	73	71	72	70.2			
WALKERTON 2 NW	18	MAX	84	82	69	77	92	92	94	93	92	87	87	86	91	97	92	87	92	95	90	88	89	93	96	97	99	97	95	96	87	82	91	90.0		
		MIN	66	61	64	66	75	72	71	72	71	66	66	66	72	69	72	70	69	70	69	67	64	69	72	74	74	76	73	73	76	71	74	70.0		
WALLACETON LK DRUMMOND	08	MAX	90	90	87	74	82	95	96	95	96	93	92	91	95	94	99	97	90	92	92	94	90	93	93	97	99	99	100	97	99	93	92	93.1		
		MIN	59	59	58	54	61	62	64	65	61	60	58	61	62	62	65	60	60	61	65	57	56	60	63	64	65	67	64	68	67	62	62	61.7		
WALLOPS ISLAND NASA TEST FACIL	24	MAX	84	83	72	75	90	86	92	92	89	85	82	82	87	94	95	85	86	90	87	85	85	88	93	89	96	89	91	89	88	85	90	87.2		
		MIN	73	68	63	64	74	78	74	79	77	70	70	69	75	76	78	75	73	71	71	72	69	73	80	81	80	77	79	74	75	75	75	73.8		
WARSAW 2 NW	18	MAX	84		91		94		99	94		93	89	89	92	98	98		93	97	96		92	95	100		101	99	98	99	98	92		94.8		
		MIN	65	62			79		72	72	65		76	64	72	70	74		68	74	69		63	71	73		77	78	73	72	72			71.0		
WEST POINT 2 NW	17	MAX	85	83	81	76	92	93	94	94	91	91	88	87	92	96	96	93	90	93	91	87	90	93	95	97	97	97	95	95	94	87	91	91.1		
		MIN	68	67	63	66	74	73	73	73	69	68	67	68	74	71	73	69	69	71	69	67	67	71	74	77	76	78	73	74	72	71	71	70.8		
WILLIAMSBURG 2 N	24	MAX	86	84	70	77	90	93	93	92	90	88	87	86	91	96	94	87	90	93	90	87	88	92	94	96	96	96	95	95	87	87	93	89.8		
		MIN	70	69	65	66	75	75	75	75	73	70	70	71	74	72	74	71	70	72	72	69	69	72	75	78	77	79	76	76	76	73	73	72.6		
EASTERN PIEDMONT 02																																				
AMELIA COURTHOUSE 1	08	MAX	81		87	68	75	89	92	93	91	90	88	87	88	91	95	92	86	90	94	90	88	88	94	95	97	98	98	98	94	94	83	89.8		

VIRGINIA
201607

DAILY TEMPERATURES (°F)

STATION	OB. TIME	MAX/MIN	DAY OF MONTH																															AVERAGE
			01	02	03	04	05	06	07	08	09	10	11	12	13	14	15	16	17	18	19	20	21	22	23	24	25	26	27	28	29	30	31	
ASHLAND	18	MIN	67		63	64	64	64	73	70	71	75	66	69	70	69	69	71	68	69	69	66	67	69	72	73	74	76	72	72	72	71	70	69.5
		MAX	83	83	78	72	87	88	90	90	88	86	84	85	87	92	89	88	87	92	86	85	86	89	93	94	95	94	91	93	89	84	87	87.6
CAMP PICKETT	08	MIN	65	65	60	64	71	72	72	71	70	65	66	69	71	70	72	70	68	70	68	64	62	69	72	74	74	76	70	72	72	71	71	69.2
		MAX	81	87	84	68	75	89	91	91	90	88	86	86	86	89	93	91	86	88	91	89	86	87	91	94	95	95	92	92	93	87	82	87.8
CHASE CITY	17	MIN	66	66	66	64	66	71	72	70	70	66	66	68	70	69	70	68	70	70	68	68	68	71	72	73	75	70	72	72	71	70	69.3	
		MAX	82	87	87	78	76	90	89	89	90	88	85	86	88	89	91	90	85	87	91	88	88	86	90	93	94	94	94	92	93	87	90	88.3
CLARKSVILLE	07	MIN	68	67	66	66	67	71	70	69	69	65	66	66	71	69	71	69	70	70	67	68	68	70	72	72	74	73	72	72	73	72	69.5	
		MAX	86	88	88	70	78	93	90	92	93	90	91	88	91	93	94	94	87	90	93	92	91	89	93	95	96	96	98	97	95	91	92	90.8
CORBIN	09	MIN	68	69	69	67	67	71	72	71	70	70	67	70	71	71	73	72	69	70	73	69	70	71	71	72	74	75	73	74	73	75	71.0	
		MAX	87	81	71	74	90	91	91	91	90	85	86	85	89	94	90	89	90	92	87	86	89	92	95	95	97	93	93	94	89	87	92	88.9
CROZIER	07	MIN	65	64	63	65	73	71	72	71	72	64	63	66	71	69	71	70	66	72	68	66	62	70	70	73	75	76	73	72	72	71	69	69.2
		MAX	81	85	82	66	72	88	90	91	90	89	86	85	88	89	93	89	87	89	92	89	84	87	90	94	95	95	95	91	92	86	83	87.5
FARMVILLE 2 N	07	MIN	64	63	61	61	65	71	71	69	69	65	65	66	69	69	69	69	67	68	69	65	64	67	70	72	72	75	71	71	71	70	68.0	
		MAX	80	87	83	67	74	90	90	91	92	90	87	86	88	90	93	91	87	92	87	93	96	88	93	96	98	97	95	93	93	87	84	89.0
GREENBAY 3 NE	09	MIN	64	65	63	64	66	72	72	69	69	66	66	66	67	69	69	71	68	67	66	67	69	69	73	72	73	72	72	72	72	72	68.7	
		MAX																																M
JOHN H KERR DAM	08	MIN	88	90	89	71	80	95	91	94	94	92	89	92	93	94	97	96	90	93	96	94	90	94	96	100	100	101	101	99	99	91	91	92.9
		MAX	71	72	69	68	68	75	75	73	69	69	69	70	72	71	75	75	72	73	76	69	70	74	77	77	78	82	75	74	76	74	76	73.0
KEYSVILLE 2 S	07	MIN	81	87	87	72	75	90	89	90	90	89	87	86	87	90	93	90	85	89	92	90	88	88	93	95	97	97	97	94	94	88	87	88.9
		MAX	84	64	64	65	65	70	72	68	68	65	64	65	68	69	69	70	67	69	68	66	67	67	68	72	73	75	71	71	71	71	70	68.3
LOUISA	18	MIN	68	81	80	70	89	90	91	90	90	89	86	87	89	93	90	88	89	93	86	86	87	91	94	95	94	95	92	92	90	86	88	88.7
		MAX	61	59	60	64	70	69	69	67	68	61	60	66	68	69	70	68	63	67	65	63	60	67	67	70	73	71	70	70	71	69	67	66.5
PALMYRA 3S	06	MIN	81	87	84	67	78	88	90	91	91	90	86	86																				M
		MAX	65	61	62	62	66	72	74	68	69	67	64	66																				
PETERSBURG	08	MIN	84	69	69	78	90	92	93	91	90	87	88	88	91	96	95	86	89	93	91	88	88	93	94	92	97	96		95	90	86	93	89.1
		MAX	67	65	65	67	73	74	72	71	68	68	69	73	72	73	71	70	70	71	67	68	69	73	74	75	76	73		75	73	71	71	70.8
RICHMOND INTL AP	24	MIN	84	83	71	76	90	91	93	92	91	87	87	87	91	96	93	87	88	93	89	88	87	93	93	96	96	95	92	93	87	84	89	89.1
		MAX	66	68	63	65	73	73	72	73	72	67	70	69	72	71	72	69	68	72	68	66	67	71	73	76	74	74	72	74	74	73	71	70.6
SANDSTON	07	MIN																																M
		MAX																																
WESTERN PIEDMONT 03 APPOMATTOX	07	MIN	80	87	84	66	72	89	89	89	89	88	87	87	87	90	92	90	86	91	93	92	92	90	95	96	97	96	98	96	94	88	87	88.9
		MAX	63	65	61	62	65	70	71	69	68	66	64	68	69	70	71	69	66	66	69	65	65	67	69	70	71	72	70	71	70	72	69	67.8
BROOKNEAL	07	MIN	80	88	86	89	74	89	88	89	91	90	87	87	89	91	94	91	88	90	92	91	88	90	93	95	96	96	96	94	93	89	91	89.8
		MAX	63	64	64	65	67	71	70	67	69	65	65	67	69	68	70	71	67	68	69	67	67	67	70	70	71	73	71	72	73	72	70	68.5
CHARLOTTESVILLE 2W	08	MIN	81	87	85	68	71	89	89	91	90	90	88	87	87	91	92	89	91	92	95	93	90	92	94	98	98	99	99	94	95	87	91	89.8
		MAX	65	67	62	62	64	71	73	70	71	69	66	68	69	70	73	70	66	69	72	68	68	69	71	76	77	77	73	71	70	71	69	69.6
CHATHAM	07	MIN	77	83	84	67	74	85	86	85	84	81	84	82	86	88	88	82	88	89	85	85	86	88	91	92	91	90	90	90	84	86	85.0	
		MAX	65	64	64	63	65	68	67	66	66	62	62	66	67	66	65	66	65	65	65	65	64	64	66	68	68	68	70	70	71	71	66.2	
DANVILLE RGNL AP	24	MIN	87	87	72	79	91	88	89	92	88	86	88	88	90	92	90	85	90	92	90	88	89	94	94	95	96	97	96	93	90	91	93	89.7
		MAX	67	66	66	66	70	71	70	67	67	64	68	69	70	68	70	70	68	69	70	66	66	68	70	71	71	73	72	70	73	71	69.0	

VIRGINIA
201607

DAILY TEMPERATURES (°F)

STATION	OB. TIME	MAX/MIN	DAY OF MONTH																															AVERAGE	
			01	02	03	04	05	06	07	08	09	10	11	12	13	14	15	16	17	18	19	20	21	22	23	24	25	26	27	28	29	30	31		
FREE UNION	08	MAX	78	85	82	69	69	87	86	87	87	87	84	85	85	88	90	85	88	90	90	88	87	88	90	94	93	94	94	90	90	85	87	86.5	
		MIN	60	61	61	62	63	69	69	66	67	63	61	62	67	68	69	65	63	64	67	65	64	64	66	69	71	72	70	71	70	70	67	66.0	
LYNCHBURG INTL AP	24	MAX	85	84	68	72	88	87	86	88	88	85	85	87	89	92	88	86	90	90	90	87	88	92	93	95	94	95	92	91	86	88	89	87.7	
		MIN	66	63	62	64	69	68	70	67	66	63	62	67	68	68	70	68	64	67	68	65	66	67	69	69	70	71	70	71	70	72	69	67.4	
MARTINSVILLE FLTR PLT	07	MAX	81	89	85	68	78	90	87	88	93	89	87	87	89	92	93	89	85	89	93	89	88	89	94	95	96	98	95	96	94	89	91	89.2	
		MIN	63	63	63	64	65	67	68	64	64	61	62	66	67	67	68	67	63	63	66	66	63	64	66	67	68	69	71	69	70	70	68	65.9	
MEADOWS OF DAN 5 SW	07	MAX	78	83	82		73	86	83	82	89	85	85	84	85	86	89	85	82	88	89	87	87	87	90	90	91	90	89	89	85	85	85.7		
		MIN	60	63	63	63	63	67	66	64	65	60	60	64	65	65	66	62	62	67	64	63	62	66	66	67	68	70	68	67	66	67	64.6		
MONTEBELLO FISH CULTURAL STN	07	MAX			88	62	74	84	86	85						87	90												94	91	90	88	M		
		MIN			52	59	61	66	64	62					58	69								57	62	62			65	67	68	67	M		
MONTECELLO	07	MAX	78	85	82	67	71	87	87	87	88	88	84	84	86	88	91	85	87	89	91	90	86	88	91	94	95	95	93	93	93	83	86	86.8	
		MIN	62	65	61	60	64	70	73	69	69	68	66	69	69	69	71	69	66	66	71	68	67	67	68	74	75	79	73	71	70	71	68	68.6	
ROCKY MT	07	MAX	81	89	84		76	90	85	85	89	88	86	86	88	90	92	87	86	91	93	93	86	90	93	95	96	94	96	93	92	87	88	89.0	
		MIN	64	64	64		64	71	75	66	67	64	64	68	67	68	69	69	63	66	69	66	63	66	68	69	69	69	71	71	69	69	70	67.4	
SOUTH BOSTON	07	MAX	82	88	88	71	78	92	90	92	93	90	88	88	89	93	94	93	86	89	94	91	90	90	95	96	98	98	97	95	91	92	90.6		
		MIN	66	68	67	67	66	71	71	69	69	65	66	69	70	69	69	72	69	69	70	69	69	69	70	73	72	75	72	72	73	73	72	69.7	
STUART	07	MAX	80	87	84	71	76	87	88	85	88	86	85	86	87	90	91	90	82	89	89	88	88	88	91	93	95	95	92	92	92	87	90	87.5	
		MIN	65	64	68	65	65	70	69	66	67	63	63	67	66	68	68	67	63	64	67	66	65	64	68	68	69	70	71	71	67	68	69	66.8	
TYE RVR 1 SE	07	MAX																															M		
		MIN																																M	
NORTHERN 04																																			
EDINBURG	07	MAX																																M	
		MIN																																	M
FRONT ROYAL	06	MAX		85	79	70	71	88	90	87	88	88	88	86	85		92	85			91	91	85	88	91	94	94	98		91	87	86	86	87.1	
		MIN		55	60	62	64	70	70	68	68	68	61	60	68		71	68			67	63	61	60	70	67	71	73		70	58	62	68	65.5	
LINCOLN	07	MAX	91				82	96	100	100	94	96	86	88	90	94	100	94	96	94	100	94	88	98	100	100	100	104	96	94	94	92	94	94.8	
		MIN					70	70	70	70	72	70	70	64	64	64	70	67	64	64	70	66	60	60	70	70	70	74	74	72	71	70	70	68.4	
LURAY 5 E	08	MAX	79	86	79	69	75	86	88	87	87	87	83	85	86	90	91	82	87	89	90	85	84	86	90	94	93	95	92	90	88	85	87	86.3	
		MIN	64	57	60	60	61	67	67	63	63	60	57	63	66	66	65	63	59	65	64	60	58	62	66	68	70	70	69	68	68	67	66	63.9	
MADISON	08	MAX																																M	
		MIN																																M	
MANASSAS	07	MAX	83	90	81	73	75	92	93	93	93	80	90	87	92	97	97	93	91	95	90	87	90	95	99	98	100	96	96	95	90	88	90.7		
		MIN	61	68	62	64	69	75	76	76	73	71	64	70	73	72	74	71	68	74	71	70	63	64	72	76	79	79	77	73	73	72	71.2		
MT WEATHER	07	MAX	78	82	75	68	68	85	87	83	84	86	80	82	80	87	90	83	85	88	88	85	83	88	87	92	92	94	85	88	85	83	81	83.9	
		MIN	59	61	61	61	61	68	71	70	70	64	63	65	68	68	71	70	66	67	69	70	66	67	73	72	74	72	72	72	66	66	67	67.4	
PIEDMONT RSCH STN	08	MAX	80	87	81	67	73	89	90	89	90	89	85	85	86	86	92	88	89	89	92	87	85	87	90	94	94	96	95	91	92	88	86	87.5	
		MIN	63	63	61	61	65	72	72	71	65	65	66	67	69	69	70	66	64	69	67	68	62	68	70	74	73	74	73	72	71	71	68	68.0	
SOMERSET	08	MAX	81	87	82	68	75	91	90	90	91	91	86	85	86	91	93	88	89	91	94	89	86	88	91	96	93	97	94	91	93	88	88	88.5	
		MIN	62	62	62	62	65	73	72	68	70	63	61	65	69	70	70	66	65	68	67	66	62	66	70	72	73	74	72	71	72	71	69	67.7	
SPERRYVILLE	06	MAX			81	70	70		91		90	90	85	85	88	91	86	88	89	91		85	87	91		96	101	96	95	94	89	91	88.2		
		MIN			62	61	65		70		69	64	60	60	64	67	67	64	61	66	66		60	63	64		73	72	71	70	70	69	67	65.8	
STERLING (RCS)	07	MAX	83	88	79	74	72	89	92	89	89	90	84	86	86	91		89	91	90	94	89	89	90	94	98	98	102	93	93	93	89	89	89.1	

VIRGINIA
201607

DAILY TEMPERATURES (°F)

STATION	OB. TIME	MAX/MIN	DAY OF MONTH																															AVERAGE
			01	02	03	04	05	06	07	08	09	10	11	12	13	14	15	16	17	18	19	20	21	22	23	24	25	26	27	28	29	30	31	
VIENNA	07	MIN	63	68	64	64	66	71	72	72	71	70	64	66	70	70		67	65	66	68	69	62	67	68	74	76	76	76	75	71	71	70	69.1
		MAX	81	79	78	71	71	88	91	89	89	89	82	86	85	89	95	88	90	89	90	89	85	89	92	96	96	97	93	93	94	88	90	87.8
WARRENTON 3 SE	08	MIN	58	67	62	62	65	71	72	71	71	66	62	62	67	71	75	70	66	65	69	66	62	62	70	72	72	74	74	72	70	71	68.1	
		MAX																																M
WASHGTN DULLES INTL AP	24	MIN	88	80	73	72	90	91	90	89	91	85	87	86	92	95	91	92	90	95	91	86	90	94	98	97	100	95	94	92	90	88	90	89.7
		MAX	63	67	63	66	71	72	72	70	72	66	62	65	74	71	70	67	65	70	70	67	60	67	71	71	74	76	75	74	72	71	72	69.2
WASHINGTON REAGAN NATL AP	24	MIN	88	80	74	74	91	94	93	91	93	86	88	87	90	98	94	93	93	95	92	89	90	95	98	97	100	98	97	95	92	90	92	91.2
		MAX	71	70	64	68	74	77	77	77	78	74	70	73	75	75	76	72	71	73	70	70	71	74	79	80	81	80	81	77	75	74	75	74.3
WINCHESTER	07	MIN	81	80	74	70	86	88	92	88	89	91	84	87	84	92	94	87	90	92	90	91	86	89	92	99	96	98	89	91	86	88	85	88.0
		MAX	59	60	55	55	63	70	71	69	68	70	61	65	68	72	72	68	65	67	69	69	60	62	70	73	74	73	74	73	67	68	68	67.0
WINCHESTER 7 SE	08	MIN	87	81	72	71	86	91	89	90	90	87	88	87	92	94	88	88	92	91	92	92	90	92	97	96	97	92	92	92	88	87	88	89.0
		MAX	60	60	61	64	65	68	68	63	61	55	56	63	68	72	66	66	67	66	60	56	57	68	69	70	70	71	70	67	68	68	69	64.9
WOODSTOCK 2 NE	07	MIN	80	86	80	71	74	88	90	88	87	89	84	87	84	89	91	89	82	89	89	88	90	87	90	95	95	96	92	92	89	86	87	87.2
		MAX	54	49	60	62	65	68	68	67	65	64	58	63	64	68	69	66	64	65	66	62	63	60	65	68	71	72	71	70	69	70	69	65.0
CENTRAL MOUNTAIN 05 COVINGTON FLTR PLT	07	MIN	79	87	84	73	81	87	88	81	87	87	86	85	86	86	90	83	87	92	89	91	92	89	89	94	95	95	95	92	91	91	91	87.8
		MAX	58	60	61	63	65	67	67	65	63	56	57	59	64	67	66	65	65	65	65	61	58	58	61	60	68	68	68	70	68	68	67	63.6
DALE ENTERPRISE	07	MIN	79	86	79	75	73	88	89	88	88	88	82	83	83	88	87	82	87	89	90	89	86	86	93	94	92	90	90	90	90	90	90	86.3
		MAX	62	59	59	60	61	67	67	65	64	63	60	62	66	66	66	62	61	62	63	65	62	61	61	68	70	68	69	66	67	68	68	64.1
GATHRIGHT DAM	07	MIN	75	83	81	69	76	86	83	78	81	81	80	81	81	81	81	78	81	85	85	86	83	82	86	89	90	88	88	87	84	80	84	82.4
		MAX	57	60	61	61	64	67	66	63	63	61	58	59	64	66	65	64	63	64	65	62	59	59	61	66	68	68	67	68	66	67	66	63.5
HOT SPRINGS	07	MIN	74	82	80	70	76	81	82	80	80	81	79	80	82	83	84	77	82	83	84	83	81	82	86	89	90	88	87	85	85	78	80	81.7
		MAX	55	59	60	60	63	67	64	63	63	60	57	57	65	66	65	63	60	62	65	59	58	58	58	66	66	69	68	68	66	65	57	62.3
LEXINGTON	07	MIN	80	87	85	69	77	88	89	87	89	88	86	87	87	90	90	86	88	91	91	89	88	89	92	95	96	95	94	92	92	87	89	88.2
		MAX	61	61	62	62	64	68	68	64	65	62	59	61	66	68	68	64	64	64	67	64	63	62	63	67	68	69	71	71	70	70	68	65.3
MILLGAP	06	MIN	75	80	79	69	73	80	83	81	79	78	78	80	81	82	81	78	80	84	83	83	81	83	87	90	89	87	86	84	81	82	81.2	
		MAX	48	51	51	58	62	64	61	57	58	56	51	51	57	63	60	58	57	57	57	53	51	51	54	60	60		63	61	61	62	61	57.1
MUSTOE 1 SW	24	MIN	80	79	68	72	80	83	81	81	80	79	80	81	83	81	77	83	84	83	84	81	82	86	89	88	88	88	86	83	79	82	81	81.7
		MAX	56	53	59	63	66	64	62	58	63	58	52	60	66	66	62	62	62	59	61	55	54	54	59	60	62	65	64	67	64	61	59	60.5
ROANOKE 8 N	07	MIN	84	87	85	69	73	88	88	82	87	87	85	86	86	89	89	88	87	91	90	91	89	89	93	96	97	93	95	91	90	87	88	87.7
		MAX	62	65	65	64	65	69	66	67	65	64	67	67	67	67	69	65	64	64	70	67	63	65	68	69	70	71	72	73	68	68	68	67.0
ROANOKE INTL AP	24	MIN	89	84	72	73	89	90	83	89	88	86	85	86	90	91	88	88	92	93	92	90	90	94	96	97	96	98	92	91	89	90	91	89.1
		MAX	66	66	65	64	69	73	71	70	71	67	63	70	70	69	70	66	65	72	71	67	64	69	70	70	73	75	73	71	71	70	70	69.1
STAUNTON WATER TRMTMT PLT	08	MIN	82	83	82	65	73	84	87	85	87	87	83	83	82	86	86	81	85	88	88	88	85	86	90	93	93	91	92	87	89	83	87	85.2
		MAX	56	61	58	58	63	70	69	64	66	64	59	63	67	68	70	64	63	69	67	61	63	66	68	68	73	72	67	68	66	68	66	65.3
WAYNESBORO WTP	07	MIN	78	86	82	68	72	88	90	88	88	88	84	85	85	85	90	85	88	91	91	87	87	87	90	94	94	95	97	90	92	85	90	87.1
		MAX	59	60	61	62	63	69	68	64	65	62	60	61	67	66	69	63	61	61	67	63	63	64	65	67	69	70	69	70	69	70	69	65.0
SOUTHWESTERN MOUNTAIN 06 ABINGDON 3S	22	MIN	85	85	86	86	89	82	85	78	86	82	83	85	84	86	83	82	85	87	86	88	87	89	89	93	93	92	91	90	85	84	83	86.1
		MAX	58	60	63	63	68	70	62	63	64	60	60	60	64	64	64	61	60	60	64	63	61	60	60	65	65	67	67	69	68	66	65	63.4

VIRGINIA
201607

DAILY TEMPERATURES (°F)

STATION	OB. TIME	MAX/MIN	DAY OF MONTH																															AVERAGE	
			01	02	03	04	05	06	07	08	09	10	11	12	13	14	15	16	17	18	19	20	21	22	23	24	25	26	27	28	29	30	31		
BIG STONE GAP	08	MAX	85	84	86	85	88	83	86	77	86	83	82	85	84	86	83	82	83	85	86	85	89	91	89	91	90	92	90	92	83	83	83	85.7	
		MIN	58	59	64	68	69	70	66	66	66	62	61	62	67	66	67	63	64	66	66	67	63	63	65	67	67	70	70	69	68	67	67	65.6	
BLACKSBURG NWSO	07	MAX	78	84	83	69	80	85	85	78	84	82	81	85	83	84	84	82	84	87	86	86	85	87	88	92	93	89	90	89	86	84	84	84.4	
		MIN	62	60	61	63	63	66	65	63	64	61	60	61	64	65	65	62	61	62	66	62	60	59	62	64	66	67	68	69	66	66	65	63.5	
BURKES GARDEN	07	MAX	77	77	78	79	80	79	79	71	78	75	76	80	79	80	79	76	80	81	80	80	80		84	87	87	85	84	83	80	79	78	79.7	
		MIN	52	54	57	63	65	66	60	59	62	59	52	51	58	64	63	52	53	56	57	57	53		50	60	60	60	62	63	61	57	61	58.2	
CHRISTIANSBURG	07	MAX	76	82	81	68	78	81	82	78	81	81	78	82	82	82	83	79	82	85	84	83	86	86	87	91	93	89	88	89	86	83	85	82.9	
		MIN	58	62	66	62	62	67	64	63	63	62	62	62	64	65	66	60	62	61	66	62	61	61	62	66	66	68	68	68	66	65	65	63.7	
CLINTWOOD 1 W	07	MAX	81	83	81	83	85	84	86	76	85	82	82	83	83	85	83	80	82	84	83	86	86	87	88	91	89	82	89	83	82	81	81	83.7	
		MIN	54	56	62	64	67	68	64	64	64	60	58	59	65	64	64	63	63	62	63	64	57	57		60	64	64	67	68	68	67	64	64	62.8
COPPER HILL	07	MAX	72	83	77	65	74	83	82	77	82	80	79	79	78	83	84	83																	81.3
		MIN	59	60	63	59	59	59	64	63	63	61	61	61	64	64	65	63																	63.2
GALAX RADIO WBRF	17	MAX																																M	
		MIN																																	M
GALAX WTP	07	MAX	75	84	83	79	79	85	86	79	88	83	82	82	80	86	86	81	84	86	87	84	84	85	89	88	88	87	90	89	84	84	82	84.2	
		MIN	60	58	59	64	66	64	65	65	66	61	60	61	64	62	62	62	62	62	64	60	59	59	61	62	63	63	68	68	68	65	64	62.8	
GRUNDY	07	MAX	85	87	82	83	85	86	89	89	86	84	83	87	83	86	86	85	87	89	87	88	90	90	91	93	94	89	92	87	84	80	83	86.8	
		MIN	58	60	65	65	67	68	65	65	65	63	62	62	67	67	65	65	65	67	68	67	62	61	61	67	69	69	70	68	68	65	65	65.2	
JOHN FLANNAGAN LAKE	07	MAX	88				90	87		80							91	88																M	
		MIN	57				60	68		66		63				67	66																	M	
LEBANON	07	MAX	85	85	84	86	89	89	85	86	87	83	84	86	86	87	84	83	85	84	87	88	87	90	89	93	94	92	88	94	86	83	84	86.9	
		MIN	55	57	63	67	67	67	65	55	64	60	57	58	63	63	64	57	59	59	59	59	57	57	59	63	65	68	68	65	67	63	63	61.7	
NORA 4 SSE	07	MAX	80	83	78	80	82	83	82	74	83	79	79	82	80	84	78	77	82	82	86	86	83	85	86	88	87	86	88	82	80	78	79	82.0	
		MIN	58	65	64	64	66	67	63	63	64	62	63	67	66	66	64	64	65	68	68	68	66	70	71	68	69	71	71	66	65	64	64	65.8	
N FK LAKE	08	MAX					88	87	88	79			88	87	84	87	86																	M	
		MIN					56	69	65	65		61	60	65	67	65																		M	
PULASKI 2 E	07	MAX	77	83	82	75	83	84	84	75	85	83	81	85	82	85	86	81	85	86	85	86	87	88	92	93	88	90	88	86	84	84	84	84.5	
		MIN		60	65	65	65	68	64	64	64	60	57	65	64	65	69	60	60	64	63	61	60	58	63	64	65	68	68	68	66	63	65	63.7	
RADFORD 3 N	07	MAX	77	84	83	71	79	84	84	77	85	83	80	83	84	83	85	79	83	86	84	83	84	86	87	90	92	91	90	90	88	84	84	84.0	
		MIN	61	61	61	64	65	68	63	63	63	64	58	64	64	64	64	59	61	63	68	61	52	58	63	65	67	66	58	66	67	65	65	62.9	
RICHLANDS	07	MAX	84	83		83	85	84	84	77	83	81	81	85	83	85	83	82	86	87	87	87	86	88	89	92	93	91	90	87	87	81	83	85.2	
		MIN	57	58		65	65	68	64	64	65	60	57	60	64	64	64	60	60	62	62	62	58	58	58	63	67	67	68	67	65	65	65	62.8	
SALTVILLE 1N	07	MAX	83	85	87	87	87	83	86	77	86	84	83	87	87	87	84	82	86	88	87	89	89	91	89	95	94	92	92	87	82	84	86.9		
		MIN				68	68	65	64	66	60	59	63	63	65	66	61	61	64	64	59	58	59	58	59	67	68	67	68	68	66	67	64.2		
STAFFORDSVILLE 3 ENE	07	MAX	77	85	82	72	81	86	85	77	84	83	82	84	81	84	82	79	83	85	87	86	85	85	89	90	92	91	90	92	85	83	86	84.3	
		MIN	57	61	62	64	64	67	64	62	64	63	57	58	64	65	65	62	61	61	64	63	57	56	57	63	63	65	67	68	66	65	65	62.6	
WISE 1SE	09	MAX	81	81		81	85	85	84	74	85	80	80	83	82	84	82	81	75	84	83	85	84	86	87	87	90	89	86	85	81	80	82	83.1	
		MIN	55	63		63	67	67	64	65	64	60	58	64	65	66	63	59	66	64	64	64	59	67	73	65	68	66	67	65	65	66	65	64.2	
WYTHEVILLE	07	MAX	78	82	85	80	87	84	84	73	85	82	82	86	86	86	85	81	86	88	87	88	86	90	90	93	94	94	92	93	88	85	87	86.0	
		MIN	59	64	65	64	64	67	64	64	64	62	58	58	65	65	65	60	58	58	63	63	59	59	59	64	66	67	68	66	64	64	64	63.0	

TOTAL SNOWFALL AND NUMBER OF DAYS WITH ONE INCH OR MORE ON GROUND

VIRGINIA
201607

STATION	JUL		AUG		SEP		OCT		NOV		DEC		JAN		FEB		MAR		APR		MAY		JUN		TOTAL		TOTAL PRECIPITATION							
	SNOWFALL	1 IN ON GD	SNOWFALL	1 IN ON GD	SNOWFALL	1 IN ON GD	SNOWFALL	1 IN ON GD	SNOWFALL	1 IN ON GD	SNOWFALL	1 IN ON GD	SNOWFALL	1 IN ON GD	SNOWFALL	1 IN ON GD	SNOWFALL	1 IN ON GD	SNOWFALL	1 IN ON GD	SNOWFALL	1 IN ON GD	SNOWFALL	1 IN ON GD	SNOWFALL	1 IN ON GD		TOTAL						
VIRGINIA																																		
TIDEWATER 01																																		
DISPUTANTA	M		M		M		M		M		M		M	2	M	1	M		M		M		M		M	0.0	M	3	50.53					
EASTVILLE	M		M		M		M		M		M		M		M		M		M		M		M		M	0.0	M	0	8.51					
EMPORIA 1 WNW	M		M		M		M		M		M		M	2	M		M		M		M		M		M	0.0	M	2	35.05					
FREDERICKSBURG SEWAGE	M		M		M		M		M		M		M	2	M	2	M		M		M	0.0	0	0.0	0	M	0.0	M	4	31.75				
HOLLAND 1 E	M		M		M		M		M		M		M		M		M		M		M		M		M	0.0	M	0	38.02					
HOPEWELL	M 0.0		M		M	0	M 0.0	0	M 0.0	0	M	0	M	3	M 0.0	1	M 0.0	0	M	0	M	0	M	0	M 0.0	0	M	0.0	M	4	54.09			
NORFOLK INTL AP	0.0		0.0		0.0	0	0.0	0	0.0	0	0.0	0	2.8	1	2.2	0	T	0	T	0	0.0	0	0.0	0	0.0	0	0.0	0	M	1	54.14			
NORFOLK SOUTH	M		M		M		M		M		M		M	1	M	1	M	0	M	0	M		M		M	0.0	M	0	M	2	55.81			
NORTH	0.0		M 0.0		0.0	0	0.0	0	0.0	0	0.0	0	8.5	4	1.0	0	0.0	0	0.0	0	0.0	0	0.0	0	0.0	0	0.0	0	M	9.5	M	4	54.40	
PAINTER 2W	M		M		M		M		M		M		M	2	M	0	M		M		M		M		M	0.0	M	0	M	2	47.35			
STONY CREEK 2 N	0.0		0.0		0.0	0	0.0	0	0.0	0	0.0	0	9.0	6	2.0	1	0.0	0	0.0	0	0.0	0	0.0	0	0.0	0	0.0	0	M	11.0	M	7	57.18	
SUFFOLK LAKE KILBY	0.0		0.0		0.0	0	0.0	0	0.0	0	0.0	0	5.5	4	3.0	2	T	0	0.0	0	0.0	0	0.0	0	0.0	0	0.0	0	M	8.5	M	6	57.92	
WAKEFIELD 1NW	M 0.0		M 0.0		0.0	0	0.0	0	0.0	0	0.0	0	7.1	5	2.5	1	1.1	1	T	0	0.0	0	0.0	0	0.0	0	M	10.7	M	7	52.23			
WALKERTON 2 NW	0.0		0.0		0.0	0	0.0	0	0.0	0	0.0	0	11.0	6	4.0	2	0.0	0	M 0.0	0	0.0	0	0.0	0	0.0	0	M	15.0	M	8	52.70			
WALLACETON LK DRUMMOND	M		M		M		M		M		M		M		M		M		M		M		M		M	0.0	M	0	M	0	M	0	58.72	
WALLOPS ISLAND NASA TEST FACIL	0.0		0.0		0.0	0	0.0	0	0.0	0	0.0	0	7.3	5	3.6	0	0.8	0	0.6	1	0.0	0	0.0	0	0.0	0	0.0	0	M	12.3	M	6	49.43	
WARSAW 2 NW	M		M		M		M		M		M		M	7	M	2	M		M		M		M		M	0.0	M	0	M	9	M	47.79		
WEST POINT 2 NW	M 0.0		M 0.0		0.0	0	0.0	0	0.0	0	0.0	0	11.5	6	2.4	0	1.1	0	T	0	T	0	T	0	M	15.0	M	6	M	47.90				
WILLIAMSBURG 2 N	M		M		M		M		M		M		M	5	M	0	M		M		M		M		M	0.0	M	0	M	6	M	52.23		
EASTERN PIEDMONT 02																																		
ALBERTA 5N	0.0		0.0		0.0	0	0.0	0	0.0	0	0.0	0	12.1	6	2.8	2	T	0	0.0	0	0.0	0	0.0	0	0.0	0	0.0	0	M	14.9	M	8	54.73	
AMELIA COURTHOUSE 1	0.0		M		M		0.0		0.0		0.0		M 17.5		2.1		M 1.0	1	0.0		0.0		0.0		0.0		M	20.6	M	1	M	56.55		
ASHLAND	0.0		0.0		0.0	0	0.0	0	0.0	0	0.0	0	17.0	9	2.2	1	2.0	0	0.0	0	0.0	0	0.0	0	0.0	0	0.0	0	M	21.2	M	10	51.77	
BREMO BLUFF	M 0.0		M 0.0		0.0	0	M 0.0	0	M 0.0	0	M 0.0	0	M 4.5	2	0.0	0	M 0.0	0	0.0	0	M 0.0	0	M 0.0	0	M 0.0	0	M	4.5	M	2	M	46.23		
BUCKINGHAM	0.0		0.0		0.0	0	0.0	0	0.0	0	0.0	0	12.8	9	M 3.0	2	T	0	0.0	0	0.0	0	0.0	0	0.0	0	M	15.8	M	11	M	52.57		
CAMP PICKETT	M		M		M		M		M		M		M	2	M	0	M		M		M		M		M	0.0	M	0	M	2	M	48.96		
CHASE CITY	M		M		M		M		M		M		M	2	M	1	M		M		M		M		M	0.0	M	0	M	3	M	48.92		
CLARKSVILLE	0.0		M		0.0	0	M 0.0	0	0.0	0	0.0	0	5.6	2	0.6	0	0.0	0	M 0.0	0	0.0	0	0.0	0	0.0	0	0.0	0	M	6.2	M	2	M	53.78
CORBIN	M		M		M		M		M		M		M	7	M	3	M	1	M		M		M		M	0.0	M	0	M	11	M	45.83		
CROZIER	M 0.0		0.0		0.0	0	M 0.0	0	0.0	0	M 0.0	0	12.0	8	M 2.0	1	M 1.0	1	0.0	0	0.0	0	0.0	0	M 0.0	0	M	15.0	M	10	M	54.33		
FARMVILLE 2 N	M		M		M		M		M		M		M	3	M	2	M		M		M		M		M	0.0	M	0	M	5	M	47.32		
GREENBAY 3 NE	M		M		M		M		M		M		M		M		M		M		M		M		M	0.0	M	0	M	0	M	0	0.00	
JOHN H KERR DAM	M		M		M		M		M		M		M		M		M		M		M		M		M	0.0	M	0	M	0	M	0	58.36	
KEYSVILLE 2 S	M		M		M		M	0	0.0	0	0.0	0	11.0	6	3.0	2	0.0	0	0.0	0	0.0	0	0.0	0	0.0	0	M	14.0	M	8	M	36.32		
LOUISA	M		M		M		M		M		M		M	10	M	1	M		M		M		M		M	0.0	M	0	M	11	M	40.28		
PALMYRA 3S	M		M		M		M		M		M		M	8	M	1	M		M		M		M		M	0.0	M	0	M	9	M	45.21		
PETERSBURG	M		M		M		M		M		M		M		M		M	0	M		M		M		M	0.0	M	0	M	0	M	0	49.22	
RICHMOND INTL AP	0.0		0.0		0.0	0	0.0	0	0.0	0	0.0	0	12.1	7	1.8	1	1.2	1	0.0	0	0.0	0	0.0	0	0.0	0	0.0	0	M	15.1	M	9	53.62	
SANDSTON	M		M		M		M		M		M		M	9	M	1	M		M		M		M		M	0.0	M	0	M	10	M	25.41		
WINTERPOCK 4 W	M		M		M		M		M		M		M		M		M		M		M		M		M	0.0	M	0	M	0	M	0	52.07	
WESTERN PIEDMONT 03																																		
ALTAVISTA	0.0		0.0		0.0	0	0.0	0	0.0	0	0.0	0	M		M		0.0	0	0.0	0	0.0	0	0.0	0	0.0	0	M	0.0	M	0	M	49.60		
APPOMATTOX	0.0		0.0		0.0	0	0.0	0	0.0	0	0.0	0	11.7	9	5.8	3	1.0	1	T	0	0.0	0	0.0	0	0.0	0	0.0	0	M	18.5	M	13	56.33	
BEDFORD 4 NW	0.0		0.0		0.0	0	0.0	0	0.0	0	0.0	0	10.2	10	6.3	4	T	0	0.0	0	0.0	0	0.0	0	0.0	0	0.0	0	M	16.5	M	14	55.38	
BROOKNEAL	0.0		0.0		0.0	0	0.0	0	0.0	0	0.0	0	9.3	7	3.2	2	0.0	0	0.0	0	0.0	0	0.0	0	0.0	0	0.0	0	M	12.5	M	9	56.92	
CHARLOTTESVILLE 2W	0.0		0.0		0.0	0	0.0	0	0.0	0	0.0	0	15.7	9	3.7	3	0.4	0	0.0	0	0.0	0	0.0	0	0.0	0	0.0	0	M	19.8	M	12	54.81	
CHATHAM	0.0		0.0		0.0	0	0.0	0	0.0	0	0.0	0	11.6	10	2.0	2	0.0	0	0.0	0	0.0	0	0.0	0	0.0	0	0.0	0	M	13.6	M	12	63.30	
CONCORD 4 SSW	0.0		0.0		0.0	0	0.0	0	0.0	0	0.0	0	8.1	7	3.5	2	T	0	0.0	0	0.0	0	0.0	0	0.0	0	0.0	0	M	11.6	M	9	59.05	
DANVILLE RGNL AP	0.0		0.0		0.0	0	0.0	0	0.0	0	0.0	0	9.2	6	1.9	2	0.0	0	0.0	0	0.0	0	0.0	0	0.0	0	0.0	0	M	11.1	M	8	61.29	

TOTAL SNOWFALL AND NUMBER OF DAYS WITH ONE INCH OR MORE ON GROUND

VIRGINIA
201607

STATION	JUL		AUG		SEP		OCT		NOV		DEC		JAN		FEB		MAR		APR		MAY		JUN		TOTAL		TOTAL PRECIPITATION		
	SNOWFALL	I IN ON GD	SNOWFALL	I IN ON GD	SNOWFALL	I IN ON GD	SNOWFALL	I IN ON GD	SNOWFALL	I IN ON GD	SNOWFALL	I IN ON GD	SNOWFALL	I IN ON GD	SNOWFALL	I IN ON GD	SNOWFALL	I IN ON GD	SNOWFALL	I IN ON GD	SNOWFALL	I IN ON GD	SNOWFALL	I IN ON GD	SNOWFALL	I IN ON GD			
FREE UNION	M		M		M		M		M		M		M	7	M	4	M	0	M		0.0	0	0.0	0	0.0	0	M 0.0	M 11	M 32.18
HOLCOMB ROCK	0.0		0.0		0.0	0	0.0	0	0.0	0	0.0	0	11.4	7	8.2	3	0.6	0	T	0	0.0	0	0.0	0	0.0	0	20.2	M 10	64.68
HUDDLESTON 4 SW	0.0		0.0		0.0	0	0.0	0	0.0	0	0.0	0	11.8	9	5.0	3	T	0	0.0	0	0.0	0	0.0	0	0.0	0	16.8	M 12	55.35
LYNCHBURG INTL AP	0.0		0.0		0.0	0	0.0	0	0.0	0	T	0	10.2	6	5.4	3	T	0	0.0	0	0.0	0	T	0	0.0	0	15.6	M 9	52.26
MARTINSVILLE FLTR PLT	0.0		0.0		0.0	0	0.0	0	M	0	0.0	0	16.7	2	M	2	0.0	0	0.0	0	M 0.0	0	0.0	0	0.0	0	M 16.7	M 4	57.74
MEADOWS OF DAN 5 SW	0.0		0.0		0.0	0	0.0	0	0.0	0	0.0	0	7.0	8	M 0.0	0	0.0	0	0.0	0	0.0	0	0.0	0	0.0	0	M 7.0	M 8	68.00
MONTEBELLO FISH CULTURAL STN	M		M		M		M		M		M		M		M		M		M		M		M		M 0.0	M 0	M 10.59		
MONTECELLO	M		M		M		M		M		M		M		M	2	M		M		M	0.0	0	0.0	0	M 2.3	M 2	M 49.04	
PEDLAR DAM	0.0		0.0		0.0	0	0.0	0	0.0	0	0.0	0	10.7	9	7.6	2	0.9	0	T	0	0.0	0	0.0	0	0.0	0	19.2	M 11	60.85
ROCKY MT	0.0		0.0		0.0	0	0.0	0	0.0	0	0.0	0	12.2	10	5.0	4	T	0	T	0	0.0	0	0.0	0	0.0	0	17.2	M 14	61.68
SOUTH BOSTON	0.0		0.0		0.0	0	0.0	0	0.0	0	0.0	0	8.7	6	1.2	1	0.0	0	0.0	0	0.0	0	0.0	0	0.0	0	9.9	M 7	57.90
STUART	0.0		0.0		0.0	0	0.0	0	0.0	0	0.0	0	16.5	5	3.0	2	0.0	0	0.0	0	0.0	0	0.0	0	0.0	0	19.5	M 7	61.27
TYE RVR 1 SE	M		M		M		M		M		M		M		M		M		M		M		M		M 0.0	M 0	M 20.14		
WOOLWINE	0.0		0.0		0.0	0	0.0	0	0.0	0	0.0	0	11.9	9	5.0	3	T	0	T	0	0.0	0	0.0	0	0.0	0	16.9	M 12	87.72
NORTHERN 04																													
EDINBURG	M		M		M		M		M		M		M		M		M		M		M		M		M 0.0	M 0	M 0.00		
FRONT ROYAL	M		M		M	0	M		M		M		M	7	M	0	0.2	0	0.0	0	0.0	0	0.0	0	0.0	0	M 0.2	M 7	M 44.18
LINCOLN	M		M		M		M		M		M		M	8	6.0	12	1.0	0	0.0	0	0.0	0	0.0	0	0.0	0	M 7.0	M 20	M 28.65
LURAY 5 E	M 0.0		M 0.0		M 0.0	0	M 0.0	0	0.0	0	0.0	0	25.1	9	M 0.5	3	1.0	1	0.2	0	0.0	0	0.0	0	0.0	0	M 26.8	M 13	M 43.96
MADISON	M		M		0.0	0	M		M		M		M		M		M		M		M		M		0.0	0	M 0.0	M 0	M 9.82
MANASSAS	M		M		M		M		M		M		M	9	M	4	M	1	M		M		M		0.0	0	M 0.0	M 14	M 34.02
MT WEATHER	M		M		M		M		M		M		M	3	M	4	M		0.0	0	0.0	0	0.0	0	0.0	0	M 0.0	M 7	M 47.56
PIEDMONT RSCH STN	M		M		M		M		M		M		M	5	M 4.0	1	1.0	0	M	0	0.0	0	M		0.0	0	M 5.0	M 6	M 48.04
SOMERSET	M		M		M		M		M		M		M	9	M	2	M	0	M		M		M		0.0	0	M 0.0	M 11	47.52
SPERRYVILLE	M		M		M		M		M		M		M	6	M	3	M	1	0.5	0	0.0	0	0.0	0	0.0	0	M 0.5	M 10	M 35.87
STERLING (RCS)	M 0.0		M 0.0		0.0	0	M 0.0	0	M 0.0	0	M T	0	29.9	9	3.1	5	1.3	1	T	0	0.0	0	0.0	0	0.0	0	M 34.3	M 15	46.57
VIENNA	M		M		M		M		M		M		M	10	M 4.2	5	M	1	M		M		M		0.0	0	M 4.2	M 16	33.23
WARRENTON 3 SE	M		M		M		M		M		M		M	2	M	2	M		M		M		M		0.0	0	M 0.0	M 4	M 26.67
WASHGTN DULLES INTL AP	0.0		0.0		0.0	0	0.0	0	0.0	0	T	0	29.9	9	3.1	5	1.3	1	T	0	0.0	0	T	0	0.0	0	34.3	M 15	42.10
WASHINGTON REAGAN NATL AP	0.0		0.0		0.0	0	0.0	0	0.0	0	0.0	0	18.8	9	3.1	2	0.3	0	T	0	T	0	0.0	0	0.0	0	22.2	M 11	37.31
WINCHESTER	M		M		M		M		M		M		M	9	M	3	1.4	1	0.0	0	0.0	0	0.0	0	0.0	0	M 1.4	M 13	36.79
WINCHESTER 7 SE	M		M 0.0		M	0	0.0	0	M 0.0	0	M 0.0	0	26.0	10	M 1.0	4	M	0	0.0	0	0.0	0	0.0	0	0.0	0	M 27.0	M 14	M 28.34
WOODSTOCK 2 NE	M		M		M		M		M		M		M	8	M	2	1.6	2	M	0	0.0	0	0.0	0	0.0	0	M 1.6	M 12	M 39.85
CENTRAL MOUNTAIN 05																													
BUENA VISTA	0.0		0.0		0.0	0	0.0	0	0.0	0	0.0	0	8.8	9	2.5	3	0.5	0	0.0	0	0.0	0	0.0	0	0.0	0	11.8	M 12	46.94
COVINGTON FLTR PLT	0.0		0.0		0.0	0	0.0	0	0.0	0	T	0	15.1	10	6.0	4	2.5	1	1.0	0	0.0	0	0.0	0	0.0	0	24.6	M 15	50.24
DALE ENTERPRISE	0.0		0.0		0.0	0	0.0	0	0.0	0	0.0	0	M 25.0	9	M 7.2	5	1.0	1	0.0	0	0.0	0	0.0	0	0.0	0	M 33.2	M 15	M 41.07
GATHRIGHT DAM	0.0		0.0		0.0	0	0.0	0	0.0	0	0.0	0	21.0	11	5.5	6	4.0	1	T	0	0.0	0	0.0	0	0.0	0	30.5	M 18	45.75
GLASGOW 1 SE	0.0		0.0		0.0	0	0.0	0	0.0	0	0.0	0	12.5	9	6.9	2	0.4	0	T	0	0.0	0	0.0	0	0.0	0	19.8	M 11	63.92
HOT SPRINGS	0.0		0.0		0.0	0	0.0	0	0.0	0	T	0	20.0	12	8.0	5	5.0	1	T	0	0.0	0	0.0	0	0.0	0	33.0	M 18	50.64
LEXINGTON	0.0		0.0		0.0	0	0.0	0	0.0	0	0.0	0	11.0	9	6.0	5	3.2	1	T	0	0.0	0	0.0	0	0.0	0	20.2	M 15	47.66
MILLGAP	M 0.0		M		M		M		M		M		M	11	M	13	3.2	1	M	2	0.0	0	M		0.0	0	M 3.2	M 27	45.80
MTN GROVE	0.0		0.0		0.0	0	0.0	0	0.0	0	T	0	19.0	10	7.0	9	4.0	1	T	0	0.0	0	0.0	0	0.0	0	30.0	M 20	46.52
MUSTOE 1 SW	M		M		M		M		M		0.5	0	19.7	12	10.3	8	3.6	2	M		M		M		0.0	0	M 34.1	M 22	M 45.49
NEW CASTLE	0.0		0.0		0.0	0	0.0	0	0.0	0	T	0	13.5	10	6.0	4	0.0	0	0.0	0	0.0	0	0.0	0	0.0	0	19.5	M 14	55.38
ROANOKE 8 N	0.0		0.0		0.0	0	M 0.0	0	M 0.0	0	0.0	0	M 16.6	8	8.0	3	0.0	0	0.0	0	0.0	0	0.0	0	0.0	0	M 24.6	M 11	51.38
ROANOKE INTL AP	0.0		0.0		0.0	0	0.0	0	0.0	0	T	0	13.5	9	8.5	3	1.0	1	T	0	0.0	0	0.0	0	0.0	0	23.0	M 13	54.27
STAUNTON WATER TRMTMT PLT	0.0		0.0		0.0	0	0.0	0	0.0	0	0.0	0	18.0	9	4.2	2	2.3	1	0.0	0	0.0	0	0.0	0	0.0	0	24.5	M 12	45.34
WAYNESBORO WTP	0.0		0.0		0.0	0	0.0	0	0.0	0	0.0	0	18.0	1	2.9	1	T	0	0.0	0	0.0	0	0.0	0	0.0	0	20.9	M 2	53.89
SOUTHWESTERN MOUNTAIN 06																													
ABINGDON 3S	0.0		0.0		0.0	0	0.0	0	0.0	0	0.0	0	7.8	6	6.5	6	0.0	0	0.0	0	0.0	0	0.0	0	0.0	0	14.3	M 12	M 51.38

TOTAL SNOWFALL AND NUMBER OF DAYS WITH ONE INCH OR MORE ON GROUND

VIRGINIA
201607

STATION	JUL		AUG		SEP		OCT		NOV		DEC		JAN		FEB		MAR		APR		MAY		JUN		TOTAL		TOTAL PRECIPITATION
	SNOWFALL	1 IN ON GD	SNOWFALL	1 IN ON GD	SNOWFALL	1 IN ON GD	SNOWFALL	1 IN ON GD	SNOWFALL	1 IN ON GD	SNOWFALL	1 IN ON GD	SNOWFALL	1 IN ON GD	SNOWFALL	1 IN ON GD	SNOWFALL	1 IN ON GD	SNOWFALL	1 IN ON GD	SNOWFALL	1 IN ON GD	SNOWFALL	1 IN ON GD	SNOWFALL	1 IN ON GD	
BIG STONE GAP	0.0		0.0		0.0	0	0.0	0	0.0	0	0.0	0	8.0	5	5.0	2	0.0	0	0.0	0	0.0	0	0.0	0	13.0	M 7	56.64
BLACKSBURG NWSO	T		0.0		0.0	0	0.0	0	T	0	T	0	14.2	10	9.8	10	1.0	1	0.6	0	0.0	0	0.0	0	25.6	M 21	49.31
BURKES GARDEN	0.0		0.0		0.0	0	0.0	0	M T	0	M T	0	19.4	13	M 12.0	12	0.4	0	2.0	2	0.0	0	0.0	0	M 33.8	M 27	M 52.10
CHRISTIANSBURG	0.0		0.0		0.0	0	0.0	0	0.0	0	T	0	15.0	11	9.6	7	1.0	1	T	0	0.0	0	0.0	0	25.6	M 19	48.68
CLINTWOOD 1 W	0.0		0.0		0.0	0	0.0	0	T	0	0.2	0	17.3	14	12.1	11	0.2	0	0.1	0	0.0	0	0.0	0	29.9	M 25	43.49
COPPER HILL	0.0		0.0		0.0	0	0.0	0	0.0	0	0.0	0	18.0	11	8.5	11	1.0	1	0.5	1	0.0	0	0.0	0	28.0	M 24	M 59.65
GALAX RADIO WBRF	0.0		0.0		0.0	0	0.0	0	0.0	0	T	0	13.6	0	6.7		0.6	1	0.3	0	M		0.0	0	M 21.2	M 1	M 52.65
GALAX WTP	0.0		0.0		0.0	0	0.0	0	0.0	0	0.0	0	8.0	9	7.0	4	0.4	0	0.0	0	0.0	0	0.0	0	15.4	M 13	53.27
GRUNDY	0.0		0.0		0.0	0	0.0	0	T	0	T	0	10.1	10	10.5	9	0.1	0	0.5	0	0.0	0	0.0	0	21.2	M 19	47.47
JOHN FLANNAGAN LAKE	0.0		0.0		0.0	0	0.0	0	0.0	0	0.0	0	M	5	M	3	0.0	0	0.0	0	0.0	0	0.0	0	M 0.0	M 8	M 0.00
LAFAYETTE 1 NE	0.0		0.0		0.0	0	0.0	0	0.0	0	0.0	0	15.8	10	9.8	5	0.7	0	T	0	0.0	0	0.0	0	26.3	M 15	50.04
LEBANON	0.0		0.0		0.0	0	0.0	0	0.0	0	0.0	0	6.2	3	F 1.5	2	0.0	0	0.0	0	0.0	0	0.0	0	M 6.2	M 5	45.75
NORA 4 SSE	0.0		0.0		0.0	0	0.0	0	T	0	T	0	18.5	9	M 16.7	9	0.3	0	0.3	0	0.0	0	0.0	0	M 35.8	M 18	M 46.73
N FK LAKE	M		M		M	0	M	0	M	0	M	0	M	7	M	4	M	0	M	0	M	0	0.0	0	M 0.0	M 11	M 20.78
PULASKI 2 E	0.0		0.0		0.0	0	0.0	0	0.0	0	0.0	0	M 11.0	2	8.0	5	1.0	1	0.8	0	0.0	0	0.0	0	M 20.8	M 8	M 49.01
RADFORD 3 N	0.0		0.0		0.0	0	0.0	0	0.0	0	0.0	0	12.0	10	9.5	4	1.0	1	T	0	0.0	0	0.0	0	22.5	M 15	48.63
RICHLANDS	0.0		0.0		0.0	0	0.0	0	T	0	M T	0	15.0	9	10.3	9	M 0.0	0	T	0	0.0	0	0.0	0	M 25.3	M 18	M 46.42
SALTVILLE 1N	0.0		0.0		0.0	0	0.0	0	0.0	0	T	0	M 12.2	11	6.9	6	T	0	T	0	0.0	0	0.0	0	M 19.1	M 17	52.79
STAFFORDSVILLE 3 ENE	0.0		0.0		0.0	0	0.0	0	0.0	0	M T	0	12.7	11	10.2	5	1.5	1	T	0	0.0	0	0.0	0	M 24.4	M 17	M 49.10
WILLIS	0.0		0.0		0.0	0	0.0	0	0.0	0	0.0	0	11.8	3	4.1	3	T	0	0.9	1	0.0	0	0.0	0	16.8	M 7	M 60.35
WISE 1SE	0.0		0.0		0.0	0	0.0	0	0.0	0	0.3	0	19.9	6	12.7	5	0.8	0	0.5	0	0.0	0	0.0	0	34.2	M 11	45.81
WYTHEVILLE	0.0		0.0		0.0	0	0.0	0	0.0	0	0.0	0	16.1	11	8.6	7	0.6	1	1.7	1	0.0	0	0.0	0	27.0	M 20	49.10

MONTHLY AND SEASONAL HEATING DEGREE DAYS

STATION	JUL	AUG	SEP	OCT	NOV	DEC	JAN	FEB	MAR	APR	MAY	JUN	TOTAL	SEASONAL NORM
VIRGINIA														
TIDEWATER 01														
DISPUTANTA	0	0	7	240	382	412	926	698	384	304	120	0	3473	3854
EASTVILLE	0	0	0	36E									M 36E	3674
EMPORIA 1 WNW	0	0	0					659E	280	205	57E	0	M 1201E	3717
FREDERICKSBURG SEWAGE	0	0	4E	255E	422	465E	996	758	401E	270E	177	2E	3750E	4411
HOLLAND 1 E	0	0	1	147	331	377E	815	606	302	250	86	0	2915E	3476
HOPEWELL	0	0	2	139	260	343E	777E	622E	273	207	65	0	2688E	3150
NORFOLK INTL AP	0	0	0	106	233	255	733	589	295	241	70	0	2522	3376
NORFOLK SOUTH	0	0	0	141	283	298	773	622	316	272	85	0	2790	3282
NORTH	0	0	5	195	353	387	893	693	408	318	144	1	3397	3859
PAINTER 2W	0	0	0	158	292	346	793	646	376	298	114	0	3023	3679
STONY CREEK 2 N	0	0	3	210	366	380	877	662	354	256	86	0	3194	3812
SUFFOLK LAKE KILBY	0	0	1	159	299	294	808	618	312	254	82	0	2827	3432
WAKEFIELD INW	0	0	4	206	358	365	877	671	347	286	99	0	3213	3820
WALKERTON 2 NW	0	0	2	180	326	376	837	650	313	235	91	0	3010	3713
WALLACETON LK DRUMMOND	0	19	11	226	378	417	933	696E	396	358	136E	5	3575E	3992
WALLOPS ISLAND NASA TEST FACIL	0	0	0	192	330	349	853	692	419	353	133	0	3321	4189
WARSAW 2 NW	0	0	2E	175E	279E	388E	914E	638E	326E	207E	105E	0	3034E	3725
WEST POINT 2 NW	0	0	2	200	355	400	848	688	321	241	87	0	3142	3677
WILLIAMSBURG 2 N	0	0	0	153	306	322	814	627	321	243	88	0	2874	3711
EASTERN PIEDMONT 02														
AMELIA COURTHOUSE 1	0	0	9E	210E	347E	449E	933E	691E	322E	267E	106E	0	3334E	4073
ASHLAND	0	0	3	248	392	428	918	701	341	230	123	0	3384	4096
BREMO BLUFF	0	0	26	268E	433E	499	986E	777	395	290	149	2	3825E	4059
CAMP PICKETT	0	0	10	252	393	471	959	709E	359	290	116	2	3561E	4256
CHASE CITY	0	0	7	222	340	393	841	633	332	240	96	0	3104	3919
CLARKSVILLE	0	0	3	171E	321	408	880	670	294	212E	76	0	3035E	3705
CORBIN	0	0	3	242	379	420	919	712	352	274	147	1	3449	4419
CROZIER	0	0	21	282E	418	473	971	751	379E	326	164	5E	3790E	4311
FARMVILLE 2 N	0	0	13	249	408	454	945	755	374	279	120	3	3600	4387
JOHN H KERR DAM	0	0	0	180	309	371	850	646	297	213	70	0	2936	3590
KEYSVILLE 2 S				251E	374	436	923	703	361	280	118	2	M 3448E	
LOUISA	0	0	15	289	438	495	974	726	374	277	137	0	3725	4241
PALMYRA 3S	0	0	22	298	439	505	1019	798	459	337	147	4	4028	4861
PETERSBURG	0	0	3	221	363	388	889	674	358	282	99	0	3277	3771
RICHMOND INTL AP	0	0	0	231	361	403	901	692	358	269	110	0	3325	3771
SANDSTON	0	0	10	269	410	443	947	540E					M 2619E	4146
WESTERN PIEDMONT 03														
APPOMATTOX	0	0	22	256	394	477	976	768	378	275	122	1	3669	4396
BROOKNEAL	0	0	19	274	425	495	963	752	393E	261	88	2	3672E	5487
CHARLOTTESVILLE 2W	0	0	23	240	356	456	963	770	371	281	146	0	3606	4148
CHATHAM	0	0	41	309	467	534	1002	808	423	312	139	8	4043	4691
DANVILLE RGNL AP	0	0	6	195	341	391	883	669E	293	227	79	0	3084E	3815
FREE UNION	0	0	48	315	485	563	1054	848	472	335	198	7	4325	
LYNCHBURG INTL AP	0	0	27	295E	407	484	983	789	390	292	117	1	3785E	4459
MARTINSVILLE FLTR PLT	0	0	36	273	418E	479E	989	779E	419E	294	121	0	3808E	4455
MEADOWS OF DAN 5 SW	0	0	50	239E	407	464E	961E	806E	399E	314	129E	3E	3772E	
MONTEBELLO FISH CULTURAL STN	4E	9E	91E	341E	694E	639E	1158E	904E	571E	524E	230E	16E	5181E	
MONTICELLO	0	0	37	285	430E	515	1007	803	403		171	0	M 3651E	4733
ROCKY MT	0	0	30	270	413	490E	969	795E	401	302	121	4E	3795E	4496
SOUTH BOSTON	0	0	11	221	388	442	910	711	348E	248	83	0	3362E	4221
STUART	0	0	27	237	384	454	924	713E	356	258	103	3	3459E	4133
TYE RVR 1 SE	0	5	34	247									M 286	4284
NORTHERN 04														
FRONT ROYAL	0	3E	55E	309	481E	571	1071	842E	478	351E	164E	4	4329E	4790
LINCOLN	0	0	33	360	491	592	1097	861	538	375	210E	1E	4558E	5231
LURAY 5 E	0	0	55E	344E	447	513	1040	818E	470	356	202	9	4254E	4699
MADISON	0	0	17	254	378E	647E							M 1296E	4730
MANASSAS	0	0	8E	294E	435	507E	1030	808	434	318E	162E	3E	3999E	4639
MT WEATHER	0	0	50	323	459	596	1076E	902	534	432	262	6	4640E	5302
PIEDMONT RSCH STN	0	0	20	272	404	498	995	786	425	324	166	3	3893	4503
SOMERSET	0	0	26	298	441	516	1039	805	442	311	161	4	4043	4700
SPERRYVILLE	0	0	31E	296E	457E	620E	1036E	741E	477E	366E	197E	7E	4228E	4745
STERLING (RCS)	0	0	12E	328	472	550E	1084	860	506	359E	190	4	4365E	5001
VIENNA	0	0	4	259	392	462	979	777	431	393	221	5	3923	4881
WARRENTON 3 SE	0	0	17E	294	429E	510E	1026E	976E					M 3252E	4700
WASHGTON DULLES INTL AP	0	0	6	304	440	503	1033	805	446	335	164	3	4039	4717
WASHINGTON REAGAN NATL AP	0	0	0	197	338	421	923	722	351	269	119	0	3340	4030
WINCHESTER	0	0	39	353	496	564	1079	854	509	358	202	5	4459	5052
WINCHESTER 7 SE	0	0	39E	372	512E	609E	1138	924E	543E	453E	202	10E	4802E	5368
WOODSTOCK 2 NE	0	0	47	346	496	600E	1138	890	581	396	237	9	4740E	5419
CENTRAL MOUNTAIN 05														
COVINGTON FLTR PLT	0	0	37	268	450E	548	1086E	849	491E	297	151	9E	4186E	4728
DALE ENTERPRISE	0	0	38	349	519	591	1119	887	521	394	220	6	4644	5461
GATHRIGHT DAM	1	6	69	355	518	612	1152	938	535	349	214	16	4765	5331
HOT SPRINGS	2	10	88	396	540	620	1182E	947	542	391	227	18	4963E	5627

MONTHLY AND SEASONAL HEATING DEGREE DAYS

STATION	JUL	AUG	SEP	OCT	NOV	DEC	JAN	FEB	MAR	APR	MAY	JUN	TOTAL	SEASONAL NORM
LEXINGTON	0	0	46	303	464	571	1074	842	462	311	141	4	4218	4681
MILLGAP	11	41	126	470	633	699	1291	1014	694	543	304	76	5902	6438
MUSTOE 1 SW	2	23E	115	463	594	663	1246	1021	623		262	49	M 5061E	6271
ROANOKE 8 N	0	0	32E	252	408	493	999E	777E	413	285	129E	0	3788E	4354
ROANOKE INTL AP	0	0	21	239	382	461	970	761	339	240	92	0	3505	4143
STAUNTON WATER TRMTMT PLT	0	0	55	313	442	544	1060	856	463	349	207	7	4296	5009
WAYNESBORO WTP	0	0	55	336	502	550	1100	860	503	359	192	8	4465	5104
SOUTHWESTERN MOUNTAIN 06														
ABINGDON 3S	4	1E	42	289E	470	511	1063	832	484	321	160	9	4186E	4842
BIG STONE GAP	0	0	26	254	435	495	1060	804	453	297	149	1	3974	4558
BLACKSBURG NWSO	0	1	68	342	502	570	1120	908	519	382	188	14	4614	5445
BURKES GARDEN	4E	41E	135E	474E	632E	641E	1234	992E	646E	516E	303E	59	5677E	6242
CHRISTIANSBURG	0	2	82	373E	486E	551	1109	892	490	371	204	11	4571E	4987
CLINTWOOD 1 W	0	11	62	338	514	564	1165	849	521	340	203	12	4579	5315
COPPER HILL	0	1	92	381E	502E	534E	1140E	936E	524	408	240	19	4777E	
GALAX RADIO WBRF	0	0	81	337	503	517	1043	840	450	357		23E	M 4151E	5355
GALAX WTP	0	0	58E	250E	451	523	1090E	885	548	418	188	17	4428E	5503
GRUNDY	0	4	35	284	448	518	1091	813	464	293	183	8E	4141E	4932
JOHN FLANNAGAN LAKE	0	0	0	202E	352E	473E	1089E	738E	430E	210E	172E	0	3666E	
LEBANON	0	3	51	315	497	496	1101	809	476	343	181	11	4283	5081
NORA 4 SSE	0	8	49	289	453E	496	1113	862	470	400E	214E	5E	4359E	5304
N FK LAKE	0	8E	18E	232E	398E	501E	1131E	789E	425E	313E	208E	11E	4034E	
PULASKI 2 E	0	4	76	340E	496	585E	1109	898E	520	348	167	14E	4557E	5096
RADFORD 3 N	0	2	67	356	494	569	1112	878	525	389	188	24	4604	5486
RICHLANDS	0	6E	59	319E	487	537E	1123	834	480E	357	190E	11	4403E	5219
SALTVILLE 1N	0	2E	35	283E	485	538	1097E	846	506	340	151	10E	4293E	4942
STAFFORDSVILLE 3 ENE	0	5	67	349	516	559E	1131	908	533	389	187	21	4665E	5267
WISE 1SE	0	12	49	284	431	489	1051	797	415	297	194	11	4030	4848
WYTHEVILLE	0	2	84	345	524	567	1136	901	513	386	197	19	4674	5578

VIRGINIA
201607

SNOWFALL AND SNOW ON GROUND (INCHES)

STATION		DAY OF MONTH																															
		01	02	03	04	05	06	07	08	09	10	11	12	13	14	15	16	17	18	19	20	21	22	23	24	25	26	27	28	29	30	31	
VIRGINIA																																	
TIDEWATER 01																																	
DISPUTANTA	SNOWFALL																																
EASTVILLE	SNOWFALL																																
EMPORIA 1 WNW	SNOWFALL																																
FREDERICKSBURG SEWAGE	SNOWFALL																																
	SN ON GND																																
HOLLAND 1 E	SNOWFALL																																
HOPEWELL	SNOWFALL				-	-	-	-																									
	SN ON GND				-	-	-	-																									
NORFOLK INTL AP	SNOWFALL																																
	SN ON GND																																
NORFOLK SOUTH	SNOWFALL																																
NORTH	SNOWFALL																																
	SN ON GND																																
PAINTER 2W	SNOWFALL																																
STONY CREEK 2 N	SNOWFALL																																
	SN ON GND																																
SUFFOLK LAKE KILBY	SNOWFALL																																
	SN ON GND																																
WAKEFIELD 1NW	SNOWFALL																																
	SN ON GND																																
WALKERTON 2 NW	SNOWFALL																																
	SN ON GND																																
WALLACETON LK DRUMMOND	SNOWFALL																																
WALLOPS ISLAND NASA TEST FACIL	SNOWFALL																																
	SN ON GND																																
WARSAW 2 NW	SNOWFALL																																
WEST POINT 2 NW	SNOWFALL																																
	SN ON GND																																
WILLIAMSBURG 2 N	SNOWFALL																																

Snowfall: Includes snow and ice. Values for NWS stations (J index note) are Mid-Mid (LST).

Snow on ground: Includes snow, sleet, ice, and hail. Values for NWS stations (J index note) are observed at 12 UTC (GMT).

Water Equivalent: Given for NWS stations (J index note) only, when snow depth is 2 inches or more, and is measured at 18 UTC (GMT)

VIRGINIA
201607

PAN EVAPORATION AND WIND

STATION		DAY OF MONTH																															TOTAL OR AVERAGE		
		01	02	03	04	05	06	07	08	09	10	11	12	13	14	15	16	17	18	19	20	21	22	23	24	25	26	27	28	29	30	31			
VIRGINIA EASTERN PIEDMONT 02 JOHN H KERR DAM	WIND	-	-	-	-	-	-	-	-	-	-	-	-	-	-	-	-	-	-	-	-	-	-	-	-	-	-	-	-	-	-	-	-	-	M
	EVAP	-	-	-	-	-	-	-	-	-	-	-	-	-	-	-	-	-	-	-	-	-	-	-	-	-	-	-	-	-	-	-	-	-	M
	MAX	-	-	-	-	-	-	-	-	-	-	-	-	-	-	-	-	-	-	-	-	-	-	-	-	-	-	-	-	-	-	-	-	-	M
	MIN	-	-	-	-	-	-	-	-	-	-	-	-	-	-	-	-	-	-	-	-	-	-	-	-	-	-	-	-	-	-	-	-	-	M

Evaporation: Is measured in hundreths of inches.

Wind: Is measured in miles.

Max and Min: The maximum and minimum temperatures (Fahrenheit) of the water in the evaporation pan.

STATION INDEX

STATION	INDEX NO.	DIVISION	COUNTY	LATITUDE	LONGITUDE	ELEVATION (IN FEET)	OBSERVATION TIME AND TABLES			
							LOCAL STD TIME			
							TEMP	PRECIP	EVAP	SPECIAL SEE (NOTES)
VIRGINIA										
ABINGDON 3S	0021	06	WASHINGTON	36 40	81 58W	1925	22	22		H
ALBERTA 5N	0079	02	BRUNSWICK	36 56	77 54W	376		08		H
ALTAVISTA	0166	03	CAMPBELL	37 7	79 17W	529		07		CH
AMELIA COURTHOUSE 1	0187	02	AMELIA	37 21	77 59W	345	08	08		H
APPOMATTOX	0243	03	APPOMATTOX	37 20	78 50W	850	07	07		H
ASHLAND	0327	02	HANOVER	37 45	77 29W	220	18	18		H
BEDFORD 4 NW	0561	03	BEDFORD	37 23	79 34W	1228		07		CH
BIG STONE GAP	0735	06	WISE	36 52	82 46W	1464	08	08		H
BLACKSBURG NWSO	0766	06	MONTGOMERY	37 12	80 25W	2103	07	07		H
BREMO BLUFF	0993	02	FLUVANNA	37 43	78 17W	225		07		CH
BROOKNEAL	1082	03	CAMPBELL	37 4	78 57W	408	07	07		H
BUCKINGHAM	1136	02	BUCKINGHAM	37 30	78 32W	580		07		H
BUENA VISTA	1159	05	ROCKBRIDGE	37 44	79 22W	840		07		H
BURKES GARDEN	1209	06	TAZEWELL	37 6	81 20W	3068	07	07		H
CAMP PICKETT	1322	02	NOTTOWAY	37 2	77 57W	330	08	08		CH
CHARLOTTESVILLE 2W	1593	03	ALBEMARLE	38 2	78 31W	866	08	08		H
CHASE CITY	1606	02	MECKLENBURG	36 47	78 29W	510	17	17		H
CHATHAM	1614	03	PITTSYLVANIA	36 49	79 25W	651	07	07		CH
CHRISTIANSBURG	1692	06	MONTGOMERY	37 8	80 24W	2100	07	07		H
CLARKSVILLE	1746	02	MECKLENBURG	36 37	78 33W	330	07	07		H
CLINTWOOD 1 W	1825	06	DICKENSON	37 9	82 29W	1780	07	07		H
CONCORD 4 SSW	1955	03	CAMPBELL	37 17	78 58W	815		07		H
COPPER HILL	1999	06	FLOYD	37 5	80 9W	2690	07	07		H
CORBIN	2009	02	CAROLINE	38 12	77 22W	220	09	09		H
COVINGTON FLTR PLT	2044	05	ALLEGHANY	37 49	79 59W	1230	07	07		H
CROZIER	2142	02	GOOCHLAND	37 40	77 53W	350	07	07		H
DALE ENTERPRISE	2208	05	ROCKINGHAM	38 27	78 56W	1358	07	07		H
DANVILLE RGNL AP	2250	03	PITTSYLVANIA	36 34	79 20W	571	24	24		H
DISPUTANTA	2400	01	PRINCE GEORGE	37 7	77 12W	15	07	07		H
EASTVILLE	2635	01	NORTHAMPTON	37 23	75 58W	10	07	07		H
EDINBURG	2663	04	SHENANDOAH	38 48	78 35W	928	07	07		H
EMPORIA 1 WNW	2790	01	GREENSVILLE	36 42	77 34W	100	08	08		H
FARMVILLE 2 N	2941	02	CUMBERLAND	37 20	78 23W	450	07	07		H
FREDERICKSBURG SEWAGE	3204	01	FREDERICKSBURG	38 17	77 27W	15	07	07		H
FREE UNION	3213	03	ALBEMARLE	38 5	78 35W	590	08	07		H
FRONT ROYAL	3229	04	WARREN	38 54	78 11W	930	06	06		CH
GALAX RADIO WBRF	3267	06	CARROLL	36 40	80 55W	2385	17	17		H
GALAX WTP	3272	06	CARROLL	36 39	80 55W	2360	07	07		CH
GATHRIGHT DAM	3310	05	ALLEGHANY	37 57	79 57W	1770	07	07		CH
GLASGOW 1 SE	3375	05	ROCKBRIDGE	37 37	79 26W	737		07		H
GREENBAY 3 NE	3565	02	PRINCE EDWARD	37 11	78 17W	500	09	09		H
GRUNDY	3640	06	BUCHANAN	37 17	82 5W	1170	07	07		H
HOLCOMB ROCK	4039	03	BEDFORD	37 33	79 24W	900		07		H
HOLLAND 1 E	4044	01	SUFFOLK	36 41	76 46W	80	08	08		H
HOPEWELL	4101	01	PRINCE GEORGE	37 18	77 17W	40	16	16		H
HOT SPRINGS	4128	05	BATH	37 60	79 50W	2236	07	07		H
HUDDLESTON 4 SW	4148	03	BEDFORD	37 8	79 32W	898		07		H
JOHN FLANNAGAN LAKE	4410	06	DICKENSON	37 14	82 21W	1460	07	07		H
JOHN H KERR DAM	4414	02	MECKLENBURG	36 36	78 18W	250	08	08	08	CH
KEYSVILLE 2 S	4568	02	CHARLOTTE	37 1	78 29W	625	07	07		H
LAFAYETTE 1 NE	4676	06	MONTGOMERY	37 14	80 12W	1320		07		H
LEBANON	4777	06	RUSSELL	36 54	82 2W	1912	07	07		H
LEXINGTON	4876	05	ROCKBRIDGE	37 47	79 26W	1097	07	07		H
LINCOLN	4909	04	LOUDOUN	39 5	77 42W	500	07	07		H
LOUISA	5050	02	LOUISA	38 3	78 0W	420	18	18		H
LURAY 5 E	5096	04	PAGE	38 40	78 22W	1400	08	08		H
LYNCHBURG INTL AP R	5120	03	CAMPBELL	37 19	79 12W	940	24	24		HJ
MADISON	5150	04	MADISON	38 22	78 15W	577	08	08		H
MANASSAS	5204	04	MANASSAS	38 44	77 30W	245	07	07		H
MARTINSVILLE FLTR PLT	5300	03	HENRY	36 42	79 52W	760	07	07		H
MEADOWS OF DAN 5 SW	5453	03	PATRICK	36 40	80 27W	2225	07	07		H
MILLGAP	5595	05	HIGHLAND	38 18	79 43W	2421	06	06		CH
MONTEBELLO FISH CULTURAL STN	5690	03	NELSON	37 51	79 8W	2667	07	07		H
MONTICELLO	5700	03	ALBEMARLE	38 1	78 27W	758	07	07		H
MT WEATHER	5851	04	LOUDOUN	39 4	77 53W	1659	07	07		H

STATION INDEX

STATION	INDEX NO.	DIVISION	COUNTY	LATITUDE	LONGITUDE	ELEVATION (IN FEET)	OBSERVATION TIME AND TABLES			
							LOCAL STD TIME			
							TEMP	PRECIP	EVAP	SPECIAL SEE (NOTES)
MTN GROVE	5756	05	BATH	38 6	79 53W	1775		07		H
MUSTOE 1 SW	5880	05	HIGHLAND	38 20	79 40W	2380	24	24		H
N FK LAKE	6173	06	WISE	37 7	82 38W	1675	08	08		H
NEW CASTLE	6012	05	CRAIG	37 31	80 6W	1258		07		H
NORA 4 SSE	6125	06	DICKENSON	37 1	82 19W	2650	07	07		H
NORFOLK INTL AP R	6139	01	NORFOLK (CITY)	36 54	76 12W	30	24	24		HJ
NORFOLK SOUTH	6147	01	NORFOLK (CITY)	36 52	76 14W	100	24	24		H
NORTH	6161	01	MATHEWS	37 26	76 26W	10	07	07		H
PAINTER 2W	6475	01	ACCOMACK	37 35	75 49W	30	16	16		CH
PALMYRA 3S	6491	02	FLUVANNA	37 49	78 16W	410	06	06		H
PEDLAR DAM	6593	03	AMHERST	37 40	79 17W	1024		07		H
PETERSBURG	6656	02	PETERSBURG	37 14	77 24W	15	08	08		H
PIEDMONT RSCH STN	6712	04	ORANGE	38 14	78 7W	520	08	08		CH
PULASKI 2 E	6955	06	PULASKI	37 3	80 47W	1850	07	07		CH
RADFORD 3 N	6999	06	PULASKI	37 12	80 35W	1800	07	07		H
RICHLANDS	7174	06	TAZEWELL	37 6	81 48W	1910	07	07		H
RICHMOND INTL AP R	7201	02	HENRICO	37 30	77 19W	164	24	24		HJ
ROANOKE 8 N	7278	05	ROANOKE	37 22	79 58W	1190	07	07		H
ROANOKE INTL AP R	7285	05	ROANOKE	37 19	79 58W	1175	24	24		HJ
ROCKY MT	7338	03	FRANKLIN	36 59	79 54W	1315	07	07		CH
SALTVILLE 1N	7506	06	SMYTH	36 53	81 46W	1733	07	07		H
SANDSTON	7541	02	HENRICO	37 33	77 17W	165	07	07		H
SOMERSET	7904	04	ORANGE	38 15	78 16W	510	08	08		H
SOUTH BOSTON	7925	03	HALIFAX	36 42	78 53W	329	07	07		H
SPERRYVILLE	7985	04	RAPPAHANNOCK	38 39	78 14W	750	06	06		H
STAFFORDSVILLE 3 ENE	8022	06	GILES	37 16	80 43W	1950	07	07		CH
STAUNTON WATER TRMTMT PLT	8062	05	AUGUSTA	38 10	79 5W	169	08	08		H
STERLING (RCS)	8084	04	LOUDOUN	38 59	77 29W	288	07	07		H
STONY CREEK 2 N	8129	01	SUSSEX	36 58	77 24W	105	08	08		H
STUART	8170	03	PATRICK	36 38	80 15W	1375	07	07		H
SUFFOLK LAKE KILBY	8192	01	SUFFOLK	36 44	76 36W	22	24	24		H
TYE RVR 1 SE	8600	03	NELSON	37 38	78 56W	720	07	07		H
VIENNA	8737	04	FAIRFAX	38 54	77 16W	418	07	07		H
WAKEFIELD 1NW	8800	01	SUSSEX	36 59	77 0W	113	24	24		CH
WALKERTON 2 NW	8829	01	KING AND QUEEN	37 45	77 2W	50	18	18		H
WALLACETON LK DRUMMOND	8837	01	CHESAPEAKE	36 36	76 26W	20	08	08		H
WALLOPS ISLAND NASA TEST FACIL R	8849	01	ACCOMACK	37 56	75 28W	46	24	24		HJ
WARRENTON 3 SE	8888	04	FAUQUIER	38 41	77 46W	500	08	08		H
WARSAW 2 NW	8894	01	RICHMOND	37 59	76 47W	140	18	18		H
WASHGTN DULLES INTL AP R	8903	04	LOUDOUN	38 56	77 28W	290	24	24		HJ
WASHINGTON REAGAN NATL AP R	8906	04	ARLINGTON	38 51	77 2W	10	24	24		HJ
WAYNESBORO WTP	8941	05	WAYNESBORO	38 5	78 53W	1270	07	07		H
WEST POINT 2 NW	9025	01	KING WILLIAM	37 34	76 48W	20	17	17		H
WILLIAMSBURG 2 N	9151	01	YORK	37 18	76 42W	70	24	24		CH
WILLIS	9169	06	FLOYD	36 55	80 30W	2810		07		CH
WINCHESTER	9181	04	FREDERICK	39 11	78 9W	720	07	07		H
WINCHESTER 7 SE	9186	04	FREDERICK	39 11	78 7W	680	08	08		H
WINTERPOCK 4 W	9213	02	CHESTERFIELD	37 19	77 39W	300		07		H
WISE 1SE	9215	06	WISE	36 58	82 33W	2564	09	09		CH
WOODSTOCK 2 NE	9263	04	SHENANDOAH	38 54	78 28W	675	07	07		H
WOOLWINE	9272	03	PATRICK	36 47	80 17W	1500		07		H
WYTHEVILLE	9301	06	WYTHE	36 58	81 5W	2458	07	07		H

REFERENCE NOTES

STATION NAMES: Name of the city, town or locality. Figures and letters following the station names indicate the distance in miles and direction from the post office or town community center.

DIVISIONS: Areas within a state of similar climatological characteristics. Division averages are calculated using data from stations that record temperature and/or precipitation. Station Precipitation totals flagged with an 'F' or 'M' are excluded from the Divisional Average calculations of precipitation. Stations with monthly Temperature averages flagged with an 'F' or 'M' are included in the Divisional Average if there are no more than 9 flagged or missing daily values in the month, else they are excluded from the divisional average for temperature.

NORMALS: The average value of the meteorological element over a time period. Effective 1 January 2012, the averaging period for station departures is 1981 to 2010. The normals for National Weather Service localities have been adjusted so as to be representative for the current observation site.

The January 2011 through December 2015 publications incorrectly state the computation of divisional departures. Climate Division departures have been, and continue to be, computed from 1971-2000 Normals, not 1981-2010 as stated. Station departures are accurately described as departures from 1981-2010.

MONTHLY DEGREE DAY TOTALS: One heating (cooling) degree day is accumulated for each whole degree that the daily mean temperature is below (above) 65 degrees Fahrenheit.

PRECIPITATION: Values shown in hundredths of inches are water equivalent totals, i.e., total of liquid and melted frozen precipitation. In the "Monthly Summarized Data" table the total snow and sleet values shown in tenths of inches are unmelted amounts. The max depth on ground values of snow and sleet shown in whole inches are cumulative unmelted amounts. The number of days with .10, .50, 1.00 or more refers to water equivalents.

PRECIPITATION QUALITY CONTROL: The NCEI quality control process may flag precipitation data that are spatially inconsistent, exceed climatological limits, or are inconsistent with prevailing weather patterns.

TEMPERATURE: Original temperature values are given in the "Daily Temperature" table. Summary temperature information (averages, departures, extremes, monthly degree day totals) is based on the values labeled MAX/MIN.

WIND: (As shown in the "Evaporation and Wind" table) the total wind movement in miles over the evaporation pan as determined by an anemometer recorder located 6-8 inches above the pan.

SYMBOLS AND LETTERS USED IN THE STATION INDEX TABLE

C Station is equipped with recording rain gage (R) but values in this bulletin are from a non-recording rain gage unless indicated by an R.
G Observations appear in the "Soil Temperatures" table.
H Observations appear in the "Snowfall and Snow on the Ground" table.
J Station also published as a Local Climatological Data publication.
VAR Observation time varies.
SR / SS Observation time near sunrise / Observation time near sunset, respectively.

SYMBOLS AND LETTERS USED IN THE DATA TABLES

(DAILY DATA ARE FOR THE 24 HOURS IMMEDIATELY PRECEDING OBSERVATION TIME.)

BLANK Entries in the "Monthly Summarized Data" table indicate no record.

BLANK Entries in the "Daily Precipitation" and "Snowfall and Snow on the Ground" tables indicate zero.

BLANK Entries in the "Daily Temperature" table indicate a missing record

- No record. Data not recorded or not received in time for publication.

+ Precipitation or temperature extremes occurred on one or more previous dates during the month.

* Rain gage not read. Precipitation is included in the amount following the asterisks.

Time distribution may not be known. A * preceding the monthly total indicates precipitation amount is being carried forward to next month's total, and may include amounts from the previous month(s).

a As a subscript, indicates accumulated total.

A Amount of precipitation is the total of observer's entries for the current month. It may include precipitation that occurred during the previous month. Refer to earlier bulletin to determine date of last

reading. (Hawaii stations)

B Divisional Departure from normals are computed using 1971-2000 normals.

E Normalized HDD/CDD Calculation. E is appended to the HDD/CDD Calculation when 1-9 individual daily TMAX and/or TMIN values are missing and a Normalized HDD/CDD Calculation is provided. M appears alone if 10 or more daily values are missing.

F Monthly calculation flagged value. F is appended to average and/or total values computed which exclude one or more daily data values that have been flagged by the GHCN-Daily Dataset

M Insufficient or partial data. M is appended to average and/or total values computed with 1-9 daily values missing. M appears alone if 10 or more daily values are missing, (8 or more for wind and evaporation).

N Indicates snow fall or Snowdepth totals are computed with one or more missing days.

R Amounts from recording rain gage.

T Trace. An amount too small to measure.

SEASONAL TABLES: Monthly and seasonal snowfall and heating degree days for the 12 months ending with the June data are published in the July issue of this bulletin. Cooling degree days for the calendar year are published in the "Climatological Data Annual Summary."

Information concerning the history of changes in locations, exposure, etc. of substations is kept on file at the National Centers for Environmental Information. Historical information of regular National Weather Service Offices may be obtained from the "Local Climatological Data" annual publication. The contents of this publication may be reprinted or otherwise used freely, with proper credit to the National Centers For Environmental Information. The data are also available digitally.

Effective with the January 2011 Data-Month, COOP Observer Names are no longer included in the Monthly and Annual Climatological Data Publications. This information is not published to ensure the privacy of personal information pursuant to Section 208 of the E-Government Act of 2002 (44 USC 3601).

As of the 2011 Data-Year, Station and Climate Division Maps are no longer being included in the CD Publications. NCEI's Products Branch provides updated Station Maps for various data networks via the Historical Observing Metadata Repository: <http://www.ncdc.noaa.gov/homr>.

The GHCN-Daily Quality Control Flags shown below are displayed as superscripts with the data. For more information on Global Historical Climatology Network - Daily and flags, see: <http://www.ncdc.noaa.gov/oa/climate/ghcn-daily/> and Comprehensive Automated Quality Assurance of Daily Surface Observations. Durre, Imke, Matthew J. Menne, Byron E. Gleason, Tamara G. Houston, Russell S. Vose, 2010: J. Appl. Meteor. Climatol., 49, 16151633. doi: 10.1175/2010JAMC2375.1

Blank = Passed All checks	N = failed naught check
D = failed duplicate check	O = failed climatological outlier check
G = failed gap check	R = failed lagged range check
I = failed internal consistency check	S = failed spatial consistency check
K = failed streak/frequent-value check	T = failed temporal consistency check
L = failed check on length of multiday period	W = temperature too warm for snow
M = failed megaconsistency check	X = failed bounds check
	Z = flagged as a result of an official Datzilla investigation

Beginning with the January 2013 CD Publication, monthly mean temperature calculations have changed to the National Data Stewardship Team standard. Monthly maximum and minimum temperatures are not rounded until after the monthly mean temperature is calculated. This is the most accurate outcome, but may be slightly different from the mean derived from rounded monthly maximum and minimum.

The climate division temperature and precipitation values in this publication are based on simple averages from the current set of NWS-Designated Open and Published COOP and First Order Sites within each division. These values differ from those found in NCEI's nClimDiv product. Beginning in February 2014, the nClimDiv product is used by NCEI's Monitoring Branch and in its monthly climate reports. For more details on nClimDiv, please go to <http://www.ncdc.noaa.gov/monitoring-references/maps/us-climate-divisions.php>.

Effective January 2016, Alaska's Climate Divisions are updated to reflect the 13 climate divisional boundaries established by University of Alaska-Fairbanks, NWS, NCEI, Oregon State University, and University of Nebraska-Lincoln. For more details regarding the updated Alaska Climate Divisions, see: <http://journals.ametsoc.org/doi/pdf/10.1175/JAMC-D-11-0168.1> (Bienek et al., 2012).

NOAA National Centers for Environmental Information
Attn: Customer Engagement Branch
151 Patton Avenue
Asheville, NC 28801-5001

Customer Services Number: (828) 271-4800, option 2
TDD : (828) 271-4010
Fax number: (828) 271-4876

NCEI now offers free online access to the *Climatological Data* publication.
Go to : www.ncdc.noaa.gov and choose Most Popular.