



CLIMATOLOGICAL DATA

VIRGINIA

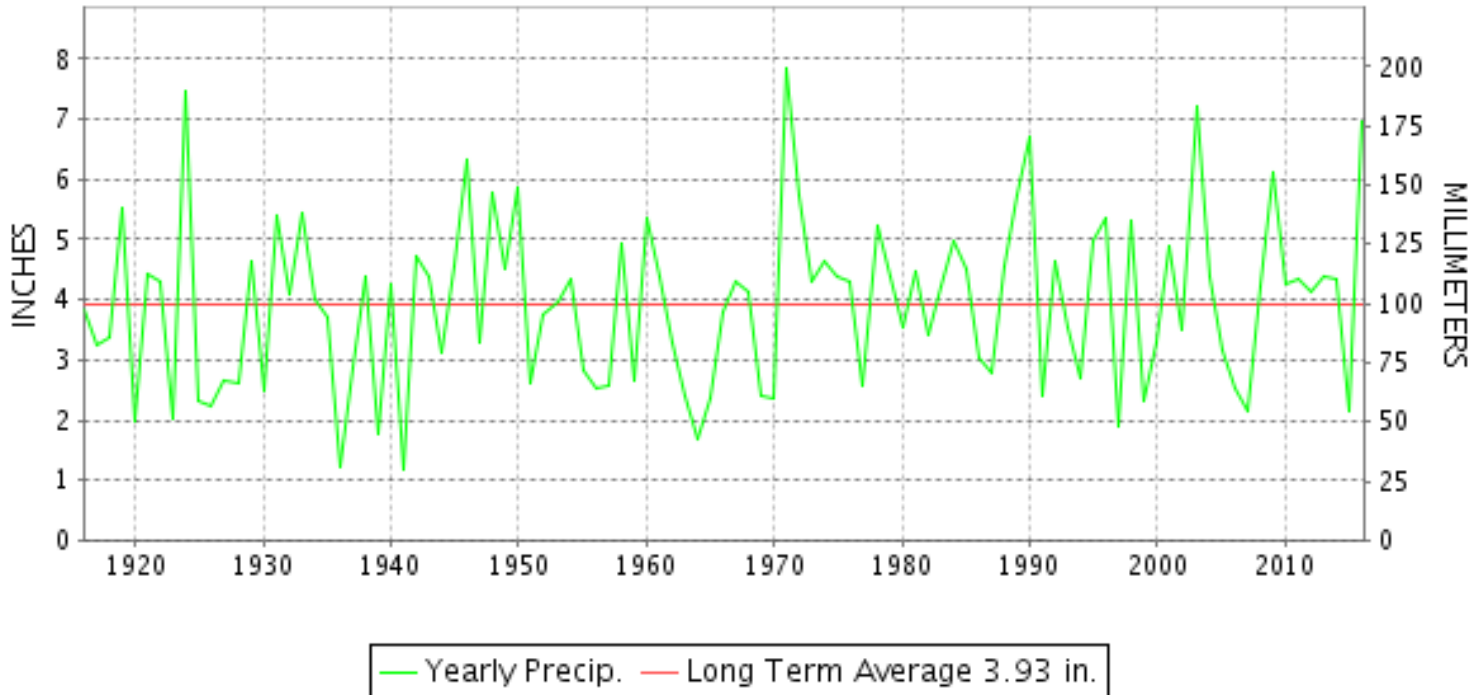
MAY 2016

VOLUME 126 NUMBER 05

ISSN 0364-5630

GHCND Ver: 3.22-upd-2016082405

MAY PRECIPITATION BY YEAR



TEMPERATURE AND PRECIPITATION EXTREMES

VIRGINIA

HIGHEST TEMPERATURE	98	MAY 27+	2 STATIONS
LOWEST TEMPERATURE	26	MAY 16	WOODSTOCK 2 NE
GREATEST TOTAL PRECIPITATION	11.13		ASHLAND
LEAST TOTAL PRECIPITATION	2.89		ABINGDON 3S
GREATEST 1 DAY PRECIPITATION	3.38	MAY 06	CHASE CITY
GREATEST TOTAL SNOWFALL	T		2 STATIONS

"I certify that this is an official publication of the National Oceanic and Atmospheric Administration (NOAA) It is compiled using information from weather observing sites supervised by NOAA/National Weather Service and received at the National Centers for Environmental Information(NCEI), Asheville, North Carolina 28801."

Director
National Centers for Environmental Information

noaa

National
Oceanic and
Atmospheric Administration

National
Environmental Satellite, Data
and Information Service

National
Centers for Environmental Information
Asheville, North Carolina

VIRGINIA
201605

MONTHLY STATION AND DIVISION SUMMARY

STATION	TEMPERATURE (°F)											PRECIPITATION (IN)												
	AVERAGE MAXIMUM	AVERAGE MINIMUM	AVERAGE	DEPARTURE FROM NORMAL	HIGHEST	DATE	LOWEST	DATE	HEATING DEG. DAYS	COOLING DEG. DAYS	NO. OF DAYS				TOTAL	DEPARTURE FROM NORMAL	GREATEST 24 HOURS	DATE	ICE PELLETS, SNOW			NO. OF DAYS		
											MAX		MIN						TOTAL	MAX DEPTH ON GROUND	DATE	.10 OR MORE	.50 OR MORE	1.00 OR MORE
											>=90	<=32	<=32	<=0										
PALMYRA 3S	71.8	51.8	61.8	0.6	88	28+	35	16	147	54	0	0	0	0	5.48	1.78	1.60	21	M			11	3	2
PETERSBURG	73.8	54.4	64.1	-2.4	88	26	40	15	99	77	0	0	0	0	8.86	5.00	1.55	05	M			13	6	5
RICHMOND INTL AP	72.6	54.9	63.8	-2.6	89	26	39	16	110	79	0	0	0	0	9.79	6.01	1.62	06	0.0	0		13	9	4
SANDSTON	M	M	M								0	0	0	0	M				M					
WINTERPOCK 4 W															9.88	2.25		03	M			12	7	5
--DIVISIONAL DATA-----> WESTERN PIEDMONT 03			63.5	-0.6B										8.43	4.30B									
ALTAVISTA														6.46		1.52	21	0.0	0			9	5	3
APPOMATTOX	71.9	54.0	63.0	-0.3	87	28	43	16+	122	66	0	0	0	0	8.92	4.16	2.10	06	0.0	0		11	7	3
BEDFORD 4 NW														7.22		1.42	02	0.0	0			14	4	3
BROOKNEAL	74.4	53.9	64.1	4.5	88	28	39	16	88	71	0	0	0	0	7.01	2.32	1.42	06	0.0	0		14	5	3
CHARLOTTESVILLE 2W	70.5	54.4	62.5	-2.5	88	27	42	16	146	76	0	0	0	0	7.17	2.54	1.59	21	0.0	0		14	6	2
CHATHAM	71.8	50.5	61.1	-1.1	85	28	37	17+	139	26	0	0	0	0	10.35	6.31	1.45	06	0.0	0		16	8	5
CONCORD 4 SSW														9.42		2.01	06	0.0	0			13	6	4
DANVILLE RGNL AP	75.5	54.9	65.2	-1.2	86	27+	38	16	79	92	0	0	0	0	7.57	3.69	1.34	21+	0.0	0		11	7	3
FREE UNION	69.4	50.5	59.9		87	29+	34	16	198	51	0	0	0	0	MA 5.75		1.25	21	0.0	0		14	2	1
HOLCOMB ROCK														7.63		1.32	21	0.0	0			17	6	1
HUDDLESTON 4 SW														7.14		1.36	21	0.0	0			10	5	3
LYNCHBURG INTL AP	72.7	52.7	62.7	-0.4	86	27	37	16	117	54	0	0	0	0	6.89	3.16	1.71	01	0.0	0		11	4	3
MARTINSVILLE FLTR PLT	74.3	51.2	62.7	-0.6	87	28	36	17+	121	61	0	0	0	0	5.62	1.59	1.06	21	M 0.0	0		11	5	1
MEADOWS OF DAN 5 SW	73.1M	50.9M	62.0M		83	29+	37	16	129E	47E	0	0	0	0	7.20		1.39	21	0.0	0		12	5	2
MONTEBELLO FISH CULTURAL STN	M	M	M		84	30	34	17	230E	9E	0	0	0	0	M				M					
MONTICELLO	68.8	53.5	61.1	-1.7	86	29+	42	17	171	59	0	0	0	0	7.16	3.06	1.48	21	0.0	0		16	7	1
PEDLAR DAM														6.03		1.25	03	0.0	0			13	5	2
ROCKY MT	72.8	52.9	62.8	0.2	88	28	39	16	121	63	0	0	0	0	7.14	3.07	1.98	03	0.0	0		12	5	1
SOUTH BOSTON	74.6	54.4	64.5	0.7	88	28+	40	16	83	79	0	0	0	0	7.32	3.40	1.86	06	0.0	0		10	5	3
STUART	74.9	52.9	63.9	-0.2	85	28	38	16	103	76	0	0	0	0	8.14	3.54	0.97	01	0.0	0		13	7	0
TYE RIVER 1 SE	M	M	M								0	0	0	0	M				0.0	0				
WOOLWINE														5.78		1.08	03	0.0	0			9	5	2
--DIVISIONAL DATA-----> NORTHERN 04			62.7	-0.8B										7.38	2.99B									
EDINBURG	M	M	M								0	0	0	0	M				M					
FRONT ROYAL	70.1M	52.1M	61.1M	-1.3	98	27	42	17+	164E	52E	1	0	0	0	M 6.34	2.14	0.92	23	0.0	0		16	3	0
LINCOLN	69.5	48.9M	59.2M	-1.7	90	28	38	17+	210E	53E	1	0	0	0	M				0.0	0				
LURAY 5 E	69.6	50.0	59.8	-3.0	87	26	33	16	202	47	0	0	0	0	5.86	1.86	0.74	23	0.0	0		14	5	0
MADISON	M	M	M								0	0	0	0	M				0.0	0				
MANASSAS	71.3M	53.7M	62.5M	-1.5	91	29	37	16	162E	92E	3	0	0	0	MA 6.45		0.70	07	0.0	0		13	4	0
MT WEATHER	65.1	50.9	58.0	-2.9	86	29	39	16	262	52	0	0	0	0	7.08	2.60	0.96	03	0.0	0		15	5	0

VIRGINIA
201605

MONTHLY STATION AND DIVISION SUMMARY

STATION	TEMPERATURE (°F)										PRECIPITATION (IN)													
	AVERAGE MAXIMUM	AVERAGE MINIMUM	AVERAGE	DEPARTURE FROM NORMAL	HIGHEST	DATE	LOWEST	DATE	HEATING DEG. DAYS	COOLING DEG. DAYS	NO. OF DAYS				TOTAL	DEPARTURE FROM NORMAL	GREATEST 24 HOURS	DATE	ICE PELLETS, SNOW			NO. OF DAYS		
											MAX		MIN						TOTAL	MAX DEPTH ON GROUND	DATE	.10 OR MORE	.50 OR MORE	1.00 OR MORE
											>=90	<=32	<=32	<=0										
PIEDMONT RSCH STN	69.4F	53.3	61.3F	-2.4	87	29+	37	16	166	75	0	0	0	0	A 6.39	2.25	0.65	06	0.0	0		8	2	0
SOMERSET	70.1	53.0	61.5	-1.9	87	29	35	16	161	62	0	0	0	0	5.66	1.44	0.87	21	0.0	0		12	4	0
SPERRYVILLE	69.0M	51.2M	60.1M	-1.9	86	29+	35	16	197E	53E	0	0	0	0	M 6.39	2.04	1.07	05	0.0	0		16	6	1
STERLING (RCS)	69.7	51.9	60.8	-1.5	90	29+	39	16	190	68	2	0	0	0	5.93	1.21	1.30	03	0.0	0		14	4	1
VIENNA	67.7	51.4	59.5	-2.0	89	29	38	17+	221	57	0	0	0	0	3.78	-0.75	0.56	07	0.0	0		11	1	0
WARRENTON 3 SE	M	M	M								0	0	0	0	M				0.0	0				
WASHGTN DULLES INTL AP	71.1	52.8	61.9	-1.3	89	28+	36	16	164	75	0	0	0	0	6.08	1.53	1.39	02	0.0	0		11	6	1
WASHINGTON REAGAN NATL AP	71.3	56.5	63.9	-2.1	88	27+	45	16	119	92	0	0	0	0	5.65	1.66	1.24	02	T	0		12	3	1
WINCHESTER	68.8	51.8	60.3	-1.7	87	29+	41	16	202	63	0	0	0	0	6.02	2.15	0.66	21	0.0	0		18	5	0
WINCHESTER 7 SE	71.5	49.3	60.4	-0.2	89	28+	34	16	202	67	0	0	0	0	5.20	1.38	0.64	20	0.0	0		17	3	0
WOODSTOCK 2 NE	68.7	48.9	58.8	-1.6	88	27	26	16	237	54	0	0	1	0	6.49	2.48	0.90	04	0.0	0		16	5	0
--DIVISIONAL DATA----->			60.6	-1.2B											5.83	1.60B								
CENTRAL MOUNTAIN 05																								
BUENA VISTA														5.72		1.18	03	0.0	0			10	4	1
COVINGTON FLTR PLT	73.7	50.0	61.8	-1.0	89	29	34	16	151	61	0	0	0	0	4.80	0.72	0.74	02	0.0	0		15	3	0
DALE ENTERPRISE	68.5	48.9	58.7	-1.6	87	28+	35	16	220	34	0	0	0	0	5.90	2.19	0.75	21	0.0	0		19	3	0
GATHRIGHT DAM	69.0	48.3	58.6	-1.7	85	28	33	16	214	26	0	0	0	0	4.98	0.87	0.77	02	0.0	0		12	3	0
GLASGOW 1 SE														8.68		2.19	03	0.0	0			14	7	1
HOT SPRINGS	68.6	47.9	58.2	-1.2	85	28	34	16	227	23	0	0	0	0	6.39	2.20	1.13	02	0.0	0		18	4	1
LEXINGTON	72.9	50.9	61.9	-0.9	88	28	35	16	141	50	0	0	0	0	5.63	1.61	1.02	03	0.0	0		13	5	1
MILLGAP	66.9	43.4	55.2	-1.2	82	29+	32	16	304	7	0	0	1	0	6.19	1.42	0.75	21	0.0	0		15	5	0
MTN GROVE														6.81		0.99	01	0.0	0			19	3	0
MUSTOE 1 SW	67.0	46.3	56.7	0.1	82	27	32	16	262	12	0	0	1	0	M 5.83	1.13	1.03	21	0.0	0		13	4	1
NEW CASTLE														7.75		1.41	13	0.0	0			12	6	3
ROANOKE 8 N	72.3M	52.6M	62.5M	-0.8	87	28	41	16	129E	58E	0	0	0	0	6.05	1.62	0.97	12	0.0	0		14	5	0
ROANOKE INTL AP	73.9	54.7	64.3	-0.3	86	27+	44	16	92	76	0	0	0	0	6.12	2.06	1.51	11	0.0	0		10	4	2
STAUNTON WATER TRMTMT PLT	68.5	50.6	59.5	-2.0	85	28	37	16	207	43	0	0	0	0	6.08	2.34	0.98	06	0.0	0		15	3	0
WAYNESBORO WTP	69.8	50.4	60.1	-0.8	86	29+	34	16	192	45	0	0	0	0	5.99	2.06	0.96	21	0.0	0		17	2	0
--DIVISIONAL DATA----->			59.8	-1.6B											6.22	2.10B								
SOUTHWESTERN MOUNTAIN 06																								
ABINGDON 3S	72.0	49.6	60.8	-1.2	84	29+	35	17+	160	37	0	0	0	0	2.89	-1.72	0.40	21+	0.0	0		14	0	0
BIG STONE GAP	72.6	50.1	61.4	-1.6	84	28	37	16+	149	45	0	0	0	0	5.23	0.35	1.10	11	0.0	0		12	2	2
BLACKSBURG NWSO	69.9	49.5	59.7	0.4	83	29+	38	16	188	29	0	0	0	0	4.76	0.43	0.74	02	0.0	0		10	4	0
BURKES GARDEN	65.0M	45.1M	55.0M	-1.2	78	31	31	16	303E	1E	0	0	2	0	M 5.69	0.93	0.85	01	0.0	0		15	4	0
CHRISTIANSBURG	68.6	49.4	59.0	-2.0	81	31+	38	16	204	25	0	0	0	0	4.15	-0.75	0.81	21	0.0	0		13	2	0
CLINTWOOD 1 W	70.7	47.5	59.1	-0.7	83	31	33	17+	203	26	0	0	0	0	6.72	2.13	1.76	13	0.0	0		15	3	2
COPPER HILL	66.7	48.5	57.6		79	26	35	15	240	18	0	0	0	0	5.30		1.15	06	0.0	0		11	3	1

VIRGINIA
201605

MONTHLY STATION AND DIVISION SUMMARY

STATION	TEMPERATURE (°F)											PRECIPITATION (IN)																						
	AVERAGE MAXIMUM	AVERAGE MINIMUM	AVERAGE	DEPARTURE FROM NORMAL	HIGHEST	DATE	LOWEST	DATE	HEATING DEG. DAYS	COOLING DEG. DAYS	NO. OF DAYS				TOTAL	DEPARTURE FROM NORMAL	GREATEST 24 HOURS	DATE	ICE PELLETS, SNOW			NO. OF DAYS												
											MAX		MIN						TOTAL	MAX DEPTH ON GROUND	DATE	.10 OR MORE	.50 OR MORE	1.00 OR MORE										
											>=90	<=32	<=32	<=0																				
GALAX RADIO WBRF	M	M	M								0	0	0	0	M				M															
GALAX WTP	69.3	49.1	59.2	0.3	82	31	38	16+	188	17	0	0	0	0	3.33		0.73	21	0.0	0			7	2	0									
GRUNDY	69.6	50.5	60.0	-1.1	82	31+	36	16	183	36	0	0	0	0	7.48	2.59	1.42	13	0.0	0			16	5	2									
JOHN FLANNAGAN LAKE	M	M	M		85	26	34	16	172E	45E	0	0	0	0	MA 4.85		1.77	13	0.0	0			8	1	1									
LAFAYETTE 1 NE															4.10		0.79	02	0.0	0			10	4	0									
LEBANON	72.4	47.1	59.8	-0.9	85	28	33	18+	181	26	0	0	0	0	4.55	0.13	0.69	01	0.0	0			14	3	0									
NORA 4 SSE	67.5M	50.7M	59.1M	-1.6	82	28	35	15	214E	38E	0	0	0	0	A 4.34	-1.16	0.54	11	0.0	0			11	1	0									
N FK LAKE	M	M	M		86	31	36	17+	208E	43E	0	0	0	0	A 6.83		0.49	03	M	0			5	0	0									
PULASKI 2 E	70.6	49.8	60.2	-0.4	84	28	38	16	167	28	0	0	0	0	4.69	0.92	1.02	18	0.0	0			11	3	1									
RADFORD 3 N	69.5	49.5	59.5	-0.1	84	28	39	15	188	26	0	0	0	0	4.85	0.93	1.05	01	0.0	0			13	4	1									
RICHLANDS	70.4M	47.9M	59.2M	-1.0	84	29	33	17+	190E	20E	0	0	0	0	M 6.72	1.97	1.34	03	0.0	0			16	5	1									
SALTVILLE 1N	71.9	50.0	61.0	-0.6	83	31+	34	16	151	33	0	0	0	0	5.03	0.68	0.79	13	0.0	0			11	5	0									
STAFFORDSVILLE 3 ENE	69.8	49.5	59.7	0.1	85	28	39	16	187	31	0	0	0	0	3.98	-0.26	0.80	13	0.0	0			9	3	0									
WILLIS															5.23		1.70	03	0.0	0			10	4	1									
WISE 3E	68.9	49.8	59.4	-1.4	80	31+	35	16+	194	25	0	0	0	0	4.85	0.23	1.09	28	0.0	0			12	3	1									
WYTHEVILLE	69.5	48.6	59.0	0.3	83	31	38	16+	197	21	0	0	0	0	4.67	0.56	1.29	03	0.0	0			11	3	1									
--DIVISIONAL DATA----->			59.4	-0.2B											4.89	0.29B																		

VIRGINIA
201605

DAILY TEMPERATURES (°F)

STATION	OB. TIME	MAX/MIN	DAY OF MONTH																															AVERAGE	
			01	02	03	04	05	06	07	08	09	10	11	12	13	14	15	16	17	18	19	20	21	22	23	24	25	26	27	28	29	30	31		
			VIENNA	07	MIN MAX MIN	50 55 49	50 57 49	54 76 53	54 71 52	49 59 48	49 55 48	48 52 48	48 62 47	41 68 47	46 62 46	52 63 52	52 58 55	56 65 49	46 57 45	39 57 38	42 68 38	50 63 51	52 69 51	46 75 47	50 56 51	51 55 51	53 71 53	54 80 56	57 86 59	62 88 66	67 87 63	64 89 63	63 85 64		65 82 64
WARRENTON 3 SE	08	MAX MIN																																	M M
WASHGTN DULLES INTL AP	24	MAX MIN	59 51	80 54	71 57	62 53	57 50	54 50	65 49	71 45	63 42	60 54	67 54	77 57	75 46	59 37	66 36	56 50	65 52	72 50	77 45	62 53	57 52	75 54	82 52	86 56	89 67	89 69	89 64	84 63	83 63	88 67	71.1 52.8		
WASHINGTON REAGAN NATL AP	24	MAX MIN	59 52	77 55	73 58	60 53	58 51	55 51	67 50	72 64	65 54	61 56	66 54	78 58	76 52	62 48	59 45	67 54	66 54	65 56	59 53	66 54	67 57	63 60	58 57	83 63	86 69	88 70	88 66	87 68	87 68	83 70	85 80	85 70	71.3 56.5
WINCHESTER	07	MAX MIN	55 50	67 51	84 55	72 51	65 48	56 48	53 48	65 49	69 45	62 50	60 50	58 52	68 48	75 43	68 41	57 44	67 49	56 50	72 46	72 49	53 51	54 51	75 51	82 55	85 59	86 64	87 65	87 64	87 61	82 62	84 62	68.8 51.8	
WINCHESTER 7 SE	08	MAX MIN	66 51	86 55	86 49	65 47	55 48	54 48	65 48	69 39	64 41	62 51	58 52	70 45	76 43	70 35	66 34	66 38	57 50	70 40	73 41	55 51	54 50	75 49	81 51	85 55	88 63	89 63	89 59	83 61	85 60	85 56	85 49.3		
WOODSTOCK 2 NE	07	MAX MIN	55 50	72 52	84 57	71 50	65 48	55 48	53 47	68 49	68 42	63 47	64 36	62 43	73 56	69 45	74 40	56 26	65 35	53 47	57 49	70 34	71 44	55 51	56 51	73 50	80 51	85 54	88 63	87 70	87 62	83 59	83 60	68.7 48.9	
CENTRAL MOUNTAIN 05																																			
COVINGTON FLTR PLT	07	MAX MIN	62 54	82 54	84 57	75 43	69 46	51 46	64 42	75 42	73 48	79 48	81 56	85 60	76 44	70 44	62 34	67 35	63 48	56 52	72 47	67 47	71 54	69 51	71 49	82 48	85 48	85 58	88 59	89 60	89 58	74 58	84 59	73.7 50.0	
DALE ENTERPRISE	07	MAX MIN	56 48	76 54	84 55	69 46	65 47	50 47	56 41	69 45	71 47	56 48	66 53	73 56	74 44	70 37	56 35	64 38	52 47	54 48	67 43	72 50	57 49	57 49	69 49	80 54	82 59	87 54	87 58	87 58	76 58	80 58	80 59	68.5 48.9	
GATHRIGHT DAM	07	MAX MIN	60 51	78 52	79 56	70 45	62 46	49 45	60 42	71 43	66 47	71 56	75 56	76 37	69 45	66 42	54 33	62 37	59 46	52 49	67 46	65 46	69 46	64 46	66 49	76 48	81 50	78 58	85 60	82 60	82 56	71 56	80 56	69.0 48.3	
HOT SPRINGS	07	MAX MIN	60 51	76 52	80 52	71 44	62 45	48 44	58 40	71 40	67 45	71 48	73 55	80 56	70 44	67 40	54 34	61 35	58 45	51 47	65 43	65 43	63 53	65 48	63 45	75 46	80 48	79 59	85 59	83 57	83 54	71 54	80 54	68.6 47.9	
LEXINGTON	07	MAX MIN	59 53	77 53	84 58	76 51	71 51	55 49	64 43	77 43	74 48	71 50	73 57	77 59	80 60	77 45	74 46	61 35	64 36	59 49	59 50	70 44	69 46	69 55	67 50	72 49	82 50	84 49	85 60	88 62	86 61	84 58	72 58	84 50.9	
MILLGAP	07	MAX MIN	59 46	75 50	77 39	68 39	60 41	49 35	57 34	69 37	62 42	70 53	71 53	73 37	79 37	68 32	64 35	49 43	63 44	53 44	50 37	65 64	63 57	57 66	67 73	66 81	45 77	40 51	38 55	39 52	51 55	52 52	51 51	43.4 66.9	
MUSTOE 1 SW	24	MAX MIN	73 50	76 53	69 48	59 42	49 43	57 43	67 38	64 45	69 40	70 53	73 55	76 56	65 38	49 37	61 32	49 44	50 44	64 42	64 38	60 51	60 47	66 45	74 42	80 42	77 51	82 55	81 45	81 42	69 53	77 52	81 56	67.0 46.3	
ROANOKE 8 N	07	MAX MIN	57 53	79 53	83 58	75 51	69 48	51 46	65 49	75 50	75 50	75 54	75 59	77 60	76 48	73 45	61 41	66 46	60 49	57 51	68 50	66 52	74 55	70 50	71 49	85 52	84 62	87 63	85 63	85 59	76 60	83 60	72.3 52.6		
ROANOKE INTL AP	24	MAX MIN	78 54	84 59	76 58	69 52	56 48	66 48	75 48	75 56	71 51	76 60	78 59	76 64	73 54	65 49	62 45	57 44	66 50	65 52	62 53	57 51	66 53	71 52	72 52	81 51	86 53	85 64	86 63	77 61	84 60	85 63	73.9 54.7		
STAUNTON WATER TRMTMT PLT	08	MAX MIN	54 50	74 51	82 57	71 47	65 47	49 46	56 44	69 49	70 47	63 49	66 53	73 57	77 60	75 42	70 37	57 43	63 46	52 47	54 44	66 44	67 50	58 48	58 51	67 52	79 60	82 60	82 63	85 60	83 60	83 56	74 59	81 59	68.5 50.6
WAYNESBORO WTP	07	MAX MIN	56 51	72 51	83 55	75 53	68 50	52 47	56 42	71 43	70 48	62 52	67 54	73 57	72 60	76 46	58 44	66 36	53 48	53 48	68 44	70 44	59 51	58 50	70 51	81 50	85 51	86 61	86 62	86 61	78 59	81 59	69.8 50.4		
SOUTHWESTERN MOUNTAIN 06																																			
ABINGDON 3S	22	MAX MIN	77 51	77 57	77 57	69 49	63 41	52 41	59 41	72 41	70 50	77 50	79 57	74 58	81 60	72 44	67 37	59 35	64 35	69 51	70 52	66 53	64 55	69 54	69 46	68 44	77 48	81 52	82 52	84 56	84 57	77 57	83 58	72.0 49.6	

VIRGINIA
201605

SNOWFALL AND SNOW ON GROUND (INCHES)

STATION		DAY OF MONTH																															
		01	02	03	04	05	06	07	08	09	10	11	12	13	14	15	16	17	18	19	20	21	22	23	24	25	26	27	28	29	30	31	
VIRGINIA																																	
TIDEWATER 01																																	
DISPUTANTA	SNOWFALL																																
EASTVILLE	SNOWFALL																																
EMPORIA 1 WNW	SNOWFALL																																
FREDERICKSBURG SEWAGE	SNOWFALL																																
	SN ON GND																																
HOLLAND 1 E	SNOWFALL																																
HOPEWELL	SNOWFALL	-				-				-	-	-	-																				
	SN ON GND	-								-	-	-	-																				
NORFOLK INTL AP	SNOWFALL																																
	SN ON GND																																
NORFOLK SOUTH	SNOWFALL																																
NORTH	SNOWFALL																																
	SN ON GND																																
PAINTER 2W	SNOWFALL																																
STONY CREEK 2 N	SNOWFALL																																
	SN ON GND																																
SUFFOLK LAKE KILBY	SNOWFALL																																
	SN ON GND																																
WAKEFIELD 1NW	SNOWFALL																																
	SN ON GND																																
WALKERTON 2 NW	SNOWFALL																																
	SN ON GND																																
WALLACETON LK DRUMMOND	SNOWFALL																																
WALLOPS ISLAND NASA TEST FACIL	SNOWFALL																																
	SN ON GND																																
WARSAW 2 NW	SNOWFALL																																
WEST POINT 2 NW	SNOWFALL																																
	SN ON GND																																
WILLIAMSBURG 2 N	SNOWFALL																																
NORTHERN 04																																	
WASHINGTON REAGAN NATL AP	SNOWFALL																																
	SN ON GND																																
WINCHESTER	SNOWFALL																																
	SN ON GND																																
	WTR EQUIV																																
WINCHESTER 7 SE	SNOWFALL																																
	SN ON GND																																
	WTR EQUIV																																
WOODSTOCK 2 NE	SNOWFALL																																
	SN ON GND																																

Snowfall: Includes snow and ice. Values for NWS stations (J index note) are Mid-Mid (LST).

Snow on ground: Includes snow, sleet, ice, and hail. Values for NWS stations (J index note) are observed at 12 UTC (GMT).

Water Equivalent: Given for NWS stations (J index note) only, when snow depth is 2 inches or more, and is measured at 18 UTC (GMT)

VIRGINIA
201605

PAN EVAPORATION AND WIND

STATION		DAY OF MONTH																															TOTAL OR AVERAGE		
		01	02	03	04	05	06	07	08	09	10	11	12	13	14	15	16	17	18	19	20	21	22	23	24	25	26	27	28	29	30	31			
VIRGINIA EASTERN PIEDMONT 02 JOHN H KERR DAM	WIND	-	-	-	-	-	-	-	-	-	-	-	-	-	-	-	-	-	-	-	-	-	-	-	-	-	-	-	-	-	-	-	-	-	M
	EVAP	-	-	-	-	-	-	-	-	-	-	-	-	-	-	-	-	-	-	-	-	-	-	-	-	-	-	-	-	-	-	-	-	-	M
	MAX	-	-	-	-	-	-	-	-	-	-	-	-	-	-	-	-	-	-	-	-	-	-	-	-	-	-	-	-	-	-	-	-	-	M
	MIN	-	-	-	-	-	-	-	-	-	-	-	-	-	-	-	-	-	-	-	-	-	-	-	-	-	-	-	-	-	-	-	-	-	M

Evaporation: Is measured in hundreths of inches.

Wind: Is measured in miles.

Max and Min: The maximum and minimum temperatures (Fahrenheit) of the water in the evaporation pan.

STATION INDEX

STATION	INDEX NO.	DIVISION	COUNTY	LATITUDE	LONGITUDE	ELEVATION (IN FEET)	OBSERVATION TIME AND TABLES			
							LOCAL STD TIME			
							TEMP	PRECIP	EVAP	SPECIAL SEE (NOTES)
VIRGINIA										
ABINGDON 3S	0021	06	WASHINGTON	36 40	81 58W	1925	22	22		H
ALBERTA 5N	0079	02	BRUNSWICK	36 56	77 54W	376		08		H
ALTAVISTA	0166	03	CAMPBELL	37 7	79 17W	529		07		CH
AMELIA COURTHOUSE 1	0187	02	AMELIA	37 21	77 59W	345	08	08		H
APPOMATTOX	0243	03	APPOMATTOX	37 20	78 50W	850	07	07		H
ASHLAND	0327	02	HANOVER	37 45	77 29W	220	18	18		H
BEDFORD 4 NW	0561	03	BEDFORD	37 23	79 34W	1228		07		CH
BIG STONE GAP	0735	06	WISE	36 52	82 46W	1464	08	08		H
BLACKSBURG NWSO	0766	06	MONTGOMERY	37 12	80 25W	2103	07	07		H
BREMO BLUFF	0993	02	FLUVANNA	37 43	78 17W	225		07		CH
BROOKNEAL	1082	03	CAMPBELL	37 4	78 57W	408	07	07		H
BUCKINGHAM	1136	02	BUCKINGHAM	37 30	78 32W	580		07		H
BUENA VISTA	1159	05	ROCKBRIDGE	37 44	79 22W	840		07		H
BURKES GARDEN	1209	06	TAZEWELL	37 6	81 20W	3068	07	07		H
CAMP PICKETT	1322	02	NOTTOWAY	37 2	77 57W	330	08	08		CH
CHARLOTTESVILLE 2W	1593	03	ALBEMARLE	38 2	78 31W	866	08	08		H
CHASE CITY	1606	02	MECKLENBURG	36 47	78 29W	510	17	17		H
CHATHAM	1614	03	PITTSYLVANIA	36 49	79 25W	651	07	07		CH
CHRISTIANSBURG	1692	06	MONTGOMERY	37 8	80 24W	2100	07	07		H
CLARKSVILLE	1746	02	MECKLENBURG	36 37	78 33W	330	07	07		H
CLINTWOOD 1 W	1825	06	DICKENSON	37 9	82 29W	1780	07	07		H
CONCORD 4 SSW	1955	03	CAMPBELL	37 17	78 58W	815		07		H
COPPER HILL	1999	06	FLOYD	37 5	80 9W	2690	07	07		H
CORBIN	2009	02	CAROLINE	38 12	77 22W	220	09	09		H
COVINGTON FLTR PLT	2044	05	ALLEGHANY	37 49	79 59W	1230	07	07		H
CROZIER	2142	02	GOOCHLAND	37 40	77 53W	350	07	07		H
DALE ENTERPRISE	2208	05	ROCKINGHAM	38 27	78 56W	1358	07	07		H
DANVILLE RGNL AP	2250	03	PITTSYLVANIA	36 34	79 20W	571	24	24		H
DISPUTANTA	2400	01	PRINCE GEORGE	37 7	77 12W	15	07	07		H
EASTVILLE	2635	01	NORTHAMPTON	37 23	75 58W	10	07	07		H
EDINBURG	2663	04	SHENANDOAH	38 48	78 35W	928	07	07		H
EMPORIA 1 WNW	2790	01	GREENSVILLE	36 42	77 34W	100	08	08		H
FARMVILLE 2 N	2941	02	CUMBERLAND	37 20	78 23W	450	07	07		H
FREDERICKSBURG SEWAGE	3204	01	FREDERICKSBURG	38 17	77 27W	15	07	07		H
FREE UNION	3213	03	ALBEMARLE	38 5	78 35W	590	08	07		H
FRONT ROYAL	3229	04	WARREN	38 54	78 11W	930	07	07		H
GALAX RADIO WBRF	3267	06	CARROLL	36 40	80 55W	2385	17	17		H
GALAX WTP	3272	06	CARROLL	36 39	80 55W	2360	07	07		CH
GATHRIGHT DAM	3310	05	ALLEGHANY	37 57	79 57W	1770	07	07		CH
GLASGOW 1 SE	3375	05	ROCKBRIDGE	37 37	79 26W	737		07		H
GREENBAY 3 NE	3565	02	PRINCE EDWARD	37 11	78 17W	500	09	09		H
GRUNDY	3640	06	BUCHANAN	37 17	82 5W	1170	07	07		H
HOLCOMB ROCK	4039	03	BEDFORD	37 33	79 24W	900		07		H
HOLLAND 1 E	4044	01	SUFFOLK	36 41	76 46W	80	08	08		H
HOPEWELL	4101	01	PRINCE GEORGE	37 18	77 17W	40	16	16		H
HOT SPRINGS	4128	05	BATH	37 60	79 50W	2236	07	07		H
HUDDLESTON 4 SW	4148	03	BEDFORD	37 8	79 32W	898		07		H
JOHN FLANNAGAN LAKE	4410	06	DICKENSON	37 14	82 21W	1460	07	07		H
JOHN H KERR DAM	4414	02	MECKLENBURG	36 36	78 18W	250	08	08	08	CH
KEYSVILLE 2 S	4568	02	CHARLOTTE	37 1	78 29W	625	07	07		H
LAFAYETTE 1 NE	4676	06	MONTGOMERY	37 14	80 12W	1320		07		H
LEBANON	4777	06	RUSSELL	36 54	82 2W	1912	07	07		H
LEXINGTON	4876	05	ROCKBRIDGE	37 47	79 26W	1097	07	07		H
LINCOLN	4909	04	LOUDOUN	39 5	77 42W	500	07	07		H
LOUISA	5050	02	LOUISA	38 3	78 0W	420	18	18		H
LURAY 5 E	5096	04	PAGE	38 40	78 22W	1400	08	08		H
LYNCHBURG INTL AP R	5120	03	CAMPBELL	37 19	79 12W	940	24	24		HJ
MADISON	5150	04	MADISON	38 22	78 15W	577	08	08		H
MANASSAS	5204	04	MANASSAS	38 44	77 30W	245	07	07		H
MARTINSVILLE FLTR PLT	5300	03	HENRY	36 42	79 52W	760	07	07		H
MEADOWS OF DAN 5 SW	5453	03	PATRICK	36 40	80 27W	2225	07	07		H
MILLGAP	5595	05	HIGHLAND	38 18	79 43W	2421	07	07		CH
MONTEBELLO FISH CULTURAL STN	5690	03	NELSON	37 51	79 8W	2667	07	07		H
MONTICELLO	5700	03	ALBEMARLE	38 1	78 27W	758	08	08		H
MT WEATHER	5851	04	LOUDOUN	39 4	77 53W	1659	07	07		H

STATION INDEX

STATION	INDEX NO.	DIVISION	COUNTY	LATITUDE	LONGITUDE	ELEVATION (IN FEET)	OBSERVATION TIME AND TABLES			
							LOCAL STD TIME			
							TEMP	PRECIP	EVAP	SPECIAL SEE (NOTES)
MTN GROVE	5756	05	BATH	38 6	79 53W	1775		07		H
MUSTOE 1 SW	5880	05	HIGHLAND	38 20	79 40W	2380	24	24		H
N FK LAKE	6173	06	WISE	37 7	82 38W	1675	08	08		H
NEW CASTLE	6012	05	CRAIG	37 18	80 3W	1258		07		H
NORA 4 SSE	6125	06	DICKENSON	37 1	82 19W	2650	07	07		H
NORFOLK INTL AP R	6139	01	NORFOLK (CITY)	36 54	76 12W	30	24	24		HJ
NORFOLK SOUTH	6147	01	NORFOLK (CITY)	36 52	76 14W	100	24	24		H
NORTH	6161	01	MATHEWS	37 26	76 26W	10	07	07		H
PAINTER 2W	6475	01	ACCOMACK	37 35	75 49W	30	16	16		CH
PALMYRA 3S	6491	02	FLUVANNA	37 49	78 16W	410	06	06		H
PEDLAR DAM	6593	03	AMHERST	37 40	79 17W	1024		07		H
PETERSBURG	6656	02	PETERSBURG	37 14	77 24W	15	08	08		H
PIEDMONT RSCH STN	6712	04	ORANGE	38 14	78 7W	520	08	08		CH
PULASKI 2 E	6955	06	PULASKI	37 3	80 47W	1850	07	07		CH
RADFORD 3 N	6999	06	PULASKI	37 12	80 35W	1800	07	07		H
RICHLANDS	7174	06	TAZEWELL	37 6	81 48W	1910	07	07		H
RICHMOND INTL AP R	7201	02	HENRICO	37 30	77 19W	164	24	24		HJ
ROANOKE 8 N	7278	05	ROANOKE	37 22	79 58W	1190	07	07		H
ROANOKE INTL AP R	7285	05	ROANOKE	37 19	79 58W	1175	24	24		HJ
ROCKY MT	7338	03	FRANKLIN	36 59	79 54W	1315	07	07		CH
SALTVILLE 1N	7506	06	SMYTH	36 53	81 46W	1733	07	07		H
SANDSTON	7541	02	HENRICO	37 33	77 17W	165	07	07		H
SOMERSET	7904	04	ORANGE	38 15	78 16W	510	07	07		H
SOUTH BOSTON	7925	03	HALIFAX	36 42	78 53W	329	07	07		H
SPERRYVILLE	7985	04	RAPPAHANNOCK	38 39	78 14W	750	06	06		H
STAFFORDSVILLE 3 ENE	8022	06	GILES	37 16	80 43W	1950	07	07		CH
STAUNTON WATER TRMTMT PLT	8062	05	AUGUSTA	38 10	79 5W	169	08	08		H
STERLING (RCS)	8084	04	LOUDOUN	38 59	77 29W	288	07	07		H
STONY CREEK 2 N	8129	01	SUSSEX	36 58	77 24W	105	08	08		H
STUART	8170	03	PATRICK	36 38	80 15W	1375	07	07		H
SUFFOLK LAKE KILBY	8192	01	SUFFOLK	36 44	76 36W	22	24	24		H
TYE RIVER 1 SE	8600	03	NELSON	37 38	78 56W	720	07	07		H
VIENNA	8737	04	FAIRFAX	38 54	77 16W	418	07	07		H
WAKEFIELD 1NW	8800	01	SUSSEX	36 59	77 0W	113	24	24		CH
WALKERTON 2 NW	8829	01	KING AND QUEEN	37 45	77 2W	50	18	18		H
WALLACETON LK DRUMMOND	8837	01	CHESAPEAKE	36 36	76 26W	20	08	08		H
WALLOPS ISLAND NASA TEST FACIL R	8849	01	ACCOMACK	37 56	75 28W	46	24	24		HJ
WARRENTON 3 SE	8888	04	FAUQUIER	38 41	77 46W	500	08	08		H
WARSAW 2 NW	8894	01	RICHMOND	37 59	76 47W	140	18	18		H
WASHGTN DULLES INTL AP R	8903	04	LOUDOUN	38 56	77 28W	290	24	24		HJ
WASHINGTON REAGAN NATL AP R	8906	04	ARLINGTON	38 51	77 2W	10	24	24		HJ
WAYNESBORO WTP	8941	05	WAYNESBORO	38 5	78 53W	1270	07	07		H
WEST POINT 2 NW	9025	01	KING WILLIAM	37 34	76 48W	20	17	17		H
WILLIAMSBURG 2 N	9151	01	YORK	37 18	76 42W	70	24	24		CH
WILLIS	9169	06	FLOYD	36 55	80 30W	2810		07		CH
WINCHESTER	9181	04	FREDERICK	39 11	78 9W	720	07	07		H
WINCHESTER 7 SE	9186	04	FREDERICK	39 11	78 7W	680	08	08		H
WINTERPOCK 4 W	9213	02	CHESTERFIELD	37 19	77 39W	300		07		H
WISE 3E	9215	06	WISE	36 60	82 32W	2549	17	17		CH
WOODSTOCK 2 NE	9263	04	SHENANDOAH	38 54	78 28W	675	07	07		H
WOOLWINE	9272	03	PATRICK	36 47	80 17W	1500		07		H
WYTHEVILLE	9301	06	WYTHE	36 58	81 5W	2458	07	07		H

REFERENCE NOTES

STATION NAMES: Name of the city, town or locality. Figures and letters following the station names indicate the distance in miles and direction from the post office or town community center.

DIVISIONS: Areas within a state of similar climatological characteristics. Division averages are calculated using data from stations that record temperature and/or precipitation. Station Precipitation totals flagged with an 'F' or 'M' are excluded from the Divisional Average calculations of precipitation. Stations with monthly Temperature averages flagged with an 'F' or 'M' are included in the Divisional Average if there are no more than 9 flagged or missing daily values in the month, else they are excluded from the divisional average for temperature.

NORMALS: The average value of the meteorological element over a time period. Effective 1 January 2012, the averaging period for station departures is 1981 to 2010. The normals for National Weather Service localities have been adjusted so as to be representative for the current observation site.

The January 2011 through December 2015 publications incorrectly state the computation of divisional departures. Climate Division departures have been, and continue to be, computed from 1971-2000 Normals, not 1981-2010 as stated. Station departures are accurately described as departures from 1981-2010.

MONTHLY DEGREE DAY TOTALS: One heating (cooling) degree day is accumulated for each whole degree that the daily mean temperature is below (above) 65 degrees Fahrenheit.

PRECIPITATION: Values shown in hundredths of inches are water equivalent totals, i.e., total of liquid and melted frozen precipitation. In the "Monthly Summarized Data" table the total snow and sleet values shown in tenths of inches are unmelted amounts. The max depth on ground values of snow and sleet shown in whole inches are cumulative unmelted amounts. The number of days with .10, .50, 1.00 or more refers to water equivalents.

PRECIPITATION QUALITY CONTROL: The NCEI quality control process may flag precipitation data that are spatially inconsistent, exceed climatological limits, or are inconsistent with prevailing weather patterns.

TEMPERATURE: Original temperature values are given in the "Daily Temperature" table. Summary temperature information (averages, departures, extremes, monthly degree day totals) is based on the values labeled MAX/MIN.

WIND: (As shown in the "Evaporation and Wind" table) the total wind movement in miles over the evaporation pan as determined by an anemometer recorder located 6-8 inches above the pan.

SYMBOLS AND LETTERS USED IN THE STATION INDEX TABLE

C Station is equipped with recording rain gage (R) but values in this bulletin are from a non-recording rain gage unless indicated by an R.
G Observations appear in the "Soil Temperatures" table.
H Observations appear in the "Snowfall and Snow on the Ground" table.
J Station also published as a Local Climatological Data publication.
VAR Observation time varies.
SR / SS Observation time near sunrise / Observation time near sunset, respectively.

SYMBOLS AND LETTERS USED IN THE DATA TABLES

(DAILY DATA ARE FOR THE 24 HOURS IMMEDIATELY PRECEDING OBSERVATION TIME.)

BLANK Entries in the "Monthly Summarized Data" table indicate no record.

BLANK Entries in the "Daily Precipitation" and "Snowfall and Snow on the Ground" tables indicate zero.

BLANK Entries in the "Daily Temperature" table indicate a missing record

- No record. Data not recorded or not received in time for publication.

+ Precipitation or temperature extremes occurred on one or more previous dates during the month.

* Rain gage not read. Precipitation is included in the amount following the asterisks.

Time distribution may not be known. A * preceding the monthly total indicates precipitation amount is being carried forward to next month's total, and may include amounts from the previous month(s).

a As a subscript, indicates accumulated total.

A Amount of precipitation is the total of observer's entries for the current month. It may include precipitation that occurred during the previous month. Refer to earlier bulletin to determine date of last

reading. (Hawaii stations)

B Divisional Departure from normals are computed using 1971-2000 normals.

E Normalized HDD/CDD Calculation. E is appended to the HDD/CDD Calculation when 1-9 individual daily TMAX and/or TMIN values are missing and a Normalized HDD/CDD Calculation is provided. M appears alone if 10 or more daily values are missing.

F Monthly calculation flagged value. F is appended to average and/or total values computed which exclude one or more daily data values that have been flagged by the GHCN-Daily Dataset

M Insufficient or partial data. M is appended to average and/or total values computed with 1-9 daily values missing. M appears alone if 10 or more daily values are missing, (8 or more for wind and evaporation).

N Indicates snow fall or Snowdepth totals are computed with one or more missing days.

R Amounts from recording rain gage.

T Trace. An amount too small to measure.

SEASONAL TABLES: Monthly and seasonal snowfall and heating degree days for the 12 months ending with the June data are published in the July issue of this bulletin. Cooling degree days for the calendar year are published in the "Climatological Data Annual Summary."

Information concerning the history of changes in locations, exposure, etc. of substations is kept on file at the National Centers for Environmental Information. Historical information of regular National Weather Service Offices may be obtained from the "Local Climatological Data" annual publication. The contents of this publication may be reprinted or otherwise used freely, with proper credit to the National Centers For Environmental Information. The data are also available digitally.

Effective with the January 2011 Data-Month, COOP Observer Names are no longer included in the Monthly and Annual Climatological Data Publications. This information is not published to ensure the privacy of personal information pursuant to Section 208 of the E-Government Act of 2002 (44 USC 3601).

As of the 2011 Data-Year, Station and Climate Division Maps are no longer being included in the CD Publications. NCEI's Products Branch provides updated Station Maps for various data networks via the Historical Observing Metadata Repository: <http://www.ncdc.noaa.gov/homr>.

The GHCN-Daily Quality Control Flags shown below are displayed as superscripts with the data. For more information on Global Historical Climatology Network - Daily and flags, see: <http://www.ncdc.noaa.gov/oa/climate/ghcn-daily/> and Comprehensive Automated Quality Assurance of Daily Surface Observations. Durre, Imke, Matthew J. Menne, Byron E. Gleason, Tamara G. Houston, Russell S. Vose, 2010: J. Appl. Meteor. Climatol., 49, 16151633. doi: 10.1175/2010JAMC2375.1

Blank = Passed All checks	N = failed naught check
D = failed duplicate check	O = failed climatological outlier check
G = failed gap check	R = failed lagged range check
I = failed internal consistency check	S = failed spatial consistency check
K = failed streak/frequent-value check	T = failed temporal consistency check
L = failed check on length of multiday period	W = temperature too warm for snow
M = failed megaconsistency check	X = failed bounds check
	Z = flagged as a result of an official Datzilla investigation

Beginning with the January 2013 CD Publication, monthly mean temperature calculations have changed to the National Data Stewardship Team standard. Monthly maximum and minimum temperatures are not rounded until after the monthly mean temperature is calculated. This is the most accurate outcome, but may be slightly different from the mean derived from rounded monthly maximum and minimum.

The climate division temperature and precipitation values in this publication are based on simple averages from the current set of NWS-Designated Open and Published COOP and First Order Sites within each division. These values differ from those found in NCEI's nClimDiv product. Beginning in February 2014, the nClimDiv product is used by NCEI's Monitoring Branch and in its monthly climate reports. For more details on nClimDiv, please go to <http://www.ncdc.noaa.gov/monitoring-references/maps/us-climate-divisions.php>.

Effective January 2016, Alaska's Climate Divisions are updated to reflect the 13 climate divisional boundaries established by University of Alaska-Fairbanks, NWS, NCEI, Oregon State University, and University of Nebraska-Lincoln. For more details regarding the updated Alaska Climate Divisions, see: <http://journals.ametsoc.org/doi/pdf/10.1175/JAMC-D-11-0168.1> (Bienek et al., 2012).

These and other publications are available from the National Centers for Environmental Information

Hourly Precipitation Data

This publication contains hourly precipitation amounts obtained from recording rain gages located at National Weather Service, Federal Aviation Administration, and cooperative observer stations. Published data are displayed in inches and tenths or inches and hundredths at local standard time. HPD includes maximum precipitation for nine (9) time periods from 15 minutes to 24 hours, for selected stations.

Climatological Data

Monthly editions contain station daily maximum and minimum temperatures and precipitation. Some Stations provide daily snowfall, snow depth, evaporation, and soil temperature data. Each edition also contains monthly summaries for heating and cooling degree days (65 degree F base). The July issue contains a recap of monthly heating degree days and snow data for the preceding July through June.

The Annual issue contains monthly and annual averages of temperature, precipitation, temperature extremes, freeze data, soil temperatures, evaporation, and a recap of monthly cooling degree days.

Storm Data

Monthly issues contain a chronological listing, by states, of occurrences of storms and unusual weather phenomena. Reports contain information on storm paths, deaths, injuries, and property damage. An "Outstanding storms of the month" section highlights severe weather events with photographs, illustrations, and narratives. The December issue includes annual tornado, lightning, flash flood, and tropical cyclone summaries.

Monthly Climatic Data for the World

This publication contains monthly means for temperature, pressure, precipitation, vapor pressure, and sunshine for approximately 2,000 surface data collection stations worldwide and monthly mean upper air temperatures, dew point depressions, and wind velocities for approximately 500 observing sites.

Local Climatological Data

LCD publications summarize temperature, relative humidity, precipitation, cloudiness, wind speed and direction observations for several hundred cities in the U.S. and its territories. Each monthly publication also contains 3 hourly weather observations for that month and a hourly summary of precipitation. Annual LCD publications contain a summary of the past calendar year as well as historical averages and extremes.

For Information Call:

(828) 271-4800 Option 2

(828) 271-4010 (TDD)

(828) 271-4876 (Fax)

NOAA National Centers for Environmental Information
Attn: Customer Engagement Branch
151 Patton Avenue
Asheville, NC 28801-5001

Customer Services Number: (828) 271-4800, option 2
TDD : (828) 271-4010
Fax number: (828) 271-4876

NCEI now offers free online access to the *Climatological Data* publication.
Go to : www.ncdc.noaa.gov and choose Most Popular.