



CLIMATOLOGICAL DATA

VIRGINIA

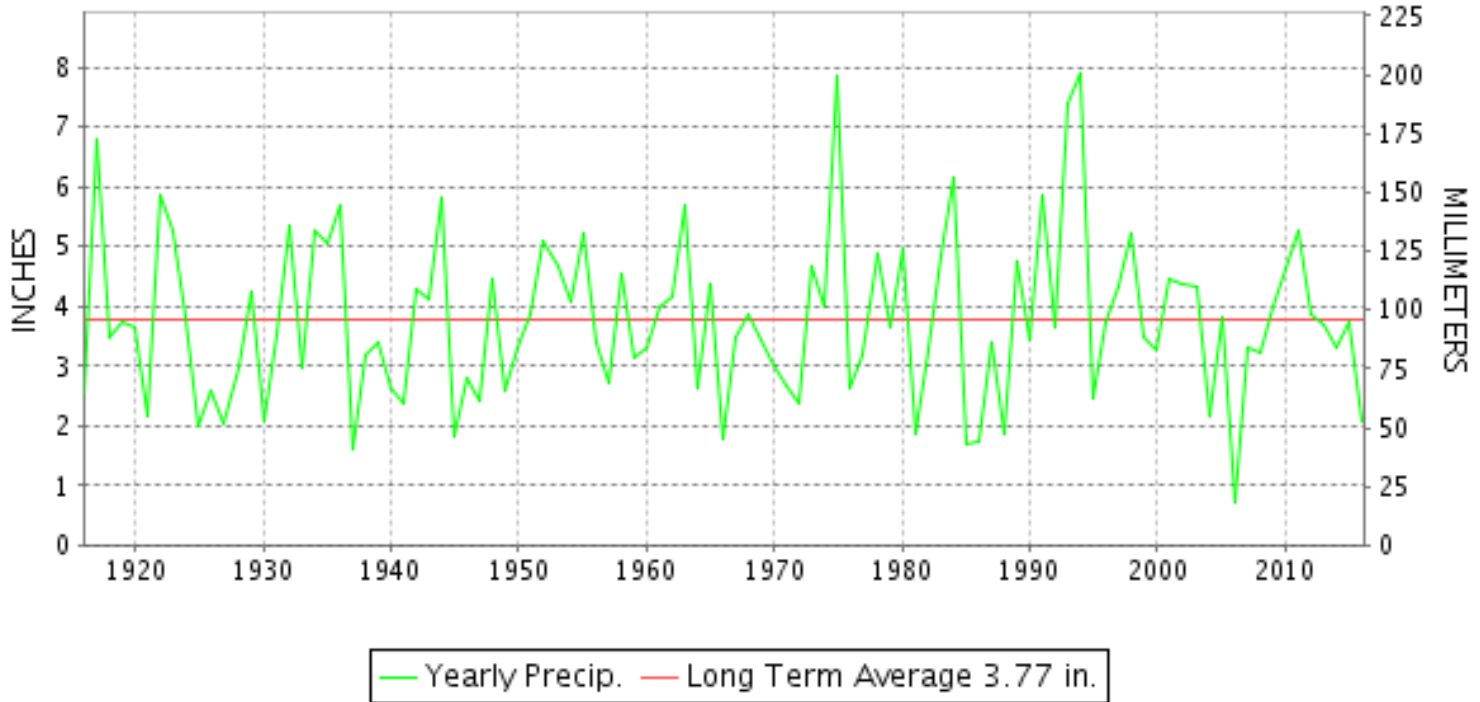
MARCH 2016

VOLUME 126 NUMBER 03

ISSN 0364-5630

GHCND Ver: 3.22-upd-2016062805

MARCH PRECIPITATION BY YEAR



TEMPERATURE AND PRECIPITATION EXTREMES

VIRGINIA

HIGHEST TEMPERATURE	90	MARCH 17	JOHN H KERR DAM
LOWEST TEMPERATURE	13	MARCH 03	MILLGAP
GREATEST TOTAL PRECIPITATION	4.14		CHATHAM
LEAST TOTAL PRECIPITATION	0.75		WARSAW 2 NW
GREATEST 1 DAY PRECIPITATION	1.76	MARCH 03	STONY CREEK 2 N
GREATEST TOTAL SNOWFALL	5.0		HOT SPRINGS
GREATEST DEPTH OF SNOW OR ICE	5		HOT SPRINGS

"I certify that this is an official publication of the National Oceanic and Atmospheric Administration (NOAA) It is compiled using information from weather observing sites supervised by NOAA/National Weather Service and received at the National Centers for Environmental Information(NCEI), Asheville, North Carolina 28801."

Director
National Centers for Environmental Information

noaa

National
Oceanic and
Atmospheric Administration

National
Environmental Satellite, Data
and Information Service

National
Centers for Environmental Information
Asheville, North Carolina

VIRGINIA
201603

MONTHLY STATION AND DIVISION SUMMARY

STATION	TEMPERATURE (°F)											PRECIPITATION (IN)												
	AVERAGE MAXIMUM	AVERAGE MINIMUM	AVERAGE	DEPARTURE FROM NORMAL	HIGHEST	DATE	LOWEST	DATE	HEATING DEG. DAYS	COOLING DEG. DAYS	NO. OF DAYS				TOTAL	DEPARTURE FROM NORMAL	GREATEST 24 HOURS	DATE	ICE PELLETS, SNOW			NO. OF DAYS		
											MAX		MIN						TOTAL	MAX DEPTH ON GROUND	DATE	.10 OR MORE	.50 OR MORE	1.00 OR MORE
											>=90	<=32	<=32	<=0										
PALMYRA 3S	64.7	35.7	50.2	6.4	84	17	18	03	459	6	0	0	14	0	1.90	-1.81	0.65	28	M			5	1	0
PETERSBURG	65.4	41.5	53.5	5.1	85	16	26	04+	358	7	0	0	5	0	1.43	-2.71	0.36	14	M	0		5	0	0
RICHMOND INTL AP	65.2	41.7	53.4	4.8	84	16	23	03	358	6	0	0	7	0	1.02	-3.02	0.17	14	1.2	1	04	6	0	0
SANDSTON	M	M	M								0	0	0	0	M				M					
WINTERPOCK 4 W															1.72		0.62	14	M			4	1	0
--DIVISIONAL DATA-----> WESTERN PIEDMONT 03			53.6	6.7B										1.87	-2.29B									
ALTAVISTA														3.11		0.98	14	0.0	0			5	3	0
APPOMATTOX	63.5	42.1	52.8	7.1	83	17	25	04+	378	6	0	0	5	0	3.14	-0.83	1.06	15	1.0	1	04	6	3	1
BEDFORD 4 NW														2.85		0.79	15	T	0			5	2	0
BROOKNEAL	66.6M	38.0M	52.3M	10.7	86	17	23	03	393E	6E	0	0	11	0	3.12	-0.82	0.98	14	0.0	0		4	3	0
CHARLOTTESVILLE 2W	63.5	42.8	53.2	6.4	82	17	26	03	371	12	0	0	4	0	1.68	-2.17	0.54	15	0.4	T	04	5	1	0
CHATHAM	66.7	35.7	51.2	6.5	86	18+	21	03	423	3	0	0	13	0	4.14	0.09	1.41	15	0.0	0		7	3	2
CONCORD 4 SSW														3.21		0.99	15	T	0			5	3	0
DANVILLE RGNL AP	68.3	43.7	56.0	7.3	88	16	25	03	293	21	0	0	8	0	2.33	-1.78	0.84	27	0.0	0		5	1	0
FREE UNION	64.3	34.9	49.6		84	17	20	03	472	1	0	0	14	0	1.39		0.40	15	M	M T	04	5	0	0
HOLCOMB ROCK														3.36		0.88	28	0.6	T	04	5	3	0	
HUDDLESTON 4 SW														3.29		1.05	14	T	T	04	5	3	1	
LYNCHBURG INTL AP	64.1	40.5	52.3	6.4	84	16	21	03	390	3	0	0	9	0	3.36	-0.22	0.77	13	T	T	03	7	4	0
MARTINSVILLE FLTR PLT	66.2M	36.5	51.4M	5.4	85	17	22	03	419E	4E	0	0	12	0	2.77	-1.38	0.90	28	0.0	0		5	3	0
MEADOWS OF DAN 5 SW	65.4M	38.0M	51.7M		83	17	27	07+	399E	0	0	0	10	0	3.22		1.57	14	0.0	0		4	2	1
MONTEBELLO FISH CULTURAL STN	M	M	M		78	18	19	05+	571E	0	0	0	12	0	M				M					
MONTICELLO	61.9	41.5	51.7	7.3	80	17	25	04+	403	2	0	0	5	0	1.58	-2.07	0.50	15	M			5	1	0
PEDLAR DAM														2.32		0.67	28	0.9	T	04	5	2	0	
ROCKY MT	64.7	39.3	52.0	6.6	82	17	25	05+	401	6	0	0	11	0	3.92	-0.34	1.48	14	T	T	04	5	4	1
SOUTH BOSTON	66.9M	40.5	53.7M	7.1	85	17	25	04+	348E	2E	0	0	8	0	2.20	-1.95	0.83	28	0.0	0		5	1	0
STUART	66.9	39.8	53.3	6.4	84	17	25	03	356	2	0	0	11	0	1.98	-2.10	0.74	15	0.0	0		5	1	0
TYE RIVER 1 SE	M	M	M								0	0	0	0	M				M					
WOOLWINE														3.08		0.93	14	T	T	04	5	4	0	
--DIVISIONAL DATA-----> NORTHERN 04			52.4	5.9B										2.80	-1.43B									
EDINBURG	M	M	M								0	0	0	0	M				M					
FRONT ROYAL	60.6	38.6	49.6	6.4	83	10	20	19	478	5	0	0	8	0	1.83	-1.93	0.61	14	0.2	0		5	1	0
LINCOLN	61.4	33.3	47.4	5.7	82	10	20	03	538	0	0	0	13	0	1.73		0.92	11	1.0	T	04	3	1	0
LURAY 5 E	61.4	38.4	49.9	5.6	83	11+	18	03	470	10	0	0	13	0	1.04	-2.84	0.31	20	1.0	1	04	4	0	0
MADISON	M	M	M								0	0	0	0	M				M					
MANASSAS	63.1	39.2	51.1	7.1	85	10	23	04+	434	9	0	0	8	0	M 1.06		0.46	14	M	1	04	3	0	0
MT WEATHER	56.7	38.5	47.6	6.9	78	10	22	03	534	2	0	0	11	0	2.09	-1.47	0.75	14	M			5	1	0

VIRGINIA
201603

MONTHLY STATION AND DIVISION SUMMARY

STATION	TEMPERATURE (°F)										PRECIPITATION (IN)													
	AVERAGE MAXIMUM	AVERAGE MINIMUM	AVERAGE	DEPARTURE FROM NORMAL	HIGHEST	DATE	LOWEST	DATE	HEATING DEG. DAYS	COOLING DEG. DAYS	NO. OF DAYS				TOTAL	DEPARTURE FROM NORMAL	GREATEST 24 HOURS	DATE	ICE PELLETS, SNOW			NO. OF DAYS		
											MAX		MIN						TOTAL	MAX DEPTH ON GROUND	DATE	.10 OR MORE	.50 OR MORE	1.00 OR MORE
											>=90	<=32	<=32	<=0										
PIEDMONT RSCH STN	61.5	41.0	51.3	6.3	81	10	21	03	425	6	0	0	6	0	1.67	-1.84	0.54	15	1.0	T	04	5	1	0
SOMERSET	62.5	38.8	50.7	6.2	82	17	20	03	442	6	0	0	10	0	1.27	-2.46	0.45	15	M	MT	04	4	0	0
SPERRYVILLE	60.5M	38.5M	49.5M	5.9	78	25+	21	03	477E	3E	0	0	6	0	M 1.16	-2.86	0.37	15	M	1	04	3	0	0
STERLING (RCS)	60.9	36.2	48.5	5.8	83	10	21	03	506	3	0	0	11	0	1.47	-2.13	0.61	14	1.3	1	04	3	1	0
VIENNA	61.7	40.0	50.8	8.0	84	10	27	04+	431	1	0	0	6	0	1.02	-2.80	0.39	14	M	1	04	4	0	0
WARRENTON 3 SE	M	M	M								0	0	0	0	M				M					
WASHGTN DULLES INTL AP	62.6	38.5	50.6	6.4	82	09	22	03	446	5	0	0	9	0	1.45	-1.93	0.53	13	1.3	1	04	3	1	0
WASHINGTON REAGAN AP	63.1	44.0	53.5	6.7	79	10+	29	03	351	3	0	0	3	0	1.16	-2.32	0.32	28	0.3	T	04	5	0	0
WINCHESTER	59.7	37.3	48.5	6.2	83	10	23	03	509	4	0	0	12	0	1.91	-1.54	0.71	14	1.4	1	04	5	1	0
WINCHESTER 7 SE	59.4M	35.1M	47.3M	6.3	82	09	21	02	543E	0	0	0	7	0	M 1.24	-2.18	0.60	13	M	0		3	1	0
WOODSTOCK 2 NE	58.3	34.0	46.1	5.0	80	10	19	03	581	2	0	1	17	0	1.61	-1.65	0.54	14	1.6	1	20	4	1	0
--DIVISIONAL DATA-----> CENTRAL MOUNTAIN 05			49.5	6.4B											1.52	-2.05B								
BUENA VISTA															1.77		0.57	28	0.5	0		6	1	0
COVINGTON FLTR PLT	63.2M	35.1M	49.1M	5.0	79	24+	20	03	491E	2E	0	0	17	0	1.57	-1.71	0.44	15+	2.5	3	04	6	0	0
DALE ENTERPRISE	60.3	35.6	47.9	6.9	80	17	19	04+	521	0	0	0	14	0	M 1.13	-1.79	0.40	28	1.0	1	04	4	0	0
GATHRIGHT DAM	60.0	34.8	47.4	5.5	76	11	19	03	535	0	0	1	15	0	2.07	-1.21	0.70	15	4.0	4	04	6	2	0
GLASGOW 1 SE															2.21		0.55	15	0.4	T	04	5	2	0
HOT SPRINGS	59.4	35.1	47.2	6.3	77	11	19	03	542	0	0	1	15	0	2.03	-2.06	0.54	15	5.0	5	04	7	1	0
LEXINGTON	63.6	36.2	49.9	5.2	82	17	22	03	462	1	0	0	12	0	2.39	-0.76	0.64	14	3.2	2	04	5	3	0
MILLGAP	57.6	27.1	42.4	4.3	76	11	13	03	694	0	0	1	23	0	1.44	-2.43	0.36	14	3.2	3	04	6	0	0
MTN GROVE															1.53		0.56	15	4.0	4	04	4	2	0
MUSTOE 1 SW	58.0	31.2	44.6	6.3	74	16+	14	03	623	0	0	0	20	0	2.13	-2.03	0.47	28	3.6	3	03	8	0	0
NEW CASTLE															2.02		0.68	14	0.0	0		6	2	0
ROANOKE 8 N	63.3	39.7	51.5	5.7	83	17	24	03	413	4	0	0	8	0	2.01	-1.72	0.78	15	0.0	0		4	1	0
ROANOKE INTL AP	64.7	43.5	54.1	6.8	83	16	25	03	339	10	0	0	6	0	2.25	-1.21	1.02	14	1.0	1	03	6	1	1
STAUNTON WATER TRMTMT PLT	60.1	39.7	49.9	6.7	80	17	21	03	463	1	0	0	8	0	1.94	-1.31	0.51	28	2.3	2	04	6	1	0
WAYNESBORO WTP	61.6	35.5	48.5	6.2	80	17	21	03	503	0	0	0	12	0	1.21	-2.52	0.52	15	T	MT	04	4	1	0
--DIVISIONAL DATA-----> SOUTHWESTERN MOUNTAIN 06			48.4	4.7B											1.90	-1.68B								
ABINGDON 3S	63.2	35.3	49.2	4.7	80	11	23	03	484	1	0	0	15	0	2.06	-1.98	0.73	02	0.0	0		8	1	0
BIG STONE GAP	64.5	35.9	50.2	4.5	80	13	24	03	453	2	0	0	11	0	1.93	-2.76	0.45	25+	0.0	0		5	0	0
BLACKSBURG NWSO	60.7	35.4	48.0	6.4	77	17	21	03	519	0	0	0	13	0	2.56	-1.08	0.73	15	1.0	1	04	8	3	0
BURKES GARDEN	55.1M	32.6M	43.8M	4.7	72	11	17	03	646E	0	0	1	16	0	1.92	-2.10	0.47	02	0.4	T	06	6	0	0
CHRISTIANSBURG	59.2	38.9	49.0	5.7	75	17	22	03	490	0	0	0	9	0	2.50	-0.78	0.97	15	1.0	1	04	6	2	0
CLINTWOOD 1 W	62.8	32.9	47.9	5.5	79	13	21	04+	521	0	0	1	18	0	1.54	-2.33	0.39	15+	0.2	T	02	5	0	0
COPPER HILL	57.1	38.6	47.8		75	17	20	03	524	0	0	2	9	0	2.59		1.12	15	1.0	1	04	7	1	1

VIRGINIA
201603

MONTHLY STATION AND DIVISION SUMMARY

STATION	TEMPERATURE (°F)										PRECIPITATION (IN)													
	AVERAGE MAXIMUM	AVERAGE MINIMUM	AVERAGE	DEPARTURE FROM NORMAL	HIGHEST	DATE	LOWEST	DATE	HEATING DEG. DAYS	COOLING DEG. DAYS	NO. OF DAYS				TOTAL	DEPARTURE FROM NORMAL	GREATEST 24 HOURS	DATE	ICE PELLETS, SNOW			NO. OF DAYS		
											MAX		MIN						TOTAL	MAX DEPTH ON GROUND	DATE	.10 OR MORE	.50 OR MORE	1.00 OR MORE
											>=90	<=32	<=32	<=0										
GALAX RADIO WBRF	62.6	37.8	50.2	8.2	75	16	23	05+	450	0	0	0	13	0	2.14	-1.65	0.69	14	0.6	1	04	5	2	0
GALAX WTP	59.4	34.9	47.1	6.3	75	17	22	03	548	0	0	0	16	0	1.73		0.71	14	0.4	T	04	4	1	0
GRUNDY	63.4	36.2	49.8	6.1	79	11	23	03	464	0	0	0	14	0	0.99	-2.44	0.44	02	0.1	0		4	0	0
JOHN FLANNAGAN LAKE	M	M	M		81	14	22	04+	430E	0	0	0	8	0	M				0.0	0				
LAFAYETTE 1 NE															2.40		0.64	15	0.7	T	04	5	2	0
LEBANON	65.0	34.3	49.7	6.5	80	13+	20	03	476	10	0	0	17	0	1.43	-2.41	0.43	02	0.0	0		6	0	0
NORA 4 SSE	58.9	40.5	49.7	8.3	74	13+	22	03	470	3	0	1	9	0	1.23	-2.67	0.27	02	0.3	T	04	7	0	0
N FK LAKE	M	M	M		78	14+	26	23+	425E	0	0	0	9	0	MA 2.31		0.54	02	M	0		3	1	0
PULASKI 2 E	60.7	35.3	48.0	5.1	76	17	20	03	520	0	0	0	12	0	2.03	-1.16	0.55	14	1.0	1	04	6	1	0
RADFORD 3 N	60.1	35.7	47.9	7.0	78	17	20	03	525	0	0	0	14	0	2.60	-0.38	0.76	15	1.0	1	04	7	2	0
RICHLANDS	62.9M	35.7M	49.3M	7.2	78	13+	20	04	480E	1E	0	0	12	0	M 1.42	-2.52	0.43	02	M 0.0	0		4	0	0
SALTVILLE 1N	63.5	33.4	48.5	4.7	78	13+	21	03	506	1	0	0	18	0	1.33	-2.53	0.42	15	T	0		4	0	0
STAFFORDSVILLE 3 ENE	60.5	34.7	47.6	4.9	77	17	20	03	533	1	0	1	14	0	1.93	-1.50	0.63	15	1.5	2	04	7	1	0
WILLIS															3.01		1.60	15	T	T	04	5	2	1
WISE 3E	61.9	40.8	51.4	6.7	75	12	20	03	415	0	0	0	8	0	1.31	-2.81	0.31	02	0.8	0		6	0	0
WYTHEVILLE	59.9	36.5	48.2	7.1	75	17+	20	03	513	0	0	1	12	0	2.13	-1.11	0.59	15	0.6	1	04	5	2	0
--DIVISIONAL DATA----->			48.6	5.3B											1.97	-2.09B								

VIRGINIA
201603

DAILY PRECIPITATION (INCHES)

STATION	TOTAL	DAY OF MONTH																														
		01	02	03	04	05	06	07	08	09	10	11	12	13	14	15	16	17	18	19	20	21	22	23	24	25	26	27	28	29	30	31
WESTERN PIEDMONT 03																																
ALTAVISTA	3.11		0.35		0.02									0.98	0.87						0.15											0.74
APPOMATTOX	3.14		0.35		0.21									0.69	1.06						0.19	0.05									0.59	
BEDFORD 4 NW	2.85		0.37		0.02		0.03							0.46	0.79						0.42	0.01									0.75	
BROOKNEAL	3.12				0.04		0.02							0.98	0.84						0.22	0.05						0.09		0.88		
CHARLOTTESVILLE 2W	1.68		0.20		0.06				T					0.24	0.54						0.23	T				T				0.41		
CHATHAM	4.14		0.28											0.60	1.41						0.18	0.10						0.17		1.40		
CONCORD 4 SSW	3.21		0.43		0.04		0.02							0.56	0.99						0.30	0.04								0.83		
DANVILLE RGNL AP	2.33	T	0.19	0.04	0.01	0.08						T	0.18	0.33	0.04					0.04	0.06				0.05	0.04	0.84			0.36		
FREE UNION	1.39		0.11		0.08									0.23	0.40						0.20									0.37		
HOLCOMB ROCK	3.36		0.43		0.05		T							0.75	0.81						0.40	0.04								0.88		
HUDDLESTON 4 SW	3.29		0.31		0.02		0.02							1.05	0.88						0.11									0.90		
LYNCHBURG INTL AP	3.36	0.60	0.04	0.01	T	0.01						T	0.77	0.73	0.08					0.16	0.06						0.53	0.25		0.12		
MARTINSVILLE FLTR PLT	2.77		0.25				0.03							0.55	0.65						0.31	0.06					0.02	0.90				
MEADOWS OF DAN 5 SW	3.22		0.74				0.04							1.57	0.47							0.04								0.35		
MONTEBELLO FISH CULTURAL STN	M		0.36		-				-			-	-		-					-	0.27	-			-	-			0.62	-		
MONTICELLO	1.58		0.30		T									0.14	0.50						0.24									0.40		
PEDLAR DAM	2.32		0.27		0.05									0.39	0.59						0.31	0.04								0.67		
ROCKY MT	3.92		0.68		0.03		0.02						0.01	1.48	0.75	0.02					0.17	0.09							0.67	T		
SOUTH BOSTON	2.20		0.23		0.07		0.04							0.30	0.40						0.08	0.05					0.20	0.83				
STUART	1.98		0.35											0.31	0.74						0.13	0.05				T			0.40			
TYE RIVER 1 SE	M		-		-		-		-					-	-					-	-				-	-			-	-		
WOOLWINE	3.08		0.51		0.02		T						T	0.93	0.79						0.24	0.03								0.56		
NORTHERN 04																																
EDINBURG	M		-		-		-		-					-	-					-	-				-	-			-	-	-	
FRONT ROYAL	1.83				0.20	0.04								0.61	0.20						0.45								0.25	0.08		
LINCOLN	1.73				0.08							0.92										0.34							0.39			
LURAY 5 E	1.04		0.02		0.05							0.01		0.22	0.17						0.31					0.01			0.25			
MADISON	M		-		-		-		-					-	-					-	-				-	-			-	-	-	
MANASSAS	M 1.06		0.05		-		-		-					0.46							0.25								0.30			
MT WEATHER	2.09	T			0.20		0.02					0.04	T	0.75	0.12	0.02				0.01	0.44							0.40	0.09			
PIEDMONT RSCH STN	1.67		0.30		0.06									0.17	0.54						0.14								0.46			
SOMERSET	1.27				0.08									0.12	0.45	0.03					0.20	0.02						0.36	0.01			
SPERRYVILLE	M 1.16		0.02	T	0.07		0.02							-	0.37	T					0.35					0.01		0.32				
STERLING (RCS)	1.47		0.05		0.09	T	T					T		0.61	0.02	T					0.37	T				0.01		0.25	0.07			
VIENNA	1.02		0.08		0.12									0.01	0.39	0.01					0.19							0.21	0.01			
WARRENTON 3 SE	M		-		-		-		-					-	-					-	-				-	-		-	-	-		
WASHGTN DULLES INTL AP	1.45		0.04	0.05	0.04		T					T	T	0.53	0.03	0.01	T			0.34	T				T		0.03	0.38		T		
WASHINGTON REAGAN AP	1.16	T	0.10	0.02	0.05		T					T	T	0.26	0.19	0.03	0.01	T		0.13	T				0.03		0.02	0.32		T		
WINCHESTER	1.91				0.13		0.01							0.71	0.11	0.02					0.35					0.03		0.48	0.05			
WINCHESTER 7 SE	M 1.24	0.04		0.09							0.01			0.60	0.10	-	0.01				-						-	0.35	0.04	-		
WOODSTOCK 2 NE	1.61				0.06									0.54	0.15						0.43							0.43				

VIRGINIA
201603

DAILY PRECIPITATION (INCHES)

STATION	TOTAL	DAY OF MONTH																																
		01	02	03	04	05	06	07	08	09	10	11	12	13	14	15	16	17	18	19	20	21	22	23	24	25	26	27	28	29	30	31		
CENTRAL MOUNTAIN 05																																		
BUENA VISTA	1.77		0.16		0.10		0.02							0.21	0.40						0.29	0.02									0.57			
COVINGTON FLTR PLT	1.57		0.03		0.14		0.07							0.44	0.44						0.16				0.12	0.10			0.05	0.02				
DALE ENTERPRISE	M 1.13				-						0.08			0.30	0.15						0.16							0.04	0.40					
GATHRIGHT DAM	2.07				0.32		0.08							0.57	0.70						0.12			0.13					0.15					
GLASGOW 1 SE	2.21		0.31		0.03		0.01							0.39	0.55						0.33	0.05				0.03		0.51						
HOT SPRINGS	2.03	0.02	0.02		0.25		0.05							0.43	0.54						0.04	0.22			0.16	0.10		0.20						
LEXINGTON	2.39		0.09		0.24		0.03							0.64	0.59						0.26	0.02			0.01		0.51							
MILLGAP	1.44		0.12		0.17		T							0.36	0.24		T				0.13	0.05			0.08			0.25	0.04					
MTN GROVE	1.53				0.26		0.16							0.53	0.56														0.02					
MUSTOE 1 SW	2.13	0.07	0.04	0.20	T								0.44	0.23	0.13					0.20	0.10				0.17		0.08	0.47						
NEW CASTLE	2.02	0.02	0.12		0.11		0.19							0.68	0.54						0.16	0.04			0.03	0.05	T	0.08						
ROANOKE 8 N	2.01		T		0.05		0.07					0.01		0.33	0.78						0.30	T			0.04		0.43							
ROANOKE INTL AP	2.25	0.23	T	0.06	T	0.09						T	0.15	1.02	0.01					0.30	T			0.01		0.14	0.23				0.01			
STAUNTON WATER TRMTMT PLT	1.94		0.12		0.17									0.42	0.38						0.34					T		0.51	T					
WAYNESBORO WTP	1.21		0.05		T									0.16	0.52						0.28	T					0.20							
SOUTHWESTERN MOUNTAIN 06																																		
ABINGDON 3S	2.06		0.73				0.15						0.07	0.12	0.47						0.10				0.22	0.10		0.10						
BIG STONE GAP	1.93		0.45		0.04	0.02	0.08				0.02	0.03	0.04	0.28	0.30									0.45		0.22								
BLACKSBURG NWSO	2.56		0.51	T	0.10	T	0.10					T		0.50	0.73		T				0.31	T			T	0.13		0.17	0.01					
BURKES GARDEN	1.92	0.06	0.47		0.04		0.17				T	0.02		0.14	0.36					0.04	0.33			0.22		0.07								
CHRISTIANSBURG	2.50	0.02	0.33		0.13	T	0.09							0.50	0.97										0.10		0.05							
CLINTWOOD 1 W	1.54		0.39	T	0.04	T	0.08					0.09	T	0.15	0.39						T	T			0.25		0.15							
COPPER HILL	2.59		0.29		0.11									0.35	1.12	0.03						0.27	0.04		0.12	0.01	0.25							
GALAX RADIO WBRF	2.14		0.59	T	0.06						T		0.13	0.69	0.34						0.14	0.01	0.04			0.05		0.08				0.01		
GALAX WTP	1.73		0.38		0.03		0.07							0.71	0.35					0.01	0.07	T				T	0.11							
GRUNDY	0.99		0.44		0.01		0.11				0.01		T	0.11	0.06										0.05		0.20							
JOHN FLANNAGAN LAKE	M		0.46		0.02	-	*	0.23 _a			0.03	*	*	0.15 _a	0.22						-	-	-	-	-	0.16	-	-	0.23	-	-	-		
LAFAYETTE 1 NE	2.40		0.35		0.08		0.05							0.54	0.64						0.33	0.03			0.04		0.34							
LEBANON	1.43		0.43		0.02	0.01	0.10					0.04		0.25							0.11			0.27	0.04	0.16								
NORA 4 SSE	1.23		0.27	T	0.04	T	0.13					0.12	T	0.13	0.12						T	T	T		0.19		0.23							
N FK LAKE	MA 2.31		0.54	-	*	*	*	*	0.16 _a	*	0.00 _a	0.12	*	*	0.32 _a	0.42	0.01				*	*	0.00 _a		*	*	*	0.74 _a					-	
PULASKI 2 E	2.03		0.34		0.05	T	0.18							0.55	0.38						0.25	0.01				0.27		0.27						
RADFORD 3 N	2.60	T	0.39	T	0.11		0.15							0.60	0.76										0.22	0.03		0.09						
RICHLANDS	M 1.42		0.43				-					0.08	0.01	0.06	0.28						0.02				0.40	0.02	0.12							
SALTVILLE 1N	1.33		0.38		0.02		0.09					0.01		0.05	0.42						0.04	0.10			0.12	0.02	0.08							
STAFFORDSVILLE 3 ENE	1.93	T	0.22		0.11		0.13			T				0.25	0.63	T						0.24	0.03		0.22	0.07	0.03							
WILLIS	3.01		0.50		0.07		0.07						T	0.31	1.60							0.22					0.24						0.24	
WISE 3E	1.31		0.31		0.03	0.11						0.05		0.04	0.11										0.24									0.27
WYTHEVILLE	2.13		0.46	T	0.07		0.18							0.51	0.59						T	0.13	0.02		0.07	0.02	0.08							

VIRGINIA
201603

DAILY TEMPERATURES (°F)

STATION	OB. TIME	MAX/MIN	DAY OF MONTH																															AVERAGE
			01	02	03	04	05	06	07	08	09	10	11	12	13	14	15	16	17	18	19	20	21	22	23	24	25	26	27	28	29	30	31	
ASHLAND	18	MIN	31	45	23	30	29		30	30	49	59	62	50	51	50	49	47	44	40	42		33	29	41	45	57	45	47	50	40	34	40	42.1
		MAX	71	61	44	43	44	50	66	79	80	79	73	67	72	60	69	83	78	69	60	44	55	65	77	78	78	75	58	73	66	68	76	66.5
CAMP PICKETT	08	MIN	31	39	22	30	26	30	28	46	47	60	63	48	50	48	45	46	42	37	39	35	34	29	47	51	63	42	48	50	39	31	53	41.9
		MAX	69	73	73	45	46	47	52	64	79	79	77	75	67	78	58	73	85	74	74	53	42	55	64	76	78	77	57	57	73	73	68	66.5
CHASE CITY	17	MIN	32	32	23	26	28	32	30	33	44	44	60	55	53	51	50	50	43	41	41	37	35	28	29	47	47	47	47	48	40	32	33	39.9
		MAX	70	71	50	46	51	50	55	65	77	77	76	76	72	75	59	74	85	75	70	55	44	57	64	76	76	77	59	56	72	66	67	65.9
CLARKSVILLE	07	MIN	34	35	28	31	35	35	32	45	42	46	50	58	54	54	51	49	42	42	42	39	35	32	33	44	44	50	50	51	40	37	51	42.3
		MAX	73	73	49	46	52	51	56	67	80	79	78	78	73	77	64	77	87	76	73	57	43	57	66	78	78	77	60	56	73	69	69	67.5
CORBIN	09	MIN	31	39	27	30	34	38	33	40	48	56	59	58	57	56	52	52	44	45	44	37	36	31	33	48	51	51	50	50	43	42	46	43.9
		MAX	70	64	42	41	44	52	67	79	82	79	73	66	62	54	67	80	72	68	57	44	53	65	77	78	75	62	57	72	61	67	76	64.7
CROZIER	07	MIN	33	35	22	31	32	34	32	48	49	62	60	47	54	48	46	47	44	39	37	37	34	30	49	54	61	40	49	49	43	32	52	42.9
		MAX	68	72	47	42	43	44	51	65	79	78	78	74	67	71	55	69	83		73	50	42	55	64	77	77	76	58	54	62	71	68	63.8
FARMVILLE 2 N	07	MIN	30	38	21	25	25	32	27	41	50	59	61	49	52	48	47	45	41		37	35	34	29	43	50	59	42	46	48	31	62 ^s	62	41.6
		MAX	68	74	47	47	49	51	54	67	79	77	77	65	76	76	56	74	85	74	69	49	41	55	65	76	78	75	56	53	71	65	61	64.8
GREENBAY 3 NE	09	MIN	29	31	22	23	33	37	28	29	50	52	60	54	54	50	50	48	42	40	47	36	34	31	31	46	47	49	50	50	41	36	36	40.8
		MAX																																
JOHN H KERR DAM	08	MIN	74	72	52	47	51	50	55	64	79	77	77	78	75	75	62	76	90	79	74	54	42	58	66	76	78	77	61	57	76	69	71	67.5
		MAX	33	38	26	32	33	36	34	43	45	58	60	57	57	57	52	50	43	45	42	38	37	31	35	53	58	51	50	50	42	36	40	43.9
KEYSVILLE 2 S	07	MIN	68	73	46	43	49	48	54	66	78	77	77	76	71	75	57	75	84	73	69	53	42	54	65	76	77	75	58	53	69	65	67	64.9
		MAX	34	35	22	23	31	32	30	32	51	53	59	57	57	51	49	50	46	47	43	36	35	32	36	47	53	47	46	49	36	37	40	41.8
LOUISA	18	MIN	70	66	41	45	45	52	65	78	80	77	74	68	64	59	69	82	82	70	67	40	54	63	76	77	75	72	58	70	65	66	72	65.9
		MAX	30	37	20	31	27	31	29	47	43	61	59	42	50	47	46	41	35	31	34	35	32	26	50	46	63	38	48	50	36	27	51	40.1
PALMYRA 3S	06	MIN	70	73	47	41	47	47	53	67	80	80	80	75	68	67	55	70	84	73	70	48	41	54	65	77	79	77	59	55	71	64	68	64.7
		MAX	27	28	18	19	24	30	25	26	38	39	61	47	51	49	49	41	36	33	32	31	35	26	28	42	47	41	41	51	35	28	28	35.7
PETERSBURG	08	MIN	74	52	46	43	45	51	66	79	80	79	73	65	79	59	70	85	75	70	52	43	56	65	65	78	78	60	55	74	66	68	77	65.4
		MAX	33	26	31	26	29	34	35	43	52	60	50	51	51	50	50	45	43	42	39	36	32	33	33	51	50	48	45	45	35	34	54	41.5
RICHMOND INTL AP	24	MIN	70	63	44	43	42	51	64	78	80	78	74	62	76	57	70	84	74	69	50	44	55	65	76	77	78	60	54	74	65	66	77	65.2
		MAX	34	31	23	31	26	29	31	42	45	59	53	50	50	50	48	49	46	40	38	36	35	29	45	48	52	44	48	51	42	35	52	41.7
SANDSTON	07	MIN																																M
		MAX																																
WESTERN PIEDMONT 03 APPOMATTOX	07	MIN	65	71	44	41	52	49	54	65	77	75	76	73	69	71	54	74	83	71	67	48	42	53	62	74	76	72	56	54	68	64	67	63.5
		MAX	40	40	25	25	30	32	34	36	49	53	60	55	54	49	48	49	52	44	45	34	32	34	37	46	50	43	44	50	42	37	37	42.1
BROOKNEAL	07	MIN	68	73	45	44	53	53	56	67	78	78	78	78		74	57	76	86	75	71		44	56	66	78	79	75	59	56	70	67	70	66.6
		MAX	29	37	23	24	34	32	28	30	37	38	57	57		52	51	44	38	39	38	38	31	29	32	37	40	47	49	52	35	31	31	38.0
CHARLOTTESVILLE 2W	08	MIN	66	71	42	42	47	48	54	65	79	81	79	74	67	62	54	70	82	71	68	46	44	53	66	76	78	72	59	56	68	62	68	63.5
		MAX	44	38	26	27	30	32	34	38	54	56	59	53	53	48	47	47	51	47	44	34	35	37	39	47	52	40	40	50	45	40	40	42.8
CHATHAM	07	MIN	70	73	46	42	53	53	54	66	76	77	77	77	71	71	56	75	86	86	70	49	49	55	64	75	77	74	74	60	72	72	67	66.7
		MAX	29	28	21	22	27	27	26	26	38	37	37	58	51	51	50	43	36	36	37	36	30	27	27	40	40	47	43	43	33	31	30	35.7
DANVILLE RGNL AP	24	MIN	73	65	45	56	56	57	69	79	78	79	78	76	71	63	78	88	77	72	53	45	57	66	79	78	78	62	56	72	66	69	75	68.3
		MAX	32	29	25	34	29	32	29	46	47	62	62	59	55	54	52	49	42	44	41	39	30	31	45	48	58	48	51	50	39	39	55	43.7

VIRGINIA
201603

DAILY TEMPERATURES (°F)

STATION	OB. TIME	MAX/MIN	DAY OF MONTH																															AVERAGE		
			01	02	03	04	05	06	07	08	09	10	11	12	13	14	15	16	17	18	19	20	21	22	23	24	25	26	27	28	29	30	31			
FREE UNION	08	MAX	65	71	43	41	46	48	54	66	81	83	80	76	68	62	54	72	84	72	70	46	45	54	65	77	78	75	60	55	70	64	68	64.3		
		MIN	29	30	20	21	25	27	26	28	35	35	51	46	51	48	47	41	41	32	32	34	34	27	29	38	39	35	34	47	43	28	28	34.9		
LYNCHBURG INTL AP	24	MAX	70	52	40	50	50	55	68	77	77	77	73	69	68	54	74	84	71	68	51	45	53	63	74	76	72	55	55	66	64	67	69	64.1		
		MIN	32	24	21	29	26	29	32	44	39	56	59	55	52	50	48	46	40	37	37	34	32	31	41	44	53	43	50	45	40	34	52	40.5		
MARTINSVILLE FLTR PLT	07	MAX	71	72	45	43	55	53	57	69	79	76	77	78	74	68	67	77	85		72	50	47	55	65	78	77	75	61	57	69	66	69	66.2		
		MIN	27	27	22	25	23	23	27	31	38	38	55	57	51	51	52	44	36	36	37	38	33	27	30	36	40	42	42	50	33	30	31	36.5		
MEADOWS OF DAN 5 SW	07	MAX	68	69			47	48	48	64	78	72	73	75	69	69	71	76	83	73	68	51	46	52	61	72	72	73	62	61	66	63	66	65.4		
		MIN	29	28	28	28	27	27	27	31	41	42	42		53	51	47	47	43	42	42	39	32	31	33	38	43	46	46	51	37	35	35	38.0		
MONTEBELLO FISH CULTURAL STN	07	MAX	58	61	36		42	43		65	73	75		73	63		67		78		61		45	59			73	57	55		59		M			
		MIN	28	28	19		19	25		27	38	49		46	50		42		29			29		25	33			29	30	46		25		M		
MONTECELLO	08	MAX	62	70	42	38	46	46	50	63	77	77	77	72	65	62	53	66	80	69	66	47	43	51	62	73	75	72	58	66	66	61	65	61.9		
		MIN	45	41	25	25	29	29	31	34	52	51	57	52	52	47	47	46	48	46	44	34	34	37	39	47	50	40	40	49	45	36	36	41.5		
ROCKY MT	07	MAX	68	71	42	42	51	53	58	69	80	77	76	74	71	65	62	76	82	72	70	45	45	53	65	77	76	71	58	56	65	66	70	64.7		
		MIN	30	31	25	25	25	28	29	32	40	41	61	59	53	53	50	45	42	44	42	37	37	29	34	34	49	43	45	51	42	31	31	39.3		
SOUTH BOSTON	07	MAX	71	73	49	46	52	54	56	66	78	77	77	76	76	76	61	75	85	75	72	55	44	56	65	77	78	76		55	73	66	68	66.9		
		MIN	31	31	25	25	33	34	29	29	42	42	53	58	54	54	52	48	42	42	42	38	33	31	32	47	46	51	50	51	40	35	35	40.5		
STUART	07	MAX	72	71	46	43	53	51	58	68	79	75	76	76	73	65	71	78	84	76	73	52	48	56	65	76	78	77	62	66	69	66	70	66.9		
		MIN	32	32	25	27	27	29	29	31	44	47	56	55	54	55	49	47	44	43	42	39	35	30	31	31	45	46	48	50	39	35	36	39.8		
TYE RIVER 1 SE	07	MAX																																M		
		MIN																																	M	
NORTHERN 04																																				
EDINBURG	07	MAX																																	M	
		MIN																																		M
FRONT ROYAL	07	MAX	60	68	39	40	37	42	49	62	77	83	81	71	63	56	48	64	74	66	66	43	41	50	63	77	77	69	61	58	66	61	66	60.6		
		MIN	36	36	24	22	24	31	32	34	49	50	55	48	53	44	44	44	43	39	20	32	33	32	33	51	49	39	37	48	46	35	33	38.6		
LINCOLN	07	MAX	61	66	60	40	39	46	48	66	78	82	79	72	63	59	49	59	72	68	64	57	42	50	60	75	77	72	59	56	64	57	63	61.4		
		MIN	28	28	20	21	30	33	25	27	34	34	51	37	43	48	43	39	39	34	41	31	33	25	25	38	38	33	38	32	26	26	26	33.3		
LURAY 5 E	08	MAX	59	67	37	43	38	45	50	60	77	83	83	71	65	64	49	71	82	66	63	40	42	49	64	75	77	62	59	63	58	65	61.4			
		MIN	31	31	18	27	29	28	29	40	42	53	53	45	55	45	45	46	39	33	38	32	32	26	30	43	61	30	39	47	44	29	51	38.4		
MADISON	08	MAX																																	M	
		MIN																																		M
MANASSAS	07	MAX	64	66	43	41	42	43	51	68	80	85	80	73	66	63	53	64	78	71	66	45	44	52	63	77	79	73	73	57	71	60	66	63.1		
		MIN	32	38	23	23	33	33	31	36	44	43	61	45	49	47	46	44	45	41	40	35	36	28	28	47	57	37	37	48	46	30	31	39.2		
MT WEATHER	07	MAX	55	64	34	36	33	40	45	59	74	78	74	66	60	56	46	59	70	61	59	59	39	47	57	71	73	63	51	53	60	54	61	56.7		
		MIN	40	31	22	23	27	28	30	34	55	56	51	47	46	42	41	41	45	41	38	31	31	32	36	53	53	32	32	42	40	36	36	38.5		
PIEDMONT RSCH STN	08	MAX	65	70	58	41	45	43	51	65	78	81	78	73	66	61	52	54	63	55	66	55	42	51	63	75	76	72	60	54	67	62	66	61.5		
		MIN	36	38	21	27	29	28	31	39	49	52	59	57	52	47	46	47	45	41	41	34	35	31	34	49	52	38	40	49	47	35	41	41.0		
SOMERSET	07	MAX	64	69	43	41	45	45	52	66	78	81	78	73	66	62	53	67	82	70	67	47	43	52	63	75	76	73	59	54	68	62	65	62.5		
		MIN	30	36	20	26	28	29	28	38	43	53	59	49	51	47	47	44	43	34	40	35	35	29	31	47	48	38	39	49	46	29	32	38.8		
SPERRYVILLE	06	MAX		67	39	41	42	43	51	64	78		77	74	66		51	66	75	67	64	43	41	50	61	76	78	70	61	56	68	60	66	60.5		
		MIN		35	21	27	30	27	32	39	42		56	44	50		45	44	41	41	41	33	35	30	34	48	54	33	36	43	48	33	37	38.5		
STERLING (RCS)	07	MAX	62	67	38	39	39	44	49	65	79	83	79	71	63	60	51	62	75	67	65	44	43	51	62	75	78	70	61	56	68	58	65	60.9		

VIRGINIA
201603

DAILY TEMPERATURES (°F)

STATION	OB. TIME	MAX/MIN	DAY OF MONTH																															AVERAGE
			01	02	03	04	05	06	07	08	09	10	11	12	13	14	15	16	17	18	19	20	21	22	23	24	25	26	27	28	29	30	31	
VIENNA	07	MIN	30	32	21	23	31	32	29	33	39	40	56	41	46	46	45	41	41	39	35	33	34	26	27	42	41	36	35	44	45	29	29	36.2
		MAX	64	67	42	42	40	44	51	69	80	84	73	72	67	62	63	63	76	68	67	46	44	52	63	74	70	69	58	55	66	61	61	61.7
WARRENTON 3 SE	08	MIN	37	37	27	27	33	36	35	38	47	47	54	47	47	49	47	46	46	43	43	36	37	31	31	48	47	36	36	46	44	30	31	40.0
		MAX																																
WASHGTON DULLES INTL AP	24	MIN	66	61	41	40	45	51	66	78	82	80	72	63	61	53	63	75	67	65	51	44	52	62	74	77	71	61	56	68	59	65	72	62.6
		MAX	30	25	22	32	35	29	29	40	39	59	47	40	48	47	45	42	39	36	35	36	30	26	49	42	47	37	43	48	37	27	53	38.5
WASHINGTON REAGAN AP	24	MIN	65	60	41	42	45	52	66	79	79	73	60	60	53	65	74	69	67	57	44	53	62	75	77	72	62	57	70	60	63	74	63.1	
		MAX	40	31	29	32	35	37	36	46	47	57	57	50	49	47	47	49	49	48	38	37	37	35	53	50	49	41	48	49	46	41	54	44.0
WINCHESTER	07	MIN	58	66	37	41	37	45	50	58	79	83	79	70	61	56	48	63	75	65	63	41	42	50	61	74	77	67	62	58	62	58	65	59.7
		MAX	35	32	23	25	30	32	28	38	47	50	54	43	47	44	43	43	43	41	41	33	34	28	29	43	43	31	31	41	43	31	31	37.3
WINCHESTER 7 SE	08	MIN	66	38	40	37	44	50	59	77	82	80		70	56	48		73	65		41	51			76			58	64		63	69	59.4	
		MAX	32	21	23	29	29	33	38	37	36	50		36	44	44		35	34		33	24			37			34	45		24	55	35.1	
WOODSTOCK 2 NE	07	MIN	58	32	36	40	38	48	51	56	77	80	79	71	65	48	49	67	78	65	62	39	42	49	64	75	76	66	62	50	62	58	63	58.3
		MAX	29	27	19	20	31	31	27	31	36	36	54	43	47	44	43	32	38	31	34	31	35	27	28	37	37	32	32	44	44	25	28	34.0
CENTRAL MOUNTAIN 05 COVINGTON FLTR PLT	07	MIN	60	69	37	40	47	52	53	69	77	76	79	72	71	63	69	72	79		66	46	43	51	67	79	77	62	65	63	59	64	68	63.2
		MAX	26	26	20	23	30	32	26	27	32	31	46	61	54	53	52	43		31	31	38	34	27	27	33	35	33	32	48	46	28	28	35.1
DALE ENTERPRISE	07	MIN	60	65	54	40	40	48	51	63	74	76	75	63	68	61	50	70	80	65	62	44	40	48	60	72	68	68	61	61	61	57	64	60.3
		MAX	29	30	19	19	25	25	27	36	36	44	54	52	44	45	45	42	39	25	32	32	31	26	28	40	45	32	33	42	42	42	42	35.6
GATHRIGHT DAM	07	MIN	56	65	32	37	44	48	49	66	73	75	76	72	67	62	67	67	75	62	61	44	41	44	64	74	75	56	62	62	62	59	64	60.0
		MAX	26	28	19	22	29	31	26	27	34	36	45	54	52	52	50	43	37	33	33	35	31	27	27	36	37	32	31	45	43	29	29	34.8
HOT SPRINGS	07	MIN	54	64	32	38	41	47	49	65	76	75	77	71	68	64	64	67	76	63	60	44	41	44	62	73	73	57	61	61	54	57	63	59.4
		MAX	29	29	19	20	28	29	27	30	36	36	47	55	54	51	50	44	37	33	33	34	28	28	28	37	38	31	30	46	41	30	30	35.1
LEXINGTON	07	MIN	63	69	42	40	50	52	55	69	78	78	78	75	69	63	59	73	82	69	66	46	46	52	64	77	75	67	61	59	63	65	66	63.6
		MAX	28	28	22	23	26	26	28	29	36	36	50	56	52	50	49	44	43	35	34	35	34	27	27	37	41	37	37	47	46	30	30	36.2
MILLGAP	07	MIN	49	62	28	37	40	46	52	66	72	75	76	71	65	66	66	64	73	58	57	39	37	40	61	70	70	54	62	61	53	55	62	57.6
		MAX	19	19	13	15	25	28	19	20	24	24	37	39	48	48	48	35	30	22	21	32	25	21	20	27	26	21	20	36	39	19	19	27.1
MUSTOE 1 SW	24	MIN	61	44	38	39	45	50	65	71	73	74	69	62	65	64	62	74	60	57	40	38	41	60	69	69	60	60	59	54	54	60	60	58.0
		MAX	22	19	14	24	27	26	23	29	28	39	43	43	48	47	41	37	32	28	33	31	27	22	30	29	31	25	34	43	29	23	39	31.2
ROANOKE 8 N	07	MIN	64	51	38	40	49	51	57	68	77	76	79	73	71	63	62	75	83	70	70	52	46	52	66	77	76	66	58	57	63	64	68	63.3
		MAX	31	29	24	28	28	30	30	32	40	41	58	56	54	54	51	46	45	39	39	37	36	34	36	40	43	42	42	49	47	35	35	39.7
ROANOKE INTL AP	24	MIN	69	51	40	50	51	57	69	79	76	79	74	71	63	61	75	83	71	68	51	47	53	67	78	76	68	58	57	63	64	68	69	64.7
		MAX	32	29	25	30	29	37	31	49	43	58	65	56	56	52	51	48	48	41	39	37	37	36	43	51	50	42	50	49	44	37	55	43.5
STAUNTON WATER TRMTMT PLT	08	MIN	59	66	38	39	42	46	51	65	75	75	70	66	62	51	69	80	66	64	41	42	48	61	73	73	65	62	56	60	61	63	60.1	
		MAX	35	31	21	25	26	30	33	40	52	57	55	50	52	45	45	45	46	40	41	31	31	32	39	49	53	34	36	48	42	34	34	39.7
WAYNESBORO WTP	07	MIN	60	67	39	39	42	47	54	66	75	78	78	70	67	62	53	70	80	66	64	46	43	49	63	76	75	67	61	65	62	65	61.6	
		MAX	31	30	21	22	26	27	32	34	37	38	49	51	51	48	47	45	38	33	32	33	33	27	28	39	41	34	34	34	43	31	31	35.5
SOUTHWESTERN MOUNTAIN 06 ABINGDON 3S	22	MIN	62	67	33	44	41	49	55	68	72	78	80	68	78	68	75	73	74	65	64	50	45	50	62	70	75	61	71	70	58	61	71	63.2
		MAX	30	29	23	28	24	24	29	28	33	37	47	54	54	49	47	46	37	33	32	38	28	27	26	31	37	37	50	30	32	37	35.3	

VIRGINIA
201603

DAILY TEMPERATURES (°F)

STATION	OB. TIME	MAX/MIN	DAY OF MONTH																															AVERAGE
			01	02	03	04	05	06	07	08	09	10	11	12	13	14	15	16	17	18	19	20	21	22	23	24	25	26	27	28	29	30	31	
BIG STONE GAP	08	MAX	63	65	36	43	44	47	56	65	72	76	78	66	80	65	73	75	74	66	67	59	59	63	61	73	76	59	72	70	58	65	73	64.5
		MIN	29	29	24	29	25	26	28	29	33	37	46	53	54	49	48	47	36	33	35	39	30	26	30	40	40	36	37	47	33	33	33	35.9
BLACKSBURG NWSO	07	MAX	61	66	34	39	40	49	52	68	74	73	74	70	73	62	68	71	77	66	63	48	39	48	61	73	71	63	59	57	58	59	65	60.7
		MIN	26	27	21	24	25	25	27	28	34	35	50	55	53	53	50	44	41	33	33	34	31	28	31	35	37	34	34	46	41	30	31	35.4
BURKES GARDEN	07	MAX	54	61	26	34	33	43	48	62	67	71	72	60	69	59	65	66		59	57	40	38	41	56	65	67	52	62	62	52	52	60	55.1
		MIN	25	24	17	21	20	22	23	25	30	29	45	50	53	44	41	41		31	30	31	25	25	33	37	34	34	37	51	36	24	39	32.6
CHRISTIANSBURG	07	MAX	60	64	34	39	41	48	50	66	72	70	71	70	70	61	66	69	75	64	62	40	41	47	58	71	69	61	59	58	57	58	63	59.2
		MIN	32	30	22	24	26	26	33	32	42	44	54	54	54	53	49	49	43	41	38	38	31	31	35	41	45	37	40	47	39	37	39	38.9
CLINTWOOD 1 W	07	MAX	61	69	32	38	40	48	53	65	74	76	78	63	79	66	74	76	75	65	65	54	49	50	65	72	77	55	71	72	54	58	74	62.8
		MIN	26	26	21	21	32	31	26	26	31	33	43	47	47	44	45	45	32	29	29	37	26	24	24	38	38	33	34	45	31	28	28	32.9
COPPER HILL	07	MAX	58	61	31	32	40	45	50	65	71	70	70	65	64	62	60	68	75	64	61	46	37	45	57	71	67	61	52	51	55	57	59	57.1
		MIN	42	30	20	21	24	24	31	37	45	46	54	50	50	51	48	49	44	42	40	31	28	28	33	43	49	37	42	45	38	36	38	38.6
GALAX RADIO WBRF	07	MAX	65	57	37	41	48	55	73	73	71	73	71	67	65	68	74	75	74	64	63	41	48	61	71	70	67	65	59	60	61	63	61	62.6
		MIN	27	28	23	29	23	32	27	32	35	48	57	52	54	51	47	44	35	32	36	36	29	28	32	38	53	37	47	48	35	27	51	37.8
GALAX WTP	07	MAX	61	65	35	36	41	47	54	61	71	69	70	70	66	63	68	73	75	65	63	42	41	46	60	69	68	66	58	58	59	59	61	59.4
		MIN	27	27	22	25	23	23	27	27	32	34	49	56	51	53	50	44	35	33	32	37	31	27	30	31	37	38	40	48	38	27	27	34.9
GRUNDY	07	MAX	60	67	33	38	38	48	53	66	74	77	79	64	78	67	75	77	74	66	64	55	49	51	65	74	77	57	74	73	56	64	73	63.4
		MIN	28	28	23	26	29	32	28	28	33	35	50	50	52	50	49	46	36	32	32	38	28	27	27	37	39	36	36	49	38	31	50	36.2
JOHN FLANNAGAN LAKE	07	MAX	64	66	33	35		59	60	76	77	80		81	73	78	77	67						66		78		76						M
		MIN	28	28	22	22		29	30	33	36	47		47	47	35	32						25		39		36		36					M
LEBANON	07	MAX	63	66	66	43	39	49	53	64	73	78	80	80	80	70	75	75	66	65	53	45	45	63	71	76	58	72	71	71	60	71	65.0	
		MIN	26	27	20	25	24	24	26	28	26	35	60	52	57	44	44	44	35	31	31	37	28	24	24	37	33	32	50	35	32	48	34.3	
NORA 4 SSE	07	MAX	59	62	28	38	35	42	49	60	67	70	74	64	74	63	70	70	73	64	62	54	44	46	57	67	70	54	69	66	53	55	66	58.9
		MIN	43	25	22	26	29	30	30	41	51	52	57	54	60	54	51	52	46	42	42	32	26	25	34	49	47	37	38	47	34	34	46	40.5
N FK LAKE	08	MAX	64	64					65		75	78		78	72	76	76	64					65	50	64	70			74	55	58			M
		MIN	28	27				26		26	46		46	45	49	37	32						30	26	26	42			37	35	30			M
PULASKI 2 E	07	MAX	61	65	33	41	42	50	52	70	73	72	74	70	72	62	70	71	76	66	64	43	39	48	62	73	71	60	57	63	58	60	63	60.7
		MIN	28	27	20	21	24	36	26	33	36	35	56	58	52	52	50	43	35	31	33	36	31	28	34	34	36	32	40	33	41	27	27	35.3
RADFORD 3 N	07	MAX	61	66	33	40	39	48	50	69	74	74	74	71	72	60	68	69	78	66	62	42	39	48	61	74	72	60	59	58	57	57	63	60.1
		MIN	25	28	20	24	26	30	25	31	32	40	48	56	51	54	50	41	38	36	36	37	31	26	27	34	36	35	42	50	42	27	29	35.7
RICHLANDS	07	MAX		65	42	36	38			66	75	78	78	65	78	67	75	74	73	64	53	48	44	45	64	71	75		70	70	56	59	70	62.9
		MIN		31	23	20	21			26	31	32	45	52	54	44	44	46	46	45	41	33	28	25	24	35	35	35	35	45	42	31	31	35.7
SALTVILLE 1N	07	MAX	64	66	35	42	40	49	55	68	72	78	78	68	78	67	74	72	76	66	66	49	49	50	63	73	75	62	72	70	60	62	70	63.5
		MIN	26	26	21	26	23	26	26	29	31	44	53	53	48	48	43	35	31	30	38	31	24	24	29	33	35	35	46	38	30	31	33.4	
STAFFORDSVILLE 3 ENE	07	MAX	61	67	32	39	43	49	49	68	74	73	76	71	71	61	69	71	77	66	63	43	40	48	63	73	71	59	62	60	58	57	63	60.5
		MIN	25	25	20	22	25	25	24	24	34	34	55	57	53	52	51	43	36	33	31	36	32	26	28	33	36	34	34	48	42	28	30	34.7
WISE 3E	17	MAX	61	53	39	37	44	52	62	69	70	73	73	75	72	70	73	70	67	60	60	50	44	59	65	72	67	68	66	64	53	66	66	61.9
		MIN	35	23	20	29	23	34	37	49	46	53	56	49	56	50	56	60	36	32	38	32	27	30	48	51	44	33	51	43	33	36	55	40.8
WYTHEVILLE	07	MAX	60	66	32	37	40	49	53	67	72	74	75	68	70	62	69	70	75	64	62	42	39	45	62	72	71	61	63	60	57	58	63	59.9
		MIN	30	28	20	23	24	26	27	28	37	38	52	58	56	53	51	45	42	35	34	35	29	29	34	39	38	36	37	48	38	31	31	36.5

VIRGINIA
201603

SNOWFALL AND SNOW ON GROUND (INCHES)

STATION		DAY OF MONTH																																
		01	02	03	04	05	06	07	08	09	10	11	12	13	14	15	16	17	18	19	20	21	22	23	24	25	26	27	28	29	30	31		
VIRGINIA																																		
TIDEWATER 01																																		
DISPUTANTA	SNOWFALL																																	
EASTVILLE	SNOWFALL																																	
EMPORIA 1 WNW	SNOWFALL																																	
FREDERICKSBURG SEWAGE	SNOWFALL																																	
HOLLAND 1 E	SNOWFALL																																	
HOPEWELL	SNOWFALL				-	-	-								-		-																	
	SN ON GND				-	-	-								-		-																	
NORFOLK INTL AP	SNOWFALL			T	T																													
	SN ON GND																																	
NORFOLK SOUTH	SNOWFALL	-	-	T	-	-	-	-	-	-	-	-	-	-	-	-	-	-	-	-	-	-	-	-	-	-	-	-	-	-	-	-	-	
	SN ON GND	-	-		-	-	-	-	-	-	-	-	-	-	-	-	-	-	-	-	-	-	-	-	-	-	-	-	-	-	-	-	-	
NORTH	SNOWFALL																																	
	SN ON GND																																	
PAINTER 2W	SNOWFALL																																	
STONY CREEK 2 N	SNOWFALL																																	
	SN ON GND																																	
SUFFOLK LAKE KILBY	SNOWFALL			T																														
	SN ON GND			T																														
WAKEFIELD 1NW	SNOWFALL			1.0	0.1																													
	SN ON GND			1																														
WALKERTON 2 NW	SNOWFALL																																	
	SN ON GND																																	
WALLACETON LK DRUMMOND	SNOWFALL																																	
WALLOPS ISLAND NASA TEST FACIL	SNOWFALL			T	0.8																		T											
	SN ON GND			T																														
WARSAW 2 NW	SNOWFALL	-	-	-	1.0	-	-	-	-	-	-	-	-	-	-	-	-	-	-	-	-	-	-	-	-	-	-	-	-	-	-	-	-	
WEST POINT 2 NW	SNOWFALL				1.1																													
	SN ON GND																																	
WILLIAMSBURG 2 N	SNOWFALL	-	-	1.0	-	-	-	-	-	-	-	-	-	-	-	-	-	-	-	-	-	-	-	-	-	-	-	-	-	-	-	-	-	
	SN ON GND	-	-	1	-	-	-	-	-	-	-	-	-	-	-	-	-	-	-	-	-	-	-	-	-	-	-	-	-	-	-	-	-	
EASTERN PIEDMONT 02																																		
ALBERTA 5N	SNOWFALL				T																													
	SN ON GND																																	
AMELIA COURTHOUSE 1	SNOWFALL				1.0	-																												
	SN ON GND	-	-	-	1	-	-	-	-	-	-	-	-	-	-	-	-	-	-	-	-	-	-	-	-	-	-	-	-	-	-	-	-	
ASHLAND	SNOWFALL				2.0																													
	SN ON GND																																	
BREMO BLUFF	SNOWFALL																																	
	SN ON GND																																	
BUCKINGHAM	SNOWFALL				T																													

Snowfall: Includes snow and ice. Values for NWS stations (J index note) are Mid-Mid (LST).

Snow on ground: Includes snow, sleet, ice, and hail. Values for NWS stations (J index note) are observed at 12 UTC (GMT).

Water Equivalent: Given for NWS stations (J index note) only, when snow depth is 2 inches or more, and is measured at 18 UTC (GMT)

VIRGINIA
201603

SNOWFALL AND SNOW ON GROUND (INCHES)

STATION	DAY OF MONTH																														
	01	02	03	04	05	06	07	08	09	10	11	12	13	14	15	16	17	18	19	20	21	22	23	24	25	26	27	28	29	30	31
CAMP PICKETT	SN ON GND																														
	SNOWFALL	-	-	-	T	-	-	-	-	-	-	-	-	-	-	-	-	-	-	-	-	-	-	-	-	-	-	-	-	-	-
CHASE CITY	SN ON GND																														
	SNOWFALL	-	-	-	T	-	-	-	-	-	-	-	-	-	-	-	-	-	-	-	-	-	-	-	-	-	-	-	-	-	
CLARKSVILLE	SN ON GND																														
	SNOWFALL	-	-	-	T	-	-	-	-	-	-	-	-	-	-	-	-	-	-	-	-	-	-	-	-	-	-	-	-	-	
CORBIN	SN ON GND																														
	SNOWFALL	-	-	-	1.0	-	-	-	-	-	-	-	-	-	-	-	-	-	-	-	-	-	-	-	-	-	-	-	-	-	
CROZIER	SN ON GND																														
	SNOWFALL	-	-	-	1	-	-	-	-	-	-	-	-	-	-	-	-	-	-	-	-	-	-	-	-	-	-	-	-	-	
FARMVILLE 2 N	SN ON GND																														
	SNOWFALL	-	-	-	T	-	-	-	-	-	-	-	-	-	-	-	-	-	-	-	-	-	-	-	-	-	-	-	-	-	
GREENBAY 3 NE	SN ON GND																														
	SNOWFALL	-	-	-	T	-	-	-	-	-	-	-	-	-	-	-	-	-	-	-	-	-	-	-	-	-	-	-	-	-	
JOHN H KERR DAM	SN ON GND																														
	SNOWFALL	-	-	-	-	-	-	-	-	-	-	-	-	-	-	-	-	-	-	-	-	-	-	-	-	-	-	-	-	-	
KEYSVILLE 2 S	SN ON GND																														
	SNOWFALL	-	-	-	-	-	-	-	-	-	-	-	-	-	-	-	-	-	-	-	-	-	-	-	-	-	-	-	-	-	
LOUISA	SN ON GND																														
	SNOWFALL	-	-	-	T	-	-	-	-	-	-	-	-	-	-	-	-	-	-	-	-	-	-	-	-	-	-	-	-	-	
PALMYRA 3S	SN ON GND																														
	SNOWFALL	-	-	-	-	-	-	-	-	-	-	-	-	-	-	-	-	-	-	-	-	-	-	-	-	-	-	-	-	-	
PETERSBURG	SN ON GND																														
	SNOWFALL	-	-	-	-	-	-	-	-	-	-	-	-	-	-	-	-	-	-	-	-	-	-	-	-	-	-	-	-	-	
RICHMOND INTL AP	SN ON GND																														
	SNOWFALL	-	-	0.4	0.8	-	-	-	-	-	-	-	-	-	-	-	-	-	-	-	-	-	-	-	-	-	-	-	-	-	
SANDSTON	SN ON GND																														
	SNOWFALL	-	-	-	1	-	-	-	-	-	-	-	-	-	-	-	-	-	-	-	-	-	-	-	-	-	-	-	-	-	
WINTERPOCK 4 W	SN ON GND																														
	SNOWFALL	-	-	-	0.5	-	-	-	-	-	-	-	-	-	-	-	-	-	-	-	-	-	-	-	-	-	-	-	-	-	
WESTERN PIEDMONT 03	SN ON GND																														
	SNOWFALL	-	-	-	1.0	-	-	-	-	-	-	-	-	-	-	-	-	-	-	-	-	T	-	-	-	-	-	-	-	-	
APPOMATTOX	SN ON GND																														
	SNOWFALL	-	-	-	1	-	-	-	-	-	-	-	-	-	-	-	-	-	-	-	-	-	-	-	-	-	-	-	-	-	
BEDFORD 4 NW	SN ON GND																														
	SNOWFALL	-	-	-	T	-	-	-	-	-	-	-	-	-	-	-	-	-	-	-	-	-	-	-	-	-	-	-	-	-	
BROOKNEAL	SN ON GND																														
	SNOWFALL	-	-	-	-	-	-	-	-	-	-	-	-	-	-	-	-	-	-	-	-	-	-	-	-	-	-	-	-	-	
CHARLOTTESVILLE 2W	SN ON GND																														
	SNOWFALL	-	-	-	0.4	-	-	-	-	-	-	-	-	-	-	-	-	-	-	-	-	T	-	-	-	-	-	-	-	-	
CHATHAM	SN ON GND																														
	SNOWFALL	-	-	-	T	-	-	-	-	-	-	-	-	-	-	-	-	-	-	-	-	-	-	-	-	-	-	-	-	-	
CONCORD 4 SSW	SN ON GND																														
	SNOWFALL	-	-	-	T	-	-	-	-	-	-	-	-	-	-	-	-	-	-	-	-	-	-	-	-	-	-	-	-	-	
DANVILLE RGNL AP	SN ON GND																														
	SNOWFALL	-	-	-	-	-	-	-	-	-	-	-	-	-	-	-	-	-	-	-	-	-	-	-	-	-	-	-	-	-	
FREE UNION	SN ON GND																														
	SNOWFALL	-	-	-	1.6	-	-	-	-	-	-	-	-	-	-	-	-	-	-	-	-	-	-	-	-	-	-	-	-	-	
HOLCOMB ROCK	SN ON GND																														
	SNOWFALL	-	-	-	T	-	-	-	-	-	-	-	-	-	-	-	-	-	-	-	-	-	-	-	-	-	-	-	-	-	
	SN ON GND																														
	SNOWFALL	-	-	-	0.6	-	-	-	-	-	-	-	-	-	-	-	-	-	-	-	-	T	-	-	-	-	-	-	-	-	

Snowfall: Includes snow and ice. Values for NWS stations (J index note) are Mid-Mid (LST).

Snow on ground: Includes snow, sleet, ice, and hail. Values for NWS stations (J index note) are observed at 12 UTC (GMT).

Water Equivalent: Given for NWS stations (J index note) only, when snow depth is 2 inches or more, and is measured at 18 UTC (GMT)

VIRGINIA
201603

SNOWFALL AND SNOW ON GROUND (INCHES)

STATION	DAY OF MONTH																														
	01	02	03	04	05	06	07	08	09	10	11	12	13	14	15	16	17	18	19	20	21	22	23	24	25	26	27	28	29	30	31
HUDDLESTON 4 SW	SN ON GND			T																											
	WTR EQUIV	-	-	-	0.1	-	-	-	-	-	-	-	-	-	-	-	-	-	-	-	-	-	-	-	-	-	-	-	-	-	-
LYNCHBURG INTL AP	SNOWFALL			T																											
	SN ON GND			T																											
MARTINSVILLE FLTR PLT	SNOWFALL			T																											
	SN ON GND			T																											
MEADOWS OF DAN 5 SW	SNOWFALL																														
	SN ON GND																														
MONTEBELLO FISH CULTURAL STN	SNOWFALL																														
	SNOWFALL																														
MONTICELLO	SNOWFALL																														
	SNOWFALL																														
PEDLAR DAM	SNOWFALL				0.9																										
	SN ON GND				T																										
ROCKY MT	SNOWFALL				T																										
	SNOWFALL				T																										
SOUTH BOSTON	SN ON GND				T																										
	SNOWFALL				T																										
STUART	SN ON GND																														
	SNOWFALL																														
TYE RIVER 1 SE	SN ON GND																														
	SNOWFALL																														
WOOLWINE	SNOWFALL				T																										
	SN ON GND				T																										
NORTHERN 04																															
FRONT ROYAL	SNOWFALL				0.2																										
	SN ON GND																														
LINCOLN	SNOWFALL				1.0																										
	SN ON GND				T																										
LURAY 5 E	SNOWFALL				1.0																										
	SN ON GND				1																										
MADISON	WTR EQUIV	-	-	-	1.0	-	-	-	-	-	-	-	-	-	-	-	-	-	-	-	-	-	-	-	-	-	-	-	-	-	
	SNOWFALL																														
MANASSAS	SNOWFALL																														
	SN ON GND	-	-	-	1	-	-	-	-	-	-	-	-	-	-	-	-	-	-	-	-	-	-	-	-	-	-	-	-	-	-
MT WEATHER	WTR EQUIV	-	-	-	1.0	-	-	-	-	-	-	-	-	-	-	-	-	-	-	-	-	-	-	-	-	-	-	-	-	-	-
	SNOWFALL	-	-	-	1.5	-	0.5	-	-	-	-	-	-	-	-	-	-	-	-	-	-	2.0	-	-	-	-	-	-	-	-	-
PIEDMONT RSCH STN	SNOWFALL				1.0																										
	SN ON GND				T																										
SOMERSET	SNOWFALL	-	-	-	0.5	-	-	-	-	-	-	-	-	-	-	-	-	-	-	-	-	-	-	-	-	-	-	-	-	-	
	SN ON GND	-	-	-	T	-	-	-	-	-	-	-	-	-	-	-	-	-	-	-	-	-	-	-	-	-	-	-	-	-	-
SPERRYVILLE	SNOWFALL	-	-	T	0.7	-	-	-	-	-	-	-	-	-	-	-	-	-	-	-	0.2	-	-	-	-	-	-	-	-	-	
	SN ON GND	-	-		1	-	-	-	-	-	-	-	-	-	-	-	-	-	-	-	-	-	-	-	-	-	-	-	-	-	-

Snowfall: Includes snow and ice. Values for NWS stations (J index note) are Mid-Mid (LST).

Snow on ground: Includes snow, sleet, ice, and hail. Values for NWS stations (J index note) are observed at 12 UTC (GMT).

Water Equivalent: Given for NWS stations (J index note) only, when snow depth is 2 inches or more, and is measured at 18 UTC (GMT)

VIRGINIA
201603

SNOWFALL AND SNOW ON GROUND (INCHES)

STATION		DAY OF MONTH																															
		01	02	03	04	05	06	07	08	09	10	11	12	13	14	15	16	17	18	19	20	21	22	23	24	25	26	27	28	29	30	31	
ROANOKE INTL AP	SN ON GND			1.0	T																												
	SNOWFALL			1																													
STAUNTON WATER TRMTMT PLT	SN ON GND																																
	SNOWFALL				2.3																												
WAYNESBORO WTP	SN ON GND				2																												
	SNOWFALL				T																												
	SN ON GND				T																												
	WTR EQUIV																																
SOUTHWESTERN MOUNTAIN 06																																	
BLACKSBURG NWSO	SNOWFALL		T	T	1.0	T																T											
	SN ON GND				1																												
BURKES GARDEN	SNOWFALL		T		0.4				T																								
	SN ON GND		T		T				T																								
CHRISTIANSBURG	SNOWFALL				1.0																												
	SN ON GND				1																												
CLINTWOOD 1 W	SNOWFALL		0.2	T	T	T	T																										
	SN ON GND		T																														
COPPER HILL	SNOWFALL				1.0																												
	SN ON GND				1																												
GALAX RADIO WBRF	SNOWFALL			T	0.6																												
	SN ON GND				1																												
GALAX WTP	SNOWFALL				0.4																												
	SN ON GND				T																												
GRUNDY	SNOWFALL		0.1																														
	SN ON GND																																
JOHN FLANNAGAN LAKE	SNOWFALL																																
	SN ON GND																																
LAFAYETTE 1 NE	SNOWFALL				0.7																												
	SN ON GND				T																												
LEBANON	SNOWFALL																																
	SN ON GND																																
NORA 4 SSE	SNOWFALL		T	T	0.3	T	T																										
	SN ON GND				T																												
N FK LAKE	SNOWFALL			-	-	-	-	-					-	-																			
	SN ON GND			-	-	-	-	-					-	-																			
PULASKI 2 E	SNOWFALL				1.0																												
	SN ON GND				1																												
RADFORD 3 N	SNOWFALL		T	T	1.0																												
	SN ON GND				1																												
RICHLANDS	SNOWFALL																																
	SN ON GND																																

Snowfall: Includes snow and ice. Values for NWS stations (J index note) are Mid-Mid (LST).

Snow on ground: Includes snow, sleet, ice, and hail. Values for NWS stations (J index note) are observed at 12 UTC (GMT).

Water Equivalent: Given for NWS stations (J index note) only, when snow depth is 2 inches or more, and is measured at 18 UTC (GMT)

VIRGINIA
201603

SNOWFALL AND SNOW ON GROUND (INCHES)

STATION		DAY OF MONTH																														
		01	02	03	04	05	06	07	08	09	10	11	12	13	14	15	16	17	18	19	20	21	22	23	24	25	26	27	28	29	30	31
SALTVILLE 1N	SNOWFALL				T																											
	SN ON GND																															
STAFFORDSVILLE 3 ENE	SNOWFALL				1.5																											
	SN ON GND				2																											
WILLIS	SNOWFALL				T																											
	SN ON GND				T																											
WISE 3E	SNOWFALL				0.8																											
	SN ON GND																															
WYTHEVILLE	SNOWFALL			T	0.6																											
	SN ON GND				1																											

Snowfall: Includes snow and ice. Values for NWS stations (J index note) are Mid-Mid (LST).

Snow on ground: Includes snow, sleet, ice, and hail. Values for NWS stations (J index note) are observed at 12 UTC (GMT).

Water Equivalent: Given for NWS stations (J index note) only, when snow depth is 2 inches or more, and is measured at 18 UTC (GMT)

VIRGINIA
201603

PAN EVAPORATION AND WIND

STATION		DAY OF MONTH																															TOTAL OR AVERAGE		
		01	02	03	04	05	06	07	08	09	10	11	12	13	14	15	16	17	18	19	20	21	22	23	24	25	26	27	28	29	30	31			
VIRGINIA EASTERN PIEDMONT 02 JOHN H KERR DAM	WIND	-	-	-	-	-	-	-	-	-	-	-	-	-	-	-	-	-	-	-	-	-	-	-	-	-	-	-	-	-	-	-	-	-	M
	EVAP	-	-	-	-	-	-	-	-	-	-	-	-	-	-	-	-	-	-	-	-	-	-	-	-	-	-	-	-	-	-	-	-	-	M
	MAX	-	-	-	-	-	-	-	-	-	-	-	-	-	-	-	-	-	-	-	-	-	-	-	-	-	-	-	-	-	-	-	-	-	M
	MIN	-	-	-	-	-	-	-	-	-	-	-	-	-	-	-	-	-	-	-	-	-	-	-	-	-	-	-	-	-	-	-	-	-	-

Evaporation: Is measured in hundreths of inches.

Wind: Is measured in miles.

Max and Min: The maximum and minimum temperatures (Fahrenheit) of the water in the evaporation pan.

STATION INDEX

STATION	INDEX NO.	DIVISION	COUNTY	LATITUDE	LONGITUDE	ELEVATION (IN FEET)	OBSERVATION TIME AND TABLES			
							LOCAL STD TIME			
							TEMP	PRECIP	EVAP	SPECIAL SEE (NOTES)
VIRGINIA										
ABINGDON 3S	0021	06	WASHINGTON	36 40	81 58W	1925	22	22		H
ALBERTA 5N	0079	02	BRUNSWICK	36 56	77 54W	376		08		H
ALTAVISTA	0166	03	CAMPBELL	37 7	79 17W	529		07		CH
AMELIA COURTHOUSE 1	0187	02	AMELIA	37 21	77 59W	345	08	08		H
APPOMATTOX	0243	03	APPOMATTOX	37 20	78 50W	850	07	07		H
ASHLAND	0327	02	HANOVER	37 45	77 29W	220	18	18		H
BEDFORD 4 NW	0561	03	BEDFORD	37 23	79 34W	1228		07		CH
BIG STONE GAP	0735	06	WISE	36 52	82 46W	1464	08	08		H
BLACKSBURG NWSO	0766	06	MONTGOMERY	37 12	80 25W	2103	07	07		H
BREMO BLUFF	0993	02	FLUVANNA	37 43	78 17W	225		07		CH
BROOKNEAL	1082	03	CAMPBELL	37 4	78 57W	408	07	07		H
BUCKINGHAM	1136	02	BUCKINGHAM	37 30	78 32W	580		07		H
BUENA VISTA	1159	05	ROCKBRIDGE	37 44	79 22W	840		07		H
BURKES GARDEN	1209	06	TAZEWELL	37 6	81 20W	3068	07	07		H
CAMP PICKETT	1322	02	NOTTOWAY	37 2	77 57W	330	08	08		CH
CHARLOTTESVILLE 2W	1593	03	ALBEMARLE	38 2	78 31W	866	08	08		H
CHASE CITY	1606	02	MECKLENBURG	36 47	78 29W	510	17	17		H
CHATHAM	1614	03	PITTSYLVANIA	36 49	79 25W	651	07	07		CH
CHRISTIANSBURG	1692	06	MONTGOMERY	37 8	80 24W	2100	07	07		H
CLARKSVILLE	1746	02	MECKLENBURG	36 37	78 33W	330	07	07		H
CLINTWOOD 1 W	1825	06	DICKENSON	37 9	82 29W	1780	07	07		H
CONCORD 4 SSW	1955	03	CAMPBELL	37 17	78 58W	815		07		H
COPPER HILL	1999	06	FLOYD	37 5	80 9W	2690	07	07		H
CORBIN	2009	02	CAROLINE	38 12	77 22W	220	09	09		H
COVINGTON FLTR PLT	2044	05	ALLEGHANY	37 49	79 59W	1230	07	07		H
CROZIER	2142	02	GOOCHLAND	37 40	77 53W	350	07	07		H
DALE ENTERPRISE	2208	05	ROCKINGHAM	38 27	78 56W	1358	07	07		H
DANVILLE RGNL AP	2250	03	PITTSYLVANIA	36 34	79 20W	571	24	24		H
DISPUTANTA	2400	01	PRINCE GEORGE	37 7	77 12W	15	07	07		H
EASTVILLE	2635	01	NORTHAMPTON	37 23	75 58W	10	07	07		H
EDINBURG	2663	04	SHENANDOAH	38 48	78 35W	928	07	07		H
EMPORIA 1 WNW	2790	01	GREENSVILLE	36 42	77 34W	100	08	08		H
FARMVILLE 2 N	2941	02	CUMBERLAND	37 20	78 23W	450	07	07		H
FREDERICKSBURG SEWAGE	3204	01	FREDERICKSBURG	38 17	77 27W	15	07	07		H
FREE UNION	3213	03	ALBEMARLE	38 5	78 35W	590	08	07		H
FRONT ROYAL	3229	04	WARREN	38 54	78 11W	930	07	07		H
GALAX RADIO WBRF	3267	06	CARROLL	36 40	80 55W	2385	07	07		H
GALAX WTP	3272	06	CARROLL	36 39	80 55W	2360	07	07		CH
GATHRIGHT DAM	3310	05	ALLEGHANY	37 57	79 57W	1770	07	07		CH
GLASGOW 1 SE	3375	05	ROCKBRIDGE	37 37	79 26W	737		07		H
GREENBAY 3 NE	3565	02	PRINCE EDWARD	37 11	78 17W	500	09	09		H
GRUNDY	3640	06	BUCHANAN	37 17	82 5W	1170	07	07		H
HOLCOMB ROCK	4039	03	BEDFORD	37 33	79 24W	900		07		H
HOLLAND 1 E	4044	01	SUFFOLK	36 41	76 46W	80	08	08		H
HOPEWELL	4101	01	PRINCE GEORGE	37 18	77 17W	40	16	16		H
HOT SPRINGS	4128	05	BATH	37 60	79 50W	2236	07	07		H
HUDDLESTON 4 SW	4148	03	BEDFORD	37 8	79 32W	898		07		H
JOHN FLANNAGAN LAKE	4410	06	DICKENSON	37 14	82 21W	1460	07	07		H
JOHN H KERR DAM	4414	02	MECKLENBURG	36 36	78 18W	250	08	08	08	CH
KEYSVILLE 2 S	4568	02	CHARLOTTE	37 1	78 29W	625	07	07		H
LAFAYETTE 1 NE	4676	06	MONTGOMERY	37 14	80 12W	1320		07		H
LEBANON	4777	06	RUSSELL	36 54	82 2W	1912	07	07		H
LEXINGTON	4876	05	ROCKBRIDGE	37 47	79 26W	1097	07	07		H
LINCOLN	4909	04	LOUDOUN	39 5	77 42W	500	07	07		H
LOUISA	5050	02	LOUISA	38 3	78 0W	420	18	18		H
LURAY 5 E	5096	04	PAGE	38 40	78 22W	1400	08	08		H
LYNCHBURG INTL AP R	5120	03	CAMPBELL	37 19	79 12W	940	24	24		HJ
MADISON	5150	04	MADISON	38 22	78 15W	577	08	08		H
MANASSAS	5204	04	MANASSAS	38 44	77 30W	245	07	07		H
MARTINSVILLE FLTR PLT	5300	03	HENRY	36 42	79 52W	760	07	07		H
MEADOWS OF DAN 5 SW	5453	03	PATRICK	36 40	80 27W	2225	07	07		H
MILLGAP	5595	05	HIGHLAND	38 18	79 43W	2421	07	07		CH
MONTEBELLO FISH CULTURAL STN	5690	03	NELSON	37 51	79 8W	2667	07	07		H
MONTICELLO	5700	03	ALBEMARLE	38 1	78 27W	758	08	08		H
MT WEATHER	5851	04	LOUDOUN	39 4	77 53W	1659	07	07		H

STATION INDEX

STATION	INDEX NO.	DIVISION	COUNTY	LATITUDE	LONGITUDE	ELEVATION (IN FEET)	OBSERVATION TIME AND TABLES			
							LOCAL STD TIME			
							TEMP	PRECIP	EVAP	SPECIAL SEE (NOTES)
MTN GROVE	5756	05	BATH	38 6	79 53W	1775		07		H
MUSTOE 1 SW	5880	05	HIGHLAND	38 20	79 40W	2380	24	24		H
N FK LAKE	6173	06	WISE	37 7	82 38W	1675	08	08		H
NEW CASTLE	6012	05	CRAIG	37 18	80 3W	1258		07		H
NORA 4 SSE	6125	06	DICKENSON	37 1	82 19W	2650	07	07		H
NORFOLK INTL AP R	6139	01	NORFOLK (CITY)	36 54	76 12W	30	24	24		HJ
NORFOLK SOUTH	6147	01	NORFOLK (CITY)	36 52	76 14W	100	24	24		H
NORTH	6161	01	MATHEWS	37 26	76 26W	10	07	07		H
PAINTER 2W	6475	01	ACCOMACK	37 35	75 49W	30	16	16		CH
PALMYRA 3S	6491	02	FLUVANNA	37 49	78 16W	410	06	06		H
PEDLAR DAM	6593	03	AMHERST	37 40	79 17W	1024		07		H
PETERSBURG	6656	02	PETERSBURG	37 14	77 24W	15	08	08		H
PIEDMONT RSCH STN	6712	04	ORANGE	38 14	78 7W	520	08	08		CH
PULASKI 2 E	6955	06	PULASKI	37 3	80 47W	1850	07	07		CH
RADFORD 3 N	6999	06	PULASKI	37 12	80 35W	1800	07	07		H
RICHLANDS	7174	06	TAZEWELL	37 6	81 48W	1910	07	07		H
RICHMOND INTL AP R	7201	02	HENRICO	37 30	77 19W	164	24	24		HJ
ROANOKE 8 N	7278	05	ROANOKE	37 22	79 58W	1190	07	07		H
ROANOKE INTL AP R	7285	05	ROANOKE	37 19	79 58W	1175	24	24		HJ
ROCKY MT	7338	03	FRANKLIN	36 59	79 54W	1315	07	07		CH
SALTVILLE 1N	7506	06	SMYTH	36 53	81 46W	1733	07	07		H
SANDSTON	7541	02	HENRICO	37 33	77 17W	165	07	07		H
SOMERSET	7904	04	ORANGE	38 15	78 16W	510	07	07		H
SOUTH BOSTON	7925	03	HALIFAX	36 42	78 53W	329	07	07		H
SPERRYVILLE	7985	04	RAPPAHANNOCK	38 39	78 14W	750	06	06		H
STAFFORDSVILLE 3 ENE	8022	06	GILES	37 16	80 43W	1950	07	07		CH
STAUNTON WATER TRMTMT PLT	8062	05	AUGUSTA	38 10	79 5W	169	08	08		H
STERLING (RCS)	8084	04	LOUDOUN	38 59	77 29W	288	07	07		H
STONY CREEK 2 N	8129	01	SUSSEX	36 58	77 24W	105	08	08		H
STUART	8170	03	PATRICK	36 38	80 15W	1375	07	07		H
SUFFOLK LAKE KILBY	8192	01	SUFFOLK	36 44	76 36W	22	24	24		H
TYE RIVER 1 SE	8600	03	NELSON	37 38	78 56W	720	07	07		H
VIENNA	8737	04	FAIRFAX	38 54	77 16W	418	07	07		H
WAKEFIELD 1NW	8800	01	SUSSEX	36 59	77 0W	113	24	24		CH
WALKERTON 2 NW	8829	01	KING AND QUEEN	37 45	77 2W	50	18	18		H
WALLACETON LK DRUMMOND	8837	01	CHESAPEAKE	36 36	76 26W	20	08	08		H
WALLOPS ISLAND NASA TEST FACIL R	8849	01	ACCOMACK	37 56	75 28W	46	24	24		HJ
WARRENTON 3 SE	8888	04	FAUQUIER	38 41	77 46W	500	08	08		H
WARSAW 2 NW	8894	01	RICHMOND	37 59	76 47W	140	18	18		H
WASHGTN DULLES INTL AP R	8903	04	LOUDOUN	38 56	77 28W	290	24	24		HJ
WASHINGTON REAGAN AP R	8906	04	ARLINGTON	38 51	77 2W	10	24	24		HJ
WAYNESBORO WTP	8941	05	WAYNESBORO	38 5	78 53W	1270	07	07		H
WEST POINT 2 NW	9025	01	KING WILLIAM	37 34	76 48W	20	17	17		H
WILLIAMSBURG 2 N	9151	01	YORK	37 18	76 42W	70	24	24		CH
WILLIS	9169	06	FLOYD	36 55	80 30W	2810		07		CH
WINCHESTER	9181	04	FREDERICK	39 11	78 9W	720	07	07		H
WINCHESTER 7 SE	9186	04	FREDERICK	39 11	78 7W	680	08	08		H
WINTERPOCK 4 W	9213	02	CHESTERFIELD	37 19	77 39W	300		07		H
WISE 3E	9215	06	WISE	36 60	82 32W	2549	17	17		CH
WOODSTOCK 2 NE	9263	04	SHENANDOAH	38 54	78 28W	675	07	07		H
WOOLWINE	9272	03	PATRICK	36 47	80 17W	1500		07		CH
WYTHEVILLE	9301	06	WYTHE	36 58	81 5W	2458	07	07		H

REFERENCE NOTES

STATION NAMES: Name of the city, town or locality. Figures and letters following the station names indicate the distance in miles and direction from the post office or town community center.

DIVISIONS: Areas within a state of similar climatological characteristics. Division averages are calculated using data from stations that record temperature and/or precipitation. Station Precipitation totals flagged with an 'F' or 'M' are excluded from the Divisional Average calculations of precipitation. Stations with monthly Temperature averages flagged with an 'F' or 'M' are included in the Divisional Average if there are no more than 9 flagged or missing daily values in the month, else they are excluded from the divisional average for temperature.

NORMALS: The average value of the meteorological element over a time period. Effective 1 January 2012, the averaging period for station departures is 1981 to 2010. The normals for National Weather Service localities have been adjusted so as to be representative for the current observation site.

The January 2011 through December 2015 publications incorrectly state the computation of divisional departures. Climate Division departures have been, and continue to be, computed from 1971-2000 Normals, not 1981-2010 as stated. Station departures are accurately described as departures from 1981-2010.

MONTHLY DEGREE DAY TOTALS: One heating (cooling) degree day is accumulated for each whole degree that the daily mean temperature is below (above) 65 degrees Fahrenheit.

PRECIPITATION: Values shown in hundredths of inches are water equivalent totals, i.e., total of liquid and melted frozen precipitation. In the "Monthly Summarized Data" table the total snow and sleet values shown in tenths of inches are unmelted amounts. The max depth on ground values of snow and sleet shown in whole inches are cumulative unmelted amounts. The number of days with .10, .50, 1.00 or more refers to water equivalents.

PRECIPITATION QUALITY CONTROL: The NCEI quality control process may flag precipitation data that are spatially inconsistent, exceed climatological limits, or are inconsistent with prevailing weather patterns.

TEMPERATURE: Original temperature values are given in the "Daily Temperature" table. Summary temperature information (averages, departures, extremes, monthly degree day totals) is based on the values labeled MAX/MIN.

WIND: (As shown in the "Evaporation and Wind" table) the total wind movement in miles over the evaporation pan as determined by an anemometer recorder located 6-8 inches above the pan.

SYMBOLS AND LETTERS USED IN THE STATION INDEX TABLE

C Station is equipped with recording rain gage (R) but values in this bulletin are from a non-recording rain gage unless indicated by an R.
G Observations appear in the "Soil Temperatures" table.
H Observations appear in the "Snowfall and Snow on the Ground" table.
J Station also published as a Local Climatological Data publication.
VAR Observation time varies.
SR / SS Observation time near sunrise / Observation time near sunset, respectively.

SYMBOLS AND LETTERS USED IN THE DATA TABLES

(DAILY DATA ARE FOR THE 24 HOURS IMMEDIATELY PRECEDING OBSERVATION TIME.)

BLANK Entries in the "Monthly Summarized Data" table indicate no record.

BLANK Entries in the "Daily Precipitation" and "Snowfall and Snow on the Ground" tables indicate zero.

BLANK Entries in the "Daily Temperature" table indicate a missing record

- No record. Data not recorded or not received in time for publication.

+ Precipitation or temperature extremes occurred on one or more previous dates during the month.

* Rain gage not read. Precipitation is included in the amount following the asterisks.

Time distribution may not be known. A * preceding the monthly total indicates precipitation amount is being carried forward to next month's total, and may include amounts from the previous month(s).

a As a subscript, indicates accumulated total.

A Amount of precipitation is the total of observer's entries for the current month. It may include precipitation that occurred during the previous month. Refer to earlier bulletin to determine date of last

reading. (Hawaii stations)

B Divisional Departure from normals are computed using 1971-2000 normals.

E Normalized HDD/CDD Calculation. E is appended to the HDD/CDD Calculation when 1-9 individual daily TMAX and/or TMIN values are missing and a Normalized HDD/CDD Calculation is provided. M appears alone if 10 or more daily values are missing.

F Monthly calculation flagged value. F is appended to average and/or total values computed which exclude one or more daily data values that have been flagged by the GHCN-Daily Dataset

M Insufficient or partial data. M is appended to average and/or total values computed with 1-9 daily values missing. M appears alone if 10 or more daily values are missing, (8 or more for wind and evaporation).

N Indicates snow fall or Snowdepth totals are computed with one or more missing days.

R Amounts from recording rain gage.

T Trace. An amount too small to measure.

SEASONAL TABLES: Monthly and seasonal snowfall and heating degree days for the 12 months ending with the June data are published in the July issue of this bulletin. Cooling degree days for the calendar year are published in the "Climatological Data Annual Summary."

Information concerning the history of changes in locations, exposure, etc. of substations is kept on file at the National Centers for Environmental Information. Historical information of regular National Weather Service Offices may be obtained from the "Local Climatological Data" annual publication. The contents of this publication may be reprinted or otherwise used freely, with proper credit to the National Centers For Environmental Information. The data are also available digitally.

Effective with the January 2011 Data-Month, COOP Observer Names are no longer included in the Monthly and Annual Climatological Data Publications. This information is not published to ensure the privacy of personal information pursuant to Section 208 of the E-Government Act of 2002 (44 USC 3601).

As of the 2011 Data-Year, Station and Climate Division Maps are no longer being included in the CD Publications. NCEI's Products Branch provides updated Station Maps for various data networks via the Historical Observing Metadata Repository: <http://www.ncdc.noaa.gov/homr>.

The GHCN-Daily Quality Control Flags shown below are displayed as superscripts with the data. For more information on Global Historical Climatology Network - Daily and flags, see: <http://www.ncdc.noaa.gov/oa/climate/ghcn-daily/> and Comprehensive Automated Quality Assurance of Daily Surface Observations. Durre, Imke, Matthew J. Menne, Byron E. Gleason, Tamara G. Houston, Russell S. Vose, 2010: J. Appl. Meteor. Climatol., 49, 16151633. doi: 10.1175/2010JAMC2375.1

Blank = Passed All checks	N = failed naught check
D = failed duplicate check	O = failed climatological outlier check
G = failed gap check	R = failed lagged range check
I = failed internal consistency check	S = failed spatial consistency check
K = failed streak/frequent-value check	T = failed temporal consistency check
L = failed check on length of multiday period	W = temperature too warm for snow
M = failed megaconsistency check	X = failed bounds check
	Z = flagged as a result of an official Datzilla investigation

Beginning with the January 2013 CD Publication, monthly mean temperature calculations have changed to the National Data Stewardship Team standard. Monthly maximum and minimum temperatures are not rounded until after the monthly mean temperature is calculated. This is the most accurate outcome, but may be slightly different from the mean derived from rounded monthly maximum and minimum.

The climate division temperature and precipitation values in this publication are based on simple averages from the current set of NWS-Designated Open and Published COOP and First Order Sites within each division. These values differ from those found in NCEI's nClimDiv product. Beginning in February 2014, the nClimDiv product is used by NCEI's Monitoring Branch and in its monthly climate reports. For more details on nClimDiv, please go to <http://www.ncdc.noaa.gov/monitoring-references/maps/us-climate-divisions.php>.

Effective January 2016, Alaska's Climate Divisions are updated to reflect the 13 climate divisional boundaries established by University of Alaska-Fairbanks, NWS, NCEI, Oregon State University, and University of Nebraska-Lincoln. For more details regarding the updated Alaska Climate Divisions, see: <http://journals.ametsoc.org/doi/pdf/10.1175/JAMC-D-11-0168.1> (Bienek et al., 2012).

NOAA National Centers for Environmental Information
Attn: Customer Engagement Branch
151 Patton Avenue
Asheville, NC 28801-5001

Customer Services Number: (828) 271-4800, option 2
TDD : (828) 271-4010
Fax number: (828) 271-4876

NCEI now offers free online access to the *Climatological Data* publication.
Go to : www.ncdc.noaa.gov and choose Most Popular.