



CLIMATOLOGICAL DATA

VIRGINIA

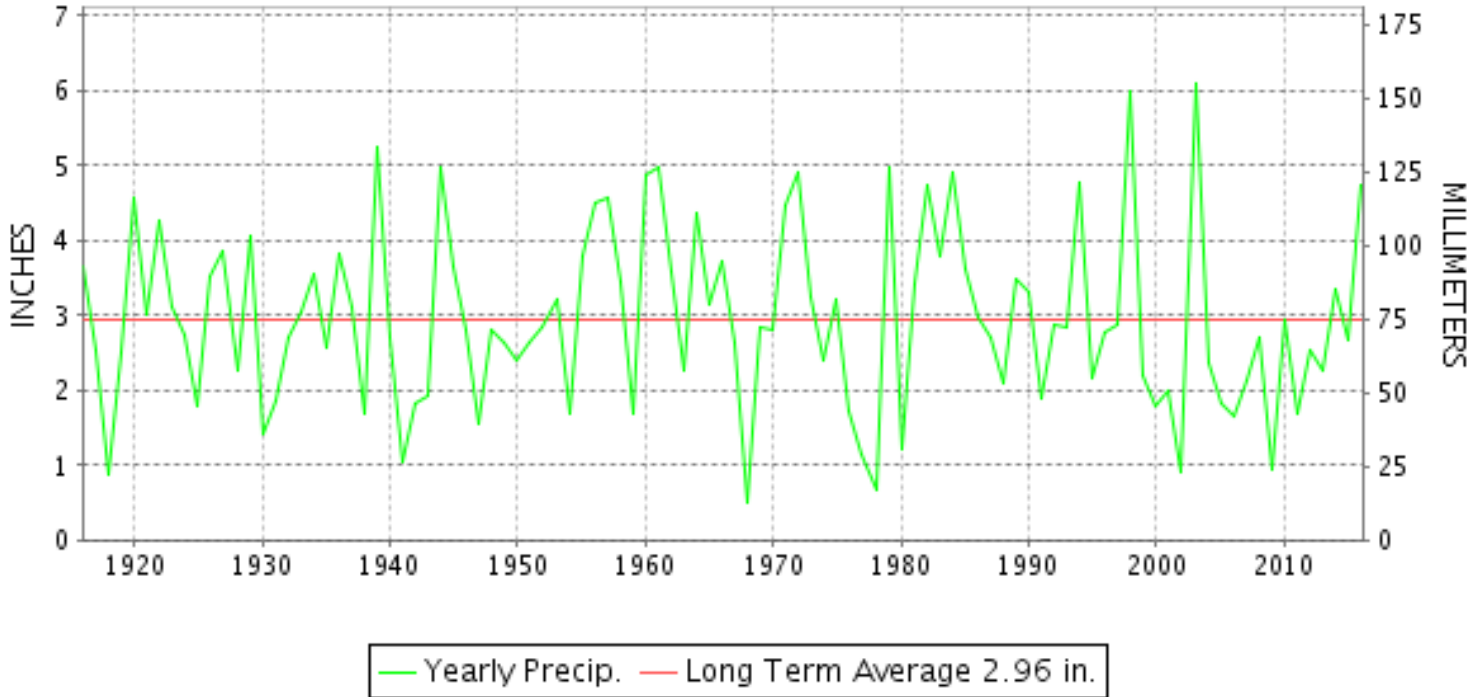
FEBRUARY 2016

VOLUME 126 NUMBER 02

ISSN 0364-5630

GHCND Ver: 3.22-upd-2016060705

FEBRUARY PRECIPITATION BY YEAR



TEMPERATURE AND PRECIPITATION EXTREMES

VIRGINIA

HIGHEST TEMPERATURE	77	FEBRUARY 03	NORFOLK INTL AP
LOWEST TEMPERATURE	-3	FEBRUARY 15+	2 STATIONS
GREATEST TOTAL PRECIPITATION	8.14		WOOLWINE
LEAST TOTAL PRECIPITATION	3.01		FREDERICKSBURG SEWAGE
GREATEST 1 DAY PRECIPITATION	2.72	FEBRUARY 16	WOOLWINE
GREATEST TOTAL SNOWFALL	16.7		NORA 4 SSE
GREATEST DEPTH OF SNOW OR ICE	16		LINCOLN

"I certify that this is an official publication of the National Oceanic and Atmospheric Administration (NOAA) It is compiled using information from weather observing sites supervised by NOAA/National Weather Service and received at the National Centers for Environmental Information(NCEI), Asheville, North Carolina 28801."

Director
National Centers for Environmental Information

noaa

National
Oceanic and
Atmospheric Administration

National
Environmental Satellite, Data
and Information Service

National
Centers for Environmental Information
Asheville, North Carolina

MONTHLY STATION AND DIVISION SUMMARY

STATION	TEMPERATURE (°F)											PRECIPITATION (IN)															
	AVERAGE MAXIMUM	AVERAGE MINIMUM	AVERAGE	DEPARTURE FROM NORMAL	HIGHEST	DATE	LOWEST	DATE	HEATING DEG. DAYS	COOLING DEG. DAYS	NO. OF DAYS				TOTAL	DEPARTURE FROM NORMAL	GREATEST 24 HOURS	DATE	ICE PELLETS, SNOW			NO. OF DAYS					
											MAX		MIN						TOTAL	MAX DEPTH ON GROUND	DATE	.10 OR MORE	.50 OR MORE	1.00 OR MORE			
											>=90	<=32	<=32	<=0													
VIRGINIA																											
 TIDEWATER 01																											
DISPUTANTA	52.6	28.8	40.7	0.4	75	02	9	14	698	0	0	3	19	0	6.65	3.56	1.28	25	M	2	15	7	5	4			
EASTVILLE	M	M	M								0	0	0	0	M				M								
EMPORIA 1 WNW	M	31.2M	MM		75	22	2	15	659E	0	0	2	11	0	5.14	2.27	1.55	04	M			8	4	2			
FREDERICKSBURG SEWAGE	48.1	29.1	38.6	1.2	68	02	9	14	758	0	0	5	16	0	3.01	0.50	0.55	25	M	6	15	8	1	0			
HOLLAND 1 E	55.3	32.4	43.8	1.0	75	03	14	14	606	0	0	0	14	0	5.66	2.42	1.28	03	M			7	6	3			
HOPEWELL	54.1M	33.1MF	43.6MF	-0.6	73	01	14	14	622E	0	0	3	13	0	M 6.08	2.90	1.55	25	M 0.0	1	15	8	5	2			
NORFOLK INTL AP	53.0	36.1	44.5	1.9	77	03	17	14	589	0	0	3	9	0	6.25	3.13	1.72	04	M	2.2	0	7	5	2			
NORFOLK SOUTH	51.9	34.6	43.2	-0.1	76	03	15	14	622	0	0	3	11	0	6.43	3.27	1.91	04	M	1	12	7	5	2			
NORFOLK NORTH	49.7	31.9	40.8	0.5	71	04	14	14	693	0	0	3	15	0	5.35	2.32	1.17	05	M	1.0	T 10	10	5	2			
PAINTER 2W	50.9	34.0	42.5	1.6	69	01	16	14	646	0	0	3	12	0	5.56	2.55	1.23	04	M	0		10	4	2			
STONY CREEK 2 N	53.5	30.2	41.9	0.5	75	01	10	14	662	0	0	4	18	0	6.45	3.38	2.00	04	M	2.0	2	15	5	4	3		
SUFFOLK LAKE KILBY	52.8	34.1	43.4	0.6	74	03	15	14	618	0	0	2	12	0	6.01	2.78	1.54	04	M	3.0	2	15	7	6	2		
WAKEFIELD 1NW	52.8	30.5	41.7	0.7	75	03	10	14	671	0	0	4	17	0	5.44	2.52	1.44	03	M	2.5	1	15	8	5	2		
WALKERTON 2 NW	52.1	32.7	42.4	1.2	73	01	7	14	650	0	0	3	16	0	6.04	3.13	1.60	24	M	4.0	2	15	10	4	2		
WALLACETON LK DRUMMOND	55.4M	26.1M	40.8M	0.8	75	04+	12	19+	696E	0	0	2	19	0	M 6.53	2.00	05+	M				10	4	2			
WALLOPS ISLAND NASA TEST FACIL	48.8	33.0	40.9	2.2	69	01	13	14	692	0	0	4	14	0	4.56	1.80	0.80	04	M	3.6	T 10	10	5	0			
WARSAW 2 NW	54.3M	31.9M	43.1M	2.0	71	03+	12	14	638E	0	0	1	12	0	5.08	2.38	1.43	25	M	6	15	10	2	2			
WEST POINT 2 NW	51.8	30.3	41.1	-0.3	74	01	10	14	688	0	0	4	17	0	4.86	1.89	0.92	05	M	2.4	T 15	10	5	0			
WILLIAMSBURG 2 N	52.3	33.7	43.0	1.7	74	03+	15	14	627	0	0	3	14	0	4.93	1.73	1.10	03	M	M T	15	8	6	1			
--DIVISIONAL DATA----->			42.1	2.0B											5.46	2.18B											
 EASTERN PIEDMONT 02																											
ALBERTA 5N																		5.33	1.66	04	2.8	2	15	9	4	2	
AMELIA COURTHOUSE 1	51.9M	29.9M	40.9M	0.9	73	02	10	14	691E	0	0	3	15	0	4.93	1.93	1.19	16	M	2.1		8	4	2			
ASHLAND	50.6	30.5	40.6	0.9	71	01	7	14	701	0	0	4	17	0	3.95	0.95	0.95	03	M	2.2	2	15	7	4	0		
BREMO BLUFF																		3.36	0.57	0.90	25	0.0	0	7	3	0	
BUCKINGHAM																		M 4.92		1.47	17	M 3.0	3	15	8	3	2
CAMP PICKETT	52.6M	28.0M	40.3M	1.3	72	22+	10	15+	709E	0	0	2	18	0	M 6.20	3.02	1.50	25	M	M T	01	8	5	3			
CHASE CITY	53.1	32.9	43.0	2.3	72	02	18	14	633	0	0	0	16	0	5.79	2.98	1.85	04	M	1	15	8	4	2			
CLARKSVILLE	53.6	29.8	41.7	0.8	74	02	14	15+	670	0	0	3	18	0	5.48	2.63	1.40	16	M	0.6	0	10	5	3			
CORBIN	49.4	31.1	40.3	2.4	69	01	4	14	712	0	0	5	16	0	3.23	0.17	0.90	25	M	5	15	7	2	0			
CROZIER	49.2	28.4	38.8	0.0	70	02	7	15+	751	0	0	3	18	0	4.85	2.01	1.08	04	M 2.0	2	15	9	4	3			
FARMVILLE 2 N	49.4	28.9F	39.2F	1.2	73	02	10	15+	755	0	0	3	17	0	3.45	0.36	1.14	04	M	3	15	6	4	1			
GREENBAY 3 NE	M	M	M								0	0	0	0	M				M								
JOHN H KERR DAM	53.3	31.7	42.5	0.6	73	02	11	14	646	0	0	2	16	0	5.51	2.76	1.63	04	M			7	4	3			
KEYSVILLE 2 S	51.6	29.4	40.5		71	02	11	15+	703	0	0	3	17	0	3.40		1.17	04	M	3.0	3	15	8	1	1		
LOUISA	48.9	30.5	39.7	0.6	68	01	4	14	726	0	0	4	16	0	3.14	0.22	0.97	16	M	2	15	6	2	0			

VIRGINIA
201602

MONTHLY STATION AND DIVISION SUMMARY

STATION	TEMPERATURE (°F)											PRECIPITATION (IN)												
	AVERAGE MAXIMUM	AVERAGE MINIMUM	AVERAGE	DEPARTURE FROM NORMAL	HIGHEST	DATE	LOWEST	DATE	HEATING DEG. DAYS	COOLING DEG. DAYS	NO. OF DAYS				TOTAL	DEPARTURE FROM NORMAL	GREATEST 24 HOURS	DATE	ICE PELLETS, SNOW			NO. OF DAYS		
											MAX		MIN						TOTAL	MAX DEPTH ON GROUND	DATE	.10 OR MORE	.50 OR MORE	1.00 OR MORE
											>=90	<=32	<=32	<=0										
PALMYRA 3S	48.7	25.7	37.2	0.9	70	02	3	14	798	0	0	4	20	0	4.40	1.60	1.45	16	M	1	16	7	3	1
PETERSBURG	53.3	29.8	41.6	0.7	74	01	12	13	674	0	0	3	18	0	5.31	2.63	1.10	03	M			9	4	2
RICHMOND INTL AP	50.7	30.9	40.8	-0.1	72	01	9	14	692	0	0	4	17	0	4.35	1.59	1.03	24	1.8	1	15	9	4	1
SANDSTON	M	M	M		71	04+	25	07+	540E	0	0	0	3	0					M	1	01			
WINTERPOCK 4 W															4.17		1.27	25	M			8	2	1
--DIVISIONAL DATA----->			40.5	1.4B											4.42									
WESTERN PIEDMONT 03																								
ALTAVISTA														M 2.97		1.13	04	M				6	2	1
APPOMATTOX	47.3	29.2	38.3	-0.3	67	02	9	14	768	0	0	4	18	0	5.54	2.46	1.85	16	5.8	5	15	8	5	1
BEDFORD 4 NW														4.59		1.57	16	6.3	6	16	7	2	2	
BROOKNEAL	49.6	28.0	38.8	5.0	70	25	8	14	752	0	0	2	20	0	5.60	2.46	1.85	16	3.2	3	15	7	5	2
CHARLOTTESVILLE 2W	46.8	29.6	38.2	-0.9	68	29	9	15+	770	0	0	3	16	0	5.24	2.17	1.78	16	3.7	3	15	8	4	1
CHATHAM	47.8	25.9	36.9	-0.6	67	25+	8	14	808	0	0	4	20	0	5.35	2.34	1.80	04	2.0	2	15	7	3	2
CONCORD 4 SSW														5.03		1.57	16	3.5	4	15	9	3	1	
DANVILLE RGNL AP	52.1M	31.3M	41.7M	0.8	73	29+	13	14	669E	0	0	2	18	0	4.31	1.30	1.65	03	1.9	1	15	5	3	1
FREE UNION	46.4	24.7	35.5		69	29	3	15+	848	0	0	4	22	0	5.11		1.61	16	M	3	15	9	3	1
HOLCOMB ROCK														6.31		1.67	17	8.2	6	16	9	5	2	
HUDDLESTON 4 SW														4.81		1.46	16	5.0	5	15	8	3	2	
LYNCHBURG INTL AP	47.0	28.3	37.6	-0.6	66	29+	7	14	789	0	0	6	18	0	4.52	1.59	1.14	16	5.4	5	15	6	4	2
MARTINSVILLE FLTR PLT	49.5M	26.2	37.9M	-0.5	68	29+	7	14	779E	0	0	2	20	0	5.37	2.23	1.91	16	M	3	15	8	3	2
MEADOWS OF DAN 5 SW	46.8M	27.3	37.1M		65	29+	11	14	806E	0	0	4	22	0	5.72		2.03	04	M 0.0	0		9	3	2
MONTEBELLO FISH CULTURAL STN	M	M	M		64	29	1	14	904E	0	0	2	12	0	M				M					
MONTECELLO	45.2	29.0	37.1	0.9	65	29	8	14	803	0	0	5	17	0	4.85	2.07	1.43	16	2.3	3	15	8	4	2
PEDLAR DAM														5.42		1.80	16	7.6	4	16	8	4	2	
ROCKY MT	47.4M	27.3M	37.3M	-1.0	68	29	7	15+	795E	0	0	3	19	0	7.29	4.21	2.26	16	5.0	5	16	9	5	3
SOUTH BOSTON	51.7	28.9	40.3	0.9	72	25+	12	14	711	0	0	1	19	0	5.07	1.95	1.48	16	1.2	1	15	9	4	2
STUART	50.8M	28.3	39.6M	-0.2	68	25	10	14	713E	0	0	1	21	0	5.68	2.43	2.11	16	3.0	3	15	9	4	2
TYE RIVER 1 SE	M	M	M									0	0	0	M				M					
WOOLWINE														8.14		2.72	16	5.0	4	16	8	5	2	
--DIVISIONAL DATA----->			38.2	-0.7B											5.47									
NORTHERN 04																								
EDINBURG	M	M	M									0	0	0	M				M					
FRONT ROYAL	44.4M	26.9M	35.7M	-0.5	69	29	8	15+	842E	0	0	4	16	0	M 2.60	-0.05	0.89	17	M	0		7	2	0
LINCOLN	44.4	25.6	35.0	1.4	67	21	11	13	861	0	0	4	21	0	M 4.58		1.98	17	6.0	16	01	4	3	3
LURAY 5 E	46.6M	26.5M	36.5M	0.0	67	29+	3	14	818E	0	0	2	18	0	M 4.04	1.38	1.60	16	M 0.5	4	01	7	3	1
MADISON	M	M	M									0	0	0	M				M					
MANASSAS	46.2	27.5	36.9	0.9	69	21	11	15+	808	0	0	4	19	0	A 3.70		1.20	25	M	4	16	7	2	1
MT WEATHER	41.7	25.7	33.7	0.4	64	22+	4	15+	902	0	0	5	21	0	5.16	2.20	2.25	16	M	6	02	7	3	2

VIRGINIA
201602

MONTHLY STATION AND DIVISION SUMMARY

STATION	TEMPERATURE (°F)											PRECIPITATION (IN)												
	AVERAGE MAXIMUM	AVERAGE MINIMUM	AVERAGE	DEPARTURE FROM NORMAL	HIGHEST	DATE	LOWEST	DATE	HEATING DEG. DAYS	COOLING DEG. DAYS	NO. OF DAYS				TOTAL	DEPARTURE FROM NORMAL	GREATEST 24 HOURS	DATE	ICE PELLETS, SNOW			NO. OF DAYS		
											MAX		MIN						TOTAL	MAX DEPTH ON GROUND	DATE	.10 OR MORE	.50 OR MORE	1.00 OR MORE
											>=90	<=32	<=32	<=0										
PIEDMONT RSCH STN	47.1	28.1	37.6	0.3	66	29+	5	14	786	0	0	4	18	0	A 4.37	1.62	0.88	25	M 4.0	2	16	7	2	0
SOMERSET	46.9	27.1	37.0	0.5	67	21	5	14	805	0	0	4	17	0	4.83	2.06	1.68	16	M	M 3	15	10	2	1
SPERRYVILLE	49.4M	28.9M	39.2M	3.0	68	21	20	19	741E	0	0	0	16	0	M 3.68	0.84	1.22	25	M	4	01	6	3	1
STERLING (RCS)	44.3	25.9	35.1	0.5	68	21	7	15+	860	0	0	4	20	0	4.03	1.26	0.81	04	3.1	10	01	9	4	0
VIENNA	46.7	29.2	37.9	2.2	69	21	10	15	777	0	0	4	19	0	4.11	1.30	0.97	16	M 4.2	6	01	9	4	0
WARRENTON 3 SE	M	M	M		65	21	6	14	976E	0	0	4	13	0	M				M	3	16			
WASHGTN DULLES INTL AP	45.6	28.2	36.9	0.7	67	20	7	14	805	0	0	5	19	0	3.79	1.05	0.79	16	3.1	10	01	7	3	0
WASHINGTON REAGAN AP	47.6	32.2	39.9	0.9	65	29+	13	14	722	0	0	5	15	0	3.79	1.17	1.10	24	3.1	2	16	7	4	1
WINCHESTER	44.0	26.6	35.3	0.4	68	29+	6	14	854	0	0	5	21	0	3.25	0.93	0.92	16	M	4	01	5	3	0
WINCHESTER 7 SE	43.1M	22.6M	32.8M	-0.7	67	20	4	14	924E	0	0	5	19	0	M 2.71	0.24	0.86	15	M 1.0	3	01	5	3	0
WOODSTOCK 2 NE	43.6	24.6	34.1	1.0	69	29	7	14	890	0	0	4	23	0	3.33	0.74	1.12	16	M	M 2	15	9	2	1
--DIVISIONAL DATA----->			36.2	1.1B											4.04	1.39B								
CENTRAL MOUNTAIN 05															4.79	1.50	16	2.5	2	15	8	4	1	
BUENA VISTA															3.42	1.05	1.44	16	6.0	4	16	7	2	1
COVINGTON FLTR PLT	45.0	26.0	35.5	-1.0	70	29	3	15+	849	0	0	4	21	0	3.42	1.05	1.44	16	6.0	4	16	7	2	1
DALE ENTERPRISE	44.0	24.2	34.1	1.2	66	29	1	10	887	0	0	4	22	0	M 3.29	1.07	0.90	04	M 7.2	4	15	8	1	0
GATHRIGHT DAM	40.9	24.0	32.4	-1.7	65	29	1	15+	938	0	0	7	23	0	3.56	0.96	1.30	16	5.5	5	15	8	3	1
GLASGOW 1 SE															6.45	2.37	16	6.9	4	16	9	5	2	
HOT SPRINGS	40.3	24.0	32.1	-0.9	63	29	1	15	947	0	0	7	21	0	5.11	2.08	1.90	16	8.0	6	16	10	4	1
LEXINGTON	45.6	25.8	35.7	-1.1	67	29+	5	15+	842	0	0	4	21	0	4.88	2.23	1.92	16	6.0	3	15	8	2	2
MILLGAP	40.0	19.4	29.7	-0.4	61	29+	-3	15	1014	0	0	8	25	2	4.41	1.43	1.55	16	M	5	15	9	3	1
MTN GROVE															3.47	0.97	04	7.0	5	16	6	3	0	
MUSTOE 1 SW	38.2	20.9	29.6	-1.6	60	20	-3	14	1021	0	0	8	26	1	5.09	1.84	1.35	16	10.3	8	15	9	4	1
NEW CASTLE															4.22	1.20	16	6.0	6	15	7	2	2	
ROANOKE 8 N	45.7	29.0M	37.3M	-1.4	69	29	9	14	777E	0	0	5	19	0	4.94	2.30	1.79	16	8.0	6	15	7	4	2
ROANOKE INTL AP	46.6	30.3	38.5	-1.1	69	28	9	14	761	0	0	5	16	0	5.24	2.35	1.21	16	8.5	9	15	7	5	3
STAUNTON WATER TRMTMT PLT	43.7	26.9	35.3	-0.3	65	29+	4	14	856	0	0	5	19	0	3.94	1.39	1.47	16	4.2	4	15	9	2	1
WAYNESBORO WTP	45.1	25.2	35.1	0.2	67	29	3	15	860	0	0	5	22	0	4.58	1.66	1.43	16	2.9	3	15	8	4	1
--DIVISIONAL DATA----->			34.1	-1.5B											4.58	1.84B								
SOUTHWESTERN MOUNTAIN 06																								
ABINGDON 3S	45.2	27.0	36.1	-0.7	66	03	4	14	832	0	0	5	22	0	4.45	0.71	0.70	22	6.5	4	15	12	4	0
BIG STONE GAP	46.3	27.8	37.0	-0.8	69	03	11	14	804	0	0	5	23	0	6.46	2.06	1.78	16	5.0	4	15	11	5	2
BLACKSBURG NWSO	42.3	24.6	33.5	-0.7	65	29	5	14	908	0	0	6	21	0	4.70	1.89	1.29	16	9.8	7	15	9	4	2
BURKES GARDEN	38.0M	23.1M	30.5M	-1.1	57	25	-1	14	992E	0	0	9	20	1	M 4.29	0.83	0.90	04	M 12.0	9	15	10	4	0
CHRISTIANSBURG	41.8	26.2	34.0	-1.8	63	29+	5	14	892	0	0	7	21	0	3.97	1.14	1.03	04	9.6	6	15	8	4	1
CLINTWOOD 1 W	44.5	26.4	35.4	0.8	67	03	5	14	849	0	0	6	22	0	5.13	1.48	1.10	16	12.1	6	15	11	5	1
COPPER HILL	39.9	25.0M	32.4M		62	29	1	14	936E	0	0	7	19	0	4.69		1.26	16	8.5	5	16	10	2	2

VIRGINIA
201602

MONTHLY STATION AND DIVISION SUMMARY

STATION	TEMPERATURE (°F)											PRECIPITATION (IN)												
	AVERAGE MAXIMUM	AVERAGE MINIMUM	AVERAGE	DEPARTURE FROM NORMAL	HIGHEST	DATE	LOWEST	DATE	HEATING DEG. DAYS	COOLING DEG. DAYS	NO. OF DAYS				TOTAL	DEPARTURE FROM NORMAL	GREATEST 24 HOURS	DATE	ICE PELLETS, SNOW			NO. OF DAYS		
											MAX		MIN						TOTAL	MAX DEPTH ON GROUND	DATE	.10 OR MORE	.50 OR MORE	1.00 OR MORE
											>=90	<=32	<=32	<=0										
GALAX RADIO WBRF	44.8	26.8	35.8	1.0	64	28+	7	14	840	0	0	6	18	0	5.68	2.39	1.73	03	6.7			7	4	1
GALAX WTP	43.1	25.2	34.1	-0.2	64	25	9	14	885	0	0	6	21	0	5.26		1.32	04	7.0	4	15	8	5	2
GRUNDY	45.6	27.9	36.8	0.5	68	03	7	14	813	0	0	6	21	0	3.83	0.74	0.83	22	10.5	5	15	10	3	0
JOHN FLANNAGAN LAKE	M	M	M		71	03	15	12+	738E	0	0	2	12	0	MA 4.43		0.65	03	M	2	16	6	1	0
LAFAYETTE 1 NE															4.62		1.67	16	9.8	7	15	8	4	2
LEBANON	46.4	27.4	36.9	1.0	63	25	4	14	809	0	0	7	22	0	4.17	0.74	1.10	04	F 1.5	1	14	8	4	1
NORA 4 SSE	42.4	27.4	34.9	1.4	63	03	6	14	862	0	0	8	19	0	3.98	0.36	0.74	03	M 16.7	6	15	11	2	0
N FK LAKE	M	M	M		69	03	6	16	789E	0	0	2	11	0	A 5.49		0.54	04	M	2	09	6	2	0
PULASKI 2 E	42.3M	26.6	34.5M	-1.2	65	29+	4	14	898E	0	0	7	21	0	3.79	1.10	1.09	16	8.0	8	16	7	3	1
RADFORD 3 N	42.9	26.1	34.5	0.4	65	29	6	14+	878	0	0	6	20	0	4.53	1.79	1.17	16	9.5	7	15	7	4	1
RICHLANDS	47.1	24.9	36.0	0.8	67	20	0	14	834	0	0	7	24	1	3.84	0.93	0.76	21	10.3	7	15	10	2	0
SALTVILLE 1N	45.5	25.7	35.6	-0.5	64	25	6	14	846	0	0	4	22	0	4.37	0.90	1.14	04	6.9	4	15	11	3	1
STAFFORDSVILLE 3 ENE	42.2	24.6	33.4	-1.6	64	29+	4	14	908	0	0	6	22	0	4.24	1.51	1.10	16	10.2	9	15	8	3	1
WILLIS															5.43		1.43	16	4.1	4	15	10	3	2
WISE 3E	44.9	29.6	37.2	0.4	69	03	3	14	797	0	0	7	18	0	4.73	0.75	0.96	24+	12.7	3	15	8	4	0
WYTHEVILLE	42.0	25.4	33.7	-0.2	64	25	6	14	901	0	0	6	21	0	4.55	1.75	0.94	04	8.6	5	15	9	4	0
--DIVISIONAL DATA----->			34.9	-0.3B											4.66	1.28B								

VIRGINIA
201602

DAILY PRECIPITATION (INCHES)

STATION	TOTAL	DAY OF MONTH																															
		01	02	03	04	05	06	07	08	09	10	11	12	13	14	15	16	17	18	19	20	21	22	23	24	25	26	27	28	29	30	31	
WESTERN PIEDMONT 03																																	
ALTAVISTA	M 2.97		0.04	0.01	1.13	0.15				0.04					0.19	-	0.08						0.09	0.33	0.27	0.64							
APPOMATTOX	5.54		0.10	0.05	0.92					0.06					0.38	1.85	0.03						0.23	0.52	0.54	0.86							
BEDFORD 4 NW	4.59		0.02	0.09	1.05					0.05					0.44	1.57							0.16	0.45	0.39	0.37							
BROOKNEAL	5.60		0.05	0.01	1.24	0.07				0.02					0.29	1.85	0.03						0.14	0.55	0.60	0.75							
CHARLOTTESVILLE 2W	5.24		0.05	0.21	0.69	0.02				0.07	T				0.20	1.78	0.09						0.48	0.37	0.55	0.73							
CHATHAM	5.35		0.04	0.07	1.80										0.20	1.50	0.20							0.42	0.72	0.40							
CONCORD 4 SSW	5.03		0.08	0.06	0.99	0.10				0.04					0.15	1.57	0.12						0.20	0.45	0.39	0.88							
DANVILLE RGNL AP	4.31	0.04		1.65	0.01	0.05			T			T		0.09	0.49	0.87	0.01					0.08	0.01	0.38	0.63								
FREE UNION	5.11		0.05	0.17	0.82	0.01				0.05					0.22	1.61	0.28						0.40	0.33	0.42	0.75							
HOLCOMB ROCK	6.31		0.05	0.17	1.16					0.08					0.32	0.85	1.67						0.29	0.45	0.67	0.60							
HUDDLESTON 4 SW	4.81		0.10	0.03	1.03					0.07					0.22	1.46	0.46						0.05	0.39	0.48	0.52							
LYNCHBURG INTL AP	4.52	0.07		1.02	T	0.07			0.07			T		0.04	0.84	1.14	T					0.20	0.01	0.47	0.59	T							
MARTINSVILLE FLTR PLT	5.37		0.05	0.03	1.45	0.03				0.01					0.24	1.91	0.10						0.21	0.38	0.69	0.27							
MEADOWS OF DAN 5 SW	5.72		0.03	0.22	2.03										0.30	1.25	0.20						0.32	0.43	0.52	0.42							
MONTEBELLO FISH CULTURAL STN	M	-	-	0.20	1.09		-			-	-	-	-	-	4.90	-	0.20					-	0.37	0.24	0.70	-		-	-				
MONTICELLO	4.85				0.70	T				0.18					0.39	1.43							0.52	0.23	0.30	1.10							
PEDLAR DAM	5.42		0.04	0.09	1.15					T	T				0.23	1.80	0.32						0.43	0.26	0.52	0.58	T						
ROCKY MT	7.29		0.14	0.25	1.53	0.03				0.06	T				0.35	2.26	0.06					0.03	0.22	0.68	0.54	1.12	T	0.02					
SOUTH BOSTON	5.07				1.34	0.18							0.01		0.12	1.48	0.18						0.20	0.74	0.60	0.22							
STUART	5.68		0.03	0.15	1.40										0.30	2.11	0.10						0.24	0.58	0.58	0.19							
TYE RIVER 1 SE	M	-	-	-	-	-	-	-	-	-	-	-	-	-	-	-	-	-	-	-	-	-	-	-	-	-	-	-	-	-	-	-	
WOOLWINE	8.14		0.02	0.33	2.15					T					0.43	2.72	T						0.29	0.60	0.91	0.69							
NORTHERN 04																																	
EDINBURG	M	-	-	-	-	-	-	-	-	-	-	-	-	-	-	-	-	-	-	-	-	-	-	-	-	-	-	-	-	-	-	-	
FRONT ROYAL	M 2.60		0.15		0.62					0.04	0.07		0.25		0.03	-	0.89						0.17	0.11	0.27	-							
LINCOLN	M 4.58				1.20						0.30				-	-	1.98						0.09			1.01							
LURAY 5 E	M 4.04		0.05	0.16	0.80	0.02	-			0.06	0.05				-	1.60							0.18	0.22	0.30	0.60	T						
MADISON	M	-	-	-	-	-	-	-	-	-	-	-	-	-	-	-	-	-	-	-	-	-	-	-	-	-	-	-	-	-	-	-	
MANASSAS	A 3.70		0.10	0.10	0.70	0.10				0.20			T		* 0.40 _a	0.40								*	0.50 _a	1.20							
MT WEATHER	5.16		0.18	0.05	0.86					0.07	0.03				0.10	2.25							0.12	0.07	0.18	1.25							
PIEDMONT RSCH STN	A 4.37		0.03	0.07	0.77	T				0.17	T				*	1.40 _a	0.16						0.33	0.43	0.13	0.88							
SOMERSET	4.83		0.06	0.17	0.85	0.03				0.21	0.02			T	0.18	1.68	0.13						0.41	0.29	0.34	0.46							
SPERRYVILLE	M 3.68			0.12	0.88	T				0.05	0.03	-	-	-	-	-	0.96						0.17	0.25	-	1.22	T						
STERLING (RCS)	4.03		0.18	0.03	0.81	0.02				0.17	0.14			T	T	0.09	0.64	0.65					0.09	0.10	0.40	0.71	T	T					
VIENNA	4.11		0.09	0.01	0.61	0.01				0.11	0.11				0.20	0.97	0.64						0.01	0.11	0.29	0.95							
WARRENTON 3 SE	M	-	-	-	-	-				0.16	0.19			T	-	0.60	0.64						-	-	-	-	-	-	-	-	-	-	
WASHGTN DULLES INTL AP	3.79	0.18		0.76	0.01	0.02			T	0.31	T		T		0.02	0.48	0.79					0.08		0.36	0.78	T							
WASHINGTON REAGAN AP	3.79	0.12		0.50	0.02	0.04			0.01	0.22	T		T		0.01	0.47	0.69					0.09	T	0.52	1.10	T							
WINCHESTER	3.25		0.17	0.06	0.54					0.03	T			0.06	0.09	0.92	0.27						0.07	0.05	0.08	0.91	T						
WINCHESTER 7 SE	M 2.71	0.18		0.03	0.61				0.02	0.03			0.02		0.08	0.86	-					-	0.05	0.16	0.67		-	-	-				
WOODSTOCK 2 NE	3.33		0.20	0.02	0.60									0.02	0.12	1.12	0.39						0.15	0.13	0.14	0.44							

VIRGINIA
201602

DAILY PRECIPITATION (INCHES)

STATION	TOTAL	DAY OF MONTH																															
		01	02	03	04	05	06	07	08	09	10	11	12	13	14	15	16	17	18	19	20	21	22	23	24	25	26	27	28	29	30	31	
CENTRAL MOUNTAIN 05																																	
BUENA VISTA	4.79		0.05	0.03	0.84					T					0.13	1.50	0.43						0.34	0.21	0.50	0.76							
COVINGTON FLTR PLT	3.42		0.02	0.03	0.64					T	0.01	T			0.28	1.44	0.02						0.42	0.22	0.16	0.18	T				T		
DALE ENTERPRISE	M 3.29		0.20	0.05	0.90					-				-	-	0.30	0.40						0.35	0.28	0.35	0.45	0.01						
GATHRIGHT DAM	3.56		0.04	0.03	0.68	T				0.11	0.01	0.01			0.27	1.30							0.51	0.22	0.14	0.21	T	0.02		0.01			
GLASGOW 1 SE	6.45		0.05	0.11	1.05					0.03			T		0.30	2.37	0.16						0.58	0.35	0.70	0.75	T						
HOT SPRINGS	5.11		0.16	0.04	0.90					0.11	T	T		T	0.31	1.90	0.12						0.55	0.28	0.17	0.57	T						
LEXINGTON	4.88		0.04	0.05	1.01					0.02					0.20	1.92	0.28						0.28	0.25	0.34	0.49	T						
MILLGAP	4.41		0.04	0.09	0.54					0.04	0.03			T	0.27	1.55	0.31						0.48	0.14	0.18	0.60	0.14	T					
MTN GROVE	3.47				0.97					T	0.02	T			0.40	0.95	0.05						0.60	0.30	0.02	0.11	0.05						
MUSTOE 1 SW	5.09	0.10		0.79		T			0.07	T	0.01		T	0.03	0.22	0.72	1.35					0.49		0.34	0.74	0.10	0.04			0.09			
NEW CASTLE	4.22		0.05	0.06	1.02					0.06					0.30	1.20							0.30	0.44	0.45	0.33	0.01	T					
ROANOKE 8 N	4.94		0.04	0.07	1.05					T					0.54	1.79							0.20	0.52	0.43	0.30							
ROANOKE INTL AP	5.24	0.04	0.02	1.17	T	T			0.02				T	T	0.10	1.03	1.21					0.24	0.05	0.58	0.78	T				T			
STAUNTON WATER TRMTMT PLT	3.94		0.14	0.24	0.79					0.02					0.22	1.47							0.30	0.24	0.26	0.26							
WAYNESBORO WTP	4.58			0.21	0.79										0.64	1.43							0.40	0.25	0.35	0.51							
SOUTHWESTERN MOUNTAIN 06																																	
ABINGDON 3S	4.45		0.53	0.65						0.30				0.15	0.16	0.40	0.18					0.12	0.70	0.50	0.30	0.43	0.03						
BIG STONE GAP	6.46		0.40	1.02						0.08	T			0.18	0.32	1.78	0.24	0.02				0.05	0.55	0.25	0.92	0.50	0.10				0.05		
BLACKSBURG NWSO	4.70		0.16	0.03	1.03	T				0.10	T	T		T	0.57	1.29	T	T				T	0.25	0.55	0.39	0.33	T		T			T	
BURKES GARDEN	M 4.29		0.20	0.10	0.90				-	0.24	0.04	0.02		0.09	0.50	0.52	0.05	T			-	T	0.50	0.40	0.35	0.31	0.07						
CHRISTIANSBURG	3.97		0.10	0.05	1.03					0.05	0.01			T	0.51	0.84	T					T	0.21	0.53	0.37	0.27	T						
CLINTWOOD 1 W	5.13		0.42	0.60	0.24					0.17	0.03	0.01	T	0.04	T	0.50	1.10	0.10	T				0.64	0.30	0.31	0.61	0.02				0.04		
COPPER HILL	4.69		0.16	0.04	1.21					0.11					0.30	1.26	0.26						0.17	0.38	0.46	0.34							
GALAX RADIO WBRF	5.68	0.06	0.05	1.73				0.03		T			0.02		0.05	0.48	0.98	0.11				0.29	0.09	0.76	0.97	0.06							
GALAX WTP	5.26		0.07	0.37	1.32					0.02	T				0.31	1.03	0.09					0.01	0.33	0.64	0.50	0.57							
GRUNDY	3.83		0.35	0.29	0.28					0.10	T	T		0.04	0.02	0.52	0.72	0.08	0.01				0.83	0.13	0.15	0.22	T	0.04			0.05		
JOHN FLANNAGAN LAKE	MA 4.43		0.38	0.65	0.18		-	-		-	0.04			*	*	* 1.50 _a	0.08				*	*	0.71 _a	0.19	0.33	0.23	0.06	-	-	0.08			
LAFAYETTE 1 NE	4.62		0.10	T	1.02					0.05	T	T			0.55	1.67							0.20	0.51	0.29	0.23	T	T					
LEBANON	4.17		0.53	0.06	1.10									0.02	T	0.78	0.16					0.02	0.38	0.22	0.26	0.59	0.04	0.01					
NORA 4 SSE	3.98		0.37	0.74	0.26					0.23	0.08	0.09	T	0.08	T	0.22	0.73	0.13	0.01			T	0.36	0.20	0.26	T	0.17	0.05			T		
N FK LAKE	A 5.49		0.50	0.40	0.54		*	*	0.00 _a	0.32	0.02	T	*	*	* 1.68 _a	0.15	0.01		*	*	*	*	0.80 _a	0.26	*	*	*	*	*	*	0.81 _a		
PULASKI 2 E	3.79		0.20	0.08	0.93	T				T				T	0.25	1.09							0.25	0.50	0.45	0.04	T						
RADFORD 3 N	4.53		0.09	0.08	0.98					0.04	0.01			T	0.64	1.17							0.26	0.66	0.16	0.42	T				0.02		
RICHLANDS	3.84		0.14	0.36	0.54					0.22	0.02	0.01	0.01	0.07	0.02	0.33	0.41					0.76		0.33	0.15	0.42	0.03				0.02		
SALTVILLE 1N	4.37		0.35	0.04	1.14					0.15	0.02	0.01		0.11	0.43	0.54	0.11					0.01	0.37	0.58	0.20	0.27	0.04						
STAFFORDSVILLE 3 ENE	4.24		0.04	0.13	0.79	T				0.03	T			0.01	0.73	1.10							0.24	0.48	0.32	0.36	0.01					T	
WILLIS	5.43		0.16	0.12	1.32					0.10	T	T			0.45	1.43							0.25	0.74	0.46	0.40							
WISE 3E	4.73	0.25		0.96					0.02	0.05	0.03	T	0.01	0.08	0.06	0.62	0.80	0.09				0.20	0.20	0.33	0.96	0.04	0.03						
WYTHEVILLE	4.55		0.31	0.08	0.94					0.23	T	T		0.08	0.37	0.75							0.26	0.55	0.35	0.58	0.05						

VIRGINIA
201602

DAILY TEMPERATURES (°F)

STATION	OB.TIME	MAX/MIN	DAY OF MONTH																															AVERAGE	
			01	02	03	04	05	06	07	08	09	10	11	12	13	14	15	16	17	18	19	20	21	22	23	24	25	26	27	28	29	30	31		
FREE UNION	08	MAX MIN	61 25	62 35	47 36	46 37	53 32	43 19	44 19	45 21	47 22	44 23	35 15	31 14	33 15	26 3	27 3	31 18	52 26	52 22	46 19	46 22	68 28	53 40	48 38	44 38	56 32	46 22	42 23	48 30	69 30	46.4 24.7			
LYNCHBURG INTL AP	24	MAX MIN	66 40	48 44	53 43	52 39	44 23	44 21	45 22	47 21	40 24	32 20	31 15	32 18	31 11	26 7	29 19	49 29	51 27	47 23	48 22	66 38	59 42	49 39	44 39	60 39	44 39	47 27	41 24	49 28	66 40	47.0 28.3			
MARTINSVILLE FLTR PLT	07	MAX MIN	64 26	67 40	52 44	58 44	52 34	45 19	47 19	47 21	48 21	48 12	34 12	37 21	35 7	28 13	27 20	33 29	52 53	53 48	48 53	64 64	61 61	50 47	47 68	49 49	46 46	54 54	68 68	49 24	46 24	68 24	49.5 26.2		
MEADOWS OF DAN 5 SW	07	MAX MIN	60 27	65 32	48 42	57 43	29 29	26 26	26 27	27 27	27 21	16 16	17 17	17 11	13 13	18 18	19 19	27 27	27 27	27 27	27 33	33 33	39 39	39 39	37 37	32 32	29 29	29 29	29 29	29 29	29 29	29 29	27.3 27.3		
MONTEBELLO FISH CULTURAL STN	07	MAX MIN	63 18	59 40	59 23	44 40	44 23	38 17	38 17	38 17	38 17	38 6	39 6	29 1	22 2	22 12	45 22	45 18	47 27	47 27	39 45	45 45	63 63	42 42	45 45	60 60	60 24	60 24	64 20	64 20	64 20	64 20	M M		
MONTECELLO	08	MAX MIN	58 35	64 41	48 40	55 40	51 33	40 27	42 28	44 28	45 33	42 26	34 15	29 15	30 16	27 8	24 13	32 23	48 32	49 30	41 25	46 26	64 40	55 39	49 38	41 37	58 37	45 32	40 24	46 24	65 35	45.2 29.0			
ROCKY MT	07	MAX MIN	61 27	65 43	49 41	53 42	50 32	45 31	45 21	46 23	45 23	45 15	35 15	45 19	40 7	38 31	43 35	33 55	33 56	33 52	40 52	66 66	68 68	51 51	46 46	72 72	54 54	46 46	51 51	67 67	51.7 28.9				
SOUTH BOSTON	07	MAX MIN	68 28	72 48	56 48	66 48	55 36	47 23	47 23	45 25	45 25	40 23	38 18	34 18	33 12	40 14	45 21	56 33	56 25	52 23	52 23	66 38	68 38	51 41	46 41	72 43	54 31	46 21	51 21	67 27	51.7 28.9				
STUART	07	MAX MIN	61 24	66 39	50 45	58 45	53 31	46 23	47 25	49 27	47 26	39 22	38 18	36 20	26 15	33 20	54 31	54 25	50 25	53 25	63 26	63 25	50 41	46 41	68 40	49 35	49 29	55 28	67 43	50.8 28.3					
TYE RIVER 1 SE	07	MAX MIN																																M M	
NORTHERN 04 EDINBURG	07	MAX MIN																																	M M
FRONT ROYAL	07	MAX MIN	64 43	54 31	46 31	56 40	48 34	40 18		43 24	45 24	39 26	34 16	25 13	30 15	18 8	24 8		48 29	47 28	41 20	45 23	68 39	58 35	50 34	38 35		44 34	36 27		69 38	44.4 26.9			
LINCOLN	07	MAX MIN	61 26	52 24	49 27	45 38	49 34	34 33	41 19	42 19	42 19	47 19	41 26	34 17	26 11	29 14	24 17	31 20	45 31	43 30	38 15	40 18	67 36	57 36	50 33	43 36	52 36	52 32	41 25	46 23	66 27	44.4 25.6			
LURAY 5 E	08	MAX MIN	65 34	55 28	48 34	54 41	48 30		48 21	44 22	47 28	38 24	35 14	26 9	35 14	19 3	47 11	49 25	47 26	42 19	49 27	67 40	55 37	47 37	41 35	62 38	41 31	36 23	46 26	67 38	46.6 26.5				
MADISON	08	MAX MIN																																M M	
MANASSAS	07	MAX MIN	65 39	57 32	51 36	47 40	48 35	41 22	44 23	45 24	47 26	37 29	36 18	28 15	31 15	22 11	25 20	40 27	50 28	47 18	40 18	46 43	69 38	55 39	52 38	44 38	63 38	47 35	39 23	46 26	68 31	46.2 27.5			
MT WEATHER	07	MAX MIN	59 42	56 32	43 32	53 35	44 30	36 25	39 27	40 27	42 28	42 22	30 12	26 12	16 4	21 4	41 5	43 31	41 23	37 22	45 25	64 45	64 33	46 33	46 33	64 33	54 35	38 26	33 24	43 25	62 41	41.7 25.7			
PIEDMONT RSCH STN	08	MAX MIN	63 34	64 44	50 37	54 41	57 33	42 27	44 22	44 24	47 32	42 26	38 15	30 14	27 12	25 5	28 18	36 26	53 26	51 26	44 24	66 40	56 41	51 38	43 38	58 37	54 35	41 27	47 20	66 30	47.1 28.1				
SOMERSET	07	MAX MIN	63 33	65 35	48 37	56 41	50 33	43 20	45 22	45 23	48 26	43 26	38 16	31 15	31 17	25 5	33 8	53 20	51 27	44 19	45 24	67 39	55 40	55 39	43 38	56 39	45 35	42 21	48 28	66 36	46.9 27.1				
SPERRYVILLE	06	MAX MIN	63 31	54 30	47 34	49 39	51 33	41 22	41 23	43 23	43 24	46 25	40 27					49 29	48 30	43 20	44 27	68 31	58 37	49 38		55 39	44 21	48 21	47 26	67 29	49.4 28.9				
STERLING (RCS)	07	MAX	60	55	49	53	47	40	43	43	47	37	36	26	30	20	23	34	47	45	37	44	68	56	53	41	55	45	38	46	66	44.3			

VIRGINIA
201602

SNOWFALL AND SNOW ON GROUND (INCHES)

STATION		DAY OF MONTH																													
		01	02	03	04	05	06	07	08	09	10	11	12	13	14	15	16	17	18	19	20	21	22	23	24	25	26	27	28	29	30
VIRGINIA TIDEWATER 01 DISPUTANTA	SNOWFALL																														
	SN ON GND	-	-	-	-	-	-	-	-	-	-	-	-	-	-	2	-	-	-	-	-	-	-	-	-	-	-	-	-	-	-
EASTVILLE EMPORIA 1 WNW	SNOWFALL																														
	SNOWFALL																														
FREDERICKSBURG SEWAGE	SNOWFALL	-	-	-	-	-	-	-	-	-	-	-	-	-	5.5	0.5	-	-	-	-	-	-	-	-	-	-	-	-	-	-	
	SN ON GND	-	-	-	-	-	-	-	-	-	-	-	-	-	6	5	-	-	-	-	-	-	-	-	-	-	-	-	-	-	
HOLLAND 1 E HOPEWELL	SNOWFALL																														
	SN ON GND					-	-	-								-	-	-	-												
NORFOLK INTL AP	SNOWFALL				0.2							0.7		0.2	1.1																
	SN ON GND																														
NORFOLK SOUTH	SNOWFALL	-	-	-	-	0.2	-	-	-	-	-	0.7	-	T	1.3	-	-	-	-	-	-	-	-	-	-	-	-	-	-	-	
	SN ON GND	-	-	-	-		-	-	-	-	-	1	-	T	-	-	-	-	-	-	-	-	-	-	-	-	-	-	-	-	
NORTH	SNOWFALL									T			T		1.0	T															
	SN ON GND									T																					
PAINTER 2W	SNOWFALL	-	-	-	-	-	-	-	-	-	-	-	-	-	1.0	-	-	-	-	-	-	-	-	-	-	-	-	-	-	-	
	SN ON GND	-	-	-	-	-	-	-	-	-	-	-	-	-		-	-	-	-	-	-	-	-	-	-	-	-	-	-	-	
STONY CREEK 2 N	SNOWFALL															2.0															
	SN ON GND															2															
SUFFOLK LAKE KILBY	SNOWFALL											T		1.0	2.0																
	SN ON GND											T		1	2																
WAKEFIELD 1NW	SNOWFALL				T							0.7		0.1	1.7																
	SN ON GND											T		T	1	2															
WALKERTON 2 NW	SNOWFALL				1.0					T	T		T		3.0																
	SN ON GND				1					T	-	-			2																
WALLACETON LK DRUMMOND	SNOWFALL																														
WALLOPS ISLAND NASA TEST FACIL	SNOWFALL				1.0						0.6	T	T	T	2.0																
	SN ON GND				T						T																				
WARSAW 2 NW	SNOWFALL	-	-	-	-	-	-	-	-	-	0.5	-	-	-	6.0	-	-	-	-	-	-	-	-	-	-	-	-	-	-	-	
	SN ON GND	-	-	-	-	-	-	-	-	-	-	-	-	-	6	1	-	-	-	-	-	-	-	-	-	-	-	-	-	-	
WEST POINT 2 NW	SNOWFALL				0.4					T	1.0		T	T	1.0																
	SN ON GND												T	T																	
WILLIAMSBURG 2 N	SNOWFALL	-	-	-	-	-	-	-	-	-	T	-	T	-	1.0	-	-	-	-	-	-	-	-	-	-	-	-	-	-	-	
	SN ON GND	-	-	-	-	-	-	-	-	-	-	-	T	-	T	-	-	-	-	-	-	-	-	-	-	-	-	-	-	-	
EASTERN PIEDMONT 02 ALBERTA 5N	SNOWFALL															1.6	1.2														
	SN ON GND	T														2	1														
AMELIA COURTHOUSE 1	SNOWFALL															2.1															
	SNOWFALL															2.0	T														
ASHLAND	SNOWFALL					T				T	0.2																				
	SN ON GND	T														2															

Snowfall: Includes snow and ice. Values for NWS stations (J index note) are Mid-Mid (LST).

Snow on ground: Includes snow, sleet, ice, and hail. Values for NWS stations (J index note) are observed at 12 UTC (GMT).

Water Equivalent: Given for NWS stations (J index note) only, when snow depth is 2 inches or more, and is measured at 18 UTC (GMT)

VIRGINIA
201602

SNOWFALL AND SNOW ON GROUND (INCHES)

STATION		DAY OF MONTH																														
		01	02	03	04	05	06	07	08	09	10	11	12	13	14	15	16	17	18	19	20	21	22	23	24	25	26	27	28	29	30	31
BREMO BLUFF	SNOWFALL																															
	SN ON GND																															
BUCKINGHAM	SNOWFALL															3.0	-	-														
	SN ON GND	1														3	-	-														
CAMP PICKETT	SNOWFALL	-	-	-	-	-	-	-	-	-	-	-	-	-	-	3.0	-	-	-	-	-	-	-	-	-	-	-	-	-	-	-	-
	SN ON GND	T														-	-	-	-	-	-	-	-	-	-	-	-	-	-	-	-	-
CHASE CITY	SNOWFALL	-	-	-	-	-	-	-	-	-	-	-	-	-	-	0.5	-	-	-	-	-	-	-	-	-	-	-	-	-	-	-	-
	SN ON GND	-	-	-	-	-	-	-	-	-	-	-	-	-	-	1	-	-	-	-	-	-	-	-	-	-	-	-	-	-	-	-
CLARKSVILLE	SNOWFALL															0.6																
	SN ON GND																															
CORBIN	SNOWFALL	-	-	-	-	-	-	-	-	-	0.5	-	-	-	-	5.3	-	-	-	-	-	-	-	-	-	-	-	-	-	-	-	-
	SN ON GND	-	-	-	-	-	-	-	-	-	1	-	-	-	-	5	2	-	-	-	-	-	-	-	-	-	-	-	-	-	-	-
CROZIER	SNOWFALL				-											2.0																
	SN ON GND				-											2																
FARMVILLE 2 N	SNOWFALL	-	-	-	-	-	-	-	-	-	-	-	-	-	-	3.0	T	-	-	-	-	-	-	-	-	-	-	-	-	-	-	-
	SN ON GND	-	-	-	-	-	-	-	-	-	-	-	-	-	-	3	2	-	-	-	-	-	-	-	-	-	-	-	-	-	-	-
GREENBAY 3 NE	SNOWFALL																															
JOHN H KERR DAM	SNOWFALL															3.0	T															
KEYSVILLE 2 S	SNOWFALL															3	2															
	SN ON GND																															
LOUISA	SNOWFALL	-	-	-	-	-	-	-	-	-	-	-	-	-	-	3.2	-	-	-	-	-	-	-	-	-	-	-	-	-	-	-	-
	SN ON GND	-	-	-	-	-	-	-	-	-	-	-	-	-	-	2	-	-	-	-	-	-	-	-	-	-	-	-	-	-	-	-
PALMYRA 3S	SNOWFALL	-	-	-	-	-	-	-	-	-	-	-	-	-	-	1.7	0.5															
	SN ON GND	-	-	-	-	-	-	-	-	-	-	-	-	-	-		1															
PETERSBURG	SNOWFALL																															
RICHMOND INTL AP	SNOWFALL					T					T	0.4		T		T	1.4															
	SN ON GND										T					1																
SANDSTON	SNOWFALL																															
	SN ON GND	1																														
WINTERPOCK 4 W	SNOWFALL	-	-	-	-	-	-	-	-	-	-	-	-	-	-	-	1.0	-	-	-	-	-	-	-	-	-	-	-	-	-	-	-
WESTERN PIEDMONT 03																																
APPOMATTOX	SNOWFALL																4.6	1.2														
	SN ON GND	1														5	3															
BEDFORD 4 NW	SNOWFALL															5.8	0.5															
	SN ON GND	1														5	6	1														
BROOKNEAL	SNOWFALL															3.2	T															
	SN ON GND															3	2															
CHARLOTTESVILLE 2W	SNOWFALL															3.0	0.7															
	SN ON GND	3	T													3	2	T														
	WTR EQUIV	1.2	-													0.2	-															
CHATHAM	SNOWFALL															1.5	0.5															
	SN ON GND															2	1															

Snowfall: Includes snow and ice. Values for NWS stations (J index note) are Mid-Mid (LST).

Snow on ground: Includes snow, sleet, ice, and hail. Values for NWS stations (J index note) are observed at 12 UTC (GMT).

Water Equivalent: Given for NWS stations (J index note) only, when snow depth is 2 inches or more, and is measured at 18 UTC (GMT)

VIRGINIA
201602

SNOWFALL AND SNOW ON GROUND (INCHES)

STATION		DAY OF MONTH																														
		01	02	03	04	05	06	07	08	09	10	11	12	13	14	15	16	17	18	19	20	21	22	23	24	25	26	27	28	29	30	31
CONCORD 4 SSW	SNOWFALL															3.5																
	SN ON GND															4	3															
DANVILLE RGNL AP	SNOWFALL					T						T		1.1	0.8																	
	SN ON GND													1	1																	
FREE UNION	SNOWFALL				-	-	-	-	-	-	-	-	-	-	3.4	0.7		-	-	-	-	-	-	-	-	-	-	-	-	-	-	
	SN ON GND	3	1	T	T	-	-	-	-	-	-	-	-	-	3	2		-	-	-	-	-	-	-	-	-	-	-	-	-	-	
	WTR EQUIV	1.5													0.6	0.5		-	-	-	-	-	-	-	-	-	-	-	-	-	-	
HOLCOMB ROCK	SNOWFALL														4.2	4.0																
	SN ON GND														4	6	1	T														
	WTR EQUIV	-	-	-	-	-	-	-	-	-	-	-	-	-	0.3	-	-	-	-	-	-	-	-	-	-	-	-	-	-	-	-	-
HUDDLESTON 4 SW	SNOWFALL														5.0	T																
	SN ON GND	T													5	2	1	T														
LYNCHBURG INTL AP	SNOWFALL											T		0.5	4.9																	
	SN ON GND													1	5	1	T															
MARTINSVILLE FLTR PLT	SNOWFALL	-	-	-	-	-	-	-	-	-	-	-	-	-	3.0	-	-	-	-	-	-	-	-	-	-	-	-	-	-	-	-	-
	SN ON GND	-	-	-	-	-	-	-	-	-	-	-	-	-	3	1	-	-	-	-	-	-	-	-	-	-	-	-	-	-	-	-
MEADOWS OF DAN 5 SW	SNOWFALL														-																	
	SN ON GND														-																	
MONTEBELLO FISH CULTURAL STN	SNOWFALL														2.3																	
MONTEBELLO	SNOWFALL														3	1																
	SN ON GND														3.0	4.6											T					
PEDLAR DAM	SNOWFALL										T				3	4	T	T														
	SN ON GND	T	T	T											3	4	T	T														
ROCKY MT	SNOWFALL														3.5	1.5																
	SN ON GND	2	T												3	5	1	T														
SOUTH BOSTON	SNOWFALL												T		1.2	T																
	SN ON GND														1																	
STUART	SNOWFALL														3.0																	
	SN ON GND														3	2																
TYE RIVER 1 SE	SNOWFALL														4.0	1.0																
WOOLWINE	SNOWFALL														4	4	2															
	SN ON GND														4	4	2															
	WTR EQUIV	-	-	-	-	-	-	-	-	-	-	-	-	-	0.4	-	-	-	-	-	-	-	-	-	-	-	-	-	-	-	-	-
NORTHERN 04																																
FRONT ROYAL	SNOWFALL	-	-	-	-	-	-	-	-	-	-	-	0.2	-	0.2	-	-	-	-	-	-	-	-	-	-	-	-	-	-	-	-	-
	SN ON GND	-	-	-	-	-	-	-	-	-	-	-	-	-	-	-	-	-	-	-	-	-	-	-	-	-	-	-	-	-	-	-
	WTR EQUIV	-	-	-	-	-	-	-	-	-	-	-	-	-	-	-	-	-	-	-	-	-	-	-	-	-	-	-	-	-	-	-
LINCOLN	SNOWFALL														3.0	1.0	2.0															
	SN ON GND	16	12	11	6	4	3	2	1	T	3	1	T		1	3	T															
LURAY 5 E	SNOWFALL														-	-																
	SN ON GND	4	3	1											-	-																
	WTR EQUIV	-	-	-	-	-	-	-	-	0.5					-	-																

Snowfall: Includes snow and ice. Values for NWS stations (J index note) are Mid-Mid (LST).

Snow on ground: Includes snow, sleet, ice, and hail. Values for NWS stations (J index note) are observed at 12 UTC (GMT).

Water Equivalent: Given for NWS stations (J index note) only, when snow depth is 2 inches or more, and is measured at 18 UTC (GMT)

VIRGINIA
201602

SNOWFALL AND SNOW ON GROUND (INCHES)

STATION		DAY OF MONTH																														
		01	02	03	04	05	06	07	08	09	10	11	12	13	14	15	16	17	18	19	20	21	22	23	24	25	26	27	28	29	30	31
MADISON MANASSAS	SNOWFALL	-	-	-	-	-	-	-	-	-	-	-	-	-	-	2.0	4.0	-	-	-	-	-	-	-	-	-	-	-	-	-	-	-
	SN ON GND	4	3	-	-	-	-	-	-	-	-	-	-	-	-	2	4	-	-	-	-	-	-	-	-	-	-	-	-	-	-	
	WTR EQUIV	4.0	3.0	-	-	-	-	-	-	-	-	-	-	-	-	2.0	4.0	-	-	-	-	-	-	-	-	-	-	-	-	-	-	
MT WEATHER	SNOWFALL	-	-	-	-	-	-	-	-	1.0	-	-	-	-	-	1.0	-	-	-	-	-	-	-	-	-	-	-	-	-	-	-	
	SN ON GND	-	6	-	-	-	-	-	-	1	1	-	-	-	-	1	-	-	-	-	-	-	-	-	-	-	-	-	-	-	-	
	WTR EQUIV	6.0	-	-	-	-	-	-	-	-	-	-	-	-	-	-	-	-	-	-	-	-	-	-	-	-	-	-	-	-	-	
PIEDMONT RSCH STN	SNOWFALL	-	-	-	-	T	-	-	-	T	T	-	-	-	-	-	4.0	-	-	-	-	-	-	-	-	-	-	-	-	-	-	
	SN ON GND	-	-	-	-	-	-	-	-	-	-	-	-	-	-	-	2	-	-	-	-	-	-	-	-	-	-	-	-	-	-	
SOMERSET	SNOWFALL	-	-	-	-	-	-	-	-	-	-	-	T	-	-	2.7	T	-	-	-	-	-	-	-	-	-	-	-	-	-	-	
	SN ON GND	T	T	T	-	-	-	-	-	-	-	-	-	-	-	3	2	T	-	-	-	-	-	-	-	-	-	-	-	-	-	
	WTR EQUIV	-	-	-	-	-	-	-	-	-	-	-	-	-	-	0.2	-	-	-	-	-	-	-	-	-	-	-	-	-	-	-	
SPERRYVILLE	SNOWFALL	-	-	-	-	T	-	-	-	-	T	-	-	-	-	-	-	-	-	T	-	-	-	-	-	-	T	-	-	-	-	
	SN ON GND	4	3	1	T	T	T	T	-	-	-	-	-	-	-	-	-	-	-	T	T	-	-	-	-	-	-	-	-	-	-	
STERLING (RCS)	SNOWFALL	-	-	-	-	-	-	-	-	0.2	0.5	-	T	T	-	1.1	1.3	-	-	-	-	-	-	-	-	-	-	-	-	-	-	
	SN ON GND	10	7	3	-	T	-	-	-	T	T	-	T	T	-	1	1	T	-	-	-	-	-	-	-	-	-	-	-	-	-	
	WTR EQUIV	-	-	-	-	-	-	-	-	-	-	-	-	-	-	-	-	-	-	-	-	-	-	-	-	-	-	-	-	-	-	
VIENNA	SNOWFALL	-	-	-	-	-	-	-	-	0.1	0.1	-	-	-	-	2.0	2.0	-	-	-	-	-	-	-	-	-	-	-	-	-	-	
	SN ON GND	6	4	2	-	-	-	-	-	-	-	-	-	-	-	2	2	-	-	-	-	-	-	-	-	-	-	-	-	-	-	
	WTR EQUIV	-	-	-	-	-	-	-	-	-	-	-	-	-	-	-	-	-	-	-	-	-	-	-	-	-	-	-	-	-	-	
WARRENTON 3 SE	SNOWFALL	-	-	-	-	-	-	-	-	-	-	-	-	-	-	2.7	-	-	-	-	-	-	-	-	-	-	-	-	-	-	-	
	SN ON GND	-	-	-	-	-	-	-	-	-	-	-	-	-	-	2	3	-	-	-	-	-	-	-	-	-	-	-	-	-	-	
	WTR EQUIV	-	-	-	-	-	-	-	-	-	-	-	-	-	-	2.7	-	-	-	-	-	-	-	-	-	-	-	-	-	-	-	
WASHGTN DULLES INTL AP	SNOWFALL	-	-	-	-	T	-	-	-	0.7	T	-	T	T	0.2	2.2	-	-	-	-	-	-	-	-	-	-	-	-	-	-	-	
	SN ON GND	10	7	3	-	T	-	-	-	T	T	-	-	-	-	1	1	T	-	-	-	-	-	-	-	-	-	-	-	-	-	
WASHINGTON REAGAN AP	SNOWFALL	-	-	-	-	T	-	-	-	T	T	-	T	0.1	0.2	2.8	-	-	-	-	-	-	-	-	-	T	T	-	-	-	-	
	SN ON GND	-	-	-	-	-	-	-	-	T	T	-	T	-	-	2	2	-	-	-	-	-	-	-	-	-	-	-	-	-	-	
WINCHESTER	SNOWFALL	-	-	-	-	-	-	-	-	-	T	-	-	0.8	-	1.1	0.5	-	-	-	-	-	-	-	-	-	-	-	-	-	-	
	SN ON GND	4	-	-	-	-	-	-	-	-	-	-	-	-	-	1	1	-	-	-	-	-	-	-	-	-	-	-	-	-	-	
WINCHESTER 7 SE	SNOWFALL	-	-	-	-	-	-	-	-	-	-	-	-	-	1.0	-	-	-	-	-	-	-	-	-	-	-	-	-	-	-	-	
	SN ON GND	3	1	-	-	-	-	-	-	-	-	-	-	-	1	1	-	-	-	-	-	-	-	-	-	-	-	-	-	-	-	
	WTR EQUIV	-	-	-	-	-	-	-	-	-	-	-	-	-	-	-	-	-	-	-	-	-	-	-	-	-	-	-	-	-	-	
WOODSTOCK 2 NE	SNOWFALL	-	-	-	-	-	-	-	-	-	-	-	0.2	-	1.5	1.4	-	-	-	-	-	-	-	-	-	-	-	-	-	-	-	
	SN ON GND	T	T	-	T	T	-	-	-	-	-	-	T	T	2	1	-	-	-	-	-	-	-	-	-	-	-	-	-	-	-	
CENTRAL MOUNTAIN 05 BUENA VISTA	SNOWFALL	-	-	-	-	-	-	-	-	-	-	-	-	-	2.0	0.5	-	-	-	-	-	-	-	-	-	-	-	-	-	-	-	
	SN ON GND	1	-	-	-	-	-	-	-	-	-	-	-	-	2	1	-	-	-	-	-	-	-	-	-	-	-	-	-	-	-	
COVINGTON FLTR PLT	SNOWFALL	-	-	-	-	-	-	-	-	T	T	T	-	-	4.0	2.0	-	-	-	-	-	-	-	-	-	-	T	-	-	-	-	
	SN ON GND	T	-	-	-	-	-	-	-	T	T	-	-	-	4	4	2	1	-	-	-	-	-	-	-	-	-	-	-	-	-	
DALE ENTERPRISE	SNOWFALL	-	-	-	-	-	-	-	-	-	-	-	0.2	-	4.0	4.0	-	-	-	-	-	-	-	-	-	-	-	-	-	-	-	
	SN ON GND	2	1	-	-	-	-	-	-	3	-	-	-	-	4	4	2	-	-	-	-	-	-	-	-	-	-	-	-	-	-	
	WTR EQUIV	2.0	1.0	-	-	-	-	-	-	3.0	-	-	-	0.2	-	4.0	2.0	-	-	-	-	-	-	-	-	-	-	-	-	-	-	

Snowfall: Includes snow and ice. Values for NWS stations (J index note) are Mid-Mid (LST).

Snow on ground: Includes snow, sleet, ice, and hail. Values for NWS stations (J index note) are observed at 12 UTC (GMT).

Water Equivalent: Given for NWS stations (J index note) only, when snow depth is 2 inches or more, and is measured at 18 UTC (GMT)

VIRGINIA
201602

SNOWFALL AND SNOW ON GROUND (INCHES)

STATION		DAY OF MONTH																														
		01	02	03	04	05	06	07	08	09	10	11	12	13	14	15	16	17	18	19	20	21	22	23	24	25	26	27	28	29	30	31
GATHRIGHT DAM	SNOWFALL					T				0.5	T	T				5.0												T	T			
	SN ON GND	4	1	T						T		T				5	3	2	1	T								T				
GLASGOW 1 SE	SNOWFALL												T			3.9	3.0										T					
	SN ON GND	T														4	4															
HOT SPRINGS	SNOWFALL									1.0	T			T		5.0	2.0										T					
	SN ON GND									1	T	T		T		5	6	4	2	T							T					
LEXINGTON	SNOWFALL															3.0	3.0										T					
	SN ON GND	3	1													3	2	1														
MILLGAP	SNOWFALL	-	-	-	-	-	-	-	-	0.4	0.8	-	-	T	-	4.6	1.6	-	-	-	-	-	-	-	-	-	1.7	T	-	-		
	SN ON GND	1	1	T	T	T	-	-	-	T	1	1	1	1	T	5	2	1	1	1	T	-	-	-	-	-	2	1	T	-		
MTN GROVE	SNOWFALL									T	0.5	T				4.0	2.0									0.5						
	SN ON GND	2	T							T	1	T				4	5	3	2	2	1					1	T					
MUSTOE 1 SW	SNOWFALL					T				0.7	T	0.1		T	0.3	3.8	4.4									0.6	0.4					
	SN ON GND	3	2	T	T	T	T	T	T	T	T	T	T	T	4	8	4	2	1	1	T	T	T	T		T	T	T	T			
NEW CASTLE	SNOWFALL															6.0																
	SN ON GND															6	3	2	1													
ROANOKE 8 N	SNOWFALL															6.0	2.0															
	SN ON GND															6	5	1														
ROANOKE INTL AP	SNOWFALL				T	T				T	T		T	T	1.0	7.5										T	T					
	SN ON GND														1	9	2															
STAUNTON WATER TRMTMT PLT	SNOWFALL									T						4.2																
	SN ON GND															4	2															
	WTR EQUIV	-	-	-	-	-	-	-	-	-	-	-	-	-	-	-	-	-	-	-	-	-	-	-	-	-	-	-	-	-	-	
WAYNESBORO WTP	SNOWFALL															2.9																
	SN ON GND															3																
	WTR EQUIV		-													0.7		-														
SOUTHWESTERN MOUNTAIN 06																																
ABINGDON 3S	SNOWFALL									2.0				2.0		2.5		T									T					
	SN ON GND									2	2	2		2	1	4																
BIG STONE GAP	SNOWFALL									1.0	T			T		4.0										T	T					
	SN ON GND									1	T			T		4	T															
BLACKSBURG NWSO	SNOWFALL					T				0.8	T	T		T		6.5	2.5	T	T							T	T	T				
	SN ON GND	3	1							1	1	T	T	T	T	7	6	5	4	3	1											
BURKES GARDEN	SNOWFALL									-	4.0	1.0	1.0			6.0	T	T	T							T	T					
	SN ON GND									-	4	4	4	3	4	9	4	3	3	3	-					T	1	T				
CHRISTIANSBURG	SNOWFALL									0.6	T			T		6.0	3.0	T								T						
	SN ON GND	1	T	T							T			T		6	5	4	3	2	1	T										
CLINTWOOD 1 W	SNOWFALL									2.5	1.0	0.8	0.2	1.4	0.2	4.7	T	0.2								0.7	0.4					
	SN ON GND	T								2	2	2	1	2	2	6	2	2	1	T						1	T					
COPPER HILL	SNOWFALL									1.0						5.0	2.0	0.5														
	SN ON GND	2	1							1	1	1	1			5	5	4	3	3												

Snowfall: Includes snow and ice. Values for NWS stations (J index note) are Mid-Mid (LST).

Snow on ground: Includes snow, sleet, ice, and hail. Values for NWS stations (J index note) are observed at 12 UTC (GMT).

Water Equivalent: Given for NWS stations (J index note) only, when snow depth is 2 inches or more, and is measured at 18 UTC (GMT)

VIRGINIA
201602

SNOWFALL AND SNOW ON GROUND (INCHES)

STATION		DAY OF MONTH																																		
		01	02	03	04	05	06	07	08	09	10	11	12	13	14	15	16	17	18	19	20	21	22	23	24	25	26	27	28	29	30	31				
GALAX RADIO WBRF	SNOWFALL							T	T			0.2		0.5	5.0	1.0																				
	SNOW ON GND								1.0	T					3.5	2.0	0.5																			
GALAX WTP	SNOWFALL								1						4	3	2																			
	SN ON GND																																			
GRUNDY	SNOWFALL								1.0	0.1	T		0.3	0.2	4.8	2.6	1.3	0.2									T	T								
	SN ON GND								1	1	1	T	1	1	5	3	1	1																		
JOHN FLANNAGAN LAKE	SNOWFALL		-				-	-	-				-	-	-	-	-					-	-	-	-											
	SN ON GND		-				-	-	-	1			-	-	-	2	1					-	-	-	-											
LAFAYETTE 1 NE	SNOWFALL										T	T			7.1	2.7																				
	SN ON GND	1	T												7	6	4	2	T	T																
LEBANON	SNOWFALL												1.0	0.2													0.2	0.1								
	SN ON GND								1	4 ¹			1	1																						
NORA 4 SSE	SNOWFALL								3.8	1.9	1.1	0.3	2.4	0.1	5.8	0.6	0.7	T									T	-	-							
	SN ON GND								3	5	4	2	3	2	6	1	1	T									T	-	-							
N FK LAKE	SNOWFALL								2.0	T	T	-	-	-	-	-	-					-	-	-	-											
	SN ON GND								2	1	1	-	-	-	-	1						-	-	-	-											
PULASKI 2 E	SNOWFALL								T				T		4.0	4.0											T	T								
	SN ON GND														4	8	5	3	1																	
RADFORD 3 N	SNOWFALL								0.5	T			T		7.5	1.5												T								
	SN ON GND	T	T	T					T	T			T		7	5	3	1	T	T																
RICHLANDS	SNOWFALL								2.3	T	T	T	1.0	T	7.0	T											T	T								
	SN ON GND								2	2	2	T	1	1	7	6	4	1	T								T	T								
SALTVILLE 1N	SNOWFALL								1.0	0.4	T		1.5		4.0												T	T								
	SN ON GND								1	1	1		2		4	2	T																			
STAFFORDSVILLE 3 ENE	SNOWFALL								0.1	T			0.1		9.0	1.0						T														
	SN ON GND	T	T						T	T	T	T	T	T	9	7	5	4	3	T																
WILLIS	SNOWFALL								0.1	T	T				4.0												T									
	SN ON GND								1	T	T				4	3																				
WISE 3E	SNOWFALL							0.5	1.2	0.8	T	0.3	1.4	0.8	4.2		1.5										1.2	0.8								
	SN ON GND							T	1	1	T	T	1	T	3	T	T										T	1								
WYTHEVILLE	SNOWFALL								1.7	T	T		0.8		4.6	1.5						T					T	T								
	SN ON GND								1	1	1	T	1	T	5	3	2	T									T	T								

Snowfall: Includes snow and ice. Values for NWS stations (J index note) are Mid-Mid (LST).

Snow on ground: Includes snow, sleet, ice, and hail. Values for NWS stations (J index note) are observed at 12 UTC (GMT).

Water Equivalent: Given for NWS stations (J index note) only, when snow depth is 2 inches or more, and is measured at 18 UTC (GMT)

VIRGINIA
201602

PAN EVAPORATION AND WIND

STATION		DAY OF MONTH																														TOTAL OR AVERAGE							
		01	02	03	04	05	06	07	08	09	10	11	12	13	14	15	16	17	18	19	20	21	22	23	24	25	26	27	28	29	30		31						
VIRGINIA EASTERN PIEDMONT 02 JOHN H KERR DAM	WIND	-	-	-	-	-	-	-	-	-	-	-	-	-	-	-	-	-	-	-	-	-	-	-	-	-	-	-	-	-	-	-	-	-	-	-	-	-	-
	EVAP	-	-	-	-	-	-	-	-	-	-	-	-	-	-	-	-	-	-	-	-	-	-	-	-	-	-	-	-	-	-	-	-	-	-	-	-	-	-
	MAX	-	-	-	-	-	-	-	-	-	-	-	-	-	-	-	-	-	-	-	-	-	-	-	-	-	-	-	-	-	-	-	-	-	-	-	-	-	
	MIN	-	-	-	-	-	-	-	-	-	-	-	-	-	-	-	-	-	-	-	-	-	-	-	-	-	-	-	-	-	-	-	-	-	-	-	-	-	-

Evaporation: Is measured in hundreths of inches.

Wind: Is measured in miles.

Max and Min: The maximum and minimum temperatures (Fahrenheit) of the water in the evaporation pan.

STATION INDEX

STATION	INDEX NO.	DIVISION	COUNTY	LATITUDE	LONGITUDE	ELEVATION (IN FEET)	OBSERVATION TIME AND TABLES			
							LOCAL STD TIME			
							TEMP	PRECIP	EVAP	SPECIAL SEE (NOTES)
VIRGINIA										
ABINGDON 3S	0021	06	WASHINGTON	36 40	81 58W	1925	22	22		H
ALBERTA 5N	0079	02	BRUNSWICK	36 56	77 54W	376		08		H
ALTAVISTA	0166	03	CAMPBELL	37 7	79 17W	529		07		CH
AMELIA COURTHOUSE 1	0187	02	AMELIA	37 21	77 59W	345	08	08		H
APPOMATTOX	0243	03	APPOMATTOX	37 20	78 50W	850	07	07		H
ASHLAND	0327	02	HANOVER	37 45	77 29W	220	18	18		H
BEDFORD 4 NW	0561	03	BEDFORD	37 23	79 34W	1228		07		CH
BIG STONE GAP	0735	06	WISE	36 52	82 46W	1464	08	08		H
BLACKSBURG NWSO	0766	06	MONTGOMERY	37 12	80 25W	2103	07	07		H
BREMO BLUFF	0993	02	FLUVANNA	37 43	78 17W	225		07		CH
BROOKNEAL	1082	03	CAMPBELL	37 4	78 57W	408	07	07		H
BUCKINGHAM	1136	02	BUCKINGHAM	37 30	78 32W	580		07		H
BUENA VISTA	1159	05	ROCKBRIDGE	37 44	79 22W	840		07		H
BURKES GARDEN	1209	06	TAZEWELL	37 6	81 20W	3068	07	07		H
CAMP PICKETT	1322	02	NOTTOWAY	37 2	77 57W	330	08	08		CH
CHARLOTTESVILLE 2W	1593	03	ALBEMARLE	38 2	78 31W	866	08	08		H
CHASE CITY	1606	02	MECKLENBURG	36 47	78 29W	510	17	17		H
CHATHAM	1614	03	PITTSYLVANIA	36 49	79 25W	651	07	07		CH
CHRISTIANSBURG	1692	06	MONTGOMERY	37 8	80 24W	2100	07	07		H
CLARKSVILLE	1746	02	MECKLENBURG	36 37	78 33W	330	07	07		H
CLINTWOOD 1 W	1825	06	DICKENSON	37 9	82 29W	1780	07	07		H
CONCORD 4 SSW	1955	03	CAMPBELL	37 17	78 58W	815		07		H
COPPER HILL	1999	06	FLOYD	37 5	80 9W	2690	07	07		H
CORBIN	2009	02	CAROLINE	38 12	77 22W	220	09	09		H
COVINGTON FLTR PLT	2044	05	ALLEGHANY	37 49	79 59W	1230	07	07		H
CROZIER	2142	02	GOOCHLAND	37 40	77 53W	350	07	07		H
DALE ENTERPRISE	2208	05	ROCKINGHAM	38 27	78 56W	1358	07	07		H
DANVILLE RGNL AP	2250	03	PITTSYLVANIA	36 34	79 20W	571	24	24		H
DISPUTANTA	2400	01	PRINCE GEORGE	37 7	77 12W	15	07	07		H
EASTVILLE	2635	01	NORTHAMPTON	37 23	75 58W	10	07	07		H
EDINBURG	2663	04	SHENANDOAH	38 48	78 35W	928	07	07		H
EMPORIA 1 WNW	2790	01	GREENSVILLE	36 42	77 34W	100	08	08		H
FARMVILLE 2 N	2941	02	CUMBERLAND	37 20	78 23W	450	07	07		H
FREDERICKSBURG SEWAGE	3204	01	FREDERICKSBURG	38 17	77 27W	15	07	07		H
FREE UNION	3213	03	ALBEMARLE	38 5	78 35W	590	08	07		H
FRONT ROYAL	3229	04	WARREN	38 54	78 11W	930	07	07		H
GALAX RADIO WBRF	3267	06	CARROLL	36 40	80 55W	2385	07	07		H
GALAX WTP	3272	06	CARROLL	36 39	80 55W	2360	07	07		CH
GATHRIGHT DAM	3310	05	ALLEGHANY	37 57	79 57W	1770	07	07		CH
GLASGOW 1 SE	3375	05	ROCKBRIDGE	37 37	79 26W	737		07		H
GREENBAY 3 NE	3565	02	PRINCE EDWARD	37 11	78 17W	500	09	09		H
GRUNDY	3640	06	BUCHANAN	37 17	82 5W	1170	07	07		H
HOLCOMB ROCK	4039	03	BEDFORD	37 33	79 24W	900		07		H
HOLLAND 1 E	4044	01	SUFFOLK	36 41	76 46W	80	08	08		H
HOPEWELL	4101	01	PRINCE GEORGE	37 18	77 17W	40	16	16		H
HOT SPRINGS	4128	05	BATH	37 60	79 50W	2236	07	07		H
HUDDLESTON 4 SW	4148	03	BEDFORD	37 8	79 32W	898		07		H
JOHN FLANNAGAN LAKE	4410	06	DICKENSON	37 14	82 21W	1460	07	07		H
JOHN H KERR DAM	4414	02	MECKLENBURG	36 36	78 18W	250	08	08	08	CH
KEYSVILLE 2 S	4568	02	CHARLOTTE	37 1	78 29W	625	07	07		H
LAFAYETTE 1 NE	4676	06	MONTGOMERY	37 14	80 12W	1320		07		H
LEBANON	4777	06	RUSSELL	36 54	82 2W	1912	07	07		H
LEXINGTON	4876	05	ROCKBRIDGE	37 47	79 26W	1097	07	07		H
LINCOLN	4909	04	LOUDOUN	39 5	77 42W	500	07	07		H
LOUISA	5050	02	LOUISA	38 3	78 0W	420	18	18		H
LURAY 5 E	5096	04	PAGE	38 40	78 22W	1400	08	08		H
LYNCHBURG INTL AP R	5120	03	CAMPBELL	37 19	79 12W	940	24	24		HJ
MADISON	5150	04	MADISON	38 22	78 15W	577	08	08		H
MANASSAS	5204	04	MANASSAS	38 44	77 30W	245	07	07		H
MARTINSVILLE FLTR PLT	5300	03	HENRY	36 42	79 52W	760	07	07		H
MEADOWS OF DAN 5 SW	5453	03	PATRICK	36 40	80 27W	2225	07	07		H
MILLGAP	5595	05	HIGHLAND	38 18	79 43W	2421	07	07		CH
MONTEBELLO FISH CULTURAL STN	5690	03	NELSON	37 51	79 8W	2667	07	07		H
MONTICELLO	5700	03	ALBEMARLE	38 1	78 27W	758	08	08		H
MT WEATHER	5851	04	LOUDOUN	39 4	77 53W	1659	07	07		H

STATION INDEX

STATION	INDEX NO.	DIVISION	COUNTY	LATITUDE	LONGITUDE	ELEVATION (IN FEET)	OBSERVATION TIME AND TABLES			
							LOCAL STD TIME			
							TEMP	PRECIP	EVAP	SPECIAL SEE (NOTES)
MTN GROVE	5756	05	BATH	38 6	79 53W	1775		07		H
MUSTOE 1 SW	5880	05	HIGHLAND	38 20	79 40W	2380	24	24		H
N FK LAKE	6173	06	WISE	37 7	82 38W	1675	08	08		H
NEW CASTLE	6012	05	CRAIG	37 18	80 3W	1258		07		H
NORA 4 SSE	6125	06	DICKENSON	37 1	82 19W	2650	07	07		H
NORFOLK INTL AP R	6139	01	NORFOLK (CITY)	36 54	76 12W	30	24	24		HJ
NORFOLK SOUTH	6147	01	NORFOLK (CITY)	36 52	76 14W	100	24	24		H
NORTH	6161	01	MATHEWS	37 26	76 26W	10	07	07		H
PAINTER 2W	6475	01	ACCOMACK	37 35	75 49W	30	16	16		CH
PALMYRA 3S	6491	02	FLUVANNA	37 49	78 16W	410	06	06		H
PEDLAR DAM	6593	03	AMHERST	37 40	79 17W	1024		07		H
PETERSBURG	6656	02	PETERSBURG	37 14	77 24W	15	08	08		H
PIEDMONT RSCH STN	6712	04	ORANGE	38 14	78 7W	520	08	08		CH
PULASKI 2 E	6955	06	PULASKI	37 3	80 47W	1850	07	07		CH
RADFORD 3 N	6999	06	PULASKI	37 12	80 35W	1800	07	07		H
RICHLANDS	7174	06	TAZEWELL	37 6	81 48W	1910	07	07		H
RICHMOND INTL AP R	7201	02	HENRICO	37 30	77 19W	164	24	24		HJ
ROANOKE 8 N	7278	05	ROANOKE	37 22	79 58W	1190	07	07		H
ROANOKE INTL AP R	7285	05	ROANOKE	37 19	79 58W	1175	24	24		HJ
ROCKY MT	7338	03	FRANKLIN	36 59	79 54W	1315	07	07		CH
SALTVILLE 1N	7506	06	SMYTH	36 53	81 46W	1733	07	07		H
SANDSTON	7541	02	HENRICO	37 33	77 17W	165	07	07		H
SOMERSET	7904	04	ORANGE	38 15	78 16W	510	07	07		H
SOUTH BOSTON	7925	03	HALIFAX	36 42	78 53W	329	07	07		H
SPERRYVILLE	7985	04	RAPPAHANNOCK	38 39	78 14W	750	06	06		H
STAFFORDSVILLE 3 ENE	8022	06	GILES	37 16	80 43W	1950	07	07		CH
STAUNTON WATER TRMTMT PLT	8062	05	AUGUSTA	38 10	79 5W	169	08	08		H
STERLING (RCS)	8084	04	LOUDOUN	38 59	77 29W	288	07	07		H
STONY CREEK 2 N	8129	01	SUSSEX	36 58	77 24W	105	08	08		H
STUART	8170	03	PATRICK	36 38	80 15W	1375	07	07		H
SUFFOLK LAKE KILBY	8192	01	SUFFOLK	36 44	76 36W	22	24	24		H
TYE RIVER 1 SE	8600	03	NELSON	37 38	78 56W	720	07	07		H
VIENNA	8737	04	FAIRFAX	38 54	77 16W	418	07	07		H
WAKEFIELD 1NW	8800	01	SUSSEX	36 59	77 0W	113	24	24		CH
WALKERTON 2 NW	8829	01	KING AND QUEEN	37 45	77 2W	50	18	18		H
WALLACETON LK DRUMMOND	8837	01	CHESAPEAKE	36 36	76 26W	20	08	08		H
WALLOPS ISLAND NASA TEST FACIL R	8849	01	ACCOMACK	37 56	75 28W	46	24	24		HJ
WARRENTON 3 SE	8888	04	FAUQUIER	38 41	77 46W	500	08	08		H
WARSAW 2 NW	8894	01	RICHMOND	37 59	76 47W	140	18	18		H
WASHGTN DULLES INTL AP R	8903	04	LOUDOUN	38 56	77 28W	290	24	24		HJ
WASHINGTON REAGAN AP R	8906	04	ARLINGTON	38 51	77 2W	10	24	24		HJ
WAYNESBORO WTP	8941	05	WAYNESBORO	38 5	78 53W	1270	07	07		H
WEST POINT 2 NW	9025	01	KING WILLIAM	37 34	76 48W	20	17	17		H
WILLIAMSBURG 2 N	9151	01	YORK	37 18	76 42W	70	24	24		CH
WILLIS	9169	06	FLOYD	36 55	80 30W	2810		07		CH
WINCHESTER	9181	04	FREDERICK	39 11	78 9W	720	07	07		H
WINCHESTER 7 SE	9186	04	FREDERICK	39 11	78 7W	680	08	08		H
WINTERPOCK 4 W	9213	02	CHESTERFIELD	37 19	77 39W	300		07		H
WISE 3E	9215	06	WISE	36 60	82 32W	2549	17	17		CH
WOODSTOCK 2 NE	9263	04	SHENANDOAH	38 54	78 28W	675	07	07		H
WOOLWINE	9272	03	PATRICK	36 47	80 17W	1500		07		CH
WYTHEVILLE	9301	06	WYTHE	36 58	81 5W	2458	07	07		H

REFERENCE NOTES

STATION NAMES: Name of the city, town or locality. Figures and letters following the station names indicate the distance in miles and direction from the post office or town community center.

DIVISIONS: Areas within a state of similar climatological characteristics. Division averages are calculated using data from stations that record temperature and/or precipitation. Station Precipitation totals flagged with an 'F' or 'M' are excluded from the Divisional Average calculations of precipitation. Stations with monthly Temperature averages flagged with an 'F' or 'M' are included in the Divisional Average if there are no more than 9 flagged or missing daily values in the month, else they are excluded from the divisional average for temperature.

NORMALS: The average value of the meteorological element over a time period. Effective 1 January 2012, the averaging period for station departures is 1981 to 2010. The normals for National Weather Service localities have been adjusted so as to be representative for the current observation site.

The January 2011 through December 2015 publications incorrectly state the computation of divisional departures. Climate Division departures have been, and continue to be, computed from 1971-2000 Normals, not 1981-2010 as stated. Station departures are accurately described as departures from 1981-2010.

MONTHLY DEGREE DAY TOTALS: One heating (cooling) degree day is accumulated for each whole degree that the daily mean temperature is below (above) 65 degrees Fahrenheit.

PRECIPITATION: Values shown in hundredths of inches are water equivalent totals, i.e., total of liquid and melted frozen precipitation. In the "Monthly Summarized Data" table the total snow and sleet values shown in tenths of inches are unmelted amounts. The max depth on ground values of snow and sleet shown in whole inches are cumulative unmelted amounts. The number of days with .10, .50, 1.00 or more refers to water equivalents.

PRECIPITATION QUALITY CONTROL: The NCEI quality control process may flag precipitation data that are spatially inconsistent, exceed climatological limits, or are inconsistent with prevailing weather patterns.

TEMPERATURE: Original temperature values are given in the "Daily Temperature" table. Summary temperature information (averages, departures, extremes, monthly degree day totals) is based on the values labeled MAX/MIN.

WIND: (As shown in the "Evaporation and Wind" table) the total wind movement in miles over the evaporation pan as determined by an anemometer recorder located 6-8 inches above the pan.

SYMBOLS AND LETTERS USED IN THE STATION INDEX TABLE

C Station is equipped with recording rain gage (R) but values in this bulletin are from a non-recording rain gage unless indicated by an R.
G Observations appear in the "Soil Temperatures" table.
H Observations appear in the "Snowfall and Snow on the Ground" table.
J Station also published as a Local Climatological Data publication.
VAR Observation time varies.
SR / SS Observation time near sunrise / Observation time near sunset, respectively.

SYMBOLS AND LETTERS USED IN THE DATA TABLES

(DAILY DATA ARE FOR THE 24 HOURS IMMEDIATELY PRECEDING OBSERVATION TIME.)

BLANK Entries in the "Monthly Summarized Data" table indicate no record.

BLANK Entries in the "Daily Precipitation" and "Snowfall and Snow on the Ground" tables indicate zero.

BLANK Entries in the "Daily Temperature" table indicate a missing record

- No record. Data not recorded or not received in time for publication.

+ Precipitation or temperature extremes occurred on one or more previous dates during the month.

* Rain gage not read. Precipitation is included in the amount following the asterisks.

Time distribution may not be known. A * preceding the monthly total indicates precipitation amount is being carried forward to next month's total, and may include amounts from the previous month(s).

a As a subscript, indicates accumulated total.

A Amount of precipitation is the total of observer's entries for the current month. It may include precipitation that occurred during the previous month. Refer to earlier bulletin to determine date of last

reading. (Hawaii stations)

B Divisional Departure from normals are computed using 1971-2000 normals.

E Normalized HDD/CDD Calculation. E is appended to the HDD/CDD Calculation when 1-9 individual daily TMAX and/or TMIN values are missing and a Normalized HDD/CDD Calculation is provided. M appears alone if 10 or more daily values are missing.

F Monthly calculation flagged value. F is appended to average and/or total values computed which exclude one or more daily data values that have been flagged by the GHCN-Daily Dataset

M Insufficient or partial data. M is appended to average and/or total values computed with 1-9 daily values missing. M appears alone if 10 or more daily values are missing, (8 or more for wind and evaporation).

N Indicates snow fall or Snowdepth totals are computed with one or more missing days.

R Amounts from recording rain gage.

T Trace. An amount too small to measure.

SEASONAL TABLES: Monthly and seasonal snowfall and heating degree days for the 12 months ending with the June data are published in the July issue of this bulletin. Cooling degree days for the calendar year are published in the "Climatological Data Annual Summary."

Information concerning the history of changes in locations, exposure, etc. of substations is kept on file at the National Centers for Environmental Information. Historical information of regular National Weather Service Offices may be obtained from the "Local Climatological Data" annual publication. The contents of this publication may be reprinted or otherwise used freely, with proper credit to the National Centers For Environmental Information. The data are also available digitally.

Effective with the January 2011 Data-Month, COOP Observer Names are no longer included in the Monthly and Annual Climatological Data Publications. This information is not published to ensure the privacy of personal information pursuant to Section 208 of the E-Government Act of 2002 (44 USC 3601).

As of the 2011 Data-Year, Station and Climate Division Maps are no longer being included in the CD Publications. NCEI's Products Branch provides updated Station Maps for various data networks via the Historical Observing Metadata Repository: <http://www.ncdc.noaa.gov/homr>.

The GHCN-Daily Quality Control Flags shown below are displayed as superscripts with the data. For more information on Global Historical Climatology Network - Daily and flags, see: <http://www.ncdc.noaa.gov/oa/climate/ghcn-daily/> and Comprehensive Automated Quality Assurance of Daily Surface Observations. Durre, Imke, Matthew J. Menne, Byron E. Gleason, Tamara G. Houston, Russell S. Vose, 2010: J. Appl. Meteor. Climatol., 49, 16151633. doi: 10.1175/2010JAMC2375.1

Blank = Passed All checks

D = failed duplicate check

G = failed gap check

I = failed internal consistency check

K = failed streak/frequent-value check

L = failed check on length of multiday period

M = failed megaconsistency check

N = failed naught check

O = failed climatological outlier check

R = failed lagged range check

S = failed spatial consistency check

T = failed temporal consistency check

W = temperature too warm for snow

X = failed bounds check

Z = flagged as a result of an official Datzilla investigation

Beginning with the January 2013 CD Publication, monthly mean temperature calculations have changed to the National Data Stewardship Team standard. Monthly maximum and minimum temperatures are not rounded until after the monthly mean temperature is calculated. This is the most accurate outcome, but may be slightly different from the mean derived from rounded monthly maximum and minimum.

The climate division temperature and precipitation values in this publication are based on simple averages from the current set of NWS-Designated Open and Published COOP and First Order Sites within each division. These values differ from those found in NCEI's nClimDiv product. Beginning in February 2014, the nClimDiv product is used by NCEI's Monitoring Branch and in its monthly climate reports. For more details on nClimDiv, please go to <http://www.ncdc.noaa.gov/monitoring-references/maps/us-climate-divisions.php>.

Effective January 2016, Alaska's Climate Divisions are updated to reflect the 13 climate divisional boundaries established by University of Alaska-Fairbanks, NWS, NCEI, Oregon State University, and University of Nebraska-Lincoln. For more details regarding the updated Alaska Climate Divisions, see: <http://journals.ametsoc.org/doi/pdf/10.1175/JAMC-D-11-0168.1> (Bienek et al., 2012).

NOAA National Centers for Environmental Information
Attn: Customer Engagement Branch
151 Patton Avenue
Asheville, NC 28801-5001

Customer Services Number: (828) 271-4800, option 2
TDD : (828) 271-4010
Fax number: (828) 271-4876

NCEI now offers free online access to the *Climatological Data* publication.
Go to : www.ncdc.noaa.gov and choose Most Popular.