



CLIMATOLOGICAL DATA

VIRGINIA

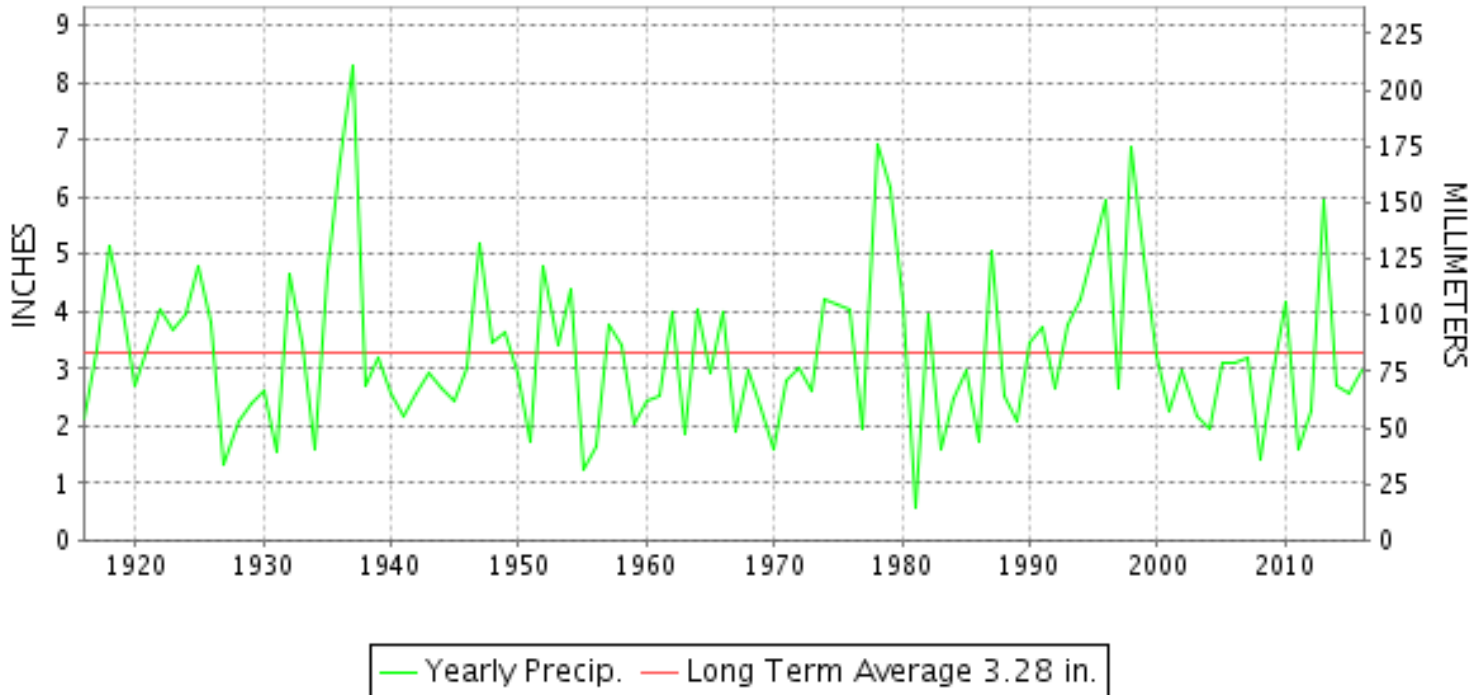
JANUARY 2016

VOLUME 126 NUMBER 01

ISSN 0364-5630

GHCND Ver: 3.22-upd-2016053105

JANUARY PRECIPITATION BY YEAR



TEMPERATURE AND PRECIPITATION EXTREMES

VIRGINIA

HIGHEST TEMPERATURE	70	JANUARY 31+	2 STATIONS
LOWEST TEMPERATURE	-9	JANUARY 25	MILLGAP
GREATEST TOTAL PRECIPITATION	5.01		WALLACETON LK DRUMMOND
LEAST TOTAL PRECIPITATION	1.23		WARSAW 2 NW
GREATEST 1 DAY PRECIPITATION	3.04	JANUARY 24	MONTEBELLO FISH CULTURAL STN
GREATEST TOTAL SNOWFALL	29.9		2 STATIONS
GREATEST DEPTH OF SNOW OR ICE	36		LINCOLN

"I certify that this is an official publication of the National Oceanic and Atmospheric Administration (NOAA) It is compiled using information from weather observing sites supervised by NOAA/National Weather Service and received at the National Centers for Environmental Information(NCEI), Asheville, North Carolina 28801."

Director
National Centers for Environmental Information

noaa

National
Oceanic and
Atmospheric Administration

National
Environmental Satellite, Data
and Information Service

National
Centers for Environmental Information
Asheville, North Carolina

VIRGINIA
201601

MONTHLY STATION AND DIVISION SUMMARY

STATION	TEMPERATURE (°F)											PRECIPITATION (IN)												
	AVERAGE MAXIMUM	AVERAGE MINIMUM	AVERAGE	DEPARTURE FROM NORMAL	HIGHEST	DATE	LOWEST	DATE	HEATING DEG. DAYS	COOLING DEG. DAYS	NO. OF DAYS				TOTAL	DEPARTURE FROM NORMAL	GREATEST 24 HOURS	DATE	ICE PELLETS, SNOW			NO. OF DAYS		
											MAX		MIN						TOTAL	MAX DEPTH ON GROUND	DATE	.10 OR MORE	.50 OR MORE	1.00 OR MORE
											>=90	<=32	<=32	<=0										
PALMYRA 3S	43.5	20.2	31.8	-2.1	59	11	7	24+	1019	0	0	5	27	0	3.57	0.69	1.03	23	M	6	25	5	4	1
PETERSBURG	46.6	25.7	36.1	-1.7	68	31	12	19	889	0	0	5	25	0	2.66	-0.60	0.84	22	M			5	3	0
RICHMOND INTL AP	45.1	26.2	35.7	-2.2	65	31+	13	20	901	0	0	4	24	0	3.30	0.26	0.89	22	12.1	9	24	6	3	0
SANDSTON	43.6	24.7	34.2	-2.3	63	11	12	20	947	0	0	5	25	0	A 4.41	1.04	1.57	23	M	M 12	24	2	2	1
WINTERPOCK 4 W															3.08		1.31	23	M			5	2	1
--DIVISIONAL DATA-----> WESTERN PIEDMONT 03			35.0	-0.9B											2.88	-0.96B								
ALTAVISTA															2.98		1.43	23	M			4	3	1
APPOMATTOX	41.9	24.5	33.2	-1.9	58	01	11	19	976	0	0	5	25	0	3.24	0.10	1.38	23	11.7	11	24	5	3	1
BEDFORD 4 NW															2.82		1.03	23	10.2	9	23	4	3	1
BROOKNEAL	44.5	23.0	33.8	2.5	60	01	11	20	963	0	0	3	27	0	3.77	0.10	1.84	23	9.3	8	23	6	3	1
CHARLOTTESVILLE 2W	42.2	25.2	33.7	-2.2	58	11	12	20+	963	0	0	5	24	0	4.35	1.25	2.04	23	15.7	14	24	5	4	2
CHATHAM	43.4	21.4	32.4	-2.2	59	01	8	20	1002	0	0	5	27	0	2.87	-0.91	1.08	23	11.6	8	26	6	3	1
CONCORD 4 SSW															2.75		0.91	23	8.1	8	24	5	3	0
DANVILLE RGNL AP	46.4	26.0	36.2	-1.5	68	31	14	20	883	0	0	4	25	0	2.54	-0.88	0.98	22	9.2	8	24	5	2	0
FREE UNION	41.8	19.8	30.8		58	11	9	20+	1054	0	0	5	29	0	A 4.60		1.26	10	M	16	25	3	1	1
HOLCOMB ROCK															3.88		1.56	23	11.4	10	24	5	3	2
HUDDLESTON 4 SW															3.65		1.56	23	11.8	11	23	4	3	1
LYNCHBURG INTL AP	43.4	22.8	33.1	-2.0	64	31	9	20	983	0	0	4	29	0	2.77	-0.37	1.08	22	10.2	8	23	5	2	1
MARTINSVILLE FLTR PLT	44.8	21.0	32.9	-2.6	61	01	10	20	989	0	0	4	29	0	3.63	0.14	1.38	23	16.7	M 14	23	5	3	1
MEADOWS OF DAN 5 SW	42.9M	24.7	33.8M		58	01	11	20+	961E	0	0	4	27	0	2.79		0.83	23	7.0	7	23	5	3	0
MONTEBELLO FISH CULTURAL STN	38.3M	16.0M	27.1M		55	01	2	20	1158E	0	0	8	22	0	M 4.32		3.04	24	M			4	2	1
MONTECELLO	40.8	23.7	32.2	-1.3	56	02	12	19	1007	0	0	8	24	0	M 1.81	-0.55	0.81	10	M			5	2	0
PEDLAR DAM															3.16		1.30	23	10.7	9	24	4	2	2
ROCKY MT	43.5	22.8F	33.2F	-2.4	58	01	10	20	969	0	0	4	25	0	3.77	0.40	1.15	23	12.2	10	24	6	3	1
SOUTH BOSTON	46.3	24.5	35.4	-1.0	60	17	13	20	910	0	0	4	25	0	2.98	-0.63	1.36	23	8.7	7	24	5	2	1
STUART	47.1	22.8	35.0	-1.8	61	01	10	20	924	0	0	2	30	0	3.13	-0.74	1.00	23	16.5	15	23	4	3	1
TYE RIVER 1 SE	M	M	M									0	0	0	M				M					
WOOLWINE															4.03		1.42	23	11.9	12	23	4	4	2
--DIVISIONAL DATA-----> NORTHERN 04			33.1	-2.7B											3.35	-0.49B								
EDINBURG	M	M	M									0	0	0	M				M					
FRONT ROYAL	40.5	19.8	30.2	-2.7	58	27	8	25	1071	0	0	7	28	0	4.48	2.04	1.70	24	M	30	24	4	3	3
LINCOLN	40.4	18.3	29.3	-2.0	59	11	3	25	1097	0	0	6	27	0	M				M	36	24			
LURAY 5 E	42.7	19.8	31.2	-1.7	60	26	5	24	1040	0	0	7	26	0	3.33	0.65	1.58	23	25.1	25	24	4	3	1
MADISON	M	M	M									0	0	0	M				M					
MANASSAS	41.4	21.8	31.6	-1.9	61	11	11	25+	1030	0	0	9	27	0	MA 3.80		0.40	16	M	30	24	1	0	0
MT WEATHER	39.4M	20.6M	30.0M	-0.7	54	11	6	20+	1076E	0	0	6	26	0	M 2.13	-0.75	1.36	10	M	32	26	4	1	1

VIRGINIA
201601

MONTHLY STATION AND DIVISION SUMMARY

STATION	TEMPERATURE (°F)										PRECIPITATION (IN)														
	AVERAGE MAXIMUM	AVERAGE MINIMUM	AVERAGE	DEPARTURE FROM NORMAL	HIGHEST	DATE	LOWEST	DATE	HEATING DEG. DAYS	COOLING DEG. DAYS	NO. OF DAYS				TOTAL	DEPARTURE FROM NORMAL	GREATEST 24 HOURS	DATE	ICE PELLETS, SNOW			NO. OF DAYS			
											MAX		MIN						TOTAL	MAX DEPTH ON GROUND	DATE	.10 OR MORE	.50 OR MORE	1.00 OR MORE	
											>=90	<=32	<=32	<=0											
PIEDMONT RSCH STN	42.3	22.4F	32.3F	-2.0	59	11	10	20	995	0	0	7	26	0	A 2.81	0.05	0.88	10	M	14	24	2	2	0	
SOMERSET	42.1	20.5	31.3	-2.2	61	11	7	20	1039	0	0	5	27	0	2.70	-0.19	1.01	10	M	17	24	5	3	1	
SPERRYVILLE	41.5M	20.6M	31.1M	-2.0	60	11	7	20	1036E	0	0	5	24	0	M 2.97	-0.10	1.64	10	M	M 16	26	4	2	2	
STERLING (RCS)	40.3	19.3	29.8	-2.2	59	11	7	25	1084	0	0	8	27	0	4.54	1.69	1.61	23	M	29.9	28	24	4	3	3
VIENNA	42.5	23.9	33.2	0.6	61	11+	14	20+	979	0	0	7	27	0	4.93	1.80	1.88	24	M	M 25	24	4	3	2	
WARRENTON 3 SE	40.3M	23.1M	31.7M	-1.5	58	11	11	19	1026E	0	0	5	19	0	M 3.83	0.81	2.15	23	M	M 25	26	3	2	2	
WASHGTON DULLES INTL AP	41.5	21.4	31.5	-1.7	60	31	4	25	1033	0	0	8	26	0	4.47	1.79	1.88	23	M	29.9	28	24	5	4	2
WASHINGTON REAGAN AP	42.5	27.3	34.9	-1.1	62	10	15	19	923	0	0	5	23	0	2.68	-0.13	0.97	23	M	18.8	18	24	5	3	0
WINCHESTER	39.6	20.1	29.9	-1.9	56	11	9	19	1079	0	0	7	27	0	3.48	0.92	1.43	23	M	M 25	24	4	3	1	
WINCHESTER 7 SE	40.4	15.2F	27.8F	-3.1	62	31	-2	23	1138	0	0	7	28	2	2.71	0.52	0.99	22	M	26.0	26	24	4	2	0
WOODSTOCK 2 NE	39.4	16.8	28.1	-2.4	57	11	6	25	1138	0	0	9	29	0	3.49	0.82	2.20	23	M	M 26	24	4	2	1	
--DIVISIONAL DATA----->			30.9	-0.9B											3.60	0.43B									
CENTRAL MOUNTAIN 05																									
BUENA VISTA															2.88		1.15	23	M	8.8	8	24	4	2	1
COVINGTON FLTR PLT	40.6M	18.9M	29.8M	-3.7	56	15	7	25+	1086E	0	0	5	27	0	3.02	0.52	1.80	23	M	15.1	13	24	6	1	1
DALE ENTERPRISE	39.9	17.3	28.6	-1.8	58	01	2	25+	1119	0	0	8	28	0	M 1.16	-1.13	0.78	10	M	M 25.0	25	25	2	1	0
GATHRIGHT DAM	37.0	18.1	27.5	-3.9	51	31	4	20	1152	0	0	8	29	0	2.84	0.06	1.75	23	M	21.0	18	24	4	1	1
GLASGOW 1 SE															3.83		1.63	23	M	12.5	11	24	4	3	2
HOT SPRINGS	36.5M	16.6M	26.6M	-3.4	49	31+	4	25+	1182E	0	0	10	29	0	3.33	-0.13	1.67	23	M	20.0	16	24	5	2	1
LEXINGTON	41.2	19.0	30.1	-3.9	56	15+	7	25	1074	0	0	4	29	0	3.06	0.27	1.35	23	M	11.0	10	25	4	3	1
MILLGAP	36.0	10.3	23.2	-4.5	53	08	-9	25	1291	0	0	11	30	7	2.46	-0.79	0.95	23	M	M 10	25	5	2	0	
MTN GROVE															2.36		1.20	23	M	19.0	18	24	5	1	1
MUSTOE 1 SW	M	M	M												M					M					
NEW CASTLE															3.23		1.50	09	M	13.5	13	23	4	2	1
ROANOKE 8 N	42.2M	23.0	32.6M	-2.7	57	15+	12	20+	999E	0	0	4	27	0	2.75	-0.27	1.05	23	M	M 16.6	M 16	24	6	2	1
ROANOKE INTL AP	42.6	24.3	33.5	-3.1	63	31	12	19	970	0	0	4	27	0	2.99	0.07	1.37	22	M	13.5	11	22	6	2	1
STAUNTON WATER TRMTMT PLT	39.9	21.2	30.6	-2.0	54	02+	6	20+	1060	0	0	8	26	0	2.78	0.11	1.34	23	M	18.0	16	24	4	2	1
WAYNESBORO WTP	39.6	19.0	29.3	-3.5	56	01	3	25+	1100	0	0	7	29	0	4.45	1.66	2.20	23	M	18.0	14	23	6	3	1
--DIVISIONAL DATA----->			29.2	-3.1B											3.08	-0.08B									
SOUTHWESTERN MOUNTAIN 06																									
ABINGDON 3S	40.4	20.6	30.5	-2.6	59	31	6	19	1063	0	0	6	28	0	1.82	-1.85	0.40	22	M	7.8	5	24	7	0	0
BIG STONE GAP	41.2	19.9	30.5	-3.5	59	31	7	19	1060	0	0	6	28	0	2.84	-1.35	0.77	27	M	8.0	5	22	8	3	0
BLACKSBURG NWSO	38.9	18.4	28.6	-2.9	53	08	7	20	1120	0	0	6	29	0	2.44	-0.64	1.02	23	M	14.2	11	23	5	2	1
BURKES GARDEN	34.7	15.2	25.0	-3.9	52	08	-2	25	1234	0	0	13	30	3	2.97	-0.98	1.05	23	M	19.4	17	24	7	2	1
CHRISTIANSBURG	38.2	19.5	28.9	-3.9	53	01	6	20+	1109	0	0	9	29	0	2.40	-0.36	0.91	23	M	15.0	11	23	5	3	0
CLINTWOOD 1 W	38.2	16.0	27.1	-4.0	53	10+	1	25+	1165	0	0	7	30	0	2.51	-1.10	0.60	22	M	17.3	11	24	7	1	0
COPPER HILL	36.5M	19.6M	28.1M		50	27+	3	20	1140E	0	0	10	27	0	3.09		1.43	23	M	18.0	16	24	5	3	1

VIRGINIA
201601

MONTHLY STATION AND DIVISION SUMMARY

STATION	TEMPERATURE (°F)											PRECIPITATION (IN)												
	AVERAGE MAXIMUM	AVERAGE MINIMUM	AVERAGE	DEPARTURE FROM NORMAL	HIGHEST	DATE	LOWEST	DATE	HEATING DEG. DAYS	COOLING DEG. DAYS	NO. OF DAYS				TOTAL	DEPARTURE FROM NORMAL	GREATEST 24 HOURS	DATE	ICE PELLETS, SNOW			NO. OF DAYS		
											MAX		MIN						TOTAL	MAX DEPTH ON GROUND	DATE	.10 OR MORE	.50 OR MORE	1.00 OR MORE
											>=90	<=32	<=32	<=0										
GALAX RADIO WBRF	41.5	20.7	31.1	-0.6	55	31+	7	24+	1043	0	0	4	28	0	2.75	-0.61	0.82	22	13.6	0		6	2	0
GALAX WTP	40.6M	18.8	29.7M	-1.3	56	08	7	20+	1090E	0	0	6	29	0	1.80		0.60	16	8.0	8	23	4	1	0
GRUNDY	38.9	20.1	29.5	-3.4	59	31	9	20+	1091	0	0	7	28	0	2.27	-0.92	0.55	16	10.1	6	24	8	1	0
JOHN FLANNAGAN LAKE	M	M	M		60	11	8	20	1089E	0	0	2	16	0	MA 2.57		0.40	11	M	7	25	3	0	0
LAFAYETTE 1 NE															2.65		1.33	23	15.8	11	23	5	1	1
LEBANON	40.0	18.3	29.1	-3.9	58	31+	7	19	1101	0	0	8	30	0	2.35	-0.69	0.49	22	6.2	6	24	8	0	0
NORA 4 SSE	36.4	21.2	28.8	-1.3	54	08	4	19	1113	0	0	11	27	0	3.02	-0.59	0.96	22	18.5	10	24	7	1	0
N FK LAKE	M	M	M		63	05	3	25	1131E	0	0	3	17	0	MA 2.26		0.41	27	M	M 8	25	3	0	0
PULASKI 2 E	38.9	19.1	29.0	-4.0	53	08+	5	20	1109	0	0	6	28	0	2.53	-0.32	0.90	23	M 11.0	M 11	23	5	3	0
RADFORD 3 N	38.8	18.9	28.9	-1.4	54	08	7	20	1112	0	0	8	28	0	2.09	-0.84	0.54	16	12.0	10	24	4	1	0
RICHLANDS	40.3F	17.1	28.7F	-3.3	59	31	6	19	1123	0	0	5	30	0	M 2.54	-0.51	1.24	24	15.0	10	24	7	1	1
SALTVILLE 1N	40.6	18.7M	29.6M	-3.3	59	31+	8	20+	1097E	0	0	7	27	0	2.61	-0.99	0.88	22	M 12.2	9	22	7	1	0
STAFFORDSVILLE 3 ENE	38.6	17.8	28.2	-3.4	52	15	5	20	1131	0	0	7	29	0	2.21	-0.69	0.90	23	12.7	11	23	5	1	0
WILLIS															2.55		0.88	23	11.8	12	24	4	2	0
WISE 3E	39.1	22.6	30.9	-2.2	58	31	4	19	1051	0	0	10	28	0	2.90	-0.98	0.74	23	19.9	14	23	9	2	0
WYTHEVILLE	37.5	18.8	28.1	-2.6	56	08	5	20+	1136	0	0	8	28	0	2.66	-0.24	0.74	23	16.1	13	23	6	2	0
--DIVISIONAL DATA----->			29.0	-3.0B											2.52	-1.02B								

VIRGINIA
201601

DAILY PRECIPITATION (INCHES)

STATION	TOTAL	DAY OF MONTH																																	
		01	02	03	04	05	06	07	08	09	10	11	12	13	14	15	16	17	18	19	20	21	22	23	24	25	26	27	28	29	30	31			
VIRGINIA																																			
TIDEWATER 01																																			
DISPUTANTA	2.21	0.05							0.02	0.34					0.43		0.08						0.63	0.63				0.01	0.02						
EASTVILLE	M	-	-	-	-	-	-	-	-	-	-	-	-	-	-	-	-	-	-	-	-	-	-	-	-	-	-	-	-	-	-	-	-	-	
EMPORIA 1 WNW	2.37	T								0.03	0.37				0.42		0.05				0.10		0.30	1.10				T							
FREDERICKSBURG SEWAGE	3.39								0.03	0.03	0.66				0.65		0.07				0.01		1.19	0.74				0.01							
HOLLAND 1 E	2.18	0.08	0.09	0.19		0.14			0.29	0.14	0.16				0.07	0.09	0.05				0.18	0.13	0.12	0.12			0.13	0.12			0.08				
HOPEWELL	M 2.23									T	0.22				0.02	0.59	0.48						0.09	0.30	0.50	T		0.03	T						
NORFOLK INTL AP	4.62					T		T	0.01	0.02	0.08				1.09	0.01	0.49				T		1.40	1.49	T			0.03							
NORFOLK SOUTH	4.90				T	T			0.03	0.04	0.10				1.23	T	0.53				0.01		1.62	1.30	T			0.04							
NORTH	3.03								T		0.20					0.84		0.15				T		1.42	0.42										
PAINTER 2W	4.54										0.23					1.00	0.37					0.01	0.14	2.75	0.03			0.01							
STONY CREEK 2 N	2.37									0.64							0.63						0.30	0.50						0.30					
SUFFOLK LAKE KILBY	3.52					T			0.01	0.14	0.11				0.58		0.24				0.03		1.31	1.02	T			0.08							
WAKEFIELD 1NW	2.98								0.04	0.16	0.04		T		0.51	0.01	0.32				T		1.50	0.36	T			0.04							
WALKERTON 2 NW	2.13									T	0.56				0.02	0.82	0.18						0.18	0.22				0.15							
WALLACETON LK DRUMMOND	5.01	0.55								0.03	0.10					1.28		0.45						2.20	0.35				0.05						
WALLOPS ISLAND NASA TEST FACIL	2.62							0.01	T	T	0.26				0.62	0.20	0.36				0.02	T	0.33	0.81	T			0.01			T				
WARSAW 2 NW	FA 1.23								0.02		0.42					0.58	0.18					0.02	0.00 ^L	1.90 ^a				0.01							
WEST POINT 2 NW	3.16								0.02	0.01	0.20				0.02	0.63	0.35				T	0.02	0.50	1.09	0.31			0.01							
WILLIAMSBURG 2 N	3.31								0.04	0.08	0.04				0.65	0.10	0.29				T		1.55	0.53				0.03							
EASTERN PIEDMONT 02																																			
ALBERTA 5N	2.46	0.04				T		T	T	0.04	0.35			T		0.59		0.19				T		0.80	0.45				T						
AMELIA COURTHOUSE 1	M 3.46					T			0.04	0.07	0.44					0.93		0.17			T		0.81	1.00			-	-	-	-	-	-	-		
ASHLAND	3.54				T				0.02	0.05	0.57		T		0.30	0.49	0.15					T	0.47	1.40	0.04			0.05							
BREMO BLUFF	M 3.17	0.02					-			0.06	0.60	0.06				0.87		0.10				0.15		0.95	0.36										
BUCKINGHAM	3.17									0.09	0.74					0.94		0.11				T		0.84	0.45										
CAMP PICKETT	2.25	0.05								0.08	0.40					0.66	0.02	0.20						0.60	0.24										
CHASE CITY	1.83	0.04								0.09	0.15					0.55								0.70	0.30										
CLARKSVILLE	1.45	0.10								0.15	0.20					0.45						0.05	0.10	0.40											
CORBIN	3.11								0.03			0.60							0.84								1.64								
CROZIER	3.50										0.50					0.87								1.53	0.60										
FARMVILLE 2 N	2.00							T	T	0.10	0.30					0.20		T				T		1.14	0.26				T						
GREENBAY 3 NE	M	-	-	-	-	-	-	-	-	-	-	-	-	-	-	-	-	-	-	-	-	-	-	-	-	-	-	-	-	-	-	-	-	-	
JOHN H KERR DAM	2.57	0.06								0.07	0.27					0.45		0.10						1.30		0.02	0.29		0.01						
KEYSVILLE 2 S	3.04					T				0.09	0.51					0.84	T	0.17				T		1.17	0.25			0.01							
LOUISA	3.05									0.05	0.84				0.14	0.42	0.08						0.36	1.16											
PALMYRA 3S	3.57					T	T			0.08	0.55					0.89		0.10			T	0.02		1.03	0.90										
PETERSBURG	2.66								0.02	0.52	0.03				0.59	0.24							0.84	0.37				0.05							
RICHMOND INTL AP	3.30							T	0.04	0.37	0.27		T		0.60	0.02	0.23						0.89	0.87				0.01							
SANDSTON	A 4.41	*	*	*	*	*	*	0.57 ^a		0.05							*	1.55 ^a						1.57	0.67										
WINTERPOCK 4 W	3.08	0.01							0.01	0.04	0.43					0.64		0.22						1.31	0.40			0.01	0.01						

VIRGINIA
201601

DAILY PRECIPITATION (INCHES)

STATION	TOTAL	DAY OF MONTH																																				
		01	02	03	04	05	06	07	08	09	10	11	12	13	14	15	16	17	18	19	20	21	22	23	24	25	26	27	28	29	30	31						
WESTERN PIEDMONT 03																																						
ALTAVISTA	2.98								0.05	0.56						0.77		0.04			0.03		1.43	0.10														
APPOMATTOX	3.24								0.10	0.75	0.02					0.79	0.02	0.02			0.02	0.01	1.38	0.11					0.02									
BEDFORD 4 NW	2.82								0.21	0.91						0.57		0.02			T	0.08	1.03	T				T										
BROOKNEAL	3.77								0.12	0.63	0.01					0.83	0.01	0.12			0.01	0.08	1.84	0.11				0.01										
CHARLOTTESVILLE 2W	4.35	T			T				0.14	1.06						0.52		0.05			T		2.04	0.54											T			
CHATHAM	2.87				T				0.11	0.51						0.72	0.04	0.20			0.05	0.16	1.08															
CONCORD 4 SSW	2.75								0.10	0.74						0.80		0.10			0.03		0.91	0.05											0.02			
DANVILLE RGNL AP	2.54								0.09	0.24	0.10					0.95	0.15				T		0.98	0.01	0.05										0.02			
FREE UNION	A 4.60								0.28	1.26						0.48		0.07			T		*	*	2.51 _a													
HOLCOMB ROCK	3.88				T				0.30	1.28						0.58		0.06			T		1.56	0.10					T									
HUDDLESTON 4 SW	3.65								0.18	0.95	0.01					0.82		0.06			0.01		1.56	0.04												0.02		
LYNCHBURG INTL AP	2.77				T				0.08	0.38	0.25					0.71	0.04				0.01	1.08	0.21				T								0.01			
MARTINSVILLE FLTR PLT	3.63								0.09	0.85						0.95		0.15			0.05	0.14	1.38	0.01												0.01		
MEADOWS OF DAN 5 SW	2.79								0.09	0.82						0.62		T			0.11	0.30	0.83				0.02											
MONTEBELLO FISH CULTURAL STN	M 4.32								0.28	-						-	-	0.60	-		0.40		-	3.04	-											-	-	
MONTICELLO	M 1.81								0.10	0.81	T					0.60		0.10				-	-													0.20		
PEDLAR DAM	3.16				T				0.23	1.07	T		T			0.48	T	T			0.03		1.30	0.05					T									
ROCKY MT	3.77	0.02	0.02						0.30	0.97				0.02		0.75	0.02	0.04			0.08	0.20	1.15	0.20														
SOUTH BOSTON	2.98	0.02							0.10	0.38						0.80		0.20					1.36	0.09												0.03		
STUART	3.13								0.90	0.02						0.80	0.04				0.07	0.30	1.00															
TYE RIVER 1 SE	M	-	-	-	-	-	-	-	-	-	-	-	-	-	-	-	-	-	-	-	-	-	-	-	-	-	-	-	-	-	-	-	-	-	-	-	-	
WOOLWINE	4.03								0.07	1.05						0.66	T	0.02			0.01	0.80	1.42													T		
NORTHERN 04																																						
EDINBURG	M	-	-	-	-	-	-	-	-	-	-	-	-	-	-	-	-	-	-	-	-	-	-	-	-	-	-	-	-	-	-	-	-	-	-	-	-	
FRONT ROYAL	4.48								0.02	1.05			0.03			0.28		0.04					1.35	1.70													0.01	
LINCOLN	M	-	-	-	-	-	-	-	-	1.40						-	0.82						-	3.00	-													
LURAY 5 E	3.33								0.01	0.92						0.28		0.03					1.58	0.51														
MADISON	M	-	-	-	-	-	-	-	-	-	-	-	-	-	-	-	-	-	-	-	-	-	-	-	-	-	-	-	-	-	-	-	-	-	-	-	-	-
MANASSAS	MA 3.80								*	1.25 _a						0.40		-				*	2.15 _a															
MT WEATHER	M 2.13								0.10	1.36	0.07		T			0.48						-	-			T	0.12											
PIEDMONT RSCH STN	A 2.81								T	0.09	0.88					0.52		0.08				*	1.24 _a															
SOMERSET	2.70	0.02							T	0.18	1.01					0.50	0.02	0.04					0.64	0.29														
SPERRYVILLE	M 2.97	-							0.11	1.64				T		-		0.11				T	1.11	-													T	
STERLING (RCS)	4.54								0.01	0.06	1.32	0.02		0.01		0.46		0.02				T	1.61	1.02					T								0.01	
VIENNA	4.93				0.01				0.01	0.02	0.86			0.01		0.21		0.03				0.03	1.86	1.88													0.01	
WARRENTON 3 SE	M 3.83								T	0.02	1.22					0.44	T	T				T	-	2.15	-	-											-	-
WASHGTN DULLES INTL AP	4.47							T	0.03	0.24	1.00		0.01			0.51	0.01	0.02	T		T	0.75	1.88				T	0.01						0.01				
WASHINGTON REAGAN AP	2.68								T	0.23	0.56		T			0.32	0.01	0.05	T		0.03	T	0.51	0.97				T	T									
WINCHESTER	3.48								0.02	0.93				0.04		0.39		0.02					1.43	0.63													0.02	
WINCHESTER 7 SE	2.71									0.91				0.01		0.37		0.01					0.99	0.42														
WOODSTOCK 2 NE	3.49									0.65				T		0.32							2.20	0.32														

VIRGINIA
201601

DAILY PRECIPITATION (INCHES)

STATION	TOTAL	DAY OF MONTH																																	
		01	02	03	04	05	06	07	08	09	10	11	12	13	14	15	16	17	18	19	20	21	22	23	24	25	26	27	28	29	30	31			
CENTRAL MOUNTAIN 05																																			
BUENA VISTA	2.88								0.21	0.97	0.02					0.40		0.02				0.04		1.15	0.07										
COVINGTON FLTR PLT	3.02					T			0.10	0.42			T			0.39		T	0.01			0.10	T	1.80	0.20			T			T				
DALE ENTERPRISE	M 1.16								0.05	0.78						0.33								-	-										
GATHRIGHT DAM	2.84				T				0.09	0.40			0.05			0.37		0.07				0.10		1.75	T			T			0.01				
GLASGOW 1 SE	3.83					T			0.22	1.38	T		T			0.52	T	0.04				0.01		1.63	0.03			T					T		
HOT SPRINGS	3.33					T			0.08	0.64			0.06			0.44						0.14		1.67	0.28			0.02			T				
LEXINGTON	3.06					T			0.13	0.90	0.02		T			0.51		0.04				0.03		1.35	0.07			0.01					T		
MILLGAP	2.46				T	0.02			0.10	0.57	0.06		0.06			0.32		0.02				0.05		0.95	0.06			0.24			T		0.01		
MTN GROVE	2.36				T					0.45			T			0.46						0.15		1.20	0.10						T				
MUSTOE 1 SW	M	-	-	-	-	-	-	-	-	-	-	-	-	-	-	-	-	-	-	-	-	-	-	-	-	-	-	-	-	-	-	-	-	-	
NEW CASTLE	3.23								1.50	0.71	0.02					0.45		T				0.07		0.45				0.03			T				
ROANOKE 8 N	2.75								0.17	0.70						0.46		T				T	0.17	1.05	0.20			T							
ROANOKE INTL AP	2.99				T				0.13	0.63	0.14		T			0.47		0.03	T			T	1.37	0.22			T						T		
STAUNTON WATER TRMTMT PLT	2.78				T				0.03	0.78						0.41		0.04				T		1.34	0.18			T							
WAYNESBORO WTP	4.45								0.10	0.94						0.47		0.11						2.20	0.63										
SOUTHWESTERN MOUNTAIN 06																																			
ABINGDON 3S	1.82					T				0.25	0.30	0.15						0.02					0.30	0.40	0.15							0.25			
BIG STONE GAP	2.84								0.11	0.14	0.35					0.50	0.04						0.23	0.20	0.50							0.77			
BLACKSBURG NWSO	2.44				T	T			0.10	0.53	0.01		T			0.46	T	0.08	T	T		0.02	0.18	1.02	0.02						0.02		T		
BURKES GARDEN	2.97				T	T			0.15	0.42	0.05		T			0.56	0.06	0.03	T			0.20	0.22	1.05	0.06						0.14		0.03		
CHRISTIANSBURG	2.40					T			0.15	0.50	0.03					0.53	0.02	0.03				0.06	0.11	0.91	0.03						0.03				
CLINTWOOD 1 W	2.51				T	0.01			T	0.13	0.20	0.01		0.05		0.32	0.03	0.07	T	T		0.20	0.60	0.49	0.07						0.33		T		
COPPER HILL	3.09					0.01			0.06	0.64						0.52	0.01	0.05				0.05	0.12	1.43	0.20										
GALAX RADIO WBRF	2.75				T				0.11	0.01	0.47	T	T			0.38	0.26	0.05	0.01			0.05	0.82	0.55			0.01			0.03					
GALAX WTP	1.80					T			0.05	0.44						0.60	0.02					0.05	0.43	0.18							0.03				
GRUNDY	2.27					0.01			0.15		0.10		T			0.55	0.03	0.01	T			0.21	0.40	0.29	0.18						0.34		T		
JOHN FLANNAGAN LAKE	MA 2.57	-	-	-		0.02	0.01		-	-	-	0.40	-	0.01		*	*	*	0.46 _a			0.21	*	*	*	1.14 _a				0.32			-	-	
LAFAYETTE 1 NE	2.65					T			0.17	0.48	0.01					0.39	T	0.03				0.02	0.21	1.33	T						0.01				
LEBANON	2.35								0.01	0.19	0.42	0.10				0.40	0.02						0.49	0.38	0.10							0.24			
NORA 4 SSE	3.02				T				0.04		0.36	0.02	T	0.03		0.39	0.03	0.06	T			T	0.14	0.96	0.44	0.34						0.21		T	
N FK LAKE	MA 2.26	*	*	*		0.00 _a			-	*	*	0.21 _a				*	*	*	0.40 _a				0.22	0.22	*	*	0.80 _a				0.41			-	-
PULASKI 2 E	2.53								0.12	0.57	T					0.44	T	T				T	T	0.90	0.50						T				
RADFORD 3 N	2.09					T			0.09	0.49	0.01					0.54	0.01	T				0.05	0.38	0.49	0.01						0.02				
RICHLANDS	M 2.54					0.02			0.10	0.15	0.03	0.38				0.35	0.02	0.03	0.01			0.10	-	-	1.24						0.10	0.01		T	
SALTVILLE 1N	2.61				T	0.02			T	0.17	0.45	0.04				0.47		0.02				0.26	0.88	0.12	T						0.18		T		
STAFFORDSVILLE 3 ENE	2.21				T	T			0.08	0.47	0.01					0.40	0.05	T				0.11	0.12	0.90	0.06	T				0.01			T		
WILLIS	2.55								0.06	0.51			T			0.42		0.06	0.06			0.06	0.38	0.88	0.06					0.06			T		
WISE 3E	2.90				0.50				0.12		0.01	0.03	0.11			0.28	0.12	0.07	0.02			0.03	0.46	0.74	0.04		0.27			0.10					
WYTHEVILLE	2.66								0.08	0.39	0.05					0.43		0.09					0.14	0.57	0.74	0.14						0.03		T	

VIRGINIA
201601

DAILY TEMPERATURES (°F)

STATION	OB. TIME	MAX/MIN	DAY OF MONTH																															AVERAGE		
			01	02	03	04	05	06	07	08	09	10	11	12	13	14	15	16	17	18	19	20	21	22	23	24	25	26	27	28	29	30	31			
VIRGINIA																																				
TIDEWATER 01																																				
DISPUTANTA	07	MAX	64	49	50	52	39	30	43	51	48	60	66	44	52	38	58	54	60	39	31	28	35	37	37	28	42	51	39	46	45	51	53	45.8		
		MIN	44	27	27	27	17	15	15	35	40	44	25	23	23	21	21	27	35	24	11	10	11	18	22	19	18	19	34	24	24	20	20	23.9		
EASTVILLE	07	MAX																																	M	
		MIN																																	M	
EMPORIA 1 WNW	08	MAX																																	M	
		MIN																																	M	
FREDERICKSBURG SEWAGE	07	MAX	55	48	51	55	38	33	41	43	42	59	61	41	49	33	56	53	58	36	26	27	32	34	27	29	39	46	59	45	44	43	51	43.7		
		MIN	38	26	26	26	15	13	14	13	40	41	25	23	19	23	23	27	30	20	13	13	14	19	21	14	12	12	37	18	19	18	18	21.6		
HOLLAND 1 E	08	MAX	51	51	50	49	47	47	54	51	61	66	45	52	45	58	57	59	45	46	29	47	40	45	43	51	50	64	52	49	52	52	67	50.8		
		MIN	34	30	32	29	19	25	30	30	27	29	24	24	22	28	28	26	26	20	14	14	21	20	28	23	32	33	30	31	27	21	31	26.1		
HOPEWELL	16	MAX	53	50	54	53	37	42	51	51	54	64	64		50	57	57	59	59	35	29	34	36	34	34	40	48	58	55	44	48	52	67	49.0		
		MIN	45	29	31	35	18	20	36	39	45	51	29		25	27	36	42	32	26	15	15	15	24	24	25	18	37	34	41	33	22	38	30.2		
NORFOLK INTL AP	24	MAX	54	51	50	43	35	46	51	51	58	69	45	54	42	58	59	60	46	35	29	37	37	45	48	41	50	66	56	45	51	53	69	49.5		
		MIN	46	36	35	31	23	33	44	46	47	44	30	29	26	24	34	46	32	22	19	24	29	31	30	24	23	34	37	37	35	28	35	32.7		
NORFOLK SOUTH	24	MAX	52	50	49	42	33	45	50	50	57	67	44	52	41	57	58	59	45	34	27	36	36	45	48	37	50	64	55	45	52	51	67	48.3		
		MIN	43	34	34	29	21	29	42	45	46	43	30	28	26	25	34	44	31	21	17	20	28	28	28	25	23	35	35	34	33	25	36	31.4		
NORTH	07	MAX	57	47	49	50	39	31	43	51	49	61	63	42	50	36	55	51	45	39	34	28	33	35	37	31	38	46	57	45	44	48	48	44.6		
		MIN	43	30	30	33	19	20	25	37	42	45	30	25	26	23	31	33	39	26	13	14	18	21	25	24	18	18	37	25	28	23	27	27.4		
PAINTER 2W	16	MAX	53	48	49	46	35	44	53	51	59	66	60	50	49	54	53	58	54	35	27	32	34	32	44	36	47	60	57	49	49	44	65	48.2		
		MIN	43	30	33	32	16	18	33	42	41	52	33	27	28	22	34	37	32	24	18	21	27	24	24	28	22	39	39	25	29	27	36	30.2		
STONY CREEK 2 N	08	MAX	57	51	53	39	32	44	51	48	53	66	59	53	40	59	54	60	44	40	29	36	38	33	33	42	49	59	46	45	50	54	70	48.0		
		MIN	39	29	29	29	18	17	19	36	41	41	26	25	24	27	30	31	22	14	12	15	21	25	21	17	18	30	26	26	22	22	22	25.1		
SUFFOLK LAKE KILBY	24	MAX	51	50	49	41	31	45	52	50	58	66	44	52	40	57	57	59	46	33	30	36	38	41	41	38	51	63	51	45	51	54	68	48.0		
		MIN	41	33	34	28	19	25	40	44	46	40	29	27	26	26	33	42	32	21	15	18	18	25	25	23	22	32	32	31	29	24	34	29.5		
WAKEFIELD 1NW	24	MAX	49	50	50	40	32	46	52	50	55	67	44	52	39	59	56	61	40	32	32	36	39	34	33	40	49	59	49	45	52	53	67	47.2		
		MIN	31	27	30	26	17	17	32	39	44	38	25	24	22	22	31	39	31	14	10	9	20	18	26	19	18	32	27	26	24	20	36	25.6		
WALKERTON 2 NW	18	MAX	53	53	56	41	33	45	47	57	66	66	45	53	46	57	55	60	51	35	29	35	37	30	30	40	50	60	46	46	45	51	65	47.8		
		MIN	42	27	26	28	18	14	38	43	46	45	26	23	25	25	30	44	35	24	11	12	28	19	25	24	11	29	36	22	26	20	33	27.6		
WALLACETON LK DRUMMOND	08	MAX	63	55	55	50	45	32	50	55	55	70	70	50	55	45	45	52	64	45	38	34	40	36	34	35	44	52	65	47	50	50	50	49.4		
		MIN	35	24	22	23	12	12	20	35	35	37	21	16	16	14	18	18	31	25	6	7	15	10	10	10	12	20	30	21	21	22	20	19.9		
WALLOPS ISLAND NASA TEST FACIL	24	MAX	47	48	52	41	32	41	52	53	59	67	42	50	36	54	52	57	44	34	25	32	35	36	44	35	45	60	58	48	49	43	63	46.3		
		MIN	36	30	35	22	15	22	34	43	42	27	26	22	22	31	44	28	18	15	19	25	22	28	25	22	33	29	26	31	27	34	28.2			
WARSAW 2 NW	18	MAX		55		54	36	46	53	48	65		43	52	50	57	57	59			28	34	36					59	46	46	45		65	M		
		MIN		26		28	16	14	34	34		26	24	20	21	39					13	15	22			14		38	20	26	19		M			
WEST POINT 2 NW	17	MAX	56	52	54	49	35	43	51	49	57	66	58	51	49	57	54	59	54	32	28	33	36	33	31	39	48	58	52	46	50	51	67	48.3		
		MIN	33	28	31	26	16	17	33	39	42	40	26	26	23	23	36	38	29	16	11	14	23	20	24	19	17	36	26	23	26	21	38	26.5		
WILLIAMSBURG 2 N	24	MAX	50	51	52	41	32	45	52	51	58	67	44	52	40	58	56	60	44	33	29	35	38	36	36	41	49	60	48	46	51	53	69	47.6		
		MIN	38	31	34	29	19	22	38	42	45	41	28	27	25	25	35	44	32	19	15	17	25	26	28	23	21	37	30	27	29	23	39	29.5		
EASTERN PIEDMONT 02																																				
AMELIA COURTHOUSE 1	08	MAX		55		53	39	30	42	38	45	61	61	40	50	36	56	56		59		28	37	36			41							M		

VIRGINIA
201601

DAILY TEMPERATURES (°F)

STATION	OB. TIME	MAX/MIN	DAY OF MONTH																															AVERAGE	
			01	02	03	04	05	06	07	08	09	10	11	12	13	14	15	16	17	18	19	20	21	22	23	24	25	26	27	28	29	30	31		
ASHLAND	18	MIN		28		28	16	14	17	34	38	43	24	24	22	24	30	30		23	11	12	15	20		17	14								M
		MAX	47	49	54	41	30	41	47	43	51	62	48	50	43	56	54	57	46	30	26	34	35	28	26	39	48	59	46	44	45	51	64	45.0	
CAMP PICKETT	08	MIN	38	27	26	28	14	12	32	34	40	46	25	23	21	22	30	38	30	20	11	11	21	20	21	16	12	28	35	21	30	19	32	25.3	
		MAX	56	49	51	55	37	31	43	50	47	58	62	41	52	38	57	51	58	35	29	28	38	38	25	29	44	49	59	48	44	48	53	45.3	
CHASE CITY	17	MIN	42	27	27	27	17	14	15	34	38	43	15	23	22	22	19	15	28	9	12	11	16	21	20	22	17	18	31	24	29	19	19	22.5	
		MAX	59	50	52	55	42	36	43	49	46	58	61	44	52	41	58	51	60	40	33	33	40	42	30	33	46	49	58	50	44	50	55	47.1	
CLARKSVILLE	07	MIN	42	32	29	30	24	20	20	36	40	44	29	26	27	26	26	33	35	28	20	19	23	26	26	22	19	24	36	28	28	26	30	28.2	
		MAX	58	50	51	55	41	36	42	47	45	58	62	43	51	40	58	49	60	39	31	31	40	24	26	32	48	50	60	51	43	50	55	46.7	
CORBIN	09	MIN	43	31	28	31	21	18	18	36	40	43	27	25	26	25	26	31	36	26	15	16	18	24	22	24	21	24	37	26	26	22	23	26.7	
		MAX	50	49	54	43	31	42	44	42	48	62	48	48	41	55	54	58	46	31	25	31	33	27	26	39	47	60	53	44	45	51	64	44.9	
CROZIER	07	MIN	37	25	26	28	14	11	30	33	40	46	23	24	17	22	34	41	30	19	9	11	23	17	22	19	14	35	35	20	29	19	38	25.5	
		MAX	60	45	49	53	38	31	41	44	42	57	59	41	49	35	55	51	57	35	27	27	34	35	24	27	40	49	57	46	42	46	52	43.5	
FARMVILLE 2 N	07	MIN	38	27	30	26	15	11	19	30	38	42	25	23	20	21	29	37	31	21	11	9	16	16	19	16	13	18	36	21	24	19	25	23.4	
		MAX	59	49	50	54	37	32	41	44	41	55	59	41	50	37	57	51	57	37	28	29	39	37	24	23	47	48	58	48	44	45	54	44.4	
GREENBAY 3 NE	09	MIN	39	28	28	28	19	12	9	34	37	41	26	22	23	22	25	36	35	24	13	13	14	22	20	19	15	21	36	23	23	22	22	24.2	
		MAX																																	
JOHN H KERR DAM	08	MIN																																	M
		MAX	59	48	52	54	43	33	44	50	46	60	64	44	52	41	60	50	63	39	32	32	40	43	28	31	49	50	56	49	43	53	56	47.2	
KEYSVILLE 2 S	07	MIN	42	31	32	30	20	15	18	35	38	44	28	27	23	25	38	41	38	26	14	15	17	24	22	23	21	22	39	26	27	24	26	27.5	
		MAX	57	50	51	56	39	32	42	43	42	57	58	41	50	39	57	51	56	37	27	28	39	38	23	30	45	49	59	49	43	47	54	44.8	
LOUISA	18	MIN	40	27	29	27	19	14	15	34	37	41	26	24	24	22	25	34	34	26	11	11	15	23	20	22	19	29	37	25	25	23	23	25.2	
		MAX	49	50	54	39	34	43	42	41	47	58	45	47	40	55	50	57	46	30	27	32	35	29	26	43	46	57	50	43	43	51	64	44.3	
PALMYRA 3S	06	MIN	33	24	23	22	13	6	28	36	40	45	22	18	16	20	24	36	26	18	9	6	15	17	19	5	12	24	36	17	31	17	37	22.4	
		MAX	55	47	51	55	39	32	41	44	43	48	59	41	48	35	56	50	58	35	28	28	34	35	24	28	40	45	57	50	44	45	52	43.5	
PETERSBURG	08	MIN	35	24	23	24	15	7	7	31	37	43	24	19	18	19	25	27	27	20	9	7	14	16	19	7	8	18	35	17	17	17	18	20.2	
		MAX	50	51	55	40	31	41	52	46	61	66	43	53	38	58	58	59	40	31	29	35	38	32	28	41	49	59	46	44	49	53	68	46.6	
RICHMOND INTL AP	24	MIN	28	29	30	19	17	17	36	40	44	29	25	27	24	29	32	39	28	14	12	15	22	24	21	16	18	35	24	24	22	22	34	25.7	
		MAX	49	50	54	40	31	43	53	45	54	65	42	51	36	56	53	59	40	33	28	33	36	28	28	40	46	55	47	43	47	49	65	45.1	
SANDSTON	07	MIN	36	28	28	25	16	17	35	36	43	38	25	24	22	23	32	40	32	17	15	13	24	22	24	17	15	32	31	25	24	21	33	26.2	
		MAX	55	49	49	52	38	29	41	50	44	59	63	40	50	34	55	54	56	38	27	26	34	34	27	28	38	45	55	45	43	46	49	43.6	
WESTERN PIEDMONT 03 APPOMATTOX	07	MIN	43	29	28	28	17	15	16	35	39	42	28	23	23	23	25	30	37	26	14	12	15	22	22	23	14	14	34	23	23	21	21	24.7	
		MAX	58	46	48	50	35	32	40	45	42	49	55	38	47	33	53	47	53	36	24	26	35	35	24	30	41	46	53	45	41	42	50	41.9	
BROOKNEAL	07	MIN	37	29	31	27	16	14	14	33	35	42	22	23	18	19	24	36	32	18	11	12	17	20	19	20	25	27	33	25	27	26	29	24.5	
		MAX	60	48	50	53	39	34	42	46	44	52	58	41	49	36	56	47	57	39	27	27	39	39	25	33	43	49	57	48	44	46	53	44.5	
CHARLOTTESVILLE 2W	08	MIN	38	26	26	29	18	12	13	34	40	43	26	20	22	20	20	25	32	23	15	11	16	19	22	13	16	16	25	24	24	21	23	23.0	
		MAX	57	44	48	54	35	33	41	45	41	46	58	40	44	34	55	47	55	36	25	25	32	34	23	29	43	45	56	47	44	42	50	42.2	
CHATHAM	07	MIN	39	32	33	32	15	15	19	32	34	40	24	24	18	18	28	33	34	16	12	12	17	19	18	22	25	25	34	27	27	29	29	25.2	
		MAX	59	49	50	53	39	31	39	46	42	45	57	41	47	37	55	45	58	39	28	28	37	37	22	30	45	47	54	45	42	49	50	43.4	
DANVILLE RGNL AP	24	MIN	39	26	23	23	18	12	12	27	37	41	19	17	17	19	19	26	31	24	9	8	12	18	20	21	15	15	34	21	23	19	19	21.4	
		MAX	50	51	56	43	36	44	45	45	50	59	43	50	40	58	46	59	43	31	30	40	42	28	32	46	51	56	48	43	50	56	68	46.4	
		MIN	33	27	26	27	19	15	35	39	43	34	24	21	23	23	30	35	28	19	15	14	23	23	21	20	30	29	25	29	24	30	26.0		

VIRGINIA
201601

DAILY TEMPERATURES (°F)

STATION	OB. TIME	MAX/MIN	DAY OF MONTH																															AVERAGE	
			01	02	03	04	05	06	07	08	09	10	11	12	13	14	15	16	17	18	19	20	21	22	23	24	25	26	27	28	29	30	31		
FREE UNION	08	MAX	56	44	49	54	36	35	40	47	40	44	58	39	44	33	55	46	56	35	25	25	31	35	23	27	43	41	53	46	43	42	51	41.8	
		MIN	38	27	26	26	16	9	9	26	32	38	22	18	18	17	23	23	28	17	10	9	11	13	18	15	12	12	22	19	19	20	20	19.8	
LYNCHBURG INTL AP	24	MAX	45	50	52	38	34	42	48	42	45	57	40	47	35	57	47	54	39	32	27	35	38	24	30	43	45	53	47	41	43	50	43.4		
		MIN	29	26	32	26	16	12	31	34	40	30	22	19	18	21	25	27	27	14	11	9	19	20	20	13	17	24	26	24	26	21	22.8		
MARTINSVILLE FLTR PLT	07	MAX	61	50	51	55	38	36	41	51	42	48	56	42	48	40	56	45	57	43	28	28	36	40	25	31	45	50	56	46	45	47	44.8		
		MIN	42	25	21	22	22	11	11	20	32	41	24	18	18	19	22	25	29	23	13	10	15	20	21	18	15	16	24	18	18	19	21.0		
MEADOWS OF DAN 5 SW	07	MAX	58		49	51	35	37	43	48	44	50	50	37	45	41	56	42	51		26	26	33	43	26	26	44	47	50	45	46	44	42.9		
		MIN	38	31	29	30	21	19	18	24	32	39	23	22	21	21	21	30	33	21	11	11	21	21	21	20	21	25	33	27	27	27	24.7		
MONTEBELLO FISH CULTURAL STN	07	MAX	55	40	42	44	27	29	37	45	41		51	31	35	29	48				18	30	32		22		48	51	44	43		38.3			
		MIN	34	26	27	24	7	7	8	18	23		16	17	8	8	25			6		2	11	9		8		18	32	15	18		16.0		
MONTICELLO	08	MAX	44	56	48	52	34	30	37	42	39	46	55	38	45	32	53	46	53	53	23	23	30	31	23	27	40	40	53	43	41	40.8			
		MIN	33	33	33	31	15	14	14	30	33	39	24	21	19	18	24	33	33	17	12	14	15	18	17	20	24	19	31	25	25	26	23.7		
ROCKY MT	07	MAX	58	48	51	54	37	35	42	48	41	46	53	40	46	40	57	41	54	41	25	27	36	39	22	28	46	50	57	46	46	43.5			
		MIN	39	30	36	30	20	11	11	17	32	39	25	19	21	20	26	27	35	19	11	10	15	21	19	18	17	18	37	19	19	40 ^s	22.8		
SOUTH BOSTON	07	MAX	59	51	51	55	45	35	42	43	44	56	59	44	51	40	58	48	60	39	32	30	40	42	25	32	45	51	58	51	43	46.3			
		MIN	43	29	26	28	21	15	15	35	39	42	25	20	21	22	22	28	37	27	15	13	17	22	21	19	17	16	33	24	24	22	24.5		
STUART	07	MAX	61	51	54	53	39	37	42	52	47	48	54	42	48	43	56	44	57	46	45	44	45	42	27	32	46	49	54	55	46	47.1			
		MIN	41	28	27	30	22	13	13	21	29	31	22	20	20	21	21	30	32	22	11	10	19	21	21	22	21	22	23	22	24	24	22.8		
TYE RIVER 1 SE	07	MAX																															M		
		MIN																																M	
NORTHERN 04																																			
EDINBURG	07	MAX																																M	
		MIN																																	M
FRONT ROYAL	07	MAX	55	42	47	52	35	29	40	46	36	47	57	37	42	30	53	51	51	34	19	22	26	29	29	34	41	41	58	40	42	42	40.5		
		MIN	37	31	29	32	12	11	13	19	28	34	25	24	16	15	23	32	34	14	10	9	9	14	14	18	8	15	15	18	17	17	19.8		
LINCOLN	07	MAX	54	45	47	52	37	29	39	42	40	47	59	40	43	35	50	47	51	39	34	23	28	30	26	25	34	38	48	46	41	40.4			
		MIN	37	25	21	21	12	8	8	22	34	40	23	22	16	16	19	24	31	13	11	12	17	13	18	17	3	10	33	7	7	14.8			
LURAY 5 E	08	MAX	58	45	47	52	34	31	45	49	39	48	56	38	42	45	54	49	51	32	17	22	29	30	23	43	46	60	58	42	47	42.7			
		MIN	35	24	24	24	9	10	11	22	33	38	18	21	14	16	28	35	29	12	6	6	11	11	17	5	15	24	34	17	19	19.8			
MADISON	08	MAX																																M	
		MIN																																	M
MANASSAS	07	MAX	56	45	50	54	36	31	41	40	42	54	61	41	46	30	54	50	54	35	22	24	30	31	27	27	31	39	56	42	44	41.4			
		MIN	38	26	25	26	14	11	11	30	36	41	27	23	19	18	20	29	29	16	12	12	16	18	20	19	11	16	37	15	18	21.8			
MT WEATHER	07	MAX	50	37	43	50	33	33	37	40	38	47	54	33	38	29	48	53	46	30	31	20	24	28			51	49	37	39	35	39.4			
		MIN	32	28	29	26	7	7	20	27	31	37	19	18	12	12	25	37	30	9	6	6	11	15			14	31	22	24	20	20.6			
PIEDMONT RSCH STN	08	MAX	49	45	54	53	37	31	41	46	40	45	59	40	45	32	54	49	57	37	32	25	30	33	24	30	43	49	54	44	42	42.3			
		MIN	26	32	44 ^s	25	14	13	15	30	34	40	25	23	19	20	23	30	34	27	12	10	13	21	18	18	12	19	34	21	22	22.4			
SOMERSET	07	MAX	55	45	51	54	37	33	41	44	41	47	61	41	46	33	54	47	58	35	23	25	31	34	25	30	38	42	55	45	42	42.1			
		MIN	36	27	28	26	13	8	10	30	35	40	25	21	18	20	22	26	29	17	11	7	10	14	19	8	10	14	34	18	19	20.5			
SPERRYVILLE	06	MAX		44	48	54		34	40	47	42	47	60	40	44	31	53		54	34	22		30	31	25		43		44	42	42	41.5			
		MIN		32	26	32		11	16	22	32	41	24	21	17	16	21		32	14	11	7	11	15	17		23		17	19	16	20.6			
STERLING (RCS)	07	MAX	56	42	48	53	35	30	40	40	41	51	59	38	44	30	52	48	52	36	21	24	28	31	27	28	35	42	50	41	41	40.3			

VIRGINIA
201601

DAILY TEMPERATURES (°F)

STATION	OB. TIME	MAX/MIN	DAY OF MONTH																															AVERAGE
			01	02	03	04	05	06	07	08	09	10	11	12	13	14	15	16	17	18	19	20	21	22	23	24	25	26	27	28	29	30	31	
VIENNA	07	MIN	38	25	22	22	12	9	10	28	36	39	24	21	16	17	19	26	32	15	11	12	15	14	19	19	7	9	34	13	12	11	11	19.3
		MAX	57	44	50	59	37	32	41	43	44	61	61	40	46	30	54	50	52	38	23	26	30	33	28	28	36	43	57	44	43	42	47	42.5
WARRENTON 3 SE	08	MIN	41	29	29	29	15	15	15	31	39	36	27	27	19	19	24	32	32	16	14	14	18	22	22	16	16	37	20	20	22	22	23.9	
		MAX	54	44	46	50	36	30	38	39	41	50	58	38	44	33	51	47	52	37	21	23	29		30		35						40.3	
WASHGTON DULLES INTL AP	24	MIN	37	26	25	31	13	13	15	31	37	41	22	24	15	18	32	35	30	15	11	13	15		18		15						23.1	
		MAX	43	49	54	37	32	40	41	42	50	59	39	45	30	52	49	52	37	32	26	29	32	28	29	35	42	51	45	42	39	47	60	41.5
WASHINGTON REAGAN AP	24	MIN	30	27	23	20	13	9	23	36	40	34	23	23	18	19	27	36	30	14	13	15	20	14	21	9	4	22	20	11	23	13	34	21.4
		MAX	47	48	54	38	34	40	43	45	50	62	41	47	32	53	50	53	38	34	28	31	34	29	29	35	42	52	48	40	43	42	57	42.5
WINCHESTER	07	MIN	36	32	32	21	16	20	34	40	41	37	28	28	21	28	34	38	32	16	15	19	24	22	24	19	16	30	31	25	28	24	36	27.3
		MAX	53	41	48	51	35	34	43	48	36	46	56	36	43	28	53	51	48	35	19	23	28	30	22	24	36	42	50	40	44	40	46	39.6
WINCHESTER 7 SE	08	MIN	36	28	28	29	11	11	14	19	31	36	22	21	14	14	22	29	33	12	9	10	12	15	17	17	12	16	35	15	15	19	21	20.1
		MAX	54	47	53	37	41	42	45	35	35	47	44	37	43	54	50	52	34	20	24	27	32	22	24	31	39	51	41	44	37	47	62	40.4
WOODSTOCK 2 NE	07	MIN	26	23	29	10	8	8	10	31	31	35	18	18	12	15	24	24	13	10	7	7	10	12	-2	-1	6	35 ^s	5	6	6	15	41	15.2
		MAX	56	42	47	54	33	32	42	47	35	44	57	37	43	31	55	46	49	34	19	27	28	32	21	27	40	29	37	41	46	39	50	39.4
CENTRAL MOUNTAIN 05 COVINGTON FLTR PLT	07	MIN	33	25	23	25	11	11	12	18	26	34	21	21	13	13	13	26	12	12	9	10	13	12	15	8	6	13	21	12	12	21	21	16.8
		MAX	53	41	46	50	34	37	39	51		47	51	36	43	34	56	43	46	38	20	23	29	37	24	27	41	44	39	45	50	39	55	40.6
DALE ENTERPRISE	07	MIN	37	27	20	25	16	11	12	16		37	20	20	15	14	24	24	33	13	11	10	9	20	18	7	7	14	30	17	16	22	22	18.9
		MAX	58	42	44	53	35	28	44	46	39	54	54	37	39	32	54	44	51	34	28	22	22	30	20	27	35	44	51	42	43	37	48	39.9
GATHRIGHT DAM	07	MIN	35	25	25	28	11	10	11	17	23	35	21	21	14	14	24	26	28	11	6	5	5	7	15	2	2	12	35	14	16	17	21	17.3
		MAX	49	38	41	47	29	36	40	47	38	44	48	30	37	32	50	42	44	34	14	18	26	34	24	22	33	41	40	40	45	34	51	37.0
HOT SPRINGS	07	MIN	34	28	27	28	11	10	15	14	27	37	17	17	10	11	23	23	31	8	7	4	5	16	14	9	12	17	30	16	16	20	23	18.1
		MAX	49	38	39	44	28	30	38	47	40	45	47	30	36	31	48	42	45	33	15		25	30	19	21	30	41	42	37	43	33	49	36.5
LEXINGTON	07	MIN	32	25	25	27	8	7	11	16	27	36	16	15	8	7	25	25	29	6	4		4	12	14	4	4	15	31	13	13	16	23	16.6
		MAX	56	42	46	50	35	33	41	47	38	46	54	36	43	37	56	46	51	40	23	25	33	37	22	30	42	44	45	46	43	40	51	41.2
MILLGAP	07	MIN	38	25	24	32	16	10	10	15	24	36	21	20	16	16	24	23	30	15	9	8	11	19	17	10	7	12	27	16	16	19	22	19.0
		MAX	48	35	42	45	26	33	44	53	40	44	46	27	32	32	50	41	41	32	11	15	27	33	19	19	33	41	42	39	44	31	51	36.0
MUSTOE 1 SW	24	MIN	31	22	21	25	0	-1	4	7	20	36	15	12	4	2	17	16	27	5	3	-1	0	7	12	-8	-9	5	26	3	0	6	13	10.3
		MAX																																
ROANOKE 8 N	07	MIN			50	53	35	34	42	50	39	45	54	37	44	42	57	48	52	40	24	25	34	39	23	28	43	45	45	44	44	41	53	42.2
		MAX	57																															
ROANOKE INTL AP	24	MIN	39	32	31	33	19	15	14	19	30	38	23	23	19	18	28	27	34	17	12	12	15	21	19	20	18	20	30	19	19	24	25	23.0
		MAX	44	50	54	38	35	41	49	40	46	54	38	44	36	57	43	53	41	32	25	33	39	26	27	41	47	47	45	42	41	51	63	42.6
STAUNTON WATER TRMTMT PLT	08	MIN	35	32	33	24	18	14	19	27	39	30	22	25	18	31	26	34	30	15	12	13	23	20	19	20	21	24	27	20	29	25	28	24.3
		MAX	54	54	43	51	31	17	44	51	41	44	53	35	40	35	53	47	49	35	20	21	32	32	19	25	37	48	52	43	42	42	48	39.9
WAYNESBORO WTP	07	MIN	35	28	30	28	11	11	15	24	26	39	19	20	12	13	34	36	28	11	6	6	8	14	14	13	13	27	35	21	26	24	30	21.2
		MAX	56	42	45	50	33	29	41	47	42	47	55	36	41	33	53	48	51	35	21	22	33	30	20	23	31	40	55	41	42	38	49	39.6
SOUTHWESTERN MOUNTAIN 06 ABINGDON 3S	22	MIN	38	30	30	30	14	10	10	20	24	38	23	20	16	15	23	25	29	15	9	8	10	13	16	3	3	12	27	22	20	18	18	19.0
		MAX	51	43	41	43	30	39	50	58	51	56	45	30	37	33	51	41	42	33	33	23	27	35	29	22	37	51	41	38	41	42	59	40.4
		MIN	35	23	23	25	14	17	19	19	36	39	17	16	15	13	20	28	30	13	6	8	18	22	19	17	17	18	31	19	18	22	21	20.6

VIRGINIA
201601

DAILY TEMPERATURES (°F)

STATION	OB. TIME	MAX/MIN	DAY OF MONTH																															AVERAGE
			01	02	03	04	05	06	07	08	09	10	11	12	13	14	15	16	17	18	19	20	21	22	23	24	25	26	27	28	29	30	31	
BIG STONE GAP	08	MAX	56	41	43	47	34	43	51	57	51	55	44	32	37	35	53	40	41	32	22	25	26	38	40	24	37	46	39	40	44	44	59	41.2
		MIN	34	22	21	20	19	17	17	24	35	35	14	14	12	12	18	24	31	12	7	8	17	15	19	19	19	31	19	20	22	22	19.9	
BLACKSBURG NWSO	07	MAX	51	39	46	47	30	34	44	53	38	43	48	34	39	36	52	45	46	34	19	21	28	36	19	22	37	47	44	40	45	37	38.9	
		MIN	33	26	24	25	14	10	10	16	30	37	16	16	14	13	23	23	29	12	8	7	11	17	16	16	12	12	31	13	16	17	18.4	
BURKES GARDEN	07	MAX	45	36	37	40	23	31	43	52	45	44	40	26	31	34	43	44	37	28	12	13	30	29	21	16	28	47	44	30	37	40	34.7	
		MIN	29	22	23	23	9	9	11	16	32	32	13	12	9	9	23	23	23	6	2	0	8	10	13	-1	-2	14	27	11	10	21	15.2	
CHRISTIANSBURG	07	MAX	53	39	44	48	30	32	43	52	38	43	47	32	40	32	50	46	46	34	19	20	28	34	18	21	38	47	44	37	44	36	38.2	
		MIN	33	26	26	27	13	12	17	30	37	16	16	13	13	31	31	27	11	6	6	11	17	15	12	14	18	31	18	18	23	26	19.5	
CLINTWOOD 1 W	07	MAX	45	38	42	46	31	35	44	53	53	53	42	33	36	34	51	40	38	30	17	18	29	28	33	24	34	44	39	34	46	40	38.2	
		MIN	33	21	20	20	14	12	13	18	30	30	12	12	11	11	16	22	30	9	6	6	12	15	17	1	1	12	28	13	13	19	16.0	
COPPER HILL	07	MAX	49	36	41	44	26	28	36	50	39	44	46	29	38	29	47	45	44	31	15	17	30	33	17	19	33	50	50	38	44	48	36.5	
		MIN	30	24	25	25	11	11	14	24	33	38	15	13	12	10	28	33	26	12	4	3	14	15	13	13	13	26	31	22	22	28	19.6	
GALAX RADIO WBRF	07	MAX	53	41	46	42	35	39	55	45	46	45	33	40	37	52	49	46	41	29	21	31	37	34	23	40	46	50	41	45	40	48	41.5	
		MIN	35	22	23	25	13	9	16	27	37	32	16	16	14	21	25	34	27	12	7	8	22	19	17	7	17	23	31	15	25	19	20.7	
GALAX WTP	07	MAX	55	48	47	30	37	39	56	44	46	48	34	40	38	52	43	47	36	22	22	31	38	21	23	47	47	51	43	45	40	49	40.6	
		MIN	37	29	22	23	15	10	9	16	30	39	17	15	16	16	25	28	30	14	7	7	14	20	17	10	10	18	18	16	15	20	18.8	
GRUNDY	07	MAX	45	40	45	49	33	37	44	48	50	54	45	35	37	34	54	39	40	32	20	20	29	30	31	24	35	41	35	36	47	38	38.9	
		MIN	34	23	22	21	17	16	15	20	33	36	17	16	14	13	20	24	29	12	9	9	15	19	18	15	18	18	31	22	22	22	20.1	
JOHN FLANNAGAN LAKE	07	MAX				51	34	42	52				60			36	37	54				24	28			46	51	39	38	50			M	
		MIN				22	16	15	15			15			13	12	19				9	8	16			12	18	29	18	18			M	
LEBANON	07	MAX	47	41	42	45	29	39	50	58	52	55	45	31	36	34	50	46	42	31	20	21	29	35	29	21	38	48	48	36	44	41	40.0	
		MIN	34	22	19	19	13	12	12	28	30	32	14	13	11	11	25	25	29	10	7	9	16	24	17	16	15	15	15	17	16	20	18.3	
NORA 4 SSE	07	MAX	42	38	38	45	27	37	45	54	48	52	41	27	32	33	46	43	37	28	16	19	27	30	30	18	33	42	40	32	38	39	36.4	
		MIN	29	23	23	24	14	14	24	40	41	41	11	11	10	9	27	36	25	5	4	5	15	19	13	13	14	31	26	25	26	27	21.2	
N FK LAKE	08	MAX					63	40	48			58	34	38	36	53					44	22	29	28			42	51	48	37	49		M	
		MIN					17	15	14			14	13	14	12	20					8	8	14	18			3	14	29	15	14		M	
PULASKI 2 E	07	MAX	53	43	44	47	29	33	42	53	38	44	45	33	38	33	52	40	47	34	19	20	31	35	22	23	41	47	48	39	44	37	38.9	
		MIN	35	26	26	29	16	8	8	15	28	37	19	16	16	12	25	24	28	16	8	5	8	19	17	16	11	16	34	18	16	19	19.1	
RADFORD 3 N	07	MAX	52	40	46	48	30	32	43	54	41	43	47	31	41	37	53	43	47	33	18	21	30	35	20	21	37	45	43	38	45	37	38.8	
		MIN	34	27	26	27	14	9	11	16	29	40	17	18	14	16	21	23	29	12	9	7	11	17	17	16	13	13	34	13	14	17	18.9	
RICHLANDS	07	MAX	45	40	43	47	30	41	36	29 ^s	40	47	47	58	35	34	51	40	40	31	20	25	35	34	31	35	38	50	52	39	46	40	40.3	
		MIN	34	23	19	21	12	12	16	13	19	30	18	11	11	11	22	23	28	11	6	8	15	21	16	7	13	14	28	16	13	19	17.1	
SALTVILLE 1N	07	MAX	55	42	44	46	31	41	50	59	48	56	46	32	36	35	52	39	43	34	22	23	27	38	26	24	38	49	38	40	44	42	40.6	
		MIN	34	24	24	21	15	13	13		34	37	17	16	13	13	22	24	31	13	8	8	15	17	19	12	12	12	31	15	15	18	18.7	
STAFFORDSVILLE 3 ENE	07	MAX	50	41	45	48	30	35	42	50	41	45	48	34	41	38	52	44	45	34	19	20	29	32	21	23	35	45	44	36	44	36	38.6	
		MIN	34	28	25	29	15	10	10	15	28	38	17	16	14	13	21	21	30	13	9	5	9	16	18	15	10	10	26	12	11	16	17.8	
WISE 3E	17	MAX	37	40	45	38	38	46	55	51	52	50	30	31	31	48	47	40	29	25	18	27	27	30	24	36	44	43	41	41	37	39.1		
		MIN	29	20	23	22	11	17	27	39	35	30	10	22	27	26	30	29	25	5	4	15	18	17	13	12	21	31	24	18	30	22.6		
WYTHEVILLE	07	MAX	54	40	42	44	27	33	43	56	40	44	45	30	36	32	48	39	44	33	18	18	27	35	19	20	37	45	44	39	42	35	37.5	
		MIN	33	24	24	26	13	11	11	18	35	38	15	14	13	13	25	27	27	10	5	5	12	12	15	13	16	18	30	17	18	22	18.8	

VIRGINIA
201601

SNOWFALL AND SNOW ON GROUND (INCHES)

STATION		DAY OF MONTH																															
		01	02	03	04	05	06	07	08	09	10	11	12	13	14	15	16	17	18	19	20	21	22	23	24	25	26	27	28	29	30	31	
VIRGINIA																																	
TIDEWATER 01																																	
DISPUTANTA	SNOWFALL	-	-	-	-	-	-	-	-	-	-	-	-	-	-	-	-	-	-	-	-	-	5.5	4.5	-	-	-	-	-	-	-	-	
	SN ON GND	-	-	-	-	-	-	-	-	-	-	-	-	-	-	-	-	-	-	-	-	-	3	10	-	-	-	-	-	-	-	-	
EASTVILLE	SNOWFALL																																
EMPORIA 1 WNW	SNOWFALL	T	-	-	-	-	-	-	-	-	-	-	-	-	-	-	-	1.0	-	-	T	-	3.0	-	-	-	-	-	-	-	-	-	
	SN ON GND	-	-	-	-	-	-	-	-	-	-	-	-	-	-	-	-	-	-	-	T	2	-	-	-	3	-	-	-	-	-	-	
FREDERICKSBURG SEWAGE	SNOWFALL	-	-	-	-	-	-	-	-	-	-	-	-	-	-	-	-	-	-	-	-	0.2	-	8.0	5.0	-	-	-	-	-	-	-	
	SN ON GND	-	-	-	-	-	-	-	-	-	-	-	-	-	-	-	-	-	-	-	T	-	8	12	-	-	-	-	-	-	-	-	
HOLLAND 1 E	SNOWFALL																																
HOPEWELL	SNOWFALL																T	-	-	-	-	-	3.6	3.6	2.2								
	SN ON GND																-	-	-	-	-	-	4	4	3								
NORFOLK INTL AP	SNOWFALL					T											0.4				0.1		1.1	1.2	T								
	SN ON GND																								1								
NORFOLK SOUTH	SNOWFALL	-	-	-	T	T	-	-	-	-	-	-	-	-	-	-	0.4	-	-	0.1	-	1.1	1.2	T	-	-	-	-	-	-	-	-	
	SN ON GND	-	-	-			-	-	-	-	-	-	-	-	-	-		-	-	T		T	1	T	-	-	-	-	-	-	-	-	
NORTH	SNOWFALL																	1.0				T		5.0	2.5								
	SN ON GND																		T	T	T	T		2	5	3	2	T					
PAINTER 2W	SNOWFALL	-	-	-	-	-	-	-	-	-	-	-	-	-	-	-	1.0	-	-	-	-	0.1	2.0	1.5	0.5	-	-	-	-	-	-	-	
	SN ON GND	-	-	-	-	-	-	-	-	-	-	-	-	-	-	-	1	-	-	-	-	-	2	-	-	-	-	-	-	-	-	-	
STONY CREEK 2 N	SNOWFALL																						3.0	5.0									
	SN ON GND																1						3	7	3	3	2						
SUFFOLK LAKE KILBY	SNOWFALL					T											1.5				T		2.0	2.0	T								
	SN ON GND																1	T	T	T			2	3	2	T							
WAKEFIELD 1NW	SNOWFALL																1.8				T		2.8	2.5	T								
	SN ON GND																1	T	T	T			2	5	4	2	T						
WALKERTON 2 NW	SNOWFALL																1.0						4.0	6.0									
	SN ON GND																1						4	10	10	6	2						
WALLACETON LK DRUMMOND	SNOWFALL																1.0				0.3	T	5.0	1.0	T								
WALLOPS ISLAND NASA TEST FACIL	SNOWFALL																					1	1	1	1	T	1	T					
	SN ON GND																																
WARSAW 2 NW	SNOWFALL	-	-	-	-	-	-	-	-	-	-	-	-	-	-	-	0.8				-	-	0.5	-	12.0	-	-	-	-	-	-	-	
	SN ON GND	-	-	-	-	-	-	-	-	-	-	-	-	-	-	-	1				-	-	-	-	12	12	8	4	1	1	-	-	
WEST POINT 2 NW	SNOWFALL																1.2				T	0.2	5.0	2.0	3.1								
	SN ON GND																T	T		T	T		5	6	8	6	4	2	T	T			
WILLIAMSBURG 2 N	SNOWFALL	-	-	-	-	-	-	-	-	-	-	-	-	-	-	-	0.7	-	-	-	-	-	2.5	3.2	-	-	-	-	-	-	-	-	
	SN ON GND	-	-	-	-	-	-	-	-	-	-	-	-	-	-	-	1	T	T	T	T		3	3	3	2	T	T	T	T	T	T	
EASTERN PIEDMONT 02																																	
ALBERTA 5N	SNOWFALL					T													0.6			T		8.0	3.5								
	SN ON GND																					T		8	11	7	5	3	1	T	T	T	
AMELIA COURTHOUSE 1	SNOWFALL					T													1.0		T		6.5	10.0									
ASHLAND	SNOWFALL				T												1.0					T	5.0	10.0	1.0								

Snowfall: Includes snow and ice. Values for NWS stations (J index note) are Mid-Mid (LST).

Snow on ground: Includes snow, sleet, ice, and hail. Values for NWS stations (J index note) are observed at 12 UTC (GMT).

Water Equivalent: Given for NWS stations (J index note) only, when snow depth is 2 inches or more, and is measured at 18 UTC (GMT)

VIRGINIA
201601

SNOWFALL AND SNOW ON GROUND (INCHES)

STATION		DAY OF MONTH																														
		01	02	03	04	05	06	07	08	09	10	11	12	13	14	15	16	17	18	19	20	21	22	23	24	25	26	27	28	29	30	31
BREMO BLUFF	SN ON GND																	T	T	T	T	T	5	15	13	11	7	4	4	3	3	T
	SNOWFALL																						0.1	-	0.9	3.5	-	-	-	-	-	-
BUCKINGHAM	SN ON GND																															
	SNOWFALL																			0.8												
CAMP PICKETT	SN ON GND																															
	SNOWFALL	-	-	-	-	-	-	-	-	-	-	-	-	-	-	-	-	-	T	-	-	-	-	-	6.0	8.0	-	-	-	-	-	-
CHASE CITY	SN ON GND																															
	SNOWFALL	-	-	-	-	-	-	-	-	-	-	-	-	-	-	-	-	-	T	-	-	-	-	-	6	8	T	-	-	-	-	T
CLARKSVILLE	SN ON GND																															
	SNOWFALL																															
CORBIN	SN ON GND																															
	SNOWFALL	-	-	-	-	-	-	-	-	-	-	-	-	-	-	-	-	-	-	-	-	-	-	-	-	-	-	14.0	-	-	-	-
CROZIER	SN ON GND																															
	SNOWFALL																															
FARMVILLE 2 N	SN ON GND																															
	SNOWFALL	-	-	-	-	-	-	-	-	-	-	-	-	-	-	-	-	-	T	-	-	-	-	-	6.5	3.5	-	-	-	-	-	-
GREENBAY 3 NE JOHN H KERR DAM	SN ON GND																															
	SNOWFALL																															
KEYSVILLE 2 S	SN ON GND																															
	SNOWFALL																															
LOUISA	SN ON GND																															
	SNOWFALL	-	-	-	-	-	-	-	-	-	-	-	-	-	-	-	-	-	-	-	-	-	-	4.2	12.6	-	-	-	-	-	-	-
PALMYRA 3S	SN ON GND																															
	SNOWFALL	-	-	-	-																											
PETERSBURG	SN ON GND																															
	SNOWFALL	-	-	-	-																											
RICHMOND INTL AP	SN ON GND																															
	SNOWFALL																															
SANDSTON	SN ON GND																															
	SNOWFALL	-	-	-	-	-	-	-	-	-	-	-	-	-	-	-	-	-	-	-	-	-	-	-	-	-	-	-	-	-	-	-
WINTERPOCK 4 W WESTERN PIEDMONT 03	SN ON GND																															
	SNOWFALL																															
APPOMATTOX	SN ON GND																															
	SNOWFALL																															
BEDFORD 4 NW	SN ON GND																															
	SNOWFALL																															
BROOKNEAL	SN ON GND																															
	SNOWFALL																															
CHARLOTTESVILLE 2W	SN ON GND																															
	SNOWFALL																															
CHATHAM	SN ON GND																															
	SNOWFALL	-	-	-	-																											

Snowfall: Includes snow and ice. Values for NWS stations (J index note) are Mid-Mid (LST).

Snow on ground: Includes snow, sleet, ice, and hail. Values for NWS stations (J index note) are observed at 12 UTC (GMT).

Water Equivalent: Given for NWS stations (J index note) only, when snow depth is 2 inches or more, and is measured at 18 UTC (GMT)

VIRGINIA
201601

SNOWFALL AND SNOW ON GROUND (INCHES)

STATION		DAY OF MONTH																														
		01	02	03	04	05	06	07	08	09	10	11	12	13	14	15	16	17	18	19	20	21	22	23	24	25	26	27	28	29	30	31
MADISON	SNOWFALL	-	-	-	-	-	-	-	-	-	-	-	-	-	-	-	-	-	-	-	-	-	-	18.0	12.0	-	-	-	-	-	-	
	SN ON GND	-	-	-	-	-	-	-	-	-	-	-	-	-	-	-	-	-	-	-	-	-	-	18	30	25	23	15	15	12	10	5
MANASSAS	WTR EQUIV	-	-	-	-	-	-	-	-	-	-	-	-	-	-	-	-	-	-	-	-	-	18.0	30.0	25.0	23.0	15.0	15.0	-	10.0	5.0	
	SNOWFALL	-	-	-	-	-	-	-	-	-	-	-	0.2	-	-	-	-	-	-	-	-	-	-	-	-	-	-	-	-	-	-	
MT WEATHER	SN ON GND	-	-	-	-	-	-	-	-	-	-	-	-	-	-	-	-	-	-	-	-	-	-	-	-	-	32	12	12	-	-	
	WTR EQUIV	-	-	-	-	-	-	-	-	-	-	-	-	-	-	-	-	-	-	-	-	-	-	-	-	-	-	-	12.0	12.0	12.0	
PIEDMONT RSCH STN	SNOWFALL	-	-	-	-	T	-	-	-	-	-	-	-	-	-	-	-	0.5	-	-	-	-	-	-	15.0	-	-	-	-	-		
	SN ON GND	-	-	-	-	-	-	-	-	-	-	-	-	-	-	-	-	-	-	-	-	-	-	-	14	13	11	6	3	-	-	
SOMERSET	SNOWFALL	-	-	-	-	T	-	-	-	-	-	-	-	-	-	-	-	-	T	-	-	-	-	12.1	6.0	-	-	-	-	-	-	
	SN ON GND	-	-	-	-	-	-	-	-	-	-	-	-	-	-	-	-	-	-	-	-	-	-	12	17	15	12	8	7	4	4	2
SPERRYVILLE	WTR EQUIV	-	-	-	-	-	-	-	-	-	-	-	-	-	-	-	-	-	-	-	-	-	-	1.9	1.5	3.1	1.7	-	-	-	-	-
	SNOWFALL	-	-	-	-	-	-	-	-	-	-	-	T	-	-	-	-	-	1.0	-	-	T	-	13.0	-	-	-	-	-	T	-	-
STERLING (RCS)	SN ON GND	-	-	-	-	-	-	-	-	-	-	-	-	-	-	-	-	-	T	T	T	T	T	13	-	-	16	-	9	8	7	6
	SNOWFALL	-	-	-	-	T	-	-	-	-	-	-	0.3	-	-	-	-	-	0.1	-	-	-	0.1	15.2	14.1	-	-	-	-	0.1	-	
VIENNA	SN ON GND	-	-	-	-	-	-	-	-	-	-	-	T	-	-	-	-	-	-	-	-	-	15	28	27	25	18	16	15	15	14	
	WTR EQUIV	-	-	-	-	-	-	-	-	-	-	-	-	-	-	-	-	-	-	-	-	-	-	-	-	-	-	2.3	2.1	-	-	-
WARRENTON 3 SE	SNOWFALL	-	-	-	-	-	-	-	-	-	-	-	-	-	-	-	-	-	-	-	-	-	-	17.0	-	-	-	-	-	-	-	-
	SN ON GND	-	-	-	-	-	-	-	-	-	-	-	-	-	-	-	-	-	-	-	-	-	-	20.5	-	-	-	-	-	-	-	-
WASHGTN DULLES INTL AP	WTR EQUIV	-	-	-	-	-	-	-	-	-	-	-	-	-	-	-	-	-	-	-	-	-	-	20	-	-	25	-	-	-	-	-
	SNOWFALL	-	-	-	-	T	-	-	-	-	-	-	0.3	-	-	-	-	-	0.1	T	-	-	0.1	7.2	22.1	-	-	-	-	0.1	-	-
WASHINGTON REAGAN AP	SN ON GND	-	-	-	-	-	-	-	-	-	-	-	T	-	-	-	-	-	-	-	-	T	15	28	27	25	18	16	15	15	14	
	SNOWFALL	-	-	-	-	-	-	-	-	-	-	-	-	-	-	-	-	0.3	T	-	0.7	T	6.5	11.3	T	-	-	T	-	-	-	
WINCHESTER	SN ON GND	-	-	-	-	-	-	-	-	-	-	-	-	-	-	-	-	-	-	-	-	-	14	18	17	10	4	4	3	3	3	
	SNOWFALL	-	-	-	-	-	-	-	-	-	-	-	0.3	-	-	-	-	-	T	-	-	-	-	16.2	9.2	-	-	-	-	-	T	-
WINCHESTER 7 SE	SN ON GND	-	-	-	-	-	-	-	-	-	-	-	-	-	-	-	-	-	-	-	-	-	16	25	18	15	10	7	7	6	6	
	SNOWFALL	-	-	-	-	-	-	-	-	-	-	-	-	-	-	-	-	-	-	-	-	-	19.0	7.0	-	-	-	-	-	-	-	
WOODSTOCK 2 NE	SN ON GND	-	-	-	-	-	-	-	-	-	-	-	-	-	-	-	-	-	-	-	-	-	19	26	26	21	12	11	9	7	6	5
	WTR EQUIV	-	-	-	-	-	-	-	-	-	-	-	-	-	-	-	-	-	-	-	-	-	-	-	-	-	-	-	-	-	-	-
CENTRAL MOUNTAIN 05	SNOWFALL	-	-	-	-	-	-	-	-	-	-	-	-	-	-	-	-	-	-	-	-	-	19.8	7.2	-	-	-	-	-	-	-	
	SN ON GND	-	-	-	-	-	-	-	-	-	-	-	-	-	-	-	-	-	-	-	-	-	-	20	26	18	12	8	6	5	2	T
BUENA VISTA	SNOWFALL	-	-	-	-	-	-	-	-	-	-	-	-	-	-	-	-	-	0.2	-	-	-	0.2	8.0	0.4	-	-	-	-	-	-	
	SN ON GND	-	-	-	-	-	-	-	-	-	-	-	-	-	-	-	-	-	-	-	-	T	8	8	7	7	5	3	3	3	2	
COVINGTON FLTR PLT	SNOWFALL	-	-	-	-	T	-	-	-	-	-	-	T	-	-	-	-	T	0.1	-	1.0	T	13.0	1.0	-	-	-	T	-	-	-	
	SN ON GND	-	-	-	-	-	-	-	-	-	-	-	-	-	-	-	-	-	-	-	-	1	13	13	12	11	10	7	6	4	2	
DALE ENTERPRISE	SNOWFALL	-	-	-	-	-	-	-	-	-	-	-	-	-	-	-	-	-	-	-	-	-	18.0	7.0	-	-	-	-	-	-	-	
	SN ON GND	-	-	-	-	-	-	-	-	-	-	-	-	-	-	-	-	-	-	-	-	-	18	25	25	24	12	10	8	8	4	
	WTR EQUIV	-	-	-	-	-	-	-	-	-	-	-	-	-	-	-	-	-	-	-	-	-	18.0	25.0	25.0	24.0	12.0	10.0	8.0	8.0	4.0	

Snowfall: Includes snow and ice. Values for NWS stations (J index note) are Mid-Mid (LST).

Snow on ground: Includes snow, sleet, ice, and hail. Values for NWS stations (J index note) are observed at 12 UTC (GMT).

Water Equivalent: Given for NWS stations (J index note) only, when snow depth is 2 inches or more, and is measured at 18 UTC (GMT)

VIRGINIA
201601

SNOWFALL AND SNOW ON GROUND (INCHES)

STATION		DAY OF MONTH																																		
		01	02	03	04	05	06	07	08	09	10	11	12	13	14	15	16	17	18	19	20	21	22	23	24	25	26	27	28	29	30	31				
GATHRIGHT DAM	SNOWFALL				T								1.0					0.5			1.0		18.0	T							0.5					
	SN ON GND												1	T				T		T		T		18	18	12	10	8	6	6	5	5				
GLASGOW 1 SE	SNOWFALL					T							T					0.3				0.2		11.5	0.5							T				
	SN ON GND																					T		11	11	10	9	7	4	3	3	2				
HOT SPRINGS	SNOWFALL					T							1.0									2.0		13.0	4.0						T					
	SN ON GND												1									2	1	13	16	15	13	10	8	5	3	1				
LEXINGTON	SNOWFALL					T							T					0.2				0.2		10.0	0.6					T						
	SN ON GND																						10	10	10	9	6	6	5	5	5					
MILLGAP	SNOWFALL	-	-	-	0.1	0.5	-	-	-	-	-	T	-	1.2	-	-	-	0.4	-	-	0.5	-	8.0	2.0	-	-	-	-	0.2	1.0	-					
	SN ON GND	-	-	-	T	T	-	T	-	-	-	T	-	1	-	-	-	T	T	T	1	T	8	10	10	8	5	4	4	4	3					
MTN GROVE	SNOWFALL					T							T									1.0		16.0	2.0					T						
	SN ON GND												T									1	T	16	18	16	14	11	9	6	6	4				
MUSTOE 1 SW	SNOWFALL																																			
NEW CASTLE	SNOWFALL																					0.5		13.0												
	SN ON GND																					1	T	13	12	11	8	6	6	4	3	2				
ROANOKE 8 N	SNOWFALL																					T	0.5	14.0	2.1											
	SN ON GND																					T	1	15	16	8	7	5	3	3						
ROANOKE INTL AP	SNOWFALL				T								T				0.3	T			0.2		11.0	2.0							T					
	SN ON GND																					T		11	10	9	8	6	4	3	2	2				
STAUNTON WATER TRMTMT PLT	SNOWFALL																							13.0	5.0											
	SN ON GND																							13	16	13	10	5	4	4	3	2				
	WTR EQUIV																																			
WAYNESBORO WTP	SNOWFALL																								14.0	4.0										
	SN ON GND																								14	-										
	WTR EQUIV																									14.0	4.0									
SOUTHWESTERN MOUNTAIN 06																																				
ABINGDON 3S	SNOWFALL					T																	2.8	4.0	1.0											
	SN ON GND																						3	4	5	5	4	3								
BIG STONE GAP	SNOWFALL																						4.0	2.0	2.0											
	SN ON GND																						4	5	3	2	1	T								
BLACKSBURG NWSO	SNOWFALL				T	T													0.8	T	T		0.4	1.5	11.0	0.5					T	T				
	SN ON GND																		T	T	T		T	1	11	10	10	10	7	7	6	6	3			
BURKES GARDEN	SNOWFALL				T													0.4	0.5	T			4.0	2.0	9.0	3.0					0.5					
	SN ON GND					T												T	1	1	T		4	4	14	17	15	12	7	7	6	5	3			
CHRISTIANSBURG	SNOWFALL					T												T	1.0				1.0	1.5	11.0	0.5										
	SN ON GND																	T	T				1	1	11	10	9	7	6	5	4	4	3			
CLINTWOOD 1 W	SNOWFALL				T	0.7			T									0.4	1.8	0.1	0.1		2.4	3.5	5.5	2.1					T					
	SN ON GND					T	T	T										T	2	1	1		3	6	11	11	10	8	6	5	5	4	2			
COPPER HILL	SNOWFALL					T												T	0.5				0.5	1.0	14.0	2.0										
	SN ON GND																	T					1	1	14	16	15	13	8	7	6	6	5	5		
GALAX RADIO WBRF	SNOWFALL				T													0.5	0.1		1.0		7.0	5.0												

Snowfall: Includes snow and ice. Values for NWS stations (J index note) are Mid-Mid (LST).

Snow on ground: Includes snow, sleet, ice, and hail. Values for NWS stations (J index note) are observed at 12 UTC (GMT).

Water Equivalent: Given for NWS stations (J index note) only, when snow depth is 2 inches or more, and is measured at 18 UTC (GMT)

VIRGINIA
201601

PAN EVAPORATION AND WIND

STATION		DAY OF MONTH																															TOTAL OR AVERAGE		
		01	02	03	04	05	06	07	08	09	10	11	12	13	14	15	16	17	18	19	20	21	22	23	24	25	26	27	28	29	30	31			
VIRGINIA EASTERN PIEDMONT 02 JOHN H KERR DAM	WIND	-	-	-	-	-	-	-	-	-	-	-	-	-	-	-	-	-	-	-	-	-	-	-	-	-	-	-	-	-	-	-	-	-	M
	EVAP	-	-	-	-	-	-	-	-	-	-	-	-	-	-	-	-	-	-	-	-	-	-	-	-	-	-	-	-	-	-	-	-	-	M
	MAX	-	-	-	-	-	-	-	-	-	-	-	-	-	-	-	-	-	-	-	-	-	-	-	-	-	-	-	-	-	-	-	-	-	M
	MIN	-	-	-	-	-	-	-	-	-	-	-	-	-	-	-	-	-	-	-	-	-	-	-	-	-	-	-	-	-	-	-	-	-	M

Evaporation: Is measured in hundreths of inches.

Wind: Is measured in miles.

Max and Min: The maximum and minimum temperatures (Fahrenheit) of the water in the evaporation pan.

STATION INDEX

STATION	INDEX NO.	DIVISION	COUNTY	LATITUDE	LONGITUDE	ELEVATION (IN FEET)	OBSERVATION TIME AND TABLES			
							LOCAL STD TIME			
							TEMP	PRECIP	EVAP	SPECIAL SEE (NOTES)
VIRGINIA										
ABINGDON 3S	0021	06	WASHINGTON	36 40	81 58W	1925	22	22		H
ALBERTA 5N	0079	02	BRUNSWICK	36 56	77 54W	376		08		H
ALTAVISTA	0166	03	CAMPBELL	37 7	79 17W	529		07		CH
AMELIA COURTHOUSE 1	0187	02	AMELIA	37 21	77 59W	345	08	08		H
APPOMATTOX	0243	03	APPOMATTOX	37 20	78 50W	850	07	07		H
ASHLAND	0327	02	HANOVER	37 45	77 29W	220	18	18		H
BEDFORD 4 NW	0561	03	BEDFORD	37 23	79 34W	1228		07		CH
BIG STONE GAP	0735	06	WISE	36 52	82 46W	1464	08	08		H
BLACKSBURG NWSO	0766	06	MONTGOMERY	37 12	80 25W	2103	07	07		H
BREMO BLUFF	0993	02	FLUVANNA	37 43	78 17W	225		07		CH
BROOKNEAL	1082	03	CAMPBELL	37 4	78 57W	408	07	07		H
BUCKINGHAM	1136	02	BUCKINGHAM	37 30	78 32W	580		07		H
BUENA VISTA	1159	05	ROCKBRIDGE	37 44	79 22W	840		07		H
BURKES GARDEN	1209	06	TAZEWELL	37 6	81 20W	3068	07	07		H
CAMP PICKETT	1322	02	NOTTOWAY	37 2	77 57W	330	08	08		CH
CHARLOTTESVILLE 2W	1593	03	ALBEMARLE	38 2	78 31W	866	08	08		H
CHASE CITY	1606	02	MECKLENBURG	36 47	78 29W	510	17	17		H
CHATHAM	1614	03	PITTSYLVANIA	36 49	79 25W	651	07	07		CH
CHRISTIANSBURG	1692	06	MONTGOMERY	37 8	80 24W	2100	07	07		H
CLARKSVILLE	1746	02	MECKLENBURG	36 37	78 33W	330	07	07		H
CLINTWOOD 1 W	1825	06	DICKENSON	37 9	82 29W	1780	07	07		H
CONCORD 4 SSW	1955	03	CAMPBELL	37 17	78 58W	815		07		H
COPPER HILL	1999	06	FLOYD	37 5	80 9W	2690	07	07		H
CORBIN	2009	02	CAROLINE	38 12	77 22W	220	09	09		H
COVINGTON FLTR PLT	2044	05	ALLEGHANY	37 49	79 59W	1230	07	07		H
CROZIER	2142	02	GOOCHLAND	37 40	77 53W	350	07	07		H
DALE ENTERPRISE	2208	05	ROCKINGHAM	38 27	78 56W	1358	07	07		H
DANVILLE RGNL AP	2250	03	PITTSYLVANIA	36 34	79 20W	571	24	24		H
DISPUTANTA	2400	01	PRINCE GEORGE	37 7	77 12W	15	07	07		H
EASTVILLE	2635	01	NORTHAMPTON	37 23	75 58W	10	07	07		H
EDINBURG	2663	04	SHENANDOAH	38 48	78 35W	928	07	07		H
EMPORIA 1 WNW	2790	01	GREENSVILLE	36 42	77 34W	100	08	08		H
FARMVILLE 2 N	2941	02	CUMBERLAND	37 20	78 23W	450	07	07		H
FREDERICKSBURG SEWAGE	3204	01	FREDERICKSBURG	38 17	77 27W	15	07	07		H
FREE UNION	3213	03	ALBEMARLE	38 5	78 35W	590	08	07		H
FRONT ROYAL	3229	04	WARREN	38 54	78 11W	930	07	07		H
GALAX RADIO WBRF	3267	06	CARROLL	36 40	80 55W	2385	07	07		H
GALAX WTP	3272	06	CARROLL	36 39	80 55W	2360	07	07		CH
GATHRIGHT DAM	3310	05	ALLEGHANY	37 57	79 57W	1770	07	07		CH
GLASGOW 1 SE	3375	05	ROCKBRIDGE	37 37	79 26W	737		07		H
GREENBAY 3 NE	3565	02	PRINCE EDWARD	37 11	78 17W	500	09	09		H
GRUNDY	3640	06	BUCHANAN	37 17	82 5W	1170	07	07		H
HOLCOMB ROCK	4039	03	BEDFORD	37 33	79 24W	900		07		H
HOLLAND 1 E	4044	01	SUFFOLK	36 41	76 46W	80	08	08		H
HOPEWELL	4101	01	PRINCE GEORGE	37 18	77 17W	40	16	16		H
HOT SPRINGS	4128	05	BATH	37 60	79 50W	2236	07	07		H
HUDDLESTON 4 SW	4148	03	BEDFORD	37 8	79 32W	898		07		H
JOHN FLANNAGAN LAKE	4410	06	DICKENSON	37 14	82 21W	1460	07	07		H
JOHN H KERR DAM	4414	02	MECKLENBURG	36 36	78 18W	250	08	08	08	CH
KEYSVILLE 2 S	4568	02	CHARLOTTE	37 1	78 29W	625	07	07		H
LAFAYETTE 1 NE	4676	06	MONTGOMERY	37 14	80 12W	1320		07		H
LEBANON	4777	06	RUSSELL	36 54	82 2W	1912	07	07		H
LEXINGTON	4876	05	ROCKBRIDGE	37 47	79 26W	1097	07	07		H
LINCOLN	4909	04	LOUDOUN	39 5	77 42W	500	07	07		H
LOUISA	5050	02	LOUISA	38 3	78 0W	420	18	18		H
LURAY 5 E	5096	04	PAGE	38 40	78 22W	1400	08	08		H
LYNCHBURG INTL AP R	5120	03	CAMPBELL	37 19	79 12W	940	24	24		HJ
MADISON	5150	04	MADISON	38 22	78 15W	577	08	08		H
MANASSAS	5204	04	MANASSAS	38 44	77 30W	245	07	07		H
MARTINSVILLE FLTR PLT	5300	03	HENRY	36 42	79 52W	760	07	07		H
MEADOWS OF DAN 5 SW	5453	03	PATRICK	36 40	80 27W	2225	07	07		H
MILLGAP	5595	05	HIGHLAND	38 18	79 43W	2421	07	07		CH
MONTEBELLO FISH CULTURAL STN	5690	03	NELSON	37 51	79 8W	2667	07	07		H
MONTICELLO	5700	03	ALBEMARLE	38 1	78 27W	758	08	08		H
MT WEATHER	5851	04	LOUDOUN	39 4	77 53W	1659	07	07		H

STATION INDEX

STATION	INDEX NO.	DIVISION	COUNTY	LATITUDE	LONGITUDE	ELEVATION (IN FEET)	OBSERVATION TIME AND TABLES			
							LOCAL STD TIME			
							TEMP	PRECIP	EVAP	SPECIAL SEE (NOTES)
MTN GROVE	5756	05	BATH	38 6	79 53W	1775		07		H
MUSTOE 1 SW	5880	05	HIGHLAND	38 20	79 40W	2380	24	24		H
N FK LAKE	6173	06	WISE	37 7	82 38W	1675	08	08		H
NEW CASTLE	6012	05	CRAIG	37 18	80 3W	1258		07		H
NORA 4 SSE	6125	06	DICKENSON	37 1	82 19W	2650	07	07		H
NORFOLK INTL AP R	6139	01	NORFOLK (CITY)	36 54	76 12W	30	24	24		HJ
NORFOLK SOUTH	6147	01	NORFOLK (CITY)	36 52	76 14W	100	24	24		H
NORTH	6161	01	MATHEWS	37 26	76 26W	10	07	07		H
PAINTER 2W	6475	01	ACCOMACK	37 35	75 49W	30	16	16		CH
PALMYRA 3S	6491	02	FLUVANNA	37 49	78 16W	410	06	06		H
PEDLAR DAM	6593	03	AMHERST	37 40	79 17W	1024		07		H
PETERSBURG	6656	02	PETERSBURG	37 14	77 24W	15	08	08		H
PIEDMONT RSCH STN	6712	04	ORANGE	38 14	78 7W	520	08	08		CH
PULASKI 2 E	6955	06	PULASKI	37 3	80 47W	1850	07	07		CH
RADFORD 3 N	6999	06	PULASKI	37 12	80 35W	1800	07	07		H
RICHLANDS	7174	06	TAZEWELL	37 6	81 48W	1910	07	07		H
RICHMOND INTL AP R	7201	02	HENRICO	37 30	77 19W	164	24	24		HJ
ROANOKE 8 N	7278	05	ROANOKE	37 22	79 58W	1190	07	07		H
ROANOKE INTL AP R	7285	05	ROANOKE	37 19	79 58W	1175	24	24		HJ
ROCKY MT	7338	03	FRANKLIN	36 59	79 54W	1315	07	07		CH
SALTVILLE 1N	7506	06	SMYTH	36 53	81 46W	1733	07	07		H
SANDSTON	7541	02	HENRICO	37 33	77 17W	165	07	07		H
SOMERSET	7904	04	ORANGE	38 15	78 16W	510	07	07		H
SOUTH BOSTON	7925	03	HALIFAX	36 42	78 53W	329	07	07		H
SPERRYVILLE	7985	04	RAPPAHANNOCK	38 39	78 14W	750	06	06		H
STAFFORDSVILLE 3 ENE	8022	06	GILES	37 16	80 43W	1950	07	07		CH
STAUNTON WATER TRMTMT PLT	8062	05	AUGUSTA	38 10	79 5W	169	08	08		H
STERLING (RCS)	8084	04	LOUDOUN	38 59	77 29W	288	07	07		H
STONY CREEK 2 N	8129	01	SUSSEX	36 58	77 24W	105	08	08		H
STUART	8170	03	PATRICK	36 38	80 15W	1375	07	07		H
SUFFOLK LAKE KILBY	8192	01	SUFFOLK	36 44	76 36W	22	24	24		H
TYE RIVER 1 SE	8600	03	NELSON	37 38	78 56W	720	07	07		H
VIENNA	8737	04	FAIRFAX	38 54	77 16W	418	07	07		H
WAKEFIELD 1NW	8800	01	SUSSEX	36 59	77 0W	113	24	24		CH
WALKERTON 2 NW	8829	01	KING AND QUEEN	37 45	77 2W	50	18	18		H
WALLACETON LK DRUMMOND	8837	01	CHESAPEAKE	36 36	76 26W	20	08	08		H
WALLOPS ISLAND NASA TEST FACIL R	8849	01	ACCOMACK	37 56	75 28W	46	24	24		HJ
WARRENTON 3 SE	8888	04	FAUQUIER	38 41	77 46W	500	08	08		H
WARSAW 2 NW	8894	01	RICHMOND	37 59	76 47W	140	18	18		H
WASHGTN DULLES INTL AP R	8903	04	LOUDOUN	38 56	77 28W	290	24	24		HJ
WASHINGTON REAGAN AP R	8906	04	ARLINGTON	38 51	77 2W	10	24	24		HJ
WAYNESBORO WTP	8941	05	WAYNESBORO	38 5	78 53W	1270	07	07		H
WEST POINT 2 NW	9025	01	KING WILLIAM	37 34	76 48W	20	17	17		H
WILLIAMSBURG 2 N	9151	01	YORK	37 18	76 42W	70	24	24		CH
WILLIS	9169	06	FLOYD	36 55	80 30W	2810		07		CH
WINCHESTER	9181	04	FREDERICK	39 11	78 9W	720	07	07		H
WINCHESTER 7 SE	9186	04	FREDERICK	39 11	78 7W	680	08	08		H
WINTERPOCK 4 W	9213	02	CHESTERFIELD	37 19	77 39W	300		07		H
WISE 3E	9215	06	WISE	36 60	82 32W	2549	17	17		CH
WOODSTOCK 2 NE	9263	04	SHENANDOAH	38 54	78 28W	675	07	07		H
WOOLWINE	9272	03	PATRICK	36 47	80 17W	1500		07		CH
WYTHEVILLE	9301	06	WYTHE	36 58	81 5W	2458	07	07		H

REFERENCE NOTES

STATION NAMES: Name of the city, town or locality. Figures and letters following the station names indicate the distance in miles and direction from the post office or town community center.

DIVISIONS: Areas within a state of similar climatological characteristics. Division averages are calculated using data from stations that record temperature and/or precipitation. Station Precipitation totals flagged with an 'F' or 'M' are excluded from the Divisional Average calculations of precipitation. Stations with monthly Temperature averages flagged with an 'F' or 'M' are included in the Divisional Average if there are no more than 9 flagged or missing daily values in the month, else they are excluded from the divisional average for temperature.

NORMALS: The average value of the meteorological element over a time period. Effective 1 January 2012, the averaging period for station departures is 1981 to 2010. The normals for National Weather Service localities have been adjusted so as to be representative for the current observation site.

The January 2011 through December 2015 publications incorrectly state the computation of divisional departures. Climate Division departures have been, and continue to be, computed from 1971-2000 Normals, not 1981-2010 as stated. Station departures are accurately described as departures from 1981-2010.

MONTHLY DEGREE DAY TOTALS: One heating (cooling) degree day is accumulated for each whole degree that the daily mean temperature is below (above) 65 degrees Fahrenheit.

PRECIPITATION: Values shown in hundredths of inches are water equivalent totals, i.e., total of liquid and melted frozen precipitation. In the "Monthly Summarized Data" table the total snow and sleet values shown in tenths of inches are unmelted amounts. The max depth on ground values of snow and sleet shown in whole inches are cumulative unmelted amounts. The number of days with .10, .50, 1.00 or more refers to water equivalents.

PRECIPITATION QUALITY CONTROL: The NCEI quality control process may flag precipitation data that are spatially inconsistent, exceed climatological limits, or are inconsistent with prevailing weather patterns.

TEMPERATURE: Original temperature values are given in the "Daily Temperature" table. Summary temperature information (averages, departures, extremes, monthly degree day totals) is based on the values labeled MAX/MIN.

WIND: (As shown in the "Evaporation and Wind" table) the total wind movement in miles over the evaporation pan as determined by an anemometer recorder located 6-8 inches above the pan.

SYMBOLS AND LETTERS USED IN THE STATION INDEX TABLE

C Station is equipped with recording rain gage (R) but values in this bulletin are from a non-recording rain gage unless indicated by an R.
G Observations appear in the "Soil Temperatures" table.
H Observations appear in the "Snowfall and Snow on the Ground" table.
J Station also published as a Local Climatological Data publication.
VAR Observation time varies.
SR / SS Observation time near sunrise / Observation time near sunset, respectively.

SYMBOLS AND LETTERS USED IN THE DATA TABLES

(DAILY DATA ARE FOR THE 24 HOURS IMMEDIATELY PRECEDING OBSERVATION TIME.)

BLANK Entries in the "Monthly Summarized Data" table indicate no record.

BLANK Entries in the "Daily Precipitation" and "Snowfall and Snow on the Ground" tables indicate zero.

BLANK Entries in the "Daily Temperature" table indicate a missing record

- No record. Data not recorded or not received in time for publication.

+ Precipitation or temperature extremes occurred on one or more previous dates during the month.

* Rain gage not read. Precipitation is included in the amount following the asterisks.

Time distribution may not be known. A * preceding the monthly total indicates precipitation amount is being carried forward to next month's total, and may include amounts from the previous month(s).

a As a subscript, indicates accumulated total.

A Amount of precipitation is the total of observer's entries for the current month. It may include precipitation that occurred during the previous month. Refer to earlier bulletin to determine date of last

reading. (Hawaii stations)

B Divisional Departure from normals are computed using 1971-2000 normals.

E Normalized HDD/CDD Calculation. E is appended to the HDD/CDD Calculation when 1-9 individual daily TMAX and/or TMIN values are missing and a Normalized HDD/CDD Calculation is provided. M appears alone if 10 or more daily values are missing.

F Monthly calculation flagged value. F is appended to average and/or total values computed which exclude one or more daily data values that have been flagged by the GHCN-Daily Dataset

M Insufficient or partial data. M is appended to average and/or total values computed with 1-9 daily values missing. M appears alone if 10 or more daily values are missing, (8 or more for wind and evaporation).

N Indicates snow fall or Snowdepth totals are computed with one or more missing days.

R Amounts from recording rain gage.

T Trace. An amount too small to measure.

SEASONAL TABLES: Monthly and seasonal snowfall and heating degree days for the 12 months ending with the June data are published in the July issue of this bulletin. Cooling degree days for the calendar year are stated and published in the "Climatological Data Annual Summary."

Information concerning the history of changes in locations, exposure, etc. of substations is kept on file at the National Centers for Environmental Information. Historical information of regular National Weather Service Offices may be obtained from the "Local Climatological Data" annual publication. The contents of this publication may be reprinted or otherwise used freely, with proper credit to the National Centers For Environmental Information. The data are also available digitally.

Effective with the January 2011 Data-Month, COOP Observer Names are no longer included in the Monthly and Annual Climatological Data Publications. This information is not published to ensure the privacy of personal information pursuant to Section 208 of the E-Government Act of 2002 (44 USC 3601).

As of the 2011 Data-Year, Station and Climate Division Maps are no longer being included in the CD Publications. NCEI's Products Branch provides updated Station Maps for various data networks via the Historical Observing Metadata Repository: <http://www.ncdc.noaa.gov/homr>.

The GHCN-Daily Quality Control Flags shown below are displayed as superscripts with the data. For more information on Global Historical Climatology Network - Daily and flags, see: <http://www.ncdc.noaa.gov/oa/climate/ghcn-daily/> and Comprehensive Automated Quality Assurance of Daily Surface Observations. Durre, Imke, Matthew J. Menne, Byron E. Gleason, Tamara G. Houston, Russell S. Vose, 2010: J. Appl. Meteor. Climatol., 49, 16151633. doi: 10.1175/2010JAMC2375.1

Blank = Passed All checks	N = failed naught check
D = failed duplicate check	O = failed climatological outlier check
G = failed gap check	R = failed lagged range check
I = failed internal consistency check	S = failed spatial consistency check
K = failed streak/frequent-value check	T = failed temporal consistency check
L = failed check on length of multiday period	W = temperature too warm for snow
M = failed megaconsistency check	X = failed bounds check
	Z = flagged as a result of an official Datzilla investigation

Beginning with the January 2013 CD Publication, monthly mean temperature calculations have changed to the National Data Stewardship Team standard. Monthly maximum and minimum temperatures are not rounded until after the monthly mean temperature is calculated. This is the most accurate outcome, but may be slightly different from the mean derived from rounded monthly maximum and minimum.

The climate division temperature and precipitation values in this publication are based on simple averages from the current set of NWS-Designated Open and Published COOP and First Order Sites within each division. These values differ from those found in NCEI's nClimDiv product. Beginning in February 2014, the nClimDiv product is used by NCEI's Monitoring Branch and in its monthly climate reports. For more details on nClimDiv, please go to <http://www.ncdc.noaa.gov/monitoring-references/maps/us-climate-divisions.php>.

Effective January 2016, Alaska's Climate Divisions are updated to reflect the 13 climate divisional boundaries established by University of Alaska-Fairbanks, NWS, NCEI, Oregon State University, and University of Nebraska-Lincoln. For more details regarding the updated Alaska Climate Divisions, see: <http://journals.ametsoc.org/doi/pdf/10.1175/JAMC-D-11-0168.1> (Bienek et al., 2012).

NOAA National Centers for Environmental Information
Attn: Customer Engagement Branch
151 Patton Avenue
Asheville, NC 28801-5001

Customer Services Number: (828) 271-4800, option 2
TDD : (828) 271-4010
Fax number: (828) 271-4876

NCEI now offers free online access to the *Climatological Data* publication.
Go to : www.ncdc.noaa.gov and choose Most Popular.