



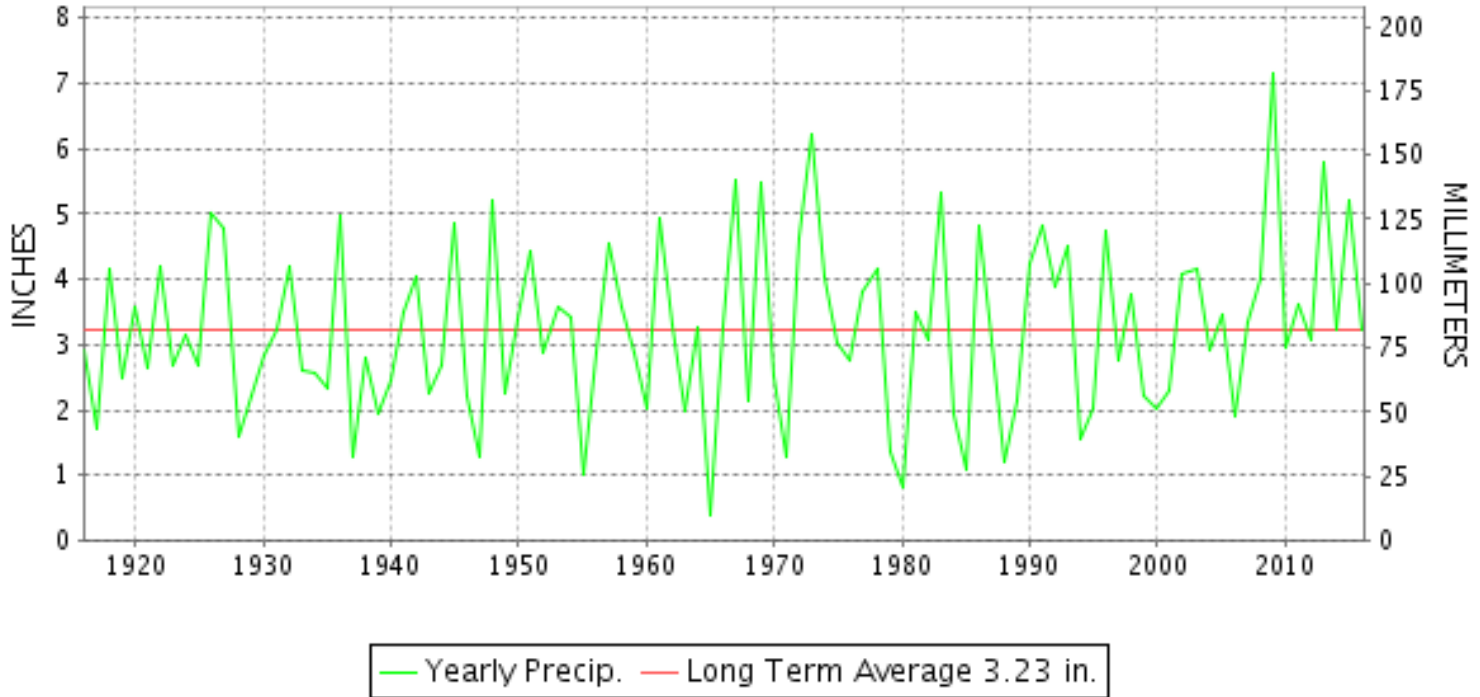
CLIMATOLOGICAL DATA

VIRGINIA

DECEMBER 2016
 VOLUME 126 NUMBER 12
 ISSN 0364-5630

GHCND Ver: 3.22-upd-2017050205

DECEMBER PRECIPITATION BY YEAR



TEMPERATURE AND PRECIPITATION EXTREMES

VIRGINIA

HIGHEST TEMPERATURE	80	DECEMBER 19	WALLACETON LK DRUMMOND
LOWEST TEMPERATURE	2	DECEMBER 16	MUSTOE 1 SW
GREATEST TOTAL PRECIPITATION	8.85		BIG STONE GAP
LEAST TOTAL PRECIPITATION	1.50		WOODSTOCK 2 NE
GREATEST 1 DAY PRECIPITATION	2.29	DECEMBER 06	WALLOPS ISLAND NASA TEST FACIL
GREATEST TOTAL SNOWFALL	3.0		BURKES GARDEN
GREATEST DEPTH OF SNOW OR ICE	3		BURKES GARDEN

"I certify that this is an official publication of the National Oceanic and Atmospheric Administration (NOAA) It is compiled using information from weather observing sites supervised by NOAA/National Weather Service and received at the National Centers for Environmental Information(NCEI), Asheville, North Carolina 28801."

Director
 National Centers for Environmental Information

noaa

National
 Oceanic and
 Atmospheric Administration

National
 Environmental Satellite, Data
 and Information Service

National
 Centers for Environmental Information
 Asheville, North Carolina

VIRGINIA
201612

MONTHLY STATION AND DIVISION SUMMARY

STATION	TEMPERATURE (°F)											PRECIPITATION (IN)												
	AVERAGE MAXIMUM	AVERAGE MINIMUM	AVERAGE	DEPARTURE FROM NORMAL	HIGHEST	DATE	LOWEST	DATE	HEATING DEG. DAYS	COOLING DEG. DAYS	NO. OF DAYS				TOTAL	DEPARTURE FROM NORMAL	GREATEST 24 HOURS	DATE	ICE PELLETS, SNOW			NO. OF DAYS		
											MAX		MIN						TOTAL	MAX DEPTH ON GROUND	DATE	.10 OR MORE	.50 OR MORE	1.00 OR MORE
											>=90	<=32	<=32	<=0										
RICHMOND INTL AP	50.5	31.7	41.1	0.1	70	18	15	16	734	0	0	1	14	0	2.80	-0.46	1.22	06	0.0	0		6	1	1
WINTERPOCK 4 W														2.65		1.14	07	M			5	1	1	
--DIVISIONAL DATA-----> WESTERN Piedmont 03			40.5	1.1B										2.50	-0.68B									
ALTAVISTA														3.20		0.92	07	0.0	0		7	2	0	
APPOMATTOX	47.8	29.9	38.9	0.6	68	01	13	16	800	0	0	2	18	0	3.83	0.40	1.26	07	0.0	T	17	8	1	1
BEDFORD 4 NW														3.24		0.93	07	0.0	T	17	8	2	0	
BROOKNEAL	50.5M	27.8	39.2M	4.7	72	01	16	16+	794E	0	0	2	25	0	2.99	-0.36	0.85	07	0.0	0		7	3	0
CHARLOTTESVILLE 2W	48.1	31.0	39.5	0.6	66	01	14	16	783	0	0	2	15	0	2.51	-0.84	1.10	07	T	T	17	5	1	1
CHATHAM	49.8	27.1	38.5	1.4	71	01	14	16+	814	0	0	1	24	0	3.12	-0.32	0.90	29	M 0.0	0		7	2	0
CONCORD 4 SSW														3.62		1.11	07	0.0	T	17	8	1	1	
DANVILLE RGNL AP	51.2	30.9	41.0	0.9	71	18	15	16	734	0	0	1	16	0	1.62	-1.64	0.82	06	0.0	0		4	1	0
FREE UNION	49.4	27.4	38.4		67	28	12	16	818	0	0	2	24	0	2.73		1.15	07	M			5	2	1
HOLCOMB ROCK														F 3.30		1.24	07	T	T	17	7	2	1	
HUDDLESTON 4 SW														3.53		1.24	07	T	T	30	7	1	1	
LYNCHBURG INTL AP	48.5	29.0	38.7	1.1	65	27	13	16	809	0	0	1	20	0	3.10	-0.14	1.25	06	0.0	0		6	2	1
MARTINSVILLE FLTR PLT	50.3	27.5	38.9	1.2	72	01	14	11	802	0	0	1	24	0	2.26	-1.13	0.79	07	0.0	0		5	1	0
MEADOWS OF DAN 5 SW	48.8M	30.5	39.7M		66	01	16	16	777E	0	0	1	19	0	2.47		0.83	01	T	T	30	7	2	0
MONTEBELLO FISH CULTURAL STN	46.8M	24.0M	35.4M		66	01	6	19	909E	0	0	3	20	0	M 3.99		1.18	07	M			7	4	1
MONTICELLO	M	M	M											M										
PEDLAR DAM														3.11		1.10	07	T	T	17	7	2	1	
ROCKY MT	49.5	29.7	39.6	1.7	69	01	16	16	780	0	0	1	17	0	2.47	-1.02	0.97	07	T	T	30	6	2	0
SOUTH BOSTON	55.5M	34.2	44.8M	5.5	78	01	18	16+	612E	0	0	1	10	0	1.81	-1.55	0.85	07	0.0	0		3	1	0
STUART	51.8	29.4	40.6	1.4	69	02+	16	16+	750	0	0	0	20	0	1.95	-1.56	0.54	01	0.0	0		6	2	0
WOOLWINE														2.95		0.74	01	T	T	31	8	2	0	
--DIVISIONAL DATA-----> NORTHERN 04			39.5	0.6B										2.81	-0.44B									
FRONT ROYAL	46.8	27.5	37.2	0.9	66	19	11	16	856	0	0	2	22	0	3.25	0.43	1.30	01	M	0		7	2	2
LINCOLN	45.3M	28.9M	37.1M	2.3	63	28	16	17+	861E	0	0	2	20	0	3.27		1.17	07	0.0	0		4	3	2
LURAY 5 E	48.0M	26.7MF	37.3MF	0.4	70	27	6	16	843E	0	0	1	22	0	M 3.35	0.30	1.73	01	M 0.0			7	2	1
MANASSAS	48.1M	28.9M	38.5M	1.4	66	28+	9	16	816E	0	0	2	20	0	3.12		1.05	07	M			9	2	1
MT WEATHER	44.0	27.1	35.5	1.1	62	28	5	16	906	0	0	4	23	0	3.82	0.87	1.70	01	M	0		8	2	1
PIEDMONT RSCH STN	48.5	29.0	38.8	1.3	69	01	12	16	806	0	0	2	20	0	2.10	-0.97	1.09	07	M			5	1	1
SOMERSET	49.5	27.4	38.4	1.7	67	01	11	16	814	0	0	2	23	0	2.62	-0.51	0.97	07	M			6	1	0
SPERRYVILLE	47.0M	28.1M	37.6M	1.0	69	28	9	16	844E	0	0	2	24	0	M 3.72	0.34	1.61	01	M	M T	30	6	2	1
STERLING (RCS)	46.9M	28.7M	37.8M	2.2	67	28	9	17+	836E	0	0	2	18	0	M 4.16	1.07	1.75	01	T	0		8	2	2
VIENNA	45.8	28.6	37.2	0.8	64	01	11	16	855	0	0	3	20	0	2.67	-0.60	0.75	07	M			7	2	0
WASHINGTON DULLES INTL AP	46.9	29.5	38.2	1.6	67	27	9	16	823	0	0	1	22	0	2.36	-0.60	1.03	06	T	0		7	1	1

VIRGINIA
201612

MONTHLY STATION AND DIVISION SUMMARY

STATION	TEMPERATURE (°F)											PRECIPITATION (IN)													
	AVERAGE MAXIMUM	AVERAGE MINIMUM	AVERAGE	DEPARTURE FROM NORMAL	HIGHEST	DATE	LOWEST	DATE	HEATING DEG. DAYS	COOLING DEG. DAYS	NO. OF DAYS				TOTAL	DEPARTURE FROM NORMAL	GREATEST 24 HOURS	DATE	ICE PELLETS, SNOW			NO. OF DAYS			
											MAX		MIN						TOTAL	MAX DEPTH ON GROUND	DATE	.10 OR MORE	.50 OR MORE	1.00 OR MORE	
											>=90	<=32	<=32	<=0											
WASHINGTON REAGAN NATL AP	49.2	34.4	41.8	2.1	68	27	17	16	710	0	0	1	12	0	2.61	-0.44	1.03	06	T	0		7	2	1	
WINCHESTER	45.6	28.6	37.1	1.8	63	28	9	16	858	0	0	3	22	0	2.48	-0.20	1.05	07	M	0		7	2	1	
WINCHESTER 7 SE	46.7	25.1	35.9	2.0	64	27	5	15	894	0	0	2	24	0	M 0.42	-2.05	0.12	04	0.0	0		2	0	0	
WOODSTOCK 2 NE	48.8	25.9	37.4	3.4	64	28+	8	16	847	0	0	1	26	0	1.50	-1.15	0.82	07	M			3	1	0	
--DIVISIONAL DATA-----> CENTRAL MOUNTAIN 05			37.7	1.7B											2.71	-0.31B									
BUENA VISTA															3.02		1.22	07	T	T	30	7	2	1	
COVINGTON FLTR PLT	45.6	27.7	36.7	0.2	61	18	10	16	871	0	0	2	22	0	3.97	1.26	1.66	01	1.0	1	30	9	1	1	
DALE ENTERPRISE	46.3	24.9	35.6	1.9	67	28	14	20+	902	0	0	3	27	0	3.03	0.42	1.62	01	M 0.0	0		5	2	1	
GATHRIGHT DAM	44.2	27.0	35.6	1.7	58	19+	8	16	903	0	0	3	23	0	3.42	0.46	1.08	01	0.5	T	31	9	2	1	
GLASGOW 1 SE															3.14		1.23	07	0.0	T	17	8	1	1	
HOT SPRINGS	42.7	25.3	34.0	1.2	60	18	7	16	952	0	0	5	23	0	4.13	0.78	1.40	01	2.2	2	30	9	2	1	
LEXINGTON	47.1	26.8	37.0	0.3	65	01	11	16	862	0	0	2	22	0	3.67	0.56	1.25	07	T	T	30	8	2	1	
MILLGAP	42.5	21.3	31.9	1.8	56	28+	3	16	1019	0	0	5	28	0	3.10	-0.25	0.78	01	M	1	31	10	2	0	
MTN GROVE															M				M	M T	09				
MUSTOE 1 SW	40.4	22.3	31.4	0.7	57	27	2	16	1038	0	0	6	28	0	2.77	-0.54	0.63	06	1.7	1	30	8	2	0	
NEW CASTLE															3.27		0.91	07	0.3	T	31	7	3	0	
ROANOKE 8 N	48.3M	29.4M	38.9M	0.2	66	01	13	16	800E	0	0	2	18	0	M 3.06	-0.17	1.24	07	M T	M T	30	6	1	1	
ROANOKE INTL AP	48.5	32.1	40.3	1.3	66	27	14	16	759	0	0	1	14	0	2.79	-0.15	1.61	06	T	0		5	1	1	
STAUNTON WTP	46.5	27.0	36.7	0.9	63	28	9	16	868	0	0	2	23	0	3.26	0.52	1.56	01	T	T	30	6	2	1	
WAYNESBORO WTP	47.8	25.7	36.8	1.4	65	01	12	16	866	0	0	2	28	0	2.34	-0.60	1.09	07	T	0		7	2	1	
--DIVISIONAL DATA-----> SOUTHWESTERN MOUNTAIN 06			35.9	0.0B											3.22	0.42B									
ABINGDON 3S	47.4	28.0	37.7	1.9	68	27+	11	11+	838	0	0	2	23	0	6.62	2.73	1.35	01	T	0		15	3	2	
BIG STONE GAP	48.4	27.2	37.8	0.9	63	27	13	11+	834	0	0	1	21	0	8.85	3.76	1.17	01	0.0	0		15	9	2	
BLACKSBURG NWSO	45.8	27.4	36.6	2.8	63	01	10	16	874	0	0	4	22	0	4.10	1.15	1.22	07	0.7	T	31	8	3	1	
BURKES GARDEN	43.3	25.3	34.3	2.7	61	18	6	16	947	0	0	4	24	0	5.12	1.32	1.08	01	3.0	3	30	11	4	1	
CHRISTIANSBURG	46.3	27.8	37.0	1.3	64	01	9	16	861	0	0	3	21	0	3.65	0.67	1.22	07	0.3	T	31	10	1	1	
CLINTWOOD 1 W	46.3	26.4	36.3	2.2	67	18	12	16+	879	0	0	4	23	0	7.07	3.41	0.80	01	2.0	2	30	15	7	0	
COPPER HILL	43.7	26.5	35.1		62	18+	7	16	921	0	0	5	23	0	3.05		0.98	07	0.5	1	30	9	1	0	
GALAX WTP	48.5	29.6	39.1	4.9	65	02+	13	16	795	0	0	2	17	0	M 2.68		0.97	07	1.0	1	30	6	2	0	
GRUNDY	46.6	28.8	37.7	2.1	68	27	13	17+	839	0	0	2	21	0	6.36	3.09	1.06	01	0.4	T	30	11	7	1	
JOHN FLANNAGAN LAKE	M	M	M		68	27	13	19+	839E	0	0	1	15	0	MA 6.42		1.08	01	0.1	T	30	5	2	1	
LAFAYETTE 1 NE															M 2.51		1.22	07	M 0.0	0		5	1	1	
LEBANON	48.5	26.8	37.6	2.2	69	01	10	11	840	0	0	3	23	0	5.01	1.59	1.40	01	0.4	0		12	2	1	
NORA 4 SSE	44.5	27.7	36.1	2.2	60	27	9	16	888	0	0	5	23	0	5.56	1.82	0.84	01	2.1	2	30	14	2	0	
PULASKI 2 E	47.1	26.6	36.8	1.4	64	01	10	16+	865	0	0	3	24	0	3.07	0.27	0.74	07	1.0	1	30	6	2	0	

MONTHLY STATION AND DIVISION SUMMARY

STATION	TEMPERATURE (°F)											PRECIPITATION (IN)												
	AVERAGE MAXIMUM	AVERAGE MINIMUM	AVERAGE	DEPARTURE FROM NORMAL	HIGHEST	DATE	LOWEST	DATE	HEATING DEG. DAYS	COOLING DEG. DAYS	NO. OF DAYS				TOTAL	DEPARTURE FROM NORMAL	GREATEST 24 HOURS	DATE	ICE PELLETS, SNOW			NO. OF DAYS		
											MAX		MIN						TOTAL	MAX DEPTH ON GROUND	DATE	.10 OR MORE	.50 OR MORE	1.00 OR MORE
											>=90	<=32	<=32	<=0										
RADFORD 3 N	47.3	29.2	38.2	4.5	62	01	10	16	822	0	0	2	20	0	3.42	0.48	0.83	01	0.4	T	31	8	2	0
RICHLANDS	47.9M	25.1M	36.5M	1.9	69	27+	11	16+	891E	0	0	3	22	0	M 5.38	1.93	1.05	01	M 0.6	M T	31	11	4	1
SALTVILLE 1N	47.9	27.8	37.8	2.4	64	27	10	10	836	0	0	2	22	0	6.50	2.84	1.58	01	0.3	T	31	15	2	1
STAFFORDSVILLE 3 ENE	46.1	27.4	36.7	2.2	63	18	9	16	868	0	0	4	22	0	3.41	0.57	1.10	01	1.5	T	31	7	2	1
WILLIS															M 3.04	1.40	0.07	07	0.1	T	31	6	1	1
WISE 1SE	45.4	27.6	36.5	0.4	64	18	10	16+	878	0	0	3	22	0	7.07	3.26	1.20	18	2.6	2	30	12	7	2
WYTHEVILLE	45.5	26.5	36.0	2.4	61	01	9	16	890	0	0	4	23	0	3.74	0.96	0.82	01	1.8	2	30	11	2	0
--DIVISIONAL DATA----->			36.9	1.6B											5.16	1.89B								

VIRGINIA
201612

DAILY PRECIPITATION (INCHES)

STATION	TOTAL	DAY OF MONTH																														
		01	02	03	04	05	06	07	08	09	10	11	12	13	14	15	16	17	18	19	20	21	22	23	24	25	26	27	28	29	30	31
BEDFORD 4 NW	3.24	0.50	T			0.35	0.08	0.93				0.20	0.22				T		0.02					0.48	0.12	0.05	0.01	T	0.28			
BROOKNEAL	2.99	0.50				0.40	0.10	0.85				0.08	0.32	0.01					0.02					0.53	0.16	0.02						
CHARLOTTESVILLE 2W	2.51	0.39				0.19	0.02	1.10				0.08		T			T	T	0.02					0.26	0.06	0.06		0.01	0.32	T		
CHATHAM	3.12	0.17				0.40	0.07	0.70					0.30						T						0.38	0.20					0.90	
CONCORD 4 SSW	3.62	0.49				0.42	0.03	1.11				0.28	0.20	0.03			0.01		0.02					0.24	0.49	0.06	0.01	0.03	0.20			
DANVILLE RGNL AP	1.62			0.30		0.16	0.82				T	0.02	T					0.07					0.17				T		0.08			
FREE UNION	2.73	0.54				0.14	0.04	1.15				0.07		0.02			0.03	T	T				0.29	0.07	0.06	0.01	0.01	0.30				
HOLCOMB ROCK	F 3.30	0.59				0.35	T	1.24				0.17	0.11	T			T		0.06				0.45	0.27	0.06			0.00 ^L	0.32 ^L			
HUDDLESTON 4 SW	3.53	0.34				0.44	0.04	1.24					0.31	0.01				0.03	0.02				0.36	0.45	0.02	0.04	0.03	0.15	0.05			
LYNCHBURG INTL AP	3.10			0.21		0.16	1.25					0.45	0.01				0.02	T					0.77				0.02	0.21				
MARTINSVILLE FLTR PLT	2.26	0.43				0.38	0.07	0.79					0.15					0.01	0.04						0.28		0.02	0.09				
MEADOWS OF DAN 5 SW	2.47	0.83				0.30	0.18	0.51					0.08					0.03	0.06				0.14	0.10	0.05	0.04		0.15	T			
MONTEBELLO FISH CULTURAL STN	M 3.99	0.77	-	-	-	0.22	0.04	1.18	-	-	-	0.21	0.04	0.02	-	-	-	-	-	0.25	-	-	0.61	0.09	0.05	0.01	-	0.50	-	-	-	
MONTICELLO	M	-	-	-	-	-	-	-	-	-	-	-	-	-	-	-	-	-	-	-	-	-	-	-	-	-	-	-	-	-	-	-
PEDLAR DAM	3.11	0.59				0.27	T	1.10				0.10	T	T			T	T	0.07				0.30	0.29	T	T	T	0.30	0.09	T		
ROCKY MT	2.47		T			0.32	0.11	0.97	0.02			0.05	0.05	0.03				0.03	T				0.15	0.50	0.06	0.02		0.16	T			
SOUTH BOSTON	1.81	0.05				0.42	0.02	0.85				0.02	0.08							0.03				0.26				0.08				
STUART	1.95	0.54				0.26	0.11	0.53										0.06	0.02				0.05	0.15	0.04			0.19				
WOOLWINE	2.95	0.74				0.23	0.38	0.62				0.20	0.06	0.03					0.04				0.32	0.07	0.10	0.02		0.14	T			
NORTHERN 04																																
FRONT ROYAL	3.25	1.30				0.14	0.02	1.08				0.15						0.07	0.05				0.13	0.10				0.15	0.06			
LINCOLN	3.27		1.15					1.17										0.30														0.65
LURAY 5 E	M 3.35	1.73				0.24	0.10	0.71				0.10					0.02						0.24				-	0.19	0.02			
MANASSAS	3.12	0.75				0.17		1.05				0.15					0.10	0.10					0.40	0.10		0.05		0.25				
MT WEATHER	3.82	1.70				0.24		0.97	T			0.12					0.02	0.14	0.07				0.22	0.12	0.04			0.17		0.01		
PIEDMONT RSCH STN	2.10	0.33				0.21	0.06	1.09				0.11		T			0.01		T				0.29									
SOMERSET	2.62	0.39				0.27	0.07	0.97				0.14	0.02	T			0.03	T	0.02				0.32	0.05	0.02	0.01		0.30	0.01			
SPERRYVILLE	M 3.72	1.61				0.25	0.08	0.89				0.16		-			0.06		0.08				0.27	0.03	0.04		T	0.21	0.04	T		
STERLING (RCS)	M 4.16	1.75	0.01			0.30		1.06	-			0.12					0.04	0.12	0.02				0.38	0.13		T		0.21	0.01	0.01		
VIENNA	2.67	0.68				0.31	0.01	0.75				0.12					0.05	0.06					0.38	0.13				0.16	0.01	0.01		
WASHINGTON DULLES INTL AP	2.36	0.07		0.10		0.16	1.03					0.12					0.16	0.04				T	0.48			T		0.20	T	T		
WASHINGTON REAGAN NATL AP	2.61	0.14		0.05		0.18	1.03					0.16					0.26	0.01				T	0.54			T		0.24	T	T		
WINCHESTER	2.48	0.58				0.10	0.01	1.05			T	0.12					0.22	0.03					0.24					0.10	0.03			
WINCHESTER 7 SE	M 0.42	-		0.12		-		-			-					-	0.10	0.06					0.08				0.06					
WOODSTOCK 2 NE	1.50	0.46				0.09		0.82				0.10					0.03	T								T						
CENTRAL MOUNTAIN 05																																
BUENA VISTA	3.02	0.53				0.25	0.01	1.22				0.10	0.02	0.01			0.04	0.02	T				0.21	0.25	T			0.35	0.01			
COVINGTON FLTR PLT	3.97	1.66				0.22	0.05	0.48				0.07	0.07	0.02			0.02	0.02	0.10				0.37	0.18	0.02	0.01	0.18	0.40	0.10			
DALE ENTERPRISE	3.03	1.62				0.12	0.02	0.82				0.05	0.02					0.03	0.02				0.12		0.05	0.01		0.12	0.03			
GATHRIGHT DAM	3.42	1.08				0.23	0.03	0.62		T		0.12	0.05				0.11		0.16				0.36	0.12	0.01	0.02	0.07	0.40	0.04	T		
GLASGOW 1 SE	3.14	0.44				0.28	0.01	1.23				0.16	0.05	0.01			0.02	T	0.10				0.33	0.17	0.03	T	T	0.30	0.01			
HOT SPRINGS	4.13	1.40				0.27	0.07	0.64				0.15	T	0.06			0.02	0.10	0.32				0.40	0.14	0.02	0.02	0.02	0.40	0.08	0.02		

VIRGINIA
201612

DAILY PRECIPITATION (INCHES)

STATION	TOTAL	DAY OF MONTH																														
		01	02	03	04	05	06	07	08	09	10	11	12	13	14	15	16	17	18	19	20	21	22	23	24	25	26	27	28	29	30	31
LEXINGTON	3.67	0.68			0.26	0.04	1.25					0.10	0.03	0.02			0.02	0.10	0.07					0.34	0.15	0.03	0.02	0.05	0.48	0.03	T	
MILLGAP	3.10	0.78		T	0.15	0.51	0.51		0.01	T		0.27	0.27				0.12	0.12	0.27					0.35	0.14	T	0.02	0.03	0.26	0.07	T	
MTN GROVE	M	-			-	0.32	0.30	-	T	-		0.29	-	-	-	-	0.18	-	-				-	-	-	-	-	-	-	-	-	
MUSTOE 1 SW	2.77			0.17	0.03	0.63			T			0.30			T		0.23	0.29						0.52	-	0.06	0.11	0.40	0.03			
NEW CASTLE	3.27	0.75			0.32	0.05	0.91					0.04	0.03	0.02			0.01	0.01	0.15					0.51	0.11	0.05	T	0.03	0.25	0.03	T	
ROANOKE 8 N	M 3.06	0.45			0.33	0.10	1.24					0.07	0.02				T	0.01	0.09					0.40	-	0.03	0.02		0.27	0.03		
ROANOKE INTL AP	2.79			0.20	0.06	1.61						0.12	T				0.02	0.04						0.48	T	T	0.01	0.25	T	T		
STAUNTON WTP	3.26	1.56	0.01	T	0.16	0.03	0.91	0.01				0.12					0.04	T						0.20	0.02	0.02		0.18	T			
WAYNESBORO WTP	2.34	0.54			0.11	T	1.09					0.10		T			T	0.04	0.02					0.20	0.10			0.03	0.11			
SOUTHWESTERN MOUNTAIN 06																																
ABINGDON 3S	6.62	1.35			0.10	0.44	0.28	0.75				0.25	0.45	0.17					0.05	0.48					0.17	0.40	0.20	0.10	1.00	0.38	0.05	
BIG STONE GAP	8.85	1.17	0.02	0.16	0.40	0.64	0.64					1.08	0.24				0.22	0.90	0.60					0.72	0.42	0.05	0.64	0.36	0.55	0.02	0.02	
BLACKSBURG NWSO	4.10	0.65			0.35	0.10	1.22		T	T		0.08	0.03	0.03			T	0.01	0.17					0.36	0.59	0.06	T	0.07	0.31	0.06	0.01	
BURKES GARDEN	5.12	1.08		0.02	0.29	0.15	0.68		T	T		0.24	0.52	0.08	0.02		0.03	0.03	0.32					0.76	0.06	0.03	0.15	0.23	0.35	0.08	T	
CHRISTIANSBURG	3.65	0.47			0.36	0.17	1.22					0.12	0.10					0.03	0.17					0.40	0.17	0.08	0.02	0.01	0.31	0.02	T	
CLINTWOOD 1 W	7.07	0.80		0.04	0.27	0.43	0.57		T	T		0.60	0.33	T	T		0.03	0.78	0.64					0.64	0.36	0.12	0.51	0.29	0.48	0.18	T	
COPPER HILL	3.05	0.40			0.25	0.10	0.98					0.11	0.05	0.05					0.14					0.21	0.38	0.05	0.01		0.27	0.05		
GALAX WTP	M 2.68	0.64			0.25	0.27	0.97					0.02	0.04	0.04					0.08		T			0.12	0.01	0.01	T	0.03	0.20	-		
GRUNDY	6.36	1.06			0.21	0.11	0.88		0.01	0.01		0.62	0.18	0.01				0.87	0.05					0.80	0.16	0.07	0.67	0.64	0.01			
JOHN FLANNAGAN LAKE	MA 6.42	1.08		*	* 0.29 _a	0.07	-		0.01	*	*	0.52 _a	0.34	0.02	0.04		*	*	1.37 _a				*	*	*	* 1.58 _a	0.30	0.65	0.15	-		
LAFAYETTE 1 NE	M 2.51	0.43		T	0.39	0.19	1.22					0.09	0.05	0.04					0.10				-	-	-	-	-	-	-	-		
LEBANON	5.01	1.40		0.02	0.24	0.12	0.66			0.01		0.35	0.39	0.16			0.02	0.05						0.38	0.12	0.06	0.30	0.40	0.32	0.01		
NORA 4 SSE	5.56	0.84		0.04	0.19	0.24	0.71		T	T		0.48	0.31	0.09			T	0.49	0.38					0.49	0.15	0.07	0.39	0.26	0.32	0.11	T	
PULASKI 2 E	3.07	0.72		0.04	0.32	0.30	0.74		T			0.07	0.04	0.06			T	T	0.01					0.40	T	0.07	0.02	0.01	0.26	0.01		
RADFORD 3 N	3.42	0.83			0.37	0.23	0.80					0.16	0.05						0.04	0.11				0.39	0.03	0.08	T	T	0.30	0.03	T	
RICHLANDS	M 5.38	1.05			0.26	0.32	0.42		T	T		0.51		0.23				0.08	0.54					0.80	-	-	0.46	0.32	0.31	0.06	0.02	
SALTVILLE 1N	6.50	1.58		0.04	0.45	0.20	0.84		0.01	T		0.34	0.29	0.12				0.15	0.41					0.42	0.31	0.22	0.48	0.23	0.32	0.09		
STAFFORDSVILLE 3 ENE	3.41	1.10	T		0.25	0.05	0.68	0.02	0.01			0.06	0.12	0.02		T			0.07					0.34	0.22	0.05	0.01	0.08	0.24	0.04	0.05	
WILLIS	M 3.04				0.31	0.19	1.40					0.07	0.05	0.06					T	-				0.39	0.24	0.05		0.04	0.21	0.03		
WISE 1SE	7.07	0.93		0.13	0.24	0.70	0.50		T	T		1.03	0.10				0.05	1.20	0.05					0.78	0.10	0.05	0.76	0.40	0.05			
WYTHEVILLE	3.74	0.82			0.33	0.22	0.69		T			0.15	0.17	0.08					0.05					0.19	0.27	0.06		0.28	0.27	0.16		

VIRGINIA
201612

DAILY TEMPERATURES (°F)

STATION	OB. TIME	MAX/MIN	DAY OF MONTH																															AVERAGE
			01	02	03	04	05	06	07	08	09	10	11	12	13	14	15	16	17	18	19	20	21	22	23	24	25	26	27	28	29	30	31	
VIRGINIA																																		
TIDEWATER 01																																		
DISPUTANTA	07	MAX	75	61	55	51	44	54	49	55	52	41	39	45	60	52	40	39	28	61	74	38	41	52	61	49	50	51	59	65	53	59	45	51.5
		MIN	51	29	27	28	35	41	43	35	24	17	17	24	24	35	16	12	12	28	35	25	20	20	23	23	32	36	43	48	33	29	21	28.6
EMPORIA 1 WNW	08	MAX																																M
		MIN																																M
FREDERICKSBURG SEWAGE	07	MAX	72	60	55	51	51	55	43	54	49	40	38	44	60	60	48		28	63	65	38	39	56	61	48	49	49	56	65	65	53	44	52.0
		MIN	46	30	30	30	30	30	39	32	27	21	21	27	37	35	32	13	15	28	31	21	21	21	23	25	30	30	30	30	30	36	24	28.2
HOLLAND 1 E	08	MAX	71	55	52	48	55	59	56	50	41	40	47	57	55	55	45	40	50	78	50	43	54	62	50	52	53	53	67	59	55	48	48	53.2
		MIN	36	32	33	36	42	45	37	33	27	21	23	34	39	39	23	17	32	43	34	30	25	30	36	31	41	44	45	35	33	31	24	33.3
HOPEWELL	16	MAX	72	61	52	49	51	50	56	53	48	39	44	59	59	50	47	27	51	72	64	40	51		53	50	50	51	67	65	59		48	53.0
		MIN	58	29	35	36	39	42	44	40	28	20	20	21	20	40	27	14	25	25	34	26	21		25	40	36	42	42	41	37		24	32.1
NORFOLK INTL AP	24	MAX	71	55	53	49	52	61	54	49	43	40	48	61	55	47	44	34	52	79	43	42	51	61	47	56	49	51	69	60	57	46	50	52.5
		MIN	50	43	42	43	44	48	38	35	33	31	27	47	44	40	24	22	34	43	36	34	27	31	41	44	41	45	48	39	41	36	25	37.9
NORFOLK SOUTH	24	MAX	70	54	50	47	51	60	53	49	40	38	48	60	55	46	43	33	51	78	41	40	50	59	47	54	47	50	67	58	55	45	48	51.2
		MIN	47	37	39	38	43	47	37	37	32	27	26	45	43	41	22	20	33	41	34	32	26	31	37	42	38	43	48	36	36	34	25	36.0
NORTH	07	MAX	72	61	54	51	44	52	53	53	46	41	39	50	57	48	48	39	38	63	71	37	41	53	61		51	48		64	53	56	44	51.3
		MIN	56	33	33	33	36	41	44	33	29	24	24	28	37	38	38	16	17	35	36	27	24	25	28		27	33		36	37	37	24	32.0
PAINTER 2W	16	MAX	68	54	51	47	50	51	57	47	43	39	43	57	55	48	46	28	49	75	67	41	49	58	50	52	49	55	64	61	55	52	46	51.8
		MIN	54	41	38	34	40	39	45	32	31	30	25	39	37	39	26	21	26	48	34	26	25	28	31	35	32	34	44	39	31	38	25	34.4
STONY CREEK 2 N	08	MAX	69	56	52	44	49	57	52	43	46	61	54	50	43	39	52	75	61	43	54	63	49	51	52	52	67	57	60	49	49	53.4		
		MIN	42	30	30	33	36	41	40	38	26	19	20	24	36	37	19	13	16	30	34	26	21	21	24	25	36	38	44	35	31	31	22	29.6
SUFFOLK LAKE KILBY	24	MAX	70	54	52	46	54	58	58	49	41	40	43	56	53	48	48	31	57	75	42	42	56	61	50	51	52	53	64	57	55	55	47	52.2
		MIN	46	35	34	37	36	45	39	36	29	24	24	42	41	40	22	18	30	42	35	30	26	31	37	37	41	41	45	37	36	32	25	34.6
WAKEFIELD 1NW	24	MAX	69	56	52	44	55	52	58	52	43	41	47	60	54	51	42	30	49	77	40	44	54	63	49	50	54	53	66	56	59	46	48	52.1
		MIN	36	30	28	33	41	43	35	32	22	17	20	42	36	37	15	11	28	40	33	25	30	25	40	36	43	49	32	32	26	21	30.9	
WALKERTON 2 NW	18	MAX	70	56	51	45	53	48	54	52	43	39	44	56	49	49	44	31	56	70	60	41	54	62	56	51	50	54	67	64	54	44	49	52.1
		MIN	37	37	32	30	37	41	32	32	28	25	25	36	36	36	14	12	27	39	31	22	20	37	26	37	31	37	46	34	36	27	23	31.1
WALLACETON LK DRUMMOND	08	MAX	75	65	58	52	50	53	60	60	52	45	44	59	59	55	52		37	68	80	38	47	53	62	53	54	56	62	71	57	59	50	56.2
		MIN	46	38	29	27	32	32	32	24	16	13	11	37	25	31	22		11	27	24	21	15	18	17	26	30	24	30	26	24	20	15	24.8
WALLOPS ISLAND NASA TEST FACIL	24	MAX	69	52	52	46	53	53	52	44	41	40	48	57	47	48	45	28	56	72	38	51	53	58	48	53	49	51	65	51	53	45	49	50.5
		MIN	41	34	38	35	40	41	33	32	28	25	24	41	36	36	18	18	28	38	29	28	27	29	28	39	33	34	48	37	39	31	24	32.6
WARSAW 2 NW	18	MAX	70	60	54		53	49	53	51	47	45		56	56	50	46	28		67	39		48	62						66			M	
		MIN	49	31	31		38	38	41	31	28	23		44	34	36	25	13	26		33	20		33									M	
WEST POINT 2 NW	17	MAX	70	55	52	45	54	48	55	49	45	39	43	56	52	49	44	29	52	72	62	40	53	62	56	49	49	53	66	62	58	50	47	52.1
		MIN	38	31	29	30	39	41	34	34	27	22	25	40	36	35	15	13	27	37	28	23	21	29	27	38	31	39	50	33	32	26	24	30.8
WILLIAMSBURG 2 N	24	MAX	70	56	53	46	54	53	56	52	42	40	46	61	51	50	45	31	51	74	40	43	54	62	50	51	52	53	67	55	59	45	49	52.0
		MIN	45	35	34	35	42	44	36	36	30	24	26	44	39	40	21	18	31	40	33	28	26	33	32	42	37	43	50	35	35	29	24	34.4
EASTERN PIEDMONT 02																																		
AMELIA COURTHOUSE 1	08	MAX	71	63	54	49	42	53	44	55	51	39		46	56	49	49	34	29	62	68	68	40	54	60	47		50	57	68	54	57	44	52.2
		MIN	48	30	29	32	38	39	41	38	26	19		23	22	35	33	14	18	29	33	22	23	29	24	40		34	43	36	32	32	24	30.6
ASHLAND	18	MAX	63	53	50	43	49	44	53	52	42	38	42	56	47	48	39	28	57	65	41	39	53	60	48	50	48	51	66	53	56	42	49	49.2

DAILY TEMPERATURES (°F)

STATION	OB. TIME	MAX/MIN	DAY OF MONTH																														AVERAGE	
			01	02	03	04	05	06	07	08	09	10	11	12	13	14	15	16	17	18	19	20	21	22	23	24	25	26	27	28	29	30		31
			BREMO BLUFF	07	MIN 45 MAX 71	28 62	28	28	37	38	34	33	24	18	23	36	30	30	20	12	25	41	28	21	19	28	22	38	29	39	45	32		33
		MIN 42 MAX 74	25		24	26	35	33	28	23	13	13	21	31	34	27	10	10	25	30	18	16	18	20	18	34	33	38	29	34	28	22	25.3	
CAMP PICKETT	08	MIN 49 MAX 74	30 60	60	49	42	56	56	52	52	39	39	43	58	50	49	38	28	60	69	39	39	56	62	48	51	54	55	67	55	59	44	51.7	
		MIN 49 MAX 74	30 60	29	29	37	40	39	17	17	17	17	26	34	35	37	13	20	26	26	24	24	25	25	25	37	38	42	38	35	31	22	29.2	
CHASE CITY	17	MIN 50 MAX 74	23 60	33	34	40	31	35	35	29	23	14	30	36	38	37	24	24	31	38	29	27	27	21	32	39	44	45	36	33	33	26	32.2	
		MIN 51 MAX 76	31 61	31	35	38	41	34	35	29	20	21	24	36	36	36	18	20	26	36	27	25	30	29	29	39	41	43	39	33	24	31.9		
CLARKSVILLE	07	MIN 51 MAX 64	31 53	31	35	38	41	34	35	29	20	21	24	36	36	36	18	20	26	36	27	25	30	29	29	39	41	43	39	33	24	31.9		
		MIN 34 MAX 70	29 59	34	31	38	40	32	31	25	20	25	39	38	34	11	10	25	35	28	20	21	34	25	38	31	39	43	36	35	26	25	30.1	
CORBIN	09	MIN 46 MAX 70	29 59	29	19	33	37	36	34	19	18	22	25	33	30	29	12	16	27	31	20	21	28	21	25	31	33	40	31	33	30	13	27.5	
		MIN 46 MAX 72	29 68	29	19	33	37	36	34	19	18	22	25	33	30	29	12	16	27	31	20	21	28	21	25	31	33	40	31	33	30	13	27.5	
CROZIER	07	MIN 48 MAX 74	31 64	31	34	39	34	35	25	16	16	16	27	34	35	35	14	15	28	35	24	24	25	40	38	34	43	41	37	33	26	31.0		
		MIN 52 MAX 74	32 64	33	37	39	42	36	36	26	20	22	25	37	37	38	16	20	29	36	26	26	29	29	31	39	39	44	39	33	36	23	32.5	
FARMLVILLE 2 N	07	MIN 51 MAX 74	32 58	28	29	36	38	34	32	27	17	16	25	36	36	34	13	15	25	35	24	23	26	27	30	39	40	42	39	31	32	21	30.1	
		MIN 42 MAX 62	25 54	27	25	36	37	32	29	22	14	18	28	33	26	20	11	25	44	28	17	19	32	20	38	34	41	46	30	31	27	23	28.4	
JOHN H KERR DAM	08	MIN 40 MAX 69	26 60	26	27	29	38	31	30	27	14	14	23	34	28	28	7	12	30	30	17	16	17	18	18	34	37	41	29	26	24	20	25.5	
		MIN 34 MAX 62	31 56	33	36	41	42	38	29	19	23	28	36	36	38	16	16	28	36	28	21	29	25	24	33	34	43	37	36	34	24	22	30.6	
KEYSVILLE 2 S	07	MIN 41 MAX 68	31 55	31	33	39	41	36	36	27	22	26	39	39	36	17	15	26	37	29	23	20	33	24	38	34	42	50	34	33	28	23	31.7	
		MIN 41 MAX 68	31 55	31	33	39	41	36	36	27	22	26	39	39	36	17	15	26	37	29	23	20	33	24	38	34	42	50	34	33	28	23	31.7	
WESTERN PIEDMONT 03																																		
APPOMATTOX	07	MIN 44 MAX 68	33 55	29	32	34	38	33	36	24	19	19	25	37	35	29	13	16	27	31	20	21	31	30	31	34	41	41	36	36	29	23	29.9	
		MIN 42 MAX 72	25 53	28	29	29	31	31	24	16	16	24	32	31	31	16	20	29	36	21	19	20	24	35	35	40	43	32	29	28	19	27.8		
BROOKNEAL	07	MIN 45 MAX 66	38 56	34	32	33	37	37	37	25	22	22	24	39	35	25	14	16	26	28	21	21	38	32	33	37	40	40	39	33	32	25	31.0	
		MIN 45 MAX 66	38 56	34	32	33	37	37	37	25	22	22	24	39	35	25	14	16	26	28	21	21	38	32	33	37	40	40	39	33	32	25	31.0	
CHARLOTTESVILLE 2W	08	MIN 44 MAX 71	26 59	26	30	36	39	29	29	26	15	14	19	32	29	29	14	19	28	37	23	17	18	23	25	36	36	36	36	32	27	19	27.1	
		MIN 44 MAX 71	26 59	26	30	36	39	29	29	26	15	14	19	32	29	29	14	19	28	37	23	17	18	23	25	36	36	36	32	27	19	27.1		
CHATHAM	07	MIN 36 MAX 66	29 55	31	36	40	36	30	35	25	16	19	37	34	34	18	15	27	42	34	23	22	33	26	40	41	45	51	29	31	23	19	30.9	
		MIN 36 MAX 66	29 55	31	36	40	36	30	35	25	16	19	37	34	34	18	15	27	42	34	23	22	33	26	40	41	45	51	29	31	23	19	30.9	
DANVILLE RGNL AP	24	MIN 47 MAX 65	29 58	28	28	30	35	34	30	25	20	21	22	35	28	26	12	16	27	60	64	38	40	55	62	50	48	46	55	67	53	54	40	49.4
		MIN 47 MAX 65	29 58	28	28	30	35	34	30	25	20	21	22	35	28	26	12	16	27	60	64	38	40	55	62	50	48	46	55	67	53	54	40	49.4
FREE UNION	08	MIN 58 MAX 71	47 51	47	41	57	46	56	47	37	37	41	59	50	48	39	27	57	62	40	40	53	59	48	46	50	48	65	52	56	41	44	48.5	
		MIN 33 MAX 71	28 51	27	31	37	35	30	32	23	14	25	37	33	29	15	13	27	39	28	19	21	33	23	36	35	42	45	30	32	26	20	29.0	
LYNCHBURG INTL AP	24	MIN 33 MAX 58	28 51	27	31	37	35	30	32	23	14	25	37	33	29	15	13	27	39	28	19	21	33	23	36	35	42	45	30	32	26	20	29.0	

DAILY TEMPERATURES (°F)

STATION	OB. TIME	MAX/MIN	DAY OF MONTH																															AVERAGE
			01	02	03	04	05	06	07	08	09	10	11	12	13	14	15	16	17	18	19	20	21	22	23	24	25	26	27	28	29	30	31	
MARTINSVILLE FLTR PLT	07	MAX	72	58	55	48	41	57	44	56	47	37	40	45	58	50	49	33	30	54	63	40	42	55	61	48	49	52	53	66	53	59	44	
		MIN	45	27	27	32	37	37	30	29	28	15	14	19	32	28	26	16	19	29	36	18	17	17	22	27	38	44	44	28	27	26	17	
MEADOWS OF DAN 5 SW	07	MAX	66	53	51	45	40	57	42	52	42	34	38	45	57	46	45	30	39	54	55		45	57	57	51	47	49	52	63	51	51		
		MIN	38	32	32	35	36	38	34	34	26	18	20	20	35	33	29	16	19	39	31	24	24	28	29	32	39	44	44	31	31	29		
MONTEBELLO FISH CULTURAL STN	07	MAX	66	49			45	52	41	50	37	31	29	47	51	42	38			62	32	38	52	51	48	53	44	58		61				
		MIN	38	32			25	34	32	27	16	11	12	16	30	30	17			6	15	15	27	19	24	33	32	38		25				
MONTICELLO	07	MAX																																
		MIN																																
ROCKY MT	07	MAX	69	58	52	45	45	56	43	55	45	35	40	50	61	49	46	33	27	54	63	38	43	55	58	48	48	50	54	66	52			
		MIN	45	39	36	36	36	36	31	31	26	17	17	22	36	34	27	16	18	27	33	18	18	18	25	28	40	46	44	37	30			
SOUTH BOSTON	07	MAX	78	65	61	56	49	62	51	62	56	41	40	51	61	57	50	39	31	61	73	48	50			57	55	61	58	71	61			
		MIN	52	35	35	39	43	45	38	38	32	18	18	21	37	38	36	18	19	29	42	33	28	22	33	35	43	46	49	38	35			
STUART	07	MAX	69	69	55	49	41	59	59	58	45	36	43	52	61	49	50	35	37	53	59	42	44	57	62	50	50	50	54	63	55			
		MIN	43	30	30	35	37	39	33	32	26	16	16	20	36	32	30	16	20	37	35	21	20	22	25	28	40	40	41	29	29			
NORTHERN 04 FRONT ROYAL	06	MAX	59	53	49	48	41	55	40	50	46	35	33	42	52	45	45	24	27	63	66	34	36	48	54	42	52	48	63	65	48			
		MIN	48	41	40	29	29	35	35	30	26	25	20	23	30	29	24	11	13	14	26	17	16	17	27	28	36	32	39	18	36			
LINCOLN	07	MAX	59	50	48				48	40	38	36	37	48	43	43	25	28	48	57	46	46	46	48	46	54	46	55	63	46	40			
		MIN	48	36	34				32	27	27	27	27	32	30	23	16	16	25	19	18	18	30	30	30	36	36	37	35	32	32			
LURAY 5 E	08	MAX	60	53	49	48	41	56	38	50	44	36	33	50	57	48	45	20	48	63	63	35	50	55	43	46	52	50	70	50	50			
		MIN	44	39	37	26	29	35	34	28	23	18	17	24	29	29	19	6	16	45 ^s	24	15	16	22	23	29	32	41	41	28	28			
MANASSAS	07	MAX	65	58	53			47	40	50	47	37	35	42	53	46	47	26	28	63	66	35	39	50	59	46	47	51	57	66	50			
		MIN	47	38	39			30		39	30	28	21	23	26	35	32	26	9	13	27	28	19	19	20	28	28	30	31	41	37			
MT WEATHER	07	MAX	57	50	45	43	39	51	37	47	43	32	30	36	49	41	42	19	22	53	58	58	34	44	52	41	50	47	52	62	46			
		MIN	42	36	34	30	31	34	33	35	22	22	21	21	31	30	18	5	10	20	21	18	19	32	29	30	32	34	34	32	30			
PIEDMONT RSCH STN	08	MAX	69	57	53	49	43	54	42	54	45	39	36	42	61	46	46	26	27	61	64	35	39	54	60	45	46	44	55	66	52			
		MIN	45	29	32	30	34	38	36	33	25	21	23	25	37	30	26	12	16	26	27	19	21	31	22	26	33	35	40	32	36			
SOMERSET	08	MAX	67	58	54	51	44	57	42	55	45	39	37	42	63	47	49	27	27	60	66	37	39	54	61	46	48	44	57	66	53			
		MIN	46	29	31	27	30	38	37	30	26	19	21	24	34	28	26	11	15	27	28	16	18	21	20	24	34	37	40	28	28			
SPERRYVILLE	06	MAX	61	56	50	50	43	55	38	53	47	39	36	33		47	47	24	26	56	64	36	37	51	59	45	45	44	53	69	51			
		MIN	45	41	40	31	31	37	32	30	26	27	25	27		29	23	9	14	26	26	16	16	24	25	27	32	35	39	32	27			
STERLING (RCS)	07	MAX	63	55	50	47	44	54	40		47	36	34	42	52	45	45	23	27	60	63	34	37	48	57	46	46	50	56	67	48			
		MIN	45	42	39	33	33	37	38		27	24	20	24	31	30	23	9	9	25	28	17	18	26	25	33	31	34	39	37	30			
VIENNA	07	MAX	64	53	49	44	43	52	40	47	43	34	32	45	50	43	43	24	26	59	62	35	35	46	54	44	45	49	63	63	47			
		MIN	44	38	37	33	32	37	38	30	26	25	25	25	25	31	24	11	12	24	26	17	17	24	29	28	35	32	37	33	33			
WASHINGTON DULLES INTL AP	24	MAX	58	51	48	45	55	41	50	48	37	35	40	53	46	45	34	27	52	63	35	37	48	57	46	47	51	48	67	50	51			
		MIN	44	41	38	30	38	38	29	29	26	22	22	40	32	30	11	9	25	33	28	17	19	29	26	32	32	39	41	31	31			
WASHINGTON REAGAN NATL AP	24	MAX	63	55	51	47	57	46	52	48	41	39	43	56	47	49	40	30	50	67	39	37	48	60	48	48	51	49	68	52	52			
		MIN	47	44	42	38	40	42	37	34	30	26	29	41	40	37	18	17	28	36	31	26	27	35	31	36	35	37	49	37	35			
WINCHESTER	07	MAX	55	53	44	44	42	52	41	49	46	33	32	35	50	44	43	20	27	59	60	35	38	48	53	44	51	50	56	63	50			
		MIN	46	39	37	32	32	35	35	31	26	25	23	23	30	30	19	9	14	27	23	16	16	29	28	28	37	37	38	35	29			
WINCHESTER 7 SE	08	MAX	53	48	48	42	58	41	50	45	35	34	35	52	52	52	22	26	62	62	35	38	47	56	45	52	51	56	64	50				

VIRGINIA
201612

DAILY TEMPERATURES (°F)

STATION	OB. TIME	MAX/MIN	DAY OF MONTH																															AVERAGE
			01	02	03	04	05	06	07	08	09	10	11	12	13	14	15	16	17	18	19	20	21	22	23	24	25	26	27	28	29	30	31	
WOODSTOCK 2 NE	07	MIN	40	36	28	29	33	33	26	26	24	18	23	26	22	5	11	26	23	13	12	20	23	23	36	34	39	29	24	32	18	20		
		MAX	57	52	47	48	46	55	37	51	45	36	34	45	57	46	46	46	32	64	58	62	40	48	55	42	49	51	59	64	52	50		
		MIN	44	41	39	27	27	27	35	28	24	22	19	24	26	26	19	8	12	12	21	15	28	25	26	27	32	32	40	27	25	30		
CENTRAL MOUNTAIN 05 COVINGTON FLTR PLT	07	MAX	55	49	43	45	41	53	43	51	43	30	33	50	54	47	42	22	35	61	58	37	35	51	53	45	48	49	52	58	48			
		MIN	40	38	35	33	33	32	35	29	23	20	20	23	30	30	21	10	13	29	29	22	20	20	23	24	37	43	39	32	28			
		MAX	59	57	49	48	50	55	39	50	44	35	35	41	58	48	29	21	28	54	61	33	41	49	55	45	53	48	49	67	49			
DALE ENTERPRISE	07	MIN	41	37	29	27	28	34	32	27	21	14	15	21	27	28	16	16	16	24	24	14	15	28	19	20	26	26	39	30				
		MAX	56	56	44	41	39	52	42	49	41	28	32	44	51	45	40	20	34	58	58	36	37	46	51	42	50	47	49	57				
		MIN	41	38	35	30	30	36	36	28	22	15	16	23	30	31	18	8	11	26	30	22	22	21	22	24	37	39	40	31				
HOT SPRINGS	07	MAX	58	45	42	39	41	49	41	46	38	27	30	47	49	46	39	17	31	60	57	34	35	45	40	43	50	49	52					
		MIN	38	36	33	29	28	37	33	27	20	14	14	21	29	29	16	7	10	27	26	19	18	24	20	23	34	36						
		MAX	65	53	49	47	40	56	41	53	44	35	35	42	58	49	44	25	27	54	58	37	41	52	56	47	52	49						
LEXINGTON	07	MIN	44	33	33	31	33	34	34	30	24	15	14	23	32	28	24	11	15	27	30	17	19	21	22	35	35							
		MAX	55	43	37	35	42	49	41	48	37	25	28	38	46	46	38	15	30	55	56	38	45	47	45	50	51							
		MIN	39	34	30	21	25	32	32	19	17	7	7	14	24	28	15	3	6	30	25	13	13	19	12	11	28	27						
MILLGAP	06	MAX	50	39	37	36	47	40	47	37	26	28	32	47	45	38	29	20	39	52	35	41	45	46	45	49	44							
		MIN	34	31	26	24	31	32	23	22	18	9	15	27	25	28	3	2	19	27	19	12	18	20	15	31	27							
		MAX	66	52	50	44	44	56	48	53	45	33	39	47	59	47	45	26	28	53	59	42	54	57	47	54	48							
ROANOKE 8 N	07	MIN	46	38	36	35	34	35	38	36	24	18	18	27	37	33	26	13	16	27	26	21	20	31	27	32	40							
		MAX	57	52	45	39	59	47	55	45	34	40	41	62	50	45	41	27	50	62	39	42	57	58	48	56	51							
		MIN	42	39	35	36	37	39	37	31	22	18	26	38	37	37	15	14	27	34	28	21	32	33	28	38	45							
ROANOKE INTL AP	24	MAX	62	49	50	47	40	54	40	51	43	33	34	44	56	47	44	20	32	56	60	35	42	52	54	48	53							
		MIN	40	36	32	28	29	29	31	31	20	16	18	23	35	34	17	9	12	32	26	16	18	32	24	26								
		MAX	65	53	49	46	40	54	38	52	43	33	33	43	57	46	45	24	27	64	62	62	38	52	41	48	56							
STAUNTON WTP	07	MIN	44	31	31	27	25	33	32	30	23	15	14	24	30	28	24	12	14	27	28	17	16	21	20	20	31							
		MAX	65	53	49	46	40	54	38	52	43	33	33	43	57	46	45	24	27	64	62	62	38	52	41	48	56							
		MIN	44	31	31	27	25	33	32	30	23	15	14	24	30	28	24	12	14	27	28	17	16	21	20	20	31							
WAYNESBORO WTP	07	MAX	60	46	48	39	43	51	45	50	42	29	34	52	51	50	40	25	36	68	57	36	40	50	52	60	48							
		MIN	38	26	27	34	34	43	31	31	23	11	11	20	32	29	23	13	16	34	28	27	25	25	25	30	44							
		MAX	60	47	52	42	44	52	53	51	41	32	35	48	54	46	46	46	40	62	55	38	38	46	53	58	47							
SOUTHWESTERN MOUNTAIN 06 ABINGDON 3S	22	MIN	33	25	25	35	35	44	34	33	22	13	13	22	33	31	20	16	17	17	26	21	19	19	26	32								
		MAX	63	48	47	38	39	53	44	49	40	30	35	50	54	49	39	24	31	59	58	36	43	51	52	47	51							
		MIN	39	33	32	31	33	39	36	31	21	15	16	23	32	33	20	10	13	31	24	16	15	31	24	16	15							
BIG STONE GAP	08	MAX	59	40	41	34	43	46	46	41	34	20	28	46	49	45	34	17	45	61	55	35	44	48	46	48	50							
		MIN	34	31	27	27	33	38	32	25	16	8	13	18	30	29	14	6	11	45	21	18	16	24	14	25	43							
		MAX	64	48	44	44	44	53	40	49	40	30	34	49	53	50	38	23	48	57	57	35	42	51	52	48	52							
BLACKSBURG NWSO	07	MIN	38	32	30	30	30	38	34	34	20	14	14	24	34	33	21	9	12	45	24	17	17	29	26	27								
		MAX	58	44	46	40	45	49	48	43	38	25	32	47	52	46	41	23	40	67	66	32	40	49	49	57								
		MIN	35	24	24	33	34	42	30	28	23	12	12	18	32	32	17	12	14	40	26	19	18	22	27	47								
BURKES GARDEN	07	MAX	62	46	42	35	37	50	39	45	37	24	30	47	51	42	36	24	45	62	58	32	40	48	49	45	50							
		MIN	36	31	27	27	28	36	33	32	19	13	12	23	33	30	24	7	9	45	24	16	16	27	25	27								
		MAX	62	46	42	35	37	50	39	45	37	24	30	47	51	42	36	24	45	62	58	32	40	48	49	45	50							
CHRISTIANSBURG	07	MIN	36	31	27	27	28	36	33	32	19	13	12	23	33	30	24	7	9	45	24	16	16	27	25	27								
		MAX	62	46	42	35	37	50	39	45	37	24	30	47	51	42	36	24	45	62	58	32	40	48	49	45	50							
		MIN	36	31	27	27	28	36	33	32	19	13	12	23	33	30	24	7	9	45	24	16	16	27	25	27								
CLINTWOOD 1 W	07	MAX	58	44	46	40	45	49	48	43	38	25	32	47	52	46	41	23	40	67	66	32	40	49	49	57								
		MIN	35	24	24	33	34	42	30	28	23	12	12	18	32	32	17	12	14	40	26	19	18	22	27	47								
		MAX	62	46	42	35	37	50	39	45	37	24	30	47	51	42	36	24	45	62	58	32	40	48	49	45	50							
COPPER HILL	07	MIN	36	31	27	27	28	36	33	32	19	13	12	23	33	30	24	7	9	45	24	16	16	27	25	27								
		MAX	62	46	42	35	37	50	39	45	37	24	30	47	51	42	36	24	45	62	58	32	40	48	49	45	50							
		MIN	36	31	27	27	28	36	33	32	19	13	12	23	33	30	24	7	9	45	24	16	16	27	25	27								
AVERAGE																														25.1				

VIRGINIA
201612

DAILY TEMPERATURES (°F)

STATION	OB. TIME	MAX/MIN	DAY OF MONTH																															AVERAGE
			01	02	03	04	05	06	07	08	09	10	11	12	13	14	15	16	17	18	19	20	21	22	23	24	25	26	27	28	29	30	31	
GALAX WTP	07	MAX	65	65	48	40	44	53	47	54	39	29	38	50	55	45	41	24	47	58	59	41	44	55	53	47	56	50	56	62	56	50	34	
		MIN	38	33	34	33	34	41	39	36	24	14	15	21	35	34	24	13	15	43	29	20	20	26	27	30	44	45	45	30	30	27	20	
GRUNDY	07	MAX	58	46	48	40	44	50	47	45	39	25	39	53	52	46	41	24	49	67	51	34	42	48	50	52	50	54	68	56	47	45		
		MIN	32	27	27	34	34	43	35	29	23	17	18	18	36	36	19	13	13	42	28	26	22	22	26	28	45	45	45	29	31	30	21	
JOHN FLANNAGAN LAKE	07	MAX	58	47			51	50		48	39			52	56	45	41	27				38	47	52				68	59		47			
		MIN	36	29			28	42		30	21			16	35	34	20	13			13	23	23	24				25	29	28	30			
LEBANON	07	MAX	69	47	49	38	47	53	47	48	41	25	34	54	54	50	40	23	49	68	59	32	42	51	51	58	50	58	68	63	52	46		
		MIN	32	24	23	33	34	44	33	30	20	11	10	18	32	32	19	12	14	41	26	24	18	18	22	26	45	47	43	26	25	28	20	
NORA 4 SSE	07	MAX	58	45	47	36	42	47	47	43	39	23	32	46	49	48	48	22	42	58	55	29	35	45	49	54	50	54	60	56	46	43		
		MIN	34	30	29	30	34	40	32	29	16	14	13	28	35	31	14	9	11	38	21	21	23	25	27	31	41	49	50	27	27	25	25	
PULASKI 2 E	07	MAX	64	47	47	38	42	53	45	49	41	27	35	51	53	49	40	23	32	59	59	35	41	54	54	55	55	48	56	60	51	48		
		MIN	37	29	32	30	33	38	37	31	21	10	17	20	31	32	19	10	15	31	15	15	23	26	23	23	33	43	43	30	30	27	21	
RADFORD 3 N	07	MAX	62	49	46	39	49	51	46	48	41	29	36	49	54	51	42	24	55	60	59	36	43	52	52	47	51	48	57	60	49	48		
		MIN	40	36	34	34	34	40	32	29	21	17	18	23	38	32	21	10	15	45	24	18	19	31	28	32	40	43	43	31	30	29	17	
RICHLANDS	07	MAX	69	46	48	37	45	52	49	40	26	34	53	54	51	40	23	44	67	58	36	46	49	50	59			69	60	55	46	32		
		MIN	31	23	23	32	33	43	33	29	21	11	11	22	33	32	19	11	15	40	26	25	22	23	22				27	27	28	17		
SALTVILLE 1N	07	MAX	57	47	50	41	44	54	47	53	43	30	36	50	54	48	44	26	39	54	55	42	42	50	53	59	48	61	64	58	52			
		MIN	34	25	27	34	34	43	33	30	23	10	12	17	30	30	22	13	16	39	28	28	24	29	23	28	42	39	46	28	27	29		
STAFFORDSVILLE 3 ENE	07	MAX	61	48	47	38	44	50	46	47	42	30	35	48	53	49	40	23	31	63	59	36	42	51	52	48	49	48	60	61	48			
		MIN	39	34	33	31	33	41	37	30	21	14	17	21	32	32	20	9	14	30	26	16	16	27	23	25	37	43	43	32	29	27		
WISE 1SE	09	MAX	57	43	48	37	43	48	47	45	37	27	34	48	52	50	38	22	43	64	55	32	35	46	49	57	49	57	62	54	50			
		MIN	33	26	28	31	37	41	33	29	16	10	10	24	32	31	15	10	12	37	21	18	20	32	22	41	45	47	46	29	29	26		
WYTHEVILLE	07	MAX	61	46	46	37	41	52	44	49	39	26	33	49	53	50	39	22	30	60	60	37	43	51	51	52	50	50	53	57	51			
		MIN	37	30	28	30	31	33	35	33	20	11	12	23	33	31	20	9	12	30	25	18	18	24	24	25	39	39	43	30	30	25		

VIRGINIA
201612

SNOWFALL AND SNOW ON GROUND (INCHES)

STATION	DAY OF MONTH																																
	01	02	03	04	05	06	07	08	09	10	11	12	13	14	15	16	17	18	19	20	21	22	23	24	25	26	27	28	29	30	31		
VIRGINIA																																	
TIDEWATER 01																																	
DISPUTANTA																																	
EMPORIA 1 WNW																																	
FREDERICKSBURG SEWAGE																																	
HOLLAND 1 E																																	
HOPEWELL																																	
						-																											
						-																											
NORFOLK INTL AP																																	
NORFOLK SOUTH																																	
NORTH																																	
Painter 2W																																	
STONY CREEK 2 N																																	
SUFFOLK LAKE KILBY																																	
WAKEFIELD 1NW																																	
WALKERTON 2 NW																																	
WALLACETON LK DRUMMOND																																	
WALLOPS ISLAND NASA TEST FACIL																																	
WARSAW 2 NW																																	
WEST POINT 2 NW																																	
WILLIAMSBURG 2 N																																	
EASTERN PIEDMONT 02																																	
ALBERTA 5N																																	
AMELIA COURTHOUSE 1																																	
ASHLAND																																	
BREMO BLUFF																																	
BUCKINGHAM																																	
CAMP PICKETT																																	
CHASE CITY																																	

Snowfall: Includes snow and ice. Values for NWS stations (J index note) are Mid-Mid (LST).

Snow on ground: Includes snow, sleet, ice, and hail. Values for NWS stations (J index note) are observed at 12 UTC (GMT).

Water Equivalent: Given for NWS stations (J index note) only, when snow depth is 2 inches or more, and is measured at 18 UTC (GMT)

VIRGINIA
201612

SNOWFALL AND SNOW ON GROUND (INCHES)

STATION		DAY OF MONTH																															
		01	02	03	04	05	06	07	08	09	10	11	12	13	14	15	16	17	18	19	20	21	22	23	24	25	26	27	28	29	30	31	
CLARKSVILLE	SNOWFALL																																
	SN ON GND																																
CORBIN	SNOWFALL																																
CROZIER	SNOWFALL																																
	SN ON GND																																
FARMVILLE 2 N	SNOWFALL																																
JOHN H KERR DAM	SNOWFALL																																
KEYSVILLE 2 S	SNOWFALL																																
	SN ON GND																																
LOUISA	SNOWFALL																																
PALMYRA 3S	SNOWFALL	-	-	-	-	-	-	-	-	-	-	-	-	-	-	-	-	-	-	-	-	-	-	-	-	-	-	-	-	-	-	-	T
PETERSBURG	SNOWFALL																																
RICHMOND INTL AP	SNOWFALL																																
	SN ON GND																																
WINTERPOCK 4 W	SNOWFALL																																
WESTERN PIEDMONT 03																																	
APPOMATTOX	SNOWFALL																																
	SN ON GND																																
BEDFORD 4 NW	SNOWFALL																																
	SN ON GND																																
BROOKNEAL	SNOWFALL																																
	SN ON GND																																
CHARLOTTESVILLE 2W	SNOWFALL																																
	SN ON GND																																
CHATHAM	SNOWFALL																																
	SN ON GND																																
CONCORD 4 SSW	SNOWFALL																																
	SN ON GND																																
DANVILLE RGNL AP	SNOWFALL																																
	SN ON GND																																
FREE UNION	SNOWFALL																																
HOLCOMB ROCK	SNOWFALL																																
	SN ON GND																																
HUDDLESTON 4 SW	SNOWFALL																																
	SN ON GND																																
LYNCHBURG INTL AP	SNOWFALL																																
	SN ON GND																																
MARTINSVILLE FLTR PLT	SNOWFALL																																
	SN ON GND																																
MEADOWS OF DAN 5 SW	SNOWFALL																																
	SN ON GND																																
MONTEBELLO FISH CULTURAL STN	SNOWFALL																																

Snowfall: Includes snow and ice. Values for NWS stations (J index note) are Mid-Mid (LST).

Snow on ground: Includes snow, sleet, ice, and hail. Values for NWS stations (J index note) are observed at 12 UTC (GMT).

Water Equivalent: Given for NWS stations (J index note) only, when snow depth is 2 inches or more, and is measured at 18 UTC (GMT)

SNOWFALL AND SNOW ON GROUND (INCHES)

STATION		DAY OF MONTH																																		
		01	02	03	04	05	06	07	08	09	10	11	12	13	14	15	16	17	18	19	20	21	22	23	24	25	26	27	28	29	30	31				
MONTICELLO	SNOWFALL																																	T	T	
PEDLAR DAM	SNOWFALL																																	T	T	
	SN ON GND																	T																		
ROCKY MT	SNOWFALL																																	T		
	SN ON GND																																T			
SOUTH BOSTON	SNOWFALL																																			
	SN ON GND																																			
STUART	SNOWFALL																																			
	SN ON GND																																			
WOOLWINE	SNOWFALL																																			
	SN ON GND																																	T	T	
NORTHERN 04																																				
MT WEATHER	SNOWFALL	-	-	-	-	-	-	-	-	-	-	-	-	-	-	-	-	-	-	-	-	-	-	-	-	-	-	-	-	-	-	-	-	-	T	
	SN ON GND	-	-	-	-	-	-	-	-	-	-	-	-	-	-	-	-	-	-	-	-	-	-	-	-	-	-	-	-	-	-	-	-	-		
	WTR EQUIV	-	-	-	-	-	-	-	-	-	-	-	-	-	-	-	-	-	-	-	-	-	-	-	-	-	-	-	-	-	-	-	-	-		
PIEDMONT RSCH STN	SNOWFALL																																			
SOMERSET	SNOWFALL																																			
SPERRYVILLE	SNOWFALL	-	-	-	-	-	-	-	-	-	-	-	-	-	-	-	-	-	-	-	-	-	-	-	-	-	-	-	-	-	-	-	0.1	T	T	
	SN ON GND	-	-	-	-	-	-	-	-	-	-	-	-	-	-	-	-	-	-	-	-	-	-	-	-	-	-	-	-	-	-	-	T	T		
STERLING (RCS)	SNOWFALL					T				T									T													T	T	T		
	SN ON GND																																			
	WTR EQUIV	-	-	-	-	-	-	-	-	-	-	-	-	-	-	-	-	-	-	-	-	-	-	-	-	-	-	-	-	-	-	-	-	-	-	
VIENNA	SNOWFALL																																			
WASHINGTON DULLES INTL AP	SNOWFALL				T														T															T	T	
	SN ON GND																																			
WASHINGTON REAGAN NATL AP	SNOWFALL																																			
	SN ON GND																																			T
WINCHESTER	SNOWFALL	-	-	-	-	-	-	-	-	-	-	-	-	-	-	-	-	0.2	-	-	-	-	-	-	-	-	-	-	-	-	-	-	-	-	-	
	SN ON GND	-	-	-	-	-	-	-	-	-	-	-	-	-	-	-	-	-	-	-	-	-	-	-	-	-	-	-	-	-	-	-	-	-	-	
WINCHESTER 7 SE	SNOWFALL																																			
	SN ON GND																																			
	WTR EQUIV	-	-	-	-	-	-	-	-	-	-	-	-	-	-	-	-	-	-	-	-	-	-	-	-	-	-	-	-	-	-	-	-	-	-	
WOODSTOCK 2 NE	SNOWFALL																																			
CENTRAL MOUNTAIN 05																																				
BUENA VISTA	SNOWFALL																																			
	SN ON GND																																			T
COVINGTON FLTR PLT	SNOWFALL																																			
	SN ON GND																																			1.0
DALE ENTERPRISE	SNOWFALL																																			
	SN ON GND																																			1
	WTR EQUIV	-	-	-	-	-	-	-	-	-	-	-	-	-	-	-	-	-	-	-	-	-	-	-	-	-	-	-	-	-	-	-	-	-	-	
GATHRIGHT DAM	SNOWFALL																																			0.5
	SN ON GND								T																											T

Snowfall: Includes snow and ice. Values for NWS stations (J index note) are Mid-Mid (LST).

Snow on ground: Includes snow, sleet, ice, and hail. Values for NWS stations (J index note) are observed at 12 UTC (GMT).

Water Equivalent: Given for NWS stations (J index note) only, when snow depth is 2 inches or more, and is measured at 18 UTC (GMT)

VIRGINIA
201612

SNOWFALL AND SNOW ON GROUND (INCHES)

STATION		DAY OF MONTH																															
		01	02	03	04	05	06	07	08	09	10	11	12	13	14	15	16	17	18	19	20	21	22	23	24	25	26	27	28	29	30	31	
GLASGOW 1 SE	SN ON GND								T																						T	T	
	SNOWFALL																																
HOT SPRINGS	SN ON GND																T																
	SNOWFALL																														2.0	0.2	
LEXINGTON	SN ON GND																T													2	T		
	SNOWFALL																													T	T		
MILLGAP	SN ON GND																T																
	SNOWFALL	-	-	T	-	-	-	-	-	0.5	0.3	-	-	-	-	T	-	-	-	-	-	-	-	-	-	-	-	-	-	-	-	-	
MTN GROVE	SN ON GND									1	-	T	-	-	-	-	-	-	-	-	-	-	-	-	-	-	-	-	-	-	-	-	
	SNOWFALL	-	-	-	-	-	-	-	-	T	-	-	-	-	-	-	-	-	-	-	-	-	-	-	-	-	-	-	-	-	-	-	
MUSTOE 1 SW	SN ON GND									T	-																						
	SNOWFALL									T	-																						
NEW CASTLE	SN ON GND									T						T																	
	SNOWFALL									T																							
ROANOKE 8 N	SN ON GND																																
	SNOWFALL																																
ROANOKE INTL AP	SN ON GND																																
	SNOWFALL																																
STAUNTON WTP	SN ON GND																																
	SNOWFALL																																
WAYNESBORO WTP	SN ON GND																																
	SNOWFALL																																
	SN ON GND																																
	WTR EQUIV																																
SOUTHWESTERN MOUNTAIN 06																																	
ABINGDON 3S	SNOWFALL																																
	SN ON GND																																
BIG STONE GAP	SNOWFALL																																
	SN ON GND																																
BLACKSBURG NWSO	SNOWFALL																																
	SN ON GND																																
BURKES GARDEN	SNOWFALL																																
	SN ON GND																																
CHRISTIANSBURG	SNOWFALL																																
	SN ON GND																																
CLINTWOOD 1 W	SNOWFALL																																
	SN ON GND																																
COPPER HILL	SNOWFALL																																
	SN ON GND																																
GALAX WTP	SNOWFALL																																
	SN ON GND																																

Snowfall: Includes snow and ice. Values for NWS stations (J index note) are Mid-Mid (LST).

Snow on ground: Includes snow, sleet, ice, and hail. Values for NWS stations (J index note) are observed at 12 UTC (GMT).

Water Equivalent: Given for NWS stations (J index note) only, when snow depth is 2 inches or more, and is measured at 18 UTC (GMT)

VIRGINIA
201612

SNOWFALL AND SNOW ON GROUND (INCHES)

STATION		DAY OF MONTH																															
		01	02	03	04	05	06	07	08	09	10	11	12	13	14	15	16	17	18	19	20	21	22	23	24	25	26	27	28	29	30	31	
GRUNDY	SNOWFALL								0.1																						0.3		
	SN ON GND																														T		
JOHN FLANNAGAN LAKE	SNOWFALL																														0.1		
	SN ON GND																														T		
LAFAYETTE 1 NE	SNOWFALL																							-	-	-	-	-	-	-	-	-	
	SN ON GND																							-	-	-	-	-	-	-	-	-	
LEBANON	SNOWFALL																															0.4	
	SN ON GND																																
NORA 4 SSE	SNOWFALL									T	0.4										0.1										1.6	T	
	SN ON GND								T	T										T										2	T		
PULASKI 2 E	SNOWFALL				T					T																					1.0		
	SN ON GND									T								T												1	T		
RADFORD 3 N	SNOWFALL																														0.4	T	
	SN ON GND																													T	T		
RICHLANDS	SNOWFALL									T	T																				0.6	T	
	SN ON GND									T	T																			T	T		
SALTVILLE 1N	SNOWFALL									T	T																				0.3		
	SN ON GND									T	T																			T	T		
STAFFORDSVILLE 3 ENE	SNOWFALL									T							T														1.0	0.5	
	SN ON GND									T																				1	1		
WILLIS	SNOWFALL																														0.1		
	SN ON GND																													T	T		
WISE 1SE	SNOWFALL									T	T											0.1									2.5		
	SN ON GND																				T									2			
WYTHEVILLE	SNOWFALL									T																					1.8		
	SN ON GND									T																				2	1		

Snowfall: Includes snow and ice. Values for NWS stations (J index note) are Mid-Mid (LST).

Snow on ground: Includes snow, sleet, ice, and hail. Values for NWS stations (J index note) are observed at 12 UTC (GMT).

Water Equivalent: Given for NWS stations (J index note) only, when snow depth is 2 inches or more, and is measured at 18 UTC (GMT)

VIRGINIA
201612

PAN EVAPORATION AND WIND

STATION		DAY OF MONTH																															TOTAL OR AVERAGE
		01	02	03	04	05	06	07	08	09	10	11	12	13	14	15	16	17	18	19	20	21	22	23	24	25	26	27	28	29	30	31	
VIRGINIA EASTERN PIEDMONT 02 JOHN H KERR DAM	WIND	41	17	9	24	14	32	8	19	15	12	24	40	13	18	40	25	58	79	63	17	7	49	8	15	23	17	53	11	32	44	59	886
	EVAP	-	-	-	-	-	-	-	-	-	-	-	-	-	-	-	-	-	-	-	-	-	-	-	-	-	-	-	-	-	-	-	M
	MAX	-	-	-	-	-	-	-	-	-	-	-	-	-	-	-	-	-	-	-	-	-	-	-	-	-	-	-	-	-	-	-	M
	MIN	-	-	-	-	-	-	-	-	-	-	-	-	-	-	-	-	-	-	-	-	-	-	-	-	-	-	-	-	-	-	-	M

Evaporation: Is measured in hundreths of inches.

Wind: Is measured in miles.

Max and Min: The maximum and minimum temperatures (Fahrenheit) of the water in the evaporation pan.

STATION INDEX

STATION	INDEX NO.	DIVISION	COUNTY	LATITUDE	LONGITUDE	ELEVATION (IN FEET)	OBSERVATION TIME AND TABLES				
							LOCAL STD TIME				
							TEMP	PRECIP	EVAP	SPECIAL SEE (NOTES)	
VIRGINIA											
ABINGDON 3S	0021	06	WASHINGTON	36 40	81 58W	1925	22	22			H
ALBERTA 5N	0079	02	BRUNSWICK	36 56	77 54W	376		08			H
ALTAVISTA	0166	03	CAMPBELL	37 7	79 17W	529		07			CH
AMELIA COURTHOUSE 1	0187	02	AMELIA	37 21	77 59W	345	08	08			H
APPOMATTOX	0243	03	APPOMATTOX	37 20	78 50W	850	07	07			H
ASHLAND	0327	02	HANOVER	37 45	77 29W	220	18	18			H
BEDFORD 4 NW	0561	03	BEDFORD	37 23	79 34W	1228		07			CH
BIG STONE GAP	0735	06	WISE	36 52	82 46W	1464	08	08			H
BLACKSBURG NWSO	0766	06	MONTGOMERY	37 12	80 25W	2103	07	07			CH
BREMO BLUFF	0993	02	FLUVANNA	37 43	78 17W	225	07	07			CH
BROOKNEAL	1082	03	CAMPBELL	37 4	78 57W	408	07	07			H
BUCKINGHAM	1136	02	BUCKINGHAM	37 30	78 32W	580		07			H
BUENA VISTA	1159	05	ROCKBRIDGE	37 44	79 22W	840		07			H
BURKES GARDEN	1209	06	TAZEWELL	37 6	81 20W	3068	07	07			H
CAMP PICKETT	1322	02	NOTTOWAY	37 2	77 57W	330	08	08			CH
CHARLOTTESVILLE 2W	1593	03	ALBEMARLE	38 2	78 31W	866	08	08			H
CHASE CITY	1606	02	MECKLENBURG	36 47	78 29W	510	17	17			H
CHATHAM	1614	03	PITTSYLVANIA	36 49	79 25W	651	07	07			CH
CHRISTIANSBURG	1692	06	MONTGOMERY	37 8	80 24W	2100	07	07			H
CLARKSVILLE	1746	02	MECKLENBURG	36 37	78 33W	330	07	07			H
CLINTWOOD 1 W	1825	06	DICKENSON	37 9	82 29W	1780	07	07			H
CONCORD 4 SSW	1955	03	CAMPBELL	37 17	78 58W	815		07			H
COPPER HILL	1999	06	FLOYD	37 5	80 9W	2690	07	07			H
CORBIN	2009	02	CAROLINE	38 12	77 22W	220	09	09			H
COVINGTON FLTR PLT	2044	05	ALLEGHANY	37 49	79 59W	1230	07	07			CH
CROZIER	2142	02	GOOCHLAND	37 40	77 53W	350	07	07			H
DALE ENTERPRISE	2208	05	ROCKINGHAM	38 27	78 56W	1358	07	07			CH
DANVILLE RGNL AP	2250	03	PITTSYLVANIA	36 34	79 20W	571	24	24			CH
DISPUTANTA	2400	01	PRINCE GEORGE	37 7	77 12W	15	07	07			H
EMPORIA 1 WNW	2790	01	GREENSVILLE	36 42	77 34W	100	08	08			H
FARMVILLE 2 N	2941	02	CUMBERLAND	37 20	78 23W	450	07	07			H
FREDERICKSBURG SEWAGE	3204	01	FREDERICKSBURG	38 17	77 27W	15	07	07			H
FREE UNION	3213	03	ALBEMARLE	38 5	78 35W	590	08	07			H
FRONT ROYAL	3229	04	WARREN	38 54	78 11W	930	06	06			CH
GALAX WTP	3272	06	CARROLL	36 39	80 55W	2360	07	07			CH
GATHRIGHT DAM	3310	05	ALLEGHANY	37 57	79 57W	1770	07	07			CH
GLASGOW 1 SE	3375	05	ROCKBRIDGE	37 37	79 26W	737		07			H
GRUNDY	3640	06	BUCHANAN	37 17	82 5W	1170	07	07			H
HOLCOMB ROCK	4039	03	BEDFORD	37 33	79 24W	900		07			H
HOLLAND 1 E	4044	01	SUFFOLK	36 41	76 46W	80	08	08			H
HOPEWELL	4101	01	PRINCE GEORGE	37 18	77 17W	40	16	16			H
HOT SPRINGS	4128	05	BATH	37 60	79 50W	2236	07	07			H
HUDDLESTON 4 SW	4148	03	BEDFORD	37 8	79 32W	898		07			H
JOHN FLANNAGAN LAKE	4410	06	DICKENSON	37 14	82 21W	1460	07	07			H
JOHN H KERR DAM	4414	02	MECKLENBURG	36 36	78 18W	250	08	08	08		CH
KEYSVILLE 2 S	4568	02	CHARLOTTE	37 1	78 29W	625	07	07			H
LAFAYETTE 1 NE	4676	06	MONTGOMERY	37 14	80 12W	1320		07			H
LEBANON	4777	06	RUSSELL	36 54	82 2W	1912	07	07			H
LEXINGTON	4876	05	ROCKBRIDGE	37 47	79 26W	1097	07	07			H
LINCOLN	4909	04	LOUDOUN	39 5	77 42W	500	07	07			H
LOUISA	5050	02	LOUISA	38 3	78 0W	420	18	18			H
LURAY 5 E	5096	04	PAGE	38 40	78 22W	1400	08	08			H
LYNCHBURG INTL AP R	5120	03	CAMPBELL	37 19	79 12W	940	24	24			HJ
MANASSAS	5204	04	MANASSAS	38 44	77 30W	245	07	07			H
MARTINSVILLE FLTR PLT	5300	03	HENRY	36 42	79 52W	760	07	07			H
MEADOWS OF DAN 5 SW	5453	03	PATRICK	36 40	80 27W	2225	07	07			H
MILLGAP	5595	05	HIGHLAND	38 18	79 43W	2421	06	06			CH
MONTEBELLO FISH CULTURAL STN	5690	03	NELSON	37 51	79 8W	2667	07	07			H
MONTICELLO	5700	03	ALBEMARLE	38 1	78 27W	758	07	07			H
MT WEATHER	5851	04	LOUDOUN	39 4	77 53W	1659	07	07			H
MTN GROVE	5756	05	BATH	38 6	79 53W	1775		07			H
MUSTOE 1 SW	5880	05	HIGHLAND	38 20	79 40W	2380	24	24			H
NEW CASTLE	6012	05	CRAIG	37 31	80 6W	1258		07			H
NORA 4 SSE	6125	06	DICKENSON	37 1	82 19W	2650	07	07			H
NORFOLK INTL AP R	6139	01	NORFOLK (CITY)	36 54	76 12W	30	24	24			HJ

STATION INDEX

STATION	INDEX NO.	DIVISION	COUNTY	LATITUDE	LONGITUDE	ELEVATION (IN FEET)	OBSERVATION TIME AND TABLES			
							LOCAL STD TIME			
							TEMP	PRECIP	EVAP	SPECIAL SEE (NOTES)
NORFOLK SOUTH	6147	01	NORFOLK (CITY)	36 52	76 14W	100	24	24		H
NORTH	6161	01	MATHEWS	37 26	76 26W	10	07	07		H
PAINTER 2W	6475	01	ACCOMACK	37 35	75 49W	30	16	16		CH
PALMYRA 3S	6491	02	FLUVANNA	37 49	78 16W	410	06	06		H
PEDLAR DAM	6593	03	AMHERST	37 40	79 17W	1024		07		CH
PETERSBURG	6656	02	PETERSBURG	37 14	77 24W	15	08	08		H
PIEDMONT RSCH STN	6712	04	ORANGE	38 14	78 7W	520	08	08		CH
PULASKI 2 E	6955	06	PULASKI	37 3	80 47W	1850	07	07		CH
RADFORD 3 N	6999	06	PULASKI	37 12	80 35W	1800	07	07		H
RICHLANDS	7174	06	TAZEWELL	37 6	81 48W	1910	07	07		H
RICHMOND INTL AP R	7201	02	HENRICO	37 30	77 19W	164	24	24		HJ
ROANOKE 8 N	7278	05	ROANOKE	37 22	79 58W	1190	07	07		H
ROANOKE INTL AP R	7285	05	ROANOKE	37 19	79 58W	1175	24	24		HJ
ROCKY MT	7338	03	FRANKLIN	36 59	79 54W	1315	07	07		CH
SALTVILLE 1N	7506	06	SMYTH	36 53	81 46W	1733	07	07		H
SOMERSET	7904	04	ORANGE	38 15	78 16W	510	08	08		H
SOUTH BOSTON	7925	03	HALIFAX	36 42	78 53W	329	07	07		H
SPERRYVILLE	7985	04	RAPPAHANNOCK	38 39	78 14W	750	06	06		H
STAFFORDSVILLE 3 ENE	8022	06	GILES	37 16	80 43W	1950	07	07		CH
STAUNTON WTP	8062	05	AUGUSTA	38 10	79 5W	169	08	08		CH
STERLING (RCS)	8084	04	LOUDOUN	38 59	77 29W	288	07	07		H
STONY CREEK 2 N	8129	01	SUSSEX	36 58	77 24W	105	08	08		H
STUART	8170	03	PATRICK	36 38	80 15W	1375	07	07		H
SUFFOLK LAKE KILBY	8192	01	SUFFOLK	36 44	76 36W	22	24	24		H
VIENNA	8737	04	FAIRFAX	38 54	77 16W	418	07	07		H
WAKEFIELD 1NW	8800	01	SUSSEX	36 59	77 0W	113	24	24		CH
WALKERTON 2 NW	8829	01	KING AND QUEEN	37 45	77 2W	50	18	18		H
WALLACETON LK DRUMMOND	8837	01	CHESAPEAKE	36 36	76 26W	20	08	08		H
WALLOPS ISLAND NASA TEST FACIL R	8849	01	ACCOMACK	37 56	75 28W	46	24	24		HJ
WARSAW 2 NW	8894	01	RICHMOND	37 59	76 47W	140	18	18		H
WASHINGTON DULLES INTL AP R	8903	04	LOUDOUN	38 56	77 28W	290	24	24		HJ
WASHINGTON REAGAN NATL AP R	8906	04	ARLINGTON	38 51	77 2W	10	24	24		HJ
WAYNESBORO WTP	8941	05	WAYNESBORO	38 5	78 53W	1270	07	07		H
WEST POINT 2 NW	9025	01	KING WILLIAM	37 34	76 48W	20	17	17		H
WILLIAMSBURG 2 N	9151	01	YORK	37 18	76 42W	70	24	24		CH
WILLIS	9169	06	FLOYD	36 55	80 30W	2810		07		CH
WINCHESTER	9181	04	FREDERICK	39 11	78 9W	720	07	07		H
WINCHESTER 7 SE	9186	04	FREDERICK	39 11	78 7W	680	08	08		H
WINTERPOCK 4 W	9213	02	CHESTERFIELD	37 19	77 39W	300		07		H
WISE 1SE	9215	06	WISE	36 58	82 33W	2564	09	09		CH
WOODSTOCK 2 NE	9263	04	SHENANDOAH	38 54	78 28W	675	07	07		H
WOOLWINE	9272	03	PATRICK	36 47	80 17W	1500		07		H
WYTHEVILLE	9301	06	WYTHE	36 58	81 5W	2458	07	07		H

REFERENCE NOTES

STATION NAMES: Name of the city, town or locality. Figures and letters following the station names indicate the distance in miles and direction from the post office or town community center.

DIVISIONS: Areas within a state of similar climatological characteristics. Division averages are calculated using data from stations that record temperature and/or precipitation. Station Precipitation totals flagged with an 'F' or 'M' are excluded from the Divisional Average calculations of precipitation. Stations with monthly Temperature averages flagged with an 'F' or 'M' are included in the Divisional Average if there are no more than 9 flagged or missing daily values in the month, else they are excluded from the divisional average for temperature.

NORMALS: The average value of the meteorological element over a time period. Effective 1 January 2012, the averaging period for station departures is 1981 to 2010. The normals for National Weather Service localities have been adjusted so as to be representative for the current observation site.

The January 2011 through December 2015 publications incorrectly state the computation of divisional departures. Climate Division departures have been, and continue to be, computed from 1971-2000 Normals, not 1981-2010 as stated. Station departures are accurately described as departures from 1981-2010.

MONTHLY DEGREE DAY TOTALS: One heating (cooling) degree day is accumulated for each whole degree that the daily mean temperature is below (above) 65 degrees Fahrenheit.

PRECIPITATION: Values shown in hundredths of inches are water equivalent totals, i.e., total of liquid and melted frozen precipitation. In the "Monthly Summarized Data" table the total snow and sleet values shown in tenths of inches are unmelted amounts. The max depth on ground values of snow and sleet shown in whole inches are cumulative unmelted amounts. The number of days with .10, .50, 1.00 or more refers to water equivalents.

PRECIPITATION QUALITY CONTROL: The NCEI quality control process may flag precipitation data that are spatially inconsistent, exceed climatological limits, or are inconsistent with prevailing weather patterns.

TEMPERATURE: Original temperature values are given in the "Daily Temperature" table. Summary temperature information (averages, departures, extremes, monthly degree day totals) is based on the values labeled MAX/MIN.

WIND: (As shown in the "Evaporation and Wind" table) the total wind movement in miles over the evaporation pan as determined by an anemometer recorder located 6-8 inches above the pan.

SYMBOLS AND LETTERS USED IN THE STATION INDEX TABLE

C Station is equipped with recording rain gage (R) but values in this bulletin are from a non-recording rain gage unless indicated by an R.
G Observations appear in the "Soil Temperatures" table.
H Observations appear in the "Snowfall and Snow on the Ground" table.
J Station also published as a Local Climatological Data publication.
VAR Observation time varies.
SR / SS Observation time near sunrise / Observation time near sunset, respectively.

SYMBOLS AND LETTERS USED IN THE DATA TABLES

(DAILY DATA ARE FOR THE 24 HOURS IMMEDIATELY PRECEDING OBSERVATION TIME.)

BLANK Entries in the "Monthly Summarized Data" table indicate no record.

BLANK Entries in the "Daily Precipitation" and "Snowfall and Snow on the Ground" tables indicate zero.

BLANK Entries in the "Daily Temperature" table indicate a missing record

- No record. Data not recorded or not received in time for publication.

+ Precipitation or temperature extremes occurred on one or more previous dates during the month.

* Rain gage not read. Precipitation is included in the amount following the asterisks.

Time distribution may not be known. A * preceding the monthly total indicates precipitation amount is being carried forward to next month's total, and may include amounts from the previous month(s).

a As a subscript, indicates accumulated total.

A Amount of precipitation is the total of observer's entries for the current month. It may include precipitation that occurred during the previous month. Refer to earlier bulletin to determine date of last

reading. (Hawaii stations)

B Divisional Departure from normals are computed using 1971-2000 normals.

E Normalized HDD/CDD Calculation. E is appended to the HDD/CDD Calculation when 1-9 individual daily TMAX and/or TMIN values are missing and a Normalized HDD/CDD Calculation is provided. M appears alone if 10 or more daily values are missing.

F Monthly calculation flagged value. F is appended to average and/or total values computed which exclude one or more daily data values that have been flagged by the GHCN-Daily Dataset

M Insufficient or partial data. M is appended to average and/or total values computed with 1-9 daily values missing. M appears alone if 10 or more daily values are missing, (8 or more for wind and evaporation).

N Indicates snow fall or Snowdepth totals are computed with one or more missing days.

R Amounts from recording rain gage.

T Trace. An amount too small to measure.

SEASONAL TABLES: Monthly and seasonal snowfall and heating degree days for the 12 months ending with the June data are published in the July issue of this bulletin. Cooling degree days for the calendar year are published in the "Climatological Data Annual Summary."

Information concerning the history of changes in locations, exposure, etc. of substations is kept on file at the National Centers for Environmental Information. Historical information of regular National Weather Service Offices may be obtained from the "Local Climatological Data" annual publication. The contents of this publication may be reprinted or otherwise used freely, with proper credit to the National Centers For Environmental Information. The data are also available digitally.

Effective with the January 2011 Data-Month, COOP Observer Names are no longer included in the Monthly and Annual Climatological Data Publications. This information is not published to ensure the privacy of personal information pursuant to Section 208 of the E-Government Act of 2002 (44 USC 3601).

As of the 2011 Data-Year, Station and Climate Division Maps are no longer being included in the CD Publications. NCEI's Products Branch provides updated Station Maps for various data networks via the Historical Observing Metadata Repository: <http://www.ncdc.noaa.gov/homr>.

The GHCN-Daily Quality Control Flags shown below are displayed as superscripts with the data. For more information on Global Historical Climatology Network - Daily and flags, see: <http://www.ncdc.noaa.gov/oa/climate/ghcn-daily/> and Comprehensive Automated Quality Assurance of Daily Surface Observations. Durre, Imke, Matthew J. Menne, Byron E. Gleason, Tamara G. Houston, Russell S. Vose, 2010: J. Appl. Meteor. Climatol., 49, 16151633. doi: 10.1175/2010JAMC2375.1

Blank = Passed All checks	N = failed naught check
D = failed duplicate check	O = failed climatological outlier check
G = failed gap check	R = failed lagged range check
I = failed internal consistency check	S = failed spatial consistency check
K = failed streak/frequent-value check	T = failed temporal consistency check
L = failed check on length of multiday period	W = temperature too warm for snow
M = failed megaconsistency check	X = failed bounds check
	Z = flagged as a result of an official Datzilla investigation

Beginning with the January 2013 CD Publication, monthly mean temperature calculations have changed to the National Data Stewardship Team standard. Monthly maximum and minimum temperatures are not rounded until after the monthly mean temperature is calculated. This is the most accurate outcome, but may be slightly different from the mean derived from rounded monthly maximum and minimum.

The climate division temperature and precipitation values in this publication are based on simple averages from the current set of NWS-Designated Open and Published COOP and First Order Sites within each division. These values differ from those found in NCEI's nClimDiv product. Beginning in February 2014, the nClimDiv product is used by NCEI's Monitoring Branch and in its monthly climate reports. For more details on nClimDiv, please go to <http://www.ncdc.noaa.gov/monitoring-references/maps/us-climate-divisions.php>.

Effective January 2016, Alaska's Climate Divisions are updated to reflect the 13 climate divisional boundaries established by University of Alaska-Fairbanks, NWS, NCEI, Oregon State University, and University of Nebraska-Lincoln. For more details regarding the updated Alaska Climate Divisions, see: <http://journals.ametsoc.org/doi/pdf/10.1175/JAMC-D-11-0168.1> (Bienek et al., 2012).

These and other publications are available from the National Centers for Environmental Information

Hourly Precipitation Data

This publication contains hourly precipitation amounts obtained from recording rain gages located at National Weather Service, Federal Aviation Administration, and cooperative observer stations. Published data are displayed in inches and tenths or inches and hundredths at local standard time. HPD includes maximum precipitation for nine (9) time periods from 15 minutes to 24 hours, for selected stations.

Climatological Data

Monthly editions contain station daily maximum and minimum temperatures and precipitation. Some Stations provide daily snowfall, snow depth, evaporation, and soil temperature data. Each edition also contains monthly summaries for heating and cooling degree days (65 degree F base). The July issue contains a recap of monthly heating degree days and snow data for the preceding July through June.

The Annual issue contains monthly and annual averages of temperature, precipitation, temperature extremes, freeze data, soil temperatures, evaporation, and a recap of monthly cooling degree days.

Storm Data

Monthly issues contain a chronological listing, by states, of occurrences of storms and unusual weather phenomena. Reports contain information on storm paths, deaths, injuries, and property damage. An "Outstanding storms of the month" section highlights severe weather events with photographs, illustrations, and narratives. The December issue includes annual tornado, lightning, flash flood, and tropical cyclone summaries.

Monthly Climatic Data for the World

This publication contains monthly means for temperature, pressure, precipitation, vapor pressure, and sunshine for approximately 2,000 surface data collection stations worldwide and monthly mean upper air temperatures, dew point depressions, and wind velocities for approximately 500 observing sites.

Local Climatological Data

LCD publications summarize temperature, relative humidity, precipitation, cloudiness, wind speed and direction observations for several hundred cities in the U.S. and its territories. Each monthly publication also contains 3 hourly weather observations for that month and a hourly summary of precipitation. Annual LCD publications contain a summary of the past calendar year as well as historical averages and extremes.

For Information Call:

(828) 271-4800 Option 2

(828) 271-4010 (TDD)

(828) 271-4876 (Fax)

NOAA National Centers for Environmental Information
Attn: Customer Engagement Branch
151 Patton Avenue
Asheville, NC 28801-5001

Customer Services Number: (828) 271-4800, option 2
TDD : (828) 271-4010
Fax number: (828) 271-4876

NCEI now offers free online access to the *Climatological Data* publication.
Go to : www.ncdc.noaa.gov and choose Most Popular.