



CLIMATOLOGICAL DATA

VIRGINIA

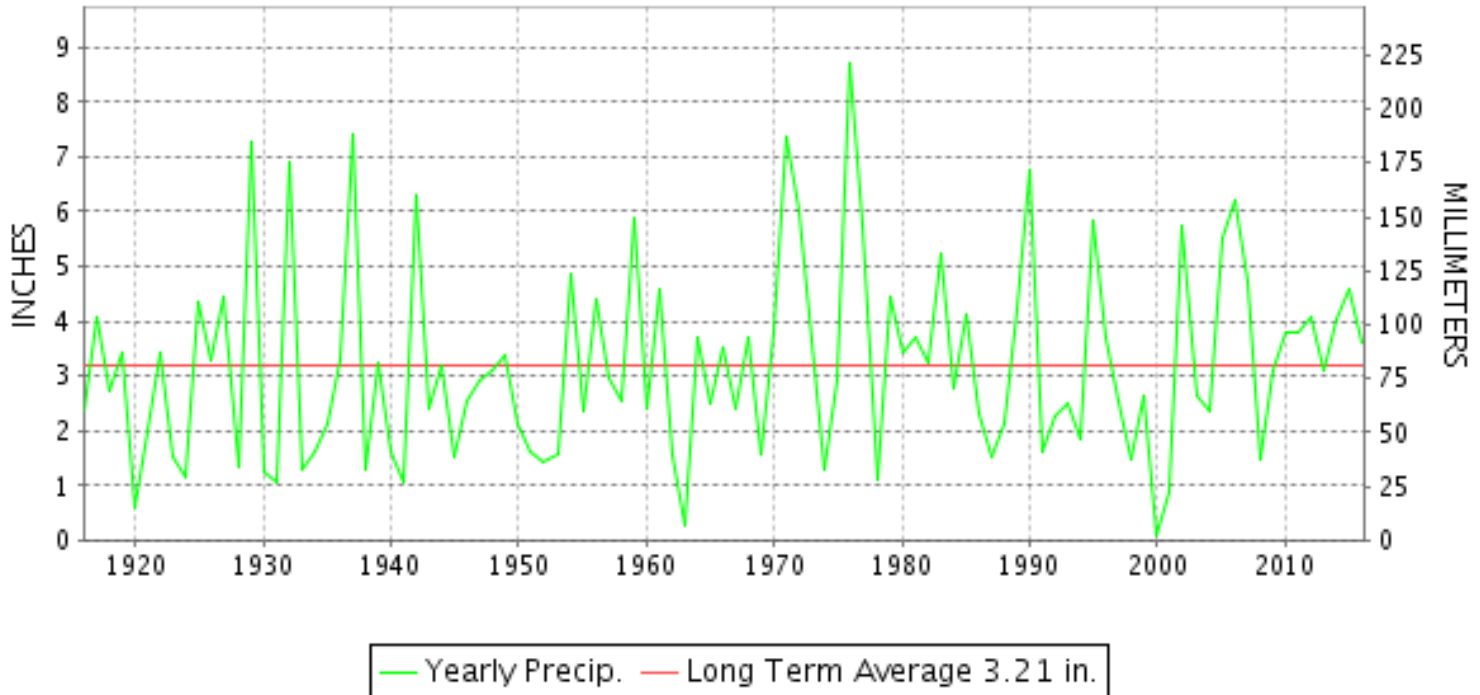
OCTOBER 2016

VOLUME 126 NUMBER 10

ISSN 0364-5630

GHCND Ver: 3.22-upd-2017030206

OCTOBER PRECIPITATION BY YEAR



TEMPERATURE AND PRECIPITATION EXTREMES

VIRGINIA

HIGHEST TEMPERATURE	90	OCTOBER 21++	2 STATIONS
LOWEST TEMPERATURE	24	OCTOBER 27	BURKES GARDEN
GREATEST TOTAL PRECIPITATION	12.09		NORFOLK SOUTH
LEAST TOTAL PRECIPITATION	0.65		WASHINGTON DULLES INTL AP
GREATEST 1 DAY PRECIPITATION	11.00	OCTOBER 10	WALLACETON LK DRUMMOND

"I certify that this is an official publication of the National Oceanic and Atmospheric Administration (NOAA) It is compiled using information from weather observing sites supervised by NOAA/National Weather Service and received at the National Centers for Environmental Information(NCEI), Asheville, North Carolina 28801."

Director
National Centers for Environmental Information

noaa

National
Oceanic and
Atmospheric Administration

National
Environmental Satellite, Data
and Information Service

National
Centers for Environmental Information
Asheville, North Carolina

VIRGINIA
201610

MONTHLY STATION AND DIVISION SUMMARY

STATION	TEMPERATURE (°F)											PRECIPITATION (IN)												
	AVERAGE MAXIMUM	AVERAGE MINIMUM	AVERAGE	DEPARTURE FROM NORMAL	HIGHEST	DATE	LOWEST	DATE	HEATING DEG. DAYS	COOLING DEG. DAYS	NO. OF DAYS				TOTAL	DEPARTURE FROM NORMAL	GREATEST 24 HOURS	DATE	ICE PELLETS, SNOW			NO. OF DAYS		
											MAX		MIN						TOTAL	MAX DEPTH ON GROUND	DATE	.10 OR MORE	.50 OR MORE	1.00 OR MORE
											>=90	<=32	<=32	<=0										
RICHMOND INTL AP	73.0	51.7	62.4	2.7	87	19	37	23	136	62	0	0	0	0	4.24	1.26	3.31	08	0.0	0		2	2	1
WINTERPOCK 4 W														M 4.74		3.92	09	M				4	2	1
--DIVISIONAL DATA-----> WESTERN Piedmont 03			61.3	4.4B										4.16	0.31B									
ALTAVISTA														4.13		2.29	09	0.0	0			4	2	2
APPOMATTOX	70.7M	50.5M	60.6M	3.8	86	20	40	23+	161E	32E	0	0	0	0	5.70	1.94	2.72	09	0.0	0		4	2	2
BEDFORD 4 NW														3.38		1.61	01	0.0	0			5	2	2
BROOKNEAL	72.3	47.6	60.0	8.5	84	20	34	24+	177	27	0	0	0	0	5.47	1.86	3.54	09	0.0	0		4	3	2
CHARLOTTESVILLE 2W	70.5	50.8	60.7	2.4	88	20	41	27+	170	42	0	0	0	0	2.34	-1.40	0.91	01	0.0	0		4	2	0
CHATHAM	71.5	46.1	58.8	3.8	85	20	33	24	206	21	0	0	0	0	4.56	1.27	2.63	09	0.0	0		4	2	2
CONCORD 4 SSW														3.82		2.44	09	0.0	0			4	2	1
DANVILLE RGNL AP	73.7	49.1	61.4	1.9	86	19	36	23	136	34	0	0	0	0	5.01	1.47	3.76	08	0.0	0		2	2	2
FREE UNION	70.8M	48.5M	59.7M		86	20	36	12+	189E	25E	0	0	0	0	2.53		1.27	01	0.0	0		5	2	1
HOLCOMB ROCK														M 1.45		1.45	01	0.0	0			1	1	1
HUDDLESTON 4 SW														6.43		2.81	01	0.0	0			4	3	3
LYNCHBURG INTL AP	71.6	49.8	60.7	4.5	87	19	38	26	161	34	0	0	0	0	1.73	-1.38	1.30	08	0.0	0		2	1	1
MARTINSVILLE FLTR PLT	73.4	46.3	59.8	4.0	87	20	34	26	179	26	0	0	0	0	3.69	0.39	1.88	09	0.0	0		3	3	2
MEADOWS OF DAN 5 SW	71.9	47.5	59.7		84	21	37	26+	170	12	0	0	0	0	0.98		0.65	08	0.0	0		3	1	0
MONTEBELLO FISH CULTURAL STN	M	M	M		84	21	31	12+	295E	8E	0	0	2	0	M				M					
MONTICELLO	M	M	M								0	0	0	0	M				0.0	0				
PEDLAR DAM														1.65		1.04	08	0.0	0			3	1	1
ROCKY MT	72.1	47.0	59.6	3.7	87	20	35	27	185	23	0	0	0	0	4.89	1.71	2.96	08	0.0	0		4	3	1
SOUTH BOSTON	74.9	49.8	62.3	5.1	87	20	37	23	131	56	0	0	0	0	6.25	2.77	3.70	09	0.0	0		4	3	2
STUART	74.9	48.0	61.5	3.8	86	20	35	27+	133	30	0	0	0	0	2.00	-1.32	0.84	01	0.0	0		4	2	0
WOOLWINE														4.24		3.29	08	0.0	0			4	2	1
--DIVISIONAL DATA-----> NORTHERN 04			60.4	4.1B										3.82	0.06B									
FRONT ROYAL	68.5	48.1	58.3	2.2	84	20+	35	27	224	28	0	0	0	0	2.12	-1.03	0.90	01	0.0	0		5	2	0
LINCOLN	69.1	47.4	58.2	3.9	84	19	32	27+	223	22	0	0	2	0	M				0.0	0				
LURAY 5 E	70.0	46.4	58.2	1.7	85	20	32	26	225	23	0	0	1	0	1.22	-1.81	0.41	08	0.0	0		4	0	0
MANASSAS	71.0M	48.5M	59.8M	3.4	87	21	33	27	188E	34E	0	0	0	0	A 1.15		0.40	01	0.0	0		5	0	0
MT WEATHER	65.6	48.2	56.9	2.2	82	20+	38	27+	273	29	0	0	0	0	1.26	-2.17	0.57	01	0.0	0		4	1	0
PIEDMONT RSCH STN	70.2	48.7	59.5	2.8	86	20	37	26+	194	30	0	0	0	0	A 1.17	-2.25	0.06	28	M			0	0	0
SOMERSET	71.0	46.6	58.8	3.1	89	20	34	27+	216	32	0	0	0	0	1.15	-2.40	0.36	01	0.0	0		3	0	0
SPERRYVILLE	71.8M	47.8M	59.8M	3.9	89	20	35	26	187E	34E	0	0	0	0	M 0.95	-2.61	0.52	09	0.0	0		2	1	0
STERLING (RCS)	70.4	47.5	58.9	3.7	86	20	32	26	210	31	0	0	1	0	0.83	-2.76	0.30	09	0.0	0		3	0	0
VIENNA	67.8	47.5	57.7	2.7	84	20	33	27+	243	23	0	0	0	0	0.95	-2.56	0.34	22	0.0	0		4	0	0
WASHINGTON DULLES INTL AP	70.7	48.2	59.4	3.4	87	19	30	26	205	39	0	0	1	0	0.65	-2.60	0.20	08+	0.0	0		3	0	0

VIRGINIA
201610

MONTHLY STATION AND DIVISION SUMMARY

STATION	TEMPERATURE (°F)										PRECIPITATION (IN)													
	AVERAGE MAXIMUM	AVERAGE MINIMUM	AVERAGE	DEPARTURE FROM NORMAL	HIGHEST	DATE	LOWEST	DATE	HEATING DEG. DAYS	COOLING DEG. DAYS	NO. OF DAYS				TOTAL	DEPARTURE FROM NORMAL	GREATEST 24 HOURS	DATE	ICE PELLETS, SNOW			NO. OF DAYS		
											MAX		MIN						TOTAL	MAX DEPTH ON GROUND	DATE	.10 OR MORE	.50 OR MORE	1.00 OR MORE
											>=90	<=32	<=32	<=0										
WASHINGTON REAGAN NATL AP	71.5	54.7	63.1	3.6	87	19	41	26	116	64	0	0	0	0	0.90	-2.50	0.26	21	0.0	0		3	0	0
WINCHESTER	67.1	47.2	57.1	2.5	82	20+	34	27+	259	24	0	0	0	0	1.70	-1.25	0.67	01	0.0	0		5	2	0
WINCHESTER 7 SE	69.8	43.1F	56.5F	2.9	85	19	29	25	273	24	0	0	4	0	1.33	-1.61	0.93	08	0.0	0		3	1	0
WOODSTOCK 2 NE	69.8	44.7	57.3	3.6	85	20	30	26	246	17	0	0	2	0	1.26	-1.40	0.53	08	0.0	0		5	1	0
--DIVISIONAL DATA-----> CENTRAL MOUNTAIN 05			58.6	4.1B										1.21	-2.35B									
BUENA VISTA														3.27		1.50	01	0.0	0			4	2	2
COVINGTON FLTR PLT	72.4	46.5	59.4	3.3	87	20	34	26	193	25	0	0	0	0	2.71	0.17	1.50	08	0.0	0		4	2	1
DALE ENTERPRISE	69.9	45.3	57.6	4.2	87	20	32	26	241	18	0	0	1	0	2.00	-0.52	0.95	01	0.0	0		4	1	0
GATHRIGHT DAM	67.6	46.4	57.0	3.7	81	20	36	26	247	6	0	0	0	0	1.95	-0.78	0.97	01	0.0	0		4	2	0
GLASGOW 1 SE														3.75		1.69	08	0.0	0			5	2	2
HOT SPRINGS	67.6	44.5	56.0	4.0	82	20	34	26+	278	7	0	0	0	0	2.20	-0.81	0.88	08	0.0	0		4	2	0
LEXINGTON	71.9	45.8	58.8	3.0	88	20	36	26+	202	17	0	0	0	0	3.52	0.60	2.19	01	0.0	0		3	2	1
MILLGAP	66.7	39.1	52.9	4.0	79	21	27	26	365	0	0	0	7	0	4.03	1.09	2.08	01	M			4	2	2
MTN GROVE														M 0.51		0.51	01	0.0	0			1	1	0
MUSTOE 1 SW	65.6	40.8	53.2	3.6	78	20+	30	25	357	0	0	0	4	0	M									
NEW CASTLE														3.82		2.17	08	0.0	0			5	2	2
ROANOKE 8 N	72.2	49.1	60.6	3.5	88	20	39	27+	149	23	0	0	0	0	4.78	1.72	3.30	08	0.0	0		5	2	1
ROANOKE INTL AP	72.6	51.5	62.0	4.3	89	19	40	26+	123	40	0	0	0	0	4.42	1.53	3.05	07	0.0	0		3	2	2
STAUNTON WTP	69.5	47.4	58.4	4.2	85	20	37	27+	221	24	0	0	0	0	2.05	-0.93	0.76	08	0.0	0		4	2	0
WAYNESBORO WTP	69.3	46.1	57.7	3.5	86	20	34	26	237	16	0	0	0	0	2.57	-0.64	1.31	01	0.0	0		4	2	1
--DIVISIONAL DATA-----> SOUTHWESTERN MOUNTAIN 06			57.6	3.6B										3.16	-0.01B									
ABINGDON 3S	71.3	45.5	58.4	3.8	82	21	33	24+	203	6	0	0	0	0	1.63	-0.78	0.90	22	0.0	0		5	1	0
BIG STONE GAP	72.7	45.0	58.9	2.9	83	20	31	24+	192	10	0	0	2	0	1.15	-1.78	0.72	08	0.0	0		3	1	0
BLACKSBURG NWSO	69.3	44.9	57.1	4.8	83	20	34	27+	241	5	0	0	0	0	2.26	-0.52	1.81	08	0.0	0		4	1	1
BURKES GARDEN	65.1M	39.7M	52.4M	3.3	77	21	24	27	386E	0	0	0	7	0	M 1.16	-1.76	0.53	22	M 0.0	0		3	1	0
CHRISTIANSBURG	67.5	46.4	56.9	2.4	80	20	37	26+	246	4	0	0	0	0	2.33	-0.42	1.72	08	0.0	0		4	1	1
CLINTWOOD 1 W	71.1	42.5	56.8	3.9	82	21	30	27+	251	3	0	0	5	0	0.76	-1.94	0.40	21	0.0	0		2	0	0
COPPER HILL	65.4M	46.9M	56.1M		79	20	37	26	278E	8E	0	0	0	0	M 5.82		4.17	09	0.0	0		3	2	2
GALAX WTP	69.2	43.2	56.2	4.4	82	20	31	28+	266	1	0	0	3	0	1.96		1.55	08	0.0	0		3	1	1
GRUNDY	71.4	46.2	58.8	3.9	82	21+	33	27+	192	7	0	0	0	0	1.72	-1.10	0.75	08	0.0	0		4	1	0
JOHN FLANNAGAN LAKE	M	M	M		89	20	35	27+	97E	44E	0	0	0	0	M									
LAFAYETTE 1 NE														3.09		1.56	08	0.0	0			5	2	1
LEBANON	71.3	42.3	56.8	3.6	83	21	30	27+	247	3	0	0	4	0	1.67	-0.73	0.57	22	0.0	0		4	1	0
NORA 4 SSE	68.4	49.9	59.1	4.4	80	20	38	23	186	13	0	0	0	0	1.03	-1.65	0.51	21	0.0	0		3	1	0
PULASKI 2 E	69.0	45.0	57.0	3.4	82	20	30	26	244	4	0	0	1	0	1.28	-1.37	0.92	08	0.0	0		3	1	0

VIRGINIA
201610

MONTHLY STATION AND DIVISION SUMMARY

STATION	TEMPERATURE (°F)											PRECIPITATION (IN)												
	AVERAGE MAXIMUM	AVERAGE MINIMUM	AVERAGE	DEPARTURE FROM NORMAL	HIGHEST	DATE	LOWEST	DATE	HEATING DEG. DAYS	COOLING DEG. DAYS	NO. OF DAYS				TOTAL	DEPARTURE FROM NORMAL	GREATEST 24 HOURS	DATE	ICE PELLETS, SNOW			NO. OF DAYS		
											MAX		MIN						TOTAL	MAX DEPTH ON GROUND	DATE	.10 OR MORE	.50 OR MORE	1.00 OR MORE
											>=90	<=32	<=32	<=0										
RADFORD 3 N	69.2	44.3	56.8	4.6	81	20	30	26	249	1	0	0	2	0	1.66	-0.98	1.12	08	0.0	0		3	1	1
RICHLANDS	71.1M	40.6M	55.9M	2.7	83	21	30	28+	277E	2E	0	0	6	0	1.67	-0.77	0.52	21	0.0	0		4	1	0
SALTVILLE 1N	72.8	43.2	58.0	3.7	83	21+	30	27+	217	9	0	0	4	0	1.61	-1.12	1.00	08	0.0	0		4	1	1
STAFFORDSVILLE 3 ENE	68.7	44.7	56.7	3.5	82	20	31	27+	256	3	0	0	2	0	1.73	-0.92	1.39	08	0.0	0		3	1	1
WILLIS															1.06		0.61	08	0.0	0		3	1	0
WISE 1SE	70.8	46.9	58.9	4.0	83	20	35	25	195	13	0	0	0	0	A 0.84	-1.73	0.48	21	0.0	0		2	0	0
WYTHEVILLE	69.5M	44.9M	57.2M	5.3	83	20	32	26	242E	9E	0	0	1	0	1.40	-1.29	0.88	08	0.0	0		2	1	0
--DIVISIONAL DATA----->			57.1	4.4B											1.60	-1.50B								

VIRGINIA
201610

DAILY PRECIPITATION (INCHES)

STATION	TOTAL	DAY OF MONTH																																					
		01	02	03	04	05	06	07	08	09	10	11	12	13	14	15	16	17	18	19	20	21	22	23	24	25	26	27	28	29	30	31							
VIRGINIA																																							
TIDEWATER 01																																							
DISPUTANTA	5.43	0.78					0.10	0.08	3.97																												0.49		0.01
EMPORIA 1 WNW	5.11							0.34	0.43	4.20																										0.14		T	
FREDERICKSBURG SEWAGE	M 3.18	0.65	0.56						-	1.85							-																				0.12		
HOLLAND 1 E	11.28	0.05	0.02	0.01		0.03	0.40	0.02	8.95	1.79																											0.01		
HOPEWELL	5.34	2.10						0.03	0.07	3.10																										0.04			
NORFOLK INTL AP	9.43	0.01	0.06	T		T	0.03		7.44	1.80												0.08	T											0.01	T				
NORFOLK SOUTH	12.09	T	0.29	T		T	0.08		8.42	3.13												0.12	T											T	0.05				
NORTH	6.19	0.08	0.08						0.06	5.50																									0.40	0.07			
PAINTER 2W	7.17	0.57							0.06	6.13																									0.25	0.16			
STONY CREEK 2 N	4.00				0.01					1.00	2.70	0.02																							0.25	0.02			
SUFFOLK LAKE KILBY	11.46	T	T	0.02		T	0.51	T	8.70	1.77												0.33												0.03	0.10				
WAKEFIELD 1NW	5.66	T					0.11	0.01	4.70	0.70												0.13												0.01					
WALKERTON 2 NW	3.64								0.94	2.62																		0.08											
WALLACETON LK DRUMMOND	M 11.72							0.55	0.07	-	11.00	-	-	-	-																					0.10			
WALLOPS ISLAND NASA TEST FACIL	7.35	0.43		0.29					2.88	3.40													0.18	0.04											0.13				
WARSAW 2 NW	4.02	1.32			0.01		0.02		1.50	0.79			0.01										0.04	0.20										0.06	0.07				
WEST POINT 2 NW	5.74	1.20	0.04						0.90	3.01													0.29	0.05										0.25					
WILLIAMSBURG 2 N	5.67	0.05		0.02			0.05		3.50	1.72				0.01									0.29	0.01										0.02					
EASTERN PIEDMONT 02																																							
ALBERTA 5N	5.50	0.85		T		T		0.35	0.39	3.88																										T	0.03		
AMELIA COURTHOUSE 1	M 4.22	0.26	-					0.34	0.34	3.22	0.01																									0.05			
ASHLAND	3.98	0.80					T	0.01	1.61	1.48													0.02												0.06				
BREMO BLUFF	M 3.08	0.55						0.17	0.22	2.14																													
BUCKINGHAM	4.05	0.80	0.02					0.22	0.35	2.66																													
CAMP PICKETT	4.80	0.52						0.37	0.28	3.63																													
CHASE CITY	4.64	0.12						0.13	0.92	3.45																										0.02			
CLARKSVILLE	M 4.97							0.12	1.40	3.45																													
CORBIN	4.08			0.89						2.46																										0.22	0.50		
CROZIER	3.37	0.38							0.45	2.46																										0.04	0.04		
FARMVILLE 2 N	4.76	0.28	0.01					0.47	0.47	3.53																										T			
JOHN H KERR DAM	5.53	0.25						0.13	1.04	4.09																										0.02			
KEYSVILLE 2 S	5.18	0.64						0.20	0.52	3.82																													
LOUISA	1.66	0.36							1.20																											0.09	0.01		
PALMYRA 3S	2.25	0.45						0.13	0.05	1.19	0.40																									0.02	0.01		
PETERSBURG	M 3.80						0.08	0.03	3.65																											0.04			
RICHMOND INTL AP	4.24	0.03	T		T		0.08	T	3.31	0.75																										0.01			
WINTERPOCK 4 W	M 4.74	0.52						0.15	0.15	3.92																													
WESTERN PIEDMONT 03																																							
ALTAVISTA	4.13	0.35	0.01		0.02			0.24	1.20	2.29	0.02																												
APPOMATTOX	5.70	2.27						0.30	0.41	2.72																											T		

VIRGINIA
201610

DAILY PRECIPITATION (INCHES)

STATION	TOTAL	DAY OF MONTH																															
		01	02	03	04	05	06	07	08	09	10	11	12	13	14	15	16	17	18	19	20	21	22	23	24	25	26	27	28	29	30	31	
BEDFORD 4 NW	3.38	1.61	0.02					0.33	1.16	0.11												0.15											
BROOKNEAL	5.47	1.05						0.21	0.67	3.54																							
CHARLOTTESVILLE 2W	2.34	0.91	0.01					0.21	0.69	0.48												0.04							T			T	
CHATHAM	4.56	0.20						0.23	1.50	2.63																							
CONCORD 4 SSW	3.82	0.53	0.02					0.34	0.49	2.44																							
DANVILLE RGNL AP	5.01	T					0.01	1.21	3.76	0.03																						T	
FREE UNION	2.53	1.27	0.02					0.17	0.60	0.32													0.13									0.02	
HOLCOMB ROCK	M 1.45	1.45					-	-	-	-	-	-	-	-	-	-	-	-	-	-	-	T											
HUDDLESTON 4 SW	6.43	2.81	0.02					0.23	2.05	1.31												0.01											
LYNCHBURG INTL AP	1.73						T	0.43	1.30	T												T										T	
MARTINSVILLE FLTR PLT	3.69	0.03						0.50	1.28	1.88																							
MEADOWS OF DAN 5 SW	0.98		0.05					0.10	0.65	0.18																							
MONTEBELLO FISH CULTURAL STN	M	-		0.31		0.02		0.45	1.64	0.24												0.10	-	-	-	-				0.01	-	-	
MONTICELLO	M	-	-	-	-	-	-	-	-	-	-	-	-	-	-	-	-	-	-	-	-	-	-	-	-	-	-	-	-	-	-	-	
PEDLAR DAM	1.65	0.31						0.09	1.04	0.15													0.06										
ROCKY MT	4.89	0.41		T				0.60	2.96	0.90	0.02																						T
SOUTH BOSTON	6.25	0.54						0.24	1.75	3.70													0.01										0.01
STUART	2.00	0.84						0.20	0.58	0.38																							
WOOLWINE	4.24	0.20						0.62	3.29	0.13																							
NORTHERN 04																																	
FRONT ROYAL	2.12	0.90	0.13						0.10	0.72													0.21										0.06
LINCOLN	M	-	0.10	-	-	-	-	-	-	-	0.23	-	-	-	-	-	-	-	-	-	-	-	-	-	-	-	-	-	-	-	-	-	
LURAY 5 E	1.22	0.23	T	0.01			T		0.41	0.29																							0.05
MANASSAS	A 1.15	0.40	0.10						0.10	0.30											*	0.05 _a	0.20										
MT WEATHER	1.26	0.57	0.03	T					0.02	0.35													0.14									0.04	0.11
PIEDMONT RSCH STN	A 1.17								*	1.11 _a																						0.06	
SOMERSET	1.15	0.36	0.02	0.01				0.03	0.35	0.30													0.05									0.03	
SPERRYVILLE	M 0.95	-	0.03	0.02					0.25	0.52													-	-							0.08	0.05	
STERLING (RCS)	0.83	0.11	0.02					T	0.05	0.30													0.27								0.03	0.05	
VIENNA	0.95	0.14	0.16						0.20													0.07	0.34								0.04		
WASHINGTON DULLES INTL AP	0.65	0.20					T		0.20											0.03	T	0.14								0.03		0.05	
WASHINGTON REAGAN NATL AP	0.90	0.23	0.02						0.25	0.09										T	0.02	0.26	T							0.03		T	
WINCHESTER	1.70	0.67	0.03	0.11					0.13	0.62													0.11								T	0.03	
WINCHESTER 7 SE	1.33	0.02						0.13	0.93	0.02												0.12	0.01							0.02		0.08	
WOODSTOCK 2 NE	1.26	0.23	T						0.53	0.22												0.03	0.15								0.10		
CENTRAL MOUNTAIN 05																																	
BUENA VISTA	3.27	1.50	0.01						0.07	1.34	0.12												0.23										
COVINGTON FLTR PLT	2.71	0.80							0.06	1.50	0.10												0.22									0.03	
DALE ENTERPRISE	2.00	0.95	0.02						0.05	0.44	0.33												0.18										0.03
GATHRIGHT DAM	1.95	0.97							0.51	0.22													0.20									0.05	
GLASGOW 1 SE	3.75	1.48							0.27	1.69	0.18												0.12									0.01	
HOT SPRINGS	2.20	0.85							0.02	0.88	0.29												0.14									0.02	

VIRGINIA
201610

DAILY PRECIPITATION (INCHES)

STATION	TOTAL	DAY OF MONTH																																	
		01	02	03	04	05	06	07	08	09	10	11	12	13	14	15	16	17	18	19	20	21	22	23	24	25	26	27	28	29	30	31			
LEXINGTON	3.52	2.19					0.08	0.96	0.09													0.18										0.02			
MILLGAP	4.03	2.08				0.02	0.02	1.19	0.41													0.16						0.09				0.06			
MTN GROVE	M 0.51	0.51					-	-	-													-						-	-	-	-				
MUSTOE 1 SW	M	0.34	-	-	-	-	0.54	0.85	-	-	-	-	-	-	-	-	-	-	-	-	-	0.14	0.07	-	-	-	-	0.14	-	-	0.09	-			
NEW CASTLE	3.82	1.13	0.01				0.12	2.17	0.19													0.19	0.01												
ROANOKE 8 N	4.78	0.87					0.30	3.30	0.18													0.13													
ROANOKE INTL AP	4.42					0.01	3.05	1.24													0.12														
STAUNTON WTP	2.05	0.70	0.02	0.01		0.01	0.07	0.76	0.25			T										0.21						0.02							
WAYNESBORO WTP	2.57	1.31					0.14	0.82	0.30																										
SOUTHWESTERN MOUNTAIN 06																																			
ABINGDON 3S	1.63							0.27	0.20													0.12	0.90	0.04				0.10							
BIG STONE GAP	1.15							0.72	0.01				0.01									0.31	0.10												
BLACKSBURG NWSO	2.26	0.11			T		0.05	1.81	0.10													0.19	T												
BURKES GARDEN	M 1.16	0.03					0.03	0.29	0.23													0.05	0.53						-						
CHRISTIANSBURG	2.33	0.14					0.27	1.72	0.07													0.13													
CLINTWOOD 1 W	0.76			T				0.06	0.25													0.40	0.05												
COPPER HILL	M 5.82	1.43			0.02		0.18	-	4.17														0.02												
GALAX WTP	1.96						0.18	1.55	0.15														0.05					0.03							
GRUNDY	1.72	0.02		0.04				0.75	0.11													0.47	0.28					0.01							
JOHN FLANNAGAN LAKE	M	-	-	-				-	-	-	-	0.01		0.04		-	-					0.15	*	*	*	0.28 _a			-	-					
LAFAYETTE 1 NE	3.09	0.86					0.36	1.56	0.16														0.15												
LEBANON	1.67	0.02						0.31	0.42													0.35	0.57												
NORA 4 SSE	1.03	T		T				0.24	0.21					T								0.51	0.07												
PULASKI 2 E	1.28	T					0.13	0.92	0.05														0.18	T											
RADFORD 3 N	1.66	0.04						1.12	0.31														0.19												
RICHLANDS	1.67							0.48	0.38	0.01												0.52	0.25	0.01											
SALTVILLE 1N	1.61							1.00	0.15					0.01								0.33	0.12												
STAFFORDSVILLE 3 ENE	1.73	0.01					0.02	1.39	0.10				T										0.21	T											
WILLIS	1.06	0.06					0.15	0.61	0.24																										
WISE 1SE	A 0.84							*	0.21 _a													0.48	0.15												
WYTHEVILLE	1.40						0.07	0.88	0.03														0.42												

VIRGINIA
201610

DAILY TEMPERATURES (°F)

STATION	OB. TIME	MAX/MIN	DAY OF MONTH																															AVERAGE
			01	02	03	04	05	06	07	08	09	10	11	12	13	14	15	16	17	18	19	20	21	22	23	24	25	26	27	28	29	30	31	
GALAX WTP	07	MAX	75	72	74	72	72	68	66	68	67	64	68	67	70	70	59	68	75	77	79	82	78	60	50	65	69	64	61	63	70	77	74	69.2
		MIN	48	47	47	50	51	49	51	51	48	43	37	36	35	41	47	50	48	47	47	49	50	42	40	41	37	31	31	31	37	37	40	43.2
GRUNDY	07	MAX	65	72	70	74	77	75	76	73	65	64	65	72	73	63	72	77	72	78	80	82	82	58	53	68	70	63	74	71	70	79	71.4	
		MIN	54	53	53	54	50	49	48	49	44	43	42	42	45	47	53	52	51	52	52	54	53	43	35	36	37	33	33	49	41	40	46.2	
JOHN FLANNAGAN LAKE	07	MAX				79	82	82	81										83	81	82	89	84				74	69	76	72		84		
		MIN				53	53	50	50					42	41	45	48			51	52	51	55	55				35	36	35	50		42	
LEBANON	07	MAX	67	72	72	76	76	76	73	72	66	64	68	74	75	67	74	78	75	74	75	80	83	56	53	64	71	67	71	67	72	76	71.3	
		MIN	48	48	47	46	55	43	43	59	40	36	35	38	38	44	44	52	46	47	47	51	46	43	31	31	34	30	30	44	37	42	42.3	
NORA 4 SSE	07	MAX	64	67	67	71	74	76	72	71	61	59	63	70	69	63	70	73	73	74	75	80	79	52	49	63	68	63	66	65	71	75	68.4	
		MIN	50	49	54	54	54	52	53	56	42	42	43	51	51	47	47	55	57	57	58	63	52	39	38	41	42	42	49	49	48	57	49.9	
PULASKI 2 E	07	MAX	75	72	71	72	73	67	65	62	64	60	66	67	71	69	62	72	74	77	78	82	81	60	49	64	68	65	66	65	71	76	69.0	
		MIN	51	48	49	51	50	53	53	58	47	40	35	35	35	40	41	48	50	51	51	51	52	41	42	42	34	30	33	44	40	48	45.0	
RADFORD 3 N	07	MAX	71	72	72	73	73	63	65	64	66	63	69	68	70	67	61	73	74	78	79	81	79	61	51	64	68	63	61	69	72	79	69.2	
		MIN	54	49	50	52	53	45	46	54	48	42	38	38	40	40	40	51	47	47	49	49	52	41	39	40	42	30	32	44	38	40	44.3	
RICHLANDS	07	MAX	65	72		73	75	75	73	69	66	62	68	75	75		76	76	78	77	78		83	58	51	64	69	67	67	72	76	71.1		
		MIN	53	49		49	51	43	43	58	40	38	37	36	37		39	38	39	46	46		50	41	31	31	32	30	31	30	39	37	40.6	
SALTVILLE 1N	07	MAX	69	73	74	77	77	74	74	70	70	65	71	74	76	70	75	79	79	76	79	83	83	59	59	66	72	70	72	65	72	77	72.8	
		MIN	50	49	50	50	50	46	47	61	43	39	38	37	37	44	46	46	45	46	50	50	58	43	33	32	32	30	30	44	37	37	43.2	
STAFFORDSVILLE 3 ENE	07	MAX	75	73	72	71	73	67	66	63	64	61	54	66	71	68	61	71	74	77	79	82	80	62	50	65	69	61	63	70	67	78	68.7	
		MIN	56	51	50	50	51	48	48	57	47	44	36	36	38	43	45	49	49	49	49	50	51	42	42	43	40	31	31	42	37	36	44.7	
WISE 1SE	09	MAX	68	68	67	72	78	78	78	73	62	63	67	74	72	69	72	77	74	76	78	83	78	50	53	63	72	67	71	66	75	76	70.8	
		MIN	46	49	47	50	53	48	56	57	41	38	41	43	47	46	48	51	53	59	55	57	49	39	36	41	35	36	41	44	46	50	46.9	
WYTHEVILLE	07	MAX	74	72	73	72	73		66	61	64	62	67	67	70	69	65	74	76	77	78	83	82	61	49	63	69	66	67	63	71	76	69.5	
		MIN	50	48	48	48	54		52	57	47	42	39	38	37	44	42	47	47	48	49	56	56	40	40	38	36	32	33	44	41	40	44.9	

VIRGINIA
201610

SNOWFALL AND SNOW ON GROUND (INCHES)

STATION	DAY OF MONTH																															
	01	02	03	04	05	06	07	08	09	10	11	12	13	14	15	16	17	18	19	20	21	22	23	24	25	26	27	28	29	30	31	
VIRGINIA																																
TIDEWATER 01																																
DISPUTANTA																																
EMPORIA 1 WNW																																
FREDERICKSBURG SEWAGE																																
HOLLAND 1 E																																
HOPEWELL																																
NORFOLK INTL AP																																
NORFOLK SOUTH																																
NORTH																																
PAINTER 2W																																
STONY CREEK 2 N																																
SUFFOLK LAKE KILBY																																
WAKEFIELD 1NW																																
WALKERTON 2 NW																																
WALLACETON LK DRUMMOND																																
WALLOPS ISLAND NASA TEST FACIL																																
WARSAW 2 NW																																
WEST POINT 2 NW																																
WILLIAMSBURG 2 N																																

Snowfall: Includes snow and ice. Values for NWS stations (J index note) are Mid-Mid (LST).

Snow on ground: Includes snow, sleet, ice, and hail. Values for NWS stations (J index note) are observed at 12 UTC (GMT).

Water Equivalent: Given for NWS stations (J index note) only, when snow depth is 2 inches or more, and is measured at 18 UTC (GMT)

VIRGINIA
201610

PAN EVAPORATION AND WIND

STATION		DAY OF MONTH																															TOTAL OR AVERAGE
		01	02	03	04	05	06	07	08	09	10	11	12	13	14	15	16	17	18	19	20	21	22	23	24	25	26	27	28	29	30	31	
VIRGINIA EASTERN PIEDMONT 02 JOHN H KERR DAM	WIND	13	10	17	36	60	53	69	92	63	27	19	11	16	29	20	6	24	59	34	16	42	41	63	43	12	12	57	24	23	43	29	1063 M M M
	EVAP	0.09	0.04	-	-	-	-	-	-	-	-	-	-	-	-	-	-	-	-	-	-	-	-	-	-	-	-	-	-	-	-	-	
	MAX	-	-	-	-	-	-	-	-	-	-	-	-	-	-	-	-	-	-	-	-	-	-	-	-	-	-	-	-	-	-	-	
	MIN	-	-	-	-	-	-	-	-	-	-	-	-	-	-	-	-	-	-	-	-	-	-	-	-	-	-	-	-	-	-	-	

Evaporation: Is measured in hundredths of inches.

Wind: Is measured in miles.

Max and Min: The maximum and minimum temperatures (Fahrenheit) of the water in the evaporation pan.

STATION INDEX

STATION	INDEX NO.	DIVISION	COUNTY	LATITUDE	LONGITUDE	ELEVATION (IN FEET)	OBSERVATION TIME AND TABLES					
							LOCAL STD TIME					
							TEMP	PRECIP	EVAP	SPECIAL SEE (NOTES)		
VIRGINIA												
ABINGDON 3S	0021	06	WASHINGTON	36 40	81 58W	1925	22	22				H
ALBERTA 5N	0079	02	BRUNSWICK	36 56	77 54W	376		08				H
ALTAVISTA	0166	03	CAMPBELL	37 7	79 17W	529		07				CH
AMELIA COURTHOUSE 1	0187	02	AMELIA	37 21	77 59W	345	08	08				H
APPOMATTOX	0243	03	APPOMATTOX	37 20	78 50W	850	07	07				H
ASHLAND	0327	02	HANOVER	37 45	77 29W	220	18	18				H
BEDFORD 4 NW	0561	03	BEDFORD	37 23	79 34W	1228		07				CH
BIG STONE GAP	0735	06	WISE	36 52	82 46W	1464	08	08				H
BLACKSBURG NWSO	0766	06	MONTGOMERY	37 12	80 25W	2103	07	07				CH
BREMO BLUFF	0993	02	FLUVANNA	37 43	78 17W	225	07	07				CH
BROOKNEAL	1082	03	CAMPBELL	37 4	78 57W	408	07	07				H
BUCKINGHAM	1136	02	BUCKINGHAM	37 30	78 32W	580		07				H
BUENA VISTA	1159	05	ROCKBRIDGE	37 44	79 22W	840		07				H
BURKES GARDEN	1209	06	TAZEWELL	37 6	81 20W	3068	07	07				H
CAMP PICKETT	1322	02	NOTTOWAY	37 2	77 57W	330	08	08				CH
CHARLOTTESVILLE 2W	1593	03	ALBEMARLE	38 2	78 31W	866	08	08				H
CHASE CITY	1606	02	MECKLENBURG	36 47	78 29W	510	17	17				H
CHATHAM	1614	03	PITTSYLVANIA	36 49	79 25W	651	07	07				CH
CHRISTIANSBURG	1692	06	MONTGOMERY	37 8	80 24W	2100	07	07				H
CLARKSVILLE	1746	02	MECKLENBURG	36 37	78 33W	330	07	07				H
CLINTWOOD 1 W	1825	06	DICKENSON	37 9	82 29W	1780	07	07				H
CONCORD 4 SSW	1955	03	CAMPBELL	37 17	78 58W	815		07				H
COPPER HILL	1999	06	FLOYD	37 5	80 9W	2690	07	07				H
CORBIN	2009	02	CAROLINE	38 12	77 22W	220	09	09				H
COVINGTON FLTR PLT	2044	05	ALLEGHANY	37 49	79 59W	1230	07	07				CH
CROZIER	2142	02	GOOCHLAND	37 40	77 53W	350	07	07				H
DALE ENTERPRISE	2208	05	ROCKINGHAM	38 27	78 56W	1358	07	07				H
DANVILLE RGNL AP	2250	03	PITTSYLVANIA	36 34	79 20W	571	24	24				CH
DISPUTANTA	2400	01	PRINCE GEORGE	37 7	77 12W	15	07	07				H
EMPORIA 1 WNW	2790	01	GREENSVILLE	36 42	77 34W	100	08	08				H
FARMVILLE 2 N	2941	02	CUMBERLAND	37 20	78 23W	450	07	07				H
FREDERICKSBURG SEWAGE	3204	01	FREDERICKSBURG	38 17	77 27W	15	07	07				H
FREE UNION	3213	03	ALBEMARLE	38 5	78 35W	590	08	07				H
FRONT ROYAL	3229	04	WARREN	38 54	78 11W	930	06	06				CH
GALAX WTP	3272	06	CARROLL	36 39	80 55W	2360	07	07				CH
GATHRIGHT DAM	3310	05	ALLEGHANY	37 57	79 57W	1770	07	07				CH
GLASGOW 1 SE	3375	05	ROCKBRIDGE	37 37	79 26W	737		07				H
GRUNDY	3640	06	BUCHANAN	37 17	82 5W	1170	07	07				H
HOLCOMB ROCK	4039	03	BEDFORD	37 33	79 24W	900		07				H
HOLLAND 1 E	4044	01	SUFFOLK	36 41	76 46W	80	08	08				H
HOPEWELL	4101	01	PRINCE GEORGE	37 18	77 17W	40	16	16				H
HOT SPRINGS	4128	05	BATH	37 60	79 50W	2236	07	07				H
HUDDLESTON 4 SW	4148	03	BEDFORD	37 8	79 32W	898		07				H
JOHN FLANNAGAN LAKE	4410	06	DICKENSON	37 14	82 21W	1460	07	07				H
JOHN H KERR DAM	4414	02	MECKLENBURG	36 36	78 18W	250	08	08	08			CH
KEYSVILLE 2 S	4568	02	CHARLOTTE	37 1	78 29W	625	07	07				H
LAFAYETTE 1 NE	4676	06	MONTGOMERY	37 14	80 12W	1320		07				H
LEBANON	4777	06	RUSSELL	36 54	82 2W	1912	07	07				H
LEXINGTON	4876	05	ROCKBRIDGE	37 47	79 26W	1097	07	07				H
LINCOLN	4909	04	LOUDOUN	39 5	77 42W	500	07	07				H
LOUISA	5050	02	LOUISA	38 3	78 0W	420	18	18				H
LURAY 5 E	5096	04	PAGE	38 40	78 22W	1400	08	08				H
LYNCHBURG INTL AP R	5120	03	CAMPBELL	37 19	79 12W	940	24	24				HJ
MANASSAS	5204	04	MANASSAS	38 44	77 30W	245	07	07				H
MARTINSVILLE FLTR PLT	5300	03	HENRY	36 42	79 52W	760	07	07				H
MEADOWS OF DAN 5 SW	5453	03	PATRICK	36 40	80 27W	2225	07	07				H
MILLGAP	5595	05	HIGHLAND	38 18	79 43W	2421	06	06				CH
MONTEBELLO FISH CULTURAL STN	5690	03	NELSON	37 51	79 8W	2667	07	07				H
MONTICELLO	5700	03	ALBEMARLE	38 1	78 27W	758	07	07				H
MT WEATHER	5851	04	LOUDOUN	39 4	77 53W	1659	07	07				H
MTN GROVE	5756	05	BATH	38 6	79 53W	1775		07				H
MUSTOE 1 SW	5880	05	HIGHLAND	38 20	79 40W	2380	24	24				H
NEW CASTLE	6012	05	CRAIG	37 31	80 6W	1258		07				H
NORA 4 SSE	6125	06	DICKENSON	37 1	82 19W	2650	07	07				H
NORFOLK INTL AP R	6139	01	NORFOLK (CITY)	36 54	76 12W	30	24	24				HJ

STATION INDEX

STATION	INDEX NO.	DIVISION	COUNTY	LATITUDE	LONGITUDE	ELEVATION (IN FEET)	OBSERVATION TIME AND TABLES			
							LOCAL STD TIME			
							TEMP	PRECIP	EVAP	SPECIAL SEE (NOTES)
NORFOLK SOUTH	6147	01	NORFOLK (CITY)	36 52	76 14W	100	24	24		H
NORTH	6161	01	MATHEWS	37 26	76 26W	10	07	07		H
PAINTER 2W	6475	01	ACCOMACK	37 35	75 49W	30	16	16		CH
PALMYRA 3S	6491	02	FLUVANNA	37 49	78 16W	410	06	06		H
PEDLAR DAM	6593	03	AMHERST	37 40	79 17W	1024		07		CH
PETERSBURG	6656	02	PETERSBURG	37 14	77 24W	15	08	08		H
PIEDMONT RSCH STN	6712	04	ORANGE	38 14	78 7W	520	08	08		CH
PULASKI 2 E	6955	06	PULASKI	37 3	80 47W	1850	07	07		CH
RADFORD 3 N	6999	06	PULASKI	37 12	80 35W	1800	07	07		H
RICHLANDS	7174	06	TAZEWELL	37 6	81 48W	1910	07	07		H
RICHMOND INTL AP R	7201	02	HENRICO	37 30	77 19W	164	24	24		HJ
ROANOKE 8 N	7278	05	ROANOKE	37 22	79 58W	1190	07	07		H
ROANOKE INTL AP R	7285	05	ROANOKE	37 19	79 58W	1175	24	24		HJ
ROCKY MT	7338	03	FRANKLIN	36 59	79 54W	1315	07	07		CH
SALTVILLE 1N	7506	06	SMYTH	36 53	81 46W	1733	07	07		H
SOMERSET	7904	04	ORANGE	38 15	78 16W	510	08	08		H
SOUTH BOSTON	7925	03	HALIFAX	36 42	78 53W	329	07	07		H
SPERRYVILLE	7985	04	RAPPAHANNOCK	38 39	78 14W	750	06	06		H
STAFFORDSVILLE 3 ENE	8022	06	GILES	37 16	80 43W	1950	07	07		CH
STAUNTON WTP	8062	05	AUGUSTA	38 10	79 5W	169	08	08		H
STERLING (RCS)	8084	04	LOUDOUN	38 59	77 29W	288	07	07		H
STONY CREEK 2 N	8129	01	SUSSEX	36 58	77 24W	105	08	08		H
STUART	8170	03	PATRICK	36 38	80 15W	1375	07	07		H
SUFFOLK LAKE KILBY	8192	01	SUFFOLK	36 44	76 36W	22	24	24		H
VIENNA	8737	04	FAIRFAX	38 54	77 16W	418	07	07		H
WAKEFIELD 1NW	8800	01	SUSSEX	36 59	77 0W	113	24	24		CH
WALKERTON 2 NW	8829	01	KING AND QUEEN	37 45	77 2W	50	18	18		H
WALLACETON LK DRUMMOND	8837	01	CHESAPEAKE	36 36	76 26W	20	08	08		H
WALLOPS ISLAND NASA TEST FACIL R	8849	01	ACCOMACK	37 56	75 28W	46	24	24		HJ
WARSAW 2 NW	8894	01	RICHMOND	37 59	76 47W	140	18	18		H
WASHINGTON DULLES INTL AP R	8903	04	LOUDOUN	38 56	77 28W	290	24	24		HJ
WASHINGTON REAGAN NATL AP R	8906	04	ARLINGTON	38 51	77 2W	10	24	24		HJ
WAYNESBORO WTP	8941	05	WAYNESBORO	38 5	78 53W	1270	07	07		H
WEST POINT 2 NW	9025	01	KING WILLIAM	37 34	76 48W	20	17	17		H
WILLIAMSBURG 2 N	9151	01	YORK	37 18	76 42W	70	24	24		CH
WILLIS	9169	06	FLOYD	36 55	80 30W	2810		07		CH
WINCHESTER	9181	04	FREDERICK	39 11	78 9W	720	07	07		H
WINCHESTER 7 SE	9186	04	FREDERICK	39 11	78 7W	680	08	08		H
WINTERPOCK 4 W	9213	02	CHESTERFIELD	37 19	77 39W	300		07		H
WISE 1SE	9215	06	WISE	36 58	82 33W	2564	09	09		CH
WOODSTOCK 2 NE	9263	04	SHENANDOAH	38 54	78 28W	675	07	07		H
WOOLWINE	9272	03	PATRICK	36 47	80 17W	1500		07		H
WYTHEVILLE	9301	06	WYTHE	36 58	81 5W	2458	07	07		H

REFERENCE NOTES

STATION NAMES: Name of the city, town or locality. Figures and letters following the station names indicate the distance in miles and direction from the post office or town community center.

DIVISIONS: Areas within a state of similar climatological characteristics. Division averages are calculated using data from stations that record temperature and/or precipitation. Station Precipitation totals flagged with an 'F' or 'M' are excluded from the Divisional Average calculations of precipitation. Stations with monthly Temperature averages flagged with an 'F' or 'M' are included in the Divisional Average if there are no more than 9 flagged or missing daily values in the month, else they are excluded from the divisional average for temperature.

NORMALS: The average value of the meteorological element over a time period. Effective 1 January 2012, the averaging period for station departures is 1981 to 2010. The normals for National Weather Service localities have been adjusted so as to be representative for the current observation site.

The January 2011 through December 2015 publications incorrectly state the computation of divisional departures. Climate Division departures have been, and continue to be, computed from 1971-2000 Normals, not 1981-2010 as stated. Station departures are accurately described as departures from 1981-2010.

MONTHLY DEGREE DAY TOTALS: One heating (cooling) degree day is accumulated for each whole degree that the daily mean temperature is below (above) 65 degrees Fahrenheit.

PRECIPITATION: Values shown in hundredths of inches are water equivalent totals, i.e., total of liquid and melted frozen precipitation. In the "Monthly Summarized Data" table the total snow and sleet values shown in tenths of inches are unmelted amounts. The max depth on ground values of snow and sleet shown in whole inches are cumulative unmelted amounts. The number of days with .10, .50, 1.00 or more refers to water equivalents.

PRECIPITATION QUALITY CONTROL: The NCEI quality control process may flag precipitation data that are spatially inconsistent, exceed climatological limits, or are inconsistent with prevailing weather patterns.

TEMPERATURE: Original temperature values are given in the "Daily Temperature" table. Summary temperature information (averages, departures, extremes, monthly degree day totals) is based on the values labeled MAX/MIN.

WIND: (As shown in the "Evaporation and Wind" table) the total wind movement in miles over the evaporation pan as determined by an anemometer recorder located 6-8 inches above the pan.

SYMBOLS AND LETTERS USED IN THE STATION INDEX TABLE

C Station is equipped with recording rain gage (R) but values in this bulletin are from a non-recording rain gage unless indicated by an R.
G Observations appear in the "Soil Temperatures" table.
H Observations appear in the "Snowfall and Snow on the Ground" table.
J Station also published as a Local Climatological Data publication.
VAR Observation time varies.
SR / SS Observation time near sunrise / Observation time near sunset, respectively.

SYMBOLS AND LETTERS USED IN THE DATA TABLES

(DAILY DATA ARE FOR THE 24 HOURS IMMEDIATELY PRECEDING OBSERVATION TIME.)

BLANK Entries in the "Monthly Summarized Data" table indicate no record.

BLANK Entries in the "Daily Precipitation" and "Snowfall and Snow on the Ground" tables indicate zero.

BLANK Entries in the "Daily Temperature" table indicate a missing record

- No record. Data not recorded or not received in time for publication.

+ Precipitation or temperature extremes occurred on one or more previous dates during the month.

* Rain gage not read. Precipitation is included in the amount following the asterisks.

Time distribution may not be known. A * preceding the monthly total indicates precipitation amount is being carried forward to next month's total, and may include amounts from the previous month(s).

a As a subscript, indicates accumulated total.

A Amount of precipitation is the total of observer's entries for the current month. It may include precipitation that occurred during the previous month. Refer to earlier bulletin to determine date of last

reading. (Hawaii stations)

B Divisional Departure from normals are computed using 1971-2000 normals.

E Normalized HDD/CDD Calculation. E is appended to the HDD/CDD Calculation when 1-9 individual daily TMAX and/or TMIN values are missing and a Normalized HDD/CDD Calculation is provided. M appears alone if 10 or more daily values are missing.

F Monthly calculation flagged value. F is appended to average and/or total values computed which exclude one or more daily data values that have been flagged by the GHCN-Daily Dataset

M Insufficient or partial data. M is appended to average and/or total values computed with 1-9 daily values missing. M appears alone if 10 or more daily values are missing, (8 or more for wind and evaporation).

N Indicates snow fall or Snowdepth totals are computed with one or more missing days.

R Amounts from recording rain gage.

T Trace. An amount too small to measure.

SEASONAL TABLES: Monthly and seasonal snowfall and heating degree days for the 12 months ending with the June data are published in the July issue of this bulletin. Cooling degree days for the calendar year are published in the "Climatological Data Annual Summary."

Information concerning the history of changes in locations, exposure, etc. of substations is kept on file at the National Centers for Environmental Information. Historical information of regular National Weather Service Offices may be obtained from the "Local Climatological Data" annual publication. The contents of this publication may be reprinted or otherwise used freely, with proper credit to the National Centers For Environmental Information. The data are also available digitally.

Effective with the January 2011 Data-Month, COOP Observer Names are no longer included in the Monthly and Annual Climatological Data Publications. This information is not published to ensure the privacy of personal information pursuant to Section 208 of the E-Government Act of 2002 (44 USC 3601).

As of the 2011 Data-Year, Station and Climate Division Maps are no longer being included in the CD Publications. NCEI's Products Branch provides updated Station Maps for various data networks via the Historical Observing Metadata Repository: <http://www.ncdc.noaa.gov/homr>.

The GHCN-Daily Quality Control Flags shown below are displayed as superscripts with the data. For more information on Global Historical Climatology Network - Daily and flags, see: <http://www.ncdc.noaa.gov/oa/climate/ghcn-daily/> and Comprehensive Automated Quality Assurance of Daily Surface Observations. Durre, Imke, Matthew J. Menne, Byron E. Gleason, Tamara G. Houston, Russell S. Vose, 2010: J. Appl. Meteor. Climatol., 49, 16151633. doi: 10.1175/2010JAMC2375.1

Blank = Passed All checks	N = failed naught check
D = failed duplicate check	O = failed climatological outlier check
G = failed gap check	R = failed lagged range check
I = failed internal consistency check	S = failed spatial consistency check
K = failed streak/frequent-value check	T = failed temporal consistency check
L = failed check on length of multiday period	W = temperature too warm for snow
M = failed megaconsistency check	X = failed bounds check
	Z = flagged as a result of an official Datzilla investigation

Beginning with the January 2013 CD Publication, monthly mean temperature calculations have changed to the National Data Stewardship Team standard. Monthly maximum and minimum temperatures are not rounded until after the monthly mean temperature is calculated. This is the most accurate outcome, but may be slightly different from the mean derived from rounded monthly maximum and minimum.

The climate division temperature and precipitation values in this publication are based on simple averages from the current set of NWS-Designated Open and Published COOP and First Order Sites within each division. These values differ from those found in NCEI's nClimDiv product. Beginning in February 2014, the nClimDiv product is used by NCEI's Monitoring Branch and in its monthly climate reports. For more details on nClimDiv, please go to <http://www.ncdc.noaa.gov/monitoring-references/maps/us-climate-divisions.php>.

Effective January 2016, Alaska's Climate Divisions are updated to reflect the 13 climate divisional boundaries established by University of Alaska-Fairbanks, NWS, NCEI, Oregon State University, and University of Nebraska-Lincoln. For more details regarding the updated Alaska Climate Divisions, see: <http://journals.ametsoc.org/doi/pdf/10.1175/JAMC-D-11-0168.1> (Bienek et al., 2012).

These and other publications are available from the National Centers for Environmental Information

Hourly Precipitation Data

This publication contains hourly precipitation amounts obtained from recording rain gages located at National Weather Service, Federal Aviation Administration, and cooperative observer stations. Published data are displayed in inches and tenths or inches and hundredths at local standard time. HPD includes maximum precipitation for nine (9) time periods from 15 minutes to 24 hours, for selected stations.

Climatological Data

Monthly editions contain station daily maximum and minimum temperatures and precipitation. Some Stations provide daily snowfall, snow depth, evaporation, and soil temperature data. Each edition also contains monthly summaries for heating and cooling degree days (65 degree F base). The July issue contains a recap of monthly heating degree days and snow data for the preceding July through June.

The Annual issue contains monthly and annual averages of temperature, precipitation, temperature extremes, freeze data, soil temperatures, evaporation, and a recap of monthly cooling degree days.

Storm Data

Monthly issues contain a chronological listing, by states, of occurrences of storms and unusual weather phenomena. Reports contain information on storm paths, deaths, injuries, and property damage. An "Outstanding storms of the month" section highlights severe weather events with photographs, illustrations, and narratives. The December issue includes annual tornado, lightning, flash flood, and tropical cyclone summaries.

Monthly Climatic Data for the World

This publication contains monthly means for temperature, pressure, precipitation, vapor pressure, and sunshine for approximately 2,000 surface data collection stations worldwide and monthly mean upper air temperatures, dew point depressions, and wind velocities for approximately 500 observing sites.

Local Climatological Data

LCD publications summarize temperature, relative humidity, precipitation, cloudiness, wind speed and direction observations for several hundred cities in the U.S. and its territories. Each monthly publication also contains 3 hourly weather observations for that month and a hourly summary of precipitation. Annual LCD publications contain a summary of the past calendar year as well as historical averages and extremes.

For Information Call:

(828) 271-4800 Option 2

(828) 271-4010 (TDD)

(828) 271-4876 (Fax)

NOAA National Centers for Environmental Information
Attn: Customer Engagement Branch
151 Patton Avenue
Asheville, NC 28801-5001

Customer Services Number: (828) 271-4800, option 2
TDD : (828) 271-4010
Fax number: (828) 271-4876

NCEI now offers free online access to the *Climatological Data* publication.
Go to : www.ncdc.noaa.gov and choose Most Popular.