



CLIMATOLOGICAL DATA

VIRGINIA

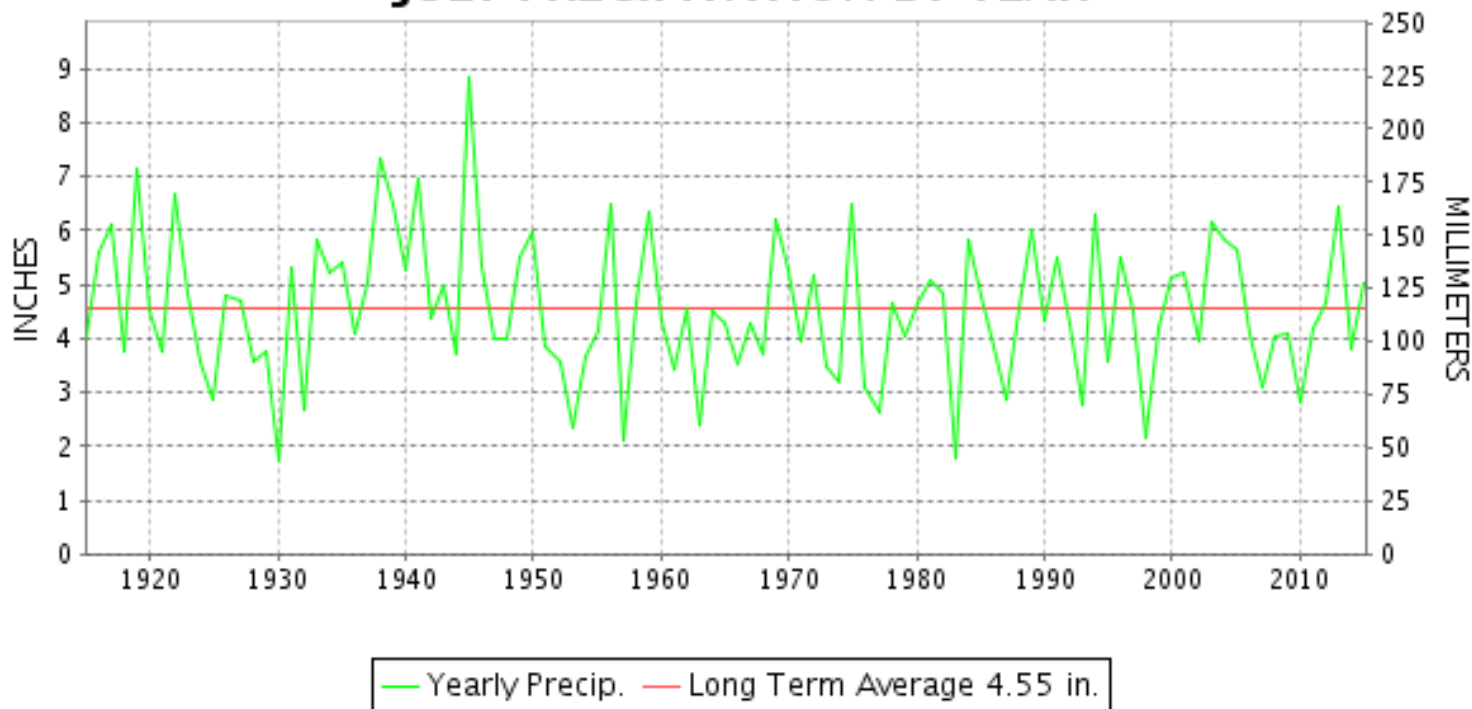
JULY 2015

VOLUME 125 NUMBER 07

ISSN 0364-5630

GHCND Ver: 3.22-upd-2015120106

JULY PRECIPITATION BY YEAR



TEMPERATURE AND PRECIPITATION EXTREMES

VIRGINIA

HIGHEST TEMPERATURE	99	JULY 20	WALLACETON LK DRUMMOND
LOWEST TEMPERATURE	49	JULY 24+	MILLGAP
GREATEST TOTAL PRECIPITATION	9.42		ABINGDON 3S
LEAST TOTAL PRECIPITATION	2.11		FARMVILLE 2 N
GREATEST 1 DAY PRECIPITATION	3.74	JULY 13	ROANOKE 8 N
GREATEST TOTAL SNOWFALL	T		BLACKSBURG NWSO

"I certify that this is an official publication of the National Oceanic and Atmospheric Administration (NOAA) It is compiled using information from weather observing sites supervised by NOAA/National Weather Service and received at the National Centers for Environmental Information(NCEI), Asheville, North Carolina 28801."

Director
National Centers for Environmental Information

noaa

National
Oceanic and
Atmospheric Administration

National
Environmental Satellite, Data
and Information Service

National
Centers for Environmental Information
Asheville, North Carolina

VIRGINIA
201507

MONTHLY STATION AND DIVISION SUMMARY

STATION	TEMPERATURE (°F)											PRECIPITATION (IN)												
	AVERAGE MAXIMUM	AVERAGE MINIMUM	AVERAGE	DEPARTURE FROM NORMAL	HIGHEST	DATE	LOWEST	DATE	HEATING DEG. DAYS	COOLING DEG. DAYS	NO. OF DAYS				TOTAL	DEPARTURE FROM NORMAL	GREATEST 24 HOURS	DATE	ICE PELLETS, SNOW			NO. OF DAYS		
											MAX		MIN						TOTAL	MAX DEPTH ON GROUND	DATE	.10 OR MORE	.50 OR MORE	1.00 OR MORE
											>=90	<=32	<=32	<=0										
PETERSBURG	87.3	68.9	78.1	-1.1	93	20+	63	24	0	416	7	0	0	0	5.14	0.68	1.40	13	M			8	3	3
RICHMOND INTL AP	88.0	70.5	79.2	-0.1	95	09	63	25	0	449	10	0	0	0	5.89	1.38	1.21	04	0.0	0		11	5	1
SANDSTON	87.1	67.9	77.5	-1.1	94	21	61	25	0	396	8	0	0	0	A 6.02	1.73	1.35	29	M			7	3	1
WINTERPOCK 4 W															4.68		1.63	29	M			8	3	1
--DIVISIONAL DATA-----> WESTERN PIEDMONT 03			77.1	0.3B										4.16	-0.20B									
ALTAVISTA														2.80		0.67	07	0.0	0			8	1	0
APPOMATTOX	86.0	66.6	76.3	0.4	92	21+	62	02+	0	356	5	0	0	0	4.27	-0.55	1.13	28	0.0	0		9	3	1
BEDFORD 4 NW														5.37		1.58	28	0.0	0			10	3	1
BROOKNEAL	87.2	67.2	77.2	5.1	93	20+	62	17	0	387	7	0	0	0	3.64	-0.72	0.99	07	0.0	0		8	3	0
CHARLOTTE COURT HOUSE	86.9	67.7	77.3	0.5	93	19+	62	25	0	390	7	0	0	0	3.51	-0.73	0.64	19	0.0	0		9	2	0
CHARLOTTESVILLE 2W	85.4	67.6	76.5	-0.7	93	21+	61	16	0	363	6	0	0	0	3.61	-1.71	1.00	29	0.0	0		7	3	1
CHATHAM	83.7	64.3	74.0	-0.7	89	20	59	01	0	284	0	0	0	0	4.61	0.12	1.21	29	0.0	0		10	5	1
CONCORD 4 SSW														3.82		1.20	14	0.0	0			10	3	1
DANVILLE RGNL AP	87.7	69.4	78.5	0.2	93	20+	65	12+	0	425	7	0	0	0	7.24	2.57	2.08	13	0.0	0		10	5	2
FREE UNION	M	M	M		89	10	60	01	0	231E	0	0	0	0	M				M					
HOLCOMB ROCK														5.59		1.84	29	0.0	0			10	4	1
HUDDLESTON 4 SW														3.85		0.93	06	0.0	0			8	4	0
LYNCHBURG INTL AP	85.0	65.6	75.3	0.0	91	19	59	01	0	329	3	0	0	0	3.79	-0.57	0.84	06	0.0	0		7	4	0
MARTINSVILLE FLTR PLT	87.3	65.5	76.4	1.0	93	31+	61	31+	0	363	8	0	0	0	5.54	1.07	1.64	05	0.0	0		8	4	2
MEADOWS OF DAN 5 SW	83.6	63.9	73.7		89	21+	59	02+	0	277	0	0	0	0	2.92		0.93	03	0.0	0		6	2	0
MONTEBELLO FISH CULTURAL STN	81.7M	62.3M	72.0M		89	19	53	22	4E	228E	0	0	0	0	M 6.27		2.06	29	M			10	3	3
MONTECELLO	83.3	66.3	74.8	-0.5	91	20	62	17+	0	310	2	0	0	0	2.35	-3.14	0.53	29	M			7	2	0
PEDLAR DAM														6.10		3.20	29	0.0	0			8	3	1
ROCKY MT	86.5	66.3	76.4	1.5	94	31	62	31+	0	361	9	0	0	0	2.88	-1.99	1.08	13	0.0	0		6	2	1
SOUTH BOSTON	88.0	68.1	78.0	1.2	94	20	64	26+	0	410	11	0	0	0	4.99	0.66	1.25	04	0.0	0		11	4	2
STUART	85.7	65.5	75.6	0.3	93	10	59	02	0	337	3	0	0	0	5.91	0.34	2.30	13	0.0	0		9	2	2
TYE RIVER 1 SE	84.7	66.1	75.4	-0.7	92	20	55	13	0	330	4	0	0	0	4.83	0.79	1.35	01	M			9	4	1
WOOLWINE														8.35		3.14	13	0.0	0			10	4	2
--DIVISIONAL DATA-----> NORTHERN 04			75.8	-0.1B										4.57	-0.06B									
BOSTON 4 SE	83.5	63.9	73.7	-0.7	92	20	57	12+	0	275	2	0	0	0	4.33	-0.87	2.62	13	0.0	0		7	2	1
EDINBURG	M	M	M								0	0	0	0	M				M					
FRONT ROYAL	83.7	63.9	73.8	-1.2	93	20	57	19+	0	282	2	0	0	0	4.77	1.47	1.02	28	M	0		10	3	1
LINCOLN	84.2	63.1	73.7	-1.2	93	20	54	16	0	275	2	0	0	0	A 3.70		2.56	15	M	0		2	1	1
LURAY 5 E	83.8M	62.8M	73.3M	-1.2	92	20	56	23+	0	268E	1	0	0	0	A 3.78	-0.33	1.42	13	M 0.0	0		9	2	1
MADISON	84.0	66.3	75.1	-0.7	93	21	60	16	0	320	3	0	0	0	A 3.61	-0.60	0.50	07	M			3	1	0
MANASSAS	86.3M	69.2M	77.7M	-0.5	95	20	60	16	0	404E	4	0	0	0	6.54		1.30	31	M			14	5	2

VIRGINIA
201507

MONTHLY STATION AND DIVISION SUMMARY

STATION	TEMPERATURE (°F)											PRECIPITATION (IN)													
	AVERAGE MAXIMUM	AVERAGE MINIMUM	AVERAGE	DEPARTURE FROM NORMAL	HIGHEST	DATE	LOWEST	DATE	HEATING DEG. DAYS	COOLING DEG. DAYS	NO. OF DAYS				TOTAL	DEPARTURE FROM NORMAL	GREATEST 24 HOURS	DATE	ICE PELLETS, SNOW			NO. OF DAYS			
											MAX		MIN						TOTAL	MAX DEPTH ON GROUND	DATE	.10 OR MORE	.50 OR MORE	1.00 OR MORE	
											>=90	<=32	<=32	<=0											
MT WEATHER	78.9	64.3	71.6	-2.4	88	20	55	16	0	211	0	0	0	0	4.50	0.69	1.40	09	M			11	3	1	
PIEDMONT RSCH STN	84.4	66.9	75.6	-0.8	93	20	60	16	0	340	4	0	0	0	5.90	1.20	2.09	29	M			9	3	2	
SOMERSET	84.7	66.4	75.5	0.2	93	20	60	23+	0	335	5	0	0	0	4.68	-1.02	1.38	11	M			7	4	2	
SPERRYVILLE	82.9M	63.5M	73.2M	-1.4	91	21+	58	17	0	262E	2	0	0	0	M 9.33	5.01	2.45	06	M			11	5	3	
STERLING RCS	84.9M	M	M		93	20	60	12+	0	344E	4	0	0	0	4.23	0.53	1.07	09	M 0.0	0		9	3	1	
VIENNA	87.4	69.2	78.3	3.7	97	20+	62	17+	0	421	9	0	0	0	4.98	0.79	2.24	09	M			9	2	1	
WARRENTON 3 SE	84.0M	66.1M	75.1M	-0.6	92	20	57	16	0	319E	3	0	0	0	M 4.12	-0.15	1.63	14	M			8	3	1	
WASHGTN DULLES INTL AP	85.2	66.8	76.0	-0.7	94	19	58	24	0	347	3	0	0	0	4.89	1.22	1.60	08	0.0	0		6	4	2	
WASHINGTON REAGAN AP	89.1	73.8	81.5	1.7	98	19	66	16+	0	520	14	0	0	0	5.01	1.28	1.30	01	0.0	0		5	5	2	
WINCHESTER	84.4	65.5	75.0	-0.2	94	20	56	16	0	319	2	0	0	0	2.73	-0.80	0.82	15	M			6	2	0	
WINCHESTER 7 SE	M	M	M		94	19	54	19+	0	241E	3	0	0	0	M				M	0					
WOODSTOCK 2 NE	83.5	62.1	72.8	-0.7	91	20	50	22	0	251	2	0	0	0	5.79	1.99	2.07	13	M			9	2	2	
--DIVISIONAL DATA----->			75.1	0.6B											4.63	0.72B									
CENTRAL MOUNTAIN 05																									
BUENA VISTA															3.25		0.74	29	0.0	0		8	4	0	
COVINGTON FLTR PLT	85.1	63.0	74.0	-0.6	93	20	56	01	0	289	6	0	0	0	6.91	2.94	1.73	29	0.0	0		14	4	2	
DALE ENTERPRISE	83.3	63.2	73.2	-0.3	91	30+	54	05	0	264	5	0	0	0	2.67	-1.33	1.22	22	0.0	0		3	2	1	
GATHRIGHT DAM	79.8	62.5	71.1	-0.9	86	20	57	23+	1	201	0	0	0	0	4.82	0.92	1.24	06	0.0	0		13	3	1	
GLASGOW 1 SE															4.67		1.13	11	0.0	0		9	3	2	
HOT SPRINGS	79.3	61.1	70.2	-0.6	85	20+	55	23+	2	173	0	0	0	0	4.94	0.73	0.92	06	0.0	0		12	3	0	
LEXINGTON	86.0	65.0	75.5	0.3	93	20	59	31+	0	333	6	0	0	0	2.61	-1.51	0.56	11	0.0	0		7	1	0	
MILLGAP	78.8	56.9	67.9	0.5	85	20	49	24+	11	105	0	0	0	0	5.55	0.88	0.95	28	M 0.0	0		12	5	0	
MTN GROVE															4.58		0.96	06	0.0	0		12	3	0	
MUSTOE 1 SW	79.7	61.1	70.4	2.6	87	19	52	23	2	176	0	0	0	0	4.31	-0.30	1.31	05	M			12	2	1	
NEW CASTLE															7.32		2.51	13	0.0	0		10	3	2	
ROANOKE 8 N	86.1	66.8	76.5	1.2	92	31+	59	01	0	364	6	0	0	0	5.88	0.70	3.74	13	0.0	0		6	2	1	
ROANOKE INTL AP	86.2	68.5	77.4	0.7	94	30	61	01	0	392	7	0	0	0	4.29	0.25	1.68	06	0.0	0		7	3	2	
STAUNTON WATER TRMTMT PLT	82.9	64.2	73.5	-0.1	90	21+	57	23	0	271	2	0	0	0	5.85	1.95	1.51	29	0.0	0		12	5	1	
WAYNESBORO WTP	84.3	64.0	74.1	0.6	91	21+	59	31+	0	293	5	0	0	0	2.94	-1.29	0.85	28	0.0	0		7	2	0	
--DIVISIONAL DATA----->			73.1	-0.3B											4.71	0.74B									
SOUTHWESTERN MOUNTAIN 06																									
ABINGDON 3S	82.6	63.6F	73.1F	0.1	88	30+	58	31	4	253	0	0	0	0	9.42	4.39	3.60	04	0.0	0		14	5	2	
BIG STONE GAP	82.7	64.7	73.7	-0.7	89	20	58	01	0	278	0	0	0	0	8.50	3.21	1.80	04	0.0	0		13	5	3	
BLACKSBURG NWSO	82.5	62.7	72.6	1.4	88	31	56	31+	0	242	0	0	0	0	4.28	0.02	1.52	06	T	0		6	2	2	
BURKES GARDEN	76.6M	59.3M	68.0M	0.6	83	29	53	08+	4E	102E	0	0	0	0	M 7.37	2.89	0.98	03	0.0	0		15	6	0	
CHRISTIANSBURG	80.0	63.1	71.5	-0.9	85	31+	58	01	0	212	0	0	0	0	4.12	-0.23	1.25	06	0.0	0		9	3	2	
CLINTWOOD 1 W	81.5	62.9	72.2	1.1	88	29	54	02+	0	230	0	0	0	0	6.20	1.45	1.28	14	0.0	0		13	4	2	

VIRGINIA
201507

MONTHLY STATION AND DIVISION SUMMARY

STATION	TEMPERATURE (°F)											PRECIPITATION (IN)												
	AVERAGE MAXIMUM	AVERAGE MINIMUM	AVERAGE	DEPARTURE FROM NORMAL	HIGHEST	DATE	LOWEST	DATE	HEATING DEG. DAYS	COOLING DEG. DAYS	NO. OF DAYS				TOTAL	DEPARTURE FROM NORMAL	GREATEST 24 HOURS	DATE	ICE PELLETS, SNOW			NO. OF DAYS		
											MAX		MIN						TOTAL	MAX DEPTH ON GROUND	DATE	.10 OR MORE	.50 OR MORE	1.00 OR MORE
											>=90	<=32	<=32	<=0										
COPPER HILL	79.4M	62.1M	70.8M		86	30	57	02	0	187E	0	0	0	0	M 4.65		0.75	07	0.0	0		10	5	0
GALAX RADIO WBRF	82.0	61.6	71.8	0.8	89	19	56	07+	0	217	0	0	0	0	5.41	1.17	2.72	06	0.0	0		9	2	1
GALAX WTP	82.3	63.4	72.9	2.5	88	31+	58	02+	0	251	0	0	0	0	4.66		2.52	06	0.0	0		9	1	1
GRUNDY	81.3	65.6	73.4	0.6	88	10	58	02+	0	267	0	0	0	0	6.07	0.87	1.31	14	0.0	0		11	3	1
JOHN FLANNAGAN LAKE	M	M	M		93	21	56	01	0	313E	4	0	0	0	MA 6.51		1.47	14	0.0	0		9	3	2
LAFAYETTE 1 NE															3.67		1.50	13	0.0	0		7	2	1
LEBANON	83.6	62.4	73.0	1.1	89	30+	55	31	0	255	0	0	0	0	5.57	1.00	1.54	15	0.0	0		10	3	2
NORA 4 SSE	79.5	64.9	72.2	0.5	86	21+	59	01	0	230	0	0	0	0	7.77	3.02	2.14	06	0.0	0		13	4	4
N FK LAKE	M	M	M		90	29	56	02	0	262E	1	0	0	0	MA 5.14		0.50	21	M	0		3	1	0
PULASKI 2 E	81.3M	62.7M	72.0M	-0.3	87	28+	58	12	0	226E	0	0	0	0	M 4.78	0.85	1.19	04	0.0	0		11	3	2
RADFORD 3 N	82.2	63.0	72.6	0.2	87	31+	57	31+	0	242	0	0	0	0	5.02	0.80	1.60	13	0.0	0		9	4	1
RICHLANDS	82.6	62.6	72.6	1.1	88	29+	56	01	0	243	0	0	0	0	5.26	0.94	0.82	20	0.0	0		13	5	0
SALTVILLE 1N	82.8	63.5	73.1	0.2	89	29	56	01	0	259	0	0	0	0	6.70	1.67	1.63	14	0.0	0		11	5	2
STAFFORDSVILLE 3 ENE	82.1	62.9	72.5	1.0	88	31	55	01	0	239	0	0	0	0	8.28	4.19	2.92	13	0.0	0		11	4	3
WILLIS															8.23		2.25	13	0.0	0		10	6	2
WISE 3E	79.6	63.3	71.5	0.6	85	20	55	31	0	206	0	0	0	0	6.48	1.18	1.51	14	0.0	0		12	5	2
WYTHEVILLE 1 S	82.3	62.4	72.3	1.9	88	31+	57	19	0	234	0	0	0	0	5.10	1.35	1.48	04	0.0	0		9	4	1
--DIVISIONAL DATA----->			72.2	1.0B											6.15	1.86B								

VIRGINIA
201507

DAILY PRECIPITATION (INCHES)

STATION	TOTAL	DAY OF MONTH																																
		01	02	03	04	05	06	07	08	09	10	11	12	13	14	15	16	17	18	19	20	21	22	23	24	25	26	27	28	29	30	31		
ALTAVISTA	2.80	0.02	0.02	0.04	0.23	0.18	0.48	0.67	0.01	0.05	0.01	0.08		0.31	0.03	0.04	0.11															0.01	0.41	0.10
APPOMATTOX	4.27	0.45	0.02		0.10	T	0.41	0.09		0.03		0.10	0.03	0.04	0.48	0.50															1.13	0.17	0.72	
BEDFORD 4 NW	5.37	0.26		0.02	0.18	0.02	0.75	0.88	0.01	0.01		0.33	0.02	0.37	0.38	0.13						0.01								1.58	0.38	0.04		
BROOKNEAL	3.64		0.09	0.03	0.14	0.01	0.26	0.99		0.02		0.16		0.12	0.76		0.72														0.34			
CHARLOTTE COURT HOUSE	3.51	0.02	0.01		0.11	0.02	0.46	0.47		0.02		0.21		0.61		0.15				0.64										T	0.45	0.09	0.25	
CHARLOTTESVILLE 2W	3.61	0.21			0.02	0.05	0.25	0.02		T		0.86	0.03	0.21	0.07	0.04						0.29							0.02	1.00		0.54		
CHATHAM	4.61	0.03		0.10	0.70	0.67	0.15	0.04				0.02		0.11	0.61		0.02					0.10		0.25					1.21		0.60			
CONCORD 4 SSW	3.82	0.52	0.03		0.13		0.93	0.17		0.02		0.22	0.02	0.06	1.20	0.10	0.06			0.11									0.11	0.14				
DANVILLE RGNL AP	7.24	0.06	0.03	0.37	0.76	1.02	0.04		T				T	2.08	0.31							0.12		0.81				0.82	0.48		0.34			
FREE UNION	M	T			0.05	0.02	0.26	0.04		0.01	T	0.85	0.05	0.15	-	-	-	-	-	-	-	-	-	-	-	-	-	-	-	-	-	-		
HOLCOMB ROCK	5.59	0.11			0.32	0.09	0.69	0.58				0.93		0.25	0.20	T	0.13						0.05							0.40	1.84			
HUDDLESTON 4 SW	3.85	0.09		0.40	0.70	0.17	0.93	0.54		0.05				0.56	0.18									0.03		T			0.02	0.18				
LYNCHBURG INTL AP	3.79		T	0.35	T	0.57	0.84		0.02		0.05	0.17		0.67	0.04	T	T		0.02			T				T		0.71	0.35	T	T			
MARTINSVILLE FLTR PLT	5.54	0.09		0.50	0.47	1.64	0.41	0.25						0.60	1.10	0.04					0.04			0.30		0.03				0.07				
MEADOWS OF DAN 5 SW	2.92	0.04		0.93	0.37	0.03	0.39	0.08		0.01		0.22			0.24	0.05																0.56		
MONTEBELLO FISH CULTURAL STN	M 6.27	0.05	0.01	0.06	0.10	0.12	1.11	0.02			0.05	0.49	0.08	0.12	0.40	0.18				0.02			0.13		-	-				1.27	2.06			
MONTICELLO	2.35	0.32			0.03	0.06	0.15	0.05					0.37	T	0.15								0.07							0.10	0.53	0.52		
PEDLAR DAM	6.10	0.08		T	0.05	0.10	0.89	0.24		0.04		0.61	T	0.21	0.21		T			T			0.09						0.38	3.20				
ROCKY MT	2.88		0.02	0.06	0.18	0.04	0.79	0.09	T	0.10			0.13	1.08	0.22	T									0.06	0.01				0.08	0.02			
SOUTH BOSTON	4.99	0.04		0.12	1.25	0.19	0.55	0.04				0.15	0.01	0.10	0.14							0.24				0.04			1.20	0.32	0.03	0.57		
STUART	5.91	0.03		0.48	0.36	0.06	0.30	0.28		0.03				2.30	0.37	0.03						0.02							0.30	1.20	0.15			
TYE RIVER 1 SE	4.83	1.35		T	0.08		0.39	0.12		T		0.82		0.14	0.35	0.57														0.58	0.35			
WOOLWINE	8.35	0.01	0.03	0.30	0.32	0.08	2.22	0.15				0.04		3.14	0.14	0.20						0.09	0.24	0.55		0.08			0.67	0.02				
NORTHERN 04																																		
BOSTON 4 SE	4.33				0.33	0.26	0.13	0.25					0.51		2.62																		0.23	
EDINBURG	M	-	-	-	-	-	-	-	-	-	-	-	-	-	-	-	-	-	-	-	-	-	-	-	-	-	-	-	-	-	-	-	-	
FRONT ROYAL	4.77		0.21	0.01	0.02	0.48	0.24			0.91	0.60	0.37		0.05	0.41	0.28	0.01							0.13						1.02		0.01		
LINCOLN	A 3.70	*	*	*	*	0.82 _a									2.56														0.32					
LURAY 5 E	A 3.78	0.14	0.01	*	0.11 _a	T	0.28	0.02		0.45	T	0.65		1.42	0.20	0.12	0.06		0.15										0.06			0.11		
MADISON	A 3.61	0.41			*	* 0.70 _a	0.50					*	*	1.55 _a																	0.45			
MANASSAS	6.54	0.57	0.30	0.15	0.43	0.45	0.05			1.00		0.67			0.35							0.10		0.15					0.50	0.42	0.10	1.30		
MT WEATHER	4.50	0.03	0.30	0.03	0.08	0.68	0.17		0.01	1.40	0.01	0.19	0.02	0.10	0.31	0.79						0.10							0.16	0.02				
PIEDMONT RSCH STN	5.90	0.96				0.27	0.25	0.05						1.51	0.10	0.12	0.04	0.08					0.10						0.11	0.01	2.09		0.29	
SOMERSET	4.68	0.11			0.03	0.55	0.08	0.05						1.38	0.02	0.03	0.04	1.14	0.14										0.06	0.01	0.14	0.01	0.82	
SPERRYVILLE	M 9.33	0.12	-		0.11	0.11	2.45	-		0.75		0.98	0.03	0.42	2.35	0.17	0.05													0.04	1.53	-	0.14	
STERLING RCS	4.23	0.10			0.03	0.69	0.01	0.45	T	1.07	0.01	0.10	0.02	0.08	0.22		T												0.11	0.09	0.89		0.29	
VIENNA	4.98	0.35	0.01	0.34	0.03	0.34	0.01	0.12		2.24		0.06		0.04	0.06		0.01					0.04		0.02					0.13	0.29		0.60	0.29	
WARRENTON 3 SE	M 4.12	0.31	-	-	0.26	0.07	0.60	0.01		0.15		-	-	-	1.63	-	T						0.15		0.07		-			0.13	T	0.74		
WASHGTON DULLES INTL AP	4.89	0.05	T	0.01	0.86	0.02	0.50		1.60	T	T	0.05	T	0.21	T	T					0.05							0.33	0.06		1.15			
WASHINGTON REAGAN AP	5.01	1.30	0.02	0.03	0.85	T	0.02		1.12	0.03	T	0.09		0.03	T	0.01													0.94		0.53			
WINCHESTER	2.73	0.04	0.06	0.02	0.03		0.14			0.81	0.10	0.16				0.82																	0.07	
WINCHESTER 7 SE	M	0.29	0.02	0.05	0.02	0.11		-	-	-	-	-	-	-	0.02	-	-	-	-	-	-	-	0.14	-	-	-	-	0.05	-	-	-	-	-	

VIRGINIA
201507

DAILY TEMPERATURES (°F)

STATION	OB. TIME	MAX/MIN	DAY OF MONTH																															AVERAGE
			01	02	03	04	05	06	07	08	09	10	11	12	13	14	15	16	17	18	19	20	21	22	23	24	25	26	27	28	29	30	31	
ASHLAND	18	MIN	66	66	65	68	68	68	68	68	73	70			63	63	68	63	62	62		71	74	69	64	65	61		66	71	71	72	70	67.2
		MAX	84	81	80	82	82	84	87	85	90	87	80	81	81	83	84	81	83	87	91	92	90	82 ¹	84	84	85	87	86	84	83	89	85	84.7
CAMP PICKETT	08	MIN	67	71	62	67	68	69	70	74	73	74	69	63	66	68	66	60	63	73	71	74	75	67	63	64	61	67	68	68	70	72	69	68.1
		MAX	87	85	82	81	85	83	84	87	86	91	88	81	83	83	85	86	82	85	90	92	91	89	84	83	84	85	87	86	85	87	88	85.6
CHASE CITY	17	MIN	65	66	64	66	68	67	67	67	72	73	69	63	64	64	69	64	62	64	64	65	73	71	65	66	60	65	67	70	72	71	70	66.9
		MAX	87	84	82	80	84	85	84	87	85	91	89	83	85	86	85	85	83	85	90	93	92	90	86	83	86	86	87	87	88	87	88	86.2
CLARKSVILLE	07	MIN	65	69	64	69	69	68	66	73	72	70	70	62	71	68	61	68	65	70	72	71	74	71	67	67	60	65	68	72	71	71	71	68.4
		MAX	89	87	85	80	86	87	89	90	87	94	92	86	86	88	88	87	85	86	91	93	93	93	89	82	87	88	90	89	89	88	91	88.2
CORBIN	09	MIN	65	65	67	68	69	68	67	67	74	74	73	66	66	69	69	70	69	68	72	72	73	73	71	70	65	65	69	70	72	72	73	69.4
		MAX	85	79	81	84	82	87	89	85	92	86	79	83	78	87	84	80	84	89	93	92	87	84	83	84	88	89	88	88	86	92	87	85.6
CROZIER	07	MIN	65	68	60	67	66	71	70	74	72	72	68	63	68	68	68	60	63	71	71	73	74	66	63	62	61	68	70	66	70	73	64	67.6
		MAX	85	83	75	78	84	81	83	87	85	90	86	77	82	79	84	82	79	83	89	91	90	87	82	84	83	87	88	87	87	86	90	84.3
FARMVILLE 2 N	07	MIN	65	68	60	67	68	68	66	69	72	71	68	62	63	66	66	58	62	66	69	69	72	66	62	62	60	64	67	69	71	72	66	66.3
		MAX	85	85	79	77	86	82	84	87	86	92	89	79	84	86	87	87	82	85	92	94	91	89	84	83	85	89	90	89	88	88	91	86.3
GREENBAY 3 NE	09	MIN	65	65	64	65	66	66	68	68	71	71	71	63	63	66	66	65	62	62	70	71	73	71	64	65	61	61	66	71	72	71	69	66.8
		MAX	85	85	82	81	85	85	88	88	92	90	90	82	82	85	85	84	88	92	94	94	92	90	88	87	88	89	89	89	88	88	91	88.2
JOHN H KERR DAM	08	MIN	68	72	66	69	70	69	71	75	75	74	72	65	68	72	73	70	65	70	75	77	76	73	69	70	64	66	68	76	73	73	71	70.8
		MAX	83	82	77	81	79	82	86	85	89	85	78	83	81	84	83	80	82	89	92	91	90	83	83	83	85	88	87	86	84	89	88	84.5
LOUISA	18	MIN	62	65	57	66	62	67	65	69	70	67	65	57	65	65	65	56	59	67	69	68	70	63	58	57	55	60	67	65	69	70	61	63.9
		MAX	85	85	79	77	84	80	84	87	86	92	88	80	83	82	85	86	80	84	89	92	91	88	83	84	85	87	89	89	88	86	89	85.4
PALMYRA 3S	06	MIN	62	68	62	69	66	69	66	70	73	73	69	61	66	67	66	61	62	68	70	71	73	66	62	62	58	63	67	69	73	72	65	66.7
		MAX	89	84	83	85	85	87	89	87	93	89	78	85	85	86	87	81	86	91	91	93	91	85	87	87	88	90	88	88	88	91	89	87.3
PETERSBURG	08	MIN	67	65	66	68	70	70	72	72	75	71	66	66	69	69	68	65	67	72	72	74	74	65	65	63	65	68	67	73	73	73	66	68.9
		MAX	88	83	84	85	85	88	91	89	95	91	78	85	85	87	88	83	86	92	92	94	92	87	86	88	88	90	89	87	87	93	91	88.0
RICHMOND INTL AP	24	MIN	68	68	67	68	69	71	71	75	78	74	70	67	69	71	73	65	65	74	72	74	76	68	67	63	69	74	73	74	72	70.5		
		MAX	90	87	83	83	85	84	87	90	88	93	90	76	85	85	87	86	82	86	91	92	94	89	85	85	86	88	89	88	86	91	87.1	
SANDSTON	07	MIN	67	68	65	65	67	69	70	70	75	76	73	64	65	68	69	63	63	64	71	72	73	69	62	64	61	62	66	71	71	71	67.9	
		MAX	86	85	82	76	86	80	81	87	87	92	87	81	85	86	87	86	81	85	91	91	92	90	84	84	86	88	89	88	88	87	88	86.0
WESTERN PIEDMONT 03 APPOMATTOX	07	MIN	62	62	63	66	66	68	66	67	71	72	69	63	65	66	64	64	66	70	71	72	69	66	64	63	65	67	70	70	70	64	66.6	
		MAX	88	87	82	79	87	84	83	88	87	93	90	83	85	85	87	87	84	86	91	93	92	91	88	85	88	88	90	88	87	89	87.2	
BROOKNEAL	07	MIN	63	69	64	66	68	70	66	68	70	69	64	65	69	66	67	62	67	71	70	71	68	66	64	63	64	66	69	72	71	66	67.2	
		MAX	86	84	81	81	87	85	85	89	87	93	89	80	85	86	87	86	83	86	93	91	91	90	87	83	87	89	90	88	88	90	86.9	
CHARLOTTE COURT HOUSE	07	MIN	64	65	64	64	67	67	68	68	70	71	70	64	71	67	67	67	65	66	71	72	74	70	68	66	62	63	67	70	71	72	68	67.7
		MAX	83	84	76	75	82	81	81	87	82	92	86	79	84	82	86	84	80	83	91	93	93	88	86	87	86	89	90	91	89	87	89	85.4
CHARLOTTESVILLE 2W	08	MIN	63	65	63	65	67	67	67	70	72	73	66	65	67	67	68	61	62	66	71	75	75	68	64	64	66	68	69	70	72	72	67	67.6
		MAX	84	82	82	76	83	83	81	84	83	88	87	82	82	84	83	83	80	80	86	89	88	85	83	80	82	84	86	85	87	85	87	83.7
CHATHAM	07	MIN	59	61	64	64	67	67	63	62	62	66	67	64	64	66	64	62	66	68	68	67	67	62	61	61	62	65	68	68	62	64.3		
		MAX	87	84	79	86	84	86	89	85	93	93	86	85	89	87	88	83	86	93	93	93	91	88	83	87	88	88	88	89	90	88	87.7	
DANVILLE RGNL AP	24	MIN	65	68	67	70	70	70	66	72	73	70	70	65	68	69	70	69	67	71	72	72	75	70	69	66	66	66	69	73	72	74	68	69.4
		MAX	87	84	79	86	84	86	89	85	93	93	86	85	89	87	88	83	86	93	93	93	91	88	83	87	88	88	88	89	90	88	87.7	

VIRGINIA
201507

DAILY TEMPERATURES (°F)

STATION	OB. TIME	MAX/MIN	DAY OF MONTH																															AVERAGE		
			01	02	03	04	05	06	07	08	09	10	11	12	13	14	15	16	17	18	19	20	21	22	23	24	25	26	27	28	29	30	31			
FREE UNION	08	MAX	81	82	74	73	83	77	78	86	79	89	84	76	81																					M
		MIN	60	63	61	62	63	65	65	66	69	71	66	62	63																				M	
LYNCHBURG INTL AP	24	MAX	84	79	75	84	80	80	86	85	90	88	81	83	84	86	86	81	82	89	91	90	88	83	83	85	86	89	87	88	86	89	86	85.0		
		MIN	59	63	62	67	67	65	63	69	68	69	67	62	66	66	64	62	63	68	68	69	71	64	63	63	62	63	68	69	71	70	64	65.6		
MARTINSVILLE FLTR PLT	07	MAX	88	87	82	76	85	82	85	89	86	93	93	85	85	89	89	86	83	87	91	93	93	91	87	83	86	85	90	87	88	89	93	87.3		
		MIN	61	62	66	67	68	68	64	64	67	66	67	65	66	66	66	66	63	64	68	69	69	66	68	62	62	63	65	66	68	69	61	65.5		
MEADOWS OF DAN 5 SW	07	MAX	82	82	77	73	80	81	81	84	81	89	89	84	82	86	86	80	82	82	88	87	89	88	84	79	82	83	87	83	87	86	87	83.6		
		MIN	59	59	63	63	65	65	62	62	65	65	62	64	63	63	64	62	63	68	69	69	64	63	63	63	63	63	68	66	67	61	63.9			
MONTEBELLO FISH CULTURAL STN	07	MAX	81	79	67	68	80	77	79	85	80	87	82	78	81	84	88	82	80	78	89	85	86	81											81.7	
		MIN	56	59	56	60	61	65	65	67	69	68	65	58	59	66	67	63	60	66	66	67	60	53											62.3	
MONTICELLO	08	MAX	82	82	75	73	81	79	78	85	83	90	84	77	82	78	80	84	83	86	87	91	89	86	82	81	84	87	88	87	88	87	83	83.3		
		MIN	63	65	64	63	67	67	66	69	72	72	68	64	67	66	65	62	62	65	65	75	74	68	64	64	64	64	66	69	70	63	63	66.3		
ROCKY MT	07	MAX	85	87	78	74	85	80	86	83	82	92	91	85	85	89	90	84	82	85	93	93	92	90	85	85	87	86	90	87	89	87	94	86.5		
		MIN	62	67	65	64	67	68	63	63	67	69	70	67	65	66	68	67	65	66	66	70	73	66	66	62	62	64	66	68	71	69	62	66.3		
SOUTH BOSTON	07	MAX	90	86	85	80	85	86	85	89	85	92	92	87	86	87	86	90	84	88	93	94	93	92	90	83	89	88	89	90	88	87	90	88.0		
		MIN	65	66	66	66	69	68	67	68	72	71	71	64	66	69	68	70	64	67	67	72	73	70	68	69	64	64	66	66	72	72	70	68.1		
STUART	07	MAX	85	85	85	82	84	81	82	86	83	93	88	86	84	86	87	84	82	85	91	89	91	88	86	83	86	86	88	86	85	83	87	85.7		
		MIN	60	59	65	65	67	67	63	63	66	65	66	63	62	65	67	68	65	67	69	70	70	65	66	65	65	64	65	68	68	67	66	65.5		
TYE RIVER 1 SE	07	MAX	84	85	80	75	84	79	78	88	80	90	85	80	84	85	86	86	80	84	88	92	90	85	84	81	85	87	88	89	87	87	90	84.7		
		MIN	62	64	61	62	66	67	64	65	72	73	69	64	55	67	68	64	64	65	68	73	74	67	63	64	62	63	67	69	70	74	64	66.1		
NORTHERN 04																																				
BOSTON 4 SE	07	MAX	83	83	73	75	81	79	82	86	84	89	83	80	82	75	85	83	78	82	87	92	91	86	84	83	83	87	88	83	86	86	89	83.5		
		MIN	60	64	57	59	63	65	68	70	69	69	66	57	58	61	65	59	58	66	68	70	70	64	58	59	58	63	68	68	69	72	61	63.9		
EDINBURG	07	MAX																																	M	
		MIN																																		M
FRONT ROYAL	07	MAX	83	84	73	75	80	78	81	87	86	86	86	86	81	81	86	83	79	81	89	93	90	86	82	82	84	84	86	85	87	86	86	83.7		
		MIN	63	65	60	60	65	66	66	66	71	70	67	60	59	60	68	58	57	57	57	70	71	64	61	60	60	64	67	69	69	69	63	63.9		
LINCOLN	07	MAX	84	84	78	81	83	82	86	88	86	82	82	78	82	79	87	82	78	82	88	93	89	86	83	81	83	87	89	85	90	84	88	84.2		
		MIN	63	62	58	58	63	63	68	70	70	66	57	57	66	68	65	54	57	59	70	72	71	63	57	55	55	61	64	67	67	71	60	63.1		
LURAY 5 E	08	MAX	85	83		83	79	80	83	86	82	85	84	81	81	77	86	79	78	84	88	92	88	85	81	83	82	86	88	85	85	87	87	83.8		
		MIN	59	62		56	62	66	64	67	68	66	65	56	65	65	63	56	58	67	67	67	67	57	56	59	57	63	69	65	65	70	58	62.8		
MADISON	08	MAX	83	85	74	75	82	80	88	83	92	83	80	83	78	86	84	79	82	89	91	93	84	85	83	84	81	88	85	87	87	89	84.0			
		MIN	64	65	61	63	66	68	68	70	73	67	61	63	68	67	60	62	66	71	72	72	64	61	62	61	63	67	70	71	73	63	66.3			
MANASSAS	07	MAX	87	86	75		83	83	85	89	88	89	86	85	85	77	88	85	82	82	87	95	93	89											86.3	
		MIN	67	68	62		69	69	73	73	74	74	70	63	70	70	70	60	62	68	75	77	76													69.2
MT WEATHER	07	MAX	80	79	68	72	76	75	78	82	82	80	78	78	78	72	81	77	73	75	83	88	85	80	78	77	79	81	83	79	84	82	82	78.9		
		MIN	63	61	61	61	62	64	68	68	68	65	63	63	64	64	64	55	63	63	63	72	72	60	60	60	63	67	68	68	68	68	65	64.3		
PIEDMONT RSCH STN	08	MAX	83	83	75	76	83	80	82	86	85	91	85	80	82	79	85	83	79	82	89	93	92	87	84	84	85	87	88	85	87	85	90	84.4		
		MIN	62	68	62	63	66	67	72	72	72	67	63	68	67	68	60	62	68	71	74	73	65	63	64	63	66	69	67	70	72	64	66.9			
SOMERSET	07	MAX	83	84	75	76	83	80	83	87	84	91	85	80	83	79	86	85	78	83	90	93	92	87	85	83	83	87	88	87	88	87	91	84.7		
		MIN	64	67	61	63	64	68	66	71	72	73	67	60	68	67	61	61	66	72	72	72	65	60	61	61	64	70	70	71	72	61	66.4			
SPERRYVILLE	06	MAX	81		73	74	79	79		86	80	86	83	81	81	73	85	83	78	81	86	91	91	87	84	82	84	87	87	83	86			82.9		

VIRGINIA
201507

DAILY TEMPERATURES (°F)

STATION	OB. TIME	MAX/MIN	DAY OF MONTH																															AVERAGE	
			01	02	03	04	05	06	07	08	09	10	11	12	13	14	15	16	17	18	19	20	21	22	23	24	25	26	27	28	29	30	31		
ABINGDON 3S	22	MAX	78	78	74	76	76	85	85	84	79	85	86	83	79	86	77	73	84	87	87	82	87	84	84	81	84	86	87	83	88	88	86	82.6	
		MIN	61	61	64	66	46 ^s	65	60	60	64	63	67	60	60	64	65	62	62	65	69	69	69	64	64	65	61	61	66	66	66	58	63.6		
BIG STONE GAP	08	MAX	79	76	75	74	77	78	78	84	77	86	87	87	80	86	78	75	85	86	87	89	87	84	83	80	84	85	86	87	87	88	88	82.7	
		MIN	58	62	65	65	65	65	65	65	67	66	66	62	63	65	65	63	66	66	69	69	70	66	66	64	60	62	64	63	70	65	60	64.7	
BLACKSBURG NWSO	07	MAX	81	81	73	74	85	78	79	83	77	86	85	82	79	85	82	77	84	84	87	86	86	84	82	80	84	86	87	82	87	84	88	82.5	
		MIN	56	57	63	64	65	65	59	60	63	65	67	60	62	62	63	61	62	65	67	67	68	63	62	59	60	62	63	66	67	66	56	62.7	
BURKES GARDEN	07	MAX	74	75	68	68	74	75	74	78	71	79	79	75	74	80	75	68	77	80	82	80	81	78	76	76		79	80	78	83	81	80	76.6	
		MIN	53	61	59	61	60	61	53	53	66	65	64	56	56	60	59	56	60	64	63	65	58	56	56			60	60	60	60	61	54	59.3	
CHRISTIANSBURG	07	MAX	78	78	69	69	77	75	78	80	81	84	83	79	78	83	81	77	79	81	84	85	83	82	79	78	81	84	80	84	80	84	80	85	80.0
		MIN	58	59	63	63	64	64	60	61	61	65	65	61	63	62	62	63	62	62	65	68	68	64	62	60	60	65	66	67	67	68	59	63.1	
CLINTWOOD 1 W	07	MAX	78	77	74	75	78	78	77	83	78	85	85	81	78	85	82	72	82	86	86	87	85	82	82	77	82	83	84	84	88	87	84	81.5	
		MIN	54	54	64	64	65	65	61	61	65	64	65	61	61	64	64	64	64	64	68	68	68	64	64	61	57	58	60	67	68	68	56	62.9	
COPPER HILL	07	MAX	79	79	70	70	79	79	77	81	74	85	84	80	77	84	81	78	77	78									80	83	81	86	85	79.4	
		MIN	58	57	61	61	61	61	60	60	67	66	65	62	62	61	61	62	61	62										65	66	65	65	59	62.1
GALAX RADIO WBRF	07	MAX	80	80	76	71	78	76	78	82	80	87	85	82	78	87	83	78	79	81	89	84	88	85	84	82	83	81	84	82	85	86	87	82.0	
		MIN	56	62	63	63	62	63	56	63	60	64	64	57	57	61	61	60	60	60	66	65	66	63	64	61	62	61	60	64	63	65	57	61.6	
GALAX WTP	07	MAX	80	80	77	74	82	79	83	84	83	87	85	83	80	86	84	77	78	81	88	84	87	84	83	81	80	79	83	83	84	84	88	82.3	
		MIN	58	58	64	67	67	62	62	63	64	65	59	60	64	67	62	61	62	65	65	67	64	65	63	62	60	61	66	66	67	63	63.4		
GRUNDY	07	MAX	80	80	73	71	76	80	74	84	76	88	85	79	76	86	80	72	82	86	86	86	86	84	82	78	81	84	85	82	87	85	85	81.3	
		MIN	58	58	66	65	65	66	64	66	66	67	68	65	67	65	65	66	68	69	70	70	69	64	64	62	62	64	68	69	69	63	65.6		
JOHN FLANNAGAN LAKE	07	MAX	82	81			83	81	83	82	88	91			88	83	78	88				93	89	87	85			91	88		90	89	M		
		MIN	56	57			65	63	63	66	66				63	65	63	63	65				68	67	65	63			62	70		70	62	M	
LEBANON	07	MAX	80	77	77	76	80	83	79	84	79	87	87	82	78	87	87	87	86	87	88	80	88	84	82	82	84	85	87	87	89	89	84	83.6	
		MIN	56	57	65	64	65	65	58	59	63	63	65	59	60	64	64	63	63	63	68	69	68	62	63	62	58	58	61	61	66	68	55	62.4	
NORA 4 SSE	07	MAX	74	74	72	69	73	77	76	78	76	84	84	80	75	85	79	72	81	81	86	86	86	81	81	78	81	83	83	82	83	84	81	79.5	
		MIN	59	60	63	63	63	63	63	66	65	66	66	62	64	63	63	63	62	68	68	70	67	65	65	62	64	68	70	71	69	69	61	64.9	
N FK LAKE	08	MAX	80	80			78	79	84	80					87	83	74	83				89	88	83	78			87	85	90	89		M		
		MIN	57	56			64	62	62	63					61	64	63	63				65	68	64	62			59	68	68	70		M		
PULASKI 2 E	07	MAX	80	80	70	72	78	79	79	83	74		85	81	80	85	81	75	83	84	85	83	87	83	82	80	83	83	87	87	85	83		81.3	
		MIN	59	59	63	64	64	64	62	59	65		65	58	64	62	63	61	60	64	64	69	68	63	61	60	59	60	62	65	66	66		62.7	
RADFORD 3 N	07	MAX	81	81	71	68	80	74	78	84	82	87	86	81	79	85	84	82	83	84	87	86	84	82	82	82	84	86	87	82	86	83	87	82.2	
		MIN	57	60	64	65	63	64	60	63	60	62	66	59	62	61	63	62	63	65	66	68	69	66	61	60	60	63	65	65	68	65	57	63.0	
RICHLANDS	07	MAX	78	78	74	74	76	83	77	82	83	85	86	80	80	85	85	76	85	86	87	86	86	85	84	79	83	85	88	86	88	87	84	82.6	
		MIN	56	57	64	64	66	65	59	60	60	63	66	61	61	64	61	64	64	68	68	67	63	64	61	58	58	61	63	67	67	58	62.6		
SALTVILLE 1N	07	MAX	79	78	75	74	78	84	78	83	77	86	87	84	79	86	77	74	85	87	88	84	86	85	83	83	85	86	87	84	89	87	88	82.8	
		MIN	56	58	65	65	65	66	62	63	65	65	65	61	61	64	61	63	63	64	66	68	67	63	64	63	59	61	64	67	68	68	58	63.5	
STAFFORDSVILLE 3 ENE	07	MAX	81	81	70	68	81	77	80	83	75	87	86	81	79	86	85	77	82	84	86	87	87	84	84	82	83	85	87	80	84	84	88	82.1	
		MIN	55	57	64	63	63	63	61	62	64	64	66	60	61	63	63	61	62	66	66	67	67	67	61	62	60	60	64	65	67	67	58	62.9	
WISE 3E	17	MAX	74	72	73	74	76	74	80	78	82	83	82	77	83	79	75	79	82	84	83	85	82	78	77	78	81	83	84	84	83	79	79.6		
		MIN	58	58	64	62	64	62	63	66	65	65	66	57	67	62	62	61	64	67	62	61	64	67	68	63	64	59	60	66	68	67	55	63.3	
WYTHEVILLE 1 S	07	MAX	79	80	74	72	78	80	78	84	77	86	86	79	79	86	79	75	83	87	88	82	88	84	83	82	84	87	88	85	86	83	88	82.3	
		MIN	59	60	64	63	63	64	58	59	63	64	66	58	58	63	63	61	61	65	57	68	68	64	64	62	62	63	66	65	64	58	62.4		

TOTAL SNOWFALL AND NUMBER OF DAYS WITH ONE INCH OR MORE ON GROUND

VIRGINIA
201507

STATION	JUL		AUG		SEP		OCT		NOV		DEC		JAN		FEB		MAR		APR		MAY		JUN		TOTAL		TOTAL PRECIPITATION		
	SNOWFALL	1 IN ON GD	SNOWFALL	1 IN ON GD	SNOWFALL	1 IN ON GD	SNOWFALL	1 IN ON GD	SNOWFALL	1 IN ON GD	SNOWFALL	1 IN ON GD	SNOWFALL	1 IN ON GD	SNOWFALL	1 IN ON GD	SNOWFALL	1 IN ON GD	SNOWFALL	1 IN ON GD	SNOWFALL	1 IN ON GD	SNOWFALL	1 IN ON GD	SNOWFALL	1 IN ON GD		TOTAL	
VIRGINIA																													
TIDEWATER 01																													
DISPUTANTA	M		M		M		M		M		M		M	0	M	12	M	3	M		M		M		M	0.0	M 15	49.91	
EASTVILLE	M		M		M		M		M		M		M	0	M	3	M	4	M		M		M		M	0.0	M 8	M 42.84	
EMPORIA 1 WNW	M		M		M		M		M		M		M	0	M		M	0	M		M		M		M	0.0	M 0	M 47.92	
FREDERICKSBURG SEWAGE	M		M		M		M		M		M		M	0	M	3	M	1	M		M		M		M	0.0	M 4	M 35.91	
HOLLAND 1 E	M		M		M		M		M		M		M		M		M		M		M		M		M	0.0	M 0	M 36.74	
HOPEWELL	M 0.0		M		M	0	M	0	M	0	M	0	M	0	M 8.8	1	M	0	M	0	M	0	M	0	M	8.8	M 1	M 45.70	
NORFOLK INTL AP	0.0		0.0		0.0	0	0.0	0	0.0	0	0.0	0	1.0	0	11.5	6	0.2	2	0.0	0	0.0	0	0.0	0	0.0	0	12.7	M 8	52.10
NORFOLK SOUTH	M		M		M		M		M		M		M	0	M	11	M	2	M		M		M		M	0.0	M 13	53.85	
NORTH	0.0		0.0		0.0	0	M 0.0	0	0.0	0	0.0	0	0.0	0	17.5	12	T	3	M 0.0	0	0.0	0	0.0	0	M 17.5	M 15	M 45.16		
PAINTER 2W	M		M		M		M		M		M		M		M	10	M	3	M		M		M		M	0.0	M 13	45.42	
STONY CREEK 2 N	0.0		0.0		0.0	0	0.0	0	0.0	0	0.0	0	1.0	1	11.0	6	0.0	0	0.0	0	0.0	0	0.0	0	0.0	0	12.0	M 7	48.97
SUFFOLK LAKE KILBY	0.0		0.0		0.0	0	0.0	0	0.0	0	0.0	0	0.5	0	14.0	9	T	1	0.0	0	0.0	0	0.0	0	0.0	0	14.5	M 10	56.55
WAKEFIELD 1NW	0.0		M 0.0		0.0	0	M 0.0	0	0.0	0	0.0	0	M 0.6	0	12.6	10	M 0.2	1	0.0	0	0.0	0	0.0	0	M 13.4	M 11	M 54.33		
WALKERTON 2 NW	M 0.0		0.0		0.0	0	0.0	0	0.0	0	0.0	0	1.5	2	10.1	8	2.0	2	0.0	0	0.0	0	0.0	0	M 13.6	M 12	M 46.08		
WALLACETON LK DRUMMOND	M		M		M		M		M		M		M		M		M		M		M		M		M	0.0	M 0	M 52.54	
WALLOPS ISLAND NASA TEST FACIL	0.0		0.0		0.0	0	0.0	0	0.0	0	T	0	T	0	M 11.0	10	0.3	2	0.0	0	0.0	0	0.0	0	M 11.3	M 12	42.24		
WARSAW 2 NW	M		M		M		M		M		M		M	1	M	6	M	3	M		M		M		M	0.0	M 10	41.55	
WEST POINT 2 NW	0.0		0.0		0.0	0	0.0	0	T	0	T	0	0.8	0	15.0	8	1.0	0	0.0	0	0.0	0	0.0	0	0.0	0	16.8	M 8	M 40.12
WILLIAMSBURG 2 N	M		M		M		M		M		M		M	0	M	12	M	3	M		M		M		M	0.0	M 15	53.35	
EASTERN PIEDMONT 02																													
ALBERTA 5N	0.0		0.0		0.0	0	0.0	0	0.0	0	T	0	0.6	1	13.5	11	2.3	3	0.0	0	0.0	0	0.0	0	16.4	M 15	47.62		
AMELIA COURTHOUSE 1	0.0		0.0		0.0	0	0.0	0	0.0	0	M 0.0	0	M 0.5	0	11.2	11	0.1	0	0.0	0	0.0	0	0.0	0	M 11.8	M 0	M 42.89		
ASHLAND	0.0		0.0		0.0	0	0.0	0	T	0	T	0	1.6	0	11.9	13	3.3	3	0.0	0	0.0	0	0.0	0	16.8	M 16	40.23		
BREMO BLUFF	M 0.0		M 0.0		M	0	M 0.0	0	M 0.0	0	M	0	M 0.0	0	M 11.5	3	M	1	M 0.0	0	M 0.0	0	M	0	M 11.5	M 4	M 44.35		
BUCKINGHAM	M		M		M		M		T	0	0.0	0	T	0	16.5	13	2.0	5	0.0	0	0.0	0	0.0	0	M 18.5	M 18	42.49		
CAMP PICKETT	M		M		M		M		M		M		M		M		M	0	M		M		M		M	0.0	M 0	M 34.45	
CHASE CITY	M		M		M		M		M		M		M		M	2	M	0	M		M		M		M	0.0	M 2	45.59	
CLARKSVILLE	0.0		0.0		M 0.0	0	0.0	0	M 0.0	0	0.0	0	0.0	0	M 9.2	2	M 0.0	0	0.0	0	M 0.0	0	M 0.0	0	M 9.2	M 2	M 49.74		
CORBIN	M		M		M		M		M		M		M	1	M	12	M	4	M		M		M		M	0.0	M 17	40.51	
CROZIER	0.0		M 0.0		M 0.0	0	M 0.0	0	0.0	0	0.0	0	M 1.7	1	12.0	12	2.0	6	M 0.0	0	0.0	0	0.0	0	M 15.7	M 19	M 46.32		
FARMVILLE 2 N	M		M		M		M		M		M		M	0	M	12	M	1	M		M		M		M	0.0	M 13	37.84	
GREENBAY 3 NE	M		M		M		M		M		M		M		M		M		M		M		M		M	0.0	M 0	M 17.93	
JOHN H KERR DAM	M		M		M		M		M		M		M		M		M		M		M		M		M	0.0	M 0	M 55.65	
LOUISA	M		M		M		M		M		M		M	0	M	13	M	5	M		M		M		M	0.0	M 18	35.84	
PALMYRA 3S	M		M		M		M		M		M		M	0	M	11	M	5	M		M		M		M	0.0	M 16	M 38.81	
PETERSBURG	M		M		M		M		M		M		M		M		M	1	M		M		M		M	0.0	M 1	50.61	
RICHMOND INTL AP	0.0		0.0		0.0	0	M 0.0	0	T	0	0.0	0	0.3	0	12.2	9	0.3	1	0.0	0	0.0	0	0.0	0	M 12.8	M 10	40.20		
SANDSTON	M		M		M		M		M		M		M	0	M	6	M	3	M		M		M		M	0.0	M 9	M 33.84	
WINTERPOCK 4 W	M		M		M		M		M		M		M		M		M		M		M		M		M	0.0	M 0	44.33	
WESTERN PIEDMONT 03																													
ALTAVISTA	M		M		M		0.0	0	0.0	0	0.0	0	0.0	0	M		M		0.0	0	0.0	0	0.0	0	M 0.0	M 0	37.54		
APPOMATTOX	M		M		M		0.0	0	T	0	T	0	T	0	14.5	12	0.9	4	0.0	0	T	0	0.0	0	M 15.4	M 16	40.57		
BEDFORD 4 NW	M		M		M		0.0	0	T	0	0.0	0	T	0	17.0	12	2.0	6	0.0	0	0.0	0	0.0	0	M 19.0	M 18	41.23		
BROOKNEAL	0.0		0.0		0.0	0	0.0	0	0.0	0	0.0	0	0.0	0	11.0	9	T	0	0.0	0	0.0	0	0.0	0	11.0	M 9	38.62		
CHARLOTTE COURT HOUSE	0.0		0.0		0.0	0	0.0	0	0.0	0	T	0	T	0	11.8	10	T	1	0.0	0	0.0	0	0.0	0	11.8	M 11	37.84		
CHARLOTTESVILLE 2W	0.0		0.0		0.0	0	0.0	0	0.8	0	T	0	0.1	0	14.7	12	6.7	7	0.0	0	0.0	0	0.0	0	22.3	M 19	42.44		
CHATHAM	0.0		0.0		0.0	0	0.0	0	T	0	T	0	T	0	9.5	9	0.1	0	0.0	0	0.0	0	0.0	0	9.6	M 9	47.60		
CONCORD 4 SSW	M		M		M		0.0	0	0.0	0	0.0	0	0.0	0	12.0	12	0.3	2	0.0	0	0.0	0	0.0	0	M 12.3	M 14	36.42		
DANVILLE RGNL AP	0.0		0.0		0.0	0	0.0	0	0.0	0	T	0	T	0	9.8	5	M T	0	0.0	0	0.0	0	0.0	0	M 9.8	M 5	41.41		

TOTAL SNOWFALL AND NUMBER OF DAYS WITH ONE INCH OR MORE ON GROUND

VIRGINIA
201507

STATION	JUL		AUG		SEP		OCT		NOV		DEC		JAN		FEB		MAR		APR		MAY		JUN		TOTAL		TOTAL PRECIPITATION		
	SNOWFALL	1 IN ON GD	SNOWFALL	1 IN ON GD	SNOWFALL	1 IN ON GD	SNOWFALL	1 IN ON GD	SNOWFALL	1 IN ON GD	SNOWFALL	1 IN ON GD	SNOWFALL	1 IN ON GD	SNOWFALL	1 IN ON GD	SNOWFALL	1 IN ON GD	SNOWFALL	1 IN ON GD	SNOWFALL	1 IN ON GD	SNOWFALL	1 IN ON GD	SNOWFALL	1 IN ON GD		TOTAL	
FREE UNION	M		M		M		M		M		M		M	0	M	12	M	6	M		M		M		M	0.0	M 18	M 44.66	
HOLCOMB ROCK	0.0		0.0		0.0	0	0.0	0	T	0	0.0	0	T	0	25.7	13	3.4	4	0.0	0	0.0	0	0.0	0	0.0	0	M 29.1	M 17	46.75
HUDDLESTON 4 SW	M		M		M		M		0.0	0	0.0	0	T	0	15.0	12	T	2	0.0	0	0.0	0	0.0	0	M 15.0	M 14	43.10		
LYNCHBURG INTL AP	0.0		0.0	0	0.0	0	0.0	0	T	0	T	0	0.1	0	20.3	13	2.5	2	0.0	0	0.0	0	0.0	0	0.0	0	M 22.9	M 15	40.28
MARTINSVILLE FLTR PLT	0.0		M		0.0	0	0.0	0	0.0	0	0.0	0	0.0	0	10.2	5	M		0.0	0	0.0	0	0.0	0	M 10.2	M 5	39.61		
MEADOWS OF DAN 5 SW	M 0.0		0.0		0.0	0	0.0	0	0.0	0	0.0	0	0.0	0	10.0	8	0.0	0	0.0	0	0.0	0	M 0.0	0	M 10.0	M 8	M 50.15		
MONTEBELLO FISH CULTURAL STN	M		M		M		M		M		M	0	M		M		M		M		M		M		M 0.0	M 0	M 4.99		
MONTECELLO	M		M		M		M		M		M		M	0	M	3	M	3	M		M		M		M 0.0	M 6	40.69		
PEDLAR DAM	0.0		0.0	0	0.0	0	0.0	0	T	0	T	0	T	0	26.2	12	4.3	9	0.0	0	T	0	0.0	0	30.5	M 21	44.54		
ROCKY MT	0.0		0.0		M 0.0	0	0.0	0	0.0	0	0.0	0	0.0	0	13.5	10	0.0	1	0.0	0	0.0	0	0.0	0	M 13.5	M 11	M 41.53		
SOUTH BOSTON	0.0		0.0	0	0.0	0	0.0	0	0.0	0	0.0	0	0.0	0	8.4	6	0.0	0	0.0	0	0.0	0	0.0	0	8.4	M 6	46.55		
STUART	0.0		M		0.0	0	0.0	0	0.0	0	0.0	0	0.0	0	13.7	7	0.0	0	0.0	0	0.0	0	0.0	0	M 13.7	M 7	47.83		
TYE RIVER 1 SE	M		M		M		M		M		M		M		M	3	M	1	M		M		M		M 0.0	M 4	40.69		
WOOLWINE	0.0		0.0		0.0	0	0.0	0	T	0	T	0	0.0	0	12.1	10	T	0	0.0	0	0.0	0	0.0	0	12.1	M 10	51.33		
NORTHERN 04																													
BOSTON 4 SE	M 0.0		M 0.0		M	0	M 0.0	0	M T	0	M 0.0	0	M 0.5	0	M 5.4	3	4.5	1	0.0	0	0.0	0	0.0	0	M 10.4	M 4	M 37.73		
EDINBURG	M		M		M		M		M	4	M 0.6	1	6.4	9	14.0	12	10.4	8	0.0	0	M		M		M 31.4	M 34	39.15		
FRONT ROYAL	M		M		M	0	M	0	M	1	M	0	M	3	M	4	M	2	M	0	M	0	M	0	M 0.0	M 10	M 38.57		
LINCOLN	M		M		M		M		M	1	M		M	4	M	10	M 9.0	9	M		M		M		M 9.0	M 24	M 29.31		
LURAY 5 E	0.0		0.0	0	0.0	0	0.0	0	M 5.0	4	0.0	0	M 5.4	7	11.6	11	M 1.4	7	0.0	0	0.0	0	0.0	0	M 23.4	M 29	M 31.03		
MADISON	M		M		M	0	M	0	M 3.0	1	M 0.0	0	M	1	M 13.9	8	M	2	M	0	M	0	M	0	M 16.9	M 12	M 17.82		
MANASSAS	M		M		M		M		M		M		M	5	M	5	M	2	M		M		M		M 0.0	M 12	M 16.88		
MT WEATHER	M		M		M		M		M	3	M		M	10	M	11	M	9	M		M		M		M 0.0	M 33	46.13		
PIEDMONT RSCH STN	M		M		M		M	M 1.0	0	M 0.0	0	1.5	1	13.3	11	5.5	3	M		M		M		M 21.3	M 15	M 38.33			
SOMERSET	M		M		M		M		M	0	M		M	1	M	12	M	7	M		M		M		M 0.0	M 20	M 44.53		
SPERRYVILLE	M		M		M		M		M	0	M		M	8	M	11	M	10	M	0	M		M		M 0.0	M 29	M 30.59		
STERLING RCS	0.0		0.0	0	0.0	0	0.0	0	M 1.6	1	T	0	8.8	12	15.2	12	M 1.3	6	T	0	0.0	0	0.0	0	M 26.9	M 31	M 42.59		
VIENNA	M		M		M		M		M	1	M		M	6.5	10	13.3	13	M	10	M		M		M 19.8	M 34	40.06			
WARRENTON 3 SE	M		M		M		M		M		M		M	6	M	12	M	7	M		M		M		M 0.0	M 25	M 36.41		
WASHGTN DULLES INTL AP	0.0		0.0	0	0.0	0	0.0	0	1.6	1	T	0	8.7	12	16.1	12	10.5	8	T	0	0.0	0	T	0	36.9	M 33	38.40		
WASHINGTON REAGAN AP	0.0		0.0	0	0.0	0	0.0	0	T	0	T	0	3.6	5	9.8	8	4.9	3	T	0	0.0	0	0.0	0	18.3	M 16	45.53		
WINCHESTER	M		M		M		M		M	2	M		M	7	M	10	M	7	M		M		M		M 0.0	M 26	M 37.43		
WINCHESTER 7 SE	M 0.0		M 0.0		M	0	M	0	M	0	M		M		M		M		M	0	M 0.0	0	M	0	M 0.0	M 0	M 15.01		
WOODSTOCK 2 NE	M		M		M		M		M	4	M		M	11	M	11	M	6	M		M		M		M 0.0	M 32	M 39.49		
CENTRAL MOUNTAIN 05																													
BUENA VISTA	M		M		0.0	0	0.0	0	0.5	0	T	0	0.5	0	16.5	12	5.1	9	0.0	0	0.0	0	0.0	0	M 22.6	M 21	38.52		
COVINGTON FLTR PLT	0.0		0.0	0	0.0	0	0.0	0	T	0	T	0	T	0	17.5	14	6.0	8	0.0	0	0.0	0	0.0	0	M 23.5	M 22	39.46		
DALE ENTERPRISE	M 0.0		0.0	0	0.0	0	0.0	0	4.0	4	1.0	1	0.9	2	18.3	12	7.0	9	0.0	0	0.0	0	M 0.0	0	M 31.2	M 28	M 41.29		
GATHRIGHT DAM	0.0		0.0	0	M	0	0.0	0	2.0	2	T	0	T	0	16.9	12	5.0	9	0.0	0	0.0	0	0.0	0	M 23.9	M 23	41.39		
GLASGOW 1 SE	0.0		0.0	0	0.0	0	0.0	0	1.5	0	T	0	0.3	0	21.1	12	4.8	4	0.0	0	0.0	0	0.0	0	27.7	M 16	43.32		
HOT SPRINGS	M		M		M		M		2.5	2	1.0	1	0.4	0	25.0	13	5.0	10	0.0	0	0.0	0	0.0	0	M 33.9	M 26	41.88		
LEXINGTON	M		M		M		M		2.5	1	0.3	0	0.3	0	22.1	12	6.0	9	0.0	0	0.0	0	0.0	0	M 31.2	M 22	38.98		
MILLGAP	M 0.0		0.0	0	0.0	0	0.0	0	7.0	5	1.1	1	5.0	7	F 27.2	20	6.8	12	0.0	0	0.0	0	0.0	0	M 19.9	M 45	M 43.19		
MTN GROVE	M		M		M		M		3.0	4	T	0	T	0	19.5	13	M	0	0.0	0	0.0	0	0.0	0	M 22.5	M 17	M 32.84		
MUSTOE 1 SW	M		M		M 0.0		M		6.7	4	2.2	1	6.9	9	28.8	20	6.9	12	T	0	M		M		M 5.1	M 46	48.05		
NEW CASTLE	M		M		M		M		0.5	0	0.5	0	T	0	21.6	12	4.0	7	0.0	0	0.0	0	0.0	0	M 26.6	M 19	43.03		
ROANOKE 8 N	0.0		0.0	0	0.0	0	0.0	0	0.0	0	0.0	0	T	0	17.1	11	2.0	5	M 0.0	0	0.0	0	M 0.0	0	M 19.1	M 16	43.57		
ROANOKE INTL AP	0.0		0.0	0	0.0	0	0.0	0	0.5	0	T	0	0.2	0	19.1	13	1.9	3	0.0	0	0.0	0	T	0	21.7	M 16	44.83		
STAUNTON WATER TRMTMT PLT	0.0		0.0	0	0.0	0	0.0	0	3.6	4	0.0	0	T	0	M 15.5	12	6.0	6	0.0	0	0.0	0	0.0	0	M 25.1	M 22	35.02		
WAYNESBORO WTP	0.0		0.0	0	0.0	0	0.0	0	M 3.0	1	T	0	T	0	F 16.1	6	4.8	4	0.0	0	0.0	0	0.0	0	M 7.8	M 11	M 36.49		
SOUTHWESTERN MOUNTAIN 06																													

TOTAL SNOWFALL AND NUMBER OF DAYS WITH ONE INCH OR MORE ON GROUND

VIRGINIA
201507

STATION	JUL		AUG		SEP		OCT		NOV		DEC		JAN		FEB		MAR		APR		MAY		JUN		TOTAL		TOTAL PRECIPITATION	
	SNOWFALL	1 IN ON GD	SNOWFALL	1 IN ON GD	SNOWFALL	1 IN ON GD	SNOWFALL	1 IN ON GD	SNOWFALL	1 IN ON GD	SNOWFALL	1 IN ON GD	SNOWFALL	1 IN ON GD	SNOWFALL	1 IN ON GD	SNOWFALL	1 IN ON GD	SNOWFALL	1 IN ON GD	SNOWFALL	1 IN ON GD	SNOWFALL	1 IN ON GD	SNOWFALL	1 IN ON GD		
ABINGDON 3S	M		M		M 0.0	0	0.0	0	0.1	0	T	0	0.0	0	F 11.4	8	T	1	0.0	0	0.0	0	0.0	0	M 0.1	M 9	M 47.23	
BIG STONE GAP	0.0		0.0		0.0	0	0.0	0	T	0	0.0	0	T	0	32.0	14	4.0	2	0.0	0	0.0	0	0.0	0	36.0	M 16	61.14	
BLACKSBURG NWSO	0.0		0.0		0.0	0	0.0	0	2.4	1	0.5	0	1.1	0	19.4	14	4.4	5	0.0	0	0.0	0	0.0	0	27.8	M 20	40.62	
BURKES GARDEN	0.0		0.0		0.0	0	M 0.0	0	8.7	7	3.0	4	1.6	0	M 25.7	14	3.6	6	M 0.0	0	M 0.0	0	M 0.0	0	M 42.6	M 31	M 51.40	
CHRISTIANSBURG	0.0		0.0		0.0	0	0.0	0	4.5	3	0.3	0	1.0	0	16.7	13	3.0	5	0.0	0	0.0	0	0.0	0	25.5	M 21	37.96	
CLINTWOOD 1 W	0.0		0.0		0.0	0	0.0	0	3.0	2	T	0	3.7	3	30.4	15	5.5	12	0.0	0	0.0	0	0.0	0	42.6	M 32	M 53.73	
COPPER HILL	M 0.0		0.0		0.0	0	M 0.0	0	5.5	5	1.0	2	0.1	1	19.3	13	2.0	4	0.0	0	0.0	0	0.0	0	M 27.9	M 25	M 45.05	
GALAX RADIO WBRF	M		M		M	0.0	0	0.0	0	9.1	3	0.0	0	T	0	12.0	12	M 0.0	0	0.0	0	0.0	0	M 21.1	M 15	M 44.12		
GALAX WTP	M		0.0		0.0	0	0.0	0	5.5	3	0.0	0	T	0	14.7	11	T	0	0.0	0	T	0	0.0	0	M 20.2	M 14	41.79	
GRUNDY	0.0		0.0		M 0.0	0	0.0	0	M 0.3	0	T	0	1.5	0	19.8	15	3.5	6	0.0	0	0.0	0	0.0	0	M 25.1	M 21	M 44.71	
JOHN FLANNAGAN LAKE	0.0		0.0		0.0	0	0.0	0	M	0	M	0	M	0	M	7	M	1	0.0	0	0.0	0	0.0	0	M 0.0	M 8	M 4.03	
LAFAYETTE 1 NE	M		M		M	0.0	0	0.0	0	2.6	0	T	0	0.1	0	17.0	12	1.9	3	T	0	0.0	0	T	0	M 21.6	M 15	42.82
LEBANON	0.0		0.0		0.0	0	0.0	0	4.0	4	0.4	0	0.8	0	18.3	11	4.0	4	0.0	0	0.0	0	0.0	0	27.5	M 19	55.97	
NORA 4 SSE	0.0		0.0		0.0	0	0.0	0	12.6	6	1.4	1	4.5	3	M 19.2	11	7.3	6	0.0	0	0.0	0	0.0	0	M 45.0	M 27	M 46.80	
N FK LAKE	M		M		M	0.0	0	M	0	M	0	M	0	M	8	M	4	M	0	M	0	M	0	M	0	M 0.0	M 12	M 14.06
PULASKI 2 E	0.0		0.0		0.0	0	0.0	0	M T	0	T	0	T	0	13.0	12	T	1	0.0	0	0.0	0	0.0	0	M 13.0	M 13	M 40.23	
RADFORD 3 N	0.0		0.0		0.0	0	0.0	0	1.0	0	T	0	T	0	24.8	12	3.0	4	0.0	0	0.0	0	0.0	0	28.8	M 16	M 42.87	
RICHLANDS	M		0.0		0.0	0	0.0	0	0.6	0	T	0	T	0	M 20.1	12	3.0	2	0.0	0	0.0	0	0.0	0	M 23.7	M 14	M 51.69	
SALTVILLE 1N	M		M		M	0.0	0	0.0	0	0.8	1	T	0	T	0	16.6	14	T	6	0.0	0	0.0	0	M 17.4	M 21	52.41		
STAFFORDSVILLE 3 ENE	M		M		M	0.0	0	0.0	0	0.3	0	1.0	0	0.6	1	14.5	12	1.0	6	0.0	0	0.0	0	M 17.4	M 19	42.95		
WILLIS	M		M		M	0.0	0	0.0	0	6.2	3	0.0	0	1.0	1	10.5	11	0.0	1	0.0	0	0.0	0	M 17.7	M 16	M 43.73		
WISE 3E	0.0		0.0		0.0	0	0.0	0	6.6	1	3.0	1	5.4	0	41.7	14	6.6	6	0.0	0	M 0.0	0	M 0.0	0	M 63.3	M 22	M 52.74	
WYTHEVILLE 1 S	M		M		M	0	0.0	0	3.9	1	0.8	0	0.8	1	14.4	14	0.3	0	0.0	0	0.0	0	0.0	0	M 20.2	M 16	41.62	

MONTHLY AND SEASONAL HEATING DEGREE DAYS

STATION	JUL	AUG	SEP	OCT	NOV	DEC	JAN	FEB	MAR	APR	MAY	JUN	TOTAL	SEASONAL NORM
VIRGINIA														
TIDEWATER 01														
DISPUTANTA	0	0	16	191	626	716	914	977	633	255	58	5	4391	3854
EASTVILLE	0	0	3	94	540	626	845	967	683	234	55	1	4048	3674
EMPORIA 1 WNW	0	0	11	128	584	657	848	793E	518E	207	38E	0	3784E	3717
FREDERICKSBURG SEWAGE	0	0	21E	185E	659	761E	962E	1016	656E	269E	54	16E	4599E	4411
HOLLAND 1 E	0	0	8	161	531	611	866	747	733E	162	26	0	3845E	3476
HOPEWELL	0	0	1	61E	456	569	745E	836E	464E	115E	65E	24E	3336E	3150
NORFOLK INTL AP	0	0	0	87	476	593	778	902	539	194	30	0	3599	3376
NORFOLK SOUTH	0	0	1	107	516	626	807	911	558	212	40	1	3779	3282
NORTH	0	0	7	189E	612	663	903	987	714	287E	67	1	4430E	3859
PAINTER 2W	0	0	6	101	507	631	853	953	634	211	48	4	3948	3679
STONY CREEK 2 N	0	0	11	154	602	695	886	936	587	241	36	1	4149	3812
SUFFOLK LAKE KILBY	0	0	4	105	533	622	815	921	549	200	35	0	3784	3432
WAKEFIELD INW	0	0	13	155	600	684	876	940	575	233	56	4	4136	3820
WALKERTON 2 NW	0	0	9	106	503	650	855	911	566	194	27	2	3823	3713
WALLACETON LK DRUMMOND	0	0	25	182	627	727E	905	985	665	268	75	4E	4463E	3992
WALLOPS ISLAND NASA TEST FACIL	0	0	5	114	575	678	914	1044	701	305	71	8	4415	4189
WARSAW 2 NW	0	0	17E	134E	539E	680E	897E	971	611	185E	37	13	4084E	3725
WEST POINT 2 NW	0	0	6	137	570	694	897	948	591	199	35	6	4083	3677
WILLIAMSBURG 2 N	0	0	8	117	531	647	851	923	570	197	37	1	3882	3711
EASTERN PIEDMONT 02														
AMELIA COURTHOUSE 1	0	0	17E	172E	579E	706E	885E	950E	596E	197E	52E	9E	4163E	4073
ASHLAND	0	0	21	167	610	734	932	964	602	191	38	13	4272	4096
BREMO BLUFF	0	1	28	206E	659E	757	941E	961E	638E	261E	47E	11E	4510E	4059
CAMP PICKETT	0	0	24	191	655	711	927	961	654	255	62	0	4440	4256
CHASE CITY	0	0	15	175	585	647	811	841	536	209	42	7	3868	3919
CLARKSVILLE	0	0	11	134	588E	641	851	849E	522E	183	34E	6E	3819E	3705
CORBIN	0	0	27	183	591	734	948	979	640	228	43	12	4385	4419
CROZIER	0	0	37E	224E	641	756	967E	991	679	261E	60	18E	4634E	4311
FARMVILLE 2 N	0	0	22	203	656	739	935	975	643	255	58	11	4497	4387
GREENBAY 3 NE	0	0	19	199	606	581E							M 1405E	4103
JOHN H KERR DAM	0	0	9	107	567	636	831	840E	549	178	26	4	3747E	3590
LOUISA	0	0	39	212	627	747	920	949	591	232	56	18	4391	4241
PALMYRA 3S	0	0	31	243	694	775	983	1035	714E	293	63	11E	4842E	4861
PETERSBURG	0	0	5	169	582	697	880	969	579	243	40	5	4169	3771
RICHMOND INTL AP	0	0	7	128	535	646	851	935	535	181	28	6	3852	3771
SANDSTON	0	0	19	200	659	740	952	1011	677	262	55	9	4584	4146
WESTERN PIEDMONT 03														
APPOMATTOX	0	0	25	216	676	738	939	991	620	234	50	13	4502	4396
BROOKNEAL	0	0	18	232	684	734	936	982	614	261	57	8	4526	5487
CHARLOTTE COURT HOUSE	0	0	23	198	636	700	891	947	591	224	50	12	4272	4286
CHARLOTTESVILLE 2W	0	0	27	179	639	726	965	988	646	242	41	17	4470	4148
CHATHAM	0	1	41	270	739	757	971	1009	649	310	79	12	4838	4691
DANVILLE RGNL AP	0	0	12	157	591	661	833	871E	472	184	24	5	3810E	3815
FREE UNION	1	1	62	275	715	802	1029	1056E	737	334	75	20	5107E	
LYNCHBURG INTL AP	0	0	31	262	683	754	953	1006	610	269	59	13	4640	4459
MARTINSVILLE FLTR PLT	0	0	31	239	707	723	934	981	602	286	60	7	4570	4455
MEADOWS OF DAN 5 SW	0	3	37	234E	679E	693E	921	970	598	280E	64	5	4484E	
MONTEBELLO FISH CULTURAL STN	20E	57E	142E	348E	817E	873E	1141E	1202E	803E	453E	21E	34E	5911E	
MONTICELLO	0	0	43	223	662	773	974	1025	679	275E	61	14	4729E	4733
ROCKY MT	0	1	39E	222E	706E	718	923	924	575	260	54	11	4433E	4496
SOUTH BOSTON	0	0	14	164	638	693	890	940	580	226	42	8	4195	4221
STUART	0	1	21	182	663	678E	889	915	525	249	43	4	4170E	4133
TYE RIVER 1 SE	0	0	20	215	649	722	934	964	604	242	62	11	4423	4284
NORTHERN 04														
BOSTON 4 SE	0	1E	33E	270E	696E	792E	1042E	1078E	753E	331	75	26	5097E	4988
EDINBURG	13	6	103	295	795	849	1107	1149	822	402	92	25	5658	5324
FRONT ROYAL	3	0	70	251E	707	810	1101E	1097E	735	293	54	20	5141E	4790
LINCOLN	4	2	101	294	746	855E	1165E	1151E	882	376	74	24	5674E	5231
LURAY 5 E	8	6	72	288	721	815	1066	1057	732E	326	81	22	5194E	4699
MADISON	0	0	39	176E	599	696	883	909	623	249	48	15	4237E	4730
MANASSAS	2E	0	42E	217E	643E	743E	1057E	1061E	758E	260E	50E	8E	4841E	4639
MT WEATHER	7	1	81	290	741	872	1160	1190	856	391	93	38	5720	5302
PIEDMONT RSCH STN	0	0	30E	227	665	772	1010	1037	715	286	49	20	4811E	4503
SOMERSET	1	0	40	242	675	787	1009	1055	730	302	97E	16	4954E	4700
SPERRYVILLE	0	0	61	260E	728E	792	1052E	1066E	773	341E	70E	26E	5169E	4745
STERLING RCS	2	0	47	252E	718E	804	1121	1131	809E	337	62	24	5307E	5001
VIENNA	0	0	3	84	505	794	1080	1126	802	288	39	11	4732	4881
WARRENTON 3 SE	3E	0	47E	244E	635E	788E	1054E	1082E	730E	332E	61E	23E	4999E	4700
WASHGTN DULLES INTL AP	3	0	45	257	689	817	1088	1102	761	305	49	15	5131	4717
WASHINGTON REAGAN AP	0	0	0	102	505	649	904	964	603	181	16	6	3930	4030
WINCHESTER	3	0	66	275	732	818	1113	1123	783	320	66	27E	5326E	5052
WINCHESTER 7 SE	0	0								300E	81E	38E	M 419E	5368
WOODSTOCK 2 NE	11E	4E	86	271E	760	852	1109	1117	799	365	83	30	5487E	5419
CENTRAL MOUNTAIN 05														
COVINGTON FLTR PLT	7	3	54	279	763E	760E	1033	1067	689E	324	74	5	5058E	4728

MONTHLY AND SEASONAL HEATING DEGREE DAYS

STATION	JUL	AUG	SEP	OCT	NOV	DEC	JAN	FEB	MAR	APR	MAY	JUN	TOTAL	SEASONAL NORM
DALE ENTERPRISE	12	6	83	307	787	848	1083	1116	787	376	95	24	5524	5461
GATHRIGHT DAM	24	15	97	352	831	834	1102	1143E	794E	367	97	14	5670E	5331
HOT SPRINGS	33	20	112	365	863	868	1140	1161	792	401	107	17	5879	5627
LEXINGTON	1	0	46	282	765	793	1016	971E	680	295	62	9	4920E	4681
MILLGAP	79E	58	168	452	948	939	1219	1244	918	527	204	44	6800E	6438
MUSTOE 1 SW	75	64E	173	440	925	948	1199	1256	880	500	158	24	6642E	6271
ROANOKE 8 N	0	3	30	211	701	724E	935	972E	625	275	71	6	4553E	4354
ROANOKE INTL AP	0	0	19	205	654	697	897	957	544	236	35	7	4251	4143
STAUNTON WATER TRMTMT PLT	4	3	58	268	735	813	1051	1076	703	328	71	9	5119	5009
WAYNESBORO WTP	10	2	71	287	751E	818	1021	1072	726	347	87	19	5211E	5104
SOUTHWESTERN MOUNTAIN 06														
ABINGDON 3S	18E	3E	37	311E	796	769	983E	1112	665E	302	73	1	5070E	4842
BIG STONE GAP	14	0	17	270	776	749	1013	1085	669	253E	80	2	4928E	4558
BLACKSBURG NWSO	11	9	69	334	811	823	1051	1089	706	375	92	12	5382	5445
BURKES GARDEN	80E	67	155	487E	921	886	1137	1241E	771	475E	205E	44E	6469E	6242
CHRISTIANSBURG	9	22	86	325	796	819	1041	1077	704	366	89	15	5349	4987
CLINTWOOD 1 W	33	7	63	379	855	794	1061	1151	722	331	110	7	5513	5315
COPPER HILL	34E	28	116	339E	826	857	1095	1117	745	396E	110	29E	5692E	
GALAX RADIO WBRF	22	13	79	315	786	796	1018	1046	629E	347	95	12	5158E	5355
GALAX WTP	28	17	98	363	839	810	1041	1081	702	396	126	12	5513	5503
GRUNDY	9E	0	29E	296E	810	760	1015	1105	670	330E	91	4	5119E	4932
JOHN FLANNAGAN LAKE	5E	3E	34E	274E	755E	797E	1056E	1031E	660E	302E	62E	5E	4984E	
LEBANON	21	7	38	337	812	764	1025	1106	657	308	104	3	5182	5081
NORA 4 SSE	25	4	54	328	837	805	1057	1163E	682E	316	83	7	5361E	5304
N FK LAKE	14E	7E	44E	295E	788E	767E	1054E	1068E	657E	291E	56E	7E	5048E	
PULASKI 2 E	13E	5E	60E	285	758E	764	984	1040	646	353	102E	8E	5018E	5096
RADFORD 3 N	12	13	86	355	821	835	1065	1096	689	377	95	11	5455	5486
RICHLANDS	17	4	56	350	813	741	968E	1055E	676	339	104	7	5130E	5219
SALTVILLE 1N	20	3	48	320	815	768	1009	1062E	668	328	88	2	5131E	4942
STAFFORDSVILLE 3 ENE	23	10E	76	350	820	815	1048	1115	697	386E	113E	12	5465E	5267
WISE 3E	31	5	62	331	784	784	1010	1085	607	275	81E	11E	5066E	4848
WYTHEVILLE 1 S	24	12E	88	334	831	818	1035	1098	682	379	94	13	5408E	5578

VIRGINIA
201507

SNOWFALL AND SNOW ON GROUND (INCHES)

STATION		DAY OF MONTH																																
		01	02	03	04	05	06	07	08	09	10	11	12	13	14	15	16	17	18	19	20	21	22	23	24	25	26	27	28	29	30	31		
VIRGINIA																																		
TIDEWATER 01																																		
DISPUTANTA	SNOWFALL																																	
EASTVILLE	SNOWFALL																																	
EMPORIA 1 WNW	SNOWFALL																																	
FREDERICKSBURG SEWAGE	SNOWFALL																																	
HOLLAND 1 E	SNOWFALL																																	
HOPEWELL	SNOWFALL																																	
	SN ON GND						-	-	-	-												-					-	-	-					
NORFOLK INTL AP	SNOWFALL																																	
	SN ON GND																																	
NORFOLK SOUTH	SNOWFALL																																	
NORTH	SNOWFALL																																	
	SN ON GND																																	
PAINTER 2W	SNOWFALL																																	
STONY CREEK 2 N	SNOWFALL																																	
	SN ON GND																																	
SUFFOLK LAKE KILBY	SNOWFALL																																	
	SN ON GND																																	
WAKEFIELD 1NW	SNOWFALL																																	
	SN ON GND																																	
WALKERTON 2 NW	SNOWFALL																																	
	SN ON GND																																	
WALLACETON LK DRUMMOND	SNOWFALL																																	
WALLOPS ISLAND NASA TEST FACIL	SNOWFALL																																	
	SN ON GND																																	
WARSAW 2 NW	SNOWFALL																																	
WEST POINT 2 NW	SNOWFALL																																	
	SN ON GND																																	
WILLIAMSBURG 2 N	SNOWFALL																																	
SOUTHWESTERN																																		
MOUNTAIN 06																																		
BLACKSBURG NWSO	SNOWFALL																																	
	SN ON GND																																	
BURKES GARDEN	SNOWFALL																																	
	SN ON GND																																	
CHRISTIANSBURG	SNOWFALL																																	
	SN ON GND																																	
CLINTWOOD 1 W	SNOWFALL																																	
	SN ON GND																																	
COPPER HILL	SNOWFALL																																	
	SN ON GND																																	

Snowfall: Includes snow and ice. Values for NWS stations (J index note) are Mid-Mid (LST).

Snow on ground: Includes snow, sleet, ice, and hail. Values for NWS stations (J index note) are observed at 12 UTC (GMT).

Water Equivalent: Given for NWS stations (J index note) only, when snow depth is 2 inches or more, and is measured at 18 UTC (GMT)

VIRGINIA
201507

SNOWFALL AND SNOW ON GROUND (INCHES)

STATION		DAY OF MONTH																														
		01	02	03	04	05	06	07	08	09	10	11	12	13	14	15	16	17	18	19	20	21	22	23	24	25	26	27	28	29	30	31
GALAX RADIO WBRF	SNOWFALL																															
	SN ON GND																															
GALAX WTP	SNOWFALL																															
	SN ON GND																															
GRUNDY	SNOWFALL																															
	SN ON GND																															
JOHN FLANNAGAN LAKE	SNOWFALL																															
	SN ON GND																															
LAFAYETTE 1 NE	SNOWFALL																															
	SN ON GND																															
LEBANON	SNOWFALL																															
	SN ON GND																															
NORA 4 SSE	SNOWFALL																															
	SN ON GND																															
N FK LAKE	SNOWFALL			-	-	-					-	-	-		-					-	-											-
	SN ON GND			-	-	-					-	-	-		-					-	-											-
PULASKI 2 E	SNOWFALL																															
	SN ON GND																															
RADFORD 3 N	SNOWFALL																															
	SN ON GND																															
RICHLANDS	SNOWFALL																															
	SN ON GND																															
SALTVILLE 1N	SNOWFALL																															
	SN ON GND																															
STAFFORDSVILLE 3 ENE	SNOWFALL																															
	SN ON GND																															
WILLIS	SNOWFALL																															
	SN ON GND																															
WISE 3E	SNOWFALL																															
	SN ON GND																															
WYTHEVILLE 1 S	SNOWFALL																															
	SN ON GND																															

Snowfall: Includes snow and ice. Values for NWS stations (J index note) are Mid-Mid (LST).

Snow on ground: Includes snow, sleet, ice, and hail. Values for NWS stations (J index note) are observed at 12 UTC (GMT).

Water Equivalent: Given for NWS stations (J index note) only, when snow depth is 2 inches or more, and is measured at 18 UTC (GMT)

VIRGINIA
201507

PAN EVAPORATION AND WIND

STATION		DAY OF MONTH																															TOTAL OR AVERAGE		
		01	02	03	04	05	06	07	08	09	10	11	12	13	14	15	16	17	18	19	20	21	22	23	24	25	26	27	28	29	30	31			
VIRGINIA EASTERN PIEDMONT 02 JOHN H KERR DAM	WIND	-	-	-	-	-	-	-	-	-	-	-	-	-	-	-	-	-	-	-	-	-	-	-	-	-	-	-	-	-	-	-	-	-	M
	EVAP	-	-	-	-	-	-	-	-	-	-	-	-	-	-	-	-	-	-	-	-	-	-	-	-	-	-	-	-	-	-	-	-	-	M
	MAX	-	-	-	-	-	-	-	-	-	-	-	-	-	-	-	-	-	-	-	-	-	-	-	-	-	-	-	-	-	-	-	-	-	M
	MIN	-	-	-	-	-	-	-	-	-	-	-	-	-	-	-	-	-	-	-	-	-	-	-	-	-	-	-	-	-	-	-	-	-	M

Evaporation: Is measured in hundredths of inches.

Wind: Is measured in miles.

Max and Min: The maximum and minimum temperatures (Fahrenheit) of the water in the evaporation pan.

STATION INDEX

STATION	INDEX NO.	DIVISION	COUNTY	LATITUDE	LONGITUDE	ELEVATION (IN FEET)	OBSERVATION TIME AND TABLES			
							LOCAL STD TIME			
							TEMP	PRECIP	EVAP	SPECIAL SEE (NOTES)
VIRGINIA										
ABINGDON 3S	0021	06	WASHINGTON	36 40	81 58W	1925	22	22		H
ALBERTA 5N	0079	02	BRUNSWICK	36 56	77 54W	376		08		H
ALTAVISTA	0166	03	CAMPBELL	37 7	79 17W	529		07		CH
AMELIA COURTHOUSE 1	0187	02	AMELIA	37 21	77 59W	345	08	08		H
APPOMATTOX	0243	03	APPOMATTOX	37 20	78 50W	850	07	07		H
ASHLAND	0327	02	HANOVER	37 45	77 29W	220	18	18		H
BEDFORD 4 NW	0561	03	BEDFORD	37 23	79 34W	1228		07		CH
BIG STONE GAP	0735	06	WISE	36 52	82 46W	1464	08	08		H
BLACKSBURG NWSO	0766	06	MONTGOMERY	37 12	80 25W	2103	07	07		H
BOSTON 4 SE	0860	04	CULPEPER	38 33	78 6W	590	07	07		H
BREMO BLUFF	0993	02	FLUVANNA	37 43	78 17W	225		07		CH
BROOKNEAL	1082	03	CAMPBELL	37 4	78 57W	408	07	07		H
BUCKINGHAM	1136	02	BUCKINGHAM	37 30	78 32W	580		07		H
BUENA VISTA	1159	05	ROCKBRIDGE	37 44	79 22W	840		07		H
BURKES GARDEN	1209	06	TAZEWELL	37 6	81 20W	3068	07	07		H
CAMP PICKETT	1322	02	NOTTOWAY	37 2	77 57W	330	08	08		CH
CHARLOTTE COURT HOUSE	1585	03	CHARLOTTE	37 3	78 39W	569	07	07		H
CHARLOTTESVILLE 2W	1593	03	ALBEMARLE	38 2	78 31W	866	08	08		H
CHASE CITY	1606	02	MECKLENBURG	36 47	78 29W	510	17	17		H
CHATHAM	1614	03	PITTSYLVANIA	36 49	79 25W	651	07	07		CH
CHRISTIANSBURG	1692	06	MONTGOMERY	37 8	80 24W	2100	07	07		H
CLARKSVILLE	1746	02	MECKLENBURG	36 37	78 33W	330	07	07		H
CLINTWOOD 1 W	1825	06	DICKENSON	37 9	82 29W	1780	07	07		H
CONCORD 4 SSW	1955	03	CAMPBELL	37 17	78 58W	815		07		H
COPPER HILL	1999	06	FLOYD	37 5	80 9W	2690	07	07		H
CORBIN	2009	02	CAROLINE	38 12	77 22W	220	09	09		H
COVINGTON FLTR PLT	2044	05	ALLEGHANY	37 49	79 59W	1230	07	07		H
CROZIER	2142	02	GOOCHLAND	37 40	77 53W	350	07	07		H
DALE ENTERPRISE	2208	05	ROCKINGHAM	38 27	78 56W	1358	07	07		H
DANVILLE RGNL AP	2250	03	PITTSYLVANIA	36 34	79 20W	571	24	24		H
DISPUTANTA	2400	01	PRINCE GEORGE	37 7	77 12W	15	07	07		H
EASTVILLE	2635	01	NORTHAMPTON	37 23	75 58W	10	07	07		H
EDINBURG	2663	04	SHENANDOAH	38 48	78 35W	928	07	07		H
EMPORIA 1 WNW	2790	01	GREENSVILLE	36 42	77 34W	100	08	08		H
FARMVILLE 2 N	2941	02	CUMBERLAND	37 20	78 23W	450	07	07		H
FREDERICKSBURG SEWAGE	3204	01	FREDERICKSBURG	38 17	77 27W	15	07	07		H
FREE UNION	3213	03	ALBEMARLE	38 5	78 35W	590	08	07		H
FRONT ROYAL	3229	04	WARREN	38 54	78 11W	930	07	07		H
GALAX RADIO WBRF	3267	06	CARROLL	36 40	80 55W	2385	07	07		H
GALAX WTP	3272	06	CARROLL	36 39	80 55W	2360	07	07		CH
GATHRIGHT DAM	3310	05	ALLEGHANY	37 57	79 57W	1770	07	07		CH
GLASGOW 1 SE	3375	05	ROCKBRIDGE	37 37	79 26W	737		07		H
GREENBAY 3 NE	3565	02	PRINCE EDWARD	37 11	78 17W	500	09	09		H
GRUNDY	3640	06	BUCHANAN	37 17	82 5W	1170	07	07		H
HOLCOMB ROCK	4039	03	BEDFORD	37 33	79 24W	810		07		H
HOLLAND 1 E	4044	01	SUFFOLK	36 41	76 46W	80	08	08		H
HOPEWELL	4101	01	PRINCE GEORGE	37 18	77 17W	40	16	16		H
HOT SPRINGS	4128	05	BATH	37 60	79 50W	2236	07	07		H
HUDDLESTON 4 SW	4148	03	BEDFORD	37 8	79 32W	898		07		H
JOHN FLANNAGAN LAKE	4410	06	DICKENSON	37 14	82 21W	1460	07	07		H
JOHN H KERR DAM	4414	02	MECKLENBURG	36 36	78 18W	250	08	08	08	CH
LAFAYETTE 1 NE	4676	06	MONTGOMERY	37 14	80 12W	1320		07		H
LEBANON	4777	06	RUSSELL	36 54	82 2W	1912	07	07		H
LEXINGTON	4876	05	ROCKBRIDGE	37 47	79 26W	1097	07	07		H
LINCOLN	4909	04	LOUDOUN	39 5	77 42W	500	07	07		H
LOUISA	5050	02	LOUISA	38 3	78 0W	420	18	18		H
LURAY 5 E	5096	04	PAGE	38 40	78 22W	1400	08	08		H
LYNCHBURG INTL AP R	5120	03	CAMPBELL	37 19	79 12W	940	24	24		HJ
MADISON	5150	04	MADISON	38 22	78 15W	577	08	08		H
MANASSAS	5204	04	MANASSAS	38 44	77 30W	245	07	07		H
MARTINSVILLE FLTR PLT	5300	03	HENRY	36 42	79 52W	760	07	07		H
MEADOWS OF DAN 5 SW	5453	03	PATRICK	36 40	80 27W	2225	07	07		H
MILLGAP	5595	05	HIGHLAND	38 18	79 43W	2421	07	07		CH
MONTEBELLO FISH CULTURAL STN	5690	03	NELSON	37 51	79 8W	2667	07	07		H
MONTICELLO	5700	03	ALBEMARLE	38 1	78 27W	758	08	08		H

STATION INDEX

STATION	INDEX NO.	DIVISION	COUNTY	LATITUDE	LONGITUDE	ELEVATION (IN FEET)	OBSERVATION TIME AND TABLES			
							LOCAL STD TIME			
							TEMP	PRECIP	EVAP	SPECIAL SEE (NOTES)
MT WEATHER	5851	04	LOUDOUN	39 4	77 53W	1659	07	07		H
MTN GROVE	5756	05	BATH	38 6	79 53W	1775		07		H
MUSTOE 1 SW	5880	05	HIGHLAND	38 20	79 40W	2380	24	24		H
N FK LAKE	6173	06	WISE	37 7	82 38W	1675	08	08		H
NEW CASTLE	6012	05	CRAIG	37 18	80 3W	1258		07		H
NORA 4 SSE	6125	06	DICKENSON	37 1	82 19W	2650	07	07		H
NORFOLK INTL AP R	6139	01	NORFOLK (CITY)	36 54	76 12W	30	24	24		HJ
NORFOLK SOUTH	6147	01	NORFOLK (CITY)	36 52	76 14W	100	24	24		H
NORTH	6161	01	MATHEWS	37 26	76 26W	10	07	07		H
PAINTER 2W	6475	01	ACCOMACK	37 35	75 49W	30	16	16		CH
PALMYRA 3S	6491	02	FLUVANNA	37 49	78 16W	410	06	06		H
PEDLAR DAM	6593	03	AMHERST	37 40	79 17W	1024		07		H
PETERSBURG	6656	02	PETERSBURG	37 14	77 24W	15	08	08		H
PIEDMONT RSCH STN	6712	04	ORANGE	38 14	78 7W	520	08	08		CH
PULASKI 2 E	6955	06	PULASKI	37 3	80 47W	1850	07	07		CH
RADFORD 3 N	6999	06	PULASKI	37 12	80 35W	1800	07	07		H
RICHLANDS	7174	06	TAZEWELL	37 6	81 48W	1910	07	07		H
RICHMOND INTL AP R	7201	02	HENRICO	37 30	77 19W	164	24	24		HJ
ROANOKE 8 N	7278	05	ROANOKE	37 22	79 58W	1190	07	07		H
ROANOKE INTL AP R	7285	05	ROANOKE	37 19	79 58W	1175	24	24		HJ
ROCKY MT	7338	03	FRANKLIN	36 59	79 54W	1315	07	07		CH
SALTVILLE 1N	7506	06	SMYTH	36 53	81 46W	1733	07	07		H
SANDSTON	7541	02	HENRICO	37 33	77 17W	165	07	07		H
SOMERSET	7904	04	ORANGE	38 15	78 16W	510	07	07		H
SOUTH BOSTON	7925	03	HALIFAX	36 42	78 53W	329	07	07		H
SPERRYVILLE	7985	04	RAPPAHANNOCK	38 39	78 14W	750	06	06		H
STAFFORDSVILLE 3 ENE	8022	06	GILES	37 16	80 43W	1950	07	07		CH
STAUNTON WATER TRMTMT PLT	8062	05	AUGUSTA	38 10	79 5W	169	08	08		H
STERLING RCS	8084	04	LOUDOUN	38 59	77 29W	288	07	07		H
STONY CREEK 2 N	8129	01	SUSSEX	36 58	77 24W	105	08	08		H
STUART	8170	03	PATRICK	36 38	80 15W	1375	07	07		H
SUFFOLK LAKE KILBY	8192	01	SUFFOLK	36 44	76 36W	22	24	24		H
TYE RIVER 1 SE	8600	03	NELSON	37 38	78 56W	720	07	07		H
VIENNA	8737	04	FAIRFAX	38 54	77 16W	418	07	07		H
WAKEFIELD 1NW	8800	01	SUSSEX	36 59	77 0W	113	24	24		CH
WALKERTON 2 NW	8829	01	KING AND QUEEN	37 45	77 2W	50	18	18		H
WALLACETON LK DRUMMOND	8837	01	CHESAPEAKE	36 36	76 26W	20	08	08		H
WALLOPS ISLAND NASA TEST FACIL R	8849	01	ACCOMACK	37 56	75 28W	46	24	24		HJ
WARRENTON 3 SE	8888	04	FAUQUIER	38 41	77 46W	500	08	08		H
WARSAW 2 NW	8894	01	RICHMOND	37 59	76 47W	140	18	18		H
WASHGTN DULLES INTL AP R	8903	04	LOUDOUN	38 56	77 28W	290	24	24		HJ
WASHINGTON REAGAN AP R	8906	04	ARLINGTON	38 51	77 2W	10	24	24		HJ
WAYNESBORO WTP	8941	05	WAYNESBORO	38 5	78 53W	1270	07	07		H
WEST POINT 2 NW	9025	01	KING WILLIAM	37 34	76 48W	20	17	17		H
WILLIAMSBURG 2 N	9151	01	YORK	37 18	76 42W	70	24	24		CH
WILLIS	9169	06	FLOYD	36 55	80 30W	2810		07		CH
WINCHESTER	9181	04	FREDERICK	39 11	78 9W	720	07	07		H
WINCHESTER 7 SE	9186	04	FREDERICK	39 11	78 7W	680	08	08		H
WINTERPOCK 4 W	9213	02	CHESTERFIELD	37 19	77 39W	300		07		H
WISE 3E	9215	06	WISE	36 60	82 32W	2549	17	17		CH
WOODSTOCK 2 NE	9263	04	SHENANDOAH	38 54	78 28W	675	07	07		H
WOOLWINE	9272	03	PATRICK	36 47	80 17W	1500		07		CH
WYTHEVILLE 1 S	9301	06	WYTHE	36 58	81 5W	2458	07	07		H

REFERENCE NOTES

STATION NAMES: Name of the city, town or locality. Figures and letters following the station names indicate the distance in miles and direction from the post office or town community center.

DIVISIONS: Areas within a state of similar climatological characteristics. Division averages are calculated using data from stations that record temperature and/or precipitation. Station Precipitation totals flagged with an 'F' or 'M' are excluded from the Divisional Average calculations of precipitation. Stations with monthly Temperature averages flagged with an 'F' or 'M' are included in the Divisional Average if there are no more than 9 flagged or missing daily values in the month, else they are excluded from the divisional average for temperature.

NORMALS: The average value of the meteorological element over a time period. Effective 1 January 2012, the averaging period is 1981 to 2010. The normals for National Weather Service localities have been adjusted so as to be representative for the current observation site.

MONTHLY DEGREE DAY TOTALS: One heating (cooling) degree day is accumulated for each whole degree that the daily mean temperature is below (above) 65 degrees Fahrenheit.

PRECIPITATION: Values shown in hundredths of inches are water equivalent totals, i.e., total of liquid and melted frozen precipitation. In the "Monthly Summarized Data" table the total snow and sleet values shown in tenths of inches are unmelted amounts. The max depth on ground values of snow and sleet shown in whole inches are cumulative unmelted amounts. The number of days with .10, .50, 1.00 or more refers to water equivalents.

PRECIPITATION QUALITY CONTROL: The NCEI quality control process may flag precipitation data that are spatially inconsistent, exceed climatological limits, or are inconsistent with prevailing weather patterns.

TEMPERATURE: Original temperature values are given in the "Daily Temperature" table. Summary temperature information (averages, departures, extremes, monthly degree day totals) is based on the values labeled MAX/MIN.

WIND: (As shown in the "Evaporation and Wind" table) the total wind movement in miles over the evaporation pan as determined by an anemometer recorder located 6-8 inches above the pan.

SYMBOLS AND LETTERS USED IN THE STATION INDEX TABLE

C Station is equipped with recording rain gage (R) but values in this bulletin are from a non-recording rain gage unless indicated by an R.

G Observations appear in the "Soil Temperatures" table.

H Observations appear in the "Snowfall and Snow on the Ground" table.

J Station also published as a Local Climatological Data publication.

VAR Observation time varies.

SR / SS Observation time near sunrise / Observation time near sunset, respectively.

SYMBOLS AND LETTERS USED IN THE DATA TABLES

(DAILY DATA ARE FOR THE 24 HOURS IMMEDIATELY PRECEDING OBSERVATION TIME.)

BLANK Entries in the "Monthly Summarized Data" table indicate no record.

BLANK Entries in the "Daily Precipitation" and "Snowfall and Snow on the Ground" tables indicate zero.

BLANK Entries in the "Daily Temperature" table indicate a missing record

- No record. Data not recorded or not received in time for publication.

+ Precipitation or temperature extremes occurred on one or more previous dates during the month.

* Rain gage not read. Precipitation is included in the amount following the asterisks.

Time distribution may not be known. A * preceding the monthly total indicates precipitation amount is being carried forward to next month's total, and may include amounts from the previous month(s).

a As a subscript, indicates accumulated total.

A Amount of precipitation is the total of observer's entries for the current month. It may include precipitation that occurred during the previous month. Refer to earlier bulletin to determine date of last reading. (Hawaii stations)

B Divisional Departure from normals are computed using 1981-2010 normals.

E Normalized HDD/CDD Calculation. E is appended to the HDD/CDD Calculation when 1-9 individual daily TMAX

and/or TMIN values are missing and a Normalized HDD/CDD Calculation is provided. M appears alone if 10 or more daily values are missing.

F Monthly calculation flagged value. F is appended to average and/or total values computed which exclude one or more daily data values that have been flagged by the GHCN-Daily Dataset

M Insufficient or partial data. M is appended to average and/or total values computed with 1-9 daily values missing. M appears alone if 10 or more daily values are missing, (8 or more for wind and evaporation).

N Indicates snow fall or Snowdepth totals are computed with one or more missing days.

R Amounts from recording rain gage.

T Trace. An amount too small to measure.

SEASONAL TABLES: Monthly and seasonal snowfall and heating degree days for the 12 months ending with the June data are published in the July issue of this bulletin. Cooling degree days for the calendar year are published in the "Climatological Data Annual Summary."

Information concerning the history of changes in locations, exposure, etc. of substations is kept on file at the National Centers for Environmental Information. Historical information of regular National Weather Service Offices may be obtained from the "Local Climatological Data" annual publication. The contents of this publication may be reprinted or otherwise used freely, with proper credit to the National Centers For Environmental Information. The data are also available digitally.

Effective with the January 2011 Data-Month, COOP Observer Names are no longer included in the Monthly and Annual Climatological Data Publications. This information is not published to ensure the privacy of personal information pursuant to Section 208 of the E-Government Act of 2002 (44 USC 3601).

As of the 2011 Data-Year, Station and Climate Division Maps are no longer being included in the CD Publications. NCEI's Products Branch provides updated Station Maps for various data networks via the Historical Observing Metadata Repository: <http://www.ncdc.noaa.gov/homr>.

The GHCN-Daily Quality Control Flags shown below are displayed as superscripts with the data. For more Information on Global Historical Climatology Network - Daily and flags, see: <http://www.ncdc.noaa.gov/oa/climate/ghcn-daily/> and Comprehensive Automated Quality Assurance of Daily Surface Observations. Durre, Imke, Matthew J. Menne, Byron E. Gleason, Tamara G. Houston, Russell S. Vose, 2010: J. Appl. Meteor. Climatol., 49, 16151633. doi: 10.1175/2010JAMC2375.1

Blank = Passed All checks

D = failed duplicate check

G = failed gap check

I = failed internal consistency check

K = failed streak/frequent-value check

L = failed check on length of multiday period

M = failed megaconsistency check

N = failed naught check

O = failed climatological outlier check

R = failed lagged range check

S = failed spatial consistency check

T = failed temporal consistency check

W = temperature too warm for snow

X = failed bounds check

Z = flagged as a result of an official Datzilla investigation

Beginning with the January 2013 CD Publication, monthly mean temperature calculations have changed to the National Data Stewardship Team standard. Monthly maximum and minimum temperatures are not rounded until after the monthly mean temperature is calculated. This is the most accurate outcome, but may be slightly different from the mean derived from rounded monthly maximum and minimum.

Processing Updates and Errata: The CD Publications are periodically reproduced to include the addition of late reports and reported corrections. The GHCND data version noted on the cover of the publication provides the generation date.

The climate division temperature and precipitation values in this publication are based on simple averages from the current set of NWS-Designated Open and Published COOP and First Order Sites within each division. These values differ from those found in NCEI's nClimDiv product. Beginning in February 2014, the nClimDiv product is used by NCEI's Monitoring Branch and in its monthly climate reports. For more details on nClimDiv, please go to <http://www.ncdc.noaa.gov/monitoring-references/maps/us-climate-divisions.php>.

These and other publications are available from the National Centers for Environmental Information

Hourly Precipitation Data

This publication contains hourly precipitation amounts obtained from recording rain gages located at National Weather Service, Federal Aviation Administration, and cooperative observer stations. Published data are displayed in inches and tenths or inches and hundredths at local standard time. HPD includes maximum precipitation for nine (9) time periods from 15 minutes to 24 hours, for selected stations.

Climatological Data

Monthly editions contain station daily maximum and minimum temperatures and precipitation. Some Stations provide daily snowfall, snow depth, evaporation, and soil temperature data. Each edition also contains monthly summaries for heating and cooling degree days (65 degree F base). The July issue contains a recap of monthly heating degree days and snow data for the preceding July through June.

The Annual issue contains monthly and annual averages of temperature, precipitation, temperature extremes, freeze data, soil temperatures, evaporation, and a recap of monthly cooling degree days.

Storm Data

Monthly issues contain a chronological listing, by states, of occurrences of storms and unusual weather phenomena. Reports contain information on storm paths, deaths, injuries, and property damage. An "Outstanding storms of the month" section highlights severe weather events with photographs, illustrations, and narratives. The December issue includes annual tornado, lightning, flash flood, and tropical cyclone summaries.

Monthly Climatic Data for the World

This publication contains monthly means for temperature, pressure, precipitation, vapor pressure, and sunshine for approximately 2,000 surface data collection stations worldwide and monthly mean upper air temperatures, dew point depressions, and wind velocities for approximately 500 observing sites.

Local Climatological Data

LCD publications summarize temperature, relative humidity, precipitation, cloudiness, wind speed and direction observations for several hundred cities in the U.S. and its territories. Each monthly publication also contains 3 hourly weather observations for that month and a hourly summary of precipitation. Annual LCD publications contain a summary of the past calendar year as well as historical averages and extremes.

For Information Call:

(828) 271-4800 Option 2

(828) 271-4010 (TDD)

(828) 271-4876 (Fax)

NOAA National Centers for Environmental Information
Attn: Customer Engagement Branch
151 Patton Avenue
Asheville, NC 28801-5001

Customer Services Number: (828) 271-4800, option 2
TDD : (828) 271-4010
Fax number: (828) 271-4876

NCEI now offers free online access to the *Climatological Data* publication.
Go to : www.ncdc.noaa.gov and choose Most Popular.