



CLIMATOLOGICAL DATA

VIRGINIA

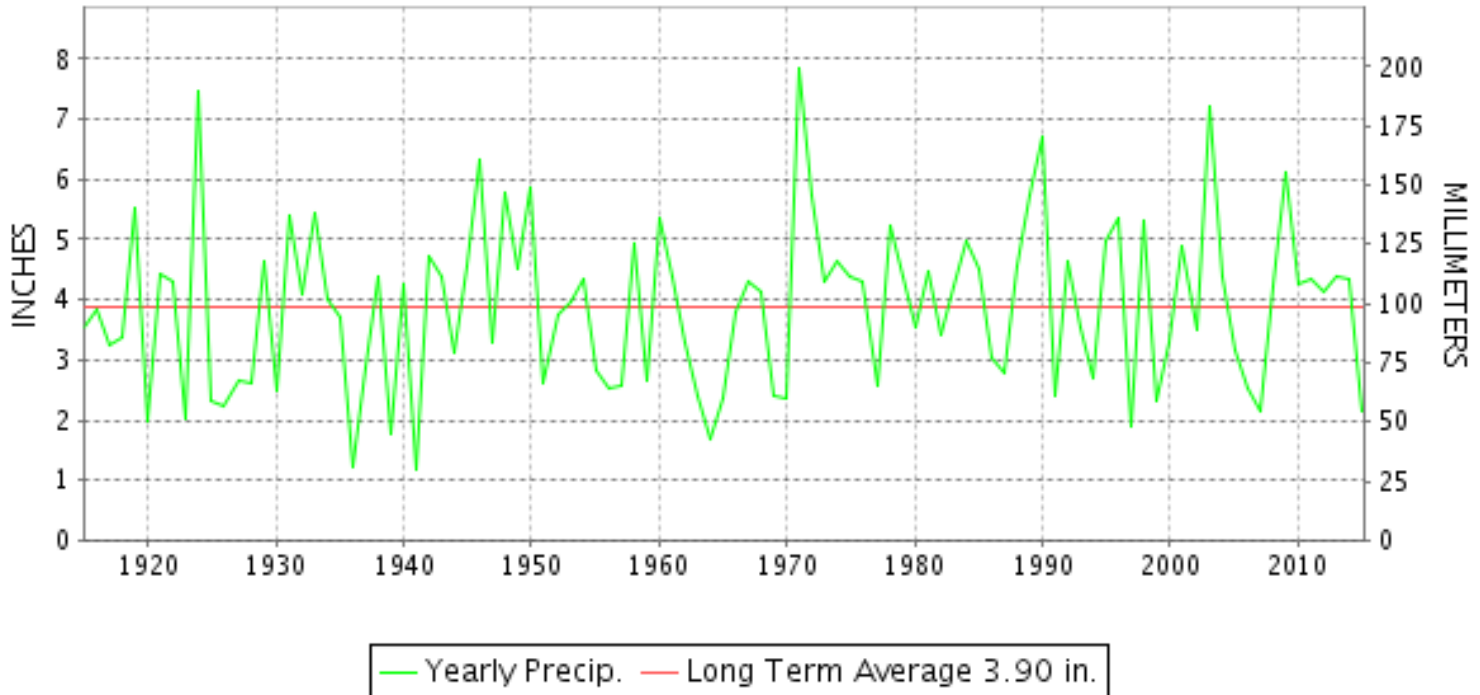
MAY 2015

VOLUME 125 NUMBER 05

ISSN 0364-5630

GHCND Ver: 3.21-upd-2015083005

MAY PRECIPITATION BY YEAR



TEMPERATURE AND PRECIPITATION EXTREMES

VIRGINIA

HIGHEST TEMPERATURE	93	MAY 18+	2 STATIONS
LOWEST TEMPERATURE	30	MAY 15++	2 STATIONS
GREATEST TOTAL PRECIPITATION	4.95		FRONT ROYAL
LEAST TOTAL PRECIPITATION	0.48		HOLLAND 1 E
GREATEST 1 DAY PRECIPITATION	2.34	MAY 07	BOSTON 4 SE
GREATEST TOTAL SNOWFALL	T		3 STATIONS

"I certify that this is an official publication of the National Oceanic and Atmospheric Administration (NOAA) It is compiled using information from weather observing sites supervised by NOAA/National Weather Service and received at the National Centers for Environmental Information(NCEI), Asheville, North Carolina 28801."

Director
National Centers for Environmental Information

noaa

National
Oceanic and
Atmospheric Administration

National
Environmental Satellite, Data
and Information Service

National
Centers for Environmental Information
Asheville, North Carolina

VIRGINIA
201505

MONTHLY STATION AND DIVISION SUMMARY

STATION	TEMPERATURE (°F)											PRECIPITATION (IN)												
	AVERAGE MAXIMUM	AVERAGE MINIMUM	AVERAGE	DEPARTURE FROM NORMAL	HIGHEST	DATE	LOWEST	DATE	HEATING DEG. DAYS	COOLING DEG. DAYS	NO. OF DAYS				TOTAL	DEPARTURE FROM NORMAL	GREATEST 24 HOURS	DATE	ICE PELLETS, SNOW			NO. OF DAYS		
											MAX		MIN						TOTAL	MAX DEPTH ON GROUND	DATE	.10 OR MORE	.50 OR MORE	1.00 OR MORE
											>=90	<=32	<=32	<=0										
PETERSBURG	82.0	58.3	70.1	3.6	93	18	44	02+	40	210	2	0	0	0	1.71	-2.15	1.20	21	0.0			3	1	1
RICHMOND INTL AP	82.6	60.5	71.5	5.1	92	12	45	02	28	237	5	0	0	0	1.61	-2.17	0.97	21	0.0	0		3	1	0
SANDSTON	81.0	56.6	68.8	3.4	90	28	42	02	55	181	1	0	0	0	A 1.52	-2.51			0.0			0	0	0
WINTERPOCK 4 W															1.46		0.97	22	0.0			2	1	0
--DIVISIONAL DATA-----> WESTERN PIEDMONT 03			69.1	5.0B										1.73	-2.40B									
ALTAVISTA														1.17		0.62	01	0.0	0			3	1	0
APPOMATTOX	80.0	56.7	68.4	5.1	88	29+	44	15+	50	164	0	0	0	0	3.17	-1.59	0.84	29	T	0		7	3	0
BEDFORD 4 NW														1.06		0.31	12	0.0	0			5	0	0
BROOKNEAL	81.9	54.3	68.1	8.5	91	29+	42	04	57	161	2	0	0	0	1.42	-3.27	0.47	29	0.0	0		4	0	0
CHARLOTTE COURT HOUSE	80.6	56.9	68.7	4.5	90	19	46	03+	50	172	1	0	0	0	2.49	-1.62	0.70	22	0.0	0		4	3	0
CHARLOTTESVILLE 2W	80.0	58.2	69.1	4.1	90	29	46	14	41	175	1	0	0	0	3.67	-0.96	0.85	01	0.0	0		8	4	0
CHATHAM	78.2	51.4	64.8	2.6	88	29	40	01	79	82	0	0	0	0	1.83	-2.21	0.68	02	0.0	0		5	2	0
CONCORD 4 SSW														1.54		0.75	01	0.0	0			5	1	0
DANVILLE REGIONAL AP	82.4	57.9	70.2	3.8	89	31+	45	03	24	193	0	0	0	0	1.12	-2.76	0.58	21	0.0	0		3	1	0
FREE UNION	78.5	52.9	65.7		87	13+	41	14	75	106	0	0	0	0	2.12		0.62	01	0.0	0		6	2	0
HOLCOMB ROCK														0.98		0.35	16	0.0	0			5	0	0
HUDDLESTON 4 SW														1.77		0.72	29	0.0	0			5	1	0
LYNCHBURG INTL AP	79.6	54.8	67.2	4.1	87	28	41	02	59	140	0	0	0	0	1.66	-2.07	0.72	11	0.0	0		4	2	0
MARTINSVILLE FLTR PLT	80.7	51.9	66.3	3.0	88	12	39	04+	60	107	0	0	0	0	1.78	-2.25	0.57	29	0.0	0		5	1	0
MEADOWS OF DAN 5 SW	78.7	52.0	65.4		86	13+	43	03+	64	82	0	0	0	0	1.93		0.56	01	0.0	0		5	1	0
MONTEBELLO FISH CULTURAL STN	M	M	M		86	25	39	25	21E	83E	0	0	0	0	M		0.0							
MONTECELLO	77.9	56.3	67.1	4.3	86	31+	45	14	61	132	0	0	0	0	2.84	-1.26	0.80	01	0.0			8	1	0
PEDLAR DAM														1.74		0.80	30	T	0			4	1	0
ROCKY MT	80.1	54.3	67.2	4.6	87	31+	41	03	54	129	0	0	0	0	2.42	-1.65	0.98	07	0.0	0		5	2	0
SOUTH BOSTON	80.7	55.7	68.2	4.4	90	20+	45	02	42	150	2	0	0	0	1.49	-2.43	0.51	01	0.0	0		5	1	0
STUART	80.2	54.2	67.2	3.1	87	21+	43	04+	43	122	0	0	0	0	2.28	-2.32	0.87	01	0.0	0		5	2	0
TYE RIVER 1 SE	79.7	55.5	67.6	4.0	88	29+	41	14+	62	150	0	0	0	0	1.75	-2.76	0.52	01	0.0	0		6	1	0
WOOLWINE														1.82		0.47	12	0.0	0			6	0	0
--DIVISIONAL DATA-----> NORTHERN 04			67.4	3.9B										1.91	-2.48B									
BOSTON 4 SE	78.2	53.9	66.0	4.4	87	20+	41	14	75	115	0	0	0	0	4.14	-0.21	2.34	07	0.0	0		6	2	1
EDINBURG	77.7	51.4	64.5	3.8	86	20+	40	23	92	90	0	0	0	0	3.69	-0.21	1.01	19	M 0.0	0		11	2	1
FRONT ROYAL	79.3	55.7	67.5	5.1	86	20+	43	24	54	141	0	0	0	0	4.95	0.75	0.90	27	M 0.0	0		10	5	0
LINCOLN	79.5	53.8	66.7	5.8	89	31	41	03+	74	135	0	0	0	0	0.95		0.95	17	0.0			1	1	0
LURAY 5 E	78.3	53.7	66.0	3.2	86	27+	40	22	81	117	0	0	0	0	2.69	-1.31	0.73	17	0.0	0		6	2	0
MADISON	79.4	56.8	68.1	4.9	89	13	45	14	48	152	0	0	0	0	0.55	-3.93	0.28	05	M 0.0	0		3	0	0
MANASSAS	80.7	59.0M	69.8M	5.8	90	19	46	14	50E	209E	1	0	0	0	3.45		1.30	29	0.0			8	3	1

VIRGINIA
201505

MONTHLY STATION AND DIVISION SUMMARY

STATION	TEMPERATURE (°F)										PRECIPITATION (IN)													
	AVERAGE MAXIMUM	AVERAGE MINIMUM	AVERAGE	DEPARTURE FROM NORMAL	HIGHEST	DATE	LOWEST	DATE	HEATING DEG. DAYS	COOLING DEG. DAYS	NO. OF DAYS				TOTAL	DEPARTURE FROM NORMAL	GREATEST 24 HOURS	DATE	ICE PELLETS, SNOW			NO. OF DAYS		
											MAX		MIN						TOTAL	MAX DEPTH ON GROUND	DATE	.10 OR MORE	.50 OR MORE	1.00 OR MORE
											>=90	<=32	<=32	<=0										
MT WEATHER	74.4	55.1	64.7	3.8	83	19	42	14	93	92	0	0	0	0	3.41	-1.07	1.73	07	0.0			5	2	1
PIEDMONT RSCH STN	78.9	56.8	67.8	4.1	86	31+	44	22	49	145	0	0	0	0	3.62	-0.52	1.24	07	0.0			7	3	2
SOMERSET	M	M	M		87	29	46	22+	97E	116E	0	0	0	0	A 4.34	0.12	0.37	01	0.0			2	0	0
SPERRYVILLE	77.5M	52.9M	65.2M	3.2	87	20+	45	24	70E	85E	0	0	0	0	MA 2.93	-1.42	0.96	17	0.0			3	2	0
STERLING RCS	79.1	56.9	68.0	5.7	88	29	44	14+	62	163	0	0	0	0	1.63	-3.09	1.02	17	0.0	0		3	1	1
VIENNA	81.1	60.2	70.6	9.1	92	19	46	14	39	220	2	0	0	0	2.61	-1.92	0.80	19	0.0			6	2	0
WARRENTON 3 SE	78.0M	56.6M	67.3M	4.4	86	31+	44	14	61E	138E	0	0	0	0	M 1.15	-3.41	0.32	17	0.0			5	0	0
WASHGTN DULLES INTL AP	80.3	57.5	68.9	5.7	89	30+	42	23	49	179	0	0	0	0	2.46	-2.09	1.05	27	0.0	0		4	2	1
WASHINGTON REAGAN AP	82.7	63.8	73.2	7.2	92	31+	51	02	16	278	7	0	0	0	1.92	-2.07	0.76	18	0.0	0		4	2	0
WINCHESTER	78.5	56.0	67.2	5.2	89	19	42	23	66	145	0	0	0	0	3.41	-0.46	1.14	17	0.0			6	3	1
WINCHESTER 7 SE	79.3M	51.8M	65.5M	4.9	88	30+	37	24+	81E	103E	0	0	0	0	M 1.78	-2.04	0.80	01	M 0.0	0		5	1	0
WOODSTOCK 2 NE	78.2	52.9F	65.5F	5.1	85	27+	41	23	83	100	0	0	0	0	3.76	-0.25	0.63	06	0.0			10	2	0
--DIVISIONAL DATA----->			67.4	5.6B											2.97	-1.26B								
CENTRAL MOUNTAIN 05																								
BUENA VISTA														1.85		0.72	12	0.0	0			6	1	0
COVINGTON FLTR PLT	80.9	49.9	65.4	2.6	91	12	39	04+	74	95	1	0	0	0	2.60	-1.48	0.48	17+	0.0	0		9	0	0
DALE ENTERPRISE	77.1	51.1	64.1	3.8	86	20+	38	20	95	74	0	0	0	0	2.76	-0.95	0.65	12	0.0	0		9	2	0
GATHRIGHT DAM	76.2	51.1	63.6	3.3	85	13+	40	14	97	62	0	0	0	0	2.46	-1.65	0.90	12	0.0	0		8	1	0
GLASGOW 1 SE														0.95		0.31	17	0.0	0			4	0	0
HOT SPRINGS	76.1	49.8	63.0	3.6	83	12	38	14	107	53	0	0	0	0	2.34	-1.85	0.61	12	0.0	0		9	1	0
LEXINGTON	80.3	52.7	66.5	3.7	88	20	41	04+	62	118	0	0	0	0	2.99	-1.03	0.92	17	0.0	0		8	2	0
MILLGAP	74.3	42.9	58.6	2.2	83	12	30	15+	204	12	0	0	5	0	2.08	-2.69	0.52	01	0.0	0		5	1	0
MTN GROVE														2.25		1.20	12	0.0	0			5	1	1
MUSTOE 1 SW	73.9	46.7	60.3	3.7	82	11	32	03	158	22	0	0	1	0	2.98	-1.72	1.05	11	M 0.0			7	1	1
NEW CASTLE														1.84		0.64	01	0.0	0			6	1	0
ROANOKE 8 N	80.0	54.0	67.0	3.7	88	12	34	02	71	141	0	0	0	0	1.96	-2.47	0.65	07	0.0	0		6	1	0
ROANOKE INTL AP	80.7	57.1	68.9	4.3	88	18+	44	03	35	162	0	0	0	0	1.75	-2.31	0.62	31	0.0	0		4	2	0
STAUNTON WATER TRMTMT PLT	76.9	54.8	65.8	4.3	85	12	41	14	71	104	0	0	0	0	3.85	0.11	0.85	01	0.0	0		9	3	0
WAYNESBORO WTP	78.4	52.5	65.5	4.6	86	31+	40	03+	87	108	0	0	0	0	1.16	-2.77	0.33	01	0.0	0		5	0	0
--DIVISIONAL DATA----->			64.4	3.0B											2.25	-1.87B								
SOUTHWESTERN MOUNTAIN 06																								
ABINGDON 3S	79.0	51.9	65.5	3.5	86	31+	36	03+	73	97	0	0	0	0	1.53	-3.08	0.35	01	0.0	0		6	0	0
BIG STONE GAP	78.1	52.6	65.4	2.4	85	12	32	02+	80	99	0	0	2	0	2.26	-2.62	0.40	16	0.0	0		9	0	0
BLACKSBURG NWSO	77.1	50.5	63.8	4.5	85	12	36	03	92	66	0	0	0	0	2.40	-1.93	0.73	01	0.0	0		5	2	0
BURKES GARDEN	72.0M	44.9M	58.4M	2.2	81	12	30	03	205E	9E	0	0	3	0	M 1.28	-3.48	0.36	22	M 0.0	0		6	0	0
CHRISTIANSBURG	75.9	52.0	64.0	3.0	83	29+	38	01	89	65	0	0	0	0	1.50	-3.40	0.49	01	0.0	0		4	0	0
CLINTWOOD 1 W	77.7	49.0	63.4	3.6	87	12	35	03+	110	65	0	0	0	0	1.85	-2.74	0.39	01	0.0	0		7	0	0

VIRGINIA
201505

MONTHLY STATION AND DIVISION SUMMARY

STATION	TEMPERATURE (°F)										PRECIPITATION (IN)													
	AVERAGE MAXIMUM	AVERAGE MINIMUM	AVERAGE	DEPARTURE FROM NORMAL	HIGHEST	DATE	LOWEST	DATE	HEATING DEG. DAYS	COOLING DEG. DAYS	NO. OF DAYS				TOTAL	DEPARTURE FROM NORMAL	GREATEST 24 HOURS	DATE	ICE PELLETS, SNOW			NO. OF DAYS		
											MAX		MIN						TOTAL	MAX DEPTH ON GROUND	DATE	.10 OR MORE	.50 OR MORE	1.00 OR MORE
											>=90	<=32	<=32	<=0										
COPPER HILL	72.5	52.5	62.5		84	12	39	02	110	38	0	0	0	0	3.67		1.01	19	0.0	0		7	3	1
GALAX RADIO WBRF	75.5	50.8	63.1	3.3	82	29+	37	03+	95	45	0	0	0	0	2.35	-1.57	0.72	12	0.0	0		8	2	0
GALAX WTP	74.6	48.6	61.6	2.7	81	29+	35	03+	126	26	0	0	0	0	2.20		0.96	12	T	0		8	1	0
GRUNDY	77.2	51.8	64.5	3.4	86	12	38	03	91	84	0	0	0	0	2.11	-2.78	0.71	19	0.0	0		6	2	0
JOHN FLANNAGAN LAKE	M	M	M		91	09	39	05	62E	132E	1	0	0	0	MA 2.04		0.56	19	0.0	0		6	1	0
LAFAYETTE 1 NE															1.46		0.70	01	0.0	0		4	1	0
LEBANON	78.0	49.8	63.9	3.2	86	12+	35	03+	104	78	0	0	0	0	3.61	-0.81	1.44	29	0.0	0		7	2	1
NORA 4 SSE	74.3	56.1	65.2	4.5	82	11+	40	02+	83	95	0	0	0	0	2.29	-3.21	0.94	09	0.0	0		6	1	0
N FK LAKE	M	M	M		86	12	37	04	56E	79E	0	0	0	0	A* 2.02		0.50	19	M 0.0	0		2	1	0
PULASKI 2 E	76.8M	50.3M	63.5M	2.9	83	31+	38	04+	102E	62E	0	0	0	0	1.42	-2.35	0.39	01	0.0	0		6	0	0
RADFORD 3 N	76.4	50.5	63.4	3.8	84	12	35	03	95	55	0	0	0	0	3.00	-0.92	1.70	30	0.0	0		5	2	1
RICHLANDS	77.8	49.0	63.4	3.2	85	12+	36	04+	104	60	0	0	0	0	1.91	-2.84	0.52	30	0.0	0		5	1	0
SALTVILLE 1N	79.0	50.0	64.5	2.9	86	29+	36	04+	88	79	0	0	0	0	1.25	-3.10	0.36	17	0.0	0		5	0	0
STAFFORDSVILLE 3 ENE	75.5M	49.6M	62.6M	3.0	83	12	35	04+	113E	47E	0	0	0	0	4.08	-0.16	0.99	27	0.0	0		9	3	0
WILLIS															1.87		0.58	12	0.0	0		7	1	0
WISE 3E	75.2M	53.8M	64.5M	3.7	81	11	38	22+	81E	73E	0	0	0	0	M 1.33	-3.29	0.44	01	M 0.0	0		5	0	0
WYTHEVILLE 1 S	77.3	50.6	63.9	5.2	87	12	38	04+	94	69	0	0	0	0	1.36	-2.75	0.76	29	0.0	0		3	1	0
--DIVISIONAL DATA----->			63.5	3.9B											2.21	-2.39B								

VIRGINIA
201505

DAILY PRECIPITATION (INCHES)

STATION	TOTAL	DAY OF MONTH																																
		01	02	03	04	05	06	07	08	09	10	11	12	13	14	15	16	17	18	19	20	21	22	23	24	25	26	27	28	29	30	31		
VIRGINIA																																		
TIDEWATER 01																																		
DISPUTANTA	1.89	0.18	0.31							0.27	0.05							0.11	0.04			0.77					0.16							
EASTVILLE	2.27	0.22	0.33									0.12							0.30			1.30												
EMPORIA 1 WNW	1.88	0.12	0.09								0.04	0.86	0.19					T	0.05	0.12		0.41												
FREDERICKSBURG SEWAGE	2.50	0.06				0.10						0.03					0.58		0.97		0.01	0.35										0.40		
HOLLAND 1 E	0.48										0.02	0.11							0.07	0.01	0.27													
HOPEWELL	M 1.23										0.15	0.07						0.02	0.67	T	-							0.32						
NORFOLK INTL AP	1.51	0.50							T		0.02	0.13					0.01	0.06	0.05		0.48			T				0.26						
NORFOLK SOUTH	1.39	0.68						T			0.20	0.17					0.01		0.02		0.31								T					
NORTH	2.27	0.19	0.11										0.99							0.24		0.74												
PAINTER 2W	2.90	0.64	0.04									0.18	0.02							0.62		0.82	0.58											
STONY CREEK 2 N	1.13	0.24									0.05	0.01							0.03		0.72						0.08							
SUFFOLK LAKE KILBY	1.50	0.22									0.24	0.18							0.16	0.37		0.33							T					
WAKEFIELD 1NW	2.99	0.17							T		0.84	0.04					0.26	0.14	0.01		0.94					0.59		T						
WALKERTON 2 NW	2.18	0.81			0.05											0.01					0.05	1.23					0.03							
WALLACETON LK DRUMMOND	4.71	0.40	0.20									0.36	0.35								1.80	1.60												
WALLOPS ISLAND NASA TEST FACIL	2.73	0.97			T						0.19	0.10				T	T	0.33	0.09		1.05													
WARSAW 2 NW	1.60	0.24				0.13						0.15				0.16				0.15		0.77												
WEST POINT 2 NW	1.57	0.13									0.09	0.30	0.01					T		0.12		0.89	0.03											
WILLIAMSBURG 2 N	2.53	0.16									0.28	0.07					0.39		0.47		1.01					0.10	0.05							
EASTERN PIEDMONT 02																																		
ALBERTA 5N	2.07	0.05	0.12							T	T	0.90							T	T	T	0.15	0.85											
AMELIA COURTHOUSE 1	1.30	0.12	0.12									0.07										0.28	0.62							0.01	0.08			
ASHLAND	1.89	0.23										0.01						T	T	0.13	0.18	0.73					0.05	0.56						
BREMO BLUFF	M 2.21	0.07	0.29			0.80	0.14					0.08	0.02								0.34		0.29			-							0.18	
BUCKINGHAM	1.57	0.20	0.31				0.03					0.03	0.33							0.22		0.35											0.10	
CAMP PICKETT	1.54		0.45										0.12									0.97												
CHASE CITY	1.24	0.19	0.27																0.15			0.27	0.36											
CLARKSVILLE	A 1.88	0.30	0.25									0.10							0.10		*	0.30 _a	0.83											
CORBIN	2.42					0.28					0.09	0.06									1.62	0.04	0.27										0.06	
CROZIER	1.75	0.20	0.12			0.42	0.12					0.02									0.15		0.55											0.17
FARMVILLE 2 N	2.04	T	0.15									T	0.53								T		0.44								0.31	0.61		-
GREENBAY 3 NE	M	-	-	-	-	-	-	-	-	-	-	-	-	-	-	-	-	-	-	-	-	-	-	-	-	-	-	-	-	-	-	-	-	-
JOHN H KERR DAM	1.97	0.12	0.44									0.09								0.07		0.29	0.96											
LOUISA	2.37	0.25			0.06	0.25	0.06				0.01		0.22				0.56	0.01				0.18						0.16	0.61					
PALMYRA 3S	1.11	0.30	0.24			0.15	0.16															0.17												0.05
PETERSBURG	1.71	0.18								0.15	0.07	0.04						0.01	0.06			1.20												
RICHMOND INTL AP	1.61	0.20			0.07						T	0.02	T						0.30	0.05		0.97												T
SANDSTON	A 1.52											T									*	*	*	*										
WINTERPOCK 4 W	1.46	0.05	0.30									0.05	0.04					0.46 _a				0.05			*	1.06 _a								
WESTERN PIEDMONT 03																																		

VIRGINIA
201505

DAILY PRECIPITATION (INCHES)

STATION	TOTAL	DAY OF MONTH																														
		01	02	03	04	05	06	07	08	09	10	11	12	13	14	15	16	17	18	19	20	21	22	23	24	25	26	27	28	29	30	31
ALTAVISTA	1.17	0.62	0.20				0.02			0.05	0.04	0.02									0.04	0.08									0.10	
APPOMATTOX	3.17	0.77	0.14				0.03				0.16	0.83							T	T		0.03	0.27				T			0.84	0.10	
BEDFORD 4 NW	1.06	0.19	0.14									0.31				0.03		0.03	0.10			0.04	0.20							0.02		
BROOKNEAL	1.42	0.45	0.12				0.01			0.07	0.05	0.01										0.09	0.15							0.47		
CHARLOTTE COURT HOUSE	2.49	0.49	0.09							0.07	T									0.01		0.01	0.70							0.55	0.57	
CHARLOTTESVILLE 2W	3.67	0.85	0.06			0.03	0.13		T	T	0.58	0.13					0.65	0.27	0.02			T	0.21							0.74	T	
CHATHAM	1.83	0.61	0.68								0.18	0.02										0.20	0.11							0.03		
CONCORD 4 SSW	1.54	0.75	0.28				0.16					0.10										0.04	0.21									
DANVILLE REGIONAL AP	1.12	0.39							T	0.01	0.11								T			0.58						T	0.02		0.01	
FREE UNION	2.12	0.62	0.08			0.02	0.23				0.06						0.13	0.56	0.19			0.23					T					
HOLCOMB ROCK	0.98	0.24	0.17				0.12					T				0.35	T	T				T	0.10							T		
HUDDLESTON 4 SW	1.77	0.26	0.20				0.35					0.07				0.04						0.02	0.11							0.72		
LYNCHBURG INTL AP	1.66	0.57			T	0.01				0.14	0.72	T			T							0.12						0.01	0.09		T	
MARTINSVILLE FLTR PLT	1.78	0.47	0.06								0.25	0.22								0.02		0.10								0.57	0.09	
MEADOWS OF DAN 5 SW	1.93	0.56	0.09			0.03	0.13					0.41						0.48	0.12			0.04					0.04			0.03		
MONTEBELLO FISH CULTURAL STN	M	-	-	-	-	-	-	-	-	-	-	-	-	-	-	-	-	-	-	-	0.62	-	-	-	-	-	-	-	-	-	-	-
MONTICELLO	2.84	0.80	0.10			0.30	0.09			T	0.36	0.11					0.30	0.34	0.01				0.31							0.08	0.03	0.01
PEDLAR DAM	1.74	0.12	0.06			0.04					T	0.48				T	0.07	T					0.13							0.04	0.80	
ROCKY MT	2.42	0.61	0.20				0.98				0.08	0.06										0.20	T	0.06						0.23		
SOUTH BOSTON	1.49	0.51	0.14																			0.26	0.34							0.24		
STUART	2.28	0.87	0.22							0.02		0.84							0.03	0.12										0.18		
TYE RIVER 1 SE	1.75	0.52	0.14			0.18	0.47				0.11	0.25										T	0.08									
WOOLWINE	1.82	0.25	0.25				0.15			0.03	0.03	0.47				0.04		0.22	0.30				0.05				T		0.02	0.01		
NORTHERN 04																																
BOSTON 4 SE	4.14	0.41				0.09	2.34										0.65						0.20					0.14			0.31	
EDINBURG	3.69	0.27	0.02			0.62	0.05					0.10					0.18	0.18	1.01		0.02	0.26				0.12	0.40		0.10	0.36		
FRONT ROYAL	4.95	0.53	0.02			0.70	0.84					0.07					0.81	0.19	0.19			0.25				0.90	0.29				0.16	
LINCOLN	0.95																0.95															
LURAY 5 E	2.69	0.70	0.01			0.03	0.33					0.08					0.73	0.03	0.21				0.25								0.32	
MADISON	0.55				0.28	0.15						T											0.12									
MANASSAS	3.45	0.22				0.20	0.60					0.10					0.55		0.20			0.28								1.30		
MT WEATHER	3.41	0.70	0.03				1.73					0.05					0.38	0.12	0.07			0.25					0.02	0.04				0.02
PIEDMONT RSCH STN	3.62	0.27				0.14	1.24										1.03		0.05			T	0.14							0.63	0.12	
SOMERSET	A 4.34	0.37	0.03		*	*	*	*	*	*	*	*	*	*	*	*	*	*	*	*	*	3.79 _a	0.04	0.11								
SPERRYVILLE	MA 2.93	0.90				*	0.70 _a					0.03				-	0.96	0.03	-			0.23						0.06	0.02			
STERLING RCS	1.63	0.02				T	0.07				T						1.02	0.06	0.14			T	0.21				0.02	0.09				
VIENNA	2.61	0.43				0.47	0.10		0.01								0.56		0.80				0.23							0.01		
WARRENTON 3 SE	M 1.15	0.22				0.10	0.21		-			-					0.32	T				0.06	0.19				T	T	0.05	T		
WASHGTN DULLES INTL AP	2.46	T			0.02	0.04					0.01	T				0.70	T	0.38				0.26			T			1.05			T	
WASHINGTON REAGAN AP	1.92	0.11			0.05	T			T							0.66	T	0.76				0.33						0.01	T			
WINCHESTER	3.41	0.59	0.07			0.02	0.46					0.04					1.14					0.01	0.12					0.10	0.08		0.04	
WINCHESTER 7 SE	M 1.78	0.80				0.07	0.38					0.13										0.02	0.14					0.02	0.07	-		

VIRGINIA
201505

DAILY PRECIPITATION (INCHES)

STATION	TOTAL	DAY OF MONTH																														
		01	02	03	04	05	06	07	08	09	10	11	12	13	14	15	16	17	18	19	20	21	22	23	24	25	26	27	28	29	30	31
WOODSTOCK 2 NE	3.76	0.58	0.02			0.63	0.22	T				0.20					0.47	0.20	0.47		0.02	0.20					0.05	0.41	0.02		0.27	
CENTRAL MOUNTAIN 05																																
BUENA VISTA	1.85	0.21	0.14									0.72					0.19		0.03			0.18					0.01			0.37		
COVINGTON FLTR PLT	2.60	0.48	0.34									0.13				0.10	0.48	0.24	0.32		0.04	0.12				0.05		0.03	0.27			
DALE ENTERPRISE	2.76	0.53	0.10			0.02	0.38					0.65					0.28	0.10	0.27		0.03	0.02				0.10	0.28					
GATHRIGHT DAM	2.46	0.34	0.40						0.11			0.90					0.13	0.10			T	0.11				0.32		0.04		0.01		
GLASGOW 1 SE	0.95	0.30	0.17									0.03				0.02	0.31					0.10						0.02				
HOT SPRINGS	2.34	0.26	0.44			0.13	0.04					0.61					0.22	0.18	0.11		T	0.16				0.19						
LEXINGTON	2.99	0.39	0.12				0.17					0.11					0.92	0.04	0.02			0.11				0.40		0.01	0.70			
MILLGAP	2.08	0.52	0.04						0.08			0.43				0.01	0.07	0.26	0.08		0.02	0.27				0.22			0.06	0.02		
MTN GROVE	2.25	0.13	0.45					T				1.20					T	0.10	0.05		T				0.32							
MUSTOE 1 SW	2.98	0.29			T	0.02	0.05				1.05				0.02	0.36	0.45	0.02			0.35				0.12		0.03	0.09		0.13		
NEW CASTLE	1.84	0.64	0.17					T									0.14	0.06	0.09			0.11				0.27			0.36			
ROANOKE 8 N	1.96	0.34	0.24				0.65					0.02				0.10	0.07	0.26	0.06			0.18				T			0.04			
ROANOKE INTL AP	1.75	0.18				0.61				T	T	0.03			0.02	0.02	0.01				0.22					T	T	0.04	0.62			
STAUNTON WATER TRMTMT PLT	3.85	0.85	0.36	T			0.62	T				0.18				0.03	0.11	0.34	0.08		0.18	0.04	T			0.24	T	T	0.82	T		
WAYNESBORO WTP	1.16	0.33	0.12					T				0.03					0.28	0.10	0.07							0.18		T	0.05			
SOUTHWESTERN MOUNTAIN 06																																
ABINGDON 3S	1.53	0.35										0.08					0.25		0.10	0.05	0.10	0.34				0.21			0.05			
BIG STONE GAP	2.26	0.05					0.35				0.20	0.03				0.40	0.12	0.12	0.32		0.25	0.04			0.15			0.02	0.21			
BLACKSBURG NWSO	2.40	0.73	0.34				0.01			T		T				T	0.02	0.65	0.01	T	T	0.26				0.08		0.06	0.24			
BURKES GARDEN	M 1.28	0.25										0.10				-	0.17	0.03	0.10			0.36				0.02		0.22	0.03			
CHRISTIANSBURG	1.50	0.49	0.25									0.05				0.02		0.38	0.09		T	0.15						T	0.07			
CLINTWOOD 1 W	1.85	0.39	T									0.31				0.15	0.02	0.01	0.24		0.25	0.10			T			0.08	0.02			
COPPER HILL	3.67	0.77	0.38								0.04	0.05	0.11			0.03		0.80	1.01	0.03		0.26						0.12	0.02			
GALAX RADIO WBRF	2.35						0.16				0.01	0.72				0.15			0.30	0.01		0.11	0.01		0.01	0.16	0.01	0.58	0.13			
GALAX WTP	2.20				T		0.09	0.12				0.96				0.15		0.17	0.10	0.01						0.25	0.01	0.20	0.14			
GRUNDY	2.11	0.15						T	0.16			0.56				0.21	T	0.07	0.71	T	0.17	0.07				0.01						
JOHN FLANNAGAN LAKE	MA 2.04	0.38	*	*	* 0.00 _a					0.04	-	0.14				*	*	0.26 _a	0.56		0.15	0.12	*	*	*	0.01 _a		0.38	-	-		
LAFAYETTE 1 NE	1.46	0.70	0.15									0.18					0.04	0.09	0.04								0.23		0.01			
LEBANON	3.61	0.49	T						T			0.03					0.22	0.04	0.44		0.18	0.56				0.03		1.44	0.18			
NORA 4 SSE	2.29	0.43	0.01			T	0.06	0.04	0.94			0.04				0.04	T	0.26	0.15		0.13	0.10			T			0.09	T			
N FK LAKE	A* 2.02	*	*	*	0.78 _a		0.04		*	*	0.00 _a	0.20			*	*	*	0.20 _a	0.50		*	*	*	*	*	0.15 _a	0.01	*	0.14 _a	-	-	
PULASKI 2 E	1.42	0.39	0.08									0.15				0.19		0.14	0.29	T		0.14				0.02		0.02	T			
RADFORD 3 N	3.00	0.53	0.09				0.06									0.03	0.13	0.26	0.04		T	0.15						0.01	1.70			
RICHLANDS	1.91	0.26	0.02									0.03				0.01	0.15	0.01	0.25	0.07	0.04	0.46			T	0.02		0.07	0.52			
SALTVILLE 1N	1.25	0.28						0.02				0.19					0.36		0.01	0.03	0.15	0.08			T	0.13						
STAFFORDSVILLE 3 ENE	4.08	0.55	T						0.01	T		0.37				0.33	0.35	0.42	0.75	0.01		0.14				0.99			0.16			
WILLIS	1.87	0.26	0.12									0.58				0.06		0.37	0.10	0.19	0.04					0.13			0.02			
WISE 3E	M 1.33	0.44				T	0.04			T						-			0.19				0.28	0.11				0.04	0.06	0.17		
WYTHEVILLE 1 S	1.36	0.28	0.05				0.02					0.03			T	0.03		0.05				0.14							0.76			

VIRGINIA
201505

DAILY TEMPERATURES (°F)

STATION	OB. TIME	MAX/MIN	DAY OF MONTH																															AVERAGE
			01	02	03	04	05	06	07	08	09	10	11	12	13	14	15	16	17	18	19	20	21	22	23	24	25	26	27	28	29	30	31	
VIRGINIA TIDEWATER 01 DISPUTANTA	07	MAX	61	61	73	81	83	84	84	78	81	82	83	80	88	75	69	75	85	86	90	91	78	63	74	81	86	82	85	88	85	87	86	80.2
		MIN	51	40	43	46	48	49	56	54	59	66	67	68	58	48	46	47	59	65	66	64	56	49	48	50	63	60	61	68	64	64	67	56.5
EASTVILLE	07	MAX	61	54	65	77	80	80	79	75	79	79	80	73	85	71	65	73	83	83	86	83	76	63	71	70	76	80	82	85	83	82	83	76.2
		MIN	53	46	49	57	61	63	58	56	57	64	67	67	66	52	49	50	65	68	69	69	58	53	56	55	59	66	69	71	69	68	69	60.6
EMPORIA 1 WNW	08	MAX	64	64	72	81	82	83	83	83	82	85	82	84	87	79	72	76	85	87	90	90	85	64		78	82	84	87	89	87	87	87	81.4
		MIN	52	44	44	49	49	54	54	56	57	66	69	67	59	50	49	49	60	64	69	66	63	53		52	53	59	62	70	66	66	66	57.9
FREDERICKSBURG SEWAGE	07	MAX	73	61	74	80	85	87	83	80	82	82	82	89	69	71	80	89	87	89	89	89	74	55	76	75	84	84	87	89	87	84	88	80.5
		MIN	51	47	45	48	45	59	58	56	57	63	64	66	62	49	49	52	66	67	67	60	54	48	45	45	52	62	63	67	67	66	67	57.0
HOLLAND 1 E	08	MAX	56	68	81	81	82	82	80	78	88	85	82	89	79	70	77	85	89	92	91	84	73	76	80	83	85	88	90	88	92	89	90	82.4
		MIN	50	47	47	49	58	52	55	54	66	66	70	69	63	57	46	48	58	70	68	61	57	52	48	48	58	59	69	69	64	64	64	58.3
HOPEWELL	16	MAX	63	72	80	83	85	85	85	82	84	83	80	90	88	75	75	87	87	89	89	87		73	74	81	83	85	88	88	87	87	87	82.7
		MIN	49	1 ^G	0 ^G	55	61	62	61	61	61	70	71	71	66	62	63	61	67	70	70	66		54	55	53	62	63	71	71	76	72	68	64.0
NORFOLK INTL AP	24	MAX	57	65	81	82	84	82	72	73	77	82	78	90	78	65	78	86	89	88	86	73	67	73	69	81	85	87	90	87	85	87	79.4	
		MIN	51	50	50	59	61	58	60	58	61	67	69	71	62	52	51	61	66	71	72	64	57	55	57	55	60	64	71	70	70	68	69	61.6
NORFOLK SOUTH	24	MAX	55	65	81	82	83	82	74	73	78	83	77	90	79	65	78	86	89	89	85	72	67	72	69	80	83	86	88	87	86	85	88	79.3
		MIN	49	47	48	55	61	57	58	57	60	65	68	70	60	50	48	59	65	70	70	61	56	53	52	53	59	62	69	69	68	66	67	59.7
NORTH	07	MAX	62	55	68	77	80	81	76	73	77	77	77	71	85	71	66	68	82	83	85	82	73	62	71	70	74	80	81	84	82	81	79	75.3
		MIN	53	40	46	51	62	59	55	53	59	66	64	66	62	52	49	50	67	68	70	64	56	50	50	54	62	67	69	72	67	68	70	59.4
PAINTER 2W	16	MAX	63	66	78	80	80	80	75	75	77	78	77	86	86	68	69	82	84	89	83	83	71	71	71	72	78	81	81	81	82	80	84	77.8
		MIN	47	43	47	54	64	61	56	55	60	64	65	66	65	51	44	60	68	68	67	67	52	52	52	50	57	64	68	68	66	66	68	59.2
STONY CREEK 2 N	08	MAX	58	72	81	83	85	85	80	80	84	83	83	90	78	71	79	87	90	92	90	82	68	75	77	83	85	87	89	88	89	88	90	82.3
		MIN	48	41	45	48	53	54	56	54	65	66	67	68	58	48	47	52	61	67	68	63	56	51	49	50	55	61	66	69	66	64	66	57.5
SUFFOLK LAKE KILBY	24	MAX	56	70	78	80	81	81	79	79	83	83	77	86	76	69	76	83	86	91	89	80	68	74	72	81	82	85	87	87	87	87	88	80.0
		MIN	49	44	49	49	58	55	58	58	64	66	68	68	59	51	49	58	58	68	69	61	55	51	54	52	58	56	68	68	66	63	65	58.5
WAKEFIELD 1NW	24	MAX	55	73	81	83	84	85	80	80	84	84	81	89	78	70	77	86	88	91	88	81	61	75	76	83	85	87	89	87	88	87	89	81.5
		MIN	44	38	44	48	59	55	55	53	64	66	66	71	51	44	45	59	65	66	66	58	45	50	45	49	58	61	69	68	65	64	67	56.7
WALKERTON 2 NW	18	MAX	60	74	83	84	86	85	82	84	84	86	84	91	84	71	78	88	88	93	91	83	70	76	76	84	85	86	90	87	88	88	89	83.2
		MIN	54	43	45	48	58	59	58	55	65	67	64	65	59	47	48	59	66	68	69	61	57	52	49	50	59	63	70	69	66	65	66	58.8
WALLACETON LK DRUMMOND	08	MAX	60	58	74	82	85	84	83	80	79	85	86	80	90	80	73	80	86	89	92	92	84	74	75	77	84	85	88	90	88	87	85	81.8
		MIN	42	35	34	42	48	47	46	47	54	55	59	60	53	40	37	47	51	61	59	56	50	45	43	50	56	49	58	58	55	58	59	50.1
WALLOPS ISLAND NASA TEST FACIL	24	MAX	55	63	79	80	80	75	67	71	77	78	70	87	75	66	68	76	83	86	83	73	61	72	65	70	78	78	77	76	79	80	81	74.5
		MIN	43	43	48	55	62	57	56	61	64	63	67	55	47	46	61	67	66	65	59	51	50	53	54	58	63	66	65	64	66	67	67	58.0
WARSAW 2 NW	18	MAX	67	71	82	85	86	84	84	81	81	84	75	90	90	71	76	85	86	91	89	83	60	74	75	84	85	86	90	89	86	86	89	82.1
		MIN	52	40	50	40	61	61	57	54	60	65	65	65	57	48	48	61	67	67	68	59	53	49	51	61	62	64	70	69	67	69	69	59.0
WEST POINT 2 NW	17	MAX	61	72	82	83	84	83	82	81	82	83	78	90	87	71	76	86	87	89	88	87	76	75	75	82	84	86	89	89	87	87	90	82.3
		MIN	47	41	46	51	62	60	57	54	64	66	65	66	53	47	48	62	67	69	69	55	53	49	49	53	63	64	71	70	67	66	69	58.8
WILLIAMSBURG 2 N	24	MAX	56	71	80	83	84	83	78	79	80	80	75	89	75	69	76	86	88	89	88	78	63	74	74	82	84	86	88	87	85	86	88	80.1
		MIN	48	44	49	54	64	60	58	58	65	68	67	69	59	51	50	62	70	67	71	60	55	51	52	52	63	65	71	70	67	68	69	60.5
EASTERN PIEDMONT 02 AMELIA COURTHOUSE 1	08	MAX	73	58	72	79	83	85	84	79	82	82	84	84	89	75	69	78	87	85	90	88	80	59	74	79	81	83	85	87	88	88	80.3	

VIRGINIA
201505

DAILY TEMPERATURES (°F)

STATION	OB. TIME	MAX/MIN	DAY OF MONTH																															AVERAGE	
			01	02	03	04	05	06	07	08	09	10	11	12	13	14	15	16	17	18	19	20	21	22	23	24	25	26	27	28	29	30	31		
FREE UNION	08	MAX	72	61	71	80	85	87	83	74	81	78	80	85	87	72	66	76	86	77	85	86	77	54	72	73	82	81	85	83	85	82	86	78.5	
		MIN	44	44	44	44	45	52	58	55	53	55	60	60	57	41	43	49	57	65	64	56	54	45	46	47	49	54	56	60	61	62	61	52.9	
LYNCHBURG INTL AP	24	MAX	62	71	76	81	85	84	78	80	79	80	85	85	75	67	76	84	84	86	86	81	61	73	74	81	82	84	84	87	86	86	86	79.6	
		MIN	45	41	43	46	54	55	59	53	56	62	62	64	52	43	49	57	65	65	64	52	50	47	44	48	57	58	65	60	59	61	63	54.8	
MARTINSVILLE FLTR PLT	07	MAX	73	65	74	79	83	84	85	81	83	80	78	88	86	78	70	79	84	84	87	85	85	71	75	77	81	83	85	84	87	83	85	80.7	
		MIN	39	39	39	39	45	52	52	52	53	53	58	59	58	48	50	52	56	61	63	52	52	43	45	46	49	55	62	59	59	59	60	51.9	
MEADOWS OF DAN 5 SW	07	MAX	71	72	71	76	81	83	82	79	83	82	77	86	86	76	68	77	80	83	84	82	83	71	72	75	78	77	80	80	82	84	78.7		
		MIN	43	43	43	44	44	50	53	53	53	56	58	57	50	45	46	46	56	60	62	59	57	45	45	45	50	57	57	60	58	58	52.0		
MONTEBELLO FISH CULTURAL STN	07	MAX																		81														M	
		MIN																		63														M	
Monticello	08	MAX	72	58	70	77	83	85	82	75	79	78	81	82	86	69	66	75	85	79	86	85	76	55	72	72	81	82	85	84	86	82	86	77.9	
		MIN	50	48	48	53	54	58	59	58	59	60	64	64	57	45	48	49	60	67	66	59	54	46	49	53	49	49	60	64	65	65	64	56.3	
Rocky Mt	07	MAX	73	60	73	78	82	85	85	79	79	80	79	82	87	78	69	81	84	83	86	86	83	71	74	76	81	83	85	85	82	86	87	80.1	
		MIN	47	45	41	43	52	57	55	54	56	65	62	62	54	45	45	52	58	65	63	58	57	49	45	46	48	48	65	61	61	61	62	54.3	
South Boston	07	MAX	73	60	73	80	83	83	84	81	83	81	80	86	88	79	70	76	85	87	90	90	86	62	75	76	81	82	84	85	89	84	86	80.7	
		MIN	49	45	46	46	50	54	55	54	55	65	57	57	62	52	50	51	59	65	68	58	58	49	48	51	53	59	62	64	62	62	62	55.7	
Stuart	07	MAX	73	62	72	78	82	82	84	80	82	80	81	87	85	75	69	79	84	84	86	84	87	76	76	77	81	81	84	82	84	84	86	80.2	
		MIN	46	46	43	43	50	49	55	55	55	60	58	59	57	48	50	50	60	65	63	53	54	47	47	49	55	58	65	59	60	59	62	54.2	
Tye River 1 SE	07	MAX	75	62	74	80	84	88	84	78	80	80	82	85	88	75	68	78	85	80	85	85	80	60	75	74	80	82	85	85	88	85	82	79.7	
		MIN	45	41	42	48	49	55	55	56	58	60	65	67	57	41	42	52	60	68	66	67	57	47	47	48	52	62	63	63	64	62	63	55.5	
NORTHERN 04																																			
Boston 4 SE	07	MAX	70	62	73	79	84	85	81	78	80	77	81	82	87	68	67	76	83	82	85	87	73	54	75	71	81	82	86	85	84	81	85	78.2	
		MIN	49	48	43	44	54	54	58	55	52	55	58	58	58	41	44	52	60	63	62	56	52	44	45	45	57	58	59	61	61	61	63	53.9	
Edinburg	07	MAX	65	64	71	76	82	82	83	79	82	82	82	86	84	65	66	78	83	81	84	86	71	55	73	72	81	82	84	81	84	80	84	77.7	
		MIN	45	45	45	41	41	49	53	54	51	52	57	59	53	43	43	51	60	62	63	51	50	44	40	41	48	53	59	61	60	61	59	51.4	
Front Royal	07	MAX	68	64	74	79	85	83	82	79	81	76	82	84	86	86	67	74	82	83	86	86	70	71	74	72	80	84	85	82	85	85	84	79.3	
		MIN	48	51	47	46	54	57	56	60	59	59	61	61	58	46	46	46	64	64	66	54	53	46	45	43	50	62	64	67	64	63	67	55.7	
Lincoln	07	MAX	71	63	73	80	84	84	84	81	83	79	85	84	86	63	67	78	86	83	86	85	68	68	74	72	82	84	85	85	88	86	89	79.5	
		MIN	45	41	41	45	45	55	55	54	56	61	60	61	57	46	46	48	62	64	54	51	51	49	43	43	52	62	63	61	65	66	67	53.8	
Luray 5 E	08	MAX	54	64	70	77	84	83	82	79	81	79	82	84	84	65	67	81	86	82	86	85	74	64	72	73	84	85	86	81	85	83	84	78.3	
		MIN	47	46	44	47	52	54	56	54	53	57	57	60	53	45	49	57	63	62	62	54	50	40	42	47	54	56	62	60	60	62	60	53.7	
Madison	08	MAX	73	62	75	79	84	85	82	78	81	78	81	83	89	71	69	77	85	82	88	88	74	56	77	73	83	82	87	86	85	82	87	79.4	
		MIN	50	51	47	49	53	59	61	57	55	58	60	63	61	45	47	54	64	66	66	57	55	48	51	49	53	59	64	65	63	65	67	56.8	
Manassas	07	MAX	74	63	75	82	86	87	84	80	82	84	84	83	89	65	70	78	89	84	90	89	73	53	76	74	83	85	88	88	89	86	88	80.7	
		MIN	49	50	48	53	53	60		58	58	64	64	68	60	46	47	54	68	69	69	58	52	47	51	53	64	65	65	68	69	69	71	59.0	
MT Weather	07	MAX	66	59	70	75	81	77	80	75	77	74	79	81	82	58	64	79	79	75	83	82	65	50	71	68	77	79	80	78	82	79	81	74.4	
		MIN	46	47	50	55	62	63	55	55	55	58	58	62	52	42	43	49	51	67	64	50	50	43	45	45	57	62	63	66	65	64	64	55.1	
Piedmont RSCH STN	08	MAX	74	71	72	78	83	85	82	77	81	79	81	83	86	70	67	75	85	82	86	86	73	55	74	72	82	81	86	86	86	81	86	78.9	
		MIN	47	50	52	50	57	56	58	55	55	60	60	64	57	45	50	52	63	66	66		58	54	44	50	49	57	60	65	64	65	66	56.8	
Somerset	07	MAX	71	61	73	79																	74	54	75	73	82	82	86	85	87	83	86	M	
		MIN	47	49	47	46																	58	53	46	48	47	52	57	65	63	63	64	M	
Sperryville	06	MAX	72	64	73	78	81		79	78	81	75	81	83	87	68		76	82	80														77.5	

VIRGINIA
201505

DAILY TEMPERATURES (°F)

STATION	OB. TIME	MAX/MIN	DAY OF MONTH																															AVERAGE
			01	02	03	04	05	06	07	08	09	10	11	12	13	14	15	16	17	18	19	20	21	22	23	24	25	26	27	28	29	30	31	
STERLING RCS	07	MIN	46	50	46	48	48		55	55	53	53	60	59	58	47		47	56	65		53	50	47	46	45	47	51	54	61	61	61	60	52.9
		MAX	72	63	74	79	84	84	82	80	82	80	83	81	86	62	69	77	86	87	87	86	69	56	74	72	82	83	87	86	88	85	87	79.1
VIENNA	07	MIN	49	50	44	50	52	57	57	56	58	64	63	66	58	44	47	54	64	66	66	56	54	49	46	48	56	61	64	64	67	67	68	56.9
		MAX	72	64	75	82	87	86	85	82	84	82	75	89	88	63	78	77	88	86	92	87	70	59	75	74	84	85	89	89	91	87	88	81.1
WARRENTON 3 SE	08	MIN	52	52	52	52	57	62	58	58	61	66	70	69	61	46	50	55	65	69	69	59	56	51	50	50	55	66	68	71	71	73	72	60.2
		MAX	71	63	74	79	83	83	82	76		80	81		85	65	66	74	85	81	85	85	70	63	73	73	79	81	85	85	86	82	86	78.0
WASHGTN DULLES INTL AP	24	MIN	50	49	50	56	56	58	56	56		56	62		57	44	50	54	64	64	65	55	50	50	47	47	58	60	67	64	65	64	66	56.6
		MAX	64	75	80	84	85	83	80	83	79	82	83	87	68	70	77	87	83	89	87	71	58	75	73	81	83	87	86	89	84	89	87	80.3
WASHINGTON REAGAN AP	24	MIN	50	49	43	52	58	56	57	55	58	64	64	66	51	46	52	63	61	68	66	57	50	46	42	48	61	62	67	66	68	68	69	57.5
		MAX	64	78	84	84	86	83	81	84	83	85	83	90	72	73	78	88	87	92	90	75	63	79	75	82	85	88	90	92	87	90	92	82.7
WINCHESTER	07	MIN	54	51	56	56	64	64	62	64	65	69	71	71	56	53	58	67	70	72	72	62	53	52	54	57	67	69	75	73	74	72	74	63.8
		MAX	72	64	73	78	85	81	83	80	82	82	82	86	85	62	68	76	86	80	89	86	69	54	74	73	82	84	84	81	86	82	83	78.5
WINCHESTER 7 SE	08	MIN	49	49	46	51	54	57	56	57	56	61	65	54	44	47	53	65	66	65	53	52	48	42	47	55	63	65	65	65	65	66	64	56.0
		MAX	71	73	78	78	85	81	83	83	83	79	84	85	86	64	68	76	84	81	87	88	71	54	74	74	83	84	86	83		88	84	79.3
WOODSTOCK 2 NE	07	MIN	50	47	43	43	47	52	53	53	51	52	52	59	54	41	44	51	64	64	65	53	51	42	37	37	51	53	62	61		61	60	51.8
		MAX	67	65	75	77	83	82	82	79	83	81	83	85	84	63	68	77	83	82	85	84	72	56	72	74	81	83	85	83	84	83	83	78.2
CENTRAL MOUNTAIN 05 COVINGTON FLTR PLT	07	MIN	47	48	45	45	47	53	55	56	53	55	56	62	53	43	44	53	60	64	63	50	50	44	41	42	50	59	63	41 ^s	61	62	62	52.9
		MAX	70	59	70	78	85	84	85	83	85	85	85	91	87	76	73	83	83	84	87	86	82	67	74	77	83	85	83	86	83	85	85	80.9
DALE ENTERPRISE	07	MIN	47	44	39	39	43	48	54	55	53	53	53	57	55	41	41	42	42	63	61	50	50	43	43	44	48	51	56	58	58	57	60	49.9
		MAX	65	67	68	77	82	80	84	78	81	82	81	86	78	67	66	79	78	78	83	86	70	55	72	72	80	77	85	81	84	83	84	77.1
GATHRIGHT DAM	07	MIN	46	41	42	45	46	51	55	54	53	54	59	60	53	42	47	54	50	63	63	38	49	43	43	40	47	52	54	59	60	63	59	51.1
		MAX	64	58	69	74	81	79	81	78	82	81	79	85	85	69	69	75	78	79	80	80	80	59	68	73	79	79	79	80	78	81	80	76.2
HOT SPRINGS	07	MIN	46	42	41	43	43	50	54	55	54	56	57	57	52	40	43	43	56	61	60	51	51	43	44	46	50	54	57	58	59	59	59	51.1
		MAX	63	62	67	74	81	79	81	79	81	82	79	83	79	67	69	78	80	79	81	80	75	61	67	72	78	79	79	80	80	82	82	76.1
LEXINGTON	07	MIN	46	40	40	41	41	49	54	53	53	56	57	50	38	41	51	55	60	60	48	49	40	40	44	47	51	55	57	59	60	57	49.8	
		MAX	68	66	72	77	83	86	85	80	82	82	82	87	85	77	71	78	86	84	87	88	82	60	75	75	82	83	85	84	87	86	85	80.3
MILLGAP	07	MIN	46	44	41	41	45	51	58	55	53	54	58	59	57	44	45	51	57	65	63	53	54	49	44	48	48	53	56	59	61	63	60	52.7
		MAX	62	62	68	70	78	76	77	76	81	80	78	83	76	65	68	75	76	77	81	79	72	57	65	73	76	79	79	78	79	80	78	74.3
MUSTOE 1 SW	24	MIN	41	32	30	30	34	40	42	44	45	48	49	52	48	30	30	46	49	58	58	43	42	37	35	35	36	42	48	51	51	52	51	42.9
		MAX	59	64	70	76	76	75	77	79	78	76	82	76	64	66	75	77	74	79	79	73	57	66	72	76	77	78	78	78	79	78	78	73.9
ROANOKE 8 N	07	MIN	39	33	32	36	42	44	46	46	45	52	50	57	41	34	46	49	59	60	56	45	45	39	40	41	46	51	57	52	54	58	53	46.7
		MAX	71	64	71	76	82	85	84	80	81	81	80	88	85	76	68	79	83	82	86	86	81	68	73	77	82	83	84	87	87	84	87	80.0
ROANOKE INTL AP	24	MIN	44	34	43	44	50	56	58	57	57	60	61	62	57	37	46	52	59	64	65	58	59	43	41	49	52	57	61	62	64	63	60	54.0
		MAX	64	71	76	82	84	84	78	79	80	79	88	86	75	68	79	84	86	88	87	82	69	73	76	82	83	86	87	87	86	87	85	80.7
STAUNTON WATER TRMTMT PLT	08	MIN	48	47	44	48	55	57	58	57	57	66	61	65	55	49	53	59	65	66	67	60	54	48	50	50	55	59	65	63	65	63	61	57.1
		MAX	65	65	68	75	81	82	82	77	79	79	78	85	83	70	67	76	83	78	82	84	75	53	73	73	80	80	83	82	83	79	83	76.9
WAYNESBORO WTP	07	MIN	47	44	49	53	58	55	55	55	54	54	58	61	53	41	47	56	63	63	63	53	51	44	46	46	56	60	65	62	60	63	63	54.8
		MAX	65	63	69	77	82	84	83	78	80	79	81	86	85	69	69	77	85	83	86	86	76	55	74	73	82	83	84	84	83	83	86	78.4
SOUTHWESTERN MOUNTAIN 06	07	MIN	46	40	40	44	46	52	58	56	56	60	60	56	41	41	51	58	63	64	53	54	42	42	45	50	54	57	60	61	61	61	52.5	

VIRGINIA
201505

SNOWFALL AND SNOW ON GROUND (INCHES)

STATION	DAY OF MONTH																															
	01	02	03	04	05	06	07	08	09	10	11	12	13	14	15	16	17	18	19	20	21	22	23	24	25	26	27	28	29	30	31	
VIRGINIA																																
TIDEWATER 01																																
DISPUTANTA																																
EASTVILLE																																
EMPORIA 1 WNW																																
FREDERICKSBURG SEWAGE																																
HOLLAND 1 E																																
HOPEWELL																																
NORFOLK INTL AP																																
NORFOLK SOUTH																																
NORTH																																
Painter 2W																																
STONY CREEK 2 N																																
SUFFOLK LAKE KILBY																																
WAKEFIELD 1NW																																
WALKERTON 2 NW																																
WALLACETON LK DRUMMOND																																
WALLOPS ISLAND NASA TEST FACIL																																
WARSAW 2 NW																																
WEST POINT 2 NW																																
WILLIAMSBURG 2 N																																
WESTERN PIEDMONT 03																																
APPOMATTOX																																
BEDFORD 4 NW																																
BROOKNEAL																																
CHARLOTTE COURT HOUSE																																
CHARLOTTESVILLE 2W																																
CHATHAM																																

Snowfall: Includes snow and ice. Values for NWS stations (J index note) are Mid-Mid (LST).

Snow on ground: Includes snow, sleet, ice, and hail. Values for NWS stations (J index note) are observed at 12 UTC (GMT).

Water Equivalent: Given for NWS stations (J index note) only, when snow depth is 2 inches or more, and is measured at 18 UTC (GMT)

VIRGINIA
201505

SNOWFALL AND SNOW ON GROUND (INCHES)

STATION		DAY OF MONTH																														
		01	02	03	04	05	06	07	08	09	10	11	12	13	14	15	16	17	18	19	20	21	22	23	24	25	26	27	28	29	30	31
CONCORD 4 SSW	SN ON GND																															
	SNOWFALL																															
DANVILLE REGIONAL AP	SN ON GND																															
	SNOWFALL																															
FREE UNION	SN ON GND																															
HOLCOMB ROCK	SNOWFALL																															
	SN ON GND																															
HUDDLESTON 4 SW	SNOWFALL																															
	SN ON GND																															
LYNCHBURG INTL AP	SNOWFALL																															
	SN ON GND																															
MARTINSVILLE FLTR PLT	SNOWFALL																															
	SN ON GND																															
MEADOWS OF DAN 5 SW	SNOWFALL																															
	SN ON GND																															
MONTEBELLO FISH CULTURAL STN	SNOWFALL																															
MONTICELLO	SNOWFALL																															
PEDLAR DAM	SNOWFALL																															
	SN ON GND																															
ROCKY MT	SNOWFALL																															
	SN ON GND																															
SOUTH BOSTON	SNOWFALL																															
	SN ON GND																															
STUART	SNOWFALL																															
	SN ON GND																															
TYE RIVER 1 SE	SNOWFALL																															
WOOLWINE	SNOWFALL																															
	SN ON GND																															
SOUTHWESTERN																																
MOUNTAIN 06																																
GALAX WTP	SNOWFALL																															
	SN ON GND																															
GRUNDY	SNOWFALL																															
	SN ON GND																															
JOHN FLANNAGAN LAKE	SNOWFALL																															
	SN ON GND																															
LAFAYETTE 1 NE	SNOWFALL																															
	SN ON GND																															
LEBANON	SNOWFALL																															
	SN ON GND																															
NORA 4 SSE	SNOWFALL																															

Snowfall: Includes snow and ice. Values for NWS stations (J index note) are Mid-Mid (LST).

Snow on ground: Includes snow, sleet, ice, and hail. Values for NWS stations (J index note) are observed at 12 UTC (GMT).

Water Equivalent: Given for NWS stations (J index note) only, when snow depth is 2 inches or more, and is measured at 18 UTC (GMT)

VIRGINIA
201505

SNOWFALL AND SNOW ON GROUND (INCHES)

STATION		DAY OF MONTH																															
		01	02	03	04	05	06	07	08	09	10	11	12	13	14	15	16	17	18	19	20	21	22	23	24	25	26	27	28	29	30	31	
N FK LAKE	SN ON GND																																
	SNOWFALL	-	-	-						-	-					-	-	-					-	-	-	-	-			-	-	-	
PULASKI 2 E	SN ON GND	-	-	-						-	-					-	-	-					-	-	-	-	-			-	-	-	
	SNOWFALL																																
RADFORD 3 N	SN ON GND																																
	SNOWFALL																																
RICHLANDS	SN ON GND																																
	SNOWFALL																																
SALTVILLE 1N	SN ON GND																																
	SNOWFALL																																
STAFFORDSVILLE 3 ENE	SN ON GND																																
	SNOWFALL																																
WILLIS	SN ON GND																																
	SNOWFALL																																
WISE 3E	SN ON GND																																
	SNOWFALL																																
WYTHEVILLE 1 S	SN ON GND																																
	SNOWFALL																																
	SN ON GND																																
	SNOWFALL																																

Snowfall: Includes snow and ice. Values for NWS stations (J index note) are Mid-Mid (LST).

Snow on ground: Includes snow, sleet, ice, and hail. Values for NWS stations (J index note) are observed at 12 UTC (GMT).

Water Equivalent: Given for NWS stations (J index note) only, when snow depth is 2 inches or more, and is measured at 18 UTC (GMT)

VIRGINIA
201505

PAN EVAPORATION AND WIND

STATION		DAY OF MONTH																															TOTAL OR AVERAGE		
		01	02	03	04	05	06	07	08	09	10	11	12	13	14	15	16	17	18	19	20	21	22	23	24	25	26	27	28	29	30	31			
VIRGINIA EASTERN PIEDMONT 02 JOHN H KERR DAM	WIND	-	-	-	-	-	-	-	-	-	-	-	-	-	-	-	-	-	-	-	-	-	-	-	-	-	-	-	-	-	-	-	-	-	M
	EVAP	-	-	-	-	-	-	-	-	-	-	-	-	-	-	-	-	-	-	-	-	-	-	-	-	-	-	-	-	-	-	-	-	-	M
	MAX	-	-	-	-	-	-	-	-	-	-	-	-	-	-	-	-	-	-	-	-	-	-	-	-	-	-	-	-	-	-	-	-	-	M
	MIN	-	-	-	-	-	-	-	-	-	-	-	-	-	-	-	-	-	-	-	-	-	-	-	-	-	-	-	-	-	-	-	-	-	M

Evaporation: Is measured in hundreths of inches.

Wind: Is measured in miles.

Max and Min: The maximum and minimum temperatures (Fahrenheit) of the water in the evaporation pan.

STATION INDEX

STATION	INDEX NO.	DIVISION	COUNTY	LATITUDE	LONGITUDE	ELEVATION (IN FEET)	OBSERVATION TIME AND TABLES			
							LOCAL STD TIME			
							TEMP	PRECIP	EVAP	SPECIAL SEE (NOTES)
VIRGINIA										
ABINGDON 3S	0021	06	WASHINGTON	36 40	81 58W	1925	22	22		H
ALBERTA 5N	0079	02	BRUNSWICK	36 56	77 54W	376		08		H
ALTAVISTA	0166	03	CAMPBELL	37 7	79 17W	529		07		CH
AMELIA COURTHOUSE 1	0187	02	AMELIA	37 21	77 59W	345	08	08		H
APPOMATTOX	0243	03	APPOMATTOX	37 20	78 50W	850	07	07		H
ASHLAND	0327	02	HANOVER	37 45	77 29W	220	18	18		H
BEDFORD 4 NW	0561	03	BEDFORD	37 23	79 34W	1228		07		CH
BIG STONE GAP	0735	06	WISE	36 52	82 46W	1464	08	08		H
BLACKSBURG NWSO	0766	06	MONTGOMERY	37 12	80 25W	2103	07	07		H
BOSTON 4 SE	0860	04	CULPEPER	38 33	78 6W	590	07	07		H
BREMO BLUFF	0993	02	FLUVANNA	37 43	78 17W	225		07		CH
BROOKNEAL	1082	03	CAMPBELL	37 4	78 57W	408	07	07		H
BUCKINGHAM	1136	02	BUCKINGHAM	37 30	78 32W	580		07		H
BUENA VISTA	1159	05	ROCKBRIDGE	37 44	79 22W	840		07		H
BURKES GARDEN	1209	06	TAZEWELL	37 6	81 20W	3068	07	07		H
CAMP PICKETT	1322	02	NOTTOWAY	37 2	77 57W	330	08	08		CH
CHARLOTTE COURT HOUSE	1585	03	CHARLOTTE	37 3	78 39W	569	07	07		H
CHARLOTTESVILLE 2W	1593	03	ALBEMARLE	38 2	78 31W	866	08	08		H
CHASE CITY	1606	02	MECKLENBURG	36 47	78 29W	510	17	17		H
CHATHAM	1614	03	PITTSYLVANIA	36 49	79 25W	651	07	07		CH
CHRISTIANSBURG	1692	06	MONTGOMERY	37 8	80 24W	2100	07	07		H
CLARKSVILLE	1746	02	MECKLENBURG	36 37	78 33W	330	07	07		H
CLINTWOOD 1 W	1825	06	DICKENSON	37 9	82 29W	1780	07	07		H
CONCORD 4 SSW	1955	03	CAMPBELL	37 17	78 58W	815		07		H
COPPER HILL	1999	06	FLOYD	37 5	80 9W	2690	07	07		H
CORBIN	2009	02	CAROLINE	38 12	77 22W	220	09	09		H
COVINGTON FLTR PLT	2044	05	ALLEGHANY	37 49	79 59W	1230	07	07		H
CROZIER	2142	02	GOOCHLAND	37 40	77 53W	350	07	07		H
DALE ENTERPRISE	2208	05	ROCKINGHAM	38 27	78 56W	1358	07	07		H
DANVILLE REGIONAL AP R	2250	03	PITTSYLVANIA	36 34	79 20W	571	24	24		H
DISPUTANTA	2400	01	PRINCE GEORGE	37 7	77 12W	15	07	07		H
EASTVILLE	2635	01	NORTHAMPTON	37 23	75 58W	10	07	07		H
EDINBURG	2663	04	SHENANDOAH	38 48	78 35W	928	07	07		H
EMPORIA 1 WNW	2790	01	GREENSVILLE	36 42	77 34W	100	08	08		H
FARMVILLE 2 N	2941	02	CUMBERLAND	37 20	78 23W	450	07	07		H
FREDERICKSBURG SEWAGE	3204	01	FREDERICKSBURG	38 17	77 27W	15	07	07		H
FREE UNION	3213	03	ALBEMARLE	38 5	78 35W	590	08	07		H
FRONT ROYAL	3229	04	WARREN	38 54	78 11W	930	07	07		H
GALAX RADIO WBRF	3267	06	CARROLL	36 40	80 55W	2385	07	07		H
GALAX WTP	3272	06	CARROLL	36 39	80 55W	2360	07	07		CH
GATHRIGHT DAM	3310	05	ALLEGHANY	37 57	79 57W	1770	07	07		CH
GLASGOW 1 SE	3375	05	ROCKBRIDGE	37 37	79 26W	737		07		H
GREENBAY 3 NE	3565	02	PRINCE EDWARD	37 11	78 17W	500	09	09		H
GRUNDY	3640	06	BUCHANAN	37 17	82 5W	1170	07	07		H
HOLCOMB ROCK	4039	03	BEDFORD	37 33	79 24W	810		07		H
HOLLAND 1 E	4044	01	SUFFOLK	36 41	76 46W	80	08	08		H
HOPEWELL	4101	01	PRINCE GEORGE	37 18	77 17W	40	16	16		H
HOT SPRINGS	4128	05	BATH	37 60	79 50W	2236	07	07		H
HUDDLESTON 4 SW	4148	03	BEDFORD	37 8	79 32W	898		07		H
JOHN FLANNAGAN LAKE	4410	06	DICKENSON	37 14	82 21W	1460	07	07		H
JOHN H KERR DAM	4414	02	MECKLENBURG	36 36	78 18W	250	08	08	08	CH
LAFAYETTE 1 NE	4676	06	MONTGOMERY	37 14	80 12W	1320		07		H
LEBANON	4777	06	RUSSELL	36 54	82 2W	1912	07	07		H
LEXINGTON	4876	05	ROCKBRIDGE	37 47	79 26W	1097	07	07		H
LINCOLN	4909	04	LOUDOUN	39 5	77 42W	500	07	07		H
LOUISA	5050	02	LOUISA	38 3	78 0W	420	18	18		H
LURAY 5 E	5096	04	PAGE	38 40	78 22W	1400	08	08		H
LYNCHBURG INTL AP R	5120	03	CAMPBELL	37 19	79 12W	940	24	24		HJ
MADISON	5150	04	MADISON	38 22	78 15W	577	08	08		H
MANASSAS	5204	04	MANASSAS	38 44	77 30W	245	07	07		H
MARTINSVILLE FLTR PLT	5300	03	HENRY	36 42	79 52W	760	07	07		H
MEADOWS OF DAN 5 SW	5453	03	PATRICK	36 40	80 27W	2225	07	07		H
MILLGAP	5595	05	HIGHLAND	38 18	79 43W	2421	07	07		CH
MONTEBELLO FISH CULTURAL STN	5690	03	NELSON	37 51	79 8W	2667	07	07		H
MONTICELLO	5700	03	ALBEMARLE	38 1	78 27W	758	08	08		H

STATION INDEX

STATION	INDEX NO.	DIVISION	COUNTY	LATITUDE	LONGITUDE	ELEVATION (IN FEET)	OBSERVATION TIME AND TABLES			
							LOCAL STD TIME			
							TEMP	PRECIP	EVAP	SPECIAL SEE (NOTES)
MT WEATHER	5851	04	LOUDOUN	39 4	77 53W	1659	07	07		H
MTN GROVE	5756	05	BATH	38 6	79 53W	1775		07		H
MUSTOE 1 SW	5880	05	HIGHLAND	38 20	79 40W	2380	24	24		H
N FK LAKE	6173	06	WISE	37 7	82 38W	1675	08	08		H
NEW CASTLE	6012	05	CRAIG	37 18	80 3W	1258		07		H
NORA 4 SSE	6125	06	DICKENSON	37 1	82 19W	2650	07	07		H
NORFOLK INTL AP R	6139	01	NORFOLK (CITY)	36 54	76 12W	30	24	24		HJ
NORFOLK SOUTH	6147	01	NORFOLK (CITY)	36 52	76 14W	100	24	24		H
NORTH	6161	01	MATHEWS	37 26	76 26W	10	07	07		H
PAINTER 2W	6475	01	ACCOMACK	37 35	75 49W	30	16	16		CH
PALMYRA 3S	6491	02	FLUVANNA	37 49	78 16W	410	06	06		H
PEDLAR DAM	6593	03	AMHERST	37 40	79 17W	1024		07		H
PETERSBURG	6656	02	PETERSBURG	37 14	77 24W	15	08	08		H
PIEDMONT RSCH STN	6712	04	ORANGE	38 14	78 7W	520	08	08		CH
PULASKI 2 E	6955	06	PULASKI	37 3	80 47W	1850	07	07		CH
RADFORD 3 N	6999	06	PULASKI	37 12	80 35W	1800	07	07		H
RICHLANDS	7174	06	TAZEWELL	37 6	81 48W	1910	07	07		H
RICHMOND INTL AP R	7201	02	HENRICO	37 30	77 19W	164	24	24		HJ
ROANOKE 8 N	7278	05	ROANOKE	37 22	79 58W	1190	07	07		H
ROANOKE INTL AP R	7285	05	ROANOKE	37 19	79 58W	1175	24	24		HJ
ROCKY MT	7338	03	FRANKLIN	36 59	79 54W	1315	07	07		CH
SALTVILLE 1N	7506	06	SMYTH	36 53	81 46W	1733	07	07		H
SANDSTON	7541	02	HENRICO	37 33	77 17W	165	07	07		H
SOMERSET	7904	04	ORANGE	38 15	78 16W	510	07	07		H
SOUTH BOSTON	7925	03	HALIFAX	36 42	78 53W	329	07	07		H
SPERRYVILLE	7985	04	RAPPAHANNOCK	38 39	78 14W	750	06	06		H
STAFFORDSVILLE 3 ENE	8022	06	GILES	37 16	80 43W	1950	07	07		CH
STAUNTON WATER TRMTMT PLT	8062	05	AUGUSTA	38 10	79 5W	169	08	08		H
STERLING RCS	8084	04	LOUDOUN	38 59	77 29W	288	07	07		H
STONY CREEK 2 N	8129	01	SUSSEX	36 58	77 24W	105	08	08		H
STUART	8170	03	PATRICK	36 38	80 15W	1375	07	07		H
SUFFOLK LAKE KILBY	8192	01	SUFFOLK	36 44	76 36W	22	24	24		H
TYE RIVER 1 SE	8600	03	NELSON	37 38	78 56W	720	07	07		H
VIENNA	8737	04	FAIRFAX	38 54	77 16W	418	07	07		H
WAKEFIELD 1NW	8800	01	SUSSEX	36 59	77 0W	113	24	24		CH
WALKERTON 2 NW	8829	01	KING AND QUEEN	37 45	77 2W	50	18	18		H
WALLACETON LK DRUMMOND	8837	01	CHESAPEAKE	36 36	76 26W	20	08	08		H
WALLOPS ISLAND NASA TEST FACIL R	8849	01	ACCOMACK	37 56	75 28W	46	24	24		HJ
WARRENTON 3 SE	8888	04	FAUQUIER	38 41	77 46W	500	08	08		H
WARSAW 2 NW	8894	01	RICHMOND	37 59	76 47W	140	18	18		H
WASHGTN DULLES INTL AP R	8903	04	LOUDOUN	38 56	77 28W	290	24	24		HJ
WASHINGTON REAGAN AP R	8906	04	ARLINGTON	38 51	77 2W	10	24	24		HJ
WAYNESBORO WTP	8941	05	WAYNESBORO	38 5	78 53W	1270	07	07		H
WEST POINT 2 NW	9025	01	KING WILLIAM	37 34	76 48W	20	17	17		H
WILLIAMSBURG 2 N	9151	01	YORK	37 18	76 42W	70	24	24		CH
WILLIS	9169	06	FLOYD	36 55	80 30W	2810		07		CH
WINCHESTER	9181	04	FREDERICK	39 11	78 9W	720	07	07		H
WINCHESTER 7 SE	9186	04	FREDERICK	39 11	78 7W	680	08	08		H
WINTERPOCK 4 W	9213	02	CHESTERFIELD	37 19	77 39W	300		07		H
WISE 3E	9215	06	WISE	36 60	82 32W	2549	17	17		CH
WOODSTOCK 2 NE	9263	04	SHENANDOAH	38 54	78 28W	675	07	07		H
WOOLWINE	9272	03	PATRICK	36 47	80 17W	1500		07		CH
WYTHEVILLE 1 S	9301	06	WYTHE	36 58	81 5W	2458	07	07		H

REFERENCE NOTES

STATION NAMES: Name of the city, town or locality. Figures and letters following the station names indicate the distance in miles and direction from the post office or town community center.

DIVISIONS: Areas within a state of similar climatological characteristics. Division averages are calculated using data from stations that record temperature and/or precipitation. Station Precipitation totals flagged with an 'F' or 'M' are excluded from the Divisional Average calculations of precipitation. Stations with monthly Temperature averages flagged with an 'F' or 'M' are included in the Divisional Average if there are no more than 9 flagged or missing daily values in the month, else they are excluded from the divisional average for temperature.

NORMALS: The average value of the meteorological element over a time period. Effective 1 January 2012, the averaging period is 1981 to 2010. The normals for National Weather Service localities have been adjusted so as to be representative for the current observation site.

MONTHLY DEGREE DAY TOTALS: One heating (cooling) degree day is accumulated for each whole degree that the daily mean temperature is below (above) 65 degrees Fahrenheit.

PRECIPITATION: Values shown in hundredths of inches are water equivalent totals, i.e., total of liquid and melted frozen precipitation. In the "Monthly Summarized Data" table the total snow and sleet values shown in tenths of inches are unmelted amounts. The max depth on ground values of snow and sleet shown in whole inches are cumulative unmelted amounts. The number of days with .10, .50, 1.00 or more refers to water equivalents.

PRECIPITATION QUALITY CONTROL: The NCEI quality control process may flag precipitation data that are spatially inconsistent, exceed climatological limits, or are inconsistent with prevailing weather patterns.

TEMPERATURE: Original temperature values are given in the "Daily Temperature" table. Summary temperature information (averages, departures, extremes, monthly degree day totals) is based on the values labeled MAX/MIN.

WIND: (As shown in the "Evaporation and Wind" table) the total wind movement in miles over the evaporation pan as determined by an anemometer recorder located 6-8 inches above the pan.

SYMBOLS AND LETTERS USED IN THE STATION INDEX TABLE

C Station is equipped with recording rain gage (R) but values in this bulletin are from a non-recording rain gage unless indicated by an R.

G Observations appear in the "Soil Temperatures" table.

H Observations appear in the "Snowfall and Snow on the Ground" table.

J Station also published as a Local Climatological Data publication.

VAR Observation time varies.

SR / SS Observation time near sunrise / Observation time near sunset, respectively.

SYMBOLS AND LETTERS USED IN THE DATA TABLES

(DAILY DATA ARE FOR THE 24 HOURS IMMEDIATELY PRECEDING OBSERVATION TIME.)

BLANK Entries in the "Monthly Summarized Data" table indicate no record.

BLANK Entries in the "Daily Precipitation" and "Snowfall and Snow on the Ground" tables indicate zero.

BLANK Entries in the "Daily Temperature" table indicate a missing record

- No record. Data not recorded or not received in time for publication.

+ Precipitation or temperature extremes occurred on one or more previous dates during the month.

* Rain gage not read. Precipitation is included in the amount following the asterisks.

Time distribution may not be known. A * preceding the monthly total indicates precipitation amount is being carried forward to next month's total, and may include amounts from the previous month(s).

a As a subscript, indicates accumulated total.

A Amount of precipitation is the total of observer's entries for the current month. It may include precipitation that occurred during the previous month. Refer to earlier bulletin to determine date of last reading. (Hawaii stations)

B Divisional Departure from normals are computed using 1981-2010 normals.

E Normalized HDD/CDD Calculation. E is appended to the HDD/CDD Calculation when 1-9 individual daily

and/or TMIN values are missing and a Normalized HDD/CDD Calculation is provided. M appears alone if 10 or more daily values are missing.

F Monthly calculation flagged value. F is appended to average and/or total values computed which exclude one or more daily data values that have been flagged by the GHCN-Daily Dataset

M Insufficient or partial data. M is appended to average and/or total values computed with 1-9 daily values missing. M appears alone if 10 or more daily values are missing, (8 or more for wind and evaporation).

N Indicates snow fall or Snowdepth totals are computed with one or more missing days.

R Amounts from recording rain gage.

T Trace. An amount too small to measure.

SEASONAL TABLES: Monthly and seasonal snowfall and heating degree days for the 12 months ending with the June data are published in the July issue of this bulletin. Cooling degree days for the calendar year are published in the "Climatological Data Annual Summary."

Information concerning the history of changes in locations, exposure, etc. of substations is kept on file at the National Centers for Environmental Information. Historical information of regular National Weather Service Offices may be obtained from the "Local Climatological Data" annual publication. The contents of this publication may be reprinted or otherwise used freely, with proper credit to the National Centers For Environmental Information. The data are also available digitally.

Effective with the January 2011 Data-Month, COOP Observer Names are no longer included in the Monthly and Annual Climatological Data Publications. This information is not published to ensure the privacy of personal information pursuant to Section 208 of the E-Government Act of 2002 (44 USC 3601).

As of the 2011 Data-Year, Station and Climate Division Maps are no longer being included in the CD Publications. NCEI's Products Branch provides updated Station Maps for various data networks via the Historical Observing Metadata Repository: <http://www.ncdc.noaa.gov/homr>.

The GHCN-Daily Quality Control Flags shown below are displayed as superscripts with the data. For more Information on Global Historical Climatology Network - Daily and flags, see: <http://www.ncdc.noaa.gov/oa/climate/ghcn-daily/> and Comprehensive Automated Quality Assurance of Daily Surface Observations. Durre, Imke, Matthew J. Menne, Byron E. Gleason, Tamara G. Houston, Russell S. Vose, 2010: J. Appl. Meteor. Climatol., 49, 16151633. doi: 10.1175/2010JAMC2375.1

Blank = Passed All checks

D = failed duplicate check

G = failed gap check

I = failed internal consistency check

K = failed streak/frequent-value check

L = failed check on length of multiday period

M = failed megaconsistency check

N = failed naught check

O = failed climatological outlier check

R = failed lagged range check

S = failed spatial consistency check

T = failed temporal consistency check

W = temperature too warm for snow

X = failed bounds check

Z = flagged as a result of an official Datzilla investigation

Beginning with the January 2013 CD Publication, monthly mean temperature calculations have changed to the National Data Stewardship Team standard. Monthly maximum and minimum temperatures are not rounded until after the monthly mean temperature is calculated. This is the most accurate outcome, but may be slightly different from the mean derived from rounded monthly maximum and minimum.

Processing Updates and Errata: The CD Publications are periodically reproduced to include the addition of late reports and reported corrections. The GHCND data version noted on the cover of the publication provides the generation date.

The climate division temperature and precipitation values in this publication are based on simple averages from the current set of NWS-Designated Open and Published COOP and First Order Sites within each division. These values differ from those found in NCEI's nClimDiv product. Beginning in February 2014, the nClimDiv product is used by NCEI's Monitoring Branch and in its monthly climate reports. For more details on nClimDiv, please go to <http://www.ncdc.noaa.gov/monitoring-references/maps/us-climate-divisions.php>.

These and other publications are available from the National Centers for Environmental Information

Hourly Precipitation Data

This publication contains hourly precipitation amounts obtained from recording rain gages located at National Weather Service, Federal Aviation Administration, and cooperative observer stations. Published data are displayed in inches and tenths or inches and hundredths at local standard time. HPD includes maximum precipitation for nine (9) time periods from 15 minutes to 24 hours, for selected stations.

Climatological Data

Monthly editions contain station daily maximum and minimum temperatures and precipitation. Some Stations provide daily snowfall, snow depth, evaporation, and soil temperature data. Each edition also contains monthly summaries for heating and cooling degree days (65 degree F base). The July issue contains a recap of monthly heating degree days and snow data for the preceding July through June.

The Annual issue contains monthly and annual averages of temperature, precipitation, temperature extremes, freeze data, soil temperatures, evaporation, and a recap of monthly cooling degree days.

Storm Data

Monthly issues contain a chronological listing, by states, of occurrences of storms and unusual weather phenomena. Reports contain information on storm paths, deaths, injuries, and property damage. An "Outstanding storms of the month" section highlights severe weather events with photographs, illustrations, and narratives. The December issue includes annual tornado, lightning, flash flood, and tropical cyclone summaries.

Monthly Climatic Data for the World

This publication contains monthly means for temperature, pressure, precipitation, vapor pressure, and sunshine for approximately 2,000 surface data collection stations worldwide and monthly mean upper air temperatures, dew point depressions, and wind velocities for approximately 500 observing sites.

Local Climatological Data

LCD publications summarize temperature, relative humidity, precipitation, cloudiness, wind speed and direction observations for several hundred cities in the U.S. and its territories. Each monthly publication also contains 3 hourly weather observations for that month and a hourly summary of precipitation. Annual LCD publications contain a summary of the past calendar year as well as historical averages and extremes.

For Information Call:

(828) 271-4800 Option 2

(828) 271-4010 (TDD)

(828) 271-4876 (Fax)

NOAA National Centers for Environmental Information
Attn: Customer Engagement Branch
151 Patton Avenue
Asheville, NC 28801-5001

Customer Services Number: (828) 271-4800, option 2
TDD : (828) 271-4010
Fax number: (828) 271-4876

NCEI now offers free online access to the *Climatological Data* publication.
Go to : www.ncdc.noaa.gov and choose Most Popular.