



CLIMATOLOGICAL DATA

VIRGINIA

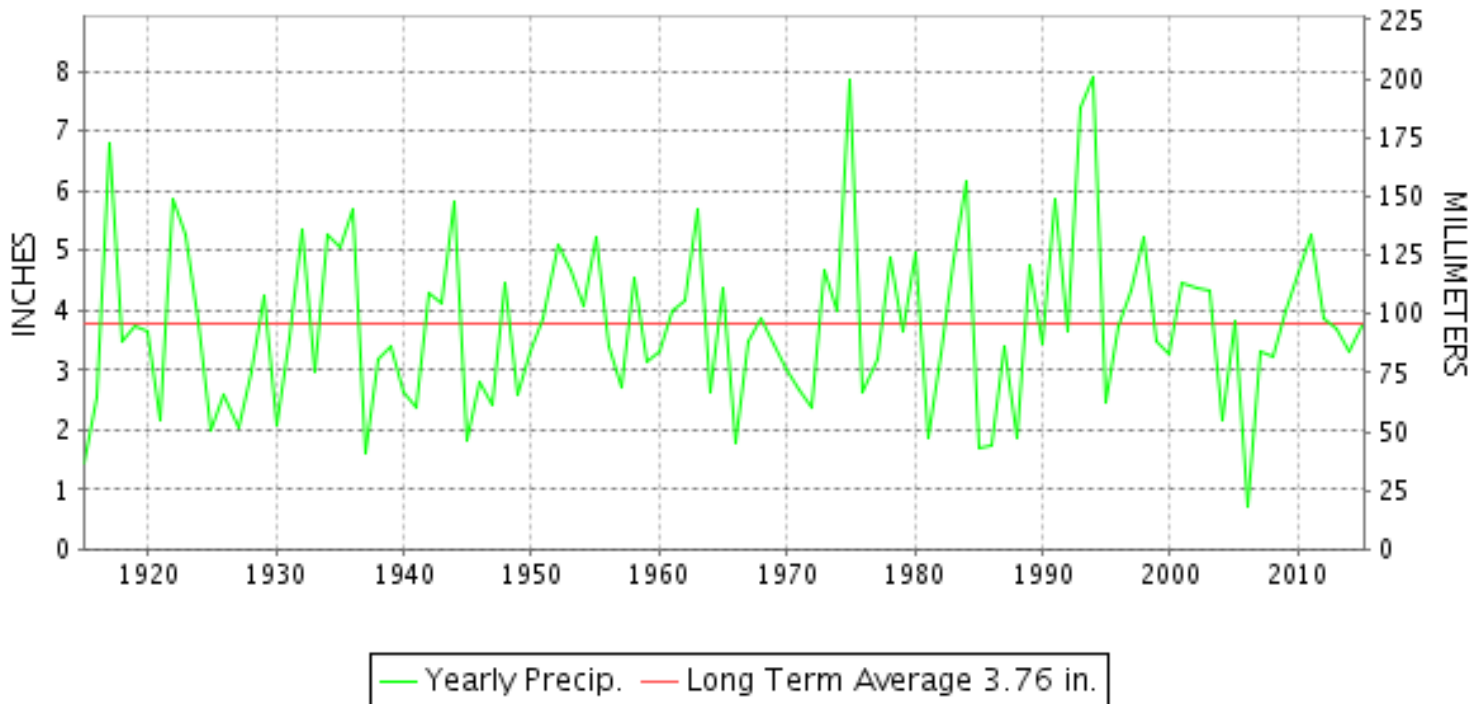
MARCH 2015

VOLUME 125 NUMBER 03

ISSN 0364-5630

GHCND Ver: 3.21-upd-2015070705

MARCH PRECIPITATION BY YEAR



TEMPERATURE AND PRECIPITATION EXTREMES

VIRGINIA

HIGHEST TEMPERATURE	83	MARCH 16	DANVILLE REGIONAL AP
LOWEST TEMPERATURE	-15	MARCH 07	MILLGAP
GREATEST TOTAL PRECIPITATION	7.82		BIG STONE GAP
LEAST TOTAL PRECIPITATION	2.06		LURAY 5 E
GREATEST 1 DAY PRECIPITATION	2.20	MARCH 05	NORA 4 SSE
GREATEST TOTAL SNOWFALL	13.0		MT WEATHER
GREATEST DEPTH OF SNOW OR ICE	12		3 STATIONS

"I certify that this is an official publication of the National Oceanic and Atmospheric Administration (NOAA) It is compiled using information from weather observing sites supervised by NOAA/National Weather Service and received at the National Centers for Environmental Information(NCEI), Asheville, North Carolina 28801."

Director
National Centers for Environmental Information

noaa

National
Oceanic and
Atmospheric Administration

National
Environmental Satellite, Data
and Information Service

National
Centers for Environmental Information
Asheville, North Carolina

VIRGINIA
201503

MONTHLY STATION AND DIVISION SUMMARY

STATION	TEMPERATURE (°F)											PRECIPITATION (IN)												
	AVERAGE MAXIMUM	AVERAGE MINIMUM	AVERAGE	DEPARTURE FROM NORMAL	HIGHEST	DATE	LOWEST	DATE	HEATING DEG. DAYS	COOLING DEG. DAYS	NO. OF DAYS				TOTAL	DEPARTURE FROM NORMAL	GREATEST 24 HOURS	DATE	ICE PELLETS, SNOW			NO. OF DAYS		
											MAX		MIN						TOTAL	MAX DEPTH ON GROUND	DATE	.10 OR MORE	.50 OR MORE	1.00 OR MORE
											>=90	<=32	<=32	<=0										
PETERSBURG	57.7	34.3	46.0	-2.4	77	17	17	06+	579	0	0	1	11	0	3.68	-0.46	0.70	05	0.0	1	05	10	3	0
RICHMOND INTL AP	58.9	36.1	47.5	-1.1	79	17	16	06	535	0	0	1	9	0	3.78	-0.26	0.98	05	0.3	1	01	7	3	0
SANDSTON	54.5	31.2	42.9	-3.8	77	18	14	07+	677	0	0	1	14	0	MA 3.66	-0.49	0.68	06	M 1.3	1	07	6	1	0
WINTERPOCK 4 W															3.70		0.67	06	0.0			10	3	0
--DIVISIONAL DATA-----> WESTERN PIEDMONT 03			45.1	-1.8B											3.68	-0.48B								
ALTAVISTA															3.10		0.71	06	0.0			8	2	0
APPOMATTOX	55.1	34.4	44.8	-0.9	76	17	13	06	620	0	0	1	12	0	3.79	-0.18	0.90	06	0.9	3	01	10	2	0
BEDFORD 4 NW															4.00		0.87	06	2.0	6	01	8	4	0
BROOKNEAL	57.4	32.4	44.9	3.3	78	17	15	08	614	0	0	0	14	0	3.22	-0.72	0.52	20	T	T	02	10	1	0
CHARLOTTE COURT HOUSE	57.2	34.2	45.7	-0.6	76	18	13	06	591	0	0	1	9	0	2.94	-1.08	0.72	20	T	T	01	8	1	0
CHARLOTTESVILLE 2W	54.6	33.2	43.9	-2.9	79	17	10	06	646	1	0	1	11	0	4.37	0.52	1.23	27	6.7	6	06	8	4	1
CHATHAM	56.3	31.2	43.7	-1.0	78	18	14	08+	649	0	0	0	14	0	3.01	-1.04	0.60	06	0.1	0		8	3	0
CONCORD 4 SSW															3.75		0.83	06	0.3	2	01	9	2	0
DANVILLE REGIONAL AP	61.0	38.0	49.5	0.8	83	16	19	07	472	0	0	0	7	0	2.17	-1.94	1.00	05	M T	0		5	1	1
FREE UNION	54.3	27.6	41.0		82	17	5	07+	737	0	0	2	20	0	4.78		1.53	27	M 6.7	6	07	8	4	1
HOLCOMB ROCK															4.51		1.25	27	3.4	3	06	9	3	1
HUDDLESTON 4 SW															2.87		0.87	06	T	1	02	8	2	0
LYNCHBURG INTL AP	56.2	34.0	45.1	-0.8	77	16	15	06	610	0	0	2	10	0	3.28	-0.30	0.87	05	2.5	3	05	8	2	0
MARTINSVILLE FLTR PLT	58.8	31.8	45.3	-0.7	80	17	15	30+	602	0	0	0	14	0	2.60	-1.55	0.78	06	0.0			7	1	0
MEADOWS OF DAN 5 SW	57.5	33.5	45.5		77	17	16	07+	598	0	0	0	11	0	2.61		0.77	06	0.0	0		7	1	0
MONTEBELLO FISH CULTURAL STN	M	M	M		71	17	-5	06	803E	0	0	2	5	2	M				M 4.9					
MONTICELLO	52.8	32.8	42.8	-1.6	78	17	9	07+	679	0	0	2	12	0	6.24	2.59	2.10	15	M 5.8	6	06	9	5	2
PEDLAR DAM															4.51		1.30	27	4.3	8	01	8	3	1
ROCKY MT	58.0	34.6	46.3	0.9	79	17	16	07+	575	2	0	0	12	0	2.77	-1.49	0.75	06	0.0	2	01	7	1	0
SOUTH BOSTON	57.6	34.5	46.1	-0.5	78	18	19	08+	580	0	0	0	10	0	3.66	-0.49	0.78	06	0.0	0		10	3	0
STUART	60.7	35.0	47.9	1.0	80	17	18	29+	525	0	0	0	10	0	2.44	-1.64	0.75	06	0.0	0		6	2	0
TYE RIVER 1 SE	57.6	33.2	45.4	-0.7	80	17	9	06	604	2	0	0	10	0	4.50	0.76	0.96	27	0.0	4	06	9	5	0
WOOLWINE															2.55		0.80	06	T	0		8	1	0
--DIVISIONAL DATA-----> NORTHERN 04			45.2	-1.3B											3.53	-0.70B								
BOSTON 4 SE	51.8	28.9M	40.4M	-2.8	78	17	4	07	753E	0	0	4	20	0	3.55	-0.15	1.16	27	4.5	5	06	6	3	1
EDINBURG	51.4	25.0	38.2	-3.3	76	27	-7	07+	822	0	0	3	24	3	2.72	-0.20	0.72	05	10.4	9	06	6	3	0
FRONT ROYAL	52.6F	29.0	40.8F	-2.4	77	17	4	07	735	0	0	5	17	0	F 1.74	-2.02	0.65	05	M 0.0	9	06	6	1	0
LINCOLN	48.6	24.0	36.3	-5.4	74	27	-2	07	882	0	0	3	29	2	MA 3.84		1.17	05	M 9.0	8	06	4	3	1
LURAY 5 E	53.6M	28.5M	41.1M	-3.2	79	27	1	06	732E	0	0	3	18	0	MA 2.06	-1.82	0.52	27	M 1.4	5	06	4	1	0
MADISON	54.8	34.5	44.6	0.5	80	17	17	06+	623	0	0	0	8	0	M 1.63	-2.07	0.54	20	M T	5	03	4	1	0
MANASSAS	51.6M	28.7M	40.2M	-3.8	77	27	6	07	758E	0	0	3	12	0	MA 4.20		1.10	27+	M 7.0	7	07	6	3	2

VIRGINIA
201503

MONTHLY STATION AND DIVISION SUMMARY

STATION	TEMPERATURE (°F)											PRECIPITATION (IN)												
	AVERAGE MAXIMUM	AVERAGE MINIMUM	AVERAGE	DEPARTURE FROM NORMAL	HIGHEST	DATE	LOWEST	DATE	HEATING DEG. DAYS	COOLING DEG. DAYS	NO. OF DAYS				TOTAL	DEPARTURE FROM NORMAL	GREATEST 24 HOURS	DATE	ICE PELLETS, SNOW			NO. OF DAYS		
											MAX		MIN						TOTAL	MAX DEPTH ON GROUND	DATE	.10 OR MORE	.50 OR MORE	1.00 OR MORE
											>=90	<=32	<=32	<=0										
MT WEATHER	47.7	26.7	37.2	-3.5	71	17	2	06	856	0	0	5	21	0	3.63	0.07	1.27	06	M 13.0	9	06	8	3	1
PIEDMONT RSCH STN	52.9	30.5	41.7	-3.3	79	17	8	07	715	0	0	4	14	0	3.50	-0.01	0.97	27	5.5	6	06	6	4	0
SOMERSET	52.6	29.6	41.1	-3.4	80	17	5	06	730	0	0	3	15	0	4.13	0.40	1.45	27	M 3.8	4	06	10	3	1
SPERRYVILLE	51.2	28.5	39.9	-3.7	77	17	3	06	773	0	0	3	20	0	3.18	-0.84	0.75	27	M 5.7	7	06	8	3	0
STERLING RCS	49.1M	28.0M	38.6M	-4.1	74	27	7	08	809E	0	0	2	22	0	M 3.42	-0.18	0.68	27	M 1.3	4	02	8	3	0
VIENNA	49.5	28.2	38.9	-3.9	74	27	9	07+	802	0	0	4	24	0	4.10	0.28	0.68	06	M 7.1	8	06	8	4	0
WARRENTON 3 SE	51.1M	31.4M	41.2M	-2.8	73	18+	6	06	730E	0	0	2	14	0	M 2.32	-1.20	0.77	27	M 6.7	6	06	6	2	0
WASHGTN DULLES INTL AP	51.3	29.2	40.2	-4.0	74	26	2	07	761	0	0	2	20	0	3.92	0.54	0.88	05	10.5	5	06	8	5	0
WASHINGTON REAGAN AP	54.5	36.1	45.3	-1.5	77	26	15	06	603	0	0	1	8	0	4.04	0.56	0.87	05	4.9	5	06	8	3	0
WINCHESTER	50.9	28.0	39.5	-2.8	75	27	3	06	783	0	0	3	22	0	3.34	-0.11	1.09	05	M 9.3	8	06	8	2	1
WINCHESTER 7 SE	M	M	M									0	0	0	M				0.0					
WOODSTOCK 2 NE	51.5	26.5	39.0	-2.1	78	27	0	06	799	0	0	4	23	1	2.60	-0.66	0.88	05	M 9.3	9	06	6	3	0
--DIVISIONAL DATA----->			40.2	-2.9B											3.52	-0.05B								
CENTRAL MOUNTAIN 05																								
BUENA VISTA															3.74		0.97	27	5.1	7	06	8	3	0
COVINGTON FLTR PLT	55.3M	29.6	42.5M	-1.6	78	27	7	07+	689E	0	0	0	16	0	3.69	0.41	0.94	06	6.0	6	06	8	2	0
DALE ENTERPRISE	51.1	27.5	39.3	-1.7	76	17	-2	06	787	0	0	2	19	1	M 1.98	-0.94	0.60	05	7.0	7	06	7	1	0
GATHRIGHT DAM	50.9M	27.3	39.1M	-2.8	73	27	3	06	794E	0	0	2	21	0	3.96	0.68	0.94	05	5.0	10	01	7	3	0
GLASGOW 1 SE															4.44		1.27	27	4.8	5	06	8	3	1
HOT SPRINGS	51.1	27.2	39.1	-1.8	71	17	0	07+	792	0	0	2	19	2	3.97	-0.12	0.99	05	5.0	7	07	9	3	0
LEXINGTON	55.3	30.3	42.8	-1.9	78	17	6	07+	680	0	0	1	12	0	3.77	0.62	0.91	06	6.0	9	07	8	3	0
MILLGAP	48.7	21.7	35.2	-2.9	69	27	-15	07	918	0	0	3	27	3	3.36	-0.51	0.78	06	6.8	11	01	7	3	0
MTN GROVE															M				M 0.0	0				
MUSTOE 1 SW	47.8	24.8	36.3	-2.0	71	26	-8	06	880	0	0	4	27	1	3.86	-0.30	1.10	05	6.9	12	05	7	3	1
NEW CASTLE															2.95		1.05	06	4.0	7	01	6	2	1
ROANOKE 8 N	55.8	33.3	44.6	-1.2	77	17	11	06	625	0	0	0	12	0	4.69	0.96	1.46	27	2.0	5	01	8	4	1
ROANOKE INTL AP	57.0	37.5	47.2	-0.1	77	16	11	06	544	0	0	1	6	0	4.32	0.86	1.26	05	1.9	4	01	8	3	1
STAUNTON WATER TRMTMT PLT	53.7	30.5	42.1	-1.1	76	17	3	07+	703	0	0	3	13	0	2.68	-0.57	0.94	05	6.0	6	06	7	2	0
WAYNESBORO WTP	54.1	28.6	41.4	-0.9	76	17	1	07+	726	0	0	1	18	0	3.35	-0.38	0.84	06	4.8	5	06	7	3	0
--DIVISIONAL DATA----->			40.9	-2.8B											3.75	0.17B								
SOUTHWESTERN MOUNTAIN 06																								
ABINGDON 3S	54.6M	32.1M	43.3M	-1.2	73	26	12	01	665E	0	0	1	11	0	4.34	0.30	0.80	06	T	4	01	12	3	0
BIG STONE GAP	55.8	30.5	43.1	-2.6	76	17	8	06	669	0	0	1	18	0	7.82	3.13	1.73	05	4.0	4	06	11	5	4
BLACKSBURG NWSO	53.5	30.4	41.9	0.3	73	27+	4	06	706	0	0	2	14	0	4.56	0.92	1.12	06	4.4	7	01	9	3	1
BURKES GARDEN	50.4	29.4	39.9	0.8	68	17	2	07+	771	0	0	3	15	0	4.90	0.88	1.10	05	3.6	10	01	9	4	1
CHRISTIANSBURG	52.3	31.8	42.0	-1.3	72	17	6	06	704	0	0	2	14	0	3.65	0.37	1.01	05	3.0	5	01	8	2	1
CLINTWOOD 1 W	54.1	28.9	41.5	-0.9	76	26	3	07+	722	0	0	2	17	0	6.72	2.85	2.10	05	5.5	12	01	13	4	2

VIRGINIA
201503

MONTHLY STATION AND DIVISION SUMMARY

STATION	TEMPERATURE (°F)											PRECIPITATION (IN)												
	AVERAGE MAXIMUM	AVERAGE MINIMUM	AVERAGE	DEPARTURE FROM NORMAL	HIGHEST	DATE	LOWEST	DATE	HEATING DEG. DAYS	COOLING DEG. DAYS	NO. OF DAYS				TOTAL	DEPARTURE FROM NORMAL	GREATEST 24 HOURS	DATE	ICE PELLETS, SNOW			NO. OF DAYS		
											MAX		MIN						TOTAL	MAX DEPTH ON GROUND	DATE	.10 OR MORE	.50 OR MORE	1.00 OR MORE
											>=90	<=32	<=32	<=0										
COPPER HILL	51.1	30.3	40.7		71	27	6	07	745	0	0	3	15	0	3.45		1.17	06	2.0	4	01	8	1	1
GALAX RADIO WBRF	56.0M	32.7M	44.4M	2.4	72	17	10	06	629E	0	0	0	11	0	M 2.76	-1.03	0.90	27	M 0.0	0		5	2	0
GALAX WTP	54.1	30.1	42.1	1.3	70	17	12	07+	702	0	0	0	15	0	2.28		0.60	06	T	0		7	2	0
GRUNDY	54.5	31.9	43.2	-0.5	76	26	12	07+	670	0	0	1	14	0	6.18	2.75	2.00	05	3.5	7	01	11	3	1
JOHN FLANNAGAN LAKE	M	M	M		76	26	-1	06	660E	0	0	1	9	1	MA 5.42		2.02	05	M 3.0	3	06	8	2	1
LAFAYETTE 1 NE															4.66		1.03	06	1.9	4	01	10	4	1
LEBANON	56.2	30.9	43.6	0.4	75	26	3	06	657	0	0	1	15	0	5.13	1.29	1.05	05	4.0	5	01	11	4	1
NORA 4 SSE	52.7M	32.9M	42.8M	1.4	72	17	6	06	682E	0	0	2	12	0	M 6.28	2.38	2.20	05	7.3	12	01	11	3	2
N FK LAKE	M	M	M		75	26	4	09	657E	0	0	1	10	0	A 6.07		2.18	05	M 4.0	5	06	6	1	1
PULASKI 2 E	56.0	31.7	43.9	1.0	75	17	8	07	646	0	0	0	11	0	2.86	-0.33	0.80	06	T	2	01	6	2	0
RADFORD 3 N	53.3	31.9	42.6	1.7	74	27	10	06	689	0	0	2	13	0	3.27	0.29	1.19	05	3.0	3	06	8	2	1
RICHLANDS	56.0	29.8	42.9	0.8	74	26	7	07+	676	0	0	2	15	0	6.22	2.28	1.44	05	3.0	3	06	12	5	2
SALTVILLE 1N	55.4	31.0	43.2	-0.6	75	26	12	07+	668	0	0	0	15	0	4.44	0.58	0.70	05	T	9	01	12	4	0
STAFFORDSVILLE 3 ENE	53.8	30.6	42.2	-0.5	73	27+	10	07+	697	0	0	2	14	0	3.21	-0.22	0.73	06	1.0	6	01	8	2	0
WILLIS															3.33		0.81	06	0.0	1	01	7	2	0
WISE 3E	55.6	34.8	45.2	0.5	71	25	4	06	607	0	0	1	11	0	6.52	2.40	1.92	05	6.6	11	01	10	4	2
WYTHEVILLE 1 S	53.9	31.6	42.8	1.7	72	17	9	06	682	0	0	0	13	0	3.40	0.16	0.77	05	0.3	T	06	8	2	0
--DIVISIONAL DATA----->			42.7	-0.6B											4.65	0.59B								

VIRGINIA
201503

DAILY PRECIPITATION (INCHES)

STATION	TOTAL	DAY OF MONTH																																
		01	02	03	04	05	06	07	08	09	10	11	12	13	14	15	16	17	18	19	20	21	22	23	24	25	26	27	28	29	30	31		
VIRGINIA																																		
TIDEWATER 01																																		
DISPUTANTA	5.05	0.40	0.30	0.20	0.12	0.23	0.85					0.47		0.34	0.83						0.57	0.15					0.12	0.24	0.23	T				
EASTVILLE	2.98		0.15		0.15	0.02	0.53				0.01	0.22		0.40	0.72						0.27	0.30						0.05	0.10				0.06	
EMPORIA 1 WNW	M 3.84	-	-	-	0.16	0.26	0.82					0.15		0.31	0.33						0.63	0.17					0.27	0.42	0.25	0.03			0.04	
FREDERICKSBURG SEWAGE	M 3.99	0.30		0.01	0.11	0.56	0.80	-	-	-		0.16	0.10	0.19	0.13						0.53	0.15						0.73	0.22					
HOLLAND 1 E	M	-	-	-	-	-	-	-	-	-		-	-	-	-	-	-	-	-	-	-	-	-	-	-	-	-	-	-	-	-	-	-	
HOPEWELL	M 4.06	0.14	0.17	-	0.05	0.83	0.03				0.08	0.44	0.22		0.81	-					0.84	0.02					-	-	-	-	-	-	T	
NORFOLK INTL AP	2.69	0.15	0.01	0.01	0.19	0.61					T	0.17		0.09	0.54					0.02	0.53						0.12	0.14			0.11	T		
NORFOLK SOUTH	2.97	0.15	0.01	T	0.19	0.75					T	0.17		0.08	0.55					0.05	0.55						0.12	0.25	T		0.10	T		
NORTH	4.13				0.09	0.20	0.48						0.34		0.39	0.76						0.46	0.27				0.10	0.69	0.29				0.06	
PAINTER 2W	3.02	0.04	0.16		0.08	0.50	0.16						0.13	0.05	0.71	0.31						0.43	0.01				0.15	0.14	0.06		0.09			
STONY CREEK 2 N	4.03	0.50			0.22	0.24	0.62				0.01	0.06				1.07						0.15	0.65		0.01			0.21	0.25				0.04	
SUFFOLK LAKE KILBY	4.43	0.09	0.03	0.05	0.16	0.93						0.19		0.24	0.75						0.16	0.80					0.49	0.42	0.02		0.10			
WAKEFIELD 1NW	4.67	0.21	0.01	0.03	0.14	1.06					0.01	0.43		0.27	0.67						0.13	0.61			T	T	0.85	0.20	T		0.05	T		
WALKERTON 2 NW	2.84	0.19	0.12			0.04					0.29			T	0.85							0.81					0.18	0.32			0.04	T		
WALLACETON LK DRUMMOND	3.88		0.41		0.10	0.08	0.85					0.16	0.10		0.24	0.50						0.68	0.19					0.40	0.10				0.07	
WALLOPS ISLAND NASA TEST FACIL	3.38	0.28	0.01	T	0.07	0.61					0.02	0.09		0.14	1.12							0.47	T				0.17	0.12			0.17	0.11		
WARSAW 2 NW	2.95	0.37			0.05	1.06					0.01	0.05			0.50							0.52					0.09	0.29			0.01			
WEST POINT 2 NW	3.90	0.13	0.03		0.01	0.85	0.05				T	0.23	0.12		1.11							0.72	0.02				0.26	0.30			0.07			
WILLIAMSBURG 2 N	4.99	0.23	0.21		0.16	0.68						0.38		0.17	1.00						0.03	0.71					1.09	0.29			0.03	0.01		
EASTERN PIEDMONT 02																																		
ALBERTA 5N	3.79	T	0.28		0.14	0.16	0.79					0.06	0.28		0.33	0.42						0.65	0.02				T	0.08	0.02	0.42	0.14		T	
AMELIA COURTHOUSE 1	4.19		0.32		0.01	0.48	0.69					0.08	0.24		0.33	0.53						0.83						0.28	0.11			0.29		
ASHLAND	3.48	0.40			0.08	1.02	T				0.04	0.15	T		0.47	T						0.77				T	0.16	0.39			T			
BREMO BLUFF	M 3.22	-	0.17		0.01	0.43	0.83		-			0.02	0.09		0.18	0.25						0.38	0.22					0.30	0.34					
BUCKINGHAM	3.62		0.15		0.02	0.22	0.94					0.02	0.13		0.28	0.27						0.48	0.29					0.31	0.51					
CAMP PICKETT	3.51		0.24			0.33	0.66						0.25		0.45	0.43						0.54	0.06				0.09	0.38	0.08					
CHASE CITY	4.05	0.05				1.03	0.67					0.11			0.29	0.48						0.50					0.32		0.60					
CLARKSVILLE	M 3.67	0.05	0.45		0.15	0.10	0.80						0.18		0.30	0.28						0.64					0.07	0.01	0.64	-		-		
CORBIN	3.93		0.23			0.83	0.68					0.16	0.08			0.46						0.62						0.70	0.17					
CROZIER	3.32					0.60	0.48					0.06	0.16		0.30	0.22						0.70						0.33	0.47					
FARMVILLE 2 N	3.73		T		T	0.54	0.82					T	0.27			0.58						0.67	0.08					0.26	0.51					
GREENBAY 3 NE	M	-	-	-	-	-	-	-	-	-	-	-	-	-	-	-	-	-	-	-	-	-	-	-	-	-	-	-	-	-	-	-	-	
JOHN H KERR DAM	3.71	0.15	0.43		0.19	0.08	0.68						0.12		0.26	0.31						0.67					0.10	0.01	0.35	0.35			0.01	
LOUISA	3.07	0.06			0.01	1.01					0.06	0.05		T	0.30							0.62						0.01	0.95					
PALMYRA 3S	M 3.52		0.12			0.54	0.72					0.06	0.10		0.29	0.27						0.49	0.12					0.40	0.41				-	
PETERSBURG	3.68	0.21		0.05	0.18	0.70					0.04	0.43		0.30	0.51						0.62	0.20				0.01	0.13	0.30						
RICHMOND INTL AP	3.78	0.16		T	0.06	0.98					T	0.36		0.07	0.90						0.08	0.66				T	0.01	0.15	0.30		0.05	T		
SANDSTON	MA 3.66	-	-	0.14	0.12	0.26	0.68					0.02	0.26		0.37							*	1.33 _a				0.01	*	*	0.48 _a	-	-	-	
WINTERPOCK 4 W	3.70		0.21		0.02	0.31	0.67					0.02	0.42		0.29	0.52						0.65	0.12					0.11	0.35				0.01	
WESTERN PIEDMONT 03																																		

VIRGINIA
201503

DAILY PRECIPITATION (INCHES)

STATION	TOTAL	DAY OF MONTH																																
		01	02	03	04	05	06	07	08	09	10	11	12	13	14	15	16	17	18	19	20	21	22	23	24	25	26	27	28	29	30	31		
ALTAVISTA	3.10		0.05		0.01	0.32	0.71					0.03	0.17		0.27	0.33					0.60	0.01						0.20	0.40					
APPOMATTOX	3.79	T	0.11		0.04	0.24	0.90				T	0.03	0.36		0.42	0.25					0.58	0.03					0.11	0.30	0.39		0.03			
BEDFORD 4 NW	4.00		0.06		0.04	0.54	0.87				T	0.06	0.10		0.45	0.27					0.64	0.01					0.02	0.75	0.19				T	
BROOKNEAL	3.22	0.01				0.30	0.47				0.04	0.14	0.20		0.35	0.36					0.52	0.05					0.15	0.14	0.46		0.03			
CHARLOTTE COURT HOUSE	2.94	T	0.20		0.01	0.25	0.29					T	0.17		0.20	0.49					0.72	0.02					0.09	0.07	0.43					
CHARLOTTESVILLE 2W	4.37	T	0.03		T	0.74	0.81					0.21	0.08		0.22	0.23					0.59	0.07			T	0.01	1.23	0.15						
CHATHAM	3.01	T			0.06	0.17	0.60					0.05	0.20		0.38	0.22					0.50	0.03					0.03	0.20	0.57					
CONCORD 4 SSW	3.75				0.05	0.30	0.83					0.03	0.18		0.44	0.34					0.60	0.03					0.18	0.35	0.40		0.02			
DANVILLE REGIONAL AP	2.17	0.19		0.06		1.00					0.01	0.19		0.09	0.05					T	T				T	0.11	0.47			T				
FREE UNION	4.78		0.04			0.76	0.96				T	0.25	0.05		0.19	0.10					0.68	0.08				0.02	T	1.53	0.12					
HOLCOMB ROCK	4.51		0.03		T	0.44	0.91					0.10	0.05		0.42	0.31					0.55	0.12					T	1.25	0.33					
HUDDLESTON 4 SW	2.87		0.03			0.11	0.87					0.03	0.16		0.35	0.25					0.55	0.10					0.03	0.02	0.37					
LYNCHBURG INTL AP	3.28	0.09		0.04	0.14	0.87					0.02	0.16		0.30	0.49					0.31	0.28			T	0.01	0.04	0.52			0.01				
MARTINSVILLE FLTR PLT	2.60		0.03			0.28	0.78				T	0.03	0.13		0.39	0.12					0.43	0.01					0.01	0.09	0.30					
MEADOWS OF DAN 5 SW	2.61				0.02	0.26	0.77					0.01	0.15		0.32	0.27					0.48	0.02				0.02	0.03	0.09	0.17					
MONTEBELLO FISH CULTURAL STN	M	-	-	-	-	-	5.60	0.82		-	-	-	-	-	0.72		-		-	-	-	0.97		-	-	-	-	-	-	-	-	-	-	-
MONTICELLO	6.24		0.04			0.60	0.88					0.13	0.03		0.20	2.10					0.55	0.12				0.04	T	1.32	0.23					
PEDLAR DAM	4.51		T		T	0.53	0.93					0.24	0.04		0.43	0.27					0.47	0.06					T	1.30	0.24					
ROCKY MT	2.77					0.05	0.75	0.02			T	0.06	0.22		0.37	0.40					0.48		0.03				0.03	0.17	0.19					
SOUTH BOSTON	3.66	0.10	0.20		0.09	0.12	0.78				0.01	0.04	0.18		0.30	0.30					0.52	0.02					0.34	0.04	0.62					
STUART	2.44	0.01			0.03	0.33	0.75					0.12			0.33	0.26					0.50						0.06	0.05						
TYE RIVER 1 SE	4.50				0.12	0.62	0.65					T	0.12		0.82	0.38					0.65	0.04					T	0.96	0.14					
WOOLWINE	2.55		0.10		0.03	0.25	0.80					T	0.10	T	0.36	0.26					0.34					T	0.02	0.03	0.26			T		
NORTHERN 04																																		
BOSTON 4 SE	3.55						0.49					0.22			0.16					0.87									1.16					
EDINBURG	2.72		T		T	0.72	0.68					0.23			0.25						0.58	0.17				0.02		0.07						
FRONT ROYAL	F 1.74		0.05		0.03	0.65	8.50 ^o					0.28			0.10	0.06					0.24	0.12						0.21						
LINCOLN	MA 3.84		-			1.17	0.70					0.40			0.06						0.59					*	*	*	*	0.92 _a				
LURAY 5 E	MA 2.06		0.02		0.02	*	0.70 _a					0.28	-		0.16	0.03					0.02	0.27				0.01	0.02	0.52	0.01					
MADISON	M 1.63		T		T	0.41	0.47					0.21									0.54													
MANASSAS	MA 4.20					1.10	0.70					0.45		-	*	* 0.25 _a					0.40	0.20						1.10	-					
MT WEATHER	3.63		0.22		0.03	0.02	1.27					0.28			0.20	0.21					0.50	0.15					0.05	0.70						
PIEDMONT RSCH STN	3.50		0.04		0.02	0.69	0.77					0.18	0.09		0.10						0.57	0.04						0.97	0.03					
SOMERSET	4.13	T	0.01		0.04	0.75	0.41					0.24	0.11		0.17	0.11					0.54	0.10				0.02	0.05	1.45	0.13					
SPERRYVILLE	3.18		0.05		0.02	0.55	0.65					0.33			0.14	0.10					0.25	0.29				0.05		0.75						
STERLING RCS	M 3.42		0.27		0.05	0.36	-	-				0.57			0.34	0.52					0.37	0.23			T	0.01		0.68	0.01		0.01			
VIENNA	4.10	0.01	0.25		0.01	0.35	0.68					0.58	0.01		0.48	0.35					0.05	0.67						0.66						
WARRENTON 3 SE	M 2.32	T	T		T	0.20	0.05					0.39	-		0.18	0.04					0.53	0.13					-	0.03	0.77		-			
WASHGTON DULLES INTL AP	3.92	0.31		T	0.33	0.88					0.53	T		T	0.55						0.54					0.02	0.12	0.63		T	T	0.01		0.01
WASHINGTON REAGAN AP	4.04	0.51		0.04	0.34	0.87					0.44	T		0.01	0.60						0.49					T	0.35	0.36			0.02		0.01	
WINCHESTER	3.34		0.14		0.04	1.09	0.57					0.30			0.34	0.10					0.47	0.07				0.03	0.03	0.16						
WINCHESTER 7 SE	M	-	-	-	-	-	-	-	-	-	-	-	-	-	-	-	-	-	-	-	-	-	-	-	-	-	-	-	-	-	-	-	-	-

VIRGINIA
201503

DAILY PRECIPITATION (INCHES)

STATION	TOTAL	DAY OF MONTH																															
		01	02	03	04	05	06	07	08	09	10	11	12	13	14	15	16	17	18	19	20	21	22	23	24	25	26	27	28	29	30	31	
WOODSTOCK 2 NE	2.60					0.88	0.58					0.23			0.23	T					0.55					0.01	T	0.12					
CENTRAL MOUNTAIN 05																																	
BUENA VISTA	3.74		0.01		0.01	0.55	0.92				T	0.20	T		0.32	0.25					0.35	0.02						0.97	0.14				
COVINGTON FLTR PLT	3.69	T	0.04		0.14	0.93	0.94				T	0.41	0.02		0.25	0.18					0.45	0.06			0.04		0.17				0.06		
DALE ENTERPRISE	M 1.98				0.10	0.60	-					0.20			0.22	0.02					0.35	0.25			0.03		0.16	0.05					
GATHRIGHT DAM	3.96	0.03	0.04		0.32	0.94	0.89					0.52	0.01		0.31	0.07					0.43	0.05			0.07		0.28				T		
GLASGOW 1 SE	4.44		0.04		0.02	0.65	0.95				T	0.20	0.02		0.39	0.22					0.41	0.04					1.27	0.23					
HOT SPRINGS	3.97	T	0.08		0.41	0.99	0.95					0.60			0.36	0.10						0.12			0.10		0.26	T			T		
LEXINGTON	3.77		0.02		T	0.76	0.91					0.31	0.04		0.30	0.25					0.41	0.06					0.57	0.13			0.01		
MILLGAP	3.36		0.06		0.24	0.62	0.78					0.60	T		0.49	0.01					0.24	0.05			0.01		0.24	T	0.02				
MTN GROVE	M	-	-	-	-	-	-	-	-	-	-	-	-	-	0.35	0.26					0.44	T			T	0.10		0.30					
MUSTOE 1 SW	3.86	0.09		0.05	0.76	1.10					0.56	0.08		0.41	0.15					0.09	0.32				0.02	0.12	0.09	0.02		T	T		
NEW CASTLE	2.95	T			0.13	0.79	1.05				0.02	0.21	0.04		0.39	0.22					T	T			0.03		0.07	T					
ROANOKE 8 N	4.69				0.15	0.77	0.92				T	0.05	0.03		0.33	0.25					0.60				T	T	1.46	0.10			0.03		
ROANOKE INTL AP	4.32	T	T	0.03	0.61	1.26					0.03	0.03		0.31	0.22					0.46	0.14			T	T	0.83	0.39			0.01			
STAUNTON WATER TRMTMT PLT	2.68				0.11	0.94	0.61				T	0.23	T		0.19	T					0.34	0.06	T		T		0.20						
WAYNESBORO WTP	3.35				0.04	0.73	0.84					0.20	0.09		0.17						0.30	T				0.01	0.81		0.16				
SOUTHWESTERN MOUNTAIN 06																																	
ABINGDON 3S	4.34				0.57	0.40	0.80					0.40	0.30	0.12	0.30	0.68					0.35	0.10					0.20	T	T	0.12			
BIG STONE GAP	7.82		0.75		1.25	1.73	0.25				0.12	1.13	0.15	0.07	0.42	0.36				0.05	0.36	0.03					1.07				0.08		
BLACKSBURG NWSO	4.56		0.01		0.12	0.87	1.12				0.01	0.21	0.13		0.38	0.22					0.45	0.04			T		0.91	0.07			T	0.02	
BURKES GARDEN	4.90		0.16	0.03	0.32	1.10	0.69	T			T	0.41	0.54		0.42	0.40			T		0.56	0.03			T		0.09	0.08			0.07		
CHRISTIANSBURG	3.65			T	0.02	1.01	0.26				0.01	0.04	0.20		0.40	0.31					0.48	0.06			0.01		0.72	0.11			0.02		
CLINTWOOD 1 W	6.72	T	0.18	T	0.40	2.10	0.33	T			0.15	0.65	0.25	0.10	0.59	0.25					0.02	0.38	0.09				1.11	0.02	T		0.10		
COPPER HILL	3.45				0.07	0.30	1.17				0.01	0.03	0.22		0.25	0.30					0.41	0.01					0.45	0.22			0.01		
GALAX RADIO WBRF	M 2.76					0.37	0.65					0.03		0.03	0.34					0.05	0.39						0.90				-		
GALAX WTP	2.28		T		T	0.23	0.60					0.01	0.06	T	0.16	0.11					0.42				T		0.59	0.10		T	T		
GRUNDY	6.18		0.23	T	0.36	2.00	0.39				0.04	0.85	0.21		0.40	0.23			T		0.28	0.08					0.92	T			0.19		
JOHN FLANNAGAN LAKE	MA 5.42	-	0.23		0.31	2.02	0.43	*	*	*	0.08 _a	0.72	0.21		*	*	0.72 _a				0.01	0.39	*	*	0.03 _a		-	-	-		0.27		
LAFAYETTE 1 NE	4.66		T		0.10	0.85	1.03				0.02	0.13	0.13		0.49	0.31					0.64	0.03				0.02	0.80	0.11					
LEBANON	5.13		0.32		0.56	1.05	0.62				0.03	0.38	0.38	0.06	0.20	0.27					0.01	0.27	0.05				0.77	0.11	0.01	0.04			
NORA 4 SSE	M 6.28		0.25	T	0.29	2.20	0.40				0.05	0.69	0.24	0.04	0.19	0.22				T	0.25	0.06					1.24	0.10	0.01	0.05	T		
N FK LAKE	A 6.07	*	0.20 _a	0.03	0.38	2.18	0.37	*	*	0.00 _a	0.05	0.44	0.26	*	*	*	0.98 _a	0.01			0.32	*	*	0.11 _a			*	*	*	0.74 _a			
PULASKI 2 E	2.86		0.05		T	0.30	0.80				T	T	0.19		0.30	T					0.47	0.04				T		0.71	T		T		
RADFORD 3 N	3.27		0.01	T	0.03	1.19	0.30				0.03	0.16	0.14		0.36	0.30					0.56	0.02			T		0.14	0.02			0.01		
RICHLANDS	6.22		0.24	0.02	0.69	1.44	0.21				0.05	0.43	0.14		0.28	0.60					0.01	0.50	0.11				1.32	0.05			0.13		
SALTVILLE 1N	4.44		0.24		0.47	0.70	0.55				0.02	0.60	0.28	0.02	0.25	0.28					0.52	0.18					0.19	0.02	T		0.12	T	
STAFFORDSVILLE 3 ENE	3.21		T		0.18	0.71	0.73				T	0.23	0.18	0.01	0.40	0.24					0.42	0.05				T	0.02	0.03			0.01		
WILLIS	3.33		0.02		0.03	0.35	0.81					0.30	T	0.33	0.31						0.27					0.03	0.80	0.08					
WISE 3E	6.52		0.17		1.55	1.92	0.03				0.11	0.81		0.38	0.18				0.02		0.17	0.14	T			0.03	0.91	0.06			0.04		
WYTHEVILLE 1 S	3.40		0.10		0.07	0.77	0.66				0.04	0.22	0.16		0.41	0.25				T		0.44	0.07			0.04	0.06	0.04		0.04	0.04	0.03	

VIRGINIA
201503

DAILY TEMPERATURES (°F)

STATION	OB. TIME	MAX/MIN	DAY OF MONTH																															AVERAGE
			01	02	03	04	05	06	07	08	09	10	11	12	13	14	15	16	17	18	19	20	21	22	23	24	25	26	27	28	29	30	31	
			ASHLAND	18	MIN MAX MIN	21 33 19	28 52 30	27 41 24	58 50 33	15 30 25	15 52 11	15 69 31	64 62 38	48 64 38	37 62 48	32 59 29	36 68 42	43 73 32	35 64 43	40 76 32	29 55 30	29 49 35	39 64 30	34 63 38	34 55 40	32 55 33	32 40 37	40 78 44	42 55 37	32 44 31	40 76 44	42 43 31	32 49 22	
CAMP PICKETT	08	MAX MIN	35 19	33 27	36 28	46 31	64 38	38 15	32 15	55 19	65 33	68 47	65 40	65 31	55 32	55 43	70 35	70 38	78 30	57 32	44 35	62 35	62 35	53 33	59 36	62 40	76 44	44 33	76 44	42 33	49 21	66 21	73 32	55.4 31.9
CHASE CITY	17	MAX MIN	39 26	37 31	58 31	51 36	67 48	48 23	38 22	57 29	68 37	67 43	66 40	63 36	54 37	55 42	71 38	71 41	78 35	59 34	52 40	48 41	64 42	63 46	56 36	62 36	61 43	75 47	47 35	45 26	52 34	67 34	58.3 36.6	
CLARKSVILLE	07	MAX MIN	37 23	37 23	61 33	51 34	72 46	46 19	56 18	67 26	70 41	68 43	69 48	65 40	52 40	57 41	72 44	73 44	79 39	61 36	51 39	51 38	66 41	64 45	56 36	63 37	60 42	76 47	47 35	47 25	52 25	59.2 36.7		
CORBIN	09	MAX MIN	32 20	49 31	37 25	55 36	51 24	28 10	52 9	63 38	62 34	54 36	59 47	59 39	55 30	63 42	76 41	70 45	53 26	53 30	47 36	64 31	57 41	50 37	49 33	54 30	76 44	70 39	43 30	48 23	64 36	73 36	55.6 32.5	
CROZIER	07	MAX MIN	33 19	37 25	53 25	48 25	55 34	34 12	30 13	64 28	69 38	60 38	62 40	61 35	57 29	54 32	68 43	75 41	74 27	66 29	51 37	40 31	64 38	61 39	52 32	54 34	53 39	75 40	43 31	41 18	48 21	65 33	54.8 31.0	
FARMVILLE 2 N	07	MAX MIN	35 17	34 26	56 30	47 31	61 39	39 14	31 14	55 18	65 31	68 44	65 46	65 39	62 32	56 32	55 32	70 38	73 40	77 31	57 38	51 44	44 64	63 63	53 58	58 54	75 44	44 42	34 49	21 65	20 55.9	35 32.2		
GREENBAY 3 NE	09	MAX MIN																																M M
JOHN H KERR DAM	08	MAX MIN	37 23	35 28	62 34	47 34	73 44	44 18	35 18	57 28	72 38	67 45	68 46	69 41	53 35	57 43	74 38	72 41	82 34	58 35	52 38	48 39	63 41	65 44	57 34	64 36	61 42	73 46	46 33	47 22	51 26	69 34	58.7 35.3	
LOUISA	18	MAX MIN	32 20	54 32	50 25	53 34	48 25	33 8	52 32	65 69	69 67	61 61	62 62	60 33	55 49	68 41	79 32	76 44	68 23	55 28	51 38	65 32	64 38	60 37	56 32	54 36	74 47	73 39	47 30	49 14	65 43	73 31	59.3 32.0	
PALMYRA 3S	06	MAX MIN	32 17	32 25	53 25	43 27	56 36	36 6	29 5	52 20	65 34	70 35	60 40	64 31	62 28	57 31	69 43	79 34	78 36	56 25	51 27	42 30	65 30	62 39	62 31	51 36	55 38	75 42	46 31	41 15	49 19		54.5 28.8	
PETERSBURG	08	MAX MIN	34 27	53 27	50 29	65 39	39 17	32 17	56 19	65 38	71 41	64 44	67 44	61 32	58 32	56 46	74 36	77 37	56 35	53 31	43 36	62 37	60 45	52 37	55 37	63 41	76 47	48 35	42 25	49 25	66 35	73 35	57.7 34.3	
RICHMOND INTL AP	24	MAX MIN	33 23	54 30	40 28	62 40	53 26	31 16	55 18	66 40	71 43	64 42	66 53	63 39	59 33	57 45	68 38	73 46	79 30	57 34	55 44	44 64	63 63	53 53	55 62	62 77	55 66	62 44	77 48	66 28	44 26	50 61	68 36	58.9 36.1
SANDSTON	07	MAX MIN	33 18	33 25	50 25	51 25	59 37	37 14	28 14	51 15	62 39	69 40	62 43	64 39	57 30	54 43	67 34	70 36	77 30	53 29	53 32	42 36	61 36	59 42	50 33	53 33	60 38	76 38	49 33	41 22	46 25	64 33	54.5 31.2	
WESTERN PIEDMONT 03																																		
APPOMATTOX	07	MAX MIN	33 18	39 27	52 30	47 31	58 38	38 13	31 15	53 23	63 41	67 48	60 44	65 36	63 38	52 41	69 46	76 50	73 31	58 32	49 35	45 37	65 38	64 42	54 35	58 39	52 43	72 50	44 31	41 20	50 23	64 39	55.1 34.4	
BROOKNEAL	07	MAX MIN	35 20	34 27	55 29	46 33	64 43	43 19	33 16	56 15	66 27	67 39	64 45	65 37	53 33	59 41	70 38	78 39	75 31	59 30	52 39	48 39	67 67	66 57	57 61	56 56	75 50	47 42	33 18	19 19	29 29	32.4 32.4		
CHARLOTTE COURT HOUSE	07	MAX MIN	44 20	35 23	56 32	46 33	63 45	45 13	32 16	57 18	66 35	68 46	63 49	66 42	63 36	53 41	56 39	69 42	75 35	76 32	59 37	51 38	47 38	67 38	65 45	57 34	59 41	55 45	75 34	45 21	43 25	66 36	57.2 34.2	
CHARLOTTESVILLE 2W	08	MAX MIN	32 16	44 24	51 28	41 29	49 35	35 10	34 11	51 22	62 39	67 44	62 43	63 43	58 36	57 44	66 46	79 52	73 32	56 33	52 38	40 35	65 36	63 36	52 34	55 35	49 37	74 40	48 27	39 23	50 41	64 33	54.6 33.2	
CHATHAM	07	MAX MIN	34 19	34 19	55 24	42 35	65 41	49 18	33 14	55 25	67 64	63 63	65 36	62 33	48 35	58 40	69 35	77 37	78 31	57 47	47 36	46 39	66 39	67 59	54 29	59 42	72 47	48 31	42 17	49 16	65 28	56.3 31.2		
DANVILLE REGIONAL AP	24	MAX MIN	35 25	57 35	40 35	70 40	56 31	37 22	57 19	69 30	67 42	70 49	67 55	65 41	50 41	60 41	72 45	83 46	79 35	58 41	49 40	68 39	69 46	59 41	67 35	60 46	75 50	63 40	45 28	52 21	68 43	75 33	61.0 38.0	

VIRGINIA
201503

DAILY TEMPERATURES (°F)

STATION	OB. TIME	MAX/MIN	DAY OF MONTH																															AVERAGE	
			01	02	03	04	05	06	07	08	09	10	11	12	13	14	15	16	17	18	19	20	21	22	23	24	25	26	27	28	29	30	31		
FREE UNION	08	MAX	31	44	51	35	50	34	31	51	63	68	52	60	64	57	59	67	82	75	57	51	40	67	64	52	56	47	75	47	39	50	65	54.3	
		MIN	12	22	24	26	34	5	5	8	32	32	36	32	27	27	40	35	42	25	25	32	34	35	37	30	33	36	40	28	16	16	30	27.6	
LYNCHBURG INTL AP	24	MAX	32	52	37	58	48	31	53	62	65	58	64	63	50	56	68	77	73	58	47	48	65	67	53	57	49	72	57	38	49	62	74	56.2	
		MIN	20	30	31	37	25	15	17	37	39	41	43	36	32	38	44	39	43	29	38	37	40	42	37	33	39	44	37	24	17	37	34	34.0	
MARTINSVILLE FLTR PLT	07	MAX	37	36	55	47	69	47	37	58	69	68	66	66	48	62	71	80	76	62	45	50	72	70	62	65	56	74	49	42	53	65	58.8		
		MIN	18	28	26	35	46	16	15	15	24	42	47	33	32	32	41	36	37	33	33	38	38	39	41	30	33	44	44	31	15	15	29	31.8	
MEADOWS OF DAN 5 SW	07	MAX	36	39	54	53	69	42	42	57	67	67	61	64	66	48	56	69	77	73	62	45	52	69	69	60	64	53	67	46	40	52	62	57.5	
		MIN	23	29	31	34	42	16	16	21	30	31	45	39	38	38	40	39	39	34	34	37	38	40	42	35	36	44	41	27	23	24	33	33.5	
MONTEBELLO FISH CULTURAL STN	07	MAX						32	28	44					60	60		71					65	60	60									M	
		MIN						-5	-4	28					29	38		38					23	39	34										M
MONTECELLO	08	MAX	29	46	49	40	49	35	25	49	60	65	59	64	60	54	58	65	78	72	54	50	40	63	60	49	54	47	71	45	37	47	62	52.8	
		MIN	15	25	27	28	35	9	9	18	45	43	42	43	37	35	41	48	45	32	31	37	34	34	37	34	35	36	41	30	23	27	41	32.8	
ROCKY MT	07	MAX	36	52	54	50	60	42	36	56	66	68	63	65	65	50	62	69	79	71	62	46	51	70	71	58	62	52	72	48	40	59	62	58.0	
		MIN	19	28	30	31	42	16	16	21	45	47	46	36	35	35	40	51	55	34	33	36	37	41	45	32	42	42	29	22	21	35	34.6		
SOUTH BOSTON	07	MAX	36	36	58	46	68	51	35	56	69	66	68	66	65	51	56	71	65	78	58	50	47	65	65	57	62	58	74	48	45	50	66	57.6	
		MIN	22	27	34	34	46	20	19	19	27	41	46	39	38	38	40	40	41	37	34	38	39	42	44	32	34	43	48	35	21	20	32	34.5	
STUART	07	MAX	38	46	57	57	68	44	52	59	69	68	69	65	66	50	61	73	80	77	61	46	55	73	72	60	66	66	71	47	48	54	65	60.7	
		MIN	24	28	32	33	43	18	18	18	36	48	51	39	38	39	42	45	45	36	33	37	38	41	41	32	34	34	44	29	18	38	32	35.0	
TYE RIVER 1 SE	07	MAX	35	50	58	45	54	40	34	55	65	70	60	67	65	57	58	72	80	77	60	52	50	68	67	54	60	50	74	49	43	50	67	57.6	
		MIN	15	28	29	30	37	9	10	15	37	38	42	37	33	34	44	48	54	34	34	35	38	39	39	34	35	41	46	29	21	22	43	33.2	
NORTHERN 04																																			
BOSTON 4 SE	07	MAX	29	30	47	37	48	32	27	49	59	62	57	61	60	57	59	61	78	73	52	53	38	64	58	49	49	51	71	49	36	48	62	51.8	
		MIN	16	17	26	26	32	8	4		31	31	34	38	27	32	46	31	36	27	29	28	34	34	33	31	28	37	40	26	20	28	37	28.9	
EDINBURG	07	MAX	31	44	44	40	48	30	29	45	57	62	50	61	59	56	61	56	75	63	50	50	36	65	65	49	49	52	76	50	33	47	60	51.4	
		MIN	5	23	22	25	30	-7	-7	-4	28	28	31	35	26	25	43	33	38	31	28	31	31	33	29	28	26	31	40	23	16	18	36	25.0	
FRONT ROYAL	07	MAX	29	30	45	46	56	32	27	50	58	63	48	64	59	54	61	61	77	66	67	67 ^s	38	65	65	47	50	60	74	49	28	49	60	52.6	
		MIN	8	22	24	26	32	7	4	10	35	32	35	39	38	38	41	39	39	31	30	30	33	34	30	27	34	33	41	25	20	19	42	29.0	
LINCOLN	07	MAX	28	39	40	36	44	32	24	45	53	58	43	62	55	54	58	53	68	66	47	51	35	62	54	44	46	50	74	48	33	45	60	48.6	
		MIN	13	22	24	25	29	6	-2	-1	23	23	29	38	23	24	42	30	31	31	28	29	30	28	28	22	22	27	25	21	21	22	32	24.0	
LURAY 5 E	08	MAX	32	42	46	50		50	29	50	58	63	61		64	58	65	58	77	66	50	51	41	65	58	50	49	57	79	47	31	48	60	53.6	
		MIN	16	27	23	29		1	8	26	34	33	42		29	38	44	33	33	28	28	28	33	38	29	31	28	40	38	23	16	19	32	28.5	
MADISON	08	MAX	35	35	40	51	38	34	51	64	64	56	60	60	61	58	58	65	80	76	55	54	43	65	62	51	53	52	73	50	41	50	65	54.8	
		MIN	20	29	32	38	17	17	19	37	38	41	39	39	34	34	45	41	42	34	35	37	37	39	37	37	38	38	44	33	27	27	43	34.5	
MANASSAS	07	MAX	30	43	38	46	32	32	49	56	63	48	64																						51.6
		MIN	14		26	31	32	10	6	10	33	33	36	41																					28.7
MT WEATHER	07	MAX	25	40	39	49	51	29	23	44	52	55	52	59	54	50	54	52	71	63	45	46	32	60	51	43	44	54	70	43	29	44	57	47.7	
		MIN	9	18	22	23	29	2	8	16	33	38	38	35	33	31	38	37	40	27	27	30	28	32	25	23	29	28	36	21	17	17	37	26.7	
PIEDMONT RSCH STN	08	MAX	32	32	49	40	49	32	31	49	62	65	57	59	59	57	59	65	79	74	53	53	40	64	60	50	53	50	74	47	36	48	63	52.9	
		MIN	14	24	25	29	32	10	8	16	36	40	43	35	32	40	44	36	37	27	29	33	35	35	34	34	35	36	41	28	18	22	36	30.5	
SOMERSET	07	MAX	28	31	49	39	49	34	25	50	63	64	59	59	60	57	57	66	80	72	53	53	41	64	61	48	52	49	74	47	37	48	63	52.6	
		MIN	13	24	26	27	34	5	7	13	33	33	36	34	28	29	47	37	39	31	30	32	36	36	35	34	35	36	41	29	20	24	35	29.6	
SPERRYVILLE	06	MAX	29	29	46	34	46	33	29	51	59	61	54	64	59	55	59	59	77	69	51	50	38	63	60	51	49	48	72	49	33	48	61	51.2	

VIRGINIA
201503

DAILY TEMPERATURES (°F)

STATION	OB. TIME	MAX/MIN	DAY OF MONTH																															AVERAGE
			01	02	03	04	05	06	07	08	09	10	11	12	13	14	15	16	17	18	19	20	21	22	23	24	25	26	27	28	29	30	31	
STERLING RCS	07	MIN	13	22	24	26	33	3	8	9	30	35	36	43	29	28	40	35	37	32	32	34	32	36	31	28	32	40	26	21	24	35	28.5	
		MAX	31	32	42	38	45				46	55	59	44	62	56	52	57	54		49	50	35	61	53	46	46	51	74	48	34	46	61	49.1
VIENNA	07	MIN	12	23	23	24	32				7	27	30	35	41	28	27	40	29		29	31	30	31	31	31	25	29	38	27	21	22	33	28.0
		MAX	30	31	42	39	46	33	26	49	55	62	46	62	55	50	58	65	64	66	52	50	43	61	54	47	44	54	74	40	32	45	61	49.5
WARRENTON 3 SE	08	MIN	11	24	24	24	33	9	9	13	32	32	32	40	31	31	41	30	30	30	30	33	33	31	32	32	27	27	40	27	23	23	40	28.2
		MAX	27	41	44	37	47	28	33	45	55	58	50		56	55	56	57	73	73	52	50	50	60		54		54	71	47		46	60	51.1
WASHGTON DULLES INTL AP	24	MIN	17	24	24	24	28	6	9	33	35	35	41		30	37	45	31	42	30	33	32	40		31		47	39	26		38	38	31.4	
		MAX	31	41	37	46	41	27	47	55	61	45	62	56	51	57	55	69	69	49	51	43	61	54	47	51	74	49	37	46	62	68	51.3	
WASHINGTON REAGAN AP	24	MIN	19	27	25	36	18	6	2	25	30	30	41	31	26	41	35	29	36	25	30	33	29	39	32	29	25	45	37	27	21	41	34	29.2
		MAX	34	46	41	51	45	30	49	59	62	50	67	60	55	60	58	69	73	53	53	46	61	56	51	47	54	77	52	42	49	66	73	54.5
WINCHESTER	07	MIN	24	33	31	39	23	15	19	32	37	39	46	43	37	45	44	38	40	36	39	36	35	45	36	37	35	49	41	31	28	42	43	36.1
		MAX	32	39	42	44	50	28	31	46	56	61	46	63	60	54	58	54	74	64	48	52	36	55	64	48	44	53	75	48	45	49	60	50.9
WINCHESTER 7 SE	08	MIN	10	23	23	25	28	3	4	17	31	31	36	38	30	30	42	35	37	28	30	32	35	27	27	27	32	37	33	22	24	39	28.0	
		MAX																																
WOODSTOCK 2 NE	07	MIN																																M
		MAX	31	34	42	50	49	30	31	49	57	63	48	63	61	57	62	56	74	64	50	50	37	65	57	49	50	54	78	49	31	48	59	51.5
CENTRAL MOUNTAIN 05 COVINGTON FLTR PLT	07	MIN	6	24	22	35	30	0	2	4	28	30	32	35	27	27	42	35	37	30	30	32	31	34	28	27	27	28	40	23	20	19	35	26.5
		MAX	37	45	47	40	44	44	35	52	60	63	47	60	66	53	60	64	76	65		48	48	65	67	67	63	62	78	51	36	55	60	55.3
DALE ENTERPRISE	07	MIN	10	27	27	35	35	7	7	9	31	34	37	33	32	37	39	32	31	28	28	36	37	37	34	39	40	44	42	25	17	18	31	29.6
		MAX	29	35	47	39	46	41	25	46	56	63	51	60	58	54	63	61	76	68	51	50	40	67	57	48	49	75	39	35	46	60	51.1	
GATHRIGHT DAM	07	MIN	15	24	22	28	34	-2	2	4	32	33	35	37	29	30	43	33	39	27	28	31	32	34	32	32	34	36	38	22	16	16	38	27.5
		MAX	34	44	44	38	44	33	29	48	55	59	43	56	62	51	58	59	72			45	47	63	61	59	60	59	73	47	29	50	55	50.9
HOT SPRINGS	07	MIN	7	23	26	28	33	3	5	10	32	31	34	27	28	32	37	30	30	27	27	32	35	36	41	35	35	41	39	21	15	15	32	27.3
		MAX	34	42	42	42	43	43	29	47	54	58	51	56	60	51	55	58	71	60	50	45	47	63	61	58	60	58	69	45	29	48	55	51.1
LEXINGTON	07	MIN	5	23	25	30	32	0	0	10	33	33	36	31	30	34	39	32	32	27	26	30	30	40	39	34	33	40	37	21	13	13	34	27.2
		MAX	34	49	50	38	50	37	31	52	61	66	56	65	64	56	62	66	78	71	59	48	46	67	67	57	59	50	75	50	36	51	62	55.3
MILLGAP	07	MIN	9	26	26	28	37	6	6	8	35	35	39	33	33	34	40	37	43	28	28	34	37	41	41	35	36	42	42	27	20	20	34	30.3
		MAX	34	41	41	39	41	31	30	46	50	56	45	52	59	51	57	54	68	57	48	46	45	58	57	54	54	60	69	42	25	48	51	48.7
MUSTOE 1 SW	24	MIN	-8	18	17	19	31	-13	-15	18	25	25	31	25	24	23	37	24	25	25	22	26	32	37	31	31	28	35	35	18	9	6	32	21.7
		MAX	33	42	31	39	32	28	46	50	55	37	53	57	48	54	54	68	58	47	45	44	50	48	53	53	56	71	43	28	45	51	64	47.8
ROANOKE 8 N	07	MIN	12	20	20	31	5	-8	3	30	27	28	32	27	25	32	31	27	28	26	28	31	38	36	32	30	36	36	28	16	9	27	27	24.8
		MAX	35	50	49	42	53	39	33	55	63	65	61	65	66	49	62	67	77	69	59	46	49	69	68	57	58	52	74	49	37	51	61	55.8
ROANOKE INTL AP	24	MIN	14	28	30	33	37	11	12	18	39	42	42	38	38	27	39	46	52	35	34	32	36	38	46	31	38	42	26	24	22	41	33.3	
		MAX	37	49	39	56	47	32	54	64	65	58	66	65	50	62	68	77	70	59	48	50	68	68	57	59	51	75	50	38	51	60	74	57.0
STAUNTON WATER TRMTMT PLT	08	MIN	26	35	33	36	21	11	21	42	43	46	51	40	37	38	48	50	45	33	34	36	47	50	42	36	41	49	36	26	23	43	43	37.5
		MAX	31	45	46	46	50	30	30	47	57	62	57	60	61	55	60	62	76	65	65	49	42	66	61	52	55	55	75	49	49	48	59	53.7
WAYNESBORO WTP	07	MIN	9	26	27	28	30	3	3	25	40	38	42	38	37	36	42	42	49	26	26	34	35	36	33	33	34	34	39	23	17	18	41	30.5
		MAX	31	47	46	47	55	35	35	49	60	63	60	62	61	56	64	63	76	69	54	50	45	66	63	52	53	49	74	48	34	49	60	54.1
SOUTHWESTERN MOUNTAIN 06	07	MIN	8	26	28	29	35	1	1	8	28	35	38	32	32	39	42	34	42	27	27	32	37	37	37	33	32	37	40	27	17	16	31	28.6

VIRGINIA
201503

DAILY TEMPERATURES (°F)

STATION	OB. TIME	MAX/MIN	DAY OF MONTH																															AVERAGE
			01	02	03	04	05	06	07	08	09	10	11	12	13	14	15	16	17	18	19	20	21	22	23	24	25	26	27	28	29	30	31	
ABINGDON 3S	22	MAX	31		43	47	57	35	35	50	60	55	67	60	67	49	56	45	70		54	44	48	62	65	68	69	73	70	45	45	53	59	54.6
		MIN	12		30	37	34	13	13	18	28	41	44	37	35	44	39	33	33		28	38	40	41	41	40	41	46	39	23	17	16	31	32.1
BIG STONE GAP	08	MAX	46	46	48	40	46	31	35	50	60	56	51	60	69	50	54	69	76	66	53	46	52	65	69	71	71	75	73	46	40	55	61	55.8
		MIN	16	29	29	34	31	8	12	17	24	32	42	38	41	46	39	27	23	29	31	39	43	30	40	39	40	43	33	26	17	16	31	30.5
BLACKSBURG NWSO	07	MAX	35	46	44	45	51	33	32	49	59	59	59	62	62	47	58	62	73	66	54	43	47	65	62	61	62	63	73	46	32	51	56	53.5
		MIN	12	26	26	30	32	4	5	17	36	37	45	34	35	36	41	37	44	29	29	32	34	43	42	35	35	41	37	22	17	17	33	30.4
BURKES GARDEN	07	MAX	40	49	36	53	51	30	27	41	52	53	61	56	57	50	56	56	68	60	47	38	47	58	58	61	62	65	64	41	29	47	50	50.4
		MIN	2	35	24	32	29	2	2	23	34	39	40	32	31	37	38	37	43	25	24	33	38	40	37	33	32	43	33	15	14	25	39	29.4
CHRISTIANSBURG	07	MAX	35	46	43	36	50	32	34	48	58	59	58	60	61	46	58	61	72	63	52	41	46	63	61	59	63	63	71	44	32	50	55	52.3
		MIN	18	24	28	31	32	6	10	22	35	42	45	41	40	35	42	43	42	29	29	32	33	42	43	35	35	41	36	20	18	19	39	31.8
CLINTWOOD 1 W	07	MAX	43	42	42	46	39	27	32	49	59	57	57	55	65	48	58	64	74	63	51	46	51	64	63	68	70	76	74	45	38	54	58	54.1
		MIN	8	31	28	30	27	3	3	13	25	33	36	43	43	44	35	32	32	27	27	37	42	37	33	33	34	39	35	24	16	17	28	28.9
COPPER HILL	07	MAX	28	51	43	52	54	36	30	47	56	57	60	59	57	47	57	60	70	64	52	38	43	62	61	51	55	55	71	39	29	47	53	51.1
		MIN	14	26	28	25	36	8	6	22	36	44	44	38	37	32	38	39	45	30	27	30	32	39	40	33	33	34	35	21	16	15	36	30.3
GALAX RADIO WBRF	07	MAX	37	51	47	51	66	34	40	53	60	58	60	61	62	54	63	65	72	68	58	38	60	66	66	60	62	69	67	44	39	50	55	56.0
		MIN	20	24	28	32	32	10	16	24	33	45	49	33	40	35	42	34	43	30	34	33	37	42	41	37	40	41	33	21	16	37		32.7
GALAX WTP	07	MAX	33	50	45	44	67	36	36	52	59	59	59	61	62	45	62	63	70	68	56	40	52	64	65	58	60	59	68	43	36	49	56	54.1
		MIN	15	28	29	32	35	12	12	17	24	26	41	34	33	35	43	34	34	32	32	33	35	41	41	36	36	40	37	23	17	16	31	30.1
GRUNDY	07	MAX	42	38	42	53	45	31	34	51	60	57	64	55	64	53	56	63	74	62	51	45	49	64	62	66	66	76	70	46	38	54	58	54.5
		MIN	13	33	28	31	30	12	12	20	26	35	41	45	44	46	38	34	34	29	29	39	43	39	38	36	39	44	38	24	19	19	30	31.9
JOHN FLANNAGAN LAKE	07	MAX		45	41	51	40	29				61	58	52	68			64	74	63	52	44		64	64	71	76				54	62	M	
		MIN		33	28	31	29	-1				2	38	41	43			35	34	29	28	37			36	36	38	41				18	30	M
LEBANON	07	MAX	46	51	51	56	58	32	33	48	53	59	67	61	66	55	59	64	72	65	53	45	49	64	63	67	68	75	71	45	36	52	58	56.2
		MIN	8	34	32	34	32	3	4	16	26	37	44	38	39	45	40	32	32	28	28	38	43	40	38	37	39	52	37	21	16	16	30	30.9
NORA 4 SSE	07	MAX	38	48	42	54	54	28	30	45	57	51	59	57	62	51	56	62	72	63	51	41	46	63		66	67	71	66	43	34	48	55	52.7
		MIN	11	32	28	38	27	6	7	24	38	43	45	43	42	41	39	39	47	29	28	37	39	39		36	48	51	33	18	18	20	41	32.9
N FK LAKE	08	MAX		49	44	52	48	29			61	56	61	57			66	74	63	52	44			65	69	69	75				71	59	M	
		MIN		9	28	31	29	5			4	34	39	41			34	33	30	28	36			38	35	36	43				17	30	M	
PULASKI 2 E	07	MAX	35	48	47	48	53	35	35	51	61	63	63	62	63	60	65	64	75	66	57	42	50	66	64	65	67	66	72	47	36	53	57	56.0
		MIN	9	26	28	30	35	10	8	21	36	44	44	38	36	34	34	35	38	35	32	33	36	45	43	36	33	44	40	25	19	16	41	31.7
RADFORD 3 N	07	MAX	34	44	42	37	52	32	34	50	61	61	61	62	62	48	57	63	73	65	53	43	47	65	60	61	63	64	74	44	31	52	57	53.3
		MIN	14	25	26	32	32	10	12	20	36	40	43	37	39	37	40	38	41	31	32	33	35	45	42	33	37	42	35	20	20	24	37	31.9
RICHLANDS	07	MAX	46	53	48	53	53	30	39	51	60	55	66	60	66	52	56	64	73	65	58	44	47	65	66	67	68	74	69	47	32	52	57	56.0
		MIN	7	32	29	35	30	7	7	19	25	35	38	41	47	37	37	31	35	26	26	36	38	37	39	37	36	38	35	26	15	15	28	29.8
SALTVILLE 1N	07	MAX	44	47	46	41	45	35	36	50	60	54	66	60	66	51	55	65	73	66	57	42	48	64	67	69	68	75	70	48	38	53	59	55.4
		MIN	15	32	30	35	34	12	12	19	25	35	43	36	35	43	39	31	30	29	29	38	40	39	39	37	38	44	40	24	15	15	29	31.0
STAFFORDSVILLE 3 ENE	07	MAX	35	46	41	44	50	33	30	50	60	60	61	60	62	48	59	62	73	73	53	43	48	65	60	62	64	64	73	47	32	53	56	53.8
		MIN	10	27	26	32	32	10	10	24	35	35	40	35	33	37	43	34	34	31	32	33	35	43	42	33	33	43	38	22	19	19	30	30.6
WISE 3E	17	MAX	47	42	47	52	45	30	44	57	55	59	56	64	63	55	59	70	64	58	46	46	69	61	64	66	71	69	57	38	48	54	67	55.6
		MIN	27	28	29	45	16	4	22	32	39	43	52	38	41	43	38	36	52	27	37	39	39	41	35	39	46	55	30	19	14	41	33	34.8
WYTHEVILLE 1 S	07	MAX	36	50	44	46	53	33	35	49	59	58	63	61	62	46	56	62	72	65	53	39	48	62	65	65	66	68	70	45	33	52	55	53.9
		MIN	10	26	28	33	32	9	11	22	34	42	43	39	37	36	42	42	44	30	28	32	35	42	41	38	38	43	37	19	16	15	37	31.6

VIRGINIA
201503

SNOWFALL AND SNOW ON GROUND (INCHES)

STATION		DAY OF MONTH																															
		01	02	03	04	05	06	07	08	09	10	11	12	13	14	15	16	17	18	19	20	21	22	23	24	25	26	27	28	29	30	31	
VIRGINIA																																	
	TIDEWATER 01																																
DISPUTANTA	SNOWFALL	T	-	-	-	-	0.2	-	-	-	-	-	-	-	-	-	-	-	-	-	-	-	-	-	-	-	-	-	-	-	T	-	-
	SN ON GND	4	3	2	T	-	-	-	-	-	-	-	-	-	-	-	-	-	-	-	-	-	-	-	-	-	-	-	-	-	-	-	
EASTVILLE	SNOWFALL	-	-	-	-	-	0.5	-	-	-	-	-	-	-	-	-	-	-	-	-	-	-	-	-	-	-	-	-	-	-	-	-	
	SN ON GND	5	4	2	-	-	1	-	-	-	-	-	-	-	-	-	-	-	-	-	-	-	-	-	-	-	-	-	-	-	-	-	
EMPORIA 1 WNW	SNOWFALL	-	-	-	-	-	-	-	-	-	-	-	-	-	-	-	-	-	-	-	-	-	-	-	-	-	-	-	-	-	-	-	
	SN ON GND	-	-	-	-	-	-	-	-	-	-	-	-	-	-	-	-	-	-	-	-	-	-	-	-	-	-	-	-	-	-	-	
FREDERICKSBURG SEWAGE	SNOWFALL	-	-	-	-	-	-	-	-	-	-	-	-	-	-	-	-	-	-	-	-	-	-	-	-	-	-	-	-	-	-	-	
	SN ON GND	-	-	-	-	-	6	-	-	-	-	-	-	-	-	-	-	-	-	-	-	-	-	-	-	-	-	-	-	-	-	-	
HOLLAND 1 E	SNOWFALL	-	-	-	-	-	-	-	-	-	-	-	-	-	-	-	-	-	-	-	-	-	-	-	-	-	-	-	-	-	-	-	
HOPEWELL	SNOWFALL	-	-	-	-	-	-	-	-	-	-	-	-	-	-	-	-	-	-	-	-	-	-	-	-	-	-	-	-	-	-	-	
	SN ON GND	-	-	-	-	-	-	-	-	-	-	-	-	-	-	-	-	-	-	-	-	-	-	-	-	-	-	-	-	-	-	-	
NORFOLK INTL AP	SNOWFALL	-	-	-	-	0.2	-	-	-	-	-	-	-	-	-	-	-	-	-	-	-	-	-	-	-	-	-	-	-	-	-	-	
	SN ON GND	3	-	1	-	-	-	-	-	-	-	-	-	-	-	-	-	-	-	-	-	-	-	-	-	-	-	-	-	-	-	-	
NORFOLK SOUTH	SNOWFALL	-	-	-	-	0.2	-	-	-	-	-	-	-	-	-	-	-	-	-	-	-	-	-	-	-	-	-	-	-	T	-	T	-
	SN ON GND	2	1	T	-	T	-	-	-	-	-	-	-	-	-	-	-	-	-	-	-	-	-	-	-	-	-	-	-	-	-	-	
NORTH	SNOWFALL	-	-	-	-	-	-	-	-	-	-	-	-	-	-	-	-	-	-	-	-	-	-	-	-	-	-	-	-	-	-	-	
	SN ON GND	4	3	1	T	-	T	-	-	-	-	-	-	-	-	-	-	-	-	-	-	-	-	-	-	-	-	-	-	-	-	-	
PAINTER 2W	SNOWFALL	-	-	-	-	-	-	-	-	-	-	-	-	-	-	-	-	-	-	-	-	-	-	-	-	-	-	-	-	-	-	-	
	SN ON GND	3	1	1	-	-	-	-	-	-	-	-	-	-	-	-	-	-	-	-	-	-	-	-	-	-	-	-	-	-	-	-	
STONY CREEK 2 N	SNOWFALL	-	-	-	-	-	-	-	-	-	-	-	-	-	-	-	-	-	-	-	-	-	-	-	-	-	-	-	-	-	-	-	
	SN ON GND	-	-	-	-	-	-	-	-	-	-	-	-	-	-	-	-	-	-	-	-	-	-	-	-	-	-	-	-	-	-	-	
SUFFOLK LAKE KILBY	SNOWFALL	-	-	-	-	-	T	-	-	-	-	-	-	-	-	-	-	-	-	-	-	-	-	-	-	-	-	-	-	-	-	T	-
	SN ON GND	2	T	-	-	T	-	-	-	-	-	-	-	-	-	-	-	-	-	-	-	-	-	-	-	-	-	-	-	-	-	-	
WAKEFIELD 1NW	SNOWFALL	T	-	-	-	0.2	-	-	-	-	-	-	-	-	-	-	-	-	-	-	-	-	-	-	-	-	-	-	-	-	-	T	-
	SN ON GND	1	-	-	-	T	-	-	-	-	-	-	-	-	-	-	-	-	-	-	-	-	-	-	-	-	-	-	-	-	-	-	-
WALKERTON 2 NW	SNOWFALL	-	-	-	-	2.0	-	-	-	-	-	-	-	-	-	-	-	-	-	-	-	-	-	-	-	-	-	-	-	-	-	-	-
	SN ON GND	-	-	-	-	2	2	-	-	-	-	-	-	-	-	-	-	-	-	-	-	-	-	-	-	-	-	-	-	-	-	-	-
WALLACETON LK DRUMMOND	SNOWFALL	-	-	-	-	-	-	-	-	-	-	-	-	-	-	-	-	-	-	-	-	-	-	-	-	-	-	-	-	-	-	-	-
WALLOPS ISLAND NASA TEST FACIL	SNOWFALL	T	-	-	-	0.3	-	-	-	-	-	-	-	-	-	-	-	-	-	-	-	-	-	-	-	-	-	-	-	-	-	-	-
	SN ON GND	2	1	-	-	-	-	-	-	-	-	-	-	-	-	-	-	-	-	-	-	-	-	-	-	-	-	-	-	-	-	-	-
WARSAW 2 NW	SNOWFALL	-	-	-	-	2.0	-	-	-	-	-	-	-	-	-	-	-	-	-	-	-	-	-	-	-	-	-	-	-	-	-	-	-
	SN ON GND	1	-	-	-	2	1	-	-	-	-	-	-	-	-	-	-	-	-	-	-	-	-	-	-	-	-	-	-	-	-	-	-
WEST POINT 2 NW	SNOWFALL	T	-	-	-	0.5	0.5	-	-	-	-	-	-	-	-	-	-	-	-	-	-	-	-	-	-	-	-	-	-	-	-	-	-
	SN ON GND	T	-	-	-	T	T	-	-	-	-	-	-	-	-	-	-	-	-	-	-	-	-	-	-	-	-	-	-	-	-	-	-
WILLIAMSBURG 2 N	SNOWFALL	-	-	-	-	1.0	-	-	-	-	-	-	-	-	-	-	-	-	-	-	-	-	-	-	-	-	-	-	-	-	-	-	-
	SN ON GND	1	T	T	-	1	1	T	-	-	-	-	-	-	-	-	-	-	-	-	-	-	-	-	-	-	-	-	-	-	-	-	-
EASTERN PIEDMONT 02																																	
ALBERTA 5N	SNOWFALL	T	T	-	-	0.4	-	-	-	-	-	-	-	-	-	-	-	-	-	-	-	-	-	-	-	-	-	-	-	-	0.1	1.8	
	SN ON GND	2	1	T	T	T	1	T	-	-	-	-	-	-	-	-	-	-	-	-	-	-	-	-	-	-	-	-	-	-	T	T	
AMELIA COURTHOUSE 1	SNOWFALL	-	-	-	-	-	0.1	-	-	-	-	-	-	-	-	-	-	-	-	-	-	-	-	-	-	-	-	-	-	-	-	-	-

Snowfall: Includes snow and ice. Values for NWS stations (J index note) are Mid-Mid (LST).

Snow on ground: Includes snow, sleet, ice, and hail. Values for NWS stations (J index note) are observed at 12 UTC (GMT).

Water Equivalent: Given for NWS stations (J index note) only, when snow depth is 2 inches or more, and is measured at 18 UTC (GMT)

VIRGINIA
201503

SNOWFALL AND SNOW ON GROUND (INCHES)

STATION		DAY OF MONTH																																				
		01	02	03	04	05	06	07	08	09	10	11	12	13	14	15	16	17	18	19	20	21	22	23	24	25	26	27	28	29	30	31						
CHATHAM	SNOWFALL					0.1																																
	SN ON GND																																					
CONCORD 4 SSW	SNOWFALL					0.3																																
	SN ON GND	2	1			T																																
DANVILLE REGIONAL AP	SNOWFALL	T				T																																
	SN ON GND																																					
FREE UNION	SNOWFALL	-	0.1	-	-	-	6.6	-	-	-	-	-	-	-	-	-	-	-	-	-	-	-	-	-	-	-	-	-	-	-	-	-	-	-	-			
	SN ON GND	4	4	2	2	T	6	6	T	-	-	-	-	-	-	-	-	-	-	-	-	-	-	-	-	-	-	-	-	-	-	-	-	-	-			
HOLCOMB ROCK	SNOWFALL					3.4																																
	SN ON GND	3	2	T	T	T	3	2	T	T																												
	WTR EQUIV	-	-	-	-	-	0.6	-	-	-	-	-	-	-	-	-	-	-	-	-	-	-	-	-	-	-	-	-	-	-	-	-	-	-	-	-		
HUDDLESTON 4 SW	SNOWFALL					T																																
	SN ON GND	1	1	T		T	T																															
LYNCHBURG INTL AP	SNOWFALL					2.5																																
	SN ON GND	T	T		3	2	T																															
MARTINSVILLE FLTR PLT	SNOWFALL																																					
MEADOWS OF DAN 5 SW	SNOWFALL																																					
	SN ON GND																																					
MONTEBELLO FISH CULTURAL STN	SNOWFALL	-	-	-	-	-	-	4.9	-	-	-	-	-	-	-	-	-	-	-	-	-	-	-	-	-	-	-	-	-	-	-	-	-	-	-	-		
MONTEBELLO	SNOWFALL	-	-	-	-	-	5.8	-	-	-	-	-	-	-	-	-	-	-	-	-	-	-	-	-	-	-	-	-	-	-	-	-	-	-	-	-		
	SN ON GND	-	4	2	-	-	6	-	-	-	-	-	-	-	-	-	-	-	-	-	-	-	-	-	-	-	-	-	-	-	-	-	-	-	-	-		
PEDLAR DAM	SNOWFALL					4.3																																
	SN ON GND	8	7	5	4	3	7	5	4	2																												
ROCKY MT	SNOWFALL																																					
	SN ON GND	2																																				
SOUTH BOSTON	SNOWFALL																																					
	SN ON GND																																					
STUART	SNOWFALL																																					
	SN ON GND																																					
TYE RIVER 1 SE	SNOWFALL																																					
	SN ON GND	-	-	-	-	-	4	-	-	-	-	-	-	-	-	-	-	-	-	-	-	-	-	-	-	-	-	-	-	-	-	-	-	-	-	-		
WOOLWINE	SNOWFALL					T																																
	SN ON GND																																					
NORTHERN 04																																						
BOSTON 4 SE	SNOWFALL					4.5																																
	SN ON GND					5																																
	WTR EQUIV					4.5																																
EDINBURG	SNOWFALL				0.2	8.8																1.2	0.2															
	SN ON GND	4	3	2	1	T	9	7	3	T	T											1	T															
FRONT ROYAL	SNOWFALL	-	-	-	-	-	-	-	-	-	-	-	-	-	-	-	-	-	-	-	-	-	-	-	-	-	-	-	-	-	-	-	-	-	-	-	-	
	SN ON GND	2	-	-	-	-	9	-	-	-	-	-	-	-	-	-	-	-	-	-	-	-	-	-	-	-	-	-	-	-	-	-	-	-	-	-	-	
	WTR EQUIV	-	-	-	-	-	-	-	-	-	-	-	-	-	-	-	-	-	-	-	-	-	-	-	-	-	-	-	-	-	-	-	-	-	-	-	-	

Snowfall: Includes snow and ice. Values for NWS stations (J index note) are Mid-Mid (LST).

Snow on ground: Includes snow, sleet, ice, and hail. Values for NWS stations (J index note) are observed at 12 UTC (GMT).

Water Equivalent: Given for NWS stations (J index note) only, when snow depth is 2 inches or more, and is measured at 18 UTC (GMT)

VIRGINIA
201503

SNOWFALL AND SNOW ON GROUND (INCHES)

STATION		DAY OF MONTH																														
		01	02	03	04	05	06	07	08	09	10	11	12	13	14	15	16	17	18	19	20	21	22	23	24	25	26	27	28	29	30	31
GATHRIGHT DAM	SN ON GND	6	3	2	2	1	7	6	4	1																						
	WTR EQUIV	6.0	3.0	2.0	2.0	1.0	7.0	6.0	4.0	1.0	0.5																					
	SNOWFALL	T					5.0																									
GLASGOW 1 SE	SN ON GND	10	8	5	4	2	6	6	6	2	T	T	T																			
	SNOWFALL						4.8																									
HOT SPRINGS	SN ON GND	3	2				5	3																								
	SNOWFALL	T					5.0																									
LEXINGTON	SN ON GND	5	5	4	3	2	7	7	4	2	1																					
	SNOWFALL						6.0																									
MILLGAP	SN ON GND	9	8	7	6	3	9	9	5	3	T																					
	SNOWFALL		0.5				6.0															0.1										
	SN ON GND	11	9	7	6	5	9	8	5	4	2	2	1	T	T						T											
MTN GROVE	WTR EQUIV	I	I	I	I	I	I	I	I																							
	SNOWFALL	-	-	-	-	-	-	-	-	-	-	-	-	-	-	-	-	-	-	-	-	-	-	-	-	-	-	-	-	-	-	
MUSTOE 1 SW	SN ON GND	-	-	-	-	-	-	-	-	-	-	-	-	-	-	-	-	-	-	-	-	-	-	-	-	-	-	-	-	-	-	
	SNOWFALL	0.4				6.3																										
NEW CASTLE	SN ON GND	11	10	9	7	12	11	9	7	5	4	2	1	T	T	T	T	T	T	T	T	T	T	T	T	T	T	T	T	T		
	SNOWFALL						4.0																									
ROANOKE 8 N	SN ON GND	7	5	4	2		4	3	1																							
	SNOWFALL						2.0																									
ROANOKE INTL AP	SN ON GND	5	3	2	1	T	2																									
	SNOWFALL					1.9															T											
STAUNTON WATER TRMTMT PLT	SN ON GND	4				2	1																									
	SNOWFALL						6.0																									
	SN ON GND	4	3	2			6	3	1																							
WAYNESBORO WTP	WTR EQUIV	-	-	-	-	-	-	-	-	-	-	-	-	-	-	-	-	-	-	-	-	-	-	-	-	-	-	-	-	-	-	
	SNOWFALL						4.8																									
	SN ON GND	4	3	2			5																									
SOUTHWESTERN MOUNTAIN 06	WTR EQUIV			-			4.8																									
	SN ON GND																															
ABINGDON 3S	SNOWFALL																															
BIG STONE GAP	SN ON GND	4																														
	SNOWFALL						4.0																									
BLACKSBURG NWSO	SN ON GND						4	2																								
	SNOWFALL						4.2																									
BURKES GARDEN	SN ON GND	7	4	1			4	4	T																							
	SNOWFALL					T	2.0	T																								
CHRISTIANSBURG	SN ON GND	10	6	4		T	3	2	T																							
	SNOWFALL						3.0																									
CLINTWOOD 1 W	SN ON GND	5	2	T	T		3	2	1	T																						
	SNOWFALL			T		1.0	3.5	T																								

Snowfall: Includes snow and ice. Values for NWS stations (J index note) are Mid-Mid (LST).

Snow on ground: Includes snow, sleet, ice, and hail. Values for NWS stations (J index note) are observed at 12 UTC (GMT).

Water Equivalent: Given for NWS stations (J index note) only, when snow depth is 2 inches or more, and is measured at 18 UTC (GMT)

VIRGINIA
201503

SNOWFALL AND SNOW ON GROUND (INCHES)

STATION		DAY OF MONTH																																
		01	02	03	04	05	06	07	08	09	10	11	12	13	14	15	16	17	18	19	20	21	22	23	24	25	26	27	28	29	30	31		
COPPER HILL	SN ON GND	12	11	9	5	4	7	6	5	4	3	1	T	T																		1		
	SNOWFALL						2.0																											
GALAX RADIO WBRF	SN ON GND	4	1				2	2																										
	SNOWFALL																																	
GALAX WTP	SN ON GND																																	
	SNOWFALL						T																											
GRUNDY	SN ON GND						0.3	3.0																										
	SNOWFALL						3	2	1																									
JOHN FLANNAGAN LAKE	SN ON GND	7	5	4	T	T	3	2	1																									T
	SNOWFALL	-	-	-	-	-	3.0	-	-	-	-	-	-	-	-	-	-	-	-	-	-	-	-	-	-	-	-	-	-	-	-	-	-	-
LAFAYETTE 1 NE	SN ON GND	-	-	-	-	-	3	-	-	-	-	-	-	-	-	-	-	-	-	-	-	-	-	-	-	-	-	-	-	-	-	-	-	-
	SNOWFALL						1.9															T												
LEBANON	SN ON GND	4	2	T	T		1	T																										
	SNOWFALL						0.2	3.2																										
NORA 4 SSE	SN ON GND	5	3				3	2																										
	SNOWFALL						0.3	5.1																										
N FK LAKE	SN ON GND	12	6	2	T	T	4	2	T	T	T																							2
	SNOWFALL	-	-	-	-	-	4.0	-	-	-	-	-	-	-	-	-	-	-	-	-	-	-	-	-	-	-	-	-	-	-	-	-	-	-
PULASKI 2 E	SN ON GND	-	4	2	2	T	5	-	-																									
	SNOWFALL						T																											
RADFORD 3 N	SN ON GND	2																																
	SNOWFALL						3.0																											
RICHLANDS	SN ON GND	3	2	T			3	2	T																									
	SNOWFALL						3.0																											
SALTVILLE 1N	SN ON GND						3	1																										
	SNOWFALL																																	
STAFFORDSVILLE 3 ENE	SN ON GND	9	4	4	2	1	1																											
	SNOWFALL						1.0																											
WILLIS	SN ON GND	6	4	3	1	T	1	1	T	T	T																							
	SNOWFALL																																	
WISE 3E	SN ON GND	1																																
	SNOWFALL		0.2				4.2	0.7																										
WYTHEVILLE 1 S	SN ON GND	11	9	5	T	4	2	T	T	T																								1
	SNOWFALL						0.3																											
	SN ON GND						T																											

Snowfall: Includes snow and ice. Values for NWS stations (J index note) are Mid-Mid (LST).

Snow on ground: Includes snow, sleet, ice, and hail. Values for NWS stations (J index note) are observed at 12 UTC (GMT).

Water Equivalent: Given for NWS stations (J index note) only, when snow depth is 2 inches or more, and is measured at 18 UTC (GMT)

VIRGINIA
201503

PAN EVAPORATION AND WIND

STATION		DAY OF MONTH																															TOTAL OR AVERAGE		
		01	02	03	04	05	06	07	08	09	10	11	12	13	14	15	16	17	18	19	20	21	22	23	24	25	26	27	28	29	30	31			
VIRGINIA EASTERN PIEDMONT 02 JOHN H KERR DAM	WIND	-	-	-	-	-	-	-	-	-	-	-	-	-	-	-	-	-	-	-	-	-	-	-	-	-	-	-	-	-	-	-	-	-	M
	EVAP	-	-	-	-	-	-	-	-	-	-	-	-	-	-	-	-	-	-	-	-	-	-	-	-	-	-	-	-	-	-	-	-	-	M
	MAX	-	-	-	-	-	-	-	-	-	-	-	-	-	-	-	-	-	-	-	-	-	-	-	-	-	-	-	-	-	-	-	-	-	M
	MIN	-	-	-	-	-	-	-	-	-	-	-	-	-	-	-	-	-	-	-	-	-	-	-	-	-	-	-	-	-	-	-	-	-	M

Evaporation: Is measured in hundredths of inches.

Wind: Is measured in miles.

Max and Min: The maximum and minimum temperatures (Fahrenheit) of the water in the evaporation pan.

STATION INDEX

STATION	INDEX NO.	DIVISION	COUNTY	LATITUDE	LONGITUDE	ELEVATION (IN FEET)	OBSERVATION TIME AND TABLES			
							LOCAL STD TIME			
							TEMP	PRECIP	EVAP	SPECIAL SEE (NOTES)
VIRGINIA										
ABINGDON 3S	0021	06	WASHINGTON	36 40	81 58W	1925	22	22		H
ALBERTA 5N	0079	02	BRUNSWICK	36 56	77 54W	376		08		H
ALTAVISTA	0166	03	CAMPBELL	37 7	79 17W	529		07		CH
AMELIA COURTHOUSE 1	0187	02	AMELIA	37 21	77 59W	345	08	08		H
APPOMATTOX	0243	03	APPOMATTOX	37 20	78 50W	850	07	07		H
ASHLAND	0327	02	HANOVER	37 45	77 29W	220	18	18		H
BEDFORD 4 NW	0561	03	BEDFORD	37 23	79 34W	1228		07		CH
BIG STONE GAP	0735	06	WISE	36 52	82 46W	1464	08	08		H
BLACKSBURG NWSO	0766	06	MONTGOMERY	37 12	80 25W	2100	07	07		CH
BOSTON 4 SE	0860	04	CULPEPER	38 33	78 6W	590	07	07		H
BREMO BLUFF	0993	02	FLUVANNA	37 43	78 17W	225		07		CH
BROOKNEAL	1082	03	CAMPBELL	37 4	78 57W	408	07	07		H
BUCKINGHAM	1136	02	BUCKINGHAM	37 30	78 32W	580		07		H
BUENA VISTA	1159	05	ROCKBRIDGE	37 44	79 22W	840		07		H
BURKES GARDEN	1209	06	TAZEWELL	37 6	81 20W	3068	07	07		H
CAMP PICKETT	1322	02	NOTTOWAY	37 2	77 57W	330	08	08		CH
CHARLOTTE COURT HOUSE	1585	03	CHARLOTTE	37 3	78 39W	569	07	07		H
CHARLOTTESVILLE 2W	1593	03	ALBEMARLE	38 2	78 31W	866	08	08		H
CHASE CITY	1606	02	MECKLENBURG	36 47	78 29W	510	17	17		H
CHATHAM	1614	03	PITTSYLVANIA	36 49	79 25W	651	07	07		CH
CHRISTIANSBURG	1692	06	MONTGOMERY	37 8	80 24W	2100	07	07		H
CLARKSVILLE	1746	02	MECKLENBURG	36 37	78 33W	330	07	07		H
CLINTWOOD 1 W	1825	06	DICKENSON	37 9	82 29W	1780	07	07		H
CONCORD 4 SSW	1955	03	CAMPBELL	37 17	78 58W	815		07		H
COPPER HILL	1999	06	FLOYD	37 5	80 9W	2690	07	07		H
CORBIN	2009	02	CAROLINE	38 12	77 22W	220	09	09		H
COVINGTON FLTR PLT	2044	05	ALLEGHANY	37 49	79 59W	1230	07	07		H
CROZIER	2142	02	GOOCHLAND	37 40	77 53W	350	07	07		H
DALE ENTERPRISE	2208	05	ROCKINGHAM	38 27	78 56W	1358	07	07		H
DANVILLE REGIONAL AP R	2250	03	PITTSYLVANIA	36 34	79 20W	571	24	24		H
DISPUTANTA	2400	01	PRINCE GEORGE	37 7	77 12W	15	07	07		H
EASTVILLE	2635	01	NORTHAMPTON	37 23	75 58W	10	07	07		H
EDINBURG	2663	04	SHENANDOAH	38 48	78 35W	928	07	07		H
EMPORIA 1 WNW	2790	01	GREENSVILLE	36 42	77 34W	100	08	08		H
FARMVILLE 2 N	2941	02	CUMBERLAND	37 20	78 23W	450	07	07		H
FREDERICKSBURG SEWAGE	3204	01	FREDERICKSBURG	38 17	77 27W	15	07	07		H
FREE UNION	3213	03	ALBEMARLE	38 5	78 35W	590	08	07		H
FRONT ROYAL	3229	04	WARREN	38 54	78 11W	930	07	07		H
GALAX RADIO WBRF	3267	06	CARROLL	36 40	80 55W	2385	07	07		H
GALAX WTP	3272	06	CARROLL	36 39	80 55W	2360	07	07		CH
GATHRIGHT DAM	3310	05	ALLEGHANY	37 57	79 57W	1770	07	07		CH
GLASGOW 1 SE	3375	05	ROCKBRIDGE	37 37	79 26W	737		07		H
GREENBAY 3 NE	3565	02	PRINCE EDWARD	37 11	78 17W	500	09	09		H
GRUNDY	3640	06	BUCHANAN	37 17	82 5W	1170	07	07		H
HOLCOMB ROCK	4039	03	BEDFORD	37 33	79 24W	810		07		H
HOLLAND 1 E	4044	01	SUFFOLK	36 41	76 46W	80	08	08		H
HOPEWELL	4101	01	PRINCE GEORGE	37 18	77 17W	40	16	16		H
HOT SPRINGS	4128	05	BATH	37 60	79 50W	2236	07	07		H
HUDDLESTON 4 SW	4148	03	BEDFORD	37 8	79 32W	898		07		H
JOHN FLANNAGAN LAKE	4410	06	DICKENSON	37 14	82 21W	1460	07	07		H
JOHN H KERR DAM	4414	02	MECKLENBURG	36 36	78 18W	250	08	08	08	CH
LAFAYETTE 1 NE	4676	06	MONTGOMERY	37 14	80 12W	1320		07		H
LEBANON	4777	06	RUSSELL	36 54	82 2W	1912	07	07		H
LEXINGTON	4876	05	ROCKBRIDGE	37 47	79 26W	1097	07	07		H
LINCOLN	4909	04	LOUDOUN	39 5	77 42W	500	07	07		H
LOUISA	5050	02	LOUISA	38 3	78 0W	420	18	18		H
LURAY 5 E	5096	04	PAGE	38 40	78 22W	1400	08	08		H
LYNCHBURG INTL AP R	5120	03	CAMPBELL	37 19	79 12W	940	24	24		HJ
MADISON	5150	04	MADISON	38 22	78 15W	577	08	08		H
MANASSAS	5204	04	MANASSAS	38 44	77 30W	245	07	07		H
MARTINSVILLE FLTR PLT	5300	03	HENRY	36 42	79 52W	760	07	07		H
MEADOWS OF DAN 5 SW	5453	03	PATRICK	36 40	80 27W	2225	07	07		H
MILLGAP	5595	05	HIGHLAND	38 18	79 43W	2421	07	07		CH
MONTEBELLO FISH CULTURAL STN	5690	03	NELSON	37 51	79 8W	2667	07	07		H
MONTICELLO	5700	03	ALBEMARLE	38 1	78 27W	758	08	08		H

STATION INDEX

STATION	INDEX NO.	DIVISION	COUNTY	LATITUDE	LONGITUDE	ELEVATION (IN FEET)	OBSERVATION TIME AND TABLES			
							LOCAL STD TIME			
							TEMP	PRECIP	EVAP	SPECIAL SEE (NOTES)
MT WEATHER	5851	04	LOUDOUN	39 4	77 53W	1659	07	07		H
MTN GROVE	5756	05	BATH	38 6	79 53W	1775		07		H
MUSTOE 1 SW	5880	05	HIGHLAND	38 20	79 40W	2380	24	24		H
N FK LAKE	6173	06	WISE	37 7	82 38W	1675	08	08		H
NEW CASTLE	6012	05	CRAIG	37 18	80 3W	1258		07		H
NORA 4 SSE	6125	06	DICKENSON	37 1	82 19W	2650	07	07		H
NORFOLK INTL AP R	6139	01	NORFOLK (CITY)	36 54	76 12W	30	24	24		HJ
NORFOLK SOUTH	6147	01	NORFOLK (CITY)	36 52	76 14W	100	24	24		H
NORTH	6161	01	MATHEWS	37 26	76 26W	10	07	07		H
PAINTER 2W	6475	01	ACCOMACK	37 35	75 49W	30	16	16		CH
PALMYRA 3S	6491	02	FLUVANNA	37 49	78 16W	410	06	06		H
PEDLAR DAM	6593	03	AMHERST	37 40	79 17W	1024		07		H
PETERSBURG	6656	02	PETERSBURG	37 14	77 24W	15	08	08		H
PIEDMONT RSCH STN	6712	04	ORANGE	38 14	78 7W	520	08	08		CH
PULASKI 2 E	6955	06	PULASKI	37 3	80 47W	1850	07	07		CH
RADFORD 3 N	6999	06	PULASKI	37 12	80 35W	1800	07	07		H
RICHLANDS	7174	06	TAZEWELL	37 6	81 48W	1910	07	07		H
RICHMOND INTL AP R	7201	02	HENRICO	37 30	77 19W	164	24	24		HJ
ROANOKE 8 N	7278	05	ROANOKE	37 22	79 58W	1190	07	07		H
ROANOKE INTL AP R	7285	05	ROANOKE	37 19	79 58W	1175	24	24		HJ
ROCKY MT	7338	03	FRANKLIN	36 59	79 54W	1315	07	07		CH
SALTVILLE 1N	7506	06	SMYTH	36 53	81 46W	1733	07	07		H
SANDSTON	7541	02	HENRICO	37 33	77 17W	165	07	07		H
SOMERSET	7904	04	ORANGE	38 15	78 16W	510	07	07		H
SOUTH BOSTON	7925	03	HALIFAX	36 42	78 53W	329	07	07		H
SPERRYVILLE	7985	04	RAPPAHANNOCK	38 39	78 14W	750	06	06		H
STAFFORDSVILLE 3 ENE	8022	06	GILES	37 16	80 43W	1950	07	07		CH
STAUNTON WATER TRMTMT PLT	8062	05	AUGUSTA	38 10	79 5W	169	08	08		H
STERLING RCS	8084	04	LOUDOUN	38 59	77 29W	288	07	07		H
STONY CREEK 2 N	8129	01	SUSSEX	36 58	77 24W	105	08	08		H
STUART	8170	03	PATRICK	36 38	80 15W	1375	07	07		H
SUFFOLK LAKE KILBY	8192	01	SUFFOLK	36 44	76 36W	22	24	24		H
TYE RIVER 1 SE	8600	03	NELSON	37 38	78 56W	720	07	07		H
VIENNA	8737	04	FAIRFAX	38 54	77 16W	418	07	07		H
WAKEFIELD 1NW	8800	01	SUSSEX	36 59	77 0W	113	24	24		CH
WALKERTON 2 NW	8829	01	KING AND QUEEN	37 45	77 2W	50	18	18		H
WALLACETON LK DRUMMOND	8837	01	CHESAPEAKE	36 36	76 26W	20	08	08		H
WALLOPS ISLAND NASA TEST FACIL R	8849	01	ACCOMACK	37 56	75 28W	46	24	24		HJ
WARRENTON 3 SE	8888	04	FAUQUIER	38 41	77 46W	500	08	08		H
WARSAW 2 NW	8894	01	RICHMOND	37 59	76 47W	140	18	18		H
WASHGTN DULLES INTL AP R	8903	04	LOUDOUN	38 56	77 28W	290	24	24		HJ
WASHINGTON REAGAN AP R	8906	04	ARLINGTON	38 51	77 2W	10	24	24		HJ
WAYNESBORO WTP	8941	05	WAYNESBORO	38 5	78 53W	1270	07	07		H
WEST POINT 2 NW	9025	01	KING WILLIAM	37 34	76 48W	20	17	17		H
WILLIAMSBURG 2 N	9151	01	YORK	37 18	76 42W	70	24	24		CH
WILLIS	9169	06	FLOYD	36 55	80 30W	2810		07		CH
WINCHESTER	9181	04	FREDERICK	39 11	78 9W	720	07	07		H
WINCHESTER 7 SE	9186	04	FREDERICK	39 11	78 7W	680	08	08		H
WINTERPOCK 4 W	9213	02	CHESTERFIELD	37 19	77 39W	300		07		H
WISE 3E	9215	06	WISE	36 60	82 32W	2549	17	17		CH
WOODSTOCK 2 NE	9263	04	SHENANDOAH	38 54	78 28W	675	07	07		H
WOOLWINE	9272	03	PATRICK	36 47	80 17W	1500		07		CH
WYTHEVILLE 1 S	9301	06	WYTHE	36 58	81 5W	2458	07	07		H

REFERENCE NOTES

STATION NAMES: Name of the city, town or locality. Figures and letters following the station names indicate the distance in miles and direction from the post office or town community center.

DIVISIONS: Areas within a state of similar climatological characteristics. Division averages are calculated using data from stations that record temperature and/or precipitation. Station Precipitation totals flagged with an 'F' or 'M' are excluded from the Divisional Average calculations of precipitation. Stations with monthly Temperature averages flagged with an 'F' or 'M' are included in the Divisional Average if there are no more than 9 flagged or missing daily values in the month, else they are excluded from the divisional average for temperature.

NORMALS: The average value of the meteorological element over a time period. Effective 1 January 2012, the averaging period is 1981 to 2010. The normals for National Weather Service localities have been adjusted so as to be representative for the current observation site.

MONTHLY DEGREE DAY TOTALS: One heating (cooling) degree day is accumulated for each whole degree that the daily mean temperature is below (above) 65 degrees Fahrenheit.

PRECIPITATION: Values shown in hundredths of inches are water equivalent totals, i.e., total of liquid and melted frozen precipitation. In the "Monthly Summarized Data" table the total snow and sleet values shown in tenths of inches are unmelted amounts. The max depth on ground values of snow and sleet shown in whole inches are cumulative unmelted amounts. The number of days with .10, .50, 1.00 or more refers to water equivalents.

PRECIPITATION QUALITY CONTROL: The NCEI quality control process may flag precipitation data that are spatially inconsistent, exceed climatological limits, or are inconsistent with prevailing weather patterns.

TEMPERATURE: Original temperature values are given in the "Daily Temperature" table. Summary temperature information (averages, departures, extremes, monthly degree day totals) is based on the values labeled MAX/MIN.

WIND: (As shown in the "Evaporation and Wind" table) the total wind movement in miles over the evaporation pan as determined by an anemometer recorder located 6-8 inches above the pan.

SYMBOLS AND LETTERS USED IN THE STATION INDEX TABLE

- C Station is equipped with recording rain gage (R) but values in this bulletin are from a non-recording rain gage unless indicated by an R.
- G Observations appear in the "Soil Temperatures" table.
- H Observations appear in the "Snowfall and Snow on the Ground" table.
- J Station also published as a Local Climatological Data publication.
- VAR Observation time varies.
- SR / SS Observation time near sunrise / Observation time near sunset, respectively.

SYMBOLS AND LETTERS USED IN THE DATA TABLES

(DAILY DATA ARE FOR THE 24 HOURS IMMEDIATELY PRECEDING OBSERVATION TIME.)

- BLANK Entries in the "Monthly Summarized Data" table indicate no record.
- BLANK Entries in the "Daily Precipitation" and "Snowfall and Snow on the Ground" tables indicate zero.
- BLANK Entries in the "Daily Temperature" table indicate a missing record

- No record. Data not recorded or not received in time for publication.
- + Precipitation or temperature extremes occurred on one or more previous dates during the month.
- * Rain gage not read. Precipitation is included in the amount following the asterisks.
Time distribution may not be known. A * preceding the monthly total indicates precipitation amount is being carried forward to next month's total, and may include amounts from the previous month(s).
- a As a subscript, indicates accumulated total.
- A Amount of precipitation is the total of observer's entries for the current month. It may include precipitation that occurred during the previous month. Refer to earlier bulletin to determine date of last reading. (Hawaii stations)
- B Divisional Departure from normals are computed using 1981-2010 normals.
- E Normalized HDD/CDD Calculation. E is appended to the HDD/CDD Calculation when 1-9 individual daily

and/or TMIN values are missing and a Normalized HDD/CDD Calculation is provided. M appears alone if 10 or more daily values are missing.

F Monthly calculation flagged value. F is appended to average and/or total values computed which exclude one or more daily data values that have been flagged by the GHCN-Daily Dataset

M Insufficient or partial data. M is appended to average and/or total values computed with 1-9 daily values missing. M appears alone if 10 or more daily values are missing, (8 or more for wind and evaporation).

N Indicates snow fall or Snowdepth totals are computed with one or more missing days.

R Amounts from recording rain gage.

T Trace. An amount too small to measure.

SEASONAL TABLES: Monthly and seasonal snowfall and heating degree days for the 12 months ending with the June data are published in the July issue of this bulletin. Cooling degree days for the calendar year are published in the "Climatological Data Annual Summary."

Information concerning the history of changes in locations, exposure, etc. of substations is kept on file at the National Centers for Environmental Information. Historical information of regular National Weather Service Offices may be obtained from the "Local Climatological Data" annual publication. The contents of this publication may be reprinted or otherwise used freely, with proper credit to the National Centers For Environmental Information. The data are also available digitally.

Effective with the January 2011 Data-Month, COOP Observer Names are no longer included in the Monthly and Annual Climatological Data Publications. This information is not published to ensure the privacy of personal information pursuant to Section 208 of the E-Government Act of 2002 (44 USC 3601).

As of the 2011 Data-Year, Station and Climate Division Maps are no longer being included in the CD Publications. NCEI's Products Branch provides updated Station Maps for various data networks via the Historical Observing Metadata Repository: <http://www.ncdc.noaa.gov/homr>.

The GHCN-Daily Quality Control Flags shown below are displayed as superscripts with the data. For more Information on Global Historical Climatology Network - Daily and flags, see: <http://www.ncdc.noaa.gov/oa/climate/ghcn-daily/> and Comprehensive Automated Quality Assurance of Daily Surface Observations. Durre, Imke, Matthew J. Menne, Byron E. Gleason, Tamara G. Houston, Russell S. Vose, 2010: J. Appl. Meteor. Climatol., 49, 16151633. doi: 10.1175/2010JAMC2375.1

Blank = Passed All checks	N = failed naught check
D = failed duplicate check	O = failed climatological outlier check
G = failed gap check	R = failed lagged range check
I = failed internal consistency check	S = failed spatial consistency check
K = failed streak/frequent-value check	T = failed temporal consistency check
L = failed check on length of multiday period	W = temperature too warm for snow
M = failed megaconsistency check	X = failed bounds check
	Z = flagged as a result of an official Datzilla investigation

Beginning with the January 2013 CD Publication, monthly mean temperature calculations have changed to the National Data Stewardship Team standard. Monthly maximum and minimum temperatures are not rounded until after the monthly mean temperature is calculated. This is the most accurate outcome, but may be slightly different from the mean derived from rounded monthly maximum and minimum.

Processing Updates and Errata: The CD Publications are periodically reproduced to include the addition of late reports and reported corrections. The GHCND data version noted on the cover of the publication provides the generation date.

The climate division temperature and precipitation values in this publication are based on simple averages from the current set of NWS-Designated Open and Published COOP and First Order Sites within each division. These values differ from those found in NCEI's nClimDiv product. Beginning in February 2014, the nClimDiv product is used by NCEI's Monitoring Branch and in its monthly climate reports. For more details on nClimDiv, please go to <http://www.ncdc.noaa.gov/monitoring-references/maps/us-climate-divisions.php>.

NOAA National Centers for Environmental Information
Attn: Customer Engagement Branch
151 Patton Avenue
Asheville, NC 28801-5001

Customer Services Number: (828) 271-4800, option 2
TDD : (828) 271-4010
Fax number: (828) 271-4876

NCEI now offers free online access to the *Climatological Data* publication.
Go to : www.ncdc.noaa.gov and choose Most Popular.