



CLIMATOLOGICAL DATA

VIRGINIA

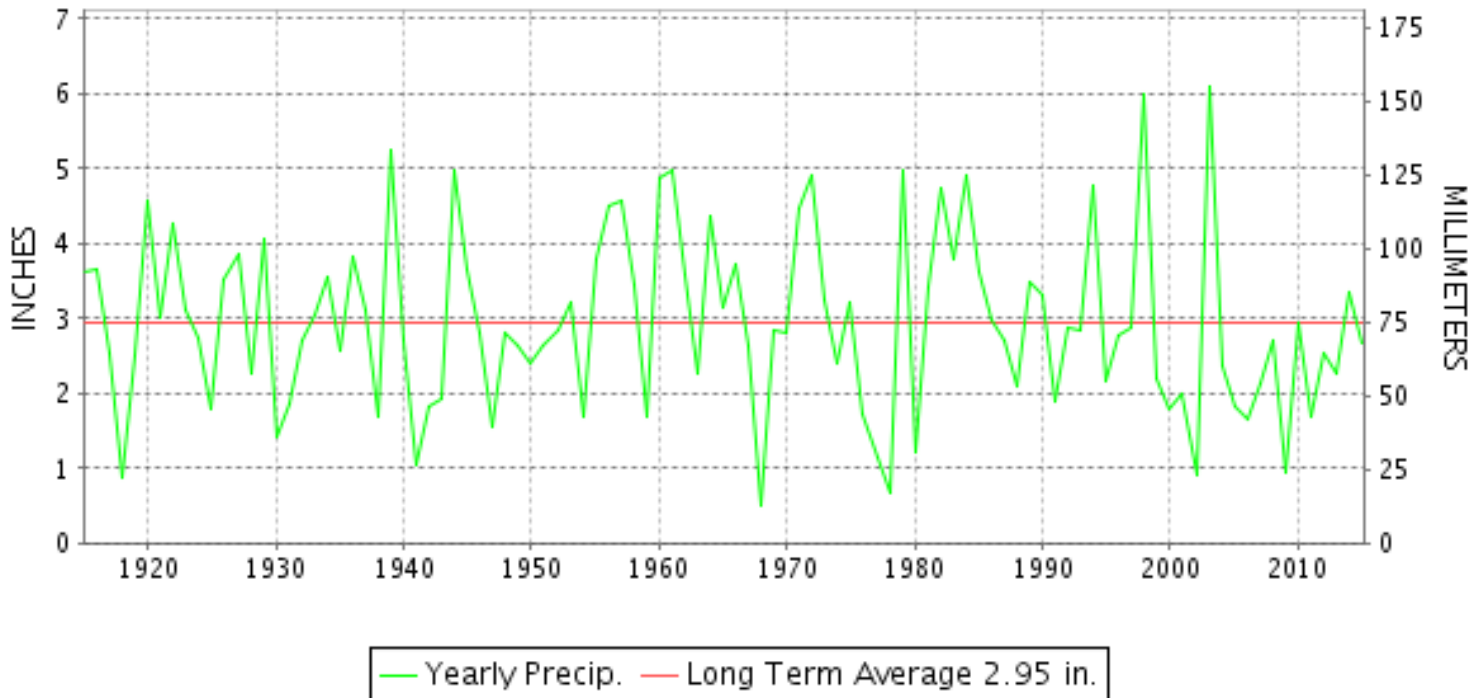
FEBRUARY 2015

VOLUME 125 NUMBER 02

ISSN 0364-5630

GHCND Ver: 3.20-upd-2015052705

FEBRUARY PRECIPITATION BY YEAR



TEMPERATURE AND PRECIPITATION EXTREMES

VIRGINIA

HIGHEST TEMPERATURE	73	FEBRUARY 08	DANVILLE REGIONAL AP
LOWEST TEMPERATURE	-23	FEBRUARY 21+	CLINTWOOD 1 W
GREATEST TOTAL PRECIPITATION	5.35		CHASE CITY
LEAST TOTAL PRECIPITATION	1.14		EDINBURG
GREATEST 1 DAY PRECIPITATION	4.00	FEBRUARY 17	CHASE CITY
GREATEST TOTAL SNOWFALL	41.7		WISE 3E
GREATEST DEPTH OF SNOW OR ICE	22		2 STATIONS

"I certify that this is an official publication of the National Oceanic and Atmospheric Administration (NOAA) It is compiled using information from weather observing sites supervised by NOAA/National Weather Service and received at the National Centers for Environmental Information(NCEI), Asheville, North Carolina 28801."

Director
National Centers for Environmental Information

noaa

National
Oceanic and
Atmospheric Administration

National
Environmental Satellite, Data
and Information Service

National
Centers for Environmental Information
Asheville, North Carolina

VIRGINIA
201502

MONTHLY STATION AND DIVISION SUMMARY

STATION	TEMPERATURE (°F)											PRECIPITATION (IN)												
	AVERAGE MAXIMUM	AVERAGE MINIMUM	AVERAGE	DEPARTURE FROM NORMAL	HIGHEST	DATE	LOWEST	DATE	HEATING DEG. DAYS	COOLING DEG. DAYS	NO. OF DAYS				TOTAL	DEPARTURE FROM NORMAL	GREATEST 24 HOURS	DATE	ICE PELLETS, SNOW			NO. OF DAYS		
											MAX		MIN						TOTAL	MAX DEPTH ON GROUND	DATE	.10 OR MORE	.50 OR MORE	1.00 OR MORE
											>=90	<=32	<=32	<=0										
PETERSBURG	41.0	19.3	30.2	-10.7	70	07	2	19	969	0	0	7	28	0	2.38	-0.30	0.80	08	M 12.0			5	2	0
RICHMOND INTL AP	41.9	20.9	31.4	-9.5	71	08	4	21+	935	0	0	7	25	0	3.77	1.01	0.77	22	12.2	6	17	8	3	0
SANDSTON	39.9	17.5	28.7	-10.8	69	09	-2	21	1011	0	0	7	27	2	MA 3.82	0.80	0.69	17	M 10.7	6	17	4	2	0
WINTERPOCK 4 W															3.25		1.03	22	M 10.5			6	3	1
--DIVISIONAL DATA-----> WESTERN PIEDMONT 03			31.0	-8.1B											3.11	-0.08B								
ALTAVISTA															2.18		0.65	17	0.0			5	2	0
APPOMATTOX	40.5	18.0	29.3	-9.3	70	09	-6	20	991	0	0	6	24	2	3.20	0.12	1.21	17	14.5	8	26	6	2	1
BEDFORD 4 NW															2.40		0.98	22	17.0	11	22	3	2	0
BROOKNEAL	42.8	16.4	29.6	-4.2	70	09	-9	20	982	0	0	6	27	2	1.69	-1.45	0.48	22+	11.0	6	26	5	0	0
CHARLOTTE COURT HOUSE	42.9	19.0	30.9	-7.9	70	09	-3	21+	947	0	0	5	25	2	2.28	-0.81	0.69	22	11.8	6	26	4	2	0
CHARLOTTESVILLE 2W	40.4	18.5	29.5	-9.6	71	09	-1	20	988	0	0	7	26	1	1.91	-1.16	1.02	22	14.7	10	22	4	2	1
CHATHAM	41.9	15.5	28.7	-8.8	67	09	-7	21+	1009	0	0	7	27	2	1.73	-1.28	0.65	26	9.5	6	26	5	1	0
CONCORD 4 SSW															2.07		0.82	22	12.0	8	17	6	1	0
DANVILLE REGIONAL AP	44.9M	22.3M	33.6M	-7.3	73	08	3	20	871E	0	0	4	25	0	2.28	-0.73	0.44	02	9.8	4	26	7	0	0
FREE UNION	40.1M	14.1M	27.1M		71	09	-6	21+	1056E	0	0	7	25	2	1.96		1.07	22	M 15.5	10	22	4	2	1
HOLCOMB ROCK															3.00		1.44	22	25.7	12	22	4	2	1
HUDDLESTON 4 SW															2.11		0.71	22	15.0	6	26	5	2	0
LYNCHBURG INTL AP	40.1	17.6	28.8	-9.4	67	08	-11	20	1006	0	0	8	27	1	2.52	-0.41	0.78	16	20.3	11	21	6	2	0
MARTINSVILLE FLTR PLT	43.4	16.2	29.8	-8.6	70	09	-7	21	981	0	0	5	27	2	2.47	-0.67	0.64	17	10.2	6	26	5	3	0
MEADOWS OF DAN 5 SW	41.4	18.8	30.1		67	10+	-3	21+	970	0	0	6	27	2	2.40		0.57	02	10.0	5	26	5	2	0
MONTEBELLO FISH CULTURAL STN	M	M	M		64	09	-11	20	1202E	0	0	6	14	4	M				M 14.1					
MONTECELLO	39.0	17.4	28.2	-8.0	68	08	1	21+	1025	0	0	8	27	0	2.46	-0.32	0.92	22	M 10.6	M 9	22	3	3	0
PEDLAR DAM															2.70		1.53	22	26.2	17	22	4	2	1
ROCKY MT	43.1	20.4	31.8	-6.5	70	09	0	21+	924	0	0	6	25	2	1.95	-1.13	0.71	17	13.5	7	17	5	1	0
SOUTH BOSTON	43.5	18.9	31.2	-8.2	71	09	1	21+	940	0	0	6	27	0	2.98	-0.14	0.94	10	8.4	6	26	6	3	0
STUART	45.2	19.0	32.1	-7.7	68	09	-5	21+	915	0	0	4	25	2	2.09	-1.16	0.59	02	13.7	5	26	6	2	0
TYE RIVER 1 SE	43.0	17.6	30.3	-8.7	70	09	-4	21+	964	0	0	5	25	2	2.56	-0.45	1.05	22	M 18.0	M 8	17	5	2	1
WOOLWINE															2.01		0.60	17	12.1	6	26	4	2	0
--DIVISIONAL DATA-----> NORTHERN 04			30.1	-8.8B											2.32	-0.97B								
BOSTON 4 SE	37.8M	14.7M	26.3M	-9.1	68	09	1	24	1078E	0	0	9	26	0	M 3.33	0.75	1.60	26	M 5.4	2	26	4	2	2
EDINBURG	35.8	11.6	23.7	-10.2	60	09	-6	24	1149	0	0	10	27	6	1.14	-0.67	0.86	22	14.0	9	22	1	1	0
FRONT ROYAL	37.2M	13.8M	25.5M	-10.7	61	09	1	21+	1097E	0	0	9	26	0	M 1.74	-0.91	0.85	22	M 13.0	9	22	4	1	0
LINCOLN	34.6M	12.8M	23.7M	-9.9	52	05	-5	24	1151E	0	0	10	26	4	M 0.20		0.20	28	M 2.0	4	23	1	0	0
LURAY 5 E	38.2	15.7	26.9	-9.6	69	09	-3	20	1057	0	0	9	27	1	1.15	-1.51	0.58	22	11.6	8	22	3	1	0
MADISON	41.8	22.6	32.2	-4.0	69	09	5	21	909	0	0	5	23	0	A 1.90	-1.03	0.44	18	M 13.9	7	26	3	0	0
MANASSAS	38.2M	15.3M	26.7M	-9.3	70	09	2	20	1061E	0	0	5	25	0	M 0.85		0.50	22	M 11.5	6	26	3	1	0

VIRGINIA
201502

MONTHLY STATION AND DIVISION SUMMARY

STATION	TEMPERATURE (°F)											PRECIPITATION (IN)												
	AVERAGE MAXIMUM	AVERAGE MINIMUM	AVERAGE	DEPARTURE FROM NORMAL	HIGHEST	DATE	LOWEST	DATE	HEATING DEG. DAYS	COOLING DEG. DAYS	NO. OF DAYS				TOTAL	DEPARTURE FROM NORMAL	GREATEST 24 HOURS	DATE	ICE PELLETS, SNOW			NO. OF DAYS		
											MAX		MIN						TOTAL	MAX DEPTH ON GROUND	DATE	.10 OR MORE	.50 OR MORE	1.00 OR MORE
											>=90	<=32	<=32	<=0										
MT WEATHER	31.9	12.6	22.2	-11.1	58	09	-3	21	1190	0	0	14	27	4	1.35	-1.61	0.76	22	M 12.5	9	22	3	1	0
PIEDMONT RSCH STN	38.4	17.0	27.7	-9.6	69	09	-2	20	1037	0	0	7	27	1	1.44	-1.31	0.71	22	13.3	6	17	2	2	0
SOMERSET	38.7	15.5	27.1	-9.4	69	09	1	20+	1055	0	0	8	28	0	1.58	-1.19	0.77	22	M 11.3	M 7	22	4	1	0
SPERRYVILLE	37.6M	15.6M	26.6M	-9.6	64	09	1	24	1066E	0	0	9	26	0	M 1.75	-1.09	1.02	22	M 12.2	M 9	22	4	1	1
STERLING RCS	34.8	14.0	24.4	-10.2	54	09+	-3	24	1131	0	0	9	28	2	1.89	-0.88	1.02	22	15.2	7	22	3	1	1
VIENNA	34.5	14.6	24.5	-11.2	64	09	-1	21+	1126	0	0	11	28	2	1.69	-1.12	0.83	22	13.3	9	22	3	1	0
WASHGTN DULLES INTL AP	35.7	15.0	25.4	-10.8	60	08	-4	24	1102	0	0	9	28	2	1.76	-0.98	0.93	21	16.1	7	22	6	1	0
WASHINGTON REAGAN AP	39.1	21.5	30.3	-8.7	68	08	5	20	964	0	0	7	24	0	1.68	-0.94	0.70	21	9.8	5	17	5	1	0
WINCHESTER	34.9	14.4	24.6	-10.3	57	09	0	20	1123	0	0	11	28	1	1.46	-0.86	0.80	22	M 12.2	7	22	4	1	0
WINCHESTER 7 SE	M	M	M									0	0	0	M				0.0					
WOODSTOCK 2 NE	36.8	12.9	24.8	-8.3	61	09	-2	25+	1117	0	0	9	28	3	1.78	-0.81	0.71	22	M 13.7	M 7	22	5	2	0
--DIVISIONAL DATA----->			26.0	-9.1B											1.57	-1.08B								
CENTRAL MOUNTAIN 05																								
BUENA VISTA															2.12		1.04	22	16.5	13	22	4	2	1
COVINGTON FLTR PLT	38.6	14.6	26.6	-9.9	70	09	1	20	1067	0	0	9	27	0	2.65	0.28	1.30	22	17.5	12	22	3	3	1
CRAIGSVILLE 2 S															M				0.0					
DALE ENTERPRISE	36.3	13.5	24.9	-8.0	67	09	-2	24+	1116	0	0	10	26	4	M 0.61	-1.61	0.25	02	18.3	14	22	3	0	0
GATHRIGHT DAM	35.6M	12.5M	24.0M	-10.1	66	09	-4	21+	1143E	0	0	11	26	2	3.18	0.58	1.65	22	16.9	12	23	3	3	1
GLASGOW 1 SE															2.62		1.17	22	21.1	13	22	6	2	1
HOT SPRINGS	35.3	11.1	23.2	-9.8	65	09	-9	21	1161	0	0	11	28	5	3.70	0.67	2.01	22	25.0	22	22	5	3	1
LEXINGTON	42.8M	17.2M	30.0M	-6.8	70	09	6	16+	971E	0	0	4	20	0	2.82	0.17	1.34	22	22.1	18	22	5	2	1
MILLGAP	34.5	6.2	20.3	-9.8	62	09	-16	25+	1244	0	0	11	26	11	3.31	0.33	1.86	22	F 27.2	17	22	3	2	1
MTN GROVE															3.10		1.55	22	19.5	15	22	5	3	1
MUSTOE 1 SW	32.1	7.8	19.9	-11.3	61	08	-11	24	1256	0	0	12	27	9	3.42	0.17	1.78	21	28.8	19	21	5	2	1
NEW CASTLE															2.58		1.30	22	21.6	16	22	6	1	1
ROANOKE 8 N	41.3	18.7M	30.0M	-8.7	70	09	1	21+	972E	0	0	8	25	0	2.81	0.17	1.40	22	17.1	9	26	5	2	1
ROANOKE INTL AP	41.0	20.3	30.6	-9.0	69	08	0	20	957	0	0	8	25	1	2.61	-0.28	1.04	21	19.1	12	21	5	2	1
STAUNTON WATER TRMTMT PLT	37.1	15.6	26.4	-9.2	67	09	-6	20	1076	0	0	9	26	3	2.26	-0.29	1.20	22	M 15.5	12	22	4	1	1
WAYNESBORO WTP	38.6	14.3	26.5	-8.4	69	09	-2	21+	1072	0	0	7	28	2	1.54	-1.38	0.51	22	F 16.1	F 11	22	6	1	0
--DIVISIONAL DATA----->			25.7	-9.9B											2.77	0.03B								
SOUTHWESTERN MOUNTAIN 06																								
ABINGDON 3S	36.1	13.8	25.0	-11.8	59	09	-15	20	1112	0	0	11	28	4	3.13	-0.61	1.00	22	F 11.4	F 6	26	8	2	1
BIG STONE GAP	37.9	14.9F	26.4F	-11.4	58	08	-17	20	1085	0	0	7	27	3	3.84	-0.56	1.08	22	32.0	22	26	7	2	2
BLACKSBURG NWSO	37.2	14.5	25.8	-8.4	63	09	-5	21+	1089	0	0	11	27	3	2.12	-0.69	0.66	17	19.4	9	26	5	2	0
BURKES GARDEN	30.2M	10.7M	20.5M	-11.1	52	10	-10	21+	1241E	0	0	15	24	6	M 2.99	-0.47	1.09	22	M 25.7	M 13	22	6	2	1
CHRISTIANSBURG	37.1	15.4	26.3	-9.5	62	09	-5	21+	1077	0	0	11	27	3	1.76	-1.07	0.64	17	16.7	7	26	4	1	0
CLINTWOOD 1 W	34.9	12.3	23.6	-11.0	62	09	-23	21+	1151	0	0	12	28	4	4.60	0.95	1.78	22	30.4	14	27	6	2	2

VIRGINIA
201502

MONTHLY STATION AND DIVISION SUMMARY

STATION	TEMPERATURE (°F)											PRECIPITATION (IN)												
	AVERAGE MAXIMUM	AVERAGE MINIMUM	AVERAGE	DEPARTURE FROM NORMAL	HIGHEST	DATE	LOWEST	DATE	HEATING DEG. DAYS	COOLING DEG. DAYS	NO. OF DAYS				TOTAL	DEPARTURE FROM NORMAL	GREATEST 24 HOURS	DATE	ICE PELLETS, SNOW			NO. OF DAYS		
											MAX		MIN						TOTAL	MAX DEPTH ON GROUND	DATE	.10 OR MORE	.50 OR MORE	1.00 OR MORE
											>=90	<=32	<=32	<=0										
COPPER HILL	35.5	14.1	24.8		63	09	-9	21	1117	0	0	10	25	5	2.05		0.65	17	19.3	9	20	4	2	0
GALAX RADIO WBRF	38.4	16.5	27.4	-7.4	65	09	-5	20	1046	0	0	8	25	2	1.85	-1.44	0.59	17	12.0	6	26	5	2	0
GALAX WTP	38.2	14.2	26.2	-8.1	65	09	-4	21+	1081	0	0	8	27	3	1.58		0.47	26	14.7	6	26	4	0	0
GRUNDY	35.8	14.9	25.3	-11.0	62	09	-17	21+	1105	0	0	11	28	3	4.37	1.28	1.50	22	19.8	11	19	6	3	2
JOHN FLANNAGAN LAKE	M	M	M		61	09	-1	19	1031E	0	0	3	11	1	MA 4.68		0.24	26	M 15.9	M 10	26	2	0	0
LAFAYETTE 1 NE															2.17		0.81	17	17.0	10	22	5	2	0
LEBANON	36.1	14.5	25.3	-10.6	59	10+	-18	21	1106	0	0	11	27	3	4.79	1.36	2.98	22	18.3	8	17	5	3	1
NORA 4 SSE	31.0M	15.6M	23.3M	-10.2	54	09	-8	20	1163E	0	0	13	19	3	M 2.32	-1.30	0.80	17	M 19.2	M 18	26	6	2	0
NORTH FORK LAKE	M	M	M		60	09	-1	19	1068E	0	0	5	15	1	MA 4.06		0.23	25	M 19.1	11	17	3	0	0
PULASKI 2 E	40.0	15.1	27.6	-8.1	64	09	-8	21	1040	0	0	9	26	4	2.23	-0.46	1.32	22	13.0	6	26	4	2	1
RADFORD 3 N	36.4	14.9	25.6	-8.5	61	09	-3	21+	1096	0	0	11	28	3	2.19	-0.55	0.70	17	24.8	11	22	5	2	0
RICHLANDS	38.1M	16.1M	27.1M	-8.1	58	09	-5	21	1055E	0	0	8	26	2	M 3.49	0.58	1.41	22	M 20.1	M 11	17	8	3	1
SALTVILLE 1N	38.2M	15.5M	26.8M	-9.3	59	09	-8	21	1062E	0	0	8	27	2	3.20	-0.27	0.94	22	16.6	12	22	6	2	0
STAFFORDSVILLE 3 ENE	36.6	13.4	25.0	-10.0	63	09	-5	20	1115	0	0	11	28	3	2.02	-0.71	0.87	22	14.5	8	26	3	2	0
WILLIS															1.80		0.51	17	10.5	5	19	5	1	0
WISE 3E	35.8	16.2	26.0	-10.8	55	08	-15	20	1085	0	0	11	25	3	3.50	-0.48	1.07	21	41.7	15	21	8	2	1
WYTHEVILLE 1 S	36.3	14.8	25.6	-8.3	58	09	-5	21+	1098	0	0	11	27	5	2.11	-0.69	0.58	22	14.4	5	17	5	1	0
--DIVISIONAL DATA----->			25.5	-9.7B											2.74	-0.64B								

VIRGINIA
201502

DAILY PRECIPITATION (INCHES)

STATION	TOTAL	DAY OF MONTH																																				
		01	02	03	04	05	06	07	08	09	10	11	12	13	14	15	16	17	18	19	20	21	22	23	24	25	26	27	28	29	30	31						
VIRGINIA																																						
TIDEWATER 01																																						
DISPUTANTA	3.05		0.21	0.07						0.61			0.03	T			0.50	0.51	0.04				0.21	0.01	T	T	0.86											
EASTVILLE	MA 2.11		0.11						-	*	*	*	*	*	*	*	*	*	*	*	*	*	*	*	*	*	*	1.60 _a	0.40									
EMPORIA 1 WNW	M		0.14	0.09						0.62	0.05					-	-	-	-	-	-	-	-	-	-	-	-	-	-	-	-	-	-	-				
FREDERICKSBURG SEWAGE	2.28		0.08	0.25						0.23	0.02		0.08					0.70					0.75				0.17	T										
HOLLAND 1 E	3.04	0.40	0.01	0.22	0.25	0.15	0.02					0.29	0.49	0.01	0.49			0.02	0.02				0.39	0.03		0.20	0.02	0.02	0.02	0.01								
HOPEWELL	M 2.40		0.22							0.71		0.02		-		0.02	0.30					T	0.40	T			0.73											
NORFOLK INTL AP	2.54	0.01	0.30							0.27	0.07	T	0.03		T		0.46	0.61	T				0.07	0.02	0.14	0.01	0.55											
NORFOLK SOUTH	3.04	0.01	0.34		0.04					0.24	0.13		0.04		T		0.46	0.61	T				T	0.06	0.05	0.14	0.01	0.91										
NORTH	2.75			0.27							0.41			0.12		0.02		0.58		0.15						0.12	1.00	0.08										
PAINTER 2W	2.47		0.24								0.42		0.03					0.75		0.03			0.41			0.09	0.50											
STONY CREEK 2 N	4.12	0.22	0.10								0.70						0.50	0.10					1.90			0.60												
SUFFOLK LAKE KILBY	2.93	0.02	0.33			T				0.25	0.26		0.08		0.01		0.35	0.43	0.03				0.02	T	0.18	T	0.97	T										
WAKEFIELD 1NW	3.24	T	0.26							0.35	0.39		0.03		T		0.59	0.51	0.04				0.05	0.09	T	0.04	0.03	0.86										
WALKERTON 2 NW	2.61		0.34								0.51	0.07				T	T	0.20	T				T	1.30			0.19											
WALLACETON LK DRUMMOND	3.15		0.14	0.25		0.05					0.59	0.11		0.05			0.90						0.08			0.15	0.83											
WALLOPS ISLAND NASA TEST FACIL	3.06	0.07	0.21							0.06	0.25		0.02		0.08		0.36	0.41	0.04	T	T		0.38	0.73		0.06	0.38	0.01										
WARSAW 2 NW	2.84		0.35								0.41		0.03				0.70						0.52	0.60			0.22	0.01										
WEST POINT 2 NW	3.37		0.38								0.50	0.09				0.02	0.03	0.70		0.05			0.04	0.83	T	0.02	0.01	0.70										
WILLIAMSBURG 2 N	2.81	0.05	0.22							0.27	0.36	0.06				0.41	0.39	0.07				0.02	0.26	T	0.05	0.65												
EASTERN PIEDMONT 02																																						
ALBERTA 5N	2.90		0.10	0.07							0.98	0.03				T		0.75		T				0.25		T	T	0.72	T									
AMELIA COURTHOUSE 1	3.71		0.12	0.27							0.78	0.08				0.30	0.70							1.12			0.34											
ASHLAND	3.33		0.35								T	0.72	0.03		T	0.10	0.10	0.68	T	T		0.15	0.86		T	0.34												
BREMO BLUFF	M 4.82		0.09		0.05						0.18	0.05					0.80		-				1.05		-	2.50	0.10	-										
BUCKINGHAM	2.67		0.11	0.21							0.24	0.03				0.05	0.72						0.95			0.36												
CAMP PICKETT	2.41		0.30								0.40						0.97						0.04			0.70												
CHASE CITY	5.35		0.20								1.10	0.05					4.00																					
CLARKSVILLE	M 3.40		0.10	0.22							1.10	0.10					0.71						-	0.40		-	0.77											
CORBIN	2.22			0.29							0.21						0.80						0.62			0.30												
CROZIER	4.25		0.09	0.42							0.42						1.35							1.10			0.87											
FARMVILLE 2 N	3.39		T	0.44							0.51	T			0.05	0.95	0.95						0.95			0.49												
GREENBAY 3 NE	M	-	-	-	-	-	-	-	-	-	-	-	-	-	-	-	-	-	-	-	-	-	-	-	-	-	-	-	-	-	-	-	-	-	-	-	-	
JOHN H KERR DAM	M 3.76		0.11	0.21							0.74	0.01					0.95	0.27	0.33				-	-	0.29	0.04		0.80	0.01									
LOUISA	1.50		0.14								0.06					0.06	0.45						0.26	0.37			0.16											
PALMYRA 3S	2.43	T	0.12	0.06							0.21					T	0.80			T			0.97			0.18	0.09											
PETERSBURG	2.38	0.14							0.80	0.02						0.55	0.05						0.36			0.46												
RICHMOND INTL AP	3.77	T	0.47							0.19	0.37		0.03		T	0.51	0.18	T					0.76	0.77	T	T	0.49											
SANDSTON	MA 3.82		0.08	*	*	0.34 _a					0.60			0.04			0.69					*	*	*	*	1.45 _a	0.43	0.19	-									
WINTERPOCK 4 W	3.25		0.15	0.18							0.59	0.02					0.77						1.03				0.48	0.03										
WESTERN PIEDMONT 03																																						

VIRGINIA
201502

DAILY PRECIPITATION (INCHES)

STATION	TOTAL	DAY OF MONTH																															
		01	02	03	04	05	06	07	08	09	10	11	12	13	14	15	16	17	18	19	20	21	22	23	24	25	26	27	28	29	30	31	
CENTRAL MOUNTAIN 05																																	
BUENA VISTA	2.12		0.22	0.04						0.05					0.02		0.57		T		T	1.04					0.17	0.01					
COVINGTON FLTR PLT	2.65		0.50	0.05					T						0.05	T	0.65		T		0.01	1.30					0.09						
CRAIGSVILLE 2 S	M	-	-	-	-	-	-	-	-	-	-	-	-	-	-	-	-	-	-	-	-	-	-	-	-	-	-	-	-	-	-	-	
DALE ENTERPRISE	M 0.61		0.25							0.06					0.20		-				-	-	-	-	-	-	0.10	-	-	-	-	-	
GATHRIGHT DAM	3.18		0.68							T			T		0.05		0.61		0.04		0.09	1.65				0.06							
GLASGOW 1 SE	2.62		0.10	0.22						0.11			T		0.02		0.74		0.05			1.17			T	0.20	0.01						
HOT SPRINGS	3.70		0.64	0.02						0.06			T		0.10		0.72				0.10	2.01				0.05							
LEXINGTON	2.82		0.29	0.05						0.04	0.26				0.02		0.69		0.02		T	1.34			T	0.11	T						
MILLGAP	3.31		0.76	0.02							T			0.05		0.09		0.44		0.04			1.86			0.05	T						
MTN GROVE	3.10		0.50							0.10			T		0.10		0.75		0.05		T	1.55				0.05							
MUSTOE 1 SW	3.42	0.63	0.16			T				0.02			0.06		0.09		0.45	T	0.06	0.03		1.78	0.04			0.10							
NEW CASTLE	2.58		0.32	0.13							0.04					T	T	0.37			0.24	1.30				0.18							
ROANOKE 8 N	2.81		0.23							T	0.05				0.10	T	0.69				0.01	1.40				0.33							
ROANOKE INTL AP	2.61	0.03	0.13							0.04	0.03			T		0.89	0.10	0.01	0.01			1.04	0.03			0.26							
STAUNTON WATER TRMTMT PLT	2.26		0.43							0.11	T				T		0.43			T	0.04	1.20				0.05							
WAYNESBORO WTP	1.54		0.14			0.10				0.17					0.04		0.44					0.51				0.14							
SOUTHWESTERN MOUNTAIN 06																																	
ABINGDON 3S	3.13		0.45	0.07						0.05	0.07				0.02		0.60		0.12		0.25	1.00	0.10	0.15	T	0.25							
BIG STONE GAP	3.84		1.00	T		T				0.04				T	0.05		0.48	T	T		0.27	1.08		0.26		0.26						0.40	
BLACKSBURG NWSO	2.12		0.13	0.18			T			T	0.06		T	0.01	0.05	T	0.66	T	0.03		0.05	0.64	T		0.02	0.29	T				T		
BURKES GARDEN	M 2.99		0.46	0.23		T				-	T		T	0.05	0.14	T	0.77	T	0.02	T	0.14	1.09	T	0.03	0.06	-	T						
CHRISTIANSBURG	1.76	0.02	0.09	0.03						0.05				T	0.05	T	0.64		0.05		0.10	0.43				0.30							
CLINTWOOD 1 W	4.60		0.49	0.03		0.04	T			0.01	0.07	T	T	0.03	0.22	T	1.30		0.07		0.20	1.78		0.03	0.06	0.25	0.02				T		
COPPER HILL	2.05		0.05	0.04						0.03				0.01	0.03	0.01	0.65		0.15		0.01	0.60			0.02	0.45							
GALAX RADIO WBRF	1.85		0.18												0.02		0.59		0.04		0.18	0.28		0.03		0.53							
GALAX WTP	1.58		0.15	0.01						T					0.02		0.41		0.02		0.02	0.45			0.01	0.02	0.47						
GRUNDY	4.37		0.58	0.01		0.01				0.05	0.10		T	0.03	0.05		1.29		0.05		0.35	1.50	T	T	0.01	0.34	T						
JOHN FLANNAGAN LAKE	MA 4.68	*	*	0.75 _a		0.03		*	*	0.08 _a	0.02		0.01	0.05	*	*	*	*	1.41 _a	0.14	0.02	*	*	1.85 _a	0.02	0.06	0.24	-	-	-	-		
LAFAYETTE 1 NE	2.17		0.13	T							0.03				0.02	T	0.81		0.02		0.19	0.76			T	0.21							
LEBANON	4.79		0.52							0.02				0.01	0.01		0.66				0.08	2.98	0.04	0.25	0.21	0.01					T		
NORA 4 SSE	M 2.32		0.51	0.17		0.02	T			T	0.16	0.01	-	-	-		0.80	0.01	0.18		-	-	-	0.08	0.09	0.28	0.01					T	
NORTH FORK LAKE	MA 4.06	*	*	0.98 _a		0.01		*	*	0.04 _a	0.15	T		0.04	*	*	0.87 _a		0.06	*	*	1.50 _a		0.23	0.18	-	-	-	-				
PULASKI 2 E	2.23		0.19								T				T		0.50				T	1.32			T	0.22							
RADFORD 3 N	2.19	0.01	0.28	0.02			T			T	T			T	0.02	T	0.70		0.06	0.06	0.15	0.66			0.23								
RICHLANDS	M 3.49		0.55	0.07							0.02			0.02	0.10		0.72		0.10		-	0.15	1.41		0.10	0.24	0.01						
SALTVILLE 1N	3.20		0.49	0.04							0.03			0.01	0.11	T	0.88	T	0.09		0.24	0.94		0.09	0.07	0.21	T						
STAFFORDSVILLE 3 ENE	2.02		0.06	0.05						0.01				T	0.02	T	0.70		0.02		0.05	0.87			T	0.24	T					T	
WILLIS	1.80		0.20	0.10							0.03				0.06		0.51		0.04		0.06	0.44				0.36							
WISE 3E	3.50	0.03	0.70			0.02				0.14	0.03		0.05	0.02	0.03	0.05	0.36	0.30	0.14	0.21	0.04	1.07		0.02	0.05	0.22	0.02						
WYTHEVILLE 1 S	2.11		0.22	0.09										0.06	0.18		0.49		0.07		0.06	0.58		0.05	0.04	0.27							

VIRGINIA
201502

DAILY TEMPERATURES (°F)

STATION	OB. TIME	MAX/MIN	DAY OF MONTH																															AVERAGE
			01	02	03	04	05	06	07	08	09	10	11	12	13	14	15	16	17	18	19	20	21	22	23	24	25	26	27	28	29	30	31	
ASHLAND	18	MIN		25	19	19	27	11	11		34	32	28	27	18	17	11		14	9	8	-2	2	18	32	16	16	22	21	19				18.2
		MAX	47	57	40	56	46	39	59	71	59	38	46	48	32	46	30	21	33	37	31	22	32	50	38	29	45	42	38	37				41.8
CAMP PICKETT	08	MIN	21	33	18	23	27	10	23	34	36	29	27	24	13	17	11	9	14	5	8	-5	2	29	26	13	18	28	19	15			18.8	
		MAX	43	55	57	42	54	42	39	57	69	66	39	49	49	33	48	27	19	33	40	19	21	34	55	39	26	46	36	43			42.1	
CHASE CITY	17	MIN	17	29	19	19	25	11	12	27	40	32	28	26	20	16	12	12	15	12	10	0	-2	13	32	19	18	19	22	19			18.6	
		MAX	47	56	57	45	55	48	42	58	71	60	44	51	50	37	50	32	25	38	41	26	28	38	57	43	28	48	39	45			45.0	
CLARKSVILLE	07	MIN	28	37	25	26	29	19	25	31	42	36	32	29	26	21	18	21	21	15	15	9	10	26	27	26	22	26	22	22			24.5	
		MAX	46	56	58	58	55	50	41	59	72	61	42	53	53	36	50	29	22	36	41	20		33	56	44		48	38	45			46.2	
CORBIN	09	MIN	21	33	24	24	31	15	14	25	38	34	30	28	22	20	12	12	17	15	11	4		28	33	23		29	22	23			22.6	
		MAX	47	56	38	57	49	37	56	69	59	38	45	39	30	45	40	17	30	36	31	20	31	47	38	27	44	36	36	32			40.4	
CROZIER	07	MIN	22	29	19	25	25	9	24	45	35	30	26	24	12	17	10	10	13	6	9	-6	6	31	25	9	16	28	26	18			19.4	
		MAX	41	52	55	40	56	38	39	58	70	55	38	47	47	30	45	25	19	33	36	19	20	42	50	38	27	43	35	38			40.6	
FARMVILLE 2 N	07	MIN	15	28	20	23	28	10	15	30	43	30	26	24	15	16	10	10	14	7	8	-2	3	15	29	13	15	22	24	16			18.1	
		MAX	45	54	55	42	55	43	40	60	70	63	42	50	48	34	48	27	19	35	38	19	21	32	54	42	28	43	36	42			42.3	
GREENBAY 3 NE	09	MIN	16	29	20	20	26	11	11	30	38	32	26	26	18	17	11	11	14	8	8	-5	-5	11	32	16	16	17	21	18			17.6	
		MAX																																M
JOHN H KERR DAM	08	MIN																															M	
		MAX	48	54	58	44	55	47	41	58	71	61	41	51	53	34	50	30	22	36	42			35	54	41	29	46	34	47			45.5	
LOUISA	18	MIN	26	33	22	25	35	14	18	29	46	34	29	28	21	21	12	14	16	16	12			21	34	22	22	29	24	22			24.0	
		MAX	46	52	41	57	50	41	55	70	64	43	49	46	33	46	44	23	34	37	31	23	26	52	43	29	43	40	39	33			42.5	
PALMYRA 3S	06	MIN	24	32	21	25	26	9	24	35	40	32	26	25	13	17	11	8	15	2	8	-5	2	26	29	7	19	29	24	14			19.2	
		MAX	42	45	52	40	57	37	41	58	71	56	41	49	50	32	47	25	20	33	36	19	21	32	49	40	26	43	37	38			40.6	
PETERSBURG	08	MIN	16	28	20	18	22	6	20	26	31	32	23	22	15	12	10	6	13	0	0	-11	-7	8	30	10	14	20	20	16			15.0	
		MAX	59	42	56	43	40	60	70	64	37	47	47	32	47	27	27	19	34	40	21	22	37	52	39	28	48	37	39	35			41.0	
RICHMOND INTL AP	24	MIN	20	20	29	15	15	25	32	32	30	29	18	18	14	13	13	15	12	13	2	3	14	32	19	19	22	25	21	21			19.3	
		MAX	50	58	42	57	45	43	61	71	59	38	49	48	31	48	27	22	32	39	23	21	34	51	39	27	47	37	37	36			41.9	
SANDSTON	07	MIN	24	29	20	27	22	12	23	36	35	32	28	27	17	19	14	12	17	12	9	4	4	33	22	17	20	24	25	20			20.9	
		MAX	39	54	57	39	55	40	40	58	69	56	36	43	46	28	46	24	20	30	37	19	18	34	48	37	28	44	36	35			39.9	
WESTERN PIEDMONT 03 APPOMATTOX	07	MIN	16	23	19	19	26	12	12	24	36	32	28	25	16	15	13	10	12	10	-1	-2	11	30	15	15	21	25	18			17.5		
		MAX	42	52	52	39	52	42	39	58	70	63	44	49	46	30	46	24	18	33	35	15	18	35	51	40	26	41	35	39			40.5	
BROOKNEAL	07	MIN	20	33	21	23	26	13	14	35	40	32	25	25	17	17	8	8	12	11	4	-6	-5	12	34	15	15	18	22	16			18.0	
		MAX	46	56	56	41	54	44	41	59	70	64	46	50	48	33	48	25	21	36	39	17	20	32	55	45	29	45	37	41			42.8	
CHARLOTTE COURT HOUSE	07	MIN	20	31	19	18	19	11	11	21	26	35	23	23	20	13	12	13	16	6	4	-9	-7	9	32	22	16	18	20	18			16.4	
		MAX	41	56	53	43	55	46	43	60	70	61	43	51	49	33	48	31	24	37	36	19	22	33	55	43	27	45	37	41			42.9	
CHARLOTTESVILLE 2W	08	MIN	21	34	20	21	26	12	13	29	36	32	27	26	20	18	13	13	18	9	9	-3	-3	12	33	19	19	20	18	19			19.0	
		MAX	42	47	50	40	57	34	40	51	71	54	43	49	47	32	47	23	19	36	37	17	23	32	50	37	29	45	38	41			40.4	
CHATHAM	07	MIN	21	28	22	23	26	14	17	37	40	31	27	29	13	13	8	8	12	13	6	-1	1	12	32	9	12	25	26	15			18.5	
		MAX	45	52	52	39	52	40	40	56	67	62	45	48	50	32	45	30	21	37	39	19	21	32	56	45	26	44	35	43			41.9	
DANVILLE REGIONAL AP	24	MIN	14	30	17	17	18	9	8	19	25	35	21	22	19	11	11	10	14	8	5	-7	-7	11	31	22	17	17	20	17			15.5	
		MAX	57	58	44	56	46	43	60	73	59	47	52	51	36	50		23	38	40	20	24	36	59	48	30	46	38	42	36			44.9	
		MIN	31	27	21	24	25	13	23	30	43	35	26	26	19	16		17	17	13	9	3	12	32	29	21	20	27	22	22			22.3	

VIRGINIA
201502

DAILY TEMPERATURES (°F)

STATION	OB. TIME	MAX/MIN	DAY OF MONTH																															AVERAGE		
			01	02	03	04	05	06	07	08	09	10	11	12	13	14	15	16	17	18	19	20	21	22	23	24	25	26	27	28	29	30	31			
FREE UNION	08	MAX	42	42	51	40	57	35	42	52	71	53	44	49	46	32	47	24	18	34	32	16	21	26	48			43	36	41						40.1
		MIN	14	28	20	18	18	9	9	26	29	31	20	20	13	13	8	7	12	2	2	-6	-6	9	25											14.1
LYNCHBURG INTL AP	24	MAX	48	50	39	53	42	41	58	67	65	47	51	45	31	47	25	18	34	34	15	18	31	51	41	27	41	35	37	32					40.1	
		MIN	30	24	16	21	15	9	24	32	37	29	23	20	16	15	8	12	13	2	2	-11	3	31	24	17	16	28	18	18					17.6	
MARTINSVILLE FLTR PLT	07	MAX	48	55	52	44	54	42	41	58	70	60	49	54	49	35	49	25	21	39	37	17	25	33	59	46	27	45	39	42					43.4	
		MIN	16	31	18	18	18	9	9	20	26	38	21	21	19	11	11	11	14	9	8	-6	-7	19	32	21	16	16	19	16					16.2	
MEADOWS OF DAN 5 SW	07	MAX	46	52	52	43	50	37	40	57	67	67	49	54	41	34	46	24	19	37	32	14	26	34	51	43	26	43	37	38					41.4	
		MIN	21	34	23	23	24	19	18	28	28	29	27	27	16	16	7	7	14	15	4	-3	-3	18	32	20	19	19	22	22					18.8	
MONTEBELLO FISH CULTURAL STN	07	MAX	37	46	44		49	30			64				55	35		35	14	11		23	5		39		31								M	
		MIN	19	32	12		13	10			43				22	5		-3	1	5		-4	-11		-9		4								M	
MONTECELLO	08	MAX	39	48	50	50	54	36	38	68	63	53	42	46	46	29	45	21	18	30	33	14	17	31	45	36	27	39	36	37					39.0	
		MIN	19	31	23	22	24	13	13	30	43	30	26	26	12	12	8	9	11	11	5	1	1	7	31	9	11	19	25	15					17.4	
ROCKY MT	07	MAX	48	54	52	45	54	41	45	60	70	65	49	55	43	35	47	24	20	39	35	15	27	32	55	46	28	44	39	40					43.1	
		MIN	30	33	23	24	25	11	11	30	34	37	26	26	17	17	9	9	13	13	6	0	0	27	31	23	22	28	27	20					20.4	
SOUTH BOSTON	07	MAX	46	57	56	44	55	48	42	59	71	60	45	50	50	35	49	29	21	36	40	21	22	32	57	45	25	46	36	42					43.5	
		MIN	18	31	23	21	21	14	13	23	31	35	27	26	21	15	12	12	15	12	11	1	1	14	32	22	19	20	20	20					18.9	
STUART	07	MAX	50	53	51	44	52	41	43	58	68	64	53	56	48	38	50	50	21	42	37	18	28	40	59	47	28	45	39	43					45.2	
		MIN	20	37	18	23	24	12	12	22	26	40	28	27	19	16	10	10	15	13	5	-5	-5	22	37	22	18	21	24	21					19.0	
TYE RIVER 1 SE	07	MAX	48	50	45	42	58	40	42	58	70	53	48	52	50	34	50	30	22	40	37	20	25	34	55	42	30	45	40	44					43.0	
		MIN	18	30	22	21	22	9	10	35	41	34	24	25	25	24	7	8	15	10	4	-4	-4	12	32	14	11	12	21	14					17.6	
NORTHERN 04																																				
BOSTON 4 SE	07	MAX	36	47	50	36	55	31		47	68	49	41		46	44	45	20	21	30	32	15	20	31	48	34	26	41	35	34					37.8	
		MIN	20	28	22	18	18	7		18	18	30	25		11	11	8	7	8	6	4	3	6	13	31	1	9	26	23	12					14.7	
EDINBURG	07	MAX	39	41	44	33	55	29	41	54	60	48	37	41	38	29	41	16	14	32	30	12	18	33	51	31	29	38	34	33					35.8	
		MIN	14	26	18	18	19	9	12	25	36	30	29	29	7	7	4	4	8	-5	-5	-1	-2	10	10	-6	-5	12	19	4					11.6	
FRONT ROYAL	07	MAX	37	40	45	35	53	32	40	47	61	48	39	43	39	28	42	15	15			32	32	19	42	48	32	27	40	40	34					37.2
		MIN	15	15	19	21	25	10	11	32	36	29	28	27	8	7	5	4	4			6	1	1	10	10	2	2	17	17	11					13.8
LINCOLN	07	MAX	32	39	45	34	52	33	37	45	51	39	37	42	39	25	40	16		26	31	15	17	46	31	26	39	33	29					34.6		
		MIN	15	26	20	21	23	7	9	24	27	29	24	24	9	9	5	5		-2	-3	1	3		28	-5	-4	5	21	13					12.8	
LURAY 5 E	08	MAX	38	44	47	36	57	29	40	55	69	53	36	43	41	31	42	19	25	33	32	12	20	42	51	30	31	40	40	34					38.2	
		MIN	21	32	18	21	26	6	15	32	37	30	29	29	6	11	5	5	4	4	2	-3	2	15	30	1	9	24	22	6					15.7	
MADISON	08	MAX	43	43	53	42	57	41	44	53	69	51	46	45	45	36	47	28	26	35	37	22	24	38	49	40	32	44	40	40					41.8	
		MIN	24	33	26	28	29	20	20	33	40	36	29	30	20	21	19	17	21	16	15	6	5	15	36	15	15	15	29	20					22.6	
MANASSAS	07	MAX	35	43	49	37	56	36	37	48	70		41	46	41	40	43		15	29	34	16	20	33	48	34	34	40	35	32					38.2	
		MIN	17	28	21		28	10	10	25	30		25	25	11	11	7	7	7	9	10	2	3	13	33	5	5	15	27	13					15.3	
MT WEATHER	07	MAX	32	41	42	32	46	25	34	49	58	36	34	40	36	23	36	13	10	28	27	10	15	37	45	25	24	36	29	29					31.9	
		MIN	11	30	15	16	25	10	12	32	34	25	23	23	5	4	1	-1	0	6	3	-2	-3	7	24	3	3	18	18	10					12.6	
PIEDMONT RSCH STN	08	MAX	41	44	52	38	57	35	40	52	69	51	41	47	41	31	45	22	18	29	33	14	21	33	49	37	28	39	35	33					38.4	
		MIN	15	29	21	24	26	10	14	29	40	31	27	28	11	12	9	7	12	11	7	-2	2	11	32	6	10	18	24	12					17.0	
SOMERSET	07	MAX	42	48	52	38	56	36	41	52	69	51	43	47	42	31	47	22	19	29	33	16	19	32	46	37	26	40	35	34					38.7	
		MIN	18	28	22	19	22	8	12	30	32	32	20	23	12	14	9	8	12	1	4	1	2	13	31	5	7	12	25	12					15.5	
SPERRYVILLE	06	MAX	40	40	49	38	54	31	40	47	64	47	41	47	37	29	45	19	17	30	29		20	29	52	35	25	40	35	36					37.6	

VIRGINIA
201502

DAILY TEMPERATURES (°F)

STATION	OB. TIME	MAX/MIN	DAY OF MONTH																															AVERAGE		
			01	02	03	04	05	06	07	08	09	10	11	12	13	14	15	16	17	18	19	20	21	22	23	24	25	26	27	28	29	30	31			
STERLING RCS	07	MIN	21	28	22	19	19	8	10	27	33	32	30	31	10	9	7	8	9	5	6		2	10	29	1	4	12	23	7						15.6
		MAX	33	40	47	36	54	33	36	46	54	40	37	44	39	26	42	16	15	27	32	15	18	37	45	33	27	38	34	30						34.8
VIENNA	07	MIN	15	26	20	21	25	9	11	24	29	28	24	24	10	10	6	5	6	5	5	1	2	13	32	-3	-1	8	26	12					14.0	
		MAX	32	39	46	35	45	28	35	44	64	39	36	43	38	42	42	16	14	26	31	17	14	33	47	30	26	39	34	30						34.5
WASHGTN DULLES INTL AP	24	MIN	16	26	20	21	16	11	11	27	32	28	24	24	10	10	6	5	5	9	9	-1	-1	11	30	4	4	14	27	11					14.6	
		MAX	41	47	36	54	41	36	47	60	39	38	45	40	27	42	18	16	28	33	15	19	33	46	38	27	38	34	31	30						35.7
WASHINGTON REAGAN AP	24	MIN	18	23	21	21	17	9	17	27	32	29	25	17	11	13	6	6	7	2	6	0	9	32	11	-4	6	28	20	12					15.0	
		MAX	44	50	39	55	44	38	50	68	45	40	47	44	30	45	22	20	31	34	21	22	35	50	41	30	42	39	35	33						39.1
WINCHESTER	07	MIN	27	27	25	29	21	17	26	35	34	33	29	20	15	18	11	10	17	13	11	5	14	35	19	14	21	31	25	20					21.5	
		MAX	35	41	35	35	53	27	41	53	57	40	39	43	38	28	39	16	15	31	30	13	21	35	49	27	29	42	34	32						34.9
WINCHESTER 7 SE	08	MIN	14	29	18	20	22	10	16	29	32	29	27	27	8	8	3	2	5	7	7	0	1	13	26	1	2	19	19	8					14.4	
		MAX																																		
WOODSTOCK 2 NE	07	MIN	39	41	47	35	55	30	41	55	61	49	39	41	39	28	42	16	14	34	41	12	17	34	52	31	31	39	35	32					36.8	
		MAX	14	28	19	19	21	9	11	25	30	26	28	29	7	7	4	3	8	1	0	1	1	10	31	-2	-2	8	19	6						12.9
CENTRAL MOUNTAIN 05 COVINGTON FLTR PLT	07	MIN	43	50	47	39	58	35	41	60	70	59	46	51	38	31	23	13	15	34	31	12	22	32	53	35	28	42	39	33					38.6	
		MAX	13	28	20	18	18	9	5	18	26	40	26	28	11	11	2	2	8	7	4	1	3	11	32	9	9	18	23	10						14.6
DALE ENTERPRISE	07	MIN	39	42	47	35	53	40	39	55	67	51	36	42	40	29	41	18	12	29	29	13	30	35	33	35	26	37	32	32					36.3	
		MAX	11	33	15	19	21	9	9	29	41	30	27	27	9	9	3	3	6	0	1	-2	-1	7	30	-2	4	8	22	10					13.5	
GATHRIGHT DAM	07	MIN	40	43	40	35	52	32	38	55	66	56	42	47	34	28	38	15	13	31	25	6	18	49	30	25	37	38	28						35.6	
		MAX	10	28	16	18	18	8	8	23	26	38	24	25	7	7	3	3	7	6	3	-4	-4		9	5	7	19	20	7						12.5
HOT SPRINGS	07	MIN	38	48	41	33	52	30	36	53	65	56	42	48	34	28	37	13	14	32	25	6	16	34	48	31	25	37	36	29					35.3	
		MAX	10	29	13	13	21	8	7	22	30	30	23	25	5	5	0	0	6	3	-2	-8	-9	9	27	4	6	15	15	5						11.1
LEXINGTON	07	MIN	44	48	49	39	55	40	42	58	70	61	44	51	42	32	44	21	16																	M
		MAX	19	30	20	18	18	9	9	23	27	34	31	31	12	12	6	6	11																	M
MILLGAP	07	MIN	37	40	42	42	48	31	33	51	62	53	40	49	49	33	33	12	11	30	22	3	18	32	47	28	23	36	34	26					34.5	
		MAX	13	23	10	10	13	3	2	19	34	33	19	23	-1	-2	-2	-3	3	-4	-8	-9	-11	3	26	-16	-16	12	9	-9						6.2
MUSTOE 1 SW	24	MIN	39	39	32	47	39	33	50	61	53	38	46	34	25	34	10	9	30	21	3	15	22	47	33	21	35	33	26	25					32.1	
		MAX	19	14	8	12	8	1	17	23	35	28	24	8	1	2	-3	-5	5	-5	-4	-8	-4	22	-2	-11	14	22	1	-5					7.8	
ROANOKE 8 N	07	MIN	45	49	50	43	57	39	46	63	70	62	47	54	43	32	47	23	15	37	31	13	23	32	53	37	28	42	39	37					41.3	
		MAX	19	32	21	23	24	13	13	29	33	38	32	25		9	8	8	12	10	5	1	1	13	32	19	18	27	24	17						18.7
ROANOKE INTL AP	24	MIN	50	50	43	56	45	46	63	69	65	47	53	43	33	46	22	17	34	32	13	22	30	53	39	27	43	39	35	32					41.0	
		MAX	34	24	22	24	19	17	27	37	43	32	24	19	15	13	7	13	13	12	4	0	10	30	20	19	21	29	22	17						20.3
STAUNTON WATER TRMTMT PLT	08	MIN	42	46	46	35	53	31	38	55	67	61	38	47	40	31	42	19	12	32	27	10	16	37	49	36	23	37	35	35					37.1	
		MAX	18	18	16	18	31	12	18	37	49	30	27	26	8	8	2	2	8	10	-1	-6	-2	13	31	5	10	22	18	8						15.6
WAYNESBORO WTP	07	MIN	42	52	51	37	55	39	39	54	69	60	35	48	41	31	43	19	15	33	29	12	20	33	52	33	27	41	35	36					38.6	
		MAX	15	31	19	20	20	11	10	27	32	32	29	29	11	11	5	5	9	5	4	-2	-2	15	15	4	6	13	18	9						14.3
SOUTHWESTERN MOUNTAIN 06 ABINGDON 3S	22	MIN	41	53	43	40	50	29	38	54	59	55	35	50	37	30	36	20	21	25	23	9	23	38	44	31	28	34	35	31					36.1	
		MAX	14	32	22	19	19	9	11	19	28	31	26	27	13	13	3	3	16	11	-3	-15	-12	-12	30	18	13	16	23	12						13.8

VIRGINIA
201502

DAILY TEMPERATURES (°F)

STATION	OB. TIME	MAX/MIN	DAY OF MONTH																															AVERAGE				
			01	02	03	04	05	06	07	08	09	10	11	12	13	14	15	16	17	18	19	20	21	22	23	24	25	26	27	28	29	30	31					
BIG STONE GAP	08	MAX	45	49	40	42	50	50	42	58	56	56	35	36	37	34	37	24	28	33	25	11	29	34	44	27	30	38	37	33							37.9	
		MIN	17	32	22	20	21	12	19	28	31	28	28	17	17	6	6	7	3	-3	-17	-13	29	18	18	10	11	22	-4 ^s								14.9	
BLACKSBURG NWSO	07	MAX	41	48	46	40	53	32	42	57	63	60	41	52	35	27	40	17	16	29	28	7	21	36	48	32	27	37	37	30							37.2	
		MIN	16	31	17	18	20	14	15	22	43	31	19	20	9	9	1	2	10	2	-1	-5	-5	10	29	13	16	21	21	7							14.5	
BURKES GARDEN	07	MAX	38	46	40	33	45	27	36	48		52	26	47	30	22	30	10	18	18	19	2	21	39	40	24	24		31	20							30.2	
		MIN	22	37	11	12	27	5	4	33		26	20	18	4	2	-3	-3	8	8	-7	-10	-10	21	24	5	15		15	-5							10.7	
CHRISTIANSBURG	07	MAX	41	48	46	39	53	32	41	56	62	60	41	52	35	27	39	16	15	29	29	8	21	41	47	31	26	38	35	31							37.1	
		MIN	17	31	16	18	25	10	10	31	48	30	20	20	8	8	1	1	8	10	-2	-5	-5	19	27	15	16	21	22	12							15.4	
CLINTWOOD 1 W	07	MAX	42	49	39	39	50	27	40	53	62	53	29	48	32	29	37	17	21	25	24	9	23	33	38	28	34	37	35	25							34.9	
		MIN	14	29	20	19	19	8	8	18	29	26	26	27	11	11	2	2	11	-4	-1	-23	-23	22	28	14	12	14	19	7							12.3	
COPPER HILL	07	MAX	37	47	47	37	50	34	38	56	63	57	40	50	33	23	37	13	11	25	28	5	18	41	46	38	23	35	32	29							35.5	
		MIN	14	34	14	14	27	11	11	29	46	35	21	21	7	6	-2	-2	6	7	-3	-8	-9	15	27	14	13	16	20	10							14.1	
GALAX RADIO WBRF	07	MAX	47	46	39	43	48	29	45	57	65	57	43	54	34	41	41	18	20	32	27	8	26	36	49	36	25	38	35	35							38.4	
		MIN	18	37	18	18	24	7	19	26	41	33	17	26	11	11	2	10	12	5	-3	-5	1	21	29	17	13	24	19	11							16.5	
GALAX WTP	07	MAX	42	47	45	41	48	35	42	59	65	57	48	53	37	30	42	17	19	30	26	8	26	41	49	35	22	37	35	33							38.2	
		MIN	17	32	19	18	18	8	8	19	26	33	18	18	12	10	2	2	12	7	-2	-4	-4	16	30	17	12	21	19	13							14.2	
GRUNDY	07	MAX	40	48	39	41	52	30	40	52	62	52	30	49	34	30	38	19	22	25	24	10	32	37	36	30	33	37	34	27							35.8	
		MIN	15	32	23	21	21	11	12	20	26	29	28	27	12	12	6	7	11	0	1	-17	-17	30	29	15	15	16	20	11							14.9	
JOHN FLANNAGAN LAKE	07	MAX			38	42	52	26			61	51	28	49	33								24															M
		MIN			22	22	22	10			10	25	24	27	11								-1															M
LEBANON	07	MAX	41	53	40	39	49	28	38	54	59	59	28	49	35	29	36	18	24	25	26	9	33	46	41	29	29	35	33	26							36.1	
		MIN	12	31	20	20	21	8	8	26	46	27	26	26	11	11	2	2	13	3	-4	-17	-18	28	28	16	15	19	20	7							14.5	
NORA 4 SSE	07	MAX	39	45	35	34	45	24	32	49	54	50	25				15	24	23	19	5					23	24	32	29	25								M
		MIN	18	35	17	16	22	14	16	30	42	24	22				-2	8	8	-6	-8					12	16	18	15	10								M
NORTH FORK LAKE	08	MAX			51	42	51	29			60	56	28	51	33									36	26	24		32	35	35								M
		MIN			14	19	20	9			9	26	25	25	13									3	1	-1		16	15	15								M
PULASKI 2 E	07	MAX	50	50	48	42	55	40	44	57	64	60	43	56	39	31	41	14	15	32	28	13	28	40	49	35	49	27	38	31							40.0	
		MIN	19	22	20	20	28	9	9	24	47	35	17	16	10	7	0	1	9	11	-3	-6	-8	17	32	25	12	18	24	9							15.1	
RADFORD 3 N	07	MAX	38	46	41	38	53	32	41	55	61	60	37	54	37	26	41	14	16	28	29	9	18	34	47	30	28	38	37	30							36.4	
		MIN	20	30	17	17	21	14	14	24	32	30	21	28	10	10	3	4	10	5	-1	-3	-3	3	28	14	17	23	22	8							14.9	
RICHLANDS	07	MAX	40	50	37	45	51	27	38	54	58	54	30	47	40	34	35	15	21	31	27			27	42	47	44	30	37	34	34							38.1
		MIN	10	30	20	18	19	7	8	19	37	28	26	26	15	14	2	2	11	11	-3			-5	21	30	18	18	26	20	7							16.1
SALTVILLE 1N	07	MAX	42	48	44	41	51	31	40	55	59	54	37	50	38	31	37	21	20	30	27			26	34	46	34	28	36	38	33							38.2
		MIN	13	31	22	17	17	8	7	16	21	32	24	27	14	13	5	4	17	16	-6			-8	19	30	17	14	15	22	11							15.5
STAFFORDSVILLE 3 ENE	07	MAX	41	49	43	39	53	31	43	58	63	59	36	51	35	28	40	16	18	28	27	7	18	39	45	28	27	37	36	29							36.6	
		MIN	16	29	18	17	16	7	7	17	26	31	18	20	10	10	2	2	9	4	-1	-5	-4	17	28	14	15	22	22	9							13.4	
WISE 3E	17	MAX	46	47	37	48	40	35	53	55	51	43	47	46	27	31	28	20	24	20	16	21	35	37	34	27	33	30	29	42							35.8	
		MIN	31	18	16	29	17	7	30	43	43	22	22	17	7	21	-1	8	7	2	-6	-15	17	34	18	10	12	22	15	7							16.2	
WYTHEVILLE 1 S	07	MAX	42	49	44	38	52	31	40	53	58	57	41	52	37	28	36	16	18	28	24	7	22	39	46	32	26	36	35	30							36.3	
		MIN	18	31	17	17	23	12	13	27	45	31	20	18	9	8	0	0	11	10	-4	-5	-5	17	28	15	15	17	17	10							14.8	

VIRGINIA
201502

SNOWFALL AND SNOW ON GROUND (INCHES)

STATION		DAY OF MONTH																															
		01	02	03	04	05	06	07	08	09	10	11	12	13	14	15	16	17	18	19	20	21	22	23	24	25	26	27	28	29	30	31	
VIRGINIA																																	
TIDEWATER 01																																	
DISPUTANTA	SNOWFALL	-	-	-	-	-	-	-	-	-	-	-	T	T	-	-	5.0	1.0	0.7	-	-	-	-	T	T	7.0	-	-					
	SN ON GND	-	-	-	-	-	-	-	-	-	-	-	-	-	-	-	5	4	4	4	4	4	2	2	1	8	8	4					
EASTVILLE	SNOWFALL	-	-	-	-	-	-	-	-	-	-	-	-	-	-	-	-	-	-	-	-	-	-	-	-	4.0	4.0	-					
	SN ON GND	-	-	-	-	-	-	-	-	-	-	-	-	-	-	-	-	-	-	-	-	-	-	-	-	4	8	6					
EMPORIA 1 WNW	SNOWFALL																																
FREDERICKSBURG SEWAGE	SNOWFALL																																
	SN ON GND	-	-	-	-	-	-	-	-	-	-	-	-	-	-	-	7	-	-	-	-	-	-	-	-	-	4	1	-				
HOLLAND 1 E	SNOWFALL	-	-	-	-	-	-	-	-	-	-	-	-	-	-	-	2.1	-	-	-	-	-	-	-	-	3.1	3.1	-					
HOPEWELL	SNOWFALL	-	-	-	-	-	-	-	-	-	-	-	-	-	-	T	4.8	-	-	-	-	-	-	-	-	-	4.0	4.0	-				
	SN ON GND	-	-	-	-	-	-	-	-	-	-	-	-	-	-	T	-	-	-	-	-	-	-	-	-	-	4	8	6				
NORFOLK INTL AP	SNOWFALL											0.2				3.6	T	T						T	2.1	0.1	5.5						
	SN ON GND															-	3	3		z	z	z	z	-	2	5	4	3					
NORFOLK SOUTH	SNOWFALL	-	-	-	-	-	-	-	-	-	-	0.2	-	-	-	3.6	0.2	T	-	-	-	-	-	T	2.1	0.1	5.4	-	-				
	SN ON GND	-	-	-	-	-	-	-	-	-	-	T	-	-	-	4	3	3	3	3	3	2	1	T	2	T	4	3	3				
NORTH	SNOWFALL												T		T		5.5		1.5						1.5	8.0	1.0						
	SN ON GND																6	6	5	5	4	2	2	1	2	8	6	5					
PAINTER 2W	SNOWFALL	-	-	-	-	-	-	-	-	-	-	-	-	-	-	-	5.5	-	1.0	-	-	-	-	-	-	2.0	6.0	-					
	SN ON GND	-	-	-	-	-	-	-	-	-	-	-	-	-	-	-	5	5	6	6	4	2	1	-	-	6	5	5					
STONY CREEK 2 N	SNOWFALL																5.0									6.0							
	SN ON GND																5	4	4	3						6	3						
SUFFOLK LAKE KILBY	SNOWFALL											T				4.0	1.0	T						2.0	T	7.0							
	SN ON GND											T				4	4	3	2	1	T			2	T	7	5	3					
WAKEFIELD 1NW	SNOWFALL											T		T		4.0	1.0	0.7					T	0.4	0.3	6.2							
	SN ON GND															4	4	4	3	3	3	2	T	T	T	4	2	1					
WALKERTON 2 NW	SNOWFALL											T				T	5.1									5.0							
	SN ON GND															5	4	3	2	1						5	3	2					
WALLACETON LK DRUMMOND	SNOWFALL																																
WALLOPS ISLAND NASA TEST FACIL	SNOWFALL										T	-		T		3.5	2.7	0.8	T					1.0		3.0	T						
	SN ON GND																6	5	4	3	3	1	T		1	4	3	3					
WARSAW 2 NW	SNOWFALL	-	-	-	-	-	-	-	-	-	-	-	-	-	-	-	6.0	-	-	-	-	-	-	-	-	2.0	-	-					
	SN ON GND	-	-	-	-	-	-	-	-	-	-	-	-	-	-	-	6	5	4	4	3	-	-	-	-	2	-	-					
WEST POINT 2 NW	SNOWFALL											0.5				0.2	0.3	6.2		0.5		T		T	0.2	0.1	7.0						
	SN ON GND																T	5	4	4	3	3	T	T	T	5	4	3					
WILLIAMSBURG 2 N	SNOWFALL	-	-	-	-	-	-	-	-	-	-	-	-	-	-	-	3.2	1.0	0.5	-	-	-	-	-	0.5	-	6.0	-	-				
	SN ON GND	-	-	-	-	-	-	-	-	-	-	-	-	-	-	-	3	4	4	3	3	2	2	T	2	1	5	2	2				
EASTERN PIEDMONT 02																																	
ALBERTA 5N	SNOWFALL										T	T					5.2		T					T	T	8.3	T						
	SN ON GND																5	4	4	4	3	3		1	1	8	5	3					
AMELIA COURTHOUSE 1	SNOWFALL															0.3										4.1							
ASHLAND	SNOWFALL															0.3	1.0	5.5	T	T			0.2	0.2		4.5							

Snowfall: Includes snow and ice. Values for NWS stations (J index note) are Mid-Mid (LST).

Snow on ground: Includes snow, sleet, ice, and hail. Values for NWS stations (J index note) are observed at 12 UTC (GMT).

Water Equivalent: Given for NWS stations (J index note) only, when snow depth is 2 inches or more, and is measured at 18 UTC (GMT)

VIRGINIA
201502

SNOWFALL AND SNOW ON GROUND (INCHES)

STATION		DAY OF MONTH																														
		01	02	03	04	05	06	07	08	09	10	11	12	13	14	15	16	17	18	19	20	21	22	23	24	25	26	27	28	29	30	31
BREMO BLUFF	SN ON GND									T	T					1	6	6	5	5	5	3	2	1	1	5	4	4				
	SNOWFALL												-	-	-	-	7.0	-	-	-	-	2.0	-	-	-	2.5	-	-				
BUCKINGHAM	SN ON GND																7					2				2						
	SNOWFALL									T						1.0	7.5					2.0				6.0						
CAMP PICKETT	SN ON GND														1	T	8	7	7	6	5	6	4	3	3	5	5	4				
	SNOWFALL	-	-	-	-	-	-	-	-	-	-	-	-	-	-	-	5.0	-	-	-	-	-	-	-	-	7.0	-	-				
CHASE CITY	SNOWFALL	-	-	-	-	-	-	-	-	1.1	-	-	-	-	-	-	4.0	-	-	-	-	-	-	-	-	-	-	-				
	SN ON GND	-	-	-	-	-	-	-	-	1	-	-	-	-	-	-	4	-	-	-	-	-	-	-	-	-	-	-				
CLARKSVILLE	SNOWFALL																2.2									7.0						
	SN ON GND																2									7						
CORBIN	SNOWFALL	-	-	-	-	-	-	-	-	-	-	-	-	-	-	-	8.5	-	-	-	-	-	-	-	-	3.0	-	-				
	SN ON GND	-	-	-	-	-	-	-	-	-	-	-	-	-	-	-	9	7	6	6	6	2	2	2	1	4	3	2				
CROZIER	SNOWFALL																7.0									5.0						
	SN ON GND																7	5	5	5	5	5	4	3	2	7	6	3				
FARMVILLE 2 N	SNOWFALL	-	-	-	-	-	-	-	-	T	-	-	-	-	T	-	6.0	-	-	-	-	-	-	-	-	5.0	-	-				
	SN ON GND	-	-	-	-	-	-	-	-	T	-	-	-	-	-	-	6	5	4	4	4	3	3	2	1	5	3	2				
GREENBAY 3 NE	SNOWFALL																															
	SNOWFALL	-	-	-	-	-	-	-	-	T	-	-	-	-	-	2.0	3.8	-	-	-	3.2	-	-	-	-	4.2	-	-				
JOHN H KERR DAM	SNOWFALL	-	-	-	-	-	-	-	-	-	-	-	-	-	-	2	5	4	4	4	7	3	2	2	2	3	2	2				
	SN ON GND	T	-	-	-	-	-	-	-	T	-	-	-	-	T	-	6.6		T			1.1				3.1	1.6					
LOUISA	SNOWFALL	-	-	-	-	-	-	-	-	-	-	-	-	-	-	-	-	6	5	5	4	4	4	3	3	2	3	3				
	SN ON GND	-	-	-	-	-	-	-	-	-	-	-	-	-	-	6.0	-	-	-	-	-	-	-	-	6.0	-	-	-				
PALMYRA 3S	SNOWFALL	T	-	-	-	-	-	-	-	T	-	-	-	-	-	-	6.6		T			1.1				3.1	1.6					
	SN ON GND	-	-	-	-	-	-	-	-	-	-	-	-	-	-	-	-	6	5	5	4	4	4	3	3	2	3	3				
PETERSBURG	SNOWFALL	-	-	-	-	-	-	-	-	-	-	-	-	-	-	6.0	-	-	-	-	-	-	-	-	6.0	-	-	-				
	SNOWFALL	-	-	-	-	-	-	-	-	T		T		T		6.2	1.0				T		T		T	5.0						
RICHMOND INTL AP	SNOWFALL	-	-	-	-	-	-	-	-	-	-	-	-	-	-	-	6	4	3	3	3	2	T	T	T	5	3	1				
	SN ON GND	-	-	-	-	-	-	-	-	-	-	-	-	-	-	-	6	5	3	-	-	-	-	-	-	5	3	2				
SANDSTON	SNOWFALL	-	-	-	-	-	-	-	-	-	-	-	T	-	-	-	5.5	-	-	-	-	-	-	-	-	5.2	-	-				
	SN ON GND	-	-	-	-	-	-	-	-	-	-	-	-	-	-	-	6	5	3	-	-	-	-	-	-	5	3	2				
WINTERPOCK 4 W	SNOWFALL	-	-	-	-	-	-	-	-	-	-	-	-	-	-	-	5.5	-	-	-	-	-	-	-	-	5.0	-	-				
	SNOWFALL															0.1		8.2		0.5		T	0.5		T	5.2						
WESTERN PIEDMONT 03	SNOWFALL									T		T					8	8	7	7	6	6	4	3	3	8	7	3				
	SN ON GND															T	T	9.5		T		0.2	3.8			3.5						
APPOMATTOX	SNOWFALL															T	T	9	9	8	8	8	11	7	6	5	6	6	6			
	SN ON GND															T	5.0	5	4	4	4	3	T			6.0	6	6	6			
BEDFORD 4 NW	SNOWFALL																5	5	4	4	4	3	T			6	4	1				
	SN ON GND															T	6.2		T			T				5.6						
BROOKNEAL	SNOWFALL																6	6	5	4	4	2	1			6	5	3				
	SN ON GND															0.1	5.5		T		T	7.0				2.1	T					
CHARLOTTE COURT HOUSE	SNOWFALL															T	6	5	4	4	4	10	6	5	5	7	6	6				
	SN ON GND															T	6	5	4	4	4	10	6	5	5	7	6	6				
CHARLOTTESVILLE 2W	SNOWFALL																-	0.5	-	-	-	-	1.4	-	-	-	-	-				
	WTR EQUIV	-	-	-	-	-	-	-	-	-	-	-	-	-	-	-	-	-	-	-	-	-	-	-	-	-	-	-				
CHATHAM	SNOWFALL															T	3.2				T					6.3						
	SN ON GND															T	3	2	2	1	1	1				6	4	1				

Snowfall: Includes snow and ice. Values for NWS stations (J index note) are Mid-Mid (LST).

Snow on ground: Includes snow, sleet, ice, and hail. Values for NWS stations (J index note) are observed at 12 UTC (GMT).

Water Equivalent: Given for NWS stations (J index note) only, when snow depth is 2 inches or more, and is measured at 18 UTC (GMT)

VIRGINIA
201502

SNOWFALL AND SNOW ON GROUND (INCHES)

STATION		DAY OF MONTH																														
		01	02	03	04	05	06	07	08	09	10	11	12	13	14	15	16	17	18	19	20	21	22	23	24	25	26	27	28	29	30	31
LINCOLN	WTR EQUIV	-	-	-	-	-	-	-	-	-	-	-	-	-	-	-	-	-	-	-	-	-	-	-	-	-	-	-	-	-	-	
	SNOWFALL	-	-	-	-	-	-	-	-	-	-	-	-	-	-	-	-	-	-	-	-	-	-	-	-	-	-	-	-	-	-	
	SN ON GND	-	-	-	-	-	-	-	-	-	-	-	-	-	-	-	-	-	4	3	2	1	-	4	3	3	3	2	2	2		
LURAY 5 E	SNOWFALL	-	-	-	-	-	-	-	-	-	-	-	-	-	0.1	-	3.0	-	-	-	-	1.3	6.7	-	-	-	-	-	-	-		
	SN ON GND	-	-	-	-	-	-	-	-	-	-	-	-	-	-	-	3	2	2	-	1	8	2	2	2	1	1	1	-	-		
	WTR EQUIV	-	-	-	-	-	-	-	-	-	-	-	-	-	0.1	-	3.0	-	-	-	1.3	8.0	-	-	-	-	-	-	-	-		
MADISON	SNOWFALL	-	-	-	-	-	-	-	-	-	-	-	T	-	-	-	-	4.7	T	-	-	7.0	-	-	-	-	-	-	-	-		
	SN ON GND	-	-	-	-	-	-	-	-	-	-	-	-	-	-	-	5	3	3	-	-	7	7	6	7	6	-	-	-	-		
	WTR EQUIV	-	-	-	-	-	-	-	-	-	-	-	-	-	-	-	4.5	-	-	-	-	5.5	-	-	-	-	-	-	-	-		
MANASSAS	SNOWFALL	-	-	-	-	-	-	-	-	-	-	-	-	-	-	-	4.5	5	5	-	-	6	-	-	-	6	-	-	-	-		
	SN ON GND	-	-	-	-	-	-	-	-	-	-	-	-	-	-	-	5	5	5	-	-	6	-	-	-	6	-	-	-	-		
	WTR EQUIV	-	-	-	-	-	-	-	-	-	-	-	-	-	-	-	4.5	4.5	4.5	-	-	-	-	-	-	-	-	-	-	-	-	
MT WEATHER	SNOWFALL	-	-	-	-	-	-	-	-	-	-	-	-	-	-	-	4.5	-	-	-	-	6.0	-	-	-	2.0	-	-	-	-		
	SN ON GND	-	1	-	-	-	-	-	-	-	-	-	-	-	-	-	5	3	3	3	3	9	4	-	-	5	5	4	-	-		
	WTR EQUIV	-	-	-	-	-	-	-	-	-	-	-	-	-	-	-	4.5	4.5	4.5	-	-	-	-	-	-	-	-	-	-	-	-	
PIEDMONT RSCH STN	SNOWFALL	-	-	-	-	-	-	-	-	-	T	-	-	-	-	-	6.0	-	T	-	-	4.5	-	-	-	2.3	0.5	-	-	-		
	SN ON GND	-	-	-	-	-	-	-	-	-	-	-	-	-	-	-	6	5	4	4	4	4	3	-	2	3	2	2	-	-		
	WTR EQUIV	-	-	-	-	-	-	-	-	-	-	-	-	-	-	T	-	4.5	-	T	-	T	5.4	-	-	-	1.4	T	-	-	-	
SOMERSET	SNOWFALL	-	-	-	-	-	-	-	-	-	-	-	-	-	-	T	-	4.5	-	T	-	T	5.4	-	-	-	1.4	T	-	-	-	
	SN ON GND	-	-	-	-	-	-	-	-	-	-	-	-	-	-	T	-	5	4	3	3	3	7	4	4	3	4	3	3	-	-	
	WTR EQUIV	-	-	-	-	-	-	-	-	-	-	-	-	-	-	-	0.5	0.5	0.5	0.5	0.5	1.2	0.9	1.0	1.0	1.2	1.2	1.2	-	-	-	
SPERRYVILLE	SNOWFALL	-	0.1	-	-	-	T	-	-	-	-	-	T	-	0.3	-	3.1	-	T	-	-	7.0	-	-	-	1.7	T	-	-	-		
	SN ON GND	T	T	-	-	-	-	-	-	-	-	-	-	-	T	T	3	3	2	-	2	9	5	5	5	7	5	5	-	-		
	WTR EQUIV	-	-	-	-	-	-	-	-	-	-	-	-	-	-	-	0.7	3.9	0.4	-	-	8.9	-	-	-	1.3	-	-	-	-	-	
STERLING RCS	SNOWFALL	-	T	-	-	-	-	-	-	-	-	-	-	-	-	T	T	4	2	2	2	2	7	3	3	3	4	4	4	-	-	
	SN ON GND	-	-	-	-	-	-	-	-	-	-	-	-	-	-	-	4	2	2	2	2	7	3	3	3	4	4	4	-	-		
	WTR EQUIV	-	-	-	-	-	-	-	-	-	-	-	-	-	-	-	-	-	-	-	-	-	-	-	-	-	-	-	-	-	-	
VIENNA	SNOWFALL	-	-	-	-	-	-	-	-	-	-	-	0.1	-	-	0.5	4.5	-	0.1	0.1	-	7.0	-	-	-	1.0	-	-	-	-		
	SN ON GND	-	-	-	-	-	-	-	-	-	-	-	-	-	-	1	5	4	3	4	4	9	5	4	3	3	3	3	3	3	-	-
	WTR EQUIV	-	-	-	-	-	-	-	-	-	-	-	-	-	-	-	0.5	4.5	0.1	0.1	-	7.0	-	-	-	1.0	-	-	-	-	-	
WASHGTN DULLES INTL AP	SNOWFALL	T	-	-	-	-	-	-	T	T	-	T	-	0.7	-	2.5	1.4	0.4	0.1	-	8.9	-	-	-	2.1	-	-	-	-	-		
	SN ON GND	-	-	-	-	-	-	-	-	-	-	-	-	-	T	-	4	2	2	2	2	7	3	3	3	4	4	4	4	4	-	-
	WTR EQUIV	-	-	-	-	-	-	-	-	-	-	-	-	-	-	-	0.5	4.5	0.1	0.1	-	7.0	-	-	-	1.0	-	-	-	-	-	
WASHINGTON REAGAN AP	SNOWFALL	T	-	-	-	-	-	-	-	T	T	-	0.1	-	2.9	1.8	0.1	0.1	-	2.6	-	-	-	2.2	T	-	-	-	-	-		
	SN ON GND	-	-	-	-	-	-	-	-	-	-	-	-	-	-	-	5	4	4	3	3	4	1	-	1	-	-	-	-	-	-	
	WTR EQUIV	-	-	-	-	-	-	-	-	-	-	-	-	-	-	-	0.5	4.5	0.1	0.1	-	7.0	-	-	-	1.0	-	-	-	-	-	
WINCHESTER	SNOWFALL	-	T	-	-	-	-	-	-	-	-	-	T	-	0.2	-	3.1	-	0.1	0.1	-	7.8	-	-	-	0.9	T	-	-	-		
	SN ON GND	-	-	-	-	-	-	-	-	-	-	-	-	-	-	-	3	2	1	-	-	7	4	4	3	4	3	3	-	-	-	
	WTR EQUIV	-	-	-	-	-	-	-	-	-	-	-	-	-	-	-	0.5	4.5	0.1	0.1	-	7.0	-	-	-	1.0	-	-	-	-	-	
WINCHESTER 7 SE	SNOWFALL	-	-	-	-	-	-	-	-	-	-	-	-	-	-	-	3.3	-	-	-	-	8.4	-	-	-	2.0	-	-	-	-	-	
	SN ON GND	-	-	-	-	-	-	-	-	-	-	-	-	-	-	-	3	2	1	-	-	7	4	4	3	4	3	3	-	-	-	
	WTR EQUIV	-	-	-	-	-	-	-	-	-	-	-	-	-	-	-	0.5	4.5	0.1	0.1	-	7.0	-	-	-	1.0	-	-	-	-	-	
WOODSTOCK 2 NE	SNOWFALL	-	-	-	-	-	-	-	-	-	-	-	-	-	-	-	3.3	-	-	-	-	8.4	-	-	-	2.0	-	-	-	-	-	
	SN ON GND	-	-	-	-	-	-	-	-	-	-	-	-	-	-	-	3	2	1	-	-	7	4	4	3	4	3	3	-	-	-	
	WTR EQUIV	-	-	-	-	-	-	-	-	-	-	-	-	-	-	-	0.5	4.5	0.1	0.1	-	7.0	-	-	-	1.0	-	-	-	-	-	
CENTRAL MOUNTAIN 05	SNOWFALL	-	-	-	-	-	-	-	-	-	-	-	-	-	-	-	3.3	-	-	-	-	8.4	-	-	-	2.0	-	-	-	-	-	
	SN ON GND	-	-	-	-	-	-	-	-	-	-	-	-	-	-	-	3	2	1	-	-	7	4	4	3	4	3	3	-	-	-	
	WTR EQUIV	-	-	-	-	-	-	-	-	-	-	-	-	-	-	-	0.5	4.5	0.1	0.1	-	7.0	-	-	-	1.0	-	-	-	-	-	
BUENA VISTA	SNOWFALL	-	-	-	-	-	-	-	-	-	-	-	-	-	-	T	-	5.5	-	T	-	9.0	-	-	-	2.0	T	-	-	-	-	
	SN ON GND	-	-	-	-	-	-	-	-	-	-	-	-	-	-	T	-	5	5	5	5	4	13	9	7	7	9	7	7	-	-	
	WTR EQUIV	-	-	-	-	-	-	-	-	-	-	-	-	-	-	-	0.5	4.5	0.1	0.1	-	7.0	-	-	-	1.0	-	-	-	-	-	
COVINGTON FLTR PLT	SNOWFALL	-	-	-	-	-	-	-	-	-	-	-	-	-	-	1.0	T	6.5	-	0.5	-	8.5	-	-	-	1.0	-	-	-	-	-	
	SN ON GND	-	-	-	-	-	-	-	-	-	-	-	-	-	-	1	1	7	5	6	5	4	12	9	7	7	8	7	7	-	-	
	WTR EQUIV	-	-	-	-	-	-	-	-	-	-	-	-	-	-	-	0.5	4.5	0.1	0.1	-	7.0	-	-	-	1.0	-	-	-	-	-	
CRAIGSVILLE 2 S	SNOWFALL	-	-	-	-	-	-	-	-	-	-	-	-	-	-	-	3.3	-	-	-	-	8.4	-	-	-	2.0	-	-	-	-	-	
	SN ON GND	-	-	-	-	-	-	-	-	-	-	-	-	-	-	-	3	2	1	-	-	7	4	4	3	4	3	3	-	-	-	
	WTR EQUIV	-	-	-	-	-	-	-	-	-	-	-	-	-	-	-	0.5	4.5	0.1	0.1	-	7.0	-	-	-	1.0	-	-	-	-	-	
DALE ENTERPRISE	SNOWFALL	-	-	-	-	-	-	-	-	-	-	-	-	-	-	0.2	-	3.0	-	-	-	14.0	-	-	-	0.1	1.0	-	-	-	-	
	SN ON GND	-	-	-	-	-	-	-	-	-	-	-	-	-	-	-	3	3	3	3	3	14	14	10	8	8	8	8	8	6	-	-
	WTR EQUIV	-	-	-	-	-	-	-	-	-	-	-	-	-	-	-	0.5	4.5	0.1	0.1	-	7.0	-	-	-	1.0	-	-	-	-	-	

Snowfall: Includes snow and ice. Values for NWS stations (J index note) are Mid-Mid (LST).

Snow on ground: Includes snow, sleet, ice, and hail. Values for NWS stations (J index note) are observed at 12 UTC (GMT).

Water Equivalent: Given for NWS stations (J index note) only, when snow depth is 2 inches or more, and is measured at 18 UTC (GMT)

SNOWFALL AND SNOW ON GROUND (INCHES)

STATION		DAY OF MONTH																														
		01	02	03	04	05	06	07	08	09	10	11	12	13	14	15	16	17	18	19	20	21	22	23	24	25	26	27	28	29	30	31
GATHRIGHT DAM	WTR EQUIV	-																														
	SNOWFALL												T																			
GLASGOW 1 SE	SN ON GND																															
	SNOWFALL												0.1																			
HOT SPRINGS	SN ON GND																															
	SNOWFALL												T																			
LEXINGTON	SN ON GND																															
	SNOWFALL												T	T																		
MILLGAP	SN ON GND																															
	SNOWFALL		2.2	0.2																												
MTN GROVE	SN ON GND	1	2	1	1	1	1	1	1	T																						
	WTR EQUIV																															
MUSTOE 1 SW	SN ON GND																															
	SNOWFALL												T																			
NEW CASTLE	SN ON GND	3.0	0.3			T																										
	SNOWFALL	3	3	2	1	1	1	T	T	T																						
ROANOKE 8 N	SN ON GND																															
	SNOWFALL																															
ROANOKE INTL AP	SN ON GND																															
	SNOWFALL																															
STAUNTON WATER TRMTMT PLT	SN ON GND																															
	SNOWFALL	-	-	-	-	-	-	-	-	-	-	-	-	-	-	-	-	-	-	-	-	-	-	-	-	-	-	-	-	-	-	-
WAYNESBORO WTP	SN ON GND																															
	SNOWFALL																															
SOUTHWESTERN MOUNTAIN 06	SN ON GND																															
	SNOWFALL																															
ABINGDON 3S	SN ON GND																															
	SNOWFALL																															
BIG STONE GAP	SN ON GND																															
	SNOWFALL																															
BLACKSBURG NWSO	SN ON GND																															
	SNOWFALL																															
BURKES GARDEN	SN ON GND																															
	SNOWFALL																															
CHRISTIANSBURG	SN ON GND																															
	SNOWFALL																															
CLINTWOOD 1 W	SN ON GND																															
	SNOWFALL																															

Snowfall: Includes snow and ice. Values for NWS stations (J index note) are Mid-Mid (LST).

Snow on ground: Includes snow, sleet, ice, and hail. Values for NWS stations (J index note) are observed at 12 UTC (GMT).

Water Equivalent: Given for NWS stations (J index note) only, when snow depth is 2 inches or more, and is measured at 18 UTC (GMT)

VIRGINIA
201502

SNOWFALL AND SNOW ON GROUND (INCHES)

STATION		DAY OF MONTH																														
		01	02	03	04	05	06	07	08	09	10	11	12	13	14	15	16	17	18	19	20	21	22	23	24	25	26	27	28	29	30	31
COPPER HILL	SNOWFALL												T		0.5		8.0		2.0		0.1	4.0				0.2	4.5					
	SN ON GND															1		8	8	9	9	7	5	3	3	4	6	4	4			
GALAX RADIO WBRF	SNOWFALL														1.0		4.3		0.4		0.5	T				5.8						
	SN ON GND														T		4	4	4	4	4	4	3	1	1	1	6	3	2			
GALAX WTP	SNOWFALL														1.0		5.0		0.5		0.2	1.0		1.0		6.0						
	SN ON GND														1		4	3	3	3	3	3	3	T	1	6	3	1				
GRUNDY	SNOWFALL			0.3		T					0.2		0.8		1.0		11.0		1.0		1.5	T		T	1.0	3.0	T					
	SN ON GND					T							1	1	1	11	10	11	10	10	8	7	7	7	7	10	8	8				
JOHN FLANNAGAN LAKE	SNOWFALL	-	-					-	-	-	-	-	0.3	-	-	-	-	9.4	1.0	0.1	-	-	1.5	0.5	0.6	2.5	-	-				
	SN ON GND	-	-					-	-	-	T	-	-	T	-	-	-	9	10	10	-	-	7	8	8	10	-	-				
LAFAYETTE 1 NE	SNOWFALL			T											0.2	T	7.0		0.2		1.2	5.8			T	2.6						
	SN ON GND														T	T	7	6	6	6	7	10	6	5	5	7	5	4				
LEBANON	SNOWFALL														0.4		8.0				0.3	1.6		5.0		2.7	0.1	0.2				
	SN ON GND															8	7	6	5	5	5	5	5	5	5	4	7	6	6			
NORA 4 SSE	SNOWFALL		T	1.8		0.2	T				T	0.1	-	-	-	-	7.8	0.2	3.5		-	-	-	0.9	1.4	3.2	0.1	T				
	SN ON GND	T		1	T	T	T	T			T	T	-	-	-	1	9	8	11	9	-	-	-	18	16	18	16	15				
NORTH FORK LAKE	SNOWFALL	-	-	T		T		-	-				0.5	-	-	-	11.0		1.1	-	-	-	1.5		2.0	3.0	-	-				
	SN ON GND	-	-	1		T		-	-				T	-	-	-	11	10	9	-	-	-	6	6	6	9	-	-				
PULASKI 2 E	SNOWFALL														T		5.0				T	4.0			4.0							
	SN ON GND														T	T	5	4	4	4	3	6	3	3	2	6	4	4				
RADFORD 3 N	SNOWFALL	T		T			T						T		T	T	10.0		1.0	1.0	2.0	8.0		2.8								
	SN ON GND												T		T	T	8	7	7	7	8	11	6	5	4	6	5	4				
RICHLANDS	SNOWFALL			0.1											T		1.0		11.0		2.0	-	T	2.0		3.0	T					
	SN ON GND			T											1	T	11	10	10	-	8	9	7	5	5	8	7	7				
SALTVILLE 1N	SNOWFALL													T		1.0	T	7.0	T	T		2.0	3.0		0.1	0.7	2.8	T				
	SN ON GND													T		1	1	8	8	8	8	10	12	10	9	9	11	9	9			
STAFFORDSVILLE 3 ENE	SNOWFALL			T											T		0.1	T	8.0	T		1.0	2.4		T	3.0	T	T				
	SN ON GND														T	T	8	7	6	5	6	8	5	5	5	8	7	6				
WILLIS	SNOWFALL														0.5		4.1		1.0		0.5	T			4.4							
	SN ON GND														1		4	4	5	4	4	3	1		4	4	3					
WISE 3E	SNOWFALL		1.6			1.3					1.2	1.8	0.8	0.5	3.0	6.2	4.8	2.1	3.5	0.8	9.3		0.5	1.2		2.8	0.3					
	SN ON GND		T							T	T		T		2	7	11	12	13	11	15	13	12	11	10	12	12	11				
WYTHEVILLE 1 S	SNOWFALL													0.7		1.7		4.5		0.2		0.6	2.3		0.4	0.4	3.6					
	SN ON GND													1		2	T	5	3	3	3	3	4	1	1	1	4	1	1			

Snowfall: Includes snow and ice. Values for NWS stations (J index note) are Mid-Mid (LST).

Snow on ground: Includes snow, sleet, ice, and hail. Values for NWS stations (J index note) are observed at 12 UTC (GMT).

Water Equivalent: Given for NWS stations (J index note) only, when snow depth is 2 inches or more, and is measured at 18 UTC (GMT)

STATION INDEX

STATION	INDEX NO.	DIVISION	COUNTY	LATITUDE	LONGITUDE	ELEVATION (IN FEET)	OBSERVATION TIME AND TABLES			
							LOCAL STD TIME			
							TEMP	PRECIP	EVAP	SPECIAL SEE (NOTES)
VIRGINIA										
ABINGDON 3S	0021	06	WASHINGTON	36 40	81 58W	1925	22	22		H
ALBERTA 5N	0079	02	BRUNSWICK	36 56	77 54W	376		08		H
ALTAVISTA	0166	03	CAMPBELL	37 7	79 17W	529		07		CH
AMELIA COURTHOUSE 1	0187	02	AMELIA	37 21	77 59W	345	08	08		H
APPOMATTOX	0243	03	APPOMATTOX	37 20	78 50W	850	07	07		H
ASHLAND	0327	02	HANOVER	37 45	77 29W	220	18	18		H
BEDFORD 4 NW	0561	03	BEDFORD	37 23	79 34W	1228		07		CH
BIG STONE GAP	0735	06	WISE	36 52	82 46W	1464	08	08		H
BLACKSBURG NWSO	0766	06	MONTGOMERY	37 12	80 25W	2100	07	07		CH
BOSTON 4 SE	0860	04	CULPEPER	38 33	78 6W	590	07	07		H
BREMO BLUFF	0993	02	FLUVANNA	37 43	78 17W	225		07		CH
BROOKNEAL	1082	03	CAMPBELL	37 4	78 57W	408	07	07		H
BUCKINGHAM	1136	02	BUCKINGHAM	37 30	78 32W	580		07		H
BUENA VISTA	1159	05	ROCKBRIDGE	37 44	79 22W	840		07		H
BURKES GARDEN	1209	06	TAZEWELL	37 6	81 20W	3068	07	07		H
CAMP PICKETT	1322	02	NOTTOWAY	37 2	77 57W	330	08	08		CH
CHARLOTTE COURT HOUSE	1585	03	CHARLOTTE	37 3	78 39W	569	07	07		H
CHARLOTTESVILLE 2W	1593	03	ALBEMARLE	38 2	78 31W	866	08	08		H
CHASE CITY	1606	02	MECKLENBURG	36 47	78 29W	510	17	17		H
CHATHAM	1614	03	PITTSYLVANIA	36 49	79 25W	651	07	07		CH
CHRISTIANSBURG	1692	06	MONTGOMERY	37 8	80 24W	2100	07	07		H
CLARKSVILLE	1746	02	MECKLENBURG	36 37	78 33W	330	07	07		H
CLINTWOOD 1 W	1825	06	DICKENSON	37 9	82 29W	1780	07	07		H
CONCORD 4 SSW	1955	03	CAMPBELL	37 17	78 58W	815		07		H
COPPER HILL	1999	06	FLOYD	37 5	80 9W	2690	07	07		H
CORBIN	2009	02	CAROLINE	38 12	77 22W	220	09	09		H
COVINGTON FLTR PLT	2044	05	ALLEGHANY	37 49	79 59W	1230	07	07		H
CRAIGSVILLE 2 S	2064	05	AUGUSTA	38 3	79 23W	1758		07		H
CROZIER	2142	02	GOOCHLAND	37 40	77 53W	350	07	07		H
DALE ENTERPRISE	2208	05	ROCKINGHAM	38 27	78 56W	1358	07	07		H
DANVILLE REGIONAL AP R	2250	03	PITTSYLVANIA	36 34	79 20W	571	24	24		H
DISPUTANTA	2400	01	PRINCE GEORGE	37 7	77 12W	15	07	07		H
EASTVILLE	2635	01	NORTHAMPTON	37 23	75 58W	10	07	07		H
EDINBURG	2663	04	SHENANDOAH	38 48	78 35W	928	07	07		H
EMPORIA 1 WNW	2790	01	GREENSVILLE	36 42	77 34W	100	08	08		H
FARMVILLE 2 N	2941	02	CUMBERLAND	37 20	78 23W	450	07	07		H
FREDERICKSBURG SEWAGE	3204	01	FREDERICKSBURG	38 17	77 27W	15	07	07		H
FREE UNION	3213	03	ALBEMARLE	38 5	78 35W	590	08	07		H
FRONT ROYAL	3229	04	WARREN	38 54	78 11W	930	07	07		H
GALAX RADIO WBRF	3267	06	CARROLL	36 40	80 55W	2385	07	07		H
GALAX WTP	3272	06	CARROLL	36 39	80 55W	2360	07	07		CH
GATHRIGHT DAM	3310	05	ALLEGHANY	37 57	79 57W	1770	07	07		CH
GLASGOW 1 SE	3375	05	ROCKBRIDGE	37 37	79 26W	737		07		H
GREENBAY 3 NE	3565	02	PRINCE EDWARD	37 11	78 17W	500	09	09		H
GRUNDY	3640	06	BUCHANAN	37 17	82 5W	1170	07	07		H
HOLCOMB ROCK	4039	03	BEDFORD	37 33	79 24W	810		07		H
HOLLAND 1 E	4044	01	SUFFOLK	36 41	76 46W	80	08	08		H
HOPEWELL	4101	01	PRINCE GEORGE	37 18	77 17W	40	16	16		H
HOT SPRINGS	4128	05	BATH	37 60	79 50W	2236	07	07		H
HUDDLESTON 4 SW	4148	03	BEDFORD	37 8	79 32W	898		07		H
JOHN FLANNAGAN LAKE	4410	06	DICKENSON	37 14	82 21W	1460	07	07		H
JOHN H KERR DAM	4414	02	MECKLENBURG	36 36	78 18W	250	08	08	08	CH
LAFAYETTE 1 NE	4676	06	MONTGOMERY	37 14	80 12W	1320		07		H
LEBANON	4777	06	RUSSELL	36 54	82 2W	1912	07	07		H
LEXINGTON	4876	05	ROCKBRIDGE	37 47	79 26W	1097	07	07		H
LINCOLN	4909	04	LOUDOUN	39 5	77 42W	500	07	07		H
LOUISA	5050	02	LOUISA	38 3	78 0W	420	18	18		H
LURAY 5 E	5096	04	PAGE	38 40	78 22W	1400	08	08		H
LYNCHBURG INTL AP R	5120	03	CAMPBELL	37 19	79 12W	940	24	24		HJ
MADISON	5150	04	MADISON	38 22	78 15W	577	08	08		H
MANASSAS	5204	04	MANASSAS	38 44	77 30W	245	07	07		H
MARTINSVILLE FLTR PLT	5300	03	HENRY	36 42	79 52W	760	07	07		H
MEADOWS OF DAN 5 SW	5453	03	PATRICK	36 40	80 27W	2225	07	07		H
MILLGAP	5595	05	HIGHLAND	38 18	79 43W	2421	07	07		CH
MONTEBELLO FISH CULTURAL STN	5690	03	NELSON	37 51	79 8W	2667	07	07		H

STATION INDEX

STATION	INDEX NO.	DIVISION	COUNTY	LATITUDE	LONGITUDE	ELEVATION (IN FEET)	OBSERVATION TIME AND TABLES			
							LOCAL STD TIME			
							TEMP	PRECIP	EVAP	SPECIAL SEE (NOTES)
MONTICELLO	5700	03	ALBEMARLE	38 1	78 27W	758	08	08		H
MT WEATHER	5851	04	LOUDOUN	39 4	77 53W	1659	07	07		H
MTN GROVE	5756	05	BATH	38 6	79 53W	1775		07		H
MUSTOE 1 SW	5880	05	HIGHLAND	38 20	79 40W	2380	24	24		H
NEW CASTLE	6012	05	CRAIG	37 18	80 3W	1258		07		H
NORA 4 SSE	6125	06	DICKENSON	37 1	82 19W	2650	07	07		H
NORFOLK INTL AP R	6139	01	NORFOLK (CITY)	36 54	76 12W	30	24	24		HJ
NORFOLK SOUTH	6147	01	NORFOLK (CITY)	36 52	76 14W	100	24	24		H
NORTH	6161	01	MATHEWS	37 26	76 26W	10	07	07		H
NORTH FORK LAKE	6173	06	WISE	37 7	82 38W	1675	08	08		H
PAINTER 2W	6475	01	ACCOMACK	37 35	75 49W	30	16	16		CH
PALMYRA 3S	6491	02	FLUVANNA	37 49	78 16W	410	06	06		H
PEDLAR DAM	6593	03	AMHERST	37 40	79 17W	1024		07		H
PETERSBURG	6656	02	PETERSBURG	37 14	77 24W	15	08	08		H
PIEDMONT RSCH STN	6712	04	ORANGE	38 14	78 7W	520	08	08		CH
PULASKI 2 E	6955	06	PULASKI	37 3	80 47W	1850	07	07		CH
RADFORD 3 N	6999	06	PULASKI	37 12	80 35W	1800	07	07		H
RICHLANDS	7174	06	TAZEWELL	37 6	81 48W	1910	07	07		H
RICHMOND INTL AP R	7201	02	HENRICO	37 30	77 19W	164	24	24		HJ
ROANOKE 8 N	7278	05	ROANOKE	37 22	79 58W	1190	07	07		H
ROANOKE INTL AP R	7285	05	ROANOKE	37 19	79 58W	1175	24	24		HJ
ROCKY MT	7338	03	FRANKLIN	36 59	79 54W	1315	07	07		CH
SALTVILLE 1N	7506	06	SMYTH	36 53	81 46W	1733	07	07		H
SANDSTON	7541	02	HENRICO	37 33	77 17W	165	07	07		H
SOMERSET	7904	04	ORANGE	38 15	78 16W	510	07	07		H
SOUTH BOSTON	7925	03	HALIFAX	36 42	78 53W	329	07	07		H
SPERRYVILLE	7985	04	RAPPAHANNOCK	38 39	78 14W	750	06	06		H
STAFFORDSVILLE 3 ENE	8022	06	GILES	37 16	80 43W	1950	07	07		CH
STAUNTON WATER TRMTMT PLT	8062	05	AUGUSTA	38 10	79 5W	169	08	08		H
STERLING RCS	8084	04	LOUDOUN	38 59	77 29W	288	07	07		H
STONY CREEK 2 N	8129	01	SUSSEX	36 58	77 24W	105	08	08		H
STUART	8170	03	PATRICK	36 38	80 15W	1375	07	07		H
SUFFOLK LAKE KILBY	8192	01	SUFFOLK	36 44	76 36W	22	24	24		H
TYE RIVER 1 SE	8600	03	NELSON	37 38	78 56W	720	07	07		H
VIENNA	8737	04	FAIRFAX	38 54	77 16W	418	07	07		H
WAKEFIELD 1NW	8800	01	SUSSEX	36 59	77 0W	113	24	24		CH
WALKERTON 2 NW	8829	01	KING AND QUEEN	37 45	77 2W	50	18	18		H
WALLACETON LK DRUMMOND	8837	01	CHESAPEAKE	36 36	76 26W	20	08	08		H
WALLOPS ISLAND NASA TEST FACIL R	8849	01	ACCOMACK	37 56	75 28W	46	24	24		HJ
WARSAW 2 NW	8894	01	RICHMOND	37 59	76 47W	140	18	18		H
WASHGTN DULLES INTL AP R	8903	04	LOUDOUN	38 56	77 28W	290	24	24		HJ
WASHINGTON REAGAN AP R	8906	04	ARLINGTON	38 51	77 2W	10	24	24		HJ
WAYNESBORO WTP	8941	05	WAYNESBORO	38 5	78 53W	1270	07	07		H
WEST POINT 2 NW	9025	01	KING WILLIAM	37 34	76 48W	20	17	17		H
WILLIAMSBURG 2 N	9151	01	YORK	37 18	76 42W	70	24	24		CH
WILLIS	9169	06	FLOYD	36 55	80 30W	2810		07		CH
WINCHESTER	9181	04	FREDERICK	39 11	78 9W	720	07	07		H
WINCHESTER 7 SE	9186	04	FREDERICK	39 11	78 7W	680	08	08		H
WINTERPOCK 4 W	9213	02	CHESTERFIELD	37 19	77 39W	300		07		H
WISE 3E	9215	06	WISE	36 60	82 32W	2549	17	17		CH
WOODSTOCK 2 NE	9263	04	SHENANDOAH	38 54	78 28W	675	07	07		H
WOOLWINE	9272	03	PATRICK	36 47	80 17W	1500		07		CH
WYTHEVILLE 1 S	9301	06	WYTHE	36 58	81 5W	2458	07	07		H

REFERENCE NOTES

STATION NAMES: Name of the city, town or locality. Figures and letters following the station names indicate the distance in miles and direction from the post office or town community center.

DIVISIONS: Areas within a state of similar climatological characteristics. Division averages are calculated using data from stations that record temperature and/or precipitation. Station Precipitation totals flagged with an 'F' or 'M' are excluded from the Divisional Average calculations of precipitation. Stations with monthly Temperature averages flagged with an 'F' or 'M' are included in the Divisional Average if there are no more than 9 flagged or missing daily values in the month, else they are excluded from the divisional average for temperature.

NORMALS: The average value of the meteorological element over a time period. Effective 1 January 2012, the averaging period is 1981 to 2010. The normals for National Weather Service localities have been adjusted so as to be representative for the current observation site.

MONTHLY DEGREE DAY TOTALS: One heating (cooling) degree day is accumulated for each whole degree that the daily mean temperature is below (above) 65 degrees Fahrenheit.

PRECIPITATION: Values shown in hundredths of inches are water equivalent totals, i.e., total of liquid and melted frozen precipitation. In the "Monthly Summarized Data" table the total snow and sleet values shown in tenths of inches are unmelted amounts. The max depth on ground values of snow and sleet shown in whole inches are cumulative unmelted amounts. The number of days with .10, .50, 1.00 or more refers to water equivalents.

PRECIPITATION QUALITY CONTROL: The NCEI quality control process may flag precipitation data that are spatially inconsistent, exceed climatological limits, or are inconsistent with prevailing weather patterns.

TEMPERATURE: Original temperature values are given in the "Daily Temperature" table. Summary temperature information (averages, departures, extremes, monthly degree day totals) is based on the values labeled MAX/MIN.

WIND: (As shown in the "Evaporation and Wind" table) the total wind movement in miles over the evaporation pan as determined by an anemometer recorder located 6-8 inches above the pan.

SYMBOLS AND LETTERS USED IN THE STATION INDEX TABLE

- C Station is equipped with recording rain gage (R) but values in this bulletin are from a non-recording rain gage unless indicated by an R.
- G Observations appear in the "Soil Temperatures" table.
- H Observations appear in the "Snowfall and Snow on the Ground" table.
- J Station also published as a Local Climatological Data publication.
- VAR Observation time varies.
- SR / SS Observation time near sunrise / Observation time near sunset, respectively.

SYMBOLS AND LETTERS USED IN THE DATA TABLES

(DAILY DATA ARE FOR THE 24 HOURS IMMEDIATELY PRECEDING OBSERVATION TIME.)

- BLANK Entries in the "Monthly Summarized Data" table indicate no record.
- BLANK Entries in the "Daily Precipitation" and "Snowfall and Snow on the Ground" tables indicate zero.
- BLANK Entries in the "Daily Temperature" table indicate a missing record

- No record. Data not recorded or not received in time for publication.
- + Precipitation or temperature extremes occurred on one or more previous dates during the month.
- * Rain gage not read. Precipitation is included in the amount following the asterisks.
- Time distribution may not be known. A * preceding the monthly total indicates precipitation amount is being carried forward to next month's total, and may include amounts from the previous month(s).
- a As a subscript, indicates accumulated total.
- A Amount of precipitation is the total of observer's entries for the current month. It may include precipitation that occurred during the previous month. Refer to earlier bulletin to determine date of last reading. (Hawaii stations)
- B Divisional Departure from normals are computed using 1981-2010 normals.
- E Normalized HDD/CDD Calculation. E is appended to the HDD/CDD Calculation when 1-9 individual daily

and/or TMIN values are missing and a Normalized HDD/CDD Calculation is provided. M appears alone if 10 or more daily values are missing.

- F Monthly calculation flagged value. F is appended to average and/or total values computed which exclude one or more daily data values that have been flagged by the GHCN-Daily Dataset
- M Insufficient or partial data. M is appended to average and/or total values computed with 1-9 daily values missing. M appears alone if 10 or more daily values are missing, (8 or more for wind and evaporation).
- N Indicates snow fall or Snowdepth totals are computed with one or more missing days.
- R Amounts from recording rain gage.
- T Trace. An amount too small to measure.

SEASONAL TABLES: Monthly and seasonal snowfall and heating degree days for the 12 months ending with the June data are published in the July issue of this bulletin. Cooling degree days for the calendar year are published in the "Climatological Data Annual Summary."

Information concerning the history of changes in locations, exposure, etc. of substations is kept on file at the National Centers for Environmental Information. Historical information of regular National Weather Service Offices may be obtained from the "Local Climatological Data" annual publication. The contents of this publication may be reprinted or otherwise used freely, with proper credit to the National Centers For Environmental Information. The data are also available digitally.

Effective with the January 2011 Data-Month, COOP Observer Names are no longer included in the Monthly and Annual Climatological Data Publications. This information is not published to ensure the privacy of personal information pursuant to Section 208 of the E-Government Act of 2002 (44 USC 3601).

As of the 2011 Data-Year, Station and Climate Division Maps are no longer being included in the CD Publications. NCEI's Products Branch provides updated Station Maps for various data networks via the Historical Observing Metadata Repository: <http://www.ncdc.noaa.gov/homr>.

The GHCN-Daily Quality Control Flags shown below are displayed as superscripts with the data. For more Information on Global Historical Climatology Network - Daily and flags, see: <http://www.ncdc.noaa.gov/oa/climate/ghcn-daily/> and Comprehensive Automated Quality Assurance of Daily Surface Observations. Durre, Imke, Matthew J. Menne, Byron E. Gleason, Tamara G. Houston, Russell S. Vose, 2010: J. Appl. Meteor. Climatol., 49, 16151633. doi: 10.1175/2010JAMC2375.1

- | | |
|-----------------------------------------------|---------------------------------------------------------------|
| Blank = Passed All checks | N = failed naught check |
| D = failed duplicate check | O = failed climatological outlier check |
| G = failed gap check | R = failed lagged range check |
| I = failed internal consistency check | S = failed spatial consistency check |
| K = failed streak/frequent-value check | T = failed temporal consistency check |
| L = failed check on length of multiday period | W = temperature too warm for snow |
| M = failed megaconsistency check | X = failed bounds check |
| | Z = flagged as a result of an official Datzilla investigation |

Beginning with the January 2013 CD Publication, monthly mean temperature calculations have changed to the National Data Stewardship Team standard. Monthly maximum and minimum temperatures are not rounded until after the monthly mean temperature is calculated. This is the most accurate outcome, but may be slightly different from the mean derived from rounded monthly maximum and minimum.

Processing Updates and Errata: The CD Publications are periodically reproduced to include the addition of late reports and reported corrections. The GHCND data version noted on the cover of the publication provides the generation date.

The climate division temperature and precipitation values in this publication are based on simple averages from the current set of NWS-Designated Open and Published COOP and First Order Sites within each division. These values differ from those found in NCEI's nClimDiv product. Beginning in February 2014, the nClimDiv product is used by NCEI's Monitoring Branch and in its monthly climate reports. For more details on nClimDiv, please go to <http://www.ncdc.noaa.gov/monitoring-references/maps/us-climate-divisions.php>.

NOAA National Centers for Environmental Information
Attn: Customer Engagement Branch
151 Patton Avenue
Asheville, NC 28801-5001

Customer Services Number: (828) 271-4800, option 2
TDD : (828) 271-4010
Fax number: (828) 271-4876

NCEI now offers free online access to the *Climatological Data* publication.
Go to : www.ncdc.noaa.gov and choose Most Popular.