



CLIMATOLOGICAL DATA

VIRGINIA

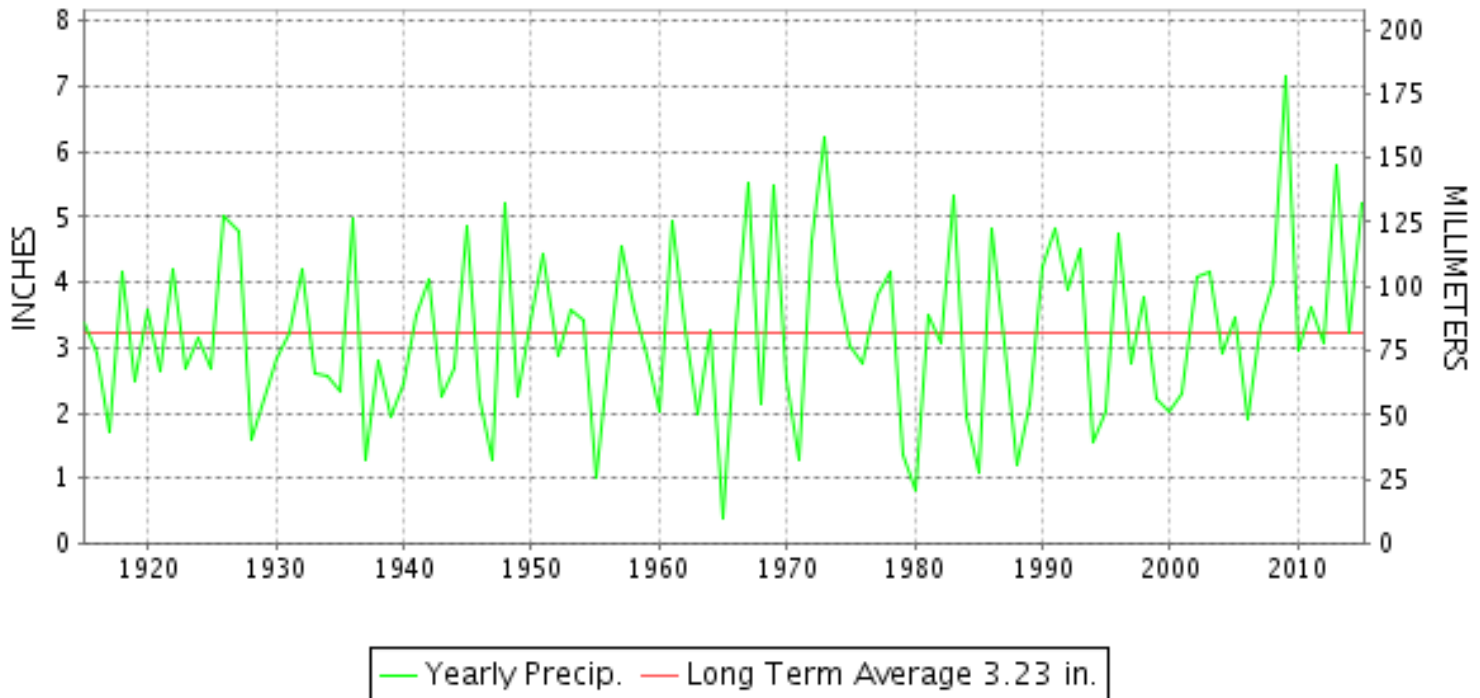
DECEMBER 2015

VOLUME 125 NUMBER 12

ISSN 0364-5630

GHCND Ver: 3.22-upd-2016033005

DECEMBER PRECIPITATION BY YEAR



TEMPERATURE AND PRECIPITATION EXTREMES

VIRGINIA

HIGHEST TEMPERATURE	82	DECEMBER 24	NORFOLK INTL AP
LOWEST TEMPERATURE	14	DECEMBER 06	BURKES GARDEN
GREATEST TOTAL PRECIPITATION	9.08		MEADOWS OF DAN 5 SW
LEAST TOTAL PRECIPITATION	2.98		LURAY 5 E
GREATEST 1 DAY PRECIPITATION	2.92	DECEMBER 24	AMELIA COURTHOUSE 1
GREATEST TOTAL SNOWFALL	0.5		MUSTOE 1 SW
GREATEST DEPTH OF SNOW OR ICE	T		8 STATIONS

"I certify that this is an official publication of the National Oceanic and Atmospheric Administration (NOAA) It is compiled using information from weather observing sites supervised by NOAA/National Weather Service and received at the National Centers for Environmental Information(NCEI), Asheville, North Carolina 28801."

Director
National Centers for Environmental Information

noaa

National
Oceanic and
Atmospheric Administration

National
Environmental Satellite, Data
and Information Service

National
Centers for Environmental Information
Asheville, North Carolina

VIRGINIA
201512

MONTHLY STATION AND DIVISION SUMMARY

STATION	TEMPERATURE (°F)											PRECIPITATION (IN)												
	AVERAGE MAXIMUM	AVERAGE MINIMUM	AVERAGE	DEPARTURE FROM NORMAL	HIGHEST	DATE	LOWEST	DATE	HEATING DEG. DAYS	COOLING DEG. DAYS	NO. OF DAYS				TOTAL	DEPARTURE FROM NORMAL	GREATEST 24 HOURS	DATE	ICE PELLETS, SNOW			NO. OF DAYS		
											MAX		MIN						TOTAL	MAX DEPTH ON GROUND	DATE	.10 OR MORE	.50 OR MORE	1.00 OR MORE
											>=90	<=32	<=32	<=0										
PALMYRA 3S	59.6	37.6	48.6	12.5	77	13	20	21+	505	2	0	0	11	0	4.94	1.75	1.60	24	M			8	2	2
PETERSBURG	62.5	43.0	52.7	11.7	77	27+	25	20+	388	12	0	0	9	0	5.57	2.37	2.01	23	M			7	3	2
RICHMOND INTL AP	61.4	42.7	52.1	11.1	76	12	25	20	403	8	0	0	6	0	5.94	2.68	1.49	23	0.0	0		7	4	3
SANDSTON	59.0	42.1	50.5	11.8	75	28	25	21+	443	6	0	0	9	0	A 6.16	2.74	1.56	24	M			6	4	3
WINTERPOCK 4 W															6.69		2.17	24	M			11	5	1
--DIVISIONAL DATA-----> WESTERN PIEDMONT 03			50.9	11.5B										6.17	3.01B									
ALTAVISTA														6.17		1.04	18	0.0	0			11	5	1
APPOMATTOX	57.3	41.5	49.4	11.1	73	13	26	19	477	1	0	0	7	0	8.00	4.57	1.92	24	0.0	0		12	7	3
BEDFORD 4 NW														5.09		1.03	01	0.0	0			11	4	1
BROOKNEAL	59.3	38.2	48.8	14.3	76	13	22	20	495	0	0	0	12	0	7.32	3.97	1.83	24	0.0	0		12	4	3
CHARLOTTESVILLE 2W	57.7	42.6	50.1	11.2	77	13	28	19	456	2	0	0	5	0	5.18	1.83	0.97	24+	0.0	0		11	4	0
CHATHAM	58.1	37.0	47.5	10.4	76	13	20	20	534	0	0	0	13	0	7.41	3.97	1.85	25	0.0	0		11	5	3
CONCORD 4 SSW														7.16		1.78	24	0.0	0			12	6	1
DANVILLE RGNL AP	62.4	42.4	52.4	12.3	77	27+	25	20	391	11	0	0	7	0	5.56	2.30	1.70	23	0.0	0		9	5	2
FREE UNION	57.1	36.0	46.5		78	13	21	21	563	0	0	0	14	0	A 4.75		0.96	01	M			10	2	0
HOLCOMB ROCK														6.78		1.34	24	0.0	0			15	5	2
HUDDLESTON 4 SW														5.99		0.91	24	0.0	0			12	6	0
LYNCHBURG INTL AP	58.9	39.2	49.1	11.5	76	12	22	20+	484	0	0	0	10	0	4.97	1.73	0.98	01	T	0		9	5	0
MARTINSVILLE FLTR PLT	60.5M	37.7	49.1M	11.4	76	13	21	21+	479E	3E	0	0	11	0	6.23	2.84	1.03	01	0.0	0		12	5	1
MEADOWS OF DAN 5 SW	59.4M	39.8M	49.6M		76	13	27	21+	464E	0	0	0	8	0	9.08		1.78	24	0.0	0		14	8	2
MONTEBELLO FISH CULTURAL STN	M	M	M		67	13	21	19	639E	0	0	0	5	0	M				M					
MONTECELLO	56.0	40.5	48.2	11.5	75	13	27	20+	515	1	0	0	7	0	5.06	2.02	1.32	24	M			9	5	1
PEDLAR DAM														5.81		0.97	01	0.0	0			12	5	0
ROCKY MT	59.3M	38.6	49.0M	11.1	76	13	23	07+	490E	0	0	0	10	0	6.28	2.79	1.07	01	0.0	0		12	4	1
SOUTH BOSTON	60.9	40.4	50.6	11.3	76	13	24	21+	442	5	0	0	9	0	7.64	4.28	2.14	24	0.0	0		11	5	2
STUART	60.2	40.2	50.2	11.0	77	13	25	20+	454	1	0	0	7	0	7.46	3.95	1.70	24	0.0	0		13	5	2
TYE RIVER 1 SE	M	M	M												M				M					
WOOLWINE														7.42		1.35	24	0.0	0			14	4	2
--DIVISIONAL DATA-----> NORTHERN 04			49.3	10.4B										6.47	3.22B									
EDINBURG	M	M	M								0	0	0	0	M				M					
FRONT ROYAL	55.2	37.5	46.4	10.1	74	28+	16	09	571	0	0	0	10	0	4.00	1.18	0.96	26	M			9	4	0
LINCOLN	55.2	36.0	45.6	10.8	72	14	21	07+	592	0	0	0	12	0	4.48		1.13	27	M			5	5	2
LURAY 5 E	58.3	38.1	48.2	11.3	74	28+	23	20	513	0	0	0	10	0	2.98	-0.07	0.56	01	0.0	0		10	2	0
MADISON	M	M	M		58	09	30	07+	647E	0	0	0	4	0	M				M					
MANASSAS	57.5	39.8M	48.7M	11.6	75	13	23	21+	507E	6E	0	0	8	0	M 4.12		0.65	01	M			12	4	0
MT WEATHER	52.9	38.2	45.6	11.2	72	13	24	19	596	1	0	0	7	0	4.62	1.67	0.84	26	M			10	5	0

VIRGINIA
201512

MONTHLY STATION AND DIVISION SUMMARY

STATION	TEMPERATURE (°F)											PRECIPITATION (IN)												
	AVERAGE MAXIMUM	AVERAGE MINIMUM	AVERAGE	DEPARTURE FROM NORMAL	HIGHEST	DATE	LOWEST	DATE	HEATING DEG. DAYS	COOLING DEG. DAYS	NO. OF DAYS				TOTAL	DEPARTURE FROM NORMAL	GREATEST 24 HOURS	DATE	ICE PELLETS, SNOW			NO. OF DAYS		
											MAX		MIN						TOTAL	MAX DEPTH ON GROUND	DATE	.10 OR MORE	.50 OR MORE	1.00 OR MORE
											>=90	<=32	<=32	<=0										
PIEDMONT RSCH STN	57.7	39.7	48.7	11.2	75	13	22	21	498	1	0	0	7	0	3.31	0.24	1.03	24	M			7	3	1
SOMERSET	57.7	38.5	48.1	11.4	77	14+	23	20	516	0	0	0	11	0	4.58	1.45	1.01	24	M			11	3	1
SPERRYVILLE	M	M	M		77	13	23	21	620E	0	0	0	6	0	M				M					
STERLING RCS	56.9M	37.4	47.1M	11.5	73	14	22	21+	550E	0	0	0	10	0	4.61	1.52	0.71	29	M T	0		9	4	0
VIENNA	58.4	41.6	50.0	13.6	75	13	28	20+	462	5	0	0	7	0	3.11	-0.16	0.74	24	M			8	1	0
WARRENTON 3 SE	56.1M	40.5M	48.3M	11.6	70	13	24	20	510E	0	0	0	6	0	M 3.81	0.41	0.98	24	M			9	3	0
WASHGTN DULLES INTL AP	57.7	39.6	48.7	12.1	73	13	23	06	503	2	0	0	9	0	3.76	0.80	0.67	25	T	0		9	4	0
WASHINGTON REAGAN AP	58.8	43.5	51.2	11.5	71	24+	30	19	421	1	0	0	2	0	4.84	1.79	1.67	23	0.0	0		11	3	1
WINCHESTER	55.5	37.7	46.6	11.3	72	28	25	07+	564	0	0	0	9	0	3.24	0.56	0.76	29	M			9	2	0
WINCHESTER 7 SE	55.8M	34.4M	45.1M	11.2	72	27	20	07+	609E	0	0	0	10	0	M 3.33	0.86	1.03	26	M 0.0	0		7	2	1
WOODSTOCK 2 NE	55.6M	35.1M	45.4M	11.4	73	28	21	21+	600E	0	0	0	14	0	M 3.42	0.77	1.04	26	M			10	2	1
--DIVISIONAL DATA----->			47.6	11.6B											3.96	0.94B								
CENTRAL MOUNTAIN 05																								
BUENA VISTA									4.84						4.84	0.77	0.77	02	0.0	0		12	5	0
COVINGTON FLTR PLT	56.8	37.5	47.2	10.7	77	28	24	21+	548	1	0	0	12	0	4.27	1.56	0.78	02	T	0		12	4	0
DALE ENTERPRISE	55.8	35.7	45.7	12.0	71	28+	19	06	591	0	0	0	12	0	3.11	0.50	0.63	18	0.0	0		7	4	0
GATHRIGHT DAM	53.5	36.6	45.0	11.1	73	28	23	21+	612	0	0	0	11	0	4.20	1.24	0.78	24+	0.0	0		9	4	0
GLASGOW 1 SE									5.36						5.36	0.84	0.84	01	0.0	0		13	5	0
HOT SPRINGS	53.3	36.4	44.8	12.0	71	28	22	21+	620	0	0	0	13	0	4.94	1.59	0.85	02	T	T	19	14	4	0
LEXINGTON	56.2	36.5	46.3	9.6	73	28+	22	21+	571	0	0	0	13	0	5.00	1.89	0.85	01	0.0	0		11	5	0
MILLGAP	54.0	30.7	42.3	12.2	72	28	15	21+	699	0	0	0	17	0	4.50	1.15	0.91	24	M			9	4	0
MTN GROVE									4.42						4.42	1.54	1.54	01	T	0		10	4	1
MUSTOE 1 SW	53.7	33.2	43.4	12.7	71	27	18	20	663	0	0	0	14	0	4.94	1.63	0.74	01	0.5	T	19	10	5	0
NEW CASTLE									5.07						5.07	0.79	0.79	02	T	0		12	4	0
ROANOKE 8 N	58.3	39.5	48.9	10.2	76	28	26	21	493	0	0	0	11	0	5.04	1.81	0.92	02	0.0	0		12	5	0
ROANOKE INTL AP	58.9	40.8	49.9	10.9	76	27	26	06	461	0	0	0	10	0	4.55	1.61	0.95	01	T	0		9	5	0
STAUNTON WATER TRMTMT PLT	56.1	38.4	47.2	11.4	73	13	25	19+	544	0	0	0	7	0	3.20	0.46	0.75	01	0.0	0		6	2	0
WAYNESBORO WTP	57.3	36.6	47.0	11.6	74	28	24	21+	550	0	0	0	13	0	3.74	0.80	0.80	01	0.0	0		9	4	0
--DIVISIONAL DATA----->			46.2	10.3B											4.48	1.68B								
SOUTHWESTERN MOUNTAIN 06																								
ABINGDON 3S	58.6	38.0	48.3	12.5	74	28	22	21+	511	0	0	0	11	0	6.36	2.47	1.30	02	0.0	0		11	6	1
BIG STONE GAP	58.4	39.1	48.8	11.9	73	28	22	20+	495	0	0	0	10	0	7.71	2.62	1.33	02	0.0	0		10	6	3
BLACKSBURG NWSO	56.6	36.1	46.4	12.6	73	28	20	07+	570	0	0	0	13	0	5.51	2.56	1.09	02	T	0		12	4	1
BURKES GARDEN	54.2M	33.9M	44.1M	12.5	67	28	14	06	641E	0	0	0	14	0	M 5.29	1.49	0.92	02	M T	M T	19	11	6	0
CHRISTIANSBURG	55.9	38.2	47.0	11.3	72	28	22	06	551	0	0	0	8	0	4.94	1.96	0.92	01	T	0		11	4	0
CLINTWOOD 1 W	57.6	35.4	46.5	12.4	73	28	19	07+	564	0	0	0	13	0	5.24	1.58	1.10	26	0.2	T	19	11	3	2
COPPER HILL	54.6M	40.2M	47.4M		69	28+	20	19	534E	0	0	0	6	0	4.94		0.80	01	0.0	0		12	3	0

VIRGINIA
201512

MONTHLY STATION AND DIVISION SUMMARY

STATION	TEMPERATURE (°F)											PRECIPITATION (IN)												
	AVERAGE MAXIMUM	AVERAGE MINIMUM	AVERAGE	DEPARTURE FROM NORMAL	HIGHEST	DATE	LOWEST	DATE	HEATING DEG. DAYS	COOLING DEG. DAYS	NO. OF DAYS				TOTAL	DEPARTURE FROM NORMAL	GREATEST 24 HOURS	DATE	ICE PELLETS, SNOW			NO. OF DAYS		
											MAX		MIN						TOTAL	MAX DEPTH ON GROUND	DATE	.10 OR MORE	.50 OR MORE	1.00 OR MORE
											>=90	<=32	<=32	<=0										
GALAX RADIO WBRF	58.0	38.0	48.0	13.5	70	28	19	06	517	0	0	0	11	0	5.76	2.49	1.21	24	T	0		11	5	2
GALAX WTP	58.3	37.4	47.8	13.6	70	28+	19	07+	523	0	0	0	12	0	5.10		0.88	02	0.0	0		12	5	0
GRUNDY	57.6	38.5	48.1	12.5	75	28	21	19	518	0	0	0	9	0	4.57	1.30	0.96	02	T	0		10	3	0
JOHN FLANNAGAN LAKE	M	M	M		74	28	22	21	473E	0	0	0	4	0	M				0.0	0				
LAFAYETTE 1 NE															4.89		0.99	02	0.0	0		11	4	0
LEBANON	61.0	36.6	48.8	13.4	73	28	17	07	496	0	0	0	14	0	4.98	1.56	0.77	18	0.0	0		11	5	0
NORA 4 SSE	55.0	42.5	48.8	14.9	70	28	20	20+	496	0	0	1	7	0	4.51	0.77	1.12	02	T	T	19	9	2	2
N FK LAKE	M	M	M		73	29	21	21	501E	0	0	0	5	0	MA 5.22		1.31	02	M	0		5	2	1
PULASKI 2 E	56.9M	35.5	46.2M	10.8	70	13+	20	08+	585E	0	0	0	13	0	5.80	3.00	1.13	02	0.0	0		12	5	1
RADFORD 3 N	56.3	36.3	46.3	12.6	74	28	19	05	569	0	0	0	13	0	5.20	2.26	1.21	25	0.0	0		9	4	1
RICHLANDS	58.7M	36.5M	47.6M	13.0	74	28	19	20+	537E	0	0	0	10	0	M 4.70	1.25	0.94	26	MT	MT	19	10	5	0
SALTVILLE 1N	58.2	36.5	47.3	11.9	74	28	19	07+	538	0	0	0	9	0	5.80	2.14	1.10	02	T	T	19	11	5	1
STAFFORDSVILLE 3 ENE	56.9M	36.5M	46.7M	12.2	75	28	19	07+	559E	0	0	0	11	0	M 5.46	2.62	0.92	24	MT	MT	19	12	5	0
WILLIS															5.56		0.92	01	0.0	0		13	4	0
WISE 3E	56.9	41.0	48.9	12.8	69	27+	21	20+	489	0	0	0	8	0	5.25	1.44	1.13	25	0.3	0		8	5	2
WYTHEVILLE 1 S	56.4	36.6	46.5	12.9	74	28	20	07+	567	0	0	0	11	0	5.72	2.94	1.14	02	0.0	0		11	4	1
--DIVISIONAL DATA----->			47.3	12.0B											5.44	2.17B								

VIRGINIA
201512

DAILY PRECIPITATION (INCHES)

STATION	TOTAL	DAY OF MONTH																														
		01	02	03	04	05	06	07	08	09	10	11	12	13	14	15	16	17	18	19	20	21	22	23	24	25	26	27	28	29	30	31
WESTERN PIEDMONT 03																																
ALTAVISTA	6.17	0.70	0.42	0.39				0.03							0.04		0.34	1.04					0.54	0.09	0.94	0.60	0.11	0.06		0.43	0.02	0.42
APPOMATTOX	8.00	1.03	0.39	0.30				0.05							0.05		0.21	1.09					0.67	0.51	1.92	0.49	0.11	0.06	0.01	0.57		0.54
BEDFORD 4 NW	5.09	1.03	0.82	0.17				0.06							0.05		0.22	0.73					0.30	0.25	0.79	0.10	0.17	0.05	0.01	0.27		0.07
BROOKNEAL	7.32	1.03	0.14	0.29				0.07							0.01		0.24	0.73					0.47	0.37	1.83	1.10	0.19	0.05	0.01	0.45	0.02	0.32
CHARLOTTESVILLE 2W	5.18	0.97	0.60	0.24				0.01	T	T					0.23		0.12	0.39					0.19	0.29	0.97	0.04	0.14	0.06	0.03	0.86	0.02	0.02
CHATHAM	7.41	1.14	0.25	0.10				0.08							0.03		0.25	0.70					0.20	0.53	1.38	1.85	0.04	0.08		0.43		0.35
CONCORD 4 SSW	7.16	0.96	0.25	0.37				0.04		0.02					0.06		0.24	0.99					0.59	0.33	1.78	0.55	0.14	0.05		0.51	0.03	0.25
DANVILLE RGNL AP	5.56	0.58	0.12				0.03							0.04		0.63		0.63					0.28	1.70	0.63	T			0.29	0.14	1.11	0.01
FREE UNION	A 4.75	0.96	0.48	0.25				0.04		T					0.18		0.12	0.49					0.14	0.28	0.78	0.01	0.14	0.05	*	*	*	0.83 _a
HOLCOMB ROCK	6.78	1.12	0.65	0.48				0.08							0.26		0.11	0.71					0.25	0.42	1.34	0.19	0.18	0.15	T	0.61	0.11	0.12
HUDDLESTON 4 SW	5.99	0.88	0.53	0.45				0.08							0.08		0.09	0.89					0.22	0.37	0.91	0.19	0.14	0.12		0.50	0.02	0.52
LYNCHBURG INTL AP	4.97	0.98	0.55				0.03							0.06		0.85	T					0.04	0.49	0.57	0.53	0.08	T	0.22	0.16	0.41		
MARTINSVILLE FLTR PLT	6.23	1.03	0.41	0.28											0.12		0.23	0.73					0.37	0.27	0.92	0.91	0.03	0.08		0.58		0.27
MEADOWS OF DAN 5 SW	9.08	0.82	1.02	0.50				0.04							0.40		0.35	0.65					0.49	0.64	1.78	0.53	0.19	0.37		0.85		0.45
MONTEBELLO FISH CULTURAL STN	M	1.50	-		-			-		-		-	0.02	-	-		-	0.69				-	-	-	-	-	-	-	-	-	-	-
MONTICELLO	5.06	0.82	0.76												0.14			0.53						0.20	1.32	0.40		0.16	0.07	0.66		
PEDLAR DAM	5.81	0.97	0.84	0.38				0.04							0.43		0.10	0.68					0.28	0.26	0.93	0.12	0.15	0.04	T	0.59		T
ROCKY MT	6.28	1.07	0.42	0.24	0.02			0.04	0.02		0.02				0.06	0.02	0.42	0.63	0.02				0.40	0.43	0.74	0.24	0.02	0.38		0.80	0.02	0.27
SOUTH BOSTON	7.64	0.96	0.18	0.04				0.02							0.10		0.29	1.34					0.28	0.68	2.14	0.18	0.02	0.04		0.46	0.03	0.88
STUART	7.46	0.90	0.70	0.20				0.03						0.04	0.25		0.31						1.18	0.40	1.70	0.40	0.10	0.12	0.05	0.75	0.03	0.30
TYE RIVER 1 SE	M	-	-	-	-	-	-	-	-	-	-	-	-	-	-	-	-	-	-	-	-	-	-	-	-	-	-	-	-	-	-	-
WOOLWINE	7.42	0.98	0.30	0.43				0.01		T					0.35		0.15	0.73					0.30	0.47	1.35	0.38	0.22	0.23	0.01	1.21	0.02	0.28
NORTHERN 04																																
EDINBURG	M	-	-	-	-	-	-	-	-	-	-	-	-	-	-	-	-	-	-	-	-	-	-	-	-	-	-	-	-	-	-	-
FRONT ROYAL	4.00	0.44	0.62	0.15						0.03							0.01	0.54					0.04	0.02	0.19	0.05	0.96	0.13	0.12	0.61		0.09
LINCOLN	4.48		1.06														0.82							0.74			1.13		0.73			
LURAY 5 E	2.98	0.56	0.15	0.15						0.03		T			0.01		0.21	0.45					0.06	0.14	0.25		0.31	0.01	0.11	0.51	0.01	0.02
MADISON	M	-	-	-	-	-	-	-	-	-	-	-	-	-	-	-	-	-	-	-	-	-	-	-	-	-	-	-	-	-	-	-
MANASSAS	M 4.12	0.65	0.45	0.20											0.05		0.10	0.50					0.12	0.30	0.50	-	0.30	0.10	0.05	0.60	0.05	0.15
MT WEATHER	4.62	0.32	0.56	0.27						0.04					0.10		0.02	0.58				0.01	0.12	0.04	0.74	0.04	0.84	0.03	0.15	0.71	0.01	0.04
PIEDMONT RSCH STN	3.31	0.79	0.51	0.25											0.05		0.11	0.37					0.12	0.08	1.03							
SOMERSET	4.58	0.81	0.39	0.33						T					0.08		0.28	0.28					0.19	0.22	1.01		0.16	0.04	0.03	0.61	0.02	0.13
SPERRYVILLE	M	0.83	0.28	0.16				-		-					-		-	0.48					0.10	-	1.05	-	-	-	-	-	-	0.07
STERLING RCS	4.61	0.40	0.40	0.23						0.04					0.08		0.03	0.56					0.19	0.04	0.70	0.05	0.68	0.06	0.07	0.71	0.28	0.09
VIENNA	3.11	0.35	0.28	0.14											0.08		0.03	0.41					0.07	0.03	0.74	0.01	0.49	0.01	0.10	0.32	0.03	0.02
WARRENTON 3 SE	M 3.81	0.64	-	-	-	-		T	T						0.46		0.20	0.34					0.13	0.04	0.98	0.04	0.14	-	0.12	0.64	0.02	0.06
WASHGTN DULLES INTL AP	3.76	0.58	0.21						0.01	T				0.07	0.07		0.58						0.11	0.58	0.03	0.67	0.04	0.13	0.26	0.39	0.03	
WASHINGTON REAGAN AP	4.84	0.85	0.22							T				0.13	T		0.42						0.14	1.67	0.20	0.30	0.01	0.02	0.23	0.50	0.15	
WINCHESTER	3.24	0.29	0.38	0.18						0.08					0.06		0.07						0.13	0.01	0.22	0.15	0.70	0.07		0.76	0.03	0.11
WINCHESTER 7 SE	M 3.33		0.25	0.40	0.02				0.04					0.02		0.03	0.42	0.01				0.10	0.02	0.18	0.02	-	1.03	0.03	-	0.71	0.05	
WOODSTOCK 2 NE	M 3.42	0.42	0.41	0.11						0.01							0.11	0.51					0.10	0.05	0.10	T	1.04	0.02	0.11	0.43		-

VIRGINIA
201512

DAILY PRECIPITATION (INCHES)

STATION	TOTAL	DAY OF MONTH																														
		01	02	03	04	05	06	07	08	09	10	11	12	13	14	15	16	17	18	19	20	21	22	23	24	25	26	27	28	29	30	31
CENTRAL MOUNTAIN 05																																
BUENA VISTA	4.84	0.70	0.77	0.35				0.15							0.02		0.10	0.73					0.19	0.12	0.69	0.15	0.18	0.02	T	0.60		0.07
COVINGTON FLTR PLT	4.27	0.62	0.78	0.25				0.08		0.03					0.04		0.17	0.65	T			0.20	0.13	0.70	0.12	0.17	0.03		0.17	T	0.13	
DALE ENTERPRISE	3.11		0.55	0.20								0.02					0.03	0.63				0.08	0.03	0.52	0.02	0.20	0.20	0.07	0.50	0.02	0.04	
GATHRIGHT DAM	4.20	0.68	0.78	0.22				0.07							0.09		0.18	0.72				0.23	0.06	0.78	0.03	0.13	0.02	T	0.13		0.08	
GLASGOW 1 SE	5.36	0.84	0.75	0.27				0.15						T	0.23		0.13	0.64				0.28	0.22	0.73	0.12	0.21	0.05	0.05	0.65		0.04	
HOT SPRINGS	4.94	0.56	0.85	0.33				0.10		0.03					0.14		0.14	0.80	T			0.30	0.15	0.77	0.10	0.25	0.04		0.25		0.13	
LEXINGTON	5.00	0.85	0.75	0.24				0.08		0.01					0.02		0.13	0.68				0.25	0.16	0.84	0.14	0.16	0.03	0.02	0.57	0.01	0.06	
MILLGAP	4.50	0.48	0.76	0.30				0.04		0.05					0.02		0.01	0.55	T			0.50	0.07	0.91	0.19	0.34		0.01	0.24		0.03	
MTN GROVE	4.42	1.54	0.60	0.20				0.10										0.65	T			0.20	0.15	0.68	0.10	0.15			0.05		0.03	
MUSTOE 1 SW	4.94	0.74	0.60	0.03				0.05		0.08					0.07		0.71	0.02	T		0.25	0.20	0.70	0.62	0.37	0.03	0.07	0.24	0.11	0.05		
NEW CASTLE	5.07	0.65	0.79	0.39				0.04		T					0.08		0.22	0.61	T			0.15	0.33	0.61	0.32	0.29	0.05	0.01	0.38	0.01	0.14	
ROANOKE 8 N	5.04	0.83	0.92	0.14				0.04									0.18	0.62				0.20	0.42	0.66	0.20	0.16	0.05	T	0.50		0.12	
ROANOKE INTL AP	4.55	0.95	0.60	T				0.02		T					0.03		0.78	T			0.02	0.20	0.62	0.55	0.13	0.01		0.38	0.18	0.08		
STAUNTON WATER TRMTMT PLT	3.20	0.75	0.45	0.08				T							0.03	T	0.20	0.45				0.07	0.08	0.47	T	0.04	0.02	0.05	0.51	T	T	
WAYNESBORO WTP	3.74	0.80	0.52	0.17				0.06							T		0.10	0.61				0.14	0.04	0.44	0.13	0.07		T	0.63		0.03	
SOUTHWESTERN MOUNTAIN 06																																
ABINGDON 3S	6.36	0.80	1.30	0.20				0.02	0.03		0.02				0.28		0.25	0.68						0.27	0.56	0.80	0.60	0.02		0.45		0.08
BIG STONE GAP	7.71	0.84	1.33	0.14				0.04	0.05		0.02				0.44		0.97	0.27				0.30	0.07	1.05	0.01	1.28	0.05	0.01	0.81		0.03	
BLACKSBURG NWSO	5.51	0.93	1.09	0.15				0.06		0.01					0.02		0.19	0.64	T			0.18	0.29	0.76	0.44	0.30	T		0.27	T	0.18	
BURKES GARDEN	M 5.29	0.64	0.92	0.20				T	0.05	0.04					0.16		0.24	-	0.58			0.09	T	0.60	0.62	0.56			0.44		0.15	
CHRISTIANSBURG	4.94	0.92	0.88	0.05				T	0.14						0.04		0.24	0.56	T			0.03	0.08	0.30	0.76	0.30	0.11	0.02		0.33		0.18
CLINTWOOD 1 W	5.24	0.50	1.02	0.34				0.02	0.11		0.06	T			0.12		0.41	0.49	0.01			0.05	0.10	0.47	0.05	1.10	0.06		0.32		0.01	
COPPER HILL	4.94	0.80	0.48	0.38					0.07						0.07		0.17	0.70				0.28	0.23	0.61	0.31	0.20	0.06	0.03	0.35		0.20	
GALAX RADIO WBRF	5.76	0.57	1.05					T							0.37	0.05	0.61	T			0.10	0.32	0.23	1.21	0.02	0.29		0.08	0.66	0.05	0.15	
GALAX WTP	5.10	0.64	0.88	0.06				T							0.01	0.29	0.26	0.32				0.33	0.15	0.67	0.53	0.17	0.03		0.65		0.11	
GRUNDY	4.57	0.62	0.96	0.14				0.02	0.10	0.01	0.05				0.12		0.42	0.44	T			0.09	0.01	0.49	0.01	0.93	0.03		0.13		0.03	
JOHN FLANNAGAN LAKE	M	-	1.04			-	-	-	-	-	-	-	-	-	0.07		0.62	0.24	-	-	-	0.10		-	-	-	-	1.74	0.20	-		
LAFAYETTE 1 NE	4.89	0.82	0.99	0.13				0.08							0.02		0.17	0.63				0.24	0.47	0.76	0.22				0.23	0.01	0.12	
LEBANON	4.98	0.51	0.63	0.23				0.05	0.03		0.09	0.01			0.42		0.21	0.77	0.02			0.18	0.02	0.56	0.18	0.72	0.03		0.25		0.07	
NORA 4 SSE	4.51	0.26	1.12	0.10				0.03		0.06	T		T		0.17		0.33	0.42	T			0.06	0.03	0.39	0.03	1.11	0.06		0.34		T	
N FK LAKE	MA 5.22	0.61	1.31	0.12	*	*	*	0.01 _a	0.07	0.10		*	*	0.00 _a	0.10		*	*	*	*	*	0.70 _a	*	*	*	*	*	*	2.20 _a	-		
PULASKI 2 E	5.80	0.76	1.13					0.06		T					0.13		0.18	0.65				0.14	0.17	0.76	0.26	0.96	T	T	0.42	T	0.18	
RADFORD 3 N	5.20	0.89	0.98	0.03				T	0.07						0.06		0.55	0.35	T			0.09	0.24	0.41	1.21	0.03			0.13		0.16	
RICHLANDS	M 4.70	0.50	0.81	0.14		-		0.04	0.08	-	0.06				0.22		0.27	0.59	0.02			0.10	0.05	0.64	0.08	0.94			0.14		0.02	
SALTVILLE 1N	5.80	0.91	1.10	0.16				0.05		0.02		T			0.15		0.27	0.74	T			0.21	0.07	0.53	0.33	0.74	0.01		0.43		0.08	
STAFFORDSVILLE 3 ENE	M 5.46	0.74	0.85	0.24				0.05		-					0.08	T	0.33	0.61	T			0.11	0.10	0.92	0.66	0.36	0.02		0.21		0.18	
WILLIS	5.56	0.92	0.77	0.21		T				T					0.30		0.28	0.44	T			0.25	0.37	0.59	0.52	0.25	0.03	T	0.47		0.16	
WISE 3E	5.25	0.30	1.07					0.04			0.07	T			0.22		0.90	T	T			0.10	0.03	0.67	1.13	0.02			0.69		0.01	
WYTHEVILLE 1 S	5.72	0.52	1.14	0.09				0.02			0.04				0.22		0.43	0.37				0.18	0.09	0.89	0.84	0.33	0.03		0.39	0.02	0.12	

VIRGINIA
201512

DAILY TEMPERATURES (°F)

STATION	OB. TIME	MAX/MIN	DAY OF MONTH																															AVERAGE
			01	02	03	04	05	06	07	08	09	10	11	12	13	14	15	16	17	18	19	20	21	22	23	24	25	26	27	28	29	30	31	
ASHLAND	18	MIN	38	42	40	27	28		26	24	33	37	43	43	48	55	52	36	37	37	25		25	40	40	60		61		50	42	42	52	40.1
		MAX	52	60	60	52	53	55	51	57	59	63	70	75	72	72	68	58	53	53	46	49	61	63	68	71	75	69	74	68	60	57	55	61.3
CAMP PICKETT	08	MIN	38	50	39	27	26	25	31	30	32	37	42	44	47	52	53	34	38	40	25	22	30	50	55	62	63	53	52	41	40	47	45	41.0
		MAX	42	52	61	52	52	55	56	53	58	62	66	70	75	66	67	66	59	53	51	46	52	58	62	71	74	74	65	75	52	59	64	60.3
CHASE CITY	17	MIN	39	39	26	24	27	24	25	29	30	37	41	45	40	43	40	37	37	49	24	23	23	34	51	60	65	59	55	51	43	43	52	39.2
		MAX	44	53	61	52	54	56	58	57	58	62	65	71	75	71	71	70	60	54	54	49	51	57	62	69	74	72	68	75	56	57	62	61.2
CLARKSVILLE	07	MIN	41	43	42	30	29	29	38	34	34	39	39	42	46	47	54	42	41	50	29	27	29	42	55	61	67	59	58	56	44	45	53	43.4
		MAX	44	53	62	53	56	59	59	55	58	63	66	73	77	73	72	70	60	54	54	48	53	57	63	69	76	76	67	76	59	58	64	62.2
CORBIN	09	MIN	40	42	43	28	28	28	28	34	35	40	40	49	49	49	54	42	42	50	28	26	26	40	40	67	61	59	59	44	44	44	41.9	
		MAX	48	60	60	51	52	55	58	56	54	62	70	74	71	70	68	58	52	52	46	49	58	61	68	69	70	66	73	69	58	53	54	60.2
CROZIER	07	MIN	39	48	40	28	28	26	30	34	36	40	46	48	51	57	53	35	42	38	26	23	33	52	58	64	65	52	52	41	41	47	49	42.6
		MAX	41	52	58	51	51	53	54	55	58	58	64	70	74	72	70	67	57	50	45	46	50	59	61	68	69	72	60	73	60	53	54	58.9
FARMVILLE 2 N	07	MIN	37	41	38	25	25	24	28	29	33	37	43	44	47	48	53	33	33	41	26	22	23	37	55	61	64	59	51	48	48	50	45	40.3
		MAX	42	52	59	51	52	54	55	61	59	61	66	71	76	71	71	69	59	52	52	48	52	57	60	67	70	73	61	76	50	61	54	60.1
GREENBAY 3 NE	09	MIN	39	42	42	26	25	26	24	30	30	39	42	45	51	51	54	36	35	46	26	24	24	35	49	59	65	57	53	49	40	41	47	40.4
		MAX	48	60	60	51	52	55	58	56	54	62	70	74	71	70	68	58	52	52	46	49	58	61	68	69	70	66	73	69	58	53	54	60.2
JOHN H KERR DAM	08	MIN	41	42	43	29	27	27	29	34	34	42	42	54	48	48	57	39	41	51	29	27	29	39	52	54	65	62	60	58	46	46	57	43.6
		MAX	44	54	63	54	55	57	59	54	62	63	69	71	75	73	71	71	63	62	61	48	55	57	60	70	74	71	68	76	58	60	64	62.6
KEYSVILLE 2 S	07	MIN	41	42	43	29	27	27	29	34	34	42	42	54	48	48	57	39	41	51	29	27	29	39	52	54	65	62	60	58	46	46	57	43.6
		MAX	41	52	60	50	52	56	57	61	58	61	65	71	75	71	69	68	59	53	51	47	51	51	61	67	71	73	63	75	58	58	55	60.0
LOUISA	18	MIN	38	41	41	27	27	24	26	33	34	38	42	50	54	54	40	40	48	25	25	29	32	41	60	65	62	55	58	40	41	51	41.8	
		MAX	46	57	57	52	54	54	61	58	50	63	70	76	68	68	66	57	51	50	46	49	57	59	63	68	69	64	72	68	59	53	55	59.4
PALMYRA 3S	06	MIN	36	46	35	21	22	21	26	27	27	31	36	42	45	53	48	31	34	42	22	19	26	47	55	61	62	51	50	40	38	44	48	38.3
		MAX	57	52	58	52	52	54	54	63	58	55	64	72	77	71	70	67	57	50	51	47	49	59	59	67	70	70	60	73	47	60	52	59.6
PETERSBURG	08	MIN	37	42	34	23	23	22	22	27	28	31	34	42	44	44	50	29	35	43	23	20	20	39	47	58	64	57	52	47	39	41	49	37.6
		MAX	55	64	54	54	55	58	50	59	62	67	72	77	74	73	70	61	54	53	47	53	62	64	73	75	76	64	77	53	61	60	60	62.5
RICHMOND INTL AP	24	MIN	44	47	29	28	27	28	32	31	39	39	46	46	48	57	38	38	50	27	25	25	40	52	61	67	62	58	53	46	47	57	46	43.0
		MAX	53	62	59	53	55	55	51	58	60	64	70	76	72	72	68	59	53	53	46	49	61	63	71	71	75	67	75	67	55	55	56	61.4
SANDSTON	07	MIN	41	52	36	31	30	28	35	32	34	38	44	45	48	54	46	36	43	35	26	25	35	49	58	65	64	54	54	44	45	49	49	42.7
		MAX	42	53	61	51	50	52	53	50	55	59	62	68	74	71	72	66	57	53	48	45	48	61	63	70	70	74	62	75	51	56	56	59.0
WESTERN PIEDMONT 03 APPOMATTOX	07	MIN	41	42	46	30	29	27	31	32	40	39	45	46	48	57	37	36	48	29	25	25	38	52	60	66	62	55	51	45	45	52	42.1	
		MAX	41	51	57	48	48	53	53	59	55	54	62	67	73	69	68	65	56	51	50	44	48	53	59	66	68	71	59	72	46	57	52	57.3
BROOKNEAL	07	MIN	37	41	37	27	27	31	32	36	38	38	44	47	51	53	49	38	37	46	26	27	29	40	49	59	64	58	51	46	38	42	50	41.5
		MAX	43	52	59	49	50	53	55	60	57	57	64	70	76	70	71	68	58	53	51	48	50	54	59	67	68	71	63	74	54	61	54	59.3
CHARLOTTESVILLE 2W	08	MIN	40	43	36	24	24	24	24	28	31	34	34	35	42	43	47	31	31	48	23	22	24	32	47	56	60	58	55	54	41	43	51	38.2
		MAX	41	49	55	49	53	52	55	63	58	55	64	69	77	69	65	64	56	51	50	46	50	54	57	63	69	68	59	72	45	57	53	57.7
CHATHAM	07	MIN	37	41	38	32	32	34	36	42	36	37	45	47	55	56	56	40	40	45	28	29	32	36	47	54	63	58	52	45	37	42	48	42.6
		MAX	43	50	58	49	51	50	54	62	55	56	65	68	76	68	69	69	56	52	54	47	49	52	56	64	67	67	63	61	57	58	54	58.1
DANVILLE RGNL AP	24	MIN	39	40	37	24	22	22	28	27	29	29	33	35	41	42	45	31	30	46	21	20	22	30	44	55	62	54	55	39	41	49	37.0	
		MAX	50	63	52	54	55	57	63	60	63	66	72	77	73	72	71	61	55	56	50	53	56	61	65	72	74	65	77	65	59	55	63	62.4
		MIN	41	50	31	26	26	26	31	33	33	39	45	50	48	55	45	38	48	33	27	25	33	47	57	64	61	59	62	43	42	48	48	42.4

VIRGINIA
201512

DAILY TEMPERATURES (°F)

STATION	OB. TIME	MAX/MIN	DAY OF MONTH																															AVERAGE		
			01	02	03	04	05	06	07	08	09	10	11	12	13	14	15	16	17	18	19	20	21	22	23	24	25	26	27	28	29	30	31			
FREE UNION	08	MAX	40	45	53	49	53	53	56	61	57	47	63	71	78	71	65	64	55	48	49	42	51	54	59	64	70	67	57	73	45	60	50	57.1		
		MIN	37	40	37	24	23	22	22	26	28	28	31	33	44	44	54	31	31	43	26	22	21	29	45	52	53	54	50	45	36	40	45	36.0		
LYNCHBURG INTL AP	24	MAX	47	57	49	51	53	54	61	56	57	63	71	76	69	68	67	56	51	49	46	49	52	58	62	68	68	61	73	63	60	52	59	58.9		
		MIN	40	46	34	22	26	24	28	30	31	35	42	48	43	51	40	34	46	32	27	22	31	46	53	61	59	52	52	38	38	44	41	39.2		
MARTINSVILLE FLTR PLT	07	MAX	44	51	58		53	54	57	64	59	59	66	69	76	71	69	70	59	53	53	47	52	52	58	66	70	69	69	74	58	62	53	60.5		
		MIN	40	42	40	23	21	21	22	28	28	35	35	36	41	42	41	31	30	46	24	21	21	40	47	54	64	56	56	57	40	42	45	37.7		
MEADOWS OF DAN 5 SW	07	MAX	46	55	55	45	56	56	57	60	59	56	65	68	76	68		68		55		43	52	54	57	63	67	67	65	71	59	65	56	59.4		
		MIN	41	42	32	29	30	29	29	34	33	35	39	40	40	44		39	39	43		27	27	36	50	53	53	53	55	56	43	46	49	39.8		
MONTEBELLO FISH CULTURAL STN	07	MAX		60		59		56			49		59			67		66			55													M		
		MIN		34		22		22			31		35			41		31			21													M		
MONTICELLO	08	MAX	40	48	56	47	49	50	58	59	54	48	60	68	75	67	66	62	53	50	47	43	47	53	55	66	67	66	67	70	44	49	52	56.0		
		MIN	36	40	39	31	30	31	34	31	36	34	42	45	52	53	52	40	40	44	27	27	29	41	44	53	64	50	50	44	36	41	39	40.5		
ROCKY MT	07	MAX	68	52	58	48	53	53	55	59	59	65	72	76		66	68	56	52	47	46	51	51	59	65	68	66	62	73	56	61	54	59.3			
		MIN	38	41	39	25	25	23	23	30	29	29	37	39	43	42	53	33	33	46	31	25	25	35	48	54	61	55	55	56	38	42	45	38.6		
SOUTH BOSTON	07	MAX	43	52	60	53	53	54	58	60	60	62	66	71	76	71	71	60	53	56	49	53	55	61	66	72	72	65	75	58	56	55	60.9			
		MIN	40	41	42	28	25	25	25	32	31	37	37	42	46	46	49	35	35	48	26	24	24	34	47	60	64	58	58	58	42	42	51	40.4		
STUART	07	MAX	46	55	57	48	54	54	57	62	60	57	66	69	77	69	66	70	60	56	53	46	53	55	58	64	67	68	67	73	62	63	55	60.2		
		MIN	41	40	35	26	27	26	31	33	33	36	36	36	44	44	44	36	36	44	25	25	32	47	50	54	63	56	56	59	40	41	49	40.2		
TYE RIVER 1 SE	07	MAX																																M		
		MIN																																	M	
NORTHERN 04																																				
EDINBURG	07	MAX																																	M	
		MIN																																		M
FRONT ROYAL	07	MAX	37	43	51	45	49	51	54	55	54	48	60	65	74	70	68	59	51	51	43	41	46	58	60	70	71	61	57	74	42	55	49	55.2		
		MIN	34	35	38	32	28	28	26	31	16	20	36	44	45	52	56	40	40	38	29	28	26	36	48	48	57	52	45	42	36	37	40	37.5		
LINCOLN	07	MAX	43	44	51	52	49	51	53	55	50	43	61	62	71	72	67	66	54	49	50	40	46	52	60	65	71	64	60	66	40	53	50	55.2		
		MIN	36	39	37	34	22	21	21	23	25	30	31	31	42	44	50	35	35	39	25	25	27	30	47	56	55	51	49	40	37	40	40	36.0		
LURAY 5 E	08	MAX	39	49	53	46	50	52	54	59	55	56	64	68	74	69	70	60	54	53	43	43	51	64	65	73	71	64	57	74	59	59	58	58.3		
		MIN	34	38	35	25	25	25	28	31	31	33	37	46	48	48	53	32	36	36	26	23	25	50	48	52	52	52	47	41	37	43	45	38.1		
MADISON	08	MAX		49	56	51	53	54	55		58	50																							M	
		MIN		44	43	30	30	30	30		34	34																							M	
MANASSAS	07	MAX	41	49	57	49	52	53	54	59	56	47	63	70	75	74	72	62	57	51	45	45	48	57	60	68	72	71	56	72	44	52	52	57.5		
		MIN	36	41	41	29	26	25	28	29	33		34	38	46	50	59	36	36	44	27	23	23		51	57	65	56	51	40	42	48	39.8			
MT WEATHER	07	MAX	40	45	50	43	47	50	51	53	48	49	57	63	72	68	62	55	50	49	49	38	42	52	57	60	65	68	52	65	41	52	48	52.9		
		MIN	31	35	33	31	31	32	35	37	34	34	34	34	59	53	50	37	39	35	24	25	27	33	45	52	60	52	46	37	34	34	41	38.2		
PIEDMONT RSCH STN	08	MAX	41	50	58	52	53	52	54	60	57	47	61	69	75	69	68	64	55	50	48	46	48	56	58	63	69	68	61	71	60	57	50	57.7		
		MIN	36	40	36	30	27	31	28	33	32	35	35	42	46	50	53	36	38	39	34	26	22	36	46	54	62	61	50	50	38	38	46	39.7		
SOMERSET	07	MAX	42	48	57	49	52	53	55	60	57	47	61	69	77	77	68	64	55	50	49	47	50	55	59	65	70	68	58	72	45	60	51	57.7		
		MIN	37	41	38	25	24	26	27	29	28	29	34	38	48	48	56	32	34		42	27	23	26	39	48	55	57	56	52	45	38	42	38.5		
SPERRYVILLE	06	MAX	41	46	51	48		55	54		55		60	65	77																			M		
		MIN	36	40	39	27		27	27		30		37	38	48																				M	
STERLING RCS	07	MAX	40	48	56	56	56	51	53	58	51	45	61	63	71	73	69	69	56	51	42	43	46	56	60	66	72	69	55	69			56.9			

VIRGINIA
201512

DAILY TEMPERATURES (°F)

STATION	OB. TIME	MAX/MIN	DAY OF MONTH																															AVERAGE
			01	02	03	04	05	06	07	08	09	10	11	12	13	14	15	16	17	18	19	20	21	22	23	24	25	26	27	28	29	30	31	
VIENNA	07	MIN	35	40	38	32	25	23	23	28	29	31	33	37	41	46	56	35	34	41	22	22	22	35	48	56	58	55	50	41	38	40	44	37.4
		MAX	41	51	58	49	51	54	56	59	55	48	63	69	75	74	70	62	57	54	45	45	59	59	62	67	73	72	57	72	44	53	55	58.4
WARRENTON 3 SE	08	MIN	39	41	41	33	30	29	29	32	35	37	37	43	47	53	58	39	39	43	28	28	31	42	52	59	67	57	52	44	41	42	43	41.6
		MAX	41					51	51	57	53	53	59	64	70	69	67	61	53	50	45	43	45	55	58	63	69	67		67	46	52	49	56.1
WASHGTN DULLES INTL AP	24	MIN	35					27	30	36	31	31	37	44	51	53	54	36	38	40	26	24	34	40	48	55	61	54		41	38	43	46	40.5
		MAX	47	57	49	50	53	54	59	53	46	63	63	71	73	69	66	56	52	49	44	46	56	60	64	71	70	60	69	56	51	54	57	57.7
WASHINGTON REAGAN AP	24	MIN	39	47	38	30	26	23	27	29	29	35	35	39	45	57	41	34	42	31	26	24	37	49	56	63	58	51	51	39	40	45	43	39.6
		MAX	48	59	53	53	54	52	60	56	49	63	66	68	71	69	67	57	54	52	45	46	58	62	66	71	69	60	70	60	53	55	57	58.8
WINCHESTER	07	MIN	44	48	42	36	33	33	36	38	39	41	42	45	48	53	47	41	47	35	30	32	38	51	54	60	57	51	41	44	49	44	43.5	
		MAX	38	45	49	44	51	53	54	58	55	53	63	64	71	71	64	57	55	55	40	40	47	53	62	64	71	68	56	72	42	55	49	55.5
WINCHESTER 7 SE	08	MIN	34	37	37	35	27	25	25	28	29	29	35	43	51	48	49	43	38	36	26	27	27	41	47	51	52	50	46	40	37	37	40	37.7
		MAX	61	36	42	46	52	53	56	54	50	61	67	70	70	65	56	54	50	43	43	46	52	62	65	71		71	72		41	56	54	55.8
WOODSTOCK 2 NE	07	MIN	35	33	36	31	20	20	20	24	32	31	33	44	45	45	43	36	36	27	21	21	37	42	48	45		46	40	36	37	35	34.4	
		MAX	40	42	49	45	51	54	54	57	56	53	62	65	71	67	67	59	55	55	43	42	48	53	62	65	70	59	54	73	41	56		55.6
CENTRAL MOUNTAIN 05 COVINGTON FLTR PLT	07	MIN	34	36	37	26	24	24	26	27	26	32	35	46	47	55	32	31	31	28	21	21	36	43	48	50	52	45	41	36	37		35.1	
		MAX	46	47	58	44	50	55	53	52	55	51	65	69	73	62	66	63	59	53	43	43	49	42	57	63	67	61	63	77	55	66	54	56.8
DALE ENTERPRISE	07	MIN	42	42	37	24	25	25	29	29	30	37	37	43	45	56	34	34	43	25	24	24	31	31	49	53	53	55	55	40	42	44	37.5	
		MAX	43	51	55	45	45	52	54	54	53	57	61	67	71	71	60	54	54	51	45	42	44	49	61	60	68	62	62	71	52	63	52	55.8
GATHRIGHT DAM	07	MIN	35	37	35	25	23	19	24	27	27	28	40	41	44	44	53	30	32	35	25	20	20	36	46	49	51	51	54	41	36	36	42	35.7
		MAX	42	47	55	38	47	51	49	50	49	51	59	64	69	61	63	56	55	51	38	38	45	42	54	61	65	58	59	73	53	63	51	53.5
HOT SPRINGS	07	MIN	39	41	35	23	23	25	26	28	30	29	38	38	45	44	51	33	33	38	25	23	23	30	42	48	49	49	54	52	37	41	43	36.6
		MAX	41	51	56	38	44	49	49	51	48	52	56	62	67	62	64	54	54	52	37	36	44	47	58	62	65	60	59	71	47	59	56	53.3
LEXINGTON	07	MIN	37	41	33	23	22	24	24	28	29	29	44	44	43	44	50	32	32	36	23	22	22	30	44	51	50	50	52	47	36	41	44	36.4
		MAX	40	47	56	45	49	52	52	56	53	54	62	70	73	64	67	63	56	51	44	43	48	46	60	61	70	65	61	73	49	58	54	56.2
MILLGAP	07	MIN	38	40	39	22	22	22	25	28	29	35	35	43	42	57	32	32	41	27	22	22	29	46	51	54	54	53	49	37	40	43	36.5	
		MAX	41	48	54	36	52	59	56	52	51	55	59	63	68	65	61	51	59	51	35	35	45	42	58	59	66	59	58	72	44	64	55	54.0
MUSTOE 1 SW	24	MIN	37	40	31	17	15	15	15	20	21	21	29	31	40	40	47	25	25	28	21	17	15	24	42	46	44	43	49	44	36	36	37	30.7
		MAX	46	55	41	49	57	54	51	49	53	57	63	68	64	59	55	56	50	41	36	44	38	58	55	64	59	57	71	50	60	55	50	53.7
ROANOKE 8 N	07	MIN	40	41	27	21	21	22	25	29	25	35	31	36	39	42	30	26	35	24	23	18	25	37	39	48	46	50	36	36	37	34	33.2	
		MAX	43	49	57	46	53	54	55	55	58	57	65	72	75	67	66	67	55	51	52	49	49	50	54	61	68	68	61	76	55	66	52	58.3
ROANOKE INTL AP	24	MIN	42	40	39	27	27	27	32	31	31	40	41	46	44	56	37	37	39	29	27	26	32	47	52	56	55	55	54	39	42	46	39.5	
		MAX	46	58	48	54	54	57	56	58	64	72	75	67	67	68	55	53	52	46	49	50	54	58	69	65	61	76	65	66	53	57	58.9	
STAUNTON WATER TRMTMT PLT	08	MIN	41	46	29	27	26	32	33	31	42	41	51	45	54	50	37	47	31	28	27	31	46	53	56	55	54	54	39	39	48	44	40.8	
		MAX	38	53	56	44	51	53	55	57	52	56	61	67	73	67	64	59	55	54	44	41	48	52	60	62	67	66	56	70	41	62	54	56.1
WAYNESBORO WTP	07	MIN	34	38	34	25	25	29	31	31	34	35	43	43	50	52	51	34	35	38	25	26	33	33	49	51	51	55	48	41	35	38	42	38.4
		MAX	39	52	58	45	47	51	55	58	55	55	62	68	73	69	67	60	51	53	46	42	50	55	63	66	71	68	59	74	44	65	54	57.3
SOUTHWESTERN MOUNTAIN 06 ABINGDON 3S	22	MIN	36	38	37	24	24	24	24	27	30	30	35	39	45	44	56	31	31	37	26	24	24	32	48	54	52	52	50	44	36	38	44	36.6
		MAX	54	57	56	43	51	54	58	47	53	56	60	64	68	68	68	68	72	55	40	40	48	51	60	65	62	63	68	74	71	64	58	58.6
		MIN	45	46	31	23	22	24	24	29	25	27	39	45	44	44	48	35	34	40	23	22	22	34	50	54	53	53	52	51	49	44	45	38.0

VIRGINIA
201512

DAILY TEMPERATURES (°F)

STATION	OB. TIME	MAX/MIN	DAY OF MONTH																															AVERAGE
			01	02	03	04	05	06	07	08	09	10	11	12	13	14	15	16	17	18	19	20	21	22	23	24	25	26	27	28	29	30	31	
BIG STONE GAP	08	MAX	57	59	53	45	54	59	57	50	54	55	55	60	67	69	67	62	68	54	35	43	48	55	56	64	67	62	70	73	72	64	56	58.4
		MIN	54	53	32	26	26	24	24	32	26	43	43	50	46	47	39	34	34	35	22	22	23	35	49	51	52	52	49	49	55	43	43	39.1
BLACKSBURG NWSO	07	MAX	42	54	57	44	50	54	54	50	56	55	60	67	71	66	65	62	59	52	39	40	50	53	62	62	64	62	59	73	56	65	53	56.6
		MIN	38	40	33	23	21	20	20	29	28	28	36	37	41	41	50	31	32	38	23	25	25	30	50	52	51	51	51	52	36	40	46	36.1
BURKES GARDEN	07	MAX	50	54	53	35	46	50	52	49	47	50	52	60	63	64	60	55	59		53	34	47	52	56	60	60	61	62	67	61	58	56	54.2
		MIN	42	49	28	17	16	14	21	26	20	20	40	48	36	31	44	26	25		19	18	19	40	45	55	51	46	45	50	38	45	44	33.9
CHRISTIANSBURG	07	MAX	42	56	56	42	49	53	52	48	54	53	59	66	70	66	64	62	61	51	39	39	51	53	61	61	64	61	61	72	57	61	48	55.9
		MIN	37	39	32	25	24	22	24	34	34	35	36	38	44	46	49	38	37	37	23	26	28	40	50	51	52	53	56	35	39	43	38.2	
CLINTWOOD 1 W	07	MAX	57	58	55	40	46	53	56	47	53	56	58	65	68	69	68	61	67	54	33	40	47	58	62	62	67	58	66	73	70	65	55	57.6
		MIN	50	53	33	21	19	19	19	29	25	25	36	40	43	43	45	30	30	33	21	20	20	30	46	52	46	46	46	46	51	40	40	35.4
COPPER HILL	07	MAX	41	55	55	39	46	58	53	52	52	54	59	64	69	65	62	59	51	52	38	38	46	52	60	61	64		59	69	50	60	56	54.6
		MIN	33	41	30	25	24	30	33	34	34	39	40	47	52	52	47	42	37	37	20		25	39	51	52	59	55	54	50	33	45	46	40.2
GALAX RADIO WBRF	07	MAX	55	55	55	42	51	50	53	53	53	61	67	66	68	65	63	60	57	54	39	46	48	60	60	64	64	63	68	70	64	66	57	58.0
		MIN	39	46	32	21	20	19	27	28	28	35	34	43	38	52	41	30	40	34	24	22	30	45	49	56	59	51	57	49	41	43	46	38.0
GALAX WTP	07	MAX	49	57	57	43	53	53	57	57	56	53	62	68	70	66	65	63	57	66	44	39	48	54	64	63	65	66	64	70	61	68	59	58.3
		MIN	42	47	35	24	22	19	19	20	29	30	35	36	39	39	48	32	32	40	25	24	25	38	52	57	56	54	54	53	42	44	47	37.4
GRUNDY	07	MAX	55	56	53	42	47	50	51	43	54	58	59	66	70	65	69	63	69	52	36	42	46	56	62	66	67	58	63	75	70	68	54	57.6
		MIN	51	51	36	26	25	23	24	33	30	30	38	40	47	49	53	35	36	35	21	22	22	35	47	48	50	51	51	51	48	43	44	38.5
JOHN FLANNAGAN LAKE	07	MAX		57	53	46					60		60			71	69	69	56	52			52	56	62				74	70		68	M	
		MIN		50	33	27					30		30			42	51	35	35	33			22	37	48				48	48		42	M	
LEBANON	07	MAX	56	63	60	42	49	60	57	47	54	58	57	62	67	72	69	69	70	70	36	41	50	60	62	69	67	66	72	73	72	68	72	61.0
		MIN	52	53	31	22	18	18	17	29	24	24	40	48	42	43	48	29	30	30	23	20	19	36	36	60	50	51	50	53	50	45	44	36.6
NORA 4 SSE	07	MAX	53	55	53	39	46	57	52	45	49	51	52	58	63	65	63	61	64	52	31	37	45	52	58	62	61	61	66	70	67	63	55	55.0
		MIN	50	49	30	25	25	41	40	35	37	40	43	50	54	55	43	43	48	30	20	20	30	40	52	56	57	57	57	51	50	49	42	42.5
N FK LAKE	08	MAX	59	60	52				60	46	56	55	60			70	67	63												73				M
		MIN	53	50	34				22	35	28	28	39			41	49	32											40				M	
PULASKI 2 E	07	MAX	44	55	55	56	52	51	54	54	55	55	60	70	70	62	65	63	61	53	40	40	50	54	63	61	62	63	63		64	54	56.9	
		MIN	39	40	38	24	22	21	20	20	27	28	39	40	40	39	50	31	31	38	24	24	24	24	49	51	51	51	51	48	37	38	43	35.5
RADFORD 3 N	07	MAX	43	57	53	41	48	52	52	46	55	56	60	68	73	59	69	66	60	52	39	41	50	51	63	61	62	58	59	74	57	67	52	56.3
		MIN	39	40	34	24	19	22	25	29	25	29	34	40	42	44	39	29	31	39	25	26	29	30	50	52	50	51	52	53	39	40	45	36.3
RICHLANDS	07	MAX	54	60	55	42		63	60	43		57	59	57	66	71	72	73	68	55	34	41	50	56	56	65	67	60	63	74		66	57	58.7
		MIN	50	50	32	21		19	19	34		25	37	37	25	43	43	29	45	33	19	19	21	33	49	46	46	50	51	51	46	42	43	36.5
SALTVILLE 1N	07	MAX	53	54	54	44	54	59	57	47	54	58	59	64	67	71	68	62	70	54	40	42	51	48	55	60	63	58	69	74	71	66	57	58.2
		MIN	46	47	33	22	22	19	19	33	27	26	37	40	44	44	49	33	33	40	21	20	20	33	46	49	52	50	47	46	43	44	36.5	
STAFFORDSVILLE 3 ENE	07	MAX	45	56	57	41	48	52	53	46	54		64	68	71	64	64	63	59	53	42	42	49	53	62	62	64	60	62	75	58	65	55	56.9
		MIN	40	41	34	23	20	19	19	29	26		34	35	42	43	51	31	31	38	25	24	24	34	49	54	52	52	51	53	38	41	42	36.5
WISE 3E	17	MAX	56	56	44	46	59	54	50	53	50	53	58	64	67	63	61	66	60	44	39	49	53	55	60	63	62	69	69	67	66	56	52	56.9
		MIN	52	44	27	22	27	29	35	28	36	34	51	54	49	54	42	36	44	25	21	21	38	50	51	55	54	54	56	50	49	45	37	41.0
WYTHEVILLE 1 S	07	MAX	44	54	55	40	53	51	56	52	55	56	59	64	68	62	65	60	61	54	39	39	49	53	61	62	62	62	62	74	58	63	54	56.4
		MIN	39	40	32	22	23	20	20	30	28	27	40	49	42	42	42	33	33	36	21	22	24	34	50	54	52	52	52	54	37	40	44	36.6

VIRGINIA
201512

SNOWFALL AND SNOW ON GROUND (INCHES)

STATION	DAY OF MONTH																															
	01	02	03	04	05	06	07	08	09	10	11	12	13	14	15	16	17	18	19	20	21	22	23	24	25	26	27	28	29	30	31	
VIRGINIA																																
TIDEWATER 01																																
DISPUTANTA																																
EASTVILLE																																
EMPORIA 1 WNW																																
FREDERICKSBURG SEWAGE																																
HOLLAND 1 E																																
HOPEWELL																																
NORFOLK INTL AP																																
NORFOLK SOUTH																																
NORTH																																
PAINTER 2W																																
STONY CREEK 2 N																																
SUFFOLK LAKE KILBY																																
WAKEFIELD 1NW																																
WALKERTON 2 NW																																
WALLACETON LK DRUMMOND																																
WALLOPS ISLAND NASA TEST FACIL																																
WARSAW 2 NW																																
WEST POINT 2 NW																																
WILLIAMSBURG 2 N																																
WESTERN PIEDMONT 03																																
LYNCHBURG INTL AP																																
MARTINSVILLE FLTR PLT																																
MEADOWS OF DAN 5 SW																																
MONTEBELLO FISH CULTURAL STN																																
MONTECELLO																																
PEDLAR DAM																																
ROCKY MT																																

Snowfall: Includes snow and ice. Values for NWS stations (J index note) are Mid-Mid (LST).

Snow on ground: Includes snow, sleet, ice, and hail. Values for NWS stations (J index note) are observed at 12 UTC (GMT).

Water Equivalent: Given for NWS stations (J index note) only, when snow depth is 2 inches or more, and is measured at 18 UTC (GMT)

VIRGINIA
201512

SNOWFALL AND SNOW ON GROUND (INCHES)

STATION		DAY OF MONTH																													
		01	02	03	04	05	06	07	08	09	10	11	12	13	14	15	16	17	18	19	20	21	22	23	24	25	26	27	28	29	30
ROANOKE 8 N	SN ON GND																														
	SNOWFALL																														
ROANOKE INTL AP	SN ON GND																														
	SNOWFALL																														
STAUNTON WATER TRMTMT PLT	SN ON GND																														
	SNOWFALL																														
WAYNESBORO WTP	WTR EQUIV	-	-			-	-				-	-																			
	SNOWFALL																														
	SN ON GND																														
	WTR EQUIV																														
SOUTHWESTERN MOUNTAIN 06																															
BLACKSBURG NWSO	SNOWFALL																														
	SN ON GND																														
BURKES GARDEN	SNOWFALL																														
	SN ON GND																														
CHRISTIANSBURG	SNOWFALL																														
	SN ON GND																														
CLINTWOOD 1 W	SNOWFALL																														
	SN ON GND																														
COPPER HILL	SNOWFALL																														
	SN ON GND																														
GALAX RADIO WBRF	SNOWFALL																														
	SN ON GND																														
GALAX WTP	SNOWFALL																														
	SN ON GND																														
GRUNDY	SNOWFALL																														
	SN ON GND																														
JOHN FLANNAGAN LAKE	SNOWFALL																														
	SN ON GND																														
LAFAYETTE 1 NE	SNOWFALL																														
	SN ON GND																														
LEBANON	SNOWFALL																														
	SN ON GND																														
NORA 4 SSE	SNOWFALL																														
	SN ON GND																														
N FK LAKE	SNOWFALL																														
	SN ON GND																														
PULASKI 2 E	SNOWFALL																														
	SN ON GND																														
RADFORD 3 N	SNOWFALL																														

Snowfall: Includes snow and ice. Values for NWS stations (J index note) are Mid-Mid (LST).

Snow on ground: Includes snow, sleet, ice, and hail. Values for NWS stations (J index note) are observed at 12 UTC (GMT).

Water Equivalent: Given for NWS stations (J index note) only, when snow depth is 2 inches or more, and is measured at 18 UTC (GMT)

VIRGINIA
201512

SNOWFALL AND SNOW ON GROUND (INCHES)

STATION		DAY OF MONTH																														
		01	02	03	04	05	06	07	08	09	10	11	12	13	14	15	16	17	18	19	20	21	22	23	24	25	26	27	28	29	30	31
RICHLANDS	SN ON GND																															
	SNOWFALL					-				-																						
SALTVILLE 1N	SN ON GND					-				-																						
	SNOWFALL																															
STAFFORDSVILLE 3 ENE	SN ON GND																															
	SNOWFALL										-																					
WILLIS	SN ON GND										-																					
	SNOWFALL																															
WISE 3E	SN ON GND																															
	SNOWFALL																			0.2	0.1											
WYTHEVILLE 1 S	SN ON GND																															
	SNOWFALL																															
	SN ON GND																															

Snowfall: Includes snow and ice. Values for NWS stations (J index note) are Mid-Mid (LST).

Snow on ground: Includes snow, sleet, ice, and hail. Values for NWS stations (J index note) are observed at 12 UTC (GMT).

Water Equivalent: Given for NWS stations (J index note) only, when snow depth is 2 inches or more, and is measured at 18 UTC (GMT)

VIRGINIA
201512

PAN EVAPORATION AND WIND

STATION		DAY OF MONTH																															TOTAL OR AVERAGE		
		01	02	03	04	05	06	07	08	09	10	11	12	13	14	15	16	17	18	19	20	21	22	23	24	25	26	27	28	29	30	31			
VIRGINIA EASTERN PIEDMONT 02 JOHN H KERR DAM	WIND	-	-	-	-	-	-	-	-	-	-	-	-	-	-	-	-	-	-	-	-	-	-	-	-	-	-	-	-	-	-	-	-	-	M
	EVAP	-	-	-	-	-	-	-	-	-	-	-	-	-	-	-	-	-	-	-	-	-	-	-	-	-	-	-	-	-	-	-	-	-	M
	MAX	-	-	-	-	-	-	-	-	-	-	-	-	-	-	-	-	-	-	-	-	-	-	-	-	-	-	-	-	-	-	-	-	-	M
	MIN	-	-	-	-	-	-	-	-	-	-	-	-	-	-	-	-	-	-	-	-	-	-	-	-	-	-	-	-	-	-	-	-	-	M

Evaporation: Is measured in hundreths of inches.

Wind: Is measured in miles.

Max and Min: The maximum and minimum temperatures (Fahrenheit) of the water in the evaporation pan.

STATION INDEX

STATION	INDEX NO.	DIVISION	COUNTY	LATITUDE	LONGITUDE	ELEVATION (IN FEET)	OBSERVATION TIME AND TABLES					
							LOCAL STD TIME					
							TEMP	PRECIP	EVAP	SPECIAL SEE (NOTES)		
VIRGINIA												
ABINGDON 3S	0021	06	WASHINGTON	36 40	81 58W	1925	22	22				H
ALBERTA 5N	0079	02	BRUNSWICK	36 56	77 54W	376		08				H
ALTAVISTA	0166	03	CAMPBELL	37 7	79 17W	529		07				CH
AMELIA COURTHOUSE 1	0187	02	AMELIA	37 21	77 59W	345	08	08				H
APPOMATTOX	0243	03	APPOMATTOX	37 20	78 50W	850	07	07				H
ASHLAND	0327	02	HANOVER	37 45	77 29W	220	18	18				H
BEDFORD 4 NW	0561	03	BEDFORD	37 23	79 34W	1228		07				CH
BIG STONE GAP	0735	06	WISE	36 52	82 46W	1464	08	08				H
BLACKSBURG NWSO	0766	06	MONTGOMERY	37 12	80 25W	2103	07	07				H
BREMO BLUFF	0993	02	FLUVANNA	37 43	78 17W	225		07				CH
BROOKNEAL	1082	03	CAMPBELL	37 4	78 57W	408	07	07				H
BUCKINGHAM	1136	02	BUCKINGHAM	37 30	78 32W	580		07				H
BUENA VISTA	1159	05	ROCKBRIDGE	37 44	79 22W	840		07				H
BURKES GARDEN	1209	06	TAZEWELL	37 6	81 20W	3068	07	07				H
CAMP PICKETT	1322	02	NOTTOWAY	37 2	77 57W	330	08	08				CH
CHARLOTTESVILLE 2W	1593	03	ALBEMARLE	38 2	78 31W	866	08	08				H
CHASE CITY	1606	02	MECKLENBURG	36 47	78 29W	510	17	17				H
CHATHAM	1614	03	PITTSYLVANIA	36 49	79 25W	651	07	07				CH
CHRISTIANSBURG	1692	06	MONTGOMERY	37 8	80 24W	2100	07	07				H
CLARKSVILLE	1746	02	MECKLENBURG	36 37	78 33W	330	07	07				H
CLINTWOOD 1 W	1825	06	DICKENSON	37 9	82 29W	1780	07	07				H
CONCORD 4 SSW	1955	03	CAMPBELL	37 17	78 58W	815		07				H
COPPER HILL	1999	06	FLOYD	37 5	80 9W	2690	07	07				H
CORBIN	2009	02	CAROLINE	38 12	77 22W	220	09	09				H
COVINGTON FLTR PLT	2044	05	ALLEGHANY	37 49	79 59W	1230	07	07				H
CROZIER	2142	02	GOOCHLAND	37 40	77 53W	350	07	07				H
DALE ENTERPRISE	2208	05	ROCKINGHAM	38 27	78 56W	1358	07	07				H
DANVILLE RGNL AP	2250	03	PITTSYLVANIA	36 34	79 20W	571	24	24				H
DISPUTANTA	2400	01	PRINCE GEORGE	37 7	77 12W	15	07	07				H
EASTVILLE	2635	01	NORTHAMPTON	37 23	75 58W	10	07	07				H
EDINBURG	2663	04	SHENANDOAH	38 48	78 35W	928	07	07				H
EMPORIA 1 WNW	2790	01	GREENSVILLE	36 42	77 34W	100	08	08				H
FARMVILLE 2 N	2941	02	CUMBERLAND	37 20	78 23W	450	07	07				H
FREDERICKSBURG SEWAGE	3204	01	FREDERICKSBURG	38 17	77 27W	15	07	07				H
FREE UNION	3213	03	ALBEMARLE	38 5	78 35W	590	08	07				H
FRONT ROYAL	3229	04	WARREN	38 54	78 11W	930	07	07				H
GALAX RADIO WBRF	3267	06	CARROLL	36 40	80 55W	2385	07	07				H
GALAX WTP	3272	06	CARROLL	36 39	80 55W	2360	07	07				CH
GATHRIGHT DAM	3310	05	ALLEGHANY	37 57	79 57W	1770	07	07				CH
GLASGOW 1 SE	3375	05	ROCKBRIDGE	37 37	79 26W	737		07				H
GREENBAY 3 NE	3565	02	PRINCE EDWARD	37 11	78 17W	500	09	09				H
GRUNDY	3640	06	BUCHANAN	37 17	82 5W	1170	07	07				H
HOLCOMB ROCK	4039	03	BEDFORD	37 33	79 24W	900		07				H
HOLLAND 1 E	4044	01	SUFFOLK	36 41	76 46W	80	08	08				H
HOPEWELL	4101	01	PRINCE GEORGE	37 18	77 17W	40	16	16				H
HOT SPRINGS	4128	05	BATH	37 60	79 50W	2236	07	07				H
HUDDLESTON 4 SW	4148	03	BEDFORD	37 8	79 32W	898		07				H
JOHN FLANNAGAN LAKE	4410	06	DICKENSON	37 14	82 21W	1460	07	07				H
JOHN H KERR DAM	4414	02	MECKLENBURG	36 36	78 18W	250	08	08	08			CH
KEYSVILLE 2 S	4568	02	CHARLOTTE	37 1	78 29W	625	07	07				H
LAFAYETTE 1 NE	4676	06	MONTGOMERY	37 14	80 12W	1320		07				H
LEBANON	4777	06	RUSSELL	36 54	82 2W	1912	07	07				H
LEXINGTON	4876	05	ROCKBRIDGE	37 47	79 26W	1097	07	07				H
LINCOLN	4909	04	LOUDOUN	39 5	77 42W	500	07	07				H
LOUISA	5050	02	LOUISA	38 3	78 0W	420	18	18				H
LURAY 5 E	5096	04	PAGE	38 40	78 22W	1400	08	08				H
LYNCHBURG INTL AP R	5120	03	CAMPBELL	37 19	79 12W	940	24	24				HJ
MADISON	5150	04	MADISON	38 22	78 15W	577	08	08				H
MANASSAS	5204	04	MANASSAS	38 44	77 30W	245	07	07				H
MARTINSVILLE FLTR PLT	5300	03	HENRY	36 42	79 52W	760	07	07				H
MEADOWS OF DAN 5 SW	5453	03	PATRICK	36 40	80 27W	2225	07	07				H
MILLGAP	5595	05	HIGHLAND	38 18	79 43W	2421	07	07				CH
MONTEBELLO FISH CULTURAL STN	5690	03	NELSON	37 51	79 8W	2667	07	07				H
MONTICELLO	5700	03	ALBEMARLE	38 1	78 27W	758	08	08				H
MT WEATHER	5851	04	LOUDOUN	39 4	77 53W	1659	07	07				H

STATION INDEX

STATION	INDEX NO.	DIVISION	COUNTY	LATITUDE	LONGITUDE	ELEVATION (IN FEET)	OBSERVATION TIME AND TABLES			
							LOCAL STD TIME			
							TEMP	PRECIP	EVAP	SPECIAL SEE (NOTES)
MTN GROVE	5756	05	BATH	38 6	79 53W	1775		07		H
MUSTOE 1 SW	5880	05	HIGHLAND	38 20	79 40W	2380	24	24		H
N FK LAKE	6173	06	WISE	37 7	82 38W	1675	08	08		H
NEW CASTLE	6012	05	CRAIG	37 18	80 3W	1258		07		H
NORA 4 SSE	6125	06	DICKENSON	37 1	82 19W	2650	07	07		H
NORFOLK INTL AP R	6139	01	NORFOLK (CITY)	36 54	76 12W	30	24	24		HJ
NORFOLK SOUTH	6147	01	NORFOLK (CITY)	36 52	76 14W	100	24	24		H
NORTH	6161	01	MATHEWS	37 26	76 26W	10	07	07		H
PAINTER 2W	6475	01	ACCOMACK	37 35	75 49W	30	16	16		CH
PALMYRA 3S	6491	02	FLUVANNA	37 49	78 16W	410	06	06		H
PEDLAR DAM	6593	03	AMHERST	37 40	79 17W	1024		07		H
PETERSBURG	6656	02	PETERSBURG	37 14	77 24W	15	08	08		H
PIEDMONT RSCH STN	6712	04	ORANGE	38 14	78 7W	520	08	08		CH
PULASKI 2 E	6955	06	PULASKI	37 3	80 47W	1850	07	07		CH
RADFORD 3 N	6999	06	PULASKI	37 12	80 35W	1800	07	07		H
RICHLANDS	7174	06	TAZEWELL	37 6	81 48W	1910	07	07		H
RICHMOND INTL AP R	7201	02	HENRICO	37 30	77 19W	164	24	24		HJ
ROANOKE 8 N	7278	05	ROANOKE	37 22	79 58W	1190	07	07		H
ROANOKE INTL AP R	7285	05	ROANOKE	37 19	79 58W	1175	24	24		HJ
ROCKY MT	7338	03	FRANKLIN	36 59	79 54W	1315	07	07		CH
SALTVILLE 1N	7506	06	SMYTH	36 53	81 46W	1733	07	07		H
SANDSTON	7541	02	HENRICO	37 33	77 17W	165	07	07		H
SOMERSET	7904	04	ORANGE	38 15	78 16W	510	07	07		H
SOUTH BOSTON	7925	03	HALIFAX	36 42	78 53W	329	07	07		H
SPERRYVILLE	7985	04	RAPPAHANNOCK	38 39	78 14W	750	06	06		H
STAFFORDSVILLE 3 ENE	8022	06	GILES	37 16	80 43W	1950	07	07		CH
STAUNTON WATER TRMTMT PLT	8062	05	AUGUSTA	38 10	79 5W	169	08	08		H
STERLING RCS	8084	04	LOUDOUN	38 59	77 29W	288	07	07		H
STONY CREEK 2 N	8129	01	SUSSEX	36 58	77 24W	105	08	08		H
STUART	8170	03	PATRICK	36 38	80 15W	1375	07	07		H
SUFFOLK LAKE KILBY	8192	01	SUFFOLK	36 44	76 36W	22	24	24		H
TYE RIVER 1 SE	8600	03	NELSON	37 38	78 56W	720	07	07		H
VIENNA	8737	04	FAIRFAX	38 54	77 16W	418	07	07		H
WAKEFIELD 1NW	8800	01	SUSSEX	36 59	77 0W	113	24	24		CH
WALKERTON 2 NW	8829	01	KING AND QUEEN	37 45	77 2W	50	18	18		H
WALLACETON LK DRUMMOND	8837	01	CHESAPEAKE	36 36	76 26W	20	08	08		H
WALLOPS ISLAND NASA TEST FACIL R	8849	01	ACCOMACK	37 56	75 28W	46	24	24		HJ
WARRENTON 3 SE	8888	04	FAUQUIER	38 41	77 46W	500	08	08		H
WARSAW 2 NW	8894	01	RICHMOND	37 59	76 47W	140	18	18		H
WASHGTN DULLES INTL AP R	8903	04	LOUDOUN	38 56	77 28W	290	24	24		HJ
WASHINGTON REAGAN AP R	8906	04	ARLINGTON	38 51	77 2W	10	24	24		HJ
WAYNESBORO WTP	8941	05	WAYNESBORO	38 5	78 53W	1270	07	07		H
WEST POINT 2 NW	9025	01	KING WILLIAM	37 34	76 48W	20	17	17		H
WILLIAMSBURG 2 N	9151	01	YORK	37 18	76 42W	70	24	24		CH
WILLIS	9169	06	FLOYD	36 55	80 30W	2810		07		CH
WINCHESTER	9181	04	FREDERICK	39 11	78 9W	720	07	07		H
WINCHESTER 7 SE	9186	04	FREDERICK	39 11	78 7W	680	08	08		H
WINTERPOCK 4 W	9213	02	CHESTERFIELD	37 19	77 39W	300		07		H
WISE 3E	9215	06	WISE	36 60	82 32W	2549	17	17		CH
WOODSTOCK 2 NE	9263	04	SHENANDOAH	38 54	78 28W	675	07	07		H
WOOLWINE	9272	03	PATRICK	36 47	80 17W	1500		07		CH
WYTHEVILLE 1 S	9301	06	WYTHE	36 58	81 5W	2458	07	07		H

REFERENCE NOTES

STATION NAMES: Name of the city, town or locality. Figures and letters following the station names indicate the distance in miles and direction from the post office or town community center.

DIVISIONS: Areas within a state of similar climatological characteristics. Division averages are calculated using data from stations that record temperature and/or precipitation. Station Precipitation totals flagged with an 'F' or 'M' are excluded from the Divisional Average calculations of precipitation. Stations with monthly Temperature averages flagged with an 'F' or 'M' are included in the Divisional Average if there are no more than 9 flagged or missing daily values in the month, else they are excluded from the divisional average for temperature.

NORMALS: The average value of the meteorological element over a time period. Effective 1 January 2012, the averaging period is 1981 to 2010. The normals for National Weather Service localities have been adjusted so as to be representative for the current observation site.

MONTHLY DEGREE DAY TOTALS: One heating (cooling) degree day is accumulated for each whole degree that the daily mean temperature is below (above) 65 degrees Fahrenheit.

PRECIPITATION: Values shown in hundredths of inches are water equivalent totals, i.e., total of liquid and melted frozen precipitation. In the "Monthly Summarized Data" table the total snow and sleet values shown in tenths of inches are unmelted amounts. The max depth on ground values of snow and sleet shown in whole inches are cumulative unmelted amounts. The number of days with .10, .50, 1.00 or more refers to water equivalents.

PRECIPITATION QUALITY CONTROL: The NCEI quality control process may flag precipitation data that are spatially inconsistent, exceed climatological limits, or are inconsistent with prevailing weather patterns.

TEMPERATURE: Original temperature values are given in the "Daily Temperature" table. Summary temperature information (averages, departures, extremes, monthly degree day totals) is based on the values labeled MAX/MIN.

WIND: (As shown in the "Evaporation and Wind" table) the total wind movement in miles over the evaporation pan as determined by an anemometer recorder located 6-8 inches above the pan.

SYMBOLS AND LETTERS USED IN THE STATION INDEX TABLE

C Station is equipped with recording rain gage (R) but values in this bulletin are from a non-recording rain gage unless indicated by an R.

G Observations appear in the "Soil Temperatures" table.

H Observations appear in the "Snowfall and Snow on the Ground" table.

J Station also published as a Local Climatological Data publication.

VAR Observation time varies.

SR / SS Observation time near sunrise / Observation time near sunset, respectively.

SYMBOLS AND LETTERS USED IN THE DATA TABLES

(DAILY DATA ARE FOR THE 24 HOURS IMMEDIATELY PRECEDING OBSERVATION TIME.)

BLANK Entries in the "Monthly Summarized Data" table indicate no record.

BLANK Entries in the "Daily Precipitation" and "Snowfall and Snow on the Ground" tables indicate zero.

BLANK Entries in the "Daily Temperature" table indicate a missing record

- No record. Data not recorded or not received in time for publication.

+ Precipitation or temperature extremes occurred on one or more previous dates during the month.

* Rain gage not read. Precipitation is included in the amount following the asterisks.

Time distribution may not be known. A * preceding the monthly total indicates precipitation amount is being carried forward to next month's total, and may include amounts from the previous month(s).

a As a subscript, indicates accumulated total.

A Amount of precipitation is the total of observer's entries for the current month. It may include precipitation that occurred during the previous month. Refer to earlier bulletin to determine date of last reading. (Hawaii stations)

B Divisional Departure from normals are computed using 1981-2010 normals.

E Normalized HDD/CDD Calculation. E is appended to the HDD/CDD Calculation when 1-9 individual daily TMAX

and/or TMIN values are missing and a Normalized HDD/CDD Calculation is provided. M appears alone if 10 or more daily values are missing.

F Monthly calculation flagged value. F is appended to average and/or total values computed which exclude one or more daily data values that have been flagged by the GHCN-Daily Dataset

M Insufficient or partial data. M is appended to average and/or total values computed with 1-9 daily values missing. M appears alone if 10 or more daily values are missing, (8 or more for wind and evaporation).

N Indicates snow fall or Snowdepth totals are computed with one or more missing days.

R Amounts from recording rain gage.

T Trace. An amount too small to measure.

SEASONAL TABLES: Monthly and seasonal snowfall and heating degree days for the 12 months ending with the June data are published in the July issue of this bulletin. Cooling degree days for the calendar year are published in the "Climatological Data Annual Summary."

Information concerning the history of changes in locations, exposure, etc. of substations is kept on file at the National Centers for Environmental Information. Historical information of regular National Weather Service Offices may be obtained from the "Local Climatological Data" annual publication. The contents of this publication may be reprinted or otherwise used freely, with proper credit to the National Centers For Environmental Information. The data are also available digitally.

Effective with the January 2011 Data-Month, COOP Observer Names are no longer included in the Monthly and Annual Climatological Data Publications. This information is not published to ensure the privacy of personal information pursuant to Section 208 of the E-Government Act of 2002 (44 USC 3601).

As of the 2011 Data-Year, Station and Climate Division Maps are no longer being included in the CD Publications. NCEI's Products Branch provides updated Station Maps for various data networks via the Historical Observing Metadata Repository: <http://www.ncdc.noaa.gov/homr>.

The GHCN-Daily Quality Control Flags shown below are displayed as superscripts with the data. For more Information on Global Historical Climatology Network - Daily and flags, see: <http://www.ncdc.noaa.gov/oa/climate/ghcn-daily/> and Comprehensive Automated Quality Assurance of Daily Surface Observations. Durre, Imke, Matthew J. Menne, Byron E. Gleason, Tamara G. Houston, Russell S. Vose, 2010: J. Appl. Meteor. Climatol., 49, 16151633. doi: 10.1175/2010JAMC2375.1

Blank = Passed All checks

D = failed duplicate check

G = failed gap check

I = failed internal consistency check

K = failed streak/frequent-value check

L = failed check on length of multiday period

M = failed megaconsistency check

N = failed naught check

O = failed climatological outlier check

R = failed lagged range check

S = failed spatial consistency check

T = failed temporal consistency check

W = temperature too warm for snow

X = failed bounds check

Z = flagged as a result of an official Datzilla investigation

Beginning with the January 2013 CD Publication, monthly mean temperature calculations have changed to the National Data Stewardship Team standard. Monthly maximum and minimum temperatures are not rounded until after the monthly mean temperature is calculated. This is the most accurate outcome, but may be slightly different from the mean derived from rounded monthly maximum and minimum.

Processing Updates and Errata: The CD Publications are periodically reproduced to include the addition of late reports and reported corrections. The GHCND data version noted on the cover of the publication provides the generation date.

The climate division temperature and precipitation values in this publication are based on simple averages from the current set of NWS-Designated Open and Published COOP and First Order Sites within each division. These values differ from those found in NCEI's nClimDiv product. Beginning in February 2014, the nClimDiv product is used by NCEI's Monitoring Branch and in its monthly climate reports. For more details on nClimDiv, please go to <http://www.ncdc.noaa.gov/monitoring-references/maps/us-climate-divisions.php>.

NOAA National Centers for Environmental Information
Attn: Customer Engagement Branch
151 Patton Avenue
Asheville, NC 28801-5001

Customer Services Number: (828) 271-4800, option 2
TDD : (828) 271-4010
Fax number: (828) 271-4876

NCEI now offers free online access to the *Climatological Data* publication.
Go to : www.ncdc.noaa.gov and choose Most Popular.