



CLIMATOLOGICAL DATA

VIRGINIA

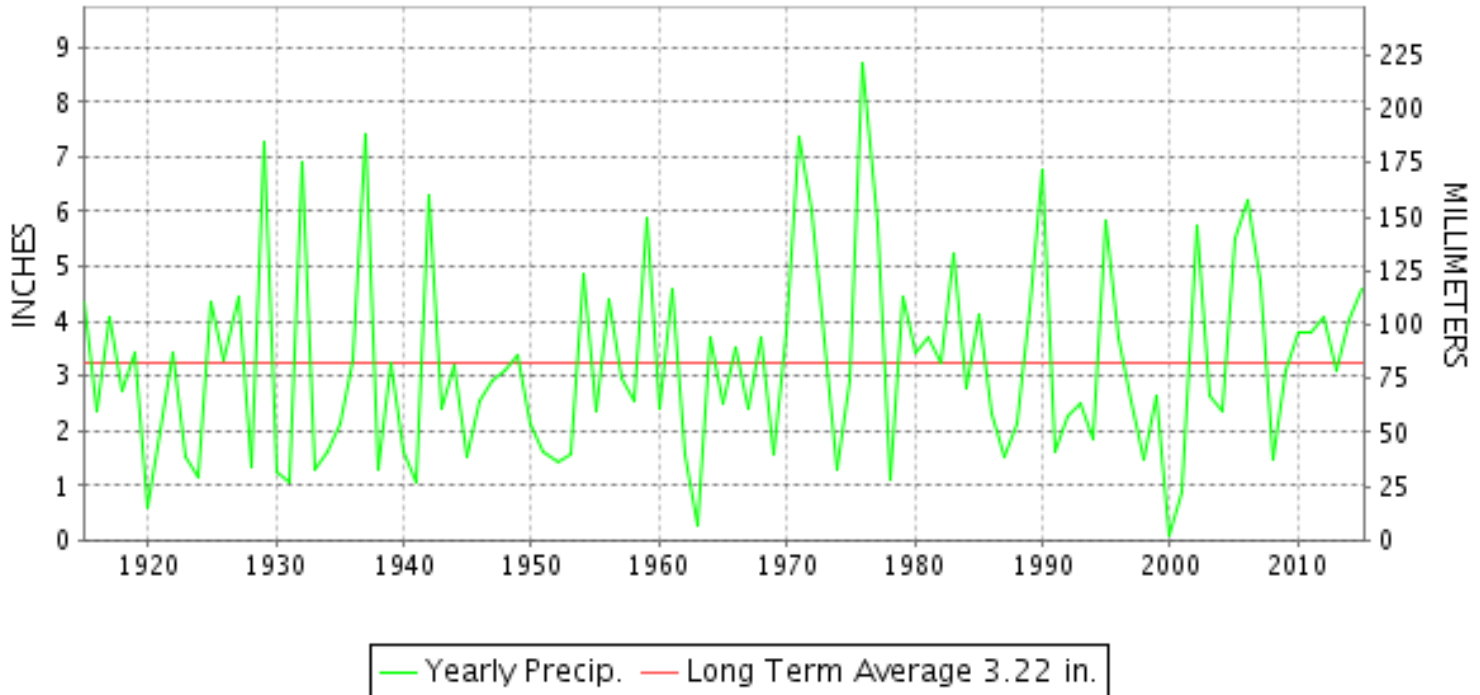
OCTOBER 2015

VOLUME 125 NUMBER 10

ISSN 0364-5630

GHCND Ver: 3.22-upd-2016012706

OCTOBER PRECIPITATION BY YEAR



TEMPERATURE AND PRECIPITATION EXTREMES

VIRGINIA

HIGHEST TEMPERATURE	88	OCTOBER 01	JOHN H KERR DAM
LOWEST TEMPERATURE	18	OCTOBER 20+	MILLGAP
GREATEST TOTAL PRECIPITATION	10.06		WOOLWINE
LEAST TOTAL PRECIPITATION	2.39		VIENNA
GREATEST 1 DAY PRECIPITATION	3.98	OCTOBER 02	NORFOLK SOUTH

"I certify that this is an official publication of the National Oceanic and Atmospheric Administration (NOAA) It is compiled using information from weather observing sites supervised by NOAA/National Weather Service and received at the National Centers for Environmental Information(NCEI), Asheville, North Carolina 28801."

Director
National Centers for Environmental Information

noaa

National
Oceanic and
Atmospheric Administration

National
Environmental Satellite, Data
and Information Service

National
Centers for Environmental Information
Asheville, North Carolina

VIRGINIA
201510

MONTHLY STATION AND DIVISION SUMMARY

STATION	TEMPERATURE (°F)											PRECIPITATION (IN)												
	AVERAGE MAXIMUM	AVERAGE MINIMUM	AVERAGE	DEPARTURE FROM NORMAL	HIGHEST	DATE	LOWEST	DATE	HEATING DEG. DAYS	COOLING DEG. DAYS	NO. OF DAYS				TOTAL	DEPARTURE FROM NORMAL	GREATEST 24 HOURS	DATE	ICE PELLETS, SNOW			NO. OF DAYS		
											MAX		MIN						TOTAL	MAX DEPTH ON GROUND	DATE	.10 OR MORE	.50 OR MORE	1.00 OR MORE
											>=90	<=32	<=32	<=0										
PALMYRA 3S	68.1	42.7	55.4	0.9	81	23	25	19	298	8	0	0	6	0	5.64	2.20	2.69	03	M			5	4	2
PETERSBURG	69.4	46.9	58.1	-1.2	82	09	29	21	221	16	0	0	3	0	3.43	0.21	1.54	02	M			5	2	1
RICHMOND INTL AP	68.2	47.1	57.6	-2.1	81	09	33	18	231	10	0	0	0	0	3.24	0.26	1.16	02	M 0.0	0		7	2	1
SANDSTON	66.9	46.2	56.5	-1.0	83	01	31	19+	269	13	0	0	3	0	A 3.28	0.12	0.35	29	M			2	0	0
WINTERPOCK 4 W															3.59		1.56	03	M			6	3	1
--DIVISIONAL DATA-----> WESTERN PIEDMONT 03			57.5	0.6B										4.09	0.24B									
ALTAVISTA														4.43		1.89	03	0.0	0			6	3	2
APPOMATTOX	67.0	46.8	56.9	0.1	80	08+	31	20+	256	13	0	0	3	0	4.95	1.19	2.26	03	0.0	0		6	3	1
BEDFORD 4 NW														5.02		1.93	03	0.0	0			6	2	2
BROOKNEAL	68.6	43.9	56.3	4.8	82	01	27	19	274	10	0	0	5	0	3.17	-0.44	1.04	03	0.0	0		5	2	1
CHARLOTTESVILLE 2W	67.3	48.1	57.7	-0.6	81	23+	34	20+	240	20	0	0	0	0	6.36	2.62	2.12	03	0.0	0		6	4	3
CHATHAM	67.4	42.5	55.0	0.0	80	01	26	20	309	5	0	0	7	0	4.76	1.47	1.60	03	0.0	0		7	4	2
CONCORD 4 SSW														4.65		2.02	03	0.0	0			5	3	2
DANVILLE RGNL AP	70.6	47.3	59.0	-0.5	83	09+	29	19	195	16	0	0	3	0	4.34	0.80	1.36	03	0.0	0		4	4	2
FREE UNION	67.1	42.3	54.7		81	23	26	20	315	3	0	0	5	0	FM 3.01		1.67	28	M			2	2	2
HOLCOMB ROCK														6.20		2.19	28	0.0	0			6	4	3
HUDDLESTON 4 SW														5.78		2.49	03	0.0	0			6	3	2
LYNCHBURG INTL AP	66.0M	44.8M	55.4M	-0.8	80	07	27	19	295E	4E	0	0	3	0	4.07	0.96	1.34	02	0.0	0		5	4	1
MARTINSVILLE FLTR PLT	69.6	43.1	56.4	0.6	83	01	27	20+	273	11	0	0	5	0	6.00	2.70	2.13	28	0.0	0		5	4	2
MEADOWS OF DAN 5 SW	69.5M	45.2M	57.3M		81	24	31	21+	239E	4E	0	0	3	0	5.33		2.17	28	0.0	0		6	4	2
MONTEBELLO FISH CULTURAL STN	M	M	M		77	08	26	18	341E	0	0	0	2	0	M				M					
MONTECELLO	64.4	46.9	55.6	0.0	77	22	32	18	285	4	0	0	1	0	6.21	2.53	2.24	03	M			5	4	3
PEDLAR DAM														4.31		1.80	03	0.0	0			6	3	2
ROCKY MT	68.9	44.1	56.5	0.6	82	01	28	20+	270	15	0	0	5	0	7.95	4.77	2.92	28	0.0	0		7	5	3
SOUTH BOSTON	70.5	45.8	58.2	1.0	85	01	29	20	221	19	0	0	4	0	4.05	0.57	1.51	03	0.0	0		5	3	1
STUART	70.3	44.7	57.5	-0.2	83	01	30	20+	237	11	0	0	3	0	5.12	1.80	2.00	28	0.0	0		6	3	2
TYE RIVER 1 SE	69.1	45.5	57.3	0.1	82	23	28	19+	247	16	0	0	3	0	4.56	0.92	2.50	03	M			4	3	2
WOOLWINE														10.06		3.55	28	0.0	0			7	4	4
--DIVISIONAL DATA-----> NORTHERN 04			56.7	0.4B										5.37	1.61B									
EDINBURG	M	M	M								0	0	0	0	M				M					
FRONT ROYAL	66.5	43.3	54.9	-1.2	79	23+	28	20	309	2	0	0	2	0	6.30	3.15	1.73	03	M	0		7	5	3
LINCOLN	66.0	40.7	53.3	-1.0	79	23+	25	20+	360	4	0	0	5	0	A 3.23		1.98	29	M			1	1	1
LURAY 5 E	65.3M	42.2M	53.7M	-2.8	79	23	26	19	344E	1E	0	0	4	0	M 5.09	2.06	2.10	03	M 0.0	0		7	3	3
MADISON	67.5	46.5	57.0	1.4	81	10	32	20+	254	14	0	0	2	0	4.80	1.44	2.10	05	M	0		3	3	3
MANASSAS	67.1M	44.0M	55.5M	-0.9	80	10	29	20+	294E	3E	0	0	2	0	A 3.72		1.70	03	M			6	2	2
MT WEATHER	63.1	45.6	54.4	-0.3	77	23	32	19+	323	1	0	0	2	0	3.74	0.31	1.12	29	M			6	2	2

VIRGINIA
201510

MONTHLY STATION AND DIVISION SUMMARY

STATION	TEMPERATURE (°F)										PRECIPITATION (IN)													
	AVERAGE MAXIMUM	AVERAGE MINIMUM	AVERAGE	DEPARTURE FROM NORMAL	HIGHEST	DATE	LOWEST	DATE	HEATING DEG. DAYS	COOLING DEG. DAYS	NO. OF DAYS				TOTAL	DEPARTURE FROM NORMAL	GREATEST 24 HOURS	DATE	ICE PELLETS, SNOW			NO. OF DAYS		
											MAX		MIN						TOTAL	MAX DEPTH ON GROUND	DATE	.10 OR MORE	.50 OR MORE	1.00 OR MORE
											>=90	<=32	<=32	<=0										
PIEDMONT RSCH STN	67.0	45.8	56.4	-0.3	79	23+	31	19	272	11	0	0	2	0	A 5.21	1.79	2.04	29	M			4	2	1
SOMERSET	67.6	43.2	55.4	-0.3	87	08	26	19	298	7	0	0	3	0	4.62	1.07	1.85	29	M			6	3	2
SPERRYVILLE	66.6M	44.2M	55.4M	-0.5	81	10	29	19	296E	7E	0	0	4	0	M 5.68	2.12	1.72	29	M			5	4	3
STERLING RCS	66.3	42.3	54.3	-0.9	81	10	27	19	328	4	0	0	3	0	5.57	1.98	2.79	29	M 0.0	0		6	3	2
VIENNA	67.3	45.9	56.6	1.6	80	23+	32	20+	259	7	0	0	2	0	2.39	-1.12	0.96	29+	M			4	2	0
WARRENTON 3 SE	65.5	45.1	55.3	-1.1	78	14+	29	19	294	1	0	0	1	0	5.06	1.84	2.53	29	M			6	2	2
WASHGTN DULLES INTL AP	66.6	43.7	55.2	-0.8	82	09	27	19	304	8	0	0	2	0	3.95	0.70	1.97	28	0.0	0		5	2	2
WASHINGTON REAGAN AP	67.4	50.3	58.9	-0.6	79	09	37	19	197	16	0	0	0	0	3.04	-0.36	0.96	02	0.0	0		5	3	0
WINCHESTER	63.1	43.6	53.4	-1.2	77	23+	28	20+	353	0	0	0	2	0	3.06	0.11	1.09	03	M			6	3	1
WINCHESTER 7 SE	65.8	39.7	52.8	-0.8	80	22	24	19	372	0	0	0	6	0	3.08	0.14	1.20	02	0.0	0		5	3	1
WOODSTOCK 2 NE	65.4	41.8	53.6	-0.1	79	23	27	20+	346	1	0	0	3	0	4.09	1.43	1.97	03	M			7	3	1
--DIVISIONAL DATA-----> CENTRAL MOUNTAIN 05			55.1	0.6B										4.12	0.56B									
BUENA VISTA														4.30		1.80	28	0.0	0			5	3	2
COVINGTON FLTR PLT	68.8	43.8	56.3	0.2	82	24	26	18	268	6	0	0	5	0	2.85	0.31	0.97	28	0.0	0		5	3	0
DALE ENTERPRISE	64.9	42.1	53.5	0.1	78	23+	26	20+	349	1	0	0	4	0	2.91	0.39	0.90	03	0.0	0		5	3	0
GATHRIGHT DAM	63.5	43.1	53.3	0.0	75	24	26	19+	355	0	0	0	5	0	2.52	-0.21	0.84	03	0.0	0		5	2	0
GLASGOW 1 SE														7.23		2.78	28	0.0	0			7	3	3
HOT SPRINGS	62.7	41.3	52.0	0.0	76	24	26	20+	396	0	0	0	4	0	4.09	1.08	1.45	28	0.0	0		6	3	1
LEXINGTON	67.4	42.9	55.2	-0.6	80	08	26	20+	303	6	0	0	5	0	3.79	0.87	1.42	03	0.0	0		5	3	2
MILLGAP	63.3	35.9	49.6	0.7	77	24	18	20+	470	0	0	0	11	0	3.39	0.45	1.02	29	M			5	4	1
MTN GROVE														2.82		0.90	28	0.0	0			5	3	0
MUSTOE 1 SW	61.2	38.4	49.8	0.2	75	23+	22	19	463	0	0	0	8	0	3.40	0.56	1.29	28	M			5	3	1
NEW CASTLE														4.36		1.60	28	0.0	0			7	3	1
ROANOKE 8 N	67.9	46.2	57.0	-0.1	82	01	30	20+	252	15	0	0	2	0	5.15	2.09	2.14	28	M 0.0	0		7	3	1
ROANOKE INTL AP	67.4	47.3	57.3	-0.4	81	22	29	19	239	8	0	0	1	0	6.10	3.21	1.63	27	M 0.0	0		6	5	4
STAUNTON WATER TRMTMT PLT	65.2	44.3	54.7	0.5	77	10+	29	19	313	1	0	0	3	0	4.03	1.05	1.48	03	0.0	0		5	3	2
WAYNESBORO WTP	65.5	42.4	53.9	-0.3	78	23+	27	20+	336	2	0	0	4	0	7.05	3.84	2.45	03	0.0	0		7	4	3
--DIVISIONAL DATA-----> SOUTHWESTERN MOUNTAIN 06			53.9	-0.1B										4.27	1.10B									
ABINGDON 3S	66.8M	44.3M	55.6M	1.0	78	24+	28	20+	289E	4E	0	0	4	0	3.81	1.40	0.81	10	0.0	0		8	4	0
BIG STONE GAP	68.7	44.9	56.8	0.8	81	06	29	20+	254	6	0	0	4	0	5.95	3.02	1.54	03	0.0	0		10	3	2
BLACKSBURG NWSO	65.2	42.6	53.9	1.6	79	24	26	19	342	3	0	0	5	0	3.87	1.09	1.16	28	0.0	0		8	3	1
BURKES GARDEN	60.8M	38.3M	49.6M	0.5	73	24+	19	20	474E	0	0	0	8	0	M 4.38	1.46	1.18	28	0.0	0		9	4	1
CHRISTIANSBURG	62.6M	43.2	52.9M	-1.6	77	24	28	20+	373E	1E	0	0	3	0	3.93	1.18	1.15	28	0.0	0		6	4	1
CLINTWOOD 1 W	65.9	41.9	53.9	1.0	79	09	25	19	338	0	0	0	8	0	2.90	0.20	0.50	01	0.0	0		9	1	0
COPPER HILL	61.1M	43.2M	52.2M		73	10+	29	19+	381E	0	0	0	3	0	M 6.79		2.31	28	0.0	0		8	4	2

VIRGINIA
201510

MONTHLY STATION AND DIVISION SUMMARY

STATION	TEMPERATURE (°F)										PRECIPITATION (IN)													
	AVERAGE MAXIMUM	AVERAGE MINIMUM	AVERAGE	DEPARTURE FROM NORMAL	HIGHEST	DATE	LOWEST	DATE	HEATING DEG. DAYS	COOLING DEG. DAYS	NO. OF DAYS				TOTAL	DEPARTURE FROM NORMAL	GREATEST 24 HOURS	DATE	ICE PELLETS, SNOW			NO. OF DAYS		
											MAX		MIN						TOTAL	MAX DEPTH ON GROUND	DATE	.10 OR MORE	.50 OR MORE	1.00 OR MORE
											>=90	<=32	<=32	<=0										
GALAX RADIO WBRF	65.8	42.1	53.9	1.6	77	09+	24	19	337	1	0	0	6	0	6.98	4.15	2.53	28	0.0	0		7	3	2
GALAX WTP	68.1M	45.8M	57.0M	5.2	77	11+	29	20+	250E	9E	0	0	4	0	6.84		2.25	28	0.0	0		8	5	3
GRUNDY	66.3	45.0	55.6	0.7	78	09	28	20+	284	1	0	0	4	0	4.27	1.45	1.24	10	0.0	0		9	3	1
JOHN FLANNAGAN LAKE	M	M	M		85	25	30	19	202E	5E	0	0	1	0	MA 2.59		0.46	28	0.0	0		5	0	0
LAFAYETTE 1 NE															4.88		1.46	04	0.0	0		7	4	2
LEBANON	67.7	41.7	54.7	1.5	79	24+	24	19	315	4	0	0	10	0	3.53	1.13	0.62	10	0.0	0		8	2	0
NORA 4 SSE	63.6	47.5	55.5	0.8	76	24+	30	19+	289	6	0	0	2	0	3.71	1.03	0.53	01	0.0	0		10	2	0
N FK LAKE	M	M	M		79	09	28	20	232E	0	0	0	2	0	MA 3.98		0.40	28	M	0		3	0	0
PULASKI 2 E	64.9M	42.7M	53.8M	0.2	77	24	26	20+	340E	2E	0	0	4	0	M 4.51	1.86	1.42	28	0.0	0		9	3	2
RADFORD 3 N	64.3	42.5	53.4	1.2	78	09	25	19	356	1	0	0	6	0	4.03	1.39	1.40	28	0.0	0		7	3	1
RICHLANDS	67.1M	42.0M	54.6M	1.4	81	24	25	20+	319E	0	0	0	7	0	3.22	0.78	0.58	10	0.0	0		9	1	0
SALTVILLE 1N	68.5	43.0M	55.8M	1.5	81	25+	26	20+	283E	2E	0	0	6	0	4.40	1.67	0.72	29	0.0	0		10	4	0
STAFFORDSVILLE 3 ENE	64.4	42.7	53.5	0.3	77	24	25	20+	349	2	0	0	6	0	4.25	1.60	1.55	28	0.0	0		9	3	1
WILLIS														M 5.13		1.70	31	0.0	0		8	3	2	
WISE 3E	65.7	45.7	55.7	0.8	76	08	27	19+	284	1	0	0	3	0	3.30	0.73	1.10	02	0.0	0		7	3	1
WYTHEVILLE 1 S	64.5	42.9	53.7	1.8	79	09	26	20	345	1	0	0	5	0	4.94	2.25	1.42	28	0.0	0		9	4	1
--DIVISIONAL DATA----->			54.3	1.6B										4.40	1.30B									

VIRGINIA
201510

DAILY PRECIPITATION (INCHES)

STATION	TOTAL	DAY OF MONTH																															
		01	02	03	04	05	06	07	08	09	10	11	12	13	14	15	16	17	18	19	20	21	22	23	24	25	26	27	28	29	30	31	
VIRGINIA																																	
TIDEWATER 01																																	
DISPUTANTA	4.31	0.46	0.73	1.41	0.70	0.19				0.09																				0.27	0.46		
EASTVILLE	M 1.67	0.72	0.67	0.36	0.10					0.12			-	-	-	-	-	-	-	-	-	-	-	-	-	-	-	-	-	-	-	-	-
EMPORIA 1 WNW	M -	-	-	-	-	-	-	-	-	-	-	-	-	-	-	-	-	-	-	-	-	-	-	-	-	-	-	-	-	-	-	-	-
FREDERICKSBURG SEWAGE	M 3.79	0.11	0.64	1.45	0.54	0.02				0.28														0.04				0.21	0.50	T			
HOLLAND 1 E	3.10	0.51	1.23	0.37	0.35	0.08				0.01					0.03	0.01						0.10	0.10					0.07	0.21	0.03			
HOPEWELL	3.72	0.40	1.17	1.10	0.33	0.02				0.04														T				0.02	0.34	0.30			
NORFOLK INTL AP	3.66	0.70	2.68	0.07	T	T				T					0.04													0.06	0.10	0.01			
NORFOLK SOUTH	6.56	1.39	3.98	0.73	0.04	0.06				T		T			0.06													0.07	0.22	0.01			
NORTH	7.05	0.87	0.97	1.84	2.41	0.18				0.32																		0.17	0.29				
PAINTER 2W	3.98	1.45	0.81	0.89	0.20	0.01				0.32																		0.03	0.08	0.19			
STONY CREEK 2 N	4.69	0.83	1.30	1.05	0.43				0.02															0.20			0.16	0.70					
SUFFOLK LAKE KILBY	4.66	0.88	1.87	0.48	0.49	0.37	0.02								0.06													0.13	0.28	0.08			
WAKEFIELD 1NW	4.45	0.28	1.54	1.10	0.60	0.05				T					0.04													0.21	0.62	0.01			
WALKERTON 2 NW	5.17	0.10	2.72	1.13	0.22				T						T								0.13	0.02			0.08	0.30	0.17		0.30		
WALLACETON LK DRUMMOND	5.10	1.80	1.26	1.05	0.10	0.34											0.05											0.15	0.35				
WALLOPS ISLAND NASA TEST FACIL	3.34	1.52	0.81	0.19	0.12	T			0.49	T				T	T			T							T		0.02	0.14	0.05				
WARSAW 2 NW	4.05	0.12	1.51	1.04		0.01					0.30				0.03	0.01								0.02			0.03	0.35	0.62	0.01			
WEST POINT 2 NW	5.36	0.25	1.60	2.30	0.31	0.05			T	0.15					T										T		0.07	0.30	0.33				
WILLIAMSBURG 2 N	4.99	0.73	1.50	1.24	0.44	0.02			0.26	0.06					0.02												0.22	0.33	0.17				
EASTERN PIEDMONT 02																																	
ALBERTA 5N	4.22	0.08	0.65	2.19	0.25	0.08				0.03	T						0.01								T	T	T	0.66	0.27			T	
AMELIA COURTHOUSE 1	5.26		0.97	2.15	0.43	0.06						0.34														0.05	0.02	0.76	0.48				
ASHLAND	4.61	0.04	2.16	0.72	0.28	0.01				0.16														0.17			0.11	0.87	0.09				
BREMO BLUFF	M 6.14	0.06	0.29	3.25	0.57	0.06				0.02															0.01		0.72	1.15	0.01				
BUCKINGHAM	4.62	0.02	0.34	2.16	0.30	0.12				0.09			-											T	0.02	T	0.88	0.69					
CAMP PICKETT	3.95	0.02	0.45	2.00	0.23	0.10					0.04																0.01	0.72	0.38				
CHASE CITY	2.70		0.33	1.54	0.19	0.02																						0.06	0.56				
CLARKSVILLE	M 3.96		0.38	1.65	0.80	0.10																					0.10	0.68	0.25	-	-		
CORBIN	4.82	0.33	0.77		2.30					0.27															0.04		0.18	0.93					
CROZIER	M 5.63	1.00	1.00	2.00	0.25	0.10				0.19															0.03		0.80	0.26					
FARMVILLE 2 N	4.08	T	0.25	1.92	0.32	0.11				0.13	T														T		0.84	0.51					
GREENBAY 3 NE	M -	-	-	-	-	-	-	-	-	-	-	-	-	-	-	-	-	-	-	-	-	-	-	-	-	-	-	-	-	-	-	-	
JOHN H KERR DAM	4.48	0.03	0.57	1.42	1.26	0.01																						0.05	0.73	0.41			
KEYSVILLE 2 S	M -	-	-	-	-	-	-	-	-	-	-	-	-	-	-	-	-	-	-	-	-	-	-	-	-	-		0.01	0.76	0.58			
LOUISA	3.46	0.14	0.86	0.58	0.28					0.11														0.01			0.15	1.31	0.02				
PALMYRA 3S	5.64		0.68	2.69	0.33	0.02				0.01																	0.01	1.04	0.86				
PETERSBURG	3.43	0.30	1.54	0.79	0.06					0.03															0.04	0.05	0.34	0.28					
RICHMOND INTL AP	3.24	0.21	1.16	0.70	0.10					0.28	0.01																0.30	0.47	T				
SANDSTON	A 3.28		*	*	2.27 _a	0.07		*	*	0.28 _a						T												0.31	0.35				
WINTERPOCK 4 W	3.59	0.01	0.44	1.56	0.50	0.08				0.10															0.04		0.31	0.55					

VIRGINIA
201510

DAILY PRECIPITATION (INCHES)

STATION	TOTAL	DAY OF MONTH																															
		01	02	03	04	05	06	07	08	09	10	11	12	13	14	15	16	17	18	19	20	21	22	23	24	25	26	27	28	29	30	31	
WESTERN PIEDMONT 03																																	
ALTAVISTA	4.43	0.01	0.16	1.89	0.16	0.01					0.36	0.01														0.02			1.22	0.57	0.02		
APPOMATTOX	4.95	T	0.41	2.26	0.20	0.07					0.34														0.02	T	0.04	0.85	0.76				
BEDFORD 4 NW	5.02	0.01	0.43	1.93	0.06	0.01					0.31	0.02																0.10	1.82	0.32	0.01		
BROOKNEAL	3.17	T	0.42	1.04	0.06	0.01					0.20														0.01		0.06	0.91	0.44	0.02			
CHARLOTTESVILLE 2W	6.36	T	0.37	2.12	0.57	0.01			T	0.11															T	0.01	T	1.64	1.53				
CHATHAM	4.76	0.02	0.35	1.60	0.61						0.11														T	0.02	0.12	1.25	0.68				
CONCORD 4 SSW	4.65		0.29	2.02	0.07	0.03					0.18	0.01													0.02		0.03	0.96	1.04				
DANVILLE RGNL AP	4.34	0.09	1.23	1.36	0.03					0.02	T					T									T	0.02	0.90	0.69					
FREE UNION	FM 3.01	-	-	-	-	-	6.23 ^s				0.04														T	T	T	1.67	1.30				
HOLCOMB ROCK	6.20		0.20	1.40	1.22	0.06					0.24	T															T	2.19	0.89				
HUDDLESTON 4 SW	5.78		0.26	2.49	0.47	0.08					0.12	0.04													0.02		0.01	1.75	0.54				
LYNCHBURG INTL AP	4.07	0.02	1.34	0.90	0.02				0.29	0.01															T	T	0.67	0.82					
MARTINSVILLE FLTR PLT	6.00		0.53	1.98	0.82	0.03				0.04																		0.07	2.13	0.40			
MEADOWS OF DAN 5 SW	5.33	0.02	0.11	1.36	0.69	0.03				0.09	0.01		0.04															0.11	2.17	0.70			
MONTEBELLO FISH CULTURAL STN	M	-	0.22	2.57	-	1.05	-			-	0.15	-				-	-			-	-	-	-	-	-			-	3.10	1.53			
MONTICELLO	6.21		0.28	2.24	0.50	0.03				0.04	T															T	0.02	1.00	2.10				
PEDLAR DAM	4.31		0.13	1.80	0.20	0.03				0.12	T															T	T	T	1.35	0.68			
ROCKY MT	7.95	0.02	0.56	2.12	1.38	0.13	0.02			0.07	0.03		0.02												0.02		0.13	2.92	0.52	T	0.01		
SOUTH BOSTON	4.05	0.02	0.38	1.51	0.58	0.02				0.01						0.03						0.02						0.06	0.92	0.48	0.02		
STUART	5.12	0.02	0.20	1.65	0.20	0.06			0.08	0.01																		0.10	2.00	0.80			
TYE RIVER 1 SE	4.56		0.15	2.50																								T	1.35	0.56			
WOOLWINE	10.06	0.01	0.27	2.05	2.28	0.29				0.03	0.17		0.02												0.01		0.08	3.55	1.30				
NORTHERN 04																																	
EDINBURG	M	-	-	-	-	-	-	-	-	-	-	-	-	-	-	-	-	-	-	-	-	-	-	-	-	-	-	-	-	-	-	-	-
FRONT ROYAL	6.30	0.28	0.57	1.73	1.40	0.17				0.02															0.03			0.71	1.39				
LINCOLN	A 3.23	*	*	*	1.25 _a																												1.98
LURAY 5 E	M 5.09	0.07	0.14	2.10	1.01	0.14				0.14		-		T											0.01			1.23	0.25				
MADISON	4.80	T			2.10	T																						T	1.05	1.65			
MANASSAS	A 3.72	*	0.47 _a	1.70	0.15					0.15				0.05											0.10			0.10	1.00				
MT WEATHER	3.74	0.41	0.24	1.05	0.35	0.02				0.05				T											0.05	T		0.45	1.12				
PIEDMONT RSCH STN	A 5.21	0.03	0.40	*	* 1.83 _a					0.11																0.02		0.78	2.04				
SOMERSET	4.62		0.23	0.88	0.24	0.02				0.17																T	0.01	T	1.22	1.85			
SPERRYVILLE	M 5.68	0.04	0.08	1.51	0.67	0.06				0.28															0.04		-	1.28	1.72				
STERLING RCS	5.57	0.08	0.56	1.62	0.11	0.01			T	0.09																0.09	0.11	0.11	2.79				
VIENNA	2.39	0.05	0.23	0.96	0.01					0.10																0.05		0.03	0.96				
WARRENTON 3 SE	5.06	0.05	0.40	1.10	0.37	0.06				0.03															0.10			0.42	2.53				
WASHGTN DULLES INTL AP	3.95	0.27	1.10	0.37	0.01					0.13				T											0.08		0.01	1.97	0.01				
WASHINGTON REAGAN AP	3.04	0.78	0.96	0.19	T					0.40				T											0.03		T	0.65	0.03				
WINCHESTER	3.06	0.04	0.11	1.09	0.50	0.03				0.10			0.02	0.03											0.05			0.24	0.83				
WINCHESTER 7 SE	3.08	0.15	1.20	0.52	0.03					0.05					0.02													0.24	0.82		0.02		
WOODSTOCK 2 NE	4.09	0.03	0.35	1.97	0.68	0.12																			0.03			0.28	0.56				

VIRGINIA
201510

DAILY PRECIPITATION (INCHES)

STATION	TOTAL	DAY OF MONTH																																		
		01	02	03	04	05	06	07	08	09	10	11	12	13	14	15	16	17	18	19	20	21	22	23	24	25	26	27	28	29	30	31				
CENTRAL MOUNTAIN 05																																				
BUENA VISTA	4.30	0.01	0.08	1.27	0.20	0.05					0.15	0.01																							1.80	0.73
COVINGTON FLTR PLT	2.85	0.03	0.02	0.66	0.14	0.01					0.23		0.02																				0.03	0.97	0.74	
DALE ENTERPRISE	2.91	0.01	0.03	0.90	0.22	0.03					0.10														0.02									0.75	0.85	
GATHRIGHT DAM	2.52	0.05	T	0.84	0.12	0.01					0.35		T																			0.03	0.71	0.41		
GLASGOW 1 SE	7.23		0.13	2.02	0.28	0.16					0.25		0.01													T						0.02	2.78	1.58		
HOT SPRINGS	4.09	0.04	0.12	0.87	0.37	0.02					0.35		0.02																			0.02	1.45	0.83		
LEXINGTON	3.79		0.05	1.42	0.14	0.01					0.13	T	0.03																		0.02	1.26	0.73			
MILLGAP	3.39	0.01	0.02	0.69	0.13						0.58		0.03												0.01								0.90	1.02		
MTN GROVE	2.82	0.07	0.03	0.82		0.10					0.40																						0.90	0.50		
MUSTOE 1 SW	3.40	0.03	0.51	0.47	0.05					0.43			0.03													0.02					0.57	1.29				
NEW CASTLE	4.36	0.02	0.16	0.75	0.44	0.03					0.69	0.02	0.22																		0.08	1.60	0.35			
ROANOKE 8 N	5.15		0.45	0.95	0.53	0.06					0.33	0.08	0.02																		0.13	2.14	0.46			
ROANOKE INTL AP	6.10	T	1.32	1.10	0.02					0.50	0.24		T													T	T				1.63	1.29			T	
STAUNTON WATER TRMTMT PLT	4.03	0.01	0.08	1.48	0.82	0.16	T				0.07	T	T																		0.03	1.00	0.38			
WAYNESBORO WTP	7.05	T	0.11	2.45	1.55	0.40					0.16																				1.68	0.70				
SOUTHWESTERN MOUNTAIN 06																																				
ABINGDON 3S	3.81	0.80	0.04	0.02	0.50						0.81	0.22	T	0.37													T	0.19	0.31	0.55						
BIG STONE GAP	5.95	1.32	0.53	1.54	0.45					0.38	0.45		0.46			0.02										0.05	0.15	0.22	0.30	0.08						
BLACKSBURG NWSO	3.87	0.02	0.26	0.60	0.76	0.11	T				0.45	0.08	0.07												T	0.01	0.14	1.16	0.21							
BURKES GARDEN	M 4.38	0.14	0.05	-	0.92	-	0.04				0.03	0.54	0.10	0.27											0.03	0.17	0.23	1.18	0.61	0.03						
CHRISTIANSBURG	3.93	T	0.09	0.65	0.86	0.09	0.03				0.56	0.06	0.05												0.02	T	0.19	1.15	0.18							
CLINTWOOD 1 W	2.90	0.50	0.30	0.28	0.21	T					0.01	0.35	T	0.33											0.01	0.09	0.10	0.40	0.32							
COPPER HILL	M 6.79	0.02	0.15	0.99	1.95	0.31	0.03				0.25	-	-	-	0.12										0.01		0.09	2.31	0.56							
GALAX RADIO WBRF	6.98	0.59	0.40	2.42	1.20	0.05	0.01				0.01	0.19	0.07	0.01	0.07	0.01										0.04	0.01	0.28	2.53	0.09						
GALAX WTP	6.84	0.62	0.26	1.19	1.38	0.04					0.19	0.07	0.08												0.03	0.01	0.16	2.25	0.56							
GRUNDY	4.27	0.74	0.08	0.38	0.26	T					1.24	0.01	0.23												0.13	0.01	0.18	0.68	0.30	0.03						
JOHN FLANNAGAN LAKE	MA 2.59	0.36	0.07	-	-	0.03	T			-	*	*	*	1.05 _a											-	0.16	0.07	0.16	0.46	0.22	-					
LAFAYETTE 1 NE	4.88	T	0.20	0.64	1.46	0.38	T				0.63	0.03	0.04													T		0.06	1.23	0.21						
LEBANON	3.53	0.30	0.08	0.54	0.33						0.62	0.05	0.40												0.02	0.07	0.23	0.43	0.44							
NORA 4 SSE	3.71	0.53	0.35	0.52	0.41	0.04					0.38	T	0.48												0.02	T										
N FK LAKE	MA 3.98	0.12	*	*	*	2.54 _a					*	*	*	0.56 _a											*	*	0.10 _a	0.26	0.40	-						
PULASKI 2 E	M 4.51	0.16	0.05	1.00	0.84	0.10					T	0.23	0.05	0.13												T	0.15	1.42	0.38							
RADFORD 3 N	4.03	0.13	0.03	0.34	0.67	0.04	0.02				0.61	0.08	0.09														T	0.20	1.40	0.42						
RICHLANDS	3.22	0.20	0.14	0.27	0.24	0.01					0.58	0.04	0.34												0.05		0.37	0.46	0.49							
SALTVILLE 1N	4.40	0.21	0.05	0.30	0.40						T	0.65	0.16	0.42											0.50	0.02	0.24	0.71	0.72							
STAFFORDSVILLE 3 ENE	4.25	0.11	0.14	0.56	0.76	0.02					0.38	0.22	T															0.13	1.55	0.38						
WILLIS	M 5.13	0.14	0.15	0.83	1.66	0.16	0.03				0.16	0.05	0.05														0.02	0.18	-	-	-				1.70	
WISE 3E	3.30	0.52	1.10	0.52	0.11						0.02	0.25	0.46													0.06	0.02	0.18	0.18	0.03						
WYTHEVILLE 1 S	4.94	0.13	0.05	0.64	0.94	0.06					0.88	0.20	0.18															0.19	1.42	0.18	0.03					

VIRGINIA
201510

DAILY TEMPERATURES (°F)

STATION	OB. TIME	MAX/MIN	DAY OF MONTH																															AVERAGE		
			01	02	03	04	05	06	07	08	09	10	11	12	13	14	15	16	17	18	19	20	21	22	23	24	25	26	27	28	29	30	31			
VIRGINIA																																				
TIDEWATER 01																																				
DISPUTANTA	07	MAX	84	62	58	70	64	64	71	77	79	81	62	69	75	75	72	71	58	64	56	56	68	74	77	72	72	71	57	63	75	75	63	68.9		
		MIN	60	55	54	58	57	49	50	52	52	59	47	46	46	51	44	45	39	30	30	30	34	38	39	43	44	49	45	49	63	44	35	46.4		
EASTVILLE	07	MAX	79	66	66	72	66	71	70	74	76	78	66	69																					M	
		MIN	66	61	61	66	59	58	56	58	60	62	56	53																					M	
EMPORIA 1 WNW	08	MAX																																	M	
		MIN																																		M
FREDERICKSBURG SEWAGE	07	MAX	77	59	55	60	59	66	74	78	78	76					73	70	68		54	59	73	77	80	72	63	70	58	60	71	74	75	68.4		
		MIN	55	54	49	50	53	46	46	53	54					49	47	40		31	31	37	39	42	46	48	45	39	39	59	45	35	45.3			
HOLLAND 1 E	08	MAX	76	70	82	75	64	71	79	82	82	73	71	82	76	76	73	71	69	65	60	70	76	79	79	72	74	61	63	75	78	68	65	72.8		
		MIN	60	62	63	56	59	52	51	54	59	55	52	50	60	52	45	42	40	32	32	33	37	44	44	42	47	53	55	59	61	42	37	49.4		
HOPEWELL	16	MAX	78	64	71	71	65	72	75	78	81	81	68	75	76	75	71	69	64	64	56	70	74	78	77	72	70	69	57	74	74	73	62	71.1		
		MIN	61	57	57	62	57	53	53	57	62	59	49	49	60	53	47	50	43	37	39	38	43	44	51	48	54	51	49	57	66	51	40	51.5		
NORFOLK INTL AP	24	MAX	71	67	77	71	67	68	73	76	82	70	68	73	77	73	70	63	66	56	54	69	76	79	70	67	73	63	65	78	78	66	62	69.9		
		MIN	66	64	68	64	62	58	56	58	62	61	56	55	62	59	52	48	46	46	40	38	45	52	53	53	53	55	58	65	65	54	53	55.7		
NORFOLK SOUTH	24	MAX	70	65	78	71	66	67	72	77	81	70	66	72	75	75	69	61	65	55	53	67	74	76	67	66	72	62	64	78	77	64	61	68.9		
		MIN	64	63	65	63	61	56	54	56	61	59	55	53	61	57	49	47	45	43	40	39	45	50	50	47	50	54	57	63	64	52	44	53.8		
NORTH	07	MAX	81	66	69	72	69	62	68	72	74	79	61	69	71	74	70	67	68	63	53	54	66	70	74	68	65	68	54	66	71	73	62	67.7		
		MIN	66	60	61	67	60	55	53	55	55	61	50	48	48	54	49	50	45	38	36	38	39	40	46	42	45	52	48	53	66	48	39	50.5		
PAINTER 2W	16	MAX	78	63	72	70	67	70	73	76	80	78	68	73	75	74	71	68	64	61	54	66	72	75	73	65	66	63	62	74	74	74	61	69.7		
		MIN	63	61	61	63	58	55	52	53	59	55	53	48	58	54	47	50	42	44	37	37	41	48	51	39	47	49	45	61	66	52	38	51.2		
STONY CREEK 2 N	08	MAX	74	58	69	65	65	72	78	79	82	70	70	76	76	73	71	62	66	57	59	70	75	79	74	68	73	59	59	74	76	65	63	69.6		
		MIN	58	55	55	57	55	50	51	53	54	52	48	47	47	53	45	44	38	32	31	32	34	36	39	48	52	50	50	51	56	43	36	46.8		
SUFFOLK LAKE KILBY	24	MAX	68	64	80	70	70	68	75	77	78	67	67	75	73	73	69	58	65	57	54	67	73	74	70	67	70	62	62	74	75	68	63	68.8		
		MIN	60	62	62	61	60	55	53	58	58	56	55	53	60	55	49	48	45	40	37	38	42	42	51	47	51	52	52	61	62	42	43	51.9		
WAKEFIELD 1NW	24	MAX	66	60	74	66	64	72	79	79	81	66	72	78	76	73	72	58	67	58	59	71	76	78	74	69	73	58	60	76	76	65	62	69.6		
		MIN	57	57	56	57	53	51	50	52	61	50	47	47	59	50	45	42	37	30	28	35	37	41	46	43	52	47	49	60	54	40	34	47.3		
WALKERTON 2 NW	18	MAX	70	59	69	66	70	73	78	78	81	69	71	76	79	74	72	66	66	57	59	77	79	73	66	68	70	62	57	75	76	68	64	69.9		
		MIN	59	56	56	60	46	56	51	51	58	59	42	44	56	50	45	45	38	31	30	38	41	49	41	53	54	48	41	56	60	46	49	48.7		
WALLACETON LK DRUMMOND	08	MAX	81	70	73	82	71	68	75	79	85	85	67	70	82	72	80	76	64	72	60	62	72	80	81	74	67	73	63	70	77	78	72	73.6		
		MIN	58	53	53	58	52	48	42	44	49	47	44	42	45	47	40	38	36	30	30	25	28	35	37	34	42	40	40	45	55	44	30	42.3		
WALLOPS ISLAND NASA TEST FACIL	24	MAX	69	63	69	65	68	68	74	74	81	63	68	71	77	72	68	63	64	54	54	68	73	76	66	65	66	58	63	71	74	63	60	67.4		
		MIN	61	60	63	60	58	54	53	55	63	50	50	48	62	56	49	44	41	36	34	44	46	52	48	42	51	47	45	62	55	43	40	50.7		
WARSAW 2 NW	18	MAX	72	65		64	73	77	79	81	80				79	78	70	69	66		59	71	76	79	78	68		58	59	73	76	71	67	71.5		
		MIN	57			52	55	46	52	51	62				40	59	49	46	49		30	41	40	45	53	39		45	40	56	64	43	35	47.9		
WEST POINT 2 NW	17	MAX	76	58	67	65	65	72	77	78	82	78	70	75	77	73	71	67	66	60	57	70	74	78	72	68	67	64	59	73	76	70	60	69.8		
		MIN	57	55	55	56	53	50	52	53	61	49	46	47	60	51	46	47	39	34	32	40	40	43	45	42	51	43	43	57	51	41	37	47.6		
WILLIAMSBURG 2 N	24	MAX	68	61	72	66	65	72	75	79	82	68	71	79	77	73	71	62	65	56	57	70	75	77	72	66	70	59	61	73	76	64	62	69.2		
		MIN	60	59	59	59	58	55	55	57	62	54	52	51	60	56	50	49	47	39	38	40	42	47	49	47	52	48	48	61	58	47	41	51.6		
EASTERN PIEDMONT 02																																				
AMELIA COURTHOUSE 1	08	MAX	82	59	59		61	61	65	72	77	78			81	66	69	77	77	71		64	63	71	75	78			73	56	62	73	74	63	69.5	

VIRGINIA
201510

DAILY TEMPERATURES (°F)

STATION	OB. TIME	MAX/MIN	DAY OF MONTH																															AVERAGE
			01	02	03	04	05	06	07	08	09	10	11	12	13	14	15	16	17	18	19	20	21	22	23	24	25	26	27	28	29	30	31	
ASHLAND	18	MIN	57	55	49		51	53	46	48	53	59		59	44	44	50	50	47		40	30	39	39	45			50	46	48	61	44	36	47.8
		MAX	70	55	62	62	64	70	74	76	77	70	68	74	75	70	67	64	63	57	57	69	73	76	71	65	67	63	54	72	72	66	59	67.2
CAMP PICKETT	08	MIN	55	50	49	55	51	45	52	54	60	55	41	44	57	48	45	47	38	30	31	36	36	41	50	45	53	47	41	51	60	43	35	46.6
		MAX	82	60	60	63	62	63	71	78	78	80	60	69	76	76	71	71	63	64	56	58	70	74	78	75	64	74	57	62	72	74	65	68.6
CHASE CITY	17	MIN	58	55	50	51	53	47	47	50	56	59	46	45	46	49	44	44	36	30	28	28	28	38	40	52	52	49	48	47	62	43	35	45.7
		MAX	83	61	56	62	64	64	72	80	79	80	61	71	76	77	73	70	66	64	57	60	69	74	78	77	67	74	56	63	70	73	66	69.1
CLARKSVILLE	07	MIN	59	56	51	52	52	49	49	50	56	57	49	48	56	49	44	44	37	32	32	34	34	36	40	46	52	52	49	48	62	45	38	47.0
		MAX	86	62	57	63	65	67	76	82	80	82	82	74	79	79	75	72	66	66	59	60	72	77	81	78	66	76	75	63	71			72.1
CORBIN	09	MIN	62	56	51	51	54	50	50	52	57	61	51	50	49	51	45	47	37	32	31	31	35	38	41	51	53	52	48	48	61			48.1
		MAX	68	56	60	60	65	73	76	77	80	74	71	77	78	71	69	68	61	53	57	71	76	79	70	61	68	60	53	72	74	59	60	67.6
CROZIER	07	MIN	56	51	50	55	53	44	54	54	60	49	39	44	58	50	45	47	39	31	29	38	40	44	53	46	54	43	39	53	56	43	35	46.8
		MAX		80	52	58	58	64	71	77	77	78	61	70	77	77	71		66	63	55	58	71	76	79	72	62	54	56	63	70	73	61	67.2
FARMVILLE 2 N	07	MIN		52	48	50	51	44	44	52	59	57	41	40	49	48	44		36	29	29	33	38	38	44	48	50	47	42	46	61	41	34	44.7
		MAX	80	59	55	58	60	65	71	78	79	79	79	68	77	77	72	69	66	63	56	58	70	76	80	74	65	74	56	60	69	72	62	68.6
GREENBAY 3 NE	09	MIN	59	55	48	48	53	46	46	51	55	59	43	43	45	50	44	43	36	30	29	28	36	40	43	49	53	51	47	46	60	42	34	45.5
		MAX																																
JOHN H KERR DAM	08	MIN																																M
		MAX	88	63	58	65	66	64	74	82	85	82	63	74	81	79	76	73	65	68	60	61	73	77	83	81	69	78	58	63	71	75	70	71.8
KEYSVILLE 2 S	07	MIN	61	57	51	52	55	49	50	53	59	63	51	48	50	53	47	48	38	31	30	30	38	39	41	50	54	52	48	48	63	46	37	48.1
		MAX																																
LOUISA	18	MIN																																M
		MAX	68	54	54	55	67	74	78	77	78	74	71	77	77	72	69	70	62	55	58	71	76	79	73	64	70	63	53	69	71	64	57	67.7
PALMYRA 3S	06	MIN	54	50	46	52	50	39	48	49	56	55	34	39	56	46	40	44	33	25	24	37	34	38	45	47	54	46	35	49	59	36	29	43.5
		MAX	80	58	53	56	57	66	73	78	78	80	64	69	78	79	73	69	67	63	56	57	73	76	81	74	64	67	57	62	70	72	61	68.1
PETERSBURG	08	MIN	56	53	47	48	52	41	50	50	52	59	36	37	40	47	40	41	32	29	25	27	31	33	36	51	52	48	39	45	59	38	30	42.7
		MAX	68	58	67	64	66	73	80	79	82	63	71	76	78	73	71	65	66	57	58	71	74	80	74	67	72	57	63	75	76	64	62	69.4
RICHMOND INTL AP	24	MIN	57	54	56	56	50	50	53	55	61	48	48	48	53	47	47	42	33	32	32	39	29	41	45	46	52	45	50	63	46	38	38	46.9
		MAX	64	55	63	59	66	74	78	79	81	63	71	75	79	72	70	64	66	56	58	70	74	79	73	65	71	58	57	74	75	64	60	68.2
SANDSTON	07	MIN	54	50	50	52	51	46	53	49	58	49	45	46	57	50	47	48	39	33	34	36	40	43	51	46	54	44	46	57	49	43	39	47.1
		MAX	83	60	57	65	62	65	70	75	76	79	61	67	72	76	69	67	60	62	54	54	67	71	75	71	63	68	57	62	73	72	61	66.9
WESTERN PIEDMONT 03 APPOMATTOX	07	MIN	59	56	53	55	55	48	48	52	53	59	45	44	45	52	47	45	40	31	31	32	33	37	39	45	44	50	42	47	62	46	37	46.2
		MAX	80	60	53	55	55	67	72	80	76	78	58	69	75	77	71	68	68	61	55	57	70	75	78	74	64	72	54	60	67	68	61	67.0
BROOKNEAL	07	MIN	57	53	46	47	51	45	45	55	57	58	44	48	54	55	47	48	41	32	31	31	36	41	46	53	53	49	44	44	59	45	36	46.8
		MAX	82	62	56	58	62	68	72	79	78	80	60	70	76	78	72	69	67	62	55	58	72	76	78	76	65	73	58	62	69	71	62	68.6
CHARLOTTESVILLE 2W	08	MIN	61	55	49	49	54	44	46	49	52	56	42	43	43	49	40	40	32	28	27	28	30	33	37	45	53	52	48	48	57	39	33	43.9
		MAX	76	58	52	53	53	66	73	79	79	81	62	71	78	78	74	69	69	62	54	59	73	76	81	74	65	66	55	54	67	68	60	67.3
CHATHAM	07	MIN	58	52	46	47	51	48	49	58	58	57	44	44	51	56	49	50	48	35	34	34	38	50	57	52	52	48	44	44	53	46	39	48.1
		MAX	80	62	54	56	60	65	69	79	78	78	60	69	75	77	73	67	65	63	56	56	70	75	78	75	64	74	54	60	64	71	61	67.4
DANVILLE RGNL AP	24	MIN	58	54	47	47	53	43	43	50	50	54	44	42	42	45	37	38	32	27	27	26	28	31	35	44	53	51	46	46	57	38	31	42.5
		MAX	68	57	59	65	68	75	83	81	83	65	73	79	80	75	72	72	66	59	61	73	78	80	80	70	77	61	59	72	72	64	62	70.6
		MIN	56	52	49	56	50	49	51	53	59	56	50	48	56	50	43	40	36	31	29	32	36	39	49	56	56	50	48	59	51	40	37	47.3

VIRGINIA
201510

DAILY TEMPERATURES (°F)

STATION	OB. TIME	MAX/MIN	DAY OF MONTH																															AVERAGE		
			01	02	03	04	05	06	07	08	09	10	11	12	13	14	15	16	17	18	19	20	21	22	23	24	25	26	27	28	29	30	31			
FREE UNION	08	MAX	75	58	53	53	54	68	72	78	77	80	61	71	77	78	73	69	71	62	55	60	73	76	81	73	62	67	55	53	65	69	62	67.1		
		MIN	57	52	46	47	51	42	42	50	52	54	38	38	41	51	42	40	37	27	27	26	29	36	39	48	52	43	40	43	52	38	31	42.3		
LYNCHBURG INTL AP	24	MAX	64	55	56	58	68	74	80	77	79	61	69	75	77	71	69	69	60	56	57	71	77			63	69	55	51	67	68	61	57	66.0		
		MIN	54	48	47	53	50	45	49	55	57	46	42	43	53	46	43	40	33	29	27	32	37			55	54	49	45	51	44	37	34	44.8		
MARTINSVILLE FLTR PLT	07	MAX	83	63	55	57	60	70	74	81	80	81	60	73	77	78	79	72	71	62	57	61	73	78	80	79	68	74	55	55	71	69	63	69.6		
		MIN	63	54	49	49	54	43	43	47	50	54	46	45	44	45	39	38	32	28	27	27	29	34	37	43	54	52	46	46	49	36	33	43.1		
MEADOWS OF DAN 5 SW	07	MAX	78	66				71	71	77	79	73	73	74	77	74	70	70	68	60	55	61	73	78	76	81	65	72	54	57	67	65	61	69.5		
		MIN	58	54	49	49		47	47	50	53	57	51	49	49	47	41	41	39	33	31	31	31	41	43	44	54	53	44	44	49	39	37	45.2		
MONTEBELLO FISH CULTURAL STN	07	MAX		75	53		56		73	77		76		69	73	71	66			63							62	61		56	65	58	57	M		
		MIN		52	41		47		40	47		48		39	42	48	35			26							48	41		39	54	39	28	M		
MONTECELLO	08	MAX	73	58	53	52	52	62	69	74	75	76	60	67	74	74	65	66	59	51	55	68	71	77	69	69	61	65	55	55	67	69	56	64.4		
		MIN	58	52	45	45	50	47	47	47	57	57	43	49	55	47	48	48	35	32	35	35	46	48	52	52	52	48	43	43	53	47	37	46.9		
ROCKY MT	07	MAX	82	62	54	58	58	69	72	79	80	81	62	81	77	76	72	71	70	59	56	61	75	75	80	77	64	71	55	55	71	71	61	68.9		
		MIN	62	53	48	48	49	44	44	49	52	60	46	44	44	55	39	39	35	30	28	28	30	36	41	47	54	51	44	44	53	38	32	44.1		
SOUTH BOSTON	07	MAX	85	62	56	59	65	67	72	81	81	82	82	72	78	78	75	72	67	65	58	58	71	75	79	78	66	75	56	62	70	74	65	70.5		
		MIN	62	55	48	49	54	49	49	50	55	57	49	47	47	50	44	42	36	32	30	29	31	35	38	46	52	53	47	47	59	43	36	45.8		
STUART	07	MAX	83	64	65	61	61	71	74	81	81	62	70	74	77	80	75	78	73	64	59	62	73	78	81	80	74	73	55	55	64	68	64	70.3		
		MIN	63	54	50	51	55	46	46	46	55	48	46	47	48	48	41	40	34	32	30	30	33	33	42	50	52	53	46	43	48	40	37	44.7		
TYE RIVER 1 SE	07	MAX	80	61	54	57	58	67	74	80	79	80	62	72	78	80	75	72	71	63	60	61	70	78	82	75	62	60	68	60	68	70	65	69.1		
		MIN	59	51	48	49	52	44	45	52	55	56	44	43	44	59	46	44	35	28	28	29	35	40	42	54	55	49	46	47	57	41	34	45.5		
NORTHERN 04																																				
EDINBURG	07	MAX																																	M	
		MIN																																		M
FRONT ROYAL	07	MAX	69	69	51	50	52	64	72	76	75	79	79	71	74	77	68	68	65	55	51	58	73	75	79	66	62	66	58	58	68	66	66	66.5		
		MIN	53	51	44	44	47	44	41	53	54	53	40	40	46	54	45	43	39	36	29	28	39	41	45	51	50	40	37	37	37	44	36	43.3		
LINCOLN	07	MAX	72	67	55	53	56	63	72	74	76	79	67	70	75	77	68	65	63	56	51	57	71	75	79	65	62	67	58	57	69	67	59	66.0		
		MIN	66	53	47	47	45	39	39	48	48	50	35	35	38	47	41	40	35	35	25	25	30	37	37	46	46	35	32	34	53	43	30	40.7		
LURAY 5 E	08	MAX	70	55	50	51	54	64	71	76	76	77	63		77	77	69	66	65	56	50	59	74	76	79	70	64	66	58	60	65	66	54	65.3		
		MIN	52	50	44	45	43	40	46	51	56	49	38		43	51	40	41	35	27	26	31	35	42	45	48	53	38	37	42	51	35	31	42.2		
MADISON	08	MAX	77	59	54	55	56	67	74	78	76	81	64	72	76	78	72	71	68	62	56	58	70	74	78	71	63	70	60	56	68	71	59	67.5		
		MIN	59	54	49	49	53	46	46	55	57	58	41	41	44	56	45	45	44	38	32	32	38	41	43	52	52	46	41	46	56	44	37	46.5		
MANASSAS	07	MAX			54	57	58	68	74	76	76	80	64	71	75	79	70	68	65	57	51	57	71	77	79	70	61	70	59	58	71	72	57	67.1		
		MIN		54	48	48	51	46	45	53	54	55	39	40	43	50	45	44	41	33	29	29	40	41	43	44	47	42	38	39	58	47	34	44.0		
MT WEATHER	07	MAX	70	52	52	52	50	62	68	71	72	75	75	75	75	72	64	63	61	50	50	54	68	72	77	64	58	65	56	56	63	62	51	63.1		
		MIN	50	48	43	43	46	46	48	56	57	50	47	47	47	53	46	45	42	32	32	33	50	53	54	46	44	42	41	41	52	41	40	45.6		
PIEDMONT RSCH STN	08	MAX	77	58	53	54	55	65	73	78	76	79	64	70	76	78	72	68	68	62	54	57	69	75	79	71	63	69	57	57	69	72	59	67.0		
		MIN	56	52	47	46	51	46	49	55	58	59	42	40	43	54	45	44	44	34	31	32	36	40	43	53	49	48	40	45	57	42	38	45.8		
SOMERSET	07	MAX	77	57	54	54	54	65	73	87	77	81	63	71	76	78	73	69	69	61	55	58	71	76	80	71	63	70	58	55	69	72	60	67.6		
		MIN	57	53	47	47	52	41	43	45	53	57	37	39	44	51	41	42	37	34	26	27	34	38	42	50	51	45	37	42	55	40	32	43.2		
SPERRYVILLE	06	MAX	74	58	52	54	55	66	73	77	76	81	64	71	76	78	72	68	65	57	53	58	72	76	79	71	62	67		53	66	68	57	66.6		
		MIN	54	52	47	48	46	44	46	54	55	54	40	40	50	53	43	43	40	30	29	31	32	42	45	46	50	43		43	50	40	34	44.2		
STERLING RCS	07	MAX	72	56	53	56	58	65	73	76	77	81	66	71	76	78	68	67	64	57	52	56	70	76	80	68	61	68	59	58	70	68	56	66.3		

VIRGINIA
201510

DAILY TEMPERATURES (°F)

STATION	OB. TIME	MAX/MIN	DAY OF MONTH																															AVERAGE	
			01	02	03	04	05	06	07	08	09	10	11	12	13	14	15	16	17	18	19	20	21	22	23	24	25	26	27	28	29	30	31		
VIENNA	07	MIN	54	53	47	47	48	43	45	52	53	55	38	37	41	53	47	42	39	31	27	28	37	40	40	39	45	39	36	39	39	39	44	34	42.3
		MAX	74	58	53	59	59	67	75	76	79	80	65	72	76	78	68	65	66	58	51	58	70	80	80	70	69	62	58	61	70	70	58	67.3	
WARRENTON 3 SE	08	MIN	56	52	49	50	51	46	46	56	56	54	43	43	47	52	48	48	43	35	32	32	42	45	47	42	42	42	39	40	61	47	38	45.9	
		MAX	73	56	52	56	56	64	72	75	75	78	66	69	73	78	69	66	65	59	51	54	66	73	76	67	62	68	57	60	68	69	56	65.5	
WASHGTON DULLES INTL AP	24	MIN	54	51	46	48	47	46	51	54	56	52	49	43	43	51	44	46	42	34	29	35	36	43	44	46	51	42	37	44	58	42	35	45.1	
		MAX	58	55	56	59	68	75	77	76	82	66	71	75	79	69	67	66	58	52	57	69	77	80	69	62	69	60	57	70	69	58	60	66.6	
WASHINGTON REAGAN AP	24	MIN	54	48	48	52	48	45	52	51	60	42	38	40	55	46	46	42	33	31	27	40	39	40	40	39	52	37	36	54	49	38	34	43.7	
		MAX	63	58	58	59	69	77	78	78	79	66	71	75	78	71	68	67	60	54	56	68	73	76	70	62	71	61	59	70	73	61	61	67.4	
WINCHESTER	07	MIN	57	50	50	54	52	50	58	57	62	51	47	50	59	55	53	51	44	38	37	44	48	50	52	47	54	46	44	55	56	46	42	50.3	
		MAX	69	54	51	49	53	64	72	74	74	77	61	69	73	73	64	65	61	51	50	56	70	72	77	64	61	64	55	53	65	63	53	63.1	
WINCHESTER 7 SE	08	MIN	52	51	44	44	45	43	43	54	54	51	40	41	45	56	44	44	40	36	28	28	42	42	47	45	46	41	37	39	53	43	34	43.6	
		MAX	54	51	50	53	66	74	77	77	79	63	71	76	76	67	68	65	53	53	58	73	75	80	68	62	69	59	59	66	68	64	66	65.8	
WOODSTOCK 2 NE	07	MIN	51	44	45	42	38	38	49	49	49	36	38	44	54	40	39	35	29	25	24	37	37	39	37	49	34	32	32	52	29	40	44	39.7	
		MAX	71	55	51	50	52	65	74	78	76	78	63	72	76	75	68	67	65	60	50	59	75	76	79	70	66	65	60	52	62	65	53	65.4	
CENTRAL MOUNTAIN 05 COVINGTON FLTR PLT	07	MIN	53	50	44	44	44	41	42	52	53	53	41	41	44	54	42	41	34	29	27	27	38	40	40	45	49	36	35	39	48	36	33	41.8	
		MAX	78	64	56	58	64	74	73	79	78	79	62	74	77	76	71	70	67	56	54	64	75	76	80	82	65	68	59	54	73	67	59	68.8	
DALE ENTERPRISE	07	MIN	58	55	48	48	53	45	45	49	52	56	52	47	48	53	39	39	33	26	27	27	30	35	36	46	52	49	45	44	54	37	30	43.8	
		MAX	71	63	52	49	53	66	70	75	77	78	61	71	74	75	72	70	68	57	54	52	75	74	78	73	62	56	50	51	64	66	56	64.9	
GATHRIGHT DAM	07	MIN	54	50	43	44	47	40	42	50	51	54	37	40	43	52	43	40	36	26	26	26	34	35	39	48	53	48	42	44	50	38	30	42.1	
		MAX	74	61	53	55	59	68	68	72	73	72	61	68	70	68	68	63	59	49	47	58	68	70	74	75	61	63	57	53	67	60	53	63.5	
HOT SPRINGS	07	MIN	56	52	46	46	50	44	44	48	50	54	50	45	45	53	40	39	33	26	26	27	32	37	38	48	52	48	43	42	53	37	31	43.1	
		MAX	73	59	52	49	55	66	69	73	73	73	60	66	68	70	62	63	59	49	46	57	69	71	74	76	63	62	54	54	66	60	53	62.7	
LEXINGTON	07	MIN	56	51	44	43	45	41	40	47	49	53	47	41	42	48	40	40	34	27	26	26	33	37	39	47	52	44	42	41	41	34	30	41.3	
		MAX	79	60	53	52	58	69	75	80	78	79	62	70	75	75	71	69	69	58	55	60	73	76	79	79	62	69	57	53	67	66	61	67.4	
MILLGAP	07	MIN	59	52	45	45	51	42	43	47	49	55	47	44	45	52	39	38	33	27	26	26	30	34	36	45	55	50	46	45	53	41	31	42.9	
		MAX	72	58	49	49	55	71	74	73	75	73	64	72	71	65	65	62	58	47	46	60	73	75	76	77	61	61	54	53	62	60	51	63.3	
MUSTOE 1 SW	24	MIN	54	49	41	41	46	33	33	42	44	47	39	38	38	47	32	31	24	25	18	18	24	26	29	41	43	36	37	39	45	30	22	35.9	
		MAX	59	50	48	53	68	72	73	71	70	62	69	70	69	63	62	58	48	45	57	70	72	75	75	60	60	53	48	62	56	50	50	61.2	
ROANOKE 8 N	07	MIN	49	44	42	46	43	36	42	43	48	49	41	36	44	42	35	33	27	26	22	27	30	32	42	46	40	38	40	48	44	29	25	38.4	
		MAX	82	64	54	53	57	70	74	80	79	80	61	71	75	76	72	70	68	58	55	61	75	77	79	79	62	67	56	56	69	66	59	67.9	
ROANOKE INTL AP	24	MIN	61	53	47	47	51	46	46	51	53	59	50	47	47	55	45	45	38	34	30	30	36	41	42	50	55	52	45	44	54	44	34	46.2	
		MAX	65	56	53	57	71	74	80	78	80	63	71	75	77	71	70	69	58	57	60	74	77	81	78	64	68	58	51	71	66	59	56	67.4	
STAUNTON WATER TRMTMT PLT	08	MIN	55	49	47	51	51	45	50	53	59	52	50	45	54	54	46	43	40	34	29	37	41	45	54	56	56	50	45	51	51	39	35	47.3	
		MAX	75	55	55	49	51	65	72	77	76	77	62	69	72	75	75	67	66	56	51	58	73	74	76	73	62	65	55	55	63	64	58	65.2	
WAYNESBORO WTP	07	MIN	53	49	43	43	43	43	45	53	55	53	39	42	49	49	44	45	39	34	29	31	43	43	49	52	52	44	43	43	50	40	32	44.3	
		MAX	75	57	51	51	52	64	71	76	76	78	62	71	75	74	70	67	66	57	51	58	77	73	78	72	63	66	54	58	66	65	56	65.5	
SOUTHWESTERN MOUNTAIN 06 ABINGDON 3S	22	MIN	54	51	44	44	48	41	40	49	51	55	39	39	42	52	41	40	36	28	27	27	33	37	39	48	54	44	44	45	51	38	32	42.4	
		MAX	74	66	58	58	65	73	76	78	78	73	62	69	70		69	68	64	56	53	61	68	71	72	78	70	64	54	64	71	63	58	66.8	
		MIN	62	54	49	50	54	51	47	46	52	58	53	43	47		40	38	33	28	28	28	32	36	38	43	50	53	44	44	56	35	37	44.3	

VIRGINIA
201510

DAILY TEMPERATURES (°F)

STATION	OB. TIME	MAX/MIN	DAY OF MONTH																															AVERAGE
			01	02	03	04	05	06	07	08	09	10	11	12	13	14	15	16	17	18	19	20	21	22	23	24	25	26	27	28	29	30	31	
BIG STONE GAP	08	MAX	73	73	57	60	72	81	79	79	79	76	62	71	70	70	69	70	65	59	55	62	67	71	73	78	71	71	61	62	67	67	60	68.7
		MIN	59	56	53	53	55	53	49	50	53	57	50	47	47	45	39	40	33	29	29	29	32	36	39	44	49	49	46	47	55	35	34	44.9
BLACKSBURG NWSO	07	MAX	75	64	54	52	57	69	72	77	78	76	58	69	71	71	67	66	64	53	52	60	69	74	75	79	63	63	52	53	70	63	54	65.2
		MIN	58	50	45	45	49	42	42	45	48	56	51	43	45	52	40	42	35	29	26	27	31	35	37	45	54	49	41	41	48	39	30	42.6
BURKES GARDEN	07	MAX	68	61		54		67	69	72	73	69	57	64	63	64	60	60	56	48	45	57	63	67	68	73	59	56	47	54	63	57	50	60.8
		MIN	56	49		44		42	39	38	46	54	47	38	37	49	34	33	32	25	20	19	24	27	32	35	54	46	39	39	51	35	26	38.3
CHRISTIANSBURG	07	MAX	72		52	51	54	63	68	74	75	73	57	65	68	69	65	63	62	51	49	58	65	71	71	77	62	62	50	51	69	60	52	62.6
		MIN	59	49	44	44	48	43	43	48	49	57	48	44	45	51	43	42	34	34	28	28	33	36	37	49	52	48	39	39	51	41	32	43.2
CLINTWOOD 1 W	07	MAX	67	61	57	59	66	74	75	76	79	76	57	68	73	70	68	66	64	55	51	63	68	70	74	76	67	60	62	54	68	65	55	65.9
		MIN	60	54	51	51	50	50	45	46	48	54	49	44	44	42	36	36	30	26	25	26	29	32	35	40	45	50	45	45	49	31	31	41.9
COPPER HILL	07	MAX	73	58	50	53	53	61	67	71	70	73			67	63	61	60		46	53	64	69	71	72	59	61	47	51	65	60	52	61.1	
		MIN	56	48	43	45	45	44	44	49	54	56			47	43	42	38	29	29	30	35	44	44	49	49	46	38	38	51	40	34	43.2	
GALAX RADIO WBRF	07	MAX	76	63	53	59	61	66	72	77	77	74	73	71	71	70	66	67	63	58	52	57	70	73	76	76	63	64	50	58	64	61	58	65.8
		MIN	55	50	46	51	50	41	43	47	51	51	50	41	40	44	35	41	33	28	24	28	32	32	42	52	54	47	42	42	46	35	31	42.1
GALAX WTP	07	MAX	77	66	57	61	64	67	72	77	76	77	77	74	74	75	69	69	68	57	53	58	70	73	75	75	62	66		62	68	65	60	68.1
		MIN	60	55	51	50	54	46	45	46	51	57	57	57	48	50	41	41	38	33	29	29	32	32	36	41	54	54		55	51	44	37	45.8
GRUNDY	07	MAX	66	62	57	60	68	74	76	76	78	74	59	68	72	72	69	68	64	56	53	64	67	69	74	76	67	58	62	55	68	66	56	66.3
		MIN	59	55	51	52	52	53	52	52	54	56	54	48	48	46	40	41	34	30	28	28	31	34	38	45	51	50	45	46	53	37	33	45.0
JOHN FLANNAGAN LAKE	07	MAX	71	61			71	80	82						83	71	73		68		58		75	78	80		85	59	63	63	75			M
		MIN	59	55			56	50	53						46	46	42		36		30		35	38	38		38	51	45	45	46			M
LEBANON	07	MAX	75	66	66	63	67	77	79	79	79	75	59	70	73	70	67	71	64	55	51	63	69	71	74	79	70	59	56	63	69	64	56	67.7
		MIN	61	53	51	52	53	46	44	45	49	57	53	43	44	47	37	36	31	26	24	25	25	32	25	25	48	51	45	47	54	31	32	41.7
NORA 4 SSE	07	MAX	64	57	52	58	67	73	74	76	76	71	54	67	64	69	67	66	61	53	49	58	64	67	72	76	65	57	56	58	64	63	54	63.6
		MIN	56	51	47	47	52	52	55	55	60	53	49	49	50	48	47	47	37	30	30	38	43	52	55	57	56	48	41	43	52	36	35	47.5
N FK LAKE	08	MAX	66				70	76	77	78	79				76	70	68				68	66	70	73	76		78	61	58					M
		MIN	58				50	51	50	49	51				45	47	41				29	28	33	35	38		43	44	44					M
PULASKI 2 E	07	MAX	74	62	53	54	59	68	71	75	76	59	71	71	69	67	67	54	51	61		72	75	77	64	64	52	52	69	62	55	64	55	64.9
		MIN	59	51	46	46	50	42	42	45	45	45	50	42	42	51	39	38	35	29	26	26		38	38	51	55	49	41	40	51	40	29	42.7
RADFORD 3 N	07	MAX	74	64	54	53	58	69	70	75	78	74	58	67	72	73	66	65	63	52	49	60	69	72	74	77	62	61	51	51	69	60	52	64.3
		MIN	58	51	46	46	51	42	42	47	50	55	50	44	46	53	40	39	32	33	25	26	29	32	34	41	54	47	41	43	51	42	29	42.5
RICHLANDS	07	MAX		71	56	62	67	76	77	79	79	73	60	70	72			72	62	54	51	63	71	72	75	81	70	60	57	61	68	65	56	67.1
		MIN		53	50	52	53	47	45	45	48	55	52	44	43			36	30	26	25	25	29	32	35	40	47	51	45	46	55	34	32	42.0
SALTVILLE 1N	07	MAX	72	67	59	60	65	76	79	78	79	74	63	72	71	70	68	69	64	64	64	63	70	72	74	81	63	55	58	69	64	59	68.5	
		MIN	60	55	51	51	56	48	45	44	52	53	55	47			37	31	28	26	26	28	32	34	40	40	52	44	45	54	36	35	43.0	
STAFFORDSVILLE 3 ENE	07	MAX	72	65	54	55	64	69	74	74	76	76	59	67	71	72	67	66	63	52	49	60	64	69	75	77	62	62	53	54	66	57	51	64.4
		MIN	59	51	47	48	50	44	44	47	51	55	52	45	45	53	41	39	32	34	25	25	29	31	34	42	53	49	41	41	52	35	29	42.7
WISE 3E	17	MAX	61	55	56	64	72	72	74	76	73	68	67	68	66	64	65	63	56	54	60	66	68	72	75	74	67	58	63	67	68	62	62	65.7
		MIN	55	51	47	52	52	50	48	50	58	51	43	46	54	42	37	49	32	27	27	34	37	40	45	54	54	51	55	56	54	33	34	45.7
WYTHEVILLE 1 S	07	MAX	73	62	53	52	59	67	72	76	79	73	59	69	70	69	65	66	62	53	49	60	70	73	75	77	63	63	49	53	70	61	56	64.5
		MIN	58	50	45	45	50	43	42	45	49	56	51	43	41	51	40	39	37	32	27	26	32	37	41	46	53	49	40	39	52	40	32	42.9

VIRGINIA
201510

SNOWFALL AND SNOW ON GROUND (INCHES)

STATION	DAY OF MONTH																														
	01	02	03	04	05	06	07	08	09	10	11	12	13	14	15	16	17	18	19	20	21	22	23	24	25	26	27	28	29	30	31
VIRGINIA																															
TIDEWATER 01																															
DISPUTANTA																															
EASTVILLE																															
EMPORIA 1 WNW																															
FREDERICKSBURG SEWAGE																															
HOLLAND 1 E																															
HOPEWELL																															
NORFOLK INTL AP																															
NORFOLK SOUTH																															
NORTH																															
PAINTER 2W																															
STONY CREEK 2 N																															
SUFFOLK LAKE KILBY																															
WAKEFIELD 1NW																															
WALKERTON 2 NW																															
WALLACETON LK DRUMMOND																															
WALLOPS ISLAND NASA TEST FACIL																															
WARSAW 2 NW																															
WEST POINT 2 NW																															
WILLIAMSBURG 2 N																															

Snowfall: Includes snow and ice. Values for NWS stations (J index note) are Mid-Mid (LST).

Snow on ground: Includes snow, sleet, ice, and hail. Values for NWS stations (J index note) are observed at 12 UTC (GMT).

Water Equivalent: Given for NWS stations (J index note) only, when snow depth is 2 inches or more, and is measured at 18 UTC (GMT)

VIRGINIA
201510

PAN EVAPORATION AND WIND

STATION		DAY OF MONTH																															TOTAL OR AVERAGE	
		01	02	03	04	05	06	07	08	09	10	11	12	13	14	15	16	17	18	19	20	21	22	23	24	25	26	27	28	29	30	31		
VIRGINIA EASTERN PIEDMONT 02 JOHN H KERR DAM	WIND	-	-	-	-	-	-	-	-	-	-	-	-	-	-	-	-	-	-	-	-	-	-	-	-	-	-	-	-	-	-	-	-	M
	EVAP	-	-	-	-	-	-	-	-	-	-	-	-	-	-	-	-	-	-	-	-	-	-	-	-	-	-	-	-	-	-	-	-	M
	MAX	-	-	-	-	-	-	-	-	-	-	-	-	-	-	-	-	-	-	-	-	-	-	-	-	-	-	-	-	-	-	-	-	M
	MIN	-	-	-	-	-	-	-	-	-	-	-	-	-	-	-	-	-	-	-	-	-	-	-	-	-	-	-	-	-	-	-	-	-

Evaporation: Is measured in hundreths of inches.

Wind: Is measured in miles.

Max and Min: The maximum and minimum temperatures (Fahrenheit) of the water in the evaporation pan.

STATION INDEX

STATION	INDEX NO.	DIVISION	COUNTY	LATITUDE	LONGITUDE	ELEVATION (IN FEET)	OBSERVATION TIME AND TABLES			
							LOCAL STD TIME			
							TEMP	PRECIP	EVAP	SPECIAL SEE (NOTES)
VIRGINIA										
ABINGDON 3S	0021	06	WASHINGTON	36 40	81 58W	1925	22	22		H
ALBERTA 5N	0079	02	BRUNSWICK	36 56	77 54W	376		08		H
ALTAVISTA	0166	03	CAMPBELL	37 7	79 17W	529		07		CH
AMELIA COURTHOUSE 1	0187	02	AMELIA	37 21	77 59W	345	08	08		H
APPOMATTOX	0243	03	APPOMATTOX	37 20	78 50W	850	07	07		H
ASHLAND	0327	02	HANOVER	37 45	77 29W	220	18	18		H
BEDFORD 4 NW	0561	03	BEDFORD	37 23	79 34W	1228		07		CH
BIG STONE GAP	0735	06	WISE	36 52	82 46W	1464	08	08		H
BLACKSBURG NWSO	0766	06	MONTGOMERY	37 12	80 25W	2103	07	07		H
BREMO BLUFF	0993	02	FLUVANNA	37 43	78 17W	225		07		CH
BROOKNEAL	1082	03	CAMPBELL	37 4	78 57W	408	07	07		H
BUCKINGHAM	1136	02	BUCKINGHAM	37 30	78 32W	580		07		H
BUENA VISTA	1159	05	ROCKBRIDGE	37 44	79 22W	840		07		H
BURKES GARDEN	1209	06	TAZEWELL	37 6	81 20W	3068	07	07		H
CAMP PICKETT	1322	02	NOTTOWAY	37 2	77 57W	330	08	08		CH
CHARLOTTESVILLE 2W	1593	03	ALBEMARLE	38 2	78 31W	866	08	08		H
CHASE CITY	1606	02	MECKLENBURG	36 47	78 29W	510	17	17		H
CHATHAM	1614	03	PITTSYLVANIA	36 49	79 25W	651	07	07		CH
CHRISTIANSBURG	1692	06	MONTGOMERY	37 8	80 24W	2100	07	07		H
CLARKSVILLE	1746	02	MECKLENBURG	36 37	78 33W	330	07	07		H
CLINTWOOD 1 W	1825	06	DICKENSON	37 9	82 29W	1780	07	07		H
CONCORD 4 SSW	1955	03	CAMPBELL	37 17	78 58W	815		07		H
COPPER HILL	1999	06	FLOYD	37 5	80 9W	2690	07	07		H
CORBIN	2009	02	CAROLINE	38 12	77 22W	220	09	09		H
COVINGTON FLTR PLT	2044	05	ALLEGHANY	37 49	79 59W	1230	07	07		H
CROZIER	2142	02	GOOCHLAND	37 40	77 53W	350	07	07		H
DALE ENTERPRISE	2208	05	ROCKINGHAM	38 27	78 56W	1358	07	07		H
DANVILLE RGNL AP	2250	03	PITTSYLVANIA	36 34	79 20W	571	24	24		H
DISPUTANTA	2400	01	PRINCE GEORGE	37 7	77 12W	15	07	07		H
EASTVILLE	2635	01	NORTHAMPTON	37 23	75 58W	10	07	07		H
EDINBURG	2663	04	SHENANDOAH	38 48	78 35W	928	07	07		H
EMPORIA 1 WNW	2790	01	GREENSVILLE	36 42	77 34W	100	08	08		H
FARMVILLE 2 N	2941	02	CUMBERLAND	37 20	78 23W	450	07	07		H
FREDERICKSBURG SEWAGE	3204	01	FREDERICKSBURG	38 17	77 27W	15	07	07		H
FREE UNION	3213	03	ALBEMARLE	38 5	78 35W	590	08	07		H
FRONT ROYAL	3229	04	WARREN	38 54	78 11W	930	07	07		H
GALAX RADIO WBRF	3267	06	CARROLL	36 40	80 55W	2385	07	07		H
GALAX WTP	3272	06	CARROLL	36 39	80 55W	2360	07	07		CH
GATHRIGHT DAM	3310	05	ALLEGHANY	37 57	79 57W	1770	07	07		CH
GLASGOW 1 SE	3375	05	ROCKBRIDGE	37 37	79 26W	737		07		H
GREENBAY 3 NE	3565	02	PRINCE EDWARD	37 11	78 17W	500	09	09		H
GRUNDY	3640	06	BUCHANAN	37 17	82 5W	1170	07	07		H
HOLCOMB ROCK	4039	03	BEDFORD	37 33	79 24W	810		07		H
HOLLAND 1 E	4044	01	SUFFOLK	36 41	76 46W	80	08	08		H
HOPEWELL	4101	01	PRINCE GEORGE	37 18	77 17W	40	16	16		H
HOT SPRINGS	4128	05	BATH	37 60	79 50W	2236	07	07		H
HUDDLESTON 4 SW	4148	03	BEDFORD	37 8	79 32W	898		07		H
JOHN FLANNAGAN LAKE	4410	06	DICKENSON	37 14	82 21W	1460	07	07		H
JOHN H KERR DAM	4414	02	MECKLENBURG	36 36	78 18W	250	08	08	08	CH
KEYSVILLE 2 S	4568	02	CHARLOTTE	37 1	78 29W	625	07	07		H
LAFAYETTE 1 NE	4676	06	MONTGOMERY	37 14	80 12W	1320		07		H
LEBANON	4777	06	RUSSELL	36 54	82 2W	1912	07	07		H
LEXINGTON	4876	05	ROCKBRIDGE	37 47	79 26W	1097	07	07		H
LINCOLN	4909	04	LOUDOUN	39 5	77 42W	500	07	07		H
LOUISA	5050	02	LOUISA	38 3	78 0W	420	18	18		H
LURAY 5 E	5096	04	PAGE	38 40	78 22W	1400	08	08		H
LYNCHBURG INTL AP R	5120	03	CAMPBELL	37 19	79 12W	940	24	24		HJ
MADISON	5150	04	MADISON	38 22	78 15W	577	08	08		H
MANASSAS	5204	04	MANASSAS	38 44	77 30W	245	07	07		H
MARTINSVILLE FLTR PLT	5300	03	HENRY	36 42	79 52W	760	07	07		H
MEADOWS OF DAN 5 SW	5453	03	PATRICK	36 40	80 27W	2225	07	07		H
MILLGAP	5595	05	HIGHLAND	38 18	79 43W	2421	07	07		CH
MONTEBELLO FISH CULTURAL STN	5690	03	NELSON	37 51	79 8W	2667	07	07		H
MONTICELLO	5700	03	ALBEMARLE	38 1	78 27W	758	08	08		H
MT WEATHER	5851	04	LOUDOUN	39 4	77 53W	1659	07	07		H

STATION INDEX

STATION	INDEX NO.	DIVISION	COUNTY	LATITUDE	LONGITUDE	ELEVATION (IN FEET)	OBSERVATION TIME AND TABLES			
							LOCAL STD TIME			
							TEMP	PRECIP	EVAP	SPECIAL SEE (NOTES)
MTN GROVE	5756	05	BATH	38 6	79 53W	1775		07		H
MUSTOE 1 SW	5880	05	HIGHLAND	38 20	79 40W	2380	24	24		H
N FK LAKE	6173	06	WISE	37 7	82 38W	1675	08	08		H
NEW CASTLE	6012	05	CRAIG	37 18	80 3W	1258		07		H
NORA 4 SSE	6125	06	DICKENSON	37 1	82 19W	2650	07	07		H
NORFOLK INTL AP R	6139	01	NORFOLK (CITY)	36 54	76 12W	30	24	24		HJ
NORFOLK SOUTH	6147	01	NORFOLK (CITY)	36 52	76 14W	100	24	24		H
NORTH	6161	01	MATHEWS	37 26	76 26W	10	07	07		H
PAINTER 2W	6475	01	ACCOMACK	37 35	75 49W	30	16	16		CH
PALMYRA 3S	6491	02	FLUVANNA	37 49	78 16W	410	06	06		H
PEDLAR DAM	6593	03	AMHERST	37 40	79 17W	1024		07		H
PETERSBURG	6656	02	PETERSBURG	37 14	77 24W	15	08	08		H
PIEDMONT RSCH STN	6712	04	ORANGE	38 14	78 7W	520	08	08		CH
PULASKI 2 E	6955	06	PULASKI	37 3	80 47W	1850	07	07		CH
RADFORD 3 N	6999	06	PULASKI	37 12	80 35W	1800	07	07		H
RICHLANDS	7174	06	TAZEWELL	37 6	81 48W	1910	07	07		H
RICHMOND INTL AP R	7201	02	HENRICO	37 30	77 19W	164	24	24		HJ
ROANOKE 8 N	7278	05	ROANOKE	37 22	79 58W	1190	07	07		H
ROANOKE INTL AP R	7285	05	ROANOKE	37 19	79 58W	1175	24	24		HJ
ROCKY MT	7338	03	FRANKLIN	36 59	79 54W	1315	07	07		CH
SALTVILLE 1N	7506	06	SMYTH	36 53	81 46W	1733	07	07		H
SANDSTON	7541	02	HENRICO	37 33	77 17W	165	07	07		H
SOMERSET	7904	04	ORANGE	38 15	78 16W	510	07	07		H
SOUTH BOSTON	7925	03	HALIFAX	36 42	78 53W	329	07	07		H
SPERRYVILLE	7985	04	RAPPAHANNOCK	38 39	78 14W	750	06	06		H
STAFFORDSVILLE 3 ENE	8022	06	GILES	37 16	80 43W	1950	07	07		CH
STAUNTON WATER TRMTMT PLT	8062	05	AUGUSTA	38 10	79 5W	169	08	08		H
STERLING RCS	8084	04	LOUDOUN	38 59	77 29W	288	07	07		H
STONY CREEK 2 N	8129	01	SUSSEX	36 58	77 24W	105	08	08		H
STUART	8170	03	PATRICK	36 38	80 15W	1375	07	07		H
SUFFOLK LAKE KILBY	8192	01	SUFFOLK	36 44	76 36W	22	24	24		H
TYE RIVER 1 SE	8600	03	NELSON	37 38	78 56W	720	07	07		H
VIENNA	8737	04	FAIRFAX	38 54	77 16W	418	07	07		H
WAKEFIELD 1NW	8800	01	SUSSEX	36 59	77 0W	113	24	24		CH
WALKERTON 2 NW	8829	01	KING AND QUEEN	37 45	77 2W	50	18	18		H
WALLACETON LK DRUMMOND	8837	01	CHESAPEAKE	36 36	76 26W	20	08	08		H
WALLOPS ISLAND NASA TEST FACIL R	8849	01	ACCOMACK	37 56	75 28W	46	24	24		HJ
WARRENTON 3 SE	8888	04	FAUQUIER	38 41	77 46W	500	08	08		H
WARSAW 2 NW	8894	01	RICHMOND	37 59	76 47W	140	18	18		H
WASHGTN DULLES INTL AP R	8903	04	LOUDOUN	38 56	77 28W	290	24	24		HJ
WASHINGTON REAGAN AP R	8906	04	ARLINGTON	38 51	77 2W	10	24	24		HJ
WAYNESBORO WTP	8941	05	WAYNESBORO	38 5	78 53W	1270	07	07		H
WEST POINT 2 NW	9025	01	KING WILLIAM	37 34	76 48W	20	17	17		H
WILLIAMSBURG 2 N	9151	01	YORK	37 18	76 42W	70	24	24		CH
WILLIS	9169	06	FLOYD	36 55	80 30W	2810		07		CH
WINCHESTER	9181	04	FREDERICK	39 11	78 9W	720	07	07		H
WINCHESTER 7 SE	9186	04	FREDERICK	39 11	78 7W	680	08	08		H
WINTERPOCK 4 W	9213	02	CHESTERFIELD	37 19	77 39W	300		07		H
WISE 3E	9215	06	WISE	36 60	82 32W	2549	17	17		CH
WOODSTOCK 2 NE	9263	04	SHENANDOAH	38 54	78 28W	675	07	07		H
WOOLWINE	9272	03	PATRICK	36 47	80 17W	1500		07		CH
WYTHEVILLE 1 S	9301	06	WYTHE	36 58	81 5W	2458	07	07		H

REFERENCE NOTES

STATION NAMES: Name of the city, town or locality. Figures and letters following the station names indicate the distance in miles and direction from the post office or town community center.

DIVISIONS: Areas within a state of similar climatological characteristics. Division averages are calculated using data from stations that record temperature and/or precipitation. Station Precipitation totals flagged with an 'F' or 'M' are excluded from the Divisional Average calculations of precipitation. Stations with monthly Temperature averages flagged with an 'F' or 'M' are included in the Divisional Average if there are no more than 9 flagged or missing daily values in the month, else they are excluded from the divisional average for temperature.

NORMALS: The average value of the meteorological element over a time period. Effective 1 January 2012, the averaging period is 1981 to 2010. The normals for National Weather Service localities have been adjusted so as to be representative for the current observation site.

MONTHLY DEGREE DAY TOTALS: One heating (cooling) degree day is accumulated for each whole degree that the daily mean temperature is below (above) 65 degrees Fahrenheit.

PRECIPITATION: Values shown in hundredths of inches are water equivalent totals, i.e., total of liquid and melted frozen precipitation. In the "Monthly Summarized Data" table the total snow and sleet values shown in tenths of inches are unmelted amounts. The max depth on ground values of snow and sleet shown in whole inches are cumulative unmelted amounts. The number of days with .10, .50, 1.00 or more refers to water equivalents.

PRECIPITATION QUALITY CONTROL: The NCEI quality control process may flag precipitation data that are spatially inconsistent, exceed climatological limits, or are inconsistent with prevailing weather patterns.

TEMPERATURE: Original temperature values are given in the "Daily Temperature" table. Summary temperature information (averages, departures, extremes, monthly degree day totals) is based on the values labeled MAX/MIN.

WIND: (As shown in the "Evaporation and Wind" table) the total wind movement in miles over the evaporation pan as determined by an anemometer recorder located 6-8 inches above the pan.

SYMBOLS AND LETTERS USED IN THE STATION INDEX TABLE

C Station is equipped with recording rain gage (R) but values in this bulletin are from a non-recording rain gage unless indicated by an R.

G Observations appear in the "Soil Temperatures" table.

H Observations appear in the "Snowfall and Snow on the Ground" table.

J Station also published as a Local Climatological Data publication.

VAR Observation time varies.

SR / SS Observation time near sunrise / Observation time near sunset, respectively.

SYMBOLS AND LETTERS USED IN THE DATA TABLES

(DAILY DATA ARE FOR THE 24 HOURS IMMEDIATELY PRECEDING OBSERVATION TIME.)

BLANK Entries in the "Monthly Summarized Data" table indicate no record.

BLANK Entries in the "Daily Precipitation" and "Snowfall and Snow on the Ground" tables indicate zero.

BLANK Entries in the "Daily Temperature" table indicate a missing record

- No record. Data not recorded or not received in time for publication.

+ Precipitation or temperature extremes occurred on one or more previous dates during the month.

* Rain gage not read. Precipitation is included in the amount following the asterisks.

Time distribution may not be known. A * preceding the monthly total indicates precipitation amount is being carried forward to next month's total, and may include amounts from the previous month(s).

a As a subscript, indicates accumulated total.

A Amount of precipitation is the total of observer's entries for the current month. It may include precipitation that occurred during the previous month. Refer to earlier bulletin to determine date of last reading. (Hawaii stations)

B Divisional Departure from normals are computed using 1981-2010 normals.

E Normalized HDD/CDD Calculation. E is appended to the HDD/CDD Calculation when 1-9 individual daily

and/or TMIN values are missing and a Normalized HDD/CDD Calculation is provided. M appears alone if 10 or more daily values are missing.

F Monthly calculation flagged value. F is appended to average and/or total values computed which exclude one or more daily data values that have been flagged by the GHCN-Daily Dataset

M Insufficient or partial data. M is appended to average and/or total values computed with 1-9 daily values missing. M appears alone if 10 or more daily values are missing, (8 or more for wind and evaporation).

N Indicates snow fall or Snowdepth totals are computed with one or more missing days.

R Amounts from recording rain gage.

T Trace. An amount too small to measure.

SEASONAL TABLES: Monthly and seasonal snowfall and heating degree days for the 12 months ending with the June data are published in the July issue of this bulletin. Cooling degree days for the calendar year are published in the "Climatological Data Annual Summary."

Information concerning the history of changes in locations, exposure, etc. of substations is kept on file at the National Centers for Environmental Information. Historical information of regular National Weather Service Offices may be obtained from the "Local Climatological Data" annual publication. The contents of this publication may be reprinted or otherwise used freely, with proper credit to the National Centers For Environmental Information. The data are also available digitally.

Effective with the January 2011 Data-Month, COOP Observer Names are no longer included in the Monthly and Annual Climatological Data Publications. This information is not published to ensure the privacy of personal information pursuant to Section 208 of the E-Government Act of 2002 (44 USC 3601).

As of the 2011 Data-Year, Station and Climate Division Maps are no longer being included in the CD Publications. NCEI's Products Branch provides updated Station Maps for various data networks via the Historical Observing Metadata Repository: <http://www.ncdc.noaa.gov/homr>.

The GHCN-Daily Quality Control Flags shown below are displayed as superscripts with the data. For more Information on Global Historical Climatology Network - Daily and flags, see: <http://www.ncdc.noaa.gov/oa/climate/ghcn-daily/> and Comprehensive Automated Quality Assurance of Daily Surface Observations. Durre, Imke, Matthew J. Menne, Byron E. Gleason, Tamara G. Houston, Russell S. Vose, 2010: J. Appl. Meteor. Climatol., 49, 16151633. doi: 10.1175/2010JAMC2375.1

Blank = Passed All checks

D = failed duplicate check

G = failed gap check

I = failed internal consistency check

K = failed streak/frequent-value check

L = failed check on length of multiday period

M = failed megaconsistency check

N = failed naught check

O = failed climatological outlier check

R = failed lagged range check

S = failed spatial consistency check

T = failed temporal consistency check

W = temperature too warm for snow

X = failed bounds check

Z = flagged as a result of an official Datzilla investigation

Beginning with the January 2013 CD Publication, monthly mean temperature calculations have changed to the National Data Stewardship Team standard. Monthly maximum and minimum temperatures are not rounded until after the monthly mean temperature is calculated. This is the most accurate outcome, but may be slightly different from the mean derived from rounded monthly maximum and minimum.

Processing Updates and Errata: The CD Publications are periodically reproduced to include the addition of late reports and reported corrections. The GHCND data version noted on the cover of the publication provides the generation date.

The climate division temperature and precipitation values in this publication are based on simple averages from the current set of NWS-Designated Open and Published COOP and First Order Sites within each division. These values differ from those found in NCEI's nClimDiv product. Beginning in February 2014, the nClimDiv product is used by NCEI's Monitoring Branch and in its monthly climate reports. For more details on nClimDiv, please go to <http://www.ncdc.noaa.gov/monitoring-references/maps/us-climate-divisions.php>.

These and other publications are available from the National Centers for Environmental Information

Hourly Precipitation Data

This publication contains hourly precipitation amounts obtained from recording rain gages located at National Weather Service, Federal Aviation Administration, and cooperative observer stations. Published data are displayed in inches and tenths or inches and hundredths at local standard time. HPD includes maximum precipitation for nine (9) time periods from 15 minutes to 24 hours, for selected stations.

Climatological Data

Monthly editions contain station daily maximum and minimum temperatures and precipitation. Some Stations provide daily snowfall, snow depth, evaporation, and soil temperature data. Each edition also contains monthly summaries for heating and cooling degree days (65 degree F base). The July issue contains a recap of monthly heating degree days and snow data for the preceding July through June.

The Annual issue contains monthly and annual averages of temperature, precipitation, temperature extremes, freeze data, soil temperatures, evaporation, and a recap of monthly cooling degree days.

Storm Data

Monthly issues contain a chronological listing, by states, of occurrences of storms and unusual weather phenomena. Reports contain information on storm paths, deaths, injuries, and property damage. An "Outstanding storms of the month" section highlights severe weather events with photographs, illustrations, and narratives. The December issue includes annual tornado, lightning, flash flood, and tropical cyclone summaries.

Monthly Climatic Data for the World

This publication contains monthly means for temperature, pressure, precipitation, vapor pressure, and sunshine for approximately 2,000 surface data collection stations worldwide and monthly mean upper air temperatures, dew point depressions, and wind velocities for approximately 500 observing sites.

Local Climatological Data

LCD publications summarize temperature, relative humidity, precipitation, cloudiness, wind speed and direction observations for several hundred cities in the U.S. and its territories. Each monthly publication also contains 3 hourly weather observations for that month and a hourly summary of precipitation. Annual LCD publications contain a summary of the past calendar year as well as historical averages and extremes.

For Information Call:

(828) 271-4800 Option 2

(828) 271-4010 (TDD)

(828) 271-4876 (Fax)

NOAA National Centers for Environmental Information
Attn: Customer Engagement Branch
151 Patton Avenue
Asheville, NC 28801-5001

Customer Services Number: (828) 271-4800, option 2
TDD : (828) 271-4010
Fax number: (828) 271-4876

NCEI now offers free online access to the *Climatological Data* publication.
Go to : www.ncdc.noaa.gov and choose Most Popular.