



CLIMATOLOGICAL DATA VIRGINIA



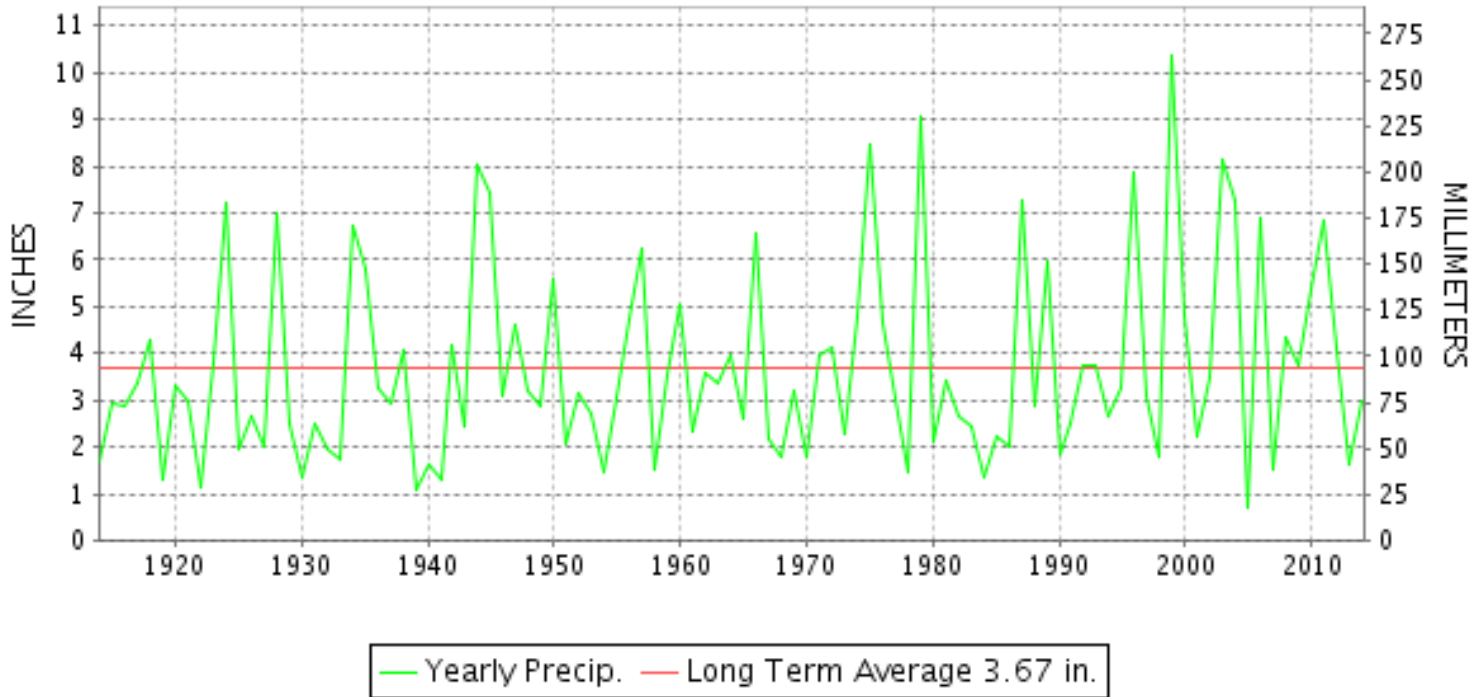
SEPTEMBER 2014

VOLUME 124 NUMBER 09

ISSN 0364-5630

GHCND Ver: 3.20-upd-2014121706

SEPTEMBER PRECIPITATION BY YEAR



TEMPERATURE AND PRECIPITATION EXTREMES

VIRGINIA

HIGHEST TEMPERATURE	101	SEPTEMBER 02	RICHMOND INTL AP
LOWEST TEMPERATURE	30	SEPTEMBER 23	MUSTOE 1 SW
GREATEST TOTAL PRECIPITATION	9.89		EASTVILLE
LEAST TOTAL PRECIPITATION	0.70		MUSTOE 1 SW
GREATEST 1 DAY PRECIPITATION	6.32	SEPTEMBER 09	EMPORIA 1 WNW

"I certify that this is an official publication of the National Oceanic and Atmospheric Administration (NOAA) It is compiled using information from weather observing sites supervised by NOAA/National Weather Service and received at the National Climatic Data Center(NCDC), Asheville, North Carolina 28801."

Director
National Climatic Data Center

noaa

National
Oceanic and
Atmospheric Administration

National
Environmental Satellite, Data
and Information Service

National
Climatic Data Center
Asheville, North Carolina

VIRGINIA
201409

MONTHLY STATION AND DIVISION SUMMARY

STATION	TEMPERATURE (°F)											PRECIPITATION (IN)												
	AVERAGE MAXIMUM	AVERAGE MINIMUM	AVERAGE	DEPARTURE FROM NORMAL	HIGHEST	DATE	LOWEST	DATE	HEATING DEG. DAYS	COOLING DEG. DAYS	NO. OF DAYS				TOTAL	DEPARTURE FROM NORMAL	GREATEST 24 HOURS	DATE	ICE PELLETS, SNOW			NO. OF DAYS		
											MAX		MIN						TOTAL	MAX DEPTH ON GROUND	DATE	.10 OR MORE	.50 OR MORE	1.00 OR MORE
											>=90	<=32	<=32	<=0										
PETERSBURG	80.0	63.1	71.6	1.0	95	03	53	28+	5	210	7	0	0	0	2.48	-1.78	1.16	09	0.0			4	2	1
RICHMOND INTL AP	81.8	63.5	72.7	2.1	101	02	52	23	7	244	8	0	0	0	1.35	-2.78	0.66	24	0.0	0		2	1	0
SANDSTON	79.9	60.5	70.2	0.6	97	03	49	29	19	182	5	0	0	0	A 1.76	-2.30	0.66	25	0.0			2	1	0
WINTERPOCK 4 W															2.61	0.86	05	0.0				3	3	0
--DIVISIONAL DATA-----> WESTERN PIEDMONT 03			70.1	1.6B											3.37	-0.66B								
ALTAVISTA															1.78	0.41	24	0.0				6	0	0
APPOMATTOX	78.4	60.1	69.3	1.7	93	04+	48	24	25	159	4	0	0	0	1.96	-2.34	0.75	25	0.0			6	1	0
BEDFORD 4 NW															0.95	0.47	03	0.0				3	0	0
BROOKNEAL	79.0	60.4	69.7	6.3	93	03	48	28	18	166	3	0	0	0	1.70	-2.18	0.82	25	0.0	0		3	1	0
CHARLOTTE COURT HOUSE	78.5	61.0	69.8	1.4	93	03	46	29+	23	171	6	0	0	0	3.18	-0.90	1.56	25	0.0	0		4	3	1
CHARLOTTESVILLE 2W	78.7	59.8	69.3	0.5	95	03	48	24+	27	162	4	0	0	0	2.28	-2.62	1.10	04	0.0	0		4	2	1
CHATHAM	75.0	58.6	66.8	0.7	87	03	47	29	41	103	0	0	0	0	3.70	-0.75	0.96	12	0.0	0		7	3	0
CONCORD 4 SSW															1.51	0.68	25	0.0				4	1	0
DANVILLE REGIONAL AP	79.4	62.3	70.9	1.0	94	02	52	27	12	196	3	0	0	0	3.88	-0.11	2.00	08	0.0	0		6	3	1
FREE UNION	76.5	56.3	66.4		90	03	44	24+	62	113	1	0	0	0	0.98	0.53	25	0.0	0			2	1	0
HOLCOMB ROCK															1.60	0.59	03	0.0	0			5	1	0
HUDDLESTON 4 SW															3.16	0.68	13	0.0				8	3	0
LYNCHBURG INTL AP	76.3	59.3	67.8	0.8	90	02	48	28	31	122	1	0	0	0	1.62	-2.26	0.55	02	0.0	0		5	1	0
MARTINSVILLE FLTR PLT	77.7	58.6	68.2	1.6	92	03	49	29+	31	134	2	0	0	0	4.14	-0.42	1.11	07	0.0	0		7	4	1
MEADOWS OF DAN 5 SW	75.5	57.6	66.6		85	12+	49	24+	37	91	0	0	0	0	3.18	0.97	03	0.0	0			8	2	0
MONTEBELLO FISH CULTURAL STN	73.4M	51.5M	62.5M		88	06	37	25	142E	73E	0	0	0	0	M 1.41	0.38	04	0.0				5	0	0
MONTICELLO	75.4	59.6	67.5	1.6	91	03	48	24+	43	124	1	0	0	0	2.37	-2.10	0.71	25	0.0			5	3	0
PEDLAR DAM															1.84	1.22	03	0.0	0			3	1	1
ROCKY MT	75.8M	58.4M	67.1M	0.7	92	03	49	29+	39E	116E	1	0	0	0	M 2.30	-2.29	0.67	14	M 0.0	0		8	1	0
SOUTH BOSTON	79.6	61.5	70.6	2.2	94	03	51	29	14	188	4	0	0	0	3.90	-0.08	1.66	25	0.0	0		6	3	1
STUART	77.4	59.8	68.6	0.5	90	03	52	24+	21	138	1	0	0	0	3.83	-0.81	1.36	20	0.0	0		9	2	1
TYE RIVER 1 SE	78.3	59.2	68.8	1.0	92	03	48	28	20	142	4	0	0	0	1.26	-2.90	0.55	03	0.0			5	1	0
WOOLWINE															4.69	1.28	07	0.0	0			9	3	2
--DIVISIONAL DATA-----> NORTHERN 04			68.1	0.5B											2.55	-1.83B								
BOSTON 4 SE	M	M	M		92	03	44	15	33E	177E	4	0	0	0	M				M 0.0	0				
EDINBURG	77.1	52.3	64.7	0.0	91	03+	37	24+	103	101	2	0	0	0	1.29	-2.11	0.85	01	0.0			3	1	0
FRONT ROYAL	76.3	56.3	66.3	-0.3	90	07+	44	25+	70	118	3	0	0	0	1.71	-2.79	0.74	01	M 0.0	0		4	2	0
LINCOLN	77.4	52.6	65.0	-0.6	92	03	38	23	101	107	3	0	0	0	1.56	0.97	03	0.0				2	2	0
LURAY 5 E	77.5	54.6	66.1	-0.4	92	02	40	23	72	112	4	0	0	0	0.97	-3.56	0.32	01	0.0	0		4	0	0
MADISON	78.0	58.3	68.1	1.6	92	03+	45	23	39	140	3	0	0	0	A 1.29	-3.09	0.62	25	M 0.0	0		3	1	0
MANASSAS	78.2M	58.4M	68.3M	-0.3	92	03	46	24+	42E	149E	3	0	0	0	M 3.10		1.25	01	0.0			6	2	2

MONTHLY STATION AND DIVISION SUMMARY

STATION	TEMPERATURE (°F)										PRECIPITATION (IN)													
	AVERAGE MAXIMUM	AVERAGE MINIMUM	AVERAGE	DEPARTURE FROM NORMAL	HIGHEST	DATE	LOWEST	DATE	HEATING DEG. DAYS	COOLING DEG. DAYS	NO. OF DAYS				TOTAL	DEPARTURE FROM NORMAL	GREATEST 24 HOURS	DATE	ICE PELLETS, SNOW			NO. OF DAYS		
											MAX		MIN						TOTAL	MAX DEPTH ON GROUND	DATE	.10 OR MORE	.50 OR MORE	1.00 OR MORE
											>=90	<=32	<=32	<=0										
MT WEATHER	73.0	56.8	64.9	-0.7	86	07+	45	25+	81	83	0	0	0	0	2.71	-1.81	0.81	01	0.0			6	3	0
PIEDMONT RSCH STN	78.3	M	M		93	03	46	23	30E	92E	4	0	0	0	1.23	-2.80	0.62	25	0.0			3	1	0
SOMERSET	79.9	57.2	68.6	1.3	94	03	43	23	40	154	6	0	0	0	1.26	-2.98	0.61	25	0.0			5	1	0
SPERRYVILLE	76.1	56.5	66.3	-0.4	89	03+	43	24	61	106	0	0	0	0	1.42	-3.55	0.61	25	0.0			5	1	0
STERLING RCS	79.2	57.1	68.1	1.3	93	03	43	24+	47	149	5	0	0	0	1.32	-2.68	0.47	25	0.0	0		5	0	0
VIENNA	83.0	63.7	73.3	7.2	98	07	51	24+	3	262	8	0	0	0	1.26	-2.92	0.87	25	0.0			3	1	0
WASHGTN DULLES INTL AP	77.3	57.6	67.5	-0.4	91	06	42	23	45	126	2	0	0	0	0.93	-2.99	0.58	25	0.0	0		2	1	0
WASHINGTON REAGAN AP	81.8	65.8	73.8	2.8	95	06+	54	23	0	273	6	0	0	0	1.11	-2.61	0.64	25	0.0	0		3	1	0
WINCHESTER	77.1	55.5	66.3	0.2	90	06	44	23	66	113	1	0	0	0	1.45	-2.29	0.53	06	0.0			6	1	0
WINCHESTER 7 SE	M	M	M								0	0	0	0	1.35	-2.56	0.36	30	M 0.0	0		5	0	0
WOODSTOCK 2 NE	77.7	53.4	65.5	0.7	91	03	39	24+	86	110	1	0	0	0	1.10	-2.78	0.76	01	0.0			1	1	0
--DIVISIONAL DATA-----> CENTRAL MOUNTAIN 05			67.5	1.5B										1.37	-2.70B									
BUENA VISTA														1.42		1.10	03	0.0	0			2	1	1
COVINGTON FLTR PLT	77.2	56.2	66.7	0.4	92	03	41	24+	54	113	3	0	0	0	1.70	-1.54	0.75	03	0.0	0		5	1	0
CRAIGSVILLE 2 S														M				0.0						
DALE ENTERPRISE	76.8	54.3	65.6	1.0	92	03	39	24+	83	108	2	0	0	0	0.73	-2.81	0.40	09	0.0	0		3	0	0
GATHRIGHT DAM	73.0	55.1	64.1	0.1	85	03	41	24+	97	76	0	0	0	0	1.87	-1.50	0.79	03	M 0.0	0		4	2	0
GLASGOW 1 SE														2.31		1.44	03	0.0	0			5	1	1
HOT SPRINGS	72.8	54.0	63.4	0.7	85	07+	39	24+	112	70	0	0	0	0	1.41	-2.24	0.34	07	0.0			6	0	0
LEXINGTON	77.8	56.9	67.4	0.7	92	03	45	24+	46	124	1	0	0	0	0.73	-2.79	0.42	03	0.0			1	0	0
MILLGAP	72.8	48.5	60.7	1.1	85	03	32	24+	168	46	0	0	2	0	1.45	-2.14	0.77	06	0.0	0		3	1	0
MTN GROVE														1.43		0.84	07	0.0				5	1	0
MUSTOE 1 SW	71.7	48.8	60.3	0.3	82	06+	30	23	173	40	0	0	1	0	0.70	-2.96	0.20	06	M 0.0			4	0	0
NEW CASTLE														2.85		1.16	03	0.0				3	2	1
ROANOKE 8 N	77.1	59.4	68.3	0.3	92	03	49	24+	30	135	3	0	0	0	2.03	-2.11	0.76	07	0.0	0		4	1	0
ROANOKE INTL AP	77.1	60.5	68.8	0.7	92	02	47	23	19	140	2	0	0	0	1.23	-2.66	0.50	02	0.0	0		5	1	0
STAUNTON WATER TRMTMT PLT	77.1	55.9	66.5	1.3	91	03	40	23	58	109	1	0	0	0	0.85	-2.94	0.50	07	0.0	0		2	1	0
WAYNESBORO WTP	77.0	55.5	66.3	1.4	91	03	42	24	71	115	3	0	0	0	0.92	-3.78	0.45	07	0.0	0		2	0	0
--DIVISIONAL DATA-----> SOUTHWESTERN MOUNTAIN 06			65.3	0.2B										1.44	-2.15B									
ABINGDON 3S	77.6	56.9	67.2	1.6	87	03	42	24+	37	111	0	0	0	0	1.81	-1.54	0.72	13	M 0.0	0		6	1	0
BIG STONE GAP	79.8	58.6	69.2	2.0	87	02	43	24+	17	151	0	0	0	0	1.96	-1.92	0.75	12	0.0	0		5	1	0
BLACKSBURG NWSO	74.3	56.0	65.1	2.0	86	03	43	24+	69	81	0	0	0	0	3.80	0.70	1.08	13	0.0	0		7	3	1
BURKES GARDEN	70.1	51.4	60.8	1.2	80	05+	32	24	155	37	0	0	1	0	4.97	1.66	2.43	05	0.0	0		7	3	1
CHRISTIANSBURG	72.6	55.5	64.1	-0.3	86	03	43	24	86	66	0	0	0	0	3.34	-0.14	0.98	13	0.0	0		9	2	0
CLINTWOOD 1 W	74.1	56.1	65.1	1.7	84	07	44	24+	63	73	0	0	0	0	2.29	-0.99	0.85	03	0.0	0		5	2	0

VIRGINIA
201409

MONTHLY STATION AND DIVISION SUMMARY

STATION	TEMPERATURE (°F)										PRECIPITATION (IN)													
	AVERAGE MAXIMUM	AVERAGE MINIMUM	AVERAGE	DEPARTURE FROM NORMAL	HIGHEST	DATE	LOWEST	DATE	HEATING DEG. DAYS	COOLING DEG. DAYS	NO. OF DAYS				TOTAL	DEPARTURE FROM NORMAL	GREATEST 24 HOURS	DATE	ICE PELLETS, SNOW			NO. OF DAYS		
											MAX		MIN						TOTAL	MAX DEPTH ON GROUND	DATE	.10 OR MORE	.50 OR MORE	1.00 OR MORE
											>=90	<=32	<=32	<=0										
COPPER HILL	69.8	55.8	62.8		84	03	45	24+	116	54	0	0	0	0	2.43		0.67	12	0.0	0		8	1	0
GALAX RADIO WBRF	73.5	55.3	64.4	1.5	84	12+	41	23	79	69	0	0	0	0	3.29	-0.54	1.32	08	0.0			5	2	1
GALAX WTP	72.7	54.4	63.6	1.2	86	03	41	24	98	63	0	0	0	0	3.25		1.25	08	0.0	0		5	2	1
GRUNDY	75.9M	60.4M	68.1M	2.5	87	03+	48	24+	29E	129E	0	0	0	0	M 2.87	-0.27	1.10	12	M 0.0	0		4	3	1
JOHN FLANNAGAN LAKE	78.7M	57.5M	68.1M		86	03+	45	24	34E	139E	0	0	0	0	A 1.79		0.68	03	0.0	0		2	2	0
LAFAYETTE 1 NE																	1.24	03	0.0			7	2	1
LEBANON	77.4	56.3	66.8	2.0	86	03	42	24+	38	104	0	0	0	0	4.47	1.38	1.43	05	0.0	0		7	4	2
NORA 4 SSE	72.9	57.7	65.3	0.1	81	05+	44	24+	54	71	0	0	0	0	3.21	-0.10	1.04	13	0.0	0		6	3	1
NORTH FORK LAKE	M	M	M		87	02	44	24+	44E	95E	0	0	0	0	MA 2.22		0.64	03	0.0			1	1	0
PULASKI 2 E	76.0M	56.2	66.1M	2.0	86	02	41	25+	60E	108E	0	0	0	0	3.74	0.68	1.50	07	0.0	0		4	3	1
RADFORD 3 N	74.1	55.4	64.8	1.5	88	03	41	23	86	82	0	0	0	0	4.21	1.20	1.03	12	0.0	0		8	4	1
RICHLANDS	77.8	55.0	66.4	2.0	88	01	41	24+	56	104	0	0	0	0	3.14	0.01	0.88	12	0.0	0		8	3	0
SALTVILLE 1N	77.4	56.4	66.9	1.4	86	05+	41	23	48	111	0	0	0	0	4.19	0.91	1.44	06	0.0			8	4	1
STAFFORDSVILLE 3 ENE	73.8	56.3	65.0	1.3	89	03	42	23	76	84	0	0	0	0	2.42	-0.67	0.75	03	0.0			6	2	0
WILLIS															3.99		1.30	13	0.0			8	3	1
WISE 3E	73.8	56.4	65.1	0.9	82	02	40	23	62	75	0	0	0	0	2.29	-1.31	0.75	11	0.0	0		5	2	0
WYTHEVILLE 1 S	74.1	55.0	64.5	1.9	87	03	40	24	88	81	0	0	0	0	3.36	0.17	1.24	05	0.0			6	2	1
--DIVISIONAL DATA----->			65.5	1.9B											3.19	-0.28B								

VIRGINIA
201409

DAILY PRECIPITATION (INCHES)

STATION	TOTAL	DAY OF MONTH																														
		01	02	03	04	05	06	07	08	09	10	11	12	13	14	15	16	17	18	19	20	21	22	23	24	25	26	27	28	29	30	31
VIRGINIA																																
TIDEWATER 01																																
DISPUTANTA	6.12				2.30	0.01			2.02	0.06														0.01	1.53							0.19
EASTVILLE	A 9.89	*	*	*	1.52 _a		0.47	0.02	5.05	0.80		0.10	0.30	0.03								0.02			1.48	0.05					0.05	
EMPORIA 1 WNW	M 8.31				0.08	T		0.36	6.32	0.02				0.05	0.07					-					1.19	0.03					0.19	
FREDERICKSBURG SEWAGE	0.90	0.20	0.13	0.02					0.05	0.02				0.09											0.33	0.06						
HOLLAND 1 E	7.88			0.25	1.02				3.90	0.06				0.15								0.05		0.20	1.75	0.50						
HOPEWELL	2.26							0.80	0.37	0.01									T				0.57	0.35	0.04			0.09	0.03			
NORFOLK INTL AP	9.17			1.89	0.02		0.01	3.05	1.72	T		0.01	0.33					0.03			T	0.49		1.56	0.04	T		0.01	0.01			
NORFOLK SOUTH	9.78			2.41	T		T	2.88	2.33	0.01		T	0.28	T				0.01			T	0.36		1.32	0.11	0.03		T	0.04			
NORTH	4.56				0.12	0.29	0.18		1.82	0.10				0.07											1.62	0.16					0.20	
PAINTER 2W	5.65		0.19				1.07	1.40	1.11	0.02		0.16		0.03										0.83	0.70	0.06					0.05	
STONY CREEK 2 N	5.14							0.20	3.09	0.06					0.34									0.05	1.14	0.05					0.21	
SUFFOLK LAKE KILBY	6.68			0.83				1.91	1.32	0.05			0.07	T										2.18	0.11	0.03		0.10	0.05			
WAKEFIELD 1NW	7.56			1.17	0.10		0.01	3.81	0.17				0.43					T		T			T	1.64	0.09	0.02		0.11	0.01			
WALKERTON 2 NW	2.43		0.03	0.05				0.21	0.15			1.15	0.05					T		T				0.41	0.07			0.31				
WALLACETON LK DRUMMOND	5.07			0.20	0.88			0.42	0.65	0.05				0.42										0.20	1.35	0.80						
WALLOPS ISLAND NASA TEST FACIL	4.73	0.01		T	0.16	0.40	1.39	0.48	0.87			0.15	T		0.05									1.07	0.09			0.01	T			
WARSAW 2 NW	2.71	0.01	0.01				0.87	0.15	0.04			0.94												0.30	0.20	0.15		0.02	0.02			
WEST POINT 2 NW	2.69				0.75			0.45	0.30			0.02							T					0.61	0.34	0.07		0.01	0.14			
WILLIAMSBURG 2 N	5.04			0.03	0.36			2.02	0.35			0.04	0.10											1.84	0.07	0.02		0.20	0.01			
EASTERN PIEDMONT 02																																
ALBERTA 5N	4.61				T	T		T	2.31	0.04		T		0.49	0.03						T			T	1.54	0.04		T	0.16			
AMELIA COURTHOUSE 1	2.97			0.05	0.11			0.06	0.67				0.33					0.01		0.38	0.05			0.02	1.12	0.02		0.07	0.08			
ASHLAND	2.29			0.30	0.15	0.05		0.30	0.10			0.65	0.08						0.02					0.28	0.32	0.01		0.03				
BREMO BLUFF	3.16	0.91	0.03	0.10	0.94				0.10					0.05							0.01		0.06		0.85	0.02			0.09			
BUCKINGHAM	2.86	0.06		0.01	0.80				0.20				0.02	0.11							0.59				0.82	0.03			0.22			
CAMP PICKETT	4.17							2.40	0.05																1.53	0.04			0.15			
CHASE CITY	5.12				1.44			0.03	2.10				0.03												1.49	0.03						
CLARKSVILLE	8.17				0.10			0.35	5.90			0.03		0.20										0.05	1.34				0.20			
CORBIN	2.31	0.94		0.16	0.08				0.05			0.14	0.14												0.48	0.04			0.03			
CROZIER	M 1.40						0.02		0.21	0.02		0.01	0.08	-										0.92					0.14			
FARMVILLE 2 N	2.62			0.04	0.52				0.29	0.03		T	0.18							0.01	0.04			T	1.33	0.05		0.06	0.07			
GREENBAY 3 NE	4.46				0.46	T			0.70	0.02	0.01		0.47											0.03	2.50	0.05	T	0.10	0.10			
JOHN H KERR DAM	6.44				0.15	0.02		0.54	3.25				0.30	0.02										0.02	1.82			0.04	0.28			
LOUISA	1.32	0.31						0.03	0.05				0.02						0.01					0.06	0.78	0.03		0.03				
PALMYRA 3S	2.03	0.20	0.02	0.07	0.20		0.54		0.13				0.09												0.69				0.05			
PETERSBURG	2.48					0.14			1.16	0.05			0.08									0.02			0.83	0.05			0.15			
RICHMOND INTL AP	1.35			0.06	T	0.03	T	0.32	0.04		T	0.04	0.06							T	T			0.66	0.06	T		0.08				
SANDSTON	A 1.76			0.05	*	*	0.14 _a		*	*	*	*	*	0.46 _a											0.66				0.45			
WINTERPOCK 4 W	2.61				0.86	0.06			0.61	0.03				0.07											0.83	0.05				0.09		
WESTERN PIEDMONT 03																																

VIRGINIA
201409

DAILY PRECIPITATION (INCHES)

STATION	TOTAL	DAY OF MONTH																															
		01	02	03	04	05	06	07	08	09	10	11	12	13	14	15	16	17	18	19	20	21	22	23	24	25	26	27	28	29	30	31	
ALTAVISTA	1.78			0.01	0.02			0.01	0.10		0.01	0.15	0.38	0.40										0.41	0.01				0.25	0.03			
APPOMATTOX	1.96	0.08		0.14	0.08		0.03	T	0.20	T			0.20							0.11	0.02				0.75	0.05			0.27	0.03			
BEDFORD 4 NW	0.95	0.03		0.47			0.18	T	0.01	T	0.01		0.07	0.04											0.01				0.03				
BROOKNEAL	1.70				0.03			0.01	0.32	0.02		0.06	0.26	0.09											0.82				0.09				
CHARLOTTE COURT HOUSE	3.18				T				0.77	0.01		T	0.17						0.56	0.02			T	1.56	0.04			0.03	0.02				
CHARLOTTESVILLE 2W	2.28	0.23		0.15	1.10			0.01	0.05			0.01	T	0.04											0.61	0.04			0.04				
CHATHAM	3.70			0.85	0.03	0.05	0.45		0.22	0.04		0.96	0.10	0.53					0.02						0.33	0.02		0.04	0.06				
CONCORD 4 SSW	1.51						0.02		0.11	0.01			0.05	0.33											0.68			0.29	0.02				
DANVILLE REGIONAL AP	3.88			0.24	T			2.00	T		0.50		0.36	T	T							T	0.61	0.06	0.01			0.10					
FREE UNION	0.98	0.19		0.09			T	0.02	0.03	0.03				T											0.53	0.02			0.07				
HOLCOMB ROCK	1.60	0.35		0.59			0.30		T				0.09	0.10											0.06								
HUDDLESTON 4 SW	3.16				0.55		0.30	0.65	0.20			0.28	0.68	0.06											0.24			0.20					
LYNCHBURG INTL AP	1.62		0.55	T		0.02		0.02			T	T	0.36							0.10			0.44	T			0.13						
MARTINSVILLE FLTR PLT	4.14						1.11	0.30	0.60	0.02	0.05	0.36	0.64	0.08	0.03										0.13			0.08	0.04				
MEADOWS OF DAN 5 SW	3.18			0.97	0.17	0.28	0.02	0.41	0.11																0.06		0.01	0.11	0.02				
MONTEBELLO FISH CULTURAL STN	M 1.41	0.12		0.25	0.38		0.04				-		0.03	-	T								0.20		0.30	-		0.11	-				
MONTICELLO	2.37	0.13	T	0.13	0.61	T		T	0.02	T	T		0.70	T	T										0.71				0.07				
PEDLAR DAM	1.84	0.30		1.22			0.11	T	T				0.07	0.07											0.03								
ROCKY MT	M 2.30	0.40	-	0.12	T	0.03	-	0.04	0.08	0.11	T	T	0.13	-	0.67	T									0.15	T	-	0.17	0.03				
SOUTH BOSTON	3.90				0.12	0.04		0.98	0.02			0.14	0.02	0.70											1.66	0.04		0.10	0.08				
STUART	3.83			0.23	0.25		0.35	0.22		0.02	0.01	0.24	0.90												0.11			0.11	0.03				
TYE RIVER 1 SE	1.26	0.25		0.55										T											0.22			T	0.12				
WOOLWINE	4.69	0.15		0.40	0.02	0.15	1.28	0.08	0.12	0.04	0.03	0.03	1.10	0.05	0.05									0.19	0.04	0.02	0.13	0.03					
NORTHERN 04																																	
BOSTON 4 SE	M								0.12				0.05											-	-	-	-	-	-	-	-	-	
EDINBURG	1.29	0.85		0.02	0.18		0.17		0.04																	0.03							
FRONT ROYAL	1.71	0.74		0.15			0.01		0.03	0.01			0.01	0.03											0.51	0.22							
LINCOLN	1.56			0.97									0.06												0.53								
LURAY 5 E	0.97	0.32		0.17		T		T	0.08	0.01			T	0.17											0.20	0.02							
MADISON	A 1.29			0.27	* 0.25 _a			T																0.15	0.62								
MANASSAS	M 3.10	1.25		0.10	-		-		-	-		0.30		0.15										0.05	1.10	0.15							
MT WEATHER	2.71	0.81	0.14	0.55			0.40		0.02	0.02	0.02		0.02	0.05											0.58	0.10							
PIEDMONT RSCH STN	1.23	0.20		0.13	0.01				0.03	0.01															0.62	0.09				0.09			
SOMERSET	1.26	0.13		0.12	0.16			0.03	0.04					0.03											0.61	0.04			0.10				
SPERRYVILLE	1.42	0.30	0.02	0.22					0.10	0.04				0.13											0.61								
STERLING RCS	1.32	0.46	0.11	T			T		T					0.11											0.47	0.16			0.01				
VIENNA	1.26	0.01	0.01	0.01			0.23																		0.87	0.12			0.01				
WASHGTN DULLES INTL AP	0.93	0.01	0.12			0.01		T					0.07											0.06	0.58			T	0.08				
WASHINGTON REAGAN AP	1.11	0.02	0.08			0.10		T					0.23											0.04	0.64			T					
WINCHESTER	1.45	0.06	0.03	0.15		0.53	0.15		0.02				0.10												0.26	0.15							
WINCHESTER 7 SE	1.35						0.25		0.03	0.02			0.21												0.25			0.19	0.02				
WOODSTOCK 2 NE	1.10	0.76		0.06			0.08		0.02			0.03	0.03	0.02	T										0.01	0.09							

VIRGINIA
201409

DAILY PRECIPITATION (INCHES)

STATION	TOTAL	DAY OF MONTH																																				
		01	02	03	04	05	06	07	08	09	10	11	12	13	14	15	16	17	18	19	20	21	22	23	24	25	26	27	28	29	30	31						
CENTRAL MOUNTAIN 05																																						
BUENA VISTA	1.42	0.06		1.10				0.14	0.01		0.02			0.08	0.01																							
COVINGTON FLTR PLT	1.70	0.04		0.75				0.28	0.10	T				0.10	0.41						0.01						0.01											
CRAIGSVILLE 2 S	M	-	-	-	-	-	-	-	-	-	-	-	-	-	-	-	-	-	-	-	-	-	-	-	-	-	-	-	-	-	-	-	-	-	-			
DALE ENTERPRISE	0.73	0.10		0.08						0.40					0.15																							
GATHRIGHT DAM	1.87	0.07	0.01	0.79				0.50	0.09					0.17	0.24																							
GLASGOW 1 SE	2.31	0.34		1.44	0.12			0.15		0.02	0.02		T	0.10	0.07						0.04		T			0.01							T					
HOT SPRINGS	1.41	0.05	0.10	0.28				0.34	0.18					0.13	0.33																							
LEXINGTON	0.73	0.09		0.42				0.08	0.01					0.09	0.03						0.01																	
MILLGAP	1.45	0.05	0.08	0.05			0.77	0.01	0.01	0.23				0.06	0.15						T		0.01												0.03			
MTN GROVE	1.43	0.15	T	0.15				0.84	0.10				T	0.14	T							T	0.05										T		T			
MUSTOE 1 SW	0.70		0.13		0.02	0.20		0.10					0.02	0.16																				0.07				
NEW CASTLE	2.85	0.05		1.16		0.01	0.09	0.07					0.06	0.93	0.05	0.01						0.06													0.36			
ROANOKE 8 N	2.03			0.41			0.76			T	T			0.46	0.04							0.27	0.07										T		0.02			
ROANOKE INTL AP	1.23		0.50	T		0.11	T	T	T	T	T	T	0.18	0.22	T		T			0.13		0.08			T							0.01			0.02			
STAUNTON WATER TRMTMT PLT	0.85	0.01					0.50	0.04	T					0.07	0.18							T						0.03					T		0.02			
WAYNESBORO WTP	0.92	0.09		0.09			0.45		0.05					0.02	0.03												0.16	0.03										
SOUTHWESTERN MOUNTAIN 06																																						
ABINGDON 3S	1.81			0.28		0.21	0.25							0.25	0.72																					0.10		
BIG STONE GAP	1.96	0.05		0.41		0.27	0.03	0.02		0.15				0.75	0.03			0.05																	0.05			
BLACKSBURG NWSO	3.80	T		0.75		0.96	T	0.35	0.04	0.04				0.19	1.08	0.02	T				T	0.12					0.02	T					0.15		0.03			
BURKES GARDEN	4.97			0.59	0.02	2.43	0.22	0.43	0.15		0.04			0.72	0.20	0.02	0.02		0.02								0.09									0.09		
CHRISTIANSBURG	3.34			0.23		0.11	0.36	0.21	0.23	0.07				0.48	0.98	0.50											0.10		0.02	T					0.05			
CLINTWOOD 1 W	2.29	T		0.85		0.23	T	0.03	T		0.05			0.51	0.07	T		0.04									0.39								0.12			
COPPER HILL	2.43			0.20		0.03	0.15	0.17	0.05	0.10				0.67	0.35	0.05	0.04																			0.04	0.03	
GALAX RADIO WBRF	3.29	0.02		0.34		0.28	0.10	1.32	0.03	0.02	0.01			0.95	0.01					0.01				0.25	0.04	0.01	0.20	0.03	0.03	0.01			0.04	0.01	0.03			
GALAX WTP	3.25	0.02	0.02	0.30		0.15	0.25	0.08	1.25	0.03		0.01		0.01	0.86		0.01								0.08	0.06	0.01	0.02	0.01	0.02			0.04	0.05		0.05		
GRUNDY	M 2.87			0.78	0.01	0.24		0.04		0.02				1.10	0.02	0.01		0.05	0.02																0.05	T		
JOHN FLANNAGAN LAKE	A 1.79			0.68			*	*	0.37 _a	0.01				0.60	*	*	0.02 _a					*	*	0.09 _a					*	*		*	*	0.02 _a				
LAFAYETTE 1 NE	3.11			1.24	0.02	0.01	0.44	0.05	0.04	0.13	T			0.14	0.65	0.03	0.01						0.10			0.19	T								0.04			
LEBANON	4.47			1.00		1.43		0.23	0.27		0.08			0.68	0.10																				0.02	0.04		
NORA 4 SSE	3.21			0.52		0.33	0.16	0.34	0.03	T				0.61	1.04	0.02	T	T																	0.09	0.02		
NORTH FORK LAKE	MA 2.22	*	0.50 _a	0.64	0.02	-	*	*	0.32 _a	*	0.06 _a			-	*	*	0.32 _a	0.02	0.04										*	*		*	*	0.05 _a			0.05	
PULASKI 2 E	3.74		0.03		T	0.05	0.04	1.50	0.05	0.05		T		0.61	0.89	0.09	0.02		0.05																	0.36		
RADFORD 3 N	4.21			0.87		0.36	0.02	0.54	0.19	0.02				1.03	0.56	0.29																				0.08		
RICHLANDS	3.14			0.67		0.21	0.55	0.31	0.02					0.88	0.25																					0.12		
SALTVILLE 1N	4.19	0.10		0.42		0.55	1.44	0.15	0.02					0.56	0.70	T																			0.01	0.02		
STAFFORDSVILLE 3 ENE	2.42			0.75	0.02			0.40	0.16					0.14	0.51	0.07																				0.28		
WILLIS	3.99	0.53		0.27		0.05	0.33	0.13	0.77	0.09				0.14	1.30																					0.05	0.04	
WISE 3E	2.29			0.53		0.09	0.04	0.04	0.41	0.01		0.75		0.13	0.03	0.01		0.01																	0.20			
WYTHEVILLE 1 S	3.36	0.05	0.02	0.39		1.24	0.04	0.41	0.06	0.03				0.27	0.53	0.18	0.02											0.03								0.07		

VIRGINIA
201409

DAILY TEMPERATURES (°F)

STATION	OB. TIME	MAX/MIN	DAY OF MONTH																															AVERAGE		
			01	02	03	04	05	06	07	08	09	10	11	12	13	14	15	16	17	18	19	20	21	22	23	24	25	26	27	28	29	30	31			
VIRGINIA																																				
TIDEWATER 01																																				
DISPUTANTA	07	MAX	91	92	96	90	91	87	91	76	71	79	82	87	76	73	71	75	81	81	77	81	84	84	78	66	66	67	66	75	78	77			79.6	
		MIN	71	70	68	68	68	69	72	67	66	65	66	66	58	59	59	61	61	54	55	55	59	59	51	51	54	61	62	52	50	50			60.9	
EASTVILLE	07	MAX	88	90	93	86	86	88	89	74	71	76	78	84	72	79	71	75	79	76	77	77	77	78	78	66	69	68	73	76	75	71			78.0	
		MIN	77	73	78	73	75	76	71	69	68	68	68	71	66	62	59	61	65	59	59	63	66	69	57	57	66	62	60	59	59	63			66.0	
EMPORIA 1 WNW	08	MAX	89	92	94	90	90	88	90	77	72	79	81	81	79	76	69	65	82	79	79	78	82	83	78	67	66	67	78	80	78	63			79.1	
		MIN	71	72	72	70	70	71	71	67	67	66	66	66	67	60	61	62	63	57	58	57	57	63	55	55	58	62	55	53	53	61			62.9	
FREDERICKSBURG SEWAGE	07	MAX	93	93	94	94	87	91	93																											81.3
		MIN	73	71	71	69	68	71	69	65	64	65	65	63	63	50	52		55	52	57	57	57	57	49	49	55	58	52	52	53	59			60.0	
HOLLAND 1 E	08	MAX	91	94	96	93	92	92	91	89	78	82	83	87	77	87	74	76	83	77	80	77	81	84	80	68	70	69	77	79	79	79			82.2	
		MIN	69	70	69	65	65	68	69	70	65	69	62	69	65	60	56	59	62	51	55	51	63	60	52	53	61	59	52	49	51	58			60.9	
HOPEWELL	16	MAX	92	96	96	90	90	93	92	78	78	83	87	87	77	74	76	81	81	78	78	81	86	86	86	68	69	78	81	80	80	72			82.5	
		MIN	76	74	74	72	72	74	71	70	69	69	69	70	69	59	64	66	64	59	63	61	65	61	56	59	63	62	56	56	56	66			65.5	
NORFOLK INTL AP	24	MAX	95	99	89	89	90	92	79	75	79	79	88	79	80	72	73	80	75	76	77	76	81	77	69	71	72	72	77	74	75	75			79.5	
		MIN	76	79	77	73	73	75	72	70	72	69	68	71	69	64	63	66	66	62	65	68	71	68	62	65	66	65	62	59	62	64			68.1	
NORFOLK SOUTH	24	MAX	92	95	85	88	90	92	79	75	80	81	88	75	84	73	74	81	75	76	78	77	80	77	67	70	70	72	76	76	73	76			79.2	
		MIN	75	77	75	72	72	73	70	68	71	67	65	68	66	62	59	61	62	57	60	60	69	65	61	63	65	64	57	55	60	62			65.4	
NORTH	07	MAX	88	89	93	84	76	85	88	74	73	74	72	84	72	77	69	72	78	75	75	74	76	80	75	65	67	67	72	77	75	71			76.6	
		MIN	75	72	76	72	71	74	73	67	69	69	68	71	67	61	59	62	55	59	62	55	56	65	54	55	65	62	55	53	57	59			63.9	
PAINTER 2W	16	MAX	90	94	93	84	89	90	90	73	73	81	85	85	80	76	72	78	76	75	75	76	79	78	73	68	69	73	79	78	77			79.6		
		MIN	76	72	75	69	69	75	69	66	68	68	64	68	64	59	55	62	61	52	56	58	66	67	54	56	66	61	53	53	56	62			63.3	
STONY CREEK 2 N	08	MAX	91	93	90	90	89	91	76	95	71	81	81	87	77	75	87	82	77	78	77	80	85	78	85	66	66	66	69	77	77	78			80.5	
		MIN	71	62	72	69	69	72	69	67	67	66	66	67	68	62	59	61	60	55	57	55	58	58	53	53	58	62	58	55	51	51			61.7	
SUFFOLK LAKE KILBY	24	MAX	90	94	90	90	90	90	77	77	79	82	85	85	81	72	74	82	82	78	79	78	84	79	66	68	68	74	77	77	72	72			79.7	
		MIN	71	71	73	69	69	69	72	69	70	68	66	66	62	60	63	60	58	60	58	69	63	59	61	61	59	57	56	56	56			63.9		
WAKEFIELD 1NW	24	MAX	93	96	92	91	90	91	75	72	76	84	87	76	79	72	74	82	75	77	75	80	85	79	67	66	66	77	80	79	69	78			79.4	
		MIN	73	72	73	69	69	72	69	67	68	66	66	67	60	57	58	63	55	48	55	53	65	54	52	54	63	54	51	50	58	57			61.3	
WALKERTON 2 NW	18	MAX	96	99	88	90	91	95	82	73	77	83	90	80	74	75	77	82	78	74	79	82	86	78	70	68	70	78	81	81	73	75			80.8	
		MIN	74	71	72	70	70	73	71	64	68	67	68	69	67	57	56	65	57	56	59	55	61	59	50	53	65	60	51	51	59	63			62.7	
WALLACETON LK DRUMMOND	08	MAX	92	95	98	95	88	93	92	84	80	84	85	85	78	84	80	77	86	77	82	78	82	85	80	70	71	72	80	79	79	80			83.0	
		MIN	60	65	63	65	61	61	58	62	60	58	57	62	60	52	51	56	56	47	48	42	47	58	47	50	56	55	49	44	42	45			54.6	
WALLOPS ISLAND NASA TEST FACIL	24	MAX	90	94	87	85	88	93	77	76	73	78	87	78	79	74	73	81	75	76	78	77	82	77	66	72	76	76	78	77	82	76			79.4	
		MIN	76	76	73	70	73	72	69	68	70	67	70	66	63	58	56	63	59	54	59	67	69	57	53	57	64	59	57	55	61	63			64.1	
WARSAW 2 NW	18	MAX	95	98	95	90	90	94	77	74	78	81	87	81	73	71	79	80	77	78	77	80	86	76	74	69	66	73	78	82	71	78			80.3	
		MIN		71	70	65	67	73	63	64	64	65	61	63	61	55	50	62	53	52	55	52	60	61	47	48	61	54	48	50	58	60			59.1	
WEST POINT 2 NW	17	MAX	94	96	95	90	89	91	90	80	76	82	88	85	76	73	77	80	76	77	77	79	84	82	74	67	67	76	80	79	75	74			81.0	
		MIN	74	72	72	70	69	73	65	65	67	67	68	66	60	56	57	64	58	56	57	56	63	57	50	56	62	54	51	52	58	59			61.8	
WILLIAMSBURG 2 N	24	MAX	93	97	90	90	88	91	77	72	77	81	88	78	81	73	77	81	77	77	79	80	84	78	66	77	69	77	81	81	74	80			80.5	
		MIN	75	73	73	70	70	73	68	69	70	69	68	69	67	61	62	66	61	57	60	59	67	58	54	58	66	60	59	58	50	67			64.6	
EASTERN PIEDMONT 02																																				
AMELIA COURTHOUSE 1	08	MAX	91	92	95	89	89	87	91	79	76	82	87	75	70		69	73	80	78	75	75	81	85	76	68	63	66	77		78	70		79.2		

VIRGINIA
201409

DAILY TEMPERATURES (°F)

STATION	OB. TIME	MAX/MIN	DAY OF MONTH																															AVERAGE
			01	02	03	04	05	06	07	08	09	10	11	12	13	14	15	16	17	18	19	20	21	22	23	24	25	26	27	28	29	30	31	
ASHLAND	18	MIN	74	71	71	69	69	73	68	65	63	65	68	66	57	59	61	58	55	59	58	58	58	50	51	55		52		52	63			
		MAX	91	94	89	84	88	90	86	75	78	80	87	85	75	70	75	78	75	74	75	79	84	76	68	66	67	74	78	76	72	72		
CAMP PICKETT	08	MIN	73	71	69	69	68	71	66	62	62	63	66	64	63	53	54	62	54	55	58	55	56	58	48	50	58	57	60	50	58	60		
		MAX	88	89	92	89	89	85	89	77	70	75	80	86	78	71	68	72	80	76	77	74	79	84	76	65	63	65	76	77	76	69		
CHASE CITY	17	MIN	72	70	71	70	71	71	65	64	65	65	66	65	58	58	58	60	55	55	55	57	60	52	53	56	60	52	51	51	51			
		MAX	87	89	91	88	88	87	88	78	78	74	79	86	78	73	67	74	80	75	78	76	79	84	76	63	63	67	76	77	77	69		
CLARKSVILLE	07	MIN	70	66	67	68	69	69	65	64	63	62	64	66	60	60	61	61	57	58	55	55	54	54	54	57	61	51	50	59	62			
		MAX	90	91	95	88	89	88	90	81	81	76	80	89	82	76	67	74	82	77	79	76	81	85	78	64	63	68	78	78	77	71		
CORBIN	09	MIN	73	71	71	70	70	70	65	65	65	67	67	61	61	62	63	60	61	62	63	60	61	59	59	62	56	55	57	61	55	63		
		MAX	91	93	84	87	90	92	82	71	75	80	89	78	70	71	77	78	75	73	75	82	87	77	68	66	64	74	79	79	70	76		
CROZIER	07	MIN	73	72	72	67	70	72	67	63	65	65	67	64	61	49	49	60	52	54	57	56	55	54	47	50	59	58	50	51	58	62		
		MAX	89	90	93	84	87	88	89	77	68	75	81	87	73	70		74	80	76	76	74	80	86	75	65	65	64	74	77	77	70		
FARMVILLE 2 N	07	MIN	71	69	69	69	69	70	65	61	62	62	65	63	63	54		53	54	54	61	58	56	55	47	46	46	58	49	50	49	60		
		MAX	89	90	93	86	85	86	89	69	69	75	79	87	71	72	72	73	79	74	77	73	79	86	76	63	62	67	75	76	75	69		
GREENBAY 3 NE	09	MIN	73	69	69	70	69	70	71	64	62	63	66	67	65	58	58	60	58	55	55	59	56	59	52	51	55	60	51	50	50	60		
		MAX	90	90	98	88	88	85	90	77	68	73	73	85	67	71	70	70	77	75	76	73	84	86	76	74	61	65	76	76	75	69		
JOHN H KERR DAM	08	MIN	73	69	71	69	69	71	67	64	62	62	62	62	63	57	57	60	56	54	54	58	61	56	51	51	54	54	55	50	55	61		
		MAX	95	93	98	93	92	93	95	79	72	78	84	91	82	75	69	77	85	78	83	78	81	87	80	64	64	68	78	79	79	72		
LOUISA	18	MIN	77	76	74	72	73	77	72	66	66	66	69	73	68	62	61	64	64	59	61	58	60	62	56	55	57	63	54	53	56	64		
		MAX	92	93	89	87	90	91	85	74	76	81	89	86	75	69	75	79	77	75	73	82	87	83	71	64	67	78	80	79	72	70		
PALMYRA 3S	06	MIN	72	68	69	68	69	70	65	60	63	65	63	61	47	46	59	50	50	57	54	51	50	43	47	59	56	45	45	55	62			
		MAX	90	91	93	86	86	89	90	78	69	76	80	89	74	74	68	75	80	76	76	71	80	87	76	66	63	69	76	79	77	70		
PETERSBURG	08	MIN	73	67	70	70	68	71	66	61	64	65	66	66	63	54	52	58	53	52	55	60	52	53	46	51	54	59	47	46	48	59		
		MAX	91	92	95	90	90	90	92	80	72	76	83	88	77	76	71	76	81	78	77	77	80	85	79	67	66	67	77	80	78	70		
RICHMOND INTL AP	24	MIN	73	72	73	71	70	71	73	67	67	67	67	69	67	61	59	62	64	57	57	55	55	64	55	56	59	62	53	53	54	60		
		MAX	96	101	91	92	90	96	81	74	79	83	90	79	76	74	79	83	81	78	80	85	90	80	70	67	69	80	83	82	71	75		
SANDSTON	07	MIN	75	73	74	72	71	74	67	66	66	67	68	62	56	63	65	59	56	61	58	63	61	52	56	62	59	55	56	61	61			
		MAX	92	94	97	88	90	89	93	78	72	77	81	88	76	75	72	77	81	78	76	77	81	86	76	66	66	67	76	79	79	70		
WESTERN PIEDMONT 03 APPOMATTOX	07	MIN	72	71	71	69	70	70	64	65	66	66	67	66	55	55	60	57	53	53	55	55	61	50	50	56	59	51	50	49	58			
		MAX	90	90	93	93	88	87	89	78	68	76	77	89	72	76	69	74	81	77	78	67	81	86	77	62	61	71	77	78	76	70		
BROOKNEAL	07	MIN	70	69	68	68	69	69	67	64	60	61	64	67	63	57	56	57	56	57	60	59	55	55	49	48	53	59	53	54	56	61		
		MAX	90	91	93	89	89	87	89	82	70	78	79	88	75	77	70	77	81	76	77	69	82	85	77	64	63	71	78	77	77	69		
CHARLOTTE COURT HOUSE	07	MIN	69	67	67	69	69	71	68	65	64	64	66	66	60	58	59	58	55	57	58	54	53	51	51	60	62	50	48	49	61			
		MAX	90	91	93	90	90	89	90	79	69	75	81	89	74	73	70	74	80	77	77	73	80	84	77	63	62	68	73	77	78	69		
CHARLOTTESVILLE 2W	08	MIN	73	70	69	70	70	70	64	63	63	65	66	66	61	59	60	60	57	57	61	55	55	54	53	54	60	52	46	46	61			
		MAX	90	91	95	87	86	89	92	77	70	73	80	88	76	74	68	76	80	76	75	69	82	89	75	67	62	69	77	79	79	70		
CHATHAM	07	MIN	71	72	69	70	68	69	66	61	61	62	66	63	61	52	53	54	55	56	57	59	58	48	48	50	58	56	56	57	60			
		MAX	86	84	87	82	82	84	86	77	68	74	76	84	74	72	67	74	77	72	73	66	75	79	72	62	61	70	73	74	73	67		
DANVILLE REGIONAL AP	24	MIN	66	64	64	65	66	68	65	64	61	61	62	64	64	59	58	58	55	56	54	53	52	51	53	59	50	48	47	60				
		MAX	93	94	89	87	88	91	82	71	77	79	89	78	80	71	77	82	77	80	73	82	85	76	63	63	73	77	78	79	69	80		
		MIN	72	68	68	70	71	70	68	62	64	66	65	69	65	61	60	62	59	59	62	56	57	54	55	55	62	60	52	53	62	61		

VIRGINIA
201409

DAILY TEMPERATURES (°F)

STATION	OB. TIME	MAX/MIN	DAY OF MONTH																															AVERAGE
			01	02	03	04	05	06	07	08	09	10	11	12	13	14	15	16	17	18	19	20	21	22	23	24	25	26	27	28	29	30	31	
FREE UNION	08	MAX	88	88	90	83	85	87	88	76	70	71	77	86	74	72	65	73	77	73	74	66	79	84	74	68	61	69	77	77	76	68	76.5	
		MIN	66	68	67	68	66	66	65	60	60	62	62	63	61	48	49	49	53	51	52	56	52	53	44	44	46	58	50	47	47	57	56.3	
LYNCHBURG INTL AP	24	MAX	88	90	84	85	84	86	76	70	74	76	87	72	75	67	73	79	74	76	64	78	83	74	61	65	72	76	75	70	79	76.3		
		MIN	68	66	67	68	68	67	65	61	61	65	63	65	61	55	53	57	54	54	60	58	52	57	50	53	59	55	51	48	57	60	59.3	
MARTINSVILLE FLTR PLT	07	MAX	89	91	92	86	85	88	84	78	69	77	77	89	76	78	68	75	79	74	77	67	79	85	74	60	63	74	73	76	76	71	77.7	
		MIN	68	65	64	65	67	67	64	60	60	62	63	67	64	60	55	57	56	55	58	58	52	52	51	49	53	60	50	49	49	59	58.6	
MEADOWS OF DAN 5 SW	07	MAX	85	83	85	80	81	84	84	79	70	75	70	85	74	76	67	72	77	71	74	74	75	79	79	59	64	75	71	74	73	69	75.5	
		MIN	66	63	64	66	65	65	62	60	61	61	63	63	65	54	58	59	54	55	55	55	53	52	49	49	52	52	53	50	51	54	57.6	
MONTEBELLO FISH CULTURAL STN	07	MAX	81	86	86	79	81	88	85	69	63	67		82	69	68		71	75	65	72	58	75	79	71	62	62		73	72	70	73.4		
		MIN	66	63	63	62	61	62	59	55	55	56		58	57	44		48	47	45	48	49	48	50	38	38	37		43	43	44	51.5		
MONTICELLO	08	MAX	88	87	91	83	83	86	88	73	69	70	78	85	72	70	66	73	75	72	72	71	77	84	70	63	61	66	72	75	75	68	75.4	
		MIN	70	71	69	69	68	68	65	62	61	61	66	63	62	51	54	53	55	56	56	56	58	60	48	48	52	58	54	54	60	60	59.6	
ROCKY MT	07	MAX	88		92	84	83			73	70	75	75	87			67	75	78	71	76			83	73	59	65	73		74	71	M		
		MIN	70		67	67	67		64	62	60	62	62	65		59	55	55	54	58	60		53	54	50	51	52	58		49	49	57	58.4	
SOUTH BOSTON	07	MAX	90	92	94	89	89	89	90	80	70	76	79	89	88	76	67	75	83	76	79	73	83	87	78	63	63	69	78	78	77	69	79.6	
		MIN	71	69	69	70	70	70	69	66	63	64	63	64	64	62	61	61	58	58	57	57	56	55	54	55	60	52	52	51	62	61.5		
STUART	07	MAX	88	89	90	84	84	86	86	80	70	74	74	88	79	76	67	74	79	73	73	78	78	83	75	60	67	76	71	76	75	70	77.4	
		MIN	68	65	65	65	66	67	65	63	63	60	65	69	65	60	58	59	58	57	57	55	55	54	52	52	56	60	53	53	55	53	59.8	
TYE RIVER 1 SE	07	MAX	90	90	92	85	86	87	90	78	70	75	78	88	74	75	67	75	80	75	78	67	79	86	78	65	66	70	78	79	77	70	78.3	
		MIN	70	69	67	68	70	72	67	61	62	64	63	64	62	56	54	55	54	55	58	58	52	53	51	52	53	59	51	48	49	60	59.2	
NORTHERN 04																																		
BOSTON 4 SE	07	MAX	89	91	92	82	85	90	91	77	70	71	87	79	80	79	68	76	77	75	75	72											M	
		MIN	70	67	69	67	67	68	64	57	56	64	63	61	58	45	44	56	46	49	54	53											M	
EDINBURG	07	MAX	89	91	91	83	87	88	89	74	70	72	80	84	71	68	69	75	75	73	74	71	81	85	69	67	62	67	76	78	79	76	77.1	
		MIN	67	67	67	65	65	65	59	52	55	60	63	55	55	41	41	44	45	45	48	54	51	54	37	37	41	55	43	43	46	49	52.3	
FRONT ROYAL	07	MAX	89	90	90	82	85	88	90	75	68	69	80	85	72	67	69	71	74	74	75	71	78	85	69	67	62	63	74	76	78	74	76.3	
		MIN	70	69	71	68	68	70	62	55	56	61	65	59	57	51	48	44	50	49	53	52	57	57	46	45	44	57	51	49	49	57	56.3	
LINCOLN	07	MAX	89	88	92	82	87	90	91	75	74	72	79	87	70	67	67	73	74	74	74	73	81	85	70	68	67	66	74	78	80	75	77.4	
		MIN	68	68	68	64	65	68	62	53	57	63	58	57	43	44	43	44	46	46	48	53	51	51	38	39	41	43	47	46	47	57	52.6	
LURAY 5 E	08	MAX	91	92	90	84	87	86	90	77	69	71	81	87	75	68	68	74	74	74	78	72	81	86	70	69	63	63	76	78	77	74	77.5	
		MIN	68	65	66	64	66	66	62	54	57	60	61	57	59	42	45	51	46	51	54	55	52	55	40	42	50	50	47	48	54	52	54.6	
MADISON	08	MAX	88	92	92	82	85	89	90	77	71	72	80	88	75	70	70	74	78	74	74	72	80	86	73	68	64	72	75	78	79	71	78.0	
		MIN	71	70	70	70	70	66	62	62	65	67	62	62	48	49	50	51	51	55	58	54	54	45	46	51	58	51	51	51	59	58.3		
MANASSAS	07	MAX	91	89	92	83		90					79	89	76	69	70	74	76	78	74	79	84	73	71	70	68	76	80	79	70	78.2		
		MIN	74	74	74	70		72		63			70	62	61	49	49	50	51	51	56	55	57	60	46	46	50	57	51	51	60	60	58.4	
MT WEATHER	07	MAX	82	82	86	79	82	85	86	71	67	74	79	67	62	63	68	71	69	71	68	75	80	70	67	67	60	70	74	75	72	73.0		
		MIN	68	72	67	67	67	70	58	58	59	60	62	55	54	46	47	52	52	53	55	54	57	56	46	45	45	54	55	55	59	57	56.8	
PIEDMONT RSCH STN	08	MAX	91	90	93	85	86	91	86	78	67	73	81	88	76	70	68	75	78	76	76	74	81	87	76	68	63	69	77	79	79	69	78.3	
		MIN			66	62	54					60	52					56	53	56	56	55	56	46	50	52	58	55	52	57	58	M		
SOMERSET	07	MAX	91	92	94	84	87	90	92	79	79	73	83	90	76	76	70	76	81	76	77	73	82	88	76	69	64	73	77	80	80	70	79.9	
		MIN	71	71	70	69	66	68	66	61	61	65	66	63	61	45	47	49	51	50	54	56	52	53	43	45	46	59	49	49	51	58	57.2	
SPERRYVILLE	06	MAX	87	89	89	81	85	86	87	75	70	69	79	85	73	69	67	73	74	73	75	69	79	84	69	67	63	69	74	77	70	76.1		

VIRGINIA
201409

DAILY TEMPERATURES (°F)

STATION	OB. TIME	MAX/MIN	DAY OF MONTH																															AVERAGE
			01	02	03	04	05	06	07	08	09	10	11	12	13	14	15	16	17	18	19	20	21	22	23	24	25	26	27	28	29	30	31	
STERLING RCS	07	MIN	69	68	69	66	66	67	64	57	60	63	61	61	59	45	47	49	49	51	54	56	53	53	48	43	49	56	51	53	55	52		56.5
		MAX	91	91	93	85	88	91	92	78	74	75	80	89	74	68	69	75	77	76	78	75	81	87	72	70	69	68	76	81	81	71		79.2
VIENNA	07	MIN	71	70	70	67	69	71	64	60	61	64	67	60	60	46	47	50	48	49	54	53	54	43	43	48	56	52	52	51	58		57.1	
		MAX	96	95	91	90	94	96	98	83	78	80	83	92	81	72	74	80	80	78	82	79	86	79	77	76	74	70	87	86	76	76		83.0
WASHGTN DULLES INTL AP	24	MIN	72	77	76	71	71	77	70	68	68	71	73	66	66	55	55	56	57	57	61	60	63	58	51	51	56	62	58	58	59	67		63.7
		MAX	89	90	85	86	89	91	78	72	74	77	86	74	69	68	73	76	74	77	73	79	84	72	70	68	67	76	80	80	70	73		77.3
WASHINGTON REAGAN AP	24	MIN	71	71	69	65	68	71	65	61	64	67	67	60	55	45	48	52	48	53	52	55	52	54	42	47	57	52	51	49	57	61		57.6
		MAX	95	95	89	91	93	95	84	77	79	83	91	80	73	74	77	80	79	81	78	84	86	76	75	73	69	78	85	82	74	79		81.8
WINCHESTER	07	MIN	76	77	77	74	76	75	70	70	71	72	67	63	56	58	63	59	64	61	64	64	59	54	59	63	60	60	61	65	67		65.8	
		MAX	88	89	89	84	88	90	89	76	71	69	80	84	73	68	69	72	75	73	77	71	80	84	70	69	65	66	75	78	77	74		77.1
WINCHESTER 7 SE	08	MIN	70	70	70	65	66	70	60	55	57	62	64	56	52	47	47	47	47	48	52	53	56	56	44	45	46	55	50	50	51	55		55.5
		MAX																																
WOODSTOCK 2 NE	07	MIN	89	89	91	85	89	88	89	77	71	73	80	86	73	69	69	75	73	74	75	72	81	85	68	69	63	66	78	80	79	75		77.7
		MAX	68	66	68	65	66	65	60	51	54	61	64	56	56	43	43	45	46	47	50	54	54	55	39	39	41	56	45	45	46	53		53.4
CENTRAL MOUNTAIN 05 COVINGTON FLTR PLT	07	MIN	90	91	92	84	84	88	88	68	71	77	76	83	76	67	65	74	77	72	79	66	79	82	67	70	69	78	76	77	76	75		77.2
		MAX	67	65	66	64	64	66	66	57	57	60	61	61	63	51	52	54	53	51	51	55	55	55	41	41	46	58	51	50	49	56		56.2
DALE ENTERPRISE	07	MIN	89	90	92	85	84	88	88	74	68	71	82	86	73	69	64	75	72	74	73	65	80	87	69	65	65	69	75	79	79	75		76.8
		MAX	68	66	67	64	65	65	61	55	59	60	64	59	59	45	43	44	48	48	52	55	52	53	39	39	49	58	45	46	50	51		54.3
GATHRIGHT DAM	07	MIN	83	83	85	80	80	83	84	68	68	74	74	79	79	66	60	70	70	67	71	61	74	77	66	65	65	73	73	73	69	71		73.0
		MAX	66	64	64	64	64	64	65	56	56	59	59	61	60	48	49	52	51	51	52	52	52	53	41	41	47	57	51	50	49	55		55.1
HOT SPRINGS	07	MIN	83	83	85	80	81	83	85	70	67	74	73	78	75	66	59	70	71	67	71	63	71	77	64	65	65	71	73	73	70	71		72.8
		MAX	66	64	64	63	63	64	63	55	55	58	59	60	61	45	47	51	49	49	50	55	51	50	39	39	51	55	48	47	47	51		54.0
LEXINGTON	07	MIN	89	89	92	85	85	87	88	75	72	76	77	86	74	74	64	74	79	73	77	65	78	84	74	70	67	75	79	78	74	75		77.8
		MAX	67	66	66	66	66	66	62	61	62	63	63	62	53	52	52	55	51	52	54	53	53	45	45	49	59	49	46	46	57		56.9	
MILLGAP	07	MIN	82	84	85	79	82	81	82	69	64	74	74	76	77	65	57	71	67	68	70	59	75	77	63	68	66	70	77	76	74	72		72.8
		MAX	61	59	59	56	56	61	61	50	53	54	58	58	57	41	40	45	43	44	43	47	48	48	32	32	37	50	38	39	39	47		48.5
MUSTOE 1 SW	24	MIN	82	82	78	80	82	82	68	63	72	71	76	77	66	57	69	67	66	70	58	73	78	62	65	68	69	76	75	73	69	77		71.7
		MAX	62	59	59	57	60	61	51	50	55	60	59	57	45	39	43	46	42	42	48	50	44	38	30	37	52	47	39	38	49	46		48.8
ROANOKE 8 N	07	MIN	90	90	92	83	83	87	85	75	72	77	76	88	72	72	68	75	77	73	76	64	78	83	72	65	67	76	73	76	74	75		77.1
		MAX	71	69	67	67	68	67	65	63	63	63	64	64	63	56	56	55	58	54	57	58	55	54	49	49	53	59	55	51	51	57		59.4
ROANOKE INTL AP	24	MIN	90	92	84	82	87	86	75	71	78	77	87	73	72	68	74	77	73	77	65	77	84	73	64	69	76	73	77	75	75	83		77.1
		MAX	72	70	69	68	68	68	65	64	63	66	63	64	58	59	56	63	57	55	60	58	54	55	47	53	59	59	54	50	60	57		60.5
STAUNTON WATER TRMTMT PLT	08	MIN	88	88	91	84	85	88	87	74	69	73	76	85	76	76	76	73	74	71	73	60	79	84	71	71	64	71	78	79	75	73		77.1
		MAX	69	70	67	65	67	67	62	56	57	60	63	61	58	46	46	50	50	51	54	55	53	56	40	41	51	57	49	50	51	55		55.9
WAYNESBORO WTP	07	MIN	88	90	91	84	86	88	90	74	69	73	79	87	77	72	65	74	75	74	74	65	79	85	71	68	63	67	77	77	72		77.0	
		MAX	67	66	67	67	67	66	64	60	60	61	61	62	61	46	47	49	51	51	52	56	52	52	43	42	47	57	47	47	47	51		55.5
SOUTHWESTERN MOUNTAIN 06 ABINGDON 3S	22	MIN	82	85	87	83	85	84	82	82	76	82	82	81	79	69	68	73	73	77	72	77	80	74	74	71	71	77	76	77	75	74		77.6
		MAX	66	64	64	65	63	65	61	61	62	61	61	62	67	53	57	58	53	51	52	54	53	48	42	42	51	55	54	53	57	51		56.9

VIRGINIA
201409

DAILY TEMPERATURES (°F)

STATION	OB. TIME	MAX/MIN	DAY OF MONTH																															AVERAGE	
			01	02	03	04	05	06	07	08	09	10	11	12	13	14	15	16	17	18	19	20	21	22	23	24	25	26	27	28	29	30	31		
BIG STONE GAP	08	MAX	79	87	86	84	86	83	85	78	83	83	82	85	78	78	74	77	74	75	76	81	82	74	70	76	79	83	83	82	78	73		79.8	
		MIN	67	68	67	67	67	68	66	63	63	63	66	68	65	54	56	62	55	54	53	53	54	50	43	43	48	55	55	54	54	56		58.6	
BLACKSBURG NWSO	07	MAX	85	85	86	80	79	83	82	76	67	75	75	83	72	70	64	74	73	71	73	64	77	78	67	60	67	75	70	73	71	73		74.3	
		MIN	68	65	65	63	64	65	63	57	58	59	60	60	51	55	58	53	53	55	56	52	52	43	43	48	56	50	47	47	54		56.0		
BURKES GARDEN	07	MAX	76	79	80	75	80	76	79	74	63	73	73	77	71	62	60	70	64	66	67	69	72	71	57	63	63	70	67	68	70	69		70.1	
		MIN	65	62	61	58	58	58	57	57	56	55	55	62	62	43	48	53	49	50	49	50	46	48	33	32	44	52	47	43	43	47		51.4	
CHRISTIANSBURG	07	MAX	84	82	86	77	78	80	83	78	66	72	73	80	70	66	62	73	70	70	71	65	73	77	68	59	65	72	66	74	71	68		72.6	
		MIN	67	65	64	63	63	64	62	56	56	57	61	61	60	51	54	56	53	53	54	55	54	52	44	43	48	54	50	46	46	54		55.5	
CLINTWOOD 1 W	07	MAX	76	82	83	77	80	77	84	68	78	78	79	81	60	68	62	66	73	68	70	70	77	78	72	64	69	72	75	77	76	71	72		74.1
		MIN	65	64	64	63	64	65	65	63	61	60	60	62	62	54	54	59	55	53	52	51	51	47	44	44	47	48	52	50	50	53		56.1	
COPPER HILL	07	MAX	82	82	84	76	75	78	78	70	70	68	69	80	68	65	60	66	69	64	68	59	69	75	75	55	60	66	63	67	66	67		69.8	
		MIN	68	66	64	63	63	64	62	58	57	57	61	61	58	51	50	54	54	53	54	53	53	50	45	45	49	54	51	51	52	53		55.8	
GALAX RADIO WBRF	07	MAX	84	84	83	80	77	80	80	79	66	75	71	84	77	72	60	69	76	71	72	69	75	78	68	58	63	71	70	73	71	70		73.5	
		MIN	65	60	62	64	61	61	61	59	59	60	59	63	63	51	55	55	52	51	56	54	50	46	41	43	47	56	52	45	54	53		55.3	
GALAX WTP	07	MAX	83	83	86	79	77	80	80	77	66	74	70	82	76	71	60	68	75	69	71	68	73	78	67	58	63	69	68	72	71	68		72.7	
		MIN	65	60	60	63	61	61	62	60	59	60	60	60	63	52	54	56	52	51	52	55	49	47	42	41	46	46	52	45	45	54		54.4	
GRUNDY	07	MAX	80	87	87	79	82	83	86	69	79	81	82	78	68	64	66	73	72	72	71		78	72	65	71		76	78		73	76		75.9	
		MIN	68	69	67	68	67	67	67	63	62	63	64	67	63	56	58	62	58	56	55		56	53	48	48		54	56		56	59		60.4	
JOHN FLANNAGAN LAKE	07	MAX	81	86	86	83	83			85	78	84	81	85			68	76	76	74	73			68	75	74	78			81	78		M		
		MIN	66	67	65	65	65			63	62	62	63	63			53	53	56	54	52			52	46	45	47	53			57	57		57.5	
LEBANON	07	MAX	80	85	86	84	81	82	83	76	78	83	81	84	76	66	69	75	74	76	70	79	78	75	70	73	74	77	78	77	75	76		77.4	
		MIN	65	64	65	64	63	63	62	65	62	60	60	67	65	51	54	57	55	53	51	51	51	48	42	42	52	53	53	50	50	51		56.3	
NORA 4 SSE	07	MAX	73	80	81	78	81	78	79	65	73	78	76	79	68	61	66	70	71	70	68	74	75	72	63	70	71	74	76	74	71	72		72.9	
		MIN	64	66	63	63	66	66	63	60	61	62	64	63	61	51	51	58	54	53	53	55	59	49	44	44	50	55	58	57	58	60		57.7	
NORTH FORK LAKE	08	MAX		87	86	80				85		80	80				83	73	72	72			79	66	72	73	77			78	77		M		
		MIN		63	65	65				62		60	60				53	58	56	53			51	44	44	47	55			52	54		M		
PULASKI 2 E	07	MAX	85	86	84	80	83	83	84	83	83	74	76	84	77	68	65	75	72	71	74	72	78	80	62	64	73	69	73	72	73		76.0		
		MIN	68	65	65	65	64	62	62	63	60	60	63	63	62	50	53	57	54	52	55	56	52	51	44	41	41	57	53	47	47	55		56.2	
RADFORD 3 N	07	MAX	86	87	88	81	81	84	82	77	70	74	76	83	73	65	64	74	71	70	71	65	78	80	65	61	66	73	68	71	68	72		74.1	
		MIN	64	65	66	63	63	64	64	59	60	61	58	59	61	50	54	58	47	50	53	55	53	48	41	42	46	54	52	48	50	53		55.4	
RICHLANDS	07	MAX	88	84	86	86	83	84	84	79	76	84	81	82	82	64	67	74	75	74	70	77	81	77	65	73	74	76	78	78	76	77		77.8	
		MIN	64	64	64	63	62	62	63	64	61	62	61	59	59	50	52	53	53	53	52	51	53	51	41	41	44	51	50	48	50	49		55.0	
SALTVILLE 1N	07	MAX	82	85	86	83	86	84	82	81	73	83	81	82	77	68	65	75	75	77	72	78	80	75	68	71	71	79	75	76	75	76		77.4	
		MIN	66	65	65	64	64	65	62	64	61	61	61	62	66	52	54	57	54	55	52	52	53	49	41	42	42	58	51	49	50	54		56.4	
STAFFORDSVILLE 3 ENE	07	MAX	85	86	89	80	82	82	83	75	67	73	76	82	76	64	63	72	71	68	71	66	76	76	64	63	65	74	71	72	69	72		73.8	
		MIN	66	63	63	64	64	66	64	60	60	60	60	60	62	49	52	56	54	54	55	57	54	54	42	43	46	58	53	47	48	55		56.3	
WISE 3E	17	MAX	80	82	80	81	80	80	69	74	78	76	78	76	65	68	70	70	69	66	75	76	73	68	69	69	74	75	74	71	73	75		73.8	
		MIN	66	69	63	65	62	63	63	59	60	61	67	63	54	51	56	59	54	48	49	59	55	49	40	44	44	54	51	54	58	53		56.4	
WYTHEVILLE 1 S	07	MAX	84	84	87	80	84	81	80	81	66	74	77	83	77	68	63	76	71	71	70	72	75	76	63	62	62	73	66	72	70	74		74.1	
		MIN	66	64	63	64	64	63	62	58	57	59	58	58	62	49	52	57	52	52	54	58	50	50	41	40	47	56	52	46	46	50		55.0	

VIRGINIA
201409

SNOWFALL AND SNOW ON GROUND (INCHES)

STATION		DAY OF MONTH																														
		01	02	03	04	05	06	07	08	09	10	11	12	13	14	15	16	17	18	19	20	21	22	23	24	25	26	27	28	29	30	31
VIRGINIA																																
TIDEWATER 01																																
DISPUTANTA	SNOWFALL																															
EASTVILLE	SNOWFALL																															
EMPORIA 1 WNW	SNOWFALL																															
FREDERICKSBURG SEWAGE	SNOWFALL																															
HOLLAND 1 E	SNOWFALL																															
HOPEWELL	SNOWFALL	-	-	-	-	-	-	-								-	-	-	-	-	-									-	-	
	SN ON GND	-	-	-	-	-	-	-								-	-	-	-	-	-									-	-	
NORFOLK INTL AP	SNOWFALL																															
	SN ON GND																															
NORFOLK SOUTH	SNOWFALL																															
NORTH	SNOWFALL																															
	SN ON GND																															
PAINTER 2W	SNOWFALL																															
STONY CREEK 2 N	SNOWFALL																															
	SN ON GND																															
SUFFOLK LAKE KILBY	SNOWFALL																															
	SN ON GND																															
WAKEFIELD 1NW	SNOWFALL																															
	SN ON GND																															
WALKERTON 2 NW	SNOWFALL																															
	SN ON GND																															
WALLACETON LK DRUMMOND	SNOWFALL																															
WALLOPS ISLAND NASA TEST FACIL	SNOWFALL																															
	SN ON GND																															
WARSAW 2 NW	SNOWFALL																															
WEST POINT 2 NW	SNOWFALL																															
	SN ON GND																															
WILLIAMSBURG 2 N	SNOWFALL																															

Snowfall: Includes snow and ice. Values for NWS stations (J index note) are Mid-Mid (LST).

Snow on ground: Includes snow, sleet, ice, and hail. Values for NWS stations (J index note) are observed at 12 UTC (GMT).

Water Equivalent: Given for NWS stations (J index note) only, when snow depth is 2 inches or more, and is measured at 18 UTC (GMT)

VIRGINIA
201409

PAN EVAPORATION AND WIND

STATION		DAY OF MONTH																														TOTAL OR AVERAGE			
		01	02	03	04	05	06	07	08	09	10	11	12	13	14	15	16	17	18	19	20	21	22	23	24	25	26	27	28	29	30		31		
VIRGINIA EASTERN PIEDMONT 02 JOHN H KERR DAM	WIND	-	-	-	-	-	-	-	-	-	-	-	-	-	-	-	-	-	-	-	-	-	-	-	-	-	-	-	-	-	-	-	-	-	M M M M
	EVAP	-	-	-	-	-	-	-	-	-	-	-	-	-	-	-	-	-	-	-	-	-	-	-	-	-	-	-	-	-	-	-	-	-	
	MAX	-	-	-	-	-	-	-	-	-	-	-	-	-	-	-	-	-	-	-	-	-	-	-	-	-	-	-	-	-	-	-	-	-	
	MIN	-	-	-	-	-	-	-	-	-	-	-	-	-	-	-	-	-	-	-	-	-	-	-	-	-	-	-	-	-	-	-	-	-	

Evaporation: Is measured in hundreths of inches.

Wind: Is measured in miles.

Max and Min: The maximum and minimum temperatures (Fahrenheit) of the water in the evaporation pan.

STATION INDEX

STATION	INDEX NO.	DIVISION	COUNTY	LATITUDE	LONGITUDE	ELEVATION (IN FEET)	OBSERVATION TIME AND TABLES			
							LOCAL STD TIME			
							TEMP	PRECIP	EVAP	SPECIAL SEE (NOTES)
VIRGINIA										
ABINGDON 3S	0021	06	WASHINGTON	36 40	81 58W	1925	22	22		H
ALBERTA 5N	0079	02	BRUNSWICK	36 56	77 54W	376		08		H
ALTAVISTA	0166	03	CAMPBELL	37 7	79 17W	529		07		CH
AMELIA COURTHOUSE 1	0187	02	AMELIA	37 21	77 59W	345	08	08		H
APPOMATTOX	0243	03	APPOMATTOX	37 20	78 50W	850	07	07		H
ASHLAND	0327	02	HANOVER	37 45	77 29W	220	18	18		H
BEDFORD 4 NW	0561	03	BEDFORD	37 23	79 34W	1228		07		CH
BIG STONE GAP	0735	06	WISE	36 52	82 46W	1464	08	08		H
BLACKSBURG NWSO	0766	06	MONTGOMERY	37 12	80 25W	2100	07	07		CH
BOSTON 4 SE	0860	04	CULPEPER	38 33	78 6W	590	07	07		H
BREMO BLUFF	0993	02	FLUVANNA	37 43	78 17W	225		07		CH
BROOKNEAL	1082	03	CAMPBELL	37 4	78 57W	408	07	07		H
BUCKINGHAM	1136	02	BUCKINGHAM	37 30	78 32W	580		07		H
BUENA VISTA	1159	05	ROCKBRIDGE	37 44	79 22W	840		07		H
BURKES GARDEN	1209	06	TAZEWELL	37 6	81 20W	3068	07	07		H
CAMP PICKETT	1322	02	NOTTOWAY	37 2	77 57W	330	08	08		CH
CHARLOTTE COURT HOUSE	1585	03	CHARLOTTE	37 3	78 39W	569	07	07		H
CHARLOTTESVILLE 2W	1593	03	ALBEMARLE	38 2	78 31W	866	08	08		H
CHASE CITY	1606	02	MECKLENBURG	36 47	78 29W	510	17	17		H
CHATHAM	1614	03	PITTSYLVANIA	36 49	79 25W	651	07	07		CH
CHRISTIANSBURG	1692	06	MONTGOMERY	37 8	80 24W	2100	07	07		H
CLARKSVILLE	1746	02	MECKLENBURG	36 37	78 33W	330	07	07		H
CLINTWOOD 1 W	1825	06	DICKENSON	37 9	82 29W	1780	07	07		H
CONCORD 4 SSW	1955	03	CAMPBELL	37 17	78 58W	815		07		H
COPPER HILL	1999	06	FLOYD	37 5	80 9W	2690	07	07		H
CORBIN	2009	02	CAROLINE	38 12	77 22W	220	09	09		H
COVINGTON FLTR PLT	2044	05	ALLEGHANY	37 49	79 59W	1230	07	07		H
CRAIGSVILLE 2 S	2064	05	AUGUSTA	38 3	79 23W	1758		07		H
CROZIER	2142	02	GOOCHLAND	37 40	77 53W	350	07	07		H
DALE ENTERPRISE	2208	05	ROCKINGHAM	38 27	78 56W	1358	07	07		H
DANVILLE REGIONAL AP R	2250	03	PITTSYLVANIA	36 34	79 20W	571	24	24		H
DISPUTANTA	2400	01	PRINCE GEORGE	37 7	77 12W	15	07	07		H
EASTVILLE	2635	01	NORTHAMPTON	37 23	75 58W	10	07	07		H
EDINBURG	2663	04	SHENANDOAH	38 48	78 35W	928	07	07		H
EMPORIA 1 NW	2790	01	GREENSVILLE	36 42	77 34W	100	08	08		H
FARMVILLE 2 N	2941	02	CUMBERLAND	37 20	78 23W	450	07	07		H
FREDERICKSBURG SEWAGE	3204	01	FREDERICKSBURG	38 17	77 27W	15	07	07		H
FREE UNION	3213	03	ALBEMARLE	38 5	78 35W	590	08	07		H
FRONT ROYAL	3229	04	WARREN	38 54	78 11W	930	07	07		H
GALAX RADIO WBRF	3267	06	CARROLL	36 40	80 55W	2385	07	07		H
GALAX WTP	3272	06	CARROLL	36 39	80 55W	2360	07	07		CH
GATHRIGHT DAM	3310	05	ALLEGHANY	37 57	79 57W	1770	07	07		CH
GLASGOW 1 SE	3375	05	ROCKBRIDGE	37 37	79 26W	737		07		H
GREENBAY 3 NE	3565	02	PRINCE EDWARD	37 11	78 17W	500	09	09		H
GRUNDY	3640	06	BUCHANAN	37 17	82 5W	1170	07	07		H
HOLCOMB ROCK	4039	03	BEDFORD	37 33	79 24W	810		07		H
HOLLAND 1 E	4044	01	SUFFOLK	36 41	76 46W	80	08	08		H
HOPEWELL	4101	01	PRINCE GEORGE	37 18	77 17W	40	16	16		H
HOT SPRINGS	4128	05	BATH	37 60	79 50W	2236	07	07		H
HUDDLESTON 4 SW	4148	03	BEDFORD	37 8	79 32W	898		07		H
JOHN FLANNAGAN LAKE	4410	06	DICKENSON	37 14	82 21W	1460	07	07		H
JOHN H KERR DAM	4414	02	MECKLENBURG	36 36	78 18W	250	08	08	08	CH
LAFAYETTE 1 NE	4676	06	MONTGOMERY	37 14	80 12W	1320		07		H
LEBANON	4777	06	RUSSELL	36 54	82 2W	1912	07	07		H
LEXINGTON	4876	05	ROCKBRIDGE	37 47	79 26W	1097	07	07		H
LINCOLN	4909	04	LOUDOUN	39 5	77 42W	500	07	07		H
LOUISA	5050	02	LOUISA	38 3	78 0W	420	18	18		H
LURAY 5 E	5096	04	PAGE	38 40	78 22W	1400	08	08		H
LYNCHBURG INTL AP R	5120	03	CAMPBELL	37 19	79 12W	940	24	24		HJ
MADISON	5150	04	MADISON	38 22	78 15W	577	08	08		H
MANASSAS	5204	04	MANASSAS	38 44	77 30W	245	07	07		H
MARTINSVILLE FLTR PLT	5300	03	HENRY	36 42	79 52W	760	07	07		H
MEADOWS OF DAN 5 SW	5453	03	PATRICK	36 40	80 27W	2225	07	07		H
MILLGAP	5595	05	HIGHLAND	38 18	79 43W	2421	07	07		CH
MONTEBELLO FISH CULTURAL STN	5690	03	NELSON	37 51	79 8W	2667	07	07		H

STATION INDEX

STATION	INDEX NO.	DIVISION	COUNTY	LATITUDE	LONGITUDE	ELEVATION (IN FEET)	OBSERVATION TIME AND TABLES			
							LOCAL STD TIME			
							TEMP	PRECIP	EVAP	SPECIAL SEE (NOTES)
MONTICELLO	5700	03	ALBEMARLE	38 1	78 27W	758	08	08		H
MT WEATHER	5851	04	LOUDOUN	39 4	77 53W	1659	07	07		H
MTN GROVE	5756	05	BATH	38 6	79 53W	1775		07		H
MUSTOE 1 SW	5880	05	HIGHLAND	38 20	79 40W	2380	24	24		H
NEW CASTLE	6012	05	CRAIG	37 18	80 3W	1258		07		H
NORA 4 SSE	6125	06	DICKENSON	37 1	82 19W	2650	07	07		H
NORFOLK INTL AP R	6139	01	NORFOLK (CITY)	36 54	76 12W	30	24	24		HJ
NORFOLK SOUTH	6147	01	NORFOLK (CITY)	36 52	76 14W	100	24	24		H
NORTH	6161	01	MATHEWS	37 26	76 26W	10	07	07		H
NORTH FORK LAKE	6173	06	WISE	37 7	82 38W	1675	08	08		H
PAINTER 2W	6475	01	ACCOMACK	37 35	75 49W	30	16	16		CH
PALMYRA 3S	6491	02	FLUVANNA	37 49	78 16W	410	06	06		H
PEDLAR DAM	6593	03	AMHERST	37 40	79 17W	1024		07		H
PETERSBURG	6656	02	PETERSBURG	37 14	77 24W	15	08	08		H
PIEDMONT RSCH STN	6712	04	ORANGE	38 14	78 7W	520	08	08		CH
PULASKI 2 E	6955	06	PULASKI	37 3	80 47W	1850	07	07		CH
RADFORD 3 N	6999	06	PULASKI	37 12	80 35W	1800	07	07		H
RICHLANDS	7174	06	TAZEWELL	37 6	81 48W	1910	07	07		H
RICHMOND INTL AP R	7201	02	HENRICO	37 30	77 19W	164	24	24		HJ
ROANOKE 8 N	7278	05	ROANOKE	37 22	79 58W	1190	07	07		H
ROANOKE INTL AP R	7285	05	ROANOKE	37 19	79 58W	1175	24	24		HJ
ROCKY MT	7338	03	FRANKLIN	36 59	79 54W	1315	07	07		CH
SALTVILLE 1N	7506	06	SMYTH	36 53	81 46W	1733	07	07		H
SANDSTON	7541	02	HENRICO	37 33	77 17W	165	07	07		H
SOMERSET	7904	04	ORANGE	38 15	78 16W	510	07	07		H
SOUTH BOSTON	7925	03	HALIFAX	36 42	78 53W	329	07	07		H
SPERRYVILLE	7985	04	RAPPAHANNOCK	38 39	78 14W	750	06	06		H
STAFFORDSVILLE 3 ENE	8022	06	GILES	37 16	80 43W	1950	07	07		CH
STAUNTON WATER TRMTMT PLT	8062	05	AUGUSTA	38 10	79 5W	169	08	08		H
STERLING RCS	8084	04	LOUDOUN	38 59	77 29W	288	07	07		H
STONY CREEK 2 N	8129	01	SUSSEX	36 58	77 24W	105	08	08		H
STUART	8170	03	PATRICK	36 38	80 15W	1375	07	07		H
SUFFOLK LAKE KILBY	8192	01	SUFFOLK	36 44	76 36W	22	24	24		H
TYE RIVER 1 SE	8600	03	NELSON	37 38	78 56W	720	07	07		H
VIENNA	8737	04	FAIRFAX	38 54	77 16W	418	07	07		H
WAKEFIELD 1NW	8800	01	SUSSEX	36 59	77 0W	113	24	24		CH
WALKERTON 2 NW	8829	01	KING AND QUEEN	37 45	77 2W	50	18	18		H
WALLACETON LK DRUMMOND	8837	01	CHESAPEAKE	36 36	76 26W	20	08	08		H
WALLOPS ISLAND NASA TEST FACIL R	8849	01	ACCOMACK	37 56	75 28W	46	24	24		HJ
WARSAW 2 NW	8894	01	RICHMOND	37 59	76 47W	140	18	18		H
WASHGTN DULLES INTL AP R	8903	04	LOUDOUN	38 56	77 28W	290	24	24		HJ
WASHINGTON REAGAN AP R	8906	04	ARLINGTON	38 51	77 2W	10	24	24		HJ
WAYNESBORO WTP	8941	05	WAYNESBORO	38 5	78 53W	1270	07	07		H
WEST POINT 2 NW	9025	01	KING WILLIAM	37 34	76 48W	20	17	17		H
WILLIAMSBURG 2 N	9151	01	YORK	37 18	76 42W	70	24	24		CH
WILLIS	9169	06	FLOYD	36 55	80 30W	2810		07		CH
WINCHESTER	9181	04	FREDERICK	39 11	78 9W	720	07	07		H
WINCHESTER 7 SE	9186	04	FREDERICK	39 11	78 7W	680	08	08		H
WINTERPOCK 4 W	9213	02	CHESTERFIELD	37 19	77 39W	300		07		H
WISE 3E	9215	06	WISE	36 60	82 32W	2549	17	17		CH
WOODSTOCK 2 NE	9263	04	SHENANDOAH	38 54	78 28W	675	07	07		H
WOOLWINE	9272	03	PATRICK	36 47	80 17W	1500		07		CH
WYTHEVILLE 1 S	9301	06	WYTHE	36 58	81 5W	2458	07	07		H

REFERENCE NOTES

STATION NAMES: Name of the city, town or locality. Figures and letters following the station names indicate the distance in miles and direction from the post office or town community center.

DIVISIONS: Areas within a state of similar climatological characteristics. Division averages are calculated using data from stations that record temperature and/or precipitation. Station Precipitation totals flagged with an 'F' or 'M' are excluded from the Divisional Average calculations of precipitation. Stations with monthly Temperature averages flagged with an 'F' or 'M' are included in the Divisional Average if there are no more than 9 flagged or missing daily values in the month, else they are excluded from the divisional average for temperature.

NORMALS: The average value of the meteorological element over a time period. Effective 1 January 2012, the averaging period is 1981 to 2010. The normals for National Weather Service localities have been adjusted so as to be representative for the current observation site.

MONTHLY DEGREE DAY TOTALS: One heating (cooling) degree day is accumulated for each whole degree that the daily mean temperature is below (above) 65 degrees Fahrenheit.

PRECIPITATION: Values shown in hundredths of inches are water equivalent totals, i.e., total of liquid and melted frozen precipitation. In the "Monthly Summarized Data" table the total snow and sleet values shown in tenths of inches are unmelted amounts. The max depth on ground values of snow and sleet shown in whole inches are cumulative unmelted amounts. The number of days with .10, .50, 1.00 or more refers to water equivalents.

PRECIPITATION QUALITY CONTROL: The NCDC quality control process may flag precipitation data that are spatially inconsistent, exceed climatological limits, or are inconsistent with prevailing weather patterns.

TEMPERATURE: Original temperature values are given in the "Daily Temperature" table. Summary temperature information (averages, departures, extremes, monthly degree day totals) is based on the values labeled MAX/MIN.

WIND: (As shown in the "Evaporation and Wind" table) the total wind movement in miles over the evaporation pan as determined by an anemometer recorder located 6-8 inches above the pan.

SYMBOLS AND LETTERS USED IN THE STATION INDEX TABLE

- C Station is equipped with recording rain gage (R) but values in this bulletin are from a non-recording rain gage unless indicated by an R.
- G Observations appear in the "Soil Temperatures" table.
- H Observations appear in the "Snowfall and Snow on the Ground" table.
- J Station also published as a Local Climatological Data publication.
- VAR Observation time varies.
- SR Observation time near sunrise.
- SS Observation time near sunset.

SYMBOLS AND LETTERS USED IN THE DATA TABLES

(DAILY DATA ARE FOR THE 24 HOURS IMMEDIATELY PRECEDING OBSERVATION TIME.)
BLANK Entries in the "Monthly Summarized Data" table indicate no record.
BLANK Entries in the "Daily Precipitation" and "Snowfall and Snow on the Ground" tables indicate zero.
BLANK Entries in the "Daily Temperature" table indicate a missing record

- No record. Data not recorded or not received in time for publication.
- + Precipitation or temperature extremes occurred on one or more previous dates during the month.
- * Rain gage not read. Precipitation is included in the amount following the asterisks.
Time distribution may not be known. A * preceding the monthly total indicates precipitation amount is being carried forward to next month's total, and may include amounts from the previous month(s).
- a As a subscript, indicates accumulated total.

by NCDC's Climate Prediction Branch and its entries for the report. If on the day in which the precipitation was recorded during the time period, the date of last reading. (Hawaii stations)

- B Divisional Departure from normals are computed using 1981-2010 normals.
- E Normalized HDD/CDD Calculation. E is appended to the HDD/CDD Calculation when 1-9 individual daily TMAX and/or TMIN values are missing and a Normalized HDD/CDD Calculation is provided. M appears alone if 10 or more daily values are missing.
- F Monthly calculation flagged value. F is appended to average and/or total values computed which exclude one or more daily data values that have been flagged by the GHCN-Daily Dataset
- M Insufficient or partial data. M is appended to average and/or total values computed with 1-9 daily values missing. M appears alone if 10 or more daily values are missing, (8 or more for wind and evaporation).
- N Indicates snow fall or Snowdepth totals are computed with one or more missing days.
- R Amounts from recording rain gage.
- T Trace. An amount too small to measure.

SEASONAL TABLES: Monthly and seasonal snowfall and heating degree days for the 12 months ending with the June data are published in the July issue of this bulletin. Cooling degree days for the calendar year are published in the "Climatological Data Annual Summary."

Information concerning the history of changes in locations, exposure, etc. of substations is kept on file at the National Climatic Data Center. Historical information of regular National Weather Service Offices may be obtained from the "Local Climatological Data" annual publication. The contents of this publication may be reprinted or otherwise used freely, with proper credit to the National Climatic Data Center. The data are also available digitally.

Effective with the January 2011 Data-Month, COOP Observer Names are no longer included in the Monthly and Annual Climatological Data Publications. This information is not published to ensure the privacy of personal information pursuant to Section 208 of the E-Government Act of 2002 (44 USC 3601).

As of the 2011 Data-Year, Station and Climate Division Maps are no longer being included in the CD Publications. NCDC's Product Development Branch provides updated Station Maps for various data networks via the Historical Observing Metadata Repository: <http://www.ncdc.noaa.gov/homr>.

The GHCN-Daily Quality Control Flags shown below are displayed as superscripts with the data. For more Information on Global Historical Climatology Network - Daily and flags, see: <http://www.ncdc.noaa.gov/oa/climate/ghcn-daily/> and Comprehensive Automated Quality Assurance of Daily Surface Observations. Durre, Imke, Matthew J. Menne, Byron E. Gleason, Tamara G. Houston, Russell S. Vose, 2010: J. Appl. Meteor. Climatol., 49, 16151633. doi: 10.1175/2010JAMC2375.1

- | | |
|---|---|
| Blank = Passed All checks | N = failed naught check |
| D = failed duplicate check | O = failed climatological outlier check |
| G = failed gap check | R = failed lagged range check |
| I = failed internal consistency check | S = failed spatial consistency check |
| K = failed streak/frequent-value check | T = failed temporal consistency check |
| L = failed check on length of multiday period | W = temperature too warm for snow |
| M = failed megaconsistency check | X = failed bounds check |
| | Z = flagged as a result of an official Datzilla investigation |

Beginning with the January 2013 CD Publication, monthly mean temperature calculations have changed to the National Data Stewardship Team standard. Monthly maximum and minimum temperatures are not rounded until after the monthly mean temperature is calculated. This is the most accurate outcome, but may be slightly different from the mean derived from rounded monthly maximum and minimum.

Processing Updates and Errata: The CD Publications are periodically reproduced to include the addition of late reports and reported corrections. The GHCND data version noted on the cover of the publication provides the generation date.

The climate division temperature and precipitation values in this publication are based on simple averages from the current set of NWS-Designated Open and Published COOP and First Order Sites within each division. These values differ from those found in NCDC's nClimDiv product. Beginning in February 2014, the nClimDiv product is used

These and other publications are available from the National Climatic Data Center

Hourly Precipitation Data

This publication contains hourly precipitation amounts obtained from recording rain gages located at National Weather Service, Federal Aviation Administration, and cooperative observer stations. Published data are displayed in inches and tenths or inches and hundredths at local standard time. HPD includes maximum precipitation for nine (9) time periods from 15 minutes to 24 hours, for selected stations.

Climatological Data

Monthly editions contain station daily maximum and minimum temperatures and precipitation. Some Stations provide daily snowfall, snow depth, evaporation, and soil temperature data. Each edition also contains monthly summaries for heating and cooling degree days (65 degree F base). The July issue contains a recap of monthly heating degree days and snow data for the preceding July through June.

The Annual issue contains monthly and annual averages of temperature, precipitation, temperature extremes, freeze data, soil temperatures, evaporation, and a recap of monthly cooling degree days.

Storm Data

Monthly issues contain a chronological listing, by states, of occurrences of storms and unusual weather phenomena. Reports contain information on storm paths, deaths, injuries, and property damage. An "Outstanding storms of the month" section highlights severe weather events with photographs, illustrations, and narratives. The December issue includes annual tornado, lightning, flash flood, and tropical cyclone summaries.

Monthly Climatic Data for the World

This publication contains monthly means for temperature, pressure, precipitation, vapor pressure, and sunshine for approximately 2,000 surface data collection stations worldwide and monthly mean upper air temperatures, dew point depressions, and wind velocities for approximately 500 observing sites.

Local Climatological Data

LCD publications summarize temperature, relative humidity, precipitation, cloudiness, wind speed and direction observations for several hundred cities in the U.S. and its territories. Each monthly publication also contains 3 hourly weather observations for that month and a hourly summary of precipitation. Annual LCD publications contain a summary of the past calendar year as well as historical averages and extremes.

For Information Call:

(828) 271-4800 Option 2

(828) 271-4010 (TDD)

(828) 271-4876 (Fax)

NOAA\National Climatic Data Center
Attn: User Engagement & Services Branch
151 Patton Avenue
Asheville, NC 28801-5001

Customer Services Number: (828) 271-4800, option 2
TDD : (828) 271-4010
Fax number: (828) 271-4876

NCDC now offers free online access to the *Climatological Data* publication.
Go to : www.ncdc.noaa.gov and choose Most Popular.