



# CLIMATOLOGICAL DATA

## VIRGINIA

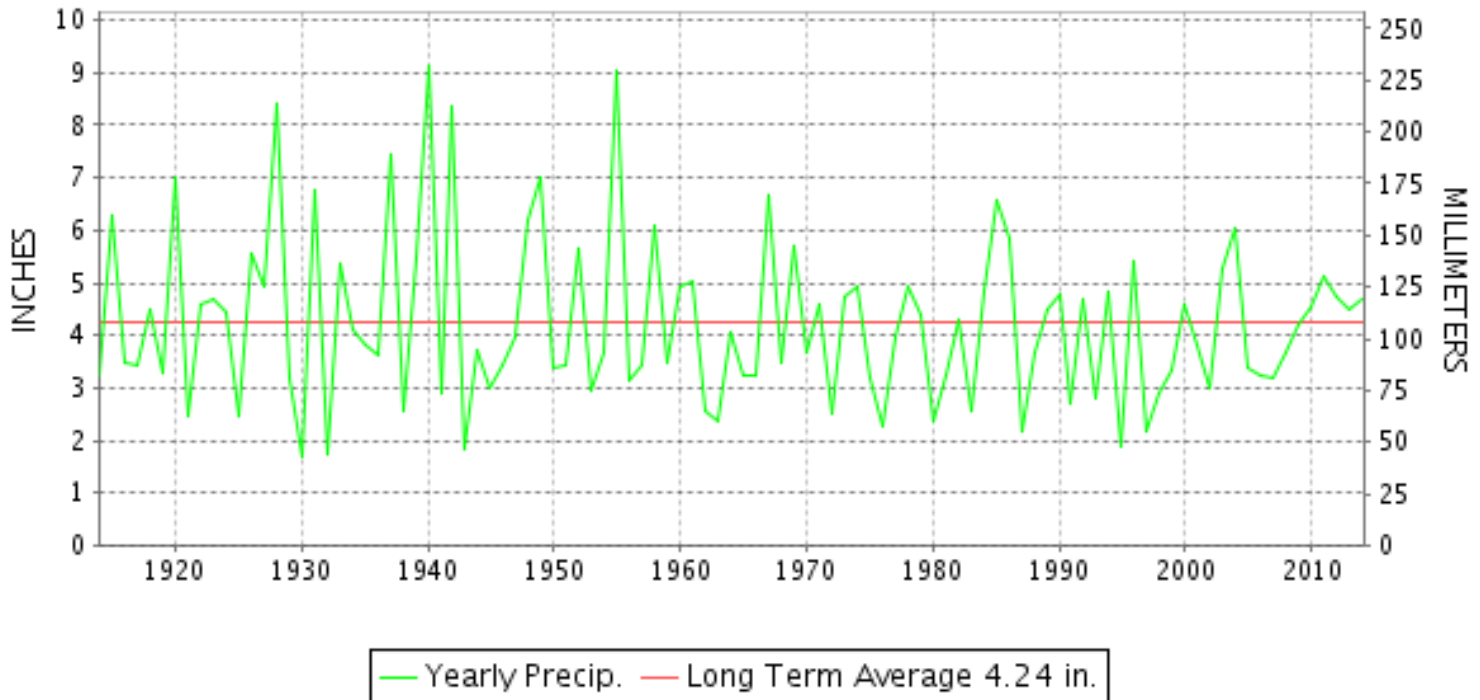
**AUGUST 2014**

VOLUME 124 NUMBER 08

ISSN 0364-5630

GHCND Ver: 3.20-upd-2014121706

### AUGUST PRECIPITATION BY YEAR



#### TEMPERATURE AND PRECIPITATION EXTREMES

**VIRGINIA**

HIGHEST TEMPERATURE	96	AUGUST 31	WASHINGTON REAGAN AP
LOWEST TEMPERATURE	40	AUGUST 16	MUSTOE 1 SW
GREATEST TOTAL PRECIPITATION	9.68		WOOLWINE
LEAST TOTAL PRECIPITATION	2.19		MILLGAP
GREATEST 1 DAY PRECIPITATION	3.71	AUGUST 12	ASHLAND

"I certify that this is an official publication of the National Oceanic and Atmospheric Administration (NOAA) It is compiled using information from weather observing sites supervised by NOAA/National Weather Service and received at the National Climatic Data Center(NCDC), Asheville, North Carolina 28801."

Director  
National Climatic Data Center

**noaa**

National  
Oceanic and  
Atmospheric Administration

National  
Environmental Satellite, Data  
and Information Service

National  
Climatic Data Center  
Asheville, North Carolina



VIRGINIA  
201408

# MONTHLY STATION AND DIVISION SUMMARY

STATION	TEMPERATURE (°F)											PRECIPITATION (IN)												
	AVERAGE MAXIMUM	AVERAGE MINIMUM	AVERAGE	DEPARTURE FROM NORMAL	HIGHEST	DATE	LOWEST	DATE	HEATING DEG. DAYS	COOLING DEG. DAYS	NO. OF DAYS				TOTAL	DEPARTURE FROM NORMAL	GREATEST 24 HOURS	DATE	ICE PELLETS, SNOW			NO. OF DAYS		
											MAX		MIN						TOTAL	MAX DEPTH ON GROUND	DATE	.10 OR MORE	.50 OR MORE	1.00 OR MORE
											>=90	<=32	<=32	<=0										
PETERSBURG	83.9	65.6	74.8	-2.7	91	31	58	26+	0	311	1	0	0	0	5.89	1.12	3.30	19	0.0			5	3	2
RICHMOND INTL AP	85.5	67.2	76.4	-1.1	94	31	60	27+	0	358	5	0	0	0	3.61	-1.05	1.15	01	0.0	0		8	2	1
SANDSTON	83.6	62.9	73.3	-3.3	89	29+	56	28+	0	265	0	0	0	0	A 3.51	-1.21	1.42	03	0.0			2	1	1
WINTERPOCK 4 W															2.78	0.97	0.97	02	0.0			5	2	0
--DIVISIONAL DATA-----> WESTERN PIEDMONT 03			73.3	-1.8B											4.35	0.42B								
ALTAVISTA															6.48	1.72	1.72	22	0.0			10	5	1
APPOMATTOX	80.9	63.0	71.9	-2.8	88	29	56	27+	0	223	0	0	0	0	4.19	0.21	0.61	01	0.0			10	4	0
BEDFORD 4 NW															6.08	1.30	1.30	12	0.0			11	5	1
BROOKNEAL	82.1	63.4	72.7	1.5	90	29	54	14	0	248	1	0	0	0	3.68	-0.28	0.78	09	0.0	0		8	3	0
CHARLOTTE COURT HOUSE	82.2	63.7	72.9	-2.3	90	29	56	15+	0	251	1	0	0	0	4.13	0.20	1.14	19	0.0	0		8	3	1
CHARLOTTESVILLE 2W	81.9	63.4	72.6	-3.1	89	29+	57	15	0	247	0	0	0	0	3.23	-0.84	0.90	21	0.0	0		5	4	0
CHATHAM	78.6	60.8	69.7	-3.6	85	29	53	28+	1	156	0	0	0	0	8.33	4.51	1.70	09	0.0	0		14	7	3
CONCORD 4 SSW															3.66	0.62	0.62	10	0.0			10	3	0
DANVILLE REGIONAL AP	82.9	66.0	74.5	-2.5	91	31+	57	27+	0	300	2	0	0	0	6.23	2.32	2.05	09	0.0	0		9	4	2
FREE UNION	78.7	59.4	69.1		86	29	52	16+	1	133	0	0	0	0	3.98	1.65	2.1	21	0.0			5	4	1
HOLCOMB ROCK															6.63	1.30	1.30	12	0.0	0		9	7	2
HUDDLESTON 4 SW															6.54	1.46	1.46	12	0.0			8	6	2
LYNCHBURG INTL AP	80.2	62.4M	71.3M	-2.8	88	31	52	14	0	201E	0	0	0	0	4.78	1.52	1.00	09	0.0	0		10	5	1
MARTINSVILLE FLTR PLT	81.6M	61.5	71.5M	-2.4	90	29	53	28+	0	213E	1	0	0	0	5.16	1.25	1.30	09	0.0			8	5	1
MEADOWS OF DAN 5 SW	77.8	59.5	68.7		85	31+	51	28	3	123	0	0	0	0	7.60	1.94	1.94	12	0.0	0		9	6	2
MONTEBELLO FISH CULTURAL STN	74.9M	55.2M	65.0M		87	30	45	26+	57E	61E	0	0	0	0	A 3.58	0.75	0.75	24	0.0			7	3	0
MONTICELLO	79.2	62.6	70.9	-2.8	86	06	57	17+	0	190	0	0	0	0	4.05	0.01	1.61	23	0.0			6	3	2
PEDLAR DAM															4.81	0.97	0.97	24	0.0	0		9	5	0
ROCKY MT	80.2	62.2	71.2	-2.3	89	29+	54	28+	1	200	0	0	0	0	8.50	4.21	1.45	09	0.0	0		14	6	3
SOUTH BOSTON	82.5	64.3	73.4	-2.0	91	29	56	14	0	268	2	0	0	0	8.58	4.81	2.10	09	0.0	0		12	3	3
STUART	80.5	61.6	71.0	-3.5	88	29	53	14	1	196	0	0	0	0	8.74	3.75	2.20	12	0.0			13	7	3
TYE RIVER 1 SE	80.9	62.4	71.6	-3.1	90	29	54	27+	0	213	1	0	0	0	3.90	0.13	1.08	12	0.0			10	2	1
WOOLWINE															9.68	1.88	1.88	12	0.0	0		12	9	4
--DIVISIONAL DATA-----> NORTHERN 04			71.1	-3.2B											5.76	1.95B								
BOSTON 4 SE	79.9M	59.4M	69.7M	-2.9	85	29+	50	16+	1E	152E	0	0	0	0	M 3.73	0.17	1.52	12	M 0.0	0		6	3	2
EDINBURG	80.3	56.4	68.4	-3.6	87	31	47	17+	6	121	0	0	0	0	3.72	0.23	2.50	13	0.0			4	2	1
FRONT ROYAL	80.6M	59.3M	70.0M	-3.9	86	28+	51	17+	0	161E	0	0	0	0	M 4.23	1.17	1.16	13	M 0.0	0		6	4	2
LINCOLN	81.8	57.8	69.8	-3.3	88	08	48	15+	2	161	0	0	0	0	3.77		2.30	11	0.0			3	3	1
LURAY 5 E	80.1	58.4	69.2	-3.9	87	28	48	16+	6	144	0	0	0	0	2.61	-0.71	0.90	12	0.0	0		5	2	0
MADISON	80.8	61.4	71.1	-3.1	88	28	53	15	0	197	0	0	0	0	MA 2.87	-0.76	0.90	21+	M 0.0	0		4	3	0
MANASSAS	82.7M	64.1M	73.4M	-3.5	89	06	54	15	0	273E	0	0	0	0	M 6.45		3.00	13	0.0			7	4	2

VIRGINIA  
201408

## MONTHLY STATION AND DIVISION SUMMARY

STATION	TEMPERATURE (°F)											PRECIPITATION (IN)												
	AVERAGE MAXIMUM	AVERAGE MINIMUM	AVERAGE	DEPARTURE FROM NORMAL	HIGHEST	DATE	LOWEST	DATE	HEATING DEG. DAYS	COOLING DEG. DAYS	NO. OF DAYS				TOTAL	DEPARTURE FROM NORMAL	GREATEST 24 HOURS	DATE	ICE PELLETS, SNOW			NO. OF DAYS		
											MAX		MIN						TOTAL	MAX DEPTH ON GROUND	DATE	.10 OR MORE	.50 OR MORE	1.00 OR MORE
											>=90	<=32	<=32	<=0										
MT WEATHER	76.5	61.3	68.9	-3.8	83	28	53	16+	1	129	0	0	0	0	4.33	0.88	1.38	13	0.0			6	4	1
PIEDMONT RSCH STN	80.6	M	M		88	06	52	18+	0	158E	0	0	0	0	2.35	-0.87	0.71	12	0.0			6	2	0
SOMERSET	81.7	61.0	71.4	-3.3	87	28+	52	16	0	206	0	0	0	0	2.94	-0.60	0.92	13	0.0			5	3	0
SPERRYVILLE	M	M	M		84	22	52	17+	0	154E	0	0	0	0	M				0.0					
STERLING RCS	83.2	62.2	72.7	-1.7	90	06	54	16	0	245	1	0	0	0	3.95	0.46	1.30	22	0.0	0		5	4	2
VIENNA	86.7	66.1	76.4	3.3	95	31	58	16+	0	363	6	0	0	0	5.08	1.39	2.93	13	0.0			7	2	1
WASHGTN DULLES INTL AP	82.0	61.7	71.8	-3.6	90	31	53	29+	0	219	1	0	0	0	5.15	1.62	1.43	21	0.0	0		7	4	2
WASHINGTON REAGAN AP	85.6	69.7	77.7	-0.4	96	31	62	15	0	399	3	0	0	0	3.39	0.46	1.60	12	0.0	0		7	1	1
WINCHESTER	81.0	60.4	70.7	-2.9	88	28	51	16	0	185	0	0	0	0	3.16	0.14	1.13	21	0.0			4	3	1
WINCHESTER 7 SE	M	M	MM		85	19+			0	0	0	0	0	M 3.69	0.46	1.07	12	M 0.0	0		7	3	1	
WOODSTOCK 2 NE	81.0M	57.4M	69.2M	-3.1	88	31	48	16	4E	144E	0	0	0	0	M 2.85	-0.31	1.94	13	0.0			3	1	1
--DIVISIONAL DATA----->			71.4	-1.4B										3.68	0.02B									
<b>CENTRAL MOUNTAIN 05</b>																								
BUENA VISTA														3.92		1.15	22	0.0				9	3	1
COVINGTON FLTR PLT	81.0	58.8	69.9	-3.6	89	29+	50	17+	3	162	0	0	0	0	3.43	0.21	0.82	12	0.0	0		7	3	0
CRAIGSVILLE 2 S										M									0.0					
DALE ENTERPRISE	80.0	57.5	68.8	-3.3	87	31	47	16	6	128	0	0	0	0	3.13	-0.31	1.22	24	0.0	0		6	2	1
GATHRIGHT DAM	76.8	58.2	67.5	-3.5	85	31	50	17+	15	100	0	0	0	0	4.16	0.97	1.65	12	0.0	0		8	3	1
GLASGOW 1 SE														4.52		1.33	22	0.0	0			9	3	1
HOT SPRINGS	76.5	57.2	66.8	-3.0	83	31+	48	17+	20	86	0	0	0	0	3.41	-0.02	1.66	12	0.0			8	1	1
LEXINGTON	80.5	59.5	70.0	-4.2	90	29	49	17+	0	162	1	0	0	0	4.29	1.12	1.39	20	0.0			9	3	1
MILLGAP	75.8	52.7	64.2	-2.4	84	29+	41	17+	58	41	0	0	0	0	2.19	-1.32	0.87	12	0.0	0		6	2	0
MTN GROVE														2.42		1.00	12	0.0				7	1	1
MUSTOE 1 SW	74.3	53.6M	63.9M	-2.6	82	30+	40	16	64E	35E	0	0	0	0	2.77	-0.61	0.61	11	M 0.0			9	2	0
NEW CASTLE														5.08		1.28	09	0.0				11	4	2
ROANOKE 8 N	80.5	61.4	71.0	-3.6	89	29+	50	25	3	196	0	0	0	0	6.23	2.64	1.71	24	0.0	0		10	4	2
ROANOKE INTL AP	80.3	63.6	71.9	-3.5	90	31	55	26+	0	220	1	0	0	0	6.53	2.97	1.72	09	0.0	0		8	5	2
STAUNTON WATER TRMTMT PLT	79.7	59.4	69.5	-2.8	88	29	50	17+	3	150	0	0	0	0	2.37	-1.26	1.05	24	0.0	0		4	2	1
WAYNESBORO WTP	80.5	58.4	69.5	-2.8	87	21	50	17+	2	151	0	0	0	0	2.42	-1.62	0.86	23	0.0	0		5	3	0
--DIVISIONAL DATA----->			68.5	-3.4B										3.79	0.37B									
<b>SOUTHWESTERN MOUNTAIN 06</b>																								
ABINGDON 3S	80.6M	59.4M	70.0M	-2.2	87	31+	52	28+	3E	164E	0	0	0	0	M 4.86	1.26	1.20	19	M 0.0	0		7	5	2
BIG STONE GAP	82.6	61.8	72.2	-1.8	89	31+	55	15+	0	229	0	0	0	0	6.56	2.28	1.60	11	0.0	0		10	5	2
BLACKSBURG NWSO	77.7	58.3	68.0	-2.0	85	31+	49	16	9	110	0	0	0	0	5.95	2.36	1.47	10	0.0	0		11	4	2
BURKES GARDEN	72.9	54.8	63.9	-2.3	80	31	44	27	67	41	0	0	0	0	6.68	2.52	1.35	10	0.0	0		10	6	2
CHRISTIANSBURG	76.1	58.5	67.3	-4.1	86	06	50	28	22	102	0	0	0	0	5.86	2.56	1.55	09	0.0	0		9	4	3
CLINTWOOD 1 W	78.0	59.0	68.5	-2.0	83	25+	51	15+	7	122	0	0	0	0	A 6.83	3.18	1.25	23	0.0	0		10	3	1

VIRGINIA  
201408

## MONTHLY STATION AND DIVISION SUMMARY

STATION	TEMPERATURE (°F)										PRECIPITATION (IN)													
	AVERAGE MAXIMUM	AVERAGE MINIMUM	AVERAGE	DEPARTURE FROM NORMAL	HIGHEST	DATE	LOWEST	DATE	HEATING DEG. DAYS	COOLING DEG. DAYS	NO. OF DAYS				TOTAL	DEPARTURE FROM NORMAL	GREATEST 24 HOURS	DATE	ICE PELLETS, SNOW			NO. OF DAYS		
											MAX		MIN						TOTAL	MAX DEPTH ON GROUND	DATE	.10 OR MORE	.50 OR MORE	1.00 OR MORE
											>=90	<=32	<=32	<=0										
COPPER HILL	74.0	58.3	66.2		82	29+	52	17	28	75	0	0	0	0	8.42		1.52	24	0.0	0		14	7	4
GALAX RADIO WBRF	77.7	58.4	68.0	-1.8	86	29	50	27	13	115	0	0	0	0	4.99	0.95	0.76	12+	0.0			12	4	0
GALAX WTP	77.1	57.0	67.0	-2.2	85	29	49	27	17	89	0	0	0	0	4.96		1.21	12	0.0	0		10	2	1
GRUNDY	80.5	63.8	72.1	-0.1	88	31	58	01	0	228	0	0	0	0	4.39	0.53	1.13	19	0.0	0		9	4	1
JOHN FLANNAGAN LAKE	81.9M	61.2M	71.6M		88	31	56	18+	3E	214E	0	0	0	0	MA 6.80		1.76	23	0.0	0		7	3	1
LAFAYETTE 1 NE															6.76		1.70	09	0.0			10	5	2
LEBANON	80.6	57.7	69.1	-1.9	89	30	49	28+	7	141	0	0	0	0	4.76	1.09	0.88	19	0.0	0		11	4	0
NORA 4 SSE	76.6	62.2	69.4	-1.9	84	30	56	14+	4	149	0	0	0	0	5.15	0.87	1.46	23	0.0	0		10	3	1
NORTH FORK LAKE	M	M	M		86	25	54	18+	7E	166E	0	0	0	0	MA 4.75		1.04	21	M 0.0	0		4	3	1
PULASKI 2 E	80.6M	57.7M	69.2M	-1.9	87	31	48	04+	5E	142E	0	0	0	0	7.46	4.37	1.17	20+	0.0	0		10	7	4
RADFORD 3 N	77.1	58.2	67.6	-3.4	86	31	49	16	13	102	0	0	0	0	6.71	3.31	1.52	09	0.0	0		10	4	3
RICHLANDS	80.4	57.9	69.1	-1.8	88	31+	51	01	4	140	0	0	0	0	4.75	0.62	0.95	19	0.0	0		10	4	0
SALTVILLE 1N	80.4	58.6	69.5	-2.5	89	31+	52	26	3	150	0	0	0	0	6.57	2.39	1.19	12	0.0			11	6	2
STAFFORDSVILLE 3 ENE	77.8	58.3M	68.1M	-2.3	85	31+	50	16	10E	111E	0	0	0	0	6.67	3.43	1.67	09	0.0			11	5	2
WILLIS														M 6.06		3.15	12	0.0				9	3	1
WISE 3E	77.5	59.9	68.7	-1.3	83	29+	51	16+	5	130	0	0	0	0	6.42	2.37	1.26	23	0.0	0		13	4	2
WYTHEVILLE 1 S	77.9M	58.1	68.0M	-1.5	86	31	49	28+	12E	116E	0	0	0	0	6.48	3.04	1.24	19	0.0			11	7	1
--DIVISIONAL DATA----->			68.7	-1.1B											6.12	2.55B								

VIRGINIA  
201408

## DAILY PRECIPITATION (INCHES)

STATION	TOTAL	DAY OF MONTH																																	
		01	02	03	04	05	06	07	08	09	10	11	12	13	14	15	16	17	18	19	20	21	22	23	24	25	26	27	28	29	30	31			
<b>VIRGINIA</b>																																			
<b>TIDEWATER 01</b>																																			
DISPUTANTA	2.80	0.08	0.54	0.28					0.03			0.07	0.03							1.55					0.22										
EASTVILLE	M 3.49	-	1.15	0.05								0.40								0.60	0.89		0.40									-	-		
EMPORIA 1 WNW	5.95	0.04	0.94	0.74						0.16	0.41	0.02	0.02			1.04		0.02	2.25	0.05										0.26					
FREDERICKSBURG SEWAGE	3.52		0.28	0.02					0.09			1.87	0.08			0.11		0.01	T	0.40	0.49		0.08	0.09		T									
HOLLAND 1 E	6.61	0.02	2.10	2.50					1.42		0.01		0.08						0.30	0.02					0.11										
HOPEWELL	M 5.24	0.05	2.25	0.32	0.02							0.08						1.98	0.37	0.01	0.02		0.05	0.09									-		
NORFOLK INTL AP	3.01	0.42	0.98	0.12		0.04	T				T	0.31	T			0.52		0.60	0.01			0.02	T	T	0.01				T						
NORFOLK SOUTH	2.69	0.35	1.00	0.19		0.07	0.05					0.32				0.29	T	0.40	0.02			T	T							T					
NORTH	5.32		0.98	0.28										2.35						1.27	0.22														
PAINTER 2W	3.22		1.17	0.09										0.06						0.61	0.01		1.28												
STONY CREEK 2 N	3.29	0.03		0.98				0.15			0.03	0.04								2.00				0.06											
SUFFOLK LAKE KILBY	4.05	1.21	1.15	1.02			0.04					0.06	T			0.37		0.11	0.02			0.03	0.02	0.02											
WAKEFIELD 1NW	2.25	0.70	0.44	0.02			0.01				0.01	0.01				T		0.65	0.20			T	0.21	T					T						
WALKERTON 2 NW	5.70	0.16	1.84	0.81							T	2.49						T	0.32			T	0.08												
WALLACETON LK DRUMMOND	3.39		1.74	0.60	0.05	0.05			0.16		0.08		0.18			0.35			0.10	0.03			0.05												
WALLOPS ISLAND NASA TEST FACIL	4.48	0.81	1.53	0.51							T		0.10		0.07			T	0.10		0.38	0.97	0.01												
WARSAW 2 NW	3.60	0.60	0.73	0.98								0.81							0.02				0.46												
WEST POINT 2 NW	4.83	0.11	1.06	0.60			0.05					2.05	0.05					0.53	0.21			T		0.17											
WILLIAMSBURG 2 N	3.57	0.74	1.24	0.06			0.12	0.02				0.48						0.68	0.23																
<b>EASTERN PIEDMONT 02</b>																																			
ALBERTA 5N	4.29	0.08	0.82	0.18						T	0.18	0.32	0.12	T						1.63	T		T	0.08	0.20							0.68			
AMELIA COURTHOUSE 1	3.13	0.18	0.46					0.33			0.01	0.14							0.83	0.01	0.58		0.59												
ASHLAND	4.55	0.19	0.27				T					0.02	3.71					T	0.03	0.10	0.03	0.08	0.12												
BREMO BLUFF	4.95	0.04	0.38	0.01				0.07				0.33	0.69					0.03	0.07		1.39	0.02	0.54	1.38											
BUCKINGHAM	5.34	0.24	0.32			0.20	0.73				0.02	0.41	0.19						0.58		0.75	0.02	0.55	0.08								1.25			
CAMP PICKETT	4.09	0.10	0.88	0.25								0.27	0.15						1.05		0.16		0.36										0.87		
CHASE CITY	3.21	0.35	0.96	0.02					0.33			0.12					0.19			1.00		0.17	0.07												
CLARKSVILLE	5.92	0.15	0.80	0.05				0.45		1.25	1.30	0.06	0.30			0.09				1.10		0.10	0.27												
CORBIN	2.86		0.76	0.01			0.54						0.38							0.43		0.64											0.10		
CROZIER	M 6.18	-	1.09	0.09								0.14	2.38								2.39		0.09												
FARMVILLE 2 N	4.31	0.02	0.53			0.07	0.08					0.03	0.21	1.22					0.76			T	0.06	0.63									0.70		
GREENBAY 3 NE	M 2.63	0.25	0.51			0.02				0.09	0.20	0.48	0.06						0.56		0.14	0.05	0.17	0.05								0.05		T	
JOHN H KERR DAM	5.38	0.18	0.82	0.08				0.60		0.72	1.14	0.04	0.06				0.46			1.06	0.04	0.10	0.02	0.06											
LOUISA	3.91	0.19	0.11									0.03	0.63	0.31			0.03		0.01	0.08		2.04	0.02	0.44	0.02										
PALMYRA 3S	6.16		0.40					0.01				0.21	0.33							0.36		3.21	1.63	0.01											
PETERSBURG	5.89	0.03	1.65	0.53				0.02				0.06	0.11							3.30				0.19											
RICHMOND INTL AP	3.61	1.15	0.44	0.66		0.01						0.22	0.33					0.25	0.38	T	T		0.17												
SANDSTON	A 3.51	*	1.31 <sub>a</sub>	1.42							*	*	0.06 <sub>a</sub>	0.20		*	*	*	*	*	*	*	0.46 <sub>a</sub>	*	*	*	0.06 <sub>a</sub>	*	*	*	*	*	*	*	
WINTERPOCK 4 W	2.78	0.06	0.97	0.64				0.07				0.06	0.35							0.48	0.04		0.01	0.10											
<b>WESTERN PIEDMONT 03</b>																																			

VIRGINIA  
201408

## DAILY PRECIPITATION (INCHES)

STATION	TOTAL	DAY OF MONTH																																		
		01	02	03	04	05	06	07	08	09	10	11	12	13	14	15	16	17	18	19	20	21	22	23	24	25	26	27	28	29	30	31				
ALTAVISTA	6.48	0.50	0.34				0.08		0.65	0.94	0.05	0.67	0.40						0.40	0.08	0.25	1.72	0.07	0.33												
APPOMATTOX	4.19	0.61	0.45	0.02		0.59	0.38		0.31	0.16		0.55	0.16					0.06	0.26		0.07		0.57													
BEDFORD 4 NW	6.08	0.25	0.28	0.01		0.45	0.06		0.80	0.60	0.16	1.30	0.20					0.01	0.71	0.22	0.03	0.06	0.03	0.90	0.01											
BROOKNEAL	3.68	0.40	0.31	0.02					0.78	0.72		0.55	0.03						0.37			0.25	0.09	0.16												
CHARLOTTE COURT HOUSE	4.13	0.12	0.79	0.03		0.05	0.14		0.18	0.05		0.47	0.35						1.14			0.06	0.01	0.74												
CHARLOTTESVILLE 2W	3.23	0.05	0.09								T	0.75	0.57						0.01		0.90	T	0.60	0.26												
CHATHAM	8.33	0.34	0.50			0.82	0.10		1.70	1.18	0.15	0.75	0.23			0.06		0.14	1.22			0.22	0.02	0.10								0.80				
CONCORD 4 SSW	3.66	0.54	0.59	0.02		0.12	0.17		0.21	0.62		0.47	0.03					0.06	0.31			0.31	0.02	0.17	0.02											
DANVILLE REGIONAL AP	6.23	0.73			0.02	0.15		0.36	2.05		0.55	1.41		T	0.38			0.22	0.31	0.18	0.09	0.02	0.06	0.01								T				
FREE UNION	3.98	0.03	0.09	0.01							T	0.59	0.11					0.02	0.02			1.65	0.07	0.81	0.58											
HOLCOMB ROCK	6.63	0.82	0.30				T		0.09	0.62	0.07	1.30	0.76						0.50	0.68		0.31	T	1.18												
HUDDLESTON 4 SW	6.54	0.25	0.58						1.35	0.76	0.06	1.46	0.05						0.93			0.60	0.06	0.44												
LYNCHBURG INTL AP	4.78	0.78	0.02		0.57	0.04		0.05	1.00	0.02	0.66	0.31	T				T	0.59	0.23		0.14	0.03	0.23	0.11												
MARTINSVILLE FLTR PLT	5.16	0.35	0.43						1.30	0.73	0.08	0.98	0.13						0.54			0.05		0.50	0.04								0.03			
MEADOWS OF DAN 5 SW	7.60	0.92	0.31						0.94	0.29	0.39	1.94	1.30				0.03		0.05	0.64		0.04	0.03	0.01	0.66								0.05			
MONTEBELLO FISH CULTURAL STN	A 3.58	0.12	0.21			0.05	0.30	*	*	0.01 <sub>a</sub>	0.01	0.70	0.50				*	0.00 <sub>a</sub>	0.03	0.03		*	0.41 <sub>a</sub>	0.75							*	*	0.00 <sub>a</sub>	0.46		
MONTICELLO	4.05	0.03	0.16		T		T					1.05	0.40								0.54	T	1.61	0.25	0.01		T									
PEDLAR DAM	4.81	0.73	0.19	T		0.56	0.32		T	0.07	T	0.81	0.05					T	0.30	0.14	T	0.67	T	0.97										T		
ROCKY MT	8.50	0.07	0.33			0.20	0.23		1.45	0.80	0.22	1.41	0.19						0.78	0.10	0.33	0.32	0.71	1.27	0.09											
SOUTH BOSTON	8.58	0.30	0.45	0.01			0.30		2.10	1.94	0.04	0.36	0.12			0.40			1.52		0.42	0.48	0.02										0.12			
STUART	8.74	0.69	0.24	0.02		0.02			0.90	1.20	0.30	2.20	0.50			0.03	T	0.05	0.51	0.44	0.02	0.02	0.28	1.03	0.19								0.10			
TYE RIVER 1 SE	3.90	0.55	0.25			0.46	0.32					1.08	0.37						0.25	0.25		T	0.25	0.12												
WOOLWINE	9.68	0.73	0.65	0.03		0.10	0.27		1.21	0.65	1.00	1.88	0.52		T				0.02	0.72	0.02	0.01	0.02		1.67	0.18										
<b>NORTHERN 04</b>																																				
BOSTON 4 SE	M 3.73			1.08								1.52										0.55	0.12	0.10	0.36											
EDINBURG	3.72						0.15	0.02				0.36	2.50											0.67	0.02											
FRONT ROYAL	M 4.23						1.00					0.61	1.16					0.08				0.89		0.18	0.31											
LINCOLN	3.77										2.30											0.76		0.71												
LURAY 5 E	2.61		0.02	0.35			0.45					0.90	0.06				T					0.28	0.55													
MADISON	MA 2.87		-	*	* 0.10 <sub>a</sub>		0.35					-	0.90									0.90			0.62											
MANASSAS	M 6.45		0.10	0.05	0.40						0.50	0.40	3.00						0.05			1.05		0.90												
MT WEATHER	4.33			0.18		0.01	0.06					0.67	1.38								T	0.88	0.02	0.21	0.92											
PIEDMONT RSCH STN	2.35	T	0.12				0.16					0.71	0.27						T	T		0.33		0.68	0.08											
SOMERSET	2.94	0.02	0.07				0.18					0.61	0.92					T	T		T	0.36		0.66	0.09	0.03										
SPERRYVILLE	M		-		0.68		0.25					0.63	0.52								0.02	0.04	0.15	0.03	-	-	-	-	-	-	-	-	-	-	-	
STERLING RCS	3.95		0.02	0.01	0.21							0.03	1.02									T	0.58	1.30	0.03	0.75										
VIENNA	5.08		0.13	0.54	0.01	0.02	0.01					0.15	2.93									0.45	0.47	0.02	0.35											
WASHGTN DULLES INTL AP	5.15	T	0.01	0.15		T			T		0.12	1.13					0.02					0.99	1.43	0.03	0.83	T								0.44		
WASHINGTON REAGAN AP	3.39	0.11	0.06	0.45		0.38			T		0.03	1.60					0.01			T	0.26	0.01	T	0.21										0.27		
WINCHESTER	3.16		0.02			0.02	0.01					0.85	0.56									1.13		0.09	0.48											
WINCHESTER 7 SE	M 3.69		0.10			0.42	0.04					1.07	0.91									0.02	0.85	0.02	0.12	0.12	0.02	-	-	-	-	-	-	-		
WOODSTOCK 2 NE	M 2.85											0.38	1.94									0.01	0.05	0.02		0.45										





VIRGINIA  
201408

## DAILY TEMPERATURES (°F)

STATION	OB. TIME	MAX/MIN	DAY OF MONTH																															AVERAGE		
			01	02	03	04	05	06	07	08	09	10	11	12	13	14	15	16	17	18	19	20	21	22	23	24	25	26	27	28	29	30	31			
<b>VIRGINIA</b>																																				
<b>TIDEWATER 01</b>																																				
DISPUTANTA	07	MAX	83	76	76	80	84	86	89	89	81	73	83	85	86	84	82	83	86	89	86	84	87	90	81	80	80	79	84	86	88	83	88	83	88	
		MIN	61	62	62	67	66	68	68	61	62	64	57	59	68	51	57	59	59	67	68	67	68	71	66	65	58	56	55	59	66	68	69	68	69	
EASTVILLE	07	MAX	83	76	75	79	79	83	86	84	81	78	83	83	82	82	82	81	85	86	81	78	84	84	81	82	79	80	83	81	85	81	84	81	84	
		MIN	71	64	69	71	70	71	70	64	68	65	66	72	71	70	70	68	70	73	70	67	68	73	70	66	66	64	64	66	65	65	73	68	64	
EMPORIA 1 WNW	08	MAX	84	77	71	80	85	89	88	86	83	83	83	83	87	83	83	84	85	85	87	87	87	90	85	83	80	80	85	87	90	83	89	84	89	
		MIN	63	63	65	68	70	70	67	64	64	66	62	63	69	59	59	64	66	69	69	70	70	71	72	67	60	58	58	58	68	69	68	69	68	
FREDERICKSBURG SEWAGE	07	MAX	87	76	76	84	86	88	84	84	84	84	84	86	83	82	82	84	81	85	80	83	82	88	88	81	75	78	80	81	87	87	81	86	83	
		MIN	61	63	64	65	65	65	65	61	61	63	62	63	68	57	57	57	59	55	68	68	66	66	69	66	60	59	59	59	59	56	64	67	62	55
HOLLAND 1 E	08	MAX	86	76	75	78	84	86	90	84	84	78	84	85	90	86	84	85	86	87	88	85	90	91	81	79	80	80	83	86	90	85	83	84	82	84
		MIN	68	62	62	64	68	64	62	58	62	64	58	58	62	55	59	58	59	60	62	65	64	65	65	62	55	56	56	59	65	65	62	61	62	61
HOPEWELL	16	MAX	85	85	85	85	86	87	89	86	84	84	84	87	87	87	87	86	88	88	88	87	89	88	83	80	79	85	86	88	90	88			86	0
		MIN	71	65	65	65	64	72	71	68	69	68	64	73	72	61	61	67	69	69	69	71	74	73	74	68	68	62	61	70	70	71			68	0
NORFOLK INTL AP	24	MAX	78	75	78	80	81	89	82	82	80	81	83	86	85	83	82	86	88	88	81	82	88	86	80	78	79	79	80	84	80	87	93	82	87	82
		MIN	69	71	72	70	71	70	72	68	67	68	68	75	74	70	67	69	73	72	73	74	73	76	74	71	70	72	69	69	73	74	74	74	71	71
NORFOLK SOUTH	24	MAX	77	73	77	80	82	87	81	81	77	82	83	84	83	83	82	85	86	87	81	83	87	86	80	77	77	80	81	84	80	86	90	82	87	82
		MIN	67	70	71	68	70	69	69	65	65	66	65	73	71	68	66	67	71	70	72	73	72	75	71	70	69	68	67	66	70	71	72	69	69	69
NORTH	07	MAX	80	75	73	77	80	83	84	81	81	78	79	80	82	81	79	78	82	83	84	77	79	86	80	79	75	78	81	81	85	78	80	80	80	80
		MIN	69	63	69	69	66	69	66	62	64	63	60	66	73	62	62	65	66	67	68	67	68	74	69	67	61	60	58	64	62	64	68	65	65	65
PAINTER 2W	16	MAX	81	77	80	83	82	85	85	82	81	82	82	82	84	83	81	86	89	85	80	81	86	84	83	77	77	80	84	85	84	82	89	82	89	82
		MIN	68	64	70	67	66	65	67	60	65	60	60	73	71	67	61	63	65	67	70	64	69	68	68	64	60	58	59	65	60	60	62	60	60	60
STONY CREEK 2 N	08	MAX	86	84	72	80	86	84	89	84	82	72	83	84	84	88	84	87	89	89	89	89	86	88	89	83	80	89	79	84	87	90	84	88	88	84
		MIN	60	60	64	63	68	69	67	61	61	67	59	66	67	57	61	63	66	69	63	69	69	72	70	71	59	58	56	54	66	66	69	64	62	62
SUFFOLK LAKE KILBY	24	MAX	75	75	77	81	85	88	84	84	84	84	84	88	84	82	83	85	86	87	84	87	89	85	80	80	78	82	84	88	88	87	89	83	88	83
		MIN	66	68	69	67	67	68	69	65	63	65	64	70	63	62	62	62	62	62	70	70	70	72	70	68	66	61	61	64	70	70	71	66	64	66
WAKEFIELD 1NW	24	MAX	76	72	79	85	87	90	86	83	74	84	85	89	86	84	84	88	89	89	85	87	89	80	78	80	80	85	87	89	84	89	91	84	83	84
		MIN	63	64	68	68	66	68	65	60	64	61	57	69	66	56	64	64	67	68	66	65	71	67	67	59	56	54	51	64	66	70	73	64	61	64
WALKERTON 2 NW	18	MAX	77	77	83	86	89	90	84	83	81	84	83	80	84	83	83	86	84	82	80	86	90	83	81	80	81	86	87	90	85	87	93	84	81	84
		MIN	69	66	71	69	71	70	67	69	68	62	59	70	71	57	58	61	62	66	58	67	71	71	71	65	57	57	58	67	61	64	72	65	65	65
WALLACETON LK DRUMMOND	08	MAX	88	77	75	77	82	86	91	85	85		86	87	88	89	85	90	85	89	90	88	90	89	92	83	82	83	88	89	90	85	92	86	86	86
		MIN	58	59	62	56	61	58	60	54	55		54	58	62	55	55	59	60	60	63	61	62	61	60	54	51	50	54	56	63	59	61	58	58	58
WALLOPS ISLAND NASA TEST FACIL	24	MAX	79	77	82	84	83	87	83	82	83	82	82	83	85	82	81	84	89	84	80	83	85	86	81	78	80	80	84	87	82	82	88	82	88	82
		MIN	65	64	72	70	69	71	66	65	67	63	62	74	70	63	64	69	69	70	72	66	73	72	70	63	62	62	63	68	62	62	76	62	62	62
WARSAW 2 NW	18	MAX	81	77	82	87	89	88	85	82	82	82	85	80	83	83	81	85	81	84	85	86	91	87	80	80	81	87	90	90						
		MIN	65	63	69	64	65	67	65	59	66	61	55	68	69	55	55	61	60	65	64	62	65	68	67	63	57	55	55	67						
WEST POINT 2 NW	17	MAX	81	74	80	85	86	87	85	84	81	82	83	81	83	82	81	86	86	83	80	85	88	85	81	81	79	83	87	90	89	87	92	83	83	83
		MIN	61	64	68	67	66	69	65	62	65	63	60	69	67	58	59	61	63	66	69	66	69	70	68	62	59	59	59	66	61	64	72	64	64	64
WILLIAMSBURG 2 N	24	MAX	77	74	82	84	87	89	85	83	79	81	82	87	85	85	85	87	87	87	81	85	88	84	80	78	79	83	85	87	82	87	92	83	83	83
		MIN	63	66	71	70	69	70	68	63	66	62	62	70	68	62	62	63	63	62	62	67	72	71	57	64	59	62	61	66	65	68	73	65	65	65
<b>EASTERN PIEDMONT 02</b>																																				
AMELIA COURTHOUSE 1	08	MAX	82	72		81	84	87	88	88	81	71	81	81	84	84	83	82	84	86	83	84	86	88	84		79	80	84	86	88	83	87	83	87	83

VIRGINIA  
201408

## DAILY TEMPERATURES (°F)

STATION	OB. TIME	MAX/MIN	DAY OF MONTH																															AVERAGE
			01	02	03	04	05	06	07	08	09	10	11	12	13	14	15	16	17	18	19	20	21	22	23	24	25	26	27	28	29	30	31	
ASHLAND	18	MIN	68	63		65	67	66	65	64	66	65	60	60	66	57	61	62	66	67	69	68	65	68	71		57	57	56	57	65	68	71	64.1
		MAX	79	74	81	85	86	86	84	82	80	83	81	79	80	81	79	81	82	80	82	84	85	82	79	77	78	83	85	86	83	86	90	82.0
CAMP PICKETT	08	MIN	67	64	68	65	70	66	65	60	67	61	61	68	66	55	57	61	63	66	68	66	68	68	63	56	56	57	67	60	66	70	63.9	
		MAX	81	74	70	79	83	84	86	84	79	69	80	78	84	81	80	81	83	85	84	83	84	88	83	78	77	78	83	85	88	82	85	81.3
CHASE CITY	17	MIN	61	61	64	65	68	66	65	62	63	64	61	66	65	55	58	64	65	67	69	68	66	68	69	66	58	55	55	55	64	65	69	63.5
		MAX	81	74	70	79	83	85	86	83	81	70	80	81	83	79	80	80	82	84	83	84	85	89	82	79	77	77	81	84	88	88	86	81.4
CLARKSVILLE	07	MIN	67	62	65	64	65	64	64	63	66	64	67	67	65	55	58	63	65	69	69	69	66	70	70	67	55	54	55	55	67	67	70	64.1
		MAX	82	75	71	80	84	88	90	86	81	68	81	81	83	81	81	82	85	87	84	87	88	91	84	80	79	80	84	88	91	82	88	83.0
CORBIN	09	MIN	65	62	62	67	69	68	67	64	63	67	69	66	59	58	64	66	69	71	71	69	71	71	69	61	59	59	60	67	70	72	65.9	
		MAX	75	76	83	85	87	83	82	82	82	83	82	83	81	83	80	82	81	81	80	87	87	80	77	78	79	84	86	85	80	86	92	82.3
CROZIER	07	MIN	68	63	67	63	63	66	64	58	65	60	59	69	68	55	54	59	64	66	71	66	63	69	68	64	58	56	58	68	56	61	72	63.3
		MAX	71	73	81	83	85	84	80	79	75	82	76	82	80	80	80	72	82	78	82	86	86	81	78	75	80	81	84	86	81	85	80.3	
FARMVILLE 2 N	07	MIN	62	63	63	65	65	63	61	63	61	59	61	65	55	57	57	59	59	67	67	64	64	69	65	56	55	58	65	55	61	61	61.5	
		MAX	82	71	71	81	84	86	87	82	79	70	80	78	82	81	80	82	84	85	77	83	85	87	83	79	77	77	81	84	88	80	86	81.0
GREENBAY 3 NE	09	MIN	59	63	63	66	62	65	65	64	65	64	64	65	55	55	60	60	65	69	69	66	66	69	60	59	57	57	58	64	64	70	63.0	
		MAX	82	70	70	79	81	86	87	83	83	69	80	77	82	79		82	84	87	80	83	84	88	88	88	77	78	83	86	88	82	87	81.8
JOHN H KERR DAM	08	MIN	66	61	62	65	66	65	63	63	62	65	63	65	64	54		62	65	67	69	68	64	64	65	64	56	53	55	59	63	67	71	63.2
		MAX	85	75	71	80	86	91	91	87	85	69	84	85	88	84	84	86	86	88	88	86	90	92	88	81	80	81	84	91	93	84	92	85.0
LOUISA	18	MIN	66	64	66	69	59	70	67	66	66	65	68	69	70	59	64	68	71	72	72	72	71	73	73	69	69	57	58	62	71	71	72	67.4
		MAX	81	76	83	86	88	83	84	81	79	84	77	82	82	80	84	82	81	84	85	87	83	80	77	79	84	87	88	86	84	90	82.9	
PALMYRA 3S	06	MIN	68	62	60	60	61	60	57	62	55	58	66	63	51	50	52	61	64	69	64	65	66	70	65	54	52	53	64	54	65	71	60.8	
		MAX	85	73	75	81	84	86	87	85	81	77	84	77	79	82	83	81	85	84	79	83	86	87	81	78	78	79	83	85	88	81	84	82.0
PETERSBURG	08	MIN	67	63	63	64	60	64	62	61	64	60	61	62	64	51	53	54	61	65	69	68	66	67	68	66	56	53	55	59	61	64	65	61.8
		MAX	84	76	72	82	85	87	88	86	83	74	83	84	85	83	82	82	86	88	88	85	87	89	85	81	79	78	85	87	89	88	91	83.9
RICHMOND INTL AP	24	MIN	62	63	66	69	69	69	67	65	66	67	61	61	70	59	58	65	66	68	69	70	70	70	72	67	59	58	59	59	69	69	72	65.6
		MAX	79	76	83	86	89	90	86	83	79	83	85	86	84	84	84	87	89	85	86	87	92	86	81	81	81	87	91	93	85	89	94	85.5
SANDSTON	07	MIN	64	65	71	69	71	70	69	65	68	65	63	72	70	60	63	64	67	69	72	70	74	69	64	61	61	60	70	65	69	74	67.2	
		MAX	85	76	75	83	86	87	87	85	83	79	82	84	84	82	83	83	86	88	84	84	87	89	83	79	78	80	85	87	89	82	88	83.6
WESTERN PIEDMONT 03 APPOMATTOX	07	MIN	59	62	65	66	66	67	67	61	62	61	59	60	69	58	58	60	62	63	67	68	68	70	64	58	57	56	62	63	67	62.9		
		MAX	81	71	71	83	84	87	87	82	79	67	79	76	82	79	80	81	83	82	76	84	85	87	81	81	76	79	82	86	88	82	86	80.9
BROOKNEAL	07	MIN	63	61	63	63	64	64	64	64	64	65	66	65	56	59	56	56	68	68	69	66	67	68	64	57	56	56	60	63	64	70	63.0	
		MAX	82	73	73	83	84	87	88	85	80	68	78	78	83	80	81	81	84	85	80	87	89	80	81	77	80	83	86	90	83	88	82.1	
CHARLOTTE COURT HOUSE	07	MIN	57	63	62	62	63	63	65	66	66	65	67	68	65	54	57	60	60	68	70	71	70	68	69	68	57	55	55	56	64	64	68	63.4
		MAX	83	73	73	81	85	87	87	85	80	69	80	80	81	80	82	82	84	86	82	86	87	89	83	80	80	78	83	86	90	80	86	82.2
CHARLOTTESVILLE 2W	08	MIN	60	61	61	63	65	65	66	65	65	66	66	66	65	56	56	59	61	64	70	70	67	67	70	66	57	58	58	57	66	66	72	63.7
		MAX	85	74	74	84	87	89	84	85	83	79	84	74	79	82	83	82	83	81	77	84	85	86	82	76	74	78	83	87	89	81	85	81.9
CHATHAM	07	MIN	64	61	63	63	65	65	64	64	62	64	65	65	59	57	59	60	69	68	69	65	66	69	64	59	59	60	64	60	61	67	63.4	
		MAX	78	74	71	80	82	83	83	80	75	65	74	74	80	76	79	79	79	82	78	83	84	84	77	79	75	76	77	81	85	79	84	78.6
DANVILLE REGIONAL AP	24	MIN	55	57	60	59	59	61	61	63	63	62	64	67	62	53	53	59	57	63	68	68	65	66	67	56	53	53	53	62	65	67	60.8	
		MAX	72	72	84	86	88	89	85	78	68	77	79	86	81	81	83	84	85	80	86	88	88	87	84	80	79	82	86	91	82	89	91	82.9
		MIN	64	64	64	66	65	66	65	67	63	67	70	70	64	57	63	64	69	71	70	69	68	69	73	64	60	57	57	66	70	72	71	66.0

VIRGINIA  
201408

## DAILY TEMPERATURES (°F)

STATION	OB. TIME	MAX/MIN	DAY OF MONTH																															AVERAGE
			01	02	03	04	05	06	07	08	09	10	11	12	13	14	15	16	17	18	19	20	21	22	23	24	25	26	27	28	29	30	31	
FREE UNION	08	MAX	82	71	73	81	83	85	79	83	78	75	78	69	75	78	79	78	80	78	75	81	83	82	80	74	73	78	81	85	86	78	80	78.7
		MIN	56	60	61	61	60	61	60	59	60	59	61	63	60	52	52	54	64	65	66	63	63	66	63	55	55	55	55	57	57	66	59.4	
LYNCHBURG INTL AP	24	MAX	70	72	82	85	86	86	82	76	67	75	74	81	78	80	80	82	80	75	85	85	84	81	81	79	77	80	84	86	79	85	88	80.2
		MIN	62	62	61	59	62	61	63	65	64	65	66	67	58	52	57	56	64	68	68	69	66		65	58	55	53	64	63	70	67	62.4	
MARTINSVILLE FLTR PLT	07	MAX	80	73	72	85	86	88	88	84	75	68	72	74	84	79	82	83	85	85	77	83	88	88	82	86		79	80	85	90	80	88	81.6
		MIN	57	62	62	60	61	59	62	62	65	63	66	68	62	53	53	56	56	65	69	68	65	66	67	68	56	53	53	53	62	65	68	61.5
MEADOWS OF DAN 5 SW	07	MAX	76	76	70	80	81	82	83	82	70	65	67	67	77	77	76	77	81	81	73	82	84	84	80	83	69	77	78	83	85	81	85	77.8
		MIN	58	58	60	58	58	58	58	62	62	62	63	64	60	54	54	57	56	65	63	63	63	63	64	66	57	53	52	51	53	65	66	59.5
MONTEBELLO FISH CULTURAL STN	07	MAX	78	68	68		78	78	78			64	68	65	78	70	74	77		79	72	72	82		80	80	68	74	77		87	82	74.9	
		MIN	60	56	56		52	55	54			58	58	59	58	48	48	45		53	61	62	60		64	60	48	45	46		51	67	55.2	
MONTICELLO	08	MAX	83	72	74	82	83	86	83	82	81	76	81	71	76	77	79	78	80	80	76	81	84	83	80	73	74	75	80	82	84	76	82	79.2
		MIN	61	61	61	64	64	65	64	63	62	62	65	63	63	59	58	57	57	68	68	68	65	65	68	64	60	58	59	62	60	60	66	62.6
ROCKY MT	07	MAX	81	73	72	84	84	86	87	81	74	66	69	76	81	77	81	82	85	84	74	78	88	89	81	83	73	77	78	86	89	79	87	80.2
		MIN	58	64	61	60	60	60	61	64	62	62	65	67	67	56	58	57	63	65	67	67	66	66	66	66	57	58	54	64	65	67	62.2	
SOUTH BOSTON	07	MAX	83	71	71	82	86	89	90	85	79	67	78	79	83	81	82	83	84	87	83	85	86	89	84	80	78	80	83	87	91	83	87	82.5
		MIN	61	62	64	64	66	65	66	65	62	65	67	65	56	58	63	63	68	70	70	67	67	70	69	58	57	57	58	66	68	70	64.3	
STUART	07	MAX	79	71	73	82	85	86	87	85	85	66	68	69	81	78	80	80	84	83	75	83	86	87	82	86	73	79	80	86	88	82	86	80.5
		MIN	58	62	61	59	61	62	62	63	62	62	66	66	61	53	54	57	64	67	64	64	64	64	67	68	56	54	54	56	64	67	68	61.6
TYE RIVER 1 SE	07	MAX	85	73	74	84	85	86	85	83	77	71	76	74	79	80	80	81	84	84	75	82	83	88	82	77	75	78	80	85	90	88	85	80.9
		MIN	57	62	63	61	62	64	65	63	64	65	66	67	61	54	55	56	64	65	67	68	64	65	68	66	67	54	54	55	61	62	68	62.4
<b>NORTHERN 04</b>																																		
BOSTON 4 SE	07	MAX	82	78	75	81	83	85	82	80	79	81	80	74	78	80	81	77	80	81	79	81	83	84	79	74	75	78	82		85		81	79.9
		MIN		59	62	59	59	61	60	56	58	57	59	63	60	51	50	50	61	66	67	68	65	64	69	64	55	53	54		52		61	59.4
EDINBURG	07	MAX	82	74	77	84	84	85	80	80	78	80	80	72	83	78	79	78	80	84	81	80	85	84	79	74	73	78	82	86	83	80	87	80.3
		MIN	55	59	58	57	57	58	60	54	54	55	55	61	60	51	48	47	47	62	62	63	63	64	65	63	53	51	52	55	49	49	62	56.4
FRONT ROYAL	07	MAX	84	76	79	83	85	86	86	79	77	81	81	75	77	76	79	78	81	83	79	82	81	85	85	81	77	78		86	84	77	77	80.6
		MIN	56	60	60	60	61	61	57	57	60	59	65	64	55	52	51	51	65	66	68	65	65	65	64	56	56		55	56	54	54	59.3	
LINCOLN	07	MAX	85	77	80	85	82	87	80	88	82	84	85	81	77	79	81	78	81	85	83	84	87	87	81	72	77	79	83	87	81	78	81	81.8
		MIN	55	63	63	59	59	59	61	55	56	60	57	60	52	48	48	49	52	62	64	62	62	66	63	63	54	52	52	57	53	59	66	57.8
LURAY 5 E	08	MAX	83	77	78	83	82	84	82	79	77	80	81	72	79	76	79	79	81	81	80	81	81	84	80	75	75	77	82	87	85	80	84	80.1
		MIN	60	56	59	58	58	60	59	55	59	55	61	61	59	50	48	48	59	61	65	64	62	64	68	63	53	51	54	59	52	62	66	58.4
MADISON	08	MAX	84	74	76	82	83	86	84	81	79	79	80	73	78	83	85	79	82	83	78	83	85	85	78	74	75	79	82	88	87	79	80	80.8
		MIN	61	61	64	62	61	63	63	59	62	59	61	65	62	54	53	55	56	65	67	70	66	67	69	65	58	57	57	59	57	60	66	61.4
MANASSAS	07	MAX	87	78	80	84	87	89		85	82	85	84	81	79	83	84	80	83	86	84		85	83	72	79							82.7	
		MIN	60	64	65	68	66	67		60	62	65	63	64	68	57	54	57	68	69	73		67		71	67	61	58					64.1	
MT WEATHER	07	MAX	80	70	74	78	80	82	76	76	76	80	79	74	70	74	76	74	75	80	76	78	76	82	76	76	70	76	79	83	78	73	76	76.5
		MIN	62	60	61	62	63	63	64	62	62	63	62	61	61	56	53	53	59	65	65	66	64	66	65	60	60	60	62	64	56	57	62	61.3
PIEDMONT RSCH STN	08	MAX	84	75	74	73	85	88	85	83	81	80	82	74	79	77	81	79	82	82	79	83	85	86	80	73	77	79	82	85	84	80	82	80.6
		MIN	62	62	67	60	60	65	53	57	52	56	59	64	64	60	55	57	59	52	63	61												M
SOMERSET	07	MAX	86	75	75	84	86	87	86	83	82	80	84	74	79	82	83	81	83	82	78	83	87	87	79	75	76	78	83	87	85	81	83	81.7
		MIN	62	62	63	61	60	62	61	57	61	57	59	66	63	54	54	52	57	65	66	66	66	66	70	65	55	58	55	63	56	63	66	61.0
SPERRYVILLE	06	MAX	81		75	79	82	83	80	78	77	79	80	72	75	78	79	77	80	82	78	81	82	84										M

VIRGINIA  
201408

## DAILY TEMPERATURES (°F)

STATION	OB. TIME	MAX/MIN	DAY OF MONTH																															AVERAGE			
			01	02	03	04	05	06	07	08	09	10	11	12	13	14	15	16	17	18	19	20	21	22	23	24	25	26	27	28	29	30	31				
STERLING RCS	07	MIN	64		61	62	61	63	63	58	58	58	58	62	65	54	53	52	52	63	64	67	64	66													M
		MAX	88	79	80	85	86	90	83	84	84	85	86	84	72	82	84	80	82	88	84	85	87	88	82	72	78	82	86	88	83	80	83	83	83	83.2	
VIENNA	07	MIN	60	64	65	63	63	63	66	60	63	63	60	62	68	58	56	54	57	66	67	69	63	65	69	65	59	58	60	62	55	58	66	62.2			
		MAX	88	82	86	89	92	87	86	86	86	85	89	84	79	83	85	83	85	89	88	88	89	92	85	75	83	92	90	93	87	87	95	86.7			
WASHGTN DULLES INTL AP	24	MIN	62	67	68	69	68	68	69	65	65	68	66	63	71	61	58	58	61	70	71	73	69	69	72	69	64	64	64	66	60	60	71	66.1			
		MAX	77	79	83	85	87	84	84	81	82	84	82	77	82	82	79	81	87	82	82	84	85	81	71	76	81	85	87	82	79	80	90	82.0			
WASHINGTON REAGAN AP	24	MIN	64	63	66	62	61	64	62	59	61	61	58	67	63	53	53	56	65	64	68	65	62	67	66	60	58	57	59	59	53	66	71	61.7			
		MAX	80	84	85	89	92	85	87	84	87	88	85	78	86	85	82	85	88	84	86	89	90	84	76	82	84	89	89	86	84	86	96	85.6			
WINCHESTER	07	MIN	68	68	70	69	70	71	69	71	71	70	73	70	64	62	65	72	72	74	72	71	74	71	68	66	67	69	71	65	70	77	69.7				
		MAX	85	74	79	83	87	87	87	82	78	75	80	77	76	79	80	80	81	85	82	83	83	84	80	70	76	80	83	88	84	79	83	81.0			
WINCHESTER 7 SE	08	MIN	59	60	62	61	62	62	62	58	58	62	62	62	63	56	52	51	55	68	67	66	66	67	68	62	58	55	56	61	54	54	63	60.4			
		MAX	85	73	78	82	85	85	82	84	77	80	78	77	78	80	82	82	67	85	85														M		
WOODSTOCK 2 NE	07	MIN	83	76	78		85	85	81	80	80	82	81	73	82	76	77	79	81	82	81	82	85	84	82	82	75	79	82	86	83	79	88	81.0			
		MAX	58	57	58		59	60	62	55	56	57	57	61	61	51	49	48	49	61	64	65	65	65	63	63	55	52	52	57	49	50	64	57.4			
CENTRAL MOUNTAIN 05 COVINGTON FLTR PLT	07	MIN	82	76	77	83	84	89	86	86	76	72	71	71	82	75	77	79	83	81	75	85	86	87	82	86	75	79	81	87	89	81	88	81.0			
		MAX	54	62	62	57	57	58	58	57	57	64	64	65	59	51	51	50	50	61	63	65	63	63	66	65	58	55	54	57	55	56	65	58.8			
DALE ENTERPRISE	07	MIN	83	76	80	77	81	81	80	78	78	80	78	70	82	75	80	79	82	82	80	80	86	85	79	79	77	75	81	85	85	80	87	80.0			
		MAX	63	60	60	57	59	60	57	56	60	57	60	61	59	51	49	47	48	62	64	65	60	60	64	63	55	51	51	53	53	54	65	57.5			
GATHRIGHT DAM	07	MIN	78	74	75	77	81	84	80	82	73	68	68	65	80	70	73	75	77	78	71	81	81	77	81	71	75	76	82	83	78	85	76.8				
		MAX	53	61	60	55	57	58	59	59	59	63	63	63	58	50	51	50	50	60	63	64	63	62	62	64	57	52	52	55	58	58	65	58.2			
HOT SPRINGS	07	MIN	78	72	73	78	80	82	80	80	72	68	68	65	79	70	72	75	77	76	76	80	81	81	78	81	76	73	75	81	83	77	83	76.5			
		MAX	52	60	60	55	55	58	58	57	57	62	63	62	56	50	51	48	48	62	63	62	62	62	66	62	53	49	50	53	57	57	64	57.2			
LEXINGTON	07	MIN	83	74	74	83	85	87	82	85	76	70	72	69	82	79	78	82	83	82	75	85	85	85	83	82	73	79	81	86	90	80	86	80.5			
		MAX	53	62	62	57	57	60	61	61	63	65	65	64	59	50	51	49	49	62	65	65	65	65	66	64	58	51	52	56	60	60	67	59.5			
MILLGAP	07	MIN	77	70	74	78	80	80	73	78	73	70	67	63	78	66	70	73	78	75	72	79	81	79	79	82	69	74	80	84	84	80	83	75.8			
		MAX	48	52	57	50	51	53	53	49	49	60	61	59	53	45	46	41	41	57	58	62	57	57	63	62	52	47	47	48	48	48	60	52.7			
MUSTOE 1 SW	24	MIN	69	74	77	78	77	71	76	71	69	66	62	75	68	69	72	76	76	72	78	79	76	76	78	67	72	77	82	81	77	82	80	74.3			
		MAX	53	53	55	49	55	52	52	50	60	60	58	60	51	46	41	40	53	58	62	59	55	61	63	58	50	43	46	54	49		61	53.6			
ROANOKE 8 N	07	MIN	83	73	73	83	85	88	89	84	74	69	69	69	82	77	79	83	84	83	75	79	88	88	80	84	73	79	80	86	89	80	87	80.5			
		MAX	57	61	62	58	57	61	62	65	64	64	65	65	60	56	58	55	56	65	68	64	64	67	68	67	50	57	56	57	62	63	70	61.4			
ROANOKE INTL AP	24	MIN	73	72	83	83	85	88	83	74	67	69	70	80	76	80	83	84	85	75	79	87	88	81	83	73	78	80	85	89	78	87	90	80.3			
		MAX	62	62	63	58	61	62	65	66	64	65	66	66	61	58	61	55	65	69	67	63	67	69	70	65	58	55	56	70	64	69	69	63.6			
STAUNTON WATER TRMTMT PLT	08	MIN	82	74	74	83	84	82	78	83	76	75	73	67	80	77	79	80	82	82	78	84	84	82	83	79	71	78	82	86	88	80	85	79.7			
		MAX	60	58	58	58	59	64	58	60	60	59	63	61	60	55	51	50	50	65	65	65	63	66	67	62	55	53	53	59	56	59	69	59.4			
WAYNESBORO WTP	07	MIN	83	83	74	82	83	84	80	81	78	75	76	70	80	79	79	82	83	82	82	83	87	83	84	78	72	77	81	86	86	79	84	80.5			
		MAX	50	50	59	59	59	61	61	61	61	61	61	61	63	61	52	51	50	50	65	65	65	62	62	66	63	54	52	52	53	57	57	68	58.4		
SOUTHWESTERN MOUNTAIN 06 ABINGDON 3S	22	MIN	78		82	80		83	82	81	71	79	76	80	80	72	77	79	80	78	76	81	86											80.6			
		MAX	56		56	53		57	59	60	63	63	64	67	54	52	54	55	57	65	66	63	62											59.4			

VIRGINIA  
201408

## DAILY TEMPERATURES (°F)

STATION	OB. TIME	MAX/MIN	DAY OF MONTH																															AVERAGE	
			01	02	03	04	05	06	07	08	09	10	11	12	13	14	15	16	17	18	19	20	21	22	23	24	25	26	27	28	29	30	31		
BIG STONE GAP	08	MAX	81	81	81	80	85	85	84	83	71	83	75	77	83	74	79	80	81	80	79	84	82	83	88	88	87	86	86	88	88	88	89	89	82.6
		MIN	56	60	58	58	57	61	62	63	65	67	67	68	57	55	55	56	56	64	68	67	66	66	67	61	58	58	59	64	65	65	65	61.8	
BLACKSBURG NWSO	07	MAX	79	69	72	78	82	85	85	80	71	66	67	66	81	71	76	78	80	79	72	78	84	83	85	85	70	76	78	84	85	80	85	77.7	
		MIN	54	59	59	53	53	56	57	60	61	61	62	64	58	54	54	49	50	63	66	63	63	62	63	64	55	51	50	52	61	64	65	58.3	
BURKES GARDEN	07	MAX	74	65	71	71	75	78	75	74	67	65	64	65	75	61	70	72	74	74	71	77	78	79	79	78	67	72	75	78	78	79	80	72.9	
		MIN	48	57	50	49	48	55	52	52	61	58	60	62	56	48	56	47	47	61	60	59	60	59	63	63	55	47	44	49	55	54	63	54.8	
CHRISTIANSBURG	07	MAX	76	65	71	77	83	86	84	78	69	63	66	65	78	67	73	75	79	78	69	76	81	83	82	82	67	74	78	83	83	83	84	76.1	
		MIN	54	58	59	54	54	57	57	60	61	60	61	63	57	53	53	53	56	63	65	63	62	62	67	63	55	52	51	50	62	62	65	58.5	
CLINTWOOD 1 W	07	MAX	76	78	75	75	78	80	80	79	70	76	73	76	80	68	76	76	77	75	76	79	80	81	83	81	83	80	81	80	82	82	82	78.0	
		MIN	52	56	57	56	57	57	58	60	60	65	64	64	55	51	51	53	53	63	64	65	61	61	63	67	60	56	56	56	60	64	64	59.0	
COPPER HILL	07	MAX	73	66	66	77	77	78	82	76	68	61	63	65	80	69	71	76	79	77	71	75	81	82	77	79	66	72	72	81	82	72	80	74.0	
		MIN	56	57	59	55	54	54	57	61	60	58	61	61	59	54	54	53	52	61	65	62	62	63	65	62	55	55	53	54	61	59	66	58.3	
GALAX RADIO WBRF	07	MAX	73	64	76	80	82	81	81	82	68	68	66	73	82	70	77	78	82	81	75	83	83	84	83	84	68	74	79	83	86	80	82	77.7	
		MIN	58	58	57	51	56	54	59	58	62	60	63	63	55	52	54	53	59	64	60	61	60	61	65	65	54	56	50	52	60	66	64	58.4	
GALAX WTP	07	MAX	73	65	69	80	81	81	82	81	68	66	66	68	81	80	77	78	81	80	74	81	82	83	84	83	69	74	77	81	85	79	81	77.1	
		MIN	50	58	58	51	51	54	54	59	61	60	61	63	59	57	52	52	53	60	60	60	61	60	60	65	55	51	49	50	57	62	64	57.0	
GRUNDY	07	MAX	78	78	77	74	79	84	82	77	72	77	77	82	83	72	79	80	81	79	76	85	86	86	87	81	82	83	82	81	81	87	88	80.5	
		MIN	58	59	61	60	60	62	64	63	65	65	68	69	63	61	61	60	61	66	68	69	66	66	66	71	63	60	60	61	66	66	69	63.8	
JOHN FLANNAGAN LAKE	07	MAX				79	82	84	83	80				78	79	83	69			82	76	83	85	78	86		85	83	83	84	85	87	88	81.9	
		MIN				58	59	61	61	62				62	65	59	56			56	65	65	62	63	64		61	58	58	59	63	64	66	61.2	
LEBANON	07	MAX	81	75	81	72	83	83	82	82	71	74	76	80	81	71	78	79	81	80	77	82	83	82	85	85	82	83	83	84	85	89	88	80.6	
		MIN	51	57	55	52	52	55	57	58	63	64	64	66	56	51	51	54	53	63	65	62	60	60	63	63	61	54	49	49	59	60	62	57.7	
NORA 4 SSE	07	MAX	76	74	76	74	78	81	77	75	68	74	72	74	76	66	76	77	79	74	72	81	80	77	82	79	79	77	76	78	79	84	83	76.6	
		MIN	62	59	58	59	60	65	62	62	64	64	65	65	56	56	58	61	60	65	65	65	62	62	67	68	61	58	59	63	66	67	64	62.2	
NORTH FORK LAKE	08	MAX	79						83	79				79	79	82	68			80	74	83	84	81			86	81	82	83	84		M		
		MIN	54						58	61				62	64	59	54			54	64	64	61	60			60	56	55	58	62		M		
PULASKI 2 E	07	MAX	80	70	74	76	82	84	84	81				83	79	78	80	82	83	75	83	85	86	85	84	70	76	78	83	86	83	87	80.6		
		MIN	48	61	61	48	52	57	59	59				60	54	54	52	51	51	65	64	64	63	66	67	60	53	51	49	61	61	67	57.7		
RADFORD 3 N	07	MAX	78	69	73	76	82	84	84	79	70	65	66	66	81	70	74	78	81	78	67	80	84	84	84	85	68	75	77	82	83	81	86	77.1	
		MIN	56	61	60	55	58	55	58	57	61	62	63	63	59	50	53	49	54	64	65	63	61	57	62	65	56	52	50	50	57	63	64	58.2	
RICHLANDS	07	MAX	80	76	82	80	82	82	81	80	72	75	76	80	80	69	77	79	79	81	80	82	82	81	84	83	80	81	83	85	84	88	88	80.4	
		MIN	51	56	55	55	54	56	60	59	61	61	63	60	56	53	53	53	53	62	62	65	63	61	62	65	57	52	53	52	57	61	64	57.9	
SALTVILLE 1N	07	MAX	80	80	81	78	83	83	81	82	71	74	74	78	81	70	78	79	80	80	75	81	83	82	85	84	79	80	82	84	86	89	89	80.4	
		MIN	53	54	54	55	55	57	58	60	61	61	63	66	55	53	54	55	55	62	65	65	65	64	64	65	58	52	53	53	60	62	61	58.6	
STAFFORDSVILLE 3 ENE	07	MAX	80	81	75	77	81	84	85	79	69	65	67	67	82	70	74	79	81	80	70	79	83	85	85	83	69	75	77	81	83	80	85	77.8	
		MIN		60	59	55	55	56	56	58	59	62	62	63	60	52	52	50	51	60	65	65	62	62	64	65	59	52	52	53	58	58	65	58.3	
WISE 3E	17	MAX	75	76	73	76	78	78	77	74	77	71	74	77	76	74	75	77	75	73	80	80	79	83	81	81	79	78	80	82	83	82	80	77.5	
		MIN	57	59	52	53	57	61	59	60	65	62	66	65	55	51	58	51	61	65	64	61	60	65	66	65	60	55	53	61	64	64	63	59.9	
WYTHEVILLE 1 S	07	MAX	78	68	75	78	82	85	83	82	68	65	66	68	82	70	77	77	80	80	71	81	83	83	85	84	74	77	83	84	83	86	77.9		
		MIN	51	60	59	51	51	57	56	60	62	60	61	63	55	53	54	51	52	63	63	62	63	64	66	67	56	52	49	49	61	62	67	58.1	

VIRGINIA  
201408

## SNOWFALL AND SNOW ON GROUND (INCHES)

STATION		DAY OF MONTH																															
		01	02	03	04	05	06	07	08	09	10	11	12	13	14	15	16	17	18	19	20	21	22	23	24	25	26	27	28	29	30	31	
<b>VIRGINIA</b>																																	
<b>TIDEWATER 01</b>																																	
DISPUTANTA	SNOWFALL																																
EASTVILLE	SNOWFALL																																
EMPORIA 1 WNW	SNOWFALL																																
FREDERICKSBURG SEWAGE	SNOWFALL																																
HOLLAND 1 E	SNOWFALL																																
HOPEWELL	SNOWFALL																																
	SN ON GND					-	-	-	-	-	-																						
NORFOLK INTL AP	SNOWFALL																																
	SN ON GND					-	-	-	-	-	-																						
NORFOLK SOUTH	SNOWFALL																																
NORTH	SNOWFALL																																
	SN ON GND																																
PAINTER 2W	SNOWFALL																																
STONY CREEK 2 N	SNOWFALL																																
	SN ON GND																																
SUFFOLK LAKE KILBY	SNOWFALL																																
	SN ON GND																																
WAKEFIELD 1NW	SNOWFALL																																
	SN ON GND																																
WALKERTON 2 NW	SNOWFALL																																
	SN ON GND																																
WALLACETON LK DRUMMOND	SNOWFALL																																
WALLOPS ISLAND NASA TEST FACIL	SNOWFALL																																
	SN ON GND																																
WARSAW 2 NW	SNOWFALL																																
WEST POINT 2 NW	SNOWFALL																																
	SN ON GND																																
WILLIAMSBURG 2 N	SNOWFALL																																

Snowfall: Includes snow and ice. Values for NWS stations (J index note) are Mid-Mid (LST).

Snow on ground: Includes snow, sleet, ice, and hail. Values for NWS stations (J index note) are observed at 12 UTC (GMT).

Water Equivalent: Given for NWS stations (J index note) only, when snow depth is 2 inches or more, and is measured at 18 UTC (GMT)

VIRGINIA  
201408

## PAN EVAPORATION AND WIND

STATION		DAY OF MONTH																															TOTAL OR AVERAGE		
		01	02	03	04	05	06	07	08	09	10	11	12	13	14	15	16	17	18	19	20	21	22	23	24	25	26	27	28	29	30	31			
VIRGINIA EASTERN PIEDMONT 02 JOHN H KERR DAM	WIND	-	-	-	-	-	-	-	-	-	-	-	-	-	-	-	-	-	-	-	-	-	-	-	-	-	-	-	-	-	-	-	-	-	M
	EVAP	-	-	-	-	-	-	-	-	-	-	-	-	-	-	-	-	-	-	-	-	-	-	-	-	-	-	-	-	-	-	-	-	-	M
	MAX	-	-	-	-	-	-	-	-	-	-	-	-	-	-	-	-	-	-	-	-	-	-	-	-	-	-	-	-	-	-	-	-	-	M
	MIN	-	-	-	-	-	-	-	-	-	-	-	-	-	-	-	-	-	-	-	-	-	-	-	-	-	-	-	-	-	-	-	-	-	M

Evaporation: Is measured in hundredths of inches.

Wind: Is measured in miles.

Max and Min: The maximum and minimum temperatures (Fahrenheit) of the water in the evaporation pan.

# STATION INDEX

STATION	INDEX NO.	DIVISION	COUNTY	LATITUDE	LONGITUDE	ELEVATION (IN FEET)	OBSERVATION TIME AND TABLES			
							LOCAL STD TIME			
							TEMP	PRECIP	EVAP	SPECIAL SEE (NOTES)
VIRGINIA										
ABINGDON 3S	0021	06	WASHINGTON	36 40	81 58W	1925	22	22		H
ALBERTA 5N	0079	02	BRUNSWICK	36 56	77 54W	376		08		H
ALTAVISTA	0166	03	CAMPBELL	37 7	79 17W	529		07		CH
AMELIA COURTHOUSE 1	0187	02	AMELIA	37 21	77 59W	345	08	08		H
APPOMATTOX	0243	03	APPOMATTOX	37 20	78 50W	850	07	07		H
ASHLAND	0327	02	HANOVER	37 45	77 29W	220	18	18		H
BEDFORD 4 NW	0561	03	BEDFORD	37 23	79 34W	1228		07		CH
BIG STONE GAP	0735	06	WISE	36 52	82 46W	1464	08	08		H
BLACKSBURG NWSO	0766	06	MONTGOMERY	37 12	80 25W	2100	07	07		CH
BOSTON 4 SE	0860	04	CULPEPER	38 33	78 6W	590	07	07		H
BREMO BLUFF	0993	02	FLUVANNA	37 43	78 17W	225		07		CH
BROOKNEAL	1082	03	CAMPBELL	37 4	78 57W	408	07	07		H
BUCKINGHAM	1136	02	BUCKINGHAM	37 30	78 32W	580		07		H
BUENA VISTA	1159	05	ROCKBRIDGE	37 44	79 22W	840		07		H
BURKES GARDEN	1209	06	TAZEWELL	37 6	81 20W	3068	07	07		H
CAMP PICKETT	1322	02	NOTTOWAY	37 2	77 57W	330	08	08		CH
CHARLOTTE COURT HOUSE	1585	03	CHARLOTTE	37 3	78 39W	569	07	07		H
CHARLOTTESVILLE 2W	1593	03	ALBEMARLE	38 2	78 31W	866	08	08		H
CHASE CITY	1606	02	MECKLENBURG	36 47	78 29W	510	17	17		H
CHATHAM	1614	03	PITTSYLVANIA	36 49	79 25W	651	07	07		CH
CHRISTIANSBURG	1692	06	MONTGOMERY	37 8	80 24W	2100	07	07		H
CLARKSVILLE	1746	02	MECKLENBURG	36 37	78 33W	330	07	07		H
CLINTWOOD 1 W	1825	06	DICKENSON	37 9	82 29W	1780	07	07		H
CONCORD 4 SSW	1955	03	CAMPBELL	37 17	78 58W	815		07		H
COPPER HILL	1999	06	FLOYD	37 5	80 9W	2690	07	07		H
CORBIN	2009	02	CAROLINE	38 12	77 22W	220	09	09		H
COVINGTON FLTR PLT	2044	05	ALLEGHANY	37 49	79 59W	1230	07	07		H
CRAIGSVILLE 2 S	2064	05	AUGUSTA	38 3	79 23W	1758		07		H
CROZIER	2142	02	GOOCHLAND	37 40	77 53W	350	07	07		H
DALE ENTERPRISE	2208	05	ROCKINGHAM	38 27	78 56W	1358	07	07		H
DANVILLE REGIONAL AP R	2250	03	PITTSYLVANIA	36 34	79 20W	571	24	24		H
DISPUTANTA	2400	01	PRINCE GEORGE	37 7	77 12W	15	07	07		H
EASTVILLE	2635	01	NORTHAMPTON	37 23	75 58W	10	07	07		H
EDINBURG	2663	04	SHENANDOAH	38 48	78 35W	928	07	07		H
EMPORIA 1 WNW	2790	01	GREENSVILLE	36 42	77 34W	100	08	08		H
FARMVILLE 2 N	2941	02	CUMBERLAND	37 20	78 23W	450	07	07		H
FREDERICKSBURG SEWAGE	3204	01	FREDERICKSBURG	38 17	77 27W	15	07	07		H
FREE UNION	3213	03	ALBEMARLE	38 5	78 35W	590	08	07		H
FRONT ROYAL	3229	04	WARREN	38 54	78 11W	930	07	07		H
GALAX RADIO WBRF	3267	06	CARROLL	36 40	80 55W	2385	07	07		H
GALAX WTP	3272	06	CARROLL	36 39	80 55W	2360	07	07		CH
GATHRIGHT DAM	3310	05	ALLEGHANY	37 57	79 57W	1770	07	07		CH
GLASGOW 1 SE	3375	05	ROCKBRIDGE	37 37	79 26W	737		07		H
GREENBAY 3 NE	3565	02	PRINCE EDWARD	37 11	78 17W	500	09	09		H
GRUNDY	3640	06	BUCHANAN	37 17	82 5W	1170	07	07		H
HOLCOMB ROCK	4039	03	BEDFORD	37 33	79 24W	810		07		H
HOLLAND 1 E	4044	01	SUFFOLK	36 41	76 46W	80	08	08		H
HOPEWELL	4101	01	PRINCE GEORGE	37 18	77 17W	40	16	16		H
HOT SPRINGS	4128	05	BATH	37 60	79 50W	2236	07	07		H
HUDDLESTON 4 SW	4148	03	BEDFORD	37 8	79 32W	898		07		H
JOHN FLANNAGAN LAKE	4410	06	DICKENSON	37 14	82 21W	1460	07	07		H
JOHN H KERR DAM	4414	02	MECKLENBURG	36 36	78 18W	250	08	08	08	CH
LAFAYETTE 1 NE	4676	06	MONTGOMERY	37 14	80 12W	1320		07		H
LEBANON	4777	06	RUSSELL	36 54	82 2W	1912	07	07		H
LEXINGTON	4876	05	ROCKBRIDGE	37 47	79 26W	1097	07	07		H
LINCOLN	4909	04	LOUDOUN	39 5	77 42W	500	07	07		H
LOUISA	5050	02	LOUISA	38 3	78 0W	420	18	18		H
LURAY 5 E	5096	04	PAGE	38 40	78 22W	1400	08	08		H
LYNCHBURG INTL AP R	5120	03	CAMPBELL	37 19	79 12W	940	24	24		HJ
MADISON	5150	04	MADISON	38 22	78 15W	577	08	08		H
MANASSAS	5204	04	MANASSAS	38 44	77 30W	245	07	07		H
MARTINSVILLE FLTR PLT	5300	03	HENRY	36 42	79 52W	760	07	07		H
MEADOWS OF DAN 5 SW	5453	03	PATRICK	36 40	80 27W	2225	07	07		H
MILLGAP	5595	05	HIGHLAND	38 18	79 43W	2421	07	07		CH
MONTEBELLO FISH CULTURAL STN	5690	03	NELSON	37 51	79 8W	2667	07	07		H



# STATION INDEX

STATION	INDEX NO.	DIVISION	COUNTY	LATITUDE	LONGITUDE	ELEVATION (IN FEET)	OBSERVATION TIME AND TABLES			
							LOCAL STD TIME			
							TEMP	PRECIP	EVAP	SPECIAL SEE (NOTES)
MONTICELLO	5700	03	ALBEMARLE	38 1	78 27W	758	08	08		H
MT WEATHER	5851	04	LOUDOUN	39 4	77 53W	1659	07	07		H
MTN GROVE	5756	05	BATH	38 6	79 53W	1775		07		H
MUSTOE 1 SW	5880	05	HIGHLAND	38 20	79 40W	2380	24	24		H
NEW CASTLE	6012	05	CRAIG	37 18	80 3W	1258		07		H
NORA 4 SSE	6125	06	DICKENSON	37 1	82 19W	2650	07	07		H
NORFOLK INTL AP R	6139	01	NORFOLK (CITY)	36 54	76 12W	30	24	24		HJ
NORFOLK SOUTH	6147	01	NORFOLK (CITY)	36 52	76 14W	100	24	24		H
NORTH	6161	01	MATHEWS	37 26	76 26W	10	07	07		H
NORTH FORK LAKE	6173	06	WISE	37 7	82 38W	1675	08	08		H
PAINTER 2W	6475	01	ACCOMACK	37 35	75 49W	30	16	16		CH
PALMYRA 3S	6491	02	FLUVANNA	37 49	78 16W	410	06	06		H
PEDLAR DAM	6593	03	AMHERST	37 40	79 17W	1024		07		H
PETERSBURG	6656	02	PETERSBURG	37 14	77 24W	15	08	08		H
PIEDMONT RSCH STN	6712	04	ORANGE	38 14	78 7W	520	08	08		CH
PULASKI 2 E	6955	06	PULASKI	37 3	80 47W	1850	07	07		CH
RADFORD 3 N	6999	06	PULASKI	37 12	80 35W	1800	07	07		H
RICHLANDS	7174	06	TAZEWELL	37 6	81 48W	1910	07	07		H
RICHMOND INTL AP R	7201	02	HENRICO	37 30	77 19W	164	24	24		HJ
ROANOKE 8 N	7278	05	ROANOKE	37 22	79 58W	1190	07	07		H
ROANOKE INTL AP R	7285	05	ROANOKE	37 19	79 58W	1175	24	24		HJ
ROCKY MT	7338	03	FRANKLIN	36 59	79 54W	1315	07	07		CH
SALTVILLE 1N	7506	06	SMYTH	36 53	81 46W	1733	07	07		H
SANDSTON	7541	02	HENRICO	37 33	77 17W	165	07	07		H
SOMERSET	7904	04	ORANGE	38 15	78 16W	510	07	07		H
SOUTH BOSTON	7925	03	HALIFAX	36 42	78 53W	329	07	07		H
SPERRYVILLE	7985	04	RAPPAHANNOCK	38 39	78 14W	750	06	06		H
STAFFORDSVILLE 3 ENE	8022	06	GILES	37 16	80 43W	1950	07	07		CH
STAUNTON WATER TRMTMT PLT	8062	05	AUGUSTA	38 10	79 5W	169	08	08		H
STERLING RCS	8084	04	LOUDOUN	38 59	77 29W	288	07	07		H
STONY CREEK 2 N	8129	01	SUSSEX	36 58	77 24W	105	08	08		H
STUART	8170	03	PATRICK	36 38	80 15W	1375	07	07		H
SUFFOLK LAKE KILBY	8192	01	SUFFOLK	36 44	76 36W	22	24	24		H
TYE RIVER 1 SE	8600	03	NELSON	37 38	78 56W	720	07	07		H
VIENNA	8737	04	FAIRFAX	38 54	77 16W	418	07	07		H
WAKEFIELD 1NW	8800	01	SUSSEX	36 59	77 0W	113	24	24		CH
WALKERTON 2 NW	8829	01	KING AND QUEEN	37 45	77 2W	50	18	18		H
WALLACETON LK DRUMMOND	8837	01	CHESAPEAKE	36 36	76 26W	20	08	08		H
WALLOPS ISLAND NASA TEST FACIL R	8849	01	ACCOMACK	37 56	75 28W	46	24	24		HJ
WARSAW 2 NW	8894	01	RICHMOND	37 59	76 47W	140	18	18		H
WASHGTN DULLES INTL AP R	8903	04	LOUDOUN	38 56	77 28W	290	24	24		HJ
WASHINGTON REAGAN AP R	8906	04	ARLINGTON	38 51	77 2W	10	24	24		HJ
WAYNESBORO WTP	8941	05	WAYNESBORO	38 5	78 53W	1270	07	07		H
WEST POINT 2 NW	9025	01	KING WILLIAM	37 34	76 48W	20	17	17		H
WILLIAMSBURG 2 N	9151	01	YORK	37 18	76 42W	70	24	24		CH
WILLIS	9169	06	FLOYD	36 55	80 30W	2810		07		CH
WINCHESTER	9181	04	FREDERICK	39 11	78 9W	720	07	07		H
WINCHESTER 7 SE	9186	04	FREDERICK	39 11	78 7W	680	08	08		H
WINTERPOCK 4 W	9213	02	CHESTERFIELD	37 19	77 39W	300		07		H
WISE 3E	9215	06	WISE	36 60	82 32W	2549	17	17		CH
WOODSTOCK 2 NE	9263	04	SHENANDOAH	38 54	78 28W	675	07	07		H
WOOLWINE	9272	03	PATRICK	36 47	80 17W	1500		07		CH
WYTHEVILLE 1 S	9301	06	WYTHE	36 58	81 5W	2458	07	07		H

# REFERENCE NOTES

**STATION NAMES:** Name of the city, town or locality. Figures and letters following the station names indicate the distance in miles and direction from the post office or town community center.

**DIVISIONS:** Areas within a state of similar climatological characteristics. Division averages are calculated using data from stations that record temperature and/or precipitation. Station Precipitation totals flagged with an 'F' or 'M' are excluded from the Divisional Average calculations of precipitation. Stations with monthly Temperature averages flagged with an 'F' or 'M' are included in the Divisional Average if there are no more than 9 flagged or missing daily values in the month, else they are excluded from the divisional average for temperature.

**NORMALS:** The average value of the meteorological element over a time period. Effective 1 January 2012, the averaging period is 1981 to 2010. The normals for National Weather Service localities have been adjusted so as to be representative for the current observation site.

**MONTHLY DEGREE DAY TOTALS:** One heating (cooling) degree day is accumulated for each whole degree that the daily mean temperature is below (above) 65 degrees Fahrenheit.

**PRECIPITATION:** Values shown in hundredths of inches are water equivalent totals, i.e., total of liquid and melted frozen precipitation. In the "Monthly Summarized Data" table the total snow and sleet values shown in tenths of inches are unmelted amounts. The max depth on ground values of snow and sleet shown in whole inches are cumulative unmelted amounts. The number of days with .10, .50, 1.00 or more refers to water equivalents.

**PRECIPITATION QUALITY CONTROL:** The NCDC quality control process may flag precipitation data that are spatially inconsistent, exceed climatological limits, or are inconsistent with prevailing weather patterns.

**TEMPERATURE:** Original temperature values are given in the "Daily Temperature" table. Summary temperature information (averages, departures, extremes, monthly degree day totals) is based on the values labeled MAX/MIN.

**WIND:** (As shown in the "Evaporation and Wind" table) the total wind movement in miles over the evaporation pan as determined by an anemometer recorder located 6-8 inches above the pan.

## SYMBOLS AND LETTERS USED IN THE STATION INDEX TABLE

- C Station is equipped with recording rain gage (R) but values in this bulletin are from a non-recording rain gage unless indicated by an R.
- G Observations appear in the "Soil Temperatures" table.
- H Observations appear in the "Snowfall and Snow on the Ground" table.
- J Station also published as a Local Climatological Data publication.
- VAR Observation time varies.
- SR Observation time near sunrise.
- SS Observation time near sunset.

## SYMBOLS AND LETTERS USED IN THE DATA TABLES

- (DAILY DATA ARE FOR THE 24 HOURS IMMEDIATELY PRECEDING OBSERVATION TIME.)
- BLANK Entries in the "Monthly Summarized Data" table indicate no record.
- BLANK Entries in the "Daily Precipitation" and "Snowfall and Snow on the Ground" tables indicate zero.
- BLANK Entries in the "Daily Temperature" table indicate a missing record

- No record. Data not recorded or not received in time for publication.
- + Precipitation or temperature extremes occurred on one or more previous dates during the month.
- \* Rain gage not read. Precipitation is included in the amount following the asterisks.
- Time distribution may not be known. A \* preceding the monthly total indicates precipitation amount is being carried forward to next month's total, and may include amounts from the previous month(s).
- a As a subscript, indicates accumulated total.

by NCDC's Climate Prediction Branch and its entries for the report. If on the day in which the precipitation was recorded, the temperature was below 32°F, the date of last reading. (Hawaii stations)

- B Divisional Departure from normals are computed using 1981-2010 normals.
- E Normalized HDD/CDD Calculation. E is appended to the HDD/CDD Calculation when 1-9 individual daily TMAX and/or TMIN values are missing and a Normalized HDD/CDD Calculation is provided. M appears alone if 10 or more daily values are missing.
- F Monthly calculation flagged value. F is appended to average and/or total values computed which exclude one or more daily data values that have been flagged by the GHCN-Daily Dataset
- M Insufficient or partial data. M is appended to average and/or total values computed with 1-9 daily values missing. M appears alone if 10 or more daily values are missing, (8 or more for wind and evaporation).
- N Indicates snow fall or Snowdepth totals are computed with one or more missing days.
- R Amounts from recording rain gage.
- T Trace. An amount too small to measure.

**SEASONAL TABLES:** Monthly and seasonal snowfall and heating degree days for the 12 months ending with the June data are published in the July issue of this bulletin. Cooling degree days for the calendar year are published in the "Climatological Data Annual Summary."

Information concerning the history of changes in locations, exposure, etc. of substations is kept on file at the National Climatic Data Center. Historical information of regular National Weather Service Offices may be obtained from the "Local Climatological Data" annual publication. The contents of this publication may be reprinted or otherwise used freely, with proper credit to the National Climatic Data Center. The data are also available digitally.

Effective with the January 2011 Data-Month, COOP Observer Names are no longer included in the Monthly and Annual Climatological Data Publications. This information is not published to ensure the privacy of personal information pursuant to Section 208 of the E-Government Act of 2002 (44 USC 3601).

As of the 2011 Data-Year, Station and Climate Division Maps are no longer being included in the CD Publications. NCDC's Product Development Branch provides updated Station Maps for various data networks via the Historical Observing Metadata Repository: <http://www.ncdc.noaa.gov/homr>.

The GHCN-Daily Quality Control Flags shown below are displayed as superscripts with the data. For more Information on Global Historical Climatology Network - Daily and flags, see: <http://www.ncdc.noaa.gov/oa/climate/ghcn-daily/> and Comprehensive Automated Quality Assurance of Daily Surface Observations. Durre, Imke, Matthew J. Menne, Byron E. Gleason, Tamara G. Houston, Russell S. Vose, 2010: J. Appl. Meteor. Climatol., 49, 16151633. doi: 10.1175/2010JAMC2375.1

- |   |   |
|---|---|
| Blank = Passed All checks                     | N = failed naught check                                       |
| D = failed duplicate check                    | O = failed climatological outlier check                       |
| G = failed gap check                          | R = failed lagged range check                                 |
| I = failed internal consistency check         | S = failed spatial consistency check                          |
| K = failed streak/frequent-value check        | T = failed temporal consistency check                         |
| L = failed check on length of multiday period | W = temperature too warm for snow                             |
| M = failed megaconsistency check              | X = failed bounds check                                       |
|   | Z = flagged as a result of an official Datzilla investigation |

Beginning with the January 2013 CD Publication, monthly mean temperature calculations have changed to the National Data Stewardship Team standard. Monthly maximum and minimum temperatures are not rounded until after the monthly mean temperature is calculated. This is the most accurate outcome, but may be slightly different from the mean derived from rounded monthly maximum and minimum.

**Processing Updates and Errata:** The CD Publications are periodically reproduced to include the addition of late reports and reported corrections. The GHCND data version noted on the cover of the publication provides the generation date.

The climate division temperature and precipitation values in this publication are based on simple averages from the current set of NWS-Designated Open and Published COOP and First Order Sites within each division. These values differ from those found in NCDC's nClimDiv product. Beginning in February 2014, the nClimDiv product is used

## **These and other publications are available from the National Climatic Data Center**

### **Hourly Precipitation Data**

This publication contains hourly precipitation amounts obtained from recording rain gages located at National Weather Service, Federal Aviation Administration, and cooperative observer stations. Published data are displayed in inches and tenths or inches and hundredths at local standard time. HPD includes maximum precipitation for nine (9) time periods from 15 minutes to 24 hours, for selected stations.

### **Climatological Data**

Monthly editions contain station daily maximum and minimum temperatures and precipitation. Some Stations provide daily snowfall, snow depth, evaporation, and soil temperature data. Each edition also contains monthly summaries for heating and cooling degree days (65 degree F base). The July issue contains a recap of monthly heating degree days and snow data for the preceding July through June.

The Annual issue contains monthly and annual averages of temperature, precipitation, temperature extremes, freeze data, soil temperatures, evaporation, and a recap of monthly cooling degree days.

### **Storm Data**

Monthly issues contain a chronological listing, by states, of occurrences of storms and unusual weather phenomena. Reports contain information on storm paths, deaths, injuries, and property damage. An "Outstanding storms of the month" section highlights severe weather events with photographs, illustrations, and narratives. The December issue includes annual tornado, lightning, flash flood, and tropical cyclone summaries.

### **Monthly Climatic Data for the World**

This publication contains monthly means for temperature, pressure, precipitation, vapor pressure, and sunshine for approximately 2,000 surface data collection stations worldwide and monthly mean upper air temperatures, dew point depressions, and wind velocities for approximately 500 observing sites.

### **Local Climatological Data**

LCD publications summarize temperature, relative humidity, precipitation, cloudiness, wind speed and direction observations for several hundred cities in the U.S. and its territories. Each monthly publication also contains 3 hourly weather observations for that month and a hourly summary of precipitation. Annual LCD publications contain a summary of the past calendar year as well as historical averages and extremes.

For Information Call:

(828) 271-4800 Option 2

(828) 271-4010 (TDD)

(828) 271-4876 (Fax)

NOAA\National Climatic Data Center  
Attn: User Engagement & Services Branch  
151 Patton Avenue  
Asheville, NC 28801-5001

Customer Services Number: (828) 271-4800, option 2  
TDD : (828) 271-4010  
Fax number: (828) 271-4876

NCDC now offers free online access to the *Climatological Data* publication.  
Go to : [www.ncdc.noaa.gov](http://www.ncdc.noaa.gov) and choose Most Popular.