



# CLIMATOLOGICAL DATA VIRGINIA



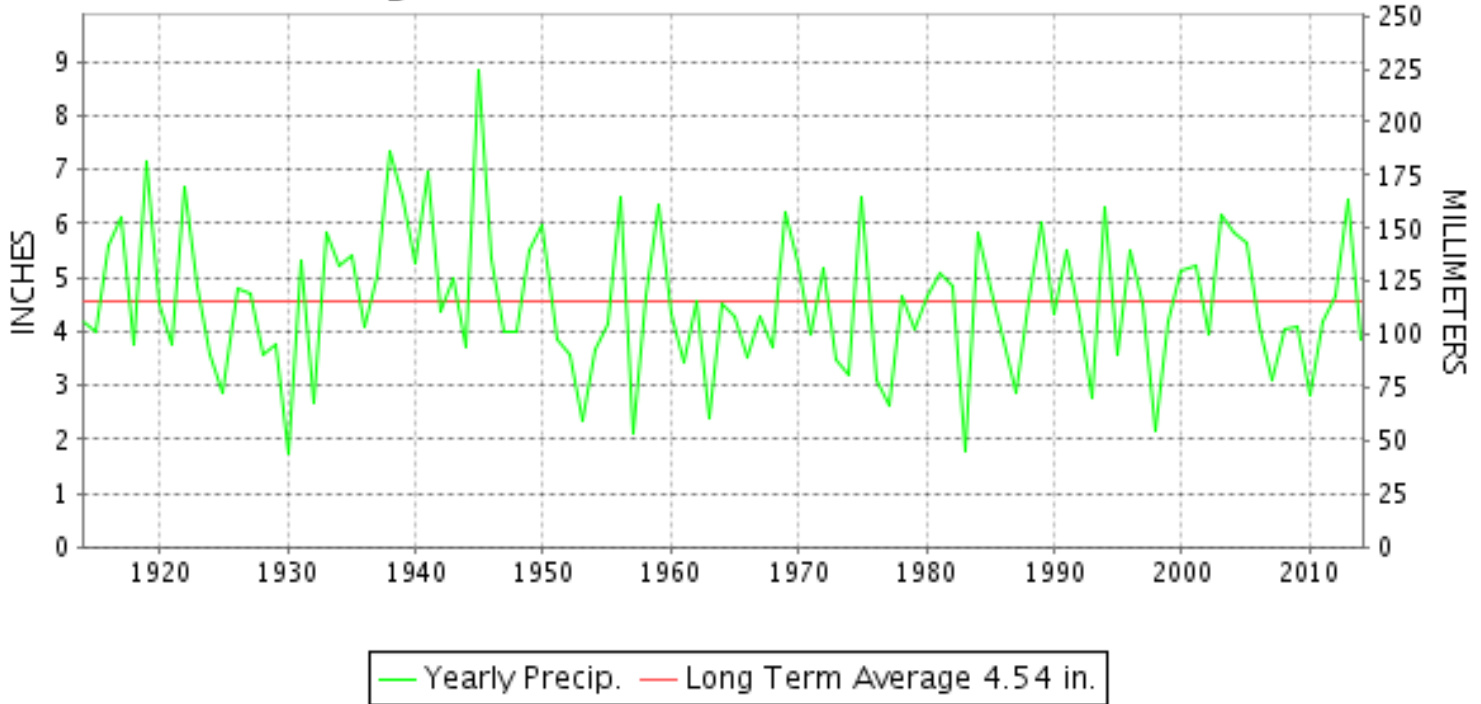
JULY 2014

VOLUME 124 NUMBER 07

ISSN 0364-5630

GHCND Ver: 3.12-upd-2014110406

## JULY PRECIPITATION BY YEAR



### TEMPERATURE AND PRECIPITATION EXTREMES

#### VIRGINIA

HIGHEST TEMPERATURE	100	JULY 08+	2 STATIONS
LOWEST TEMPERATURE	38	JULY 05+	2 STATIONS
GREATEST TOTAL PRECIPITATION	9.47		SUFFOLK LAKE KILBY
LEAST TOTAL PRECIPITATION	1.17		FREDERICKSBURG SEWAGE
GREATEST 1 DAY PRECIPITATION	4.87	JULY 24	SUFFOLK LAKE KILBY

"I certify that this is an official publication of the National Oceanic and Atmospheric Administration (NOAA) It is compiled using information from weather observing sites supervised by NOAA/National Weather Service and received at the National Climatic Data Center(NCDC), Asheville, North Carolina 28801."

Director  
National Climatic Data Center

noaa

National  
Oceanic and  
Atmospheric Administration

National  
Environmental Satellite, Data  
and Information Service

National  
Climatic Data Center  
Asheville, North Carolina



VIRGINIA  
201407

## MONTHLY STATION AND DIVISION SUMMARY

STATION	TEMPERATURE (°F)											PRECIPITATION (IN)												
	AVERAGE MAXIMUM	AVERAGE MINIMUM	AVERAGE	DEPARTURE FROM NORMAL	HIGHEST	DATE	LOWEST	DATE	HEATING DEG. DAYS	COOLING DEG. DAYS	NO. OF DAYS				TOTAL	DEPARTURE FROM NORMAL	GREATEST 24 HOURS	DATE	ICE PELLETS, SNOW			NO. OF DAYS		
											MAX		MIN						TOTAL	MAX DEPTH ON GROUND	DATE	.10 OR MORE	.50 OR MORE	1.00 OR MORE
											>=90	<=32	<=32	<=0										
PETERSBURG	87.1	67.1	77.1	-2.1	97	09+	60	06+	0	382	10	0	0	0	4.72	0.26	2.20	16	M 0.0	0		6	2	2
RICHMOND INTL AP	89.8	69.3	79.5	0.2	100	08	60	06	0	459	14	0	0	0	2.63	-1.88	1.99	24	0.0	0		4	1	1
SANDSTON	88.4	64.9	76.7	-1.9	99	15+	54	06	0	372	12	0	0	0	A 2.57	-1.72	1.81	25	0.0			5	1	1
WINTERPOCK 4 W															4.34		1.90	25	0.0			7	3	1
--DIVISIONAL DATA-----> WESTERN PIEDMONT 03			76.4	-0.4B											3.61	-0.75B								
ALTAVISTA															2.19		1.14	25	0.0			6	1	1
APPOMATTOX	85.9	63.9	74.9	-1.0	96	03	54	05	0	314	7	0	0	0	3.01	-1.81	0.58	25	0.0			8	1	0
BEDFORD 4 NW															4.09		1.25	04	0.0			8	3	1
BROOKNEAL	86.2	63.8	75.0	2.9	96	03	52	07+	0	315	7	0	0	0	5.59	1.23	1.82	16	0.0	0		9	2	2
CHARLOTTE COURT HOUSE	86.8	65.3	76.0	-0.8	97	03	55	06	0	348	11	0	0	0	4.10	-0.14	1.41	25	0.0	0		10	2	1
CHARLOTTESVILLE 2W	85.9	65.4	75.6	-1.6	96	24	58	30+	0	337	8	0	0	0	2.25	-3.07	0.88	25	0.0	0		6	2	0
CHATHAM	83.5	61.2	72.4	-2.3	93	09	49	07	0	236	6	0	0	0	4.53	0.04	1.87	16	0.0	0		6	2	2
CONCORD 4 SSW															2.92		0.65	25	0.0			7	2	0
DANVILLE REGIONAL AP	87.5	66.7	77.1	-1.2	97	02	54	06+	0	383	11	0	0	0	3.73	-0.94	1.28	10	0.0	0		6	3	1
FREE UNION	81.9	61.7	71.8		91	03	51	05	1	223	1	0	0	0	3.48		1.10	22	0.0			6	3	1
HOLCOMB ROCK															2.88		1.39	04	0.0	0		7	1	1
HUDDLESTON 4 SW															1.52		0.32	03	0.0			7	0	0
LYNCHBURG INTL AP	84.7	63.5	74.1	-1.2	94	23+	52	06	0	290	5	0	0	0	5.79	1.43	3.88	24	0.0	0		5	3	1
MARTINSVILLE FLTR PLT	86.4	62.9	74.6	-0.8	95	03	51	06+	0	307	11	0	0	0	1.40	-3.07	0.71	10	0.0	0		3	1	0
MEADOWS OF DAN 5 SW	81.3M	59.8M	70.6M		90	03	53	30	0	173E	1	0	0	0	M 5.19		1.95	04	M 0.0	0		6	4	2
MONTEBELLO FISH CULTURAL STN	78.6M	56.1M	67.3M		91	03	44	05	20E	100E	1	0	0	0	MA 3.02		0.40	27	0.0			4	0	0
MONTICELLO	83.4	63.9	73.6	-1.7	93	24+	57	30+	0	276	5	0	0	0	2.29	-3.20	1.17	25	0.0			4	1	1
PEDLAR DAM															4.65		2.19	04	0.0	0		7	3	1
ROCKY MT	84.8	62.4	73.6	-1.3	95	03	51	06	0	276	7	0	0	0	2.17	-2.70	0.54	09	0.0	0		7	1	0
SOUTH BOSTON	86.4	65.5	75.9	-0.9	95	15+	54	06	0	347	8	0	0	0	5.04	0.71	1.42	11	0.0	0		10	3	1
STUART	84.1	62.6	73.4	-1.9	93	02	53	07	0	268	5	0	0	0	4.01	-1.56	1.11	03	0.0	0		6	3	1
TYE RIVER 1 SE	85.0	63.4	74.2	-1.9	94	03	54	29+	0	293	8	0	0	0	2.35	-1.69	0.75	15	0.0			9	1	0
WOOLWINE															4.92		2.35	15	0.0	0		8	3	1
--DIVISIONAL DATA-----> NORTHERN 04			73.8	-2.1B											3.47	-1.16B								
BOSTON 4 SE	84.0M	64.0M	74.0M	-0.4	93	03	54	31	0	292E	4	0	0	0	FM 3.64	-1.56	2.12	10	M 0.0	0		6	1	1
EDINBURG	81.9	59.9	70.9	-2.2	90	03+	48	31+	13	204	2	0	0	0	4.14	0.47	0.95	04	0.0			11	2	0
FRONT ROYAL	83.1	62.6	72.8	-2.2	93	03	51	31+	3	254	5	0	0	0	2.40	-0.90	0.52	15	M 0.0	0		7	1	0
LINCOLN	84.3	60.6	72.5	-2.4	95	03	51	31+	4	241	6	0	0	0	3.47		2.10	26	0.0			2	2	2
LURAY 5 E	83.3	60.5	71.9	-2.6	93	03	47	30	8	227	6	0	0	0	2.66	-1.45	0.76	27	0.0	0		9	2	0
MADISON	83.8	64.2	74.0	-1.8	95	03	53	30	0	288	5	0	0	0	A 4.68	0.47	1.50	04	M 0.0	0		6	4	1
MANASSAS	M	M	M		93	09	52	30	2E	322E	4	0	0	0	MA 6.80		2.30	16	0.0			7	3	2

VIRGINIA  
201407

## MONTHLY STATION AND DIVISION SUMMARY

STATION	TEMPERATURE (°F)										PRECIPITATION (IN)													
	AVERAGE MAXIMUM	AVERAGE MINIMUM	AVERAGE	DEPARTURE FROM NORMAL	HIGHEST	DATE	LOWEST	DATE	HEATING DEG. DAYS	COOLING DEG. DAYS	NO. OF DAYS				TOTAL	DEPARTURE FROM NORMAL	GREATEST 24 HOURS	DATE	ICE PELLETS, SNOW			NO. OF DAYS		
											MAX		MIN						TOTAL	MAX DEPTH ON GROUND	DATE	.10 OR MORE	.50 OR MORE	1.00 OR MORE
											>=90	<=32	<=32	<=0										
MT WEATHER	78.7	62.6	70.7	-3.3	89	03	53	29	7	189	0	0	0	0	5.16	1.35	1.17	03	0.0			11	4	1
PIEDMONT RSCH STN	83.9	63.0	73.5	-2.9	94	24	53	06	0	272	6	0	0	0	3.18	-1.52	1.38	04	0.0			7	3	1
SOMERSET	84.5	63.8	74.2	-1.1	94	24+	51	05	1	296	6	0	0	0	4.16	-1.54	1.22	04	0.0			5	4	2
SPERRYVILLE	82.2M	62.4M	72.3M	-2.3	91	03	54	29+	0	233E	1	0	0	0	MA 6.05	1.73	3.04	03	0.0			7	3	1
STERLING RCS	86.5	64.6	75.6	-0.3	96	03	50	30	2	338	7	0	0	0	1.73	-1.97	0.50	03	0.0	0		7	1	0
VIENNA	87.8	67.0	77.4	2.8	97	03	57	31+	0	392	11	0	0	0	3.78	-0.41	1.43	16	0.0			6	2	1
WASHGTN DULLES INTL AP	84.5	63.8	74.2	-2.5	95	02	48	30	3	296	5	0	0	0	2.09	-1.58	0.42	10	0.0	0		7	0	0
WASHINGTON REAGAN AP	88.0	70.8	79.4	-0.4	99	02	60	30	0	453	9	0	0	0	4.68	0.95	1.71	15	0.0	0		7	3	2
WINCHESTER	83.9	63.8	73.9	-1.3	94	03	51	30	3	286	5	0	0	0	3.62	0.09	1.08	14	0.0			7	3	1
WINCHESTER 7 SE	84.3M	M	MM		100	23			0	0	6	0	0	0	M 3.91	0.32	1.16	15	M 0.0	0		7	3	1
WOODSTOCK 2 NE	82.8M	60.9M	71.9M	-1.6	90	24+	49	30+	11E	233E	3	0	0	0	3.67	-0.13	0.66	24	0.0			9	2	0
--DIVISIONAL DATA-----> CENTRAL MOUNTAIN 05			73.7	-0.8B										3.53	-0.38B									
BUENA VISTA														4.34		2.67	04	0.0				5	2	1
COVINGTON FLTR PLT	83.2	58.4	70.8	-3.8	93	09+	48	18+	7	194	5	0	0	0	3.86	-0.11	0.80	24	0.0	0		11	4	0
CRAIGSVILLE 2 S										M									0.0					
DALE ENTERPRISE	82.1	60.0	71.0	-2.5	91	03	48	30+	12	207	3	0	0	0	4.87	0.87	1.05	03	M 0.0	0		9	5	1
GATHRIGHT DAM	79.5	58.6	69.1	-2.9	87	14+	49	31+	24	158	0	0	0	0	1.25	-2.65	0.21	24	0.0	0		6	0	0
GLASGOW 1 SE														3.61		1.25	04	0.0	0			7	3	1
HOT SPRINGS	79.5	57.5	68.5	-2.3	88	03	47	31+	33	147	0	0	0	0	1.90	-2.31	0.48	27	0.0			7	0	0
LEXINGTON	83.7	60.9	72.3	-2.9	92	24+	50	05	1	236	5	0	0	0	2.83	-1.29	1.04	03	0.0			5	2	1
MILLGAP	77.9M	51.6M	64.7M	-2.7	87	14	38	05	79E	79E	0	0	0	0	A 2.92	-1.75	0.51	27	M 0.0	0		5	1	0
MTN GROVE											1.79					0.35	21	0.0				7	0	0
MUSTOE 1 SW	76.2	52.7	64.4	-3.4	85	13	39	05	75	65	0	0	0	0	3.61	-1.00	1.44	24	M 0.0			10	2	1
NEW CASTLE											2.12					0.60	25	0.0				5	1	0
ROANOKE 8 N	84.9	63.4	74.1	-1.2	95	03	53	05	0	291	8	0	0	0	2.35	-2.83	0.76	04	0.0	0		7	1	0
ROANOKE INTL AP	84.5	64.6	74.6	-2.1	96	02	53	05	0	304	8	0	0	0	3.40	-0.64	0.68	03	0.0	0		9	3	0
STAUNTON WATER TRMTMT PLT	81.7	61.5	71.6	-2.0	90	03	50	05	4	216	1	0	0	0	2.07	-1.83	0.32	25	0.0	0		9	0	0
WAYNESBORO WTP	82.4	61.5	72.0	-1.5	92	03	49	05	10	235	4	0	0	0	3.35	-0.88	1.31	04	0.0	0		7	2	1
--DIVISIONAL DATA-----> SOUTHWESTERN MOUNTAIN 06			70.3	-3.1B							2.95					-1.02B								
ABINGDON 3S	80.2M	59.3M	69.8M	-3.2	88	24	48	31+	18E	169E	0	0	0	0	M 5.40	0.37	2.20	09	M 0.0	0		7	4	1
BIG STONE GAP	81.1	58.6	69.9	-4.5	88	13+	42	19	14	171	0	0	0	0	7.70	2.41	1.48	15	0.0	0		11	7	2
BLACKSBURG NWSO	81.2	59.0	70.1	-1.1	89	03	47	05	11	179	0	0	0	0	2.15	-2.11	0.66	15	0.0	0		7	2	0
BURKES GARDEN	75.2M	53.8M	64.5M	-2.9	83	14+	38	05	80E	71E	0	0	0	0	3.76	-0.72	1.35	25	0.0	0		7	3	1
CHRISTIANSBURG	80.4	59.2	69.8	-2.6	87	14+	49	17+	9	167	0	0	0	0	2.01	-2.34	0.48	15	0.0	0		8	0	0
CLINTWOOD 1 W	77.5	57.1	67.3	-3.8	85	03	46	30	33	113	0	0	0	0	6.15	1.40	1.80	15	0.0	0		10	4	2

VIRGINIA  
201407

## MONTHLY STATION AND DIVISION SUMMARY

STATION	TEMPERATURE (°F)											PRECIPITATION (IN)												
	AVERAGE MAXIMUM	AVERAGE MINIMUM	AVERAGE	DEPARTURE FROM NORMAL	HIGHEST	DATE	LOWEST	DATE	HEATING DEG. DAYS	COOLING DEG. DAYS	NO. OF DAYS				TOTAL	DEPARTURE FROM NORMAL	GREATEST 24 HOURS	DATE	ICE PELLETS, SNOW			NO. OF DAYS		
											MAX		MIN						TOTAL	MAX DEPTH ON GROUND	DATE	.10 OR MORE	.50 OR MORE	1.00 OR MORE
											>=90	<=32	<=32	<=0										
COPPER HILL	77.4M	58.1M	67.8M		85	15+	48	18	34E	125E	0	0	0	0	M 4.50		2.80	04	M 0.0	0		4	2	1
GALAX RADIO WBRF	79.3	58.2	68.8	-2.2	88	15	46	30+	22	147	0	0	0	0	2.58	-1.66	1.69	04	0.0	0		4	1	1
GALAX WTP	78.9	56.7	67.8	-2.6	87	15+	46	06+	28	122	0	0	0	0	2.29		1.50	04	0.0	0		4	1	1
GRUNDY	M	M	M		86	08+	52	07	9E	164E	0	0	0	0	MA 5.49	0.29	0.68	19	0.0	0		6	1	0
JOHN FLANNAGAN LAKE	81.1M	59.6M	70.4M		89	14	51	31	5E	186E	0	0	0	0	MA 5.11		1.12	15	0.0	0		6	2	1
LAFAYETTE 1 NE															3.19		1.69	04	0.0	0		3	2	1
LEBANON	80.4	57.6	69.0	-2.9	88	13+	46	30+	21	152	0	0	0	0	3.82	-0.75	1.27	15	0.0	0		8	1	1
NORA 4 SSE	75.4	61.0	68.2	-3.5	84	13	53	31+	25	129	0	0	0	0	5.17	0.42	1.56	15	0.0	0		10	4	1
NORTH FORK LAKE	81.5M	58.3M	69.9M		89	14	50	31+	14E	173E	0	0	0	0	MA 6.62		1.66	15	0.0	0		5	2	2
PULASKI 2 E	82.5	58.3M	70.4M	-1.9	91	03	48	31+	13E	186E	2	0	0	0	2.05	-1.88	0.57	25	0.0	0		6	2	0
RADFORD 3 N	81.8	59.3	70.6	-1.8	92	03	45	05	12	189	3	0	0	0	3.45	-0.77	1.04	25	0.0	0		6	3	1
RICHLANDS	80.4	56.5	68.4	-3.1	88	04	46	06+	17	132	0	0	0	0	6.23	1.91	1.74	10	0.0	0		10	4	3
SALTVILLE 1N	80.4	57.6	69.0	-3.9	88	13+	48	31+	20	150	0	0	0	0	4.76	-0.27	1.35	25	0.0	0		10	4	1
STAFFORDSVILLE 3 ENE	81.4	57.9	69.7	-1.8	92	03	46	17+	23	174	3	0	0	0	2.52	-1.57	0.85	04	0.0	0		7	1	0
WILLIS															3.45		1.11	15	0.0	0		6	3	1
WISE 3E	76.3	58.9	67.6	-3.3	84	02	46	30	31	120	0	0	0	0	5.08	-0.22	1.18	15	0.0	0		10	4	2
WYTHEVILLE 1 S	81.0	57.2	69.1	-1.3	89	14+	47	31+	24	158	0	0	0	0	1.81	-1.94	0.32	01	0.0	0		6	0	0
--DIVISIONAL DATA----->			68.9	-2.3B											3.79	-0.50B								

VIRGINIA  
201407

## DAILY PRECIPITATION (INCHES)

STATION	TOTAL	DAY OF MONTH																																
		01	02	03	04	05	06	07	08	09	10	11	12	13	14	15	16	17	18	19	20	21	22	23	24	25	26	27	28	29	30	31		
<b>VIRGINIA</b>																																		
<b>TIDEWATER 01</b>																																		
DISPUTANTA	4.17			0.38						0.24	0.40					0.27						0.03			2.85									
EASTVILLE	M 3.76		0.40	0.65	0.06					0.72	0.33						0.10								1.35		0.15				-	-		
EMPORIA 1 WNW	3.44			0.10						0.36	1.30	T			0.28	0.23					0.12	0.20			0.77					0.08				
FREDERICKSBURG SEWAGE	1.17		0.16	0.12					0.13	0.12											0.09			0.33			0.22							
HOLLAND 1 E	3.89									1.03	1.80														1.05						0.01			
HOPEWELL	4.98									0.24			0.19			1.55					0.05	0.04			0.70	2.00		0.21						
NORFOLK INTL AP	7.87		T	T	1.46	T			1.35	2.40					0.20	0.07								0.93	0.04	1.42	T							
NORFOLK SOUTH	8.76				1.03				1.97	3.46					0.41	0.02				T	T	T		1.26	0.02	0.59	T							
NORTH	4.49			0.56	0.06					0.19	0.27					0.77									1.23		1.33	0.08						
PAINTER 2W	3.18			0.01	1.51					0.57	0.17					0.16					0.02			0.50	0.15		0.09							
STONY CREEK 2 N	3.77									1.20						0.95									1.27		0.11							
SUFFOLK LAKE KILBY	9.47				1.09					1.56	1.68				0.24	T					T	T		4.87			T		0.03					
WAKEFIELD 1NW	6.87		0.05	1.42						0.58	0.33			T		0.71	0.14							3.58				0.06						
WALKERTON 2 NW	M 1.98		T	0.06						0.10	0.05			T		0.92	0.06							0.49	0.15	T	0.15					-		
WALLACETON LK DRUMMOND	7.33			0.75							2.38	1.05													3.10				0.05					
WALLOPS ISLAND NASA TEST FACIL	3.35			0.14	0.42			0.32	0.23	0.73					0.32	0.90				0.04	T			0.24		T	0.01							
WARSAW 2 NW	3.03				0.25				0.31	0.05	0.01			0.02	1.64	0.23								0.13	0.10	0.11	0.18							
WEST POINT 2 NW	6.34				2.00					0.07	0.05				0.34	1.22								0.61	0.45	0.60	1.00							
WILLIAMSBURG 2 N	5.81			1.74						0.53	0.34				0.62	0.02								2.05		0.36	0.15							
<b>EASTERN PIEDMONT 02</b>																																		
ALBERTA 5N	5.45			0.12							0.36	0.42				0.34	0.50	0.14					0.65	0.10	0.11	2.54		0.12	T		0.05			
AMELIA COURTHOUSE 1	1.86			0.06					0.03	0.08	0.07				0.06	0.08							0.05	0.01	0.57	0.85								
ASHLAND	1.35			0.02					0.03	0.03					0.40	T									0.60	0.07		0.20						
BREMO BLUFF	2.41			0.23	0.12				0.02	0.03					0.21										0.03	1.49		0.12	0.16					
BUCKINGHAM	3.53			0.10	0.36				0.13	0.06	0.03				1.41									0.16	1.14		0.12	0.02						
CAMP PICKETT	3.65				0.10					0.19	0.47				0.15	0.47								0.78	1.00		0.05	0.02						
CHASE CITY	7.41			0.39	0.26						0.24	0.91											0.84	2.94	0.72	0.92		0.16	0.03					
CLARKSVILLE	5.60				0.58						0.23	0.60				0.05	0.88	0.05					0.38	2.00	0.05	0.73						0.05		
CORBIN	3.85			0.18	0.57					0.31	0.02	0.02				2.00										0.74								
CROZIER	2.98				0.29					0.05	0.05				0.09	0.75									0.40	0.70		0.65						
FARMVILLE 2 N	1.98				0.05					0.05	0.05	0.07				0.32									T	1.16		0.06						
GREENBAY 3 NE	3.20									0.34	0.19	0.20				0.45	0.13	0.02					0.55	0.05	0.50	0.71		0.06						
JOHN H KERR DAM	5.63				0.04						0.12	0.42				1.72	0.06						0.47	0.51	0.52	1.65				0.08		0.02	0.02	
LOUISA	3.51			1.09	0.10					0.17						0.73	0.13								1.01	0.01		0.27						
PALMYRA 3S	1.99			0.23	0.08					0.10	0.04					0.25										1.01		0.28						
PETERSBURG	4.72										0.10	0.19				2.20										1.80				0.15				
RICHMOND INTL AP	2.63			0.01	0.03				T	T	0.05					T								0.10										0.21
SANDSTON	A 2.57									0.10	*	0.08 <sub>a</sub>			0.05	0.19	T							0.30		1.99	0.10	1.81				0.18		
WINTERPOCK 4 W	4.34				0.02					0.23	0.04	0.12				0.17	0.57	0.02							0.74	1.90		0.05	0.48					
<b>WESTERN PIEDMONT 03</b>																																		

VIRGINIA  
201407

## DAILY PRECIPITATION (INCHES)

STATION	TOTAL	DAY OF MONTH																														
		01	02	03	04	05	06	07	08	09	10	11	12	13	14	15	16	17	18	19	20	21	22	23	24	25	26	27	28	29	30	31
ALTAVISTA	2.19			0.13	0.06				0.01	0.30				0.03	0.10							0.01	0.03	0.22	1.14	0.01	0.12	0.02			0.01	
APPOMATTOX	3.01			0.32	0.38				0.03	0.17	0.03				0.06	0.45					T	T	0.40	0.45	0.58	0.12	0.02					
BEDFORD 4 NW	4.09				1.25				0.02	0.31	0.59			0.38	0.65	0.03				0.04	0.02	0.02	0.03	0.19	0.40	0.03	0.11	0.02				
BROOKNEAL	5.59			0.03	0.36				0.05	1.46	0.28			0.14	1.82					0.02		0.08	0.26	0.47	0.39		0.19	0.04				
CHARLOTTE COURT HOUSE	4.10			0.19	0.31				0.11	0.26	0.19				0.23							0.16	0.82	0.35	1.41			0.07				
CHARLOTTESVILLE 2W	2.25			0.02	0.24				0.20		0.01				0.19					0.03	0.02	0.01	0.53	0.88		0.10	0.02					
CHATHAM	4.53								0.04	1.75	0.12				1.87					0.03		0.11	0.11	0.40		0.04	0.06					
CONCORD 4 SSW	2.92			0.62	0.42				0.01	0.24	0.09				0.24							0.03	0.15	0.37	0.65		0.08	0.02				
DANVILLE REGIONAL AP	3.73			0.01					0.84	1.28					0.46					0.01	T	0.01	0.86		0.14					0.10		
FREE UNION	3.48			0.09	0.74				0.27						0.03					0.05	0.04		1.10	0.82	0.18		0.15	0.01				
HOLCOMB ROCK	2.88				1.39				T	0.03	0.03				0.27	0.09				0.09	T		0.20	0.10	0.35		0.15	0.18				
HUDDLESTON 4 SW	1.52			0.32					0.11	0.12	0.04			0.25	0.02					0.06			0.01	0.16	0.25			0.18				
LYNCHBURG INTL AP	5.79		0.04	0.61				0.34	0.68	0.01			T	T	0.02				T	0.02		0.01	3.88			0.13			0.05			
MARTINSVILLE FLTR PLT	1.40			0.22	0.12				0.09	0.71	0.02				0.03					0.03		0.07	0.05	0.04			0.05					
MEADOWS OF DAN 5 SW	M 5.19				1.95	0.01		-	0.08	0.30	0.09				0.10	0.04				0.10	0.04		0.03	0.91	1.08	0.60						
MONTEBELLO FISH CULTURAL STN	MA 3.02		*	0.11 <sub>a</sub>	*	1.15 <sub>a</sub>			0.30	*	0.13 <sub>a</sub>		*	*	0.06 <sub>a</sub>				*	0.10 <sub>a</sub>	0.02		*	0.40 <sub>a</sub>	0.20		0.40	0.15		-		
MONTICELLO	2.29			0.40	0.31				0.20		T				0.04					0.02		T	T	T	0.07	1.17		0.07	0.01			
PEDLAR DAM	4.65			0.22	2.19				0.13	T	0.49				0.54	T				0.09	T		T	T	0.84		0.15	T				
ROCKY MT	2.17	0.02		0.30	0.18	0.03			0.54	0.27	0.04	0.02		0.14	0.08	0.02				0.05	0.04	0.22	0.02	0.02	0.03		0.11	0.04				
SOUTH BOSTON	5.04			0.08	0.44					0.34	1.42				0.35							0.60	0.18	0.40	0.83		0.20			0.20		
STUART	4.01			1.11	0.45				0.06	0.22	0.85			0.02						0.21	0.02		0.02	0.09	0.04	0.90	0.02					
TYE RIVER 1 SE	2.35			0.12	0.18				T	0.08	0.26				0.75					0.12	0.02		0.21	0.16	0.35		0.12					
WOOLWINE	4.92	0.02			0.45				0.10	0.53	0.30			0.01	2.35	0.05				0.50	0.03	T	0.07	0.05	0.16	0.28		0.02				
<b>NORTHERN 04</b>																																
BOSTON 4 SE	FM 3.64			0.42	0.44				0.09	2.12					0.17						3.66 <sup>S</sup>			0.18	0.22		-	-	-			
EDINBURG	4.14		0.10	0.10	0.95				0.19		0.45			0.03	0.49	0.24				0.15	0.12		0.05	0.05	0.01	0.72	0.49					
FRONT ROYAL	2.40				0.23				0.06	0.25				0.26	0.52	0.27				0.04	0.05		0.27	0.03		0.34	0.08					
LINCOLN	3.47								1.37																							
LURAY 5 E	2.66			0.11	0.15				0.08	0.17	0.02				0.57	0.18				0.09	0.09		0.12	0.12	0.16	T	0.76	0.04				
MADISON	A 4.68				1.50				0.72						0.71								0.22	0.18	0.60	*	*	0.75 <sub>a</sub>				
MANASSAS	MA 6.80	*	*	*	1.45 <sub>a</sub>				0.50	0.45	1.50			-	0.25	2.30	-			-	-	-	0.05	-	-	0.20	0.10					
MT WEATHER	5.16			1.17	0.28				0.45	0.16	0.66	0.01		0.17	0.90	0.58				0.02	0.05	0.03	0.27	T		0.26	0.15					
PIEDMONT RSCH STN	3.18			0.50	1.38				0.17					0.01	0.22	0.11							0.03	0.11		0.65						
SOMERSET	4.16			0.59	1.22																	0.89	0.33	0.06		1.07	T					
SPERRYVILLE	MA 6.05			3.04	0.22				0.32	0.13	0.65				0.83	0.06			0.05	0.06	*	*	*	*	0.33 <sub>a</sub>	0.36	-			-		
STERLING RCS	1.73			0.50	0.16				0.33	T	0.24			0.11	0.04	0.10				T	T	T	0.10	0.02		0.09	0.04					
VIENNA	3.78			0.36	0.41				0.56		0.42			0.03	0.46	1.43					0.01		0.01			0.08	0.01					
WASHGTN DULLES INTL AP	2.09		0.31	0.10	0.17			0.40	T	0.42			0.02	0.19	0.35					T	T	T	T	0.06		T	0.07					
WASHINGTON REAGAN AP	4.68		0.04	0.36	0.16			0.76	0.02	1.31			0.05	0.16	1.71					T			T	0.01		T	0.10	T				
WINCHESTER	3.62			0.01	0.28				0.24		0.69				1.08	0.65	0.02			0.06	0.04		0.03				0.38	0.14				
WINCHESTER 7 SE	M 3.91			0.17	0.58				0.10		0.08		-	0.92	1.16	0.02				0.06	0.06		0.04	0.06	0.02		0.37	0.27				
WOODSTOCK 2 NE	3.67		0.04	0.33	0.58				0.09	0.07	0.24			0.18	0.13					0.48	0.08			0.66	0.07		0.43	0.29				

VIRGINIA  
201407

## DAILY PRECIPITATION (INCHES)

STATION	TOTAL	DAY OF MONTH																																	
		01	02	03	04	05	06	07	08	09	10	11	12	13	14	15	16	17	18	19	20	21	22	23	24	25	26	27	28	29	30	31			
<b>CENTRAL MOUNTAIN 05</b>																																			
BUENA VISTA	4.34			0.43	2.67						0.01				0.02				0.10	0.01				0.03	0.88		0.15	0.04							
COVINGTON FLTR PLT	3.86	0.10		0.10	0.50					0.01	0.66		0.04	0.20	T	0.14			0.07	0.15	T			0.80	0.71		0.16	0.18	0.04						
CRAIGSVILLE 2 S	M	-	-	-	-	-	-	-	-	-	-	-	-	-	-	-	-	-	-	-	-	-	-	-	-	-	-	-	-	-	-	-	-		
DALE ENTERPRISE	4.87			1.05					0.17	0.02	0.90				0.15	0.07					0.24		0.55		0.77	0.40		0.55							
GATHRIGHT DAM	1.25			0.02	0.09				0.11	0.03					0.12	0.07			0.07	0.16	0.01			0.21	0.07		0.11	0.18							
GLASGOW 1 SE	3.61			0.35	1.25				0.02	0.01	0.15				0.16	0.01			0.11	T	T	0.08	T	0.01	0.87		0.56	0.03							
HOT SPRINGS	1.90			0.02	0.30				0.02	0.02	0.15				0.03	0.04			0.11	0.16				0.16	0.04		0.48	0.33	0.04						
LEXINGTON	2.83			1.04	0.34				0.08		0.06								0.11	0.03				0.08	0.93		0.12	0.04							
MILLGAP	A 2.92				0.04				0.32						0.07	0.09			0.12	0.13			*	*	1.32 <sub>a</sub>		0.51	0.26	0.02	0.04					
MTN GROVE	1.79				0.20				T		0.17				T	0.02			T		0.35			0.25	0.30		0.26	0.24	T						
MUSTOE 1 SW	3.61			0.10				0.25	0.12					0.08	0.15			0.13	0.31	T			0.24	1.44		0.03	0.57	0.14	0.05						
NEW CASTLE	2.12			0.35					0.06	0.02			0.40	0.02		0.13			0.08	0.08	T	T		T	0.60		0.37	0.01							
ROANOKE 8 N	2.35	T			0.76				0.22	0.20					0.33	0.14			0.05	0.02	0.07	0.07		T	0.27		0.15	0.07							
ROANOKE INTL AP	3.40			0.68				0.07	0.36	0.19	0.05				0.16	0.26			0.03	0.03	0.10	0.01	T	0.62	0.67		0.20								
STAUNTON WATER TRMTMT PLT	2.07			0.18	0.08				0.05		0.09				0.12	0.25	T		0.14	0.16	T	0.28		0.20	0.32		0.20								
WAYNESBORO WTP	3.35			0.08	1.31				0.47		0.16								0.08	0.05		0.66		0.10	0.20		0.21	0.03							
<b>SOUTHWESTERN MOUNTAIN 06</b>																																			
ABINGDON 3S	M 5.40									2.20	0.75	0.02			0.40	0.45			0.75	0.18				0.05	-		0.60					0.60			
BIG STONE GAP	7.70								0.45	0.98				0.16	1.48	0.65			1.31	0.83	0.05		0.60	0.08	0.15	0.02	0.23	0.71							
BLACKSBURG NWSO	2.15	0.23		T	0.01				0.03	0.60	T		0.11		0.66	0.07			0.06	0.02	T	0.01		T	0.15		0.10	0.10	T						
BURKES GARDEN	3.76								0.10	0.53					0.88	0.06			0.32	0.18	0.17			T	1.35		0.09	0.06	0.02						
CHRISTIANSBURG	2.01	0.40							0.13	0.23			T	0.03	0.48	0.14			0.12	0.06	0.08	0.04			0.17		0.10	0.03							
CLINTWOOD 1 W	6.15	0.04		0.17				0.01	0.11	0.76				0.52	1.80	0.45			1.00	0.32	0.03			0.39	T		0.09	0.46	T						
COPPER HILL	M 4.50	0.02		0.09	2.80				0.15	0.76	0.08			0.03	0.08	0.06			0.08	-	-	-	-	-	-	-	-	0.35							
GALAX RADIO WBRF	2.58	0.07			1.69			0.01	0.20	0.12	0.04	0.01			0.24				0.02	0.02	0.04	0.03		0.03	0.05	0.01	0.01	0.02							
GALAX WTP	2.29	T		0.01	1.50				0.16	0.03	0.11		0.03	T	0.26	T			0.03	0.02		0.02		0.01	0.08		0.01	0.02							
GRUNDY	MA 5.49			0.35	-	-	-		*	0.67 <sub>a</sub>				0.33	*	1.90 <sub>a</sub>			0.68	0.24	*	*	*	*	*	0.63 <sub>a</sub>	0.36	0.33							
JOHN FLANNAGAN LAKE	MA 5.11	0.07	0.01	0.07					0.30	0.30		*	*	0.06 <sub>a</sub>	1.12	0.43			*	*	1.34 <sub>a</sub>	0.01		0.62	0.15	-	*	0.63 <sub>a</sub>							
LAFAYETTE 1 NE	3.19				1.69				0.02	0.62			0.05		0.42	0.05			0.08	0.02		0.09	T	0.02	0.04		0.04	0.05							
LEBANON	3.82			0.05					0.32	0.43					1.27	0.44			0.48	0.14				0.04	0.43		0.05	0.17							
NORA 4 SSE	5.17	0.14			T				0.37	0.04				T	1.56	0.20			0.71	0.29				0.82	0.63		0.11	0.30							
NORTH FORK LAKE	MA 6.62	0.04		0.06	-	*	*	0.00 <sub>a</sub>	0.41	0.05		*	*	0.07 <sub>a</sub>	1.66	0.49			*	*	1.19 <sub>a</sub>			1.57	0.20	*	*	0.85 <sub>a</sub>							
PULASKI 2 E	2.05	0.30			0.13				0.04	0.56	0.02				T	0.04	0.08			0.06	0.10		T		0.57		0.14	0.01							
RADFORD 3 N	3.45	T							0.07	0.05			0.25	0.01	0.71	0.15			0.06	0.08	0.02			0.49	1.04		0.52								
RICHLANDS	6.23		0.02						0.03	1.74	0.01				1.29	0.20	0.51		0.34	0.16	0.10			0.22	1.13	0.01	0.08	0.39							
SALTVILLE 1N	4.76	T							0.28	0.52					0.68	0.26			0.47	0.24	0.15			0.18	1.35		0.09	0.54							
STAFFORDSVILLE 3 ENE	2.52	0.22	0.01		0.85					0.34					0.08	0.12			0.05	0.20	0.01			0.04	0.34	0.02	0.15	0.08	0.01						
WILLIS	3.45	0.09	0.07		0.65				0.16	0.49	0.06				1.11				0.21	0.05				0.53		0.03									
WISE 3E	5.08							0.17	0.52					0.10	1.18			0.20	1.03	0.08			0.44	0.37	0.03		0.46	0.50							
WYTHEVILLE 1 S	1.81	0.32			0.04				0.07	0.23	0.02				0.07	0.14			0.17	0.20	0.02			0.28	0.09		0.02	0.08	0.06						





VIRGINIA  
201407

## DAILY TEMPERATURES (°F)

STATION	OB. TIME	MAX/MIN	DAY OF MONTH																															AVERAGE
			01	02	03	04	05	06	07	08	09	10	11	12	13	14	15	16	17	18	19	20	21	22	23	24	25	26	27	28	29	30	31	
ASHLAND	18	MIN	69	74	76	69	56	54	67	73	69	69	64	68		72	72	70	69	61	64		66	69	70	70	62	66	70	72	60	58	59	66.8
		MAX	89	93	92	81	80	86	90	93	90	81	83	88	91	94	89	79	81	84	80	83	81	85	93	90	85	86	84	85	80	79	83	85.7
CAMP PICKETT	08	MIN	70	75	71	68	66	56	68	75	69	70	65	68	73	76	75	67	68	64	65	65	71	69	68	67	61	63	69	73	60	55	58	67.4
		MAX	87	90	94	91	91	82	86	90	94	86	86	84	88	89	94	88	79	83	83	80	80	78	85	90	85	81	87	83	83	78	78	85.6
CHASE CITY	17	MIN	65	71	71	70	60	54	56	69	73	69	65	67	68	72	72	69	62	61	62	64	67	69	69	70	64	65	65	71	60	59	59	65.7
		MAX	87	89	93	90	83	80	85	90	93	86	77	85	88	88	92	88	79	81	84	81	80	78	86	89	84	82	86	82	83	79	78	84.7
CLARKSVILLE	07	MIN	61	73	73	71	55	53	65	71	71	68	66	67	69	74	72	68	57	59	63	67	70	69	69	71	66	65	70	70	59	61	59	66.2
		MAX	89	91	96	91	86	82	86	92	95	89	78	85	89	92	95	91	82	84	85	80	80	78	87	91	85	82	88	84	85	85	82	86.6
CORBIN	09	MIN	68	72	76	72	61	58	59	70	73	70	69	68	69	72	75	68	60	63	66	68	68	70	71	73	67	66	70	73	63	63	63	67.9
		MAX	93	95	92	80	81	87	92	94	88	81	84	90	93	96	91	79	81	82	78	83	83	85	94	83	82	86	83	84	76	79	85	85.8
CROZIER	07	MIN	70	74	69	68	52	55	67	73	69	69	63	67	71	75	69	66	58	61	64	65	71	67	69	68	58	64	69	73	58	52	59	65.6
		MAX	86	90	94	92	80	80	86	90	93	87	78	85	89	90	93	88	78	81	82	79	81	80	85	94	79	81	88	82	83	77	78	84.8
FARMVILLE 2 N	07	MIN	68	69	67	66	53	54	56	71	68	68	64	65	70	72	69	67	59	58	58	63	64	69	68	70	61	62	65	69	58	56	57	64.0
		MAX	88	92	96	92	83	82	88	92	95	88	80	87	90	91	96	89	82	83	84	82	80	79	85	94	85	83	89	83	84	79	79	86.5
GREENBAY 3 NE	09	MIN	64	71	75	69	55	54	54	66	69	68	65	67	69	70	72	69	60	59	59	64	66	70	69	69	62	62	65	70	60	59	58	64.8
		MAX	86	91	95	94	84	83	87	91	96	86	74	83	89	94	93	87	86	82	82	82	79	82	85	91	82	80	87	87	84	78	79	85.8
JOHN H KERR DAM	08	MIN	69	69	75	69	56	53	67	72	70	68	64	67	71	73	70	68	67	58	62	62	68	69	70	69	61	65	70	70	58	57	57	65.9
		MAX	92	95	99	94	88	84	92	95	96	92	78	87	93	95	97	92	81	86	87	82	84	80	89	94	88	87	92	86	90	84	83	89.1
LOUISA	18	MIN	71	78	79	74	57	58	72	76	78	71	70	67	70	78	81	70	61	63	65	66	70	71	67	75	68	68	72	75	62	64	63	69.7
		MAX	92	95	93	81	81	87	90	92	92	85	86	88	90	93	88	82	82	83	80	81	81	86	94	91	83	88	87	83	81	79	84	86.4
PALMYRA 3S	06	MIN	67	72	69	65	50	51	64	70	68	67	62	70	69	73	69	66	58	60	63	62	69	70	68	66	56	63	69	71	53	50	56	64.1
		MAX	86	92	96	90	82	79	88	92	94	88	81	86	89	92	96	89	82	82	84	82	81	79	88	95	81	82	88	83	86	78	79	86.1
PETERSBURG	08	MIN	69	71	71	69	50	50	61	67	67	67	65	67	69	73	69	69	59	57	65	64	66	72	66	68	60	63	69	70	54	54	54	64.4
		MAX	87	92	97	94	86	83	88	94	97	89	77	87	91	93	96	90	82	85	85	78	83	80	86	92	84	84	89	85	86	80	81	87.1
RICHMOND INTL AP	24	MIN	67	72	78	73	60	60	61	70	74	71	67	67	69	70	70	70	64	64	63	64	68	68	69	69	64	64	69	70	64	61	61	67.1
		MAX	94	99	95	87	86	91	97	100	92	81	90	93	96	99	94	86	88	89	84	87	82	88	97	85	85	91	89	89	83	82	86	89.8
SANDSTON	07	MIN	71	76	77	66	61	60	69	76	74	70	67	69	74	77	73	68	66	64	67	69	72	69	70	66	69	73	72	65	63	64	69.3	
		MAX	89	92	99	95	84	84	90	96	98	92	79	87	92	93	99	94	84	85	86	81	85	81	86	96	84	84	89	86	87	81	83	88.4
WESTERN PIEDMONT 03 APPOMATTOX	07	MIN	64	67	76	71	56	54	55	56	72	71	65	66	69	72	76	69	61	60	61	64	66	67	67	68	63	63	63	71	62	59	58	64.9
		MAX	89	92	96	86	84	80	87	91	93	87	81	86	89	91	95	89	83	84	83	82	79	78	87	94	83	81	89	83	83	79	79	85.9
BROOKNEAL	07	MIN	65	71	69	67	54	55	56	65	68	66	63	64	67	70	69	65	59	59	62	64	64	68	69	68	63	65	67	69	56	56	58	63.9
		MAX	89	92	96	85	85	83	88	92	94	88	82	86	89	90	93	89	82	82	84	83	80	85	93	86	83	84	84	84	80	80	80	86.2
CHARLOTTE COURT HOUSE	07	MIN	65	70	72	68	54	52	52	63	68	68	64	65	67	68	69	67	56	57	58	65	68	71	67	67	65	65	66	70	58	57	57	63.8
		MAX	91	93	97	91	83	81	90	93	95	86	80	86	90	91	95	89	82	84	85	85	81	79	86	93	86	83	89	84	84	79	80	86.8
CHARLOTTESVILLE 2W	08	MIN	64	70	75	71	57	55	61	67	69	68	66	67	70	72	71	67	60	60	60	62	64	69	69	69	63	63	66	70	60	59	59	65.3
		MAX	87	92	94	89	80	81	88	91	93	87	82	85	90	92	95	87	83	85	84	82	79	82	89	96	80	82	88	82	81	77	80	85.9
CHATHAM	07	MIN	67	73	71	67	58	60	61	67	68	67	65	65	70	71	70	67	63	62	63	60	64	70	70	70	62	63	67	68	59	58	60	65.4
		MAX	87	90	92	91	83	80	86	90	93	86	77	82	86	88	90	84	77	79	80	78	76	78	83	89	83	80	85	81	82	77	76	83.5
DANVILLE REGIONAL AP	24	MIN	58	67	70	67	50	50	49	62	66	65	64	63	62	65	67	62	56	55	54	63	65	68	64	63	62	65	68	54	55	54	61.2	
		MAX	95	97	94	88	84	89	94	96	90	83	87	90	92	96	90	84	83	86	82	79	82	86	94	87	84	89	84	86	80	82	81	87.5
		MIN	70	74	74	67	54	54	66	71	70	69	69	66	69	70	70	66	58	61	67	67	72	71	68	69	66	68	72	67	63	59	61	66.7

VIRGINIA  
201407

## DAILY TEMPERATURES (°F)

STATION	OB. TIME	MAX/MIN	DAY OF MONTH																															AVERAGE	
			01	02	03	04	05	06	07	08	09	10	11	12	13	14	15	16	17	18	19	20	21	22	23	24	25	26	27	28	29	30	31		
FREE UNION	08	MAX	83	88	91	85	79	78	83	87	88	82	80	83	85	87	89	83	81	80	78	75	75	80	84	89	76	79	84	79	78	73	77	81.9	
		MIN	62	68	68	63	51	53	54	62	67	66	64	64	66	67	68	63	59	57	58	60	62	67	67	68	59	60	63	67	53	54	54	61.7	
LYNCHBURG INTL AP	24	MAX	91	94	87	83	80	86	89	93	84	82	85	88	88	92	85	82	83	81	81	79	79	86	94	85	81	88	83	80	78	79	81	84.7	
		MIN	68	71	69	63	55	52	60	67	65	64	63	64	67	70	68	63	56	60	64	65	67	70	66	65	65	66	69	61	56	54	56	63.5	
MARTINSVILLE FLTR PLT	07	MAX	89	92	95	90	80	82	87	91	93	85	84	86	90	91	92	92	83	83	80	79	79	79	87	94	87	84	91	86	86	80	81	86.4	
		MIN	64	69	70	65	51	51	53	64	66	65	66	62	64	67	67	60	58	61	64	66	68	70	65	65	63	64	68	71	56	53	53	62.9	
MEADOWS OF DAN 5 SW	07	MAX		87	90	87	80	78	82					89	80	84	85	87	83	83	75	72	71	75	79	81	88	88	80	83	79	78	76	81.3	
		MIN			67	63	57	54	54				59	60	62	62	65	61	55	57	58	61	61	66	63	64	59	59	63	58	53	54	59.8		
MONTEBELLO FISH CULTURAL STN	07	MAX	81		91		81	77	80	84	86		78	78			88	79	78															78.6	
		MIN	56		63		44	47	56	56	65		54	54			62	53	49															56.1	
MONTECELLO	08	MAX	85	90	93	85	76	78	85	89	90	85	80	84	88	89	92	85	78	81	81	80	78	81	86	93	75	79	85	81	81	74	78	83.4	
		MIN	65	65	69	65	57	57	63	64	61	67	65	65	68	70	69	67	63	61	62	62	61	69	68	70	62	61	63	67	58	57	59	63.9	
ROCKY MT	07	MAX	89	92	95	87	82	81	87	90	92	84	85	85	88	87	91	83	83	82	77	75	77	77	87	93	85	86	90	80	79	81	80	84.8	
		MIN	68	60	70	63	53	51	53	64	67	68	65	66	63	66	68	62	54	55	60	63	66	68	65	65	62	63	70	71	56	54	54	62.4	
SOUTH BOSTON	07	MAX	89	91	95	91	87	83	87	93	95	88	77	84	89	90	95	88	81	83	84	83	79	80	85	92	84	81	89	84	88	82	80	86.4	
		MIN	67	69	74	70	56	54	60	69	72	68	68	65	65	65	72	67	58	58	60	66	67	70	69	69	66	65	68	71	61	60	60	65.5	
STUART	07	MAX	85	93	92	89	82	80	84	87	90	83	83	85	87	88	90	87	82	80	76	72	77	78	86	91	83	83	87	83	82	83	79	84.1	
		MIN	64	67	64	64	54	54	53	59	66	66	64	64	64	68	66	64	61	57	57	63	66	69	65	65	63	68	70	67	56	57	56	62.6	
TYE RIVER 1 SE	07	MAX	88	90	94	86	82	80	85	90	92	88	80	84	90	92	90	85	82	83	82	80	78	78	85	93	84	83	88	84	80	78	80	85.0	
		MIN	65	72	71	64	54	55	56	65	70	64	61	62	68	70	69	62	61	59	60	63	64	68	68	69	61	62	68	69	54	55	57	63.4	
<b>NORTHERN 04</b>																																			
BOSTON 4 SE	07	MAX	85	91	93			79	84	88	90	85	82	83	86	88	89	85	78	77	80	77	79	82	84	90	87	80						84.0	
		MIN	64	69	66			62	68	64	65	60	63	67	69	69	62	55		63	59	65	69	69	68	59	62							64.0	
EDINBURG	07	MAX	86	90	90	86	77	78	84	87	89	86	83	83	86	88	86	79	77	78	77	77	77	82	87	89	72	80	84	81	71	72	76	81.9	
		MIN	63	67	67	63	50	52	54	65	63	61	60	62	65	67	68	56	56	53	53	61	61	64	68	67	59	58	64	64	50	48	48	59.9	
FRONT ROYAL	07	MAX	85	90	93	86	78	80	86	90	91	85	85	84	87	89	87	81	77	79	79	77	78	81	84	91	75	81	86	82	78	72	78	83.1	
		MIN	65	70	68	64	56	55	61	69	69	65	64	65	67	70	70	60	58	56	57	62	62	65	69	58	57	66	65	56	51	51	51	62.6	
LINCOLN	07	MAX	87	92	95	88	78	78	86	90	91	88	86	85	89	90	89	83	78	79	81	80	81	83	86	92	77	80	86	87	80	71	78	84.3	
		MIN	64	70	67	67	52	52	52	56	63	65	64	64	69	69	63	57	53	53	59	63	65	68	68	53	53	61	66	65	56	51	51	60.6	
LURAY 5 E	08	MAX	85	91	93	83	78	81	84	89	90	90	83	83	87	89	90	83	78	79	82	76	77	82	88	92	74	80	86	81	77	74	78	83.3	
		MIN	65	69	65	65	49	52	60	65	62	62	59	63	65	68	68	56	55	54	60	59	62	65	66	68	54	60	66	63	49	47	53	60.5	
MADISON	08	MAX	86	91	95	85	80	80	85	89	91	85	82	83	86	89	92	88	81	79	81	78	78	81	84	92	72	81	85	81	83	76	79	83.8	
		MIN	68	73	68	65	54	55	59	68	68	67	63	66	69	72	71	65	59	61	64	61	65	70	71	70	58	60	67	68	55	53	56	64.2	
MANASSAS	07	MAX					82	84	88	91	93	87	87	87	89		91	87		81	83													M	
		MIN					57	58	65	70	70	70	65	66			73	65		61	64														M
MT WEATHER	07	MAX	82	86	89	83	74	76	80	83	84	81	82	80	81	82	81	77	74	74	76	74	75	76	80	87	72	77	81	80	73	68	72	78.7	
		MIN	66	70	70	60	54	56	64	70	66	65	62	63	68	67	67	60	59	59	61	62	64	66	68	65	58	61	61	65	53	54	57	62.6	
PIEDMONT RSCH STN	08	MAX	87	90	93	85	79	79	84	88	90	86	81	85	86	90	92	87	80	81	82	80	80	80	84	94	74	81	86	82	82	76	78	83.9	
		MIN	67	69	69	67	56	53	55	65	67	67	63	64	67	69	55	59	63	62	63	62	62	69	69	71	60	60	65	68	55	54	57	63.0	
SOMERSET	07	MAX	87	92	94	86	80	79	86	89	91	86	82	84	88	90	93	87	81	80	82	79	79	82	86	94	74	82	87	83	83	76	79	84.5	
		MIN	67	71	68	67	51	53	63	67	68	67	63	67	69	71	70	67	62	61	63	61	63	71	69	70	57	57	67	68	53	52	56	63.8	
SPERRYVILLE	06	MAX	85	89	91	81	77	78	83	86	88	83	82	82	85	87	87	83	78	79	76													82.2	

VIRGINIA  
201407

## DAILY TEMPERATURES (°F)

STATION	OB. TIME	MAX/MIN	DAY OF MONTH																															AVERAGE	
			01	02	03	04	05	06	07	08	09	10	11	12	13	14	15	16	17	18	19	20	21	22	23	24	25	26	27	28	29	30	31		
STERLING RCS	07	MIN	61	69	67	68	57	54	58	64	64	65	62	62	67	70	70	64	64	59	61							57	58	67		54		55	62.4
		MAX	88	93	96	89	89	81	86	91	93	88	88	88	89	91	92	86	79	81	83	81	82	85	88	95	79	83	89	89	83	75	81	86.5	
VIENNA	07	MIN	69	74	69	65	58	56	60	70	67	66	63	67	71	71	70	65	60	59	61	65	67	70	71	71	59	61	69	66	58	50	56	64.6	
		MAX	89	92	97	91	78	88	87	91	93	89	91	87	89	92	92	87	82	80	86	83	84	86	96	96	86	86	90	87	82	83	83	87.8	
WASHGTN DULLES INTL AP	24	MIN	66	75	73	67	58	58	65	72	70	71	66	65	67	74	74	67	62	62	63	69	69	74	75	73	61	61	72	72	63	57	57	67.0	
		MAX	91	95	88	79	80	85	89	92	87	86	85	87	89	90	87	79	80	83	80	80	82	84	93	78	82	87	84	81	74	79	85	84.5	
WASHINGTON REAGAN AP	24	MIN	72	71	69	60	54	57	69	67	67	66	63	66	72	71	68	62	55	58	66	65	69	70	71	61	56	66	68	65	52	48	55	63.8	
		MAX	93	99	92	83	86	89	94	96	89	87	89	90	94	93	89	82	83	86	84	85	86	88	94	83	85	88	87	86	78	80	89	88.0	
WINCHESTER	07	MIN	76	77	75	68	64	65	74	72	73	69	69	73	76	76	72	71	66	68	73	73	74	75	71	65	72	73	71	65	60	67	70.8		
		MAX	87	93	94	89	83	81	87	91	91	88	86	84	86	88	84	80	78	80	79	78	78	83	85	92	76	83	88	81	78	72	79	83.9	
WINCHESTER 7 SE	08	MIN	69	73	69	65	58	60	64	73	66	64	64	65	68	69	70	63	61	56	58	65	65	67	68	68	57	60	67	65	56	51	53	63.8	
		MAX	85	92	95	89	79	81	86	90	92	87	86	84		75	88	88	81	82	79	78	80	83	100	92	75	84	87	82	78	75	77	84.3	
WOODSTOCK 2 NE	07	MIN	87	90	90	87	77	74	84	89	89	85	84	83	87	88	86		80	78	78	76	83	86	84	90	73	81	85	87	77	71	76	82.8	
		MAX	64	69	67	63	51	53	56	65	63	62	62	63	66	67	69		57	54	55	62	63	67	67	67	60	60	64	63	49	49	50	60.9	
<b>CENTRAL MOUNTAIN 05</b>																																			
COVINGTON FLTR PLT	07	MAX	85	89	93	85	79	80	85	90	93	83	85	87	84	90	89	76	80	81	78	70	74	84	87	91	79	82	89	82	77	74	77	83.2	
		MIN	61	66	66	55	48	48	50	57	60	60	60	61	61	65	65	56	48	48	54	62	62	65	64	64	60	60	62	65	55	50	51	58.4	
DALE ENTERPRISE	07	MAX	85	90	91	87	75	78	84	88	90	83	85	81	89	89	88	81	81	77	78	73	75	83	83	87	71	80	85	81	77	73	76	82.1	
		MIN	62	67	65	62	48	52	57	64	62	62	60	63	66	69	69	55	55	56	57	59	64	65	68	67	55	60	64	59	50	48	49	60.0	
GATHRIGHT DAM	07	MAX	83	86	87	87	73	76	82	84	85	80	82	83	85	87	84	73	74	77	75	68	71	81	85	86	77	79	85	78	70	70	73	79.5	
		MIN	61	65	66	56	49	50	51	60	63	62	58	59	64	66	66	54	49	50	56	60	61	64	65	65	59	60	62	64	54	50	49	58.6	
HOT SPRINGS	07	MAX	82	85	88	84	73	75	81	85	87	81	81	81	85	87	86	74	73	76	77	69	71	81	85	87	76	79	84	77	73	69	73	79.5	
		MIN	62	65	64	56	47	47	52	59	65	60	56	56	63	66	66	52	49	49	54	59	60	60	64	65	58	58	62	62	51	47	47	57.5	
LEXINGTON	07	MAX	86	92	92	84	80	78	85	89	92	84	83	85	87	89	92	81	82	81	78	74	76	82	86	92	80	83	87	82	79	77	78	83.7	
		MIN	62	68	67	61	50	51	52	61	64	66	63	63	64	69	69	58	51	52	56	63	63	66	65	66	65	65	65	67	54	51	51	60.9	
MILLGAP	07	MAX	81	85	86	82	72	77	81	84	85	78	82	82	84	87	83	73	72	76	74	67	70	80										77.9	
		MIN	60	59	59	50	38	40	40	50	55	52	53	55	58	59	61	47	41	41	46	57	57	59										51.6	
MUSTOE 1 SW	24	MAX	83	84	81	70	74	78	81	83	77	80	79	81	85	79	72	71	75	72	65	68	79	83	84	71	75	80	73	68	66	69	75	76.2	
		MIN	59	58	58	46	39	42	52	55	58	52	53	55	57	62	55	46	42	47	58	57	61	60	58	55	50	56	59	53	45	40	45	52.7	
ROANOKE 8 N	07	MAX	85	94	95	87	81	80	87	91	93	83	83	85	89	92	92	83	81	81	78	74	78	80	87	93	83	83	90	84	80	82	78	84.9	
		MIN	65	69	71	67	53	54	56	65	67	65	64	67	70	69	60	54	56	63	65	65	69	67	68	62	63	68	68	57	55	56	63.4		
ROANOKE INTL AP	24	MAX	94	96	86	81	79	87	91	94	84	84	84	88	90	93	84	80	80	77	74	78	80	86	92	84	81	90	84	79	80	77	82	84.5	
		MIN	69	73	68	61	53	55	64	71	68	67	65	65	69	73	64	60	54	59	66	65	69	71	68	68	63	69	71	64	59	55	58	64.6	
STAUNTON WATER TRMTMT PLT	08	MAX	84	88	90	83	77	78	83	86	89	83	82	85	87	88	87	80	81	80	76	73	74	81	84	88	77	81	85	79	76	74	75	81.7	
		MIN	60	73	65	60	50	57	57	70	68	63	58	61	69	71	69	57	56	56	60	58	60	66	68	66	60	61	65	65	51	51	54	61.5	
WAYNESBORO WTP	07	MAX	85	89	92	83	77	71	85	88	91	85	80	83	86	88	90	83	79	78	79	75	76	82	84	90	76	81	85	83	79	74	77	82.4	
		MIN	62	62	67	65	49	50	62	62	65	66	65	65	65	69	69	59	57	57	58	61	61	67	67	67	63	63	65	67	52	50	50	61.5	
<b>SOUTHWESTERN MOUNTAIN 06</b>																																			
ABINGDON 3S	22	MAX	80	85	87	81	75	82	82	86	84	78	82	86	87	85	86	76	74	78	65	73	78	83	86	88		80	82	75	73	74	76	80.2	
		MIN	64	66	65	54	49	50	56	58	66	64	59	60	65	67	67	52	50	56	61	61	62	63	63	66		60	61	65	54	48	48	59.3	

VIRGINIA  
201407

## DAILY TEMPERATURES (°F)

STATION	OB. TIME	MAX/MIN	DAY OF MONTH																															AVERAGE	
			01	02	03	04	05	06	07	08	09	10	11	12	13	14	15	16	17	18	19	20	21	22	23	24	25	26	27	28	29	30	31		
BIG STONE GAP	08	MAX	82	87	88	78	78	83	84	87	83	81	87	87	88	87	86	77	76	80	66	71	79	87	87	76	81	81	82	77	77	75	77	81.1	
		MIN	68	69	66	61	52	51	51	58	66	65	53	53	53	64	66	55	51	53	42	63	63	65	65	67	57	58	59	64	55	51	52	58.6	
BLACKSBURG NWSO	07	MAX	81	88	89	84	77	79	83	86	88	78	82	84	86	87	86	77	75	78	73	69	77	80	84	86	83	83	87	78	76	76	77	81.2	
		MIN	62	66	67	56	47	48	52	59	66	64	60	61	62	65	66	53	48	49	56	62	62	67	62	63	62	62	64	65	55	49	50	59.0	
BURKES GARDEN	07	MAX	76	81	83	79	69	75	77	80	79	72	77	81	83	83	79	69	67	71	60	74	78	77	79	77	75	78	72	66	68	71	75.2		
		MIN	58	62	57	55	38	43	54	64	63	57	50	50	58	58	63	46	41	41	55	58	63	56	60	50	53	60	61	54	42	43	53.8		
CHRISTIANSBURG	07	MAX	82	86	87	84	77	80	83	84	87	77	80	84	85	87	86	74	75	77	73	73	75	78	82	85	82	79	86	76	75	75	78	80.4	
		MIN	61	66	66	58	49	53	58	58	65	63	61	60	64	64	65	54	49	50	58	58	60	65	63	63	61	61	63	64	55	50	51	59.2	
CLINTWOOD 1 W	07	MAX	78	84	85	74	74	79	81	83	79	78	81	82	83	83	78	72	72	76	65	70	75	82	84	83	77	76	80	73	72	71	74	77.5	
		MIN	63	64	65	54	47	47	52	54	62	63	55	56	59	63	65	52	48	48	54	62	62	62	62	63	59	59	59	62	57	46	47	57.1	
COPPER HILL	07	MAX	76	83	83	83	70	71	80	82	85	76	76	77	79	82	85	76	74	72	69														77.4
		MIN	61	65	65	56	50	51	56	62	64	62	60	61	64	66	64	56	49	48	59														58.1
GALAX RADIO WBRF	07	MAX	76	86	87	80	77	76	79	83	86	76	79	81	82	82	88	84	76	75	66	67	76	78	82	87	81	78	85	78	75	75	77	79.3	
		MIN	62	62	63	53	46	50	54	58	63	62	60	58	62	63	64	65	48	53	53	59	64	65	60	65	56	61	65	63	52	46	50	58.2	
GALAX WTP	07	MAX	76	86	87	81	75	75	78	83	86	77	79	81	81	82	87	78	75	75	68	66	76	77	81	86	81	79	85	79	74	75	76	78.9	
		MIN	60	63	63	56	46	46	52	54	54	63	60	58	58	62	62	56	49	50	54	60	60	65	60	62	56	56	62	64	52	47	47	56.7	
GRUNDY	07	MAX	78	86	86				82	86		83	83	82	84	84		77	72	77	66	68												M	
		MIN	67	69	69				52	59		65	60	61	62	64		56	54	54	58	62													M
JOHN FLANNAGAN LAKE	07	MAX	83	88	88	77	75	83	84	87	84	82	85			89	80	76	73	77			80	87	88	84	77							81.1	
		MIN	66	66	68	57	52	52	56	58	63	63	60			60	67	53	53	53			56	63	65	65	59								59.6
LEBANON	07	MAX	81	86	88	77	75	82	83	86	84	79	82	86	88	86	83	73	77	69	69	76	84	84	86	81	80	83	77	74	74	76	80.4		
		MIN	63	65	66	56	46	46	54	56	67	62	55	55	58	66	67	51	47	47	61	61	62	61	64	63	59	57	58	63	57	46	47	57.6	
NORA 4 SSE	07	MAX	76	83	82	73	70	75	79	80	78	75	77	82	84	81	79	74	67	72	65	66	74	82	81	74	74	73	79	72	72	65	72	75.4	
		MIN	65	68	66	55	56	59	63	64	64	63	63	67	68	68	64	53	53	53	59	59	62	66	67	64	57	56	65	61	56	53	53	61.0	
NORTH FORK LAKE	08	MAX	86	88	87				84	87	84	82	84			89	78	76	73	76			80	86	87	85	77							81.5	
		MIN	62	66	66				50	57	64	61	58			58	65	52	51	51			55	62	64	64	58								58.3
PULASKI 2 E	07	MAX	82	89	91	86	77	84	83	87	90	78	81	86	86	89	88	78	76	79	72	69	80	82	86	87	84	84	86	89	75	77	77	82.5	
		MIN	62	59	68	60	48	48		61	66	64	61	59	60	65	67	55	48	49	54	61	61	61	61	64	57	56	57	61	59	48	48	58.3	
RADFORD 3 N	07	MAX	83	90	92	86	77	80	84	88	89	79	81	85	88	90	89	75	76	77	71	68	78	81	83	86	84	84	87	77	78	74	76	81.8	
		MIN	63	62	66	62	45	50	55	58	63	65	59	57	61	64	65	55	47	54	59	62	63	67	62	62	61	62	64	68	58	48	52	59.3	
RICHLANDS	07	MAX	82	86	87	88	78	82	84	86	83	78	82	86	86	86	83	77	83	77	68	67	72	85	86	79	79	79	83	78	75	73	75	80.4	
		MIN	65	63	63	60	46	46	54	53	53	62	56	54	54	65	66	54	47	48	55	60	60	60	62	58	58	58	57	57	48	48	48	56.5	
SALTVILLE 1N	07	MAX	81	86	88	88	76	82	83	86	83	76	83	87	88	87	87	75	74	78	65	66	77	85	86	81	79	81	83	76	75	74	76	80.4	
		MIN	65	66	63	59	48	48	53	54	61	63	58	57	60	62	66	53	49	50	59	59	58	63	63	64	55	55	61	64	54	48	48	57.6	
STAFFORDSVILLE 3 ENE	07	MAX	83	90	92	84	74	79	84	87	89	79	80	85	86	91	88	75	75	79	69	67	77	83	86	86	81	82	87	78	75	76	76	81.4	
		MIN	62	63	63	61	46	48	52	54	63	65	58	59	62	64	64	55	46	47	52	61	61	66	62	63	59	59	60	66	59	48	48	57.9	
WISE 3E	17	MAX	82	84	81	71	76	78	80	78	74	78	81	83	83	78	76	69	73	69	66	76	82	82	78	75	74	78	76	70	68	71	75	76.3	
		MIN	66	69	64	55	50	56	61	67	65	59	56	60	60	68	63	49	47	55	59	60	61	61	63	63	55	56	66	60	56	46	51	58.9	
WYTHEVILLE 1 S	07	MAX	78	86	89	85	74	78	83	87	88	88	81	85	86	89	87	75	75	79	68	65	79	82	84	85	82	83	86	79	74	75	77	81.0	
		MIN	63	63	63	58	47	47	47	57	66	61	57	60	60	65	66	54	49	48	56	57	59	65	61	61	55	55	59	63	56	47	47	57.2	

# TOTAL SNOWFALL AND NUMBER OF DAYS WITH ONE INCH OR MORE ON GROUND

VIRGINIA  
201407

STATION	JUL		AUG		SEP		OCT		NOV		DEC		JAN		FEB		MAR		APR		MAY		JUN		TOTAL		TOTAL PRECIPITATION	
	SNOWFALL	1 IN ON GD	SNOWFALL	1 IN ON GD	SNOWFALL	1 IN ON GD	SNOWFALL	1 IN ON GD	SNOWFALL	1 IN ON GD	SNOWFALL	1 IN ON GD	SNOWFALL	1 IN ON GD	SNOWFALL	1 IN ON GD	SNOWFALL	1 IN ON GD	SNOWFALL	1 IN ON GD	SNOWFALL	1 IN ON GD	SNOWFALL	1 IN ON GD	SNOWFALL	1 IN ON GD		TOTAL
<b>VIRGINIA</b>																												
<b>TIDEWATER 01</b>																												
DISPUTANTA													M 8.0	3	M 0.0	2	M 2.0	1							M 2.0	M 6	51.92	
EASTVILLE													M 6.0	6	M 0.0	1									M 8.0	M 7	M 11.03	
EMPORIA 1 WNW													M 1.1	1	M 10.0	2	M 2.0	1							M 13.1	M 4	48.65	
FREDERICKSBURG SEWAGE													M 0.7	3	M 1.7	2	M 1.9	2							M 4.3	M 7	35.12	
HAMPTON UNIV																									0.0	0	0.00	
HOLLAND 1 E																								0.0	0	M 40.44		
HOPEWELL	M 0.0		M 0.0		M 0.0		M 0.0		M 0.0		M 0.0		M 4.2	1	M 2.8	1	M 2.3	1	M 0.0		M 0.0		M 0.0		M 9.3	M 3	M 53.49	
NORFOLK INTL AP													11.5	5	1.7		2.3	1							15.5	M 6	47.14	
NORFOLK SOUTH													M 10.8	9	M 1.7	1	M 2.3	2							M 14.8	M 12	49.11	
N																M T			M 0.0		M 0.0		M 0.0		M 0.0	M 0	M 12.40	
PAINTER 2W													M 8.5	7		1	M 4.5	2							M 13.0	M 10	44.25	
STONY CREEK 2 N												M 0.0	M 1.5	3		1							M 0.0		M 1.5	M 4	M 35.46	
SUFFOLK LAKE KILBY													12.0	9	3.0	1	1.5	1							16.5	11	48.66	
WAKEFIELD INW							M 0.0		T		T		7.5	8	4.3	1	M 1.4	1			M 0.0				M 13.2	M 10	53.29	
WALKERTON 2 NW												M 0.0	0.1	1	3.9	4	FM 0.1	4							M 4.0	M 9	47.21	
WALLACETON LK DRUMMOND			M 0.0																						0.0	0	M 56.29	
WALLOPS ISLAND NASA TEST FACIL									T		T		6.9	6		T	1	6.2	5						13.1	12	38.96	
WARSAW 2 NW													M 9.0	8	M 6.0	1	M 7.0	4							M 22.0	M 13	41.84	
WEST POINT 2 NW									T		T		8.0	6	4.1		4.5	2			T				16.6	8	43.84	
WILLIAMSBURG 2 N													M 6.5	8	M 2.0	1	M 2.0	1							M 10.5	M 10	52.29	
<b>EASTERN PIEDMONT 02</b>																												
AMELIA COURTHOUSE 1													M 1.7		M 4.5	1	M 1.3								M 7.5	M 1	M 39.86	
ASHLAND									MT		M 0.5		M 7.1	8	M 6.6	5	6.7	5			M 0.0				M 20.9	M 18	46.61	
CAMP PICKETT															M 3.0	1	M 1.2								M 4.2	M 1	M 46.05	
CHASE CITY													M 1.0	1	M 6.5	2									M 7.5	M 3	45.22	
CLARKSVILLE	M 0.0		M 0.0				M 0.0						M 1.3	1	5.8	2	1.6	1							M 8.7	M 4	M 46.31	
CORBIN													M 8.0	11	M 8.5	6	M 3.5	4							M 20.0	M 21	44.70	
CROZIER	M 0.0						M 0.0		M 0.0		M 0.0		3.5	3	6.5	6	6.0	7			M 0.0		M 0.0		M 16.0	M 16	M 47.39	
FARMVILLE 2 N													M 3.5	3	M 7.2	1	M 3.5	3			M 0.0				M 14.2	M 7	M 47.82	
GREENBAY 3 NE									M 0.0		M 0.0		M 5.1	2	M 6.0	2	M 0.0				M 0.0				M 11.1	M 4	M 46.63	
JOHN H KERR DAM																									0.0	0	M 42.74	
LOUISA													M 4.5	5	M 9.3	6	M 10.5	6							M 24.3	M 17	45.05	
PALMYRA 3S													M 2.1		M 6.6	6	M 5.1	6							M 13.8	M 12	M 50.63	
PETERSBURG	M 0.0		M 0.0		M 0.0		M 0.0		M 0.0		M 0.0		M 4.5	2	M 3.0	1	M 1.5	1			M 0.0		M 0.0		M 9.0	M 4	M 41.05	
RICHMOND INTL AP									T		T		5.1	5	5.8	2	3.6	2							14.5	9	47.73	
SANDSTON													M 4.8	9	M 4.1	3	M 3.5	3							M 12.4	M 15	0.00	
<b>WESTERN PIEDMONT 03</b>																												
APPOMATTOX									T		T		3.0	4	9.9	7	6.8	4								19.7	15	M 46.71
BROOKNEAL													3.1	4	8.2	7	M 2.1	3							M 13.4	14	45.28	
CHARLOTTE COURT HOUSE									T		T		2.2	4	9.6	6	2.1	2							13.9	12	M 47.37	
CHARLOTTESVILLE 2W									T		0.2		3.3	7	16.0	9	17.8	10							37.3	26	55.18	
CHATHAM													1.7	3	10.0	7	M 5.8	3							M 17.5	M 13	M 44.67	
DANVILLE REGIONAL AP									MT		M 0.0		1.6	3	6.3	6	5.5	4							M 13.4	13	M 45.41	
FREE UNION													M 3.4	5	M 0.9	5	M 18.7	8							M 23.4	M 18	M 40.98	
LYNCHBURG INTL AP									T		T		2.0	2	10.0	6	9.4	4			T				21.4	12	42.24	
MARTINSVILLE FLTR PLT													3.0	1	19.8	6	M 11.1	2							M 33.9	M 9	M 40.32	
MEADOWS OF DAN 5 SW													2.0	3	M 0.0										M 2.0	M 3	37.23	
MONTEBELLO FISH CULTURAL STN													M 3.0	1			M 15.8	7							M 18.8	M 8	M 6.48	
MONTICELLO												M 0.3	M 3.1	7	M 14.0	5	M 7.8	6							M 25.2	M 18	M 56.14	

# TOTAL SNOWFALL AND NUMBER OF DAYS WITH ONE INCH OR MORE ON GROUND

VIRGINIA  
201407

STATION	JUL		AUG		SEP		OCT		NOV		DEC		JAN		FEB		MAR		APR		MAY		JUN		TOTAL		TOTAL PRECIPITATION	
	SNOWFALL	I IN ON GD	SNOWFALL	I IN ON GD	SNOWFALL	I IN ON GD	SNOWFALL	I IN ON GD	SNOWFALL	I IN ON GD	SNOWFALL	I IN ON GD	SNOWFALL	I IN ON GD	SNOWFALL	I IN ON GD	SNOWFALL	I IN ON GD	SNOWFALL	I IN ON GD	SNOWFALL	I IN ON GD	SNOWFALL	I IN ON GD	SNOWFALL	I IN ON GD		
ROCKY MT													2.2	5	16.5	7	10.2	4							28.9	16	42.55	
SOUTH BOSTON													2.3	2	7.0	4	1.5	2							10.8	8	M 43.43	
STUART			M 0.0										M 0.0		12.0	5	M 5.0	3							M 17.0	M 8	M 50.22	
TYE RIVER 1 SE													M 1.0	1	M 12.0		M 9.0	3							M 22.0	M 4	47.15	
<b>NORTHERN 04</b>																												
BOSTON 4 SE									M 0.0		1.7	2	M 5.7	3	M 13.3	2	15.9	4	M 0.0		M 0.0				M 36.6	M 11	M 49.30	
EDINBURG										M 8.8	11	M 9.2	15	12.3	8	14.6	9								M 44.9	M 43	37.30	
FRONT ROYAL								M 0.0		M 7.0	6	M 8.5	8	M 14.7	5	M 18.2	5	M 0.0		M 0.0		M 0.0			M 33.7	M 24	M 37.65	
LINCOLN										M 8.0	8	M 10.0	9	M 22.0	11	M 17.0	9								M 57.0	M 37	M 26.59	
LURAY 5 E										6.0	10	6.4	13	M 15.4	8	16.8	9								M 44.6	M 40	48.80	
MADISON	M 0.0							M 0.0		M 2.2								M 0.0		M 0.0		M 0.0			M 2.2	M 0	M 6.88	
MANASSAS										M 5.2	5	M 8.1	7	M 17.0	8	M 14.0	9								M 44.3	M 29	M 20.80	
MT WEATHER										M 8.0	8	M 10.9	11	M 17.4	5	M 20.7	9								M 57.0	M 33	M 46.57	
PIEDMONT RSCH STN										T		M 7.2	5	M 14.8	6	14.4	6								M 36.4	M 17	36.00	
SOMERSET										M T		M 5.2	6	M 16.3	7	M 12.1	8								M 33.6	M 21	46.39	
SPERRYVILLE										M 2.9	7	M 5.3	14	M 14.3	7	M 20.7	10	M T							M 43.2	M 38	M 18.30	
STERLING RCS			M 0.0					M T		FM 4.9	5	F 9.1	8	16.4	9	M 22.8	9			M 0.0		M 0.0			M 39.2	M 31	46.94	
VIENNA										M 3.0	5	M 10.0	10	M 16.9	9	M 14.5	9								M 44.4	M 33	43.71	
WASHGTN DULLES INTL AP									T	4.7	6	12.0	9	16.3	9	19.8	9			T					52.8	33	55.68	
WASHINGTON REAGAN AP									T	1.5		6.6	9	M 11.2	6	12.7	5			T					M 32.0	20	47.29	
WINCHESTER										M 12.6	10	M 8.9	12	M 21.9	11	M 12.5	6								M 55.9	M 39	33.07	
WINCHESTER 7 SE	M 0.0		M 0.0				M 0.0			8.0	8	M 9.3	8	19.1	8	14.0	5	M 0.0		M 0.0		M 0.0			M 50.4	M 29	M 28.75	
WOODSTOCK 2 NE										M 5.2	7	M 11.0	13	M 13.0	6	M 19.6	8								M 48.8	M 34	M 36.61	
<b>CENTRAL MOUNTAIN 05</b>																												
COVINGTON FLTR PLT	M 0.0		M 0.0		M 0.0		M 0.0			1.0	1	10.0	7	12.5	7	3.5	3								M 27.0	M 18	42.34	
DALE ENTERPRISE			M 0.0							4.7	6	F 9.5	7	15.7	7	17.0	10					M 0.0			M 37.4	M 30	40.47	
GATHRIGHT DAM	M 0.0		M 0.0		M 0.0		M 0.0		T	2.0	2	6.5	10	16.4	7	6.3	3								M 31.2	M 22	37.18	
HOT SPRINGS										3.0	2	10.7	10	14.1	10	10.0	9									37.8	31	42.38
LEXINGTON							M 0.0			0.5	1	4.6	9	13.0	8	8.6	7								M 26.7	M 25	44.75	
MILLGAP									1.2	9.3	12	F 11.2	14	16.8	11	16.2	10									43.5	47	39.45
MUSTOE 1 SW	M 0.0		M 0.0		M 0.0		M T		2.0	1	F 9.7	12	12.9	15	18.3	10	15.8	8							M 49.0	M 46	39.84	
ROANOKE 8 N												1.1			M 0.0		M 3.6	4							M 4.7	M 4	M 47.84	
ROANOKE INTL AP										T		3.4	4	19.0	7	5.6	2									28.0	13	44.72
STAUNTON WATER TRMTMT PLT	M 0.0		M 0.0		M 0.0		M 0.0					M 4.7	10	M 14.1	7	M 12.4	8	M 0.0							M 32.8	M 27	42.12	
WAYNESBORO WTP	M 0.0											M T		M 2.3	2	M 14.3	7	M 8.8	6						M 25.4	M 15	39.54	
<b>SOUTHWESTERN MOUNTAIN 06</b>																												
ABINGDON 3S	M 0.0		M 0.0		M 0.0		M 0.0		M 1.2	1	M 0.0		M 4.5	3	M 11.0	4	M 1.1	1	M 0.0		M 0.0				M 17.8	M 9	M 40.56	
BIG STONE GAP									1.5	2			8.0	4	6.5	2	1.5	2								17.5	10	49.88
BLACKSBURG NWSO									T	0.1		T		6.5	2	20.5	8	7.3	4	T						34.4	14	40.03
BURKES GARDEN							M 2.0	1		3.4	1	1.6	FM 9.5	12	M 13.1	6	9.6	5	T		M 0.0				M 29.7	M 27	M 41.74	
CHRISTIANSBURG										T		T		6.4	3	23.5	8	7.5	4							37.4	15	40.26
CLINTWOOD 1 W							T			4.7	4	1.4	5	15.8	20	20.9	11	13.7	8	0.4						56.9	48	47.00
COPPER HILL	M 0.0		M 0.0							1.0	1	0.8		7.1	11	19.0	9	9.6	7						M 37.5	M 28	M 47.77	
GALAX RADIO WBRF													3.1	5	12.7	8	5.8	3								21.6	M 16	M 51.34
GALAX WTP	M 0.0		M 0.0				M T			T			3.0	3	15.0	7	M 6.5	4	M 0.0		M 0.0				M 24.5	M 14	50.97	
GRUNDY										1.9	2	0.6		8.7	11	15.8	7	M 4.4	4						M 31.4	M 24	42.89	
JOHN FLANNAGAN LAKE	M 0.0								M 2.0	1	M 0.5		M 4.5	3	M 8.8	2	M 5.5	1							M 21.3	M 4	0.00	
LEBANON										2.1	2			4.4	3	10.0	4	M 0.7	1						M 17.2	M 10	46.80	
NORA 4 SSE								0.3		4.8	4		1	17.5	16	14.6	6	9.2	5	1.6	1					49.8	33	49.51
NORTH FORK LAKE												M T		M 6.5	7	M 8.0	2	M 5.5	6						M 20.0	M 15	0.00	
PULASKI 2 E	M 0.0						M 0.0		M T			M 0.0		1.8	2	M 13.0	6	M 2.6	3	M 0.0					M 17.4	M 11	M 34.47	

# TOTAL SNOWFALL AND NUMBER OF DAYS WITH ONE INCH OR MORE ON GROUND

VIRGINIA  
201407

STATION	JUL		AUG		SEP		OCT		NOV		DEC		JAN		FEB		MAR		APR		MAY		JUN		TOTAL		TOTAL PRECIPITATION		
	SNOWFALL	1 IN ON GD	SNOWFALL	1 IN ON GD	SNOWFALL	1 IN ON GD	SNOWFALL	1 IN ON GD	SNOWFALL	1 IN ON GD	SNOWFALL	1 IN ON GD	SNOWFALL	1 IN ON GD	SNOWFALL	1 IN ON GD	SNOWFALL	1 IN ON GD	SNOWFALL	1 IN ON GD	SNOWFALL	1 IN ON GD	SNOWFALL	1 IN ON GD	SNOWFALL	1 IN ON GD			
RADFORD 3 N										T				2.0	1	16.0	7	7.0	4								25.0	12	M 39.81
RICHLANDS	M 0.0		M 0.0		M 0.0		M 0.0		4.1	3		T		7.1	9	10.0	6	5.3	3							M 26.5	M 21	40.70	
SALTVILLE 1N									M 1.2	2		M 0.0		F 2.5	4	M 1.9	7	M 1.7	1	M 0.0						M 4.8	M 14	M 44.34	
STAFFORDSVILLE 3 ENE							M T					T		4.4	6	14.0	7	6.0	4							24.4	M 17	40.35	
TROUT DALE 3 SSE																										0.0	0	0.00	
WISE 3E							T		2.0			4.9	1	10.5	9	16.9	5	8.8	1	2.5	1					45.6	17	46.30	
WYTHEVILLE 1 S	M 0.0										M 0.0		6.0	4	M 12.7	7	M 3.7	3	M T							M 22.4	M 14	17.14	



MONTHLY AND SEASONAL HEATING DEGREE DAYS

STATION	JUL	AUG	SEP	OCT	NOV	DEC	JAN	FEB	MAR	APR	MAY	JUN	TOTAL	SEASONAL NORM
<b>VIRGINIA</b>														
<b>TIDEWATER 01</b>														
DISPUTANTA	0	1	55	216	576	704	1005	735	724	267	53	7	4343	
EASTVILLE	0	0	6E		735E	630	916	729	709	294	42	5	M 4066E	
EMPORIA 1 WNW	0	0	14E	178	507	652	927	653E	706	235	28	2	3902E	3839
FREDERICKSBURG SEWAGE	0	0	60E	238E	633	776	1087E	820E	778E	246E	53	0	4691E	
HOLLAND 1 E	0	0	35	175	512	656	931	696	647E	229	26	10	3917E	3820
HOPEWELL	0	0	8	124E	414E	544E	814E	586	516	163	8	0	3177E	3334
NORFOLK INTL AP	0	0	8	112	411	571	857	652	574	231	27	3	3446	3368
NORFOLK SOUTH	0	0	22	155	479	607	882	683	628	245	33	6	3740	
N									663E	362E	55	11E	M 1091E	
PAINTER 2W	0	0	39	141	488	626	906	717	628	280	38	11	3874	3698
STONY CREEK 2 N	0	0	36	204	526	677E	920E	737	716	236	39	6E	4097E	3926
SUFFOLK LAKE KILBY	0	0	36	152	496	606	889	665	618	220	35	1	3718	3467
WAKEFIELD INW	0	0	48	181	541	651	970	713	664	234	48	6	4056	3652
WALKERTON 2 NW	0	0	16	122	471	638	957	711	582	223	28	1	3749	3908
WALLACETON LK DRUMMOND	0	0	43E	194	530	680	680	738E	724	275	62	15	3941E	
WALLOPS ISLAND NASA TEST FACIL	0	0	22	132	489	640	974	736	670	318	46	7	4034	
WARSAW 2 NW	0	3	64	176E	548E	709E	979E	736E	626E	256E	41	3	4141E	3902
WEST POINT 2 NW	0	0	26	164	529	683	951	707	629	246	31	3	3969	3619
WILLIAMSBURG 2 N	0	0	25	167	507	652	937	696	611	215	23	1	3834	3629
<b>EASTERN PIEDMONT 02</b>														
AMELIA COURTHOUSE 1	0	1E	56E	215E	558E	675E	1014E	745E	694E	262E	43E	3E	4266E	4364
ASHLAND	0	0	55	213	563	686	1016	737	634	238	31	3	4176	4170
CAMP PICKETT	0	3E	37	240	578	699	1030	726	749	257	56	5	4380E	4272
CHASE CITY	0	0	44	192	545	676	929	684	701	249	50	4	4074	4188
CLARKSVILLE	0	0	7	168E	522	656	946E	666	681	224	28	0	3898E	
CORBIN	0	0	65	237	598	721	1034	752	676	303	49	2	4437	4252
CROZIER	0	5	73	249	619	738E	1062	764	778	315E	72E	7	4682E	4335
FARMVILLE 2 N	0	0	44E	230	578	729E	1041	744	758	270	62	3	4459E	4023
GREENBAY 3 NE	0	4	59	257	561	709	1047E	751	707E	251	62	3	4411E	
JOHN H KERR DAM	0	0	13	167	487	651E	910	672	697	215	18	0	3830E	3806
LOUISA	0	4	79	250	631	730	1040	762	680	310	58	4	4548	4779
PALMYRA 3S	0	5E	99	285	668	769	1104	794	810	332	85	8	4959E	
PETERSBURG	0	0	39E	186	531	659	964	714	715E	232	44E	1	4085E	
RICHMOND INTL AP	0	0	13	137	490	651	962	700	613	194	20	0	3780	3919
SANDSTON	0	0	67	234	598	725	1039	767	745	259	40	2	4476	
<b>WESTERN PIEDMONT 03</b>														
APPOMATTOX	0	1	54	254	615E	723E	1112E	793E	768E	267	63E	0	4650E	4510
BROOKNEAL	0	0	53	236E	636E	755E	1089E	748E	774	290	56E	1	4638E	4726
CHARLOTTE COURT HOUSE	0	0	48E	233	588	698E	1044E	717	751E	269	61E	0	4409E	4190
CHARLOTTESVILLE 2W	0	2	58	232	601	730	1095	758	775	275	56	0	4582	4103
CHATHAM	0	9	83E	274E	695E	787E	1128	805E	828E	352	103	6E	5070E	4628
DANVILLE REGIONAL AP	0	0	24	166	558	648	982	669	645	209	35	0	3936	
FREE UNION	0	13	103	276	677	797E	1150E	838E	834E	361	102	6	5157E	
LYNCHBURG INTL AP	0	5	43	231	639	736	1088	772	650	211	65	1	4441	4354
MARTINSVILLE FLTR PLT	0	10	50	237	656	769	1111	764	755	318	72	3	4745	4734
MONTEBELLO FISH CULTURAL STN	9E	27E	111E	415E	962E	1013E	1369E	996E	931E	446E	202E	34E	6515E	
MONTECELLO	0	7	93	274	604E	768	1097	805	824	313	85	2	4872E	4428
ROCKY MT	0	7	58	242	634	736E	1105	745	736	284	79	1	4627E	4444
SOUTH BOSTON	0	0	34	210	583E	712	1031	718E	743	266	47E	0	4344E	4252
STUART	0	8	40	206	618	699	1087E	715E	718	309E	68	1	4469E	
TYE RIVER 1 SE	0	4	64	242	596	725E	1066	718	727	265	71	3	4481E	4425
<b>NORTHERN 04</b>														
BOSTON 4 SE	0	9	121	331	694E	844	1160E	916E	859	354E	118E	2E	5408E	
EDINBURG	1	16	132	352	733	877	1250	909	943	436	156	11	5816	
FRONT ROYAL	0	8	108	304	691E	831	1206E	887E	873	366	110E	2	5386E	
LINCOLN	0	13	126	335	750	908	1287	957	923	397	142	10	5848	5031
LURAY 5 E	1	17	112	315	680	812	1162	863	871	345	128	11	5317	4548
MADISON	0	7	77	237	576	846E				281E	67	0	M 2091E	
MANASSAS	0	0	72E	247E	586E	760E	1127E	903E	857E	307E	61E	0	4920E	
MT WEATHER	0	10	100	315	723	881	1257	959	959E	427	160	12	5803E	5716
PIEDMONT RSCH STN	0	4	74	272	664	791	1123	806	836	401	98	4	5073	4643
SOMERSET	0	11	89	279	658	776	1136	807	846	344	84	4	5034	
SPERRYVILLE	0	22E	114E	317E	599E	831	1187	820E	877	372E	107E	5E	5251E	
STERLING RCS	0	3	85	297E	692E	865	1222	930	911	375	100E	9	5489E	5237
VIENNA	0	22	116	314	739	843	1196	917	879	376	95	1	5498	
WASHGTON DULLES INTL AP	0	0	67	242	655	793	1162	912	849	390	94	2	5166	4925
WASHINGTON REAGAN AP	0	0	9	156	543	696	1008	754	678	245	32	0	4121	4055
WINCHESTER		5E	93E	315	691	868	1229	909	881	358	111	2	M 5462E	5103
WINCHESTER 7 SE	1E	522E	158E	317E	793E	887E	1306E	1071E	944E	398E	310E	11E	6718E	5204
WOODSTOCK 2 NE	0	9	108	339E	719	922E	1252	910	928	419	164	8E	5778E	5099
<b>CENTRAL MOUNTAIN 05</b>														
COVINGTON FLTR PLT	0	6	60	281	685E	797	1212	836	811	330	104	1E	5123E	4920
DALE ENTERPRISE	1	21	108	334	721	816	1203	839	906	396	140	6	5491	5333
GATHRIGHT DAM	2	24	104	346	752	888E	1288	898E	876	383	133	10	5704E	5215
HOT SPRINGS	10	41	123	363	779	924	1303	935	911	406	152	14	5961	5585

MONTHLY AND SEASONAL HEATING DEGREE DAYS

STATION	JUL	AUG	SEP	OCT	NOV	DEC	JAN	FEB	MAR	APR	MAY	JUN	TOTAL	SEASONAL NORM
LEXINGTON	0	9	70	260E	686	824	1173	832	821	355	103	2	5135E	4896
MILLGAP	18	61	173	445	859	1006	1405	1043	1013	546	269	50	6888	
MUSTOE 1 SW	23	71E		455	878	1001	1377	1035	977	518	234	43	M 6612E	
ROANOKE 8 N	0	2E	45	226	627	747	1105	759E	716	295	73E	0	4595E	
ROANOKE INTL AP	0	1	35	214	624	695	1071	764	650	260	54	0	4368	4284
STAUNTON WATER TRMTMT PLT	0	13	92	315	688	804	1181	848	857	353	106	3	5260	5447
WAYNESBORO WTP	0	14	110	319	703	798	1153	867	873	376	130	2	5345	
<b>SOUTHWESTERN MOUNTAIN 06</b>														
ABINGDON 3S	0	3	48E	267E	685E	814	1205E	814	740E	283E	129E	0	4988E	4940
BIG STONE GAP	0	1	35	251	713	849	1200	784	703	306	102	0	4944	
BLACKSBURG NWSO	3	22	111	356	763	870	1240	873	831	395	127	7	5598	5559
BURKES GARDEN	22	75	202	479	856E	939	1363E	976E	917	472	237E	37	6575E	6320
CHRISTIANSBURG	0	21	107E	344	737	835	1224	851	834	378	122	6	5459E	
CLINTWOOD 1 W	6	11	94	348	787	906	1263	883	805	343	136	5	5587	
COPPER HILL	13E	43E	131E	421E	784	878	1250	914	886	429	155	16E	5920E	
GALAX RADIO WBRF	0	22	105	339	741	841E	1202	852	804	383	130	8	5427E	5728
GALAX WTP	0	36	121	371E	755E	851	1257	860	851	442	144	15	5703E	
GRUNDY	0	3	43	279E	710	842E	1228	838	777E	294	111	3	5128E	4535
JOHN FLANNAGAN LAKE	0	12E	38E	360E	776E	844E	1299E	901E	850E	326E	86E	3E	5495E	
LEBANON	1	8	70	350	718	830	1208	835	764	339	135	2	5260	5106
NORA 4 SSE	0	16	92	342	758	871	1273	891	790	294	118	2	5447	
NORTH FORK LAKE	2E	12E	38E	227E	642E	948E	1322E	840E	767E	342E	93E	3E	5236E	
PULASKI 2 E	1	9E	105	322E	673E	817E	1158	841E	809E	362	111E	3	5211E	5293
RADFORD 3 N	0	17	96E	332	720	835	1215	843	824	382	124	13	5401E	
RICHLANDS	1	10	74	353	764	857	1227	837	826	399	148E	3	5499E	5290
SALTVILLE 1N	0	12	52E	330E	725E	855	1227E	837E	760	348	134	2	5282E	5082
STAFFORDSVILLE 3 ENE	0	23	100	345	752	858	1241	856	829	397	135	10	5546	5438
WISE 3E	7	8	76	323	701	809	1186	826	709	248	127	6	5026	4901
WYTHEVILLE 1 S	0					0	1231E	869	799	373	128	6	M 3406E	5542



VIRGINIA  
201407

## PAN EVAPORATION AND WIND

STATION		DAY OF MONTH																															TOTAL OR AVERAGE		
		01	02	03	04	05	06	07	08	09	10	11	12	13	14	15	16	17	18	19	20	21	22	23	24	25	26	27	28	29	30	31			
VIRGINIA EASTERN PIEDMONT 02 JOHN H KERR DAM	WIND	-	-	-	-	-	-	-	-	-	-	-	-	-	-	-	-	-	-	-	-	-	-	-	-	-	-	-	-	-	-	-	-	-	M
	EVAP	-	-	-	-	-	-	-	-	-	-	-	-	-	-	-	-	-	-	-	-	-	-	-	-	-	-	-	-	-	-	-	-	-	M
	MAX	-	-	-	-	-	-	-	-	-	-	-	-	-	-	-	-	-	-	-	-	-	-	-	-	-	-	-	-	-	-	-	-	-	M
	MIN	-	-	-	-	-	-	-	-	-	-	-	-	-	-	-	-	-	-	-	-	-	-	-	-	-	-	-	-	-	-	-	-	-	-

Evaporation: Is measured in hundreths of inches.

Wind: Is measured in miles.

Max and Min: The maximum and minimum temperatures (Fahrenheit) of the water in the evaporation pan.

# STATION INDEX

STATION	INDEX NO.	DIVISION	COUNTY	LATITUDE	LONGITUDE	ELEVATION (IN FEET)	OBSERVATION TIME AND TABLES			
							LOCAL STD TIME			
							TEMP	PRECIP	EVAP	SPECIAL SEE (NOTES)
VIRGINIA										
ABINGDON 3S	0021	06	WASHINGTON	36 40	81 58W	1920	22	22		H
ALBERTA 5N	0079	02	BRUNSWICK	36 56	77 54W	376		08		H
ALTAVISTA	0166	03	CAMPBELL	37 7	79 17W	529		07		CH
AMELIA COURTHOUSE 1	0187	02	AMELIA	37 21	77 59W	345	08	08		H
APPOMATTOX	0243	03	APPOMATTOX	37 20	78 50W	850	07	07		H
ASHLAND	0327	02	HANOVER	37 45	77 29W	220	18	18		H
BEDFORD 4 NW	0561	03	BEDFORD	37 23	79 34W	1228		07		CH
BIG STONE GAP	0735	06	WISE	36 52	82 46W	1464	08	08		H
BLACKSBURG NWSO	0766	06	MONTGOMERY	37 12	80 25W	2100	07	07		CH
BOSTON 4 SE	0860	04	CULPEPER	38 33	78 6W	590	07	07		H
BREMO BLUFF	0993	02	FLUVANNA	37 43	78 17W	225		07		CH
BROOKNEAL	1082	03	CAMPBELL	37 4	78 57W	408	07	07		H
BUCKINGHAM	1136	02	BUCKINGHAM	37 30	78 32W	580		07		H
BUENA VISTA	1159	05	ROCKBRIDGE	37 44	79 22W	840		07		H
BURKES GARDEN	1209	06	TAZEWELL	37 6	81 20W	3068	07	07		H
CAMP PICKETT	1322	02	NOTTOWAY	37 2	77 57W	330	08	08		CH
CHARLOTTE COURT HOUSE	1585	03	CHARLOTTE	37 3	78 39W	569	07	07		H
CHARLOTTESVILLE 2W	1593	03	ALBEMARLE	38 2	78 31W	866	08	08		H
CHASE CITY	1606	02	MECKLENBURG	36 47	78 29W	510	17	17		H
CHATHAM	1614	03	PITTSYLVANIA	36 49	79 25W	651	07	07		CH
CHRISTIANSBURG	1692	06	MONTGOMERY	37 8	80 24W	2100	07	07		H
CLARKSVILLE	1746	02	MECKLENBURG	36 37	78 33W	330	07	07		H
CLINTWOOD 1 W	1825	06	DICKENSON	37 9	82 29W	1780	07	07		H
CONCORD 4 SSW	1955	03	CAMPBELL	37 17	78 58W	815		07		H
COPPER HILL	1999	06	FLOYD	37 5	80 9W	2690	07	07		H
CORBIN	2009	02	CAROLINE	38 12	77 22W	220	09	09		H
COVINGTON FLTR PLT	2044	05	ALLEGHANY	37 49	79 59W	1230	07	07		H
CRAIGSVILLE 2 S	2064	05	AUGUSTA	38 3	79 23W	1758		07		H
CROZIER	2142	02	GOOCHLAND	37 40	77 53W	350	07	07		H
DALE ENTERPRISE	2208	05	ROCKINGHAM	38 27	78 56W	1358	07	07		H
DANVILLE REGIONAL AP R	2250	03	PITTSYLVANIA	36 34	79 20W	571	24	24		H
DISPUTANTA	2400	01	PRINCE GEORGE	37 7	77 12W	15	07	07		H
EASTVILLE	2635	01	NORTHAMPTON	37 23	75 58W	10	07	07		H
EDINBURG	2663	04	SHENANDOAH	38 48	78 35W	928	07	07		H
EMPORIA 1 WNW	2790	01	GREENSVILLE	36 42	77 34W	100	08	08		H
FARMVILLE 2 N	2941	02	CUMBERLAND	37 20	78 23W	450	07	07		H
FREDERICKSBURG SEWAGE	3204	01	FREDERICKSBURG	38 17	77 27W	15	07	07		H
FREE UNION	3213	03	ALBEMARLE	38 5	78 35W	590	08	07		H
FRONT ROYAL	3229	04	WARREN	38 54	78 11W	930	07	07		H
GALAX RADIO WBRF	3267	06	CARROLL	36 40	80 55W	2385	07	07		H
GALAX WTP	3272	06	CARROLL	36 39	80 55W	2360	07	07		CH
GATHRIGHT DAM	3310	05	ALLEGHANY	37 57	79 57W	1770	07	07		CH
GLASGOW 1 SE	3375	05	ROCKBRIDGE	37 37	79 26W	737		07		H
GREENBAY 3 NE	3565	02	PRINCE EDWARD	37 11	78 17W	500	09	09		H
GRUNDY	3640	06	BUCHANAN	37 17	82 5W	1170	07	07		H
HOLCOMB ROCK	4039	03	BEDFORD	37 33	79 24W	810		07		H
HOLLAND 1 E	4044	01	SUFFOLK	36 41	76 46W	80	08	08		H
HOPEWELL	4101	01	PRINCE GEORGE	37 18	77 17W	40	16	16		H
HOT SPRINGS	4128	05	BATH	37 60	79 50W	2236	07	07		H
HUDDLESTON 4 SW	4148	03	BEDFORD	37 8	79 32W	898		07		H
JOHN FLANNAGAN LAKE	4410	06	DICKENSON	37 14	82 21W	1460	07	07		H
JOHN H KERR DAM	4414	02	MECKLENBURG	36 36	78 18W	250	08	08	08	CH
LAFAYETTE 1 NE	4676	06	MONTGOMERY	37 14	80 12W	1320		07		H
LEBANON	4777	06	RUSSELL	36 54	82 2W	1912	07	07		H
LEXINGTON	4876	05	ROCKBRIDGE	37 47	79 26W	1097	07	07		H
LINCOLN	4909	04	LOUDOUN	39 5	77 42W	500	07	07		H
LOUISA	5050	02	LOUISA	38 3	78 0W	420	18	18		H
LURAY 5 E	5096	04	PAGE	38 40	78 22W	1400	08	08		H
LYNCHBURG INTL AP R	5120	03	CAMPBELL	37 19	79 12W	940	24	24		HJ
MADISON	5150	04	MADISON	38 22	78 15W	577	08	08		H
MANASSAS	5204	04	MANASSAS	38 44	77 30W	245	07	07		H
MARTINSVILLE FLTR PLT	5300	03	HENRY	36 42	79 52W	760	07	07		H
MEADOWS OF DAN 5 SW	5453	03	PATRICK	36 40	80 27W	2225	07	07		H
MILLGAP	5595	05	HIGHLAND	38 18	79 43W	2421	07	07		CH
MONTEBELLO FISH CULTURAL STN	5690	03	NELSON	37 51	79 8W	2667	07	07		H

# STATION INDEX

STATION	INDEX NO.	DIVISION	COUNTY	LATITUDE	LONGITUDE	ELEVATION (IN FEET)	OBSERVATION TIME AND TABLES			
							LOCAL STD TIME			
							TEMP	PRECIP	EVAP	SPECIAL SEE (NOTES)
MONTICELLO	5700	03	ALBEMARLE	38 1	78 27W	758	08	08		H
MT WEATHER	5851	04	LOUDOUN	39 4	77 53W	1659	07	07		H
MTN GROVE	5756	05	BATH	38 6	79 53W	1775		07		H
MUSTOE 1 SW	5880	05	HIGHLAND	38 20	79 40W	2380	24	24		H
NEW CASTLE	6012	05	CRAIG	37 18	80 3W	1258		07		H
NORA 4 SSE	6125	06	DICKENSON	37 1	82 19W	2650	07	07		H
NORFOLK INTL AP R	6139	01	NORFOLK (CITY)	36 54	76 12W	30	24	24		HJ
NORFOLK SOUTH	6147	01	NORFOLK (CITY)	36 52	76 14W	100	24	24		H
NORTH	6161	01	MATHEWS	37 26	76 26W	10	07	07		H
NORTH FORK LAKE	6173	06	WISE	37 7	82 38W	1675	08	08		H
PAINTER 2W	6475	01	ACCOMACK	37 35	75 49W	30	16	16		CH
PALMYRA 3S	6491	02	FLUVANNA	37 49	78 16W	410	06	06		H
PEDLAR DAM	6593	03	AMHERST	37 40	79 17W	1024		07		H
PETERSBURG	6656	02	PETERSBURG	37 14	77 24W	15	08	08		H
PIEDMONT RSCH STN	6712	04	ORANGE	38 14	78 7W	520	08	08		CH
PULASKI 2 E	6955	06	PULASKI	37 3	80 47W	1850	07	07		CH
RADFORD 3 N	6999	06	PULASKI	37 12	80 35W	1800	07	07		H
RICHLANDS	7174	06	TAZEWELL	37 6	81 48W	1910	07	07		H
RICHMOND INTL AP R	7201	02	HENRICO	37 30	77 19W	164	24	24		HJ
ROANOKE 8 N	7278	05	ROANOKE	37 22	79 58W	1190	07	07		H
ROANOKE INTL AP R	7285	05	ROANOKE	37 19	79 58W	1175	24	24		HJ
ROCKY MT	7338	03	FRANKLIN	36 59	79 54W	1315	07	07		CH
SALTVILLE 1N	7506	06	SMYTH	36 53	81 46W	1733	07	07		H
SANDSTON	7541	02	HENRICO	37 33	77 17W	165	07	07		H
SOMERSET	7904	04	ORANGE	38 15	78 16W	510	07	07		H
SOUTH BOSTON	7925	03	HALIFAX	36 42	78 53W	329	07	07		H
SPERRYVILLE	7985	04	RAPPAHANNOCK	38 39	78 14W	750	06	06		H
STAFFORDSVILLE 3 ENE	8022	06	GILES	37 16	80 43W	1950	07	07		CH
STAUNTON WATER TRMTMT PLT	8062	05	AUGUSTA	38 10	79 5W	169	08	08		H
STERLING RCS	8084	04	LOUDOUN	38 59	77 29W	288	07	07		H
STONY CREEK 2 N	8129	01	SUSSEX	36 58	77 24W	105	08	08		H
STUART	8170	03	PATRICK	36 38	80 15W	1375	07	07		H
SUFFOLK LAKE KILBY	8192	01	SUFFOLK	36 44	76 36W	22	24	24		H
TYE RIVER 1 SE	8600	03	NELSON	37 38	78 56W	720	07	07		H
VIENNA	8737	04	FAIRFAX	38 54	77 16W	418	07	07		H
WAKEFIELD 1NW	8800	01	SUSSEX	36 59	77 0W	113	24	24		CH
WALKERTON 2 NW	8829	01	KING AND QUEEN	37 45	77 2W	50	18	18		H
WALLACETON LK DRUMMOND	8837	01	CHESAPEAKE	36 36	76 26W	20	08	08		H
WALLOPS ISLAND NASA TEST FACIL R	8849	01	ACCOMACK	37 56	75 28W	46	24	24		HJ
WARSAW 2 NW	8894	01	RICHMOND	37 59	76 47W	140	18	18		H
WASHGTN DULLES INTL AP R	8903	04	LOUDOUN	38 56	77 28W	290	24	24		HJ
WASHINGTON REAGAN AP R	8906	04	ARLINGTON	38 51	77 2W	10	24	24		HJ
WAYNESBORO WTP	8941	05	WAYNESBORO	38 5	78 53W	1270	07	07		H
WEST POINT 2 NW	9025	01	KING WILLIAM	37 34	76 48W	20	17	17		H
WILLIAMSBURG 2 N	9151	01	YORK	37 18	76 42W	70	24	24		CH
WILLIS	9169	06	FLOYD	36 55	80 30W	2810		07		CH
WINCHESTER	9181	04	FREDERICK	39 11	78 9W	720	07	07		H
WINCHESTER 7 SE	9186	04	FREDERICK	39 11	78 7W	680	08	08		H
WINTERPOCK 4 W	9213	02	CHESTERFIELD	37 19	77 39W	300		07		H
WISE 3E	9215	06	WISE	36 60	82 32W	2549	17	17		CH
WOODSTOCK 2 NE	9263	04	SHENANDOAH	38 54	78 28W	675	07	07		H
WOOLWINE	9272	03	PATRICK	36 47	80 17W	1500		07		CH
WYTHEVILLE 1 S	9301	06	WYTHE	36 58	81 5W	2458	07	07		H

# REFERENCE NOTES

**STATION NAMES:** Name of the city, town or locality. Figures and letters following the station names indicate the distance in miles and direction from the post office or town community center.

**DIVISIONS:** Areas within a state of similar climatological characteristics. Division averages are calculated using data from stations that record temperature and/or precipitation. Station Precipitation totals flagged with an 'F' or 'M' are excluded from the Divisional Average calculations of precipitation. Stations with monthly Temperature averages flagged with an 'F' or 'M' are included in the Divisional Average if there are no more than 9 flagged or missing daily values in the month, else they are excluded from the divisional average for temperature.

**NORMALS:** The average value of the meteorological element over a time period. Effective 1 January 2012, the averaging period is 1981 to 2010. The normals for National Weather Service localities have been adjusted so as to be representative for the current observation site.

**MONTHLY DEGREE DAY TOTALS:** One heating (cooling) degree day is accumulated for each whole degree that the daily mean temperature is below (above) 65 degrees Fahrenheit.

**PRECIPITATION:** Values shown in hundredths of inches are water equivalent totals, i.e., total of liquid and melted frozen precipitation. In the "Monthly Summarized Data" table the total snow and sleet values shown in tenths of inches are unmelted amounts. The max depth on ground values of snow and sleet shown in whole inches are cumulative unmelted amounts. The number of days with .10, .50, 1.00 or more refers to water equivalents.

**PRECIPITATION QUALITY CONTROL:** The NCDC quality control process may flag precipitation data that are spatially inconsistent, exceed climatological limits, or are inconsistent with prevailing weather patterns.

**TEMPERATURE:** Original temperature values are given in the "Daily Temperature" table. Summary temperature information (averages, departures, extremes, monthly degree day totals) is based on the values labeled MAX/MIN.

**WIND:** (As shown in the "Evaporation and Wind" table) the total wind movement in miles over the evaporation pan as determined by an anemometer recorder located 6-8 inches above the pan.

## SYMBOLS AND LETTERS USED IN THE STATION INDEX TABLE

- C Station is equipped with recording rain gage (R) but values in this bulletin are from a non-recording rain gage unless indicated by an R.
- G Observations appear in the "Soil Temperatures" table.
- H Observations appear in the "Snowfall and Snow on the Ground" table.
- J Station also published as a Local Climatological Data publication.
- VAR Observation time varies.
- SR Observation time near sunrise.
- SS Observation time near sunset.

## SYMBOLS AND LETTERS USED IN THE DATA TABLES

(DAILY DATA ARE FOR THE 24 HOURS IMMEDIATELY PRECEDING OBSERVATION TIME.)  
BLANK Entries in the "Monthly Summarized Data" table indicate no record.  
BLANK Entries in the "Daily Precipitation" and "Snowfall and Snow on the Ground" tables indicate zero.  
BLANK Entries in the "Daily Temperature" table indicate a missing record

- No record. Data not recorded or not received in time for publication.
- + Precipitation or temperature extremes occurred on one or more previous dates during the month.
- \* Rain gage not read. Precipitation is included in the amount following the asterisks. Time distribution may not be known. A \* preceding the monthly total indicates precipitation amount is being carried forward to next month's total, and may include amounts from the previous month(s).
- a As a subscript, indicates accumulated total.

by NCDC's Climate Prediction Branch and its entries for the report. If on the day in which the precipitation was recorded, the temperature was not recorded, the date of last reading. (Hawaii stations)

- B Divisional Departure from normals are computed using 1981-2010 normals.
- E Normalized HDD/CDD Calculation. E is appended to the HDD/CDD Calculation when 1-9 individual daily TMAX and/or TMIN values are missing and a Normalized HDD/CDD Calculation is provided. M appears alone if 10 or more daily values are missing.
- F Monthly calculation flagged value. F is appended to average and/or total values computed which exclude one or more daily data values that have been flagged by the GHCN-Daily Dataset
- M Insufficient or partial data. M is appended to average and/or total values computed with 1-9 daily values missing. M appears alone if 10 or more daily values are missing, (8 or more for wind and evaporation).
- N Indicates snow fall or Snowdepth totals are computed with one or more missing days.
- R Amounts from recording rain gage.
- T Trace. An amount too small to measure.

**SEASONAL TABLES:** Monthly and seasonal snowfall and heating degree days for the 12 months ending with the June data are published in the July issue of this bulletin. Cooling degree days for the calendar year are published in the "Climatological Data Annual Summary."

Information concerning the history of changes in locations, exposure, etc. of substations is kept on file at the National Climatic Data Center. Historical information of regular National Weather Service Offices may be obtained from the "Local Climatological Data" annual publication. The contents of this publication may be reprinted or otherwise used freely, with proper credit to the National Climatic Data Center. The data are also available digitally.

Effective with the January 2011 Data-Month, COOP Observer Names are no longer included in the Monthly and Annual Climatological Data Publications. This information is not published to ensure the privacy of personal information pursuant to Section 208 of the E-Government Act of 2002 (44 USC 3601).

As of the 2011 Data-Year, Station and Climate Division Maps are no longer being included in the CD Publications. NCDC's Product Development Branch provides updated Station Maps for various data networks via the Historical Observing Metadata Repository: <http://www.ncdc.noaa.gov/homr>.

The GHCN-Daily Quality Control Flags shown below are displayed as superscripts with the data. For more Information on Global Historical Climatology Network - Daily and flags, see: <http://www.ncdc.noaa.gov/oa/climate/ghcn-daily/> and Comprehensive Automated Quality Assurance of Daily Surface Observations. Durre, Imke, Matthew J. Menne, Byron E. Gleason, Tamara G. Houston, Russell S. Vose, 2010: J. Appl. Meteor. Climatol., 49, 1615-1633. doi: 10.1175/2010JAMC2375.1

- |   |   |
|---|---|
| Blank = Passed All checks                     | N = failed naught check                                       |
| D = failed duplicate check                    | O = failed climatological outlier check                       |
| G = failed gap check                          | R = failed lagged range check                                 |
| I = failed internal consistency check         | S = failed spatial consistency check                          |
| K = failed streak/frequent-value check        | T = failed temporal consistency check                         |
| L = failed check on length of multiday period | W = temperature too warm for snow                             |
| M = failed megaconsistency check              | X = failed bounds check                                       |
|   | Z = flagged as a result of an official Datzilla investigation |

Beginning with the January 2013 CD Publication, monthly mean temperature calculations have changed to the National Data Stewardship Team standard. Monthly maximum and minimum temperatures are not rounded until after the monthly mean temperature is calculated. This is the most accurate outcome, but may be slightly different from the mean derived from rounded monthly maximum and minimum.

**Processing Updates and Errata:** The CD Publications are periodically reproduced to include the addition of late reports and reported corrections. The GHCND data version noted on the cover of the publication provides the generation date.

The climate division temperature and precipitation values in this publication are based on simple averages from the current set of NWS-Designated Open and Published COOP and First Order Sites within each division. These values differ from those found in NCDC's nClimDiv product. Beginning in February 2014, the nClimDiv product is used

NOAA\National Climatic Data Center  
Attn: User Engagement & Services Branch  
151 Patton Avenue  
Asheville, NC 28801-5001

Customer Services Number: (828) 271-4800, option 2  
TDD : (828) 271-4010  
Fax number: (828) 271-4876

NCDC now offers free online access to the *Climatological Data* publication.  
Go to : [www.ncdc.noaa.gov](http://www.ncdc.noaa.gov) and choose Most Popular.