



CLIMATOLOGICAL DATA

VIRGINIA



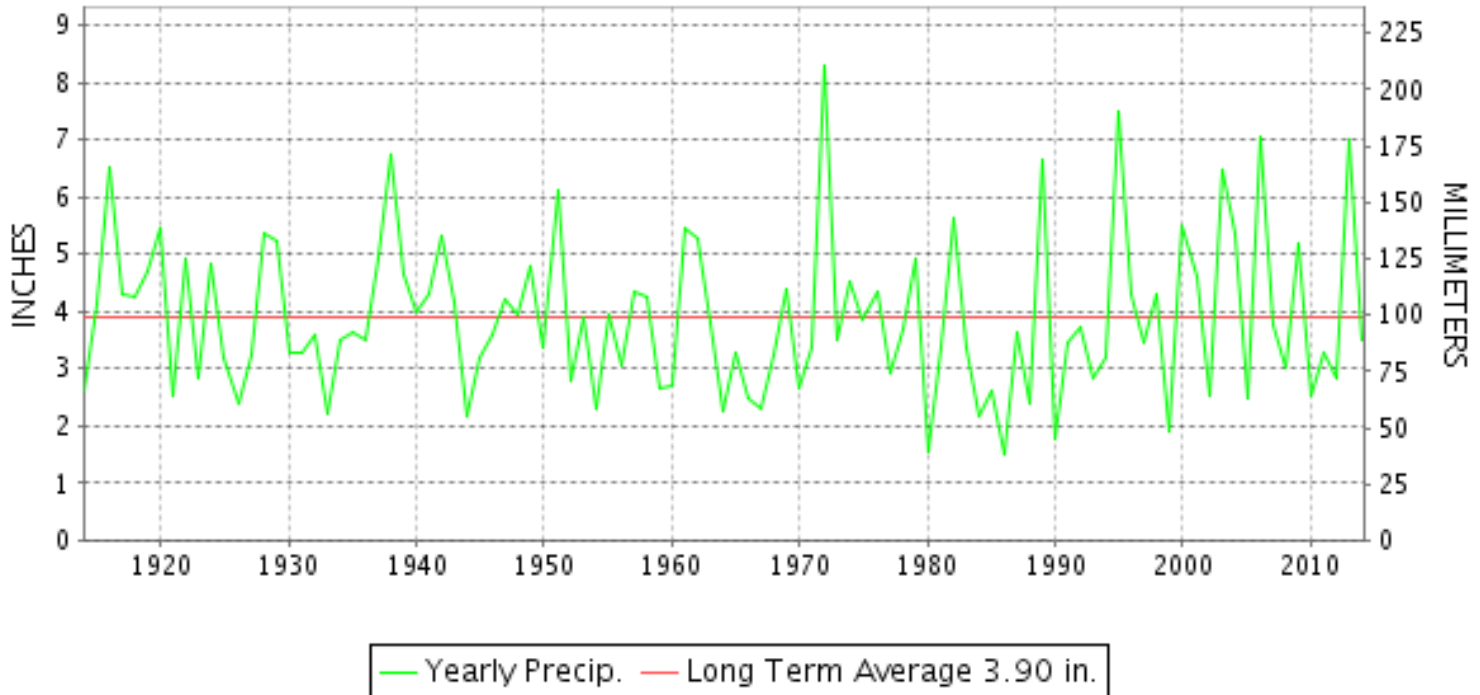
JUNE 2014

VOLUME 124 NUMBER 06

ISSN 0364-5630

GHCND Ver: 3.12-upd-2014092405

JUNE PRECIPITATION BY YEAR



TEMPERATURE AND PRECIPITATION EXTREMES

VIRGINIA

HIGHEST TEMPERATURE	99	JUNE 19	JOHN H KERR DAM
LOWEST TEMPERATURE	37	JUNE 02	WALLACETON LK DRUMMOND
GREATEST TOTAL PRECIPITATION	9.30		HOPEWELL
LEAST TOTAL PRECIPITATION	1.04		WILLIS
GREATEST 1 DAY PRECIPITATION	2.90	JUNE 12	HOPEWELL
GREATEST TOTAL SNOWFALL	T		BLACKSBURG NWSO

"I certify that this is an official publication of the National Oceanic and Atmospheric Administration (NOAA) It is compiled using information from weather observing sites supervised by NOAA/National Weather Service and received at the National Climatic Data Center(NCDC), Asheville, North Carolina 28801."

Director
National Climatic Data Center

noaa

National
Oceanic and
Atmospheric Administration

National
Environmental Satellite, Data
and Information Service

National
Climatic Data Center
Asheville, North Carolina

VIRGINIA
201406

MONTHLY STATION AND DIVISION SUMMARY

STATION	TEMPERATURE (°F)											PRECIPITATION (IN)												
	AVERAGE MAXIMUM	AVERAGE MINIMUM	AVERAGE	DEPARTURE FROM NORMAL	HIGHEST	DATE	LOWEST	DATE	HEATING DEG. DAYS	COOLING DEG. DAYS	NO. OF DAYS				TOTAL	DEPARTURE FROM NORMAL	GREATEST 24 HOURS	DATE	ICE PELLETS, SNOW			NO. OF DAYS		
											MAX		MIN						TOTAL	MAX DEPTH ON GROUND	DATE	.10 OR MORE	.50 OR MORE	1.00 OR MORE
											>=90	<=32	<=32	<=0										
PETERSBURG	86.2	64.0	75.1	0.1	95	19+	49	02	1	310	8	0	0	0	3.79	0.18	0.98	21	M 0.0	0		6	3	0
RICHMOND INTL AP	87.3	65.8	76.6	1.3	97	18	50	02	0	355	11	0	0	0	3.39	-0.54	1.68	12	0.0	0		6	2	1
SANDSTON	86.0	63.2	74.6	0.1	96	19	47	02	2	297	6	0	0	0	A 3.84	0.30	0.22	04	0.0			3	0	0
WINTERPOCK 4 W															2.93		1.18	13	0.0			5	3	1
--DIVISIONAL DATA-----> WESTERN PIEDMONT 03			74.4	2.0B											3.43	-0.15B								
ALTAVISTA														1.12		0.38	13	0.0				4	0	0
APPOMATTOX	85.2	62.5M	73.8M	1.6	95	19	50	01	0	275E	6	0	0	0	2.91	-1.04	0.76	05	0.0	0		7	3	0
BEDFORD 4 NW														2.42		0.75	05	0.0				6	2	0
BROOKNEAL	86.4	62.1	74.2	5.0	96	19	50	02	1	286	6	0	0	0	3.19	0.22	1.07	26	0.0	0		6	2	1
CHARLOTTE COURT HOUSE	86.7	63.5	75.1	2.0	96	19	51	03+	0	308	9	0	0	0	1.53	-2.05	0.39	11	0.0	0		6	0	0
CHARLOTTESVILLE 2W	84.7	64.3	74.5	0.9	96	19	54	01	0	291	5	0	0	0	3.87	-0.29	1.06	22	0.0	0		5	3	1
CHATHAM	83.3M	59.1	71.2M	0.3	92	19+	47	03+	6E	199E	3	0	0	0	1.58	-2.16	0.32	05	0.0	0		7	0	0
CONCORD 4 SSW														4.12		0.99	21	0.0				7	3	0
DANVILLE REGIONAL AP	87.9	64.7	76.3	1.5	95	19+	51	02	0	345	12	0	0	0	1.23	-2.61	0.78	11	0.0	0		2	1	0
FREE UNION	81.3	59.8	70.6		90	19+	48	02+	6	179	2	0	0	0	3.84	0.99	0.99	05	0.0			6	3	0
HOLCOMB ROCK														4.95		1.15	13	0.0	0			9	4	1
HUDDLESTON 4 SW														1.69		0.62	13	0.0				4	1	0
LYNCHBURG INTL AP	84.5	62.0	73.2	1.6	95	18	50	02	1	255	4	0	0	0	2.40	-1.22	0.84	20	0.0	0		6	1	0
MARTINSVILLE FLTR PLT	85.5	60.5	73.0	1.3	95	19	48	03+	3	248	6	0	0	0	2.75	-1.00	1.19	12	0.0	0		4	2	1
MEADOWS OF DAN 5 SW	M	M	M								0	0	0	0	M				M 0.0	0				
MONTEBELLO FISH CULTURAL STN	79.3M	55.1M	67.2M		89	19	43	01	34E	106E	0	0	0	0	MA 2.36		0.55	13	0.0			6	2	0
MONTICELLO	82.0	63.4	72.7	1.2	91	19	52	02	2	241	3	0	0	0	3.07	-0.89	0.88	12	0.0			7	4	0
PEDLAR DAM														3.64		1.16	05	0.0	0			9	2	1
ROCKY MT	85.6	61.9	73.7	2.6	95	19+	49	02	1	271	4	0	0	0	2.09	-2.43	0.76	12	0.0	0		4	2	0
SOUTH BOSTON	87.1	62.9M	75.0M	2.2	97	19	49	02	0	301E	8	0	0	0	2.22	-2.07	0.80	26	0.0	0		5	1	0
STUART	84.5	62.3	73.4	1.4	91	19+	51	03	1	259	3	0	0	0	4.17	-0.82	1.24	12	0.0	0		9	3	2
TYE RIVER 1 SE	83.8	60.7	72.2	0.1	94	19	49	02	3	227	4	0	0	0	2.65	-0.94	0.72	12	0.0			7	2	0
WOOLWINE														4.57		0.88	12	0.0	0			12	3	0
--DIVISIONAL DATA-----> NORTHERN 04			73.1	1.5B										2.86	-1.09B									
BOSTON 4 SE	81.2	60.1M	70.7M	-0.1	92	20	50	07+	2E	188E	1	0	0	0	4.62	0.37	1.31	12	0.0	0		9	3	2
EDINBURG	81.3	58.5	69.9	0.4	93	19	46	01	11	163	1	0	0	0	4.02	0.24	1.10	20	0.0			11	3	1
FRONT ROYAL	82.0	61.3	71.6	0.4	92	19	52	16+	2	208	2	0	0	0	5.17	1.14	2.43	09	M 0.0	0		9	2	1
LINCOLN	82.0	59.3	70.6	0.5	92	19	49	15+	10	186	2	0	0	0	A 6.23		2.00	12	0.0			3	2	1
LURAY 5 E	81.8	59.5	70.7	-0.2	91	19	48	01	11	188	1	0	0	0	4.44	0.49	1.31	09	0.0	0		8	4	1
MADISON	82.6	63.2	72.9	0.8	93	19	51	01	0	246	2	0	0	0	MA 2.63	-1.73	1.00	20	M 0.0	0		3	2	1
MANASSAS	M	M	M		96	19	55	08	0	333E	3	0	0	0	MA 4.13		1.20	09	0.0			10	2	1

VIRGINIA
201406

MONTHLY STATION AND DIVISION SUMMARY

STATION	TEMPERATURE (°F)										PRECIPITATION (IN)													
	AVERAGE MAXIMUM	AVERAGE MINIMUM	AVERAGE	DEPARTURE FROM NORMAL	HIGHEST	DATE	LOWEST	DATE	HEATING DEG. DAYS	COOLING DEG. DAYS	NO. OF DAYS				TOTAL	DEPARTURE FROM NORMAL	GREATEST 24 HOURS	DATE	ICE PELLETS, SNOW			NO. OF DAYS		
											MAX		MIN						TOTAL	MAX DEPTH ON GROUND	DATE	.10 OR MORE	.50 OR MORE	1.00 OR MORE
											>=90	<=32	<=32	<=0										
MT WEATHER	77.2	61.1	69.1	-1.0	86	19	52	01	12	142	0	0	0	0	4.14	-0.10	1.17	09	0.0			8	3	1
PIEDMONT RSCH STN	82.6	61.7	72.1	-0.5	92	19	49	02	4	225	2	0	0	0	4.08	-0.09	1.04	14	0.0			8	3	1
SOMERSET	83.5	62.2	72.9	1.1	94	19	48	01	4	246	4	0	0	0	4.34	0.27	1.60	20	0.0			7	3	1
SPERRYVILLE	80.8M	60.5M	70.7M	-0.3	91	19	48	01	5E	184E	1	0	0	0	MA 5.13	0.79	1.45	09	0.0			7	4	1
STERLING RCS	82.6	62.0	72.3	0.8	92	19+	51	02	9	235	4	0	0	0	3.31	-0.61	0.80	13	M 0.0	0		7	3	0
VIENNA	83.1	63.5	73.3	2.8	98	29	54	02	1	260	4	0	0	0	3.44	-0.64	1.23	12	0.0			7	2	1
WASHGTN DULLES INTL AP	82.3	62.5	72.4	0.0	91	18+	50	01	2	232	3	0	0	0	4.62	0.64	1.71	08	0.0	0		7	4	1
WASHINGTON REAGAN AP	85.6	68.8	77.2	2.0	97	17	58	02	0	372	4	0	0	0	3.31	-0.47	0.80	11	0.0	0		7	2	0
WINCHESTER	82.3	62.1	72.2	1.2	93	19	50	01	2	224	3	0	0	0	2.61	-1.00	0.86	21	0.0			6	1	0
WINCHESTER 7 SE	82.9	M	M		90	19+	49	12	11E	159E	3	0	0	0	3.47	-0.19	0.88	13	0.0	0		10	2	0
WOODSTOCK 2 NE	81.7	60.3M	71.0M	1.6	91	19	46	01	8E	202E	1	0	0	0	4.99	1.19	1.65	09	0.0			9	3	1
--DIVISIONAL DATA----->			71.9	1.8B											4.19	0.25B								
CENTRAL MOUNTAIN 05																								
BUENA VISTA														3.41		0.72	05	0.0				8	3	0
COVINGTON FLTR PLT	83.1M	59.1M	71.1M	0.1	91	19	49	15	1E	192E	2	0	0	0	4.75	1.45	2.28	05	0.0	0		8	2	1
CRAIGSVILLE 2 S														M				0.0						
DALE ENTERPRISE	82.0	60.0	71.0	1.3	93	19	50	15+	6	193	2	0	0	0	4.66	1.25	1.30	22	M 0.0	0		9	3	2
GATHRIGHT DAM	79.1	58.8	69.0	0.5	86	19	50	15+	10	140	0	0	0	0	1.74	-1.90	0.55	09	0.0	0		6	1	0
GLASGOW 1 SE														2.73		1.05	05	0.0	0			7	1	1
HOT SPRINGS	79.0	57.7	68.4	1.0	88	19	48	15+	14	121	0	0	0	0	2.67	-0.99	1.11	09	0.0			5	2	1
LEXINGTON	83.7	60.2	72.0	0.6	94	19	49	02	2	217	2	0	0	0	4.67	0.42	0.96	27+	0.0			9	4	0
MILLGAP	78.7	52.0	65.4	2.0	86	19+	41	17+	50	70	0	0	0	0	1.77	-2.29	0.62	05	0.0	0		5	1	0
MTN GROVE														2.88		0.84	23+	0.0				5	3	0
MUSTOE 1 SW	76.9	53.6	65.3	0.9	85	18	40	15	43	59	0	0	0	0	3.17	-0.64	1.01	22	M 0.0			8	3	1
NEW CASTLE														2.43		0.58	13	0.0				7	2	0
ROANOKE 8 N	84.1	63.1	73.6	1.9	93	19	54	15+	0	265	2	0	0	0	3.19	-1.27	1.12	05	0.0	0		6	3	1
ROANOKE INTL AP	84.8	64.5	74.7	1.8	94	18	53	02	0	297	5	0	0	0	3.05	-0.78	0.69	04	0.0	0		6	3	0
STAUNTON WATER TRMTMT PLT	81.9	61.6	71.7	1.7	92	19	51	06+	3	211	2	0	0	0	3.98	0.37	1.50	21	M 0.0	0		9	2	1
WAYNESBORO WTP	82.8	59.8	71.3	1.4	94	19	51	07+	2	198	2	0	0	0	4.15	0.28	1.33	21	M 0.0	0		6	4	1
--DIVISIONAL DATA----->			70.3	1.0B											3.28	-0.42B								
SOUTHWESTERN MOUNTAIN 06																								
ABINGDON 3S	82.6M	59.9M	71.2M	1.2	89	19	53	06	0	196E	0	0	0	0	M 3.52	-0.54	1.40	20	M 0.0	0		7	3	1
BIG STONE GAP	83.4	60.8	72.1	1.1	90	19	46	15	0	220	1	0	0	0	5.86	2.01	1.47	21	0.0	0		11	3	1
BLACKSBURG NWSO	81.5	58.5	70.0	2.3	88	19	48	15	7	165	0	0	0	0	2.84	-1.16	0.47	05	T	0		8	0	0
BURKES GARDEN	76.1	55.1	65.6	1.5	81	19+	43	07	37	63	0	0	0	0	3.69	-0.53	1.39	05	0.0	0		6	3	1
CHRISTIANSBURG	80.2	59.1	69.7	1.1	88	21+	49	15	6	154	0	0	0	0	2.11	-1.81	0.65	05	0.0	0		5	2	0
CLINTWOOD 1 W	80.5	57.8	69.1	1.5	86	20+	49	16+	5	137	0	0	0	0	6.08	1.29	1.05	21	0.0	0		10	6	1

VIRGINIA
201406

MONTHLY STATION AND DIVISION SUMMARY

STATION	TEMPERATURE (°F)										PRECIPITATION (IN)													
	AVERAGE MAXIMUM	AVERAGE MINIMUM	AVERAGE	DEPARTURE FROM NORMAL	HIGHEST	DATE	LOWEST	DATE	HEATING DEG. DAYS	COOLING DEG. DAYS	NO. OF DAYS				TOTAL	DEPARTURE FROM NORMAL	GREATEST 24 HOURS	DATE	ICE PELLETS, SNOW			NO. OF DAYS		
											MAX		MIN						TOTAL	MAX DEPTH ON GROUND	DATE	.10 OR MORE	.50 OR MORE	1.00 OR MORE
											>=90	<=32	<=32	<=0										
COPPER HILL	76.4M	57.8M	67.1M		87	19	49	07+	16E	86E	0	0	0	0	M 3.15		0.82	12	M 0.0	0		7	2	0
GALAX RADIO WBRF	80.2	58.1	69.1	1.5	89	19	48	15+	8	140	0	0	0	0	1.66	-2.21	0.34	23	0.0			5	0	0
GALAX WTP	79.7	56.9	68.3	1.4	88	19	46	15	15	121	0	0	0	0	1.45		0.37	12	M 0.0	0		5	0	0
GRUNDY	79.9	61.2	70.6	1.4	86	24+	51	15	3	177	0	0	0	0	4.70	0.20	1.45	11	0.0	0		8	3	2
JOHN FLANNAGAN LAKE	M	M	M		89	20+	52	16	3E	222E	0	0	0	0	MA 2.98		0.45	05	0.0	0		6	0	0
LAFAYETTE 1 NE															2.26		0.74	13	0.0			5	2	0
LEBANON	82.6	58.7	70.7	2.2	87	25+	51	15+	2	179	0	0	0	0	3.88	-0.70	0.90	12	0.0	0		10	2	0
NORA 4 SSE	78.5	62.4	70.5	1.5	86	20	55	14+	2	173	0	0	0	0	5.23	-0.49	1.34	11	0.0	0		14	3	1
NORTH FORK LAKE	M	M	M		88	24+	51	16	3E	197E	0	0	0	0	MA 3.35		0.66	05	M 0.0	0		10	3	0
PULASKI 2 E	83.5	58.0	70.7	1.9	91	19	46	15	3	179	1	0	0	0	1.70	-1.81	0.50	11	0.0	0		6	1	0
RADFORD 3 N	81.6	58.5	70.1	1.9	90	19	45	15	13	172	1	0	0	0	1.61	-1.46	0.50	05	0.0	0		5	1	0
RICHLANDS	82.2	58.3	70.3	2.2	87	17	49	15	3	169	0	0	0	0	2.69	-1.26	0.72	05	0.0	0		6	2	0
SALTVILLE 1N	82.7	58.7	70.7	1.2	89	11	51	15+	2	181	0	0	0	0	4.17	0.02	1.03	11	0.0			11	4	1
STAFFORDSVILLE 3 ENE	81.2	58.0	69.6	1.8	90	19	46	15	10	154	1	0	0	0	1.52	-2.19	0.42	13	0.0			5	0	0
WILLIS															1.04		0.38	05	0.0			4	0	0
WISE 3E	78.5	60.4	69.4	1.5	83	19+	49	06	6	146	0	0	0	0	4.76	0.30	1.80	19	0.0	0		9	3	1
WYTHEVILLE 1 S	81.6	58.6	70.1	3.5	89	19	49	16+	6	166	0	0	0	0	3.52	-0.05	1.02	13	0.0			6	4	1
--DIVISIONAL DATA----->			69.7	2.5B											3.20	-0.91B								

VIRGINIA
201406

DAILY PRECIPITATION (INCHES)

STATION	TOTAL	DAY OF MONTH																															
		01	02	03	04	05	06	07	08	09	10	11	12	13	14	15	16	17	18	19	20	21	22	23	24	25	26	27	28	29	30	31	
VIRGINIA																																	
TIDEWATER 01																																	
DISPUTANTA	8.68				0.36							2.77	0.57	0.90							0.54	0.45	1.92	0.02			0.53	0.62					
EASTVILLE	1.39				0.50					0.10		0.34	0.27								0.10	0.06	0.02										
EMPORIA 1 WNW	2.70				0.08					0.01	0.18	0.16	0.75				0.80			0.30	0.15	0.05	0.05			0.10	0.07						
FREDERICKSBURG SEWAGE	2.77			0.25	0.13				0.15		0.66	0.22	0.09	0.22						0.58	0.18		0.02				0.21		0.06				
HOLLAND 1 E	3.41				0.04				0.06	0.30	0.65	0.17	0.09					0.16		0.23	0.22	0.50				0.12		0.87					
HOPEWELL	9.30				0.55				0.07	2.50	2.90	0.21	0.75						0.25	0.29	1.26	0.52											
NORFOLK INTL AP	1.91			T	0.19					T	0.92	0.16	T						0.33		0.27	0.04				T							
NORFOLK SOUTH	2.43				0.17				0.10		T	0.67	0.18						1.02		0.22	0.07				T							
NORTH	M 3.52						T			0.39	1.80	-	-	-						0.32	0.75	0.24	0.02										
PAINTER 2W	1.99				0.18					0.06	0.01	0.67	0.11	0.19						0.70	0.02					0.05							
STONY CREEK 2 N	FMA 1.29				0.50						0.20	0.10	0.00 ^L	0.00 ^L	0.00 ^L	0.00 ^L	0.00 ^L	1.95 ^L _a	0.20			0.29				-	-	-	-	-	-	-	
SUFFOLK LAKE KILBY	4.33				0.03				0.07		0.93	1.80	0.46	0.03			T		0.36		0.46	0.15				0.04		T					
WAKEFIELD 1NW	5.23				0.40						0.75	0.35	0.26						0.58	T	0.58	2.28				0.01		0.02					
WALKERTON 2 NW	5.05				0.68					0.03	0.03	1.85		0.35				1.94			0.09	0.08				T							
WALLACETON LK DRUMMOND	5.18				0.10	0.70	0.02			0.02		0.65	1.65							0.47	0.75		0.10			0.10		0.62					
WALLOPS ISLAND NASA TEST FACIL	1.58			0.04	T 0.86					T 0.07	T 0.37	0.09	T				T		0.12		T	T				0.03	T	T					
WARSAW 2 NW	3.05			0.11	0.33						0.18	1.12	0.08	0.18					0.24	0.36	0.07	0.06			0.32								
WEST POINT 2 NW	4.08				0.02	0.40				0.03	0.86	0.70	0.23							1.38	0.33	0.13											
WILLIAMSBURG 2 N	4.25				0.51				0.05		0.40	0.43	1.41						0.35	1.03	0.07												
EASTERN PIEDMONT 02																																	
ALBERTA 5N	3.01				0.52							0.81	0.06	0.05							T 0.04	0.10					0.26	1.13	0.04				
AMELIA COURTHOUSE 1	4.18				0.55						0.01	0.49	0.12	0.34						1.02	0.53		0.92				0.20						
ASHLAND	3.25				T 0.43					T 0.27	0.44	0.21	0.13						0.74	0.08	0.06	0.64			0.25								
BREMO BLUFF	M 5.54				0.25				-	0.02	0.22	2.02	1.03	0.59						1.13	0.12	0.12	0.02					0.02					
BUCKINGHAM	5.04				1.10					0.82	1.02	0.39								0.10	0.10	1.31				-	0.25	0.50					
CAMP PICKETT	M 2.64				1.25						0.49										0.10	0.10						0.20	0.50				
CHASE CITY	1.12										0.17	0.20	0.08									0.60	0.02									0.05	
CLARKSVILLE	M 2.13										0.15	0.17		0.01						-	0.28	0.32		0.30		0.45	0.45						
CORBIN	3.57			0.24	0.39						0.54	0.13	0.90	0.42							0.62	0.28	0.05										
CROZIER	3.93				0.25						0.79	0.49	0.80			0.10					1.25	0.22	0.03										
FARMVILLE 2 N	1.95				0.63						0.17	0.22									0.20	0.26									0.26		
GREENBAY 3 NE	2.40				0.57						0.19	0.58	0.15								0.20	0.26									0.45		
JOHN H KERR DAM	4.79									0.04	1.51	0.04	1.14								0.22	0.47					1.04	0.33					
LOUISA	4.62				0.44					0.70	0.24	1.58	0.37	0.21						0.20	0.30	0.18	0.22		0.07	0.11							
PALMYRA 3S	3.02				0.10	0.27			0.19		0.05	1.21	0.03	0.24							0.34	0.30	0.20								0.09		
PETERSBURG	3.79				0.34					0.03	0.90	0.36	0.70								0.45	0.98	0.03										
RICHMOND INTL AP	3.39			0.04	0.25					0.01	0.28	1.68	0.69	T						0.20	T 0.18	0.06						T					
SANDSTON	A 3.84			0.22		*	*	*	*	*	*	*	*	*	*	3.30 ^a						0.13	0.19										
WINTERPOCK 4 W	2.93				0.24					0.01	0.55	1.18	0.53								0.09	0.31	0.01	0.01									
WESTERN PIEDMONT 03																																	

VIRGINIA
201406

DAILY PRECIPITATION (INCHES)

STATION	TOTAL	DAY OF MONTH																														
		01	02	03	04	05	06	07	08	09	10	11	12	13	14	15	16	17	18	19	20	21	22	23	24	25	26	27	28	29	30	31
ALTAVISTA	1.12				0.18	0.02				0.03	0.23	0.07	0.38								0.13					0.05	0.03					
APPOMATTOX	2.91				0.76				T		0.59	0.31	0.15							0.26	0.58	0.15				0.03	0.08					
BEDFORD 4 NW	2.42				0.75				0.02	0.01	0.14	0.69	0.15				0.05	0.23	0.02		0.07	0.03	0.01		0.07	0.15	0.03					
BROOKNEAL	3.19				0.25						0.26	0.49	0.02								0.91	0.13				1.07	0.06					
CHARLOTTE COURT HOUSE	1.53				0.21						0.39	0.07									0.17	0.15	T			0.23	0.31					
CHARLOTTESVILLE 2W	3.87				0.46						0.06	0.89	0.07	0.93							0.05	0.28	1.06			0.07	T					
CHATHAM	1.58				0.32					0.09	0.25	0.15	0.09								0.10	0.26				0.18	0.14					
CONCORD 4 SSW	4.12				0.47					0.04	0.78	0.33	0.68							0.45	0.99	0.06				0.08	0.24					
DANVILLE REGIONAL AP	1.23			0.02	0.33	T			0.02		0.78	0.01					T	T	0.05	T	0.02											
FREE UNION	3.84				0.99						0.05	0.87	0.40	0.82							0.04	0.29	0.29				0.07	T	0.02			
HOLCOMB ROCK	4.95				0.99				0.04	0.84	0.59	0.27	1.15								0.29	T	0.05		0.40	0.19	0.14					
HUDDLESTON 4 SW	1.69				0.32					0.07	0.30	0.62					0.08			0.03	0.14	0.06				0.07						
LYNCHBURG INTL AP	2.40			0.42	0.01			T	T	T	0.32	0.19								0.12	0.84	T	T			0.48	0.02					
MARTINSVILLE FLTR PLT	2.75				0.17					0.09	0.22	1.19		0.08					0.02	0.03	0.80					0.07	0.05	0.03				
MEADOWS OF DAN 5 SW	M	-	-	-	-	-	-	-	-	-	-	-	-	-	-	-	-	-	-	-	-	-	-	-	-	-	-	-	-	-	-	0.02
MONTEBELLO FISH CULTURAL STN	MA 2.36			*	0.40 _a	-	-	-			0.20	0.02	0.54	0.55							-	0.12	0.34	-		0.08						
MONTICELLO	3.07				0.58						0.17	0.88	0.15	0.57							T	0.18	0.52	T			0.11					
PEDLAR DAM	3.64				1.16						0.12	0.30	0.62	0.42							T	0.35		T		0.27	0.22	0.18				
ROCKY MT	2.09				0.32					0.04	0.08	0.76	0.02									0.27		0.02			0.58					
SOUTH BOSTON	2.22				0.39						0.01	0.09	0.44	0.02	0.14							0.25					0.80	0.08				
STUART	4.17				0.21					0.17	0.11	0.10	1.24	0.05					1.01	0.62		0.09	0.02			0.29	0.18	0.08				
TYE RIVER 1 SE	2.65				0.32						T	0.42	0.72	0.35								0.12	0.18									
WOOLWINE	4.57				0.42	0.02				0.63	0.28	0.41	0.88	0.24					0.50	0.12		0.02	0.35	0.07	0.05	0.10	0.38	0.10				
NORTHERN 04																																
BOSTON 4 SE	4.62				0.36					0.12	0.19	0.15	1.31	0.34					0.73		1.05	0.33				0.04						
EDINBURG	4.02			0.10	0.15					0.58		0.27	0.35	0.11	0.12				0.22		1.10	0.08	0.10			0.84						
FRONT ROYAL	5.17				0.42					2.43		0.47	0.45	0.02	0.16				0.51		T	T	0.18	0.23		0.30						
LINCOLN	A 6.23	*	*	*	*	*	*	*	*	2.99 _a		2.00					0.99						0.25									
LURAY 5 E	4.44				0.05	0.70				1.31		0.01	0.64	0.02	0.05					0.71		0.30	0.18	0.14			0.33					
MADISON	MA 2.63	*	0.10 _a		0.50				*	0.10 _a		0.12		*	*	*	0.34 _a				1.00	-	*	*	*	*	*	*	*	*	*	0.47 _a
MANASSAS	MA 4.13				0.60					1.20	0.28	0.28	0.26	0.10					0.26		0.10	0.20	*	0.75 _a		0.10	-					
MT WEATHER	4.14				0.60	0.02				1.17	0.23	0.15	0.87	0.37	0.20				0.08		0.02	0.02	0.30	0.05	0.01		0.05					
PIEDMONT RSCH STN	4.08				0.21					0.02	0.05	0.28	0.88	0.11	1.04							0.92	0.43	0.19								
SOMERSET	4.34				0.25					0.02	0.05	0.83	0.71	0.02	0.21							1.60	0.34	0.23			T	0.08				
SPERRYVILLE	MA 5.13		-		0.02	-				1.45	0.03	0.03	0.95	0.88	-				0.45		0.18	0.43	*	0.06 _a	-	-	0.65	-				
STERLING RCS	3.31				0.02	0.36				0.71	0.07	T	0.74	0.80	0.13				T			T	0.06	0.11		T	0.01		0.30			
VIENNA	3.44				0.15	0.37				0.27	0.06	0.13	1.23	0.36	0.78	0.01						0.06	0.02									
WASHGTN DULLES INTL AP	4.62			0.13	0.72	T		1.71	0.03		0.76	0.35	0.77				T				T	T	0.14			T	0.01					
WASHINGTON REAGAN AP	3.31			0.01	0.41	0.01		0.24	0.21	0.78	0.80	0.09	0.22							T	T	T	T	0.09		0.45						
WINCHESTER	2.61				0.28					0.46	0.10	0.42	0.08	0.05					0.19		T	T	0.01	0.86	0.06		0.02					
WINCHESTER 7 SE	3.47				0.25					0.67	0.23	0.36	0.13	0.88	0.42				0.16	0.14	0.02	0.07	0.12			0.02						
WOODSTOCK 2 NE	4.99				0.19					1.65	0.01	0.26	0.22	0.33	0.78				0.23			0.40	0.03	0.05	0.01		0.83					

VIRGINIA
201406

DAILY PRECIPITATION (INCHES)

STATION	TOTAL	DAY OF MONTH																															
		01	02	03	04	05	06	07	08	09	10	11	12	13	14	15	16	17	18	19	20	21	22	23	24	25	26	27	28	29	30	31	
CENTRAL MOUNTAIN 05																																	
BUENA VISTA	3.41				T	0.72					0.32	0.08	0.25	0.07								0.70	0.45	0.03		0.19	0.10	0.50					
COVINGTON FLTR PLT	4.75				T	2.28				0.36	0.10	0.24	0.60								0.39	0.42	0.02	0.02		0.19	0.32	0.50					
CRAIGSVILLE 2 S	M	-	-	-	-	-	-	-	-	-	-	-	-	-	-	-	-	-	-	-	-	-	-	-	-	-	-	-	-	-	-	-	-
DALE ENTERPRISE	4.66				0.08	0.25					1.00	0.30	0.15	0.28	0.25						0.06	0.27	1.30			0.04	0.68						
GATHRIGHT DAM	1.74					0.41					0.55	0.15	0.23	0.10							0.03	0.09		0.13								0.05	
GLASGOW 1 SE	2.73					1.05					T	0.48	0.25	0.23	0.01						T	0.25	0.01	0.07		0.16	0.19	0.03					
HOT SPRINGS	2.67				T	0.73					1.11	0.12	0.36	0.03								0.20	0.02	0.05		0.16	0.19	0.03				0.05	
LEXINGTON	4.67				T	0.61					0.01	0.20	0.02	0.34	0.06	0.04					0.01	0.40	0.96	0.05		0.23	0.63	0.96	0.15				
MILLGAP	1.77				0.05	0.62					0.14	0.03	0.22	0.13							0.02	0.07		0.42		0.05	0.02					T	
MTN GROVE	2.88				T	0.33					0.84	0.60	0.17	0.05									0.84									0.05	
MUSTOE 1 SW	3.17			0.07	0.65	0.21			0.15			0.63	0.15	0.04						T	0.12		1.01			0.10					0.04		
NEW CASTLE	2.43				T	0.31					0.02		0.52	0.58	0.05						0.22	0.07	0.28	0.01			0.18	0.01	0.16		0.02		
ROANOKE 8 N	3.19					1.12					T	T	0.07	0.65	0.52							0.44	0.07	0.16	T		0.01	0.01	0.16		0.14		
ROANOKE INTL AP	3.05			T	0.69	0.05			0.25	T	0.09	0.62	0.39	0.01			T	T			0.58	T	0.30				T		0.07		T		
STAUNTON WATER TRMTMT PLT	3.98	T			0.12	0.97						0.35	0.17	0.19	0.01							1.50	0.25			0.13		0.29	T		T		
WAYNESBORO WTP	4.15					0.60					0.02	0.04	0.49	0.03								1.33	0.88				0.20	0.51	0.05				
SOUTHWESTERN MOUNTAIN 06																																	
ABINGDON 3S	M 3.52					0.05	0.50			-		0.10	0.04	0.12	0.04							1.40	0.56	0.42		0.02	0.08	0.03		0.15	0.01		
BIG STONE GAP	5.86					0.43	0.02		0.06		0.20	0.37	0.72	0.48	0.13						0.04	0.15	1.47	0.02	0.02	0.37	0.42	0.03		0.88	0.08		
BLACKSBURG NWSO	2.84				0.01	0.47				0.04	0.03	0.24	0.44	0.05	T				0.38			0.44		0.17		0.05		0.37		0.15			
BURKES GARDEN	3.69					1.39	0.53					0.38		0.41	0.06							0.61	0.06			T	0.08		0.03	0.14			
CHRISTIANSBURG	2.11					0.65	0.03				0.03	0.19	0.58	0.03	T					0.11	0.04		0.27	0.08	0.02		0.08	0.15		0.10	0.41		
CLINTWOOD 1 W	6.08				0.08	0.75	0.01				0.07	0.46	0.70	0.99	T							0.71	1.05	T	0.55	0.05	0.15		0.10	0.41			
COPPER HILL	M 3.15			-		0.45					0.03	0.10	0.82	0.06								0.40		0.74		0.08	0.18		0.29				
GALAX RADIO WBRF	1.66					0.07	0.08		0.03	0.04		0.19	0.31	0.03					0.27			0.02		0.34		0.08	0.18		0.29		0.28		
GALAX WTP	1.45				0.01	0.04	0.05			0.04	0.15	0.01	0.37	0.05				0.15	0.02			0.02	0.02	0.24			0.02		0.22	0.04			
GRUNDY	4.70				0.15	0.37						1.45	1.34	0.03	0.02							T	0.60		0.22	0.03		0.13	0.02	0.34			
JOHN FLANNAGAN LAKE	MA 2.98	*	*	0.11 _a		0.45	0.01	-	-		0.01	0.35	0.41	0.44	-	-	0.01				0.25	-	-	0.15		0.01	0.01	*	*	0.77 _a			
LAFAYETTE 1 NE	2.26				0.05	0.50			0.06			0.02	0.41	0.74	0.08			0.02	0.04				0.17			T	0.02	0.15					
LEBANON	3.88				0.18	0.02	0.26					0.35	0.90	0.26	0.28							0.34	0.85			0.28			0.14	0.02			
NORA 4 SSE	5.23				0.14	0.38	0.16				0.27	1.34	0.94	0.25	T						0.31	0.56	0.11		T	0.11	0.23	0.01	0.29	0.13			
NORTH FORK LAKE	MA 3.35	-			0.36	0.66	0.16	-	-		0.05	0.21	0.52	0.15	-	-						0.12	*	*	0.13 _a	0.57	0.13	0.17	-	-	*	0.12 _a	
PULASKI 2 E	1.70					0.35	0.02				0.04	0.50	0.11	0.10							T		0.09		0.04		0.14	0.04	0.01	0.26			
RADFORD 3 N	1.61					0.50	0.02				0.01	0.18	0.45	0.03								0.02	0.02			0.13			0.25				
RICHLANDS	2.69					0.72	0.23				0.03	0.35	0.51	0.03	T							0.05	0.32	0.01		0.30		0.06	0.08				
SALTVILLE 1N	4.17				0.05	0.28	0.26				0.01	1.03		0.19	0.62							0.08	0.11	0.14	T	0.21	0.50	0.50	T	0.10	0.09		
STAFFORDSVILLE 3 ENE	1.52					0.33	0.03			0.08	0.04	0.10	0.20	0.42	0.04								0.03		0.11		0.23	T	0.02	0.04	0.05		
WILLIS	1.04					0.38						0.24	0.20											0.11		0.02			0.04	0.05			
WISE 3E	4.76			0.02		0.18					0.83	0.38	0.60	0.13							1.80	0.33				0.13			0.33	0.03			
WYTHEVILLE 1 S	3.52					0.57	0.26				0.08	0.64	0.18	1.02									0.05			0.05		0.08	0.04	0.55			

VIRGINIA
201406

DAILY TEMPERATURES (°F)

STATION	OB. TIME	MAX/MIN	DAY OF MONTH																															AVERAGE		
			01	02	03	04	05	06	07	08	09	10	11	12	13	14	15	16	17	18	19	20	21	22	23	24	25	26	27	28	29	30	31			
VIRGINIA																																				
TIDEWATER 01																																				
DISPUTANTA	07	MAX	77	75	80	86	87	85	79	82	85	85	93	90	80	85	81	82	91	94	93	94	84	85	78	82	86	88	87	88	83	82			84.9	
		MIN	49	45	52	53	63	59	56	58	59	67	70	67	69	65	56	60	61	67	69	67	70	68	59	58	59	66	67	67	57	62			61.5	
EASTVILLE	07	MAX	76	72	76	84	82	79	78	80	82	82	89	83	78	86	79	78	87	89	94	87	83	78	80	81	83	88	87	85	82	82			82.3	
		MIN	53	50	51	66	69	64	60	62	70	71	72	71	70	69	58	60	69	76	77	70	68	68	65	64	66	75	73	68	63	65			66.1	
EMPORIA 1 WNW	08	MAX	80	78	79	87	88	86	83	85	85	86	91	92	81	85	85	85	92	93	95	95	87	87	81	84	87	89	90	89	89	87			86.7	
		MIN	52	48	50	57	57	64	62	61	62	62	62	69	70	67	61	63	69	69	69	68	69	70	62	62	65	72	72	69	59	61			63.4	
FREDERICKSBURG SEWAGE	07	MAX	79	79	81	86	87	80	79	83	85	85	89	87	79	85	78	83	90	94	94	89	84	77	80	84	87	91	87	88	85	85			84.7	
		MIN	52	52	55	61	66	58	56	59	65	69	69	67	70	64	57	58	65	70	73	69	67	66	61	62	62	69	69	66	61	62			63.3	
HOLLAND 1 E	08	MAX	75	75	81	89	92	87	85	84	87	89	93	93	82	88	85	86	90	96	98	97	87	85	81	84	87	91	91	88	85	82			87.1	
		MIN	49	40	51	51	67	58	53	54	59	62	69	67	65	64	65	61	63	66	69	66	66	67	58	58	56	69	66	65	54	63			60.7	
HOPEWELL	16	MAX	79	81	89	89	89	89	88	89	89	92	92	92	82	83	83	92	94	95	97	96	85	83	84	86	89	88	90	89	84	88			88.2	
		MIN	56	50	59	68	68	66	67	61	61	74	69	69	72	68	62	67	67	67	77	71	73	71	64	64	74	74	74	71	63	67			67.1	
NORFOLK INTL AP	24	MAX	69	80	87	86	86	78	79	86	84	93	86	82	88	79	81	89	95	97	94	82	83	79	81	85	92	86	89	84	80	90			85.0	
		MIN	54	51	59	69	66	65	63	62	67	75	74	72	70	69	65	67	74	77	71	72	70	71	69	68	75	77	74	70	65	66			68.2	
NORFOLK SOUTH	24	MAX	70	79	86	88	86	80	80	85	83	92	86	82	87	81	82	89	95	95	94	80	82	78	80	86	90	86	86	82	79	88			84.6	
		MIN	52	47	58	67	66	62	58	59	66	73	73	70	68	67	62	66	73	75	68	69	68	66	63	63	71	74	72	66	60	63			65.5	
NORTH	07	MAX	75	71	73	83	84	79	78	79	80	80	84	85				82	84	91	92	90	79	78	75	78	80	83	85	86	81	79			81.3	
		MIN	49	46	55	62	69	58	55	58	65	72	69	70				62	70	75	77	69	68	68	60	68	72	71	68	59	63			64.4		
PAINTER 2W	16	MAX	68	74	84	86	82	77	80	82	81	87	86	76	83	80	78	84	92	94	94	85	81	78	77	81	84	86	85	79	83			82.2		
		MIN	49	45	59	64	69	59	55	57	65	70	69	69	68	69	54	60	71	77	76	69	64	68	60	59	73	76	69	63	57	61			64.1	
STONY CREEK 2 N	08	MAX	78	80	83	90	91	86	87	85	94	95	80	81	84	84	84	92	93	97	96	95	85	84	79	84									87.0	
		MIN	50	46	43	55	54	62	56	69	69	69	68	68	66	65	59	65	69	71	71	70	69	72	65	60									63.0	
SUFFOLK LAKE KILBY	24	MAX	77	79	84	88	88	82	82	83	81	88	90	81	85	81	82	90	93	94	93	93	93	78	83	88	86	89	89	84	84	87			85.8	
		MIN	52	48	55	65	65	63	60	59	64	71	72	68	68	66	59	66	73	73	70	69	69	64	63	62	71	73	71	65	61	62			64.9	
WAKEFIELD 1NW	24	MAX	76	81	88	90	85	82	83	86	84	92	92	82	86	83	84	93	95	96	96	85	86	79	83	88	89	89	89	84	84	89			86.6	
		MIN	48	43	55	65	63	59	57	57	65	71	68	69	66	61	55	64	68	70	69	67	69	61	58	58	72	70	69	58	55	62			62.4	
WALKERTON 2 NW	18	MAX	78	81	90	89	80	83	83	85	85	91	82	75	84	82	83	92	94	96	94	85	84	80	83	86	90	88	90	84	85	88			85.7	
		MIN	50	49	56	63	69	59	54	59	69	71	67	70	72	66	56	61	70	69	71	70	69	70	59	60	70	71	71	72	58	64			64.5	
WALLACETON LK DRUMMOND	08	MAX	75	81	78	90	92	90	85	85	88	83	92	89	88	90	86	87	95	97	98	97	87	86	82	84	90	95	90	91	85	85			88.0	
		MIN	47	37	42	54	58	52	49	49	55	62	64	62	65	65	62	65	59	62	67	67	67	62	54	64	63	63	60	59	49	53			57.9	
WALLOPS ISLAND NASA TEST FACIL	24	MAX	70	75	84	88	79	80	82	83	80	85	78	76	81	81	82	83	94	96	95	85	79	80	81	82	87	90	83	82	80	84			82.8	
		MIN	51	48	59	66	64	61	58	62	70	72	70	69	70	63	56	66	74	78	72	69	70	69	68	68	75	74	71	64	61	64			66.1	
WARSAW 2 NW	18	MAX	74	80	89	89	89	80	83	85	83	91	91	78	84	78	82	92	95	96	95	84	82	80	83	86	88	88	82	82	81	81			85.0	
		MIN	49	49	59	64	68	55	54	59	70	69	67	69	68	60	53	60	70	72	71	68	67	64	57	59	71	71	68	62	56	68			63.2	
WEST POINT 2 NW	17	MAX	76	80	89	90	89	82	84	86	85	92	90	78	83	81	82	90	95	96	94	84	82	79	82	87	90	89	89	87	84	88			86.1	
		MIN	50	48	57	63	68	57	55	58	68	69	67	70	67	61	56	63	77	71	66	68	67	63	60	59	72	71	69	62	59	65			63.5	
WILLIAMSBURG 2 N	24	MAX	79	79	87	89	83	82	82	84	82	92	85	84	84	84	82	89	93	95	93	84	84	79	81	87	88	88	89	83	82	87			85.3	
		MIN	52	49	57	66	63	60	58	60	67	73	69	71	68	64	60	66	70	74	69	70	71	66	64	62	75	73	73	64	61	65			65.3	
EASTERN PIEDMONT 02																																				
AMELIA COURTHOUSE 1	08	MAX	78	76	80	86	87	81	81		83	85	91	91	80	86	82	83	91	94	95	92	85		85	83	86	89	89	89	84	83			85.5	

VIRGINIA
201406

DAILY TEMPERATURES (°F)

STATION	OB. TIME	MAX/MIN	DAY OF MONTH																															AVERAGE
			01	02	03	04	05	06	07	08	09	10	11	12	13	14	15	16	17	18	19	20	21	22	23	24	25	26	27	28	29	30	31	
ASHLAND	18	MIN	50	50	57	66	67	61	59		60	71	67	66	68	64	56	62	68	72	73	67	68		60	61	69	69	69	69	58	64		64.0
		MAX	75	78	85	85	78	78	81	83	83	87	87	75	83	79	80	89	91	92	91	81	82	79	81	84	85	86	87	82	81	86		83.1
CAMP PICKETT	08	MIN	51	49	58	66	66	56	56	61	69	72	67	67	69	63	56	63	71	70	68	68	69	66	63	62	71	71	70	67	59	66		64.3
		MAX	78	76	78	85	88	83	80	82	82	82	90	91	81	85	82	83	91	94	95	92	85	84	78	83	83	89	88	87	83	82		84.7
CHASE CITY	17	MIN	50	47	50	59	59	60	59	59	64	70	69	66	68	64	57	59	67	70	73	66	69	66	59	60	64	68	69	69	56	62		62.6
		MAX	79	76	79	86	87	86	80	82	84	81	89	90	90	84	83	83	91	93	94	94	86	85	80	84	85	88	90	88	88	83		85.6
CLARKSVILLE	07	MIN	49	47	53	59	68	65	57	60	64	67	65	69	65	61	58	61	65	69	67	66	67	68	59	62	68	67	66	68	55	61		62.5
		MAX	82	77	80	88	89	87	81	83	86	84	92	92	84	87	86	85	95	96		98	87	89	82	86	86	91	91	89	85	83		86.9
CORBIN	09	MIN	55	54	56	63	63	68	62	65	66	69	65	68	68	65	62	64	70	70		70	68	70	66	66	66	69	69	70	61	65		65.3
		MAX	76	80	86	87	78	78	82	85	85	87	86	77	85	78	82	90	93	94	89	83	77	78	83	83	89	85	87	83	85	88		84.0
CROZIER	07	MIN	49	50	61	63	64	55	54	60	67	71	67	67	69	63	53	62	67	70	69	68	67	65	59	60	69	71	67	64	58	66		63.2
		MAX	75	75	79	83	87	77	80	82	82	84	88	88	75	84	80	81	90	92	93	91	82	82	75	82	86	87	85	85	83	83		83.2
FARMVILLE 2 N	07	MIN	49	46	56	62	64	55	55	58	61	68	65	66	67	62	54	56	68	68	71	66	67	64	58	60	66	66	67	66	57	59		61.6
		MAX	77	76	84	84	87	82	81	82	83	84	90	89	80	86	83	84	92	95	95	93	85	84	77	82	85	90	89	87	83	83		85.1
GREENBAY 3 NE	09	MIN	51	49	49	49	67	60	59	60	62	65	65	66	67	62	56	57	66	68	69	67	68	65	61	62	64	69	69	58	58		61.9	
		MAX	77	75	79	84	86	81	80	83	79	82	90	88	77	85	82	84	90	94	96	96	96	96	77	82	85	89	89	86	83	82		85.1
JOHN H KERR DAM	08	MIN	51	51	56	65	65	60	57	57	65	69	67	66	68	62	55	55	66	72	73	66	66	66	58	62	69	67	68	70	56	63		63.0
		MAX	81	79	84	89	92	91	85	86	88	86	94	95	83	90	87	87	96	96	99	96	89	89	82	86	89	94	91	89	85	87		88.8
LOUISA	18	MIN	53	53	57	66	71	66	60	65	73	71	71	69	71	66	61	67	73	78	77	69	70	70	62	65	72	71	71	70	60	65		67.1
		MAX	77	81	85	88	84	81	83	83	84	89	89	77	83	82	82	91	92	94	91	83	82	78	81	85	87	87	88	86	83	86		84.7
PALMYRA 3S	06	MIN	46	46	59	59	66	52	51	56	66	69	67	66	68	60	51	60	65	66	69	68	67	64	59	58	65	66	64	67	56	64		61.3
		MAX	77	76	81	84	87	80	81	81	83	84	88	88	80	84	80	81	90	92	94	92	82	82	75	82	84	87	87	83	82		83.8	
PETERSBURG	08	MIN	47	46	46	62	66	51	57	57	65	68	66	67	66	61	54	61	67	66	68	66	68	65	60	60	65	66	66	68	57	62		61.5
		MAX	79	78	82	89	91	83	83	84	86	85	93	91	81	83	83	84	93	95	95	94	85	85	78	83	87	88	89	90	84	84		86.2
RICHMOND INTL AP	24	MIN	53	49	50	58	65	60	59	60	64	65	72	68	69	67	58	61	67	72	74	69	71	69	62	62	62	72	71	71	59	60		64.0
		MAX	78	82	90	91	83	83	85	86	85	94	92	80	84	84	84	93	96	97	96	86	87	80	84	87	90	90	91	86	86	89		87.3
SANDSTON	07	MIN	53	50	58	67	66	59	59	62	70	71	69	69	64	58	66	73	76	70	71	67	63	61	73	74	72	65	62	67		65.8		
		MAX	79	79	82	81	89	89	82	83	87	87	93	89	78	80	83	85	91	93	96	94	86	85	80	84	87	91	88	89	84	85		86.0
WESTERN PIEDMONT 03 APPOMATTOX	07	MIN	50	47	54	56	67	57	55	57	67	70	68	68	69	64	56	62	70	73	75	68	70	68	59	59	59	71	72	66	58	60		63.2
		MAX	79	77	82	84	88	84	82	82	82	86	90	87	81	85	83	83	92	94	95	91	86	87	78	81	85	88	90	88	83	82		85.2
BROOKNEAL	07	MIN	50	52	52	59	66	61	58	61	65	66	65	65	63	63	56		67	67	67	66	67	64	62	62	62	68	67	68	60	63		62.5
		MAX	82	77	83	84	87	86	81	84	84	85	91	91	84	86	85	85	93	95	96	95	89	86	80	84	88	89	89	89	84	79		86.4
CHARLOTTE COURT HOUSE	07	MIN	51	50	51	57	64	64	56	59	67	67	67	65	62	55	56	63	66	66	68	68	61	62	64	66	67	68	60	60		62.1		
		MAX	79	79	81	84	88	85	84	84	81	85	91	92	84	85	83	85	93	95	96	93	84	88	84	86	88	91	91	91	87	85		86.7
CHARLOTTESVILLE 2W	08	MIN	57	51	51	58	67	65	60	61	63	67	67	68	68	63	61	61	65	70	71	67	69	67	61	61	64	68	69	68	57	59		63.5
		MAX	79	77	82	84	89	80	82	84	83	88	90	87	83	83	81	81	92	93	96	91	83	80	77	82	84	88	88	85	85	83		84.7
CHATHAM	07	MIN	54	55	57	67	65	59	59	63	65	69	66	65	66	61	56	59	69	72	76	67	67	63	63	63	66	70	67	69	65	65		64.3
		MAX	77	74	79	84	84	81	78	81	82	83	87	87		82	82	83	89	92	92	90	86	82	77	80	85	87	86	85	82	78		83.3
DANVILLE REGIONAL AP	24	MIN	53	47	47	53	61	56	55	54	58	63	63	65	63	61	51	52	60	63	63	66	64	65	61	60	60	65	63	64	60	58		59.1
		MAX	78	81	86	89	89	83	85	84	85	91	92	86	86	86	86	92	95	95	95	88	90	82	86	90	91	92	90	87	85	92		87.9
		MIN	56	51	57	65	64	62	59	65	64	66	67	68	67	60	57	64	69	69	70	70	68	70	64	65	72	70	69	61	62		64.7	

VIRGINIA
201406

DAILY TEMPERATURES (°F)

STATION	OB. TIME	MAX/MIN	DAY OF MONTH																															AVERAGE
			01	02	03	04	05	06	07	08	09	10	11	12	13	14	15	16	17	18	19	20	21	22	23	24	25	26	27	28	29	30	31	
FREE UNION	08	MAX	77	73	80	80	85	78	79	81	78	84	86	83	78	81	79	79	88	90	90	87	80	76	74	78	82	84	85	84	81	80	81.3	
		MIN	48	48	50	60	63	52	53	54	58	65	65	65	64	59	51	53	62	66	68	64	66	63	61	59	60	65	64	65	62	60	59.8	
LYNCHBURG INTL AP	24	MAX	73	81	82	84	83	81	82	82	85	88	87	83	84	83	83	90	93	95	91	86	86	78	81	85	86	88	87	81	80	87	84.5	
		MIN	54	50	56	63	63	58	58	60	63	65	66	65	63	59	55	62	65	65	66	65	67	65	62	63	65	64	65	67	60	60	62.0	
MARTINSVILLE FLTR PLT	07	MAX	81	76	82	84	85	86	83	83	80	86	89	88	84	84	85	85	91	93	95	90	90	85	82	82	85	89	90	87	84	81	85.5	
		MIN	56	48	48	55	63	56	56	60	65	62	63	66	60	58	51	53	63	62	62	66	66	65	66	64	66	64	64	66	61	59	60.5	
MEADOWS OF DAN 5 SW	07	MAX																															M	
		MIN																																M
MONTEBELLO FISH CULTURAL STN	07	MAX	73	66	76		82				80	80	85	85	76	80	77	81	84		89		84	84		74	79	80	81	80	73	75	79.3	
		MIN	43	46	47		58				47	47	58	58	56	54	45	58	60		59		57	63		60	61	63	57	58	55	57	55.1	
MONTECELLO	08	MAX	77	74	79	82	86	76	79	81	80	84	87	83	80	79	77	79	90	90	91	89	81	78	75	81	83	87	85	84	82	82	82.0	
		MIN	55	52	53	63	65	58	59	61	67	67	67	64	65	61	56	62	67	76	75	66	66	63	63	61	63	67	66	67	64	63	63.4	
ROCKY MT	07	MAX	80	78	84	85	83	83	82	84	80	88	89	89	89	85	86	86	91	95	95	91	89	85	81	82	87	87	87	86	83	77	85.6	
		MIN	58	49	53	63	63	55	58	57	61	61	66	66	61	59	53	54	65	67	67	67	66	66	66	65	66	68	66	67	63	61	61.9	
SOUTH BOSTON	07	MAX	81	81	83	87	89	87	84	83	84	84	91	90	83	87	84	85	95	96	97	96	89	89	81	84	87	92	91	87	85	82	87.1	
		MIN	51	49	53	56	65	61	57	58	64	66	66	66	67	63	57	58		69	71	68	68	69	63	64	65	69	69	69	61	61	62.9	
STUART	07	MAX	81	76	81	83	88	85	85	82	76	85	89	86	82	82	84	85	87	91	91	90	86	89	88	82	83	85	87	86	82	78	84.5	
		MIN	56	52	51	59	66	60	58	60	65	63	64	66	60	62	52	62	63	64	64	66	67	62	62	67	68	65	67	68	65	64	62.3	
TYE RIVER 1 SE	07	MAX	77	75	80	84	87	80	81	80	82	85	89	83	80	84	82	84	90	91	94	88	83	85	75	85	86	86	90	85	80	82	83.8	
		MIN	52	49	50	58	65	56	57	59	63	68	53	54	61	62	54	55	62	65	68	65	66	64	64	65	67	68	63	64	61	62	60.7	
NORTHERN 04																																		
BOSTON 4 SE	07	MAX	76	75	80	83	81	80	77	81	82	81	84	83	77	81	78	80	89	89	78	92	80	70	77	80	83	86	86	85	82	81	81.2	
		MIN		52	52	52		50	50	54	65	66	65	64	66	57		54	65	65	65	66	62	62	61	66	64	60	60	60	60	60.1		
EDINBURG	07	MAX	75	75	82	80	84	78	79	80	80	84	84	83	76	84	76	81	89	89	93	84	80	70	75	78	84	86	83	83	82	81	81.3	
		MIN	46	49	52	60	61	49	49	50	56	62	63	64	64	54	49	53	61	65	69	66	66	61	59	58	61	64	60	61	63	61	58.5	
FRONT ROYAL	07	MAX	76	75	80	83	86	78	78	82	81	83	83	85	79	83	76	83	89	90	92	84	84	69	78	80	84	86	84	85	82	81	82.0	
		MIN	52	55	55	67	61	52	53	53	61	65	65	66	65	60	52	52	63	65	71	67	66	61	62	63	63	69	63	63	64	65	61.3	
LINCOLN	07	MAX	76	77	81	83	84	77	76	80	84	82	84	85	79	82	74	80	89	90	92	82	80	69	79	82	85	88	85	86	84	84	82.0	
		MIN	51	51	59	59	51	50	50	54	60	65	65	66	59	49	49	57	64	68	70	63	62	57	57	63	66	69	61	60	63	59.3		
LURAY 5 E	08	MAX	76	74	82	82	85	77	77	81	80	82	83	84	79	82	76	82	89	89	91	86	82	79	76	78	85	88	83	84	81	81	81.8	
		MIN	48	50	59	59	58	49	50	56	61	63	65	64	61	55	49	59	63	63	66	65	66	61	60	59	66	64	60	66	61	59	59.5	
MADISON	08	MAX	78	75	81	84	87	81	79	83	81	84	85	84	80	84	81	81	88	90	93	80	71	77	81	83	86	86	85	82	82	86	82.6	
		MIN	51	56	60	66	66	55	54	58	62	68	68	66	67	60	54	58	67	69	71	66	64	65	64	67	67	64	67	64	65	67	63.2	
MANASSAS	07	MAX				82	85	89			86	84	84	89	87	82	84			94	96	87	86	75	79	82	87	90				M		
		MIN			57	62	61				55	69	69	72	69	72	64			70	74	68	67	65	61	64	68	68				M		
MT WEATHER	07	MAX	74	71	76	78	80	73	73	77	76	77	79	79	72	78	71	77	85	85	86	77	77	64	74	76	78	83	80	82	79	79	77.2	
		MIN	52	53	56	64	55	55	55	60	64	65	64	63	65	57	55	57	67	70	69	63	60	59	62	60	62	66	65	62	65	61.1		
PIEDMONT RSCH STN	08	MAX	77	74	80	83	87	79	80	82	82	83	87	86	76	83	80	80	89	91	92	89	81	74	77	80	84	86	85	86	83	82.6		
		MIN	51	49	50	61	65	56	55	58	69	68	65	66	62	55	55	67	67	73	67	66	63	61	60	66	68	66	66	59	60	61.7		
SOMERSET	07	MAX	77	76	81	84	87	80	80	82	82	85	87	85	79	84	81	81	90	92	94	91	82	74	77	81	84	88	86	87	83	84	83.5	
		MIN	48	50	60	64	64	52	51	57	67	69	68	67	66	60	52	59	66	70	72	65	66	64	63	61	65	67	64	68	60	62	62.2	
SPERRYVILLE	06	MAX	76		79	82		76	77	80	78	80	82	82		76	79	87	88	91		84		69		83	86		84	81	81	80.8		

VIRGINIA
201406

DAILY TEMPERATURES (°F)

STATION	OB. TIME	MAX/MIN	DAY OF MONTH																															AVERAGE
			01	02	03	04	05	06	07	08	09	10	11	12	13	14	15	16	17	18	19	20	21	22	23	24	25	26	27	28	29	30	31	
STERLING RCS	07	MIN	48		54	62		53	53	57	61	66	66	65	66		52	53	62	65	66	65		64			60	66		65	62	61		60.5
		MAX	60	78	82	84	85	79	78	82	84	84	85	87	78	81	80	82	90	92	92	83	82	71	80	82	86	90	86	87	85	84		82.6
VIENNA	07	MIN	52	51	60	63	61	55	53	53	61	61	69	68	69	60	53	53	64	72	74	63	64	64	60	64	67	70	66	62	61	66	62.0	
		MAX	77	75	81	86	86	76	75	82	83	85	85	86	77	81	73	80	92	92	91	83	83	71	80	84	86	89	85	86	98	86		83.1
WASHGTN DULLES INTL AP	24	MIN	55	54	56	65	61	58	56	56	62	68	71	69	69	63	55	55	65	70	75	65	65	67	65	65	67	70	68	65	65	61	63.5	
		MAX	75	79	84	86	78	77	81	82	83	85	84	77	80	74	81	90	91	91	83	82	71	79	81	83	88	86	85	83	83	87	82.3	
WASHINGTON REAGAN AP	24	MIN	50	54	63	63	60	54	52	58	65	69	68	68	65	61	51	60	66	71	71	65	64	64	59	63	69	68	65	61	63	66	62.5	
		MAX	77	82	86	90	82	81	86	85	85	88	88	80	83	78	84	90	97	95	87	87	75	82	85	87	89	88	87	87	89	89	85.6	
WINCHESTER	07	MIN	59	58	67	70	66	62	64	67	70	74	72	71	72	66	60	68	73	77	74	70	69	68	68	69	75	74	72	69	69	72	68.8	
		MAX	78	78	81	83	85	78	80	83	80	83	82	83	77	84	75	83	91	90	93	84	84	70	78	79	85	87	87	87	84	77	82.3	
WINCHESTER 7 SE	08	MIN	50	53	58	67	59	54	54	58	63	65	64	65	65	60	52	55	64	70	72	65	64	62	60	63	66	70	64	67	67	66	62.1	
		MAX	80	75	82	85	88	79	79	81	79	84	83	84	78	86	77	84	90	90	90	84	84	68	79	81	86	89	89	89	83	82	82.9	
WOODSTOCK 2 NE	07	MIN	77	77	82	77	77	78	83	81	83	84	84	83	76	83	76	83	83	89	91	84	81	78	77	80	86	87	84	83	81	81.7		
		MAX	46	49							52	64	62	65	64	66	56	50	51	63	65	67	66	65	61	59	60	64	65	61	63	63	60.3	
CENTRAL MOUNTAIN 05																																		M
COVINGTON FLTR PLT	07	MAX	82	75	82	83	81	78	81	81	82	82	86	86	79	83	80		89	90	91	84	86	87	84	81	84	85	86	86	82	74	83.1	
		MIN	55	53	53	60	61	52	50	50	59	60	62	63	63	54	49		60	60	63	64	64	63	63	62	63	61	59	60	67	61	59.1	
DALE ENTERPRISE	07	MAX	74	74	82	82	85	77	76	81	79	83	84	84	79	77	82	89	89	91	93	88	82	81	75	78	84	83	83	83	82	81	82.0	
		MIN	50	52	55	60	63	50	53	57	62	63	63	64	65	57	50	52	63	64	66	64	65	61	62	62	64	65	61	64	64	60	60.0	
GATHRIGHT DAM	07	MAX	77	72	78	78	79	72	77	78	75	77	82	81	76	78	76	81	85	85	86	80	81	81	81	78	81	80	82	83	83	71	79.1	
		MIN	54	52	53	60	62	50	50	53	60	60	61	62	63	53	50	51	60	62	63	64	64	64	62	62	64	62	61	62	62	59	58.8	
HOT SPRINGS	07	MAX	76	72	78	78	80	72	76	77	77	77	83	80	73	78	75	80	85	87	88	81	80	81	80	76	82	82	82	84	78	71	79.0	
		MIN	51	51	54	60	60	48	50	53	57	57	60	61	62	51	48	50	60	61	63	64	64	63	60	60	61	62	59	60	63	59	57.7	
LEXINGTON	07	MAX	79	76	82	83	84	81	81	81	81	84	87	86	81	84	82	82	89	92	94	89	86	86	80	80	84	84	87	86	82	78	83.7	
		MIN	54	49	51	59	62	51	53	57	61	64	63	64	61	58	51	52	62	64	66	66	66	66	63	63	65	63	65	65	63	60	60.2	
MILLGAP	07	MAX	76	72	78	78	80	71	77	76	74	76	82	79	76	78	74	83	86	86	86	81	84	80	76	81	80	82	81	78	69	78.7		
		MIN	43	43	45	53	56	43	43	43	54	56	57	59	59	43	41	41	41	55	57	55	57	57	59	59	58	54	54	61	58	52.0		
MUSTOE 1 SW	24	MAX	69	76	76	78	70	76	75	73	73	79	76	72	77	73	79	84	84	85	81	81	79	79	73	78	79	78	80	76	69	80	76.9	
		MIN	44	44	52	55	48	42	46	54	54	57	56	60	55	44	40	51	54	58	57	55	61	58	58	59	60	58	52	59	60	58	53.6	
ROANOKE 8 N	07	MAX	80	76	83	82	85	80	82	82	80	85	89	87	81	82	82	84	89	92	93	88	89	87	82	82	86	85	87	87	80	76	84.1	
		MIN	59	54	56	64	65	56	58	61	63	65	64	66	62	58	54	56	66	66	68	69	67	67	64	66	68	68	66	69	67	62	63.1	
ROANOKE INTL AP	24	MAX	75	83	83	85	82	84	82	81	87	90	87	80	85	82	83	89	93	94	91	92	87	81	80	85	86	89	87	82	75	85	84.8	
		MIN	60	53	64	68	60	54	59	64	64	67	65	64	62	58	54	66	67	71	73	70	69	66	66	67	69	70	67	71	63	63	64.5	
STAUNTON WATER TRMTMT PLT	08	MAX	77	72	80	80	83	77	79	81	79	81	84	84	80	83	80	81	88	90	92	87	84	83	83	76	83	83	85	84	79	78	81.9	
		MIN	51	56	62	64	64	51	55	61	63	64	61	64	63	56	52	59	64	69	72	65	65	61	61	62	66	66	62	65	64	60	61.6	
WAYNESBORO WTP	07	MAX	77	73	80	83	85	78	80	80	81	83	87	84	84	84	81	82	89	92	94	88	83	82	77	79	83	85	84	84	80	81	82.8	
		MIN	52	52	52	58	62	51	51	61	62	63	65	65	62	60	52	52	52	52	66	66	66	63	63	64	64	65	63	64	64	61	59.8	
SOUTHWESTERN MOUNTAIN 06																																		
ABINGDON 3S	22	MAX	83	80	82	74	83	76	80		82	82	87	84	77	79	80	86	87	86	89	85	83	80	84	87	87	79	81	86	82	83	82.6	
		MIN	58	54	55	57	57	53	54		61	59	62	62	62	62	56	54	54	61	61	61	61	62	63	63	63	64	64	63	65	66	62	59.9

VIRGINIA
201406

DAILY TEMPERATURES (°F)

STATION	OB. TIME	MAX/MIN	DAY OF MONTH																															AVERAGE
			01	02	03	04	05	06	07	08	09	10	11	12	13	14	15	16	17	18	19	20	21	22	23	24	25	26	27	28	29	30	31	
BIG STONE GAP	08	MAX	87	81	83	79	83	76	82	84	81	79	81	81	78	79	83	86	88	88	90	89	83	83	86	89	86	83	86	87	79	83	83.4	
		MIN	59	58	58	62	53	56	56	62	57	57	61	64	64	57	46	55	64	60	59	63	66	66	63	63	66	64	64	66	67	68	60.8	
BLACKSBURG NWSO	07	MAX	78	73	81	78	80	76	78	79	79	83	86	83	79	80	79	83	87	87	88	85	84	83	81	83	80	84	85	81	76	81.5		
		MIN	54	49	50	60	63	49	51	57	57	58	59	62	59	55	48	52	61	62	63	62	65	59	61	62	63	65	62	63	65	60	58.5	
BURKES GARDEN	07	MAX	74	69	76	72	78	69	72	77	76	76	79	77	76	74	72	79	80	81	81	79	78	76	78	78	79	72	77	79	74	75	76.1	
		MIN	52	48	47	59	59	45	43	51	53	53	56	60	57	50	44	51	54	56	58	60	60	56	57	64	59	64	56	59	64	59	55.1	
CHRISTIANSBURG	07	MAX	79	71	77	75	78	76	78	78	76	79	82	80	78	78	78	80	85	87	88	87	88	83	83	78	80	78	85	85	80	75	80.2	
		MIN	57	51	52	59	61	51	53	59	59	59	60	62	60	55	49	54	63	62	63	63	60	62	62	63	63	63	63	63	60	59.1		
CLINTWOOD 1 W	07	MAX	81	80	80	77	82	70	77	81	82	78	84	79	74	78	77	81	86	86	84	86	79	80	82	84	82	80	81	84	78	82	80.5	
		MIN	53	53	55	58	59	55	50	50	55	55	60	60	62	52	49	49	60	60	61	63	63	61	58	59	62	60	60	63	64	64	57.8	
COPPER HILL	07	MAX	71	71		74	77	73	75	71	71	79	81	76	74	77	76	76	82	84	87	82	83	80	73	73	75	76	80	78	73	69	76.4	
		MIN	54	51		51	60	49	49	58	58	57	57	60	59	54	54	56	56	62	63	63	62	58	58	61	61	62	61	63	59	60	57.8	
GALAX RADIO WBRF	07	MAX	76	69	76	77	84	77	81	76	76	82	84	78	78	80	82	80	87	86	89	85	78	84	84	78	80	81	85	81	78	73	80.2	
		MIN	51	48	54	57	64	50	54	60	56	58	58	61	59	55	48	57	60	59	60	60	62	57	63	64	62	60	63	61	60	62	58.1	
GALAX WTP	07	MAX	75	68	75	75	83	77	78	75	75	81	83	78	78	79	80	80	86	86	88	86	86	83	83	78	77	80	84	81	76	76	79.7	
		MIN	51	48	49	54	58	51	51	57	57	57	59	61	59	58	46	49	57	58	58	60	60	56	60	65	62	61	64	62	60	60	56.9	
GRUNDY	07	MAX	79	80	78	74	82	70	77	80	82	76	84	74	71	78	76	80	83	86	82	84	82	80	84	86	84	82	81	84	78	81	79.9	
		MIN	54	57	60	63	63	56	54	54	61	62	62	63	63	56	51	57	62	63	66	64	64	64	65	62	64	64	65	65	65	66	61.2	
JOHN FLANNAGAN LAKE	07	MAX			83	79	84	71		86	77	83	79	78			86	89	89	86	89			85	86	86	85	85		88	M	M		
		MIN			56	56	63	55		54	61	61	61	62			52	64	63	63	64			61	61	64	61	62		65	M	M		
LEBANON	07	MAX	83	80	83	78	84	74	78	84	83	82	87	82	78	79	79	83	86	87	86	86	84	81	82	85	87	82	84	86	80	84	82.6	
		MIN	58	53	53	58	60	51	51	52	67	57	60	63	62	54	51	53	52	60	60	61	62	60	61	62	65	62	63	64	66	61	58.7	
NORA 4 SSE	07	MAX	80	75	77	72	78	70	74	79	79	77	80	76	73	78	75	81	82	84	80	86	75	81	81	83	80	79	80	84	76	80	78.5	
		MIN	61	59	59	60	65	55	56	58	57	58	61	58	61	55	59	65	69	69	69	64	64	64	67	68	64	64	66	68	66	64	62.4	
NORTH FORK LAKE	08	MAX		82	81	80	83	72		83	77	84	79	75			86	88	88	87	88			85	88	86	82			86	M	M		
		MIN		56	56	60	60	54		54	60	59	61	63			51	61	62	62	64			59	59	63	62			62	M	M		
PULASKI 2 E	07	MAX	79	75	82	82	84	77	79	81	84	87	82	81	81	86	85	88	89	91	89	86	86	89	83	84	80	86	87	82	78	83.5		
		MIN	53	51	50	50	62	50	50	52	59	60	59	60	61	51	46	48	62	63	63	65	65	61	61	64	64	63	60	60	64	62	58.0	
RADFORD 3 N	07	MAX	77	73	80	77	80	73	78	78	79	82	86	82	78	80	77	84	87	89	90	88	87	85	85	84	84	80	85	85	80	76	81.6	
		MIN	56	49	56	59	62	48	50	56	58	60	60	63	60	59	45	52	59	58	61	61	65	58	64	64	63	64	59	64	63	59	58.5	
RICHLANDS	07	MAX	82	79	82	79	82	78	76	84	82	80	83	85	79	77	79	85	87	86	85	84	83	83	82	86	85	80	83	86	80	83	82.2	
		MIN	55	54	55	55	53	52	50	51	60	61	64	62	64	58	49	50	60	60	62	61	64	61	58	58	62	61	62	64	63	58.3	58.3	
SALTVILLE 1N	07	MAX	82	77	82	76	83	76	80	84	83	82	89	82	81	81	86	87	87	86	83	82	82	85	87	85	80	85	85	81	82	82.7		
		MIN	52	51	53	58	60	52	52	53	61	60	61	62	63	55	51	52	62	60	61	61	62	60	62	62	61	63	62	66	63	58.7		
STAFFORDSVILLE 3 ENE	07	MAX	78	73	79	77	81	75	77	78	80	79	85	81	79	80	76	82	88	89	90	87	87	85	84	83	83	78	83	84	80	75	81.2	
		MIN	54	51	54	58	62	52	49	51	57	57	61	61	61	58	46	48	58	60	60	62	64	59	59	66	63	63	59	62	64	61	58.0	
WISE 3E	17	MAX	76	78	74	79	77	73	80	79	76	80	79	74	75	74	81	83	82	83	83	76	78	80	82	80	77	79	81	79	77	78.5		
		MIN	61	57	60	60	61	49	52	62	56	59	61	61	59	52	51	63	61	66	62	63	72	59	60	66	64	62	63	64	63	62	60.4	
WYTHEVILLE 1 S	07	MAX	78	73	80	76	84	76	79	79	81	82	86	81	81	79	77	85	87	88	89	86	85	85	85	81	81	80	84	85	78	78	81.6	
		MIN	55	53	53	59	61	50	51	55	58	57	57	60	60	57	49	49	61	62	64	62	63	61	63	63	62	62	61	62	65	62	58.6	

VIRGINIA
201406

SNOWFALL AND SNOW ON GROUND (INCHES)

STATION		DAY OF MONTH																															
		01	02	03	04	05	06	07	08	09	10	11	12	13	14	15	16	17	18	19	20	21	22	23	24	25	26	27	28	29	30	31	
VIRGINIA																																	
TIDEWATER 01																																	
DISPUTANTA	SNOWFALL																																
EASTVILLE	SNOWFALL																																
EMPORIA 1 WNW	SNOWFALL																																
FREDERICKSBURG SEWAGE	SNOWFALL																																
HOLLAND 1 E	SNOWFALL																																
HOPEWELL	SNOWFALL	-	-	-																													
	SN ON GND	-	-	-																													
NORFOLK INTL AP	SNOWFALL																																
	SN ON GND																																
NORFOLK SOUTH	SNOWFALL																																
NORTH	SNOWFALL																																
	SN ON GND																																
PAINTER 2W	SNOWFALL																																
STONY CREEK 2 N	SNOWFALL																																
	SN ON GND																																
SUFFOLK LAKE KILBY	SNOWFALL																																
	SN ON GND																																
WAKEFIELD 1NW	SNOWFALL																																
	SN ON GND																																
WALKERTON 2 NW	SNOWFALL																																
	SN ON GND																																
WALLACETON LK DRUMMOND	SNOWFALL																																
WALLOPS ISLAND NASA TEST FACIL	SNOWFALL																																
	SN ON GND																																
WARSAW 2 NW	SNOWFALL																																
WEST POINT 2 NW	SNOWFALL																																
	SN ON GND																																
WILLIAMSBURG 2 N	SNOWFALL																																
SOUTHWESTERN																																	
MOUNTAIN 06																																	
BLACKSBURG NWSO	SNOWFALL																																
	SN ON GND																																
BURKES GARDEN	SNOWFALL																																
	SN ON GND																																
CHRISTIANSBURG	SNOWFALL																																
	SN ON GND																																
CLINTWOOD 1 W	SNOWFALL																																
	SN ON GND																																
COPPER HILL	SNOWFALL																																
	SN ON GND																																

Snowfall: Includes snow and ice. Values for NWS stations (J index note) are Mid-Mid (LST).

Snow on ground: Includes snow, sleet, ice, and hail. Values for NWS stations (J index note) are observed at 12 UTC (GMT).

Water Equivalent: Given for NWS stations (J index note) only, when snow depth is 2 inches or more, and is measured at 18 UTC (GMT)

VIRGINIA
201406

SNOWFALL AND SNOW ON GROUND (INCHES)

STATION		DAY OF MONTH																														
		01	02	03	04	05	06	07	08	09	10	11	12	13	14	15	16	17	18	19	20	21	22	23	24	25	26	27	28	29	30	31
GALAX RADIO WBRF	SNOWFALL																															
GALAX WTP	SNOWFALL		-			-			-		-	-					-	-	-	-								-			-	-
	SN ON GND		-			-			-		-	-				-	-	-	-								-			-	-	
GRUNDY	SNOWFALL																															
	SN ON GND																															
JOHN FLANNAGAN LAKE	SNOWFALL																															
	SN ON GND																															
LAFAYETTE 1 NE	SNOWFALL																															
LEBANON	SNOWFALL																															
	SN ON GND																															
NORA 4 SSE	SNOWFALL																															
	SN ON GND																															
NORTH FORK LAKE	SNOWFALL	-	-	-	-	-	-	-	-	-	-	-	-	-	-	-	-	-	-	-	-	-	-	-	-	-	-	-	-	-	-	
	SN ON GND	-	-	-	-	-	-	-	-	-	-	-	-	-	-	-	-	-	-	-	-	-	-	-	-	-	-	-	-	-	-	
PULASKI 2 E	SNOWFALL																															
	SN ON GND																															
RADFORD 3 N	SNOWFALL																															
	SN ON GND																															
RICHLANDS	SNOWFALL																															
	SN ON GND																															
SALTVILLE 1N	SNOWFALL																															
STAFFORDSVILLE 3 ENE	SNOWFALL																															
WILLIS	SNOWFALL																															
WISE 3E	SNOWFALL																															
	SN ON GND																															
WYTHEVILLE 1 S	SNOWFALL																															

Snowfall: Includes snow and ice. Values for NWS stations (J index note) are Mid-Mid (LST).

Snow on ground: Includes snow, sleet, ice, and hail. Values for NWS stations (J index note) are observed at 12 UTC (GMT).

Water Equivalent: Given for NWS stations (J index note) only, when snow depth is 2 inches or more, and is measured at 18 UTC (GMT)

VIRGINIA
201406

PAN EVAPORATION AND WIND

STATION		DAY OF MONTH																														TOTAL OR AVERAGE			
		01	02	03	04	05	06	07	08	09	10	11	12	13	14	15	16	17	18	19	20	21	22	23	24	25	26	27	28	29	30		31		
VIRGINIA EASTERN PIEDMONT 02 JOHN H KERR DAM	WIND	-	-	-	-	-	-	-	-	-	-	-	-	-	-	-	-	-	-	-	-	-	-	-	-	-	-	-	-	-	-	-	-	-	M M M M
	EVAP	-	-	-	-	-	-	-	-	-	-	-	-	-	-	-	-	-	-	-	-	-	-	-	-	-	-	-	-	-	-	-	-		
	MAX	-	-	-	-	-	-	-	-	-	-	-	-	-	-	-	-	-	-	-	-	-	-	-	-	-	-	-	-	-	-	-	-		
	MIN	-	-	-	-	-	-	-	-	-	-	-	-	-	-	-	-	-	-	-	-	-	-	-	-	-	-	-	-	-	-	-	-		

Evaporation: Is measured in hundreths of inches.

Wind: Is measured in miles.

Max and Min: The maximum and minimum temperatures (Fahrenheit) of the water in the evaporation pan.

STATION INDEX

STATION	INDEX NO.	DIVISION	COUNTY	LATITUDE	LONGITUDE	ELEVATION (IN FEET)	OBSERVATION TIME AND TABLES			
							LOCAL STD TIME			
							TEMP	PRECIP	EVAP	SPECIAL SEE (NOTES)
VIRGINIA										
ABINGDON 3S	0021	06	WASHINGTON	36 40	81 58W	1920	22	22		H
ALBERTA 5N	0079	02	BRUNSWICK	36 56	77 54W	376		08		H
ALTAVISTA	0166	03	CAMPBELL	37 7	79 17W	529		07		CH
AMELIA COURTHOUSE 1	0187	02	AMELIA	37 21	77 59W	345	08	08		H
APPOMATTOX	0243	03	APPOMATTOX	37 20	78 50W	850	07	07		H
ASHLAND	0327	02	HANOVER	37 45	77 29W	220	18	18		H
BEDFORD 4 NW	0561	03	BEDFORD	37 23	79 34W	1228		07		CH
BIG STONE GAP	0735	06	WISE	36 52	82 46W	1464	08	08		H
BLACKSBURG NWSO	0766	06	MONTGOMERY	37 12	80 25W	2100	07	07		CH
BOSTON 4 SE	0860	04	CULPEPER	38 33	78 6W	590	07	07		H
BREMO BLUFF	0993	02	FLUVANNA	37 43	78 17W	225		07		CH
BROOKNEAL	1082	03	CAMPBELL	37 4	78 57W	408	07	07		H
BUCKINGHAM	1136	02	BUCKINGHAM	37 30	78 32W	580		07		H
BUENA VISTA	1159	05	ROCKBRIDGE	37 44	79 22W	840		07		H
BURKES GARDEN	1209	06	TAZEWELL	37 6	81 20W	3068	07	07		H
CAMP PICKETT	1322	02	NOTTOWAY	37 2	77 57W	330	08	08		CH
CHARLOTTE COURT HOUSE	1585	03	CHARLOTTE	37 3	78 39W	569	07	07		H
CHARLOTTESVILLE 2W	1593	03	ALBEMARLE	38 2	78 31W	866	08	08		H
CHASE CITY	1606	02	MECKLENBURG	36 47	78 29W	510	17	17		H
CHATHAM	1614	03	PITTSYLVANIA	36 49	79 25W	651	07	07		CH
CHRISTIANSBURG	1692	06	MONTGOMERY	37 8	80 24W	2100	07	07		H
CLARKSVILLE	1746	02	MECKLENBURG	36 37	78 33W	330	07	07		H
CLINTWOOD 1 W	1825	06	DICKENSON	37 9	82 29W	1780	07	07		H
CONCORD 4 SSW	1955	03	CAMPBELL	37 17	78 58W	815		07		H
COPPER HILL	1999	06	FLOYD	37 5	80 9W	2690	07	07		H
CORBIN	2009	02	CAROLINE	38 12	77 22W	220	09	09		H
COVINGTON FLTR PLT	2044	05	ALLEGHANY	37 49	79 59W	1230	07	07		H
CRAIGSVILLE 2 S	2064	05	AUGUSTA	38 3	79 23W	1758		07		H
CROZIER	2142	02	GOOCHLAND	37 40	77 53W	350	07	07		H
DALE ENTERPRISE	2208	05	ROCKINGHAM	38 27	78 56W	1358	07	07		H
DANVILLE REGIONAL AP R	2250	03	PITTSYLVANIA	36 34	79 20W	571	24	24		H
DISPUTANTA	2400	01	PRINCE GEORGE	37 7	77 12W	15	07	07		H
EASTVILLE	2635	01	NORTHAMPTON	37 23	75 58W	10	07	07		H
EDINBURG	2663	04	SHENANDOAH	38 48	78 35W	928	07	07		H
EMPORIA 1 WNW	2790	01	GREENSVILLE	36 42	77 34W	100	08	08		H
FARMVILLE 2 N	2941	02	CUMBERLAND	37 20	78 23W	450	07	07		H
FREDERICKSBURG SEWAGE	3204	01	FREDERICKSBURG	38 17	77 27W	15	07	07		H
FREE UNION	3213	03	ALBEMARLE	38 5	78 35W	590	08	07		H
FRONT ROYAL	3229	04	WARREN	38 54	78 11W	930	07	07		H
GALAX RADIO WBRF	3267	06	CARROLL	36 40	80 55W	2385	07	07		H
GALAX WTP	3272	06	CARROLL	36 39	80 55W	2360	07	07		CH
GATHRIGHT DAM	3310	05	ALLEGHANY	37 57	79 57W	1770	07	07		CH
GLASGOW 1 SE	3375	05	ROCKBRIDGE	37 37	79 26W	737		07		H
GREENBAY 3 NE	3565	02	PRINCE EDWARD	37 11	78 17W	500	09	09		H
GRUNDY	3640	06	BUCHANAN	37 17	82 5W	1170	07	07		H
HOLCOMB ROCK	4039	03	BEDFORD	37 33	79 24W	810		07		H
HOLLAND 1 E	4044	01	SUFFOLK	36 41	76 46W	80	08	08		H
HOPEWELL	4101	01	PRINCE GEORGE	37 18	77 17W	40	16	16		H
HOT SPRINGS	4128	05	BATH	37 60	79 50W	2236	07	07		H
HUDDLESTON 4 SW	4148	03	BEDFORD	37 8	79 32W	898		07		H
JOHN FLANNAGAN LAKE	4410	06	DICKENSON	37 14	82 21W	1460	07	07		H
JOHN H KERR DAM	4414	02	MECKLENBURG	36 36	78 18W	250	08	08	08	CH
LAFAYETTE 1 NE	4676	06	MONTGOMERY	37 14	80 12W	1320		07		H
LEBANON	4777	06	RUSSELL	36 54	82 2W	1912	07	07		H
LEXINGTON	4876	05	ROCKBRIDGE	37 47	79 26W	1097	07	07		H
LINCOLN	4909	04	LOUDOUN	39 5	77 42W	500	07	07		H
LOUISA	5050	02	LOUISA	38 3	78 0W	420	18	18		H
LURAY 5 E	5096	04	PAGE	38 40	78 22W	1400	08	08		H
LYNCHBURG INTL AP R	5120	03	CAMPBELL	37 19	79 12W	940	24	24		HJ
MADISON	5150	04	MADISON	38 22	78 15W	577	08	08		H
MANASSAS	5204	04	MANASSAS	38 44	77 30W	245	07	07		H
MARTINSVILLE FLTR PLT	5300	03	HENRY	36 42	79 52W	760	07	07		H
MEADOWS OF DAN 5 SW	5453	03	PATRICK	36 40	80 27W	2225	07	07		H
MILLGAP	5595	05	HIGHLAND	38 18	79 43W	2421	07	07		CH
MONTEBELLO FISH CULTURAL STN	5690	03	NELSON	37 51	79 8W	2667	07	07		H

STATION INDEX

STATION	INDEX NO.	DIVISION	COUNTY	LATITUDE	LONGITUDE	ELEVATION (IN FEET)	OBSERVATION TIME AND TABLES			
							LOCAL STD TIME			
							TEMP	PRECIP	EVAP	SPECIAL SEE (NOTES)
MONTICELLO	5700	03	ALBEMARLE	38 1	78 27W	758	08	08		H
MT WEATHER	5851	04	LOUDOUN	39 4	77 53W	1659	07	07		H
MTN GROVE	5756	05	BATH	38 6	79 53W	1775		07		H
MUSTOE 1 SW	5880	05	HIGHLAND	38 20	79 40W	2380	24	24		H
NEW CASTLE	6012	05	CRAIG	37 18	80 3W	1258		07		H
NORA 4 SSE	6125	06	DICKENSON	37 1	82 19W	2650	07	07		H
NORFOLK INTL AP R	6139	01	NORFOLK (CITY)	36 54	76 12W	30	24	24		HJ
NORFOLK SOUTH	6147	01	NORFOLK (CITY)	36 52	76 14W	100	24	24		H
NORTH	6161	01	MATHEWS	37 26	76 26W	10	07	07		H
NORTH FORK LAKE	6173	06	WISE	37 7	82 38W	1675	08	08		H
PAINTER 2W	6475	01	ACCOMACK	37 35	75 49W	30	16	16		CH
PALMYRA 3S	6491	02	FLUVANNA	37 49	78 16W	410	06	06		H
PEDLAR DAM	6593	03	AMHERST	37 40	79 17W	1024		07		H
PETERSBURG	6656	02	PETERSBURG	37 14	77 24W	15	08	08		H
PIEDMONT RSCH STN	6712	04	ORANGE	38 14	78 7W	520	08	08		CH
PULASKI 2 E	6955	06	PULASKI	37 3	80 47W	1850	07	07		CH
RADFORD 3 N	6999	06	PULASKI	37 12	80 35W	1800	07	07		H
RICHLANDS	7174	06	TAZEWELL	37 6	81 48W	1910	07	07		H
RICHMOND INTL AP R	7201	02	HENRICO	37 30	77 19W	164	24	24		HJ
ROANOKE 8 N	7278	05	ROANOKE	37 22	79 58W	1190	07	07		H
ROANOKE INTL AP R	7285	05	ROANOKE	37 19	79 58W	1175	24	24		HJ
ROCKY MT	7338	03	FRANKLIN	36 59	79 54W	1315	07	07		CH
SALTVILLE 1N	7506	06	SMYTH	36 53	81 46W	1733	07	07		H
SANDSTON	7541	02	HENRICO	37 33	77 17W	165	07	07		H
SOMERSET	7904	04	ORANGE	38 15	78 16W	510	07	07		H
SOUTH BOSTON	7925	03	HALIFAX	36 42	78 53W	329	07	07		H
SPERRYVILLE	7985	04	RAPPAHANNOCK	38 39	78 14W	750	06	06		H
STAFFORDSVILLE 3 ENE	8022	06	GILES	37 16	80 43W	1950	07	07		CH
STAUNTON WATER TRMTMT PLT	8062	05	AUGUSTA	38 10	79 5W	169	08	08		H
STERLING RCS	8084	04	LOUDOUN	38 59	77 29W	288	07	07		H
STONY CREEK 2 N	8129	01	SUSSEX	36 58	77 24W	105	08	08		H
STUART	8170	03	PATRICK	36 38	80 15W	1375	07	07		H
SUFFOLK LAKE KILBY	8192	01	SUFFOLK	36 44	76 36W	22	24	24		H
TYE RIVER 1 SE	8600	03	NELSON	37 38	78 56W	720	07	07		H
VIENNA	8737	04	FAIRFAX	38 54	77 16W	418	07	07		H
WAKEFIELD 1NW	8800	01	SUSSEX	36 59	77 0W	113	24	24		CH
WALKERTON 2 NW	8829	01	KING AND QUEEN	37 45	77 2W	50	18	18		H
WALLACETON LK DRUMMOND	8837	01	CHESAPEAKE	36 36	76 26W	20	08	08		H
WALLOPS ISLAND NASA TEST FACIL R	8849	01	ACCOMACK	37 56	75 28W	46	24	24		HJ
WARSAW 2 NW	8894	01	RICHMOND	37 59	76 47W	140	18	18		H
WASHGTN DULLES INTL AP R	8903	04	LOUDOUN	38 56	77 28W	290	24	24		HJ
WASHINGTON REAGAN AP R	8906	04	ARLINGTON	38 51	77 2W	10	24	24		HJ
WAYNESBORO WTP	8941	05	WAYNESBORO	38 5	78 53W	1270	07	07		H
WEST POINT 2 NW	9025	01	KING WILLIAM	37 34	76 48W	20	17	17		H
WILLIAMSBURG 2 N	9151	01	YORK	37 18	76 42W	70	24	24		CH
WILLIS	9169	06	FLOYD	36 55	80 30W	2810		07		CH
WINCHESTER	9181	04	FREDERICK	39 11	78 9W	720	07	07		H
WINCHESTER 7 SE	9186	04	FREDERICK	39 11	78 7W	680	08	08		H
WINTERPOCK 4 W	9213	02	CHESTERFIELD	37 19	77 39W	300		07		H
WISE 3E	9215	06	WISE	36 60	82 32W	2549	17	17		CH
WOODSTOCK 2 NE	9263	04	SHENANDOAH	38 54	78 28W	675	07	07		H
WOOLWINE	9272	03	PATRICK	36 47	80 17W	1500		07		CH
WYTHEVILLE 1 S	9301	06	WYTHE	36 58	81 5W	2458	07	07		H

REFERENCE NOTES

STATION NAMES: Name of the city, town or locality. Figures and letters following the station names indicate the distance in miles and direction from the post office or town community center.

DIVISIONS: Areas within a state of similar climatological characteristics. Division averages are calculated using data from stations that record temperature and/or precipitation. Station Precipitation totals flagged with an 'F' or 'M' are excluded from the Divisional Average calculations of precipitation. Stations with monthly Temperature averages flagged with an 'F' or 'M' are included in the Divisional Average if there are no more than 9 flagged or missing daily values in the month, else they are excluded from the divisional average for temperature.

NORMALS: The average value of the meteorological element over a time period. Effective 1 January 2012, the averaging period is 1981 to 2010. The normals for National Weather Service localities have been adjusted so as to be representative for the current observation site.

MONTHLY DEGREE DAY TOTALS: One heating (cooling) degree day is accumulated for each whole degree that the daily mean temperature is below (above) 65 degrees Fahrenheit.

PRECIPITATION: Values shown in hundredths of inches are water equivalent totals, i.e., total of liquid and melted frozen precipitation. In the "Monthly Summarized Data" table the total snow and sleet values shown in tenths of inches are unmelted amounts. The max depth on ground values of snow and sleet shown in whole inches are cumulative unmelted amounts. The number of days with .10, .50, 1.00 or more refers to water equivalents.

PRECIPITATION QUALITY CONTROL: The NCDC quality control process may flag precipitation data that are spatially inconsistent, exceed climatological limits, or are inconsistent with prevailing weather patterns.

TEMPERATURE: Original temperature values are given in the "Daily Temperature" table. Summary temperature information (averages, departures, extremes, monthly degree day totals) is based on the values labeled MAX/MIN.

WIND: (As shown in the "Evaporation and Wind" table) the total wind movement in miles over the evaporation pan as determined by an anemometer recorder located 6-8 inches above the pan.

SYMBOLS AND LETTERS USED IN THE STATION INDEX TABLE

- C Station is equipped with recording rain gage (R) but values in this bulletin are from a non-recording rain gage unless indicated by an R.
- G Observations appear in the "Soil Temperatures" table.
- H Observations appear in the "Snowfall and Snow on the Ground" table.
- J Station also published as a Local Climatological Data publication.
- VAR Observation time varies.
- SR Observation time near sunrise.
- SS Observation time near sunset.

SYMBOLS AND LETTERS USED IN THE DATA TABLES

- (DAILY DATA ARE FOR THE 24 HOURS IMMEDIATELY PRECEDING OBSERVATION TIME.)
- BLANK Entries in the "Monthly Summarized Data" table indicate no record.
- BLANK Entries in the "Daily Precipitation" and "Snowfall and Snow on the Ground" tables indicate zero.
- BLANK Entries in the "Daily Temperature" table indicate a missing record

- No record. Data not recorded or not received in time for publication.
- + Precipitation or temperature extremes occurred on one or more previous dates during the month.
- * Rain gage not read. Precipitation is included in the amount following the asterisks. Time distribution may not be known. A * preceding the monthly total indicates precipitation amount is being carried forward to next month's total, and may include amounts from the previous month(s).
- a As a subscript, indicates accumulated total.

by NCDC's Climate Prediction Branch. Entries for the report. If the data is not in the report, please contact the office for more information. For stations that determine date of last reading. (Hawaii stations)

- B Divisional Departure from normals are computed using 1981-2010 normals.
- E Normalized HDD/CDD Calculation. E is appended to the HDD/CDD Calculation when 1-9 individual daily TMAX and/or TMIN values are missing and a Normalized HDD/CDD Calculation is provided. M appears alone if 10 or more daily values are missing.
- F Monthly calculation flagged value. F is appended to average and/or total values computed which exclude one or more daily data values that have been flagged by the GHCN-Daily Dataset
- M Insufficient or partial data. M is appended to average and/or total values computed with 1-9 daily values missing. M appears alone if 10 or more daily values are missing, (8 or more for wind and evaporation).
- N Indicates snow fall or Snowdepth totals are computed with one or more missing days.
- R Amounts from recording rain gage.
- T Trace. An amount too small to measure.

SEASONAL TABLES: Monthly and seasonal snowfall and heating degree days for the 12 months ending with the June data are published in the July issue of this bulletin. Cooling degree days for the calendar year are published in the "Climatological Data Annual Summary."

Information concerning the history of changes in locations, exposure, etc. of substations is kept on file at the National Climatic Data Center. Historical information of regular National Weather Service Offices may be obtained from the "Local Climatological Data" annual publication. The contents of this publication may be reprinted or otherwise used freely, with proper credit to the National Climatic Data Center. The data are also available digitally.

Effective with the January 2011 Data-Month, COOP Observer Names are no longer included in the Monthly and Annual Climatological Data Publications. This information is not published to ensure the privacy of personal information pursuant to Section 208 of the E-Government Act of 2002 (44 USC 3601).

As of the 2011 Data-Year, Station and Climate Division Maps are no longer being included in the CD Publications. NCDC's Product Development Branch provides updated Station Maps for various data networks via the Historical Observing Metadata Repository: <http://www.ncdc.noaa.gov/homr>.

The GHCN-Daily Quality Control Flags shown below are displayed as superscripts with the data. For more Information on Global Historical Climatology Network - Daily and flags, see: <http://www.ncdc.noaa.gov/oa/climate/ghcn-daily/> and Comprehensive Automated Quality Assurance of Daily Surface Observations. Durre, Imke, Matthew J. Menne, Byron E. Gleason, Tamara G. Houston, Russell S. Vose, 2010: J. Appl. Meteor. Climatol., 49, 16151633. doi: 10.1175/2010JAMC2375.1

- Blank = Passed All checks
- D = failed duplicate check
- G = failed gap check
- I = failed internal consistency check
- K = failed streak/frequent-value check
- L = failed check on length of multiday period
- M = failed megaconsistency check
- N = failed naught check
- O = failed climatological outlier check
- R = failed lagged range check
- S = failed spatial consistency check
- T = failed temporal consistency check
- W = temperature too warm for snow
- X = failed bounds check
- Z = flagged as a result of an official Datzilla investigation

Beginning with the January 2013 CD Publication, monthly mean temperature calculations have changed to the National Data Stewardship Team standard. Monthly maximum and minimum temperatures are not rounded until after the monthly mean temperature is calculated. This is the most accurate outcome, but may be slightly different from the mean derived from rounded monthly maximum and minimum.

Processing Updates and Errata: The CD Publications are periodically reproduced to include the addition of late reports and reported corrections. The GHCND data version noted on the cover of the publication provides the generation date.

The climate division temperature and precipitation values in this publication are based on simple averages from the current set of NWS-Designated Open and Published COOP and First Order Sites within each division. These values differ from those found in NCDC's nClimDiv product. Beginning in February 2014, the nClimDiv product is used

NOAA\National Climatic Data Center
Attn: User Engagement & Services Branch
151 Patton Avenue
Asheville, NC 28801-5001

Customer Services Number: (828) 271-4800, option 2
TDD : (828) 271-4010
Fax number: (828) 271-4876

NCDC now offers free online access to the *Climatological Data* publication.
Go to : www.ncdc.noaa.gov and choose Most Popular.