



CLIMATOLOGICAL DATA

VIRGINIA

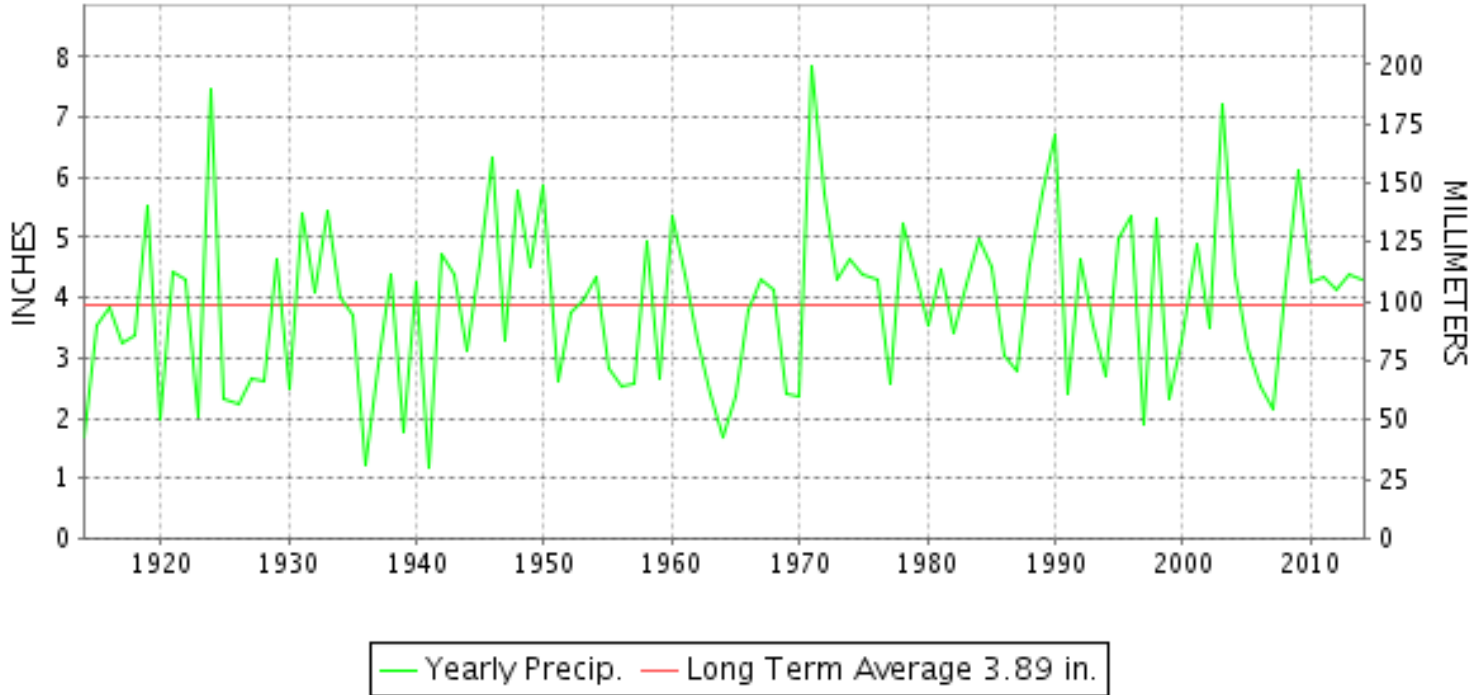
MAY 2014

VOLUME 124 NUMBER 05

ISSN 0364-5630

GHCND Ver: 3.12-upd-2014090305

MAY PRECIPITATION BY YEAR



TEMPERATURE AND PRECIPITATION EXTREMES

VIRGINIA

HIGHEST TEMPERATURE	95	MAY 14+	2 STATIONS
LOWEST TEMPERATURE	28	MAY 20+	MILLGAP
GREATEST TOTAL PRECIPITATION	9.02		MANASSAS
LEAST TOTAL PRECIPITATION	1.62		ROCKY MT
GREATEST 1 DAY PRECIPITATION	6.60	MAY 16	CLARKSVILLE

"I certify that this is an official publication of the National Oceanic and Atmospheric Administration (NOAA) It is compiled using information from weather observing sites supervised by NOAA/National Weather Service and received at the National Climatic Data Center(NCDC), Asheville, North Carolina 28801."

Director
National Climatic Data Center

noaa

National
Oceanic and
Atmospheric Administration

National
Environmental Satellite, Data
and Information Service

National
Climatic Data Center
Asheville, North Carolina

VIRGINIA
201405

MONTHLY STATION AND DIVISION SUMMARY

STATION	TEMPERATURE (°F)											PRECIPITATION (IN)												
	AVERAGE MAXIMUM	AVERAGE MINIMUM	AVERAGE	DEPARTURE FROM NORMAL	HIGHEST	DATE	LOWEST	DATE	HEATING DEG. DAYS	COOLING DEG. DAYS	NO. OF DAYS				TOTAL	DEPARTURE FROM NORMAL	GREATEST 24 HOURS	DATE	ICE PELLETS, SNOW			NO. OF DAYS		
											MAX		MIN						TOTAL	MAX DEPTH ON GROUND	DATE	.10 OR MORE	.50 OR MORE	1.00 OR MORE
											>=90	<=32	<=32	<=0										
PETERSBURG	79.9M	56.1M	68.0M	1.5	93	14	44	20	44E	146E	4	0	0	0	M 0.71	-3.15	0.22	17+	M 0.0	0		4	0	0
RICHMOND INTL AP	81.1	58.8	70.0	3.6	94	13	47	19	20	179	7	0	0	0	2.44	-1.34	0.66	22	0.0	0		5	2	0
SANDSTON	80.0	56.0	68.0	2.6	93	28	44	19	40	141	7	0	0	0	A 3.03	-1.00	1.07	15	0.0			4	3	1
WINTERPOCK 4 W															3.96		2.66	16	0.0			6	2	1
--DIVISIONAL DATA-----> WESTERN PIEDMONT 03			67.5	3.4B										5.02	0.89B									
ALTAVISTA														4.82		2.74	16	0.0				8	2	1
APPOMATTOX	78.0	55.0M	66.5M	3.2	92	14	44	17	63E	114E	1	0	0	0	4.66	-0.10	3.50	16	0.0	0		4	2	1
BEDFORD 4 NW														3.05		1.61	16	0.0				7	1	1
BROOKNEAL	80.2M	52.7M	66.5M	6.9	93	14	42	19	56E	110E	5	0	0	0	4.98	0.29	3.32	16	0.0	0		4	2	2
CHARLOTTE COURT HOUSE	79.0M	54.6M	66.8M	2.6	93	14	42	18+	61E	127E	2	0	0	0	6.21	2.10	4.43	16	0.0	0		4	3	2
CHARLOTTESVILLE 2W	77.8	56.6	67.2	2.2	92	14	46	19+	56	130	3	0	0	0	6.99	2.36	4.16	16	0.0	0		6	2	2
CHATHAM	77.3	49.6	63.4	1.2	89	14	38	20+	103	61	0	0	0	0	2.78	-1.26	2.27	16	0.0	0		3	1	1
CONCORD 4 SSW														4.06		2.93	16	0.0				4	2	1
DANVILLE REGIONAL AP	80.6	56.0	68.3	1.9	90	13	45	19+	35	146	1	0	0	0	4.48	0.60	2.66	15	0.0	0		3	3	2
FREE UNION	76.2	51.1	63.6		90	09	39	18	102	68	1	0	0	0	6.35		4.12	16	0.0			7	2	2
HOLCOMB ROCK														3.78		2.22	16	0.0	0			7	1	1
HUDDLESTON 4 SW														2.60		1.45	16	0.0				4	2	1
LYNCHBURG INTL AP	78.1	53.2	65.7	2.6	91	13	41	17	65	95	1	0	0	0	5.39	1.66	3.12	15	0.0	0		5	2	2
MARTINSVILLE FLTR PLT	80.3	49.9	65.1	1.8	91	14	38	17	72	86	1	0	0	0	2.26	-1.77	1.20	16	0.0	0		3	2	1
MEADOWS OF DAN 5 SW	M	M	M								0	0	0	0	M		0.0							
MONTEBELLO FISH CULTURAL STN	73.1M	46.0M	59.5M		85	15+	33	19+	202E	39E	0	0	0	0	MA 5.00		3.62	16	0.0			5	1	1
MONTICELLO	75.1	55.2	65.2	2.4	89	14	44	19	85	98	0	0	0	0	7.42	3.32	4.50	16	0.0			6	3	2
PEDLAR DAM														4.02		2.64	16	0.0	0			7	1	1
ROCKY MT	79.1	52.7	65.9	3.3	92	29+	40	17	79	113	4	0	0	0	1.62	-2.45	1.22	16	0.0	0		3	1	1
SOUTH BOSTON	80.1M	53.5M	66.8M	3.0	91	14	43	19	47E	111E	3	0	0	0	5.41	1.49	3.52	16	0.0	0		4	2	2
STUART	79.6	51.9	65.8	1.7	90	14	40	20+	68	100	1	0	0	0	2.08	-2.52	1.90	16	0.0	0		1	1	1
TYE RIVER 1 SE	77.5	53.3	65.4	1.8	90	14	44	18	71	91	1	0	0	0	5.66	1.15	3.72	16	0.0			6	2	1
WOOLWINE														2.37		1.78	16	0.0	0			3	1	1
--DIVISIONAL DATA-----> NORTHERN 04			65.4	1.9B										4.33	-0.06B									
BOSTON 4 SE	76.4M	49.6MF	63.0MF	1.4	89	09	32	01	118E	68E	0	0	1	0	M 5.23	0.88	3.33	16	M 0.0	0		7	3	1
EDINBURG	74.0	48.2	61.1	0.4	89	14	36	19+	156	43	0	0	0	0	4.51	0.61	2.87	16	0.0			6	2	1
FRONT ROYAL	75.3M	51.4M	63.4M	1.0	90	09	39	19	110E	66E	1	0	0	0	M 5.48	1.28	4.00	16	M 0.0	0		5	2	1
LINCOLN	74.2	50.2	62.2	1.3	88	14	36	19	142	61	0	0	0	0	5.10		3.49	16	0.0			5	2	1
LURAY 5 E	75.6	50.3	62.9	0.1	91	14	36	19	128	72	1	0	0	0	4.59	0.59	3.14	16	0.0	0		8	1	1
MADISON	76.9	54.6	65.8	2.6	90	14+	42	19	67	97	2	0	0	0	* 6.88		3.00	16	M 0.0	0		6	4	3
MANASSAS	78.9M	54.5M	66.7M	2.7	92	14	41	19	61E	117E	3	0	0	0	9.02		3.15	01	0.0			8	4	4

VIRGINIA
201405

MONTHLY STATION AND DIVISION SUMMARY

STATION	TEMPERATURE (°F)											PRECIPITATION (IN)												
	AVERAGE MAXIMUM	AVERAGE MINIMUM	AVERAGE	DEPARTURE FROM NORMAL	HIGHEST	DATE	LOWEST	DATE	HEATING DEG. DAYS	COOLING DEG. DAYS	NO. OF DAYS				TOTAL	DEPARTURE FROM NORMAL	GREATEST 24 HOURS	DATE	ICE PELLETS, SNOW			NO. OF DAYS		
											MAX		MIN						TOTAL	MAX DEPTH ON GROUND	DATE	.10 OR MORE	.50 OR MORE	1.00 OR MORE
											>=90	<=32	<=32	<=0										
MT WEATHER	70.6	51.7	61.1	0.2	86	14	40	05	160	48	0	0	0	0	5.64	1.16	3.25	16	0.0			9	2	1
PIEDMONT RSCH STN	75.6	53.2	64.4	0.7	90	14	36	05	98	89	1	0	0	0	7.57	3.43	4.02	16	0.0			5	3	2
SOMERSET	76.7	53.2	65.0	1.6	90	29+	39	19	84	90	2	0	0	0	5.73	1.51	3.15	16	0.0			4	3	2
SPERRYVILLE	74.3M	52.5M	63.4M	1.4	88	14	40	19	107E	68E	0	0	0	0	MA 6.46	2.11	3.75	16	0.0			6	3	2
STERLING RCS	75.8M	52.6M	64.2M	1.9	91	14	40	19+	100E	82E	1	0	0	0	7.66	2.94	3.76	16	M 0.0	0		8	2	2
VIENNA	74.7	52.8	63.8	2.3	91	14	42	20+	95	64	1	0	0	0	7.62	3.09	3.23	01	0.0			9	2	2
WASHGTN DULLES INTL AP	75.4	53.0	64.2	1.0	90	13	39	19	94	75	1	0	0	0	6.34	1.79	1.97	16	0.0	0		9	3	2
WASHINGTON REAGAN AP	78.0	58.9	68.5	2.5	92	27+	49	19	32	148	2	0	0	0	4.96	0.97	2.25	16	0.0	0		9	2	1
WINCHESTER	74.8	52.1	63.5	1.5	89	14	41	19	111	72	0	0	0	0	5.10	1.23	3.33	16	0.0			8	1	1
WINCHESTER 7 SE	76.6M	M	M		90	15+	35	02	310E	0	3	0	0	0	M 5.21	1.39	3.85	16	M 0.0	0		7	1	1
WOODSTOCK 2 NE	74.4	47.7	61.0	0.6	89	09	33	19+	164	50	0	0	0	0	4.92	0.91	3.15	16	0.0			6	2	1
--DIVISIONAL DATA-----> CENTRAL MOUNTAIN 05			63.8	2.0B										6.12	1.89B									
BUENA VISTA														3.33		2.00	16	0.0	0			6	1	1
COVINGTON FLTR PLT	79.2	47.7	63.5	0.7	90	15+	38	20+	104	61	3	0	0	0	5.04	0.96	2.35	16	0.0	0		6	3	2
CRAIGSVILLE 2 S														M		0.0								
DALE ENTERPRISE	74.8	49.1	62.0	1.7	90	14	37	19	140	54	1	0	0	0	4.15	0.44	2.10	16	0.0	0		6	3	1
GATHRIGHT DAM	74.5	49.5	62.0	1.7	88	14	37	17	133	50	0	0	0	0	4.05	-0.06	2.16	16	0.0	0		5	2	1
GLASGOW 1 SE														4.02		2.47	16	0.0	0			7	1	1
HOT SPRINGS	74.1	48.5	61.3	1.9	88	14	36	19+	152	45	0	0	0	0	4.68	0.49	2.50	16	0.0			7	2	1
LEXINGTON	77.3	50.1	63.7	0.9	90	14	39	18	103	71	1	0	0	0	3.44	-0.58	2.06	16	0.0	0		5	2	1
MILLGAP	72.0	40.7	56.3	-0.1	85	14	28	20+	269	7	0	0	3	0	3.76	-1.01	2.17	16	0.0	0		6	2	1
MTN GROVE														3.39		2.10	16	0.0				6	2	1
MUSTOE 1 SW	71.3	43.6	57.4	0.8	84	13	29	19+	234	8	0	0	2	0	4.65	-0.05	1.98	15	M 0.0			8	3	1
NEW CASTLE														3.39		2.33	16	0.0				2	2	1
ROANOKE 8 N	78.5	53.6M	66.0M	2.7	90	13	43	19+	73E	109E	1	0	0	0	3.00	-1.43	2.08	16	0.0	0		5	1	1
ROANOKE INTL AP	78.7	56.2	67.4	2.8	91	12	43	19	54	137	1	0	0	0	2.38	-1.68	1.86	15	0.0	0		3	1	1
STAUNTON WATER TRMTMT PLT	75.2	52.5	63.9	2.4	88	14	40	20+	106	80	0	0	0	0	4.93	1.19	2.40	16	0.0	0		9	3	1
WAYNESBORO WTP	75.9	49.0	62.5	1.6	89	09	38	20+	130	58	0	0	0	0	3.95	0.02	2.77	16	M 0.0	0		6	1	1
--DIVISIONAL DATA-----> SOUTHWESTERN MOUNTAIN 06			62.4	1.0B										3.88	-0.24B									
ABINGDON 3S	76.0M	48.9M	62.4M	0.4	86	15	35	17	129E	58E	0	0	0	0	M 2.65	-1.96	1.42	16	M 0.0	0		4	3	1
BIG STONE GAP	77.6	50.3	63.9	0.9	86	14	38	17+	102	75	0	0	0	0	2.78	-2.10	0.77	15	0.0	0		7	3	0
BLACKSBURG NWSO	75.7	49.4	62.5	3.2	88	14	37	17	127	59	0	0	0	0	2.85	-1.48	1.83	16	0.0	0		6	1	1
BURKES GARDEN	70.9M	43.2M	57.0M	0.8	81	15+	29	20+	237E	0	0	0	3	0	M 2.64	-2.12	1.72	16	M 0.0	0		5	1	1
CHRISTIANSBURG	74.8	50.9	62.9	1.9	86	15+	37	17	122	63	0	0	0	0	3.05	-1.85	1.89	16	0.0	0		6	1	1
CLINTWOOD 1 W	76.5	46.9	61.7	1.9	87	14+	34	20+	136	42	0	0	0	0	4.78	0.19	1.52	22	0.0	0		6	3	2

VIRGINIA
201405

MONTHLY STATION AND DIVISION SUMMARY

STATION	TEMPERATURE (°F)										PRECIPITATION (IN)													
	AVERAGE MAXIMUM	AVERAGE MINIMUM	AVERAGE	DEPARTURE FROM NORMAL	HIGHEST	DATE	LOWEST	DATE	HEATING DEG. DAYS	COOLING DEG. DAYS	NO. OF DAYS				TOTAL	DEPARTURE FROM NORMAL	GREATEST 24 HOURS	DATE	ICE PELLETS, SNOW			NO. OF DAYS		
											MAX		MIN						TOTAL	MAX DEPTH ON GROUND	DATE	.10 OR MORE	.50 OR MORE	1.00 OR MORE
											>=90	<=32	<=32	<=0										
COPPER HILL	71.6	49.9	60.8		82	09	36	17	155	31	0	0	0	0	3.49		2.44	16	0.0	0		5	1	1
GALAX RADIO WBRF	75.0	49.2	62.1	2.3	85	14	35	17	130	47	0	0	0	0	4.13	0.21	1.77	16	0.0			5	3	2
GALAX WTP	74.5	47.6	61.1	2.2	84	15+	36	20+	144	31	0	0	0	0	4.39		1.98	16	M 0.0	0		6	3	1
GRUNDY	76.0	49.9	63.0	1.9	87	14	38	19	111	57	0	0	0	0	3.76	-1.13	1.46	28	0.0	0		7	1	1
JOHN FLANNAGAN LAKE	79.0M	50.3M	64.7M		88	15+	39	19	86E	82E	0	0	0	0	A* 2.68		0.61	30	0.0			6	1	0
LAFAYETTE 1 NE															2.14		1.60	16	0.0			3	1	1
LEBANON	76.6	47.6	62.1	1.4	87	15+	34	18+	135	54	0	0	0	0	3.74	-0.68	0.88	11	0.0	0		7	4	0
NORA 4 SSE	72.1	54.4	63.2	2.5	82	14+	38	17	118	70	0	0	0	0	3.96	-1.54	1.23	30	0.0	0		7	3	1
NORTH FORK LAKE	M	M	M		88	14	37	19	93E	64E	0	0	0	0	MA 2.41		0.41	22	0.0			3	0	0
PULASKI 2 E	77.4	49.1M	63.2M	2.6	89	14	35	20	111E	62E	0	0	0	0	1.83	-1.94	1.25	16	0.0			2	1	1
RADFORD 3 N	75.5	49.7	62.6	3.0	88	14	35	19	124	57	0	0	0	0	3.10	-0.82	1.65	16	0.0	0		6	2	1
RICHLANDS	76.0M	46.5	61.2M	1.0	86	14	35	19	148E	41E	0	0	0	0	3.14	-1.61	0.80	15	0.0	0		9	3	0
SALTVILLE 1N	76.5	47.9	62.2	0.6	87	14	35	17+	134	55	0	0	0	0	4.02	-0.33	1.30	16	0.0			6	3	2
STAFFORDSVILLE 3 ENE	75.3	48.2	61.8	2.2	86	14	35	19	135	44	0	0	0	0	3.43	-0.81	2.04	16	0.0			5	2	1
WILLIS															3.51		1.73	16	0.0			7	1	1
WISE 3E	73.1	51.9	62.5	1.7	82	13	32	17	127	58	0	0	1	0	3.94	-0.68	1.03	27	0.0	0		9	3	2
WYTHEVILLE 1 S	75.1	50.0	62.5	3.8	87	14	35	18+	128	59	0	0	0	0	2.93	-1.18	1.21	16	0.0			7	2	1
--DIVISIONAL DATA----->			62.2	2.6B											3.38	-1.22B								

VIRGINIA
201405

DAILY PRECIPITATION (INCHES)

STATION	TOTAL	DAY OF MONTH																																			
		01	02	03	04	05	06	07	08	09	10	11	12	13	14	15	16	17	18	19	20	21	22	23	24	25	26	27	28	29	30	31					
VIRGINIA																																					
TIDEWATER 01																																					
DISPUTANTA	3.15	1.14				0.36				0.04	0.69					0.75																		0.17			
EASTVILLE	A 5.06	0.26				0.35			*	*	*	0.48 _a				0.10	2.20						0.31	0.56										0.80			
EMPORIA 1 WNW	3.40	0.22				0.07					0.81					1.60																	0.60	0.10			
FREDERICKSBURG SEWAGE	7.01	1.92				0.06					0.03		0.02	1.22		2.16	0.04																0.15	0.74	0.27	0.02	
HOLLAND 1 E	4.76				0.11						0.10					1.70		1.50					0.05	0.14	0.03								0.81	0.32			
HOPEWELL	3.77	0.05			0.08	0.03					0.15	0.16		0.09		1.54	0.02																0.40	0.03			
NORFOLK INTL AP	4.64				0.10	0.01					0.01	T				3.01						0.01	0.22	0.01								T	1.27	T			
NORFOLK SOUTH	4.24	T	T		0.22	0.04					T		T			3.28							0.21	0.06								0.41	0.02	T			
NORTH	3.38	1.70	0.08			0.15						0.31				0.90	0.24						T											T			
PAINTER 2W	6.48	0.29				0.49						0.45				3.62						0.02	0.25	0.54									0.08	0.65	0.09		
STONY CREEK 2 N	3.17	0.68			0.17						0.57				0.04	1.58	0.04																	0.09			
SUFFOLK LAKE KILBY	3.17		T		0.39							0.79				2.07							T	0.58								0.13	T				
WAKEFIELD 1NW	4.37				0.44							0.80				0.93							0.59	0.07									1.48	0.02	0.02		
WALKERTON 2 NW	2.55	0.03			0.01																	0.60		0.47							T	0.28	0.31	0.05			
WALLACETON LK DRUMMOND	5.28	0.14				0.20										3.10	1.24									0.55								0.05			
WALLOPS ISLAND NASA TEST FACIL	3.45	0.04			0.09	0.20	T				0.49					1.78						0.42	0.01								0.20	0.01	0.07	0.14			
WARSAW 2 NW	4.43	0.90				0.08					0.04					0.72						0.03	0.07	0.85								0.76	0.61	0.37			
WEST POINT 2 NW	2.17	0.20	0.02		0.02	0.03					0.15	0.02			T	1.05							0.18	0.20							T		0.23	0.07			
WILLIAMSBURG 2 N	3.46				0.03	T					0.42					1.86						0.73	0.02									0.37	0.03				
EASTERN PIEDMONT 02																																					
ALBERTA 5N	3.18	0.01				0.05					0.03	0.32				0.07	2.57																	0.11	0.02		
AMELIA COURTHOUSE 1	5.42	0.52				0.19					0.05	1.32			0.01	0.18	2.72															0.01	0.40	0.02			
ASHLAND	3.66	0.20			T				T		0.03				0.24	2.07							0.09											1.01	0.02		
BREMO BLUFF	M 3.54	1.83	0.04			0.10						0.06		0.05		-								-	-	-					0.04	1.31	0.07	0.02			
BUCKINGHAM	6.28	2.06				0.24						0.06				3.84																	0.03	0.05			
CAMP PICKETT	4.72	0.35				0.05					0.26	0.18				3.10																	0.25	0.05			
CHASE CITY	6.62	0.70									0.19	0.47				5.10																		0.14	0.02		
CLARKSVILLE	8.25	0.07				0.10						0.45				6.60																		1.03			
CORBIN	4.76	0.84			0.02								0.05	0.48	0.01	2.17								0.29									0.11	0.55	0.24		
CROZIER	M 5.57	-	-	-	-	-	-	-	-			0.02				3.37																0.12	1.90	0.06	0.01		
FARMVILLE 2 N	7.42	1.21				0.24						0.30				4.70																	0.88	0.02	T		
GREENBAY 3 NE	6.42	1.53	0.02			0.11					1.05	0.12				3.00																	0.22	0.02			
JOHN H KERR DAM	4.32	0.02									0.04	0.39				3.45																		0.42			
LOUISA	3.66				0.02						0.18				0.23	0.01	1.38							0.50									0.02	1.24	0.08		
PALMYRA 3S	6.11	1.36				0.07						0.05		0.25	0.01	3.60																0.02	0.67	0.08			
PETERSBURG	M 0.71	0.22				0.14	-				0.10	-				-	0.22																	0.01	0.02		
RICHMOND INTL AP	2.44	T			0.03				0.06		0.24					0.43	0.61						0.06	0.66	T						T	0.34	T	0.01			
SANDSTON	A 3.03	0.67 _a									0.50					1.07									0.12								0.60	0.07			
WINTERPOCK 4 W	3.96	0.17				0.13					0.16	0.53				2.66	0.05															0.24	0.01	0.01			
WESTERN PIEDMONT 03																																					

VIRGINIA
201405

DAILY PRECIPITATION (INCHES)

STATION	TOTAL	DAY OF MONTH																																
		01	02	03	04	05	06	07	08	09	10	11	12	13	14	15	16	17	18	19	20	21	22	23	24	25	26	27	28	29	30	31		
ALTAVISTA	4.82	0.33	0.03			0.01	0.12					0.23				0.73	2.74												0.01	0.40	0.10	0.10	0.02	
APPOMATTOX	4.66	0.63				0.16						0.07		0.19		0.03	3.50																	
BEDFORD 4 NW	3.05	0.15				0.06					0.21	0.18					1.61													0.27	0.01	0.45	0.11	
BROOKNEAL	4.98	1.10				0.02						0.02				0.12	3.32													0.29	0.04	0.07		
CHARLOTTE COURT HOUSE	6.21	1.09				T						0.14				0.55	4.43														T		T	
CHARLOTTESVILLE 2W	6.99	1.56				0.06					0.02	0.37		0.31	T	0.04	4.16													0.03	0.28	0.15	0.01	
CHATHAM	2.78	0.28															2.27													0.08	0.10	0.05		
CONCORD 4 SSW	4.06	0.65				0.09						0.04		0.10		0.04	2.93													0.09	0.12			
DANVILLE REGIONAL AP	4.48	0.01							T	1.11						2.66	0.01						0.01					0.68						
FREE UNION	6.35	1.07				0.07					0.02	0.16		0.17		0.04	4.12													0.34	0.18	0.18		
HOLCOMB ROCK	3.78	0.32				0.22					0.05	0.16		0.17			2.22													0.41	0.23			
HUDDLESTON 4 SW	2.60	0.60				0.07					0.02	0.33				0.01	1.45														0.12			
LYNCHBURG INTL AP	5.39				0.02				T	0.29			T		0.04	3.12	0.10						T						1.70		0.12			
MARTINSVILLE FLTR PLT	2.26	0.04				0.07											1.20													0.50	0.43	0.02		
MEADOWS OF DAN 5 SW	M	-	-	-	-	-	-	-	-	-	-	-	-	-	-	-	-	-	-	-	-	-	-	-	-	-	-	-	-	-	-	-	-	
MONTEBELLO FISH CULTURAL STN	MA 5.00	0.38			*	*	0.26 _a			0.20	0.34						3.62													0.20				
MONTICELLO	7.42	1.38				0.06						0.16		0.36		0.02	4.50													0.01	0.73	0.19	0.01	
PEDLAR DAM	4.02	0.20				0.35					0.10	0.38		T			2.64													T	0.15	0.20		
ROCKY MT	1.62	0.14				0.16					0.03						1.22	0.02														0.05		
SOUTH BOSTON	5.41	0.44				0.02						1.10				0.22	3.52	0.02								0.04					0.05			
STUART	2.08	0.08										0.03					1.90															0.07		
TYE RIVER 1 SE	5.66	0.42									0.34	0.42					3.72														0.58	T	0.18	
WOOLWINE	2.37	0.11				0.21					0.03	0.07					1.78													0.08		0.08	0.01	
NORTHERN 04																																		
BOSTON 4 SE	M 5.23								-		0.11	-	0.04	0.52	0.69	0.04	3.33														0.17	0.22	0.11	
EDINBURG	4.51	0.19				0.15					0.02	0.22			0.08		2.87												T	0.07	0.74	0.17		
FRONT ROYAL	M 5.48	0.44				0.10			0.02					0.21	0.55		4.00	0.02												0.05	0.08	T		0.01
LINCOLN	5.10					0.30			0.29					0.30			3.49															0.72		
LURAY 5 E	4.59	0.20				0.13					0.02	0.10		0.02	0.16		3.14	0.01						0.05						0.20	0.46	0.10		
MADISON	* 6.88	1.62				T	T					0.18		T	0.83	0.05	3.00													0.20	1.00	-	-	
MANASSAS	9.02	3.15				0.25			0.10			0.20		0.12	T		2.95													1.10	1.15			
MT WEATHER	5.64	0.68				0.02	T	0.22			0.03	0.26		0.01	0.10	0.11	3.25	0.02												0.14	0.39	0.36	0.03	
PIEDMONT RSCH STN	7.57	2.28				T						0.15		T	0.44		4.02													0.07	0.54	0.07		
SOMERSET	5.73	1.35				0.04					T	0.08		0.02	0.01	0.03	3.15													0.08	0.84	0.12	0.01	
SPERRYVILLE	MA 6.46	0.53				* 0.20 _a				*		* 0.08 _a		0.03	1.00	0.08	3.75	-	-											0.14	0.41	0.23	0.01	
STERLING RCS	7.66	2.57				0.22			0.24			0.12		0.06	T	T	3.76	T												0.01	0.23	0.29		
VIENNA	7.62	3.23				0.15			0.16			0.16		0.07	0.11		3.15	0.02												0.21	0.13	0.18		
WASHGTN DULLES INTL AP	6.34	0.13				0.23		0.18				0.12		0.08	0.02	T	1.91	1.97											0.48	0.81	0.33	0.01		
WASHINGTON REAGAN AP	4.96	0.16		T		0.38		0.14	T	T		0.16		0.08		T	0.40	2.25											0.91	0.03	0.29	T		
WINCHESTER	5.10	0.22				0.03			0.32			0.03	0.29		0.08	0.19	T	3.33													0.38	0.12		
WINCHESTER 7 SE	M 5.21	0.22				0.04			0.21			0.02			0.02	0.31	0.02	3.85												0.22	0.16	0.10	0.02	
WOODSTOCK 2 NE	4.92	0.20				0.42						T	0.63		0.04	0.24		3.15												0.01	0.14	0.04		

VIRGINIA
201405

DAILY PRECIPITATION (INCHES)

STATION	TOTAL	DAY OF MONTH																														
		01	02	03	04	05	06	07	08	09	10	11	12	13	14	15	16	17	18	19	20	21	22	23	24	25	26	27	28	29	30	31
CENTRAL MOUNTAIN 05																																
BUENA VISTA	3.33	0.10				0.33				0.06	0.31					2.00														0.39	0.14	
COVINGTON FLTR PLT	5.04	0.07				0.18					0.70	T	0.03	0.22	2.35							0.13						0.07	0.08	1.21		
CRAIGSVILLE 2 S	M	-	-	-	-	-	-	-	-	-	-	-	-	-	-	-	-	-	-	-	-	-	-	-	-	-	-	-	-	-	-	
DALE ENTERPRISE	4.15	0.20				0.08					0.30			0.64	2.10	0.06												0.25	0.02	0.50		
GATHRIGHT DAM	4.05	0.08				0.31					0.27		0.13		2.16	0.01						0.05							0.05	0.99		
GLASGOW 1 SE	4.02	0.11				0.18				0.01	0.29		0.34		T	2.47						0.01							0.40	0.21		
HOT SPRINGS	4.68	0.11			T	0.32				T	0.33		T	T	2.50	T						0.05						0.31	0.10	0.96		
LEXINGTON	3.44	0.08				0.31				0.01	0.16		0.15		2.06													0.04	0.54	0.09		
MILLGAP	3.76	0.20				0.15				0.01	0.72		0.04		0.16	2.17	0.02					0.02						0.05	0.22			
MTN GROVE	3.39	0.14				0.16									2.10	T												0.14	0.67	0.18		
MUSTOE 1 SW	4.65	0.04		0.02	0.19				0.04	0.55		0.20	0.26	0.15	1.98	0.23						0.07				0.05	T	0.87				
NEW CASTLE	3.39	0.07				0.06					0.06		0.05		0.01	2.33	0.03					0.04							0.74	T		
ROANOKE 8 N	3.00	0.03				0.08				0.03	0.17		0.12	0.16	0.02	2.08													0.31			
ROANOKE INTL AP	2.38				0.06				0.09	0.07		0.12	T	0.01	1.86	T					T								0.17			
STAUNTON WATER TRMTMT PLT	4.93	0.05		T		0.13				0.15	0.15	T	0.52	0.34	T	2.40	0.02	T										0.67	0.12	0.38	T	
WAYNESBORO WTP	3.95	0.27				0.14					0.03				2.77													0.28	0.19	0.27		
SOUTHWESTERN MOUNTAIN 06																																
ABINGDON 3S	M 2.65	0.02													0.52	1.42	0.15					0.50						0.04				
BIG STONE GAP	2.78	0.15								0.12	0.65	0.02		0.01	0.77	0.13	0.03					0.58	0.02				0.07	0.17	0.03	0.03		
BLACKSBURG NWSO	2.85	0.17				0.02				0.17	0.27				0.14	1.83	T				T		T				0.13	0.03	0.09	T		
BURKES GARDEN	M 2.64	0.08									0.22			T	0.13	1.72	0.08					0.30						0.10	0.01			
CHRISTIANSBURG	3.05	0.05				0.08				0.31	0.30				0.21	1.89					T							0.11	0.10			
CLINTWOOD 1 W	4.78	0.05									0.56		0.01	0.01	0.41	0.29	0.08	T				1.52				0.03	0.27	0.04	1.51			
COPPER HILL	3.49	0.05				0.14				0.08	0.35			0.14	0.05	2.44											0.19		0.05			
GALAX RADIO WBRF	4.13									0.01	0.20				1.03	1.77	0.01							0.16	0.01				0.93	0.01		
GALAX WTP	4.39	0.03								0.07	0.22			0.02	0.85	1.98							0.17						0.72	0.33		
GRUNDY	3.76	0.13								0.02	0.44			0.03	0.40	0.05	0.25					0.46	0.04					1.46	0.02	0.46		
JOHN FLANNAGAN LAKE	A* 2.68	0.15		*	0.00 _a					*	*	0.58 _a	0.01		0.36	0.18	*	*	0.01 _a			0.40			*	*	0.00 _a	0.34	0.04	0.61	-	
LAFAYETTE 1 NE	2.14	0.03				0.05				0.15	0.21				1.60													0.02	T	0.08		
LEBANON	3.74	0.09									0.88			0.10	0.80	0.63	0.11	0.02				0.79	0.02				0.27		0.03			
NORA 4 SSE	3.96	0.34								T	0.48		T	0.02	0.59	0.27	0.09	T			T	0.58					0.03	T	0.33	1.23		
NORTH FORK LAKE	MA 2.41	0.11		-					-	*	*	0.70 _a			*	0.65 _a	*	*	0.07 _a			0.41		*	*	*	0.04 _a	0.04	0.09	0.30	-	
PULASKI 2 E	1.83	0.04				0.03				0.08	0.19				0.06	1.25	T					0.07						0.03	0.03	0.05		
RADFORD 3 N	3.10	0.03				0.02				0.18	0.04				0.13	1.65												0.14	0.80	0.11		
RICHLANDS	3.14	0.13	0.01								0.20			0.20	0.80	0.70	0.10	0.01				0.28	0.01				0.50	0.01	0.19			
SALTVILLE 1N	4.02	0.05									0.30			0.37	1.05	1.30	0.01					0.72	0.01				0.15	0.06				
STAFFORDSVILLE 3 ENE	3.43	0.06				T				0.05	0.25				0.10	2.04	0.02					0.02					0.15	0.02	0.70	0.02		
WILLIS	3.51	0.09				0.32				0.17	0.31				0.36	1.73											0.10	0.43				
WISE 3E	3.94	0.11							0.02	0.42	0.04				1.02	0.20	0.12					0.50				1.03	0.15	0.33				
WYTHEVILLE 1 S	2.93	0.03								0.24	0.16				0.22	1.21	0.03					0.10					0.21	0.73				

VIRGINIA
201405

DAILY TEMPERATURES (°F)

STATION	OB. TIME	MAX/MIN	DAY OF MONTH																															AVERAGE
			01	02	03	04	05	06	07	08	09	10	11	12	13	14	15	16	17	18	19	20	21	22	23	24	25	26	27	28	29	30	31	
VIRGINIA TIDEWATER 01 DISPUTANTA	07	MAX	75	79	69	77	82	65	69	77	90	90	84	82	88	93	80	83	73	69	69	73	79	88	81	77	83	88	89	90	90	65	71	79.6
		MIN	66	51	50	46	47	48	52	52	51	61	58	56	57	61	63	63	47	50	42	44	46	54	58	49	53	62	64	64	61	60	54	54.5
EASTVILLE	07	MAX	69	79	68	73	75	62	64	72	85	78	78	78	85	89	72	80	69	66	69	72	76	78	82	76	74	80	83	87	85	62	70	75.4
		MIN	60	59	53	54	54	49	51	54	59	64	65	59	60	62	63	69	58	53	50	51	63	65	66	62	60	61	68	70	59	58	59	59.3
EMPORIA 1 WNW	08	MAX	77	79	68	75	82	82	73	77	90	89	85	84	88	92	88	84	74	69	70	73	79	86	87	87	78	82	85	90	89	68	71	80.7
		MIN	67	53	52	51	52	52	55	57	60	65	59	58	61	66	64	62	50	50	47	47	50	62	63	53	55	56	59	59	63	62	56	57.0
FREDERICKSBURG SEWAGE	07	MAX	66	79	72	75	82	65	74	74	91	82	77	83	89	91	68	84	72	69	67	73	79	84	87	80	76	82	87	89	89	62	72	78.1
		MIN	55	50	51	46	48	49	51	54	57	62	57	58	62	60	60	56	49	49	44	47	57	61	55	54	55	56	60	65	57	57	56	54.8
HOLLAND 1 E	08	MAX	82	83	70	78	70	74	80	90	90	88	87	90	94	88	85	80	72	72	77	80	88	92	84	78	87	88	92	94	77	74	81	82.7
		MIN	55	54	50	47	49	53	55	64	61	67	60	59	68	65	65	57	50	50	45	48	62	64	62	53	53	58	69	67	62	59	57	57.7
HOPEWELL	16	MAX	78	79	75	81	83	71	75	89	89	90	90	90	91	92	83	83	72	70	73	72	76	93	89	79	81	86	91	92	91	68	78	82.3
		MIN	69	55	54	51	55	54	58	64	63	64	64	61	68	66	67	60	52	54	59	61	63	61	60	59	56	61	69	71	62	62	59	60.7
NORFOLK INTL AP	24	MAX	81	69	76	81	63	65	73	90	88	88	78	88	92	75	83	74	69	68	70	80	87	86	76	73	80	87	91	92	64	68	75	78.4
		MIN	69	57	55	57	55	54	56	66	63	68	63	62	65	63	69	64	55	53	52	52	65	66	64	61	59	61	70	64	62	59	57	60.8
NORFOLK SOUTH	24	MAX	80	70	76	81	66	65	73	89	91	86	79	87	92	76	83	73	69	67	71	79	85	86	77	73	80	85	90	90	64	67	74	78.2
		MIN	69	57	54	53	51	52	55	64	63	67	64	60	67	63	68	62	55	51	49	51	64	65	61	58	56	58	69	63	61	57	56	59.5
NORTH	07	MAX	69	74	67	72	79	65	65	71	85	81	81	78	80	88	73	76	70	67	67	69	76	83	81	75	75	77	83	86	87	67	66	75.3
		MIN	62	55	50	50	48	51	52	55	60	62	64	57	62	63	63	69	53	48	45	49	59	65	63	55	56	56	67	66	59	60	57	57.5
PAINTER 2W	16	MAX	76	76	70	78	78	67	69	84	85	82	81	83	90	71	78	76	68	69	69	76	82	82	75	79	84	87	88	85	69	75	77.9	
		MIN	61	58	50	50	49	50	48	59	57	62	64	57	71	59	62	60	55	49	45	53	62	63	63	57	56	59	71	67	57	54	57.6	
STONY CREEK 2 N	08	MAX	81	71	73	84	68	83	70	78	91	91	85	83	89	93	84	84	71	62	73	81	81	88	90	81	78	83	87	92	93	67	79	81.1
		MIN	67	52	51	48	48	48	53	58	65	60	62	59	57	66	63	62	50	50	44	47	44	62	62	59	51	52	51	61	62	61	56	55.8
SUFFOLK LAKE KILBY	24	MAX	80	67	74	78	66	68	76	87	88	88	81	86	91	82	83	83	69	68	71	76	84	88	77	73	82	83	87	90	67	69	77	78.7
		MIN	65	56	53	53	52	52	54	65	64	65	61	60	63	66	53	51	51	48	48	62	66	61	54	52	60	68	67	62	58	55	58.2	
WAKEFIELD 1NW	24	MAX	81	69	77	83	68	72	78	91	91	88	83	90	94	84	85	74	71	70	74	81	88	90	81	76	82	87	91	92	66	69	79	80.8
		MIN	66	52	50	46	46	52	56	64	61	62	59	56	67	65	62	51	47	45	40	45	63	62	57	49	50	56	67	64	60	54	53	55.7
WALKERTON 2 NW	18	MAX	80	73	76	83	76	75	78	90	89	82	83	89	92	81	83	76	71	70	75	80	87	88	80	77	87	82	90	91	74	71	79	80.9
		MIN	65	55	50	46	45	52	53	61	58	68	60	57	63	64	63	50	52	48	43	45	59	66	63	51	54	52	65	65	61	62	54	56.5
WALLACETON LK DRUMMOND	08	MAX	81	81	75	81	80	70	70	80	92	93	90	86	92	95	90	85	74	73	72	76	80	88	90	82	78	82	87	92	92	67	71	82.1
		MIN	59	51	48	56	41	44	46	45	52	61	53	49	58	57	57	60	46	43	41	41	54	57	54	46	47	52	49	55	54	48	50.9	
WALLOPS ISLAND NASA TEST FACIL	24	MAX	70	71	69	80	67	67	64	84	71	84	81	81	87	68	80	70	71	72	73	78	83	85	78	74	78	87	90	85	62	68	75	75.9
		MIN	59	54	51	51	50	51	50	60	58	64	63	61	61	62	63	57	55	49	48	56	65	64	61	57	58	63	69	60	58	56	59	57.8
WARSAW 2 NW	18	MAX	80	80	73	81	65	74	75	90	90	79	82	89	93	90	83	79	72	66	74	80	86	88	83	79	82	88	91	88	83	69	78	81.0
		MIN	65	53	50	45	49	50	49	60	61	65	58	61	64	61	65	56	50	47	40	48	60	64	56	51	52	58	67	65	57	58	56	56.2
WEST POINT 2 NW	17	MAX	79	75	75	82	79	72	75	90	89	85	82	89	93	90	84	76	70	68	73	80	86	89	83	77	82	88	90	91	86	70	78	81.5
		MIN	64	53	50	47	46	52	52	62	59	64	60	57	65	62	63	55	50	47	43	47	63	62	57	54	53	58	66	61	59	56	54	56.2
WILLIAMSBURG 2 N	24	MAX	80	70	77	82	67	73	73	89	89	85	82	89	92	77	85	75	70	70	74	80	87	86	79	77	81	87	90	91	67	70	78	79.7
		MIN	67	56	52	52	50	54	55	61	60	64	62	58	67	64	64	58	52	50	48	50	67	65	62	56	57	60	69	67	62	60	59	59.0
EASTERN PIEDMONT 02 AMELIA COURTHOUSE 1	08	MAX	71	77	68	75	82	63	69	77	88	89	80	82	88	92	74	80	73		68	72	79	86	86	79	76	81	85	90	90	65	70	78.5

VIRGINIA
201405

DAILY TEMPERATURES (°F)

STATION	OB. TIME	MAX/MIN	DAY OF MONTH																															AVERAGE	
			01	02	03	04	05	06	07	08	09	10	11	12	13	14	15	16	17	18	19	20	21	22	23	24	25	26	27	28	29	30	31		
ASHLAND	18	MIN	51	51	51	50	49	53	55	60	59	66	58	57	65	65	61	58	47		43	52	61	66	61	57	54	56	66	68	60	60	57	57.2	
		MAX	78	76	75	82	78	74	76	88	88	81	81	89	92	89	83	80	70	67	72	78	85	86	77	77	80	85	89	89	86	68	76	80.5	
CAMP PICKETT	08	MIN	64	51	52	42	48	52	56	60	58	65	58	59	63	63	63	56	48	48	43	49	61	65	60	53	59	57	66	67	58	60	57	56.8	
		MAX	77	79	68	75	83	65	68	77	88	89	80	82	88	92	82	80	72	68	68	71	78	85	87	87	76	80	84	88	89	66	72	78.8	
CHASE CITY	17	MIN	55	50	50	46	46	52	54	58	61	63	57	57	58	65	62	57	46	49	42	45	49	64	60	50	50	53	53	66	61	60	54	54.6	
		MAX	78	80	68	75	84	67	73	76	87	87	80	82	87	90	90	79	70	68	68	71	78	84	86	80	77	79	84	87	89	69	75	79.0	
CLARKSVILLE	07	MIN	55	47	51	43	51	53	53	57	54	59	55	53	59	62	62	55	46	53	43	45	49	60	58	47	51	54	61	63	61	64	53	54.1	
		MAX	79	81	70	76	85	70	75	77	89	89	82	84	89	92	87	79	71	71	71	74	80	86	89	82	80	80	86	83	90	90	74	81.0	
CORBIN	09	MIN	54	63	53	48	49	49	56	59	60	63	57	57	58	66	66	55	48	48	50	50	63	62	57	60	62	62	65	64	58	56.9			
		MAX	79	70	74	82	74	73	75	90	84	77	82	89	89	81	82	72	68	66	72	77	85	86	78	75	81	86	89	87	71	70	77	78.7	
CROZIER	07	MIN	58	49	50	47	46	50	50	58	60	68	57	60	63	59	63	55	46	46	41	50	58	63	55	51	52	57	64	64	56	58	55	55.1	
		MAX	87	75	81	88	91	71	81	71	66	66	71	78	84	86	78	74	79	84	88	87	62	68	78.0										
FARMVILLE 2 N	07	MIN	67	78	69	75	83	63	68	78	88	88	77	82	88	93	72	79	71	68	68	72	79	85	87	82	76	80	85	89	89	65	72	77.9	
		MAX	50	51	51	48	48	47	53	58	60	59	58	56	56	64	59	56	46	47	43	43	47	63	60	50	52	52	57	66	63	62	56	54.2	
GREENBAY 3 NE	09	MIN	69	76	68	74	81	64	67	77	87	88	79	81	88	92	76	78	71	71	67	70	77	84	86	79	76	80	84	89	89	68	72	77.7	
		MAX	51	50	51	46	50	52	56	58	59	66	58	55	60	60	60	55	46	46	42	48	59	63	60	48	48	51	64	67	60	60	54	54.9	
JOHN H KERR DAM	08	MIN	77	81	71	78	85	70	75	79	91	91	87	86	91	95	90	82	73	72	72	74	82	88	91	83	82	84	89	91	92	71	74	82.2	
		MAX	61	52	57	50	54	54	56	60	60	72	59	56	62	68	63	57	51	55	45	49	57	67	62	53	55	60	70	67	65	65	57	58.7	
LOUISA	18	MIN	79	77	74	79	76	76	76	90	88	84	82	88	90	88	80	73	71	67	73	79	84	85	81	77	82	87	89	89	75	70	78	80.2	
		MAX	56	45	49	43	42	48	52	61	54	65	52	54	58	62	57	57	43	40	36	43	62	61	52	46	47	56	62	62	58	59	50	52.6	
PALMYRA 3S	06	MIN	60	79	72	75	83	63	75	90	88	76	82	91	91	69	80	71	67	66	71	79	86	89	80	75	79	89	89	89	62	67	77.8		
		MAX	49	48	47	43	45	47	53	59	54	60	64	54	60	63	61	56	44	43	38	44	49	64	57	49	48	57	60	67	60	59	51	53.3	
PETERSBURG	08	MIN	77	79	69	76	83	66		77	89	90		83	89	93	77		75	70	70	73	80	87	88	79		82	87	91	92	66	70	79.9	
		MAX	51	53	52	48	49	49		58	59	60		60	64	66	64		51	51	45	44	48	65	63	52		58	58	68	62	61	56	56.1	
RICHMOND INTL AP	24	MIN	81	70	77	84	69	74	78	91	92	83	84	90	94	75	86	76	71	70	75	81	87	90	80	78	83	88	92	92	68	73	81	81.1	
		MAX	67	55	51	50	51	55	58	62	61	66	60	60	67	65	64	59	53	52	47	51	62	64	63	56	55	59	66	68	60	59	58	58.8	
SANDSTON	07	MIN	75	80	69	76	82	67	73	78	91	90	83	82	90	92	74	84	75	71	69	74	81	87	90	81	77	84	88	93	91	62	71	80.0	
		MAX	66	54	50	49	47	52	54	58	59	65	59	57	58	64	62	61	49	49	44	46	49	65	61	54	52	55	58	67	59	59	54	56.0	
WESTERN PIEDMONT 03																																			
APPOMATTOX	07	MIN	66	77	71	74	82	62	69	75	88	88	76	83	89	92	75	78	69	67	69	71	79	85	87	83	79	81	86	89	89	65	75	78.0	
		MAX	50	51	50		51	48	50	56	57		56	56	62	64	61	52	44	49	45	46	52	62	62	50	56		60	66	63	62	58	55.0	
BROOKNEAL	07	MIN	67	80	72	76	85	65	74	80	90	81	84	91	93	82	77	71	70	71	74	81	86	88	84		82	87	90	89	70	77	80.2		
		MAX	52	47	49	44	44	52	54	55	55	55	55	54	54	60	62	54	43	43	42	44	45	58	60	48		53	54	62	62	64	57	52.7	
CHARLOTTE COURT HOUSE	07	MIN	71	78	72	74	83	65	71	80	88	89	85	81	90	93	81	77	68	67	67	72	80	85		83	75	83	86	89	89	70	77	79.0	
		MAX	51	49	49	48	50	52	53	59	59	58	57	56	57	64	61	55	42	42	44	44	51	62		52	52	56	60	66	64	63	62	54.6	
CHARLOTTESVILLE 2W	08	MIN	60	79	71	75	81	63	76	77	91	86	72	83	87	92	69	80	72	68	69	73	79	84	87	82	77	83	88	90	89	62	66	77.8	
		MAX	49	51	51	53	48	49	51	60	62	63	59	63	63	63	63	54	46	48	46	50	56	64	62	54	57	61	64	70	59	58	58	56.6	
CHATHAM	07	MIN	65	78	69	74	83	66	71	77	86	86	78	80	87	89	84	71	68	68	67	70	77	84	85	79	76	79	83	86	85	70	74	77.3	
		MAX	50	44	42	41	41	45	46	51	52	52	53	51	51	57	58	50	48	39	38	38	43	60	58	47	46	49	51	58	58	64	57	49.6	
DANVILLE REGIONAL AP	24	MIN	79	71	75	85	73	78	79	89	89	80	83	88	90	88	76	72	69	70	72	80	86	89	84	79	81	87	87	89	73	76	81	80.6	
		MAX	56	47	50	48	51	49	58	54	58	60	58	55	62	64	61	54	45	48	45	48	64	64	61	51	53	56	64	64	64	65	59	56.0	

VIRGINIA
201405

DAILY TEMPERATURES (°F)

STATION	OB. TIME	MAX/MIN	DAY OF MONTH																															AVERAGE	
			01	02	03	04	05	06	07	08	09	10	11	12	13	14	15	16	17	18	19	20	21	22	23	24	25	26	27	28	29	30	31		
FREE UNION	08	MAX	57	78	72	77	82	62	76	75	90	86	71	82	86	89	67	77	68	67	67	70	77	83	86	80	76	80	85	87	85	60	65	76.2	
		MIN	49	46	46	44	44	45	46	55	55	54	55	56	60	61	53	45	39	40	42	46	55	56	53	49	51	54	61	58	58	52	51.1		
LYNCHBURG INTL AP	24	MAX	76	70	73	81	66	72	79	88	88	75	81	89	91	76	73	67	66	68	71	78	84	87	82	78	80	86	88	87	69	74	78	78.1	
		MIN	52	44	48	43	51	45	56	55	54	59	53	54	60	62	59	50	41	45	42	45	59	62	56	49	51	54	61	61	62	62	55	53.2	
MARTINSVILLE FLTR PLT	07	MAX	72	80	71	77	85	77	81	81	89	87	78	83	89	91	87	71	71	67	70	72	80	86	88	84	80	80	86	86	89	72	79	80.3	
		MIN	51	41	40	41	42	44	45	53	53	53	53	52	52	52	60	52	38	41	41	43	47	59	58	47	47	47	53	58	58	63	62	49.9	
MEADOWS OF DAN 5 SW	07	MAX																																M	
		MIN																																M	
MONTEBELLO FISH CULTURAL STN	07	MAX	67	62	72	67			74	73	85	67			82		85	64	62	59	61	65	75	76	78	80	71	75	84	84	84	78	70	73.1	
		MIN	50	44	38	38			39	52	56	51			54		54	46	38	33	33	35	45	41	42	41	42	50	56	62	57	52	47	46.0	
MONTICELLO	08	MAX	62	76	67	72	79	61	73	74	86	85	79	73	85	89	66	78	68	66	65	69	76	82	85	79	74	78	85	87	87	60	63	75.1	
		MIN	48	52	50	50	47	48	49	58	60	61	59	62	64	62	62	53	46	45	44	45	55	63	60	53	53	59	61	70	59	58	56	55.2	
ROCKY MT	07	MAX	66	76	71	74	83	69	76	80	90	87	77	84	90	92	85	69	69	67	69	72	80	85	86	82	78	82	87	85	92	71	79	79.1	
		MIN	46	44	48	44	45	46	46	55	55	55	55	55	56	56	61	50	40	41	43	46	50	66	66	49	49	52	58	67	64	64	61	52.7	
SOUTH BOSTON	07	MAX	76	79	70	76	85	69	74	77	89	88		83	89	91	85	77	71	70	69	73	80	87	89	83		82	86	90	90	70	76	80.1	
		MIN	53	48	47	45	45	50	52	52	53	55	55	54	58	61	59	54	46	53	43	45	46	62	61	49		55	56	64	64	64	57	53.5	
STUART	07	MAX	72	78	72	76	84	79	82	80	88	85	76	84	89	90	86	69	70	67	69	69	78	85	88	83	80	77	85	83	88	76	81	79.6	
		MIN	52	44	44	46	49	45	47	53	54	50	51	54	54	59	62	48	40	44	42	40	48	58	58	50	50	57	58	62	62	63	64	51.9	
TYE RIVER 1 SE	07	MAX	62	79	72	75	83	63	72	80	88	87	74	84	88	90	70	76	70	68	69	72	80	85	86	79	76	80	86	87	88	65	70	77.5	
		MIN	53	48	49	50	49	46	47	58	54	55	54	55	58	63	62	51	46	44	45	46	48	62	61	49	50	55	58	62	62	59	54	53.3	
NORTHERN 04																																			
BOSTON 4 SE	07	MAX	61	77	71	73	88	66	73		89			80	86	88	67	78	69	66		71	77	80	87	79	79	80	86	85		59	71	76.4	
		MIN	32	46	46	45	41	47	48		50			55	62	60	30 ^s	55	42	40		42	54	56	53	50	48	50	59	60				49.6	
EDINBURG	07	MAX	55	74	66	68	75	58	73	66	86	85	75	80	84	89	69	77	67	65	61	69	76	81	84	76	74	79	82	85	86	60	70	74.0	
		MIN	45	41	43	46	36	40	44	45	48	51	50	52	53	60	59	51	44	40	36	39	45	54	48	48	48	49	53	63	57	56	49	48.2	
FRONT ROYAL	07	MAX	55	77	77	71	77	61	74	68	90	82	78	82	87	88	67	75	68	69	65	71	77	77	83		76	79	85	86	85	59	71	75.3	
		MIN	45	53	50	50	44	44	48	50	58	58	58	63	63	60	51	48	41	39	40	46	46	56		49	50	50	66	57	56	52	51.4		
LINCOLN	07	MAX	55	76	67	71	75	63	70	61	86	79	81	80	87	88	67	79	69	65	64	70	76	75	84	75	74	78	85	87	83	59	70	74.2	
		MIN	46	50	43	43	43	47	44	46	53	62	55	54	55	58	53	43	43	40	36	43	47	58	61	48	48	54	54	64	55	55	55	50.2	
LURAY 5 E	08	MAX	59	75	68	70	75	60	75	70	88	86	77	81	86	91	80	76	68	65	63	70	77	81	82	76	77	82	83	85	84	62	71	75.6	
		MIN	47	42	46	44	38	45	50	50	55	61	50	55	61	58	64	52	42	37	36	43	52	59	48	44	47	52	58	60	57	57	48	50.3	
MADISON	08	MAX	60	78	72	74	81	65	73	73	90	85	74	84	87	90	67	78	73	69	66	72	71	86	87	79	76	82	87	85	88	62	71	76.9	
		MIN	52	53	48	52	46	50	52	56	58	61	57	60	63	63	62	57	47	44	42	47	52	62	57	51	52	54	61	65	58	58	53	54.6	
MANASSAS	07	MAX	60	80	71	75	81	64	75	65	90	80	77	82	89	92	69	82		71	71	74	79	83	88	81	83	88	90	87				78.9	
		MIN	52	50	50	49	47	49	49	56	61	63	58	59	62	60	60	54		48	41	48	49	58	57	55			60	65	56			54.5	
MT WEATHER	07	MAX	58	71	64	67	70	58	69	58	83	76	75	77	83	86	62	73	64	61	60	67	71	74	80	71	71	76	81	83	79	55	65	70.6	
		MIN	44	43	48	51	40	41	49	45	53	59	56	58	64	56	56	49	46	44	45	46	56	60	53	48	50	57	63	64	53	53	53	51.7	
PIEDMONT RSCH STN	08	MAX	61	76	69	71	79	62	74	75	88	85	73	80	87	90	65	79	70	66	65	70	74	83	84	79	75	80	81	83	89	60	70	75.6	
		MIN	44	49	50	46	36	47	53	56	60	62	55	57	61	61	60	56	48	45	42	43	45	51	65	41	58	62	63	63	56	56	58	53.2	
SOMERSET	07	MAX	59	77	70	73	80	63	73	75	89	85	74	82	86	90	66	79	71	68	66	72	78	84	86	81	76	81	85	87	90	62	69	76.7	
		MIN	50	48	47	48	44	48	53	56	56	61	56	56	60	62	62	56	45	40	39	44	50	62	58	49	51	54	62	65	57	57	54	53.2	
SPERRYVILLE	06	MAX	59	76	69	71		61	74	67		75	81	87	88	64	74						75	80	84	76	73		85	84	86	59	70	74.3	

VIRGINIA
201405

DAILY TEMPERATURES (°F)

STATION	OB. TIME	MAX/MIN	DAY OF MONTH																															AVERAGE		
			01	02	03	04	05	06	07	08	09	10	11	12	13	14	15	16	17	18	19	20	21	22	23	24	25	26	27	28	29	30	31			
			STERLING RCS	07	MIN MAX MIN	48 57 48	47 	46 69 50	45 72 40	44 79 47	44 63 47	47 63 43	48 88 57		58 80 61	56 81 57	56 87 61	61 91 58	60 67 53	54 80 46		68 66 40		40 71 45	47 78 49	57 78 59	59 87 54	53 77 52	52 75 54		80 85 54	65 87 63	54 87 55		62 87 63	56 85 55
VIENNA	07	MAX MIN	65 50	79 50	68 50	78 50	75 44	62 44	70 49	88 52	76 61	77 57	79 57	86 59	91 59	66 53	79 48	67 46	64 64	64 42	70 42	78 53	78 54	75 54	74 54	81 54	80 54	85 55	87 66	87 55	87 55	84 55	87 56	84 56	70 52	74.7 52.8
WASHGTN DULLES INTL AP	24	MAX MIN	76 55	67 47	71 49	79 47	63 40	72 49	63 46	87 55	78 61	77 62	80 59	85 55	90 62	65 58	78 64	69 53	65 45	65 43	70 39	77 44	77 55	85 61	77 56	75 52	80 50	85 53	87 61	85 59	85 55	59 56	72 52	78 52	75.4 53.0	
WASHINGTON REAGAN AP	24	MAX MIN	77 57	72 55	74 57	81 55	66 50	74 53	65 55	87 59	76 61	78 67	81 62	86 63	92 60	67 81	66 66	55 52	52 53	69 49	74 56	77 80	89 81	81 78	84 88	92 64	88 60	88 64	92 62	88 58	62 59	76 61	81 58	81 58	78.0 58.9	
WINCHESTER	07	MAX MIN	53 45	76 46	66 49	70 52	75 42	64 45	76 49	62 46	88 51	83 60	78 59	82 58	88 59	89 51	68 49	76 44	69 44	66 41	63 46	73 50	74 59	73 51	83 50	77 51	81 52	81 52	85 56	87 68	87 56	85 55	58 53	71 53	74.8 52.1	
WINCHESTER 7 SE	08	MAX MIN	54 38	77 35	69 	72 	76 	62 	74 	74 	90 	84 	78 	81 	88 	90 	76 51	70 37		66 	72 	73 	76 	85 	76 	77 	80 	83 	80 	88 	64 	74 			76.6 M	
WOODSTOCK 2 NE	07	MAX MIN	56 45	75 39	66 39	69 48	73 33	59 39	75 40	68 43	89 46	86 53	76 52	82 54	85 59	87 61	67 60	76 52	68 44	64 33	61 33	70 37	76 39	78 57	82 48	75 48	76 48	80 49	83 54	85 63	86 58	86 56	61 49	72 49	74.4 47.7	
CENTRAL MOUNTAIN 05																																				
COVINGTON FLTR PLT	07	MAX MIN	71 51	74 40	71 40	71 40	79 43	66 46	81 49	79 52	90 50	88 51	88 51	87 53	88 54	90 54	68 48	69 40	65 39	70 38	73 38	81 46	82 56	83 51	77 42	77 45	81 47	87 50	84 50	85 47	78 60	81 55	81 55	79.2 47.7		
DALE ENTERPRISE	07	MAX MIN	58 45	73 39	70 41	72 45	72 48	57 46	73 48	74 48	88 48	82 50	76 52	79 57	84 56	90 58	82 50	73 40	66 39	65 37	62 40	69 46	75 50	82 47	77 46	77 47	73 52	79 56	85 56	84 61	86 56	86 49	66 49	70 49	74.8 49.1	
GATHRIGHT DAM	07	MAX MIN	69 50	69 40	69 42	67 46	74 46	60 48	79 53	79 52	86 52	86 54	71 53	82 55	81 58	88 60	66 47	62 37	59 39	64 40	68 41	74 47	78 57	77 53	73 46	74 47	76 48	81 52	81 59	81 59	82 59	76 51	81 53	82 49	80 49	74.5 49.5
HOT SPRINGS	07	MAX MIN	66 48	70 40	66 41	67 41	75 43	58 45	78 46	78 53	85 53	84 54	71 51	80 53	81 55	88 57	82 59	66 46	62 38	61 36	63 36	67 38	75 46	76 58	78 52	74 46	73 46	75 47	82 51	83 58	80 60	75 50	78 50	74.1 48.5		
LEXINGTON	07	MAX MIN	65 48	75 40	71 41	72 44	80 46	59 46	78 53	79 52	88 52	87 55	73 54	82 55	84 59	90 60	68 48	67 40	66 39	68 41	68 42	71 46	79 56	82 55	86 47	81 48	77 50	79 53	87 58	87 62	86 61	79 58	79 58	77.3 50.1		
MILLGAP	07	MAX MIN	65 44	66 33	61 33	63 34	67 33	61 33	74 45	77 43	83 43	81 43	69 46	78 43	85 45	78 51	63 45	61 35	57 28	65 29	66 28	74 38	73 47	74 41	70 37	72 36	75 36	81 39	80 48	80 55	80 57	74 43	79 43	72.0 40.7		
MUSTOE 1 SW	24	MAX MIN	64 44	60 33	63 35	68 39	56 35	75 45	75 52	82 44	79 45	68 50	77 44	78 45	84 51	78 50	65 42	60 34	56 29	61 29	64 36	71 47	73 54	74 44	70 38	72 38	73 41	80 50	81 57	80 57	70 50	77 43	75 43	71.3 43.6		
ROANOKE 8 N	07	MAX MIN	67 50	75 45	71 45	73 48	81 49	68 49	75 50	89 58	88 57	86 72	71 83	83 91	90 81	89 69	68 67	67 43	64 44	68 43	80 46	79 51	83 63	82 62	81 51	79 52	81 54	88 57	85 63	88 65	88 63	71 61	82 61	78.5 53.6		
ROANOKE INTL AP	24	MAX MIN	75 54	71 47	72 49	81 52	67 53	74 50	88 60	88 58	72 58	83 61	89 56	81 59	81 62	69 55	67 48	65 44	47 45	68 43	70 49	80 65	85 85	82 80	80 88	88 87	82 89	80 71	88 81	87 82	63 63	68 61	56.2 56.2			
STAUNTON WATER TRMTMT PLT	08	MAX MIN	59 45	73 49	73 44	70 51	72 43	76 43	76 50	74 55	86 59	83 60	70 55	80 60	83 64	88 59	75 48	66 42	63 40	65 40	70 40	75 53	79 64	83 55	78 49	75 49	77 56	84 64	83 64	86 61	86 58	64 50	69 50	75.2 52.5		
WAYNESBORO WTP	07	MAX MIN	62 47	76 42	69 42	71 43	77 43	56 43	77 43	77 43	89 54	86 54	74 51	82 52	85 55	88 59	73 52	72 45	68 38	65 38	70 38	77 46	81 56	84 53	79 45	74 45	79 53	86 45	86 54	88 61	88 60	66 51	71 51	75.9 49.0		
SOUTHWESTERN MOUNTAIN 06																																				
ABINGDON 3S	22	MAX MIN	78 52	63 38	63 39	68 41	80 47	81 49	81 50	85 51	83 52	81 52		80 55	84 56	85 60	86 61	70 43	58 35	57 38	66 39	71 39	76 45	77 53				78 52	82 52	77 55			82 58	84 59	76.0 48.9	

VIRGINIA
201405

DAILY TEMPERATURES (°F)

STATION	OB. TIME	MAX/MIN	DAY OF MONTH																															AVERAGE
			01	02	03	04	05	06	07	08	09	10	11	12	13	14	15	16	17	18	19	20	21	22	23	24	25	26	27	28	29	30	31	
BIG STONE GAP	08	MAX	76	64	65	72	81	85	84	85	84	79	69	77	84	86	85	85	61	55	69	73	78	80	82	77	78	77	84	81	83	83	83	77.6
		MIN	52	38	39	39	43	49	52	48	46	56	59	55	55	63	63	43	38	39	41	42	46	53	59	47	47	49	57	60	59	61	61	50.3
BLACKSBURG NWSO	07	MAX	69	69	66	69	77	71	84	81	84	81	65	81	86	88	83	70	63	61	65	68	76	80	79	76	75	76	83	79	83	75	83	75.7
		MIN	48	42	41	46	47	46	46	52	51	53	50	53	55	58	60	44	37	38	38	42	45	57	56	44	45	47	53	58	59	61	59	49.4
BURKES GARDEN	07	MAX	69	59	60	62	73	78	78	79	77		78	75	81	81	81	64	55	52	59	65	70	72	72	68	67	73	77	73	76	77	75	70.9
		MIN	50	42	38	45	41	41	42	41	42		41	48	48	49	49	42	32	33	29	29	37	55	53	37	38	40	40	54	53	53	54	43.2
CHRISTIANSBURG	07	MAX	69	69	64	67	76	73	84	80	82	80	65	81	84	86	86	68	63	60	64	67	74	77	76	74	74	74	83	79	83	75	83	74.8
		MIN	48	44	44	48	49	45	46	53	55	55	53	55	56	60	61	43	37	40	42	43	50	58	46	48	51	51	56	60	60	61	59	50.9
CLINTWOOD 1 W	07	MAX	80	64	67	72	82	86	87	87	86	80	68	81	84	87	85	66	61	54	65	73	78	79	79	75	76	78	82	75	78	76	80	76.5
		MIN	51	39	38	39	40	45	49	46	46	50	53	52	53	57	60	42	36	36	34	34	42	49	54	43	43	44	50	56	56	60	57	46.9
COPPER HILL	07	MAX	65	68	65	65	74	74	74	74	82	77	77	77	79	80	75	61	60	56	62	61	71	75	75	73	73	73	78	76	80	65	76	71.6
		MIN	48	42	41	43	48	45	46	46	56	59	53	55	57	61	60	41	36	37	39	44	49	56	58	46	46	52	52	59	59	58	54	49.9
GALAX RADIO WBRF	07	MAX	65	70	66	69	77	80	83	77	84	79	69	82	82	85	79	67	61	59	65	66	72	79	78	77	75	73	83	81	83	77	81	75.0
		MIN	47	40	41	43	46	47	49	50	50	56	50	51	54	56	61	42	35	40	36	42	50	57	55	46	46	51	55	53	55	60	61	49.2
GALAX WTP	07	MAX	65	69	69	67	77	80	82	77	83	80	69	79	81	84	84	66	61	58	64	65	73	78	77	75	74	73	81	79	82	77	80	74.5
		MIN	47	40	40	42	46	46	49	49	50	50	50	50	51	56	56	44	36	37	36	36	44	50	55	47	45	46	52	56	55	55	61	47.6
GRUNDY	07	MAX	80	67	68	72	81	85	86	86	86	80	65	79	82	87	86	66	60	54	65	70	78	80	79	76	72	77	80	75	77	80	78	76.0
		MIN	51	41	41	42	46	47	51	48	49	53	56	55	55	61	62	45	41	41	38	40	42	53	58	47	48	50	50	59	59	62	57	49.9
JOHN FLANNAGAN LAKE	07	MAX	78	63	62		80	85	86	87	86			82	85	88	88	67		65	72	79	80	82			80	83	80	80	80	80	79.0	
		MIN	50	40	40		41	47	51	47	48			52	58	60	60	43		39	41	51	53	57			47	51	59	59	62		50.3	
LEBANON	07	MAX	79	64	65	69	81	83	84	85	85	85	70	81	84	87	87	71	59	55	65	71	76	78	80	75	74	78	81	79	81	82	82	76.6
		MIN	53	37	37	41	42	46	49	47	47	47	54	54	58	57	58	44	34	34	35	36	43	59	54	43	43	46	54	55	56	56	58	47.6
NORA 4 SSE	07	MAX	74	61	63	66	77	82	80	79	78	75	62	73	79	82	80	65	56	52	61	67	72	75	77	72	71	75	75	74	77	77	79	72.1
		MIN	49	43	44	48	53	56	62	63	64	57	56	56	64	64	59	41	38	40	42	49	53	58	58	51	53	57	61	63	63	62	58	54.4
NORTH FORK LAKE	08	MAX	76	63	65		81	85	85	86				85	84	88			85		65	72	79	78				83	81	81	82		M	
		MIN	51	41	40		40	48	51	48				48	56	59			44		37	38	44	52				46	58	58	59		M	
PULASKI 2 E	07	MAX	71	68	69	68	79	82	85	82	85	82	67	82	87	89	83	70	59	64	69	78	79	80	81	80	78	83	80	84	84	81	77.4	
		MIN	50	46	43	41	51	47	47	54	55	54	54	54	53	58	58	47	37	37	36	35	45		45	45	50	45	51	54	60	59	62	49.1
RADFORD 3 N	07	MAX	71	69	66	68	77	74	83	80	84	81	65	80	85	88	83	69	62	59	64	68	76	78	79	76	73	77	83	80	83	77	81	75.5
		MIN	48	45	41	47	49	46	48	50	49	56	49	52	55	55	62	46	39	39	35	40	49	60	56	48	43	47	53	56	58	60	61	49.7
RICHLANDS	07	MAX	78	64	69	69	78	82	77	78	79	81	82	84	83	86	85		59	57	65	71	75	76	79	74	70	78	81	78	80	81	82	76.0
		MIN	52	37	38	37	40	46	44	43	45	45	51	47	54	58	61	44	36	36	35	36	42	50	57	43	41	47	51	56	57	56	55	46.5
SALTVILLE 1N	07	MAX	79	65	65	70	81	82	83	85	84	82	66	81	85	87	85	69	60	57	67	71	76	76	80	76	76	78	82	77	82	82	83	76.5
		MIN	54	37	35	38	43	48	47	47	47	50	54	54	57	58	62	46	35	37	36	37	42	50	55	43	45	46	51	59	58	57	58	47.9
STAFFORDSVILLE 3 ENE	07	MAX	70	69	67	69	78	75	83	79	84	80	69	79	84	86	81	68	63	59	63	69	76	80	78	76	70	75	83	80	84	77	80	75.3
		MIN	50	46	41	42	46	45	45	52	48	48	50	52	53	55	58	47	36	37	35	36	45	59	55	45	43	45	49	56	57	58	61	48.2
WISE 3E	17	MAX	70	61	65	75	80	79	80	79	78	65	74	80	82	81	80	55	50	59	67	70	73	74	74	75	73	78	77	78	78	77	78	73.1
		MIN	48	39	41	48	50	63	56	62	59	57	57	57	61	60	51	38	32	37	37	48	54	57	59	52	43	52	62	61	56	56	57	51.9
WYTHEVILLE 1 S	07	MAX	72	64	64	66	77	80	82	81	82	79	66	80	86	87	81	67	61	57	64	70	75	77	79	75	74	77	81	79	83	82	81	75.1
		MIN	50	44	42	43	51	49	53	52	53	52	56	55	53	57	57	44	35	35	36	39	45	60	59	48	46	47	50	59	59	61	50.0	

VIRGINIA
201405

SNOWFALL AND SNOW ON GROUND (INCHES)

STATION		DAY OF MONTH																														
		01	02	03	04	05	06	07	08	09	10	11	12	13	14	15	16	17	18	19	20	21	22	23	24	25	26	27	28	29	30	31
VIRGINIA																																
TIDEWATER 01																																
DISPUTANTA	SNOWFALL																															
EASTVILLE	SNOWFALL																															
EMPORIA 1 WNW	SNOWFALL																															
FREDERICKSBURG SEWAGE	SNOWFALL																															
HOLLAND 1 E	SNOWFALL																															
HOPEWELL	SNOWFALL		-	-	-																											
	SN ON GND		-	-	-								-	-	-	-											-	-	-	-	-	-
NORFOLK INTL AP	SNOWFALL																															
	SN ON GND																															
NORFOLK SOUTH	SNOWFALL																															
NORTH	SNOWFALL																															
	SN ON GND																															
PAINTER 2W	SNOWFALL																															
	SN ON GND																															
STONY CREEK 2 N	SNOWFALL																															
	SN ON GND																															
SUFFOLK LAKE KILBY	SNOWFALL																															
	SN ON GND																															
WAKEFIELD 1NW	SNOWFALL																															
	SN ON GND																															
WALKERTON 2 NW	SNOWFALL																															
	SN ON GND																															
WALLACETON LK DRUMMOND	SNOWFALL																															
WALLOPS ISLAND NASA TEST FACIL	SNOWFALL																															
	SN ON GND																															
WARSAW 2 NW	SNOWFALL																															
WEST POINT 2 NW	SNOWFALL																															
	SN ON GND																															
WILLIAMSBURG 2 N	SNOWFALL																															

Snowfall: Includes snow and ice. Values for NWS stations (J index note) are Mid-Mid (LST).

Snow on ground: Includes snow, sleet, ice, and hail. Values for NWS stations (J index note) are observed at 12 UTC (GMT).

Water Equivalent: Given for NWS stations (J index note) only, when snow depth is 2 inches or more, and is measured at 18 UTC (GMT)

VIRGINIA
201405

PAN EVAPORATION AND WIND

STATION		DAY OF MONTH																															TOTAL OR AVERAGE		
		01	02	03	04	05	06	07	08	09	10	11	12	13	14	15	16	17	18	19	20	21	22	23	24	25	26	27	28	29	30	31			
VIRGINIA EASTERN PIEDMONT 02 JOHN H KERR DAM	WIND	-	-	-	-	-	-	-	-	-	-	-	-	-	-	-	-	-	-	-	-	-	-	-	-	-	-	-	-	-	-	-	-	-	M
	EVAP	-	-	-	-	-	-	-	-	-	-	-	-	-	-	-	-	-	-	-	-	-	-	-	-	-	-	-	-	-	-	-	-	-	M
	MAX	-	-	-	-	-	-	-	-	-	-	-	-	-	-	-	-	-	-	-	-	-	-	-	-	-	-	-	-	-	-	-	-	-	M
	MIN	-	-	-	-	-	-	-	-	-	-	-	-	-	-	-	-	-	-	-	-	-	-	-	-	-	-	-	-	-	-	-	-	-	M

Evaporation: Is measured in hundreths of inches.

Wind: Is measured in miles.

Max and Min: The maximum and minimum temperatures (Fahrenheit) of the water in the evaporation pan.

STATION INDEX

STATION	INDEX NO.	DIVISION	COUNTY	LATITUDE	LONGITUDE	ELEVATION (IN FEET)	OBSERVATION TIME AND TABLES			
							LOCAL STD TIME			
							TEMP	PRECIP	EVAP	SPECIAL SEE (NOTES)
VIRGINIA										
ABINGDON 3S	0021	06	WASHINGTON	36 40	81 58W	1920	22	22		H
ALBERTA 5N	0079	02	BRUNSWICK	36 56	77 54W	376		08		H
ALTAVISTA	0166	03	CAMPBELL	37 7	79 17W	529		07		CH
AMELIA COURTHOUSE 1	0187	02	AMELIA	37 21	77 59W	345	08	08		H
APPOMATTOX	0243	03	APPOMATTOX	37 20	78 50W	850	07	07		H
ASHLAND	0327	02	HANOVER	37 45	77 29W	220	18	18		H
BEDFORD 4 NW	0561	03	BEDFORD	37 23	79 34W	1228		07		CH
BIG STONE GAP	0735	06	WISE	36 52	82 46W	1464	08	08		H
BLACKSBURG NWSO	0766	06	MONTGOMERY	37 12	80 25W	2100	07	07		CH
BOSTON 4 SE	0860	04	CULPEPER	38 33	78 6W	590	07	07		H
BREMO BLUFF	0993	02	FLUVANNA	37 43	78 17W	225		07		CH
BROOKNEAL	1082	03	CAMPBELL	37 4	78 57W	408	07	07		H
BUCKINGHAM	1136	02	BUCKINGHAM	37 30	78 32W	580		07		H
BUENA VISTA	1159	05	ROCKBRIDGE	37 44	79 22W	840		07		H
BURKES GARDEN	1209	06	TAZEWELL	37 6	81 20W	3068	07	07		H
CAMP PICKETT	1322	02	NOTTOWAY	37 2	77 57W	330	08	08		CH
CHARLOTTE COURT HOUSE	1585	03	CHARLOTTE	37 3	78 39W	569	07	07		H
CHARLOTTESVILLE 2W	1593	03	ALBEMARLE	38 2	78 31W	866	08	08		H
CHASE CITY	1606	02	MECKLENBURG	36 47	78 29W	510	17	17		H
CHATHAM	1614	03	PITTSYLVANIA	36 49	79 25W	651	07	07		CH
CHRISTIANSBURG	1692	06	MONTGOMERY	37 8	80 24W	2100	07	07		H
CLARKSVILLE	1746	02	MECKLENBURG	36 37	78 33W	330	07	07		H
CLINTWOOD 1 W	1825	06	DICKENSON	37 9	82 29W	1780	07	07		H
CONCORD 4 SSW	1955	03	CAMPBELL	37 17	78 58W	815		07		H
COPPER HILL	1999	06	FLOYD	37 5	80 9W	2690	07	07		H
CORBIN	2009	02	CAROLINE	38 12	77 22W	220	09	09		H
COVINGTON FLTR PLT	2044	05	ALLEGHANY	37 49	79 59W	1230	07	07		H
CRAIGSVILLE 2 S	2064	05	AUGUSTA	38 3	79 23W	1758		07		H
CROZIER	2142	02	GOOCHLAND	37 40	77 53W	350	07	07		H
DALE ENTERPRISE	2208	05	ROCKINGHAM	38 27	78 56W	1358	07	07		H
DANVILLE REGIONAL AP R	2250	03	PITTSYLVANIA	36 34	79 20W	571	24	24		H
DISPUTANTA	2400	01	PRINCE GEORGE	37 7	77 12W	15	07	07		H
EASTVILLE	2635	01	NORTHAMPTON	37 23	75 58W	10	07	07		H
EDINBURG	2663	04	SHENANDOAH	38 48	78 35W	928	07	07		H
EMPORIA 1 WNW	2790	01	GREENSVILLE	36 42	77 34W	100	08	08		H
FARMVILLE 2 N	2941	02	CUMBERLAND	37 20	78 23W	450	07	07		H
FREDERICKSBURG SEWAGE	3204	01	FREDERICKSBURG	38 17	77 27W	15	07	07		H
FREE UNION	3213	03	ALBEMARLE	38 5	78 35W	590	08	07		H
FRONT ROYAL	3229	04	WARREN	38 54	78 11W	930	07	07		H
GALAX RADIO WBRF	3267	06	CARROLL	36 40	80 55W	2385	07	07		H
GALAX WTP	3272	06	CARROLL	36 39	80 55W	2360	07	07		CH
GATHRIGHT DAM	3310	05	ALLEGHANY	37 57	79 57W	1770	07	07		CH
GLASGOW 1 SE	3375	05	ROCKBRIDGE	37 37	79 26W	737		07		H
GREENBAY 3 NE	3565	02	PRINCE EDWARD	37 11	78 17W	500	09	09		H
GRUNDY	3640	06	BUCHANAN	37 17	82 5W	1170	07	07		H
HOLCOMB ROCK	4039	03	BEDFORD	37 33	79 24W	810		07		H
HOLLAND 1 E	4044	01	SUFFOLK	36 41	76 46W	80	08	08		H
HOPEWELL	4101	01	PRINCE GEORGE	37 18	77 17W	40	16	16		H
HOT SPRINGS	4128	05	BATH	37 60	79 50W	2236	07	07		H
HUDDLESTON 4 SW	4148	03	BEDFORD	37 8	79 32W	898		07		H
JOHN FLANNAGAN LAKE	4410	06	DICKENSON	37 14	82 21W	1460	07	07		H
JOHN H KERR DAM	4414	02	MECKLENBURG	36 36	78 18W	250	08	08	08	CH
LAFAYETTE 1 NE	4676	06	MONTGOMERY	37 14	80 12W	1320		07		H
LEBANON	4777	06	RUSSELL	36 54	82 2W	1912	07	07		H
LEXINGTON	4876	05	ROCKBRIDGE	37 47	79 26W	1097	07	07		H
LINCOLN	4909	04	LOUDOUN	39 5	77 42W	500	07	07		H
LOUISA	5050	02	LOUISA	38 3	78 0W	420	18	18		H
LURAY 5 E	5096	04	PAGE	38 40	78 22W	1400	08	08		H
LYNCHBURG INTL AP R	5120	03	CAMPBELL	37 19	79 12W	940	24	24		HJ
MADISON	5150	04	MADISON	38 22	78 15W	577	08	08		H
MANASSAS	5204	04	MANASSAS	38 44	77 30W	245	07	07		H
MARTINSVILLE FLTR PLT	5300	03	HENRY	36 42	79 52W	760	07	07		H
MEADOWS OF DAN 5 SW	5453	03	PATRICK	36 40	80 27W	2225	07	07		H
MILLGAP	5595	05	HIGHLAND	38 18	79 43W	2421	07	07		CH
MONTEBELLO FISH CULTURAL STN	5690	03	NELSON	37 51	79 8W	2667	07	07		H

STATION INDEX

STATION	INDEX NO.	DIVISION	COUNTY	LATITUDE	LONGITUDE	ELEVATION (IN FEET)	OBSERVATION TIME AND TABLES			
							LOCAL STD TIME			
							TEMP	PRECIP	EVAP	SPECIAL SEE (NOTES)
MONTICELLO	5700	03	ALBEMARLE	38 1	78 27W	758	08	08		H
MT WEATHER	5851	04	LOUDOUN	39 4	77 53W	1659	07	07		H
MTN GROVE	5756	05	BATH	38 6	79 53W	1775		07		H
MUSTOE 1 SW	5880	05	HIGHLAND	38 20	79 40W	2380	24	24		H
NEW CASTLE	6012	05	CRAIG	37 18	80 3W	1258		07		H
NORA 4 SSE	6125	06	DICKENSON	37 1	82 19W	2650	07	07		H
NORFOLK INTL AP R	6139	01	NORFOLK (CITY)	36 54	76 12W	30	24	24		HJ
NORFOLK SOUTH	6147	01	NORFOLK (CITY)	36 52	76 14W	100	24	24		H
NORTH	6161	01	MATHEWS	37 26	76 26W	10	07	07		H
NORTH FORK LAKE	6173	06	WISE	37 7	82 38W	1675	08	08		H
PAINTER 2W	6475	01	ACCOMACK	37 35	75 49W	30	16	16		CH
PALMYRA 3S	6491	02	FLUVANNA	37 49	78 16W	410	06	06		H
PEDLAR DAM	6593	03	AMHERST	37 40	79 17W	1024		07		H
PETERSBURG	6656	02	PETERSBURG	37 14	77 24W	15	08	08		H
PIEDMONT RSCH STN	6712	04	ORANGE	38 14	78 7W	520	08	08		CH
PULASKI 2 E	6955	06	PULASKI	37 3	80 47W	1850	07	07		CH
RADFORD 3 N	6999	06	PULASKI	37 12	80 35W	1800	07	07		H
RICHLANDS	7174	06	TAZEWELL	37 6	81 48W	1910	07	07		H
RICHMOND INTL AP R	7201	02	HENRICO	37 30	77 19W	164	24	24		HJ
ROANOKE 8 N	7278	05	ROANOKE	37 22	79 58W	1190	07	07		H
ROANOKE INTL AP R	7285	05	ROANOKE	37 19	79 58W	1175	24	24		HJ
ROCKY MT	7338	03	FRANKLIN	36 59	79 54W	1315	07	07		CH
SALTVILLE 1N	7506	06	SMYTH	36 53	81 46W	1733	07	07		H
SANDSTON	7541	02	HENRICO	37 33	77 17W	165	07	07		H
SOMERSET	7904	04	ORANGE	38 15	78 16W	510	07	07		H
SOUTH BOSTON	7925	03	HALIFAX	36 42	78 53W	329	07	07		H
SPERRYVILLE	7985	04	RAPPAHANNOCK	38 39	78 14W	750	06	06		H
STAFFORDSVILLE 3 ENE	8022	06	GILES	37 16	80 43W	1950	07	07		CH
STAUNTON WATER TRMTMT PLT	8062	05	AUGUSTA	38 10	79 5W	169	08	08		H
STERLING RCS	8084	04	LOUDOUN	38 59	77 29W	288	07	07		H
STONY CREEK 2 N	8129	01	SUSSEX	36 58	77 24W	105	08	08		H
STUART	8170	03	PATRICK	36 38	80 15W	1375	07	07		H
SUFFOLK LAKE KILBY	8192	01	SUFFOLK	36 44	76 36W	22	24	24		H
TYE RIVER 1 SE	8600	03	NELSON	37 38	78 56W	720	07	07		H
VIENNA	8737	04	FAIRFAX	38 54	77 16W	418	07	07		H
WAKEFIELD 1NW	8800	01	SUSSEX	36 59	77 0W	113	24	24		CH
WALKERTON 2 NW	8829	01	KING AND QUEEN	37 45	77 2W	50	18	18		H
WALLACETON LK DRUMMOND	8837	01	CHESAPEAKE	36 36	76 26W	20	08	08		H
WALLOPS ISLAND NASA TEST FACIL R	8849	01	ACCOMACK	37 56	75 28W	46	24	24		HJ
WARSAW 2 NW	8894	01	RICHMOND	37 59	76 47W	140	18	18		H
WASHGTN DULLES INTL AP R	8903	04	LOUDOUN	38 56	77 28W	290	24	24		HJ
WASHINGTON REAGAN AP R	8906	04	ARLINGTON	38 51	77 2W	10	24	24		HJ
WAYNESBORO WTP	8941	05	WAYNESBORO	38 5	78 53W	1270	07	07		H
WEST POINT 2 NW	9025	01	KING WILLIAM	37 34	76 48W	20	17	17		H
WILLIAMSBURG 2 N	9151	01	YORK	37 18	76 42W	70	24	24		CH
WILLIS	9169	06	FLOYD	36 55	80 30W	2810		07		CH
WINCHESTER	9181	04	FREDERICK	39 11	78 9W	720	07	07		H
WINCHESTER 7 SE	9186	04	FREDERICK	39 11	78 7W	680	08	08		H
WINTERPOCK 4 W	9213	02	CHESTERFIELD	37 19	77 39W	300		07		H
WISE 3E	9215	06	WISE	36 60	82 32W	2549	17	17		CH
WOODSTOCK 2 NE	9263	04	SHENANDOAH	38 54	78 28W	675	07	07		H
WOOLWINE	9272	03	PATRICK	36 47	80 17W	1500		07		CH
WYTHEVILLE 1 S	9301	06	WYTHE	36 58	81 5W	2458	07	07		H

REFERENCE NOTES

STATION NAMES: Name of the city, town or locality. Figures and letters following the station names indicate the distance in miles and direction from the post office or town community center.

DIVISIONS: Areas within a state of similar climatological characteristics. Division averages are calculated using data from stations that record temperature and/or precipitation. Station Precipitation totals flagged with an 'F' or 'M' are excluded from the Divisional Average calculations of precipitation. Stations with monthly Temperature averages flagged with an 'F' or 'M' are included in the Divisional Average if there are no more than 9 flagged or missing daily values in the month, else they are excluded from the divisional average for temperature.

NORMALS: The average value of the meteorological element over a time period. Effective 1 January 2012, the averaging period is 1981 to 2010. The normals for National Weather Service localities have been adjusted so as to be representative for the current observation site.

MONTHLY DEGREE DAY TOTALS: One heating (cooling) degree day is accumulated for each whole degree that the daily mean temperature is below (above) 65 degrees Fahrenheit.

PRECIPITATION: Values shown in hundredths of inches are water equivalent totals, i.e., total of liquid and melted frozen precipitation. In the "Monthly Summarized Data" table the total snow and sleet values shown in tenths of inches are unmelted amounts. The max depth on ground values of snow and sleet shown in whole inches are cumulative unmelted amounts. The number of days with .10, .50, 1.00 or more refers to water equivalents.

PRECIPITATION QUALITY CONTROL: The NCDC quality control process may flag precipitation data that are spatially inconsistent, exceed climatological limits, or are inconsistent with prevailing weather patterns.

TEMPERATURE: Original temperature values are given in the "Daily Temperature" table. Summary temperature information (averages, departures, extremes, monthly degree day totals) is based on the values labeled MAX/MIN.

WIND: (As shown in the "Evaporation and Wind" table) the total wind movement in miles over the evaporation pan as determined by an anemometer recorder located 6-8 inches above the pan.

SYMBOLS AND LETTERS USED IN THE STATION INDEX TABLE

- C Station is equipped with recording rain gage (R) but values in this bulletin are from a non-recording rain gage unless indicated by an R.
- G Observations appear in the "Soil Temperatures" table.
- H Observations appear in the "Snowfall and Snow on the Ground" table.
- J Station also published as a Local Climatological Data publication.
- VAR Observation time varies.
- SR Observation time near sunrise.
- SS Observation time near sunset.

SYMBOLS AND LETTERS USED IN THE DATA TABLES

(DAILY DATA ARE FOR THE 24 HOURS IMMEDIATELY PRECEDING OBSERVATION TIME.)
BLANK Entries in the "Monthly Summarized Data" table indicate no record.
BLANK Entries in the "Daily Precipitation" and "Snowfall and Snow on the Ground" tables indicate zero.
BLANK Entries in the "Daily Temperature" table indicate a missing record

- No record. Data not recorded or not received in time for publication.
- + Precipitation or temperature extremes occurred on one or more previous dates during the month.
- * Rain gage not read. Precipitation is included in the amount following the asterisks.
 Time distribution may not be known. A * preceding the monthly total indicates precipitation amount is being carried forward to next month's total, and may include amounts from the previous month(s).
- a As a subscript, indicates accumulated total.

by NCDC's Climate Prediction Branch. Entries for the report. If the data is not available, please contact the office for more information. For a complete list of stations, please refer to the "Local Climatological Data" annual publication. The contents of this publication may be reprinted or otherwise used freely, with proper credit to the National Climatic Data Center. The data are also available digitally.

- A Monthly calculation flagged value. A is appended to average and/or total values computed which exclude one or more daily data values that have been flagged by the GHCN-Daily Dataset
- B Divisional Departure from normals are computed using 1981-2010 normals.
- E Normalized HDD/CDD Calculation. E is appended to the HDD/CDD Calculation when 1-9 individual daily TMAX and/or TMIN values are missing and a Normalized HDD/CDD Calculation is provided. M appears alone if 10 or more daily values are missing.
- F Monthly calculation flagged value. F is appended to average and/or total values computed which exclude one or more daily data values that have been flagged by the GHCN-Daily Dataset
- M Insufficient or partial data. M is appended to average and/or total values computed with 1-9 daily values missing. M appears alone if 10 or more daily values are missing, (8 or more for wind and evaporation).
- N Indicates snow fall or Snowdepth totals are computed with one or more missing days.
- R Amounts from recording rain gage.
- T Trace. An amount too small to measure.

SEASONAL TABLES: Monthly and seasonal snowfall and heating degree days for the 12 months ending with the June data are published in the July issue of this bulletin. Cooling degree days for the calendar year are published in the "Climatological Data Annual Summary."

Information concerning the history of changes in locations, exposure, etc. of substations is kept on file at the National Climatic Data Center. Historical information of regular National Weather Service Offices may be obtained from the "Local Climatological Data" annual publication. The contents of this publication may be reprinted or otherwise used freely, with proper credit to the National Climatic Data Center. The data are also available digitally.

Effective with the January 2011 Data-Month, COOP Observer Names are no longer included in the Monthly and Annual Climatological Data Publications. This information is not published to ensure the privacy of personal information pursuant to Section 208 of the E-Government Act of 2002 (44 USC 3601).

As of the 2011 Data-Year, Station and Climate Division Maps are no longer being included in the CD Publications. NCDC's Product Development Branch provides updated Station Maps for various data networks via the Historical Observing Metadata Repository: <http://www.ncdc.noaa.gov/homr>.

The GHCN-Daily Quality Control Flags shown below are displayed as superscripts with the data. For more Information on Global Historical Climatology Network - Daily and flags, see: <http://www.ncdc.noaa.gov/oa/climate/ghcn-daily/> and Comprehensive Automated Quality Assurance of Daily Surface Observations. Durre, Imke, Matthew J. Menne, Byron E. Gleason, Tamara G. Houston, Russell S. Vose, 2010: J. Appl. Meteor. Climatol., 49, 1615-1633. doi: 10.1175/2010JAMC2375.1

- | | |
|---|---|
| Blank = Passed All checks | N = failed naught check |
| D = failed duplicate check | O = failed climatological outlier check |
| G = failed gap check | R = failed lagged range check |
| I = failed internal consistency check | S = failed spatial consistency check |
| K = failed streak/frequent-value check | T = failed temporal consistency check |
| L = failed check on length of multiday period | W = temperature too warm for snow |
| M = failed megaconsistency check | X = failed bounds check |
| | Z = flagged as a result of an official Datzilla investigation |

Beginning with the January 2013 CD Publication, monthly mean temperature calculations have changed to the National Data Stewardship Team standard. Monthly maximum and minimum temperatures are not rounded until after the monthly mean temperature is calculated. This is the most accurate outcome, but may be slightly different from the mean derived from rounded monthly maximum and minimum.

Processing Updates and Errata: The CD Publications are periodically reproduced to include the addition of late reports and reported corrections. The GHCND data version noted on the cover of the publication provides the generation date.

The climate division temperature and precipitation values in this publication are based on simple averages from the current set of NWS-Designated Open and Published COOP and First Order Sites within each division. These values differ from those found in NCDC's nClimDiv product. Beginning in February 2014, the nClimDiv product is used

These and other publications are available from the National Climatic Data Center

Hourly Precipitation Data

This publication contains hourly precipitation amounts obtained from recording rain gages located at National Weather Service, Federal Aviation Administration, and cooperative observer stations. Published data are displayed in inches and tenths or inches and hundredths at local standard time. HPD includes maximum precipitation for nine (9) time periods from 15 minutes to 24 hours, for selected stations.

Climatological Data

Monthly editions contain station daily maximum and minimum temperatures and precipitation. Some Stations provide daily snowfall, snow depth, evaporation, and soil temperature data. Each edition also contains monthly summaries for heating and cooling degree days (65 degree F base). The July issue contains a recap of monthly heating degree days and snow data for the preceding July through June.

The Annual issue contains monthly and annual averages of temperature, precipitation, temperature extremes, freeze data, soil temperatures, evaporation, and a recap of monthly cooling degree days.

Storm Data

Monthly issues contain a chronological listing, by states, of occurrences of storms and unusual weather phenomena. Reports contain information on storm paths, deaths, injuries, and property damage. An "Outstanding storms of the month" section highlights severe weather events with photographs, illustrations, and narratives. The December issue includes annual tornado, lightning, flash flood, and tropical cyclone summaries.

Monthly Climatic Data for the World

This publication contains monthly means for temperature, pressure, precipitation, vapor pressure, and sunshine for approximately 2,000 surface data collection stations worldwide and monthly mean upper air temperatures, dew point depressions, and wind velocities for approximately 500 observing sites.

Local Climatological Data

LCD publications summarize temperature, relative humidity, precipitation, cloudiness, wind speed and direction observations for several hundred cities in the U.S. and its territories. Each monthly publication also contains 3 hourly weather observations for that month and a hourly summary of precipitation. Annual LCD publications contain a summary of the past calendar year as well as historical averages and extremes.

For Information Call:

(828) 271-4800 Option 2

(828) 271-4010 (TDD)

(828) 271-4876 (Fax)

NOAA\National Climatic Data Center
Attn: User Engagement & Services Branch
151 Patton Avenue
Asheville, NC 28801-5001

Customer Services Number: (828) 271-4800, option 2
TDD : (828) 271-4010
Fax number: (828) 271-4876

NCDC now offers free online access to the *Climatological Data* publication.
Go to : www.ncdc.noaa.gov and choose Most Popular.