



# CLIMATOLOGICAL DATA

## VIRGINIA

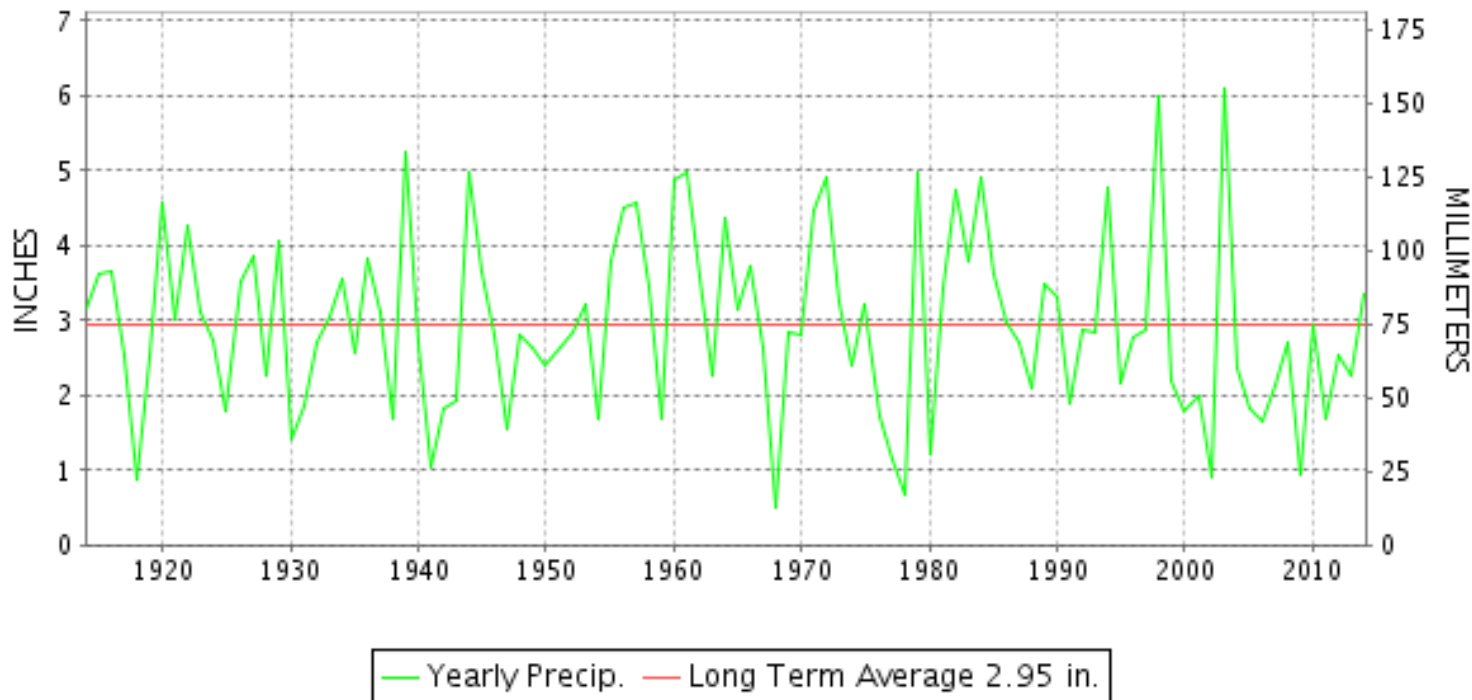
**FEBRUARY 2014**

VOLUME 124 NUMBER 02

ISSN 0364-5630

GHCND Ver: 3.12-upd-2014060505

### FEBRUARY PRECIPITATION BY YEAR



#### TEMPERATURE AND PRECIPITATION EXTREMES

**VIRGINIA**

HIGHEST TEMPERATURE	79	FEBRUARY 22+	2 STATIONS
LOWEST TEMPERATURE	-2	FEBRUARY 01	WINCHESTER 7 SE
GREATEST TOTAL PRECIPITATION	4.87		SOMERSET
LEAST TOTAL PRECIPITATION	1.82		FREDERICKSBURG SEWAGE
GREATEST 1 DAY PRECIPITATION	2.29	FEBRUARY 13	CROZIER
GREATEST TOTAL SNOWFALL	23.5		CHRISTIANSBURG
GREATEST DEPTH OF SNOW OR ICE	21		WOOLWINE

"I certify that this is an official publication of the National Oceanic and Atmospheric Administration (NOAA) It is compiled using information from weather observing sites supervised by NOAA/National Weather Service and received at the National Climatic Data Center(NCDC), Asheville, North Carolina 28801."

Director  
National Climatic Data Center

noaa

National  
Oceanic and  
Atmospheric Administration

National  
Environmental Satellite, Data  
and Information Service

National  
Climatic Data Center  
Asheville, North Carolina



# MONTHLY STATION AND DIVISION SUMMARY

STATION	TEMPERATURE (°F)											PRECIPITATION (IN)												
	AVERAGE MAXIMUM	AVERAGE MINIMUM	AVERAGE	DEPARTURE FROM NORMAL	HIGHEST	DATE	LOWEST	DATE	HEATING DEG. DAYS	COOLING DEG. DAYS	NO. OF DAYS				TOTAL	DEPARTURE FROM NORMAL	GREATEST 24 HOURS	DATE	ICE PELLETS, SNOW			NO. OF DAYS		
											MAX		MIN						TOTAL	MAX DEPTH ON GROUND	DATE	.10 OR MORE	.50 OR MORE	1.00 OR MORE
											>=90	<=32	<=32	<=0										
PETERSBURG	50.3	28.2	39.3	-1.6	72	22	15	01	714	0	0	0	20	0	2.60	-0.08	0.81	13	M 3.0	3	13	6	1	0
RICHMOND INTL AP	49.6	29.9	39.8	-1.1	71	23+	18	28	700	0	0	1	20	0	3.03	0.27	1.02	13	5.8	2	14	7	2	1
SANDSTON	48.1	26.8	37.4	-2.1	71	22	13	01	767	0	0	1	22	0	A 3.02	0.00	0.92	13	M 4.1	4	14	4	1	0
WINTERPOCK 4 W															3.29		1.25	13	M 5.0			6	1	1
--DIVISIONAL DATA-----> WESTERN PIEDMONT 03			38.6	-0.5B											3.24	0.05B								
ALTAVISTA															3.65		1.45	03	0.0			6	2	2
APPOMATTOX	48.1M	26.7M	37.4M	-1.2	67	24	14	28	793E	0	0	1	21	0	4.03	0.95	1.51	03	9.9	10	14	7	2	2
BEDFORD 4 NW															3.60		1.55	03	10.5	11	13	5	2	2
BROOKNEAL	50.8M	25.3M	38.1M	4.3	69	24	10	01	748E	0	0	0	25	0	3.47	0.33	1.45	13	8.2	8	14	6	2	1
CHARLOTTE COURT HOUSE	49.4	28.8	39.1	0.3	69	24	17	01	717	0	0	1	22	0	M 1.79	-1.30	0.76	03	9.6	9	14	5	1	0
CHARLOTTESVILLE 2W	47.2	28.1	37.7	-1.4	68	24	12	28	758	0	0	1	22	0	4.80	1.73	2.02	13	16.0	14	14	8	2	2
CHATHAM	48.6M	23.4	36.0M	-1.5	68	24	7	01	805E	0	0	2	27	0	M 2.15	-0.86	1.00	13	10.0	10	13	4	2	1
CONCORD 4 SSW															3.11		1.27	03	7.5	8	14	8	1	1
DANVILLE REGIONAL AP	51.9	29.9	40.9	0.0	70	23+	19	27	669	0	0	1	22	0	1.83	-1.18	0.63	03	6.3	6	13	5	1	0
FREE UNION	47.5	23.0M	35.2M		70	24	12	28	838E	0	0	1	27	0	A 4.52		1.32	03	M 0.9	9	15	4	1	1
HOLCOMB ROCK															4.69		1.56	13	14.0	12	14	6	3	2
HUDDLESTON 4 SW															4.25		1.90	13	14.0	14	14	7	2	2
LYNCHBURG INTL AP	47.7	26.7	37.2	-1.0	69	23	15	28	772	0	0	1	25	0	3.81	0.88	1.69	03	10.0	8	13	6	3	1
MARTINSVILLE FLTR PLT	50.8	24.1	37.4	-1.0	69	24+	10	01	764	0	0	1	26	0	M 1.59	-1.55	0.48	04	19.8	17	13	5	0	0
MEADOWS OF DAN 5 SW	M	M	M									0	0	0	M				M 0.0	0				
MONTEBELLO FISH CULTURAL STN	M	M	M		61	27	0	14	996E	0	0	5	14	1	M				0.0					
MONTECELLO	45.8	26.3	36.1	-0.1	65	25+	7	01	805	0	0	3	22	0	4.19	1.41	2.14	13	M 14.0	14	14	6	2	2
PEDLAR DAM															4.59		1.62	13	15.7	12	13	7	3	2
ROCKY MT	50.0	26.4	38.2	-0.1	70	24	14	01	745	0	0	0	22	0	3.74	0.66	1.20	13	16.5	14	13	6	2	1
SOUTH BOSTON	51.1M	27.3	39.2M	-0.2	68	24+	11	01	718E	0	0	1	25	0	M 1.77	-1.35	0.40	22+	7.0	7	14	6	0	0
STUART	52.3M	27.6M	39.9M	0.1	70	20	17	27	715E	0	0	0	21	0	M 3.04	-0.21	1.20	13	12.0	12	14	6	3	1
TYE RIVER 1 SE	51.3	27.0	39.2	0.2	70	24+	13	12	718	0	0	0	23	0	3.20	0.19	1.21	13	M 12.0			7	2	1
WOOLWINE															4.57		1.98	13	21.0	21	14	6	4	1
--DIVISIONAL DATA-----> NORTHERN 04			38.0	-0.9B											3.88	0.59B								
BOSTON 4 SE	42.9M	22.9MF	32.9MF	-2.5	66	03	9	28	916E	0	0	3	18	0	M 5.04	2.46	1.53	13	M 13.3	11	13	5	4	3
EDINBURG	43.0	21.5	32.3	-1.6	62	03	8	28	909	0	0	3	27	0	3.03	1.22	0.93	03	12.3	10	14	6	3	0
FRONT ROYAL	43.0M	23.1M	33.1M	-3.1	65	03	4	01	887E	0	0	5	21	0	M 3.24	0.59	1.05	13	FM 14.7	11	16	6	2	1
LINCOLN	40.1	21.1	30.6	-3.0	60	23	8	28+	957	0	0	7	27	0	M 3.95		2.25	05	M 22.0	18	13	4	2	2
LURAY 5 E	45.4	22.4	33.9	-2.6	65	24	5	28	863	0	0	2	25	0	4.24	1.58	1.83	14	M 15.4	15	14	5	2	2
MADISON	M	M	M									0	0	0	M				0.0					
MANASSAS	42.6M	23.3M	33.0M	-3.0	63	20+	11	28	903E	0	0	4	20	0	MA 4.05		2.00	03	M 17.0	13	14	4	3	2

VIRGINIA  
201402

## MONTHLY STATION AND DIVISION SUMMARY

STATION	TEMPERATURE (°F)											PRECIPITATION (IN)												
	AVERAGE MAXIMUM	AVERAGE MINIMUM	AVERAGE	DEPARTURE FROM NORMAL	HIGHEST	DATE	LOWEST	DATE	HEATING DEG. DAYS	COOLING DEG. DAYS	NO. OF DAYS				TOTAL	DEPARTURE FROM NORMAL	GREATEST 24 HOURS	DATE	ICE PELLETS, SNOW			NO. OF DAYS		
											MAX		MIN						TOTAL	MAX DEPTH ON GROUND	DATE	.10 OR MORE	.50 OR MORE	1.00 OR MORE
											>=90	<=32	<=32	<=0										
MT WEATHER	39.2	21.8	30.5	-2.8	58	23	4	28	959	0	0	13	24	0	3.88	0.92	1.20	13	M 17.4	M 9	17	8	3	1
PIEDMONT RSCH STN	46.2	25.7	35.9	-1.4	67	24	11	28	806	0	0	2	24	0	A 3.22	0.47	1.16	03	M 14.8	11	14	5	1	1
SOMERSET	46.5	25.3	35.9	-0.6	68	24	11	28	807	0	0	3	25	0	4.87	2.10	1.49	13	M 16.3	M 13	14	7	4	2
SPERRYVILLE	47.4M	23.8M	35.6M	-0.6	65	03	9	28	820E	0	0	1	20	0	MA 3.60	0.76	1.11	13	M 14.3	M 12	13	6	3	1
STERLING RCS	42.1	21.1	31.6	-3.0	63	23	9	28	930	0	0	5	27	0	3.54	0.77	0.87	13	16.4	10	13	5	3	0
VIENNA	41.1	22.9	32.0	-3.7	61	22	9	28	917	0	0	6	26	0	3.31	0.50	0.83	13	M 16.9	12	14	7	3	0
WASHGTN DULLES INTL AP	41.5	22.9	32.2	-4.0	62	22	10	28	912	0	0	6	27	0	3.81	1.07	1.33	03	M 16.3	8	14	6	3	2
WASHINGTON REAGAN AP	45.9	29.8	37.8	-1.2	69	21	14	28	754	0	0	2	18	0	4.02	1.40	1.61	13	M 11.2	6	13	5	2	2
WINCHESTER	42.0	22.5	32.3	-2.6	61	23	5	28	909	0	0	5	26	0	3.79	1.47	0.94	03	M 21.9	14	14	7	3	0
WINCHESTER 7 SE	43.1	M	M		62	04+	-2	01	1071E	0	0	5	8	1	2.63	0.16	0.70	03	19.1	12	14	6	3	0
WOODSTOCK 2 NE	43.5	21.0	32.2	-0.9	62	20+	6	13+	910	0	0	2	27	0	3.06	0.47	1.01	03	M 13.0	M 13	14	5	3	1
--DIVISIONAL DATA----->			33.2	-1.9B											3.62	0.97B								
<b>CENTRAL MOUNTAIN 05</b>																								
BUENA VISTA															4.64		1.83	03	10.9	9	14	7	3	2
COVINGTON FLTR PLT	45.8	24.0	34.9	-1.6	67	24	13	28	836	0	0	1	26	0	3.68	1.31	1.27	13	12.5	12	14	7	2	2
CRAIGSVILLE 2 S															M				0.0					
DALE ENTERPRISE	45.3	24.1	34.7	1.8	66	24	7	28	839	0	0	2	25	0	4.60	2.38	1.40	13	15.7	14	14	8	4	2
GATHRIGHT DAM	42.3M	22.8	32.5M	-1.6	61	24	10	28	898E	0	0	5	28	0	4.11	1.51	1.45	03	16.4	15	13	7	3	2
GLASGOW 1 SE															4.78		1.95	03	14.3	12	13	6	2	2
HOT SPRINGS	41.3	21.6	31.4	-1.6	61	24	9	28	935	0	0	5	27	0	4.19	1.16	1.44	03	14.1	13	14	6	3	2
LEXINGTON	46.5	23.7	35.1	-1.7	67	24	14	28+	832	0	0	1	26	0	4.09	1.44	1.74	03	13.0	12	14	7	2	1
MILLGAP	39.3	15.6	27.5	-2.6	59	24	-1	18	1043	0	0	9	28	1	3.43	0.45	1.18	03	16.8	14	15	8	2	1
MTN GROVE															4.15		1.50	03	16.6	15	14	9	2	2
MUSTOE 1 SW	38.4	17.3	27.8	-3.4	58	23	2	28+	1035	0	0	10	28	0	3.97	0.72	1.48	03	18.3	12	13	9	2	1
NEW CASTLE															3.63		1.27	13	15.2	15	14	7	2	2
ROANOKE 8 N	48.4	27.0M	37.7M	-1.0	68	24	17	27	759E	0	0	0	23	0	M 4.16	1.52	1.84	03	M 0.0	0		5	3	2
ROANOKE INTL AP	47.3	27.8	37.5	-2.1	68	23	18	28	764	0	0	1	21	0	4.47	1.58	1.89	03	19.0	18	13	5	3	2
STAUNTON WATER TRMTMT PLT	44.2	24.7	34.5	-1.1	64	24	8	28	848	0	0	2	22	0	3.73	1.18	1.81	03	M 14.1	14	13	5	2	2
WAYNESBORO WTP	45.0	22.6	33.8	-1.1	65	24	11	28	867	0	0	1	28	0	4.33	1.41	1.41	03	M 14.3	14	14	8	2	2
--DIVISIONAL DATA----->			33.4	-2.2B											4.13	1.39B								
<b>SOUTHWESTERN MOUNTAIN 06</b>																								
ABINGDON 3S	45.1	26.1	35.6	-1.2	71	21	14	28	814	0	0	5	23	0	3.61	-0.13	1.20	03	M 11.0	9	14	7	3	1
BIG STONE GAP	47.4	26.0F	36.7F	-1.1	66	20	16	28+	784	0	0	0	25	0	4.64	0.24	1.80	03	6.5	6	13	7	3	1
BLACKSBURG NWSO	44.4	22.8	33.6	-0.6	63	24	11	28	873	0	0	2	27	0	3.98	1.17	1.27	13	20.5	17	14	6	4	1
BURKES GARDEN	39.4M	20.5M	30.0M	-1.6	59	21	5	17	976E	0	0	7	25	0	M 3.59	0.13	0.95	13	M 13.1	M 12	15	9	2	0
CHRISTIANSBURG	43.7	25.0	34.4	-1.4	61	24	14	28	851	0	0	4	22	0	4.23	1.40	1.46	13	23.5	19	14	5	3	2
CLINTWOOD 1 W	44.4	22.1	33.3	-1.3	70	21	12	28	883	0	0	4	27	0	3.94	0.29	1.70	03	20.9	12	14	7	3	1

VIRGINIA  
201402

## MONTHLY STATION AND DIVISION SUMMARY

STATION	TEMPERATURE (°F)										PRECIPITATION (IN)													
	AVERAGE MAXIMUM	AVERAGE MINIMUM	AVERAGE	DEPARTURE FROM NORMAL	HIGHEST	DATE	LOWEST	DATE	HEATING DEG. DAYS	COOLING DEG. DAYS	NO. OF DAYS				TOTAL	DEPARTURE FROM NORMAL	GREATEST 24 HOURS	DATE	ICE PELLETS, SNOW			NO. OF DAYS		
											MAX		MIN						TOTAL	MAX DEPTH ON GROUND	DATE	.10 OR MORE	.50 OR MORE	1.00 OR MORE
											>=90	<=32	<=32	<=0										
COPPER HILL	40.6	23.5	32.1		59	24	12	13	914	0	0	8	22	0	3.88		1.06	13	19.0	18	14	7	4	2
GALAX RADIO WBRF	45.2	23.8	34.5	-0.3	64	24	12	16	852	0	0	2	25	0	3.20	-0.09	1.52	13	12.7	12	13	6	3	1
GALAX WTP	44.9	23.0	34.0	-0.3	67	24	12	01	860	0	0	2	25	0	2.79		1.10	13	15.0	13	14	6	2	1
GRUNDY	45.6	24.0	34.8	-1.5	72	21	14	15+	838	0	0	5	25	0	3.04	-0.05	1.53	03	15.8	10	14	5	2	1
JOHN FLANNAGAN LAKE	M	M	M		72	21	12	18+	901E	0	0	6	17	0	MA 3.68		1.51	03	M 8.8	7	14	6	2	1
LAFAYETTE 1 NE															4.57		1.70	03	18.5	15	14	6	2	2
LEBANON	46.2	23.6	34.9	-1.0	72	21	13	28+	835	0	0	6	26	0	2.28	-1.15	0.40	13	10.0	7	13	8	0	0
NORA 4 SSE	41.5	24.3	32.9	-0.6	67	21	13	12+	891	0	0	7	23	0	3.66	0.04	1.63	03	14.6	9	14	7	1	1
NORTH FORK LAKE	M	M	M		71	21	13	28	840E	0	0	2	12	0	MA 3.69		0.62	21	M 8.0	M 8	13	4	1	0
PULASKI 2 E	45.7	24.0M	34.9M	-0.8	64	24	10	27	841E	0	0	1	24	0	3.14	0.45	1.17	13	M 13.0	13	14	6	3	1
RADFORD 3 N	44.9	24.3	34.6	0.5	64	24	13	28	843	0	0	2	26	0	3.24	0.50	1.08	13	16.0	13	13	5	3	1
RICHLANDS	46.2	23.5	34.9	-0.3	71	21	11	26	837	0	0	4	25	0	3.04	0.13	1.44	03	10.0	10	14	4	2	1
SALTVILLE 1N	46.1M	24.2M	35.2M	-0.9	71	21	14	28	837E	0	0	2	24	0	2.68	-0.79	1.28	03	M 1.9	M 9	13	5	1	1
STAFFORDSVILLE 3 ENE	45.3	23.1	34.2	-0.8	64	24	10	28	856	0	0	2	28	0	2.74	0.01	0.73	13	14.0	12	14	7	3	0
WILLIS															3.22		1.04	13	19.7	18	14	8	3	1
WISE 3E	45.2	25.2	35.2	-1.6	66	20	11	15	826	0	0	4	23	0	4.29	0.31	1.85	03	16.9	9	12	6	3	1
WYTHEVILLE 1 S	43.2	24.1	33.7	-0.2	61	24+	13	28	869	0	0	4	23	0	3.55	0.75	1.07	13	M 12.7	M 11	14	8	3	1
--DIVISIONAL DATA----->			34.2	-1.0B											3.49	0.11B								

VIRGINIA  
201402

## DAILY PRECIPITATION (INCHES)

STATION	TOTAL	DAY OF MONTH																															
		01	02	03	04	05	06	07	08	09	10	11	12	13	14	15	16	17	18	19	20	21	22	23	24	25	26	27	28	29	30	31	
<b>VIRGINIA</b>																																	
<b>TIDEWATER 01</b>																																	
DISPUTANTA	3.00		0.02	0.28	0.16	0.36							0.83	0.40		0.40		0.02	0.02				0.51										
EASTVILLE	M 2.63		0.22		0.20	0.28							1.25	0.12		0.10		0.20					0.26									-	
EMPORIA 1 WNW	2.01				0.23	0.37	0.09						0.55	0.17	0.05	0.25			0.05	0.02		0.23											
FREDERICKSBURG SEWAGE	1.82			0.69	0.70	0.21	0.12						T	T				T		0.06		0.04				T	T						
HOLLAND 1 E	3.18		0.80	0.09	0.13	0.39	0.05						0.71	0.11		0.50							0.40										
HOPEWELL	2.97			0.45		0.51							1.23	0.24	0.25			0.06	0.04			0.19											
NORFOLK INTL AP	3.06	0.30		0.16	0.16	0.19					T		0.28	0.98	0.23			0.04	0.04			0.72					T						
NORFOLK SOUTH	3.18	0.30		0.20	0.19	0.18					T		0.28	0.95	0.27			0.04				0.77				T	T						
N	M	-	-	-	-	-	-	-	-	-	-	-	-	-	-	-	-	-	-	-	-	-	-	-	-	-	-	-	-	-	-	-	
PAINTER 2W	2.76		0.17	0.35		0.36							1.27	0.11	0.08	0.02		0.15			0.23	0.02											
STONY CREEK 2 N	M	-	-	-	-	-	-	-	-	-	-	-	-	-	1.09	0.45		-	-	-	-	-	-	-	-	-	-	-	-	-	-	-	-
SUFFOLK LAKE KILBY	2.45	0.37	0.06	0.18	0.24	0.14					T		0.23	0.47	0.45			0.02	T		0.29					T	T						
WAKEFIELD 1NW	2.07	T		0.20	0.26	0.05					T		0.37	0.30	0.47			0.04	T		0.38					T	T						
WALKERTON 2 NW	M	-	-	-	-	-	-	-	-	-	-	-	-	-	-	-	-	-	-	-	-	-	-	-	-	-	-	-	-	-	-	-	-
WALLACETON LK DRUMMOND	M 3.18	-	0.20		0.22	0.35	0.08						0.97	0.10		0.30		0.10		0.05		0.81											
WALLOPS ISLAND NASA TEST FACIL	2.61	0.21	T	0.39	0.17	0.26							0.11	1.11	T	0.12		0.15			0.09												
WARSAW 2 NW	3.22			1.17		0.26							1.15	0.10	0.15			0.11	0.03		0.25												
WEST POINT 2 NW	2.85	T	0.05	0.35		0.47					T		T	1.10	0.13	0.36		0.06	T		0.33												
WILLIAMSBURG 2 N	2.50	0.07		0.24	0.31	0.05					T		0.27	0.84		0.45		0.09	0.01		0.17												
<b>EASTERN PIEDMONT 02</b>																																	
ALBERTA 5N	3.12			0.53	0.10	0.32							1.51	0.10	0.13	0.07			T	T		0.36											
AMELIA COURTHOUSE 1	3.07			0.85	0.37	0.20								0.95	0.08	0.05			0.01		0.56												
ASHLAND	3.06	T		1.12		0.23				T			0.10	1.32	0.02	0.10			0.02	0.15						T							
BREMO BLUFF	M 2.87			0.30	1.26	0.19	0.09						-	0.66		0.10					0.10	0.17											
BUCKINGHAM	4.06			0.30	1.54	0.10	0.06						1.60	0.19	0.11	0.03					0.10	0.03											
CAMP PICKETT	M 2.82			0.51		0.61	0.02						1.10	0.35	0.06			0.10	0.03	0.04		-	-										
CHASE CITY	2.92			0.77		0.60							0.50	0.10	0.90	0.05																	
CLARKSVILLE	2.49			0.22	0.26	0.36	0.03						0.63	0.30	0.10	0.10				0.08	0.05	0.36											
CORBIN	3.66			1.15	0.05	0.20	0.07						1.00	0.71	0.10	0.02			0.08	0.07		0.18					0.03						
CROZIER	4.36			1.38		0.20							2.29	0.02							0.30	0.17											
FARMVILLE 2 N	M 2.77			0.60	0.70	0.15	0.02						0.70	0.30	-	0.17					0.13												
GREENBAY 3 NE	4.16				1.10	0.24		0.20			0.05		0.33	0.16						0.80			1.18		0.10								
JOHN H KERR DAM	2.53			0.03	0.26	0.33	0.02						0.23	0.60	0.54	0.09					0.03	0.40											
LOUISA	3.16			1.20		0.14							1.50	0.10	0.16					0.04		0.02											
PALMYRA 3S	3.29			0.40	1.10	0.10	0.12			T			1.20	0.17		0.18						0.02											
PETERSBURG	2.60			0.02	0.41	0.48							0.81	0.37	0.03	0.14											0.27						
RICHMOND INTL AP	3.03			0.68	0.18	0.13					T		0.45	1.02	0.14			T	0.04	0.03		0.36											
SANDSTON	A 3.02		T		*	1.03 <sub>a</sub>							0.92	0.49	0.01				0.15			0.42											
WINTERPOCK 4 W	3.29			0.37	0.37	0.33	0.02						1.25	0.29	0.05	0.06			0.02	0.01	0.03	0.49											
<b>WESTERN PIEDMONT 03</b>																																	

VIRGINIA  
201402

## DAILY PRECIPITATION (INCHES)

STATION	TOTAL	DAY OF MONTH																																	
		01	02	03	04	05	06	07	08	09	10	11	12	13	14	15	16	17	18	19	20	21	22	23	24	25	26	27	28	29	30	31			
ALTAVISTA	3.65		0.01	1.45	0.01	0.08						0.01	1.40	0.15	0.11	0.03				0.10	0.08		0.22												
APPOMATTOX	4.03			1.51	0.11	0.03							1.47	0.33	0.18				0.04	0.12	0.08		0.16												
BEDFORD 4 NW	3.60			1.55	0.31	0.10							1.27	0.03	0.06	T			0.01	T	T		0.27												
BROOKNEAL	3.47			0.78	0.40	0.09							1.45	0.31	0.15	0.09					0.03		0.17												
CHARLOTTE COURT HOUSE	M 1.79			0.76	0.35	0.16							-	-		0.19				T	0.06	T	0.27												
CHARLOTTESVILLE 2W	4.80			1.48	0.15	0.17	0.12			T	T		2.02	0.45	0.19	T			T		0.01		0.21				T	T							
CHATHAM	M 2.15			0.16	0.60	0.08							1.00	0.12	0.08	0.08					0.03		-												
CONCORD 4 SSW	3.11			1.27	0.29	0.10	0.03						0.39	0.38	0.21	0.02					0.12	0.09	0.21												
DANVILLE REGIONAL AP	1.83			0.63	0.12	0.03							0.34	0.41	0.09	T					0.06		0.15												
FREE UNION	A 4.52			1.32	0.18	0.27	0.04			T			*	*	2.27 <sub>a</sub>	0.04			0.04	T	T		0.36				T	T							
HOLCOMB ROCK	4.69			1.52	0.70	0.04	0.12						1.56	0.26	0.06				T				0.43												
HUDDLESTON 4 SW	4.25			0.38	1.05	0.09	0.03						1.90	0.18	0.13	0.03						0.22	0.24												
LYNCHBURG INTL AP	3.81			1.69	0.04	0.05							0.63	0.81	0.20			T			0.15		0.24												
MARTINSVILLE FLTR PLT	M 1.59			0.20	0.48	0.14							-	0.27	0.05								0.45												
MEADOWS OF DAN 5 SW	M	-	-	0.95	0.24	-	-	-	-	-	-	-	-	-	-	-	-	-	-	-	-	-	-	-	-	-	-	-	-	-	-	-	-	-	
MONTEBELLO FISH CULTURAL STN	M	-	-	-	-	2.67	-	-	-	-	-	-	-	-	-	-	-	-	-	-	-	-	-	-	-	-	-	-	-	-	-	-	-	-	
MONTICELLO	4.19			1.14	0.34	0.21	T						2.14	0.18	0.04	0.13			T		T		0.01					T	T						
PEDLAR DAM	4.59			1.50	0.54	0.20			T	T			1.62	0.13	0.10	0.05			T	T	T	T	0.45												
ROCKY MT	3.74		0.05	0.98	0.28	0.15	0.03	T	0.02				1.20	0.49	0.05	0.02					0.03	0.09	0.03	0.32											
SOUTH BOSTON	M 1.77			0.15	0.40	0.22	0.04					0.02	-	0.35	0.05	0.10						0.04		0.40											
STUART	M 3.04			0.53	0.40	0.16			T				1.20	0.65								0.10		-											
TYE RIVER 1 SE	3.20			0.85	0.11	0.22							1.21	0.23	0.25				T	0.05			0.28												
WOOLWINE	4.57			0.36	0.67	0.15							1.98	0.65	T	0.01					T	0.05	0.70												
<b>NORTHERN 04</b>																																			
BOSTON 4 SE	M 5.04	-	1.43	1.40		0.50				-	-		1.53	0.18								-	-	-	-				T						
EDINBURG	3.03			0.93	0.24	0.50							0.78	0.18	0.05				0.01		0.01		0.33					T							
FRONT ROYAL	M 3.24			0.85	0.32	0.40							1.05	0.22		0.03			0.09			0.25				0.03									
LINCOLN	M 3.95			-	-	2.25							1.50	0.10	T				0.10							T		T							
LURAY 5 E	4.24			1.35	0.05	0.47							0.26	1.83	T				0.01		T		0.27					T							
MADISON	M	-	-	-	-	-	-	-	-	-	-	-	-	-	-	-	-	-	-	-	-	-	-	-	-	-	-	-	-	-	-	-	-	-	-
MANASSAS	MA 4.05			2.00	-	T	-						1.00	0.10	-	-					0.60	*	0.20 <sub>a</sub>	-			*	0.15 <sub>a</sub>							
MT WEATHER	3.88			0.90	T	0.10							1.20	0.28	0.20			T	0.09	0.70		0.28		0.01			0.12								
PIEDMONT RSCH STN	A 3.22			1.16	0.22	0.14							*	1.39 <sub>a</sub>	0.17				T			0.02						T	T						
SOMERSET	4.87			1.25	0.15	0.30	0.08			T			1.49	0.65	0.64				0.02	0.02	0.02	0.02	0.25				T	T							
SPERRYVILLE	MA 3.60			0.74	0.70	0.38	0.15			-	-	-	1.11	*	0.06 <sub>a</sub>	*		T <sub>a</sub>	0.03		0.06	0.27					*	0.10 <sub>a</sub>							
STERLING RCS	3.54			0.82	0.48	0.51	0.07			T	T		0.87	0.47	0.01	0.07	T	0.03		0.06	0.06	0.09			T		0.02	0.04							
VIENNA	3.31			0.60	0.34	0.07	0.12				0.01		0.83	0.43	0.05	0.05			0.03	0.02	0.10	0.05					0.56	0.05							
WASHGTN DULLES INTL AP	3.81			1.33	0.01	0.55				T	T		0.11	1.24		0.11			0.02	0.06	0.08		0.19		T	T	0.05	0.06							
WASHINGTON REAGAN AP	4.02			1.48	0.05	0.33				T	T		0.09	1.61	0.07				0.06	0.12		0.03		0.34		T	0.11	0.07							
WINCHESTER	3.79			0.94	0.23	0.84	0.10				0.02		0.88	0.28	0.01	0.01	0.02	0.04			0.07		0.18		0.01				T						
WINCHESTER 7 SE	2.63			0.70	0.35	0.55	0.03						0.55	0.20	0.03			T		0.04			0.18												
WOODSTOCK 2 NE	3.06			1.01	0.01	0.77							0.83	T	0.12				0.02			0.30					T	T							

VIRGINIA  
201402

## DAILY PRECIPITATION (INCHES)

STATION	TOTAL	DAY OF MONTH																														
		01	02	03	04	05	06	07	08	09	10	11	12	13	14	15	16	17	18	19	20	21	22	23	24	25	26	27	28	29	30	31
<b>CENTRAL MOUNTAIN 05</b>																																
BUENA VISTA	4.64			1.83	0.30	0.18	0.01						1.54	0.15	0.12								0.51									
COVINGTON FLTR PLT	3.68			1.15	0.25	0.15	0.01				T		1.27	0.20	0.19			T	0.03	T		0.43							T			
CRAIGSVILLE 2 S	M	-	-	-	-	-	-	-	-	-	-	-	-	-	-	-	-	-	-	-	-	-	-	-	-	-	-	-	-	-	-	
DALE ENTERPRISE	4.60			1.00	0.25	0.35	0.25						1.40	0.10				0.75				0.50										
GATHRIGHT DAM	4.11			1.45	0.23	0.23							1.21	0.13	0.19			0.05	0.06		T	0.56					T					
GLASGOW 1 SE	4.78			1.95	0.35	0.17	0.03			T	T		1.59	0.18	0.08	0.03		T	T	T		0.40										
HOT SPRINGS	4.19			1.44	0.23	0.23			T				1.23	T	0.22			0.04	0.05	0.03		0.72					T					
LEXINGTON	4.09			1.74	0.28	0.26	0.02						0.92	0.23	0.15	0.02		0.01	T	0.02		0.44					T					
MILLGAP	3.43			1.18	0.30	0.32	T			0.01	T		0.75	0.11	0.20	0.01	T	0.10		0.06		0.39					T					
MTN GROVE	4.15			1.50	0.20	0.32							1.25	0.10	0.15			0.10	T		0.18	0.35						T				
MUSTOE 1 SW	3.97		0.14	1.48	0.21	0.19			T	0.01		0.44	0.67	0.05	0.22	T	0.10		0.06		0.39					T	0.01					
NEW CASTLE	3.63			1.08	0.26	0.19	0.03						1.27	0.27	0.15				T		0.38											
ROANOKE 8 N	M 4.16			1.84	0.17	0.26	0.06						1.21	0.52	0.08	0.01					0.01	-										
ROANOKE INTL AP	4.47			1.89	0.17	0.02			T	T		0.76	1.21	T	0.07	T			T		0.35						T					
STAUNTON WATER TRMTMT PLT	3.73			1.81	0.13	0.38	T						1.18	0.05	0.11			0.05	0.02		T						T					
WAYNESBORO WTP	4.33			1.41	0.41	0.24	0.10						1.12	0.39	0.18			0.05		0.04	0.01	0.35	0.03									
<b>SOUTHWESTERN MOUNTAIN 06</b>																																
ABINGDON 3S	3.61			1.20	0.08	0.32							0.23	0.13	0.14	0.05		0.06	0.50	0.03	0.87											
BIG STONE GAP	4.64		0.02	1.80	0.40	T		0.02		0.05			0.34	0.50	0.05		0.17	0.45		0.80	0.04											
BLACKSBURG NWSO	3.98			0.99	0.27	0.19	0.03		T	0.02	T		1.27	0.53	0.05	0.01		T	0.01	0.06	T	0.55							T			
BURKES GARDEN	M 3.59			0.85	0.39	0.12	0.09		T	T	0.02		0.95	0.15	0.14	-		T	0.01	0.30	0.10	0.46			T			0.01				
CHRISTIANSBURG	4.23			1.03	0.03	0.30			0.02	0.03			1.46	0.87	T	T		0.01	T	0.08	0.01	0.39										
CLINTWOOD 1 W	3.94			1.70	0.04	0.13	0.02	T	0.02	T	0.03	T	0.74	0.22	0.20	0.08				0.20		0.50	T		0.04		0.01	0.01				
COPPER HILL	3.88			1.04	0.27	0.10							1.06	0.68	0.09					0.11		0.53										
GALAX RADIO WBRF	3.20			0.68	0.11								1.52	0.12					0.25		0.52											
GALAX WTP	2.79			0.57	0.02	0.22							1.10	0.24				0.01	0.02	0.19	0.04	0.38										
GRUNDY	3.04			1.53	0.05	0.05	T		0.03		0.06		0.50	0.25		0.03		T	0.14		0.32											
JOHN FLANNAGAN LAKE	MA 3.68	-	-	1.51	0.03	0.10	0.03	0.01	-	-	0.06		0.67	0.15	-	*	*	0.40 <sub>a</sub>	0.21		0.46	*	*	0.03 <sub>a</sub>	0.01	0.03	0.01	0.01				
LAFAYETTE 1 NE	4.57			1.70	0.20	0.19	0.02			0.01			1.56	0.39	0.08	T		T	0.01	0.06	T	0.35										
LEBANON	2.28				0.20	0.20				0.01			0.40	0.15	0.18	0.04		0.08	0.30		0.30	0.38			0.02				0.02			
NORA 4 SSE	3.66			1.63	0.30	0.07	0.05	0.04	0.01	0.02	0.08	0.01	0.42	0.11	0.17	0.04		0.05	0.20		0.41	0.02					T		0.03			
NORTH FORK LAKE	MA 3.69	*	*	1.60 <sub>a</sub>	0.03	0.15	T	-	-	-	-		0.45	-	*	*	*	0.53 <sub>a</sub>	0.25		0.62	*	*	0.06 <sub>a</sub>	-			-				
PULASKI 2 E	3.14			0.59	0.36	0.20	T						1.17	0.05	0.10	0.01		T	0.04	T	0.62											
RADFORD 3 N	3.24			0.90	0.07	0.26			T	T			1.08	0.06		0.02		0.02	0.10	0.02	0.69	0.02					T					
RICHLANDS	3.04			1.44	0.02	0.09	0.01				0.05		0.64	0.02				0.05	0.24	0.01	0.45			0.02				T				
SALTVILLE 1N	2.68			1.28	T	0.18	0.07						0.09	0.06	T	0.01		0.02	0.31		0.39	0.27										
STAFFORDSVILLE 3 ENE	2.74			0.62	0.20	0.17	0.07		T	T	0.01		0.73	0.15	0.13	T			T		0.01	0.65										
WILLIS	3.22			0.75	0.22	0.16				T	T	T	T	1.04	0.51	0.10	T		T	0.02	0.14	0.28										
WISE 3E	4.29		0.02	1.85	0.19	0.06		0.04	0.07	0.02		0.03	0.80	0.19	0.06			0.08	0.28		0.60											
WYTHEVILLE 1 S	3.55			0.84	0.14	0.12	0.09		T	0.01	T		1.07	0.18	0.05	0.02		T	0.11	0.18	0.06	0.68										





VIRGINIA  
201402

## DAILY TEMPERATURES (°F)

STATION	OB. TIME	MAX/MIN	DAY OF MONTH																															AVERAGE	
			01	02	03	04	05	06	07	08	09	10	11	12	13	14	15	16	17	18	19	20	21	22	23	24	25	26	27	28	29	30	31		
ASHLAND	18	MIN	12		31	29	31	29	24	27	28	31	22	18	19	29	29	23	23	28	28	36	43	32	31	31	26	27	23	16					26.9
		MAX	51	66	53	42	46	42	45	39	40	39	34	29	35	54	41	45	40	60	68	58	70	63	68	55	43	42	48	33					48.2
CAMP PICKETT	08	MIN	23	37	38	29	31	28	25	27	29	28	20	17	24	31	32	24	22	30	35	33	43	32	34	34	27	30	23	15					28.6
		MAX	53	58	65	44	44	47	47	45	44	43	37	32	32	34	54	44	46	43	60	69	65	71	64	70	70	47	47	49					50.9
CHASE CITY	17	MIN	13	23	42	28	29	29	26	26	27	29	23	18	18	30	33	25	24	25	27	27	43	32	30	31	26	28	20	18					26.8
		MAX	53	58	64	51	47	49	42	47	47	48	40	35	33	36	57	47	50	45	62	70	67	69	64	69	57	52	48	53					52.1
CLARKSVILLE	07	MIN	16	24	37	31	31	30	26	27	29	32	29	21	23	30	30	29	25	25	33	40	43	32	30	34	26	27	20	21					28.6
		MAX	50	58	65	52	45	51	43	46	46	50	40	34	31	35	57	57	50	55	62	71	67	70	66	70	57	53	53	52					53.1
CORBIN	09	MIN	3	22	41	31	31	31	27	27	29	31	28	22	22	30	31	26	26	28	29	41	45	35	33	33	28	31	23	23					28.8
		MAX	55	69	55	40	46	40	45	35	38	34	32	27	35	54	45	43	35	59	64	59	70	63	69	56	39	39	46	34					47.4
CROZIER	07	MIN	23	41	36	29	31	27	22	26	27	27	18	15	24	31	32	21	25	28	40	35	40	30	42	33	27	28	21	13					28.3
		MAX	52	56	65	40	41	49	37	44	38	40	33	34	31	40	54	40	44	38	58	67	63	67	62	68	54	44	42	48					48.2
FARMVILLE 2 N	07	MIN	20	25	39	28	30	27	24	25	29	27	20	16	20	30	33	25	21	26	27	32	38	28	34	33	26	28	21	14					26.6
		MAX	52	59	67	42	41	48	40	44	41	45	38	35	28	36	45	45	45	41	58	68	59	68	64	70	54	54	45	48					49.3
GREENBAY 3 NE	09	MIN	19	25	42	28	29	29	26	25	28	28	22	19	19	28	31	26	22	22	29	38	38	30	31	35	26	26	19	17					27.0
		MAX	51	57	65	41	42	46	46	43	40	43	37	32	25	30	52	44	44	44	66	67	65	67	62	68	54	44	46	46					48.8
JOHN H KERR DAM	08	MIN	23	32	41	28	31	28	28	26	28	30	22	17	15	19	20	25	22	22	34	35	43	31	33	33	25	28	20	20					27.1
		MAX	51	58	60	52	45	49	42	47	47	48	38	32	32	38	58	45	50	45	63	72	64	68	66	68	59	54	50	53					51.9
LOUISA	18	MIN	17	25	42	32	32	29	30	30	28	30	27	19	22	31	37	28	25	28	34	40	46	33	29	34	25	30	22	22					29.5
		MAX	55	66	54	39	51	49	44	35	38	38	34	28	32	56	46	44	40	60	66	62	62	65	70	63	47	44	49	40					49.2
PALMYRA 3S	06	MIN	20	33	36	31	31	27	18	25	27	24	17	15	21	31	31	24	16	30	29	26	37	27	38	30	24	26	18	13					25.9
		MAX	55	57	68	41	41	53	40	44	36	39	34	33	28	34	56	42	44	38	61	58	68	69	64	69	55	45	44	48					48.7
PETERSBURG	08	MIN	16	27	31	29	31	27	20	24	28	26	17	15	18	28	28	25	20	26	26	26	26	26	26	30	24	28	16	13					24.2
		MAX	51	57	66	45	42	50	38	46	42	42	36	33	34	37	55	42	48	41	62	71	65	72	65	71	57	46	45	50					50.3
RICHMOND INTL AP	24	MIN	15	22	42	33	31	30	27	26	26	23	19	22	32	34	26	25	24	31	35	36	34	34	34	34	28	28	27	20					28.2
		MAX	56	67	51	43	49	41	46	43	41	37	36	30	37	54	42	47	41	61	71	58	71	65	71	57	45	45	49	36					49.6
SANDSTON	07	MIN	24	37	34	31	33	30	27	30	29	22	20	27	31	31	24	25	31	40	37	45	37	34	31	28	26	24	18					29.9	
		MAX	47	53	53	65	42	45	37	45	39	38	38	32	33	36	52	38	45	38	59	69	62	71	61	68	54	41	41	46					48.1
WESTERN PIEDMONT 03 APPOMATTOX	07	MIN	13	23	23	39	29	29	26	26	29	29	21	18	18	30	30	24	23	24	25	37	37	35	33	34	28	26	24	16					26.8
		MAX	52	56	65	43	38	49	40	42	39	42	38	34	30		51	42	40	39	55	66	58	64	62	67	52	45	44	47					48.1
BROOKNEAL	07	MIN	22	30		30	30	28	25	25	29	31	20	17		26	33	25	24	23	31	38	40	36			27	28	19	14					26.7
		MAX	51	58	67	45	42	49	43	43	42	49	42	36		37	55	44	48	42	60	68	60	68	63	69	53	46	44	48					50.8
CHARLOTTE COURT HOUSE	07	MIN	10	21	29	29	31	29	23	23	28	30	26	17		25	27	28	21	21	29	33	36	28	26	27	24	27	18	18					25.3
		MAX	54	56	65	43	43	47	41	43	43	46	40	34	28	33	54	43	46	41	60	68	67	65	58	69	54	47	46	49					49.4
CHARLOTTESVILLE 2W	08	MIN	17	30	40	29	29	30	26	26	32	32	24	19	19	25	29	28	27	26	31	45	45	33	34	36	26	28	21	18					28.8
		MAX	54	56	66	42	36	52	40	44	36	39	33	33	29	38	53	40	45	41	56	63	52	59	63	68	51	45	42	46					47.2
CHATHAM	07	MIN	26	29	37	31	31	28	25	26	27	27	18	16	16	29	31	25	24	25	28	39	40	42	38	36	32	29	20	12					28.1
		MAX	52	55	64	48	39	52	41	42	41	50	38	32	31	33	54			40	58	64	58	63	68	54	46	44	49					48.6	
DANVILLE REGIONAL AP	24	MIN	7	18	27	29	29	22	22	27	27	25	15	19	26	28	25	23	20	27	31	34	27	25	24	21	22	13	13					23.4	
		MAX	61	63	54	44	56	43	46	46	54	43	35	27	40	54	44	48	44	60	70	67	68	65	70	57	51	49	52	41					51.9
		MIN	22	39	36	32	35	32	26	30	29	32	21	20	24	27	31	29	27	32	40	43	36	31	32	32	27	28	19	24					29.9

VIRGINIA  
201402

## DAILY TEMPERATURES (°F)

STATION	OB. TIME	MAX/MIN	DAY OF MONTH																															AVERAGE					
			01	02	03	04	05	06	07	08	09	10	11	12	13	14	15	16	17	18	19	20	21	22	23	24	25	26	27	28	29	30	31						
FREE UNION	08	MAX	53	56	67	45	35	55	40	43	34	42	33	34	27	38	53	40	40	38	59	65	52	61	64	70	52	44	43	47							47.5		
		MIN	18	22		31	30	27	20	20	27	24	18	13	13	26	31	25	18	18	21	28	28	29	27	28	25	26	15	12								23.0	
LYNCHBURG INTL AP	24	MAX	57	67	51	38	55	41	42	40	43	38	36	25	38	53	42	42	38	57	67	54	59	63	69	51	44	43	47	36							47.7		
		MIN	23	31	33	32	31	30	20	30	32	23	21	19	24	31	27	26	20	26	32	34	35	27	31	30	23	26	16	15								26.7	
MARTINSVILLE FLTR PLT	07	MAX	52	59	65	52	42	59	42	44	45	53	40	36	28	39	55	40	48	42	60	69	56	64	65	69	56	49	45	49							50.8		
		MIN	10	19	27	30	31	30	24	23	28	29	24	17	19	20	25	26	22	23	27	33	34	27	26	26	21	26	14	13								24.1	
MEADOWS OF DAN 5 SW	07	MAX																																				M	
		MIN																																				M	
MONTEBELLO FISH CULTURAL STN	07	MAX		51			56			49	23	28		30		45		32	31	56	52	55							61	36							M		
		MIN		23			26			17	22	9		8		0		16	5	12	28	30							12	5							M		
MONTECELLO	08	MAX	51	53	64	40	40	51	38	41	33	40	31	26	31	38	52	37	40	35	57	63	48	59	60	65	65	43	39	43							45.8		
		MIN	7	27	36	31	30	28	24	23	27	17	15	15	15	30	29	26	25	23	23	38	40	40	37	37	31	29	21	12							26.3		
ROCKY MT	07	MAX	55	59	66	48	39	63	40	42	44	49	37	36	35	40	54	39	46	39	59	67	67	61	61	70	51	46	41	46							50.0		
		MIN	14	23	33	33	32	28	25	27	30	33	23	18	18	18	34	25	21	22	29	35	35	29	31	31	27	29	17	18							26.4		
SOUTH BOSTON	07	MAX	52	58	64	50	45	50	44	46	43	49	40	33	30	36	54	45	48	43	59	68	65	67	63	68	57		51	51							51.1		
		MIN	11	23	39	30	30	30	26	26	28	29	29	19	20	25	30	27	22	22	31	38	38	32	29	30	26	29	23	22							27.3		
STUART	07	MAX	54	59	65		43	60	43	45	46	53	40	40	34	38	53	48	47	53	61	70	60	61	65	68	55	51	51	48							52.3		
		MIN	20	30	43	33	33	28	27	27	30	32	27	21	21	24	23	24	22	22			40	36	32	32	27	29	17	18								27.6	
TYE RIVER 1 SE	07	MAX	56	60	68	48	39	57	44	47	40	44	39	38	35	41	55	45	44	40	61	70	70	61	66	70	53	48	48	50							51.3		
		MIN	20	25	32	31	32	29	24	25	29	30	17	13	20	33	35	24	21	22	25	34	35	31	32	34	31	29	29	14							27.0		
<b>NORTHERN 04</b>																																							
BOSTON 4 SE	07	MAX		52	66	40	35	45	37	41		32	31	26	41	55	37	42	33	57						64	47	37	39	44							M		
		MIN		-17 <sup>G</sup>	37	29	29	26	20	20		13	11	12	26	32	26	20	21	28						35	24	25	14	9								M	
EDINBURG	07	MAX	49	54	62	36	31	46	37	40	33	35	35	31	25	37	52	35	35	34	56	61	53	58	61	60	41	39	33	36							43.0		
		MIN	22	22	26	27	27	23	19	20	23	20	10	10	11	18	32	22	13	13	25	26	26	36	32	31	21	22	16	8							21.5		
FRONT ROYAL	07	MAX	47	50	65	35	32	46	35	40	32	33	33	30	24	38	55	34	36	32	56	63	52	61	61	58	42		35	36							43.0		
		MIN	4	25	34	27	26	24	20	20	22	23	13	11	13	17	34	24	20	17	24	33	32	40	38	33	25		18	7							23.1		
LINCOLN	07	MAX	44	49	57	36	32	40	33	40	30	33	30	27	28	35	48	34	35	30	53	58	51	52	60	55	36	34	36	26							40.1		
		MIN	21	24	26	26	24	24	18	18	18	20	14	9	9	26	26	24	17	19	25	26	28	31	33	32	24	13	8	8							21.1		
LURAY 5 E	08	MAX	50	55	64	35	34	48	36	40	35	36	34	31	26	43	57	37	39	41	62	62	64	64	61	65	42	37	36	38							45.4		
		MIN	7	30	32	28	28	24	17	22	25	18	9	8	17	19	32	21	13	20	31	28	36	33	34	30	22	25	13	5							22.4		
MADISON	08	MAX																																				M	
		MIN																																				M	
MANASSAS	07	MAX	50	41	63		38		40	42	32	33	32	31	27	37	54	36	39		58	63				62	46	36	37	41							42.6		
		MIN	24	24	37		27		22	27	24	24	16	13	14	23	33	24	21	22	26	32					25	27	16	11							23.3		
MT WEATHER	07	MAX	44	51	57	57	29	37	31	36	28	28	28	28	22	29	46	30	31	29	52	54	50	55	58	55	38	32	30	33							39.2		
		MIN	30	31	32	22	21	20	20	20	20	16	12	10	10	20	26	18	12	12	22	33	36	36	39	27	23	22	17	4							21.8		
PIEDMONT RSCH STN	08	MAX	53	55	65	40	36	54	36	42	33	36	31	25	39	38	53	39	41	34	59	66	52	61	62	67	50	41	40	45							46.2		
		MIN	21	26	36	30	30	27	22	22	27	25	16	16	25	31	31	25	20	21	28	33	31	30	33	34	26	25	18	11							25.7		
SOMERSET	07	MAX	54	55	66	41	36	54	37	43	33	36	32	32	28	39	52	40	42	33	59	65	51	63	64	68	51	41	41	46							46.5		
		MIN	23	25	34	30	30	27	20	23	28	23	15	14	16	28	32	27	21	23	30	30	34	29	32	38	25	26	15	11							25.3		
SPERRYVILLE	06	MAX	49	51	65	42	33	46	38					33	29		56		39	35	57	62	50	61	63	63	45		37	41							M		

VIRGINIA  
201402

## DAILY TEMPERATURES (°F)

STATION	OB. TIME	MAX/MIN	DAY OF MONTH																															AVERAGE	
			01	02	03	04	05	06	07	08	09	10	11	12	13	14	15	16	17	18	19	20	21	22	23	24	25	26	27	28	29	30	31		
STERLING RCS	07	MIN	19	25	31	31	29	28	21				12	11		32		17	21	19	30	35	32	31	31	23		13	9					M	
		MAX	46	50	61	37	34	39	34	40	31	32	30	29	26	35	48	36	35	34	54	60	60	57	63	56	43	37	34	37					42.1
VIENNA	07	MIN	22	22	27	24	25	20	19	21	22	13	11	11	21	20	24	19	19	24	24	24	27	28	33	20	25	13	9					21.1	
		MAX	46	48	60	37	35	39	33	39	31	31	29	27	27	33	48	34	35	32	53	60	51	61	60	57	42	33	33	36					41.1
WASHGTN DULLES INTL AP	24	MIN	24	24	35	24	24	25	21	21	22	23	14	12	12	26	26	23	19	19	27	29	29	31	31	33	24	18	16	9					22.9
		MAX	49	61	45	34	41	35	40	31	32	31	29	26	35	50	36	35	34	53	57	52	57	62	57	42	37	34	38	28					41.5
WASHINGTON REAGAN AP	24	MIN	22	26	29	25	29	26	19	21	20	14	14	20	22	26	24	19	25	29	28	29	26	38	24	22	20	14	10					22.9	
		MAX	53	64	50	39	44	38	44	37	36	35	35	31	39	52	40	38	38	58	63	56	69	64	64	48	39	38	43	30					45.9
WINCHESTER	07	MIN	28	34	34	30	33	30	29	29	25	22	19	27	33	31	27	25	30	35	37	40	34	46	34	30	27	21	14					29.8	
		MAX	47	50	60	37	33	44	36	38	32	32	32	31	25	36	48	35	36	34	56	60	52	57	61	60	40	37	33	35					42.0
WINCHESTER 7 SE	08	MIN	26	28	32	24	24	24	22	22	21	20	14	9	11	18	31	22	14	15	25	29	29	37	36	29	24	26	14	5					22.5
		MAX	48	50	62	62	32	44	36	40	32	33	33	31	24	35	50	35	35	31	55	61	51	58	61	59	42	37	35	35					43.1
WOODSTOCK 2 NE	07	MIN	-2		32		24							8	8		20												21		6			M	
		MAX	48	53	62	37	32	46	38	41	35	34	35	33	27	38	54	34	35	35	56	62	54	59	61	59	41	38	35	36					43.5
CENTRAL MOUNTAIN 05 COVINGTON FLTR PLT	07	MIN	22	22	28	28	27	24	18	20	22	11	6	6	20	32	20	18	16	20	25	27	36	29	31	19	19	12	7					21.0	
		MAX	48	58	59	44	38	53	36	41	38	43	35	40	27	37	50	35	36	41	57	64	59	59	62	67	42	40	36	38					45.8
DALE ENTERPRISE	07	MIN	18	23	28	34	34	25	24	24	27	28	16	17	18	24	24	17	18	19	27	30	30	31	28	28	24	27	16	13					24.0
		MAX	50	53	62	47	33	53	35	41	36	36	35	32	24	39	53	41	36	35	57	62	60	60	61	66	45	41	36	40					45.3
GATHRIGHT DAM	07	MIN	23	29	33	30	28	24	19	20	25	24	24	23	17	19	32	21	15	13	28	27	31	35	35	30	21	25	17	7					24.1
		MAX	44	54	54	41	34	47	32	36	35	40	40	26	34	46	32	33	36	52	58	56	57	58	61	38	35	30	32					42.3	
HOT SPRINGS	07	MIN	17	24	28	32	31	23	20	23	25	25	12	12	16	25	31	16	15	16	30	30	30	28	27	27	25	13	10					22.8	
		MAX	43	51	53	39	35	47	31	36	35	39	32	36	24	33	46	33	31	36	51	57	55	55	56	61	39	35	32	34					41.3
LEXINGTON	07	MIN	21	25	33	31	31	21	21	21	24	23	11	11	15	21	25	14	11	11	22	29	29	30	28	27	23	23	14	9					21.6
		MAX	51	57	64	44	36	55	38	42	38	42	36	37	25	38	51	39	37	40	56	66	54	61	62	67	47	40	39	41					46.5
MILLGAP	07	MIN	17	22	26	33	32	27	21	20	28	26	16	16	17	21	33	23	17	17	24	30	30	29	28	29	26	27	14	14					23.7
		MAX	46	53	54	37	33	46	31	34	34	35	28	34	24	32	44	32	30	37	50	55	48	51	53	59	34	30	28	28					39.3
MUSTOE 1 SW	24	MIN	16	18	27	29	30	19	14	14	14	20	3	3	6	20	23	3	3	-1	11	21	23	27	21	21	23	22	7	1					15.6
		MAX	50	51	38	31	46	31	34	32	35	29	32	24	34	44	31	30	34	48	55	46	49	53	58	38	33	27	29	33					38.4
ROANOKE 8 N	07	MIN	19	23	29	29	23	18	12	18	26	9	3	5	16	26	15	8	2	19	23	24	27	24	23	22	19	11	8	2					17.3
		MAX	55	58	64	45	37	57	42	42	39	46	37	38	40	41	53	36	43	38	57	67	54	60	64	68	48	44	39	43					48.4
ROANOKE INTL AP	24	MIN	25	31	32	32	27	24	23	30	31	22	20	21	23	35	21	20	25	26	34	35	34	32	32	28	31	17	19					27.0	
		MAX	57	64	53	38	59	41	42	39	46	38	37	26	40	51	39	42	36	56	66	51	60	63	68	49	44	39	44	36					47.3
STAUNTON WATER TRMTMT PLT	08	MIN	24	37	35	32	32	28	24	29	34	26	22	19	21	32	21	20	21	26	32	35	36	36	32	33	30	23	20	18					27.8
		MAX	48	56	60	38	31	51	37	41	37	41	35	33	22	35	48	35	35	35	55	60	59	58	60	64	45	42	37	40					44.2
WAYNESBORO WTP	07	MIN	28	31	33	29	28	24	20	21	27	23	12	11	13	13	31	20	17	16	33	35	39	38	41	30	26	26	19	8					24.7
		MAX	49	54	62	38	34	54	36	40	36	41	35	35	22	35	49	36	37	37	55	62	62	61	60	65	46	41	37	40					45.0
SOUTHWESTERN MOUNTAIN 06 ABINGDON 3S	22	MIN	21	24	28	31	29	26	22	21	28	25	18	14	14	18	18	21	14	14	21	29	29	28	28	31	26	27	16	11					22.6
		MAX	43	67	47	40	47	50	33	37	38	40	32	40	30	32	44	29	44	49	55	65	71	52	59	62	46	42	32	38					45.1
		MIN	16	28	36	29	34	23	23	25	32	29	21	22	19	19	27	19	20	26	34	39	41	28	28	29	25	27	17	14					26.1

VIRGINIA  
201402

## DAILY TEMPERATURES (°F)

STATION	OB. TIME	MAX/MIN	DAY OF MONTH																															AVERAGE					
			01	02	03	04	05	06	07	08	09	10	11	12	13	14	15	16	17	18	19	20	21	22	23	24	25	26	27	28	29	30	31						
BIG STONE GAP	08	MAX	45	64	47	39	55	51	35	40	40	33	41	37	38	48	48	46	55	58	66	46	54	62	65	49	46	36	42							47.4			
		MIN	24	24	32	32	32	24	25	28	29	29	21	21	24	17	17	17	28	29	40	44	27	27	30	28	29	16	16								26.0		
BLACKSBURG NWSO	07	MAX	52	60	58	45	35	55	33	38	36	40	32	37	24	34	48	33	39	38	53	60	58	58	59	63	44	39	34	39							44.4		
		MIN	16	21	26	27	29	22	21	21	27	26	15	15	16	24	32	14	12	13	30	31	34	30	27	28	25	27	17	11							22.8		
BURKES GARDEN	07	MAX	40	56	50	37	43	48	24	33	34	34	26	31	22	29	40		32	38	46	54	59	51	52	56	38	34	25	33							39.4		
		MIN	18	21	37	27	29	16	16	20	26	22	12	11	15	20	16		5	6	31	28	33	30	28	23	20	22	14	7							20.5		
CHRISTIANSBURG	07	MAX	49	58	56	44	34	56	32	37	35	40	32	34	21	32	46	45	39	38	50	58	57	57	60	61	44	38	33	38							43.7		
		MIN	18	26	40	28	29	21	20	20	26	26	16	16	15	21	28	29	16	18	33	37	38	35	33	28	26	27	16	14								25.0	
CLINTWOOD 1 W	07	MAX	44	62	56	33	46	49	29	35	38	42	28	33	36	34	48	27	40	51	55	63	70	54	60	64	42	38	28	38							44.4		
		MIN	14	22	29	30	30	23	23	23	23	26	15	16	17	14	20	14	20	21	28	32	36	23	23	27	22	22	14	12								22.1	
COPPER HILL	07	MAX	48	50	55	40	33	52	30	33	35	39	29	29	25	28	45	30	36	32	50	57	53	55	55	59	40	35	29	35								40.6	
		MIN	23	35	39	25	25	19	18	18	24	23	14	13	12	23	27	14	14	16	27	38	38	34	34	29	25	24	15	13								23.5	
GALAX RADIO WBRF	07	MAX	53	50	59	50	43	55	33	39	42	44	33	36	25	38	48	29	38	42	54	61	56	55	59	64	46	41	34	38								45.2	
		MIN	19	24	39	27	29	21	23	24	28	28	19	17	15	20	26	12	15	16	31	33	36	29	27	28	24	27	14	14								23.8	
GALAX WTP	07	MAX	52	52	60	49	38	55	33	38	42	44	32	33	25	35	51	33	44	35	53	62	55	51	58	67	46	40	37	38								44.9	
		MIN	12	19	24	28	29	22	22	25	27	27	20	18	16	23	33	13	13	18	24	34	35	29	27	24	26	28	14	15								23.0	
GRUNDY	07	MAX	46	66	55	35	50	50	32	37	38	47	30	35	37	31	47	27	38	52	57	64	72	54	62	64	43	40	30	38								45.6	
		MIN	17	25	34	32	32	24	24	25	25	28	18	17	19	14	14	18	22	26	28	34	34	26	27	29	24	26	16	15								24.0	
JOHN FLANNAGAN LAKE	07	MAX				32	47	48	27			40	27	32	35	32				53	57	64	72			64	42	39	29	36								M	
		MIN				30	30	22	22			23	16	15	19	12				12	28	32	34			26	24	24	14	14									M
LEBANON	07	MAX	43	67	52	36	59	56	32	39	38	40	30	37	32	32	45	29	41	50	55	65	72	53	58	62	62	38	30	40								46.2	
		MIN	14	20	33	31	29	22	22	24	27	26	17	17	23	15	29	14	20	22	27	27	47	26	26	28	23	26	13	13								23.6	
NORA 4 SSE	07	MAX	43	59	48	31	49	48	26	37	34	36	26	33	29	29	41	23	37	46	50	60	67	51	54	61	41	38	28	37								41.5	
		MIN	25	40	30	27	27	17	17	20	23	23	13	13	19	21	22	16	20	25	32	43	40	35	34	24	24	22	14	14								24.3	
NORTH FORK LAKE	08	MAX			65	38	49					27	35	35					55	57	63	71			65	42		29	37									M	
		MIN			15	29	29					16	15	17					15	28	33	34			24	24		15	13									M	
PULASKI 2 E	07	MAX	52	60	56	47	37	58	35	37	38	43	34	37	23	36	47	35	42	41	54	63	60	59	59	64	46	41	34	42								45.7	
		MIN	19	22	45	29	32	24	24	25	25	25	19	18	17	22	31	12	13	18		33	33	27	30	29	24	27	10	16								24.0	
RADFORD 3 N	07	MAX	52	60	56	45	34	57	33	38	36	41	33	36	25	36	50	31	40	38	54	63	59	59	60	64	45	40	34	39								44.9	
		MIN	17	25	30	29	31	23	23	25	27	25	16	17	17	25	30	14	16	23	29	31	34	36	26	29	26	26	18	13								24.3	
RICHLANDS	07	MAX	47	68	52	35	50	51	40	40	38	38	31	37	32	34	37	41	47	51	57	63	71	55	59	62	62	30	28	38								46.2	
		MIN	15	25	32	27	27	22	22	24	27	25	16	16	23	18	18	25	13	13	28	28	45	45	35	28	23	11	15	12								23.5	
SALTVILLE 1N	07	MAX	45	66	44		46	53	35	39	38	39	34	41	29	33	46	30	42	49	55	65	71	53	59	62	47	42	42	41								46.1	
		MIN			25	25	25	24	24	24	27	30	20	21	22	22	22	15	19	22	27	34	42	25	25	27	23	28	17	14								24.2	
STAFFORDSVILLE 3 ENE	07	MAX	51	59	58	43	35	53	31	39	38	42	34	35	24	36	48	48	40	39	53	63	60	58	60	64	44	40	34	38								45.3	
		MIN	16	21	26	31	31	23	20	25	27	25	15	16	18	23	31	11	12	16	32	30	30	32	29	28	23	27	18	10								23.1	
WISE 3E	17	MAX	63	57	46	50	51	27	35	35	34	33	32	29	30	44	40	41	48	53	59	66	65	56	60	57	37	37	33	48								45.2	
		MIN	28	43	28	27	26	17	20	21	31	22	12	17	20	25	11	23	26	30	43	40	34	31	39	24	24	19	12	13								25.2	
WYTHEVILLE 1 S	07	MAX	47	60	53	46	36	52	33	38	38	38	31	36	21	33	43	31	38	39	52	61	61	53	58	61	43	39	31	38								43.2	
		MIN	22	23	35	27	30	20	20	24	26	27	16	16	14	20	28	14	18	18	34	34	40	33	30	27	24	27	16	13								24.1	

VIRGINIA  
201402

## SNOWFALL AND SNOW ON GROUND (INCHES)

STATION		DAY OF MONTH																																				
		01	02	03	04	05	06	07	08	09	10	11	12	13	14	15	16	17	18	19	20	21	22	23	24	25	26	27	28	29	30	31						
<b>VIRGINIA</b>																																						
	<b>TIDEWATER 01</b>																																					
DISPUTANTA	SNOWFALL																																					
	SN ON GND	-	-	-	-	-	-	-	-	-	-	-	4	2	-	-	-	-	-	-	-	-	-	-	-	-	-	-	-	-	-	-	-					
EASTVILLE	SNOWFALL																																					
	SN ON GND	3	-	-	-	-	-	-	-	-	-	-	-	-	-	-	-	-	-	-	-	-	-	-	-	-	-	-	-	-	-	-	-					
EMPORIA 1 WNW	SNOWFALL																																					
	SN ON GND	-	-	-	-	-	-	-	-	-	-	-	3	2	-	-	-	-	-	-	-	-	-	-	-	-	-	-	-	-	-	-	-	-				
FREDERICKSBURG SEWAGE	SNOWFALL																																					
	SN ON GND	-	-	-	-	-	-	-	-	-	-	-	1.3	0.3	-	-	-	0.1	-	-	-	-	-	-	-	-	-	T	T	-	-	-	-	-				
HOLLAND 1 E	SNOWFALL																																					
HOPEWELL	SNOWFALL												2.8	-	-	-	-	-	-	-	-	-	-	-	-	-	-	-	-	-	-	-	-	-				
	SN ON GND	-	-	-	-	-	-	-	-	-	-	3	-	-	-	-	-	-	-	-	-	-	-	-	-	-	-	-	-	-	-	-	-	-	-			
NORFOLK INTL AP	SNOWFALL										T	1.7				T																						
	SN ON GND	-	-	-	-	-	-	-	-	-	-	-	-	-	-	-	-	-	-	-	-	-	-	-	-	-	-	T										
NORFOLK SOUTH	SNOWFALL																																					
	SN ON GND	2	-	-	-	-	-	-	-	-	T	-	1.7	-	-	T	-	-	-	-	-	-	-	-	-	-	-	T	T	-	-	-	-	-	-			
N	SNOWFALL																																					
PAINTER 2W	SNOWFALL																																					
	SN ON GND	1	-	-	-	-	-	-	-	-	-	-	-	-	-	-	-	-	-	-	-	-	-	-	-	-	-	-	-	-	-	-	-	-	-	-		
STONY CREEK 2 N	SNOWFALL																																					
	SN ON GND	-	-	-	-	-	-	-	-	-	-	-	-	-	1	-	-	-	-	-	-	-	-	-	-	-	-	-	-	-	-	-	-	-	-	-		
SUFFOLK LAKE KILBY	SNOWFALL												3.0																									
	SN ON GND	2																																				
WAKEFIELD 1NW	SNOWFALL																																					
	SN ON GND	-	-	-	-	-	-	-	-	-	T	4.3	T			T			T									T	T									
WALKERTON 2 NW	SNOWFALL																																					
WALLACETON LK DRUMMOND	SNOWFALL																																					
WALLOPS ISLAND NASA TEST FACIL	SNOWFALL												T	T	T	T																						
	SN ON GND	2																																				
WARSAW 2 NW	SNOWFALL																																					
	SN ON GND	-	-	-	-	-	-	-	-	-	-	-	5.0	1.0	-	-	-	-	-	-	-	-	-	-	-	-	-	-	-	-	-	-	-	-	-	-	-	
WEST POINT 2 NW	SNOWFALL																																					
	SN ON GND	T	-	-	-	-	-	-	-	-	T	T	3.0	1.0	T			0.1	-	-	-	-	-	-	-	-	-	-	-	-	-	-	-	-	-	-	-	
WILLIAMSBURG 2 N	SNOWFALL																																					
	SN ON GND	T	-	-	-	-	-	-	-	-	-	2.0	-	-	-	-	-	-	-	-	-	-	-	-	-	-	-	-	-	-	-	-	-	-	-	-	-	
<b>EASTERN PIEDMONT 02</b>																																						
ALBERTA 5N	SNOWFALL																																					
	SN ON GND	T	-	-	-	-	-	-	-	-	-	-	6.5	T																								
AMELIA COURTHOUSE 1	SNOWFALL																																					
	SN ON GND	-	-	-	-	-	-	-	-	-	-	-	-	5	4	1	T	T																				
ASHLAND	SNOWFALL																																					
	SN ON GND	-	-	-	-	T	-	-	-	T	-	-	1.0	5.5	T	T	-	-	0.1	-	-	-	-	-	-	-	-	-	-	-	-	-	-	-	-	-	-	

Snowfall: Includes snow and ice. Values for NWS stations (J index note) are Mid-Mid (LST).

Snow on ground: Includes snow, sleet, ice, and hail. Values for NWS stations (J index note) are observed at 12 UTC (GMT).

Water Equivalent: Given for NWS stations (J index note) only, when snow depth is 2 inches or more, and is measured at 18 UTC (GMT)

VIRGINIA  
201402

## SNOWFALL AND SNOW ON GROUND (INCHES)

STATION		DAY OF MONTH																														
		01	02	03	04	05	06	07	08	09	10	11	12	13	14	15	16	17	18	19	20	21	22	23	24	25	26	27	28	29	30	31
BREMO BLUFF	SN ON GND	T		-	-	-	-		-		-	-	1	4	3	2	1	T	T			-	-									
	SNOWFALL	-	-		-	-	-						7.5																			
BUCKINGHAM	SN ON GND	-	-		-	-							8																			
	SNOWFALL												7.5	1.0																		
CAMP PICKETT	SN ON GND												8	7	6	3	2	1														
	SNOWFALL	-	-	-	-	-	-	-	-	-	-	-	3.0	-	-	-	-	T	-	-	-	-	-	-	-	-	-	-	-	-	-	-
CHASE CITY	SN ON GND	-	-	-	-	-	-	-	-	-	-	-	3	-	-	-	-	T	T	T	T	-	-	-	-	-	-	-	-	-	-	
	SNOWFALL	-	-	-	-	-	-	-	-	-	-	-	5.5	1.0	-	-	-	-	-	-	-	-	-	-	-	-	-	-	-	-	-	-
CLARKSVILLE	SN ON GND	-	-	-	-	-	-	-	-	-	-	-	6	1	-	-	-	-	-	-	-	-	-	-	-	-	-	-	-	-	-	
	SNOWFALL												4.5	1.3																		
CORBIN	SN ON GND												5	1																		
	SNOWFALL	-	-	-	-	-	-	-	-	-	-	-	6.0	2.5	-	-	-	-	-	-	-	-	-	-	-	-	-	-	-	-	-	-
CROZIER	SN ON GND	-	-	-	-	-	-	-	-	-	-	-	-	7	4	4	3	2	1	-	-	-	-	-	-	-	-	-	-	-	-	-
	SNOWFALL												6.0	0.5																		
FARMVILLE 2 N	SN ON GND												6	5	3	2	2	2														
	SNOWFALL	-	-	-	-	-	-	-	-	-	-	-	7.0	0.2	-	-	-	-	-	-	-	-	-	-	-	-	-	-	-	-	-	-
GREENBAY 3 NE	SN ON GND	-	-	-	-	-	-	-	-	-	-	-	-	6	-	-	T	T	T													
	SNOWFALL												4.0	2.0																		
JOHN H KERR DAM LOUISA	SN ON GND												4	6																		
	SNOWFALL												9.3	-	-	-	-	-	-	-	-	-	-	-	-	-	-	-	-	-	-	-
PALMYRA 3S	SN ON GND	-	-	-	-	-	-	-	-	-	-	-	8	6	5	4	4	3														
	SNOWFALL	-	-	-	-	-	-	-	-	T	-	-	6.2	0.4																		
PETERSBURG	SN ON GND	-	-	-	-	-	-	-	-	-	-	-	6	4	3	2	1	1														
	SNOWFALL												3.0																			
RICHMOND INTL AP	SN ON GND												3																			
	SNOWFALL									T		3.7	2.1		T		T	T														
SANDSTON	SN ON GND												2	2																		
	SNOWFALL	-	-	-	-	-	-	-	-	-	-	-	2.8	1.2					0.1													
WINTERPOCK 4 W WESTERN PIEDMONT 03	SN ON GND	-	-	-	-	-	-	-	-	-	-	-	3	4	1	T	T	T														
	SNOWFALL	-	-	-	-	-	-	-	-	-	-	-	4.0	1.0	-	-	-	-	-	-	-	-	-	-	-	-	-	-	-	-	-	-
APPOMATTOX	SN ON GND												7.4	2.5					T													
	SNOWFALL												7	10	6	4	3	3	1													
BEDFORD 4 NW	SN ON GND												10.5	T					T													
	SNOWFALL												11	10	6	6	3	3	2													
BROOKNEAL	SN ON GND												7.5	0.7																		
	SNOWFALL												8	8	4	3	2	2	1													
CHARLOTTE COURT HOUSE	SN ON GND												9.2	0.4																		
	SNOWFALL												9	9	5	4	2	1														
CHARLOTTESVILLE 2W	SN ON GND					T				T	T		11.1	4.3	0.5	T		0.1														
	SNOWFALL					T							11	14	9	8	7	7	5	3	2											

Snowfall: Includes snow and ice. Values for NWS stations (J index note) are Mid-Mid (LST).

Snow on ground: Includes snow, sleet, ice, and hail. Values for NWS stations (J index note) are observed at 12 UTC (GMT).

Water Equivalent: Given for NWS stations (J index note) only, when snow depth is 2 inches or more, and is measured at 18 UTC (GMT)

VIRGINIA  
201402

## SNOWFALL AND SNOW ON GROUND (INCHES)

STATION		DAY OF MONTH																															
		01	02	03	04	05	06	07	08	09	10	11	12	13	14	15	16	17	18	19	20	21	22	23	24	25	26	27	28	29	30	31	
CHATHAM	WTR EQUIV	-	-	-	-	-	-	-	-	-	-	-	2.0	2.4	2.4	2.2	2.1	2.1	-	-	-	-	-	-	-	-	-	-	-	-	-	-	-
	SNOWFALL												10.0	T																			
CONCORD 4 SSW	SN ON GND												10	8	6	4	4	3	1														
	SNOWFALL												7.0	0.5																			
DANVILLE REGIONAL AP	SN ON GND												7	8	5	3	3	2															
	SNOWFALL											5.5	0.8			T																	
FREE UNION	SN ON GND											6	6	3	3	1	1																
	SNOWFALL	-	-	-	-	-	-	-	-	T	-	-	-	-	0.3	T		0.4										0.1	0.1	-	-	-	
HOLCOMB ROCK	SN ON GND	-	-	-	-	-	-	-	-	-	-	-	-	-	9	7	6	6	4	T	T	-	-	-	-	-	-	-	-	-	-	-	
	SNOWFALL												11.0	3.0					T														
HUDDLESTON 4 SW	SN ON GND												11	12	6	4	3	2	2	T													
	WTR EQUIV	-	-	-	-	-	-	-	-	-	-	-	1.6	-	-	-	-	-	-	-	-	-	-	-	-	-	-	-	-	-	-	-	
LYNCHBURG INTL AP	SNOWFALL												12.0	2.0																			
	SN ON GND												12	14	8	5	3	3	2	T													
MARTINSVILLE FLTR PLT	SNOWFALL												5.9	4.1			T																
	SN ON GND												6	8	5	4	3	2	T														
MEADOWS OF DAN 5 SW	SNOWFALL												16.8	3.0																			
	SN ON GND												17	9	5	4	2	1															
MONTEBELLO FISH CULTURAL STN	SNOWFALL	-	-	-	-	-	-	-	-	-	-	-	-	-	-	-	-	-	-	-	-	-	-	-	-	-	-	-	-	-	-	-	
	SN ON GND	-	-	-	-	-	-	-	-	-	-	-	-	-	-	-	-	-	-	-	-	-	-	-	-	-	-	-	-	-	-	-	
MONTICELLO	SNOWFALL	-	-	-	-	-	-	-	-	-	-	-	11.8	2.2	T	T	-	-	-	-	-	-	-	-	-	-	-	-	-	-	-	-	
	SN ON GND	-	-	-	-	-	-	-	-	-	-	-	12	14	-	-	5	5	5	-	-	-	-	-	-	-	-	-	-	-	-	-	
PEDLAR DAM	SNOWFALL									T			13.4	2.3					T														
	SN ON GND												12	11	7	6	5	5	5	2	1												
ROCKY MT	SNOWFALL												13.5	3.0																			
	SN ON GND												14	13	9	8	7	6	4														
SOUTH BOSTON	SNOWFALL												7.0	T																			
	SN ON GND												7	7	4	3																	
STUART	SNOWFALL									T			9.0	3.0																			
	SN ON GND												9	12	8	6	4	-	-														
TYE RIVER 1 SE	SNOWFALL	-	-	-	-	-	-	-	-	-	-	-	9.0	3.0	-	-	-	-	-	-	-	-	-	-	-	-	-	-	-	-	-	-	
	SN ON GND	-	-	-	-	-	-	-	-	-	-	-	13.0	8.0																			
WOOLWINE	SNOWFALL												13	21	13	10	9	8	5	4	1												
	SN ON GND												13	21	13	10	9	8	5	4	1												
NORTHERN 04	WTR EQUIV	-	-	-	-	-	-	-	-	-	-	-	2.0	2.6	-	-	-	-	-	-	-	-	-	-	-	-	-	-	-	-	-	-	
	SNOWFALL																																
BOSTON 4 SE	SNOWFALL	-	-	-	-	-	-	-	-	-	-	-	11.4	1.9																			
	SN ON GND	-	-	-	-	-	-	-	-	-	-	-	11	2																			
EDINBURG	WTR EQUIV	-	-	-	-	-	-	-	-	-	-	-	11.4	1.9																			
	SNOWFALL				1.3	T							9.6	1.4																			
FRONT ROYAL	SN ON GND	1	T			T						10	10			5	4	4	4	2													
	SNOWFALL	-	-	-	-	-	-	-	-	-	-	-	10.5	3.0																			

Snowfall: Includes snow and ice. Values for NWS stations (J index note) are Mid-Mid (LST).

Snow on ground: Includes snow, sleet, ice, and hail. Values for NWS stations (J index note) are observed at 12 UTC (GMT).

Water Equivalent: Given for NWS stations (J index note) only, when snow depth is 2 inches or more, and is measured at 18 UTC (GMT).



VIRGINIA  
201402

## SNOWFALL AND SNOW ON GROUND (INCHES)

STATION		DAY OF MONTH																																
		01	02	03	04	05	06	07	08	09	10	11	12	13	14	15	16	17	18	19	20	21	22	23	24	25	26	27	28	29	30	31		
LINCOLN	SN ON GND	-	-	-	-	-	-	-	-	-	-	-	-	11	3 <sup>I</sup>	11 <sup>I</sup>	11	10	-	6	1	-	-	-	-	-	-	-	-	-	-	-	-	-
	WTR EQUIV	-	-	-	-	-	-	-	-	-	-	-	-	-	-	-	-	-	8.0	6.0	-	-	-	-	-	-	-	-	-	-	-	-	-	
	SNOWFALL	-	-	-	-	1.0	-	-	-	-	-	-	-	18.0	2.0	T	-	-	1.0	-	-	-	-	-	-	-	-	-	-	-	-	-	-	
LURAY 5 E	SN ON GND	-	-	-	-	1	-	-	-	-	-	-	-	18	14	12	10	8	7	6	4	2	1	T	-	-	-	-	-	-	-	-	-	
	SNOWFALL	-	-	-	-	-	-	-	-	-	-	-	-	3.0	12.0	-	-	-	-	-	-	-	-	-	-	-	-	0.4	-	-	-	-	-	
	WTR EQUIV	-	-	-	-	-	-	-	-	-	-	-	-	3	15	11	10	10	9	5	2	-	-	-	-	-	-	0.4	-	-	-	-	-	
MADISON MANASSAS	SNOWFALL	-	-	-	-	-	-	-	-	-	-	-	12.0	1.0	-	-	-	-	-	-	-	-	-	-	-	-	-	3.0	1.0	-	-	-		
	SN ON GND	-	-	-	-	-	-	-	-	-	-	-	12	13	7	7	6	6	5	3	-	-	-	-	-	-	-	-	-	-	-	-	-	
	WTR EQUIV	-	-	-	-	-	-	-	-	-	-	-	12.0	13.0	-	7.0	-	-	-	-	-	-	-	-	-	-	-	-	-	-	-	-	-	
MT WEATHER	SNOWFALL	-	-	-	0.1	-	-	-	-	-	T	-	-	12.0	2.8	-	-	0.5	T	-	-	-	-	-	-	-	-	2.0	-	-	-	-		
	SN ON GND	-	-	-	T	-	-	-	-	-	-	T	-	-	-	9	9	9	8	4	-	-	-	-	-	-	-	T	-	-	-	-		
	SNOWFALL	-	-	-	-	0.1	-	-	-	-	-	-	-	-	14.5	-	-	0.2	-	-	-	-	-	-	-	-	-	T	T	-	-	-		
SOMERSET	SN ON GND	T	-	-	-	-	-	-	-	-	-	-	11	13	9	6	4	4	3	T	T	T	-	-	-	-	T	-	-	-	-	-		
	WTR EQUIV	-	-	-	-	-	-	-	-	-	-	-	1.5	1.7	0.6	1.4	1.3	1.2	1.0	-	-	-	-	-	-	-	-	-	-	-	-	-		
	SNOWFALL	-	-	-	-	-	-	-	-	-	-	-	12.0	-	0.4	-	T	0.3	-	-	-	-	-	-	-	-	-	-	1.6	-	-	-		
STERLING RCS	SN ON GND	T	T	-	-	-	-	-	-	-	-	-	12	-	6	-	4	4	3	2	1	-	-	-	-	-	-	T	T	-	-	-		
	SNOWFALL	-	-	-	T	T	-	-	-	T	0.2	-	10.8	2.5	T	0.3	T	0.5	-	-	-	-	-	-	-	-	0.7	1.4	-	-	-			
	SN ON GND	-	-	-	-	-	-	-	-	-	-	-	10	8	6	6	6	6	4	1	-	-	-	-	-	-	1	-	-	-	-	-		
VIENNA	WTR EQUIV	-	-	-	-	-	-	-	-	-	-	-	-	-	-	-	-	-	-	1.1	-	-	-	-	-	-	-	-	-	-	-	-		
	SNOWFALL	-	-	-	0.1	-	-	-	-	-	0.2	-	12.0	2.5	-	-	-	0.1	-	-	-	-	-	-	-	-	-	-	2.0	-	-	-		
	SN ON GND	-	-	-	-	-	-	-	-	-	-	-	12	12	9	9	8	9	7	3	1	-	-	-	-	-	-	-	-	-	-	-	-	
WASHGTN DULLES INTL AP	WTR EQUIV	-	-	-	-	-	-	-	-	-	-	12.0	12.0	9.0	9.0	-	9.0	7.0	-	-	-	-	-	-	-	-	-	-	-	-	-	-		
	SNOWFALL	-	-	-	-	T	-	-	T	0.2	-	1.6	11.7	0.3	T	0.2	0.3	-	-	-	-	-	-	-	-	-	0.6	1.4	-	-	-			
	SN ON GND	-	-	-	-	-	-	-	-	-	-	-	7	8	6	6	6	6	4	1	-	-	-	-	-	-	-	1	-	-	-	-		
WASHINGTON REAGAN AP	SNOWFALL	-	-	-	-	-	-	-	T	0.1	-	1.1	5.9	-	T	-	0.3	-	-	-	-	-	-	-	-	-	2.8	1.0	-	-	-			
	SN ON GND	-	-	-	-	-	-	-	-	-	-	-	6	4	3	2	1	1	-	-	-	-	-	-	-	-	-	-	-	-	-	-		
	SNOWFALL	-	-	1.8	1.7	0.2	0.1	-	-	-	0.3	-	14.3	2.7	T	T	0.3	0.5	-	-	-	-	-	-	-	-	-	-	T	-	-	-		
WINCHESTER	SN ON GND	-	-	2	2	1	1	-	-	-	-	-	14	14	10	9	9	7	3	-	-	-	-	-	-	-	-	-	-	-	-	-		
	SNOWFALL	-	-	0.5	1.0	1.0	-	-	-	-	-	-	12.5	4.0	-	-	0.1	-	-	-	-	-	-	-	-	-	-	-	-	-	-	-		
	SN ON GND	-	-	-	-	1	1	-	-	-	-	-	12	12	7	6	4	3	-	-	-	-	-	-	-	-	-	-	-	-	-	-		
WOODSTOCK 2 NE	WTR EQUIV	-	-	-	-	-	-	-	-	-	-	12.0	-	-	-	-	-	-	-	-	-	-	-	-	-	-	-	-	-	-	-	-		
	SNOWFALL	-	-	-	T	-	-	-	-	-	-	-	12.0	1.0	-	-	-	T	-	-	-	-	-	-	-	-	-	-	-	-	-	-		
	SN ON GND	T	T	-	T	-	-	-	-	-	-	-	12	13	6	5	4	4	T	-	-	-	-	-	-	-	-	-	-	-	-	-		
CENTRAL MOUNTAIN 05 BUENA VISTA	SNOWFALL	-	-	-	-	-	-	-	-	-	-	-	8.4	2.5	-	-	-	-	-	-	-	-	-	-	-	-	-	-	-	-	-	-		
	SN ON GND	-	-	-	-	-	-	-	-	-	-	-	8	9	6	5	5	4	3	-	-	-	-	-	-	-	-	-	-	-	-	-		
	SNOWFALL	-	-	-	-	-	-	-	-	-	-	-	11.0	1.5	-	-	-	T	-	-	-	-	-	-	-	-	-	-	-	-	-	-		
COVINGTON FLTR PLT	SN ON GND	-	-	-	-	-	-	-	-	-	-	11	12	9	8	7	6	1	-	-	-	-	-	-	-	-	-	-	-	-	-	-		

Snowfall: Includes snow and ice. Values for NWS stations (J index note) are Mid-Mid (LST).

Snow on ground: Includes snow, sleet, ice, and hail. Values for NWS stations (J index note) are observed at 12 UTC (GMT).

Water Equivalent: Given for NWS stations (J index note) only, when snow depth is 2 inches or more, and is measured at 18 UTC (GMT)

VIRGINIA  
201402

## SNOWFALL AND SNOW ON GROUND (INCHES)

STATION		DAY OF MONTH																															
		01	02	03	04	05	06	07	08	09	10	11	12	13	14	15	16	17	18	19	20	21	22	23	24	25	26	27	28	29	30	31	
CRAIGSVILLE 2 S DALE ENTERPRISE	SNOWFALL													14.0	1.0				0.7														
	SNOWFALL													14	14	10	8	8	6	4													
GATHRIGHT DAM	SN ON GND																																
	WTR EQUIV												-	14.0	14.0	10.0	8.0	8.0	6.7	4.0	1.0												
GLASGOW 1 SE	SNOWFALL													14.8	1.1	T			0.5														
	SN ON GND	T	T											15	13	6	6	6	4	3	T												
HOT SPRINGS	SNOWFALL													12.3	2.0				T														
	SN ON GND													12	11	8	7	5	4	2													
LEXINGTON	SNOWFALL													13.0	T	0.1			1.0														
	SN ON GND	1												13	13	11	11	8	7	6	3	2											
MILLGAP	SNOWFALL													10.0	3.0				T														
	SN ON GND	T												10	12	7	6	6	5	4	1	T											
MTN GROVE	SNOWFALL													10.0	2.0	2.5	0.5	0.4	1.0														
	SN ON GND	2	1	T										10	14	14	12	12	11	8	4	2	T	T									
MUSTOE 1 SW	WTR EQUIV																																
	SNOWFALL													15.0	1.0	T			0.6														
NEW CASTLE	SN ON GND	T	T											15	15	11	8	7	6	5	2	T											
	SNOWFALL													15.0	1.0	T			0.6														
ROANOKE 8 N	SN ON GND	1	T	T	T	T	T	T	T	T	T		6.0	8.0	0.6	2.5	T	1.0															
	SNOWFALL													13.0	2.2	T																	
ROANOKE INTL AP	SN ON GND													13	15	12	11	10	8	5	2	T											
	SNOWFALL																																
STAUNTON WATER TRMTMT PLT	SN ON GND																																
	SNOWFALL																																
WAYNESBORO WTP	SN ON GND																																
	SNOWFALL																																
SOUTHWESTERN MOUNTAIN 06	SN ON GND																																
	SNOWFALL																																
ABINGDON 3S	SN ON GND																																
	SNOWFALL																																
BIG STONE GAP	SN ON GND																																
	SNOWFALL																																
BLACKSBURG NWSO	SN ON GND																																
	SNOWFALL																																
BURKES GARDEN	SN ON GND																																
	SNOWFALL																																
CHRISTIANSBURG	SN ON GND																																
	SNOWFALL																																

Snowfall: Includes snow and ice. Values for NWS stations (J index note) are Mid-Mid (LST).

Snow on ground: Includes snow, sleet, ice, and hail. Values for NWS stations (J index note) are observed at 12 UTC (GMT).

Water Equivalent: Given for NWS stations (J index note) only, when snow depth is 2 inches or more, and is measured at 18 UTC (GMT)

VIRGINIA  
201402

## SNOWFALL AND SNOW ON GROUND (INCHES)

STATION		DAY OF MONTH																																					
		01	02	03	04	05	06	07	08	09	10	11	12	13	14	15	16	17	18	19	20	21	22	23	24	25	26	27	28	29	30	31							
CLINTWOOD 1 W	SNOWFALL			T	0.1		0.5	0.2	0.6	T	0.3	T		12.0	3.5	1.0	1.7								T			0.5	0.5										
	SN ON GND	1	T				1	T	1		T	T		12	12	8	8	7	4	2	T						1												
COPPER HILL	SNOWFALL													11.0	7.0	1.0																							
	SN ON GND													11	18	16	16	14	12	10	6	1																	
GALAX RADIO WBRF	SNOWFALL													11.5	1.2																								
	SN ON GND													12	11	10	9	8	8	6	3																		
GALAX WTP	SNOWFALL													11.0	4.0																								
	SN ON GND													10	13	6	6	5	4	3																			
GRUNDY	SNOWFALL						0.2		0.5					9.5	3.0		1.0											0.2	1.4										
	SN ON GND	T	T				T		T					9	10	6	6	5	3	1	T						T												
JOHN FLANNAGAN LAKE	SNOWFALL	-	-	-	-	-	0.2	-	-	-	-	-	-	8.0	-	-	-	-	-	-	-	-	-	-	-	-	-	0.6	T	-									
	SN ON GND	-	-	-	-	-	-	-	-	-	-	-	-	-	7	-	-	-	-	3	-	-	-	-	-	-	-	-	-	-	-	-	-	-	-	-			
LAFAYETTE 1 NE	SNOWFALL					T	T			T				14.8	3.7		T		T																				
	SN ON GND					T								14	15	10	10	8	7	5	T	T																	
LEBANON	SNOWFALL													7.0	2.5		0.5																						
	SN ON GND													7	3		1	2																					
NORA 4 SSE	SNOWFALL				T		T	1.0	0.2	0.3	0.5	0.1		7.0	1.8	0.5	2.1							T		T		T	1.1										
	SN ON GND	T			T		T	1	T	T	T	T	T	7	9	5	5	4	T	T							T	T											
NORTH FORK LAKE	SNOWFALL	-	-	-	-	-	T	-	-	-	-	-	-	8.0	-	-	-	-	-	-	-	-	-	-	-	-	-	-	-	-	-	-	-	-	-	-	-		
	SN ON GND	-	-	-	-	-	T	-	-	-	-	-	-	8	-	-	-	-	-	1	-	-	-	-	-	-	-	-	-	-	-	-	-	-	-	-	-		
PULASKI 2 E	SNOWFALL	-	-	-	-	-	-	-	-	-	-	-	-	13.0						T																			
	SN ON GND	-	-	-	-	-	-	-	-	-	-	-	-	13	13	7	7	6	6	-	-	-	-	-	-	-	-	-	-	-	-	-	-	-	-	-	-	-	
RADFORD 3 N	SNOWFALL								T	T				15.0	1.0		T		T																				
	SN ON GND				T									13	12	9	8	6	4	2	T																		
RICHLANDS	SNOWFALL													9.0	1.0																								
	SN ON GND													9	10	9	7	5	2	T																			
SALTVILLE 1N	SNOWFALL	-	-	-	-	-	-	-	-	-	-	-	-	0.9	T	T	1.0																						
	SN ON GND	T												9	8	5	6	5	4	2																			
STAFFORDSVILLE 3 ENE	SNOWFALL								T	T				11.0	3.0		T																						
	SN ON GND	T												11	12	9	8	7	6	4	T																		
WILLIS	SNOWFALL													12.4	7.2	0.1	T		T																				
	SN ON GND													12	18	11	9	9	8	5	2																		
WISE 3E	SNOWFALL			0.3			1.2		0.5	0.3	0.5		0.6	9.2		3.2	1.1																						
	SN ON GND	T		T			T				T	T		6	7	6	4	T	T																				
WYTHEVILLE 1 S	SNOWFALL	-	-	-	-	-	T	-	0.1		-	-	-	9.8	2.3	0.1	0.4		T																				
	SN ON GND	-	-	-	-	-	T		T		-	-	-	10	11	7	7	6	5	4																			

Snowfall: Includes snow and ice. Values for NWS stations (J index note) are Mid-Mid (LST).

Snow on ground: Includes snow, sleet, ice, and hail. Values for NWS stations (J index note) are observed at 12 UTC (GMT).

Water Equivalent: Given for NWS stations (J index note) only, when snow depth is 2 inches or more, and is measured at 18 UTC (GMT)



# STATION INDEX

STATION	INDEX NO.	DIVISION	COUNTY	LATITUDE	LONGITUDE	ELEVATION (IN FEET)	OBSERVATION TIME AND TABLES			
							LOCAL STD TIME			
							TEMP	PRECIP	EVAP	SPECIAL SEE (NOTES)
VIRGINIA										
ABINGDON 3S	0021	06	WASHINGTON	36 40	81 58W	1920	22	22		H
ALBERTA 5N	0079	02	BRUNSWICK	36 56	77 54W	376		08		H
ALTAVISTA	0166	03	CAMPBELL	37 7	79 17W	529		07		CH
AMELIA COURTHOUSE 1	0187	02	AMELIA	37 21	77 59W	345	08	08		H
APPOMATTOX	0243	03	APPOMATTOX	37 20	78 50W	850	07	07		H
ASHLAND	0327	02	HANOVER	37 45	77 29W	220	18	18		H
BEDFORD 4 NW	0561	03	BEDFORD	37 23	79 34W	1228		07		CH
BIG STONE GAP	0735	06	WISE	36 52	82 46W	1464	08	08		H
BLACKSBURG NWSO	0766	06	MONTGOMERY	37 12	80 25W	2100	07	07		CH
BOSTON 4 SE	0860	04	CULPEPER	38 33	78 6W	590	07	07		H
BREMO BLUFF	0993	02	FLUVANNA	37 43	78 17W	225		07		CH
BROOKNEAL	1082	03	CAMPBELL	37 4	78 57W	408	07	07		H
BUCKINGHAM	1136	02	BUCKINGHAM	37 30	78 32W	580		07		H
BUENA VISTA	1159	05	ROCKBRIDGE	37 44	79 22W	840		07		H
BURKES GARDEN	1209	06	TAZEWELL	37 6	81 20W	3068	07	07		H
CAMP PICKETT	1322	02	NOTTOWAY	37 2	77 57W	330	08	08		CH
CHARLOTTE COURT HOUSE	1585	03	CHARLOTTE	37 3	78 39W	569	07	07		H
CHARLOTTESVILLE 2W	1593	03	ALBEMARLE	38 2	78 31W	866	08	08		H
CHASE CITY	1606	02	MECKLENBURG	36 47	78 29W	510	17	17		H
CHATHAM	1614	03	PITTSYLVANIA	36 49	79 25W	651	07	07		CH
CHRISTIANSBURG	1692	06	MONTGOMERY	37 8	80 24W	2100	07	07		H
CLARKSVILLE	1746	02	MECKLENBURG	36 37	78 33W	330	07	07		H
CLINTWOOD 1 W	1825	06	DICKENSON	37 9	82 29W	1780	07	07		H
CONCORD 4 SSW	1955	03	CAMPBELL	37 17	78 58W	815		07		H
COPPER HILL	1999	06	FLOYD	37 5	80 9W	2690	07	07		H
CORBIN	2009	02	CAROLINE	38 12	77 22W	220	09	09		H
COVINGTON FLTR PLT	2044	05	ALLEGHANY	37 49	79 59W	1230	07	07		H
CRAIGSVILLE 2 S	2064	05	AUGUSTA	38 3	79 23W	1758		07		H
CROZIER	2142	02	GOOCHLAND	37 40	77 53W	350	07	07		H
DALE ENTERPRISE	2208	05	ROCKINGHAM	38 27	78 56W	1358	07	07		H
DANVILLE REGIONAL AP R	2250	03	PITTSYLVANIA	36 34	79 20W	571	24	24		H
DISPUTANTA	2400	01	PRINCE GEORGE	37 7	77 12W	15	07	07		H
EASTVILLE	2635	01	NORTHAMPTON	37 23	75 58W	10	07	07		H
EDINBURG	2663	04	SHENANDOAH	38 48	78 35W	928	07	07		H
EMPORIA 1 WNW	2790	01	GREENSVILLE	36 42	77 34W	100	08	08		H
FARMVILLE 2 N	2941	02	CUMBERLAND	37 20	78 23W	450	07	07		H
FREDERICKSBURG SEWAGE	3204	01	FREDERICKSBURG	38 17	77 27W	15	07	07		H
FREE UNION	3213	03	ALBEMARLE	38 5	78 35W	590	08	07		H
FRONT ROYAL	3229	04	WARREN	38 54	78 11W	930	07	07		H
GALAX RADIO WBRF	3267	06	CARROLL	36 40	80 55W	2385	07	07		H
GALAX WTP	3272	06	CARROLL	36 39	80 55W	2360	07	07		CH
GATHRIGHT DAM	3310	05	ALLEGHANY	37 57	79 57W	1770	07	07		CH
GLASGOW 1 SE	3375	05	ROCKBRIDGE	37 37	79 26W	737		07		H
GREENBAY 3 NE	3565	02	PRINCE EDWARD	37 11	78 17W	500	09	09		H
GRUNDY	3640	06	BUCHANAN	37 17	82 5W	1170	07	07		H
HOLCOMB ROCK	4039	03	BEDFORD	37 33	79 24W	715		07		H
HOLLAND 1 E	4044	01	SUFFOLK	36 41	76 46W	80	08	08		H
HOPEWELL	4101	01	PRINCE GEORGE	37 18	77 17W	40	16	16		H
HOT SPRINGS	4128	05	BATH	37 60	79 50W	2236	07	07		H
HUDDLESTON 4 SW	4148	03	BEDFORD	37 8	79 32W	898		07		H
JOHN FLANNAGAN LAKE	4410	06	DICKENSON	37 14	82 21W	1460	07	07		H
JOHN H KERR DAM	4414	02	MECKLENBURG	36 36	78 18W	250	08	08	08	CH
LAFAYETTE 1 NE	4676	06	MONTGOMERY	37 14	80 12W	1320		07		H
LEBANON	4777	06	RUSSELL	36 54	82 2W	1912	07	07		H
LEXINGTON	4876	05	ROCKBRIDGE	37 47	79 26W	1097	07	07		H
LINCOLN	4909	04	LOUDOUN	39 5	77 42W	500	07	07		H
LOUISA	5050	02	LOUISA	38 3	78 0W	420	18	18		H
LURAY 5 E	5096	04	PAGE	38 40	78 22W	1400	08	08		H
LYNCHBURG INTL AP R	5120	03	CAMPBELL	37 19	79 12W	940	24	24		HJ
MADISON	5150	04	MADISON	38 22	78 15W	577	08	08		H
MANASSAS	5204	04	MANASSAS	38 44	77 30W	245	07	07		H
MARTINSVILLE FLTR PLT	5300	03	HENRY	36 42	79 52W	760	07	07		H
MEADOWS OF DAN 5 SW	5453	03	PATRICK	36 40	80 27W	2225	07	07		H
MILLGAP	5595	05	HIGHLAND	38 18	79 43W	2421	07	07		CH
MONTEBELLO FISH CULTURAL STN	5690	03	NELSON	37 51	79 8W	2667	07	07		H

# STATION INDEX

STATION	INDEX NO.	DIVISION	COUNTY	LATITUDE	LONGITUDE	ELEVATION (IN FEET)	OBSERVATION TIME AND TABLES			
							LOCAL STD TIME			
							TEMP	PRECIP	EVAP	SPECIAL SEE (NOTES)
MONTICELLO	5700	03	ALBEMARLE	38 1	78 27W	758	08	08		H
MT WEATHER	5851	04	LOUDOUN	39 4	77 53W	1659	07	07		H
MTN GROVE	5756	05	BATH	38 6	79 53W	1775		07		H
MUSTOE 1 SW	5880	05	HIGHLAND	38 20	79 40W	2380	24	24		H
N	6161	01	MATHEWS	37 26	76 26W	10	07	07		H
NEW CASTLE	6012	05	CRAIG	37 18	80 3W	1258		07		H
NORA 4 SSE	6125	06	DICKENSON	37 1	82 19W	2650	07	07		H
NORFOLK INTL AP R	6139	01	NORFOLK (CITY)	36 54	76 12W	30	24	24		HJ
NORFOLK SOUTH	6147	01	NORFOLK (CITY)	36 52	76 14W	100	24	24		H
NORTH FORK LAKE	6173	06	WISE	37 7	82 38W	1675	08	08		H
PAINTER 2W	6475	01	ACCOMACK	37 35	75 49W	30	16	16		CH
PALMYRA 3S	6491	02	FLUVANNA	37 49	78 16W	410	06	06		H
PEDLAR DAM	6593	03	AMHERST	37 40	79 17W	1024		07		H
PETERSBURG	6656	02	PETERSBURG	37 14	77 24W	15	08	08		H
PIEDMONT RSCH STN	6712	04	ORANGE	38 14	78 7W	520	08	08		CH
PULASKI 2 E	6955	06	PULASKI	37 3	80 47W	1850	07	07		CH
RADFORD 3 N	6999	06	PULASKI	37 12	80 35W	1800	07	07		H
RICHLANDS	7174	06	TAZEWELL	37 6	81 48W	1910	07	07		H
RICHMOND INTL AP R	7201	02	HENRICO	37 30	77 19W	164	24	24		HJ
ROANOKE 8 N	7278	05	ROANOKE	37 22	79 58W	1190	07	07		H
ROANOKE INTL AP R	7285	05	ROANOKE	37 19	79 58W	1175	24	24		HJ
ROCKY MT	7338	03	FRANKLIN	36 59	79 54W	1315	07	07		CH
SALTVILLE 1N	7506	06	SMYTH	36 53	81 46W	1733	07	07		H
SANDSTON	7541	02	HENRICO	37 33	77 17W	165	07	07		H
SOMERSET	7904	04	ORANGE	38 15	78 16W	510	07	07		H
SOUTH BOSTON	7925	03	HALIFAX	36 42	78 53W	329	07	07		H
SPERRYVILLE	7985	04	RAPPAHANNOCK	38 39	78 14W	750	06	06		H
STAFFORDSVILLE 3 ENE	8022	06	GILES	37 16	80 43W	1950	07	07		CH
STAUNTON WATER TRMTMT PLT	8062	05	AUGUSTA	38 10	79 5W	169	08	08		H
STERLING RCS	8084	04	LOUDOUN	38 59	77 29W	288	07	07		H
STONY CREEK 2 N	8129	01	SUSSEX	36 58	77 24W	105	08	08		H
STUART	8170	03	PATRICK	36 38	80 15W	1375	07	07		H
SUFFOLK LAKE KILBY	8192	01	SUFFOLK	36 44	76 36W	22	24	24		H
TYE RIVER 1 SE	8600	03	NELSON	37 38	78 56W	720	07	07		H
VIENNA	8737	04	FAIRFAX	38 54	77 16W	418	07	07		H
WAKEFIELD 1NW	8800	01	SUSSEX	36 59	77 0W	113	24	24		CH
WALKERTON 2 NW	8829	01	KING AND QUEEN	37 45	77 2W	50	18	18		H
WALLACETON LK DRUMMOND	8837	01	CHESAPEAKE	36 36	76 26W	20	08	08		H
WALLOPS ISLAND NASA TEST FACIL R	8849	01	ACCOMACK	37 56	75 28W	46	24	24		HJ
WARSAW 2 NW	8894	01	RICHMOND	37 59	76 47W	140	18	18		H
WASHGTN DULLES INTL AP R	8903	04	LOUDOUN	38 56	77 28W	290	24	24		HJ
WASHINGTON REAGAN AP R	8906	04	ARLINGTON	38 51	77 2W	10	24	24		HJ
WAYNESBORO WTP	8941	05	WAYNESBORO	38 5	78 53W	1270	07	07		H
WEST POINT 2 NW	9025	01	KING WILLIAM	37 34	76 48W	20	17	17		H
WILLIAMSBURG 2 N	9151	01	YORK	37 18	76 42W	70	24	24		CH
WILLIS	9169	06	FLOYD	36 55	80 30W	2810		07		CH
WINCHESTER	9181	04	FREDERICK	39 11	78 9W	720	07	07		H
WINCHESTER 7 SE	9186	04	FREDERICK	39 11	78 7W	680	08	08		H
WINTERPOCK 4 W	9213	02	CHESTERFIELD	37 19	77 39W	300		07		H
WISE 3E	9215	06	WISE	36 60	82 32W	2549	17	17		CH
WOODSTOCK 2 NE	9263	04	SHENANDOAH	38 54	78 28W	675	07	07		H
WOOLWINE	9272	03	PATRICK	36 47	80 17W	1500		07		CH
WYTHEVILLE 1 S	9301	06	WYTHE	36 58	81 5W	2458	07	07		H

# REFERENCE NOTES

**STATION NAMES:** Name of the city, town or locality. Figures and letters following the station names indicate the distance in miles and direction from the post office or town community center.

**DIVISIONS:** Areas within a state of similar climatological characteristics. Division averages are calculated using data from stations that record temperature and/or precipitation. Station Precipitation totals flagged with an 'F' or 'M' are excluded from the Divisional Average calculations of precipitation. Stations with monthly Temperature averages flagged with an 'F' or 'M' are included in the Divisional Average if there are no more than 9 flagged or missing daily values in the month, else they are excluded from the divisional average for temperature.

**NORMALS:** The average value of the meteorological element over a time period. Effective 1 January 2012, the averaging period is 1981 to 2010. The normals for National Weather Service localities have been adjusted so as to be representative for the current observation site.

**MONTHLY DEGREE DAY TOTALS:** One heating (cooling) degree day is accumulated for each whole degree that the daily mean temperature is below (above) 65 degrees Fahrenheit.

**PRECIPITATION:** Values shown in hundredths of inches are water equivalent totals, i.e., total of liquid and melted frozen precipitation. In the "Monthly Summarized Data" table the total snow and sleet values shown in tenths of inches are unmelted amounts. The max depth on ground values of snow and sleet shown in whole inches are cumulative unmelted amounts. The number of days with .10, .50, 1.00 or more refers to water equivalents.

**PRECIPITATION QUALITY CONTROL:** The NCDC quality control process may flag precipitation data that are spatially inconsistent, exceed climatological limits, or are inconsistent with prevailing weather patterns.

**TEMPERATURE:** Original temperature values are given in the "Daily Temperature" table. Summary temperature information (averages, departures, extremes, monthly degree day totals) is based on the values labeled MAX/MIN.

**WIND:** (As shown in the "Evaporation and Wind" table) the total wind movement in miles over the evaporation pan as determined by an anemometer recorder located 6-8 inches above the pan.

## SYMBOLS AND LETTERS USED IN THE STATION INDEX TABLE

- C Station is equipped with recording rain gage (R) but values in this bulletin are from a non-recording rain gage unless indicated by an R.
- G Observations appear in the "Soil Temperatures" table.
- H Observations appear in the "Snowfall and Snow on the Ground" table.
- J Station also published as a Local Climatological Data publication.
- VAR Observation time varies.
- SR Observation time near sunrise.
- SS Observation time near sunset.

## SYMBOLS AND LETTERS USED IN THE DATA TABLES

- (DAILY DATA ARE FOR THE 24 HOURS IMMEDIATELY PRECEDING OBSERVATION TIME.)
- BLANK Entries in the "Monthly Summarized Data" table indicate no record.
- BLANK Entries in the "Daily Precipitation" and "Snowfall and Snow on the Ground" tables indicate zero.
- BLANK Entries in the "Daily Temperature" table indicate a missing record

- No record. Data not recorded or not received in time for publication.
- + Precipitation or temperature extremes occurred on one or more previous dates during the month.
- \* Rain gage not read. Precipitation is included in the amount following the asterisks.
- Time distribution may not be known. A \* preceding the monthly total indicates precipitation amount is being carried forward to next month's total, and may include amounts from the previous month(s).
- a As a subscript, indicates accumulated total.

by NCDC's Climate Prediction Branch and its entries for the report. If the data is not in the report, please contact the station for more information. For stations that have been discontinued, please refer to the station's determination date of last reading. (Hawaii stations)

- B Divisional Departure from normals are computed using 1971-2000 normals.
- E Normalized HDD/CDD Calculation. E is appended to the HDD/CDD Calculation when 1-9 individual daily TMAX and/or TMIN values are missing and a Normalized HDD/CDD Calculation is provided. M appears alone if 10 or more daily values are missing.
- F Monthly calculation flagged value. F is appended to average and/or total values computed which exclude one or more daily data values that have been flagged by the GHCN-Daily Dataset
- M Insufficient or partial data. M is appended to average and/or total values computed with 1-9 daily values missing. M appears alone if 10 or more daily values are missing, (8 or more for wind and evaporation).
- N Indicates snow fall or Snowdepth totals are computed with one or more missing days.
- R Amounts from recording rain gage.
- T Trace. An amount too small to measure.

**SEASONAL TABLES:** Monthly and seasonal snowfall and heating degree days for the 12 months ending with the June data are published in the July issue of this bulletin. Cooling degree days for the calendar year are published in the "Climatological Data Annual Summary."

Information concerning the history of changes in locations, exposure, etc. of substations is kept on file at the National Climatic Data Center. Historical information of regular National Weather Service Offices may be obtained from the "Local Climatological Data" annual publication. The contents of this publication may be reprinted or otherwise used freely, with proper credit to the National Climatic Data Center. The data are also available digitally.

Effective with the January 2011 Data-Month, COOP Observer Names are no longer included in the Monthly and Annual Climatological Data Publications. This information is not published to ensure the privacy of personal information pursuant to Section 208 of the E-Government Act of 2002 (44 USC 3601).

As of the 2011 Data-Year, Station and Climate Division Maps are no longer being included in the CD Publications. NCDC's Product Development Branch provides updated Station Maps for various data networks via the Historical Observing Metadata Repository: <http://www.ncdc.noaa.gov/homr>.

The GHCN-Daily Quality Control Flags shown below are displayed as superscripts with the data. For more Information on Global Historical Climatology Network - Daily and flags, see: <http://www.ncdc.noaa.gov/oa/climate/ghcn-daily/> and Comprehensive Automated Quality Assurance of Daily Surface Observations. Durre, Imke, Matthew J. Menne, Byron E. Gleason, Tamara G. Houston, Russell S. Vose, 2010: J. Appl. Meteor. Climatol., 49, 1615-1633. doi: 10.1175/2010JAMC2375.1

- |   |   |
|---|---|
| Blank = Passed All checks                     | N = failed naught check                                       |
| D = failed duplicate check                    | O = failed climatological outlier check                       |
| G = failed gap check                          | R = failed lagged range check                                 |
| I = failed internal consistency check         | S = failed spatial consistency check                          |
| K = failed streak/frequent-value check        | T = failed temporal consistency check                         |
| L = failed check on length of multiday period | W = temperature too warm for snow                             |
| M = failed megaconsistency check              | X = failed bounds check                                       |
|   | Z = flagged as a result of an official Datzilla investigation |

Beginning with the January 2013 CD Publication, monthly mean temperature calculations have changed to the National Data Stewardship Team standard. Monthly maximum and minimum temperatures are not rounded until after the monthly mean temperature is calculated. This is the most accurate outcome, but may be slightly different from the mean derived from rounded monthly maximum and minimum.

**Processing Updates and Errata:** The CD Publications are periodically reproduced to include the addition of late reports and reported corrections. The GHCND data version noted on the cover of the publication provides the generation date.

The climate division temperature and precipitation values in this publication are based on simple averages from the current set of NWS-Designated Open and Published COOP and First Order Sites within each division. These values differ from those found in NCDC's nClimDiv product. Beginning in February 2014, the nClimDiv product is used

NOAA\National Climatic Data Center  
Attn: User Engagement & Services Branch  
151 Patton Avenue  
Asheville, NC 28801-5001

Customer Services Number: (828) 271-4800, option 2  
TDD : (828) 271-4010  
Fax number: (828) 271-4876

NCDC now offers free online access to the *Climatological Data* publication.  
Go to : [www.ncdc.noaa.gov](http://www.ncdc.noaa.gov) and choose Most Popular.