



CLIMATOLOGICAL DATA

VIRGINIA

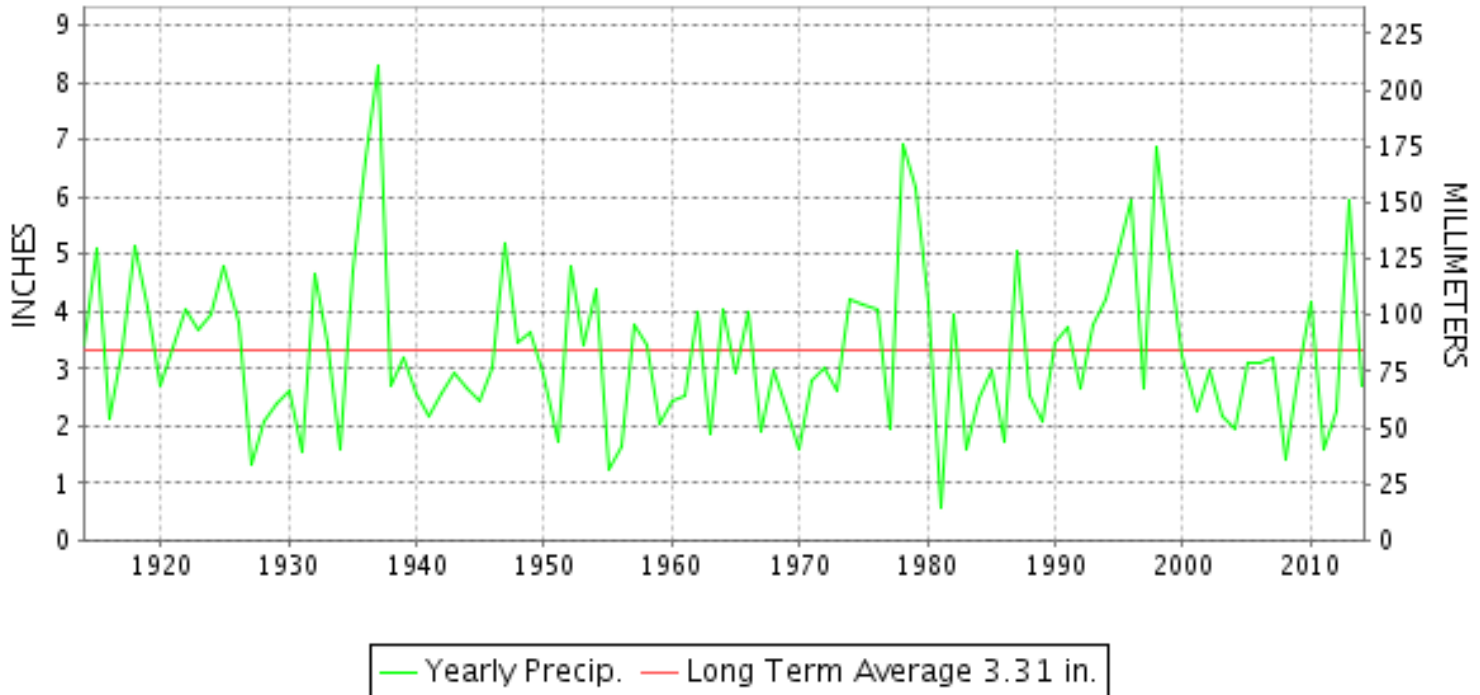
JANUARY 2014

VOLUME 124 NUMBER 01

ISSN 0364-5630

GHCND Ver: 3.12-upd-2014060505

JANUARY PRECIPITATION BY YEAR



TEMPERATURE AND PRECIPITATION EXTREMES

VIRGINIA

HIGHEST TEMPERATURE	75	JANUARY 22+	WALLACETON LK DRUMMOND
LOWEST TEMPERATURE	-18	JANUARY 31	BURKES GARDEN
GREATEST TOTAL PRECIPITATION	5.75		AMELIA COURTHOUSE 1
LEAST TOTAL PRECIPITATION	1.15		GATHRIGHT DAM
GREATEST 1 DAY PRECIPITATION	2.50	JANUARY 29	AMELIA COURTHOUSE 1
GREATEST TOTAL SNOWFALL	17.5		NORA 4 SSE
GREATEST DEPTH OF SNOW OR ICE	15		FARMVILLE 2 N

"I certify that this is an official publication of the National Oceanic and Atmospheric Administration (NOAA) It is compiled using information from weather observing sites supervised by NOAA/National Weather Service and received at the National Climatic Data Center(NCDC), Asheville, North Carolina 28801."

Director
National Climatic Data Center

noaa

National
Oceanic and
Atmospheric Administration

National
Environmental Satellite, Data
and Information Service

National
Climatic Data Center
Asheville, North Carolina

VIRGINIA
201401

MONTHLY STATION AND DIVISION SUMMARY

STATION	TEMPERATURE (°F)											PRECIPITATION (IN)												
	AVERAGE MAXIMUM	AVERAGE MINIMUM	AVERAGE	DEPARTURE FROM NORMAL	HIGHEST	DATE	LOWEST	DATE	HEATING DEG. DAYS	COOLING DEG. DAYS	NO. OF DAYS				TOTAL	DEPARTURE FROM NORMAL	GREATEST 24 HOURS	DATE	ICE PELLETS, SNOW			NO. OF DAYS		
											MAX		MIN						TOTAL	MAX DEPTH ON GROUND	DATE	.10 OR MORE	.50 OR MORE	1.00 OR MORE
											>=90	<=32	<=32	<=0										
PETERSBURG	45.6F	21.7	33.7F	-4.1	69	12	3	31	964	0	0	7	25	0	2.33	-0.93	0.92	15	M 4.5	2	29	6	1	0
RICHMOND INTL AP	44.6	22.8	33.7	-4.2	67	11	4	30	962	0	0	6	24	0	3.28	0.24	0.98	14	5.1	3	29	7	2	0
SANDSTON	41.9	20.7	31.3	-5.2	65	12	1	31+	1039	0	0	8	26	0	A 3.40	0.03	0.80	15	M 4.8	3	29	7	2	0
WINTERPOCK 4 W															3.33		0.77	15	M 4.5			9	2	0
--DIVISIONAL DATA-----> WESTERN PIEDMONT 03			32.2	-3.7B											3.24	-0.60B								
ALTAVISTA															3.33		0.85	12	0.0			7	3	0
APPOMATTOX	39.6M	19.2M	29.4M	-5.7	58	28+	2	07	1112E	0	0	9	25	0	3.67	0.53	0.94	12	3.0	1	29	8	2	0
BEDFORD 4 NW															2.57		0.80	11	0.6	1	29	6	2	0
BROOKNEAL	41.9M	17.2M	29.5M	-1.8	61	21	-2	31+	1089E	0	0	7	28	2	3.90	0.23	1.22	11	3.1	2	29	8	2	1
CHARLOTTE COURT HOUSE	41.5M	21.0	31.3M	-4.7	61	28	7	30+	1044E	0	0	6	28	0	3.37	-0.30	1.45	12	2.2	1	30	6	3	1
CHARLOTTESVILLE 2W	39.4	19.7	29.5	-6.4	59	21	3	08+	1095	0	0	8	28	0	2.76	-0.34	0.89	11	3.3	2	23	5	3	0
CHATHAM	40.8	15.9	28.4	-6.2	62	28	-7	31	1128	0	0	8	31	2	4.79	1.01	1.16	11	1.7	2	30	8	5	2
CONCORD 4 SSW															3.42		0.90	12	2.5	2	22	7	3	0
DANVILLE REGIONAL AP	44.6	21.6	33.1	-4.6	63	27+	0	30	982	0	0	5	26	1	3.29	-0.13	1.10	11	1.6	1	29	6	3	1
FREE UNION	39.3M	15.9M	27.6M		58	21	2	31+	1150E	0	0	8	28	0	3.07		0.97	11	M 3.4	M 1	29	6	3	0
HOLCOMB ROCK															3.34		1.28	12	1.4	1	22	6	3	1
HUDDLESTON 4 SW															2.85		0.83	11	2.2	2	29	6	3	0
LYNCHBURG INTL AP	40.8	18.5	29.7	-5.4	60	20	1	24	1088	0	0	6	30	0	3.27	0.13	1.01	11	2.0	1	28	5	3	1
MARTINSVILLE FLTR PLT	42.2	15.7	28.9	-6.6	64	21	-4	31	1111	0	0	6	29	3	3.54	0.05	0.95	11	3.0	2	29	8	3	0
MEADOWS OF DAN 5 SW	M	M	M									0	0	0	3.70		1.46	11	2.0	2	30	8	3	1
MONTEBELLO FISH CULTURAL STN	M	M	M		57	12	-7	08+	1369E	0	0	9	18	6	A 3.31		1.56	01	M 3.0	3	29	1	1	1
MONTICELLO	39.0	19.6	29.3	-4.2	56	21+	3	08+	1097	0	0	9	27	0	1.50	-0.86	0.59	12	M 3.1	M 2	22	5	1	0
PEDLAR DAM															3.35		1.22	11	2.0	1	29	6	3	1
ROCKY MT	40.6	17.6	29.1	-6.5	60	21	-1	31	1105	0	0	7	30	2	3.14	-0.23	1.05	12	2.2	2	29	6	3	1
SOUTH BOSTON	43.4	19.7	31.5	-4.9	63	28	0	31+	1031	0	0	5	28	2	3.21	-0.40	0.86	12+	2.3	1	29	7	3	0
STUART	41.9	17.8M	29.8M	-7.0	64	21	2	31+	1087E	0	0	7	28	0	M 2.82	-1.05	1.30	11	M 0.0	0		6	2	1
TYE RIVER 1 SE	42.4	18.3	30.3	-5.8	63	21	4	30+	1066	0	0	7	30	0	3.00	-0.21	1.15	11	M 1.0	1	22	5	3	1
WOOLWINE															2.58		1.42	11	1.7	1	29	5	2	1
--DIVISIONAL DATA-----> NORTHERN 04			29.8	-6.0B											3.23	-0.61B								
BOSTON 4 SE	38.4M	14.8M	26.6M	-6.1	58	21	-12	07	1160E	0	0	10	26	3	MA 1.99	-0.71	0.94	11	M 5.7	3	22	5	1	0
EDINBURG	36.7	12.2	24.4	-6.7	58	14	-9	23	1250	0	0	11	30	7	1.57	-0.51	0.39	06	M 9.2	5	22	6	0	0
FRONT ROYAL	36.0M	15.5M	25.8M	-7.1	58	12	1	08+	1206E	0	0	11	29	0	MA 1.24	-1.20	0.38	12	M 8.5	5	24	6	0	0
LINCOLN	34.2	12.3	23.2	-8.1	53	14	0	30+	1287	0	0	14	30	4	3.29		2.10	11	M 10.0	6	22	4	2	1
LURAY 5 E	39.2	15.2	27.2	-5.7	61	12	-2	24	1162	0	0	9	28	4	1.73	-0.95	0.41	06	6.4	3	03	7	0	0
MADISON	M	M	M									0	0	0	M				0.0					
MANASSAS	39.0M	17.8M	28.4M	-5.1	60	14	3	08+	1127E	0	0	9	27	0	MA 2.55		0.25	15	M 8.1	5	23	2	0	0

VIRGINIA
201401

MONTHLY STATION AND DIVISION SUMMARY

STATION	TEMPERATURE (°F)											PRECIPITATION (IN)												
	AVERAGE MAXIMUM	AVERAGE MINIMUM	AVERAGE	DEPARTURE FROM NORMAL	HIGHEST	DATE	LOWEST	DATE	HEATING DEG. DAYS	COOLING DEG. DAYS	NO. OF DAYS				TOTAL	DEPARTURE FROM NORMAL	GREATEST 24 HOURS	DATE	ICE PELLETS, SNOW			NO. OF DAYS		
											MAX		MIN						TOTAL	MAX DEPTH ON GROUND	DATE	.10 OR MORE	.50 OR MORE	1.00 OR MORE
											>=90	<=32	<=32	<=0										
MT WEATHER	33.8	14.6	24.2	-6.5	51	12	-3	08+	1257	0	0	14	27	5	2.54	-0.34	0.52	12	M 10.9	6	22	7	2	0
PIEDMONT RSCH STN	39.0	18.1	28.5	-5.8	58	21+	2	24	1123	0	0	8	29	0	A 2.79	0.03	0.30	16	M 7.2	2	22	6	0	0
SOMERSET	39.5	16.9	28.2	-5.3	59	21	0	30	1136	0	0	9	30	1	3.16	0.27	0.96	11	M 5.2	2	22	9	2	0
SPERRYVILLE	37.6	15.2	26.4	-6.7	57	21	-1	24+	1187	0	0	11	30	2	2.58	-0.49	0.80	06	M 5.3	2	27	6	3	0
STERLING RCS	35.5	15.0	25.2	-6.8	57	14	-2	24	1222	0	0	12	30	2	2.21	-0.64	0.56	22	F 9.1	5	22	6	1	0
VIENNA	35.4	17.0	26.2	-6.4	57	14	1	08+	1196	0	0	13	29	0	2.49	-0.64	0.60	12	M 10.0	6	22	7	2	0
WASHGTN DULLES INTL AP	36.9	17.5	27.2	-6.0	56	13	-2	23	1162	0	0	12	28	1	2.69	0.01	0.74	11	12.0	5	22	6	3	0
WASHINGTON REAGAN AP	40.8	23.7	32.2	-3.8	61	13	6	07	1008	0	0	7	24	0	2.58	-0.23	0.87	11	6.6	4	22	7	2	0
WINCHESTER	35.7	14.5	25.1	-6.7	55	14	-1	08+	1229	0	0	12	30	2	1.62	-0.94	0.41	22	M 8.9	5	23	5	0	0
WINCHESTER 7 SE	36.2M	10.9M	23.6M	-7.3	55	12	-8	24+	1306E	0	0	12	21	3	A 1.63	-0.56	0.49	22	M 9.3	7	22	4	0	0
WOODSTOCK 2 NE	36.6	12.0	24.3	-6.2	57	14	-3	23	1252	0	0	12	30	6	1.91	-0.76	0.48	22	M 11.0	8	22	5	0	0
--DIVISIONAL DATA----->			26.3	-5.5B											2.34	-0.83B								
CENTRAL MOUNTAIN 05																								
BUENA VISTA															2.29		0.75	11	1.6	1	29	5	2	0
COVINGTON FLTR PLT	37.5	13.8	25.7	-7.8	56	21	-1	31+	1212	0	0	9	30	5	1.43	-1.07	0.34	22	10.0	5	22	6	0	0
CRAIGSVILLE 2 S															M				0.0					
DALE ENTERPRISE	37.0	15.0	26.0	-4.4	56	21+	-5	23	1203	0	0	12	29	5	F 3.66	1.37	1.00	16+	F 9.5	7	23	10	2	2
GATHRIGHT DAM	33.7	12.7	23.2	-8.2	53	12	-4	24+	1288	0	0	13	30	6	1.15	-1.63	0.32	12	6.5	4	29	5	0	0
GLASGOW 1 SE															2.87		0.91	11	2.0	1	29	6	2	0
HOT SPRINGS	33.9	11.5	22.7	-7.3	56	12	-6	08+	1303	0	0	14	30	7	1.89	-1.57	0.55	12	10.7	7	23	5	1	0
LEXINGTON	38.3	15.5	26.9	-7.1	56	21	-2	31	1173	0	0	10	30	4	2.65	-0.14	0.90	11	4.6	2	30	7	2	0
MILLGAP	32.5	6.4	19.4	-8.3	53	12	-16	31	1405	0	0	13	30	12	1.58	-1.67	0.40	12	F 11.2	4	23	6	0	0
MTN GROVE															M 0.90		0.45	11	8.5	5	30	4	0	0
MUSTOE 1 SW	32.3	8.4	20.4	-7.7	51	11	-13	30	1377	0	0	14	30	11	2.09	-1.29	0.45	11	12.9	6	26	7	0	0
NEW CASTLE															1.91		0.67	11	5.0	3	29	6	1	0
ROANOKE 8 N	41.1F	17.8	29.5F	-5.8	59	21	0	25	1105	0	0	6	29	1	1.92	-1.10	0.67	11	1.1	0		5	1	0
ROANOKE INTL AP	40.5	19.8	30.2	-6.4	59	20	1	07	1071	0	0	9	26	0	1.81	-1.11	0.67	11	3.4	2	28	6	2	0
STAUNTON WATER TRMTMT PLT	37.0	16.2	26.6	-6.0	54	21	-3	07	1181	0	0	12	26	3	1.69	-0.98	0.34	12	M 4.7	3	26	6	0	0
WAYNESBORO WTP	38.8	16.2	27.5	-5.3	57	13+	0	25+	1153	0	0	10	30	3	1.88	-0.91	0.47	06	M 2.3	M 2	23	6	0	0
--DIVISIONAL DATA----->			25.3	-7.0B											1.94	-1.22B								
SOUTHWESTERN MOUNTAIN 06																								
ABINGDON 3S	37.1M	14.8M	25.9M	-7.2	57	11	-5	29+	1205E	0	0	10	27	5	M 2.13	-1.54	0.84	11	M 4.5	M 2	29	8	1	0
BIG STONE GAP	38.3	13.8	26.0	-8.0	56	12	-4	30	1200	0	0	9	29	7	3.13	-1.06	0.80	12	8.0	2	26	7	2	0
BLACKSBURG NWSO	36.6	12.9	24.8	-6.7	56	12	-5	31+	1240	0	0	11	30	6	1.65	-1.43	0.49	12	6.5	3	29	5	0	0
BURKES GARDEN	32.6M	9.0M	20.8M	-8.1	54	11	-18	31	1363E	0	0	14	29	8	M 1.94	-2.01	0.60	12	FM 9.5	3	29	7	1	0
CHRISTIANSBURG	36.1	14.5	25.3	-7.5	55	12	-5	08+	1224	0	0	12	30	6	1.54	-1.22	0.47	12	6.4	4	29	5	0	0
CLINTWOOD 1 W	36.4	11.5	24.0	-7.1	54	12	-6	31+	1263	0	0	9	29	8	2.20	-1.41	0.80	12	15.8	3	29	6	1	0

VIRGINIA
201401

MONTHLY STATION AND DIVISION SUMMARY

STATION	TEMPERATURE (°F)											PRECIPITATION (IN)												
	AVERAGE MAXIMUM	AVERAGE MINIMUM	AVERAGE	DEPARTURE FROM NORMAL	HIGHEST	DATE	LOWEST	DATE	HEATING DEG. DAYS	COOLING DEG. DAYS	NO. OF DAYS				TOTAL	DEPARTURE FROM NORMAL	GREATEST 24 HOURS	DATE	ICE PELLETS, SNOW			NO. OF DAYS		
											MAX		MIN						TOTAL	MAX DEPTH ON GROUND	DATE	.10 OR MORE	.50 OR MORE	1.00 OR MORE
											>=90	<=32	<=32	<=0										
COPPER HILL	34.7	14.2	24.4		53	12	-8	08+	1250	0	0	10	28	5	2.12		0.58	11	7.1	3	30	8	2	0
GALAX RADIO WBRF	37.0	14.8	25.9	-5.8	55	21	-6	30	1202	0	0	10	29	4	1.85	-1.51	0.78	11	3.1	1	31	4	1	0
GALAX WTP	35.8	12.6	24.2	-6.8	55	21	-6	31+	1257	0	0	10	30	6	1.16		0.64	11	3.0	1	29	3	1	0
GRUNDY	36.8	13.5	25.2	-7.7	57	12	-4	08+	1228	0	0	9	30	7	2.07	-1.12	0.50	11	8.7	3	26	7	1	0
JOHN FLANNAGAN LAKE	M	M	M		57	13	-5	08+	1299E	0	0	7	20	7	MA 2.20		0.28	03	M 4.5			3	0	0
LAFAYETTE 1 NE															1.71		0.57	12	4.5	3	29	4	2	0
LEBANON	40.0F	11.6	25.8F	-7.2	62	12	-10	30+	1208	0	0	7	29	7	3.38	0.34	1.50	29	4.4	3	29	5	2	1
NORA 4 SSE	33.8	13.7	23.8	-6.3	56	12	-10	08+	1273	0	0	13	28	8	2.48	-1.13	0.88	12	17.5	4	29	6	1	0
NORTH FORK LAKE	M	M	M		57	13	-7	31+	1322E	0	0	6	19	8	MA 1.90		0.25	14	M 6.5	3	22	2	0	0
PULASKI 2 E	39.0	15.6	27.3	-5.7	57	12	-7	08	1158	0	0	8	29	6	M 0.78	-2.07	0.40	11	1.8	1	29	2	0	0
RADFORD 3 N	37.3	13.8	25.5	-4.8	55	21	-3	07	1215	0	0	10	30	4	1.33	-1.60	0.48	11	2.0	1	29	3	0	0
RICHLANDS	39.2	11.3	25.2	-6.8	61	12	-8	31+	1227	0	0	11	29	7	1.72	-1.33	0.75	12	7.1	3	30	6	1	0
SALTVILLE 1N	38.6	12.0M	25.3M	-7.6	58	06	-7	31+	1227E	0	0	9	28	6	M 2.13	-1.47	1.15	26	F 2.5	F 2	26	4	1	1
STAFFORDSVILLE 3 ENE	36.9	12.5	24.7	-6.9	56	12	-4	08+	1241	0	0	10	30	6	1.25	-1.65	0.45	12	4.4	2	26	3	0	0
WILLIS															2.36		0.84	11	4.3	2	29	7	2	0
WISE 3E	37.0	16.1	26.6	-6.5	55	11	-10	07	1186	0	0	10	27	6	2.52	-1.36	0.98	11	10.5	3	28	7	1	0
WYTHEVILLE 1 S	36.7M	13.4M	25.1M	-5.6	60	12	-7	07	1231E	0	0	9	29	6	1.23	-1.67	0.49	12	6.0	2	26	4	0	0
--DIVISIONAL DATA----->			25.0	-7.0B											1.98	-1.56B								

VIRGINIA
201401

DAILY PRECIPITATION (INCHES)

STATION	TOTAL	DAY OF MONTH																																	
		01	02	03	04	05	06	07	08	09	10	11	12	13	14	15	16	17	18	19	20	21	22	23	24	25	26	27	28	29	30	31			
VIRGINIA																																			
TIDEWATER 01																																			
DISPUTANTA	2.19			0.54		0.26					0.40	0.42		0.11			0.08					0.14								0.24					
EASTVILLE	2.94			0.50		0.01	0.10				0.55	0.57		0.03	0.37			0.01				0.20								0.60					
EMPORIA 1 WNW	2.92		0.02	0.55		0.20	0.15				0.90	0.37	0.03	0.12	0.31	T	0.07	0.04		0.03	0.02	0.03								0.08					
FREDERICKSBURG SEWAGE	2.21			T		0.20				0.05	0.91	0.60		0.02	0.13	0.07						0.16								0.07					
HOLLAND 1 E	1.86									0.17	0.08	1.20			0.37			0.04																	
HOPEWELL	M 2.52		0.02	0.05		0.41				0.07	0.51			1.17	0.04	-						0.05									0.20				
NORFOLK INTL AP	3.23		0.49	0.03		0.03	0.05			0.10	1.27			0.36				0.01				0.06	0.06						0.34	0.43					
NORFOLK SOUTH	3.33		0.51	0.02		0.03	0.07			0.10	1.29			0.40				0.01				0.20	0.05						0.26	0.39					
N	M	-	-	-	-	-	-	-	-	-	-	-	-	-	-	-	-	-	-	-	-	-	-	-	-	-	-	-	-	-	-	-	-	-	
PAINTER 2W	3.06			0.64		0.24				0.04	0.51	0.51		0.48	0.02			0.02				0.19								0.41					
STONY CREEK 2 N	M 2.12			0.59		0.24	0.07			0.02			0.96	0.13		0.01						0.10								-	-	-			
SUFFOLK LAKE KILBY	3.52		0.56	0.01		0.06	0.13			0.19	1.40			0.38				0.01				0.11	0.02						0.45	0.20					
WAKEFIELD 1NW	3.47		0.55	T		0.26	0.17			0.23	1.19			0.50		0.05						0.17	0.03						0.28	0.04					
WALKERTON 2 NW	2.89			0.49		T	0.50			0.19	0.79	0.03		0.71	0.18						T						T		T						
WALLACETON LK DRUMMOND	4.95				0.10	0.03		0.10	0.07	0.40	0.75	0.30		0.12	1.00	0.03									0.90		T		T		0.25	0.85	0.05		
WALLOPS ISLAND NASA TEST FACIL	2.96		0.38	0.10		0.09	0.12			0.09	1.12			0.36				0.02				0.08	0.08				T	T		0.37	0.15				
WARSAW 2 NW	2.48			0.10		0.64			0.05	0.23	0.69			0.33								0.01	0.32							0.11					
WEST POINT 2 NW	3.31		0.01	0.50		0.43				0.17	0.58			0.89		0.08		0.01				0.03	0.37						0.02	0.22					
WILLIAMSBURG 2 N	3.66		0.59			0.03	0.25			0.15	1.69			0.53		0.03		T				0.10	0.03						0.23	0.03					
EASTERN PIEDMONT 02																																			
ALBERTA 5N	3.09			0.61		0.38	T			T	0.40	0.64		0.11	0.65	0.15	T					0.05								0.10					
AMELIA COURTHOUSE 1	5.75			0.08		0.25	0.24	0.05			0.90	0.71		0.28	0.47	0.17						0.10	0.06				T			2.50					
ASHLAND	2.63		0.09	0.27		0.07	0.25			0.30		0.78		0.28		0.28						0.10	0.06						T	0.15					
BREMO BLUFF	M 3.08			0.27		0.06	0.28			0.06	0.90	0.94		0.18	0.12	0.14							0.07							0.06				-	
BUCKINGHAM	2.80			0.27		0.01	0.29	0.05		0.01	1.13	0.55		0.22	0.12	0.02	0.01					0.08								0.04					
CAMP PICKETT	M 3.89			0.60		0.10	0.50				0.57	1.07		0.25	0.80	-						-								-					
CHASE CITY	4.48			0.56		0.59				0.02	0.86	0.73		0.05	0.57	0.10						1.00													
CLARKSVILLE	M 4.01	-	0.50			0.73					0.70	1.00		0.10	0.60	0.18						-								0.20					
CORBIN	2.70			0.20		0.12	0.06			0.16	0.86	0.62		0.15		0.04						0.25								0.24					
CROZIER	3.13			0.40		0.22						1.85			0.14	0.22						0.08								0.22					
FARMVILLE 2 N	M 3.22			0.43		0.02	0.16	T		T	0.92	0.93			0.60	0.04						0.12								-					
GREENBAY 3 NE	M 3.43					0.60					0.77	0.80		0.20	0.35							0.10							0.30	0.20					
JOHN H KERR DAM	3.03			0.51		0.22	0.09				0.58	0.72		0.13	0.43	0.15	0.01					0.04								0.12	0.02	0.01			
LOUISA	2.52		0.11	0.17		0.02	0.10			0.54	1.10			0.25		0.12							0.04	0.04						0.03					
PALMYRA 3S	2.92			0.25		0.28					1.19	0.60		0.22	0.13	0.09							0.10							0.06					
PETERSBURG	2.33			0.48		0.12	0.02			0.05	0.25			0.08	0.92	0.12	0.03					0.05								0.21					
RICHMOND INTL AP	3.28		0.41	T		0.05	0.37			0.23	0.80			0.98	0.01	0.06						0.13	T						0.15	0.09					
SANDSTON	A 3.40			*	*	* 0.89 _a				0.05	0.40	0.50		0.20	0.80	0.11						0.23								0.22					
WINTERPOCK 4 W	3.33		0.42			0.37	0.07			0.01	0.39	0.73		0.11	0.77	0.14	0.03					0.12								0.17					
WESTERN PIEDMONT 03																																			

VIRGINIA
201401

DAILY PRECIPITATION (INCHES)

STATION	TOTAL	DAY OF MONTH																															
		01	02	03	04	05	06	07	08	09	10	11	12	13	14	15	16	17	18	19	20	21	22	23	24	25	26	27	28	29	30	31	
ALTAVISTA	3.33		0.01	0.35		0.02	0.70				0.04	0.77	0.85		0.20	0.23						0.01	0.05									0.10	
APPOMATTOX	3.67			0.40		0.04	0.41	0.03			0.10	0.88	0.94		0.30	0.34	0.03						0.14									0.06	
BEDFORD 4 NW	2.57			0.16		0.03	0.43				0.06	0.80	0.70		0.17	0.16							0.01									0.05	
BROOKNEAL	3.90			0.47		0.03	0.26				0.09	1.22	0.97		0.27	0.32	0.02						0.12									0.13	
CHARLOTTE COURT HOUSE	3.37			0.17		T	0.11				0.02	0.67	1.45		0.03	0.63	T						0.25									0.04	
CHARLOTTESVILLE 2W	2.76			0.20		0.04	0.62				0.07	0.89	0.58		0.06	0.08	0.03						0.17									0.02	
CHATHAM	4.79			0.50		0.02	0.53	0.04			0.15	1.16	1.10		0.11	0.30							T									0.88	
CONCORD 4 SSW	3.42			0.37		0.02	0.59				0.07	0.73	0.90		0.30	0.27	0.01						0.12									0.04	
DANVILLE REGIONAL AP	3.29		0.51			0.21	0.13				0.88	1.10		0.03	0.36	0.01						0.02							0.03			0.01	
FREE UNION	3.07			0.23		0.09	0.73				0.13	0.97	0.60		0.04	0.05	0.01			T			0.19			T						0.03	
HOLCOMB ROCK	3.34			0.22			0.52				T	0.83	1.28		0.11	0.26	T						0.09									0.03	
HUDDLESTON 4 SW	2.85			0.30		0.02	0.55	0.03				0.83	0.71		0.02	0.25							0.03									0.11	
LYNCHBURG INTL AP	3.27		0.31			0.70	0.04				0.77	1.01		0.06	0.31	T						0.05							0.02			0.19	
MARTINSVILLE FLTR PLT	3.54			0.30		0.02	0.57				0.20	0.95	0.88		0.20	0.16							0.07									0.20	
MEADOWS OF DAN 5 SW	3.70			0.52		0.12	0.17				0.28	1.46	0.85		0.10																	0.00 _a	
MONTEBELLO FISH CULTURAL STN	A 3.31	1.56	* 0.00 _a			*	*	0.00 _a				*	1.75 _a		*	*	*	0.00 _a				*	*	0.00 _a		*	*	*	*	*	*	0.00 _a	
MONTICELLO	1.50			0.19		0.20	0.04				0.03	0.13	0.59		0.08	0.07	0.02						0.13									0.02	
PEDLAR DAM	3.35			0.24		T	0.58	T			T	1.22	0.78		0.23	0.17	T			0.05			0.05			T						0.03	
ROCKY MT	3.14			0.23		0.04	0.30				0.06	0.56	1.05		0.08	0.25	T						0.50		0.02				T			0.05	
SOUTH BOSTON	3.21			0.54		0.04	0.13	0.06				0.86	0.86		0.05	0.36	0.04	0.02					0.10									0.15	
STUART	M 2.82					0.01	0.30				0.24	1.30	0.70		0.11	0.11	0.01					0.01	0.02					0.01				-	
TYE RIVER 1 SE	3.00			0.25		T	0.85				T	1.15	0.52		0.18		T						0.05									T	
WOOLWINE	2.58			0.16		0.05	0.16				0.03	1.42	0.55		T	0.14	0.02						T									0.05	
NORTHERN 04																																	
BOSTON 4 SE	MA 1.99			0.10		0.39	0.23					0.94			0.29								*	0.00 _a								0.04	-
EDINBURG	1.57			0.15			0.39				0.16	0.07	0.33			0.11	0.06			0.02		0.02	0.26									T	
FRONT ROYAL	MA 1.24	* 0.00 _a		0.18							0.05	0.14	0.38			0.08	0.10			0.10			0.21									-	
LINCOLN	3.29			0.39		0.30						2.10											0.50										-
LURAY 5 E	1.73			0.20			0.41				0.22		0.34		0.01	0.14	0.14			0.06		0.01	0.16				0.02					0.02	
MADISON	M	-	-	-	-	-	-	-	-	-	-	-	-	-	-	-	-	-	-	-	-	-	-	-	-	-	-	-	-	-	-	-	-
MANASSAS	MA 2.55			0.20		*	0.60 _a				*	*	1.50 _a			0.25	-						-										-
MT WEATHER	2.54			0.28			0.50				0.07	0.30	0.52		0.05	0.09	0.01			0.16		0.25	0.31									0.02	
PIEDMONT RSCH STN	A 2.79			0.12		*	0.49 _a				0.10	*	1.26 _a		0.10	0.15	0.30						0.25	0.41								0.05	
SOMERSET	3.16			0.23		0.06	0.56				0.12	0.96	0.32		0.10	0.18	0.17						0.41										0.02
SPERRYVILLE	2.58			0.14			0.80	0.01			0.02	0.62	0.52			0.11	0.06						0.24				0.03						0.02
STERLING RCS	2.21			T			0.34	T			0.13	0.48	0.48		0.01	0.15	0.01			0.03			0.56		T		T					0.02	
VIENNA	2.49			0.36		0.01	0.33				0.10	0.58	0.60	0.01	0.04	0.01	0.01						0.34										0.10
WASHGTN DULLES INTL AP	2.69		0.36	T		0.23	0.08				0.53	0.74		T	0.17	0.01	T					0.56				T						0.01	
WASHINGTON REAGAN AP	2.58		0.34	T		0.11	0.13				0.57	0.87			0.35	T	T					0.18		T								0.03	
WINCHESTER	1.62			0.23			0.29				0.07	0.03	0.33		0.01	0.11	0.07					0.04	0.41		T							T	
WINCHESTER 7 SE	A 1.63			0.23		*	0.34 _a				0.11	0.04	0.27			0.07	0.05					*	T _a	0.49									T
WOODSTOCK 2 NE	1.91			0.19			0.47				0.03	0.15	0.44			0.04	0.06					0.05	0.48										T

VIRGINIA
201401

DAILY PRECIPITATION (INCHES)

STATION	TOTAL	DAY OF MONTH																															
		01	02	03	04	05	06	07	08	09	10	11	12	13	14	15	16	17	18	19	20	21	22	23	24	25	26	27	28	29	30	31	
CENTRAL MOUNTAIN 05																																	
BUENA VISTA	2.29			0.21		0.33				0.08	0.75	0.57		0.07	0.10			0.05				0.09										0.04	
COVINGTON FLTR PLT	1.43			0.09						0.21	0.11	0.32		0.10	0.11			0.04	0.03			0.34										0.08	
CRAIGSVILLE 2 S	M	-	-	-	-	-	-	-	-	-	-	-	-	-	-	-	-	-	-	-	-	-	-	-	-	-	-	-	-	-	-	-	-
DALE ENTERPRISE	F 3.66			1.00		0.45				0.17	0.26			0.11	0.12	1.00		0.25			7.00 ^o						0.20				0.10		
GATHRIGHT DAM	1.15			0.10						0.22	0.02	0.32		0.10	0.03	T		T	T		T	0.30	T			T				0.06			
GLASGOW 1 SE	2.87			0.19		0.02	0.42			0.03	0.91	0.81		0.14	0.08	T		0.15				0.09		T		T				0.03			
HOT SPRINGS	1.89			0.12		0.04				0.30	0.05	0.55		0.07	0.05	T		0.12				0.40	0.08			0.07			0.02	0.02			
LEXINGTON	2.65			0.24		0.36				0.14	0.90	0.51		0.10	0.09			0.03				0.20								0.08			
MILLGAP	1.58			0.16		0.11				0.11	0.16	0.40		0.05	0.04	T		0.03	0.01			0.38	T			0.09				0.02			
MTN GROVE	M 0.90		T	T		T					0.45	-		0.10		T		T		T		0.25	T		T			0.10		T			
MUSTOE 1 SW	2.09		0.22			0.12	0.08			0.33	0.45		0.03	0.17	0.01		0.05		0.02		0.43		T		0.13			0.05					
NEW CASTLE	1.91			0.16		0.03				0.14	0.67	0.44		0.12		0.02		T				0.24				T			0.09				
ROANOKE 8 N	1.92			0.10		0.05	0.17			0.06	0.67	0.48		0.06	0.13							0.08				T			0.05	0.07			
ROANOKE INTL AP	1.81		0.11			0.11	0.05			0.58	0.67		T	0.14	T		T				0.10		T		T			0.05	0.05	0.07			
STAUNTON WATER TRMTMT PLT	1.69			0.18		0.31				0.16	0.31	0.34		0.16	0.31	0.34		0.02	0.04		T	0.25		T		0.01			0.03				
WAYNESBORO WTP	1.88			0.10		0.47				0.06	0.40	0.35			0.15			0.08				0.27											
SOUTHWESTERN MOUNTAIN 06																																	
ABINGDON 3S	M 2.13			0.25		-		0.23			0.84	0.15		0.20		0.16		0.01	0.03			0.01	0.02			0.10			0.03	0.10			
BIG STONE GAP	3.13		0.05	0.25		0.63				0.12	0.48	0.80		0.49	0.01		0.05				0.21	0.02			0.02					0.02			
BLACKSBURG NWSO	1.65			0.10	T	0.01	0.01			0.03	0.46	0.49		0.18	0.09	T		0.02			0.12	T	T		0.05				0.09				
BURKES GARDEN	M 1.94			0.21	0.20	0.11	0.07			0.04	0.16	0.60		0.05	0.06	0.02		0.05	T		T	0.12	0.01	T	T	0.15			0.09				
CHRISTIANSBURG	1.54			0.07		0.04	T			0.04	0.46	0.47		0.12		T		0.08			0.10				0.03			0.13					
CLINTWOOD 1 W	2.20		0.01	0.25	T	0.25	0.08			0.06	0.02	0.80		0.30	0.02	0.01	T	0.06	T	T	0.15	T	0.01		0.11			0.07					
COPPER HILL	2.12					0.15	0.14				0.58	0.55		0.03	0.18	0.10		0.06			0.15				0.04				0.14				
GALAX RADIO WBRF	1.85					0.15				0.36	0.78		0.07	0.23		0.08		0.03			0.01								0.01	0.08			
GALAX WTP	1.16					0.02	T			0.10	0.64	0.04		0.02		0.21		0.03			0.05								T	0.05			
GRUNDY	2.07		0.01	0.23		0.30	0.08			0.09	0.50	0.26		0.21	T	T		0.06		T	T	0.16	T	T		0.11			0.06				
JOHN FLANNAGAN LAKE	MA 2.20	*	0.01 _a	0.28	*	0.35 _a	0.05			0.08	*	* 0.75 _a	0.24	0.07		0.01	*	*	*	0.00 _a	0.19	0.01	0.01	-	-	0.09			0.06				
LAFAYETTE 1 NE	1.71			0.10		0.09					0.55	0.57		0.11	0.09	T		0.04			0.06				0.01				0.09				
LEBANON	3.38			0.28		0.04				0.34	0.09	0.69		0.04			0.33	0.02							0.03		0.02		1.50				
NORA 4 SSE	2.48		T	0.25	T	0.37	0.06			0.09	0.04	0.88		0.10	0.06	0.03	0.04	0.04	T	T	0.15	0.01	0.06		0.09			0.21					
NORTH FORK LAKE	MA 1.90	-	-	-	*	0.32 _a	0.06			0.01	*	* 0.85 _a	0.25	0.07		0.04	0.04	*	*	*	0.13 _a	0.13	0.01	T	*	0.04 _a			0.04				
PULASKI 2 E	M 0.78					0.01	0.04			0.01	0.40	-		-	0.13	0.08					0.07	T	T		0.01			0.03					
RADFORD 3 N	1.33			0.05		0.03	T			0.06	0.48	0.37		0.15		T		0.03			0.02	0.09		T		0.02		0.03					
RICHLANDS	1.72			0.30		0.10	0.02			0.01		0.75		0.10	0.02	T	T	0.14			0.05	0.01			T	0.05		0.17					
SALTVILLE 1N	M 2.13			0.22		0.19	0.01			0.09	-	-		0.14	0.07	0.05		0.02	0.01		T	0.09		T		1.15		0.09					
STAFFORDSVILLE 3 ENE	1.25			0.04		0.01	0.05			0.06	0.34	0.45		0.04		0.01		T			0.17		0.02		0.04			0.02					
WILLIS	2.36			0.12		T	0.12			0.04	0.84	0.69		0.14		0.20		0.04			0.05								0.12				
WISE 3E	2.52		0.16	0.05		0.40				0.09	0.98		0.20	0.06	0.02		T	0.05			0.01	T			0.10	0.15		0.20	0.05				
WYTHEVILLE 1 S	1.23			0.05		0.04				0.02	0.15	0.49		0.06	0.05	0.10				T		0.08				0.14			0.05				

VIRGINIA
201401

DAILY TEMPERATURES (°F)

STATION	OB.TIME	MAX/MIN	DAY OF MONTH																													AVERAGE					
			01	02	03	04	05	06	07	08	09	10	11	12	13	14	15	16	17	18	19	20	21	22	23	24	25	26	27	28	29		30	31			
FREE UNION	08	MAX MIN	47 23	50 23	36 17	27 9	35 9	46 29	44 3	20 3	35 7	42 24	35 30	51 35	54 24	57 24	49 24	54 20	40 20	49 20	33 20	45 20	58 26	31 9	23 5	27 4	24 5		36	54	19	25	33	39.3			
LYNCHBURG INTL AP	24	MAX MIN	46 22	39 25	35 14	36 13	37 31	43 7	20 2	40 8	47 21	38 31	52 37	54 30	57 27	54 29	53 26	39 23	46 20	35 18	47 20	60 28	37 11	25 11	28 1	24 15	35 17	46	58	23	25	33	53	40.8			
MARTINSVILLE FLTR PLT	07	MAX MIN	48 20	47 19	43 19	29 11	38 10	41 31	42 5	24 3	40 6	49 20	39 33	54 38	56 23	56 23	55 23	55 22	41 20	48 19	35 20	49 19	64 25	43 17	26 9	33 -3	26 3	37	51	59	20	26	34	42.2			
MEADOWS OF DAN 5 SW	07	MAX MIN																																			M M
MONTEBELLO FISH CULTURAL STN	07	MAX MIN	42 22		44 8	21 8			48 -7	11 -7	31 10	40 22		57 31	44 27				47 13	42 12	28 11	35 27			10 -2	17 -4					10	16	31		M M		
MONTECELLO	08	MAX MIN	44 27	48 27	36 18	24 14	33 14	44 30	44 3	18 3	33 10	40 24	37 29	52 35	52 34	56 34	56 31	54 29	38 25	46 25	39 22	44 33	56 30	32 10	32 9	32 7	22 7	33 16	38 25	53 15	19 8	23 7	30 7	39.0			
ROCKY MT	07	MAX MIN	46 24	48 23	40 17	29 11	39 12	45 30	39 2	22 2	43 7	49 22	39 32	53 38	55 27	55 26	54 26	49 25	42 23	48 25	35 21	45 25	60 28	41 14	24 6	25 6	27 18	34 20	44 13	54 10	16 23	26 30	33 30	40.6			
SOUTH BOSTON	07	MAX MIN	50 25	46 25	45 23	34 14	41 14	44 33	45 8	23 7	40 8	48 21	41 34	56 36	51 27	60 28	53 29	56 23	43 23	51 22	37 25	52 26	62 18	42 13	28 10	33 10	26 21	37 24	50 23	63 13	25 0	28 0	34 0	43.4			
STUART	07	MAX MIN	47 26	48 24	45 18	32 13	39 13	41 30	39 3	23 3	28 9	50 43	43	52 36	57 30	53 30	56 28	54 23	42 22	47 22	35 21	47 23	64 25	43 16	24 14	33 7	28 7	36 18	50 23	58 17	24 10	28 2	33 2	41.9			
TYE RIVER 1 SE	07	MAX MIN	44 23	52 24	40 17	35 11	40 12	45 32	41 4	22 5	42 9	45 24	41 32	50 38	56 30	58 32	55 24	56 25	45 22	50 21	35 22	50 24	63 31	37 9	30 10	30 4	29 5	35 20	45 22	60 17	25 8	31 4	26 5	42.4			
NORTHERN 04 BOSTON 4 SE	07	MAX MIN	46 22	46 26	37 17	25 9	33 6	43 31	40 -12	20 -10	33 5	38 29	37 15	53 21	50 25	55 35	48 24	47 27	37 21	48 16	31 24	47 29	58 30	30 20	24 23	23 32	32 51	56 17	17 26					38.4			
EDINBURG	07	MAX MIN	40 22	52 24	31 14	22 3	36 3	47 15	41 0	18 1	30 6	37 20	39 31	53 36	50 23	58 23	47 23	49 21	36 20	48 20	28 16	43 21	54 25	29 0	18 -9	19 -7	22 0	33 13	36 12	45 6	16 1	26 -3	34 -2	36.7			
FRONT ROYAL	07	MAX MIN		46 27	31 14	21 9	39 12	45 23	46 1	16 1	26 5	35 21	36 31	58 33	49 30	49 30	45 26	46 24	36 23	47 17	47 19	34 2	44 5	33 15	17 10	17 5	21 15	34 14	38 7	47 13	13 24	24 29	36.0				
LINCOLN	07	MAX MIN	45 22	30 0	33 0	20 0	30 1	43 11	42 1	14 1	29 5	36 22	34 24	51 34	48 22	53 22	48 29	45 22	36 21	46 21	26 17	44 22	52 22	33 4	14 4	22 6	20 14	31 12	32 7	39 7	13 0	21 1	30 1	34.2			
LURAY 5 E	08	MAX MIN	41 22	52 28	34 14	23 6	37 12	57 34	38 0	17 0	30 9	38 23	46 36	61 36	50 29	60 31	47 27	51 20	37 23	49 18	28 15	44 22	56 27	34 3	20 0	26 -2	30 5	37 7	48 10	50 7	16 1	24 2	34 7	39.2			
MADISON	08	MAX MIN																																		M M	
MANASSAS	07	MAX MIN	47 23	48 29	36 15	23 9	34 10	45 33	44 3	19 3	29 8	38 24	36 31	53 36	53 26	60 26	49 32	48 31	40 26	49 19	31 21	50 32	58 5	34 4	17 4	26 4	23 15	33 14	40 18	50 10		26	32	39.0			
MT WEATHER	07	MAX MIN	38 24	41 27	31 9	19 9	39 10	44 28	40 -3	14 -3	27 8	32 25	39 28	51 35	46 34	49 35	44 35	47 24	34 22	44 17	24 15	41 21	50 26	26 -2	14 -2	19 1	19 -1	29 9	43 10	46 1	9 1	20 2	30 9	33.8			
PIEDMONT RSCH STN	08	MAX MIN	47 26	50 25	38 18	25 9	34 12	44 30	46 4	20 5	33 8	42 25	36 30	52 36	53 31	58 34	49 28	54 29	39 24	48 24	32 22	47 22	58 29	33 9	20 4	26 2	22 8	33 16	39 13	56 5	17 5	26 5	33 11	39.0			
SOMERSET	07	MAX MIN	47 23	50 24	38 18	26 8	35 11	45 30	44 3	21 5	34 8	43 24	36 31	52 36	54 27	57 31	48 25	56 28	40 22	49 22	32 20	48 22	59 27	33 9	21 1	28 2	24 9	33 17	36 19	57 15	18 3	27 0	32 3	39.5			
SPERRYVILLE	06	MAX	45	49	35	26	33	50	50	20	28	38	34	52	52	54	51	49	37	45	31	46	57	32	20	25	22	33	33	51	18	22	29	37.6			

VIRGINIA
201401

DAILY TEMPERATURES (°F)

STATION	OB. TIME	MAX/MIN	DAY OF MONTH																															AVERAGE
			01	02	03	04	05	06	07	08	09	10	11	12	13	14	15	16	17	18	19	20	21	22	23	24	25	26	27	28	29	30	31	
			STERLING RCS	07	MIN MAX MIN	22 42 21	26 44 25	16 34 13	8 20 6	11 31 7	27 42 1	2 16 1	6 25 7	6 36 23	21 35 30	30 50 34	34 49 24	27 57 24	26 48 31	27 45 30	28 37 24	18 47 18	21 27 17	16 46 18	17 54 31	24 33 4	6 16 -1	-1 20 -2	5 32 14	9 37 9	11 43 8	12 43 7	9 14 8	
VIENNA	07	MAX MIN	42 26	43 25	35 12	20 9	33 12	44 31	44 1	15 1	26 10	31 23	37 31	52 37	49 29	57 29	46 34	48 31	35 19	45 26	26 46	46 53	32 14	23 20	20 31	39 39	49 49	13 13	21 21	29 29	35.4 17.0			
WASHGTN DULLES INTL AP	24	MAX MIN	46 23	37 28	29 9	32 8	37 24	44 11	18 1	26 5	37 24	35 34	51 28	50 24	56 34	50 34	49 26	37 47	47 36	47 47	36 54	47 37	15 15	23 23	21 31	31 32	46 46	18 18	23 23	31 31	48 48	36.9 17.5		
WASHINGTON REAGAN AP	24	MAX MIN	48 30	39 33	33 18	34 17	42 31	49 11	21 6	31 13	41 29	58 38	54 37	61 36	54 41	49 39	40 34	51 25	59 38	41 19	28 24	19 21	9 12	11 22	28 19	24 23	35 35	54 54	23 23	13 13	16 16	25 25	23.7 40.8	
WINCHESTER	07	MAX MIN	40 21	49 25	31 13	20 8	34 10	45 17	40 -1	15 -1	28 8	36 21	40 31	53 33	48 26	55 26	49 30	47 26	38 25	50 20	26 17	43 18	52 28	28 16	20 20	34 34	36 36	45 45	14 14	24 24	32 32	35.7 14.5		
WINCHESTER 7 SE	08	MAX MIN	41 19	47 24	31 13	23 3	46 16	46 0	17 1	27 6	35 21	40 31	55 34	49 23	49 23	37 23	50 23	49 23	37 15	50 15	28 2	53 2	31 -8	17 -8	22 1	22 8	34 5	35 11	45 10	15 4	24 4	30 4	36.2 10.9	
WOODSTOCK 2 NE	07	MAX MIN	41 21	50 25	31 14	22 3	35 4	45 18	42 -1	17 -1	29 5	39 21	40 30	53 36	50 21	57 24	48 21	48 20	42 19	50 19	28 16	44 18	54 21	30 2	18 -3	20 -2	20 3	35 7	27 6	41 6	17 2	25 -2	37 -2	36.6 12.0
CENTRAL MOUNTAIN 05 COVINGTON FLTR PLT	07	MAX MIN	41 22	53 20	37 15	25 11	41 12	52 26	37 -1	17 -1	38 4	51 18	38 31	53 38	51 23	47 23	50 26	38 20	38 21	49 18	26 17	40 21	56 27	35 7	19 6	21 -1	21 3	31 12	39 10	42 1	18 -1	24 -1	35 13.8	
DALE ENTERPRISE	07	MAX MIN	41 24	51 24	34 12	29 8	43 12	46 29	20 0	33 0	38 7	53 30	51 38	51 27	56 38	48 25	48 20	35 21	47 18	32 19	32 23	56 32	32 -2	16 -5	21 -4	21 3	22 12	35 12	48 7	15 5	25 3	31 5	37.0 15.0	
GATHRIGHT DAM	07	MAX MIN	34 22	47 21	36 12	20 8	36 8	48 24	31 -4	12 -4	33 2	45 21	40 31	53 36	46 25	46 25	47 26	37 18	34 17	44 15	24 15	36 21	50 28	31 5	15 5	16 -4	17 -2	27 8	31 10	44 6	15 3	20 -2	29 -2	33.7 12.7
HOT SPRINGS	07	MAX MIN	36 20	46 21	34 11	19 8	33 10	49 25	32 -6	11 -6	32 5	44 20	48 32	56 26	44 26	51 26	45 26	39 16	31 15	42 14	23 13	35 13	48 26	31 0	14 1	16 -4	22 7	26 6	39 4	43 1	15 -1	19 -2	28 11.5	
LEXINGTON	07	MAX MIN	43 21	50 20	36 16	27 11	46 11	41 29	17 0	37 5	48 19	38 31	52 37	51 24	53 23	50 24	47 22	38 21	49 22	29 21	42 22	56 28	32 10	20 9	24 2	22 2	32 17	43 11	52 9	19 -1	24 -2	33 15.5		
MILLGAP	07	MAX MIN	30 15	47 16	34 8	18 -4	37 -4	45 10	33 -9	11 -9	30 1	46 14	41 30	53 33	45 19	33 18	45 18	33 11	33 10	42 13	21 8	37 21	47 20	29 -2	15 -3	18 -6	24 -12	33 9	38 4	13 0	18 -1	30 -16	32.5 6.4	
MUSTOE 1 SW	24	MAX MIN	46 15	33 18	18 0	34 0	40 9	44 -5	11 -8	29 -2	44 13	40 28	51 35	42 24	48 24	44 20	34 10	31 20	41 11	23 15	34 22	47 9	29 -5	13 0	12 -8	16 -6	25 2	32 5	39 1	13 -6	17 -13	28 13	43 8.4	
ROANOKE 8 N	07	MAX MIN	45 25	50 25	40 15	40 13	38 13	46 30	39 1	19 1	43 9	49 34	53 40	52 27	54 27	53 28	48 24	40 22	49 22	30 21	44 31	59 12	35 11	22 6	25 0	25 18	35 17	46 13	37 9	17 6	32 8	33 8	41.1 17.8	
ROANOKE INTL AP	24	MAX MIN	49 26	41 28	30 15	37 13	38 27	46 4	20 1	43 11	49 24	53 33	54 38	54 27	48 33	40 29	48 22	48 24	32 21	44 22	59 36	37 19	23 12	26 8	24 5	35 16	49 20	54 19	19 13	25 7	32 6	56 19.8		
STAUNTON WATER TRMTMT PLT	08	MAX MIN	41 28	50 30	37 12	24 11	36 15	46 33	34 -3	17 -2	32 11	44 26	49 31	52 36	48 36	48 38	49 35	36 19	46 17	46 17	28 26	42 29	54 2	30 3	20 -2	20 1	30 1	44 15	47 7	15 3	25 2	31 5	37.0 16.2	
WAYNESBORO WTP	07	MAX MIN	42 24	48 24	37 15	23 12	34 16	55 30	43 0	17 0	35 7	43 26	49 32	57 39	57 27	55 26	55 26	50 23	36 21	48 20	29 20	42 23	55 28	33 4	17 3	24 1	20 0	32 16	46 15	51 10	16 7	24 3	31 3	38.8 16.2
SOUTHWESTERN MOUNTAIN 06 ABINGDON 3S	22	MAX MIN	38 21	50 25	38 10	23 12	56 23	23 -5	13 -4	39 13	52 32	57 40	54 32	49 25	49 27	36 17	35 18	46 16	30 18	40 30	52 41	41 21	21 8	24 -3	22 4	27 9	47 13	41 11	17 -5	18 -4	37.1 14.8			

VIRGINIA
201401

DAILY TEMPERATURES (°F)

STATION	OB. TIME	MAX/MIN	DAY OF MONTH																															AVERAGE
			01	02	03	04	05	06	07	08	09	10	11	12	13	14	15	16	17	18	19	20	21	22	23	24	25	26	27	28	29	30	31	
			BIG STONE GAP	08	MAX MIN	43 20	50 20	38 13	27 14	43 14	53 18	23 -3	14 -3	33 5	46 24	55 36	56 33	53 28	46 28	53 29	41 17	37 19	42 19	34 25	44 26	55 7	39 5	24 5	24 -1	24 7	29 45	45 38	17 12	
BLACKSBURG NWSO	07	MAX MIN	39 19	48 19	35 10	21 9	40 10	47 31	31 -5	15 -4	39 6	50 17	46 31	56 34	50 24	49 24	49 24	38 18	36 18	46 15	28 14	40 26	54 8	32 5	18 -2	21 -2	27 10	46 14	46 8	14 2	21 -5	33 -5	36.6	
BURKES GARDEN	07	MAX MIN	32 16	45 14	39 4	19 2	37 13	50 25	25 -10	14 -11	33 13	43 15	54 35	53 31		47 32	43 32	30 11	39 8	27 8	36 24	45 21	35 1	13 -1	13 -7	17 -10	22 12	40 16	40 4	11 -5	13 -17	32 -18	32.6	
CHRISTIANSBURG	07	MAX MIN	39 24	48 24	36 9	21 8	41 13	46 32	32 -5	14 8	38 21	49 30	55 52	48 34	50 28	48 28	36 18	35 18	45 13	30 30	37 32	51 7	32 5	17 -2	20 -3	19 16	26 19	45 6	46 1	12 0	20 -1	32 -1	36.1	
CLINTWOOD 1 W	07	MAX MIN	35 18	48 18	39 10	19 7	42 7	49 19	19 -6	13 -6	36 0	44 20	53 32	54 34	51 28	49 40	39 16	36 17	43 15	43 12	33 11	40 8	53 24	34 21	21 18	18 -3	21 32	32 46	41 15	19 19	36 36	36.4		
COPPER HILL	07	MAX MIN	35 24	43 28	43 8	17 7	41 13	47 37	12 -8	35 -8	43 7	50 26	53 26	45 31	52 31	45 34	38 17	38 15	43 12	27 11	35 27	47 33	33 14	14 18	18 16	28 28	42 44	44 14	16 16	24 16	24 24	34.7		
GALAX RADIO WBRF	07	MAX MIN	38 18	44 23	38 9	28 10	43 27	42 25	42 -4	14 -2	42 11	44 23	50 35	50 34	49 24	47 30	47 23	39 13	41 18	41 13	28 17	38 24	55 6	37 7	22 -2	23 2	31 13	48 29	44 9	13 2	21 -6	30 4	37.0	
GALAX WTP	07	MAX MIN	38 19	43 19	38 10	21 10	39 13	42 30	30 -3	13 -3	42 4	44 20	47 32	50 34	48 24	42 24	49 23	38 16	35 15	42 14	28 14	37 24	55 8	39 7	21 -1	23 -1	33 12	47 12	45 10	13 4	19 -6	28 -6	35.8	
GRUNDY	07	MAX MIN	39 22	52 22	38 12	20 10	39 11	45 21	21 -4	15 -4	36 5	41 21	51 31	57 35	51 27	52 28	38 29	37 21	45 16	35 23	42 23	55 7	33 6	21 -1	19 -2	24 6	27 12	46 11	36 -1	17 -2	38 -2	36.8		
JOHN FLANNAGAN LAKE	07	MAX MIN		53 22	39 10			51 -5	20 -5	14 -5	35 5	43 21			57 28	51 29	51 19	37 20	36 16			55 15	32 4	20 6	18 -3		47 -3	42 8	14 -2	22 -2	39 -3	M		
LEBANON	07	MAX MIN	47 18	50 18	42 10	22 9	47 11	60 22	27 -5	11 -6	35 5	50 19	61 37	62 35	50 31	51 27	35 26	36 13	44 13	34 14	40 13	40 30	51 25	43 5	42 -3	22 -3	26 4	46 7	44 -10	14 -10	19 -9	38 11.6		
NORA 4 SSE	07	MAX MIN	34 24	46 33	37 6	23 5	41 23	47 18	18 -10	9 -10	33 4	42 28	55 42	56 32	48 32	46 37	48 30	32 15	30 15	39 11	28 11	38 26	50 28	33 0	16 0	17 -5	17 -5	25 13	43 15	41 5	11 -2	15 -3	29 8	33.8
NORTH FORK LAKE	08	MAX MIN					52 9	20 -7	16 -7	36 0	43 21			57 28	52 29	38 18	37 18					55 14	35 5	22 4	18 -6		47 -6	47 9	14 -2	22 -6	37 -7	M		
PULASKI 2 E	07	MAX MIN	42 25	50 22	50 12	24 10	42 9	48 33	33 -2	17 -7	40 9	52 21	40 32	57 37	52 26	52 26	37 16	38 17	40 17	50 31	40 29	40 54	33 24	24 11	22 -1	28 -1	28 19	47 14	46 11	15 8	24 0	36 -3	39.0	
RADFORD 3 N	07	MAX MIN	39 18	49 20	35 10	20 8	40 16	48 30	30 -3	15 -2	41 6	51 17	51 31	51 36	54 23	54 24	50 23	38 18	38 18	48 16	31 17	39 26	55 26	34 7	17 6	21 -1	20 1	27 12	47 17	46 6	13 2	21 -2	33 1	37.3
RICHLANDS	07	MAX MIN	38 19	53 18	53 9	23 7	51 7	60 19	21 -6	12 -6	21 5	51 34	58 35	61 25	48 24	50 27	44 18	35 5	45 14	31 14	40 30	51 25	36 4	20 5	20 -4	22 -4	27 10	46 15	45 3	45 -8	27 -8	30 -8	39.2	
SALTVILLE 1N	07	MAX MIN	41 19	53 20	37 12	23 10	47 11	58 26	14 -3	37 -3	52 5	53 34	57 33	50 23	48 23	51 24	36 17	35 16	47 16	47 16	40 16	52 22	38 8	23 8	25 1	21 -5	24 8	47 6	18 12	38 -5	21 -7	38 -7	38.6	
STAFFORDSVILLE 3 ENE	07	MAX MIN	39 18	48 17	37 10	21 8	39 10	48 30	31 -4	16 -4	39 2	49 16	47 32	56 36	50 22	49 22	49 23	37 19	38 17	47 16	28 15	40 26	53 25	34 7	18 5	19 -3	25 -3	30 12	45 11	45 7	14 2	21 -3	33 -3	36.9
WISE 3E	17	MAX MIN	48 19	40 29	33 5	42 10	52 31	48 0	11 -10	31 5	44 20	53 33	55 47	48 31	48 38	47 38	43 28	32 37	37 28	38 38	50 28	48 50	19 48	16 19	17 16	20 20	42 41	41 23	18 18	34 34	41 41	37.0		
WYTHEVILLE 1 S	07	MAX MIN	39 21	48 20	36 8	19 8	39 13	50 27	27 -7		36 20	49 32	54 32	60 24	49 25	48 27	48 13	49 13	48 13	43 12	32 25	37 31	48 5	45 4	29 -3	36 -4	50 14	35 14	19 8	22 0	18 8	24 0	44 -3	36.7

VIRGINIA
201401

SNOWFALL AND SNOW ON GROUND (INCHES)

STATION		DAY OF MONTH																														
		01	02	03	04	05	06	07	08	09	10	11	12	13	14	15	16	17	18	19	20	21	22	23	24	25	26	27	28	29	30	31
VIRGINIA TIDEWATER 01 DISPUTANTA	SNOWFALL																															
	SN ON GND	-	-	-	-	-	-	-	-	-	-	-	-	-	-	-	-	1	-	-	-	-	3	-	-	-	-	-	-	3	-	-
EASTVILLE	SNOWFALL	-	-	-	-	-	-	-	-	-	-	-	-	-	-	-	-	-	-	-	-	2.0	-	-	-	-	-	-	6.0	-	-	
	SN ON GND	-	-	-	-	-	-	-	-	-	-	-	-	-	-	-	-	-	-	-	-	2	1	1	-	-	-	-	6	5	5	
EMPORIA 1 WNW	SNOWFALL	-	-	-	-	-	-	-	-	-	-	-	-	-	-	-	0.3	-	-	-	-	0.8	-	-	-	-	-	-	-	-	-	
	SN ON GND	-	-	-	-	-	-	-	-	-	-	-	-	-	-	-	-	-	-	-	-	8	-	-	-	-	-	-	-	-	-	
FREDERICKSBURG SEWAGE	SNOWFALL	-	-	0.3	-	-	-	-	-	-	-	-	-	-	-	-	0.1	-	-	-	-	0.2	-	-	-	-	-	-	0.1	-	-	
	SN ON GND	-	-	1	-	-	-	-	-	-	-	-	-	-	-	-	-	-	-	-	-	3	-	-	-	-	-	-	1	-	-	
HOLLAND 1 E HOPEWELL	SNOWFALL	-	-	-	-	-	-	-	-	-	-	-	-	-	-	-	-	-	-	-	-	1.5	-	-	-	-	-	-	2.7	-	-	
	SN ON GND	-	-	-	-	-	-	-	-	-	-	-	-	-	-	-	-	-	-	-	-	-	-	-	-	-	-	-	2	-	-	
NORFOLK INTL AP	SNOWFALL	-	-	-	-	-	-	-	-	-	-	-	-	-	-	-	-	-	-	-	-	2.0	1.0	-	-	-	-	-	5.6	2.9	-	
	SN ON GND	-	-	-	-	-	-	-	-	-	-	-	-	-	-	-	-	-	-	-	-	3	3	2	-	-	-	-	8	-	6	
NORFOLK SOUTH	SNOWFALL	-	-	T	-	-	-	-	-	-	-	-	-	-	-	-	-	-	-	-	-	2.0	1.0	-	-	-	-	4.2	3.6	-	-	
	SN ON GND	-	-	-	-	-	-	-	-	-	-	-	-	-	-	-	-	-	-	-	-	2	3	2	2	2	T	4	7	6	4	
N PAINTER 2W	SNOWFALL	-	-	-	-	-	-	-	-	-	-	-	-	-	-	-	-	-	-	-	-	3.0	-	-	-	-	-	-	5.5	-	-	
	SN ON GND	-	-	-	-	-	-	-	-	-	-	-	-	-	-	-	-	-	-	-	-	3	1	1	1	-	-	-	5	4	2	
STONY CREEK 2 N	SNOWFALL	-	-	-	-	-	-	-	-	-	-	-	-	-	-	-	0.5	-	-	-	-	1.0	-	-	-	-	-	-	-	-	-	
	SN ON GND	-	-	-	-	-	-	-	-	-	-	-	-	-	-	-	-	-	-	-	-	1	1	1	-	-	-	-	-	-	-	
SUFFOLK LAKE KILBY	SNOWFALL	-	-	-	-	-	-	-	-	-	-	-	-	-	-	-	-	-	-	-	-	2.0	1.0	-	-	-	-	4.0	5.0	-	-	
	SN ON GND	-	-	-	-	-	-	-	-	-	-	-	-	-	-	-	-	-	-	-	-	2	3	2	1	1	T	4	9	7	5	
WAKEFIELD 1NW	SNOWFALL	-	-	T	-	-	-	-	-	-	-	-	-	-	-	-	0.1	-	-	-	-	2.5	0.5	-	-	-	-	3.9	0.5	-	-	
	SN ON GND	-	-	-	-	-	-	-	-	-	-	-	-	-	-	-	-	-	-	-	-	2	2	1	1	1	-	4	4	2	T	
WALKERTON 2 NW	SNOWFALL	-	-	0.1	-	-	-	-	-	-	-	-	-	-	-	-	-	-	-	-	-	2	2	1	1	1	T	4	4	2	T	
	SN ON GND	-	-	1	-	-	-	-	-	-	-	-	-	-	-	-	-	-	-	-	-	-	-	-	-	-	-	-	-	-	-	
WALLACETON LK DRUMMOND WALLOPS ISLAND NASA TEST FACIL	SNOWFALL	-	-	T	-	-	-	-	-	-	-	-	-	-	-	-	-	-	-	-	-	1.0	1.1	-	T	T	3.5	1.3	-	-		
	SN ON GND	-	-	-	-	-	-	-	-	-	-	-	-	-	-	-	-	-	-	-	-	2	2	1	-	-	-	5	5	4	-	
WARSAW 2 NW	SNOWFALL	-	-	1.0	-	-	-	-	-	-	-	-	-	-	-	-	-	-	-	-	-	5.0	-	-	-	-	-	3.0	-	-	-	
	SN ON GND	-	-	1	-	-	-	-	-	-	-	-	-	-	-	-	-	-	-	-	-	5	4	2	2	1	-	3	2	-	-	
WEST POINT 2 NW	SNOWFALL	-	-	T	-	-	-	-	-	-	-	-	-	-	-	0.5	-	T	-	-	-	0.3	3.7	-	-	-	0.2	3.3	-	-		
	SN ON GND	-	-	-	-	-	-	-	-	-	-	-	-	-	-	-	-	-	-	-	-	T	4	3	2	1	T	T	3	2	T	
WILLIAMSBURG 2 N	SNOWFALL	-	-	-	-	-	-	-	-	-	-	-	-	-	-	-	T	-	-	-	-	2.0	0.5	-	-	-	3.0	1.0	-	-		
	SN ON GND	-	-	-	-	-	-	-	-	-	-	-	-	-	-	-	T	-	-	-	-	2	2	1	1	T	-	3	4	3	1	
EASTERN PIEDMONT 02 ALBERTA 5N	SNOWFALL	-	-	-	-	-	-	-	-	-	-	-	-	-	-	0.1	-	T	-	-	-	-	2.0	-	-	-	-	2.5	-	-		
	SN ON GND	-	-	-	-	-	-	-	-	-	-	-	-	-	-	-	T	-	-	-	-	-	2	-	-	-	3	3	1	-	-	
AMELIA COURTHOUSE 1 ASHLAND	SNOWFALL	-	-	-	-	-	-	-	-	-	-	-	-	-	-	0.8	-	-	-	-	-	0.8	-	-	-	-	-	0.1	-	-	-	
	SNOWFALL	-	T	T	-	-	T	-	-	-	-	-	-	-	-	2.0	-	-	-	-	-	1.0	1.2	-	-	T	-	0.1	2.8	-	-	

Snowfall: Includes snow and ice. Values for NWS stations (J index note) are Mid-Mid (LST).

Snow on ground: Includes snow, sleet, ice, and hail. Values for NWS stations (J index note) are observed at 12 UTC (GMT).

Water Equivalent: Given for NWS stations (J index note) only, when snow depth is 2 inches or more, and is measured at 18 UTC (GMT)

VIRGINIA
201401

SNOWFALL AND SNOW ON GROUND (INCHES)

STATION		DAY OF MONTH																																		
		01	02	03	04	05	06	07	08	09	10	11	12	13	14	15	16	17	18	19	20	21	22	23	24	25	26	27	28	29	30	31				
BREMO BLUFF	SN ON GND	-	T	-	T			-	-	-	-	-	-	-	-			-	-	-	1	2	2	2	2	1	T	T	3	2	T					
	SNOWFALL				-	-	-	-	-	-													2.0													
BUCKINGHAM	SN ON GND				-	-	-	-	-														2	1	-											
	SNOWFALL																						1.5									1.0				
CAMP PICKETT	SN ON GND																						1	1	1	1	T				1					
	SNOWFALL																																			
CHASE CITY	SNOWFALL	-	-	-	-	-	-	-	-	-	-	-	-	-	-	-	-	-	-	-	-	-	1.0	-	-	-	-	-	-	-	-					
	SN ON GND	-	-	-	-	-	-	-	-	-	-	-	-	-	-	-	-	-	-	-	-	-	1	-	-	-	-	-	-	-	-					
CLARKSVILLE	SNOWFALL	-	-	-	-	-	-	-	-	-	-	-	-	-	-	-	0.2	-	-	-	-	-														
	SN ON GND	-	-	-	-	-	-	-	-	-	-	-	-	-	-	-							0.4									0.7				
CORBIN	SNOWFALL	-	-	2.0	-	-	-	-	-	-	-	-	-	-	-	-	-	-	-	-	-	-	3.5	-	-	-	-	-	-	-	-					
	SN ON GND	-	-	2	1	1	-	-	-	-	-	-	-	-	-	-	-	-	-	-	-	-	4	3	3	2	1	1	-	3	1	-				
CROZIER	SNOWFALL																0.5						1.0									2.0				
	SN ON GND																															2	1	1		
FARMVILLE 2 N	SNOWFALL	-	-	-	-	-	-	-	-	-	-	-	-	-	-	-	-	-	-	-	-	-	1.5	-	-	-	-	-	-	-	-	2.0	-	-		
	SN ON GND	-	-	-	-	-	-	-	-	-	-	-	-	-	-	-	-	-	-	-	-	-	15	-	-	-	-	-	-	-	-	2	1	T		
GREENBAY 3 NE	SNOWFALL	-	-	-	-	-	-	-	-	-	-	-	-	-	-	-	-	-	-	-	-	-	-	-	-	-	-	3.1					2.0			
	SN ON GND	-	-	-	-	-	-	-	-	-	-	-	-	-	-	-	-	-	-	-	-	-	-	-	-	-	-	3					2			
JOHN H KERR DAM	SNOWFALL	-	-	1.1	-	-	-	-	-	-	-	-	-	-	-	-	0.6	-	-	-	-	-	1.5	-	-	-	-	-	-	-	-	1.3	-	-		
	SN ON GND	-	-	-	-	-	-	-	-	-	-	-	-	-	-	-	-	-	-	-	-	-	1	1	1	-	-	-	-	-	1	-	-			
PALMYRA 3S	SNOWFALL	-	-	-	-	-	-	-	-	-	-	-	-	-	-	-	-	-	-	-	-	-	1.0										1.1	-	-	
	SN ON GND	-	-	-	-	-	-	-	-	-	-	-	-	-	-	-	-	-	-	-	-	-	-	-	-	-	-	-	-	-	-	-	-	-		
PETERSBURG	SNOWFALL																						2.5											2.0		
	SN ON GND																						2											2		
RICHMOND INTL AP	SNOWFALL		T	T													T					2.0	T						1.8				1.3			
	SN ON GND																																	3	2	T
SANDSTON	SNOWFALL	-	-	-	-	-	-	-	-	-	-	-	-	-	-	-	-	-	-	-	-	-	2.0	-	-	-	-	-	-	-	-	-	2.8			
	SN ON GND	-	-	-	-	-	-	-	-	-	-	-	-	-	-	-	-	-	-	-	-	-	2	2	2	2	1	1					3	2	1	
WINTERPOCK 4 W	SNOWFALL	-	-	-	-	-	-	-	-	-	-	-	-	-	-	-	0.5	-	-	-	-	-	2.0	-	-	-	-	-	-	-	-	-	-	2.0	-	-
WESTERN PIEDMONT 03	SNOWFALL																0.3						1.4												1.3	
	SN ON GND																						1	1	1	T								1		
BEDFORD 4 NW	SNOWFALL																						0.1												0.5	
	SN ON GND																						T											1	T	
BROOKNEAL	SNOWFALL																						1.3												1.8	
	SN ON GND																						1	T	T	T	T							2	1	1
CHARLOTTE COURT HOUSE	SNOWFALL																						T												1.0	
	SN ON GND																																		1	
CHARLOTTESVILLE 2W	SNOWFALL			0.5		T					T	T					0.3						1.6												0.9	
	SN ON GND			1	T	T					T						T						2	2	1	1								1	T	T
CHATHAM	SNOWFALL																						0.1												1.6	

Snowfall: Includes snow and ice. Values for NWS stations (J index note) are Mid-Mid (LST).
 Snow on ground: Includes snow, sleet, ice, and hail. Values for NWS stations (J index note) are observed at 12 UTC (GMT).
 Water Equivalent: Given for NWS stations (J index note) only, when snow depth is 2 inches or more, and is measured at 18 UTC (GMT)

SNOWFALL AND SNOW ON GROUND (INCHES)

STATION	DAY OF MONTH																																			
	01	02	03	04	05	06	07	08	09	10	11	12	13	14	15	16	17	18	19	20	21	22	23	24	25	26	27	28	29	30	31					
CONCORD 4 SSW	SN ON GND																															2	2	1		
	SNOWFALL																T																1.0			
DANVILLE REGIONAL AP	SN ON GND																																			
	SNOWFALL															T							0.5										0.8	0.3		
FREE UNION	SN ON GND																																			
	SNOWFALL	-	-	0.8	-	T	-	-	-	-	T	T	-	-	-	-	T	-	-	-	-	-											1	1	T	T
HOLCOMB ROCK	SN ON GND	-	-	T	T	T	-	-	-	-	T	-	-	-	-	T	-	-	-	-	-	-														
	SNOWFALL			T												T																				
HUDDLESTON 4 SW	SN ON GND	-	-	-	-	-	-	-	-	-	-	-	-	-	-	-	-	-	-	-	-	-	-	-	-	-	-	-	-	-	-	-	-	-		
	SNOWFALL																																			
LYNCHBURG INTL AP	SN ON GND																																			
	SNOWFALL															T																				
MARTINSVILLE FLTR PLT	SN ON GND																																			
	SNOWFALL																																			
MEADOWS OF DAN 5 SW	SN ON GND																																			
	SNOWFALL																																			
MONTEBELLO FISH CULTURAL STN	SN ON GND	-	-	-	-	-	-	-	-	-	-	-	-	-	-	-	-	-	-	-	-	-	-	-	-	-	-	-	-	-	-	-	-	-		
	SNOWFALL																																			
MONTICELLO	SN ON GND	-	-	-	-	-	-	-	-	-	-	-	-	-	-	-	-	-	-	-	-	-	-	-	-	-	-	-	-	-	-	-	-	-		
	SNOWFALL			0.2	-	-	-	-	-	-	-	-	-	-	-	-	T	-	-	-	-	-	-	1.5	-	-	-	-	-	-	-	-	-	-	-	
PEDLAR DAM	SN ON GND	-	-	T	-	-	-	-	-	-	-	-	-	-	-	-	-	-	-	-	-	-	-	-	-	-	-	-	-	-	-	-	-	-		
	SNOWFALL			T												T																				
ROCKY MT	SN ON GND															T																				
	SNOWFALL																T																			
SOUTH BOSTON	SN ON GND																																			
	SNOWFALL																																			
STUART	SN ON GND																																			
	SNOWFALL																																			
TYE RIVER 1 SE	SN ON GND	-	-	-	-	-	-	-	-	-	-	-	-	-	-	-	-	-	-	-	-	-	-	-	-	-	-	-	-	-	-	-	-	-		
	SNOWFALL																																			
WOOLWINE	SN ON GND	-	-	-	-	-	-	-	-	-	-	-	-	-	-	-	-	-	-	-	-	-	-	-	-	-	-	-	-	-	-	-	-	-		
	SNOWFALL																																			
NORTHERN 04 BOSTON 4 SE	SN ON GND																																			
	SNOWFALL																																			
EDINBURG	SN ON GND																																			
	SNOWFALL																																			
	SN ON GND																																			
	SNOWFALL																																			
	SN ON GND																																			
	SNOWFALL																																			

Snowfall: Includes snow and ice. Values for NWS stations (J index note) are Mid-Mid (LST).
 Snow on ground: Includes snow, sleet, ice, and hail. Values for NWS stations (J index note) are observed at 12 UTC (GMT).
 Water Equivalent: Given for NWS stations (J index note) only, when snow depth is 2 inches or more, and is measured at 18 UTC (GMT)

VIRGINIA
201401

SNOWFALL AND SNOW ON GROUND (INCHES)

STATION		DAY OF MONTH																														
		01	02	03	04	05	06	07	08	09	10	11	12	13	14	15	16	17	18	19	20	21	22	23	24	25	26	27	28	29	30	31
FRONT ROYAL	SNOWFALL	-	-	-	-	-	-	-	-	-	-	-	-	-	-	1.0	-	1.0	-	-	-	5.5	-	-	-	-	-	-	-	1.0	-	-
	SN ON GND	-	-	-	2	1	-	-	-	-	-	-	-	-	-	-	1	-	1	-	-	-	5	5	5	-	-	-	-	1	-	-
LINCOLN	SNOWFALL	-	-	4.0	-	-	-	-	-	-	-	-	-	-	-	-	-	-	-	-	-	6.0	-	-	-	-	-	-	-	-	-	
	SN ON GND	-	-	-	-	-	-	-	-	-	-	-	-	-	-	-	-	-	-	-	-	6	5	4	3	2	1	1	1	1	-	
LURAY 5 E	SNOWFALL	-	-	2.5	-	-	-	-	-	-	-	-	-	-	-	0.5	-	1.0	-	-	-	T	2.0	-	-	-	0.2	-	0.2	-	-	
	SN ON GND	-	-	3	2	1	-	-	-	-	-	-	-	-	-	-	-	-	1	-	-	T	2	2	2	2	2	2	1	1	1	
	WTR EQUIV	-	-	2.5	-	-	-	-	-	-	-	-	-	-	-	0.5	-	1.0	-	-	-	-	2.0	-	-	-	-	-	-	-	-	
MADISON MANASSAS	SNOWFALL	-	-	2.1	-	-	-	-	-	-	-	-	-	-	-	-	-	-	-	-	-	5.0	-	-	-	-	-	-	1.0	-	-	
	SN ON GND	-	-	2	2	1	-	-	-	-	-	-	-	-	-	-	-	-	-	-	-	5	5	-	3	3	-	-	-	-	-	
	WTR EQUIV	-	-	2.1	2.0	-	-	-	-	-	-	-	-	-	-	-	-	-	-	-	-	5.0	5.0	-	3.0	3.0	-	-	-	-	-	
MT WEATHER	SNOWFALL	-	-	3.0	-	-	-	-	-	-	-	-	-	-	-	0.1	-	2.0	-	-	0.3	5.5	-	-	-	-	-	-	-	-	-	
	SN ON GND	-	-	3	2	1	-	-	-	-	-	-	-	-	-	T	-	2	2	1	T	6	5	5	-	4	3	-	-	-	-	
PIEDMONT RSCH STN	SNOWFALL	-	-	2.2	-	-	-	-	-	-	T	-	-	-	-	1.1	-	-	-	-	-	2.7	-	-	-	-	-	-	-	1.2	-	
	SN ON GND	-	-	2	-	-	-	-	-	-	-	-	-	-	-	1	-	-	-	-	-	2	1	-	-	-	-	-	-	1	-	
SOMERSET	SNOWFALL	-	-	1.0	-	-	-	-	-	-	-	-	-	-	-	0.9	-	-	-	-	-	2.0	-	-	-	-	-	-	-	1.3	-	-
	SN ON GND	-	-	1	T	T	-	-	-	-	-	-	-	-	-	1	T	T	-	-	-	2	1	1	T	T	T	T	1	T	T	
SPERRYVILLE	SNOWFALL	-	-	1.5	-	-	-	-	-	-	-	-	-	-	-	0.5	-	0.2	-	-	-	2.5	-	-	-	0.3	-	-	0.3	-	-	
	SN ON GND	-	-	1	1	1	T	T	T	T	T	-	-	-	-	1	T	T	T	-	-	2	2	2	2	2	2	1	1	1	1	
STERLING RCS	SNOWFALL	-	-	T ¹	-	-	-	T	-	-	-	-	-	-	-	T	-	0.3	-	-	-	8.5	-	T	-	T	-	0.3	-	-		
	SN ON GND	-	-	3 ¹	2	1	-	-	-	-	-	-	-	-	-	-	-	T	T	-	-	5	3	3	3	2	2	-	T	-	-	
	WTR EQUIV	-	-	-	-	-	-	-	-	-	-	-	-	-	-	-	-	-	-	-	-	-	-	-	-	-	-	-	-	-	-	
VIENNA	SNOWFALL	-	-	3.0	-	-	-	-	-	-	-	-	-	-	-	-	-	-	-	-	-	6.0	-	-	-	-	-	-	-	1.0	-	
	SN ON GND	-	-	3	3	-	-	-	-	-	-	-	-	-	-	-	-	-	-	-	-	6	4	3	2	1	1	-	1	1	-	
	WTR EQUIV	-	-	3.0	2.5	-	-	-	-	-	-	-	-	-	-	-	-	-	-	-	-	6.0	-	3.0	-	-	-	-	-	-	-	
WASHGTN DULLES INTL AP	SNOWFALL	-	3.0	T	-	-	T	-	-	-	-	-	-	-	-	T	T	-	0.3	-	-	8.5	T	-	T	T	-	0.2	T	-	-	
	SN ON GND	-	-	3	2	1	-	-	-	-	-	-	-	-	-	-	-	-	T	T	-	5	3	3	3	2	2	-	T	-	-	
WASHINGTON REAGAN AP	SNOWFALL	-	1.9	T	-	-	-	-	-	-	-	-	-	-	-	T	T	-	-	-	-	3.8	T	T	T	-	0.5	0.4	-	-		
	SN ON GND	-	-	2	1	1	-	-	-	-	-	-	-	-	-	-	-	-	-	-	-	4	3	3	2	1	T	-	1	-	-	
WINCHESTER	SNOWFALL	-	-	2.9	-	-	-	-	-	-	-	-	-	-	-	0.4	-	T	-	-	0.5	4.9	-	0.2	-	-	-	-	-	-	-	
	SN ON GND	-	-	2	1	-	-	-	-	-	-	-	-	-	-	-	-	-	-	-	-	5	5	4	3	3	3	1	1	1	1	
WINCHESTER 7 SE	SNOWFALL	-	-	2.0	-	-	-	-	-	-	-	-	-	-	-	-	-	-	-	-	-	7.0	-	-	-	-	-	-	-	-	-	
	SN ON GND	-	-	2	1	-	-	-	-	-	-	-	-	-	-	-	-	-	-	-	-	7	6	4	3	2	1	-	-	-	-	
	WTR EQUIV	-	-	-	-	-	-	-	-	-	-	-	-	-	-	-	-	-	-	-	-	7.0	6.0	4.0	-	-	-	-	-	-	-	
WOODSTOCK 2 NE	SNOWFALL	-	-	3.0	-	-	-	-	-	-	-	-	-	-	-	-	-	-	-	-	0.5	7.5	-	-	-	-	-	-	-	-	-	
	SN ON GND	-	-	1	1	1	-	-	-	-	-	-	-	-	-	-	-	-	-	-	-	1	8	5	3	2	2	2	2	2	1	T
CENTRAL MOUNTAIN 05 BUENA VISTA	SNOWFALL	-	-	-	-	-	-	-	-	-	-	-	-	-	-	-	-	-	-	-	-	0.3	-	-	-	-	-	-	-	1.3	-	
	SN ON GND	-	-	-	-	-	-	-	-	-	-	-	-	-	-	-	-	-	-	-	-	T	-	-	-	-	-	-	-	1	-	
COVINGTON FLTR PLT	SNOWFALL	-	-	-	-	-	-	-	-	-	-	-	-	-	-	-	-	-	-	-	-	5.0	T	-	-	-	-	-	4.0	-	-	
	SN ON GND	-	-	-	-	-	-	-	-	-	-	-	-	-	-	-	-	-	-	-	-	5	4	4	3	2	T	-	4	4	T	
CRAIGSVILLE 2 S	SNOWFALL	-	-	-	-	-	-	-	-	-	-	-	-	-	-	-	-	-	-	-	-	-	-	-	-	-	-	-	-	-	-	

Snowfall: Includes snow and ice. Values for NWS stations (J index note) are Mid-Mid (LST).

Snow on ground: Includes snow, sleet, ice, and hail. Values for NWS stations (J index note) are observed at 12 UTC (GMT).

Water Equivalent: Given for NWS stations (J index note) only, when snow depth is 2 inches or more, and is measured at 18 UTC (GMT)

VIRGINIA
201401

SNOWFALL AND SNOW ON GROUND (INCHES)

STATION		DAY OF MONTH																														
		01	02	03	04	05	06	07	08	09	10	11	12	13	14	15	16	17	18	19	20	21	22	23	24	25	26	27	28	29	30	31
DALE ENTERPRISE	SNOWFALL			1.0												1.0		0.2					7.0			¹ 0.2						
	SN ON GND			1	1											1							7	7		¹ 7 ¹	6	6			0.1	
	WTR EQUIV			1.0	1.0	0.5										1.0							7.0	7.0		7.0	6.0	5.5				
GATHRIGHT DAM	SNOWFALL										T					T		T	T			T	3.5	T							3.0	
	SN ON GND										T					T		T	T			T	4	3	3	2	2	2	2	4	3	2
GLASGOW 1 SE	SNOWFALL															T		T					0.7		T						1.3	
	SN ON GND						T									T							T	T							1	
HOT SPRINGS	SNOWFALL			T												T		1.0					6.0	1.0			0.7				2.0	T
	SN ON GND			T												T		1	T				6	7	6	5	5	3	T	2	2	2
LEXINGTON	SNOWFALL																	0.3					2.3								2.0	
	SN ON GND																	T					2	2	2	1	1	1		2	2	1
MILLGAP	SNOWFALL			3.0												0.1		0.8	0.2			0.7	4.8	0.2		1.0		¹ 0.4				
	SN ON GND			3	2	1										T		1	1	T		1	4	4	3	3	3		¹ 2 ¹	2	2	2
	WTR EQUIV																															
MTN GROVE	SNOWFALL			T												T		T			T	1.0	5.0	T		T		1.0		1.5		
	SN ON GND			T												T		T		T		1	5	5	4	4	4	4	4	5	5	4
MUSTOE 1 SW	SNOWFALL		3.3				0.1								0.1		0.8		0.2			5.3	T		2.2		0.9					
	SN ON GND		3	2	2	T	T	T	T	T					T	T	1	T	T	T		5	5	5	4	6	6	3	4	3	2	2
NEW CASTLE	SNOWFALL																						2.0								3.0	
	SN ON GND																						2								3	2
ROANOKE 8 N	SNOWFALL																						0.1								1.0	
	SN ON GND																															
ROANOKE INTL AP	SNOWFALL		T	T											T		T					1.4		T		T		2.0	T			
	SN ON GND															T							1	1	T			2	1			
STAUNTON WATER TRMTMT PLT	SNOWFALL	-	-	0.3												0.6	-					0.5	2.3			0.3			0.7	-		
	SN ON GND	-	-	1	T											1	-					1	2	2	2	2	3	2	1	-		
	WTR EQUIV	-	-	-	-	-										-	-	-	-	-	-	-	-	-	-	-	-	-	-	-	-	
WAYNESBORO WTP	SNOWFALL			T														T					2.3									
	SN ON GND			T														T					2	2								
	WTR EQUIV			0.1	-																		0.3	-								
SOUTHWESTERN MOUNTAIN 06																																
ABINGDON 3S	SNOWFALL			0.5	-	-										0.5		0.1	0.3	-			T	T	-		1.0		0.1	2.0	-	
	SN ON GND			T	-	-													1	-			T	T	-		1		T	2	-	
BIG STONE GAP	SNOWFALL			1.0												T		T					2.0				2.0				2.0	
	SN ON GND			1																			2				2					
BLACKSBURG NWSO	SNOWFALL			0.4	T		T	T								T		0.2					1.8	T	0.2		0.8				3.1	
	SN ON GND			T	T													T					T	T	T	T	T	T		3	2	T
BURKES GARDEN	SNOWFALL			2.0	0.6		0.4	¹ 0.2 ¹								T		2.0	T				1.5	T	T	T	¹ T ¹				3.0	
	SN ON GND			2	2	1	T ¹	² 2 ¹	2	1						T		2	1	T			T	2	1	1	T ¹	4 ¹	T	T	3	2
CHRISTIANSBURG	SNOWFALL			T			T	T								T		1.0					1.0								4.0	
	SN ON GND			T			T											1					T	T	T		T			4	2	T

Snowfall: Includes snow and ice. Values for NWS stations (J index note) are Mid-Mid (LST).

Snow on ground: Includes snow, sleet, ice, and hail. Values for NWS stations (J index note) are observed at 12 UTC (GMT).

Water Equivalent: Given for NWS stations (J index note) only, when snow depth is 2 inches or more, and is measured at 18 UTC (GMT)

VIRGINIA
201401

SNOWFALL AND SNOW ON GROUND (INCHES)

STATION		DAY OF MONTH																														
		01	02	03	04	05	06	07	08	09	10	11	12	13	14	15	16	17	18	19	20	21	22	23	24	25	26	27	28	29	30	31
CLINTWOOD 1 W	SNOWFALL		T	3.0	T		1.0	1.8							0.5	0.2	T	1.8	T	T		3.5	0.2	0.4		1.7			1.7			
	SN ON GND		T	3	2	1	1	2	2	1	T				1		T	2	1	T		3	3	2	2	3	2	1	3	2	2	
COPPER HILL	SNOWFALL															1.0		0.6				2.0				0.5			3.0			
	SN ON GND															1		1				2	2	2	2	2	1		3	3	2	
GALAX RADIO WBRF	SNOWFALL						T									1.0		T									T	1.1		1.0		
	SN ON GND						T									1	1	T									T	1	1	1		
GALAX WTP	SNOWFALL															1.0		1.0				T						1.0				
	SN ON GND															1	1	1										1	T	T		
GRUNDY	SNOWFALL			1.5			0.3	0.3							T	T		0.5		T	T	2.0	T	0.3		2.8			1.0			
	SN ON GND			2			T	T							T	T		T		T	T	2	1	1	1	3	2	1	2	2	1	
JOHN FLANNAGAN LAKE	SNOWFALL	-	-	0.3	-	-	0.4	0.9	-	-	-	-	-	-	-	-	-	-	-	-	-	1.9	-	-	-	-	-	-	1.0	-	-	
	SN ON GND																					0.7		T		0.2			3.6			
LEBANON	SNOWFALL			0.1														0.5	0.3								0.5		3.0			
	SN ON GND																1					T	T			T	1		3	1	T	
NORA 4 SSE	SNOWFALL			2.2	T		0.9	1.3							T	1.0	T	1.3	T	T		3.0	0.2	1.2		2.1			4.3			
	SN ON GND			2	1	T	1	2	1	1					T	1	T	1	T	T		3	2	2	1	3	T	T	4	3	3	
NORTH FORK LAKE	SNOWFALL	-	-	-	-	-	1.0	1.5	-	-	-	-	-	-	T	-	-	-	-	-	-	3.0	-	-	-	-	-	-	1.0	-	-	
	SN ON GND	-	-	-	-	-	1	2	2	-	-	-	-	-	T	-	-	-	-	-	-	3	2	-	-	-	T	-	1	-	1	
PULASKI 2 E	SNOWFALL																					0.8	T	T		0.3			0.7			
	SN ON GND																					1	T	T		T		1	T			
RADFORD 3 N	SNOWFALL			T			T	T								T		T				T	1.0	T	T	T		1.0				
	SN ON GND			T			T	T			T											T	T	T	T	T		1	T			
RICHLANDS	SNOWFALL			2.0			T	0.1							T	T	T	1.0				0.5	T		T	1.0		2.5				
	SN ON GND			2	2	1	T	T	T						T	T	T	1				1	T	T	T	1		3	3	2		
SALTVILLE 1N	SNOWFALL			T			T	T								T		0.3	0.2			T	T			2.0		0.2 ^I				
	SN ON GND			T			T	T								T		T	T			T	T			2	1	T ^I	2 ^I	1	1	
STAFFORDSVILLE 3 ENE	SNOWFALL			0.1												T		T				3.1		T		1.0		0.2				
	SN ON GND			T	T																	2	2	2	2	2	1	T	T	T	T	
WILLIS	SNOWFALL															0.8		0.5					0.5				2.5					
	SN ON GND															1	T	1					T			2		2	1			
WISE 3E	SNOWFALL		0.5				2.6								T		T					0.7	T		2.5	0.8		2.8	0.6			
	SN ON GND						2	2	1	T												T	T		2	2	1	3	2	2	T	
WYTHEVILLE 1 S	SNOWFALL			T			T									1.2				T			1.0			2.4		1.4				
	SN ON GND			T			T									1				T			T	T		2		1	1			

Snowfall: Includes snow and ice. Values for NWS stations (J index note) are Mid-Mid (LST).

Snow on ground: Includes snow, sleet, ice, and hail. Values for NWS stations (J index note) are observed at 12 UTC (GMT).

Water Equivalent: Given for NWS stations (J index note) only, when snow depth is 2 inches or more, and is measured at 18 UTC (GMT)

VIRGINIA
201401

PAN EVAPORATION AND WIND

STATION		DAY OF MONTH																															TOTAL OR AVERAGE		
		01	02	03	04	05	06	07	08	09	10	11	12	13	14	15	16	17	18	19	20	21	22	23	24	25	26	27	28	29	30	31			
VIRGINIA EASTERN PIEDMONT 02 JOHN H KERR DAM	WIND	-	-	-	-	-	-	-	-	-	-	-	-	-	-	-	-	-	-	-	-	-	-	-	-	-	-	-	-	-	-	-	-	-	M
	EVAP	-	-	-	-	-	-	-	-	-	-	-	-	-	-	-	-	-	-	-	-	-	-	-	-	-	-	-	-	-	-	-	-	-	M
	MAX	-	-	-	-	-	-	-	-	-	-	-	-	-	-	-	-	-	-	-	-	-	-	-	-	-	-	-	-	-	-	-	-	-	M
	MIN	-	-	-	-	-	-	-	-	-	-	-	-	-	-	-	-	-	-	-	-	-	-	-	-	-	-	-	-	-	-	-	-	-	M

Evaporation: Is measured in hundreths of inches.

Wind: Is measured in miles.

Max and Min: The maximum and minimum temperatures (Fahrenheit) of the water in the evaporation pan.

STATION INDEX

STATION	INDEX NO.	DIVISION	COUNTY	LATITUDE	LONGITUDE	ELEVATION (IN FEET)	OBSERVATION TIME AND TABLES			
							LOCAL STD TIME			
							TEMP	PRECIP	EVAP	SPECIAL SEE (NOTES)
VIRGINIA										
ABINGDON 3S	0021	06	WASHINGTON	36 40	81 58W	1920	22	22		H
ALBERTA 5N	0079	02	BRUNSWICK	36 56	77 54W	376		08		H
ALTAVISTA	0166	03	CAMPBELL	37 7	79 17W	529		07		CH
AMELIA COURTHOUSE 1	0187	02	AMELIA	37 21	77 59W	345	08	08		H
APPOMATTOX	0243	03	APPOMATTOX	37 20	78 50W	850	07	07		H
ASHLAND	0327	02	HANOVER	37 45	77 29W	220	18	18		H
BEDFORD 4 NW	0561	03	BEDFORD	37 23	79 34W	1228		07		CH
BIG STONE GAP	0735	06	WISE	36 52	82 46W	1464	08	08		H
BLACKSBURG NWSO	0766	06	MONTGOMERY	37 12	80 25W	2100	07	07		CH
BOSTON 4 SE	0860	04	CULPEPER	38 33	78 6W	590	07	07		H
BREMO BLUFF	0993	02	FLUVANNA	37 43	78 17W	225		07		CH
BROOKNEAL	1082	03	CAMPBELL	37 4	78 57W	408	07	07		H
BUCKINGHAM	1136	02	BUCKINGHAM	37 30	78 32W	580		07		H
BUENA VISTA	1159	05	ROCKBRIDGE	37 44	79 22W	840		07		H
BURKES GARDEN	1209	06	TAZEWELL	37 6	81 20W	3068	07	07		H
CAMP PICKETT	1322	02	NOTTOWAY	37 2	77 57W	330	08	08		CH
CHARLOTTE COURT HOUSE	1585	03	CHARLOTTE	37 3	78 39W	569	07	07		H
CHARLOTTESVILLE 2W	1593	03	ALBEMARLE	38 2	78 31W	866	08	08		H
CHASE CITY	1606	02	MECKLENBURG	36 47	78 29W	510	17	17		H
CHATHAM	1614	03	PITTSYLVANIA	36 49	79 25W	651	07	07		CH
CHRISTIANSBURG	1692	06	MONTGOMERY	37 8	80 24W	2100	07	07		H
CLARKSVILLE	1746	02	MECKLENBURG	36 37	78 33W	330	07	07		H
CLINTWOOD 1 W	1825	06	DICKENSON	37 9	82 29W	1780	07	07		H
CONCORD 4 SSW	1955	03	CAMPBELL	37 17	78 58W	815		07		H
COPPER HILL	1999	06	FLOYD	37 5	80 9W	2690	07	07		H
CORBIN	2009	02	CAROLINE	38 12	77 22W	220	09	09		H
COVINGTON FLTR PLT	2044	05	ALLEGHANY	37 49	79 59W	1230	07	07		H
CRAIGSVILLE 2 S	2064	05	AUGUSTA	38 3	79 23W	1758		07		H
CROZIER	2142	02	GOOCHLAND	37 40	77 53W	350	07	07		H
DALE ENTERPRISE	2208	05	ROCKINGHAM	38 27	78 56W	1358	07	07		H
DANVILLE REGIONAL AP R	2250	03	PITTSYLVANIA	36 34	79 20W	571	24	24		H
DISPUTANTA	2400	01	PRINCE GEORGE	37 7	77 12W	15	07	07		H
EASTVILLE	2635	01	NORTHAMPTON	37 23	75 58W	10	07	07		H
EDINBURG	2663	04	SHENANDOAH	38 48	78 35W	928	07	07		H
EMPORIA 1 WNW	2790	01	GREENSVILLE	36 42	77 34W	100	08	08		H
FARMVILLE 2 N	2941	02	CUMBERLAND	37 20	78 23W	450	07	07		H
FREDERICKSBURG SEWAGE	3204	01	FREDERICKSBURG	38 17	77 27W	15	07	07		H
FREE UNION	3213	03	ALBEMARLE	38 5	78 35W	590	08	07		H
FRONT ROYAL	3229	04	WARREN	38 54	78 11W	930	07	07		H
GALAX RADIO WBRF	3267	06	CARROLL	36 40	80 55W	2385	07	07		H
GALAX WTP	3272	06	CARROLL	36 39	80 55W	2360	07	07		CH
GATHRIGHT DAM	3310	05	ALLEGHANY	37 57	79 57W	1770	07	07		CH
GLASGOW 1 SE	3375	05	ROCKBRIDGE	37 37	79 26W	737		07		H
GREENBAY 3 NE	3565	02	PRINCE EDWARD	37 11	78 17W	500	09	09		H
GRUNDY	3640	06	BUCHANAN	37 17	82 5W	1170	07	07		H
HOLCOMB ROCK	4039	03	BEDFORD	37 33	79 24W	715		07		H
HOLLAND 1 E	4044	01	SUFFOLK	36 41	76 46W	80	08	08		H
HOPEWELL	4101	01	PRINCE GEORGE	37 18	77 17W	40	16	16		H
HOT SPRINGS	4128	05	BATH	37 60	79 50W	2236	07	07		H
HUDDLESTON 4 SW	4148	03	BEDFORD	37 8	79 32W	898		07		H
JOHN FLANNAGAN LAKE	4410	06	DICKENSON	37 14	82 21W	1460	07	07		H
JOHN H KERR DAM	4414	02	MECKLENBURG	36 36	78 18W	250	08	08	08	CH
LAFAYETTE 1 NE	4676	06	MONTGOMERY	37 14	80 12W	1320		07		H
LEBANON	4777	06	RUSSELL	36 54	82 2W	1912	07	07		H
LEXINGTON	4876	05	ROCKBRIDGE	37 47	79 26W	1097	07	07		H
LINCOLN	4909	04	LOUDOUN	39 5	77 42W	500	07	07		H
LOUISA	5050	02	LOUISA	38 3	78 0W	420	18	18		H
LURAY 5 E	5096	04	PAGE	38 40	78 22W	1400	08	08		H
LYNCHBURG INTL AP R	5120	03	CAMPBELL	37 19	79 12W	940	24	24		HJ
MADISON	5150	04	MADISON	38 22	78 15W	577	08	08		H
MANASSAS	5204	04	MANASSAS	38 44	77 30W	245	07	07		H
MARTINSVILLE FLTR PLT	5300	03	HENRY	36 42	79 52W	760	07	07		H
MEADOWS OF DAN 5 SW	5453	03	PATRICK	36 40	80 27W	2225	07	07		H
MILLGAP	5595	05	HIGHLAND	38 18	79 43W	2421	07	07		CH
MONTEBELLO FISH CULTURAL STN	5690	03	NELSON	37 51	79 8W	2667	07	07		H

STATION INDEX

STATION	INDEX NO.	DIVISION	COUNTY	LATITUDE	LONGITUDE	ELEVATION (IN FEET)	OBSERVATION TIME AND TABLES			
							LOCAL STD TIME			
							TEMP	PRECIP	EVAP	SPECIAL SEE (NOTES)
MONTICELLO	5700	03	ALBEMARLE	38 1	78 27W	758	08	08		H
MT WEATHER	5851	04	LOUDOUN	39 4	77 53W	1659	07	07		H
MTN GROVE	5756	05	BATH	38 6	79 53W	1775		07		H
MUSTOE 1 SW	5880	05	HIGHLAND	38 20	79 40W	2380	24	24		H
N	6161	01	MATHEWS	37 26	76 26W	10	07	07		H
NEW CASTLE	6012	05	CRAIG	37 18	80 3W	1258		07		H
NORA 4 SSE	6125	06	DICKENSON	37 1	82 19W	2650	07	07		H
NORFOLK INTL AP R	6139	01	NORFOLK (CITY)	36 54	76 12W	30	24	24		HJ
NORFOLK SOUTH	6147	01	NORFOLK (CITY)	36 52	76 14W	100	24	24		H
NORTH FORK LAKE	6173	06	WISE	37 7	82 38W	1675	08	08		H
PAINTER 2W	6475	01	ACCOMACK	37 35	75 49W	30	16	16		CH
PALMYRA 3S	6491	02	FLUVANNA	37 49	78 16W	410	06	06		H
PEDLAR DAM	6593	03	AMHERST	37 40	79 17W	1024		07		H
PETERSBURG	6656	02	PETERSBURG	37 14	77 24W	15	08	08		H
PIEDMONT RSCH STN	6712	04	ORANGE	38 14	78 7W	520	08	08		CH
PULASKI 2 E	6955	06	PULASKI	37 3	80 47W	1850	07	07		CH
RADFORD 3 N	6999	06	PULASKI	37 12	80 35W	1800	07	07		H
RICHLANDS	7174	06	TAZEWELL	37 6	81 48W	1910	07	07		H
RICHMOND INTL AP R	7201	02	HENRICO	37 30	77 19W	164	24	24		HJ
ROANOKE 8 N	7278	05	ROANOKE	37 22	79 58W	1190	07	07		H
ROANOKE INTL AP R	7285	05	ROANOKE	37 19	79 58W	1175	24	24		HJ
ROCKY MT	7338	03	FRANKLIN	36 59	79 54W	1315	07	07		CH
SALTVILLE 1N	7506	06	SMYTH	36 53	81 46W	1733	07	07		H
SANDSTON	7541	02	HENRICO	37 33	77 17W	165	07	07		H
SOMERSET	7904	04	ORANGE	38 15	78 16W	510	07	07		H
SOUTH BOSTON	7925	03	HALIFAX	36 42	78 53W	329	07	07		H
SPERRYVILLE	7985	04	RAPPAHANNOCK	38 39	78 14W	750	06	06		H
STAFFORDSVILLE 3 ENE	8022	06	GILES	37 16	80 43W	1950	07	07		CH
STAUNTON WATER TRMTMT PLT	8062	05	AUGUSTA	38 10	79 5W	169	08	08		H
STERLING RCS	8084	04	LOUDOUN	38 59	77 29W	288	07	07		H
STONY CREEK 2 N	8129	01	SUSSEX	36 58	77 24W	105	08	08		H
STUART	8170	03	PATRICK	36 38	80 15W	1375	07	07		H
SUFFOLK LAKE KILBY	8192	01	SUFFOLK	36 44	76 36W	22	24	24		H
TYE RIVER 1 SE	8600	03	NELSON	37 38	78 56W	720	07	07		H
VIENNA	8737	04	FAIRFAX	38 54	77 16W	418	07	07		H
WAKEFIELD 1NW	8800	01	SUSSEX	36 59	77 0W	113	24	24		CH
WALKERTON 2 NW	8829	01	KING AND QUEEN	37 45	77 2W	50	18	18		H
WALLACETON LK DRUMMOND	8837	01	CHESAPEAKE	36 36	76 26W	20	08	08		H
WALLOPS ISLAND NASA TEST FACIL R	8849	01	ACCOMACK	37 56	75 28W	46	24	24		HJ
WARSAW 2 NW	8894	01	RICHMOND	37 59	76 47W	140	18	18		H
WASHGTN DULLES INTL AP R	8903	04	LOUDOUN	38 56	77 28W	290	24	24		HJ
WASHINGTON REAGAN AP R	8906	04	ARLINGTON	38 51	77 2W	10	24	24		HJ
WAYNESBORO WTP	8941	05	WAYNESBORO	38 5	78 53W	1270	07	07		H
WEST POINT 2 NW	9025	01	KING WILLIAM	37 34	76 48W	20	17	17		H
WILLIAMSBURG 2 N	9151	01	YORK	37 18	76 42W	70	24	24		CH
WILLIS	9169	06	FLOYD	36 55	80 30W	2810		07		CH
WINCHESTER	9181	04	FREDERICK	39 11	78 9W	720	07	07		H
WINCHESTER 7 SE	9186	04	FREDERICK	39 11	78 7W	680	08	08		H
WINTERPOCK 4 W	9213	02	CHESTERFIELD	37 19	77 39W	300		07		H
WISE 3E	9215	06	WISE	36 60	82 32W	2549	17	17		CH
WOODSTOCK 2 NE	9263	04	SHENANDOAH	38 54	78 28W	675	07	07		H
WOOLWINE	9272	03	PATRICK	36 47	80 17W	1500		07		CH
WYTHEVILLE 1 S	9301	06	WYTHE	36 58	81 5W	2458	07	07		H

REFERENCE NOTES

STATION NAMES: Name of the city, town or locality. Figures and letters following the station names indicate the distance in miles and direction from the post office or town community center.

DIVISIONS: Areas within a state of similar climatological characteristics. Division averages are calculated using data from stations that record temperature and/or precipitation. Station Precipitation totals flagged with an 'F' or 'M' are excluded from the Divisional Average calculations of precipitation. Stations with monthly Temperature averages flagged with an 'F' or 'M' are included in the Divisional Average if there are no more than 9 flagged or missing daily values in the month, else they are excluded from the divisional average for temperature.

NORMALS: The average value of the meteorological element over a time period. Effective 1 January 2012, the averaging period is 1981 to 2010. The normals for National Weather Service localities have been adjusted so as to be representative for the current observation site.

MONTHLY DEGREE DAY TOTALS: One heating (cooling) degree day is accumulated for each whole degree that the daily mean temperature is below (above) 65 degrees Fahrenheit.

PRECIPITATION: Values shown in hundredths of inches are water equivalent totals, i.e., total of liquid and melted frozen precipitation. In the "Monthly Summarized Data" table the total snow and sleet values shown in tenths of inches are unmelted amounts. The max depth on ground values of snow and sleet shown in whole inches are cumulative unmelted amounts. The number of days with .10, .50, 1.00 or more refers to water equivalents.

PRECIPITATION QUALITY CONTROL: The NCDC quality control process may flag precipitation data that are spatially inconsistent, exceed climatological limits, or are inconsistent with prevailing weather patterns.

TEMPERATURE: Original temperature values are given in the "Daily Temperature" table. Summary temperature information (averages, departures, extremes, monthly degree day totals) is based on the values labeled MAX/MIN.

WIND: (As shown in the "Evaporation and Wind" table) the total wind movement in miles over the evaporation pan as determined by an anemometer recorder located 6-8 inches above the pan.

SYMBOLS AND LETTERS USED IN THE STATION INDEX TABLE

- C Station is equipped with recording rain gage (R) but values in this bulletin are from a non-recording rain gage unless indicated by an R.
- G Observations appear in the "Soil Temperatures" table.
- H Observations appear in the "Snowfall and Snow on the Ground" table.
- J Station also published as a Local Climatological Data publication.
- VAR Observation time varies.
- SR Observation time near sunrise.
- SS Observation time near sunset.

SYMBOLS AND LETTERS USED IN THE DATA TABLES

(DAILY DATA ARE FOR THE 24 HOURS IMMEDIATELY PRECEDING OBSERVATION TIME.)
BLANK Entries in the "Monthly Summarized Data" table indicate no record.
BLANK Entries in the "Daily Precipitation" and "Snowfall and Snow on the Ground" tables indicate zero.
BLANK Entries in the "Daily Temperature" table indicate a missing record

- No record. Data not recorded or not received in time for publication.
- + Precipitation or temperature extremes occurred on one or more previous dates during the month.
- * Rain gage not read. Precipitation is included in the amount following the asterisks.
 Time distribution may not be known. A * preceding the monthly total indicates precipitation amount is being carried forward to next month's total, and may include amounts from the previous month(s).
- a As a subscript, indicates accumulated total.

AMOUNTS: Climate Division totals are published in the report. If the amount is not published, please contact the Climate Division for more information. For stations that do not have a determine date of last reading. (Hawaii stations)

- B Divisional Departure from normals are computed using 1971-2000 normals.
- E Normalized HDD/CDD Calculation. E is appended to the HDD/CDD Calculation when 1-9 individual daily TMAX and/or TMIN values are missing and a Normalized HDD/CDD Calculation is provided. M appears alone if 10 or more daily values are missing.
- F Monthly calculation flagged value. F is appended to average and/or total values computed which exclude one or more daily data values that have been flagged by the GHCN-Daily Dataset
- M Insufficient or partial data. M is appended to average and/or total values computed with 1-9 daily values missing. M appears alone if 10 or more daily values are missing, (8 or more for wind and evaporation).
- N Indicates snow fall or Snowdepth totals are computed with one or more missing days.
- R Amounts from recording rain gage.
- T Trace. An amount too small to measure.

SEASONAL TABLES: Monthly and seasonal snowfall and heating degree days for the 12 months ending with the June data are published in the July issue of this bulletin. Cooling degree days for the calendar year are published in the "Climatological Data Annual Summary."

Information concerning the history of changes in locations, exposure, etc. of substations is kept on file at the National Climatic Data Center. Historical information of regular National Weather Service Offices may be obtained from the "Local Climatological Data" annual publication. The contents of this publication may be reprinted or otherwise used freely, with proper credit to the National Climatic Data Center. The data are also available digitally.

Effective with the January 2011 Data-Month, COOP Observer Names are no longer included in the Monthly and Annual Climatological Data Publications. This information is not published to ensure the privacy of personal information pursuant to Section 208 of the E-Government Act of 2002 (44 USC 3601).

As of the 2011 Data-Year, Station and Climate Division Maps are no longer being included in the CD Publications. NCDC's Product Development Branch provides updated Station Maps for various data networks via the Historical Observing Metadata Repository: <http://www.ncdc.noaa.gov/homr>.

The GHCN-Daily Quality Control Flags shown below are displayed as superscripts with the data. For more Information on Global Historical Climatology Network - Daily and flags, see: <http://www.ncdc.noaa.gov/oa/climate/ghcn-daily/> and Comprehensive Automated Quality Assurance of Daily Surface Observations. Durre, Imke, Matthew J. Menne, Byron E. Gleason, Tamara G. Houston, Russell S. Vose, 2010: J. Appl. Meteor. Climatol., 49, 16151633. doi: 10.1175/2010JAMC2375.1

- | | |
|---|---|
| Blank = Passed All checks | N = failed naught check |
| D = failed duplicate check | O = failed climatological outlier check |
| G = failed gap check | R = failed lagged range check |
| I = failed internal consistency check | S = failed spatial consistency check |
| K = failed streak/frequent-value check | T = failed temporal consistency check |
| L = failed check on length of multiday period | W = temperature too warm for snow |
| M = failed megaconsistency check | X = failed bounds check |
| | Z = flagged as a result of an official Datzilla investigation |

Beginning with the January 2013 CD Publication, monthly mean temperature calculations have changed to the National Data Stewardship Team standard. Monthly maximum and minimum temperatures are not rounded until after the monthly mean temperature is calculated. This is the most accurate outcome, but may be slightly different from the mean derived from rounded monthly maximum and minimum.

Processing Updates and Errata: The CD Publications are periodically reproduced to include the addition of late reports and reported corrections. The GHCND data version noted on the cover of the publication provides the generation date.

The climate division temperature and precipitation values in this publication are based on simple averages from the current set of NWS-Designated Open and Published COOP and First Order Sites within each division. These values differ from those found in NCDC's nClimDiv product. Beginning in February 2014, the nClimDiv product is used

NOAA\National Climatic Data Center
Attn: User Engagement & Services Branch
151 Patton Avenue
Asheville, NC 28801-5001

Customer Services Number: (828) 271-4800, option 2
TDD : (828) 271-4010
Fax number: (828) 271-4876

NCDC now offers free online access to the *Climatological Data* publication.
Go to : www.ncdc.noaa.gov and choose Most Popular.