



CLIMATOLOGICAL DATA ANNUAL SUMMARY VIRGINIA

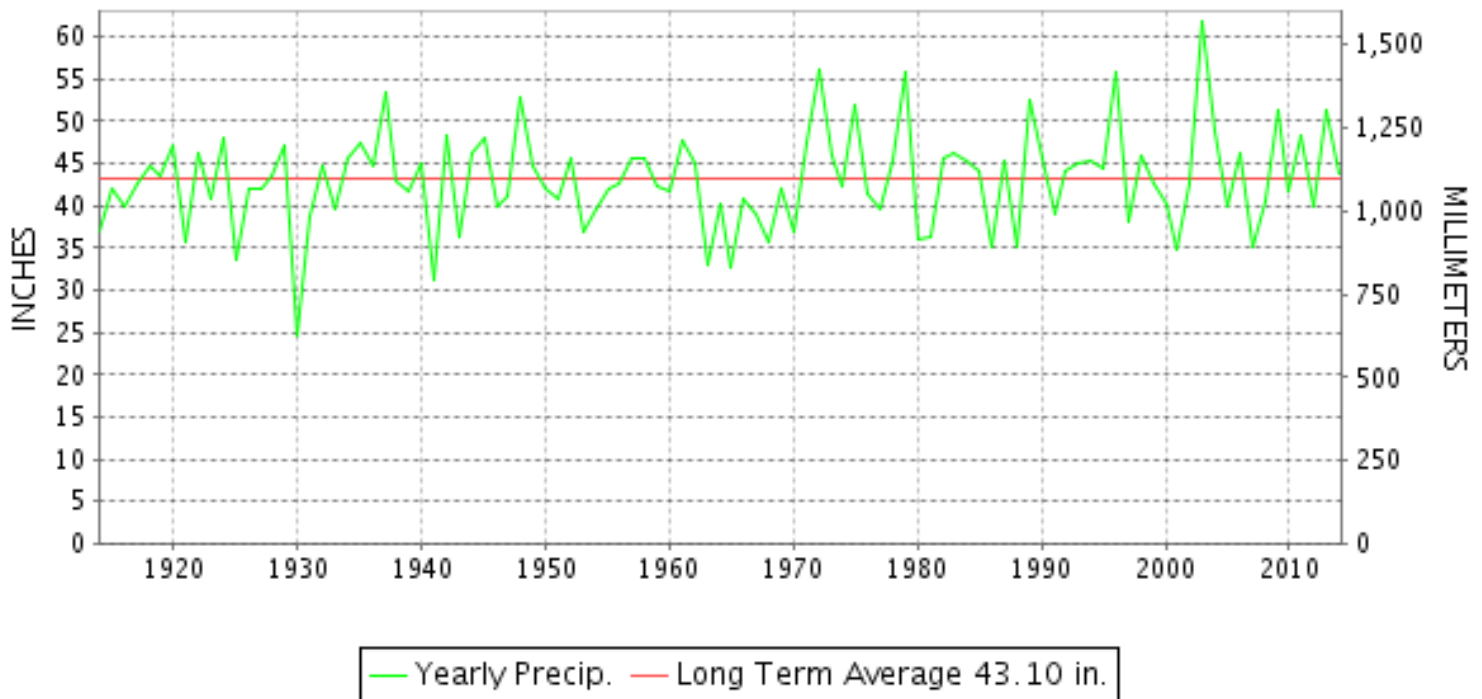
2014

VOLUME 124 NUMBER 13

ISSN 0364-5630

GHCND Ver: 3.20-upd-2015041405

YEARLY TOTAL PRECIPITATION



VIRGINIA PRECIPITATION 1914-2014

"I certify that this is an official publication of the National Oceanic and Atmospheric Administration (NOAA) It is compiled using information from weather observing sites supervised by NOAA/National Weather Service and received at the National Climatic Data Center(NCDC), Asheville, North Carolina 28801."

DIRECTOR
NATIONAL CLIMATIC DATA CENTER

noaa

National
Oceanic and
Atmospheric Administration

National
Environmental Satellite, Data
and Information Service

National
Climatic Data Center
Asheville, North Carolina

TOTAL PRECIPITATION AND DEPARTURE FROM NORMAL (INCHES)

VIRGINIA
2014

STATION	JAN		FEB		MAR		APR		MAY		JUN	
	PRECIP.	DEPART.	PRECIP.	DEPART.	PRECIP.	DEPART.	PRECIP.	DEPART.	PRECIP.	DEPART.	PRECIP.	DEPART.
VIRGINIA												
TIDEWATER 01												
DISPUTANTA	2.19	-1.43	3.00	-0.09	3.99	-0.27	4.91	1.30	3.15	-0.77	8.68	5.08
EASTVILLE	2.94	-0.82	M 2.63	-0.33	3.43	-0.42	4.07	0.77	5.06	1.52	1.39	-2.36
EMPORIA 1 WNW	2.92	-0.59	3.71	0.84	4.92	0.85	5.97	2.37	3.40	-0.42	2.70	-0.75
FREDERICKSBURG SEWAGE	2.21	-0.69	1.82	-0.69	F 2.18	-1.81	5.38	2.03	7.01	2.93	2.77	-1.20
HOLLAND 1 E	1.86	-1.95	3.18	-0.06	M 2.89	-1.09	5.46	2.02	4.76	0.84	3.41	-0.30
HOPEWELL	M 2.52	-0.95	2.97	-0.21	3.27	-0.80	3.87	0.11	3.77	-0.06	9.30	5.95
NORFOLK INTL AP	3.23	-0.17	3.06	-0.06	3.82	0.14	4.87	1.46	4.64	1.23	1.91	-2.35
NORFOLK SOUTH	3.33	-0.38	3.18	0.02	4.88	0.86	5.03	1.42	4.24	0.39	2.43	-2.04
NORTH	M		M		M		M 5.50	1.81	3.38	-0.83	M 3.52	-0.68
PAINTER 2W	3.06	-0.41	2.76	-0.25	3.64	-0.49	4.30	1.03	6.48	3.16	1.99	-1.95
STONY CREEK 2 N	M 2.12	-1.51	2.78	-0.29	3.48	-0.81	4.94	1.43	3.17	-1.14	FMA 1.29	-2.83
SUFFOLK LAKE KILBY	3.52	-0.11	2.45	-0.78	4.23	0.18	5.29	1.74	3.17	-0.66	4.33	-0.04
WAKEFIELD 1NW	3.47	-0.23	2.07	-0.85	3.95	-0.23	6.42	2.71	4.37	0.26	5.23	1.24
WALKERTON 2 NW	2.89	-0.29	2.80	-0.11	2.94	-1.17	4.88	1.75	2.55	-1.35	5.05	1.70
WALLACETON LK DRUMMOND	4.95		M 3.18		4.80		6.02		5.28		5.18	
WALLOPS ISLAND NASA TEST FACIL	2.96	-0.08	2.61	-0.15	3.15	-0.85	4.01	0.94	3.45	0.50	1.58	-1.71
WARSAW 2 NW	2.48	-0.60	3.22	0.52	2.90	-1.08	3.68	0.55	4.43	0.28	3.05	-0.50
WEST POINT 2 NW	3.31	-0.31	2.85	-0.12	3.63	-0.45	6.14	2.57	2.17	-1.73	4.08	0.34
WILLIAMSBURG 2 N	3.66	-0.04	2.50	-0.70	4.09	-0.25	8.66	4.96	3.46	-0.55	4.25	0.91
--DIVISIONAL DATA----->	3.06	-0.91	2.81	-0.47	3.82	-0.54	5.22	2.01	4.10	0.08	3.96	0.48
EASTERN PIEDMONT 02												
ALBERTA 5N	3.09		3.12		3.55		4.77		3.18		3.01	
AMELIA COURTHOUSE 1	5.75	2.42	3.07	0.07	MA 2.93	-1.26	5.96	2.77	5.42	1.58	4.18	0.77
ASHLAND	2.63	-0.62	3.06	0.06	3.35	-0.60	6.17	2.84	3.66	-0.37	3.25	-0.37
BREMO BLUFF	M 3.08	0.00	M 2.87	0.08	M 3.04	-0.93	M 4.82	1.66	M 6.99	3.02	M 5.54	2.04
BUCKINGHAM	2.80		4.06		3.12		4.86		6.28		5.04	
CAMP PICKETT	M 3.89	0.22	M 2.82	-0.36	5.29	1.01	4.11	0.51	4.72	0.49	M 2.64	-1.29
CHASE CITY	4.48	1.02	2.92	0.11	2.98	-1.35	FA 1.97	-1.96	6.62	2.66	1.12	-2.49
CLARKSVILLE	M 4.01	0.73	2.49	-0.36	4.08	0.15	4.37	1.08	8.25	4.14	M 2.13	-2.06
CORBIN	2.70	-0.44	3.66	0.60	2.46	-1.56	6.06	2.81	4.76	0.80	3.57	-0.15
CROZIER	3.13	-0.07	4.36	1.52	4.01	0.37	M		M 5.57	1.38	3.93	0.35
FARMVILLE 2 N	M 3.22	-0.25	M 2.77	-0.32	M 2.49	-1.77	5.52	2.25	7.42	3.42	1.95	-1.33
GREENBAY 3 NE	M 3.43	0.02	4.16	0.99	M 2.13	-2.05	6.20	2.99	6.42	2.31	2.40	-0.99
JOHN H KERR DAM	3.03	-0.26	2.53	-0.22	4.84	0.64	5.46	2.16	4.32	0.74	4.79	1.26
LOUISA	2.52	-0.54	3.16	0.24	2.63	-1.17	6.03	2.79	3.66	-0.48	4.62	1.00
PALMYRA 3S	2.92	0.04	3.29	0.49	2.94	-0.77	5.04	2.01	6.11	2.41	3.02	-0.63
PETERSBURG	2.33	-0.93	2.60	-0.08	M 2.33	-1.81	3.42	0.19	M 0.71	-3.15	3.79	0.18
RICHMOND INTL AP	3.28	0.24	3.03	0.27	3.24	-0.80	4.05	0.78	2.44	-1.34	3.39	-0.54
SANDSTON	3.40	0.03	3.02	0.00	MA 3.46	-0.69	MA 3.71	0.30	3.03	-1.00	3.84	0.30
WINTERPOCK 4 W	3.33		3.29		2.83		4.66		3.96		2.93	
--DIVISIONAL DATA----->	3.24	-0.60	3.24	0.05	3.49	-0.67	5.11	1.78	5.02	0.89	3.43	-0.15
WESTERN PIEDMONT 03												
ALTAVISTA	3.33		3.65		3.02		5.33		4.82		1.12	

TOTAL PRECIPITATION AND DEPARTURE FROM NORMAL (INCHES)

VIRGINIA
2014

STATION	JUL		AUG		SEP		OCT		NOV		DEC		ANNUAL	
	PRECIP.	DEPART.	PRECIP.	DEPART.	PRECIP.	DEPART.	PRECIP.	DEPART.	PRECIP.	DEPART.	PRECIP.	DEPART.	PRECIP.	DEPART.
VIRGINIA														
TIDEWATER 01														
DISPUTANTA	4.17	-1.05	2.80	-2.03	6.12	1.41	2.72	-0.65	3.33	-0.04	3.66	0.20	48.72	
EASTVILLE	M 3.76	-1.28	M 3.49	-1.82	9.89	5.55	2.09	-1.40	3.07	-0.01	3.27	-0.33	M 45.09	
EMPORIA 1 WNW	3.44	-1.20	5.95	1.39	M 8.31	3.89	3.41	0.17	3.89	0.80	3.38	-0.02	M 52.00	7.64
FREDERICKSBURG SEWAGE	1.17	-3.36	3.52	0.13	0.90	-3.42	2.53	-0.85	1.95	-1.80	3.05	-0.13	34.49	
HOLLAND 1 E	3.89	-1.31	6.61	1.41	7.88	2.73	1.46	-2.32	3.59	0.31	0.00	-3.49	M 44.99	-4.08
HOPEWELL	4.98	0.33	M 5.24	0.18	2.26	-2.36	M 1.86	-1.46	3.54	0.03	3.85	0.39	M 47.43	2.17
NORFOLK INTL AP	7.87	2.73	3.01	-2.51	9.17	4.41	1.57	-1.85	3.44	0.29	3.70	0.44	50.29	4.55
NORFOLK SOUTH	8.76	3.62	2.69	-4.65	9.78	4.71	1.51	-1.91	3.99	0.58	4.01	0.42	53.83	
NORTH	4.49	-0.34	5.32	0.85	4.56	-0.51	M 0.71	-3.32	2.84	-0.49	3.85	0.48		
PAINTER 2W	3.18	-1.86	3.22	-1.07	5.65	1.69	1.76	-1.83	4.33	1.22	3.44	-0.41	43.81	0.46
STONY CREEK 2 N	3.77	-1.06	3.29	-1.62	5.14	0.73	2.88	-0.42	3.74	0.65	3.34	-0.16	M 39.94	-7.12
SUFFOLK LAKE KILBY	9.47	4.33	4.05	-1.66	6.68	1.36	2.40	-1.23	4.63	1.09	3.69	0.20	53.91	5.20
WAKEFIELD INW	6.87	2.06	2.25	-2.85	7.56	2.40	2.44	-0.74	3.95	0.84	3.50	0.04	52.08	7.03
WALKERTON 2 NW	M 1.98	-2.54	5.70	1.94	2.43	-1.31	2.62	-0.72	3.70	0.37	3.32	-0.09	M 40.86	-2.72
WALLACETON LK DRUMMOND	7.33		3.39		5.07		1.42		3.73		M 2.63		M 52.98	0.74
WALLOPS ISLAND NASA TEST FACIL	3.35	-0.74	4.48	0.29	4.73	0.75	1.31	-1.86	3.13	0.26	3.22	-0.21	37.98	
WARSAW 2 NW	3.03	-1.55	3.60	-1.03	2.71	-1.52	2.00	-1.47	3.23	-0.11	2.85	-0.27	37.18	-6.67
WEST POINT 2 NW	6.34	1.77	4.83	0.31	2.69	-1.82	2.66	-0.64	3.29	0.12	3.48	0.05	45.47	-0.29
WILLIAMSBURG 2 N	5.81	0.34	3.57	-1.80	5.04	0.14	1.82	-1.64	3.61	0.34	3.65	0.10	50.12	1.08
--DIVISIONAL DATA----->	5.17	0.51	4.02	-0.42	5.46	1.09	2.15	-1.32	3.53	0.39	3.29	0.06	46.59	0.96
EASTERN PIEDMONT 02														
ALBERTA 5N	5.45		4.29		4.61		3.64		3.52		3.52		45.75	
AMELIA COURTHOUSE 1	1.86	-2.32	3.13	-0.96	2.97	-0.85	4.57	1.15	2.53	-1.52	3.76	0.09	M 46.13	0.88
ASHLAND	1.35	-3.22	4.55	1.03	2.29	-1.47	2.06	-1.21	2.79	-0.79	2.79	-0.74	37.95	-6.09
BREMO BLUFF	2.41	-1.82	4.95	1.10	3.16	-0.55	M 3.57	-0.13	M 2.31	-1.45	3.63	0.37	M 46.37	3.70
BUCKINGHAM	3.53		5.34		2.86		3.60		2.51		4.08		48.08	3.06
CAMP PICKETT	3.65	-0.48	4.09	-0.38	4.17	0.11	2.92	-0.71	3.62	0.19	3.59	0.16	M 45.51	-1.00
CHASE CITY	7.41	2.98	3.21	-1.23	5.12	1.03	2.20	-1.35	3.78	0.25	3.12	-0.60	44.93	-0.33
CLARKSVILLE	5.60	1.11	5.92	2.83	8.17	4.42	3.50	0.07	M 4.43	1.19	3.56	0.15	M 56.51	13.42
CORBIN	3.85	-0.13	2.86	-0.49	2.31	-1.80	3.32	-0.42	2.36	-1.25	3.20	-0.14	41.11	-3.43
CROZIER	2.98	-0.82	M 6.18	2.04	M 1.40	-2.04	M 3.45	0.27	3.39	-0.29	2.78	-0.57		
FARMVILLE 2 N	1.98	-2.14	4.31	0.40	2.62	-1.36	3.67	0.25	2.39	-1.26	3.40	0.04	M 41.74	-3.13
GREENBAY 3 NE	3.20	-1.14	M 2.63	-1.54	4.46	0.39	4.09	0.71	3.55	-0.04	M			
JOHN H KERR DAM	5.63	0.53	5.38	1.45	6.44	2.97	4.86	1.53	4.11	1.02	3.82	0.58	55.21	11.13
LOUISA	3.51	-1.20	3.91	0.33	1.32	-2.86	3.38	-0.24	2.47	-1.66	3.20	0.02	40.41	-3.61
PALMYRA 3S	1.99	-2.37	6.16	2.33	2.03	-1.64	3.34	-0.10	2.32	-1.20	3.76	0.57	42.92	0.60
PETERSBURG	4.72	0.26	5.89	1.12	2.48	-1.78	2.74	-0.48	3.49	0.25	4.05	0.85	M 38.55	
RICHMOND INTL AP	2.63	-1.88	3.61	-1.05	1.35	-2.78	2.63	-0.35	2.95	-0.29	3.14	-0.12	35.74	-8.17
SANDSTON	2.57	-1.72	3.51	-1.21	1.76	-2.30	2.21	-0.95	2.45	-1.22	3.32	-0.10	M 36.28	
WINTERPOCK 4 W	4.34		2.78		2.61		2.66		3.30		3.14		39.83	-4.54
--DIVISIONAL DATA----->	3.61	-0.75	4.35	0.42	3.37	-0.66	3.26	-0.59	3.03	-0.39	3.44	0.26	44.59	-0.41
WESTERN PIEDMONT 03														
ALTAVISTA	2.19		6.48		1.78		4.15		2.55		2.95		41.37	-2.58

TOTAL PRECIPITATION AND DEPARTURE FROM NORMAL (INCHES)

VIRGINIA
2014

STATION	JAN		FEB		MAR		APR		MAY		JUN	
	PRECIP.	DEPART.	PRECIP.	DEPART.	PRECIP.	DEPART.	PRECIP.	DEPART.	PRECIP.	DEPART.	PRECIP.	DEPART.
APPOMATTOX	3.67	0.53	4.03	0.95	M 3.13	-0.84	5.28	1.86	4.66	-0.10	2.91	-1.04
BEDFORD 4 NW	2.57		3.60		2.64		4.96		3.05		2.42	
BROOKNEAL	3.90	0.23	3.47	0.33	2.93	-1.01	5.25	1.54	4.98	0.29	3.19	0.22
CHARLOTTE COURT HOUSE	3.37	-0.30	M 1.79	-1.30	3.02	-1.00	6.42	2.91	6.21	2.10	1.53	-2.05
CHARLOTTESVILLE 2W	2.76	-0.34	4.80	1.73	4.25	0.40	5.63	2.23	6.99	2.36	3.87	-0.29
CHATHAM	4.79	1.01	M 2.15	-0.86	M 3.00	-1.05	5.54	1.99	2.78	-1.26	1.58	-2.16
CONCORD 4 SSW	3.42		3.11		2.86		5.45		4.06		4.12	
DANVILLE REGIONAL AP	3.29	-0.13	1.83	-1.18	3.20	-0.91	5.76	2.30	4.48	0.60	1.23	-2.61
FREE UNION	3.07		4.52		3.58		4.87		6.35		3.84	
HOLCOMB ROCK	3.34		4.69		4.06		6.95		3.78		4.95	
HUDDLESTON 4 SW	2.85		4.25		3.38		4.52		2.60		1.69	
LYNCHBURG INTL AP	3.27	0.13	3.81	0.88	2.93	-0.65	5.62	2.31	5.39	1.66	2.40	-1.22
MARTINSVILLE FLTR PLT	3.54	0.05	M 1.59	-1.55	M 3.17	-0.98	4.71	1.22	2.26	-1.77	2.75	-1.00
MEADOWS OF DAN 5 SW	3.70		M		M		M		M		M	
MONTEBELLO FISH CULTURAL STN	3.31		M		M 6.48		M		MA 5.00		MA 2.36	
MONTICELLO	1.50	-0.86	4.19	1.41	3.34	-0.31	6.13	2.88	7.42	3.32	3.07	-0.89
PEDLAR DAM	3.35		4.59		3.86		5.66		4.02		3.64	
ROCKY MT	3.14	-0.23	3.74	0.66	3.57	-0.69	4.80	1.03	1.62	-2.45	2.09	-2.43
SOUTH BOSTON	3.21	-0.40	M 1.77	-1.35	3.77	-0.38	5.73	2.25	5.41	1.49	2.22	-2.07
STUART	M 2.82	-1.05	M 3.04	-0.21	M 3.53	-0.55	4.49	0.50	2.08	-2.52	4.17	-0.82
TYE RIVER 1 SE	3.00	-0.21	3.20	0.19	3.01	-0.73	5.48	2.07	5.66	1.15	2.65	-0.94
WOOLWINE	2.58		4.57		4.08		5.22		2.37		4.57	
--DIVISIONAL DATA----->	3.23	-0.61	3.88	0.59	3.38	-0.85	5.42	1.69	4.33	-0.06	2.86	-1.09
NORTHERN 04												
BOSTON 4 SE	MA 1.99		M 5.04		3.99		M 5.01		M 5.23		4.62	
EDINBURG	1.57	-0.51	3.03	1.22	2.16	-0.76	3.27	0.46	4.51	0.61	4.02	0.24
FRONT ROYAL	MA 1.24	-1.20	M 3.24	0.59	M 1.72	-2.04	3.34	0.08	M 5.48	1.28	5.17	1.14
LINCOLN	3.29		M 3.95		4.08		5.08		5.10		6.23	
LURAY 5 E	1.73	-0.95	4.24	1.58	2.89	-0.99	3.58	0.14	4.59	0.59	4.44	0.49
MADISON	M		M		M		MA 4.91	1.62	M 6.88	2.40	MA 2.63	-1.73
MANASSAS	MA 2.55		MA 4.05		MA 4.20		M 5.00		9.02		MA 4.13	
MT WEATHER	2.54	-0.34	3.88	0.92	M 4.28	0.72	4.47	0.78	5.64	1.16	4.14	-0.10
PIEDMONT RSCH STN	2.79	0.03	3.22	0.47	3.09	-0.42	6.23	2.83	7.57	3.43	4.08	-0.09
SOMERSET	3.16	0.27	4.87	2.10	2.89	-0.84	5.18	1.99	5.73	1.51	4.34	0.27
SPERRYVILLE	2.58	-0.49	MA 3.60	0.76	4.11	0.09	M 5.65	1.88	MA 6.46	2.11	MA 5.13	0.79
STERLING RCS	2.21	-0.64	3.54	0.77	4.36	0.76	3.98	0.36	7.66	2.94	3.31	-0.61
VIENNA	2.49	-0.64	3.31	0.50	3.76	-0.06	4.23	0.64	7.62	3.09	3.44	-0.64
WASHGTON DULLES INTL AP	2.69	0.01	3.81	1.07	4.10	0.72	7.41	3.94	6.34	1.79	4.62	0.64
WASHINGTON REAGAN AP	2.58	-0.23	4.02	1.40	4.26	0.78	6.47	3.41	4.96	0.97	3.31	-0.47
WINCHESTER	1.62	-0.94	3.79	1.47	3.05	-0.40	3.23	-0.14	5.10	1.23	2.61	-1.00
WINCHESTER 7 SE	1.63	-0.56	2.63	0.16	3.00	-0.42	M 3.26	0.09	M 5.21	1.39	3.47	-0.19
WOODSTOCK 2 NE	1.91	-0.76	3.06	0.47	2.44	-0.82	2.76	-0.17	4.92	0.91	4.99	1.19
--DIVISIONAL DATA----->	2.34	-0.83	3.62	0.97	3.44	-0.13	4.56	1.36	6.06	1.83	4.19	0.25
CENTRAL MOUNTAIN 05												
BUENA VISTA	2.29		4.64		3.80		4.28		3.33		3.41	
COVINGTON FLTR PLT	1.43	-1.07	3.68	1.31	2.54	-0.74	3.16	-0.06	5.04	0.96	4.75	1.45

TOTAL PRECIPITATION AND DEPARTURE FROM NORMAL (INCHES)

VIRGINIA
2014

STATION	JUL		AUG		SEP		OCT		NOV		DEC		ANNUAL	
	PRECIP.	DEPART.	PRECIP.	DEPART.	PRECIP.	DEPART.	PRECIP.	DEPART.	PRECIP.	DEPART.	PRECIP.	DEPART.	PRECIP.	DEPART.
APPOMATTOX	3.01	-1.81	4.19	0.21	1.96	-2.34	4.69	0.93	2.62	-1.36	3.60	0.17	M 43.75	-2.13
BEDFORD 4 NW	4.09		6.08		0.95		3.42		3.14		3.21		40.13	
BROOKNEAL	5.59	1.23	3.68	-0.28	1.70	-2.18	4.10	0.49	2.56	-1.12	3.53	0.18	44.88	0.64
CHARLOTTE COURT HOUSE	4.10	-0.14	4.13	0.20	3.18	-0.90	2.33	-1.04	2.57	-1.13	3.19	-0.27	M 41.84	-3.47
CHARLOTTESVILLE 2W	2.25	-3.07	3.23	-0.84	2.28	-2.62	4.60	0.86	3.03	-1.06	3.49	0.14	47.18	-1.69
CHATHAM	4.53	0.04	8.33	4.51	3.70	-0.75	3.53	0.24	3.11	-0.47	3.13	-0.31	M 46.17	0.89
CONCORD 4 SSW	2.92		3.66		1.51		3.99		2.68		3.62		41.40	-3.35
DANVILLE REGIONAL AP	3.73	-0.94	6.23	2.32	3.88	-0.11	4.13	0.59	2.72	-0.63	2.67	-0.59	43.15	
FREE UNION	3.48		3.98		0.98		4.66		3.55		3.50		46.38	-0.40
HOLCOMB ROCK	2.88		6.63		1.60		4.05		3.78		4.15		50.86	6.12
HUDDLESTON 4 SW	1.52		6.54		3.16		3.17		2.96		3.31		39.95	-2.94
LYNCHBURG INTL AP	5.79	1.43	4.78	1.52	1.62	-2.26	3.57	0.46	2.43	-0.98	3.12	-0.12	44.73	1.42
MARTINSVILLE FLTR PLT	1.40	-3.07	5.16	1.25	4.14	-0.42	3.16	-0.14	3.42	-0.02	2.48	-0.91	M 37.78	-7.83
MEADOWS OF DAN 5 SW	M 5.19		7.60		3.18		3.51		4.04		2.74			
MONTEBELLO FISH CULTURAL STN	MA 3.02		3.58		M 1.41		M		M		M			
MONTICELLO	2.29	-3.20	4.05	0.01	2.37	-2.10	4.49	0.81	2.49	-1.37	2.79	-0.25	44.13	1.57
PEDLAR DAM	4.65		4.81		1.84		5.82		3.64		2.89		48.77	4.07
ROCKY MT	2.17	-2.70	8.50	4.21	M 2.30	-2.29	M 3.88	0.70	M 3.36	-0.21	3.07	-0.42	M 42.24	-4.38
SOUTH BOSTON	5.04	0.71	8.58	4.81	3.90	-0.08	2.69	-0.79	3.30	-0.10	3.50	0.14	M 49.12	4.71
STUART	4.01	-1.56	8.74	3.75	3.83	-0.81	3.18	-0.14	2.60	-0.86	2.41	-1.10	M 44.90	-6.45
TYE RIVER 1 SE	2.35	-1.69	3.90	0.13	1.26	-2.90	4.96	1.32	2.89	-0.72	3.04	-0.52	41.40	-4.54
WOOLWINE	4.92		9.68		4.69		2.81		4.15		2.76		52.40	-1.33
--DIVISIONAL DATA----->	3.47	-1.16	5.76	1.95	2.55	-1.83	3.86	0.10	3.06	-0.29	3.14	-0.11	44.94	-1.67
NORTHERN 04														
BOSTON 4 SE	FM 3.64		M 3.73		M		M 5.93		M 2.21		M 2.69			
EDINBURG	4.14	0.47	3.72	0.23	1.29	-2.11	3.88	1.54	2.02	-0.74	2.47	0.15	36.08	
FRONT ROYAL	2.40	-0.90	M 4.23	1.17	1.71	-2.79	M 5.17	2.02	1.83	-1.92	3.02	0.20	M 38.55	
LINCOLN	3.47		3.77		1.56		4.81		MA 2.09		3.54		M 46.97	3.76
LURAY 5 E	2.66	-1.45	2.61	-0.71	0.97	-3.56	5.10	2.07	2.34	-1.27	2.74	-0.31	37.89	-3.72
MADISON	4.68	0.47	MA 2.87	-0.76	1.29	-3.09	MA 4.44	1.08	MA 1.10	-2.81	3.70	0.19		
MANASSAS	MA 6.80		M 6.45		M 3.10		MA 3.64		3.03		MA 4.11		M 56.08	
MT WEATHER	5.16	1.35	4.33	0.88	2.71	-1.81	5.14	1.71	3.17	-0.34	3.08	0.13	M 48.54	5.25
PIEDMONT RSCH STN	3.18	-1.52	2.35	-0.87	1.23	-2.80	4.33	0.91	2.72	-1.10	2.93	-0.14	43.72	-0.92
SOMERSET	4.16	-1.54	2.94	-0.60	1.26	-2.98	4.33	0.78	3.14	-0.71	3.24	0.11	45.24	
SPERRYVILLE	MA 6.05	1.73	M		1.42	-3.55	4.82	1.26	M 0.87	-3.78	4.32	0.94		
STERLING RCS	1.73	-1.97	3.95	0.46	1.32	-2.68	4.06	0.47	M 3.12	-0.46	3.86	0.77	M 43.10	0.92
VIENNA	3.78	-0.41	5.08	1.39	1.26	-2.92	2.93	-0.58	2.09	-1.47	2.43	-0.84	42.42	-2.70
WASHGTN DULLES INTL AP	2.09	-1.58	5.15	1.62	0.93	-2.99	3.01	-0.24	2.66	-0.75	3.26	0.30	46.07	4.27
WASHINGTON REAGAN AP	4.68	0.95	3.39	0.46	1.11	-2.61	3.49	0.09	2.64	-0.53	3.50	0.45	44.41	5.06
WINCHESTER	3.62	0.09	3.16	0.14	1.45	-2.29	4.26	1.31	2.24	-0.99	2.75	0.07	36.88	0.48
WINCHESTER 7 SE	M 3.91	0.32	M 3.69	0.46	1.35	-2.56	M		M		M			
WOODSTOCK 2 NE	3.67	-0.13	M 2.85	-0.31	1.10	-2.78	M 5.29	2.63	2.38	-0.47	2.41	-0.24	M 37.78	0.26
--DIVISIONAL DATA----->	3.53	-0.38	3.68	0.02	1.37	-2.70	4.18	0.62	2.52	-0.94	3.15	0.13	42.64	0.20
CENTRAL MOUNTAIN 05														
BUENA VISTA	4.34		3.92		1.42		4.30		3.63		2.49		41.85	3.01
COVINGTON FLTR PLT	3.86	-0.11	3.43	0.21	1.70	-1.54	4.95	2.41	2.55	-0.81	1.90	-0.81	38.99	1.76

TOTAL PRECIPITATION AND DEPARTURE FROM NORMAL (INCHES)

VIRGINIA
2014

STATION	JAN		FEB		MAR		APR		MAY		JUN	
	PRECIP.	DEPART.	PRECIP.	DEPART.	PRECIP.	DEPART.	PRECIP.	DEPART.	PRECIP.	DEPART.	PRECIP.	DEPART.
CRAIGSVILLE 2 S	M		M		M		M		M		M	
DALE ENTERPRISE	F 3.66	1.37	4.60	2.38	FM 1.51	-1.41	3.72	0.75	4.15	0.44	4.66	1.25
GATHRIGHT DAM	1.15	-1.63	4.11	1.51	2.84	-0.44	3.00	-0.17	4.05	-0.06	1.74	-1.90
GLASGOW 1 SE	2.87		4.78		4.49		4.68		4.02		2.73	
HOT SPRINGS	1.89	-1.57	4.19	1.16	3.95	-0.14	3.41	-0.29	4.68	0.49	2.67	-0.99
LEXINGTON	2.65	-0.14	4.09	1.44	3.90	0.75	4.56	1.14	3.44	-0.58	4.67	0.42
MILLGAP	1.58	-1.67	3.43	0.45	3.47	-0.40	3.69	-0.06	3.76	-1.01	1.77	-2.29
MTN GROVE	M 0.90		4.15		2.99		3.73		3.39		2.88	
MUSTOE 1 SW	2.09	-1.29	3.97	0.72	3.68	-0.48	4.33	0.52	4.65	-0.05	3.17	-0.64
NEW CASTLE	1.91		3.63		2.36		3.48		3.39		2.43	
ROANOKE 8 N	1.92	-1.10	M 4.16	1.52	M 3.14	-0.59	4.44	0.71	3.00	-1.43	3.19	-1.27
ROANOKE INTL AP	1.81	-1.11	4.47	1.58	2.76	-0.70	4.18	0.81	2.38	-1.68	3.05	-0.78
STAUNTON WATER TRMTMT PLT	1.69	-0.98	3.73	1.18	3.95	0.70	4.23	1.08	4.93	1.19	3.98	0.37
WAYNESBORO WTP	1.88	-0.91	4.33	1.41	3.54	-0.19	4.20	0.65	3.95	0.02	4.15	0.28
--DIVISIONAL DATA----->	1.94	-1.22	4.13	1.39	3.41	-0.17	3.94	0.74	3.88	-0.24	3.28	-0.42
SOUTHWESTERN MOUNTAIN 06												
ABINGDON 3S	M 2.13		3.61		M 2.22		M 1.75		M 2.65		M 3.52	
BIG STONE GAP	3.13	-1.06	4.64	0.24	3.54	-1.15	2.98	-1.69	2.78	-2.10	5.86	2.01
BLACKSBURG NWSO	1.65	-1.43	3.98	1.17	2.42	-1.22	3.93	0.45	2.85	-1.48	2.84	-1.16
BURKES GARDEN	M 1.94	-2.01	M 3.59	0.13	2.61	-1.41	2.67	-1.01	M 2.64	-2.12	3.69	-0.53
CHRISTIANSBURG	1.54	-1.22	4.23	1.40	2.14	-1.14	3.64	0.36	3.05	-1.85	2.11	-1.81
CLINTWOOD 1 W	2.20	-1.41	3.94	0.29	3.90	0.03	2.68	-1.40	4.78	0.19	6.08	1.29
COPPER HILL	2.12		3.88		2.75		4.18		3.49		M 3.15	
GALAX RADIO WBRF	1.85	-1.51	3.20	-0.09	2.11	-1.68	3.60	0.06	4.13	0.21	1.66	-2.21
GALAX WTP	1.16		2.79		1.98		3.52		4.39		1.45	
GRUNDY	2.07	-1.12	3.04	-0.05	3.32	-0.11	3.01	-1.05	3.76	-1.13	4.70	0.20
JOHN FLANNAGAN LAKE	MA 2.20		MA 3.68		3.76		2.47		MA 2.68		MA 2.98	
LAFAYETTE 1 NE	1.71		4.57		2.78		4.13		2.14		2.26	
LEBANON	3.38	0.34	2.28	-1.15	2.97	-0.87	3.32	-0.11	3.74	-0.68	3.88	-0.70
NORA 4 SSE	2.48	-1.13	3.66	0.04	3.48	-0.42	2.13	-1.08	3.96	-1.54	5.23	-0.49
NORTH FORK LAKE	MA 1.90		MA 3.69		MA 3.61		MA 2.19		MA 2.41		MA 3.35	
PULASKI 2 E	M 0.78	-2.07	3.14	0.45	2.12	-1.07	3.78	0.83	1.83	-1.94	1.70	-1.81
RADFORD 3 N	1.33	-1.60	3.24	0.50	2.00	-0.98	4.36	1.29	3.10	-0.82	1.61	-1.46
RICHLANDS	1.72	-1.33	3.04	0.13	2.35	-1.59	2.25	-1.54	3.14	-1.61	2.69	-1.26
SALTVILLE 1N	M 2.13	-1.47	2.68	-0.79	2.98	-0.88	2.82	-0.80	4.02	-0.33	4.17	0.02
STAFFORDSVILLE 3 ENE	1.25	-1.65	2.74	0.01	2.06	-1.37	3.20	-0.15	3.43	-0.81	1.52	-2.19
WILLIS	2.36		3.22		2.17		3.63		3.51		1.04	
WISE 3E	2.52	-1.36	4.29	0.31	3.43	-0.69	2.71	-1.42	3.94	-0.68	4.76	0.30
WYTHEVILLE 1 S	1.23	-1.67	3.55	0.75	2.41	-0.83	3.50	0.28	2.93	-1.18	3.52	-0.05
--DIVISIONAL DATA----->	1.98	-1.56	3.49	0.11	2.73	-1.33	3.26	-0.44	3.42	-1.18	3.20	-0.91

TOTAL PRECIPITATION AND DEPARTURE FROM NORMAL (INCHES)

VIRGINIA
2014

STATION	JUL		AUG		SEP		OCT		NOV		DEC		ANNUAL	
	PRECIP.	DEPART.	PRECIP.	DEPART.	PRECIP.	DEPART.	PRECIP.	DEPART.	PRECIP.	DEPART.	PRECIP.	DEPART.	PRECIP.	DEPART.
CRAIGSVILLE 2 S	M		M		M		M		M		M			
DALE ENTERPRISE	4.87	0.87	3.13	-0.31	0.73	-2.81	4.03	1.51	5.66	2.81	2.59	-0.02	M 43.31	7.19
GATHRIGHT DAM	1.25	-2.65	4.16	0.97	1.87	-1.50	4.22	1.49	2.25	-0.86	2.37	-0.59	33.01	-5.69
GLASGOW 1 SE	3.61		4.52		2.31		5.39		4.45		3.03		46.88	-2.78
HOT SPRINGS	1.90	-2.31	3.41	-0.02	1.41	-2.24	5.43	2.42	2.87	-0.85	2.37	-0.98	38.18	-4.73
LEXINGTON	2.83	-1.29	4.29	1.12	0.73	-2.79	5.08	2.16	3.13	-0.26	2.67	-0.44	42.04	2.08
MILLGAP	2.92	-1.75	2.19	-1.32	1.45	-2.14	4.20	1.26	2.62	-0.92	2.61	-0.74	33.69	-10.18
MTN GROVE	1.79		2.42		1.43		3.69		2.67		2.47		M 32.51	
MUSTOE 1 SW	3.61	-1.00	2.77	-0.61	0.70	-2.96	4.59	1.75	2.71	-1.10	3.10	-0.21	39.37	
NEW CASTLE	2.12		5.08		2.85		5.51		3.09		2.60		38.45	
ROANOKE 8 N	2.35	-2.83	6.23	2.64	2.03	-2.11	3.82	0.76	3.68	0.42	2.67	-0.56	M 40.63	
ROANOKE INTL AP	3.40	-0.64	6.53	2.97	1.23	-2.66	3.56	0.67	3.52	0.12	2.54	-0.40	39.43	-3.06
STAUNTON WATER TRMTMT PLT	2.07	-1.83	2.37	-1.26	0.85	-2.94	4.13	1.15	2.61	-0.48	2.41	-0.33	36.95	-1.90
WAYNESBORO WTP	3.35	-0.88	2.42	-1.62	0.92	-3.78	4.85	1.64	M 3.27	-1.21	2.77	-0.17	M 39.63	
--DIVISIONAL DATA----->	2.95	-1.02	3.79	0.37	1.44	-2.15	4.52	1.35	3.25	0.06	2.57	-0.23	39.10	-1.54
SOUTHWESTERN MOUNTAIN 06														
ABINGDON 3S	M 5.40		M 4.86		1.81		M 6.29		3.27		3.50		M 41.01	-6.40
BIG STONE GAP	7.70	2.41	6.56	2.28	1.96	-1.92	7.27	4.34	3.60	-0.36	6.46	1.37	56.48	4.12
BLACKSBURG NWSO	2.15	-2.11	5.95	2.36	3.80	0.70	4.07	1.29	3.01	0.14	2.65	-0.30	39.30	-3.33
BURKES GARDEN	3.76	-0.72	6.68	2.52	4.97	1.66	M 8.28	5.36	2.95	-0.17	3.39	-0.41	M 47.17	1.42
CHRISTIANSBURG	2.01	-2.34	5.86	2.56	3.34	-0.14	3.68	0.93	3.45	0.55	2.88	-0.10	37.93	
CLINTWOOD 1 W	6.15	1.40	6.83	3.18	2.29	-0.99	5.36	2.66	2.36	-0.62	3.06	-0.60	49.63	
COPPER HILL	M 4.50		8.42		2.43		M 4.71		3.86		2.04		M 45.53	-1.63
GALAX RADIO WBRF	2.58	-1.66	4.99	0.95	3.29	-0.54	5.42	2.59	4.46	0.87	2.25	-1.02	39.54	-4.36
GALAX WTP	2.29		4.96		3.25		5.30		4.09		2.14		37.32	
GRUNDY	MA 5.49	0.29	4.39	0.53	M 2.87	-0.27	M 5.99	3.17	2.12	-0.79	3.14	-0.13	M 43.90	-1.94
JOHN FLANNAGAN LAKE	MA 5.11		MA 6.80		1.79		MA 5.51		MA 2.19		2.24		M 41.41	-3.18
LAFAYETTE 1 NE	3.19		6.76		3.11		4.29		3.40		2.36		40.70	1.82
LEBANON	3.82	-0.75	4.76	1.09	4.47	1.38	7.23	4.83	4.19	1.18	3.71	0.29	47.75	6.45
NORA 4 SSE	5.17	0.42	5.15	0.87	3.21	-0.10	5.87	3.19	2.55	-0.81	3.50	-0.24	46.39	
NORTH FORK LAKE	MA 6.62		MA 4.75		MA 2.22		MA 5.54		MA 2.77		M			
PULASKI 2 E	2.05	-1.88	7.46	4.37	3.74	0.68	4.46	1.81	M 3.25	0.80	2.65	-0.15	M 36.96	-0.85
RADFORD 3 N	3.45	-0.77	6.71	3.31	4.21	1.20	4.49	1.85	3.35	0.00	2.70	-0.24	40.55	4.07
RICHLANDS	6.23	1.91	4.75	0.62	3.14	0.01	6.54	4.10	2.87	-0.11	4.46	1.01	43.18	2.73
SALTVILLE 1N	4.76	-0.27	6.57	2.39	4.19	0.91	6.75	4.02	3.41	0.16	3.74	0.08	M 48.22	3.25
STAFFORDSVILLE 3 ENE	2.52	-1.57	6.67	3.43	2.42	-0.67	5.01	2.36	3.15	0.31	2.88	0.04	36.85	-2.80
WILLIS	3.45		M 6.06		3.99		3.69		3.74		2.22		M 39.08	-6.03
WISE 3E	5.08	-0.22	6.42	2.37	2.29	-1.31	7.21	4.64	2.68	-0.78	3.94	0.13	49.27	2.27
WYTHEVILLE 1 S	1.81	-1.94	6.48	3.04	3.36	0.17	6.03	3.34	3.29	0.56	2.46	-0.32	40.57	2.72
--DIVISIONAL DATA----->	3.79	-0.50	6.12	2.55	3.19	-0.28	5.45	2.35	3.29	0.09	3.11	-0.16	43.03	-1.26

AVERAGE TEMPERATURES AND DEPARTURES FROM NORMAL(°F)

VIRGINIA
2014

STATION	JAN		FEB		MAR		APR		MAY		JUN		JUL		AUG		SEP		OCT		NOV		DEC		ANNUAL	
	TEMPERATURE	DEPARTURE.	TEMPERATURE	DEPARTURE.	TEMPERATURE	DEPARTURE.	TEMPERATURE	DEPARTURE.	TEMPERATURE	DEPARTURE.	TEMPERATURE	DEPARTURE.	TEMPERATURE	DEPARTURE.	TEMPERATURE	DEPARTURE.	TEMPERATURE	DEPARTURE.	TEMPERATURE	DEPARTURE.	TEMPERATURE	DEPARTURE.	TEMPERATURE	DEPARTURE.	TEMPERATURE	DEPARTURE.
--DIVISIONAL DATA----->	25.3	-7.0	33.4	-2.2	37.1	-6.6	52.1	-0.6	62.4	1.0	70.3	1.0	70.3	-3.1	68.5	-3.4	65.3	0.2	54.9	0.9	38.3	-6.0	38.3	2.4	51.4	-23.4
SOUTHWESTERN MOUNTAIN 06																										
ABINGDON 3S	25.9M		35.6		40.9M		55.5M		62.4M		71.2M		69.8M		70.0M		67.2		54.9M		38.2		39.9		M 52.6	-0.8
BIG STONE GAP	26.0	-7.6	36.7F	-0.7	42.0	-3.6	54.9	1.4	63.9	1.1	72.1	1.9	69.9	-4.4	72.2	-1.7	69.2	1.9	56.3	0.9	38.8	-7.0	40.5	3.5	53.5	-1.2
BLACKSBURG NWSO	24.8	-6.1	33.6	0.1	38.0	-3.4	51.6	1.6	62.5	3.6	70.0	3.1	70.1	-1.0	68.0	-1.6	65.1	2.1	53.9	2.2	37.7	-5.1	38.1	4.0	51.1	-0.1
BURKES GARDEN	20.8M	-8.0	30.0M	-1.1	35.2	-3.9	49.1	2.3	57.0M	1.0	65.6	2.1	64.5M	-2.8	63.9	-1.7	60.8	1.3	49.1M	0.5	34.0	-6.1	36.1	3.8	M 47.2	-1.0
CHRISTIANSBURG	25.3		34.4		37.8		52.3		62.9		69.7		69.8		67.3		64.1		54.2		38.3		38.4		51.2	
CLINTWOOD 1 W	24.0		33.3		38.8		53.4		61.7		69.1		67.3		68.5		65.1		52.5		36.3		39.1		50.8	
COPPER HILL	24.4		32.1		36.1		50.4		60.8		67.1M		67.8M		66.2		62.8		53.9M		37.2		37.1		M 49.7	
GALAX RADIO WBRF	25.9	-4.5	34.5	1.3	38.9	-1.9	52.0	2.9	62.1	3.7	69.1	3.4	68.8	-1.1	68.0	-0.3	64.4	2.4	54.6	3.7	38.6	-3.1	39.1	5.3	51.3	0.9
GALAX WTP	24.2		34.0		37.4		50.0		61.1		68.3		67.8		67.0		63.6		53.0		36.8		38.6		50.2	
GRUNDY	25.2	-9.2	34.8	-3.1	39.7M	-6.2	55.0	0.8	63.0	0.1	70.6	-0.2	MM		72.1	-2.1	68.1M	0.0	55.6M	-0.5	37.8	-8.8	40.2	2.4	M 51.1	-4.2
JOHN FLANNAGAN LAKE	MM		MM		MM		53.9M		64.7M		MM		70.4M		71.6M		68.1M		56.2M		MM		MM		M	
LEBANON	25.8F	-6.9	34.9	-0.9	40.1	-3.3	53.8	2.4	62.1	1.6	70.7	2.4	69.0	-2.8	69.1	-1.5	66.8	2.3	54.0	1.1	37.6	-6.5	40.1	4.1	52.0	-0.7
NORA 4 SSE	23.8		32.9		39.3		55.3		63.2		70.5		68.2		69.4		65.3		54.6		36.9		38.7		51.5	
NORTH FORK LAKE	MM		MM		MM		MM		MM		MM		69.9M		MM		MM		MM		MM		MM		M	
PULASKI 2 E	27.3	-4.3	34.9M	0.5	39.0M	-3.3	52.7	1.7	63.2M	3.2	70.7	3.2	70.4M	-1.1	69.2M	-1.0	66.1M	2.3	55.6	2.9	39.4M	-4.2	40.2	4.8	M 52.4	0.4
RADFORD 3 N	25.5		34.6		38.2		52.1		62.6		70.1		70.6		67.6		64.8		53.3		37.4		37.8		51.2	
RICHLANDS	25.2	-6.5	34.9	0.1	38.4F	-4.1	51.4	0.8	61.2M	1.2	70.3	2.3	68.4	-3.8	69.1	-1.5	66.4	2.0	53.4	0.9	37.6	-5.9	40.8	5.9	M 51.4	-0.7
SALTVILLE 1N	25.3M	-6.7	35.2M	0.1	40.2	-3.3	53.2	0.9	62.2	0.8	70.7	1.6	69.0	-4.1	69.5	-2.3	66.9	1.5	54.4	0.9	37.6	-6.3	40.0	4.8	M 52.0	-1.0
STAFFORDSVILLE 3 ENE	24.7	-6.0	34.2	0.3	38.0	-4.3	51.6	0.8	61.8	2.2	69.6	2.5	69.7	-1.6	68.1M	-1.7	65.0	1.6	53.5	1.3	37.4	-5.7	38.5	3.7	M 51.0	-0.6
WISE 3E	26.6	-6.1	35.2	-1.2	41.8	-2.9	56.9	3.8	62.5	1.7	69.4	1.6	67.6	-3.8	68.7	-1.5	65.1	0.6	54.2	-0.4	38.6	-6.6	39.4	2.8	52.2	-1.0
WYTHEVILLE 1 S	25.1M	-5.8	33.7	-0.1	39.0	-2.6	52.3	2.5	62.5	3.6	70.1	3.7	69.1	-1.7	68.0M	-1.4	64.5	1.2	54.0	2.1	37.1	-5.4	38.3	4.1	M 51.1	0.0
--DIVISIONAL DATA----->	25.0	-7.0	34.2	-1.0	38.9	-4.4	52.9	1.6	62.2	2.6	69.7	2.5	68.9	-2.3	68.7	-1.1	65.5	1.9	54.1	1.4	37.5	-6.0	39.0	3.7	51.4	-8.1

TEMPERATURE EXTREMES AND FREEZE DATA (°F)

VIRGINIA
2014

STATION	HIGHEST	DATE	LOWEST	DATE	LAST SPRING MINIMUM OF										FIRST FALL MINIMUM OF										NUMBER OF DAYS BETWEEN DATES				
					16° OR BELOW		20° OR BELOW		24° OR BELOW		28° OR BELOW		32° OR BELOW		32° OR BELOW		28° OR BELOW		24° OR BELOW		20° OR BELOW		16° OR BELOW		16° OR BELOW	20° OR BELOW	24° OR BELOW	28° OR BELOW	32° OR BELOW
					DATE	TEMP.	DATE	TEMP.	DATE	TEMP.	DATE	TEMP.	DATE	TEMP.	DATE	TEMP.	DATE	TEMP.	DATE	TEMP.	DATE	TEMP.	DATE	TEMP.					
BURKES GARDEN	83	07/14	-18	01/31	03/28	16	04/17	19	04/17	19	04/25	25	05/20	29	09/24	32	10/20	28	11/03	18	11/03	18	11/15	7	232	200	200	178	127
CHRISTIANSBURG	88	06/21	-5	01/08	03/05	10	03/28	20	04/17	23	04/18	27	04/18	27	10/31	32	11/03	28	11/14	22	11/15	14	11/15	14	255	232	211	199	196
CLINTWOOD 1 W	87	05/14	-6	01/31	03/05	10	03/26	20	04/17	23	04/18	26	04/25	31	10/05	30	11/02	28	11/03	23	11/15	12	11/15	12	255	234	200	198	163
COPPER HILL	87	06/19	-8	01/08	03/27	16	03/27	16	04/17	21	04/18	27	04/19	32	11/01	32	11/02	28	11/14	20	11/14	20	11/15	12	233	232	211	198	196
GALAX RADIO WBRF	89	06/19	-6	01/30	03/04	12	03/27	20	04/16	23	04/17	25	04/24	32	10/06	31	11/03	24	11/03	24	11/14	20	11/15	12	256	232	201	200	165
GALAX WTP	88	06/19	-6	01/31	03/05	14	03/28	20	03/28	20	04/18	26	04/24	32	10/06	32	10/31	28	11/03	24	11/15	12	11/15	12	255	232	220	196	165
GRUNDY	88	08/31	-4	01/08	03/05	11	03/05	11	03/28	23	04/17	25	04/18	30	11/01	32	11/03	25	11/14	23	11/15	15	11/15	15	255	255	231	200	197
JOHN FLANNAGAN LAKE	89	07/14	-5	01/08	03/05	9	03/27	20	04/17	24	04/17	24	04/17	24	11/03	27	11/03	27	11/14	22	11/17	15	11/17	15	257	235	211	200	200
LEBANON	89	08/30	-10	01/30	03/05	11	03/28	20	04/17	22	04/17	22	04/26	32	10/05	31	11/03	21	11/03	21	11/14	20	11/15	12	255	231	200	200	162
NORA 4 SSE	86	06/20	-10	01/08	03/27	15	03/27	15	04/17	21	04/17	21	04/17	21	11/01	29	11/02	25	11/14	16	11/14	16	11/14	16	232	232	211	199	198
NORTH FORK LAKE	89	07/14	-7	01/31	03/05	11	03/28	20	04/17	24	04/17	24	04/18	30	11/03	25	11/03	25	11/17	13	11/17	13	11/17	13	257	234	214	200	199
PULASKI 2 E	91	07/03	-7	01/08	03/05	12	03/28	20	03/28	20	04/24	28	04/24	28	10/31	31	11/03	27	11/15	13	11/15	13	11/15	13	255	232	232	193	190
RADFORD 3 N	92	07/03	-3	01/07	03/05	11	03/27	18	04/17	24	04/17	24	04/21	32	10/27	32	11/02	27	11/08	24	11/15	14	11/15	14	255	233	205	199	189
RICHLANDS	88	09/01	-8	01/31	03/27	16	03/28	20	04/17	23	04/22	28	04/24	31	10/05	32	11/03	22	11/03	22	11/15	12	11/15	12	233	232	200	195	164
SALTVILLE 1N	89	08/31	-7	01/31	03/04	16	03/25	20	04/17	24	04/17	24	04/25	31	10/05	32	11/03	22	11/03	22	11/15	13	11/15	13	256	235	200	200	163
STAFFORDSVILLE 3 ENE	92	07/03	-4	01/08	03/05	7	03/28	19	03/28	19	04/18	26	04/21	32	10/20	32	11/03	24	11/03	24	11/15	14	11/15	14	255	232	220	199	182
WISE 3E	84	07/02	-10	01/07	03/26	16	04/16	20	04/16	20	04/16	20	05/17	32	10/05	31	11/02	25	11/03	22	11/14	16	11/14	16	233	212	201	200	141
WYTHEVILLE 1 S	89	07/14	-7	01/07	03/05	14	03/28	20	04/17	23	04/18	28	04/18	28	10/31	31	11/03	25	11/08	24	11/14	20	11/15	12	255	231	205	199	196

MONTHLY AND SEASONAL COOLING DEGREE DAYS
BASE = 65 DEGREES FAHENHEIT

VIRGINIA
2014

STATION	JAN	FEB	MAR	APR	MAY	JUN	JUL	AUG	SEP	OCT	NOV	DEC	TOTAL	SEASONAL NORM
VIRGINIA														
TIDEWATER 01														
DISPUTANTA	0	0	0	10	127	259	336	266	180	27	1	0	1206	
EASTVILLE	0	0	0	12	125	291	384	319	221	47	2	0	1401	
EMPORIA 1 WNW	0	0	0	17	150	310	379	313	198	40	1	0	1408	1298
FREDERICKSBURG SEWAGE	0	0	0	16E	104	278	359	249	190E	24E	0	0	1220E	
HOLLAND 1 E	0	0	0	25	196	285	328	248	211	25	0	0	1318	1210
HOPEWELL	0	0	1	43	217	388	478	382E	277	81E	1	0	1868E	1619
NORFOLK INTL AP	0	0	1	26	175	358	432	381	271	75	5	0	1724	1612
NORFOLK SOUTH	0	0	0	19	161	313	375	335	228	51	4	0	1486	
NORTH	-	-	0	0	106	253E	336	247	171	6E	2	0	-	
PAINTER 2W	0	0	0	4	130	264	374	280	209	42	0	0	1303	1334
STONY CREEK 2 N	0	0	0	15	154	311E	391	300	202	34	0	0	1407E	1409
SUFFOLK LAKE KILBY	0	0	0	20	150	321	349	320	218	44	2	0	1424	1427
WAKEFIELD 1NW	0	0	0	21	156	300	350	293	183	36	3	0	1342	1356
WALKERTON 2 NW	0	0	0	5	151	310	406E	309	219	46	0	0	1446E	1254
WALLACETON LK DRUMMOND	2	0	0	13	117	258	288	229E	146	14	0	0	1067E	
WALLOPS ISLAND NASA TEST FACIL	0	0	0	0	111	298	370	318	215	40	0	0	1352	
WARSAW 2 NW	0	0	0	18E	157	285	375	267E	155E	44E	0	0	1301E	1282
WEST POINT 2 NW	0	0	0	13	157	304	389	288	206	32	0	0	1389	1446
WILLIAMSBURG 2 N	0	0	0	21	167	319	410	306	241	43	3	0	1510	1364
EASTERN PIEDMONT 02														
AMELIA COURTHOUSE 1	0	0	0	19E	141E	301E	369E	276E	197E	25E	0	0	1328E	1125
ASHLAND	0	0	0	9	150	271	364	252	165	23	0	0	1234	1131
CAMP PICKETT	0	0	0	10	118	272	340	234	161	26	1	0	1162	1158
CHASE CITY	0	0	0	8	105	284	329	248	161	22	0	0	1157	1316
CLARKSVILLE	0	0	0	17	159	339E	386	301	212	37	2E	0	1453E	
CORBIN	0	0	0	14	119	265	340	250	158	22	0	0	1168	1155
CROZIER	0	0	0	0	121E	235	301	192E	147E	18E	1	0	1015E	1193
FARMLVILLE 2 N	0	0	0	11	104	266	336	222	159	18	0	0	1116	1218
GREENBAY 3 NE	0	0	0	21	109	283	344	240E	146	18	0	0	1161E	
JOHN H KERR DAM	0	0	0	28	196	398	452	355	257	65	1	0	1752	1383
LOUISA	0	0	0	10	110	253	323	219	156	17	0	0	1088	854
PALMYRA 3S	0	0	0	12	108	243	329	221	151	15	0	0	1079	
PETERSBURG	0	0	0	18	146E	310	382	311	210	30	1	0	1408E	
RICHMOND INTL AP	0	0	2	27	179	355	459	358	244	52	3	0	1679	1435
SANDSTON	0	0	0	22	141	297	372	265	182	22	1	0	1302	
WESTERN PIEDMONT 03														
APPOMATTOX	0	0	0	13	114E	275E	314	223	159	16	0	0	1114E	1052
BROOKNEAL	0	0	0	3	110E	286	315	248	166	22	0	0	1150E	1015
CHARLOTTE COURT HOUSE	0	0	0	7	127E	308	348	251	171	22	1	0	1235E	1146
CHARLOTTESVILLE 2W	0	0	0	13	130	291	337	247	162	18	0	0	1198	1212
CHATHAM	0	0	0	1	61	199E	236	156	103	9	0	0	765E	971
DANVILLE REGIONAL AP	0	0	0	15	146	345	383	300	196	33	1	0	1419	
FREE UNION	0	0	0	3	68	179	223	133	113	5	0	0	724	
LYNCHBURG INTL AP	0	0	0	19	95	255	290	201E	122	15	0	0	997E	1075
MARTINSVILLE FLTR PLT	0	0	0	5	86	248	307	213E	134	17	0	0	1010E	921
MEADOWS OF DAN 5 SW	-	-	-	-	-	-	173E	123	91	3E	0	0	-	
MONTEBELLO FISH CULTURAL STN	0	0	0	0	39E	106E	100E	61E	73E	0	0	0	379E	
MONTICELLO	0	0	0	7	98	241	276	190	124	4	0	0	940	991
ROCKY MT	0	0	0	4	113	271	276	200	116E	15E	0	0	995E	984

MONTHLY AND SEASONAL COOLING DEGREE DAYS
BASE = 65 DEGREES FAHENHEIT

VIRGINIA
2014

STATION	JAN	FEB	MAR	APR	MAY	JUN	JUL	AUG	SEP	OCT	NOV	DEC	TOTAL	SEASONAL NORM
SOUTH BOSTON	0	0	0	6	111E	301E	347	268	188	21	1	0	1243E	1159
STUART	0	0	0	7E	100	259	268	196	138	9	0	0	977E	967
TYE RIVER 1 SE	0	0	0	12	91	227	293	213	142	23	0	0	1001	976
NORTHERN 04														
BOSTON 4 SE	0	0	0	9E	68E	188E	292E	152E	177E	7E	0	0	893E	
EDINBURG	0	0	0	0	43	163	204	121	101	10	0	0	642	
FRONT ROYAL	0	0	0	7	66E	208	254	161E	118	13E	0	0	827E	
LINCOLN	0	0	0	7	61	186	241	161	107	6	0	0	769	911
LURAY 5 E	0	0	0	5	72	188	227	144	112	16	0	0	764	862
MADISON	-	-	-	14E	97	246	288	197	140	18E	0	0	-	
MANASSAS	0	0	0	16E	117E	333E	322E	273E	149E	25E	0	0	1235E	
MT WEATHER	0	0	0	2	48	142	189	83	129	6	0	0	599	625
PIEDMONT RSCH STN	0	0	0	6	89	225	272	158E	92E	16	0	0	858E	1042
SOMERSET	0	0	0	5	90	246	296	206	154	14	0	0	1011	
SPERRYVILLE	0	0	0	1E	68E	184E	233E	154E	106	8E	0	0	754E	
STERLING RCS	0	0	0	9	82E	235	338	245	149	20E	0	0	1078E	824
VIENNA	0	0	0	8	64	260	392	363	262	68	5	0	1422	
WASHGTN DULLES INTL AP	0	0	0	11	75	232	296	219	126	9	0	0	968	1075
WASHINGTON REAGAN AP	0	0	0	21	148	372	453	399	273	46	0	0	1712	1531
WINCHESTER	0	0	0	8	72	224	286	185	113	6	0	0	894	907
WINCHESTER 7 SE	0	0	0	8E	0	159E	0	0	-	-	-	-	-	
WOODSTOCK 2 NE	0	0	0	4	50	202E	233E	144E	110	10E	0	0	753E	848
CENTRAL MOUNTAIN 05														
COVINGTON FLTR PLT	0	0	0	0	61	192E	194	162	113	5	0	0	727E	846
DALE ENTERPRISE	0	0	0	5	54	193	207	128	108	10	0	0	705	758
GATHRIGHT DAM	0	0	0	0	50	140	158	100	76	0	0	0	524	679
HOT SPRINGS	0	0	0	0	45	121	147	86	70	0	0	0	469	579
LEXINGTON	0	0	0	0	71	217	236	162	124	18	0	0	828	881
MILLGAP	0	0	0	0	7	70	79E	41	46	0	0	0	243E	
MUSTOE 1 SW	0	0	0	0	8	59	65	35E	40	0	0	0	207E	
ROANOKE 8 N	0	0	0	5	109E	265	291	196	135	20	0	0	1021E	
ROANOKE INTL AP	0	0	0	12	137	297	304	220	140	18	0	0	1128	1134
STAUNTON WATER TRMTMT PLT	0	0	0	6	80	211	216	150	109	9	0	0	781	622
WAYNESBORO WTP	0	0	0	8	58	198	235	151	115	6	0	0	771	
SOUTHWESTERN MOUNTAIN 06														
ABINGDON 3S	0	0	0	6E	58E	196E	169E	164E	111	3E	0	0	707E	736
BIG STONE GAP	0	0	0	10	75	220	171	229	151	6	0	0	862	937
BLACKSBURG NWSO	0	0	0	0	59	165	179	110	81	0	0	0	594	533
BURKES GARDEN	0	0	0	2	0	63	71E	41	37	0	0	0	214E	225
CHRISTIANSBURG	0	0	0	2	63	154	167	102	66	0	0	0	554	
CLINTWOOD 1 W	0	0	0	2	42	137	113	122	73	1	0	0	490	
COPPER HILL	0	0	0	0	31	86E	125E	75	54	2E	0	0	373E	
GALAX RADIO WBRF	0	0	0	3	47	140	147	115	69	0	0	0	521	410
GALAX WTP	0	0	0	0	31	121	122	89	63	0	0	0	426	
GRUNDY	0	0	0	3	57	177	164E	228	129E	9E	0	0	767E	1035
JOHN FLANNAGAN LAKE	0	0	0	3E	82E	222E	186E	214E	139E	6E	0	0	852E	
LEBANON	0	0	0	8	54	179	152	141	104	5	0	0	643	631
NORA 4 SSE	0	0	0	9	70	173	129	149	71	11	0	0	612	
NORTH FORK LAKE	0	0	0	3E	64E	197E	173E	166E	95E	2E	0	0	700E	
PULASKI 2 E	0	0	0	0	62E	179	186E	142E	108E	2	0	0	679E	574
RADFORD 3 N	0	0	0	0	57	172	189	102	82	0	0	0	602	
RICHLANDS	0	0	0	0	41E	169	132	140	104	0	0	0	586E	622

VIRGINIA
2014

MONTHLY AND SEASONAL COOLING DEGREE DAYS BASE = 65 DEGREES FAHENHEIT

STATION	JAN	FEB	MAR	APR	MAY	JUN	JUL	AUG	SEP	OCT	NOV	DEC	TOTAL	SEASONAL NORM
SALTVILLE 1N	0	0	0	1	55	181	150	150	111	1	0	0	649	734
STAFFORDSVILLE 3 ENE	0	0	0	0	44	154	174	111E	84	0	0	0	567E	564
WISE 3E	0	0	0	13	58	146	120	130	75	2	0	0	544	605
WYTHEVILLE 1 S	0	0	0	1	59	166	158	116E	81	0	0	0	581E	503

VIRGINIA
2014

TOTAL PAN EVAPORATION AND WIND MOVEMENT

STATION		JAN	FEB	MAR	APR	MAY	JUN	JUL	AUG	SEP	OCT	NOV	DEC	ANNUAL
VIRGINIA EASTERN PIEDMONT 02 JOHN H KERR DAM	WIND	-	-	-	-	-	-	-	-	-	-	-	-	-
	EVAP	-	-	-	-	-	-	-	-	-	-	-	-	-
	MAX TEMP	-	-	-	-	-	-	-	-	-	-	-	-	-
	MIN TEMP	-	-	-	-	-	-	-	-	-	-	-	-	-

STATION INDEX

STATION	INDEX NO.	DIVISION NO.	COUNTY	LATITUDE	LONGITUDE	ELEVATION FEET	YEARS OF RECORD			OPENED OR CLOSED DURING YR		SEE REFERENCE NOTES
							TEMP.	PRECIP.	EVAP.	MONTH OPENED	MONTH CLOSED	
VIRGINIA												
ABINGDON 3S	0021	06	WASHINGTON	36 40	81 58W	1925	46	46	0			H
ALBERTA 5N	0079	02	BRUNSWICK	36 56	77 54W	376	0	11	0			H
ALTAVISTA	0166	03	CAMPBELL	37 7	79 17W	529	0	65	0			CH
AMELIA COURTHOUSE 1	0187	02	AMELIA	37 21	77 59W	345	38	38	0			H
APPOMATTOX	0243	03	APPOMATTOX	37 20	78 50W	850	54	78	0			H
ASHLAND	0327	02	HANOVER	37 45	77 29W	220	104	104	0			H
BEDFORD 4 NW	0561	03	BEDFORD	37 23	79 34W	1228	3	12	0			CH
BIG STONE GAP	0735	06	WISE	36 52	82 46W	1464	25	25	0			H
BLACKSBURG NWSO	0766	06	MONTGOMERY	37 12	80 25W	2100	63	63	0			CH
BOSTON 4 SE	0860	04	CULPEPER	38 33	78 6W	590	17	17	0			H
BREMO BLUFF	0993	02	FLUVANNA	37 43	78 17W	225	36	76	0			CH
BROOKNEAL	1082	03	CAMPBELL	37 4	78 57W	408	33	56	0			H
BUCKINGHAM	1136	02	BUCKINGHAM	37 30	78 32W	580	11	85	0			H
BUENA VISTA	1159	05	ROCKBRIDGE	37 44	79 22W	840	18	77	0			H
BURKES GARDEN	1209	06	TAZEWELL	37 6	81 20W	3068	119	119	0			H
CAMP PICKETT	1322	02	NOTTOWAY	37 2	77 57W	330	43	43	0			CH
CHARLOTTE COURT HOUSE	1585	03	CHARLOTTE	37 3	78 39W	569	63	68	0			H
CHARLOTTESVILLE 2W	1593	03	ALBEMARLE	38 2	78 31W	866	121	121	0			H
CHASE CITY	1606	02	MECKLENBURG	36 47	78 29W	510	68	68	0			H
CHATHAM	1614	03	PITTSYLVANIA	36 49	79 25W	651	93	93	0			CH
CHRISTIANSBURG	1692	06	MONTGOMERY	37 8	80 24W	2100	20	20	0			H
CLARKSVILLE	1746	02	MECKLENBURG	36 37	78 33W	330	18	124	0			H
CLINTWOOD 1 W	1825	06	DICKENSON	37 9	82 29W	1780	22	22	0			H
CONCORD 4 SSW	1955	03	CAMPBELL	37 17	78 58W	815	2	65	0			H
COPPER HILL	1999	06	FLOYD	37 5	80 9W	2690	5	75	0			H
CORBIN	2009	02	CAROLINE	38 12	77 22W	220	56	56	0			H
COVINGTON FLTR PLT	2044	05	ALLEGHANY	37 49	79 59W	1230	55	55	0			H
CRAIGSVILLE 2 S	2064	05	AUGUSTA	38 3	79 23W	1758	0	51	0			H
CROZIER	2142	02	GOOCHLAND	37 40	77 53W	350	39	39	0			H
DALE ENTERPRISE	2208	05	ROCKINGHAM	38 27	78 56W	1358	122	122	0			H
DANVILLE REGIONAL AP R	2250	03	PITTSYLVANIA	36 34	79 20W	571	33	33	0			H
DISPUTANTA	2400	01	PRINCE GEORGE	37 7	77 12W	15	9	9	0			H
EASTVILLE	2635	01	NORTHAMPTON	37 23	75 58W	10	21	21	0			H
EDINBURG	2663	04	SHENANDOAH	38 48	78 35W	928	19	19	0			H
EMPORIA 1 WNW	2790	01	GREENSVILLE	36 42	77 34W	100	34	86	0			H
FARMVILLE 2 N	2941	02	CUMBERLAND	37 20	78 23W	450	96	96	0			H
FREDERICKSBURG SEWAGE	3204	01	FREDERICKSBURG	38 17	77 27W	15	20	20	0			H
FREE UNION	3213	03	ALBEMARLE	38 5	78 35W	590	8	59	0			H
FRONT ROYAL	3229	04	WARREN	38 54	78 11W	930	20	20	0			H
GALAX RADIO WBRF	3267	06	CARROLL	36 40	80 55W	2385	61	65	0			H
GALAX WTP	3272	06	CARROLL	36 39	80 55W	2360	18	18	0			CH
GATHRIGHT DAM	3310	05	ALLEGHANY	37 57	79 57W	1770	35	35	17			CH
GLASGOW 1 SE	3375	05	ROCKBRIDGE	37 37	79 26W	737	11	48	0			H

STATION INDEX

STATION	INDEX NO.	DIVISION NO.	COUNTY	LATITUDE	LONGITUDE	ELEVATION FEET	YEARS OF RECORD			OPENED OR CLOSED DURING YR		SEE REFERENCE NOTES
							TEMP.	PRECIP.	EVAP.	MONTH OPENED	MONTH CLOSED	
GREENBAY 3 NE	3565	02	PRINCE EDWARD	37 11	78 17W	500	11	11	0			H
GRUNDY	3640	06	BUCHANAN	37 17	82 5W	1170	55	66	0			H
HOLCOMB ROCK	4039	03	BEDFORD	37 33	79 24W	810	4	37	0			H
HOLLAND 1 E	4044	01	SUFFOLK	36 41	76 46W	80	82	82	19			H
HOPEWELL	4101	01	PRINCE GEORGE	37 18	77 17W	40	99	99	0			H
HOT SPRINGS	4128	05	BATH	37 60	79 50W	2236	120	120	0			H
HUDDLESTON 4 SW	4148	03	BEDFORD	37 8	79 32W	898	2	65	0			H
JOHN FLANNAGAN LAKE	4410	06	DICKENSON	37 14	82 21W	1460	22	46	0			H
JOHN H KERR DAM	4414	02	MECKLENBURG	36 36	78 18W	250	67	67	60			CH
LAFAYETTE 1 NE	4676	06	MONTGOMERY	37 14	80 12W	1320	0	64	0			H
LEBANON	4777	06	RUSSELL	36 54	82 2W	1912	26	26	0			H
LEXINGTON	4876	05	ROCKBRIDGE	37 47	79 26W	1097	125	125	0			H
LINCOLN	4909	04	LOUDOUN	39 5	77 42W	500	115	115	0			H
LOUISA	5050	02	LOUISA	38 3	78 0W	420	99	99	0			H
LURAY 5 E	5096	04	PAGE	38 40	78 22W	1400	71	74	0			H
LYNCHBURG INTL AP R	5120	03	CAMPBELL	37 19	79 12W	940	71	71	0			HJ
MADISON	5150	04	MADISON	38 22	78 15W	577	16	16	0			H
MANASSAS	5204	04	MANASSAS	38 44	77 30W	245	11	11	0			H
MARTINSVILLE FLTR PLT	5300	03	HENRY	36 42	79 52W	760	77	84	0			H
MEADOWS OF DAN 5 SW	5453	03	PATRICK	36 40	80 27W	2225	12	65	0			H
MILLGAP	5595	05	HIGHLAND	38 18	79 43W	2421	17	39	0			CH
MONTEBELLO FISH CULTURAL STN	5690	03	NELSON	37 51	79 8W	2667	9	12	0			H
MONTICELLO	5700	03	ALBEMARLE	38 1	78 27W	758	33	33	0			H
MT WEATHER	5851	04	LOUDOUN	39 4	77 53W	1659	100	100	0			H
MTN GROVE	5756	05	BATH	38 6	79 53W	1775	5	34	0			H
MUSTOE 1 SW	5880	05	HIGHLAND	38 20	79 40W	2380	21	21	0			H
NEW CASTLE	6012	05	CRAIG	37 18	80 3W	1258	0	58	0			H
NORA 4 SSE	6125	06	DICKENSON	37 1	82 19W	2650	9	9	0			H
NORFOLK INTL AP R	6139	01	NORFOLK (CITY)	36 54	76 12W	30	69	69	0			HJ
NORFOLK SOUTH	6147	01	NORFOLK (CITY)	36 52	76 14W	100	12	12	0			H
NORTH	6161	01	MATHEWS	37 26	76 26W	10	13	13	0			H
NORTH FORK LAKE	6173	06	WISE	37 7	82 38W	1675	23	46	0			H
PAINTER 2W	6475	01	ACCOMACK	37 35	75 49W	30	60	60	0			CH
PALMYRA 3S	6491	02	FLUVANNA	37 49	78 16W	410	21	58	0			H
PEDLAR DAM	6593	03	AMHERST	37 40	79 17W	1024	9	80	0			H
PETERSBURG	6656	02	PETERSBURG	37 14	77 24W	15	14	19	0			H
PIEDMONT RSCH STN	6712	04	ORANGE	38 14	78 7W	520	69	69	39			CH
PULASKI 2 E	6955	06	PULASKI	37 3	80 47W	1850	63	80	0			CH
RADFORD 3 N	6999	06	PULASKI	37 12	80 35W	1800	11	36	0			H
RICHLANDS	7174	06	TAZEWELL	37 6	81 48W	1910	26	26	0			H
RICHMOND INTL AP R	7201	02	HENRICO	37 30	77 19W	164	73	73	0			HJ
ROANOKE 8 N	7278	05	ROANOKE	37 22	79 58W	1190	17	17	0			H
ROANOKE INTL AP R	7285	05	ROANOKE	37 19	79 58W	1175	67	67	0			HJ
ROCKY MT	7338	03	FRANKLIN	36 59	79 54W	1315	121	121	0			CH

STATION INDEX

STATION	INDEX NO.	DIVISION NO.	COUNTY	LATITUDE	LONGITUDE	ELEVATION FEET	YEARS OF RECORD			OPENED OR CLOSED DURING YR		SEE REFERENCE NOTES
							TEMP.	PRECIP.	EVAP.	MONTH OPENED	MONTH CLOSED	
SALTVILLE 1N	7506	06	SMYTH	36 53	81 46W	1733	61	60	0			H
SANDSTON	7541	02	HENRICO	37 33	77 17W	165	13	13	0			H
SOMERSET	7904	04	ORANGE	38 15	78 16W	510	20	52	0			H
SOUTH BOSTON	7925	03	HALIFAX	36 42	78 53W	329	35	35	0			H
SPERRYVILLE	7985	04	RAPPAHANNOCK	38 39	78 14W	750	20	20	0			H
STAFFORDSVILLE 3 ENE	8022	06	GILES	37 16	80 43W	1950	45	64	0			CH
STAUNTON WATER TRMTMT PLT	8062	05	AUGUSTA	38 10	79 5W	169	121	121	0			H
STERLING RCS	8084	04	LOUDOUN	38 59	77 29W	288	38	38	0			H
STONY CREEK 2 N	8129	01	SUSSEX	36 58	77 24W	105	53	57	0			H
STUART	8170	03	PATRICK	36 38	80 15W	1375	55	55	0			H
SUFFOLK LAKE KILBY	8192	01	SUFFOLK	36 44	76 36W	22	70	70	0			H
TYE RIVER 1 SE	8600	03	NELSON	37 38	78 56W	720	52	78	0			H
VIENNA	8737	04	FAIRFAX	38 54	77 16W	418	22	78	0			H
WAKEFIELD 1NW	8800	01	SUSSEX	36 59	77 0W	113	33	33	0			CH
WALKERTON 2 NW	8829	01	KING AND QUEEN	37 45	77 2W	50	83	83	0			H
WALLACETON LK DRUMMOND	8837	01	CHESAPEAKE	36 36	76 26W	20	11	89	0			H
WALLOPS ISLAND NASA TEST FACIL R	8849	01	ACCOMACK	37 56	75 28W	46	49	49	0			HJ
WARSAW 2 NW	8894	01	RICHMOND	37 59	76 47W	140	107	107	0			H
WASHGTN DULLES INTL AP R	8903	04	LOUDOUN	38 56	77 28W	290	53	53	0			HJ
WASHINGTON REAGAN AP R	8906	04	ARLINGTON	38 51	77 2W	10	70	70	0			HJ
WAYNESBORO WTP	8941	05	WAYNESBORO	38 5	78 53W	1270	15	15	0			H
WEST POINT 2 NW	9025	01	KING WILLIAM	37 34	76 48W	20	61	61	0			H
WILLIAMSBURG 2 N	9151	01	YORK	37 18	76 42W	70	64	67	0			CH
WILLIS	9169	06	FLOYD	36 55	80 30W	2810	1	35	0			CH
WINCHESTER	9181	04	FREDERICK	39 11	78 9W	720	33	33	0			H
WINCHESTER 7 SE	9186	04	FREDERICK	39 11	78 7W	680	103	103	0			H
WINTERPOCK 4 W	9213	02	CHESTERFIELD	37 19	77 39W	300	0	36	0			H
WISE 3E	9215	06	WISE	36 60	82 32W	2549	60	60	0			CH
WOODSTOCK 2 NE	9263	04	SHENANDOAH	38 54	78 28W	675	119	125	0			H
WOOLWINE	9272	03	PATRICK	36 47	80 17W	1500	0	64	0			CH
WYTHEVILLE 1 S	9301	06	WYTHE	36 58	81 5W	2458	98	98	0			H

REFERENCE NOTES

STATION NAMES: Name of the city, town or locality. Figures and letters following the station names indicate the distance in miles and direction from the post office or town community center.

DIVISIONS: Areas within a state of similar climatological characteristics. Division averages are calculated using data from stations that record temperature and/or precipitation. Station Precipitation totals flagged with an 'F' or 'M' are excluded from the Divisional Average calculations of precipitation. Stations with monthly Temperature averages flagged with an 'F' or 'M' are included in the Divisional Average if there are no more than 9 flagged or missing daily values in the month, else they are excluded from the divisional average for temperature.

NORMALS: The average value of the meteorological element over a time period. Effective 1 January 2012, the averaging period is 1981 to 2010. The normals for National Weather Service localities have been adjusted so as to be representative for the current observation site.

TEMPERATURE EXTREMES AND FREEZE DATA: Spring minimum dates are obtained from data for January through June; Fall dates are from July through December data. "NONE" indicates temperature threshold not reached. "MSG" indicates available data insufficient to determine date.

MONTHLY DEGREE DAY TOTALS: One heating (cooling) degree day is accumulated for each whole degree that the daily mean temperature is below (above) 65 degrees Fahrenheit.

SOIL TEMPERATURE EXTREMES: The highest and lowest Max and Min temperature for each month and the year.

WIND: (As shown in the "Evaporation and Wind" table) the total wind movement in miles over the evaporation pan as determined by an anemometer recorder located 6-8 inches above the pan.

SYMBOLS AND LETTERS USED IN THE DATA TABLES

- No record. Data not recorded, determined unreliable by quality control checks, or not received in time for publication.
- * Equipment gage not read. Precipitation is included in the amount following asterisks. Time distribution not known.
- // Equipment gage equipped with a windshield.
- A Amount of precipitation is the total of observer's entries for the current month. It may include precipitation that occurred during the previous month. Refer to monthly bulletins to determine date of last reading.
- E Normalized HDD/CDD Calculation. E is appended to the HDD/CDD Calculation when 1-9 individual daily TMAX and/or TMIN values are missing and a Normalized HDD/CDD Calculation is provided. M appears alone if 10 or more are missing or flagged.
- F Monthly Calculation Flagged Value. F is appended to the average of the monthly station values when 1-9 daily observations were determined to be invalid during the Quality Control process.
- M Insufficient or partial data. M is appended to average and/or total values computed with 1-9 daily values missing. M appears alone if 10 or more daily values are missing or flagged.
- R Amounts from recording rain gage.
- T Trace. An amount too small to measure.

SYMBOLS AND LETTERS USED IN THE STATION INDEX TABLE

Thermometers located in rooftop shelter.

C Station is equipped with a recording rain gage (R), but values in this bulletin are from a non-recording rain gage unless indicated by an R.

G Observations appear in "Soil Temperatures" table.

H Observations appear in "Snowfall and Snow on the Ground" table in monthly "Climatological Data" publication.

J Station also published as a "Local Climatological Data" bulletin.

Seasonal Tables: Monthly and seasonal snowfall and heating degree days for the 12 months ending with the June data are published in the July issue of "Climatological Data".

Cooling degree days for the calendar year are published in the "Climatological Data Annual Summary".

Additional precipitation data are contained in the "Hourly Precipitation Data" bulletin for each state.

Information concerning the history of changes in locations, exposure, etc. of substations is kept on file at the National Climatic Data Center. Historical information of regular National Weather Service Offices may be obtained from the "Local Climatological Data" annual publication. The contents of this publication may be reprinted or otherwise used freely, with proper credit to the National Climatic Data Center. The data are also available digitally.

ERRATA

Beginning in January of 2011, CD Publications are produced from the Global Historical Climatology Network data set. (<http://www.ncdc.noaa.gov/oa/climate/ghcn-daily/>) The GHCND data Version is printed on first page of the publication.

New flags were added to indicate:

E Normalized HDD/CDD, Evap, and Wind Movement Calculations in 2011, previously was B.

F Monthly calculation flagged value.

Station metadata is provided by NCDC's Product Development Branch from the Historical Observing Metadata Repository: <http://www.ncdc.noaa.gov/homr>

As of the 2011 Data-Year, Station and Climate Division Maps are no longer being included in the CD Publications. NCDC's Product Development Branch provides updated Station Maps for various data networks via the Historical Observing Metadata Repository: <http://www.ncdc.noaa.gov/homr>.

Beginning with the January 2013 CD Publication, monthly mean temperature calculations have changed to the National Data Stewardship Team standard. Monthly maximum and minimum temperatures are not rounded until after the monthly mean temperature is calculated. This is the most accurate outcome, but may be slightly different from the mean derived from rounded monthly maximum and minimum.

Processing Updates and Errata: The CD Publications are periodically reproduced to include the addition of late reports and reported corrections. The GHCND data version noted on the cover of the publication provides the generation date.

The climate division temperature and precipitation values in this publication are based on simple averages from the current set of NWS-Designated Open and Published COOP and First Order Sites within each division. These values differ from those found in NCDC's nClimDiv product. Beginning in February 2014, the nClimDiv product is used by NCDC's Climate Monitoring Branch and in its monthly climate reports. For more details on nClimDiv, please go to <http://www.ncdc.noaa.gov/monitoring-references/maps/us-climate-divisions.php>.

NOAA\National Climatic Data Center
Attn: User Engagement & Services Branch
151 Patton Avenue
Asheville, NC 28801-5001

Customer Services Number: (828) 271-4800, option 2
TDD : (828) 271-4010
Fax number: (828) 271-4876

NCDC now offers free online access to the *Climatological Data* publication.
Go to : www.ncdc.noaa.gov and choose Most Popular.