



CLIMATOLOGICAL DATA ANNUAL SUMMARY VIRGINIA



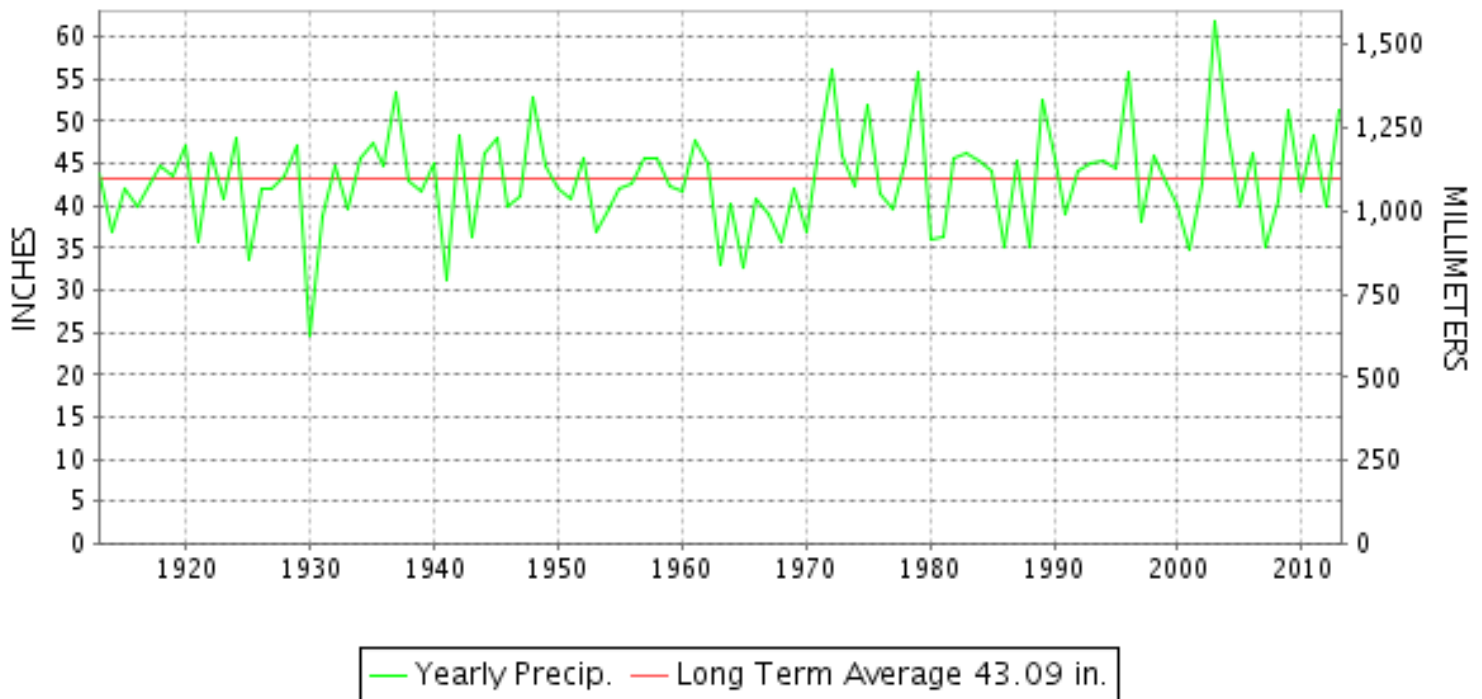
2013

VOLUME 123 NUMBER 13

ISSN 0364-5630

GHCND Ver: 3.12-upd-2014052705

YEARLY TOTAL PRECIPITATION



VIRGINIA PRECIPITATION 1913-2013

"I certify that this is an official publication of the National Oceanic and Atmospheric Administration (NOAA) It is compiled using information from weather observing sites supervised by NOAA/National Weather Service and received at the National Climatic Data Center (NCDC), Asheville, North Carolina 28801."

DIRECTOR
NATIONAL CLIMATIC DATA CENTER

noaa

National
Oceanic and
Atmospheric Administration

National
Environmental Satellite, Data
and Information Service

National
Climatic Data Center
Asheville, North Carolina

TOTAL PRECIPITATION AND DEPARTURE FROM NORMAL (INCHES)

VIRGINIA
2013

STATION	JAN		FEB		MAR		APR		MAY		JUN	
	PRECIP.	DEPART.	PRECIP.	DEPART.	PRECIP.	DEPART.	PRECIP.	DEPART.	PRECIP.	DEPART.	PRECIP.	DEPART.
VIRGINIA												
TIDEWATER 01												
DISPUTANTA	6.98	3.36	3.19	0.10	2.85	-1.41	4.40	0.79	6.76	2.84	11.09	7.49
EASTVILLE	4.40	0.64	4.55	1.59	M 3.71	-0.14	3.52	0.22	2.28	-1.26	4.24	0.49
EMPORIA 1 WNW	5.76	2.25	3.73	0.86	2.84	-1.23	3.90	0.30	3.40	-0.42	M 9.98	6.53
FREDERICKSBURG SEWAGE	3.20	0.30	MA 1.41	-1.10	2.38	-1.61	2.34	-1.01	2.98	-1.10	4.10	0.13
HAMPTON UNIV	M		M		M		M		M		M	
HOLLAND 1 E	3.67	-0.14	4.09	0.85	2.68	-1.30	3.45	0.01	2.96	-0.96	7.11	3.40
HOPEWELL	M 6.96	3.49	M 3.14	-0.04	4.44	0.37	4.59	0.83	M 4.34	0.51	8.76	5.41
NORFOLK INTL AP	2.76	-0.64	4.80	1.68	2.50	-1.18	3.21	-0.20	4.15	0.74	2.62	-1.64
NORFOLK SOUTH	3.09	-0.62	5.02	1.86	2.60	-1.42	3.57	-0.04	4.04	0.19	4.00	-0.47
N	M		M		M		M		M		M	
PAINTER 2W	4.46	0.99	4.88	1.87	5.21	1.08	3.66	0.39	1.65	-1.67	7.04	3.10
STONY CREEK 2 N	M 8.32	4.69	3.26	0.19	3.04	-1.25	4.40	0.89	3.57	-0.74	8.76	4.64
SUFFOLK LAKE KILBY	2.76	-0.87	4.47	1.24	3.10	-0.95	3.51	-0.04	3.31	-0.52	6.97	2.60
WAKEFIELD 1NW	5.79	2.09	3.84	0.92	3.25	-0.93	3.69	-0.02	2.33	-1.78	8.73	4.74
WALKERTON 2 NW	M 4.59	1.41	2.66	-0.25	6.02	1.91	3.30	0.17	3.65	-0.25	7.25	3.90
WALLACETON LK DRUMMOND	3.18		M 5.54		2.83		M 4.15		4.33		M 5.16	
WALLOPS ISLAND NASA TEST FACIL	3.61	0.57	4.63	1.87	4.67	0.67	3.77	0.70	1.39	-1.56	3.81	0.52
WARSAW 2 NW	3.55	0.47	1.81	-0.89	FA 4.60	0.62	M		M 2.18	-1.97	7.63	4.08
WEST POINT 2 NW	5.55	1.93	2.84	-0.13	5.02	0.94	3.98	0.41	4.32	0.42	8.68	4.94
WILLIAMSBURG 2 N	6.44	2.74	4.27	1.07	3.91	-0.43	3.96	0.26	5.62	1.61	11.08	7.74
--DIVISIONAL DATA----->	4.35	0.38	3.87	0.59	3.58	-0.78	3.70	0.49	3.55	-0.47	6.99	3.51
EASTERN PIEDMONT 02												
ALBERTA 5N	7.04		2.72		4.20		5.49		2.26		5.33	
AMELIA COURTHOUSE 1	MA 7.24	3.91	M		6.93	2.74	3.80	0.61	4.79	0.95	M	
ASHLAND	4.91	1.66	1.82	-1.18	4.38	0.43	3.99	0.66	3.41	-0.62	5.35	1.73
BREMO BLUFF	M 4.89	1.81	2.14	-0.65	4.70	0.73	3.84	0.68	2.97	-1.00	9.67	6.17
BUCKINGHAM	5.62		2.00		3.96		3.28		3.54		6.85	
CAMP PICKETT	M 6.69	3.02	2.85	-0.33	4.04	-0.24	4.23	0.63	2.21	-2.02	M 5.86	1.93
CHASE CITY	M		4.01	1.20	3.74	-0.59	M		M		5.93	2.32
CLARKSVILLE	6.56	3.28	5.00	2.15	2.40	-1.53	4.13	0.84	M 5.65	1.54	8.15	3.96
CORBIN	4.24	1.10	1.71	-1.35	3.59	-0.43	3.39	0.14	2.99	-0.97	6.26	2.54
CROZIER	M 5.09	1.89	1.80	-1.04	M 3.56	-0.08	4.00	0.59	M 4.38	0.19	8.87	5.29
FARMVILLE 2 N	M 7.23	3.76	2.22	-0.87	M 3.48	-0.78	M 3.33	0.06	3.87	-0.13	7.27	3.99
GREENBAY 3 NE	6.57	3.16	1.97	-1.20	3.16	-1.02	3.42	0.21	3.08	-1.03	M 6.59	3.20
JOHN H KERR DAM	M 4.11	0.82	2.68	-0.07	M 2.05	-2.15	M 3.79	0.49	2.91	-0.67	6.26	2.73
LOUISA	4.04	0.98	1.50	-1.42	4.44	0.64	3.09	-0.15	4.42	0.28	7.89	4.27
PALMYRA 3S	4.48	1.60	1.93	-0.87	4.44	0.73	3.06	0.03	M		9.09	5.44
PETERSBURG	6.74	3.48	2.89	0.21	M 2.65	-1.49	4.09	0.86	M 3.49	-0.37	9.32	5.71
RICHMOND INTL AP	5.33	2.29	2.60	-0.16	5.57	1.53	2.88	-0.39	2.50	-1.28	6.50	2.57
SANDSTON	5.89	2.52	3.51	0.49	6.14	1.99	3.48	0.07	3.87	-0.16	3.81	0.27
WINTERPOCK 4 W	6.82		2.63		3.71		M 3.96		3.46		7.18	
--DIVISIONAL DATA----->	5.69	1.85	2.55	-0.64	4.36	0.20	3.74	0.41	3.31	-0.82	7.11	3.53
WESTERN PIEDMONT 03												

TOTAL PRECIPITATION AND DEPARTURE FROM NORMAL (INCHES)

VIRGINIA
2013

STATION	JUL		AUG		SEP		OCT		NOV		DEC		ANNUAL	
	PRECIP.	DEPART.	PRECIP.	DEPART.	PRECIP.	DEPART.	PRECIP.	DEPART.	PRECIP.	DEPART.	PRECIP.	DEPART.	PRECIP.	DEPART.
VIRGINIA														
TIDEWATER 01														
DISPUTANTA	5.67	0.45	5.10	0.27	1.65	-3.06	4.41	1.04	2.77	-0.60	6.40	2.94	61.27	
EASTVILLE	4.11	-0.93	5.87	0.56	MA 0.78	-3.56	MA 1.36	-2.13	MA 2.37	-0.71	5.27	1.67	M 42.46	
EMPORIA 1 WNW	5.81	1.17	5.08	0.52	2.24	-2.18	2.68	-0.56	2.85	-0.24	6.37	2.97	M 54.64	10.28
FREDERICKSBURG SEWAGE	2.55	-1.98	MA 5.72	2.33	1.13	-3.19	2.98	-0.40	3.35	-0.40	5.92	2.74	M 38.06	
HAMPTON UNIV	M		M		M		M		M		M			
HOLLAND 1 E	3.18	-2.02	3.72	-1.48	1.64	-3.51	1.43	-2.35	3.60	0.32	5.31	1.82	42.84	-6.23
HOPEWELL	5.24	0.59	6.10	1.04	1.30	-3.32	5.56	2.24	2.72	-0.79	M 6.87	3.41	M 60.02	14.76
NORFOLK INTL AP	8.19	3.05	5.04	-0.48	0.93	-3.83	4.13	0.71	2.57	-0.58	4.75	1.49	45.65	-0.09
NORFOLK SOUTH	6.00	0.86	5.34	-2.00	1.56	-3.51	5.39	1.97	2.41	-1.00	5.32	1.73	48.34	
N	M		M		M		M		M		M			
PAINTER 2W	3.31	-1.73	3.92	-0.37	1.83	-2.13	3.78	0.19	2.42	-0.69	6.76	2.91	48.92	5.57
STONY CREEK 2 N	8.04	3.21	3.84	-1.07	0.85	-3.56	3.47	0.17	2.77	-0.32	FMA 3.66	0.16	M 53.98	6.92
SUFFOLK LAKE KILBY	4.95	-0.19	4.07	-1.64	1.04	-4.28	5.21	1.58	3.29	-0.25	7.11	3.62	49.79	1.08
WAKEFIELD 1NW	8.21	3.40	5.32	0.22	0.73	-4.43	3.91	0.73	3.06	-0.05	6.55	3.09	55.41	10.36
WALKERTON 2 NW	4.72	0.20	5.76	2.00	1.92	-1.82	3.75	0.41	3.69	0.36	6.26	2.85	M 53.57	9.99
WALLACETON LK DRUMMOND	6.48		4.24		M 2.11		5.71		3.39		4.95		M 52.07	-0.17
WALLOPS ISLAND NASA TEST FACIL	5.74	1.65	1.74	-2.45	1.30	-2.68	4.20	1.03	2.48	-0.39	5.74	2.31	43.08	
WARSAW 2 NW	6.21	1.63	3.73	-0.90	1.03	-3.20	3.00	-0.47	2.97	-0.37	5.14	2.02		
WEST POINT 2 NW	3.61	-0.96	4.62	0.10	1.92	-2.59	3.22	-0.08	2.38	-0.79	5.91	2.48	52.05	6.29
WILLIAMSBURG 2 N	7.07	1.60	5.32	-0.05	0.86	-4.04	3.18	-0.28	2.66	-0.61	6.58	3.03	60.95	11.91
--DIVISIONAL DATA----->	5.51	0.85	4.64	0.20	1.37	-3.00	3.88	0.41	2.90	-0.24	5.90	2.67	50.24	4.61
EASTERN PIEDMONT 02														
ALBERTA 5N	6.37		2.52		0.89		2.22		3.31		6.48		48.83	
AMELIA COURTHOUSE 1	5.65	1.47	FA 1.30	-2.79	MA 1.89	-1.93	M 3.06	-0.36	2.69	-1.36	4.08	0.41		
ASHLAND	4.69	0.12	5.98	2.46	1.13	-2.63	3.63	0.36	3.20	-0.38	5.86	2.33	48.35	4.31
BREMO BLUFF	7.27	3.04	7.50	3.65	1.54	-2.17	M 3.01	-0.69	M 3.77	0.01	5.44	2.18	M 56.74	14.07
BUCKINGHAM	7.46		3.48		0.60		M 2.32		3.45		5.40		M 47.96	2.94
CAMP PICKETT	7.39	3.26	M 2.89	-1.58	0.56	-3.50	2.52	-1.11	M 3.17	-0.26	6.05	2.62	M 48.46	1.95
CHASE CITY	11.53	7.10	3.09	-1.35	0.51	-3.58	2.22	-1.33	3.42	-0.11	M			
CLARKSVILLE	M 5.58	1.09	M 3.30	0.21	0.93	-2.82	M 2.23	-1.20	2.78	-0.46	6.16	2.75	M 52.87	9.78
CORBIN	2.51	-1.47	4.90	1.55	1.22	-2.89	3.26	-0.48	3.14	-0.47	6.46	3.12	43.67	-0.87
CROZIER	M 6.89	3.09	8.70	4.56	1.94	-1.50	2.47	-0.71	3.31	-0.37	M 5.55	2.20	M 56.56	12.52
FARMVILLE 2 N	M 8.66	4.54	M 3.56	-0.35	M 0.78	-3.20	M 2.18	-1.24	M 3.26	-0.39	M 6.01	2.65	M 51.85	6.98
GREENBAY 3 NE	5.37	1.03	3.01	-1.16	1.61	-2.46	2.64	-0.74	2.83	-0.76	6.43	2.23	M 46.68	
JOHN H KERR DAM	5.23	0.13	1.05	-2.88	0.67	-2.80	2.37	-0.96	2.93	-0.16	M 5.52	2.28	M 39.57	-4.51
LOUISA	3.81	-0.90	7.20	3.62	1.02	-3.16	2.09	-1.53	3.14	-0.99	5.17	1.99	47.81	3.79
PALMYRA 3S	5.76	1.40	M 6.13	2.30	2.97	-0.70	3.13	-0.31	3.63	0.11	5.69	2.50		
PETERSBURG	4.60	0.14	6.11	1.34	M 0.41	-3.85	5.22	2.00	2.71	-0.53	6.82	3.62	M 55.05	
RICHMOND INTL AP	5.88	1.37	7.61	2.95	1.39	-2.74	4.25	1.27	3.06	-0.18	6.11	2.85	53.68	9.77
SANDSTON	MA 3.38	-0.91	MA 7.64	2.92	1.12	-2.94	2.97	-0.19	3.21	-0.46	5.13	1.71	M 50.15	
WINTERPOCK 4 W	6.23		2.85		2.95		2.86		2.77		6.59		M 52.01	7.64
--DIVISIONAL DATA----->	5.98	1.62	4.92	0.99	1.32	-2.71	2.99	-0.86	3.10	-0.32	5.86	2.68	50.93	5.93
WESTERN PIEDMONT 03														

TOTAL PRECIPITATION AND DEPARTURE FROM NORMAL (INCHES)

VIRGINIA
2013

STATION	JAN		FEB		MAR		APR		MAY		JUN	
	PRECIP.	DEPART.	PRECIP.	DEPART.	PRECIP.	DEPART.	PRECIP.	DEPART.	PRECIP.	DEPART.	PRECIP.	DEPART.
ALTAVISTA	7.75		1.98		2.62		3.36		7.49		6.00	
APPOMATTOX	6.00	2.86	2.41	-0.67	3.29	-0.68	4.16	0.74	M 5.66	0.90	6.05	2.10
BEDFORD 4 NW	7.73		1.72		4.22		3.90		7.34		8.27	
BROOKNEAL	8.49	4.82	2.39	-0.75	3.04	-0.90	3.20	-0.51	5.87	1.18	4.55	1.58
CHARLOTTE COURT HOUSE	7.17	3.50	1.89	-1.20	3.06	-0.96	3.50	-0.01	4.46	0.35	7.51	3.93
CHARLOTTESVILLE 2W	5.61	2.51	1.82	-1.25	5.29	1.44	3.26	-0.14	3.83	-0.80	9.15	4.99
CHATHAM	9.14	5.36	2.09	-0.92	2.87	-1.18	3.74	0.19	4.72	0.68	7.36	3.62
CONCORD 4 SSW	7.22		2.19		3.64		3.56		4.44		7.20	
DANVILLE REGIONAL AP	7.16	3.74	2.65	-0.36	2.55	-1.56	M 3.04	-0.42	4.81	0.93	5.94	2.10
FREE UNION	5.31		1.51		4.48		2.63		3.53		8.50	
HOLCOMB ROCK	7.36		1.93		5.59		4.47		7.01		10.47	
HUDDLESTON 4 SW	7.24		1.90		2.83		3.23		7.00		5.40	
LYNCHBURG #2	M		M		M		M		M		M	
LYNCHBURG INTL AP	6.06	2.92	1.57	-1.36	3.31	-0.27	3.38	0.07	6.12	2.39	6.32	2.70
MARTINSVILLE FLTR PLT	9.80	6.31	2.94	-0.20	2.93	-1.22	3.99	0.50	3.74	-0.29	5.28	1.53
MEADOWS OF DAN 5 SW	11.81		2.55		3.95		4.96		5.35		7.13	
MONTEBELLO FISH CULTURAL STN	6.47		FMA 1.50		M 3.51		M 5.26		8.38		M	
MONTICELLO	5.50	3.14	1.62	-1.16	4.56	0.91	2.43	-0.82	4.34	0.24	7.17	3.21
PEDLAR DAM	7.27		1.35		4.44		4.15		5.39		7.81	
ROCKY MT	9.05	5.68	2.44	-0.64	3.41	-0.85	4.31	0.54	6.08	2.01	6.24	1.72
SOUTH BOSTON	7.87	4.26	2.88	-0.24	2.98	-1.17	2.94	-0.54	5.02	1.10	6.71	2.42
STUART	10.52	6.65	2.77	-0.48	3.45	-0.63	4.22	0.23	5.71	1.11	7.23	2.24
TYE RIVER 1 SE	6.41	3.20	0.68	-2.33	3.48	-0.26	3.80	0.39	M		8.45	4.86
WOOLWINE	9.67		3.05		4.29		5.04		9.31		8.35	
--DIVISIONAL DATA----->	7.68	3.84	2.11	-1.18	3.65	-0.58	3.73	0.00	5.71	1.32	7.14	3.19
NORTHERN 04												
BOSTON 4 SE	5.01		4.67		7.33		2.14		M 4.03		7.29	
EDINBURG	4.14	2.06	1.15	-0.66	2.72	-0.20	1.93	-0.88	6.30	2.40	5.34	1.56
FRONT ROYAL	3.84	1.40	1.40	-1.25	3.94	0.18	M 1.46	-1.80	3.36	-0.84	6.25	2.22
LINCOLN	MA 5.73		1.69		2.86		2.29		3.53		5.67	
LURAY 5 E	3.15	0.47	1.45	-1.21	3.01	-0.87	1.53	-1.91	7.27	3.27	5.80	1.85
MADISON	FA 3.35	0.63	M		M		M		MA 4.80	0.32	8.53	4.17
MANASSAS	FMA 2.80		M		M		M		M		M	
MT WEATHER	5.68	2.80	2.34	-0.62	3.98	0.42	1.99	-1.70	5.15	0.67	6.86	2.62
PIEDMONT RSCH STN	4.19	1.43	1.67	-1.08	4.09	0.58	2.57	-0.83	5.56	1.42	6.09	1.92
SOMERSET	5.16	2.27	1.87	-0.90	5.15	1.42	2.47	-0.72	6.38	2.16	8.86	4.79
SPERRYVILLE	4.51	1.44	1.95	-0.89	MA 3.35	-0.67	M 2.20	-1.57	5.03	0.68	5.80	1.46
STERLING RCS	4.38	1.53	1.73	-1.04	3.55	-0.05	2.12	-1.50	3.76	-0.96	7.04	3.12
VIENNA	M 2.68	-0.45	1.36	-1.45	3.08	-0.74	2.12	-1.47	2.50	-2.03	5.01	0.93
WARRENTON 3 SE	M		M		M		M		M		M	
WASHGTN DULLES INTL AP	3.70	1.02	1.63	-1.11	3.16	-0.22	2.30	-1.17	3.20	-1.35	4.64	0.66
WASHINGTON REAGAN AP	2.53	-0.28	1.67	-0.95	2.80	-0.68	2.76	-0.30	2.82	-1.17	9.97	6.19
WINCHESTER	M		M		M		M		M		M	
WINCHESTER 7 SE	4.15	1.96	1.36	-1.11	3.22	-0.20	1.83	-1.34	4.56	0.74	5.56	1.90
WOODSTOCK 2 NE	4.04	1.37	1.05	-1.54	M 2.59	-0.67	1.77	-1.16	5.59	1.58	4.06	0.26
--DIVISIONAL DATA----->	4.19	1.02	1.80	-0.85	3.76	0.19	2.14	-1.06	4.64	0.41	6.42	2.48
CENTRAL MOUNTAIN 05												

TOTAL PRECIPITATION AND DEPARTURE FROM NORMAL (INCHES)

VIRGINIA
2013

STATION	JUL		AUG		SEP		OCT		NOV		DEC		ANNUAL	
	PRECIP.	DEPART.	PRECIP.	DEPART.	PRECIP.	DEPART.	PRECIP.	DEPART.	PRECIP.	DEPART.	PRECIP.	DEPART.	PRECIP.	DEPART.
ALTAVISTA	3.25		4.61		1.29		1.50		3.83		5.58		49.26	5.31
APPOMATTOX	6.98	2.16	3.05	-0.93	0.92	-3.38	2.57	-1.19	3.77	-0.21	5.74	2.31	M 50.60	4.72
BEDFORD 4 NW	6.12		3.51		2.95		2.66		3.31		6.20		57.93	
BROOKNEAL	6.06	1.70	2.77	-1.19	0.93	-2.95	2.26	-1.35	3.67	-0.01	5.87	2.52	49.10	4.86
CHARLOTTE COURT HOUSE	12.47	8.23	2.08	-1.85	0.45	-3.63	2.25	-1.12	2.93	-0.77	4.85	1.39	52.62	7.31
CHARLOTTESVILLE 2W	7.01	1.69	6.32	2.25	1.34	-3.56	3.18	-0.56	3.36	-0.73	5.67	2.32	55.84	6.97
CHATHAM	6.46	1.97	4.59	0.77	1.50	-2.95	2.14	-1.15	4.05	0.47	6.09	2.65	54.75	9.47
CONCORD 4 SSW	5.56		3.98		0.80		2.35		3.52		4.74		49.20	4.45
DANVILLE REGIONAL AP	11.50	6.83	3.66	-0.25	1.15	-2.84	1.20	-2.34	M 2.89	-0.46	5.22	1.96	M 51.77	
FREE UNION	M 6.11		5.59		1.64		3.11		2.72		5.69		M 50.82	4.04
HOLCOMB ROCK	6.49		5.47		2.86		3.21		3.71		6.98		65.55	20.81
HUDDLESTON 4 SW	4.37		4.63		1.77		2.60		3.32		5.86		50.15	7.26
LYNCHBURG #2	M		M		M		M		M		M			
LYNCHBURG INTL AP	3.41	-0.95	3.55	0.29	0.48	-3.40	2.34	-0.77	3.35	-0.06	5.69	2.45	45.58	2.27
MARTINSVILLE FLTR PLT	4.61	0.14	5.00	1.09	2.05	-2.51	1.57	-1.73	3.62	0.18	5.45	2.06	50.98	5.37
MEADOWS OF DAN 5 SW	14.91		4.24		2.63		1.89		3.63		6.23		69.28	13.49
MONTEBELLO FISH CULTURAL STN	7.22		MA 5.57		MA 1.24		3.34		4.67		M			
MONTICELLO	9.62	4.13	7.21	3.17	1.09	-3.38	4.45	0.77	M 2.91	-0.95	5.21	2.17	M 56.11	13.55
PEDLAR DAM	6.80		6.12		1.20		2.96		3.48		6.62		57.59	12.89
ROCKY MT	6.59	1.72	3.64	-0.65	2.44	-2.15	2.45	-0.73	3.06	-0.51	5.41	1.92	55.12	8.50
SOUTH BOSTON	7.07	2.74	4.11	0.34	1.04	-2.94	1.96	-1.52	2.06	-1.34	5.08	1.72	49.72	5.31
STUART	8.42	2.85	6.47	1.48	3.94	-0.70	3.26	-0.06	1.85	-1.61	6.15	2.64	63.99	12.64
TYE RIVER 1 SE	6.03	1.99	6.76	2.99	0.41	-3.75	1.74	-1.90	3.14	-0.47	6.07	2.51		
WOOLWINE	12.09		5.17		0.88		2.50		4.23		6.02		70.60	16.87
--DIVISIONAL DATA----->	7.41	2.78	4.66	0.85	1.53	-2.85	2.50	-1.26	3.39	0.04	5.75	2.50	55.26	8.65
NORTHERN 04														
BOSTON 4 SE	6.69		5.94		0.84		6.44		0.76		5.50		M 56.64	
EDINBURG	3.00	-0.67	4.41	0.92	0.86	-2.54	3.62	1.28	1.80	-0.96	5.05	2.73	40.32	
FRONT ROYAL	3.21	-0.09	3.37	0.31	1.23	-3.27	5.89	2.74	2.02	-1.73	5.00	2.18	M 40.97	
LINCOLN	3.97		1.67		0.90		6.61		2.52		3.21		M 40.65	-2.56
LURAY 5 E	6.49	2.38	5.35	2.03	1.09	-3.44	6.81	3.78	2.56	-1.05	5.03	1.98	49.54	7.93
MADISON	MA 4.64	0.43	6.39	2.76	1.75	-2.63	MA 5.34	1.98	MA 2.76	-1.15	M			
MANASSAS	MA 5.76		M		1.73		M 5.05		MA 3.35		MA 5.00			
MT WEATHER	4.16	0.35	2.97	-0.48	0.79	-3.73	5.75	2.32	2.50	-1.01	5.45	2.50	47.62	4.33
PIEDMONT RSCH STN	5.94	1.24	7.08	3.86	2.03	-2.00	3.25	-0.17	3.07	-0.75	4.77	1.70	50.31	5.67
SOMERSET	3.96	-1.74	5.76	2.22	2.45	-1.79	4.66	1.11	3.25	-0.60	5.90	2.77	55.87	
SPERRYVILLE	2.48	-1.84	3.14	-0.77	0.74	-4.23	7.29	3.73	MA 0.58	-4.07	5.96	2.58	M 43.03	
STERLING RCS	4.27	0.57	1.64	-1.85	1.30	-2.70	9.28	5.69	2.99	-0.59	5.39	2.30	47.45	5.27
VIENNA	4.55	0.36	1.53	-2.16	1.60	-2.58	4.93	1.42	2.30	-1.26	3.95	0.68	M 35.61	-9.51
WARRENTON 3 SE	M		M		M		M		M		6.32	2.92		
WASHGTN DULLES INTL AP	7.27	3.60	1.95	-1.58	1.61	-2.31	7.51	4.26	2.79	-0.62	5.58	2.62	45.34	3.54
WASHINGTON REAGAN AP	4.43	0.70	1.34	-1.59	1.22	-2.50	6.25	2.85	2.92	-0.25	5.53	2.48	44.24	4.89
WINCHESTER	M		0.98	-2.04	0.88	-2.86	6.23	3.28	1.90	-1.33	5.54	2.86		
WINCHESTER 7 SE	M 3.24	-0.35	MA 2.36	-0.87	1.01	-2.90	6.17	3.23	1.98	-1.17	4.95	2.48	M 40.39	1.29
WOODSTOCK 2 NE	2.33	-1.47	4.02	0.86	0.86	-3.02	M 5.01	2.35	1.80	-1.05	M 2.51	-0.14	M 35.63	-1.89
--DIVISIONAL DATA----->	4.48	0.57	3.60	-0.06	1.27	-2.80	6.05	2.49	2.34	-1.12	5.20	2.18	45.89	3.45
CENTRAL MOUNTAIN 05														

TOTAL PRECIPITATION AND DEPARTURE FROM NORMAL (INCHES)

VIRGINIA
2013

STATION	JAN		FEB		MAR		APR		MAY		JUN	
	PRECIP.	DEPART.	PRECIP.	DEPART.	PRECIP.	DEPART.	PRECIP.	DEPART.	PRECIP.	DEPART.	PRECIP.	DEPART.
BUCHANAN	6.94		1.14		3.73		3.47		8.44		M 9.88	
BUENA VISTA	6.58		1.49		3.85		2.74		4.44		7.56	
COVINGTON FLTR PLT	4.73	2.23	0.90	-1.47	2.14	-1.14	2.81	-0.41	5.54	1.46	7.27	3.97
CRAIGSVILLE 2 S	M		M		M		M		M		M	
DALE ENTERPRISE	FA 2.72	0.43	1.17	-1.05	F 7.76	4.84	2.30	-0.67	2.22	-1.49	4.81	1.40
GATHRIGHT DAM	4.71	1.93	1.00	-1.60	2.65	-0.63	3.34	0.17	4.70	0.59	4.98	1.34
GLASGOW 1 SE	7.69		1.86		4.44		3.72		6.16		7.54	
HOT SPRINGS	4.74	1.28	1.83	-1.20	3.85	-0.24	3.90	0.20	4.98	0.79	5.22	1.56
LEXINGTON	6.34	3.55	1.42	-1.23	4.73	1.58	2.99	-0.43	4.67	0.65	6.80	2.55
MILLGAP	4.21	0.96	1.45	-1.53	2.86	-1.01	3.11	-0.64	4.81	0.04	5.00	0.94
MTN GROVE	4.05		0.72		1.90		4.19		4.23		4.46	
MUSTOE 1 SW	4.67	1.29	1.90	-1.35	3.42	-0.74	3.22	-0.59	4.78	0.08	5.36	1.55
NEW CASTLE	5.65		1.45		3.77		3.76		6.26		7.12	
ROANOKE 8 N	6.84	3.82	1.75	-0.89	3.29	-0.44	4.22	0.49	4.68	0.25	7.99	3.53
ROANOKE INTL AP	7.21	4.29	2.08	-0.81	3.40	-0.06	2.94	-0.43	4.91	0.85	6.49	2.66
STAUNTON WATER TRMTMT PLT	3.52	0.85	1.11	-1.44	3.63	0.38	2.44	-0.71	5.04	1.30	7.56	3.95
WAYNESBORO WTP	4.99	2.20	1.57	-1.35	6.93	3.20	3.19	-0.36	4.58	0.65	7.65	3.78
--DIVISIONAL DATA----->	5.52	2.36	1.43	-1.31	3.64	0.06	3.27	0.07	5.03	0.91	6.39	2.69
SOUTHWESTERN MOUNTAIN 06												
ABINGDON 3S	M 8.07		1.93		M 5.22		M 4.26		M 5.05		M 3.42	
BIG STONE GAP	8.96	4.77	2.75	-1.65	5.80	1.11	5.77	1.10	3.82	-1.06	7.93	4.08
BLACKSBURG NWSO	7.74	4.66	1.36	-1.45	3.12	-0.52	3.80	0.32	5.83	1.50	7.37	3.37
BURKES GARDEN	8.16	4.21	2.50	-0.96	4.11	0.09	5.56	1.88	4.88	0.12	4.15	-0.07
CHRISTIANSBURG	9.26	6.50	1.58	-1.25	3.03	-0.25	4.05	0.77	4.92	0.02	5.74	1.82
CLINTWOOD 1 W	6.81	3.20	2.08	-1.57	4.71	0.84	4.65	0.57	2.71	-1.88	7.66	2.87
COPPER HILL	8.90		M 1.94		3.00		4.22		6.82		5.44	
GALAX RADIO WBRF	10.83	7.47	2.77	-0.52	2.45	-1.34	4.62	1.08	4.62	0.70	10.24	6.37
GALAX WTP	9.85		2.61		3.02		4.94		4.93		10.96	
GRUNDY	5.92	2.73	1.25	-1.84	3.59	0.16	4.17	0.11	5.56	0.67	6.77	2.27
JOHN FLANNAGAN LAKE	M		M		M		MA 5.03		M		M	
LAFAYETTE 1 NE	8.31		1.24		2.86		3.31		7.99		7.00	
LEBANON	8.19	5.15	1.86	-1.57	4.01	0.17	4.33	0.90	3.37	-1.05	5.19	0.61
NORA 4 SSE	7.73	4.12	M 2.01	-1.61	4.62	0.72	4.92	1.71	4.31	-1.19	6.83	1.11
NORTH FORK LAKE	MA 6.64		M		MA 4.64		M		MA 3.56		M	
PULASKI 2 E	6.95	4.10	1.81	-0.88	2.61	-0.58	3.68	0.73	4.05	0.28	5.53	2.02
RADFORD 3 N	6.87	3.94	1.60	-1.14	2.75	-0.23	3.13	0.06	4.88	0.96	6.35	3.28
RICHLANDS	7.17	4.12	1.41	-1.50	3.92	-0.02	4.11	0.32	4.37	-0.38	4.19	0.24
SALTVILLE 1N	8.44	4.84	1.77	-1.70	4.05	0.19	4.16	0.54	4.47	0.12	7.27	3.12
STAFFORDSVILLE 3 ENE	6.10	3.20	1.50	-1.23	2.34	-1.09	3.64	0.29	3.99	-0.25	6.27	2.56
TROUT DALE 3 SSE	8.85		2.33		4.20		5.48		7.28		5.89	
WILLIS	11.52		1.63		3.09		4.18		5.35		8.36	
WISE 3E	8.99	5.11	1.92	-2.06	4.76	0.64	5.33	1.20	3.97	-0.65	8.22	3.76
WYTHEVILLE 1 S	7.49	4.59	2.01	-0.79	2.92	-0.32	3.91	0.69	4.03	-0.08	4.97	1.40
--DIVISIONAL DATA----->	8.24	4.70	1.90	-1.48	3.57	-0.49	4.38	0.68	4.86	0.26	6.78	2.67

TOTAL PRECIPITATION AND DEPARTURE FROM NORMAL (INCHES)

VIRGINIA
2013

STATION	JUL		AUG		SEP		OCT		NOV		DEC		ANNUAL	
	PRECIP.	DEPART.	PRECIP.	DEPART.	PRECIP.	DEPART.	PRECIP.	DEPART.	PRECIP.	DEPART.	PRECIP.	DEPART.	PRECIP.	DEPART.
BUCHANAN	6.62		2.64		1.67		M 3.29		M		M			
BUENA VISTA	9.35		3.41		0.83		3.00		2.98		5.79		52.02	13.18
COVINGTON FLTR PLT	6.70	2.73	3.78	0.56	1.51	-1.73	1.43	-1.11	2.79	-0.57	5.53	2.82	45.13	7.90
CRAIGSVILLE 2 S	M		M		M		M		M		M			
DALE ENTERPRISE	7.26	3.26	4.16	0.72	0.69	-2.85	1.80	-0.72	2.35	-0.50	7.08	4.47	44.32	8.20
GATHRIGHT DAM	4.76	0.86	4.21	1.02	1.24	-2.13	1.23	-1.50	2.76	-0.35	6.09	3.13	41.67	2.97
GLASGOW 1 SE	10.14		3.38		1.22		3.32		3.73		6.32		59.52	9.86
HOT SPRINGS	6.06	1.85	3.41	-0.02	1.41	-2.24	1.30	-1.71	3.06	-0.66	6.35	3.00	46.11	3.20
LEXINGTON	6.43	2.31	2.66	-0.51	1.03	-2.49	2.48	-0.44	2.72	-0.67	6.12	3.01	48.39	8.43
MILLGAP	4.21	-0.46	4.29	0.78	2.23	-1.36	1.69	-1.25	2.80	-0.74	6.53	3.18	43.19	-0.68
MTN GROVE	M		5.67		1.08		1.31		2.76		6.66			
MUSTOE 1 SW	M		4.17	0.79	1.69	-1.97	1.69	-1.15	3.19	-0.62	7.21	3.90		
NEW CASTLE	9.48		3.32		1.53		2.09		2.62		6.34		53.39	
ROANOKE 8 N	10.57	5.39	4.61	1.02	2.63	-1.51	2.47	-0.59	2.89	-0.37	4.82	1.59	56.76	
ROANOKE INTL AP	12.73	8.69	2.55	-1.01	1.13	-2.76	2.54	-0.35	2.74	-0.66	4.38	1.44	53.10	10.61
STAUNTON WATER TRMTMT PLT	3.61	-0.29	4.33	0.70	1.26	-2.53	2.51	-0.47	1.99	-1.10	5.91	3.17	42.91	4.06
WAYNESBORO WTP	4.22	-0.01	5.96	1.92	0.77	-3.93	4.80	1.59	2.50	-1.98	3.46	0.52	50.62	
--DIVISIONAL DATA----->	7.30	3.33	3.91	0.49	1.37	-2.22	2.24	-0.93	2.79	-0.40	5.91	3.11	48.80	8.16
SOUTHWESTERN MOUNTAIN 06														
ABINGDON 3S	5.79		4.82		M 3.71		M 1.19		M 3.35		5.82		M 52.63	5.22
BIG STONE GAP	4.65	-0.64	5.51	1.23	3.94	0.06	1.35	-1.58	2.89	-1.07	8.61	3.52	61.98	9.62
BLACKSBURG NWSO	8.01	3.75	2.08	-1.51	1.35	-1.75	2.64	-0.14	3.02	0.15	5.26	2.31	51.58	8.95
BURKES GARDEN	6.03	1.55	5.17	1.01	2.67	-0.64	1.86	-1.06	3.66	0.54	5.21	1.41	53.96	8.21
CHRISTIANSBURG	7.57	3.22	2.72	-0.58	1.69	-1.79	3.48	0.73	3.08	0.18	5.01	2.03	52.13	
CLINTWOOD 1 W	4.05	-0.70	4.40	0.75	3.08	-0.20	1.38	-1.32	3.52	0.54	6.99	3.33	52.04	
COPPER HILL	M 11.75		M 3.67		M 1.65		M 3.17		3.42		4.54		M 58.52	11.36
GALAX RADIO WBRF	M 17.01	12.77	4.10	0.06	2.38	-1.45	2.71	-0.12	3.32	-0.27	M 5.27	2.00	M 70.32	26.42
GALAX WTP	17.50		4.33		2.83		2.72		2.95		5.35		71.99	
GRUNDY	5.38	0.18	7.50	3.64	3.05	-0.09	MA 1.10	-1.72	3.57	0.66	6.81	3.54	M 54.67	8.83
JOHN FLANNAGAN LAKE	M		MA 5.05		MA 3.80		M		M		MA 5.86			
LAFAYETTE 1 NE	10.50		2.57		2.21		2.91		2.94		5.18		57.02	18.14
LEBANON	5.66	1.09	5.33	1.66	5.51	2.42	1.25	-1.15	3.85	0.84	5.63	2.21	54.18	12.88
NORA 4 SSE	8.44	3.69	4.03	-0.25	4.80	1.49	1.11	-1.57	3.40	0.04	6.79	3.05	M 58.99	
NORTH FORK LAKE	MA 2.43		MA 3.76		MA 4.59		MA 1.28		MA 1.79		MA 3.45			
PULASKI 2 E	8.94	5.01	2.84	-0.25	1.77	-1.29	2.17	-0.48	M 3.25	0.80	M 2.15	-0.65	M 45.75	7.94
RADFORD 3 N	9.12	4.90	2.62	-0.78	1.88	-1.13	2.24	-0.40	2.94	-0.41	M 5.37	2.43	M 49.75	13.27
RICHLANDS	5.32	1.00	7.75	3.62	2.22	-0.91	1.54	-0.90	3.11	0.13	5.57	2.12	50.68	10.23
SALTVILLE 1N	6.27	1.24	5.02	0.84	3.87	0.59	M 1.15	-1.58	3.56	0.31	5.67	2.01	M 55.70	10.73
STAFFORDSVILLE 3 ENE	11.91	7.82	3.34	0.10	1.59	-1.50	1.71	-0.94	3.22	0.38	4.38	1.54	49.99	10.34
TROUT DALE 3 SSE	M		M		M		M		M		M			
WILLIS	12.10		3.27		1.84		3.17		FM 0.78		6.23		M 61.52	16.41
WISE 3E	6.19	0.89	3.65	-0.40	2.69	-0.91	1.68	-0.89	3.09	-0.37	7.35	3.54	57.84	10.84
WYTHEVILLE 1 S	M		M		M		M		M		M			
--DIVISIONAL DATA----->	7.97	3.68	4.27	0.70	2.74	-0.73	2.12	-0.98	3.27	0.07	5.91	2.64	56.01	11.72

AVERAGE TEMPERATURES AND DEPARTURES FROM NORMAL(°F)

VIRGINIA
2013

STATION	JAN		FEB		MAR		APR		MAY		JUN		JUL		AUG		SEP		OCT		NOV		DEC		ANNUAL	
	TEMPERATURE	DEPARTURE.	TEMPERATURE	DEPARTURE.	TEMPERATURE	DEPARTURE.	TEMPERATURE	DEPARTURE.	TEMPERATURE	DEPARTURE.	TEMPERATURE	DEPARTURE.	TEMPERATURE	DEPARTURE.	TEMPERATURE	DEPARTURE.	TEMPERATURE	DEPARTURE.	TEMPERATURE	DEPARTURE.	TEMPERATURE	DEPARTURE.	TEMPERATURE	DEPARTURE.	TEMPERATURE	DEPARTURE.
CHARLOTTESVILLE 2W	38.6	3.1	36.7	-2.0	40.8	-6.1	57.4	0.3	63.1	-2.1	73.4	0.5	77.1	0.2	72.5	-2.9	67.1	-2.1	59.1	0.8	44.8	-4.1	41.1	1.8	56.0	-1.0
CHATHAM	37.8	3.2	34.9	-2.5	38.9	-6.2	54.2	0.3	59.7M	-2.9	70.6M	-0.4	74.5	-0.7	70.5	-3.0	64.7M	-2.2	56.6M	1.7	41.6M	-4.3	39.4M	1.5	M 53.6	-1.3
DANVILLE REGIONAL AP	42.1		40.1		43.5		59.1		65.0		75.1		78.2		75.0		69.1		61.0		46.2		44.0		58.2	
FREE UNION	36.4		34.5		38.5M		54.5		60.5		70.6		74.3		69.9		64.2		56.3F		42.2		38.8M		M 53.4	
LYNCHBURG #2	MM		M		M		M		M		M		M		M		M		M		M		M		M	
LYNCHBURG INTL AP	39.4	4.9	37.9	0.1	41.6	-4.4	57.9	2.6	63.0	-0.4	73.3	2.3	76.9	1.8	73.0	-0.8	67.4	0.3	58.4	2.3	43.5	-3.1	41.1	2.9	56.1	0.7
MARTINSVILLE FLTR PLT	39.5	5.6	36.6	0.3	39.9	-4.5	54.9	1.5	62.4	0.0	72.5	1.9	76.1M	1.1	72.0	-1.3	66.5	-0.3	57.9	2.7	42.9	-2.7	40.0	2.9	M 55.1	0.6
MEADOWS OF DAN 5 SW	39.1		36.5		39.6M		MM		M		M		M		M		M		M		M		M		M	
MONTEBELLO FISH CULTURAL STN	34.1		29.4M		32.3M		50.2M		55.4M		MM		MM		MM		62.9M		51.5M		MM		MM		M	
MONTECELLO	37.6	3.5	35.8	-1.8	39.8	-5.9	55.9	0.1	62.1	-1.7	72.3	0.5	76.0	0.4	70.5	-3.2	65.1	-1.8	57.0	1.2	44.6M	-2.7	40.0	1.9	M 54.7	-0.8
ROCKY MT	39.3	4.2	37.0	-1.1	40.8	-4.9	56.1	1.4	62.6	-0.3	72.4	1.3	75.2	-0.3	72.0	-1.9	66.5	-0.7	57.7	1.6	43.6	-3.3	41.0M	2.6	M 55.4	-0.1
SOUTH BOSTON	40.8	4.9	38.2	-0.9	41.7	-5.0	57.6M	2.3	63.5	-0.4	74.2	1.9	77.3	0.5	73.7	-1.6	68.8	0.1	59.2	2.6	45.5M	-1.8	41.9	2.4	M 56.9	0.4
STUART	40.4	5.2	37.9	-0.4	40.5	-5.6	55.3	0.3	62.1	-1.3	71.5	0.8	74.7	0.0	71.0	-2.3	67.0	-0.2	59.2	2.9	44.2	-3.1	42.3	3.6	55.5	0.0
TYE RIVER 1 SE	39.5	4.6	37.9	-0.1	41.8	-3.8	57.3	2.1	M		72.3	1.3	75.7	0.3	71.7	-2.2	66.6	-0.6	58.0	1.8	44.9	-2.3	41.5M	3.1	M 55.2	-0.3
--DIVISIONAL DATA----->	38.9	3.1	36.5	-2.4	40.1	-6.4	56.1	0.4	62.0	-1.5	72.8	1.2	76.2	0.3	72.2	-2.1	66.5	-1.1	57.8	1.5	44.1	-3.4	41.1	2.2	55.4	-8.2
NORTHERN 04																										
BOSTON 4 SE	35.9		35.1		39.4M		53.9		60.9M		72.0		75.7		71.3		64.3		56.2F		41.6M		37.5		M 53.7	
EDINBURG	35.4		31.5		36.7		51.1		59.4		70.1		74.0		69.5		63.3		54.3		40.3		36.5		51.8	
FRONT ROYAL	36.9		33.8M		38.2M		55.5M		60.8		71.4M		75.7		70.6		64.8		56.1		41.7M		38.0		M 53.6	
LINCOLN	34.7	3.2	32.5	-1.7	38.4	-4.5	52.8	0.9	60.8	-1.0	71.1	0.8	75.9	0.7	70.8	-2.8	64.0	-2.4	55.0	-0.1	39.7	-5.1	35.5	-0.3	52.6	-1.0
LURAY 5 E	36.6	2.3	33.5	-3.8	37.7	-7.2	54.4	-0.5	60.5	-2.4	70.3	-0.1	74.2	0.1	70.1	-2.3	64.2	-2.4	55.6	-0.1	42.0	-5.1	38.5	1.0	53.1	-1.7
MADISON	40.4		MM		M		MM		62.9		73.0		77.1M		71.5		65.8		58.3		45.6		MM		M	
MANASSAS	37.3M		MM		M		M		M		MM		80.4M		MM		66.5M		58.5M		44.9M		40.4M		M	
MT WEATHER	34.0	5.2	30.9	-0.3	35.8	-3.1	51.9	2.6	58.9M	-0.2	69.2	1.6	73.2	1.1	69.0	-1.8	64.6	0.5	56.1	3.1	40.6	-2.6	36.3	2.8	M 51.7	0.7
PIEDMONT RSCH STN	36.9	3.8	34.9	-1.2	39.4	-4.9	55.5	1.2	61.8M	-1.5	72.8	1.0	76.4	0.3	71.5	-2.9	65.9	-1.8	57.3	1.3	42.6	-3.9	39.3	2.1	M 54.5	-0.6
SOMERSET	37.0		35.3		39.5		55.4		61.9		73.3		77.1		71.5		65.6		56.9		42.9		39.7		54.7	
SPERRYVILLE	35.8		34.0M		38.6M		55.2M		59.4M		69.8M		74.3M		MM		64.1M		55.4M		44.8M		38.0		M 51.8	
STERLING RCS	34.8	4.3	33.7M	0.5	38.6M	-3.1	54.9	3.4	62.0	0.6	73.0	3.2	78.1	3.6	72.7	-0.3	66.1	0.3	56.6M	2.7	41.7M	-2.2	36.8	1.8	M 54.1	1.2
VIENNA	35.1M		32.6		37.6		52.7		59.5		70.0		74.0		68.5		63.7		55.6		40.2		37.6		M 52.3	
WARRENTON 3 SE	M		M		M		M		M		M		M		M		M		M		M		37.2M	0.2	M	
WASHGTON DULLES INTL AP	37.4	5.7	35.3	0.5	40.2	-3.2	56.1	3.0	63.5	1.2	73.3	2.4	78.3	2.6	73.6	-0.8	66.8	-0.5	58.4	3.4	42.9	-2.3	39.2	3.2	55.4	1.2
WASHINGTON REAGAN AP	40.3	5.4	38.3	0.2	43.8	-2.7	58.9	2.8	66.7	1.1	76.5	2.0	81.2	2.0	77.1	-0.3	71.3	0.8	62.4	3.6	46.6	-2.1	42.3	2.8	58.8	1.3
WINCHESTER	M		M		M		M		M		M		M		MM		65.7M	-0.2	56.0	1.8	41.7	-2.9	36.8	1.5	M	
WINCHESTER 7 SE	35.1	4.7	32.3	-1.2	37.7MF	-4.4	53.2F	1.5	59.4MF	-2.1	68.9MF	-1.1	74.1M	-0.5	MMF		MM		MM		MM		35.8M	0.7	M	
WOODSTOCK 2 NE	35.9	4.9	33.0	-1.0	37.1M	-5.6	53.2	1.5	59.6	-2.1	70.4	0.3	75.5	1.0	70.2	-2.9	64.3	-1.6	55.0M	0.4	40.8	-3.4	35.0M	-0.7	M 52.5	-0.8
--DIVISIONAL DATA----->	36.4	4.6	33.8	-1.3	38.6	-4.5	54.3	1.4	61.1	-0.7	71.6	1.5	76.2	1.7	71.3	-1.5	65.4	-0.6	56.7	2.2	42.4	-2.8	37.8	1.8	53.8	1.8
CENTRAL MOUNTAIN 05																										
COVINGTON FLTR PLT	36.6		34.8		38.4		54.7		61.3		71.1		74.2		70.9		66.3		56.5		42.0M		39.0		M 53.8	0.0
DALE ENTERPRISE	36.0	5.5	32.0	-1.5	36.1	-5.9	53.0	2.2	59.7	-1.1	70.8	1.4	73.5	0.0	69.6	-2.2	64.3	-0.5	54.7	1.2	40.8	-2.5	38.4	3.5	52.4	0.0
GATHRIGHT DAM	33.9	2.7	31.6	-2.4	35.1	-7.2	53.0	1.3	59.3	-1.3	68.3	-0.2	71.4	-1.1	68.0	-3.3	63.1	-1.7	53.9	-0.1	39.7	-4.3	36.1M	0.9	M 51.1	-1.4
HOT SPRINGS	33.0	3.0	30.5	-2.5	34.3	-6.8	51.9	1.3	58.4	-1.1	67.7	0.4	70.7	-0.7	66.6	-3.6	62.5	-0.9	53.2	0.9	38.7	-3.7	34.9	1.3	50.2	-1.0
LEXINGTON	M		M		M		M		MM		71.6	1.2	75.5	0.8	71.4	-1.7	65.9	-0.2	56.8M	2.1	41.9	-2.3	38.3	2.1	M	
MILLGAP	30.6		27.5		30.9		47.5		54.4		64.7		68.4		65.1		60.3		50.5		36.0		32.3		47.4	
MUSTOE 1 SW	31.7		M		M		48.7		55.6		M		67.9		64.5M		M		50.0		35.6		32.5		M	
ROANOKE 8 N	39.0		36.9		40.2		56.1		62.0		72.2		76.1		72.7M		67.1		58.5		44.0		40.7		M 55.5	

AVERAGE TEMPERATURES AND DEPARTURES FROM NORMAL(°F)

VIRGINIA
2013

STATION	JAN		FEB		MAR		APR		MAY		JUN		JUL		AUG		SEP		OCT		NOV		DEC		ANNUAL	
	TEMPERATURE	DEPARTURE.	TEMPERATURE	DEPARTURE.	TEMPERATURE	DEPARTURE.	TEMPERATURE	DEPARTURE.	TEMPERATURE	DEPARTURE.	TEMPERATURE	DEPARTURE.	TEMPERATURE	DEPARTURE.	TEMPERATURE	DEPARTURE.	TEMPERATURE	DEPARTURE.	TEMPERATURE	DEPARTURE.	TEMPERATURE	DEPARTURE.	TEMPERATURE	DEPARTURE.	TEMPERATURE	DEPARTURE.
ROANOKE INTL AP	41.7	5.9	39.2	0.1	42.2	-5.0	58.2	2.1	64.4	0.3	73.6	1.7	77.0	0.8	74.0	-0.7	67.8	0.1	59.1	2.5	44.1	-3.2	42.3	3.2	57.0	0.7
STAUNTON WATER TRMTMT PLT	37.1	6.4	33.6	0.0	37.1	-4.6	54.2	3.4	60.9	1.1	70.7	2.8	73.6	1.5	69.9	-0.6	64.9	1.0	55.5	3.4	41.8	-1.3	38.9	4.5	53.2	1.5
WAYNESBORO WTP	36.4		34.3		37.6		54.0		60.1		70.5		74.4M		70.0		64.2		55.1		41.3		39.0		M 53.1	
--DIVISIONAL DATA----->	35.6	3.3	33.4	-2.2	36.9	-6.8	53.1	0.4	59.6	-1.8	70.1	0.8	73.0	-0.4	69.3	-2.6	64.6	-0.5	54.9	0.9	40.5	-3.8	37.5	1.6	52.4	-11.1
SOUTHWESTERN MOUNTAIN 06																										
ABINGDON 3S	39.4M		36.6		39.1M		53.8M		61.3M		70.1M		73.0		71.0		65.6M		56.5M		42.0M		38.5		M 53.9	0.5
BIG STONE GAP	37.4	3.8	37.6	0.2	38.1	-7.5	54.3	0.8	62.5F	-0.3	71.4	1.2	73.7	-0.6	72.5	-1.4	67.7	0.4	57.4	2.0	40.5F	-5.3	37.7F	0.7	54.2	-0.5
BLACKSBURG NWSO	34.5	3.6	31.8	-1.7	34.9	-6.5	51.1	1.1	58.5	-0.4	68.1	1.2	71.4	0.3	68.2	-1.4	63.0	0.0	53.3	1.6	39.4	-3.4	36.7	2.6	50.9	-0.3
BURKES GARDEN	33.2	4.4	29.8	-1.3	30.8	-8.3	47.5	0.7	54.3	-1.7	64.5	1.0	67.3	0.0	64.1	-1.5	58.8	-0.7	49.3	0.7	36.1M	-4.0	34.5	2.2	M 47.5	-0.7
CHRISTIANSBURG	36.1		32.6		35.7		52.3		59.0		68.5		71.1		68.0		63.2M		54.0		40.2		37.7		M 51.5	
CLINTWOOD 1 W	34.6		33.7		36.0		51.6		60.1		68.1		70.4		68.8		63.3		53.7		38.5		35.5		51.2	
COPPER HILL	34.4		30.8M		33.5		50.3		56.8		66.1		69.0M		65.6M		61.7M		51.3M		38.6		36.4		M 49.5	
GALAX RADIO WBRF	35.7	5.3	34.1	0.9	35.8	-5.0	51.1	2.0	58.8	0.4	68.4	2.7	70.5M	0.6	68.4	0.1	63.1	1.1	53.9	3.0	40.0	-1.7	37.7M	3.9	M 51.5	1.1
GALAX WTP	35.8		33.4		35.3		49.8M		57.8		67.0		70.1		67.2		62.3		52.8M		39.4M		37.3		M 50.7	
GRUNDY	35.9	1.5	35.3	-2.6	37.8	-8.1	53.3	-0.9	61.1	-1.8	68.6	-2.2	71.7	-3.5	70.6	-3.6	67.0	-1.1	56.4M	0.3	41.1	-5.5	37.6M	-0.2	M 53.0	-2.3
JOHN FLANNAGAN LAKE	MM		MM		MM		MM		MM		MM		MM		MM		MM		MM		MM		MM		M	
LEBANON	36.6	3.9	34.6	-1.2	36.5	-6.9	52.2	0.8	59.7	-0.8	69.2	0.9	71.6	-0.2	69.8	-0.8	64.7	0.2	53.7	0.8	40.3F	-3.8	38.0	2.0	52.2	-0.5
NORA 4 SSE	33.9		31.8M		33.2		50.6M		59.2		67.8		69.9		68.5		63.8		54.1		39.6		36.7		M 50.8	
NORTH FORK LAKE	MM		MM		MM		MM		MM		MM		MM		MM		MM		MM		MM		MM		M	
PULASKI 2 E	37.5	5.9	34.8	0.4	36.9	-5.4	53.1M	2.1	59.9M	-0.1	69.9	2.4	72.8	1.3	70.2M	0.0	63.9	0.1	54.7M	2.0	42.2M	-1.4	38.4M	3.0	M 52.9	0.9
RADFORD 3 N	35.8		33.3		36.4		52.4		59.5		69.0		72.0		69.3		63.9M		54.4		40.7		37.8		M 52.0	
RICHLANDS	35.7	4.0	34.4	-0.4	36.1	-6.4	51.5	0.9	60.3	0.3	69.4	1.4	71.8	-0.4	69.4	-1.2	64.5	0.1	53.5	1.0	39.3	-4.2	37.1	2.2	51.9	-0.2
SALTVILLE 1N	36.8	4.8	34.6	-0.5	37.0	-6.5	52.2M	-0.1	60.3	-1.1	69.8	0.7	72.8M	-0.3	69.7F	-2.1	65.6M	0.2	54.4M	0.9	40.8M	-3.1	37.2	2.0	M 52.6	-0.4
STAFFORDSVILLE 3 ENE	35.5	4.8	33.1	-0.8	36.1	-6.2	51.7	0.9	58.7	-0.9	68.3	1.2	71.5	0.2	68.7	-1.1	63.7	0.3	53.7	1.5	39.7	-3.4	37.1	2.3	51.5	-0.1
TROUT DALE 3 SSE	35.7		30.9		33.9		48.3M		55.5		65.1		M		M		M		M		M		M		M	
WISE 3E	36.8	4.1	35.0	-1.4	37.2	-7.5	53.9	0.8	60.5	-0.3	68.1	0.3	69.8	-1.6	68.7	-1.5	64.2	-0.3	54.5	-0.1	41.4	-3.8	38.6	2.0	52.4	-0.8
WYTHEVILLE 1 S	35.7	4.8	33.6	-0.2	35.7	-5.9	51.0	1.2	59.0	0.1	68.3	1.9	MM		M		M		M		M		MM		M	
--DIVISIONAL DATA----->	35.9	3.9	33.6	-1.6	35.8	-7.5	51.6	0.3	59.1	-0.5	68.3	1.1	71.1	-0.1	68.8	-1.0	63.9	0.3	54.0	1.3	40.0	-3.5	37.3	2.0	51.6	-5.3

TEMPERATURE EXTREMES AND FREEZE DATA (°F)

VIRGINIA
2013

STATION	HIGHEST	DATE	LOWEST	DATE	LAST SPRING MINIMUM OF										FIRST FALL MINIMUM OF										NUMBER OF DAYS BETWEEN DATES				
					16° OR BELOW		20° OR BELOW		24° OR BELOW		28° OR BELOW		32° OR BELOW		32° OR BELOW		28° OR BELOW		24° OR BELOW		20° OR BELOW		16° OR BELOW		16° OR BELOW	20° OR BELOW	24° OR BELOW	28° OR BELOW	32° OR BELOW
					DATE	TEMP.	DATE	TEMP.	DATE	TEMP.	DATE	TEMP.	DATE	TEMP.	DATE	TEMP.	DATE	TEMP.	DATE	TEMP.	DATE	TEMP.	DATE	TEMP.					
DANVILLE REGIONAL AP	94	07/18	14	02/18	02/18	14	03/04	20	03/22	21	03/29	26	04/03	29	10/24	32	10/26	26	11/13	22	11/24	20	11/25	15	280	265	236	211	204
FREE UNION	93	04/11	6	01/24	02/19	12	03/04	20	04/04	24	04/22	28	04/23	29	10/25	29	10/26	26	11/14	21	11/25	16	11/25	16	279	266	224	187	185
LYNCHBURG #2	60	01/10	21	01/08	MSG		MSG		01/09	22	01/10	28	01/10	28	NONE		NONE		NONE		NONE		NONE						
LYNCHBURG INTL AP	93	07/18	12	01/23	02/02	13	03/22	19	03/23	23	04/03	25	04/04	32	10/24	30	10/25	27	10/26	24	11/25	14	11/25	14	296	248	217	205	203
MARTINSVILLE FLTR PLT	93	07/17	12	02/19	03/23	16	03/23	16	04/04	24	04/04	24	05/14	32	10/24	31	10/26	24	10/26	24	11/13	19	11/25	15	247	235	205	205	163
MEADOWS OF DAN 5 SW	83	04/10	16	01/24	01/24	16	02/19	20	03/23	22	03/30	28	04/06	32	NONE		NONE		NONE		NONE		NONE						
MONTEBELLO FISH CULTURAL STN	89	07/22	5	01/25	03/23	15	03/23	15	04/07	24	05/15	27	05/15	27	10/20	32	10/25	27	10/26	20	10/26	20	11/14	16	236	217	202	163	158
MONTICELLO	92	07/22	13	01/26	02/03	15	02/19	19	03/23	24	03/23	24	04/05	29	10/26	32	11/13	27	11/14	24	11/25	19	NONE						
ROCKY MT	91	07/17	14	02/20	02/20	14	02/20	14	03/23	21	04/03	28	04/06	30	10/25	29	10/26	25	11/13	24	11/25	16	11/25	16	278	278	235	206	202
SOUTH BOSTON	95	07/19	15	02/18	02/18	15	02/18	15	03/23	23	03/28	28	04/04	29	10/26	27	10/26	27	11/13	20	11/13	20	11/25	16	280	268	235	212	205
STUART	91	07/19	16	02/19	02/19	16	03/23	18	03/23	18	04/04	27	04/07	32	10/24	30	10/26	27	11/13	23	11/25	17	NONE						
TYE RIVER 1 SE	98	08/11	11	01/23	02/19	14	03/05	20	03/23	22	04/04	28	04/23	32	10/26	24	10/26	24	10/26	24	11/25	14	11/25	14	279	265	217	205	186
NORTHERN 04																													
BOSTON 4 SE	93	07/20	5	01/24	02/19	13	02/19	13	04/05	23	04/05	23	04/23	29	10/24	32	10/25	27	11/09	24	11/14	19	11/25	13	279	268	218	203	184
EDINBURG	94	07/19	8	01/24	02/19	14	04/04	20	04/22	24	04/26	27	05/14	30	10/21	32	10/25	28	11/09	24	11/24	19	11/25	13	279	234	201	182	160
FRONT ROYAL	94	07/19	11	01/24	02/03	14	02/21	20	04/04	24	04/04	24	04/07	32	10/26	31	11/05	28	11/14	21	11/24	20	NONE						
LINCOLN	95	09/12	9	12/13	02/11	16	04/04	19	04/05	23	04/06	25	05/15	30	10/20	31	10/26	24	10/26	24	11/14	19	11/30	15	292	224	204	203	158
LURAY 5 E	93	07/20	7	01/25	02/18	11	02/25	19	04/04	21	04/06	27	05/14	30	10/25	27	10/25	27	11/13	24	11/24	19	11/25	11	280	272	223	202	164
MADISON	93	08/10	13	01/25	02/02	16	02/11	20	02/11	20	02/11	20	02/11	20	10/26	32	11/14	26	11/25	21	NONE		NONE						
MANASSAS	97	07/20	10	01/24	02/03	14	02/03	14	02/05	23	02/08	27	02/09	30	10/25	30	11/09	26	11/14	22	12/01	20	NONE						
MT WEATHER	89	07/20	8	01/24	02/19	15	02/22	19	03/23	23	04/05	27	04/22	32	11/04	27	11/04	27	11/13	24	11/24	17	11/25	16	279	275	235	213	196
PIEDMONT RSCH STN	93	07/19	8	01/23	02/18	15	02/22	20	03/22	23	04/05	28	04/05	28	10/25	32	10/26	26	11/14	20	11/14	20	11/25	13	280	265	237	204	203
SOMERSET	94	07/20	6	01/25	02/10	16	02/18	17	04/04	23	04/05	28	05/14	32	10/25	30	10/26	27	11/09	23	11/25	14	11/25	14	288	280	219	204	164
SPERRYVILLE	91	07/21	9	01/24	02/18	15	02/18	15	04/05	21	04/05	21	04/22	31	10/26	28	10/26	28	11/14	20	11/14	20	11/25	15	280	269	223	204	187
STERLING RCS	95	09/12	9	01/25	02/18	15	02/19	17	04/04	21	04/05	25	04/06	32	10/25	27	10/25	27	11/09	24	11/14	20	11/25	16	280	268	219	203	202
VIENNA	91	09/12	9	01/23	02/03	13	02/19	17	04/05	24	04/05	24	04/23	32	10/25	32	11/04	27	11/14	24	11/24	20	NONE						
WARRENTON 3 SE					MSG		MSG		MSG		MSG		MSG		NONE		NONE		NONE		NONE		NONE						
WASHGTN DULLES INTL AP	96	07/18	9	01/23	02/02	13	02/18	18	04/04	22	04/04	22	05/14	32	10/25	29	11/08	28	11/14	21	11/25	16	11/25	16	296	280	224	218	164
WASHINGTON REAGAN AP	97	07/17	15	01/23	01/23	15	02/02	18	02/18	22	03/22	28	04/04	31	11/13	32	11/24	26	11/25	24	NONE		NONE						
WINCHESTER	93	09/12	16	11/26	MSG		MSG		MSG		MSG		MSG		10/26	29	11/04	28	11/24	20	11/24	20	11/25	16					
WINCHESTER 7 SE	97	07/19	8	01/25	02/11	14	04/05	19	04/05	19	04/05	19	05/15	30	11/05	25	11/05	25	11/15	23	11/25	13	11/25	13	287	234	224	214	174
WOODSTOCK 2 NE	94	07/19	10	01/24	02/19	16	02/21	20	04/05	23	04/22	28	05/25	29	10/21	31	10/25	27	11/14	20	11/14	20	11/25	14	279	266	223	186	149
CENTRAL MOUNTAIN 05																													
COVINGTON FLTR PLT	92	07/20	11	02/03	02/19	12	03/23	18	04/04	23	04/06	28	04/22	31	10/21	31	10/25	26	10/26	23	11/14	20	11/25	16	279	236	205	202	182
DALE ENTERPRISE	93	07/19	8	01/26	02/19	11	03/23	20	04/05	22	04/05	22	05/14	30	10/25	24	10/25	24	10/25	24	11/24	17	11/25	11	279	246	203	203	164
GATHRIGHT DAM	88	07/17	5	02/02	03/23	14	03/23	14	04/04	23	04/05	26	05/14	32	10/25	27	10/25	27	10/26	24	11/14	20	11/25	11	247	236	205	203	164
HOT SPRINGS	88	07/20	7	02/03	03/23	15	03/23	15	04/04	22	04/07	28	05/15	31	10/25	27	10/25	27	10/26	22	11/14	20	11/24	15	246	236	205	201	163
MILLGAP	86	07/20	-4	01/25	04/04	15	04/07	19	04/27	23	05/26	28	05/28	31	10/19	32	10/21	24	10/21	24	10/26	14	10/26	14	205	202	177	148	144
MUSTOE 1 SW	85	07/19	-1	01/25	01/27	8	04/04	20	04/06	22	05/25	28	05/27	30	10/20	30	10/21	26	10/25	21	10/26	15	10/26	15	272	205	202	149	146
ROANOKE 8 N	93	07/17	14	02/02	02/02	14	03/22	20	03/23	22	03/23	22	04/05	32	10/26	27	10/26	27	11/14	24	11/25	18	12/25	16	326	248	236	217	204
ROANOKE INTL AP	94	07/16	15	12/25	02/02	16	02/17	19	03/22	22	03/22	22	04/03	32	10/25	31	10/26	27	11/24	20	11/24	20	12/25	15	326	280	247	218	205
STAUNTON WATER TRMTMT PLT	91	07/17	8	01/25	02/18	14	03/22	19	03/22	19	04/05	28	05/14	32	10/25	29	10/26	28	11/13	23	11/24	16	11/24	16	279	247	236	204	164
WAYNESBORO WTP	93	07/20	6	01/24	02/19	12	03/05	20	04/04	23	04/05	26	05/15	32	10/25	27	10/25	27	11/13	21	11/24	20	11/25	13	279	264	223	203	163
SOUTHWESTERN MOUNTAIN 06																													
ABINGDON 3S	89	07/19	13	11/29	03/22	14	03/22	14	03/29	23	04/03	25	04/21	31	10/24	29	10/27	25	11/13	19	11/13	19	11/25	16	248	236</			

TEMPERATURE EXTREMES AND FREEZE DATA (°F)

VIRGINIA
2013

STATION	HIGHEST	DATE	LOWEST	DATE	LAST SPRING MINIMUM OF										FIRST FALL MINIMUM OF										NUMBER OF DAYS BETWEEN DATES				
					16° OR BELOW		20° OR BELOW		24° OR BELOW		28° OR BELOW		32° OR BELOW		32° OR BELOW		28° OR BELOW		24° OR BELOW		20° OR BELOW		16° OR BELOW		16° OR BELOW	20° OR BELOW	24° OR BELOW	28° OR BELOW	32° OR BELOW
					DATE	TEMP.	DATE	TEMP.	DATE	TEMP.	DATE	TEMP.	DATE	TEMP.	DATE	TEMP.	DATE	TEMP.	DATE	TEMP.	DATE	TEMP.	DATE	TEMP.					
BIG STONE GAP	92	07/17	14	12/13	02/02	14	03/23	17	03/23	17	04/04	28	04/21	32	10/24	31	10/26	25	10/27	24	11/14	20	11/28	16	299	236	218	205	186
BLACKSBURG NWSO	89	07/17	8	02/03	03/23	16	03/23	16	04/04	24	04/07	28	05/15	32	10/21	32	10/26	20	10/26	20	10/26	20	11/25	13	247	217	205	202	159
BURKES GARDEN	83	07/20	3	12/25	03/23	11	04/04	19	04/21	23	05/15	26	05/15	26	10/10	31	10/21	25	10/26	13	10/26	13	10/26	13	217	205	188	159	148
CHRISTIANSBURG	88	07/19	11	02/02	03/23	16	03/23	16	03/23	16	04/05	28	04/23	32	10/25	31	10/26	22	10/26	22	11/13	19	11/24	16	246	235	217	204	185
CLINTWOOD 1 W	87	07/17	10	02/03	03/23	12	03/23	12	04/04	23	04/07	28	05/15	31	10/20	32	10/26	20	10/26	20	10/26	20	11/14	16	236	217	205	202	158
COPPER HILL	88	07/18	8	01/25	03/23	13	03/23	13	03/28	24	04/06	26	04/26	32	10/24	30	10/26	23	10/26	23	11/13	18	11/24	14	246	235	212	203	181
GALAX RADIO WBRF	88	07/17	10	12/25	03/22	12	03/22	12	04/03	24	04/06	28	05/14	30	10/21	30	10/25	27	10/26	21	11/13	20	11/25	12	248	236	206	202	160
GALAX WTP	87	07/17	11	12/25	03/22	14	03/23	17	03/30	23	04/04	28	05/15	30	10/21	31	10/26	20	10/26	20	10/26	20	11/25	13	248	217	210	205	159
GRUNDY	87	04/11	12	02/02	03/23	15	03/23	15	03/30	24	04/04	26	04/22	31	10/26	29	11/09	26	11/13	22	11/14	19	12/25	15	277	236	228	219	187
JOHN FLANNAGAN LAKE	90	07/17	10	02/04	03/25	14	03/25	14	04/01	23	04/04	25	04/26	32	10/24	32	10/26	26	11/13	20	11/13	20	11/25	16	245	233	226	205	181
LEBANON	89	07/19	11	11/29	03/23	13	03/23	13	04/04	23	04/04	23	05/14	32	10/20	32	10/26	20	10/26	20	10/26	20	11/14	16	236	217	205	205	159
NORA 4 SSE	84	07/19	4	02/02	03/23	15	03/23	15	03/28	24	04/04	26	04/22	32	10/24	31	10/25	26	11/13	13	11/13	13	11/13	13	235	235	230	204	185
NORTH FORK LAKE	89	07/22	8	02/04	03/25	13	03/25	13	03/29	23	04/04	25	04/22	30	10/28	24	10/28	24	10/28	24	11/13	19	11/25	16	245	233	213	207	189
PULASKI 2 E	90	07/17	11	02/02	03/22	16	03/23	18	04/04	24	04/04	24	04/22	29	10/21	32	10/26	23	10/26	23	11/24	20	11/25	12	248	246	205	205	182
RADFORD 3 N	89	07/17	9	02/02	02/18	13	03/23	19	03/29	22	04/06	27	05/14	30	10/21	30	10/26	19	10/26	19	10/26	19	11/25	13	280	217	211	203	160
RICHLANDS	89	07/17	10	02/02	03/23	12	03/23	12	04/04	23	04/06	28	05/15	31	10/21	28	10/21	28	10/26	21	11/10	20	11/14	16	236	232	205	198	159
SALTVILLE 1N	90	07/19	13	03/22	03/23	14	03/23	14	03/30	21	04/06	28	05/14	31	10/20	32	10/26	23	10/26	23	11/14	16	11/14	16	236	236	210	203	159
STAFFORDSVILLE 3 ENE	88	07/17	8	02/03	02/19	11	03/23	19	03/30	24	04/07	27	05/15	31	10/21	30	10/26	21	10/26	21	10/27	20	11/14	15	268	218	210	202	159
TROUT DALE 3 SSE	85	06/26	4	02/03	02/22	13	03/30	18	04/04	23	05/15	27	05/15	27	NONE	NONE	NONE	NONE	NONE	NONE	NONE	NONE	NONE	NONE	NONE	NONE	NONE	NONE	NONE
WISE 3E	85	06/12	4	02/01	03/22	11	03/22	11	03/29	24	03/30	27	03/30	27	10/20	29	10/24	28	10/26	21	11/13	16	11/13	16	236	236	211	208	204
WYTHEVILLE 1 S	89	06/13	10	01/19	03/23	13	03/23	13	04/04	22	04/21	28	05/15	31	NONE	NONE	NONE	NONE	NONE	NONE	NONE	NONE	NONE	NONE	NONE	NONE	NONE	NONE	NONE

MONTHLY AND SEASONAL COOLING DEGREE DAYS
BASE = 65 DEGREES FAHENHEIT

VIRGINIA
2013

STATION	JAN	FEB	MAR	APR	MAY	JUN	JUL	AUG	SEP	OCT	NOV	DEC	TOTAL	SEASONAL NORM
VIRGINIA														
TIDEWATER 01														
DISPUTANTA	0	0	0	41	102	268	397	259	137	44	1	4	1253	
EASTVILLE	0	0	0	26	109	334	457	309	322E	-	0	3	-	
EMPORIA 1 WNW	0	0	0	39	114	328E	436	315	169E	60	1	4	1466E	1298
FREDERICKSBURG SEWAGE	0	0	0	41	108	293	436	242E	129E	42E	0	0	1291E	
HAMPTON UNIV	0	-	-	-	-	-	-	-	-	-	-	-	-	
HOLLAND 1 E	0	0	0	75	128	300	434	324	153	54	8	1	1477	1210
HOPEWELL	2E	0	0	77	167E	385	489E	380	217	81E	11E	8E	1817E	1619
NORFOLK INTL AP	0	0	0	66	155	362	499	367	213	83	9	5	1759	1612
NORFOLK SOUTH	0	0	0	56	134	314	452	327	172	69	1	6	1531	
N	0	-	-	-	-	-	-	-	-	-	-	-	-	
PAINTER 2W	0	0	0	40	136	312	447	296	163	74	5	1	1474	1334
STONY CREEK 2 N	0	0	0	52	116	317	441	288	163	49	5	5E	1436E	1409
SUFFOLK LAKE KILBY	0	0	0	50	127	291	450	294	158	61	3	6	1440	1427
WAKEFIELD 1NW	1	0	0	64	140	306	437	301	150	60	6	5	1470	1356
WALKERTON 2 NW	1E	0	1	76	171	385	525	367	181	80	11	0	1798E	1254
WALLACETON LK DRUMMOND	0	0	0	26E	99	290E	405	262	140E	39	1	2	1264E	
WALLOPS ISLAND NASA TEST FACIL	0	0	0	21	112	312	466	345	174	89	6	0	1525	
WARSAW 2 NW	0	0	0	-	167E	301E	448	295	141	68E	8E	0	-	
WEST POINT 2 NW	0	0	0	56	136	307	473	326	175	61	5	4	1543	1446
WILLIAMSBURG 2 N	2	0	0	69	149	323	465	315	161	65	5	3	1557	1364
EASTERN PIEDMONT 02														
AMELIA COURTHOUSE 1	0	0	0	51E	119E	249E	404	270E	136E	41E	0	2E	1272E	1125
ASHLAND	0	0	0	59	124	275	394	270	151	44	4	2	1323	1131
CAMP PICKETT	0	0	0	35	99	279	376	244E	142	40	0	2	1217E	1158
CHASE CITY	-	0	0	-	-	288	385	264	146	38	0	0	-	
CLARKSVILLE	0	0	0	45	109E	332	407E	304E	192	58E	1	3	1451E	
CORBIN	1	0	0	58	122	288	414	264	126	49	3	3	1328	1155
CROZIER	0	0	0	45	95E	237	354E	227	114	41	0	0	1113E	1193
FARMVILLE 2 N	0	0	0	29E	83	248	368	272	158E	50	0	0	1208E	1218
GREENBAY 3 NE	0	0	0	50	107	274E	367	264	138	47	0	2	1249E	
JOHN H KERR DAM	0	0	0	42	153	390	507	384	239	72	4	0	1791	1383
LOUISA	0	0	0	55	110	284	399	258	119	42	5	2	1274	854
PALMYRA 3S	0	0	0	37	-	244	373	224E	102	31	0	1	-	
PETERSBURG	0	0	0	54	118E	300	429	285	182E	58	3	4	1433E	
RICHMOND INTL AP	1	0	0	65	147	358	490	344	194	71	8	4	1682	1435
SANDSTON	0	0	0	46	126	304	449	259	126	34	1	3	1348	
WESTERN PIEDMONT 03														
APPOMATTOX	0	0	0	35E	93E	254	362	238	128	47	0	0	1157E	1052
BROOKNEAL	0	0	0	24	88	271	393	256	123	31E	0	0	1186E	1015
CHARLOTTE COURT HOUSE	0	0	0	38	95	269	393	282	130E	39	0	1E	1247E	1146
CHARLOTTESVILLE 2W	0	0	0	47	97	265	382	243	126	57	1	0	1218	1212
CHATHAM	0	0	0	18	45E	174E	301	188	84E	18E	0	0	828E	971
DANVILLE REGIONAL AP	2	0	0	46	114	311	417	318	154	51	0	3	1416	
FREE UNION	0	0	0	30	65	178	296	171	85	27	0	0	852	
LYNCHBURG #2	0	-	-	-	-	-	-	-	-	-	-	-	-	
LYNCHBURG INTL AP	0	0	0	40	95	255	377	262	120	35	0	0	1184	1075
MARTINSVILLE FLTR PLT	0	0	0	20	71	231	352E	234	104	26	0	0	1038E	921
MEADOWS OF DAN 5 SW	0	0	0	0	-	-	-	-	-	-	-	-	-	
MONTEBELLO FISH CULTURAL STN	0	0	0	10E	21E	51E	184E	95E	60E	1E	0	0	422E	

MONTHLY AND SEASONAL COOLING DEGREE DAYS
BASE = 65 DEGREES FAHENHEIT

VIRGINIA
2013

STATION	JAN	FEB	MAR	APR	MAY	JUN	JUL	AUG	SEP	OCT	NOV	DEC	TOTAL	SEASONAL NORM
MONTICELLO	0	0	0	31	81	229	347	187	102	35	0	0	1012	991
ROCKY MT	0	0	0	28	74	230	322	231	109	23	0	0	1017	984
SOUTH BOSTON	0	0	0	35E	92	283	388	276	157	39	0	2	1272E	1159
STUART	0	0	0	21	67	204	306	200	107	33	0	0	938	967
TYE RIVER 1 SE	0	0	0	37	-	229	342	220	119	35	0	0	-	
NORTHERN 04														
BOSTON 4 SE	0	0	0	29	63E	223	339	211	108	26	0	0	999E	
EDINBURG	0	0	0	12	53	168	285	161	85	27	0	0	791	
FRONT ROYAL	0	0	0	36E	71	202E	340	188	106	37	0	1	981E	
LINCOLN	0	0	0	15	61	197	348	199	105	32	0	0	957	911
LURAY 5 E	0	0	0	27	69	175	292	182	93	29	0	0	867	862
MADISON	0	0	-	0	89	250	382E	214	110	35	0	0	-	
MANASSAS	0	0	-	-	-	324E	483E	324E	128E	56E	0	4E	-	
MT WEATHER	0	0	0	18	44E	153	261	142	95	48	0	0	761E	625
PIEDMONT RSCH STN	0	0	0	31	75E	239	363	214	105	39	0	1	1067E	1042
SOMERSET	0	0	0	32	85	260	381	217	115	37	0	0	1127	
SPERRYVILLE	0	0	0	29E	41E	157E	295E	131E	93E	25E	0	0	771E	
STERLING RCS	0	0	0	33	91	251	414	248	126	42E	0	0	1205E	824
VIENNA	0	0	0	23	55	166	287	139	84	29	0	0	783	
WARRENTON 3 SE	-	-	-	-	-	-	-	-	-	-	-	0	-	
WASHGTN DULLES INTL AP	0	0	0	30	109	256	419	277	133	47	1	2	1274	1075
WASHINGTON REAGAN AP	0	0	0	41	144	351	511	383	204	83	2	0	1719	1531
WINCHESTER	-	-	-	-	-	-	-	229E	123E	44	0	0	-	
WINCHESTER 7 SE	0	0	0	13	53E	145E	286E	143E	75E	0	0	0	715E	855
WOODSTOCK 2 NE	0	0	0	19	56	176	332	175	91	35E	0	0	884E	848
CENTRAL MOUNTAIN 05														
COVINGTON FLTR PLT	0	0	0	21	58	190	293	195	105	22	0	0	884	846
DALE ENTERPRISE	0	0	0	17	62	186	269	171	93	19	0	0	817	758
GATHRIGHT DAM	0	0	0	13	35	119	209	123	57	6	0	0	562	679
HOT SPRINGS	0	0	0	11	34	103	191	98	56	6	0	0	499	579
LEXINGTON	-	-	-	-	135E	209	331	214	105	22E	0	0	-	
MILLGAP	0	0	0	0	4	45	134	73	40	1	0	0	297	
MUSTOE 1 SW	0	-	-	0	6	-	120	66E	-	0	0	0	-	
ROANOKE 8 N	0	0	0	31	71	226	350	254E	117	33	0	0	1082E	
ROANOKE INTL AP	0	0	0	43	107	266	382	291	127	38	2	0	1256	1134
STAUNTON WATER TRMTMT PLT	0	0	0	25	79	189	275	173	95	30	0	0	866	622
WAYNESBORO WTP	0	0	0	25	60	181	299E	176	94	19	0	0	854E	
SOUTHWESTERN MOUNTAIN 06														
ABINGDON 3S	0	0	0	2E	45E	163E	256	194	73E	10E	0	0	743E	736
BIG STONE GAP	0	0	0	5	48	200	280	238	120	22	0	0	913	937
BLACKSBURG NWSO	0	0	0	1	26	109	209	130	61	7	0	0	543	533
BURKES GARDEN	0	0	0	0	1	42	101	57	21	0	0	0	222	225
CHRISTIANSBURG	0	0	0	7	35	118	199	122	56E	11	0	0	548E	
CLINTWOOD 1 W	0	0	0	1	29	106	181	133	53	4	0	0	507	
COPPER HILL	0	0	0	6	20	70	150E	68E	40E	3E	0	0	357E	
GALAX RADIO WBRF	0	0	0	1	18	114	180E	134	57	3	0	0	507E	410
GALAX WTP	0	0	0	0	14	88	165	111	46	1E	0	0	425E	
GRUNDY	0	0	0	7	35	121	212	184	110	23E	0	0	692E	1035
JOHN FLANNAGAN LAKE	0	0	0	14E	6E	159E	264E	186E	129E	18E	0	0	776E	
LEBANON	0	0	0	5	30	140	212	166	68	7	0	0	628	631
NORA 4 SSE	0	0	0	6E	30	103	161	132	62	14	0	0	508E	
NORTH FORK LAKE	0	0	0	4E	44E	138E	246E	184E	98E	13E	0	0	727E	

VIRGINIA
2013

MONTHLY AND SEASONAL COOLING DEGREE DAYS BASE = 65 DEGREES FAHENHEIT

STATION	JAN	FEB	MAR	APR	MAY	JUN	JUL	AUG	SEP	OCT	NOV	DEC	TOTAL	SEASONAL NORM
PULASKI 2 E	0	0	0	6E	38E	153	249	193E	82	9E	0	0	730E	574
RADFORD 3 N	0	0	0	4	35	135	224	158	68E	10	0	0	634E	
RICHLANDS	0	0	0	0	29	140	220	155	66	1	0	0	611	622
SALTVILLE 1N	0	0	0	0	33	152	248E	161	84E	12E	0	0	690E	734
STAFFORDSVILLE 3 ENE	0	0	0	3	26	113	208	145	68	4	0	0	567	564
TROUT DALE 3 SSE	0	0	0	0	4	41	-	-	-	-	-	-	-	
WISE 3E	0	0	0	9	38	112	163	130	57	7	0	0	516	605
WYTHEVILLE 1 S	0	0	0	2	21	115	221E	-	-	-	-	0	-	

VIRGINIA
2013

TOTAL PAN EVAPORATION AND WIND MOVEMENT

STATION		JAN	FEB	MAR	APR	MAY	JUN	JUL	AUG	SEP	OCT	NOV	DEC	ANNUAL
VIRGINIA EASTERN PIEDMONT 02 JOHN H KERR DAM	WIND	-	-	-	-	-	-	-	-	-	-	-	-	-
	EVAP	-	-	-	-	-	-	-	-	-	-	-	-	-
	MAX TEMP	-	-	-	-	-	-	-	-	-	-	-	-	-
	MIN TEMP	-	-	-	-	-	-	-	-	-	-	-	-	-

STATION INDEX

STATION	INDEX NO.	DIVISION NO.	COUNTY	LATITUDE	LONGITUDE	ELEVATION FEET	YEARS OF RECORD			OPENED OR CLOSED DURING YR		SEE REFERENCE NOTES
							TEMP.	PRECIP.	EVAP.	MONTH OPENED	MONTH CLOSED	
VIRGINIA												
ABINGDON 3S	0021	06	WASHINGTON	36 40	81 58W	1920	45	45	0			H
ALBERTA 5N	0079	02	BRUNSWICK	36 56	77 54W	376	0	10	0			H
ALTAVISTA	0166	03	CAMPBELL	37 7	79 17W	529	0	64	0			CH
AMELIA COURTHOUSE 1	0187	02	AMELIA	37 21	77 59W	345	37	37	0			H
APPOMATTOX	0243	03	APPOMATTOX	37 20	78 50W	850	53	77	0			H
ASHLAND	0327	02	HANOVER	37 45	77 29W	220	103	103	0			H
BEDFORD 4 NW	0561	03	BEDFORD	37 23	79 34W	1228	3	11	0			CH
BIG STONE GAP	0735	06	WISE	36 52	82 46W	1464	24	24	0			H
BLACKSBURG NWSO	0766	06	MONTGOMERY	37 12	80 25W	2100	62	62	0			CH
BOSTON 4 SE	0860	04	CULPEPER	38 33	78 6W	590	16	16	0			H
BREMO BLUFF	0993	02	FLUVANNA	37 43	78 17W	225	35	75	0			CH
BROOKNEAL	1082	03	CAMPBELL	37 4	78 57W	408	32	55	0			H
BUCHANAN	1121	05	BOTETOURT	37 31	79 41W	880	88	111	0		NOV	H
BUCKINGHAM	1136	02	BUCKINGHAM	37 30	78 32W	580	11	84	0			H
BUENA VISTA	1159	05	ROCKBRIDGE	37 44	79 22W	840	18	76	0			H
BURKES GARDEN	1209	06	TAZEWELL	37 6	81 20W	3068	118	118	0			H
CAMP PICKETT	1322	02	NOTTOWAY	37 2	77 57W	330	42	42	0			CH
CHARLOTTE COURT HOUSE	1585	03	CHARLOTTE	37 3	78 39W	569	62	67	0			H
CHARLOTTESVILLE 2W	1593	03	ALBEMARLE	38 2	78 31W	866	120	120	0			H
CHASE CITY	1606	02	MECKLENBURG	36 47	78 29W	510	67	67	0			H
CHATHAM	1614	03	PITTSYLVANIA	36 49	79 25W	651	92	92	0			CH
CHRISTIANSBURG	1692	06	MONTGOMERY	37 8	80 24W	2100	19	19	0			H
CLARKSVILLE	1746	02	MECKLENBURG	36 37	78 33W	330	17	123	0			H
CLINTWOOD 1 W	1825	06	DICKENSON	37 9	82 29W	1780	21	21	0			H
CONCORD 4 SSW	1955	03	CAMPBELL	37 17	78 58W	815	2	64	0			H
COPPER HILL	1999	06	FLOYD	37 5	80 9W	2690	4	74	0			H
CORBIN	2009	02	CAROLINE	38 12	77 22W	220	55	55	0			H
COVINGTON FLTR PLT	2044	05	ALLEGHANY	37 49	79 59W	1230	54	54	0			H
CRAIGSVILLE 2 S	2064	05	AUGUSTA	38 3	79 23W	1758	0	51	0			H
CROZIER	2142	02	GOOCHLAND	37 40	77 53W	350	38	38	0			H
DALE ENTERPRISE	2208	05	ROCKINGHAM	38 27	78 56W	1358	121	121	0			H
DANVILLE REGIONAL AP R	2250	03	PITTSYLVANIA	36 34	79 20W	571	32	32	0			H
DISPUTANTA	2400	01	PRINCE GEORGE	37 7	77 12W	15	8	8	0			H
EASTVILLE	2635	01	NORTHAMPTON	37 23	75 58W	10	20	20	0			H
EDINBURG	2663	04	SHENANDOAH	38 48	78 35W	928	18	18	0			H
EMPORIA 1 WNW	2790	01	GREENSVILLE	36 42	77 34W	100	33	85	0			H
FARMVILLE 2 N	2941	02	CUMBERLAND	37 20	78 23W	450	95	95	0			H
FREDERICKSBURG SEWAGE	3204	01	FREDERICKSBURG	38 17	77 27W	15	19	19	0			H
FREE UNION	3213	03	ALBEMARLE	38 5	78 35W	590	7	58	0			H
FRONT ROYAL	3229	04	WARREN	38 54	78 11W	930	19	19	0			H
GALAX RADIO WBRF	3267	06	CARROLL	36 40	80 55W	2385	60	64	0			H
GALAX WTP	3272	06	CARROLL	36 39	80 55W	2360	17	17	0			CH
GATHRIGHT DAM	3310	05	ALLEGHANY	37 57	79 57W	1770	34	34	17			CH

STATION INDEX

STATION	INDEX NO.	DIVISION NO.	COUNTY	LATITUDE	LONGITUDE	ELEVATION FEET	YEARS OF RECORD			OPENED OR CLOSED DURING YR		SEE REFERENCE NOTES
							TEMP.	PRECIP.	EVAP.	MONTH OPENED	MONTH CLOSED	
GLASGOW 1 SE	3375	05	ROCKBRIDGE	37 37	79 26W	737	11	47	0			H
GREENBAY 3 NE	3565	02	PRINCE EDWARD	37 11	78 17W	500	10	10	0			H
GRUNDY	3640	06	BUCHANAN	37 17	82 5W	1170	54	65	0			H
HAMPTON UNIV	3713	01	HAMPTON	37 1	76 20W	10	12	12	0			H
HOLCOMB ROCK	4039	03	BEDFORD	37 33	79 24W	715	4	36	0			H
HOLLAND 1 E	4044	01	SUFFOLK	36 41	76 46W	80	81	81	19			H
HOPEWELL	4101	01	PRINCE GEORGE	37 18	77 17W	40	98	98	0			H
HOT SPRINGS	4128	05	BATH	37 60	79 50W	2236	119	119	0			H
HUDDLESTON 4 SW	4148	03	BEDFORD	37 8	79 32W	898	2	64	0			H
JOHN FLANNAGAN LAKE	4410	06	DICKENSON	37 14	82 21W	1460	21	45	0			H
JOHN H KERR DAM	4414	02	MECKLENBURG	36 36	78 18W	250	66	66	60			CH
LAFAYETTE 1 NE	4676	06	MONTGOMERY	37 14	80 12W	1320	0	63	0			H
LEBANON	4777	06	RUSSELL	36 54	82 2W	1912	25	25	0			H
LEXINGTON	4876	05	ROCKBRIDGE	37 47	79 26W	1097	124	124	0			H
LINCOLN	4909	04	LOUDOUN	39 5	77 42W	500	114	114	0			H
LOUISA	5050	02	LOUISA	38 3	78 0W	420	98	98	0			H
LURAY 5 E	5096	04	PAGE	38 40	78 22W	1400	70	73	0			H
LYNCHBURG #2	5117	03	CAMPBELL	37 23	79 14W	736	16	16	0		JAN	H
LYNCHBURG INTL AP R	5120	03	CAMPBELL	37 19	79 12W	940	70	70	0			HJ
MADISON	5150	04	MADISON	38 22	78 15W	577	15	15	0			H
MANASSAS	5204	04	MANASSAS	38 44	77 30W	245	10	10	0			H
MARTINSVILLE FLTR PLT	5300	03	HENRY	36 42	79 52W	760	76	83	0			H
MEADOWS OF DAN 5 SW	5453	03	PATRICK	36 40	80 27W	2225	11	64	0			H
MILLGAP	5595	05	HIGHLAND	38 18	79 43W	2421	16	38	0			CH
MONTEBELLO FISH CULTURAL STN	5690	03	NELSON	37 51	79 8W	2667	8	11	0			H
MONTICELLO	5700	03	ALBEMARLE	38 1	78 27W	758	32	32	0			H
MT WEATHER	5851	04	LOUDOUN	39 4	77 53W	1659	99	99	0			H
MTN GROVE	5756	05	BATH	38 6	79 53W	1775	5	33	0			H
MUSTOE 1 SW	5880	05	HIGHLAND	38 20	79 40W	2380	20	20	0			H
N	6161	01	MATHEWS	37 26	76 26W	10	12	12	0			H
NEW CASTLE	6012	05	CRAIG	37 18	80 3W	1258	0	57	0			H
NORA 4 SSE	6125	06	DICKENSON	37 1	82 19W	2650	8	8	0			H
NORFOLK INTL AP R R	6139	01	NORFOLK (CITY)	36 54	76 12W	30	68	68	0			HJ
NORFOLK SOUTH	6147	01	NORFOLK (CITY)	36 52	76 14W	100	11	11	0			H
NORTH FORK LAKE	6173	06	WISE	37 7	82 38W	1675	22	45	0			H
PAINTER 2W	6475	01	ACCOMACK	37 35	75 49W	30	59	59	0			CH
PALMYRA 3S	6491	02	FLUVANNA	37 49	78 16W	410	20	57	0			H
PEDLAR DAM	6593	03	AMHERST	37 40	79 17W	1024	9	79	0			H
PETERSBURG	6656	02	PETERSBURG	37 14	77 24W	15	13	18	0			H
PIEDMONT RSCH STN	6712	04	ORANGE	38 14	78 7W	520	68	68	39			CH
PULASKI 2 E	6955	06	PULASKI	37 3	80 47W	1850	62	79	0			CH
RADFORD 3 N	6999	06	PULASKI	37 12	80 35W	1800	10	35	0			H
RICHLANDS	7174	06	TAZEWELL	37 6	81 48W	1910	25	25	0			H
RICHMOND INTL AP R	7201	02	HENRICO	37 30	77 19W	164	72	72	0			HJ

STATION INDEX

STATION	INDEX NO.	DIVISION NO.	COUNTY	LATITUDE	LONGITUDE	ELEVATION FEET	YEARS OF RECORD			OPENED OR CLOSED DURING YR		SEE REFERENCE NOTES
							TEMP.	PRECIP.	EVAP.	MONTH OPENED	MONTH CLOSED	
ROANOKE 8 N	7278	05	ROANOKE	37 22	79 58W	1190	16	16	0			H
ROANOKE INTL AP R	7285	05	ROANOKE	37 19	79 58W	1175	66	66	0			HJ
ROCKY MT	7338	03	FRANKLIN	36 59	79 54W	1315	120	120	0			CH
SALTVILLE 1N	7506	06	SMYTH	36 53	81 46W	1733	60	59	0			H
SANDSTON	7541	02	HENRICO	37 33	77 17W	165	12	12	0			H
SOMERSET	7904	04	ORANGE	38 15	78 16W	510	19	51	0			H
SOUTH BOSTON	7925	03	HALIFAX	36 42	78 53W	329	34	34	0			H
SPERRYVILLE	7985	04	RAPPAHANNOCK	38 39	78 14W	750	19	19	0			H
STAFFORDSVILLE 3 ENE	8022	06	GILES	37 16	80 43W	1950	44	63	0			CH
STAUNTON WATER TRMTMT PLT	8062	05	AUGUSTA	38 10	79 5W	169	120	120	0			H
STERLING RCS	8084	04	LOUDOUN	38 59	77 29W	288	37	37	0			H
STONY CREEK 2 N	8129	01	SUSSEX	36 58	77 24W	105	52	56	0			H
STUART	8170	03	PATRICK	36 38	80 15W	1375	54	54	0			H
SUFFOLK LAKE KILBY	8192	01	SUFFOLK	36 44	76 36W	22	69	69	0			H
TROUT DALE 3 SSE	8547	06	GRAYSON	36 39	81 24W	2839	4	66	0			CH
TYE RIVER 1 SE	8600	03	NELSON	37 38	78 56W	720	51	77	0			H
VIENNA	8737	04	FAIRFAX	38 54	77 16W	418	21	77	0			H
WAKEFIELD 1NW	8800	01	SUSSEX	36 59	77 0W	113	32	32	0			CH
WALKERTON 2 NW	8829	01	KING AND QUEEN	37 45	77 2W	50	82	82	0			H
WALLACETON LK DRUMMOND	8837	01	CHESAPEAKE	36 36	76 26W	20	10	88	0			H
WALLOPS ISLAND NASA TEST FACIL R	8849	01	ACCOMACK	37 56	75 28W	46	48	48	0			HJ
WARRENTON 3 SE	8888	04	FAUQUIER	38 41	77 46W	500	66	66	0		APR	H
WARSAW 2 NW	8894	01	RICHMOND	37 59	76 47W	140	106	106	0			H
WASHGTN DULLES INTL AP R	8903	04	LOUDOUN	38 56	77 28W	290	52	52	0			HJ
WASHINGTON REAGAN AP R	8906	04	ARLINGTON	38 51	77 2W	10	69	69	0			HJ
WAYNESBORO WTP	8941	05	WAYNESBORO	38 5	78 53W	1270	14	14	0			H
WEST POINT 2 NW	9025	01	KING WILLIAM	37 34	76 48W	20	60	60	0			H
WILLIAMSBURG 2 N	9151	01	YORK	37 18	76 42W	70	63	66	0			CH
WILLIS	9169	06	FLOYD	36 55	80 30W	2810	1	34	0			CH
WINCHESTER	9181	04	FREDERICK	39 11	78 9W	720	32	32	0			H
WINCHESTER 7 SE	9186	04	FREDERICK	39 11	78 7W	680	102	102	0			H
WINTERPOCK 4 W	9213	02	CHESTERFIELD	37 19	77 39W	300	0	35	0			H
WISE 3E	9215	06	WISE	36 60	82 32W	2549	59	59	0			CH
WOODSTOCK 2 NE	9263	04	SHENANDOAH	38 54	78 28W	675	118	124	0			H
WOOLWINE	9272	03	PATRICK	36 47	80 17W	1500	0	63	0			CH
WYTHEVILLE 1 S	9301	06	WYTHE	36 58	81 5W	2458	97	97	0			CH

REFERENCE NOTES

STATION NAMES: Name of the city, town or locality. Figures and letters following the station names indicate the distance in miles and direction from the post office or town community center.

DIVISIONS: Areas within a state of similar climatological characteristics. Division averages are calculated using data from stations that record temperature and/or precipitation. Station Precipitation totals flagged with an 'F' or 'M' are excluded from the Divisional Average calculations of precipitation. Stations with monthly Temperature averages flagged with an 'F' or 'M' are included in the Divisional Average if there are no more than 9 flagged or missing daily values in the month, else they are excluded from the divisional average for temperature.

NORMALS: The average value of the meteorological element over a time period. Effective 1 January 2002, the averaging period is 1971 to 2000. The normals for National Weather Service localities have been adjusted so as to be representative for the current observation site.

TEMPERATURE EXTREMES AND FREEZE DATA: Spring minimum dates are obtained from data for January through June; Fall dates are from July through December data. "NONE" indicates temperature threshold not reached. "MSG" indicates available data insufficient to determine date.

MONTHLY DEGREE DAY TOTALS: One heating (cooling) degree day is accumulated for each whole degree that the daily mean temperature is below (above) 65 degrees Fahrenheit.

SOIL TEMPERATURE EXTREMES: The highest and lowest Max and Min temperature for each month and the year.

WIND: (As shown in the "Evaporation and Wind" table) the total wind movement in miles over the evaporation pan as determined by an anemometer recorder located 6-8 inches above the pan.

SYMBOLS AND LETTERS USED IN THE DATA TABLES

- No record. Data not recorded, determined unreliable by quality control checks, or not received in time for publication.
- * Equipment gage not read. Precipitation is included in the amount following asterisks. Time distribution not known.
- // Equipment gage equipped with a windshield.
- A Amount of precipitation is the total of observer's entries for the current month. It may include precipitation that occurred during the previous month. Refer to monthly bulletins to determine date of last reading.
- E Normalized HDD/CDD Calculation. E is appended to the HDD/CDD Calculation when 1-9 individual daily TMAX and/or TMIN values are missing and a Normalized HDD/CDD Calculation is provided. M appears alone if 10 or more are missing or flagged.
- F Monthly Calculation Flagged Value. F is appended to the average of the monthly station values when 1-9 daily observations were determined to be invalid during the Quality Control process.
- M Insufficient or partial data. M is appended to average and/or total values computed with 1-9 daily values missing. M appears alone if 10 or more daily values are missing or flagged.
- R Amounts from recording rain gage.
- T Trace. An amount too small to measure.

SYMBOLS AND LETTERS USED IN THE STATION INDEX TABLE

Thermometers located in rooftop shelter.

C Station is equipped with a recording rain gage (R), but values in this bulletin are from a non-recording rain gage unless indicated by an R.

G Observations appear in "Soil Temperatures" table.

H Observations appear in "Snowfall and Snow on the Ground" table in monthly "Climatological Data" publication.

J Station also published as a "Local Climatological Data" bulletin.

Seasonal Tables: Monthly and seasonal snowfall and heating degree days for the 12 months ending with the June data are published in the July issue of "Climatological Data".

Cooling degree days for the calendar year are published in the "Climatological Data Annual Summary".

Additional precipitation data are contained in the "Hourly Precipitation Data" bulletin for each state.

Information concerning the history of changes in locations, exposure, etc. of substations is kept on file at the National Climatic Data Center. Historical information of regular National Weather Service Offices may be obtained from the "Local Climatological Data" annual publication. The contents of this publication may be reprinted or otherwise used freely, with proper credit to the National Climatic Data Center. The data are also available digitally.

ERRATA

Beginning in January of 2011, CD Publications are produced from the Global Historical Climatology Network data set. (<http://www.ncdc.noaa.gov/oa/climate/ghcn-daily/>) The GHCND data Version is printed on first page of the publication.

New flags were added to indicate:

E Normalized HDD/CDD, Evap, and Wind Movement Calculations in 2011, previously was B.

F Monthly calculation flagged value.

Station metadata is provided by NCDC's Product Development Branch from the Historical Observing Metadata Repository: <http://www.ncdc.noaa.gov/homr>

As of the 2011 Data-Year, Station and Climate Division Maps are no longer being included in the CD Publications. NCDC's Product Development Branch provides updated Station Maps for various data networks via the Historical Observing Metadata Repository: <http://www.ncdc.noaa.gov/homr>.

Beginning with the January 2013 CD Publication, monthly mean temperature calculations have changed to the National Data Stewardship Team standard. Monthly maximum and minimum temperatures are not rounded until after the monthly mean temperature is calculated. This is the most accurate outcome, but may be slightly different from the mean derived from rounded monthly maximum and minimum.

Processing Updates and Errata: The CD Publications are periodically reproduced to include the addition of late reports and reported corrections. The GHCND data version noted on the cover of the publication provides the generation date.

The climate division temperature and precipitation values in this publication are based on simple averages from the current set of NWS-Designated Open and Published COOP and First Order Sites within each division. These values differ from those found in NCDC's nClimDiv product. Beginning in February 2014, the nClimDiv product is used by NCDC's Climate Monitoring Branch and in its monthly climate reports. For more details on nClimDiv, please go to <http://www.ncdc.noaa.gov/monitoring-references/maps/us-climate-divisions.php>.

NOAA\National Climatic Data Center
Attn: User Engagement & Services Branch
151 Patton Avenue
Asheville, NC 28801-5001

Customer Services Number: (828) 271-4800, option 2
TDD : (828) 271-4010
Fax number: (828) 271-4876

NCDC now offers free online access to the *Climatological Data* publication.
Go to : www.ncdc.noaa.gov and choose Most Popular.