



CLIMATOLOGICAL DATA

MARYLAND AND DELAWARE

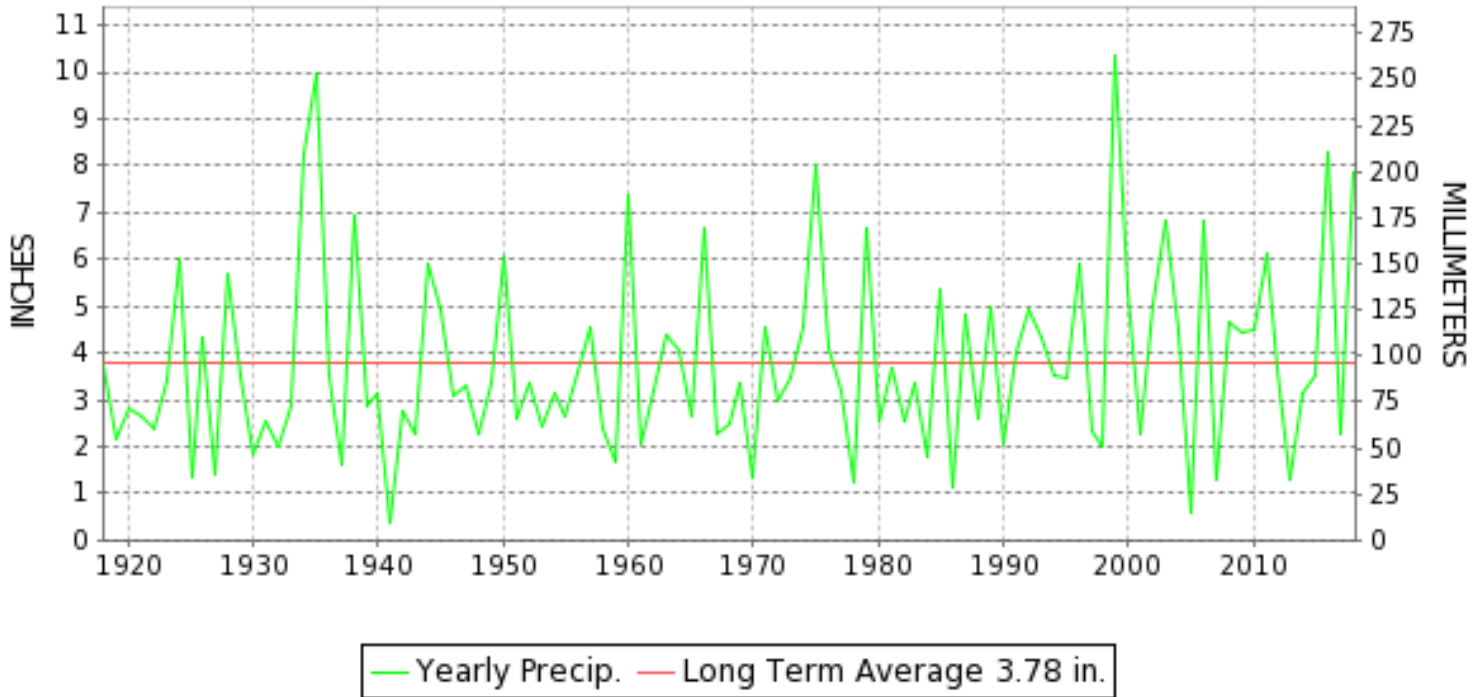
SEPTEMBER 2018

VOLUME 122 NUMBER 09

ISSN 0145-0549

GHCND Ver: 3.25-upd-2019021019

SEPTEMBER PRECIPITATION BY YEAR



TEMPERATURE AND PRECIPITATION EXTREMES

MARYLAND

HIGHEST TEMPERATURE	98	SEPTEMBER 04	EMMITSBURG 2 SE
LOWEST TEMPERATURE	47	SEPTEMBER 30	OAKLAND 1 SE
GREATEST TOTAL PRECIPITATION	15.22		EMMITSBURG 2 SE
LEAST TOTAL PRECIPITATION	5.26		SALISBURY-WICOMICO RGNL AP
GREATEST 1 DAY PRECIPITATION	3.31	SEPTEMBER 10	FROSTBURG 2

"I certify that this is an official publication of the National Oceanic and Atmospheric Administration (NOAA) It is compiled using information from weather observing sites supervised by NOAA/National Weather Service and received at the National Centers for Environmental Information(NCEI), Asheville, North Carolina 28801."

Mary S. Wolpengeth

Director
National Centers for Environmental Information

noaa

National
Oceanic and
Atmospheric Administration

National
Environmental Satellite, Data
and Information Service

National
Centers for Environmental Information
Asheville, North Carolina

DELAWARE

HIGHEST TEMPERATURE	95	SEPTEMBER 04	WILMINGTON NEW CASTLE CO AP
LOWEST TEMPERATURE	54	SEPTEMBER 30+	WILMINGTON NEW CASTLE CO AP
GREATEST TOTAL PRECIPITATION	6.40		GEORGETOWN DELEWARE COASTAL AP
LEAST TOTAL PRECIPITATION	6.22		WILMINGTON NEW CASTLE CO AP
GREATEST 1 DAY PRECIPITATION	2.33	SEPTEMBER 09	WILMINGTON NEW CASTLE CO AP

MONTHLY STATION AND DIVISION SUMMARY

STATION	TEMPERATURE (°F)													PRECIPITATION (IN)											
	AVERAGE MAXIMUM	AVERAGE MINIMUM	AVERAGE	DEPARTURE FROM NORMAL	HIGHEST	DATE	LOWEST	DATE	HEATING DEG. DAYS	COOLING DEG. DAYS	NO. OF DAYS				TOTAL	DEPARTURE FROM NORMAL	GREATEST 24 HOURS	DATE	ICE PELLETS, SNOW			NO. OF DAYS			
											MAX		MIN						TOTAL	MAX DEPTH ON GROUND	DATE	.10 OR MORE	.50 OR MORE	1.00 OR MORE	
											>=90	<=32	<=32	<=0											
--DIVISIONAL DATA-----> APPALACHIAN MOUNTAIN 07			70.5	3.9B										11.56	7.23B										
HAGERSTOWN 1 E	78.2	63.8	71.0		95	04	52	30+	28	216	4	0	0	0	11.98		2.86	09	0.0	0		17	14	4	
CUMBERLAND 2	78.7	63.7	71.2	3.8	95	04	50	30	29	221	5	0	0	0	13.49	10.26	2.55	10	0.0	0		17	14	7	
FROSTBURG 2	73.1	59.1	66.1	5.1	89	06	48	30	79	119	0	0	0	0	15.17	11.49	3.31	10	0.0	0		22	17	5	
HAGERSTOWN RGNL AP	79.2	65.3	72.3	6.6	95	04	54	30	20	244	5	0	0	0	9.31	5.64	2.89	09	M			15	12	2	
SHARPSBURG 5 S	77.9	62.6	70.3	4.7	93	07	51	30	34	199	4	0	0	0	10.47	6.47	1.89	10	0.0	0		20	14	3	
WILLIAMSPORT															10.32	6.46	2.73	10	M			17	12	3	
--DIVISIONAL DATA-----> ALLEGHENY PLATEAU 08			70.2	6.1B										11.79	8.30B										
OAKLAND 1 SE	74.9	60.1	67.5	7.5	89	06	47	30	47	130	0	0	0	0	11.83	8.38	2.99	09	0.0	0		26	12	4	
SAVAGE RVR DAM	M	M	M		87	07+	49	30	69E	123E	0	0	0	0	M				0.0	0					
SINES DEEP CREEK	M	M	M		84	06	50	28+	34E	38E	0	0	0	0	MA 12.20		1.90	28	M	0		8	7	2	
--DIVISIONAL DATA----->			67.5	7.0B										11.83	8.23B										
DELAWARE NORTHERN 01																									
WILMINGTON NEW CASTLE CO AP	79.2	65.4	72.3	4.5	95	04	54	30+	11	236	4	0	0	0	6.22	1.90	2.33	09	0.0	0		16	10	2	
WILMINGTON PORTER RSCH	M	M	M								0	0	0	0	M				M						
--DIVISIONAL DATA-----> SOUTHERN 02			72.3	4.9B										6.22	1.90B										
GEORGETOWN DELEWARE COASTAL AP	82.0	68.2	75.1	6.6	93	06+	56	29	0	313	5	0	0	0	6.40	2.27	1.37	08	M			16	11	2	
--DIVISIONAL DATA----->			75.1	6.8B										6.40	2.25B										

DAILY PRECIPITATION (INCHES)

STATION	TOTAL	DAY OF MONTH																														
		01	02	03	04	05	06	07	08	09	10	11	12	13	14	15	16	17	18	19	20	21	22	23	24	25	26	27	28	29	30	31
MARYLAND																																
SOUTHERN																																
EASTERN SHORE 01																																
PRINCESS ANNE	7.04				2.30	0.02					2.25		0.01	1.13			0.01		0.47					0.58	0.27							
SALISBURY 2N	7.73	0.15		1.15	0.06	0.01	0.50	0.02	0.42	0.56	0.70	1.00		0.18		0.02	0.09	0.20	0.20	0.38			1.33	0.44	0.17			0.15				
SALISBURY-WICOMICO RGNL AP	5.26	0.01	0.02	0.18	0.41			0.03	0.38	0.84	0.11	1.19		0.04	0.57	T		0.03	0.42				0.87	0.13	0.02	0.01						
SNOW HILL 4 N	7.47							1.03	1.10	2.00	1.86			0.66									0.12	0.24								
CENTRAL																																
EASTERN SHORE 02																																
ROYAL OAK 2 SSW	M	-	-	-	-	-	-	-	-	-	-	-	-	-	-	-	-	-	-	-	-	-	-	-	-	-	-	-	-	-	-	-
LOWER SOUTHERN 03																																
MECHANICSVILLE 5 NE	8.98		0.97						0.61	1.51	1.33	0.16	0.01	T	0.17	0.06	T	0.10	0.19	0.42			0.06	0.83	1.39	0.40	0.02	0.18	0.57			
SOLOMONS	MA 7.68	*	*	*	0.63 _a				*	*	3.65 _a	1.28		T	0.08	*	*	T _a	0.11	-	T		-	-	1.65	0.06	T	0.02	0.20	-	-	
UPPER SOUTHERN 04																																
BALTIMORE-WASHINGTON INTL AP	9.19	0.01				T	0.44	0.40	2.23	0.04	0.49	0.02	0.04	0.03	T		0.39	2.22				0.04	0.92	0.25	0.20	0.47	0.70	0.30				
BELTSVILLE	12.08	0.80	0.01					2.92	1.01	0.95	0.04	0.02	0.08	0.03				2.88	0.23			0.07	0.07	1.03	0.33	0.09	0.14	1.38				
DALECARLIA RSVR	11.76	2.00	0.40		0.55			0.55	0.76	1.05	0.15		0.04	0.05	0.01			2.10	0.23			0.15	0.14	0.90	0.70	0.06	0.20	1.72				
MARYLAND SCI CTR	10.47	0.03					0.51	0.57	1.90	0.04	0.09	0.01	0.04	0.07			1.37	2.99				0.03	0.98	0.12	0.28	0.55	0.64	0.25				
NATL ARBORETUM DC	11.18	0.05	0.31		0.02	1.15		1.74	1.00	0.98	0.05		0.87	0.04	0.01	T		1.43	0.11		T	0.15	0.20	0.71	0.33	0.09	0.70	1.24				
OXON HILL	7.63	0.52	0.99					0.73	0.54	1.35	0.02	T	0.32	T	T	T		0.26	0.06		T	0.28	0.33	0.87	0.28	0.05	0.17	0.86				
NORTHERN																																
EASTERN SHORE 05																																
STEVENSVILLE 2SW	6.46	0.22							0.25	1.18	1.58		0.04	0.01					0.10	0.03			0.14	0.27	1.10	0.11	0.01	0.76	0.66			
SUDLERSVILLE 1S	M	-	-	-	-	-	-	-	-	-	-	-	-	-	-	-	-	-	-	-	-	-	-	-	-	-	-	-	-	-	-	-
NORTHERN CENTRAL 06																																
ABERDEEN PHILLIPS FLD	9.61	1.90						0.02	0.12	1.68	2.43	0.05	0.01						0.55	0.57		0.01			1.17	0.24	0.14	0.14	0.58			
CONOWINGO DAM	13.01	2.38		0.69				0.10		1.65	1.95	0.10		0.76				1.55	0.22			0.17		0.90	0.14	0.74	0.33	1.33				
CYLBURN	M	-	-	-	-	-	-	-	-	-	-	-	-	-	-	-	-	-	-	-	-	-	-	-	-	-	-	-	-	-	-	-
DAMASCUS 3 SSW	10.64	0.72	0.02					1.69	0.44	2.01	0.18	0.05		0.09	0.02	0.01	0.67	0.34				0.03	0.03	0.90	0.21	0.64	0.91	1.15	0.53			
EMMITSBURG 2 SE	15.22	0.01							1.32	1.62	3.14	0.43	0.44	0.01	0.06	0.03	T		2.68	0.02			0.26	0.02	0.37	1.92	0.27	1.19	1.42	0.01		
MILLERS 4 NE	9.33	0.10	0.01	T				T	1.61	2.72	0.72	0.04	0.05	0.06	0.01	0.01		0.35	0.46			T	0.26	0.27	0.35	0.80	T	0.25	1.26			
REISTERSTOWN 2 NW	M 10.84	0.16							1.80	1.70	1.65	0.08	0.04	0.08	0.06	0.07	0.01	-	0.80	0.04			0.10	0.06	0.96	0.38	0.44	0.46	1.92	0.03		
SMITHSBURG 2NW	M 9.65	0.62	0.10		-				0.70	1.80	1.68	0.20	0.07	0.26	0.05				0.44	0.07			0.14	0.05	0.20	0.24	0.28	1.30	1.45			
APPALACHIAN																																
MOUNTAIN 07																																
HAGERSTOWN 1 E	11.98	0.04						2.79	1.27	2.86	0.33	0.06	T	0.25	0.35			0.45	0.05				0.14	0.26	0.16	0.53	0.98	1.34	0.12			
CUMBERLAND 2	13.49	0.20						0.96	1.29	1.76	2.55	0.10	0.11	0.33		0.01		T	1.19	0.26			0.04		0.39	1.50	1.06	0.04	1.70			
FROSTBURG 2	15.17	0.43	0.03		0.31				0.77	2.15	3.31	0.10	0.12	0.08	0.12	0.30	0.03	0.15	2.27	0.24			0.09	0.09	0.45	1.49	0.84	0.10	1.70			
HAGERSTOWN RGNL AP	9.31	0.71						0.77	0.87	2.89	0.50		T	0.06	T			0.16	0.02				0.14	0.26	0.16	0.81	0.77	1.10	0.09			
SHARPSBURG 5 S	10.47	0.08	0.27					0.55	0.32	1.79	1.89	0.32	0.09	0.02	0.15	0.03	0.01	T	0.93				0.07	0.15	0.77	0.40	0.17	0.66	1.80			
WILLIAMSPORT	10.32	0.04							0.39	1.71	2.73	0.37	0.02	0.88	0.03	0.06			0.49				0.19	0.06	0.31	0.46	0.41	0.76	1.41			
ALLEGHENY PLATEAU 08																																

MARYLAND AND DELAWARE
201809

DAILY PRECIPITATION (INCHES)

STATION	TOTAL	DAY OF MONTH																													
		01	02	03	04	05	06	07	08	09	10	11	12	13	14	15	16	17	18	19	20	21	22	23	24	25	26	27	28	29	30
OAKLAND 1 SE	11.83		0.03	0.01	0.03			0.02	2.03	2.99	0.80	0.08	0.04	0.07	0.01	0.05	0.02	0.21	1.23	0.01	0.02		0.20	0.32	0.16	0.73	0.95	0.41	1.38	0.02	0.01
SAVAGE RVR DAM	M	0.51	*	*	0.68				2.29	-	2.10	-	-	-	-	0.17		0.17	-	-		-	-	0.44	1.06	0.79	0.19	1.44	-	-	
SINES DEEP CREEK	MA 12.20	*	*	*	0.55 _a	-	0.25	-	*	*	6.40 _a	0.20		0.05	-	*	*	0.10 _a	1.10	0.10			*	*	0.60 _a	0.50	-	0.45	1.90	-	-
DELAWARE																															
NORTHERN 01																															
WILMINGTON NEW CASTLE CO AP	6.22	0.23	0.01	0.02				0.05	1.05	2.33	0.28	0.04	T		T			0.31	0.13		T		T	0.77	0.07	0.14	0.19	0.02	0.58		
WILMINGTON PORTER RSCH	M	-	-	-	-	-	-	-	-	-	-	-	-	-	-	-	-	-	-	-	-	-	-	-	-	-	-	-	-	-	-
SOUTHERN 02																															
GEORGETOWN DELEWARE COASTAL AP	6.40	0.91	0.28					0.22	1.37	1.00	0.12	0.01	T	0.03	0.18	0.01		T	0.92				0.85	0.32	0.02	T	0.12	0.04			

MARYLAND AND DELAWARE
201809

DAILY TEMPERATURES (°F)

STATION	OB. TIME	MAX/MIN	DAY OF MONTH																															AVERAGE	
			01	02	03	04	05	06	07	08	09	10	11	12	13	14	15	16	17	18	19	20	21	22	23	24	25	26	27	28	29	30	31		
MARYLAND SOUTHERN EASTERN SHORE 01 PRINCESS ANNE	17	MAX MIN																																	M M
SALISBURY 2N	17	MAX MIN	87 73	90 74	92 73	94 73	92 74	92 74	91 74	82 72	73 66	81 65	88 73	89 74	86 73	80 72	81 67	83 71	83 75	85 67	82 66	80 60	85 69	77 64	77 64	85 66	86 72	85 67	76 65	78 55	79 56	84.1 68.9			
SALISBURY-WICOMICO RGNL AP	24	MAX MIN	87 73	89 73	92 71	93 72	92 73	92 73	81 72	70 69	81 65	85 73	87 73	80 73	80 73	79 69	81 71	83 72	87 71	85 67	78 64	79 66	85 66	68 64	70 65	84 69	87 71	73 57	78 54	80 54	80 57	82.6 68.1			
SNOW HILL 4 N	17	MAX MIN	87 75	88 73	92 78	95 77	93 76	93 78	92 73	82 73	84 73	84 69	90 74	89 74	87 75	88 75	81 75	83 71	85 75	89 69	85 69	85 67	78 62	86 68	77 67	78 65	81 71	86 70	85 68	80 57	81 59	80 71.0			
CENTRAL EASTERN SHORE 02 ROYAL OAK 2 SSW	17	MAX MIN																															M M		
LOWER SOUTHERN 03 MECHANICSVILLE 5 NE	07	MAX MIN	84 73	82 70	84 71	88 71	89 70	89 70	88 72	85 71	75 63	66 63	77 66	80 69	81 70	78 71	78 70	79 71	78 73	81 67	82 65	77 65	75 67	78 60	65 60	70 61	80 69	82 64		70 58	74 58	79.1 66.8			
SOLOMONS	08	MAX MIN					94 78	93 77	94 77			81 70	87 73	87 74	83 73				79 76			79 70				73 66	81 73	87 67	74 61			M M			
UPPER SOUTHERN 04 BALTIMORE-WASHINGTON INTL AP	24	MAX MIN	83 72	90 73	93 73	94 74	94 73	95 74	87 72	74 60	64 59	72 61	76 67	83 69	79 70	76 67	81 66	82 71	78 69	82 67	86 65	81 69	75 59	78 59	63 61	67 64	79 69	87 56	70 57	75 57	79 54	76 66.0	80.0		
BELTSVILLE	08	MAX MIN	84 71	84 71	90 72	92 73	93 71	92 72	93 72	87 69	71 59	63 59	72 62	74 69	83 71	77 70	76 68	80 66	81 69	79 73	81 69	84 65	83 69	76 68	76 59	63 60	68 63	79 68	86 64	65 56	75 59	77 55	79.5 66.4		
DALECARLIA RSVR	08	MAX MIN	89 72	84 71	89 71	94 75	94 74	95 74	95 72	74 71	65 60	73 63	74 63	85 69	79 71	76 68	80 66	80 68	80 66	82 65	85 69	84 67	84 58	79 59	63 59	67 63	80 67	87 63	87 56	74 57	77 56	81.0 66.1			
MARYLAND SCI CTR	24	MAX MIN	84 73	89 75	94 78	96 80	97 81	88 79	76 62	64 60	72 63	75 68	86 70	79 74	77 71	85 69	82 69	80 72	82 73	86 72	82 70	82 71	86 64	82 61	84 62	77 65	78 72	69 59	80 60	89 64	73 62	76 62	80 62	81.1 69.1	
NATL ARBORETUM DC	08	MAX MIN	90 73	88 74	91 77	94 77	95 75	94 77	94 74	79 71	63 65	65 67	81 72	80 72	86 73	82 70	79 68	83 70	84 74	83 69	86 67	87 69	84 68	77 60	79 61	67 67	73 72	83 66	87 58	67 61	76 57	79 57	82.7 68.9		
OXON HILL	07	MAX MIN	91 72	85 70	91 71	94 73	93 71	94 72	89 72	75 69	66 60	76 61	76 70	86 70	81 70	83 69	81 66	83 69	79 74	81 68	83 67	86 67	81 67	86 67	79 58	65 58	69 61	80 69	87 65	66 57	75 58	78 58	81.3 66.4		
NORTHERN EASTERN SHORE 05 STEVENSVILLE 2SW	07	MAX MIN	89 74	85 75	91 77	95 79	92 79	95 79	95 78	85 74	76 62	66 62	77 62	79 72	81 73	81 72	83 69	78 70	83 73	82 73	86 68	82 68	84 68	77 61	77 62	64 63	70 63	86 69	87 68	68 59	72 60	80 59	81.5 69.2		
NORTHERN CENTRAL 06 ABERDEEN PHILLIPS FLD	07	MAX MIN	81 70	79 71	87 72	91 74	94 74	93 73	92 72	85 69	69 57	63 57	72 61	73 66	84 70	77 70	75 68	82 65	82 66	80 70	82 67	84 66	78 67	74 67	75 55	63 59	67 63	78 67	84 64	67 59	73 56	77 54	78.7 65.6		
CONOWINGO DAM	07	MAX MIN	89 69	82 68	88 58	90 68	90 75	93 75	94 70	84 70	74 57	75 57	85 58	84 60	85 68	85 68	78 64	78 64	81 66	84 67	84 65	78 69	84 65	75 55	74 55	67 58	67 58	84 62	87 70	74 58	75 53	73 54	80.7 63.9		

DAILY TEMPERATURES (°F)

STATION	OB. TIME	MAX/MIN	DAY OF MONTH																															AVERAGE		
			01	02	03	04	05	06	07	08	09	10	11	12	13	14	15	16	17	18	19	20	21	22	23	24	25	26	27	28	29	30	31			
CYLBURN	08	MAX MIN																																M M		
DAMASCUS 3 SSW	22	MAX MIN	80 68	85 69	89 71	88 71	90 71	90 72	82 68	69 59	60 54	69 58	69 66	77 65	77 70	72 66	74 68	78 68	81 64	79 62	71 66	72 57	22 57	59 55	62 58	73 60	83 63	68 53	71 54	73 57	72 53	75.4 63.2				
EMMITSBURG 2 SE	07	MAX MIN	85 70	80 70	92 69	98 69	97 70	96 70	96 69	85 64	71 54	58 57	66 57	70 66	81 70	75 68	80 65	82 65	75 68	83 66	83 63	83 63	73 69	73 57	60 56	63 59	72 61	83 58	67 55	78 53	76 52	78.6 62.9				
MILLERS 4 NE	18	MAX MIN	77 67	86 70	90 70	91 69	91 69	90 71	85 68	78 58	62 53	67 55	68 64	78 65	79 70	75 68	79 65	81 65	76 72	80 64	81 59	79 65	74 61	71 61	62 54	74 57	82 70	75 53	71 52	75 54	72 52	77.0 62.6				
REISTERSTOWN 2 NW	08	MAX MIN	82 68	80 69	87 72	92 73	92 74	93 75	93 71	86 67	67 55	59 56	69 58	71 66	82 68	80 74	74 81	81 67	81 67	81 67	83 67	83 67	74 54	72 54	60 54	66 58	77 59	53 53	65 57	73 54	75 54	77.5 64.0				
SMITHSBURG 2NW	08	MAX MIN	81 69	83 68	85 68			91 68	91 65	85 65		53 53	53 53	62 62	64 64	69 68	64 63	69 69	61 61	59 59	59 59	67 67	54 54	54 58	58 62	63 56	74 54	68 58	59 62	63 56	74 52	81 51	63 49	72 49	72 49	75.8 60.8
APPALACHIAN MOUNTAIN 07																																				
HAGERSTOWN 1 E	24	MAX MIN	84 71	88 71	94 70	95 71	93 71	94 73	88 68	72 56	60 55	62 58	69 62	76 65	82 72	78 71	81 69	80 65	78 69	85 68	87 64	82 69	75 59	73 57	61 59	64 59	72 61	81 65	67 54	75 55	75 52	75 52	78.2 63.8			
CUMBERLAND 2	07	MAX MIN	87 71	82 69	89 69	95 70	94 71	94 71	92 69	85 67	70 55	62 55	65 57	73 63	74 69	85 70	76 70	76 70	78 71	77 64	83 60	87 60	84 66	92 59	74 59	61 60	62 60	68 59	78 55	64 52	78 50	75 50	78.7 63.7			
FROSTBURG 2	07	MAX MIN	82 64	79 64	85 64	86 66	88 65	89 66	86 64	81 65	65 49	54 50	61 54	69 59	69 62	80 84	69 80	69 83	74 80	74 85	75 86	78 86	78 83	84 77	69 76	55 64	57 66	57 73	68 82	74 66	58 75	58 75	70 48	68 48	73.1 59.1	
HAGERSTOWN RGNL AP	24	MAX MIN	83 72	88 73	94 72	95 73	93 75	94 74	91 70	74 57	63 56	71 58	78 63	84 66	80 72	83 73	80 68	85 71	86 66	83 71	85 66	86 63	77 60	76 58	64 61	66 61	73 66	82 55	66 55	75 55	75 54	74 54	79.2 65.3			
SHARPSBURG 5 S	07	MAX MIN	87 70	83 69	86 69	92 69	92 69	92 69	93 68	86 68	69 55	61 55	63 59	68 62	75 65	81 69	78 69	79 62	82 62	80 71	83 62	85 60	82 60	76 68	71 56	60 56	65 60	73 63	83 57	63 54	74 52	74 51	77.9 62.6			
ALLEGHENY PLATEAU 08																																				
OAKLAND 1 SE	07	MAX MIN	83 64	79 63	86 64	88 64	88 64	89 64	88 63	82 63	67 52	58 56	68 57	69 61	72 64	77 66	72 65	71 65	70 65	77 66	76 61	82 59	83 61	85 56	74 56	59 56	63 58	73 62	72 57	59 52	68 51	68 47	74.9 60.1			
SAVAGE RVR DAM	08	MAX MIN	81 66	79 63	85 52	85 62	86 62	87 63	87 65	79 65																									M M	
SINES DEEP CREEK	07	MAX MIN				83 55		84 60				80 50	80 50	66 57	71 61					70 61	72 61	74 57	76 54			78 55	64 55		67 60	63 50				M M		
DELAWARE NORTHERN 01																																				
WILMINGTON NEW CASTLE CO AP	24	MAX MIN	78 69	85 71	90 73	95 74	93 73	93 75	86 72	71 62	62 56	71 56	77 65	85 71	80 71	76 69	82 68	84 64	79 67	84 68	85 66	76 67	76 67	78 60	63 60	67 61	78 62	84 70	73 59	72 57	78 54	75 54	79.2 65.4			
WILMINGTON PORTER RSCH	24	MAX MIN																																	M M	
SOUTHERN 02																																				
GEORGETOWN DELEWARE COASTAL AP	24	MAX MIN	82 73	86 74	92 73	93 73	93 74	93 75	90 73	77 68	71 64	78 64	87 72	86 73	78 72	79 73	80 67	81 71	84 71	86 71	84 67	77 64	80 61	83 66	69 64	69 64	86 69	88 72	72 67	76 58	80 56	80 58	82.0 68.2			

MARYLAND AND DELAWARE
201809

DAILY SOIL TEMPERATURES

STATION	DEPTH	TIME	DAY OF MONTH																															AVERAGE	
			01	02	03	04	05	06	07	08	09	10	11	12	13	14	15	16	17	18	19	20	21	22	23	24	25	26	27	28	29	30	31		
MARYLAND UPPER SOUTHERN 04 BELTSVILLE (in)																																			

MARYLAND AND DELAWARE
201809

SOILS REFERENCE NOTES

STATION	SOIL TYPE	SOIL COVER	SLOPE	UNITS
BELTSVILLE	UNKNOWN	GRASS	0	F

SNOWFALL AND SNOW ON GROUND (INCHES)

STATION		DAY OF MONTH																																
		01	02	03	04	05	06	07	08	09	10	11	12	13	14	15	16	17	18	19	20	21	22	23	24	25	26	27	28	29	30	31		
MARYLAND SOUTHERN EASTERN SHORE 01 PRINCESS ANNE SALISBURY 2N SALISBURY-WICOMICO RGNL AP SNOW HILL 4 N	SNOWFALL																																	
	SNOWFALL																																	
	SNOWFALL																																	
	SN ON GND																																	
	SNOWFALL																																	
DELAWARE NORTHERN 01 WILMINGTON NEW CASTLE CO AP WILMINGTON PORTER RSCH	SNOWFALL																																	
	SN ON GND																																	
	SNOWFALL																																	

Snowfall: Includes snow and ice. Values for NWS stations (J index note) are Mid-Mid (LST).

Snow on ground: Includes snow, sleet, ice, and hail. Values for NWS stations (J index note) are observed at 12 UTC (GMT).

Water Equivalent: Given for NWS stations (J index note) only, when snow depth is 2 inches or more, and is measured at 18 UTC (GMT)

PAN EVAPORATION AND WIND

STATION		DAY OF MONTH																															TOTAL OR AVERAGE
		01	02	03	04	05	06	07	08	09	10	11	12	13	14	15	16	17	18	19	20	21	22	23	24	25	26	27	28	29	30	31	
MARYLAND UPPER SOUTHERN 04 BELTSVILLE	WIND	34	24	10	10	10	16	23	39	70	81	21	36	21	53	55	31	24	50	36	34	45	56	45	42	41	16	44	46	24	31	1068 3.76E 84.3 66.8	
	EVAP	0.18	0.10	0.18	0.18	0.12	0.17	0.23	0.34	0.12	0.07	0.06	0.04	0.09	0.08	0.01	0.11	0.13	-	0.08	0.18	0.15	0.04	0.14	0.10	0.08	0.03	0.20	0.15	0.10	0.17		
	MAX	90	90	99	99	98	99	101	93	74	65 ¹	78	78	84	80	78	84	86	79	82	88	86	76	76	71	73	81	91	68	80	84		
	MIN	73	72	74	76	73	73	72	71	59	62	67 ¹	67	68	70	68	67	68	72	68	68	68	67	65	60	60	62	62	57	57	58		
ALLEGHENY PLATEAU 08 SAVAGE RVR DAM	WIND	-	-	-	-	-	-	-	-	-	-	-	-	-	-	-	-	-	-	-	-	-	-	-	-	-	-	-	-	-	-	M M - M	
	EVAP	-	-	-	-	-	-	-	-	-	-	-	-	-	-	-	-	-	-	-	-	-	-	-	-	-	-	-	-	-	-		
	MAX	-	-	-	-	-	-	-	-	-	-	-	-	-	-	-	-	-	-	-	-	-	-	-	-	-	-	-	-	-	-		
	MIN	-	-	-	-	-	-	-	-	-	-	-	-	-	-	-	-	-	-	-	-	-	-	-	-	-	-	-	-	-	-		

Evaporation: Is measured in hundreths of inches.

Wind: Is measured in miles.

Max and Min: The maximum and minimum temperatures (Fahrenheit) of the water in the evaporation pan.

STATION INDEX

STATION	INDEX NO.	DIVISION	COUNTY	LATITUDE	LONGITUDE	ELEVATION (IN FEET)	OBSERVATION TIME AND TABLES			
							LOCAL STD TIME			
							TEMP	PRECIP	EVAP	SPECIAL SEE (NOTES)
MARYLAND										
ABERDEEN PHILLIPS FLD	0015	06	HARFORD	39 28	76 10W	57	07	07		CH
ANNAPOLIS US NAVAL ACADEMY ASO R	0186	04	ANNE ARUNDEL	38 59	76 29W	6	24	24		H
BALTIMORE-WASHINGTON INTL AP R	0465	04	ANNE ARUNDEL	39 10	76 41W	156	24	24		HJ
BELTSVILLE	0700	04	PRINCE GEORGE'S	39 2	76 56W	145	08	08	08	GCH
CONOWINGO DAM	2060	06	HARFORD	39 39	76 11W	40	07	07		H
CUMBERLAND 2	2282	07	ALLEGANY	39 39	78 45W	730	07	07		H
CYLBURN	2308	06	BALTIMORE	39 21	76 39W	235	08	08		H
DALECARLIA RSVR	2325	04	DISTRICT OF COLUMBIA	38 56	77 7W	150	08	08		H
DAMASCUS 3 SSW	2336	06	MONTGOMERY	39 16	77 14W	700	22	22		H
EMMITSBURG 2 SE	2906	06	FREDERICK	39 41	77 17W	403	07	07		H
FROSTBURG 2	3415	07	ALLEGANY	39 40	78 56W	2170	07	07		H
HAGERSTOWN 1 E	1790	07	WASHINGTON	39 38	77 42W	532	24	24		H
HAGERSTOWN RGNL AP R	3976	07	WASHINGTON	39 42	77 44W	705	24	24		H
MARYLAND SCI CTR R	5718	04	BALTIMORE (CITY)	39 17	76 37W	20	24	24		H
MECHANICSVILLE 5 NE	5865	03	ST. MARY'S	38 30	76 44W	100	07	07		H
MILLERS 4 NE	5934	06	CARROLL	39 43	76 48W	860	18	18		CH
NATL ARBORETUM DC	6350	04	DISTRICT OF COLUMBIA	38 55	76 58W	50	08	08		H
OAKLAND 1 SE	6620	08	GARRETT	39 25	79 24W	2420	07	07		H
OXON HILL	6800	04	PRINCE GEORGE'S	38 48	76 60W	186	07	07		H
PRINCESS ANNE	7330	01	SOMERSET	38 13	75 41W	20	17	17		H
REISTERSTOWN 2 NW	7580	06	BALTIMORE	39 30	76 50W	737	08	08		H
ROYAL OAK 2 SSW //	7806	02	TALBOT	38 43	76 11W	10	17	17		H
SALISBURY 2N	8004	01	WICOMICO	38 24	75 36W	20	17	17		H
SALISBURY-WICOMICO RGNL AP //R	8005	01	WICOMICO	38 20	75 31W	47	24	24		H
SAVAGE RVR DAM	8065	08	GARRETT	39 31	79 8W	1495	08	08	08	CH
SHARPSBURG 5 S	8207	07	WASHINGTON	39 24	77 43W	500	07	07		H
SINES DEEP CREEK	8315	08	GARRETT	39 31	79 25W	2040	07	07		H
SMITHSBURG 2NW	8371	06	WASHINGTON	39 40	77 35W	670	08	08		H
SNOW HILL 4 N	8380	01	WORCESTER	38 14	75 23W	30	17	17		H
SOLOMONS	8405	03	CALVERT	38 19	76 27W	12	08	08		H
STEVENSVILLE 2SW	8557	05	QUEEN ANNE'S	38 58	76 20W	10	07	07		H
SUDLERSVILLE 1S	8657	05	QUEEN ANNE'S	39 10	75 51W	100		20		H
WILLIAMSPORT	9570	07	WASHINGTON	39 37	77 51W	360		06		CH
DELAWARE										
GEORGETOWN DELEWARE COASTAL AP //R	3561	02	SUSSEX	38 41	75 22W	46	24	24		H
WILMINGTON NEW CASTLE CO AP //R	9595	01	NEW CASTLE	39 40	75 36W	79	24	24		HJ
WILMINGTON PORTER RSCH	9605	01	NEW CASTLE	39 46	75 32W	270	24	24		H

REFERENCE NOTES

STATION NAMES: Name of the city, town or locality. Figures and letters following the station names indicate the distance in miles and direction from the post office or town community center.

DIVISIONS: Areas within a state of similar climatological characteristics. Division averages are calculated using data from stations that record temperature and/or precipitation. Station Precipitation totals flagged with an 'F' or 'M' are excluded from the Divisional Average calculations of precipitation. Stations with monthly Temperature averages flagged with an 'F' or 'M' are included in the Divisional Average if there are no more than 9 flagged or missing daily values in the month, else they are excluded from the divisional average for temperature.

NORMALS: The average value of the meteorological element over a time period. Effective 1 January 2012, the averaging period for station departures is 1981 to 2010. The normals for National Weather Service localities have been adjusted so as to be representative for the current observation site.

The January 2011 through December 2015 publications incorrectly state the computation of divisional departures. Climate Division departures have been, and continue to be, computed from 1971-2000 Normals, not 1981-2010 as stated. Station departures are accurately described as departures from 1981-2010.

MONTHLY DEGREE DAY TOTALS: One heating (cooling) degree day is accumulated for each whole degree that the daily mean temperature is below (above) 65 degrees Fahrenheit.

PRECIPITATION: Values shown in hundredths of inches are water equivalent totals, i.e., total of liquid and melted frozen precipitation. In the "Monthly Summarized Data" table the total snow and sleet values shown in tenths of inches are unmelted amounts. The max depth on ground values of snow and sleet shown in whole inches are cumulative unmelted amounts. The number of days with .10, .50, 1.00 or more refers to water equivalents.

PRECIPITATION QUALITY CONTROL: The NCEI quality control process may flag precipitation data that are spatially inconsistent, exceed climatological limits, or are inconsistent with prevailing weather patterns.

TEMPERATURE: Original temperature values are given in the "Daily Temperature" table. Summary temperature information (averages, departures, extremes, monthly degree day totals) is based on the values labeled MAX/MIN.

WIND: (As shown in the "Evaporation and Wind" table) the total wind movement in miles over the evaporation pan as determined by an anemometer recorder located 6-8 inches above the pan.

SYMBOLS AND LETTERS USED IN THE STATION INDEX TABLE

C Station is equipped with recording rain gage (R) but values in this bulletin are from a non-recording rain gage unless indicated by an R.

G Observations appear in the "Soil Temperatures" table.

H Observations appear in the "Snowfall and Snow on the Ground" table.

J Station also published as a Local Climatological Data publication.

VAR Observation time varies.

SR / SS Observation time near sunrise / Observation time near sunset, respectively.

SYMBOLS AND LETTERS USED IN THE DATA TABLES

(DAILY DATA ARE FOR THE 24 HOURS IMMEDIATELY PRECEDING OBSERVATION TIME.)

BLANK Entries in the "Monthly Summarized Data" table indicate no record.

BLANK Entries in the "Daily Precipitation" and "Snowfall and Snow on the Ground" tables indicate zero.

BLANK Entries in the "Daily Temperature" table indicate a missing record

- No record. Data not recorded or not received in time for publication.

+ Precipitation or temperature extremes occurred on one or more previous dates during the month.

* Rain gage not read. Precipitation is included in the amount following the asterisks.

Time distribution may not be known. A * preceding the monthly total indicates precipitation amount is being carried forward to next month's total, and may include amounts from the previous month(s).

a As a subscript, indicates accumulated total.

A Amount of precipitation is the total of observer's entries for the current month. It may include precipitation that occurred during the previous month. Refer to earlier bulletin to determine date of last

reading. (Hawaii stations)

B Divisional Departure from normals are computed using 1971-2000 normals.

E Normalized HDD/CDD Calculation. E is appended to the HDD/CDD Calculation when 1-9 individual daily TMAX and/or TMIN values are missing and a Normalized HDD/CDD Calculation is provided. M appears alone if 10 or more daily values are missing.

F Monthly calculation flagged value. F is appended to average and/or total values computed which exclude one or more daily data values that have been flagged by the GHCN-Daily Dataset

M Insufficient or partial data. M is appended to average and/or total values computed with 1-9 daily values missing. M appears alone if 10 or more daily values are missing, (8 or more for wind and evaporation).

N Indicates snow fall or Snowdepth totals are computed with one or more missing days.

R Amounts from recording rain gage.

T Trace. An amount too small to measure.

SEASONAL TABLES: Monthly and seasonal snowfall and heating degree days for the 12 months ending with the June data are published in the July issue of this bulletin. Cooling degree days for the calendar year are published in the "Climatological Data Annual Summary."

Information concerning the history of changes in locations, exposure, etc. of substations is kept on file at the National Centers for Environmental Information. Historical information of regular National Weather Service Offices may be obtained from the "Local Climatological Data" annual publication. The contents of this publication may be reprinted or otherwise used freely, with proper credit to the National Centers For Environmental Information. The data are also available digitally.

Effective with the January 2011 Data-Month, COOP Observer Names are no longer included in the Monthly and Annual Climatological Data Publications. This information is not published to ensure the privacy of personal information pursuant to Section 208 of the E-Government Act of 2002 (44 USC 3601).

As of the 2011 Data-Year, Station and Climate Division Maps are no longer being included in the CD Publications. NCEI's Products Branch provides updated Station Maps for various data networks via the Historical Observing Metadata Repository: <http://www.ncdc.noaa.gov/homr>.

The GHCN-Daily Quality Control Flags shown below are displayed as superscripts with the data. For more information on Global Historical Climatology Network - Daily and flags, see: <http://www.ncdc.noaa.gov/oa/climate/ghcn-daily/> and Comprehensive Automated Quality Assurance of Daily Surface Observations. Durre, Imke, Matthew J. Menne, Byron E. Gleason, Tamara G. Houston, Russell S. Vose, 2010: J. Appl. Meteor. Climatol., 49, 16151633. doi: 10.1175/2010JAMC2375.1

Blank = Passed All checks

D = failed duplicate check

G = failed gap check

I = failed internal consistency check

K = failed streak/frequent-value check

L = failed check on length of multiday period

M = failed megaconsistency check

N = failed naught check

O = failed climatological outlier check

R = failed lagged range check

S = failed spatial consistency check

T = failed temporal consistency check

W = temperature too warm for snow

X = failed bounds check

Z = flagged as a result of an official Datzilla investigation

Beginning with the January 2013 CD Publication, monthly mean temperature calculations have changed to the National Data Stewardship Team standard. Monthly maximum and minimum temperatures are not rounded until after the monthly mean temperature is calculated. This is the most accurate outcome, but may be slightly different from the mean derived from rounded monthly maximum and minimum.

The climate division temperature and precipitation values in this publication are based on simple averages from the current set of NWS-Designated Open and Published COOP and First Order Sites within each division. These values differ from those found in NCEI's nClimDiv product. Beginning in February 2014, the nClimDiv product is used by NCEI's Monitoring Branch and in its monthly climate reports. For more details on nClimDiv, please go to <http://www.ncdc.noaa.gov/monitoring-references/maps/us-climate-divisions.php>.

Effective January 2016, Alaska's Climate Divisions are updated to reflect the 13 climate divisional boundaries established by University of Alaska-Fairbanks, NWS, NCEI, Oregon State University, and University of Nebraska-Lincoln. For more details regarding the updated Alaska Climate Divisions, see: <http://journals.ametsoc.org/doi/pdf/10.1175/JAMC-D-11-0168.1> (Bienek et al., 2012).

NOAA National Centers for Environmental Information
Attn: Customer Engagement Branch
151 Patton Avenue
Asheville, NC 28801-5001

Customer Services Number: (828) 271-4800, option 2
TDD : (828) 271-4010
Fax number: (828) 271-4876

NCEI now offers free online access to the *Climatological Data* publication.
Go to : www.ncdc.noaa.gov and choose Most Popular.