



CLIMATOLOGICAL DATA

MARYLAND AND DELAWARE

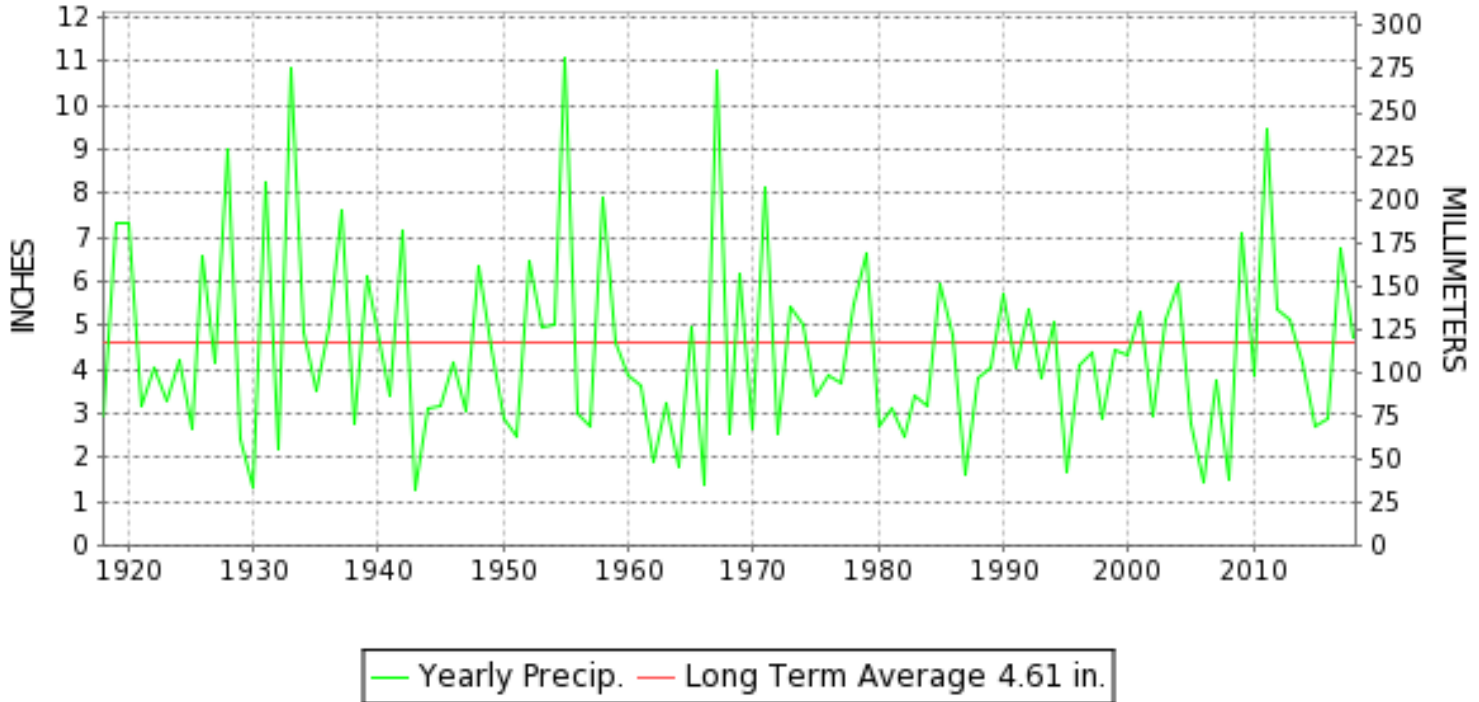
AUGUST 2018

VOLUME 122 NUMBER 08

ISSN 0145-0549

GHCND Ver: 3.25-upd-2019012821

AUGUST PRECIPITATION BY YEAR



TEMPERATURE AND PRECIPITATION EXTREMES

MARYLAND

HIGHEST TEMPERATURE	98	AUGUST 29	MARYLAND SCI CTR
LOWEST TEMPERATURE	45	AUGUST 24	SINES DEEP CREEK
GREATEST TOTAL PRECIPITATION	10.04		MILLERS 4 NE
LEAST TOTAL PRECIPITATION	1.57		SOLOMONS
GREATEST 1 DAY PRECIPITATION	2.83	AUGUST 04	MILLERS 4 NE

"I certify that this is an official publication of the National Oceanic and Atmospheric Administration (NOAA) It is compiled using information from weather observing sites supervised by NOAA/National Weather Service and received at the National Centers for Environmental Information(NCEI), Asheville, North Carolina 28801."

Mary S. Wolpenbut

Director
National Centers for Environmental Information

noaa

National
Oceanic and
Atmospheric Administration

National
Environmental Satellite, Data
and Information Service

National
Centers for Environmental Information
Asheville, North Carolina

DELAWARE

HIGHEST TEMPERATURE	94	AUGUST 29	WILMINGTON NEW CASTLE CO AP
LOWEST TEMPERATURE	59	AUGUST 25+	WILMINGTON NEW CASTLE CO AP
GREATEST TOTAL PRECIPITATION	6.67		WILMINGTON NEW CASTLE CO AP
LEAST TOTAL PRECIPITATION	6.67		WILMINGTON NEW CASTLE CO AP
GREATEST 1 DAY PRECIPITATION	2.01	AUGUST 13	WILMINGTON NEW CASTLE CO AP

MONTHLY STATION AND DIVISION SUMMARY

STATION	TEMPERATURE (°F)													PRECIPITATION (IN)																															
	AVERAGE MAXIMUM	AVERAGE MINIMUM	AVERAGE	DEPARTURE FROM NORMAL	HIGHEST	DATE	LOWEST	DATE	HEATING DEG. DAYS	COOLING DEG. DAYS	NO. OF DAYS				TOTAL	DEPARTURE FROM NORMAL	GREATEST 24 HOURS	DATE	ICE PELLETS, SNOW			NO. OF DAYS																							
											MAX		MIN						TOTAL	MAX DEPTH ON GROUND	DATE	.10 OR MORE	.50 OR MORE	1.00 OR MORE																					
											>=90	<=32	<=32	<=0																															
MARYLAND																																													
SOUTHERN																																													
EASTERN SHORE 01																																													
PRINCESS ANNE	M	M	M								0	0	0	0	A 3.22	-1.44	0.75	31		M							7	2	0																
SALISBURY 2N	88.0	70.6	79.3		93	30	57	25+	0	453	13	0	0	0	3.30	0.92	0.13	13		M						12	7	0																	
SALISBURY-WICOMICO RGNL AP	87.9	69.5	78.7	3.8	95	30	55	25+	0	432	10	0	0	0	2.26	-2.17	0.63	31		M 0.0	0					12	7	0																	
SNOW HILL 4 N	89.8	70.7	80.2	4.5	95	30	57	24	0	479	15	0	0	0	2.63	-2.27	1.70	31		M						7	6	1																	
--DIVISIONAL DATA----->			79.4	4.1B											2.85	-1.89B																													
CENTRAL																																													
EASTERN SHORE 02																																													
ROYAL OAK 2 SSW	89.0	70.5F	79.8F	2.9	95	29	58	24	0	456	16	0	0	0	3.02	-1.25	1.14	01		0.0	0					9	6	1																	
--DIVISIONAL DATA----->			79.8	3.9B											3.02	-1.24B																													
LOWER SOUTHERN 03																																													
MECHANICSVILLE 5 NE	83.7	68.5	76.1	2.4	89	30+	58	25+	0	355	0	0	0	0	4.28	0.40	2.34	22		0.0	0				13	5	1																		
SOLOMONS	M	M	M		89	02	77	02	0	558E	0	0	0	0	MA 1.57	0.51	0.22	22		M	0				4	2	0																		
--DIVISIONAL DATA----->			76.1	1.4B											4.28	0.15B																													
UPPER SOUTHERN 04																																													
BALTIMORE-WASHINGTON INTL AP	87.7	69.2	78.4	3.3	96	29	56	24	0	425	12	0	0	0	3.84	0.55	1.02	21		0.0	0				13	8	1																		
BELTSVILLE	86.5	69.1	77.8	2.0	95	29	57	24	0	402	9	0	0	0	5.67	2.40	1.81	22		0.0	0				10	9	2																		
DALECARLIA RSVR	88.0	68.6	78.3	1.5	96	30	59	24	0	423	12	0	0	0	6.26	2.40	2.10	22		0.0	0				14	10	2																		
MARYLAND SCI CTR	89.7	73.5	81.6	2.6	98	29	65	24	0	521	20	0	0	0	6.45	3.06	1.73	21		M					10	7	3																		
NATL ARBORETUM DC	88.9	71.9	80.4	2.4	96	30	59	24	0	484	14	0	0	0	M 5.04	1.63	1.84	22		0.0	0				10	8	1																		
OXON HILL	87.5	69.3	78.4	1.5	95	30+	58	24	0	424	11	0	0	0	5.78	2.16	2.22	03		0.0	0				7	6	2																		
--DIVISIONAL DATA----->			79.2	3.8B											5.60	1.65B																													
NORTHERN																																													
EASTERN SHORE 05																																													
STEVENSVILLE 2SW	89.1	73.1	81.1	4.9	96	30+	63	25+	0	505	17	0	0	0	4.19		1.22	03		0.0	0				9	7	1																		
SUDLERSVILLE 1S															M																														
--DIVISIONAL DATA----->			81.1	6.2B											4.19	0.33B																													
NORTHERN CENTRAL 06																																													
ABERDEEN PHILLIPS FLD	86.3	68.7	77.5	2.2	95	30	57	25+	0	395	8	0	0	0	A 4.34	0.58	1.26	22		0.0	0				10	5	1																		
CONOWINGO DAM	85.6	68.3	77.0	0.5	96	30+	55	24	0	379	6	0	0	0	6.12	2.21	1.34	22		0.0	0				14	11	2																		
CYLBURN	M	M	M												M																														
DAMASCUS 3 SSW	82.8	66.5	74.6	1.6	90	29+	56	24	0	307	3	0	0	0	6.00	1.71	1.23	04		0.0	0				15	8	3																		
EMMITSBURG 2 SE	85.6	65.8	75.7	3.0	94	30+	54	25+	0	341	9	0	0	0	6.15	2.75	1.91	22		0.0	0				13	8	2																		
MILLERS 4 NE	83.5	66.3	74.9	2.9	91	28	52	24	0	315	3	0	0	0	10.04	6.32	2.83	04		0.0	0				13	10	4																		
REISTERSTOWN 2 NW	84.6M	68.7M	76.6M		93	30+	58	24	0	370E	5	0	0	0	M 7.27	1.95	0.22	22		M 0.0	0				13	11	2																		
SMITHSBURG 2NW	83.1M	63.8M	73.5M	0.4	91	30+	52	25+	0	270E	3	0	0	0	M 9.50	6.36	2.00	19		M					12	8	5																		

MONTHLY STATION AND DIVISION SUMMARY

STATION	TEMPERATURE (°F)										PRECIPITATION (IN)																											
	AVERAGE MAXIMUM	AVERAGE MINIMUM	AVERAGE	DEPARTURE FROM NORMAL	HIGHEST	DATE	LOWEST	DATE	HEATING DEG. DAYS	COOLING DEG. DAYS	NO. OF DAYS				TOTAL	DEPARTURE FROM NORMAL	GREATEST 24 HOURS	DATE	ICE PELLETS, SNOW			NO. OF DAYS																
											MAX		MIN						TOTAL	MAX DEPTH ON GROUND	DATE	.10 OR MORE	.50 OR MORE	1.00 OR MORE														
											>=90	<=32	<=32	<=0																								
--DIVISIONAL DATA-----> APPALACHIAN MOUNTAIN 07			75.7	2.2B										6.53	2.69B																							
HAGERSTOWN 1 E	85.9	67.4	76.6		94	29+	54	24	0	368	7	0	0	0	8.20		2.14	21	0.0	0			13	8	4													
CUMBERLAND 2	85.5	65.4	75.4	0.0	96	30	54	25+	0	330	4	0	0	0	6.58	3.41	1.22	22	0.0	0			17	12	2													
FROSTBURG 2	78.4	61.6	70.0	2.2	87	30+	51	24	7	169	0	0	0	0	8.07	4.47	1.87	03	0.0	0			16	13	3													
HAGERSTOWN RGNL AP	86.4	69.0	77.7	4.4	95	29+	58	24	0	398	8	0	0	0	6.24	3.10	1.60	01	M			11	8	3														
SHARPSBURG 5 S	84.9	64.3	74.6	1.8	93	30	53	25+	0	305	6	0	0	0	5.68	2.45	2.25	22	0.0	0			15	8	1													
WILLIAMSPORT															M 7.99	5.07	1.98	22	M			18	10	4														
--DIVISIONAL DATA-----> ALLEGHENY PLATEAU 08			74.9	3.7B										6.95	3.50B																							
OAKLAND 1 SE	80.0	62.5	71.2	4.3	88	29	49	25+	6	211	0	0	0	0	6.44	2.66	1.25	03	0.0	0			22	12	2													
SAVAGE RIVER DAM	78.7MF	62.2M	70.4MF	1.3	87	29	50	25	6E	173E	0	0	0	0	M 6.03	2.70	1.17	01	M 0.0	0			15	11	3													
SINES DEEP CREEK	M	M	M		82	30+	45	24	18E	144E	0	0	0	0	MA 6.70		0.95	22	M	0			12	10	0													
--DIVISIONAL DATA----->			70.8	3.7B										6.44	2.53B																							
DELAWARE NORTHERN 01																																						
WILMINGTON NEW CASTLE CO AP	86.5	70.0	78.2	3.0	94	29	59	25+	0	418	9	0	0	0	6.67	3.42	2.01	13	0.0	0			13	9	1													
WILMINGTON PORTER RSCH	M	M	M								0	0	0	0	M				M																			
--DIVISIONAL DATA----->			78.2	3.7B										6.67	2.95B																							

DAILY PRECIPITATION (INCHES)

STATION	TOTAL	DAY OF MONTH																																
		01	02	03	04	05	06	07	08	09	10	11	12	13	14	15	16	17	18	19	20	21	22	23	24	25	26	27	28	29	30	31		
MARYLAND																																		
SOUTHERN																																		
EASTERN SHORE 01																																		
PRINCESS ANNE	A 3.22				*	*	0.66 _a	0.01				*	*	0.92 _a	0.02	0.02			*	*	0.07 _a	0.07	0.68	0.02									0.75	
SALISBURY 2N	3.30			0.52	0.14		0.01		0.02				0.62	0.92		0.20					0.03	0.01	0.05	0.60									0.18	
SALISBURY-WICOMICO RGNL AP	2.26		0.02	0.51	0.11			T			0.21	0.12	0.01	0.28					0.01			0.03	0.30	0.03									0.63	
SNOW HILL 4 N	2.63		0.27	0.25											0.14						0.03		0.14	0.10									1.70	
CENTRAL																																		
EASTERN SHORE 02																																		
ROYAL OAK 2 SSW	3.02	1.14		T	0.07				0.20				0.96	0.30	0.02							T	0.11	0.17									0.05	
LOWER SOUTHERN 03																																		
MECHANICSVILLE 5 NE	4.28	0.83	T	0.06	0.08				0.01	0.08			0.18	0.33	0.19	T						0.01	0.07	2.34	0.08								0.02	
SOLOMONS	MA 1.57	0.22	T	*	*	*	*	0.10 _a	T	*	*	*	*	0.67 _a	0.06	*	*	*	*	*	0.00 _a	0.01	0.51	*	0.00 _a	*	*	0.00 _a					-	-
UPPER SOUTHERN 04																																		
BALTIMORE-WASHINGTON INTL AP	3.84	0.24	0.28	0.33	0.14	0.08	T	0.48	T			0.07	0.24	0.02			T	0.06	T	T	1.02	0.01									T	0.87		
BELTSVILLE	5.67	0.60	0.59	0.24	0.31				1.26				0.19	0.47				0.08																0.12
DALECARLIA RSVR	6.26	1.11	0.58	0.35	0.55			0.40	0.50			0.06	0.19	0.13				0.21	0.02												0.04		0.02	
MARYLAND SCI CTR	6.45	0.57	0.14	0.59	0.06				0.01			0.85	1.32					0.06				1.73											1.12	
NATL ARBORETUM DC	M 5.04	0.14	T	0.97	0.55			0.54	0.16				0.55	0.24	T						T			1.84						0.03		0.02		
OXON HILL	5.78	0.07		2.22	0.30			T				0.32	0.52					T		T			2.16	0.19								T		
NORTHERN																																		
EASTERN SHORE 05																																		
STEVENSVILLE 2SW	4.19	0.81		1.22	0.56							0.35	0.47	0.15	0.01																		0.01	
SUDLERSVILLE 1S	M	-	-	-	-	-	-	-	-	-	-	-	-	-	-	-	-	-	-	-	-	-	-	-	-	-	-	-	-	-	-	-	-	
NORTHERN CENTRAL 06																																		
ABERDEEN PHILLIPS FLD	A 4.34	0.09	0.14	0.07	0.44					0.62		*	1.44 _a	0.21	0.01				0.03														0.03	
CONOWINGO DAM	6.12	0.09	1.15	0.19	0.78		0.14		0.14	0.43			0.92	0.15	0.22			0.48	0.05	0.04				1.26										
CYLBURN	M	-	-	-	-	-	-	-	-	-	-	-	-	-	-	-	-	-	-	-	-	-	-	-	-	-	-	-	-	-	-	-	-	
DAMASCUS 3 SSW	6.00	1.06	0.29	0.18	1.23			0.03	0.04	0.08		T	0.01	0.16	0.09			0.05	0.05				1.22	0.91								0.60		
EMMITSBURG 2 SE	6.15	0.19	0.86	0.31	1.13		T		0.04	0.74				T	0.04	T		0.48	0.31	0.07	0.05	1.91										0.02		
MILLERS 4 NE	10.04	0.48	0.38	T	2.83				T	0.90	0.03		0.52	0.13				1.26	0.49	0.04	0.09	1.87								T		1.02		
REISTERSTOWN 2 NW	M 7.27	0.65	0.46	0.17	1.88					0.93			0.37	0.40	0.10			0.20	0.10	0.04			1.95	0.02										
SMITHSBURG 2NW	M 9.50	0.10	1.07	1.16	0.70				0.08	1.50	-			0.94				0.03	2.00		0.05	1.80										0.07		
APPALACHIAN																																		
MOUNTAIN 07																																		
HAGERSTOWN 1 E	8.20	1.40	1.34	0.73	0.01			0.08	0.97		0.02	0.01		0.18	T		T	T	1.06	0.01		2.14							T			0.25		
CUMBERLAND 2	6.58	1.21	0.42	0.88	0.35			0.07	0.08	0.31		0.12		0.12	0.01	0.40		0.81	0.15	0.07		0.05	1.22									0.31		
FROSTBURG 2	8.07	1.18	0.57	1.87	0.76			T	0.10	0.31		T		0.39	0.53		0.14	0.09	0.18	0.02	0.10	1.59									0.05	0.19		
HAGERSTOWN RGNL AP	6.24	1.60	0.50	0.73	T			0.06	0.47		0.06	0.04		0.23	T		T	1.29	T		1.02											0.24		
SHARPSBURG 5 S	5.68	0.21	0.40	0.76	0.75				0.05	0.46			0.02	0.02	T	0.08		0.44	0.19		0.01	2.25					0.02		0.02					
WILLIAMSPORT	M 7.99	0.07	1.08	0.62	1.04			0.02	0.42	0.54		0.02	0.07		1.03	0.04		0.03	0.52	0.04	0.05	1.98										0.23		
ALLEGHENY PLATEAU 08																																		

MARYLAND AND DELAWARE
201808

DAILY PRECIPITATION (INCHES)

STATION	TOTAL	DAY OF MONTH																														
		01	02	03	04	05	06	07	08	09	10	11	12	13	14	15	16	17	18	19	20	21	22	23	24	25	26	27	28	29	30	31
OAKLAND 1 SE	6.44	0.53	0.55	1.25	0.10		0.02		0.08	0.44	0.02	0.52		0.63	0.19	0.02		0.16	0.06	0.44		0.08	1.17	0.01							0.02	0.02
SAVAGE RIVER DAM	M 6.03	1.17	0.24	1.10	0.78	-	-		-	0.53	0.10	T		0.13	0.21	0.06	-	0.05	0.37	0.16	T	0.06	1.01							0.06	0.06	
SINES DEEP CREEK	MA 6.70	0.70	0.75	0.65	*	*	*	0.40 _a	0.60	0.50	0.30	*	*	0.60 _a	-	0.25	-	0.40	*	*	0.20 _a		0.95	0.05			*	*	0.05 _a	-	0.25	0.05
DELAWARE																																
NORTHERN 01																																
WILMINGTON NEW CASTLE CO AP	6.67	0.56	T	0.93	0.06			T	0.06		T	0.78		2.01	0.31			0.24	0.33	0.05		0.45	0.08								0.81	
WILMINGTON PORTER RSCH	M	-	-	-	-	-	-	-	-	-	-	-	-	-	-	-	-	-	-	-	-	-	-	-	-	-	-	-	-	-	-	-

DAILY TEMPERATURES (°F)

STATION	OB. TIME	MAX/MIN	DAY OF MONTH																															AVERAGE	
			01	02	03	04	05	06	07	08	09	10	11	12	13	14	15	16	17	18	19	20	21	22	23	24	25	26	27	28	29	30	31		
MARYLAND SOUTHERN EASTERN SHORE 01 PRINCESS ANNE	17	MAX MIN																																	M M
SALISBURY 2N	17	MAX MIN	88 76	89 76	86 74	86 74	92 71	92 71	91 73	91 74	90 73	90 71	89 72	88 69	86 71	84 67	87 69	89 70	91 72	90 76	87 73	82 70	82 69	86 62	79 57	85 57	83 62	85 61	91 75	92 77	92 77	93 76	92 71	88.0 70.6	
SALISBURY-WICOMICO RGNL AP	24	MAX MIN	87 76	88 74	86 73	87 73	91 69	89 70	92 72	92 74	90 70	87 70	89 69	85 68	84 68	88 70	89 73	92 70	88 73	87 71	80 70	82 71	87 71	87 58	84 55	83 55	86 60	92 70	94 73	94 76	95 76	86 71	87.9 69.5		
SNOW HILL 4 N	17	MAX MIN	89 70	88 70	89 79	88 80	92 70	90 71	91 74	93 74	92 75	93 71	93 71	88 70	86 70	88 70	90 69	93 71	91 79	85 74	83 73	85 70	83 70	81 60	85 57	84 58	87 61	92 71	94 71	95 71	92 75	93 73	89.8 70.7		
CENTRAL EASTERN SHORE 02 ROYAL OAK 2 SSW	17	MAX MIN	88 72	90 76	88 75	88 62	93 71	93 71	93 64	93 73	92 76	91 73	90 75	89 70	86 72	85 62	89 71	91 71	93 74	91 76	85 72	83 54 ^s	85 71	83 74	81 62	85 58	84 60	87 63	92 70	94 73	95 79	92 78	90 72	89.0 70.5	
LOWER SOUTHERN 03 MECHANICSVILLE 5 NE	07	MAX MIN	80 70	83 70	86 71	81 72	83 69	88 69	88 71	89 70	87 70	85 70	86 70	85 69	82 70	87 65	80 66	84 69	86 70	88 73	86 71	81 70	78 70	80 72	81 61	75 58	79 58	77 60	81 62	86 69	88 73	89 74	87 72	83.7 68.5	
SOLOMONS	08	MAX MIN		89 77																														M M	
UPPER SOUTHERN 04 BALTIMORE-WASHINGTON INTL AP	24	MAX MIN	89 72	88 73	85 72	88 71	92 69	91 71	92 71	91 71	89 71	91 70	90 73	86 71	86 67	84 66	89 68	92 74	94 72	88 72	82 69	78 68	79 70	83 68	80 63	84 57	80 59	88 61	92 70	95 73	96 74	93 75	83 70	87.7 69.2	
BELTSVILLE	08	MAX MIN	83 71	86 72	84 73	83 71	88 69	92 70	90 72	92 71	90 72	88 70	89 73	89 70	85 69	86 67	83 67	88 68	90 72	91 72	85 69	80 68	78 70	79 68	83 63	79 57	83 59	82 61	86 68	92 72	95 74	94 72	89 72	86.5 69.1	
DALECARLIA RSVR	08	MAX MIN	84 71	89 72	85 72	85 70	87 69	92 70	91 73	92 71	92 70	88 69	91 73	84 70	87 66	86 65	89 66	93 66	94 66	93 66	87 68	82 69	87 69	80 68	81 62	83 62	83 60	84 61	89 70	92 73	95 74	96 74	90 74	88.0 68.6	
MARYLAND SCI CTR	24	MAX MIN	91 75	92 75	88 74	92 74	93 77	93 77	95 77	94 76	91 74	93 76	94 75	89 73	90 68	86 69	92 72	94 76	96 78	92 75	79 71	79 69	80 71	85 71	81 66	85 65	82 70	91 68	93 76	97 80	98 80	91 79	85 72	89.7 73.5	
NATL ARBORETUM DC	08	MAX MIN	85 74	89 75	86 74	85 76	89 73	94 73	93 75	92 75	93 74	92 72	92 76	87 72	87 68	86 70	91 70	93 76	93 74	89 71	85 70	81 70	83 73	84 65	81 59	85 61	84 66	89 71	93 75	93 78	94 76	96 74	93 74	88.9 71.9	
OXON HILL	07	MAX MIN	84 71	88 73	84 70	84 71	88 71	92 70	89 71	91 71	92 72	91 74	90 74	89 70	83 67	86 67	85 67	89 73	90 73	91 73	86 70	83 68	79 69	83 62	83 58	81 60	85 62	84 65	89 69	92 74	95 73	95 73	92 73	87.5 69.3	
NORTHERN EASTERN SHORE 05 STEVENSVILLE 2SW	07	MAX MIN	84 72	91 76	91 74	89 74	90 74	93 73	93 74	94 75	95 75	92 76	92 77	93 72	84 73	87 71	88 70	92 74	95 77	95 77	93 75	79 70	80 72	82 73	84 67	79 63	85 63	84 68	85 74	92 74	96 78	96 80	88 76	89.1 73.1	
NORTHERN CENTRAL 06 ABERDEEN PHILLIPS FLD	07	MAX MIN	82 69	87 73	87 73	85 73	88 69	92 70	91 71	91 71	90 70	89 68	88 70	88 69	85 66	84 66	83 67	89 70	88 71	92 73	88 71	73 67	77 68	80 69	83 64	79 57	82 57	80 61	85 63	89 69	94 73	95 76	90 74	86.3 68.7	
CONOWINGO DAM	07	MAX MIN	80 74	90 66	80 68	86 71	89 70	93 68	89 72	89 69	89 69	88 70	89 72	80 69	87 66	84 66	83 66	81 68	87 71	87 72	85 68	82 66	81 66	77 65	78 55	82 57	82 60	78 64	85 74	96 73	96 72	96 71	93 71	85.6 68.3	

DAILY TEMPERATURES (°F)

STATION	OB. TIME	MAX/MIN	DAY OF MONTH																															AVERAGE	
			01	02	03	04	05	06	07	08	09	10	11	12	13	14	15	16	17	18	19	20	21	22	23	24	25	26	27	28	29	30	31		
CYLBURN	08	MAX MIN																																M M	
DAMASCUS 3 SSW	22	MAX MIN	86 69	79 70	80 70	83 68	88 68	89 64	87 71	86 67	85 67	84 66	86 70	80 67	81 66	80 62	84 64	87 66	90 70	82 69	72 64	73 64	75 69	79 66	75 58	81 56	78 59	85 62	87 68	90 70	90 71	84 70	80 70	82.8 66.5	
EMMITSBURG 2 SE	07	MAX MIN	80 68	84 70	79 70	81 68	89 67	94 67	93 68	89 68	90 67	90 66	89 66	88 69	80 69	81 68	82 65	88 65	90 66	90 71	86 65	73 65	77 66	78 66	83 59	80 54	84 54	83 58	87 60	93 67	93 67	94 70	86 72	85.6 65.8	
MILLERS 4 NE	18	MAX MIN	83 69	82 68	82 70	84 68	89 67	89 69	88 70	86 67	85 66	85 70	82 67	82 66	78 64	85 65	87 66	90 71	83 65	72 63	76 67	76 65	80 59	77 52	80 57	80 60	83 67	88 67	91 70	90 72	87 72	83 69	83.5 66.3		
REISTERSTOWN 2 NW	08	MAX MIN	80 67	85 71	83 72	81 71	86 71	91 72	90 72	89 69	89 68	87 71	87 72	82 68	83 67	83 65	82 68	87 73	89 73	90 65	85 64	74 64	77 67	78 60	82 58	77 57	78 60	82 61	77 66	70 67	93 74	93 75	86 72	84.6 68.7	
SMITHSBURG 2NW	08	MAX MIN	79 65	86 67	79 68	80 68	85 66	89 66	90 68	85 65	86 65			84 64	81 65	78 62	77 62		87 67	88 70	81 60	73 60	76 64	83 65	80 56	77 52	81 52	81 60	85 61	89 66	91 67	91 68	86 68	83.1 63.8	
APPALACHIAN MOUNTAIN 07																																			
HAGERSTOWN 1 E	24	MAX MIN	85 69	78 69	79 70	87 69	91 68	91 71	89 69	89 68	89 67	87 70	87 67	84 66	82 64	82 65	88 68	90 72	91 70	84 64	77 66	79 69	83 66	83 60	79 54	83 58	83 61	88 68	92 68	94 72	94 73	88 72	86 72	85.9 67.4	
CUMBERLAND 2	07	MAX MIN	78 67	87 68	84 68	81 67	89 68	89 69	87 69	89 67	88 65	88 65	86 66	84 66	81 62	81 63	87 66	90 66	88 69	84 65	80 65	77 69	82 68	81 55	81 54	82 54	81 59	84 63	92 68	95 69	96 69	89 71	85.5 65.4		
FROSTBURG 2	07	MAX MIN	70 62	82 64	77 64	74 63	83 63	84 64	85 65	84 66	83 64	79 62	80 62	78 61	80 59	73 59	78 62	83 64	82 65	76 58	74 60	67 63	76 64	72 52	70 51	77 52	74 55	79 61	85 67	87 66	87 66	81 64	78.4 61.6		
HAGERSTOWN RGNL AP	24	MAX MIN	86 70	80 70	82 72	87 70	90 71	92 72	89 71	90 70	89 70	87 70	87 72	83 69	82 67	82 66	88 67	90 70	93 73	86 71	77 65	79 67	84 71	83 65	81 59	83 58	81 62	88 66	92 70	95 73	95 75	89 74	86 72	86.4 69.0	
SHARPSBURG 5 S	07	MAX MIN	80 69	85 69	80 69	81 67	86 66	90 66	91 68	88 67	88 65	87 65	87 66	82 66	83 59	80 60	86 62	89 66	90 70	83 63	78 63	76 66	83 64	81 54	78 53	81 53	81 59	87 60	90 67	92 69	93 68	88 68	84.9 64.3		
ALLEGHENY PLATEAU 08																																			
OAKLAND 1 SE	07	MAX MIN	75 64	81 64	77 64	76 64	83 64	83 64	87 67	86 65	82 62	81 64	83 64	79 63	79 60	76 61	76 62	81 64	86 67	82 65	76 64	81 65	73 65	83 53	74 49	74 49	76 58	73 66	86 64	88 64	87 64	81 64	80.0 62.5		
SAVAGE RIVER DAM	08	MAX MIN	73 64	80 64	76 65	73 65		65 ^S	81 65	82 65	82 63	82 62	80 64	82 63	80 61	76 62	76 63	84 64	82 64	76 64	75 64	71 66	76 66	73 54	75 51	75 50		76 56	85 64	87 65	86 63	84 64	78.7 62.2		
SINES DEEP CREEK	07	MAX MIN	76 52	72 60	77 61				82 62	80 65	80 65	79 60			82 62		78 58	81 56			80 62	76 63	78 63	70 50	75 45			76 60	78 62		82 65	80 64	M M		
DELAWARE NORTHERN 01																																			
WILMINGTON NEW CASTLE CO AP	24	MAX MIN	88 74	89 73	85 73	87 74	90 70	92 73	89 74	91 72	89 72	90 70	89 69	86 69	85 69	83 67	88 69	89 71	92 74	87 73	74 67	77 68	80 70	84 68	80 63	82 59	80 59	85 64	90 69	93 74	94 76	92 76	81 70	86.5 70.0	
WILMINGTON PORTER RSCH	24	MAX MIN																																	M M

MARYLAND AND DELAWARE
201808

DAILY SOIL TEMPERATURES

STATION	DEPTH	TIME	DAY OF MONTH																															AVERAGE	
			01	02	03	04	05	06	07	08	09	10	11	12	13	14	15	16	17	18	19	20	21	22	23	24	25	26	27	28	29	30	31		
MARYLAND UPPER SOUTHERN 04 BELTSVILLE (in)																																			

MARYLAND AND DELAWARE
201808

SOILS REFERENCE NOTES

STATION	SOIL TYPE	SOIL COVER	SLOPE	UNITS
BELTSVILLE	UNKNOWN	GRASS	0	F

MARYLAND AND DELAWARE
201808

SNOWFALL AND SNOW ON GROUND (INCHES)

STATION		DAY OF MONTH																															
		01	02	03	04	05	06	07	08	09	10	11	12	13	14	15	16	17	18	19	20	21	22	23	24	25	26	27	28	29	30	31	
MARYLAND																																	
SOUTHERN																																	
EASTERN SHORE 01																																	
PRINCESS ANNE	SNOWFALL																																
SALISBURY 2N	SNOWFALL																																
SALISBURY-WICOMICO RGNL AP	SNOWFALL	-																															
	SN ON GND	-		-																													
SNOW HILL 4 N	SNOWFALL																																
DELAWARE																																	
NORTHERN 01																																	
WILMINGTON NEW CASTLE CO AP	SNOWFALL																																
	SN ON GND																																
WILMINGTON PORTER RSCH	SNOWFALL																																

Snowfall: Includes snow and ice. Values for NWS stations (J index note) are Mid-Mid (LST).

Snow on ground: Includes snow, sleet, ice, and hail. Values for NWS stations (J index note) are observed at 12 UTC (GMT).

Water Equivalent: Given for NWS stations (J index note) only, when snow depth is 2 inches or more, and is measured at 18 UTC (GMT)

PAN EVAPORATION AND WIND

STATION		DAY OF MONTH																															TOTAL OR AVERAGE
		01	02	03	04	05	06	07	08	09	10	11	12	13	14	15	16	17	18	19	20	21	22	23	24	25	26	27	28	29	30	31	
MARYLAND UPPER SOUTHERN 04 BELTSVILLE	WIND	40	91	49	81	19	10	19	23	39	42	25	33	18	36	58	35	12	46	41	34	28	31	55	40	17	19	24	12	15	23	27	1042
	EVAP	0.11	0.27	0.18	0.13	0.18	0.19	0.18	0.38	0.25	0.24	0.23	0.19	0.14	0.21	0.24	0.22	0.17	0.20	0.15	0.17	0.10	0.09	0.19	0.22	0.21	0.15	0.20	0.17	0.21	0.20	0.22	5.99
	MAX	89	89	88	87	93	98	96	98	96	94	96	85	92	95	91	93	94	95	89	90	82	81	85	85	91	89	92	99	101	99	98	91.8
	MIN	68	73	72	72	72	74	74	72	73	72	72	71	71	67	66	68	70	72	69	68	68	69	61	62	61	62	71	71	75	74	74	69.8
ALLEGHENY PLATEAU 08 SAVAGE RIVER DAM	WIND	-	-	-	-	-	-	-	-	-	-	-	-	-	-	-	-	-	-	-	-	-	-	-	-	-	-	-	-	-	-	-	M
	EVAP	-	-	-	-	-	-	-	-	-	-	-	-	-	-	-	-	-	-	-	-	-	-	-	-	-	-	-	-	-	-	-	M
	MAX	-	-	-	-	-	-	-	-	-	-	-	-	-	-	-	-	-	-	-	-	-	-	-	-	-	-	-	-	-	-	-	-
	MIN	-	-	-	-	-	-	-	-	-	-	-	-	-	-	-	-	-	-	-	-	-	-	-	-	-	-	-	-	-	-	-	M

Evaporation: Is measured in hundreths of inches.

Wind: Is measured in miles.

Max and Min: The maximum and minimum temperatures (Fahrenheit) of the water in the evaporation pan.

STATION INDEX

STATION	INDEX NO.	DIVISION	COUNTY	LATITUDE	LONGITUDE	ELEVATION (IN FEET)	OBSERVATION TIME AND TABLES			
							LOCAL STD TIME			
							TEMP	PRECIP	EVAP	SPECIAL SEE (NOTES)
MARYLAND										
ABERDEEN PHILLIPS FLD	0015	06	HARFORD	39 28	76 10W	57	07	07		CH
ANNAPOLIS US NAVAL ACADEMY ASO R	0186	04	ANNE ARUNDEL	38 59	76 29W	6	24	24		H
BALTIMORE-WASHINGTON INTL AP R	0465	04	ANNE ARUNDEL	39 10	76 41W	156	24	24		HJ
BELTSVILLE	0700	04	PRINCE GEORGE'S	39 2	76 56W	145	08	08	08	GCH
CONOWINGO DAM	2060	06	HARFORD	39 39	76 11W	40	07	07		H
CUMBERLAND 2	2282	07	ALLEGANY	39 39	78 45W	730	07	07		H
CYLBURN	2308	06	BALTIMORE	39 21	76 39W	235	08	08		H
DALECARLIA RSVR	2325	04	DISTRICT OF COLUMBIA	38 56	77 7W	150	08	08		H
DAMASCUS 3 SSW	2336	06	MONTGOMERY	39 16	77 14W	700	22	22		H
EMMITSBURG 2 SE	2906	06	FREDERICK	39 41	77 17W	403	07	07		H
FROSTBURG 2	3415	07	ALLEGANY	39 40	78 56W	2170	07	07		H
HAGERSTOWN 1 E	1790	07	WASHINGTON	39 38	77 42W	532	24	24		H
HAGERSTOWN RGNL AP R	3976	07	WASHINGTON	39 42	77 44W	705	24	24		H
MARYLAND SCI CTR R	5718	04	BALTIMORE (CITY)	39 17	76 37W	20	24	24		H
MECHANICSVILLE 5 NE	5865	03	ST. MARY'S	38 30	76 44W	100	07	07		H
MILLERS 4 NE	5934	06	CARROLL	39 43	76 48W	860	18	18		CH
NATL ARBORETUM DC	6350	04	DISTRICT OF COLUMBIA	38 55	76 58W	50	08	08		H
OAKLAND 1 SE	6620	08	GARRETT	39 25	79 24W	2420	07	07		H
OXON HILL	6800	04	PRINCE GEORGE'S	38 48	76 60W	186	07	07		H
PRINCESS ANNE	7330	01	SOMERSET	38 13	75 41W	20	17	17		H
REISTERSTOWN 2 NW	7580	06	BALTIMORE	39 30	76 50W	737	08	08		H
ROYAL OAK 2 SSW //	7806	02	TALBOT	38 43	76 11W	10	17	17		H
SALISBURY 2N	8004	01	WICOMICO	38 24	75 36W	20	17	17		H
SALISBURY-WICOMICO RGNL AP //R	8005	01	WICOMICO	38 20	75 31W	47	24	24		H
SAVAGE RIVER DAM	8065	08	GARRETT	39 31	79 8W	1495	08	08	08	CH
SHARPSBURG 5 S	8207	07	WASHINGTON	39 24	77 43W	500	07	07		H
SINES DEEP CREEK	8315	08	GARRETT	39 31	79 25W	2040	07	07		H
SMITHSBURG 2NW	8371	06	WASHINGTON	39 40	77 35W	670	08	08		H
SNOW HILL 4 N	8380	01	WORCESTER	38 14	75 23W	30	17	17		H
SOLOMONS	8405	03	CALVERT	38 19	76 27W	12	08	08		H
STEVENSVILLE 2SW	8557	05	QUEEN ANNE'S	38 58	76 20W	10	07	07		H
SUDLERSVILLE 1S	8657	05	QUEEN ANNE'S	39 10	75 51W	100		20		H
WILLIAMSPORT	9570	07	WASHINGTON	39 37	77 51W	360		06		CH
DELAWARE										
WILMINGTON NEW CASTLE CO AP //R	9595	01	NEW CASTLE	39 40	75 36W	79	24	24		HJ
WILMINGTON PORTER RSCH	9605	01	NEW CASTLE	39 46	75 32W	270	24	24		H

REFERENCE NOTES

STATION NAMES: Name of the city, town or locality. Figures and letters following the station names indicate the distance in miles and direction from the post office or town community center.

DIVISIONS: Areas within a state of similar climatological characteristics. Division averages are calculated using data from stations that record temperature and/or precipitation. Station Precipitation totals flagged with an 'F' or 'M' are excluded from the Divisional Average calculations of precipitation. Stations with monthly Temperature averages flagged with an 'F' or 'M' are included in the Divisional Average if there are no more than 9 flagged or missing daily values in the month, else they are excluded from the divisional average for temperature.

NORMALS: The average value of the meteorological element over a time period. Effective 1 January 2012, the averaging period for station departures is 1981 to 2010. The normals for National Weather Service localities have been adjusted so as to be representative for the current observation site.

The January 2011 through December 2015 publications incorrectly state the computation of divisional departures. Climate Division departures have been, and continue to be, computed from 1971-2000 Normals, not 1981-2010 as stated. Station departures are accurately described as departures from 1981-2010.

MONTHLY DEGREE DAY TOTALS: One heating (cooling) degree day is accumulated for each whole degree that the daily mean temperature is below (above) 65 degrees Fahrenheit.

PRECIPITATION: Values shown in hundredths of inches are water equivalent totals, i.e., total of liquid and melted frozen precipitation. In the "Monthly Summarized Data" table the total snow and sleet values shown in tenths of inches are unmelted amounts. The max depth on ground values of snow and sleet shown in whole inches are cumulative unmelted amounts. The number of days with .10, .50, 1.00 or more refers to water equivalents.

PRECIPITATION QUALITY CONTROL: The NCEI quality control process may flag precipitation data that are spatially inconsistent, exceed climatological limits, or are inconsistent with prevailing weather patterns.

TEMPERATURE: Original temperature values are given in the "Daily Temperature" table. Summary temperature information (averages, departures, extremes, monthly degree day totals) is based on the values labeled MAX/MIN.

WIND: (As shown in the "Evaporation and Wind" table) the total wind movement in miles over the evaporation pan as determined by an anemometer recorder located 6-8 inches above the pan.

SYMBOLS AND LETTERS USED IN THE STATION INDEX TABLE

C Station is equipped with recording rain gage (R) but values in this bulletin are from a non-recording rain gage unless indicated by an R.
G Observations appear in the "Soil Temperatures" table.
H Observations appear in the "Snowfall and Snow on the Ground" table.
J Station also published as a Local Climatological Data publication.
VAR Observation time varies.
SR / SS Observation time near sunrise / Observation time near sunset, respectively.

SYMBOLS AND LETTERS USED IN THE DATA TABLES

(DAILY DATA ARE FOR THE 24 HOURS IMMEDIATELY PRECEDING OBSERVATION TIME.)

BLANK Entries in the "Monthly Summarized Data" table indicate no record.

BLANK Entries in the "Daily Precipitation" and "Snowfall and Snow on the Ground" tables indicate zero.

BLANK Entries in the "Daily Temperature" table indicate a missing record

- No record. Data not recorded or not received in time for publication.

+ Precipitation or temperature extremes occurred on one or more previous dates during the month.

* Rain gage not read. Precipitation is included in the amount following the asterisks.

Time distribution may not be known. A * preceding the monthly total indicates precipitation amount is being carried forward to next month's total, and may include amounts from the previous month(s).

a As a subscript, indicates accumulated total.

A Amount of precipitation is the total of observer's entries for the current month. It may include precipitation that occurred during the previous month. Refer to earlier bulletin to determine date of last

reading. (Hawaii stations)

B Divisional Departure from normals are computed using 1971-2000 normals.

E Normalized HDD/CDD Calculation. E is appended to the HDD/CDD Calculation when 1-9 individual daily TMAX and/or TMIN values are missing and a Normalized HDD/CDD Calculation is provided. M appears alone if 10 or more daily values are missing.

F Monthly calculation flagged value. F is appended to average and/or total values computed which exclude one or more daily data values that have been flagged by the GHCN-Daily Dataset

M Insufficient or partial data. M is appended to average and/or total values computed with 1-9 daily values missing. M appears alone if 10 or more daily values are missing, (8 or more for wind and evaporation).

N Indicates snow fall or Snowdepth totals are computed with one or more missing days.

R Amounts from recording rain gage.

T Trace. An amount too small to measure.

SEASONAL TABLES: Monthly and seasonal snowfall and heating degree days for the 12 months ending with the June data are published in the July issue of this bulletin. Cooling degree days for the calendar year are published in the "Climatological Data Annual Summary."

Information concerning the history of changes in locations, exposure, etc. of substations is kept on file at the National Centers for Environmental Information. Historical information of regular National Weather Service Offices may be obtained from the "Local Climatological Data" annual publication. The contents of this publication may be reprinted or otherwise used freely, with proper credit to the National Centers For Environmental Information. The data are also available digitally.

Effective with the January 2011 Data-Month, COOP Observer Names are no longer included in the Monthly and Annual Climatological Data Publications. This information is not published to ensure the privacy of personal information pursuant to Section 208 of the E-Government Act of 2002 (44 USC 3601).

As of the 2011 Data-Year, Station and Climate Division Maps are no longer being included in the CD Publications. NCEI's Products Branch provides updated Station Maps for various data networks via the Historical Observing Metadata Repository: <http://www.ncdc.noaa.gov/homr>.

The GHCN-Daily Quality Control Flags shown below are displayed as superscripts with the data. For more information on Global Historical Climatology Network - Daily and flags, see: <http://www.ncdc.noaa.gov/oa/climate/ghcn-daily/> and Comprehensive Automated Quality Assurance of Daily Surface Observations. Durre, Imke, Matthew J. Menne, Byron E. Gleason, Tamara G. Houston, Russell S. Vose, 2010: J. Appl. Meteor. Climatol., 49, 16151633. doi: 10.1175/2010JAMC2375.1

Blank = Passed All checks	N = failed naught check
D = failed duplicate check	O = failed climatological outlier check
G = failed gap check	R = failed lagged range check
I = failed internal consistency check	S = failed spatial consistency check
K = failed streak/frequent-value check	T = failed temporal consistency check
L = failed check on length of multiday period	W = temperature too warm for snow
M = failed megaconsistency check	X = failed bounds check
	Z = flagged as a result of an official Datzilla investigation

Beginning with the January 2013 CD Publication, monthly mean temperature calculations have changed to the National Data Stewardship Team standard. Monthly maximum and minimum temperatures are not rounded until after the monthly mean temperature is calculated. This is the most accurate outcome, but may be slightly different from the mean derived from rounded monthly maximum and minimum.

The climate division temperature and precipitation values in this publication are based on simple averages from the current set of NWS-Designated Open and Published COOP and First Order Sites within each division. These values differ from those found in NCEI's nClimDiv product. Beginning in February 2014, the nClimDiv product is used by NCEI's Monitoring Branch and in its monthly climate reports. For more details on nClimDiv, please go to <http://www.ncdc.noaa.gov/monitoring-references/maps/us-climate-divisions.php>.

Effective January 2016, Alaska's Climate Divisions are updated to reflect the 13 climate divisional boundaries established by University of Alaska-Fairbanks, NWS, NCEI, Oregon State University, and University of Nebraska-Lincoln. For more details regarding the updated Alaska Climate Divisions, see: <http://journals.ametsoc.org/doi/pdf/10.1175/JAMC-D-11-0168.1> (Bienek et al., 2012).

NOAA National Centers for Environmental Information
Attn: Customer Engagement Branch
151 Patton Avenue
Asheville, NC 28801-5001

Customer Services Number: (828) 271-4800, option 2
TDD : (828) 271-4010
Fax number: (828) 271-4876

NCEI now offers free online access to the *Climatological Data* publication.
Go to : www.ncdc.noaa.gov and choose Most Popular.