



CLIMATOLOGICAL DATA

MARYLAND AND DELAWARE

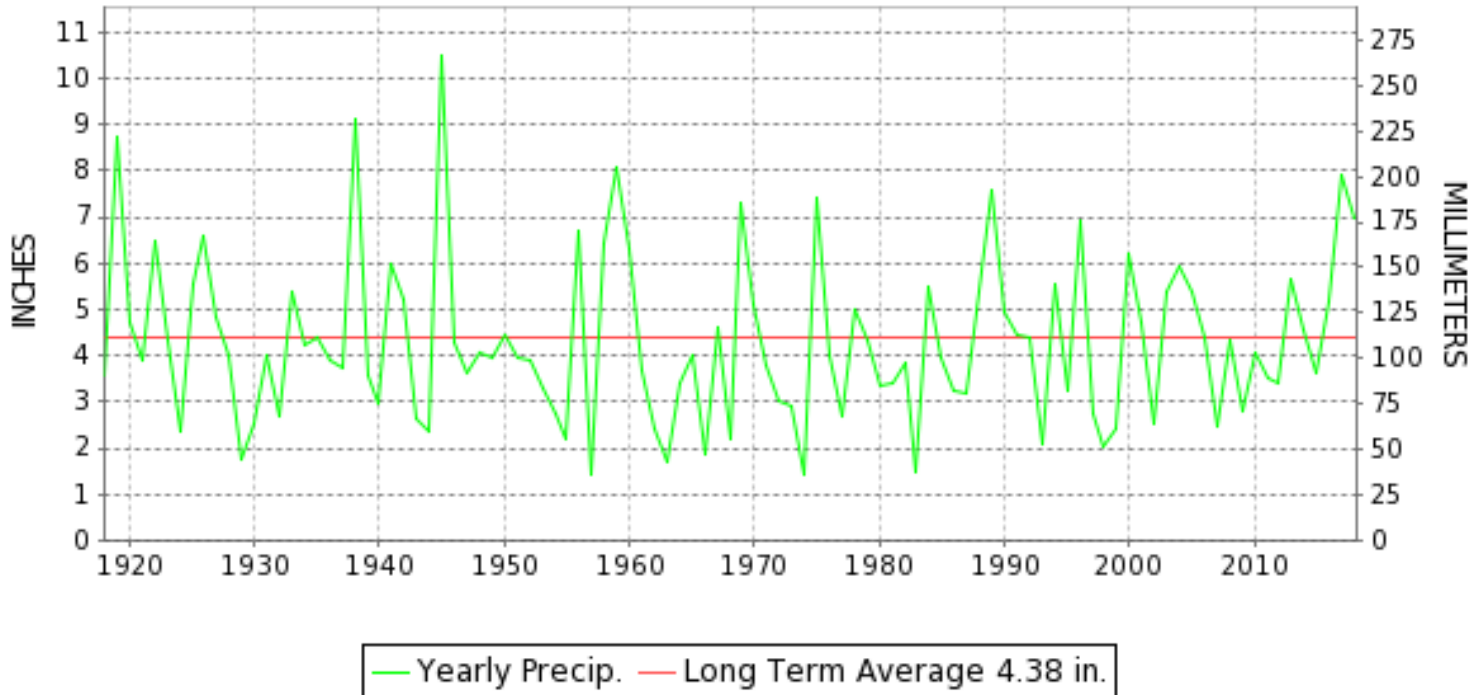
JULY 2018

VOLUME 122 NUMBER 07

ISSN 0145-0549

GHCND Ver: 3.25-upd-2018110519

JULY PRECIPITATION BY YEAR



TEMPERATURE AND PRECIPITATION EXTREMES

MARYLAND

HIGHEST TEMPERATURE	100	JULY 03	MARYLAND SCI CTR
LOWEST TEMPERATURE	43	JULY 30	SAVAGE RIVER DAM
GREATEST TOTAL PRECIPITATION	16.73		BALTIMORE-WASHINGTON INTL AP
LEAST TOTAL PRECIPITATION	2.06		OAKLAND 1 SE
GREATEST 1 DAY PRECIPITATION	6.08	JULY 24	MILLERS 4 NE

"I certify that this is an official publication of the National Oceanic and Atmospheric Administration (NOAA) It is compiled using information from weather observing sites supervised by NOAA/National Weather Service and received at the National Centers for Environmental Information(NCEI), Asheville, North Carolina 28801."

Mary S. Wolpengeti

Director
National Centers for Environmental Information

noaa

National
Oceanic and
Atmospheric Administration

National
Environmental Satellite, Data
and Information Service

National
Centers for Environmental Information
Asheville, North Carolina

DELAWARE

HIGHEST TEMPERATURE	95	JULY 16+	WILMINGTON NEW CASTLE CO AP
LOWEST TEMPERATURE	57	JULY 09+	WILMINGTON NEW CASTLE CO AP
GREATEST TOTAL PRECIPITATION	6.72		WILMINGTON NEW CASTLE CO AP
LEAST TOTAL PRECIPITATION	6.72		WILMINGTON NEW CASTLE CO AP
GREATEST 1 DAY PRECIPITATION	1.54	JULY 21	WILMINGTON NEW CASTLE CO AP

MONTHLY STATION AND DIVISION SUMMARY

STATION	TEMPERATURE (°F)													PRECIPITATION (IN)											
	AVERAGE MAXIMUM	AVERAGE MINIMUM	AVERAGE	DEPARTURE FROM NORMAL	HIGHEST	DATE	LOWEST	DATE	HEATING DEG. DAYS	COOLING DEG. DAYS	NO. OF DAYS				TOTAL	DEPARTURE FROM NORMAL	GREATEST 24 HOURS	DATE	ICE PELLETS, SNOW			NO. OF DAYS			
											MAX		MIN						TOTAL	MAX DEPTH ON GROUND	DATE	.10 OR MORE	.50 OR MORE	1.00 OR MORE	
											>=90	<=32	<=32	<=0											
--DIVISIONAL DATA-----> APPALACHIAN MOUNTAIN 07			74.9	-0.4B										10.66	6.70B										
HAGERSTOWN 1 E	86.6	65.7	76.2		96	03+	54	08	0	354	8	0	0	0	6.63		2.44	21	0.0	0			10	9	1
CUMBERLAND 2	86.2	64.2	75.2	-1.6	95	02	53	09+	0	323	10	0	0	0	5.42	1.86	2.52	25	0.0	0			10	5	2
FROSTBURG 2	79.5	59.7	69.6	0.6	89	02	51	08	7	158	0	0	0	0	4.33	0.33	1.47	06	0.0	0			11	8	2
SHARPSBURG 5 S	85.8	62.1	74.0	-0.1	95	03	51	09	0	287	8	0	0	0	A 8.24	4.14	4.24	22	0.0	0			9	7	2
WILLIAMSPORT														M 5.76	1.86	2.08	22	M					8	8	1
--DIVISIONAL DATA-----> ALLEGHENY PLATEAU 08			73.8	1.0B										6.16	2.52B										
OAKLAND 1 SE	80.1	60.4	70.2	1.8	90	03	50	08	7	177	1	0	0	0	2.06	-3.40	0.76	06	0.0	0			12	7	0
SAVAGE RIVER DAM	79.3M	59.0M	69.1M	-1.1	87	05	43	30	23E	162E	0	0	0	0	M 0.70	-3.62	0.27	31	M 0.0	0			4	3	0
SINES DEEP CREEK	M	M	M		86	05	47	20+	5E	107E	0	0	0	0	MA 3.70		0.55	31	M	0			5	4	0
--DIVISIONAL DATA----->			69.7	1.1B										2.06	-2.81B										
DELAWARE NORTHERN 01																									
WILMINGTON NEW CASTLE CO AP	87.1	68.3	77.7	0.9	95	16+	57	09+	0	402	10	0	0	0	6.72	2.15	1.54	21	0.0	0			11	10	3
WILMINGTON PORTER RSCH	M	M	M								0	0	0	0	M				M						
--DIVISIONAL DATA----->			77.7	1.5B										6.72	2.22B										

DAILY PRECIPITATION (INCHES)

STATION	TOTAL	DAY OF MONTH																														
		01	02	03	04	05	06	07	08	09	10	11	12	13	14	15	16	17	18	19	20	21	22	23	24	25	26	27	28	29	30	31
MARYLAND																																
SOUTHERN																																
EASTERN SHORE 01																																
PRINCESS ANNE	A 7.06					0.23	0.24										0.13				*	*	2.95 _a	0.13	0.80	0.52		*	*	1.11 _a	0.95	
SALISBURY 2N	4.55				0.42	0.44	0.02										0.40				1.30	0.13	0.51	0.38	0.30		0.05			0.55	0.05	
SALISBURY-WICOMICO RGNL AP	4.74				T	0.59	T	T								0.07					1.14	0.02	0.76	0.82	0.21	0.03				1.09	0.01	
SNOW HILL 4 N	7.94				0.05	0.45												0.11			1.32	0.62	1.68	0.20	0.50			0.11		2.30	0.60	
CENTRAL																																
EASTERN SHORE 02																																
ROYAL OAK 2 SSW	6.56					T	T	T				T					0.82				2.50	0.41	0.16	2.03	0.41	T	0.05	0.05		0.11	0.02	
LOWER SOUTHERN 03																																
MECHANICSVILLE 5 NE	12.88							T								T		1.90			T	5.95	2.21	1.78	0.87	0.06		0.05			0.06	
SOLOMONS	M	-	-	-	-	-	-	-	-	-	-	-	-	-	-	-	-	-	-	-	-	-	-	-	-	-	-	-	-	-	-	-
UPPER SOUTHERN 04																																
BALTIMORE-WASHINGTON INTL AP	16.73			0.03		T	T								0.02	0.86	3.35				4.79	0.50	1.42	4.07	0.39		0.97			0.27	0.06	
BELTSVILLE	7.71														0.05		0.12					4.02	1.51	0.18	0.68	0.90					0.25	
DALECARLIA RSVR	M 9.80				-					-								0.75				4.52	1.44	0.30	0.20	2.00	0.02	0.10			0.47	
MARYLAND SCI CTR	10.20			0.06											0.13	0.55	0.35				2.78	0.95	0.81	1.77	1.16		1.51			0.11	0.02	
NATL ARBORETUM DC	8.46						T											1.42				4.02	0.67	0.30	0.40	1.18		0.02			0.45	
OXON HILL	7.25							T								T	0.17	0.75			T	3.63	1.24	0.13	0.40	0.51		0.01			0.41	
NORTHERN																																
EASTERN SHORE 05																																
STEVENSVILLE 2SW	7.86			0.06															1.31			2.42	0.57	0.84	1.80	0.67		0.17			0.02	
SUDLERSVILLE 1S	M	-	-	-	-	-	-	-	-	-	-	-	-	-	-	-	-	-	-	-	-	-	-	-	-	-	-	-	-	-	-	-
NORTHERN CENTRAL 06																																
ABERDEEN PHILLIPS FLD	A 6.88															0.15		0.68				*	4.12 _a	0.42	0.61	0.34		0.53			0.03	
CONOWINGO DAM	10.04			1.45	0.01	0.15	0.07								0.33		1.62					1.54	1.82	1.25	0.42	0.74		0.62	0.02			
CYLBURN	M	-	-	-	-	-	-	-	-	-	-	-	-	-	-	-	-	-	-	-	-	-	-	-	-	-	-	-	-	-	-	-
DAMASCUS 3 SSW	10.00				0.04	T									0.05		0.22				4.15	2.39	0.92	0.95	0.58	0.01	0.18			0.47	0.04	
EMMITSBURG 2 SE	10.09				0.87	0.06												1.19				5.46	1.06	0.04	0.80	0.11		0.15			0.35	
MILLERS 4 NE	16.31				0.30	0.18									T		0.08	0.04			1.13	2.04	1.98	6.08	1.66	2.48	0.18	0.09		0.03	0.04	
REISTERSTOWN 2 NW	M	-	-	-	-	-	-	-	-	-	-	-	-	-	-	0.05	0.02	0.18	0.01			3.74	2.70	2.85	1.69	1.32		0.20			0.20	
SMITHSBURG 2NW	M 8.96				0.62		0.06											1.14				3.77	1.03	0.66	1.06	0.17		0.15			0.30	
APPALACHIAN																																
MOUNTAIN 07																																
HAGERSTOWN 1 E	6.63			0.47		0.05											0.83				2.44	0.42	0.66	0.86	0.40		0.16			0.34		
CUMBERLAND 2	5.42			T		0.13	0.06				0.04						0.04	0.57				0.04	T	0.09	2.52	0.44				T	1.49	
FROSTBURG 2	4.33			0.02		0.19	1.47	0.01			0.04					T		0.21				0.18		0.22	1.02	0.16					0.81	
SHARPSBURG 5 S	A 8.24				0.04		0.03											0.37		*	*	0.00 _a	4.24	0.37	0.82	1.09	0.52		*	*	0.48	
WILLIAMSPORT	M 5.76				0.12													0.31				2.08		0.52	0.64	0.35	-	0.82		*	0.92	
ALLEGHENY PLATEAU 08																																
OAKLAND 1 SE	2.06			0.14		0.01	0.76	0.05				0.03				0.23								0.04	0.10	0.18		0.11			0.40	

DAILY PRECIPITATION (INCHES)

STATION	TOTAL	DAY OF MONTH																															
		01	02	03	04	05	06	07	08	09	10	11	12	13	14	15	16	17	18	19	20	21	22	23	24	25	26	27	28	29	30	31	
SAVAGE RIVER DAM	M 0.70	-														0.12		-	-			T	0.06	0.25	-								0.27
SINES DEEP CREEK	MA 3.70	* 0.00 _a	0.25	*	1.35 _a	0.05	*	*	0.00 _a	0.15	-			*	*	0.70 _a		-	-		*	*	0.00 _a		0.30	*	0.10 _a	*	*	0.25 _a	0.55		
DELAWARE NORTHERN 01																																	
WILMINGTON NEW CASTLE CO AP	6.72			0.46		0.25	0.02								0.24		0.38					1.54	0.20	0.48	1.39	1.16		0.60			T	T	
WILMINGTON PORTER RSCH	M	-	-	-	-	-	-	-	-	-	-	-	-	-	-	-	-	-	-	-	-	-	-	-	-	-	-	-	-	-	-	-	

DAILY TEMPERATURES (°F)

STATION	OB. TIME	MAX/MIN	DAY OF MONTH																															AVERAGE		
			01	02	03	04	05	06	07	08	09	10	11	12	13	14	15	16	17	18	19	20	21	22	23	24	25	26	27	28	29	30	31			
MARYLAND SOUTHERN EASTERN SHORE 01 PRINCESS ANNE	17	MAX MIN																																		M M
SALISBURY 2N	17	MAX MIN	94 68	97 74	96 76	96 72	90 73	89 77	78 67	79 56	86 53	91 70	92 68	88 64	87 57	91 67	91 74	94 75	89 71	88 65	88 62	84 65	87 70	85 75	84 74	83 72	87 72	91 72	91 72	86 67	83 69	86 69	88.3 68.5			
SALISBURY-WICOMICO RGNL AP	24	MAX MIN	95 68	97 71	94 72	90 71	91 73	76 74	80 57	85 55	92 51	93 56	85 66	84 61	88 55	90 64	92 73	94 73	89 68	88 63	84 60	76 65	87 69	83 75	83 73	81 73	86 72	91 70	87 68	86 69	74 70	85 69	87.0 66.9			
SNOW HILL 4 N	17	MAX MIN	96 70	96 70	96 70	91 72	92 72	91 76	78 70	80 57	86 55	92 58	93 55	84 65	88 59	92 69	91 76	94 76	89 73	89 66	86 61	86 61	87 72	87 72	86 78	86 76	88 75	91 72	91 72	88 70	82 70	87 70	88.9 68.2			
CENTRAL EASTERN SHORE 02 ROYAL OAK 2 SSW	17	MAX MIN	94 74	98 74	96 77	94 75	91 76	88 77	80 65	84 56	87 55	94 63	93 73	91 68	94 63	89 73	88 73	93 72	94 65	87 63	88 62	88 68	79 57	86 73	86 72	82 73	81 72	89 75	91 73	88 67	86 70	78 68	87 69	88.5 69.1		
LOWER SOUTHERN 03 MECHANICSVILLE 5 NE	07	MAX MIN	88 69	90 71	92 73	92 74	88 73	89 74	84 66	75 55	78 53	82 53	89 62	87 67	84 63	83 59	86 60	82 67	91 70	89 65	82 63	82 61	81 63	73 62	79 64	81 68	79 71	78 71	84 72	88 70	88 64	80 67	73 67	83.8 65.7		
SOLOMONS	08	MAX MIN																																	M M	
UPPER SOUTHERN 04 BALTIMORE-WASHINGTON INTL AP	24	MAX MIN	96 69	98 71	99 76	94 74	92 78	88 75	80 62	83 56	91 56	95 65	92 72	90 68	87 64	92 62	87 69	96 69	91 76	88 66	87 64	86 63	73 66	80 63	83 75	80 73	82 71	89 70	89 69	87 67	86 65	77 66	82 69	87.7 67.9		
BELTSVILLE	08	MAX MIN	93 68	95 71	99 75	96 74	91 77	91 78	85 65	79 55	82 55	89 62	93 73	89 63	86 62	89 69	87 69	95 76	89 68	85 62	88 62	85 69	88 62	85 68	73 73	80 73	84 70	81 68	83 70	88 68	90 64	85 66	85 69	76 69	87.1 67.9	
DALECARLIA RSVR	08	MAX MIN		68				78	66	59		73	67	68	66	66	66	75	67	65	71	62	81	85	85	84	88	90	90	90	77			M		
MARYLAND SCI CTR	24	MAX MIN	95 79	97 80	100 82	94 82	92 81	89 76	82 67	86 67	89 68	97 73	92 79	91 73	89 72	95 75	88 76	94 77	94 73	89 73	89 72	88 74	88 68	76 66	79 76	86 75	83 73	86 72	93 72	91 72	87 73	87 73	79 71	85 69	89.2 73.9	
NATL ARBORETUM DC	08	MAX MIN	94 73	96 76	98 77	98 77	94 79	93 80	89 67	82 58	85 59	89 67	94 75	93 70	91 66	91 68	96 73	92 72	88 69	88 66	90 65	86 70	74 68	84 73	86 74	87 74	85 75	91 75	93 70	87 66	87 66	78 71	88 69	89.4 70.8		
OXON HILL	07	MAX MIN	92 70	93 71	96 74	95 76	90 76	91 76	87 65	80 59	82 59	88 62	94 66	91 65	89 63	84 64	95 71	89 72	87 68	85 67	87 64	87 70	84 61	74 65	83 74	83 72	81 70	82 70	89 69	89 67	87 67	86 70	75 69	87.0 68.1		
NORTHERN EASTERN SHORE 05 STEVENSVILLE 2SW	07	MAX MIN	97 76	96 76	99 80	98 79	95 78	95 79	87 68	81 61	82 60	89 61	95 71	89 72	87 67	87 69	91 74	87 74	95 74	86 75	88 72	88 70	88 65	74 72	81 74	87 74	83 72	85 72	90 72	92 72	89 73	87 72	77 71	88.7 71.6		
NORTHERN CENTRAL 06 ABERDEEN PHILLIPS FLD	07	MAX MIN	94 66	95 68	97 72	97 76	91 76	91 76	86 63	79 56	83 56	86 60	93 66	90 64	85 63	86 66	89 69	81 72	87 70	85 63	86 62	86 67	72 66	77 66	87 73	83 73	81 70	87 70	86 67	86 65	83 66	76 68	86.4 67.1			
CONOWINGO DAM	07	MAX MIN	90 68	85 59	87 62	86 72	84 70	88 74	82 60	75 58	86 55	90 58	88 65	88 63	86 62	88 62	83 69	92 69	80 68	84 64	90 67	87 62	77 64	80 68	84 76	78 78	82 74	85 69	85 64	88 64	88 64	84 66	85.1 65.7			

DAILY TEMPERATURES (°F)

STATION	OB. TIME	MAX/MIN	DAY OF MONTH																															AVERAGE	
			01	02	03	04	05	06	07	08	09	10	11	12	13	14	15	16	17	18	19	20	21	22	23	24	25	26	27	28	29	30	31		
CYLBURN	08	MAX MIN																																M M	
DAMASCUS 3 SSW	22	MAX MIN	92 68	94 71	92 72	89 72	85 70	82 70	75 60	78 55	84 57	89 62	85 69	83 62	85 63	88 64	82 68	92 67	82 67	80 60	83 60	82 62	70 59	74 67	80 72	76 69	80 67	84 66	87 66	82 64	82 61	82 65	74 66	77 65.1	
EMMITSBURG 2 SE	07	MAX MIN	91 66	95 66	95 69	97 71	96 72	89 72	85 59	76 53	82 55	87 60	91 69	84 60	85 59	87 63	88 66	85 66	95 63	86 62	82 58	85 59	86 60	72 61	77 70	82 72	80 67	82 67	89 66	88 61	87 61	85 63	78 63	86.0 63.7	
MILLERS 4 NE	18	MAX MIN	93 67	94 68	95 72	92 69	85 73	84 72	82 56	81 51	85 55	90 62	88 68	85 62	84 59	87 62	86 67	93 67	88 70	83 61	84 59	85 62	82 60	79 67	81 70	77 71	80 66	85 66	86 65	82 61	86 63	82 65	81 63	80 65	85.1 64.4
REISTERSTOWN 2 NW	08	MAX MIN												87 64	86 62	86 65	89 66	82 71	94 61	88 84	85 85	84 85	68 68	78 78	82 81	78 88	81 90	88 85	90 85	84 77	77 M	M			
SMITHSBURG 2NW	08	MAX MIN	91 64	92 66	94 68	94 68	87 71	89 71	84 58	77 52	82 52	86 56	88 60			86 62	89 65	86 65	93 65	85 58	81 58	83 61	84 65	74 58	76 59	78 70	82 67	81 65	85 62	86 58	86 58	86 64	75 64	84.8 62.6	
APPALACHIAN MOUNTAIN 07																																			
HAGERSTOWN 1 E	24	MAX MIN	95 68	96 71	96 72	93 74	92 74	88 70	79 61	83 54	88 56	92 61	89 68	87 61	88 62	91 67	86 72	95 68	86 68	84 61	86 62	86 62	77 60	79 61	79 70	82 73	84 69	87 68	89 67	85 65	84 61	79 64	80 68	86.6 65.7	
CUMBERLAND 2	07	MAX MIN	93 73	95 71	92 71	94 72	92 71	89 71	85 61	79 53	81 53	90 60	92 61	88 61	87 60	88 60	92 63	86 69	94 69	86 64	83 59	86 59	86 61	75 64	76 64	84 72	82 71	90 66	84 65	85 63	84 59	85 59	84 64	74 64	86.2 64.2
FROSTBURG 2	07	MAX MIN	88 63	89 66	86 66	88 68	86 65	81 65	78 52	73 51	76 53	81 55	82 64	79 55	78 56	81 58	84 60	84 64	88 65	80 56	74 54	81 57	79 57	68 57	77 58	77 66	74 66	75 62	81 62	79 58	76 55	76 55	67 61	79.5 59.7	
SHARPSBURG 5 S	07	MAX MIN	91 64	93 65	95 68	94 69	92 71	91 70	85 53	79 53	82 51	86 53	91 60	87 54	86 55	86 62	89 63	86 66	93 67	84 58	83 58	85 59	85 62	75 59	78 59	80 72	81 70	82 67	87 66	89 64	83 60	83 66	79 66	85.8 62.1	
ALLEGHENY PLATEAU 08																																			
OAKLAND 1 SE	07	MAX MIN	88 62	88 65	90 65	86 66	87 66	87 66	77 54	70 50	75 52	82 56	86 64	83 56	80 60	87 64	79 59	87 60	87 57	79 51	76 56	78 64	79 58	71 63	73 67	77 66	75 65	74 63	81 58	77 53	76 53	78 60	69 61	80.1 60.4	
SAVAGE RIVER DAM	08	MAX MIN		86 65	86 66	86 67	87 68			72 49	75 53	82 52	85 59		79 56	80 57	84 60	82 62	85 64			79 52	80 57	72 59	73 59	77 68		76 65	82 63	78 59		68 59	69 54	79.3 59.0	
SINES DEEP CREEK	07	MAX MIN	82 58	81 64		86 62	78 64				82 50	78 49		81 52	79 52		78 59	79 65			83 47	78 47			85 55	78 51	75 62		77 60			80 60	72 60	M M	
DELAWARE NORTHERN 01																																			
WILMINGTON NEW CASTLE CO AP	24	MAX MIN	94 72	95 74	95 75	90 74	90 77	84 69	80 63	85 57	87 57	95 64	92 72	86 65	86 65	91 64	82 70	95 70	94 71	88 68	87 59	84 64	74 67	86 68	86 76	86 74	82 72	88 71	87 70	87 68	85 65	78 67	82 69	87.1 68.3	
WILMINGTON PORTER RSCH	24	MAX MIN																																	M M

TOTAL SNOWFALL AND NUMBER OF DAYS WITH ONE INCH OR MORE ON GROUND

MARYLAND AND DELAWARE

201807

STATION	JUL		AUG		SEP		OCT		NOV		DEC		JAN		FEB		MAR		APR		MAY		JUN		TOTAL		TOTAL PRECIPITATION
	SNOWFALL	1 IN ON GD	SNOWFALL	1 IN ON GD	SNOWFALL	1 IN ON GD	SNOWFALL	1 IN ON GD	SNOWFALL	1 IN ON GD	SNOWFALL	1 IN ON GD	SNOWFALL	1 IN ON GD	SNOWFALL	1 IN ON GD	SNOWFALL	1 IN ON GD	SNOWFALL	1 IN ON GD	SNOWFALL	1 IN ON GD	SNOWFALL	1 IN ON GD	SNOWFALL	1 IN ON GD	
MARYLAND																											
SOUTHERN EASTERN SHORE 01																											
PRINCESS ANNE	M		M		M		M		M		M		M		M		M		M		M		M		M 0.0	M 0	M 22.16
SALISBURY 2N	M		M		M		M		M		M	1	M		M		M		M		M		M		M 0.0	M 1	M 57.27
SALISBURY-WICOMICO RGNL AP	M		M		M		M		M		M	0	M 9.4	0	M 0.0	0	M 0.8	0	M 0.0	0	M 0.0	0	M 0.0	0	M 10.2	M 0	M 58.18
SNOW HILL 4 N	M		M		M		M		M		M		M		M		M		M		M		M		M 0.0	M 0	M 32.32
CENTRAL EASTERN SHORE 02																											
ROYAL OAK 2 SSW	0.0		0.0	0	0.0	0	0.0	0	0.0	0	3.5	1	5.5	7	T	0	6.0	1	T	0	0.0	0	0.0	0	15.0	M 9	49.59
LOWER SOUTHERN 03																											
MECHANICSVILLE 5 NE	0.0		0.0	0	0.0	0	0.0	0	0.0	0	F 2.5	1	3.2	6	T	0	7.0	1	0.0	0	0.0	0	0.0	0	M 10.2	M 8	57.62
SOLOMONS	M		M 0.0		M 0.0	0	0.0	0	M	0	M	0	M	0	M	0	M	0	M	0	M 0.0	0	M	0	M 0.0	M 0	M 14.89
UPPER SOUTHERN 04																											
BALTIMORE-WASHINGTON INTL AP	0.0		0.0	0	0.0	0	0.0	0	0.0	0	4.3	4	2.2	4	2.2	1	6.7	2	0.0	0	0.0	0	0.0	0	15.4	M 11	44.44
BELTSVILLE	0.0		0.0	0	0.0	0	0.0	0	0.0	0	3.0	1	1.5	1	1.4	1	5.2	3	0.0	0	0.0	0	0.0	0	11.1	M 6	47.01
DALECARLIA RSVR	0.0		M 0.0	0	0.0	0	0.0	0	0.0	0	M 1.0	2	M 0.6	1	0.2	0	M 1.4	1	M 0.0	0	M 0.0	0	M 0.0	0	M 3.2	M 4	M 52.56
MARYLAND SCI CTR	M		M		M		M		M		M		M		M		M		M		M		M		M 0.0	M 0	45.00
NATL ARBORETUM DC	0.0		0.0	0	0.0	0	M 0.0	0	0.0	0	M 0.4	1	M 1.5	2	M 0.5	0	2.7	1	0.0	0	0.0	0	0.0	0	M 5.1	M 4	M 48.68
OXON HILL	0.0		0.0	0	0.0	0	0.0	0	0.0	0	3.2	1	1.2	6	0.8	1	5.8	2	T	0	0.0	0	0.0	0	11.0	M 10	46.11
NORTHERN EASTERN SHORE 05																											
STEVENSVILLE 2SW	0.0		0.0	0	0.0	0	0.0	0	0.0	0	4.5	2	4.3	6	2.3	1	8.8	2	0.0	0	0.0	0	0.0	0	19.9	M 11	44.47
SUDLERSVILLE 1S	0.0		0.0	0	0.0	0	0.0	0	0.0	0	5.0	3	M 4.0	7	M 2.2	1	M	3	M		M	0	M		M 11.2	M 14	M 28.65
NORTHERN CENTRAL 06																											
ABERDEEN PHILLIPS FLD	0.0		0.0	0	0.0	0	0.0	0	0.0	0	5.8	2	1.0	0	1.5	1	M 7.5	2	0.0	0	0.0	0	0.0	0	M 15.8	M 5	M 46.65
CONOWINGO DAM	0.0		0.0	0	0.0	0	0.0	0	0.0	0	7.5	0	M 2.3	0	M 1.0	0	M 7.5	0	0.0	0	0.0	0	0.0	0	M 18.3	M 0	M 48.92
CYLBURN	0.0		M		M		M		M		M		M		M		M		M		M		M		M 0.0	M 0	M 0.00
DAMASCUS 3 SSW	0.0		0.0	0	0.0	0	0.0	0	T	0	6.7	3	2.6	2	4.5	2	6.4	4	T	0	0.0	0	0.0	0	20.2	M 11	45.54
EMMITSBURG 2 SE	0.0		0.0	0	0.0	0	0.0	0	0.0	0	M 5.5	2	3.0	2	M 3.0	0	10.0	1	T	0	0.0	0	0.0	0	M 21.5	M 5	M 52.68
MILLERS 4 NE	0.0		0.0	0	0.0	0	0.0	0	0.0	0	9.0	5	4.3	11	2.9	1	16.7	6	0.5	0	0.0	0	0.0	0	33.4	M 23	46.46
REISTERSTOWN 2 NW	M		M		M		M		M 0.0	0	M 0.6	1	M 1.7	1	M 0.0	0	M 12.8	3	M 0.0	0	M	0	M 0.0	0	M 15.1	M 5	M 17.90
SMITHSBURG 2NW	0.0		0.0	0	0.0	0	M 0.0	0	M 0.0	0	M 0.0	0	M 0.0	0	M 0.0	0	M		M		M		M		M 0.0	M 0	M 45.31
APPALACHIAN MOUNTAIN 07																											
HAGERSTOWN 1 E	0.0		0.0	0	0.0	0	0.0	0	0.0	0	1.5	1	2.6	3	4.2	6	10.0	6	T	0	0.0	0	0.0	0	18.3	M 16	47.43
CUMBERLAND 2	0.0		0.0	0	0.0	0	0.0	0	0.0	0	M 3.8	5	1.7	7	6.5	7	M 10.2	4	1.8	1	0.0	0	0.0	0	M 24.0	M 24	44.23
FROSTBURG 2	0.0		0.0	0	0.0	0	0.0	0	1.2	2	9.0	12	M 4.7	21	11.4	12	20.1	17	6.6	3	0.0	0	0.0	0	M 53.0	M 67	53.35
SHARPSBURG 5 S	0.0		M 0.0	0	0.0	0	0.0	0	0.0	0	1.2	1	M		M		M		T	0	0.0	0	0.0	0	M 1.2	M 6	M 39.27
WILLIAMSPORT	M		M		M		M		M		M		M		M		M		M		M		M		M 0.0	M 0	M 37.36
ALLEGHENY PLATEAU 08																											
OAKLAND 1 SE	0.0		0.0	0	M 0.0	1	1.8	0	23.7	11	22.0	17	12.6	8	25.9	14	6.7	2	0.0	0	0.0	0	0.0	0	M 92.7	M 53	67.32
SAVAGE RIVER DAM	0.0		0.0	0	0.0	0	0.0	0	4.5	5	3.0	0	M 5.0	8	8.0	8	2.0	1	0.0	0	0.0	0	0.0	0	M 22.5	M 22	M 49.95
SINES DEEP CREEK	M		M		M	1	M	1	M	8	M	15	M	8	M	14	M	5	M	0	M	0	M	0	M 0.0	M 52	M 0.00
DELAWARE																											
NORTHERN 01																											
WILMINGTON NEW CASTLE CO AP	0.0		0.0	0	0.0	0	0.0	0	0.0	0	7.8	5	3.5	7	2.5	1	14.2	7	T	0	0.0	0	0.0	0	28.0	M 20	42.12
WILMINGTON PORTER RSCH	0.0		M 0.0		0.0	0	0.0	0	0.0	0	M 0.0	3	M	0	M		M		M		M		M		M 0.0	M 3	M 20.82

MONTHLY AND SEASONAL HEATING DEGREE DAYS

STATION	JUL	AUG	SEP	OCT	NOV	DEC	JAN	FEB	MAR	APR	MAY	JUN	TOTAL	SEASONAL NORM
MARYLAND														
SOUTHERN EASTERN SHORE 01														
PRINCESS ANNE	0	0	2E	180E									M 182E	4264
SALISBURY 2N	0	0	13	109		788	893	489	818E	331	12	0	M 3453E	
SALISBURY-WICOMICO RGNL AP	0	0	13	155	503	876	959	541	732	389	25	3	4196	4442
SNOW HILL 4 N		1	17	161	497	859	954	577E	772	401		0	M 4239E	4023
CENTRAL EASTERN SHORE 02														
ROYAL OAK 2 SSW	0	0	14	116	473	832	948	583	713	353	14	0	4046	4026
LOWER SOUTHERN 03														
MECHANICSVILLE 5 NE	0	0	43	212	570	890	1050E	636	768	414	36E	8	4627E	4640
SOLOMONS	0	0	6E	148E	556E	765E	997E	642E	760E	441E	36E	100E	4451E	3823
UPPER SOUTHERN 04														
BALTIMORE-WASHINGTON INTL AP	0	0	28	163	556	908	1014	643	760	403	18	8	4501	4764
BELTSVILLE	0	3	30	161	565	883	1043	670	773	422	27	12	4589	4727
DALECARLIA RSVR	0	2E	33E	153E	547E	871E	1028E	648E	765E	364E	36E	13E	4460E	4398
MARYLAND SCI CTR	0	0	6	78	444	788	913	563	669	317	12	1	3791	4032
NATL ARBORETUM DC	0	0	13	124E	509	827	939E	585E	695E	360	8E	4	4064E	4178
OXON HILL	0	0	27	138	525	837	995	632	726	381	15	6	4282	4270
NORTHERN EASTERN SHORE 05														
STEVENSVILLE 2SW	0	0	8	101	499	840	1036	654	737	390	21	10	4296	4329
NORTHERN CENTRAL 06														
ABERDEEN PHILLIPS FLD	0	3	38	182	585	941	1089	712	805	482	45	16	4898	4708
CONOWINGO DAM	0	3	55	204	651	999	1150	800	876	527	46	16E	5327E	4798
DAMASCUS 3 SSW	0	5	62	200	600	963	1055	690	850	459	36	18	4938	5085
EMMITSBURG 2 SE	0	6	57	219	657	964	1091	764	843	511	51	20	5183	5396
MILLERS 4 NE	0	4	62	190	617	979	1079	696	863	494	35	21	5040	5346
REISTERSTOWN 2 NW					640E	962E	1083E	791E	871E	560E	39E	21E	M 4967E	
SMITHSBURG 2NW	2	5	80	239	704E	1000	1163E	830E	929E	558	71	26	5607E	5438
APPALACHIAN MOUNTAIN 07														
HAGERSTOWN 1 E	0	3	55	192	624	966	1073	700	840	464	33	10	4960	
CUMBERLAND 2	0	2	60	214	663	965	1162	740	867	506	43	19	5241	4853
FROSTBURG 2	9	44	126	311	771	1148	1319	841	1049	660	86	63	6427	6511
SHARPSBURG 5 S	1	3E	69	215	659	950E		913	525	57	20		M 3412E	5303
ALLEGHENY PLATEAU 08														
OAKLAND 1 SE	15	38	131	294	728	1098	1307	753	1010	621	84	42	6121	6673
SAVAGE RIVER DAM	4	51	114E	313	745	1061	1277	814E	972	555E	95	70	6071E	6159
SINES DEEP CREEK	17E	47E	123E	389E	772E	1109E	1279E	832E	1033E	731E	138E	96E	6566E	
DELAWARE														
NORTHERN 01														
WILMINGTON NEW CASTLE CO AP	0	0	25	145	558	924	1037	671	788	440	36	8	4632	4819
WILMINGTON PORTER RSCH	0	2E	26	116E	573	949	641E						M 2307E	4935

DAILY SOIL TEMPERATURES

STATION	DEPTH	TIME	DAY OF MONTH																															AVERAGE	
			01	02	03	04	05	06	07	08	09	10	11	12	13	14	15	16	17	18	19	20	21	22	23	24	25	26	27	28	29	30	31		
MARYLAND UPPER SOUTHERN 04 BELTSVILLE (in)																																			

MARYLAND AND DELAWARE
201807

SOILS REFERENCE NOTES

STATION	SOIL TYPE	SOIL COVER	SLOPE	UNITS
BELTSVILLE	UNKNOWN	GRASS	0	F

SNOWFALL AND SNOW ON GROUND (INCHES)

STATION		DAY OF MONTH																																
		01	02	03	04	05	06	07	08	09	10	11	12	13	14	15	16	17	18	19	20	21	22	23	24	25	26	27	28	29	30	31		
MARYLAND																																		
SOUTHERN																																		
EASTERN SHORE 01																																		
PRINCESS ANNE	SNOWFALL																																	
SALISBURY 2N	SNOWFALL																																	
SALISBURY-WICOMICO RGNL AP	SNOWFALL	-	-																															
	SN ON GND	-	-																															
SNOW HILL 4 N	SNOWFALL																																	
DELAWARE																																		
NORTHERN 01																																		
WILMINGTON NEW CASTLE CO AP	SNOWFALL																																	
	SN ON GND																																	
WILMINGTON PORTER RSCH	SNOWFALL																																	

Snowfall: Includes snow and ice. Values for NWS stations (J index note) are Mid-Mid (LST).

Snow on ground: Includes snow, sleet, ice, and hail. Values for NWS stations (J index note) are observed at 12 UTC (GMT).

Water Equivalent: Given for NWS stations (J index note) only, when snow depth is 2 inches or more, and is measured at 18 UTC (GMT)

PAN EVAPORATION AND WIND

STATION		DAY OF MONTH																															TOTAL OR AVERAGE
		01	02	03	04	05	06	07	08	09	10	11	12	13	14	15	16	17	18	19	20	21	22	23	24	25	26	27	28	29	30	31	
MARYLAND UPPER SOUTHERN 04 BELTSVILLE	WIND	41	34	51	24	33	59	71	30	39	24	55	52	38	39	77	15	51	60	60	33	56	106	38	79	69	41	33	41	29	20	27	1425
	EVAP	0.30	0.28	0.32	0.29	0.20	0.20	0.26	0.25	0.26	0.29	0.34	0.35	0.27	0.36	0.21	0.06	0.29	0.21	0.32	0.29	0.30	-	0.26	0.15	0.11	0.20	0.18	0.22	0.25	0.17	0.06	7.49E
	MAX	98	98	100	102	99	90	89	88	89	92	95	92	92	92	89	85	95	91	88	92	90	72	83	85	83	84	88	94	89	91	78	90.1
	MIN	70	72	74	74	77	74	62	60	60	62	62	63	64	64	63	70	73	66	64	64	65	63	66	73	73	71	70	69	67	68	69	67.5
ALLEGHENY PLATEAU 08 SAVAGE RIVER DAM	WIND	-	-	-	-	-	-	-	-	-	-	-	-	-	-	-	-	-	-	-	-	-	-	-	-	-	-	-	-	-	-	M	
	EVAP	-	-	-	-	-	-	-	-	-	-	-	-	-	-	-	-	-	-	-	-	-	-	-	-	-	-	-	-	-	-	M	
	MAX	-	-	-	-	-	-	-	-	-	-	-	-	-	-	-	-	-	-	-	-	-	-	-	-	-	-	-	-	-	-	-	
	MIN	-	-	-	-	-	-	-	-	-	-	-	-	-	-	-	-	-	-	-	-	-	-	-	-	-	-	-	-	-	-	M	

Evaporation: Is measured in hundreths of inches.

Wind: Is measured in miles.

Max and Min: The maximum and minimum temperatures (Fahrenheit) of the water in the evaporation pan.

STATION INDEX

STATION	INDEX NO.	DIVISION	COUNTY	LATITUDE	LONGITUDE	ELEVATION (IN FEET)	OBSERVATION TIME AND TABLES			
							LOCAL STD TIME			
							TEMP	PRECIP	EVAP	SPECIAL SEE (NOTES)
MARYLAND										
ABERDEEN PHILLIPS FLD	0015	06	HARFORD	39 28	76 10W	57	07	07		CH
BALTIMORE-WASHINGTON INTL AP R	0465	04	ANNE ARUNDEL	39 10	76 41W	156	24	24		HJ
BELTSVILLE	0700	04	PRINCE GEORGE'S	39 2	76 56W	145	08	08	08	GCH
CONOWINGO DAM	2060	06	HARFORD	39 39	76 11W	40	07	07		H
CUMBERLAND 2	2282	07	ALLEGANY	39 39	78 45W	730	07	07		H
CYLBURN	2308	06	BALTIMORE	39 21	76 39W	235	08	08		H
DALECARLIA RSVR	2325	04	DISTRICT OF COLUMBIA	38 56	77 7W	150	08	08		H
DAMASCUS 3 SSW	2336	06	MONTGOMERY	39 16	77 14W	700	22	22		H
EMMITSBURG 2 SE	2906	06	FREDERICK	39 41	77 17W	403	07	07		H
FROSTBURG 2	3415	07	ALLEGANY	39 40	78 56W	2170	07	07		H
HAGERSTOWN 1 E	1790	07	WASHINGTON	39 38	77 42W	532	24	24		H
MARYLAND SCI CTR R	5718	04	BALTIMORE (CITY)	39 17	76 37W	20	24	24		H
MECHANICSVILLE 5 NE	5865	03	ST. MARY'S	38 30	76 44W	100	07	07		H
MILLERS 4 NE	5934	06	CARROLL	39 43	76 48W	860	18	18		CH
NATL ARBORETUM DC	6350	04	DISTRICT OF COLUMBIA	38 55	76 58W	50	08	08		H
OAKLAND 1 SE	6620	08	GARRETT	39 25	79 24W	2420	07	07		H
OXON HILL	6800	04	PRINCE GEORGE'S	38 48	76 60W	186	07	07		H
PRINCESS ANNE	7330	01	SOMERSET	38 13	75 41W	20	17	17		H
REISTERSTOWN 2 NW	7580	06	BALTIMORE	39 30	76 50W	737	08	08		H
ROYAL OAK 2 SSW //	7806	02	TALBOT	38 43	76 11W	10	17	17		H
SALISBURY 2N	8004	01	WICOMICO	38 24	75 36W	20	17	17		H
SALISBURY-WICOMICO RGNL AP //R	8005	01	WICOMICO	38 20	75 31W	47	24	24		H
SAVAGE RIVER DAM	8065	08	GARRETT	39 31	79 8W	1495	08	08	08	CH
SHARPSBURG 5 S	8207	07	WASHINGTON	39 24	77 43W	500	07	07		H
SINES DEEP CREEK	8315	08	GARRETT	39 31	79 25W	2040	07	07		H
SMITHSBURG 2NW	8371	06	WASHINGTON	39 40	77 35W	670	08	08		H
SNOW HILL 4 N	8380	01	WORCESTER	38 14	75 23W	30	17	17		H
SOLOMONS	8405	03	CALVERT	38 19	76 27W	12	08	08		H
STEVENSVILLE 2SW	8557	05	QUEEN ANNE'S	38 58	76 20W	10	07	07		H
SUDLERSVILLE 1S	8657	05	QUEEN ANNE'S	39 10	75 51W	100		20		H
WILLIAMSPORT	9570	07	WASHINGTON	39 37	77 51W	360		06		CH
DELAWARE										
WILMINGTON NEW CASTLE CO AP R	9595	01	NEW CASTLE	39 40	75 36W	79	24	24		HJ
WILMINGTON PORTER RSCH	9605	01	NEW CASTLE	39 46	75 32W	270	24	24		H

REFERENCE NOTES

STATION NAMES: Name of the city, town or locality. Figures and letters following the station names indicate the distance in miles and direction from the post office or town community center.

DIVISIONS: Areas within a state of similar climatological characteristics. Division averages are calculated using data from stations that record temperature and/or precipitation. Station Precipitation totals flagged with an 'F' or 'M' are excluded from the Divisional Average calculations of precipitation. Stations with monthly Temperature averages flagged with an 'F' or 'M' are included in the Divisional Average if there are no more than 9 flagged or missing daily values in the month, else they are excluded from the divisional average for temperature.

NORMALS: The average value of the meteorological element over a time period. Effective 1 January 2012, the averaging period for station departures is 1981 to 2010. The normals for National Weather Service localities have been adjusted so as to be representative for the current observation site.

The January 2011 through December 2015 publications incorrectly state the computation of divisional departures. Climate Division departures have been, and continue to be, computed from 1971-2000 Normals, not 1981-2010 as stated. Station departures are accurately described as departures from 1981-2010.

MONTHLY DEGREE DAY TOTALS: One heating (cooling) degree day is accumulated for each whole degree that the daily mean temperature is below (above) 65 degrees Fahrenheit.

PRECIPITATION: Values shown in hundredths of inches are water equivalent totals, i.e., total of liquid and melted frozen precipitation. In the "Monthly Summarized Data" table the total snow and sleet values shown in tenths of inches are unmelted amounts. The max depth on ground values of snow and sleet shown in whole inches are cumulative unmelted amounts. The number of days with .10, .50, 1.00 or more refers to water equivalents.

PRECIPITATION QUALITY CONTROL: The NCEI quality control process may flag precipitation data that are spatially inconsistent, exceed climatological limits, or are inconsistent with prevailing weather patterns.

TEMPERATURE: Original temperature values are given in the "Daily Temperature" table. Summary temperature information (averages, departures, extremes, monthly degree day totals) is based on the values labeled MAX/MIN.

WIND: (As shown in the "Evaporation and Wind" table) the total wind movement in miles over the evaporation pan as determined by an anemometer recorder located 6-8 inches above the pan.

SYMBOLS AND LETTERS USED IN THE STATION INDEX TABLE

- C Station is equipped with recording rain gage (R) but values in this bulletin are from a non-recording rain gage unless indicated by an R.
- G Observations appear in the "Soil Temperatures" table.
- H Observations appear in the "Snowfall and Snow on the Ground" table.
- J Station also published as a Local Climatological Data publication.
- VAR Observation time varies.
- SR / SS Observation time near sunrise / Observation time near sunset, respectively.

SYMBOLS AND LETTERS USED IN THE DATA TABLES

(DAILY DATA ARE FOR THE 24 HOURS IMMEDIATELY PRECEDING OBSERVATION TIME.)

- BLANK Entries in the "Monthly Summarized Data" table indicate no record.
- BLANK Entries in the "Daily Precipitation" and "Snowfall and Snow on the Ground" tables indicate zero.
- BLANK Entries in the "Daily Temperature" table indicate a missing record

- No record. Data not recorded or not received in time for publication.
- + Precipitation or temperature extremes occurred on one or more previous dates during the month.
- * Rain gage not read. Precipitation is included in the amount following the asterisks.
- Time distribution may not be known. A * preceding the monthly total indicates precipitation amount is being carried forward to next month's total, and may include amounts from the previous month(s).
- a As a subscript, indicates accumulated total.
- A Amount of precipitation is the total of observer's entries for the current month. It may include precipitation that occurred during the previous month. Refer to earlier bulletin to determine date of last

reading. (Hawaii stations)

- B Divisional Departure from normals are computed using 1971-2000 normals.
- E Normalized HDD/CDD Calculation. E is appended to the HDD/CDD Calculation when 1-9 individual daily TMAX and/or TMIN values are missing and a Normalized HDD/CDD Calculation is provided. M appears alone if 10 or more daily values are missing.
- F Monthly calculation flagged value. F is appended to average and/or total values computed which exclude one or more daily data values that have been flagged by the GHCN-Daily Dataset
- M Insufficient or partial data. M is appended to average and/or total values computed with 1-9 daily values missing. M appears alone if 10 or more daily values are missing, (8 or more for wind and evaporation).
- N Indicates snow fall or Snowdepth totals are computed with one or more missing days.
- R Amounts from recording rain gage.
- T Trace. An amount too small to measure.

SEASONAL TABLES: Monthly and seasonal snowfall and heating degree days for the 12 months ending with the June data are published in the July issue of this bulletin. Cooling degree days for the calendar year are published in the "Climatological Data Annual Summary."

Information concerning the history of changes in locations, exposure, etc. of substations is kept on file at the National Centers for Environmental Information. Historical information of regular National Weather Service Offices may be obtained from the "Local Climatological Data" annual publication. The contents of this publication may be reprinted or otherwise used freely, with proper credit to the National Centers For Environmental Information. The data are also available digitally.

Effective with the January 2011 Data-Month, COOP Observer Names are no longer included in the Monthly and Annual Climatological Data Publications. This information is not published to ensure the privacy of personal information pursuant to Section 208 of the E-Government Act of 2002 (44 USC 3601).

As of the 2011 Data-Year, Station and Climate Division Maps are no longer being included in the CD Publications. NCEI's Products Branch provides updated Station Maps for various data networks via the Historical Observing Metadata Repository: <http://www.ncdc.noaa.gov/homr>.

The GHCN-Daily Quality Control Flags shown below are displayed as superscripts with the data. For more information on Global Historical Climatology Network - Daily and flags, see: <http://www.ncdc.noaa.gov/oa/climate/ghcn-daily/> and Comprehensive Automated Quality Assurance of Daily Surface Observations. Durre, Imke, Matthew J. Menne, Byron E. Gleason, Tamara G. Houston, Russell S. Vose, 2010: J. Appl. Meteor. Climatol., 49, 16151633. doi: 10.1175/2010JAMC2375.1

- | | |
|---|---|
| Blank = Passed All checks | N = failed naught check |
| D = failed duplicate check | O = failed climatological outlier check |
| G = failed gap check | R = failed lagged range check |
| I = failed internal consistency check | S = failed spatial consistency check |
| K = failed streak/frequent-value check | T = failed temporal consistency check |
| L = failed check on length of multiday period | W = temperature too warm for snow |
| M = failed megaconsistency check | X = failed bounds check |
| | Z = flagged as a result of an official Datzilla investigation |

Beginning with the January 2013 CD Publication, monthly mean temperature calculations have changed to the National Data Stewardship Team standard. Monthly maximum and minimum temperatures are not rounded until after the monthly mean temperature is calculated. This is the most accurate outcome, but may be slightly different from the mean derived from rounded monthly maximum and minimum.

The climate division temperature and precipitation values in this publication are based on simple averages from the current set of NWS-Designated Open and Published COOP and First Order Sites within each division. These values differ from those found in NCEI's nClimDiv product. Beginning in February 2014, the nClimDiv product is used by NCEI's Monitoring Branch and in its monthly climate reports. For more details on nClimDiv, please go to <http://www.ncdc.noaa.gov/monitoring-references/maps/us-climate-divisions.php>.

Effective January 2016, Alaska's Climate Divisions are updated to reflect the 13 climate divisional boundaries established by University of Alaska-Fairbanks, NWS, NCEI, Oregon State University, and University of Nebraska-Lincoln. For more details regarding the updated Alaska Climate Divisions, see: <http://journals.ametsoc.org/doi/pdf/10.1175/JAMC-D-11-0168.1> (Bienek et al., 2012).

NOAA National Centers for Environmental Information
Attn: Customer Engagement Branch
151 Patton Avenue
Asheville, NC 28801-5001

Customer Services Number: (828) 271-4800, option 2
TDD : (828) 271-4010
Fax number: (828) 271-4876

NCEI now offers free online access to the *Climatological Data* publication.
Go to : www.ncdc.noaa.gov and choose Most Popular.