



CLIMATOLOGICAL DATA

MARYLAND AND DELAWARE

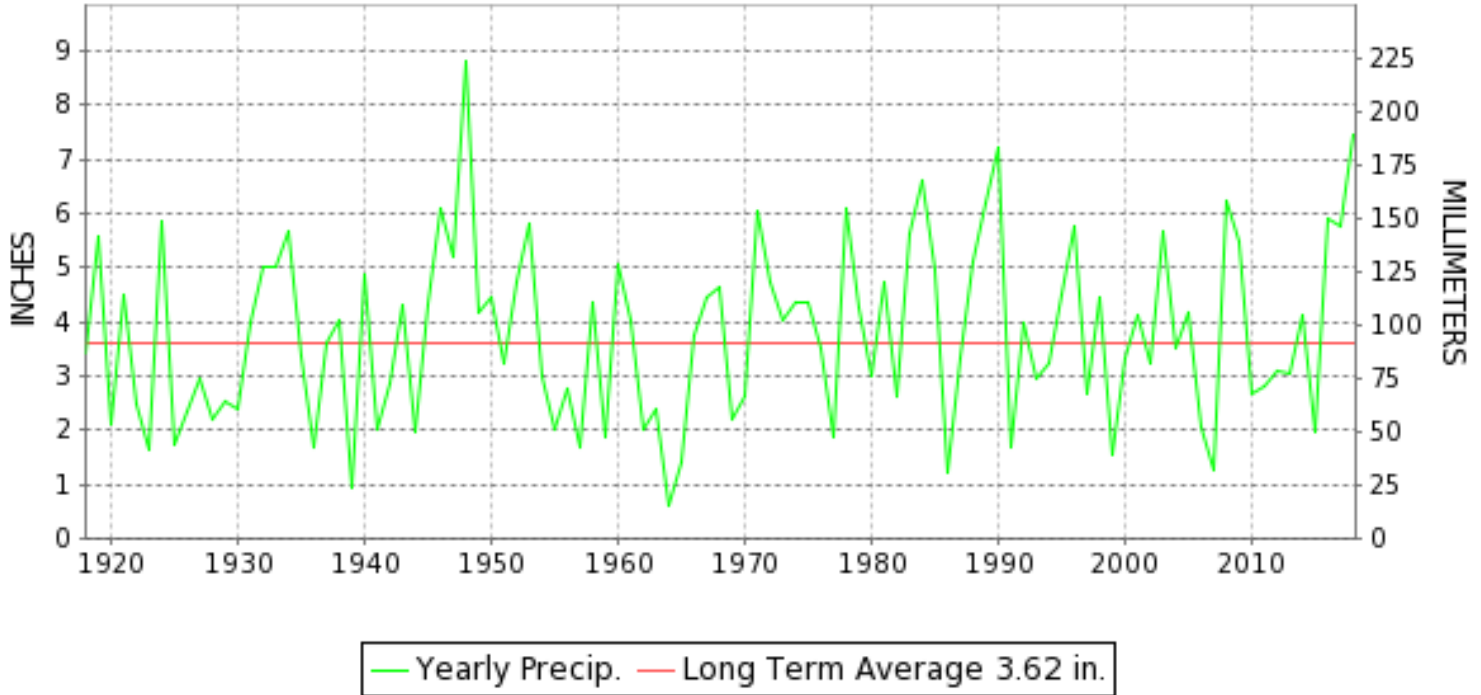
MAY 2018

VOLUME 122 NUMBER 05

ISSN 0145-0549

GHCND Ver: 3.25-upd-2018091918

MAY PRECIPITATION BY YEAR



TEMPERATURE AND PRECIPITATION EXTREMES

MARYLAND

HIGHEST TEMPERATURE	95	MAY 26+	MARYLAND SCI CTR
LOWEST TEMPERATURE	26	MAY 01	SINES DEEP CREEK
GREATEST TOTAL PRECIPITATION	12.91		SHARPSBURG 5 S
LEAST TOTAL PRECIPITATION	4.92		SMITHSBURG 2NW
GREATEST 1 DAY PRECIPITATION	4.39	MAY 18	SALISBURY 2N

"I certify that this is an official publication of the National Oceanic and Atmospheric Administration (NOAA) It is compiled using information from weather observing sites supervised by NOAA/National Weather Service and received at the National Centers for Environmental Information(NCEI), Asheville, North Carolina 28801."

Mary S. Wolpengeti

Director
National Centers for Environmental Information

noaa

National
Oceanic and
Atmospheric Administration

National
Environmental Satellite, Data
and Information Service

National
Centers for Environmental Information
Asheville, North Carolina

DELAWARE

HIGHEST TEMPERATURE	90	MAY 26+	WILMINGTON NEW CASTLE CO AP
LOWEST TEMPERATURE	39	MAY 01	WILMINGTON NEW CASTLE CO AP
GREATEST TOTAL PRECIPITATION	5.68		WILMINGTON NEW CASTLE CO AP
LEAST TOTAL PRECIPITATION	5.68		WILMINGTON NEW CASTLE CO AP
GREATEST 1 DAY PRECIPITATION	1.27	MAY 13	WILMINGTON NEW CASTLE CO AP

MONTHLY STATION AND DIVISION SUMMARY

STATION	TEMPERATURE (°F)											PRECIPITATION (IN)														
	AVERAGE MAXIMUM	AVERAGE MINIMUM	AVERAGE	DEPARTURE FROM NORMAL	HIGHEST	DATE	LOWEST	DATE	HEATING DEG. DAYS	COOLING DEG. DAYS	NO. OF DAYS				TOTAL	DEPARTURE FROM NORMAL	GREATEST 24 HOURS	DATE	ICE PELLETS, SNOW			NO. OF DAYS				
											MAX		MIN						TOTAL	MAX DEPTH ON GROUND	DATE	.10 OR MORE	.50 OR MORE	1.00 OR MORE		
											>=90	<=32	<=32	<=0												
--DIVISIONAL DATA-----> APPALACHIAN MOUNTAIN 07			66.8	4.5B										6.26	1.64B											
HAGERSTOWN 1 E	79.6	58.4	69.0		93	03	37	01	33	164	4	0	0	0	5.24		0.89	05	0.0	0		16	14	0		
CUMBERLAND 2	80.5	57.1	68.8	5.0	92	27+	40	01	43	170	5	0	0	0	7.57	3.55	1.28	28	0.0	0		17	12	1		
FROSTBURG 2	74.7	54.1	64.4	7.8	87	04	35	01	86	76	0	0	0	0	9.36	4.48	1.47	27	0.0	0		17	16	4		
SHARPSBURG 5 S	78.9	54.7	66.8	5.7	91	04	29	01	57	121	2	0	1	0	A 12.91	8.75	0.99	19	0.0	0		11	9	0		
WILLIAMSPORT															7.60	3.45	1.54	27	M			15	15	3		
--DIVISIONAL DATA-----> ALLEGHENY PLATEAU 08			67.3	7.0B										8.54	4.33B											
OAKLAND 1 SE	75.5	54.7	65.1	9.0	86	26+	32	01	84	96	0	0	1	0	7.73	2.59	1.03	06	0.0	0		18	15	2		
SAVAGE RIVER DAM	74.6	51.7	63.2	5.5	85	16	31	01	95	46	0	0	1	0	6.63	2.11	0.87	13+	0.0	0		15	15	0		
SINES DEEP CREEK	M	M	M		84	07	26	01	138E	36E	0	0	2	0	MA 5.87		0.55	15	M	0		7	6	0		
--DIVISIONAL DATA----->			64.2	7.7B										7.18	2.64B											
DELAWARE NORTHERN 01																										
WILMINGTON NEW CASTLE CO AP	77.5	57.4	67.4	4.6	90	26+	39	01	36	117	2	0	0	0	5.68	1.73	1.27	13	0.0	0		15	10	1		
WILMINGTON PORTER RSCH	M	M	M								0	0	0	0	M				M							
--DIVISIONAL DATA-----> SOUTHERN 02			67.4	4.8B										5.68	1.26B											
DOVER	M	M	M								0	0	0	0	M				M							
--DIVISIONAL DATA----->			M	B										M	B											

DAILY PRECIPITATION (INCHES)

STATION	TOTAL	DAY OF MONTH																															
		01	02	03	04	05	06	07	08	09	10	11	12	13	14	15	16	17	18	19	20	21	22	23	24	25	26	27	28	29	30	31	
MARYLAND																																	
SOUTHERN																																	
EASTERN SHORE 01																																	
PRINCESS ANNE	M	-	-	-	-	-	-	-	-	-	-	-	-	-	-	-	-	-	-	-	-	-	-	-	-	-	-	-	-	-	-	-	-
SALISBURY 2N	11.39										0.01		0.60	1.81	0.14	0.68	0.28	4.39	1.74	0.02			0.20				0.07	1.43				0.02	
SALISBURY FAA AP	9.79						T			0.01		0.72	0.01	1.87	0.76	0.21	0.30	4.01	0.62	0.01		0.11				1.03	0.05				0.08		
SNOW HILL 4 N	M	-	-	-	-	-	-	-	-	-	-	-	-	-	-	-	-	-	-	-	-	-	-	-	-	-	-	-	-	-	-	-	
CENTRAL																																	
EASTERN SHORE 02																																	
ROYAL OAK 2 SSW	7.73					T	T			T	T		0.79	0.04	0.47	1.33	0.40	2.08	1.38	T		T		0.45		T	T	0.78	0.01	T	T		
LOWER SOUTHERN 03																																	
MECHANICSVILLE 5 NE	11.59										0.03		1.10	0.05	1.09	0.16	1.99	2.15	2.07	0.15	0.06		1.39			0.06	1.28	0.01			T		
SOLOMONS	MA 8.72	T	*	0.00 _a		*	*	0.02 _a		0.03	*	*	0.86 _a	0.76	0.14	0.35	2.30	*	*	2.50 _a		0.64	*	0.00 _a	*	*	*	*	1.12 _a		-		
UPPER SOUTHERN 04																																	
BALTIMORE-WASHINGTON INTL AP	8.17				T	0.01	T			0.01		0.06	0.43	0.13	1.63	1.33	0.78	0.71	0.66	T		0.19			0.03	1.04	T		0.01	1.15			
BELTSVILLE	6.74					0.06	T						0.28	0.05	0.43	0.65	1.12	1.48	1.63	0.15		T	0.36			0.45	0.02				0.06		
DALECARLIA RSVR	M 8.06										0.05	-	0.43	-	1.10	0.27	0.50	2.58	1.75	0.20		0.02	0.95			0.01	0.08				0.12		
MARYLAND SCI CTR	9.27									0.04		0.96	0.24	0.03	1.06	1.00	0.63	0.36	1.01			0.11		0.11	0.22	3.17		0.01	0.43				
NATL ARBORETUM DC	8.58					0.08	0.01				T		0.45	0.13	2.10	0.23	1.18	1.59	1.64	0.11		T	0.94			0.01	0.09	T		0.02			
OXON HILL	7.91					0.01	T			0.02			0.53	0.50	1.05	1.14	0.81	1.44	1.37	0.05		T	0.85			0.01	0.04	T	T	0.09			
NORTHERN																																	
EASTERN SHORE 05																																	
STEVENSVILLE 2SW	6.38					0.01						0.01	1.08	0.02	0.25	1.29	0.37	1.17	1.19	0.15	0.01		0.24	T			0.57	0.02		T			
SUDLERSVILLE 1S	M	-	-	-	-	-	-	-	-	-	-	-	-	1.50	0.15	1.35	1.25	0.90	0.70	0.55													
NORTHERN CENTRAL 06																																	
ABERDEEN PHILLIPS FLD	A 8.27							0.08			0.24		*	0.93 _a	0.03	1.48	1.35	0.73	*	0.99 _a			0.45			*	1.97 _a				0.02		
CONOWINGO DAM	6.23										0.75	0.07	0.72	0.37		0.71	1.64	0.30	0.58	0.37			0.48				0.24						
CYLBURN	M	-	-	-	-	-	-	-	-	-	-	-	-	-	-	-	-	-	-	-	-	-	-	-	-	-	-	-	-	-	-	-	
DAMASCUS 3 SSW	6.29				0.01	0.19	0.01	T		0.10			0.63	0.22	0.58	0.50	1.16	0.36	0.98	T		0.56		0.27		T	T	T	0.02	0.70			
EMMITSBURG 2 SE	6.18					T	0.40	0.30		0.04			0.82	0.21	0.03	0.21	1.66	0.13	1.20	0.32		T	0.23			T	0.50			0.13			
MILLERS 4 NE	5.65					T	0.15	0.02		T		0.18	0.92	0.23	0.03	0.69	0.67	0.06	0.95	0.04		0.32	T			1.07	0.29	0.01	T	0.02			
REISTERSTOWN 2 NW	M	-	-	-	-	-	-	-	-	-	-	-	-	-	-	-	1.45	0.25	0.82	0.29			0.47	-			0.37	0.01		0.05			
SMITHSBURG 2NW	4.92						1.04	0.35		0.20			0.65	0.23	0.10	0.20	0.30	0.30	0.45	0.30			0.18			0.40	0.04			0.18			
APPALACHIAN																																	
MOUNTAIN 07																																	
HAGERSTOWN 1 E	5.24				T	0.89	0.44	0.02		0.32		0.11	0.53	0.15	0.09	0.39	0.34	0.41	0.51			0.36		0.19	0.16	T		T	0.33				
CUMBERLAND 2	7.57					T	0.87	0.12		0.03	0.09		0.52	0.74	0.18	0.72	0.44	0.37	0.80	0.05		0.03	0.33			0.95	1.28			0.05			
FROSTBURG 2	9.36					0.06	0.72	0.17		0.20			1.27	0.47	0.31	1.00	0.37	0.39	1.36	0.18		0.34	0.35			1.47	0.36			0.34			
SHARPSBURG 5 S	A 12.91						0.42	0.49		0.04			0.62	*	*	*	8.49 _a	0.28	0.99	0.15			0.83			0.02	0.38			0.20			
WILLIAMSPORT	7.60						1.06	0.34		0.12			0.50	0.72	0.22	0.31	0.36	0.34	1.08	0.18			0.30			1.54	0.27			0.26			
ALLEGHENY PLATEAU 08																																	
OAKLAND 1 SE	7.73					0.08	1.03	0.30	0.04		0.50	0.08		0.55	0.25	1.00	0.42	0.98	0.35	0.25	0.53	0.15	0.21	0.66			0.35						

DAILY PRECIPITATION (INCHES)

STATION	TOTAL	DAY OF MONTH																															
		01	02	03	04	05	06	07	08	09	10	11	12	13	14	15	16	17	18	19	20	21	22	23	24	25	26	27	28	29	30	31	
SAVAGE RIVER DAM	6.63					T	0.87	0.24		T		0.10		0.87	0.34	0.81	0.55	0.50	0.42	0.84	0.30		0.16	0.18				0.26	0.19				
SINES DEEP CREEK	MA 5.87					*	*	1.27 _a				0.35	*	*	2.05 _a	0.55	0.25	0.45	-	-	-		0.50	0.40	0.05		-	-	-	*	0.00 _a		
DELAWARE NORTHERN 01																																	
WILMINGTON NEW CASTLE CO AP	5.68				T	T	0.01			0.19	T	0.90	1.27	0.01	0.66	0.32	0.68	0.09	0.74	0.01		0.50				T	0.13			0.01	0.16		
WILMINGTON PORTER RSCH	M	-	-	-	-	-	-	-	-	-	-	-	-	-	-	-	-	-	-	-	-	-	-	-	-	-	-	-	-	-	-	-	
SOUTHERN 02																																	
DOVER	M	-	-	-	-	-	-	-	-	-	-	-	-	-	-	-	-	-	-	-	-	-	-	-	-	-	-	-	-	-	-	-	

DAILY TEMPERATURES (°F)

STATION	OB. TIME	MAX/MIN	DAY OF MONTH																															AVERAGE			
			01	02	03	04	05	06	07	08	09	10	11	12	13	14	15	16	17	18	19	20	21	22	23	24	25	26	27	28	29	30	31				
MARYLAND SOUTHERN EASTERN SHORE 01 PRINCESS ANNE	17	MAX MIN																																		M M	
SALISBURY 2N	17	MAX MIN	79 42	89 52	87 64	86 65	86 68	73 59	74 57	73 49	75 51	83 48	84 61	90 61	91 59	81 58	85 65	85 66	77 65	66 60	78 57	83 71	84 66	82 60	83 61	85 58	85 59	89 70	87 72	84 59	81 63	81 66	83 66	82.2 60.6			
SALISBURY FAA AP	24	MAX MIN	78 41	89 50	85 62	85 66	78 56	73 52	73 50	70 50	73 44	83 60	84 60	91 59	65 57	81 57	85 63	76 66	77 61	66 57	77 70	83 60	76 59	81 63	84 58	84 56	84 68	88 85	85 69	69 81	81 76	81 83	76 83	67 83	79.5 58.5		
SNOW HILL 4 N	17	MAX MIN																																	M M		
CENTRAL EASTERN SHORE 02 ROYAL OAK 2 SSW	17	MAX MIN	79 42	87 49	86 64	87 64	81 67	70 58	74 56	75 45	78 47	83 55	82 58	88 66	85 60	76 57	86 63	84 65	68 64	67 58	74 55	85 70	84 65	82 62	82 66	82 61	85 61	89 72	86 72	82 59	82 66	84 67	84 64	81.2 60.6			
LOWER SOUTHERN 03 MECHANICSVILLE 5 NE	07	MAX MIN	70 40	80 45	89 55	89 62	88 66	72 56	70 55	70 50	73 47	83 52	83 55	82 61	88 58	73 60	80 61	86 63	70 67	76 63	65 56	69 50	83 59	77 61	88 63	83 58	81 59	83 61	86 65	84 61			79 63	79 68	79.0 58.1		
SOLOMONS	08	MAX MIN	69 48			87 67					70 54	70 53	70 56	79 62										71 66	71 68							71			M M		
UPPER SOUTHERN 04 BALTIMORE-WASHINGTON INTL AP	24	MAX MIN	80 42	90 50	92 63	91 69	75 59	69 58	75 55	75 51	78 49	83 55	82 58	87 62	65 59	76 58	90 64	70 65	68 63	68 54	70 54	88 67	79 65	72 64	81 60	85 58	87 55	91 73	86 63	69 60	81 65	81 66	81 66	82 66	79.5 59.7		
BELTSVILLE	08	MAX MIN	70 39	80 46	88 55	89 63	88 65	72 57	68 55	75 50	76 48	81 51	81 54	87 61	87 62	66 59	80 60	87 66	71 64	67 64	67 54	74 56	87 64	80 65	78 64	79 58	86 70	86 55	89 70	85 61	85 61	70 61	83 61	79 67	78.9 59.1		
DALECARLIA RSVR	08	MAX MIN		83 53	91 61	91 61		68 56	66	74	75 50	83								69 56																M M	
MARYLAND SCI CTR	24	MAX MIN	83 53	92 57	95 69	94 74	78 63	68 61	76 58	78 60	79 60	85 61	82 65	83 62	67 59	72 58	92 66	71 64	68 62	68 52	68 52	89 68	80 68	72 66	83 68	88 67	92 66	95 76	89 64	73 62	83 66	85 74	89 68	73 68	83 68	85 68	81.0 63.4
NATL ARBORETUM DC	08	MAX MIN	72 43	84 51	93 59	93 69	93 68		73 57	77 54	79 52	80 59	83 58	85 64	92 64	72 62	83 64	89 69	76 71				74 64	89 67	83 64	82 66	83 59	87 62	88 66	92 74	89 63	89 64	72 64	84 69	81 69	83.1 62.4	
OXON HILL	07	MAX MIN	72 44	83 45	91 53	92 64	91 67	72 57	70 55	76 53	76 51	83 55	83 57	84 63	91 64	73 60	82 61	89 67	74 66	69 67	69 55	70 57	88 67	81 63	81 64	81 59	86 58	87 65	89 71	86 61	86 62	71 62	83 67	80 67	80.6 60.2		
NORTHERN EASTERN SHORE 05 STEVENSVILLE 2SW	07	MAX MIN	70 45	82 53	88 53	88 64	88 65	70 60	66 58	74 54	75 52	79 54	84 60	78 63	75 58	63 58	76 59	89 66	73 65	65 63	67 55	77 57	89 66	80 65	74 66	80 66	85 65	92 65	91 74	83 60	70 61	79 68	85 67	78.5 60.8			
NORTHERN CENTRAL 06 ABERDEEN PHILLIPS FLD	07	MAX MIN	69 41	80 43	87 51	88 62	86 65	72 58	64 54	73 51	75 50	77 52	76 50	79 56	77 57	59 57	74 57	87 66	71 61	68 60	67 51	70 53	86 63	78 62	66 64	80 58	83 58	85 62	88 73	80 58	68 58	80 58	68 66	77 64	79 64	76.4 57.5	
CONOWINGO DAM	07	MAX MIN	70 40	80 40	88 47	89 57	87 63	70 55	65 54	74 53	74 51	75 51	75 54	77 54	77 56	77 52	70 55	85 60	66 60	68 60	63 52	68 52	83 61	77 58	68 58	77 56	82 56	84 56	88 73	74 58	86 58	77 66	86 65	79 65	76.5 55.9		

DAILY TEMPERATURES (°F)

STATION	OB. TIME	MAX/MIN	DAY OF MONTH																															AVERAGE		
			01	02	03	04	05	06	07	08	09	10	11	12	13	14	15	16	17	18	19	20	21	22	23	24	25	26	27	28	29	30	31			
CYLBURN	08	MAX MIN																																M M		
DAMASCUS 3 SSW	22	MAX MIN	80 45	88 54	90 62	89 64	75 52	62 50	73 50	76 52	78 49	78 55	87 55	66 57	81 57	88 62	70 64	66 62	64 52	64 50	84 60	78 60	72 62	76 64	82 56	86 60	87 69	83 67	70 59	80 65	74 69	78 65	77.5 58.3			
EMMITSBURG 2 SE	07	MAX MIN	71 39	80 40	87 47	89 61	84 61	71 53	56 49	72 51	75 51	78 50	78 56	77 53	84 53	65 58	79 58	68 63	70 60	68 60	69 51	67 51	84 59	78 62	74 63	79 53	83 54	85 54	90 70	83 61	83 61	72 68	82 80	80 66	76.7 56.0	
MILLERS 4 NE	18	MAX MIN	77 44	84 56	88 59	86 64	82 58	63 52	73 50	75 49	77 47	78 54	77 56	83 50	78 56	87 55	74 63	69 59	67 59	61 48	82 61	79 57	78 61	75 62	81 55	85 56	87 66	84 69	69 57	82 64	81 67	74 63	77.9 57.4			
REISTERSTOWN 2 NW	08	MAX MIN																		69 50	71 49	71 49	85 60	79 64	71 62			87 62	89 72	88 57	88 58	72 58	82 66	80 65	M M	
SMITHSBURG 2NW	08	MAX MIN	67 33	82 34	86 48	90 62	82 56	66 51	58 43	70 45	76 49	79 49	80 51	74 52	85 53	67 58	80 59	89 59	73 60	69 61	68 50	66 50	83 59	81 59	76 63	75 51	82 52	86 52	87 68	85 63	76 64	85 67	80 68	77.5 54.5		
APPALACHIAN MOUNTAIN 07																																				
HAGERSTOWN 1 E	24	MAX MIN	83 37	90 46	93 60	85 65	71 53	59 53	72 47	77 53	79 51	82 60	78 54	88 54	68 60	83 63	91 64	73 61	69 55	69 52	64 60	86 61	82 66	76 61	77 53	84 55	88 70	91 69	86 65	75 68	87 65	82 68	80 69	79.6 58.4		
CUMBERLAND 2	07	MAX MIN	68 40	85 42	89 46	92 62	84 60	65 50	62 47	72 47	78 51	83 51	82 55	80 57	80 64	87 61	90 61	74 64	72 64	69 54	63 54	85 59	85 60	79 65	77 54	85 54	91 54	92 65	81 68	81 69	86 68	89 69	79 68	80.5 57.1		
FROSTBURG 2	07	MAX MIN	64 35	78 43	83 53	87 61	81 52	63 47	56 45	67 47	72 47	77 48	75 52	76 51	84 52	78 59	82 57	85 57	69 60	64 59	62 49	62 49	77 55	76 59	71 60	69 51	79 51	84 57	84 63	76 64	81 63	82 64	72 66	74.7 54.1		
SHARPSBURG 5 S	07	MAX MIN	70 29	82 38	88 48	91 57	88 56	68 51	58 47	71 47	76 48	79 49	79 51	88 52	72 53	82 59	90 60	75 61	69 62	70 52	65 52	86 58	81 59	78 62	77 52	83 52	88 54	88 68	86 63	76 63	85 65	79 67	78.9 54.7			
ALLEGHENY PLATEAU 08																																				
OAKLAND 1 SE	07	MAX MIN	66 32	76 39	81 43	84 60	77 53	62 51	59 44	68 45	71 46	74 53	74 47	78 47	83 61	80 63	84 57	86 60	73 63	67 52	65 52	71 58	79 61	77 62	73 49	72 49	86 61	84 64	82 65	78 64	81 64	75 67	75 67	75.5 54.7		
SAVAGE RIVER DAM	08	MAX MIN	64 31	76 38	81 44	84 54	78 50	63 46	58 46	68 46	71 47	76 50	75 50	78 55	83 52	80 49	84 52	85 61	71 61	65 51	63 48	63 48	77 57	74 58	73 62	71 51	75 50	83 50	84 58	81 56	81 56	78 56	81 56	74 56	74.6 51.7	
SINES DEEP CREEK	07	MAX MIN	63 26	75 29	80 36	80 51	80 51	84 43	70 42	70 43	69 43	75 45	75 41			80 55	75 50	78 50	78 58				51 55	75 58	71 46	68 46	77 46								M M	
DELAWARE NORTHERN 01																																				
WILMINGTON NEW CASTLE CO AP	24	MAX MIN	80 39	88 51	90 63	88 67	74 61	71 55	75 51	77 51	78 48	77 51	79 57	75 55	60 55	72 55	86 62	71 61	68 59	67 51	70 51	84 66	79 60	67 59	81 62	83 57	85 57	90 68	79 59	69 57	81 65	78 64	79 63	77.5 57.4		
WILMINGTON PORTER RSCH	24	MAX MIN																																		M M
SOUTHERN 02																																				
DOVER	16	MAX MIN																																		M M

MARYLAND AND DELAWARE
201805

DAILY SOIL TEMPERATURES

STATION	DEPTH	TIME	DAY OF MONTH																															AVERAGE	
			01	02	03	04	05	06	07	08	09	10	11	12	13	14	15	16	17	18	19	20	21	22	23	24	25	26	27	28	29	30	31		
MARYLAND UPPER SOUTHERN 04 BELTSVILLE (in)																																			

MARYLAND AND DELAWARE
201805

SOILS REFERENCE NOTES

STATION	SOIL TYPE	SOIL COVER	SLOPE	UNITS
BELTSVILLE	UNKNOWN	GRASS	0	F

SNOWFALL AND SNOW ON GROUND (INCHES)

STATION		DAY OF MONTH																															
		01	02	03	04	05	06	07	08	09	10	11	12	13	14	15	16	17	18	19	20	21	22	23	24	25	26	27	28	29	30	31	
MARYLAND																																	
SOUTHERN																																	
EASTERN SHORE 01																																	
PRINCESS ANNE	SNOWFALL																																
SALISBURY 2N	SNOWFALL																																
SALISBURY FAA AP	SNOWFALL	-	-	-	-					-																							
	SN ON GND	-	-	-	-																												
SNOW HILL 4 N	SNOWFALL																																
DELAWARE																																	
NORTHERN 01																																	
WILMINGTON NEW CASTLE CO AP	SNOWFALL																																
	SN ON GND																																
WILMINGTON PORTER RSCH	SNOWFALL																																

Snowfall: Includes snow and ice. Values for NWS stations (J index note) are Mid-Mid (LST).

Snow on ground: Includes snow, sleet, ice, and hail. Values for NWS stations (J index note) are observed at 12 UTC (GMT).

Water Equivalent: Given for NWS stations (J index note) only, when snow depth is 2 inches or more, and is measured at 18 UTC (GMT)

PAN EVAPORATION AND WIND

STATION		DAY OF MONTH																															TOTAL OR AVERAGE
		01	02	03	04	05	06	07	08	09	10	11	12	13	14	15	16	17	18	19	20	21	22	23	24	25	26	27	28	29	30	31	
MARYLAND UPPER SOUTHERN 04 BELTSVILLE	WIND	51	90	32	52	56	21	41	23	24	23	29	52	42	33	46	76	31	37	67	40	45	31	21	62	23	79	24	52	23	16	52	1294
	EVAP	0.24	0.23	0.26	0.28	0.25	0.10	0.09	0.19	0.21	0.21	0.10	0.25	0.21	0.03	0.17	0.28	0.09	0.04	0.15	0.07	0.24	0.25	0.05	0.24	0.22	0.32	0.21	0.17	0.06	0.10	0.11	5.42
	MAX	96	96	98	100	101	94	88	98 ¹	100 ¹	97	94	98	103	83	100	104	88	84	82	84	104	105	93	99	104	104	106	104	90	103 ¹	96	95.9
	MIN	54	42	68	72	72	70	70	70	68	71	73	76	80	76	76	84	80	80 ¹	70	70	83	82	82 ¹	82	82	83	88 ¹	78	80	84 ¹	84	73.9
ALLEGHENY PLATEAU 08 SAVAGE RIVER DAM	WIND	-	-	-	-	-	-	-	-	-	-	-	-	-	-	-	-	-	-	-	-	-	-	-	-	-	-	-	-	-	-	-	M
	EVAP	-	-	-	-	-	-	-	-	-	-	-	-	-	-	-	-	-	-	-	-	-	-	-	-	-	-	-	-	-	-	-	M
	MAX	-	-	-	-	-	-	-	-	-	-	-	-	-	-	-	-	-	-	-	-	-	-	-	-	-	-	-	-	-	-	-	-
	MIN	-	-	-	-	-	-	-	-	-	-	-	-	-	-	-	-	-	-	-	-	-	-	-	-	-	-	-	-	-	-	-	M

Evaporation: Is measured in hundredths of inches.

Wind: Is measured in miles.

Max and Min: The maximum and minimum temperatures (Fahrenheit) of the water in the evaporation pan.

STATION INDEX

STATION	INDEX NO.	DIVISION	COUNTY	LATITUDE	LONGITUDE	ELEVATION (IN FEET)	OBSERVATION TIME AND TABLES			
							LOCAL STD TIME			
							TEMP	PRECIP	EVAP	SPECIAL SEE (NOTES)
MARYLAND										
ABERDEEN PHILLIPS FLD	0015	06	HARFORD	39 28	76 10W	57	07	07		CH
BALTIMORE-WASHINGTON INTL AP R	0465	04	ANNE ARUNDEL	39 10	76 41W	156	24	24		HJ
BELTSVILLE	0700	04	PRINCE GEORGE'S	39 2	76 56W	145	08	08	08	GCH
CONOWINGO DAM	2060	06	HARFORD	39 39	76 11W	40	07	07		H
CUMBERLAND 2	2282	07	ALLEGANY	39 39	78 45W	730	07	07		H
CYLBURN	2308	06	BALTIMORE	39 21	76 39W	235	08	08		H
DALECARLIA RSVR	2325	04	DISTRICT OF COLUMBIA	38 56	77 7W	150	08	08		H
DAMASCUS 3 SSW	2336	06	MONTGOMERY	39 16	77 14W	700	22	22		H
EMMITSBURG 2 SE	2906	06	FREDERICK	39 41	77 17W	403	07	07		H
FROSTBURG 2	3415	07	ALLEGANY	39 40	78 56W	2170	07	07		H
HAGERSTOWN 1 E	1790	07	WASHINGTON	39 38	77 42W	532	24	24		H
MARYLAND SCI CTR R	5718	04	BALTIMORE (CITY)	39 17	76 37W	20	24	24		H
MECHANICSVILLE 5 NE	5865	03	ST. MARY'S	38 30	76 44W	100	07	07		H
MILLERS 4 NE	5934	06	CARROLL	39 43	76 48W	860	18	18		CH
NATL ARBORETUM DC	6350	04	DISTRICT OF COLUMBIA	38 55	76 58W	50	08	08		H
OAKLAND 1 SE	6620	08	GARRETT	39 25	79 24W	2420	07	07		H
OXON HILL	6800	04	PRINCE GEORGE'S	38 48	76 60W	186	07	07		H
PRINCESS ANNE	7330	01	SOMERSET	38 13	75 41W	20	17	17		H
REISTERSTOWN 2 NW	7580	06	BALTIMORE	39 30	76 50W	737	08	08		H
ROYAL OAK 2 SSW //	7806	02	TALBOT	38 43	76 11W	10	17	17		H
SALISBURY 2N	8004	01	WICOMICO	38 24	75 36W	20	17	17		H
SALISBURY FAA AP //R	8005	01	WICOMICO	38 20	75 31W	47	24	24		H
SAVAGE RIVER DAM	8065	08	GARRETT	39 31	79 8W	1495	08	08	08	CH
SHARPSBURG 5 S	8207	07	WASHINGTON	39 24	77 43W	500	07	07		H
SINES DEEP CREEK	8315	08	GARRETT	39 31	79 25W	2040	07	07		H
SMITHSBURG 2NW	8371	06	WASHINGTON	39 40	77 35W	670	08	08		H
SNOW HILL 4 N	8380	01	WORCESTER	38 14	75 23W	30	17	17		H
SOLOMONS	8405	03	CALVERT	38 19	76 27W	12	08	08		H
STEVENSVILLE 2SW	8557	05	QUEEN ANNE'S	38 58	76 20W	10	07	07		H
SUDLERSVILLE 1S	8657	05	QUEEN ANNE'S	39 10	75 51W	100		20		H
WILLIAMSPORT	9570	07	WASHINGTON	39 37	77 51W	360		06		CH
DELAWARE										
DOVER //	2730	02	KENT	39 9	75 30W	30	16	16		H
WILMINGTON NEW CASTLE CO AP R	9595	01	NEW CASTLE	39 40	75 36W	79	24	24		HJ
WILMINGTON PORTER RSCH	9605	01	NEW CASTLE	39 46	75 32W	270	24	24		H

REFERENCE NOTES

STATION NAMES: Name of the city, town or locality. Figures and letters following the station names indicate the distance in miles and direction from the post office or town community center.

DIVISIONS: Areas within a state of similar climatological characteristics. Division averages are calculated using data from stations that record temperature and/or precipitation. Station Precipitation totals flagged with an 'F' or 'M' are excluded from the Divisional Average calculations of precipitation. Stations with monthly Temperature averages flagged with an 'F' or 'M' are included in the Divisional Average if there are no more than 9 flagged or missing daily values in the month, else they are excluded from the divisional average for temperature.

NORMALS: The average value of the meteorological element over a time period. Effective 1 January 2012, the averaging period for station departures is 1981 to 2010. The normals for National Weather Service localities have been adjusted so as to be representative for the current observation site.

The January 2011 through December 2015 publications incorrectly state the computation of divisional departures. Climate Division departures have been, and continue to be, computed from 1971-2000 Normals, not 1981-2010 as stated. Station departures are accurately described as departures from 1981-2010.

MONTHLY DEGREE DAY TOTALS: One heating (cooling) degree day is accumulated for each whole degree that the daily mean temperature is below (above) 65 degrees Fahrenheit.

PRECIPITATION: Values shown in hundredths of inches are water equivalent totals, i.e., total of liquid and melted frozen precipitation. In the "Monthly Summarized Data" table the total snow and sleet values shown in tenths of inches are unmelted amounts. The max depth on ground values of snow and sleet shown in whole inches are cumulative unmelted amounts. The number of days with .10, .50, 1.00 or more refers to water equivalents.

PRECIPITATION QUALITY CONTROL: The NCEI quality control process may flag precipitation data that are spatially inconsistent, exceed climatological limits, or are inconsistent with prevailing weather patterns.

TEMPERATURE: Original temperature values are given in the "Daily Temperature" table. Summary temperature information (averages, departures, extremes, monthly degree day totals) is based on the values labeled MAX/MIN.

WIND: (As shown in the "Evaporation and Wind" table) the total wind movement in miles over the evaporation pan as determined by an anemometer recorder located 6-8 inches above the pan.

SYMBOLS AND LETTERS USED IN THE STATION INDEX TABLE

C Station is equipped with recording rain gage (R) but values in this bulletin are from a non-recording rain gage unless indicated by an R.

G Observations appear in the "Soil Temperatures" table.

H Observations appear in the "Snowfall and Snow on the Ground" table.

J Station also published as a Local Climatological Data publication.

VAR Observation time varies.

SR / SS Observation time near sunrise / Observation time near sunset, respectively.

SYMBOLS AND LETTERS USED IN THE DATA TABLES

(DAILY DATA ARE FOR THE 24 HOURS IMMEDIATELY PRECEDING OBSERVATION TIME.)

BLANK Entries in the "Monthly Summarized Data" table indicate no record.

BLANK Entries in the "Daily Precipitation" and "Snowfall and Snow on the Ground" tables indicate zero.

BLANK Entries in the "Daily Temperature" table indicate a missing record

- No record. Data not recorded or not received in time for publication.

+ Precipitation or temperature extremes occurred on one or more previous dates during the month.

* Rain gage not read. Precipitation is included in the amount following the asterisks.

Time distribution may not be known. A * preceding the monthly total indicates precipitation amount is being carried forward to next month's total, and may include amounts from the previous month(s).

a As a subscript, indicates accumulated total.

A Amount of precipitation is the total of observer's entries for the current month. It may include precipitation that occurred during the previous month. Refer to earlier bulletin to determine date of last

reading. (Hawaii stations)

B Divisional Departure from normals are computed using 1971-2000 normals.

E Normalized HDD/CDD Calculation. E is appended to the HDD/CDD Calculation when 1-9 individual daily TMAX and/or TMIN values are missing and a Normalized HDD/CDD Calculation is provided. M appears alone if 10 or more daily values are missing.

F Monthly calculation flagged value. F is appended to average and/or total values computed which exclude one or more daily data values that have been flagged by the GHCN-Daily Dataset

M Insufficient or partial data. M is appended to average and/or total values computed with 1-9 daily values missing. M appears alone if 10 or more daily values are missing, (8 or more for wind and evaporation).

N Indicates snow fall or Snowdepth totals are computed with one or more missing days.

R Amounts from recording rain gage.

T Trace. An amount too small to measure.

SEASONAL TABLES: Monthly and seasonal snowfall and heating degree days for the 12 months ending with the June data are published in the July issue of this bulletin. Cooling degree days for the calendar year are published in the "Climatological Data Annual Summary."

Information concerning the history of changes in locations, exposure, etc. of substations is kept on file at the National Centers for Environmental Information. Historical information of regular National Weather Service Offices may be obtained from the "Local Climatological Data" annual publication. The contents of this publication may be reprinted or otherwise used freely, with proper credit to the National Centers For Environmental Information. The data are also available digitally.

Effective with the January 2011 Data-Month, COOP Observer Names are no longer included in the Monthly and Annual Climatological Data Publications. This information is not published to ensure the privacy of personal information pursuant to Section 208 of the E-Government Act of 2002 (44 USC 3601).

As of the 2011 Data-Year, Station and Climate Division Maps are no longer being included in the CD Publications. NCEI's Products Branch provides updated Station Maps for various data networks via the Historical Observing Metadata Repository: <http://www.ncdc.noaa.gov/homr>.

The GHCN-Daily Quality Control Flags shown below are displayed as superscripts with the data. For more information on Global Historical Climatology Network - Daily and flags, see: <http://www.ncdc.noaa.gov/oa/climate/ghcn-daily/> and Comprehensive Automated Quality Assurance of Daily Surface Observations. Durre, Imke, Matthew J. Menne, Byron E. Gleason, Tamara G. Houston, Russell S. Vose, 2010: J. Appl. Meteor. Climatol., 49, 16151633. doi: 10.1175/2010JAMC2375.1

Blank = Passed All checks

D = failed duplicate check

G = failed gap check

I = failed internal consistency check

K = failed streak/frequent-value check

L = failed check on length of multiday period

M = failed megaconsistency check

N = failed naught check

O = failed climatological outlier check

R = failed lagged range check

S = failed spatial consistency check

T = failed temporal consistency check

W = temperature too warm for snow

X = failed bounds check

Z = flagged as a result of an official Datzilla investigation

Beginning with the January 2013 CD Publication, monthly mean temperature calculations have changed to the National Data Stewardship Team standard. Monthly maximum and minimum temperatures are not rounded until after the monthly mean temperature is calculated. This is the most accurate outcome, but may be slightly different from the mean derived from rounded monthly maximum and minimum.

The climate division temperature and precipitation values in this publication are based on simple averages from the current set of NWS-Designated Open and Published COOP and First Order Sites within each division. These values differ from those found in NCEI's nClimDiv product. Beginning in February 2014, the nClimDiv product is used by NCEI's Monitoring Branch and in its monthly climate reports. For more details on nClimDiv, please go to <http://www.ncdc.noaa.gov/monitoring-references/maps/us-climate-divisions.php>.

Effective January 2016, Alaska's Climate Divisions are updated to reflect the 13 climate divisional boundaries established by University of Alaska-Fairbanks, NWS, NCEI, Oregon State University, and University of Nebraska-Lincoln. For more details regarding the updated Alaska Climate Divisions, see: <http://journals.ametsoc.org/doi/pdf/10.1175/JAMC-D-11-0168.1> (Bienek et al., 2012).

NOAA National Centers for Environmental Information
Attn: Customer Engagement Branch
151 Patton Avenue
Asheville, NC 28801-5001

Customer Services Number: (828) 271-4800, option 2
TDD : (828) 271-4010
Fax number: (828) 271-4876

NCEI now offers free online access to the *Climatological Data* publication.
Go to : www.ncdc.noaa.gov and choose Most Popular.