



CLIMATOLOGICAL DATA MARYLAND AND DELAWARE



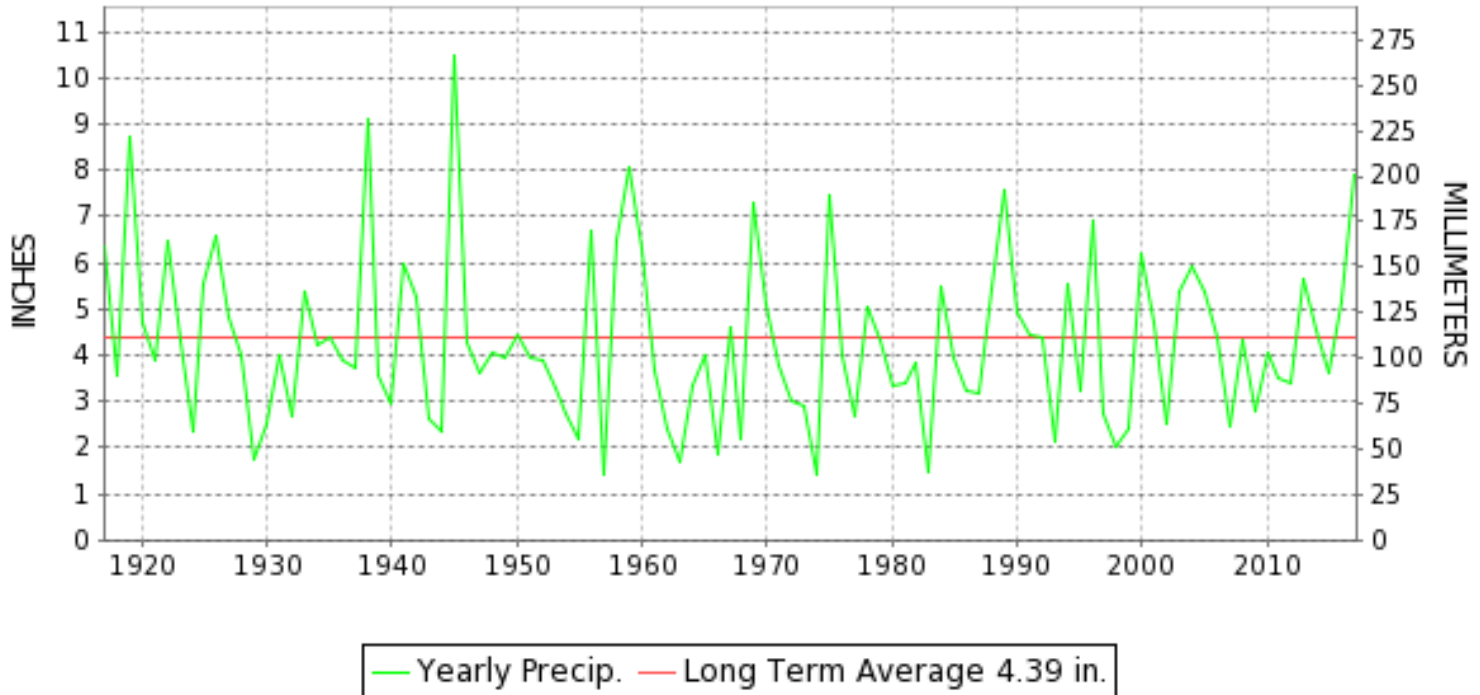
JULY 2017

VOLUME 121 NUMBER 07

ISSN 0145-0549

GHCND Ver: 3.22-upd-2017111305

JULY PRECIPITATION BY YEAR



TEMPERATURE AND PRECIPITATION EXTREMES

MARYLAND

HIGHEST TEMPERATURE	99	JULY 20+	2 STATIONS
LOWEST TEMPERATURE	48	JULY 26+	SINES DEEP CREEK
GREATEST TOTAL PRECIPITATION	11.31		SALISBURY FAA AP
LEAST TOTAL PRECIPITATION	5.43		CUMBERLAND 2
GREATEST 1 DAY PRECIPITATION	4.83	JULY 29	PRINCESS ANNE

"I certify that this is an official publication of the National Oceanic and Atmospheric Administration (NOAA) It is compiled using information from weather observing sites supervised by NOAA/National Weather Service and received at the National Centers for Environmental Information(NCEI), Asheville, North Carolina 28801."

Mary S. Wolpenbut

Director
National Centers for Environmental Information

noaa

National
Oceanic and
Atmospheric Administration

National
Environmental Satellite, Data
and Information Service

National
Centers for Environmental Information
Asheville, North Carolina

DELAWARE

HIGHEST TEMPERATURE

94

JULY 21+

DOVER

LOWEST TEMPERATURE

58

JULY 30

WILMINGTON NEW CASTLE CO AP

GREATEST TOTAL PRECIPITATION

8.64

WILMINGTON PORTER RSCH

LEAST TOTAL PRECIPITATION

6.34

DOVER

GREATEST 1 DAY PRECIPITATION

2.37

JULY 24

WILMINGTON PORTER RSCH

MONTHLY STATION AND DIVISION SUMMARY

STATION	TEMPERATURE (°F)											PRECIPITATION (IN)												
	AVERAGE MAXIMUM	AVERAGE MINIMUM	AVERAGE	DEPARTURE FROM NORMAL	HIGHEST	DATE	LOWEST	DATE	HEATING DEG. DAYS	COOLING DEG. DAYS	NO. OF DAYS				TOTAL	DEPARTURE FROM NORMAL	GREATEST 24 HOURS	DATE	ICE PELLETS, SNOW			NO. OF DAYS		
											MAX		MIN						TOTAL	MAX DEPTH ON GROUND	DATE	.10 OR MORE	.50 OR MORE	1.00 OR MORE
											>=90	<=32	<=32	<=0										
REISTERSTOWN 2 NW	86.4M	68.5M	77.5M		98	23	59	30	0	389E	8	0	0	0	M 7.45		2.18	29	M 0.0	0		13	10	3
SMITHSBURG 2NW	84.3	63.4	73.8	-0.7	91	21	50	31+	2	283	4	0	0	0	6.56	2.82	1.61	29	0.0	0		13	12	2
--DIVISIONAL DATA-----> APPALACHIAN MOUNTAIN 07			76.5	1.2B											7.99	4.03B								
HAGERSTOWN 1 E	86.6	67.3	77.0		95	20	53	30	0	375	9	0	0	0	7.51		2.42	28	0.0	0		15	10	2
CUMBERLAND 2	87.3	64.1	75.7	-1.1	96	20	52	31+	0	337	13	0	0	0	5.43	1.87	1.87	29	0.0	0		13	7	3
FROSTBURG 2	79.1	60.9	70.0	1.0	86	01	52	30	9	170	0	0	0	0	7.79	3.79	2.08	29	0.0	0		15	10	3
SHARPSBURG 5 S	86.2	63.0	74.6	0.5	93	21	50	31+	1	308	9	0	0	0	M 6.00	1.90	1.82	29	0.0	0		9	7	4
WILLIAMSPORT															M				M					
--DIVISIONAL DATA-----> ALLEGHENY PLATEAU 08			74.3	1.5B											6.91	3.27B								
OAKLAND 1 SE	80.5	61.5	71.0	2.6	87	19	49	31+	15	207	0	0	0	0	10.66	5.20	2.75	29	0.0	0		19	11	4
SAVAGE RIVER DAM	80.1	60.7	70.4	0.2	87	20+	49	18	4	179	0	0	0	0	6.95	2.63	1.90	29	0.0	0		13	10	3
SINES DEEP CREEK	M	M	M		84	24+	48	26+	17E	124E	0	0	0	0	MA 8.80		1.23	07	M	0		7	5	1
--DIVISIONAL DATA-----> DELAWARE NORTHERN 01															8.81	3.94B								
WILMINGTON NEW CASTLE CO AP	86.6	69.7	78.2	1.4	93	21+	58	30	0	417	9	0	0	0	6.75	2.18	2.16	24	0.0	0		11	8	3
WILMINGTON PORTER RSCH	83.9	67.6	75.7	-0.5	92	19	59	31+	0	339	5	0	0	0	8.64	3.28	2.37	24	0.0	0		10	9	3
--DIVISIONAL DATA-----> SOUTHERN 02			77.0	0.8B											7.70	3.20B								
DOVER	86.8	70.3	78.5	0.8	94	21+	59	31	0	425	9	0	0	0	A 6.34	2.25	1.47	29	0.0	0		11	9	3
--DIVISIONAL DATA----->			78.5	2.0B											6.34	2.42B								

DAILY PRECIPITATION (INCHES)

STATION	TOTAL	DAY OF MONTH																														
		01	02	03	04	05	06	07	08	09	10	11	12	13	14	15	16	17	18	19	20	21	22	23	24	25	26	27	28	29	30	31
MARYLAND																																
SOUTHERN																																
EASTERN SHORE 01																																
PRINCESS ANNE	M 8.56	-	-					-	0.05					0.53	1.30	-						1.85	-							4.83	-	
SALISBURY 2N	9.83					0.44	0.31							0.42	1.96								1.91	0.03	0.51				4.20	0.05		
SALISBURY FAA AP	11.31	T			T	0.27	0.16	T					0.25	2.54	0.03					T		1.25	2.12	0.02	0.18			3.84	0.65			
SNOW HILL 4 N	M	-	-	-	-	-	-	-	-	-	-	-	-	-	-	-	-	-	-	-	-	-	-	-	-	-	-	-	-	-	-	
CENTRAL																																
EASTERN SHORE 02																																
ROYAL OAK 2 SSW	8.43	0.08				T	1.09	0.05	T						0.47		T	0.32				0.92	1.45	0.03	0.05			0.25	3.72	T		
LOWER SOUTHERN 03																																
MECHANICSVILLE 5 NE	7.01		0.14				0.34	2.64	T					0.22	0.72								0.90	0.53	0.03				1.40	0.09		
SOLOMONS	M	*	*	0.33 _a		T	5.03	*	*	0.00 _a	-	-	-	-	-	-	-	-	-	-	-	-	-	-	-	-	-	-	-	-	-	
UPPER SOUTHERN 04																																
BALTIMORE-WASHINGTON INTL AP	7.11	0.35			0.32	0.02	1.54	0.23			0.01			0.02	0.15		0.02	T			T	0.07	0.41	0.03				2.58	1.36			
BALTIMORE WASHINGTON INTL CLIM	7.09	0.35			0.32		1.54	0.23			0.01			0.02	0.15		0.02	T			T	0.07	0.41	0.03				2.58	1.36			
BELTSVILLE	9.64		0.83			0.07	0.35	0.21							0.13				0.10	0.90				0.95	1.61	0.18			4.18	0.13		
DALECARLIA RSVR	8.12		0.05				0.55	0.45							1.10				0.09	0.52				0.73	1.31	0.10			3.20	0.02		
MARYLAND SCI CTR	6.41	0.96					0.33	0.17						0.03			0.01					0.01	0.46	0.22			3.46	0.76				
NATL ARBORETUM DC	10.23		0.57	0.02			0.58	0.33							0.47			0.23	0.93				0.83	1.41	T			4.80	0.06			
OXON HILL	7.48		0.32			T	1.07	0.28	0.07			T			0.37								2.16	0.72	0.03			2.45	0.01			
NORTHERN																																
EASTERN SHORE 05																																
STEVENSVILLE 2SW	5.51		0.25	0.04		0.03	0.01	1.11	T						0.88								0.54	0.50	0.01			2.14				
SUDLERSVILLE 1S	M 3.87		0.55			0.15	0.35				0.40				0.60			0.17				0.10	0.15	0.55	0.85			-				
NORTHERN CENTRAL 06																																
ABERDEEN PHILLIPS FLD	A 7.43		1.24				0.05	1.05	0.03					0.01	0.76				0.51				*	2.25 _a	0.31			1.22	T			
BRIGHTON DAM	M 5.75		0.10			0.40	-	-							0.15				0.30	0.05			0.50	1.25			-	-	3.00			
CONOWINGO DAM	8.80		0.29			0.10	0.61	0.28						0.21	1.37				0.85		0.10			3.48	0.44			1.07				
CYLBURN	M		-			0.50	0.18	1.00	-	-	-	0.01			-	0.05	-	0.11	0.09				-	-	-	-	-	0.06	0.51	0.98		
DAMASCUS 3 SSW	8.73	0.17			1.23	0.23	0.47	0.17				T		0.05			T					0.31	0.55	0.25	T			4.03	1.27			
EMMITSBURG 2 SE	9.87		0.49				0.31	0.89		0.08		0.20		0.04	1.01			T					0.08	2.81	0.56			3.37	0.03			
MILLERS 4 NE	6.54	0.40			0.01	T	0.51	0.08		0.01		T		0.88	0.02		0.20	T			0.01	0.02	0.40	2.28	0.13		0.22	1.37				
REISTERSTOWN 2 NW	M 7.45		0.30			0.40	-	2.00	0.20	0.04	-				0.23			1.45	0.10	0.01			0.11	0.36	-	0.07		2.18				
SMITHSBURG 2NW	6.56	0.56	0.36			0.41	0.38	1.25	0.08			0.37			0.12								0.17	0.33	0.82			1.61	0.10			
APPALACHIAN																																
MOUNTAIN 07																																
HAGERSTOWN 1 E	7.51	0.22			0.08	0.89	1.12	0.26	0.01		0.16	0.02		T	0.02						0.08	0.63	0.91	0.46			2.42	0.23				
CUMBERLAND 2	5.43					1.00	0.01	0.74	0.11	0.03	0.18	0.01		0.05	0.23								1.06	0.08				1.87	0.06			
FROSTBURG 2	7.79					1.15	0.06	0.85		0.36	0.42	0.03		0.06	0.43				T				1.49	0.28	0.03	0.01	0.18	2.08	0.36			
SHARPSBURG 5 S	M 6.00		0.16			T	1.12	1.19		T					-				0.09				1.20	0.11	0.01			1.82	0.30			
WILLIAMSPORT	M	-	-	-	-		0.65	-	-	-	-	-	-	-	0.10							0.14	0.97	-	0.03			2.44	0.13			

DAILY PRECIPITATION (INCHES)

STATION	TOTAL	DAY OF MONTH																																
		01	02	03	04	05	06	07	08	09	10	11	12	13	14	15	16	17	18	19	20	21	22	23	24	25	26	27	28	29	30	31		
ALLEGHENY PLATEAU 08																																		
OAKLAND 1 SE	10.66		0.01			0.01	0.05	1.27	0.40	0.31		0.38	0.56	0.03	0.58	0.70	0.01					0.03		2.40	0.01					0.10	2.75	1.05	0.01	
SAVAGE RIVER DAM	6.95	0.24				0.03	1.43	0.26	0.05		0.22	0.20		0.18	0.46								0.80						0.03	1.90	1.15			
SINES DEEP CREEK	MA 8.80	*	*	0.05 _a	*	0.00 _a	0.07	1.23	*	*	0.60 _a	0.30	0.22	0.08	0.45	*	*	*	0.70 _a				*	*	1.30 _a			-	0.10	*	*	3.70 _a		
DELAWARE																																		
NORTHERN 01																																		
WILMINGTON NEW CASTLE CO AP	6.75	0.11			0.05	0.01	0.50	0.57						1.49			0.06						T	1.35	2.16	T	T	T	0.13	0.32				
WILMINGTON PORTER RSCH	8.64	0.39			0.16		0.75	0.21						1.80										2.30	2.37	0.09			0.10	0.47				
SOUTHERN 02																																		
DOVER	A 6.34	0.31			0.30		1.07	0.08						0.83	0.12					0.12			*	*	0.52 _a	1.10	0.40		0.02	1.47				

DAILY TEMPERATURES (°F)

STATION	OB. TIME	MAX/MIN	DAY OF MONTH																															AVERAGE		
			01	02	03	04	05	06	07	08	09	10	11	12	13	14	15	16	17	18	19	20	21	22	23	24	25	26	27	28	29	30	31			
CONOWINGO DAM	07	MAX	89	88	88	89	89	81	74	84	85	82	86	89	89	90	85	83	82	85	85	89	92	89	88	85	85	80	80			73	81	85.0		
		MIN	69	68	67	68	69	69	69	67	67	63	63	71	71	73	72	63	63	70	70	72	74	74	73	72	63	64	65			58	53	67.6		
CYLBURN	08	MAX	94	95	88	89	85	82	76	86	84	82	88	91	88	92	90	90	92	93	97	99	99	90	91	87	87	76	78	82	77	74	77	87.1		
		MIN	80	77	70	70	70	70	71	71	64	66	72	77	74	76	79	71	78	79	81	83	79	76	72	72	64	63	68	71	68	69	60	72.3		
DAMASCUS 3 SSW	22	MAX	88	88	87	85	80	73	84	83	80	86	88	86	88	89	84	83	87	90	92	91	91	87	84	87	75	82	83	76	70	77	83	84.1		
		MIN	73	70	66	68	69	69	70	64	60	63	67	70	70	71	70	61	69	70	68	71	72	69	70	69	61	58	68	68	63	58	58	66.9		
EMMITSBURG 2 SE	07	MAX	90	88	89	89	88	81	74	87	84	81	86	89	87	89	89	85	85	89	89	94	92	93	88	88	87	78	82	85	79	75	80	85.8		
		MIN	69	70	64	64	67	68	68	66	62	61	61	70	69	70	70	60	60	67	66	66	70	70	70	62	60	60	70	65	56	58	65.5			
MILLERS 4 NE	18	MAX	86	87	87	88	83	81	84	83	81	85	88	86	88	87	83	84	85	87	91	91	91	87	87	86	82	80	82	81	72	79	85	84.7		
		MIN	71	67	65	67	68	67	69	66	59	61	66	69	71	71	71	60	66	65	67	69	70	70	69	67	61	58	67	69	63	53	57	65.8		
REISTERSTOWN 2 NW	08	MAX		91	90	89	87	87	75		87	80	88	89	87	90	95		85	87	88	92	92	90	98	86	87	87	80	83	78	71	80	86.4		
		MIN	74	71	68	71	70	69	69		66	63	70	71	74	74	73		67	65	69	69	76	74	71	69	63	62	66	69	65	59	60	68.5		
SMITHSBURG 2NW	08	MAX	90	86	88	87	87	78	72	85	82	80	86	87	87	88	86	82	85	88	89	90	91	90	84	86	87	75	81	84	76	76	81	84.3		
		MIN	71	65	63	64	66	66	66	65	56	56	61	70	68	67	69	58	67	68	65	64	65	66	68	67	58	57	57	64	50	50	63.4			
APPALACHIAN MOUNTAIN 07																																				
HAGERSTOWN 1 E	24	MAX	89	90	89	88	77	74	88	85	81	88	90	89	88	90	86	87	91	92	94	95	94	88	89	90	77	82	86	78	80	83	88	86.6		
		MIN	73	68	67	68	70	69	70	65	59	62	70	71	71	73	68	61	71	69	69	72	76	71	71	70	61	60	70	68	60	53	59	67.3		
CUMBERLAND 2	07	MAX	92	89	90	92	92	82	74	88	84	84	86	90	93	90	88	84	88	90	95	96	94	93	84	86	87	73	88	87	76	81	90	87.3		
		MIN	66	67	64	64	66	68	69	69	58	58	58	66	68	68	66	61	61	65	65	67	70	71	69	69	62	60	60	65	62	52	52	64.1		
FROSTBURG 2	07	MAX	86	80	81	82	82	81	68	75	80	76	77	81	82	78	78	76	81	85	85	84	84	85	79	76	80	65	77	80	80	71	76	79.1		
		MIN	65	64	61	61	64	65	65	63	54	55	56	67	65	67	63	56	59	62	63	63	67	67	67	64	54	53	53	62	56	52	55	60.9		
SHARPSBURG 5 S	07	MAX	91	88	91	89	90	81	75	88	84	82	88	90	88	89	89	84	85	90	91	92	93	92	87	86	89	77	83	86	74	77	82	86.2		
		MIN	68	65	63	64	66	68	70	62	58	58	59	65	66	68	68	58	59	67	64	65	68	67	68	69	58	55	56	66	65	50	50	63.0		
ALLEGHENY PLATEAU 08																																				
OAKLAND 1 SE	07	MAX	86	82	83	85	86	79	75	82	76	76	82	81	85	83	77	79	81	86	87	86	86	85	85	77	83	69	83	82	70	70	70	80.5		
		MIN	64	66	60	63	65	67	66	64	57	54	56	67	64	68	66	59	61	62	63	64	68	65	65	65	57	51	60	62	60	49	49	61.5		
SAVAGE RIVER DAM	08	MAX	84	82	82	83	83	78	76	79	76	77	80	81	84	83	80	76	81	85	87	87	86	86	74	76	82	71	78	82	71	74	79	80.1		
		MIN	60	64	61	61	63	67	67	67	57	55	55	63	56	66	66	60	60	49	64	65	67	68	69	68	53	55	52	62	62	51	50	60.7		
SINES DEEP CREEK	07	MAX			84		82	79	74		78	77	79	81	80				82	82	83	82			84	79	65		77			78	M			
		MIN			48		56	62	65		51	50	59	62	64				60	60	60	63			59	52	48		58			50	M			
DELAWARE NORTHERN 01																																				
WILMINGTON NEW CASTLE CO AP	24	MAX	89	89	91	91	83	75	87	87	82	87	90	90	93	87	88	85	86	88	92	93	93	91	88	88	79	79	81	83	78	84	89	86.6		
		MIN	72	69	71	71	71	70	70	68	65	64	74	76	75	72	68	65	68	73	73	76	76	77	73	71	69	68	68	71	60	58	60	69.7		
WILMINGTON PORTER RSCH	24	MAX	81	88	82	87	79	80	82	84	80	85	88	87	91	82	84	85	86	88	92	91	91	91	86	85	76	77	79	81	72	77	83	83.9		
		MIN	61	60	61	71	68	67	68	67	65	65	73	74	74	70	71	65	68	68	72	76	77	75	70	67	65	65	64	69	61	59	59	67.6		
SOUTHERN 02																																				
DOVER	16	MAX	87	90	91	87	82	81	85	86	84	89	92	91	94	89	87	85	86	86	90	94	94	93	87	88	88	79	82	79	76	81	87	86.8		
		MIN	72	70	73	72	72	72	71	69	65	65	74	76	76	72	71	67	69	70	74	74	77	75	74	70	68	67	66	71	68	61	59	70.3		

TOTAL SNOWFALL AND NUMBER OF DAYS WITH ONE INCH OR MORE ON GROUND

MARYLAND AND DELAWARE

201707

STATION	JUL		AUG		SEP		OCT		NOV		DEC		JAN		FEB		MAR		APR		MAY		JUN		TOTAL		TOTAL PRECIPITATION
	SNOWFALL	1 IN ON GD	SNOWFALL	1 IN ON GD	SNOWFALL	1 IN ON GD	SNOWFALL	1 IN ON GD	SNOWFALL	1 IN ON GD	SNOWFALL	1 IN ON GD	SNOWFALL	1 IN ON GD	SNOWFALL	1 IN ON GD	SNOWFALL	1 IN ON GD	SNOWFALL	1 IN ON GD	SNOWFALL	1 IN ON GD	SNOWFALL	1 IN ON GD	SNOWFALL	1 IN ON GD	
MARYLAND																											
SOUTHERN EASTERN SHORE 01																											
PRINCESS ANNE	M		M		M		M		M		M		M		M		M		M		M		M		M 0.0	M 0	M 47.47
SALISBURY 2N	M		M		M		M		M		M		M	4	M		M		M		M		M		M 0.0	M 4	M 54.70
SALISBURY FAA AP	0.0		0.0		0.0	0	M 0.0	0	M 0.0	0	M 0.0	0	M 9.6	1	M 0.0	0	M 0.0	0	M 0.0	0	M 0.0	0	0.0	0	M 9.6	M 1	M 48.13
SNOW HILL 4 N	M		M		M		M		M		M		M		M		M		M		M		M		M 0.0	M 0	M 46.73
CENTRAL EASTERN SHORE 02																											
ROYAL OAK 2 SSW	0.0		0.0		0.0	0	0.0	0	0.0	0	T	0	9.1	4	T	0	T	0	0.0	0	T	0	0.0	0	9.1	M 4	M 38.25
LOWER SOUTHERN 03																											
MECHANICSVILLE 5 NE	0.0		0.0		0.0	0	0.0	0	0.0	0	M		5.0	4	0.0	0	0.5	0	T	0	0.0	0	0.0	0	M 5.5	M 4	M 45.97
SOLOMONS	M		M		M		M		0.0	0	M		M 0.1	1	T	0	M	0	M	0	M	0	0.0	0	M 0.1	M 1	M 13.87
UPPER SOUTHERN 04																											
BALTIMORE-WASHINGTON INTL AP	0.0		0.0		0.0	0	0.0	0	0.0	0	T	0	0.7	0	T	0	2.3	4	0.0	0	T	0	0.0	0	3.0	M 4	M 38.00
BALTIMORE WASHINGTON INTL CLIM	0.0		0.0		M		0.0	0	M		M	0	M	1	M	0	M	1	M		M		0.0	0	M 0.0	M 2	M 1.40
BELTSVILLE	0.0		0.0		0.0	0	0.0	0	0.0	0	0.6	1	1.3	2	0.0	0	2.9	4	0.0	0	0.0	0	0.0	0	4.8	M 7	M 36.00
DALECARLIA RSVR	0.0		0.0		M 0.0	0	0.0	0	0.0	0	M 0.0	0	0.6	0	M 0.0	0	M 3.0	2	M 0.0	0	0.0	0	0.0	0	M 3.6	M 2	M 37.04
MARYLAND SCI CTR	M		M		M		M		M		M		M		M		M		M		M		M		M 0.0	M 0	M 35.56
NATL ARBORETUM DC	0.0		0.0		0.0	0	0.0	0	0.0	0	M	0	M 0.5	1	M T	0	M 2.5	3	0.0	0	0.0	0	0.0	0	M 3.0	M 4	M 35.07
OXON HILL	0.0		0.0		0.0	0	0.0	0	0.0	0	T	0	2.6	2	T	0	2.2	3	0.0	0	0.0	0	0.0	0	4.8	M 5	M 34.65
NORTHERN EASTERN SHORE 05																											
STEVENSVILLE 2SW	0.0		0.0		0.0	0	0.0	0	0.0	0	0.3	0	2.2	3	0.0	0	M 1.2	1	0.0	0	0.0	0	0.0	0	M 3.7	M 4	M 38.77
SUDLERSVILLE 1S	M		M		M		0.0	0	M		0.0	0	6.0	5	T	0	T	0	0.0	0	0.0	0	0.0	0	M 6.0	M 5	M 43.63
NORTHERN CENTRAL 06																											
ABERDEEN PHILLIPS FLD	0.0		0.0		0.0	0	0.0	0	0.0	0	0.0	0	0.6	0	0.1	0	M 3.5	3	0.0	0	0.0	0	0.0	0	M 4.2	M 3	M 28.74
BRIGHTON DAM	0.0		0.0		0.0	0	0.0	0	0.0	0	0.5	0	1.0	1	M 0.0	0	2.6	1	M 0.0	0	0.0	0	0.0	0	M 4.1	M 2	M 34.34
CONOWINGO DAM	0.0		0.0		0.0	0	0.0	0	0.0	0	M		M 0.5	0	0.0	0	3.5	0	0.0	0	0.0	0	0.0	0	M 4.0	M 0	M 31.00
CYLBURN	0.0		0.0		0.0	0	0.0	0	0.0	0	M		M 0.5	0	M 0.0	0	M 0.0	4	M	0	0.0	0	M 0.0	0	M 0.5	M 4	M 17.17
DAMASCUS 3 SSW	0.0		0.0		0.0	0	0.0	0	T	0	0.7	0	1.6	0	0.8	0	7.2	5	T	0	0.0	0	T	0	10.3	M 5	M 39.19
EMMITSBURG 2 SE	0.0		0.0		0.0	0	0.0	0	0.0	0	1.9	0	2.0	0	1.5	0	M 7.5	6	0.0	0	0.0	0	0.0	0	M 12.9	M 6	M 38.06
MILLERS 4 NE	0.0		0.0		0.0	0	0.0	0	0.2	0	1.1	1	4.2	6	2.3	2	11.8	6	T	0	0.0	0	0.0	0	19.6	M 15	M 43.77
REISTERSTOWN 2 NW	M		M		M		M		M		M		M		M	0	M	2	M	0	M 0.0	0	M 0.0	0	M 0.0	M 2	M 24.62
SMITHSBURG 2NW	0.0		0.0		0.0	0	0.0	0	0.0	0	M		M		1.0	0	M		0.0	0	M 0.0	0	0.0	0	M 1.0	M 0	M 31.00
APPALACHIAN MOUNTAIN 07																											
HAGERSTOWN 1 E	M		M		M		M		M		M		M		M		M		M		M		M		M 0.0	M 0	M 0.00
CUMBERLAND 2	0.0		0.0		0.0	0	0.0	0	T	0	1.5	1	3.2	2	0.3	0	9.0	5	0.0	0	0.0	0	0.0	0	14.0	M 8	M 39.65
FROSTBURG 2	0.0		0.0		0.0	0	0.0	0	0.6	2	M	6	15.4	13	4.6	10	M	13	0.1	0	0.0	0	0.0	0	M 20.7	M 44	M 51.21
SHARPSBURG 5 S	0.0		0.0		0.0	0	0.0	0	0.0	0	M	0	2.2	5	0.3	0	M 7.7	4	0.0	0	0.0	0	0.0	0	M 10.2	M 9	M 37.92
WILLIAMSPORT	0.0		0.0		0.0	0	0.0	0	M		M	0	M		M		M		M		M		M		M 0.0	M 0	M 7.48
ALLEGHENY PLATEAU 08																											
OAKLAND 1 SE	0.0		0.0		0.0	0	0.0	0	3.5	2	13.0	3	29.4	11	12.3	6	19.1	9	1.5	0	0.0	0	0.0	0	78.8	M 31	M 56.98
SAVAGE RIVER DAM	M		0.0		0.0	0	0.0	0	T	0	M 1.3	1	2.5	2	T	0	7.0	5	0.0	0	M		M 0.0	0	M 10.8	M 8	M 41.52
SINES DEEP CREEK	M		M 0.0		M	0	M	0	M	2	M	1	M	10	M 13.4	9	M 17.4	9	M	1	M 0.0	0	M 0.0	0	M 30.8	M 32	M 21.51
DELAWARE																											
NORTHERN 01																											
WILMINGTON NEW CASTLE CO AP	0.0		0.0		0.0	0	0.0	0	0.0	0	T	0	4.5	4	1.1	0	3.4	3	0.0	0	0.0	0	0.0	0	9.0	M 7	M 40.59
WILMINGTON PORTER RSCH	0.0		M		M	0	M	0	0.0	0	T	0	4.1	3	2.1	0	M 3.0	3	0.0	0	0.0	0	0.0	0	M 9.2	M 6	M 41.04
SOUTHERN 02																											

TOTAL SNOWFALL AND NUMBER OF DAYS WITH ONE INCH OR MORE ON GROUND

MARYLAND AND DELAWARE

201707

STATION	JUL		AUG		SEP		OCT		NOV		DEC		JAN		FEB		MAR		APR		MAY		JUN		TOTAL		TOTAL PRECIPITATION
	SNOWFALL	1 IN ON GD	SNOWFALL	1 IN ON GD	SNOWFALL	1 IN ON GD	SNOWFALL	1 IN ON GD	SNOWFALL	1 IN ON GD	SNOWFALL	1 IN ON GD	SNOWFALL	1 IN ON GD	SNOWFALL	1 IN ON GD	SNOWFALL	1 IN ON GD	SNOWFALL	1 IN ON GD	SNOWFALL	1 IN ON GD	SNOWFALL	1 IN ON GD	SNOWFALL	1 IN ON GD	
DOVER	0.0		0.0		0.0	0	M		M		0.0	0	5.6	4	0.0	0	T	0	0.0	0	0.0	0	0.0	0	M 5.6	M 4	M 45.97

MONTHLY AND SEASONAL HEATING DEGREE DAYS

STATION	JUL	AUG	SEP	OCT	NOV	DEC	JAN	FEB	MAR	APR	MAY	JUN	TOTAL	SEASONAL NORM
MARYLAND														
SOUTHERN EASTERN SHORE 01														
PRINCESS ANNE	0	0	0	151E	438E	768E	693E	554E	585E	129E	109E	20E	3447E	4264
SALISBURY 2N	0	0	1	134	435	745	741	473	571	147	93	9	3349	
SALISBURY FAA AP	0	0	4	171	485	780	762	549	624	180	133	15	3703	4442
SNOW HILL 4 N	0	0	7	145	441	789	748	557	607	180	107	14	3595	4023
CENTRAL EASTERN SHORE 02														
ROYAL OAK 2 SSW	0	0	3	128	427	758	735	494	536	140	90	5	3316	4026
LOWER SOUTHERN 03														
MECHANICSVILLE 5 NE	0	0	4	218	530	826	824	582	656	195	161	13	4009	4640
SOLOMONS	0	0	0	82E	330E	707E	672E	522E	476E	92E	73E	0	2954E	3823
UPPER SOUTHERN 04														
BALTIMORE-WASHINGTON INTL AP	0	0	15	198	486	818	798	576	647	182	131	11	3862	4764
BELTSVILLE	0	0	5	187	517	801	803	600	664	203	131	12	3923	4727
DALECARLIA RSVR	0	0	1E	178E	508E	797E	789	588E	680E	219E	116	7	3883E	4398
MARYLAND SCI CTR	0	0	4	125	393E	724	724	497	586	130	73	2	3258E	4032
NATL ARBORETUM DC	0	0	0	144	459	752	729	533E	607E	155	103	6	3488E	4178
OXON HILL	0	0	1	166	467	760	760	553	624	166	107	5	3609	4270
NORTHERN EASTERN SHORE 05														
STEVENSVILLE 2SW	0	0	2	142	446	768	803	588	653	197	99	9	3707	4329
NORTHERN CENTRAL 06														
ABERDEEN PHILLIPS FLD	0	0	16	221	549	825	854	653	733	248	150	12	4261	4708
BRIGHTON DAM	0	0	8E	229	560E	842E	827E	631E	695E	168E	165E	37E	4162E	
CONOWINGO DAM	0	0	20	246	615	916	957	701	803	276	185	11	4730	4798
CYLBURN	0	0	13	213	520			532E	501E			0	M 1779E	4917
DAMASCUS 3 SSW	0	0	25	238	519	901	858	589	712	197	180	14	4233	5085
EMMITSBURG 2 SE	0	0	33	269	601	882	885	660	765	260E	187E	20	4562E	5396
MILLERS 4 NE	0	0	28	239	527	909	905	618	739	219	188	12	4384	5346
REISTERSTOWN 2 NW				403E	518E	856E	918E	665E	771E	311E	167	12E	M 4621E	
SMITHSBURG 2NW	0	0	19	299	656E	931	903E	635E	818E	268	219E	25	4773E	5438
APPALACHIAN MOUNTAIN 07														
CUMBERLAND 2	0	0	13	241	513	893	862	603	715	205	166	14	4225	4853
FROSTBURG 2	5	1	48	370	651	1059	1033	758	922	342	307	65	5561	6511
SHARPSBURG 5 S	0	0	18E	245	588	909	876	647	760	258	185	20	4506E	5303
ALLEGHENY PLATEAU 08														
OAKLAND 1 SE	0	0	41	332	647	984	966	712	880	298	233	39	5132	6673
SAVAGE RIVER DAM	4E	0	37	350	656	970E	957	716	857	315	261	53E	5176E	6159
SINES DEEP CREEK	5E	6E	92E	430E	695E	1029E	1020E	818E	946E	372E	287E	119E	5819E	
DELAWARE														
NORTHERN 01														
WILMINGTON NEW CASTLE CO AP	0	0	20	212	485	831	841	606	717	210	148	10	4080	4819
WILMINGTON PORTER RSCH	0	0	26	252	544	892	910	682	803	251	193	17	4570	4935
SOUTHERN 02														
DOVER	0	0	7	159	434	784	776	535	619	188	120	8	3630	4269

DAILY SOIL TEMPERATURES

STATION	DEPTH	TIME	DAY OF MONTH																															AVERAGE	
			01	02	03	04	05	06	07	08	09	10	11	12	13	14	15	16	17	18	19	20	21	22	23	24	25	26	27	28	29	30	31		
MARYLAND UPPER SOUTHERN 04 BELTSVILLE (in)																																			

MARYLAND AND DELAWARE
201707

SOILS REFERENCE NOTES

STATION	SOIL TYPE	SOIL COVER	SLOPE	UNITS
BELTSVILLE	UNKNOWN	GRASS	0	F

SNOWFALL AND SNOW ON GROUND (INCHES)

STATION		DAY OF MONTH																															
		01	02	03	04	05	06	07	08	09	10	11	12	13	14	15	16	17	18	19	20	21	22	23	24	25	26	27	28	29	30	31	
MARYLAND SOUTHERN EASTERN SHORE 01 PRINCESS ANNE SALISBURY 2N SALISBURY FAA AP SNOW HILL 4 N	SNOWFALL																																
	SNOWFALL																																
	SNOWFALL																																
	SN ON GND																							-									
	SNOWFALL																									-							
DELAWARE NORTHERN 01 WILMINGTON NEW CASTLE CO AP WILMINGTON PORTER RSCH	SNOWFALL																																
	SN ON GND																																
	SNOWFALL																																
	SN ON GND																																

Snowfall: Includes snow and ice. Values for NWS stations (J index note) are Mid-Mid (LST).

Snow on ground: Includes snow, sleet, ice, and hail. Values for NWS stations (J index note) are observed at 12 UTC (GMT).

Water Equivalent: Given for NWS stations (J index note) only, when snow depth is 2 inches or more, and is measured at 18 UTC (GMT)

PAN EVAPORATION AND WIND

STATION		DAY OF MONTH																															TOTAL OR AVERAGE	
		01	02	03	04	05	06	07	08	09	10	11	12	13	14	15	16	17	18	19	20	21	22	23	24	25	26	27	28	29	30	31		
MARYLAND UPPER SOUTHERN 04 BELTSVILLE	WIND	140	54	25	31	35	42	32	59	73	42	57	50	35	50	33	49	31	28	31	21	38	32	40	31	48	48	33	39	63	79	29	1398	
	EVAP	0.40	0.31	0.21	0.26	0.19	0.16	0.03	0.24	0.34	0.30	0.21	0.25	0.18	0.29	0.25	0.29	0.25	0.14	0.25	0.23	0.30	0.22	0.30	0.24	0.37	0.20	0.23	0.15	-	0.13	0.20	7.36E	
	MAX	88	88	91	89	90	86	88	90	87	87	87	88	85	89	94	85	88	84	88	95	93	93	91	83	92	82	86	84	73	71	83	87.0	
	MIN	63	68	68	67	67	68	68	65	59	63	63	65	69	70	69	62	63	67	67	70	72	72	68	68	64	61	62	66	64	55	60	65.6	
ALLEGHENY PLATEAU 08 SAVAGE RIVER DAM	WIND	-	-	-	-	-	-	-	-	-	-	-	-	-	-	-	-	-	-	-	-	-	-	-	-	-	-	-	-	-	-	-	M	
	EVAP	-	-	-	-	-	-	-	-	-	-	-	-	-	-	-	-	-	-	-	-	-	-	-	-	-	-	-	-	-	-	-	-	M
	MAX	-	-	-	-	-	-	-	-	-	-	-	-	-	-	-	-	-	-	-	-	-	-	-	-	-	-	-	-	-	-	-	-	-
	MIN	-	-	-	-	-	-	-	-	-	-	-	-	-	-	-	-	-	-	-	-	-	-	-	-	-	-	-	-	-	-	-	-	M

Evaporation: Is measured in hundreths of inches.

Wind: Is measured in miles.

Max and Min: The maximum and minimum temperatures (Fahrenheit) of the water in the evaporation pan.

STATION INDEX

STATION	INDEX NO.	DIVISION	COUNTY	LATITUDE	LONGITUDE	ELEVATION (IN FEET)	OBSERVATION TIME AND TABLES			
							LOCAL STD TIME			
							TEMP	PRECIP	EVAP	SPECIAL SEE (NOTES)
MARYLAND										
ABERDEEN PHILLIPS FLD	0015	06	HARFORD	39 28	76 10W	57	07	07		CH
BALTIMORE WASHINGTON INTL CLIM	0467	04	ANNE ARUNDEL	39 11	76 39W	101		24		H
BALTIMORE WASHINGTON INTL AP R	0465	04	ANNE ARUNDEL	39 10	76 41W	156	24	24		HJ
BELTSVILLE	0700	04	PRINCE GEORGE'S	39 2	76 56W	145	08	08	08	GCH
BRIGHTON DAM	1125	06	MONTGOMERY	39 11	77 0W	330	08	08		H
CONOWINGO DAM	2060	06	HARFORD	39 39	76 11W	40	07	07		H
CUMBERLAND 2	2282	07	ALLEGANY	39 39	78 45W	730	07	07		H
CYLBURN	2308	06	BALTIMORE	39 21	76 39W	235	08	08		H
DALECARLIA RSVR	2325	04	DISTRICT OF COLUMBIA	38 56	77 7W	150	08	08		H
DAMASCUS 3 SSW	2336	06	MONTGOMERY	39 16	77 14W	700	22	22		H
EMMITSBURG 2 SE	2906	06	FREDERICK	39 41	77 17W	403	07	07		H
FROSTBURG 2	3415	07	ALLEGANY	39 40	78 56W	2170	07	07		H
HAGERSTOWN 1 E	1790	07	WASHINGTON	39 38	77 42W	532	24	24		H
MARYLAND SCI CTR R	5718	04	BALTIMORE (CITY)	39 17	76 37W	20	24	24		H
MECHANICSVILLE 5 NE	5865	03	ST. MARY'S	38 28	76 42W	100	07	07		H
MILLERS 4 NE	5934	06	CARROLL	39 43	76 48W	860	18	18		CH
NATL ARBORETUM DC	6350	04	DISTRICT OF COLUMBIA	38 55	76 58W	50	08	08		H
OAKLAND 1 SE	6620	08	GARRETT	39 25	79 24W	2420	07	07		H
OXON HILL	6800	04	PRINCE GEORGE'S	38 48	76 60W	186	07	07		H
PRINCESS ANNE	7330	01	SOMERSET	38 13	75 41W	20	17	17		H
REISTERSTOWN 2 NW	7580	06	BALTIMORE	39 30	76 50W	737	08	08		H
ROYAL OAK 2 SSW	7806	02	TALBOT	38 43	76 11W	10	17	17		H
SALISBURY 2N	8004	01	WICOMICO	38 24	75 36W	20	17	17		H
SALISBURY FAA AP //R	8005	01	WICOMICO	38 20	75 31W	47	24	24		H
SAVAGE RIVER DAM	8065	08	GARRETT	39 31	79 8W	1495	08	08	08	CH
SHARPSBURG 5 S	8207	07	WASHINGTON	39 24	77 43W	500	07	07		H
SINES DEEP CREEK	8315	08	GARRETT	39 31	79 25W	2040	07	07		H
SMITHSBURG 2NW	8371	06	WASHINGTON	39 40	77 35W	670	08	08		H
SNOW HILL 4 N	8380	01	WORCESTER	38 14	75 23W	30	17	17		H
SOLOMONS	8405	03	CALVERT	38 19	76 27W	12	08	08		H
STEVENSVILLE 2SW	8557	05	QUEEN ANNE'S	38 58	76 20W	10	07	07		H
SUDLERSVILLE 1S	8657	05	QUEEN ANNE'S	39 10	75 51W	100		20		H
WILLIAMSPORT	9570	07	WASHINGTON	39 37	77 51W	360		06		H
DELAWARE										
DOVER //	2730	02	KENT	39 9	75 30W	30	16	16		H
WILMINGTON NEW CASTLE CO AP R	9595	01	NEW CASTLE	39 40	75 36W	79	24	24		HJ
WILMINGTON PORTER RSCH	9605	01	NEW CASTLE	39 46	75 32W	270	24	24		H

REFERENCE NOTES

STATION NAMES: Name of the city, town or locality. Figures and letters following the station names indicate the distance in miles and direction from the post office or town community center.

DIVISIONS: Areas within a state of similar climatological characteristics. Division averages are calculated using data from stations that record temperature and/or precipitation. Station Precipitation totals flagged with an 'F' or 'M' are excluded from the Divisional Average calculations of precipitation. Stations with monthly Temperature averages flagged with an 'F' or 'M' are included in the Divisional Average if there are no more than 9 flagged or missing daily values in the month, else they are excluded from the divisional average for temperature.

NORMALS: The average value of the meteorological element over a time period. Effective 1 January 2012, the averaging period for station departures is 1981 to 2010. The normals for National Weather Service localities have been adjusted so as to be representative for the current observation site.

The January 2011 through December 2015 publications incorrectly state the computation of divisional departures. Climate Division departures have been, and continue to be, computed from 1971-2000 Normals, not 1981-2010 as stated. Station departures are accurately described as departures from 1981-2010.

MONTHLY DEGREE DAY TOTALS: One heating (cooling) degree day is accumulated for each whole degree that the daily mean temperature is below (above) 65 degrees Fahrenheit.

PRECIPITATION: Values shown in hundredths of inches are water equivalent totals, i.e., total of liquid and melted frozen precipitation. In the "Monthly Summarized Data" table the total snow and sleet values shown in tenths of inches are unmelted amounts. The max depth on ground values of snow and sleet shown in whole inches are cumulative unmelted amounts. The number of days with .10, .50, 1.00 or more refers to water equivalents.

PRECIPITATION QUALITY CONTROL: The NCEI quality control process may flag precipitation data that are spatially inconsistent, exceed climatological limits, or are inconsistent with prevailing weather patterns.

TEMPERATURE: Original temperature values are given in the "Daily Temperature" table. Summary temperature information (averages, departures, extremes, monthly degree day totals) is based on the values labeled MAX/MIN.

WIND: (As shown in the "Evaporation and Wind" table) the total wind movement in miles over the evaporation pan as determined by an anemometer recorder located 6-8 inches above the pan.

SYMBOLS AND LETTERS USED IN THE STATION INDEX TABLE

C Station is equipped with recording rain gage (R) but values in this bulletin are from a non-recording rain gage unless indicated by an R.

G Observations appear in the "Soil Temperatures" table.

H Observations appear in the "Snowfall and Snow on the Ground" table.

J Station also published as a Local Climatological Data publication.

VAR Observation time varies.

SR / SS Observation time near sunrise / Observation time near sunset, respectively.

SYMBOLS AND LETTERS USED IN THE DATA TABLES

(DAILY DATA ARE FOR THE 24 HOURS IMMEDIATELY PRECEDING OBSERVATION TIME.)

BLANK Entries in the "Monthly Summarized Data" table indicate no record.

BLANK Entries in the "Daily Precipitation" and "Snowfall and Snow on the Ground" tables indicate zero.

BLANK Entries in the "Daily Temperature" table indicate a missing record

- No record. Data not recorded or not received in time for publication.

+ Precipitation or temperature extremes occurred on one or more previous dates during the month.

* Rain gage not read. Precipitation is included in the amount following the asterisks.

Time distribution may not be known. A * preceding the monthly total indicates precipitation amount is being carried forward to next month's total, and may include amounts from the previous month(s).

a As a subscript, indicates accumulated total.

A Amount of precipitation is the total of observer's entries for the current month. It may include precipitation that occurred during the previous month. Refer to earlier bulletin to determine date of last

reading. (Hawaii stations)

B Divisional Departure from normals are computed using 1971-2000 normals.

E Normalized HDD/CDD Calculation. E is appended to the HDD/CDD Calculation when 1-9 individual daily TMAX and/or TMIN values are missing and a Normalized HDD/CDD Calculation is provided. M appears alone if 10 or more daily values are missing.

F Monthly calculation flagged value. F is appended to average and/or total values computed which exclude one or more daily data values that have been flagged by the GHCN-Daily Dataset

M Insufficient or partial data. M is appended to average and/or total values computed with 1-9 daily values missing. M appears alone if 10 or more daily values are missing, (8 or more for wind and evaporation).

N Indicates snow fall or Snowdepth totals are computed with one or more missing days.

R Amounts from recording rain gage.

T Trace. An amount too small to measure.

SEASONAL TABLES: Monthly and seasonal snowfall and heating degree days for the 12 months ending with the June data are published in the July issue of this bulletin. Cooling degree days for the calendar year are published in the "Climatological Data Annual Summary."

Information concerning the history of changes in locations, exposure, etc. of substations is kept on file at the National Centers for Environmental Information. Historical information of regular National Weather Service Offices may be obtained from the "Local Climatological Data" annual publication. The contents of this publication may be reprinted or otherwise used freely, with proper credit to the National Centers For Environmental Information. The data are also available digitally.

Effective with the January 2011 Data-Month, COOP Observer Names are no longer included in the Monthly and Annual Climatological Data Publications. This information is not published to ensure the privacy of personal information pursuant to Section 208 of the E-Government Act of 2002 (44 USC 3601).

As of the 2011 Data-Year, Station and Climate Division Maps are no longer being included in the CD Publications. NCEI's Products Branch provides updated Station Maps for various data networks via the Historical Observing Metadata Repository: <http://www.ncdc.noaa.gov/homr>.

The GHCN-Daily Quality Control Flags shown below are displayed as superscripts with the data. For more information on Global Historical Climatology Network - Daily and flags, see: <http://www.ncdc.noaa.gov/oa/climate/ghcn-daily/> and Comprehensive Automated Quality Assurance of Daily Surface Observations. Durre, Imke, Matthew J. Menne, Byron E. Gleason, Tamara G. Houston, Russell S. Vose, 2010: J. Appl. Meteor. Climatol., 49, 16151633. doi: 10.1175/2010JAMC2375.1

Blank = Passed All checks

D = failed duplicate check

G = failed gap check

I = failed internal consistency check

K = failed streak/frequent-value check

L = failed check on length of multiday period

M = failed megaconsistency check

N = failed naught check

O = failed climatological outlier check

R = failed lagged range check

S = failed spatial consistency check

T = failed temporal consistency check

W = temperature too warm for snow

X = failed bounds check

Z = flagged as a result of an official Datzilla investigation

Beginning with the January 2013 CD Publication, monthly mean temperature calculations have changed to the National Data Stewardship Team standard. Monthly maximum and minimum temperatures are not rounded until after the monthly mean temperature is calculated. This is the most accurate outcome, but may be slightly different from the mean derived from rounded monthly maximum and minimum.

The climate division temperature and precipitation values in this publication are based on simple averages from the current set of NWS-Designated Open and Published COOP and First Order Sites within each division. These values differ from those found in NCEI's nClimDiv product. Beginning in February 2014, the nClimDiv product is used by NCEI's Monitoring Branch and in its monthly climate reports. For more details on nClimDiv, please go to <http://www.ncdc.noaa.gov/monitoring-references/maps/us-climate-divisions.php>.

Effective January 2016, Alaska's Climate Divisions are updated to reflect the 13 climate divisional boundaries established by University of Alaska-Fairbanks, NWS, NCEI, Oregon State University, and University of Nebraska-Lincoln. For more details regarding the updated Alaska Climate Divisions, see: <http://journals.ametsoc.org/doi/pdf/10.1175/JAMC-D-11-0168.1> (Bienek et al., 2012).

These and other publications are available from the National Centers for Environmental Information

Hourly Precipitation Data

This publication contains hourly precipitation amounts obtained from recording rain gages located at National Weather Service, Federal Aviation Administration, and cooperative observer stations. Published data are displayed in inches and tenths or inches and hundredths at local standard time. HPD includes maximum precipitation for nine (9) time periods from 15 minutes to 24 hours, for selected stations.

Climatological Data

Monthly editions contain station daily maximum and minimum temperatures and precipitation. Some Stations provide daily snowfall, snow depth, evaporation, and soil temperature data. Each edition also contains monthly summaries for heating and cooling degree days (65 degree F base). The July issue contains a recap of monthly heating degree days and snow data for the preceding July through June.

The Annual issue contains monthly and annual averages of temperature, precipitation, temperature extremes, freeze data, soil temperatures, evaporation, and a recap of monthly cooling degree days.

Storm Data

Monthly issues contain a chronological listing, by states, of occurrences of storms and unusual weather phenomena. Reports contain information on storm paths, deaths, injuries, and property damage. An "Outstanding storms of the month" section highlights severe weather events with photographs, illustrations, and narratives. The December issue includes annual tornado, lightning, flash flood, and tropical cyclone summaries.

Monthly Climatic Data for the World

This publication contains monthly means for temperature, pressure, precipitation, vapor pressure, and sunshine for approximately 2,000 surface data collection stations worldwide and monthly mean upper air temperatures, dew point depressions, and wind velocities for approximately 500 observing sites.

Local Climatological Data

LCD publications summarize temperature, relative humidity, precipitation, cloudiness, wind speed and direction observations for several hundred cities in the U.S. and its territories. Each monthly publication also contains 3 hourly weather observations for that month and a hourly summary of precipitation. Annual LCD publications contain a summary of the past calendar year as well as historical averages and extremes.

For Information Call:

(828) 271-4800 Option 2

(828) 271-4010 (TDD)

(828) 271-4876 (Fax)

NOAA National Centers for Environmental Information
Attn: Customer Engagement Branch
151 Patton Avenue
Asheville, NC 28801-5001

Customer Services Number: (828) 271-4800, option 2
TDD : (828) 271-4010
Fax number: (828) 271-4876

NCEI now offers free online access to the *Climatological Data* publication.
Go to : www.ncdc.noaa.gov and choose Most Popular.