



CLIMATOLOGICAL DATA

MARYLAND AND DELAWARE

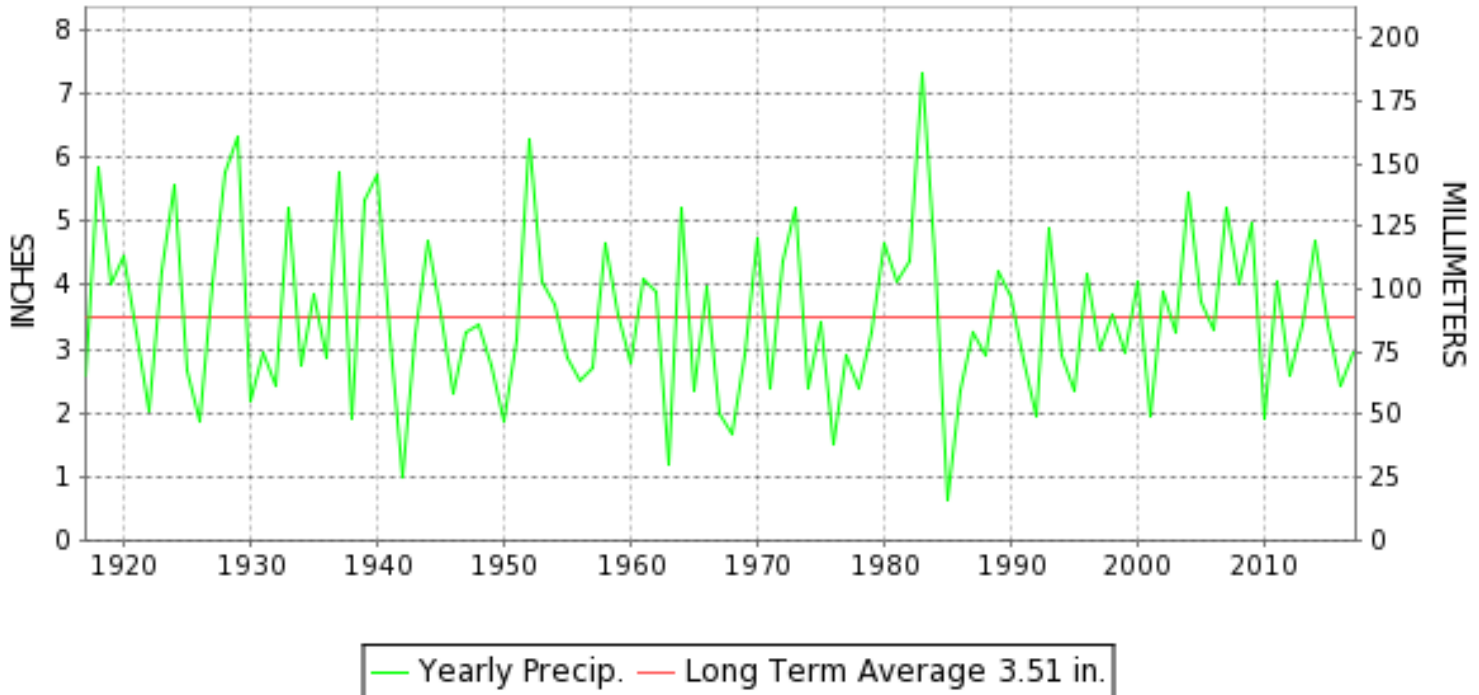
APRIL 2017

VOLUME 121 NUMBER 04

ISSN 0145-0549

GHCND Ver: 3.22-upd-2017081004

APRIL PRECIPITATION BY YEAR



TEMPERATURE AND PRECIPITATION EXTREMES

MARYLAND

HIGHEST TEMPERATURE	93	APRIL 30	NATL ARBORETUM DC
LOWEST TEMPERATURE	26	APRIL 09	SNOW HILL 4 N
GREATEST TOTAL PRECIPITATION	5.68		OAKLAND 1 SE
LEAST TOTAL PRECIPITATION	1.70		ROYAL OAK 2 SSW
GREATEST 1 DAY PRECIPITATION	1.75	APRIL 07	CYLBURN
GREATEST TOTAL SNOWFALL	1.5		OAKLAND 1 SE
GREATEST DEPTH OF SNOW OR ICE	1		SINES DEEP CREEK

"I certify that this is an official publication of the National Oceanic and Atmospheric Administration (NOAA) It is compiled using information from weather observing sites supervised by NOAA/National Weather Service and received at the National Centers for Environmental Information(NCEI), Asheville, North Carolina 28801."

Mary S. Wohlgenant

Director
National Centers for Environmental Information

noaa

National
Oceanic and
Atmospheric Administration

National
Environmental Satellite, Data
and Information Service

National
Centers for Environmental Information
Asheville, North Carolina

DELAWARE

HIGHEST TEMPERATURE	87	APRIL 29+	2 STATIONS
LOWEST TEMPERATURE	33	APRIL 09	WILMINGTON NEW CASTLE CO AP
GREATEST TOTAL PRECIPITATION	3.55		WILMINGTON PORTER RSCH
LEAST TOTAL PRECIPITATION	2.32		WILMINGTON NEW CASTLE CO AP
GREATEST 1 DAY PRECIPITATION	1.30	APRIL 25	DOVER

MONTHLY STATION AND DIVISION SUMMARY

STATION	TEMPERATURE (°F)											PRECIPITATION (IN)												
	AVERAGE MAXIMUM	AVERAGE MINIMUM	AVERAGE	DEPARTURE FROM NORMAL	HIGHEST	DATE	LOWEST	DATE	HEATING DEG. DAYS	COOLING DEG. DAYS	NO. OF DAYS				TOTAL	DEPARTURE FROM NORMAL	GREATEST 24 HOURS	DATE	ICE PELLETS, SNOW			NO. OF DAYS		
											MAX		MIN						TOTAL	MAX DEPTH ON GROUND	DATE	.10 OR MORE	.50 OR MORE	1.00 OR MORE
											>=90	<=32	<=32	<=0										
MILLERS 4 NE	69.8	47.7	58.8	7.1	83	29+	32	08	219	38	0	0	1	0	3.80	0.09	1.15	21	T	0		14	7	2
REISTERSTOWN 2 NW	68.1M	46.1MF	57.1MF		85	17	32	09+	311E	29E	0	0	2	0	M 5.39		1.52	07	M	0		12	8	3
SMITHSBURG 2NW	68.9	45.0	57.0	5.5	84	12	29	09+	268	33	0	0	6	0	M 3.97	0.16	1.10	07	0.0	0		12	9	2
--DIVISIONAL DATA-----> APPALACHIAN MOUNTAIN 07			57.9	5.6B										4.34	0.81B									
CUMBERLAND 2	71.9	46.5	59.2	4.7	86	30	33	10+	205	37	0	0	0	0	2.87	-0.43	0.51	01	0.0	0		17	14	0
FROSTBURG 2	65.1	42.1	53.6	6.1	80	16	29	08	342	5	0	0	5	0	4.37	0.50	0.67	01	0.1	T	07	19	12	0
SHARPSBURG 5 S	69.9	44.5	57.2	5.9	88	30	27	09+	258	33	0	0	5	0	3.72	0.10	1.04	07	0.0	0		16	10	1
WILLIAMSPORT														M					M					
--DIVISIONAL DATA-----> ALLEGHENY PLATEAU 08			56.7	6.0B										3.65	0.26B									
OAKLAND 1 SE	66.4	44.3	55.4	8.8	80	28	27	09	298	18	0	0	5	0	5.68	1.81	0.98	01	1.5	0		21	15	0
SAVAGE RIVER DAM	65.7	43.3	54.5	5.8	79	30+	30	09	315	7	0	0	2	0	4.55	1.22	0.88	29	0.0	0		15	13	0
SINES DEEP CREEK	M	M	M		77	27	30	07+	372E	0	0	0	2	0	A* 6.58		1.10	07	M	1	07	10	8	1
--DIVISIONAL DATA-----> DELAWARE NORTHERN 01			55.0	8.0B										5.60	1.76B									
WILMINGTON NEW CASTLE CO AP	68.6	49.0	58.8	5.5	87	29	33	09	210	30	0	0	0	0	2.32	-1.18	0.79	06	0.0	0		12	5	0
WILMINGTON PORTER RSCH	67.0	47.2	57.1	4.4	84	29+	34	08	251	21	0	0	0	0	3.55	-0.66	1.12	06	0.0	0		11	9	1
--DIVISIONAL DATA-----> SOUTHERN 02			58.0	5.6B										2.94	-0.69B									
DOVER	69.6	50.8	60.2	5.2	87	29	34	09	188	50	0	0	0	0	A 3.51	-0.37	1.30	25	0.0	0		7	6	2
--DIVISIONAL DATA----->			60.2	7.0B										3.51	0.04B									

DAILY PRECIPITATION (INCHES)

STATION	TOTAL	DAY OF MONTH																																
		01	02	03	04	05	06	07	08	09	10	11	12	13	14	15	16	17	18	19	20	21	22	23	24	25	26	27	28	29	30	31		
MARYLAND																																		
SOUTHERN																																		
EASTERN SHORE 01																																		
ASSATEAGUE	M	-	-	-	-	-	-	-	-	-	-	-	-	-	-	-	-	-	-	-	-	-	-	-	-	-	-	-	-	-	-	-	-	
PRINCESS ANNE	M 2.51	-	-		0.16			0.49	-	-													0.30	-		1.19	0.37							
SALISBURY 2N	2.60	0.03			0.16	0.03	0.78	0.01													0.01		0.39	0.20	0.09	0.82	0.08							
SALISBURY FAA AP	2.02	T		0.10			0.39	T									T			0.09	0.06	0.32	0.01	0.29	0.75	0.01		T	T					
SNOW HILL 4 N	2.32	0.22			0.11		0.22													T		0.18	0.11	0.26	0.90	0.15	0.12	0.05	T					
CENTRAL																																		
EASTERN SHORE 02																																		
ROYAL OAK 2 SSW	1.70	0.04			0.18		0.28									0.02	T				0.03		0.30		0.03	0.60	0.15		0.04	0.03				
LOWER SOUTHERN 03																																		
MECHANICSVILLE 5 NE	3.48	0.76			0.05			0.89										T				0.09	0.27	0.24	0.04	0.42	0.72	T						
SOLOMONS	MA 2.21	*	0.00 _a	0.05		*	*	*	0.25 _a	*	0.00 _a				*	0.00 _a	T			0.03	*	*	1.13 _a	0.37	0.33	0.01	0.03	-	-	0.01				
UPPER SOUTHERN 04																																		
BALTIMORE-WASHINGTON INTL AP	3.52			0.12	0.01		1.45	T				T			0.36	T	0.21				0.43	T	0.27		0.12	0.55	T	T	T	T				
BALTIMORE WASHINGTON INTL CLIM	M	-	-	-	-	-	-	-	-	-	-	-	-	-	-	-	-	-	-	-	-	-	-	-	-	-	-	-	-	-	-	-	-	
BELTSVILLE	4.60	0.81			0.10		T	1.67					T			0.35		0.06				0.82	0.14	0.27		0.16	0.21	0.01						
DALECARLIA RSVR	A 4.46	1.03			0.12	*	0.00 _a	1.62								*	0.00 _a	0.06			0.01	0.80	*	0.44 _a		0.30	0.08							
MARYLAND SCI CTR	3.09			0.16	0.01		1.74								0.16		0.07				0.14		0.14		0.01	0.66								
NATL ARBORETUM DC	3.82	0.98			0.11		T	1.73	T								T	0.12	T		T	0.10	0.19	0.23	T	0.24	0.11		0.01					
OXON HILL	4.25	0.90			0.12	T	T	1.57	T				T				T		0.09	T	0.01	0.06	0.86	0.21	0.01	0.27	0.15		T					
NORTHERN																																		
EASTERN SHORE 05																																		
STEVENSVILLE 2SW	3.46	1.39			0.24		T	0.56								0.12		0.12				0.16	0.07	0.11	T	0.13	0.54	0.01		0.01				
SUDLERSVILLE 1S	2.32			0.10			1.10								0.10		0.10	T			0.20		0.30	0.20	0.15	0.07								
NORTHERN CENTRAL 06																																		
ABERDEEN PHILLIPS FLD	A 3.91	1.20			0.25	*	0.02 _a	0.65	T				T				T		0.04			0.92	*	0.03 _a		0.06	0.72	0.01	0.01					
BRIGHTON DAM	M 3.33				0.10		1.00	1.00								0.05	-	0.19		0.11	0.13	0.03	0.05	0.20	0.47									
CONOWINGO DAM	4.11	1.11			0.18			0.96														0.14		0.18		0.12	0.60							
CYLBURN	MA 4.60	1.19			0.27		0.03	1.75		*	*	*	*	*	*	*	*	0.12 _a	*	0.03 _a	*	0.32 _a	-	*	*	0.87 _a		*	0.02 _a	-				
DAMASCUS 3 SSW	M 2.82	0.01		0.06	0.03		1.41	T				0.03			0.06		0.14		0.02	0.12	0.02	0.43		0.28	0.18	0.01		0.02	T	-				
EMMITSBURG 2 SE	5.53	1.04			0.28	0.05	0.03	1.41	T				0.03			0.01	0.25			0.01	1.58	0.01	0.27	0.03	0.15	0.27		T	0.09	0.02				
MILLERS 4 NE	3.80	0.01			0.34		1.13	0.01					0.03			T	0.17		T	0.01	1.15	0.27	0.02	0.16	0.40	0.04						0.06		
REISTERSTOWN 2 NW	M 5.39	1.01			0.30		0.03	1.52								0.40					0.21		1.03	0.31	0.01	0.05	0.44	-			0.08			
SMITHSBURG 2NW	M 3.97	1.00			-	0.15		1.10													0.10	0.78	0.05	0.20	0.08	0.14			0.10	0.05				
APPALACHIAN																																		
MOUNTAIN 07																																		
CUMBERLAND 2	2.87	0.51			0.18		0.10	0.17					0.13			T	0.12	0.10	0.05	0.10	0.29		0.18	0.05	0.11	0.18	T	0.32	0.22	0.06				
FROSTBURG 2	4.37	0.67	T		0.32	0.03	0.11	0.51	T			0.01				0.08	0.34	0.08	0.06	0.17	0.55	0.08	0.18	0.07	0.17	0.32		0.19	0.43					
SHARPSBURG 5 S	3.72	0.92			0.12	0.12		1.04					0.03			T	0.05	0.31			0.14	0.24	0.04	0.27	0.06	0.22	0.10	T			0.04	0.02		
WILLIAMSPORT	M	-			0.05	0.06	0.05	-								-	-	-	-	-	0.06	-	-	-	-	0.24	0.15	0.04	0.08	0.15	-			

DAILY PRECIPITATION (INCHES)

STATION	TOTAL	DAY OF MONTH																															
		01	02	03	04	05	06	07	08	09	10	11	12	13	14	15	16	17	18	19	20	21	22	23	24	25	26	27	28	29	30	31	
ALLEGHENY PLATEAU 08																																	
OAKLAND 1 SE	5.68	0.98	0.05		0.20	0.36	0.18	0.85	0.12				0.02				0.01	0.42		0.01	0.25	0.58	0.25	0.35	0.10	0.10	0.04		0.12	0.61	0.08		
SAVAGE RIVER DAM	4.55	0.73			0.12	0.09	0.10	0.47				T				0.16	0.29	T	0.36	0.36	0.07			0.32	0.23	0.15		0.22	0.88				
SINES DEEP CREEK	A* 6.58	*	*	1.25 _a	0.20	0.25	0.05	1.10	*	*	0.35 _a				*	*	0.70 _a	0.60			0.40	0.75	*	*	0.55 _a	0.15	0.08		0.15	-	-		
DELAWARE																																	
NORTHERN 01																																	
WILMINGTON NEW CASTLE CO AP	2.32			0.25	0.07		0.79	0.01						T		T	0.10			0.40	0.07	0.07			0.02	0.44	0.08		0.02	T			
WILMINGTON PORTER RSCH	3.55			0.04	0.47		1.12									0.10			T	0.35	0.17	0.15			T	0.70	0.28		0.10	0.07			
SOUTHERN 02																																	
DOVER	A 3.51				0.24		1.09	0.12								0.05	0.10					*	*	*	0.38 _a	1.30	0.23						

DAILY TEMPERATURES (°F)

STATION	OB. TIME	MAX/MIN	DAY OF MONTH																															AVERAGE			
			01	02	03	04	05	06	07	08	09	10	11	12	13	14	15	16	17	18	19	20	21	22	23	24	25	26	27	28	29	30	31				
MARYLAND SOUTHERN EASTERN SHORE 01 ASSATEAGUE	VA	MAX MIN																																			M M M
PRINCESS ANNE	17	MAX MIN			69	79	75	70	66			77	80	75	74	72			79	74	66	81	74			57	64	63	83	85						M M M	
SALISBURY 2N	17	MAX MIN	61	63	70	80	78	69	66	60	68	78	81	79	77	71	75	85	86	68	65	78	85	82	60	58	63	65	83	85	85	87	87			73.8	
SALISBURY FAA AP	24	MAX MIN	56	62	69	79	75	68	54	60	69	77	80	81	72	70	74	86	79	66	64	81	85	57	61	57	64	65	83	85	88	86			71.8		
SNOW HILL 4 N	17	MAX MIN	58	64	69	80	80	76	69	61	67	78	80	81	75	68	73	86	83	71	62	82	85	79	68	58	66	66	84	86	90	88			74.4		
CENTRAL EASTERN SHORE 02 ROYAL OAK 2 SSW	17	MAX MIN	42	37	33	51	45	59	41	31	26	40	51	55	41	37	41	58	57	43	39	53	59	44	46	50	55	47	63	65	67			47.6			
LOWER SOUTHERN 03 MECHANICSVILLE 5 NE	07	MAX MIN	59	62	66	76	72	67	56	62	69	77	81	78	73	70	75	85	76	71	62	79	82	69	64	60	64	65	82	83	87	87			72.0		
SOLOMONS	08	MAX MIN	48	44	40	57	51	50	45	40	36	46	57	59	60	48	49	66	55	55	45	59	55	53	48	53	53	56	53	66	69	67			52.8		
UPPER SOUTHERN 04 BALTIMORE-WASHINGTON INTL AP	07	MAX MIN	60	60	65	68	81	76	63	53	64	72	82	85	77	68	69	78	88	76	69	62	81	88	58	59	56	60	67	81	82	87			71.2		
BELTSVILLE	08	MAX MIN	46	39	42	44	47	50	43	33	33	38	48	57	48	45	45	55	65	51	47	47	53	57	47	47	50	52	55	60	64	69			49.2		
DALECARLIA RSVR	08	MAX MIN			67	80	70							76	66	64			76	70	69	75				59	63	68	79							M M	
MARYLAND SCI CTR	24	MAX MIN	58	65	69	79	71	59	49	62	72	83	87	76	69	67	75	87	72	69	62	79	70	60	60	59	58	66	80	84	89	79			70.5		
NATL ARBORETUM DC	08	MAX MIN	44	39	40	58	53	49	40	35	34	40	56	55	50	47	52	58	52	49	48	56	59	47	46	51	52	55	53	60	67	59			50.1		
OXON HILL	07	MAX MIN	51	58	64	67	78	72	57	48	62	71	79	85	76	68	70	75	85	71	70	61	81	77	59	60	57	59	68	81	83	88			69.4		
ABERDEEN PHILLIPS FLD	07	MAX MIN	42	41	39	54	52	52	41	36	34	40	53	59	43	45	49	56	62	47	47	53	56	58	44	48	51	55	53	59	66	68			50.1		
STEVENSVILLE 2SW	08	MAX MIN	50	57	64	68			60	48	63	74	83	88	77	69	71		70	73		83			59	56	59	70	84	86	92					69.7	
ABERDEEN PHILLIPS FLD	07	MAX MIN	43	40	44	44			42	34	37	37	52	56	47	48	52		49	52	46	57			47	51	54	55	60	68	68					49.3	
ABERDEEN PHILLIPS FLD	24	MAX MIN	57	66	70	81	71	59	51	64	68	84	83	78	70	68	73	89	75	70	62	76	71	63	62	61	61	68	82	85	92	80			71.3		
ABERDEEN PHILLIPS FLD	08	MAX MIN	46	44	47	60	55	51	42	38	45	50	56	65	55	54	56	63	63	56	52	59	61	53	49	52	54	58	58	66	71	61			54.7		
ABERDEEN PHILLIPS FLD	08	MAX MIN	57	61	67	69	81	75	66	49	66	73	83	87	80	72	73	78	85	72	73	62	84	83	60	62	57	60	71	84	86	93			72.3		
ABERDEEN PHILLIPS FLD	07	MAX MIN	43	42	45	50	54	54	44	39	38	44	45	60	50	52	56	66	50	50	52	58	60	47	48	51	55	55	58	64	70					51.7	
ABERDEEN PHILLIPS FLD	07	MAX MIN	54	61	66	68	81	74	66	50	65	74	82	86	79	71	72	79	87	74	72	62	83	83	62	59	55	62	72	84	85	89					71.9
ABERDEEN PHILLIPS FLD	07	MAX MIN	44	41	44	46	56	54	43	35	37	42	47	58	55	49	52	54	62	55	48	51	56	62	46	46	51	54	56	59	65	71					51.3
NORTHERN EASTERN SHORE 05 STEVENSVILLE 2SW	07	MAX MIN	58	56	63	66	79	68	61	50	61	68	77	81	75	65	62	74	87	66	69	61	77	66	58	58	58	59	65	81	83	91					68.1
ABERDEEN PHILLIPS FLD	07	MAX MIN	42	43	45	45	60	53	50	39	38	40	50	56	55	49	52	52	63	54	49	48	58	57	48	51	50	54	56	64	67					51.5	
ABERDEEN PHILLIPS FLD	07	MAX MIN	54	52	62	66	77	57	57	48	61	68	79	83	76	67	67	68	86	70	68	59	76	65	58	61	59	59	65	81	83	89					67.4
ABERDEEN PHILLIPS FLD	07	MAX MIN	39	40	40	40	50	44	44	36	35	35	43	56	50	48	48	50	59	51	46	46	57	56	45	45	51	54	52	63	68					48.3	

DAILY TEMPERATURES (°F)

STATION	OB. TIME	MAX/MIN	DAY OF MONTH																															AVERAGE		
			01	02	03	04	05	06	07	08	09	10	11	12	13	14	15	16	17	18	19	20	21	22	23	24	25	26	27	28	29	30	31			
BRIGHTON DAM	08	MAX MIN			61	67	78	71	71	71	71	80	85	74	74	74	75			71	59	78	78	79	58	60	65	65	80	83	88		72.6			
CONOWINGO DAM	07	MAX MIN	51	51	39	46	52	47	40	40	32	39	50	50	45	45	42	43		47	50	57	57	44	47	48	55	53	53	59	60		65.9			
CYLBURN	08	MAX MIN	38	40	39	38	38	49	44	36	34	34	41	50	52	45	45	49	55	47	46	47	54	56	43	45	49	53	54	56	61	65		46.8		
DAMASCUS 3 SSW	22	MAX MIN	53	60	67	77	70	61	47	60	70	81	84	74	66	69	73	84	71	71	58	80	80	65	60	57	57	66	80	82	86		69.3			
EMMITSBURG 2 SE	07	MAX MIN	41	38	44	54	53	47	39	33	39	46	58	60	49	44	49	61	56	50	47	53	61	46	40	48	48	53	53	57	65		49.4			
MILLERS 4 NE	18	MAX MIN	47	54	65	68	77	68	58	46	62	70	79	84	76	65	68	84	71	70	59	78	81	62	63	59	57	69	80	81	85		68.5			
REISTERSTOWN 2 NW	08	MAX MIN	40	37	36	35	51	50	40	37	31	31	41	53	43	42	43	43	47	44	48	49	53	53	42	42	48	49	53	56	59	65		45.4		
SMITHSBURG 2NW	08	MAX MIN	49	60	65	74	71	64	50	58	68	78	82	81	70	67	70	83	79	69	67	77	74	71	63	60	56	65	78	80	83	81		69.8		
			38	34	41	50	49	46	35	32	33	43	54	56	45	41	48	57	57	45	44	53	59	48	37	47	49	52	54	58	64	63		47.7		
			48	51	51	66	76	69	52	44	58	71	81	84	75	74	74	74	85	67	70		80	62	62	62	59	65	79	83	84		68.1			
			35	39	39	43	54	48	36	32	44	44	61	46	46	45	45	58	50	47		54	55	41	43	44	44	55	0 ^G	0 ^G	65		46.1			
			46	49	63	68	74	68	57	53	59	72	78	84	73	64	68	74	82	71	71	59	78	79	53	64	60	72	80	82	82	83		68.9		
			38	29	29	49	47	48	39	29	30	43	54	43	32	47	51	60	42	42	51	53	50	36	44	47	54	56	56	63	60		45.0			
APPALACHIAN MOUNTAIN 07																																				
CUMBERLAND 2	07	MAX MIN	54	53	67	74	74	74	58	42	65	80	85	82	73	72	77	83	80	75	77	72	85	84	55	65	60	59	80	82	85	86		71.9		
FROSTBURG 2	07	MAX MIN	46	35	35	39	50	50	39	36	33	33	43	49	49	46	46	48	54	45	45	52	55	53	41	41	48	52	55	55	58	63		46.5		
SHARPSBURG 5 S	07	MAX MIN	49	40	58	68	68	67	52	35	55	72	78	78	68	65	71	80	75	66	70	65	78	74	46	60	52	52	75	78	79	79		65.1		
			38	31	32	39	42	42	30	29	31	34	48	52	41	41	41	44	54	39	40	47	54	44	37	38	43	44	47	51	51	59		42.1		
			46	56	64	68	77	70	59	44	62	73	81	86	77	67	71	77	86	72	73	62	83	83	52	63	60	59	73	82	84	88		69.9		
			41	31	31	49	49	47	40	27	27	32	41	48	44	43	43	53	55	40	40	50	54	52	37	37	48	51	55	55	55	60		44.5		
ALLEGHENY PLATEAU 08																																				
OAKLAND 1 SE	07	MAX MIN	54	42	60	71	67	70	33	55	69	75	79	78	70	71	79	73	68	67	67	77	70	50	59	50	56	75	80	79	78		66.4			
SAVAGE RIVER DAM	08	MAX MIN	41	31	39	39	45	45	30	28	27	32	41	55	54	41	44	50	58	39	38	53	60	47	37	45	44	46	50	54	58	59		44.3		
SINES DEEP CREEK	07	MAX MIN	51	43	60	68	63	68	54	38	55	71	76	77	68	68	69	79	74	69	70	67	77	77	51	59	52	54	77	78	79	79		65.7		
			42	34	34	36	49	49	34	33	30	31	39	46	40	41	42	43	56	39	39	51	56	50	39	40	45	46	51	52	53	58		43.3		
					57	67	63	67	52		65	65	70	65	65		76	56	63	67	73		69	50	57	77	74									
					30	33	44	42	30		36	37	42	35	35		40	36	36	48	53		36	43	46	47	48									
DELAWARE NORTHERN 01																																				
WILMINGTON NEW CASTLE CO AP	24	MAX MIN	56	63	66	78	67	59	60	68	79	82	76	68	68	67	86	71	68	59	76	65	58	63	60	57	66	76	84	87	76		68.6			
WILMINGTON PORTER RSCH	24	MAX MIN	40	38	42	54	51	47	42	36	33	43	51	54	47	46	45	55	57	48	46	55	54	48	44	50	52	56	58	60	65	53		49.0		
			51	59	65	74	74	54	50	56	65	75	79	72	64	64	66	84	84	66	66	74	60	55	62	57	55	62	79	81	84	73		67.0		
			37	39	42	49	48	43	38	34	39	42	52	60	43	46	45	45	44	45	43	52	54	48	43	47	50	53	58	61	64	51		47.2		
DELAWARE SOUTHERN 02																																				
DOVER	16	MAX MIN	54	62	68	76	76	67	58	61	66	79	82	78	72	66	70	85	75	68	58	72	68	62	58	58	58	64	72	84	87	84		69.6		
			40	41	47	50	56	49	41	37	34	48	57	56	47	48	48	64	50	47	48	54	54	46	50	51	54	55	66	69	63		50.8			

MARYLAND AND DELAWARE
201704

DAILY SOIL TEMPERATURES

STATION	DEPTH	TIME	DAY OF MONTH																															AVERAGE	
			01	02	03	04	05	06	07	08	09	10	11	12	13	14	15	16	17	18	19	20	21	22	23	24	25	26	27	28	29	30	31		
MARYLAND UPPER SOUTHERN 04 BELTSVILLE (in)																																			

MARYLAND AND DELAWARE
201704

SOILS REFERENCE NOTES

STATION	SOIL TYPE	SOIL COVER	SLOPE	UNITS
BELTSVILLE	UNKNOWN	GRASS	0	F

SNOWFALL AND SNOW ON GROUND (INCHES)

STATION		DAY OF MONTH																														
		01	02	03	04	05	06	07	08	09	10	11	12	13	14	15	16	17	18	19	20	21	22	23	24	25	26	27	28	29	30	31
MARYLAND SOUTHERN EASTERN SHORE 01	ASSATEAGUE																															
	PRINCESS ANNE																															
SALISBURY 2N	SNOWFALL																															
	SN ON GND																								-	-						
SNOW HILL 4 N	SNOWFALL																															
	SN ON GND																															
LOWER SOUTHERN 03	MECHANICSVILLE 5 NE																															
	SN ON GND																															
SOLOMONS	SNOWFALL	-																														
	SN ON GND	-																														
NORTHERN CENTRAL 06	DAMASCUS 3 SSW																															
	SN ON GND																															
EMMITSBURG 2 SE	SNOWFALL																															
	SN ON GND																															
MILLERS 4 NE	SNOWFALL																															
	SN ON GND																															
REISTERSTOWN 2 NW	SNOWFALL																															
	SN ON GND																															
SMITHSBURG 2NW	SNOWFALL																															
	SN ON GND																															
APPALACHIAN MOUNTAIN 07	FROSTBURG 2																															
	SN ON GND																															
SHARPSBURG 5 S	SNOWFALL																															
	SN ON GND																															
WILLIAMSPORT	SNOWFALL																															
	SN ON GND																															
ALLEGHENY PLATEAU 08	OAKLAND 1 SE																															
	SN ON GND																															
SAVAGE RIVER DAM	SNOWFALL																															
	SN ON GND																															
SINES DEEP CREEK	SNOWFALL	-	-																													
	SN ON GND	-	-																													

Snowfall: Includes snow and ice. Values for NWS stations (J index note) are Mid-Mid (LST).

Snow on ground: Includes snow, sleet, ice, and hail. Values for NWS stations (J index note) are observed at 12 UTC (GMT).

Water Equivalent: Given for NWS stations (J index note) only, when snow depth is 2 inches or more, and is measured at 18 UTC (GMT)

SNOWFALL AND SNOW ON GROUND (INCHES)

STATION		DAY OF MONTH																														
		01	02	03	04	05	06	07	08	09	10	11	12	13	14	15	16	17	18	19	20	21	22	23	24	25	26	27	28	29	30	31
DELAWARE NORTHERN 01 WILMINGTON NEW CASTLE CO AP WILMINGTON PORTER RSCH	SNOWFALL SN ON GND SNOWFALL SN ON GND																															

Snowfall: Includes snow and ice. Values for NWS stations (J index note) are Mid-Mid (LST).

Snow on ground: Includes snow, sleet, ice, and hail. Values for NWS stations (J index note) are observed at 12 UTC (GMT).

Water Equivalent: Given for NWS stations (J index note) only, when snow depth is 2 inches or more, and is measured at 18 UTC (GMT)

PAN EVAPORATION AND WIND

STATION		DAY OF MONTH																															TOTAL OR AVERAGE
		01	02	03	04	05	06	07	08	09	10	11	12	13	14	15	16	17	18	19	20	21	22	23	24	25	26	27	28	29	30	31	
MARYLAND UPPER SOUTHERN 04 BELTSVILLE	WIND	51	90	51	82	96	70	95	96	88	29	57	37	42	36	24	45	42	37	48	59	30	34	46	24	70	76	23	44	32	31	1585	
	EVAP	0.06	0.17	0.12	0.12	0.25	0.19	0.23	0.17	0.17	0.20	0.24	0.21	0.19	0.20	0.16	0.16	0.22	0.09	0.21	0.04	0.19	0.10	0.01	0.08	0.02	0.00	0.09	0.13	0.22	0.18	4.42	
	MAX	61	61	67	62	75	75	55	50	62	71	74	83	76	72	63	76	82	69	79	59	86	78	58	65	54	58	68	80	89	88	69.8	
	MIN	40	41	38	43	50	50	39	37	34	37	44	51	46	45	45	41	59	48	46	44	52	58	44	45	48	49	54	54	59	68	47.0	
ALLEGHENY PLATEAU 08 SAVAGE RIVER DAM	WIND	-	-	-	-	-	-	-	-	-	-	-	-	-	-	-	-	-	-	-	-	-	-	-	-	-	-	-	-	-	M		
	EVAP	-	-	-	-	-	-	-	-	-	-	-	-	-	-	-	-	-	-	-	-	-	-	-	-	-	-	-	-	-	M		
	MAX	-	-	-	-	-	-	-	-	-	-	-	-	-	-	-	-	-	-	-	-	-	-	-	-	-	-	-	-	-	-		
	MIN	-	-	-	-	-	-	-	-	-	-	-	-	-	-	-	-	-	-	-	-	-	-	-	-	-	-	-	-	-	M		

Evaporation: Is measured in hundreths of inches.

Wind: Is measured in miles.

Max and Min: The maximum and minimum temperatures (Fahrenheit) of the water in the evaporation pan.

STATION INDEX

STATION	INDEX NO.	DIVISION	COUNTY	LATITUDE	LONGITUDE	ELEVATION (IN FEET)	OBSERVATION TIME AND TABLES			
							LOCAL STD TIME			
							TEMP	PRECIP	EVAP	SPECIAL SEE (NOTES)
MARYLAND										
ABERDEEN PHILLIPS FLD	0015	06	HARFORD	39 28	76 10W	57	07	07		CH
ASSATEAGUE	0335	01	WORCESTER	38 4	75 13W	10	VAR	VAR		H
BALTIMORE WASHINGTON INTL CLIM	0467	04	ANNE ARUNDEL	39 11	76 39W	101		24		H
BALTIMORE-WASHINGTON INTL AP R	0465	04	ANNE ARUNDEL	39 10	76 41W	156	24	24		HJ
BELTSVILLE	0700	04	PRINCE GEORGE'S	39 2	76 56W	145	08	08	08	GCH
BRIGHTON DAM	1125	06	MONTGOMERY	39 11	77 0W	330	08	08		H
CONOWINGO DAM	2060	06	HARFORD	39 39	76 11W	40	07	07		H
CUMBERLAND 2	2282	07	ALLEGANY	39 39	78 45W	730	07	07		H
CYLBURN	2308	06	BALTIMORE	39 21	76 39W	235	08	08		H
DALECARLIA RSVR	2325	04	DISTRICT OF COLUMBIA	38 56	77 7W	150	08	08		H
DAMASCUS 3 SSW	2336	06	MONTGOMERY	39 16	77 14W	700	22	22		H
EMMITSBURG 2 SE	2906	06	FREDERICK	39 41	77 17W	403	07	07		H
FROSTBURG 2	3415	07	ALLEGANY	39 40	78 56W	2170	07	07		H
MARYLAND SCI CTR R	5718	04	BALTIMORE (CITY)	39 17	76 37W	20	24	24		H
MECHANICSVILLE 5 NE	5865	03	ST. MARY'S	38 28	76 42W	100	07	07		H
MILLERS 4 NE	5934	06	CARROLL	39 43	76 48W	860	18	18		CH
NATL ARBORETUM DC	6350	04	DISTRICT OF COLUMBIA	38 55	76 58W	50	08	08		H
OAKLAND 1 SE	6620	08	GARRETT	39 25	79 24W	2420	07	07		H
OXON HILL	6800	04	PRINCE GEORGE'S	38 48	76 60W	186	07	07		H
PRINCESS ANNE	7330	01	SOMERSET	38 13	75 41W	20	17	17		H
REISTERSTOWN 2 NW	7580	06	BALTIMORE	39 30	76 50W	737	08	08		H
ROYAL OAK 2 SSW	7806	02	TALBOT	38 43	76 11W	10	17	17		H
SALISBURY 2N	8004	01	WICOMICO	38 24	75 36W	20	17	17		H
SALISBURY FAA AP //R	8005	01	WICOMICO	38 20	75 31W	47	24	24		H
SAVAGE RIVER DAM	8065	08	GARRETT	39 31	79 8W	1495	08	08	08	CH
SHARPSBURG 5 S	8207	07	WASHINGTON	39 24	77 43W	500	07	07		H
SINES DEEP CREEK	8315	08	GARRETT	39 31	79 25W	2040	07	07		H
SMITHSBURG 2NW	8371	06	WASHINGTON	39 40	77 35W	670	08	08		H
SNOW HILL 4 N	8380	01	WORCESTER	38 14	75 23W	30	17	17		H
SOLOMONS	8405	03	CALVERT	38 19	76 27W	12	08	08		H
STEVENSVILLE 2SW	8557	05	QUEEN ANNE'S	38 58	76 20W	10	07	07		H
SUDLERSVILLE 1S	8657	05	QUEEN ANNE'S	39 10	75 51W	100		20		H
WILLIAMSPORT	9570	07	WASHINGTON	39 37	77 51W	360		06		H
DELAWARE										
DOVER	2730	02	KENT	39 9	75 30W	30	16	16		H
WILMINGTON NEW CASTLE CO AP R	9595	01	NEW CASTLE	39 40	75 36W	79	24	24		HJ
WILMINGTON PORTER RSCH	9605	01	NEW CASTLE	39 46	75 32W	270	24	24		H

REFERENCE NOTES

STATION NAMES: Name of the city, town or locality. Figures and letters following the station names indicate the distance in miles and direction from the post office or town community center.

DIVISIONS: Areas within a state of similar climatological characteristics. Division averages are calculated using data from stations that record temperature and/or precipitation. Station Precipitation totals flagged with an 'F' or 'M' are excluded from the Divisional Average calculations of precipitation. Stations with monthly Temperature averages flagged with an 'F' or 'M' are included in the Divisional Average if there are no more than 9 flagged or missing daily values in the month, else they are excluded from the divisional average for temperature.

NORMALS: The average value of the meteorological element over a time period. Effective 1 January 2012, the averaging period for station departures is 1981 to 2010. The normals for National Weather Service localities have been adjusted so as to be representative for the current observation site.

The January 2011 through December 2015 publications incorrectly state the computation of divisional departures. Climate Division departures have been, and continue to be, computed from 1971-2000 Normals, not 1981-2010 as stated. Station departures are accurately described as departures from 1981-2010.

MONTHLY DEGREE DAY TOTALS: One heating (cooling) degree day is accumulated for each whole degree that the daily mean temperature is below (above) 65 degrees Fahrenheit.

PRECIPITATION: Values shown in hundredths of inches are water equivalent totals, i.e., total of liquid and melted frozen precipitation. In the "Monthly Summarized Data" table the total snow and sleet values shown in tenths of inches are unmelted amounts. The max depth on ground values of snow and sleet shown in whole inches are cumulative unmelted amounts. The number of days with .10, .50, 1.00 or more refers to water equivalents.

PRECIPITATION QUALITY CONTROL: The NCEI quality control process may flag precipitation data that are spatially inconsistent, exceed climatological limits, or are inconsistent with prevailing weather patterns.

TEMPERATURE: Original temperature values are given in the "Daily Temperature" table. Summary temperature information (averages, departures, extremes, monthly degree day totals) is based on the values labeled MAX/MIN.

WIND: (As shown in the "Evaporation and Wind" table) the total wind movement in miles over the evaporation pan as determined by an anemometer recorder located 6-8 inches above the pan.

SYMBOLS AND LETTERS USED IN THE STATION INDEX TABLE

C Station is equipped with recording rain gage (R) but values in this bulletin are from a non-recording rain gage unless indicated by an R.
G Observations appear in the "Soil Temperatures" table.
H Observations appear in the "Snowfall and Snow on the Ground" table.
J Station also published as a Local Climatological Data publication.
VAR Observation time varies.
SR / SS Observation time near sunrise / Observation time near sunset, respectively.

SYMBOLS AND LETTERS USED IN THE DATA TABLES

(DAILY DATA ARE FOR THE 24 HOURS IMMEDIATELY PRECEDING OBSERVATION TIME.)

BLANK Entries in the "Monthly Summarized Data" table indicate no record.

BLANK Entries in the "Daily Precipitation" and "Snowfall and Snow on the Ground" tables indicate zero.

BLANK Entries in the "Daily Temperature" table indicate a missing record

- No record. Data not recorded or not received in time for publication.

+ Precipitation or temperature extremes occurred on one or more previous dates during the month.

* Rain gage not read. Precipitation is included in the amount following the asterisks.

Time distribution may not be known. A * preceding the monthly total indicates precipitation amount is being carried forward to next month's total, and may include amounts from the previous month(s).

a As a subscript, indicates accumulated total.

A Amount of precipitation is the total of observer's entries for the current month. It may include precipitation that occurred during the previous month. Refer to earlier bulletin to determine date of last

reading. (Hawaii stations)

B Divisional Departure from normals are computed using 1971-2000 normals.

E Normalized HDD/CDD Calculation. E is appended to the HDD/CDD Calculation when 1-9 individual daily TMAX and/or TMIN values are missing and a Normalized HDD/CDD Calculation is provided. M appears alone if 10 or more daily values are missing.

F Monthly calculation flagged value. F is appended to average and/or total values computed which exclude one or more daily data values that have been flagged by the GHCN-Daily Dataset

M Insufficient or partial data. M is appended to average and/or total values computed with 1-9 daily values missing. M appears alone if 10 or more daily values are missing, (8 or more for wind and evaporation).

N Indicates snow fall or Snowdepth totals are computed with one or more missing days.

R Amounts from recording rain gage.

T Trace. An amount too small to measure.

SEASONAL TABLES: Monthly and seasonal snowfall and heating degree days for the 12 months ending with the June data are published in the July issue of this bulletin. Cooling degree days for the calendar year are published in the "Climatological Data Annual Summary."

Information concerning the history of changes in locations, exposure, etc. of substations is kept on file at the National Centers for Environmental Information. Historical information of regular National Weather Service Offices may be obtained from the "Local Climatological Data" annual publication. The contents of this publication may be reprinted or otherwise used freely, with proper credit to the National Centers For Environmental Information. The data are also available digitally.

Effective with the January 2011 Data-Month, COOP Observer Names are no longer included in the Monthly and Annual Climatological Data Publications. This information is not published to ensure the privacy of personal information pursuant to Section 208 of the E-Government Act of 2002 (44 USC 3601).

As of the 2011 Data-Year, Station and Climate Division Maps are no longer being included in the CD Publications. NCEI's Products Branch provides updated Station Maps for various data networks via the Historical Observing Metadata Repository: <http://www.ncdc.noaa.gov/homr>.

The GHCN-Daily Quality Control Flags shown below are displayed as superscripts with the data. For more information on Global Historical Climatology Network - Daily and flags, see: <http://www.ncdc.noaa.gov/oa/climate/ghcn-daily/> and Comprehensive Automated Quality Assurance of Daily Surface Observations. Durre, Imke, Matthew J. Menne, Byron E. Gleason, Tamara G. Houston, Russell S. Vose, 2010: J. Appl. Meteor. Climatol., 49, 16151633. doi: 10.1175/2010JAMC2375.1

Blank = Passed All checks

D = failed duplicate check

G = failed gap check

I = failed internal consistency check

K = failed streak/frequent-value check

L = failed check on length of multiday period

M = failed megaconsistency check

N = failed naught check

O = failed climatological outlier check

R = failed lagged range check

S = failed spatial consistency check

T = failed temporal consistency check

W = temperature too warm for snow

X = failed bounds check

Z = flagged as a result of an official Datzilla investigation

Beginning with the January 2013 CD Publication, monthly mean temperature calculations have changed to the National Data Stewardship Team standard. Monthly maximum and minimum temperatures are not rounded until after the monthly mean temperature is calculated. This is the most accurate outcome, but may be slightly different from the mean derived from rounded monthly maximum and minimum.

The climate division temperature and precipitation values in this publication are based on simple averages from the current set of NWS-Designated Open and Published COOP and First Order Sites within each division. These values differ from those found in NCEI's nClimDiv product. Beginning in February 2014, the nClimDiv product is used by NCEI's Monitoring Branch and in its monthly climate reports. For more details on nClimDiv, please go to <http://www.ncdc.noaa.gov/monitoring-references/maps/us-climate-divisions.php>.

Effective January 2016, Alaska's Climate Divisions are updated to reflect the 13 climate divisional boundaries established by University of Alaska-Fairbanks, NWS, NCEI, Oregon State University, and University of Nebraska-Lincoln. For more details regarding the updated Alaska Climate Divisions, see: <http://journals.ametsoc.org/doi/pdf/10.1175/JAMC-D-11-0168.1> (Bienek et al., 2012).

These and other publications are available from the National Centers for Environmental Information

Hourly Precipitation Data

This publication contains hourly precipitation amounts obtained from recording rain gages located at National Weather Service, Federal Aviation Administration, and cooperative observer stations. Published data are displayed in inches and tenths or inches and hundredths at local standard time. HPD includes maximum precipitation for nine (9) time periods from 15 minutes to 24 hours, for selected stations.

Climatological Data

Monthly editions contain station daily maximum and minimum temperatures and precipitation. Some Stations provide daily snowfall, snow depth, evaporation, and soil temperature data. Each edition also contains monthly summaries for heating and cooling degree days (65 degree F base). The July issue contains a recap of monthly heating degree days and snow data for the preceding July through June.

The Annual issue contains monthly and annual averages of temperature, precipitation, temperature extremes, freeze data, soil temperatures, evaporation, and a recap of monthly cooling degree days.

Storm Data

Monthly issues contain a chronological listing, by states, of occurrences of storms and unusual weather phenomena. Reports contain information on storm paths, deaths, injuries, and property damage. An "Outstanding storms of the month" section highlights severe weather events with photographs, illustrations, and narratives. The December issue includes annual tornado, lightning, flash flood, and tropical cyclone summaries.

Monthly Climatic Data for the World

This publication contains monthly means for temperature, pressure, precipitation, vapor pressure, and sunshine for approximately 2,000 surface data collection stations worldwide and monthly mean upper air temperatures, dew point depressions, and wind velocities for approximately 500 observing sites.

Local Climatological Data

LCD publications summarize temperature, relative humidity, precipitation, cloudiness, wind speed and direction observations for several hundred cities in the U.S. and its territories. Each monthly publication also contains 3 hourly weather observations for that month and a hourly summary of precipitation. Annual LCD publications contain a summary of the past calendar year as well as historical averages and extremes.

For Information Call:

(828) 271-4800 Option 2

(828) 271-4010 (TDD)

(828) 271-4876 (Fax)

NOAA National Centers for Environmental Information
Attn: Customer Engagement Branch
151 Patton Avenue
Asheville, NC 28801-5001

Customer Services Number: (828) 271-4800, option 2
TDD : (828) 271-4010
Fax number: (828) 271-4876

NCEI now offers free online access to the *Climatological Data* publication.
Go to : www.ncdc.noaa.gov and choose Most Popular.