



CLIMATOLOGICAL DATA

MARYLAND AND DELAWARE

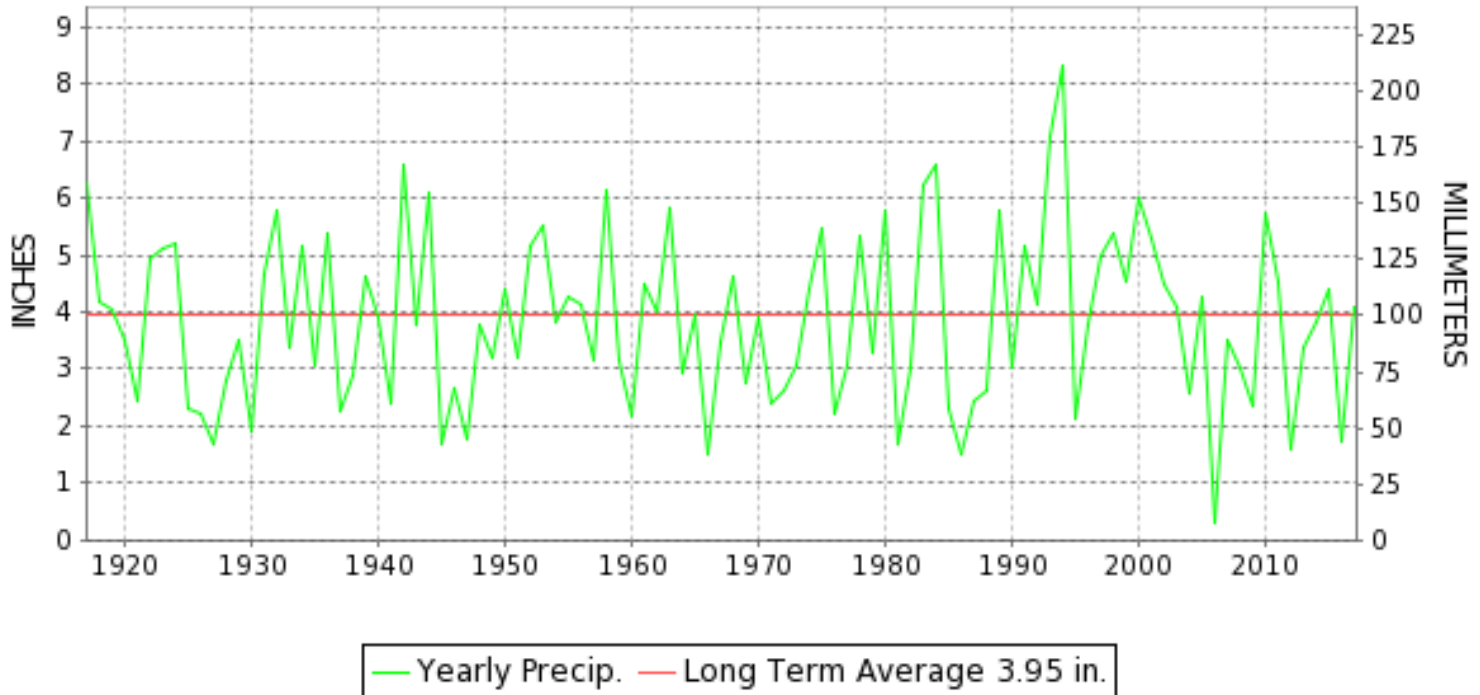
MARCH 2017

VOLUME 121 NUMBER 03

ISSN 0145-0549

GHCND Ver: 3.22-upd-2017072005

MARCH PRECIPITATION BY YEAR



TEMPERATURE AND PRECIPITATION EXTREMES

MARYLAND

HIGHEST TEMPERATURE	81	MARCH 25	MARYLAND SCI CTR
LOWEST TEMPERATURE	6	MARCH 13+	OAKLAND 1 SE
GREATEST TOTAL PRECIPITATION	5.90		OAKLAND 1 SE
LEAST TOTAL PRECIPITATION	1.81		SMITHSBURG 2NW
GREATEST 1 DAY PRECIPITATION	3.20	MARCH 14	SALISBURY 2N
GREATEST TOTAL SNOWFALL	19.1		OAKLAND 1 SE
GREATEST DEPTH OF SNOW OR ICE	11		OAKLAND 1 SE

"I certify that this is an official publication of the National Oceanic and Atmospheric Administration (NOAA) It is compiled using information from weather observing sites supervised by NOAA/National Weather Service and received at the National Centers for Environmental Information(NCEI), Asheville, North Carolina 28801."

Director
National Centers for Environmental Information

noaa

National
Oceanic and
Atmospheric Administration

National
Environmental Satellite, Data
and Information Service

National
Centers for Environmental Information
Asheville, North Carolina

DELAWARE

HIGHEST TEMPERATURE	79	MARCH 25+	2 STATIONS
LOWEST TEMPERATURE	13	MARCH 05	WILMINGTON PORTER RSCH
GREATEST TOTAL PRECIPITATION	4.98		WILMINGTON NEW CASTLE CO AP
LEAST TOTAL PRECIPITATION	4.45		DOVER
GREATEST 1 DAY PRECIPITATION	2.48	MARCH 31	WILMINGTON PORTER RSCH
GREATEST TOTAL SNOWFALL	3.4		WILMINGTON NEW CASTLE CO AP
GREATEST DEPTH OF SNOW OR ICE	3		WILMINGTON PORTER RSCH

MONTHLY STATION AND DIVISION SUMMARY

STATION	TEMPERATURE (°F)										PRECIPITATION (IN)																										
	AVERAGE MAXIMUM	AVERAGE MINIMUM	AVERAGE	DEPARTURE FROM NORMAL	HIGHEST	DATE	LOWEST	DATE	HEATING DEG. DAYS	COOLING DEG. DAYS	NO. OF DAYS				TOTAL	DEPARTURE FROM NORMAL	GREATEST 24 HOURS	DATE	ICE PELLETS, SNOW			NO. OF DAYS															
											MAX		MIN						TOTAL	MAX DEPTH ON GROUND	DATE	.10 OR MORE	.50 OR MORE	1.00 OR MORE													
											>=90	<=32	<=32	<=0																							
MARYLAND SOUTHERN EASTERN SHORE 01	M	M	M							0	0	0	0	M				M																			
ASSATEAGUE	57.1M	35.0M	46.0M	0.3	77	01	20	06	585E	3E	0	0	12	0	M 4.25	-0.11	2.79	14	M									4	4	2							
PRINCESS ANNE	57.8	35.3	46.5		77	01	16	23+	571	6	0	0	14	0	5.30		3.20	14	M								12	6	1								
SALISBURY 2N	55.1	34.2	44.6	-0.1	77	25+	18	05	624	2	0	0	16	0	4.63	0.21	2.92	14	M 0.0	0							9	5	2								
SALISBURY FAA AP	59.2	31.1	45.2	-1.2	78	01	14	06	607	0	0	0	17	0	3.52	-1.00	2.30	14	M								7	3	1								
SNOW HILL 4 N			45.6	0.3B											4.48	0.00B																					
---DIVISIONAL DATA----->																																					
CENTRAL EASTERN SHORE 02																																					
ROYAL OAK 2 SSW	56.2	38.5	47.4	0.9	77	27	19	05	536	1	0	0	10	0	4.69	0.33	2.43	14	T	0							8	5	2								
MECHANICSVILLE 5 NE			47.4	2.1B											4.69	0.40B																					
---DIVISIONAL DATA----->																																					
LOWER SOUTHERN 03																																					
MECHANICSVILLE 5 NE	55.1	32.1	43.6	-1.0	80	26	20	14+	656	1	0	1	19	0	3.16	-1.05	1.52	14	0.5	T	19	10	6	1													
SOLOMONS	M	M	M		78	01	23	14	476E	0	0	0	3	0	A 4.46		2.00	14+	M	M T	12	4	4	2													
---DIVISIONAL DATA----->			43.6	-1.6B											3.81	-0.50B																					
UPPER SOUTHERN 04																																					
BALTIMORE-WASHINGTON INTL AP	53.8	34.1	43.9	0.3	80	25	18	05	647	0	0	1	15	0	3.82	-0.08	1.40	31	2.3	2	16	12	7	2													
BALTIMORE WASHINGTON INTL CLIM															M				M	M 2	14																
BELTSVILLE	52.9	33.6	43.2	-0.5	78	26	19	05	664	0	0	1	14	0	2.83	-0.85	1.37	14	2.9	3	14	15	6	1													
DALECARLIA RSVR	53.3M	32.4M	42.9M	-2.6	79	26	20	16+	680E	0	0	0	15	0	A 2.76	-1.24	0.98	14	M 3.0	3	14	12	7	0													
MARYLAND SCI CTR	54.4	37.6	46.0	-0.3	81	25	21	05	586	4	0	0	13	0	3.67	-0.19	1.56	31	M																		
NATL ARBORETUM DC	55.8M	34.7M	45.2M	-1.0	80	26	21	05	607E	0	0	1	14	0	3.06	-0.66	1.54	14	M 2.5	2	14	12	5	1													
OXON HILL	54.8	34.3	44.6	-0.8	79	26	20	15+	624	0	0	1	15	0	3.16	-0.62	1.15	14	2.2	2	15	14	9	1													
---DIVISIONAL DATA----->			44.3	-0.2B											3.22	-0.80B																					
NORTHERN EASTERN SHORE 05																																					
STEVENSVILLE 2SW	52.2	35.2	43.7	-0.2	76	02	20	05	653	0	0	1	13	0	A 2.95		1.08	14	M 1.2	1	14	9	4	1													
SUDLERSVILLE 1S															5.19		2.74	14	T	0																	
---DIVISIONAL DATA----->			43.7	-0.1B											4.07	-0.05B																					
NORTHERN CENTRAL 06																																					
ABERDEEN PHILLIPS FLD	50.5	31.6	41.1	-1.9	79	26	17	06+	733	0	0	1	16	0	MA 3.46	-0.43	0.30	29	M 3.5	M 2	15	7	5	0													
BRIGHTON DAM	53.1MF	30.6	41.9MF		77	26	17	05+	695E	0	0	0	18	0	M 1.90		0.70	14	2.6	3	14	8	5	0													
CONOWINGO DAM	48.1	29.8	38.9	-3.9	70	26	16	05	803	0	0	1	18	0	2.59	-1.66	0.86	15	3.5	0																	
CYLBURN	M	M	M		80	26	18	15	501E	0	0	1	11	0	MA 3.41		1.98	15	M 0.0	3	16	7	4	1													
DAMASCUS 3 SSW	51.0	32.6	41.8	-0.4	76	25	14	05	712	0	0	2	17	0	4.11	0.42	1.52	31	7.2	4	15	13	7	2													
EMMITSBURG 2 SE	51.1	29.2	40.1	-0.8	76	26	14	06+	765	0	0	1	18	0	M 2.09	-1.96	0.50	29+	M 7.5	6	14	13	6	0													

MONTHLY STATION AND DIVISION SUMMARY

STATION	TEMPERATURE (°F)											PRECIPITATION (IN)												
	AVERAGE MAXIMUM	AVERAGE MINIMUM	AVERAGE	DEPARTURE FROM NORMAL	HIGHEST	DATE	LOWEST	DATE	HEATING DEG. DAYS	COOLING DEG. DAYS	NO. OF DAYS				TOTAL	DEPARTURE FROM NORMAL	GREATEST 24 HOURS	DATE	ICE PELLETS, SNOW			NO. OF DAYS		
											MAX		MIN						TOTAL	MAX DEPTH ON GROUND	DATE	.10 OR MORE	.50 OR MORE	1.00 OR MORE
											>=90	<=32	<=32	<=0										
MILLERS 4 NE	50.9	30.9	40.9	0.0	75	25	12	05	739	0	0	2	16	0	4.75	1.03	1.69	14	11.8	7	14	13	8	2
REISTERSTOWN 2 NW	50.4M	29.0MF	39.7MF		77	26	13	05	771E	0	0	1	17	0	M 1.95		0.50	14	M	4	15	11	8	0
SMITHSBURG 2NW	49.2M	27.5M	38.4M	-1.8	73	26	12	06+	818E	0	0	3	17	0	MA 1.81	-1.90	0.35	29	M			10	8	0
--DIVISIONAL DATA-----> APPALACHIAN MOUNTAIN 07			40.4	-2.3B											3.82	-0.21B								
CUMBERLAND 2	52.8	30.4	41.6	-2.1	79	26	17	06+	715	1	0	1	18	0	4.43	1.06	0.78	01	9.0	8	14	18	12	0
FROSTBURG 2	45.3	24.5	34.9	-1.2	71	25	8	12	922	0	0	8	22	0	5.15	1.21	0.93	01	M	M 8	15	19	16	0
SHARPSBURG 5 S	52.0	28.4	40.2	-1.0	77	26	11	17+	760	0	0	1	17	0	3.15	-0.52	0.92	14	M 7.7	M 7	14	17	10	0
WILLIAMSPORT															M				M					
--DIVISIONAL DATA-----> ALLEGHENY PLATEAU 08			38.9	-1.8B											4.24	0.82B								
OAKLAND 1 SE	48.1	24.7	36.4	0.2	70	25	6	13+	880	0	0	7	21	0	5.90	1.77	1.17	01	19.1	11	15	20	15	1
SAVAGE RIVER DAM	46.5	27.8	37.1	-0.7	71	26+	12	12	857	0	0	3	19	0	3.92	0.52	1.05	01	7.0	7	14	14	9	1
SINES DEEP CREEK	45.0M	MMF	MMF		64	28+	7	13+	946E	0	0	5	16	0	MA 5.25		0.50	08	M 17.4	9	16	12	10	0
--DIVISIONAL DATA-----> DELAWARE NORTHERN 01															4.91	1.04B								
WILMINGTON NEW CASTLE CO AP	51.2	32.0	41.6	-1.4	79	25	14	05	717	0	0	1	17	0	4.98	1.06	1.95	14	3.4	1	16	11	7	2
WILMINGTON PORTER RSCH	48.0	29.7	38.9	-3.4	75	25	13	05	803	0	0	3	18	0	M 3.49	-1.03	2.48	31	M 3.0	3	14	10	4	1
--DIVISIONAL DATA-----> SOUTHERN 02			40.3	-2.4B											4.98	0.87B								
DOVER	54.8	34.9	44.8	-0.4	79	25	15	05	619	3	0	0	14	0	4.45	0.14	2.24	14	T	0		10	7	1
--DIVISIONAL DATA----->			44.8	0.4B											4.45	0.05B								

DAILY PRECIPITATION (INCHES)

STATION	TOTAL	DAY OF MONTH																																			
		01	02	03	04	05	06	07	08	09	10	11	12	13	14	15	16	17	18	19	20	21	22	23	24	25	26	27	28	29	30	31					
MARYLAND																																					
SOUTHERN																																					
EASTERN SHORE 01																																					
ASSATEAGUE	M	-	-	-	-	-	-	-	-	-	-	-	-	-	-	-	-	-	-	-	-	-	-	-	-	-	-	-	-	-	-	-	-	-			
PRINCESS ANNE	M 4.25																																				
SALISBURY 2N	5.30	0.50	0.06	0.01																																	
SALISBURY FAA AP	4.63	0.08		T																																	
SNOW HILL 4 N	3.52		0.01	T																																	
CENTRAL																																					
EASTERN SHORE 02																																					
ROYAL OAK 2 SSW	4.69	0.38	T																																		
LOWER SOUTHERN 03																																					
MECHANICSVILLE 5 NE	3.16	0.23	0.16																																		
SOLOMONS	A 4.46	T		*	*	0.00 _a	T	0.10	T		*	*	T _a	2.00	2.00		*	*	0.00 _a	*	0.00 _a	*	0.00 _a	T	*	*	0.00 _a		0.15	*	*	0.21 _a					
UPPER SOUTHERN 04																																					
BALTIMORE-WASHINGTON INTL AP	3.82	0.02	0.01	T																																	
BALTIMORE WASHINGTON INTL CLIM	M	-	-	-	-	-	-	-	-	-	-	-	-	-	-	-	-	-	-	-	-	-	-	-	-	-	-	-	-	-	-	-	-	-	-	-	
BELTSVILLE	2.83	0.40	0.02	0.01	0.01																																
DALECARLIA RSVR	A 2.76	*	0.50 _a	0.01																																	
MARYLAND SCI CTR	3.67	0.01																																			
NATL ARBORETUM DC	3.06	0.40	0.07	T																																	
OXON HILL	3.16	0.38	0.13	T																																	
NORTHERN																																					
EASTERN SHORE 05																																					
STEVENSVILLE 2SW	A 2.95	0.38	0.09																																		
SUDLERSVILLE 1S	5.19	0.45																																			
NORTHERN CENTRAL 06																																					
ABERDEEN PHILLIPS FLD	MA 3.46	0.16	T																																		
BRIGHTON DAM	M 1.90	0.35																																			
CONOWINGO DAM	2.59	0.23	0.09																																		
CYLBURN	MA 3.41	0.28																																			
DAMASCUS 3 SSW	4.11	0.12	T	0.03																																	
EMMITSBURG 2 SE	M 2.09	0.08	0.02																																		
MILLERS 4 NE	4.75	0.34	0.01	T																																	
REISTERSTOWN 2 NW	M 1.95	0.20	0.25																																		
SMITHSBURG 2NW	MA 1.81	0.33	0.24	0.20																																	
APPALACHIAN																																					
MOUNTAIN 07																																					
CUMBERLAND 2	4.43	0.78	0.50	0.08	0.01																																
FROSTBURG 2	5.15	0.93	0.74	0.13	0.02																																
SHARPSBURG 5 S	3.15	0.35	0.20	0.02																																	
WILLIAMSPORT	M	-	-	-	-																																

DAILY PRECIPITATION (INCHES)

STATION	TOTAL	DAY OF MONTH																															
		01	02	03	04	05	06	07	08	09	10	11	12	13	14	15	16	17	18	19	20	21	22	23	24	25	26	27	28	29	30	31	
ALLEGHENY PLATEAU 08																																	
OAKLAND 1 SE	5.90	1.17	0.62	0.16	0.08			0.07	0.40		0.32	0.27			0.33	0.33	0.13			0.05	0.30		0.06			0.10			0.75	0.29	0.13	0.01	0.33
SAVAGE RIVER DAM	3.92	1.05	0.55	T	T			0.08	0.28		0.23	0.06			0.44	T			0.08	0.22		T		T	0.10			0.51	0.09	0.16		0.07	
SINES DEEP CREEK	MA 5.25	*	1.45 _a	0.13	*	*	0.05 _a	-	0.50		0.20	0.45	*	0.00 _a	0.25	0.25	0.15			*	*	0.40 _a	0.05	0.10			*	0.80 _a	0.15	0.25		0.07	
DELAWARE																																	
NORTHERN 01																																	
WILMINGTON NEW CASTLE CO AP	4.98	0.19	T	T				0.02	T		0.26			0.19	1.95	0.01			T	T		0.04				T		0.10	0.44		0.03	1.75	
WILMINGTON PORTER RSCH	M 3.49	0.10		T			0.01	0.02	0.03		0.25			-	-	T			0.01	T	T				T	0.02	0.02	0.55				2.48	
SOUTHERN 02																																	
DOVER	4.45	0.44		T					0.02		0.28				2.24	T					0.11		0.01					0.14	0.21	0.06		0.94	

DAILY TEMPERATURES (°F)

STATION	OB. TIME	MAX/MIN	DAY OF MONTH																															AVERAGE		
			01	02	03	04	05	06	07	08	09	10	11	12	13	14	15	16	17	18	19	20	21	22	23	24	25	26	27	28	29	30	31			
MARYLAND SOUTHERN EASTERN SHORE 01																																				
ASSATEAGUE	VA	MAX MIN																																	M M	
PRINCESS ANNE	17	MAX MIN	77 56	75 39	62 28			55 20	69 47	63 43	69 37	59 31			42 21	47 29	40 25	33 25	39 25					54 32	51 41	60 29	52 24	42 24			74 45	73 56	65 42	60 38	53 47	57.1 35.0
SALISBURY 2N	17	MAX MIN	77 45	66 45	48 30	41 22	39 18	56 22	69 44	67 46	69 42	67 29	41 16	40 21	42 23	45 34	39 23	42 25	51 23	58 40	56 36	54 30	60 44	59 44	46 16	63 24	59 56	46 44	76 56	76 44	75 45	75 60	70 63	64 38	60 45	57.8 35.3
SALISBURY FAA AP	24	MAX MIN	77 56	62 39	44 28	41 22	39 18	55 20	69 47	63 43	69 37	55 31	39 24	38 23	42 21	47 29	33 23	42 25	50 25	60 40	51 36	54 32	60 41	52 29	47 24	63 26	77 47	51 45	74 45	73 56	65 42	53 38	63 47	55.1 34.2		
SNOW HILL 4 N	17	MAX MIN	78 52	70 43	58 23	43 16	42 15	52 14	71 36	64 39	70 36	67 31	48 23	40 16	41 16	56 31	41 18	44 20	51 19	56 26	53 31	60 35	60 35	60 36	47 20	64 22	75 52	73 55	76 39	75 49	72 45	67 31	62 40	59.2 31.1		
CENTRAL EASTERN SHORE 02																																				
ROYAL OAK 2 SSW	17	MAX MIN	75 55	64 47	48 39	42 35	38 19	54 23	70 48	65 50	69 50	58 40	41 30	40 23	46 22	39 33	43 30	50 28	58 23	54 39	53 47	59 35	55 42	45 40	60 25	76 32	68 55	77 43	71 44	68 56	59 42	60 43	56.2 38.5			
LOWER SOUTHERN 03																																				
MECHANICSVILLE 5 NE	07	MAX MIN	69 41	79 40	53 31	43 21	42 21	40 21	55 24	70 48	65 41	72 43	43 25	41 25	40 20	43 20	39 21	32 21	43 22	53 32	53 32	51 31	55 39	61 22	51 24	47 29	64 29	80 45	49 45	78 49	77 55	67 43	53 43	55.1 32.1		
SOLOMONS	08	MAX MIN	78 47	51 35				59 38	70 47	64 48	70 46				42 32	40 23	42 27	51 41					56 44						45 36			76 52	70 53		M M	
UPPER SOUTHERN 04																																				
BALTIMORE-WASHINGTON INTL AP	24	MAX MIN	75 55	62 35	42 28	41 20	41 18	54 24	70 44	66 48	71 46	54 28	37 20	39 23	40 21	36 23	31 20	39 23	50 38	55 33	51 33	52 44	62 31	53 25	48 30	61 50	80 44	51 44	70 44	70 52	64 48	50 42	52 42	53.8 34.1		
BELTSVILLE	08	MAX MIN	67 44	75 45	48 31	40 21	40 19	55 21	70 33	65 47	70 37	44 23	44 25	36 21	38 21	42 27	37 21	39 22	48 33	55 34	50 31	52 41	61 39	45 22	47 30	60 38	78 46	47 44	76 46	70 46	63 52	51 40	52.9 33.6			
DALECARLIA RSVR	08	MAX MIN			49 31	41 22	41 20	54 22	54 27	70 48	66 39	44 24	44 25	37 23	44 25	44 20	66 20	72 23	44 25	38 20	38 23	49 26	57 34	57 34		46 25	48 30	63 38	79 47	48 45	75 45	71 53	65 44	54 42	53.3 32.4	
MARYLAND SCI CTR	24	MAX MIN	77 57	64 40	42 30	41 26	42 21	52 32	70 46	67 50	72 53	36 31	40 25	41 27	38 26	33 22	41 26	51 31	55 40	51 36	53 39	63 47	56 34	48 29	62 36	81 52	52 45	65 45	70 56	64 51	51 43	53 43	54.4 37.6			
NATL ARBORETUM DC	08	MAX MIN	69 42	78 47	51 33	43 25	44 21	42 23	55 31	70 49	68 45	46 26	26 24	40 24	43 25	44 22	38 32	43 43	51 51	59 37	54 35	53 42	64 25	50 30	49 37	62 48	80 47		77 47	73 55	67 45	55 43	55.8 34.7			
OXON HILL	07	MAX MIN	68 43	76 45	50 32	42 23	43 20	41 21	54 32	69 48	66 46	46 24	46 25	40 25	42 26	45 26	39 20	31 21	41 24	51 25	60 37	53 36	63 45	49 26	49 25	61 33	63 45	49 45	79 45	48 45	77 48	72 55	67 44	54.8 34.3		
NORTHERN EASTERN SHORE 05																																				
STEVENSVILLE 2SW	07	MAX MIN	64 42	76 46	49 33	42 27	40 20	38 21	53 31	68 48	63 48	70 45	46 24	37 25	39 26	43 25	38 22	32 27	41 31	50 40	52 35	48 37	60 43	52 41	44 27	59 36	75 45	48 44	62 45	68 50	60 44	52 42	52.2 35.2			
NORTHERN CENTRAL 06																																				
ABERDEEN PHILLIPS FLD	07	MAX MIN	64 41	72 44	49 32	40 20	37 17	37 17	53 24	66 42	64 48	69 42	42 21	33 22	35 22	39 22	36 19	30 19	38 23	48 27	48 34	50 34	52 36	61 43	43 22	44 23	56 32	79 44	46 42	65 43	61 48	61 38	49 38	50.5 31.6		

DAILY TEMPERATURES (°F)

STATION	OB. TIME	MAX/MIN	DAY OF MONTH																															AVERAGE	
			01	02	03	04	05	06	07	08	09	10	11	12	13	14	15	16	17	18	19	20	21	22	23	24	25	26	27	28	29	30	31		
BRIGHTON DAM	08	MAX	66	69	44	40	40	37	55	68	68	69		69 ^s	37	40	40	33	38	52	53	49	51	60	45	45	59	77	46	71	68	60	60	53.1	
		MIN	44	42	29	17	17	23	36	43	43	34	20	21	19	23	19	21	20	34	35	28	32	32	19	28	28	29	44	46	47	38	38	30.6	
CONOWINGO DAM	07	MAX	60	67	47	39	36	36	50	63	63	68	42	39	35	37	34	31	38	45	46	45	47	45	44	42	55	70	45	60	56	58	47	48.1	
		MIN	40	43	28	19	16	17	25	40	44	42	20	20	19	19	18	17	20	23	34	31	33	31	25	26	30	45	41	43	46	34	35	29.8	
CYLBURN	08	MAX	70									53					30	46	55	60							80	47	68	69	63	52	M		
		MIN	54			22						20	21	20	25	18	19	26	32	46	33			23	24	42	44	44	47	53	43	46	M		
DAMASCUS 3 SSW	22	MAX	70	58	38	37	35	52	65	62	67	56	32	35	40	33	27	35	45	50	46	47	58	53	44	58	76	66	70	61	50	47	51.0		
		MIN	53	36	27	18	14	27	41	44	48	27	18	19	18	23	17	20	24	34	31	29	42	32	21	32	54	43	42	54	46	38	39	32.6	
EMMITSBURG 2 SE	07	MAX	62	67	57	39	39	38	51	64	63	68	45	33	38	40	36	30	38	45	46	49	48	60	47	46	58	76	54	69	67	61	49	51.1	
		MIN	34	41	28	18	14	14	23	41	46	38	19	19	16	17	18	18	22	19	33	32	32	38	22	22	31	45	44	44	46	35	35	29.2	
MILLERS 4 NE	18	MAX	69	64	39	35	36	53	65	61	65	59	31	34	37	35	28	35	43	46	44	46	57	55	44	57	75	69	69	68	58	56	45	50.9	
		MIN	51	36	25	16	12	22	39	44	48	30	17	15	16	25	15	18	20	33	30	30	37	34	18	30	53	42	40	50	42	33	37	30.9	
REISTERSTOWN 2 NW	08	MAX	63	70	44	44	44	35	54	65	65	65	38	30	34	37	37		35	46	48	46	47	57	41	46	59	77	44	71	65	58	46	50.4	
		MIN	46	38	28	19	13	14	24	39	39	34	17	17	19	18	16		24	28	32	32	34	36	21	24	34	32	41	43	44	35	37 ¹	29.0	
SMITHSBURG 2NW	08	MAX	62	68	44	36	36	38	51	60	61	65	39	30	34	41	32	27	35				47	56	42	46	62	73	46	71	64	61	50	49.2	
		MIN	36	39	25	15	12	12	27	41	41	34	18	16	15	19	16	14	16				25	32	15	15	32	44	44	44	48	38	38	27.5	
APPALACHIAN MOUNTAIN 07																																			
CUMBERLAND 2	07	MAX	50	66	59	38	38	43	47	57	62	68	40	35	40	44	34	31	39	47	48	49	57	61	46	54	78	79	54	74	73	69	56	52.8	
		MIN	36	37	27	21	17	17	28	40	41	35	20	18	18	19	18	18	22	22	35	32	32	32	21	21	33	52	47	47	50	43	43	30.4	
FROSTBURG 2	07	MAX	55	59	37	29	30	38	45	51	55	61	31	23	30	41	29	22	30	41	41	41	52	53	37	47	71	70	45	69	62	59	51	45.3	
		MIN	34	28	19	15	10	11	27	34	35	31	12	8	11	14	9	9	18	20	30	30	30	22	14	15	32	45	41	42	43	36	36	24.5	
SHARPSBURG 5 S	07	MAX	65	71	48	40	40	40	50	63	65	69	43	35	39	44	35	30	39	46	54	48	50	60	46	49	62	77	48	73	69	63	52	52.0	
		MIN	37	41	25	17	13	13	28	43	37	37	22	18	16	16	18	11	11	17	34	27	27	35	18	18	36	47	44	45	50	38	42	28.4	
ALLEGHENY PLATEAU 08																																			
OAKLAND 1 SE	07	MAX	62	66	34	27	33	41	57	59	56	62	62	31	31	28	28	21	30	40	46	38	51	51	38	47	70	68	56	67	66	66	59	48.1	
		MIN	28	29	21	13	10	18	31	37	40	31	12	6	6	8	8	8	8	8	8	31	30	33	24	13	13	36	49	46	46	44	39	39	24.7
SAVAGE RIVER DAM	08	MAX	50	49	38	38	34	37	44	48	55	60	34	27	34	44	31	26	33	41	44	42	52	53	39	46	71	71	51	68	64	63	53	46.5	
		MIN	33	32	26	19	14	14	28	36	36	33	18	12	18	18	14	14	19	18	32	34	35	29	19	18	32	46	44	44	47	39	41	27.8	
SINES DEEP CREEK	07	MAX		57	33			41		53	52	58	32		30	41	29	22	30			40	48	50	35	47		64	64	60	50	55	45.0		
		MIN		29	22			7		34	32	32	15		7	15	9	9	12			10 ^s	32	28	16	15		30	44	45	38	38	M		
DELAWARE NORTHERN 01																																			
WILMINGTON NEW CASTLE CO AP	24	MAX	75	62	41	38	39	48	67	64	69	49	34	38	38	35	31	38	46	46	51	52	59	52	46	56	79	46	65	57	63	49	54	51.2	
		MIN	50	35	27	20	14	22	42	47	47	27	19	21	20	23	19	21	25	37	36	31	41	26	20	31	43	42	42	49	44	32	39	32.0	
WILMINGTON PORTER RSCH	24	MAX	71	60	37	34	35	47	64	60	63	48	29	36	36	31	27	35	41	40	46	48	55	55	41	54	75	43	59	54	58	58	49	48.0	
		MIN	51	34	25	19	13	25	37	45	45	25	17	19	18	21	16	20	20	22	33	32	32	24	22	22	43	39	39	48	44	35	36	29.7	
DELAWARE SOUTHERN 02																																			
DOVER	16	MAX	70	63	48	38	37	49	67	67	69	61	38	39	38	38	34	40	49	49	51	56	59	59	46	60	79	70	72	69	63	63	57	54.8	
		MIN	55	45	32	20	15	22	42	47	47	31	19	24	19	29	19	24	26	40	33	35	42	42	23	30	56	44	43	54	47	37	40	34.9	

MARYLAND AND DELAWARE
201703

DAILY SOIL TEMPERATURES

STATION	DEPTH	TIME	DAY OF MONTH																															AVERAGE	
			01	02	03	04	05	06	07	08	09	10	11	12	13	14	15	16	17	18	19	20	21	22	23	24	25	26	27	28	29	30	31		
MARYLAND UPPER SOUTHERN 04 BELTSVILLE (in)																																			

MARYLAND AND DELAWARE
201703

SOILS REFERENCE NOTES

STATION	SOIL TYPE	SOIL COVER	SLOPE	UNITS
BELTSVILLE	UNKNOWN	GRASS	0	F

SNOWFALL AND SNOW ON GROUND (INCHES)

STATION		DAY OF MONTH																														
		01	02	03	04	05	06	07	08	09	10	11	12	13	14	15	16	17	18	19	20	21	22	23	24	25	26	27	28	29	30	31
MARYLAND SOUTHERN EASTERN SHORE 01																																
ASSATEAGUE	SNOWFALL																															
PRINCESS ANNE	SNOWFALL																															
SALISBURY 2N	SNOWFALL																															
SALISBURY FAA AP	SNOWFALL																															
	SN ON GND																															
SNOW HILL 4 N	SNOWFALL	-	-	T	-	-	-	-	-	-	-	-	-	-	-	-	-	-	-	-	-	-	-	-	-	-	-	-	-	-	-	
CENTRAL EASTERN SHORE 02																																
ROYAL OAK 2 SSW	SNOWFALL				T										T																	
	SN ON GND																															
LOWER SOUTHERN 03																																
MECHANICSVILLE 5 NE	SNOWFALL					T																										
	SN ON GND											T			0.5	T																
	WTR EQUIV																															
SOLOMONS	SNOWFALL	-	-	-	-	-	-	-	-	-	-	T	T	-	-	-	-	-	-	-	-	-	-	-	-	-	-	-	-	-	-	
	SN ON GND	-	-	-	-	-	-	-	-	-	-	T	T	-	-	-	-	-	-	-	-	-	-	-	-	-	-	-	-	-	-	
UPPER SOUTHERN 04																																
BALTIMORE-WASHINGTON INTL AP	SNOWFALL				T									1.6	0.6	T																0.1
	SN ON GND														2	2	2	1														
BALTIMORE WASHINGTON INTL CLIM	SNOWFALL	-	-	-	-	-	-	-	-	-	-	-	-	1.3	-	0.9	-	-	-	-	-	-	-	-	-	-	-	-	-	-	-	-
	SN ON GND	-	-	-	-	-	-	-	-	-	-	-	-	-	2	-	-	-	-	-	-	-	-	-	-	-	-	-	-	-	-	-
	WTR EQUIV	-	-	-	-	-	-	-	-	-	-	-	-	-	-	-	-	-	-	-	-	-	-	-	-	-	-	-	-	-	-	-
BELTSVILLE	SNOWFALL				0.3																											
	SN ON GND				T										3	2	2	1														
DALECARLIA RSVR	SNOWFALL	-	-	-	-	-	-	-	-	-	-	-	-	-	3.0																	
	SN ON GND	-	-	-	-	-	-	-	-	-	-	-	-	-	3	2																
	WTR EQUIV	-	-	-	-	-	-	-	-	-	-	-	-	-	3.0	1.5																
MARYLAND SCI CTR	SNOWFALL																															
NATL ARBORETUM DC	SNOWFALL	-	-		T	-									2.5	T	T															
	SN ON GND	-	-	-	-	-	-	-	-	-	-	-	-	-	2	1	1	T	-	-	-	-	-	-	-	-	-	-	-	-	-	-
	WTR EQUIV	-	-	-	-	-	-	-	-	-	-	-	-	-	-	-	-	-	-	-	-	-	-	-	-	-	-	-	-	-	-	-
OXON HILL	SNOWFALL																															
	SN ON GND				T										2.0	0.2																
NORTHERN EASTERN SHORE 05																																
STEVENSVILLE 2SW	SNOWFALL																															
	SN ON GND																															
SUDLERSVILLE 1S	SNOWFALL																															
	SN ON GND																															

Snowfall: Includes snow and ice. Values for NWS stations (J index note) are Mid-Mid (LST).

Snow on ground: Includes snow, sleet, ice, and hail. Values for NWS stations (J index note) are observed at 12 UTC (GMT).

Water Equivalent: Given for NWS stations (J index note) only, when snow depth is 2 inches or more, and is measured at 18 UTC (GMT)

SNOWFALL AND SNOW ON GROUND (INCHES)

STATION	DAY OF MONTH																															
	01	02	03	04	05	06	07	08	09	10	11	12	13	14	15	16	17	18	19	20	21	22	23	24	25	26	27	28	29	30	31	
NORTHERN CENTRAL 06																																
ABERDEEN PHILLIPS FLD											T			-	3.5																	
											T			-	2	1	1	T														
BRIGHTON DAM														2.6																		
														3	-																	
CONOWINGO DAM																																
CYLBURN																																
DAMASCUS 3 SSW																																
EMMITSBURG 2 SE																																
MILLERS 4 NE																																
REISTERSTOWN 2 NW																																
SMITHSBURG 2NW																																
APPALACHIAN MOUNTAIN 07																																
CUMBERLAND 2																																
FROSTBURG 2																																
SHARPSBURG 5 S																																
WILLIAMSPORT																																
ALLEGHENY PLATEAU 08																																
OAKLAND 1 SE																																
SAVAGE RIVER DAM																																
SINES DEEP CREEK																																
DELAWARE NORTHERN 01																																
WILMINGTON NEW CASTLE CO AP																																

Snowfall: Includes snow and ice. Values for NWS stations (J index note) are Mid-Mid (LST).

Snow on ground: Includes snow, sleet, ice, and hail. Values for NWS stations (J index note) are observed at 12 UTC (GMT).

Water Equivalent: Given for NWS stations (J index note) only, when snow depth is 2 inches or more, and is measured at 18 UTC (GMT)

SNOWFALL AND SNOW ON GROUND (INCHES)

STATION		DAY OF MONTH																															
		01	02	03	04	05	06	07	08	09	10	11	12	13	14	15	16	17	18	19	20	21	22	23	24	25	26	27	28	29	30	31	
WILMINGTON PORTER RSCH	SN ON GND SNOWFALL SN ON GND			T						-			-	1 3.0	1 T	1 2																	
SOUTHERN 02 DOVER	SNOWFALL SN ON GND			T						T				T	T																		

Snowfall: Includes snow and ice. Values for NWS stations (J index note) are Mid-Mid (LST).

Snow on ground: Includes snow, sleet, ice, and hail. Values for NWS stations (J index note) are observed at 12 UTC (GMT).

Water Equivalent: Given for NWS stations (J index note) only, when snow depth is 2 inches or more, and is measured at 18 UTC (GMT)

PAN EVAPORATION AND WIND

STATION		DAY OF MONTH																															TOTAL OR AVERAGE	
		01	02	03	04	05	06	07	08	09	10	11	12	13	14	15	16	17	18	19	20	21	22	23	24	25	26	27	28	29	30	31		
MARYLAND UPPER SOUTHERN 04 BELTSVILLE	WIND	-	-	-	-	-	-	-	-	-	-	-	-	-	-	-	-	-	-	-	-	-	-	-	-	-	-	-	-	-	-	0	64	M
	EVAP	-	-	-	-	-	-	-	-	-	-	-	-	-	-	-	-	-	-	-	-	-	-	-	-	-	-	-	-	-	-	0.00	0.12	M
	MAX	-	-	-	-	-	-	-	-	-	-	-	-	-	-	-	-	-	-	-	-	-	-	-	-	-	-	-	-	-	-	49	52	50.5
	MIN	-	-	-	-	-	-	-	-	-	-	-	-	-	-	-	-	-	-	-	-	-	-	-	-	-	-	-	-	-	-	49	41	45.0
ALLEGHENY PLATEAU 08 SAVAGE RIVER DAM	WIND	-	-	-	-	-	-	-	-	-	-	-	-	-	-	-	-	-	-	-	-	-	-	-	-	-	-	-	-	-	-	-	-	M
	EVAP	-	-	-	-	-	-	-	-	-	-	-	-	-	-	-	-	-	-	-	-	-	-	-	-	-	-	-	-	-	-	-	-	M
	MAX	-	-	-	-	-	-	-	-	-	-	-	-	-	-	-	-	-	-	-	-	-	-	-	-	-	-	-	-	-	-	-	-	-
	MIN	-	-	-	-	-	-	-	-	-	-	-	-	-	-	-	-	-	-	-	-	-	-	-	-	-	-	-	-	-	-	-	-	M

Evaporation: Is measured in hundreths of inches.

Wind: Is measured in miles.

Max and Min: The maximum and minimum temperatures (Fahrenheit) of the water in the evaporation pan.

STATION INDEX

STATION	INDEX NO.	DIVISION	COUNTY	LATITUDE	LONGITUDE	ELEVATION (IN FEET)	OBSERVATION TIME AND TABLES			
							LOCAL STD TIME			
							TEMP	PRECIP	EVAP	SPECIAL SEE (NOTES)
MARYLAND										
ABERDEEN PHILLIPS FLD	0015	06	HARFORD	39 28	76 10W	57	07	07		CH
ASSATEAGUE	0335	01	WORCESTER	38 4	75 13W	10	VAR	VAR		H
BALTIMORE WASHINGTON INTL CLIM	0467	04	ANNE ARUNDEL	39 11	76 39W	101		24		H
BALTIMORE-WASHINGTON INTL AP R	0465	04	ANNE ARUNDEL	39 10	76 41W	156	24	24		HJ
BELTSVILLE	0700	04	PRINCE GEORGE'S	39 2	76 56W	145	08	08	08	GCH
BRIGHTON DAM	1125	06	MONTGOMERY	39 11	77 0W	330	08	08		H
CONOWINGO DAM	2060	06	HARFORD	39 39	76 11W	40	07	07		H
CUMBERLAND 2	2282	07	ALLEGANY	39 39	78 45W	730	07	07		H
CYLBURN	2308	06	BALTIMORE	39 21	76 39W	235	08	08		H
DALECARLIA RSVR	2325	04	DISTRICT OF COLUMBIA	38 56	77 7W	150	08	08		H
DAMASCUS 3 SSW	2336	06	MONTGOMERY	39 16	77 14W	700	22	22		H
EMMITSBURG 2 SE	2906	06	FREDERICK	39 41	77 17W	403	07	07		H
FROSTBURG 2	3415	07	ALLEGANY	39 40	78 56W	2170	07	07		H
MARYLAND SCI CTR R	5718	04	BALTIMORE (CITY)	39 17	76 37W	20	24	24		H
MECHANICSVILLE 5 NE	5865	03	ST. MARY'S	38 28	76 42W	100	07	07		H
MILLERS 4 NE	5934	06	CARROLL	39 43	76 48W	860	18	18		CH
NATL ARBORETUM DC	6350	04	DISTRICT OF COLUMBIA	38 55	76 58W	50	08	08		H
OAKLAND 1 SE	6620	08	GARRETT	39 25	79 24W	2420	07	07		H
OXON HILL	6800	04	PRINCE GEORGE'S	38 47	76 60W	120	07	07		H
PRINCESS ANNE	7330	01	SOMERSET	38 13	75 41W	20	17	17		H
REISTERSTOWN 2 NW	7580	06	BALTIMORE	39 30	76 50W	737	08	08		H
ROYAL OAK 2 SSW	7806	02	TALBOT	38 43	76 11W	10	17	17		H
SALISBURY 2N	8004	01	WICOMICO	38 24	75 36W	20	17	17		H
SALISBURY FAA AP //R	8005	01	WICOMICO	38 20	75 31W	47	24	24		H
SAVAGE RIVER DAM	8065	08	GARRETT	39 31	79 8W	1495	08	08	08	CH
SHARPSBURG 5 S	8207	07	WASHINGTON	39 24	77 43W	500	07	07		H
SINES DEEP CREEK	8315	08	GARRETT	39 31	79 25W	2040	07	07		H
SMITHSBURG 2NW	8371	06	WASHINGTON	39 40	77 35W	670	08	08		H
SNOW HILL 4 N	8380	01	WORCESTER	38 14	75 23W	30	17	17		H
SOLOMONS	8405	03	CALVERT	38 19	76 27W	12	08	08		H
STEVENSVILLE 2SW	8557	05	QUEEN ANNE'S	38 58	76 20W	10	07	07		H
SUDLERSVILLE 1S	8657	05	QUEEN ANNE'S	39 10	75 51W	100		20		H
WILLIAMSPORT	9570	07	WASHINGTON	39 37	77 51W	360		06		H
DELAWARE										
DOVER	2730	02	KENT	39 9	75 30W	30	16	16		H
WILMINGTON NEW CASTLE CO AP R	9595	01	NEW CASTLE	39 40	75 36W	79	24	24		HJ
WILMINGTON PORTER RSCH	9605	01	NEW CASTLE	39 46	75 32W	270	24	24		H

REFERENCE NOTES

STATION NAMES: Name of the city, town or locality. Figures and letters following the station names indicate the distance in miles and direction from the post office or town community center.

DIVISIONS: Areas within a state of similar climatological characteristics. Division averages are calculated using data from stations that record temperature and/or precipitation. Station Precipitation totals flagged with an 'F' or 'M' are excluded from the Divisional Average calculations of precipitation. Stations with monthly Temperature averages flagged with an 'F' or 'M' are included in the Divisional Average if there are no more than 9 flagged or missing daily values in the month, else they are excluded from the divisional average for temperature.

NORMALS: The average value of the meteorological element over a time period. Effective 1 January 2012, the averaging period for station departures is 1981 to 2010. The normals for National Weather Service localities have been adjusted so as to be representative for the current observation site.

The January 2011 through December 2015 publications incorrectly state the computation of divisional departures. Climate Division departures have been, and continue to be, computed from 1971-2000 Normals, not 1981-2010 as stated. Station departures are accurately described as departures from 1981-2010.

MONTHLY DEGREE DAY TOTALS: One heating (cooling) degree day is accumulated for each whole degree that the daily mean temperature is below (above) 65 degrees Fahrenheit.

PRECIPITATION: Values shown in hundredths of inches are water equivalent totals, i.e., total of liquid and melted frozen precipitation. In the "Monthly Summarized Data" table the total snow and sleet values shown in tenths of inches are unmelted amounts. The max depth on ground values of snow and sleet shown in whole inches are cumulative unmelted amounts. The number of days with .10, .50, 1.00 or more refers to water equivalents.

PRECIPITATION QUALITY CONTROL: The NCEI quality control process may flag precipitation data that are spatially inconsistent, exceed climatological limits, or are inconsistent with prevailing weather patterns.

TEMPERATURE: Original temperature values are given in the "Daily Temperature" table. Summary temperature information (averages, departures, extremes, monthly degree day totals) is based on the values labeled MAX/MIN.

WIND: (As shown in the "Evaporation and Wind" table) the total wind movement in miles over the evaporation pan as determined by an anemometer recorder located 6-8 inches above the pan.

SYMBOLS AND LETTERS USED IN THE STATION INDEX TABLE

- C Station is equipped with recording rain gage (R) but values in this bulletin are from a non-recording rain gage unless indicated by an R.
- G Observations appear in the "Soil Temperatures" table.
- H Observations appear in the "Snowfall and Snow on the Ground" table.
- J Station also published as a Local Climatological Data publication.
- VAR Observation time varies.
- SR / SS Observation time near sunrise / Observation time near sunset, respectively.

SYMBOLS AND LETTERS USED IN THE DATA TABLES

(DAILY DATA ARE FOR THE 24 HOURS IMMEDIATELY PRECEDING OBSERVATION TIME.)

- BLANK Entries in the "Monthly Summarized Data" table indicate no record.
- BLANK Entries in the "Daily Precipitation" and "Snowfall and Snow on the Ground" tables indicate zero.
- BLANK Entries in the "Daily Temperature" table indicate a missing record

- No record. Data not recorded or not received in time for publication.
- + Precipitation or temperature extremes occurred on one or more previous dates during the month.
- * Rain gage not read. Precipitation is included in the amount following the asterisks.
- Time distribution may not be known. A * preceding the monthly total indicates precipitation amount is being carried forward to next month's total, and may include amounts from the previous month(s).
- a As a subscript, indicates accumulated total.
- A Amount of precipitation is the total of observer's entries for the current month. It may include precipitation that occurred during the previous month. Refer to earlier bulletin to determine date of last

reading. (Hawaii stations)

- B Divisional Departure from normals are computed using 1971-2000 normals.
- E Normalized HDD/CDD Calculation. E is appended to the HDD/CDD Calculation when 1-9 individual daily TMAX and/or TMIN values are missing and a Normalized HDD/CDD Calculation is provided. M appears alone if 10 or more daily values are missing.
- F Monthly calculation flagged value. F is appended to average and/or total values computed which exclude one or more daily data values that have been flagged by the GHCN-Daily Dataset
- M Insufficient or partial data. M is appended to average and/or total values computed with 1-9 daily values missing. M appears alone if 10 or more daily values are missing, (8 or more for wind and evaporation).
- N Indicates snow fall or Snowdepth totals are computed with one or more missing days.
- R Amounts from recording rain gage.
- T Trace. An amount too small to measure.

SEASONAL TABLES: Monthly and seasonal snowfall and heating degree days for the 12 months ending with the June data are published in the July issue of this bulletin. Cooling degree days for the calendar year are published in the "Climatological Data Annual Summary."

Information concerning the history of changes in locations, exposure, etc. of substations is kept on file at the National Centers for Environmental Information. Historical information of regular National Weather Service Offices may be obtained from the "Local Climatological Data" annual publication. The contents of this publication may be reprinted or otherwise used freely, with proper credit to the National Centers For Environmental Information. The data are also available digitally.

Effective with the January 2011 Data-Month, COOP Observer Names are no longer included in the Monthly and Annual Climatological Data Publications. This information is not published to ensure the privacy of personal information pursuant to Section 208 of the E-Government Act of 2002 (44 USC 3601).

As of the 2011 Data-Year, Station and Climate Division Maps are no longer being included in the CD Publications. NCEI's Products Branch provides updated Station Maps for various data networks via the Historical Observing Metadata Repository: <http://www.ncdc.noaa.gov/homr>.

The GHCN-Daily Quality Control Flags shown below are displayed as superscripts with the data. For more information on Global Historical Climatology Network - Daily and flags, see: <http://www.ncdc.noaa.gov/oa/climate/ghcn-daily/> and Comprehensive Automated Quality Assurance of Daily Surface Observations. Durre, Imke, Matthew J. Menne, Byron E. Gleason, Tamara G. Houston, Russell S. Vose, 2010: J. Appl. Meteor. Climatol., 49, 16151633. doi: 10.1175/2010JAMC2375.1

- | | |
|---|---|
| Blank = Passed All checks | N = failed naught check |
| D = failed duplicate check | O = failed climatological outlier check |
| G = failed gap check | R = failed lagged range check |
| I = failed internal consistency check | S = failed spatial consistency check |
| K = failed streak/frequent-value check | T = failed temporal consistency check |
| L = failed check on length of multiday period | W = temperature too warm for snow |
| M = failed megaconsistency check | X = failed bounds check |
| | Z = flagged as a result of an official Datzilla investigation |

Beginning with the January 2013 CD Publication, monthly mean temperature calculations have changed to the National Data Stewardship Team standard. Monthly maximum and minimum temperatures are not rounded until after the monthly mean temperature is calculated. This is the most accurate outcome, but may be slightly different from the mean derived from rounded monthly maximum and minimum.

The climate division temperature and precipitation values in this publication are based on simple averages from the current set of NWS-Designated Open and Published COOP and First Order Sites within each division. These values differ from those found in NCEI's nClimDiv product. Beginning in February 2014, the nClimDiv product is used by NCEI's Monitoring Branch and in its monthly climate reports. For more details on nClimDiv, please go to <http://www.ncdc.noaa.gov/monitoring-references/maps/us-climate-divisions.php>.

Effective January 2016, Alaska's Climate Divisions are updated to reflect the 13 climate divisional boundaries established by University of Alaska-Fairbanks, NWS, NCEI, Oregon State University, and University of Nebraska-Lincoln. For more details regarding the updated Alaska Climate Divisions, see: <http://journals.ametsoc.org/doi/pdf/10.1175/JAMC-D-11-0168.1> (Bienek et al., 2012).

NOAA National Centers for Environmental Information
Attn: Customer Engagement Branch
151 Patton Avenue
Asheville, NC 28801-5001

Customer Services Number: (828) 271-4800, option 2
TDD : (828) 271-4010
Fax number: (828) 271-4876

NCEI now offers free online access to the *Climatological Data* publication.
Go to : www.ncdc.noaa.gov and choose Most Popular.