



CLIMATOLOGICAL DATA

MARYLAND AND DELAWARE

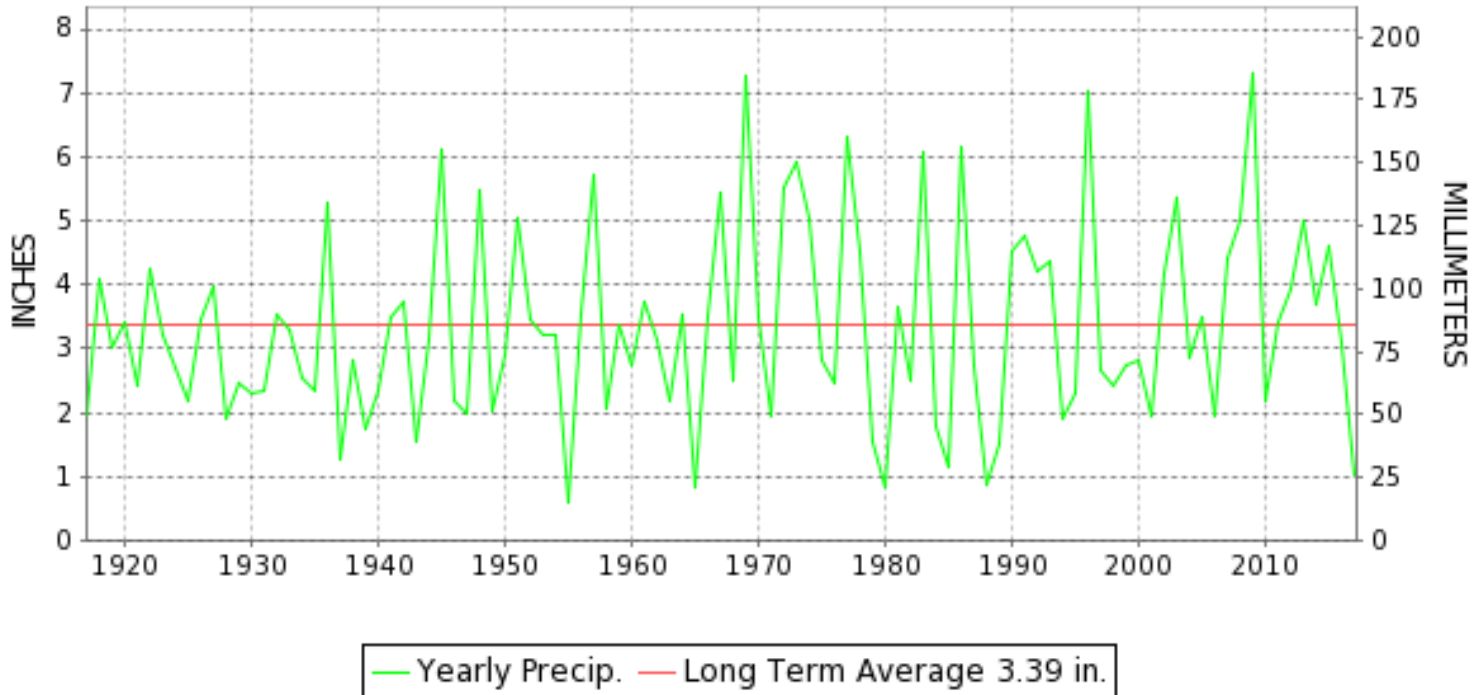
DECEMBER 2017

VOLUME 121 NUMBER 12

ISSN 0145-0549

GHCND Ver: 3.24-upd-2018040904

DECEMBER PRECIPITATION BY YEAR



TEMPERATURE AND PRECIPITATION EXTREMES

MARYLAND

HIGHEST TEMPERATURE	67	DECEMBER 05	SALISBURY FAA AP
LOWEST TEMPERATURE	-11	DECEMBER 29+	OAKLAND 1 SE
GREATEST TOTAL PRECIPITATION	2.32		OAKLAND 1 SE
LEAST TOTAL PRECIPITATION	0.56		MECHANICSVILLE 5 NE
GREATEST 1 DAY PRECIPITATION	0.67	DECEMBER 23	MILLERS 4 NE
GREATEST TOTAL SNOWFALL	23.7		OAKLAND 1 SE
GREATEST DEPTH OF SNOW OR ICE	9		OAKLAND 1 SE

"I certify that this is an official publication of the National Oceanic and Atmospheric Administration (NOAA) It is compiled using information from weather observing sites supervised by NOAA/National Weather Service and received at the National Centers for Environmental Information(NCEI), Asheville, North Carolina 28801."

Mary S. Wohlgenant

Director
National Centers for Environmental Information

noaa

National
Oceanic and
Atmospheric Administration

National
Environmental Satellite, Data
and Information Service

National
Centers for Environmental Information
Asheville, North Carolina

DELAWARE

HIGHEST TEMPERATURE	65
LOWEST TEMPERATURE	8
GREATEST TOTAL PRECIPITATION	1.23
LEAST TOTAL PRECIPITATION	0.84
GREATEST 1 DAY PRECIPITATION	0.43
GREATEST TOTAL SNOWFALL	7.8
GREATEST DEPTH OF SNOW OR ICE	4

DECEMBER 05
DECEMBER 31+

DECEMBER 23

DOVER
2 STATIONS
WILMINGTON NEW CASTLE CO AP
DOVER
WILMINGTON NEW CASTLE CO AP
WILMINGTON NEW CASTLE CO AP
WILMINGTON NEW CASTLE CO AP

MONTHLY STATION AND DIVISION SUMMARY

STATION	TEMPERATURE (°F)											PRECIPITATION (IN)												
	AVERAGE MAXIMUM	AVERAGE MINIMUM	AVERAGE	DEPARTURE FROM NORMAL	HIGHEST	DATE	LOWEST	DATE	HEATING DEG. DAYS	COOLING DEG. DAYS	NO. OF DAYS				TOTAL	DEPARTURE FROM NORMAL	GREATEST 24 HOURS	DATE	ICE PELLETS, SNOW			NO. OF DAYS		
											MAX		MIN						TOTAL	MAX DEPTH ON GROUND	DATE	.10 OR MORE	.50 OR MORE	1.00 OR MORE
											>=90	<=32	<=32	<=0										
SMITHSBURG 2NW	40.5	24.4	32.5	-1.0	56	20	7	30+	1000	0	0	9	25	0	M 0.86	-2.49	0.47	24	M 0.0	0		3	3	0
--DIVISIONAL DATA----->			33.4	-2.4B											1.21	-2.29B								
APPALACHIAN MOUNTAIN 07																								
HAGERSTOWN 1 E	40.9	26.2	33.5		59	19	9	29+	966	0	0	8	24	0	1.05		0.62	23	1.5	1	30	7	2	0
CUMBERLAND 2	41.5	25.8	33.6	-2.0	59	20	8	29+	965	0	0	7	23	0	0.94	-1.91	0.30	23	M 3.8	2	14	8	4	0
FROSTBURG 2	35.7	19.9	27.8	-2.1	53	01	-1	28	1148	0	0	12	28	3	1.13	-2.16	0.24	24	9.0	5	14	10	5	0
SHARPSBURG 5 S	44.1M	23.8	33.9M	0.3	61	20	8	29+	950E	0	0	3	27	0	1.02	-2.13	0.42	24	1.2	1	30	6	3	0
WILLIAMSPORT															M 0.88	-2.22	0.32	06	M			8	3	0
--DIVISIONAL DATA----->			32.2	-1.3B											1.04	-1.83B								
ALLEGHENY PLATEAU 08																								
OAKLAND 1 SE	38.9	19.6	29.2	-0.6	65	01	-11	29+	1098	0	0	9	28	2	2.32	-1.53	0.57	24	23.7	9	31	17	8	0
SAVAGE RIVER DAM	37.6	23.3	30.5	-0.8	53	01	2	28	1061	0	0	9	27	0	1.09	-1.71	0.40	24	4.5	2	31	6	5	0
SINES DEEP CREEK	M	M	M		58	01	-6	29+	1109E	0	0	4	16	2	MA 1.60		0.30	06	M	6	26	6	3	0
--DIVISIONAL DATA----->			29.9	-0.5B											1.71	-1.87B								
DELAWARE NORTHERN 01																								
WILMINGTON NEW CASTLE CO AP	42.8	26.8	34.8	-1.9	62	23+	8	31	924	0	0	7	22	0	1.23	-2.25	0.43	23	7.8	4	10	8	4	0
WILMINGTON PORTER RSCH	41.4	26.7	34.0	-2.2	59	20	8	31	949	0	0	6	21	0	M 0.00	-4.10			M 0.0	3	09	0	0	0
--DIVISIONAL DATA----->			34.4	-2.2B											1.23	-2.39B								
SOUTHERN 02																								
DOVER	44.8	29.5	37.2	-2.0	65	05	11	29	855	0	0	6	19	0	0.84	-2.81	0.25	09	5.7	0		8	4	0
--DIVISIONAL DATA----->			37.2	-1.8B											0.84	-2.70B								

DAILY PRECIPITATION (INCHES)

STATION	TOTAL	DAY OF MONTH																														
		01	02	03	04	05	06	07	08	09	10	11	12	13	14	15	16	17	18	19	20	21	22	23	24	25	26	27	28	29	30	31
MARYLAND																																
SOUTHERN																																
EASTERN SHORE 01																																
PRINCESS ANNE	M	-	-	-	-	-	-	-	-	-	-	-	-	-	-	-	-	-	-	-	-	-	-	-	-	-	-	-	-	-	-	-
SALISBURY 2N	M	-	-	-	-	-	-	-	-	-	-	-	-	-	-	-	-	0.01	-	-	-	-	-	-	-	-	-	-	-	-	-	
SALISBURY FAA AP	1.14	T		T	T	0.07	0.09		0.56	0.32		0.02	T		0.01								0.03	0.04								
SNOW HILL 4 N	M	-	-	-	-	-	-	-	-	-	-	-	-	-	-	-	-	-	-	-	-	-	-	-	-	-	-	-	-	-	-	
CENTRAL																																
EASTERN SHORE 02																																
ROYAL OAK 2 SSW	0.63	0.06		0.05		T	0.12		T	0.05	0.15	T	T		0.10									0.05	0.02	0.03				T		
LOWER SOUTHERN 03																																
MECHANICSVILLE 5 NE	0.56	0.01		T	T		0.12			0.01	0.24		T	T		0.01		T					0.01	0.15	T					0.01		
SOLOMONS	M		*	*	0.03 _a		0.07			*	*	0.60 _a				*	*	0.00 _a					-	-	-	-	-	-	-	-	-	
UPPER SOUTHERN 04																																
BALTIMORE-WASHINGTON INTL AP	0.95			0.03		0.14	T			0.25			0.01	T	0.10		T	T				T	0.35	0.01	T		T			0.06		
BALTIMORE WASHINGTON INTL CLIM	M			0.03		0.14				0.25			-	-	0.09		-	-	-	-	-	-	-	-	-	-	-	-	-	-	0.15	
BELTSVILLE	0.61	T		0.03		0.12					0.17			T				0.06					0.03	0.17						0.03		
DALECARLIA RSVR	M 0.77	0.02		0.05		0.04	0.10	-	0.01		0.20					0.02						-	0.04	0.24						0.05		
MARYLAND SCI CTR	0.78			0.02		0.12				0.22			0.03		0.10								0.25	0.01						0.03		
NATL ARBORETUM DC	0.67	0.02		0.05	T		0.10			T	0.22				T	0.01						T	0.24							0.03		
OXON HILL	0.66	0.01		0.04			0.11			T	0.18			T	T		0.02					T	0.01	0.25	T			T		0.04	T	
NORTHERN																																
EASTERN SHORE 05																																
STEVENSVILLE 2SW	0.69	0.02		0.02		0.11				T	0.22					0.09							0.03	0.14	0.06					T		
SUDLERSVILLE 1S	0.65	0.05		0.05		0.15					0.20	T	T	T		0.10								0.10								
NORTHERN CENTRAL 06																																
ABERDEEN PHILLIPS FLD	0.85	0.01		0.01		0.16					0.22				0.08	0.11		0.01						0.24						T	0.01	
CONOWINGO DAM	1.57					0.25					0.26	0.02			0.05	0.20							0.15	0.42	0.20					0.02		
CYLBURN	M	-	-	-	-	-	-	-	-	-	-	-	-	-	-	-	-	-	-	-	-	-	-	-	-	-	-	-	-	-	-	
DAMASCUS 3 SSW	0.95			0.02		0.18				0.22			T	T	0.03		T						0.40	0.02			T			0.08	T	
EMMITSBURG 2 SE	M 1.11	-				0.03				0.25				0.10	0.10			T					0.32	0.26	0.05			T		-		
MILLERS 4 NE	1.46	0.02		T		0.06	0.14			0.19	0.01			0.04	0.06	T							0.67	0.10	0.09		T			0.08	T	
REISTERSTOWN 2 NW	MA 1.00	0.02				0.21					-			0.01									0.21	0.36	0.15	*	0.00 _a			0.04		
SMITHSBURG 2NW	M 0.86														-								0.29	0.47	0.10					-		
APPALACHIAN																																
MOUNTAIN 07																																
HAGERSTOWN 1 E	1.05			T		0.34				0.01	T		T	0.01	T	T	T					0.01	0.62	0.01	T		T			0.05		
CUMBERLAND 2	0.94	0.01				0.16							T	0.11	T	T		T					0.30	0.25	T	0.01	T			0.06	0.04	
FROSTBURG 2	1.13	0.04			T	0.12		T			T		0.05	0.22	T	T		0.01	T				0.22	0.24	T	0.13	T			0.05	0.05	
SHARPSBURG 5 S	1.02	T		0.01		0.20					0.05			T	T	T							0.29	0.42				T		0.05	T	
WILLIAMSPORT	M 0.88	0.01				0.32					0.02			T	0.01	-							0.21	0.27	0.03					0.01	-	
ALLEGHENY PLATEAU 08																																

DAILY PRECIPITATION (INCHES)

STATION	TOTAL	DAY OF MONTH																														
		01	02	03	04	05	06	07	08	09	10	11	12	13	14	15	16	17	18	19	20	21	22	23	24	25	26	27	28	29	30	31
OAKLAND 1 SE	2.32	0.11				0.01	0.25		0.04		0.03			0.25	0.30	0.02			0.02	0.02				0.26	0.57	0.10	0.05	0.02			0.09	0.18
SAVAGE RIVER DAM	1.09					0.10								0.18					T				0.26	0.40	0.11		T			0.04	T	
SINES DEEP CREEK	MA 1.60	0.15	*	*	*	0.00 _a	0.30		0.07	-	-			-	-	0.03	*	*	0.00 _a	0.05			*	*	*	0.90 _a	0.10			-	-	
DELAWARE																																
NORTHERN 01																																
WILMINGTON NEW CASTLE CO AP	1.23			T		0.20	0.01			0.31			0.07		0.14			T					0.43	0.05	T					0.02		
WILMINGTON PORTER RSCH	M 0.00					-				-			-	-	-								-	-						-		
SOUTHERN 02																																
DOVER	0.84	0.02		0.04		T	0.13			0.25			T		0.13								0.17	0.06	0.04							

DAILY TEMPERATURES (°F)

STATION	OB. TIME	MAX/MIN	DAY OF MONTH																															AVERAGE			
			01	02	03	04	05	06	07	08	09	10	11	12	13	14	15	16	17	18	19	20	21	22	23	24	25	26	27	28	29	30	31				
MARYLAND SOUTHERN EASTERN SHORE 01 PRINCESS ANNE	17	MAX MIN																																			M M M
SALISBURY 2N	17	MAX MIN																		52 29	56 37						38 28	35 27						30 20	M M		
SALISBURY FAA AP	24	MAX MIN	56 31	54 28	58 33	56 27	67 37	61 39	48 31	42 31	33 30	37 27	45 25	47 27	35 22	46 26	39 25	45 23	50 26	54 34	59 31	52 27	45 25	59 25	66 48	48 41	42 30	37 27	32 18	25 9	32 9	31 16	24 13	46.0 27.1			
SNOW HILL 4 N	17	MAX MIN																																	M M		
CENTRAL EASTERN SHORE 02 ROYAL OAK 2 SSW	17	MAX MIN	53 35	52 29	56 33	54 30	63 38	60 40	49 35	45 34	36 30	40 32	48 30	46 40	42 22	44 32	37 27	46 22	50 26	54 33	59 33	55 36	42 26	58 42	62 38	60 40	38 26	32 25	27 16	31 12	28 19	30 19	46.4 29.6				
LOWER SOUTHERN 03 MECHANICSVILLE 5 NE	07	MAX MIN	57 36	56 28	52 28	56 29	53 29	62 39	47 35	49 32	39 32	33 26	39 26	47 28	47 21	38 21	44 27	31 21	45 21	48 28	55 30	60 34	51 25	45 25	57 32	66 39	43 34	36 28	38 25	31 14	23 11	23 11	29 18	45.2 26.9			
SOLOMONS	08	MAX MIN	51 45			40 38	53 38	57 45	45 41	43 39		37 34	44 36	42 23	40 24	40 29			42 35	40 35	49 37	49 33												M M			
UPPER SOUTHERN 04 BALTIMORE-WASHINGTON INTL AP	24	MAX MIN	55 31	50 27	56 30	53 28	61 35	56 37	49 32	40 34	37 27	39 26	47 34	47 23	32 20	41 28	29 19	46 18	49 25	56 34	60 39	54 28	45 24	53 28	64 43	45 36	38 28	35 26	31 16	24 10	29 10	33 19	21 8	44.4 26.5			
BELTSVILLE	08	MAX MIN	59 39	54 28	52 30	56 28	53 30	59 41	47 32	47 34	40 35	39 25	48 29	46 34	36 21	40 21	29 24	46 20	52 23	56 27	59 35	50 37	46 25	52 27	63 34	42 33	34 27	36 27	28 14	23 12	29 15	33 16	44.8 27.6				
DALECARLIA RSVR	08	MAX MIN	59 39	54 29	53 29	55 30	54 30	59 39	46 31	49 31	48 31	39 27	48 30	46 32	35 21	39 20	48 28	45 25	47 28	55 33	61 33	52 28	47 26	52 37	65 36	48 35	40 35	37 27	33 26	24 13	29 17	35 15	23 15	45.6 28.0			
MARYLAND SCI CTR	24	MAX MIN	55 44	51 39	57 42	52 38	63 46	57 42	49 40	43 37	40 31	41 31	49 37	48 25	34 23	41 30	31 25	47 25	48 33	55 40	61 46	52 41	47 36	52 46	65 48	48 40	37 29	33 20	24 17	29 19	35 22	23 17	45.4 33.1				
NATL ARBORETUM DC	08	MAX MIN	60 42	56 30	53 35	56 31	55 33	60 41	47 36	49 37	41 36	37 29	41 32	48 34	48 22	38 24	44 27	31 24	46 27	52 31	56 36	60 38	52 27	45 28	56 34	64 37	44 35	38 29	30 29	24 15	32 15	32 18	46.1 30.0				
OXON HILL	07	MAX MIN	60 41	55 32	53 31	56 32	55 32	61 41	47 39	49 36	40 34	36 28	42 31	48 31	47 21	42 21	42 27	31 23	46 25	50 30	56 38	60 35	53 30	45 30	55 37	64 38	53 35	35 28	37 28	31 13	23 14	30 18	46.0 29.5				
NORTHERN EASTERN SHORE 05 STEVENSVILLE 2SW	07	MAX MIN	52 41	51 32	49 37	54 33	50 34	60 45	45 41	47 38	39 34	36 30	39 35	47 37	46 22	39 22	42 25	32 26	44 29	46 39	52 38	60 38	51 32	40 30	55 35	63 40	43 34	36 29	35 26	28 16	22 17	29 18	31 17	44.0 31.3			
NORTHERN CENTRAL 06 ABERDEEN PHILLIPS FLD	07	MAX MIN	54 37	53 25	50 25	54 25	50 27	58 39	45 27	47 27	38 33	35 27	39 27	45 35	45 20	32 20	37 21	24 22	42 25	43 35	51 41	59 24	49 26	42 26	48 34	59 38	41 36	36 26	34 22	27 13	22 13	27 15	29 15	42.4 26.5			
CONOWINGO DAM	07	MAX MIN	60 30	48 30	42 30	48 29	48 29	55 25	43 29	44 30	36 33	34 24	38 24	41 32	44 19	29 19	35 18	29 16	40 20	41 24	45 31	56 35	45 25	38 25	45 34	56 36	39 24	34 25	34 23	25 12	24 11	24 12	29 13	40.3 24.7			

DAILY TEMPERATURES (°F)

STATION	OB. TIME	MAX/MIN	DAY OF MONTH																															AVERAGE		
			01	02	03	04	05	06	07	08	09	10	11	12	13	14	15	16	17	18	19	20	21	22	23	24	25	26	27	28	29	30	31			
CYLBURN	08	MAX																																	M	
		MIN																																M		
DAMASCUS 3 SSW	22	MAX	50	50	51	53	59	53	44	37	32	35	42	43	29	36	26	42	47	52	56	50	41	45	59	43	35	31	28	19	24	28	19	40.6		
		MIN	35	33	35	34	42	34	35	31	24	22	31	20	17	26	18	20	30	33	44	32	25	29	42	33	25	23	14	10	9	16	9	26.8		
EMMITSBURG 2 SE	07	MAX	52	53	49	54	53	54	51	44	37	32	39	45	46	30	37	32	45	46	51	58	51	42	40	57	41	37	33	28	24	26	29	42.5		
		MIN	32	24	25	25	25	36	35	31	31	22	23	32	19	19	22	19	21	22	33	43	23	23	34	34	32	23	22	11	10	10	10	24.9		
MILLERS 4 NE	18	MAX	50	50	52	50	57	53	43	38	32	36	42	43	31	34	27	41	47	50	56	51	42	44	59	50	35	30	26	20	24	27	20	40.6		
		MIN	36	28	31	28	41	33	32	29	26	18	29	31	16	23	16	16	27	31	41	37	25	29	40	33	24	20	18	8	8	14	7	25.6		
REISTERSTOWN 2 NW	08	MAX	52	50	49	51	51	56	40	43	34	31	34	42	43	33	33	30	41	48	52	57		42	46	59	39			24	24	23	28	41.3		
		MIN	35	31	32	32	37	35	35	30	30	23	27	31	17	19	19	17	17	33	34	43	27	28	34	33	27		18	9	8	9	9	26.0		
SMITHSBURG 2NW	08	MAX	53	49	50	50	52	54	53	42	34	32	36	42	42	30	40	31	45	46	49	56	44	39	45	55	38	30	30	22	18	23	26	40.5		
		MIN	34	26	27	27	28	34	32	28	28	23	31	31	17	18	22	21	24	27	33	35	21	21	37	33	29	19	19	7	7	7	10	24.4		
APPALACHIAN MOUNTAIN 07																																				
HAGERSTOWN 1 E	24	MAX	54	51	55	53	52	49	44	36	33	37	44	44	30	35	32	47	46	50	59	51	44	46	49	40	36	32	27	22	25	28	17	40.9		
		MIN	29	25	29	26	46	34	34	31	26	27	31	20	18	25	23	26	23	35	43	28	23	32	40	34	25	21	13	9	9	17	10	26.2		
CUMBERLAND 2	07	MAX	58	54	47	56	56	49	45	43	34	34	37	44	42	35	35	32	46	37	52	59	48	47	49	48	41	27	29	25	22	27	27	41.5		
		MIN	35	28	28	29	29	33	33	29	29	29	32	34	17	17	23	23	27	27	36	41	25	25	35	35	26	20	20	8	8	9	9	25.8		
FROSTBURG 2	07	MAX	53	45	48	49	49	49	36	36	28	30	29	39	37	31	26	25	37	38	43	49	40	40	46	49	49	20	22	14	12	18	20	35.7		
		MIN	31	27	27	29	33	25	25	20	20	23	23	27	9	10	14	17	25	30	34	35	23	22	22	29	15	12	11	-1	0	1	0	19.9		
SHARPSBURG 5 S	07	MAX	54	54	53	55	54	55	42	45	37	33	39	47	46	33	37	34	48	48	54	61	49	45	46	58	41	33	34	26	29	32	44.1			
		MIN	30	24	25	26	26	35	28	29	30	23	28	29	19	19	20	20	22	28	35	33	19	19	37	32	30	19	18	8	8	10	9	23.8		
ALLEGHENY PLATEAU 08																																				
OAKLAND 1 SE	07	MAX	65	52	52	53	57	52	41	39	39	34	30	43	36	34	29	27	39	40	43	48	46	50	54	57	35	19	24	16	12	19	20	38.9		
		MIN	28	22	22	23	26	26	26	20	20	23	23	28	8	11	20	21	27	27	36	37	20	19	37	29	13	12	13	-11	-11	10	3	19.6		
SAVAGE RIVER DAM	08	MAX	53	47	49	50	49	49	38	39	31	33	34	42	40	35	31	31	40	38	47	49	43	39	44	49	36	23	25	19	16	23	24	37.6		
		MIN	32	26	26	28	28	30	30	25	25	27	27	28	15	16	20	21	28	29	34	40	24	24	33	33	20	18	18	2	3	7	6	23.3		
SINES DEEP CREEK	07	MAX	58				50	40	39	54			35	40			28		35	43	45	45	45			37	18	14	12					M		
		MIN	31				26	25	26	21			24	30			19		25	32	34	22	21			10	11	-6	-6					M		
DELAWARE NORTHERN 01																																				
WILMINGTON NEW CASTLE CO AP	24	MAX	55	51	54	51	62	57	48	39	37	39	44	46	32	37	28	43	45	52	59	49	44	49	62	43	39	34	29	23	27	30	20	42.8		
		MIN	35	28	31	28	43	38	34	32	30	26	33	22	20	23	17	17	26	35	42	28	25	28	43	34	28	25	16	11	10	15	8	26.8		
WILMINGTON PORTER RSCH	24	MAX	50	48	50	49	58	55	44	39	37	36	40	44	44	35	35	39	40	48	56	59	40	47	58	42	38	31	26	26	23	28	19	41.4		
		MIN	39	35	37	33	44	36	33	32	24	24	32	21	19	24	18	18	28	29	35	34	27	31	31	34	27	24	14	12	12	12	8	26.7		
SOUTHERN 02																																				
DOVER	16	MAX	56	51	55	53	65	61	47	40	35	40	46	48	41	41	30	43	49	55	59	53	45	55	63	45	41	35	30	25	28	28	27	44.8		
		MIN	44	28	34	30	39	41	36	34	29	26	33	32	20	25	22	20	26	37	39	44	26	26	45	37	32	28	25	15	11	16	15	29.5		

MARYLAND AND DELAWARE
201712

DAILY SOIL TEMPERATURES

STATION	DEPTH	TIME	DAY OF MONTH																															AVERAGE	
			01	02	03	04	05	06	07	08	09	10	11	12	13	14	15	16	17	18	19	20	21	22	23	24	25	26	27	28	29	30	31		
MARYLAND UPPER SOUTHERN 04 BELTSVILLE (in)																																			

MARYLAND AND DELAWARE
201712

SOILS REFERENCE NOTES

STATION	SOIL TYPE	SOIL COVER	SLOPE	UNITS
BELTSVILLE	UNKNOWN	GRASS	0	F

SNOWFALL AND SNOW ON GROUND (INCHES)

STATION		DAY OF MONTH																															
		01	02	03	04	05	06	07	08	09	10	11	12	13	14	15	16	17	18	19	20	21	22	23	24	25	26	27	28	29	30	31	
MARYLAND SOUTHERN EASTERN SHORE 01																																	
PRINCESS ANNE	SNOWFALL																																
SALISBURY 2N	SNOWFALL																																
SALISBURY FAA AP	SNOWFALL	-			-	-	-		-	-						0.1																	
	SN ON GND								-	-	-																						
SNOW HILL 4 N	SNOWFALL																																
CENTRAL EASTERN SHORE 02																																	
ROYAL OAK 2 SSW	SNOWFALL								T	1.0	1.8					0.5																0.2	
	SN ON GND									1	T						T														T		
LOWER SOUTHERN 03																																	
MECHANICSVILLE 5 NE	SNOWFALL									T	2.5				T		T															T ^I	
	SN ON GND									T	2	T				T															T		
	WTR EQUIV										0.2	-				-																0.0	
SOLOMONS																																	
	SNOWFALL		-	-																													
	SN ON GND		-	-																													
	WTR EQUIV		-	-																													
UPPER SOUTHERN 04																																	
BALTIMORE-WASHINGTON INTL AP	SNOWFALL									2.8				0.3	T	0.7																0.5	
	SN ON GND										2	1			T		1														1	T	
BALTIMORE WASHINGTON INTL CLIM	SNOWFALL									2.8				0.3		0.7																0.5	
	SN ON GND										1	2	1																		1		
BELTSVILLE																																	
	SNOWFALL										2.1				T																	0.4	
	SN ON GND										2	T																			T		
	WTR EQUIV										-	-																					
DALECARLIA RSVR																																	
	SNOWFALL															0.5																0.5	
	SN ON GND										2																				1		
	WTR EQUIV										0.2																					-	
MARYLAND SCI CTR NATL ARBORETUM DC																																	
	SNOWFALL																																0.4
	SN ON GND										1						T														T	T	
	WTR EQUIV										-																					-	
OXON HILL																																	
	SNOWFALL										T	2.5			T		0.3															0.4	
	SN ON GND											3					T														T	T	
	WTR EQUIV										0.2																					0.0	
NORTHERN EASTERN SHORE 05																																	
STEVENSVILLE 2SW	SNOWFALL											3.5					1.0																
	SN ON GND										3	T					1															T	
SUDLERSVILLE 1S	SNOWFALL											3.0	T				2.0																

Snowfall: Includes snow and ice. Values for NWS stations (J index note) are Mid-Mid (LST).

Snow on ground: Includes snow, sleet, ice, and hail. Values for NWS stations (J index note) are observed at 12 UTC (GMT).

Water Equivalent: Given for NWS stations (J index note) only, when snow depth is 2 inches or more, and is measured at 18 UTC (GMT)

SNOWFALL AND SNOW ON GROUND (INCHES)

STATION		DAY OF MONTH																																
		01	02	03	04	05	06	07	08	09	10	11	12	13	14	15	16	17	18	19	20	21	22	23	24	25	26	27	28	29	30	31		
NORTHERN CENTRAL 06 ABERDEEN PHILLIPS FLD	SN ON GND									3	1					2	T																	
	SNOWFALL									2.8				0.5		2.5																	T	T
CONOWINGO DAM	SN ON GND									1	T			T		1	T															T	T	
	WTR EQUIV									-	-			-		-	-																-	-
CYLBURN DAMASCUS 3 SSW	SNOWFALL									1.5	2.0			1.0		2.0																	1.0	
	SN ON GND									-	-	-	-	-	-	-	-	-	-	-	-	-	-	-	-	-	-	-	-	-	-	-	-	-
EMMITSBURG 2 SE	WTR EQUIV									-	-	-	-	-	-	-	-	-	-	-	-	-	-	-	-	-	-	-	-	-	-	-	-	
	SNOWFALL								5.2				0.1	T	0.3														T			1.1	T	
MILLERS 4 NE	SN ON GND								5	1	T		T		T	T															1	T		
	WTR EQUIV								-	-	-		-		-	-	-	-	-	-	-	-	-	-	-	-	-	-	-	-	-	-	-	
REISTERSTOWN 2 NW	SNOWFALL									1.5				1.0		1.0													T		T	2.0		
	SN ON GND									1				1																				
SMITHSBURG 2NW	WTR EQUIV									-				0.5																				
	SNOWFALL								4.8	0.2				0.8		1.1	T								T	0.2			T		1.9	T		
SHARPSBURG 5 S	SN ON GND								5	1	T		T		1	T										T				1	1			
	WTR EQUIV								0.2	0.1	-		-		0.1	-															0.1	0.1		
HAGERSTOWN 1 E	SNOWFALL									-				0.1																	0.5			
	SN ON GND									4				-		-																		
CUMBERLAND 2	WTR EQUIV								-				-		-																			
	SNOWFALL																																	
FROSTBURG 2	SN ON GND																																	
	WTR EQUIV																																	
OAKLAND 1 SE	SNOWFALL																																	
	SN ON GND																																	
SAVAGE RIVER DAM	WTR EQUIV																																	
	SNOWFALL																																	
WILLIAMSPORT ALLEGHENY PLATEAU 08	SNOWFALL																																	
	SN ON GND																																	
OAKLAND 1 SE	SNOWFALL								0.5				5.0	4.0	0.3												5.0	0.1	0.8			3.0	4.5	
	SN ON GND												5	7	5	3										5	5	3	2	2	5	9		
SAVAGE RIVER DAM	SNOWFALL													1.0												2.0		T			1.0	0.5		

Snowfall: Includes snow and ice. Values for NWS stations (J index note) are Mid-Mid (LST).

Snow on ground: Includes snow, sleet, ice, and hail. Values for NWS stations (J index note) are observed at 12 UTC (GMT).

Water Equivalent: Given for NWS stations (J index note) only, when snow depth is 2 inches or more, and is measured at 18 UTC (GMT)

SNOWFALL AND SNOW ON GROUND (INCHES)

STATION		DAY OF MONTH																															
		01	02	03	04	05	06	07	08	09	10	11	12	13	14	15	16	17	18	19	20	21	22	23	24	25	26	27	28	29	30	31	
SINES DEEP CREEK	SN ON GND														1	1	1												1				2
	WTR EQUIV	-	-	-	-	-	-	-	-	-	-	-	-	-	-	-	-	-	-	-	-	-	-	-	-	-	-	-	-	-	-	-	
	SNOWFALL							0.5								0.5											6.0	2.0					
	SN ON GND							1								5			3	1							6	5	4	3			
DELAWARE																																	
NORTHERN 01																																	
WILMINGTON NEW CASTLE CO AP	SNOWFALL								4.1				0.8	T	2.1																	0.8	
	SN ON GND									4	2			1		2	1															T	
WILMINGTON PORTER RSCH	WTR EQUIV	-	-	-	-	-	-	-	-	0.4						0.2																	
	SNOWFALL																																
	SN ON GND								3				1		1																		
SOUTHERN 02																																	
DOVER	SNOWFALL								4.0				1.2		0.5																		
	SN ON GND																																

Snowfall: Includes snow and ice. Values for NWS stations (J index note) are Mid-Mid (LST).

Snow on ground: Includes snow, sleet, ice, and hail. Values for NWS stations (J index note) are observed at 12 UTC (GMT).

Water Equivalent: Given for NWS stations (J index note) only, when snow depth is 2 inches or more, and is measured at 18 UTC (GMT)

PAN EVAPORATION AND WIND

STATION		DAY OF MONTH																															TOTAL OR AVERAGE			
		01	02	03	04	05	06	07	08	09	10	11	12	13	14	15	16	17	18	19	20	21	22	23	24	25	26	27	28	29	30	31				
MARYLAND UPPER SOUTHERN 04 BELTSVILLE	WIND	-	-	-	-	-	-	-	-	-	-	-	-	-	-	-	-	-	-	-	-	-	-	-	-	-	-	-	-	-	-	-	-	-	-	M
	EVAP	-	-	-	-	-	-	-	-	-	-	-	-	-	-	-	-	-	-	-	-	-	-	-	-	-	-	-	-	-	-	-	-	-	-	M
	MAX	-	-	-	-	-	-	-	-	-	-	-	-	-	-	-	-	-	-	-	-	-	-	-	-	-	-	-	-	-	-	-	-	-	-	M
	MIN	-	-	-	-	-	-	-	-	-	-	-	-	-	-	-	-	-	-	-	-	-	-	-	-	-	-	-	-	-	-	-	-	-	-	M
ALLEGHENY PLATEAU 08 SAVAGE RIVER DAM	WIND	-	-	-	-	-	-	-	-	-	-	-	-	-	-	-	-	-	-	-	-	-	-	-	-	-	-	-	-	-	-	-	-	-	M	
	EVAP	-	-	-	-	-	-	-	-	-	-	-	-	-	-	-	-	-	-	-	-	-	-	-	-	-	-	-	-	-	-	-	-	-	-	M
	MAX	-	-	-	-	-	-	-	-	-	-	-	-	-	-	-	-	-	-	-	-	-	-	-	-	-	-	-	-	-	-	-	-	-	-	M
	MIN	-	-	-	-	-	-	-	-	-	-	-	-	-	-	-	-	-	-	-	-	-	-	-	-	-	-	-	-	-	-	-	-	-	-	M

Evaporation: Is measured in hundreths of inches.

Wind: Is measured in miles.

Max and Min: The maximum and minimum temperatures (Fahrenheit) of the water in the evaporation pan.

STATION INDEX

STATION	INDEX NO.	DIVISION	COUNTY	LATITUDE	LONGITUDE	ELEVATION (IN FEET)	OBSERVATION TIME AND TABLES			
							LOCAL STD TIME			
							TEMP	PRECIP	EVAP	SPECIAL SEE (NOTES)
MARYLAND										
ABERDEEN PHILLIPS FLD	0015	06	HARFORD	39 28	76 10W	57	07	07		CH
BALTIMORE WASHINGTON INTL CLIM	0467	04	ANNE ARUNDEL	39 11	76 39W	101		24		H
BALTIMORE WASHINGTON INTL AP R	0465	04	ANNE ARUNDEL	39 10	76 41W	156	24	24		HJ
BELTSVILLE	0700	04	PRINCE GEORGE'S	39 2	76 56W	145	08	08	08	GCH
CONOWINGO DAM	2060	06	HARFORD	39 39	76 11W	40	07	07		H
CUMBERLAND 2	2282	07	ALLEGANY	39 39	78 45W	730	07	07		H
CYLBURN	2308	06	BALTIMORE	39 21	76 39W	235	08	08		H
DALECARLIA RSVR	2325	04	DISTRICT OF COLUMBIA	38 56	77 7W	150	08	08		H
DAMASCUS 3 SSW	2336	06	MONTGOMERY	39 16	77 14W	700	22	22		H
EMMITSBURG 2 SE	2906	06	FREDERICK	39 41	77 17W	403	07	07		H
FROSTBURG 2	3415	07	ALLEGANY	39 40	78 56W	2170	07	07		H
HAGERSTOWN 1 E	1790	07	WASHINGTON	39 38	77 42W	532	24	24		H
MARYLAND SCI CTR R	5718	04	BALTIMORE (CITY)	39 17	76 37W	20	24	24		H
MECHANICSVILLE 5 NE	5865	03	ST. MARY'S	38 28	76 42W	100	07	07		H
MILLERS 4 NE	5934	06	CARROLL	39 43	76 48W	860	18	18		CH
NATL ARBORETUM DC	6350	04	DISTRICT OF COLUMBIA	38 55	76 58W	50	08	08		H
OAKLAND 1 SE	6620	08	GARRETT	39 25	79 24W	2420	07	07		H
OXON HILL	6800	04	PRINCE GEORGE'S	38 48	76 60W	186	07	07		H
PRINCESS ANNE	7330	01	SOMERSET	38 13	75 41W	20	17	17		H
REISTERSTOWN 2 NW	7580	06	BALTIMORE	39 30	76 50W	737	08	08		H
ROYAL OAK 2 SSW //	7806	02	TALBOT	38 43	76 11W	10	17	17		H
SALISBURY 2N	8004	01	WICOMICO	38 24	75 36W	20	17	17		H
SALISBURY FAA AP //R	8005	01	WICOMICO	38 20	75 31W	47	24	24		H
SAVAGE RIVER DAM	8065	08	GARRETT	39 31	79 8W	1495	08	08	08	CH
SHARPSBURG 5 S	8207	07	WASHINGTON	39 24	77 43W	500	07	07		H
SINES DEEP CREEK	8315	08	GARRETT	39 31	79 25W	2040	07	07		H
SMITHSBURG 2NW	8371	06	WASHINGTON	39 40	77 35W	670	08	08		H
SNOW HILL 4 N	8380	01	WORCESTER	38 14	75 23W	30	17	17		H
SOLOMONS	8405	03	CALVERT	38 19	76 27W	12	08	08		H
STEVENSVILLE 2SW	8557	05	QUEEN ANNE'S	38 58	76 20W	10	07	07		H
SUDLERSVILLE 1S	8657	05	QUEEN ANNE'S	39 10	75 51W	100		20		H
WILLIAMSPORT	9570	07	WASHINGTON	39 37	77 51W	360		06		CH
DELAWARE										
DOVER //	2730	02	KENT	39 9	75 30W	30	16	16		H
WILMINGTON NEW CASTLE CO AP R	9595	01	NEW CASTLE	39 40	75 36W	79	24	24		HJ
WILMINGTON PORTER RSCH	9605	01	NEW CASTLE	39 46	75 32W	270	24	24		H

REFERENCE NOTES

STATION NAMES: Name of the city, town or locality. Figures and letters following the station names indicate the distance in miles and direction from the post office or town community center.

DIVISIONS: Areas within a state of similar climatological characteristics. Division averages are calculated using data from stations that record temperature and/or precipitation. Station Precipitation totals flagged with an 'F' or 'M' are excluded from the Divisional Average calculations of precipitation. Stations with monthly Temperature averages flagged with an 'F' or 'M' are included in the Divisional Average if there are no more than 9 flagged or missing daily values in the month, else they are excluded from the divisional average for temperature.

NORMALS: The average value of the meteorological element over a time period. Effective 1 January 2012, the averaging period for station departures is 1981 to 2010. The normals for National Weather Service localities have been adjusted so as to be representative for the current observation site.

The January 2011 through December 2015 publications incorrectly state the computation of divisional departures. Climate Division departures have been, and continue to be, computed from 1971-2000 Normals, not 1981-2010 as stated. Station departures are accurately described as departures from 1981-2010.

MONTHLY DEGREE DAY TOTALS: One heating (cooling) degree day is accumulated for each whole degree that the daily mean temperature is below (above) 65 degrees Fahrenheit.

PRECIPITATION: Values shown in hundredths of inches are water equivalent totals, i.e., total of liquid and melted frozen precipitation. In the "Monthly Summarized Data" table the total snow and sleet values shown in tenths of inches are unmelted amounts. The max depth on ground values of snow and sleet shown in whole inches are cumulative unmelted amounts. The number of days with .10, .50, 1.00 or more refers to water equivalents.

PRECIPITATION QUALITY CONTROL: The NCEI quality control process may flag precipitation data that are spatially inconsistent, exceed climatological limits, or are inconsistent with prevailing weather patterns.

TEMPERATURE: Original temperature values are given in the "Daily Temperature" table. Summary temperature information (averages, departures, extremes, monthly degree day totals) is based on the values labeled MAX/MIN.

WIND: (As shown in the "Evaporation and Wind" table) the total wind movement in miles over the evaporation pan as determined by an anemometer recorder located 6-8 inches above the pan.

SYMBOLS AND LETTERS USED IN THE STATION INDEX TABLE

C Station is equipped with recording rain gage (R) but values in this bulletin are from a non-recording rain gage unless indicated by an R.
G Observations appear in the "Soil Temperatures" table.
H Observations appear in the "Snowfall and Snow on the Ground" table.
J Station also published as a Local Climatological Data publication.
VAR Observation time varies.
SR / SS Observation time near sunrise / Observation time near sunset, respectively.

SYMBOLS AND LETTERS USED IN THE DATA TABLES

(DAILY DATA ARE FOR THE 24 HOURS IMMEDIATELY PRECEDING OBSERVATION TIME.)

BLANK Entries in the "Monthly Summarized Data" table indicate no record.
BLANK Entries in the "Daily Precipitation" and "Snowfall and Snow on the Ground" tables indicate zero.
BLANK Entries in the "Daily Temperature" table indicate a missing record

- No record. Data not recorded or not received in time for publication.
+ Precipitation or temperature extremes occurred on one or more previous dates during the month.
* Rain gage not read. Precipitation is included in the amount following the asterisks.
Time distribution may not be known. A * preceding the monthly total indicates precipitation amount is being carried forward to next month's total, and may include amounts from the previous month(s).
a As a subscript, indicates accumulated total.
A Amount of precipitation is the total of observer's entries for the current month. It may include precipitation that occurred during the previous month. Refer to earlier bulletin to determine date of last

reading. (Hawaii stations)

B Divisional Departure from normals are computed using 1971-2000 normals.

E Normalized HDD/CDD Calculation. E is appended to the HDD/CDD Calculation when 1-9 individual daily TMAX and/or TMIN values are missing and a Normalized HDD/CDD Calculation is provided. M appears alone if 10 or more daily values are missing.

F Monthly calculation flagged value. F is appended to average and/or total values computed which exclude one or more daily data values that have been flagged by the GHCN-Daily Dataset

M Insufficient or partial data. M is appended to average and/or total values computed with 1-9 daily values missing. M appears alone if 10 or more daily values are missing, (8 or more for wind and evaporation).

N Indicates snow fall or Snowdepth totals are computed with one or more missing days.

R Amounts from recording rain gage.

T Trace. An amount too small to measure.

SEASONAL TABLES: Monthly and seasonal snowfall and heating degree days for the 12 months ending with the June data are published in the July issue of this bulletin. Cooling degree days for the calendar year are published in the "Climatological Data Annual Summary."

Information concerning the history of changes in locations, exposure, etc. of substations is kept on file at the National Centers for Environmental Information. Historical information of regular National Weather Service Offices may be obtained from the "Local Climatological Data" annual publication. The contents of this publication may be reprinted or otherwise used freely, with proper credit to the National Centers For Environmental Information. The data are also available digitally.

Effective with the January 2011 Data-Month, COOP Observer Names are no longer included in the Monthly and Annual Climatological Data Publications. This information is not published to ensure the privacy of personal information pursuant to Section 208 of the E-Government Act of 2002 (44 USC 3601).

As of the 2011 Data-Year, Station and Climate Division Maps are no longer being included in the CD Publications. NCEI's Products Branch provides updated Station Maps for various data networks via the Historical Observing Metadata Repository: <http://www.ncdc.noaa.gov/homr>.

The GHCN-Daily Quality Control Flags shown below are displayed as superscripts with the data. For more information on Global Historical Climatology Network - Daily and flags, see: <http://www.ncdc.noaa.gov/oa/climate/ghcn-daily/> and Comprehensive Automated Quality Assurance of Daily Surface Observations. Durre, Imke, Matthew J. Menne, Byron E. Gleason, Tamara G. Houston, Russell S. Vose, 2010: J. Appl. Meteor. Climatol., 49, 16151633. doi: 10.1175/2010JAMC2375.1

Blank = Passed All checks	N = failed naught check
D = failed duplicate check	O = failed climatological outlier check
G = failed gap check	R = failed lagged range check
I = failed internal consistency check	S = failed spatial consistency check
K = failed streak/frequent-value check	T = failed temporal consistency check
L = failed check on length of multiday period	W = temperature too warm for snow
M = failed megaconsistency check	X = failed bounds check
	Z = flagged as a result of an official Datzilla investigation

Beginning with the January 2013 CD Publication, monthly mean temperature calculations have changed to the National Data Stewardship Team standard. Monthly maximum and minimum temperatures are not rounded until after the monthly mean temperature is calculated. This is the most accurate outcome, but may be slightly different from the mean derived from rounded monthly maximum and minimum.

The climate division temperature and precipitation values in this publication are based on simple averages from the current set of NWS-Designated Open and Published COOP and First Order Sites within each division. These values differ from those found in NCEI's nClimDiv product. Beginning in February 2014, the nClimDiv product is used by NCEI's Monitoring Branch and in its monthly climate reports. For more details on nClimDiv, please go to <http://www.ncdc.noaa.gov/monitoring-references/maps/us-climate-divisions.php>.

Effective January 2016, Alaska's Climate Divisions are updated to reflect the 13 climate divisional boundaries established by University of Alaska-Fairbanks, NWS, NCEI, Oregon State University, and University of Nebraska-Lincoln. For more details regarding the updated Alaska Climate Divisions, see: <http://journals.ametsoc.org/doi/pdf/10.1175/JAMC-D-11-0168.1> (Bienek et al., 2012).

NOAA National Centers for Environmental Information
Attn: Customer Engagement Branch
151 Patton Avenue
Asheville, NC 28801-5001

Customer Services Number: (828) 271-4800, option 2
TDD : (828) 271-4010
Fax number: (828) 271-4876

NCEI now offers free online access to the *Climatological Data* publication.
Go to : www.ncdc.noaa.gov and choose Most Popular.