



# CLIMATOLOGICAL DATA

## MARYLAND AND DELAWARE

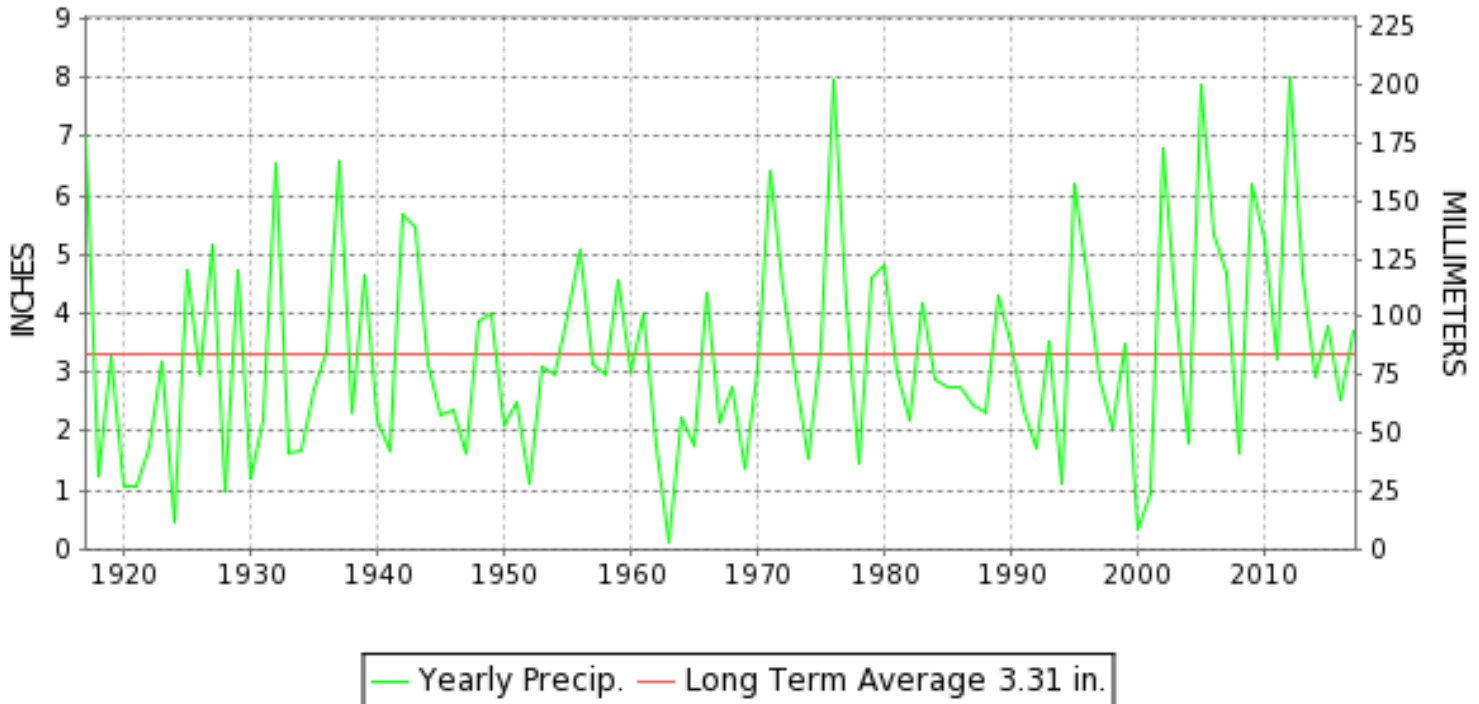
OCTOBER 2017

VOLUME 121 NUMBER 10

ISSN 0145-0549

GHCND Ver: 3.23-upd-2018021105

### OCTOBER PRECIPITATION BY YEAR



#### TEMPERATURE AND PRECIPITATION EXTREMES

##### MARYLAND

HIGHEST TEMPERATURE	90	OCTOBER 08	CUMBERLAND 2
LOWEST TEMPERATURE	27	OCTOBER 30	SINES DEEP CREEK
GREATEST TOTAL PRECIPITATION	6.70		SINES DEEP CREEK
LEAST TOTAL PRECIPITATION	2.55		2 STATIONS
GREATEST 1 DAY PRECIPITATION	2.77	OCTOBER 28	PRINCESS ANNE
GREATEST DEPTH OF SNOW OR ICE	2		SINES DEEP CREEK

"I certify that this is an official publication of the National Oceanic and Atmospheric Administration (NOAA) It is compiled using information from weather observing sites supervised by NOAA/National Weather Service and received at the National Centers for Environmental Information(NCEI), Asheville, North Carolina 28801."

*Mary S. Wohlgenant*

Director  
National Centers for Environmental Information

noaa

National  
Oceanic and  
Atmospheric Administration

National  
Environmental Satellite, Data  
and Information Service

National  
Centers for Environmental Information  
Asheville, North Carolina

**DELAWARE**

HIGHEST TEMPERATURE	86	OCTOBER 07	WILMINGTON NEW CASTLE CO AP
LOWEST TEMPERATURE	37	OCTOBER 17+	2 STATIONS
GREATEST TOTAL PRECIPITATION	4.02		WILMINGTON NEW CASTLE CO AP
LEAST TOTAL PRECIPITATION	2.89		DOVER
GREATEST 1 DAY PRECIPITATION	1.85	OCTOBER 29	WILMINGTON NEW CASTLE CO AP



## MONTHLY STATION AND DIVISION SUMMARY

STATION	TEMPERATURE (°F)													PRECIPITATION (IN)										
	AVERAGE MAXIMUM	AVERAGE MINIMUM	AVERAGE	DEPARTURE FROM NORMAL	HIGHEST	DATE	LOWEST	DATE	HEATING DEG. DAYS	COOLING DEG. DAYS	NO. OF DAYS				TOTAL	DEPARTURE FROM NORMAL	GREATEST 24 HOURS	DATE	ICE PELLETS, SNOW			NO. OF DAYS		
											MAX		MIN						TOTAL	MAX DEPTH ON GROUND	DATE	.10 OR MORE	.50 OR MORE	1.00 OR MORE
											>=90	<=32	<=32	<=0										
REISTERSTOWN 2 NW	70.0	48.7M	59.3M		84	11	35	27	214E	42E	0	0	0	0	3.72		1.27	30	0.0	0		15	6	1
SMITHSBURG 2NW	69.9	46.6	58.3	4.6	84	08	32	28+	239	37	0	0	2	0	5.63	2.39	2.00	30	0.0	0		5	5	3
--DIVISIONAL DATA-----> APPALACHIAN MOUNTAIN 07			59.5	4.2B										4.34	0.83B									
HAGERSTOWN 1 E	71.4	49.5	60.4		87	09	33	27	192	57	0	0	0	0	6.18		2.26	29	0.0	0		9	7	2
CUMBERLAND 2	71.4	47.6	59.5	3.5	90	08	33	28+	214	54	1	0	0	0	4.93	2.36	1.37	09	0.0	0		11	8	1
FROSTBURG 2	65.5	45.3	55.4	5.4	83	08	30	27	311	20	0	0	2	0	5.84	2.80	1.36	09	0.0	0		11	7	2
SHARPSBURG 5 S	71.6	47.0	59.3	4.7	88	10	32	28	215	46	0	0	1	0	6.09	2.68	2.58	30	0.0	0		8	6	3
WILLIAMSPORT														M 5.58	2.52	2.15	30	M			9	6	1	
--DIVISIONAL DATA-----> ALLEGHENY PLATEAU 08			58.7	6.0B										5.76	2.68B									
OAKLAND 1 SE	68.7	43.2	56.0	6.6	81	08	28	27	294	22	0	0	5	0	6.28	3.13	1.20	09	M 0.0	1	30	19	9	4
SAVAGE RIVER DAM	65.9	44.8	55.4	4.6	81	08	30	20	313	23	0	0	3	0	5.70	3.04	1.19	12	0.0	0		10	9	2
SINES DEEP CREEK	M	M	M		76	02	27	30	389E	0	0	0	5	0	MA 6.70		1.25	24	M	2	30	2	2	1
--DIVISIONAL DATA-----> DELAWARE NORTHERN 01														5.99	2.96B									
WILMINGTON NEW CASTLE CO AP	72.5	52.4	62.4	6.2	86	07	37	17	145	75	0	0	0	0	4.02	0.60	1.85	29	0.0	0		9	5	1
WILMINGTON PORTER RSCH	M	M	M		85	07	43	31	93E	180E	0	0	0	0	M				M	0				
--DIVISIONAL DATA-----> SOUTHERN 02														4.02	0.66B									
DOVER	72.7	54.5	63.6	4.9	85	10	37	27	115	80	0	0	0	0	A 2.89	-0.53	0.36	12	M 0.0	0		4	3	0
--DIVISIONAL DATA----->			63.6	6.3B										2.89	-0.49B									

DAILY PRECIPITATION (INCHES)

STATION	TOTAL	DAY OF MONTH																															
		01	02	03	04	05	06	07	08	09	10	11	12	13	14	15	16	17	18	19	20	21	22	23	24	25	26	27	28	29	30	31	
<b>MARYLAND</b>																																	
<b>SOUTHERN</b>																																	
<b>EASTERN SHORE 01</b>																																	
PRINCESS ANNE	M 5.22	-				0.01	-	-	0.03		1.40	0.13		-	-	0.19						-	-		0.69	0.01				2.77	-		
SALISBURY 2N	4.01					0.01			0.02	0.04	0.30	0.16	0.06	0.05	0.02	0.09								0.63	0.02	0.01				1.20	1.38	0.02	
SALISBURY FAA AP	3.94								0.02	0.01	0.76	0.07	0.06	0.07	0.01	0.10							T	0.55					2.13	0.16			
SNOW HILL 4 N	5.22								T	T	1.55	0.23	0.14	0.08	0.08	0.15								0.24					1.75		1.00		
<b>CENTRAL</b>																																	
<b>EASTERN SHORE 02</b>																																	
ROYAL OAK 2 SSW	2.86								T	0.11	0.16	0.03	0.37	0.02	0.03	0.03	0.12								0.17					1.09	0.73		
<b>LOWER SOUTHERN 03</b>																																	
MECHANICSVILLE 5 NE	2.81									0.19	0.01	0.02	0.49	0.03	0.05	T	0.15	0.01							0.23					0.65	0.98		
SOLOMONS	MA 3.58	*	0.00 <sub>a</sub>				*	*	0.10 <sub>a</sub>	0.01	0.33	0.58	0.07	*	*	0.09 <sub>a</sub>	0.16	-	*	0.15 <sub>a</sub>	*	*	0.00 <sub>a</sub>	0.32					-	*	1.77 <sub>a</sub>		
<b>UPPER SOUTHERN 04</b>																																	
BALTIMORE-WASHINGTON INTL AP	2.99								0.02	0.63		0.36	0.30	0.01	T	T	0.10							0.05	0.08		T			1.31	0.13		
BALTIMORE WASHINGTON INTL CLIM	2.99								0.02	0.63		0.36	0.30	0.01	T	T	0.10							0.05	0.08		T			1.31	0.13		
BELTSVILLE	3.60								0.01	0.15	0.77		1.12		0.02	T	0.10							0.01	0.14					0.10	1.18		
DALECARLIA RSVR	3.03									0.85	0.07	0.05	0.55		0.02	0.01	0.07								0.22					0.14	1.05		
MARYLAND SCI CTR	2.64								0.01	0.59	0.01	0.15	0.69	0.01			0.03							0.09	0.04					0.94	0.08		
NATL ARBORETUM DC	A 2.55									0.50	0.14	T	0.32	T	0.04	0.01	0.14	T						T	0.15		T	T	*	0.15 <sub>a</sub>	1.10		
OXON HILL	2.55								T	0.16	0.46		0.18	T	0.03	0.01	0.22	0.01						0.17						0.24	1.07		
<b>NORTHERN</b>																																	
<b>EASTERN SHORE 05</b>																																	
STEVENSVILLE 2SW	3.32									T	0.66	T	0.28	0.01	0.01	0.02	0.08	0.04								0.06				0.93	1.23		
SUDLERSVILLE 1S	3.45										0.60	T	0.25				0.15								0.15	0.15				0.10	2.05		
<b>NORTHERN CENTRAL 06</b>																																	
ABERDEEN PHILLIPS FLD	A 4.25									*	1.05 <sub>a</sub>		0.76	0.04	*	*	0.11 <sub>a</sub>								0.09	T					2.20		
BRIGHTON DAM	M								0.05	1.00	0.05		0.91			0.03	0.15		-	-	-	-	-	-	-	-	-	-	-	-	-	-	
CONOWINGO DAM	M 2.95									0.11	-		0.58				0.09								0.18					0.26	1.73		
CYLBURN	M	-	-	-	-	-	-	-	-	-	-	-	-	-	-	-	-	-	-	-	-	-	-	-	-	-	-	-	-	-	-	-	
DAMASCUS 3 SSW	3.38								0.16	0.96		0.02	0.49	T	T		0.09								0.38		T			0.92	0.36		
EMMITSBURG 2 SE	5.24								0.06	0.52	1.02		0.91	0.01	0.03	0.01	0.05								0.73						1.90		
MILLERS 4 NE	3.83								0.15	1.28		0.20	0.21	0.01	0.01	T	0.07							T	0.39		T			0.18	1.33		
REISTERSTOWN 2 NW	3.72	0.04							0.06	0.45	0.76	0.01	0.60	0.02	0.02	0.02	0.01							0.30	0.01				0.10	1.27	0.05		
SMITHSBURG 2NW	5.63									1.15	0.80		0.60												1.08					2.00			
<b>APPALACHIAN</b>																																	
<b>MOUNTAIN 07</b>																																	
HAGERSTOWN 1 E	6.18								0.21	1.59		0.82	0.01			0.14								0.08	0.66					2.26	0.41		
CUMBERLAND 2	4.93								0.02	1.37	0.16	0.32	0.53	0.12			0.04								0.45					0.93	0.95		
FROSTBURG 2	5.84								0.02	1.36	0.16	0.08	0.91	0.53			0.08								0.86		T			1.09	0.68		
SHARPSBURG 5 S	6.09									0.12	1.31	0.23		1.12			0.02								0.70					0.01	2.58		
WILLIAMSPORT	M 5.58								0.05	0.82	0.59		0.91				0.06								0.82				-	0.15	2.15	0.03	

DAILY PRECIPITATION (INCHES)

STATION	TOTAL	DAY OF MONTH																															
		01	02	03	04	05	06	07	08	09	10	11	12	13	14	15	16	17	18	19	20	21	22	23	24	25	26	27	28	29	30	31	
<b>ALLEGHENY PLATEAU 08</b>																																	
OAKLAND 1 SE	6.28				0.01			0.05		0.10	1.20	0.13	0.05	0.99	0.10	0.01	0.01	0.20	0.02	0.05					1.10	0.05	0.08				1.10	1.02	
SAVAGE RIVER DAM	5.70							0.12			1.17		0.13	1.19	0.19			0.10						0.96		0.04				0.96	0.84		
SINES DEEP CREEK	MA 6.70	*	0.00 <sub>a</sub>					0.10	*	*	*	1.45 <sub>a</sub>	*	1.35 <sub>a</sub>	*	*	*	0.30 <sub>a</sub>	-					1.25		-		*	*	2.25 <sub>a</sub>			
<b>DELAWARE</b>																																	
<b>NORTHERN 01</b>																																	
WILMINGTON NEW CASTLE CO AP	4.02									0.03	0.93		0.02	0.36	0.04	T		0.05							0.40					1.85	0.34		
WILMINGTON PORTER RSCH	M	-	-			-	-			0.07			-	-	-	-	-	-	-	-	-	-	-	-	-	-	-	-	-	1.80	0.50		
<b>SOUTHERN 02</b>																																	
DOVER	A 2.89										0.13		0.02	0.36	T	*	*	0.21 <sub>a</sub>							0.29				*	1.88 <sub>a</sub>			

### DAILY TEMPERATURES (°F)

STATION	OB. TIME	MAX/MIN	DAY OF MONTH																															AVERAGE			
			01	02	03	04	05	06	07	08	09	10	11	12	13	14	15	16	17	18	19	20	21	22	23	24	25	26	27	28	29	30	31				
<b>MARYLAND SOUTHERN EASTERN SHORE 01</b>																																					
PRINCESS ANNE	17	MAX		75	74	77	81	82			83	88	87	72	67			72	61	69	71	69			78	75	70	64	67				57	64	72.9		
		MIN		44	45	45	59	62			73	73	66	60	61			46	38	35	41	45			56	55	46	38	34				42	42	50.3		
SALISBURY 2N	17	MAX	69	76	75	76	80	82	84	82	83	88	83	70	67	70	74	74	61	68	71	75	79	78	79	78	75	63	68	74	69	62	63	74.1			
		MIN	46	46	46	47	59	65	65	74	74	75	69	62	61	64	66	58	41	37	45	49	45	49	61	68	50	44	39	47	61	46	44	54.9			
SALISBURY FAA AP	24	MAX	68	75	74	77	81	82	84	84	83	88	72	67	67	69	75	72	61	69	71	77	77	76	78	75	65	60	67	74	66	57	64	72.7			
		MIN	47	44	45	45	59	62	60	73	73	71	66	62	62	64	66	46	38	35	41	45	45	47	56	55	46	38	34	41	50	42	42	51.6			
SNOW HILL 4 N	17	MAX	75	74	76	78	82	84	86	86	84	89	81	76	68	70	77	75	69	71	75	78	79	76	78	76	75	75	74	70	70	65	66	76.1			
		MIN	42	40	38	38	51	55	54	67	68	67	63	58	56	59	62	62	34	28	43	40	39	40	41	63	45	39	36	38	36	40	38	47.7			
<b>CENTRAL EASTERN SHORE 02</b>																																					
ROYAL OAK 2 SSW	17	MAX	69	73	75	76	82	82	84	81	86	86	75	68	68	69	77	71	60	70	71	74	77	77	78	75	69	60	69	72	69	64	61	73.2			
		MIN	49	46	45	46	62	60	63	73	73	66	68	60	60	62	66	58	44	40	44	46	45	46	55	63	48	48	38	51	59	50	44	54.1			
<b>LOWER SOUTHERN 03</b>																																					
MECHANICSVILLE 5 NE	07	MAX	64	65	69	69	71	74	77	78	79	82	82	71	65	65	65	74	61	58	64	67	71	71	71	73	71	61	58	65	69	65	55	68.7			
		MIN	45	44	44	44	50	54	56	62	73	70	70	65	59	59	61	56	41	38	38	45	43	44	46	58	46	42	35	35	46	43	39	50.0			
SOLOMONS	08	MAX			67	68	69	75				81	77	71	66											71	63	56	51					52	M		
		MIN			57	59	61	64				73	71	66	60											63	55	48	46					47	M		
<b>UPPER SOUTHERN 04</b>																																					
BALTIMORE-WASHINGTON INTL AP	24	MAX	69	75	73	78	84	84	84	84	86	86	73	65	64	70	76	71	63	71	73	76	76	74	76	73	64	59	68	71	67	57	60	72.6			
		MIN	44	43	46	48	52	59	58	74	72	67	65	59	59	60	63	46	38	39	40	49	44	44	53	53	46	40	35	44	46	44	37	50.5			
BELTSVILLE	08	MAX	66	69	75	73	77	83	84	84	83	86	86	73	64	63	70	77	63	63	71	73	75	76	76	76	72	65	59	68	71	67	58	72.5			
		MIN	47	43	47	46	50	58	57	65	72	66	71	64	59	60	58	59	37	38	40	46	43	45	52	61	50	45	35	41	48	44	37	51.1			
DALECARLIA RSVR	08	MAX	67	69	74	75	78	84	83	85	83	85	86	74	64	63	70	78		63	71	73	75	78	76	76	72	62	59	67	62	66	59	72.6			
		MIN	46	46	47	49	49	54	60	61	72	68	68	64	59	59	60	58		40	41	43	46	46	48	60	51	48	37	37	46	43	41	51.6			
MARYLAND SCI CTR	24	MAX	70	75	74	80	85	82	87	84	86	86	76	67	65	71	77	74	64	73	75	75	76	74	76	75	66	60	70	74	68	59	60	73.7			
		MIN	53	55	59	59	61	69	67	76	74	73	67	61	60	63	65	54	48	49	51	60	55	56	60	62	52	49	44	52	49	46	46	57.9			
NATL ARBORETUM DC	08	MAX	68	71	75	75	77	83	84	85	82	83	84	74	68	65	70	78	65	63	71	73	76	78	76	77	73	66	60				70	59	73.4		
		MIN	47	47	47	50	54	56	61		74	70	70	66	60	60	60	61	40	41	42	45	47	48	57	61	55	49	38			46	41	53.3			
OXON HILL	07	MAX	68	70	74	72	77	80	83	84	80	86	85	74	69	64	68	79	65	64	70	73	75	74	75	75	73	64	59	68	70	69	58	72.4			
		MIN	48	47	47	50	50	55	61	62	71	69	69	65	58	59	61	61	43	41	41	46	49	49	49	58	54	48	38	38	49	47	40	52.4			
<b>NORTHERN EASTERN SHORE 05</b>																																					
STEVENSVILLE 2SW	07	MAX	65	66	71	72	76	81	82	83	81	85	83	74	65	66	68	77	63	58	71	71	72	73	72	78	76	64	61	67	71	67	58	71.5			
		MIN	52	52	51	52	57	63	66	72	74	72	71	65	60	60	64	61	48	47	50	54	51	53	53	58	63	57	49	41	61	46	49	57.2			
<b>NORTHERN CENTRAL 06</b>																																					
ABERDEEN PHILLIPS FLD	07	MAX	63	67	72	72	74	78	79	82	79	81	83	75	65	65	69	73	61	60	69	68	74	76	75	76	73	64	58	66	69	65	56	70.5			
		MIN	48	44	44	49	49	56	59	59	73	61	61	62	58	58	61	59	40	39	39	40	44	44	46	61	46	45	36	36	50	44	41	50.1			
BRIGHTON DAM	08	MAX	64	65	70	70	74	79	80	72	79	83	82	71	63	61	68	73																		M	
		MIN	43	43	45	46	47	47	59	58	51	65	69	63	58		58	57																		M	

DAILY TEMPERATURES (°F)

STATION	OB. TIME	MAX/MIN	DAY OF MONTH																															AVERAGE		
			01	02	03	04	05	06	07	08	09	10	11	12	13	14	15	16	17	18	19	20	21	22	23	24	25	26	27	28	29	30	31			
CONOWINGO DAM	07	MAX	62	67	71	70	73	76	77	80	73	78	80	72	61	63	68	70	55	71	67	67	63	71	70	73	70	61	57	62	67	64	56	68.2		
		MIN	48	48	47	48	50	55	61	64	64	65	63	60	56	56	46	55	47	40	40	41	41	42	46	59	51	46	37	47	47	43	41	50.1		
CYLBURN	08	MAX																																	M	
		MIN																																	M	
DAMASCUS 3 SSW	22	MAX	65	72	71	75	79	80	82	77	82	82	71	64	60	67	74	70	58	68	71	71	74	73	71	68	60	56	64	66	62	54	55	69.1		
		MIN	41	44	50	51	55	60	60	71	70	65	64	56	54	57	59	49	36	40	44	49	46	50	55	56	46	41	37	44	42	40	40	50.7		
EMMITSBURG 2 SE	07	MAX	64	70	77	75	78	82	83	84	76	85	82	70	63	61	66	75	65	63	70	73	74	75	76	73	68	63	58	66	60	65	55	70.8		
		MIN	39	38	39	41	45	57	55	55	71	64	65	62	55	55	57	58	36	36	36	37	40	41	43	54	53	44	34	32	43	43	43	47.5		
MILLERS 4 NE	18	MAX	67	73	72	76	79	79	81	77	81	82	77	65	60	67	73	71	59	70	71	72	75	74	70	69	65	58	64	67	63	54	55	69.9		
		MIN	39	42	45	48	56	58	60	70	70	64	63	56	53	57	55	53	35	39	40	51	43	45	52	58	50	42	33	45	54	41	41	50.3		
REISTERSTOWN 2 NW	08	MAX	62	66	74	72	76	80	83	82	78	83	84	68	61	60	72	74	61	60	69	73	73	75	74	75	71	60	55	64	67	64	54	70.0		
		MIN	44	44	44	49	49	58	61	64		67	66 <sup>†</sup>	60	54	54	59 <sup>†</sup>	58	39	38	39	21 <sup>§</sup>	48	49	49	55 <sup>†</sup>	51	43	35	36	48	41	43	48.7		
SMITHSBURG 2NW	08	MAX	63	68	73	74	79	78	80	84	76	83	83	68	63	64	67	78	61	62	69	72	72	74	74	71	69	59	56	65	65	63	53	69.9		
		MIN	36	35	39	44	45	54	57	57	71	63	63	60	54	54	55	54	34	33	36	36	40	41	46	56	47	41	32	32	47	42	42	46.6		
<b>APPALACHIAN MOUNTAIN 07</b>																																				
HAGERSTOWN 1 E	24	MAX	69	75	75	80	80	83	86	76	87	84	72	65	63	67	79	64	63	70	74	75	76	76	73	71	61	59	67	67	62	56	57	71.4		
		MIN	38	40	44	44	56	61	58	72	71	65	63	59	57	57	58	46	35	38	39	47	41	46	55	56	46	40	33	46	43	42	38	49.5		
CUMBERLAND 2	07	MAX	66	70	76	77	85	78	78	90	76	86	86	72	64	64	72	84	61	65	72	76	77	75	76	69	73	57	56	67	65	48	53	71.4		
		MIN	37	37	39	44	46	55	58	59	70	66	64	63	56	56	59	55	36	36	37	39	42	42	47	54	43	43	33	33	41	43	43	47.6		
FROSTBURG 2	07	MAX	58	65	71	75	81	75	73	83	73	77	77	66	58	55	68	77	54	60	67	70	69	71	73	60	64	46	49	62	63	42	47	65.5		
		MIN	36	36	39	45	46	57	56	57	67	62	61	58	51	51	55	47	34	33	39	42	46	46	47	51	37	36	30	31	40	34	34	45.3		
SHARPSBURG 5 S	07	MAX	65	68	74	74	80	81	84	85	76	88	84	71	65	62	70	79	63	63	71	74	74	77	76	73	70	62	59	66	69	62	56	71.6		
		MIN	36	35	38	44	46	53	57	57	70	64	63	62	56	56	56	55	34	33	36	39	41	40	46	55	46	42	33	32	50	42	41	47.0		
<b>ALLEGHENY PLATEAU 08</b>																																				
OAKLAND 1 SE	07	MAX	63	66	70	76	79	76	74	81	70	76	80	77	77	67	77	78	55	61	68	69	71	76	77	65	65	65	51	70	67	38	46	68.7		
		MIN	34	34	35	39	43	52	54	54	67	64	64	57	54	53	52	50	30	30	32	33	38	38	46	52	37	37	28	29	37	33	33	43.2		
SAVAGE RIVER DAM	08	MAX	61	63	68	71	78	74	75	81	74	77	80	69	62	60	69	78	56	60	65	67	70	71	64	64	48	50	61	65	45	47	65.9			
		MIN	36	35	37	41	44	53	56	55	68	63	62	62	53	53	57	53	34	34	36	30	40	40	45	51	37	33	31	31	40	40	40	44.8		
SINES DEEP CREEK	07	MAX		76	70	72	73	71				75		70			75			55	62			72	55	55			55			66	44	M		
		MIN		35	35	31	39	48				50		58			48			31	32			44	47	35			30		27	34	M			
<b>DELAWARE NORTHERN 01</b>																																				
WILMINGTON NEW CASTLE CO AP	24	MAX	69	75	73	77	83	80	86	82	82	85	76	68	65	72	72	63	71	72	76	76	74	76	76	67	60	64	70	67	58	61	72.5			
		MIN	47	47	46	48	57	62	65	73	73	65	65	57	58	62	65	43	37	40	45	49	44	46	59	57	44	39	45	52	46	38	52.4			
WILMINGTON PORTER RSCH	24	MAX			72	76			85	82	82	84	77																					68	60	M
		MIN			53	53				64	73	76	71	68																			58	45	43	M
<b>SOUTHERN 02</b>																																				
DOVER	16	MAX	69	73	74	77	83	83	83	82	80	85	77	70	66	69	73	72	62	72	73	73	79	72	75	74	68	64	68	71	67	60	61	72.7		
		MIN	50	47	56	48	60	63	65	73	72	67	68	58	58	62	66	56	41	40	45	51	45	47	57	67	51	44	37	48	60	45	42	54.5		



MARYLAND AND DELAWARE  
201710

# DAILY SOIL TEMPERATURES

STATION	DEPTH	TIME	DAY OF MONTH																															AVERAGE	
			01	02	03	04	05	06	07	08	09	10	11	12	13	14	15	16	17	18	19	20	21	22	23	24	25	26	27	28	29	30	31		
MARYLAND UPPER SOUTHERN 04 BELTSVILLE (in)																																			

MARYLAND AND DELAWARE  
201710

## SOILS REFERENCE NOTES

STATION	SOIL TYPE	SOIL COVER	SLOPE	UNITS
BELTSVILLE	UNKNOWN	GRASS	0	F



# PAN EVAPORATION AND WIND

STATION		DAY OF MONTH																															TOTAL OR AVERAGE
		01	02	03	04	05	06	07	08	09	10	11	12	13	14	15	16	17	18	19	20	21	22	23	24	25	26	27	28	29	30	31	
MARYLAND UPPER SOUTHERN 04 BELTSVILLE	WIND	73	19	15	20	25	20	15	84	30	47	12	54	46	39	25	49	59	18	10	33	27	18	19	83	59	39	50	24	30	128	50	1220
	EVAP	0.19	0.10	0.12	0.13	0.13	0.12	0.13	0.14	0.10	0.03	0.11	0.09	0.08	0.00	0.05	0.05	0.20	0.10	0.10	0.12	0.15	0.10	0.11	0.06	0.16	0.12	0.11	0.10	0.11	0.18	0.11	3.40
	MAX	76	76	79	80	81	80	86	86	86	84	88	75	66	66	72	78	69	69	73	75	77	77	78	76	78	75	64	69	70	72	63	75.4
	MIN	49	49	42	54	54	58	64	64	70	71	71	66	60	60	62	66	46	46	48	53	53	53	53	62	56	51	44	44	43	48	47	55.1
ALLEGHENY PLATEAU 08 SAVAGE RIVER DAM	WIND	-	-	-	-	-	-	-	-	-	-	-	-	-	-	-	-	-	-	-	-	-	-	-	-	-	-	-	-	-	-	-	M
	EVAP	-	-	-	-	-	-	-	-	-	-	-	-	-	-	-	-	-	-	-	-	-	-	-	-	-	-	-	-	-	-	-	M
	MAX	-	-	-	-	-	-	-	-	-	-	-	-	-	-	-	-	-	-	-	-	-	-	-	-	-	-	-	-	-	-	-	-
	MIN	-	-	-	-	-	-	-	-	-	-	-	-	-	-	-	-	-	-	-	-	-	-	-	-	-	-	-	-	-	-	-	M

Evaporation: Is measured in hundreths of inches.

Wind: Is measured in miles.

Max and Min: The maximum and minimum temperatures (Fahrenheit) of the water in the evaporation pan.

# STATION INDEX

STATION	INDEX NO.	DIVISION	COUNTY	LATITUDE	LONGITUDE	ELEVATION (IN FEET)	OBSERVATION TIME AND TABLES			
							LOCAL STD TIME			
							TEMP	PRECIP	EVAP	SPECIAL SEE (NOTES)
MARYLAND										
ABERDEEN PHILLIPS FLD	0015	06	HARFORD	39 28	76 10W	57	07	07		CH
BALTIMORE WASHINGTON INTL CLIM	0467	04	ANNE ARUNDEL	39 11	76 39W	101		24		H
BALTIMORE WASHINGTON INTL AP R	0465	04	ANNE ARUNDEL	39 10	76 41W	156	24	24		HJ
BELTSVILLE	0700	04	PRINCE GEORGE'S	39 2	76 56W	145	08	08	08	GCH
BRIGHTON DAM	1125	06	MONTGOMERY	39 11	77 0W	330	08	08		H
CONOWINGO DAM	2060	06	HARFORD	39 39	76 11W	40	07	07		H
CUMBERLAND 2	2282	07	ALLEGANY	39 39	78 45W	730	07	07		H
CYLBURN	2308	06	BALTIMORE	39 21	76 39W	235	08	08		H
DALECARLIA RSVR	2325	04	DISTRICT OF COLUMBIA	38 56	77 7W	150	08	08		H
DAMASCUS 3 SSW	2336	06	MONTGOMERY	39 16	77 14W	700	22	22		H
EMMITSBURG 2 SE	2906	06	FREDERICK	39 41	77 17W	403	07	07		H
FROSTBURG 2	3415	07	ALLEGANY	39 40	78 56W	2170	07	07		H
HAGERSTOWN 1 E	1790	07	WASHINGTON	39 38	77 42W	532	24	24		H
MARYLAND SCI CTR R	5718	04	BALTIMORE (CITY)	39 17	76 37W	20	24	24		H
MECHANICSVILLE 5 NE	5865	03	ST. MARY'S	38 28	76 42W	100	07	07		H
MILLERS 4 NE	5934	06	CARROLL	39 43	76 48W	860	18	18		CH
NATL ARBORETUM DC	6350	04	DISTRICT OF COLUMBIA	38 55	76 58W	50	08	08		H
OAKLAND 1 SE	6620	08	GARRETT	39 25	79 24W	2420	07	07		H
OXON HILL	6800	04	PRINCE GEORGE'S	38 48	76 60W	186	07	07		H
PRINCESS ANNE	7330	01	SOMERSET	38 13	75 41W	20	17	17		H
REISTERSTOWN 2 NW	7580	06	BALTIMORE	39 30	76 50W	737	08	08		H
ROYAL OAK 2 SSW //	7806	02	TALBOT	38 43	76 11W	10	17	17		H
SALISBURY 2N	8004	01	WICOMICO	38 24	75 36W	20	17	17		H
SALISBURY FAA AP //R	8005	01	WICOMICO	38 20	75 31W	47	24	24		H
SAVAGE RIVER DAM	8065	08	GARRETT	39 31	79 8W	1495	08	08	08	CH
SHARPSBURG 5 S	8207	07	WASHINGTON	39 24	77 43W	500	07	07		H
SINES DEEP CREEK	8315	08	GARRETT	39 31	79 25W	2040	07	07		H
SMITHSBURG 2NW	8371	06	WASHINGTON	39 40	77 35W	670	08	08		H
SNOW HILL 4 N	8380	01	WORCESTER	38 14	75 23W	30	17	17		H
SOLOMONS	8405	03	CALVERT	38 19	76 27W	12	08	08		H
STEVENSVILLE 2SW	8557	05	QUEEN ANNE'S	38 58	76 20W	10	07	07		H
SUDLERSVILLE 1S	8657	05	QUEEN ANNE'S	39 10	75 51W	100		20		H
WILLIAMSPORT	9570	07	WASHINGTON	39 37	77 51W	360		06		H
DELAWARE										
DOVER //	2730	02	KENT	39 9	75 30W	30	16	16		H
WILMINGTON NEW CASTLE CO AP R	9595	01	NEW CASTLE	39 40	75 36W	79	24	24		HJ
WILMINGTON PORTER RSCH	9605	01	NEW CASTLE	39 46	75 32W	270	24	24		H

# REFERENCE NOTES

**STATION NAMES:** Name of the city, town or locality. Figures and letters following the station names indicate the distance in miles and direction from the post office or town community center.

**DIVISIONS:** Areas within a state of similar climatological characteristics. Division averages are calculated using data from stations that record temperature and/or precipitation. Station Precipitation totals flagged with an 'F' or 'M' are excluded from the Divisional Average calculations of precipitation. Stations with monthly Temperature averages flagged with an 'F' or 'M' are included in the Divisional Average if there are no more than 9 flagged or missing daily values in the month, else they are excluded from the divisional average for temperature.

**NORMALS:** The average value of the meteorological element over a time period. Effective 1 January 2012, the averaging period for station departures is 1981 to 2010. The normals for National Weather Service localities have been adjusted so as to be representative for the current observation site.

The January 2011 through December 2015 publications incorrectly state the computation of divisional departures. Climate Division departures have been, and continue to be, computed from 1971-2000 Normals, not 1981-2010 as stated. Station departures are accurately described as departures from 1981-2010.

**MONTHLY DEGREE DAY TOTALS:** One heating (cooling) degree day is accumulated for each whole degree that the daily mean temperature is below (above) 65 degrees Fahrenheit.

**PRECIPITATION:** Values shown in hundredths of inches are water equivalent totals, i.e., total of liquid and melted frozen precipitation. In the "Monthly Summarized Data" table the total snow and sleet values shown in tenths of inches are unmelted amounts. The max depth on ground values of snow and sleet shown in whole inches are cumulative unmelted amounts. The number of days with .10, .50, 1.00 or more refers to water equivalents.

**PRECIPITATION QUALITY CONTROL:** The NCEI quality control process may flag precipitation data that are spatially inconsistent, exceed climatological limits, or are inconsistent with prevailing weather patterns.

**TEMPERATURE:** Original temperature values are given in the "Daily Temperature" table. Summary temperature information (averages, departures, extremes, monthly degree day totals) is based on the values labeled MAX/MIN.

**WIND:** (As shown in the "Evaporation and Wind" table) the total wind movement in miles over the evaporation pan as determined by an anemometer recorder located 6-8 inches above the pan.

## SYMBOLS AND LETTERS USED IN THE STATION INDEX TABLE

C Station is equipped with recording rain gage (R) but values in this bulletin are from a non-recording rain gage unless indicated by an R.  
G Observations appear in the "Soil Temperatures" table.  
H Observations appear in the "Snowfall and Snow on the Ground" table.  
J Station also published as a Local Climatological Data publication.  
VAR Observation time varies.  
SR / SS Observation time near sunrise / Observation time near sunset, respectively.

## SYMBOLS AND LETTERS USED IN THE DATA TABLES

(DAILY DATA ARE FOR THE 24 HOURS IMMEDIATELY PRECEDING OBSERVATION TIME.)

BLANK Entries in the "Monthly Summarized Data" table indicate no record.

BLANK Entries in the "Daily Precipitation" and "Snowfall and Snow on the Ground" tables indicate zero.

BLANK Entries in the "Daily Temperature" table indicate a missing record

- No record. Data not recorded or not received in time for publication.

+ Precipitation or temperature extremes occurred on one or more previous dates during the month.

\* Rain gage not read. Precipitation is included in the amount following the asterisks.

Time distribution may not be known. A \* preceding the monthly total indicates precipitation amount is being carried forward to next month's total, and may include amounts from the previous month(s).

a As a subscript, indicates accumulated total.

A Amount of precipitation is the total of observer's entries for the current month. It may include precipitation that occurred during the previous month. Refer to earlier bulletin to determine date of last

reading. (Hawaii stations)

B Divisional Departure from normals are computed using 1971-2000 normals.

E Normalized HDD/CDD Calculation. E is appended to the HDD/CDD Calculation when 1-9 individual daily TMAX and/or TMIN values are missing and a Normalized HDD/CDD Calculation is provided. M appears alone if 10 or more daily values are missing.

F Monthly calculation flagged value. F is appended to average and/or total values computed which exclude one or more daily data values that have been flagged by the GHCN-Daily Dataset

M Insufficient or partial data. M is appended to average and/or total values computed with 1-9 daily values missing. M appears alone if 10 or more daily values are missing, (8 or more for wind and evaporation).

N Indicates snow fall or Snowdepth totals are computed with one or more missing days.

R Amounts from recording rain gage.

T Trace. An amount too small to measure.

**SEASONAL TABLES:** Monthly and seasonal snowfall and heating degree days for the 12 months ending with the June data are published in the July issue of this bulletin. Cooling degree days for the calendar year are published in the "Climatological Data Annual Summary."

Information concerning the history of changes in locations, exposure, etc. of substations is kept on file at the National Centers for Environmental Information. Historical information of regular National Weather Service Offices may be obtained from the "Local Climatological Data" annual publication. The contents of this publication may be reprinted or otherwise used freely, with proper credit to the National Centers For Environmental Information. The data are also available digitally.

Effective with the January 2011 Data-Month, COOP Observer Names are no longer included in the Monthly and Annual Climatological Data Publications. This information is not published to ensure the privacy of personal information pursuant to Section 208 of the E-Government Act of 2002 (44 USC 3601).

As of the 2011 Data-Year, Station and Climate Division Maps are no longer being included in the CD Publications. NCEI's Products Branch provides updated Station Maps for various data networks via the Historical Observing Metadata Repository: <http://www.ncdc.noaa.gov/homr>.

The GHCN-Daily Quality Control Flags shown below are displayed as superscripts with the data. For more information on Global Historical Climatology Network - Daily and flags, see: <http://www.ncdc.noaa.gov/oa/climate/ghcn-daily/> and Comprehensive Automated Quality Assurance of Daily Surface Observations. Durre, Imke, Matthew J. Menne, Byron E. Gleason, Tamara G. Houston, Russell S. Vose, 2010: J. Appl. Meteor. Climatol., 49, 16151633. doi: 10.1175/2010JAMC2375.1

Blank = Passed All checks	N = failed naught check
D = failed duplicate check	O = failed climatological outlier check
G = failed gap check	R = failed lagged range check
I = failed internal consistency check	S = failed spatial consistency check
K = failed streak/frequent-value check	T = failed temporal consistency check
L = failed check on length of multiday period	W = temperature too warm for snow
M = failed megaconsistency check	X = failed bounds check
	Z = flagged as a result of an official Datzilla investigation

Beginning with the January 2013 CD Publication, monthly mean temperature calculations have changed to the National Data Stewardship Team standard. Monthly maximum and minimum temperatures are not rounded until after the monthly mean temperature is calculated. This is the most accurate outcome, but may be slightly different from the mean derived from rounded monthly maximum and minimum.

The climate division temperature and precipitation values in this publication are based on simple averages from the current set of NWS-Designated Open and Published COOP and First Order Sites within each division. These values differ from those found in NCEI's nClimDiv product. Beginning in February 2014, the nClimDiv product is used by NCEI's Monitoring Branch and in its monthly climate reports. For more details on nClimDiv, please go to <http://www.ncdc.noaa.gov/monitoring-references/maps/us-climate-divisions.php>.

Effective January 2016, Alaska's Climate Divisions are updated to reflect the 13 climate divisional boundaries established by University of Alaska-Fairbanks, NWS, NCEI, Oregon State University, and University of Nebraska-Lincoln. For more details regarding the updated Alaska Climate Divisions, see: <http://journals.ametsoc.org/doi/pdf/10.1175/JAMC-D-11-0168.1> (Bienek et al., 2012).

NOAA National Centers for Environmental Information  
Attn: Customer Engagement Branch  
151 Patton Avenue  
Asheville, NC 28801-5001

Customer Services Number: (828) 271-4800, option 2  
TDD : (828) 271-4010  
Fax number: (828) 271-4876

NCEI now offers free online access to the *Climatological Data* publication.  
Go to : [www.ncdc.noaa.gov](http://www.ncdc.noaa.gov) and choose Most Popular.