



CLIMATOLOGICAL DATA

MARYLAND AND DELAWARE

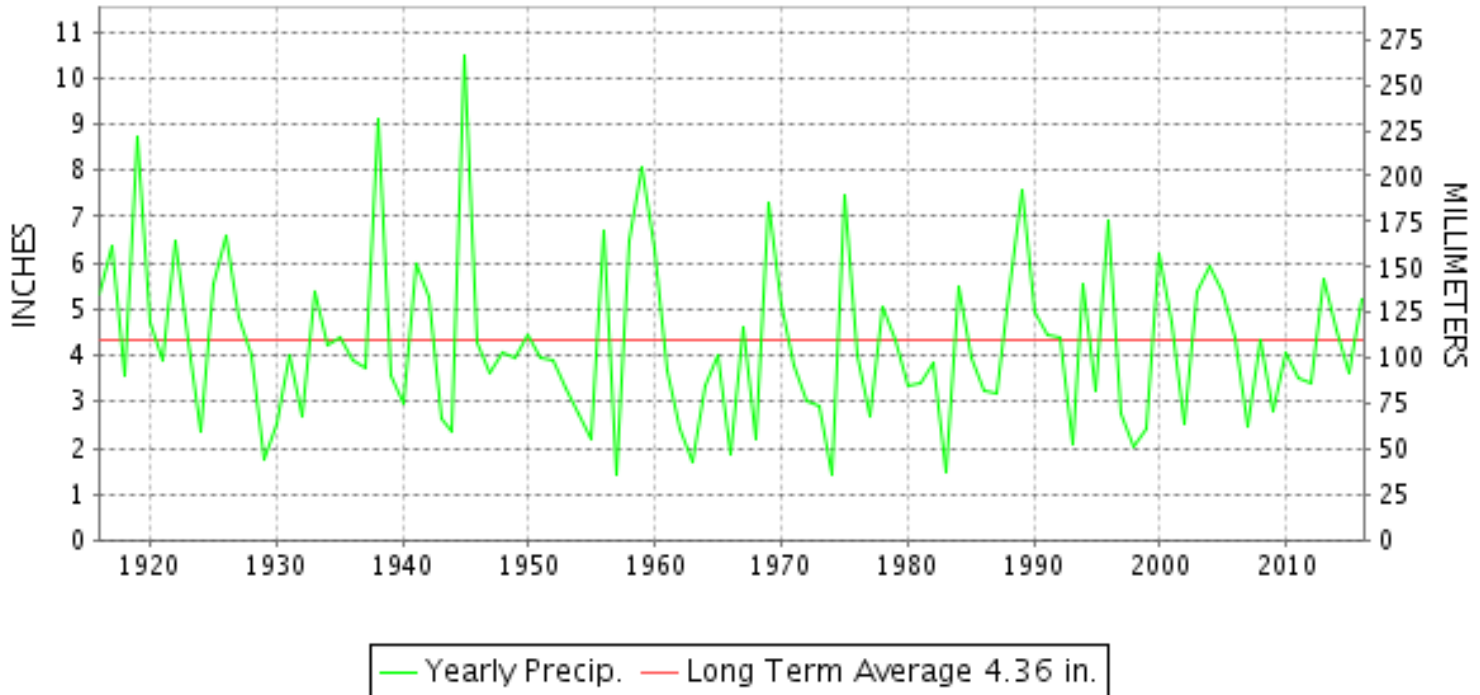
JULY 2016

VOLUME 120 NUMBER 07

ISSN 0145-0549

GHCND Ver: 3.22-upd-2016102505

JULY PRECIPITATION BY YEAR



TEMPERATURE AND PRECIPITATION EXTREMES

MARYLAND

HIGHEST TEMPERATURE	101	JULY 25	MARYLAND SCI CTR
LOWEST TEMPERATURE	46	JULY 01	SINES DEEP CREEK
GREATEST TOTAL PRECIPITATION	8.31		DAMASCUS 3 SSW
LEAST TOTAL PRECIPITATION	2.49		SNOW HILL 4 N
GREATEST 1 DAY PRECIPITATION	5.05	JULY 30	DAMASCUS 3 SSW

"I certify that this is an official publication of the National Oceanic and Atmospheric Administration (NOAA) It is compiled using information from weather observing sites supervised by NOAA/National Weather Service and received at the National Centers for Environmental Information(NCEI), Asheville, North Carolina 28801."

Director
National Centers for Environmental Information

noaa

National
Oceanic and
Atmospheric Administration

National
Environmental Satellite, Data
and Information Service

National
Centers for Environmental Information
Asheville, North Carolina

DELAWARE

HIGHEST TEMPERATURE	97	JULY 25	DOVER
LOWEST TEMPERATURE	62	JULY 11+	3 STATIONS
GREATEST TOTAL PRECIPITATION	7.49		DOVER
LEAST TOTAL PRECIPITATION	5.44		WILMINGTON PORTER RSCH
GREATEST 1 DAY PRECIPITATION	2.26	JULY 05	DOVER

MONTHLY STATION AND DIVISION SUMMARY

STATION	TEMPERATURE (°F)											PRECIPITATION (IN)																									
	AVERAGE MAXIMUM	AVERAGE MINIMUM	AVERAGE	DEPARTURE FROM NORMAL	HIGHEST	DATE	LOWEST	DATE	HEATING DEG. DAYS	COOLING DEG. DAYS	NO. OF DAYS				TOTAL	DEPARTURE FROM NORMAL	GREATEST 24 HOURS	DATE	ICE PELLETS, SNOW			NO. OF DAYS															
											MAX		MIN						TOTAL	MAX DEPTH ON GROUND	DATE	.10 OR MORE	.50 OR MORE	1.00 OR MORE													
											>=90	<=32	<=32	<=0																							
FREDERICK 2 NNE	M	M	M								0	0	0	0	M				M																		
MILLERS 4 NE	85.9	66.3	76.1	2.7	94	25	57	11	0	352	7	0	0	0	5.49	1.50	1.41	29	0.0	0		7	4	3													
SMITHSBURG 2NW	85.9	64.8	75.4	0.9	96	26	53	01	0	330	8	0	0	0	4.59	0.85	2.45	31	0.0	0		4	4	1													
--DIVISIONAL DATA-----> APPALACHIAN MOUNTAIN 07			76.9	1.6B										5.28	1.32B																						
CUMBERLAND 2	89.4	66.1	77.7	0.9	100	26	56	01	0	402	19	0	0	0	3.16	-0.40	1.62	29	0.0	0		5	2	1													
FROSTBURG 2	80.4	62.5	71.4	2.4	89	28+	51	01	5	215	0	0	0	0	2.82	-1.18	0.99	29	0.0	0		4	3	0													
SHARPSBURG 5 S	87.4	64.4	75.9	1.8	97	26	54	01	0	345	10	0	0	0	5.72	1.62	2.01	31	0.0	0		6	4	2													
WILLIAMSPORT														M					0.0	0																	
--DIVISIONAL DATA-----> ALLEGHENY PLATEAU 08			75.0	2.2B										3.90	0.26B																						
OAKLAND 1 SE	82.6	62.6	72.6	4.2	93	26	50	01	0	244	2	0	0	0	4.18	-1.28	1.75	05	0.0	0		6	2	2													
SAVAGE RIVER DAM	82.3M	62.0M	72.1M	1.9	91	27+	50	01	4E	233E	3	0	0	0	M 1.81	-2.51	1.28	05	M	0		3	1	1													
SINES DEEP CREEK	M	M	M		87	25	46	01	5E	142E	0	0	0	0	A* 4.27		0.35	26	M	0		4	0	0													
--DIVISIONAL DATA-----> DELAWARE NORTHERN 01			72.4	3.8B										4.23	-0.64B																						
WILMINGTON NEW CASTLE CO AP	88.4	70.3	79.4	2.6	96	25	62	11	0	453	16	0	0	0	6.35	1.78	1.14	18	0.0	0		10	7	2													
WILMINGTON PORTER RSCH	87.2M	69.2	78.2M	2.0	94	25+	62	11	0	417E	13	0	0	0	5.44	0.08	1.12	25	0.0	0		9	7	1													
--DIVISIONAL DATA-----> SOUTHERN 02			78.8	2.6B										5.90	1.40B																						
DOVER	88.2	71.5	79.9	2.2	97	25	62	03	0	468	16	0	0	0	7.49	3.40	2.26	05	0.0	0		7	4	3													
--DIVISIONAL DATA----->			79.9	3.4B										7.49	3.57B																						

DAILY PRECIPITATION (INCHES)

STATION	TOTAL	DAY OF MONTH																																			
		01	02	03	04	05	06	07	08	09	10	11	12	13	14	15	16	17	18	19	20	21	22	23	24	25	26	27	28	29	30	31					
MARYLAND																																					
SOUTHERN																																					
EASTERN SHORE 01																																					
ASSATEAGUE	M	-	-	-	-	-	-	-	-	-	-	-	-	-	-	-	-	-	-	-	-	-	-	-	-	-	-	-	-	-	-	-	-	-	-		
PRINCESS ANNE	M 6.09					0.58							1.45	1.15					0.86		0.49					0.16				0.85	0.55						
SALISBURY 2N	6.72			0.12	0.07	0.03							1.50	0.68					0.06	1.50	0.01					0.88	0.26	0.91	0.64					0.06			
SALISBURY FAA AP	6.54	0.01		0.16	0.07	T	T		0.39	0.01			0.75		T	0.01	T	0.60		1.45		T				0.46	0.09	2.41	0.10	0.03				T			
SNOW HILL 4 N	2.49	0.29	0.02	0.17	0.04	0.01	0.19			0.25			0.09	0.10					0.31		0.01					0.25	0.06	0.36	0.34								
CENTRAL																																					
EASTERN SHORE 02																																					
ROYAL OAK 2 SSW	5.58		0.86	0.44	T				0.07	0.08			1.41				0.05	0.17							0.10	1.38	0.10	0.03		0.52				0.34			
LOWER SOUTHERN 03																																					
MECHANICSVILLE 5 NE	3.55		T	0.06	0.04	0.37				0.53			0.17				0.08		0.58	0.02						T	0.20	T		1.37	T		0.13				
SOLOMONS	A 3.30	*	*	0.22 _a	0.14	0.02	0.03		*	*	0.00 _a	0.02			*	*	T _a	0.13	*	T _a		*	0.00 _a			0.46	0.22	0.01	2.03	*	*	0.02 _a					
UPPER SOUTHERN 04																																					
BALTIMORE-WASHINGTON INTL AP	6.09	0.69		T	0.68	0.61			0.25	T			0.47			0.32		0.12					0.08			T			0.65	0.41	1.80	0.01					
BELTSVILLE	5.86		0.07	0.01		1.66				0.17				0.13			0.13		0.39	1.06						0.16						1.18		0.90			
DALECARLIA RSVR	5.73		0.12		0.03	1.25				0.18				0.10			0.42		0.40	0.57												2.18		0.48			
MARYLAND SCI CTR	6.10	0.17			0.34	0.55						0.01						0.01											1.79	0.74	2.49						
NATL ARBORETUM DC	5.78		0.27	0.02	0.02	0.68				0.05						0.16			0.34	1.81											1.82			0.61			
OXON HILL	3.73		0.17	0.11	0.06	0.45				0.53	0.03					0.87			0.41	0.45					T	T	0.02			0.35			0.28				
UPPER MARLBORO 3 NNW	M	-	-	-	-	-	-	-	-	-	-	-	-	-	-	-	-	-	-	-	-	-	-	-	-	-	-	-	-	-	-	-	-	-	-		
NORTHERN																																					
EASTERN SHORE 05																																					
STEVENSVILLE 2SW	8.26		3.38	0.08	0.03	0.59				0.77			0.17	0.25			0.39		0.22	T							0.71			0.82				0.85			
SUDLERSVILLE 1S	7.43	0.15		T	0.15	1.65			0.67	0.07			1.67			0.20		0.37		T									1.15	1.10	0.25						
NORTHERN CENTRAL 06																																					
ABERDEEN PHILLIPS FLD	A 4.41					0.60	T			0.46			0.24	0.03			0.10		0.07	0.02					*	0.07 _a		T		1.48	*	1.34 _a					
BRIGHTON DAM	6.84					1.50					0.05					0.20		0.41														3.18		1.50			
CONOWINGO DAM	4.05					0.69								0.35				0.45							0.27		0.29				1.08		0.92				
CYLBURN	A* 4.07	*	*	*	*	*	1.63 _a			0.01			T	0.90				0.09										0.08			1.36						
DAMASCUS 3 SSW	8.31			T	0.39	1.23			0.05							0.21		0.06	T				T	T					0.45	0.87	5.05	T					
EMMITSBURG 2 SE	4.47		0.01			0.64				0.28					T			0.67											T	0.57				2.30			
FREDERICK 2 NNE	M	-	-	-	-	-	-	-	-	-	-	-	-	-	-	-	-	-	-	-	-	-	-	-	-	-	-	-	-	-	-	-	-	-	-		
MILLERS 4 NE	5.49				0.22	0.33			0.23	T			0.03	0.02											T				T		1.41	1.25	0.91				
SMITHSBURG 2NW	4.59					0.72													0.60								0.07			0.75					2.45		
APPALACHIAN																																					
MOUNTAIN 07																																					
CUMBERLAND 2	3.16					0.67													0.49												1.62	0.10	0.25				
FROSTBURG 2	2.82		T			0.72	0.01	0.01				0.02					T		0.76	T			T	0.02		0.03				0.99	0.01			0.28			
SHARPSBURG 5 S	5.72		0.02			0.45								0.97	T		0.01		0.50											1.44					2.01		
WILLIAMSPORT	M	-	-	-	-	-	-	-	-	-	-	-	-	0.10	-	-	-	-	-	-	-	-	-	-	-	-	-	-	-	-	-	-	-	-	-	1.43	

DAILY PRECIPITATION (INCHES)

STATION	TOTAL	DAY OF MONTH																																	
		01	02	03	04	05	06	07	08	09	10	11	12	13	14	15	16	17	18	19	20	21	22	23	24	25	26	27	28	29	30	31			
ALLEGHENY PLATEAU 08																																			
OAKLAND 1 SE	4.18				0.05	1.75	0.20	0.07		0.03				0.03	0.30		0.04			0.22				0.10				0.03	0.04			1.29	0.02	0.01	
SAVAGE RIVER DAM	M 1.81					1.28			-							-		0.24		-											-	-	0.29		
SINES DEEP CREEK	A* 4.27		*	*	0.00 _a	*	0.05 _a	0.20		*	*	0.05 _a			0.10		*	*	1.00 _a	0.25		*	0.00 _a	*	*	0.20 _a	0.35	*	*	2.07 _a	-	-			
DELAWARE																																			
NORTHERN 01																																			
WILMINGTON NEW CASTLE CO AP	6.35	T			0.64	0.13			T	0.77			0.27	0.07		0.06		1.14					T		0.72		T	1.02	0.60	0.63	0.30				
WILMINGTON PORTER RSCH	5.44				0.64	0.18				0.59			T	0.05				0.60				0.10		1.12			0.62	0.70	0.84						
SOUTHERN 02																																			
DOVER	7.49				0.03	2.26				0.23			0.58							0.35	0.01				0.36	T		2.05	1.53			0.09			

DAILY TEMPERATURES (°F)

STATION	OB. TIME	MAX/MIN	DAY OF MONTH																															AVERAGE		
			01	02	03	04	05	06	07	08	09	10	11	12	13	14	15	16	17	18	19	20	21	22	23	24	25	26	27	28	29	30	31			
MARYLAND SOUTHERN EASTERN SHORE 01 ASSATEAGUE	VA	MAX MIN																																		M M M
PRINCESS ANNE	17	MAX MIN	84 68			74 61	90 70	91 74	93 74	94 75		86 66	85 62	85 70	92 75				92 72	90 72	87 67	89 67	89 70			95 77	93 75	91 75	89 75	87 73				M M M		
SALISBURY 2N	17	MAX MIN	85 68	80 67	79 60	74 62	89 72	90 74	91 75	92 71	90 67	86 64	86 63	92 72	92 76	90 75	89 74	89 74	91 74	91 72	86 67	89 67	89 71	94 75	93 75	95 76	94 74	93 75	90 74	95 73	90 74	85 71	90 74	88.5 71.2		
SALISBURY FAA AP	24	MAX MIN	84 68	82 64	70 60	74 61	90 74	91 74	93 74	94 75	89 72	84 68	86 66	85 62	92 70	92 75	86 73	88 72	92 72	90 67	87 67	87 70	89 94	94 94	95 95	93 93	91 91	90 90	87 87	87 70	87 73	90 70	90 73	88.1 70.9		
SNOW HILL 4 N	17	MAX MIN	88 66	85 64	83 57	79 58	93 69	92 70	95 70	95 72	95 67	93 65	88 62	86 57	86 65	95 71	96 71	94 68	91 67	94 67	92 64	90 61	88 65	92 72	97 72	94 72	97 72	95 71	93 72	93 70	91 68	87 65	92 67	91.3 67.0		
CENTRAL EASTERN SHORE 02 ROYAL OAK 2 SSW	17	MAX MIN	87 70	82 68	72 60	75 68	93 72	92 74	93 75	91 75	90 74	86 70	88 70	87 68	85 77	94 75	93 77	90 71	94 72	90 68	88 67	89 75	93 78	95 74	97 73	96 74	94 78	94 78	93 74	89 74	87 75	91 74	89.6 72.7			
LOWER SOUTHERN 03 MECHANICSVILLE 5 NE	07	MAX MIN	81 60	83 62	79 62	68 62	70 63	87 70	89 73	89 71	88 71	86 66	81 63	82 63	83 64	85 67	92 72	88 70	88 66	87 68	90 70	85 65	84 63	86 63	89 70	93 72	92 74	96 74	90 73	91 74	90 74	84 70	83 71	85.8 67.9		
SOLOMONS	08	MAX MIN			85 63	79 71	90 76	88 76	73 76			93 71	86 73	85 77	89 74	97 77			91 71	96 73			90 72	88 81	97 75	96 80	100 77	92 73	94 79	86 75		92 75	M M			
UPPER SOUTHERN 04 BALTIMORE-WASHINGTON INTL AP	24	MAX MIN	86 65	79 64	73 63	73 65	89 72	92 71	91 72	91 73	90 73	84 67	86 63	87 64	86 73	96 75	90 73	92 68	90 65	94 71	90 70	86 66	90 63	94 69	98 73	94 70	100 76	96 73	95 78	95 74	95 74	92 72	88 71	91 72	89.6 69.8	
BELTSVILLE	08	MAX MIN	84 65	89 65	78 63	73 64	78 69	89 70	92 71	90 75	91 73	84 66	86 63	85 65	89 74	96 71	90 69	93 66	90 66	94 71	89 69	86 65	91 68	93 76	96 72	94 75	100 74	91 76	93 75	93 72	89 70	88 70	89 69.7			
DALECARLIA RSVR	08	MAX MIN	85 63	89 65	78 63	73 64	89 68	91 73	90 73	90 73	90 73	91 68	85 64	86 67	87 75	89 73	97 76	94 70	91 67	93 72	90 71	86 65	90 68	95 74	97 73	97 73	100 76	93 76	93 76	94 76	90 72	89 71	89 71	89.5 70.3		
MARYLAND SCI CTR	24	MAX MIN	85 73	80 71	76 68	75 69	91 73	90 76	93 78	93 78	93 78	86 74	88 71	88 73	86 75	98 78	92 81	95 73	93 71	97 75	92 76	87 74	89 73	95 75	99 82	95 81	101 79	95 79	95 82	92 74	89 72	89 71	92 74	90.6 75.1		
NATL ARBORETUM DC	08	MAX MIN	86 69	90 69	81 64	75 65	72 66	93 72	93 77	93 76	93 77	94 73	88 67	89 68	87 73	91 73	97 73	93 71	95 70	93 72	95 70	93 67	91 73	91 77	94 77	97 76	95 77	99 77	94 80	94 79	94 76	91 75	89 75	90.9 72.6		
OXON HILL	07	MAX MIN	83 67	88 66	80 61	71 61	73 66	90 73	91 74	89 77	91 74	88 72	86 67	87 67	85 72	90 72	95 73	91 68	93 69	91 70	93 67	87 67	89 71	91 73	96 78	95 78	98 76	95 77	95 77	93 73	95 73	90 73	87 73	89.0 71.0		
UPPER MARLBORO 3 NNW	08	MAX MIN																																	M M	
NORTHERN EASTERN SHORE 05 STEVENSVILLE 2SW	07	MAX MIN	85 68	87 69	80 62	75 65	74 68	91 71	92 76	93 76	92 76	91 75	86 70	86 70	87 72	85 73	95 75	92 75	92 70	91 72	94 74	88 70	83 70	88 71	97 80	94 75	92 79	98 75	93 77	92 77	92 74	89 74	89 72	89.1 72.6		
NORTHERN CENTRAL 06																																				

DAILY TEMPERATURES (°F)

STATION	OB. TIME	MAX/MIN	DAY OF MONTH																															AVERAGE
			01	02	03	04	05	06	07	08	09	10	11	12	13	14	15	16	17	18	19	20	21	22	23	24	25	26	27	28	29	30	31	
		MIN	69	68	62	66	73	72	74	75	74	72	66	65	70	74	76	73	69	76	72	68	67	73	74	71	77	75	79	70	70	72	75	71.5

TOTAL SNOWFALL AND NUMBER OF DAYS WITH ONE INCH OR MORE ON GROUND

MARYLAND AND DELAWARE

201607

STATION	JUL		AUG		SEP		OCT		NOV		DEC		JAN		FEB		MAR		APR		MAY		JUN		TOTAL		TOTAL PRECIPITATION
	SNOWFALL	1 IN ON GD	SNOWFALL	1 IN ON GD	SNOWFALL	1 IN ON GD	SNOWFALL	1 IN ON GD	SNOWFALL	1 IN ON GD	SNOWFALL	1 IN ON GD	SNOWFALL	1 IN ON GD	SNOWFALL	1 IN ON GD	SNOWFALL	1 IN ON GD	SNOWFALL	1 IN ON GD	SNOWFALL	1 IN ON GD	SNOWFALL	1 IN ON GD	SNOWFALL	1 IN ON GD	
MARYLAND																											
SOUTHERN EASTERN SHORE 01																											
ASSATEAGUE	M		M		M		M		M		M		M		M		M		M		M		M		M 0.0	M 0	M 0.00
PRINCESS ANNE	M		M		M		M		M		M		M	1	M		M		M		M		M		M 0.0	M 1	M 17.94
SALISBURY 2N	M		M		M		M		M		M		M	6	M		M		M		M		M		M 0.0	M 6	M 52.70
SALISBURY FAA AP	0.0		0.0	0	0.0	0	M 0.0	0	M 0.0	0	0.0	0	M 1.5	0	M 6.3	1	M 5.8	0	M 0.0	0	M 0.0	0	0.0	0	M 13.6	M 1	50.96
SNOW HILL 4 N	M		M		M		M		M		M		M	6	M	1	M		M		M		M		M 0.0	M 7	M 57.30
CENTRAL EASTERN SHORE 02																											
ROYAL OAK 2 SSW	0.0		0.0		0.0	0	0.0	0	0.0	0	0.0	0	15.0	9	6.5	1	4.0	0	T	0	0.0	0	0.0	0	25.5	M 10	M 45.27
LOWER SOUTHERN 03																											
MECHANICVILLE 5 NE	M		M		M		M		M		M		M 15.0	10	M	3	4.0	1	0.7	0	0.0	0	0.0	0	M 19.7	M 14	49.07
SOLOMONS	M		M		M		M		M		M		M	2	M	0	M	1	M		M		M		M 0.0	M 3	M 20.24
UPPER SOUTHERN 04																											
BALTIMORE-WASHINGTON INTL AP	0.0		T		0.0	0	0.0	0	0.0	0	T	0	30.0	10	2.6	3	2.5	1	T	0	0.0	0	T	0	35.1	M 14	41.92
BELTSVILLE	0.0		0.0		0.0	0	0.0	0	0.0	0	0.0	0	20.8	10	2.8	5	1.4	1	0.0	0	0.0	0	0.0	0	25.0	M 16	36.89
DALECARLIA RSVR	M 0.0		M 0.0		M 0.0	0	M 0.0	0	M 0.0	0	0.0	0	M 27.0	5	M 3.0	0	M 0.0	1	0.0	0	0.0	0	0.0	0	M 30.0	M 6	M 38.31
MARYLAND SCI CTR	M		M		M		M		M		M		M		M		M		M		M		M		M 0.0	M 0	38.91
NATL ARBORETUM DC	M		M		M		M		M		M	0	M	7	M 2.5	3	M	1	0.0	0	0.0	0	0.0	0	M 2.5	M 11	M 39.38
OXON HILL	0.0		M 0.0		M 0.0	0	0.0	0	0.0	0	0.0	0	19.3	10	4.5	4	1.0	1	0.2	0	0.0	0	0.0	0	M 25.0	M 15	39.02
UPPER MARLBORO 3 NNW	M		M		M		M		M		M		M	10	M	3	M	1	0.0	0	0.0	0	0.0	0	M 0.0	M 14	M 26.90
NORTHERN EASTERN SHORE 05																											
STEVENSVILLE 2SW	0.0		M 0.0		0.0	0	0.0	0	0.0	0	0.0	0	19.0	10	2.4	2	3.6	1	M 0.0	0	0.0	0	0.0	0	M 25.0	M 13	41.39
SUDLERSVILLE 1S	M		M		0.0	0	0.0	0	0.0	0	0.0	0	M	9	M 3.8	2	M 3.5	1	0.0	0	0.0	0	M		M 7.3	M 12	M 41.46
NORTHERN CENTRAL 06																											
ABERDEEN PHILLIPS FLD	0.0		0.0		0.0	0	0.0	0	0.0	0	0.0	0	M 29.5	8	M 3.0	3	1.5	1	0.0	0	0.0	0	0.0	0	M 34.0	M 12	M 43.30
BRIGHTON DAM	0.0		0.0		M 0.0	0	0.0	0	0.0	0	0.0	0	28.6	0	M 0.0	0	0.4	0	0.0	0	0.0	0	0.0	0	M 29.0	M 0	M 44.07
CONOWINGO DAM	M		M		M		M	0	M		0.0	0	M	0	M 2.0	7	2.5	1	M		0.0	0	0.0	0	M 4.5	M 8	M 38.02
CYLBURN	M		M		M		M		M		M		M	3	M	4	M	1	0.0	0	0.0	0	0.0	0	M 0.0	M 8	M 26.72
DAMASCUS 3 SSW	0.0		0.0		M 0.0	0	T	0	0.0	0	T	0	31.0	11	7.4	11	3.6	2	0.3	0	0.0	0	0.0	0	M 42.3	M 24	45.00
EMMITSBURG 2 SE	0.0		0.0		0.0	0	M 0.0	0	0.0	0	0.0	0	A 26.0	2	M 3.0	13	2.0	1	0.0	0	0.0	0	0.0	0	M 5.0	M 16	M 47.23
FREDERICK 2 NNE	M		M		M		M		M		M		M		M		M		M		M		M		M 0.0	M 0	M 0.00
MILLERS 4 NE	0.0		0.0		0.0	0	T	0	0.0	0	T	0	29.4	10	10.0	12	2.2	0	1.4	0	0.0	0	0.0	0	43.0	M 22	47.90
SMITHSBURG 2NW	M		M		M		M		M		M		M		M		M		0.0	0	0.0	0	0.0	0	M 0.0	M 0	M 32.20
APPALACHIAN MOUNTAIN 07																											
CUMBERLAND 2	M		M		M		M		M		M	0	M	9	M	3	M		0.2	0	0.0	0	0.0	0	M 0.2	M 12	34.75
FROSTBURG 2	M		M		M		M	0	M		M	0	M 28.9	20	M 7.4	15	M	4	M	1	0.0	0	0.0	0	M 36.3	M 40	42.14
SHARPSBURG 5 S	M		M		M		M		M		M		M		M		0.6	0	T	0	0.0	0	0.0	0	M 0.6	M 0	M 33.13
WILLIAMSPORT	M		M		M 0.0	0	M	0	M		M	0	M	0	M	0	M		0.0	0	M		M		M 0.0	M 0	M 10.43
ALLEGHENY PLATEAU 08																											
OAKLAND 1 SE	0.0		0.0		0.0	0	0.0	0	0.0	0	2.4	1	F 46.6	13	17.1	16	4.1	1	12.8	4	0.0	0	0.0	0	M 36.4	M 35	49.40
SAVAGE RIVER DAM	M		M		M		M		M		M	0	M	9	M	15	M 1.0	1	T	0	0.0	0	M 0.0	0	M 1.0	M 25	M 33.36
SINES DEEP CREEK	M		M		M		M		M		M		M	13	M	13	M 7.4	2	M 9.0	1	M 0.0	0	M 0.0	0	M 16.4	M 29	M 14.77
DELAWARE																											
NORTHERN 01																											
WILMINGTON NEW CASTLE CO AP	0.0		0.0		0.0	0	0.0	0	0.0	0	T	0	16.9	10	5.8	7	2.7	1	T	0	0.0	0	0.0	0	25.4	M 18	38.90
WILMINGTON PORTER RSCH	0.0		0.0		0.0	0	0.0	0	0.0	0	M 0.0	0	14.5	2	3.7	4	1.2	1	M 2.9	0	0.0	0	M	0	M 22.3	M 7	M 40.78
SOUTHERN 02																											

TOTAL SNOWFALL AND NUMBER OF DAYS WITH ONE INCH OR MORE ON GROUND

MARYLAND AND DELAWARE

201607

STATION	JUL		AUG		SEP		OCT		NOV		DEC		JAN		FEB		MAR		APR		MAY		JUN		TOTAL		TOTAL PRECIPITATION						
	SNOWFALL	1 IN ON GD	SNOWFALL	1 IN ON GD	SNOWFALL	1 IN ON GD	SNOWFALL	1 IN ON GD	SNOWFALL	1 IN ON GD	SNOWFALL	1 IN ON GD	SNOWFALL	1 IN ON GD	SNOWFALL	1 IN ON GD	SNOWFALL	1 IN ON GD	SNOWFALL	1 IN ON GD	SNOWFALL	1 IN ON GD	SNOWFALL	1 IN ON GD	SNOWFALL	1 IN ON GD							
DOVER	0.0		0.0		0.0	0	0.0	0	0.0	0	0.0	0	13.4	8	3.5	2	2.5	1		T	0		M		M	0.0	0	M	19.4	M	11	M	38.04

MONTHLY AND SEASONAL HEATING DEGREE DAYS

STATION	JUL	AUG	SEP	OCT	NOV	DEC	JAN	FEB	MAR	APR	MAY	JUN	TOTAL	SEASONAL NORM
MARYLAND														
SOUTHERN EASTERN SHORE 01														
PRINCESS ANNE	0	0	17E	193E	363E	470E	1000E	540E	319E	294E	138E	1E	3335E	4264
SALISBURY 2N	0	0	2E	211E	353E	360E	842E	687E	373E	289E	119E	4E	3240E	
SALISBURY FAA AP	0	0	3	253	391	411	900	713	444	362	159	1	3637	4442
SNOW HILL 4 N	0	0	1	194	356	365	840	676	402	308E	170	3	3315E	4023
CENTRAL EASTERN SHORE 02														
ROYAL OAK 2 SSW	0	0	0	211	354	410	866	730	407	311	160	0	3449	4026
LOWER SOUTHERN 03														
MECHANICSVILLE 5 NE	0	0	9	312	444	501	1001	785	452	366	207	4	4081	4640
SOLOMONS	0	0	0	162E	342E	411E	890E	746E	411E	300E	96E	0	3358E	3823
UPPER SOUTHERN 04														
BALTIMORE-WASHINGTON INTL AP	0	0	1	298	421	489	1017	795	460	344	175	4	4004	4764
BELTSVILLE	0	0	6	276	420	514	1034	821	482	351	176	6	4086	4727
DALECARLIA RSVR	0	0	8E	282E	406E	497	1018	836E	474	304E	172E	4E	4001E	4398
MARYLAND SCI CTR	0	0	0	199	329	419	932	737	386	286	133	0	3421	4032
NATL ARBORETUM DC	0	0	0	202	355	414E	956	730	401	291	104	2	3455E	4178
OXON HILL	0	0	2	251	394	461	984	758	417	322	168	3	3760	4270
UPPER MARLBORO 3 NNW	0	0	4	282	426	489	1014	801E	477	347E		11E	M 3851E	4655
NORTHERN EASTERN SHORE 05														
STEVENSVILLE 2SW	0	0	0	215	370	460	948	781	462	346	170	0	3752	4329
NORTHERN CENTRAL 06														
ABERDEEN PHILLIPS FLD	0	0	4	312	433	513	1027	761E	523	372	197	4	4146E	4708
BRIGHTON DAM	0	0	24E	341E	408E	543E	1042E	881	508E	356E	190E	8E	4301E	
CONOWINGO DAM	0	0	17	354	496	621	1089	930E	583	412	230	5	4737E	4798
CYLBURN	0	0	9E	273E	398	454E	992	801	500	358	133	5	3923E	4917
DAMASCUS 3 SSW	0	0	23	329	440	531	1067	865	479	372	210	8	4324	5085
EMMITSBURG 2 SE	0	0	31	372E	489	605	1122	906	551	422	227	9	4734E	5396
MILLERS 4 NE	0	1	20	339	449	546	1067	878	515	393	209	7	4424	5346
SMITHSBURG 2NW	0	3E	50E	383E	512E	665E	1187E	953E	571E	450E	252E	16	5042E	5438
APPALACHIAN MOUNTAIN 07														
CUMBERLAND 2	0	0	29	318	460	608	1127	882	517	354	190	7	4492	4853
FROSTBURG 2	11	26	96	456	591	688	1289	1009	642	508	313	33	5662	6511
SHARPSBURG 5 S	0	0	42	372	509		618E		561	424	215	14	M 2755E	5303
ALLEGHENY PLATEAU 08														
OAKLAND 1 SE	0	22	85	437	561	667	1286	999	627	492	257	20	5453	6673
SAVAGE RIVER DAM	4E	19E	83E	455E	541E	683	1243	996	646E	483	274	29E	5456E	6159
SINES DEEP CREEK	16E	66E	139E	492E	630E	744E	1436E	1036E	734E	544E	299E	126E	6262E	
DELAWARE														
NORTHERN 01														
WILMINGTON NEW CASTLE CO AP	0	0	0	280	424	477	1009	818	502	379	171	5	4065	4819
WILMINGTON PORTER RSCH	0	0	8	269	403	455	1023	924E	329E	443E	167	6	4027E	4935
SOUTHERN 02														
DOVER	0	0	1	216	358	401	917	735	437	308	163	0	3536	4269

SNOWFALL AND SNOW ON GROUND (INCHES)

STATION		DAY OF MONTH																														
		01	02	03	04	05	06	07	08	09	10	11	12	13	14	15	16	17	18	19	20	21	22	23	24	25	26	27	28	29	30	31
MARYLAND SOUTHERN EASTERN SHORE 01 ASSATEAGUE PRINCESS ANNE SALISBURY 2N SALISBURY FAA AP SNOW HILL 4 N	SNOWFALL SNOWFALL SNOWFALL SNOWFALL SN ON GND SNOWFALL																															
DELAWARE NORTHERN 01 WILMINGTON NEW CASTLE CO AP WILMINGTON PORTER RSCH	SNOWFALL SN ON GND SNOWFALL SN ON GND																															

Snowfall: Includes snow and ice. Values for NWS stations (J index note) are Mid-Mid (LST).

Snow on ground: Includes snow, sleet, ice, and hail. Values for NWS stations (J index note) are observed at 12 UTC (GMT).

Water Equivalent: Given for NWS stations (J index note) only, when snow depth is 2 inches or more, and is measured at 18 UTC (GMT)

PAN EVAPORATION AND WIND

STATION		DAY OF MONTH																															TOTAL OR AVERAGE
		01	02	03	04	05	06	07	08	09	10	11	12	13	14	15	16	17	18	19	20	21	22	23	24	25	26	27	28	29	30	31	
MARYLAND UPPER SOUTHERN 04 BELTSVILLE	WIND	26	47	84	21	50	53	24	55	47	59	55	40	41	27	66	39	38	29	40	36	28	29	57	36	30	42	27	26	51	30	57	1290
	EVAP	0.22	0.25	0.28	0.10	0.08	0.27	0.23	0.31	0.27	0.35	0.28	0.25	0.23	0.13	0.32	0.23	0.23	0.25	0.27	0.38	0.21	0.26	0.27	0.26	0.29	0.29	0.19	0.20	0.22	0.18	0.25	7.55
	MAX	95	95	98	80	73	95	97	96	98	96	89	95	96	94	94	91	96	96	95	94	93	95	96	99	100	102	94	96	98	95	92	94.2
	MIN	63	66	93 ¹	63	65	70	74	72	72	67	64	66	67	71	68	70	67	71	69	66	66	68	70	73	73	74	75	74	71	70	69	69.1
UPPER MARLBORO 3 NNW	WIND	-	-	-	-	-	-	-	-	-	-	-	-	-	-	-	-	-	-	-	-	-	-	-	-	-	-	-	-	-	-	M	
	EVAP	-	-	-	-	-	-	-	-	-	-	-	-	-	-	-	-	-	-	-	-	-	-	-	-	-	-	-	-	-	-	M	
	MAX	-	-	-	-	-	-	-	-	-	-	-	-	-	-	-	-	-	-	-	-	-	-	-	-	-	-	-	-	-	-	M	
	MIN	-	-	-	-	-	-	-	-	-	-	-	-	-	-	-	-	-	-	-	-	-	-	-	-	-	-	-	-	-	-	M	
ALLEGHENY PLATEAU 08 SAVAGE RIVER DAM	WIND	-	-	-	-	-	-	-	-	-	-	-	-	-	-	-	-	-	-	-	-	-	-	-	-	-	-	-	-	-	M		
	EVAP	-	-	-	-	-	-	-	-	-	-	-	-	-	-	-	-	-	-	-	-	-	-	-	-	-	-	-	-	-	M		
	MAX	-	-	-	-	-	-	-	-	-	-	-	-	-	-	-	-	-	-	-	-	-	-	-	-	-	-	-	-	-	-		
	MIN	-	-	-	-	-	-	-	-	-	-	-	-	-	-	-	-	-	-	-	-	-	-	-	-	-	-	-	-	-	M		

Evaporation: Is measured in hundredths of inches.

Wind: Is measured in miles.

Max and Min: The maximum and minimum temperatures (Fahrenheit) of the water in the evaporation pan.

STATION INDEX

STATION	INDEX NO.	DIVISION	COUNTY	LATITUDE	LONGITUDE	ELEVATION (IN FEET)	OBSERVATION TIME AND TABLES			
							LOCAL STD TIME			
							TEMP	PRECIP	EVAP	SPECIAL SEE (NOTES)
MARYLAND										
ABERDEEN PHILLIPS FLD	0015	06	HARFORD	39 28	76 10W	57	07	07		CH
ASSATEAGUE	0335	01	WORCESTER	38 4	75 13W	10	VAR	VAR		H
BALTIMORE-WASHINGTON INTL AP R	0465	04	ANNE ARUNDEL	39 10	76 41W	156	24	24		HJ
BELTSVILLE	0700	04	PRINCE GEORGE'S	39 2	76 56W	145	08	08	08	CH
BRIGHTON DAM	1125	06	MONTGOMERY	39 11	77 0W	330	08	08		H
CONOWINGO DAM	2060	06	HARFORD	39 39	76 11W	40	07	07		H
CUMBERLAND 2	2282	07	ALLEGANY	39 39	78 45W	730	07	07		H
CYLBURN	2308	06	BALTIMORE	39 21	76 39W	235	08	08		H
DALECARLIA RSVR	2325	04	DISTRICT OF COLUMBIA	38 56	77 7W	150	08	08		H
DAMASCUS 3 SSW	2336	06	MONTGOMERY	39 16	77 14W	700	22	22		H
EMMITSBURG 2 SE	2906	06	FREDERICK	39 41	77 17W	403	07	07		H
FREDERICK 2 NNE	3353	06	FREDERICK	39 26	77 24W	280	07	07		H
FROSTBURG 2	3415	07	ALLEGANY	39 40	78 56W	2170	07	07		H
MARYLAND SCI CTR R	5718	04	BALTIMORE (CITY)	39 17	76 37W	20	24	24		H
MECHANICSVILLE 5 NE	5865	03	ST. MARY'S	38 28	76 42W	100	07	07		H
MILLERS 4 NE	5934	06	CARROLL	39 43	76 48W	860	18	18		CH
NATL ARBORETUM DC	6350	04	DISTRICT OF COLUMBIA	38 55	76 58W	50	08	08		H
OAKLAND 1 SE	6620	08	GARRETT	39 25	79 24W	2420	07	07		H
OXON HILL	6800	04	PRINCE GEORGE'S	38 47	76 60W	120	07	07		H
PRINCESS ANNE	7330	01	SOMERSET	38 13	75 41W	20	17	17		H
REISTERSTOWN 2 NW	7580	06	BALTIMORE	39 30	76 50W	737	08	08		H
ROYAL OAK 2 SSW	7806	02	TALBOT	38 43	76 11W	10	17	17		H
SALISBURY 2N	8004	01	WICOMICO	38 24	75 36W	20	17	17		H
SALISBURY FAA AP	8005	01	WICOMICO	38 20	75 31W	48	24	24		H
SAVAGE RIVER DAM	8065	08	GARRETT	39 31	79 8W	1495	08	08	08	CH
SHARPSBURG 5 S	8207	07	WASHINGTON	39 24	77 43W	500	07	07		H
SINES DEEP CREEK	8315	08	GARRETT	39 31	79 25W	2040	07	07		H
SMITHSBURG 2NW	8371	06	WASHINGTON	39 40	77 35W	670	08	08		H
SNOW HILL 4 N	8380	01	WORCESTER	38 14	75 23W	30	17	17		H
SOLOMONS	8405	03	CALVERT	38 19	76 27W	12	08	08		H
STEVENSVILLE 2SW	8557	05	QUEEN ANNE'S	38 58	76 20W	10	07	07		H
SUDLERSVILLE 1S	8657	05	QUEEN ANNE'S	39 10	75 51W	100		20		H
UPPER MARLBORO 3 NNW	9070	04	PRINCE GEORGE'S	38 51	76 46W	130	08	08	08	H
WILLIAMSPORT	9570	07	WASHINGTON	39 37	77 51W	360		06		H
DELAWARE										
DOVER	2730	02	KENT	39 9	75 30W	30	16	16		H
WILMINGTON NEW CASTLE CO AP R	9595	01	NEW CASTLE	39 40	75 36W	79	24	24		HJ
WILMINGTON PORTER RSCH	9605	01	NEW CASTLE	39 46	75 32W	270	24	24		H

REFERENCE NOTES

STATION NAMES: Name of the city, town or locality. Figures and letters following the station names indicate the distance in miles and direction from the post office or town community center.

DIVISIONS: Areas within a state of similar climatological characteristics. Division averages are calculated using data from stations that record temperature and/or precipitation. Station Precipitation totals flagged with an 'F' or 'M' are excluded from the Divisional Average calculations of precipitation. Stations with monthly Temperature averages flagged with an 'F' or 'M' are included in the Divisional Average if there are no more than 9 flagged or missing daily values in the month, else they are excluded from the divisional average for temperature.

NORMALS: The average value of the meteorological element over a time period. Effective 1 January 2012, the averaging period for station departures is 1981 to 2010. The normals for National Weather Service localities have been adjusted so as to be representative for the current observation site.

The January 2011 through December 2015 publications incorrectly state the computation of divisional departures. Climate Division departures have been, and continue to be, computed from 1971-2000 Normals, not 1981-2010 as stated. Station departures are accurately described as departures from 1981-2010.

MONTHLY DEGREE DAY TOTALS: One heating (cooling) degree day is accumulated for each whole degree that the daily mean temperature is below (above) 65 degrees Fahrenheit.

PRECIPITATION: Values shown in hundredths of inches are water equivalent totals, i.e., total of liquid and melted frozen precipitation. In the "Monthly Summarized Data" table the total snow and sleet values shown in tenths of inches are unmelted amounts. The max depth on ground values of snow and sleet shown in whole inches are cumulative unmelted amounts. The number of days with .10, .50, 1.00 or more refers to water equivalents.

PRECIPITATION QUALITY CONTROL: The NCEI quality control process may flag precipitation data that are spatially inconsistent, exceed climatological limits, or are inconsistent with prevailing weather patterns.

TEMPERATURE: Original temperature values are given in the "Daily Temperature" table. Summary temperature information (averages, departures, extremes, monthly degree day totals) is based on the values labeled MAX/MIN.

WIND: (As shown in the "Evaporation and Wind" table) the total wind movement in miles over the evaporation pan as determined by an anemometer recorder located 6-8 inches above the pan.

SYMBOLS AND LETTERS USED IN THE STATION INDEX TABLE

C Station is equipped with recording rain gage (R) but values in this bulletin are from a non-recording rain gage unless indicated by an R.
G Observations appear in the "Soil Temperatures" table.
H Observations appear in the "Snowfall and Snow on the Ground" table.
J Station also published as a Local Climatological Data publication.
VAR Observation time varies.
SR / SS Observation time near sunrise / Observation time near sunset, respectively.

SYMBOLS AND LETTERS USED IN THE DATA TABLES

(DAILY DATA ARE FOR THE 24 HOURS IMMEDIATELY PRECEDING OBSERVATION TIME.)

BLANK Entries in the "Monthly Summarized Data" table indicate no record.

BLANK Entries in the "Daily Precipitation" and "Snowfall and Snow on the Ground" tables indicate zero.

BLANK Entries in the "Daily Temperature" table indicate a missing record

- No record. Data not recorded or not received in time for publication.

+ Precipitation or temperature extremes occurred on one or more previous dates during the month.

* Rain gage not read. Precipitation is included in the amount following the asterisks.

Time distribution may not be known. A * preceding the monthly total indicates precipitation amount is being carried forward to next month's total, and may include amounts from the previous month(s).

a As a subscript, indicates accumulated total.

A Amount of precipitation is the total of observer's entries for the current month. It may include precipitation that occurred during the previous month. Refer to earlier bulletin to determine date of last

reading. (Hawaii stations)

B Divisional Departure from normals are computed using 1971-2000 normals.

E Normalized HDD/CDD Calculation. E is appended to the HDD/CDD Calculation when 1-9 individual daily TMAX and/or TMIN values are missing and a Normalized HDD/CDD Calculation is provided. M appears alone if 10 or more daily values are missing.

F Monthly calculation flagged value. F is appended to average and/or total values computed which exclude one or more daily data values that have been flagged by the GHCN-Daily Dataset

M Insufficient or partial data. M is appended to average and/or total values computed with 1-9 daily values missing. M appears alone if 10 or more daily values are missing, (8 or more for wind and evaporation).

N Indicates snow fall or Snowdepth totals are computed with one or more missing days.

R Amounts from recording rain gage.

T Trace. An amount too small to measure.

SEASONAL TABLES: Monthly and seasonal snowfall and heating degree days for the 12 months ending with the June data are published in the July issue of this bulletin. Cooling degree days for the calendar year are published in the "Climatological Data Annual Summary."

Information concerning the history of changes in locations, exposure, etc. of substations is kept on file at the National Centers for Environmental Information. Historical information of regular National Weather Service Offices may be obtained from the "Local Climatological Data" annual publication. The contents of this publication may be reprinted or otherwise used freely, with proper credit to the National Centers For Environmental Information. The data are also available digitally.

Effective with the January 2011 Data-Month, COOP Observer Names are no longer included in the Monthly and Annual Climatological Data Publications. This information is not published to ensure the privacy of personal information pursuant to Section 208 of the E-Government Act of 2002 (44 USC 3601).

As of the 2011 Data-Year, Station and Climate Division Maps are no longer being included in the CD Publications. NCEI's Products Branch provides updated Station Maps for various data networks via the Historical Observing Metadata Repository: <http://www.ncdc.noaa.gov/homr>.

The GHCN-Daily Quality Control Flags shown below are displayed as superscripts with the data. For more information on Global Historical Climatology Network - Daily and flags, see: <http://www.ncdc.noaa.gov/oa/climate/ghcn-daily/> and Comprehensive Automated Quality Assurance of Daily Surface Observations. Durre, Imke, Matthew J. Menne, Byron E. Gleason, Tamara G. Houston, Russell S. Vose, 2010: J. Appl. Meteor. Climatol., 49, 16151633. doi: 10.1175/2010JAMC2375.1

Blank = Passed All checks

D = failed duplicate check

G = failed gap check

I = failed internal consistency check

K = failed streak/frequent-value check

L = failed check on length of multiday period

M = failed megaconsistency check

N = failed naught check

O = failed climatological outlier check

R = failed lagged range check

S = failed spatial consistency check

T = failed temporal consistency check

W = temperature too warm for snow

X = failed bounds check

Z = flagged as a result of an official Datzilla investigation

Beginning with the January 2013 CD Publication, monthly mean temperature calculations have changed to the National Data Stewardship Team standard. Monthly maximum and minimum temperatures are not rounded until after the monthly mean temperature is calculated. This is the most accurate outcome, but may be slightly different from the mean derived from rounded monthly maximum and minimum.

The climate division temperature and precipitation values in this publication are based on simple averages from the current set of NWS-Designated Open and Published COOP and First Order Sites within each division. These values differ from those found in NCEI's nClimDiv product. Beginning in February 2014, the nClimDiv product is used by NCEI's Monitoring Branch and in its monthly climate reports. For more details on nClimDiv, please go to <http://www.ncdc.noaa.gov/monitoring-references/maps/us-climate-divisions.php>.

Effective January 2016, Alaska's Climate Divisions are updated to reflect the 13 climate divisional boundaries established by University of Alaska-Fairbanks, NWS, NCEI, Oregon State University, and University of Nebraska-Lincoln. For more details regarding the updated Alaska Climate Divisions, see: <http://journals.ametsoc.org/doi/pdf/10.1175/JAMC-D-11-0168.1> (Bienek et al., 2012).

NOAA National Centers for Environmental Information
Attn: Customer Engagement Branch
151 Patton Avenue
Asheville, NC 28801-5001

Customer Services Number: (828) 271-4800, option 2
TDD : (828) 271-4010
Fax number: (828) 271-4876

NCEI now offers free online access to the *Climatological Data* publication.
Go to : www.ncdc.noaa.gov and choose Most Popular.