



CLIMATOLOGICAL DATA

MARYLAND AND DELAWARE

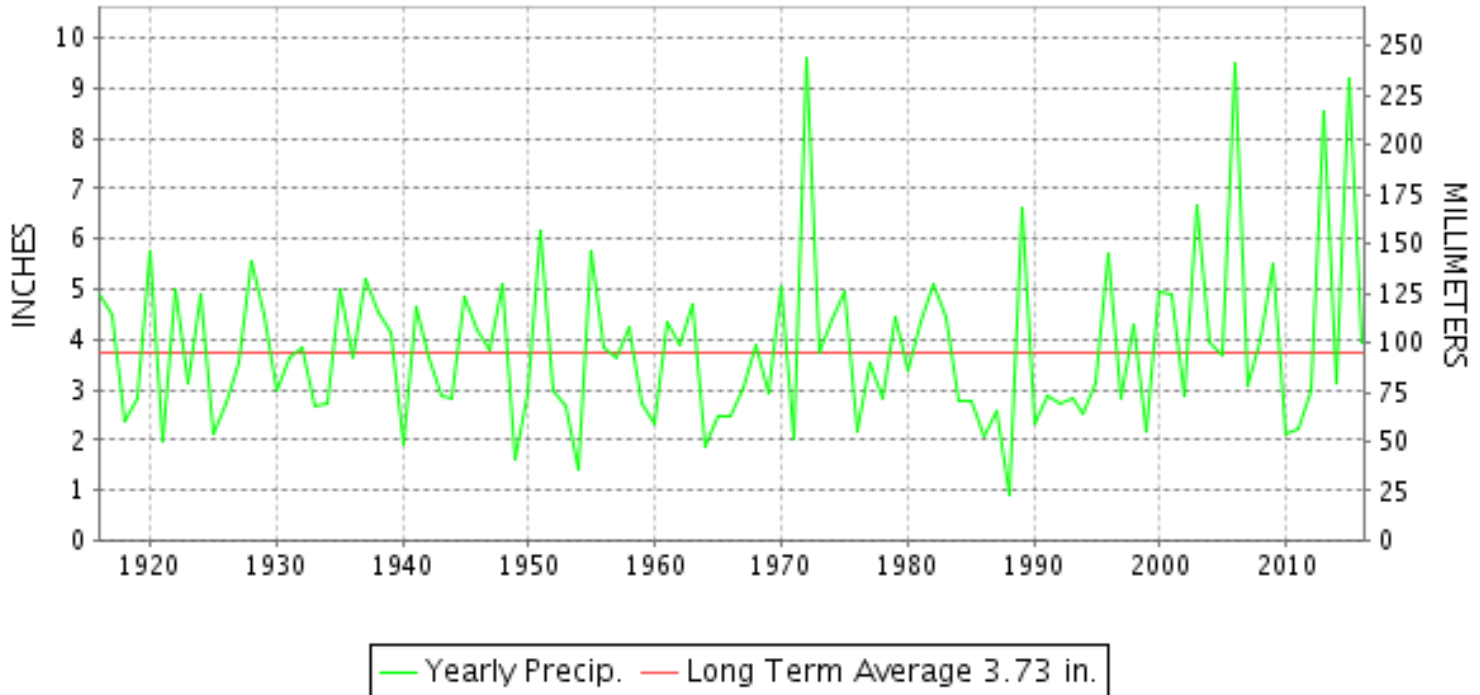
JUNE 2016

VOLUME 120 NUMBER 06

ISSN 0145-0549

GHCND Ver: 3.22-upd-2016092005

JUNE PRECIPITATION BY YEAR



TEMPERATURE AND PRECIPITATION EXTREMES

MARYLAND

HIGHEST TEMPERATURE	96	JUNE 12+	4 STATIONS
LOWEST TEMPERATURE	24	JUNE 10	SINES DEEP CREEK
GREATEST TOTAL PRECIPITATION	7.26		SALISBURY 2N
LEAST TOTAL PRECIPITATION	2.10		CONOWINGO DAM
GREATEST 1 DAY PRECIPITATION	4.32	JUNE 28	PRINCESS ANNE
GREATEST TOTAL SNOWFALL	T		BALTIMORE WASH INTL AP

"I certify that this is an official publication of the National Oceanic and Atmospheric Administration (NOAA) It is compiled using information from weather observing sites supervised by NOAA/National Weather Service and received at the National Centers for Environmental Information(NCEI), Asheville, North Carolina 28801."

Director
National Centers for Environmental Information

noaa

National
Oceanic and
Atmospheric Administration

National
Environmental Satellite, Data
and Information Service

National
Centers for Environmental Information
Asheville, North Carolina

DELAWARE

HIGHEST TEMPERATURE	90	JUNE 19++	2 STATIONS
LOWEST TEMPERATURE	47	JUNE 09	WILMINGTON PORTER RSCH
GREATEST TOTAL PRECIPITATION	4.11		DOVER
LEAST TOTAL PRECIPITATION	2.94		WILMINGTON PORTER RSCH
GREATEST 1 DAY PRECIPITATION	1.15	JUNE 28	DOVER

MONTHLY STATION AND DIVISION SUMMARY

STATION	TEMPERATURE (°F)											PRECIPITATION (IN)																	
	AVERAGE MAXIMUM	AVERAGE MINIMUM	AVERAGE	DEPARTURE FROM NORMAL	HIGHEST	DATE	LOWEST	DATE	HEATING DEG. DAYS	COOLING DEG. DAYS	NO. OF DAYS				TOTAL	DEPARTURE FROM NORMAL	GREATEST 24 HOURS	DATE	ICE PELLETS, SNOW			NO. OF DAYS							
											MAX		MIN						TOTAL	MAX DEPTH ON GROUND	DATE	.10 OR MORE	.50 OR MORE	1.00 OR MORE					
											>=90	<=32	<=32	<=0															
FREDERICK 2 NNE	M	M	M								0	0	0	0	M				M										
MILLERS 4 NE	80.7	60.6	70.7	1.3	90	11	45	09	7	185	1	0	0	0	3.91	0.52	0.69	29	0.0	0		9	4	0					
SMITHSBURG 2NW	81.2	59.0	70.1	-0.4	90	12	44	09	16	172	1	0	0	0	3.82	-0.37	0.96	17	0.0	0		9	3	0					
--DIVISIONAL DATA----->			71.1	0.4B											4.06	0.01B													
APPALACHIAN MOUNTAIN 07																													
CUMBERLAND 2	83.9	61.0	72.4	-0.2	94	12	48	10+	7	241	4	0	0	0	4.07	0.79	1.11	03	0.0	0		8	3	1					
FROSTBURG 2	76.4	56.7	66.6	1.5	84	12+	43	09	33	88	0	0	0	0	6.38	2.38	2.29	03	0.0	0		10	5	2					
SHARPSBURG 5 S	82.7	58.1	70.4	0.2	92	12	44	09	14	183	1	0	0	0	A 5.91	2.03	2.05	22	0.0	0		7	3	2					
WILLIAMSPORT															M				M										
--DIVISIONAL DATA----->			69.8	1.3B											5.45	1.93B													
ALLEGHENY PLATEAU 08																													
OAKLAND 1 SE	78.8	57.8	68.3	3.9	87	12	44	09	20	130	0	0	0	0	4.40	-0.02	1.67	17	0.0	0		7	4	1					
SAVAGE RIVER DAM	77.7M	56.9M	67.3M	1.1	86	12	43	10+	29E	104E	0	0	0	0	M 3.25	-0.65	1.35	17	M 0.0	0		5	3	1					
SINES DEEP CREEK	76.3M	MMF	MMF		83	13	24	10	126E	33E	0	0	3	0	A 5.20		1.97	16	M 0.0	0		6	2	2					
--DIVISIONAL DATA----->			67.8	3.4B											4.80	0.59B													
DELAWARE NORTHERN 01																													
WILMINGTON NEW CASTLE CO AP	81.9	62.5	72.2	0.0	90	19+	49	09	5	228	3	0	0	0	3.69	-0.19	1.14	16	0.0	0		7	3	1					
WILMINGTON PORTER RSCH	81.7	61.7	71.7	0.0	89	21+	47	09	6	212	0	0	0	0	2.94	-1.25	0.73	16	M	0		6	4	0					
--DIVISIONAL DATA----->			72.0	0.6B											3.32	-0.58B													
SOUTHERN 02																													
DOVER	82.1	64.1	73.1	-0.2	90	20+	51	09	0	251	3	0	0	0	4.11	0.11	1.15	28	M 0.0	0		6	4	2					
--DIVISIONAL DATA----->			73.1	1.4B											4.11	0.70B													

DAILY PRECIPITATION (INCHES)

STATION	TOTAL	DAY OF MONTH																															
		01	02	03	04	05	06	07	08	09	10	11	12	13	14	15	16	17	18	19	20	21	22	23	24	25	26	27	28	29	30	31	
ALLEGHENY PLATEAU 08																																	
OAKLAND 1 SE	4.40			0.25	0.04		0.62	0.03	0.04			0.07				0.01	1.67	0.20				0.08	0.14	0.62	0.02	0.56			0.02	0.03			
SAVAGE RIVER DAM	M 3.25			-	-		0.48	-	-						0.67	1.35						0.05	0.60	0.10	-								
SINES DEEP CREEK	A 5.20			0.34	*	*	0.00 _a	0.05	0.10		*	*	0.00 _a	*	0.00 _a	1.97	1.50	*	*	0.00 _a		0.05	0.45	0.24	*	*	0.45 _a	0.05					
DELAWARE																																	
NORTHERN 01																																	
WILMINGTON NEW CASTLE CO AP	3.69			0.16		0.80		0.24	0.25						0.02	1.14						0.09	0.58	0.06			0.35	T					
WILMINGTON PORTER RSCH	2.94			0.25		0.55		0.61	0.18						T	0.73							0.54				0.08	T					
SOUTHERN 02																																	
DOVER	4.11		T	0.05			0.51	T								0.41	0.23					1.09		0.04	0.63			1.15					

DAILY TEMPERATURES (°F)

STATION	OB. TIME	MAX/MIN	DAY OF MONTH																															AVERAGE					
			01	02	03	04	05	06	07	08	09	10	11	12	13	14	15	16	17	18	19	20	21	22	23	24	25	26	27	28	29	30	31						
MARYLAND SOUTHERN EASTERN SHORE 01 ASSATEAGUE	VA	MAX MIN																																		M M			
PRINCESS ANNE	17	MAX MIN	82 63	79 66	74 64			85 72	89 64	80 53	78 49	79 57			82 63	83 56	81 53	81 65	78 63					88 63	87 67	87 65	84 64	85 68			85 61	80 70	85 65	84 68	82.5				
SALISBURY 2N	17	MAX MIN	84 64	82 67	75 65			85 76	87 74	84 57	77 49	77 48	88 60	92 73		80 59	81 65	79 58	78 63				80 57	86 61	88 65	89 68	82 65	79 65	85 67	81 57	83 57	85 62	85 70	84 66	84 61	83.0			
SALISBURY FAA AP	24	MAX MIN	82 63	73 66	74 64	81 64	86 66	85 72	89 64	76 53	78 49	89 57	93 58	93 66	78 63	80 56	80 53	73 65	78 60	80 56	78 55	80 63	87 67	88 65	89 65	83 64	79 68	85 61	80 57	81 61	85 70	81 65	85 61	76 61	85 61	84 61	81.9		
SNOW HILL 4 N	17	MAX MIN	83 59	83 63	76 62	81 61	90 63	89 68	92 68	88 52	80 44	92 51	92 53	96 71	95 55	81 61	81 48	78 59	80 52	89 50	91 59	92 66	89 63	89 61	89 63	86 63	81 64	81 51	85 58	83 68	88 66	83 66	88 57	88 57	88 57	85.7			
CENTRAL EASTERN SHORE 02 ROYAL OAK 2 SSW	17	MAX MIN	86 64	78 65	77 67	82 67	86 70	86 68	85 61	75 66	80 52	80 55	90 60	92 70	78 67	78 60	81 60	77 70	81 66	83 61	87 70	88 70	89 69	83 70	80 66	85 70	85 69	85 60	85 64	86 72	83 73	85 63	84 63	84 63	83.2				
LOWER SOUTHERN 03 MECHANICSVILLE 5 NE	07	MAX MIN	80 63	84 63	78 63	79 67	77 68	82 69	84 69	84 56	73 49	78 52	78 56	88 60	91 61	76 61	78 58	82 63	76 57	81 58	84 60	86 68	87 66	82 66	76 66	84 67	80 57	81 59	84 61	81 64	84 83	79 82	81 83	84 82	79 83	81 83	81.0		
SOLOMONS	08	MAX MIN	84 67	79 69			87 69	86 73	84 63	74 59	81 64	87 68			91 65	79 68	80 65	78 70					89 63	89 70			81 69			84 67	84 71	83 68	82 68	83 71	83 71	83 71	M M		
UPPER SOUTHERN 04 BALTIMORE WASH INTL AP	24	MAX MIN	87 61	79 66	75 68	83 69	85 65	86 66	87 62	73 51	81 46	82 54	96 57	93 66	80 58	81 59	80 57	79 65	81 63	85 60	90 60	91 63	91 68	83 66	82 66	81 70	82 69	84 59	82 62	84 62	87 59	84 62	84 68	81 63	84 58	84 58	83.8		
BELTSVILLE	08	MAX MIN	86 62	86 65	80 68	76 69	81 71	84 64	86 66	85 56	71 47	80 56	80 56	94 58	90 61	78 66	80 63	83 59	81 58	85 60	89 69	90 65	90 65	83 65	81 67	82 70	82 59	82 62	84 71	87 62	84 62	87 73	86 66	80 60	80 60	83.3			
DALECARLIA RSVR	08	MAX MIN	87 65	87 66	83 67	75 69	84 69	85 68	87 68	85 58	70 51	80 57	80 61	95 70	90 61	79 64	78 62	83 68	85 63	80 60	86 61	90 62	91 66	91 71	81 67	81 68	84 71	84 70	84 69	84 71	84 69	84 68	87 73	88 66	81 60	81 60	84.0		
MARYLAND SCI CTR	24	MAX MIN	87 70	79 68	77 69	82 72	86 70	87 69	86 67	74 60	81 55	81 62	96 67	92 72	80 63	81 67	78 66	77 64	82 64	84 67	90 68	92 71	91 68	83 69	83 71	80 72	84 70	84 69	84 68	84 69	84 69	84 70	84 69	84 69	82 67	85 67	85 67	83.7	
NATL ARBORETUM DC	07	MAX MIN	89 67	90 67	84 68	81 73	83 74	85 70	87 71	88 63	73 53	83 60	83 61	96 72	93 63	81 64	83 63	84 67	88 63	83 66	86 65	90 75	93 70	91 70	84 72	81 71	86 62	86 66	87 66	87 66	87 66	87 66	87 66	87 66	87 66	87 66	85.8		
OXON HILL	08	MAX MIN	86 65	86 65	81 67	80 68	83 69	85 68	87 69	86 61	72 51	81 60	81 64	91 70	92 62	81 64	81 61	91 63	83 63	86 63	81 62	85 63	89 63	90 63	87 65	84 69	84 69	84 69	84 69	84 69	84 69	84 69	84 69	84 69	84 69	84 69	84.1		
UPPER MARLBORO 3 NNW	08	MAX MIN	86 63	87 64	81 67	78 68	82 70	85 67	87 68	86 56	72 48	81 60	82 59	92 68	91 61	80 65																					M M		
NORTHERN EASTERN SHORE 05 STEVENSVILLE 2SW	07	MAX MIN	85 66	87 66	80 66	77 67	83 70	86 68	88 71	86 64	74 59	80 60	84 64	92 70	89 64	80 64	79 62	79 63	75 63	84 60	90 68	90 70	91 70	82 69	83 70	82 70	80 68	82 63	83 66	83 66	85 67	83 67	85 68	83 68	83 67	83 67	83.4		
NORTHERN CENTRAL 06																																							

DAILY TEMPERATURES (°F)

STATION	OB. TIME	MAX/MIN	DAY OF MONTH																															AVERAGE		
			01	02	03	04	05	06	07	08	09	10	11	12	13	14	15	16	17	18	19	20	21	22	23	24	25	26	27	28	29	30	31			
ABERDEEN PHILLIPS FLD	07	MAX	87	88	81	76	81	82	85	84	72	78	79	93	90	78	77	74	71	82	82	88	90	85	83	80	81	82	84	85	83	83	82	83	83	82.1
		MIN	62	66	67	68	69	67	68	58	49	54	54	61	59	60	55	59	62	58	60	62	70	65	65	65	65	60	62	65	66	65	66	59	62.0	
BRIGHTON DAM	08	MAX	86	86	80	80	74	82	84	82	69	78		84	83	77	77	78	80	83	83	91	88	85	79	80	82	73	86	84	75	79		81.0		
		MIN	60	63	66	66	69	68			46	52		70	64	64	55	62	61	51	56	71	69	70	62	67	58	58	62	62	69	56		62.1		
CONOWINGO DAM	07	MAX	86	85	78	75	71	81	85	84	69	76	77	92	87	77	78	78	69	81	82	89	88	81	83	81	79	84	83	84	82	81		80.9		
		MIN	62	64	66	67	68	64	64	57	50	55	57	64	63	63	54	54	61	57	56	57	68	65	62	65	65	60	59	65	66	60		61.3		
CYLBURN	08	MAX	83	84	76	74	80	81	83	82	69	76	77	90	83	75	76	75	79	82	81	86	87	85	83	81	84	81	82	84	82	80		80.7		
		MIN	63	66	68	68	71	67	69	59	51	55	58	65	59	63	57	61	64	59	62	68	74	69	65	69	71	62	64	71	67	59		64.1		
DAMASCUS 3 SSW	22	MAX	85	78	78	81	82	83	81	66	76	77	91	86	75	76	80	79	78	82	85	86	83	77	77	78	81	82	83	86	76	80		80.3		
		MIN	63	63	68	67	64	63	63	53	48	53	60	68	56	60	58	65	58	57	58	60	65	64	65	66	66	60	63	64	61	56		61.2		
EMMITSBURG 2 SE	07	MAX	85	87	81	78	82	72	82	81	67	77	80	92	86	76	77	79	77	81	85	87	88	80	80	80	81	83	83	80	87	78		81.1		
		MIN	60	62	62	67	67	67	66	53	49	49	50	58	56	57	54	57	62	57	57	58	58	64	63	63	63	59	61	68	62	55		59.5		
FREDERICK 2 NNE	07	MAX																																	M	
		MIN																																	M	
MILLERS 4 NE	18	MAX	85	83	74	81	80	81	80	74	75	77	90	89	80	75	77	76	82	82	85	86	83	80	80	81	82	83	81	82	77	81		80.7		
		MIN	60	61	66	66	65	63	63	52	45	55	57	75	57	58	53	64	60	54	59	63	68	63	61	66	62	58	61	66	62	56		60.6		
SMITHSBURG 2NW	08	MAX	85	86	81	81	83	82	83	79	65	75	79	90	83	76	78	81	81	82	83	85	86	81	80	77	81	83	84	82	88	75		81.2		
		MIN	60	62	65	64	65	64	61	51	44	47	49	68	53	56	56	59	59	58	57	59	61	61	62	64	63	60	64	66	59	53		59.0		
APPALACHIAN MOUNTAIN 07																																				
CUMBERLAND 2	18	MAX	88	90	84	82	82	77	85	80	71	78	83	94	83	83	81	86	85	82	87	88	91	87	83	79	81	82	87	87	90	81		83.9		
		MIN	61	61	66	67	68	64	63	59	48	48	56	65	56	56	60	61	65	56	58	59	60	64	64	66	68	63	65	66	60	56		61.0		
FROSTBURG 2	07	MAX	82	84	76	77	75	70	77	71	60	69	76	84	77	74	75	80	79	76	80	81	82	78	76	73	74	76	78	82	81	70		76.4		
		MIN	56	58	62	62	63	59	57	50	43	50	55	66	49	49	53	58	60	54	55	56	58	58	62	63	59	61	63	54	50		56.7			
SHARPSBURG 5 S	07	MAX	87	88	79	81	83	82	85	81	68	77	80	92	87	79	79	84	84	83	84	87	89	85	81	79	82	82	85	82	89	78		82.7		
		MIN	59	61	66	64	66	61	59	50	44	45	48	60	51	56	55	62	60	58	55	55	56	61	62	65	66	58	60	67	59	53		58.1		
ALLEGHENY PLATEAU 08																																				
OAKLAND 1 SE	07	MAX	82	83	83	78	83	71	78	76	65	73	79	87	81	75	80	86	83	71	78	81	82	82	79	71	82	73	81	83	84	75		78.8		
		MIN	55	62	64	63	65	62	59	54	44	52	60	60	47	53	53	53	64	53	54	54	64	64	64	64	63	59	59	64	55	48		57.8		
SAVAGE RIVER DAM	08	MAX	82	82		80	74			63	71	79	86	80	78	75	78	82	73	78	80	82	82	78	68		74	80	80	83	74		77.7			
		MIN	57	57		64	59			43	43	55	65	52	52	54	59	63	53	54	56	56	62	62	65		61	60	63	56	51		56.9			
SINES DEEP CREEK	07	MAX	78	80	79		80	74	70	60	69			83		78	80	79			80	80	80	75	68			80	80	80	69		M			
		MIN	52	52	55		33 ^s	39	37	32	24			26		49	57	62				40	50	56	54	60			54	58	52	46		M		
DELAWARE NORTHERN 01																																				
WILMINGTON NEW CASTLE CO AP	24	MAX	86	80	75	81	83	85	85	71	77	78	90	90	77	79	76	70	83	81	90	89	86	85	83	79	85	83	82	82	83	83		81.9		
		MIN	64	65	66	66	67	67	62	53	49	53	58	66	56	61	57	64	63	57	60	65	69	67	66	68	63	62	61	71	66	62		62.5		
WILMINGTON PORTER RSCH	24	MAX	87	80	80	82	80	84	82	84	72	74	87	87	73	74	76	68	81	83	87	89	89	84	85	80	84	86	85	81	83	84		81.7		
		MIN	65	62	62	61	66	64	62	54	47	54	59	59	57	59	59	61	61	57	63	66	65	66	67	68	63	63	63	69	66	64		61.7		
SOUTHERN 02																																				
DOVER	16	MAX	84	81	74	79	85	85	86	77	78	77	90	90	78	80	80	68	80	82	89	90	89	83	83	81	80	81	82	82	84	84		82.1		

MARYLAND AND DELAWARE
201606

DAILY TEMPERATURES (°F)

STATION	OB. TIME	MAX/MIN	DAY OF MONTH																															AVERAGE
			01	02	03	04	05	06	07	08	09	10	11	12	13	14	15	16	17	18	19	20	21	22	23	24	25	26	27	28	29	30	31	
		MIN	67	66	65	64	68	68	68	59	51	56	59	78	63	65	57	64	62	58	64	68	65	66	67	69	64	61	61	70	69	62		64.1

SNOWFALL AND SNOW ON GROUND (INCHES)

STATION	DAY OF MONTH																																		
	01	02	03	04	05	06	07	08	09	10	11	12	13	14	15	16	17	18	19	20	21	22	23	24	25	26	27	28	29	30	31				
MARYLAND																																			
SOUTHERN																																			
EASTERN SHORE 01																																			
ASSATEAGUE	SNOWFALL																																		
PRINCESS ANNE	SNOWFALL																																		
SALISBURY 2N	SNOWFALL																																		
SALISBURY FAA AP	SNOWFALL																																		
	SN ON GND																																		
SNOW HILL 4 N	SNOWFALL																																		
UPPER SOUTHERN 04																																			
BALTIMORE WASH INTL AP	SNOWFALL																																		
	SN ON GND																																		
BELTSVILLE	SNOWFALL																																		
	SN ON GND																																		
DALECARLIA RSVR	SNOWFALL																																		
	SN ON GND																																		
	WTR EQUIV																																		
MARYLAND SCI CTR	SNOWFALL																																		
NATL ARBORETUM DC	SNOWFALL																																		
	SN ON GND																																		
	WTR EQUIV																																		
OXON HILL	SNOWFALL																																		
	SN ON GND																																		
UPPER MARLBORO 3 NNW	SNOWFALL																																		
	SN ON GND																																		
DELAWARE																																			
NORTHERN 01																																			
WILMINGTON NEW CASTLE CO AP	SNOWFALL																																		
	SN ON GND																																		
WILMINGTON PORTER RSCH	SNOWFALL	-	-	-	-	-	-	-	-	-	-	-	-	-	-	-	-	-	-	-	-	-	-	-	-	-	-	-	-	-	-	-	-		
	SN ON GND	-	-	-	-	-	-	-	-	-	-	-	-	-	-	-	-	-	-	-	-	-	-	-	-	-	-	-	-	-	-	-	-		

Snowfall: Includes snow and ice. Values for NWS stations (J index note) are Mid-Mid (LST).

Snow on ground: Includes snow, sleet, ice, and hail. Values for NWS stations (J index note) are observed at 12 UTC (GMT).

Water Equivalent: Given for NWS stations (J index note) only, when snow depth is 2 inches or more, and is measured at 18 UTC (GMT)

PAN EVAPORATION AND WIND

STATION		DAY OF MONTH																															TOTAL OR AVERAGE
		01	02	03	04	05	06	07	08	09	10	11	12	13	14	15	16	17	18	19	20	21	22	23	24	25	26	27	28	29	30	31	
MARYLAND UPPER SOUTHERN 04 BELTSVILLE	WIND	18	34	33	27	41	33	41	66	83	73	43	50	124	62	30	33	50	38	27	20	28	35	44	30	53	34	29	40	37	64	1320	
	EVAP	0.16	0.24	0.15	0.04	0.10	0.16	0.26	0.34	0.28	0.31	0.22	0.30	0.44	0.29	0.28	0.11	0.19	0.22	0.26	0.27	0.29	0.27	0.22	0.13	0.18	0.29	0.27	0.19	0.43	0.32	7.21	
	MAX	92	92	87	80	88	89	92	91	76	82	82	92	90	84	90	84	90	91	94	93	96	93	84	85	91	93	94	94	94	86	88.9	
	MIN	60	65	66	69	69	65	67	55	49	49	56	58	54	58	62	64	64	63	61	62	63	64	65	66	68	63	62	64	64	61	61.9	
UPPER MARLBORO 3 NNW	WIND	-	-	-	-	-	-	-	-	-	-	-	-	-	-	-	-	-	-	-	-	-	-	-	-	-	-	-	-	-	-	M	
	EVAP	-	-	-	-	-	-	-	-	-	-	-	-	-	-	-	-	-	-	-	-	-	-	-	-	-	-	-	-	-	-	M	
	MAX	-	-	-	-	-	-	-	-	-	-	-	-	-	-	-	-	-	-	-	-	-	-	-	-	-	-	-	-	-	-	M	
	MIN	-	-	-	-	-	-	-	-	-	-	-	-	-	-	-	-	-	-	-	-	-	-	-	-	-	-	-	-	-	-	M	
ALLEGHENY PLATEAU 08 SAVAGE RIVER DAM	WIND	-	-	-	-	-	-	-	-	-	-	-	-	-	-	-	-	-	-	-	-	-	-	-	-	-	-	-	-	-	-	M	
	EVAP	-	-	-	-	-	-	-	-	-	-	-	-	-	-	-	-	-	-	-	-	-	-	-	-	-	-	-	-	-	-	M	
	MAX	-	-	-	-	-	-	-	-	-	-	-	-	-	-	-	-	-	-	-	-	-	-	-	-	-	-	-	-	-	-	-	
	MIN	-	-	-	-	-	-	-	-	-	-	-	-	-	-	-	-	-	-	-	-	-	-	-	-	-	-	-	-	-	-	M	

Evaporation: Is measured in hundredths of inches.

Wind: Is measured in miles.

Max and Min: The maximum and minimum temperatures (Fahrenheit) of the water in the evaporation pan.

STATION INDEX

STATION	INDEX NO.	DIVISION	COUNTY	LATITUDE	LONGITUDE	ELEVATION (IN FEET)	OBSERVATION TIME AND TABLES			
							LOCAL STD TIME			
							TEMP	PRECIP	EVAP	SPECIAL SEE (NOTES)
MARYLAND										
ABERDEEN PHILLIPS FLD	0015	06	HARFORD	39 28	76 10W	57	07	07		CH
ASSATEAGUE	0335	01	WORCESTER	38 4	75 13W	10	VAR	VAR		H
BALTIMORE WASH INTL AP R	0465	04	ANNE ARUNDEL	39 10	76 41W	156	24	24		HJ
BELTSVILLE	0700	04	PRINCE GEORGE'S	39 2	76 56W	145	08	08	08	CH
BRIGHTON DAM	1125	06	MONTGOMERY	39 11	77 0W	330	08	08		H
CONOWINGO DAM	2060	06	HARFORD	39 39	76 11W	40	07	07		H
CUMBERLAND 2	2282	07	ALLEGANY	39 39	78 45W	730	18	18		H
CYLBURN	2308	06	BALTIMORE	39 21	76 39W	235	08	08		H
DALECARLIA RSVR	2325	04	DISTRICT OF COLUMBIA	38 56	77 7W	150	08	08		H
DAMASCUS 3 SSW	2336	06	MONTGOMERY	39 16	77 14W	700	22	22		H
EMMITSBURG 2 SE	2906	06	FREDERICK	39 41	77 17W	403	07	07		H
FREDERICK 2 NNE	3353	06	FREDERICK	39 26	77 24W	280	07	07		H
FROSTBURG 2	3415	07	ALLEGANY	39 40	78 56W	2170	07	07		H
MARYLAND SCI CTR R	5718	04	BALTIMORE (CITY)	39 17	76 37W	20	24	24		H
MECHANICSVILLE 5 NE	5865	03	ST. MARY'S	38 28	76 42W	100	07	07		H
MILLERS 4 NE	5934	06	CARROLL	39 43	76 48W	860	18	18		CH
NATL ARBORETUM DC	6350	04	DISTRICT OF COLUMBIA	38 55	76 58W	50	07	07		H
OAKLAND 1 SE	6620	08	GARRETT	39 25	79 24W	2420	07	07		H
OXON HILL	6800	04	PRINCE GEORGE'S	38 47	76 60W	120	08	08		H
PRINCESS ANNE	7330	01	SOMERSET	38 13	75 41W	20	17	17		H
ROYAL OAK 2 SSW	7806	02	TALBOT	38 43	76 11W	10	17	17		H
SALISBURY 2N	8004	01	WICOMICO	38 24	75 36W	20	17	17		H
SALISBURY FAA AP	8005	01	WICOMICO	38 20	75 31W	48	24	24		H
SAVAGE RIVER DAM	8065	08	GARRETT	39 31	79 8W	1495	08	08	08	CH
SHARPSBURG 5 S	8207	07	WASHINGTON	39 24	77 43W	500	07	07		H
SINES DEEP CREEK	8315	08	GARRETT	39 31	79 25W	2040	07	07		H
SMITHSBURG 2NW	8371	06	WASHINGTON	39 40	77 35W	670	08	08		H
SNOW HILL 4 N	8380	01	WORCESTER	38 14	75 23W	30	17	17		H
SOLOMONS	8405	03	CALVERT	38 19	76 27W	12	08	08		H
STEVENSVILLE 2SW	8557	05	QUEEN ANNE'S	38 58	76 20W	10	07	07		H
SUDLERSVILLE 1S	8657	05	QUEEN ANNE'S	39 10	75 51W	100		20		H
UPPER MARLBORO 3 NNW	9070	04	PRINCE GEORGE'S	38 51	76 46W	130	08	08	08	H
WILLIAMSPORT	9570	07	WASHINGTON	39 37	77 51W	360		06		H
DELAWARE										
DOVER	2730	02	KENT	39 9	75 30W	30	16	16		H
WILMINGTON NEW CASTLE CO AP R	9595	01	NEW CASTLE	39 40	75 36W	79	24	24		HJ
WILMINGTON PORTER RSCH	9605	01	NEW CASTLE	39 46	75 32W	270	24	24		H

REFERENCE NOTES

STATION NAMES: Name of the city, town or locality. Figures and letters following the station names indicate the distance in miles and direction from the post office or town community center.

DIVISIONS: Areas within a state of similar climatological characteristics. Division averages are calculated using data from stations that record temperature and/or precipitation. Station Precipitation totals flagged with an 'F' or 'M' are excluded from the Divisional Average calculations of precipitation. Stations with monthly Temperature averages flagged with an 'F' or 'M' are included in the Divisional Average if there are no more than 9 flagged or missing daily values in the month, else they are excluded from the divisional average for temperature.

NORMALS: The average value of the meteorological element over a time period. Effective 1 January 2012, the averaging period for station departures is 1981 to 2010. The normals for National Weather Service localities have been adjusted so as to be representative for the current observation site.

The January 2011 through December 2015 publications incorrectly state the computation of divisional departures. Climate Division departures have been, and continue to be, computed from 1971-2000 Normals, not 1981-2010 as stated. Station departures are accurately described as departures from 1981-2010.

MONTHLY DEGREE DAY TOTALS: One heating (cooling) degree day is accumulated for each whole degree that the daily mean temperature is below (above) 65 degrees Fahrenheit.

PRECIPITATION: Values shown in hundredths of inches are water equivalent totals, i.e., total of liquid and melted frozen precipitation. In the "Monthly Summarized Data" table the total snow and sleet values shown in tenths of inches are unmelted amounts. The max depth on ground values of snow and sleet shown in whole inches are cumulative unmelted amounts. The number of days with .10, .50, 1.00 or more refers to water equivalents.

PRECIPITATION QUALITY CONTROL: The NCEI quality control process may flag precipitation data that are spatially inconsistent, exceed climatological limits, or are inconsistent with prevailing weather patterns.

TEMPERATURE: Original temperature values are given in the "Daily Temperature" table. Summary temperature information (averages, departures, extremes, monthly degree day totals) is based on the values labeled MAX/MIN.

WIND: (As shown in the "Evaporation and Wind" table) the total wind movement in miles over the evaporation pan as determined by an anemometer recorder located 6-8 inches above the pan.

SYMBOLS AND LETTERS USED IN THE STATION INDEX TABLE

C Station is equipped with recording rain gage (R) but values in this bulletin are from a non-recording rain gage unless indicated by an R.
G Observations appear in the "Soil Temperatures" table.
H Observations appear in the "Snowfall and Snow on the Ground" table.
J Station also published as a Local Climatological Data publication.
VAR Observation time varies.
SR / SS Observation time near sunrise / Observation time near sunset, respectively.

SYMBOLS AND LETTERS USED IN THE DATA TABLES

(DAILY DATA ARE FOR THE 24 HOURS IMMEDIATELY PRECEDING OBSERVATION TIME.)

BLANK Entries in the "Monthly Summarized Data" table indicate no record.

BLANK Entries in the "Daily Precipitation" and "Snowfall and Snow on the Ground" tables indicate zero.

BLANK Entries in the "Daily Temperature" table indicate a missing record

- No record. Data not recorded or not received in time for publication.

+ Precipitation or temperature extremes occurred on one or more previous dates during the month.

* Rain gage not read. Precipitation is included in the amount following the asterisks.

Time distribution may not be known. A * preceding the monthly total indicates precipitation amount is being carried forward to next month's total, and may include amounts from the previous month(s).

a As a subscript, indicates accumulated total.

A Amount of precipitation is the total of observer's entries for the current month. It may include precipitation that occurred during the previous month. Refer to earlier bulletin to determine date of last

reading. (Hawaii stations)

B Divisional Departure from normals are computed using 1971-2000 normals.

E Normalized HDD/CDD Calculation. E is appended to the HDD/CDD Calculation when 1-9 individual daily TMAX and/or TMIN values are missing and a Normalized HDD/CDD Calculation is provided. M appears alone if 10 or more daily values are missing.

F Monthly calculation flagged value. F is appended to average and/or total values computed which exclude one or more daily data values that have been flagged by the GHCN-Daily Dataset

M Insufficient or partial data. M is appended to average and/or total values computed with 1-9 daily values missing. M appears alone if 10 or more daily values are missing, (8 or more for wind and evaporation).

N Indicates snow fall or Snowdepth totals are computed with one or more missing days.

R Amounts from recording rain gage.

T Trace. An amount too small to measure.

SEASONAL TABLES: Monthly and seasonal snowfall and heating degree days for the 12 months ending with the June data are published in the July issue of this bulletin. Cooling degree days for the calendar year are published in the "Climatological Data Annual Summary."

Information concerning the history of changes in locations, exposure, etc. of substations is kept on file at the National Centers for Environmental Information. Historical information of regular National Weather Service Offices may be obtained from the "Local Climatological Data" annual publication. The contents of this publication may be reprinted or otherwise used freely, with proper credit to the National Centers For Environmental Information. The data are also available digitally.

Effective with the January 2011 Data-Month, COOP Observer Names are no longer included in the Monthly and Annual Climatological Data Publications. This information is not published to ensure the privacy of personal information pursuant to Section 208 of the E-Government Act of 2002 (44 USC 3601).

As of the 2011 Data-Year, Station and Climate Division Maps are no longer being included in the CD Publications. NCEI's Products Branch provides updated Station Maps for various data networks via the Historical Observing Metadata Repository: <http://www.ncdc.noaa.gov/homr>.

The GHCN-Daily Quality Control Flags shown below are displayed as superscripts with the data. For more information on Global Historical Climatology Network - Daily and flags, see: <http://www.ncdc.noaa.gov/oa/climate/ghcn-daily/> and Comprehensive Automated Quality Assurance of Daily Surface Observations. Durre, Imke, Matthew J. Menne, Byron E. Gleason, Tamara G. Houston, Russell S. Vose, 2010: J. Appl. Meteor. Climatol., 49, 16151633. doi: 10.1175/2010JAMC2375.1

Blank = Passed All checks

D = failed duplicate check

G = failed gap check

I = failed internal consistency check

K = failed streak/frequent-value check

L = failed check on length of multiday period

M = failed megaconsistency check

N = failed naught check

O = failed climatological outlier check

R = failed lagged range check

S = failed spatial consistency check

T = failed temporal consistency check

W = temperature too warm for snow

X = failed bounds check

Z = flagged as a result of an official Datzilla investigation

Beginning with the January 2013 CD Publication, monthly mean temperature calculations have changed to the National Data Stewardship Team standard. Monthly maximum and minimum temperatures are not rounded until after the monthly mean temperature is calculated. This is the most accurate outcome, but may be slightly different from the mean derived from rounded monthly maximum and minimum.

The climate division temperature and precipitation values in this publication are based on simple averages from the current set of NWS-Designated Open and Published COOP and First Order Sites within each division. These values differ from those found in NCEI's nClimDiv product. Beginning in February 2014, the nClimDiv product is used by NCEI's Monitoring Branch and in its monthly climate reports. For more details on nClimDiv, please go to <http://www.ncdc.noaa.gov/monitoring-references/maps/us-climate-divisions.php>.

Effective January 2016, Alaska's Climate Divisions are updated to reflect the 13 climate divisional boundaries established by University of Alaska-Fairbanks, NWS, NCEI, Oregon State University, and University of Nebraska-Lincoln. For more details regarding the updated Alaska Climate Divisions, see: <http://journals.ametsoc.org/doi/pdf/10.1175/JAMC-D-11-0168.1> (Bienek et al., 2012).

These and other publications are available from the National Centers for Environmental Information

Hourly Precipitation Data

This publication contains hourly precipitation amounts obtained from recording rain gages located at National Weather Service, Federal Aviation Administration, and cooperative observer stations. Published data are displayed in inches and tenths or inches and hundredths at local standard time. HPD includes maximum precipitation for nine (9) time periods from 15 minutes to 24 hours, for selected stations.

Climatological Data

Monthly editions contain station daily maximum and minimum temperatures and precipitation. Some Stations provide daily snowfall, snow depth, evaporation, and soil temperature data. Each edition also contains monthly summaries for heating and cooling degree days (65 degree F base). The July issue contains a recap of monthly heating degree days and snow data for the preceding July through June.

The Annual issue contains monthly and annual averages of temperature, precipitation, temperature extremes, freeze data, soil temperatures, evaporation, and a recap of monthly cooling degree days.

Storm Data

Monthly issues contain a chronological listing, by states, of occurrences of storms and unusual weather phenomena. Reports contain information on storm paths, deaths, injuries, and property damage. An "Outstanding storms of the month" section highlights severe weather events with photographs, illustrations, and narratives. The December issue includes annual tornado, lightning, flash flood, and tropical cyclone summaries.

Monthly Climatic Data for the World

This publication contains monthly means for temperature, pressure, precipitation, vapor pressure, and sunshine for approximately 2,000 surface data collection stations worldwide and monthly mean upper air temperatures, dew point depressions, and wind velocities for approximately 500 observing sites.

Local Climatological Data

LCD publications summarize temperature, relative humidity, precipitation, cloudiness, wind speed and direction observations for several hundred cities in the U.S. and its territories. Each monthly publication also contains 3 hourly weather observations for that month and a hourly summary of precipitation. Annual LCD publications contain a summary of the past calendar year as well as historical averages and extremes.

For Information Call:

(828) 271-4800 Option 2

(828) 271-4010 (TDD)

(828) 271-4876 (Fax)

NOAA National Centers for Environmental Information
Attn: Customer Engagement Branch
151 Patton Avenue
Asheville, NC 28801-5001

Customer Services Number: (828) 271-4800, option 2
TDD : (828) 271-4010
Fax number: (828) 271-4876

NCEI now offers free online access to the *Climatological Data* publication.
Go to : www.ncdc.noaa.gov and choose Most Popular.