



# CLIMATOLOGICAL DATA MARYLAND AND DELAWARE



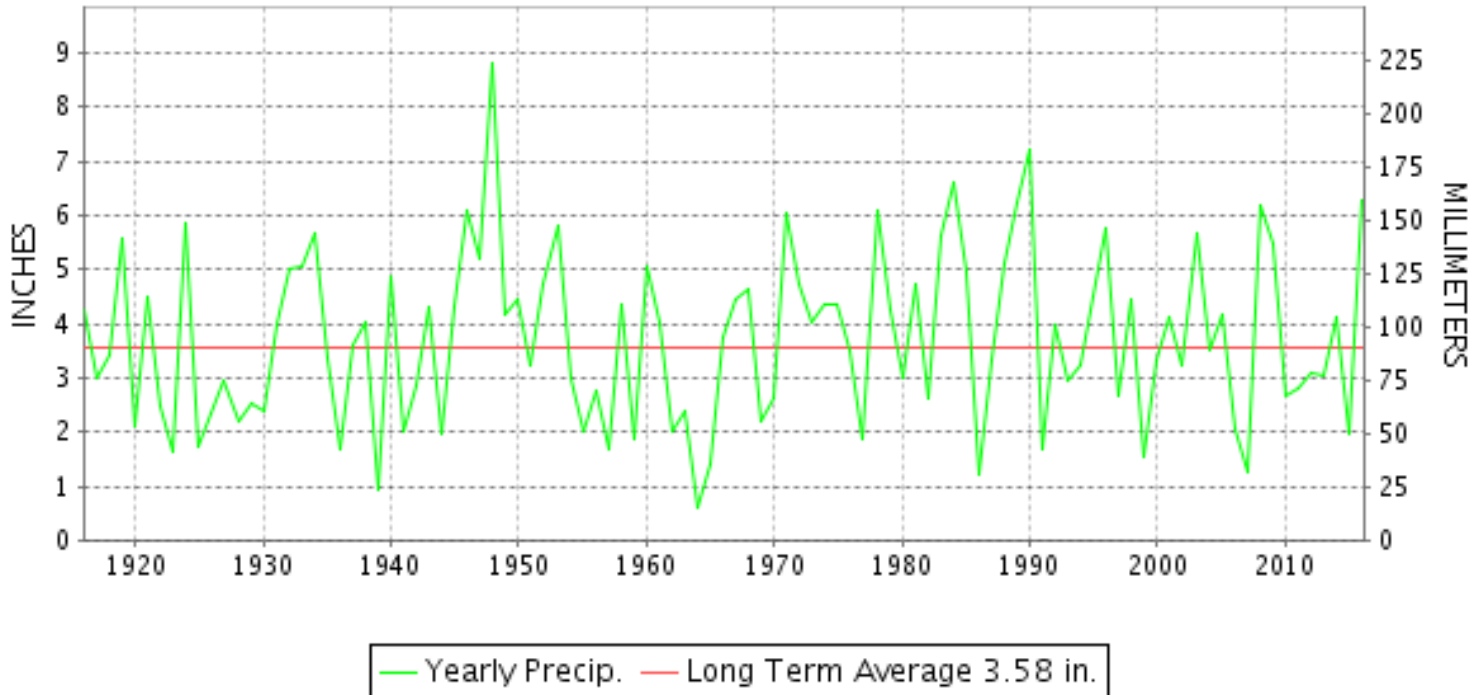
MAY 2016

VOLUME 120 NUMBER 05

ISSN 0145-0549

GHCND Ver: 3.22-upd-2016082405

## MAY PRECIPITATION BY YEAR



### TEMPERATURE AND PRECIPITATION EXTREMES

#### MARYLAND

HIGHEST TEMPERATURE	92	MAY 29++	2 STATIONS
LOWEST TEMPERATURE	30	MAY 16	SNOW HILL 4 N
GREATEST TOTAL PRECIPITATION	9.26		MECHANICSVILLE 5 NE
LEAST TOTAL PRECIPITATION	3.81		MARYLAND SCIENCE CENTER
GREATEST 1 DAY PRECIPITATION	1.95	MAY 07	BRIGHTON DAM

"I certify that this is an official publication of the National Oceanic and Atmospheric Administration (NOAA) It is compiled using information from weather observing sites supervised by NOAA/National Weather Service and received at the National Centers for Environmental Information(NCEI), Asheville, North Carolina 28801."

Director  
National Centers for Environmental Information

noaa

National  
Oceanic and  
Atmospheric Administration

National  
Environmental Satellite, Data  
and Information Service

National  
Centers for Environmental Information  
Asheville, North Carolina

**DELAWARE**

HIGHEST TEMPERATURE	89	MAY 31+	3 STATIONS
LOWEST TEMPERATURE	38	MAY 16	DOVER
GREATEST TOTAL PRECIPITATION	7.30		WILMINGTON NEW CASTLE CO AP
LEAST TOTAL PRECIPITATION	6.13		DOVER
GREATEST 1 DAY PRECIPITATION	1.91	MAY 30	WILMINGTON PORTER RSCH

MONTHLY STATION AND DIVISION SUMMARY

STATION	TEMPERATURE (°F)											PRECIPITATION (IN)																										
	AVERAGE MAXIMUM	AVERAGE MINIMUM	AVERAGE	DEPARTURE FROM NORMAL	HIGHEST	DATE	LOWEST	DATE	HEATING DEG. DAYS	COOLING DEG. DAYS	NO. OF DAYS				TOTAL	DEPARTURE FROM NORMAL	GREATEST 24 HOURS	DATE	ICE PELLETS, SNOW			NO. OF DAYS																
											MAX		MIN						TOTAL	MAX DEPTH ON GROUND	DATE	.10 OR MORE	.50 OR MORE	1.00 OR MORE														
											>=90	<=32	<=32	<=0																								
<b>MARYLAND SOUTHERN EASTERN SHORE 01</b>	M	M	M								0	0	0	0	M																							
ASSATEAGUE	71.9M	52.9M	62.4M	-1.2	89	26	40	16	138E	66E	0	0	0	0	MA 8.18	4.60	1.75	21	M				9	4	3													
PRINCESS ANNE	73.1M	54.3	63.7M		88	27+	38	16	119E	87E	0	0	0	0	5.48	0.86	03	M				13	4	0														
SALISBURY 2N	70.5	52.5	61.5	-1.1	89	26	35	16	159	61	0	0	0	0	6.43	2.81	1.30	30	M 0.0	0		13	6	1														
SALISBURY FAA AP	74.0	49.0	61.5	-3.2	91	26	30	16	170	69	3	0	1	0	6.84	3.32	0.95	21	M			14	7	0														
SNOW HILL 4 N			62.3	-0.9B																																		
---DIVISIONAL DATA----->			62.3	-0.9B											6.25	2.63B																						
<b>CENTRAL EASTERN SHORE 02</b>																																						
ROYAL OAK 2 SSW	70.4	53.2	61.8	-3.6	88	26	39	16	160	68	0	0	0	0	7.58	3.39	1.40	03	0.0	0		15	4	2														
---DIVISIONAL DATA----->			61.8	-2.5B											7.58	3.67B																						
<b>LOWER SOUTHERN 03</b>																																						
MECHANICSVILLE 5 NE	67.5	51.8	59.7	-2.8	87	27	36	16	207	49	0	0	0	0	9.26	5.06	1.64	30	0.0	0		14	6	5														
SOLOMONS	71.1M	56.9M	64.0M	-1.6	86	25	45	15	96E	75E	0	0	0	0	A 6.80	0.62	03	M				7	1	0														
---DIVISIONAL DATA----->			61.9	-1.5B											8.03	3.89B																						
<b>UPPER SOUTHERN 04</b>																																						
BALTIMORE WASH INTL AP	70.1	52.9	61.5	-1.4	90	27+	37	16	175	75	2	0	0	0	5.24	1.25	1.11	06	0.0	0		11	3	1														
BELTSVILLE	69.1	53.3	61.2	-2.2	89	28	38	16	176	66	0	0	0	0	5.15	0.83	1.05	30	0.0	0		11	3	1														
DALECARLIA RSVR	69.8M	53.7M	61.8M	-3.3	91	29+	41	16	172E	80E	3	0	0	0	M 6.75	2.31	1.85	03	0.0	0		13	4	1														
MARYLAND SCIENCE CENTER	70.7	56.7	63.7	-2.4	91	26	44	16	133	102	1	0	0	0	3.81	0.32	1.33	06	M			9	2	1														
NATL ARBORETUM DC	72.9	55.5	64.2	-1.7	92	29+	42	16	104	87	2	0	0	0	5.89	1.61	0.91	07	0.0	0		16	3	0														
OXON HILL	69.7	53.4	61.5	-3.5	90	27	40	16	168	69	1	0	0	0	5.83	1.47	0.92	07	0.0	0		15	5	0														
UPPER MARLBORO 3 NNW	M	M	M												M																							
---DIVISIONAL DATA----->			62.3	-1.3B											5.18	0.74B																						
<b>NORTHERN EASTERN SHORE 05</b>																																						
STEVENSVILLE 2SW	69.0	54.1	61.5	-1.8	88	27+	46	16	170	72	0	0	0	0	6.28		1.28	22	0.0	0		13	4	3														
SUDLERSVILLE 1S															7.65		1.80	29	0.0	0		11	7	2														
---DIVISIONAL DATA----->			61.5	-1.5B											6.97	2.82B																						
<b>NORTHERN CENTRAL 06</b>																																						
ABERDEEN PHILLIPS FLD	69.0	51.9	60.5	-2.0	89	28+	39	16	197	63	0	0	0	0	A 4.72	0.77	1.13	07	0.0	0		8	1	1														
BRIGHTON DAM	68.5	51.4M	59.9M		87	28	40	17+	190E	47E	0	0	0	0	M 8.64		1.95	07	0.0	0		14	7	2														
CONOWINGO DAM	67.5	50.9	59.2	-4.6	87	28	39	16	230	56	0	0	0	0	F 5.16	1.20	1.66	07	0.0	0		10	4	1														
CYLBURN	70.5	55.8	63.1	1.0	88	28+	41	16	133	84	0	0	0	0	MA 4.86		1.43	07	0.0	0		6	1	1														
DAMASCUS 3 SSW	68.1	52.1	60.1	-1.6	88	28+	36	16	210	67	0	0	0	0	5.13	0.96	1.35	06	0.0	0		11	4	1														
EMMITSBURG 2 SE	68.4	50.1	59.2	-1.5	88	29+	35	17+	227	54	0	0	0	0	5.61	1.27	1.27	03	0.0	0		13	3	1														

# MONTHLY STATION AND DIVISION SUMMARY

STATION	TEMPERATURE (°F)												PRECIPITATION (IN)																						
	AVERAGE MAXIMUM	AVERAGE MINIMUM	AVERAGE	DEPARTURE FROM NORMAL	HIGHEST	DATE	LOWEST	DATE	HEATING DEG. DAYS	COOLING DEG. DAYS	NO. OF DAYS				TOTAL	DEPARTURE FROM NORMAL	GREATEST 24 HOURS	DATE	ICE PELLETS, SNOW			NO. OF DAYS													
											MAX		MIN						TOTAL	MAX DEPTH ON GROUND	DATE	.10 OR MORE	.50 OR MORE	1.00 OR MORE											
											>=90	<=32	<=32	<=0																					
FREDERICK 2 NNE	M	M	M								0	0	0	0	M				M																
MILLERS 4 NE	69.1	50.8	59.9	-0.9	87	28	34	16	209	59	0	0	0	0	5.41	1.15	0.95	31	0.0	0				13	3	0									
SMITHSBURG 2NW	67.0M	48.7M	57.9M	-2.4	88	29+	33	16	252E	38E	0	0	0	0	M 6.62	2.48	1.40	03	0.0	0				20	6	2									
--DIVISIONAL DATA-----> APPALACHIAN MOUNTAIN 07			60.0	-2.3B										5.22	0.60B																				
CUMBERLAND 2	70.5	51.0	60.7	-3.1	92	29	38	17+	190	64	1	0	0	0	5.17	1.15	0.88	21	0.0	0				13	4	0									
FROSTBURG 2	64.2	46.6	55.4	-1.2	85	29	33	16	313	26	0	0	0	0	5.67	0.79	0.91	21	0.0	0				16	3	0									
SHARPSBURG 5 S	69.4	49.7	59.5	-1.6	90	29+	34	16	215	56	2	0	0	0	5.58	1.42	0.85	04	0.0	0				15	4	0									
WILLIAMSPORT														M					M																
--DIVISIONAL DATA-----> ALLEGHENY PLATEAU 08			58.5	-1.8B										5.47	1.26B																				
OAKLAND 1 SE	67.0	48.1	57.5	1.4	85	28	34	16	257	34	0	0	0	0	7.23	2.09	0.98	21	0.0	0				18	5	0									
SAVAGE RIVER DAM	65.4	48.0	56.7	-1.0	84	29+	38	16	274	27	0	0	0	0	5.43	0.91	0.83	21	0.0	0				16	3	0									
SINES DEEP CREEK	67.1M	43.0M	55.1M		82	30	31	17	299E	1E	0	0	2	0	A 6.53		0.85	18	M 0.0	0				9	2	0									
--DIVISIONAL DATA-----> DELAWARE NORTHERN 01			56.4	-0.1B										6.40	1.86B																				
WILMINGTON NEW CASTLE CO AP	70.1	53.5	61.8	-1.0	89	31	39	16	171	78	0	0	0	0	7.30	3.35	1.63	21	0.0	0				11	5	3									
WILMINGTON PORTER RSCH	70.3	53.5	61.9	-0.5	89	28+	40	16	167	78	0	0	0	0	7.27	2.89	1.91	30	0.0	0				11	5	3									
--DIVISIONAL DATA-----> SOUTHERN 02			61.9	-0.7B										7.29	2.87B																				
DOVER	69.8	53.8	61.8	-2.4	89	26	38	16	163	74	0	0	0	0	A 6.13	1.88	1.36	03	M						7	3	1								
--DIVISIONAL DATA----->			61.8	-1.1B										6.13	2.01B																				

DAILY PRECIPITATION (INCHES)

STATION	TOTAL	DAY OF MONTH																																	
		01	02	03	04	05	06	07	08	09	10	11	12	13	14	15	16	17	18	19	20	21	22	23	24	25	26	27	28	29	30	31			
<b>MARYLAND</b>																																			
<b>SOUTHERN</b>																																			
<b>EASTERN SHORE 01</b>																																			
ASSATEAGUE	M	-	-	-	-	-	-	-	-	-	-	-	-	-	-	-	-	-	-	-	-	-	-	-	-	-	-	-	-	-	-	-	-	-	-
PRINCESS ANNE	MA 8.18	-	1.16	0.23			1.06	-	-		0.21	0.21			0.67	-	0.37					1.75	-									*	2.42 <sub>a</sub>		0.10
SALISBURY 2N	5.48	0.53	0.12	0.86	0.23	0.01	0.72	0.05	0.01	0.04	0.07	0.43	0.01	0.18	0.01	0.27	0.01	0.18	0.05			0.48	0.43	0.07								0.03	0.54	0.15	
SALISBURY FAA AP	6.43	0.71	0.28	0.53	0.08	0.01	0.63	0.02		0.06	0.12	0.38		0.22	0.30			0.22	T			0.75	0.18	0.01							0.04	1.30	0.59		
SNOW HILL 4 N	6.84	0.36	0.10	0.55	0.21		0.65	0.01		0.10	0.04	0.60	0.01	0.09	0.01	0.20		0.38	0.03			0.95	0.28	0.57	0.01					0.04	0.80	0.85			
<b>CENTRAL</b>																																			
<b>EASTERN SHORE 02</b>																																			
ROYAL OAK 2 SSW	7.58	0.93	0.18	1.40	0.18	0.03	1.15	0.26	0.03	0.02	0.04	0.15	0.01	0.10	0.18			0.38	0.03	T		0.98	0.30	0.41	0.43					0.03	0.33	0.03			
<b>LOWER SOUTHERN 03</b>																																			
MECHANICSVILLE 5 NE	9.26	0.32	1.03	0.36	0.34	0.05	T	1.06	0.01		0.19	0.13	0.02	T	0.03	0.14			0.41			0.02	1.45	0.57	1.27								1.64	0.22	
SOLOMONS	A 6.80	1.03 <sub>a</sub>	0.48	0.62	0.03	*	*	*	1.15 <sub>a</sub>	0.44	0.20	0.10	0.01	*	*	0.19 <sub>a</sub>		0.24			*	*	1.71 <sub>a</sub>	0.05				*	*	0.17 <sub>a</sub>	0.38				
<b>UPPER SOUTHERN 04</b>																																			
BALTIMORE WASH INTL AP	5.24	0.47	0.57	0.07	0.07	0.03	1.11	0.09	0.01	T	0.13	0.89		0.07	0.12			0.23	T	T		0.44	0.18	0.43	0.01					0.32	T				
BELTSVILLE	5.15	0.27	0.25	0.84	0.16	0.01	0.05	0.86	0.06		0.05	0.03	0.17	T	0.09	0.09		T	0.29	0.02		0.35	0.09	0.18	0.24							1.05			
DALECARLIA RSVR	M 6.75	0.24	0.30	1.85	0.24	0.05	0.05	0.97	0.14			0.05	0.26			0.26			0.43			0.36	0.61	0.57	-							0.37			
MARYLAND SCIENCE CENTER	3.81	0.24	0.21	0.05	0.06	0.01	1.33	0.02			0.01	0.32		0.02	0.05			0.17				0.55	0.22	0.40						0.15					
NATL ARBORETUM DC	5.89	0.29	0.26	0.89	0.13	0.03	0.13	0.91	0.20	T	0.08	0.09	0.18		0.11	0.14			0.40	0.03		0.22	0.42	0.38	0.22						0.75	0.03			
OXON HILL	5.83	0.10	0.59	0.58	0.23	0.01	0.24	0.92	0.03		0.03	0.22	0.12		0.09	0.15			0.42	0.01		0.24	0.62	0.41	0.17						0.65				
UPPER MARLBORO 3 NNW	M	-	-	-	-	-	-	-	-	-	-	-	-	-	-	-	-	-	-	-	-	-	-	-	-	-	-	-	-	-	-	-	-	-	
<b>NORTHERN</b>																																			
<b>EASTERN SHORE 05</b>																																			
STEVENSVILLE 2SW	6.28	0.10	0.46	1.02	0.13	0.01	0.04	1.05	0.03		T	0.35	0.20	0.01	0.17	0.16			0.32	0.01		0.04	1.28	0.24	0.01						0.64	0.01			
SUDLERSVILLE 1S	7.65	0.55	T	0.70	0.05	1.30				T	0.05	0.50			0.15		0.05	0.32	T			0.93	0.35	0.10	T					1.80	0.80				
<b>NORTHERN CENTRAL 06</b>																																			
ABERDEEN PHILLIPS FLD	A 4.72	*	0.33 <sub>a</sub>	0.40	0.13	0.02	0.11	1.13			T	0.03	0.42		*	0.31 <sub>a</sub>			0.25				*	0.81 <sub>a</sub>	0.38							0.40			
BRIGHTON DAM	M 8.64	0.85	1.00	0.65	0.35	0.10	0.05	1.95	-		0.05	0.35	0.40		-	0.25		0.10	0.25	T		0.85	0.65	-	0.70	0.05							0.04		
CONOWINGO DAM	F 5.16	0.13	0.52	0.51	0.25		0.00 <sup>z</sup>	1.66					0.35						0.21				0.70		0.46							0.37			
CYLBURN	MA 4.86	*	*	0.96 <sub>a</sub>	0.14	0.04	0.11	1.43	-	*	0.01 <sub>a</sub>	0.19	0.36	T	*	*	*	0.27 <sub>a</sub>	0.26	T		0.06	*	*	1.03 <sub>a</sub>						-	-	-	-	
DAMASCUS 3 SSW	5.13	0.59	0.50	0.03	0.32	0.09	1.35	0.10	0.10	0.04	0.02	0.31	T	0.08	0.23	0.03		0.23	T		0.51	0.47	0.02				0.06		0.04	0.01	0.01	0.02			
EMMITSBURG 2 SE	5.61	0.35	0.32	1.27	0.30	0.34	0.29	0.63			T	0.13	0.03	T	0.18	0.08			0.07	0.02		0.17	0.77	0.43	0.05						0.16	0.02			
FREDERICK 2 NNE	M	-	-	-	-	-	-	-	-	-	-	-	-	-	-	-	-	-	-	-	-	-	-	-	-	-	-	-	-	-	-	-	-	-	
MILLERS 4 NE	5.41	0.59	0.02	0.35	0.40	0.11	0.77	0.24	T	T	0.09	0.04	0.02	0.17	0.09	0.05			0.12	T	0.01	0.42	0.48	0.10	T					0.07	T	0.32	0.95		
SMITHSBURG 2NW	M 6.62	0.50	0.15	1.40	0.55	0.10	0.17	1.00			0.10	0.12	0.10		0.11	0.27			0.12	0.10		0.50	0.15	0.55	0.25					-	-	0.13	0.25		
<b>APPALACHIAN</b>																																			
<b>MOUNTAIN 07</b>																																			
CUMBERLAND 2	5.17	0.70	0.09	0.03		0.33	0.03	0.20	0.05		0.10	0.22	0.06	0.06	0.01	0.12			T	0.50	0.13	0.88	0.33	0.50						0.09	0.28	0.02	0.44		
FROSTBURG 2	5.67	0.69	0.14	0.03		0.21	0.19	0.25	0.07		0.23	0.19	0.05	0.08	0.02	0.20			0.02	0.58	0.25	0.91	0.43	0.35	0.01					0.35	0.01	0.31	0.10		
SHARPSBURG 5 S	5.58	0.28	0.64	0.31	0.85		0.33	0.48	0.05		0.04	0.15	0.16	T	0.17	0.19			0.14	0.05		0.56	0.26	0.72	0.05					0.01		0.14			
WILLIAMSPORT	M	0.43	-	-	0.97	1.00	0.27	0.39	0.04	-	-	-	-	-	-	-	-	-	0.04	-	-	-	-	-	-	-	-	-	-	-	-	-	-	-	

DAILY PRECIPITATION (INCHES)

STATION	TOTAL	DAY OF MONTH																															
		01	02	03	04	05	06	07	08	09	10	11	12	13	14	15	16	17	18	19	20	21	22	23	24	25	26	27	28	29	30	31	
<b>ALLEGHENY PLATEAU 08</b>																																	
OAKLAND 1 SE	7.23	0.38	0.58	0.07	0.14	0.11	0.75	0.17	0.34		0.40	0.14	0.45	0.35	0.07	0.43	0.01	0.06	0.55	0.55		0.98	0.25	0.19	0.04			0.07	0.01		0.10	0.04	
SAVAGE RIVER DAM	5.43	0.55	0.08			0.03	0.48	0.17	0.15		0.22	0.11	0.13	0.37		0.27		T	0.50	0.36		0.83	0.24	0.25	0.05			0.17			0.47		
SINES DEEP CREEK	A 6.53	*	0.80 <sub>a</sub>	0.20		0.30	0.53	*	*	0.35 <sub>a</sub>	0.30	0.10	0.15	0.10	*	*	0.75 <sub>a</sub>		0.85	0.40		*	*	1.45 <sub>a</sub>	0.05				*	*	0.20 <sub>a</sub>		
<b>DELAWARE</b>																																	
<b>NORTHERN 01</b>																																	
WILMINGTON NEW CASTLE CO AP	7.30	0.36	0.25	0.33	0.01	T	1.53	0.13			0.01	0.07		0.09	0.13			0.19	T	T		1.63	0.08	0.74					0.69	1.06			
WILMINGTON PORTER RSCH	7.27	0.49	0.07	0.52	0.06	T	1.25	0.07			0.02			0.15	0.10			0.16		0.02		1.33	0.25	0.55					0.32	1.91			
<b>SOUTHERN 02</b>																																	
DOVER	A 6.13	0.66	0.01	1.36	0.08	0.01	0.99	0.10		0.02		0.21	*	0.11 <sub>a</sub>		0.13		0.25				*	*	1.08 <sub>a</sub>					*		1.12 <sub>a</sub>		

DAILY TEMPERATURES (°F)

STATION	OB. TIME	MAX/MIN	DAY OF MONTH																															AVERAGE		
			01	02	03	04	05	06	07	08	09	10	11	12	13	14	15	16	17	18	19	20	21	22	23	24	25	26	27	28	29	30	31			
<b>MARYLAND SOUTHERN EASTERN SHORE 01</b> ASSATEAGUE	VA	MAX MIN																																		M M
PRINCESS ANNE	17	MAX MIN		80	75	73	53	53			69	65	68	70	70			61	60	66	73	77			69	80	86	89	87			74	84	71.9		
SALISBURY 2N	17	MAX MIN	59	79	78	51	55	54	64	74	70	68	67	72		77	76	63	65	67	73	77	74	61	55	55	57	57	67			66	65	52.9		
SALISBURY FAA AP	24	MAX MIN	59	79	78	51	55	54	64	74	70	68	67	72		77	76	63	65	67	73	77	74	61	55	55	57	57	67			66	65	52.9		
SNOW HILL 4 N	17	MAX MIN	58	80	73	56	53	53	64	73	69	66	68	70	70	77	62	61	60	66	73	77	61	58	69	80	86	89	87	87	83	74	84	70.5		
			49	53	51	50	48	48	49	48	41	51	51	55	54	52	47	35	53	53	49	46	52	54	55	55	57	57	67	59	58	66	65	52.5		
			60	82	81	67	54	56	66	74	71	68	68	72	73	76	76	67	69	68	72	77	72	61	67	85	90	91	90	87	86	85	84	74.0		
			45	49	61	47	44	45	46	44	37	50	47	50	49	48	43	30	40	48	45	40	46	52	51	51	53	52	62	61	56	66	62	49.0		
<b>CENTRAL EASTERN SHORE 02</b> ROYAL OAK 2 SSW	17	MAX MIN	57	77	74	60	55	53	64	70	65	65	60	70	73	75	62	64	61	68	71	75	63	58	71	81	85	88	86	86	84	77	84	70.4		
			49	48	60	50	48	43	47	50	45	54	51	57	55	47	48	39	50	50	53	48	52	53	55	54	55	58	70	67	60	69	65	53.2		
<b>LOWER SOUTHERN 03</b> MECHANICSVILLE 5 NE	07	MAX MIN	57	57	77	68	57	54	53	61	70	62	61	60	64	70	75	60	63	54	63	67	74	58	57	68	80	83	87	86	86	80	80	67.5		
			49	50	52	52	49	49	48	51	43	49	53	54	56	48	47	36	38	51	51	47	53	53	53	53	55	54	61	66	59	61	66	51.8		
SOLOMONS	08	MAX MIN	68	77	69	57				71	63	64	60	66			78	65	60	66	74		71	70	81	86	82			81	75	80	71.1			
			50	63	52	50				49	54	55	57	59			45	54	54	55	55		54	57	59	62	69			64	67	68	56.9			
<b>UPPER SOUTHERN 04</b> BALTIMORE WASH INTL AP	24	MAX MIN	55	72	67	56	56	53	65	70	66	59	57	66	76	76	60	66	56	65	73	75	62	60	75	82	86	90	90	88	85	82	85	70.1		
			49	53	56	50	49	50	48	46	41	52	51	56	53	49	42	37	51	51	52	45	53	52	55	56	60	57	68	66	60	65	66	52.9		
BELTSVILLE	08	MAX MIN	58	56	78	69	57	56	53	65	70	63	61	58	65	76	75	59	66	55	65	72	75	57	62	73	82	86	88	89	88	84	81	69.1		
			50	51	55	52	49	51	48	51	41	55	52	55	58	47	47	38	49	51	53	45	54	52	52	57	57	56	66	67	61	64	67	53.3		
DALECARLIA RSVR	08	MAX MIN	57	57	73	79	60	57	54	66	70	63	61	57	68	76	76	59	67	55	65	72	77	57	57		83	88	91	91	91	85	82	69.8		
			50	51	54	60	49	50	49	51	44	51	52	54	57	49	49	41	48	52	53	48	55	53	53		54	58	61	70	63	65	67	53.7		
MARYLAND SCIENCE CENTER	24	MAX MIN	55	69	66	57	57	55	64	70	68	62	59	66	76	76	60	67	59	67	73	74	65	63	74	83	87	91	89	87	85	82	86	70.7		
			50	54	56	51	50	50	50	55	50	53	51	57	62	53	48	44	54	54	58	56	54	53	57	59	66	65	71	71	68	68	71	56.7		
NATL ARBORETUM DC	07	MAX MIN	59	62	80	75	60	57	60	65	73	67	64	65	68	78	76	76	69	60	69	73	78	78	65	76	83	85	86	92	92	87	83	72.9		
			51	55	60	55	50	51	53	55	44	56	54	55	63	50	49	42	47	55	55	49	51	51	57	61	57	59	61	71	64	70	70	55.5		
OXON HILL	08	MAX MIN	58	58	79	74	59	55	54	67	72	64	65	59	64	78	76	59	67	56	64	73	76	54	57	74	83	86	90	89	89	83	79	69.7		
			50	50	55	53	49	50	50	52	46	49	52	53	56	50	47	40	46	52	53	49	54	52	53	55	56	59	61	68	62	66	66	53.4		
UPPER MARLBORO 3 NNW	08	MAX MIN																																	M M	
<b>NORTHERN EASTERN SHORE 05</b> STEVENSVILLE 2SW	07	MAX MIN	62	56	73	65	56	55	52	63	69	63	61	57	68	74	77	61	68	59	63	73	73	58	60	74	84	88	88	87	87	85	80	69.0		
			48	49	54	52	49	49	49	49	49	49	51	52	57	57	51	46	47	52	54	51	51	53	53	57	57	69	57	69	65	65	65	54.1		
<b>NORTHERN CENTRAL 06</b>																																				

DAILY TEMPERATURES (°F)

STATION	OB. TIME	MAX/MIN	DAY OF MONTH																															AVERAGE
			01	02	03	04	05	06	07	08	09	10	11	12	13	14	15	16	17	18	19	20	21	22	23	24	25	26	27	28	29	30	31	
ABERDEEN PHILLIPS FLD	07	MAX	59	53	71	60	57	56	54	61	69	67	58	61	72	75	75	58	67	58	67	71	75	59	64	74	83	87	89	89	87	83	81	69.0
		MIN	46	47	52	51	49	50	48	49	41	44	51	53	57	52	47	39	43	51	53	48	49	51	52	52	55	57	59	67	62	67	68	51.9
BRIGHTON DAM	08	MAX	54	76	75	66	57	53	60	64	60	61	61	57	69	74	75	65	65	54	64	75	63	56	72	73	80	85	81	87	81	81	80	68.5
		MIN	48	50	53	51	48	49	49	48	43		50	52	56	46	43	40	40	49	52	46	49	53	53	53	53	54	65	64	60	60	64	51.4
CONOWINGO DAM	07	MAX	58	53	67	60	53	56	53	62	68	66	56	59	68	69	72	57	66	58	64	71	74	59	64	72	81	85	86	87	85	84	79	67.5
		MIN	46	45	49	49	49	48	48	48	42	46	49	52	53	49	45	39	41	48	50	46	46	51	53	53	54	57	59	65	63	66	68	50.9
CYLBURN	08	MAX	58	59	75	72	66	65	64	75	72	64	55	62	72	77	73	57	64	55	68	70	72	57	64	80	80	83	88	88	86	83	82	70.5
		MIN	48	50	59	59	59	59	61	60	45	52	50	52	62	54	45	41	48	51	51	48	53	52	55	62	60	58	69	68	65	66	67	55.8
DAMASCUS 3 SSW	22	MAX	54	76	65	56	53	51	63	68	60	56	56	67	73	72	56	64	54	60	69	73	60	54	74	80	83	87	88	88	84	81	85	68.1
		MIN	48	51	54	50	47	48	47	49	45	50	49	54	59	48	41	36	49	48	50	48	51	49	53	52	56	60	65	66	63	62	67	52.1
EMMITSBURG 2 SE	07	MAX	57	56	77	66	57	56	54	63	68	60	56	57	70	75	71	57	67	58	58	72	73	60	58	76	82	85	87	88	88	84	85	68.4
		MIN	46	47	53	49	49	50	49	49	42	42	50	51	56	47	43	35	35	49	51	48	44	50	50	52	52	54	56	65	63	62	63	50.1
FREDERICK 2 NNE	07	MAX																																M
		MIN																																M
MILLERS 4 NE	18	MAX	54	73	71	61	53	51	61	66	65	57	58	66	73	71	62	63	62	59	69	73	71	58	73	80	83	86	86	87	84	82	83	69.1
		MIN	45	50	54	49	46	48	46	50	42	49	47	51	58	48	40	34	48	45	50	43	49	48	51	51	58	60	64	65	60	62	63	50.8
SMITHSBURG 2NW	08	MAX	55	60	79	69	62	57	52	64	66	59	58	60	75	73	69	54	66	61	57	70	74	53	54	73	79			88	88	84	84	67.0
		MIN	47	49	53	52	48	48	46	48	40	44	47	52	55	44	42	33	38	48	46	43	49	49	49	47	51			62	62	60	61	48.7
<b>APPALACHIAN MOUNTAIN 07</b>																																		
CUMBERLAND 2	18	MAX	55	70	82	74	64	62	62	71	69	58	59	64	69	78	66	59	70	60	51	73	77	54	57	76	82	89	86	88	92	84	85	70.5
		MIN	51	52	57	50	50	50	48	49	42	44	52	55	57	48	43	38	38	47	46	42	44	52	52	52	52	55	61	64	66	62	61	51.0
FROSTBURG 2	07	MAX	50	68	75	67	59	55	54	65	62	53	51	59	62	69	62	50	61	55	46	66	69	49	52	71	75	82	80	83	85	76	80	64.2
		MIN	47	48	53	44	45	45	44	44	41	42	46	50	54	42	35	33	35	43	38	39	43	46	47	50	51	53	59	59	60	55	55	46.6
SHARPSBURG 5 S	07	MAX	56	62	82	71	61	56	53	67	69	60	61	60	72	77	71	57	68	58	58	72	74	54	55	71	82	86	88	90	90	84	86	69.4
		MIN	50	51	54	53	50	50	46	48	40	43	50	52	56	45	44	34	37	49	49	42	43	51	51	48	49	51	59	63	60	61	61	49.7
<b>ALLEGHENY PLATEAU 08</b>																																		
OAKLAND 1 SE	07	MAX	59	72	74	67	58	58	60	69	67	60	63	68	76	68	63	50	61	53	48	66	67	53	55	68	76	81	81	85	84	84	82	67.0
		MIN	50	53	55	50	47	47	44	46	39	44	51	53	54	43	35	34	40	46	37	37	45	49	49	48	47	55	60	59	61	57	55	48.1
SAVAGE RIVER DAM	08	MAX	53	73	75	67	60	58	57	69	64	54	54	59	66	69	58	51	60	54	49	67	69	52	55	71	75	80	80	84	84	77	82	65.4
		MIN	49	52	55	48	48	47	46	46	40	39	49	52	55	43	41	38	39	44	41	39	39	49	50	50	49	49	55	61	61	58	57	48.0
SINES DEEP CREEK	07	MAX		73	72	70	62	56			67	60	60	67	75			67	60	55	65	63			60	60	70	77	78			82	78	67.1
		MIN		45	53	48	43	44			40	40	48	50	52			32	31	42	34	35			35	45	38	44	51			43	54	43.0
<b>DELAWARE NORTHERN 01</b>																																		
WILMINGTON NEW CASTLE CO AP	24	MAX	53	65	59	54	56	56	61	70	67	60	65	74	70	75	60	67	59	68	74	77	60	66	74	83	87	87	88	87	83	79	89	70.1
		MIN	47	48	53	50	49	50	49	50	45	51	51	56	58	51	45	39	50	50	53	46	53	52	54	56	56	59	67	67	64	70	69	53.5
WILMINGTON PORTER RSCH	24	MAX	53	63	58	53	55	55	59	67	70	70	64	76	69	75	75	64	60	66	72	74	59	65	74	80	86	88	89	89	85	79	86	70.3
		MIN	47	46	51	48	47	47	48	50	49	49	51	56	59	53	45	40	51	50	54	55	51	50	53	55	56	61	67	67	65	68	69	53.5
<b>SOUTHERN 02</b>																																		
DOVER	16	MAX	54	71	68	60	53	53	62	70	67	61	60	74	66	74	61	65	61	67	75	77	61	62	71	80	86	89	88	87	80	77	84	69.8



MARYLAND AND DELAWARE  
201605

# DAILY TEMPERATURES (°F)

STATION	OB. TIME	MAX/MIN	DAY OF MONTH																															AVERAGE
			01	02	03	04	05	06	07	08	09	10	11	12	13	14	15	16	17	18	19	20	21	22	23	24	25	26	27	28	29	30	31	
		MIN	49	50	51	49	47	47	49	53	44	53	48	54	58	53	47	38	52	48	52	48	56	53	56	57	57	61	70	69	61	69	70	53.8

## SNOWFALL AND SNOW ON GROUND (INCHES)

STATION		DAY OF MONTH																														
		01	02	03	04	05	06	07	08	09	10	11	12	13	14	15	16	17	18	19	20	21	22	23	24	25	26	27	28	29	30	31
<b>MARYLAND</b> <b>SOUTHERN</b> <b>EASTERN SHORE 01</b> ASSATEAGUE PRINCESS ANNE SALISBURY 2N SALISBURY FAA AP SNOW HILL 4 N	SNOWFALL																															
	SNOWFALL																															
	SNOWFALL																															
	SNOWFALL	-	-																													
	SN ON GND		-																													
	SNOWFALL																															
<b>DELAWARE</b> <b>NORTHERN 01</b> WILMINGTON NEW CASTLE CO AP WILMINGTON PORTER RSCH	SNOWFALL																															
	SN ON GND																															
	SNOWFALL																															
	SN ON GND																															

Snowfall: Includes snow and ice. Values for NWS stations (J index note) are Mid-Mid (LST).

Snow on ground: Includes snow, sleet, ice, and hail. Values for NWS stations (J index note) are observed at 12 UTC (GMT).

Water Equivalent: Given for NWS stations (J index note) only, when snow depth is 2 inches or more, and is measured at 18 UTC (GMT)

## PAN EVAPORATION AND WIND

STATION		DAY OF MONTH																															TOTAL OR AVERAGE
		01	02	03	04	05	06	07	08	09	10	11	12	13	14	15	16	17	18	19	20	21	22	23	24	25	26	27	28	29	30	31	
MARYLAND UPPER SOUTHERN 04 BELTSVILLE	WIND	-	29	28	41	32	39	23	19	58	19	35	15	26	30	76	79	44	12	27	15	48	38	36	39	53	26	27	30	31	28	23	1060E
	EVAP	-	0.08	0.00	0.15	0.04	0.03	0.02	0.09	0.25	0.02	0.05	0.01	0.04	0.09	0.18	0.21	0.20	0.00	0.11	0.10	0.19	0.03	0.01	0.10	0.27	0.23	0.24	0.27	0.27	0.19	0.13	3.72E
	MAX	58	58	68	80	63	58	57	72	77	62	65	52 <sup>1</sup>	68	76	78	65	74	68	71	77	75	84	61	77	86	92	93	98	97	90	90	75.2
	MIN	-	50	52	55	50	50	49	48	46	53	52	51	55	52	42	42	43	52	50	51	52	52	50	55	56	60	63	69	65	66	69	53.3
UPPER MARLBORO 3 NNW	WIND	-	-	-	-	-	-	-	-	-	-	-	-	-	-	-	-	-	-	-	-	-	-	-	-	-	-	-	-	-	-	M	
	EVAP	-	-	-	-	-	-	-	-	-	-	-	-	-	-	-	-	-	-	-	-	-	-	-	-	-	-	-	-	-	-	M	
	MAX	-	-	-	-	-	-	-	-	-	-	-	-	-	-	-	-	-	-	-	-	-	-	-	-	-	-	-	-	-	-	M	
	MIN	-	-	-	-	-	-	-	-	-	-	-	-	-	-	-	-	-	-	-	-	-	-	-	-	-	-	-	-	-	-	M	
ALLEGHENY PLATEAU 08 SAVAGE RIVER DAM	WIND	-	-	-	-	-	-	-	-	-	-	-	-	-	-	-	-	-	-	-	-	-	-	-	-	-	-	-	-	-	M		
	EVAP	-	-	-	-	-	-	-	-	-	-	-	-	-	-	-	-	-	-	-	-	-	-	-	-	-	-	-	-	-	M		
	MAX	-	-	-	-	-	-	-	-	-	-	-	-	-	-	-	-	-	-	-	-	-	-	-	-	-	-	-	-	-	-		
	MIN	-	-	-	-	-	-	-	-	-	-	-	-	-	-	-	-	-	-	-	-	-	-	-	-	-	-	-	-	-	M		

Evaporation: Is measured in hundredths of inches.

Wind: Is measured in miles.

Max and Min: The maximum and minimum temperatures (Fahrenheit) of the water in the evaporation pan.

STATION INDEX

STATION	INDEX NO.	DIVISION	COUNTY	LATITUDE	LONGITUDE	ELEVATION (IN FEET)	OBSERVATION TIME AND TABLES			
							LOCAL STD TIME			
							TEMP	PRECIP	EVAP	SPECIAL SEE (NOTES)
MARYLAND										
ABERDEEN PHILLIPS FLD	0015	06	HARFORD	39 28	76 10W	57	07	07		CH
ASSATEAGUE	0335	01	WORCESTER	38 4	75 13W	10	VAR	VAR		H
BALTIMORE WASH INTL AP R	0465	04	ANNE ARUNDEL	39 10	76 41W	156	24	24		HJ
BELTSVILLE	0700	04	PRINCE GEORGE'S	39 2	76 56W	145	08	08	08	CH
BRIGHTON DAM	1125	06	MONTGOMERY	39 11	77 0W	330	08	08		H
CONOWINGO DAM	2060	06	HARFORD	39 39	76 11W	40	07	07		H
CUMBERLAND 2	2282	07	ALLEGANY	39 39	78 45W	730	18	18		H
CYLBURN	2308	06	BALTIMORE	39 21	76 39W	235	08	08		H
DALECARLIA RSVR	2325	04	DISTRICT OF COLUMBIA	38 56	77 7W	150	08	08		H
DAMASCUS 3 SSW	2336	06	MONTGOMERY	39 16	77 14W	700	22	22		H
EMMITSBURG 2 SE	2906	06	FREDERICK	39 41	77 17W	403	07	07		H
FREDERICK 2 NNE	3353	06	FREDERICK	39 26	77 24W	280	07	07		H
FROSTBURG 2	3415	07	ALLEGANY	39 40	78 56W	2170	07	07		H
MARYLAND SCIENCE CENTER R	5718	04	BALTIMORE (CITY)	39 17	76 37W	20	24	24		H
MECHANICSVILLE 5 NE	5865	03	ST. MARY'S	38 28	76 42W	100	07	07		H
MILLERS 4 NE	5934	06	CARROLL	39 43	76 48W	860	18	18		CH
NATL ARBORETUM DC	6350	04	DISTRICT OF COLUMBIA	38 55	76 58W	50	07	07		H
OAKLAND 1 SE	6620	08	GARRETT	39 25	79 24W	2420	07	07		H
OXON HILL	6800	04	PRINCE GEORGE'S	38 47	76 60W	120	08	08		H
PRINCESS ANNE	7330	01	SOMERSET	38 13	75 41W	20	17	17		H
ROYAL OAK 2 SSW	7806	02	TALBOT	38 43	76 11W	10	17	17		H
SALISBURY 2N	8004	01	WICOMICO	38 24	75 36W	20	17	17		H
SALISBURY FAA AP	8005	01	WICOMICO	38 20	75 31W	48	24	24		H
SAVAGE RIVER DAM	8065	08	GARRETT	39 31	79 8W	1495	08	08	08	CH
SHARPSBURG 5 S	8207	07	WASHINGTON	39 24	77 43W	500	07	07		H
SINES DEEP CREEK	8315	08	GARRETT	39 31	79 25W	2040	07	07		H
SMITHSBURG 2NW	8371	06	WASHINGTON	39 40	77 35W	670	08	08		H
SNOW HILL 4 N	8380	01	WORCESTER	38 14	75 23W	30	17	17		H
SOLOMONS	8405	03	CALVERT	38 19	76 27W	12	08	08		H
STEVENSVILLE 2SW	8557	05	QUEEN ANNE'S	38 58	76 20W	10	07	07		H
SUDLERSVILLE 1S	8657	05	QUEEN ANNE'S	39 10	75 51W	100		20		H
UPPER MARLBORO 3 NNW	9070	04	PRINCE GEORGE'S	38 51	76 46W	130	08	08	08	H
WILLIAMSPORT	9570	07	WASHINGTON	39 37	77 51W	360		06		H
DELAWARE										
DOVER	2730	02	KENT	39 9	75 30W	30	16	16		H
WILMINGTON NEW CASTLE CO AP R	9595	01	NEW CASTLE	39 40	75 36W	79	24	24		HJ
WILMINGTON PORTER RSCH	9605	01	NEW CASTLE	39 46	75 32W	270	24	24		H

# REFERENCE NOTES

**STATION NAMES:** Name of the city, town or locality. Figures and letters following the station names indicate the distance in miles and direction from the post office or town community center.

**DIVISIONS:** Areas within a state of similar climatological characteristics. Division averages are calculated using data from stations that record temperature and/or precipitation. Station Precipitation totals flagged with an 'F' or 'M' are excluded from the Divisional Average calculations of precipitation. Stations with monthly Temperature averages flagged with an 'F' or 'M' are included in the Divisional Average if there are no more than 9 flagged or missing daily values in the month, else they are excluded from the divisional average for temperature.

**NORMALS:** The average value of the meteorological element over a time period. Effective 1 January 2012, the averaging period for station departures is 1981 to 2010. The normals for National Weather Service localities have been adjusted so as to be representative for the current observation site.

The January 2011 through December 2015 publications incorrectly state the computation of divisional departures. Climate Division departures have been, and continue to be, computed from 1971-2000 Normals, not 1981-2010 as stated. Station departures are accurately described as departures from 1981-2010.

**MONTHLY DEGREE DAY TOTALS:** One heating (cooling) degree day is accumulated for each whole degree that the daily mean temperature is below (above) 65 degrees Fahrenheit.

**PRECIPITATION:** Values shown in hundredths of inches are water equivalent totals, i.e., total of liquid and melted frozen precipitation. In the "Monthly Summarized Data" table the total snow and sleet values shown in tenths of inches are unmelted amounts. The max depth on ground values of snow and sleet shown in whole inches are cumulative unmelted amounts. The number of days with .10, .50, 1.00 or more refers to water equivalents.

**PRECIPITATION QUALITY CONTROL:** The NCEI quality control process may flag precipitation data that are spatially inconsistent, exceed climatological limits, or are inconsistent with prevailing weather patterns.

**TEMPERATURE:** Original temperature values are given in the "Daily Temperature" table. Summary temperature information (averages, departures, extremes, monthly degree day totals) is based on the values labeled MAX/MIN.

**WIND:** (As shown in the "Evaporation and Wind" table) the total wind movement in miles over the evaporation pan as determined by an anemometer recorder located 6-8 inches above the pan.

## SYMBOLS AND LETTERS USED IN THE STATION INDEX TABLE

C Station is equipped with recording rain gage (R) but values in this bulletin are from a non-recording rain gage unless indicated by an R.

G Observations appear in the "Soil Temperatures" table.

H Observations appear in the "Snowfall and Snow on the Ground" table.

J Station also published as a Local Climatological Data publication.

VAR Observation time varies.

SR / SS Observation time near sunrise / Observation time near sunset, respectively.

## SYMBOLS AND LETTERS USED IN THE DATA TABLES

(DAILY DATA ARE FOR THE 24 HOURS IMMEDIATELY PRECEDING OBSERVATION TIME.)

BLANK Entries in the "Monthly Summarized Data" table indicate no record.

BLANK Entries in the "Daily Precipitation" and "Snowfall and Snow on the Ground" tables indicate zero.

BLANK Entries in the "Daily Temperature" table indicate a missing record

- No record. Data not recorded or not received in time for publication.

+ Precipitation or temperature extremes occurred on one or more previous dates during the month.

\* Rain gage not read. Precipitation is included in the amount following the asterisks.

Time distribution may not be known. A \* preceding the monthly total indicates precipitation amount is being carried forward to next month's total, and may include amounts from the previous month(s).

a As a subscript, indicates accumulated total.

A Amount of precipitation is the total of observer's entries for the current month. It may include precipitation that occurred during the previous month. Refer to earlier bulletin to determine date of last

reading. (Hawaii stations)

B Divisional Departure from normals are computed using 1971-2000 normals.

E Normalized HDD/CDD Calculation. E is appended to the HDD/CDD Calculation when 1-9 individual daily TMAX and/or TMIN values are missing and a Normalized HDD/CDD Calculation is provided. M appears alone if 10 or more daily values are missing.

F Monthly calculation flagged value. F is appended to average and/or total values computed which exclude one or more daily data values that have been flagged by the GHCN-Daily Dataset

M Insufficient or partial data. M is appended to average and/or total values computed with 1-9 daily values missing. M appears alone if 10 or more daily values are missing, (8 or more for wind and evaporation).

N Indicates snow fall or Snowdepth totals are computed with one or more missing days.

R Amounts from recording rain gage.

T Trace. An amount too small to measure.

**SEASONAL TABLES:** Monthly and seasonal snowfall and heating degree days for the 12 months ending with the June data are published in the July issue of this bulletin. Cooling degree days for the calendar year are published in the "Climatological Data Annual Summary."

Information concerning the history of changes in locations, exposure, etc. of substations is kept on file at the National Centers for Environmental Information. Historical information of regular National Weather Service Offices may be obtained from the "Local Climatological Data" annual publication. The contents of this publication may be reprinted or otherwise used freely, with proper credit to the National Centers For Environmental Information. The data are also available digitally.

Effective with the January 2011 Data-Month, COOP Observer Names are no longer included in the Monthly and Annual Climatological Data Publications. This information is not published to ensure the privacy of personal information pursuant to Section 208 of the E-Government Act of 2002 (44 USC 3601).

As of the 2011 Data-Year, Station and Climate Division Maps are no longer being included in the CD Publications. NCEI's Products Branch provides updated Station Maps for various data networks via the Historical Observing Metadata Repository: <http://www.ncdc.noaa.gov/homr>.

The GHCN-Daily Quality Control Flags shown below are displayed as superscripts with the data. For more information on Global Historical Climatology Network - Daily and flags, see: <http://www.ncdc.noaa.gov/oa/climate/ghcn-daily/> and Comprehensive Automated Quality Assurance of Daily Surface Observations. Durre, Imke, Matthew J. Menne, Byron E. Gleason, Tamara G. Houston, Russell S. Vose, 2010: J. Appl. Meteor. Climatol., 49, 16151633. doi: 10.1175/2010JAMC2375.1

Blank = Passed All checks

D = failed duplicate check

G = failed gap check

I = failed internal consistency check

K = failed streak/frequent-value check

L = failed check on length of multiday period

M = failed megaconsistency check

N = failed naught check

O = failed climatological outlier check

R = failed lagged range check

S = failed spatial consistency check

T = failed temporal consistency check

W = temperature too warm for snow

X = failed bounds check

Z = flagged as a result of an official Datzilla investigation

Beginning with the January 2013 CD Publication, monthly mean temperature calculations have changed to the National Data Stewardship Team standard. Monthly maximum and minimum temperatures are not rounded until after the monthly mean temperature is calculated. This is the most accurate outcome, but may be slightly different from the mean derived from rounded monthly maximum and minimum.

The climate division temperature and precipitation values in this publication are based on simple averages from the current set of NWS-Designated Open and Published COOP and First Order Sites within each division. These values differ from those found in NCEI's nClimDiv product. Beginning in February 2014, the nClimDiv product is used by NCEI's Monitoring Branch and in its monthly climate reports. For more details on nClimDiv, please go to <http://www.ncdc.noaa.gov/monitoring-references/maps/us-climate-divisions.php>.

Effective January 2016, Alaska's Climate Divisions are updated to reflect the 13 climate divisional boundaries established by University of Alaska-Fairbanks, NWS, NCEI, Oregon State University, and University of Nebraska-Lincoln. For more details regarding the updated Alaska Climate Divisions, see: <http://journals.ametsoc.org/doi/pdf/10.1175/JAMC-D-11-0168.1> (Bienek et al., 2012).

**These and other publications are available from the National Centers for Environmental Information**

### **Hourly Precipitation Data**

This publication contains hourly precipitation amounts obtained from recording rain gages located at National Weather Service, Federal Aviation Administration, and cooperative observer stations. Published data are displayed in inches and tenths or inches and hundredths at local standard time. HPD includes maximum precipitation for nine (9) time periods from 15 minutes to 24 hours, for selected stations.

### **Climatological Data**

Monthly editions contain station daily maximum and minimum temperatures and precipitation. Some Stations provide daily snowfall, snow depth, evaporation, and soil temperature data. Each edition also contains monthly summaries for heating and cooling degree days (65 degree F base). The July issue contains a recap of monthly heating degree days and snow data for the preceding July through June.

The Annual issue contains monthly and annual averages of temperature, precipitation, temperature extremes, freeze data, soil temperatures, evaporation, and a recap of monthly cooling degree days.

### **Storm Data**

Monthly issues contain a chronological listing, by states, of occurrences of storms and unusual weather phenomena. Reports contain information on storm paths, deaths, injuries, and property damage. An "Outstanding storms of the month" section highlights severe weather events with photographs, illustrations, and narratives. The December issue includes annual tornado, lightning, flash flood, and tropical cyclone summaries.

### **Monthly Climatic Data for the World**

This publication contains monthly means for temperature, pressure, precipitation, vapor pressure, and sunshine for approximately 2,000 surface data collection stations worldwide and monthly mean upper air temperatures, dew point depressions, and wind velocities for approximately 500 observing sites.

### **Local Climatological Data**

LCD publications summarize temperature, relative humidity, precipitation, cloudiness, wind speed and direction observations for several hundred cities in the U.S. and its territories. Each monthly publication also contains 3 hourly weather observations for that month and a hourly summary of precipitation. Annual LCD publications contain a summary of the past calendar year as well as historical averages and extremes.

For Information Call:

(828) 271-4800 Option 2

(828) 271-4010 (TDD)

(828) 271-4876 (Fax)

NOAA National Centers for Environmental Information  
Attn: Customer Engagement Branch  
151 Patton Avenue  
Asheville, NC 28801-5001

Customer Services Number: (828) 271-4800, option 2  
TDD : (828) 271-4010  
Fax number: (828) 271-4876

NCEI now offers free online access to the *Climatological Data* publication.  
Go to : [www.ncdc.noaa.gov](http://www.ncdc.noaa.gov) and choose Most Popular.