



CLIMATOLOGICAL DATA

MARYLAND AND DELAWARE

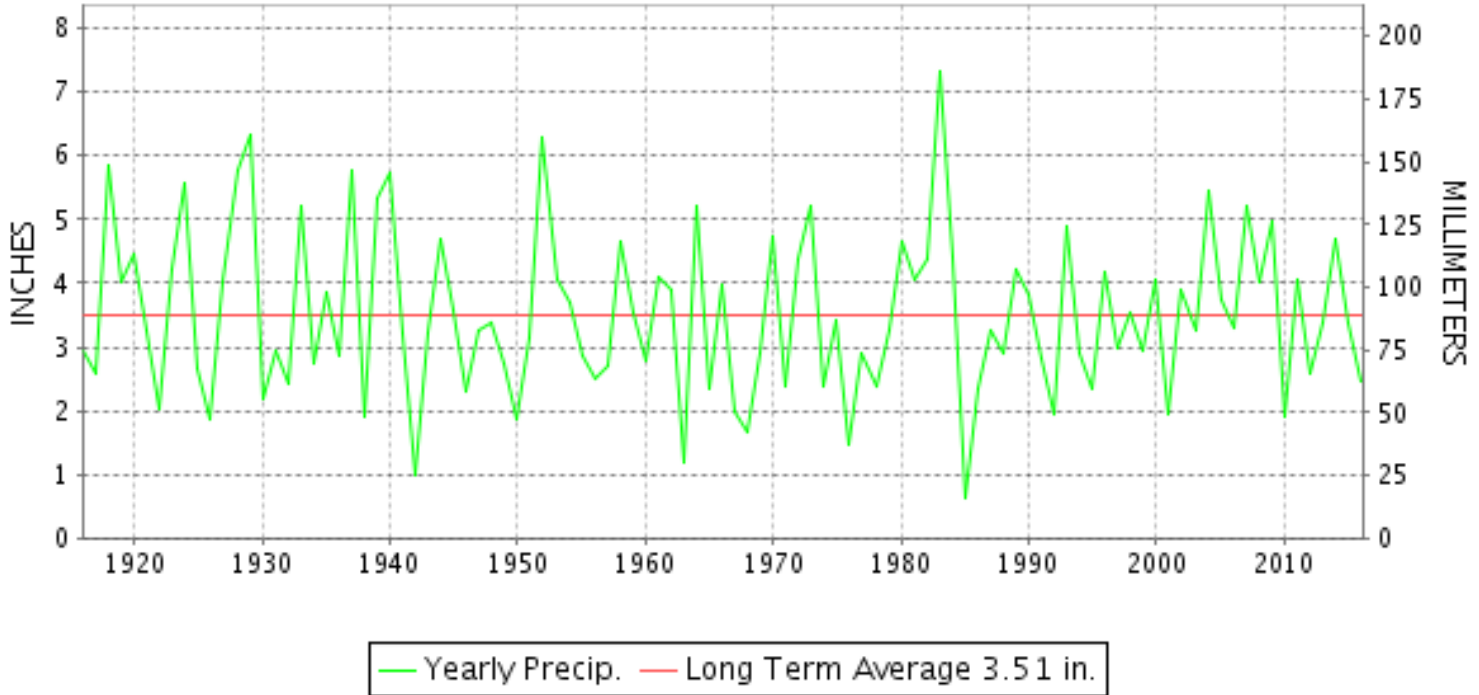
APRIL 2016

VOLUME 120 NUMBER 04

ISSN 0145-0549

GHCND Ver: 3.22-upd-2016072005

APRIL PRECIPITATION BY YEAR



TEMPERATURE AND PRECIPITATION EXTREMES

MARYLAND

HIGHEST TEMPERATURE	87	APRIL 27+	2 STATIONS
LOWEST TEMPERATURE	6	APRIL 10	OAKLAND 1 SE
GREATEST TOTAL PRECIPITATION	4.46		OAKLAND 1 SE
LEAST TOTAL PRECIPITATION	1.31		2 STATIONS
GREATEST 1 DAY PRECIPITATION	1.20	APRIL 23	OAKLAND 1 SE
GREATEST TOTAL SNOWFALL	12.8		OAKLAND 1 SE
GREATEST DEPTH OF SNOW OR ICE	6		OAKLAND 1 SE

"I certify that this is an official publication of the National Oceanic and Atmospheric Administration (NOAA) It is compiled using information from weather observing sites supervised by NOAA/National Weather Service and received at the National Centers for Environmental Information(NCEI), Asheville, North Carolina 28801."

Director
National Centers for Environmental Information

noaa

National
Oceanic and
Atmospheric Administration

National
Environmental Satellite, Data
and Information Service

National
Centers for Environmental Information
Asheville, North Carolina

DELAWARE

HIGHEST TEMPERATURE	85	APRIL 26	WILMINGTON NEW CASTLE CO AP
LOWEST TEMPERATURE	25	APRIL 10	WILMINGTON NEW CASTLE CO AP
GREATEST TOTAL PRECIPITATION	3.15		WILMINGTON PORTER RSCH
LEAST TOTAL PRECIPITATION	1.84		WILMINGTON NEW CASTLE CO AP
GREATEST 1 DAY PRECIPITATION	0.60	APRIL 09	WILMINGTON PORTER RSCH
GREATEST TOTAL SNOWFALL	2.9		WILMINGTON PORTER RSCH

DAILY PRECIPITATION (INCHES)

STATION	TOTAL	DAY OF MONTH																															
		01	02	03	04	05	06	07	08	09	10	11	12	13	14	15	16	17	18	19	20	21	22	23	24	25	26	27	28	29	30	31	
MARYLAND																																	
SOUTHERN																																	
EASTERN SHORE 01																																	
ASSATEAGUE	M	-	-	-	-	-	-	-	-	-	-	-	-	-	-	-	-	-	-	-	-	-	-	-	-	-	-	-	-	-	-	-	
PRINCESS ANNE	M 3.48	0.34	0.68	-	-	0.50	-	0.14	0.24	-	-	0.82	-	-	-	-	-	-	-	-	-	-	0.31	-	-	-	-	-	-	0.22	-	0.23	-
SALISBURY 2N	4.10	0.50	0.92	0.08	-	-	0.33	0.14	0.11	0.10	0.20	0.54	-	-	-	-	-	-	-	-	-	0.15	0.23	-	-	-	-	0.20	0.52	0.08	T		
SALISBURY FAA AP	3.67	0.63	0.76	-	0.26	0.19	-	0.14	-	0.35	-	0.64	-	-	-	-	-	-	-	-	-	0.18	0.02	-	-	0.14	0.07	0.27	0.02	T			
SNOW HILL 4 N	M 1.91	0.19	0.46	-	-	-	-	0.02	0.05	0.15	0.10	0.46	-	-	-	-	-	-	-	-	-	T	0.07	-	-	-	0.11	0.21	0.04	0.05			
CENTRAL																																	
EASTERN SHORE 02																																	
ROYAL OAK 2 SSW	2.28	0.12	0.18	T	-	0.10	-	0.25	0.24	0.35	0.10	0.03	0.25	-	-	-	-	-	-	-	-	-	0.01	0.05	-	-	-	0.10	0.32	0.13	0.05		
LOWER SOUTHERN 03																																	
MECHANICSVILLE 5 NE	2.57	-	0.24	0.08	-	0.70	-	-	0.27	0.01	0.24	T	0.05	0.14	-	-	-	-	-	-	-	-	-	0.02	0.17	-	-	0.13	0.03	0.47	0.02		
SOLOMONS	MA 2.51	*	* 0.90 _a	0.14	-	-	-	0.50	0.11	0.02	0.01	0.02	0.11	-	-	-	-	-	-	-	-	*	*	0.19 _a	-	0.05	0.31	0.15	-	-			
UPPER SOUTHERN 04																																	
BALTIMORE WASH INTL AP	1.31	0.02	0.12	-	0.13	-	-	0.45	-	0.21	-	T	0.05	-	-	-	-	-	-	-	-	-	T	0.09	-	-	-	0.01	0.14	0.07	0.02		
BELTSVILLE	1.86	-	0.07	0.11	-	0.12	-	-	0.77	0.12	0.04	-	0.01	0.02	-	-	-	-	-	-	-	-	0.02	0.17	-	-	T	0.06	0.33	0.02			
DALECARLIA RSVR	M 2.21	-	0.09	-	0.11	0.13	-	-	1.11	0.05	0.07	0.02	0.02	-	-	-	-	-	-	-	-	-	-	-	-	-	-	0.15	0.46				
MARYLAND SCIENCE CENTER	1.59	0.39	0.14	-	0.14	-	-	0.40	-	0.31	-	-	0.06	-	-	-	-	-	-	-	-	-	0.03	-	-	-	-	0.06	0.06				
NATL ARBORETUM DC	1.99	-	0.10	0.12	0.02	0.08	-	0.04	0.64	0.08	0.03	T	0.03	-	-	-	-	-	-	-	-	-	T	0.22	-	-	T	0.04	0.57	0.02			
OXON HILL	1.92	T	0.06	0.13	-	0.09	-	T	0.60	0.05	0.13	T	0.01	0.11	-	-	-	-	-	-	-	-	T	0.26	-	-	0.01	0.03	0.43	0.01			
UPPER MARLBORO 3 NNW	M 1.20	-	0.07	0.10	-	0.12	-	-	0.46	0.08	0.21	-	0.16	-	-	-	-	-	-	-	-	-	-	-	-	-	-	-	-	-	-		
NORTHERN																																	
EASTERN SHORE 05																																	
STEVENSVILLE 2SW	1.43	-	0.15	0.08	-	0.05	-	-	0.48	0.05	0.27	-	0.15	-	-	-	-	-	-	-	-	-	-	T	-	-	-	0.05	0.14	0.01			
SUDLERSVILLE 1S	1.99	0.05	0.15	0.10	0.23	-	-	0.35	0.05	0.35	-	0.28	-	-	-	-	-	-	-	-	-	-	0.10	-	-	-	0.12	0.10	0.11	T			
NORTHERN CENTRAL 06																																	
ABERDEEN PHILLIPS FLD	* 0.60	-	T	0.01	-	0.04	-	-	0.23	-	0.10	0.01	0.02	0.10	-	-	-	-	-	-	-	-	-	T	T	-	-	-	0.09	-			
BRIGHTON DAM	F 1.46	-	0.55	-	0.60 ^Z	-	0.20	0.00 ^Z	0.10	0.30 ^Z	-	0.10	0.10	-	-	-	-	-	-	-	-	-	-	0.21	0.15	0.99 ^Z	-	T	0.05	0.00 ^Z	T		
CONOWINGO DAM	1.49	-	-	0.16	-	0.16	-	-	0.55	-	-	-	-	-	-	-	-	-	-	-	-	-	-	0.12	0.10	-	-	0.19					
CYLBURN	A 1.85	-	0.08	* 0.37 _a	-	-	-	T	0.62	0.10	* 0.22 _a	0.05	-	-	-	-	-	-	-	-	-	-	-	0.05	0.05	-	-	0.25	0.06				
DAMASCUS 3 SSW	2.24	0.01	0.15	0.06	0.20	-	0.99	-	0.15	-	0.03	0.04	-	-	-	-	-	-	-	-	-	-	0.03	0.14	-	-	0.02	0.35	0.01	0.06			
EMMITSBURG 2 SE	1.69	T	0.20	0.06	-	-	-	T	0.80	0.07	0.02	0.04	0.02	-	-	-	-	-	-	-	-	-	-	0.15	0.10	-	0.01	0.21	0.01				
FREDERICK 2 NNE	M	-	-	-	-	-	-	-	-	-	-	-	-	-	-	-	-	-	-	-	-	-	-	-	-	-	-	-	-	-	-		
MILLERS 4 NE	2.71	0.57	0.22	0.02	0.15	-	1.05	0.02	0.16	0.02	0.02	0.05	-	-	-	-	-	-	-	-	-	-	0.01	0.07	-	-	-	-	-	-	-		
SMITHSBURG 2NW	2.18	-	-	-	0.10	-	-	0.60	0.05	-	0.08	0.10	-	-	-	-	-	-	-	-	-	-	-	0.95	-	-	-	0.30					
APPALACHIAN																																	
MOUNTAIN 07																																	
CUMBERLAND 2	1.31	-	0.02	0.16	-	0.03	-	0.08	0.05	T	-	0.01	0.06	-	-	-	-	-	-	-	-	-	-	0.02	0.39	-	-	0.02	0.02	0.45			
FROSTBURG 2	1.87	-	0.08	0.19	-	0.14	-	0.06	0.19	0.01	T	0.07	0.16	-	-	-	-	-	-	-	-	-	T	0.26	-	-	0.13	0.05	0.51	0.02			
SHARPSBURG 5 S	1.60	-	0.04	0.07	-	0.03	-	0.07	0.46	0.05	T	0.04	0.06	T	-	-	-	-	-	-	-	-	T	0.37	0.09	-	-	T	0.30	0.02			
WILLIAMSPORT	M	-	-	0.03	-	-	-	-	-	-	-	0.08	0.03	-	-	-	-	-	-	-	-	-	-	-	-	-	-	-	0.02	0.26	-		

DAILY PRECIPITATION (INCHES)

STATION	TOTAL	DAY OF MONTH																															
		01	02	03	04	05	06	07	08	09	10	11	12	13	14	15	16	17	18	19	20	21	22	23	24	25	26	27	28	29	30	31	
ALLEGHENY PLATEAU 08																																	
OAKLAND 1 SE	4.46		0.06	0.15		0.05		0.10	0.90		0.15	0.53	0.20			0.01								0.01	1.20	0.06			0.33	0.12	0.59		
SAVAGE RIVER DAM	1.52		0.07	0.13		0.22		0.08	0.18	T	T	0.04	0.11											0.07				0.15	T	0.47			
SINES DEEP CREEK	A* 3.97		*	*	0.45 _a	0.40		0.10	0.65	*	*	0.40 _a	0.30	0.03			*	*	0.00 _a						*	*	0.85 _a	0.30		0.49		-	
DELAWARE																																	
NORTHERN 01																																	
WILMINGTON NEW CASTLE CO AP	1.84	0.04	0.22		0.18			0.40		0.32		T	0.28										T	0.16		T	0.06	T	0.15	0.03	T		
WILMINGTON PORTER RSCH	3.15	0.51	0.30		0.22			0.31		0.60	T	T	0.39									T	0.27			0.31		0.19	0.05	T			
SOUTHERN 02																																	
DOVER	A 2.04	0.15	*	0.52 _a		0.14		0.15	0.11	0.33		0.01	0.24											0.11				0.06	0.16	0.06			

DAILY TEMPERATURES (°F)

STATION	OB. TIME	MAX/MIN	DAY OF MONTH																															AVERAGE	
			01	02	03	04	05	06	07	08	09	10	11	12	13	14	15	16	17	18	19	20	21	22	23	24	25	26	27	28	29	30	31		
ABERDEEN PHILLIPS FLD	07	MAX	73	80	59	47	67	45	55	63	52	44	48	68	65	57	63	66	71	82	80	70	70	76	68	65	76	86	56	57	54	64.2			
		MIN	55	53	35	35	29	28	32	41	34	29	29	47	38	34	35	38	37	39	44	43	43	50	60	45	43	45	50	49	45	46	41.0		
BRIGHTON DAM	08	MAX	66	81	58	70	69		54	54	50	39	54	71	61	62	49	62	69	80	80	80	69	76	71	67	84	79	83	53	57	57	65.7		
		MIN	59	46	33	38	28		23	31	30	26	33	44	34	32	33	33	33	43	43	39	44	53	59	42	46	47	51	48	45	46	40.1		
CONOWINGO DAM	07	MAX	70	77	62	39	66	43	54	59	50	43	48	66	59	55	61	62	66	72	78	73	72	69	74	67	66	71	84	54	53	51	62.1		
		MIN	53	52	33	34	29	25	26	38	32	30	30	46	34	34	34	38	38	45	44	42	42	43	56	48	43	47	51	46	44	44	40.0		
CYLBURN	08	MAX	73	82	63	52	69	42	54	60	50	47	48	71	63	57	61	61	67	74	81	81	70	72	72	70	68	75	84	54	55	55	64.3		
		MIN	54	47	33	33	27	27	40	35	27	31	46	36	34	36	37	40	48	55	45	46	49	59	42	47	53	52	51	46	48	48	41.7		
DAMASCUS 3 SSW	22	MAX	80	63	47	67	41	53	60	49	46	49	71	65	56	62	63	69	72	80	80	69	72	69	69	66	78	82	67	51	51	55	63.4		
		MIN	63	41	30	39	25	28	44	38	31	23	41	44	35	34	38	40	41	55	54	39	47	62	52	40	47	61	50	44	42	46	42.5		
EMMITSBURG 2 SE	07	MAX	71	79	61	49	64	43	54	59	50	48	48	71	66	55	62	63	68	74	82	79	69	70	70	68	65	78	81	66	53	52	63.9		
		MIN	42	47	32	31	26	22	22	39	33	25	25	43	32	30	31	33	36	39	43	40	40	44	55	43	41	41	51	48	44	45	37.4		
FREDERICK 2 NNE	07	MAX																																M	
		MIN																																	M
MILLERS 4 NE	18	MAX	78	67	56	62	53	52	57	47	46	47	68	68	54	60	63	66	72	77	76	69	68	68	68	65	75	80	77	51	49	57	63.2		
		MIN	61	43	29	34	24	25	44	35	30	23	39	49	31	30	35	40	38	49	50	41	43	57	55	37	43	56	49	44	42	44	40.7		
SMITHSBURG 2NW	08	MAX	69	78	58	51	65	43	54	55	46	43	48	70	57	56			71	76	80	76		69	70	67	66	79	78	53	52	58	62.5		
		MIN	53	46	30	28	22	22	28	35	31	19	27	44	28	28			35	41	41	34		51	56	37	37	41	52	48	43	44	37.1		
APPALACHIAN MOUNTAIN 07																																			
CUMBERLAND 2	18	MAX	73	80	55	59	64	45	57	59	49	43	53	77	61	61	68	72	77	85	87	80	74	76	75	69	75	85	80	62	54	53	66.9		
		MIN	51	49	28	29	26	25	26	34	34	23	23	45	32	32	36	37	38	42	46	46	46	50	56	41	41	44	59	52	47	47	39.5		
FROSTBURG 2	07	MAX	66	71	53	51	58	38	55	48	41	35	46	69	51	55	61	65	70	77	79	73	70	75	68	60	69	78	72	57	49	49	60.3		
		MIN	47	41	20	20	19	18	25	29	27	16	18	37	26	26	32	34	37	44	54	40	40	50	52	37	38	44	55	49	42	42	35.3		
SHARPSBURG 5 S	07	MAX	70	81	61	50	67	44	56	59	50	44	52	73	59	58	64	65	72	76	84	80	71	72	72	69	68	81	82	57	52	52	64.7		
		MIN	54	47	31	31	26	23	24	36	31	22	21	45	28	27	29	34	34	39	42	35	35	53	56	34	34	41	55	47	44	45	36.8		
ALLEGHENY PLATEAU 08																																			
OAKLAND 1 SE	07	MAX	68	69	69	52	62	38	58	46	39	26	49	65	53	55	61	64	67	74	80	75	68	78	68	59	73	67	67	68	56	68	61.4		
		MIN	46	43	21	28	17	17	27	28	26	6	15	38	25	25	35	33	34	35	42	44	48	53	54	33	34	48	56	56	46	49	35.4		
SAVAGE RIVER DAM	08	MAX	69	70	53	55	60	40	57	49	42	36	49	70	53	55	60	64	68	77	80	76	68	74	71	60	70	77	70	59	52	56	61.3		
		MIN	42	46	25	25	23	23	23	33	31	18	19	40	28	28	31	33	35	38	44	40	41	49	54	37	37	40	53	52	44	44	35.9		
SINES DEEP CREEK	07	MAX	69			66	55	50	55	50		44	60	50	54	56			74	75	77	68	74			67	74	67	64	53		M			
		MIN	39			22	22	22	22	22	22		12	35	25	25	28			25	40	24	38	46			32	35	52	45	43		M		
DELAWARE NORTHERN 01																																			
WILMINGTON NEW CASTLE CO AP	24	MAX	78	63	47	67	45	51	62	51	42	49	67	64	57	62	63	66	72	82	78	71	71	76	71	68	75	85	54	54	52	61	63.5		
		MIN	62	44	35	34	30	29	46	39	33	25	42	42	35	34	35	37	36	43	48	41	44	58	50	43	47	54	46	45	45	47	41.6		
WILMINGTON PORTER RSCH	24	MAX						50	57	47	39	46	63	63	53	57								75	69	63	73	82	55	54	51	60	M		
		MIN						44	45	37	31	27	39	39	36	37								63	45	42	45	54	47	43	43	44	M		
SOUTHERN 02																																			
DOVER	16	MAX	76	74	57	70	68	56	62	58	51	50	68	68	60	58	63	64	72	81	79	75	74	79	74	67	77	84	82	54	51	58	67.0		

MARYLAND AND DELAWARE
201604

DAILY TEMPERATURES (°F)

STATION	OB. TIME	MAX/MIN	DAY OF MONTH																															AVERAGE
			01	02	03	04	05	06	07	08	09	10	11	12	13	14	15	16	17	18	19	20	21	22	23	24	25	26	27	28	29	30	31	
		MIN	64	50	35	39	30	26	47	41	36	29	41	54	36	34	35	34	39	45	50	41	42	63	59	43	46	64	48	46	45	46		43.6

PAN EVAPORATION AND WIND

STATION		DAY OF MONTH																															TOTAL OR AVERAGE
		01	02	03	04	05	06	07	08	09	10	11	12	13	14	15	16	17	18	19	20	21	22	23	24	25	26	27	28	29	30	31	
MARYLAND UPPER SOUTHERN 04 BELTSVILLE	WIND	139	109	128	85	128	70	80	92	76	103	59	130	76	27	25	27	29	17	33	71	24	52	45	72	24	23	57	31	32	23	1887	
	EVAP	0.19	0.24	0.19	0.18	0.13	0.17	0.16	0.04	0.15	0.11	0.15	0.19	0.20	0.15	0.15	0.16	0.21	0.13	0.24	0.27	0.19	0.11	0.09	0.20	0.18	0.16	0.23	0.05	0.01	0.00	4.63	
	MAX	81	81	61	56	60	56	52	63	55	52	58	68	68	71	64	75	78	81	84	81	82	76	76	73	76	82	84	60	55	56	68.4	
	MIN	50	54	33	33	33	32	33	38	38	30 ^x	32	42	38	36	38	40	42	42	57	42	42	43	61	42	48	48	51	51	46	45	42.4	
UPPER MARLBORO 3 NNW	WIND	-	-	-	-	-	-	-	-	-	-	-	-	-	-	-	-	-	-	-	-	-	-	-	-	-	-	-	-	-	M		
	EVAP	-	-	-	-	-	-	-	-	-	-	-	-	-	-	-	-	-	-	-	-	-	-	-	-	-	-	-	-	-	M		
	MAX	-	-	-	-	-	-	-	-	-	-	-	-	-	-	-	-	-	-	-	-	-	-	-	-	-	-	-	-	-	M		
	MIN	-	-	-	-	-	-	-	-	-	-	-	-	-	-	-	-	-	-	-	-	-	-	-	-	-	-	-	-	-	M		
ALLEGHENY PLATEAU 08 SAVAGE RIVER DAM	WIND	-	-	-	-	-	-	-	-	-	-	-	-	-	-	-	-	-	-	-	-	-	-	-	-	-	-	-	-	-	M		
	EVAP	-	-	-	-	-	-	-	-	-	-	-	-	-	-	-	-	-	-	-	-	-	-	-	-	-	-	-	-	-	M		
	MAX	-	-	-	-	-	-	-	-	-	-	-	-	-	-	-	-	-	-	-	-	-	-	-	-	-	-	-	-	-	-		
	MIN	-	-	-	-	-	-	-	-	-	-	-	-	-	-	-	-	-	-	-	-	-	-	-	-	-	-	-	-	-	M		

Evaporation: Is measured in hundreths of inches.

Wind: Is measured in miles.

Max and Min: The maximum and minimum temperatures (Fahrenheit) of the water in the evaporation pan.

STATION INDEX

STATION	INDEX NO.	DIVISION	COUNTY	LATITUDE	LONGITUDE	ELEVATION (IN FEET)	OBSERVATION TIME AND TABLES			
							LOCAL STD TIME			
							TEMP	PRECIP	EVAP	SPECIAL SEE (NOTES)
MARYLAND										
ABERDEEN PHILLIPS FLD	0015	06	HARFORD	39 28	76 10W	57	07	07		CH
ASSATEAGUE	0335	01	WORCESTER	38 4	75 13W	10	VAR	VAR		H
BALTIMORE WASH INTL AP R	0465	04	ANNE ARUNDEL	39 10	76 41W	156	24	24		HJ
BELTSVILLE	0700	04	PRINCE GEORGE'S	39 2	76 56W	145	08	08	08	CH
BRIGHTON DAM	1125	06	MONTGOMERY	39 11	77 0W	330	08	08		H
CONOWINGO DAM	2060	06	HARFORD	39 39	76 11W	40	07	07		H
CUMBERLAND 2	2282	07	ALLEGANY	39 39	78 45W	730	18	18		H
CYLBURN	2308	06	BALTIMORE	39 21	76 39W	235	08	08		H
DALECARLIA RSVR	2325	04	DISTRICT OF COLUMBIA	38 56	77 7W	150	08	08		H
DAMASCUS 3 SSW	2336	06	MONTGOMERY	39 16	77 14W	700	22	22		H
EMMITSBURG 2 SE	2906	06	FREDERICK	39 41	77 17W	403	07	07		H
FREDERICK 2 NNE	3353	06	FREDERICK	39 26	77 24W	280	07	07		H
FROSTBURG 2	3415	07	ALLEGANY	39 40	78 56W	2170	07	07		H
MARYLAND SCIENCE CENTER R	5718	04	BALTIMORE (CITY)	39 17	76 37W	20	24	24		H
MECHANICSVILLE 5 NE	5865	03	ST. MARY'S	38 28	76 42W	100	07	07		H
MILLERS 4 NE	5934	06	CARROLL	39 43	76 48W	860	18	18		CH
NATL ARBORETUM DC	6350	04	DISTRICT OF COLUMBIA	38 55	76 58W	50	07	07		H
OAKLAND 1 SE	6620	08	GARRETT	39 25	79 24W	2420	07	07		H
OXON HILL	6800	04	PRINCE GEORGE'S	38 47	76 60W	120	08	08		H
PRINCESS ANNE	7330	01	SOMERSET	38 13	75 41W	20	17	17		H
ROYAL OAK 2 SSW	7806	02	TALBOT	38 43	76 11W	10	17	17		H
SALISBURY 2N	8004	01	WICOMICO	38 24	75 36W	20	17	17		H
SALISBURY FAA AP	8005	01	WICOMICO	38 20	75 31W	48	24	24		H
SAVAGE RIVER DAM	8065	08	GARRETT	39 31	79 8W	1495	08	08	08	CH
SHARPSBURG 5 S	8207	07	WASHINGTON	39 24	77 43W	500	07	07		H
SINES DEEP CREEK	8315	08	GARRETT	39 31	79 25W	2040	07	07		H
SMITHSBURG 2NW	8371	06	WASHINGTON	39 40	77 35W	670	08	08		H
SNOW HILL 4 N	8380	01	WORCESTER	38 14	75 23W	30	17	17		H
SOLOMONS	8405	03	CALVERT	38 19	76 27W	12	08	08		H
STEVENSVILLE 2SW	8557	05	QUEEN ANNE'S	38 58	76 20W	10	07	07		H
SUDLERSVILLE 1S	8657	05	QUEEN ANNE'S	39 10	75 51W	100		20		H
UPPER MARLBORO 3 NNW	9070	04	PRINCE GEORGE'S	38 51	76 46W	130	08	08	08	H
WILLIAMSPORT	9570	07	WASHINGTON	39 37	77 51W	360		06		H
DELAWARE										
DOVER	2730	02	KENT	39 9	75 30W	30	16	16		H
WILMINGTON NEW CASTLE CO AP R	9595	01	NEW CASTLE	39 40	75 36W	79	24	24		HJ
WILMINGTON PORTER RSCH	9605	01	NEW CASTLE	39 46	75 32W	270	24	24		H

REFERENCE NOTES

STATION NAMES: Name of the city, town or locality. Figures and letters following the station names indicate the distance in miles and direction from the post office or town community center.

DIVISIONS: Areas within a state of similar climatological characteristics. Division averages are calculated using data from stations that record temperature and/or precipitation. Station Precipitation totals flagged with an 'F' or 'M' are excluded from the Divisional Average calculations of precipitation. Stations with monthly Temperature averages flagged with an 'F' or 'M' are included in the Divisional Average if there are no more than 9 flagged or missing daily values in the month, else they are excluded from the divisional average for temperature.

NORMALS: The average value of the meteorological element over a time period. Effective 1 January 2012, the averaging period for station departures is 1981 to 2010. The normals for National Weather Service localities have been adjusted so as to be representative for the current observation site.

The January 2011 through December 2015 publications incorrectly state the computation of divisional departures. Climate Division departures have been, and continue to be, computed from 1971-2000 Normals, not 1981-2010 as stated. Station departures are accurately described as departures from 1981-2010.

MONTHLY DEGREE DAY TOTALS: One heating (cooling) degree day is accumulated for each whole degree that the daily mean temperature is below (above) 65 degrees Fahrenheit.

PRECIPITATION: Values shown in hundredths of inches are water equivalent totals, i.e., total of liquid and melted frozen precipitation. In the "Monthly Summarized Data" table the total snow and sleet values shown in tenths of inches are unmelted amounts. The max depth on ground values of snow and sleet shown in whole inches are cumulative unmelted amounts. The number of days with .10, .50, 1.00 or more refers to water equivalents.

PRECIPITATION QUALITY CONTROL: The NCEI quality control process may flag precipitation data that are spatially inconsistent, exceed climatological limits, or are inconsistent with prevailing weather patterns.

TEMPERATURE: Original temperature values are given in the "Daily Temperature" table. Summary temperature information (averages, departures, extremes, monthly degree day totals) is based on the values labeled MAX/MIN.

WIND: (As shown in the "Evaporation and Wind" table) the total wind movement in miles over the evaporation pan as determined by an anemometer recorder located 6-8 inches above the pan.

SYMBOLS AND LETTERS USED IN THE STATION INDEX TABLE

- C Station is equipped with recording rain gage (R) but values in this bulletin are from a non-recording rain gage unless indicated by an R.
- G Observations appear in the "Soil Temperatures" table.
- H Observations appear in the "Snowfall and Snow on the Ground" table.
- J Station also published as a Local Climatological Data publication.
- VAR Observation time varies.
- SR / SS Observation time near sunrise / Observation time near sunset, respectively.

SYMBOLS AND LETTERS USED IN THE DATA TABLES

(DAILY DATA ARE FOR THE 24 HOURS IMMEDIATELY PRECEDING OBSERVATION TIME.)

- BLANK Entries in the "Monthly Summarized Data" table indicate no record.
- BLANK Entries in the "Daily Precipitation" and "Snowfall and Snow on the Ground" tables indicate zero.
- BLANK Entries in the "Daily Temperature" table indicate a missing record

- No record. Data not recorded or not received in time for publication.
- + Precipitation or temperature extremes occurred on one or more previous dates during the month.
- * Rain gage not read. Precipitation is included in the amount following the asterisks.
- Time distribution may not be known. A * preceding the monthly total indicates precipitation amount is being carried forward to next month's total, and may include amounts from the previous month(s).
- a As a subscript, indicates accumulated total.
- A Amount of precipitation is the total of observer's entries for the current month. It may include precipitation that occurred during the previous month. Refer to earlier bulletin to determine date of last

reading. (Hawaii stations)

- B Divisional Departure from normals are computed using 1971-2000 normals.
- E Normalized HDD/CDD Calculation. E is appended to the HDD/CDD Calculation when 1-9 individual daily TMAX and/or TMIN values are missing and a Normalized HDD/CDD Calculation is provided. M appears alone if 10 or more daily values are missing.
- F Monthly calculation flagged value. F is appended to average and/or total values computed which exclude one or more daily data values that have been flagged by the GHCN-Daily Dataset
- M Insufficient or partial data. M is appended to average and/or total values computed with 1-9 daily values missing. M appears alone if 10 or more daily values are missing, (8 or more for wind and evaporation).
- N Indicates snow fall or Snowdepth totals are computed with one or more missing days.
- R Amounts from recording rain gage.
- T Trace. An amount too small to measure.

SEASONAL TABLES: Monthly and seasonal snowfall and heating degree days for the 12 months ending with the June data are published in the July issue of this bulletin. Cooling degree days for the calendar year are published in the "Climatological Data Annual Summary."

Information concerning the history of changes in locations, exposure, etc. of substations is kept on file at the National Centers for Environmental Information. Historical information of regular National Weather Service Offices may be obtained from the "Local Climatological Data" annual publication. The contents of this publication may be reprinted or otherwise used freely, with proper credit to the National Centers For Environmental Information. The data are also available digitally.

Effective with the January 2011 Data-Month, COOP Observer Names are no longer included in the Monthly and Annual Climatological Data Publications. This information is not published to ensure the privacy of personal information pursuant to Section 208 of the E-Government Act of 2002 (44 USC 3601).

As of the 2011 Data-Year, Station and Climate Division Maps are no longer being included in the CD Publications. NCEI's Products Branch provides updated Station Maps for various data networks via the Historical Observing Metadata Repository: <http://www.ncdc.noaa.gov/homr>.

The GHCN-Daily Quality Control Flags shown below are displayed as superscripts with the data. For more information on Global Historical Climatology Network - Daily and flags, see: <http://www.ncdc.noaa.gov/oa/climate/ghcn-daily/> and Comprehensive Automated Quality Assurance of Daily Surface Observations. Durre, Imke, Matthew J. Menne, Byron E. Gleason, Tamara G. Houston, Russell S. Vose, 2010: J. Appl. Meteor. Climatol., 49, 16151633. doi: 10.1175/2010JAMC2375.1

- | | |
|---|---|
| Blank = Passed All checks | N = failed naught check |
| D = failed duplicate check | O = failed climatological outlier check |
| G = failed gap check | R = failed lagged range check |
| I = failed internal consistency check | S = failed spatial consistency check |
| K = failed streak/frequent-value check | T = failed temporal consistency check |
| L = failed check on length of multiday period | W = temperature too warm for snow |
| M = failed megaconsistency check | X = failed bounds check |
| | Z = flagged as a result of an official Datzilla investigation |

Beginning with the January 2013 CD Publication, monthly mean temperature calculations have changed to the National Data Stewardship Team standard. Monthly maximum and minimum temperatures are not rounded until after the monthly mean temperature is calculated. This is the most accurate outcome, but may be slightly different from the mean derived from rounded monthly maximum and minimum.

The climate division temperature and precipitation values in this publication are based on simple averages from the current set of NWS-Designated Open and Published COOP and First Order Sites within each division. These values differ from those found in NCEI's nClimDiv product. Beginning in February 2014, the nClimDiv product is used by NCEI's Monitoring Branch and in its monthly climate reports. For more details on nClimDiv, please go to <http://www.ncdc.noaa.gov/monitoring-references/maps/us-climate-divisions.php>.

Effective January 2016, Alaska's Climate Divisions are updated to reflect the 13 climate divisional boundaries established by University of Alaska-Fairbanks, NWS, NCEI, Oregon State University, and University of Nebraska-Lincoln. For more details regarding the updated Alaska Climate Divisions, see: <http://journals.ametsoc.org/doi/pdf/10.1175/JAMC-D-11-0168.1> (Bienek et al., 2012).

NOAA National Centers for Environmental Information
Attn: Customer Engagement Branch
151 Patton Avenue
Asheville, NC 28801-5001

Customer Services Number: (828) 271-4800, option 2
TDD : (828) 271-4010
Fax number: (828) 271-4876

NCEI now offers free online access to the *Climatological Data* publication.
Go to : www.ncdc.noaa.gov and choose Most Popular.