



CLIMATOLOGICAL DATA

MARYLAND AND DELAWARE

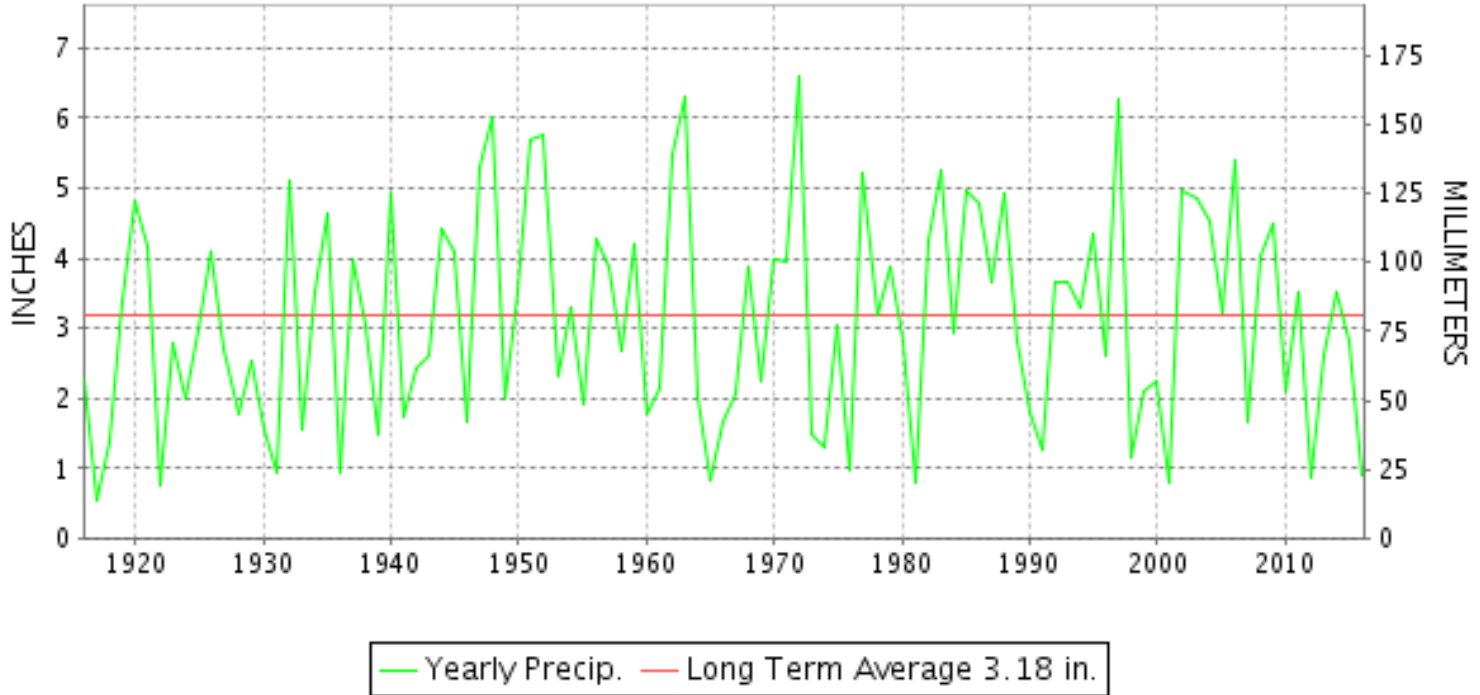
NOVEMBER 2016

VOLUME 120 NUMBER 11

ISSN 0145-0549

GHCND Ver: 3.22-upd-2017040405

NOVEMBER PRECIPITATION BY YEAR



TEMPERATURE AND PRECIPITATION EXTREMES

MARYLAND

HIGHEST TEMPERATURE	84	NOVEMBER 03+	2 STATIONS
LOWEST TEMPERATURE	17	NOVEMBER 24++	2 STATIONS
GREATEST TOTAL PRECIPITATION	2.47		DAMASCUS 3 SSW
LEAST TOTAL PRECIPITATION	0.35		BELTSVILLE
GREATEST 1 DAY PRECIPITATION	1.72	NOVEMBER 30	DAMASCUS 3 SSW
GREATEST TOTAL SNOWFALL	3.5		OAKLAND 1 SE
GREATEST DEPTH OF SNOW OR ICE	2		OAKLAND 1 SE

"I certify that this is an official publication of the National Oceanic and Atmospheric Administration (NOAA) It is compiled using information from weather observing sites supervised by NOAA/National Weather Service and received at the National Centers for Environmental Information(NCEI), Asheville, North Carolina 28801."

Director
National Centers for Environmental Information

noaa

National
Oceanic and
Atmospheric Administration

National
Environmental Satellite, Data
and Information Service

National
Centers for Environmental Information
Asheville, North Carolina

DELAWARE

HIGHEST TEMPERATURE	81	NOVEMBER 03	DOVER
LOWEST TEMPERATURE	25	NOVEMBER 23+	2 STATIONS
GREATEST TOTAL PRECIPITATION	2.07		WILMINGTON PORTER RSCH
LEAST TOTAL PRECIPITATION	0.52		DOVER
GREATEST 1 DAY PRECIPITATION	1.04	NOVEMBER 29	WILMINGTON PORTER RSCH

MONTHLY STATION AND DIVISION SUMMARY

STATION	TEMPERATURE (°F)										PRECIPITATION (IN)													
	AVERAGE MAXIMUM	AVERAGE MINIMUM	AVERAGE	DEPARTURE FROM NORMAL	HIGHEST	DATE	LOWEST	DATE	HEATING DEG. DAYS	COOLING DEG. DAYS	NO. OF DAYS				TOTAL	DEPARTURE FROM NORMAL	GREATEST 24 HOURS	DATE	ICE PELLETS, SNOW			NO. OF DAYS		
											MAX		MIN						TOTAL	MAX DEPTH ON GROUND	DATE	.10 OR MORE	.50 OR MORE	1.00 OR MORE
											>=90	<=32	<=32	<=0										
MARYLAND SOUTHERN EASTERN SHORE 01																								
ASSATEAGUE	M	M	M								0	0	0	0	M				M					
PRINCESS ANNE	62.1M	38.7M	50.4M	1.3	80	04	26	28+	438E	5E	0	0	5	0	M 0.87	-2.52	0.43	03	M			2	0	0
SALISBURY 2N	62.2	38.7	50.4		81	04+	26	23	435	6	0	0	5	0	0.47		0.13	04	M			1	0	0
SALISBURY FAA AP	60.5	37.0	48.7	0.5	82	03	25	23	485	6	0	0	8	0	0.54	-2.89	0.14	30	M 0.0	0		3	0	0
SNOW HILL 4 N	65.8	34.6	50.2	0.2	84	03	21	28+	441	2	0	0	13	0	0.68	-2.84	0.27	04	M			4	0	0
--DIVISIONAL DATA----->			49.9	1.1B											0.56	-2.62B								
CENTRAL EASTERN SHORE 02																								
ROYAL OAK 2 SSW	59.7	41.4	50.6	0.6	79	03	26	23	427	2	0	0	3	0	0.56	-3.09	0.19	09	0.0	0		2	0	0
--DIVISIONAL DATA----->			50.6	2.5B											0.56	-2.73B								
LOWER SOUTHERN 03																								
MECHANICSVILLE 5 NE	59.4	34.9	47.2	0.1	79	04	24	15	530	0	0	0	11	0	0.47	-3.12	0.19	04	0.0	0		2	0	0
SOLOMONS	M	M	M		81	07	34	27+	330E	2E	0	0	0	0	A* 0.69		0.17	10	0.0	0		1	0	0
--DIVISIONAL DATA----->			47.2	-0.1B											0.58	-2.69B								
UPPER SOUTHERN 04																								
BALTIMORE-WASHINGTON INTL AP	60.6	36.5	48.6	2.1	78	03	23	23	486	0	0	0	9	0	1.51	-1.79	0.97	30	0.0	0		3	1	0
BALTIMORE WASHINGTON INTL CLIM																								
BELTSVILLE	60.1	34.8	47.4	0.6	79	04	23	23	517	0	0	0	12	0	0.35	-2.89	0.12	30	0.0	0		2	0	0
DALECARLIA RSVR	59.7M	36.1M	47.9M	0.3	80	04	26	24+	508E	2E	0	0	8	0	M 0.39	-3.23	0.21	30	0.0	0		1	0	0
MARYLAND SCI CTR	59.9	43.7M	51.8M	1.5	77	03	33	23+	393E	2E	0	0	0	0	1.47	-1.50	0.90	30	M			3	1	0
NATL ARBORETUM DC	61.5	37.6	49.5	0.7	80	04	27	24+	459	2	0	0	8	0	0.38	-3.09	0.16	30	0.0	0		2	0	0
OXON HILL	59.7	38.9	49.3	0.9	79	04	29	24+	467	2	0	0	6	0	0.40	-3.20	0.16	10	0.0	0		2	0	0
--DIVISIONAL DATA----->			49.1	2.4B											0.82	-2.56B								
NORTHERN EASTERN SHORE 05																								
STEVENSVILLE 2SW	58.1	42.0	50.1	0.9	79	04	34	28	446	4	0	0	0	0	0.44		0.25	10	0.0	0		1	0	0
SUDLERSVILLE 1S															0.69		0.30	29	M			3	0	0
--DIVISIONAL DATA----->			50.1	3.6B											0.57	-2.70B								
NORTHERN CENTRAL 06																								
ABERDEEN PHILLIPS FLD	58.3	34.5	46.4	-0.6	74	04	24	24+	549	0	0	0	11	0	1.12	-2.30	0.73	30	0.0	0		3	1	0
BRIGHTON DAM	57.6M	34.7M	46.1M		74	04+	21	23	560E	0	0	0	13	0	0.94		0.43	30	0.0	0		4	0	0
CONOWINGO DAM	54.2	34.3	44.2	-2.0	67	04	27	29+	615	0	0	0	12	0	1.45	-2.09	0.77	30	0.0	0		4	1	0
CYLBURN	57.9	36.9	47.4	1.7	74	04	27	28+	520	0	0	0	8	0	A 0.75		0.10	10	0.0	0		1	0	0
DAMASCUS 3 SSW	56.9	38.1	47.5	2.3	75	02	25	23	519	0	0	0	7	0	2.47	-1.45	1.72	30	T	0		3	1	1
EMMITSBURG 2 SE	58.2	31.2	44.7	0.8	76	03	19	24+	601	0	0	0	17	0	1.45	-2.16	0.77	30	0.0	0		4	1	0

MONTHLY STATION AND DIVISION SUMMARY

STATION	TEMPERATURE (°F)											PRECIPITATION (IN)												
	AVERAGE MAXIMUM	AVERAGE MINIMUM	AVERAGE	DEPARTURE FROM NORMAL	HIGHEST	DATE	LOWEST	DATE	HEATING DEG. DAYS	COOLING DEG. DAYS	NO. OF DAYS				TOTAL	DEPARTURE FROM NORMAL	GREATEST 24 HOURS	DATE	ICE PELLETS, SNOW			NO. OF DAYS		
											MAX		MIN						TOTAL	MAX DEPTH ON GROUND	DATE	.10 OR MORE	.50 OR MORE	1.00 OR MORE
											>=90	<=32	<=32	<=0										
MILLERS 4 NE	57.2	37.2	47.2	2.8	76	02	25	23	527	0	0	0	10	0	1.94	-1.65	1.25	29	0.2	0		4	1	1
REISTERSTOWN 2 NW	58.8M	36.1M	47.5M		78	03	28	23	518E	0	0	0	11	0	M 1.44		0.90	30	M			5	1	0
SMITHSBURG 2NW	55.0M	30.9M	43.0M	-1.0	73	03	20	24	656E	0	0	0	19	0	M 0.91	-2.75	0.35	30	0.0	0		5	0	0
--DIVISIONAL DATA-----> APPALACHIAN MOUNTAIN 07			46.0	1.1B										1.45	-2.17B									
CUMBERLAND 2	60.7	34.5	47.6	2.2	84	03	23	24+	513	0	0	0	11	0	0.69	-2.29	0.32	30	T	T	20	2	0	0
FROSTBURG 2	52.7	33.3	43.0	2.5	76	03	22	22+	651	0	0	2	12	0	1.02	-2.65	0.41	29	0.6	1	21	3	0	0
SHARPSBURG 5 S	59.2	31.1	45.1	0.6	80	03	20	24+	588	0	0	0	20	0	0.71	-2.69	0.26	30	0.0	0		3	0	0
WILLIAMSPORT														M 0.34	-3.08	0.15	09	M				1	0	0
--DIVISIONAL DATA-----> ALLEGHENY PLATEAU 08			45.2	2.5B										0.81	-2.46B									
OAKLAND 1 SE	56.7	29.7	43.2	3.9	78	03	17	24+	647	0	0	2	20	0	1.56	-2.27	0.50	29	3.5	2	21	5	1	0
SAVAGE RIVER DAM	52.9	33.0	43.0	1.8	76	03	23	24	656	0	0	0	13	0	1.06	-1.94	0.34	29	T	T	21	5	0	0
SINES DEEP CREEK	M	M	M		73	04	17	23	695E	0	0	1	14	0	MA 1.48		0.30	30+	M	1	22	5	0	0
--DIVISIONAL DATA-----> DELAWARE NORTHERN 01			43.1	3.5B										1.31	-2.25B									
WILMINGTON NEW CASTLE CO AP	59.2	37.8	48.5	1.9	72	18+	26	23	485	0	0	0	7	0	1.91	-1.19	0.79	29	0.0	0		3	2	0
WILMINGTON PORTER RSCH	55.1	38.2	46.7	0.5	69	03	25	23	544	0	0	0	5	0	2.07	-1.41	1.04	29	0.0	0		3	2	1
--DIVISIONAL DATA-----> SOUTHERN 02			47.6	1.8B										1.99	-1.39B									
DOVER	60.8	40.1	50.5	1.3	81	03	25	28+	434	5	0	0	3	0	0.52	-2.96	0.21	29	M			2	0	0
--DIVISIONAL DATA----->			50.5	2.8B										0.52	-2.77B									

DAILY PRECIPITATION (INCHES)

STATION	TOTAL	DAY OF MONTH																															
		01	02	03	04	05	06	07	08	09	10	11	12	13	14	15	16	17	18	19	20	21	22	23	24	25	26	27	28	29	30	31	
MARYLAND																																	
SOUTHERN																																	
EASTERN SHORE 01																																	
ASSATEAGUE	M	-	-	-	-	-	-	-	-	-	-	-	-	-	-	-	-	-	-	-	-	-	-	-	-	-	-	-	-	-	-	-	
PRINCESS ANNE	M 0.87			0.43		-	-		0.06			-	-		0.06				0.04													0.28	
SALISBURY 2N	0.47				0.13			0.01	0.07	T				0.01	0.04		0.08			0.05										0.02	0.06		
SALISBURY FAA AP	0.54			0.10	0.13				0.04	T				0.02		0.07			0.03					T						0.01	0.14		
SNOW HILL 4 N	0.68				0.27				0.03	0.15				0.01			0.10			T										0.01	0.11		
CENTRAL																																	
EASTERN SHORE 02																																	
ROYAL OAK 2 SSW	0.56				0.03					0.19	0.03				0.03	0.01					0.07			0.04						0.05	0.11		
LOWER SOUTHERN 03																																	
MECHANICSVILLE 5 NE	0.47				0.19				0.01	0.14					0.02		T			T										0.02	0.09		
SOLOMONS	A* 0.69	T	T	*	*	*	*	0.00 _a	*	0.45 _a	0.17		*	*	0.00 _a	T			*	*	0.00 _a	0.04	*	*	*	*	0.00 _a	0.03	-	-			
UPPER SOUTHERN 04																																	
BALTIMORE-WASHINGTON INTL AP	1.51	T		T					0.20					0.02	T	T			T				T	T					0.32	0.97			
BALTIMORE WASHINGTON INTL CLIM	M	-	-	-	-	-	-	-	-	-	-	-	-	-	-	-	-	-	-	-	-	-	-	-	-	-	-	-	-	-	-		
BELTSVILLE	0.35								0.06	0.11					T					0.05				T					0.01	0.12			
DALECARLIA RSVR	M 0.39								-	0.05					0.03					0.06				0.01					0.03	0.21			
MARYLAND SCI CTR	1.47								0.13										0.01										0.43	0.90			
NATL ARBORETUM DC	0.38				T				0.03	0.14					T		0.02			T									0.03	0.16			
OXON HILL	0.40				T				0.07	0.16					T		0.02			0.01				T					0.04	0.10			
NORTHERN																																	
EASTERN SHORE 05																																	
STEVENSVILLE 2SW	0.44								0.07	0.25					T					0.04									0.03	0.05			
SUDLERSVILLE 1S	0.69		T						0.24						T					T				T					0.30	0.15			
NORTHERN CENTRAL 06																																	
ABERDEEN PHILLIPS FLD	1.12				0.01				0.07	0.12					T					0.03									0.16	0.73			
BRIGHTON DAM	0.94				0.03				0.15	0.08					0.10					0.05									0.10	0.43			
CONOWINGO DAM	1.45								0.08	0.25							0.08			0.12									0.15	0.77			
CYLBURN	A 0.75								0.05	0.10					T					T								*	0.60 _a				
DAMASCUS 3 SSW	2.47			0.04					0.19						0.01	T			0.04	T				T					0.47	1.72			
EMMITSBURG 2 SE	1.45				0.03				0.17	0.20					0.04	0.01				0.11	0.04				T				0.23	0.77			
MILLERS 4 NE	1.94			0.03					0.22						0.04	0.01				T	0.11				T				1.25	0.28			
REISTERSTOWN 2 NW	M 1.44	-			0.01	0.01			0.10	0.10						0.01				0.05			0.10						0.16	0.90			
SMITHSBURG 2NW	M 0.91				-				0.20	0.16																0.10			0.10	0.35			
APPALACHIAN																																	
MOUNTAIN 07																																	
CUMBERLAND 2	0.69				0.01				0.01	0.03					0.02					0.07	T			T					0.23	0.32			
FROSTBURG 2	1.02				0.08				0.06	0.03					0.06	T				0.11	T			0.01		T		0.41	0.26				
SHARPSBURG 5 S	0.71				0.03				0.13	0.15					0.02		T			0.05			0.01	T				0.06	0.26				
WILLIAMSPORT	M 0.34								0.15	0.08					-					0.03			-		0.01			0.07	-				

DAILY PRECIPITATION (INCHES)

STATION	TOTAL	DAY OF MONTH																															
		01	02	03	04	05	06	07	08	09	10	11	12	13	14	15	16	17	18	19	20	21	22	23	24	25	26	27	28	29	30	31	
ALLEGHENY PLATEAU 08																																	
OAKLAND 1 SE	1.56				0.20					0.20	0.30				0.05						0.05	0.01			0.03	0.07				0.50	0.15		
SAVAGE RIVER DAM	1.06				0.23					0.05	0.10				T						0.10	T			T	T			0.34	0.24			
SINES DEEP CREEK	MA 1.48				0.27	*	*	0.00 _a		0.30	0.10		*	*	0.00 _a	0.06					*	*	0.20 _a		-	-	*	*	0.05 _a	0.20	0.30		
DELAWARE																																	
NORTHERN 01																																	
WILMINGTON NEW CASTLE CO AP	1.91									0.36						T				0.08					T				0.79	0.68			
WILMINGTON PORTER RSCH	2.07									0.42																			1.04	0.61			
SOUTHERN 02																																	
DOVER	0.52									0.09	0.06										0.05				0.01				0.21	0.10			

DAILY TEMPERATURES (°F)

STATION	OB. TIME	MAX/MIN	DAY OF MONTH																															AVERAGE			
			01	02	03	04	05	06	07	08	09	10	11	12	13	14	15	16	17	18	19	20	21	22	23	24	25	26	27	28	29	30	31				
MARYLAND SOUTHERN EASTERN SHORE 01 ASSATEAGUE	VA	MAX MIN																																			M M
PRINCESS ANNE	17	MAX MIN	64 36	72 46	79 55	80 41				54 33	67 32	58 48	57 41	65 43			55 28	64 39	62 33	65 37		45 33	46 27	52 26	61 33	60 38			54 26	69 52	73 61			62.1 38.7			
SALISBURY 2N	17	MAX MIN	60 37	71 47	81 56	81 52	63 36	67 44	60 36	67 34	59 47	57 40	61 41	57 35	59 30	56 31	62 45	65 37	61 42	68 36	74 42	67 38	45 31	46 26	52 31	61 36	61 36	58 46	51 33	54 28	68 43	73 43		62.2 38.7			
SALISBURY FAA AP	24	MAX MIN	59 36	72 46	82 55	64 41	63 36	67 43	54 33	67 32	58 48	57 41	65 38	51 29	60 27	55 28	64 39	64 33	62 37	68 33	73 38	47 36	45 33	46 27	52 25	61 33	60 37	52 38	52 30	54 26	68 50	73 61		60.5 37.0			
SNOW HILL 4 N	17	MAX MIN	82 31	75 43	84 50	82 48	81 30	80 38	59 30	68 26	69 42	70 38	67 35	57 25	62 23	61 23	65 44	66 31	66 44	68 34	72 32	65 33	52 28	48 36	53 21	62 38	62 32	55 41	52 37	56 21	66 34	69 50		65.8 34.6			
CENTRAL EASTERN SHORE 02 ROYAL OAK 2 SSW	17	MAX MIN	60 38	71 48	79 54	68 43	63 39	65 53	55 40	65 35	60 47	59 42	63 54	58 33	60 32	54 34	61 48	62 42	60 43	67 37	71 45	45 42	45 38	47 38	49 26	60 35	56 38	52 46	52 44	54 29	63 46	68 52		59.7 41.4			
LOWER SOUTHERN 03 MECHANICSVILLE 5 NE	07	MAX MIN	57 39	59 39	70 55	79 49	61 37	62 37	66 36	55 34	65 34	62 38	57 37	63 32	49 29	61 29	53 24	61 35	64 34	60 34	68 34	73 37	47 32	45 27	47 25	53 25	60 35	58 38	50 31	51 27	58 27	68 58		59.4 34.9			
SOLOMONS	08	MAX MIN	70 54	72 59						81 48	67 44	67 44	58 47			63 39	55 42	60 44	65 44	60 43									68 34	46 34						M M	
UPPER SOUTHERN 04 BALTIMORE-WASHINGTON INTL AP	24	MAX MIN	60 36	74 48	78 52	63 38	67 34	67 46	60 36	71 30	60 50	66 38	66 38	51 30	63 30	59 28	65 31	65 34	62 35	73 33	73 34	46 36	44 32	48 30	53 23	57 35	55 35	52 37	52 30	54 25	58 47	63 55		60.6 36.5			
BELTSVILLE	08	MAX MIN	58 39	60 47	75 52	79 49	62 34	66 39	66 33	60 32	71 37	62 37	60 35	63 30	51 26	63 28	58 31	63 32	64 31	61 34	73 37	72 37	44 35	43 27	48 23	53 37	57 36	56 34	49 37	51 26	53 28	61 51		60.1 34.8			
DALECARLIA RSVR	08	MAX MIN	57 40	59 44	74 54	80 53	62 37	67 38	66 36	60 34				62 42	60 39	63 32	50 28	63 36	63 33	60 36	71 34	70 35	44 33	44 33	49 26	53 26	56 38	57 36	56 29	51 27	53 31	59 51		59.7 36.1			
MARYLAND SCI CTR	24	MAX MIN	59 46	69 53	77 57	62 50	66 45	66 51	59 45	71 43	60 51	65 45	51 44	64 38	60 37	63 39	65 50	61 46	72 48	69 45	69 41	45 38	44 36	47 33	52 33	54 43	55 43	50 42	52 38	55 37	59 49	64		59.9 43.7			
NATL ARBORETUM DC	08	MAX MIN	62 42	60 45	74 54	80 37	64 46	68 40	69 35	61 36	69 36	61 38	65 35	53 31	64 32	58 32	64 37	67 37	64 37	62 37	72 37	71 38	46 35	45 32	49 27	52 43	61 41	59 34	51 30	52 30	65 49			61.5 37.6			
OXON HILL	07	MAX MIN	60 42	59 46	72 50	74 55	65 44	67 41	59 36	65 36	67 41	59 36	65 43	62 42	61 37	63 31	51 32	60 32	53 32	62 38	64 38	59 39	70 41	44 38	44 34	47 31	51 42	58 42	57 33	50 33	51 35	58 56		59.7 38.9			
NORTHERN EASTERN SHORE 05 STEVENSVILLE 2SW	07	MAX MIN	55 41	58 43	68 51	79 58	59 45	65 47	62 44	53 40	69 40	58 46	58 46	62 40	48 41	61 38	56 36	62 48	63 45	58 43	67 43	70 38	46 36	43 35	46 37	47 40	56 43	56 40	49 34	50 35	55 52	63 52		58.1 42.0			
NORTHERN CENTRAL 06 ABERDEEN PHILLIPS FLD	07	MAX MIN	56 35	58 35	67 46	74 51	61 35	66 35	63 33	56 31	69 32	58 39	59 41	64 31	52 26	61 27	57 28	63 39	62 40	60 35	69 35	72 37	42 35	45 31	49 24	50 24	52 36	52 38	49 34	51 27	54 27	59 48		58.3 34.5			

DAILY TEMPERATURES (°F)

STATION	OB. TIME	MAX/MIN	DAY OF MONTH																															AVERAGE
			01	02	03	04	05	06	07	08	09	10	11	12	13	14	15	16	17	18	19	20	21	22	23	24	25	26	27	28	29	30	31	
BRIGHTON DAM	08	MAX	55	58	74	74	60	64	64	57	67	58	57	61	48	59	58	60	60	58	68	68	42	41	45		54	55	48	48	50	58	57.6	
		MIN	43	26	49	53	36	36	33	30	38	49	37	39	25	26	32	31	40	30	43	34	33	31	21	24	39	27	24	28	50	34.7		
CONOWINGO DAM	07	MAX	53	55	52	67	57	61	60	53	61	56	56	59	47	57	55	58	60	56	64	66	36	42	45	45	51	50	48	48	51	56	54.2	
		MIN	36	35	45	50	35	34	35	33	35	43	37	32	27	27	28	32	34	35	35	35	31	28	28	28	37	40	32	27	27	47	34.3	
CYLBURN	08	MAX	55	57	71	74	59	63	63	57	68	58	58	62	49	62	59	61	63	59	72	67	43	42	45	51	52	54	48	49	53	63	57.9	
		MIN	37	41	52	52	38	40	36	34	37	41	42	32	34	31	31	40	44	36	37	35	33	31	27	27	37	40	36	27	29	51	36.9	
DAMASCUS 3 SSW	22	MAX	56	75	72	60	62	63	56	67	57	61	46	58	60	61	60	57	68	69	41	40	44	49	54	54	46	47	50	55	61	56.9		
		MIN	39	48	58	43	36	43	36	38	48	38	44	28	30	34	43	38	36	38	38	33	31	30	25	37	38	37	30	32	43	50	38.1	
EMMITSBURG 2 SE	07	MAX	57	58	76	72	60	64	65	59	68	59	60	64	50	61	59	64	61	62	70	68	42	42	48	49	51	53	50	49	56	58.2		
		MIN	33	33	36	51	32	33	33	27	27	38	38	29	24	24	25	32	32	30	30	37	33	32	19	19	32	38	36	21	21	42	31.2	
MILLERS 4 NE	18	MAX	55	76	70	66	63	62	57	69	55	57	61	51	60	60	61	59	58	70	69	38	40	46	49	50	52	47	48	50	57	59	57.2	
		MIN	33	46	58	46	36	44	32	33	50	38	45	30	30	32	41	38	39	36	36	32	31	29	25	36	39	35	29	28	42	48	37.2	
REISTERSTOWN 2 NW	08	MAX	53	57	78	73	58	61	63	57	69		67	61	67	67	67	60	58	67	71	60	40	40	44	51		43	47	51	58	58.8		
		MIN	36	41	50	48	39	39	38	38	42	36	36	29	29	29	29	41	41	29	44	29	31	29	28	30	38	34	30	35	50	36.1		
SMITHSBURG 2NW	08	MAX	54	58	73		58	63	63	60	64	53	58	58	46	57	55	57	58	57	65	67	38	38	43	48	50	55	45	47	51	57	55.0	
		MIN	40	44	45		32	33	31	29	28	33	34	23	23	25	25	30	32	30	30	34	32	26	21	20	40	37	25	26	26	42	30.9	
APPALACHIAN MOUNTAIN 07																																		
CUMBERLAND 2	07	MAX	60	66	84	71	67	72	73	65	73	60	66	62	54	67	59	65	62	67	72	61	40	43	46	52	48	61	45	51	47	62	60.7	
		MIN	42	42	45	50	35	35	35	33	33	45	47	28	25	25	26	35	35	35	35	32	30	29	23	23	37	40	39	26	26	45	34.5	
FROSTBURG 2	07	MAX	54	58	76	64	53	58	60	61	65	50	53	53	48	56	57	55	55	58	71	66	28	29	35	47	48	52	35	41	41	55	52.7	
		MIN	37	39	50	43	36	35	36	35	38	36	36	25	25	31	33	35	34	38	43	26	22	22	23	24	43	31	30	26	27	40	33.3	
SHARPSBURG 5 S	07	MAX	58	62	80	72	62	65	67	62	67	59	62	63	51	63	56	61	63	61	71	70	41	42	46	53	54	59	48	50	50	58	59.2	
		MIN	40	45	48	43	32	32	30	29	29	33	33	25	24	24	24	31	32	30	29	34	32	23	20	20	38	35	26	23	23	45	31.1	
ALLEGHENY PLATEAU 08																																		
OAKLAND 1 SE	07	MAX	58	76	78	67	67	61	66	66	67	49	55	55	59	58	59	55	63	72	67	27	32	39	58	49	48	36	43	55	60	56.7		
		MIN	41	42	45	44	28	28	29	29	37	37	20	20	20	26	29	30	29	33	25	21	22	17	17	42	33	32	23	25	37	29.7		
SAVAGE RIVER DAM	08	MAX	54	61	76	67	55	58	63	59	65	53	53	54	46	60	57	56	55	59	69	40	33	33	40	46	46	52	39	42	42	54	52.9	
		MIN	39	38	46	44	34	34	33	33	33	41	41	26	28	27	27	32	31	35	34	31	27	28	24	23	36	36	36	26	26	41	33.0	
SINES DEEP CREEK	07	MAX	50	65	70	73		70	60	60	60	49		60	50	50	58	55				61	30	35					41	45	47	M	M	
		MIN	40	40	45	36		31	27	26	31	33		22	21	27	31	27				21	20	17					21	25	35			
DELAWARE NORTHERN 01																																		
WILMINGTON NEW CASTLE CO AP	24	MAX	57	68	72	63	65	64	58	70	58	58	64	51	61	59	65	63	62	72	68	45	45	49	51	54	54	52	52	62	61	59.2		
		MIN	36	47	53	39	34	43	35	32	47	36	42	29	32	30	38	34	42	35	37	37	37	31	26	39	37	39	35	30	47	56	37.8	
WILMINGTON PORTER RSCH	24	MAX	56	65	69	57	61	59	52	65	54	53	60	46	56	56	60	59	57	66	67	41	40	44	45	51	50	50	47	50	57	59	55.1	
		MIN	37	47	53	44	38	42	37	40	44	38	40	30	30	30	44	42	43	41	33	34	34	33	25	36	38	38	35	31	45	45	38.2	
DELAWARE SOUTHERN 02																																		
DOVER	16	MAX	59	72	81	71	65	64	56	69	59	59	64	50	61	58	66	63	62	69	74	44	45	46	52	61	56	51	61	56	63	68	60.8	
		MIN	37	47	58	51	36	50	40	34	51	39	47	36	33	30	46	39	44	36	41	38	34	33	25	36	37	44	36	25	43	56	40.1	

SNOWFALL AND SNOW ON GROUND (INCHES)

STATION	DAY OF MONTH																																
	01	02	03	04	05	06	07	08	09	10	11	12	13	14	15	16	17	18	19	20	21	22	23	24	25	26	27	28	29	30	31		
MARYLAND																																	
SOUTHERN																																	
EASTERN SHORE 01																																	
ASSATEAGUE																																	
PRINCESS ANNE																																	
SALISBURY 2N																																	
SALISBURY FAA AP																																	
SNOW HILL 4 N																																	
NORTHERN CENTRAL 06																																	
DAMASCUS 3 SSW																																	
EMMITSBURG 2 SE																																	
MILLERS 4 NE																																	
REISTERSTOWN 2 NW																																	
SMITHSBURG 2NW																																	
APPALACHIAN																																	
MOUNTAIN 07																																	
CUMBERLAND 2																																	
FROSTBURG 2																																	
SHARPSBURG 5 S																																	
WILLIAMSPORT																																	
ALLEGHENY PLATEAU 08																																	
OAKLAND 1 SE																																	
SAVAGE RIVER DAM																																	
SINES DEEP CREEK																																	
DELAWARE																																	
NORTHERN 01																																	
WILMINGTON NEW CASTLE CO AP																																	

Snowfall: Includes snow and ice. Values for NWS stations (J index note) are Mid-Mid (LST).

Snow on ground: Includes snow, sleet, ice, and hail. Values for NWS stations (J index note) are observed at 12 UTC (GMT).

Water Equivalent: Given for NWS stations (J index note) only, when snow depth is 2 inches or more, and is measured at 18 UTC (GMT)

SNOWFALL AND SNOW ON GROUND (INCHES)

STATION		DAY OF MONTH																															
		01	02	03	04	05	06	07	08	09	10	11	12	13	14	15	16	17	18	19	20	21	22	23	24	25	26	27	28	29	30	31	
WILMINGTON PORTER RSCH	SN ON GND SNOWFALL SN ON GND																																

Snowfall: Includes snow and ice. Values for NWS stations (J index note) are Mid-Mid (LST).

Snow on ground: Includes snow, sleet, ice, and hail. Values for NWS stations (J index note) are observed at 12 UTC (GMT).

Water Equivalent: Given for NWS stations (J index note) only, when snow depth is 2 inches or more, and is measured at 18 UTC (GMT)

PAN EVAPORATION AND WIND

STATION		DAY OF MONTH																															TOTAL OR AVERAGE	
		01	02	03	04	05	06	07	08	09	10	11	12	13	14	15	16	17	18	19	20	21	22	23	24	25	26	27	28	29	30	31		
MARYLAND UPPER SOUTHERN 04 BELTSVILLE	WIND	25	-	-	-	-	-	-	-	-	-	-	-	-	-	-	-	-	-	-	-	-	-	-	-	-	-	-	-	-	-	-	-	M
	EVAP	0.12	-	-	-	-	-	-	-	-	-	-	-	-	-	-	-	-	-	-	-	-	-	-	-	-	-	-	-	-	-	-	-	M
	MAX	-	-	-	-	-	-	-	-	-	-	-	-	-	-	-	-	-	-	-	-	-	-	-	-	-	-	-	-	-	-	-	-	65.0
	MIN	40	-	-	-	-	-	-	-	-	-	-	-	-	-	-	-	-	-	-	-	-	-	-	-	-	-	-	-	-	-	-	-	40.0
ALLEGHENY PLATEAU 08 SAVAGE RIVER DAM	WIND	-	-	-	-	-	-	-	-	-	-	-	-	-	-	-	-	-	-	-	-	-	-	-	-	-	-	-	-	-	-	-	-	M
	EVAP	-	-	-	-	-	-	-	-	-	-	-	-	-	-	-	-	-	-	-	-	-	-	-	-	-	-	-	-	-	-	-	-	M
	MAX	-	-	-	-	-	-	-	-	-	-	-	-	-	-	-	-	-	-	-	-	-	-	-	-	-	-	-	-	-	-	-	-	-
	MIN	-	-	-	-	-	-	-	-	-	-	-	-	-	-	-	-	-	-	-	-	-	-	-	-	-	-	-	-	-	-	-	-	M

Evaporation: Is measured in hundreths of inches.

Wind: Is measured in miles.

Max and Min: The maximum and minimum temperatures (Fahrenheit) of the water in the evaporation pan.

STATION INDEX

STATION	INDEX NO.	DIVISION	COUNTY	LATITUDE	LONGITUDE	ELEVATION (IN FEET)	OBSERVATION TIME AND TABLES			
							LOCAL STD TIME			
							TEMP	PRECIP	EVAP	SPECIAL SEE (NOTES)
MARYLAND										
ABERDEEN PHILLIPS FLD	0015	06	HARFORD	39 28	76 10W	57	07	07		CH
ASSATEAGUE	0335	01	WORCESTER	38 4	75 13W	10	VAR	VAR		H
BALTIMORE WASHINGTON INTL CLIM	0467	04	ANNE ARUNDEL	39 11	76 39W	101		24		H
BALTIMORE-WASHINGTON INTL AP R	0465	04	ANNE ARUNDEL	39 10	76 41W	156	24	24		HJ
BELTSVILLE	0700	04	PRINCE GEORGE'S	39 2	76 56W	145	08	08	08	CH
BRIGHTON DAM	1125	06	MONTGOMERY	39 11	77 0W	330	08	08		H
CONOWINGO DAM	2060	06	HARFORD	39 39	76 11W	40	07	07		H
CUMBERLAND 2	2282	07	ALLEGANY	39 39	78 45W	730	07	07		H
CYLBURN	2308	06	BALTIMORE	39 21	76 39W	235	08	08		H
DALECARLIA RSVR	2325	04	DISTRICT OF COLUMBIA	38 56	77 7W	150	08	08		H
DAMASCUS 3 SSW	2336	06	MONTGOMERY	39 16	77 14W	700	22	22		H
EMMITSBURG 2 SE	2906	06	FREDERICK	39 41	77 17W	403	07	07		H
FROSTBURG 2	3415	07	ALLEGANY	39 40	78 56W	2170	07	07		H
MARYLAND SCI CTR R	5718	04	BALTIMORE (CITY)	39 17	76 37W	20	24	24		H
MECHANICSVILLE 5 NE	5865	03	ST. MARY'S	38 28	76 42W	100	07	07		H
MILLERS 4 NE	5934	06	CARROLL	39 43	76 48W	860	18	18		CH
NATL ARBORETUM DC	6350	04	DISTRICT OF COLUMBIA	38 55	76 58W	50	08	08		H
OAKLAND 1 SE	6620	08	GARRETT	39 25	79 24W	2420	07	07		H
OXON HILL	6800	04	PRINCE GEORGE'S	38 47	76 60W	120	07	07		H
PRINCESS ANNE	7330	01	SOMERSET	38 13	75 41W	20	17	17		H
REISTERSTOWN 2 NW	7580	06	BALTIMORE	39 30	76 50W	737	08	08		H
ROYAL OAK 2 SSW	7806	02	TALBOT	38 43	76 11W	10	17	17		H
SALISBURY 2N	8004	01	WICOMICO	38 24	75 36W	20	17	17		H
SALISBURY FAA AP	8005	01	WICOMICO	38 20	75 31W	48	24	24		H
SAVAGE RIVER DAM	8065	08	GARRETT	39 31	79 8W	1495	08	08	08	CH
SHARPSBURG 5 S	8207	07	WASHINGTON	39 24	77 43W	500	07	07		H
SINES DEEP CREEK	8315	08	GARRETT	39 31	79 25W	2040	07	07		H
SMITHSBURG 2NW	8371	06	WASHINGTON	39 40	77 35W	670	08	08		H
SNOW HILL 4 N	8380	01	WORCESTER	38 14	75 23W	30	17	17		H
SOLOMONS	8405	03	CALVERT	38 19	76 27W	12	08	08		H
STEVENSVILLE 2SW	8557	05	QUEEN ANNE'S	38 58	76 20W	10	07	07		H
SUDLERSVILLE 1S	8657	05	QUEEN ANNE'S	39 10	75 51W	100		20		H
WILLIAMSPORT	9570	07	WASHINGTON	39 37	77 51W	360		06		H
DELAWARE										
DOVER	2730	02	KENT	39 9	75 30W	30	16	16		H
WILMINGTON NEW CASTLE CO AP R	9595	01	NEW CASTLE	39 40	75 36W	79	24	24		HJ
WILMINGTON PORTER RSCH	9605	01	NEW CASTLE	39 46	75 32W	270	24	24		H

REFERENCE NOTES

STATION NAMES: Name of the city, town or locality. Figures and letters following the station names indicate the distance in miles and direction from the post office or town community center.

DIVISIONS: Areas within a state of similar climatological characteristics. Division averages are calculated using data from stations that record temperature and/or precipitation. Station Precipitation totals flagged with an 'F' or 'M' are excluded from the Divisional Average calculations of precipitation. Stations with monthly Temperature averages flagged with an 'F' or 'M' are included in the Divisional Average if there are no more than 9 flagged or missing daily values in the month, else they are excluded from the divisional average for temperature.

NORMALS: The average value of the meteorological element over a time period. Effective 1 January 2012, the averaging period for station departures is 1981 to 2010. The normals for National Weather Service localities have been adjusted so as to be representative for the current observation site.

The January 2011 through December 2015 publications incorrectly state the computation of divisional departures. Climate Division departures have been, and continue to be, computed from 1971-2000 Normals, not 1981-2010 as stated. Station departures are accurately described as departures from 1981-2010.

MONTHLY DEGREE DAY TOTALS: One heating (cooling) degree day is accumulated for each whole degree that the daily mean temperature is below (above) 65 degrees Fahrenheit.

PRECIPITATION: Values shown in hundredths of inches are water equivalent totals, i.e., total of liquid and melted frozen precipitation. In the "Monthly Summarized Data" table the total snow and sleet values shown in tenths of inches are unmelted amounts. The max depth on ground values of snow and sleet shown in whole inches are cumulative unmelted amounts. The number of days with .10, .50, 1.00 or more refers to water equivalents.

PRECIPITATION QUALITY CONTROL: The NCEI quality control process may flag precipitation data that are spatially inconsistent, exceed climatological limits, or are inconsistent with prevailing weather patterns.

TEMPERATURE: Original temperature values are given in the "Daily Temperature" table. Summary temperature information (averages, departures, extremes, monthly degree day totals) is based on the values labeled MAX/MIN.

WIND: (As shown in the "Evaporation and Wind" table) the total wind movement in miles over the evaporation pan as determined by an anemometer recorder located 6-8 inches above the pan.

SYMBOLS AND LETTERS USED IN THE STATION INDEX TABLE

C Station is equipped with recording rain gage (R) but values in this bulletin are from a non-recording rain gage unless indicated by an R.
G Observations appear in the "Soil Temperatures" table.
H Observations appear in the "Snowfall and Snow on the Ground" table.
J Station also published as a Local Climatological Data publication.
VAR Observation time varies.
SR / SS Observation time near sunrise / Observation time near sunset, respectively.

SYMBOLS AND LETTERS USED IN THE DATA TABLES

(DAILY DATA ARE FOR THE 24 HOURS IMMEDIATELY PRECEDING OBSERVATION TIME.)

BLANK Entries in the "Monthly Summarized Data" table indicate no record.
BLANK Entries in the "Daily Precipitation" and "Snowfall and Snow on the Ground" tables indicate zero.
BLANK Entries in the "Daily Temperature" table indicate a missing record

- No record. Data not recorded or not received in time for publication.
+ Precipitation or temperature extremes occurred on one or more previous dates during the month.
* Rain gage not read. Precipitation is included in the amount following the asterisks.
Time distribution may not be known. A * preceding the monthly total indicates precipitation amount is being carried forward to next month's total, and may include amounts from the previous month(s).
a As a subscript, indicates accumulated total.
A Amount of precipitation is the total of observer's entries for the current month. It may include precipitation that occurred during the previous month. Refer to earlier bulletin to determine date of last

reading. (Hawaii stations)

B Divisional Departure from normals are computed using 1971-2000 normals.

E Normalized HDD/CDD Calculation. E is appended to the HDD/CDD Calculation when 1-9 individual daily TMAX and/or TMIN values are missing and a Normalized HDD/CDD Calculation is provided. M appears alone if 10 or more daily values are missing.

F Monthly calculation flagged value. F is appended to average and/or total values computed which exclude one or more daily data values that have been flagged by the GHCN-Daily Dataset

M Insufficient or partial data. M is appended to average and/or total values computed with 1-9 daily values missing. M appears alone if 10 or more daily values are missing, (8 or more for wind and evaporation).

N Indicates snow fall or Snowdepth totals are computed with one or more missing days.

R Amounts from recording rain gage.

T Trace. An amount too small to measure.

SEASONAL TABLES: Monthly and seasonal snowfall and heating degree days for the 12 months ending with the June data are published in the July issue of this bulletin. Cooling degree days for the calendar year are published in the "Climatological Data Annual Summary."

Information concerning the history of changes in locations, exposure, etc. of substations is kept on file at the National Centers for Environmental Information. Historical information of regular National Weather Service Offices may be obtained from the "Local Climatological Data" annual publication. The contents of this publication may be reprinted or otherwise used freely, with proper credit to the National Centers For Environmental Information. The data are also available digitally.

Effective with the January 2011 Data-Month, COOP Observer Names are no longer included in the Monthly and Annual Climatological Data Publications. This information is not published to ensure the privacy of personal information pursuant to Section 208 of the E-Government Act of 2002 (44 USC 3601).

As of the 2011 Data-Year, Station and Climate Division Maps are no longer being included in the CD Publications. NCEI's Products Branch provides updated Station Maps for various data networks via the Historical Observing Metadata Repository: <http://www.ncdc.noaa.gov/homr>.

The GHCN-Daily Quality Control Flags shown below are displayed as superscripts with the data. For more information on Global Historical Climatology Network - Daily and flags, see: <http://www.ncdc.noaa.gov/oa/climate/ghcn-daily/> and Comprehensive Automated Quality Assurance of Daily Surface Observations. Durre, Imke, Matthew J. Menne, Byron E. Gleason, Tamara G. Houston, Russell S. Vose, 2010: J. Appl. Meteor. Climatol., 49, 16151633. doi: 10.1175/2010JAMC2375.1

Blank = Passed All checks	N = failed naught check
D = failed duplicate check	O = failed climatological outlier check
G = failed gap check	R = failed lagged range check
I = failed internal consistency check	S = failed spatial consistency check
K = failed streak/frequent-value check	T = failed temporal consistency check
L = failed check on length of multiday period	W = temperature too warm for snow
M = failed megaconsistency check	X = failed bounds check
	Z = flagged as a result of an official Datzilla investigation

Beginning with the January 2013 CD Publication, monthly mean temperature calculations have changed to the National Data Stewardship Team standard. Monthly maximum and minimum temperatures are not rounded until after the monthly mean temperature is calculated. This is the most accurate outcome, but may be slightly different from the mean derived from rounded monthly maximum and minimum.

The climate division temperature and precipitation values in this publication are based on simple averages from the current set of NWS-Designated Open and Published COOP and First Order Sites within each division. These values differ from those found in NCEI's nClimDiv product. Beginning in February 2014, the nClimDiv product is used by NCEI's Monitoring Branch and in its monthly climate reports. For more details on nClimDiv, please go to <http://www.ncdc.noaa.gov/monitoring-references/maps/us-climate-divisions.php>.

Effective January 2016, Alaska's Climate Divisions are updated to reflect the 13 climate divisional boundaries established by University of Alaska-Fairbanks, NWS, NCEI, Oregon State University, and University of Nebraska-Lincoln. For more details regarding the updated Alaska Climate Divisions, see: <http://journals.ametsoc.org/doi/pdf/10.1175/JAMC-D-11-0168.1> (Bienek et al., 2012).

These and other publications are available from the National Centers for Environmental Information

Hourly Precipitation Data

This publication contains hourly precipitation amounts obtained from recording rain gages located at National Weather Service, Federal Aviation Administration, and cooperative observer stations. Published data are displayed in inches and tenths or inches and hundredths at local standard time. HPD includes maximum precipitation for nine (9) time periods from 15 minutes to 24 hours, for selected stations.

Climatological Data

Monthly editions contain station daily maximum and minimum temperatures and precipitation. Some Stations provide daily snowfall, snow depth, evaporation, and soil temperature data. Each edition also contains monthly summaries for heating and cooling degree days (65 degree F base). The July issue contains a recap of monthly heating degree days and snow data for the preceding July through June.

The Annual issue contains monthly and annual averages of temperature, precipitation, temperature extremes, freeze data, soil temperatures, evaporation, and a recap of monthly cooling degree days.

Storm Data

Monthly issues contain a chronological listing, by states, of occurrences of storms and unusual weather phenomena. Reports contain information on storm paths, deaths, injuries, and property damage. An "Outstanding storms of the month" section highlights severe weather events with photographs, illustrations, and narratives. The December issue includes annual tornado, lightning, flash flood, and tropical cyclone summaries.

Monthly Climatic Data for the World

This publication contains monthly means for temperature, pressure, precipitation, vapor pressure, and sunshine for approximately 2,000 surface data collection stations worldwide and monthly mean upper air temperatures, dew point depressions, and wind velocities for approximately 500 observing sites.

Local Climatological Data

LCD publications summarize temperature, relative humidity, precipitation, cloudiness, wind speed and direction observations for several hundred cities in the U.S. and its territories. Each monthly publication also contains 3 hourly weather observations for that month and a hourly summary of precipitation. Annual LCD publications contain a summary of the past calendar year as well as historical averages and extremes.

For Information Call:

(828) 271-4800 Option 2

(828) 271-4010 (TDD)

(828) 271-4876 (Fax)

NOAA National Centers for Environmental Information
Attn: Customer Engagement Branch
151 Patton Avenue
Asheville, NC 28801-5001

Customer Services Number: (828) 271-4800, option 2
TDD : (828) 271-4010
Fax number: (828) 271-4876

NCEI now offers free online access to the *Climatological Data* publication.
Go to : www.ncdc.noaa.gov and choose Most Popular.