



CLIMATOLOGICAL DATA

MARYLAND AND DELAWARE

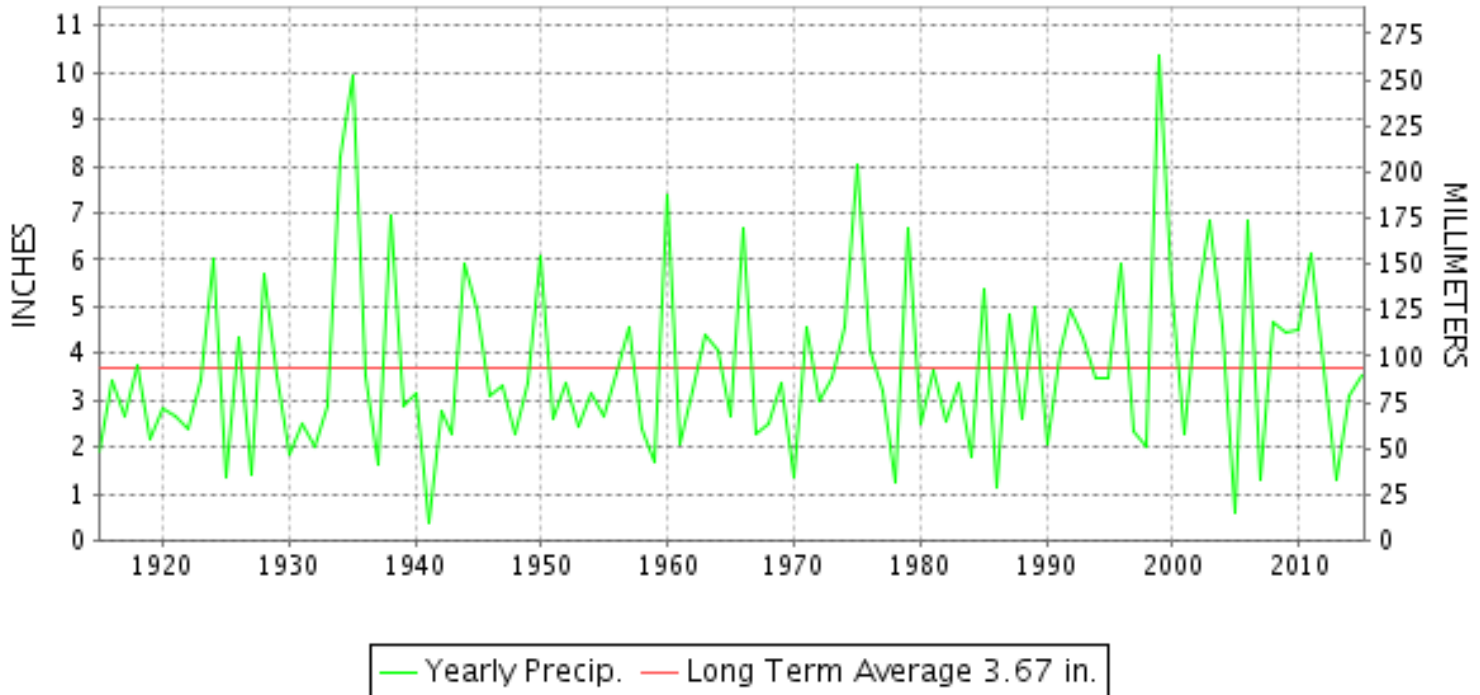
SEPTEMBER 2015

VOLUME 119 NUMBER 09

ISSN 0145-0549

GHCND Ver: 3.22-upd-2016011406

SEPTEMBER PRECIPITATION BY YEAR



TEMPERATURE AND PRECIPITATION EXTREMES

MARYLAND

HIGHEST TEMPERATURE	97	SEPTEMBER 08	CYLBURN
LOWEST TEMPERATURE	39	SEPTEMBER 16+	SINES DEEP CREEK
GREATEST TOTAL PRECIPITATION	8.61		MILLERS 4 NE
LEAST TOTAL PRECIPITATION	2.03		SALISBURY FAA AP
GREATEST 1 DAY PRECIPITATION	5.88	SEPTEMBER 30	MECHANICSVILLE 5 NE

"I certify that this is an official publication of the National Oceanic and Atmospheric Administration (NOAA) It is compiled using information from weather observing sites supervised by NOAA/National Weather Service and received at the National Centers for Environmental Information(NCEI), Asheville, North Carolina 28801."

Director
National Centers for Environmental Information

noaa

National
Oceanic and
Atmospheric Administration

National
Environmental Satellite, Data
and Information Service

National
Centers for Environmental Information
Asheville, North Carolina

DELAWARE

HIGHEST TEMPERATURE	96	SEPTEMBER 03	WILMINGTON NEW CASTLE CO AP
LOWEST TEMPERATURE	51	SEPTEMBER 24	WILMINGTON NEW CASTLE CO AP
GREATEST TOTAL PRECIPITATION	5.07		WILMINGTON PORTER RSCH
LEAST TOTAL PRECIPITATION	2.50		WILMINGTON NEW CASTLE CO AP
GREATEST 1 DAY PRECIPITATION	2.73	SEPTEMBER 10	WILMINGTON PORTER RSCH

MONTHLY STATION AND DIVISION SUMMARY

STATION	TEMPERATURE (°F)													PRECIPITATION (IN)																													
	AVERAGE MAXIMUM	AVERAGE MINIMUM	AVERAGE	DEPARTURE FROM NORMAL	HIGHEST	DATE	LOWEST	DATE	HEATING DEG. DAYS	COOLING DEG. DAYS	NO. OF DAYS				TOTAL	DEPARTURE FROM NORMAL	GREATEST 24 HOURS	DATE	ICE PELLETS, SNOW			NO. OF DAYS																					
											MAX		MIN						TOTAL	MAX DEPTH ON GROUND	DATE	.10 OR MORE	.50 OR MORE	1.00 OR MORE																			
											>=90	<=32	<=32	<=0																													
MARYLAND SOUTHERN EASTERN SHORE 01	M	M	M							0	0	0	0	M				M																									
ASSATEAGUE	81.9M	59.7M	70.8M	2.9	93	09	48	28	17E	200E	5	0	0	0	MA 3.24	-0.60			M						0	0	0																
PRINCESS ANNE	82.0M	63.8	72.9M		91	09+	51	14	2E	243E	3	0	0	0	3.11		1.05	30	M					5	3	2																	
SALISBURY 2N	82.1	62.1	72.1	3.9	93	09	50	15	3	223	5	0	0	0	2.03	-1.95	0.68	10	0.0	0				3	3	0																	
SALISBURY FAA AP	84.5	61.7F	73.1F	3.3	94	01	48	15	1	243	6	0	0	0	5.81	1.41	2.49	12	M					6	5	1																	
SNOW HILL 4 N			72.2	2.9B											3.65	-0.11B																											
--DIVISIONAL DATA-----> CENTRAL EASTERN SHORE 02																																											
ROYAL OAK 2 SSW	82.7	64.9	73.8	3.6	93	09+	55	24+	0	275	5	0	0	0	2.61	-1.40	1.15	30	0.0	0					3	3	1																
MECHANICSVILLE 5 NE			73.8	4.6B											2.61	-1.21B																											
SOLOMONS	78.7	61.2	70.0	3.5	91	10	51	15+	9	167	1	0	0	0	7.84	3.56	5.88	30	M					4	2	2																	
UPPER SOUTHERN 04	81.4M	67.5M	74.4M	2.4	93	10	59	13	0	290E	3	0	0	0	A 2.49		1.90	29	M					3	1	1																	
BALTIMORE WASH INTL AP			72.2	4.1B											5.17	1.00B																											
BELTSVILLE	82.3	61.4	71.9	4.1	94	09+	51	15+	1	215	7	0	0	0	3.25	-0.78	2.58	29	0.0	0				3	1	1																	
DALECARLIA RSVR	82.4	62.1	72.2	3.8	93	10+	48	14	6	229	7	0	0	0	3.03	-1.05	2.28	30	0.0	0				3	2	1																	
MARYLAND SCIENCE CENTER	82.5M	62.4M	72.4M	2.7	94	10+	51	15+	8E	237E	7	0	0	0	M 2.08	-2.09	1.49	30	M 0.0	0				5	1	1																	
NATL ARBORETUM DC	81.9	66.6	74.3	2.3	94	09	56	14	0	285	7	0	0	0	3.67	-0.42	1.97	29	M					3	2	2																	
OXON HILL	84.6	64.7	74.7	4.4	95	04	54	15	0	298	8	0	0	0	2.84	-0.92	2.13	30	M					5	1	1																	
UPPER MARLBORO 3 NNW	82.5	63.4	73.0	3.3	94	10	55	16+	2	248	6	0	0	0	2.52	-1.61	1.52	30	M 0.0	0				4	1	1																	
NORTHERN CENTRAL 06	83.8	61.5	72.7	4.9	96	10	50	14	4	239	7	0	0	0	3.14	-0.85	2.71	30	M					3	1	1																	
ABERDEEN PHILLIPS FLD			73.0	4.7B											3.08	-1.10B																											
BRIGHTON DAM	81.7	61.4	71.6	3.8	93	04	52	14	4	211	6	0	0	0	4.25	-0.27	1.41	30	0.0	0				4	3	3																	
CONOWINGO DAM	79.3M	58.9M	69.1M		90	04+	48	15+	24E	155E	3	0	0	0	M 2.62		1.65	30	M 0.0	0				4	1	1																	
CYLURN	M	M	M								0	0	0	0	3.92	-1.03	2.15	30	M					4	3	1																	
DAMASCUS 3 SSW	80.6M	63.5M	72.0M	6.4	97	08	55	25+	9E	226E	6	0	0	0	6.06		2.90	11	M					4	2	2																	
EMMITSBURG 2 SE	78.7	60.0	69.4	3.7	91	09+	48	14	23	165	2	0	0	0	3.92	-0.59	2.67	29	M 0.0	0				5	1	1																	
FREDERICK 2 NNE	80.2	57.5	68.9	3.8	92	09	49	17+	31	152	6	0	0	0	4.92	0.68	2.49	30	0.0	0				5	3	2																	
MILLERS 4 NE	M	M	M								0	0	0	0	M				M																								
SMITHSBURG 2NW	80.3	58.4	69.3	4.4	92	08	49	24+	20	156	6	0	0	0	8.61	4.14	2.91	30	0.0	0				4	3	3																	
APPALACHIAN MOUNTAIN 07	78.9M	55.8M	67.3M	2.0	89	09+	46	25+	50E	125E	0	0	0	0	MA 3.84	-0.20	1.35	30	M						3	3	2																
--DIVISIONAL DATA----->			69.7	3.1B											5.28	0.95B																											

MONTHLY STATION AND DIVISION SUMMARY

STATION	TEMPERATURE (°F)										PRECIPITATION (IN)													
	AVERAGE MAXIMUM	AVERAGE MINIMUM	AVERAGE	DEPARTURE FROM NORMAL	HIGHEST	DATE	LOWEST	DATE	HEATING DEG. DAYS	COOLING DEG. DAYS	NO. OF DAYS				TOTAL	DEPARTURE FROM NORMAL	GREATEST 24 HOURS	DATE	ICE PELLETS, SNOW			NO. OF DAYS		
											MAX		MIN						TOTAL	MAX DEPTH ON GROUND	DATE	.10 OR MORE	.50 OR MORE	1.00 OR MORE
											>=90	<=32	<=32	<=0										
CUMBERLAND 2	81.6	57.6	69.6	2.2	96	09	48	16+	29	172	9	0	0	0	4.37	1.14	2.27	30	M			8	2	1
FROSTBURG 2	74.2	54.8	64.5	3.5	90	09	46	16+	96	89	1	0	0	0	5.49	1.81	2.95	30	M			7	3	1
SHARPSBURG 5 S	80.8	55.8	68.3	2.7	92	10+	45	15+	42	148	7	0	0	0	A 4.35	0.35	1.44	30	M			2	1	1
WILLIAMSPORT														M 1.09	-2.77	0.62	11	M 0.0	0			3	1	0
--DIVISIONAL DATA-----> ALLEGHENY PLATEAU 08			67.5	3.4B										4.74	1.25B									
OAKLAND 1 SE	75.5	54.5	65.0	5.0	87	09+	40	15	85	90	0	0	0	0	4.09	0.64	2.65	30	0.0	0		5	2	1
SAVAGE RIVER DAM	74.9M	56.3M	65.6M	3.6	89	05	45	15	83E	108E	0	0	0	0	M 3.66	0.34	2.72	30	M			6	1	1
SINES DEEP CREEK	M	M	M		84	09	39	16+	139E	39E	0	0	0	0	MA 2.34		1.50	30	M			3	1	1
--DIVISIONAL DATA-----> DELAWARE NORTHERN 01			65.3	4.8B										4.09	0.49B									
WILMINGTON NEW CASTLE CO AP	82.9	62.0	72.4	4.6	96	03	51	24	0	232	7	0	0	0	2.50	-1.82	1.33	29	0.0	0		4	2	1
WILMINGTON PORTER RSCH	80.9	63.9	72.4	5.2	95	09	53	14	8	241	6	0	0	0	5.07	0.17	2.73	10	0.0	0		4	3	2
--DIVISIONAL DATA-----> SOUTHERN 02			72.4	5.0B										3.79	-0.53B									
DOVER	81.8	64.0	72.9	3.2	93	08+	53	14	1	246	5	0	0	0	A 3.93	-0.20	1.66	10	0.0	0		2	2	2
FRANKFORD														3.20		1.28	30	0.0	0			3	3	2
--DIVISIONAL DATA----->			72.9	4.6B										3.57	-0.58B									

DAILY PRECIPITATION (INCHES)

STATION	TOTAL	DAY OF MONTH																																			
		01	02	03	04	05	06	07	08	09	10	11	12	13	14	15	16	17	18	19	20	21	22	23	24	25	26	27	28	29	30	31					
MARYLAND																																					
SOUTHERN																																					
EASTERN SHORE 01																																					
ASSATEAGUE	M	-	-	-	-	-	-	-	-	-	-	-	-	-	-	-	-	-	-	-	-	-	-	-	-	-	-	-	-	-	-	-	-	-			
PRINCESS ANNE	MA 3.24					-	-																											*	3.24 _a		
SALISBURY 2N	3.11	0.62	0.01	0.02							0.02	0.01	1.00	0.25	0.01																			0.12	1.05		
SALISBURY FAA AP	2.03	0.07									0.68		0.61													0.01	0.01							0.59	0.06		
SNOW HILL 4 N	5.81	0.93									0.94		2.49	0.72								T				0.14								0.59			
CENTRAL																																					
EASTERN SHORE 02																																					
ROYAL OAK 2 SSW	2.61										0.76		0.58	0.07									0.02	0.02	T		T					0.01		1.15			
LOWER SOUTHERN 03																																					
MECHANICSVILLE 5 NE	7.84				0.03						1.45	0.13		0.34																					5.88		
SOLOMONS	A 2.49									*	0.15 _a	T	0.24	0.14			*	0.00 _a				T				T	T					1.90		0.06			
UPPER SOUTHERN 04																																					
BALTIMORE WASH INTL AP	3.25										T		0.47	T									0.07	T			T	T	0.01			2.58		0.12			
BELTSVILLE	3.03										T			0.56																					2.28		
DALECARLIA RSVR	M 2.08				0.12						0.11	-		0.16																				0.04	1.49		
MARYLAND SCIENCE CENTER	3.67										1.25		0.41										0.03										1.97		0.01		
NATL ARBORETUM DC	2.84	T			0.17						0.12	T	T	0.18													T							2.13			
OXON HILL	2.52	T			0.33						0.02	0.05		0.39												T		T	T					1.52			
UPPER MARLBORO 3 NNW	3.14				0.03	0.02							0.23					0.12									T	T	T					2.71			
NORTHERN CENTRAL 06																																					
ABERDEEN PHILLIPS FLD	4.25	T									0.37	1.14		1.31																					1.41		
BRIGHTON DAM	M 2.62											0.35		0.45																					1.65		
CONOWINGO DAM	3.92										0.70	0.73		0.31																					2.15		
CYLBURN	6.06										0.15	2.90		0.33																					2.63		
DAMASCUS 3 SSW	3.92			0.01							0.05		0.36																						0.45		
EMMITSBURG 2 SE	4.92					0.12					T	1.12		0.92																				T	2.49		
FREDERICK 2 NNE	M	-	-	-	-	-	-	-	-	-	-	-	-	-	-	-	-	-	-	-	-	-	-	-	-	-	-	-	-	-	-	-	-	-	-		
MILLERS 4 NE	8.61				0.01	T					2.82	T	2.66																					T	0.03	2.91	
SMITHSBURG 2NW	MA 3.84				0.50	*	0.18 _a					1.15	*	0.51 _a																			*	0.15 _a	1.35		
APPALACHIAN																																					
MOUNTAIN 07																																					
CUMBERLAND 2	4.37	T			0.50	0.01	0.11				0.27	0.42	0.23	0.11																				0.05	0.04	0.09	2.27
FROSTBURG 2	5.49	0.84			T		T				0.16	0.61	0.07	0.25																				0.06	0.23	2.95	
SHARPSBURG 5 S	A 4.35					*		*	0.57 _a		0.06	*	*	*	*	*	1.89 _a										*	*	*	0.03 _a					1.44		
WILLIAMSPORT	M 1.09											0.62		0.33	0.01	0.01																	0.01		-		
ALLEGHENY PLATEAU 08																																					
OAKLAND 1 SE	4.09				0.01	0.02	0.06	0.02			0.07	0.58	0.05		0.24	0.02																		0.04	0.11	2.65	
SAVAGE RIVER DAM	M 3.66										0.35	0.11	T	0.10																				0.09	0.10	2.72	
SINES DEEP CREEK	MA 2.34	0.05	-	0.02							0.05	0.12	*	*	*	0.25 _a						*	*	0.10 _a	0.15			*	*	*	0.10 _a			1.50			

DAILY PRECIPITATION (INCHES)

STATION	TOTAL	DAY OF MONTH																															
		01	02	03	04	05	06	07	08	09	10	11	12	13	14	15	16	17	18	19	20	21	22	23	24	25	26	27	28	29	30	31	
DELAWARE																																	
NORTHERN 01																																	
WILMINGTON NEW CASTLE CO AP	2.50				T						0.68	T	0.27																		1.33	0.22	
WILMINGTON PORTER RSCH	5.07										2.73		0.57																		0.26	1.51	
SOUTHERN 02																																	
DOVER	A 3.93										1.66	*	*	*	0.80 _a																		1.47
FRANKFORD	3.20											1.14		0.78																			1.28

DAILY TEMPERATURES (°F)

STATION	OB. TIME	MAX/MIN	DAY OF MONTH																															AVERAGE			
			01	02	03	04	05	06	07	08	09	10	11	12	13	14	15	16	17	18	19	20	21	22	23	24	25	26	27	28	29	30	31				
MARYLAND SOUTHERN EASTERN SHORE 01 ASSATEAGUE	VA	MAX MIN																																		M M M	
PRINCESS ANNE	17	MAX MIN	92 65	91 69	92 68	89 69				88 63	91 64	93 72			86 65			76 52	82 51	84 52	83 54	83 61			73 62	75 63	76 54	78 55	76 62			71 48	70 53	71 52	M M M		
SALISBURY 2N	17	MAX MIN	91 67	89 70	91 69	88 70	87 71	85 62	87 62	89 68	91 71		81 67	77 64	73 61	74 51	81 52	84 54	84 59	84 58	84 62	85 65	79 65			79 60	63 63	61 53	61 61	65 65	65 65	76 66	76 68	82 76	85 68	83 76	63.8
SALISBURY FAA AP	24	MAX MIN	91 64	91 69	92 69	89 68	82 64	85 64	88 62	91 64	93 72	86 71	81 65	78 63	72 56	75 51	82 50	84 53	83 56	83 54	85 60	77 61	73 62	75 63	76 54	77 54	74 62	71 65	76 66	85 67	84 68	83 66				82.1 62.1	
SNOW HILL 4 N	17	MAX MIN	94 64	91 62	92 68	90 66	87 72	86 44 ^s	88 55	91 62	93 69	89 70	82 61	83 61	74 62	78 49	84 48	87 50	88 64	85 52	88 59	84 62	79 62	76 63	79 62	78 52	76 62	74 65	81 66	86 61	86 66	86 74	86 66			84.5 61.7	
CENTRAL EASTERN SHORE 02 ROYAL OAK 2 SSW	17	MAX MIN	89 66	91 70	93 70	92 71	85 70	85 61	88 65	90 71	93 75	87 72	81 65	80 65	74 67	77 61	81 55	83 56	82 59	83 58	85 62	80 66	73 66	75 68	79 60	80 55	77 60	74 65	77 65	77 65	83 65	85 68	80 69		82.7 64.9		
LOWER SOUTHERN 03 MECHANICSVILLE 5 NE	07	MAX MIN	83 66	87 68	87 67	88 67	87 68	81 61	80 61	85 62	87 66	91 71	81 65	80 61	73 59	70 51	73 51	77 53	80 54	79 56	79 58	80 61	74 61	68 61	70 59	73 53	75 54	72 64	72 62	73 62	73 62	78 66	78 69		78.7 61.2		
SOLOMONS	08	MAX MIN	87 73	91 72	90 75	89 73	84 69	85 72	85 72	88 75		93 68	83 71	77 64	73 59	76 61	82 64	83 65	82 66	82 68	84 65	75 64	72 62	74 67	78 66	73 66	72 64	77 66	82 64	80 71	82 72	80 60	82 60		81.4 67.5		
UPPER SOUTHERN 04 BALTIMORE WASH INTL AP	24	MAX MIN	94 68	92 69	94 68	90 71	84 69	84 61	90 60	93 68	94 72	83 67	85 61	74 58	73 54	78 51	83 51	86 53	86 55	85 56	85 59	79 64	69 61	72 59	79 57	80 52	74 63	73 62	75 60	80 64	73 60	75 64	80 68	79 61	76 61	82.3 61.4	
BELTSVILLE	08	MAX MIN	87 68	93 70	92 70	93 69	90 71	84 61	85 59	90 66	93 72	93 64	84 64	85 59	73 61	71 48	78 51	83 53	87 55	86 57	86 59	87 65	87 62	78 60	72 58	78 54	78 59	72 60	73 60	73 60	73 61	81 66	79 71		82.4 62.1		
DALECARLIA RSVR	08	MAX MIN	88 69	93 69	92 69	94 70	91 71	85 63	87 62	91 63	93 71	94 72	85 61	74 60	72 51	74 51	83 54	86 58	86 60	86 62	87 66	87 61	79 59	67 55	72 54	78 55	78 55	70 62	73 62	73 65	81 65	81 70	80 65	80 70		82.5 62.4	
MARYLAND SCIENCE CENTER	24	MAX MIN	93 73	93 76	93 75	92 76	85 72	84 68	90 70	92 73	94 76	82 68	83 66	75 67	72 59	78 56	83 62	85 63	84 66	84 65	84 67	78 67	68 62	72 62	77 62	79 62	74 64	72 63	73 61	81 65	81 70	77 62	77 62	81 65	77 62	81 62	81.9 66.6
NATL ARBORETUM DC	07	MAX MIN	90 72	94 74	93 72	95 74	93 73	87 65	84 64	92 71	94 72	94 73	84 66	87 63	81 56	73 54	80 57	85 59	86 59	88 61	88 63	89 70	81 62	70 63	75 59	81 56	80 58	73 63	74 58	75 61	80 66	73 61	75 66	83 66	85 71		84.6 64.7
OXON HILL	08	MAX MIN	89 69	93 69	91 70	92 72	88 72	84 64	86 65	90 65	93 68	94 73	82 64	86 63	74 55	72 56	79 55	84 58	87 58	86 60	86 67	87 62	87 60	79 59	68 57	80 59	68 57	71 59	77 59	78 62	81 61	75 65	81 65	79 69	79 69	81 65	82.5 63.4
UPPER MARLBORO 3 NNW	08	MAX MIN	89 67	94 69	93 67	94 68	91 71	85 60	85 61	92 66	93 71	96 72	89 65	86 60	75 61	74 50	79 51	85 52	88 54	87 56	87 58	87 64	79 61	69 58	73 57	77 52	81 54	74 61	74 60	76 62	83 66	80 70				83.8 61.5	
NORTHERN CENTRAL 06 ABERDEEN PHILLIPS FLD	07	MAX MIN	87 69	92 67	92 67	93 69	92 71	84 60	84 60	87 62	91 70	92 73	81 65	82 62	75 60	70 52	77 53	82 55	84 55	85 57	85 58	82 65	77 60	70 61	73 56	79 53	78 53	77 60	70 59	71 59	80 65	80 67	80 67		81.7 61.4		
BRIGHTON DAM	08	MAX MIN	84 65	90 66	90 65	90 66	88 67	81 60	82 56	87 64	89 69	88 70	78 61	81 56	70 48	70 48	74 51	80 50	81 50	82 54	82 54	82 57	75 58	64 57	70 54	74 49	76 54									79.3 58.9	

DAILY TEMPERATURES (°F)

STATION	OB. TIME	MAX/MIN	DAY OF MONTH																															AVERAGE	
			01	02	03	04	05	06	07	08	09	10	11	12	13	14	15	16	17	18	19	20	21	22	23	24	25	26	27	28	29	30	31		
CONOWINGO DAM	07	MAX																																	M
		MIN																																M	
CYLBURN	08	MAX				96	91	84	85	97	91	92			87	90	74	78	81	80	81	81	74	62	74	73	73	71	69	71	79		80.6		
		MIN				78	75	69	64	71	75	78			71	59	55	56	58	60	61	67	59	59	60	55	55	60	59	60	60		63.5		
DAMASCUS 3 SSW	22	MAX	89	88	89	88	82	84	89	91	91	80	81	68	68	75	79	83	84	83	85	73	64	69	75	75	68	69	69	77	76	70	78.7		
		MIN	66	67	66	69	69	60	60	67	71	65	58	61	56	48	52	54	56	58	62	62	55	55	51	50	57	58	56	62	67	61	60.0		
EMMITSBURG 2 SE	07	MAX	88	90	91	91	89	84	87	90	92	91	76	82	67	69	77	81	84	84	85	85	74	62	64	75	78	75	70	73	76	77	80.2		
		MIN	64	64	64	65	68	65	57	56	66	71	60	55	55	49	49	49	49	51	53	56	57	56	51	50	50	53	56	56	62	67	57.5		
FREDERICK 2 NNE	07	MAX																															M		
		MIN																															M		
MILLERS 4 NE	18	MAX	90	90	91	91	83	84	89	92	90	83	80	78	69	74	80	83	83	83	82	78	72	69	75	77	74	68	73	79	77	72	80.3		
		MIN	66	63	66	67	67	58	56	65	70	64	59	56	55	49	50	51	55	57	58	60	53	55	50	49	56	53	54	59	66	64	58.4		
SMITHSBURG 2NW	08	MAX	86	89	88		88	81	84	87	89	87	70		82	66	75	79	81					61	72	76	77	76	76	71	77	75	78.9		
		MIN	62	62	62		63	61	57	63	63	67	54		54	48	47	47	49					54	48	46	46	51	51	55	63	66	55.8		
APPALACHIAN MOUNTAIN 07																																			
CUMBERLAND 2	18	MAX	90	93	86	90	90	82	89	93	96	92	75	85	70	68	78	83	88	89	90	92	79	60	67	80	81	74	75	65	74	74	81.6		
		MIN	64	65	66	66	68	62	62	62	64	68	56	56	58	48	48	48	50	52	56	56	53	53	52	51	51	51	56	57	62	66	57.6		
FROSTBURG 2	07	MAX	78	84	81	83	83	77	83	87	90	86	67	79	63	60	69	76	79	81	83	85	71	55	58	73	74	65	66	58	64	67	74.2		
		MIN	63	63	65	64	64	59	58	59	61	64	53	53	51	47	46	46	49	52	54	51	50	50	47	48	49	55	52	51	58	62	54.8		
SHARPSBURG 5 S	07	MAX	88	91	90	92	91	84	86	90	92	92	72	83	69	69	78	80	83	85	85	87	77	61	73	77	79	73	71	70	80	76	80.8		
		MIN	63	63	63	63	65	62	57	57	63	68	54	54	54	45	45	48	48	52	54	57	51	51	47	47	47	51	57	57	64	68	55.8		
ALLEGHENY PLATEAU 08																																			
OAKLAND 1 SE	07	MAX	85	85	87	87	85	79	82	87	87	85	74	79	63	67	70	74	80	82	82	85	70	57	64	69	71	66	58	66	70	68	75.5		
		MIN	59	59	61	61	64	60	57	57	57	65	60	59	52	44	40	44	46	48	49	52	54	53	48	45	48	56	56	55	62	65	54.5		
SAVAGE RIVER DAM	08	MAX	82	87	82	86	89	77	82	83	88	83	70	81	67	62	72		78			85	77	55	61		72	66	66	61	67	69	74.9		
		MIN	63	63	64	63	64	61	59	61	60	64	56	57	54	48	45		47			54	51	51	51		46	52	52	54	60	64	56.3		
SINES DEEP CREEK	07	MAX	81		81	78					84	80	71				70	73	77	78			80	56	55	67	70			70	67	M			
		MIN	56		58	57				55	59	56				39	39	43	46			47	50	45	42	40			58	59		M			
DELAWARE NORTHERN 01																																			
WILMINGTON NEW CASTLE CO AP	24	MAX	94	93	96	92	85	85	91	93	90	79	83	77	72	77	83	86	85	83	84	81	73	73	80	81	78	74	73	82	82	81	82.9		
		MIN	69	68	68	70	66	58	64	68	74	69	67	64	57	53	52	55	58	58	64	63	58	61	57	51	59	57	61	61	67	63	62.0		
WILMINGTON PORTER RSCH	24	MAX	92	90	93	90	84	85	89	94	95	80	80	75	71	74	80	84	85	84	83	76	70	70	76	76	73	69	65	79	82	82	80.9		
		MIN	71	68	72	73	66	62	66	69	74	73	69	66	58	53	59	63	64	61	66	64	57	57	57	57	61	59	57	62	67	65	63.9		
SOUTHERN 02																																			
DOVER	16	MAX	91	90	93	90	86	82	89	93	89	86	79	75	72	75	84	86	85	83	81	78	71	74	79	79	78	72	74	81	82	78	81.8		
		MIN	69	68	69	73	67	64	65	70	73	70	68	66	63	53	54	56	59	60	63	67	62	62	61	54	63	61	59	64	66	71	64.0		

SNOWFALL AND SNOW ON GROUND (INCHES)

STATION		DAY OF MONTH																															
		01	02	03	04	05	06	07	08	09	10	11	12	13	14	15	16	17	18	19	20	21	22	23	24	25	26	27	28	29	30	31	
MARYLAND SOUTHERN EASTERN SHORE 01 ASSATEAGUE PRINCESS ANNE SALISBURY 2N SALISBURY FAA AP SNOW HILL 4 N	SNOWFALL SNOWFALL SNOWFALL SNOWFALL SN ON GND SNOWFALL																																
DELAWARE NORTHERN 01 WILMINGTON NEW CASTLE CO AP WILMINGTON PORTER RSCH	SNOWFALL SN ON GND SNOWFALL SN ON GND																																

Snowfall: Includes snow and ice. Values for NWS stations (J index note) are Mid-Mid (LST).
 Snow on ground: Includes snow, sleet, ice, and hail. Values for NWS stations (J index note) are observed at 12 UTC (GMT).
 Water Equivalent: Given for NWS stations (J index note) only, when snow depth is 2 inches or more, and is measured at 18 UTC (GMT)

PAN EVAPORATION AND WIND

STATION		DAY OF MONTH																															TOTAL OR AVERAGE
		01	02	03	04	05	06	07	08	09	10	11	12	13	14	15	16	17	18	19	20	21	22	23	24	25	26	27	28	29	30	31	
MARYLAND UPPER SOUTHERN 04 BELTSVILLE	WIND	32	30	32	33	51	35	26	30	55	35	87	42	43	68	46	22	23	22	27	48	76	57	61	37	39	62	89	50	31	53	1342	
	EVAP	0.19	0.22	0.22	0.21	0.21	0.25	0.21	0.20	0.26	0.21	0.19	0.23	0.06	0.20	0.20	0.21	0.18	0.19	0.20	0.18	0.22	0.07	0.12	0.20	0.16	0.09	0.17	0.09	0.11	0.11	5.36	
	MAX	90	90	90	90	90	88	86	90	90	91	83	84	70	71	76	82	84	86	86	86	78	64	72	78	74	66	69	70	80	76	80.8	
	MIN	67	67	68	68	68	62	58	58	66	70	60	59	57	48	48	51	54	56	58	59	54	54	55	54	54	56	55	58	62	66	59.0	
UPPER MARLBORO 3 NNW	WIND	-	-	-	-	-	-	-	-	-	-	-	-	-	-	-	-	-	-	-	-	-	-	-	-	-	-	-	-	-	M		
	EVAP	-	-	-	-	-	-	-	-	-	-	-	-	-	-	-	-	-	-	-	-	-	-	-	-	-	-	-	-	-	M		
	MAX	-	-	-	-	-	-	-	-	-	-	-	-	-	-	-	-	-	-	-	-	-	-	-	-	-	-	-	-	-	M		
	MIN	-	-	-	-	-	-	-	-	-	-	-	-	-	-	-	-	-	-	-	-	-	-	-	-	-	-	-	-	-	M		
ALLEGHENY PLATEAU 08 SAVAGE RIVER DAM	WIND	-	-	-	-	-	-	-	-	-	-	-	-	-	-	-	-	-	-	-	-	-	-	-	-	-	-	-	-	-	M		
	EVAP	-	-	-	-	-	-	-	-	-	-	-	-	-	-	-	-	-	-	-	-	-	-	-	-	-	-	-	-	-	M		
	MAX	-	-	-	-	-	-	-	-	-	-	-	-	-	-	-	-	-	-	-	-	-	-	-	-	-	-	-	-	-	-		
	MIN	-	-	-	-	-	-	-	-	-	-	-	-	-	-	-	-	-	-	-	-	-	-	-	-	-	-	-	-	-	M		

Evaporation: Is measured in hundreths of inches.

Wind: Is measured in miles.

Max and Min: The maximum and minimum temperatures (Fahrenheit) of the water in the evaporation pan.

STATION INDEX

STATION	INDEX NO.	DIVISION	COUNTY	LATITUDE	LONGITUDE	ELEVATION (IN FEET)	OBSERVATION TIME AND TABLES			
							LOCAL STD TIME			
							TEMP	PRECIP	EVAP	SPECIAL SEE (NOTES)
MARYLAND										
ABERDEEN PHILLIPS FLD	0015	06	HARFORD	39 28	76 10W	57	07	07		CH
ASSATEAGUE	0335	01	WORCESTER	38 4	75 13W	10	VAR	VAR		H
BALTIMORE WASH INTL AP R	0465	04	ANNE ARUNDEL	39 10	76 41W	156	24	24		HJ
BELTSVILLE	0700	04	PRINCE GEORGE'S	39 2	76 56W	145	08	08	08	CH
BRIGHTON DAM	1125	06	MONTGOMERY	39 11	77 0W	330	08	08		H
CONOWINGO DAM	2060	06	HARFORD	39 39	76 11W	40	07	07		H
CUMBERLAND 2	2282	07	ALLEGANY	39 39	78 45W	730	18	18		H
CYLBURN	2308	06	BALTIMORE	39 21	76 39W	235	08	08		H
DALECARLIA RSVR	2325	04	DISTRICT OF COLUMBIA	38 56	77 7W	150	08	08		H
DAMASCUS 3 SSW	2336	06	MONTGOMERY	39 16	77 14W	700	22	22		H
EMMITSBURG 2 SE	2906	06	FREDERICK	39 41	77 17W	403	07	07		H
FREDERICK 2 NNE	3353	06	FREDERICK	39 26	77 24W	280	07	07		H
FROSTBURG 2	3415	07	ALLEGANY	39 40	78 56W	2170	07	07		H
MARYLAND SCIENCE CENTER R	5718	04	BALTIMORE (CITY)	39 17	76 37W	20	24	24		H
MECHANICSVILLE 5 NE	5865	03	ST. MARY'S	38 28	76 42W	100	07	07		H
MILLERS 4 NE	5934	06	CARROLL	39 43	76 48W	860	18	18		CH
NATL ARBORETUM DC	6350	04	DISTRICT OF COLUMBIA	38 55	76 58W	50	07	07		H
OAKLAND 1 SE	6620	08	GARRETT	39 25	79 24W	2420	07	07		H
OXON HILL	6800	04	PRINCE GEORGE'S	38 47	76 60W	120	08	08		H
PRINCESS ANNE	7330	01	SOMERSET	38 13	75 41W	20	17	17		H
ROYAL OAK 2 SSW	7806	02	TALBOT	38 43	76 11W	10	17	17		H
SALISBURY 2N	8004	01	WICOMICO	38 24	75 36W	20	17	17		H
SALISBURY FAA AP	8005	01	WICOMICO	38 20	75 31W	48	24	24		H
SAVAGE RIVER DAM	8065	08	GARRETT	39 31	79 8W	1495	08	08	08	CH
SHARPSBURG 5 S	8207	07	WASHINGTON	39 24	77 43W	500	07	07		H
SINES DEEP CREEK	8315	08	GARRETT	39 31	79 25W	2040	07	07		H
SMITHSBURG 2NW	8371	06	WASHINGTON	39 40	77 35W	670	08	08		H
SNOW HILL 4 N	8380	01	WORCESTER	38 14	75 23W	30	17	17		H
SOLOMONS	8405	03	CALVERT	38 19	76 27W	12	08	08		H
SUDLERSVILLE 1S	8657	05	QUEEN ANNE'S	39 10	75 51W	100		20		H
UPPER MARLBORO 3 NNW	9070	04	PRINCE GEORGE'S	38 51	76 46W	130	08	08	08	H
WILLIAMSPORT	9570	07	WASHINGTON	39 37	77 51W	360		06		H
DELAWARE										
DOVER	2730	02	KENT	39 9	75 30W	30	16	16		H
FRANKFORD	3500	02	SUSSEX	38 32	75 14W	41		07		H
WILMINGTON NEW CASTLE CO AP R	9595	01	NEW CASTLE	39 40	75 36W	79	24	24		HJ
WILMINGTON PORTER RSCH	9605	01	NEW CASTLE	39 46	75 32W	270	24	24		H

REFERENCE NOTES

STATION NAMES: Name of the city, town or locality. Figures and letters following the station names indicate the distance in miles and direction from the post office or town community center.

DIVISIONS: Areas within a state of similar climatological characteristics. Division averages are calculated using data from stations that record temperature and/or precipitation. Station Precipitation totals flagged with an 'F' or 'M' are excluded from the Divisional Average calculations of precipitation. Stations with monthly Temperature averages flagged with an 'F' or 'M' are included in the Divisional Average if there are no more than 9 flagged or missing daily values in the month, else they are excluded from the divisional average for temperature.

NORMALS: The average value of the meteorological element over a time period. Effective 1 January 2012, the averaging period is 1981 to 2010. The normals for National Weather Service localities have been adjusted so as to be representative for the current observation site.

MONTHLY DEGREE DAY TOTALS: One heating (cooling) degree day is accumulated for each whole degree that the daily mean temperature is below (above) 65 degrees Fahrenheit.

PRECIPITATION: Values shown in hundredths of inches are water equivalent totals, i.e., total of liquid and melted frozen precipitation. In the "Monthly Summarized Data" table the total snow and sleet values shown in tenths of inches are unmelted amounts. The max depth on ground values of snow and sleet shown in whole inches are cumulative unmelted amounts. The number of days with .10, .50, 1.00 or more refers to water equivalents.

PRECIPITATION QUALITY CONTROL: The NCEI quality control process may flag precipitation data that are spatially inconsistent, exceed climatological limits, or are inconsistent with prevailing weather patterns.

TEMPERATURE: Original temperature values are given in the "Daily Temperature" table. Summary temperature information (averages, departures, extremes, monthly degree day totals) is based on the values labeled MAX/MIN.

WIND: (As shown in the "Evaporation and Wind" table) the total wind movement in miles over the evaporation pan as determined by an anemometer recorder located 6-8 inches above the pan.

SYMBOLS AND LETTERS USED IN THE STATION INDEX TABLE

C Station is equipped with recording rain gage (R) but values in this bulletin are from a non-recording rain gage unless indicated by an R.

G Observations appear in the "Soil Temperatures" table.

H Observations appear in the "Snowfall and Snow on the Ground" table.

J Station also published as a Local Climatological Data publication.

VAR Observation time varies.

SR / SS Observation time near sunrise / Observation time near sunset, respectively.

SYMBOLS AND LETTERS USED IN THE DATA TABLES

(DAILY DATA ARE FOR THE 24 HOURS IMMEDIATELY PRECEDING OBSERVATION TIME.)

BLANK Entries in the "Monthly Summarized Data" table indicate no record.

BLANK Entries in the "Daily Precipitation" and "Snowfall and Snow on the Ground" tables indicate zero.

BLANK Entries in the "Daily Temperature" table indicate a missing record

- No record. Data not recorded or not received in time for publication.

+ Precipitation or temperature extremes occurred on one or more previous dates during the month.

* Rain gage not read. Precipitation is included in the amount following the asterisks.

Time distribution may not be known. A * preceding the monthly total indicates precipitation amount is being carried forward to next month's total, and may include amounts from the previous month(s).

a As a subscript, indicates accumulated total.

A Amount of precipitation is the total of observer's entries for the current month. It may include precipitation that occurred during the previous month. Refer to earlier bulletin to determine date of last reading. (Hawaii stations)

B Divisional Departure from normals are computed using 1981-2010 normals.

E Normalized HDD/CDD Calculation. E is appended to the HDD/CDD Calculation when 1-9 individual daily $\frac{1}{MAX}$

and/or TMIN values are missing and a Normalized HDD/CDD Calculation is provided. M appears alone if 10 or more daily values are missing.

F Monthly calculation flagged value. F is appended to average and/or total values computed which exclude one or more daily data values that have been flagged by the GHCN-Daily Dataset

M Insufficient or partial data. M is appended to average and/or total values computed with 1-9 daily values missing. M appears alone if 10 or more daily values are missing, (8 or more for wind and evaporation).

N Indicates snow fall or Snowdepth totals are computed with one or more missing days.

R Amounts from recording rain gage.

T Trace. An amount too small to measure.

SEASONAL TABLES: Monthly and seasonal snowfall and heating degree days for the 12 months ending with the June data are published in the July issue of this bulletin. Cooling degree days for the calendar year are published in the "Climatological Data Annual Summary."

Information concerning the history of changes in locations, exposure, etc. of substations is kept on file at the National Centers for Environmental Information. Historical information of regular National Weather Service Offices may be obtained from the "Local Climatological Data" annual publication. The contents of this publication may be reprinted or otherwise used freely, with proper credit to the National Centers For Environmental Information. The data are also available digitally.

Effective with the January 2011 Data-Month, COOP Observer Names are no longer included in the Monthly and Annual Climatological Data Publications. This information is not published to ensure the privacy of personal information pursuant to Section 208 of the E-Government Act of 2002 (44 USC 3601).

As of the 2011 Data-Year, Station and Climate Division Maps are no longer being included in the CD Publications. NCEI's Products Branch provides updated Station Maps for various data networks via the Historical Observing Metadata Repository: <http://www.ncdc.noaa.gov/homr>.

The GHCN-Daily Quality Control Flags shown below are displayed as superscripts with the data. For more Information on Global Historical Climatology Network - Daily and flags, see: <http://www.ncdc.noaa.gov/oa/climate/ghcn-daily/> and Comprehensive Automated Quality Assurance of Daily Surface Observations. Durre, Imke, Matthew J. Menne, Byron E. Gleason, Tamara G. Houston, Russell S. Vose, 2010: J. Appl. Meteor. Climatol., 49, 16151633. doi: 10.1175/2010JAMC2375.1

Blank = Passed All checks	N = failed naught check
D = failed duplicate check	O = failed climatological outlier check
G = failed gap check	R = failed lagged range check
I = failed internal consistency check	S = failed spatial consistency check
K = failed streak/frequent-value check	T = failed temporal consistency check
L = failed check on length of multiday period	W = temperature too warm for snow
M = failed megaconsistency check	X = failed bounds check
	Z = flagged as a result of an official Datzilla investigation

Beginning with the January 2013 CD Publication, monthly mean temperature calculations have changed to the National Data Stewardship Team standard. Monthly maximum and minimum temperatures are not rounded until after the monthly mean temperature is calculated. This is the most accurate outcome, but may be slightly different from the mean derived from rounded monthly maximum and minimum.

Processing Updates and Errata: The CD Publications are periodically reproduced to include the addition of late reports and reported corrections. The GHCND data version noted on the cover of the publication provides the generation date.

The climate division temperature and precipitation values in this publication are based on simple averages from the current set of NWS-Designated Open and Published COOP and First Order Sites within each division. These values differ from those found in NCEI's nClimDiv product. Beginning in February 2014, the nClimDiv product is used by NCEI's Monitoring Branch and in its monthly climate reports. For more details on nClimDiv, please go to <http://www.ncdc.noaa.gov/monitoring-references/maps/us-climate-divisions.php>.

NOAA National Centers for Environmental Information
Attn: Customer Engagement Branch
151 Patton Avenue
Asheville, NC 28801-5001

Customer Services Number: (828) 271-4800, option 2
TDD : (828) 271-4010
Fax number: (828) 271-4876

NCEI now offers free online access to the *Climatological Data* publication.
Go to : www.ncdc.noaa.gov and choose Most Popular.