



CLIMATOLOGICAL DATA

MARYLAND AND DELAWARE

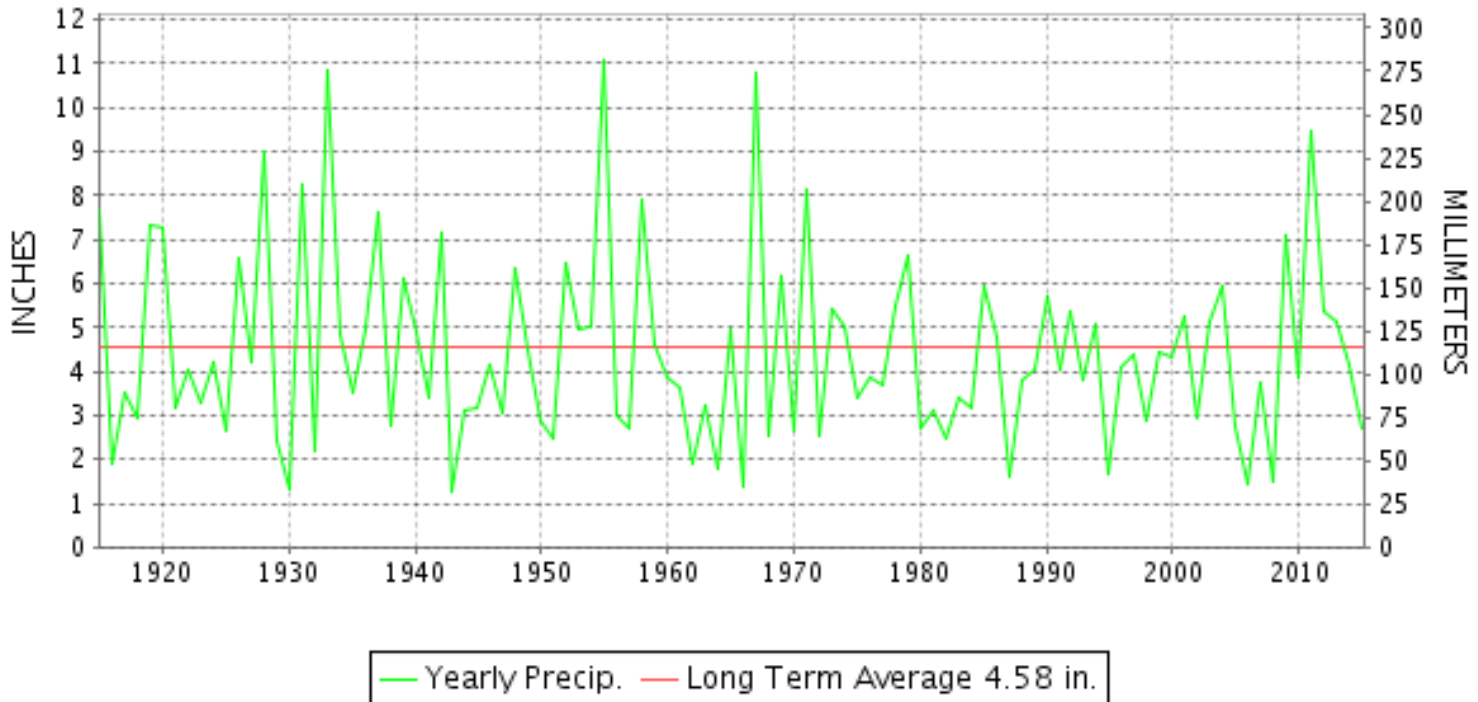
AUGUST 2015

VOLUME 119 NUMBER 08

ISSN 0145-0549

GHCND Ver: 3.22-upd-2015120206

AUGUST PRECIPITATION BY YEAR



TEMPERATURE AND PRECIPITATION EXTREMES

MARYLAND

HIGHEST TEMPERATURE	99	AUGUST 17	CYLBURN
LOWEST TEMPERATURE	46	AUGUST 28	SINES DEEP CREEK
GREATEST TOTAL PRECIPITATION	5.66		SALISBURY FAA AP
LEAST TOTAL PRECIPITATION	0.91		BELTSVILLE
GREATEST 1 DAY PRECIPITATION	3.50	AUGUST 20	CONOWINGO DAM
GREATEST TOTAL SNOWFALL	T		BALTIMORE WASH INTL AP

"I certify that this is an official publication of the National Oceanic and Atmospheric Administration (NOAA) It is compiled using information from weather observing sites supervised by NOAA/National Weather Service and received at the National Centers for Environmental Information(NCEI), Asheville, North Carolina 28801."

Director
National Centers for Environmental Information

noaa

National
Oceanic and
Atmospheric Administration

National
Environmental Satellite, Data
and Information Service

National
Centers for Environmental Information
Asheville, North Carolina

DELAWARE

HIGHEST TEMPERATURE	95	AUGUST 16	WILMINGTON PORTER RSCH
LOWEST TEMPERATURE	56	AUGUST 28	WILMINGTON NEW CASTLE CO AP
GREATEST TOTAL PRECIPITATION	3.72		FRANKFORD
LEAST TOTAL PRECIPITATION	1.52		WILMINGTON NEW CASTLE CO AP
GREATEST 1 DAY PRECIPITATION	1.47	AUGUST 20	DOVER

DAILY PRECIPITATION (INCHES)

STATION	TOTAL	DAY OF MONTH																															
		01	02	03	04	05	06	07	08	09	10	11	12	13	14	15	16	17	18	19	20	21	22	23	24	25	26	27	28	29	30	31	
MARYLAND																																	
SOUTHERN																																	
EASTERN SHORE 01																																	
ASSATEAGUE	M	-	-	-	-	-	-	-	-	-	-	-	-	-	-	-	-	-	-	-	-	-	-	-	-	-	-	-	-	-	-	-	
PRINCESS ANNE	M	-	-					0.17	-	-		1.29	0.36																				
SALISBURY 2N	5.65		0.05			1.73	0.22					1.10	1.65							0.06	0.76	0.07	0.01										
SALISBURY FAA AP	5.66				0.03	2.56	0.08	0.08		T	T	2.24	0.04							0.01	0.55	0.07								T	T		
SNOW HILL 4 N	4.25					1.92		0.02				1.16	1.02								0.10	0.03											
CENTRAL																																	
EASTERN SHORE 02																																	
ROYAL OAK 2 SSW	3.51					0.33		0.22				0.18	0.43	0.30							T	0.03	1.82								0.20		
LOWER SOUTHERN 03																																	
MECHANICSVILLE 5 NE	1.94				T	0.02		0.47	0.02	T	0.18	0.49	0.37							0.10	T	0.13									0.16		
SOLOMONS	MA 3.54	*	0.00 _a			*	1.90 _a	0.04		0.02	0.84	0.69								T	0.05												
UPPER SOUTHERN 04																																	
BALTIMORE WASH INTL AP	2.46				0.52		0.02	T			0.21	0.29						0.41	T		0.49				0.52	T					T		
BELTSVILLE	0.91					0.07		0.01			0.21	0.08	0.05								0.23	0.13									0.13		
DALECARLIA RSVR	M 1.37						-	0.05			0.59	0.10	0.18									0.15									0.30		
LAUREL 3 W	1.12				0.12		0.01	0.03			0.21	0.01									0.40				0.33	0.01							
MARYLAND SCIENCE CENTER	2.08				0.33						0.20									0.01	0.50			1.04									
NATL ARBORETUM DC	1.40							0.03	T		0.50	0.31	0.05	T							0.20	0.03									0.28		
OXON HILL	1.15		T			0.07		0.14			0.29										0.27										0.38		
UPPER MARLBORO 3 NNW	1.76			T		0.14		T			0.10	0.60	0.25								T	0.10	0.04								0.53		
NORTHERN CENTRAL 06																																	
ABERDEEN PHILLIPS FLD	2.18				0.03	0.29		0.02				0.73	0.49								0.09	0.52									T		
BRIGHTON DAM	2.16				0.25	0.81		0.03				0.11	0.08								0.03	0.50									0.35		
CONOWINGO DAM	4.24						0.19				0.55										3.50												
CYLBURN	A 4.21				0.12						*	0.39 _a	0.09								*	1.47 _a					2.14						
DAMASCUS 3 SSW	1.40				0.45		T	0.03			0.01	0.04							T	T	0.84			0.03							T		
EMMITSBURG 2 SE	2.45				0.05			0.01			0.08	0.22	0.09								0.52	0.17	1.31										
FREDERICK 2 NNE	M	-	-	-	-	-	-	-	-	-	-	-	-	-	-	-	-	-	-	-	-	-	-	-	-	-	-	-	-	-	-		
MILLERS 4 NE	1.50				0.35			0.03			T	0.33		0.02																			
SMITHSBURG 2NW	M 3.55				0.10			0.10				0.10																					
APPALACHIAN																																	
MOUNTAIN 07																																	
CUMBERLAND 2	2.87							0.12	0.02		0.28	0.10								0.01	0.16	1.60	0.58										
FROSTBURG 2	1.64				0.04			0.20	0.06	0.01		0.09	T							0.03	0.14	0.57	0.50								T		
SHARPSBURG 5 S	2.14				0.13			0.11				0.11									T	0.03	1.45			0.31							
WILLIAMSPORT	M 3.29				0.01			0.02				0.01	0.04									0.06	3.15										
ALLEGHENY PLATEAU 08																																	
OAKLAND 1 SE	3.24				0.15			0.26	0.01	0.36	0.06	0.53	0.22	0.03							0.27	0.48	0.24	0.62							0.01		
SAVAGE RIVER DAM	M 1.88				0.20		-	0.23	T	T		0.77									0.12	0.15	0.41										

DAILY PRECIPITATION (INCHES)

STATION	TOTAL	DAY OF MONTH																														
		01	02	03	04	05	06	07	08	09	10	11	12	13	14	15	16	17	18	19	20	21	22	23	24	25	26	27	28	29	30	31
SINES DEEP CREEK	A 3.04	*	*	0.00 _a	0.03			0.28	*	*	0.06 _a	0.65	0.03			*	*	0.00 _a	0.55	0.35	0.69	0.40	*	*	0.00 _a					*	*	0.00 _a
DELAWARE NORTHERN 01																																
WILMINGTON NEW CASTLE CO AP	1.52				0.11		0.10	T		T	0.03	0.66						T	T	0.57						0.05					T	
WILMINGTON PORTER RSCH	1.91				0.02		0.07				0.75	0.10									0.42										0.55	
SOUTHERN 02																																
DOVER	2.68					0.01		0.01				0.53	0.31							0.13	1.47	0.22										
FRANKFORD	3.72		0.01	0.11		1.31		0.04	0.53			1.31	0.27									0.14									T	

DAILY TEMPERATURES (°F)

STATION	OB. TIME	MAX/MIN	DAY OF MONTH																															AVERAGE			
			01	02	03	04	05	06	07	08	09	10	11	12	13	14	15	16	17	18	19	20	21	22	23	24	25	26	27	28	29	30	31				
			MARYLAND SOUTHERN EASTERN SHORE 01 ASSATEAGUE	VA	MAX MIN																																
PRINCESS ANNE	17	MAX MIN			90	91	89	84	81		76	85	84	87	85			89	86	87	86	86			87	85	83	81	83				85		M M M		
SALISBURY 2N	17	MAX MIN	90	89	90	92	91	87	83	78	84	76	85	84	82	85	85	87	90	88	86	86	86	85	83	87	86	83	84	82	85	86	85	86	85	85.5	
SALISBURY FAA AP	24	MAX MIN	90	88	90	91	88	84	74	76	83	76	84	83	83	84	86	86	89	86	87	86	86	83	83	87	85	83	81	83	85	88	85	88	85	84.6	
SNOW HILL 4 N	17	MAX MIN	91	91	90	93	91	89	83	78	85	82	86	88	86	87	88	88	90	88	89	87	88	87	87	89	89	89	82	85	87	90	89	89	87.5		
CENTRAL EASTERN SHORE 02 ROYAL OAK 2 SSW	17	MAX MIN	89	89	90	92	90	83	76	83	85	75	85	84	84	86	87	88	91	91	89	88	85	82	84	88	85	80	79	82	85	86	85	85.4			
LOWER SOUTHERN 03 MECHANICSVILLE 5 NE	07	MAX MIN	88	87	85	87	89	87	80	75	80	83	83	83	81	80	83	84	86	89	86	83	84	81	79	81	86	81	77	77	79	82	82	82.8			
SOLOMONS	08	MAX MIN	65	64	64	68	70	65	66	67	61	63	64	65	61	55	56	60	61	64	67	71	67	59	57	59	62	59	56	56	57	59	64	62.3			
UPPER SOUTHERN 04 BALTIMORE WASH INTL AP	24	MAX MIN	91	91	94	94	90	76	81	85	76	88	83	83		68	70	71	69	66	86	85	88	86	87	89	83	80	82	85	89	87	85.0				
BELTSVILLE	08	MAX MIN	73	75	75		68	71	68	70	70	71	69	66																							
DALECARLIA RSVR	08	MAX MIN	88	87	87	90	93		79	79	83	87	75	88	83	81	87	90	93	94	88	89	85	84	85	86	92	82	78	81	84	88	89	85.8			
LAUREL 3 W	24	MAX MIN	67	64	64	67	65	66	68	63	64	68	71	64	61	57	61	62	68	67	73	71	66	59	57	67	64	60	57	56	59	63	72	64.1			
MARYLAND SCIENCE CENTER	24	MAX MIN	88	87	87	88	91	87	80	80	83	85	74	87	83	81	87	88	93	94	87	89	85	83	83	85	91	83	79	79	83	87	88	85.3			
NATL ARBORETUM DC	07	MAX MIN	64	63	63	68	67	65	67	65	64	69	69	66	62	55	60	60	67	68	71	75	68	61	56	64	63	61	56	56	59	63	72	64.1			
OXON HILL	08	MAX MIN	88	87	87	90	93		79	79	83	87	75	88	83	81	87	90	93	94	88	89	85	84	85	86	92	82	78	81	84	88	89	85.8			
UPPER MARLBORO 3 NNW	08	MAX MIN	67	66	67	70	69		67	68	67	67	69	70	63	59	63	65	69	70	74	75	67	60	59	64	64	63	59	59	63	65	66	65.8			
NORTHERN CENTRAL 06 ABERDEEN PHILLIPS FLD	07	MAX MIN	90	90	93	92	89	82	83	84	86	76	89	85	84	87	89	91	92	88	90	87	84	83	84	89	84	80	79	81	86	88	90	86.3			
			74	73	71	70	74	69	70	71	72	70	71	69	67	70	70	73	75	76	74	72	68	66	73	70	69	66	65	68	70	77	70.8				
			91	92	90	92	94	92	81	81	87	89	77	90	87	85	89	91	94	95	90	92	89	88	87	90	86	81	82	85	90	87	88.1				
			71	68	70	72	72	70	67	68	68	72	72	71	67	60	66	66	70	72	74	68	70	61	60	66	67	65	59	60	64	68	73	67.6			
			89	89	87	91	92	90	81	78	83	87	75	88	84	83	87	90	93	94	88	89	86	84	86	86	91	85	80	82	84	89	88	86.4			
			68	68	66	66	71	71	66	67	66	66	68	71	67	59	63	64	65	68	69	74	71	63	61	61	68	66	62	61	61	64	66	66.0			
			90	89	90	91	94	91	82	80	84	87	75	88	84	84	87	88	92	94	87	89	87	87	85	87	90	85	82	81	84	89	89	86.8			
			66	63	62	71	69	64	67	64	62	67	68	65	61	56	60	60	65	67	72	74	68	58	55	61	64	59	56	57	59	62	68	63.5			
			89	87	86	90	90	88	81	83	82	81	73	86	83	82	86	86	88	92	88	86	83	84	81	81	88	85	80	78	81	84	84	84.4			
			66	64	65	70	67	66	68	64	63	63	70	68	64	59	61	62	64	70	72	75	63	59	59	68	63	59	58	58	59	66	64.6				

DAILY TEMPERATURES (°F)

STATION	OB. TIME	MAX/MIN	DAY OF MONTH																															AVERAGE
			01	02	03	04	05	06	07	08	09	10	11	12	13	14	15	16	17	18	19	20	21	22	23	24	25	26	27	28	29	30	31	
BRIGHTON DAM	08	MAX	86	86	85	88	88	88	78	78	80	82	73	86	86	79	83	87	90	91	91	85	85	81	80	81	86	81	75	77	79	84	82	83.3
		MIN	63	62	62	62	64	62	62	63	62	64	68	62	72	54	55	60	65	65	63	70	63	56	55	62	62	55	54	54	62	68	61.5	
CONOWINGO DAM	07	MAX	84	85	87	87	85	80	81	82	82	71	83	80	80	83	86	87	89	86	86	81	81	80	80	84	82	76	77	78	83	84	85	
		MIN	63	64	65	66	63	64	63	63	67	67	65	60	60	61	62	66	68	72	73	68	61	58	62	63	62	57	57	56	64	64	63.3	
CYLBURN	08	MAX	98	88	86	90	97	97	83	82	83	82	82			81	83	91	99	91	87	87		97	85	80	86	93	81	79	87	94	94	
		MIN	78	68	71	71	75	69	68	68	68	72	71			66	60	61	70	74	73	76	79		71	61	67	72	65	61	62	64	80	
DAMASCUS 3 SSW	22	MAX	85	84	89	86	84	75	77	80	83	72	85	81	78	84	88	90	91	86	86	82	79	79	81	88	79	76	76	80	85	86	85	
		MIN	65	61	66	62	63	61	63	61	64	68	69	62	58	57	61	64	67	68	69	69	61	56	56	64	60	58	55	56	61	64	70	
EMMITSBURG 2 SE	07	MAX	88	88	84	88	89	86	77	79	84	85	73	86	83	81	86	89	92	94	88	86	84	81	79	82	87	81	76	76	81	86	89	
		MIN	61	58	58	63	62	60	60	59	59	66	69	63	57	54	54	60	63	67	69	63	60	58	54	54	61	60	54	53	53	55	61	
FREDERICK 2 NNE	07	MAX																															M	
		MIN																															M	
MILLERS 4 NE	18	MAX	84	84	86	86	85	81	81	82	81	80	83	82	79	84	87	90	91	88	86	82	80	79	82	87	80	76	75	80	84	87	86	
		MIN	65	58	62	64	62	59	63	59	63	67	67	63	57	54	59	63	65	64	68	72	63	58	52	63	61	59	53	52	57	61	69	
SMITHSBURG 2NW	08	MAX	86	86	84	87	86	83	75	78		84	73	84	80	74	85	88	92	92	85	87	84	80	81		85	79	76	74			86	
		MIN	59	58	60	63	61	57	57	59		69	68	57	52	53	53	60	62	62	69	72	57	52	53		56	55	53	52			68	
APPALACHIAN MOUNTAIN 07																																		
CUMBERLAND 2	18	MAX	93	93	88	91	91	89	72	78	83	89	80	89	85	84	92	95	96	96	85	88	85	85	86	85	88	82	80	78	86	90	91	
		MIN	68	54	60	62	62	60	60	64	64	68	68	64	57	54	56	62	64	64	69	70	58	55	55	57	60	53	55	55	55	59	63	
FROSTBURG 2	07	MAX	80	78	80	81	80	79	64	66	77	80	72	78	74	72	84	85	86	89	79	82	77	76	78	75	80	71	73	69	77	82	83	
		MIN	59	58	58	62	59	55	55	58	61	62	64	58	49	52	54	59	61	61	65	66	55	51	51	55	52	53	51	51	54	55	61	
SHARPSBURG 5 S	07	MAX	88	88	86	90	90	87	77	78	85	86	74	87	82	81	87	90	93	95	86	89	85	82	82	83	86	81	77	78	82	87	89	
		MIN	59	57	57	61	63	58	58	59	60	65	68	58	53	54	54	58	63	65	69	72	59	53	53	53	56	55	52	52	53	60	61	
ALLEGHENY PLATEAU 08																																		
OAKLAND 1 SE	07	MAX	83	82	81	83	84	82	68	68	75	84	84	76	77	73	81	80	87	87	76	80	78	76	79	80	81	75	68	69	78	83	83	
		MIN	62	54	58	60	62	57	58	60	60	64	64	56	50	49	50	51	57	59	65	64	53	50	51	57	54	52	51	49	51	52	57	
SAVAGE RIVER DAM	08	MAX	84	81	80	82	81		64	68	75	83	74	80	77	76	86	81	87	88	76	80		78	78	75	79	75	71	72	75	84	83	
		MIN	58	57	57	57	61		56	60	61	64	65	58	53	52	52	58	59	60	67	68		50	51	56	54	52	51	51	51	54	59	
SINES DEEP CREEK	07	MAX			78	78	79	72	64		79	77	76	73	71			82	85	80	78	78			78	76	71	72	67			79	M	
		MIN			53	53	56	52	52		57	60	53	48	47			49	53	64	62	50			48	50	49	48	46			47	M	
DELAWARE NORTHERN 01																																		
WILMINGTON NEW CASTLE CO AP	24	MAX	88	88	90	91	88	83	85	84	85	76	83	83	83	87	88	92	91	88	86	87	87	84	83	87	87	81	82	85	84	89	90	
		MIN	68	64	67	71	68	62	68	63	64	67	70	65	63	57	65	66	69	72	76	75	70	62	58	61	63	60	58	56	60	66	74	
WILMINGTON PORTER RSCH	24	MAX	88	88	91	89	86	87	86	83	83	75	91	81	82	86	90	95	93	91	91	86	85	78	84	89	87	87	79	83	86	89	91	
		MIN	71	68	68	71	66	69	66	66	66	68	72	69	65	61	66	68	69	72	72	74	71	70	63	65	69	64	60	60	62	65	73	
DELAWARE SOUTHERN 02																																		
DOVER	16	MAX	89	90	90	90	90	87	80	80	84	76	85	84	82	86	89	91	92	90	86	82	85	84	83	87	87	85	82	83	84	88	88	
		MIN	72	67	67	75	70	70	66	64	66	66	68	68	64	60	64	66	68	68	73	73	72	67	60	64	70	63	61	59	62	65	73	

SNOWFALL AND SNOW ON GROUND (INCHES)

STATION	DAY OF MONTH																															
	01	02	03	04	05	06	07	08	09	10	11	12	13	14	15	16	17	18	19	20	21	22	23	24	25	26	27	28	29	30	31	
MARYLAND																																
SOUTHERN																																
EASTERN SHORE 01																																
ASSATEAGUE																																
PRINCESS ANNE																																
SALISBURY 2N																																
SALISBURY FAA AP																																
SNOW HILL 4 N																																
UPPER SOUTHERN 04																																
BALTIMORE WASH INTL AP				T																												
BELTSVILLE																																
DALECARLIA RSVR																																
LAUREL 3 W																																
MARYLAND SCIENCE CENTER																																
NATL ARBORETUM DC																																
OXON HILL																																
UPPER MARLBORO 3 NNW																																
DELAWARE																																
NORTHERN 01																																
WILMINGTON NEW CASTLE CO AP																																
WILMINGTON PORTER RSCH																																

Snowfall: Includes snow and ice. Values for NWS stations (J index note) are Mid-Mid (LST).

Snow on ground: Includes snow, sleet, ice, and hail. Values for NWS stations (J index note) are observed at 12 UTC (GMT).

Water Equivalent: Given for NWS stations (J index note) only, when snow depth is 2 inches or more, and is measured at 18 UTC (GMT)

PAN EVAPORATION AND WIND

STATION		DAY OF MONTH																														TOTAL OR AVERAGE	
		01	02	03	04	05	06	07	08	09	10	11	12	13	14	15	16	17	18	19	20	21	22	23	24	25	26	27	28	29	30		31
MARYLAND UPPER SOUTHERN 04 BELTSVILLE	WIND	32	29	22	43	35	40	37	29	34	41	61	47	48	30	23	30	30	40	38	64	51	42	39	21	32	41	42	39	23	45	29	1157
	EVAP	0.25	0.21	0.24	0.25	0.24	0.27	0.14	0.11	0.22	0.18	0.11	0.11	0.24	0.24	0.20	0.21	0.25	0.27	0.09	0.23	0.16	0.25	0.26	0.19	0.19	0.27	0.22	0.20	0.15	0.23	0.14	6.32
	MAX	91	91	93	91	92	86	80	79	86	88	73	89	84	86	90	92	94	94	83	88	84	84	87	87	91	86	82	84	83	88	88	86.9
	MIN	66	64	63	64	68	65	65	65	65	65	67	66	62	57	58	61	62	68	70	70	66	63	58	60	63	61	56	56	58	60	70	63.3
UPPER MARLBORO 3 NNW	WIND	-	-	-	-	-	-	-	-	-	-	-	-	-	-	-	-	-	-	-	-	-	-	-	-	-	-	-	-	-	-	M	
	EVAP	-	-	-	-	-	-	-	-	-	-	-	-	-	-	-	-	-	-	-	-	-	-	-	-	-	-	-	-	-	-	M	
	MAX	-	-	-	-	-	-	-	-	-	-	-	-	-	-	-	-	-	-	-	-	-	-	-	-	-	-	-	-	-	-	M	
	MIN	-	-	-	-	-	-	-	-	-	-	-	-	-	-	-	-	-	-	-	-	-	-	-	-	-	-	-	-	-	-	M	
ALLEGHENY PLATEAU 08 SAVAGE RIVER DAM	WIND	-	-	-	-	-	-	-	-	-	-	-	-	-	-	-	-	-	-	-	-	-	-	-	-	-	-	-	-	-	M		
	EVAP	-	-	-	-	-	-	-	-	-	-	-	-	-	-	-	-	-	-	-	-	-	-	-	-	-	-	-	-	-	M		
	MAX	-	-	-	-	-	-	-	-	-	-	-	-	-	-	-	-	-	-	-	-	-	-	-	-	-	-	-	-	-	-		
	MIN	-	-	-	-	-	-	-	-	-	-	-	-	-	-	-	-	-	-	-	-	-	-	-	-	-	-	-	-	-	M		

Evaporation: Is measured in hundreths of inches.

Wind: Is measured in miles.

Max and Min: The maximum and minimum temperatures (Fahrenheit) of the water in the evaporation pan.

STATION INDEX

STATION	INDEX NO.	DIVISION	COUNTY	LATITUDE	LONGITUDE	ELEVATION (IN FEET)	OBSERVATION TIME AND TABLES			
							LOCAL STD TIME			
							TEMP	PRECIP	EVAP	SPECIAL SEE (NOTES)
MARYLAND										
ABERDEEN PHILLIPS FLD	0015	06	HARFORD	39 28	76 10W	57	07	07		CH
ASSATEAGUE	0335	01	WORCESTER	38 4	75 13W	10	VAR	VAR		H
BALTIMORE WASH INTL AP R	0465	04	ANNE ARUNDEL	39 10	76 41W	156	24	24		HJ
BELTSVILLE	0700	04	PRINCE GEORGE'S	39 2	76 56W	145	08	08	08	CH
BRIGHTON DAM	1125	06	MONTGOMERY	39 11	77 0W	330	08	08		H
CONOWINGO DAM	2060	06	HARFORD	39 39	76 11W	40	07	07		H
CUMBERLAND 2	2282	07	ALLEGANY	39 39	78 45W	730	18	18		H
CYLBURN	2308	06	BALTIMORE	39 21	76 39W	235	08	08		H
DALECARLIA RSVR	2325	04	DISTRICT OF COLUMBIA	38 56	77 7W	150	08	08		H
DAMASCUS 3 SSW	2336	06	MONTGOMERY	39 16	77 14W	700	22	22		H
EMMITSBURG 2 SE	2906	06	FREDERICK	39 41	77 17W	403	07	07		H
FREDERICK 2 NNE	3353	06	FREDERICK	39 26	77 24W	280	07	07		H
FROSTBURG 2	3415	07	ALLEGANY	39 40	78 56W	2170	07	07		H
LAUREL 3 W	5111	04	PRINCE GEORGE'S	39 5	76 54W	400	24	24		H
MARYLAND SCIENCE CENTER R	5718	04	BALTIMORE (CITY)	39 17	76 37W	20	24	24		H
MECHANICSVILLE 5 NE	5865	03	ST. MARY'S	38 28	76 42W	100	07	07		H
MILLERS 4 NE	5934	06	CARROLL	39 43	76 48W	860	18	18		CH
NATL ARBORETUM DC	6350	04	DISTRICT OF COLUMBIA	38 55	76 58W	50	07	07		H
OAKLAND 1 SE	6620	08	GARRETT	39 25	79 24W	2420	07	07		H
OXON HILL	6800	04	PRINCE GEORGE'S	38 47	76 60W	120	08	08		H
PRINCESS ANNE	7330	01	SOMERSET	38 13	75 41W	20	17	17		H
ROYAL OAK 2 SSW	7806	02	TALBOT	38 43	76 11W	10	17	17		H
SALISBURY 2N	8004	01	WICOMICO	38 24	75 36W	20	17	17		H
SALISBURY FAA AP	8005	01	WICOMICO	38 20	75 31W	48	24	24		H
SAVAGE RIVER DAM	8065	08	GARRETT	39 31	79 8W	1495	08	08	08	CH
SHARPSBURG 5 S	8207	07	WASHINGTON	39 24	77 43W	500	07	07		H
SINES DEEP CREEK	8315	08	GARRETT	39 31	79 25W	2040	07	07		H
SMITHSBURG 2NW	8371	06	WASHINGTON	39 40	77 35W	670	08	08		H
SNOW HILL 4 N	8380	01	WORCESTER	38 14	75 23W	30	17	17		H
SOLOMONS	8405	03	CALVERT	38 19	76 27W	12	08	08		H
SUDLERSVILLE 1S	8657	05	QUEEN ANNE'S	39 10	75 51W	100		20		H
UPPER MARLBORO 3 NNW	9070	04	PRINCE GEORGE'S	38 51	76 46W	130	08	08	08	H
WILLIAMSPORT	9570	07	WASHINGTON	39 37	77 51W	360		06		H
DELAWARE										
DOVER	2730	02	KENT	39 9	75 30W	30	16	16		H
FRANKFORD	3500	02	SUSSEX	38 32	75 14W	41		07		H
WILMINGTON NEW CASTLE CO AP R	9595	01	NEW CASTLE	39 40	75 36W	79	24	24		HJ
WILMINGTON PORTER RSCH	9605	01	NEW CASTLE	39 46	75 32W	270	24	24		H

REFERENCE NOTES

STATION NAMES: Name of the city, town or locality. Figures and letters following the station names indicate the distance in miles and direction from the post office or town community center.

DIVISIONS: Areas within a state of similar climatological characteristics. Division averages are calculated using data from stations that record temperature and/or precipitation. Station Precipitation totals flagged with an 'F' or 'M' are excluded from the Divisional Average calculations of precipitation. Stations with monthly Temperature averages flagged with an 'F' or 'M' are included in the Divisional Average if there are no more than 9 flagged or missing daily values in the month, else they are excluded from the divisional average for temperature.

NORMALS: The average value of the meteorological element over a time period. Effective 1 January 2012, the averaging period is 1981 to 2010. The normals for National Weather Service localities have been adjusted so as to be representative for the current observation site.

MONTHLY DEGREE DAY TOTALS: One heating (cooling) degree day is accumulated for each whole degree that the daily mean temperature is below (above) 65 degrees Fahrenheit.

PRECIPITATION: Values shown in hundredths of inches are water equivalent totals, i.e., total of liquid and melted frozen precipitation. In the "Monthly Summarized Data" table the total snow and sleet values shown in tenths of inches are unmelted amounts. The max depth on ground values of snow and sleet shown in whole inches are cumulative unmelted amounts. The number of days with .10, .50, 1.00 or more refers to water equivalents.

PRECIPITATION QUALITY CONTROL: The NCEI quality control process may flag precipitation data that are spatially inconsistent, exceed climatological limits, or are inconsistent with prevailing weather patterns.

TEMPERATURE: Original temperature values are given in the "Daily Temperature" table. Summary temperature information (averages, departures, extremes, monthly degree day totals) is based on the values labeled MAX/MIN.

WIND: (As shown in the "Evaporation and Wind" table) the total wind movement in miles over the evaporation pan as determined by an anemometer recorder located 6-8 inches above the pan.

SYMBOLS AND LETTERS USED IN THE STATION INDEX TABLE

C Station is equipped with recording rain gage (R) but values in this bulletin are from a non-recording rain gage unless indicated by an R.

G Observations appear in the "Soil Temperatures" table.

H Observations appear in the "Snowfall and Snow on the Ground" table.

J Station also published as a Local Climatological Data publication.

VAR Observation time varies.

SR / SS Observation time near sunrise / Observation time near sunset, respectively.

SYMBOLS AND LETTERS USED IN THE DATA TABLES

(DAILY DATA ARE FOR THE 24 HOURS IMMEDIATELY PRECEDING OBSERVATION TIME.)

BLANK Entries in the "Monthly Summarized Data" table indicate no record.

BLANK Entries in the "Daily Precipitation" and "Snowfall and Snow on the Ground" tables indicate zero.

BLANK Entries in the "Daily Temperature" table indicate a missing record

- No record. Data not recorded or not received in time for publication.

+ Precipitation or temperature extremes occurred on one or more previous dates during the month.

* Rain gage not read. Precipitation is included in the amount following the asterisks.

Time distribution may not be known. A * preceding the monthly total indicates precipitation amount is being carried forward to next month's total, and may include amounts from the previous month(s).

a As a subscript, indicates accumulated total.

A Amount of precipitation is the total of observer's entries for the current month. It may include precipitation that occurred during the previous month. Refer to earlier bulletin to determine date of last reading. (Hawaii stations)

B Divisional Departure from normals are computed using 1981-2010 normals.

E Normalized HDD/CDD Calculation. E is appended to the HDD/CDD Calculation when 1-9 individual daily $\frac{T}{MAX}$

and/or TMIN values are missing and a Normalized HDD/CDD Calculation is provided. M appears alone if 10 or more daily values are missing.

F Monthly calculation flagged value. F is appended to average and/or total values computed which exclude one or more daily data values that have been flagged by the GHCN-Daily Dataset

M Insufficient or partial data. M is appended to average and/or total values computed with 1-9 daily values missing. M appears alone if 10 or more daily values are missing, (8 or more for wind and evaporation).

N Indicates snow fall or Snowdepth totals are computed with one or more missing days.

R Amounts from recording rain gage.

T Trace. An amount too small to measure.

SEASONAL TABLES: Monthly and seasonal snowfall and heating degree days for the 12 months ending with the June data are published in the July issue of this bulletin. Cooling degree days for the calendar year are published in the "Climatological Data Annual Summary."

Information concerning the history of changes in locations, exposure, etc. of substations is kept on file at the National Centers for Environmental Information. Historical information of regular National Weather Service Offices may be obtained from the "Local Climatological Data" annual publication. The contents of this publication may be reprinted or otherwise used freely, with proper credit to the National Centers For Environmental Information. The data are also available digitally.

Effective with the January 2011 Data-Month, COOP Observer Names are no longer included in the Monthly and Annual Climatological Data Publications. This information is not published to ensure the privacy of personal information pursuant to Section 208 of the E-Government Act of 2002 (44 USC 3601).

As of the 2011 Data-Year, Station and Climate Division Maps are no longer being included in the CD Publications. NCEI's Products Branch provides updated Station Maps for various data networks via the Historical Observing Metadata Repository: <http://www.ncdc.noaa.gov/homr>.

The GHCN-Daily Quality Control Flags shown below are displayed as superscripts with the data. For more Information on Global Historical Climatology Network - Daily and flags, see: <http://www.ncdc.noaa.gov/oa/climate/ghcn-daily/> and Comprehensive Automated Quality Assurance of Daily Surface Observations. Durre, Imke, Matthew J. Menne, Byron E. Gleason, Tamara G. Houston, Russell S. Vose, 2010: J. Appl. Meteor. Climatol., 49, 16151633. doi: 10.1175/2010JAMC2375.1

Blank = Passed All checks

D = failed duplicate check

G = failed gap check

I = failed internal consistency check

K = failed streak/frequent-value check

L = failed check on length of multiday period

M = failed megaconsistency check

N = failed naught check

O = failed climatological outlier check

R = failed lagged range check

S = failed spatial consistency check

T = failed temporal consistency check

W = temperature too warm for snow

X = failed bounds check

Z = flagged as a result of an official Datzilla investigation

Beginning with the January 2013 CD Publication, monthly mean temperature calculations have changed to the National Data Stewardship Team standard. Monthly maximum and minimum temperatures are not rounded until after the monthly mean temperature is calculated. This is the most accurate outcome, but may be slightly different from the mean derived from rounded monthly maximum and minimum.

Processing Updates and Errata: The CD Publications are periodically reproduced to include the addition of late reports and reported corrections. The GHCND data version noted on the cover of the publication provides the generation date.

The climate division temperature and precipitation values in this publication are based on simple averages from the current set of NWS-Designated Open and Published COOP and First Order Sites within each division. These values differ from those found in NCEI's nClimDiv product. Beginning in February 2014, the nClimDiv product is used by NCEI's Monitoring Branch and in its monthly climate reports. For more details on nClimDiv, please go to <http://www.ncdc.noaa.gov/monitoring-references/maps/us-climate-divisions.php>.

NOAA National Centers for Environmental Information
Attn: Customer Engagement Branch
151 Patton Avenue
Asheville, NC 28801-5001

Customer Services Number: (828) 271-4800, option 2
TDD : (828) 271-4010
Fax number: (828) 271-4876

NCEI now offers free online access to the *Climatological Data* publication.
Go to : www.ncdc.noaa.gov and choose Most Popular.