



# CLIMATOLOGICAL DATA

## MARYLAND AND DELAWARE

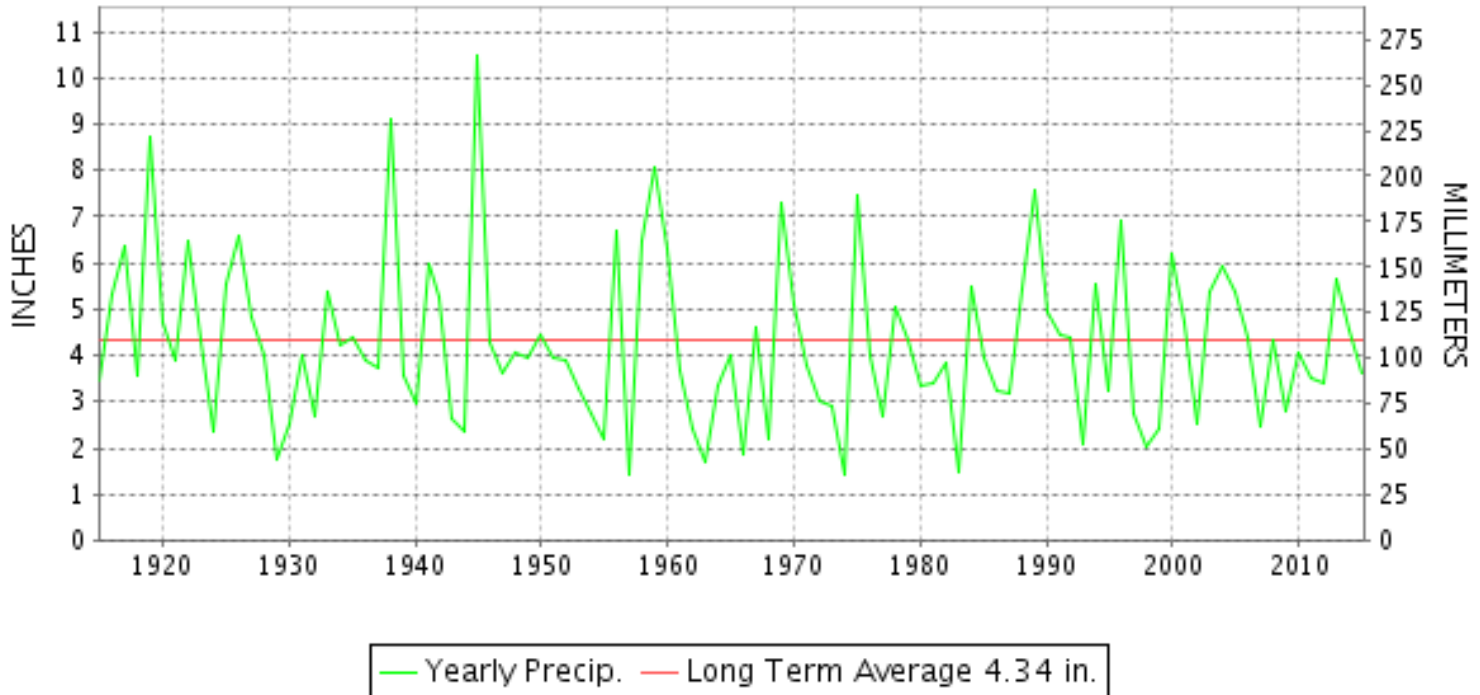
JULY 2015

VOLUME 119 NUMBER 07

ISSN 0145-0549

GHCND Ver: 3.22-upd-2015120106

### JULY PRECIPITATION BY YEAR



#### TEMPERATURE AND PRECIPITATION EXTREMES

##### MARYLAND

HIGHEST TEMPERATURE	101	JULY 29	CYLBURN
LOWEST TEMPERATURE	49	JULY 24+	SINES DEEP CREEK
GREATEST TOTAL PRECIPITATION	6.42		OAKLAND 1 SE
LEAST TOTAL PRECIPITATION	2.11		UPPER MARLBORO 3 NNW
GREATEST 1 DAY PRECIPITATION	2.30	JULY 01	ABERDEEN PHILLIPS FLD

"I certify that this is an official publication of the National Oceanic and Atmospheric Administration (NOAA) It is compiled using information from weather observing sites supervised by NOAA/National Weather Service and received at the National Centers for Environmental Information(NCEI), Asheville, North Carolina 28801."

Director  
National Centers for Environmental Information

noaa

National  
Oceanic and  
Atmospheric Administration

National  
Environmental Satellite, Data  
and Information Service

National  
Centers for Environmental Information  
Asheville, North Carolina

**DELAWARE**

HIGHEST TEMPERATURE

95

JULY 20

DOVER

LOWEST TEMPERATURE

60

JULY 24+

3 STATIONS

GREATEST TOTAL PRECIPITATION

3.64

WILMINGTON PORTER RSCH

LEAST TOTAL PRECIPITATION

2.19

DOVER

GREATEST 1 DAY PRECIPITATION

1.59

JULY 15

WILMINGTON PORTER RSCH





DAILY PRECIPITATION (INCHES)

STATION	TOTAL	DAY OF MONTH																																			
		01	02	03	04	05	06	07	08	09	10	11	12	13	14	15	16	17	18	19	20	21	22	23	24	25	26	27	28	29	30	31					
<b>MARYLAND</b>																																					
<b>SOUTHERN</b>																																					
<b>EASTERN SHORE 01</b>																																					
ASSATEAGUE	M	-	-	-	-	-	-	-	-	-	-	-	-	-	-	-	-	-	-	-	-	-	-	-	-	-	-	-	-	-	-	-	-	-	-		
PRINCESS ANNE	M 0.47															0.06																		0.16			
SALISBURY 2N	3.73		1.91			0.12	0.02			T		0.20		0.24	0.17	0.01						0.18										0.70		0.18			
SALISBURY FAA AP	6.26	T	0.18	T	0.81	0.34		0.12	T		0.49	T		0.01	0.26						1.21										1.53	1.20	0.11				
SNOW HILL 4 N	5.22		0.02		0.06	0.68	0.04			0.05		0.45			T	0.06						0.70								2.12	0.92		0.12				
<b>CENTRAL</b>																																					
<b>EASTERN SHORE 02</b>																																					
ROYAL OAK 2 SSW	3.61	0.28	0.71			0.10	0.01	0.03	0.38			0.15		0.03	0.16	0.02	0.02					0.05								0.50		1.15	0.02				
<b>LOWER SOUTHERN 03</b>																																					
MECHANICSVILLE 5 NE	3.12	0.54	0.08	0.04	T	1.00	0.04	0.37		0.01		0.32	0.28		0.11	0.02	T			T									0.10	T	T		0.21				
SOLOMONS	A 3.90	0.12	0.74		0.48	0.05	0.19				1.58	0.07		0.35	0.02	0.01					0.05					0.07	0.10	*	0.00 <sub>a</sub>			0.07					
<b>UPPER SOUTHERN 04</b>																																					
BALTIMORE WASH INTL AP	3.49	0.62	0.18	T	0.27		0.67		T	0.05		0.02		0.05	T	T			0.08								0.15		0.12	1.28							
BELTSVILLE	2.94	0.49	0.18	0.22	0.03	0.53	0.01	0.67				0.05				0.15	0.02				0.03						0.13	0.11		0.02	0.30						
DALECARLIA RSVR	M 4.95	0.83	0.15	0.15	0.03	0.53		0.32		0.65	0.20	0.05	-		0.06	0.05				0.04		0.11				0.50	0.11	-	0.02	1.15							
LAUREL 3 W	2.43	0.50		0.09	0.47		0.18		0.03	0.08			0.08	0.03	0.05				0.05		0.12		0.03			0.33		0.54									
MARYLAND SCIENCE CENTER	2.44	0.38			0.13	0.50		0.13					0.03	0.02					0.12			0.03				0.53		0.19	0.38								
NATL ARBORETUM DC	3.88	1.07	0.34	T	0.08	0.51	0.03	0.12		0.31	0.08	0.03	T	0.02	T					0.06						0.48	0.11							0.64			
OXON HILL	5.30	0.73	0.90	0.01	0.04	0.98	0.01	0.24		1.40	T	0.13	0.11		0.11	0.01	0.04				0.02					0.01	0.26	T	T					0.30			
UPPER MARLBORO 3 NNW	2.11	0.35	0.52	T	0.08	0.30	0.02	0.15		0.14	0.17	0.04			T						T					0.26	0.03							0.05			
<b>NORTHERN CENTRAL 06</b>																																					
ABERDEEN PHILLIPS FLD	A 6.33	2.30		*	*	*	0.48 <sub>a</sub>			0.13	0.46				1.72	0.05	T					0.01					0.92							0.26			
BRIGHTON DAM	3.66	0.31			0.05	0.40		1.30				0.10			0.09	0.03					0.65					0.14			0.04	0.55							
CONOWINGO DAM	4.80				0.17				0.38	0.46				0.82	0.55											0.66				1.76							
CYLBURN	A 5.56	0.51	0.02	0.03		*	*	1.20 <sub>a</sub>	T	0.02	0.21	0.02			1.06	0.23						0.25					1.12			0.82	0.07						
DAMASCUS 3 SSW	2.89	0.24	0.58		0.44		0.10		T	0.02	0.05	0.06		0.03	0.19	0.10			0.13			0.17				0.03		T	0.75								
EMMITSBURG 2 SE	3.91	0.22			0.26	0.11	0.01	0.63		0.34	0.72	0.03	0.03		0.12	0.21				1.09						0.12							0.02				
FREDERICK 2 NNE	M	-	-	-	-	-	-	-	-	-	-	-	-	-	-	-	-	-	-	-	-	-	-	-	-	-	-	-	-	-	-	-	-	-	-		
MILLERS 4 NE	3.71	0.21	T		0.17	T	0.01	0.46	T	0.56	0.31	0.01		T	0.12	0.45		T	0.14	0.55		0.01				0.69	T		0.02								
SMITHSBURG 2NW	MA 4.18	0.40		*	0.20 <sub>a</sub>	0.08	T		T		0.13	0.05			0.51	0.46			0.90							1.45											
<b>APPALACHIAN</b>																																					
<b>MOUNTAIN 07</b>																																					
CUMBERLAND 2	2.14				0.70	0.08	0.02	0.43	0.13	0.05	0.08	0.02		0.35	0.08					0.05													0.10				
FROSTBURG 2	3.57				0.50	0.08	0.06	1.33	0.11	0.20	0.24	0.04		0.50	0.18	0.04	0.07			0.09	0.02	0.02	0.09														
SHARPSBURG 5 S	A 2.15	0.36		0.02	0.15	0.10	0.12	*	*	*	*	0.12 <sub>a</sub>		0.04	0.15	0.46	*	*	0.00 <sub>a</sub>	0.23							0.37								0.03		
WILLIAMSPORT	M 2.04	0.04			0.15	0.05	0.08	0.04	-	0.10	-			0.02	0.40	0.19						0.07	-			0.90											
<b>ALLEGHENY PLATEAU 08</b>																																					
OAKLAND 1 SE	6.42	0.40		0.02			0.54	0.46	0.29	0.36	1.05	0.02			1.34	0.14	0.21	1.25	0.10																	0.04	
SAVAGE RIVER DAM	M 3.17				0.30	0.39	0.11	0.33	0.07	0.35	0.31	T			0.34	0.12																				0.25	

DAILY PRECIPITATION (INCHES)

STATION	TOTAL	DAY OF MONTH																															
		01	02	03	04	05	06	07	08	09	10	11	12	13	14	15	16	17	18	19	20	21	22	23	24	25	26	27	28	29	30	31	
SINES DEEP CREEK	MA 5.95			*	*	*	0.90 <sub>a</sub>	0.70	0.30	0.98	0.64	-	-	0.05	0.66	0.38	0.15		*	*	0.56 <sub>a</sub>	0.09	0.25				*	*	0.00 <sub>a</sub>			0.17	0.12
DELAWARE NORTHERN 01																																	
WILMINGTON NEW CASTLE CO AP	2.32	0.17	0.06	T	0.04		0.06		T	0.55		T		T	0.03	0.70						T							0.26		0.45		
WILMINGTON PORTER RSCH	3.64	0.53	0.02				0.33	0.25	T	0.60					T	1.59						T							0.32		T		
DELAWARE SOUTHERN 02																																	
DOVER	A 2.19	0.01	0.36				T			0.04	*	*	0.50 <sub>a</sub>		0.19	0.01	0.03					0.05	T					0.75		0.24		0.01	
FRANKFORD	M	-	-	-	-	-	-	-	-	-	-	-	-	-	-	-	-	-	-	-	-	-	-	-	-	-	-	-	-	-	-	-	



DAILY TEMPERATURES (°F)

STATION	OB. TIME	MAX/MIN	DAY OF MONTH																															AVERAGE	
			01	02	03	04	05	06	07	08	09	10	11	12	13	14	15	16	17	18	19	20	21	22	23	24	25	26	27	28	29	30	31		
BRIGHTON DAM	08	MAX	83	83	83	78	88	88	83	86	85	85	81	83	83	79	84	81	80	78	86	92	90	86	86	80	83	85	85	83	89	86	88	84.2	
		MIN	64	64	59	60	66	66	69	70	71	67	68	60	64	66	65	60	59	68	70	73	71	60	59	57	58	64	69	67	68	70	64	65.0	
CONOWINGO DAM	07	MAX	83	72	78	72	80	82	86	84	82	82	83	83	82	84	81	79	73	85	90	89	86	83	80	84	84	86	81	87	87	85	85	82.5	
		MIN	63	62	63	64	60	66	66	68	61	61	64	67	68	68	62	62	63	63	74	73	67	61	59	60	66	66	70	69	69	63	62	64.8	
CYLBURN	08	MAX	83	81	71	78	71	80	81	86	85	87	83	83	84	83	96	92	84	85	93	98	94	91	91	78	80	84	86	98	101	95	86.1		
		MIN	65	64	61	66	65	68	72	73	74	74	72	65	69	75	80	73	69	75	78	85	80	77	67	63	67	69	72	86	78	80	72.1		
DAMASCUS 3 SSW	22	MAX	81	70	78	74	81	82	86	83	86	79	80	82	79	85	77	77	78	86	91	88	84	80	79	81	85	87	82	87	86	85	85	82.1	
		MIN	64	62	60	65	63	69	69	72	70	66	66	60	66	68	56	56	60	69	71	73	69	60	58	58	63	67	68	68	69	72	62	65.1	
EMMITSBURG 2 SE	07	MAX	83	81	73	78	70	83	84	85	86	86	81	83	84	79	84	80	79	78	89	91	87	87	82	80	84	86	87	85	90	87	86	83.2	
		MIN	64	61	60	60	64	62	68	67	71	66	66	63	59	63	66	55	55	57	70	70	75	71	62	58	57	65	67	69	67	68	61	64.1	
FREDERICK 2 NNE	07	MAX																																M	
		MIN																																M	
MILLERS 4 NE	18	MAX	80	78	78	75	81	83	85	84	85	81	82	83	81	84	82	78	77	86	91	88	86	84	79	82	84	86	83	87	86	85	85	82.9	
		MIN	63	59	57	65	62	68	70	72	71	64	64	59	62	69	67	55	58	68	68	74	70	62	57	58	61	66	67	67	64	72	61	64.5	
SMITHSBURG 2NW	08	MAX	84	79		78	75	80	84	86	82	86	80	82	81	81	85	80	79	81	87	90	89												83.6
		MIN	62	59		61	61	62	67	67	71	63	63	57	61	61	64	50	50	68	69	71	71												86
<b>APPALACHIAN MOUNTAIN 07</b>																																			
CUMBERLAND 2	18	MAX	86	83	80	78	86	84	83	90	86	89	82	85	86	85	89	85	83	89	94	96	94	89	85	86	86	90	94	93	95	95	93	87.7	
		MIN	64	58	57	60	62	62	69	69	70	68	64	61	62	67	68	56	59	59	69	69	71	58	58	58	59	64	70	72	73	63	63.8		
FROSTBURG 2	07	MAX	78	72	70	71	75	76	76	83	74	81	76	79	79	68	83	75	75	82	85	86	83	80	74	76	77	82	82	84	84	83	80	78.4	
		MIN	59	56	53	55	56	57	64	65	66	61	59	58	59	61	62	50	50	58	66	67	68	56	54	54	56	60	63	65	66	66	57	59.6	
SHARPSBURG 5 S	07	MAX	85	83	74	79	78	83	86	87	84	88	81	84	84	79	87	82	80	81	89	93	90	87	83	82	85	87	89	86	90	89	87	84.6	
		MIN	62	60	57	60	62	63	67	69	71	64	65	57	58	66	64	51	52	61	70	70	70	57	57	55	55	62	65	68	67	68	59	62.3	
<b>ALLEGHENY PLATEAU 08</b>																																			
OAKLAND 1 SE	07	MAX	79	75	76	77	76	76	78	83	75	81	80	78	80	72	84	75	76	84	86	87	85	81	77	78	82	82	86	88	81	84	85	80.2	
		MIN	60	56	60	58	58	63	64	65	67	65	64	61	63	64	64	54	56	64	68	68	68	54	56	52	59	60	59	64	65	66	57	61.4	
SAVAGE RIVER DAM	08	MAX	77	74	73	70	77	77	74	82	77	82	79	79	77	69	83	77	75	81	86	87	85	82	77	78	81	82	84	89				79.4	
		MIN	60	56	54	54	58	58	66	66	67	66	64	60	62	63	63	56	54	55	66	68	69	56	55	54	55	59	61	65				60.5	
SINES DEEP CREEK	07	MAX	75	71			79	74	80	81	79																								78.3
		MIN	55	52			49	57	62	64	63																								56.4
<b>DELAWARE NORTHERN 01</b>																																			
WILMINGTON NEW CASTLE CO AP	24	MAX	84	74	80	76	82	85	88	88	85	83	88	87	83	86	82	81	80	86	92	92	89	83	83	86	86	88	82	89	89	90	89	85.0	
		MIN	67	63	61	69	64	72	73	76	73	71	70	64	69	73	66	61	64	73	75	79	70	65	62	60	61	69	70	73	74	66	68.5		
WILMINGTON PORTER RSCH	24	MAX	85	74	80	80	82	85	88	88	84	82	85	86	84	86	80	78	81	86	94	92	89	83	82	83	89	89	83	90	92	91	99 <sup>z</sup>	85.0	
		MIN	65	64	64	66	64	72	72	74	71	69	70	65	69	69	65	60	63	72	74	78	73	66	65	65	66	70	70	71	74	74	74	68.8	
<b>DELAWARE SOUTHERN 02</b>																																			
DOVER	16	MAX	85	83	80	80	83	86	89	90	88	85	85	84	85	84	84	82	82	87	94	95	92	86	82	83	86	90	82	86	88	90	88	85.9	
		MIN	66	67	62	68	65	72	72	75	74	72	71	67	69	71	72	64	62	70	73	79	78	68	64	60	62	70	68	72	71	73	70	69.3	



# TOTAL SNOWFALL AND NUMBER OF DAYS WITH ONE INCH OR MORE ON GROUND

MARYLAND AND DELAWARE

201507

STATION	JUL		AUG		SEP		OCT		NOV		DEC		JAN		FEB		MAR		APR		MAY		JUN		TOTAL		TOTAL PRECIPITATION
	SNOWFALL	1 IN ON GD	SNOWFALL	1 IN ON GD	SNOWFALL	1 IN ON GD	SNOWFALL	1 IN ON GD	SNOWFALL	1 IN ON GD	SNOWFALL	1 IN ON GD	SNOWFALL	1 IN ON GD	SNOWFALL	1 IN ON GD	SNOWFALL	1 IN ON GD	SNOWFALL	1 IN ON GD	SNOWFALL	1 IN ON GD	SNOWFALL	1 IN ON GD	SNOWFALL	1 IN ON GD	
<b>MARYLAND</b>																											
<b>SOUTHERN EASTERN SHORE 01</b>																											
ASSATEAGUE	M		M		M		M		M		M		M		M		M		M		M		M		M 0.0	M 0	M 0.00
PRINCESS ANNE	M		M		M		M		M		M		M		M		M		M		M		M		M 0.0	M 1	M 21.29
SALISBURY 2N	M		M		M		M		M		M		M	0	M	0	M		M		M		M		M 0.0	M 2	M 52.24
SALISBURY FAA AP	0.0		0.0	0	0.0	0	0.0	0	0.0	0	T	0	T	0	10.5	0	M 5.2	0	0.0	0	0.0	0	0.0	0	M 15.7	M 0	M 52.27
SNOW HILL 4 N	M		M		M		M		M		M		M	1	M	8	M		M		M		M		M 0.0	M 9	M 49.66
<b>CENTRAL EASTERN SHORE 02</b>																											
ROYAL OAK 2 SSW	0.0		0.0		0.0	0	0.0	0	0.0	0	T	0	3.3	1	10.0	14	6.5	6	0.0	0	0.0	0	0.0	0	19.8	M 21	M 46.23
<b>LOWER SOUTHERN 03</b>																											
MECHANICSVILLE 5 NE	M		M		M		M		M		M		M	0	M 10.0	12	M	7	M		M		M		M 10.0	M 19	M 45.68
SOLOMONS	M		M		M		M		M		M		M	1	M	4	M	1	M		M		M		M 0.0	M 6	M 33.36
<b>UPPER SOUTHERN 04</b>																											
BALTIMORE WASH INTL AP	0.0		0.0		0.0	0	0.0	0	0.3	0	0.2	0	5.9	6	14.6	14	7.7	4	0.0	0	0.0	0	0.0	0	28.7	M 24	M 55.30
BELTSVILLE	0.0		0.0		0.0	0	0.0	0	1.0	0	T	0	6.8	9	13.1	14	8.6	10	0.0	0	0.0	0	0.0	0	29.5	M 33	M 47.73
DALECARLIA RSVR	M 0.0		M 0.0		M 0.0	0	M 0.0	0	M 0.0	0	M 0.0	0	M 3.8	2	FM 6.0	2	M 5.0	0	M 0.0	0	M 0.0	0	M 0.0	0	M 8.8	M 4	M 48.70
LAUREL 3 W	M		M		M		M		M		M		M		M		M		M		M		M		M 0.0	M 0	M 51.00
MARYLAND SCIENCE CENTER	M		M		M		M		M		M		M		M		M		M		M		M		M 0.0	M 0	M 47.01
NATL ARBORETUM DC	M		M		M	0	M	0	M	0	M	0	M	5	M	8	M 6.0	4	M	0	M	0	M	0	M 6.0	M 17	M 46.60
OXON HILL	0.0		0.0		0.0	0	0.0	0	0.2	0	T	0	3.4	5	11.2	12	6.2	5	0.0	0	0.0	0	M 0.0	0	M 21.0	M 22	M 47.47
UPPER MARLBORO 3 NNW	M		M		M		M		M		M		M	8	M	11	M	5	M		M		M		M 0.0	M 24	M 48.34
<b>NORTHERN CENTRAL 06</b>																											
ABERDEEN PHILLIPS FLD	0.0		0.0		0.0	0	0.0	0	M 0.3	0	T	0	6.6	4	M 11.1	12	M 8.8	7	0.0	0	0.0	0	0.0	0	M 26.8	M 23	M 49.75
BRIGHTON DAM	0.0		0.0		0.0	0	0.0	0	0.5	0	0.0	0	7.5	2	14.7	4	10.5	3	0.0	0	M 0.0	0	M 0.0	0	M 33.2	M 9	M 54.84
CONOWINGO DAM	M		M		M		M		M		M		M		M		M		M		M		M		M 0.0	M 0	M 38.80
CYLBURN	M		M		M		M		M		M		M	0	M	11	M	9	M		M		M		M 0.0	M 20	M 42.40
DAMASCUS 3 SSW	M 0.0		0.0		0.0	0	0.0	0	3.2	3	T	0	10.4	14	17.4	15	11.8	12	T	0	0.0	0	0.0	0	M 42.8	M 44	M 48.07
EMMITSBURG 2 SE	M 0.0		0.0		0.0	0	0.0	0	3.0	1	T	0	13.0	3	F 10.5	8	F 15.0	5	0.0	0	0.0	0	0.0	0	M 16.0	M 17	M 46.94
FREDERICK 2 NNE	M		M		M		M		M		M		M		M		M		M		M		M		M 0.0	M 0	M 0.00
MILLERS 4 NE	0.0		0.0		0.0	0	0.0	0	6.0	5	0.5	1	11.1	14	12.9	15	17.2	11	0.0	0	0.0	0	0.0	0	47.7	M 46	M 43.29
SMITHSBURG 2NW	M		M		M		M		M		M		M		M		M	1	M		M		M		M 0.0	M 1	M 11.95
<b>APPALACHIAN MOUNTAIN 07</b>																											
CUMBERLAND 2	M		M		M		M		M	3	M		M	14	M	9	M	3	M		M		M		M 0.0	M 29	M 35.34
FROSTBURG 2	M		M		M		M		M	5	M	0	M 17.4	22	M 12.7	28	M	13	M		M		M		M 30.1	M 68	M 40.61
SHARPSBURG 5 S	M		M		M		M		M		M		M 6.6	6	12.2	10	M 11.1	8	M	0	M		M		M 29.9	M 24	M 40.62
WILLIAMSPORT	M		M		M	0	M	0	M	0	M	0	M	2	M		M	3	M		M	0	M	0	M 0.0	M 5	M 17.50
<b>ALLEGHENY PLATEAU 08</b>																											
OAKLAND 1 SE	0.0		0.0		0.0	0	0.0	0	12.4	5	1.2	1	22.2	15	21.3	22	F 8.2	8	2.0	0	0.0	0	0.0	0	M 59.1	M 51	M 60.52
SAVAGE RIVER DAM	M		M		M		M		M	4	M	0	M	15	M	21	M	9	M		M		M		M 0.0	M 49	M 36.35
SINES DEEP CREEK	M		M		M		M		M	3	M		M	11	M	11	M	8	M		M		M		M 0.0	M 33	M 0.00
<b>DELAWARE</b>																											
<b>NORTHERN 01</b>																											
WILMINGTON NEW CASTLE CO AP	0.0		0.0		0.0	0	M 0.0	0	0.3	0	0.2	0	M 3.7	3	10.6	14	8.6	8	0.0	0	0.0	0	0.0	0	M 23.4	M 25	M 54.75
WILMINGTON PORTER RSCH	0.0		0.0		0.0	0	0.0	0	0.0	0	0.0	0	M 1.0	0	9.1	7	M 10.8	1	0.0	0	0.0	0	0.0	0	M 20.9	M 8	M 46.78
<b>SOUTHERN 02</b>																											
DOVER	0.0		0.0		0.0	0	0.0	0	M 0.0	0	T	0	3.5	3	5.7	7	6.5	4	0.0	0	0.0	0	0.0	0	M 15.7	M 14	M 48.26
FRANKFORD	M		M		M		M		M		M		M		M		M		M		M		M		M 0.0	M 0	M 0.00

MONTHLY AND SEASONAL HEATING DEGREE DAYS

STATION	JUL	AUG	SEP	OCT	NOV	DEC	JAN	FEB	MAR	APR	MAY	JUN	TOTAL	SEASONAL NORM
<b>MARYLAND</b>														
<b>SOUTHERN EASTERN SHORE 01</b>														
PRINCESS ANNE	0	0	4E	81E	356E	596E	895E	984E	603E	231E	58E	12E	3820E	4264
SALISBURY 2N	0	0	13	142E	524	645	890E	908E	660	240E	36E	14	4072E	
SALISBURY FAA AP	0	0	6	127	539	644	888	1009	669	315	75	15	4287	4442
SNOW HILL 4 N	0	0	18	143	535	654	891	981	673	248	49	15	4207	4023
<b>CENTRAL EASTERN SHORE 02</b>														
ROYAL OAK 2 SSW	0	0	19	164	572	732	979	1029	745	258	45	13	4556	4026
<b>LOWER SOUTHERN 03</b>														
MECHANICSVILLE 5 NE	1	0	53	233	671	761	1029	1077	808	321	76	21	5051	4640
SOLOMONS	0	0	1E	71E	480E	672E	946E	983E	682E	271	35	10	4151E	3823
<b>UPPER SOUTHERN 04</b>														
BALTIMORE WASH INTL AP	0	0	37	215	640	769	1052	1102	777	310	48	14	4964	4764
BELTSVILLE	2	0	33	202	652	775	1059	1100	793	320	57	20	5013	4727
DALECARLIA RSVR	0	0	31E	195E	642E	757E	1076E	1112E	812E	292E	51E	19E	4987E	4398
LAUREL 3 W	0	0	14	174	614	767	1047	1072	735	262	26	16	4727	4476
MARYLAND SCIENCE CENTER	0	0	5	146	584	727	989	1063	674E	225	29	10	4452E	4032
NATL ARBORETUM DC	0	0	10	149	567E	699	985	995E	729E	246	33E	9E	4422E	4178
OXON HILL	0	0	14	193	622	745	1018	1051	737	271	38	15	4704	4270
UPPER MARLBORO 3 NNW	1	0	37	212	655	773	1058	1087	808	306	58	20	5015	4655
<b>NORTHERN CENTRAL 06</b>														
ABERDEEN PHILLIPS FLD	0	0	45	232	675	764	1074	1135	853	345	67	16	5206	4708
BRIGHTON DAM	4	0	58	258	697E	841E	1109E	1152	876E	366	69	27	5457E	
CONOWINGO DAM	0	0	62	280	738	880	1171	1227	907	397	74	19	5755	4798
CYLBURN	2	1	55	237	678	782	1097	1132	841	328	71	26	5250	4917
DAMASCUS 3 SSW	2E	2	60	265	697	847	1126	1151	807	310	59	25	5351E	5085
EMMITSBURG 2 SE	6	3	79	279	734	834	1152	1194	911	371	78	22	5663	5396
MILLERS 4 NE	3	7	63	261	701	826	1128	1156	816	320	54	20	5355	5346
SMITHSBURG 2NW									873E	410E	105E	34E	M 1422E	5438
<b>APPALACHIAN MOUNTAIN 07</b>														
CUMBERLAND 2	3	1	61	262	724	820	1111	1133	775	321	81	12	5304	4853
FROSTBURG 2	44	40	144	408	893	996	1298	1328	957	470	149	57	6784	6511
SHARPSBURG 5 S	8	6	99	296	783E	862	1147	1195	902	390	95	26	5809E	5303
WILLIAMSPORT	0	0	0		675E	605E	946E	1185E	705E	245E	186E	0	M 4547E	5173
<b>ALLEGHENY PLATEAU 08</b>														
OAKLAND 1 SE	63	49	165	451	905	963	1282	1294	915	520	176	46	6829	6673
SAVAGE RIVER DAM	28E	26E	140E	377E	838	934	1192E	1277E	912E	466E	129E	43E	6362E	6159
SINES DEEP CREEK	83E	78E	187E	440E	898E	964E	1305E	1371E	964E	549E	209E	69E	7117E	
<b>DELAWARE</b>														
<b>NORTHERN 01</b>														
WILMINGTON NEW CASTLE CO AP	0	0	38	217	634	765	1066	1119	834	328	56	18	5075	4819
WILMINGTON PORTER RSCH	0	0	33	239	684	799	1139E	1122E	816E	336	58	22E	5248E	4935
<b>SOUTHERN 02</b>														
DOVER	0	0	18	158	562	714	1008	1036	735	266	46	13	4556	4269

## SNOWFALL AND SNOW ON GROUND (INCHES)

STATION		DAY OF MONTH																														
		01	02	03	04	05	06	07	08	09	10	11	12	13	14	15	16	17	18	19	20	21	22	23	24	25	26	27	28	29	30	31
<b>MARYLAND</b> <b>SOUTHERN</b> <b>EASTERN SHORE 01</b> ASSATEAGUE PRINCESS ANNE SALISBURY 2N SALISBURY FAA AP SNOW HILL 4 N	SNOWFALL																															
	SNOWFALL																															
	SNOWFALL																															
	SN ON GND																															
	SNOWFALL																															
<b>DELAWARE</b> <b>NORTHERN 01</b> WILMINGTON NEW CASTLE CO AP WILMINGTON PORTER RSCH	SNOWFALL																															
	SN ON GND																															
	SNOWFALL																															
	SN ON GND																															

Snowfall: Includes snow and ice. Values for NWS stations (J index note) are Mid-Mid (LST).

Snow on ground: Includes snow, sleet, ice, and hail. Values for NWS stations (J index note) are observed at 12 UTC (GMT).

Water Equivalent: Given for NWS stations (J index note) only, when snow depth is 2 inches or more, and is measured at 18 UTC (GMT)

# PAN EVAPORATION AND WIND

STATION		DAY OF MONTH																															TOTAL OR AVERAGE
		01	02	03	04	05	06	07	08	09	10	11	12	13	14	15	16	17	18	19	20	21	22	23	24	25	26	27	28	29	30	31	
MARYLAND UPPER SOUTHERN 04 BELTSVILLE	WIND	58	38	16	33	17	23	40	43	52	56	47	25	11	22	45	78	23	54	30	27	32	34	45	37	41	77	27	19	25	44	37	1156
	EVAP	0.25	0.09	0.12	0.15	0.08	0.16	0.26	0.26	0.17	0.18	0.23	0.22	0.18	0.11	0.21	0.21	0.23	0.12	0.25	0.26	0.15	0.28	0.27	0.28	0.22	0.26	0.11	0.19	0.13	0.18	5.93	
	MAX	88	88	73	86	84	90	88	92	88	89	88	89	90	80	92	87	90	80	92	98	98	89	89	88	88	86	91	89	96	90	92	88.6
	MIN	66	67	62	63	67	68	72	72	72	70	70	67	66	70	69	60	61	66	70	74	75	64	61	62	62	66	66	70	71	72	67	67.4
UPPER MARLBORO 3 NNW	WIND	-	-	-	-	-	-	-	-	-	-	-	-	-	-	-	-	-	-	-	-	-	-	-	-	-	-	-	-	-	-	M	
	EVAP	-	-	-	-	-	-	-	-	-	-	-	-	-	-	-	-	-	-	-	-	-	-	-	-	-	-	-	-	-	-	M	
	MAX	-	-	-	-	-	-	-	-	-	-	-	-	-	-	-	-	-	-	-	-	-	-	-	-	-	-	-	-	-	-	M	
	MIN	-	-	-	-	-	-	-	-	-	-	-	-	-	-	-	-	-	-	-	-	-	-	-	-	-	-	-	-	-	-	M	
ALLEGHENY PLATEAU 08 SAVAGE RIVER DAM	WIND	-	-	-	-	-	-	-	-	-	-	-	-	-	-	-	-	-	-	-	-	-	-	-	-	-	-	-	-	-	M		
	EVAP	-	-	-	-	-	-	-	-	-	-	-	-	-	-	-	-	-	-	-	-	-	-	-	-	-	-	-	-	-	M		
	MAX	-	-	-	-	-	-	-	-	-	-	-	-	-	-	-	-	-	-	-	-	-	-	-	-	-	-	-	-	-	-		
	MIN	-	-	-	-	-	-	-	-	-	-	-	-	-	-	-	-	-	-	-	-	-	-	-	-	-	-	-	-	-	M		

Evaporation: Is measured in hundredths of inches.

Wind: Is measured in miles.

Max and Min: The maximum and minimum temperatures (Fahrenheit) of the water in the evaporation pan.

# STATION INDEX

STATION	INDEX NO.	DIVISION	COUNTY	LATITUDE	LONGITUDE	ELEVATION (IN FEET)	OBSERVATION TIME AND TABLES			
							LOCAL STD TIME			
							TEMP	PRECIP	EVAP	SPECIAL SEE (NOTES)
MARYLAND										
ABERDEEN PHILLIPS FLD	0015	06	HARFORD	39 28	76 10W	57	07	07		CH
ASSATEAGUE	0335	01	WORCESTER	38 4	75 13W	10	VAR	VAR		H
BALTIMORE WASH INTL AP R	0465	04	ANNE ARUNDEL	39 10	76 41W	156	24	24		HJ
BELTSVILLE	0700	04	PRINCE GEORGE'S	39 2	76 56W	145	08	08	08	CH
BRIGHTON DAM	1125	06	MONTGOMERY	39 11	77 0W	330	08	08		H
CONOWINGO DAM	2060	06	HARFORD	39 39	76 11W	40	07	07		H
CUMBERLAND 2	2282	07	ALLEGANY	39 39	78 45W	730	18	18		H
CYLBURN	2308	06	BALTIMORE	39 21	76 39W	235	08	08		H
DALECARLIA RSVR	2325	04	DISTRICT OF COLUMBIA	38 56	77 7W	150	08	08		H
DAMASCUS 3 SSW	2336	06	MONTGOMERY	39 16	77 14W	700	22	22		H
EMMITSBURG 2 SE	2906	06	FREDERICK	39 41	77 17W	403	07	07		H
FREDERICK 2 NNE	3353	06	FREDERICK	39 26	77 24W	280	07	07		H
FROSTBURG 2	3415	07	ALLEGANY	39 40	78 56W	2170	07	07		H
LAUREL 3 W	5111	04	PRINCE GEORGE'S	39 5	76 54W	400	24	24		H
MARYLAND SCIENCE CENTER R	5718	04	BALTIMORE (CITY)	39 17	76 37W	20	24	24		H
MECHANICSVILLE 5 NE	5865	03	ST. MARY'S	38 28	76 42W	100	07	07		H
MILLERS 4 NE	5934	06	CARROLL	39 43	76 48W	860	18	18		CH
NATL ARBORETUM DC	6350	04	DISTRICT OF COLUMBIA	38 55	76 58W	50	07	07		H
OAKLAND 1 SE	6620	08	GARRETT	39 25	79 24W	2420	07	07		H
OXON HILL	6800	04	PRINCE GEORGE'S	38 47	76 60W	120	08	08		H
PRINCESS ANNE	7330	01	SOMERSET	38 13	75 41W	20	17	17		H
ROYAL OAK 2 SSW	7806	02	TALBOT	38 43	76 11W	10	17	17		H
SALISBURY 2N	8004	01	WICOMICO	38 24	75 36W	20	17	17		H
SALISBURY FAA AP	8005	01	WICOMICO	38 20	75 31W	48	24	24		H
SAVAGE RIVER DAM	8065	08	GARRETT	39 31	79 8W	1495	08	08	08	CH
SHARPSBURG 5 S	8207	07	WASHINGTON	39 24	77 43W	500	07	07		H
SINES DEEP CREEK	8315	08	GARRETT	39 31	79 25W	2040	07	07		H
SMITHSBURG 2NW	8371	06	WASHINGTON	39 40	77 35W	670	08	08		H
SNOW HILL 4 N	8380	01	WORCESTER	38 14	75 23W	30	17	17		H
SOLOMONS	8405	03	CALVERT	38 19	76 27W	12	08	08		H
UPPER MARLBORO 3 NNW	9070	04	PRINCE GEORGE'S	38 51	76 46W	130	08	08	08	H
WILLIAMSPORT	9570	07	WASHINGTON	39 37	77 51W	360		06		H
DELAWARE										
DOVER	2730	02	KENT	39 9	75 30W	30	16	16		H
FRANKFORD	3500	02	SUSSEX	38 32	75 14W	41		07		H
WILMINGTON NEW CASTLE CO AP R	9595	01	NEW CASTLE	39 40	75 36W	79	24	24		HJ
WILMINGTON PORTER RSCH	9605	01	NEW CASTLE	39 46	75 32W	270	24	24		H

# REFERENCE NOTES

**STATION NAMES:** Name of the city, town or locality. Figures and letters following the station names indicate the distance in miles and direction from the post office or town community center.

**DIVISIONS:** Areas within a state of similar climatological characteristics. Division averages are calculated using data from stations that record temperature and/or precipitation. Station Precipitation totals flagged with an 'F' or 'M' are excluded from the Divisional Average calculations of precipitation. Stations with monthly Temperature averages flagged with an 'F' or 'M' are included in the Divisional Average if there are no more than 9 flagged or missing daily values in the month, else they are excluded from the divisional average for temperature.

**NORMALS:** The average value of the meteorological element over a time period. Effective 1 January 2012, the averaging period is 1981 to 2010. The normals for National Weather Service localities have been adjusted so as to be representative for the current observation site.

**MONTHLY DEGREE DAY TOTALS:** One heating (cooling) degree day is accumulated for each whole degree that the daily mean temperature is below (above) 65 degrees Fahrenheit.

**PRECIPITATION:** Values shown in hundredths of inches are water equivalent totals, i.e., total of liquid and melted frozen precipitation. In the "Monthly Summarized Data" table the total snow and sleet values shown in tenths of inches are unmelted amounts. The max depth on ground values of snow and sleet shown in whole inches are cumulative unmelted amounts. The number of days with .10, .50, 1.00 or more refers to water equivalents.

**PRECIPITATION QUALITY CONTROL:** The NCEI quality control process may flag precipitation data that are spatially inconsistent, exceed climatological limits, or are inconsistent with prevailing weather patterns.

**TEMPERATURE:** Original temperature values are given in the "Daily Temperature" table. Summary temperature information (averages, departures, extremes, monthly degree day totals) is based on the values labeled MAX/MIN.

**WIND:** (As shown in the "Evaporation and Wind" table) the total wind movement in miles over the evaporation pan as determined by an anemometer recorder located 6-8 inches above the pan.

## SYMBOLS AND LETTERS USED IN THE STATION INDEX TABLE

C Station is equipped with recording rain gage (R) but values in this bulletin are from a non-recording rain gage unless indicated by an R.

G Observations appear in the "Soil Temperatures" table.

H Observations appear in the "Snowfall and Snow on the Ground" table.

J Station also published as a Local Climatological Data publication.

VAR Observation time varies.

SR / SS Observation time near sunrise / Observation time near sunset, respectively.

## SYMBOLS AND LETTERS USED IN THE DATA TABLES

(DAILY DATA ARE FOR THE 24 HOURS IMMEDIATELY PRECEDING OBSERVATION TIME.)

BLANK Entries in the "Monthly Summarized Data" table indicate no record.

BLANK Entries in the "Daily Precipitation" and "Snowfall and Snow on the Ground" tables indicate zero.

BLANK Entries in the "Daily Temperature" table indicate a missing record

- No record. Data not recorded or not received in time for publication.

+ Precipitation or temperature extremes occurred on one or more previous dates during the month.

\* Rain gage not read. Precipitation is included in the amount following the asterisks.

Time distribution may not be known. A \* preceding the monthly total indicates precipitation amount is being carried forward to next month's total, and may include amounts from the previous month(s).

a As a subscript, indicates accumulated total.

A Amount of precipitation is the total of observer's entries for the current month. It may include precipitation that occurred during the previous month. Refer to earlier bulletin to determine date of last reading. (Hawaii stations)

B Divisional Departure from normals are computed using 1981-2010 normals.

E Normalized HDD/CDD Calculation. E is appended to the HDD/CDD Calculation when 1-9 individual daily

and/or TMIN values are missing and a Normalized HDD/CDD Calculation is provided. M appears alone if 10 or more daily values are missing.

F Monthly calculation flagged value. F is appended to average and/or total values computed which exclude one or more daily data values that have been flagged by the GHCN-Daily Dataset

M Insufficient or partial data. M is appended to average and/or total values computed with 1-9 daily values missing. M appears alone if 10 or more daily values are missing, (8 or more for wind and evaporation).

N Indicates snow fall or Snowdepth totals are computed with one or more missing days.

R Amounts from recording rain gage.

T Trace. An amount too small to measure.

**SEASONAL TABLES:** Monthly and seasonal snowfall and heating degree days for the 12 months ending with the June data are published in the July issue of this bulletin. Cooling degree days for the calendar year are published in the "Climatological Data Annual Summary."

Information concerning the history of changes in locations, exposure, etc. of substations is kept on file at the National Centers for Environmental Information. Historical information of regular National Weather Service Offices may be obtained from the "Local Climatological Data" annual publication. The contents of this publication may be reprinted or otherwise used freely, with proper credit to the National Centers For Environmental Information. The data are also available digitally.

Effective with the January 2011 Data-Month, COOP Observer Names are no longer included in the Monthly and Annual Climatological Data Publications. This information is not published to ensure the privacy of personal information pursuant to Section 208 of the E-Government Act of 2002 (44 USC 3601).

As of the 2011 Data-Year, Station and Climate Division Maps are no longer being included in the CD Publications. NCEI's Products Branch provides updated Station Maps for various data networks via the Historical Observing Metadata Repository: <http://www.ncdc.noaa.gov/homr>.

The GHCN-Daily Quality Control Flags shown below are displayed as superscripts with the data. For more Information on Global Historical Climatology Network - Daily and flags, see: <http://www.ncdc.noaa.gov/oa/climate/ghcn-daily/> and Comprehensive Automated Quality Assurance of Daily Surface Observations. Durre, Imke, Matthew J. Menne, Byron E. Gleason, Tamara G. Houston, Russell S. Vose, 2010: J. Appl. Meteor. Climatol., 49, 16151633. doi: 10.1175/2010JAMC2375.1

Blank = Passed All checks

D = failed duplicate check

G = failed gap check

I = failed internal consistency check

K = failed streak/frequent-value check

L = failed check on length of multiday period

M = failed megaconsistency check

N = failed naught check

O = failed climatological outlier check

R = failed lagged range check

S = failed spatial consistency check

T = failed temporal consistency check

W = temperature too warm for snow

X = failed bounds check

Z = flagged as a result of an official Datzilla investigation

Beginning with the January 2013 CD Publication, monthly mean temperature calculations have changed to the National Data Stewardship Team standard. Monthly maximum and minimum temperatures are not rounded until after the monthly mean temperature is calculated. This is the most accurate outcome, but may be slightly different from the mean derived from rounded monthly maximum and minimum.

Processing Updates and Errata: The CD Publications are periodically reproduced to include the addition of late reports and reported corrections. The GHCND data version noted on the cover of the publication provides the generation date.

The climate division temperature and precipitation values in this publication are based on simple averages from the current set of NWS-Designated Open and Published COOP and First Order Sites within each division. These values differ from those found in NCEI's nClimDiv product. Beginning in February 2014, the nClimDiv product is used by NCEI's Monitoring Branch and in its monthly climate reports. For more details on nClimDiv, please go to <http://www.ncdc.noaa.gov/monitoring-references/maps/us-climate-divisions.php>.

NOAA National Centers for Environmental Information  
Attn: Customer Engagement Branch  
151 Patton Avenue  
Asheville, NC 28801-5001

Customer Services Number: (828) 271-4800, option 2  
TDD : (828) 271-4010  
Fax number: (828) 271-4876

NCEI now offers free online access to the *Climatological Data* publication.  
Go to : [www.ncdc.noaa.gov](http://www.ncdc.noaa.gov) and choose Most Popular.